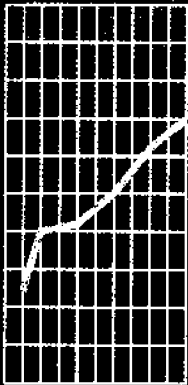


June 1997

EMBARGO: 11:30 AM (CANBERRA TIME) FRI 18 JULY 1997

# Monthly Summary of Statistics

## Victoria



# NOTES

## FORTHCOMING ISSUES

ISSUE	RELEASE DATE
July 1997	19 August 1997
August 1997	18 September 1997
September 1997	20 October 1997

\*\*\*\*\*

## ABOUT THIS PUBLICATION

The aim of this publication is to provide users with a range of the latest statistics available at the end of each month of issue. Consequently, the dates and periods shown are not always the same for each table, but are in each case the latest figures available at that time.

## SEASONAL ADJUSTMENT

Seasonal adjustment is a means of removing the estimated effects of normal seasonal variations from economic time series so that the effects of other influences are obvious. Seasonal variations are the systematic (though not necessarily regular) intra-year movements of economic time series. These are often the result of non-economic phenomena, such as climatic changes and regular religious festivals e.g. Christmas and Easter.

## TREND ESTIMATE

Smoothing seasonally adjusted series produces a measure of trend by removing the impact of the irregular component of the series. The trend estimates are derived by applying a 13-term Henderson weighted moving average to the respective seasonally adjusted series. Readers are reminded that trend estimates are subject to revision as subsequent months' data become available.

\*\*\*\*\*

## SYMBOLS AND OTHER USAGES

n.a.	not available
n.e.c.	not elsewhere classified
n.p.	not available for publication but included in totals where applicable
n.y.a.	not yet available
p	preliminary — figure or series subject to revision
r	figure or series revised since previous issue
..	not applicable
—	nil or rounded to zero

\*\*\*\*\*

## INQUIRIES

For information about other ABS statistics and services, please refer to the back of this publication.

For further information about these statistics, contact Information Services on Melbourne 03 9615 7000.

Stuart Jackson  
Regional Director, Victoria

# CONTENTS

Page

EDITORIAL			
	Selected features .....		4, 5
TABLES			
Demography			
	1 Estimated resident population .....		6
	2 Births, deaths, marriages and divorces .....		6
Labour			
	3 Labour force status of the civilian population aged 15 years and over .....		7
	4 Employed persons by industry .....		8
	5 Job vacancies .....		9
	6 Industrial disputes causing stoppage of work .....		9
Wages and prices			
	7 Average weekly earnings of employees (original series) .....		9
	8 Consumer price index, Melbourne .....		10
	9 Price Index of Materials Used in Building, Melbourne .....		10
Meat production			
	10 Livestock slaughterings .....		11
	11 Meat production .....		11
Building			
	12 Building approvals, Melbourne and Victoria .....		12
	13 New houses and other residential buildings: number of dwelling units .....		13
	14 Value of building .....		13
Finance			
	15 Statement of Budget Sector transactions .....		14
	16 Private new capital expenditure by selected industries and type of asset .....		15
	17 Commercial finance commitments .....		15
	18 Secured housing finance commitments .....		16
Retail			
	19 Retail turnover by industry (excl. motor vehicles, parts, petrol, etc.) .....		16
Trade			
	20 Exports and imports by sections of the Australian Export and Import Classifications .....		17
	21 Overseas trade, major trading partners .....		17
	22 Value of overseas trade, Victoria and Australia .....		18
Tourism			
	23 Tourist accommodation, Melbourne and Victoria .....		18
INFORMATION			
	Further references .....		19

## SELECTED FEATURES

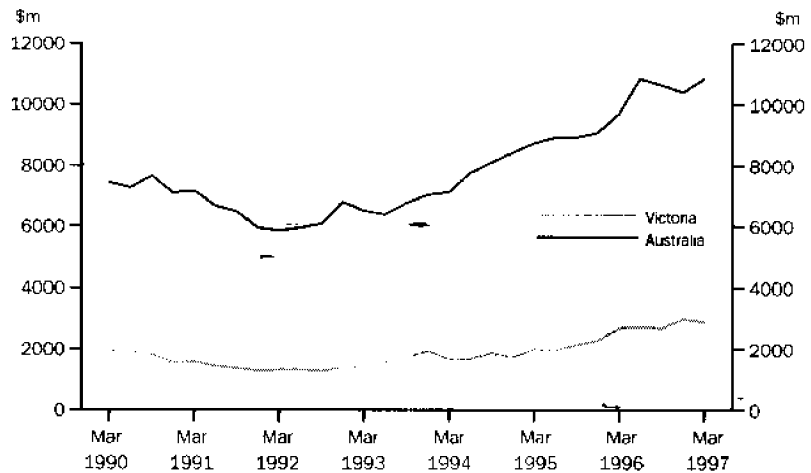
### PRIVATE NEW CAPITAL EXPENDITURE

The value of private new capital expenditure, in seasonally adjusted terms, for Victoria in the March quarter 1997 was \$2,895.3 million, which continued the quarterly variability.

For Australia, the value of private new capital expenditure, in seasonally adjusted terms, in the March quarter 1997 was \$10,860.4 million, which increased from the previous quarter after a 2-quarter decrease.

Private new capital expenditure for Victoria accounted for 26.7% of the Australian total.

PRIVATE NEW CAPITAL EXPENDITURE  
Seasonally adjusted, quarterly

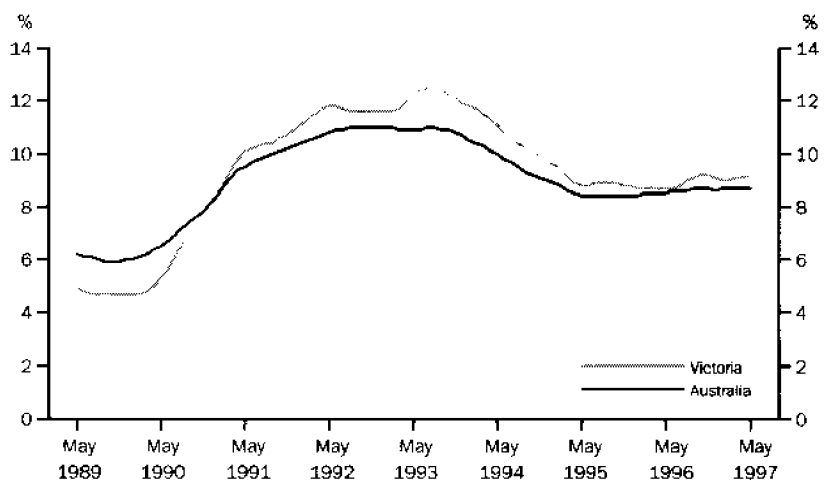


### UNEMPLOYMENT RATE

The trend estimate of the unemployment rate for Victoria in May 1997 was 9.2%, up 1 decimal point from the previous month.

For Australia, the trend estimate of the unemployment rate in May 1997 was 8.7%, remaining unchanged over the past five months.

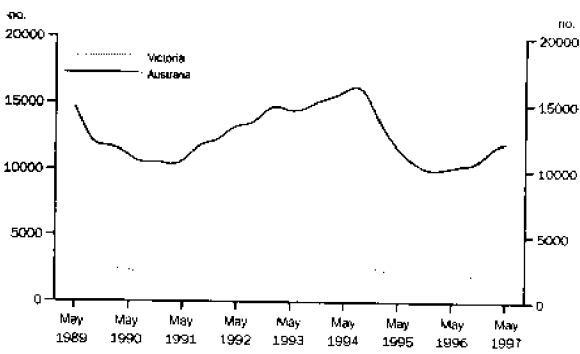
UNEMPLOYMENT RATE  
Trend, monthly



# SELECTED FEATURES *continued*

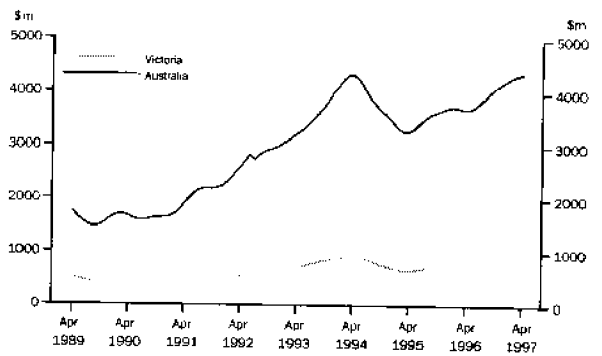
**NEW DWELLING UNITS APPROVED**

Trend, monthly



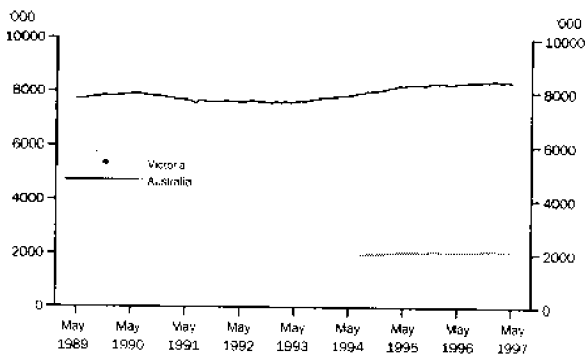
**TOTAL VALUE OF SECURED HOUSING FINANCE COMMITMENTS TO INDIVIDUALS**

Trend, monthly



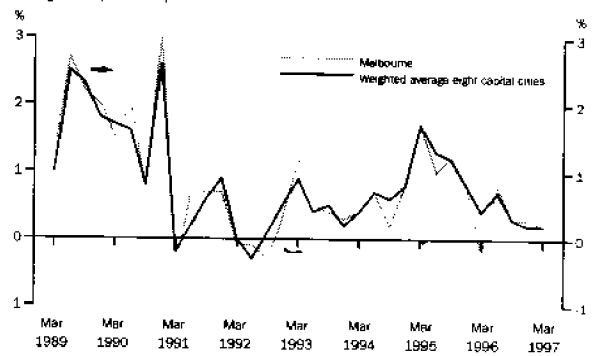
**EMPLOYED PERSONS**

Seasonally adjusted, monthly



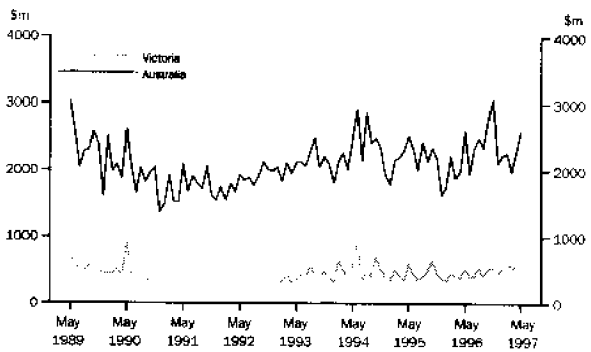
**CONSUMER PRICE INDEX**

Change from previous quarter



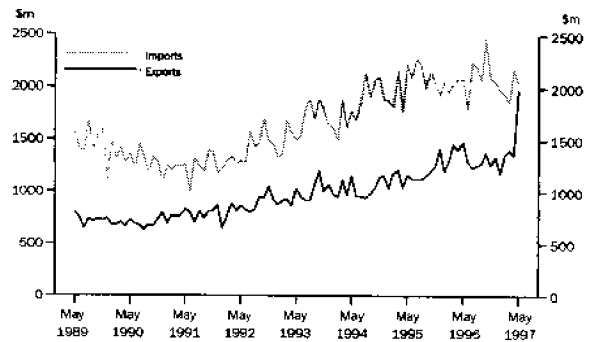
**VALUE OF ALL BUILDINGS APPROVED**

Original, monthly



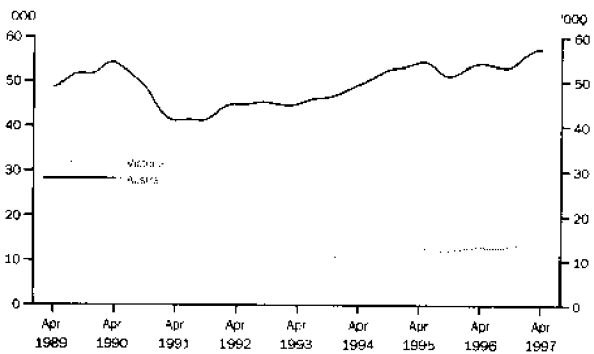
**MERCHANDISE IMPORTS AND EXPORTS, VICTORIA**

Original, monthly



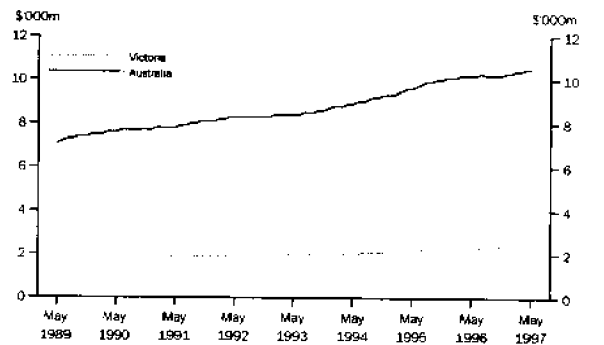
**NEW MOTOR VEHICLE REGISTRATIONS**

Trend, monthly



**RETAIL TURNOVER**

Trend, monthly



## 1

## ESTIMATED RESIDENT POPULATION

Period	At end of period			Increase during period		Mean estimated resident population for year ended		Melbourne Statistical Division at 30 June
	Males	Females	Persons	Natural	Total	30 June	31 Dec	
	'000	'000	'000	'000	'000	'000	'000	
<b>1993-94</b>	2 219.5	2 267.2	4 486.7	32.5	11.3	4 479.1	4 488.6	3 196.7
<b>1994-95</b>	2 232.7	2 283.5	4 516.1	31.3	25.6	4 501.2	4 517.6	3 217.4
<b>1995-96</b>	2 252.9	2 307.9	4 560.8	28.1	39.9	4 539.1	4 561.5	3 248.8
<b>1992</b>								
December qtr	2 211.3	2 253.7	4 465.0	8.5	3.6	..	..	..
<b>1993</b>								
March qtr	2 213.8	2 257.2	4 471.0	8.8	5.0	..	..	..
June qtr	2 213.7	2 258.0	4 471.7	8.1	-0.2	..	..	..
September qtr	2 214.8	2 260.2	4 475.0	7.7	2.3	..	..	..
December qtr	2 215.8	2 262.4	4 478.2	8.3	2.3	..	..	..
<b>1994</b>								
March qtr	2 218.3	2 265.2	4 483.6	8.5	4.4	..	..	..
June qtr	2 219.5	2 267.2	4 486.7	7.6	2.2	..	..	..
September qtr	2 223.0	2 271.4	4 494.4	6.8	5.6	..	..	..
December qtr	2 225.1	2 274.4	4 499.5	7.8	3.7	..	..	..
<b>1995</b>								
March qtr	2 229.3	2 279.3	4 508.6	8.9	8.6	..	..	..
June qtr	2 232.7	2 283.5	4 516.1	7.6	6.7	..	..	..
September qtr	2 237.4	2 289.1	4 526.5	6.6	9.1	..	..	..
December qtr	2 242.5	2 296.0	4 538.5	6.9	10.6	..	..	..
<b>1996</b>								
March qtr	2 249.0	2 303.2	4 552.2	7.4	12.4	..	..	..
June qtr	2 252.9	2 307.9	4 560.8	7.1	7.7	..	..	..
September qtr	2 258.4	2 313.6	4 571.9	6.3	11.0	..	..	..
December qtr	2 262.9	2 328.7	4 581.6	7.1	9.7	..	..	..

## 2

## BIRTHS, DEATHS, MARRIAGES AND DIVORCES

Period	Number of registrations				Annual rate per 1,000 of mean estimated resident population				Infant deaths per 1,000 live births
	Births	Deaths (including infant deaths)		Divorces	Births	Deaths	Marriages	Divorces	
		Marriages	Divorces						
<b>1993-94</b>	64 540	31 778	27 316	10 914	14.44	7.11	6.11	2.44	5.35
<b>1994-95</b>	63 960	32 291	26 831	11 602	14.26	7.20	5.98	2.59	5.19
<b>1995-96</b>	60 954	32 494	26 117	12 002	13.48	7.19	5.78	2.65	5.28
<b>1994</b>									
March qtr	16 684	7 564	8 862	2 379	..	..	..	..	..
June qtr	16 061	8 052	6 282	2 738	..	..	..	..	..
September qtr	16 039	9 140	4 149	3 050	..	..	..	..	..
December qtr	15 498	7 557	7 681	3 153	..	..	..	..	..
Year - 1994	64 282	32 313	26 974	11 320	14.36	7.22	6.03	2.53	5.26
<b>1995</b>									
March qtr	16 656	7 608	8 891	2 625	..	..	..	..	..
June qtr	15 767	7 986	6 110	2 774	..	..	..	..	..
September qtr	15 735	8 745	3 881	3 132	..	..	..	..	..
December qtr	14 808	8 059	7 725	3 307	..	..	..	..	..
Year - 1995	62 966	32 398	26 607	11 838	13.99	7.20	5.91	2.63	5.08
<b>1996</b>									
March qtr	15 244	7 725	8 372	2 672	..	..	..	..	..
June qtr	15 167	7 965	6 139	2 891	..	..	..	..	..
September qtr p	15 615	9 189	3 841	3 530	..	..	..	..	..
December qtr p	15 055	7 838	7 729	3 398	..	..	..	..	..
Year - 1996	61 081	32 717	26 081	12 491	13.33	7.14	5.69	2.73	5.09

Month	Employed		Unemployed looking for work			Labour force	Not in labour force	Civilian population 15 years and over	Unemp- loyment rate	Partici- pation rate
	Full- time	Total	Full- time	Part- time	Total					
	'000	'000	'000	'000	'000	'000	'000	'000	%	%
<b>MALES</b>										
<b>1996</b>										
February	1 050.9	1 176.2	113.5	16.8	130.3	1 306.5	443.4	1 749.9	10.0	74.7
March	1 042.2	1 169.7	101.1	14.5	115.4	1 285.1	466.7	1 751.8	9.0	73.4
April	1 043.5	1 174.3	101.7	15.5	117.2	1 291.6	462.3	1 753.8	9.1	73.6
May	1 057.5	1 187.9	96.9	12.3	109.2	1 297.2	458.6	1 755.8	8.4	73.9
June	1 057.0	1 187.1	88.5	12.7	101.2	1 288.3	469.5	1 757.8	7.9	73.3
July	1 055.2	1 185.0	90.7	13.9	104.5	1 289.5	470.3	1 759.8	8.1	73.3
August	1 045.0	1 182.2	98.5	13.5	112.0	1 294.2	467.7	1 761.9	8.7	73.5
September	1 040.3	1 185.8	107.8	15.6	123.3	1 309.1	454.8	1 763.9	9.4	74.2
October	1 047.5	1 185.9	101.5	15.7	117.2	1 303.1	462.5	1 765.5	9.0	73.8
November	1 049.0	1 192.4	104.1	12.3	116.4	1 308.8	458.4	1 767.2	8.9	74.1
December	1 059.4	1 201.7	103.4	16.4	119.8	1 321.5	447.4	1 768.8	9.1	74.7
<b>1997</b>										
January	1 050.9	1 184.8	108.4	16.6	125.0	1 309.8	460.3	1 770.2	9.5	74.0
February	1 049.8	1 180.9	113.2	19.2	132.4	1 313.3	458.2	1 771.5	10.1	74.1
March	1 037.5	1 184.1	104.8	20.0	124.8	1 308.9	463.9	1 772.9	9.5	73.8
April	1 044.3	1 186.3	97.1	19.3	116.5	1 302.8	472.0	1 774.8	8.9	73.4
May	1 040.9	1 183.3	101.9	13.8	115.7	1 299.0	477.7	1 776.7	8.9	73.1
<b>FEMALES</b>										
<b>1996</b>										
February	497.5	882.1	68.9	31.2	100.1	982.2	843.2	1 825.4	10.2	53.8
March	501.5	892.0	56.3	30.7	87.0	979.0	848.2	1 827.2	8.9	53.6
April	507.4	894.3	57.8	32.2	90.1	984.4	845.0	1 829.4	9.1	53.8
May	516.1	904.3	56.3	26.0	82.3	986.6	845.0	1 831.6	8.3	53.9
June	505.0	895.6	48.4	28.2	76.7	972.3	861.5	1 833.8	7.9	53.0
July	527.3	897.7	53.7	28.7	82.4	980.2	856.0	1 836.2	8.4	53.4
August	507.7	893.2	60.8	25.3	86.1	979.3	859.3	1 838.6	8.8	53.3
September	517.9	914.3	62.5	29.0	91.5	1 005.7	835.2	1 841.0	9.1	54.6
October	514.1	906.1	59.8	27.7	87.5	993.6	849.4	1 842.9	8.8	53.9
November	515.4	913.3	62.9	24.9	87.8	1 001.1	843.8	1 844.9	8.8	54.3
December	520.2	918.1	63.6	32.0	95.6	1 013.7	833.1	1 846.8	9.4	54.9
<b>1997</b>										
January	511.9	888.2	64.1	24.1	88.2	976.4	871.9	1 848.3	9.0	52.8
February	511.1	903.0	72.0	29.6	101.7	1 004.7	845.0	1 849.7	10.1	54.3
March	501.2	904.3	63.3	32.5	95.8	1 000.1	851.0	1 851.1	9.6	54.0
April	503.8	914.2	63.0	30.4	93.4	1 007.7	845.4	1 853.1	9.3	54.4
May	503.7	907.5	61.9	30.8	92.7	1 000.2	854.9	1 855.1	9.3	53.9
<b>PERSONS</b>										
<b>1996</b>										
February	1 548.4	2 058.3	182.5	47.9	230.4	2 288.7	1 286.6	3 575.3	10.1	64.0
March	1 543.7	2 061.7	157.3	45.1	202.4	2 264.1	1 314.9	3 579.0	8.9	63.3
April	1 550.9	2 068.7	159.5	47.8	207.3	2 276.0	1 307.2	3 583.2	9.1	63.5
May	1 573.6	2 092.3	153.2	38.3	191.5	2 283.8	1 303.6	3 587.4	8.4	63.7
June	1 562.0	2 082.8	136.9	41.0	177.8	2 260.6	1 331.0	3 591.6	7.9	62.9
July	1 582.5	2 082.7	144.4	42.6	187.0	2 269.7	1 326.3	3 596.0	8.2	63.1
August	1 552.7	2 075.4	159.3	38.8	198.2	2 273.5	1 326.9	3 600.4	8.7	63.1
September	1 558.1	2 100.0	170.3	44.5	214.8	2 314.8	1 290.0	3 604.9	9.3	64.2
October	1 561.6	2 091.9	161.3	43.4	204.7	2 296.6	1 311.8	3 608.5	8.9	63.6
November	1 564.4	2 105.7	167.0	37.2	204.2	2 309.9	1 302.2	3 612.0	8.8	63.9
December	1 579.5	2 119.8	167.0	48.4	215.4	2 335.2	1 280.5	3 615.7	9.2	64.6
<b>1997</b>										
January	1 562.8	2 073.0	172.5	40.7	213.2	2 286.2	1 332.2	3 618.4	9.3	63.2
February	1 560.9	2 084.0	185.2	48.9	234.1	2 318.0	1 303.2	3 621.2	10.1	64.0
March	1 538.7	2 088.4	168.1	52.5	220.6	2 309.0	1 315.0	3 624.0	9.6	63.7
April	1 548.1	2 100.6	160.2	49.7	209.9	2 310.5	1 317.4	3 627.9	9.1	63.7
May	1 544.6	2 090.8	163.8	44.7	208.4	2 299.2	1 332.6	3 631.8	9.1	63.3

	Feb 1996	May 1996	Aug 1996	Nov 1996	Feb 1997	May 1997
<i>Industry division</i>	'000	'000	'000	'000	'000	'000
MALES						
Agriculture, forestry and fishing	71.0	69.0	65.8	71.1	79.0	70.2
Mining	*3.0	*3.2	*3.2	4.6	*3.3	*3.0
Manufacturing	242.4	249.7	261.5	262.6	255.3	253.0
Electricity, gas and water supply	13.6	13.3	11.4	11.2	10.4	12.4
Construction	118.2	123.1	119.3	118.0	106.7	104.9
Wholesale trade	87.4	94.1	93.6	86.9	84.9	92.4
Retail trade	152.8	151.7	152.1	159.7	158.2	157.5
Accommodation, cafes and restaurants	35.5	43.2	34.9	30.7	32.0	35.2
Transport and storage	81.6	76.6	64.5	66.2	73.9	78.4
Communication services	30.8	33.0	35.0	32.0	25.8	25.2
Finance and insurance	37.4	34.9	53.1	36.8	36.2	43.3
Property and business services	118.2	119.4	116.4	115.4	117.8	121.3
Government administration and defence	37.7	31.7	40.5	42.1	39.0	33.4
Education	46.2	46.6	47.3	52.4	47.8	47.6
Health and community services	39.8	42.0	44.1	45.8	38.5	35.6
Cultural and recreational services	23.8	21.7	24.2	20.3	26.5	21.5
Personal and other services	36.7	34.6	35.1	36.8	45.6	48.4
<b>Total</b>	<b>1 176.2</b>	<b>1 187.9</b>	<b>1 182.2</b>	<b>1 192.4</b>	<b>1 180.9</b>	<b>1 183.3</b>
FEMALES						
Agriculture, forestry and fishing	31.3	29.0	29.0	33.7	34.1	35.2
Mining	*0.6	*1.0	*0.5	*0.5	*0.5	*0.0
Manufacturing	104.7	110.6	103.0	99.8	97.5	95.7
Electricity, gas and water supply	*2.6	*2.5	*2.3	*2.1	*2.9	*2.1
Construction	12.1	15.2	15.5	16.3	14.6	14.1
Wholesale trade	41.1	39.0	37.5	39.6	38.5	41.4
Retail trade	150.5	155.5	150.1	166.9	156.3	151.3
Accommodation, cafes and restaurants	39.3	48.3	45.7	46.4	45.6	49.9
Transport and storage	18.7	21.3	18.1	20.8	25.1	23.9
Communication services	18.4	18.9	18.2	18.2	17.4	14.0
Finance and insurance	45.2	45.5	45.0	40.5	44.6	49.8
Property and business services	90.3	88.7	96.0	101.3	91.4	94.6
Government administration and defence	45.4	39.7	38.9	40.7	44.3	41.7
Education	85.6	88.2	90.6	89.4	84.7	89.2
Health and community services	133.7	141.6	143.4	141.9	147.0	145.1
Cultural and recreational services	22.2	21.0	24.8	20.3	23.2	21.9
Personal and other services	40.4	38.4	34.5	35.0	35.4	39.6
<b>Total</b>	<b>882.1</b>	<b>904.3</b>	<b>893.2</b>	<b>913.3</b>	<b>903.0</b>	<b>907.5</b>
PERSONS						
Agriculture, forestry and fishing	102.3	98.0	94.9	104.7	113.1	103.4
Mining	*3.6	*4.3	*3.7	5.1	*3.8	*3.0
Manufacturing	347.1	360.2	364.5	362.4	352.7	348.7
Electricity, gas and water supply	16.1	15.8	13.7	13.3	13.3	14.5
Construction	130.3	138.2	134.9	134.2	121.4	119.0
Wholesale trade	128.5	133.1	131.1	126.5	123.4	133.8
Retail trade	303.3	307.2	302.2	326.5	314.5	308.8
Accommodation, cafes and restaurants	74.7	91.5	80.6	77.1	77.6	85.1
Transport and storage	100.3	97.9	82.6	86.9	99.0	102.3
Communication services	49.2	52.0	53.2	50.3	43.2	39.1
Finance and insurance	82.7	80.4	78.1	77.2	80.8	93.1
Property and business services	208.5	208.1	212.4	216.7	209.1	215.9
Government administration and defence	83.0	71.4	79.5	82.8	83.3	75.1
Education	131.8	134.8	137.9	141.8	132.5	136.8
Health and community services	173.5	183.6	187.5	187.6	185.5	180.7
Cultural and recreational services	46.0	42.7	49.0	40.6	49.7	43.4
Personal and other services	77.1	73.0	69.5	71.8	81.0	88.0
<b>Total</b>	<b>2 058.3</b>	<b>2 092.3</b>	<b>2 075.4</b>	<b>2 105.7</b>	<b>2 084.0</b>	<b>2 090.8</b>

\* Estimate has a relative standard error greater than 25% and is therefore subject to sampling variability too high for most practical uses.



## 5

## JOB VACANCIES

Month	Vacancies all persons '000	Industry		Sector		Job vacancy rate %
		Manu- facturing '000	Other '000	Public '000	Private '000	
<b>1995</b>						
November	12.0	1.4	10.6	2.6	9.4	0.73
<b>1996</b>						
February	16.7	*2.3	14.5	3.4	13.3	0.96
May	11.6	*2.8	8.8	2.5	9.1	0.68
August	13.6	*2.0	11.6	1.7	11.9	0.83
November	12.8	2.0	10.8	1.9	10.9	0.75
<b>1997</b>						
February	12.8	*3.3	9.5	1.7	*11.1	0.75
May	11.5	*2.1	9.4	1.9	9.6	0.66

\* Estimate has a relative standard error greater than 25% and is therefore subject to sampling variability too high for most practical uses.

## 6

## INDUSTRIAL DISPUTES CAUSING STOPPAGE OF WORK

Period	Number of disputes		Employees involved ('000)		Working days lost ('000)					
	Beginning in period	Total	Beginning in period	Total	Manu- facturing	Con- struction	Education, health, community services		Other industries	Total
<b>1996</b>										
March	11	14	4.5	6.9	0.2	2.3	0.2	8.9	11.6	
April	4	7	1.8	3.1	1.1	0.3	0.0	1.7	3.1	
May	6	7	33.0	33.1	0.4	25.0	4.4	0.9	30.7	
June	n.p.	n.p.	—	25.0	—	25.0	—	—	25.0	
July	5	6	33.8	46.8	5.5	23.0	8.9	6.7	44.1	
August	6	8	7.8	8.9	41.7	—	2.4	0.6	44.7	
September	10	11	6.1	6.5	6.3	5.8	0.1	—	12.2	
October	11	13	3.0	3.4	4.3	1.2	0.5	0.1	6.0	
November	9	12	15.3	15.4	1.9	—	10.2	1.6	13.7	
December	9	11	1.6	5.5	1.0	0.4	1.9	0.6	3.9	
<b>1997</b>										
January	3	5	0.9	1.4	—	1.1	—	0.1	1.1	
February	6	7	9.9	10.3	—	3.0	7.7	—	10.7	
March	8	8	8.8	8.8	0.5	2.3	—	5.3	8.1	

## 7

## AVERAGE WEEKLY EARNINGS OF EMPLOYEES

Reference period	Males			Females			Persons		
	Full-time adult		All males	Full-time adult		All females	Full-time adult		All employees
	Ordinary time earnings	Total earnings	Total earnings	Ordinary time earnings	Total earnings	Total earnings	Ordinary time earnings	Total earnings	Total earnings
	\$	\$	\$	\$	\$	\$	\$	\$	\$
<b>1995</b>									
November	692.00	750.20	672.50	579.10	595.00	432.60	653.60	697.40	563.60
<b>1996</b>									
February	695.70	756.10	675.50	588.10	600.00	440.70	659.40	703.50	570.30
May	702.90	764.30	673.20	594.20	607.30	441.90	666.50	711.70	570.00
August	697.60	756.00	662.30	588.00	601.70	432.30	659.70	702.60	557.80
November	720.30	791.80	686.50	607.10	625.80	443.80	681.20	734.50	577.50
<b>1997</b>									
February	726.60	782.50	687.70	611.90	625.90	462.40	687.70	729.40	590.00

## 8

## CONSUMER PRICE INDEX, MELBOURNE

Period	Melbourne									Weighted average of eight capital cities — All groups
	Food	Clothing	Housing	Household equipment and operation	Trans- port- ation	Tobacco and alcohol	Health and personal care	Recre- ation and education	All groups	
<b>1993-94</b>	107.9	107.3	92.7	110.0	115.8	132.1	135.4	113.6	111.1	110.4
<b>1994-95</b>	110.1	107.4	97.5	111.1	118.8	137.3	142.4	116.7	114.1	113.9
<b>1995-96</b>	114.1	108.0	101.4	113.0	122.6	154.2	148.7	120.3	118.4	118.7
<b>1993</b>										
December qtr	108.1	107.5	92.4	109.3	115.8	131.7	132.9	113.3	110.8	110.0
<b>1994</b>										
March qtr	107.8	106.7	92.2	110.8	114.9	133.0	137.4	114.1	111.2	110.4
June qtr	107.9	106.9	92.4	110.8	117.5	134.0	139.2	114.8	112.0	111.2
September qtr	108.6	107.0	92.7	110.3	118.4	134.0	139.8	114.9	112.2	111.9
December qtr	108.8	107.4	95.0	110.9	118.5	134.7	140.8	116.4	113.1	112.8
<b>1995</b>										
March qtr	111.2	107.0	100.4	111.5	118.5	137.1	143.4	117.9	115.0	114.7
June qtr	111.7	108.2	102.0	111.8	119.9	143.5	145.5	117.5	116.2	116.2
September qtr	113.5	107.7	102.4	112.5	122.4	149.5	146.0	118.0	117.6	117.6
December qtr	114.0	108.1	102.8	113.1	122.5	153.3	148.4	120.1	118.5	118.5
<b>1996</b>										
March qtr	113.6	107.9	99.8	112.6	121.9	156.0	150.2	122.4	118.3	119.0
June qtr	115.4	108.3	100.4	113.8	123.5	158.1	150.2	120.6	119.2	119.8
September qtr	117.5	108.5	99.6	114.2	123.1	158.3	152.0	121.1	119.6	120.1
December qtr	118.4	108.4	96.7	114.9	124.1	158.0	155.3	122.0	119.9	120.3
<b>1997</b>										
March qtr	118.8	108.1	93.5	114.6	125.1	158.4	158.4	125.2	120.1	120.5

(Base of each group: year 1989-90=100.0)

## 9

## PRICE INDEX OF MATERIALS USED IN BUILDING, MELBOURNE

Group				1997			Weighted average of six State capital cities — April 1997
	1993-94	1994-95	1995-96	Feb	Mar	Apr	
House building							
<b>All groups</b>	112.1	115.9	115.4	115.2	115.5	115.7	116.8
Other than house building							
Structural timber	119.5	123.0	116.1	111.6	111.7	111.9	117.6
Clay bricks	109.3	112.3	112.1	113.7	113.7	113.7	109.7
Ready mixed concrete	123.4	124.2	118.6	112.2	111.0	111.9	107.3
Precast concrete products	99.2	104.8	108.1	110.3	111.9	111.8	118.6
Steel decking and cladding	104.7	106.5	109.9	113.2	113.2	113.2	116.0
Structural steel	93.3	95.3	100.9	104.5	104.5	105.0	112.8
Reinforcing steel bar, mesh, etc.	102.0	101.8	102.7	100.8	100.8	100.6	112.4
Aluminium windows	96.5	98.8	100.8	100.6	100.6	100.5	108.7
Fabricated steel products	109.4	110.7	113.1	118.2	119.2	119.2	115.1
Builders' hardware	116.2	113.7	114.5	117.5	117.4	117.4	118.0
Sand and aggregate	119.5	118.5	114.6	118.4	117.5	117.5	121.2
Carpet	98.3	98.5	101.6	101.0	102.8	102.8	104.0
Paint and other coatings	125.0	131.2	141.2	146.8	147.1	140.4	134.4
Non-ferrous pipes and fittings	86.5	100.8	112.2	112.4	112.4	112.1	130.5
All groups excluding electrical materials and mechanical services	106.6	108.5	109.7	110.3	110.7	110.7	113.6
All electrical materials	107.3	113.5	119.4	112.5	112.7	111.0	116.0
All mechanical services	106.8	108.9	114.1	114.9	114.3	114.5	114.7
All plumbing materials	105.3	112.6	118.9	120.1	120.1	120.7	126.8
<b>All groups</b>	106.7	108.9	111.1	111.2	111.4	111.3	113.8

(Base of each index: year 1989-90=100.0)

# 10 LIVESTOCK SLAUGHTERINGS

Period	Cattle	Calves	Sheep	Lambs	Pigs	Chickens
	'000	'000	'000	'000	'000	'000
<b>1993-94</b>	1 393.9	583.4	3 975.9	5 600.8	1 188.5	85 797.9
<b>1994-95</b>	1 445.6	641.3	3 202.6	6 263.8	1 196.6	79 799.4
<b>1995-96</b>	1 523.6	589.8	2 488.0	5 897.7	1 142.1	85 410.9
<b>1995</b>						
August	114.5	136.5	160.7	494.6	100.6	6 574.4
September	106.6	118.8	197.6	521.2	93.3	7 128.2
October	132.0	53.2	279.6	611.7	97.2	7 051.5
November	142.7	19.3	279.5	574.1	96.4	6 644.9
December	126.2	9.1	209.0	481.9	101.2	7 812.9
<b>1996</b>						
January	148.5	7.1	247.3	494.9	90.4	7 681.1
February	146.3	4.8	261.1	460.9	92.5	6 856.1
March	132.0	9.3	219.5	450.5	93.8	7 303.2
April	115.9	27.6	196.2	455.8	94.5	7 047.4
May	135.3	47.2	158.5	505.0	107.2	7 538.7
June	109.5	75.8	128.8	400.8	87.0	6 689.1
July	121.6	82.3	123.7	425.2	103.0	7 397.0
August	121.7	182.1	182.2	439.4	91.7	7 155.9
September	118.0	131.0	182.9	468.0	91.3	7 308.5
October	146.6	70.9	251.8	551.1	102.8	8 282.4
November	131.7	19.4	251.0	546.8	94.3	6 957.6
December	138.4	8.7	274.8	528.3	103.0	7 780.8
<b>1997</b>						
January	159.3	7.9	324.5	533.6	92.9	7 661.6
February	148.8	6.6	304.8	460.0	96.8	6 863.8
March	131.7	15.4	236.1	468.2	90.2	6 520.7
April	157.1	31.3	255.5	527.0	111.1	7 244.5
May	152.1	40.7	233.2	505.1	113.5	6 867.5

# 11 MEAT PRODUCTION

Period	Meat (carcass weight)					Dressed weight of chickens tonnes
	Beef	Veal	Mutton	Lamb	Pigmeat	
	tonnes	tonnes	tonnes	tonnes	tonnes	
<b>1993-94</b>	315 279	13 466	85 010	101 386	78 488	123 529
<b>1994-95</b>	320 510	14 320	63 608	110 138	84 411	110 971
<b>1995-96</b>	348 649	12 009	50 910	110 172	83 052	127 736
<b>1995</b>						
August	23 844	2 739	3 237	8 952	7 406	10 515
September	23 868	2 373	4 092	9 685	6 935	10 764
October	30 550	1 099	5 850	11 419	7 086	10 730
November	33 585	425	5 902	10 690	7 006	10 066
December	28 815	220	4 363	9 056	7 135	11 753
<b>1996</b>						
January	34 758	180	5 080	9 456	6 530	10 862
February	33 875	139	5 324	8 815	6 747	10 279
March	30 649	220	4 398	8 481	6 642	10 894
April	26 908	583	3 952	8 449	6 624	10 543
May	31 242	961	3 159	9 685	8 048	10 675
June	25 209	1 496	2 675	7 543	6 325	10 212
July	27 672	1 720	2 432	7 664	7 446	10 739
August	27 220	3 589	3 693	7 990	6 594	11 366
September	26 388	2 643	3 730	8 468	6 624	11 122
October	33 045	1 433	5 217	10 159	7 416	12 457
November	29 544	431	5 067	10 085	6 671	10 453
December	31 543	226	5 610	9 866	7 365	11 780
<b>1997</b>						
January	35 911	218	6 485	10 024	6 607	11 173
February	33 270	174	5 915	8 720	6 835	11 030
March	29 047	350	4 506	8 838	6 312	9 188
April	34 421	659	4 889	10 028	7 972	10 256
May	33 220	816	4 436	9 605	8 242	10 367

Period	New dwelling units <sup>1</sup>						Alterations and additions to residential buildings	Non-residential building <sup>2</sup>		Total all building	
	Private sector		Public sector		Total <sup>3</sup>			Private sector	Total		
	No.	\$m	No.	\$m	No.	\$m	Conversions, etc. <sup>4</sup>	No.	\$m	\$m	\$m
MELBOURNE STATISTICAL DIVISION											
<b>1993-94</b>	20 798	1 925.7	999	71.6	21 797	1 997.3	1 152	509.2	1 619.8	2 138.6	4 645.1
<b>1994-95</b>	20 916	2 113.1	888	69.8	21 804	2 182.9	1 330	571.9	1 072.3	1 655.8	4 410.6
<b>1995-96</b>	15 676	1 624.3	1 068	86.5	16 744	1 710.8	617	467.2	1 352.5	1 934.5	4 112.5
<b>1995</b>											
September	1 669	171.7	19	3.0	1 688	174.7	4	38.2	125.4	188.5	401.4
October	1 328	145.4	88	6.0	1 416	151.4	—	41.7	286.9	343.8	536.9
November	1 260	129.3	237	19.8	1 497	149.1	1	41.9	110.0	159.1	350.0
December	1 234	138.4	96	6.2	1 330	144.5	68	32.0	95.7	137.5	314.0
<b>1996</b>											
January	923	91.4	88	5.7	1 011	97.1	23	33.0	64.1	125.5	255.5
February	1 270	146.6	41	5.4	1 311	151.9	88	40.9	114.8	126.5	319.3
March	1 134	115.8	60	4.6	1 194	120.4	336	49.8	66.6	152.9	323.0
April	1 179	117.0	133	12.3	1 310	129.3	66	44.8	89.5	136.6	310.7
May	1 456	151.0	44	3.3	1 500	154.4	5	39.4	154.2	221.6	415.3
June	1 403	141.5	19	1.1	1 422	142.5	12	35.4	76.2	103.2	281.1
July	1 540	173.5	128	8.4	1 668	181.9	19	41.8	87.2	105.1	328.9
August	1 908	215.4	52	3.6	1 960	219.0	47	46.1	118.4	163.2	428.2
September	1 275	135.1	57	3.0	1 332	138.1	30	42.0	117.8	151.5	331.6
October	1 683	172.3	31	2.9	1 714	175.2	116	53.3	132.0	175.1	403.6
November	1 297	145.8	21	1.1	1 318	146.9	40	40.2	130.1	242.8	430.0
December	1 270	139.4	17	1.8	1 287	141.3	208	39.0	142.8	162.1	342.4
<b>1997</b>											
January	1 581	164.7	37	6.0	1 618	170.7	24	39.7	169.8	203.7	414.1
February	1 524	165.3	8	0.4	1 532	165.7	174	58.6	128.3	260.1	484.4
March	1 354	142.8	12	1.2	1 366	143.9	35	40.1	74.2	106.7	290.8
April	1 526	173.8	20	2.9	1 546	176.7	18	42.9	65.0	82.1	301.8
TOTAL VICTORIA											
<b>1993-94</b>	30 336	2 718.0	1 414	99.7	31 750	2 817.7	1 167	623.5	1 853.6	2 502.7	5 943.9
<b>1994-95</b>	28 509	2 772.2	1 409	101.8	29 918	2 874.0	1 347	685.1	1 274.7	1 975.2	5 534.3
<b>1995-96</b>	21 643	2 171.1	1 401	108.7	23 044	2 279.7	663	590.1	1 721.6	2 452.4	5 322.3
<b>1995</b>											
September	2 100	211.7	31	3.7	2 131	215.4	8	47.5	154.6	227.5	490.4
October	1 877	195.3	124	8.2	2 001	203.5	1	53.8	307.9	382.1	639.4
November	1 815	180.2	268	22.8	2 083	203.1	3	52.7	137.6	212.9	468.7
December	1 647	174.6	108	7.6	1 755	182.3	69	41.1	114.9	172.4	395.8
<b>1996</b>											
January	1 380	134.0	116	7.6	1 496	141.6	23	40.9	95.4	163.5	346.1
February	1 787	193.1	50	5.9	1 837	199.0	94	49.8	182.7	200.1	448.9
March	1 691	167.4	90	6.9	1 781	174.3	338	63.1	89.2	185.6	423.0
April	1 634	161.7	153	13.6	1 787	175.3	83	55.3	107.6	164.7	395.4
May	1 988	200.4	95	6.6	2 083	206.9	12	53.4	184.7	259.6	519.9
June	1 912	187.3	41	2.2	1 953	189.5	14	44.5	118.1	171.9	405.9
July	2 044	220.0	143	9.7	2 187	229.8	22	52.1	109.3	135.3	417.1
August	2 403	262.1	66	4.6	2 469	266.7	53	54.7	140.5	200.1	521.4
September	1 780	183.8	71	4.0	1 851	187.9	43	53.3	140.3	182.2	423.3
October	2 272	226.6	41	3.5	2 313	230.2	120	66.3	153.5	205.5	502.0
November	1 832	196.9	46	2.8	1 878	199.7	43	52.1	157.7	286.5	538.3
December	1 763	186.9	26	2.8	1 789	189.7	216	49.4	177.7	221.6	460.8
<b>1997</b>											
January	2 069	213.3	50	6.9	2 119	220.2	25	50.9	189.9	228.1	499.3
February	2 002	211.2	16	1.0	2 018	212.2	176	68.9	149.6	334.9	615.9
March	1 817	188.3	12	1.2	1 829	189.5	35	49.4	91.8	137.0	375.9
April	2 034	224.5	26	3.4	2 060	227.9	22	53.6	100.9	121.1	402.6

<sup>1</sup> Valued at \$10,000 and over.

<sup>2</sup> Valued at \$50,000 and over.

<sup>3</sup> Excludes dwelling units created as a result of conversions of buildings or construction of non-residential buildings.

<sup>4</sup> Dwelling units created as a result of conversions of buildings or construction of non-residential buildings.

## 13

## NEW HOUSES AND OTHER RESIDENTIAL BUILDINGS: NUMBER OF DWELLING UNITS

	New houses				New other residential buildings			
	Approved	Commenced	Under construction	Completed	Approved	Commenced	Under construction	Completed
<b>1993-94</b>	28 057	27 904	12 362	27 118	3 693	3 562	2 355	3 206
<b>1994-95</b>	25 885	25 846	10 668	27 380	4 033	3 612	2 765	2 892
<b>1995-96</b>	18 889	19 399	8 066	21 883	4 155	4 276	3 906	3 086
<b>1995</b>								
December qtr	4 954	5 088	8 620	6 640	885	943	2 669	1 060
<b>1996</b>								
March qtr	3 996	4 373	8 392	4 582	1 118	1 193	3 111	751
June qtr	4 438	4 102	8 066	4 394	1 385	1 427	3 906	629
September qtr	4 631	4 453	8 623	3 848	1 876	1 722	4 111	1 480
December qtr p	4 456	4 093	7 823	4 869	1 524	1 228	4 115	1 224

## 14

## VALUE OF BUILDING

Period	Residential buildings		Non-residential buildings							Total
	New	Alterations and additions	Shops	Factories	Offices	Education	Health	Other		
									\$m	
COMMENCED										
<b>1993-94</b>	2 876.5	700.0	456.6	227.1	273.6	211.2	240.0	1 120.8	6 105.7	
<b>1994-95</b>	2 907.7	678.6	323.4	241.4	384.2	293.3	140.8	583.8	5 523.2	
<b>1995-96</b>	2 486.2	679.7	444.3	249.2	393.5	330.0	108.4	953.5	5 644.8	
<b>1995</b>										
December qtr	650.3	169.1	93.2	65.2	128.4	109.4	33.8	238.3	1 487.6	
<b>1996</b>										
March qtr	597.9	138.4	78.4	64.3	80.1	68.0	20.1	361.0	1 408.2	
June qtr	598.8	206.8	110.0	67.3	84.1	96.2	35.2	144.8	1 343.1	
September qtr	648.1	152.8	90.4	95.9	179.1	70.7	101.9	129.9	1 468.8	
December qtr p	582.3	182.1	70.6	76.0	104.2	62.8	48.6	221.1	1 347.7	
UNDER CONSTRUCTION AT END OF PERIOD										
<b>1993-94</b>	1 474.8	360.6	415.7	165.1	140.7	144.4	539.9	950.9	4 192.0	
<b>1994-95</b>	1 450.8	354.3	480.6	142.9	241.9	217.3	251.0	1 092.6	4 231.4	
<b>1995-96</b>	1 472.5	339.4	235.5	141.4	139.2	248.1	123.9	1 390.9	4 091.0	
<b>1995</b>										
December qtr	1 333.4	291.0	319.6	110.1	180.9	243.7	127.8	1 314.7	3 921.1	
<b>1996</b>										
March qtr	1 395.7	298.2	345.2	136.0	149.8	222.0	123.4	1 600.5	4 270.9	
June qtr	1 472.5	339.4	235.5	141.4	139.2	248.1	123.9	1 390.9	4 091.0	
September qtr	1 513.8	297.3	275.5	199.4	199.4	262.2	146.2	1 426.4	4 320.3	
December qtr p	1 433.3	285.9	249.1	183.6	202.7	221.7	162.1	1 544.1	4 282.4	
COMPLETED										
<b>1993-94</b>	2 725.1	601.3	182.5	424.0	1 056.7	201.0	113.3	517.7	5 821.7	
<b>1994-95</b>	2 882.5	709.8	313.6	253.1	290.7	228.8	387.3	521.5	5 587.3	
<b>1995-96</b>	2 489.6	689.0	715.1	249.9	514.1	302.2	234.7	844.4	6 038.9	
<b>1995</b>										
December qtr	774.5	215.0	119.0	101.2	199.8	114.3	56.0	195.9	1 775.6	
<b>1996</b>										
March qtr	537.1	141.7	55.9	39.3	120.3	86.8	22.7	137.1	1 140.8	
June qtr	521.4	147.7	217.6	60.0	98.1	72.9	33.9	392.8	1 544.6	
September qtr	606.0	204.1	85.6	41.5	119.6	55.7	79.2	175.6	1 367.4	
December qtr p	679.7	198.0	105.0	105.7	71.4	102.3	33.7	216.4	1 512.1	

	<i>Budget Estimate 1996-97</i>	<i>Actual 5 months to 30.11.1996</i>	<i>Actual 5 months to 30.11.1995</i>
	\$m	\$m	\$m
<b>Departmental outlays</b>			
Education	3 738.2	1 606.9	1 465.6
Human services	5 221.3	1 969.7	1 761.2
Infrastructure	1 655.4	664.7	726.7
Justice	1 477.7	632.0	502.3
Natural resources and environment	459.6	203.5	151.8
Parliament	71.5	21.8	19.0
Premier and cabinet	290.1	102.3	106.8
State development	317.9	76.4	111.2
Treasurer and finance	1 271.7	-664.8	1 091.3
Commonwealth grants on-passed	852.1	428.0	409.2
<i>Total</i>	<b>15 355.5</b>	<b>5 040.5</b>	<b>6 345.1</b>
<i>less</i>			
Superannuation contributions	—	—	94.6
Capital charge received	262.1	24.2	—
Payroll tax paid by departments	254.9	103.9	99.5
<b>Total departmental outlays</b>	<b>14 838.5</b>	<b>4 912.4</b>	<b>6 151.0</b>
Current outlays	14 459.1	5 945.9	5 684.6
Capital outlays	379.5	-1 033.6	466.4
<b>Revenue and grants received</b>			
Revenue			
Taxes, fees and fines			
Payroll tax	2 123.9	882.6	822.6
Stamp duty on financial and capital transactions	1 015.2	540.6	366.8
State deficit levy on rateable properties	0.5	1.0	5.0
Financial institutions transaction taxes	582.5	249.7	239.4
Franchise fees	1 471.7	561.2	454.9
Motor vehicle taxes	821.3	363.0	351.7
Land taxes	407.0	24.0	23.7
Gambling taxes	1 151.7	471.3	416.6
Public authority contribution	317.5	170.4	181.3
Taxes on insurance	334.5	146.8	143.1
Other taxes, fees and fines	205.2	104.9	84.0
<i>Total taxes, fees and fines</i>	<b>8 431.0</b>	<b>3 515.6</b>	<b>3 089.1</b>
Other revenue			
Interest received	106.4	24.7	11.5
Rent and royalties	57.3	11.1	17.7
Income from public trading and financial enterprises	1 273.0	780.1	512.0
Other state revenue	48.5	39.0	33.9
<i>Total other revenue</i>	<b>1 485.2</b>	<b>854.8</b>	<b>575.1</b>
Grants			
Grants received from Commonwealth	6 239.6	2 550.3	2 399.3
Commonwealth grants for on-passing	852.1	430.8	410.0
<i>Total grants</i>	<b>7 091.7</b>	<b>2 981.1</b>	<b>2 809.3</b>
<b>Total revenue and grants received</b>	<b>17 007.9</b>	<b>7 351.5</b>	<b>6 473.5</b>
<b>Financing transactions</b>			
Net advances from Commonwealth	-34.8	-2.8	-214.7
Other net borrowing	-2 023.3	-2 843.2	-1 627.6
Other, including changes in cash balances and investments	-111.2	406.8	1 519.6
<b>Total financing transactions</b>	<b>-2 169.3</b>	<b>-2 439.2</b>	<b>-322.7</b>

<sup>1</sup> This monthly statement of budget sector transactions (Niemeyer Statement) is presented in *Government Finance Statistics* format.  
Source: Treasurer of Victoria

Period	Selected industries				Type of asset	
	Mining	Manufacturing	Other selected industries	Total	New buildings and structures	Equipment, plant, and machinery
	\$m	\$m	\$m	\$m	\$m	\$m
ACTUAL						
<b>1993-94</b>	441	2 657	3 933	7 031	1 485	5 546
<b>1994-95</b>	603	3 034	3 896	7 533	1 535	5 998
<b>1995-96</b>	588	3 341	5 923	9 852	3 033	6 819
<b>1994</b>						
December qtr	152	762	946	1 860	365	1 495
<b>1995</b>						
March qtr	139	725	901	1 765	342	1 424
June qtr	173	799	1 031	2 002	539	1 463
September qtr	150	793	1 247	2 191	617	1 574
December qtr	172	873	1 436	2 480	820	1 661
<b>1996</b>						
March qtr	157	796	1 412	2 365	691	1 674
June qtr	109	879	1 828	2 815	905	1 911
September qtr	123	1 027	1 596	2 746	768	1 978
December qtr	299	1 107	1 818	3 223	1 010	2 213
<b>1997</b>						
March qtr	162	852	1 519	2 532	760	1 772
EXPECTED						
<b>1996-97</b>	952	3 985	6 522	11 460	3 524	7 936
<b>1997-98</b>	844	2 698	5 103	8 644	2 876	5 769

## 17

## COMMERCIAL FINANCE COMMITMENTS

Period	Fixed loan facilities						Type of lender			
	Const- ruction	Purchase of real property	Purchase of plant and equipment	Whole- sale	Other	Total	Revolving credit facilities	Total commit- ments	Banks	All other lenders
	\$m	\$m	\$m	\$m	\$m	\$m	\$m	\$m	\$m	\$m
<b>1995</b>										
September	76.2	213.3	162.0	65.9	505.4	1 022.9	1 746.4	2 769.3	2 318.4	450.9
October	142.7	207.8	155.7	78.6	396.2	980.9	1 445.2	2 426.1	1 990.0	436.1
November	83.2	270.2	177.8	73.3	733.6	1 338.0	1 447.5	2 785.5	2 462.5	322.9
December	99.9	201.0	170.6	158.2	591.2	1 220.9	3 384.6	4 605.5	3 035.6	1 570.0
<b>1996</b>										
January	101.1	271.6	137.7	55.8	577.7	1 143.9	4 484.4	5 628.3	4 562.2	1 066.2
February	111.7	260.0	153.1	67.8	598.6	1 191.1	2 012.6	3 203.7	2 491.2	712.5
March	352.6	311.6	152.6	65.4	579.7	1 461.8	2 114.1	3 575.9	3 111.3	464.5
April	93.0	223.3	147.4	66.8	336.1	866.7	2 757.0	3 623.8	2 479.4	1 144.3
May	82.7	226.1	159.1	97.8	474.3	1 040.0	2 711.9	3 751.9	2 317.8	1 434.2
June	101.0	260.1	240.1	81.3	814.3	1 496.9	2 440.5	3 937.5	3 195.8	741.6
July	97.9	264.5	183.4	107.7	648.4	1 301.9	2 175.6	3 477.6	2 868.7	608.9
August	80.5	287.6	258.4	64.9	640.8	1 332.4	1 386.5	2 718.9	2 375.6	343.2
September	75.1	248.3	190.0	69.0	896.0	1 478.5	1 300.6	2 779.1	2 384.9	394.1
October	146.3	290.8	185.7	97.8	353.3	1 074.0	1 593.6	2 667.6	2 046.4	621.2
November	76.4	290.8	176.0	78.0	525.7	1 147.1	1 913.0	3 060.1	2 105.2	954.9
December	82.8	293.8	172.5	69.1	705.7	1 324.0	1 546.0	2 870.0	2 078.9	791.1
<b>1997</b>										
January	54.6	284.3	131.8	69.3	450.8	990.7	2 538.2	3 528.9	1 688.3	1 840.6
February	77.4	310.8	151.5	74.6	316.7	931.0	1 728.9	2 659.8	2 159.6	500.2

Period	Original Series		Seasonally Adjusted		Trend Estimates	
	Dwelling units	\$m	Dwelling units	\$m	Dwelling units	\$m
<b>1995</b>						
November	8 998	787	8 471	736	8 873	770
December	8 229	719	8 868	767	9 149	793
<b>1996</b>						
January	8 022	714	9 504	834	9 403	818
February	9 990	873	9 972	866	9 536	834
March	9 800	852	9 599	860	9 500	838
April	9 140	797	9 780	839	9 359	832
May	10 051	911	8 938	812	9 237	825
June	8 382	753	8 276	767	9 203	825
July	10 015	900	9 257	822	9 279	832
August	9 845	874	9 694	869	9 411	843
September	10 153	900	10 353	906	9 507	851
October	9 947	903	9 417	857	9 483	852
November	8 743	798	8 892	815	9 355	848
December	8 557	810	9 083	824	9 203	849
<b>1997</b>						
January	7 816	741	9 300	868	9 145	859
February	8 759	818	9 003	854	9 192	879
March	8 634	839	9 107	922	9 284	902
April	10 639	1 031	9 958	962	9 447	927

## 19

## RETAIL TURNOVER BY INDUSTRY (EXCLUDING MOTOR VEHICLES, PARTS, PETROL, ETC.)

Month	Food retailing	Department stores	Clothing and soft good retailing	Household good retailing	Recreational good retailing	Other retailing	Hospitality and services	Total
	\$m	\$m	\$m	\$m	\$m	\$m	\$m	\$m
<b>1994</b>								
December	1 070.8	418.7	236.8	348.7	196.9	305.2	355.8	2 932.9
<b>1995</b>								
January	885.5	165.1	154.2	258.2	119.1	179.5	295.3	2 056.9
February	851.0	152.0	127.1	238.4	112.2	185.0	271.7	1 937.4
March	922.8	188.2	145.7	265.4	118.1	208.9	304.7	2 153.8
April	902.1	215.7	166.5	241.9	115.1	207.4	292.4	2 141.1
May	905.9	211.6	153.2	268.7	129.1	219.5	292.6	2 180.6
June	897.6	209.9	151.5	276.1	128.7	203.8	292.8	2 160.4
July	914.0	197.2	150.2	270.2	137.1	199.7	286.4	2 154.8
August	944.3	197.8	138.9	263.1	137.6	214.2	283.0	2 178.9
September	942.5	195.3	138.2	264.2	129.8	212.6	294.2	2 176.8
October	959.3	203.0	151.8	280.4	130.6	217.0	287.2	2 229.3
November	982.0	246.8	157.9	288.1	144.1	225.3	309.2	2 353.4
December	1 130.6	436.7	224.1	384.2	212.8	327.3	351.5	3 067.2
<b>1996</b>								
January	975.5	187.4	147.8	274.7	165.7	183.9	303.9	2 238.9
February	965.4	169.2	118.8	252.2	137.5	183.1	270.9	2 097.1
March	1 004.2	189.4	139.0	271.9	131.4	193.0	300.4	2 229.3
April	976.6	220.1	157.9	266.5	124.5	187.0	300.9	2 233.5
May	1 003.4	224.2	157.5	289.0	129.4	200.4	294.6	2 298.5
June	940.2	213.3	146.4	284.5	122.8	182.8	293.9	2 183.9
July	970.7	203.4	147.0	302.6	127.4	201.1	237.7	2 239.9
August	1 014.0	199.7	133.2	299.5	134.0	207.9	279.4	2 267.7
September	950.3	186.2	132.0	270.2	127.3	196.6	284.5	2 147.1
October	1 045.7	203.9	158.3	309.4	149.5	232.2	299.6	2 398.6
November	1 045.2	250.8	149.0	314.8	158.4	246.8	303.0	2 468.0
December	1 161.8	442.4	212.1	402.1	244.7	343.0	346.6	3 152.7
<b>1997</b>								
January	1 091.6	197.4	148.0	320.0	146.2	203.4	309.9	2 416.5
February	991.7	171.9	113.9	295.5	133.6	203.1	274.0	2 183.7
March	1 064.9	214.3	137.9	295.8	140.6	210.7	313.6	2 377.5
April	1 037.9	212.6	169.3	303.7	145.9	226.5	299.2	2 395.1
May	1 085.2	241.0	164.9	304.1	139.1	235.8	291.7	2 461.8



Section	1995-96		11 months ending May 1997	
	Imports	Exports	Imports	Exports
	\$m	\$m	\$m	\$m
0 Food and live animals chiefly for food	1 001	3 488	924	3 361
1 Beverages and tobacco	164	98	94	111
2 Crude materials, inedible (except fuels)	596	1 593	495	1 601
3 Mineral fuels, lubricants, and related materials	660	668	960	817
4 Animal and vegetable oils, fats, and waxes	92	84	84	75
5 Chemicals and related products, n.e.c.	2 416	867	2 266	801
6 Manufactured goods classified chiefly by material	3 834	2 352	3 407	2 111
7 Machinery and transport equipment	10 866	2 711	10 015	3 137
8 Miscellaneous manufactured articles	4 167	952	4 016	910
9 Commodities and transactions of merchandise trade, n.e.c.	867	2 598	857	2 090
<b>Total</b>	<b>24 663</b>	<b>15 411</b>	<b>23 118</b>	<b>15 014</b>

## 21

OVERSEAS TRADE, MAJOR TRADING PARTNERS<sup>1</sup>

Country	1994-95		1995-96		11 months ending May 1997	
	Imports	Exports	Imports	Exports	Imports	Exports
	\$m	\$m	\$m	\$m	\$m	\$m
Belgium-Luxembourg	225	29	253	74	222	64
Brazil	167	61	174	77	120	77
Canada	430	113	453	101	366	109
China	1 575	561	1 675	641	1 630	600
Fiji	39	127	60	215	108	218
Finland	235	6	239	9	155	8
France	487	173	536	143	674	145
Germany	2 088	262	1 994	264	1 756	261
Hong Kong	205	565	241	821	241	739
India	224	115	234	139	214	222
Indonesia	335	270	378	367	481	383
Italy	717	263	807	249	764	297
Japan	3 986	1 849	3 429	1 952	2 824	1 394
Korea, Republic of	609	1 112	634	1 921	611	1 959
Malaysia	428	749	458	737	456	608
Mexico	55	62	55	43	58	47
Netherlands	229	44	233	60	221	37
New Zealand	1 191	1 247	1 207	1 598	1 150	2 016
Pakistan	86	30	72	77	71	42
Papua New Guinea	125	188	128	237	224	256
Philippines	105	285	117	339	98	339
Saudi Arabia	242	127	225	194	206	155
Singapore	493	1 312	571	1 162	477	821
South Africa	73	193	83	207	93	274
Sweden	495	40	591	69	462	62
Switzerland	302	59	288	45	217	79
Taiwan	811	631	773	663	739	640
Thailand	323	441	322	513	307	379
United Kingdom	1 364	369	1 502	373	1 499	377
United States of America	5 256	785	5 839	788	5 424	839
Other and unknown	1 062	940	1 092	1 333	1 250	1 567
<b>Total</b>	<b>23 962</b>	<b>13 008</b>	<b>24 663</b>	<b>15 411</b>	<b>23 118</b>	<b>15 014</b>

<sup>1</sup> The list of countries in this table reflects the volume of trade with Victoria. Information about Victoria's trade with other countries is available on request.

Period	Victoria			Australia		
	Imports	Exports	Excess of exports	Imports	Exports (incl. re-exports)	Excess of exports
	\$m	\$m	\$m	\$m	\$m	\$m
<b>1993-94</b>	20 770	12 349	-8 421	64 470	64 548	+78
<b>1994-95</b>	23 967	13 008	-10 959	74 619	67 052	-7 567
<b>1995-96</b>	24 663	15 410	-9 253	77 792	76 083	-1 709
<b>1995</b>						
December	1 936	1 415	-521	6 154	6 827	+673
<b>1996</b>						
January	2 053	1 199	-854	6 539	5 969	-570
February	1 959	1 299	-660	6 202	6 045	-157
March	2 057	1 461	-596	6 273	6 925	+652
April	2 079	1 402	-677	6 443	6 254	-189
May	2 076	1 485	-591	6 682	6 788	+106
June	1 803	1 295	-508	5 827	6 331	+504
July	2 245	1 239	-1 006	6 841	6 489	-352
August	2 194	1 255	-939	6 756	6 400	-356
September	2 062	1 272	-790	6 276	6 245	-31
October	2 462	1 382	-1 080	7 304	6 728	-576
November	2 101	1 264	-837	6 573	6 373	-200
December	2 049	1 340	-709	6 691	6 735	+44
<b>1997</b>						
January	1 985	1 175	-810	6 424	6 046	-378
February	1 941	1 356	-585	6 073	6 423	+350
March	1 866	1 403	-463	5 987	6 620	+633
April	2 169	1 350	-819	6 755	6 624	-131
May	2 045	1 977	-68	6 456	7 609	+1 153

## 23

## TOURIST ACCOMMODATION, MELBOURNE AND VICTORIA

Period	Hotels, motels, etc. with facilities				Short-term caravan parks			
	Establishments	Capacity, guest rooms	Room occupancy rates	Takings from accommodation	Establishments	Capacity, sites and cabins	Site occupancy rates	Takings from accommodation
	No.	No.	%	\$'000	No.	No.	%	\$'000
MELBOURNE STATISTICAL DIVISION								
<b>1995</b>								
March qtr	240	14 905	68	94 245	53	5 694	59	2 055
June qtr	242	14 315	63	86 538	53	5 734	47	1 364
September qtr	241	14 359	66	97 625	53	5 728	45	1 854
December qtr	242	14 513	71	103 964	53	5 730	51	2 242
<b>1996</b>								
March qtr	243	14 520	71	110 002	53	5 730	59	2 209
June qtr	243	14 644	68	105 834	53	5 724	47	1 510
September qtr	239	14 440	66	100 835	53	5 728	44	1 771
December qtr	241	14 509	71	114 046	52	5 877	51	2 262
<b>1997</b>								
March qtr	240	14 456	74	125 553	52	5 899	59	2 368
TOTAL VICTORIA								
<b>1995</b>								
March qtr	1 003	29 973	56	131 900	435	53 307	47	17 781
June qtr	1 016	29 543	51	120 636	434	53 195	39	10 670
September qtr	1 009	29 504	52	135 286	438	53 825	40	10 730
December qtr	1 015	29 798	56	140 332	438	54 001	40	16 035
<b>1996</b>								
March qtr	1 019	29 891	58	150 879	438	53 918	47	19 178
June qtr	1 021	30 007	54	142 716	439	54 060	39	12 016
September qtr	1 013	29 877	52	141 778	441	54 226	36	12 239
December qtr	1 013	29 918	56	152 611	441	54 390	41	17 402
<b>1997</b>								
March qtr	1 012	29 869	60	169 396	442	54 394	49	21 407

## FURTHER REFERENCES

.....

### Table

#### DEMOGRAPHY

- 1 *Australian Demographic Statistics* (Cat. no. 3101.0) (quarterly)
- 2 *Demography, Victoria* (Cat. no. 3311.2) (annual)

#### LABOUR

- 3 *Labour Force, Victoria* (Cat. no. 6202.2) (quarterly)
- 4 *Labour Force, Australia* (Cat. no. 6203.0) (monthly)
- 5 *Job Vacancies and Overtime, Australia* (Cat. no. 6354.0) (quarterly)
- 6 *Industrial Disputes, Australia* (Cat. no. 6321.0) (monthly)

#### WAGES AND PRICES

- 7 *Average Weekly Earnings, States and Australia* (Cat. no. 6302.0) (quarterly)
- 8 *Consumer Price Index* (Cat. no. 6401.0) (quarterly)
- 9 *Price Index of Materials Used in Building Other Than House Building, Six State Capital Cities and Darwin* (Cat. no. 6407.0) (monthly)
- Price Index of Materials Used in House Building, Six State Capital Cities* (Cat. no. 6408.0) (monthly)

#### MEAT PRODUCTION

- 10, 11 *Livestock Products, Australia* (Cat. no. 7215.0) (monthly)

#### BUILDING

- 12 *Building Approvals, Victoria* (Cat. no. 8731.2) (monthly)
- 13, 14 *Building Activity, Victoria* (Cat. no. 8752.2) (quarterly)

#### FINANCE

- 15 *Treasurer of Victoria — Statement of Budget Sector Transactions, Victoria*
- 16 *State Estimates of Actual and Expected Private New Capital Expenditure* (Cat. no. 5646.0) (quarterly)
- 17, 18 *Housing Finance for Owner Occupation, Australia* (Cat. no. 5609.0) (monthly)

#### RETAIL

- 19 *Retail Sales of Goods (Excluding Motor Vehicles, Parts, Petrol, etc.) Australia* (Cat. no. 8501.0) (monthly)

#### TRADE

- 20 *Foreign Trade Australia: Fasttraccs Database*
- 21 *Overseas Trade: Fasttraccs Database*
- 22 *Overseas Trade: Fasttraccs Database*

#### TOURISM

- 23 *Tourist Accommodation, Victoria* (Cat. no. 8635.2) (quarterly)

As at June 1997.

Publication names and catalogue numbers are subject to revision or change.

.....

## For more information . . .

The ABS publishes a wide range of statistics and other information on Australia's economic and social conditions. Details of what is available in various publications and other products can be found in the ABS Catalogue of Publications and Products available from all ABS Offices.

### ABS Products and Services

Many standard products are available from ABS bookshops located in each State and Territory. In addition to these products, information tailored to the needs of clients can be obtained on a wide range of media by contacting your nearest ABS Office. The ABS also provides a Subscription Service for standard products and some tailored information services.

### National Dial-a-Statistic Line

0055 86 400

*Steadycom P/L: premium rate 25c/20 secs.*

This number gives 24-hour access, 365 days a year, for a range of important economic statistics including the CPI.

### Internet

<http://www.abs.gov.au>

A wide range of ABS information is available via the Internet, with basic statistics available for each State, Territory and Australia. We also have Key National Indicators, ABS product release details and other information of general interest.

### Sales and Inquiries

[client.services@abs.gov.au](mailto:client.services@abs.gov.au)

National Mail Order Service  
Subscription Service

(06) 252 5249  
1800 02 0608

	Information Inquiries	Bookshop Sales
SYDNEY	(02) 9268 4611	(02) 9268 4620
MELBOURNE	(03) 9615 7755	(03) 9615 7755
BRISBANE	(07) 3222 6351	(07) 3222 6350
PERTH	(08) 9360 5140	(08) 9360 5307
ADELAIDE	(08) 8237 7100	(08) 8237 7582
CANBERRA	(06) 252 6627	(06) 207 0326
HOBART	(03) 6222 5800	(03) 6222 5800
DARWIN	(08) 8943 2111	(08) 8943 2111



Client Services, ABS, PO Box 10, Belconnen ACT 2616

Produced by the Australian Government Publishing Service  
© Commonwealth of Australia 1997

Recommended retail price: \$18.00



2130320006975

ISSN 0158-202X