

CHAPTER 1

SOCIO-DEMOGRAPHIC CHARACTERISTICS OF THE POPULATION

This chapter presents a brief summary of the more important population statistics which are relevant to the structure and activities of the labour market. Important factors highlighted in the statistics include current trends in population growth, the age-sex composition of the population and projections of the population of working age. Details of overseas settler arrivals provide a further pointer to the future make-up of the population. Other population-related factors which are included in the statistics presented include the composition of families, levels of educational attainment, and characteristics of migrants.

Population

The estimated resident population of Australia at 30 June 1991 was 17,292,000 an increase of 247,400 since 30 June 1990. This represented a growth rate of 1.5 per cent, up slightly from 1.4 per cent for the previous year. Growth rates have ranged from 1.2 to 1.7 per cent over the past decade.

Principal features of current trends in population growth are low fertility, increasing longevity and high levels of net overseas migration gains. The rate of natural increase, i.e. births minus deaths as a proportion of population, is relatively steady because the low birth rate is being offset by the low death rate. The combined outcome of these trends is high levels of total population growth and a gradual ageing of the Australian population.

Over the decade since 30 June 1981, for example, the median age of the population has risen from 29.6 years to 32.3 years. The dependency ratio for 0-14 year-olds (i.e. population aged 0-14 years per thousand persons aged 15-64) has declined from 38.2 in 1981 to 32.9 in 1991 and the dependency ratio for persons aged 65 years and over (i.e. expressed per thousand population aged 15-64 years) has risen from 14.9 in 1981 to 16.7 in 1991. The working-age population has also been ageing, though at a slower rate. The proportion of the population in the young working ages 15-24 has declined from 17.4 per cent in 1981 to 16.0 per cent in 1991, and, although the proportion in the older working ages 50-64 years has also fallen (from 14.3 per cent to 13.4 per cent), the net result for the total age group 15-64 has been a rise in the median age from 34.3 years to 35.6 years over the ten-year period.

At 30 June 1991 the population aged 15-64 years was 11,560,400. The numbers of people in this age group have been increasing at a faster rate (now 18.7% higher than 1981) than the population as a whole (15.9% higher) due to the concentration of overseas arrivals in this age group. The proportion of Australia's population which is of working age has consequently risen. In 1981 it comprised 65.3 per cent of the population; in 1991 it was 66.9 per cent.

Implications for the future age profile of the labour force are illustrated in Charts 1.3 and 1.4. These demonstrate the outcome of certain assumed fertility/mortality/migration trends as described in the Technical Notes. Four alternative combinations (A,B,C and D) of these assumptions have been selected for the period up to the year 2031. Series A and B would result in the highest population increase, followed by C and then D. The outcome for the size of the labour force would be in the same order. (The median age of the labour force, however, would be in reverse order although the differences between all four are slight. The oldest labour force age structure would result if series D assumptions prevailed, with a median age of 41.2 years. For series C, the median age would be 40.9 years, and for both series A and B it would be 40.4 years.)

The projections show that the labour force would, like the population as a whole, be growing older. The median age of persons in the labour force would rise from 35.5 years in 1990 to between 40.4 and 41.2 years as described in the preceding paragraph in the year 2031 (assuming no change in the present patterns and practices of retirement from the labour force).

Projections of the population in the younger working ages, 15-24 years, show that growth rates would be much lower than for ages 25 and over. After 1993 the number of persons aged 15-24 years would decline slightly for a few years as the effect of lower numbers of births in the 1970s impacted on the 15-24 age group. The series would then diverge, but only within a narrow range. Series A and B project a steady rise until the year 2031 but Series C projects a very small increase and series D actually shows a decline.

In comparison, substantial increases in numbers are projected for the prime working age-group (25-49 years) and also the older working ages (50-64 years). A levelling off may occur for the 25-49 age group if series D assumptions prevail, but only after a considerable increase during the remaining years of this century.

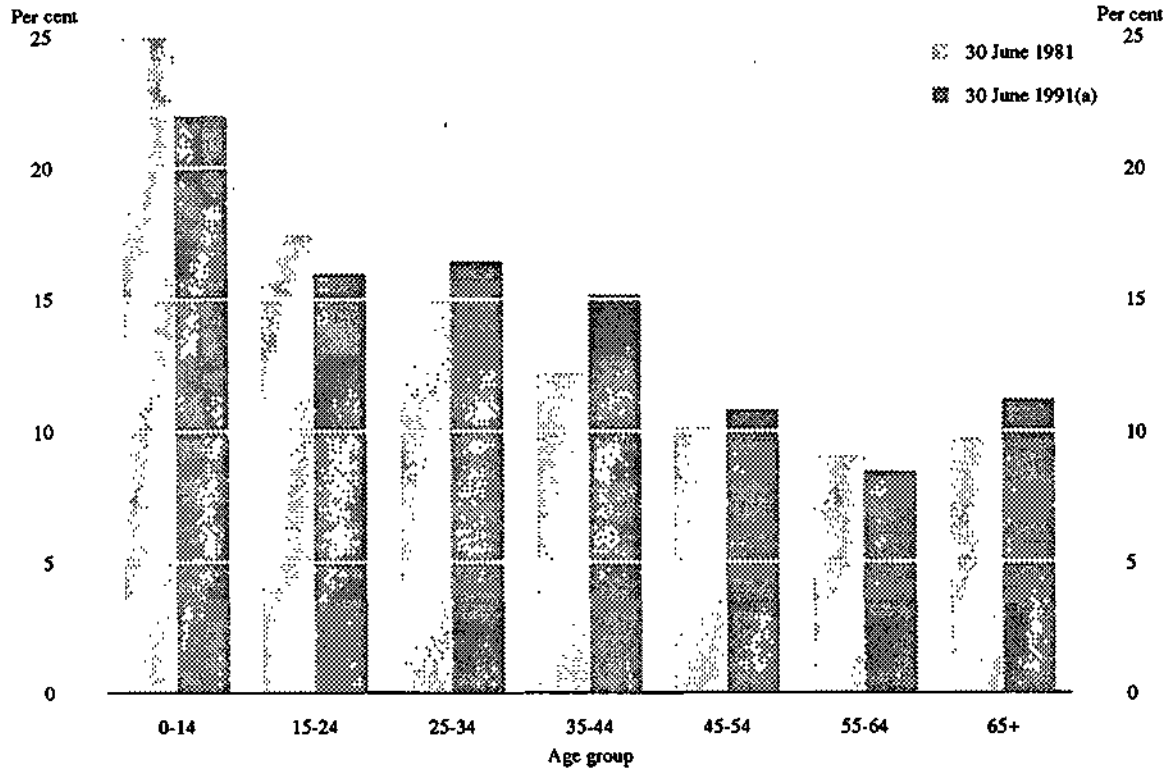
Projections of the labour force and labour force participation rates for the period 1992 to 2005 were published in 1991. The projections were based on the assumptions included in Series A and D of the population projections. See the Technical Notes for further information.

TABLE 1.1. ESTIMATED RESIDENT POPULATION(a) BY AGE GROUPS, AUSTRALIA,
30 JUNE 1988, 1989, 1990 and 1991

Age group (years)	Number				Per cent of total population			
	1988	1989	1990	1991	1988	1989	1990	1991
MALES								
0-4	629,396	636,971	643,888	654,531	3.81	3.79	3.78	3.79
5-9	625,189	636,938	647,395	653,478	3.78	3.79	3.80	3.78
10-14	641,493	635,802	632,952	637,298	3.88	3.78	3.71	3.69
15-19	715,506	718,669	713,100	695,398	4.33	4.28	4.18	4.02
20-24	673,448	677,425	687,633	706,342	4.08	4.03	4.03	4.08
25-29	709,078	719,674	717,905	706,945	4.29	4.28	4.21	4.09
30-34	663,765	682,162	700,347	717,620	4.02	4.06	4.11	4.15
35-39	640,448	648,692	656,029	666,041	3.88	3.86	3.85	3.85
40-44	595,206	618,965	639,341	655,446	3.60	3.68	3.75	3.79
45-49	460,050	480,907	501,347	524,652	2.79	2.86	2.94	3.03
50-54	393,825	405,922	420,415	433,732	2.38	2.42	2.47	2.51
55-59	375,501	371,542	367,014	367,355	2.27	2.21	2.15	2.12
60-64	361,258	365,190	368,594	367,392	2.19	2.17	2.16	2.12
65-69	291,836	306,257	312,770	319,767	1.77	1.82	1.84	1.85
70-74	212,757	212,530	218,517	228,487	1.29	1.26	1.28	1.32
75-79	142,578	148,874	153,473	158,295	0.86	0.89	0.90	0.92
80-84	73,446	76,519	79,979	83,809	0.44	0.46	0.47	0.48
85 and over	37,258	38,986	40,044	42,824	0.23	0.23	0.23	0.25
<i>All ages</i>	<i>8,242,038</i>	<i>8,382,025</i>	<i>8,500,743</i>	<i>8,619,412</i>	<i>49.90</i>	<i>49.88</i>	<i>49.87</i>	<i>49.85</i>
FEMALES								
0-4	600,730	607,505	613,038	623,668	3.64	3.62	3.60	3.61
5-9	593,384	605,366	616,750	622,752	3.59	3.60	3.62	3.60
10-14	609,967	605,170	602,351	606,082	3.69	3.60	3.53	3.50
15-19	690,636	693,248	686,830	667,483	4.18	4.13	4.03	3.86
20-24	653,461	660,951	673,438	695,849	3.96	3.93	3.95	4.02
25-29	695,919	706,756	706,836	699,148	4.21	4.21	4.15	4.04
30-34	660,754	677,958	695,478	714,955	4.00	4.03	4.08	4.13
35-39	633,148	644,447	654,817	664,063	3.83	3.84	3.84	3.84
40-44	568,774	594,526	616,990	638,089	3.44	3.54	3.62	3.69
45-49	434,046	453,833	475,487	498,897	2.63	2.70	2.79	2.89
50-54	377,054	388,953	400,461	412,630	2.28	2.31	2.35	2.39
55-59	363,454	360,725	358,566	357,966	2.20	2.15	2.10	2.07
60-64	369,548	370,465	370,859	370,366	2.24	2.20	2.18	2.14
65-69	328,420	341,254	346,099	348,789	1.99	2.03	2.03	2.02
70-74	267,105	265,562	270,526	281,697	1.62	1.58	1.59	1.63
75-79	204,613	212,911	218,250	223,619	1.24	1.27	1.28	1.29
80-84	128,561	132,883	137,906	143,633	0.78	0.79	0.81	0.83
85 and over	96,757	98,527	99,226	102,946	0.59	0.59	0.58	0.60
<i>All ages</i>	<i>8,276,331</i>	<i>8,421,040</i>	<i>8,543,908</i>	<i>8,672,632</i>	<i>50.10</i>	<i>50.12</i>	<i>50.13</i>	<i>50.15</i>
PERSONS								
0-4	1,230,126	1,244,476	1,256,926	1,278,199	7.45	7.41	7.37	7.39
5-9	1,218,573	1,242,304	1,264,145	1,276,230	7.38	7.39	7.42	7.38
10-14	1,251,460	1,240,972	1,235,303	1,243,380	7.58	7.39	7.25	7.19
15-19	1,406,142	1,411,917	1,399,930	1,362,881	8.51	8.40	8.21	7.88
20-24	1,326,909	1,338,376	1,361,071	1,402,191	8.03	7.97	7.99	8.11
25-29	1,404,997	1,426,430	1,424,741	1,406,093	8.51	8.49	8.36	8.13
30-34	1,324,519	1,360,120	1,395,825	1,432,575	8.02	8.09	8.19	8.28
35-39	1,273,596	1,293,139	1,310,846	1,330,104	7.71	7.70	7.69	7.69
40-44	1,163,980	1,213,491	1,256,331	1,293,535	7.05	7.22	7.37	7.48
45-49	894,096	934,740	976,834	1,023,549	5.41	5.56	5.73	5.92
50-54	770,879	794,875	820,876	846,362	4.67	4.73	4.82	4.89
55-59	738,955	732,267	725,580	725,321	4.47	4.36	4.26	4.19
60-64	730,806	735,655	739,453	737,758	4.42	4.38	4.34	4.27
65-69	620,256	647,511	658,869	668,556	3.75	3.85	3.87	3.87
70-74	479,862	478,092	489,043	510,184	2.91	2.85	2.87	2.95
75-79	347,191	361,785	371,723	381,914	2.10	2.15	2.18	2.21
80-84	202,007	209,402	217,885	227,442	1.22	1.25	1.28	1.32
85 and over	134,015	137,513	139,270	145,770	0.81	0.82	0.82	0.84
<i>All ages</i>	<i>16,518,369</i>	<i>16,803,065</i>	<i>17,044,651</i>	<i>17,292,044</i>	<i>100.00</i>	<i>100.00</i>	<i>100.00</i>	<i>100.00</i>

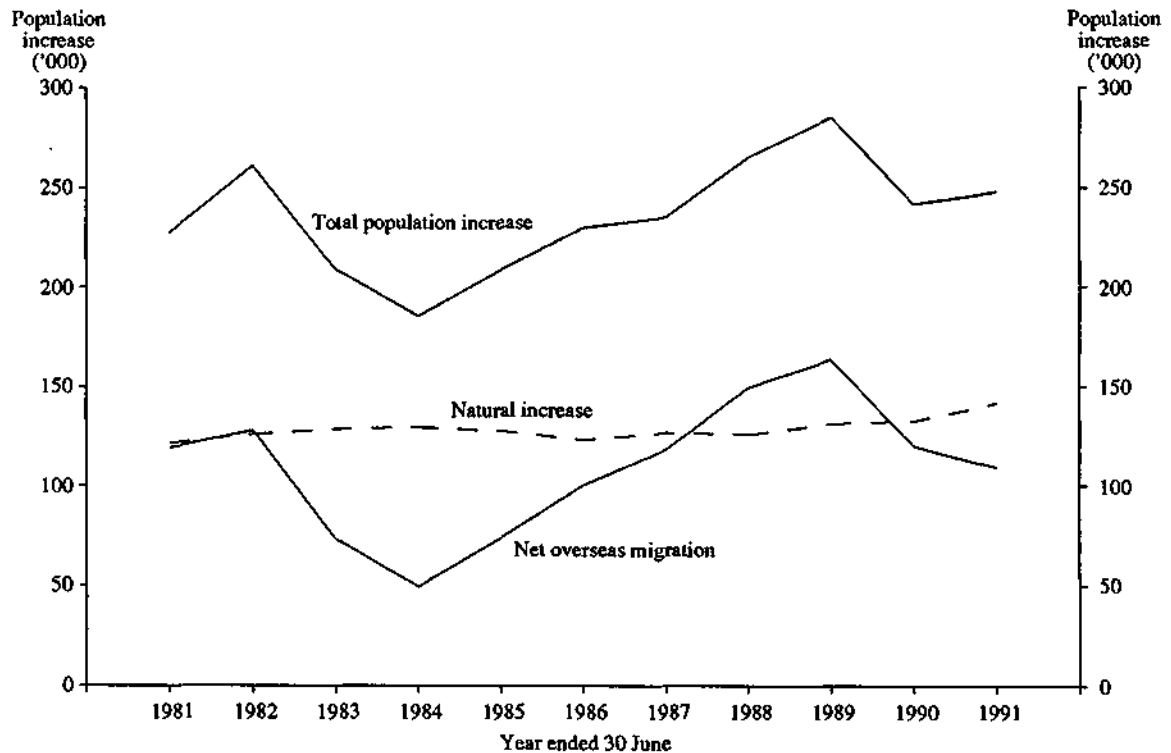
(a) Revised to incorporate preliminary 1991 Census results. Subject to further revision when final Census results become available.
Source: Australian Demographic Statistics (3101.0).

CHART 1.1. ESTIMATED RESIDENT POPULATION: PROPORTION OF POPULATION IN SELECTED AGE GROUPS, AUSTRALIA



(a) Subject to revision when final 1991 Census results become available.
Source: *Australian Demographic Statistics (3101.0)*.

CHART 1.2. ESTIMATED RESIDENT POPULATION: COMPONENTS OF GROWTH(a), AUSTRALIA



(a) Affected by adjustments to eliminate intercensal discrepancy. See the Technical Notes for further information. Years 1987 to 1991 are subject to revision when final 1991 Census results become available.

Source: *Australian Demographic Statistics (3101.0)*.

CHART 1.3. PROJECTED POPULATION: TOTAL ALL AGES, AUSTRALIA

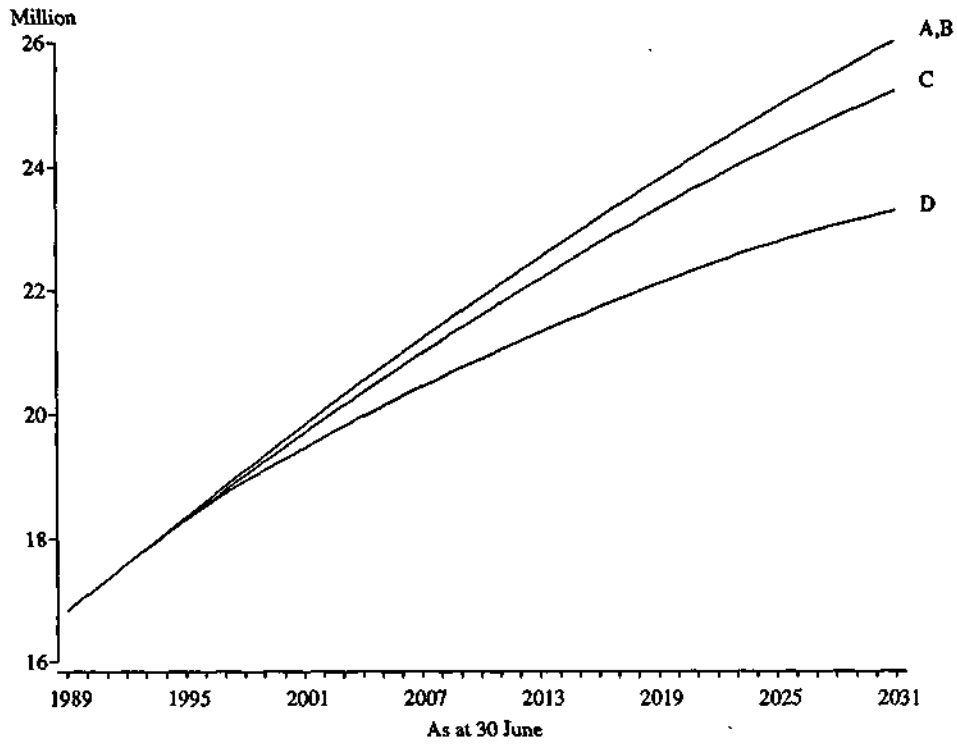
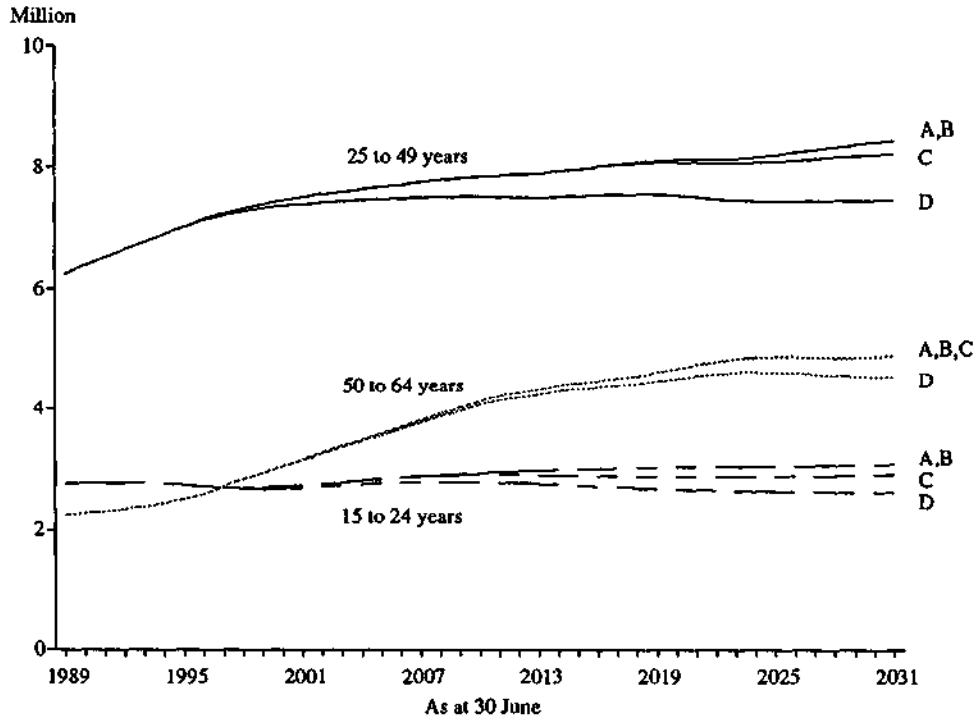


CHART 1.4. PROJECTED POPULATION: WORKING AGE GROUPS, AUSTRALIA



NOTE: The four projections A, B, C and D are based on different assumptions concerning immigration and fertility rates. See the Technical Notes for further information. All four are subject to revision when final 1991 Census results become available.

Source: *Projections of the Population of Australia, States and Territories, 1989 to 2031 (3222.0)*.

Migration

In 1987-88 and 1988-89, net overseas migration gains were the highest for forty years and exceeded the natural increase (births minus deaths) component of population growth. Since 1988-89, however, net overseas migration gains have again fallen back to below the levels of natural increase, dropping from 137,240 in 1988-89 to 103,870 in 1989-90 and 94,760 in 1990-91. The decline in the net gain for 1990-91 was mainly due to a sharp rise in the number of departures from Australia, with only a small increase in the number of arrivals compared with the previous year.

Although the net gain in overseas arrivals of working age also declined in 1990-91 (see Chart 1.5), the proportion of the net overseas migration gain who were aged 15-64 years has not changed significantly. This proportion has remained steady at about 70 per cent of the net gain since 1984-85. (In the early 1980s it had fallen, as the incidence of unemployment in Australia rose.)

In 1990-91 the United Kingdom continued to be the major source country for settlers from overseas, providing 17 per cent of the total. The next largest source countries were Hong Kong and Viet Nam (each 11%). Countries of Europe and the USSR provided a further 27 per cent (32,330 settlers), South East Asia provided 24 per cent (29,420) and North East Asia provided 18 per cent (22,100).

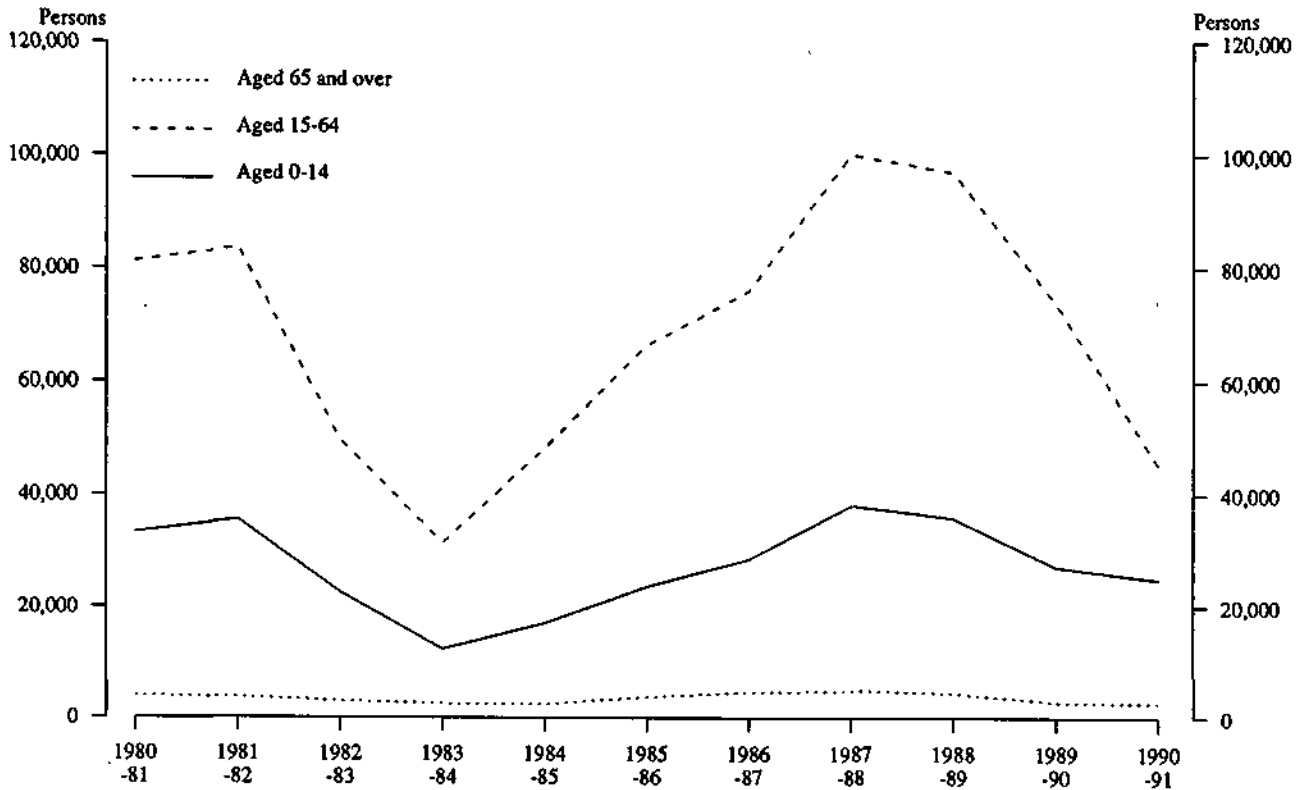
TABLE 1.2. PERMANENT AND LONG TERM OVERSEAS ARRIVALS AND DEPARTURES (a) : AGE AND SEX, AUSTRALIA

Age group (years)	Year ended 30 June											
	Arrivals						Departures					
	1986	1987	1988	1989	1990	1991	1986	1987	1988	1989	1990	1991
MALES												
0-4	7,140	8,260	10,550	10,250	8,910	9,090	3,390	3,640	3,830	4,080	4,560	5,080
5-14	14,260	15,110	18,350	18,140	15,980	15,800	5,310	5,340	5,160	5,900	6,410	6,770
15-24	19,520	20,380	23,410	25,680	24,840	23,890	9,160	9,910	10,420	11,820	14,040	14,970
25-34	25,540	27,290	33,560	34,400	33,600	34,530	13,910	14,590	15,250	17,380	20,280	23,970
35-44	16,600	17,740	21,300	22,140	20,310	21,160	8,940	8,820	9,340	10,320	11,200	13,340
45-64	11,120	11,410	13,620	14,100	13,150	13,090	6,510	6,170	6,240	7,290	8,130	8,850
65 and over	3,330	3,640	3,870	3,730	3,070	3,030	1,510	1,520	1,530	1,750	1,810	1,850
All ages	97,500	103,810	124,640	128,430	119,860	120,570	48,720	49,980	51,760	58,530	66,430	74,820
FEMALES												
0-4	6,650	8,340	10,010	9,830	8,630	8,570	3,220	3,400	3,670	3,950	4,380	4,820
5-14	12,700	14,130	17,050	17,370	15,060	14,760	5,130	4,990	5,130	5,720	6,070	6,600
15-24	19,300	21,810	24,660	26,530	25,880	26,600	9,470	10,850	11,430	13,350	15,950	16,390
25-34	24,440	27,680	32,880	33,370	31,660	34,610	12,590	13,030	13,430	15,760	18,350	20,810
35-44	12,510	13,750	16,530	17,600	16,180	16,420	6,380	6,420	6,720	7,630	8,420	9,420
45-64	9,390	10,590	12,000	12,360	10,860	11,220	5,010	4,840	4,950	5,690	6,300	6,640
65 and over	3,900	4,360	4,500	4,390	3,810	3,650	1,970	1,810	1,940	2,010	2,150	2,140
All ages	88,890	100,650	117,610	121,450	112,060	115,830	43,750	45,340	47,260	54,110	61,630	66,820
PERSONS												
0-4	13,790	16,600	20,550	20,080	17,540	17,660	6,610	7,040	7,500	8,020	8,950	9,900
5-14	26,960	29,240	35,390	35,500	31,030	30,570	10,430	10,330	10,290	11,620	12,480	13,380
15-24	38,820	42,190	48,060	52,220	50,720	50,490	18,630	20,760	21,840	25,180	29,990	31,360
25-34	49,980	54,960	66,430	67,770	65,260	69,140	26,490	27,620	28,680	33,140	38,630	44,780
35-44	29,100	31,480	37,820	39,740	36,480	37,570	15,320	15,250	16,050	17,940	19,610	22,760
45-64	20,510	21,990	25,620	26,460	24,010	24,310	11,520	11,010	11,200	12,980	14,430	15,490
65 and over	7,230	8,000	8,370	8,120	6,880	6,670	3,470	3,320	3,460	3,760	3,960	3,990
All ages	186,400	204,460	242,250	249,880	231,920	236,400	92,460	95,320	99,020	112,640	128,060	141,640

(a) Excludes 'category jumping' adjustment. See the Technical Notes.

Source: Australian Demographic Statistics (3101.0).

CHART 1.5. NET PERMANENT AND LONG-TERM OVERSEAS MOVEMENT(a)
BY AGE, AUSTRALIA



(a) Excludes 'category jumping' adjustment. See the text above and the Technical Notes for further information.
Source: Australian Demographic Statistics (3101.0).

TABLE 1.3. NET PERMANENT AND LONG TERM OVERSEAS MOVEMENT (a) : AGE AND SEX, AUSTRALIA

Age group (years)	Year ended 30 June											
	Number						Percent					
	1986	1987	1988	1989	1990	1991	1986	1987	1988	1989	1990	1991
MALES												
0-4	3,750	4,630	6,710	6,170	4,350	4,010	4.0	4.2	4.7	4.5	4.2	4.2
5-14	8,960	9,770	13,180	12,230	9,570	9,030	9.5	9.0	9.2	8.9	9.2	9.5
15-24	10,360	10,470	12,990	13,860	10,800	8,920	11.0	9.6	9.1	10.1	10.4	9.4
25-34	11,630	12,700	18,310	17,020	13,320	10,560	12.4	11.6	12.8	12.4	12.8	11.1
35-44	7,660	8,910	11,960	11,820	9,110	7,820	8.2	8.2	8.4	8.6	8.8	8.3
45-64	4,610	5,240	7,380	6,820	5,020	4,240	4.9	4.8	5.2	5.0	4.8	4.5
65 and over	1,820	2,120	2,340	1,990	1,260	1,180	1.9	1.9	1.6	1.5	1.2	1.2
All ages	48,790	53,830	72,880	69,900	53,430	45,750	51.9	49.3	50.9	50.9	51.4	48.3
FEMALES												
0-4	3,440	4,940	6,340	5,880	4,250	3,750	3.7	4.5	4.4	4.3	4.1	4.0
5-14	7,570	9,150	11,920	11,650	8,990	8,160	8.1	8.4	8.3	8.5	8.7	8.6
15-24	9,840	10,960	13,230	13,180	9,930	10,210	10.5	10.0	9.2	9.6	9.6	10.8
25-34	11,860	14,650	19,440	17,610	13,310	13,800	12.6	13.4	13.6	12.8	12.8	14.6
35-44	6,130	7,320	9,810	9,980	7,760	7,000	6.5	6.7	6.8	7.3	7.5	7.4
45-64	4,380	5,750	7,040	6,660	4,550	4,580	4.7	5.3	4.9	4.9	4.4	4.8
65 and over	1,940	2,550	2,570	2,380	1,650	1,510	2.1	2.3	1.8	1.7	1.6	1.6
All ages	45,150	55,310	70,350	67,340	50,430	49,010	48.1	50.7	49.1	49.1	48.6	51.7
PERSONS												
0-4	7,180	9,560	13,050	12,050	8,600	7,760	7.6	8.8	9.1	8.8	8.3	8.2
5-14	16,530	18,920	25,100	23,880	18,560	17,190	17.6	17.3	17.5	17.4	17.9	18.1
15-24	20,200	21,430	26,220	27,040	20,730	19,130	21.5	19.6	18.3	19.7	20.0	20.2
25-34	23,490	27,350	37,750	34,630	26,630	24,360	25.0	25.1	26.4	25.2	25.6	25.7
35-44	13,790	16,230	21,770	21,800	16,870	14,820	14.7	14.9	15.2	15.9	16.2	15.6
45-64	8,990	10,990	14,420	13,480	9,570	8,820	9.6	10.1	10.1	9.8	9.2	9.3
65 and over	3,760	4,680	4,910	4,360	2,920	2,680	4.0	4.3	3.4	3.2	2.8	2.8
All ages	93,930	109,140	143,220	137,240	103,870	94,760	100.0	100.0	100.0	100.0	100.0	100.0

(a) Excludes 'category jumping' adjustment. See the Technical Notes.

Source: Australian Demographic Statistics (3101.0).

TABLE 1.4. PERMANENT ARRIVALS (SETTLERS) : COUNTRY OF BIRTH BY AGE, AUSTRALIA
YEAR ENDED 30 JUNE 1991

Country of birth	Age group (years)			Total
	0 - 14	15 - 64	65 and over	
OCEANIA & ANTARCTICA —				
Fiji	790	1,630	20	2,440
New Zealand	1,970	5,250	240	7,470
Other	430	620	20	1,070
<i>Total</i>	<i>3,190</i>	<i>7,510</i>	<i>280</i>	<i>10,970</i>
EUROPE & THE USSR —				
Germany	190	670	30	890
Ireland	230	870	20	1,120
Poland	460	1,110	30	1,600
Portugal	280	580	10	870
Romania	190	420	30	640
United Kingdom	5,910	13,960	870	20,750
USSR & Baltic States	180	630	60	870
Yugoslavia	490	1,370	30	1,890
Other	840	2,800	90	3,730
<i>Total</i>	<i>8,770</i>	<i>22,410</i>	<i>1,150</i>	<i>32,330</i>
MIDDLE EAST & NORTH AFRICA —				
Egypt	220	570	10	800
Lebanon	630	2,240	20	2,890
Turkey	190	890	10	1,090
Other	710	1,630	40	2,370
<i>Total</i>	<i>1,750</i>	<i>5,330</i>	<i>80</i>	<i>7,150</i>
SOUTHEAST ASIA —				
Cambodia	30	150	10	190
Indonesia	220	840	10	1,070
Malaysia	1,670	4,020	50	5,740
Philippines	1,940	4,390	60	6,390
Singapore	410	850	10	1,280
Thailand	360	580	—	950
Viet Nam	2,620	9,710	920	13,250
Other	140	400	20	550
<i>Total</i>	<i>7,380</i>	<i>20,950</i>	<i>1,090</i>	<i>29,420</i>
NORTHEAST ASIA —				
China	330	2,660	270	3,260
Hong Kong	3,960	9,540	40	13,540
Korea	260	700	20	980
Taiwan	1,190	2,280	30	3,490
Other	180	640	10	830
<i>Total</i>	<i>5,920</i>	<i>15,820</i>	<i>370</i>	<i>22,100</i>
SOUTHERN ASIA —				
India	1,320	3,670	80	5,080
Sri Lanka	870	2,320	80	3,270
Other	300	730	10	1,040
<i>Total</i>	<i>2,490</i>	<i>6,720</i>	<i>180</i>	<i>9,390</i>
THE AMERICAS —				
Canada	290	610	10	910
Chile	210	480	20	700
United States of America(a)	610	1,250	30	1,890
Other	1,050	1,960	40	3,050
<i>Total</i>	<i>2,160</i>	<i>4,300</i>	<i>90</i>	<i>6,560</i>
AFRICA (excluding North Africa) —				
South Africa	710	1,320	60	2,080
Other	390	1,230	20	1,640
<i>Total</i>	<i>1,100</i>	<i>2,550</i>	<i>80</i>	<i>3,730</i>
Total(b)	32,770	85,600	3,320	121,690

(a) Includes America undefined. (b) Includes other and not stated.

Source: Unpublished Overseas Arrivals and Departures Statistics, Demography Section, ABS.

Labour Force Status and Other Characteristics of Migrants

In September 1990 the civilian population aged 15 and over was estimated at 13,104,300 persons. Of these approximately 27 per cent (3,510,900) were born outside Australia. The following tables focus on that group of migrants who arrived in Australia after 1970, had obtained permanent residency status and were aged 18 or more on arrival. This group numbered 1,158,900 at September 1990 representing some 9 per cent of the civilian population aged 15 and over. In March 1987, this group of migrants represented 7 per cent of the civilian population aged 15 and over.

The proportion of this group of migrants born in Europe has been steadily decreasing, with a corresponding increase in the numbers of migrants born in Asia and Oceania.

Of the migrants in this group, 829,100 were in the labour force at September 1990. Some 748,300 were employed — 77 per cent employed full-time and 14 per cent employed part-time. The remaining migrants in this group (329,800 or 28% of the group) were not in the labour force, a proportion that is lower than that estimated for the civilian population aged 18 and over (36%).

This group of migrants have been classified to various migration categories. Some 53 per cent (615,600) were classified as principal applicants, while a further 22 per cent (255,700) arrived as the partner of a principal applicant.

Of the principal applicants:

- 267,900 (44%) were sponsored by family
- 48,400 (8%) were sponsored by an employer or other organisation
- 262,900 (43%) arrived unsponsored
- 33,800 (5%) arrived as refugees.

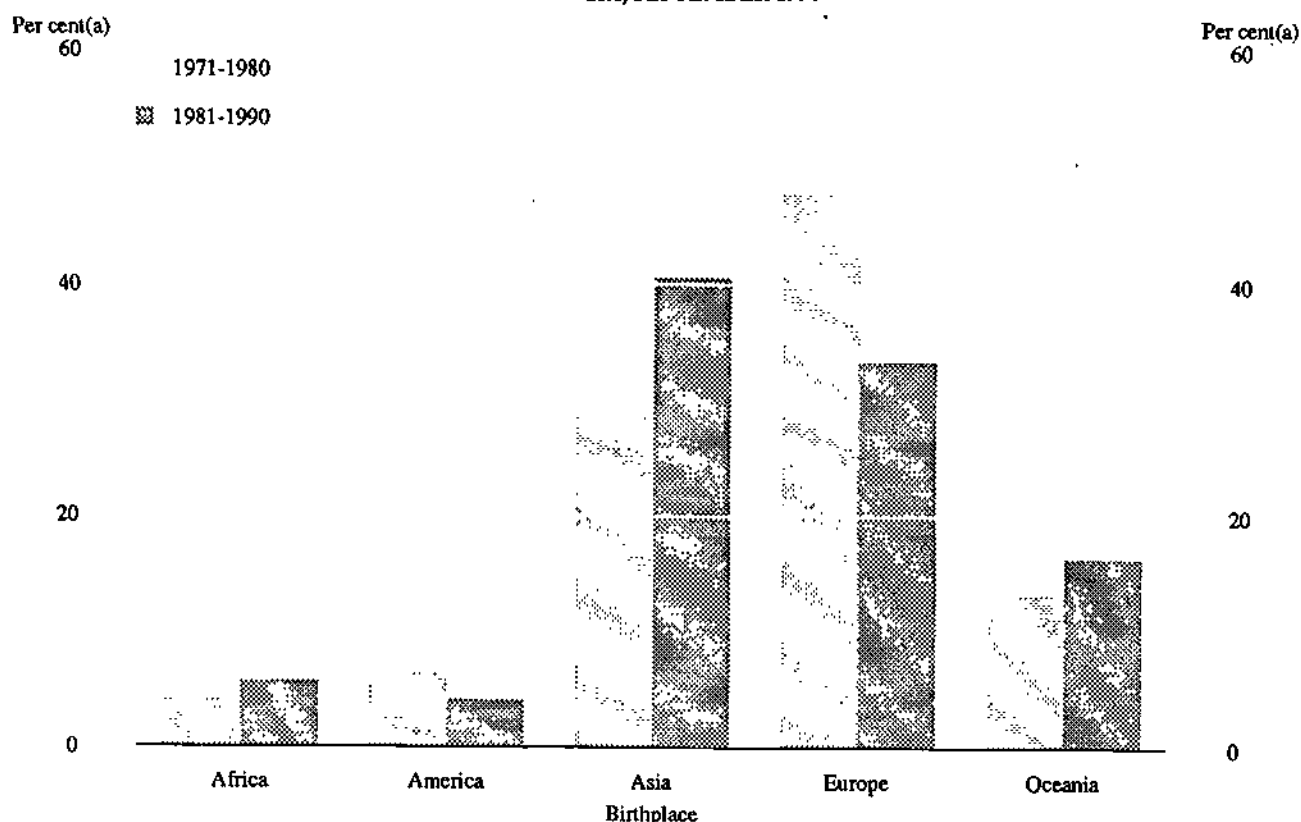
TABLE 1.5. CIVILIAN POPULATION AGED 15 AND OVER : CHARACTERISTICS OF MIGRANTS, AUSTRALIA, MARCH 1987 AND SEPTEMBER 1990

	Survey conducted in(a)							
	March 1987r (b)				September 1990			
	Males	Females —'000—	Persons	Proportion of civilian population (per cent)	Males	Females —'000—	Persons	Proportion of civilian population (per cent)
Civilian population aged 15 and over(c)—	6,018.3	6,154.3	12,172.6	100.0	6,494.4	6,609.8	13,104.3	100.0
Born in Australia	4,409.6	4,621.6	9,031.2	74.2	4,697.8	4,895.6	9,593.4	73.2
Born outside Australia	1,608.7	1,532.7	3,141.4	25.8	1,796.6	1,714.3	3,510.9	26.8
Aged 15-17 at March 1987	45.1	40.3	85.4	0.7
Aged 15-17 at September 1990	37.9	38.6	76.5	0.6
Aged less than 18 on arrival	150.6	142.8	293.6	2.2
Arrived 1970 or before	1,016.2	926.0	1,942.2	16.0	992.6	918.5	1,911.1	14.6
Arrived after 1970	547.4	566.4	1,113.8	9.2	615.6	614.1	1,229.8	9.4
Temporary residency status	21.4	16.6	38.0	0.3	43.7	27.2	70.9	0.5
Permanent residency status	526.1	549.8	1,075.9	8.8	571.9	587.0	1,158.9	8.8
Aged less than 18 on arrival	93.7	95.5	189.2	1.6
Aged 18 or more on arrival	432.4	454.3	886.7	7.3	571.9	587.0	1,158.9	8.8
Birthplace—								
Africa	24.5	25.7	50.1	0.4	27.1	29.9	57.0	0.4
America	21.5	26.7	48.0	0.4	25.4	32.6	58.1	0.4
Asia	133.8	141.7	275.4	2.3	196.7	217.6	414.2	3.2
Europe	190.6	198.5	389.1	3.2	232.6	222.8	455.4	3.5
United Kingdom and Ireland	119.7	117.9	237.6	2.0	139.7	130.1	269.8	2.1
Other countries in Europe	70.9	80.6	151.5	1.2	92.9	92.7	185.6	1.4
Oceania	62.1	61.9	124.0	1.0	90.1	84.1	174.1	1.3
New Zealand	54.2	52.3	106.6	0.9	78.2	69.4	147.5	1.1
Other countries in Oceania	7.9	9.6	17.5	0.1	11.9	14.7	26.6	0.2

(a) See the Technical Notes regarding comparability of the reference periods surveyed. (b) Prior to September 1990, the scope of the survey included persons who arrived in Australia after 1960. To enable time series comparisons, data from the March 1987 survey have been revised. See the Technical Notes. (c) Excludes institutionalised persons and boarding school pupils.

Source: Labour Force Status and Other Characteristics of Migrants, Australia, September 1990 (6250.0).

CHART 1.6. MIGRANTS WHO ARRIVED IN AUSTRALIA AFTER 1970
AGED 18 AND OVER: BIRTHPLACE AND PERIOD OF ARRIVAL,
AUSTRALIA, SEPTEMBER 1990



(a) For each 'period of arrival', the percentage distribution by birthplace.

Source: *Labour Force Status and Other Characteristics of Migrants, Australia, September 1990 (6250.0)*.

TABLE 1.6. MIGRANTS WHO ARRIVED IN AUSTRALIA AFTER 1970 AGED 18 AND OVER: MIGRATION CATEGORY AND
LABOUR FORCE STATUS, AUSTRALIA, SEPTEMBER 1990

Migration category	Employed			Unem- ployed — '000 —	Labour force	Not in labour force	Total	Unem- pment rate — per cent —	Parti- cipation rate
	Full-time	Part-time	Total						
New Zealand(a)	107.0	16.1	123.1	9.2	132.3	28.2	160.5	7.0	82.5
Principal applicant	374.0	45.0	418.9	44.6	463.6	152.1	615.6	9.6	75.3
Refugee	20.9	* 1.8	22.7	4.2	26.9	6.9	33.8	15.5	79.6
Other	353.0	43.2	396.2	40.5	436.7	145.2	581.8	9.3	75.1
Sponsored	175.4	23.1	198.5	20.0	218.4	100.4	318.9	9.1	68.5
By family	136.4	20.1	156.5	16.7	173.1	94.8	267.9	9.6	64.6
By employer	26.7	* 1.4	28.2	* 1.1	29.2	* 2.3	31.5	* 3.7	92.8
By other organisation	10.3	* 1.5	11.8	* 2.2	14.0	* 2.9	16.9	* 16.0	82.9
Did not know	* 1.9	* 0.1	* 2.1	* 0.0	* 2.1	* 0.5	* 2.6	* 0.0	* 79.6
Unsponsored	177.6	20.1	197.7	20.5	218.2	44.7	262.9	9.4	83.0
Partner of principal applicant	91.0	38.0	128.9	17.0	145.9	109.7	255.7	11.6	57.1
Principal applicant's migration status—									
Refugee	3.8	* 1.2	5.0	* 1.0	6.0	5.3	11.4	* 17.2	52.9
Other	80.1	34.2	114.3	15.2	129.5	97.5	227.0	11.7	57.1
Arrived with spouse/partner who was principal applicant	7.0	* 2.6	9.6	* 0.8	10.4	6.9	17.3	* 7.4	59.9
Other	37.1	8.1	45.1	6.4	51.5	20.5	72.0	12.4	71.6
No application form completed	17.9	4.0	21.8	* 3.2	25.0	11.1	36.1	* 12.7	69.2
Don't know	8.6	* 1.9	10.5	* 0.3	10.7	8.3	19.0	* 2.4	56.5
Total	635.5	112.9	748.3	80.7	829.1	329.8	1,158.9	9.7	71.5

(a) Includes persons born in New Zealand and those whose place of last residence was New Zealand.

Source: *Labour Force Status and Other Characteristics of Migrants, Australia, September 1990 (6250.0)*.

Educational Attainment

The number of persons aged 15 to 69 at February 1991 was estimated at 11,985,900 of whom 4,896,100 (41%) reported having a post-school qualification; 6,491,900 (54%) reported being without post-school qualifications and the remaining 597,800 (5%) were still attending school.

Of the 4,869,100 persons with post-school qualifications 2,229,200 (46%) had a certificate or diploma; 1,571,700 (32%) had a trade qualification; 1,047,200 (22%) had a degree or higher qualification and 47,900 (1%) had other post-school qualifications.

The estimate of 6,491,900 persons without post-school qualifications comprises 1,607,100 (25%) who had attended the highest level of secondary school available, 4,819,600 (74%) who had left before reaching the highest level of secondary school available, 37,300 who had never attended school and 27,900 for whom secondary school qualifications could not be determined.

TABLE 1.7. CIVILIAN POPULATION AGED 15 TO 69 : AGE AND EDUCATIONAL ATTAINMENT, AUSTRALIA, FEBRUARY 1991
(*000)

Educational attainment	Age (years)						Total
	15-19	20-24	25-34	35-44	45-54	55-69	
MALES							
With post-school qualifications	25.4	258.9	762.8	768.2	520.4	451.9	2,787.5
Degree	*0.3	52.2	185.5	202.2	105.0	76.3	621.5
Trade qualification	7.8	138.3	389.2	349.0	268.0	258.3	1,410.5
Certificate or diploma	15.8	65.8	180.2	211.6	144.1	110.8	728.4
Other	*1.5	*2.5	7.9	5.5	*3.3	6.5	27.1
Without post-school qualifications(a)	365.8	420.5	614.8	529.2	421.2	583.6	2,935.1
Attended highest level of secondary school available	173.6	191.2	171.1	128.3	68.2	63.4	795.8
Did not attend highest level of secondary school available	191.9	228.1	439.5	395.6	346.3	509.0	2,110.4
Never attended school	*0.4	*0.2	*1.9	*3.0	3.6	8.2	17.3
Still at school	303.2	*1.8	304.9
Total	694.3	681.2	1,377.6	1,297.4	941.5	1,035.5	6,027.5
FEMALES							
With post-school qualifications	53.3	273.7	649.4	569.5	319.7	243.1	2,108.6
Degree	*0.1	59.5	161.9	125.9	49.8	28.5	425.7
Trade qualification	*2.1	21.7	40.3	39.6	27.8	29.7	161.2
Certificate or diploma	50.2	189.2	440.4	401.0	237.6	182.5	1,500.9
Other	*0.8	*3.4	6.7	*3.0	4.5	*2.3	20.8
Without post-school qualifications(a)	320.8	393.3	731.0	724.6	576.9	810.2	3,556.9
Attended highest level of secondary school available	186.6	171.0	178.7	127.0	75.4	72.7	811.4
Did not attend highest level of secondary school available	133.1	219.9	547.0	588.3	496.3	724.7	2,709.2
Never attended school	*0.4	*0.0	*1.6	4.3	*3.1	10.6	20.0
Still at school	291.2	*1.6	292.9
Total	665.4	668.6	1,380.4	1,294.1	896.6	1,053.3	5,958.3
ALL PERSONS							
With post-school qualifications	78.6	532.6	1,412.2	1,337.6	840.1	695.0	4,896.1
Degree	*0.5	111.7	347.5	328.0	154.8	104.8	1,047.2
Trade qualification	9.9	160.0	429.5	388.6	295.7	288.0	1,571.7
Certificate or diploma	65.9	255.0	620.7	612.6	381.7	293.4	2,229.2
Other	*2.3	5.9	14.6	8.5	7.8	8.9	47.9
Without post-school qualifications(a)	686.6	813.8	1,345.8	1,253.8	998.1	1,393.8	6,491.9
Attended highest level of secondary school available	360.2	362.2	349.8	255.3	143.6	136.1	1,607.1
Did not attend highest level of secondary school available	325.0	448.0	986.5	983.9	842.5	1,233.7	4,819.6
Never attended school	*0.8	*0.2	3.5	7.3	6.8	18.8	37.3
Still at school	594.4	*3.4	597.8
Total	1,359.7	1,349.8	2,758.0	2,591.5	1,838.2	2,088.8	11,985.9

(a) Includes persons for whom secondary school qualifications could not be determined.

Source: Labour Force Status and Educational Attainment, Australia, February 1991 (6235.0).

Participation in Education

Between September 1989 and 1991 there was an estimated population increase of 4,300 among 15 to 24 year olds while the number in this group attending an educational institution rose by 91,100. In September 1991, 47.9 per cent (1,307,600) of 15 to 24 year olds were attending an educational institution, an increase of 3 percentage points since September 1989.

TABLE 1.8. PERSONS AGED 15 TO 24 : AGE, WHETHER ATTENDING AN EDUCATIONAL INSTITUTION AND TYPE OF INSTITUTION ATTENDING, AUSTRALIA, SEPTEMBER 1989 TO SEPTEMBER 1991

Age	Number			Education participation rate		
	1989	1990 —'000—	1991	1989	1990 —per cent—	1991
ATTENDING SCHOOL						
15-19	672.8	673.4	697.6	48.1	48.7	52.0
15	246.5	243.6	240.4	93.7	94.7	95.5
16	214.0	204.9	214.5	78.0	77.1	83.1
17	156.6	162.7	176.3	54.4	58.9	66.4
18	47.3	52.6	59.7	16.1	18.2	21.5
19	8.2	9.7	6.6	2.9	3.3	2.3
20-24	*2.7	5.4	8.6	*0.2	0.4	0.6
20	*2.2	*2.8	4.9	*0.8	*0.1	1.7
21	*0.1	*1.4	*1.2	*0.0	*0.5	*0.4
22	*0.1	*0.2	*1.1	*0.0	*0.1	*0.4
23	*0.0	*0.7	*0.4	*0.0	*0.3	*0.2
24	*0.3	*0.3	*0.9	*0.1	*0.1	*0.3
Total	675.4	678.9	706.2	24.8	24.9	25.8
ATTENDING TERTIARY						
15-19	261.9	259.5	259.5	18.7	18.8	19.3
15	*2.5	*2.0	*1.6	*0.9	*0.8	*0.6
16	13.0	18.1	10.8	4.7	6.8	4.2
17	39.8	35.4	30.6	13.8	12.8	11.5
18	100.7	96.0	100.7	34.3	33.3	36.3
19	106.0	108.1	115.9	37.9	36.6	40.0
20-24	279.1	294.2	341.9	21.1	21.9	24.6
20	89.1	84.7	113.6	32.6	30.2	38.2
21	69.1	71.9	79.3	26.0	26.0	27.9
22	46.1	56.6	60.7	17.8	21.2	21.9
23	44.2	47.7	45.3	17.0	18.3	16.9
24	30.6	33.2	43.0	11.7	12.8	16.4
Total	541.0	553.6	601.4	19.9	20.3	22.0
ATTENDING AN EDUCATIONAL INSTITUTION						
15-19	934.7	932.9	957.1	66.8	67.4	71.3
15	249.0	245.5	242.0	94.6	95.4	96.1
16	227.1	222.9	225.3	82.8	83.9	87.2
17	196.4	198.1	206.9	68.2	71.7	77.9
18	148.1	148.5	160.3	50.4	51.5	57.8
19	106.0	117.8	122.5	37.9	39.7	42.3
20-24	281.8	299.6	350.5	21.3	22.3	25.2
20	91.3	87.5	118.5	33.4	31.1	39.9
21	69.2	73.3	80.5	26.0	26.5	28.3
22	46.1	56.8	61.9	17.8	21.2	22.3
23	44.2	48.4	45.7	17.0	18.6	17.1
24	30.9	33.5	43.9	11.8	12.9	16.7
Total	1,216.5	1,232.5	1,307.6	44.7	45.2	47.9
TOTAL (a)						
15-19	1,398.9	1,383.1	1,342.6
15	263.2	257.3	251.8
16	274.4	265.6	258.2
17	287.8	276.4	265.7
18	294.0	288.6	277.4
19	279.5	295.1	289.5
20-24	1,320.1	1,345.2	1,389.6
20	273.6	280.9	297.4
21	265.7	276.9	284.3
22	259.4	267.4	277.8
23	259.4	260.9	267.9
24	261.9	259.1	262.3
Total	2,718.9	2,728.3	2,723.2

(a) Includes persons not attending an educational institution.

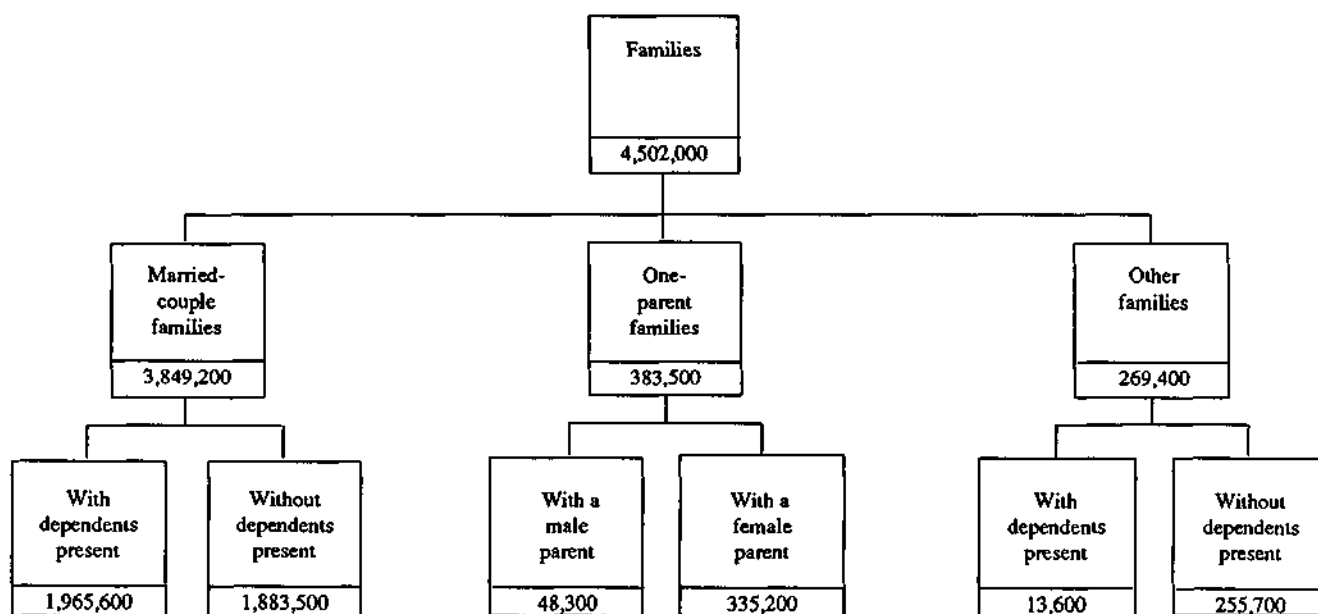
Families

In June 1991 an estimated 12,917,000 persons aged 15 years and over were usual residents of private dwellings in Australia. Of these, family status could be determined for a sub-population of 12,637,000 persons.

Within this sub-population 10,704,500 persons were members of 4,502,000 families. There were 3,849,200 *married-couple families*, 51 per cent of whom had dependents present. The number of *one-parent families* with a male parent was 48,300 and the number of *one-parent families* with a female parent was 335,200. The number of *other families* was 269,400.

Within the sub-population there were 1,932,500 persons who were not members of a family; 60 per cent of these persons lived alone.

CHART 1.7. AUSTRALIAN FAMILIES, JUNE 1991



Source: *Labour Force Status and Other Characteristics of Families, Australia, June 1991 (6224.0)*.