

## CHAPTER 5

### PERSONS NOT IN THE LABOUR FORCE

Persons not in the labour force represent that group of the population who during a particular week are not employed or unemployed. The main interest here is in their potential to participate in the labour force. In addition to analysing persons not in the labour force by their demographic and family characteristics, attention is also focussed on their degree of attachment to the labour force. This is achieved by the concepts of 'marginal attachment to the labour force' and 'discouraged jobseekers'. The various groups of persons either in the labour force or not in the labour force, including those marginally attached to the labour force, are shown schematically in Chart 5.2.

The sources for the statistics in this chapter are the ABS monthly labour force survey and its supplementaries. In particular, a survey of persons not in the labour force is conducted annually to examine the labour force attachments of persons not in the labour force.

#### SELECTED FEATURES

##### Persons not in the labour force

There were 4,922,500 persons not in the labour force in August 1988, 1,633,900 males and 3,288,600 females.

Females comprised 66.8 per cent of persons not in the labour force in August 1988 compared to 72.7 per cent ten years earlier.

In August 1988, 34.9 per cent of persons not in the labour force were aged 65 and over, compared with 29.9 per cent in August 1978.

A survey conducted in September 1988 analysed the characteristics of persons not in the labour force. There were 3,620,400 persons aged 15 to 69 who were not in the labour force. They accounted for 31.2 per cent of the civilian population aged 15 to 69. This proportion is similar to the proportion estimated in March 1988 (30.6 per cent) and March 1987 (31.0 per cent).

Persons aged 15 to 69 not in the labour force who wanted to work numbered 1,002,900. The 15 to 24 age group accounting for 31.4 per cent of this group. The 25 to 34 age group accounted for a further 27.6 per cent and 11.6 per cent were aged 55 to 69.

Older age groups were less likely to want to work full time. Some 40.8 per cent of the 15 to 19 age group stated a full-time preference compared with 21.8 per cent in the 35 to 44 age group and 20.5 per cent in the 55 to 64 age group.

Persons with marginal attachment to the labour force (i.e. persons neither employed nor unemployed who nevertheless reported some attachment to the labour force) numbered 721,700 in September 1988. This represented 19.9 per cent of all persons aged 15 to 69 not in the labour force.

There were an estimated 83,800 discouraged jobseekers among persons aged 15 to 69. The age distribution of these discouraged jobseekers varied from that of the marginally attached group. A lower percentage were in the 15 to 24 age group (13.7 per cent) and a higher percentage were in the older age groups, 35.1 per cent aged 55 to 69. In the case of those marginally attached, 31.6 per cent were aged 15 to 24 while 12.5 per cent were aged 55 to 69.

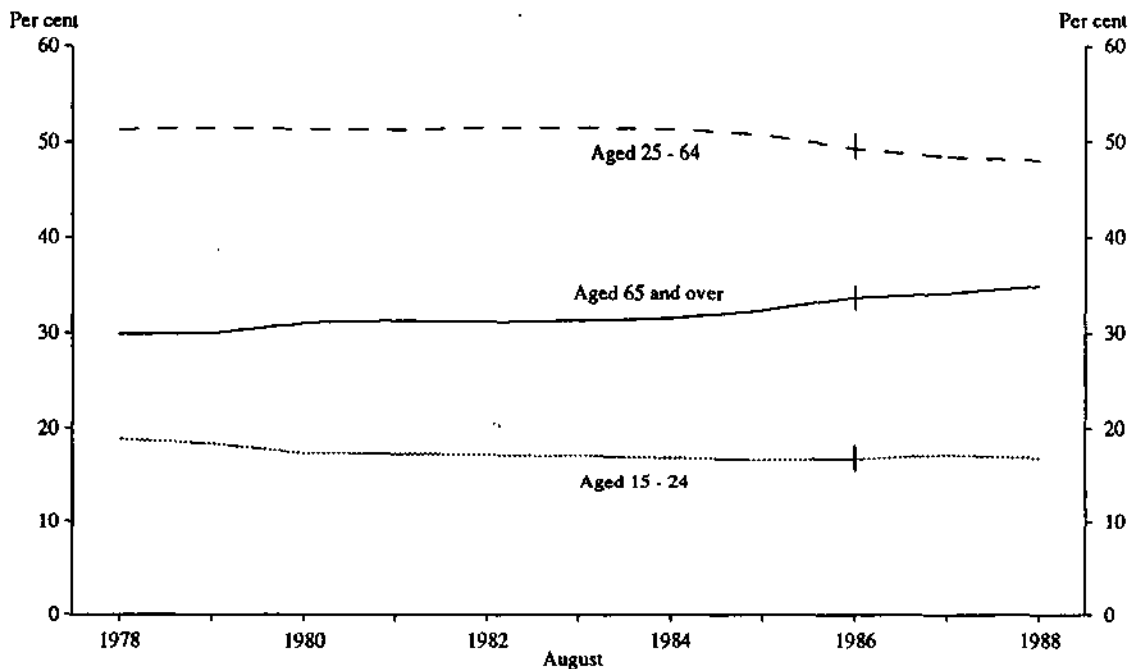
**TABLE 5.1. CIVILIAN POPULATION AGED 15 TO 69: LABOUR FORCE STATUS, AUSTRALIA,  
SEPTEMBER 1985 TO SEPTEMBER 1988**  
(\*000)

	Sept. 1985	March 1986	Sept. 1986	March 1987	March 1988	Sept. 1988
Civilian population aged 15 to 69	10,921.7	11,028.3	11,141.3	11,267.9	11,487.0	11,613.6
Persons in the labour force	7,353.6	7,520.8	7,589.9	7,771.2	7,966.8	7,993.2
Persons not in the labour force	3,568.1	3,507.5	3,551.4	3,496.7	3,520.2	3,620.4
With marginal attachment to the labour force	727.2	697.4	737.2	696.4	725.0	721.7
Wanted to work and were actively looking for work	60.4	35.2	57.0	31.1	33.6	65.7
Were available to start work within four weeks	30.2	25.0	26.7	23.6	26.9	34.8
Were not available to start work within four weeks	30.2	10.2	30.3	7.6	6.7	30.9
Wanted to work but were not actively looking for work and were available to start work within four weeks	666.9	662.3	680.2	665.3	691.4	656.0
Discouraged jobseekers	83.0	91.5	83.6	94.4	92.0	83.8
Other	583.8	570.7	596.5	570.9	599.4	572.2
Without marginal attachment to the labour force	2,840.8	2,810.1	2,814.2	2,800.3	2,795.2	2,898.8
Wanted to work but were not actively looking for work and were not available to start work within four weeks	262.5	259.6	259.9	231.8	250.3	281.3
Did not want to work	2,479.8	2,446.6	2,453.8	2,460.9	2,437.8	2,515.7
Permanently unable to work	30.0	33.3	35.5	28.8	37.5	37.2
Institutionalised(a) and boarding school pupils	68.5	70.5	65.0	78.8	69.5	64.7

(a) Includes some patients in hospitals and sanatoriums and inmates of reformatories, gaols etc.

Source: *Persons Not in the Labour Force, Australia* (6220.0)

**CHART 5.1. PERSONS NOT IN THE LABOUR FORCE BY AGE, AUSTRALIA**



Indicates break in series. Estimates from August 1986 are based on a revised definition introduced in April 1986. See Appendix C for further information.

Source: *The Labour Force, Australia* (6203.0).

TABLE 5.2: PERSONS NOT IN THE LABOUR FORCE : AGE, AUSTRALIA, AUGUST 1968 TO AUGUST 1988 ('000)

August	Age group (years)									Total
	15-19	20-24	25-34	35-44	45-54	55-59	60-64	65-69	70 and over	
MALES										
1968	204.1	36.5	18.3	16.9	29.6	26.5	47.6	105.2	226.6	711.3
1969	214.9	42.3	18.9	18.6	29.8	27.4	53.9	112.1	232.3	750.4
1970	211.8	41.2	20.7	16.5	29.2	26.6	54.8	116.4	231.8	749.0
1971	227.3	47.8	23.4	17.5	35.1	27.7	59.3	120.0	241.5	799.6
1972	234.8	46.1	22.2	18.8	33.2	28.9	60.6	128.2	241.0	813.8
1973	229.9	51.5	22.7	20.9	40.7	35.9	63.5	134.9	247.8	847.9
1974	245.8	57.2	30.8	21.9	45.3	37.8	75.6	148.6	257.5	920.5
1975	242.2	56.9	33.5	25.6	48.4	37.9	87.4	156.9	267.7	956.6
1976	247.1	52.9	33.0	25.4	47.3	42.1	101.1	174.3	277.0	1,000.1
1977	240.4	51.2	34.3	24.3	53.8	45.5	106.3	180.4	288.8	1,024.9
1978	256.2	62.3	46.3	37.1	66.1	62.6	113.8	189.8	303.4	1,137.7
1979	254.6	60.2	49.1	37.9	68.5	64.8	130.0	198.3	314.2	1,177.6
1980	243.6	59.5	53.5	36.4	66.2	61.0	141.6	203.7	327.6	1,193.2
1981	248.0	56.3	56.9	44.5	67.1	69.7	143.5	208.1	342.4	1,236.6
1982	243.6	70.4	63.4	48.2	77.0	78.0	160.5	218.3	355.3	1,314.6
1983	271.0	69.0	57.2	52.1	74.5	82.0	183.2	216.3	373.8	1,379.2
1984 r	267.6	71.0	62.1	57.1	78.1	89.0	190.6	216.7	386.6	1,418.8
1985 r	280.8	68.6	70.2	57.8	79.4	90.7	198.3	219.8	403.9	1,469.5
1986(a) r	284.2	72.2	67.3	65.2	80.9	93.2	193.2	233.9	419.3	1,509.4
1987 r	299.5	69.7	71.3	66.4	87.2	96.8	186.9	243.6	434.2	1,565.4
1988 r	311.7	65.1	85.0	71.7	109.1	98.9	190.2	257.5	444.8	1,633.9
FEMALES										
1968	212.0	194.2	467.3	439.6	420.5	200.7	193.0	180.4	376.5	2,684.3
1969	232.0	191.4	476.7	428.5	420.0	211.4	205.0	183.7	382.4	2,731.1
1970	234.4	201.3	472.8	408.8	412.5	215.2	208.6	185.9	388.7	2,728.1
1971	253.9	218.2	499.2	381.8	409.3	218.5	213.0	187.3	402.0	2,783.1
1972	249.0	214.1	523.4	379.9	401.4	216.5	222.1	195.1	410.1	2,811.6
1973	259.5	214.4	515.9	366.5	401.6	215.8	230.5	203.7	418.9	2,826.8
1974	268.4	208.1	519.9	357.1	410.8	212.7	241.1	207.5	426.3	2,851.8
1975	255.1	201.1	529.8	350.7	408.7	216.9	247.6	217.1	432.6	2,859.6
1976	276.0	194.9	549.1	352.9	389.9	222.6	252.8	223.3	448.4	2,909.8
1977	264.5	184.4	541.7	351.2	390.3	229.3	252.1	232.2	458.6	2,904.3
1978	270.8	197.8	553.9	350.2	394.7	247.2	263.7	251.6	499.3	3,029.1
1979	288.0	188.6	574.9	358.5	395.9	269.5	264.3	263.6	513.8	3,117.0
1980	260.1	181.1	558.9	357.2	386.3	263.2	268.2	267.0	529.7	3,071.7
1981	272.6	188.7	571.9	378.3	375.7	260.5	284.3	271.8	550.8	3,154.6
1982	276.8	197.0	570.6	402.3	372.8	275.3	301.2	275.8	571.0	3,242.8
1983	270.2	193.4	588.8	421.2	381.4	267.7	303.3	280.8	592.3	3,299.1
1984 r	279.6	186.8	568.9	429.1	374.0	270.9	316.5	273.6	260.5	3,319.9
1985 r	281.5	173.8	542.3	417.3	377.6	272.3	323.7	282.3	642.7	3,313.6
1986(a) r	287.1	165.7	520.4	397.8	351.9	263.8	321.1	293.3	665.2	3,266.3
1987 r	315.0	157.8	507.1	399.3	354.8	254.4	320.1	301.8	681.2	3,291.4
1988 r	303.1	156.6	514.6	384.9	351.6	248.4	315.4	317.2	696.8	3,288.6
PERSONS										
1968	416.1	230.6	485.7	456.5	450.0	227.2	240.6	285.6	603.2	3,395.5
1969	446.9	233.7	495.6	447.2	449.8	238.8	258.9	295.8	614.7	3,481.5
1970	446.2	242.5	493.5	425.3	441.6	241.8	263.5	302.2	620.4	3,477.1
1971	481.1	266.0	522.6	399.3	444.5	246.3	272.3	307.4	643.4	3,582.7
1972	483.9	260.2	545.6	398.7	434.5	245.3	282.7	323.3	651.1	3,625.3
1973	489.3	265.9	538.6	387.4	442.4	251.7	294.0	338.6	666.8	3,674.7
1974	514.2	265.3	550.7	379.1	456.0	250.4	316.8	356.1	683.8	3,772.3
1975	497.3	258.0	563.3	376.3	457.1	254.8	335.0	374.0	700.3	3,816.2
1976	523.1	247.8	582.0	378.2	437.2	264.7	353.9	397.6	725.4	3,909.8
1977	504.9	235.5	576.0	375.5	444.1	274.8	358.4	412.7	747.4	3,929.2
1978	527.0	260.1	600.2	387.4	460.8	309.7	377.5	441.4	802.6	4,166.8
1979	542.5	248.8	624.1	396.3	464.5	334.2	394.3	462.0	828.0	4,294.6
1980	503.7	240.7	612.4	393.6	452.5	324.2	409.8	470.8	857.3	4,264.9
1981	520.7	244.9	628.8	422.8	442.8	330.2	427.9	479.9	893.2	4,391.2
1982	520.4	267.4	634.0	450.5	449.7	353.3	461.7	494.1	926.3	4,557.4
1983	541.2	262.4	646.1	473.3	455.9	349.7	486.5	497.1	966.2	4,678.3
1984 r	547.2	257.8	631.0	486.2	452.1	359.9	507.2	490.3	1,007.2	4,378.7
1985 r	562.2	242.5	612.6	475.2	457.0	363.1	522.0	502.0	1,046.5	4,783.1
1986(a) r	571.3	237.9	587.7	463.0	432.8	357.0	514.3	527.0	1,084.5	4,775.7
1987 r	614.5	227.5	578.4	465.7	441.9	351.1	517.0	545.3	1,115.4	4,856.8
1988 r	614.8	221.7	599.6	456.6	460.7	347.3	505.5	574.8	1,141.5	4,922.5

(a) Estimates from August 1986 are based on a revised definition introduced in April 1986. See paragraph 22 of Appendix C for further information.

Source: The Labour Force, Australia (6203 0).

TABLE 5.3. PERSONS NOT IN THE LABOUR FORCE(a) : FAMILY STATUS, AUSTRALIA, JUNE 1988

	Males	Females	Persons	Males	Females	Persons
	— '000 —			— per cent —		
<i>Member of a family</i>	1,160.4	2,444.9	3,605.3	23.1	48.1	35.7
Husband or wife	791.5	1,805.9	2,597.4	21.4	49.7	35.4
With dependents present	112.6	828.2	940.8	5.7	43.4	24.3
Without dependents present	678.9	977.7	1,656.5	39.1	56.7	47.8
Not-married family head	32.3	267.1	299.4	30.0	57.2	52.1
With dependents present	7.2	157.5	164.7	17.6	52.9	48.7
Without dependents present	25.1	109.6	134.7	37.6	64.6	57.0
Full-time student aged 15-24	258.8	240.8	499.6	69.3	64.4	66.8
Other child(b) of family head	49.5	39.6	89.1	6.7	8.3	7.3
Other relative	28.3	91.5	119.8	30.9	70.5	54.1
<i>Not a member of a family</i>	207.3	502.3	709.6	24.5	55.3	40.4
Living alone	156.2	454.5	610.7	34.0	72.9	56.4
Not living alone	51.1	47.8	98.9	13.2	16.8	14.7
<b>Total</b>	<b>1,367.7</b>	<b>2,947.2</b>	<b>4,315.0</b>	<b>23.3</b>	<b>49.2</b>	<b>36.4</b>

(a) Excludes persons in institutions. (b) Aged 15 and over.

Source: Labour Force Status and Other Characteristics of Families, June 1988 (622A.0).

TABLE 5.4. PERSONS NOT IN THE LABOUR FORCE AT SOME TIME DURING THE YEAR ENDING FEBRUARY 1988 : TIME NOT IN THE LABOUR FORCE, AUSTRALIA ('000)

	Time not in the labour force (weeks)							Total
	1 and under 4	4 and under 13	13 and under 26	26 and under 39	39 and under 49	49 and under 52	52	
<i>Males</i>	214.7	242.3	112.6	114.6	153.8	55.9	1,289.6	2,183.6
Married	131.3	126.8	45.4	41.0	25.9	12.8	777.1	1,160.3
Not-married	83.4	115.6	67.3	73.6	127.9	43.1	512.5	1,023.3
<i>Females</i>	219.2	310.7	194.8	222.3	264.2	121.4	2,808.7	4,141.3
Married	136.8	212.8	128.7	139.4	119.3	69.6	1,699.3	2,506.0
Not-married	82.4	97.9	66.1	82.9	144.9	51.8	1,109.4	1,635.3
<b>Persons</b>	<b>433.9</b>	<b>553.0</b>	<b>307.4</b>	<b>337.0</b>	<b>418.0</b>	<b>177.2</b>	<b>4,098.4</b>	<b>6,324.9</b>
<i>Age group—</i>								
15-19	44.6	63.1	46.0	88.3	188.6	65.1	427.1	922.9
20-24	73.2	87.3	45.8	45.0	58.6	13.7	117.2	440.7
25-34	131.4	153.6	91.3	84.5	74.9	44.7	395.3	975.8
35-44	104.3	131.3	61.9	58.1	44.8	27.7	355.1	783.2
45-54	52.3	72.3	31.0	32.5	24.1	12.2	383.6	608.0
55-59	15.5	24.1	12.6	11.2	12.5	*	310.1	390.8
60-64	8.0	13.2	10.7	10.9	7.8	5.0	464.5	520.1
65 and over	*	8.1	8.1	6.5	6.8	*	1,645.3	1,683.5

Source: Labour Force Experience, Australia, During the Year Ending February 1988, Summary (6205 0).

**TABLE 5.5. PERSONS NOT IN THE LABOUR FORCE WHO WANTED TO WORK BUT WERE NOT ACTIVELY LOOKING FOR WORK AND WERE NOT AVAILABLE TO START WORK WITHIN FOUR WEEKS : REASON NOT AVAILABLE TO START WORK WITHIN FOUR WEEKS, INTENTION TO LOOK FOR WORK IN THE NEXT TWELVE MONTHS AND TYPE OF WORK PREFERRED, AUSTRALIA, SEPTEMBER 1988**  
(\*000)

Reason not available to start work within four weeks	Intention to look for work in the next twelve months				Type of work preferred			Total
	Intended to look	Did not intend to look	Did not know	Not asked(a)	Full-time	Part-time	No preference	
Personal reasons	64.7	51.7	37.9	4.9	69.2	80.0	10.1	159.3
Own ill health or injury, physical disability, or pregnancy	20.8	34.0	22.3	*3.9	32.9	40.3	7.8	81.0
Studying	36.6	14.4	12.7	*0.9	34.5	28.1	*1.9	64.5
At school	25.5	12.1	10.4	*0.4	26.8	20.7	*0.9	48.4
Other educational institution	11.0	*2.3	*2.3	*0.5	7.7	7.4	*1.0	16.1
Moved house/holidays	7.4	*3.3	*2.9	*0.1	*1.8	11.6	*0.3	13.7
Family reasons	23.6	45.7	26.1	8.2	14.3	85.2	*4.2	103.6
Ill health of other than self	*2.3	5.3	*4.3	*0.2	*3.6	7.8	*0.7	12.1
Unable to find suitable childcare	6.5	4.8	5.7	*0.3	*2.7	13.9	*0.8	17.4
Children too young/preferred to look after children	14.7	35.6	16.1	7.7	8.0	63.4	*2.7	74.1
Other reasons	4.9	8.9	*3.7	*1.0	4.8	11.4	*2.1	18.4
<b>Total</b>	<b>93.2</b>	<b>106.3</b>	<b>67.7</b>	<b>14.1</b>	<b>88.4</b>	<b>176.5</b>	<b>16.4</b>	<b>281.3</b>
Males	29.6	24.8	17.7	*1.8	42.3	25.5	6.1	73.9
Females	63.6	81.5	50.0	12.3	46.1	151.0	10.3	207.4

(a) Persons who had a job but, up to the end of the reference week, had been away from work without pay for four weeks or longer and had not been actively looking for work.

Source: *Persons Not in the Labour Force, Australia, September 1988* (6220.0).

**TABLE 5.6. PERSONS AGED 15 TO 64 NOT IN THE LABOUR FORCE(a) : WHETHER ATTENDING AN EDUCATIONAL INSTITUTION AND TYPE OF EDUCATIONAL INSTITUTION ATTENDING, AUSTRALIA, MAY 1982 TO MAY 1987**  
(\*000)

Type of educational institution attending	May 1983	May 1984	May 1985	May 1986	May 1987	May 1988
<b>MALES</b>						
Attending	282.0	293.3	303.7	301.1	330.0	353.7
School	195.1	199.3	212.3	205.0	229.0	235.7
University	44.6	46.4	42.8	39.4	49.8	52.8
CAE	18.5	20.2	24.2	25.5	20.8	26.2
TAFE/Technical College	18.8	20.4	20.1	22.5	24.2	31.2
Other	5.0	6.9	4.4	8.7	6.2	7.8
Not attending	413.8	416.5	449.2	464.2	468.9	476.8
<b>Total</b>	<b>695.9</b>	<b>709.7</b>	<b>752.9</b>	<b>765.3</b>	<b>798.9</b>	<b>830.5</b>
<b>FEMALES</b>						
Attending	328.2	335.9	336.7	336.5	371.5	391.8
School	186.7	182.8	191.4	187.2	214.0	214.3
University	38.7	41.9	36.2	37.4	36.4	43.0
CAE	29.1	30.4	28.9	26.4	37.7	40.7
TAFE/Technical College	48.2	54.2	60.6	58.8	63.2	70.6
Other	25.5	26.6	19.6	26.7	20.2	23.2
Not attending	2,000.0	2,009.9	1,990.5	1,872.6	1,848.4	1,814.7
<b>Total</b>	<b>2,328.2</b>	<b>2,345.8</b>	<b>2,327.2</b>	<b>2,209.1</b>	<b>2,219.9</b>	<b>2,206.5</b>

(a) Excludes persons in institutions and persons permanently unable to work. Estimates may therefore differ from those shown in other tables and charts

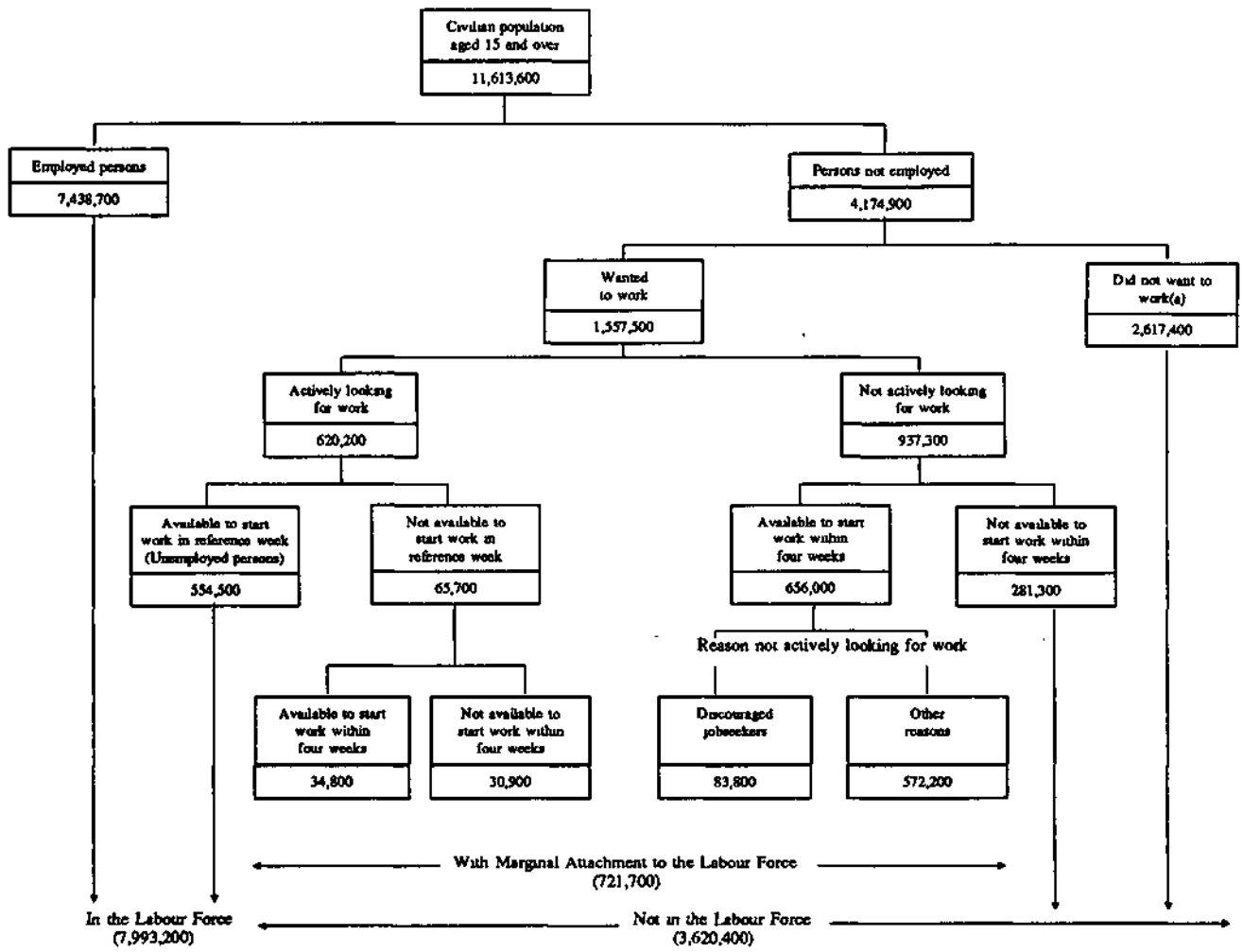
Source: *Transition from Education to Work, Australia* (6227.0).

TABLE 5.7. PERSONS NOT IN THE LABOUR FORCE : WHETHER IN THE LABOUR FORCE IN THE LAST TWELVE MONTHS, EDUCATIONAL ATTAINMENT AND MAIN ACTIVITY WHILE NOT IN THE LABOUR FORCE, AUSTRALIA, FEBRUARY 1988 ('000)

Educational attainment	Main activity while out of the labour force									Total(b)
	Kept house	Attended an educational institution	Retired or voluntarily inactive	Unpaid leave	Own illness, injury	Own disability or handicap	Worked in unpaid voluntary work	Travelled, moved house, holiday	Other(a)	
<b>IN THE LABOUR FORCE IN THE LAST TWELVE MONTHS</b>										
With post-school qualifications	115.0	16.5	34.5	*3.2	15.0	*1.8	*1.2	13.2	7.8	218.4
Degree	17.6	8.0	6.1	*0.3	*1.6	*0.0	*0.5	*3.5	*1.5	40.2
Trade qualification or apprenticeship	13.4	*1.1	14.9	*0.0	8.9	*0.5	*0.6	*3.4	*3.3	50.2
Certificate or diploma	81.9	7.4	13.6	*2.9	*4.5	*1.2	*0.2	6.3	*3.0	125.8
Without post-school qualifications(c)	199.6	44.4	38.9	*3.4	26.4	*2.3	*1.2	12.5	9.2	368.2
Attended highest level of secondary school available	33.4	33.4	5.9	*0.8	*3.8	*0.0	*0.7	*4.4	*2.8	90.5
Did not attend highest level of secondary school available	163.6	10.9	32.5	*2.6	22.3	*2.3	*0.5	8.1	6.5	273.9
Left at age—										
16 and over	63.7	5.7	7.1	*1.2	6.9	*0.3	*0.3	*4.3	*1.9	101.0
14 or 15	89.3	*4.7	20.1	*1.2	12.8	*1.9	*0.2	*3.2	*4.3	151.5
13 and under	10.6	*0.5	5.2	*0.2	*2.5	*0.0	*0.0	*0.7	*0.3	21.5
Still at school	*1.5	79.4	*0.0	*0.3	*0.2	*0.0	*0.0	*1.7	*0.0	84.3
<b>Total</b>	<b>316.1</b>	<b>140.2</b>	<b>73.5</b>	<b>6.9</b>	<b>41.7</b>	<b>*4.0</b>	<b>*2.4</b>	<b>27.4</b>	<b>17.1</b>	<b>670.9</b>
Males	10.1	69.8	59.9	*1.9	30.8	*3.9	*1.4	13.4	11.0	223.0
Females	306.0	70.5	13.6	5.0	10.8	*0.2	*1.0	14.0	6.0	447.8
<b>NOT IN THE LABOUR FORCE IN THE LAST TWELVE MONTHS</b>										
With post-school qualifications	435.8	17.4	312.5	*0.7	35.7	14.5	26.6	5.6	12.1	865.7
Degree	35.4	10.2	32.6	*0.0	*3.6	*0.7	*4.9	*2.0	*0.3	90.7
Trade qualification or apprenticeship	77.1	*1.6	187.5	*0.3	22.5	9.5	*4.1	*2.2	5.7	312.6
Certificate or diploma	311.9	5.5	91.2	*0.3	9.4	*4.3	16.9	*1.4	6.0	449.0
Without post-school qualifications(c)	1,701.1	80.9	658.3	*0.1	115.2	62.9	28.3	7.4	22.3	2,684.9
Attended highest level of secondary school available	161.0	59.7	57.8	*0.0	9.9	*4.5	*3.4	*1.5	*3.5	303.1
Did not attend highest level of secondary school available	1,519.6	20.9	586.1	*0.1	101.6	55.4	24.2	5.7	18.8	2,339.3
Left at age—										
16 and over	296.0	11.4	67.5	*0.0	19.8	10.4	7.0	*1.6	*3.2	417.7
14 or 15	974.0	9.2	366.9	*0.1	54.3	27.7	14.1	*3.8	12.5	1,466.6
13 and under	249.5	*0.3	151.6	*0.0	27.5	17.3	*3.1	*0.3	*3.1	454.9
Still at school	*0.7	314.2	*0.3	*0.0	*0.0	*0.7	*0.0	*0.4	*0.3	341.6
<b>Total</b>	<b>2,137.6</b>	<b>412.5</b>	<b>971.1</b>	<b>*0.8</b>	<b>150.9</b>	<b>78.1</b>	<b>54.9</b>	<b>13.4</b>	<b>34.7</b>	<b>3,892.2</b>
Males	53.2	205.8	748.0	*0.8	107.9	56.1	15.8	5.6	17.0	1,234.5
Females	2,084.4	206.7	223.1	*0.0	43.0	22.0	39.1	7.8	17.7	2,657.7
<b>TOTAL</b>										
With post-school qualifications	550.8	33.9	347.1	*3.9	50.8	16.2	27.8	18.8	19.9	1,084.1
Degree	53.0	18.2	38.6	*0.3	5.3	*0.7	5.4	5.5	*1.8	130.9
Trade qualification or apprenticeship	90.5	*2.7	202.4	*0.3	31.4	10.0	*4.7	5.6	9.0	362.8
Certificate or diploma	393.8	13.0	104.8	*3.2	13.9	5.5	17.1	7.8	9.1	574.8
Without post-school qualifications(c)	1,900.6	125.3	697.2	*3.5	141.6	65.1	29.5	19.9	31.5	3,053.1
Attended highest level of secondary school available	194.4	93.1	63.7	*0.8	13.7	*4.5	*4.1	5.9	6.3	393.6
Did not attend highest level of secondary school available	1,683.2	31.8	618.6	*2.7	123.9	57.7	24.7	13.8	25.2	2,613.1
Left at age—										
16 and over	359.7	17.1	74.7	*1.2	26.7	10.7	7.3	5.9	5.0	518.7
14 or 15	1,063.3	13.9	387.0	*1.3	67.1	29.6	14.3	7.0	16.8	1,618.1
15 and under	260.2	*0.8	156.8	*0.2	30.0	17.3	*3.1	*1.0	*3.4	476.4
Still at school	*2.2	393.6	*0.3	*0.3	*0.2	*0.7	*0.0	*2.1	*0.3	425.9
<b>Total</b>	<b>2,453.7</b>	<b>552.8</b>	<b>1,044.6</b>	<b>7.7</b>	<b>192.6</b>	<b>82.1</b>	<b>57.3</b>	<b>40.8</b>	<b>51.7</b>	<b>4,563.1</b>
Males	63.3	275.6	807.9	*2.7	138.8	60.0	17.2	19.0	28.0	1,457.6
Females	2,390.4	277.2	236.7	5.0	53.8	22.1	40.1	21.8	23.7	3,105.5

(a) Includes persons looking after ill or disabled persons. (b) Includes persons whose main activity could not be determined. (c) Includes persons who never attended school and those for whom secondary school qualifications could not be determined.

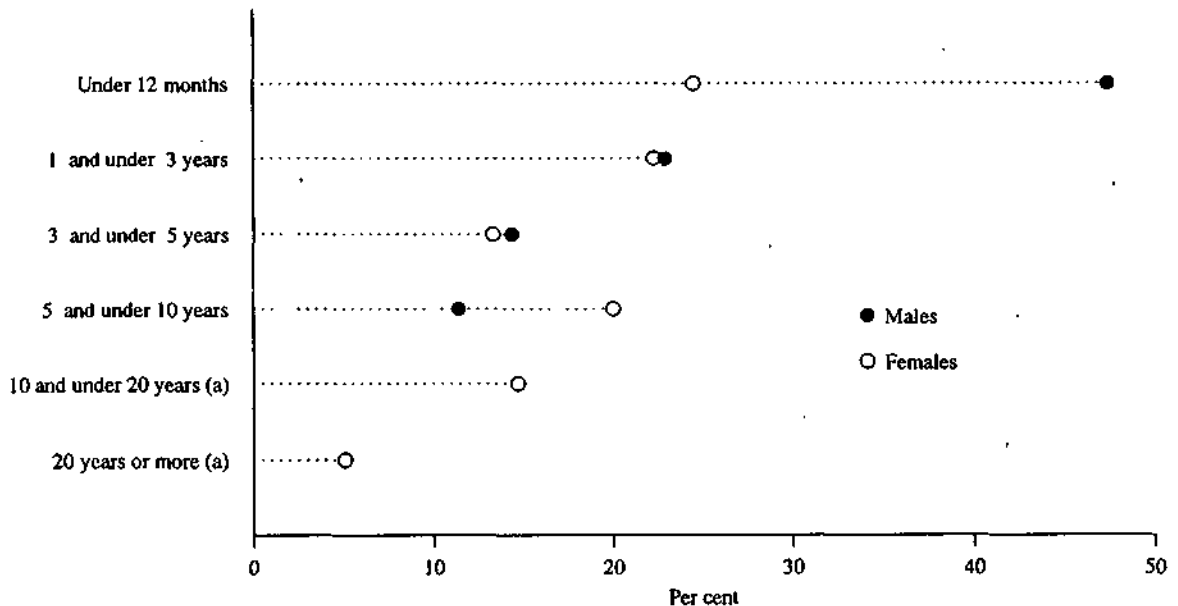
CHART 5.2. RELATIONSHIP OF PERSONS WITH MARGINAL ATTACHMENT TO THE LABOUR FORCE TO PERSONS IN OR NOT IN THE LABOUR FORCE, AUSTRALIA, SEPTEMBER 1988



(a) Includes institutionalised, boarding school pupils and persons permanently unable to work.

Source: *Persons Not in the Labour Force, Australia, September 1988* (6220.0).

CHART 5.3. PERSONS NOT IN THE LABOUR FORCE WITH MARGINAL ATTACHMENT TO THE LABOUR FORCE WHO HAD A JOB PREVIOUSLY: TIME SINCE LAST JOB, AUSTRALIA SEPTEMBER 1988



(a) Estimate for males subject to sampling variability too high for most practical uses.

Source: *Persons Not in the Labour Force, Australia, September 1988* (6220.0).

TABLE 5.8. PERSONS NOT IN THE LABOUR FORCE WITH MARGINAL ATTACHMENT TO THE LABOUR FORCE :  
SUMMARY OF CHARACTERISTICS, AUSTRALIA, SEPTEMBER 1988  
(\*000)

	Persons who wanted to work and were actively looking for work	Persons who wanted to work but were not actively looking for work and were available to start work within four weeks			Persons with marginal attachment to the labour force		
		Discouraged job seekers	Other	Total	Males	Females	Persons
<i>Age group—</i>							
15-19	28.9	8.0	115.7	123.7	76.5	76.1	152.6
20-24	11.6	*3.5	60.0	63.6	21.2	54.0	75.2
25-34	10.9	12.8	159.3	172.1	21.4	161.7	183.0
35-44	7.6	15.3	114.4	129.7	12.8	124.5	137.3
45-54	4.6	14.8	64.0	78.9	18.4	65.1	83.5
55-64	*2.1	22.3	45.6	67.9	27.5	42.5	69.9
65-69	*0.0	7.1	13.1	20.2	13.1	7.1	20.2
<i>Family status—</i>							
Member of a family	53.2	69.9	506.9	576.7	152.5	477.4	629.9
Husband or wife	19.5	50.1	325.6	375.7	62.3	332.8	395.1
With dependents present	14.9	25.2	245.6	270.7	26.1	259.5	285.6
Without dependents present	4.6	24.9	80.0	104.9	36.3	73.3	109.5
Not-married family head	*3.8	8.9	66.8	75.7	*3.8	75.7	79.5
With dependents present	*2.7	5.7	61.9	67.6	*2.3	68.0	70.3
Without dependents present	*1.1	*3.2	5.0	8.1	*1.5	7.6	9.2
Full-time student aged 15-24(a)	25.1	4.8	92.3	97.2	66.8	55.5	122.3
Other child/relative of family head	4.9	6.0	22.1	28.1	19.6	13.4	33.0
Not a member of a family	6.6	9.8	33.6	43.5	25.1	25.0	50.1
Living alone	*3.0	9.1	21.5	30.6	14.0	19.6	33.6
Not living alone	*3.6	*0.8	12.1	12.9	11.1	5.4	16.5
Family status not determined	5.8	*4.1	31.7	35.8	13.1	28.5	41.6
<i>Type of work preferred—</i>							
Full-time	37.5	23.9	123.7	147.7	90.7	94.4	185.1
Part-time	26.2	54.1	426.4	480.4	91.2	415.5	506.6
No preference	*2.0	5.8	22.1	27.9	8.9	21.0	29.9
<i>Time since last job—</i>							
Had had a job	45.2	73.7	478.9	552.7	134.7	463.2	597.9
Under 6 months	12.1	6.8	80.0	86.8	36.8	62.1	98.9
6 and under 12 months	11.6	7.4	59.3	66.7	27.1	51.3	78.4
1 and under 3 years	11.2	16.7	106.2	122.9	30.8	103.3	134.1
3 and under 5 years	*4.2	10.0	67.1	77.0	19.4	61.8	81.2
5 and under 10 years	*4.3	15.5	88.3	103.7	15.3	92.8	108.1
10 and under 20 years	*1.3	11.9	58.9	70.9	*3.9	68.3	72.2
20 years or more	*0.4	5.5	19.1	24.6	*1.4	23.6	25.1
Had never had a job	20.4	10.1	93.2	103.3	56.1	67.7	123.7
<i>Reason for ceasing last job—</i>							
Had had a job	45.2	73.7	478.9	552.7	134.7	463.2	597.9
Job loser	15.7	32.1	159.5	191.7	68.1	139.2	207.3
Retrenched	6.8	17.2	59.3	76.5	25.3	58.0	83.3
Job was temporary or seasonal and did not leave to return to studies	*2.9	6.4	47.5	53.9	11.2	45.6	56.8
Own ill health or injury	5.4	6.6	47.6	54.1	29.1	30.4	59.5
Business closed down for economic reasons	*0.5	*2.1	5.1	7.2	*2.4	5.3	7.7
Job leaver	29.6	41.6	309.4	351.0	63.7	316.8	380.5
Unsatisfactory work arrangements	*3.3	4.9	24.7	29.6	11.0	21.8	32.8
Job was temporary or seasonal and left to return to studies	*3.5	*0.3	9.2	9.5	6.5	6.6	13.1
Retired/didn't want to work any longer	*1.4	8.1	29.9	38.0	16.2	23.2	39.4
Returned to studies	6.6	*0.4	15.5	15.8	13.6	8.8	22.4
To get married	*0.2	*3.9	22.0	25.9	*0.1	25.9	26.0
Pregnancy/to have children	6.9	8.3	119.7	128.0	*0.0	134.9	134.9
To look after family, house or someone else	*1.0	*3.1	24.8	28.0	*1.5	27.4	28.9
To have holiday/to move house/spouse transferred	*4.0	8.6	45.0	53.6	6.1	51.6	57.7
Business closed down for other reasons	*0.9	*1.7	7.3	9.1	*3.3	6.6	9.9
Other	*1.8	*2.2	11.3	13.5	5.3	10.0	15.4
Not asked(b)	*0.0	*0.0	10.0	10.0	*2.9	7.2	10.0
Had never had a job	..	..	93.2	103.3	56.1	67.7	123.7
<b>Total</b>	<b>65.7</b>	<b>83.8</b>	<b>572.2</b>	<b>656.0</b>	<b>190.8</b>	<b>530.9</b>	<b>721.7</b>

(a) Excludes persons aged 20-24 attending school. (b) Persons who had a job but, up to the end of the reference week, had been away from work without pay for four weeks or longer and had not been actively looking for work.

Source: *Persons Not in the Labour Force, Australia, September 1988* (6220.0).



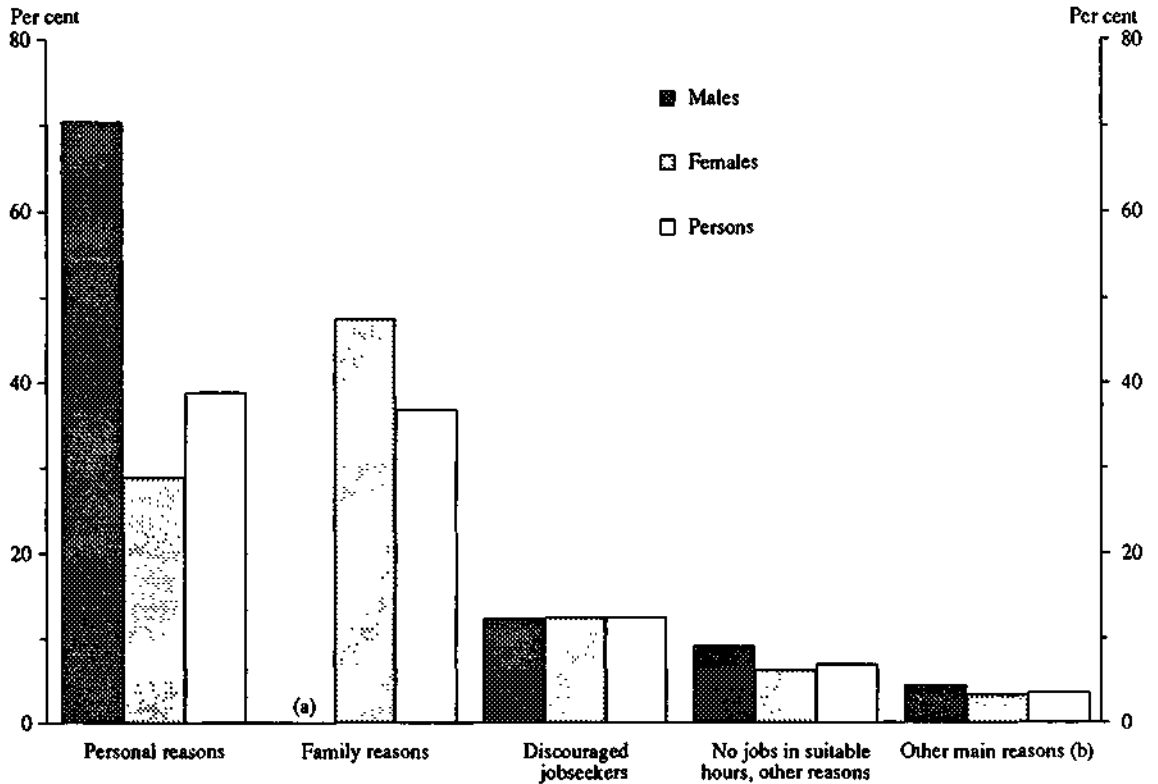
TABLE 5.9. PERSONS NOT IN THE LABOUR FORCE WITH MARGINAL ATTACHMENT TO THE LABOUR FORCE : MAIN REASON FOR NOT ACTIVELY LOOKING FOR WORK, AUSTRALIA, SEPTEMBER 1985 TO SEPTEMBER 1988 ('000)

	Sept. 1985	March 1986	Sept. 1986	March 1987	March 1988	Sept. 1988
<b>MALES</b>						
Wanted to work and were actively looking for work	24.9	14.0	26.3	12.1	13.3	34.7
Wanted to work but were not actively looking for work and were available to start work within four weeks	132.7	139.9	130.5	151.8	164.3	156.1
<i>Main reason for not actively looking for work—</i>						
Had a job to go to(a)	3.5	6.8	4.9	8.6	6.6	5.8
Personal reasons	93.1	96.0	93.5	105.7	118.4	110.4
Family reasons	4.1	*3.5	3.8	*3.8	5.7	*4.1
Discouraged jobseekers	15.4	21.8	16.2	22.2	19.5	19.7
No jobs in suitable hours	*2.8	*1.0	*1.1	*1.2	*1.3	*2.1
Other reasons	10.1	9.4	10.4	9.7	11.4	12.5
Did not know	*0.7	*1.3	*0.6	*0.8	*1.4	*1.5
<b>Total</b>	<b>157.6</b>	<b>153.9</b>	<b>156.8</b>	<b>163.9</b>	<b>177.6</b>	<b>190.8</b>
<b>FEMALES</b>						
Wanted to work and were actively looking for work	35.5	21.1	30.7	19.0	20.3	31.0
Wanted to work but were not actively looking for work and were available to start work within four weeks	534.2	522.4	549.6	513.4	527.1	499.9
<i>Main reason for not actively looking for work—</i>						
Had a job to go to(a)	15.7	15.0	15.6	15.1	17.4	13.4
Personal reasons	157.5	151.5	152.4	153.0	161.7	145.8
Own ill health, physical disability, pregnancy	38.6	36.2	33.3	36.5	42.5	35.0
Attending an educational institution	50.9	57.3	55.5	58.0	65.4	55.7
Had no need to work	34.0	31.0	32.3	27.7	25.6	28.3
Give others a chance	6.0	3.7	6.3	4.6	5.9	*3.6
Welfare payments/pension may be affected	14.5	14.1	12.7	15.2	12.5	10.5
Moved house/holidays	13.4	9.2	12.2	11.1	9.9	12.6
Family reasons	244.1	237.4	263.3	235.1	236.3	239.2
Ill health of other than self	13.2	12.4	10.8	11.6	11.0	10.6
Unable to find suitable childcare	71.8	69.4	71.9	67.6	79.5	83.1
Children too young/preferred to look after children	124.6	116.0	138.7	116.1	106.8	107.7
Other family considerations	34.4	39.5	42.0	39.7	39.0	37.8
Discouraged jobseekers	67.6	69.8	67.4	72.2	72.5	64.1
Considered too young or too old by employers	20.7	22.5	18.1	25.0	25.0	23.5
Difficulties with language or ethnic background	4.2	4.2	3.1	3.3	5.6	5.3
Lacked necessary schooling, training, skills or experience	7.4	9.8	8.5	10.4	10.9	12.0
No jobs in locality or line of work	21.6	22.6	27.8	23.7	24.1	17.5
No jobs at all	13.8	10.7	9.7	9.8	7.0	5.7
No jobs in suitable hours	15.6	16.4	15.4	10.7	13.4	8.6
Other reasons	25.5	24.6	29.7	19.2	21.4	24.1
Did not know	7.2	7.8	5.8	8.2	4.5	4.7
<b>Total</b>	<b>569.7</b>	<b>543.5</b>	<b>580.4</b>	<b>532.5</b>	<b>547.4</b>	<b>530.9</b>
<b>PERSONS</b>						
Wanted to work and were actively looking for work	60.4	35.2	57.0	31.1	33.6	65.7
Wanted to work but were not actively looking for work and were available to start work within four weeks	666.9	662.3	680.2	665.3	691.4	656.0
<i>Main reason for not actively looking for work—</i>						
Had a job to go to(a)	19.2	21.8	20.5	34.7	23.9	19.1
Personal reasons	250.5	247.5	245.9	258.7	280.1	256.2
Own ill health, physical disability, pregnancy	66.6	61.6	55.9	61.1	76.2	69.6
Attending an educational institution	102.3	111.1	106.9	119.8	128.2	111.0
Had no need to work	40.1	37.6	39.6	36.8	32.7	35.9
Give others a chance	6.0	4.3	7.1	5.2	6.4	*3.8
Welfare payments/pension may be affected	18.1	18.2	18.9	20.4	17.7	16.9
Moved house/holidays	17.4	14.7	17.6	15.3	19.0	19.0
Family reasons	248.1	240.9	267.1	238.9	242.0	243.2
Ill health of other than self	14.8	12.9	11.4	12.9	12.7	12.7
Unable to find suitable childcare	72.5	70.1	72.6	68.2	81.0	83.7
Children too young/preferred to look after children	126.1	117.2	140.2	117.2	108.2	108.3
Other family considerations	34.7	40.6	43.0	40.5	40.2	38.6
Discouraged jobseekers	83.0	91.5	83.6	94.4	92.0	83.8
Considered too young or too old by employers	26.7	33.2	25.5	35.1	35.4	32.5
Difficulties with language or ethnic background	4.8	5.2	3.8	4.2	6.0	6.5
Lacked necessary schooling, training, skills or experience	8.9	11.5	10.2	12.5	12.6	14.6
No jobs in locality or line of work	26.0	28.2	32.7	31.1	29.7	23.0
No jobs at all	16.6	13.4	11.4	11.6	8.4	7.2
No jobs in suitable hours	18.4	17.5	16.5	11.8	14.7	10.7
Other reasons	35.6	34.0	40.2	28.9	32.8	36.7
Did not know	8.0	9.0	6.4	9.0	5.9	6.3
<b>Total</b>	<b>727.2</b>	<b>697.4</b>	<b>737.2</b>	<b>696.4</b>	<b>725.0</b>	<b>721.7</b>

(a) Includes persons who had a job but, up to the end of reference week, had been away from work without pay for four weeks or longer and had not been actively looking for work.

Source: Persons Not in the Labour Force, Australia (6220 0).

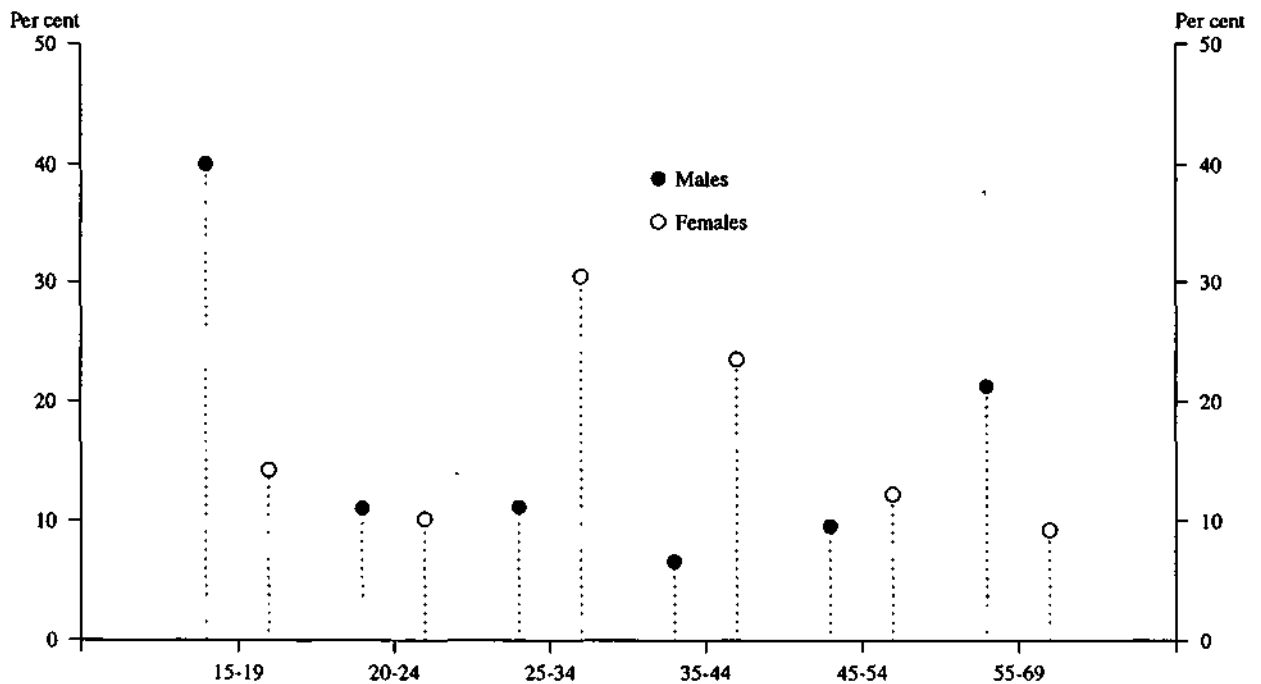
**CHART 5.4. PERSONS NOT IN THE LABOUR FORCE WHO WANTED TO WORK, NOT ACTIVELY LOOKING FOR WORK AND AVAILABLE TO START WORK WITHIN FOUR WEEKS: MAIN REASON FOR NOT ACTIVELY LOOKING FOR WORK, AUSTRALIA, SEPTEMBER 1988**



(a) Estimate subject to sampling variability too high for most practical uses. (b) Includes "Had a job to go to", "Did not know" and "Not asked."

Source: *Persons Not in the Labour Force, Australia, September 1988* (6220.0).

**CHART 5.5. AGE DISTRIBUTION OF PERSONS WITH MARGINAL ATTACHMENT TO THE LABOUR FORCE BY SEX, AUSTRALIA, SEPTEMBER 1988**



Source: *Persons Not in the Labour Force, Australia, September 1988* (6220.0).