



CENSUS OF THE COMMONWEALTH OF AUSTRALIA.

4th April, 1921.

---

CENSUS BULLETIN No. 3.

Population and Dwellings in Local  
Government Areas.

PREPARED BY

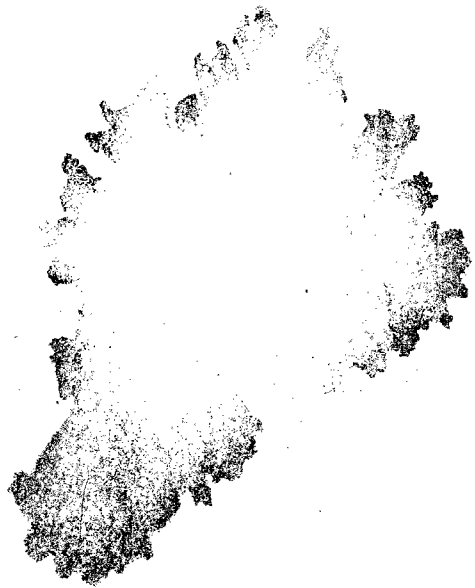
THE COMMONWEALTH STATISTICIAN

under instructions from the Minister of State  
for Home and Territories.

---

By Authority:

ALBERT J. MULLETT, GOVERNMENT PRINTER, MELBOURNE.



# CENSUS OF THE COMMONWEALTH OF AUSTRALIA, 1921.

NOTE.—The figures contained herein are subject to revision on the completion of the detailed tabulation.

## 1. AUSTRALIAN CAPITAL CITIES AND SUBURBS.—POPULATION AND DWELLINGS AS AT THE CENSUS OF 4th APRIL, 1921. (Exclusive of full-blood Aborigines.)

Capital City* (including Suburbs).	Population.			Dwellings.			
	Males.	Females.	Persons.	Occupied.	Unoccupied.	Being Built.	Total.
Sydney .. .. .	433,559	465,540	899,099	183,556	5,188	1,804	190,548
Melbourne .. .. .	359,481	407,025	766,506	165,065	4,056	1,294	170,415
Brisbane .. .. .	101,083	108,949	210,032	43,881	1,716	153	45,750
Adelaide .. .. .	120,770	134,711	255,481	55,611	1,761	541	57,913
Perth .. .. .	75,097	79,769	154,866	31,436	970	199	32,605
Hobart .. .. .	24,711	27,680	52,391	11,162	418	171	11,751
Total .. .. .	1,114,701	1,223,674	2,338,375	490,711	14,109	4,162	508,982

\* For details concerning Local Government Areas included in each case see Tables 11 to 16 inclusive.

## 2. PRINCIPAL INCORPORATED CITIES AND TOWNS OF AUSTRALIA.—POPULATION AND DWELLINGS AS AT THE CENSUS OF 4th APRIL, 1921, IN EACH INCORPORATED CITY OR TOWN CONTAINING A POPULATION OF 20,000 OR UPWARDS. (Exclusive of full-blood Aborigines.)

Incorporated City or Town and State in which situated.	Population.			Dwellings.			
	Males.	Females.	Persons.	Occupied.	Unoccupied.	Being Built.	Total.
Adelaide, S.A. .. .. .	18,727	20,835	39,562	8,160	130	6	8,296
Ashfield, N.S.W. .. .. .	15,414	18,243	33,657	7,099	259	70	7,428
Ballarat,* Vic. .. .. .	9,356	11,860	21,216	4,755	195	12	4,962
Balmain, N.S.W. .. .. .	15,889	16,235	32,124	6,863	100	1	6,964
Bendigo, Vic. .. .. .	11,735	13,958	25,693	5,768	202	15	5,985
Brighton, Vic. .. .. .	9,510	11,733	21,243	4,509	111	59	4,679
Brisbane, Qld. .. .. .	20,590	22,046	42,636	7,877	132	9	8,018
Brisbane South, Qld. .. .. .	17,838	19,334	37,172	7,816	200	3	8,019
Broken Hill, N.S.W. .. .. .	13,141	13,196	26,337	6,255	972	1	7,228
Brunswick, Vic. .. .. .	21,329	23,147	44,476	9,486	199	91	9,776
Camberwell, Vic. .. .. .	10,710	13,134	23,844	5,496	233	124	5,853
Canterbury, N.S.W. .. .. .	18,466	19,155	37,621	8,222	297	276	8,795
Caulfield, Vic. .. .. .	18,680	22,012	40,692	9,278	394	162	9,834
Collingwood, Vic. .. .. .	15,955	18,288	34,243	7,442	122	1	7,565
Essendon, Vic. .. .. .	16,515	18,745	35,260	7,849	201	36	8,086
Fitzroy, Vic. .. .. .	16,307	18,631	34,938	7,563	145	4	7,712
Footscray, Vic. .. .. .	16,785	16,987	33,772	7,041	106	46	7,193
Glebe, N.S.W. .. .. .	10,926	11,831	22,757	4,332	60	..	4,392
Hawthorn, Vic. .. .. .	12,870	16,308	29,178	6,408	155	29	6,592
Hobart, Tas. .. .. .	20,390	23,225	43,615	9,266	296	94	9,656
Ipswich, Qld. .. .. .	10,195	10,331	20,526	4,181	168	25	4,374
Ithaca, Qld. .. .. .	10,065	10,854	20,919	4,472	115	4	4,591
Launceston, Tas. .. .. .	11,283	13,035	24,318	5,028	125	26	5,179
Leichhardt, N.S.W. .. .. .	14,421	14,937	29,358	6,051	101	7	6,159
Malvern, Vic. .. .. .	14,051	18,257	32,308	7,370	256	127	7,753
Marrickville, N.S.W. .. .. .	20,033	22,231	42,264	9,177	178	31	9,386
Melbourne, Vic. .. .. .	51,104	52,165	103,269	21,194	339	22	21,555
Melbourne South, Vic. .. .. .	22,143	24,736	46,879	9,960	193	16	10,169
Mosman, N.S.W. .. .. .	8,712	11,339	20,051	4,522	157	41	4,720
Newtown, N.S.W. .. .. .	13,766	14,413	28,179	5,718	107	2	5,827
Northcote, Vic. .. .. .	14,703	15,810	30,513	6,676	165	112	6,953
Paddington, N.S.W. .. .. .	12,593	13,766	26,359	5,088	67	..	5,155
Perth, W.A. .. .. .	30,692	33,482	64,174	12,558	295	89	12,942
Petersham, N.S.W. .. .. .	12,242	13,992	26,234	5,382	138	8	5,528
Port Adelaide, S.A. .. .. .	14,710	15,406	30,116	6,222	118	20	6,360
Prahran, Vic. .. .. .	21,704	28,584	50,288	11,234	245	18	11,497
Randwick, N.S.W. .. .. .	24,503	26,328	50,831	10,177	376	149	10,702
Redfern, N.S.W. .. .. .	12,152	11,793	23,945	4,404	46	..	4,450
Richmond, Vic. .. .. .	20,599	22,575	43,174	9,347	158	6	9,511
Rockdale, N.S.W. .. .. .	12,368	12,810	25,178	5,321	165	72	5,558
Rockhampton, Qld. .. .. .	11,706	12,476	24,182	4,943	112	6	5,061
St. Kilda, Vic. .. .. .	16,758	21,835	38,593	8,100	207	64	8,371
Sydney, N.S.W. .. .. .	54,536	49,646	104,182	17,335	328	84	17,747
Sydney North, N.S.W. .. .. .	21,813	26,631	48,444	10,180	264	44	10,488
Toowoomba, Qld. .. .. .	9,443	11,259	20,702	4,081	133	4	4,218
Townsville, Qld. .. .. .	10,996	10,352	21,348	4,134	111	5	4,250
Unley, S.A. .. .. .	15,430	18,681	34,111	7,757	298	85	8,140
Waverley, N.S.W. .. .. .	17,174	19,614	36,788	7,801	205	58	8,064
Willoughby, N.S.W. .. .. .	13,127	14,960	28,087	6,250	296	77	6,623
Woollahra, N.S.W. .. .. .	10,935	14,474	25,409	5,361	156	39	5,556

\* Ballarat East, which had a population of 13,456 at the date of the Census, is now amalgamated with Ballarat, giving a total population for the combination of 34,672.

### 3. NEW SOUTH WALES.—POPULATION AND DWELLINGS IN EACH LOCAL GOVERNMENT AREA AS AT THE CENSUS OF 4th APRIL, 1921.

(Exclusive of full-blood Aborigines.)

Local Government Area.	Population.			Dwellings.			
	Males.	Females.	Persons.	Occupied.	Unoccupied.	Being Built.	Total.
<b>MUNICIPALITIES.</b>							
Aberdeen .. .. .	387	342	729	151	1	..	152
Adamstown .. .. .	2,059	1,899	3,958	838	62	4	904
Albury .. .. .	3,758	3,988	7,746	1,587	32	14	1,633
Alexandria .. .. .	5,150	4,644	9,794	2,020	39	2	2,061
Annandale .. .. .	6,102	6,555	12,657	2,813	37	..	2,850
Armidale .. .. .	2,481	2,828	5,309	1,070	30	..	1,100
Ashfield .. .. .	15,414	18,243	33,657	7,099	259	70	7,428
Auburn .. .. .	6,642	6,923	13,565	2,839	66	25	2,930
Ballina .. .. .	1,369	1,399	2,768	546	31	4	581
Balmain .. .. .	15,889	16,235	32,124	6,863	100	1	6,964
Balranald .. .. .	473	401	874	170	..	..	170
Bankstown .. .. .	5,454	5,208	10,662	2,418	130	39	2,587
Barraba .. .. .	873	589	1,462	225	10	1	236
Bathurst .. .. .	4,705	4,737	9,442	1,883	52	2	1,937
Bega .. .. .	907	1,024	1,931	436	10	1	447
Berry .. .. .	1,200	1,085	2,285	453	10	2	465
Bexley .. .. .	7,183	7,555	14,738	3,256	102	76	3,434
Bingara .. .. .	488	526	1,014	215	2	..	217
Blackheath .. .. .	886	1,294	2,180	450	124	2	576
Blayney .. .. .	666	676	1,342	302	16	2	320
Bombala .. .. .	487	491	978	220	..	..	220
Botany .. .. .	3,256	2,954	6,210	1,281	37	4	1,322
Bourke .. .. .	767	662	1,429	313	48	..	361
Bowral .. .. .	1,198	1,419	2,617	511	36	1	548
Braidwood .. .. .	522	520	1,042	240	14	..	254
Brewarrina .. .. .	356	309	665	136	..	..	136
Broken Hill .. .. .	13,141	13,196	26,337	6,255	972	1	7,228
Broughton Vale .. .. .	129	111	240	54	6	..	60
Burrowa .. .. .	634	595	1,229	256	15	2	273
Burwood .. .. .	6,942	8,791	15,733	3,192	106	24	3,322
Cabramatta and Canley Vale .. .. .	1,593	1,515	3,108	682	45	6	733
Camden .. .. .	970	1,036	2,006	410	9	..	419
Campbelltown .. .. .	1,214	1,130	2,344	505	22	4	531
Canterbury .. .. .	18,466	19,155	37,621	8,222	297	276	8,795
Carcoar .. .. .	263	254	517	96	2	..	98
Carrington .. .. .	1,662	1,456	3,118	603	4	..	607
Casino .. .. .	1,722	1,731	3,453	687	27	5	719
Castlereagh .. .. .	298	257	555	124	7	1	132
Cobar .. .. .	732	706	1,438	360	..	..	360
Concord .. .. .	5,395	5,607	11,002	2,438	146	57	2,641
Condoublin .. .. .	769	700	1,469	332	41	..	373
Cooma .. .. .	895	940	1,835	389	6	3	398
Coonamble .. .. .	1,092	1,120	2,212	461	21	..	482
Cootamundra .. .. .	1,781	1,747	3,528	742	22	..	764
Coraki .. .. .	691	680	1,371	292	9	..	301
Corowa .. .. .	1,174	1,215	2,389	485	16	..	501
Cowra .. .. .	1,896	1,821	3,717	749	27	5	781
Cudgegong .. .. .	1,117	1,028	2,145	454	21	..	475
Darlington .. .. .	1,795	1,853	3,648	697	5	..	702
Deniliquin .. .. .	1,320	1,341	2,661	592	23	..	615
Drummoyne .. .. .	9,064	9,698	18,762	4,052	92	89	4,233
Dubbo .. .. .	2,455	2,576	5,031	1,040	29	7	1,076
Dundas .. .. .	1,664	1,856	3,520	781	40	20	841
Dungog .. .. .	859	885	1,744	356	13	1	370
Eastwood .. .. .	1,108	1,024	2,132	482	17	13	512
Enfield .. .. .	4,147	4,380	8,527	1,830	68	62	1,960
Ermington and Rydalmore .. .. .	1,009	972	1,981	206	..	..	206
Erskineville .. .. .	3,704	3,848	7,552	1,578	26	..	1,604
Forbes .. .. .	2,195	2,184	4,379	922	75	..	997
Gerrington .. .. .	423	369	792	172	..	..	172
Glebe .. .. .	10,926	11,831	22,757	4,332	60	..	4,392
Glen Innes .. .. .	2,393	2,583	4,976	1,004	10	..	1,014
Goulburn .. .. .	6,251	6,416	12,667	2,464	64	25	2,553
Grafton .. .. .	2,144	2,448	4,592	960	45	3	1,008
Grafton South .. .. .	750	733	1,483	310	19	2	331
Granville .. .. .	6,542	6,778	13,320	2,788	69	28	2,885
Grenfell .. .. .	602	590	1,192	256	14	..	270
Greta .. .. .	820	714	1,534	315	10	..	325
Gulgong .. .. .	743	778	1,521	359	51	..	410
Gundagai .. .. .	550	601	1,151	247	13	1	261
Gunnedah .. .. .	1,334	1,331	2,665	529	..	..	529
Hamilton .. .. .	7,259	6,937	14,196	3,015	71	31	3,117
Hay .. .. .	1,257	1,312	2,569	532	6	..	538
Hillgrove .. .. .	259	271	530	128	13	..	141
Hillston .. .. .	282	257	539	121	..	..	121
Homebush .. .. .	784	838	1,622	340	9	8	357
Hunter's Hill .. .. .	3,697	3,603	7,300	1,235	27	105	1,367
Hurstville .. .. .	6,593	6,805	13,398	2,972	131	48	3,151
Illawarra Central .. .. .	2,911	2,560	5,471	1,179	87	10	1,276
Illawarra North .. .. .	3,208	2,872	6,080	1,284	38	..	1,322
Ingleburn .. .. .	270	275	545	119	2	..	121
Inverell .. .. .	2,124	2,242	4,366	900	51	..	951
Jamberoo .. .. .	553	503	1,056	223	20	1	244
Junee .. .. .	1,918	1,645	3,563	718	31	11	760

3. NEW SOUTH WALES.—POPULATION AND DWELLINGS IN EACH LOCAL GOVERNMENT AREA, ETC.—*continued.*

Local Government Area.	Population.			Dwellings.			
	Males.	Females.	Persons.	Occupied.	Unoccupied.	Being Built.	Total.
<b>MUNICIPALITIES—<i>continued.</i></b>							
Katoomba .. .. .	3,643	5,409	9,052	1,551	247	4	1,802
Kempsey .. .. .	1,771	1,838	3,609	755	21	5	781
Kiama .. .. .	991	971	1,962	419	15	2	436
Kogarah .. .. .	8,908	9,306	18,214	3,987	145	103	4,235
Lambton .. .. .	1,864	1,830	3,694	789	19	1	809
Lambton, New .. .. .	1,780	1,769	3,549	777	30	14	821
Lane Cove .. .. .	3,649	3,950	7,599	1,673	128	63	1,864
Leichhardt .. .. .	14,421	14,937	29,358	6,051	101	7	6,159
Lidcombe .. .. .	5,608	4,909	10,517	1,838	84	59	1,981
Lismore .. .. .	4,283	4,396	8,679	1,726	51	14	1,791
Lithgow .. .. .	7,266	6,010	13,276	2,782	113	13	2,908
Liverpool .. .. .	3,925	2,370	6,295	1,054	36	..	1,090
Maclean .. .. .	729	762	1,491	306	4	..	310
Maitland East .. .. .	1,825	1,720	3,545	760	23	..	783
Maitland West .. .. .	4,063	4,396	8,459	1,684	41	3	1,728
Manilla .. .. .	713	665	1,378	282	7	..	289
Manly .. .. .	8,312	10,203	18,515	3,587	202	46	3,835
Marrickville .. .. .	20,033	22,231	42,264	9,177	178	31	9,386
Mascot .. .. .	5,575	5,355	10,930	2,271	29	3	2,303
Merewether .. .. .	2,946	2,960	5,906	1,255	17	35	1,307
Mittagong .. .. .	689	746	1,435	294	7	2	303
Moama .. .. .	378	333	711	180	4	..	184
Molong .. .. .	758	746	1,504	342	5	..	347
Moree .. .. .	1,523	1,497	3,020	548	1	..	549
Morpeth .. .. .	533	527	1,060	240	4	..	244
Mosman .. .. .	8,712	11,339	20,051	4,522	157	41	4,720
Moss Vale .. .. .	888	1,060	1,948	383	19	4	406
Mudgee .. .. .	1,467	1,701	3,168	703	14	2	719
Mullumbimby .. .. .	678	652	1,330	261	..	..	261
Murrumburrah .. .. .	1,523	1,437	2,960	676	34	2	712
Murrurundi .. .. .	639	662	1,301	282	26	1	309
Murwillumbah .. .. .	1,432	1,423	2,855	552	16	..	568
Musclebrook .. .. .	1,062	1,086	2,148	457	21	2	480
Narrabri .. .. .	1,182	1,172	2,354	472	15	..	487
Narrabri West .. .. .	471	453	924	188	16	..	204
Narrandera .. .. .	1,499	1,484	2,983	592	14	..	606
Narromine .. .. .	747	653	1,400	296	22	..	318
Newcastle .. .. .	7,888	6,667	14,555	2,472	60	9	2,541
Newtown .. .. .	13,766	14,413	28,179	5,718	107	2	5,827
Nowra .. .. .	1,058	1,142	2,200	490	1	..	491
Nyngau .. .. .	707	667	1,374	295	16	1	312
Orange .. .. .	3,510	3,889	7,399	1,552	62	3	1,617
Paddington .. .. .	12,593	13,766	26,359	5,088	67	..	5,155
Parkes .. .. .	2,004	1,943	3,947	834	62	10	906
Parramatta .. .. .	7,449	7,153	14,602	2,548	39	20	2,607
Peak Hill .. .. .	555	525	1,080	239	28	..	267
Penrith .. .. .	1,717	1,878	3,595	793	54	1	848
Petersham .. .. .	12,242	13,992	26,234	5,382	138	8	5,528
Picton .. .. .	514	530	1,044	230	6	..	236
Port Macquarie .. .. .	775	788	1,563	308	5	..	313
Prospect and Sherwood .. .. .	4,354	4,378	8,732	1,917	54	45	2,016
Queanbeyan .. .. .	884	940	1,824	402	11	1	414
Quirindi .. .. .	1,122	1,113	2,235	459	12	..	471
Randwick .. .. .	24,503	26,328	50,831	10,177	376	149	10,702
Raymond Terrace .. .. .	431	457	888	202	9	..	211
Redfern .. .. .	12,152	11,793	23,945	4,404	46	..	4,450
Richmond .. .. .	1,100	910	2,010	420	13	2	435
Rockdale .. .. .	12,368	12,810	25,178	5,321	165	72	5,558
Ryde .. .. .	7,185	7,680	14,865	3,163	71	64	3,298
St. Mary's .. .. .	1,015	937	1,952	449	7	..	456
St. Peters .. .. .	6,360	6,348	12,708	2,693	50	2	2,745
Scone .. .. .	850	952	1,802	356	7	..	363
Shell harbour .. .. .	821	706	1,527	327	14	..	341
Shoalhaven South .. .. .	442	408	850	150	8	..	158
Singleton .. .. .	1,540	1,729	3,269	715	39	1	755
Smithfield and Fairfield .. .. .	2,743	2,558	5,301	1,176	22	1	1,199
Stockton .. .. .	2,054	2,546	4,600	829	18	8	855
Strathfield .. .. .	3,449	4,145	7,594	1,597	87	21	1,705
Sydney .. .. .	54,536	49,646	104,182	17,335	328	84	17,747
Sydney North .. .. .	21,813	26,631	48,444	10,180	264	44	10,488
Tamworth .. .. .	3,540	3,725	7,265	1,435	64	2	1,501
Taree .. .. .	862	904	1,766	353	1	..	354
Temora .. .. .	1,549	1,499	3,048	665	34	..	699
Tenterfield .. .. .	1,201	1,290	2,491	514	28	3	545
Tumut .. .. .	820	818	1,638	335	2	..	337
Ulladulla .. .. .	757	606	1,363	290	6	..	296
Umarra .. .. .	1,036	972	2,008	377	9	..	386
Uralla .. .. .	469	503	972	210	9	..	219
Vaucluse .. .. .	1,644	2,073	3,717	752	28	12	792
Wagga Wagga .. .. .	3,804	3,872	7,676	1,500	42	11	1,553
Walcha .. .. .	584	642	1,226	245	1	..	246
Wallendbeen .. .. .	403	395	798	176	6	..	182
Wallsend .. .. .	3,366	3,078	6,444	1,416	45	6	1,467
Waratah .. .. .	6,283	5,908	12,191	2,496	142	18	2,656
Warialda .. .. .	431	416	847	176	20	..	196
Warren .. .. .	600	542	1,142	233	5	..	238

3. NEW SOUTH WALES.—POPULATION AND DWELLINGS IN EACH LOCAL GOVERNMENT AREA, ETC.—*continued.*

Local Government Area.	Population.			Dwellings.			
	Males.	Females.	Persons.	Occupied.	Unoccupied.	Being Built.	Total.
<b>MUNICIPALITIES—<i>continued.</i></b>							
Waterloo .. .. .	5,805	5,394	11,199	2,290	41	2	2,333
Waverley .. .. .	17,174	19,614	36,788	7,801	205	58	8,064
Wellington .. .. .	1,962	1,967	3,929	859	32	..	891
Wentworth .. .. .	411	406	817	165	5	..	170
Wickham .. .. .	6,321	5,828	12,149	2,378	47	9	2,434
Wilcannia .. .. .	287	305	592	134	2	..	136
Willoughby .. .. .	13,127	14,960	28,087	6,250	296	77	6,623
Windsor .. .. .	1,960	1,847	3,807	838	27	2	867
Wingham .. .. .	570	602	1,172	246	11	2	259
Wollongong .. .. .	3,302	3,405	6,707	1,403	36	8	1,447
Woollahra .. .. .	10,935	14,474	25,409	5,361	156	39	5,556
Wrightville .. .. .	208	181	389	105	..	..	105
Wyalong .. .. .	387	399	786	200	21	..	221
Yass .. .. .	1,222	1,280	2,502	503	30	5	538
Young .. .. .	1,570	1,708	3,278	696	28	..	724
Total, Municipalities .. .. .	688,437	716,145	1,404,582	287,487	9,789	2,358	299,634
<b>SHIRES.</b>							
Abercrombie .. .. .	2,065	1,849	3,914	848	34	..	882
Adjungbilly .. .. .	2,012	1,654	3,666	757	25	..	782
Amaroo .. .. .	1,686	1,242	2,928	698	11	..	709
Apsley .. .. .	1,399	1,091	2,490	522	36	..	558
Ashford .. .. .	1,167	971	2,138	450	24	..	474
Bannockburn .. .. .	1,836	1,498	3,334	694	38	..	732
Barraba .. .. .	1,210	973	2,183	496	22	..	518
Baulkham Hills .. .. .	2,716	2,402	5,118	1,076	52	5	1,133
Bellingen .. .. .	2,621	2,320	4,941	1,023	64	1	1,088
Berrigan .. .. .	2,320	1,726	4,046	858	47	3	908
Bibbenluke .. .. .	1,706	1,452	3,158	705	40	2	747
Blacktown .. .. .	3,839	3,543	7,382	1,655	78	27	1,760
Bland .. .. .	3,593	2,602	6,195	1,409	48	1	1,458
Blaxland .. .. .	5,598	4,223	9,821	2,458	56	3	2,517
Blue Mountains .. .. .	3,051	3,717	6,768	1,471	437	3	1,911
Bogan .. .. .	1,002	650	1,652	381	27	..	408
Bolwarra .. .. .	1,516	1,579	3,095	664	30	..	694
Booloroo .. .. .	1,495	1,022	2,517	531	12	..	543
Boomi .. .. .	1,620	1,149	2,769	546	12	..	558
Boree .. .. .	3,154	2,678	5,832	1,212	27	..	1,239
Bulli .. .. .	7,329	6,772	14,101	2,916	225	2	3,143
Burrangong .. .. .	2,789	2,356	5,145	1,082	51	..	1,133
Byron .. .. .	4,509	3,793	8,302	1,638	68	4	1,710
Cambewarra .. .. .	708	607	1,315	283	9	..	292
Canobolas .. .. .	2,947	2,680	5,627	1,236	36	5	1,277
Carrathool .. .. .	3,574	2,133	5,707	1,559	14	..	1,573
Cessnock .. .. .	15,851	14,362	30,213	6,287	134	13	6,434
Clyde .. .. .	1,109	895	2,004	451	27	..	478
Cobbora .. .. .	2,823	2,238	5,061	1,104	34	2	1,140
Cockburn .. .. .	2,207	1,813	4,020	825	29	..	854
Colo .. .. .	2,524	2,189	4,713	1,065	73	8	1,146
Conargo .. .. .	573	269	842	176	11	..	187
Coolah .. .. .	991	692	1,683	365	14	1	380
Coolamon .. .. .	3,800	2,965	6,765	1,412	38	..	1,450
Coonabarabran .. .. .	3,094	2,064	5,158	1,265	42	..	1,307
Copmanhurst .. .. .	1,656	1,342	2,998	645	10	1	656
Coreen .. .. .	1,816	1,352	3,168	636	27	..	663
Crookwell .. .. .	3,237	2,798	6,035	1,249	42	..	1,291
Culcairn .. .. .	2,710	2,158	4,868	992	7	..	999
Dalgety .. .. .	2,102	1,737	3,839	765	20	..	785
Demondrille .. .. .	1,791	1,349	3,140	686	25	..	711
Dorrigo .. .. .	5,070	3,765	8,835	2,090	95	4	2,189
Dumaresq .. .. .	2,170	2,053	4,223	861	17	3	881
Erina .. .. .	8,096	7,362	15,458	3,363	663	31	4,057
Eurobodalla .. .. .	2,566	2,206	4,772	1,075	50	4	1,129
Gadara .. .. .	3,434	2,760	6,194	1,406	49	5	1,460
Gilgandra .. .. .	2,658	1,969	4,627	969	27	..	996
Gloucester .. .. .	2,024	1,659	3,683	759	24	3	786
Goobang .. .. .	3,249	2,287	5,536	1,157	85	2	1,244
Goodradigbee .. .. .	2,061	1,755	3,816	857	26	..	883
Gostwyck .. .. .	2,135	1,907	4,042	829	35	..	864
Gundurimba .. .. .	2,355	2,200	4,555	853	24	..	877
Gunning .. .. .	1,590	1,375	2,965	635	15	1	651
Guyra .. .. .	3,582	3,044	6,626	1,435	46	..	1,481
Gwydir .. .. .	932	687	1,619	333	5	..	338
Harwood .. .. .	2,648	2,417	5,065	1,055	61	2	1,118
Hastings .. .. .	4,031	3,380	7,411	1,490	35	4	1,529
Holbrook .. .. .	1,410	1,058	2,468	570	35	..	605
Hornsby .. .. .	7,432	7,846	15,278	3,281	136	18	3,435
Hume .. .. .	2,555	2,026	4,581	1,006	26	3	1,035
Hunter Upper .. .. .	2,330	1,952	4,282	870	33	7	910
Ilabo .. .. .	1,649	1,267	2,916	599	22	..	621
Imlay .. .. .	2,538	2,203	4,741	1,000	54	4	1,058
Jemalong .. .. .	2,041	1,411	3,452	733	51	..	784
Jerilderie .. .. .	895	589	1,484	299	4	..	303
Jindalee .. .. .	1,081	838	1,919	443	15	1	459

3. NEW SOUTH WALES.—POPULATION AND DWELLINGS IN EACH LOCAL GOVERNMENT AREA, ETC.—*continued.*

Local Government Area.	Population.			Dwellings.			
	Males.	Females.	Persons.	Occupied.	Unoccupied.	Being Built.	Total.
<b>SHIRES—<i>continued.</i></b>							
Ku-ring-gai .. .. .	8,682	10,533	19,215	4,074	265	41	4,380
Kyeamba .. .. .	2,325	1,743	4,068	860	11	1	872
Kyogle .. .. .	3,675	2,863	6,538	1,323	11	1	1,335
Lachlan .. .. .	2,288	1,578	3,866	955	95	..	1,050
Lake Macquarie .. .. .	11,127	9,615	20,742	4,369	559	25	4,953
Liverpool Plains .. .. .	2,559	2,052	4,611	955	36	3	994
Lockhart .. .. .	3,031	2,251	5,282	1,042	25	..	1,067
Lyndhurst .. .. .	3,158	2,719	5,877	1,270	44	2	1,316
Macintyre .. .. .	1,065	897	1,962	420	19	1	440
Macleay .. .. .	3,914	3,383	7,297	1,477	70	..	1,547
Macquarie .. .. .	2,125	1,752	3,877	849	24	..	873
Mandowa .. .. .	994	752	1,746	373	7	1	381
Manning .. .. .	7,091	6,341	13,432	2,728	104	4	2,836
Marthaguy .. .. .	1,066	694	1,760	384	24	..	408
Meroo .. .. .	1,556	1,279	2,835	686	29	1	716
Merriwa .. .. .	1,344	1,165	2,509	504	36	2	542
Mitchell .. .. .	2,156	1,609	3,765	764	50	1	815
Monaro .. .. .	1,650	1,290	2,940	619	18	..	637
Mulwaree .. .. .	3,839	3,396	7,235	1,301	66	..	1,367
Mymbulla .. .. .	2,263	1,881	4,144	863	38	..	901
Murray .. .. .	1,348	983	2,331	483	17	2	502
Murrumbidgee .. .. .	460	280	740	153	..	..	153
Murrungal .. .. .	1,321	1,098	2,419	453	30	..	483
Muswellbrook .. .. .	1,703	1,404	3,107	617	34	..	651
Nambucca .. .. .	3,296	2,829	6,125	1,210	23	2	1,235
Namoi .. .. .	3,706	2,860	6,566	1,395	60	..	1,455
Narraburra .. .. .	2,311	1,736	4,047	789	34	..	823
Nattai .. .. .	1,948	1,366	3,314	683	51	7	741
Nepean .. .. .	1,092	1,035	2,127	448	13	..	461
Nundle .. .. .	778	664	1,442	317	37	..	354
Nymboida .. .. .	1,204	901	2,105	479	56	1	536
Oberon .. .. .	1,433	1,255	2,688	559	24	1	584
Orara .. .. .	890	773	1,663	358	23	..	381
Patrick Plains .. .. .	3,440	3,114	6,554	1,319	97	3	1,419
Peel .. .. .	2,322	1,836	4,158	848	27	..	875
Port Stephens .. .. .	2,100	1,764	3,864	772	43	1	816
Rylstone .. .. .	2,222	1,728	3,950	885	39	10	934
Severn .. .. .	3,825	3,196	7,021	1,533	26	..	1,559
Stroud .. .. .	2,774	2,361	5,135	1,025	45	1	1,071
Sutherland .. .. .	3,759	3,917	7,676	1,739	741	16	2,496
Talbragar .. .. .	2,059	1,526	3,585	766	24	1	791
Tallaganda .. .. .	1,581	1,301	2,882	691	24	..	715
Tamarang .. .. .	2,141	1,848	3,989	846	44	..	890
Tarro .. .. .	3,197	2,868	6,065	1,275	18	31	1,324
Tenterfield .. .. .	2,786	2,230	5,016	1,124	32	..	1,156
Terania .. .. .	3,646	2,927	6,573	1,244	46	1	1,291
Timbregongie .. .. .	2,187	1,677	3,864	801	58	..	859
Tintenbar .. .. .	3,059	2,644	5,703	1,120	39	2	1,161
Tomki .. .. .	1,838	1,568	3,406	636	13	2	651
Tumbarumba .. .. .	1,443	1,082	2,525	618	22	..	640
Turon .. .. .	2,341	1,869	4,210	1,130	51	1	1,182
Tweed .. .. .	6,874	5,405	12,279	2,556	127	6	2,689
Urana .. .. .	1,428	993	2,421	528	24	1	553
Wakool .. .. .	1,691	1,036	2,727	561	19	1	581
Walgett .. .. .	1,847	1,355	3,202	669	8	..	677
Wallerobba .. .. .	3,115	2,627	5,742	1,248	50	3	1,301
Waradgery .. .. .	540	328	868	198	22	..	220
Warrah .. .. .	1,120	911	2,031	437	61	..	498
Warringah .. .. .	4,832	4,805	9,637	2,328	877	12	3,217
Waugoola .. .. .	2,986	2,392	5,378	1,113	40	..	1,153
Weddin .. .. .	2,381	1,871	4,252	893	14	..	907
Windouran .. .. .	573	319	892	165	6	..	171
Wingadee .. .. .	1,742	1,222	2,964	610	45	..	655
Wingecarribee .. .. .	1,951	1,837	3,788	814	67	4	885
Wollondilly .. .. .	2,749	2,384	5,133	1,134	67	1	1,202
Woodburn .. .. .	1,672	1,451	3,123	612	13	..	625
Wyaldra .. .. .	1,340	1,078	2,418	548	38	..	586
Yallaro .. .. .	1,319	1,061	2,380	484	7	..	491
Yanko .. .. .	5,339	4,097	9,436	1,892	64	..	1,956
Yarrowlumla .. .. .	1,270	1,080	2,350	509	27	..	536
<b>Total, Shires .. .. .</b>	<b>363,165</b>	<b>305,606</b>	<b>668,771</b>	<b>142,490</b>	<b>8,587</b>	<b>366</b>	<b>151,443</b>
<b>SUMMARY.</b>							
Municipalities .. .. .	688,437	716,145	1,404,582	287,487	9,789	2,358	299,634
Shires .. .. .	363,165	305,606	668,771	142,490	8,587	366	151,443
Not incorporated .. .. .	9,415	5,482	14,897	3,452	243	..	3,695
Migratory* .. .. .	10,041	1,472	11,513	..	..	..	..
<b>Total, New South Wales .. .. .</b>	<b>1,071,058</b>	<b>1,028,705</b>	<b>2,099,763</b>	<b>433,429</b>	<b>18,619</b>	<b>2,724</b>	<b>454,772</b>

\* Includes railway travellers and shipping.

#### 4. VICTORIA.—POPULATION AND DWELLINGS IN EACH LOCAL GOVERNMENT AREA AS AT THE CENSUS OF 4th APRIL, 1921.

(Exclusive of full-blood Aboriginals.)

Local Government Area.	Population.			Dwellings.			
	Males.	Females.	Persons.	Occupied.	Unoccupied.	Being Built.	Total.
<b>CITIES, TOWNS, AND BOROUGHES.</b>							
Ararat .. .. .	2,312	2,345	4,657	838	19	2	859
Ballarat .. .. .	9,356	11,860	21,216	4,755	195	12	4,962
Ballarat East .. .. .	6,193	7,263	13,456	3,171	137	3	3,311
Bendigo .. .. .	11,735	13,958	25,693	5,768	202	15	5,985
Brighton .. .. .	9,510	11,733	21,243	4,509	111	59	4,679
Brunswick .. .. .	21,329	23,147	44,476	9,486	199	91	9,776
Camberwell .. .. .	10,710	13,134	23,844	5,496	233	124	5,853
Carrum .. .. .	2,488	2,728	5,216	1,154	696	17	1,867
Castlemaine .. .. .	2,505	2,825	5,330	1,204	45	1	1,250
Caulfield .. .. .	18,680	22,012	40,692	9,278	394	162	9,834
Clunes .. .. .	509	717	1,226	338	16	1	355
Coburg .. .. .	8,942	9,170	18,112	3,766	91	40	3,897
Collingwood .. .. .	15,955	18,288	34,243	7,442	122	1	7,565
Creswick .. .. .	764	906	1,670	401	28	..	429
Daylesford .. .. .	1,469	1,861	3,330	718	53	..	771
Dunolly .. .. .	407	446	853	227	15	..	242
Eaglehawk .. .. .	2,131	2,588	4,719	1,111	60	..	1,171
Echuca .. .. .	1,834	1,911	3,745	832	27	1	860
Essendon .. .. .	16,515	18,745	35,260	7,849	201	36	8,086
Fitzroy .. .. .	16,307	18,631	34,938	7,563	145	4	7,712
Footscray .. .. .	16,785	16,987	33,772	7,041	106	46	7,193
Geelong .. .. .	6,865	7,953	14,818	3,177	68	2	3,247
Geelong West .. .. .	4,514	5,124	9,638	2,157	64	10	2,231
Hamilton .. .. .	2,402	2,696	5,098	1,108	47	2	1,157
Hawthorn .. .. .	12,870	16,308	29,178	6,408	155	29	6,592
Horsham .. .. .	1,803	1,985	3,788	803	30	12	845
Inglewood .. .. .	517	601	1,118	269	20	..	289
Kew .. .. .	7,712	9,670	17,382	3,557	93	57	3,707
Koroit .. .. .	857	904	1,761	355	9	..	364
Malvern .. .. .	14,051	18,257	32,308	7,370	256	127	7,753
Maryborough .. .. .	2,210	2,537	4,747	1,122	50	2	1,174
Melbourne .. .. .	51,104	52,165	103,269	21,194	339	22	21,555
Melbourne South .. .. .	22,143	24,736	46,879	9,960	193	16	10,169
Mentone and Mordialloc .. .. .	2,631	3,039	5,670	1,202	159	7	1,368
Mildura .. .. .	2,668	2,432	5,100	1,037	27	16	1,080
Newtown and Chilwell .. .. .	3,304	3,929	7,233	1,540	56	5	1,601
Northcote .. .. .	14,703	15,810	30,513	6,676	165	112	6,953
Oakleigh .. .. .	2,937	3,139	6,076	1,328	38	17	1,383
Port Fairy .. .. .	981	1,006	1,987	429	6	..	435
Portland .. .. .	1,136	1,418	2,554	545	16	2	563
Port Melbourne .. .. .	6,500	6,600	13,100	2,762	44	2	2,808
Prahran .. .. .	21,704	28,584	50,288	11,234	245	18	11,497
Queenscliff .. .. .	1,104	1,386	2,490	443	59	..	502
Richmond .. .. .	20,599	22,575	43,174	9,347	158	6	9,511
Rutherglen .. .. .	572	588	1,160	263	17	..	280
Sale .. .. .	1,762	2,006	3,768	794	30	6	830
Sandringham .. .. .	5,136	6,170	11,306	2,511	250	63	2,824
Sebastopol .. .. .	866	878	1,744	408	12	..	420
St. Arnaud .. .. .	1,225	1,496	2,721	607	31	2	640
St. Kilda .. .. .	16,758	21,835	38,593	8,100	207	64	8,371
Stawell .. .. .	2,036	2,375	4,411	1,016	30	1	1,047
Wangaratta .. .. .	1,770	1,922	3,692	739	12	4	755
Warrnambool .. .. .	3,717	4,022	7,739	1,628	27	4	1,659
Williamstown .. .. .	9,894	9,551	19,445	4,266	69	30	4,365
Wonthaggi .. .. .	2,813	2,363	5,176	1,023	22	19	1,064
<b>Total; Cities, Towns, and Boroughs ..</b>	<b>428,300</b>	<b>487,315</b>	<b>915,615</b>	<b>198,325</b>	<b>6,099</b>	<b>1,272</b>	<b>205,696</b>
<b>SHIRES.</b>							
Alberton .. .. .	3,112	2,517	5,629	1,262	77	5	1,344
Alexandra .. .. .	1,887	1,466	3,353	891	29	1	921
Arapiles .. .. .	1,196	1,128	2,324	464	16	..	480
Ararat .. .. .	3,168	2,790	5,958	1,308	41	1	1,350
Avoca .. .. .	1,660	1,651	3,311	761	57	4	822
Avon .. .. .	1,288	1,097	2,385	520	23	3	546
Bacchus Marsh .. .. .	1,734	1,565	3,299	668	7	9	684
Bairnsdale .. .. .	3,882	3,841	7,723	1,706	88	3	1,797
Ballan .. .. .	1,595	1,486	3,081	749	49	1	799
Ballarat .. .. .	1,894	2,059	3,953	690	43	4	737
Bannockburn .. .. .	1,345	1,244	2,589	590	43	..	633
Barrabool .. .. .	968	851	1,819	385	26	..	411
Barwon South .. .. .	1,528	1,642	3,170	683	174	1	858
Beechworth .. .. .	2,361	2,291	4,652	965	49	1	1,015
Belfast .. .. .	1,321	1,168	2,489	502	22	..	524
Bellarine .. .. .	2,047	1,957	4,004	895	74	4	973
Benalla .. .. .	3,898	3,700	7,598	1,680	91	3	1,774
Berwick .. .. .	4,834	4,117	8,951	2,034	122	10	2,166
Bet Bet .. .. .	1,418	1,257	2,675	641	57	1	699
Birehip .. .. .	1,014	838	1,852	372	23	2	397
Borong .. .. .	2,528	2,229	4,757	993	63	2	1,058
Braybrook .. .. .	2,335	2,092	4,427	921	23	75	1,019
Bright .. .. .	2,047	1,958	4,005	928	72	..	1,000



4. VICTORIA.—POPULATION AND DWELLINGS IN EACH LOCAL GOVERNMENT AREA, ETC.—*continued.*

Local Government Area.	Population.			Dwellings.			
	Males.	Females.	Persons.	Occupied.	Unoccupied.	Being Built.	Total.
<i>SHIRES—continued.</i>							
Broadford .. .. .	710	622	1,332	317	30	1	348
Broadmeadows .. .. .	3,617	1,803	5,420	772	48	7	827
Bulla .. .. .	1,263	1,335	2,598	356	14	..	370
Buln Buln .. .. .	3,255	2,620	5,875	1,417	55	..	1,472
Bungaree .. .. .	1,529	1,484	3,013	675	42	..	717
Buninyong .. .. .	2,681	2,426	5,057	1,148	77	3	1,228
Charlton .. .. .	1,322	1,143	2,465	515	20	..	535
Chiltern .. .. .	1,065	1,079	2,144	507	29	..	536
Colac .. .. .	6,258	5,850	12,108	2,543	119	23	2,685
Corio .. .. .	2,259	1,686	3,945	734	32	8	774
Cranbourne .. .. .	3,219	2,463	5,682	1,337	66	10	1,413
Creswick .. .. .	1,506	1,538	3,044	727	47	..	774
Dandenong .. .. .	3,456	3,444	6,900	1,511	72	27	1,610
Deakin .. .. .	2,164	1,763	3,927	875	51	2	928
Dimboola .. .. .	3,370	2,899	6,269	1,229	27	4	1,260
Donald .. .. .	1,728	1,512	3,240	662	47	..	709
Doncaster .. .. .	1,345	1,240	2,585	619	51	3	673
Dundas .. .. .	1,784	1,702	3,486	758	36	1	795
Dunmunkle .. .. .	2,487	2,098	4,585	928	54	2	984
Eltham .. .. .	2,089	1,982	4,071	971	133	1	1,105
Euroa .. .. .	1,999	1,909	3,908	856	42	1	899
Ferntree Gully .. .. .	3,365	3,640	7,005	1,629	626	37	2,292
Flinders .. .. .	2,504	2,256	4,760	1,013	224	3	1,240
Frankston and Hastings .. .. .	2,300	2,348	4,648	1,109	322	2	1,433
Gippsland South .. .. .	2,615	2,057	4,672	999	38	1	1,038
Gisborne .. .. .	1,090	1,287	2,377	522	42	..	564
Glenslg .. .. .	2,824	2,659	5,483	1,190	45	4	1,239
Glenlyon .. .. .	1,639	1,781	3,420	769	78	2	849
Gordon .. .. .	1,706	1,444	3,150	667	41	1	709
Goulburn .. .. .	1,141	1,006	2,147	468	38	1	507
Grenville .. .. .	1,556	1,565	3,121	750	53	..	803
Hampden .. .. .	5,370	5,135	10,505	2,161	121	6	2,288
Healesville .. .. .	1,557	1,866	3,423	628	82	5	715
Heidelberg .. .. .	7,940	8,671	16,611	3,269	151	43	3,463
Heytesbury .. .. .	2,324	2,126	4,450	920	41	1	962
Huntly .. .. .	1,694	1,401	3,095	696	71	1	768
Kara Kara .. .. .	1,651	1,395	3,046	647	62	4	713
Karkaroc .. .. .	3,135	2,360	5,495	1,124	86	5	1,215
Keilor .. .. .	664	526	1,190	258	7	..	265
Kerang .. .. .	5,692	4,787	10,479	2,216	137	12	2,365
Kilmore .. .. .	943	847	1,790	401	30	..	431
Korong .. .. .	2,595	2,278	4,873	1,067	74	2	1,143
Kowree .. .. .	1,754	1,549	3,303	739	53	2	794
Kyneton .. .. .	3,341	3,634	6,975	1,633	72	4	1,709
Lawloit .. .. .	1,147	1,017	2,164	432	11	..	443
Leigh .. .. .	806	716	1,522	362	25	..	387
Lexton .. .. .	893	731	1,624	391	23	..	414
Lilydale .. .. .	4,658	4,754	9,412	2,167	296	35	2,498
Loddon East .. .. .	968	802	1,770	370	37	..	407
Lowan .. .. .	1,900	1,730	3,630	736	36	..	772
Maffra .. .. .	3,076	2,577	5,653	1,229	53	9	1,291
Maldon .. .. .	1,506	1,632	3,138	738	26	..	764
Mansfield .. .. .	2,120	1,875	3,995	891	89	2	982
Marong .. .. .	3,058	2,820	5,878	1,307	35	1	1,343
McIvor .. .. .	1,745	1,590	3,335	781	30	..	811
Melton .. .. .	785	644	1,429	323	18	..	341
Metcalfe .. .. .	1,352	1,323	2,675	637	10	1	648
Mildura .. .. .	4,888	3,195	8,083	2,105	84	9	2,198
Minhamite .. .. .	1,022	859	1,881	442	26	24	492
Mirboo .. .. .	892	647	1,539	353	14	..	367
Moorabbin .. .. .	3,777	3,665	7,442	1,426	73	19	1,518
Mornington .. .. .	989	1,211	2,200	481	107	2	590
Mortlake .. .. .	1,497	1,416	2,913	643	54	4	701
Morwell .. .. .	2,105	1,580	3,685	902	67	1	970
Mount Rouse .. .. .	1,360	1,351	2,711	573	24	..	597
Mulgrave .. .. .	1,598	1,608	3,206	679	35	3	717
Murray Upper .. .. .	1,168	943	2,111	448	12	1	461
Narraacan .. .. .	3,815	3,105	6,920	1,600	71	3	1,674
Newham and Woodend .. .. .	984	1,107	2,091	465	16	..	481
Newstead and Mt. Alexander .. .. .	1,349	1,350	2,699	682	51	..	733
Numurkah .. .. .	2,999	2,769	5,768	1,226	101	..	1,327
Numawading .. .. .	6,234	6,391	12,625	2,755	100	52	2,907
Oneco .. .. .	1,304	1,065	2,369	564	101	2	667
Orbost .. .. .	2,202	1,624	3,826	938	61	1	1,000
Otway .. .. .	2,342	1,700	4,042	941	56	4	1,001
Oxley .. .. .	2,169	1,782	3,951	821	43	1	865
Phillip Island and Woolamai .. .. .	2,720	2,383	5,103	1,074	37	2	1,113
Poowong and Jeetho .. .. .	3,896	3,289	7,185	1,606	51	4	1,661
Portland .. .. .	2,743	2,534	5,277	1,178	82	3	1,263
Preston .. .. .	4,714	4,956	9,670	2,052	50	86	2,188
Pyalong .. .. .	370	332	702	172	17	..	189
Ripon .. .. .	1,717	1,712	3,429	755	48	..	803
Rochester .. .. .	3,394	2,896	6,290	1,297	102	7	1,406
Rodney .. .. .	3,919	3,483	7,402	1,576	66	7	1,649
Romsey .. .. .	1,688	1,507	3,195	759	41	..	800
Rosedale .. .. .	2,260	1,922	4,182	911	91	4	1,006

4. VICTORIA.—POPULATION AND DWELLINGS IN EACH LOCAL GOVERNMENT AREA, ETC.—*continued.*

Local Government Area.	Population.			Dwellings.			
	Males.	Females.	Persons.	Occupied.	Unoccupied.	Being Built.	Total.
<b>SHIRES—<i>continued.</i></b>							
Rutherglen .. .. .	1,519	1,268	2,787	590	15	..	605
Seymour .. .. .	2,031	1,776	3,807	810	60	2	872
Shepparton .. .. .	4,018	3,696	7,714	1,610	75	5	1,690
Stawell .. .. .	1,841	1,511	3,352	756	46	..	802
Strathfieldsaye .. .. .	1,692	1,686	3,378	752	36	..	788
Swan Hill .. .. .	6,702	4,850	11,552	2,515	206	16	2,737
Talbot .. .. .	648	734	1,382	358	30	..	388
Tambo .. .. .	2,236	2,002	4,238	873	56	1	930
Towong .. .. .	2,415	1,915	4,330	958	50	2	1,010
Traralgon .. .. .	1,724	1,612	3,336	751	40	4	795
Tullaroop .. .. .	1,314	1,264	2,578	596	41	..	637
Tungamah .. .. .	2,405	2,095	4,500	954	76	2	1,032
Violet Town .. .. .	960	923	1,883	414	47	2	463
Walpeup .. .. .	3,278	2,194	5,472	1,155	44	5	1,204
Wangaratta .. .. .	1,268	1,119	2,387	507	18	..	525
Wannon .. .. .	1,517	1,326	2,843	613	23	3	639
Waranga .. .. .	2,901	2,465	5,366	1,257	64	2	1,323
Warragul .. .. .	2,543	2,411	4,954	1,027	21	4	1,052
Warrnambool .. .. .	4,256	3,979	8,235	1,662	98	..	1,760
Werribee .. .. .	3,738	3,297	7,035	1,499	60	7	1,566
Whittlesea .. .. .	1,834	1,647	3,481	739	49	..	788
Wimmera .. .. .	2,343	1,812	4,155	840	30	2	872
Winchelsea .. .. .	2,246	2,064	4,310	897	83	1	981
Wodonga .. .. .	1,370	1,185	2,555	585	23	7	615
Woorayl .. .. .	3,311	2,661	5,972	1,278	80	4	1,362
Wycheproof .. .. .	2,424	1,786	4,210	916	84	..	1,000
Yackandandah .. .. .	1,515	1,411	2,926	634	43	2	679
Yarra wonga .. .. .	1,356	1,264	2,620	567	44	..	611
Yarra Upper .. .. .	3,014	2,511	5,525	1,238	70	10	1,318
Yea .. .. .	1,485	1,211	2,696	607	39	10	656
<b>Total, Shires .. .. .</b>	<b>321,549</b>	<b>288,428</b>	<b>609,977</b>	<b>132,686</b>	<b>8,876</b>	<b>737</b>	<b>142,299</b>
<b>SUMMARY.</b>							
Cities, Towns, and Boroughs .. .. .	428,300	487,315	915,615	198,325	6,099	1,272	205,696
Shires .. .. .	321,549	288,428	609,977	132,686	8,876	737	142,299
Not incorporated .. .. .	113	72	185	45	19	..	64
Migratory* .. .. .	4,667	1,085	5,752	..	..	..	..
<b>Total, Victoria .. .. .</b>	<b>754,629</b>	<b>776,900</b>	<b>1,531,529</b>	<b>331,056</b>	<b>14,994</b>	<b>2,009</b>	<b>348,059</b>

\* Shipping.

## 5. QUEENSLAND.—POPULATION AND DWELLINGS IN EACH LOCAL GOVERNMENT AREA AS AT THE CENSUS OF 4th APRIL, 1921.

(Exclusive of full-blood Aborigines.)

Local Government Area.	Population.			Dwellings.			
	Males.	Females.	Persons.	Occupied.	Unoccupied.	Being Built.	Total.
<b>CITIES.</b>							
Brisbane .. .. .	20,590	22,046	42,636	7,877	132	9	8,018
Brisbane South .. .. .	17,838	19,334	37,172	7,816	200	3	8,019
Bundaberg .. .. .	4,522	4,754	9,276	2,048	78	3	2,129
Charters Towers .. .. .	4,559	4,940	9,499	2,077	83	..	2,160
Gympie .. .. .	3,070	3,449	6,519	1,497	54	1	1,552
Ipswich .. .. .	10,195	10,331	20,526	4,181	168	25	4,374
Maryborough .. .. .	5,167	5,468	10,635	2,372	80	4	2,456
Rockhampton .. .. .	11,706	12,476	24,182	4,943	112	6	5,061
Toowoomba .. .. .	9,443	11,259	20,702	4,081	133	4	4,218
Townsville .. .. .	10,996	10,352	21,348	4,134	111	5	4,250
<b>TOWNS.</b>							
Beaudesert .. .. .	683	700	1,383	268	7	..	275
Blackall .. .. .	736	690	1,426	286	4	..	290
Bowen .. .. .	1,075	1,040	2,115	400	..	..	400
Cairns .. .. .	4,105	3,350	7,455	1,415	35	7	1,457
Charleville .. .. .	1,201	1,134	2,335	462	2	..	464
Clermont .. .. .	605	654	1,259	287	4	..	291
Cooktown .. .. .	446	435	881	238	30	..	268
Coolangatta .. .. .	670	796	1,466	225	24	..	249
Dalby .. .. .	1,109	1,286	2,395	472	21	..	493
Gayndah .. .. .	678	611	1,289	310	18	..	328
Gladstone .. .. .	1,088	1,040	2,128	447	4	..	451
Goondiwindi .. .. .	676	665	1,341	257	6	..	263

5. QUEENSLAND.—POPULATION AND DWELLINGS IN EACH LOCAL GOVERNMENT AREA, ETC.—*continued.*

Local Government Area.	Population.			Dwellings.			
	Males.	Females.	Persons.	Occupied.	Unoccupied.	Being Built.	Total.
<b>TOWNS—<i>continued.</i></b>							
Hamilton .. .. .	4,107	4,767	8,874	1,849	62	10	1,921
Hughenden .. .. .	1,070	811	1,881	385	16	..	401
Ithaca .. .. .	10,065	10,854	20,919	4,472	115	4	4,591
Mackay .. .. .	3,204	3,116	6,320	13,330	16	2	1,348
Mount Morgan .. .. .	3,580	3,634	7,214	1,501	59	..	1,560
Roma .. .. .	1,588	1,659	3,247	665	18	..	683
Sandgate .. .. .	2,851	3,426	6,277	1,357	116	15	1,488
Southport .. .. .	1,653	1,890	3,543	635	33	..	668
Thursday Island .. .. .	638	441	1,079	254	6	..	260
Toowong .. .. .	4,602	5,406	10,008	2,224	60	7	2,291
Warwick .. .. .	2,777	3,318	6,095	1,196	36	2	1,234
Windsor .. .. .	8,681	9,581	18,262	4,016	161	10	4,187
Wynnum .. .. .	3,947	4,410	8,357	1,858	131	5	1,994
<b>Total, Cities and Towns .. .. .</b>	<b>159,921</b>	<b>170,123</b>	<b>330,044</b>	<b>67,835</b>	<b>2,135</b>	<b>122</b>	<b>70,092</b>
<b>SHIRES.</b>							
Adavale .. .. .	965	464	1,429	256	1	..	257
Allora .. .. .	1,309	1,171	2,480	509	30	..	539
Aramac .. .. .	1,127	592	1,719	287	10	..	297
Auburn .. .. .	1,088	821	1,909	450	9	..	459
Ayr .. .. .	3,616	2,646	6,262	1,398	23	2	1,423
Balmoral .. .. .	4,380	4,650	9,030	2,006	83	13	2,102
Balonne .. .. .	2,590	1,492	4,082	763	7	1	771
Banana .. .. .	1,403	903	2,306	552	25	..	577
Barcaldine .. .. .	1,368	1,141	2,509	515	23	3	541
Barcoo .. .. .	860	349	1,209	164	4	..	168
Barkly Tableland .. .. .	726	305	1,031	314	3	..	317
Bauhinia .. .. .	986	662	1,648	384	25	3	412
Beaudesert .. .. .	1,592	1,313	2,905	538	5	..	543
Beenleigh .. .. .	1,190	1,095	2,285	453	7	..	460
Belmont .. .. .	726	635	1,361	326	12	..	338
Belyando .. .. .	1,265	765	2,030	526	4	..	530
Bendemere .. .. .	982	826	1,808	370	29	..	399
Booringa .. .. .	1,571	1,207	2,778	606	17	..	623
Boulia .. .. .	745	214	959	153	..	..	153
Broadsound .. .. .	1,148	472	1,620	664	4	..	668
Bulloo .. .. .	576	282	858	175	1	..	176
Bungil .. .. .	1,429	1,026	2,455	572	24	..	596
Burke .. .. .	251	125	376	72	1	..	73
Burrum .. .. .	3,573	3,275	6,848	1,528	123	1	1,652
Caboolture .. .. .	2,322	1,894	4,216	932	39	1	972
Cairns .. .. .	3,634	2,103	5,737	1,314	42	6	1,362
Calliope .. .. .	2,256	1,694	3,950	918	41	2	961
Calliungal .. .. .	1,079	1,021	2,100	456	35	..	491
Cambooya .. .. .	1,027	850	1,877	358	1	..	359
Cardwell .. .. .	252	118	370	148	17	1	166
Carpentaria .. .. .	469	254	723	185	9	..	194
Chillagoe .. .. .	655	470	1,125	335	3	..	338
Chinchilla .. .. .	1,647	1,448	3,095	648	39	..	687
Cleveland .. .. .	986	896	1,882	442	53	..	495
Clifton .. .. .	1,727	1,452	3,179	599	33	..	632
Cloncurry .. .. .	2,433	1,568	4,001	1,004	131	..	1,135
Cook .. .. .	1,653	1,361	3,014	834	25	13	872
Coomera .. .. .	559	463	1,022	210	1	..	211
Coorparoo .. .. .	3,186	3,446	6,632	1,486	78	4	1,568
Crow's Nest .. .. .	1,416	1,255	2,671	495	35	..	530
Croydon .. .. .	301	253	554	153	20	..	173
Dalrymple .. .. .	2,632	1,658	4,290	1,060	42	..	1,102
Degilbo .. .. .	1,145	940	2,085	462	24	..	486
Diamantina .. .. .	378	81	459	84	2	..	86
Douglas .. .. .	831	519	1,350	368	33	..	401
Drayton .. .. .	863	887	1,750	356	2	8	366
Duaringa .. .. .	751	499	1,250	302	17	2	321
Eacham .. .. .	1,891	1,174	3,065	792	48	2	842
Eidsvold .. .. .	630	465	1,095	253	5	..	258
Einassleigh .. .. .	979	555	1,534	410	14	..	424
Emerald .. .. .	2,114	1,248	3,362	923	27	..	950
Enoggera .. .. .	1,986	1,999	3,985	888	61	11	960
Esk .. .. .	4,231	3,686	7,917	1,565	51	..	1,616
Fitzroy .. .. .	2,403	1,886	4,289	906	64	..	970
Flinders .. .. .	823	252	1,075	263	..	..	263
Glengallan .. .. .	3,483	2,921	6,404	1,291	40	..	1,331
Gooburrum .. .. .	1,626	1,298	2,924	648	47	..	695
Goolman .. .. .	3,015	2,877	5,892	1,133	22	..	1,155
Herberton .. .. .	1,668	1,374	3,042	741	56	..	797
Highfields .. .. .	1,218	1,066	2,284	478	17	..	495
Hinchinbrook .. .. .	3,383	2,120	5,503	1,261	92	4	1,357
Ilfracombe .. .. .	558	283	841	180	3	..	183
Inglewood .. .. .	1,680	1,266	2,946	686	54	1	741
Isis .. .. .	1,899	1,606	3,505	803	103	..	906
Isisford .. .. .	617	318	935	194	2	..	196
Jericho .. .. .	901	738	1,639	339	21	2	362

5. QUEENSLAND.—POPULATION AND DWELLINGS IN EACH LOCAL GOVERNMENT AREA, ETC.—*continued.*

Local Government Area.	Population.			Dwellings.			
	Males.	Females.	Persons.	Occupied.	Unoccupied.	Being Built.	Total.
<b>SHIRES—<i>continued.</i></b>							
Johnstone .. .. .	3,846	1,703	5,549	1,475	37	4	1,516
Jondaryan .. .. .	2,718	2,454	5,172	976	37	1	1,014
Kargoolnah .. .. .	863	357	1,220	278	2	..	280
Kedron .. .. .	3,148	2,695	5,843	1,241	35	..	1,276
Kilcoy .. .. .	1,193	1,040	2,233	437	27	..	464
Kilkivan .. .. .	1,736	1,310	3,046	660	49	1	710
Kingaroy .. .. .	2,602	2,287	4,889	1,011	41	1	1,053
Kolan .. .. .	1,378	1,143	2,521	572	35	..	607
Laidley .. .. .	2,487	2,367	4,854	962	15	..	977
Landsborough .. .. .	2,118	1,614	3,732	946	48	..	994
Livingstone .. .. .	3,018	2,703	5,721	1,248	96	..	1,344
Longreach .. .. .	2,586	1,670	4,256	826	7	..	833
Maackinlay .. .. .	1,040	608	1,648	438	76	..	514
Maroochy .. .. .	5,484	4,562	10,046	2,233	104	7	2,344
Millmerran .. .. .	967	692	1,659	371	16	..	387
Mirani .. .. .	1,958	1,481	3,439	769	24	3	796
Miriam Vale .. .. .	919	732	1,651	341	6	..	347
Moggill .. .. .	596	501	1,097	239	11	..	250
Morston .. .. .	4,271	3,829	8,100	1,627	52	4	1,683
Murgon .. .. .	1,375	1,218	2,593	524	32	1	557
Murilla .. .. .	1,287	1,131	2,418	480	31	1	512
Murweh .. .. .	1,801	1,082	2,883	576	..	..	576
Nanango .. .. .	2,011	1,617	3,628	787	25	1	813
Nebo .. .. .	362	159	521	118	9	..	127
Nerang .. .. .	1,643	1,279	2,922	630	57	..	687
Noosa .. .. .	2,389	2,024	4,413	895	56	1	952
Normanby .. .. .	1,262	1,153	2,415	475	17	2	494
Paroo .. .. .	1,556	979	2,535	519	12	..	531
Peak Downs .. .. .	551	344	895	190	2	..	192
Perry .. .. .	553	447	1,000	253	7	..	260
Pine .. .. .	1,977	1,642	3,619	708	21	..	729
Pioneer .. .. .	3,361	2,340	5,701	1,337	32	4	1,373
Pittsworth .. .. .	1,764	1,507	3,271	661	72	1	734
Proserpine .. .. .	1,326	965	2,291	519	11	2	532
Ravenswood .. .. .	614	563	1,177	275	21	..	296
Rawbelle .. .. .	1,283	992	2,275	472	4	..	476
Redcliffe .. .. .	1,058	1,165	2,223	486	258	..	744
Rosalie .. .. .	3,779	3,062	6,841	1,354	16	1	1,371
Rosenthal .. .. .	1,163	969	2,132	458	33	..	491
Rosewood .. .. .	2,196	2,130	4,326	863	41	2	906
Sarina .. .. .	929	706	1,635	383	28	..	411
Sherwood .. .. .	3,417	3,195	6,612	1,145	69	25	1,239
Stanthorpe .. .. .	3,709	3,128	6,837	1,624	67	..	1,691
Stephens .. .. .	5,557	5,949	11,506	2,652	128	20	2,800
Tambo .. .. .	674	356	1,030	196	1	..	197
Tambourine .. .. .	935	768	1,703	357	20	1	378
Tara .. .. .	772	546	1,318	292	28	1	321
Tarampa .. .. .	2,946	2,455	5,401	1,099	26	..	1,125
Taringa .. .. .	2,335	2,715	5,050	1,135	60	15	1,210
Taroom .. .. .	940	735	1,675	375	7	..	382
Thuringowa .. .. .	1,429	908	2,337	528	11	..	539
Tiaro .. .. .	1,629	1,329	2,958	633	18	..	651
Tinaroo .. .. .	2,102	1,375	3,477	852	28	..	880
Tingalpa .. .. .	970	806	1,776	406	23	1	430
Toombul .. .. .	6,427	7,141	13,568	2,860	331	15	3,206
Waggamba .. .. .	1,239	767	2,006	448	7	..	455
Walsh .. .. .	1,045	737	1,782	537	17	..	554
Wambo .. .. .	2,689	2,216	4,905	1,009	46	..	1,055
Wangaratta .. .. .	1,523	904	2,427	719	6	..	725
Warroo .. .. .	888	470	1,358	274	8	..	282
Waterford .. .. .	465	467	932	186	8	1	195
Widgee .. .. .	3,048	2,507	5,555	1,239	31	..	1,270
Winton .. .. .	2,130	1,147	3,277	682	13	..	695
Wondai .. .. .	1,969	1,492	3,461	758	43	1	802
Woocoo .. .. .	320	262	582	115	6	..	121
Woongarra .. .. .	1,356	1,162	2,518	544	62	2	608
Woothakata .. .. .	2,156	1,656	3,812	946	68	23	1,037
Wyangarie .. .. .	1,129	573	1,702	392	16	..	408
Yeerongpilly .. .. .	1,695	1,567	3,262	742	41	3	786
<b>Total, Shires</b> .. .. .	<b>235,435</b>	<b>187,248</b>	<b>422,683</b>	<b>92,842</b>	<b>4,611</b>	<b>225</b>	<b>97,678</b>
<b>SUMMARY.</b>							
Cities and Towns .. .. .	159,921	170,123	330,044	67,835	2,135	122	70,092
Shires .. .. .	235,435	187,248	422,683	92,842	4,611	225	97,678
Not Incorporated .. .. .	1,327	294	1,621	279	1	..	280
Migratory* .. .. .	2,927	359	3,286	..	..	..	..
<b>Total, Queensland</b> .. .. .	<b>399,610</b>	<b>358,024</b>	<b>757,634</b>	<b>160,956</b>	<b>6,747</b>	<b>347</b>	<b>168,050</b>

\* Includes railway travellers and shipping.

## 6. SOUTH AUSTRALIA.—POPULATION AND DWELLINGS IN EACH LOCAL GOVERNMENT AREA AS AT THE CENSUS OF 4th APRIL, 1921.

(Exclusive of full-blood Aborigines.)

Local Government Area.	Population.			Dwellings.			
	Males.	Females.	Persons.	Occupied.	Unoccupied.	Being Built.	Total.
<b>CORPORATIONS.</b>							
Adelaide .. .. .	18,727	20,835	39,562	8,160	130	6	8,296
Brighton .. .. .	1,334	1,506	2,840	586	36	18	640
Burra .. .. .	853	925	1,778	423	43	1	467
Clare .. .. .	538	527	1,065	237	10	..	247
Davenport .. .. .	561	553	1,114	236	8	..	244
Edithburgh .. .. .	412	385	797	163	..	..	163
Gawler .. .. .	845	930	1,775	425	19	1	445
Gladstone .. .. .	472	418	890	183	4	1	188
Glenelg .. .. .	3,519	4,479	7,998	1,787	66	14	1,867
Goolwa .. .. .	245	318	563	137	4	..	141
Henley and Grange .. .. .	1,693	2,287	3,980	779	52	11	842
Hindmarsh .. .. .	6,138	6,323	12,461	2,691	56	8	2,755
Jamestown .. .. .	652	709	1,361	321	19	3	343
Kadina .. .. .	1,194	1,309	2,503	591	19	3	613
Kapunda .. .. .	729	835	1,564	380	34	1	415
Kensington and Norwood .. .. .	6,935	8,075	15,010	3,369	91	4	3,464
Laura .. .. .	315	319	634	144	13	..	157
Maitland .. .. .	224	256	480	98	6	..	104
Moonta .. .. .	616	719	1,335	328	17	..	345
Mount Gambier .. .. .	1,868	2,100	3,968	842	28	7	877
Peterborough .. .. .	1,070	1,119	2,189	499	53	4	556
Port Adelaide .. .. .	14,710	15,406	30,116	6,222	118	20	6,360
Port Augusta .. .. .	727	648	1,375	278	9	..	287
Port Augusta West .. .. .	184	205	389	84	3	..	87
Port Pirie .. .. .	4,848	4,960	9,808	2,308	307	8	2,623
Port Wakefield .. .. .	312	253	565	128	..	..	128
Quorn .. .. .	450	427	877	172	..	..	172
St. Peters .. .. .	5,124	5,980	11,104	2,507	78	5	2,590
Strathalbyn .. .. .	448	553	1,001	251	6	1	258
Thebarton .. .. .	6,791	7,246	14,037	3,186	87	20	3,293
Unley .. .. .	15,430	18,681	34,111	7,757	298	85	8,140
Victor Harbor .. .. .	704	1,114	1,818	246	15	1	262
Walleroo .. .. .	1,700	1,608	3,308	722	37	1	760
Yorke town .. .. .	230	271	501	104	6	2	112
<b>Total, Corporations</b> .. .. .	<b>100,598</b>	<b>112,279</b>	<b>212,877</b>	<b>46,344</b>	<b>1,672</b>	<b>225</b>	<b>48,241</b>
<b>DISTRICT COUNCILS.</b>							
Aldinga .. .. .	256	273	529	111	6	1	118
Alma Plains .. .. .	597	519	1,116	239	10	..	249
Angas .. .. .	254	252	506	116	..	..	116
Angastown .. .. .	1,626	1,597	3,223	676	13	11	700
Apoinga .. .. .	389	336	725	147	3	..	150
Balaklava .. .. .	1,105	1,065	2,170	509	11	..	520
Barossa .. .. .	748	788	1,536	350	4	..	354
Beachport .. .. .	188	128	316	86	4	..	90
Belahie .. .. .	639	545	1,184	247	9	1	257
Belvidere .. .. .	477	405	882	162	..	..	162
Benara .. .. .	145	87	232	55	..	..	55
Blanchetown .. .. .	796	572	1,368	302	26	..	328
Blyth .. .. .	437	397	834	158	1	..	159
Booborowie .. .. .	501	424	925	194	3	..	197
Booyoolie .. .. .	269	252	521	95	..	..	95
Bremer .. .. .	470	463	933	206	12	..	218
Brinkley .. .. .	488	330	818	188	2	1	191
Brown's Wells .. .. .	466	275	741	162	5	1	168
Burnside .. .. .	7,603	8,807	16,410	3,545	127	31	3,703
Burra .. .. .	175	156	331	72	1	..	73
Caltowie .. .. .	588	516	1,104	218	6	..	224
Campbelltown .. .. .	1,498	1,473	2,971	662	12	9	683
Carrieton .. .. .	453	411	864	190	20	1	211
Caurnamont .. .. .	466	406	872	189	20	..	209
Clare .. .. .	833	745	1,578	364	8	4	376
Clarendon .. .. .	743	712	1,455	346	7	..	353
Cleve .. .. .	756	558	1,314	264	19	1	284
Clinton .. .. .	734	599	1,333	274	3	1	278
Coglin .. .. .	519	453	972	205	22	..	227
Crafers .. .. .	950	1,005	1,955	423	55	3	481
Crystal Brook .. .. .	752	706	1,458	329	19	2	350
Dalkey .. .. .	401	391	792	172	6	1	179
Dalrymple .. .. .	460	371	831	173	17	..	190
Dublin .. .. .	347	337	684	150	11	..	161
Dudley .. .. .	252	188	440	94	2	..	96
Echunga .. .. .	708	681	1,389	327	12	1	340
Elliston .. .. .	483	418	901	177	35	..	212
Encounter Bay .. .. .	382	414	796	178	1	..	179
English .. .. .	593	558	1,151	249	8	..	257
Franklin Harbor .. .. .	704	658	1,362	283	40	1	324
Freeling* .. .. .	1,289	1,265	2,554	535	9	1	545
Gawler South .. .. .	798	818	1,616	355	9	..	364
Georgetown .. .. .	884	688	1,572	348	15	1	364

\* Late Nuriootpa.

6. SOUTH AUSTRALIA.—POPULATION AND DWELLINGS IN EACH LOCAL GOVERNMENT AREA, ETC.—*continued.*

Local Government Area.	Population.			Dwellings.			
	Males.	Females.	Persons.	Occupied.	Unoccupied.	Being Built.	Total.
DISTRICT COUNCILS— <i>continued.</i>							
Gilbert .. .. .	622	631	1,253	272	40	..	312
Gladstone .. .. .	239	185	424	85	12	..	97
Grace .. .. .	436	389	825	173	11	1	185
Hall .. .. .	361	329	690	136	1	..	137
Hallett .. .. .	256	228	484	111	5	..	116
Hamilton .. .. .	304	287	591	135	14	1	150
Hammond .. .. .	390	342	732	156	..	..	156
Hanson .. .. .	346	295	641	147	1	..	148
Hawker .. .. .	494	408	902	189	7	..	196
Highercombe .. .. .	448	423	871	202	16	..	218
Hutt and Hill Rivers .. .. .	537	326	863	224	8	3	235
Julia .. .. .	316	258	574	114	3	2	119
Kadina .. .. .	3,488	3,748	7,236	1,595	87	4	1,686
Kanyaka .. .. .	1,001	800	1,801	379	2	..	381
Kapunda .. .. .	500	599	1,099	227	28	..	255
Kennion .. .. .	153	104	257	49	2	..	51
Keyneton* .. .. .	467	468	935	209	5	..	214
Kingscote .. .. .	515	392	907	175	4	..	179
Kondoparinga .. .. .	488	442	930	223	9	1	233
Kulpara .. .. .	312	278	590	114	..	..	114
Lacepede .. .. .	376	375	751	164	34	1	199
Lameroo† .. .. .	854	673	1,527	312	31	..	343
Lincoln .. .. .	1,917	1,569	3,486	803	81	..	884
Loxton .. .. .	1,693	1,118	2,811	577	12	..	589
Lucindale .. .. .	275	242	517	128	14	..	142
Macclesfield .. .. .	324	277	601	153	4	..	157
Mannum .. .. .	1,334	1,090	2,424	557	18	3	578
Marion .. .. .	1,542	1,550	3,092	647	8	3	658
Melville .. .. .	624	555	1,179	238	10	..	248
Meningie .. .. .	1,061	1,005	2,066	476	11	..	487
Millicent .. .. .	1,238	1,221	2,459	493	23	5	521
Minlaton .. .. .	1,006	900	1,906	400	24	..	424
Mitcham .. .. .	4,315	4,879	9,194	2,039	76	36	2,151
Mobilong .. .. .	2,246	2,126	4,372	936	39	16	991
Monarto .. .. .	206	217	423	97	1	..	98
Morgan .. .. .	774	631	1,405	333	2	..	335
Morphett Vale .. .. .	404	394	798	170	13	..	183
Mount Barker .. .. .	1,075	1,124	2,199	500	1	..	501
Mount Bryan .. .. .	184	189	373	79	8	..	87
Mount Crawford .. .. .	421	406	827	171	14	1	186
Mount Gambier East .. .. .	1,024	986	2,010	432	23	2	457
Mount Gambier West .. .. .	1,537	1,519	3,056	642	10	2	654
Mudla Wirra North .. .. .	277	247	524	98	8	..	106
Mudla Wirra South .. .. .	822	824	1,646	341	14	1	356
Munno Para East .. .. .	283	271	554	124	11	..	135
Munno Para West .. .. .	844	832	1,676	349	32	1	382
Nairne .. .. .	477	517	994	243	6	1	250
Narracoorte .. .. .	1,417	1,371	2,788	599	3	..	602
Neales .. .. .	860	840	1,700	364	17	1	382
Ninnes .. .. .	862	747	1,609	313	14	..	327
Noarlunga .. .. .	761	742	1,503	313	35	..	348
Onaunga .. .. .	209	177	386	84	1	..	85
Onkaparinga .. .. .	1,720	1,688	3,408	740	18	2	760
Orroroo .. .. .	1,058	905	1,963	418	31	2	451
Para Wirra .. .. .	420	397	817	180	6	1	187
Paringa .. .. .	415	258	673	165	1	..	166
Payneham .. .. .	2,323	2,606	4,929	1,158	51	8	1,217
Peake .. .. .	451	292	743	184	2	..	186
Penola .. .. .	859	830	1,689	379	38	..	417
Pinnaroo‡ .. .. .	873	718	1,591	312	..	..	312
Pirie .. .. .	1,044	915	1,959	404	34	2	440
Port Broughton .. .. .	630	559	1,189	238	21	1	260
Port Elliott .. .. .	802	995	1,797	345	20	..	365
Port Gawler .. .. .	550	513	1,063	214	10	2	226
Port Germein .. .. .	2,872	2,470	5,342	1,162	80	3	1,245
Port MacDonnell .. .. .	393	395	788	178	22	1	201
Port Wakefield .. .. .	327	241	568	118	3	..	121
Prospect .. .. .	5,970	6,892	12,862	3,025	151	65	3,241
Rapid Bay .. .. .	204	198	402	91	12	..	103
Redhill .. .. .	531	506	1,037	220	9	..	229
Renmark Irrigation Trust No. 1 .. .. .	1,162	855	2,017	509	2	..	511
Renmark Town .. .. .	773	663	1,436	278	..	..	278
Rhynie .. .. .	141	128	269	52	4	..	56
Robe .. .. .	243	251	494	119	21	..	140
Saddleworth .. .. .	518	447	965	229	16	1	246
Snowtown .. .. .	1,126	943	2,069	415	29	..	444
Spalding .. .. .	455	314	769	157	6	..	163
Springton§ .. .. .	621	641	1,262	269	7	..	276
Stanley .. .. .	287	251	538	112	9	2	123
Stirling .. .. .	1,452	1,673	3,125	686	65	2	753
Stockport .. .. .	218	186	404	93	..	..	93
Strathalbyn .. .. .	292	289	581	133	6	..	139
Streaky Bay .. .. .	811	621	1,432	279	13	..	292
Talunga .. .. .	1,123	929	2,052	596	16	1	613
Tantanoola .. .. .	418	367	785	163	17	..	180

\* Late North Rhine.

† Late Pinnaroo

‡ Late Pinnaroo East.

§ Late South Rhine.

6. SOUTH AUSTRALIA.—POPULATION AND DWELLINGS IN EACH LOCAL GOVERNMENT AREA, ETC.—*continued.*

Local Government Area.	Population.			Dwellings.			
	Males.	Females.	Persons.	Occupied.	Unoccupied.	Being Built.	Total.
<b>DISTRICT COUNCILS—<i>continued.</i></b>							
Tanunda .. .. .	848	859	1,707	361	7	2	370
Tatiara .. .. .	1,278	1,183	2,461	534	27	..	561
Teatree Gully .. .. .	506	463	969	219	14	..	233
Terowie .. .. .	649	584	1,233	281	11	..	292
Torrens East .. .. .	1,310	936	2,246	394	22	4	420
Torrens West .. .. .	4,275	4,318	8,593	1,920	65	103	2,088
Truro .. .. .	404	388	792	183	20	..	203
Tumby Bay .. .. .	1,108	780	1,888	443	23	..	466
Tungkillo .. .. .	275	275	550	134	4	..	138
Waikerie .. .. .	1,046	820	1,866	380	1	..	381
Wakefield Upper .. .. .	625	599	1,224	283	..	..	283
Walkerville .. .. .	1,790	2,432	4,222	920	38	8	966
Waroona .. .. .	372	254	626	141	12	..	153
Waterloo .. .. .	357	304	661	139	8	..	147
Willunga .. .. .	632	588	1,220	270	8	..	278
Woodville .. .. .	6,237	6,482	12,719	2,782	84	76	2,942
Woolundunga .. .. .	250	222	472	100	2	..	102
Yankalilla .. .. .	511	520	1,031	243	10	1	254
Yatala North .. .. .	665	614	1,279	270	16	1	287
Yatala South .. .. .	1,687	1,400	3,087	637	18	3	658
Yongala .. .. .	753	638	1,391	294	4	..	298
Yorke Peninsula .. .. .	1,728	1,467	3,195	667	28	..	695
Total, District Councils .. .. .	134,525	128,650	263,175	57,431	2,588	448	60,467
<b>SUMMARY.</b>							
Corporations .. .. .	100,598	112,279	212,877	46,344	1,672	225	48,241
District Councils .. .. .	134,525	128,650	263,175	57,431	2,588	448	60,467
Not incorporated .. .. .	10,413	5,780	16,193	4,225	171	1	4,397
Migratory* .. .. .	2,757	334	3,091	..	..	..	..
Total, South Australia .. .. .	248,293	247,043	495,336	108,000	4,431	674	113,105

\* Shipping

## 7. WESTERN AUSTRALIA.—POPULATION AND DWELLINGS IN EACH LOCAL GOVERNMENT AREA AS AT THE CENSUS OF 4th APRIL, 1921.

(Exclusive of full-blood Aborigines.)

Local Government Area.	Population.			Dwellings.			
	Males.	Females.	Persons.	Occupied.	Unoccupied.	Being Built.	Total.
<b>MUNICIPALITIES.</b>							
Albany .. .. .	1,844	2,136	3,980	851	72	5	928
Boulder .. .. .	4,075	4,143	8,218	1,910	126	..	2,036
Bunbury .. .. .	2,147	2,331	4,478	843	24	6	873
Busselton .. .. .	271	339	610	115	6	1	122
Carnarvon .. .. .	584	370	954	176	3	..	179
Claremont .. .. .	2,531	2,977	5,508	1,130	12	2	1,144
Collie .. .. .	1,768	1,546	3,314	671	24	12	707
Coolgardie .. .. .	349	352	701	212	..	..	212
Cottesloe .. .. .	2,413	3,018	5,431	1,015	47	9	1,071
Fremantle .. .. .	8,852	8,703	17,555	3,368	74	5	3,447
Fremantle East .. .. .	2,145	2,279	4,424	938	21	15	974
Fremantle North .. .. .	1,751	1,796	3,547	733	25	..	758
Geraldton .. .. .	2,121	2,055	4,176	834	37	..	871
Guildford .. .. .	944	933	1,877	388	18	1	407
Kalgoorlie .. .. .	3,977	3,921	7,898	1,886	153	..	2,039
Midland Junction .. .. .	2,484	2,451	4,935	1,069	28	2	1,099
Narrogin .. .. .	944	930	1,874	383	13	1	397
Northam .. .. .	1,819	1,764	3,583	749	26	7	782
Perth .. .. .	30,692	33,482	64,174	12,558	295	89	12,942
Perth South .. .. .	1,372	1,588	2,960	675	63	5	743
Subiaco .. .. .	6,300	7,350	13,650	3,027	75	38	3,140
Wagin .. .. .	636	630	1,266	250	5	..	255
York .. .. .	752	758	1,510	326	31	..	357
Total, Municipalities .. .. .	80,771	85,852	166,623	34,107	1,178	198	35,483

7. WESTERN AUSTRALIA.—POPULATION AND DWELLINGS IN EACH LOCAL GOVERNMENT AREA, ETC.—*continued.*

Local Government Area.	Population.			Dwellings.			
	Males.	Females.	Persons.	Occupied.	Unoccupied.	Being Built.	Total.
ROAD DISTRICTS.							
Albany .. .. .	671	580	1,251	332	41	..	373
Armadale-Kelmscott .. .. .	1,174	1,076	2,250	523	28	..	551
Arthur West .. .. .	364	260	624	165	1	..	166
Ashburton .. .. .	260	64	324	57	1	..	58
Augusta .. .. .	93	107	200	44	17	..	61
Avon .. .. .	759	510	1,269	266	3	..	269
Balingup .. .. .	804	576	1,380	303	3	..	306
Bayswater .. .. .	1,184	1,208	2,392	597	28	3	628
Belmont Park .. .. .	1,018	849	1,867	434	22	..	456
Beverley .. .. .	969	886	1,855	396	6	..	402
Black Range .. .. .	437	192	629	194	5	..	199
Blackwood Lower .. .. .	679	422	1,101	310	16	2	328
Blackwood Upper .. .. .	664	462	1,126	299	19	..	318
Bridgetown .. .. .	863	756	1,619	375	10	4	389
Broad Arrow .. .. .	309	178	487	201	8	..	209
Brookton .. .. .	640	509	1,149	248	12	..	260
Broome .. .. .	730	311	1,041	326	..	..	326
Broomehill .. .. .	529	413	942	204	8	..	212
Bruce Rock .. .. .	1,596	798	2,394	554	5	..	559
Bunbury .. .. .	399	421	820	172	22	..	194
Capel .. .. .	550	446	996	233	13	..	246
Chapman Upper .. .. .	711	456	1,167	286	3	1	290
Chittering .. .. .	212	176	388	85	3	..	88
Claremont .. .. .	1,866	1,289	3,155	592	40	9	641
Collie .. .. .	1,245	809	2,054	538	1	..	539
Coolgardie .. .. .	1,464	461	1,925	1,084	19	..	1,103
Corrigin .. .. .	854	433	1,287	314	1	..	315
Cottesloe Beach .. .. .	1,544	1,676	3,220	702	20	3	725
Cuballing .. .. .	519	411	930	220	4	..	224
Cue-Day Dawn .. .. .	565	388	953	253	27	..	280
Dalwallinu .. .. .	660	295	955	194	6	..	200
Dandaragan .. .. .	128	84	212	44	2	..	46
Dardanup .. .. .	595	494	1,089	234	16	..	250
Darling Range .. .. .	903	846	1,749	461	59	..	520
Denmark .. .. .	385	285	670	196	39	3	238
Dowerin .. .. .	625	433	1,058	239	8	2	249
Drakesbrook .. .. .	631	375	1,006	302	20	..	322
Dumbleyung .. .. .	1,020	669	1,689	376	9	1	386
Esperance .. .. .	457	255	712	257	27	..	284
Fremantle .. .. .	707	571	1,278	304	17	2	323
Gascoyne-Minilya .. .. .	316	48	364	51	..	..	51
Gascoyne Upper .. .. .	162	30	192	35	..	..	35
Geraldton .. .. .	402	215	617	202	4	..	206
Gin Gin .. .. .	381	304	685	155	7	..	162
Gnowangerup .. .. .	645	459	1,104	267	10	2	279
Goomalling .. .. .	843	666	1,509	290	4	..	294
Gosnells .. .. .	986	952	1,938	453	41	..	494
Greenbushes .. .. .	631	618	1,249	294	..	..	294
Greenmount .. .. .	1,677	1,610	3,287	771	141	6	918
Greenough .. .. .	400	358	758	146	1	..	147
Guildford West .. .. .	1,329	1,400	2,729	621	39	7	667
Hall's Creek .. .. .	238	14	252	48	..	..	48
Harvey .. .. .	2,260	1,691	3,951	1,101	67	11	1,179
Irwin .. .. .	268	310	578	124	..	..	124
Jandakot .. .. .	228	172	400	123	33	1	157
Kalgoorlie .. .. .	3,942	3,437	7,379	2,162	199	..	2,361
Kanowna .. .. .	313	138	451	187	1	..	188
Katanning .. .. .	1,735	1,558	3,293	718	24	..	742
Kellerberrin .. .. .	1,048	754	1,802	409	9	..	418
Kimberley West .. .. .	346	74	420	91	4	1	96
Kojonup .. .. .	696	554	1,250	319	13	2	334
Lawlers .. .. .	230	81	311	128	10	..	138
Leonora-Mount Malcolm .. .. .	792	640	1,432	455	86	..	541
Marble Bar .. .. .	235	58	293	64	..	..	64
Marradong .. .. .	427	246	673	239	16	1	256
Meckering .. .. .	1,275	906	2,181	471	14	1	486
Meekatharra .. .. .	909	505	1,414	384	..	..	384
Melbourne .. .. .	429	230	659	156	..	..	156
Melville .. .. .	1,170	1,191	2,361	502	47	3	552
Menzies .. .. .	750	459	1,209	406	19	..	425
Merredin .. .. .	1,774	966	2,740	710	14	1	725
Minginew .. .. .	1,006	634	1,640	387	1	2	390
Moora .. .. .	940	700	1,640	340	8	..	348
Mount Magnet .. .. .	387	237	624	169	5	..	174
Mount Margaret .. .. .	385	217	602	228	115	..	343
Mullewa .. .. .	505	310	815	195	..	..	195
Murchison .. .. .	128	20	148	18	..	..	18
Murray .. .. .	1,898	1,498	3,396	878	76	1	955
Nannine .. .. .	146	58	204	63	..	..	63
Narrogin .. .. .	639	474	1,113	250	19	..	269
Ningham .. .. .	914	451	1,365	357	1	..	358
Norseman .. .. .	327	256	583	180	20	..	200
Northam .. .. .	1,202	939	2,141	499	11	1	511
Northampton .. .. .	872	645	1,517	355	8	..	363
Nullagine .. .. .	158	16	174	23	..	..	23
Peppermint Grove .. .. .	433	677	1,110	214	5	..	219
Perenjori-Morawa .. .. .	549	236	785	169	3	..	172



7. WESTERN AUSTRALIA.—POPULATION AND DWELLINGS IN EACH LOCAL GOVERNMENT AREA, ETC.—*continued.*

Local Government Area.	Population.			Dwellings.			
	Males	Females.	Persons.	Occupied.	Unoccupied.	Being Built.	Total.
<b>ROAD DISTRICTS—<i>continued.</i></b>							
Perth .. .. .	6,049	5,997	12,046	2,466	103	8	2,577
Phillips River .. .. .	346	242	588	157	..	..	157
Pingelly .. .. .	887	757	1,644	332	17	..	349
Plantagenet .. .. .	1,067	736	1,803	424	38	1	463
Port Hedland .. .. .	303	100	403	107	..	..	107
Preston .. .. .	914	729	1,643	409	18	..	427
Queen's Park .. .. .	1,083	923	2,006	441	16	1	458
Rockingham .. .. .	324	153	477	184	5	..	189
Roe .. .. .	752	360	1,112	267	..	..	267
Roebourne .. .. .	322	148	470	143	3	..	146
Serpentine-Jarrahdale .. .. .	673	510	1,183	290	36	..	326
Shark Bay .. .. .	154	77	231	50	..	..	50
Sussex .. .. .	673	563	1,236	288	25	1	314
Swan .. .. .	1,407	961	2,368	531	71	5	607
Tableland .. .. .	57	6	63	9	..	..	9
Tambellup .. .. .	519	406	925	219	5	..	224
Toodyay .. .. .	797	747	1,544	312	22	1	335
Victoria Plains .. .. .	655	427	1,082	171	..	..	171
Wagin .. .. .	601	449	1,050	226	..	..	226
Wandering .. .. .	361	203	564	160	3	..	163
Wanneroo .. .. .	190	123	313	71	4	..	75
Warren .. .. .	1,510	913	2,423	680	25	3	708
Westonia .. .. .	472	370	842	226	1	..	227
Wickepin .. .. .	805	649	1,454	330	2	..	332
Williams .. .. .	412	360	772	170	4	1	175
Wiluna .. .. .	136	45	181	82	1	..	83
Woodanilling .. .. .	348	291	639	132	1	..	133
Wyalkatchem .. .. .	761	442	1,203	274	3	..	277
Wyndham .. .. .	361	98	459	89	..	..	89
Yalgoo .. .. .	524	217	741	168	..	..	168
Yilgarn .. .. .	727	493	1,220	390	2	..	392
York .. .. .	757	576	1,333	265	27	..	292
<b>Total, Road Districts .. .. .</b>	<b>92,056</b>	<b>68,513</b>	<b>160,569</b>	<b>39,384</b>	<b>2,096</b>	<b>91</b>	<b>41,571</b>
<b>SUMMARY.</b>							
Municipalities .. .. .	80,771	85,852	166,623	34,107	1,178	198	35,483
Road Districts .. .. .	92,056	68,513	160,569	39,384	2,096	91	41,571
Migratory* .. .. .	4,186	835	5,021	..	..	..	..
<b>Total, Western Australia .. .. .</b>	<b>177,013</b>	<b>155,200</b>	<b>332,213</b>	<b>73,491</b>	<b>3,274</b>	<b>289</b>	<b>77,054</b>

\* Includes railway travellers, shipping, and certain half-caste Aborigines.

## 8. TASMANIA.—POPULATION AND DWELLINGS IN EACH LOCAL GOVERNMENT AREA AS AT THE CENSUS OF 4th APRIL, 1921.

(Exclusive of full-blood Aborigines.)

Local Government Area.	Population.			Dwellings.			
	Males.	Females.	Persons.	Occupied.	Unoccupied.	Being Built.	Total.
<b>MUNICIPALITIES.</b>							
Beaconsfield .. .. .	1,753	1,776	3,529	824	166	1	991
Bothwell .. .. .	1,888	711	2,599	863	75	5	943
Brighton .. .. .	1,068	965	2,033	444	42	..	486
Bruni .. .. .	318	324	642	137	13	..	150
Campbell Town .. .. .	775	773	1,548	343	26	..	369
Circular Head .. .. .	3,075	2,392	5,467	1,250	103	3	1,356
Clarence .. .. .	1,589	1,766	3,355	755	38	13	806
Deloraine .. .. .	3,064	2,841	5,905	1,168	34	..	1,202
Devonport .. .. .	2,917	3,263	6,180	1,248	17	10	1,275
Emu Bay .. .. .	2,977	2,877	5,854	1,120	22	3	1,145
Esperance .. .. .	1,783	1,611	3,394	726	35	4	765
Evandale .. .. .	824	853	1,677	327	9	2	338
Fingal .. .. .	1,733	1,673	3,406	733	112	2	847
Flinders Island .. .. .	522	383	905	200	85	3	288
George Town .. .. .	498	540	1,038	249	60	..	309
Glamorgan .. .. .	409	396	805	163	8	..	171
Glenorchy .. .. .	3,191	3,157	6,348	1,344	80	64	1,488
Gormanston .. .. .	991	599	1,590	370	48	..	418
Green Ponds .. .. .	606	582	1,188	269	22	..	291
Hamilton .. .. .	1,094	991	2,085	445	20	1	466
Hobart .. .. .	20,390	23,225	43,615	9,266	296	94	9,656
Huon .. .. .	2,081	1,934	4,015	817	40	1	858

8. TASMANIA.—POPULATION AND DWELLINGS IN EACH LOCAL GOVERNMENT AREA, ETC.—*continued.*

Local Government Area.	Population.			Dwellings.			
	Males.	Females.	Persons.	Occupied.	Unoccupied.	Being Built.	Total.
<b>MUNICIPALITIES—<i>continued.</i></b>							
Kentish .. .. .	2,793	2,504	5,297	1,116	45	2	1,163
Kingborough .. .. .	1,946	1,998	3,944	880	92	8	980
King Island .. .. .	579	462	1,041	271	68	..	339
Latrobe .. .. .	1,919	1,877	3,796	775	31	3	809
Launceston .. .. .	11,283	13,035	24,318	5,028	125	26	5,179
Leven .. .. .	3,078	3,009	6,087	1,227	45	9	1,281
Lilydale .. .. .	1,546	1,466	3,012	650	41	2	693
Longford .. .. .	1,930	1,964	3,894	862	50	2	914
New Norfolk .. .. .	3,661	3,504	7,165	1,377	47	8	1,432
Oatlands .. .. .	1,617	1,469	3,086	649	30	..	679
Penguin .. .. .	1,493	1,327	2,820	592	19	6	617
Port Cygnet .. .. .	1,405	1,311	2,716	562	28	2	592
Portland .. .. .	893	724	1,617	337	31	..	368
Queenstown .. .. .	1,695	1,514	3,209	765	95	1	861
Richmond .. .. .	970	823	1,793	408	25	..	433
Ringarooma .. .. .	2,501	2,146	4,647	1,050	61	2	1,113
Ross .. .. .	404	358	762	166	9	..	175
St. Leonards .. .. .	1,821	1,886	3,707	791	30	6	827
Scottsdale .. .. .	1,496	1,409	2,905	637	71	1	709
Sorell .. .. .	1,181	1,017	2,198	505	34	3	542
Spring Bay .. .. .	475	399	874	189	36	..	225
Strahan .. .. .	507	436	943	216	23	..	239
Table Cape .. .. .	2,894	2,791	5,685	1,182	75	8	1,265
Tasman .. .. .	832	676	1,508	335	60	..	395
Waratah .. .. .	1,070	850	1,920	503	57	..	560
Westbury .. .. .	1,981	1,998	3,979	860	25	..	885
Zeehan .. .. .	1,616	1,508	3,124	822	330	..	1,152
Migratory* .. .. .	635	17	652	..	..	..	..
<b>Total, Tasmania .. .. .</b>	<b>107,767</b>	<b>106,110</b>	<b>213,877</b>	<b>45,816</b>	<b>2,934</b>	<b>295</b>	<b>49,045</b>

\* Shipping.

## 9. NORTHERN TERRITORY.—POPULATION AND DWELLINGS AS AT THE CENSUS OF 4th APRIL, 1921.

(Exclusive of full-blood Aborigines.)

Local Government Area.	Population.			Dwellings.			
	Males.	Females.	Persons.	Occupied.	Unoccupied.	Being Built.	Total.
Darwin* .. .. .	917	481	1,398	435	44	..	479
Not incorporated .. .. .	1,840	567	2,407	713	91	..	804
Migratory† .. .. .	64	1	65	..	..	..	..
<b>Total .. .. .</b>	<b>2,821</b>	<b>1,049</b>	<b>3,870</b>	<b>1,148</b>	<b>135</b>	<b>..</b>	<b>1,283</b>

\* Town.

† Shipping.

## 10. FEDERAL CAPITAL TERRITORY.—POPULATION AND DWELLINGS AS AT THE CENSUS OF 4th APRIL, 1921.

(Exclusive of full-blood Aborigines.)

Particulars.	Population.			Dwellings.			
	Males.	Females.	Persons.	Occupied.	Unoccupied.	Being Built.	Total.
Not incorporated .. .. .	1,558	1,005	2,563	527	29	..	556
Migratory* .. .. .	9	..	9	..	..	..	..
<b>Total .. .. .</b>	<b>1,567</b>	<b>1,005</b>	<b>2,572</b>	<b>527</b>	<b>29</b>	<b>..</b>	<b>556</b>

\* Shipping.

## 11. SYDNEY AND SUBURBS.—POPULATION AND DWELLINGS AS AT THE CENSUS OF 4th APRIL, 1921.

(Exclusive of full-blood Aborigines.)

Local Government Area.	Population.			Dwellings.			
	Males.	Females.	Persons.	Occupied.	Unoccupied.	Being Built.	Total.
Alexandria .. .. .	5,150	4,644	9,794	2,020	39	2	2,061
Annandale .. .. .	6,102	6,555	12,657	2,813	37	..	2,850
Ashfield .. .. .	15,414	18,243	33,657	7,099	259	70	7,428
Balmain .. .. .	15,889	16,235	32,124	6,863	100	1	6,964
Bexley .. .. .	7,183	7,555	14,738	3,256	102	76	3,434
Botany .. .. .	3,256	2,954	6,210	1,281	37	4	1,322
Burwood .. .. .	6,942	8,791	15,733	3,192	106	24	3,322
Canterbury .. .. .	18,466	19,155	37,621	8,222	297	276	8,795
Concord .. .. .	5,395	5,607	11,002	2,438	146	57	2,641
Darlington .. .. .	1,795	1,853	3,648	697	5	..	702
Drummoyne .. .. .	9,064	9,698	18,762	4,052	92	89	4,233
Eastwood .. .. .	1,108	1,024	2,132	482	17	13	512
Enfield .. .. .	4,147	4,380	8,527	1,830	68	62	1,960
Erskineville .. .. .	3,704	3,848	7,552	1,578	26	..	1,604
Glebe .. .. .	10,926	11,831	22,757	4,332	60	..	4,392
Homebush .. .. .	784	838	1,622	340	9	8	357
Hunter's Hill .. .. .	3,697	3,603	7,300	1,235	27	105	1,367
Hurstville .. .. .	6,593	6,805	13,398	2,972	131	48	3,151
Kogarah .. .. .	8,908	9,306	18,214	3,987	145	103	4,235
Ku-ring-gai* .. .. .	8,682	10,533	19,215	4,074	265	41	4,380
Lane Cove .. .. .	3,649	3,950	7,599	1,673	128	63	1,864
Leichhardt .. .. .	14,421	14,937	29,358	6,051	101	7	6,159
Manly .. .. .	8,312	10,203	18,515	3,587	202	46	3,835
Marrickville .. .. .	20,033	22,231	42,264	9,177	178	31	9,386
Mascot .. .. .	5,575	5,355	10,930	2,271	29	3	2,303
Mosman .. .. .	8,712	11,339	20,051	4,522	157	41	4,720
Newtown .. .. .	13,766	14,413	28,179	5,718	107	2	5,827
Paddington .. .. .	12,593	13,766	26,359	5,088	67	..	5,155
Petersham .. .. .	12,242	13,992	26,234	5,382	138	8	5,528
Randwick .. .. .	24,503	26,328	50,831	10,177	376	149	10,702
Redfern .. .. .	12,152	11,793	23,945	4,404	46	..	4,450
Rockdale .. .. .	12,368	12,810	25,178	5,321	165	72	5,558
Ryde .. .. .	7,185	7,680	14,865	3,163	71	64	3,298
St. Peters .. .. .	6,360	6,348	12,708	2,693	50	2	2,745
Strathfield .. .. .	3,449	4,145	7,594	1,597	87	21	1,705
Sydney .. .. .	54,536	49,646	104,182	17,335	328	84	17,747
Sydney North .. .. .	21,813	26,631	48,444	10,180	264	44	10,488
Vaucluse .. .. .	1,644	2,073	3,717	752	28	12	792
Waterloo .. .. .	5,805	5,394	11,199	2,290	41	2	2,333
Waverley .. .. .	17,174	19,614	36,788	7,801	205	58	8,064
Willoughby .. .. .	13,127	14,960	28,087	6,250	296	77	6,623
Woollahra .. .. .	10,935	14,474	25,409	5,361	156	39	5,556
Total .. .. .	433,559	465,540	899,099	183,556	5,188	1,804	190,548

\* With the exception of Ku-ring-gai, which is a *shire*, each of the Local Government Areas which have been here grouped as "Sydney and Suburbs" is a *municipality*.

## 12. MELBOURNE AND SUBURBS.—POPULATION AND DWELLINGS AS AT THE CENSUS OF 4th APRIL, 1921.

(Exclusive of full-blood Aborigines.)

Local Government Area.*	Population.			Dwellings.			
	Males.	Females.	Persons.	Occupied.	Unoccupied.	Being Built.	Total.
Brighton .. .. .	9,510	11,733	21,243	4,509	111	59	4,679
Brunswick .. .. .	21,329	23,147	44,476	9,486	199	91	9,776
Camberwell .. .. .	10,710	13,134	23,844	5,496	233	124	5,853
Caulfield .. .. .	18,680	22,012	40,692	9,278	394	162	9,834
Coburg .. .. .	8,942	9,170	18,112	3,766	91	40	3,897
Collingwood .. .. .	15,955	18,288	34,243	7,442	122	1	7,565
Essendon .. .. .	16,515	18,745	35,260	7,849	201	36	8,086
Fitzroy .. .. .	16,307	18,631	34,938	7,563	145	4	7,712
Footscray .. .. .	16,785	16,987	33,772	7,041	106	46	7,193
Hawthorn .. .. .	12,870	16,308	29,178	6,408	155	29	6,592
Heidelberg .. .. .	6,968	7,747	14,715	2,808	82	40	2,930
Kew .. .. .	7,712	9,670	17,382	3,557	93	57	3,707
Malvern .. .. .	14,051	18,257	32,308	7,370	256	127	7,753
Melbourne .. .. .	51,104	52,165	103,269	21,194	339	22	21,555
Melbourne South .. .. .	22,143	24,736	46,879	9,960	193	16	10,169
Moorabbin .. .. .	1,593	1,524	3,117	680	37	5	722
Mulgrave .. .. .	211	188	399	92	3	1	96
Northcote .. .. .	14,703	15,810	30,513	6,676	165	112	6,953
Nunawading .. .. .	3,995	4,239	8,234	1,803	61	36	1,900
Oakleigh .. .. .	2,937	3,139	6,076	1,328	38	17	1,383
Port Melbourne .. .. .	6,500	6,600	13,100	2,762	44	2	2,808
Prahran .. .. .	21,704	28,584	50,288	11,234	245	18	11,497
Preston .. .. .	4,714	4,956	9,670	2,052	50	86	2,188
Richmond .. .. .	20,599	22,575	43,174	9,347	158	6	9,511
St. Kilda .. .. .	16,758	21,835	38,593	8,100	207	64	8,371
Sandringham .. .. .	5,136	6,170	11,306	2,511	250	63	2,824
Werribee .. .. .	1,156	1,124	2,280	487	9	..	496
Williamstown .. .. .	9,894	9,551	19,445	4,266	69	30	4,365
Total .. .. .	359,481	407,025	766,506	165,065	4,056	1,294	170,415

\* C—City. T—Town. B—Borough. S—Shire.

### 13. BRISBANE AND SUBURBS.—POPULATION AND DWELLINGS AS AT THE CENSUS OF 4th APRIL, 1921.

(Exclusive of full-blood Aboriginals.)

Local Government Area.*	Population.			Dwellings.			
	Males.	Females.	Persons.	Occupied.	Unoccupied.	Being Built.	Total.
Balmoral .. .. . S	4,380	4,650	9,030	2,006	83	13	2,102
Belmont .. .. . S	726	635	1,361	326	12	..	338
Brisbane .. .. . C	20,590	22,046	42,636	7,877	132	9	8,018
Brisbane South .. .. . C	17,838	19,334	37,172	7,816	200	3	8,019
Coorparoo .. .. . S	3,186	3,446	6,632	1,486	78	4	1,568
Enoggera .. .. . S (Part)	1,917	1,935	3,852	855	56	11	922
Hamilton .. .. . T	4,107	4,767	8,874	1,849	62	10	1,921
Ithaca .. .. . T	10,065	10,854	20,919	4,472	115	4	4,591
Kedron .. .. . S (Part)	2,628	2,230	4,858	1,004	26	..	1,030
Moggill .. .. . S (Part)	203	167	370	73	5	..	78
Sherwood .. .. . S	3,417	3,195	6,612	1,145	69	25	1,239
Stephens .. .. . S	5,557	5,949	11,506	2,652	128	20	2,800
Taringa .. .. . S	2,335	2,715	5,050	1,135	60	15	1,210
Toombul .. .. . S	6,427	7,141	13,568	2,860	331	15	3,206
Toowong .. .. . T	4,602	5,406	10,008	2,224	60	7	2,291
Windsor .. .. . T	8,681	9,581	18,262	4,016	161	10	4,187
Wynnum .. .. . T	3,947	4,410	8,357	1,858	131	5	1,994
Yeerongpilly .. .. . S (Part)	477	488	965	227	7	2	236
<b>Total .. .. .</b>	<b>101,083</b>	<b>108,949</b>	<b>210,032</b>	<b>43,881</b>	<b>1,716</b>	<b>153</b>	<b>45,750</b>

\* C—City. T—Town. S—Shire.

### 14. ADELAIDE AND SUBURBS.—POPULATION AND DWELLINGS AS AT THE CENSUS OF 4th APRIL, 1921.

(Exclusive of full-blood Aboriginals.)

Local Government Area.*	Population.			Dwellings.			
	Males.	Females.	Persons.	Occupied.	Unoccupied.	Being Built.	Total.
Adelaide .. .. . C	18,727	20,835	39,562	8,160	130	6	8,296
Brighton .. .. . C	1,334	1,506	2,840	586	36	18	640
Burnside .. .. . DC	7,603	8,807	16,410	3,545	127	31	3,703
Campbelltown .. .. . DC	1,498	1,473	2,971	662	12	9	683
Crafrers .. .. . DC	950	1,005	1,955	423	55	3	481
Glenelg .. .. . C	3,519	4,479	7,998	1,787	66	14	1,867
Henley and Grange .. .. . C	1,693	2,287	3,980	779	52	11	842
Hindmarsh .. .. . C	6,138	6,323	12,461	2,691	56	8	2,755
Kensington and Norwood .. .. . C	6,935	8,075	15,010	3,369	91	4	3,464
Marion .. .. . DC (Part)	1,464	1,481	2,945	615	7	3	625
Mitcham .. .. . DC	4,315	4,879	9,194	2,039	76	36	2,151
Payneham .. .. . DC	2,323	2,606	4,929	1,158	51	8	1,217
Port Adelaide .. .. . C	14,710	15,406	30,116	6,222	118	20	6,360
Prospect .. .. . DC	5,970	6,892	12,862	3,025	151	65	3,241
St. Peters .. .. . C	5,124	5,980	11,104	2,507	78	5	2,590
Stirling .. .. . DC (Part)	947	1,182	2,129	447	43	1	491
Thebarton .. .. . C	6,791	7,246	14,037	3,186	87	20	3,293
Torrens East .. .. . DC	1,310	936	2,246	394	22	4	420
Torrens West .. .. . DC	4,275	4,318	8,593	1,920	65	103	2,088
Unley .. .. . C	15,430	18,681	34,111	7,757	298	85	8,140
Walkerville .. .. . DC	1,790	2,432	4,222	920	38	8	966
Woodville .. .. . DC	6,237	6,482	12,719	2,782	84	76	2,942
Yatala South .. .. . DC	1,687	1,400	3,087	637	18	3	658
<b>Total .. .. .</b>	<b>120,770</b>	<b>134,711</b>	<b>255,481</b>	<b>55,611</b>	<b>1,761</b>	<b>541</b>	<b>57,913</b>

\* C—Corporation. DC—District Council.

## 15. PERTH AND SUBURBS.—POPULATION AND DWELLINGS AS AT THE CENSUS OF 4th APRIL, 1921.

(Exclusive of full-blood Aborigines.)

Local Government Area.*	Population.			Dwellngs.			
	Males.	Females.	Persons.	Occupied.	Unoccupied.	Being Built.	Total
Bayswater .. .. . RD (Part)	1,136	1,169	2,305	574	28	3	605
Belmont Park .. .. . RD	1,018	849	1,867	434	22	..	456
Claremont .. .. . M	2,531	2,977	5,508	1,130	12	2	1,144
Claremont .. .. . RD	1,866	1,289	3,155	592	40	9	641
Cottesloe .. .. . M	2,413	3,018	5,431	1,015	47	9	1,071
Cottesloe Beach .. .. . RD	1,544	1,676	3,220	702	20	3	725
Fremantle .. .. . M	8,852	8,703	17,555	3,368	74	5	3,447
Fremantle East .. .. . M	2,145	2,279	4,424	938	21	15	974
Fremantle North .. .. . M	1,751	1,796	3,547	733	25	..	758
Guildford .. .. . M	944	933	1,877	388	18	1	407
Guildford West .. .. . RD (Part)	1,294	1,370	2,664	604	37	6	647
Melville .. .. . RD (Part)	1,151	1,172	2,323	492	45	3	540
Midland Junction .. .. . M	2,484	2,451	4,935	1,069	28	2	1,099
Peppermint Grove .. .. . RD	433	677	1,110	214	5	..	219
Perth .. .. . M	30,692	33,482	64,174	12,558	295	89	12,942
Perth .. .. . RD (Part)	5,937	5,920	11,857	2,417	98	8	2,523
Perth South .. .. . M	1,372	1,588	2,960	675	63	5	743
Queen's Park .. .. . RD	1,083	923	2,006	441	16	1	458
Subiaco .. .. . M	6,300	7,350	13,650	3,027	75	38	3,140
Swan .. .. . RD (Part)	151	147	298	65	1	..	66
Total .. .. .	75,097	79,769	154,866	31,436	970	199	32,605

\* M—Municipality. RD—Road District.

## 16. HOBART AND SUBURBS.—POPULATION AND DWELLINGS AS AT THE CENSUS OF 4th APRIL, 1921.

(Exclusive of full-blood Aborigines.)

Local Government Area.*	Population.			Dwellings.			
	Males.	Females.	Persons.	Occupied.	Unoccupied.	Being Built.	Total.
Clarence .. .. . M (Part)	1,001	1,198	2,199	499	37	13	549
Glenorchy .. .. . M	3,191	3,157	6,348	1,344	80	64	1,488
Hobart .. .. . M	20,390	23,225	43,615	9,266	296	94	9,656
Kingborough .. .. . M (Part)	129	100	229	53	5	..	58
Total .. .. .	24,711	27,680	52,391	11,162	418	171	11,751

\* M—Municipality.

## 17. NEWCASTLE AND SUBURBS (NEW SOUTH WALES).—POPULATION AND DWELLINGS AS AT THE CENSUS OF 4th APRIL, 1921.

(Exclusive of full-blood Aborigines.)

Local Government Area.*	Population.			Dwellings.			
	Males.	Females.	Persons.	Occupied.	Unoccupied.	Being Built.	Total.
Adamstown .. .. . M	2,059	1,899	3,958	838	62	4	904
Carrington .. .. . M	1,662	1,456	3,118	603	4	..	607
Hamilton .. .. . M	7,259	6,937	14,196	3,015	71	31	3,117
Lambton .. .. . M	1,864	1,830	3,694	789	19	1	809
Lambton New .. .. . M	1,780	1,769	3,549	777	30	14	821
Merewether .. .. . M	2,946	2,960	5,906	1,255	17	35	1,307
Newcastle .. .. . M	7,888	6,667	14,555	2,472	60	9	2,541
Stockton .. .. . M	2,054	2,546	4,600	829	18	8	855
Wallsend .. .. . M	3,366	3,078	6,444	1,416	45	6	1,467
Waratah .. .. . M	6,283	5,908	12,191	2,496	142	18	2,656
Wickham .. .. . M	6,321	5,828	12,149	2,378	47	9	2,434
Total .. .. .	43,482	40,878	84,360	16,868	515	135	17,518

\* M—Municipality.

**18. BALLARAT AND SUBURBS (VICTORIA).—POPULATION AND DWELLINGS AS AT THE CENSUS OF 4th APRIL, 1921.**

(Exclusive of full-blood Aborigines.)

Local Government Area.*	Population.			Dwellings.			
	Males.	Females.	Persons.	Occupied.	Unoccupied.	Being Built.	Total.
Ballarat .. .. . C	9,356	11,860	21,216	4,755	195	12	4,962
Ballarat East .. .. . T	6,193	7,263	13,456	3,171	137	3	3,311
Sebastopol .. .. . B	866	878	1,744	408	12	..	420
Total .. .. .	16,415	20,001	36,416	8,334	344	15	8,693

\* C—City. T—Town. B—Borough.

**19. GEELONG AND SUBURBS (VICTORIA).—POPULATION AND DWELLINGS AS AT THE CENSUS OF 4th APRIL, 1921.**

(Exclusive of full-blood Aborigines.)

Local Government Area.*	Population.			Dwellings.			
	Males.	Females.	Persons.	Occupied.	Unoccupied.	Being Built.	Total.
Geelong .. .. . C	6,865	7,953	14,818	3,177	68	2	3,247
Geelong West .. .. . B	4,514	5,124	9,638	2,157	64	10	2,231
Newtown and Chilwell .. .. . B	3,304	3,929	7,233	1,540	56	5	1,601
Total .. .. .	14,683	17,006	31,689	6,874	188	17	7,079

\* C—City. B—Borough.

**20. BENDIGO AND SUBURBS (VICTORIA).—POPULATION AND DWELLINGS AS AT THE CENSUS OF 4th APRIL, 1921.**

(Exclusive of full-blood Aborigines.)

Local Government Area.*	Population.			Dwellings.			
	Males.	Females.	Persons.	Occupied.	Unoccupied.	Being Built.	Total.
Bendigo .. .. . C	11,735	13,958	25,693	5,768	202	15	5,985
Eaglehawk .. .. . B	2,131	2,588	4,719	1,111	60	..	1,171
Total .. .. .	13,866	16,546	30,412	6,879	262	15	7,156

\* C—City. B—Borough.

**21. KALGOORLIE AND SUBURBS (WESTERN AUSTRALIA).—POPULATION AND DWELLINGS AS AT THE CENSUS OF 4th APRIL, 1921.**

(Exclusive of full-blood Aborigines.)

Local Government Area.*	Population.			Dwellings.			
	Males.	Females.	Persons.	Occupied.	Unoccupied.	Being Built.	Total.
Boulder .. .. . M	4,075	4,143	8,218	1,910	126	..	2,036
Kalgoorlie .. .. . M	3,977	3,921	7,898	1,886	153	..	2,039
Kalgoorlie .. .. . RD (Part)	1,564	1,540	3,104	798	75	..	873
Total .. .. .	9,616	9,604	19,220	4,594	354	..	4,948

\* M—Municipality. RD—Road District.

## 22. FREMANTLE AND SUBURBS (WESTERN AUSTRALIA).—POPULATION AND DWELLINGS AS AT THE CENSUS OF 4th APRIL, 1921.

(Exclusive of full-blood Aboriginals.)

Local Government Area.*	Population.			Dwellings.			
	Males.	Females.	Persons.	Occupied.	Unoccupied.	Being Built.	Total.
Fremantle .. .. . M	8,852	8,703	17,555	3,368	74	5	3,447
Fremantle East .. .. M	2,145	2,279	4,424	938	21	15	974
Fremantle North .. .. M	1,751	1,796	3,547	733	25	..	758
Total .. .. .	12,748	12,778	25,526	5,039	120	20	5,179

\* M—Municipality.

NOTE.—The population, &amp;c., of Fremantle and Suburbs here given are included in those for Perth and Suburbs given in Tables 1 and 15 above.

## 23. TASMANIAN TOWNS.—POPULATION AND DWELLINGS AS AT THE CENSUS OF 4th APRIL, 1921.

(Exclusive of full-blood Aboriginals.)

Town.	Population.			Dwellings.			
	Males.	Females.	Persons.	Occupied.	Unoccupied.	Being Built.	Total.
Beaconsfield .. .. .	446	540	986	229	75	..	304
Burnie .. .. .	1,394	1,503	2,897	540	13	3	556
Deloraine .. .. .	769	819	1,588	317	4	..	321
Devonport .. .. .	2,081	2,470	4,551	917	12	10	939
Hobart and Suburbs .. .. .	24,711	27,680	52,391	11,162	418	171	11,751
Latrobe .. .. .	796	846	1,642	337	10	1	348
Launceston .. .. .	11,283	13,035	24,318	5,028	125	26	5,179
Longford .. .. .	579	649	1,228	303	6	1	310
New Norfolk .. .. .	839	965	1,804	257	7	1	265
Queenstown .. .. .	1,623	1,474	3,097	716	90	..	806
Scottsdale .. .. .	649	654	1,303	282	22	1	305
Ulverstone .. .. .	1,064	1,182	2,246	450	11	6	467
Waratah .. .. .	704	708	1,412	321	40	..	361
Zeehan .. .. .	984	1,086	2,070	488	99	..	587

NOTE.—In the above table the figures given for Launceston relate to the whole of that municipality, while those for Hobart and Suburbs relate to the municipalities of Hobart and Glenorchy and the metropolitan portions of the municipalities of Clarence and Kingborough. For the other towns the boundaries are not clearly defined, and the figures given in each case relate to the persons who stated on their Census slips that they were resident therein, and to the dwellings stated to be situated therein.

Commonwealth Bureau of Census and Statistics,  
Melbourne.

10th November, 1921.