



CATALOGUE NO. 6202.0

EMBARGOED UNTIL 11.30 A.M. 11 APRIL 1985

THE LABOUR FORCE, AUSTRALIA, MARCH 1985, PRELIMINARY

PHONE INQUIRIES for more information about these statistics - contact Mr Alan Sharp on Canberra (062) 52 6525 or any of our State offices.

other inquiries including copies of publications - contact Information Services on Canberra (062) 52 6627 or in any of our State offices.

MAIL INQUIRIES write to Information Services, ABS, P.O. Box 10, Belconnen, A.C.T. 2616 or any of our State offices.

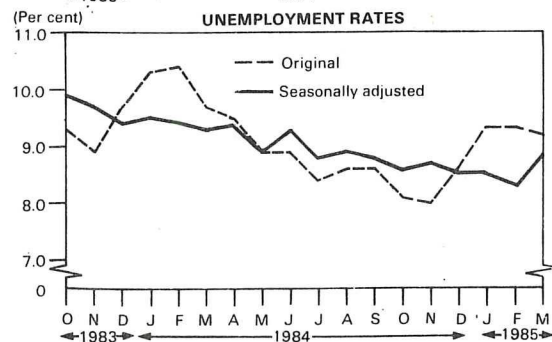
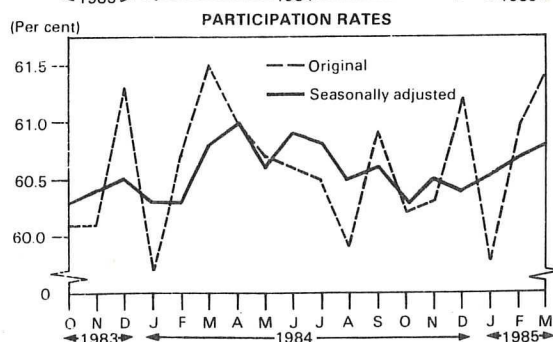
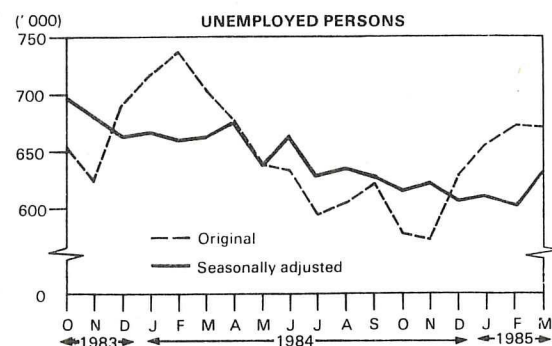
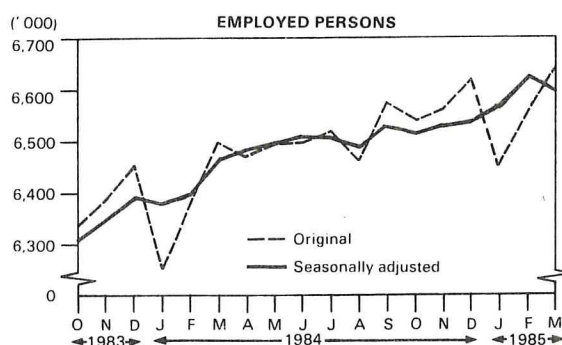
MAIN FEATURES

Care should be taken in the interpretation of month-to-month movements in these estimates. Survey estimates are subject to sampling and non-sampling variability as explained in paragraphs 13 to 17.

In seasonally adjusted terms, unemployment in Australia rose by 30,000 between February and March 1985. This was primarily due to an increase of 24,800 in the number of unemployed males, of whom 22,000 were seeking full-time jobs. The seasonally adjusted unemployment rate rose from 8.3 per cent to 8.8 per cent (8.5 per cent for males and 9.1 per cent for females). There was little change to the seasonally adjusted level of employment, a fall of 27,900 part-time workers being partially offset by a slight rise in full-time employment. The seasonally adjusted labour force participation rate in March 1985 was 60.8 per cent.

In original terms, a fall of 19,900 persons seeking full-time work was offset by a rise of 18,300 in those looking for part-time jobs, resulting in little overall movement in unemployment. The number of 15-19 year olds looking for their first full-time job fell by 14,100 to 63,700 in March 1985. Total employment rose by 59,100 in March, of whom 50,400 were females (36,000 part-time workers). The female participation rate rose from 46.2 per cent to 47.0 per cent and the participation rate for persons rose from 61.0 per cent to 61.4 per cent.

Since March 1984, employment has increased by 131,200 while unemployment has fallen by 29,000.



EXPLANATORY NOTES

INTRODUCTION

This publication contains preliminary estimates of the civilian labour force derived from the labour force survey part of the monthly population survey. Estimates for the current month are preliminary and subject to revision. Revised figures for the current month and more detailed estimates will be published in "The Labour Force, Australia" (6203.0)

THE POPULATION SURVEY

2. The population survey is based on a multi-stage area sample of private dwellings (about 33,000 houses, flats, etc.) and non-private dwellings (hotels, motels, etc.) and covers about two-thirds of one per cent of the population of Australia. The information is obtained from the occupants of selected dwellings by carefully chosen and specially trained interviewers. The interviews are generally conducted during the two weeks beginning on the Monday between the 6th and 12th of each month. Because of operational problems arising from the Christmas and New Year holidays, interviews for the December 1984 survey commenced on Monday 3 December, and for the January 1985 survey, on Monday 14 January. The information obtained relates to the week before the interview (i.e. the survey week).

SCOPE

3. The labour force survey includes all persons aged 15 and over except: members of the permanent defence forces; certain diplomatic personnel of overseas governments, customarily excluded from census and estimated populations; overseas residents in Australia; and members of non-Australian defence forces (and their dependents) stationed in Australia.

DEFINITIONS

4. The labour force category to which a person is assigned depends on his actual activity (i.e. whether working, looking for work, etc.) during the survey week. The following definitions, which conform closely to the international standard definitions specified by the International Labour Organisation (ILO), relate only to those persons within the scope of the survey.

5. Employed persons comprise all those aged 15 and over who, during the survey week:

- (a) worked for one hour or more for pay, profit, commission or payment in kind in a job or business, or on a farm (including employees, employers and self-employed persons); or

- (b) worked for 15 hours or more without pay in a family business or on a farm (i.e. unpaid family helpers); or

- (c) were employees who had a job but were not at work and were: on paid leave; on leave without pay for less than four weeks up to the end of the survey week; stood down without pay because of bad weather or plant breakdown at their place of employment for less than four weeks up to the end of the survey week; on strike or locked out; on workers' compensation and expected to be returning to their job; or receiving wages or salary while undertaking full-time study; or

- (d) were employers or self-employed persons who had a job, business or farm, but were not at work.

6. Unemployed persons are those aged 15 and over who were not employed during the survey week, and:

- (a) had actively looked for full-time or part-time work at any time in the four weeks up to the end of the survey week and:

- (i) were available for work in the survey week, or would have been available except for temporary illness (i.e. lasting for less than four weeks to the end of the survey week); or

- (ii) were waiting to start a new job within four weeks from the end of the survey week and would have started in the survey week if the job had been available then;

- or (b) were waiting to be called back to a full-time or part-time job from which they had been stood down without pay for less than four weeks up to the end of the survey week (including the whole of the survey week) for reasons other than bad weather or plant breakdown.

7. Unemployed persons looking for their first full-time job are those who had never worked full time for two weeks or more.

8. The unemployment rate for any group is the number unemployed expressed as a percentage of the labour force in the same group.

9. The labour force comprises all persons who, during the survey week, were employed or unemployed, as defined above.

10. The labour force participation rate for any group is the labour force expressed as a percentage of the civilian

population aged 15 and over in the same group.

11. Full-time workers are those who usually worked 35 hours or more a week and others who, although usually part-time workers, worked 35 hours or more during the survey week. Part-time workers are those who usually worked less than 35 hours a week and who did so during the survey week. When recording hours of work fractions of an hour are disregarded.

12. Persons not in the labour force are those who, during the survey week, were not in the categories "employed" or "unemployed".

RELIABILITY OF THE ESTIMATES

13. Two types of error are possible in an estimate based on a sample survey: sampling error and non-sampling error. The sampling error is a measure of the variability that occurs by chance because a sample, rather than the entire population, is surveyed. One measure of the likely difference resulting from not including all dwellings in the survey is given by the standard error. There are about two chances in three that a sample estimate will differ by less than one standard error from the figure that would have been obtained if all dwellings had been included in the survey, and about nineteen chances in twenty that the difference will be less than two standard errors.

14. Standard errors of estimates for the latest month and of estimates of movements since the previous month are shown in the tables. Standard errors of other estimates and other movements may be determined by using information in the Technical note in "The Labour Force, Australia" (6203.0). The February 1985 issue of 6203.0, to be released shortly, contains details of the revision of standard errors of labour force survey estimates.

15. Very small estimates are not published but are indicated with a "*" because they are subject to high relative standard errors. Although figures for these small components can in some cases be derived by subtraction, they should not be regarded as reliable.

16. Examples of the calculation and use of standard errors are given below:

- (a) The estimate of 362,600 unemployed males looking for full-time work in March 1985 has a standard error of about 6,600. Therefore there are about two chances in three that the number that would have been produced if all dwellings had been included in the survey will be within the range 356,000 to 369,200 and about nineteen chances in twenty that the

number will be within the range 349,400 to 375,800.

- (b) The estimate of movement in the number of unemployed males looking for full-time work from February 1985 to March 1985 is a decrease of 6,400. The standard error of this monthly movement is about 5,200. Therefore there are about two chances in three that if all dwellings had been included in the surveys the movement would have been within the range -11,600 to -1,200 and about nineteen chances in twenty that it would have been within the range -16,800 to +4,000.

17. The imprecision due to sampling variability, which is measured by the standard error, should not be confused with inaccuracies that may occur because of imperfections in reporting by respondents, errors made in collection such as in recording and coding of data, and errors made in processing the data. Inaccuracies of this kind are referred to as the non-sampling error, and they may occur in any enumeration, whether it be a full count or a sample. Every effort is made to reduce the non-sampling error to a minimum by careful design of questionnaires, intensive training and supervision of interviewers and efficient operating procedures.

SEASONAL ADJUSTMENT

18. Seasonally adjusted series are published in Tables 2 and 5. As happens with all seasonally adjusted series, the seasonal factors are reviewed annually to take account of each additional year's original data. The latest review, in February 1985, revised the monthly series back to February 1978. Information about the method of adjustment and revised seasonally adjusted figures for all months since February 1978 will be published in an appendix to "The Labour Force, Australia, February 1985" (6203.0)

19. In 1974 and 1975 the seasonal pattern of the unemployment series changed significantly after the rapid rise in unemployment which occurred at that time. However, the further large increase in unemployment in 1982 and 1983 does not appear to have been accompanied by a similar change in the seasonal pattern.

RELATED PUBLICATIONS

20. Users may also wish to refer to "The Labour Force, Australia" (6203.0). This publication contains a detailed list of related publications which are available on request.

R.J. CAMERON
Australian Statistician

TABLE 1. LABOUR FORCE STATUS OF THE CIVILIAN POPULATION AGED 15 AND OVER

Month	Employed		Unemployed		Looking for part-time work		Labour force	Not in labour force	Civilian population aged 15 and over	Unemployment rate	Participation rate
	Full-time workers	Total	Aged 15-19 looking for first job	Total	Looking for part-time work	Total					
- '000 -						- per cent -					
MALES											
1984 -											
February	3,767.0	4,000.3	48.5	413.2	22.7	435.8	4,436.2	1,324.1	5,760.2	9.8	77.0
March	3,809.0	4,052.3	36.8	380.0	24.7	404.7	4,457.1	1,311.3	5,768.4	9.1	77.3
April	3,781.2	4,036.6	33.4	364.3	21.3	385.6	4,422.2	1,353.8	5,776.0	8.7	76.6
May	3,791.4	4,039.3	30.3	356.5	25.7	382.2	4,421.5	1,362.2	5,783.7	8.6	76.4
June	3,797.7	4,042.1	29.1	349.7	25.3	375.0	4,417.2	1,374.1	5,791.3	8.5	76.3
July	3,807.7	4,064.5	27.0	339.9	17.9	357.8	4,422.3	1,375.9	5,798.2	8.1	76.3
August	3,767.3	4,012.4	30.3	359.0	22.5	381.5	4,393.9	1,411.5	5,805.4	8.7	75.7
September	3,804.2	4,059.1	29.2	349.1	27.7	376.8	4,435.8	1,376.5	5,812.3	8.5	76.3
October	3,798.8	4,051.0	26.4	326.1	25.0	351.2	4,402.2	1,417.9	5,820.1	8.0	75.6
November	3,800.9	4,056.0	29.0	321.4	19.7	341.1	4,397.2	1,430.3	5,827.5	7.8	75.5
December	3,845.6	4,087.5	44.6	345.3	29.8	375.1	4,462.6	1,372.3	5,834.9	8.4	76.5
1985 -											
January	3,797.7	4,028.4	49.4	376.2	28.6	404.9	4,433.3	1,409.1	5,842.4	9.1	75.9
February	3,829.6	4,072.5	42.7	369.0	21.3	390.4	4,462.9	1,386.6	5,849.5	8.7	76.3
March	3,831.9	4,081.3	36.3	362.6	27.0	389.7	4,471.0	1,385.6	5,856.6	8.7	76.3
Standard error of -											
March 1985 estimates	15.2	15.5	2.5	6.6	2.2	6.8	15.9	10.8	..	0.2	0.3
Feb 85 to Mar 85 movements	12.5	12.8	2.3	5.2	2.0	5.3	13.3	8.6	..	0.1	0.2
FEMALES											
1984 -											
February	1,528.6	2,365.7	51.7	228.6	73.7	302.3	2,668.0	3,273.6	5,941.6	11.3	44.9
March	1,546.3	2,451.9	37.5	212.1	84.2	296.3	2,748.2	3,201.9	5,950.1	10.8	46.2
April	1,537.8	2,442.4	32.1	207.7	83.5	291.2	2,733.5	3,224.5	5,958.1	10.7	45.9
May	1,541.8	2,451.2	29.4	192.7	62.1	254.8	2,706.1	3,260.1	5,966.1	9.4	45.4
June	1,545.4	2,456.6	30.3	189.5	69.5	259.1	2,715.7	3,258.4	5,974.1	9.5	45.5
July	1,561.2	2,461.6	28.1	175.3	62.5	237.8	2,699.5	3,281.9	5,981.3	8.8	45.1
August	1,547.5	2,449.9	25.9	165.1	57.9	223.1	2,673.0	3,315.5	5,988.5	8.3	44.6
September	1,578.7	2,513.8	26.2	168.9	75.6	244.5	2,758.4	3,237.4	5,995.7	8.9	46.0
October	1,565.8	2,493.6	22.3	163.6	64.1	227.7	2,721.2	3,281.9	6,003.2	8.4	45.3
November	1,581.9	2,510.0	27.5	166.9	63.3	230.2	2,740.2	3,270.4	6,010.7	8.4	45.6
December	1,624.1	2,536.1	38.1	181.8	70.2	252.1	2,788.1	3,230.0	6,018.2	9.0	46.3
1985 -											
January	1,604.7	2,409.0	40.0	196.4	56.3	252.7	2,661.7	3,364.0	6,025.7	9.5	44.2
February	1,606.0	2,503.7	35.1	207.4	75.8	283.2	2,787.0	3,246.2	6,033.2	10.2	46.2
March	1,620.4	2,554.1	27.3	193.8	88.4	282.3	2,836.4	3,204.3	6,040.7	10.0	47.0
Standard error of -											
March 1985 estimates	11.4	13.3	2.2	5.2	3.7	6.0	13.8	14.3	..	0.2	0.2
Feb 85 to Mar 85 movements	9.1	10.8	2.2	4.2	3.1	4.7	11.2	11.8	..	0.2	0.2
PERSONS											
1984 -											
February	5,295.6	6,366.0	100.1	641.8	96.4	738.2	7,104.2	4,597.6	11,701.8	10.4	60.7
March	5,355.3	6,504.2	74.3	592.2	108.9	701.0	7,205.3	4,513.2	11,718.5	9.7	61.5
April	5,319.0	6,479.0	65.5	572.0	104.8	676.7	7,155.8	4,578.4	11,734.1	9.5	61.0
May	5,333.2	6,490.5	59.7	549.2	87.8	637.0	7,127.5	4,622.3	11,749.8	8.9	60.7
June	5,343.1	6,498.7	59.5	539.2	94.9	634.1	7,132.8	4,632.5	11,765.4	8.9	60.6
July	5,368.9	6,526.1	55.1	515.2	80.4	595.7	7,121.8	4,657.8	11,779.5	8.4	60.5
August	5,314.8	6,462.3	56.2	524.2	80.5	604.6	7,066.9	4,727.0	11,793.9	8.6	59.9
September	5,382.9	6,572.9	55.4	518.1	103.3	621.3	7,194.2	4,613.8	11,808.0	8.6	60.9
October	5,364.6	6,544.6	48.7	489.7	89.1	578.8	7,123.4	4,699.8	11,823.2	8.1	60.2
November	5,382.8	6,566.0	56.5	488.3	83.0	571.3	7,137.4	4,700.8	11,838.2	8.0	60.3
December	5,469.7	6,623.6	82.7	527.1	100.0	627.1	7,250.7	4,602.4	11,853.1	8.6	61.2
1985 -											
January	5,402.4	6,437.4	89.4	572.6	84.9	657.6	7,095.0	4,773.1	11,868.0	9.3	59.8
February	5,435.7	6,576.3	77.8	576.4	97.2	673.6	7,249.9	4,632.8	11,882.7	9.3	61.0
March	5,452.3	6,635.4	63.7	556.5	115.5	672.0	7,307.4	4,589.9	11,897.3	9.2	61.4
Standard error of -											
March 1985 estimates	17.0	18.0	3.3	7.8	4.2	8.4	18.5	16.1	..	0.1	0.2
Feb 85 to Mar 85 movements	14.3	15.4	2.9	6.2	3.4	6.6	16.0	13.5	..	0.1	0.1

TABLE 2. CIVILIAN LABOUR FORCE: SEASONALLY ADJUSTED SERIES

Month	Employed		Unemployed				Labour force	Unemp- loyment rate	Partici- pation rate
	Full-time workers	Total	Looking for full-time work		Total	Looking for part-time work			
			Aged 15-19 looking for first job	Total					
MALES									
1984 -									
February	3,756.1	4,005.0	34.7	372.2	23.4	395.6	4,400.6	9.0	76.4
March	3,798.4	4,040.4	35.9	371.1	22.7	393.8	4,434.2	8.9	76.9
April	3,787.2	4,035.0	39.7	373.4	22.3	395.7	4,430.7	8.9	76.7
May	3,796.9	4,039.6	37.6	363.5	24.8	388.3	4,427.9	8.8	76.6
June	3,802.5	4,044.3	41.9	367.8	26.7	394.5	4,438.8	8.9	76.6
July	3,799.4	4,060.6	37.7	356.8	18.7	374.7	4,435.3	8.4	76.5
August	3,801.9	4,042.6	40.6	367.8	25.1	392.9	4,435.5	8.9	76.4
September	3,790.2	4,043.6	35.1	352.1	26.7	378.8	4,422.4	8.6	76.1
October	3,797.5	4,042.2	31.8	344.6	26.5	371.1	4,413.3	8.4	75.8
November	3,813.2	4,061.4	34.0	341.7	23.9	365.6	4,427.0	8.3	76.0
December	3,810.7	4,054.4	27.0	337.8	23.9	361.7	4,416.1	8.2	75.7
1985 -									
January	3,814.5	4,061.0	30.7	337.4	25.9	363.3	4,424.3	8.2	75.7
February	3,818.7	4,078.0	30.5	332.0	22.0	354.0	4,432.0	8.0	75.8
March	3,821.4	4,069.6	35.4	354.0	24.8	378.8	4,448.4	8.5	76.0
FEMALES									
1984 -									
February	1,535.3	2,396.1	38.7	199.3	65.5	264.8	2,660.9	10.0	44.8
March	1,544.9	2,424.1	33.9	196.1	71.3	267.4	2,691.5	9.9	45.2
April	1,542.5	2,443.9	33.3	202.3	77.7	280.0	2,723.9	10.3	45.7
May	1,544.5	2,448.3	32.3	190.9	59.7	250.6	2,698.9	9.3	45.2
June	1,555.9	2,460.9	34.9	192.3	70.4	262.7	2,723.6	9.6	45.6
July	1,560.3	2,456.4	35.1	189.3	66.6	255.9	2,712.3	9.4	45.3
August	1,569.1	2,457.5	33.9	177.3	66.5	243.8	2,701.3	9.0	45.1
September	1,559.4	2,486.9	32.7	178.5	70.3	248.8	2,735.7	9.1	45.6
October	1,568.5	2,477.9	30.6	182.3	61.2	243.5	2,721.4	8.9	45.3
November	1,580.9	2,480.8	36.4	185.2	70.1	255.3	2,736.1	9.3	45.5
December	1,594.9	2,498.5	25.3	172.6	73.5	246.1	2,744.6	9.0	45.6
1985 -									
January	1,607.0	2,509.0	27.4	180.1	70.3	250.4	2,759.4	9.1	45.8
February	1,613.7	2,536.7	26.3	181.2	67.4	248.6	2,785.3	8.9	46.2
March	1,619.3	2,525.5	24.6	178.9	74.9	253.8	2,779.3	9.1	46.0
PERSONS									
1984 -									
February	5,291.4	6,401.1	73.4	571.5	88.9	660.4	7,061.5	9.4	60.3
March	5,343.3	6,464.5	69.8	567.2	94.0	661.2	7,125.7	9.3	60.8
April	5,329.7	6,478.9	73.0	575.7	100.0	675.7	7,154.6	9.4	61.0
May	5,341.4	6,487.9	69.9	554.4	84.5	638.9	7,126.8	9.0	60.7
June	5,358.4	6,505.2	76.8	560.1	97.1	657.2	7,162.4	9.2	60.9
July	5,359.7	6,517.0	72.8	545.3	85.3	630.6	7,147.6	8.8	60.7
August	5,371.0	6,500.1	74.5	545.1	91.6	636.7	7,136.8	8.9	60.5
September	5,349.6	6,530.5	67.8	530.6	97.0	627.6	7,158.1	8.8	60.6
October	5,366.0	6,520.1	62.4	526.9	87.7	614.6	7,134.7	8.6	60.3
November	5,394.1	6,542.2	70.4	526.9	94.0	620.9	7,163.1	8.7	60.5
December	5,405.6	6,552.9	52.3	510.4	97.4	607.8	7,160.7	8.5	60.4
1985 -									
January	5,421.5	6,570.0	58.1	517.5	96.2	613.7	7,183.7	8.5	60.5
February	5,432.4	6,614.6	56.8	513.1	89.5	602.6	7,217.2	8.3	60.7
March	5,440.7	6,595.0	60.1	532.9	99.7	632.6	7,227.7	8.8	60.8

TABLE 3. LABOUR FORCE STATUS OF THE CIVILIAN POPULATION AGED 15 AND OVER,
STATES AND TERRITORIES, MARCH 1985

State or Territory	Employed		Unemployed			Labour force	Not in labour force	Civilian population aged 15 and over	Unemployment rate	Participation rate
	Full-time workers	Total	Looking for full-time work	Looking for part-time work	Total					
			- '000 -						- per cent -	
MALES										
New South Wales	1,327.7	1,413.7	140.1	6.7	146.9	1,560.6	478.9	2,039.5	9.4	76.5
Victoria	1,007.5	1,072.0	77.4	8.0	85.5	1,157.5	379.9	1,537.5	7.4	75.3
Queensland	598.6	640.6	70.3	5.2	75.5	716.1	222.7	938.8	10.5	76.3
South Australia	330.7	353.8	30.6	2.5	33.1	387.0	128.5	515.4	8.6	75.1
Western Australia	359.8	382.0	30.5	3.2	33.7	415.7	111.3	527.0	8.1	78.9
Tasmania	109.2	114.8	9.4	*	10.0	124.8	38.4	163.2	8.0	76.5
Northern Territory	35.9	37.1	2.8	*	2.8	39.9	10.6	50.5	6.9	79.0
Australian Capital Territory	62.6	67.2	1.6	*	2.3	69.5	15.3	84.8	3.3	81.9
Australia	3,831.9	4,081.3	362.6	27.0	389.7	4,471.0	1,385.6	5,856.6	8.7	76.3
FEMALES										
New South Wales	581.3	877.4	72.2	27.1	99.3	976.7	1,136.2	2,112.9	10.2	46.2
Victoria	439.7	685.7	44.1	23.9	67.9	753.7	848.7	1,602.4	9.0	47.0
Queensland	242.2	387.4	33.0	15.8	48.8	436.1	520.3	956.4	11.2	45.6
South Australia	128.5	226.3	16.5	8.7	25.2	251.6	287.2	538.8	10.0	46.7
Western Australia	134.4	233.1	19.2	7.6	26.8	259.9	265.8	525.7	10.3	49.4
Tasmania	40.6	68.7	5.6	2.3	7.9	76.6	91.8	168.3	10.3	45.5
Northern Territory	19.1	24.2	*	*	2.2	26.4	18.9	45.3	8.3	58.3
Australian Capital Territory	34.6	51.3	1.6	2.5	4.2	55.5	35.4	90.9	7.5	61.0
Australia	1,620.4	2,554.1	193.8	88.4	282.3	2,836.4	3,204.3	6,040.7	10.0	47.0
PERSONS										
New South Wales	1,908.9	2,291.1	212.4	33.8	246.2	2,537.3	1,615.1	4,152.4	9.7	61.1
Victoria	1,447.3	1,757.8	121.5	31.9	153.4	1,911.2	1,228.6	3,139.8	8.0	60.9
Queensland	840.8	1,027.9	103.3	21.0	124.3	1,152.2	743.0	1,895.2	10.8	60.8
South Australia	459.2	580.2	47.1	11.3	58.3	638.5	415.7	1,054.2	9.1	60.6
Western Australia	494.2	615.1	49.7	10.7	60.4	675.6	377.1	1,052.7	8.9	64.2
Tasmania	149.8	183.5	15.0	2.9	17.9	201.3	130.2	331.5	8.9	60.7
Northern Territory	55.0	61.3	4.4	*	5.0	66.3	29.5	95.8	7.5	69.2
Australian Capital Territory	97.1	118.5	3.2	3.3	6.5	125.0	50.7	175.7	5.2	71.1
Australia	5,452.3	6,635.4	556.5	115.5	672.0	7,307.4	4,589.9	11,897.3	9.2	61.4

TABLE 4. UNEMPLOYED PERSONS, AUSTRALIA

Month	Number looking for full-time work					Number looking for part-time work	Unemployment rate				
	Aged 15-19				Total		Looking for full-time work			Looking for part-time work	
	Looking for first job	Total	Aged 20 and over	Total			Aged 15-19	Aged 20 and over	Total	Total	
- '000 -											
- per cent -											
MALES											
1984 -											
February	48.5	90.8	322.4	413.2	22.7	435.8	27.1	8.4	9.9	8.9	9.8
March	36.8	81.3	298.7	380.0	24.7	404.7	24.9	7.7	9.1	9.2	9.1
April	33.4	74.7	289.6	364.3	21.3	385.6	23.3	7.6	8.8	7.7	8.7
May	30.3	71.6	284.9	356.5	25.7	382.2	22.2	7.4	8.6	9.4	8.6
June	29.1	69.4	280.4	349.7	25.3	375.0	22.0	7.3	8.4	9.4	8.5
July	27.0	67.9	272.0	339.9	17.9	357.8	21.7	7.1	8.2	6.5	8.1
August	30.3	72.6	286.4	359.0	22.5	381.5	23.6	7.5	8.7	8.4	8.7
September	29.2	69.1	280.0	349.1	27.7	376.8	22.8	7.3	8.4	9.8	8.5
October	26.4	65.3	260.8	326.1	25.0	351.2	22.8	6.8	7.9	9.0	8.0
November	29.0	65.6	255.8	321.4	19.7	341.1	22.5	6.7	7.8	7.2	7.8
December	44.6	84.5	260.8	345.3	29.8	375.1	25.1	6.8	8.2	11.0	8.4
1985 -											
January	49.4	96.6	279.6	376.2	28.6	404.9	27.8	7.3	9.0	11.0	9.1
February	42.7	84.5	284.5	369.0	21.3	390.4	25.5	7.4	8.8	8.1	8.7
March	36.3	77.8	284.8	362.6	27.0	389.7	24.2	7.4	8.6	9.8	8.7
Standard error of -											
March 1985 estimates	2.5	3.5	6.0	6.6	2.2	6.8	1.1	0.2	0.2	0.8	0.2
Feb 85 to Mar 85 movements	2.3	3.0	4.7	5.2	2.0	5.3	0.9	0.1	0.1	0.7	0.1
FEMALES											
1984 -											
February	51.7	87.2	141.4	228.6	73.7	302.3	31.9	9.5	13.0	8.1	11.3
March	37.5	70.1	142.0	212.1	84.2	296.3	27.1	9.5	12.1	8.5	10.8
April	32.1	65.2	142.5	207.7	83.5	291.2	25.5	9.6	11.9	8.4	10.7
May	29.4	59.7	133.0	192.7	62.1	254.8	23.8	9.0	11.1	6.4	9.4
June	30.3	61.2	128.3	189.5	69.5	259.1	24.7	8.6	10.9	7.1	9.5
July	28.1	57.6	117.7	175.3	62.5	237.8	23.6	7.9	10.1	6.5	8.8
August	25.9	56.8	108.4	165.1	57.9	223.1	23.6	7.4	9.6	6.0	8.3
September	26.2	53.8	115.1	168.9	75.6	244.5	22.4	7.6	9.7	7.5	8.9
October	22.3	48.5	115.2	163.6	64.1	227.7	21.0	7.7	9.5	6.5	8.4
November	27.5	57.3	109.6	166.9	63.3	230.2	24.2	7.3	9.5	6.4	8.4
December	38.1	70.1	111.7	181.8	70.2	252.1	26.9	7.2	10.1	7.2	9.0
1985 -											
January	40.0	73.9	122.5	196.4	56.3	252.7	27.1	8.0	10.9	6.5	9.5
February	35.1	72.1	135.3	207.4	75.8	283.2	26.9	8.8	11.4	7.8	10.2
March	27.3	62.8	131.0	193.8	88.4	282.3	24.2	8.4	10.7	8.7	10.0
Standard error of -											
March 1985 estimates	2.2	3.2	4.4	5.2	3.7	6.0	1.2	0.3	0.3	0.4	0.2
Feb 85 to Mar 85 movements	2.2	2.8	3.6	4.2	3.1	4.7	1.1	0.2	0.2	0.3	0.2
PERSONS											
1984 -											
February	100.1	178.0	463.8	641.8	96.4	738.2	29.3	8.7	10.8	8.3	10.4
March	74.3	151.4	440.7	592.2	108.9	701.0	25.8	8.2	10.0	8.7	9.7
April	65.5	139.9	432.1	572.0	104.8	676.7	24.2	8.1	9.7	8.3	9.5
May	59.7	131.2	417.9	549.2	87.8	637.0	22.9	7.9	9.3	7.1	8.9
June	59.5	130.5	408.7	539.2	94.9	634.1	23.2	7.7	9.2	7.6	8.9
July	55.1	125.5	389.7	515.2	80.4	595.7	22.5	7.3	8.8	6.5	8.4
August	56.2	129.4	394.7	524.2	80.5	604.6	23.6	7.5	9.0	6.6	8.6
September	55.4	122.9	395.2	518.1	103.3	621.3	22.6	7.4	8.8	8.0	8.6
October	48.7	113.7	376.0	489.7	89.1	578.8	22.0	7.0	8.4	7.0	8.1
November	56.5	122.9	365.4	488.3	83.0	571.3	23.3	6.8	8.3	6.6	8.0
December	82.7	154.6	372.5	527.1	100.0	627.1	25.9	6.9	8.8	8.0	8.6
1985 -											
January	89.4	170.5	402.2	572.6	84.9	657.6	27.5	7.5	9.6	7.6	9.3
February	77.8	156.6	419.9	576.4	97.2	673.6	26.2	7.8	9.6	7.9	9.3
March	63.7	140.7	415.8	556.5	115.5	672.0	24.2	7.7	9.3	8.9	9.2
Standard error of -											
March 1985 estimates	3.3	4.6	7.0	7.8	4.2	8.4	0.8	0.1	0.1	0.3	0.1
Feb 85 to Mar 85 movements	2.9	3.8	5.5	6.2	3.4	6.6	0.6	0.1	0.1	0.3	0.1

TABLE 5. UNEMPLOYED PERSONS: SEASONALLY ADJUSTED SERIES

Month	Number looking for full-time work				Number looking for part-time work	Total	Unemployment rate				
	Aged 15-19						Looking for full-time work			Looking for part-time work	
	Looking for first job	Total	Aged 20 and over	Total			Aged 15-19	Aged 20 and over	Total	Total	Total
- '000 -				- per cent -							
MALES											
1984 -											
February	34.7	74.8	297.4	372.2	23.4	395.6	24.1	7.8	9.0	8.6	9.0
March	35.9	83.2	287.9	371.1	22.7	393.8	25.9	7.5	8.9	8.6	8.9
April	39.7	84.3	289.1	373.4	22.3	395.7	25.8	7.5	9.0	8.3	8.9
May	37.6	77.4	286.1	363.5	24.8	388.3	24.1	7.5	8.7	9.3	8.8
June	41.9	78.9	288.9	367.8	26.7	394.5	24.2	7.5	8.8	9.9	8.9
July	37.7	76.4	279.6	356.0	18.7	374.7	23.7	7.3	8.6	6.7	8.4
August	40.6	82.7	285.1	367.8	25.1	392.9	25.2	7.4	8.8	9.4	8.9
September	35.1	75.1	277.0	352.1	26.7	378.8	23.9	7.2	8.5	9.5	8.6
October	31.8	73.4	271.2	344.6	26.5	371.1	24.0	7.1	8.3	9.8	8.4
November	34.0	72.4	269.3	341.7	23.9	365.6	23.1	7.0	8.2	8.8	8.3
December	27.0	65.4	272.4	337.8	23.9	361.7	21.2	7.1	8.1	8.9	8.2
1985 -											
January	30.7	72.0	265.4	337.4	25.9	363.3	22.8	6.9	8.1	9.5	8.2
February	30.5	69.6	262.4	332.0	22.0	354.0	22.6	6.8	8.0	7.8	8.0
March	35.4	79.5	274.5	354.0	24.8	378.8	25.2	7.1	8.5	9.1	8.5
FEMALES											
1984 -											
February	38.7	73.4	125.9	199.3	65.5	264.8	28.6	8.5	11.5	7.1	10.0
March	33.9	66.3	129.8	196.1	71.3	267.4	26.1	8.7	11.3	7.5	9.9
April	33.3	65.2	137.1	202.3	77.7	280.0	25.7	9.2	11.6	7.9	10.3
May	32.3	61.8	129.1	190.9	59.7	250.6	24.6	8.7	11.0	6.2	9.3
June	34.9	65.4	126.9	192.3	70.4	262.7	25.7	8.5	11.0	7.2	9.6
July	35.1	64.5	124.8	189.3	66.6	255.9	25.6	8.3	10.8	6.9	9.4
August	33.9	62.5	114.8	177.3	66.5	243.8	24.9	7.7	10.2	7.0	9.0
September	32.7	61.3	117.2	178.5	70.3	248.8	24.5	7.9	10.3	7.0	9.1
October	30.6	58.1	124.2	182.3	61.2	243.5	23.7	8.3	10.4	6.3	8.9
November	36.4	66.5	118.7	185.2	70.1	255.3	26.5	7.8	10.5	7.2	9.3
December	25.3	57.7	114.9	172.6	73.5	246.1	23.8	7.5	9.8	7.5	9.0
1985 -											
January	27.4	58.6	121.5	180.1	70.0	250.4	23.6	7.9	10.1	7.2	9.1
February	26.3	60.6	120.6	181.2	67.4	248.6	23.9	7.8	10.1	6.8	8.9
March	24.6	59.3	119.6	178.9	74.9	253.8	23.2	7.7	9.9	7.6	9.1
PERSONS											
1984 -											
February	73.4	148.2	423.3	571.5	88.9	660.4	26.1	8.0	9.7	7.4	9.4
March	69.8	149.5	417.7	567.2	94.0	661.2	26.0	7.8	9.6	7.7	9.3
April	73.0	149.5	426.2	575.7	100.0	675.7	25.8	8.0	9.7	8.0	9.4
May	69.9	139.2	415.2	554.4	84.5	638.9	24.3	7.8	9.4	6.9	9.0
June	76.8	144.3	415.8	560.1	97.1	657.2	24.9	7.8	9.5	7.8	9.2
July	72.8	140.9	404.4	545.3	85.3	630.6	24.6	7.6	9.2	6.9	8.8
August	74.5	145.2	399.9	545.1	91.6	636.7	25.1	7.5	9.2	7.5	8.9
September	67.8	136.4	394.2	530.6	97.0	627.6	24.2	7.4	9.0	7.6	8.8
October	62.4	131.5	395.4	526.9	87.7	614.6	23.9	7.4	8.9	7.1	8.6
November	70.4	138.9	388.0	526.9	94.0	620.9	24.6	7.2	8.9	7.6	8.7
December	52.3	123.1	387.3	510.4	97.4	607.8	22.4	7.2	8.6	7.8	8.5
1985 -											
January	58.1	130.6	386.9	517.5	96.2	613.7	23.1	7.2	8.7	7.7	8.5
February	56.8	130.1	383.0	513.1	89.5	602.6	23.2	7.1	8.6	7.0	8.3
March	60.1	138.8	394.1	532.9	99.7	632.6	24.3	7.3	8.9	8.0	8.8

TABLE 6. UNEMPLOYED PERSONS, STATES AND TERRITORIES

State or Territory	Number looking for full-time work				Number looking for part-time work	Total	Unemployment rate					Total		
	Aged 15-19			Aged 20 and over			Looking for full-time work			Looking for part-time work				
	Looking for first job	Total	Total				Aged 15-19	Aged 20 and over	Total	Total	Total			
- '000 -				- per cent -										
NEW SOUTH WALES -														
1984 - March	27.8	57.8	166.0	223.8	36.0	259.8	28.9	8.7	10.7	8.8	10.4			
1985 - February	29.5	57.1	157.0	214.2	29.6	243.8	28.8	8.2	10.1	7.3	9.7			
March	25.0	54.2	158.1	212.4	33.8	246.2	27.5	8.2	10.0	8.1	9.7			
Standard error of -														
Mar 1985 estimates	2.2	3.0	4.6	5.2	2.5	5.5	1.5	0.2	0.2	0.6	0.2			
Feb 1985 to Mar 1985 movements	1.9	2.4	3.6	4.1	2.0	4.3	1.2	0.2	0.2	0.5	0.2			
VICTORIA -														
1984 - March	17.6	29.9	98.8	128.7	32.1	160.8	22.2	6.9	8.3	9.5	8.5			
1985 - February	18.1	30.3	93.6	123.9	26.1	150.0	20.9	6.5	7.8	8.0	7.9			
March	14.4	27.9	93.6	121.5	31.9	153.4	19.9	6.6	7.7	9.3	8.0			
Standard error of -														
Mar 1985 estimates	1.7	2.2	3.6	4.0	2.4	4.3	1.6	0.3	0.3	0.7	0.2			
Feb 1985 to Mar 1985 movements	1.6	1.9	2.8	3.1	1.9	3.3	1.3	0.2	0.2	0.6	0.2			
QUEENSLAND -														
1984 - March	10.5	25.4	74.7	100.1	15.8	115.8	23.1	9.0	10.6	7.9	10.2			
1985 - February	11.3	30.4	79.0	109.4	18.8	128.2	29.2	9.5	11.7	9.7	11.3			
March	7.5	25.7	77.5	103.3	21.0	124.3	25.4	9.2	10.9	10.1	10.8			
Standard error of -														
Mar 1985 estimates	1.1	1.8	2.8	3.1	1.7	3.3	1.8	0.3	0.3	0.8	0.3			
Feb 1985 to Mar 1985 movements	1.1	1.6	2.2	2.5	1.4	2.7	1.5	0.3	0.3	0.7	0.2			
SOUTH AUSTRALIA -														
1984 - March	7.5	15.0	37.3	52.3	10.6	62.8	27.2	8.3	10.4	8.6	10.0			
1985 - February	7.3	14.4	36.3	50.7	9.4	60.1	26.1	8.0	10.0	7.5	9.5			
March	6.5	11.9	35.2	47.1	11.3	58.3	23.1	7.7	9.3	8.5	9.1			
Standard error of -														
Mar 1985 estimates	0.8	1.0	1.5	1.7	1.0	1.8	1.9	0.3	0.3	0.7	0.3			
Feb 1985 to Mar 1985 movements	0.7	0.8	1.2	1.4	0.8	1.4	1.5	0.3	0.3	0.6	0.2			
WESTERN AUSTRALIA -														
1984 - March	6.6	15.6	44.4	60.1	9.1	69.1	26.9	9.2	11.1	7.4	10.4			
1985 - February	7.1	15.9	37.6	53.4	7.9	61.3	25.7	7.8	9.8	6.5	9.2			
March	5.9	13.8	35.9	49.7	10.7	60.4	23.2	7.4	9.1	8.2	8.9			
Standard error of -														
Mar 1985 estimates	0.8	1.1	1.6	1.8	1.0	1.9	1.9	0.3	0.3	0.8	0.3			
Feb 1985 to Mar 1985 movements	0.7	0.9	1.2	1.4	0.8	1.5	1.5	0.3	0.3	0.6	0.2			
TASMANIA -														
1984 - March	3.6	5.8	10.9	16.7	2.1	18.8	32.3	7.8	10.6	6.2	9.8			
1985 - February	3.7	6.1	10.2	16.3	2.0	18.3	28.7	7.1	9.9	6.1	9.2			
March	3.5	5.5	9.5	15.0	2.9	17.9	26.9	6.6	9.1	7.9	8.9			
Standard error of -														
Mar 1985 estimates	0.4	0.5	0.7	0.8	0.4	0.8	2.6	0.5	0.5	1.1	0.4			
Feb 1985 to Mar 1985 movements	0.4	0.4	0.5	0.6	0.3	0.6	2.0	0.4	0.4	0.9	0.3			
NORTHERN TERRITORY -														
1984 - March	*	*	4.3	4.6	*	5.1	*	9.2	8.9	*	8.5			
1985 - February	*	*	2.9	3.4	*	4.3	*	5.5	5.9	*	6.8			
March	*	*	3.8	4.4	*	5.0	*	7.0	7.4	*	7.5			
Standard error of -														
Mar 1985 estimates	0.2	0.3	0.5	0.6	0.2	0.6	5.7	1.0	1.0	3.8	0.9			
Feb 1985 to Mar 1985 movements	0.1	0.2	0.5	0.5	0.3	0.5	5.1	0.9	0.9	3.7	0.8			
AUSTRALIAN CAPITAL TERRITORY -														
1984 - March	*	1.8	4.2	6.0	2.8	8.8	28.8	4.7	6.2	13.3	7.5			
1985 - February	*	1.8	3.4	5.2	2.5	7.7	23.5	3.6	5.1	10.3	6.1			
March	*	*	2.1	3.2	3.3	6.5	*	2.3	3.2	13.2	5.2			
Standard error of -														
Mar 1985 estimates	0.2	0.3	0.4	0.4	0.4	0.6	4.1	0.4	0.4	1.8	0.5			
Feb 1985 to Mar 1985 movements	0.2	0.3	0.4	0.4	0.4	0.5	4.0	0.4	0.4	1.5	0.4			

