



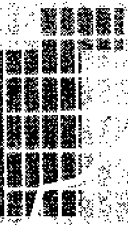
October 1996

EMBARGOED UNTIL 11.30 AM MON 18 NOVEMBER 1996

# Monthly Summary of Statistics

## Victoria

*Statistics* ■



# NOTES

## FORTHCOMING ISSUES

<i>ISSUE</i>	<i>RELEASE DATE</i>
November 1996	17 December 1996
December 1996	17 January 1997
January 1997	18 February 1997

\* \* \* \* \*

## ABOUT THIS PUBLICATION

The aim of this publication is to provide users with a range of the latest statistics available at the end of each month of issue. Consequently, the dates and periods shown are not always the same for each table, but are in each case the latest figures available at that time.

## SEASONAL ADJUSTMENT

Seasonal adjustment is a means of removing the estimated effects of normal seasonal variations from economic time series so that the effects of other influences are obvious. Seasonal variations are the systematic (though not necessarily regular) intra-year movements of economic time series. These are often the result of non-economic phenomena, such as climatic changes and regular religious festivals e.g. Christmas and Easter.

## TREND ESTIMATE

Smoothing seasonally adjusted series produces a measure of trend by removing the impact of the irregular component of the series. The trend estimates are derived by applying a 13-term Henderson weighted moving average to the respective seasonally adjusted series. Readers are reminded that trend estimates are subject to revision as subsequent months' data become available.

\* \* \* \* \*

## SYMBOLS AND OTHER USAGES

n.a.	not available
n.e.c.	not elsewhere classified
n.p.	not available for publication but included in totals where applicable
p	preliminary — figure or series subject to revision
r	figure or series revised since previous issue
..	not applicable
—	nil or rounded to zero

\* \* \* \* \*

## INQUIRIES

For information about other ABS statistics and services, please refer to the back of this publication.

For further information about these statistics, contact Information Services on (03) 9615 7000.

Stuart Jackson  
Regional Director, Victoria

# CONTENTS

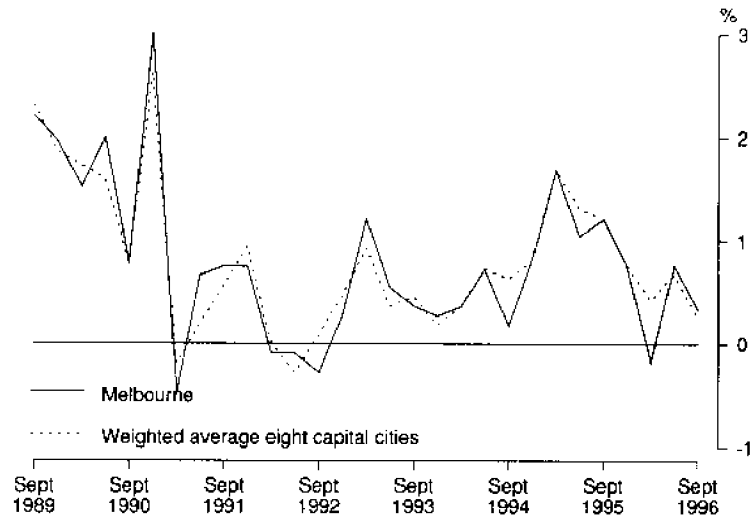
	Page
EDITORIAL	
Selected features .....	4, 5
TABLES	
Demography	
1 Estimated resident population .....	6
2 Births, deaths, marriages and divorces .....	6
Labour	
3 Labour force status of the civilian population aged 15 years and over .....	7
4 Employed persons by industry .....	8
5 Job vacancies .....	9
6 Industrial disputes causing stoppage of work .....	9
Wages and prices	
7 Average weekly earnings of employees (original series) .....	9
8 Consumer price index, Melbourne .....	10
9 Price Index of Materials Used in Building, Melbourne .....	10
Meat production	
10 Livestock slaughterings .....	11
11 Meat production .....	11
Building	
12 Building approvals, Melbourne and Victoria .....	12
13 New houses and other residential buildings: number of dwelling units .....	13
14 Value of building .....	13
Finance	
15 Statement of Budget Sector transactions .....	14
16 Private new capital expenditure by selected industries and type of asset .....	15
17 Commercial finance commitments .....	15
18 Secured housing finance commitments .....	16
Trade	
19 Retail turnover by industry (excl. motor vehicles, parts, petrol, etc.) .....	16
20 Exports and imports by sections of the Australian Export and Import Classifications .....	17
21 Overseas trade, major trading partners .....	17
22 Value of overseas trade, Victoria and Australia .....	18
Tourism	
23 Tourist accommodation, Melbourne and Victoria .....	18
INFORMATION	
Further references .....	19

## SELECTED FEATURES

### CONSUMER PRICE INDEX

The Consumer Price Index for Melbourne in the September quarter 1996 was 119.6. Although there was an increase in the CPI from the June to September quarter (0.34%), this increase was less than the previous quarterly movement, from the March to June quarter (0.76%).

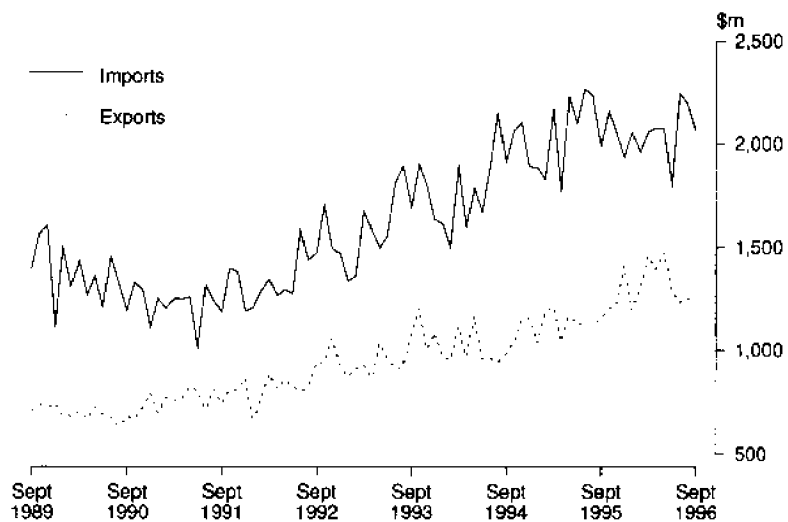
In terms of the weighted average of eight capital cities, the CPI in the September quarter 1996 was 120.1. Although there was an increase from the June to September quarter (0.25%), this increase was less than the previous quarterly movement, from the March to June quarter (0.67%).



### MERCHANDISE IMPORTS

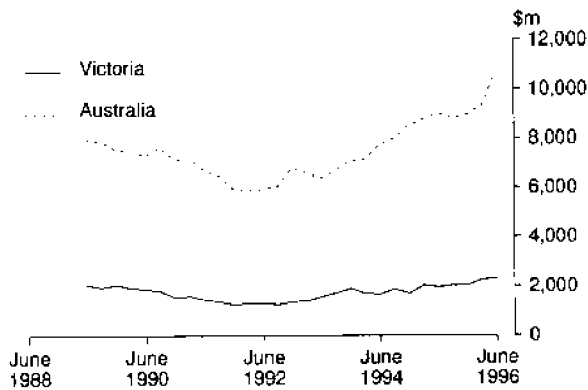
### AND EXPORTS

The value of merchandise imports, in original terms, for Victoria in September 1996 was \$2,064.3 million. The value of merchandise exports, in original terms, for Victoria in September 1996 was \$1,255.4 million.

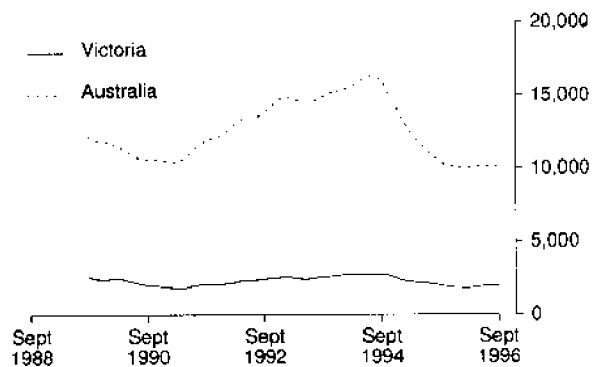


# SELECTED FEATURES *continued*

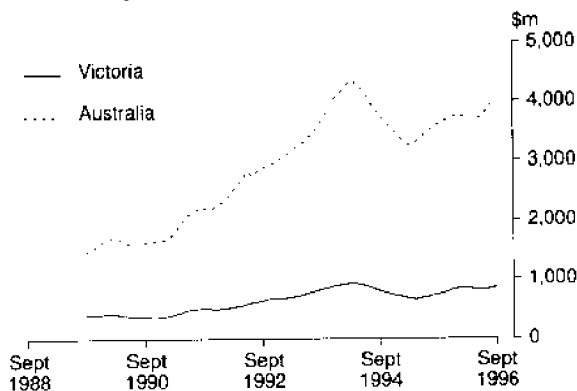
**PRIVATE NEW CAPITAL EXPENDITURE**  
Seasonally adjusted, quarterly



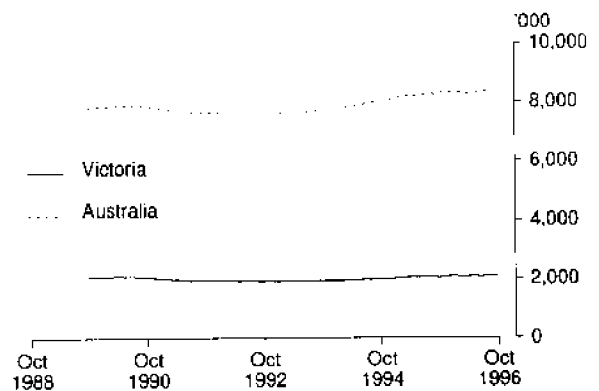
**NEW DWELLING UNITS APPROVED**  
Trend, monthly



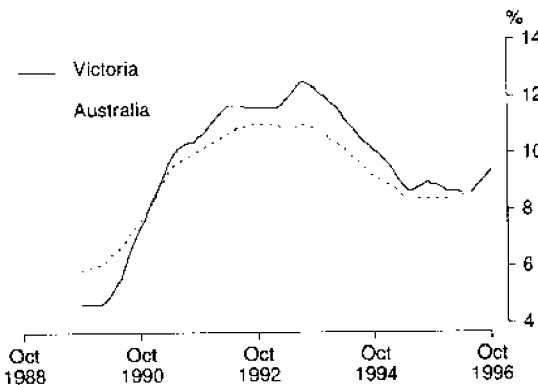
**TOTAL VALUE OF SECURED HOUSING FINANCE COMMITMENTS TO INDIVIDUALS**  
Trend, monthly



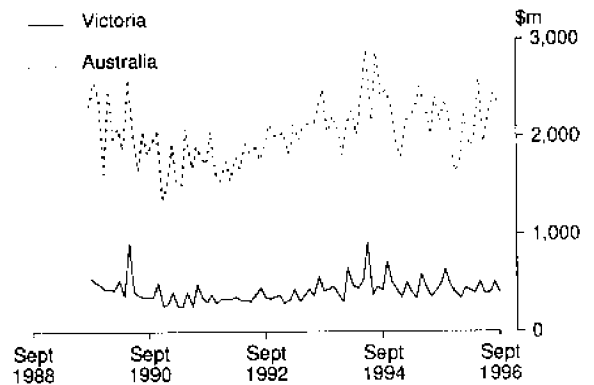
**EMPLOYED PERSONS**  
Seasonally adjusted, monthly



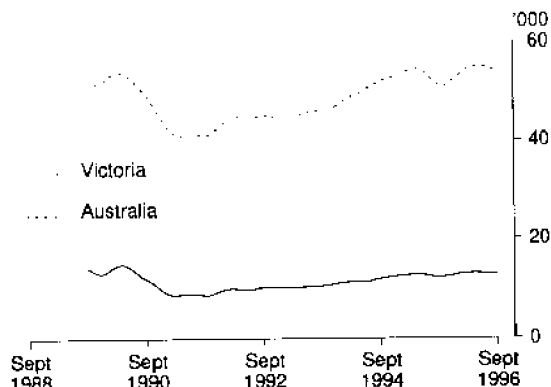
**UNEMPLOYMENT RATE**  
Trend, monthly



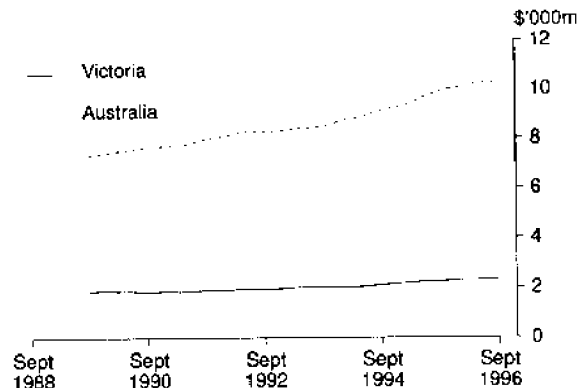
**VALUE OF ALL BUILDINGS APPROVED**  
Original, monthly



**NEW MOTOR VEHICLE REGISTRATIONS**  
Trend, monthly



**RETAIL TURNOVER**  
Trend, monthly



# 1

## ESTIMATED RESIDENT POPULATION

Period	At end of period			Increase during period		Mean estimated resident population for year ended		Melbourne Statistical Division at 30 June <sup>1</sup>
	Males	Females	Persons	Natural	Total	30 June	31 Dec	
	'000	'000	'000	'000	'000	'000	'000	'000
<b>1992-93</b>	2 211.6	2 252.6	4 464.2	33.6	13.1	4 459.6	4 465.0	3 187.9
<b>1993-94</b>	2 216.4	2 259.1	4 475.5	32.4	11.3	4 469.7	4 477.3	3 196.7
<b>1994-95</b>	2 228.9	2 273.1	4 502.2	31.2	26.5	4 488.0	4 502.3	3 218.1
<b>1992</b>								
March qtr	2 203.9	2 241.8	4 445.7	9.2	10.5	..	..	..
June qtr	2 206.4	2 244.5	4 451.0	8.0	5.3	..	..	..
September qtr	2 208.6	2 247.3	4 455.8	8.2	4.8	..	..	..
December qtr	2 209.8	2 249.7	4 459.4	8.5	3.6	..	..	..
<b>1993</b>								
March qtr	2 212.0	2 252.5	4 464.4	8.8	5.0	..	..	..
June qtr	2 211.6	2 252.6	4 464.2	8.1	-0.2	..	..	..
September qtr	2 212.4	2 254.1	4 466.5	7.7	2.3	..	..	..
December qtr	2 213.2	2 255.6	4 468.8	8.3	2.3	..	..	..
<b>1994</b>								
March qtr	2 215.5	2 257.8	4 473.2	8.5	4.4	..	..	..
June qtr	2 216.4	2 259.1	4 475.5	7.6	2.2	..	..	..
September qtr	2 219.6	2 262.6	4 482.1	6.8	5.6	..	..	..
December qtr	2 221.4	2 264.9	4 486.3	7.8	3.7	..	..	..
<b>1995</b>								
March qtr	2 225.4	2 269.1	4 494.5	8.9	8.6	..	..	..
June qtr	2 228.5	2 272.5	4 501.1	7.6	6.7	..	..	..
September qtr	2 232.8	2 277.3	4 510.2	6.6	9.1	..	..	..
December qtr	2 237.5	2 283.3	4 520.8	6.9	10.6	..	..	..
<b>1996</b>								
March qtr p	2 243.6	2 289.7	4 533.3	7.4	12.4	..	..	..

<sup>1</sup> Estimated resident population data for the Melbourne Statistical Division has been revised owing to boundary changes.

# 2

## BIRTHS, DEATHS, MARRIAGES AND DIVORCES

Period	Number of registrations				Annual rate per 1,000 of mean estimated resident population				Infant deaths per 1,000 live births
	Births	Deaths (including infant deaths)	Marriages	Divorces	Births	Deaths	Marriages	Divorces	
<b>1991-92</b>	65 478	31 447	28 567	11 511	14.71	7.05	6.41	2.59	5.93
<b>1992-93</b>	65 542	31 111	27 943	10 371	14.70	6.98	6.26	2.32	5.71
<b>1993-94</b>	64 542	31 773	27 316	10 914	14.44	7.11	6.11	2.44	5.35
<b>1993</b>									
June qtr	15 917	7 673	6 490	2 915	..	..	..	..	..
September qtr	16 240	8 545	4 092	2 706	..	..	..	..	..
December qtr	15 555	7 617	8 080	3 091	..	..	..	..	..
Year - 1993	64 264	31 078	27 418	11 050	14.38	6.96	6.14	2.48	5.57
<b>1994</b>									
March qtr	16 684	7 564	8 862	2 379	..	..	..	..	..
June qtr	16 061	8 052	6 282	2 738	..	..	..	..	..
September qtr	16 039	9 140	4 149	3 050	..	..	..	..	..
December qtr	15 498	7 557	7 681	3 153	..	..	..	..	..
Year - 1994	64 282	32 313	26 974	11 320	14.36	7.22	6.03	2.53	5.26
<b>1995</b>									
March qtr	16 656	7 608	8 891	2 625	..	..	..	..	..
June qtr	15 767	7 986	6 110	2 774	..	..	..	..	..
September qtr	15 735	8 745	3 881	3 132	..	..	..	..	..
December qtr	14 808	8 059	7 725	3 307	..	..	..	..	..
Year - 1995	62 966	32 398	26 607	11 838	13.99	7.20	5.91	2.63	5.08
<b>1996</b>									
March qtr	15 244	7 725	8 372	2 672	..	..	..	..	..

Month	Employed		Unemployed looking for work			Labour force	Not in labour force	Civilian population 15 years and over	Unemp- loyment rate	Partici- pation rate
	Full- time	Total	Full- time	Part- time	Total					
	'000	'000	'000	'000	'000	'000	'000	'000	%	%
<b>MALES</b>										
<b>1995</b>										
June	1 034.5	1 164.3	101.9	10.8	112.6	1 276.9	461.8	1 738.7	8.8	73.4
July	1 037.1	1 165.2	105.7	12.2	118.0	1 283.2	456.6	1 739.8	9.2	73.8
August	1 029.5	1 161.7	99.8	12.1	111.9	1 273.6	467.3	1 741.0	8.8	73.2
September	1 048.4	1 168.6	103.5	18.4	121.9	1 290.5	451.6	1 742.1	9.4	74.1
October	1 044.8	1 164.6	101.7	14.2	116.0	1 280.6	462.8	1 743.4	9.1	73.5
November	1 047.7	1 171.1	94.6	11.8	106.4	1 277.5	467.3	1 744.8	8.3	73.2
December	1 069.5	1 195.3	101.1	12.9	114.0	1 309.4	436.7	1 746.1	8.7	75.0
<b>1996</b>										
January	1 043.8	1 170.6	108.8	12.4	121.2	1 291.7	456.3	1 748.0	9.4	73.9
February	1 050.9	1 176.2	113.5	16.8	130.3	1 306.5	443.4	1 749.9	10.0	74.7
March	1 042.2	1 169.7	101.1	14.5	115.4	1 285.1	466.7	1 751.8	9.0	73.4
April	1 043.5	1 174.3	101.7	15.5	117.2	1 291.6	462.3	1 753.9	9.1	73.6
May	1 057.5	1 187.9	96.9	12.3	109.2	1 297.2	458.6	1 755.8	8.4	73.9
June	1 057.0	1 187.1	88.5	12.7	101.2	1 288.3	469.5	1 757.8	7.9	73.3
July	1 055.2	1 185.0	90.7	13.9	104.5	1 289.5	470.3	1 759.8	8.1	73.3
August	1 045.0	1 182.2	98.5	13.5	112.0	1 294.2	467.7	1 761.9	8.7	73.5
September	1 040.3	1 185.8	107.8	15.6	123.3	1 309.1	454.8	1 763.9	9.4	74.2
<b>FEMALES</b>										
<b>1995</b>										
June	504.9	898.3	53.3	23.7	77.0	975.4	838.3	1 813.7	7.9	53.8
July	520.4	909.4	50.4	23.8	74.1	983.5	831.5	1 815.1	7.5	54.2
August	505.5	888.9	49.8	23.1	72.9	961.8	854.7	1 816.5	7.6	52.9
September	500.9	900.5	57.0	28.5	85.6	986.0	831.8	1 817.8	8.7	54.2
October	508.2	881.3	62.9	23.5	86.4	967.7	851.4	1 819.1	8.9	53.2
November	505.4	894.4	57.9	22.9	80.8	975.3	845.2	1 820.4	8.3	53.6
December	521.3	908.3	53.3	23.3	76.6	984.9	836.9	1 821.7	7.8	54.1
<b>1996</b>										
January	501.3	876.0	59.6	27.8	87.4	963.4	860.1	1 823.6	9.1	52.8
February	497.5	882.1	68.9	31.2	100.1	982.2	843.2	1 825.4	10.2	53.8
March	501.5	892.0	56.3	30.7	87.0	979.0	848.2	1 827.2	8.9	53.6
April	507.4	894.3	57.8	32.2	90.1	984.4	845.0	1 829.4	9.1	53.8
May	516.1	904.3	56.3	26.0	82.3	986.6	845.0	1 831.6	8.3	53.9
June	505.0	895.6	48.4	28.2	76.7	972.3	861.5	1 833.8	7.9	53.0
July	527.3	897.7	53.7	28.7	82.4	980.2	856.0	1 836.2	8.4	53.4
August	507.7	893.2	60.8	25.3	86.1	979.3	859.3	1 838.6	8.8	53.3
September	517.9	914.3	62.5	29.0	91.5	1 005.7	835.2	1 840.9	9.1	54.6
<b>PERSONS</b>										
<b>1995</b>										
June	1 539.3	2 062.6	155.2	34.5	189.7	2 252.3	1 300.1	3 552.4	8.4	63.4
July	1 557.5	2 074.7	156.1	36.0	192.1	2 266.7	1 288.2	3 554.9	8.5	63.8
August	1 535.0	2 050.6	149.5	35.3	184.8	2 235.4	1 322.0	3 557.4	8.3	62.8
September	1 549.3	2 069.1	160.5	47.0	207.5	2 276.6	1 283.3	3 559.9	9.1	64.0
October	1 553.0	2 046.0	164.6	37.7	202.4	2 248.3	1 314.2	3 562.6	9.0	63.1
November	1 553.1	2 065.5	152.6	34.7	187.2	2 252.7	1 312.5	3 565.2	8.3	63.2
December	1 590.8	2 103.6	154.4	36.2	190.6	2 294.2	1 273.6	3 567.8	8.3	64.3
<b>1996</b>										
January	1 545.1	2 046.6	168.4	40.2	208.6	2 255.2	1 316.4	3 571.6	9.2	63.1
February	1 548.4	2 058.3	182.5	47.9	230.4	2 288.7	1 286.6	3 575.3	10.1	64.0
March	1 543.7	2 061.7	157.3	45.1	202.4	2 264.1	1 314.9	3 579.0	8.9	63.3
April	1 550.9	2 068.7	159.5	47.8	207.3	2 276.0	1 307.2	3 583.2	9.1	63.5
May	1 573.6	2 092.3	153.2	38.3	191.5	2 283.8	1 303.6	3 587.4	8.4	63.7
June	1 562.0	2 082.8	136.9	41.0	177.8	2 260.6	1 331.0	3 591.6	7.9	62.9
July	1 582.5	2 082.7	144.4	42.6	187.0	2 269.7	1 326.3	3 596.0	8.2	63.1
August	1 552.7	2 075.4	159.3	38.8	198.2	2 273.5	1 326.9	3 600.4	8.7	63.1
September	1 558.1	2 100.0	170.3	44.5	214.8	2 314.8	1 290.0	3 604.8	9.3	64.2

	May 1995	Aug 1995	Nov 1995	Feb 1996	May 1996	August 1996
Industry division	'000	'000	'000	'000	'000	'000
MALES						
Agriculture, forestry and fishing	57.5	58.8	64.3	71.0	69.0	65.8
Mining	5.9	4.9	*3.3	*3.0	*3.2	*3.2
Manufacturing	243.8	251.6	249.6	242.4	249.7	261.5
Electricity, gas and water supply	20.0	18.4	15.9	13.6	13.3	11.4
Construction	114.1	112.8	110.3	118.2	123.1	119.3
Wholesale trade	95.0	86.1	92.2	87.4	94.1	93.6
Retail trade	149.9	150.2	148.8	152.8	151.7	152.1
Accommodation, cafes and restaurants	37.3	34.5	34.6	35.5	43.2	34.9
Transport and storage	72.8	70.0	77.4	81.6	76.6	64.5
Communication services	24.9	27.5	27.9	30.8	33.0	35.0
Finance and insurance	37.7	36.3	34.9	37.4	34.9	53.1
Property and business services	110.0	113.3	121.2	118.2	119.4	116.4
Government administration and defence	47.4	41.2	40.6	37.7	31.7	40.5
Education	48.7	50.4	45.3	46.2	46.6	47.3
Health and community services	42.3	42.0	40.4	39.8	42.0	44.1
Cultural and recreational services	24.0	26.8	25.3	23.8	21.7	24.2
Personal and other services	34.9	36.9	39.0	36.7	34.6	35.1
<b>Total</b>	<b>1 166.4</b>	<b>1 161.7</b>	<b>1 171.1</b>	<b>1 176.2</b>	<b>1 187.9</b>	<b>1 182.2</b>
FEMALES						
Agriculture, forestry and fishing	30.1	32.1	26.3	31.3	29.0	29.0
Mining	*1.8	*1.3	*1.3	*0.6	*1.0	*0.5
Manufacturing	90.2	95.4	108.1	104.7	110.6	103.0
Electricity, gas and water supply	*3.0	*3.8	*3.7	*2.6	*2.5	*2.3
Construction	18.8	14.2	16.6	12.1	15.2	15.5
Wholesale trade	41.9	40.3	43.2	41.1	39.0	37.5
Retail trade	150.1	148.0	153.5	150.5	155.5	150.1
Accommodation, cafes and restaurants	43.9	46.2	44.7	39.3	48.3	45.7
Transport and storage	19.2	15.2	17.9	18.7	21.3	18.1
Communication services	12.1	13.6	15.3	18.4	18.9	18.2
Finance and insurance	48.8	51.0	43.3	45.2	45.5	45.0
Property and business services	92.8	92.8	91.6	90.3	88.7	96.0
Government administration and defence	41.5	39.9	41.2	45.4	39.7	38.9
Education	99.2	97.9	93.6	85.6	88.2	90.6
Health and community services	139.4	143.6	133.9	133.7	141.6	143.4
Cultural and recreational services	23.4	21.7	22.2	22.2	21.0	24.8
Personal and other services	36.0	31.9	38.1	40.4	38.4	34.5
<b>Total</b>	<b>892.0</b>	<b>888.9</b>	<b>894.4</b>	<b>882.1</b>	<b>904.3</b>	<b>893.2</b>
PERSONS						
Agriculture, forestry and fishing	87.6	90.9	90.5	102.3	98.0	94.9
Mining	7.7	6.2	4.6	*3.6	*4.3	*3.7
Manufacturing	334.0	347.0	357.7	347.1	360.2	364.5
Electricity, gas and water supply	23.0	22.1	19.6	16.1	15.8	13.7
Construction	132.9	127.0	126.9	130.3	138.2	134.9
Wholesale trade	136.9	126.4	135.4	128.5	133.1	131.1
Retail trade	300.0	298.2	302.3	303.3	307.2	302.2
Accommodation, cafes and restaurants	81.2	80.7	79.4	74.7	91.5	80.6
Transport and storage	92.1	85.2	95.3	100.3	97.9	82.6
Communication services	37.0	41.1	43.2	49.2	52.0	53.2
Finance and insurance	86.6	87.3	78.2	82.7	80.4	78.1
Property and business services	202.7	206.0	212.8	208.5	208.1	212.4
Government administration and defence	88.9	81.1	81.8	83.0	71.4	79.5
Education	147.9	148.4	138.9	131.8	134.8	137.9
Health and community services	181.7	185.6	174.2	173.5	183.6	187.5
Cultural and recreational services	47.4	48.6	47.5	46.0	42.7	49.0
Personal and other services	70.9	68.9	77.1	77.1	73.0	69.5
<b>Total</b>	<b>2 058.3</b>	<b>2 050.6</b>	<b>2 065.5</b>	<b>2 058.3</b>	<b>2 092.3</b>	<b>2 075.4</b>

\* Estimate has a relative standard error greater than 25% and is therefore subject to sampling variability too high for most practical uses.



## 5

## JOB VACANCIES

Month	Vacancies all persons '000	Industry		Sector		Job vacancy rate %
		Manu- facturing '000	Other '000	Public '000	Private '000	
<b>1994</b>						
18 November	12.8	*3.7	9.1	1.7	11.1	0.76
<b>1995</b>						
17 February	13.5	*3.5	10.0	2.1	11.4	0.82
19 May	10.2	1.1	9.1	2.0	8.2	0.60
18 August	10.6	*2.6	8.0	1.8	8.8	0.64
17 November	12.0	1.4	10.6	2.6	9.4	0.73
<b>1996</b>						
16 February	16.7	*2.3	14.5	3.4	13.3	0.96
17 May	11.6	*2.8	8.8	2.5	9.1	0.68
16 August	13.6	2.0	11.6	1.7	11.9	0.83

\* Estimate has a relative standard error greater than 25% and is therefore subject to sampling variability too high for most practical uses.

## 6

## INDUSTRIAL DISPUTES CAUSING STOPPAGE OF WORK

Period	Number of disputes		Employees involved ('000)		Working days lost ('000)					
	Beginning in period	Total	Beginning in period	Total	Manu- facturing	Con- struction	Education, health, community services		Other industries	Total
<b>1995</b>										
June	8	11	5.8	18.5	0.8	4.2	11.5		1.4	17.9
July	8	14	3.7	5.1	1.0	1.5	0.7		3.8	7.0
August	11	17	6.0	8.3	2.7	0.2	2.5		10.6	16.1
September	3	10	0.4	2.3	0.4	—	—		10.2	10.6
October	9	14	26.0	26.5	2.4	8.5	0.1		3.4	14.4
November	2	4	1.7	2.0	3.2	—	—		1.6	4.8
December	8	8	2.3	2.3	0.1	—	—		1.8	1.8
<b>1996</b>										
January	n.p.	3	0.2	1.0	—	—	—		1.1	1.1
February	7	8	9.4	9.4	2.8	1.0	0.1		3.5	7.4
March	11	14	4.5	6.9	0.2	2.3	0.2		8.9	11.6
April	4	7	1.8	3.1	1.1	0.3	0.0		1.7	3.1
May	6	7	33.0	33.1	0.4	25.0	4.4		0.9	30.7
June	n.p.	n.p.	—	25.0	—	25.0	—		—	25.0
July	5	6	33.8	46.8	5.5	23.0	8.9		6.7	44.1

## 7

## AVERAGE WEEKLY EARNINGS OF EMPLOYEES (ORIGINAL SERIES)

Reference period: pay period ending on or before —	Males		Females				Persons		
	Full-time adults		All males	Full-time adults		All females	Full-time adults		All employees
	Ordinary time earnings	Total earnings	Total earnings	Ordinary time earnings	Total earnings	Total earnings	Ordinary time earnings	Total earnings	Total earnings
	\$	\$	\$	\$	\$	\$	\$	\$	\$
<b>1994</b>									
18 November	664.70	721.40	649.40	561.60	574.80	437.30	627.30	668.30	551.70
<b>1995</b>									
17 February	674.40	732.00	661.40	563.40	578.20	442.30	634.50	676.60	561.30
19 May	680.10	737.30	664.60	576.10	590.00	435.40	643.20	685.10	558.50
18 August	680.40	736.00	657.00	575.10	588.40	430.30	642.60	682.90	549.70
17 November	692.00	750.20	672.50	579.10	595.00	432.60	653.60	697.40	563.60
<b>1996</b>									
16 February	695.70	756.10	675.50	588.10	600.00	440.70	659.40	703.50	570.30
17 May	702.90	764.30	673.20	594.20	607.30	441.90	666.50	711.70	570.00

Period	Melbourne								All groups	Weighted average of eight capital cities — All groups
	Food	Clothing	Housing	Household equipment and operation	Transportation	Tobacco and alcohol	Health and personal care	Recreation and education		
<b>1993-94</b>	107.9	107.3	92.7	110.0	115.8	132.1	135.4	113.6	111.1	110.4
<b>1994-95</b>	110.1	107.4	97.5	111.1	118.8	137.3	142.4	116.7	114.1	113.9
<b>1995-96</b>	114.1	108.0	101.4	113.0	122.6	154.2	148.7	120.3	118.4	118.7
<b>1993</b>										
June qtr	107.0	108.4	94.5	108.7	113.7	127.7	132.1	111.9	110.1	109.3
September qtr	107.8	107.9	93.8	109.0	115.0	129.8	131.9	112.2	110.5	109.8
December qtr	108.1	107.5	92.4	109.3	115.8	131.7	132.9	113.3	110.8	110.0
<b>1994</b>										
March qtr	107.8	106.7	92.2	110.8	114.9	133.0	137.4	114.1	111.2	110.4
June qtr	107.9	106.9	92.4	110.8	117.5	134.0	139.2	114.8	112.0	111.2
September qtr	108.6	107.0	92.7	110.3	118.4	134.0	139.8	114.9	112.2	111.9
December qtr	108.8	107.4	95.0	110.9	118.5	134.7	140.8	116.4	113.1	112.8
<b>1995</b>										
March qtr	111.2	107.0	100.4	111.5	118.5	137.1	143.4	117.9	115.0	114.7
June qtr	111.7	108.2	102.0	111.8	119.9	143.5	145.5	117.5	116.2	116.2
September qtr	113.5	107.7	102.4	112.5	122.4	149.5	146.0	118.0	117.6	117.6
December qtr	114.0	108.1	102.8	113.1	122.5	153.3	148.4	120.1	118.5	118.5
<b>1996</b>										
March qtr	113.6	107.9	99.8	112.6	121.9	156.0	150.2	122.4	118.3	119.0
June qtr	115.4	108.3	100.4	113.8	123.5	158.1	150.2	120.6	119.2	119.8
September qtr	117.5	108.5	99.6	114.2	123.1	158.3	152.0	121.1	119.6	120.1

(Base of each group: year 1989-90=100.0)

Group				1996			Weighted average of six State capital cities — August 1996
	1993-94	1994-95	1995-96	Jun	Jul	Aug	
House building (Base year: 1989-90=100.0) <sup>1</sup>							
<b>All groups</b>	112.1	115.9	115.4	115.0	114.9	115.1	115.7
Other than house building (Base year: 1989-90=100.0)							
Structural timber	119.5	123.0	116.1	112.0	111.4	109.8	116.3
Clay bricks	109.3	112.3	112.1	111.3	111.3	111.3	107.7
Ready mixed concrete	123.4	124.2	118.6	113.5	113.4	112.3	105.7
Precast concrete products	99.2	104.8	108.1	108.7	108.8	109.1	115.9
Steel decking and cladding	104.7	106.5	109.9	111.2	107.4	107.4	111.3
Structural steel	93.3	95.3	100.9	103.1	103.1	103.1	111.4
Reinforcing steel bar, mesh, etc.	102.0	101.8	102.7	100.2	100.2	100.6	111.6
Aluminium windows	96.5	98.8	100.8	100.8	100.6	100.6	108.0
Fabricated steel products	109.4	110.7	113.1	114.8	114.8	114.8	114.1
Builders' hardware	116.2	113.7	114.5	114.0	115.6	115.6	119.1
Sand and aggregate	119.5	118.5	114.6	114.6	114.6	115.2	118.5
Carpet	98.3	98.5	101.6	102.4	101.0	101.0	102.8
Paint and other coatings	125.0	131.2	141.2	145.5	147.6	147.6	136.4
Non-ferrous pipes and fittings	86.5	100.8	112.2	114.8	112.3	112.3	128.5
All groups excluding electrical materials and mechanical services	106.6	108.5	109.7	109.7	109.5	109.5	112.3
All electrical materials	107.3	113.5	119.4	117.5	113.6	112.7	115.3
All mechanical services	106.8	108.9	114.1	115.6	115.4	115.8	114.9
All plumbing materials	105.3	112.6	118.9	120.9	119.3	120.2	124.3
<b>All groups</b>	106.7	108.9	111.1	111.3	110.8	110.8	112.8

<sup>1</sup> This Index has been compiled on the basis of a revised list of items and updated weighting pattern. The reference base of the index has been updated to 1989-90=100.0. See Appendices in December 1995 issue of *Price Index of Materials Used in House Building* (6408.0).

# 10

## LIVESTOCK SLAUGHTERINGS

Period	Cattle	Calves	Sheep	Lambs	Pigs	Chickens
	'000	'000	'000	'000	'000	'000
<b>1992-93</b>	1 365.8	608.5	3 722.6	6 288.1	1 070.8	78 614.7
<b>1993-94</b>	1 393.9	583.4	3 975.9	5 600.8	1 188.5	85 797.9
<b>1994-95</b>	1 445.6	641.3	3 202.6	6 263.8	1 196.6	79 799.4
<b>1994</b>						
December	122.3	7.9	351.7	516.6	104.9	9 646.3
<b>1995</b>						
January	102.6	5.8	330.5	464.5	88.9	6 548.4
February	117.7	4.8	330.6	478.4	89.9	6 200.2
March	130.7	11.0	295.1	522.7	106.7	6 731.2
April	112.5	24.3	182.6	464.2	84.3	6 520.6
May	137.7	47.6	186.2	512.0	114.9	6 208.8
June	133.7	74.2	147.3	453.2	106.7	6 305.2
July	113.5	81.6	150.0	449.5	87.9	6 528.3
August	114.0	137.0	160.7	494.8	100.5	5 966.2
September	106.2	119.3	197.4	524.5	93.2	6 547.5
October	131.6	53.8	279.5	614.9	97.1	6 470.1
November	142.5	19.9	279.3	578.7	96.6	6 064.2
December	125.7	9.7	208.8	485.2	101.2	7 232.2
<b>1996</b>						
January	142.6	7.7	247.2	498.1	90.3	7 100.2
February	145.9	5.3	261.0	464.2	92.4	6 275.4
March	132.2	8.4	220.8	454.4	92.6	6 722.5
April	115.5	28.2	196.1	459.1	94.4	6 466.7
May	134.8	47.7	158.4	508.2	107.1	6 957.9
June	109.1	76.3	128.6	404.1	86.9	6 108.4
July	118.8	82.9	123.6	428.5	102.7	6 816.3
August	118.0	182.7	105.4	438.2	91.7	6 575.2
September	115.8	140.0	112.4	456.5	91.7	6 727.8

# 11

## MEAT PRODUCTION

Period	Meat (carcass weight)					Dressed weight of chickens
	Beef	Veal	Mutton	Lamb	Pigmeat	
	tonnes	tonnes	tonnes	tonnes	tonnes	
<b>1992-93</b>	299 907	14 948	81 907	113 220	70 535	114 587
<b>1993-94</b>	315 279	13 466	85 010	101 386	78 488	123 529
<b>1994-95</b>	320 510	14 320	63 608	110 138	84 411	110 971
<b>1994</b>						
December	27 469	275	6 956	8 995	7 303	9 896
<b>1995</b>						
January	23 167	226	6 467	8 244	6 182	8 879
February	25 760	203	6 431	8 525	6 187	9 222
March	29 632	328	5 578	9 378	7 471	9 995
April	25 434	582	3 478	7 884	5 991	9 294
May	30 426	1 072	3 695	9 183	8 409	8 921
June	30 983	1 572	2 917	7 991	8 005	8 835
July	25 310	1 642	2 979	7 997	6 564	9 180
August	23 804	2 773	3 240	8 997	7 400	9 350
September	23 831	2 416	4 092	9 741	6 930	9 703
October	30 513	1 170	5 850	11 474	7 081	9 669
November	33 584	496	5 903	10 771	7 021	9 005
December	28 778	295	4 363	9 112	7 130	10 692
<b>1996</b>						
January	34 722	251	5 080	9 511	6 525	9 801
February	33 838	211	5 324	8 870	6 742	9 219
March	30 860	271	4 425	8 544	6 677	9 833
April	26 877	654	3 952	8 504	6 618	9 482
May	31 202	1 031	3 158	9 741	8 043	9 614
June	25 172	1 567	2 575	7 598	6 324	9 152
July	27 062	1 791	2 432	7 719	7 428	9 678
August	26 345	3 660	2 146	7 990	6 596	10 305
September	25 816	2 850	2 240	8 309	6 648	10 061

Period	New dwelling units <sup>1</sup>						Alterations and additions to residential buildings	Non-residential building <sup>2</sup>		Total all building
	Private sector		Public sector		Total <sup>3</sup>			Private sector	Total	
	No.	\$'000	No.	\$'000	No.	\$'000		\$'000	\$'000	
MELBOURNE STATISTICAL DIVISION										
<b>1993-94</b>	20 798	1 925 655	999	71 616	21 797	1 997 271	509 231	1 619 834	2 138 618	4 645 121
<b>1994-95</b>	20 916	2 113 075	888	69 830	21 804	2 182 905	571 937	1 072 307	1 655 767	4 410 610
<b>1995-96</b>	15 535	1 611 458	1 068	86 497	16 603	1 697 955	466 305	1 351 911	1 933 633	4 097 893
<b>1995</b>										
February	1 560	149 489	133	9 118	1 693	158 607	45 869	149 770	218 203	422 679
March	1 473	135 412	77	7 725	1 550	143 137	70 084	84 976	106 011	319 232
April	1 386	135 001	10	809	1 396	135 810	30 202	59 713	91 186	257 197
May	1 935	226 429	121	12 348	2 056	238 777	51 528	118 061	188 796	479 101
June	1 515	147 831	109	6 911	1 624	154 742	41 079	84 364	156 102	351 923
July	1 403	136 198	92	6 069	1 495	142 267	32 787	80 942	94 679	269 734
August	1 421	140 179	151	13 079	1 572	153 259	37 489	87 940	144 659	335 406
September	1 669	171 719	19	2 964	1 688	174 683	38 184	125 424	188 544	401 411
October	1 328	145 420	88	5 987	1 416	151 407	41 681	286 938	343 823	536 911
November	1 260	129 278	237	19 841	1 497	149 119	41 864	110 035	159 057	350 039
December	1 234	138 352	96	6 197	1 330	144 549	31 977	95 745	137 515	314 041
<b>1996</b>										
January	923	91 406	88	5 655	1 011	97 061	32 956	64 115	125 521	255 538
February	1 270	146 592	41	5 357	1 311	151 948	40 914	114 798	126 454	319 317
March	1 134	115 757	60	4 616	1 194	120 374	49 755	66 635	152 863	322 992
April	1 179	116 956	133	12 336	1 310	129 291	44 812	89 466	136 592	310 695
May	1 405	146 542	44	3 336	1 449	149 878	39 062	153 840	221 049	409 988
June	1 313	133 158	19	1 059	1 332	134 218	34 824	76 034	102 878	271 920
July	1 426	163 379	128	8 385	1 554	171 765	41 053	86 070	103 817	316 635
August	1 832	208 230	51	3 476	1 883	211 707	45 420	117 180	161 917	419 044
September	1 159	123 999	57	3 036	1 216	127 035	41 345	110 493	144 173	312 553
TOTAL VICTORIA										
<b>1993-94</b>	30 336	2 718 022	1 414	99 663	31 750	2 817 685	623 548	1 853 551	2 502 670	5 943 903
<b>1994-95</b>	28 509	2 771 998	1 409	101 789	29 918	2 873 788	685 062	1 274 683	1 975 197	5 534 047
<b>1995-96</b>	21 502	2 158 250	1 401	108 652	22 903	2 266 902	589 247	1 721 016	2 451 514	5 307 663
<b>1995</b>										
February	2 077	195 776	183	12 211	2 260	207 987	54 539	160 034	237 605	500 131
March	2 112	190 960	114	10 043	2 226	201 003	80 834	105 401	132 093	413 929
April	1 825	173 579	50	3 245	1 875	176 824	40 442	76 600	118 649	335 915
May	2 516	279 956	154	14 272	2 670	294 229	62 740	153 918	230 951	587 920
June	2 108	199 955	186	12 631	2 294	212 586	50 786	104 004	181 425	444 797
July	1 879	179 571	162	9 712	2 041	189 283	41 048	111 685	131 436	361 767
August	1 935	185 868	163	13 784	2 098	199 652	46 875	117 115	180 525	427 053
September	2 100	211 712	31	3 736	2 131	215 448	47 450	154 641	227 509	490 407
October	1 877	195 307	124	8 187	2 001	203 494	53 811	307 906	382 126	639 430
November	1 815	180 232	268	22 841	2 083	203 073	52 733	137 562	212 939	468 745
December	1 647	174 617	108	7 642	1 755	182 259	41 127	114 949	172 420	395 806
<b>1996</b>										
January	1 380	134 038	116	7 579	1 496	141 617	40 928	95 411	163 531	346 077
February	1 787	193 111	50	5 878	1 837	198 989	49 820	182 677	200 083	448 893
March	1 691	167 353	90	6 918	1 781	174 271	63 101	89 203	185 598	422 971
April	1 634	161 704	153	13 595	1 787	175 299	55 336	107 571	164 740	395 375
May	1 937	195 855	95	6 568	2 032	202 423	53 057	184 314	259 057	514 538
June	1 822	178 982	41	2 211	1 863	181 194	43 960	117 982	171 549	396 703
July	1 930	209 817	143	9 727	2 073	219 603	51 340	108 147	133 928	404 871
August	2 327	254 922	65	4 477	2 392	259 399	54 009	139 194	198 811	512 219
September	1 664	172 755	71	4 021	1 735	176 775	52 606	132 925	174 860	404 242

<sup>1</sup> Valued at \$10,000 and over.

<sup>2</sup> Valued at \$50,000 and over.

<sup>3</sup> Excludes dwelling units created as a result of conversions of buildings or construction of non-residential buildings.

	New houses				New other residential buildings			
	Approved	Commenced	Under construction	Completed	Approved	Commenced	Under construction	Completed
<b>1993-94</b>	28 057	27 904	12 362	27 118	3 693	3 562	2 355	3 209
<b>1994-95</b>	25 885	25 846	10 668	27 380	4 033	3 612	2 765	2 892
<b>1995-96</b>	18 750	19 353	8 149	21 769	4 153	4 274	3 912	3 080
<b>1995</b>								
June qtr	5 567	5 734	10 668	6 079	1 272	1 067	2 765	615
September qtr	5 501	5 836	10 190	6 267	767	713	2 786	646
December qtr	4 954	5 088	8 620	6 640	885	943	2 669	1 060
<b>1996</b>								
March qtr r	3 996	4 373	8 392	4 582	1 118	1 193	3 111	751
June qtr p	4 361	4 056	8 149	4 280	1 383	1 425	3 912	623

## 14

## VALUE OF BUILDING

Period	Residential buildings		Non-residential buildings						
	New	Alterations and additions	Shops	Factories	Offices	Education	Health	Other	Total
	\$m	\$m	\$m	\$m	\$m	\$m	\$m	\$m	\$m
COMMENCED									
<b>1993-94</b>	2 876.5	700.0	456.6	227.1	273.6	211.2	240.0	1 120.8	6 105.7
<b>1994-95</b>	2 907.7	678.6	323.4	211.4	384.2	293.3	140.8	583.8	5 523.2
<b>1995-96</b>	2 481.1	675.2	427.2	247.6	396.7	329.9	104.4	942.3	5 604.5
<b>1995</b>									
June qtr	700.7	175.9	63.6	50.8	110.5	94.6	31.7	127.5	1 355.3
September qtr	639.2	165.5	162.7	52.4	101.0	56.3	19.3	209.4	1 405.9
December qtr	650.3	169.1	93.2	65.2	128.4	109.4	33.8	238.3	1 487.6
<b>1996</b>									
March qtr r	597.9	138.4	78.4	64.3	80.1	68.0	20.1	361.0	1 408.2
June qtr p	593.7	202.2	92.9	65.6	87.2	96.1	31.3	133.6	1 302.8
UNDER CONSTRUCTION AT END OF PERIOD									
<b>1993-94</b>	1 474.8	360.6	415.7	165.1	140.7	144.4	539.9	950.9	4 192.0
<b>1994-95</b>	1 450.8	354.3	480.6	142.9	241.9	217.3	251.0	1 092.6	4 231.4
<b>1995-96</b>	1 482.7	365.3	226.1	140.4	147.8	252.0	124.3	1 356.5	4 095.1
<b>1995</b>									
June qtr	1 450.8	354.3	480.6	142.9	241.9	217.3	251.0	1 092.6	4 231.4
September qtr	1 441.0	335.0	335.7	145.1	250.8	247.5	151.5	1 212.1	4 118.7
December qtr	1 333.4	291.0	319.6	110.1	180.9	243.7	127.8	1 314.7	3 921.1
<b>1996</b>									
March qtr r	1 395.7	298.2	345.2	136.0	149.8	222.0	123.4	1 600.5	4 270.9
June qtr p	1 482.7	365.3	226.1	140.4	147.8	252.0	124.3	1 356.5	4 095.1
COMPLETED									
<b>1993-94</b>	2 725.1	601.3	182.5	424.0	1 056.7	201.0	113.3	517.7	5 821.7
<b>1994-95</b>	2 882.5	709.8	313.6	253.1	290.7	228.8	387.3	521.5	5 587.3
<b>1995-96</b>	2 477.2	684.2	714.2	249.3	508.7	298.9	230.7	842.6	6 005.6
<b>1995</b>									
June qtr	636.1	179.2	116.9	64.7	91.2	53.6	48.1	109.0	1 298.7
September qtr	656.7	184.6	322.7	49.3	95.9	28.2	122.1	118.5	1 577.9
December qtr	774.5	215.0	119.0	101.2	199.8	114.3	56.0	195.9	1 775.6
<b>1996</b>									
March qtr r	537.1	141.7	55.9	39.3	120.3	86.8	22.7	137.1	1 140.8
June qtr p	509.0	142.9	216.7	59.4	92.6	69.6	29.9	391.2	1 511.3

	Budget Estimate 1995-96	Actual 12 months to 30.6.1996	Actual 12 months to 30.6.1995
	\$m	\$m	\$m
<b>Departmental outlays</b>			
Education	3 434.6	3 533.4	3 349.8
Human services	4 813.1	4 848.6	4 451.5
Infrastructure	1 630.5	1 659.8	1 624.4
Justice	1 303.4	1 322.7	1 420.5
Natural resources and environment	403.2	394.4	356.5
Parliament	51.7	47.7	45.8
Premier and cabinet	201.9	182.4	157.5
State development	371.8	333.6	316.5
Treasurer and finance	3 404.0	-954.4	2 867.4
Commonwealth grants on-passed	833.0	838.3	803.6
<i>Total</i>	16 447.2	12 206.5	15 393.5
<i>less</i>			
Superannuation contributions	103.0	133.0	344.0
Capital charge received	172.4	153.1	84.8
Payroll tax paid by departments	242.9	243.2	232.0
<b>Total departmental outlays</b>	<b>15 929.1</b>	<b>11 677.3</b>	<b>14 732.7</b>
Current outlays	14 292.6	13 909.0	13 421.0
Capital outlays	1 636.5	-2 231.7	1 311.7
<b>Revenue and grants received</b>			
Revenue			
Taxes, fees and fines			
Payroll tax	1 972.0	2 003.0	1 848.5
Stamp duty on financial and capital transactions	925.0	1 208.2	960.4
State deficit levy on rateable properties	4.6	7.4	179.7
Financial institutions transaction taxes	577.2	570.4	557.4
Franchise fees	1 234.1	1 482.0	1 068.9
Motor vehicle taxes	834.9	815.4	795.5
Land taxes	395.8	393.1	396.0
Gambling taxes	961.1	1 051.4	907.7
Public authority contribution	309.0	327.9	309.4
Taxes on insurance	322.2	320.9	302.5
Other taxes, fees and fines	190.9	220.0	207.8
<i>Total taxes, fees and fines</i>	7 726.8	8 399.7	7 533.8
Other revenue			
Interest received	113.3	102.9	112.8
Royalties	57.1	64.1	55.8
Income from public trading and financial enterprises	808.8	1 395.3	764.7
Other state revenue	82.5	82.9	74.9
<i>Total other revenue</i>	1 061.8	1 645.3	1 008.2
Grants			
Grants received from Commonwealth	5 963.0	5 968.4	5 601.7
Commonwealth grants for on-passing	832.5	840.9	805.1
<i>Total grants</i>	6 795.5	6 809.3	6 406.8
<b>Total revenue and grants received</b>	<b>15 584.2</b>	<b>16 854.2</b>	<b>14 948.8</b>
<b>Financing transactions</b>			
Net advances from Commonwealth	-255.4	-260.1	-467.4
Other net borrowing	708.2	-4 444.4	-412.8
Other, including changes in cash balances and investments	-107.8	-477.2	664.2
<b>Total financing transactions</b>	<b>344.9</b>	<b>-5 181.6</b>	<b>-216.1</b>

<sup>1</sup> This monthly statement of budget sector transactions (Niermeyer Statement) is presented in *Government Finance Statistics* format.  
Source: Treasurer of Victoria

Period	Selected industries				Type of asset		
	Mining	Manufacturing	Other selected industries	Total	New buildings and structures	Equipment, plant, and machinery	
	\$m	\$m	\$m	\$m	\$m	\$m	
ACTUAL							
<b>1993-94</b>	441	2 657	3 933	7 031	1 485	5 546	
<b>1994-95</b>	603	3 034	3 896	7 533	1 535	5 998	
<b>1995-96</b>	500	3 348	4 807	8 655	2 399	6 255	
<b>1994</b>							
March qtr	114	546	823	1 483	294	1 189	
June qtr	86	711	924	1 721	311	1 410	
September qtr	138	749	1 018	1 905	289	1 617	
December qtr	152	762	946	1 860	365	1 495	
<b>1995</b>							
March qtr	139	725	901	1 765	342	1 424	
June qtr	173	799	1 031	2 002	539	1 463	
September qtr	136	804	1 131	2 071	553	1 519	
December qtr	143	865	1 224	2 232	692	1 540	
<b>1996</b>							
March qtr	114	787	1 072	1 973	499	1 474	
June qtr	106	892	1 380	2 378	655	1 723	
EXPECTED							
<b>1995-96</b>	610	3 657	4 330	8 598	2 329	6 268	
<b>1996-97</b>	807	3 097	3 255	7 159	1 613	5 546	

## 17

## COMMERCIAL FINANCE COMMITMENTS

Period	Fixed loan facilities						Type of lender			
	Const- ruction	Purchase of real property	Purchase of plant and equipment	Whole- sale	Other	Total	Revolving credit facilities	Total commit- ments	Banks	All other lenders
	\$m	\$m	\$m	\$m	\$m	\$m	\$m	\$m	\$m	\$m
<b>1995</b>										
March	82.7	223.5	170.3	94.9	253.6	825.1	1 198.7	2 023.7	1 593.2	430.6
April	68.3	215.0	124.1	60.0	241.0	708.6	1 606.0	2 314.6	1 610.2	704.3
May	190.1	222.5	156.5	118.7	280.1	967.9	1 347.6	2 315.5	1 950.9	364.6
June	79.8	254.1	213.1	91.4	483.4	1 121.9	2 297.4	3 419.3	2 155.4	1 263.9
July	72.1	227.2	156.6	79.0	383.1	918.2	1 527.3	2 445.4	2 050.4	395.0
August	123.6	277.5	171.8	97.9	318.3	989.4	1 926.4	2 915.8	2 431.9	484.0
September	76.2	213.3	162.0	65.9	505.4	1 022.9	1 746.4	2 769.3	2 318.4	450.9
October	142.7	207.8	155.7	78.6	396.2	980.9	1 445.2	2 426.1	1 990.0	436.1
November	83.2	270.2	177.8	73.3	733.6	1 338.0	1 447.5	2 785.5	2 462.5	322.9
December	99.9	201.0	170.6	158.2	591.2	1 220.9	3 384.6	4 605.5	3 035.6	1 570.0
<b>1996</b>										
January	101.1	271.6	137.7	55.8	577.7	1 143.9	4 484.4	5 628.3	4 562.2	1 066.2
February	111.7	260.0	153.1	67.8	598.6	1 191.1	2 012.6	3 203.7	2 491.2	712.5
March	352.6	311.6	152.6	65.4	579.7	1 461.8	2 114.1	3 575.9	3 111.3	464.5
April	93.0	223.3	147.4	66.8	336.1	866.7	2 757.0	3 623.8	2 479.4	1 144.3
May	82.7	226.1	159.1	97.8	474.3	1 040.0	2 711.9	3 751.9	2 317.8	1 434.2
June	101.0	260.1	240.1	81.3	814.3	1 496.9	2 440.5	3 937.5	3 195.8	741.6
July	197.9	264.5	183.4	107.7	648.4	1 301.9	2 175.6	3 477.6	2 868.7	608.9
August	80.5	287.6	258.4	64.9	640.8	1 332.4	1 386.5	2 718.9	2 375.6	343.2

Period	Original Series		Seasonally Adjusted		Trend Estimates	
	Dwelling units	\$m	Dwelling units	\$m	Dwelling units	\$m
<b>1995</b>						
March	8 814	763	8 052	701	7 761	676
April	6 632	581	7 394	628	7 560	665
May	8 077	725	6 849	637	7 520	667
June	8 015	714	7 674	680	7 657	683
July	8 133	729	8 054	708	7 894	702
August	9 166	814	8 548	778	8 145	719
September	8 052	703	8 302	717	8 389	735
October	8 787	753	8 944	773	8 617	751
November	8 998	787	8 340	722	8 880	773
December	8 229	719	8 640	729	9 202	802
<b>1996</b>						
January	8 022	714	9 778	897	r9 505	832
February	9 990	873	10 283	909	r9 654	r849
March	9 800	852	9 753	838	r9 607	r849
April	9 140	797	9 908	860	r9 418	r836
May	10 051	911	8 582	805	r9 196	r819
June	8 382	753	8 210	716	r9 051	r810
July r	9 903	890	9 079	826	9 002	808
August	9 983	884	9 937	886	9 029	814

## 19

## RETAIL TURNOVER BY INDUSTRY (EXCLUDING MOTOR VEHICLES, PARTS, PETROL, ETC.)

Month	Food retailing	Department stores	Clothing and soft good retailing	Household good retailing	Recreational good retailing	Other retailing	Hospitality and services	Total
	\$m	\$m	\$m	\$m	\$m	\$m	\$m	\$m
<b>1994</b>								
June	812.9	210.8	146.3	251.4	103.0	174.0	259.2	1 957.6
July	836.4	169.9	148.9	250.1	112.3	183.3	277.3	1 978.2
August	831.8	182.2	138.7	255.0	119.7	191.6	278.6	1 997.6
September	854.4	202.8	141.8	249.7	114.1	192.8	290.2	2 045.8
October	887.1	215.2	152.6	251.0	121.0	212.5	307.0	2 146.4
November	878.4	223.1	156.0	266.4	130.7	219.9	313.4	2 187.9
December	1 070.8	418.7	236.8	348.7	196.9	305.2	355.8	2 932.9
<b>1995</b>								
January	885.5	165.1	154.2	258.2	119.1	179.5	295.3	2 056.9
February	851.0	152.0	127.1	238.4	112.2	185.0	271.7	1 937.4
March	922.8	188.2	145.7	265.4	118.1	208.9	304.7	2 153.8
April	902.1	215.7	166.5	241.9	115.1	207.4	292.4	2 141.1
May	905.9	211.6	153.2	268.7	129.1	219.5	292.6	2 180.6
June	897.6	209.9	151.5	276.1	128.7	203.8	292.8	2 160.4
July	914.0	197.2	150.2	270.2	137.1	199.7	286.4	2 154.8
August	944.3	197.8	138.9	263.1	137.6	214.2	283.0	2 178.9
September	942.5	195.3	138.2	264.2	129.8	212.6	294.2	2 176.8
October	959.3	203.0	151.8	280.4	130.6	217.0	287.2	2 229.3
November	982.0	246.8	157.9	288.1	144.1	225.3	309.2	2 353.4
December	1 130.6	436.7	224.1	384.2	232.2	327.3	351.5	3 086.6
<b>1996</b>								
January	975.5	187.4	147.8	274.7	165.7	183.9	303.9	2 238.9
February	965.4	169.2	118.8	252.2	137.5	183.1	270.9	2 097.1
March	1 004.2	189.4	139.0	271.9	131.4	193.0	300.4	2 229.3
April	976.6	220.1	157.9	266.5	124.5	187.0	300.9	2 233.5
May	1 003.4	224.2	157.5	289.0	129.4	200.4	294.6	2 298.5
June	940.2	213.3	146.4	288.4	122.8	182.8	293.9	2 187.8
July	970.7	203.4	147.0	306.8	127.4	201.1	237.7	2 244.1
August	1 014.0	199.7	133.2	303.9	134.0	207.9	279.4	2 272.1
September	950.3	186.2	132.0	274.1	127.3	196.6	284.5	2 151.0



Section	1995-96		2 months ending Aug 1996	
	Imports	Exports	Imports	Exports
	\$m	\$m	\$m	\$m
0 Food and live animals chiefly for food	1 002	3 485	176	482
1 Beverages and tobacco	164	98	20	19
2 Crude materials, inedible (except fuels)	596	1 592	106	256
3 Mineral fuels, lubricants, and related materials	660	668	141	119
4 Animal and vegetable oils, fats, and waxes	93	83	15	13
5 Chemicals and related products, n.e.c.	2 416	866	410	142
6 Manufactured goods classified chiefly by material	3 835	2 355	664	371
7 Machinery and transport equipment	r10 867	2 704	1 976	467
8 Miscellaneous manufactured articles	4 154	950	779	147
9 Commodities and transactions of merchandise trade, n.e.c.	r868	2 596	149	385
<b>Total</b>	<b>r24 654</b>	<b>15 397</b>	<b>4 438</b>	<b>2 400</b>

## 21

OVERSEAS TRADE, MAJOR TRADING PARTNERS<sup>1</sup>

Country	1994-95		1995-96		2 months ending Aug 1996	
	Imports	Exports	Imports	Exports	Imports	Exports
	\$m	\$m	\$m	\$m	\$m	\$m
Belgium-Luxembourg	226	29	253	r74	47	9
Brazil	166	61	174	77	27	17
Canada	430	113	r452	101	73	23
China	1 567	561	1 667	640	335	110
Fiji	39	127	60	214	13	34
Finland	236	6	239	9	30	1
France	488	173	536	143	97	21
Germany	2 089	262	1 995	263	351	41
Hong Kong	204	565	241	821	48	147
India	224	115	234	139	45	33
Indonesia	335	268	378	364	75	61
Italy	717	263	807	249	154	31
Japan	3 993	1 849	3 434	r1 955	565	254
Korea, Republic of	610	1 112	r634	1 922	114	331
Malaysia	428	749	457	737	82	98
Mexico	55	62	55	43	11	4
Netherlands	229	44	233	60	43	8
New Zealand	1 190	1 247	1 206	1 594	212	258
Pakistan	86	30	72	77	15	3
Papua New Guinea	125	188	128	236	35	42
Philippines	105	285	117	339	22	54
Saudi Arabia	242	127	225	195	26	14
Singapore	493	1 312	571	1 162	99	158
South Africa	73	193	83	207	19	50
Sweden	495	40	590	69	108	14
Switzerland	302	59	288	45	36	3
Taiwan	810	631	772	r663	136	122
Thailand	323	441	322	513	55	60
United Kingdom	1 363	369	1 500	373	285	71
United States of America	5 252	785	5 836	785	1 044	133
Other and unknown	1 064	940	r1 095	r1 328	236	197
<b>Total</b>	<b>23 959</b>	<b>13 006</b>	<b>r24 654</b>	<b>15 397</b>	<b>4 438</b>	<b>2 400</b>

<sup>1</sup> The list of countries in this table reflects the volume of trade with Victoria. Information about Victoria's trade with other countries is available on request.

Period	Victoria			Australia		
	Imports	Exports	Excess of exports	Imports	Exports (incl. re-exports)	Excess of exports
	\$m	\$m	\$m	\$m	\$m	\$m
<b>1993-94</b>	20 770	12 349	-8 421	64 470	64 548	+78
<b>1994-95</b>	23 959	13 006	-10 961	74 619	67 048	-7 571
<b>1995-96</b>	24 654	15 397	-9 257	77 819	76 024	-1 795
<b>1995</b>						
March	2 168	1 210	-958	6 762	6 196	-566
April	1 770	1 043	-727	5 749	5 651	-98
May	2 223	1 168	-1 055	6 905	6 192	-713
June	2 099	1 126	-973	6 564	5 759	-805
July	2 266	1 128	-1 138	6 866	6 285	-581
August	2 231	1 126	-1 105	6 842	6 127	-715
September	1 995	1 151	-844	6 280	6 261	-19
October	2 156	1 205	-951	6 950	6 255	695
November	2 049	1 241	-808	6 734	6 006	-728
December	1 936	1 414	-522	6 154	6 821	+667
<b>1996</b>						
January	2 052	1 199	-853	6 539	5 977	-562
February	1 958	1 298	-660	6 202	6 042	-160
March	2 056	1 463	-593	6 273	6 919	+646
April	2 078	1 400	-678	6 443	6 246	197
May	2 075	1 478	-597	6 710	6 766	+56
June	1 802	1 293	-509	5 826	6 319	+493
July	2 243	1 223	-1 020	6 841	6 474	-367
August	2 199	1 178	-1 021	6 793	6 378	-415

## 23

## TOURIST ACCOMMODATION, MELBOURNE AND VICTORIA

Period	Hotels, motels, etc. with facilities				Short-term caravan parks			
	Establishments	Capacity, guest rooms	Room occupancy rates	Takings from accommodation	Establishments	Capacity, sites and cabins	Site occupancy rates	Takings from accommodation
	No.	No.	%	\$'000	No.	No.	%	\$'000
<b>MELBOURNE STATISTICAL DIVISION</b>								
<b>1994</b>								
June qtr	242	14 830	57	73 416	50	5 442	47	1 147
September qtr	238	14 721	59	79 369	54	5 742	45	1 716
December qtr	240	14 843	66	93 034	53	5 709	55	2 012
<b>1995</b>								
March qtr	240	14 905	68	94 245	53	5 694	59	2 055
June qtr	242	14 315	63	86 538	53	5 734	47	1 364
September qtr	241	14 359	66	97 625	53	5 728	45	1 854
December qtr	242	14 513	71	103 964	53	5 730	51	2 242
<b>1996</b>								
March qtr	243	14 520	71	110 002	53	5 730	59	2 209
June qtr	243	14 644	68	105 834	53	5 724	47	1 510
<b>TOTAL VICTORIA</b>								
<b>1994</b>								
June qtr	1 018	29 968	48	105 846	441	53 971	38	10 268
September qtr	1 003	29 680	48	113 668	438	53 831	35	10 602
December qtr	1 006	29 892	53	127 072	436	53 377	40	14 503
<b>1995</b>								
March qtr	1 003	29 973	56	131 900	435	53 307	47	17 781
June qtr	1 016	29 543	51	120 636	434	53 195	39	10 670
September qtr	1 009	29 504	52	135 286	438	53 825	40	10 730
December qtr	1 015	29 798	56	140 332	438	54 001	40	16 035
<b>1996</b>								
March qtr	1 019	29 891	58	150 879	438	53 918	47	19 178
June qtr	1 021	30 007	54	142 716	439	54 060	39	12 016

## FURTHER REFERENCES

.....

### Table

#### DEMOGRAPHY

- 1 *Australian Demographic Statistics* (3101.0) (quarterly)
- 2 *Demography, Victoria* (3311.2) (annual)

#### LABOUR

- 3 *Labour Force, Victoria* (6202.2) (quarterly)
- 4 *Labour Force, Australia* (6203.0) (monthly)
- 5 *Job Vacancies and Overtime, Australia* (6354.0) (quarterly)
- 6 *Industrial Disputes, Australia* (6321.0) (monthly)

#### WAGES AND PRICES

- 7 *Average Weekly Earnings, States and Australia* (6302.0) (quarterly)
- 8 *Consumer Price Index* (6401.0) (quarterly)
- 9 *Price Index of Materials Used in Building Other Than House Building, Six State Capital Cities and Darwin* (6407.0) (monthly)  
*Price Index of Materials Used in House Building, Six State Capital Cities* (6408.0) (monthly)

#### MEAT PRODUCTION

- 10, 11 *Livestock Products, Australia* (7215.0) (monthly)

#### BUILDING

- 12 *Building Approvals, Victoria* (8731.2) (monthly)
- 13, 14 *Building Activity, Victoria* (8752.2) (quarterly)

#### FINANCE

- 15 *Treasurer of Victoria — Statement of Budget Sector Transactions, Victoria*
- 16 *State Estimates of Actual and Expected Private New Capital Expenditure* (5646.0) (quarterly)
- 17, 18 *Housing Finance for Owner Occupation, Australia* (5609.0) (monthly)

#### TRADE

- 19 *Retail Sales of Goods (Excluding Motor Vehicles, Parts, Petrol, etc.) Australia* (8501.0) (monthly)
- 20 *Foreign Trade Australia: Fasttraccs Database*
- 21 *Overseas Trade: Fasttraccs Database*
- 22 *Overseas Trade: Fasttraccs Database*

#### TOURISM

- 23 *Tourist Accommodation, Victoria* (8635.2) (quarterly)

As at October 1996.

Publication names and catalogue numbers are subject to revision or change.

## For more information . . .

The ABS publishes a wide range of statistics and other information on Australia's economic and social conditions. Details of what is available in various publications and other products can be found in the ABS Catalogue of Publications and Products available from all ABS Offices.

### ABS Products and Services

Many standard products are available from ABS bookshops located in each State and Territory. In addition to these products, information tailored to the needs of clients can be obtained on a wide range of media by contacting your nearest ABS Office. The ABS also provides a Subscription Service for standard products and some tailored information services.

### National Dial-a-Statistic Line

0055 86 400

*Steadycom P/L: premium rate 25c/20 secs.*

This number gives 24-hour access, 365 days a year, for a range of important economic statistics including the CPI.

### Internet

<http://www.abs.gov.au>

A wide range of ABS information is available via the Internet, with basic statistics available for each State, Territory and Australia. We also have Key National Indicators, ABS product release details and other information of general interest.

## Sales and Inquiries

Keylink      STAT.INFO/ABS  
X.400      (C:Australia,PUB:Telememo,O:ABS,FN:STAT,SN:INFO)  
Internet      [stat.info@abs.telememo.au](mailto:stat.info@abs.telememo.au)

National Mail Order Service      (06) 252 5249  
Subscription Service      1800 02 0608

	Information Inquiries	Bookshop Sales
SYDNEY	(02) 9268 4611	9268 4620
MELBOURNE	(03) 9615 7755	9615 7755
BRISBANE	(07) 3222 6351	3222 6350
PERTH	(09) 360 5140	360 5307
ADELAIDE	(08) 8237 7100	8237 7582
HOBART	(002) 205 800	205 800
CANBERRA	(06) 252 6627	207 0326
DARWIN	(089) 432 111	432 111



Client Services, ABS, GPO Box 2796Y, Melbourne 3001

