



8508.0

Information Paper

Seasonal Influences on Retail Trade

December 1998

Information paper

**Seasonal Influences
on Retail Trade**

December 1998

Dennis Trewin
Acting Australian Statistician

AUSTRALIAN BUREAU OF STATISTICS

EMBARGO: 11.30 AM (CANBERRA TIME) MON 1 MAR 1999

ABS Catalogue no. 8508.0
ISBN 0 642 54218 X

© Commonwealth of Australia 1998

This work is copyright. Apart from any use as permitted under the *Copyright Act 1968*, no part may be reproduced by any process without written permission from AusInfo. Requests and inquiries concerning reproduction and rights should be addressed to the Manager, Legislative Services, AusInfo, GPO Box 84, Canberra, ACT 2601.

In all cases the ABS must be acknowledged as the source when reproducing or quoting any part of an ABS publication or other product.

Produced by the Australian Bureau of Statistics

INQUIRIES

- For more information about these and related statistics, contact Bernard Williams on Canberra 02 6252 5304 or refer to the back cover of this publication.

CONTENTS

		Page
	Abbreviations and symbols	iv
SECTION	1 Introduction	1
SECTION	2 Seasonal adjustment—an overview	3
SECTION	3 Have seasonal patterns for November, December and January been changing?	4
SECTION	4 Is there a trading day effect in December?	5
SECTION	5 Revisions to Seasonally Adjusted Series	9
	Conclusion	10

ABBREVIATIONS AND SYMBOLS

LOM length of month

% percentage

SECTION 1

INTRODUCTION

1.1 The December 1998 release of *Retail Trade, Australia* (Cat. no. 8501.0) recorded growth for the last six months of 1998 as follows:

1 RETAIL TURNOVER ESTIMATES, AUSTRALIA, PERCENTAGE CHANGE FROM PREVIOUS MONTH

	<i>Original</i>	<i>Seasonally adjusted</i>	<i>Trend estimates</i>
1998			
July	7	2.6	0.6
August	-3.2	-0.8	0.6
September	1.6	0.8	0.5
October	7.2	1	0.3
November	-1.2	0.3	0.2
December	27.8	-2.1	0.1

1.2 Some economic commentators queried the seasonally adjusted estimate for December 1998. Their main concerns can be summarised as:

- the ABS's seasonal adjustment process is not sophisticated enough to reflect changes in shopping patterns,
- the trading day adjustment is not appropriate for December because Christmas shopping is undertaken regardless of the day of the week Christmas falls on, and
- the seasonally adjusted estimates for December will be revised upwards.

1.3 The purpose of this information paper is to address these concerns and to test some of the resulting hypotheses about the Retail turnover estimates.

1.4 Estimates of Retail turnover in this paper are obtained from the Retail Business Survey which includes: most retailing industries (the most notable exceptions being motor vehicles, boats and service stations); hotels, clubs, cafes, restaurants; and other selected service industries. The Food retailing and Hospitality and services industry groups contribute over 50% of total Retail turnover. The Household good retailing, Other retailing and Department stores groups contribute about another 30% to total turnover.

1.5 All employing businesses with at least one retail establishment are included in the scope of the survey. All 'large' businesses are included in the survey every month and these businesses contribute approximately 54% of the total turnover estimate.

1.6 Background material in this paper has been drawn from several articles previously released in *Australian Economic Indicators* (Cat. no 1350.0):

- A guide to interpreting Time Series (January 1995)
- Seasonal and Trading Day Influences on Retail Turnover (April 1996)
- How does Father's Day affect Retail Trade? (December 1996).

SECTION 2

SEASONAL ADJUSTMENT—AN OVERVIEW

2.1 The aim of seasonal adjustment is to remove systematic calendar-related variation from the original series. For the Retail turnover series this variation is the combination of two elements, namely seasonal variation and trading day variation. When estimates of these influences are removed from the original series the seasonally adjusted series is produced, and is composed of the underlying trend and the frequently changing irregular component.

2.2 In estimating seasonal and trading day variation, the ABS has to balance the requirement to make the adjustments as statistically accurate as possible by basing them on a large sample of observations from a long time series, and making the adjustments as relevant as possible to emerging patterns by giving greater weight to more recent activity. Balancing these requirements gives adjustments that, as shown in the following sections, appear to appropriately reflect shopping patterns changing as a result of influences like the deregulation of shopping hours.

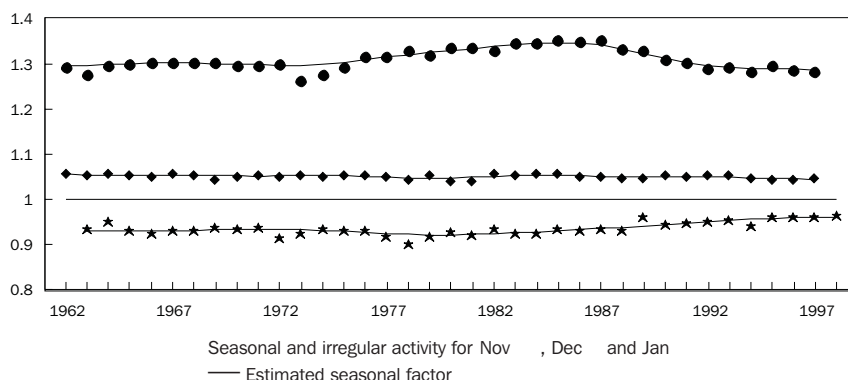
SECTION 3

HAVE SEASONAL PATTERNS FOR NOVEMBER, DECEMBER AND JANUARY BEEN CHANGING?

3.1 It is generally accepted that some shopping activity has moved from pre-Christmas to the post-Christmas sales in recent years. It has been claimed that the ABS seasonal factors for Retail turnover have not adequately reflected this change.

3.2 The following chart shows the seasonal factors applied to retail turnover for November, December and January over the last 36 years, as estimated with data to June 1998, at the last annual re-analysis. The dots in the chart represent the original data after the trend and trading day variation have been removed, or expressed another way, the dots represent the combined influences of seasonal and irregular activity for each month. The continuous lines represent the estimated seasonal factors that are applied in the seasonal adjustment process. High seasonal activity is shown when the values are higher than the base line value of 1.0, and low seasonal activity is shown when values are lower than 1.0.

1 SEASONALS AND SEASONAL—IRREGULARS, For November, December and January



3.3 A point to note in chart 1 is that generally the scatter of the dots is confined to a relatively tight range for each month. This pattern indicates that little relative irregularity is present and increases confidence in using the resulting seasonal factors. A second point to note is the drift in the dots indicates that some change in seasonal patterns has occurred in December and January, and the corresponding drift in the seasonal factors indicates that it is being reflected in the seasonal adjustment factors.

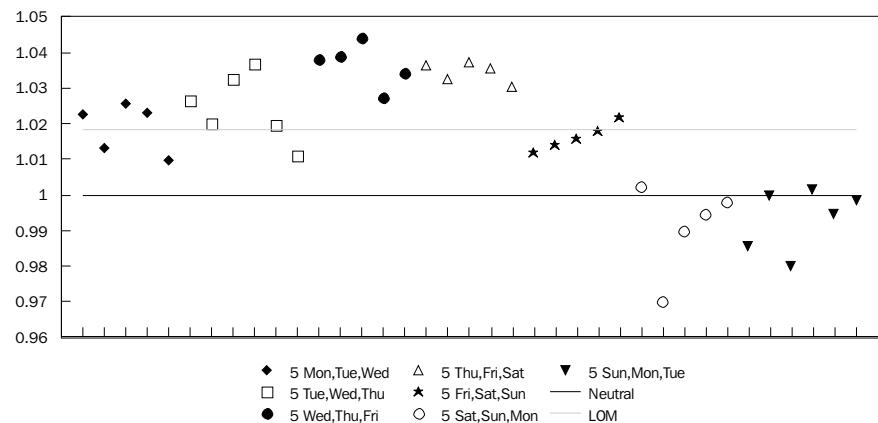
3.4 The seasonal adjustment process for December 1998 resulted in the original monthly growth estimate of 27.8% becoming a seasonally adjusted -2.1%. The adjustment for seasonal variation alone accounted for at least 23.2 percentage points of the total seasonal adjustment of 29.9 percentage points. Based on the above chart there is no reason to suppose there is any problem with the adjustment for seasonal variation. The remaining part of the seasonal adjustment is attributed to trading day variation.

SECTION 4

IS THERE A TRADING DAY EFFECT IN DECEMBER?

4.1 Some commentators have suggested that there is no trading day variation in the month of December because consumer buying patterns in this month do not follow the pattern of high or low activity shopping days displayed in other months. If this were the case, there should be no trading day variability apparent in chart 2 below.

2 DECEMBER TRADING DAY—IRREGULARS, Grouped by Day-of-Week Composition



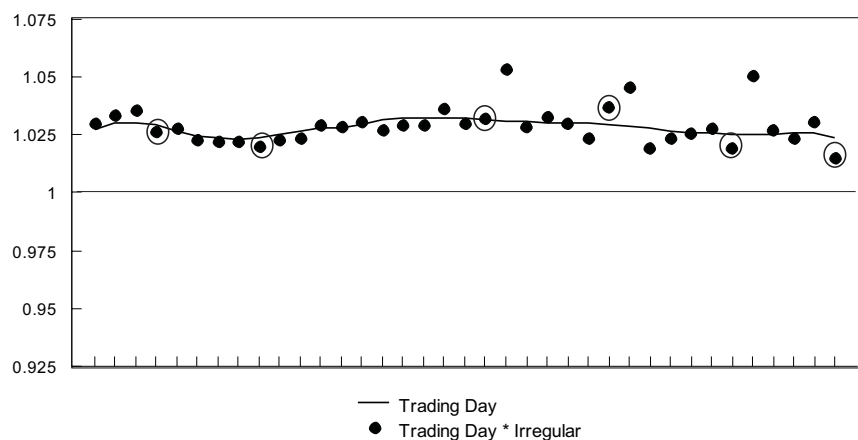
4.2 The dots in chart 2 represent for all Decembers, over the past 37 years, the original data with the trend and seasonal variation removed, or expressed another way, they represent the influence of trading day variation, if it exists, and the irregularity. For ease of interpretation the dots have been grouped so as to exhibit any systematic behaviour for Decembers having the same week day compositions. That is, there are seven groups of dots reflecting the seven different ways in which December's week day composition may differ. The first group represents Decembers that contain five Mondays, Tuesdays and Wednesdays, and four of each of the other days of the week. The second group represents Decembers that contain five Tuesdays, Wednesdays, and Thursdays, and four of the remaining days of the week, and so on.

4.3 If there is no trading day variation in December all the dots in chart 2 would be scattered randomly about the baseline marked on the chart at 1.0. This would indicate that after removing from the original data the trend and seasonal variation, only irregular variability remained. Any systematic tendency of the dots to be away from the baseline of 1.0 indicates the presence of trading day variability. A scatter of the dots above the baseline indicates high trading day activity, and a scatter of the dots below the baseline indicates low trading day activity.

4.4 Trading day variability arises because of the length of the month and the frequency of high or low activity days. If all days of the week are regarded as no more or less important with regard to trading activity than any other day of the week, the scatter of the dots for December, which is 31 days long, would cluster about the 1.0185 level. [For a 30 day month with all days of the week regarded as equally important for trading activity, the dots would cluster about the 0.9856 level.] It is evident from chart 2 that December generally exhibits trading day variability over and above that explained by length of the month.

4.5 To reconcile the December 1998 original retail turnover estimate to the seasonally adjusted estimate, the degree of trading day activity in December 1998 must be determined. This is examined in chart 3. As in chart 2, the dots represent the original data with the trend and seasonal variation removed, or expressed another way, they represent the influence of trading day variation, if it exists, and the irregularity for all 31 day months containing five Tuesdays, Wednesdays and Thursdays. The solid line passing through the dots represents the trading day adjustment factor used in the seasonal adjustment process for months of this type of day pattern.

3 ALL 31 DAY MONTHS WITH FIVE TUESDAYS, WEDNESDAYS AND THURSDAYS



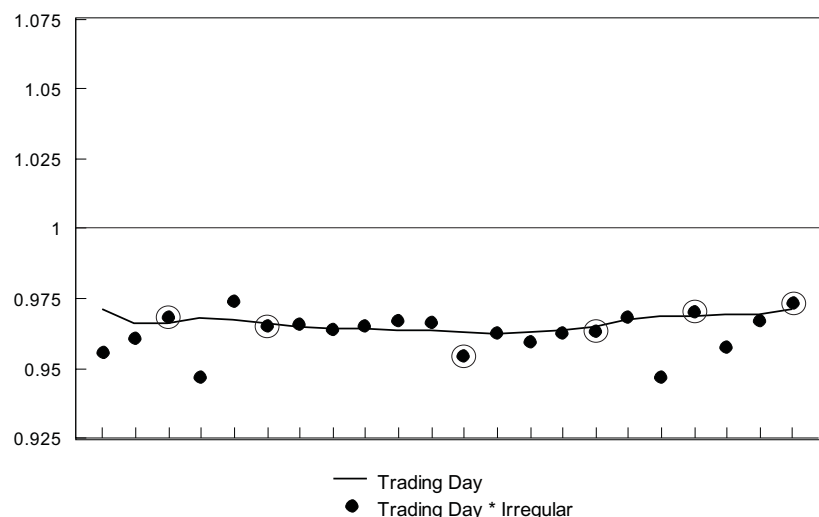
4.6 It is not feasible to just calculate a trading day adjustment factor based on Decembers with this type of day pattern as the occurrences are too infrequent. For example, Decembers that had this same type of day pattern as December 1998 occurred, within the available data span, only in 1964, 1970, 1981, 1987 and 1992. Basing an adjustment just on these five occurrences, and giving equal weight to each, would be unwise because it would be expected that shopping patterns would change between 1964 and 1998. The next December of this type occurs in 2009.

4.7 Chart 3 shows the extent to which December's trading day variability differs to other months which have the same composition of the days of the week. It can be seen from the December months highlighted in chart 3 that Decembers have not been atypical compared to other months. December 1964, 1970 and 1981 fall close to the line of 'best fit'. December 1987 is slightly above the line and December 1992 falls below the line of 'best fit', but both are within the range of the dots' previous variability

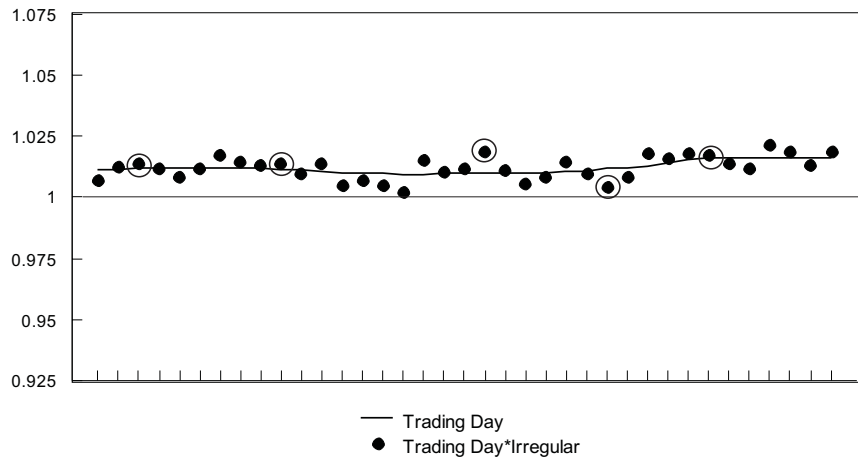
4.8 The estimation of the trading day adjustment factors used in the December 1998 publication was made with data available to only June 1998. Chart 3 indicates that these factors were appropriate given the data available. When the December 1998 observation is added to chart 3, a noticeable deviation from the trading day adjustment factor path is observed, although larger deviations have been observed for months of this type of day pattern. This latest deviation may or may not indicate a change to the trading day variability, but this is not possible to estimate presently on the basis of one observation that also contains a degree of irregularity. If the December 1998 observation were included in the estimation of the seasonal and trading day adjustment factors, the seasonally adjusted movement for December 1998 would become -1.1% . This estimate, and others, would be subject to further revision when subsequent data became available.

4.9 Charts 4 and 5 are similar in concept to chart 3, and are included to assist assessment of the appropriateness of the trading day adjustment factors used for the months of November 1998 and January 1999. The circles in chart 4 represent Novembers and in chart 5 represent Januaries.

4 ALL 30 DAY MONTHS WITH FIVE SUNDAYS AND MONDAYS



5 ALL 31 DAY MONTHS WITH FIVE FRIDAYS, SATURDAYS AND SUNDAYS



4.10 In summary, the evidence shown in chart 2 indicates that there generally exists a trading day effect in December data. It may be of interest to note that had it been assumed there was no trading day variability in December 1998 other than a length of month effect, the seasonally adjusted movement for December 1998 would none the less have been similar to the published percentage movement.

SECTION 5

REVISIONS TO SEASONALLY ADJUSTED SERIES

5.1 One of the main features of the seasonal adjustment process is that all adjustments are based on historical data with appropriate consideration given to the requirement for statistical accuracy and relevance as mentioned in paragraph 2.2.

5.2 The method used to estimate the seasonal adjustment factors is described generally in the Australian Economic Indicators article 'Seasonal and Trading Day influences on Retail Turnover', April 1996. In brief, the estimation of evolving or slowly changing seasonal variation [as seen in chart 1] and trading day variation, necessarily leads to revision of the most recent seasonal adjustment factors as subsequent data becomes available. Also, revision of the original series will generally lead to revision of the seasonally adjusted series.

5.3 Currently, seasonal adjustment factors are reanalysed once a year with revised data released in the July issue of Retail Trade, Australia. The ABS advises clients that the seasonally adjusted series can be revised for at least five years. This is one of the reasons that the ABS recommends analysis be undertaken on the trend series, which generally is only subject to noticeable revision for up to six months.

5.4 Revision of the seasonally adjusted series is an inherent result of the seasonal adjustment process and changing seasonal and trading day patterns. Will the December 1998 seasonally adjusted estimate be revised? The answer is, 'Yes' as all seasonally adjusted estimates are subject to revision for at least five years. However, while it is not possible to presently estimate the extent of the revisions it can be stated that the process used by the ABS produces appropriate estimates given the historical information available.

CONCLUSION

There have been criticisms of the accuracy of the December 1998 estimates of retail turnover. Investigations have indicated that the ABS's seasonal adjustment method is sound and accurately reflects historical seasonal and trading day patterns.

Alternative non-data based assumptions could be made in making seasonal adjustments. For example, we could assume there is only a length of month effect in December but even this alternative indicates a decline in seasonally adjusted retail sales between November and December 1998. Nevertheless, the ABS will continue to review the seasonal adjustment methods it uses. One potential area of investigation is revising seasonal adjustment monthly rather than annually.

All time series show some degree of irregularity. Indications are that the December 1998 estimate of monthly retail turnover had a higher than average irregular component. The ABS publishes trend series to help users assess the underlying trend in the face of irregularities in time series.

SELF-HELP ACCESS TO STATISTICS

DIAL-A-STATISTIC For current and historical Consumer Price Index data, call 1902 981 074.
For the latest figures for National Accounts, Balance of Payments, Labour Force, Average Weekly Earnings, Estimated Resident Population and the Consumer Price Index call 1900 986 400.
These calls cost 75c per minute.

INTERNET www.abs.gov.au

LIBRARY A range of ABS publications is available from public and tertiary libraries Australia wide. Contact your nearest library to determine whether it has the ABS statistics you require.

WHY NOT SUBSCRIBE?

PHONE +61 1300 366 323

FAX +61 3 9615 7848

CONSULTANCY SERVICES

ABS offers consultancy services on a user pays basis to help you access published and unpublished data. Data that are already published and can be provided within 5 minutes is free of charge. Statistical methodological services are also available. Please contact:

City	By phone	By fax
Canberra	02 6252 6627	02 6207 0282
Sydney	02 9268 4611	02 9268 4668
Melbourne	03 9615 7755	03 9615 7798
Brisbane	07 3222 6351	07 3222 6283
Perth	08 9360 5140	08 9360 5955
Adelaide	08 8237 7400	08 8237 7566
Hobart	03 6222 5800	03 6222 5995
Darwin	08 8943 2111	08 8981 1218



2850800001992

RRP \$10.00

POST Client Services, ABS, PO Box 10, Belconnen ACT 2616

EMAIL client.services@abs.gov.au