



2002 Labour Statistics In Brief Australia



KEY FACTS

		Annual average	
	Units	1991	2001
CIVILIAN POPULATION			
Aged 15 and over	'000	13 437.3	15 417.8

LABOUR FORCE PARTICIPATION

Participation rates			
Males	%	74.7	72.3
Females	%	52.0	55.3
Persons	%	63.2	63.7

EMPLOYMENT

Males	'000	4 460.9	5 114.1
Females	'000	3 237.3	4 042.5
Persons	'000	7 698.2	9 156.6
Full-time	%	77.6	72.6
Part-time	%	22.4	27.4
Employment/population ratio	%	57.3	59.4

UNEMPLOYMENT

Unemployed persons	'000	787.8	660.5
Unemployment rate			
Males	%	9.7	7.0
Females	%	8.7	6.4
Persons	%	9.3	6.7
Persons aged 15–19	%	21.6	17.6
Average duration of unemployment for August, persons	weeks	43.0	49.4

HOURS OF WORK

Average weekly hours worked by employed persons	hours	34.4	33.6
Full-time	hours	40.1	40.4
Part-time	hours	14.9	15.7

INDUSTRIAL RELATIONS

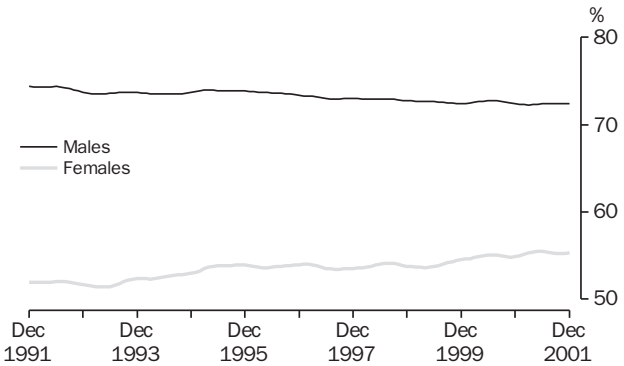
		12 months ended December	
		1991	2001
Industrial disputes			
Working days lost per thousand employees	no.	248	50
Working days lost	'000	1 610.6	393.1
		Aug 2000	Aug 2001
Trade union members	%	24.7	24.5

CHANGE IN WAGES AND PRICES

		12 months to Dec Qtr 2001	10 years to Dec Qtr 2001
Wage Cost Index, total hourly rate of pay excluding bonuses	%	3.4	n.a.
Consumer Price Index, all groups	%	3.1	25.8
		Nov 1991	Nov 2001
Average weekly earnings, full-time adults	\$	610.70	885.40

Source: *Labour Force, Australia* (6203.0); *Industrial Disputes, Australia* (6321.0); *Employee Earnings, Benefits and Trade Union Membership, Australia* (6310.0); *Wage Cost Index, Australia* (6345.0); *Consumer Price Index, Australia* (6401.0); *Average Weekly Earnings, Australia* (6302.0).

LABOUR FORCE PARTICIPATION RATES: Trend estimates



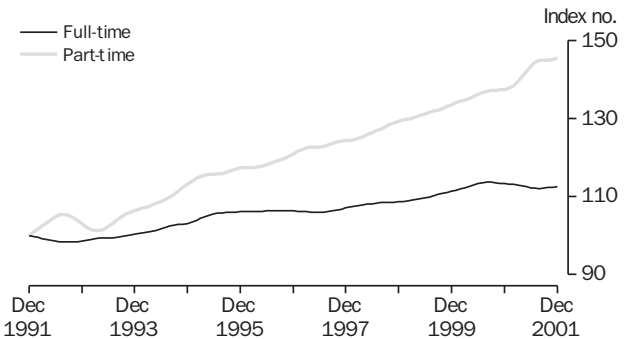
Source: Labour Force, Australia (6203.0).

EMPLOYED PERSONS: OCCUPATION

	November 2001	
	'000	%
Managers and administrators	737.1	8.0
Professionals	1 681.2	18.3
Associate professionals	1 089.7	11.9
Tradespersons and related workers	1 177.3	12.8
Advanced clerical and service workers	388.3	4.2
Intermediate clerical, sales and service workers	1 575.2	17.1
Intermediate production and transport workers	788.9	8.6
Elementary clerical, sales and service workers	915.5	10.0
Labourers and related workers	837.1	9.1
Total	9 190.4	100.0

Source: Labour Force, Australia (6203.0).

FULL-TIME AND PART-TIME EMPLOYMENT INDEX: Trend estimates (December 1991=100)



Source: Labour Force, Australia (6203.0).

EMPLOYED PERSONS: STATUS IN EMPLOYMENT

November 2001

	'000	%
Employees	7 960.9	86.6
Own account workers	860.3	9.4
Employers	324.9	3.5
Contributing family workers	44.3	0.5
Total	9 190.4	100.0

Source: Labour Force, Australia (6203.0).

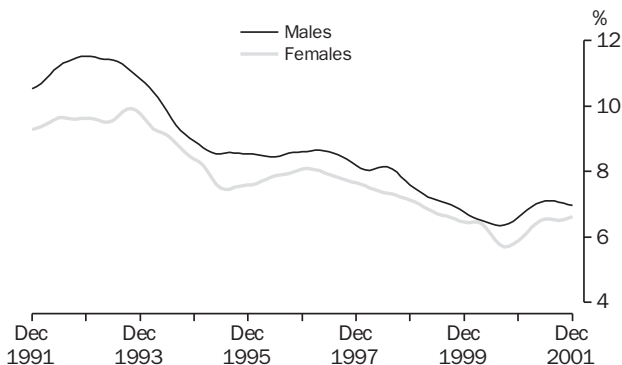
EMPLOYED PERSONS: INDUSTRY

November 2001

	'000	%
Agriculture, forestry and fishing	445.0	4.8
Mining	81.6	0.9
Manufacturing	1 095.9	11.9
Electricity, gas and water supply	68.5	0.7
Construction	711.8	7.7
Wholesale trade	438.4	4.8
Retail trade	1 399.8	15.2
Accommodation, cafes and restaurants	458.5	5.0
Transport and storage	421.7	4.6
Communication services	162.0	1.8
Finance and insurance	351.1	3.8
Property and business services	1 006.4	11.0
Government administration and defence	384.1	4.2
Education	654.0	7.1
Health and community services	909.8	9.9
Cultural and recreational services	233.4	2.5
Personal and other services	368.3	4.0
Total	9 190.4	100.0

Source: Labour Force, Australia (6203.0).

UNEMPLOYMENT RATES: Trend estimates



Source: Labour Force, Australia (6203.0).

UNEMPLOYED PERSONS: BY AGE AND WHETHER LOOKING FOR FULL-TIME OR PART-TIME WORK ('000)

	November 2001		
	Looking for full-time work	Looking for part-time work	Total
Males			
15-19	42.3	30.5	72.8
20 and over	275.0	23.6	298.6
Total	317.3	54.1	371.4
Females			
15-19	28.6	30.1	58.7
20 and over	141.5	57.8	199.4
Total	170.1	87.9	258.1
Persons			
15-19	70.9	60.6	131.5
20 and over	416.5	81.4	497.9
Total	487.5	142.0	629.5

Source: Labour Force, Australia (6203.0).

UNEMPLOYED PERSONS: DURATION OF UNEMPLOYMENT

	November 2001	
	'000	%
Under 52 weeks		
Under 4 weeks	142.0	22.6
4 weeks and under 13 weeks	143.6	22.8
13 weeks and under 26 weeks	95.6	15.2
26 weeks and under 52 weeks	109.1	17.3
52 weeks and over (Long-term unemployed)		
52 weeks and under 104 weeks	55.9	8.9
104 weeks and over	83.2	13.2
Total	629.5	100.0

Source: Labour Force, Australia (6203.0).

WAGE AND SALARY EARNERS: PRIVATE AND PUBLIC SECTORS

	August 2001	
	'000	%
Private(a)	6 091.7	80.0
Public		
Commonwealth	273.0	3.6
State	1 098.0	14.4
Local	148.0	1.9
Total	1 519.0	20.0
Total(a)	7 610.7	100.0

(a) Excludes private sector employees in Agriculture, forestry and fishing.

Source: Wage and Salary Earners, Australia (6248.0).

WAGE COST INDEX: OCCUPATION

	Annual % change to Dec Qtr 2001
Managers and administrators	3.6
Professionals	4.1
Associate professionals	2.8
Tradespersons and related workers	3.5
Advanced clerical and service workers	2.5
Intermediate clerical, sales and service workers	3.1
Intermediate production and transport workers	3.0
Elementary clerical, sales and service workers	2.7
Labourers and related workers	3.0
Total	3.4

Source: Wage Cost Index, Australia (6345.0).

AVERAGE WEEKLY TOTAL EARNINGS (\$)

	Nov 1991	Nov 2001
Full-time adults		
Males	654.20	947.70
Females	527.40	772.80
Persons	610.70	885.40

Source: Average Weekly Earnings, Australia (6302.0).

METHODS OF SETTING PAY

	Males	Females	May 2000 Persons
	%	%	%
Awards only	16.8	29.9	23.2
Registered collective agreements	34.9	35.5	35.2
Unregistered collective agreements	1.8	1.2	1.5
Registered individual agreements	2.3	1.3	1.8
Unregistered individual agreements	44.2	32.0	38.2
Total	100.0	100.0	100.0

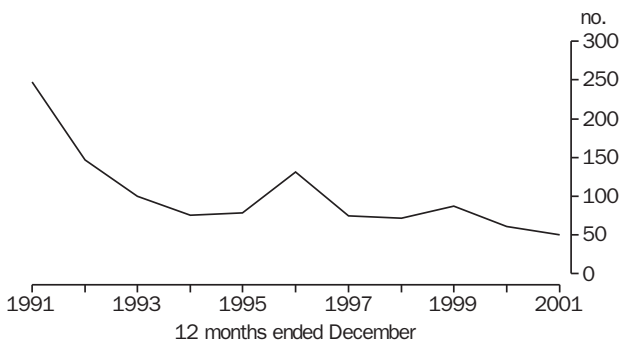
Source: Employee Earnings and Hours, Australia (6306.0).

JOB VACANCIES: INDUSTRY ('000)

	Nov 2000	Nov 2001
Manufacturing	9.3	6.6
Wholesale trade; Retail trade	26.6	19.7
Accommodation, cafes and restaurants	12.4	5.9
Finance and insurance; Property and business services	22.3	12.4
Education; Health and community services	16.9	14.7
Other	21.2	24.1
Total	108.6	83.5

Source: Job Vacancies, Australia (6354.0).

INDUSTRIAL DISPUTES: WORKING DAYS LOST PER THOUSAND EMPLOYEES



Source: *Industrial Disputes, Australia (6321.0)*.

INTERNATIONAL COMPARISONS: SELECTED CHARACTERISTICS

	Population 2000 (million)	Unemployment rate Standardised(a) 2000 %
Australia	19.2	6.3
Canada	30.8	6.8
France	58.9	9.5
Germany	82.1	7.9
Japan	126.9	4.7
Sweden	8.9	5.9
United Kingdom	(b)59.5	6.6
United States of America	275.4	4.0

(a) ILO/OECD definition.

(b) 1999.

Source: *2000 World Population Data Sheet; Main Economic Indicators, October 2001, OECD*.

SYMBOLS AND ABBREVIATIONS USED

Values shown in Australian dollars (\$). Where figures have been rounded, discrepancies may occur between the sums of the component items and totals.

Aug — August **n.a.** — not available **no.** — number
Nov — November % — per cent **'000** — thousand
Dec — December \$ — dollars **Qtr.** — quarter
OECD — Organisation for Economic Co-operation & Development
ILO — International Labour Office

ACKNOWLEDGMENTS

ABS publications draw extensively on information provided freely by individuals, businesses, governments and other organisations. Their continued cooperation is very much appreciated; without it the wide range of statistics published by the ABS would not be available for general use by the community. Information received by the ABS is treated in strict confidence as required by the *Census and Statistics Act 1905*.

FOR MORE INFORMATION...

- INTERNET** www.abs.gov.au The ABS web site is the best place to start for access to summary data from our latest publications, information about the ABS, advice about upcoming releases, our catalogue, and Australia Now — a statistical profile.
- LIBRARY** A range of ABS publications is available from public and tertiary libraries Australia-wide. Contact your nearest library to determine whether it has the ABS statistics you require, or visit our web site for a list of libraries.
- CPI INFOLINE** For current and historical Consumer Price Index data, call 1902 981 074 (call cost 77c per minute).
- DIAL-A-STATISTIC** For the latest figures for National Accounts, Balance of Payments, Labour Force, Average Weekly Earnings, Estimated Resident Population and the Consumer Price Index call 1900 986 400 (call cost 77c per minute).

INFORMATION SERVICE

Data which have been published and can be provided within five minutes are free of charge. Our information consultants can also help you to access the full range of ABS information—ABS user-pays services can be tailored to your needs, time frame and budget. Publications may be purchased. Specialists are on hand to help you with analytical or methodological advice.

- PHONE** **1300 135 070**
- EMAIL** client.services@abs.gov.au
- FAX** 1300 135 211
- POST** Client Services, ABS, GPO Box 796, Sydney 1041

WHY NOT SUBSCRIBE?

ABS subscription services provide regular, convenient and prompt deliveries of ABS publications and products as they are released. Email delivery of monthly and quarterly publications is available.

- PHONE** 1300 366 323
- EMAIL** subscriptions@abs.gov.au
- FAX** (03) 9615 7848
- POST** Subscription Services, ABS, GPO Box 2796Y, Melbourne 3001



2610400001026
ISSN 1031-041X

© Commonwealth of Australia 2002

RRP \$1.25

Produced by the Australian Bureau of Statistics