

CATALOGUE NUMBER 9303.2  
31 JANUARY 1995

**MOTOR VEHICLE REGISTRATIONS, VICTORIA,  
DECEMBER 1994**

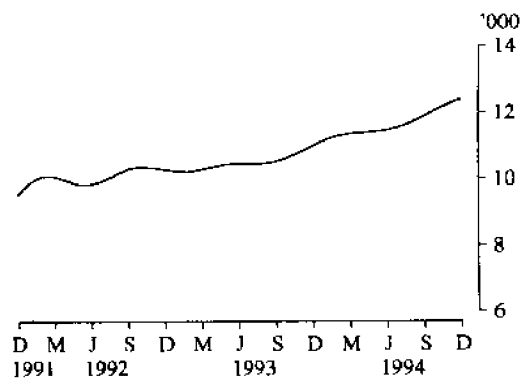
**FINAL ISSUE :**

This is the **final edition** of this monthly publication. Users may wish to refer to the future editions of the publication *Motor Vehicle Registrations, Australia* (Catalogue No. 9304.0) for tables showing data for Victoria.

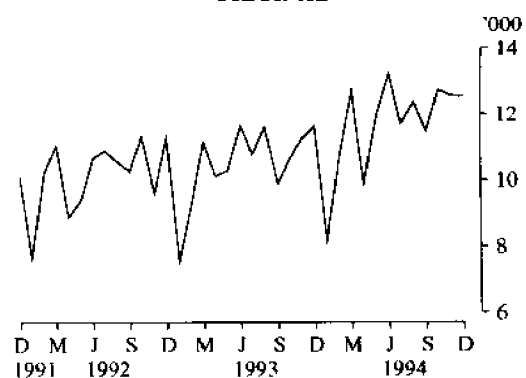
**MAIN FEATURES**

- Trend estimates of the number of new motor vehicles registered during December 1994 (12,408) showed a 1.2 per cent increase over the figure for November 1994 (12,255) and a 12.8 per cent increase over the figure for December 1993 (11,004). The trend estimate has increased continually since August 1993.
- In original terms the number of new motor vehicles registered during December 1994 (12,526) was 0.2 per cent lower than the previous month (12,554) but 7.9 per cent higher than December 1993 (11,608).
- For the 6 months ended December 1994 there were 62,839 new passenger vehicles registered, which was 10.5 per cent higher than the 56,879 registered during the 6 months ended December 1993.

**NEW MOTOR VEHICLE REGISTRATIONS  
TREND ESTIMATES**



**NEW MOTOR VEHICLE REGISTRATIONS  
ORIGINAL**



**INQUIRIES**

For further information about statistics in this publication and the availability of related unpublished statistics, contact Denis Ward or John Brand on Melbourne (03) 615 7000; or any ABS State office. For information about other ABS statistics and services contact Information Services on Melbourne (03) 615 7000; or any ABS State office.

**TABLE 1. MOTOR VEHICLES ON REGISTER(a), VICTORIA  
(<sup>'000</sup>)**

<i>As at 30 June</i>	<i>Passenger vehicles</i>	<i>Light commercial vehicles</i>	<i>Trucks</i>			<i>Buses</i>	<i>Total</i>	<i>Motor cycles</i>
			<i>Rigid</i>	<i>Artic- ulated</i>	<i>Non- freight carrying</i>			
1989	2,076.2	195.7	206.5	13.1	11.7	13.9	2,517.1	68.1
1990	2,137.8	194.8	210.7	14.2	13.0	13.8	2,584.3	67.9
1991	2,226.5	349.2	87.0	14.6	11.3	14.4	2,702.9	72.2
1992	2,178.1	322.5	73.0	14.3	11.4	15.6	2,614.9	69.9
1993	2,206.6	324.9	74.2	14.6	11.7	15.9	2,648.0	70.4

(a) See Explanatory notes, paragraphs 3 to 9.

**TABLE 2. NEW MOTOR VEHICLES REGISTERED(a), VICTORIA**

<i>Period</i>	<i>Passenger vehicles</i>	<i>Light commercial vehicles</i>	<i>Trucks</i>			<i>Buses</i>	<i>Total</i>	<i>Motor cycles</i>
			<i>Rigid</i>	<i>Artic- ulated</i>	<i>Non- freight carrying</i>			
1991-92	98,766	11,080	1,832	406	184	649	112,917	3,878
1992-93	106,213	14,137	2,008	571	166	795	123,890	4,528
1993-94	113,249	15,442	2,077	907	119	658	132,452	4,400
1993-94 —								
October	9,222	1,100	171	78	10	48	10,629	356
November	9,660	1,286	168	82	7	45	11,248	404
December	10,005	1,264	196	86	14	43	11,608	411
January	7,148	806	109	49	6	55	8,173	411
February	9,288	1,138	156	70	3	45	10,700	423
March	10,864	1,484	204	78	10	73	12,713	391
April	8,347	1,272	136	71	14	45	9,885	337
May	9,970	1,619	198	97	10	56	11,950	329
June	10,753	2,066	233	88	6	100	13,246	350
1994-95 —								
July	9,827	1,463	228	124	2	75	11,719	377
August	10,557	1,431	222	95	13	64	12,382	352
September	9,972	1,153	194	102	8	60	11,489	464
October	10,975	1,359	194	130	7	78	12,743	452
November	10,775	1,416	175	108	11	69	12,554	436
December	10,733	1,405	213	111	5	59	12,526	461
1993-94 —								
July —								
December	56,879	7,057	1,041	454	70	284	65,785	2,159
1994-95 —								
July —								
December	62,839	8,227	1,226	670	46	405	73,413	2,542

(a) See Explanatory notes, paragraphs 3 to 9.

**TABLE 3. NEW MOTOR VEHICLES REGISTERED VICTORIA(a), ORIGINAL AND SEASONALLY ADJUSTED**

Period	Passenger vehicles		Other vehicles(b)		Total(b) (c)		Trend estimate(d)
	Original	Seasonally adjusted	Original	Seasonally adjusted	Original	Seasonally adjusted	
MELBOURNE STATISTICAL DIVISION							
1993-94 —							
October	7,364	7,285	855	877	8,219	8,162	8,109
November	7,672	7,540	934	942	8,606	8,482	8,283
December	7,885	7,143	981	994	8,866	8,137	8,438
January	5,628	8,067	601	856	6,229	8,923	8,563
February	7,336	7,843	835	920	8,171	8,762	8,651
March	8,594	7,797	1,170	1,069	9,764	8,866	8,701
April	6,428	6,973	992	1,057	7,420	8,030	8,680
May	7,673	7,573	1,242	1,088	8,915	8,661	8,666
June	8,336	8,014	1,564	1,432	9,900	9,446	8,679
1994-95 —							
July	7,674	7,445	1,083	1,017	8,757	8,462	8,744
August	8,408	7,476	1,167	1,095	9,575	8,571	8,860
September	7,943	7,542	909	861	8,852	8,403	8,989
October	8,707	9,116	1,041	1,072	9,748	10,188	9,120
November	8,413	7,842	1,065	1,074	9,478	8,917	9,240
December	8,472	8,222	1,089	1,153	9,561	9,375	9,332
1993-94 —							
July — December	45,184	43,227	5,336	5,233	50,520	48,460	48,794
1994-95 —							
July — December	49,617	47,643	6,354	6,273	55,971	53,916	54,285
TOTAL VICTORIA							
1993-94 —							
October	9,222	9,080	1,407	1,426	10,629	10,506	10,635
November	9,660	9,528	1,588	1,615	11,248	11,143	10,823
December	10,005	9,282	1,603	1,640	11,608	10,921	11,004
January	7,148	9,883	1,025	1,481	8,173	11,365	11,164
February	9,288	9,733	1,412	1,532	10,700	11,264	11,289
March	10,864	9,779	1,849	1,724	12,713	11,503	11,371
April	8,347	9,379	1,538	1,628	9,885	11,008	11,392
May	9,970	9,688	1,980	1,763	11,950	11,451	11,421
June	10,753	9,912	2,493	1,983	13,246	11,895	11,472
1994-95 —							
July	9,827	9,699	1,892	1,788	11,719	11,487	11,565
August	10,557	9,664	1,825	1,750	12,382	11,414	11,709
September	9,972	9,872	1,517	1,601	11,489	11,474	11,886
October	10,975	10,932	1,768	1,775	12,743	12,707	12,075
November	10,775	10,392	1,779	1,800	12,554	12,192	12,255
December	10,733	10,530	1,793	1,941	12,526	12,472	12,408
1993-94 —							
July — December	56,879	54,865	8,906	8,914	65,785	63,779	63,910
1994-95 —							
July — December	62,839	61,090	10,574	10,656	73,413	71,746	71,899

(a) See Explanatory notes, paragraphs 3 to 9. (b) Excludes motor cycles, tractors, plant and equipment, caravans and trailers. (c) See paragraph 2 of the Explanatory notes. (d) Trend estimate (smoothed seasonally adjusted) series are revised as additional observations become available. See paragraph 11 of the Explanatory notes.

**TABLE 4. MAKES OF NEW PASSENGER VEHICLES REGISTERED(a), VICTORIA, DECEMBER 1994**

Make	Vehicle tare weight (kilograms)						Total	Per cent	M.S.D.
	Up to 900	901 to 1,100	1,101 to 1,300	1,301 to 1,500	Over 1,500	Not stated			
Ford	164	383	94	1,551	742	-	2,934	27.3	2,088
Holden	119	87	590	1,127	132	-	2,055	19.1	1,630
Honda	-	165	136	16	6	-	323	3.0	278
Hyundai	56	374	47	4	1	-	482	4.5	349
Mazda	125	97	163	2	13	-	400	3.7	351
Mitsubishi	127	98	103	827	114	-	1,269	11.8	1,071
Nissan	-	82	58	44	66	-	250	2.3	179
Toyota	8	469	505	330	326	-	1,638	15.3	1,387
Other makes	260	226	447	259	190	-	1,382	12.9	1,139
<b>Total</b>	<b>859</b>	<b>1,981</b>	<b>2,143</b>	<b>4,160</b>	<b>1,590</b>	<b>-</b>	<b>10,733</b>	<b>100.0</b>	<b>8,472</b>

(a) See Explanatory notes, paragraphs 3 to 9.

**TABLE 5. MAKES OF NEW LIGHT COMMERCIAL VEHICLES REGISTERED(a), VICTORIA, DECEMBER 1994**

Make	Vehicle tare weight (kilograms)						Total	Per cent	M.S.D.
	Up to 900	901 to 1,100	1,101 to 1,300	1,301 to 1,500	Over 1,500	Not stated			
Ford	11	9	77	222	34	-	353	25.1	223
Holden	-	1	116	93	55	-	265	18.9	153
Mazda	-	1	33	68	17	-	119	8.5	91
Mitsubishi	-	2	94	27	31	-	154	11.0	93
Nissan	-	1	6	56	42	-	105	7.5	61
Toyota	-	3	115	147	94	-	359	25.6	212
Other makes	9	9	-	3	29	-	50	3.6	26
<b>Total</b>	<b>20</b>	<b>26</b>	<b>441</b>	<b>616</b>	<b>302</b>	<b>-</b>	<b>1,405</b>	<b>100.0</b>	<b>859</b>

(a) See Explanatory notes, paragraphs 3 to 9.

**TABLE 6. MAKES OF NEW RIGID TRUCKS REGISTERED(a), VICTORIA, DECEMBER 1994**

Make	Gross vehicle mass (tonnes) (b)							Total	Per cent	M.S.D.	
	Up to 4	4,001 to 8	8,001 to 12	12,001 to 16	16,001 to 20	20,001 to 30	Over 30				
Ford	-	3	6	5	-	-	-	12	26	12.2	15
Hino	-	-	-	2	1	7	-	4	14	6.6	9
International	-	-	-	-	-	2	-	16	18	8.5	9
Isuzu	-	-	12	16	15	4	-	9	56	26.3	38
Mazda	-	-	8	6	-	-	-	-	14	6.6	13
Mitsubishi	-	-	15	1	13	5	-	5	39	18.3	25
Nissan	-	-	-	1	2	3	-	9	15	7.0	14
Toyota	-	1	9	1	-	-	-	-	11	5.2	9
Other makes	1	3	2	-	-	-	1	13	20	9.4	7
<b>Total</b>	<b>1</b>	<b>7</b>	<b>52</b>	<b>32</b>	<b>31</b>	<b>21</b>	<b>1</b>	<b>68</b>	<b>213</b>	<b>100.0</b>	<b>139</b>

(a) See Explanatory notes, paragraphs 3 to 9. (b) Gross vehicle mass is the maximum permissible weight of the loaded vehicle.

**TABLE 7. MAKES OF NEW ARTICULATED TRUCKS REGISTERED(a), VICTORIA, DECEMBER 1994**

Make	Gross combination mass (tonnes) (b)							Total	Per cent	M.S.D.
	Up to 16,001 to 20	20,001 to 24	24,001 to 30	30,001 to 34	34,001 to 40	Over 40	Not stated			
Ford	2	18	3	5	-	-	-	28	25.2	15
International	-	8	-	11	-	-	1	20	18.0	5
Kenworth	1	11	-	9	1	-	3	25	22.5	6
Mack	1	4	1	3	-	-	1	10	9.0	5
Mercedes-Benz	1	1	-	-	-	-	1	3	2.7	3
Scania	-	1	-	1	-	-	-	2	1.8	1
Volvo	1	7	1	3	-	-	-	12	10.8	9
Western Star	-	3	-	1	-	-	-	4	3.6	1
Other makes	-	3	-	3	1	-	-	7	6.3	4
<b>Total</b>	<b>6</b>	<b>56</b>	<b>5</b>	<b>36</b>	<b>2</b>	<b>-</b>	<b>6</b>	<b>111</b>	<b>100.0</b>	<b>49</b>

(a) See Explanatory notes, paragraphs 3 to 9. (b) Gross combination mass is the maximum permissible weight of the prime mover plus attached loaded trailer.

**TABLE 8. MAKES OF NEW NON-FREIGHT CARRYING TRUCKS AND BUSES REGISTERED(a), VICTORIA, DECEMBER 1994**

Make	Non-freight carrying trucks				Buses			
	M.S.D.	Rest of Victoria	Total	Per cent	M.S.D.	Rest of Victoria	Total	Per cent
Ford	-	-	-	-	-	-	-	-
Hino	-	-	-	-	-	1	1	1.7
Isuzu	2	-	2	40.0	-	-	-	-
Mazda	-	1	1	20.0	-	-	-	-
Mercedes-Benz	-	-	-	-	4	5	9	15.3
Mitsubishi	-	-	-	-	-	-	-	-
Nissan	-	-	-	-	-	-	-	-
Scania	-	-	-	-	2	-	2	3.4
Toyota	-	1	1	20.0	32	12	44	74.6
Other makes	-	1	1	20.0	2	1	3	5.1
<b>Total</b>	<b>2</b>	<b>3</b>	<b>5</b>	<b>100.0</b>	<b>40</b>	<b>19</b>	<b>59</b>	<b>100.0</b>

(a) See Explanatory notes, paragraphs 3 to 9.

**TABLE 9. NEW MOTOR CYCLES REGISTERED, VICTORIA, DECEMBER 1994**

Make	Cubic capacity of engine (cc)							Total	Per cent	M.S.D.
	Up to 50	51 to 150	151 to 250	251 to 500	501 to 750	Over 750	Not stated			
Harley Davidson	-	-	-	-	-	91	-	91	19.7	59
Honda	2	21	42	2	38	35	-	140	30.4	96
Kawasaki	-	2	27	-	11	13	-	53	11.5	28
Suzuki	2	-	12	2	11	4	-	31	6.7	22
Yamaha	1	5	52	6	24	12	-	100	21.7	49
Other makes	-	2	4	12	5	23	-	46	10.0	24
<b>Total</b>	<b>5</b>	<b>30</b>	<b>137</b>	<b>22</b>	<b>89</b>	<b>178</b>	<b>-</b>	<b>461</b>	<b>100.0</b>	<b>278</b>

**TABLE 10. NEW MOTOR VEHICLES REGISTERED(a), BY NUMBER OF CYLINDERS, VICTORIA, DECEMBER 1994**

<i>Number of cylinders</i>	<i>Passenger vehicles</i>	<i>Light commercial vehicles</i>	<i>Trucks</i>			<i>Buses</i>	<i>Total</i>	<i>Per cent</i>
			<i>Rigid</i>	<i>Articulated</i>	<i>Non-freight carrying</i>			
Four	5,071	946	89	12	2	28	6,148	49.1
Six	5,087	407	122	97	3	29	5,745	45.9
Eight	429	32	1	2	-	-	464	3.7
Other	85	17	-	-	-	-	102	0.8
Not stated	61	3	1	-	-	2	67	0.5
<b>Total</b>	<b>10,733</b>	<b>1,405</b>	<b>213</b>	<b>111</b>	<b>5</b>	<b>59</b>	<b>12,526</b>	<b>100.0</b>

(a) See Explanatory notes, paragraphs 3 to 9.

**TABLE 11. NEW PLANT AND EQUIPMENT, CARAVANS, AND TRAILERS REGISTERED, DECEMBER 1994**

<i>Type</i>	<i>M.S.D.</i>	<i>Rest of Victoria</i>	<i>Total</i>
Mobile plant, equipment, etc.	52	27	79
Caravans	91	91	182
Trailers	875	670	1,545
<b>Total</b>	<b>1,018</b>	<b>788</b>	<b>1,806</b>

## EXPLANATORY NOTES

### Introduction

This publication contains detailed information regarding registrations of new motor vehicles and includes particulars of passenger vehicles and light commercial vehicles classified by make and tare, and rigid and articulated trucks by make and gross vehicle mass/gross combination mass. Details of registrations of non-freight carrying trucks, buses, motor cycles, trailers, caravans, and plant and equipment are also included, as are particulars of motor vehicles on register.

### Scope and coverage

2. Motor vehicle registration statistics are obtained from data made available by VIC ROADS and reflect the information as recorded in registration documents. In these statistics, registrations mean registrations processed by VIC ROADS during the period. In Victoria, registrations are not processed by the VIC ROADS until some time after the actual date of registration; for this reason, a number of registrations processed in a given month actually relate to vehicles registered prior to that month. During December 1994 the proportion of registrations processed by VIC ROADS that relate to the reference month was 95 per cent, with the remaining 5 per cent relating to earlier periods.

The statistics include vehicles with diplomatic and consular plates and government-owned vehicles other than those belonging to the defence services.

Although registration of recreation vehicles intended for use in public places other than roads is compulsory, particulars of such vehicles are excluded from statistics contained in this publication.

Recent changes in processing procedures implemented by the Roads Corporation may impact on statistics contained in this publication. Care should therefore be taken when using these statistics.

### Classification of vehicles

3. The decoding of the Vehicle Identification Number (VIN) has resulted in better identification of each vehicle's bodycode and consequently classification of vehicles to particular categories. Vehicles such as microbuses which, in the old system, had been classified to cars and station wagons in some States but to buses in other States, are now consistently classified. Similarly, in the old system utilities and cab-chasses, which were sometimes classified to small trucks, are now consistently classified to utilities. In addition, duplicate records, out of scope vehicles and those vehicles not registered for the first time can now be more accurately identified and therefore excluded from the statistics.

### Vehicle Type Definitions

4. *Passenger Vehicles.* Vehicles constructed primarily for the carriage of less than 10 passengers (including the driver). Included are cars, station wagons, 4WD passenger vehicles and forward control passenger vehicles.

5. *Light Commercial Vehicles.* Vehicles constructed primarily for the carriage of goods and do not exceed 3.5 tonnes gross vehicle mass (GVM). Included are utilities, panel vans, cab-chassis and forward control vehicles (whether 4WD or not).

6. *Rigid Trucks.* Vehicles constructed primarily for load carrying with gross vehicle mass (GVM) exceeding 3.5 tonnes. Included are normal rigid trucks with a tow bar, draw bar or other non-articulated coupling on the rear for use with a trailer or dolly.

7. *Articulated Trucks.* Vehicles constructed primarily for load carrying consisting of a prime mover having no significant load carrying area but with a turn table device which can be linked to a trailer. The gross combination mass (GCM) will exceed 3.5 tonnes with or without a trailer.

8. *Non-freight Carrying Trucks.* Includes specialist vehicles such as ambulances or mobile cranes or vehicles fitted with special purpose equipment and having no goods carrying capacity.

9. *Omnibuses.* Includes all passenger vehicles having more than nine seats, including the driver.

### Seasonal adjustment

10. Original and seasonally adjusted registrations of new motor vehicles are shown in Table 3. The two component series 'Passenger vehicles' and 'Other vehicles' are each adjusted separately, and the adjusted figures for total registrations are obtained by adding together the two component series. In the seasonally adjusted series, account has been taken of normal seasonal factors and 'trading day' effects (arising from the varying numbers of Sundays, Mondays, Tuesdays, etc. in the month) and the effect of movement in the date of Easter which may, in successive years, affect figures for different months.

Seasonally adjusted statistics should not be regarded as in any way definitive. In interpreting particular seasonally adjusted statistics it is important to bear in mind the methods by which they have been derived and the limitations to which the methods used are subject.

Seasonal adjustment is a means of removing the estimated effects of normal seasonal variation from the series so that the effects of other influences on the series may be more clearly recognised. Seasonal adjustment procedures do not aim to remove the irregular or non-seasonal influences which may be present in any particular months, such as the effect of introducing new models or of industrial disputes. Irregular influences that are highly volatile can make it difficult to interpret the movement of the series even after adjustment for seasonal variation.

11. The seasonally adjusted series can, however, be smoothed to reduce the impact of the irregular component in the adjusted series. This smoothed seasonally adjusted series is called a trend estimate. Trend estimates of motor vehicle registration statistics are shown in Table 3. The trend estimates have been derived by applying a 13-term Henderson-weighted moving average to the series.

While this technique enables smoothed data for the latest period to be produced, it does result in revisions to the smoothed series for the most recent months as additional observations become available. There may also be revisions as a result of changes in the original data, and as a result of the re-estimation of the seasonal factors.

#### **Motor vehicles on register**

12. Censuses of motor vehicles on register have been conducted in respect of 31 December 1955 and 1962, and 30 September 1971, 1976, 1979, 1982, 1985, 1988 and 1991. From December 1976, details of Commonwealth Government-owned vehicles on register are only available at 31 December each year.

For 30 June estimates, the previous 31 December figures for Commonwealth Government-owned vehicles are used. Motor vehicles on register at a given date are vehicles for which either fees were paid in advance, on that date, or retrospectively. Figures for motor vehicles on register prior to June 1982 were derived from estimates of the previous Census of Motor Vehicles. From June 1982 onwards, motor vehicles on register figures have been collected from the Roads Corporation.

#### **Unpublished tables**

13. Various tabulations of a more detailed nature than those contained in this publication are available in the form of computer printouts for inspection in this Office. It is recommended that inquiries regarding the availability of unpublished statistics be made by telephoning in the first instance. In general a charge is made for supply of such tabulations.

#### **Related publications**

14. Users may also wish to refer to the following ABS publications which are available on request:  
*Motor Vehicle Registrations, Australia* (9303.0) (monthly) (\$12.00)  
*Motor Vehicle Registrations, Australia* (9304.0) (annual) (\$25.00)  
*Motor Vehicle Census, Australia* (9309.0) (irregular)

Current publications produced by the ABS are listed in the *Catalogue of Publications, Australia* (1101.0). The ABS also issues, on Tuesdays and Fridays, a *Publications Advice* (1105.0) which lists publications to be released in the next few days. These are available from any ABS Office.

#### **Electronic services**

A large range of data is available via on-line services, diskette, magnetic tape, tape cartridge and CD ROM. For more details about our electronic data services, contact any ABS Office.

#### **Symbols and other usages**

r figure or series revised since previous issue  
 - nil or rounded down to zero  
 M.S.D. Melbourne Statistical Division  
 n.a. not available

Where figures have been rounded, discrepancies may occur between sums of the component items and totals.

**STUART JACKSON**

*Deputy Commonwealth Statistician*

