



**Australian  
Bureau of  
Statistics**

**November 1994  
The Labour Force  
New South Wales and  
Australian Capital Territory**

**Catalogue No. 6201.1**



**EMBARGOED UNTIL 11.30 A.M. 13 FEBRUARY 1995**

**THE LABOUR FORCE  
NEW SOUTH WALES AND  
AUSTRALIAN CAPITAL TERRITORY  
November 1994**

**GREG BRAY**  
**Deputy Commonwealth Statistician**

© Commonwealth of Australia 1995

## CONTENTS

	Page
<b>Summary of findings—</b>	
.. New South Wales	1
.. Australian Capital Territory	4
<b>Graphs</b>	
.. <i>Unemployment rate, New South Wales and Australia, November 1994</i>	1
.. <i>Monthly change in number of persons employed, New South Wales and Australia, November 1982 – November 1994</i>	1
.. <i>Unemployment rate, New South Wales and Australia, November 1982 – November 1994</i>	1
.. <i>Unemployment rate, Regions of New South Wales, November 1994</i>	2
.. <i>Average duration of unemployment, New South Wales, November 1992 – November 1994</i>	3
.. <i>Employed persons, Australian Capital Territory, November 1982 – November 1994</i>	4
.. <i>Unemployment rate, Australian Capital Territory and Australia, November 1982 – November 1994</i>	4
.. <i>Unemployment rate by age, Australian Capital Territory, November 1992 – November 1994</i>	4
.. <i>Average duration of unemployment, Australian Capital Territory, November 1992 – November 1994</i>	5

## NEW SOUTH WALES

### LABOUR FORCE STATUS

#### Table

<b>Labour force status, New South Wales—</b>	
1. Original series	7
2. Seasonally adjusted and trend series	8
3. Age	10
4. Aged 15–24 (single years) by full-time educational attendance	11
5. Family status	12

#### Graphs

<b>Trend series, New South Wales, November 1982 – November 1994—</b>	
.. <i>Employed males</i>	9
.. <i>Employed females</i>	9
.. <i>Unemployed males</i>	9
.. <i>Unemployed females</i>	9
.. <i>Male unemployment rate</i>	9
.. <i>Female unemployment rate</i>	9
.. <i>Male participation rate</i>	9
.. <i>Female participation rate</i>	9
<b>Persons aged 15–19 in the labour force, New South Wales: Full-time attendance at school or a tertiary educational institution, November 1992 – November 1994—</b>	
.. <i>Employed</i>	10
.. <i>Unemployed</i>	10

### EMPLOYED PERSONS

#### Table

<b>Employed persons, New South Wales—</b>	
6. Status in employment	12
7. Age	13
8. Industry	14
9. Occupation	16

#### Graphs

.. <i>Annual change in employment by age, New South Wales, November 1993 – November 1994</i>	13
.. <i>Employment by industry division, New South Wales, November 1994</i>	15
.. <i>Annual change in employment by occupation group, New South Wales, November 1993 – November 1994</i>	17

CONTENTS—continued

		<i>Page</i>
	<b>UNEMPLOYED PERSONS</b>	
<i>Table</i>	<b>Unemployed persons, New South Wales—</b>	
10.	Age	18
11.	Unemployment rate by age	18
12.	Industry and occupation of last full-time job	19
13.	Duration of unemployment	20
14.	Unemployment rate by birthplace and period of arrival	20
15.	Duration of unemployment by age	21
<i>Graphs</i>		
..	<i>Unemployment rate by age, New South Wales, November 1992 – November 1994</i>	19
..	<i>Unemployment rate by period of arrival of overseas born, New South Wales, November 1994</i>	20
	<b>REGIONAL DATA</b>	
<i>Table</i>	<b>Labour force status—</b>	
16.	Sydney Major Statistical Region	22
17.	Balance of New South Wales Major Statistical Region	23
18.	Regions of New South Wales	24
	<b>Employed persons—</b>	
19.	Industry and occupation, Sydney Major Statistical Region and Balance of New South Wales Major Statistical Region	32
	<b>AUSTRALIAN CAPITAL TERRITORY</b>	
	<b>LABOUR FORCE STATUS</b>	
<i>Table</i>	<b>Labour force status, Australian Capital Territory—</b>	
20.	Original series	33
21.	Trend series	34
22.	Age	36
23.	Non-institutionalised persons: Birthplace and year of arrival	36
<i>Graphs</i>		
..	<i>Trend series, Australian Capital Territory, November 1982 – November 1994—</i>	
..	<i>Employed males</i>	35
..	<i>Employed females</i>	35
..	<i>Unemployed males</i>	35
..	<i>Unemployed females</i>	35
..	<i>Male unemployment rate</i>	35
..	<i>Female unemployment rate</i>	35
..	<i>Male participation rate</i>	35
..	<i>Female participation rate</i>	35

CONTENTS—continued

		<i>Page</i>
<b>EMPLOYED PERSONS</b>		
<i>Table</i>		
24.	Employed persons, industry and occupation, Australian Capital Territory	37
<i>Graph</i>		
..	<i>Employment by industry division, Australian Capital Territory, November 1994</i>	37
<b>UNEMPLOYED PERSONS</b>		
<i>Table</i>		
25.	Long-term unemployment, Australian Capital Territory	38
<i>Graph</i>		
..	<i>Long-term unemployed as a proportion of total unemployed, Australian Capital Territory, November 1992 – November 1994</i>	38
..	<b>Labour force supplementary topics</b>	<b>39</b>
..	<b>Explanatory notes</b>	<b>40</b>
..	<b>Technical note on data reliability</b>	<b>43</b>
<b>Appendix</b>		
..	<b>Regions of New South Wales and their statistical local areas</b>	<b>48</b>
<i>Maps</i>		
..	<i>Regions of New South Wales</i>	<i>50</i>
..	<i>Regions of Sydney Major Statistical Region</i>	<i>50</i>

---

<b>INQUIRIES</b>	<ul style="list-style-type: none"> <li>• <i>for further information about statistics in this publication and the availability of related unpublished statistics, contact the following—</i>  ABS NSW office — Elizabeth Scrivener on Sydney (02) 268 4212 or Client Services  Statistical Support on Sydney (02) 268 4398  ABS ACT office — Bill Syms on Canberra (06) 207 0285</li> <li>• <i>for information about other ABS statistics and services please refer to the back cover of this publication.</i></li> </ul>
------------------	--

---





## SUMMARY OF FINDINGS New South Wales

### Seasonally adjusted estimates

In November 1994 there were 2,679,700 people **employed** in NSW. This was an increase of 76,100 from November 1993.

The **unemployment rate** in November 1994 was 8.8%, the same as the October rate. The rate was 9.1% for males and 8.5% for females. The NSW rates for males, females and persons were less than the corresponding Australian rates of 9.5%, 9.0% and 9.3% respectively.

The number of **unemployed** people was estimated at 259,200 in November 1994. This was similar to the October estimate but 52,600 lower than in November 1993. Males represented 59% of the unemployed, compared with 60% in November 1993.

The **participation rate** stood at 61.7% overall, with a rate of 72.1% for males and 51.7% for females.

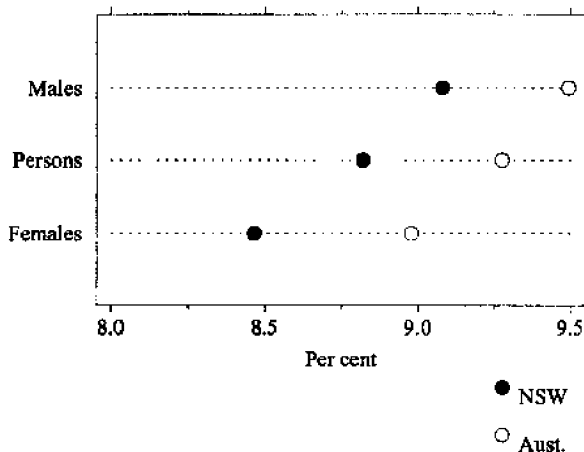
In November 1994 the size of the **labour force** was estimated at 2,938,900 people. This was an increase of 23,500 over the previous 12 months.

**LABOUR FORCE, NSW**  
(Seasonally adjusted)

	<i>Labour force</i>		<i>Unemployment rate</i> (per cent)	<i>Participation rate</i> (per cent)
	<i>Employed</i> ('000)	<i>Unemployed</i> ('000)		
1993—				
November	2,603.6	311.8	10.7	61.8
1994—				
September	2,690.6	275.0	9.3	62.4
October	2,681.0	259.6	8.8	61.8
November	2,679.7	259.2	8.8	61.7
<b>Annual change (a)</b>	<b>2.9%</b>	<b>-16.9%</b>	<b>-1.9</b>	<b>-0.1</b>

(a) For rates, the annual change is expressed as the difference in percentage points.

**UNEMPLOYMENT RATE, NOVEMBER 1994**  
(Seasonally adjusted)



### Trend series estimates

The number of **employed** people in NSW was 2,686,500 in November 1994. The trend estimate of employed people has increased each month since March 1993.

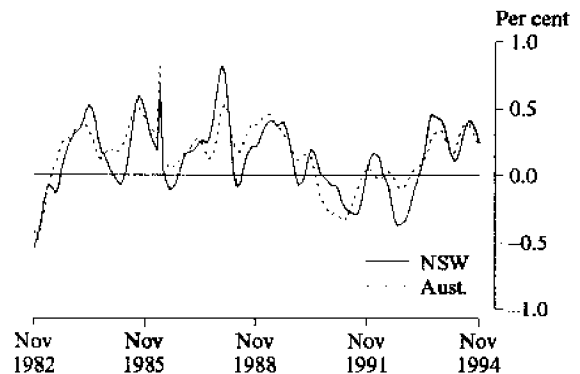
The overall trend **unemployment rate** was 8.8%, as compared to 10.6% in November 1993. A downward movement has occurred each month since November 1993. The November 1994 rate was the lowest unemployment rate since July 1991.

The trend estimate of **unemployed** people in November 1994 was 259,700. There has been a decrease in each month since November 1993 and a decrease of 49,200 in the 12 months to November 1994.

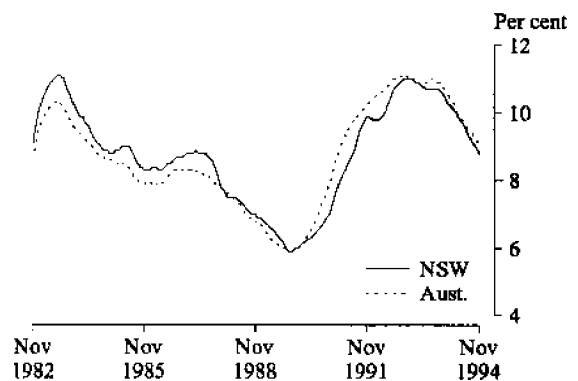
The trend series **participation rate** was 61.9% in November 1994, compared to 61.7% in November 1993.

In November 1994 the trend estimate of the **labour force** stood at 2,946,200. The estimate has shown an upward trend since April and has increased by 37,200 since November 1993.

**MONTHLY CHANGE IN NUMBER OF PERSONS EMPLOYED**  
(Trend)



**UNEMPLOYMENT RATE (Trend)**



Source: *The Labour Force, Australia (6203.0)*

## Regions of NSW

While the Labour Force Survey is designed primarily to produce reliable estimates at the national and State/Territory level, it also delivers estimates for a number of regions within States.

As with national and State estimates, regional labour force estimates are subject to sampling error. Since estimates for regions are components of corresponding estimates at the State level — and are thus based on a considerably smaller sample size — they are subject to higher relative standard errors. Care should therefore be taken in interpretation of regional estimates, particularly month to month movements. Tables of standard errors are included in the Technical Note on page 44–48 of this publication.

### Sydney

In November 1994 the estimate of the number of people **employed** in the Sydney Major Statistical Region (MSR) was 1,758,400. This was an increase of 46,400 in the 12 months since November 1993.

In November 1994 the **unemployment rate** was 7.7%, a decrease of 1.7 percentage points since November 1993.

The unemployment rates within Sydney (MSR) varied between 13.4% in Fairfield–Liverpool Statistical Region (SR) and 3.4% in Northern Beaches (SR).

The **participation rate** for Sydney (MSR) was 63.5%, the same as the November 1993 rate. The rate for males was 73.4% and for females 54.0%. Gosford–Wyong (SR) recorded the lowest participation rate of 54.6% while the highest rate was 69.1% in Northern Beaches (SR).

### Balance of NSW

In November 1994 the number of **employed** people in this area of NSW was 926,500, an increase of 29,900 since November 1993.

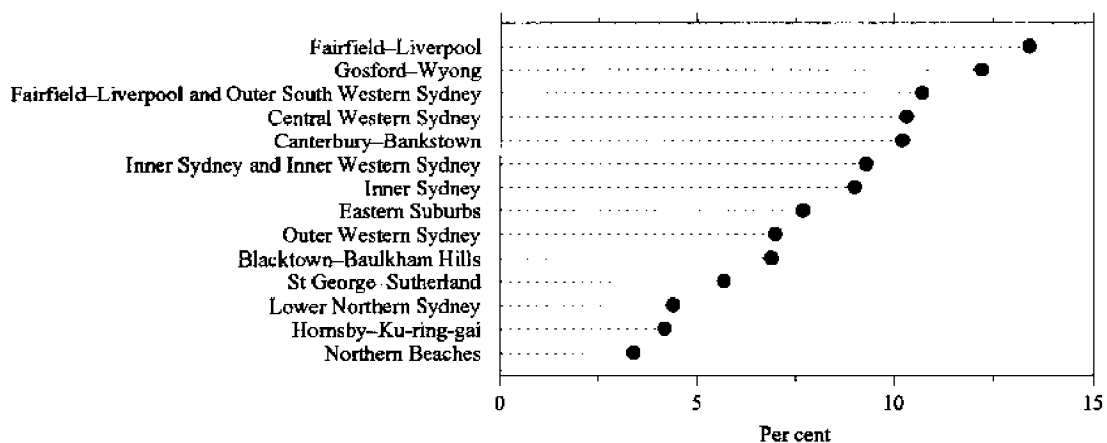
In November 1994 the **unemployment rate** was 9.3%, a decrease from 11.3% in November 1993.

Overall the unemployment rate varied from 5.9% in Murray–Murrumbidgee (SR) to 11.9% in Newcastle (SRS).

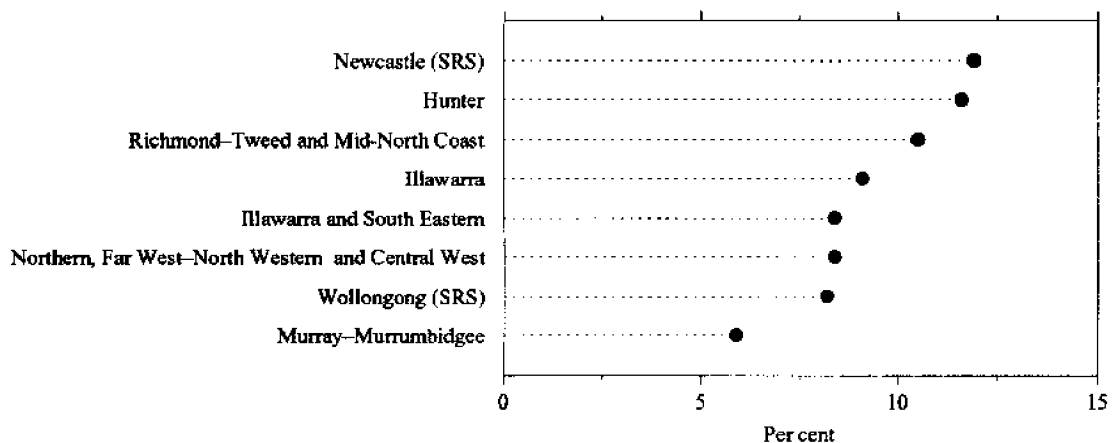
The participation rate for the Balance of NSW (MSR) was 58.0% in November 1994. The rate for males was 68.9% and for females 47.3%.

## UNEMPLOYMENT RATE, REGIONS OF NSW, NOVEMBER 1994

### Sydney (MSR)



### Balance of NSW (MSR)



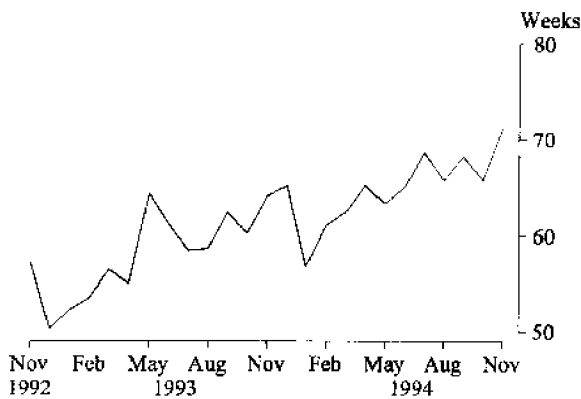
### Duration of unemployment

In November 1994 the **long term unemployed** (52 weeks and over) represented 39% of the total unemployed. This compares with 42% in November 1993.

The average duration of unemployment was 71.2 weeks in November 1994, having increased from 63.6 weeks in November 1993.

Average duration of unemployment increased with age reaching an average of 92.3 weeks for people aged 45 years and over.

AVERAGE DURATION OF UNEMPLOYMENT, NSW



### Age

Between November 1993 and November 1994, an increase in employment was recorded by all age groups except 25–34 year olds. The younger age groups showed the largest gains in employment, with an increase of 10% for 15–19 year olds and 8% for those aged 20–24 years.

Part-time workers represented an estimated 23% of all employed people in November 1994, but this proportion varied between the age groups. The highest levels were among those aged 15–19 years with 59% and those aged 65 years and over with 40%.

Estimated unemployment rates have decreased for all age groups in the 12 months to November 1994. The rate was highest for 15–19 year olds at 17.8% then declined through the older age groups with the lowest rate of 6.5% for people aged 55 and over. Nearly 40% of 15–19 year olds were looking for part-time work.

### Industry and occupation

The industries with the largest number of employees in NSW in November 1994 were *Retail trade* with 398,200 (or 15% of the total), *Manufacturing* with 369,300 (14%) and *Property and business services* (252,600 or 9%).

*Manufacturing* employed the largest number of people in Sydney (MSR) with 15% of the total while *Retail trade* had the largest number in Balance of NSW (MSR) with 17%.

The largest occupation group in NSW was *Clerks* with 465,000 employees (17% of the total). This was also the largest occupation group in Sydney (MSR) with 334,200 employees (19%) while *Labourers and related workers* with 155,800 (17%) was the largest group in Balance of NSW (MSR).

Between November 1993 and November 1994 five of the eight occupation groups showed increases in employment. The largest increases were in *Labourers and related workers* (12%) and *Salespersons and personal service workers* (10%). The largest decrease was in *Plant and Machine operators and drivers* which fell by 6%.

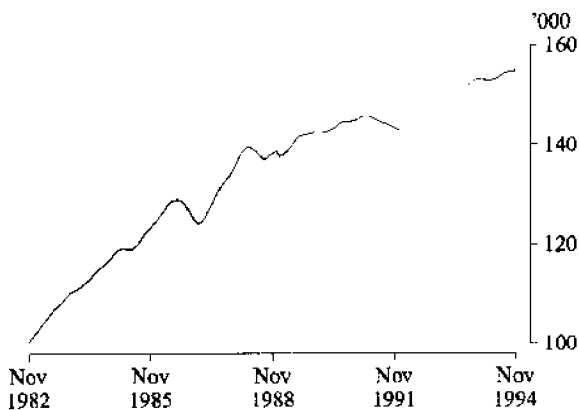
## SUMMARY OF FINDINGS Australian Capital Territory

*Note: Seasonally adjusted estimates are not available for the ACT.*

### Trend series

The trend estimate of the number of **employed** people in the ACT in November 1994 was 155,200, an increase of 2,200 people since November 1993. Employment has increased slightly in each month since March 1994.

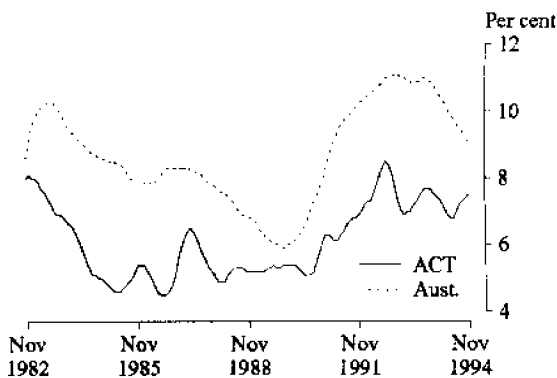
EMPLOYED PERSONS, ACT  
(Trend)



The trend **unemployment rate** was 7.5% in November 1994. The rate for males (8.0%) was higher than for females (6.9%) while in November 1993 the male and female rates were identical (7.6%). The overall unemployment rate declined to 6.8% in May 1994 before rising gradually over the next six months.

In November 1994 the trend estimate of the number of **unemployed** people in the ACT was 12,600, the same as in November 1993. As a proportion of the total unemployed, males increased from 54% in November 1993 to 57% in November 1994.

UNEMPLOYMENT RATE  
(Trend)



The **participation** rate in November 1994 was 73.2%, a small decrease on the November 1993 figure of 73.4%. The participation rate was 80.1% for males and 66.7% for females in November 1994.

The ACT **labour force** was estimated at 167,700 in November 1994, 2,100 higher than in November 1993.

### Age

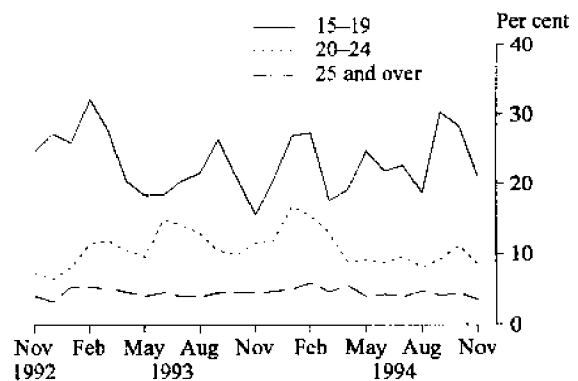
In November 1994 the unemployment rate in the ACT decreased with age, with the highest rate (21.2%) among people aged 15–19 years. The rate was 8.6% for people aged 20–24 years and 3.7% for those aged 25 years and over.

The majority (74%) of employed 15–19 year olds worked part-time, and over half (56%) of the unemployed in this age group were looking for part-time work. The average hours worked per week by those aged 15–19 years was 17.8.

The proportion of employed people who worked full-time increased in the older age groups (70% of 20–24 year olds and 82% of people aged 25 years and over). On average those aged 20–24 years worked 32.7 hours per week and those 25 years and over worked 36.8 hours per week.

The participation rate varied between 62.1% for those aged 15–19 years to 80.1% for those aged 20–24 years. Amongst 15–19 year olds who were not in the labour force 82% were attending school.

UNEMPLOYMENT RATE BY AGE, ACT



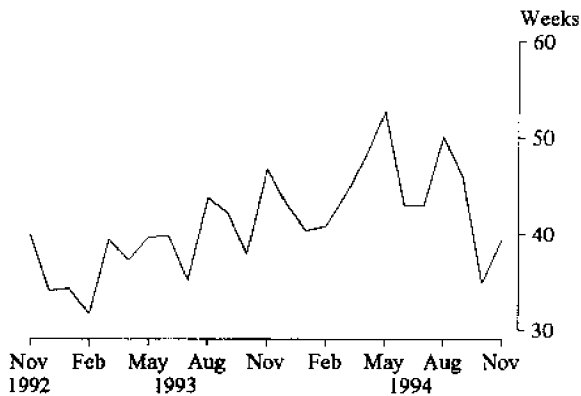
### Duration of unemployment

In November 1994 the average duration of unemployment in the ACT was 39.4 weeks.

The long term unemployed (52 weeks and over) represented 22% of all unemployed people in November 1994. This was a decrease from November 1993, when the proportion was 26%.

Among males the long term unemployed were 20% of the total, while for females the estimate was 25%.

AVERAGE DURATION OF UNEMPLOYMENT, ACT



### Country of birth

In November 1994 nearly three-quarters of the labour force (74%) in the ACT were born in Australia with a further 11% born outside Australia in the *main English speaking countries*. However, people born outside Australia in *other than main English speaking countries* recorded the highest levels of unemployment and made up over a quarter (26%) of unemployed people in the ACT.

### Industry and occupation

In November 1994, the industry division with the most employees in the ACT was *Government administration and defence* with 37,000 employees or nearly a quarter (24%) of the total. This was followed by *Retail trade* with 21,400 employees (14% of the total) and *Property and business services* (18,100 or 12%).

The largest occupation group was *Clerks* with nearly a quarter (24%) of employed people and 38% of employed women. Overall this group increased by 3,900 (about 11%) in the last 12 months to reach 38,300 in November 1994.

*Professionals* were the next largest group with 19% of employed people. This was the largest occupation group among males (22%). Between November 1993 and November 1994, the *Professionals* group decreased by 4,200, the largest fall in an occupation group over this period.

**NOTE**

This publication contains estimates of the civilian labour force in NSW and the ACT derived from the Labour Force Survey component of the Monthly Population Survey, which is conducted on a sample basis throughout Australia.

Explanatory notes for the data contained within this publication can be found on page 40.

Care should be taken in the interpretation of month-to-month movements in estimates. During the period September to December 1992 a new sample for the Labour Force Survey was introduced, which has increased the variability of estimates of month-to-month movements. See paragraphs 4-6 of the Explanatory Notes or *Information Paper: Labour Force Survey Sample Design (6269.0)*, available from any ABS office.

**GREG BRAY**  
Deputy Commonwealth Statistician

TABLE 1. LABOUR FORCE STATUS: ORIGINAL SERIES, NSW

Month	Employed		Unemployed			Labour force ('000)	Not in labour force ('000)	Civilian population aged 15 and over ('000)	Unemployment rate (per cent)	Participation rate (per cent)	
	Full-time workers ('000)	Part-time workers ('000)	Total ('000)	Looking for full-time work ('000)	Looking for part-time work ('000)						
MALES											
November—											
1990	1,435.4	118.2	1,553.6	103.3	10.9	114.3	1,667.8	579.0	2,246.8	6.9	74.2
1991	1,373.2	139.9	1,513.1	148.5	9.8	158.3	1,671.3	602.2	2,273.6	9.5	73.5
1992	1,308.2	145.7	1,453.9	173.2	12.9	186.1	1,639.9	655.3	2,295.2	11.3	71.5
1993—											
September	1,329.5	151.8	1,481.3	172.6	17.4	190.1	1,671.4	640.7	2,312.0	11.4	72.3
October	1,338.4	147.5	1,486.0	166.6	18.9	185.5	1,671.5	642.4	2,313.9	11.1	72.2
November	1,337.6	148.9	1,486.4	165.5	11.2	176.7	1,663.1	652.6	2,315.7	10.6	71.8
1994—											
August	1,346.4	173.4	1,519.8	141.4	12.4	153.8	1,673.6	659.4	2,333.0	9.2	71.7
September	1,374.9	165.2	1,540.1	143.7	19.5	163.3	1,703.3	631.7	2,335.1	9.6	72.9
October	1,366.2	173.6	1,539.8	130.9	12.8	143.7	1,683.5	653.6	2,337.1	8.5	72.0
November	1,369.3	164.9	1,534.2	129.0	14.6	143.6	1,677.8	661.3	2,339.1	8.6	71.7
MARRIED FEMALES											
November—											
1990	367.6	294.2	661.8	13.8	10.9	24.6	686.4	659.8	1,346.2	3.6	51.0
1991	350.9	300.3	651.2	29.7	11.7	41.4	692.6	663.5	1,356.1	6.0	51.1
1992	365.1	290.7	655.8	27.5	13.4	40.9	696.7	648.4	1,345.1	5.9	51.8
1993—											
September	361.8	298.6	660.4	31.7	13.8	45.5	705.9	633.8	1,339.7	6.4	52.7
October	376.4	285.6	662.0	32.5	17.0	49.6	711.6	632.0	1,343.6	7.0	53.0
November	378.3	298.3	676.6	35.6	16.5	52.1	728.8	615.3	1,344.1	7.2	54.2
1994—											
August	385.3	292.3	677.6	26.4	12.0	38.4	716.0	667.5	1,383.5	5.4	51.8
September	402.3	313.5	715.8	27.5	16.5	44.0	759.8	635.4	1,395.2	5.8	54.5
October	387.1	290.4	677.5	23.2	14.1	37.3	714.8	666.0	1,380.8	5.2	51.8
November	384.7	301.9	686.5	25.5	17.9	43.4	729.9	654.2	1,384.1	5.9	52.7
ALL FEMALES											
November—											
1990	671.0	416.3	1,087.3	49.2	23.7	72.9	1,160.2	1,161.4	2,321.6	6.3	50.0
1991	644.3	425.5	1,069.9	80.2	26.8	107.0	1,176.9	1,175.3	2,352.2	9.1	50.0
1992	642.9	427.3	1,070.2	73.4	29.0	102.4	1,172.6	1,203.3	2,375.9	8.7	49.4
1993—											
September	660.3	452.9	1,113.2	82.2	33.0	115.2	1,228.4	1,166.1	2,394.5	9.4	51.3
October	678.7	431.2	1,109.9	84.0	33.9	117.9	1,227.8	1,168.8	2,396.6	9.6	51.2
November	682.9	439.4	1,122.2	80.0	34.3	114.4	1,236.6	1,162.0	2,398.6	9.2	51.6
1994—											
August	676.3	438.3	1,114.6	74.8	26.5	101.4	1,215.9	1,202.1	2,418.0	8.3	50.3
September	704.9	466.0	1,170.9	71.2	39.6	110.8	1,281.7	1,138.6	2,420.3	8.6	53.0
October	704.4	436.6	1,141.0	69.1	33.9	103.0	1,243.9	1,178.4	2,422.3	8.3	51.4
November	695.0	455.7	1,150.7	66.7	31.8	98.5	1,249.2	1,175.1	2,424.3	7.9	51.5
PERSONS											
November—											
1990	2,106.3	534.5	2,640.9	152.5	34.6	187.1	2,828.0	1,740.5	4,568.4	6.6	61.9
1991	2,017.6	565.4	2,583.0	228.7	36.6	265.3	2,848.2	1,777.5	4,625.7	9.3	61.6
1992	1,951.1	573.0	2,524.1	246.6	41.9	288.5	2,812.5	1,858.6	4,671.1	10.3	60.2
1993—											
September	1,989.8	604.7	2,594.5	254.8	50.5	305.3	2,899.8	1,806.8	4,706.6	10.5	61.6
October	2,017.1	578.7	2,595.9	250.6	52.9	303.4	2,899.3	1,811.2	4,710.5	10.5	61.5
November	2,020.4	588.3	2,608.7	245.6	45.5	291.1	2,899.8	1,814.6	4,714.4	10.0	61.5
1994—											
August	2,022.7	611.7	2,634.4	216.2	38.9	255.1	2,889.5	1,861.6	4,751.1	8.8	60.8
September	2,079.8	631.2	2,711.0	214.9	59.1	274.0	2,985.0	1,770.4	4,755.4	9.2	62.8
October	2,070.6	610.2	2,680.8	200.0	46.7	246.7	2,927.5	1,831.9	4,759.4	8.4	61.5
November	2,064.2	620.6	2,684.9	195.7	46.4	242.0	2,926.9	1,836.4	4,763.4	8.3	61.4

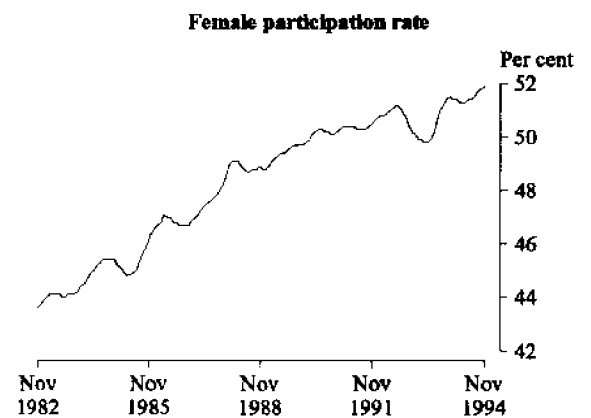
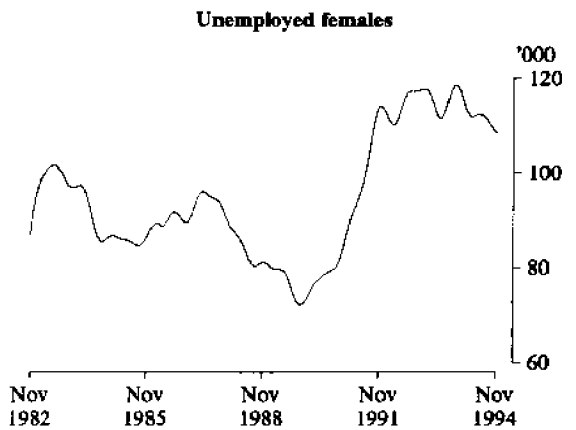
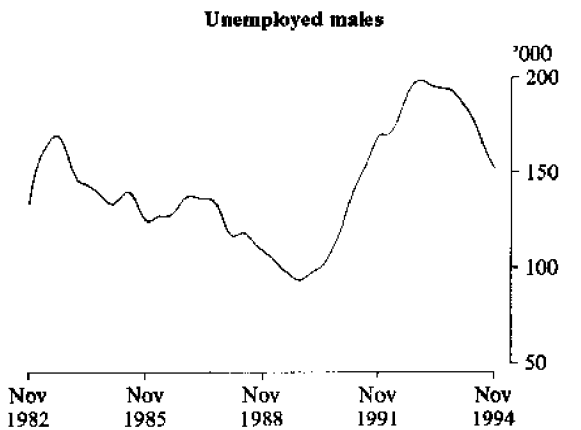
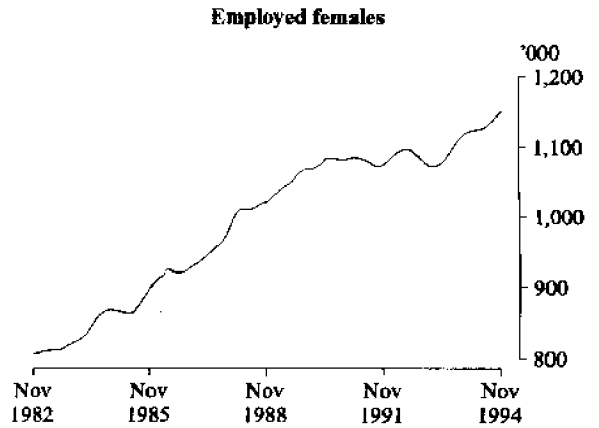
TABLE 2. LABOUR FORCE STATUS: SEASONALLY ADJUSTED AND TREND SERIES, NSW

Month	Seasonally adjusted series					Trend series (a)				
	Employed ('000)	Unemployed ('000)	Labour force ('000)	Unemployment rate (per cent)	Participation rate (per cent)	Employed ('000)	Unemployed ('000)	Labour force ('000)	Unemployment rate (per cent)	Participation rate (per cent)
MALES										
<i>November—</i>										
1990	1,552.8	122.6	1,675.4	7.3	74.6	1,558.1	118.5	1,676.6	7.1	74.6
1991	1,512.2	169.1	1,681.2	10.1	73.9	1,509.7	169.3	1,679.0	10.1	73.8
1992	1,452.8	198.3	1,651.1	12.0	71.9	1,473.5	198.0	1,671.5	11.8	72.8
<i>1993—</i>										
September	1,474.7	192.2	1,666.9	11.5	72.1	1,475.2	193.3	1,668.5	11.6	72.2
October	1,483.2	194.6	1,677.8	11.6	72.5	1,480.1	192.1	1,672.2	11.5	72.3
November	1,485.3	188.4	1,673.6	11.3	72.3	1,485.6	190.5	1,676.1	11.4	72.4
December	1,491.8	192.2	1,684.0	11.4	72.7	1,491.1	188.5	1,679.6	11.2	72.5
<i>1994—</i>										
January	1,494.1	186.8	1,680.8	11.1	72.5	1,495.3	186.3	1,681.6	11.1	72.5
February	1,501.8	178.3	1,680.1	10.6	72.4	1,497.8	184.0	1,681.8	10.9	72.5
March	1,501.1	183.4	1,684.5	10.9	72.5	1,499.8	181.5	1,681.3	10.8	72.4
April	1,503.0	177.3	1,680.3	10.6	72.3	1,502.5	178.5	1,681.0	10.6	72.3
May	1,499.2	178.1	1,677.3	10.6	72.1	1,506.7	174.9	1,681.7	10.4	72.3
June	1,509.4	176.4	1,685.8	10.5	72.4	1,512.5	170.7	1,683.2	10.1	72.3
July	1,520.5	160.3	1,680.8	9.5	72.1	1,519.3	166.1	1,685.4	9.9	72.3
August	1,532.1	155.7	1,687.8	9.2	72.3	1,525.9	161.6	1,687.5	9.6	72.3
September	1,533.2	165.3	1,698.5	9.7	72.7	1,531.4	157.7	1,689.0	9.3	72.3
October	1,536.8	150.5	1,687.3	8.9	72.2	1,535.5	154.5	1,690.0	9.1	72.3
November	1,532.9	153.1	1,686.0	9.1	72.1	1,538.6	151.9	1,690.5	9.0	72.3
FEMALES										
<i>November—</i>										
1990	1,082.5	79.5	1,162.0	6.8	50.1	1,081.9	81.4	1,163.3	7.0	50.1
1991	1,065.8	116.6	1,182.4	9.9	50.3	1,074.4	113.9	1,188.3	9.6	50.5
1992	1,066.2	110.8	1,177.0	9.4	49.5	1,081.1	117.2	1,198.4	9.8	50.4
<i>1993—</i>										
September	1,100.4	114.2	1,214.6	9.4	50.7	1,103.3	116.9	1,220.2	9.6	51.0
October	1,112.8	125.2	1,238.1	10.1	51.7	1,109.5	118.3	1,227.8	9.6	51.2
November	1,118.3	123.4	1,241.7	9.9	51.8	1,114.4	118.4	1,232.9	9.6	51.4
December	1,115.3	109.8	1,225.1	9.0	51.0	1,118.4	117.2	1,235.6	9.5	51.5
<i>1994—</i>										
January	1,122.7	115.6	1,238.3	9.3	51.5	1,120.9	115.1	1,236.0	9.3	51.4
February	1,119.0	114.3	1,233.4	9.3	51.3	1,122.7	113.0	1,235.8	9.1	51.4
March	1,127.4	110.5	1,237.9	8.9	51.4	1,123.6	112.0	1,235.6	9.1	51.3
April	1,121.3	113.8	1,235.1	9.2	51.3	1,124.1	111.9	1,235.9	9.1	51.3
May	1,131.2	104.9	1,236.1	8.5	51.3	1,125.1	112.3	1,237.4	9.1	51.3
June	1,122.2	117.1	1,239.3	9.4	51.3	1,127.2	112.5	1,239.7	9.1	51.4
July	1,131.2	118.2	1,249.4	9.5	51.7	1,130.6	112.1	1,242.7	9.0	51.4
August	1,119.7	107.0	1,226.8	8.7	50.7	1,135.1	111.3	1,246.4	8.9	51.5
September	1,157.5	109.7	1,267.2	8.7	52.4	1,139.9	110.1	1,250.0	8.8	51.6
October	1,144.2	109.1	1,253.3	8.7	51.7	1,144.4	108.8	1,253.2	8.7	51.7
November	1,146.8	106.1	1,252.9	8.5	51.7	1,147.9	107.8	1,255.7	8.6	51.8
PERSONS										
<i>November—</i>										
1990	2,635.4	202.1	2,837.4	7.1	62.1	2,640.0	199.8	2,839.8	7.0	62.2
1991	2,578.0	285.7	2,863.6	10.0	61.9	2,584.1	283.1	2,867.3	9.9	62.0
1992	2,519.0	309.1	2,828.2	10.9	60.5	2,554.6	315.3	2,869.9	11.0	61.4
<i>1993—</i>										
September	2,575.1	306.4	2,881.5	10.6	61.2	2,578.5	310.2	2,888.7	10.7	61.4
October	2,596.1	319.8	2,915.9	11.0	61.9	2,589.6	310.4	2,900.0	10.7	61.6
November	2,603.6	311.8	2,915.4	10.7	61.8	2,600.1	308.9	2,909.0	10.6	61.7
December	2,607.1	302.1	2,909.1	10.4	61.7	2,609.5	305.7	2,915.2	10.5	61.8
<i>1994—</i>										
January	2,616.8	302.3	2,919.2	10.4	61.8	2,616.2	301.4	2,917.6	10.3	61.8
February	2,620.8	292.6	2,913.4	10.0	61.7	2,620.5	297.1	2,917.6	10.2	61.7
March	2,628.4	293.9	2,922.4	10.1	61.8	2,623.4	293.4	2,916.8	10.1	61.7
April	2,624.4	291.1	2,915.5	10.0	61.6	2,626.6	290.4	2,916.9	10.0	61.6
May	2,630.4	283.0	2,913.4	9.7	61.5	2,631.8	287.3	2,919.1	9.8	61.6
June	2,631.6	293.5	2,925.1	10.0	61.7	2,639.7	283.2	2,922.9	9.7	61.6
July	2,651.7	278.5	2,930.2	9.5	61.7	2,649.9	278.3	2,928.2	9.5	61.7
August	2,651.8	262.7	2,914.5	9.0	61.3	2,660.9	272.9	2,933.9	9.3	61.8
September	2,690.6	275.0	2,965.7	9.3	62.4	2,671.2	267.8	2,939.0	9.1	61.8
October	2,681.0	259.6	2,940.6	8.8	61.8	2,680.0	263.3	2,943.2	8.9	61.8
November	2,679.7	259.2	2,938.9	8.8	61.7	2,686.5	259.7	2,946.2	8.8	61.9

(a) See Explanatory Note 26.



TREND SERIES, NSW (a)



(a) Comparisons between these graphs should not be made, as their vertical axes are not similarly scaled.

TABLE 3. LABOUR FORCE STATUS: AGE, NSW, NOVEMBER 1994

Age group (years)	Employed		Unemployed			Labour force ('000)	Not in labour force ('000)	Civilian population aged 15 and over ('000)	Unemployment rate (per cent)	Participation rate (per cent)	
	Full-time workers ('000)	Part-time workers ('000)	Total ('000)	Looking for full-time work ('000)	Looking for part-time work ('000)						Total ('000)
<b>MALES</b>											
15-19	45.1	50.2	95.2	14.5	7.1	21.6	116.8	97.4	214.2	18.5	54.5
20-24	160.4	24.3	184.7	20.0	* 2.0	22.0	206.7	32.8	239.5	10.6	86.3
25-34	360.6	26.5	387.1	34.8	* 1.3	36.2	423.3	46.5	469.8	8.5	90.1
35-44	365.1	20.2	385.4	25.6	* 1.6	27.2	412.6	39.9	452.5	6.6	91.2
45-54	296.1	15.9	312.0	20.2	* 1.6	21.7	333.7	43.2	376.9	6.5	88.5
55-59	81.0	9.7	90.7	9.5	* 0.4	9.9	100.6	38.3	138.9	9.8	72.4
60-64	39.7	8.2	47.9	* 4.4	* 0.6	* 5.0	52.9	69.1	122.0	* 9.5	43.4
65 and over	21.2	10.0	31.2	* 0.0	* 0.0	* 0.0	31.2	294.1	325.3	* 0.0	9.6
<b>Total</b>	<b>1,369.3</b>	<b>164.9</b>	<b>1,534.2</b>	<b>129.0</b>	<b>14.6</b>	<b>143.6</b>	<b>1,677.8</b>	<b>661.3</b>	<b>2,339.1</b>	<b>8.6</b>	<b>71.7</b>
<b>MARRIED FEMALES</b>											
15-19	* 1.9	* 1.3	* 3.2	* 1.0	* 1.0	* 2.0	* 5.2	* 1.6	6.8	* 38.0	* 76.5
20-24	29.0	9.5	38.5	* 2.3	* 1.5	* 3.9	42.3	17.3	59.6	* 9.1	71.0
25-34	105.7	78.1	183.8	8.1	6.1	14.2	198.0	124.5	322.5	7.2	61.4
35-44	119.0	110.2	229.3	8.4	* 4.5	12.9	242.2	110.1	352.3	5.3	68.8
45-54	102.4	75.6	178.1	5.7	* 4.1	9.8	187.9	95.5	283.3	5.2	66.3
55-59	19.8	14.4	34.2	* 0.0	* 0.0	* 0.0	34.2	61.3	95.4	* 0.0	35.8
60-64	* 5.1	8.3	13.4	* 0.0	* 0.6	* 0.6	14.0	70.0	84.1	* 4.5	16.7
65 and over	* 1.8	* 4.4	6.2	* 0.0	* 0.0	* 0.0	6.2	174.0	180.1	* 0.0	3.4
<b>Total</b>	<b>384.7</b>	<b>301.9</b>	<b>686.5</b>	<b>25.5</b>	<b>17.9</b>	<b>43.4</b>	<b>729.9</b>	<b>654.2</b>	<b>1,384.1</b>	<b>5.9</b>	<b>52.7</b>
<b>ALL FEMALES</b>											
15-19	33.5	61.2	94.7	10.5	9.0	19.5	114.2	90.8	205.0	17.0	55.7
20-24	125.3	43.9	169.2	9.9	* 2.3	12.2	181.4	53.8	235.2	6.7	77.1
25-34	191.5	96.4	287.9	18.2	7.9	26.1	314.0	161.6	475.5	8.3	66.0
35-44	167.0	128.7	295.6	15.9	6.6	22.5	318.1	136.9	455.0	7.1	69.9
45-54	136.0	88.1	224.1	10.8	* 5.1	15.9	240.0	123.2	363.2	6.6	66.1
55-59	30.1	20.0	50.1	* 1.4	* 0.3	* 1.7	51.8	84.3	136.1	* 3.3	38.0
60-64	8.0	10.8	18.8	* 0.0	* 0.6	* 0.6	19.4	104.5	124.0	* 3.3	15.7
65 and over	* 3.6	6.8	10.4	* 0.0	* 0.0	* 0.0	10.4	420.1	430.4	* 0.0	2.4
<b>Total</b>	<b>695.0</b>	<b>455.7</b>	<b>1,150.7</b>	<b>66.7</b>	<b>31.8</b>	<b>98.5</b>	<b>1,249.2</b>	<b>1,175.1</b>	<b>2,424.3</b>	<b>7.9</b>	<b>51.5</b>
<b>PERSONS</b>											
15-19	78.6	111.3	189.9	24.9	16.1	41.0	231.0	188.2	419.1	17.8	55.1
20-24	285.7	68.2	353.9	29.9	* 4.3	34.2	388.1	86.6	474.7	8.8	81.8
25-34	552.1	122.9	675.0	53.1	9.2	62.3	737.3	208.1	945.4	8.4	78.0
35-44	532.1	148.9	681.0	41.5	8.1	49.7	730.7	176.8	907.5	6.8	80.5
45-54	432.1	103.9	536.1	31.0	6.6	37.6	573.7	166.4	740.1	6.6	77.5
55-59	111.1	29.7	140.8	10.9	* 0.7	11.6	152.3	122.6	274.9	7.6	55.4
60-64	47.7	19.0	66.7	* 4.4	* 1.3	5.7	72.3	173.6	246.0	* 7.8	29.4
65 and over	24.8	16.7	41.6	* 0.0	* 0.0	* 0.0	41.6	714.2	755.7	* 0.0	5.5
<b>Total</b>	<b>2,064.2</b>	<b>620.6</b>	<b>2,684.9</b>	<b>195.7</b>	<b>46.4</b>	<b>242.0</b>	<b>2,926.9</b>	<b>1,836.4</b>	<b>4,763.4</b>	<b>8.3</b>	<b>61.4</b>

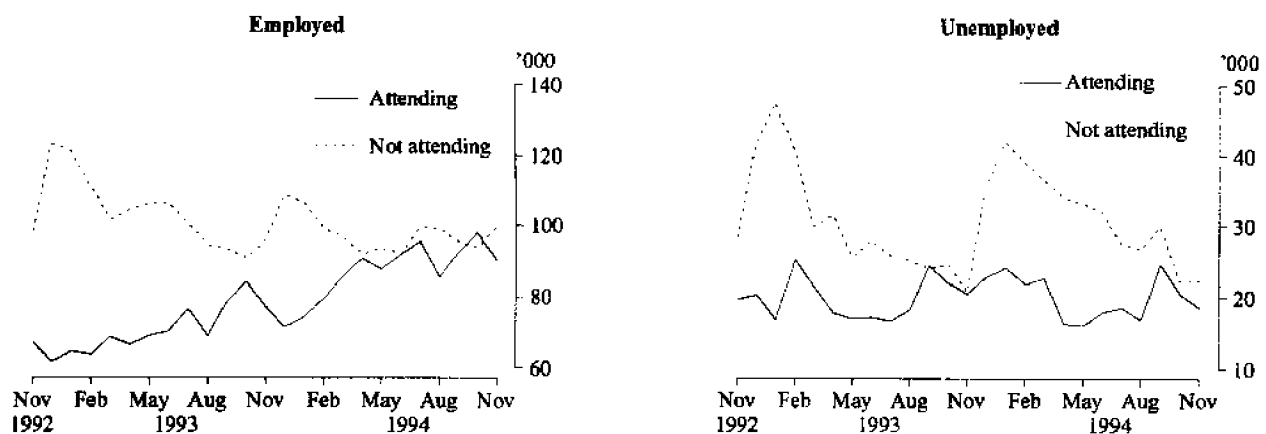
PERSONS AGED 15-19 IN THE LABOUR FORCE, NSW:  
FULL-TIME ATTENDANCE AT SCHOOL OR A TERTIARY EDUCATIONAL INSTITUTION

TABLE 4. LABOUR FORCE STATUS: PERSONS AGED 15-24 BY FULL-TIME EDUCATIONAL ATTENDANCE, NSW, NOVEMBER 1994

Age (years)	Employed			Unemployed			Labour force ('000)	Not in labour force ('000)	Civilian population aged 15 and over ('000)	Unemployment rate (per cent)	Participation rate (per cent)
	Full-time workers ('000)	Part-time workers ('000)	Total ('000)	Looking for full-time work ('000)	Looking for part-time work ('000)	Total ('000)					
<b>ATTENDING SCHOOL OR A TERTIARY EDUCATIONAL INSTITUTION FULL-TIME</b>											
15-19	* 2.1	88.0	90.1	* 4.6	14.0	18.6	108.8	171.8	280.5	17.1	38.8
15	* 0.0	19.1	19.1	* 0.8	* 5.2	6.0	25.1	53.3	78.4	23.9	32.1
16	* 0.6	23.3	23.9	* 1.1	* 3.6	* 4.7	28.6	44.1	72.8	* 16.5	39.4
17	* 0.0	22.3	22.3	* 1.7	* 2.9	* 4.6	26.9	31.2	58.1	* 17.0	46.3
18	* 0.3	12.1	12.4	* 1.0	* 0.9	* 1.9	14.3	29.8	44.1	* 13.5	32.5
19	* 1.2	11.1	12.3	* 0.0	* 1.3	* 1.3	13.7	13.4	27.0	* 9.8	50.6
20-24	* 2.4	24.4	26.9	* 1.0	* 1.0	* 2.1	29.0	41.5	70.5	* 7.2	41.1
20	* 1.0	8.1	9.1	* 0.0	* 0.0	* 0.0	9.1	16.7	25.8	* 0.0	35.2
21	* 0.7	6.5	7.2	* 0.4	* 0.4	* 0.8	8.0	11.1	19.1	* 9.6	41.8
22	* 0.4	5.5	5.9	* 0.3	* 0.3	* 0.6	6.6	* 4.0	10.6	* 9.9	62.1
23	* 0.0	* 2.6	* 2.6	* 0.3	* 0.0	* 0.3	* 2.9	6.2	9.1	* 11.4	* 32.1
24	* 0.3	* 1.7	* 2.1	* 0.0	* 0.3	* 0.3	* 2.4	* 3.5	5.9	* 14.2	* 40.8
<b>Total aged 15-24</b>	<b>* 4.6</b>	<b>112.4</b>	<b>117.0</b>	<b>5.6</b>	<b>15.1</b>	<b>20.7</b>	<b>137.7</b>	<b>213.3</b>	<b>351.0</b>	<b>15.0</b>	<b>39.2</b>
<b>NOT ATTENDING SCHOOL OR A TERTIARY EDUCATIONAL INSTITUTION FULL-TIME (a)</b>											
15-19	76.5	23.3	99.8	20.3	* 2.1	22.4	122.2	16.4	138.6	18.3	88.1
15	* 1.8	* 0.6	* 2.4	* 0.6	* 0.0	* 0.6	* 3.0	* 1.5	* 4.5	* 20.1	* 66.7
16	* 4.8	* 2.1	6.8	* 1.6	* 0.0	* 1.6	8.5	* 1.7	10.2	* 19.4	83.3
17	9.6	* 5.3	14.8	7.0	* 0.7	7.7	22.5	* 2.6	25.1	34.1	89.5
18	21.7	7.5	29.2	* 4.6	* 0.7	5.3	34.5	* 5.1	39.6	15.4	87.2
19	38.6	7.9	46.6	6.5	* 0.7	7.2	53.7	5.6	59.3	13.4	90.6
20-24	283.3	43.7	327.0	28.8	* 3.3	32.1	359.1	45.0	404.2	8.9	88.9
20	42.7	8.7	51.4	* 5.2	* 0.6	5.7	57.2	6.6	63.7	10.0	89.7
21	49.8	10.1	59.9	5.7	* 0.7	6.4	66.3	7.0	73.3	9.7	90.5
22	61.4	8.1	69.5	5.5	* 0.6	6.1	75.6	10.5	86.1	8.0	87.8
23	64.5	7.9	72.3	7.0	* 1.1	8.1	80.5	10.0	90.5	10.1	89.0
24	64.9	9.0	73.9	5.5	* 0.3	5.7	79.6	11.0	90.6	7.2	87.8
<b>Total aged 15-24</b>	<b>359.7</b>	<b>67.1</b>	<b>426.8</b>	<b>49.2</b>	<b>5.4</b>	<b>54.5</b>	<b>481.3</b>	<b>61.5</b>	<b>542.8</b>	<b>11.3</b>	<b>88.7</b>
<b>TOTAL</b>											
15-19	78.6	111.3	189.9	24.9	16.1	41.0	231.0	188.2	419.1	17.8	55.1
15	* 1.8	19.8	21.5	* 1.4	* 5.2	6.6	28.1	54.8	82.9	23.5	33.9
16	5.4	25.4	30.7	* 2.8	* 3.6	6.4	37.1	45.8	82.9	17.2	44.7
17	9.6	27.6	37.2	8.6	* 3.6	12.3	49.4	33.8	83.2	24.8	59.4
18	22.0	19.6	41.6	5.6	* 1.6	7.3	48.9	34.8	83.7	14.8	58.4
19	39.9	19.0	58.9	6.5	* 2.1	8.5	67.4	18.9	86.3	12.6	78.1
20-24	285.7	68.2	353.9	29.9	* 4.3	34.2	388.1	86.6	474.7	8.8	81.8
20	43.7	16.8	60.5	* 5.2	* 0.6	5.7	66.3	23.3	89.5	8.7	74.0
21	50.5	16.6	67.1	6.1	* 1.1	7.2	74.3	18.1	92.4	9.7	80.4
22	61.8	13.6	75.4	5.8	* 0.9	6.7	82.1	14.5	96.6	8.2	85.0
23	64.5	10.4	74.9	7.4	* 1.1	8.5	83.4	16.2	99.6	10.2	83.8
24	65.2	10.7	75.9	5.5	* 0.6	6.1	82.0	14.5	96.5	7.4	85.0
<b>Total aged 15-24</b>	<b>364.3</b>	<b>179.5</b>	<b>543.8</b>	<b>54.8</b>	<b>20.4</b>	<b>75.2</b>	<b>619.0</b>	<b>274.8</b>	<b>893.8</b>	<b>12.2</b>	<b>69.3</b>

(a) Includes institutionalised persons.

TABLE 5. LABOUR FORCE STATUS: FAMILY STATUS, NSW, NOVEMBER 1994

Family status	Employed			Unemployed			Labour force	Not in labour force	Civilian population aged 15 and over ('000)	Unemployment rate (per cent)	Participation rate (per cent)
	Full-time workers ('000)	Part-time workers ('000)	Total ('000)	Looking for full-time work ('000)	Looking for part-time work ('000)	Total ('000)					
<i>Member of a family</i>	1,665.8	543.2	2,209.0	149.1	40.2	189.4	2,398.4	1,356.9	3,755.3	7.9	63.9
Husband	907.8	58.3	966.0	54.8	* 2.8	57.6	1,023.7	343.0	1,366.7	5.6	74.9
With children aged 0-14 present	510.2	24.9	535.1	34.4	* 0.9	35.3	570.4	37.0	607.4	6.2	93.9
Without children aged 0-14 present	397.6	33.3	430.9	20.4	* 2.0	22.4	453.3	306.0	759.3	4.9	59.7
With dependants present	589.2	28.1	617.3	36.9	* 1.2	38.0	655.3	46.5	701.9	5.8	93.4
Without dependants present	318.6	30.2	348.7	17.9	* 1.7	19.6	368.3	296.5	664.8	5.3	55.4
Wife	371.5	294.2	665.8	24.3	17.6	41.9	707.7	631.5	1,339.1	5.9	52.8
With children aged 0-14 present	145.8	175.6	321.4	13.6	12.2	25.8	347.2	236.9	584.2	7.4	59.4
Without children aged 0-14 present	225.7	118.7	344.4	10.7	5.4	16.1	360.4	394.6	755.0	4.5	47.7
With dependants present	186.9	200.6	387.4	16.1	13.7	29.8	417.3	260.8	678.0	7.1	61.5
Without dependants present	184.7	93.7	278.3	8.2	* 3.8	12.1	290.4	370.7	661.1	4.2	43.9
Not-married male family head	25.1	* 4.1	29.2	* 3.3	* 1.0	* 4.2	33.4	16.5	49.9	* 12.7	67.0
With children aged 0-14 present	6.2	* 2.1	8.4	* 1.6	* 1.0	* 2.6	11.0	5.9	16.9	* 23.8	65.1
Without children aged 0-14 present	18.9	* 1.9	20.8	* 1.6	* 0.0	* 1.6	22.4	10.6	33.0	* 7.3	67.9
With dependants present	11.2	* 2.7	13.9	* 2.3	* 1.0	* 3.3	17.2	7.2	24.4	* 19.0	70.4
Without dependants present	13.9	* 1.3	15.2	* 1.0	* 0.0	* 1.0	16.2	9.3	25.5	* 6.0	63.7
Not-married female family head	47.4	30.4	77.8	7.2	* 4.0	11.2	88.9	107.5	196.4	12.6	45.3
With children aged 0-14 present	23.2	20.1	43.2	* 4.7	* 3.7	8.4	51.6	56.6	108.3	16.3	47.7
Without children aged 0-14 present	24.2	10.3	34.5	* 2.5	* 0.3	* 2.8	37.3	50.8	88.1	* 7.4	42.3
With dependants present	28.9	23.7	52.6	5.9	* 3.7	9.6	62.3	63.6	125.9	15.5	49.5
Without dependants present	18.4	6.7	25.1	* 1.2	* 0.3	* 1.5	26.6	43.9	70.5	* 5.7	37.8
Full-time student aged 15-24 (a)	* 2.9	101.3	104.2	5.6	13.5	19.1	123.3	172.7	296.0	15.5	41.7
Other child of family head	283.6	50.5	334.1	46.9	* 1.4	48.3	382.5	41.5	423.9	12.6	90.2
Other relative of family head	27.5	* 4.4	31.9	7.0	* 0.0	7.0	39.0	44.3	83.2	18.0	46.8
<i>Not a member of a family</i>	326.5	58.9	385.4	37.0	* 3.1	40.1	425.5	332.1	757.6	9.4	56.2
Living alone	143.3	30.1	173.4	20.0	* 1.9	21.9	195.3	279.2	474.5	11.2	41.2
Not living alone	183.2	28.8	212.1	17.0	* 1.2	18.2	230.3	52.9	283.2	7.9	81.3
<i>Not family coded</i>	71.9	18.5	90.4	9.5	* 3.0	12.5	103.0	147.5	250.4	12.2	41.1
<b>Total</b>	<b>2,064.2</b>	<b>620.6</b>	<b>2,684.9</b>	<b>195.7</b>	<b>46.4</b>	<b>242.0</b>	<b>2,926.9</b>	<b>1,836.4</b>	<b>4,763.4</b>	<b>8.3</b>	<b>61.4</b>

(a) Excludes persons aged 20-24 attending school.

TABLE 6. EMPLOYED PERSONS: STATUS IN EMPLOYMENT (a), NSW ('000)

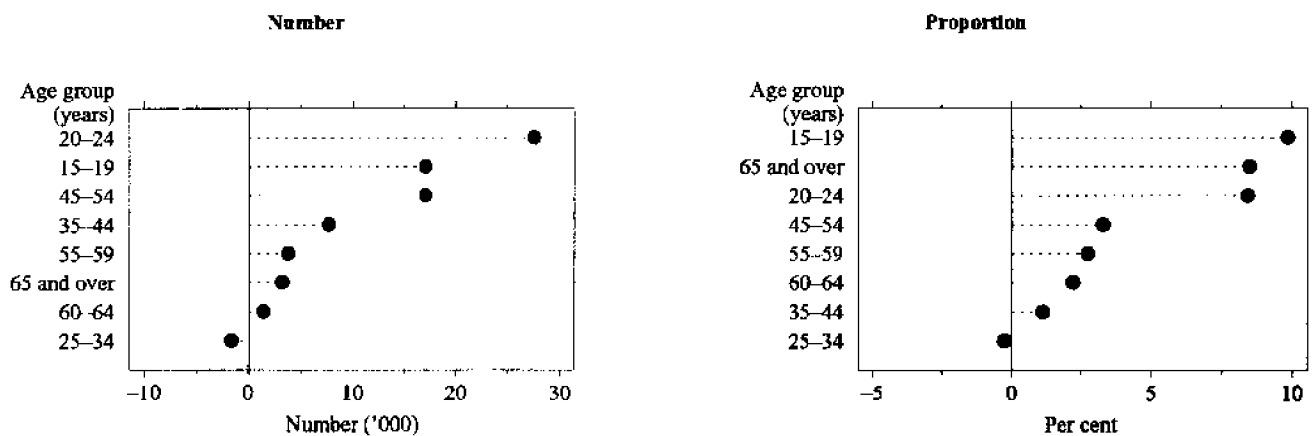
Status in employment	Males			Females			Persons		
	November 1993	August 1994	November 1994	November 1993	August 1994	November 1994	November 1993	August 1994	November 1994
Employees	1,211.4	1,252.2	1,288.5	985.2	984.6	1,023.5	2,196.6	2,236.8	2,312.0
Employers	76.2	72.3	65.5	35.2	34.3	35.3	111.5	106.6	100.8
Own account workers	184.7	182.0	169.7	87.5	80.7	78.5	272.2	262.7	248.2
<b>Total employed (b)</b>	<b>1,486.4</b>	<b>1,519.8</b>	<b>1,534.2</b>	<b>1,122.2</b>	<b>1,114.6</b>	<b>1,150.7</b>	<b>2,608.7</b>	<b>2,634.4</b>	<b>2,684.9</b>

(a) Status in Employment replaces the previous term Status of Worker. No definitional changes have been made — the only changes are to the classification titles. (b) Includes contributing family workers.

**TABLE 7. EMPLOYED PERSONS: AGE, NSW  
(<sup>'000</sup>)**

Month	Age group (years)								Total employed
	15-19	20-24	25-34	35-44	45-54	55-59	60-64	65 and over	
<b>MALES</b>									
1993—									
November	91.3	173.9	383.2	381.3	295.9	87.2	48.1	25.5	1,486.4
1994—									
August	94.9	179.8	387.0	384.6	307.3	89.4	49.7	27.0	1,519.8
September	93.6	181.5	392.8	390.0	312.5	88.5	51.1	30.0	1,540.1
October	96.7	183.5	389.5	387.5	313.3	89.4	51.1	28.9	1,539.8
November	95.2	184.7	387.1	385.4	312.0	90.7	47.9	31.2	1,534.2
<b>MARRIED FEMALES</b>									
1993—									
November	* 0.7	34.7	183.0	229.7	169.5	39.7	11.6	7.7	676.6
1994—									
August	* 3.0	41.2	191.7	224.4	166.6	33.0	11.1	6.7	677.6
September	* 3.0	41.8	199.7	235.7	175.6	37.1	16.6	6.4	715.8
October	* 4.1	35.4	185.8	228.2	172.9	33.2	12.0	5.9	677.5
November	* 3.2	38.5	183.8	229.3	178.1	34.2	13.4	6.2	686.5
<b>ALL FEMALES</b>									
1993—									
November	81.5	152.5	293.4	292.0	223.1	49.8	17.2	12.8	1,122.2
1994—									
August	89.4	158.8	289.3	289.5	214.1	48.0	13.9	11.4	1,114.6
September	93.9	165.7	301.2	300.4	225.2	52.8	20.8	10.8	1,170.9
October	95.0	163.1	293.9	295.4	219.8	47.6	15.9	10.3	1,141.0
November	94.7	169.2	287.9	295.6	224.1	50.1	18.8	10.4	1,150.7
<b>PERSONS</b>									
1993—									
November	172.9	326.4	676.6	673.3	519.0	137.0	65.2	38.3	2,608.7
1994—									
August	184.4	338.6	676.3	674.2	521.4	137.5	63.7	38.4	2,634.4
September	187.5	347.2	694.0	690.5	537.8	141.3	71.9	40.8	2,711.0
October	191.7	346.6	683.4	682.8	533.1	137.0	67.0	39.2	2,680.8
November	189.9	353.9	675.0	681.0	536.1	140.8	66.7	41.6	2,684.9

**ANNUAL CHANGE IN EMPLOYMENT BY AGE, NSW,  
NOVEMBER 1993 TO NOVEMBER 1994**

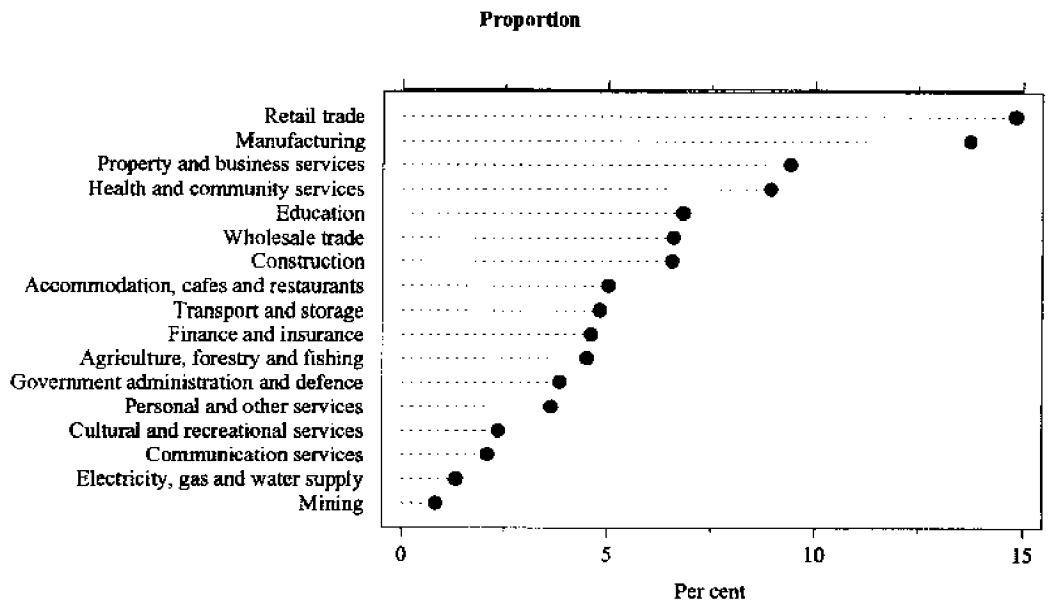
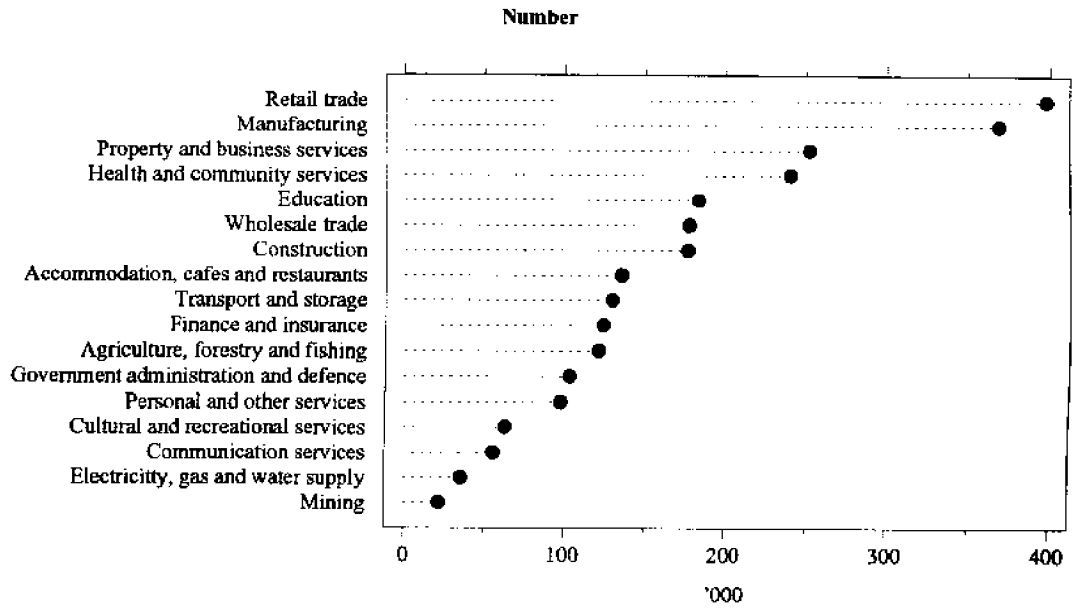


**TABLE 8. EMPLOYED PERSONS: INDUSTRY (a), NSW, NOVEMBER 1994**  
(<sup>'000</sup>)

<i>Industry division and subdivision</i>	<i>Males</i>	<i>Females</i>	<i>Persons</i>
<i>Agriculture, forestry and fishing</i>	83.2	37.6	120.7
Agriculture	70.9	34.5	105.4
Services to agriculture; hunting and trapping	* 3.9	* 1.9	5.7
Forestry and logging	* 3.8	* 0.3	* 4.2
Commercial fishing	* 4.5	* 0.9	5.4
<i>Mining</i>	21.1	* 1.2	22.3
Coal mining	14.8	* 0.0	14.8
Oil and gas extraction	* 0.9	* 0.0	* 0.9
Metal ore mining	* 1.0	* 0.0	* 1.0
Other mining	* 3.5	* 1.2	* 4.7
Services to mining	* 1.0	* 0.0	* 1.0
<i>Manufacturing</i>	256.7	112.5	369.3
Food, beverage and tobacco manufacturing	39.7	19.6	59.3
Textile, clothing, footwear and leather manufacturing	14.0	17.8	31.8
Wood and paper product manufacturing	19.3	5.9	25.1
Printing, publishing and recorded media	25.9	17.4	43.4
Petroleum, coal, chemical and associated product manufacturing	24.0	15.4	39.4
Non-metallic mineral product manufacturing	11.3	* 2.7	14.0
Metal product manufacturing	56.4	8.8	65.2
Machinery and equipment manufacturing	47.1	18.0	65.1
Other manufacturing	18.9	7.0	25.9
<i>Electricity, gas and water supply</i>	31.8	* 4.1	35.9
Electricity and gas supply	21.4	* 2.5	23.9
Water supply, sewerage and drainage services	10.4	* 1.6	12.0
<i>Construction</i>	155.1	21.3	176.4
General construction	51.5	9.6	61.0
Construction trade services	103.7	11.7	115.4
<i>Wholesale trade</i>	129.5	47.8	177.3
Basic material wholesaling	31.8	8.2	40.0
Machinery and motor vehicle wholesaling	50.5	12.3	62.8
Personal and household good wholesaling	47.3	27.5	74.5
<i>Retail trade</i>	198.1	200.1	398.2
Food Retailing	66.5	69.0	135.5
Personal and household good Retailing	67.9	112.3	180.2
Motor vehicle retailing and services	63.6	18.8	82.5
<i>Accommodation, cafes and restaurants</i>	62.4	72.8	135.1
<i>Transport and storage</i>	99.0	30.3	129.3
Road transport	49.0	8.8	57.8
Rail transport	20.6	* 1.5	22.1
Water transport	* 2.3	* 0.3	* 2.6
Air and Space transport	13.1	* 4.7	17.8
Other transport	* 1.3	* 0.3	* 1.6
Services to transport	9.0	13.6	22.6
Storage	* 3.6	* 1.1	* 4.7
<i>Communication services</i>	41.6	14.5	56.1
<i>Finance and insurance</i>	52.7	70.7	123.5
Finance	26.7	44.7	71.4
Insurance	14.2	15.3	29.4
Services to finance and insurance	11.9	10.7	22.7
<i>Property and business services</i>	139.0	113.6	252.6
Property services	19.5	12.3	31.8
Business services	119.4	101.4	220.8
<i>Government administration and defence</i>	62.1	41.2	103.3
Government administration	56.1	39.7	95.8
Defence	6.0	* 1.5	7.5
<i>Education</i>	65.0	118.4	183.3
<i>Health and community services</i>	56.8	183.6	240.4
Health services	46.3	144.9	191.2
Community services	10.5	38.7	49.3
<i>Cultural and recreational services</i>	31.9	31.5	63.4
Motion picture, radio and television services	11.5	6.9	18.4
Libraries, museums and the arts	7.3	9.6	16.8
Sport and recreation	13.2	15.0	28.2
<i>Personal and other services</i>	48.4	49.4	97.7
Personal services	15.5	29.1	44.6
Other services	32.8	16.9	49.8
Private households employing staff	* 0.0	* 3.4	* 3.4
<b>Total employed</b>	<b>1,534.2</b>	<b>1,150.7</b>	<b>2,684.9</b>

(a) Industry data are now classified according to the Australian and New Zealand Standard Industrial Classification. See the Explanatory Notes for more details.

EMPLOYMENT BY INDUSTRY DIVISION, NSW, NOVEMBER 1994



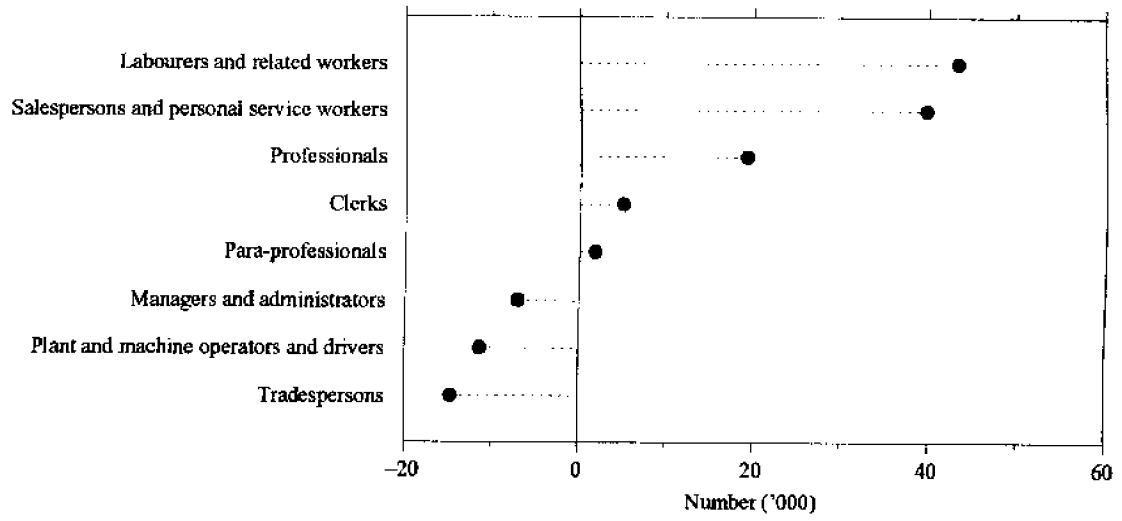
**TABLE 9. EMPLOYED PERSONS: OCCUPATION, NSW ('000)**

Major and minor occupation group	Males			Females			Persons		
	Nov- ember 1993	August 1994	Nov- ember 1994	Nov- ember 1993	August 1994	Nov- ember 1994	Nov- ember 1993	August 1994	Nov- ember 1994
<i>Managers and administrators</i>	231.1	226.6	226.0	88.2	81.2	86.4	319.3	307.8	312.3
Legislators and government appointed officials	* 0.0	* 0.0	* 0.0	* 0.3	* 0.0	* 0.3	* 0.3	* 0.0	* 0.3
General managers	11.0	16.2	22.2	* 2.8	* 3.3	5.8	13.8	19.5	28.0
Specialist managers	48.8	55.4	49.2	20.0	14.5	13.3	68.8	69.9	62.4
Farmers and farm managers	53.4	50.0	52.5	24.9	21.6	21.8	78.4	71.5	74.3
Managing supervisors (sales and service)	76.2	71.6	69.6	35.9	39.9	41.6	112.1	111.5	111.1
Managing supervisors (other business)	41.5	33.4	32.6	* 4.4	* 1.9	* 3.6	45.9	35.3	36.2
<i>Professionals</i>	209.8	218.4	216.4	156.4	167.2	169.0	366.2	385.6	385.4
Natural scientists	7.7	8.6	9.5	* 3.7	* 4.6	* 4.5	11.4	13.2	14.0
Building professionals and engineers	39.0	41.2	36.4	* 0.6	* 1.2	* 1.2	39.6	42.4	37.6
Health diagnosis and treatment practitioners	20.3	20.7	17.0	15.7	11.9	19.1	36.0	32.6	36.1
School teachers	23.7	26.5	25.1	56.6	61.7	56.6	80.3	88.2	81.7
Other teachers and instructors	16.7	14.6	18.3	21.5	17.4	21.1	38.2	32.0	39.4
Social professionals	16.3	15.5	14.4	5.8	6.8	7.0	22.1	22.3	21.4
Business professionals	62.0	66.2	66.7	31.9	37.5	35.1	93.9	103.7	101.8
Artists and related professionals	15.8	16.0	17.8	11.0	14.0	15.6	26.8	30.0	33.4
Miscellaneous professionals	8.2	9.1	11.2	9.5	12.1	8.7	17.8	21.2	19.9
<i>Para-professionals</i>	72.6	73.6	74.1	76.2	73.7	76.6	148.9	147.3	150.7
Medical and science technical officers and technicians	* 3.6	5.7	7.0	* 4.3	5.7	* 4.7	7.9	11.5	11.7
Engineering and building associates and technicians	23.5	21.5	18.9	* 1.9	* 1.2	* 1.8	25.5	22.7	20.8
Air and sea transport technical workers	* 4.3	* 3.5	* 5.1	* 0.0	* 0.0	* 0.3	* 4.3	* 3.5	5.4
Registered nurses	* 2.9	* 4.2	5.8	50.8	50.4	52.0	53.7	54.6	57.8
Police	10.5	9.1	10.7	* 1.9	* 1.5	* 1.8	12.4	10.6	12.5
Miscellaneous para-professionals	27.8	29.5	26.6	17.3	14.9	16.0	45.1	44.3	42.5
<i>Tradespersons</i>	342.7	324.6	333.0	41.3	38.5	36.4	384.0	363.7	369.4
Metal fitting and machining tradespersons	39.8	36.7	33.9	* 0.3	* 0.3	* 0.0	40.1	37.0	33.9
Other metal tradespersons	29.2	30.6	26.2	* 0.0	* 0.3	* 0.3	29.2	30.8	26.5
Electrical and electronics tradespersons	57.3	55.1	62.7	* 1.6	* 0.6	* 0.6	58.9	55.7	63.3
Building tradespersons	85.5	75.9	80.5	* 1.2	* 1.2	* 0.6	86.7	77.2	81.1
Printing tradespersons	8.1	10.8	11.6	* 1.3	* 2.2	* 2.2	9.4	13.0	13.8
Vehicle tradespersons	46.9	44.3	43.4	* 0.0	* 0.3	* 0.9	46.9	44.6	44.3
Food tradespersons	25.5	33.3	38.5	14.6	11.5	8.6	40.1	44.8	47.1
Amenity horticultural tradespersons	18.6	11.9	11.7	* 1.8	* 1.5	* 1.7	20.3	13.4	13.4
Miscellaneous tradespersons	31.8	26.1	24.5	20.5	20.6	21.5	52.3	46.7	46.1
<i>Clerks</i>	102.5	103.8	109.6	357.4	345.7	355.4	459.9	449.5	465.0
Stenographers and typists	* 0.3	* 3.1	* 1.8	100.5	92.8	93.3	100.7	95.9	95.1
Data processing and business machine operators	8.1	7.9	12.5	24.9	35.2	27.8	33.0	43.2	40.3
Numerical clerks	41.8	41.2	39.8	113.5	110.3	118.2	155.3	151.5	158.0
Filing, sorting and copying clerks	7.9	6.1	12.8	19.1	20.6	26.4	27.0	26.7	39.2
Material recording and despatching clerks	16.9	17.2	16.4	7.5	7.2	11.1	24.5	24.4	27.5
Receptionists, telephonists and messengers	9.3	13.7	12.7	59.1	54.3	53.8	68.4	68.0	66.4
Miscellaneous clerks	18.2	14.6	13.6	32.8	25.2	24.8	51.1	39.8	38.4
<i>Salespersons and personal service workers</i>	140.0	148.3	148.8	244.3	260.1	275.2	384.3	408.3	424.0
Investment, insurance and real estate salespersons	19.7	21.5	23.8	6.1	10.1	7.9	25.8	31.6	31.7
Sales representatives	31.2	27.7	26.9	12.9	12.5	9.1	44.1	40.2	36.0
Sales assistants	46.8	59.7	68.0	103.9	107.9	119.1	150.7	167.6	187.1
Tellers, cashiers and ticket salespersons	8.4	11.0	7.7	33.4	36.8	43.2	41.9	47.9	50.9
Miscellaneous salespersons	27.3	22.9	18.6	40.9	45.2	46.3	68.2	68.1	64.9
Personal service workers	6.6	5.4	* 3.8	47.0	47.5	49.6	53.6	52.9	53.5
<i>Plant and machine operators, and drivers</i>	146.7	152.1	143.6	33.1	19.6	24.8	179.7	171.7	168.4
Road and rail transport drivers	82.9	81.0	82.1	8.8	* 3.2	* 4.4	91.7	84.2	86.5
Mobile plant operators (except transport)	28.2	36.8	27.6	* 0.0	* 0.3	* 0.0	28.2	37.1	27.6
Stationary plant operators	14.5	14.7	16.3	* 0.9	* 0.3	* 1.2	15.5	15.0	17.5
Machine operators	21.1	19.6	17.6	23.3	15.8	19.2	44.4	35.4	36.8
<i>Labourers and related workers</i>	241.0	272.4	282.8	125.4	128.6	127.0	366.4	401.0	409.8
Trades assistants and factory hands	64.3	70.4	75.1	31.0	32.1	34.0	95.3	102.5	109.1
Agricultural labourers and related workers	32.7	30.3	29.4	9.2	7.1	8.4	41.9	37.5	37.8
Cleaners	20.9	29.6	35.8	39.2	38.5	36.4	60.1	68.2	72.2
Construction and mining labourers	36.2	41.2	37.9	* 0.6	* 1.0	* 0.6	36.8	42.1	38.5
Miscellaneous labourers and related workers	86.9	100.9	104.6	45.4	49.9	47.6	132.3	150.9	152.1
<b>Total employed</b>	<b>1,486.4</b>	<b>1,519.8</b>	<b>1,534.2</b>	<b>1,122.2</b>	<b>1,114.6</b>	<b>1,150.7</b>	<b>2,608.7</b>	<b>2,634.4</b>	<b>2,684.9</b>

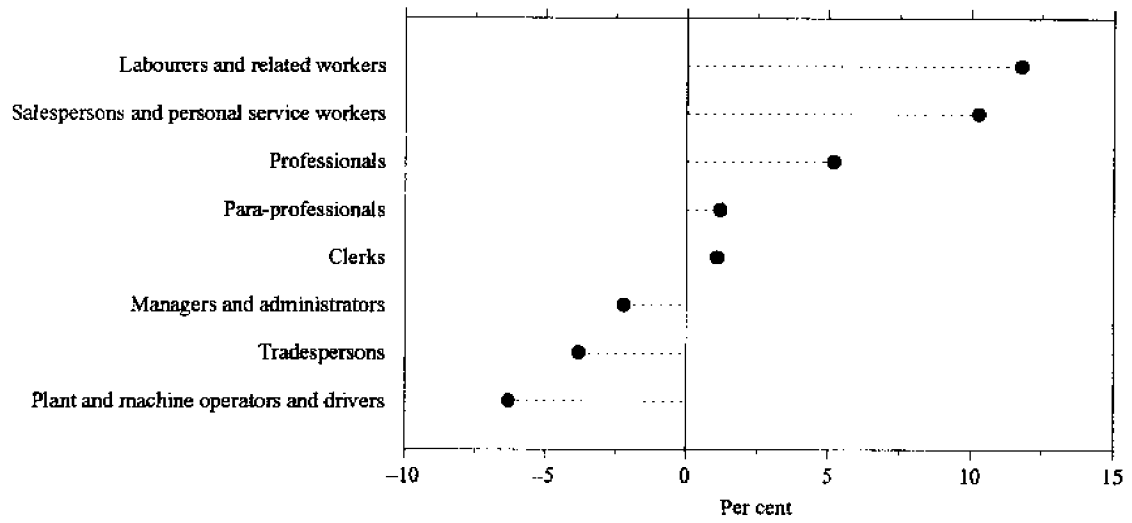


**ANNUAL CHANGE IN EMPLOYMENT BY OCCUPATION GROUP, NSW,  
NOVEMBER 1993 TO NOVEMBER 1994**

**Number**



**Proportion**



**TABLE 10. UNEMPLOYED PERSONS: AGE, NSW**  
(\*000)

Month	Age group (years)						Total unemployed
	15-19	20-24	25-34	35-44	45-54	55 and over	
<b>MALES</b>							
1993—							
November	21.2	28.9	45.6	35.8	22.2	23.0	176.7
1994—							
August	21.3	29.2	40.2	28.7	19.9	14.4	153.8
September	28.7	28.7	38.6	26.2	22.3	18.8	163.3
October	21.1	22.1	42.7	24.0	19.3	14.5	143.7
November	21.6	22.0	36.2	27.2	21.7	14.9	143.6
<b>FEMALES</b>							
1993—							
November	20.2	21.4	27.8	24.8	16.2	* 3.8	114.4
1994—							
August	22.5	20.5	23.6	19.5	12.1	* 3.2	101.4
September	26.0	17.9	26.1	21.1	16.0	* 3.6	110.8
October	21.8	17.8	26.7	18.9	14.8	* 2.9	103.0
November	19.5	12.2	26.1	22.5	15.9	* 2.3	98.5
<b>PERSONS</b>							
1993—							
November	41.4	50.3	73.4	60.6	38.5	26.9	291.1
1994—							
August	43.8	49.7	63.8	48.2	32.0	17.7	255.1
September	54.8	46.6	64.7	47.3	38.3	22.4	274.0
October	42.9	39.9	69.4	42.9	34.1	17.4	246.7
November	41.0	34.2	62.3	49.7	37.6	17.2	242.0

**TABLE 11. UNEMPLOYED PERSONS: UNEMPLOYMENT RATE BY AGE, NSW**  
(per cent)

Month	Age group (years)						Total unemployment rate
	15-19	20-24	25-34	35-44	45-54	55 and over	
<b>MALES</b>							
1993—							
November	18.8	14.2	10.6	8.6	7.0	12.5	10.6
1994—							
August	18.4	14.0	9.4	6.9	6.1	8.0	9.2
September	23.5	13.7	8.9	6.3	6.6	10.0	9.6
October	17.9	10.7	9.9	5.8	5.8	7.9	8.5
November	18.5	10.6	8.5	6.6	6.5	8.1	8.6
<b>FEMALES</b>							
1993—							
November	19.9	12.3	8.7	7.8	6.8	* 4.6	9.2
1994—							
August	20.1	11.4	7.5	6.3	5.3	* 4.2	8.3
September	21.7	9.8	8.0	6.6	6.6	* 4.1	8.6
October	18.7	9.8	8.3	6.0	6.3	* 3.8	8.3
November	17.0	6.7	8.3	7.1	6.6	* 2.9	7.9
<b>PERSONS</b>							
1993—							
November	19.3	13.4	9.8	8.3	6.9	10.0	10.0
1994—							
August	19.2	12.8	8.6	6.7	5.8	6.9	8.8
September	22.6	11.8	8.5	6.4	6.6	8.1	9.2
October	18.3	10.3	9.2	5.9	6.0	6.7	8.4
November	17.8	8.8	8.4	6.8	6.6	6.5	8.3

**TABLE 12. UNEMPLOYED PERSONS: INDUSTRY (a) AND OCCUPATION OF LAST FULL-TIME JOB, NSW, NOVEMBER 1994**  
(<sup>'000</sup>)

	Males	Females	Persons
<i>Had worked for two weeks or more in a full-time job in the last two years</i>	77.3	29.2	106.5
<b>Industry division—</b>			
Agriculture, forestry and fishing	* 3.4	* 0.6	* 4.0
Manufacturing	19.1	* 4.4	23.5
Construction	17.0	* 0.9	17.9
Wholesale trade	* 4.5	* 1.2	5.7
Retail trade	11.5	7.1	18.5
Accommodation, cafes and restaurants	* 3.0	* 3.0	6.0
Transport and storage	* 2.5	* 0.7	* 3.2
Finance and insurance	* 0.7	* 1.9	* 2.6
Property and business services	* 2.9	* 1.7	* 4.6
Education	* 1.0	* 0.6	* 1.7
Health and community services	* 1.4	* 3.2	* 4.6
Cultural and recreational services	* 1.6	* 0.6	* 2.3
Personal and other services	* 1.3	* 1.7	* 3.0
Other industries (b)	7.3	* 1.6	8.9
<b>Major occupation group—</b>			
Managers and administrators	* 2.6	* 1.8	* 4.4
Professionals	* 2.5	* 1.8	* 4.3
Para-professionals	* 1.8	* 0.6	* 2.4
Tradespersons	23.6	* 2.4	26.0
Clerks	* 3.8	5.9	9.7
Salespersons and personal service workers	* 5.2	11.0	16.2
Plant and machine operators, and drivers	8.6	* 0.3	8.9
Labourers and related workers	29.2	5.4	34.6
<i>Had not worked full-time for two weeks or more in the last two years</i>			
Looking for first job	11.6	16.8	28.4
Had worked at some time in the past	51.1	48.0	99.1
<i>Stood down</i>	* 3.6	* 4.5	8.1
<b>Total unemployed</b>	<b>143.6</b>	<b>98.5</b>	<b>242.0</b>

(a) Industry data are now classified according to the Australian and New Zealand Standard Industrial Classification. See the Explanatory Notes for more details. (b) Comprises Mining; Electricity, gas and water supply; Communication services; and Government administration and defence.

#### UNEMPLOYMENT RATE BY AGE, NSW

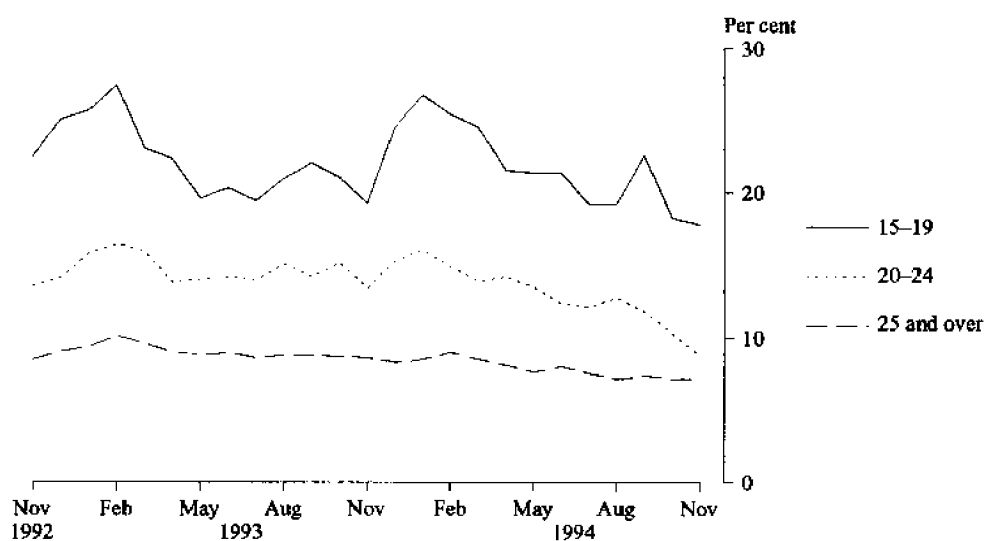


TABLE 13. UNEMPLOYED PERSONS: DURATION OF UNEMPLOYMENT, NSW

Duration of unemployment (weeks)	Males		Females		Persons				
	November 1993	November 1994	November 1993	November 1994	November 1993	August 1994	September 1994	October 1994	November 1994
	... '000 —								
Under 52	92.2	85.4	75.8	62.3	168.0	155.5	159.4	151.4	147.7
Under 2	* 4.5	8.7	10.0	8.5	14.4	8.7	14.6	15.2	17.2
2 and under 4	9.7	7.8	9.7	13.2	19.4	13.3	19.3	19.6	20.9
4 and under 8	12.9	12.7	13.9	9.6	26.8	26.4	24.9	22.8	22.3
8 and under 13	9.3	10.3	8.9	5.9	18.2	17.9	20.1	24.3	16.1
13 and under 26	19.8	16.6	13.8	10.1	33.7	30.6	30.2	23.7	26.7
26 and under 39	20.0	15.7	10.3	9.5	30.3	48.2	34.8	27.0	25.2
39 and under 52	16.0	13.6	9.2	5.6	25.2	10.3	15.6	18.9	19.3
52 and over	84.5	58.1	38.5	36.1	123.1	99.6	114.6	95.3	94.3
52 and under 104	37.3	24.3	18.1	16.0	55.4	44.1	52.2	41.6	40.3
104 and over	47.3	33.8	20.4	20.1	67.7	55.5	62.4	53.7	54.0
<b>Total unemployed</b>	<b>176.7</b>	<b>143.6</b>	<b>114.4</b>	<b>98.5</b>	<b>291.1</b>	<b>255.1</b>	<b>274.0</b>	<b>246.7</b>	<b>242.0</b>
	. Weeks —								
Average	71.6	70.7	51.4	71.9	63.6	65.8	68.3	65.8	71.2
Median	48	37	26	26	39	30	36	32	33

TABLE 14. UNEMPLOYED PERSONS: UNEMPLOYMENT RATE BY BIRTHPLACE AND PERIOD OF ARRIVAL, NSW (per cent)

	November 1993	August 1994	September 1994	October 1994	November 1994
Birthplace—					
Australia	9.0	8.4	8.6	7.7	7.5
Outside Australia	12.8	10.0	10.7	10.6	10.3
Main English speaking countries	6.6	6.6	6.1	7.3	6.2
Other countries	16.1	11.8	12.9	12.3	12.4
Period of arrival of overseas born—					
Before 1961	7.0	* 3.5	6.5	4.7	6.5
1961–1970	12.1	8.9	8.8	9.6	7.9
1971–1980	11.6	9.8	8.5	9.2	8.9
1981–1985	13.3	13.0	12.4	10.6	11.4
1986–1990	11.3	7.9	10.6	10.1	10.2
1991 to survey date	33.0	23.8	24.8	25.3	24.4
<b>Total unemployment rate</b>	<b>10.0</b>	<b>8.8</b>	<b>9.2</b>	<b>8.4</b>	<b>8.3</b>

UNEMPLOYMENT RATE BY PERIOD OF ARRIVAL OF OVERSEAS BORN, NSW, NOVEMBER 1994

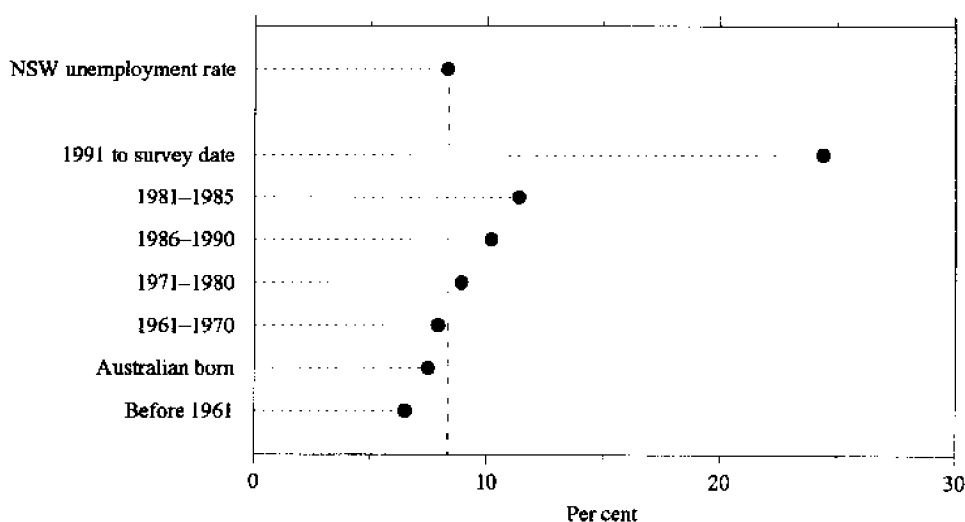


TABLE 15. UNEMPLOYED PERSONS: DURATION OF UNEMPLOYMENT BY AGE, NSW

Month	Duration of unemployment (weeks)					Total unemployed persons ('000)	Average duration (weeks)	Median duration (weeks)
	Under 13 ('000)	13 and under 26 ('000)	26 and under 39 ('000)	39 and under 104 ('000)	104 and over ('000)			
15-19								
1993—								
November	16.3	* 4.1	* 5.2	13.5	* 2.3	41.4	32.8	26
1994—								
September	24.4	8.4	7.7	10.6	* 3.7	54.8	27.4	14
October	19.4	6.0	5.7	10.1	* 1.8	42.9	27.0	15
November	19.8	6.5	* 4.2	9.4	* 1.2	41.0	24.2	13
20-24								
1993—								
November	10.8	6.8	6.1	15.9	10.8	50.3	63.9	42
1994—								
September	14.1	5.9	7.5	9.1	10.0	46.6	62.5	29
October	17.4	* 4.0	* 5.2	6.5	6.8	39.9	51.3	22
November	9.8	* 4.3	* 4.1	8.7	7.2	34.2	66.9	34
25-34								
1993—								
November	24.5	7.3	5.5	20.6	15.5	73.4	60.6	34
1994—								
September	14.1	6.9	11.2	17.1	15.5	64.7	73.2	39
October	21.4	* 4.4	7.4	17.7	18.5	69.4	70.6	40
November	19.4	5.7	6.7	16.8	13.6	62.3	72.7	34
35-44								
1993—								
November	17.2	7.6	6.8	13.9	15.1	60.6	64.9	34
1994—								
September	12.6	* 4.2	* 4.7	13.5	12.3	47.3	74.9	44
October	13.4	* 4.9	* 3.6	11.3	9.8	42.9	71.4	36
November	15.6	* 4.2	* 5.2	9.5	15.1	49.7	87.9	37
45 AND OVER								
1993—								
November	10.0	7.9	6.6	16.7	24.1	65.3	85.2	52
1994—								
September	13.7	* 4.8	* 3.8	17.4	21.0	60.7	99.4	52
October	10.3	* 4.4	* 5.1	14.9	16.9	51.5	98.2	53
November	11.9	6.0	* 4.9	15.1	16.9	54.8	92.3	48
TOTAL								
1993—								
November	78.8	33.7	30.3	80.6	67.7	291.1	63.6	39
1994—								
September	78.9	30.2	34.8	67.7	62.4	274.0	68.3	36
October	81.8	23.7	27.0	60.4	53.7	246.7	65.8	32
November	76.6	26.7	25.2	59.6	54.0	242.0	71.2	33

TABLE 16. LABOUR FORCE STATUS, SYDNEY (MSR)

Month	Employed		Unemployed			Labour force ('000)	Not in labour force ('000)	Civilian population aged 15 and over ('000)	Unemployment rate (per cent)	Participation rate (per cent)	
	Full-time workers ('000)	Part-time workers ('000)	Total ('000)	Looking for full-time work ('000)	Looking for part-time work ('000)						
MALES											
<i>November—</i>											
1990	923.9	73.4	997.3	58.6	5.8	64.4	1,061.7	350.7	1,412.4	6.1	75.2
1991	889.2	86.0	975.2	84.2	6.8	90.9	1,066.2	362.3	1,428.5	8.5	74.6
1992	849.2	91.1	940.2	106.6	8.5	115.1	1,055.3	387.4	1,442.7	10.9	73.1
<i>1993—</i>											
September	866.9	97.0	963.9	93.9	11.5	105.4	1,069.3	383.9	1,453.3	9.9	73.6
October	868.8	94.7	963.5	95.1	12.3	107.4	1,070.9	383.5	1,454.4	10.0	73.6
November	868.2	95.8	964.0	95.7	9.5	105.2	1,069.3	386.3	1,455.5	9.8	73.5
<i>1994—</i>											
August	880.6	111.8	992.4	80.6	9.1	89.7	1,082.2	384.0	1,466.2	8.3	73.8
September	895.9	106.6	1,002.5	80.9	12.8	93.7	1,096.2	371.2	1,467.5	8.5	74.7
October	889.6	108.9	998.5	77.9	8.2	86.1	1,084.6	383.6	1,468.2	7.9	73.9
November	888.4	103.8	992.1	78.1	8.3	86.5	1,078.6	390.2	1,468.8	8.0	73.4
MARRIED FEMALES											
<i>November—</i>											
1990	246.6	174.1	420.8	8.0	6.4	14.4	435.2	388.3	823.5	3.3	52.8
1991	233.5	177.5	411.0	18.6	7.1	25.7	436.7	394.5	831.2	5.9	52.5
1992	233.7	175.0	408.7	17.2	7.3	24.5	433.2	391.9	825.1	5.7	52.5
<i>1993—</i>											
September	243.4	171.9	415.3	21.9	8.2	30.1	445.4	374.9	820.3	6.8	54.3
October	248.4	169.4	417.9	19.7	10.7	30.4	448.2	370.5	818.7	6.8	54.7
November	249.8	176.4	426.2	23.0	12.0	35.0	461.2	356.4	817.6	7.6	56.4
<i>1994—</i>											
August	255.6	179.1	434.7	13.8	7.1	21.0	455.7	390.1	845.8	4.6	53.9
September	266.7	187.9	454.6	17.6	9.4	27.1	481.6	373.4	855.0	5.6	56.3
October	256.4	169.8	426.2	14.8	8.6	23.4	449.6	388.7	838.3	5.2	53.6
November	250.4	183.1	433.4	13.3	9.9	23.2	456.7	382.4	839.1	5.1	54.4
ALL FEMALES											
<i>November—</i>											
1990	473.2	251.2	724.3	26.3	13.5	39.8	764.2	708.5	1,472.6	5.2	51.9
1991	453.4	256.6	709.9	50.9	14.1	65.0	774.9	715.9	1,490.8	8.4	52.0
1992	447.9	263.6	711.5	44.8	17.8	62.6	774.1	731.3	1,505.4	8.1	51.4
<i>1993—</i>											
September	469.2	269.6	738.8	52.6	18.7	71.3	810.1	706.2	1,516.3	8.8	53.4
October	479.6	260.4	740.1	49.1	22.5	71.6	811.7	705.8	1,517.5	8.8	53.5
November	487.3	260.7	748.0	48.6	23.2	71.8	819.8	698.8	1,518.7	8.8	54.0
<i>1994—</i>											
August	478.9	275.0	753.9	39.4	16.5	55.9	809.8	720.0	1,529.8	6.9	52.9
September	492.1	289.3	781.5	46.4	22.5	68.9	850.4	680.8	1,531.1	8.1	55.5
October	491.5	265.4	756.9	45.3	22.3	67.6	824.5	707.3	1,531.8	8.2	53.8
November	480.0	286.3	766.3	42.1	18.9	60.9	827.2	705.3	1,532.5	7.4	54.0
PERSONS											
<i>November—</i>											
1990	1,397.0	324.6	1,721.6	85.0	19.3	104.2	1,825.8	1,059.2	2,885.0	5.7	63.3
1991	1,342.6	342.6	1,685.2	135.1	20.8	155.9	1,841.1	1,078.3	2,919.3	8.5	63.1
1992	1,297.1	354.7	1,651.8	151.3	26.4	177.7	1,829.5	1,118.7	2,948.2	9.7	62.1
<i>1993—</i>											
September	1,336.1	366.6	1,702.7	146.6	30.2	176.8	1,879.4	1,090.1	2,969.5	9.4	63.3
October	1,348.4	355.1	1,703.5	144.2	34.8	179.0	1,882.5	1,089.4	2,971.9	9.5	63.3
November	1,355.5	356.6	1,712.0	144.3	32.7	177.0	1,889.1	1,085.1	2,974.2	9.4	63.5
<i>1994—</i>											
August	1,359.5	386.8	1,746.3	120.1	25.6	145.7	1,892.0	1,104.1	2,996.1	7.7	63.1
September	1,388.1	395.9	1,784.0	127.3	35.3	162.6	1,946.6	1,052.0	2,998.6	8.4	64.9
October	1,381.0	374.4	1,755.4	123.2	30.5	153.7	1,909.1	1,090.9	3,000.0	8.1	63.6
November	1,368.4	390.0	1,758.4	120.2	27.2	147.4	1,905.8	1,095.5	3,001.3	7.7	63.5

TABLE 17. LABOUR FORCE STATUS, BALANCE OF NSW (MSR)

Month	Employed			Unemployed			Labour force ('000)	Not in labour force ('000)	Civilian population aged 15 and over ('000)	Unemployment rate (per cent)	Participation rate (per cent)
	Full-time workers ('000)	Part-time workers ('000)	Total ('000)	Looking for full-time work ('000)	Looking for part-time work ('000)	Total ('000)					
<b>MALES</b>											
<i>November—</i>											
1990	511.5	44.8	556.3	44.7	5.2	49.9	606.2	228.3	834.4	8.2	72.6
1991	484.0	53.8	537.8	64.3	* 3.0	67.3	605.1	239.9	845.0	11.1	71.6
1992	459.0	54.6	513.6	66.6	* 4.3	71.0	584.6	267.9	852.5	12.1	68.6
<i>1993—</i>											
September	462.6	54.8	517.4	78.7	6.0	84.7	602.0	256.7	858.8	14.1	70.1
October	469.6	52.9	522.5	71.5	6.6	78.1	600.6	258.9	859.5	13.0	69.9
November	469.4	53.0	522.4	69.8	* 1.7	71.5	593.9	266.3	860.2	12.0	69.0
<i>1994—</i>											
August	465.7	61.6	527.4	60.7	* 3.3	64.0	591.4	275.4	866.8	10.8	68.2
September	479.0	58.6	537.6	62.8	6.8	69.6	607.1	260.5	867.6	11.5	70.0
October	476.6	64.7	541.3	53.0	* 4.6	57.6	598.9	270.0	868.9	9.6	68.9
November	480.9	61.1	542.0	50.9	6.3	57.1	599.1	271.1	870.2	9.5	68.9
<b>MARRIED FEMALES</b>											
<i>November—</i>											
1990	120.9	120.1	241.0	5.7	4.5	10.2	251.2	271.5	522.8	4.1	48.1
1991	117.5	122.8	240.3	11.1	4.6	15.7	255.9	269.0	524.9	6.1	48.8
1992	129.9	116.2	246.1	10.4	* 4.4	16.6	262.7	257.0	519.7	6.3	50.5
<i>1993—</i>											
September	117.1	127.5	244.6	9.4	5.6	15.1	259.7	259.1	518.8	5.8	50.1
October	127.1	117.2	244.3	12.6	6.4	19.0	263.3	261.0	524.3	7.2	50.2
November	127.3	123.1	250.4	12.6	* 4.4	17.0	267.4	258.9	526.3	6.3	50.8
<i>1994—</i>											
August	129.7	113.2	242.9	12.6	* 4.9	17.5	260.3	277.4	537.7	6.7	48.4
September	135.6	125.6	261.2	9.9	7.1	17.0	278.2	262.0	540.2	6.1	51.5
October	130.7	120.6	251.3	8.4	5.5	13.9	265.1	277.3	542.5	5.2	48.9
November	134.3	118.8	253.1	12.2	8.0	20.2	273.3	271.7	545.0	7.4	50.1
<b>ALL FEMALES</b>											
<i>November—</i>											
1990	197.8	165.2	363.0	22.8	10.2	33.0	396.0	453.0	849.0	8.3	46.6
1991	191.0	169.0	360.0	29.4	12.7	42.1	402.0	459.3	861.4	10.5	46.7
1992	195.0	163.7	358.7	28.6	11.1	39.8	398.5	472.0	870.4	10.0	45.8
<i>1993—</i>											
September	191.1	183.3	374.4	29.6	14.3	43.9	418.3	460.0	878.3	10.5	47.6
October	199.1	170.7	369.9	34.9	11.4	46.3	416.1	463.0	879.1	11.1	47.3
November	195.6	178.6	374.2	31.4	11.1	42.6	416.8	463.2	880.0	10.2	47.4
<i>1994—</i>											
August	197.4	163.3	360.7	35.4	10.1	45.4	406.1	482.1	888.2	11.2	45.7
September	212.7	176.7	389.4	24.8	17.1	41.8	431.3	457.9	889.2	9.7	48.5
October	212.9	171.1	384.1	23.8	11.5	35.3	419.4	471.1	890.5	8.4	47.1
November	214.9	169.5	384.4	24.6	12.9	37.5	422.0	469.8	891.8	8.9	47.3
<b>PERSONS</b>											
<i>November—</i>											
1990	709.3	209.9	919.3	67.5	15.3	82.9	1,002.1	681.3	1,683.4	8.3	59.5
1991	675.0	222.8	897.8	93.7	15.7	109.4	1,007.2	699.2	1,706.4	10.9	59.0
1992	654.0	218.3	872.3	95.3	15.5	110.8	983.1	739.9	1,722.9	11.3	57.1
<i>1993—</i>											
September	653.7	238.1	891.8	108.3	20.3	128.6	1,020.3	716.7	1,737.0	12.6	58.7
October	668.7	223.6	892.3	106.4	18.1	124.4	1,016.8	721.8	1,738.6	12.2	58.5
November	665.0	231.7	896.6	101.2	12.8	114.0	1,010.7	729.5	1,740.2	11.3	58.1
<i>1994—</i>											
August	663.1	224.9	888.0	96.1	13.3	109.5	997.5	757.5	1,755.0	11.0	56.8
September	691.7	235.3	927.0	87.6	23.8	111.4	1,038.4	718.4	1,756.8	10.7	59.1
October	689.6	235.8	925.4	76.8	16.2	92.9	1,018.3	741.1	1,759.4	9.1	57.9
November	695.9	230.6	926.5	75.5	19.2	94.7	1,021.1	740.9	1,762.0	9.3	58.0

TABLE 18. LABOUR FORCE STATUS (a), REGIONS OF NSW

<i>Month</i>	<i>Employed</i> ( <i>'000</i> )	<i>Unemployed</i> ( <i>'000</i> )	<i>Labour</i> <i>force</i> ( <i>'000</i> )	<i>Not in</i> <i>labour</i> <i>force</i> ( <i>'000</i> )	<i>Unemp-</i> <i>loyment</i> <i>rate</i> ( <i>per cent</i> )	<i>Partici-</i> <i>pation</i> <i>rate</i> ( <i>per cent</i> )
INNER SYDNEY AND INNER WESTERN SYDNEY (SRs)						
MALES						
1993—						
November	105.4	10.6	115.9	42.0	9.1	73.4
1994—						
September	119.5	15.0	134.5	45.7	11.2	74.6
October	128.9	12.2	141.1	41.4	8.6	77.3
November	121.6	14.2	135.9	41.7	10.5	76.5
FEMALES						
1993—						
November	90.2	6.2	96.5	66.4	6.4	59.2
1994—						
September	94.2	8.4	102.5	69.7	8.2	59.5
October	89.9	7.8	97.7	68.0	8.0	59.0
November	91.6	7.7	99.2	71.4	7.7	58.1
PERSONS						
1993—						
November	195.6	16.8	212.4	108.5	7.9	66.2
1994—						
September	213.6	23.4	237.0	115.4	9.9	67.3
October	218.9	20.0	238.9	109.4	8.4	68.6
November	213.2	21.9	235.1	113.2	9.3	67.5
INNER SYDNEY (SR)						
MALES						
1993—						
November	67.9	6.1	73.9	27.6	8.2	72.8
1994—						
September	81.7	10.8	92.5	29.6	11.7	75.8
October	86.9	8.0	94.9	27.2	8.4	77.7
November	80.6	9.1	89.7	28.2	10.2	76.1
FEMALES						
1993—						
November	56.3	* 3.7	60.0	40.2	* 6.2	59.9
1994—						
September	59.5	5.6	65.1	35.1	8.6	65.0
October	55.8	5.6	61.4	38.0	9.2	61.8
November	57.1	4.6	61.6	40.8	7.4	60.2
PERSONS						
1993—						
November	124.1	9.8	134.0	67.8	7.3	66.4
1994—						
September	141.2	16.4	157.6	64.7	10.4	70.9
October	142.7	13.6	156.3	65.2	8.7	70.6
November	137.7	13.7	151.3	68.9	9.0	68.7
EASTERN SUBURBS (SR)						
MALES						
1993—						
November	53.9	7.7	61.6	29.8	12.5	67.4
1994—						
September	63.8	6.8	70.6	27.3	9.6	72.1
October	65.8	6.6	72.4	32.6	9.1	68.9
November	65.8	6.8	72.7	33.0	9.4	68.8
FEMALES						
1993—						
November	53.0	* 2.8	55.8	46.2	* 5.0	54.7
1994—						
September	51.4	* 3.1	54.5	44.7	* 5.6	54.9
October	48.5	* 2.5	51.0	49.5	* 4.9	50.7
November	51.0	* 2.9	54.0	48.2	* 5.4	52.8
PERSONS						
1993—						
November	106.9	10.5	117.4	76.0	9.0	60.7
1994—						
September	115.3	9.8	125.1	72.0	7.9	63.5
October	114.4	9.1	123.4	82.2	7.3	60.0
November	116.9	9.7	126.6	81.2	7.7	60.9



TABLE 18. LABOUR FORCE STATUS (a), REGIONS OF NSW—continued

	Month	Employed ( <i>'000</i> )	Unemployed ( <i>'000</i> )	Labour force ( <i>'000</i> )	Not in labour force ( <i>'000</i> )	Unemp- loyment rate (per cent)	Partici- pation rate (per cent)
ST GEORGE-SUTHERLAND (SR)							
MALES	1993—						
	November	120.4	8.2	128.6	44.1	6.4	74.4
	1994—						
	September	110.9	8.9	119.8	40.8	7.4	74.6
	October	107.1	6.4	113.5	43.8	5.6	72.1
November	111.0	6.7	117.7	44.4	5.7	72.6	
FEMALES	1993—						
	November	93.5	5.1	98.6	76.3	5.2	56.4
	1994—						
	September	101.3	4.7	106.0	77.9	4.4	57.6
	October	94.3	* 3.0	97.3	85.1	* 3.1	53.4
November	93.6	5.6	99.1	82.8	5.6	54.5	
PERSONS	1993—						
	November	213.9	13.3	227.2	120.4	5.9	65.4
	1994—						
	September	212.2	13.6	225.8	118.7	6.0	65.5
	October	201.4	9.4	210.8	128.9	4.4	62.1
November	204.5	12.3	216.8	127.2	5.7	63.0	
CANTERBURY-BANKSTOWN (SR)							
MALES	1993—						
	November	75.7	13.1	88.9	35.3	14.8	71.6
	1994—						
	September	73.4	10.5	83.9	31.1	12.5	73.0
	October	72.2	8.8	81.0	33.3	10.9	70.9
November	73.9	7.5	81.4	40.0	9.2	67.0	
FEMALES	1993—						
	November	52.5	5.9	58.5	62.6	10.1	48.3
	1994—						
	September	50.1	7.4	57.5	57.6	12.9	50.0
	October	47.8	6.8	54.6	62.0	12.5	46.8
November	51.0	6.7	57.7	66.8	11.6	46.3	
PERSONS	1993—						
	November	128.3	19.0	147.3	97.9	12.9	60.1
	1994—						
	September	123.5	17.9	141.4	88.7	12.7	61.5
	October	120.0	15.6	135.6	95.3	11.5	58.7
November	124.9	14.2	139.0	106.8	10.2	56.6	
FAIRFIELD-LIVERPOOL AND OUTER SOUTH WESTERN SYDNEY (SRs)							
MALES	1993—						
	November	132.5	17.4	149.9	42.3	11.6	78.0
	1994—						
	September	133.3	17.8	151.1	44.7	11.8	77.2
	October	130.3	13.8	144.1	48.2	9.6	74.9
November	126.9	16.1	143.0	46.4	11.2	75.5	
FEMALES	1993—						
	November	87.2	15.4	102.6	85.1	15.0	54.7
	1994—						
	September	97.1	13.8	110.9	86.9	12.5	56.1
	October	95.7	14.8	110.5	87.8	13.4	55.7
November	96.9	10.8	107.7	85.4	10.1	55.8	
PERSONS	1993—						
	November	219.8	32.8	252.5	127.4	13.0	66.5
	1994—						
	September	230.4	31.6	262.0	131.6	12.1	66.6
	October	226.0	28.6	254.6	136.0	11.2	65.2
November	223.8	26.9	250.7	131.7	10.7	65.6	

TABLE 18. LABOUR FORCE STATUS (a), REGIONS OF NSW—continued

	Month	Employed ( <i>'000</i> )	Unemployed ( <i>'000</i> )	Labour force ( <i>'000</i> )	Not in labour force ( <i>'000</i> )	Unemp- loyment rate (per cent)	Partici- pation rate (per cent)
FAIRFIELD-LIVERPOOL (SR)							
MALES	1993— November	81.1	14.6	95.7	29.6	15.2	76.4
	1994— September	74.4	13.4	87.8	30.3	15.2	74.3
	October	73.1	10.8	83.9	33.9	12.8	71.3
	November	71.5	12.5	84.0	28.3	14.9	74.8
FEMALES	1993— November	48.0	11.2	59.2	57.2	19.0	50.9
	1994— September	54.0	10.5	64.5	54.7	16.3	54.1
	October	54.1	9.6	63.7	58.2	15.1	52.2
	November	55.5	7.2	62.7	54.1	11.5	53.7
PERSONS	1993— November	129.1	25.8	154.9	86.8	16.7	64.1
	1994— September	128.4	23.9	152.3	85.0	15.7	64.2
	October	127.2	20.4	147.6	92.1	13.8	61.6
	November	127.0	19.7	146.7	82.4	13.4	64.0
CENTRAL WESTERN SYDNEY (SR)							
MALES	1993— November	53.3	10.3	63.5	33.1	16.2	65.8
	1994— September	58.3	5.1	63.5	33.9	8.1	65.2
	October	59.4	6.7	66.1	34.3	10.1	65.8
	November	63.0	7.5	70.5	31.6	10.7	69.0
FEMALES	1993— November	37.3	4.9	42.2	60.9	11.7	40.9
	1994— September	40.2	7.2	47.4	61.9	15.2	43.4
	October	41.2	6.4	47.5	62.8	13.4	43.1
	November	39.6	4.3	43.9	61.3	9.7	41.7
PERSONS	1993— November	90.5	15.2	105.8	93.9	14.4	53.0
	1994— September	98.6	12.3	110.9	95.8	11.1	53.7
	October	100.6	13.1	113.7	97.2	11.5	53.9
	November	102.6	11.8	114.4	92.9	10.3	55.2
OUTER WESTERN SYDNEY (SR)							
MALES	1993— November	75.4	7.9	83.3	24.1	9.5	77.5
	1994— September	80.5	7.0	87.4	20.6	8.0	81.0
	October	81.4	6.9	88.3	23.1	7.8	79.3
	November	78.3	4.8	83.1	23.8	5.7	77.7
FEMALES	1993— November	49.4	9.2	58.6	51.1	15.7	53.4
	1994— September	64.2	5.0	69.2	41.4	7.2	62.6
	October	62.3	6.7	69.0	43.2	9.7	61.5
	November	57.4	5.4	62.8	45.4	8.6	58.1
PERSONS	1993— November	124.7	17.1	141.9	75.3	12.1	65.3
	1994— September	144.7	12.0	156.7	62.0	7.6	71.7
	October	143.7	13.6	157.3	66.3	8.6	70.3
	November	135.7	10.1	145.9	69.1	7.0	67.8

TABLE 18. LABOUR FORCE STATUS (a), REGIONS OF NSW—continued

	Month	Employed ( <i>'000</i> )	Unemployed ( <i>'000</i> )	Labour force ( <i>'000</i> )	Not in labour force ( <i>'000</i> )	Unemp- loyment rate (per cent)	Partici- pation rate (per cent)
BLACKTOWN—BAULKHAM HILLS (SR)							
MALES	1993—						
	November	85.0	11.6	96.6	29.8	12.0	76.4
	1994—						
	September	94.3	8.1	102.4	33.7	7.9	75.2
	October	90.9	7.3	98.2	28.1	7.4	77.7
	November	89.4	8.4	97.9	30.6	8.6	76.2
FEMALES	1993—						
	November	63.2	7.8	71.0	60.4	10.9	54.0
	1994—						
	September	74.3	4.8	79.1	60.5	6.1	56.6
	October	69.1	5.0	74.1	66.1	6.8	52.9
	November	72.1	3.5	75.6	64.4	4.7	54.0
PERSONS	1993—						
	November	148.2	19.3	167.5	90.1	11.5	65.0
	1994—						
	September	168.6	12.9	181.5	94.3	7.1	65.8
	October	160.0	12.3	172.3	94.2	7.1	64.6
	November	161.5	12.0	173.5	95.1	6.9	64.6
LOWER NORTHERN SYDNEY (SR)							
MALES	1993—						
	November	78.2	* 4.8	83.0	31.2	* 5.7	72.7
	1994—						
	September	74.1	* 3.2	77.3	22.1	* 4.1	77.7
	October	72.1	4.9	77.0	24.8	6.3	75.6
	November	72.2	* 2.9	75.1	25.1	* 3.9	74.9
FEMALES	1993—						
	November	66.1	* 1.6	67.6	52.4	* 2.3	56.3
	1994—						
	September	64.7	* 3.5	68.1	49.7	* 5.1	57.8
	October	63.9	* 4.3	68.2	51.2	* 6.2	57.1
	November	65.7	* 3.5	69.2	51.9	* 5.1	57.1
PERSONS	1993—						
	November	144.3	6.3	150.6	83.6	4.2	64.3
	1994—						
	September	138.8	6.7	145.4	71.8	4.6	66.9
	October	136.0	9.1	145.1	76.0	6.3	65.6
	November	137.9	6.4	144.3	77.0	4.4	65.2
HORNSBY—KU-RING-GAI (SR)							
MALES	1993—						
	November	60.9	* 3.5	64.4	25.3	* 5.5	71.8
	1994—						
	September	74.7	* 2.3	77.0	20.9	* 2.9	78.6
	October	69.9	* 2.2	72.1	22.1	* 3.0	76.5
	November	73.2	* 2.8	75.9	21.2	* 3.7	78.2
FEMALES	1993—						
	November	53.3	* 3.4	56.7	53.3	* 6.0	51.5
	1994—						
	September	51.6	* 3.0	54.6	43.0	* 5.6	55.9
	October	50.1	* 2.7	52.8	46.5	* 5.1	53.2
	November	56.5	* 2.9	59.5	41.5	* 5.0	58.9
PERSONS	1993—						
	November	114.2	6.9	121.1	78.6	5.7	60.6
	1994—						
	September	126.3	5.3	131.6	64.0	4.0	67.3
	October	120.0	4.9	124.9	68.6	3.9	64.5
	November	129.7	5.7	135.4	62.7	4.2	68.3

TABLE 18. LABOUR FORCE STATUS (a), REGIONS OF NSW—continued

	Month	Employed ( <i>'000</i> )	Unemployed ( <i>'000</i> )	Labour force ( <i>'000</i> )	Not in labour force ( <i>'000</i> )	Unemp- loyment rate (per cent)	Partici- pation rate (per cent)
NORTHERN BEACHES (SR) (b)							
MALES	1993— November	66.0	2.7	68.7	19.4	3.9	78.0
	1994— September	65.7	2.9	68.5	18.1	4.2	79.1
	October	70.2	2.4	72.5	18.9	3.3	79.4
	November	66.5	2.6	69.1	18.9	3.8	78.5
FEMALES	1993— November	58.9	2.8	61.7	34.5	4.5	64.2
	1994— September	50.8	2.4	53.3	35.6	4.6	59.9
	October	54.0	* 1.6	55.6	35.1	* 2.8	61.3
	November	53.1	* 1.6	54.7	36.5	* 2.9	60.0
PERSONS	1993— November	124.9	5.5	130.4	53.8	4.2	70.8
	1994— September	116.5	5.3	121.8	53.8	4.4	69.4
	October	124.2	3.9	128.2	54.0	3.1	70.4
	November	119.6	4.2	123.8	55.3	3.4	69.1
GOSFORD-WYONG (SR)							
MALES	1993— November	57.3	7.4	64.8	29.9	11.5	68.4
	1994— September	54.0	6.2	60.2	32.4	10.3	65.0
	October	50.2	8.1	58.4	33.0	13.9	63.9
	November	50.3	6.1	56.4	33.5	10.9	62.7
FEMALES	1993— November	43.4	6.7	50.1	49.7	13.4	50.2
	1994— September	41.7	5.5	47.2	51.7	11.7	47.7
	October	39.9	6.1	46.0	49.8	13.2	48.0
	November	37.8	6.0	43.8	49.6	13.8	46.9
PERSONS	1993— November	100.7	14.2	114.9	79.6	12.3	59.1
	1994— September	95.7	11.7	107.4	84.0	10.9	56.1
	October	90.2	14.2	104.4	82.8	13.6	55.8
	November	88.1	12.2	100.2	83.2	12.2	54.6
HUNTER (SR)							
MALES	1993— November	114.5	21.0	135.5	66.1	15.5	67.2
	1994— September	114.0	22.7	136.8	61.8	16.6	68.9
	October	120.3	18.5	138.9	65.9	13.4	67.8
	November	119.6	18.7	138.3	69.9	13.5	66.4
FEMALES	1993— November	88.3	12.3	100.5	107.3	12.2	48.4
	1994— September	85.4	11.4	96.8	108.8	11.8	47.1
	October	81.7	9.6	91.3	110.4	10.5	45.3
	November	81.5	7.6	89.1	108.8	8.5	45.0
PERSONS	1993— November	202.8	33.3	236.1	173.4	14.1	57.7
	1994— September	199.4	34.1	233.5	170.6	14.6	57.8
	October	202.0	28.1	230.1	176.3	12.2	56.6
	November	201.0	26.3	227.4	178.7	11.6	56.0

TABLE 18. LABOUR FORCE STATUS (a), REGIONS OF NSW—continued

	<i>Month</i>	<i>Employed</i> ( <i>'000</i> )	<i>Unemployed</i> ( <i>'000</i> )	<i>Labour</i> <i>force</i> ( <i>'000</i> )	<i>Not in</i> <i>labour</i> <i>force</i> ( <i>'000</i> )	<i>Unemp-</i> <i>loyment</i> <i>rate</i> ( <i>per cent</i> )	<i>Partici-</i> <i>pation</i> <i>rate</i> ( <i>per cent</i> )
NEWCASTLE (SRS)							
MALES	1993— November	96.5	19.1	115.5	57.6	16.5	66.7
	1994— September	95.7	20.8	116.5	56.3	17.9	67.4
	October	100.1	16.0	116.1	58.6	13.8	66.5
	November	100.6	16.4	117.0	63.5	14.0	64.8
FEMALES	1993— November	74.8	11.1	85.9	93.7	13.0	47.8
	1994— September	75.8	10.7	86.5	95.8	12.4	47.5
	October	69.8	9.3	79.1	95.9	11.7	45.2
	November	69.5	6.7	76.2	95.2	8.7	44.5
PERSONS	1993— November	171.2	30.2	201.4	151.3	15.0	57.1
	1994— September	171.5	31.6	203.1	152.1	15.5	57.2
	October	170.0	25.3	195.2	154.5	12.9	55.8
	November	170.2	23.1	193.2	158.7	11.9	54.9
ILLAWARRA AND SOUTH EASTERN (SRs)							
MALES	1993— November	142.2	18.8	161.0	61.0	11.7	72.5
	1994— September	136.3	13.5	149.8	64.9	9.0	69.8
	October	136.4	13.2	149.6	68.6	8.8	68.5
	November	141.3	11.0	152.3	65.5	7.2	69.9
FEMALES	1993— November	101.2	9.1	110.3	116.3	8.2	48.7
	1994— September	96.7	10.8	107.5	113.4	10.0	48.7
	October	97.9	6.1	104.0	120.9	5.9	46.2
	November	97.6	10.9	108.5	116.6	10.1	48.2
PERSONS	1993— November	243.4	27.9	271.3	177.3	10.3	60.5
	1994— September	233.0	24.3	257.3	178.3	9.4	59.1
	October	234.3	19.3	253.6	189.5	7.6	57.2
	November	238.9	21.9	260.8	182.1	8.4	58.9
ILLAWARRA (SR)							
MALES	1993— November	96.8	14.7	111.6	44.5	13.2	71.5
	1994— September	90.5	9.1	99.6	41.1	9.2	70.8
	October	90.5	8.7	99.3	44.0	8.8	69.3
	November	92.2	6.9	99.1	45.8	7.0	68.4
FEMALES	1993— November	63.4	5.8	69.2	82.4	8.3	45.6
	1994— September	58.6	8.9	67.6	83.5	13.2	44.7
	October	60.3	3.8	64.1	88.2	6.0	42.1
	November	58.3	8.1	66.4	85.2	12.1	43.8
PERSONS	1993— November	160.3	20.5	180.8	126.8	11.3	58.8
	1994— September	149.1	18.1	167.2	124.6	10.8	57.3
	October	150.8	12.6	163.4	132.2	7.7	55.3
	November	150.5	15.0	165.4	130.9	9.1	55.8

TABLE 18. LABOUR FORCE STATUS (a), REGIONS OF NSW—continued

Month	Employed ('000)	Unemployed ('000)	Labour force ('000)	Not in labour force ('000)	Unemployment rate (per cent)	Participation rate (per cent)
WOLLONGONG (SRS)						
MALES	1993—					
	November	69.7	11.3	81.0	30.1	14.0
	1994—					
	September	67.8	6.7	74.5	28.8	9.0
	October	67.1	5.7	72.8	30.1	7.8
	November	67.4	3.5	70.9	31.0	4.9
FEMALES	1993—					
	November	44.8	5.2	50.0	57.7	10.3
	1994—					
	September	42.8	5.8	48.6	60.4	11.8
	October	41.6	* 2.6	44.3	63.1	* 6.0
	November	40.4	6.1	46.5	62.0	13.2
PERSONS	1993—					
	November	114.5	16.5	131.0	87.8	12.6
	1994—					
	September	110.6	12.5	123.1	89.2	10.1
	October	108.8	8.3	117.1	93.2	7.1
	November	107.8	9.6	117.4	93.0	8.2
RICHMOND-TWEED AND MID-NORTH COAST (SRs)						
MALES	1993—					
	November	86.2	18.2	104.4	59.2	17.4
	1994—					
	September	88.9	16.7	105.6	57.6	15.8
	October	91.2	12.5	103.7	59.8	12.0
	November	94.9	11.8	106.7	59.8	11.1
FEMALES	1993—					
	November	61.6	11.3	72.9	93.5	15.5
	1994—					
	September	71.5	8.6	80.0	89.2	10.7
	October	67.9	9.8	77.7	93.7	12.6
	November	70.6	7.5	78.1	98.0	9.6
PERSONS	1993—					
	November	147.9	29.5	177.4	152.8	16.6
	1994—					
	September	160.4	25.3	185.6	146.9	13.6
	October	159.1	22.3	181.4	153.6	12.3
	November	165.5	19.3	184.8	157.8	10.5
NORTHERN, FAR WEST-NORTH WESTERN AND CENTRAL WEST (SRs) (c)						
MALES	1993—					
	November	119.7	8.9	128.6	52.3	6.9
	1994—					
	September	127.8	12.3	140.2	47.7	8.8
	October	129.0	8.3	137.3	46.4	6.0
	November	123.2	11.8	135.0	47.8	8.8
FEMALES	1993—					
	November	82.2	7.6	89.9	89.6	8.5
	1994—					
	September	85.1	8.2	93.3	95.8	8.8
	October	86.6	6.2	92.8	94.5	6.7
	November	85.2	7.3	92.6	97.9	7.9
PERSONS	1993—					
	November	201.9	16.5	218.5	141.9	7.6
	1994—					
	September	212.9	20.6	233.5	143.5	8.8
	October	215.6	14.4	230.0	140.9	6.3
	November	208.4	19.2	227.6	145.7	8.4

TABLE 18. LABOUR FORCE STATUS (a), REGIONS OF NSW—continued

<i>Month</i>	<i>Employed (<sup>'000</sup>)</i>	<i>Unemployed (<sup>'000</sup>)</i>	<i>Labour force (<sup>'000</sup>)</i>	<i>Not in labour force (<sup>'000</sup>)</i>	<i>Unemp- loyment rate (per cent)</i>	<i>Partici- pation rate (per cent)</i>
MURRAY-MURRUMBIDGEE (SR)						
MALES						
1993— November	57.6	* 3.6	61.2	23.8	* 5.8	72.0
1994— September	68.0	* 3.6	71.6	25.2	* 5.0	74.0
October	62.1	* 4.5	66.6	26.6	* 6.7	71.4
November	60.3	* 3.5	63.7	25.9	* 5.4	71.1
FEMALES						
1993— November	39.7	* 2.3	41.9	49.2	* 5.4	46.0
1994— September	48.8	* 2.9	51.6	45.5	* 5.6	53.1
October	48.1	* 3.1	51.1	47.7	* 6.0	51.7
November	47.8	* 3.3	51.1	45.1	* 6.4	53.1
PERSONS						
1993— November	97.3	5.8	103.1	72.9	5.7	58.6
1994— September	116.7	6.5	123.2	70.7	5.3	63.5
October	110.2	7.5	117.7	74.4	6.4	61.3
November	108.1	6.8	114.8	71.0	5.9	61.8

(a) While the Labour Force Survey is designed primarily to produce reliable estimates at the national and State/Territory level, it also delivers estimates for a number of regions within States. As with national and State estimates, regional labour force estimates are subject to sampling error. Since estimates for regions are components of corresponding estimates at the State level — and are thus based on a considerably smaller sample size — they are subject to higher relative standard error. Care should therefore be taken in interpretation of regional estimates, particularly month to month movements. Tables of standard errors are included in the Technical Note on pages 43-47 of this publication. (b) Previously Manly-Warringah (SR). (c) Excludes components of Far West (SD). These are published as part of Balance of NSW (MSR).

**TABLE 19. EMPLOYED PERSONS: INDUSTRY (a) AND OCCUPATION  
SYDNEY (MSR) AND BALANCE OF NSW (MSR), NOVEMBER 1994  
(\*000)**

<i>Industry division and Major occupation group</i>	<i>Males</i>	<i>Females</i>	<i>Persons</i>
<b>SYDNEY (MSR)</b>			
<b>Industry—</b>			
Agriculture, forestry and fishing	7.5	*5.1	12.6
Mining	*3.5	*0.3	*3.8
Manufacturing	169.6	86.1	255.7
Electricity, gas and water supply	15.1	*3.5	18.6
Construction	97.7	12.1	109.8
Wholesale trade	100.5	38.2	138.7
Retail trade	124.3	120.4	244.6
Accommodation, cafes and restaurants	38.8	39.9	78.7
Transport and storage	67.7	24.5	92.1
Communication services	30.4	10.1	40.5
Finance and insurance	45.1	58.0	103.1
Property and business services	111.6	86.3	197.9
Government administration and defence	39.3	25.7	65.0
Education	39.3	73.3	112.6
Health and community services	42.9	125.0	167.8
Cultural and recreational services	25.7	24.9	50.6
Personal and other services	33.3	33.1	66.4
<b>Occupation—</b>			
Managers and administrators	126.7	41.4	168.1
Professionals	161.8	124.0	285.7
Para-professionals	45.3	51.9	97.2
Tradespersons	209.6	21.5	231.1
Clerks	84.0	250.2	334.2
Salespersons and personal service workers	101.5	181.2	282.8
Plant and machine operators, and drivers	86.4	18.9	105.3
Labourers and related workers	176.8	77.1	253.9
<b>Total employed</b>	<b>992.1</b>	<b>766.3</b>	<b>1,758.4</b>
<b>BALANCE OF NSW (MSR)</b>			
<b>Industry—</b>			
Agriculture, forestry and fishing	75.7	32.5	108.2
Mining	17.7	*0.9	18.5
Manufacturing	87.2	26.4	113.6
Electricity, gas and water supply	16.6	*0.6	17.2
Construction	57.4	9.1	66.5
Wholesale trade	28.9	9.7	38.6
Retail trade	73.8	79.8	153.6
Accommodation, cafes and restaurants	23.5	32.9	56.4
Transport and storage	31.3	5.8	37.1
Communication services	11.2	*4.4	15.6
Finance and insurance	7.6	12.7	20.4
Property and business services	27.4	27.4	54.7
Government administration and defence	22.8	15.6	38.4
Education	25.7	45.0	70.8
Health and community services	13.9	58.7	72.6
Cultural and recreational services	6.2	6.7	12.9
Personal and other services	15.1	16.2	31.3
<b>Occupation—</b>			
Managers and administrators	99.3	45.0	144.2
Professionals	54.6	45.0	99.7
Para-professionals	28.7	24.7	53.4
Tradespersons	123.4	14.9	138.3
Clerks	25.6	105.2	130.7
Salespersons and personal service workers	47.2	94.0	141.2
Plant and machine operators, and drivers	57.2	5.9	63.1
Labourers and related workers	106.0	49.9	155.8
<b>Total employed</b>	<b>542.0</b>	<b>384.4</b>	<b>926.5</b>

(a) Industry data are now classified according to the Australian and New Zealand Standard Industrial Classification. See the Explanatory Notes for more details.



TABLE 20. LABOUR FORCE STATUS: ORIGINAL SERIES, ACT

Month	Employed			Unemployed			Labour force ('000)	Not in labour force ('000)	Civilian population aged 15 and over ('000)	Unemployment rate (per cent)	Participation rate (per cent)
	Full-time workers ('000)	Part-time workers ('000)	Total ('000)	Looking for full-time work ('000)	Looking for part-time work ('000)	Total ('000)					
MALES											
November—											
1990	71.2	6.5	77.6	3.7	* 1.1	4.8	82.5	19.5	102.0	5.9	80.9
1991	68.0	9.6	77.6	3.3	* 1.1	4.5	82.1	22.5	104.6	5.4	78.5
1992	70.0	9.6	79.6	4.5	1.3	5.9	85.5	21.8	107.2	6.9	79.7
1993—											
September	71.2	10.0	81.2	4.8	1.6	6.5	87.7	22.1	109.8	7.4	79.9
October	71.9	10.3	82.2	4.5	1.8	6.4	88.6	21.5	110.0	7.2	80.5
November	70.8	10.9	81.7	4.3	1.0	5.4	87.1	23.2	110.3	6.2	78.9
1994—											
August	71.3	11.4	82.7	4.9	* 0.8	5.8	88.5	23.6	112.0	6.5	79.0
September	70.8	11.1	81.9	5.2	1.7	6.9	88.8	23.3	112.2	7.8	79.2
October	71.6	10.5	82.1	5.5	1.6	7.1	89.2	23.1	112.3	8.0	79.4
November	72.9	10.9	83.8	4.5	1.4	5.9	89.7	22.7	112.4	6.6	79.8
MARRIED FEMALES											
November—											
1990	26.4	13.2	39.6	* 0.5	* 0.4	* 0.8	40.4	21.2	61.6	* 2.0	65.6
1991	26.0	15.2	41.1	* 0.8	* 0.9	1.7	42.8	21.9	64.8	4.0	66.2
1992	25.7	15.2	40.9	* 0.9	* 0.7	1.6	42.5	19.9	62.5	3.8	68.1
1993—											
September	26.1	16.3	42.4	1.3	* 0.5	1.8	44.2	20.6	64.8	4.0	68.2
October	26.2	16.3	42.5	* 0.9	* 0.8	1.7	44.2	21.4	65.6	3.8	67.3
November	25.1	17.3	42.5	1.1	* 0.7	1.8	44.2	21.5	65.7	4.0	67.3
1994—											
August	27.1	16.2	43.2	* 0.8	* 0.8	1.6	44.8	20.5	65.3	3.6	68.7
September	27.8	16.1	43.9	1.2	* 0.5	1.7	45.6	19.4	64.9	3.8	70.2
October	26.6	16.0	42.6	1.5	* 0.7	2.1	44.7	20.4	65.1	4.7	68.6
November	27.5	15.7	43.1	* 0.8	* 0.6	1.4	44.5	20.0	64.5	3.1	69.0
ALL FEMALES											
November—											
1990	45.2	21.9	67.0	2.4	* 0.9	3.4	70.4	37.8	108.2	4.8	65.0
1991	42.0	24.2	66.2	1.7	2.4	4.1	70.2	40.8	111.0	5.8	63.3
1992	44.1	25.8	69.9	3.2	1.2	4.4	74.3	38.9	113.3	5.9	65.6
1993—											
September	42.9	28.0	70.9	3.7	2.3	6.0	76.9	38.1	115.0	7.8	66.9
October	43.9	26.5	70.5	3.2	1.7	4.9	75.4	39.8	115.2	6.5	65.4
November	42.8	28.3	71.1	3.5	1.7	5.2	76.3	39.1	115.4	6.9	66.1
1994—											
August	45.9	25.5	71.4	2.7	2.1	4.8	76.2	40.1	116.4	6.3	65.5
September	47.2	25.8	73.0	2.7	2.2	4.9	77.9	38.6	116.4	6.3	66.9
October	45.4	25.3	70.7	3.6	2.0	5.5	76.3	40.2	116.5	7.3	65.5
November	46.6	26.6	73.2	2.3	1.7	4.0	77.2	39.4	116.6	5.2	66.2
PERSONS											
November—											
1990	116.3	28.4	144.7	6.1	2.1	8.2	152.9	57.3	210.2	5.4	72.7
1991	110.0	33.8	143.8	5.1	3.5	8.6	152.3	63.3	215.6	5.6	70.6
1992	114.1	35.4	149.5	7.7	2.6	10.3	159.8	60.7	220.5	6.4	72.5
1993—											
September	114.1	38.0	152.1	8.5	3.9	12.4	164.6	60.2	224.8	7.5	73.2
October	115.9	36.8	152.7	7.7	3.5	11.2	164.0	61.3	225.2	6.9	72.8
November	113.6	39.2	152.8	7.9	2.7	10.6	163.4	62.3	225.6	6.5	72.4
1994—											
August	117.3	36.9	154.1	7.6	3.0	10.6	164.7	63.7	228.4	6.4	72.1
September	118.0	36.9	154.9	7.9	3.9	11.8	166.7	61.9	228.6	7.1	72.9
October	117.0	35.8	152.8	9.0	3.6	12.6	165.5	63.3	228.8	7.6	72.3
November	119.4	37.6	157.0	6.8	3.1	9.9	166.9	62.1	229.0	5.9	72.9

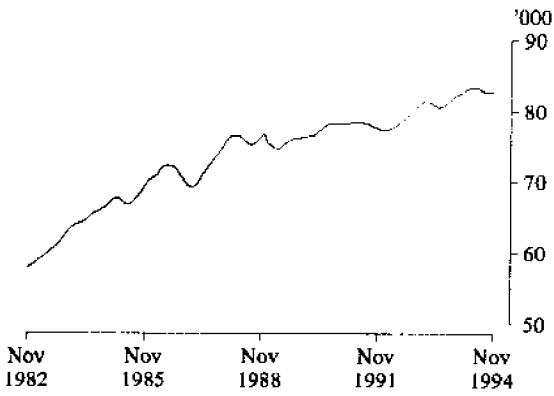
TABLE 21. LABOUR FORCE STATUS: TREND SERIES, ACT (a)

<i>Month</i>	<i>Employed</i> ( <i>'000</i> )	<i>Unemployed</i> ( <i>'000</i> )	<i>Labour force</i> ( <i>'000</i> )	<i>Unemployment</i> <i>rate</i> ( <i>per cent</i> )	<i>Participation</i> <i>rate</i> ( <i>per cent</i> )
MALES					
<i>November—</i>					
1990	78.2	5.0	83.2	6.0	81.5
1991	77.5	5.6	83.1	6.7	79.4
1992	80.4	6.6	87.0	7.6	81.1
<i>1993—</i>					
September	81.2	6.9	88.1	7.8	80.3
October	81.7	6.8	88.5	7.7	80.4
November	82.0	6.8	88.8	7.6	80.5
December	82.3	6.8	89.0	7.6	80.6
<i>1994—</i>					
January	82.5	6.8	89.3	7.6	80.6
February	82.8	6.7	89.5	7.5	80.5
March	83.1	6.5	89.6	7.3	80.4
April	83.3	6.3	89.6	7.0	80.4
May	83.3	6.2	89.5	6.9	80.2
June	83.2	6.2	89.4	6.9	80.0
July	83.0	6.3	89.4	7.1	79.9
August	82.8	6.6	89.5	7.4	79.9
September	82.8	6.9	89.6	7.7	79.9
October	82.7	7.1	89.8	7.9	80.0
November	82.8	7.2	90.0	8.0	80.1
FEMALES					
<i>November—</i>					
1990	66.7	4.4	71.1	6.2	65.7
1991	65.9	5.1	71.0	7.2	63.9
1992	69.0	5.7	74.7	7.7	66.0
<i>1993—</i>					
September	70.7	5.7	76.5	7.5	66.5
October	70.9	5.9	76.7	7.6	66.6
November	71.0	5.8	76.8	7.6	66.6
December	70.9	5.7	76.6	7.5	66.3
<i>1994—</i>					
January	70.6	5.6	76.2	7.3	65.8
February	70.2	5.3	75.6	7.1	65.2
March	69.8	5.2	75.0	6.9	64.6
April	69.7	5.1	74.8	6.8	64.4
May	69.9	5.1	75.0	6.8	64.5
June	70.4	5.1	75.5	6.8	65.0
July	71.1	5.2	76.3	6.9	65.6
August	71.6	5.3	76.9	6.9	66.1
September	72.0	5.3	77.3	6.9	66.4
October	72.2	5.4	77.6	6.9	66.6
November	72.4	5.4	77.7	6.9	66.7
PERSONS					
<i>November—</i>					
1990	144.9	9.4	154.3	6.1	73.4
1991	143.4	10.6	154.0	6.9	71.4
1992	149.4	12.4	161.8	7.7	73.4
<i>1993—</i>					
September	152.0	12.6	164.6	7.7	73.2
October	152.5	12.7	165.2	7.7	73.4
November	153.0	12.6	165.6	7.6	73.4
December	153.2	12.5	165.7	7.5	73.3
<i>1994—</i>					
January	153.1	12.3	165.4	7.4	73.0
February	153.0	12.0	165.0	7.3	72.7
March	152.9	11.7	164.6	7.1	72.4
April	153.0	11.4	164.4	6.9	72.2
May	153.2	11.2	164.5	6.8	72.2
June	153.6	11.3	164.9	6.9	72.4
July	154.1	11.6	165.7	7.0	72.6
August	154.5	11.9	166.4	7.2	72.8
September	154.7	12.2	166.9	7.3	73.0
October	154.9	12.4	167.4	7.4	73.1
November	155.2	12.6	167.7	7.5	73.2

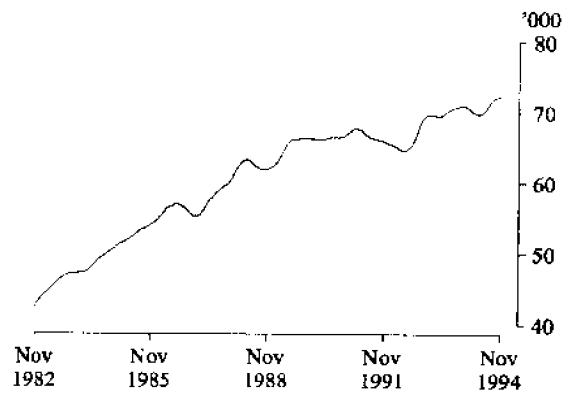
(a) See Explanatory Note 28.

TREND SERIES, ACT (a)

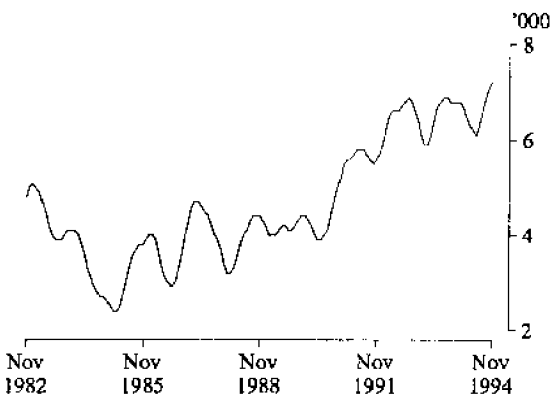
Employed males



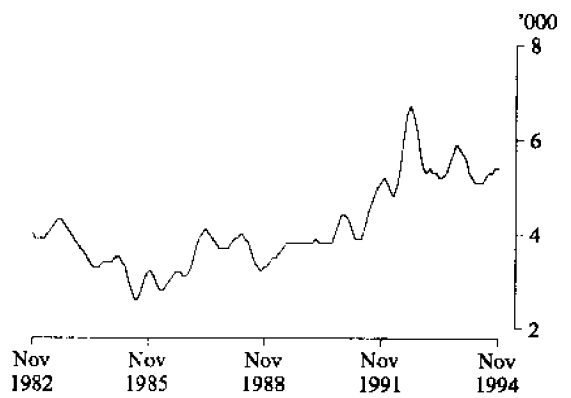
Employed females



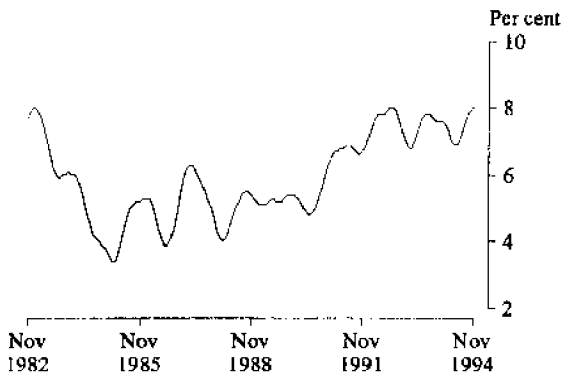
Unemployed males



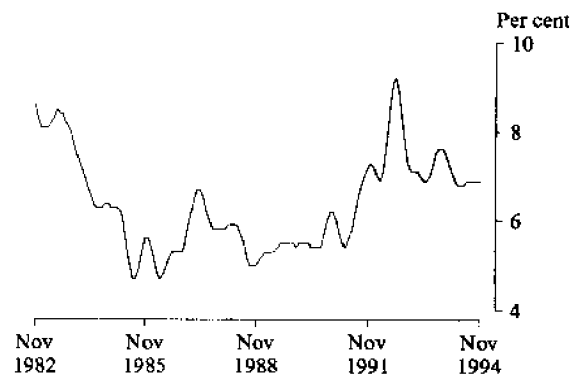
Unemployed females



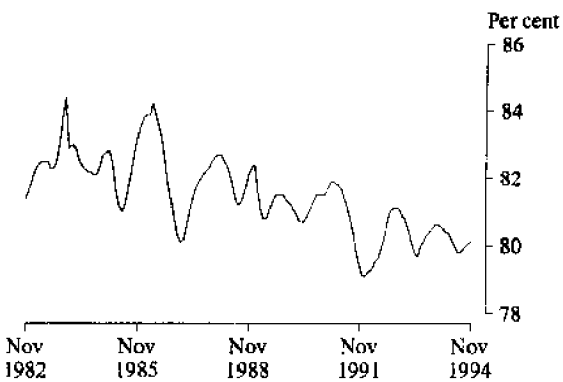
Male unemployment rate



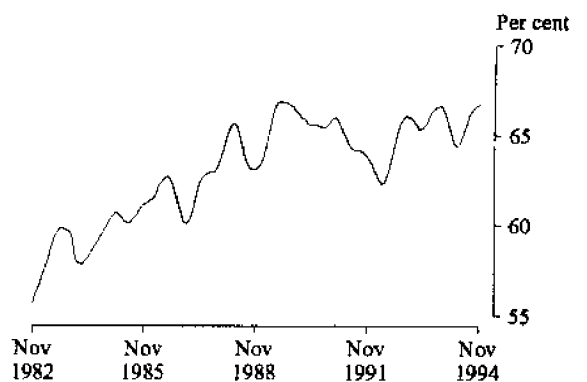
Female unemployment rate



Male participation rate



Female participation rate



(a) Comparisons between these graphs should not be made, as their vertical axes are not similarly scaled.

TABLE 22. LABOUR FORCE STATUS: AGE, ACT, NOVEMBER 1994

	Persons						
	Females			Age group (years)			Total
	Males	Married	Total	15-19	20-24	25 and over	
	— '000 —						
<i>Employed</i>	83.8	43.1	73.2	11.8	22.4	122.8	157.0
Full-time workers	72.9	27.5	46.6	3.1	15.7	100.6	119.4
Part-time workers	10.9	15.7	26.6	8.7	6.6	22.3	37.6
<i>Unemployed</i>	5.9	1.4	4.0	3.2	2.1	4.7	9.9
Looking for full-time work	4.5	* 0.8	2.3	1.4	1.6	3.8	6.8
Looking for part-time work	1.4	* 0.6	1.7	1.8	* 0.5	* 0.8	3.1
<i>Labour force</i>	89.7	44.5	77.2	15.0	24.5	127.5	166.9
<i>Not in labour force</i>	22.7	20.0	39.4	9.1	6.1	46.9	62.1
Aged 15-19 attending school	3.8	* 0.0	3.7	7.5	..	..	7.5
<i>Civilian population</i>	112.4	64.5	116.6	24.1	30.5	174.4	229.0
	— per cent —						
Unemployment rate	6.6	3.1	5.2	21.2	8.6	3.7	5.9
Looking for full-time work	5.8	* 2.8	4.8	31.1	9.2	3.7	5.4
Participation rate	79.8	69.0	66.2	62.1	80.1	73.1	72.9
Employment/population ratio	74.5	66.8	62.8	49.0	73.2	70.4	68.6
	— number —						
Average weekly hours worked							
by employed persons	39.4	29.7	29.4	17.8	32.7	36.8	34.8
Average duration of unemployment (weeks)	40.0	* 13.6	38.5	28.0	66.7	34.9	39.4

TABLE 23. NON-INSTITUTIONALISED PERSONS (a): LABOUR FORCE STATUS, BIRTHPLACE AND YEAR OF ARRIVAL, ACT, NOVEMBER 1994 ('000)

	Employed	Unemployed	Not in labour force	Labour force	Civilian population aged 15 and over
<i>Born in Australia</i>	116.4	6.4	40.3	122.9	163.2
<i>Born outside Australia</i>	40.6	3.5	19.8	44.0	63.9
Arrived before 1966	12.3	* 0.3	7.9	12.6	20.5
Arrived 1966-1970	5.8	* 0.2	2.7	6.0	8.7
Arrived 1971-1975	5.9	* 0.5	1.7	6.5	8.2
Arrived 1976-1980	4.5	* 0.3	1.6	4.8	6.4
Arrived 1981-1985	4.0	* 0.5	1.5	4.6	6.1
Arrived 1986-1990	5.0	* 0.9	1.6	6.0	7.6
Arrived 1991 to survey date	3.1	* 0.6	2.8	3.7	6.5
<i>Main English speaking countries</i>	18.2	* 0.9	6.3	19.1	25.4
Arrived before 1966	5.7	* 0.2	3.0	5.9	8.9
Arrived 1966-1970	2.7	* 0.2	1.1	2.9	3.9
Arrived 1971-1975	2.6	* 0.1	* 0.5	2.6	3.1
Arrived 1976-1980	2.2	* 0.1	* 0.6	2.2	2.8
Arrived 1981-1985	1.4	* 0.2	* 0.4	1.5	2.0
Arrived 1986-1990	1.7	* 0.2	* 0.1	1.9	2.0
Arrived 1991 to survey date	1.9	* 0.1	* 0.7	2.0	2.6
<i>Other than Main English speaking countries</i>	22.4	2.6	13.5	25.0	38.4
Arrived before 1966	6.5	* 0.2	4.8	6.7	11.5
Arrived 1966-1970	3.0	* 0.1	1.6	3.1	4.8
Arrived 1971-1975	3.4	* 0.5	1.2	3.8	5.0
Arrived 1976-1980	2.3	* 0.3	1.1	2.6	3.6
Arrived 1981-1985	2.7	* 0.3	1.1	3.0	4.1
Arrived 1986-1990	3.3	* 0.8	1.5	4.0	5.5
Arrived 1991 to survey date	1.2	* 0.5	2.2	1.7	3.8
<b>Total</b>	<b>157.0</b>	<b>9.9</b>	<b>60.1</b>	<b>166.9</b>	<b>227.1</b>

(a) Excludes boarding school pupils.

TABLE 24. EMPLOYED PERSONS: INDUSTRY (a) AND OCCUPATION, ACT, NOVEMBER 1994  
(<sup>'000</sup>)

<i>Industry division and Major occupation group</i>	<i>Males</i>	<i>Females</i>	<i>Persons</i>
<b>Industry —</b>			
Agriculture, forestry, fishing	*0.6	*0.2	*0.9
Mining	*0.1	*0.0	*0.1
Manufacturing	3.3	*1.0	4.2
Electricity, gas and water supply	*1.1	*0.3	1.4
Construction	10.0	1.6	11.6
Wholesale trade	4.0	*1.2	5.3
Retail trade	11.6	9.8	21.4
Accommodation, cafes and restaurants	3.8	4.5	8.3
Transport and storage	3.1	1.4	4.5
Communication services	1.4	*1.1	2.5
Finance and insurance	1.6	2.5	4.1
Property and business services	9.8	8.3	18.1
Government administration and defence	19.9	17.1	37.0
Education	4.4	8.0	12.4
Health and community services	2.7	10.3	13.0
Cultural and recreational services	3.4	2.4	5.8
Personal and other services	3.0	3.5	6.5
<b>Occupation—</b>			
Managers and administrators	13.8	5.1	18.8
Professionals	18.1	11.3	29.4
Para-professionals	5.2	5.4	10.6
Tradespersons	13.3	1.4	14.8
Clerks	10.8	27.6	38.3
Salespersons and personal service workers	8.4	18.5	26.9
Plant and machinery operators, and drivers	4.4	*0.3	4.7
Labourers and related workers	9.9	3.6	13.5
<b>Total employed</b>	<b>83.8</b>	<b>73.2</b>	<b>157.0</b>

(a) Industry data are now classified according to the Australian and New Zealand Standard Industrial Classification. See the Explanatory Notes for more details.

EMPLOYMENT BY INDUSTRY DIVISION, ACT, NOVEMBER 1994

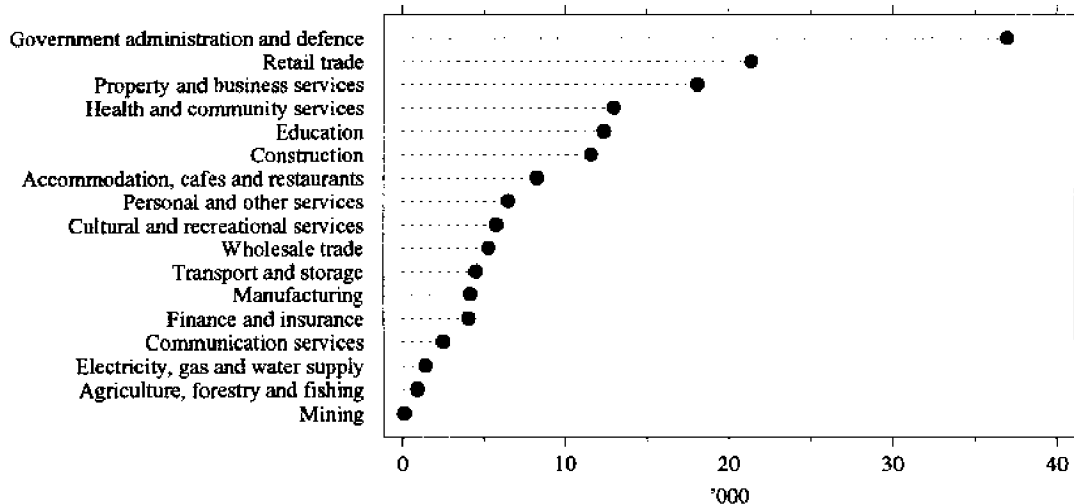
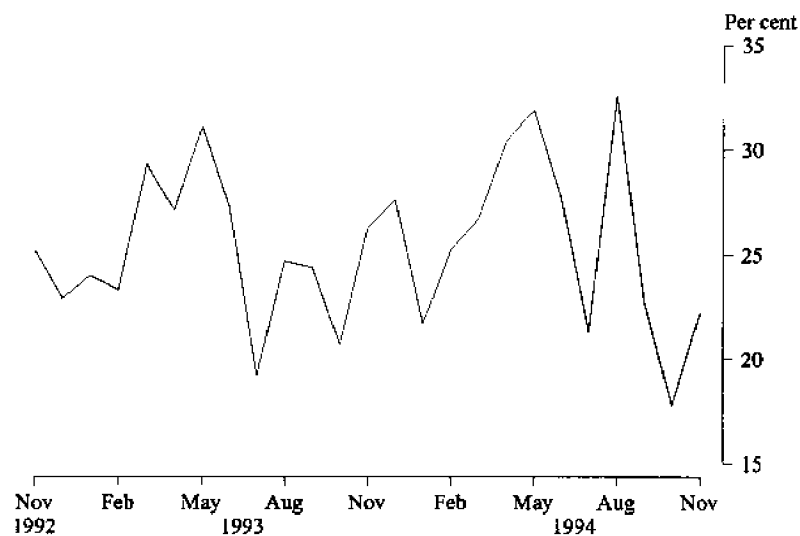


TABLE 25. LONG-TERM UNEMPLOYMENT, ACT

Month	Long-term unemployment									Long-term unemployment as a proportion of total unemployment		
	52 weeks and under 104			104 weeks and over			Total			Males (per cent)	Females (per cent)	Persons (per cent)
	Males ('000)	Females ('000)	Persons ('000)	Males ('000)	Females ('000)	Persons ('000)	Males ('000)	Females ('000)	Persons ('000)			
<i>1993—</i>												
September	* 0.7	* 0.7	* 1.4	* 0.9	* 0.7	1.7	1.6	1.4	3.0	25.1	23.7	24.4
October	* 0.7	* 0.3	* 1.2	* 0.8	* 0.3	1.1	1.5	* 0.8	2.3	23.8	16.8	20.7
November	* 0.6	* 0.5	* 1.1	1.2	* 0.5	1.7	1.8	1.0	2.8	33.8	18.7	26.3
December	* 0.6	* 0.6	* 1.2	1.5	* 0.6	2.1	2.1	1.2	3.3	31.7	22.5	27.6
<i>1994—</i>												
January	* 0.5	* 0.5	* 1.2	1.6	* 0.5	2.1	2.1	1.1	3.2	25.0	17.4	21.7
February	* 0.7	1.1	* 1.8	1.2	1.1	2.3	2.0	2.1	4.1	22.8	27.8	25.2
March	* 0.9	* 0.6	* 1.7	* 0.8	* 0.6	1.4	1.7	1.4	3.1	26.5	26.9	26.7
April	* 0.9	* 0.8	* 1.7	1.3	* 0.6	1.9	2.2	1.4	3.6	33.9	26.2	30.4
May	* 1.0	* 0.6	* 1.5	1.5	* 0.5	2.0	2.4	1.0	3.5	41.1	20.9	31.9
June	* 0.8	* 0.6	* 1.5	1.3	* 0.2	1.4	2.1	* 0.8	2.9	34.3	18.5	27.7
July	* 0.5	* 0.4	* 0.9	1.0	* 0.4	1.4	1.5	* 0.7	2.2	26.3	15.4	21.3
August	* 0.9	* 0.5	* 1.4	1.5	* 0.6	2.1	2.4	1.1	3.4	41.1	22.3	32.6
September	* 0.8	* 0.2	* 1.1	1.3	* 0.3	1.6	2.1	* 0.6	2.7	30.7	11.4	22.7
October	* 1.0	* 0.3	* 1.3	* 0.6	* 0.3	1.0	1.7	* 0.6	2.2	23.4	10.5	17.8
November	* 0.5	* 0.7	* 1.2	* 0.7	* 0.3	1.0	1.2	1.0	2.2	20.1	25.1	22.2

LONG TERM UNEMPLOYED AS A PROPORTION OF TOTAL UNEMPLOYED, ACT



## LABOUR FORCE SUPPLEMENTARY TOPICS

Although emphasis in the population survey is placed on the regular collection of data on demographic and labour force characteristics, supplementary and special surveys of particular aspects of the labour force are carried out from time to time.

<i>Catalogue no.</i>	<i>Title of Publication</i>	<i>Price (a) \$</i>
6206.0	Labour Force Experience, Australia, March 1994	13.00
6209.0	Labour Mobility, Australia, February 1994	13.00
6216.0	Multiple Jobholding, Australia, July 1991	12.50
6220.0	Persons Not in the Labour Force, Australia, September 1993	13.00
6222.0	Job Search Experience of Unemployed Persons, Australia, July 1994	13.00
6224.0	Labour Force Status and Other Characteristics of Families, Australia, June 1994	13.00
6227.0	Transition from Education to Work, Australia, May 1994	18.00
6235.0	Labour Force Status and Educational Attainment, Australia, February 1994	13.00
6238.0	Retirement and Retirement Intentions, Australia, October 1992	12.70
6243.0	Career Paths of Persons with Trade Qualifications, Australia, 1993	18.00
6245.0	Successful and Unsuccessful Job Search Experience, Australia, July 1994	13.00
6250.0	Labour Force Status and Other Characteristics of Migrants, Australia, September 1993	13.00
6254.0	Career Experience, Australia, February 1993	12.70
6264.0	Persons who had re-entered the Labour Force, Australia, May 1993	12.70
6265.0	Underemployed Workers, Australia, May 1991	11.50
6267.0	Persons Who Have Left the Labour Force, Australia, April 1991	11.50
6272.0	Participation in Education, Australia, September 1993	13.00
6275.0	Persons Employed at Home Australia, March 1992	12.50
6277.0	Career Paths of Qualified Nurses, Australia, March to July 1989	12.50
6278.0	Training and Education Experience, Australia, 1993	30.00
6310.0	Weekly Earnings of Employees (Distribution), Australia, August 1993	13.00
6317.0	Annual and Long Service Leave Taken, Australia, May 1988 to April 1989	11.50
6319.0	Superannuation, Australia, November 1993	13.00
6325.0	Trade Union Members, Australia, August 1992	12.70
6334.0	Employment Benefits, Australia, August 1992	12.50
6342.0	Working Arrangements, Australia, August 1993	13.00

(a) Prices quoted are subject to revision.

### NEW DATA SERVICES

From January 1995, certain publications containing the results of labour force supplementary surveys have been discontinued. However, data from these surveys will continue to be made available in various ways:

The principal results from labour force supplementary surveys will be released in *The Labour Force, Australia* (6203.0). At the same time, the Standard Data Service for a supplementary survey will be available, priced between \$17.50 and \$20.00, and including tables formerly included in the supplementary publications. Equivalent tables at the State level will still be available on microfiche. In addition, other unpublished data can be provided to meet special requirements.

*The Labour Force, Australia, December 1994* will contain the principal results of the following two supplementary surveys (conducted in August 1994):

- Trade Union Membership
- Weekly Earnings of Employees (Distribution)

## EXPLANATORY NOTES

### Introduction

This publication contains estimates of the civilian labour force derived from the labour force survey component of the monthly population survey, which is conducted on a sample basis throughout Australia.

### The population survey

2. This survey consists of the labour force survey (LFS) and, in most months, one or more supplementary topics. The survey is based on a multi-stage area sample of private dwellings (houses, flats, etc.) and non-private dwellings (hotels, motels, etc.) and covers slightly less than one-half of one per cent of the population of New South Wales. The information is obtained from the occupants of selected dwellings by carefully chosen and specially trained interviewers. The interviews are generally conducted during the two weeks beginning on the Monday between the 6th and 12th of each month. The information obtained relates to the week before the interview (i.e. the reference week).

### Scope

3. The labour force survey includes all persons aged 15 years and over, except:

- (a) members of the permanent defence forces;
- (b) certain diplomatic personnel of overseas governments, customarily excluded from census and estimated populations;
- (c) overseas residents in Australia; and
- (d) members of non-Australian defence forces (and their dependants) stationed in Australia.

### Survey sample redesign

4. Following each Population Census, the ABS redesigns and reselects the LFS to take into account the new information which is obtained from the Census. The sample used in the LFS from September 1987 to August 1992, which was designed and selected using data from the 1986 Census, has been updated and reselected using information collected in the 1991 Census. The new sample was phased in over the period September 1992 to December 1992.

5. For the most part, one quarter of the new sample was introduced each month so that, by December 1992, the entire new sample was in place.

### Potential effects on labour force survey estimates

6. Implications for estimates produced from the LFS due to sample redesign and its implementation are as follows.

- (a) The sampling error overall increased initially by about seven per cent over the previous level but will decline gradually during the life of the new sample. For State estimates, the initial increase

was about 8 per cent, while for the Territories, there was a decrease of 19 per cent. There were also higher standard errors for movements produced over the period September 1992 to December 1992 compared with those for the corresponding series produced prior to this period and from January 1993 onwards. Overall, these were estimated to be up to 20 per cent higher than the normal standard errors on monthly movements.

- (b) Analysis has shown that the unemployment rate is marginally higher (less than 0.5 percentage points on average) for those persons in sample for the first time. Normally, this will not affect the overall estimates of month-to-month movements because the number of persons in the sample does not change significantly. However, during the transition period, there were twice as many people as usual in the sample for the first time. This may have caused a small upward movement (of less than 0.1 percentage points on average) in the unemployment rate from August 1992 to September 1992 and a compensating decrease from December 1992 to January 1993.

7. For further information, see *Information Paper: Labour Force Survey Sample Design* (6269.0).

### Definitions

8. The labour force category to which a person is assigned depends on the actual activity undertaken during the reference week (i.e. whether working, looking for work, etc.). The following definitions, which conform closely to the international standard definitions specified by the International Labour Office (ILO), relate only to those persons within the scope of the survey.

9. *Employed persons* comprise all civilians aged 15 years and over who, during the reference week:

- (a) worked for one hour or more for pay, profit, commission or payment in kind (including employees, employers and self-employed persons) in a job or business, or on a farm; or
- (b) worked for one hour or more without pay in a family business or on a farm (i.e. unpaid family helpers); or
- (c) were employees who had a job but were not at work and were: on paid leave; on leave without pay for less than four weeks up to the end of the reference week; stood down without pay because of bad weather or plant breakdown at their place of employment for less than four weeks up to the end of the reference week; on strike or locked out; on workers' compensation and expected to be returning to their job; or receiving wages or salary while undertaking full-time study; or



- (d) were employers, self-employed persons or unpaid family helpers who had a job, business or farm, but were not at work.
10. Prior to April 1986, unpaid family helpers who worked for 1 to 14 hours were excluded from the category of employed persons.
11. Employed persons can be classified into:
- full-time workers* (i.e. those who usually worked 35 hours or more a week (in all jobs) and others who, although usually part-time workers, worked 35 hours or more during the reference week); and
  - part-time workers* (i.e. those who usually worked less than 35 hours a week and who did so during the reference week).
12. *Unemployed persons* are all those aged 15 years and over who were not employed during the reference week, and:
- had actively looked for full-time or part-time work at any time in the four weeks up to the end of the reference week, and:
    - were available for work in the reference week, or would have been available except for temporary illness (i.e. lasting for less than four weeks to the end of the reference week); or
    - were waiting to start a new job within four weeks from the end of the reference week and would have started in the reference week if the job had been available then; or
  - were waiting to be called back to a full-time or part-time job from which they had been stood down without pay for less than four weeks up to the end of the reference week (including the whole of the reference week) for reasons other than bad weather or plant breakdown.
13. *Actively looking for work* includes writing, telephoning or applying in person to an employer for work; answering a newspaper advertisement for a job; checking factory or Commonwealth Employment Service notice-boards; being registered with the Commonwealth Employment Service; checking or registering with any other employment agency; advertising or tendering for work; and contacting friends or relatives.
14. *The unemployment rate* for any group is the number unemployed expressed as a percentage of the labour force (i.e. employed plus unemployed) in the same group.
15. *The labour force* comprises all persons who, during the reference week, were employed or unemployed as defined above.
16. *Long term unemployed* comprises persons unemployed for a period of 52 weeks or more.
17. *Persons not in the labour force* are those who, during the reference week, were not in the categories *employed* or *unemployed* as defined above.
18. *The labour force participation rate* for any group is the labour force expressed as a percentage of the civilian population aged 15 years and over in the same group.
19. *Duration of unemployment* is the period from the time the person began looking for work or was stood down to the end of the reference week.
20. *Unemployed persons classified by industry and occupation.* Unemployed persons who had worked full-time for two weeks or more in the last two years are classified according to the industry and occupation of their most recent full-time job.
21. *Industry classification.* From August 1994, Labour Force Survey industry data are classified according to the Australian and New Zealand Standard Industrial Classification (ANZSIC), a detailed description of which appears in *ANZSIC 1993* (1292.0). For further information about the application of ANZSIC to Labour Force Survey data, see *Information Paper Labour Force Survey: Introduction of ANZSIC for industry data* (6259.0).
22. *Occupation classification.* Occupation data are presented in accordance with the *Australian Standard Classification of Occupations (ASCO)* (1221.0 and 1222.0).
23. *Marital status.* In the labour force survey, persons are classified as *married* or *not married*. Persons are classified as *married* if they are reported as being married (including de facto) and their spouse was a usual resident of the household at the time of the survey.
24. *Persons attending school or a tertiary educational institution.* Persons attending school comprise those aged 15–19 years who, during the reference week, were enrolled full-time at secondary or high schools (including boarding school pupils). Persons attending a tertiary educational institution comprise those aged 15–24 years who were enrolled full-time at universities, colleges of advanced education, technical colleges, colleges of technical and further education, and theological colleges.
25. *Employment/population ratio.* For any group, the number of employed persons expressed as a percentage of the civilian population aged 15 years and over in the same group.

#### Statistical areas

26. The regional structure for NSW used in tables 16 to 21 is based on the Statistical Region structure of the Australian Standard Geographical Classification (ASGC). For further information concerning statistical areas, please refer to pages 48–50 and the publications *Regional Statistics, New South Wales* (1304.1) and *Australian Standard Geographical Classification* (1216.0).

### Seasonal adjustment and trend estimation

27. Seasonal adjustment is a means of removing the estimated effects of normal seasonal variation from the series so that the effects of other influences on the series can be more clearly recognised. Seasonal adjustment does not aim to remove the irregular or non-seasonal influences which may be present in any particular month. This means that month-to-month movements of the seasonally adjusted estimates may not be reliable indicators of trend behaviour. For example, irregular factors unrelated to the trend account for more than half the seasonally adjusted movement with the following frequency:

- (a) Employment: 5 in 10 monthly movements
- (b) Unemployment: 7 in 10 monthly movements
- (c) Unemployment rate: 7 in 10 monthly movements
- (d) Participation rate: 9 in 10 monthly movements

28. Smoothing seasonally adjusted series produces a measure of the underlying trend by reducing the impact of the irregular component of the series. The trend estimates are derived by applying a 13-term Henderson-weighted moving average to the respective seasonally adjusted series. While this smoothing technique enables estimates to be produced which include the latest month, it does result in revisions to the most recent months as additional observations become available.

29. Seasonally adjusted series for NSW appear in this publication in Table 2. Trend estimates for NSW and ACT appear in Tables 2 and 21 respectively. Seasonally adjusted data is not available for ACT.

### Reliability of the estimates

30. Estimates in this publication are subject to sampling and non-sampling errors. The Technical Note on pages 43-47 of this publication gives information on these sources of error.

### Related publications

31. Users may also wish to refer to the following related publications which are available from the ABS Bookshop:

*Regional Statistics, New South Wales* (1304.1) issued annually

*Australian Capital Territory Business Indicators* (1303.8) issued monthly

*Australian Capital Territory Statistical Summary* (1307.8) issued annually

*Australian Capital Territory at a Glance* (1314.8) issued annually

*A Guide to Smoothing Time Series — Estimates of 'Trend'* (1316.0)

*Time Series Decomposition — An Overview* (1317.0)

*Labour Statistics, Australia* (6101.0) issued annually

*A Guide to Labour Statistics* (6102.0)

*The Labour Force, Australia, Preliminary* (6202.0) issued monthly

*The Labour Force, Australia* (6203.0) issued monthly

*Employed Wage and Salary Earners, Australia* (6248.0) issued quarterly

*Information Paper: Labour Force Survey: Introduction of ANZSIC for industry data* (6259.0)

*Information Paper: Labour Force Survey — Sample Design* (6269.0)

*Information Paper: Labour Force Survey — Measuring Teenage Unemployment* (6270.0)

*Technical Paper: The Labour Force, Australia: Preliminary Data on Floppy Disk — Technical Details* (6271.0)

### Additional data

32. In addition to the labour force survey, the ABS publishes a wide range of supplementary labour market information. For details see page 39 of this publication.

33. The ABS can also make available information which is not published. This information may be made available in one or more of the following forms: microfiche, photocopy, data tape, floppy disk, computer printout, clerically-extracted tabulation. In general, a charge is made for providing unpublished information.

### Symbols and other usages

A	Area
C	City
MSR	Major Statistical Region
n.e.c.	not elsewhere classified
SD	Statistical Division
SR	Statistical Region
SRS	Statistical Region Sector
*	subject to sampling variability too high for most practical purposes. See paragraph 6 of the Technical Note on Data Reliability.
—	nil or rounded to zero (including null cells)

34. Figures have been rounded and discrepancies may occur between sums of the component items and the totals shown.

## TECHNICAL NOTE ON DATA RELIABILITY

### Sources of error

There are a number of possible sources of error in sample surveys and these can be classified into two types: *sampling error*; and *non-sampling error*.

### Non-sampling errors

2. Non-sampling errors may arise as a result of errors in the reporting, recording or processing of the data and can occur even if there is a complete enumeration of the population. Non-sampling errors can be introduced through: inadequacies in the questionnaire; non-response; inaccurate reporting by respondents; errors in the application of survey procedures; incorrect recording of answers; and errors in data entry and processing.

3. It is difficult to measure the size of the non-sampling errors and the extent of these errors could vary considerably in significance from survey to survey, and from question to question. However, every effort is made in the design of the survey and development of survey procedures to minimise the effect of these errors.

### Sampling errors

4. Sampling error is the error which occurs by chance because the data were only obtained from a sample, not the entire population.

### Standard error of estimates

5. One measure of the variability of estimates which occurs as a result of surveying only a sample of the population is the *standard error* (SE). There are about two chances in three that a survey estimate is within one standard error of the figure that would have been obtained if all persons had been included and about nineteen chances in twenty that it is within two standard errors. That is, there are 19 chances in 20 that the true estimate is in the range—

$$X - 2 \times SE(X) \text{ to } X + 2 \times SE(X)$$

(Where  $X$  is the estimate)

The standard error of an estimate can be obtained from Table A. Linear interpolation should be used to calculate the standard error of estimates falling between the sizes of estimates listed in the table (see example below Table A).

6. In the tables in this publication, only estimates with relative standard errors of 25 per cent or less, and percentages based on such estimates, are considered sufficiently reliable for most purposes. However, estimates and percentages with larger relative standard errors have been included and are preceded by an asterisk (e.g. \* 3.4) to indicate they are subject to high standard errors and should be used with caution.

### Relative standard errors

7. The standard error can also be expressed as a percentage of the estimate and this is known as the *relative standard error* (RSE). The RSE is determined by dividing the standard error of an estimate  $SE(X)$  by the estimate  $X$  and expressing it as a percentage. That is,

$$RSE(X) = \frac{SE(X) \times 100}{X}$$

(where  $X$  is the estimate)

8. The look up list on the following page provides a guide for the calculation of standard errors and relative standard errors for a range of statistics.

## METHODS FOR CALCULATING THE STANDARD ERRORS FOR SELECTED ESTIMATES

*Note: The methods described below refer to the calculation of standard errors for NSW estimates. Standard errors of ACT estimates should be calculated from Table C, using column 2 (from September 1992) instead of Table A and column 3 (Monthly movements for December 1992–January 1993 onwards) instead of Table B.*

<i>Measure of reliability to be determined</i>	<i>Method</i>
Standard errors of estimates of employed persons.	Determine the SE from Table A directly.
Standard errors of estimates of unemployed persons.	Multiply the SE from Table A by 1.06.
Standard errors of estimates of persons not in the labour force.	Multiply the SE from Table A by 1.1.
Standard errors of rates (e.g. the unemployment rate which is based on the number of unemployed persons expressed as a percentage of the number of persons in the labour force).	Determine the RSE of the numerator ( $X$ ) and the denominator ( $Y$ ) then apply the following formula.  $RSE(X/Y) = \sqrt{[RSE(X)]^2 - [RSE(Y)]^2}$
Standard error of average duration of unemployment.	Determine the RSE for the number of persons on which the average is based and multiply this by 1.3.
Standard error of median duration of unemployment.	Determine the RSE for the number of persons on which the average is based and multiply this by 2.0.
Standard error of monthly movements.	Using Table B, look up the SE of the larger estimate.
Standard error of quarterly movements.	Determine the standard error of the larger estimate (using Table A) and multiply this by 1.11.
Standard error of annual movements.	Determine the standard error of the larger estimate (using Table A) and multiply this by 1.3.

### Linear interpolation

Linear interpolation is used to determine the standard error of an estimate which falls between two values listed in the *size of estimate* column in Tables A or B. Linear interpolation is best described using an example. In November 1994, there were 620,600 ( $X_e$ ) employed persons working part-time in New South Wales. This estimate falls between the values 500,000 ( $X_l$ ) and 1,000,000 ( $X_u$ ) in Table A.

2. The standard error of the estimate is determined as follows.

$$\begin{aligned} \text{Firstly, calculate } F &= \frac{X_e - X_l}{X_u - X_l} \\ &= \frac{620,600 - 500,000}{1,000,000 - 500,000} \\ &= 0.24 \end{aligned}$$

3. Secondly, calculate the standard error of the estimate,  $SE(X_e)$  thus,

$$\begin{aligned} SE(X_e) &= SE(X_l) + (F \times [SE(X_u) - SE(X_l)]) \\ &= 8,800 + (0.24 \times [11,300 - 8,800]) \\ &= 9,400 \end{aligned}$$

4. Therefore the standard error of the number of employed persons in November 1994 working part-time in New South Wales (620,600) is 9,400.

TABLE A. STANDARD ERRORS OF ESTIMATES, REGIONS OF NSW FROM SEPTEMBER 1992 (a)

Size of estimate	Regions in Sydney (MSR)							
	NSW; Sydney (MSR); Balance of NSW (MSR)	Inner Sydney and Inner Western Sydney (SRs)	Inner Sydney (SR)	Eastern Suburbs (SR)	St George-Sutherland (SR)	Canterbury-Bankstown (SR)	Fairfield-Liverpool and Outer South Western Sydney (SRs)	Fairfield-Liverpool (SR)
500	420	340	330	300	300	280	330	290
1,000	590	500	480	430	430	410	470	410
3,000	1,000	890	860	770	780	740	850	750
5,000	1,300	1,150	1,150	1,000	1,050	970	1,100	980
10,000	1,750	1,700	1,650	1,500	1,500	1,400	1,650	1,450
20,000	2,400	2,450	2,450	2,200	2,200	2,100	2,350	2,100
50,000	3,550	4,050	4,050	3,650	3,700	3,500	3,850	3,500
100,000	4,750	5,900	6,000	5,400	5,500	5,200	5,600	5,200
200,000	6,200	8,600	8,900	8,000	8,100	7,700	8,200	7,700
300,000	7,300	10,700	11,300	10,100	10,200	9,700	10,200	9,800
500,000	8,800	14,200	15,200	13,600	13,800	13,000	13,500	13,100
1,000,000	11,300							
2,000,000	14,300							
5,000,000	19,300							

Size of estimate	Regions in Sydney (MSR)—continued						
	Central Western Sydney (SR)	Outer Western Sydney (SR)	Blacktown-Baulkham Hills (SR)	Lower Northern Sydney (SR)	Hornsby-Ku-ring-gai (SR)	Northern Beaches (SR)	Gasford-Wyong (SR)
500	300	310	270	360	320	250	330
1,000	440	450	390	520	460	360	470
3,000	790	820	700	940	830	650	850
5,000	1,050	1,100	920	1,250	1,100	860	1,150
10,000	1,500	1,550	1,350	1,800	1,600	1,250	1,650
20,000	2,250	2,300	1,950	2,650	2,350	1,850	2,400
50,000	3,750	3,850	3,300	4,450	3,900	3,100	4,050
100,000	5,500	5,700	4,850	6,500	5,800	4,550	6,000
200,000	8,200	8,500	7,200	9,700	8,600	6,800	8,900
300,000	10,300	10,700	9,100	12,300	10,900	8,500	11,200

Size of estimate	Regions in Balance of NSW (MSR)							
	Hunter (SR)	Newcastle (SRS)	Illawarra and South Eastern (SRs)	Illawarra (SR)	Wollongong (SRS)	Richmond-Tweed and Mid-North Coast (SRs)	Northern, Far West-North Western and Central West (SRs)	Murray-Murrumbidgee (SR)
500	350	330	330	310	270	370	360	360
1,000	500	480	480	450	390	530	520	520
3,000	900	870	870	810	710	950	940	940
5,000	1,200	1,150	1,150	1,050	940	1,250	1,250	1,250
10,000	1,700	1,650	1,650	1,550	1,350	1,850	1,800	1,800
20,000	2,500	2,450	2,400	2,250	2,000	2,700	2,650	2,650
50,000	4,100	4,100	3,950	3,700	3,350	4,500	4,450	4,400
100,000	6,000	6,000	5,700	5,400	4,950	6,600	6,600	6,500
200,000	8,700	9,000	8,400	7,800	7,300	9,900	9,800	9,700
300,000	10,900	11,300	10,400	9,800	9,300	12,400	12,300	12,300

(a) For standard errors for earlier periods, see previous issues of this publication.

TABLE B. STANDARD ERRORS OF MONTH TO MONTH MOVEMENTS, REGIONS OF NSW  
FROM DECEMBER 1992–JANUARY 1993 ONWARDS (a)

Size of estimate	Regions in Sydney (MSR)							
	NSW: Sydney (MSR): Balance of NSW (MSR)	Inner Sydney and Inner Western Sydney (SRs)	Inner Sydney (SR)	Eastern Suburbs (SR)	St George–Sutherland (SR)	Canterbury–Bankstown (SR)	Fairfield–Liverpool and Outer South Western Sydney (SRs)	Fairfield–Liverpool (SR)
500	540	330	270	260	240	240	290	220
1,000	690	440	360	350	330	330	390	300
3,000	1,050	700	600	580	540	540	630	500
5,000	1,250	870	750	730	680	680	780	630
10,000	1,600	1,150	1,050	990	930	930	1,050	860
20,000	2,050	1,550	1,400	1,350	1,250	1,250	1,400	1,150
50,000	2,900	2,300	2,150	2,050	1,950	1,900	2,050	1,750
100,000	3,700	3,100	2,900	2,800	2,650	2,650	2,800	2,400
200,000	4,750	4,200	4,000	3,850	3,600	3,600	3,750	3,300
300,000	5,500	5,000	4,800	4,600	4,350	4,300	4,400	4,400
500,000	6,700	6,200	6,000	5,800	5,400	5,400	5,500	5,000
1,000,000	8,600							
2,000,000	11,100							
5,000,000	15,500							

Size of estimate	Regions in Sydney (MSR)—continued						
	Central Western Sydney (SR)	Outer Western Sydney (SR)	Blacktown–Baulkham Hills (SR)	Lower Northern Sydney (SR)	Hornsby–Ku-ring-gai (SR)	Northern Beaches (SR)	Gosford–Wyong (SR)
500	220	240	250	290	230	210	270
1,000	300	330	340	400	310	280	380
3,000	490	540	560	660	510	470	620
5,000	610	680	700	830	640	590	780
10,000	840	940	960	1,150	870	800	1,050
20,000	1,150	1,300	1,300	1,550	1,200	1,100	1,450
50,000	1,750	1,950	2,000	2,350	1,800	1,650	2,200
100,000	2,350	2,650	2,700	3,200	2,450	2,250	3,000
200,000	3,250	3,600	3,700	4,400	3,400	3,100	4,100
300,000	3,900	4,350	4,450	5,300	4,050	3,750	4,950

Size of estimate	Regions in Balance of NSW (MSR)							
	Hunter (SR)	Newcastle (SRS)	Illawarra and South Eastern (SRs)	Illawarra (SR)	Wollongong (SRS)	Richmond Tweed and Mid-North Coast (SRs)	Northern, Far West–North Western and Central West (SRs)	Murray–Murrumbidgee (SR)
500	320	280	340	340	260	300	340	290
1,000	430	390	460	460	350	420	470	400
3,000	690	640	740	730	580	680	760	660
5,000	860	800	910	910	730	860	960	830
10,000	1,150	1,100	1,250	1,200	990	1,200	1,300	1,150
20,000	1,550	1,500	1,650	1,650	1,350	1,600	1,800	1,550
50,000	2,300	2,250	2,450	2,400	2,050	2,450	2,750	2,350
100,000	3,100	3,100	3,250	3,250	2,800	3,350	3,750	3,200
200,000	4,150	4,250	4,400	4,350	3,850	4,550	5,100	4,350
300,000	4,900	5,100	5,200	5,200	4,600	5,500	6,100	5,200

(a) For standard errors for earlier periods, see previous issues of this publication.

TABLE C. STANDARD ERRORS OF ESTIMATES, ACT

<i>Size of estimate</i>	<i>From September 1992 (a)</i>	<i>Monthly movements for December 1992– January 1993 onwards (a)</i>
500	180	150
1,000	240	220
3,000	390	320
5,000	490	390
10,000	640	500
20,000	840	640
50,000	1,200	900
100,000	1,550	1,150
200,000	1,950	1,500
300,000	2,250	1,750

(a) For standard errors for earlier periods, see *The Labour Force, Australia* (6203.0)

## APPENDIX. REGIONS OF NSW AND THEIR STATISTICAL LOCAL AREAS

**SYDNEY (MSR)****Inner Sydney and Inner Western Sydney (SRs)**

Ashfield (A)  
 Botany (A)  
 Burwood (A)  
 Concord (A)  
 Drummoyne (A)  
 Leichhardt (A)  
 Marrickville (A)  
 South Sydney (C)  
 Strathfield (A)  
 Sydney (C) — Inner  
 Sydney (C) — Remainder

**Inner Sydney (SR)**

Botany (A)  
 Leichhardt (A)  
 Marrickville (A)  
 South Sydney (C)  
 Sydney (C) — Inner  
 Sydney (C) — Remainder

**Eastern Suburbs (SR)**

Randwick (C)  
 Waverley (A)  
 Woollahra (A)

**St George–Sutherland (SR)**

Hurstville (C)  
 Kogarah (A)  
 Rockdale (A)  
 Sutherland Shire (A)

**Canterbury–Bankstown (SR)**

Bankstown (C)  
 Canterbury (A)

**Fairfield–Liverpool and****Outer South Western Sydney (SRs)**

Camden (A)  
 Campbelltown (C)  
 Fairfield (C)  
 Liverpool (C)  
 Wollondilly (A)

**Fairfield–Liverpool (SR)**

Fairfield (C)  
 Liverpool (C)

**Central Western Sydney (SR)**

Auburn (A)  
 Holroyd (C)  
 Parramatta (C)

**Outer Western Sydney (SR)**

Blue Mountains (C)  
 Hawkesbury (C)  
 Penrith (C)

**Blacktown–Baulkham Hills (SR)**

Baulkham Hills (A)  
 Blacktown (C)

**Lower Northern Sydney (SR)**

Hunter's Hill (A)  
 Lane Cove (A)  
 Mosman (A)  
 North Sydney (A)  
 Ryde (C)  
 Willoughby (C)

**Hornsby–Ku-ring-gai (SR)**

Hornsby (A)  
 Ku-ring-gai (A)

**Northern Beaches (SR) (a)**

Manly (A)  
 Pittwater (A)  
 Warringah (A)

**Gosford–Wyong (SR)**

Gosford (C)  
 Wyong (A)

**BALANCE OF NSW (MSR) (b)****Hunter (SR)**

Cessnock (C)  
 Dungog (A)  
 Gloucester (A)  
 Great Lakes (A)  
 Lake Macquarie (C)  
 Maitland (C)  
 Merriwa (A)  
 Murrurundi (A)  
 Muswellbrook (A)  
 Newcastle (C) — Inner  
 Newcastle (C) — Remainder  
 Port Stephens (A)  
 Scone (A)  
 Singleton (A)

**Newcastle (SRs)**

Cessnock (C)  
 Lake Macquarie (C)  
 Maitland (C)  
 Newcastle (C) — Inner  
 Newcastle (C) — Remainder  
 Port Stephens (A)

**Illawarra and South Eastern (SRs)**

Bega Valley (A)  
 Bombala (A)  
 Boorowa (A)  
 Cooma–Monaro (A)  
 Crookwell (A)  
 Eurobodalla (A)  
 Goulburn (C)  
 Gunning (A)  
 Harden (A)  
 Kiama (A)  
 Mulwaree (A)  
 Queanbeyan (C)  
 Shellharbour (A)  
 Shoalhaven (C)  
 Snowy River (A)  
 Tallaganda (A)  
 Wingecarribee (A)



Wollongong (C)  
Yarrowlumla (A)  
Yass (A)  
Young (A)

**Illawarra (SR)**

Kiama (A)  
Shellharbour (A)  
Shoalhaven (C)  
Wingecarribee (A)  
Wollongong (C)

**Wollongong (SRS)**

Kiama (A)  
Shellharbour (A)  
Wollongong (C)

**Richmond-Tweed and Mid-North Coast (SRs)**

Ballina (A)  
Bellingen (A)  
Byron (A)  
Casino (A)  
Coffs Harbour (C)  
Copmanhurst (A)  
Grafton (C)  
Greater Taree (C)  
Hastings (A)  
Kempsey (A)  
Kyogic (A)  
Lismore (C)  
Lord Howe Island  
Maclean (A)  
Nambucca (A)  
Nymboida (A)  
Richmond River (A)  
Tweed (A) — Part A  
Tweed (A) — Part B  
Ulmarra (A)

**Northern, Far West-North Western and  
Central West (SRs) (b)**

Armidale (C)  
Barraba (A)  
Bathurst (C)  
Bingara (A)  
Bland (A)  
Blayney (A) — Part A  
Blayney (A) — Part B  
Bogan (A)  
Bourke (A)  
Brewarrina (A)  
Cabonne (A) — Part A  
Cabonne (A) — Part B  
Cabonne (A) — Part C  
Cobar (A)  
Coolah (A)  
Coonabarabran (A)  
Coonamble (A)  
Cowra (A)  
Dubbo (C)  
Dumaresq (A)  
Evans (A) — Part A  
Evans (A) — Part B

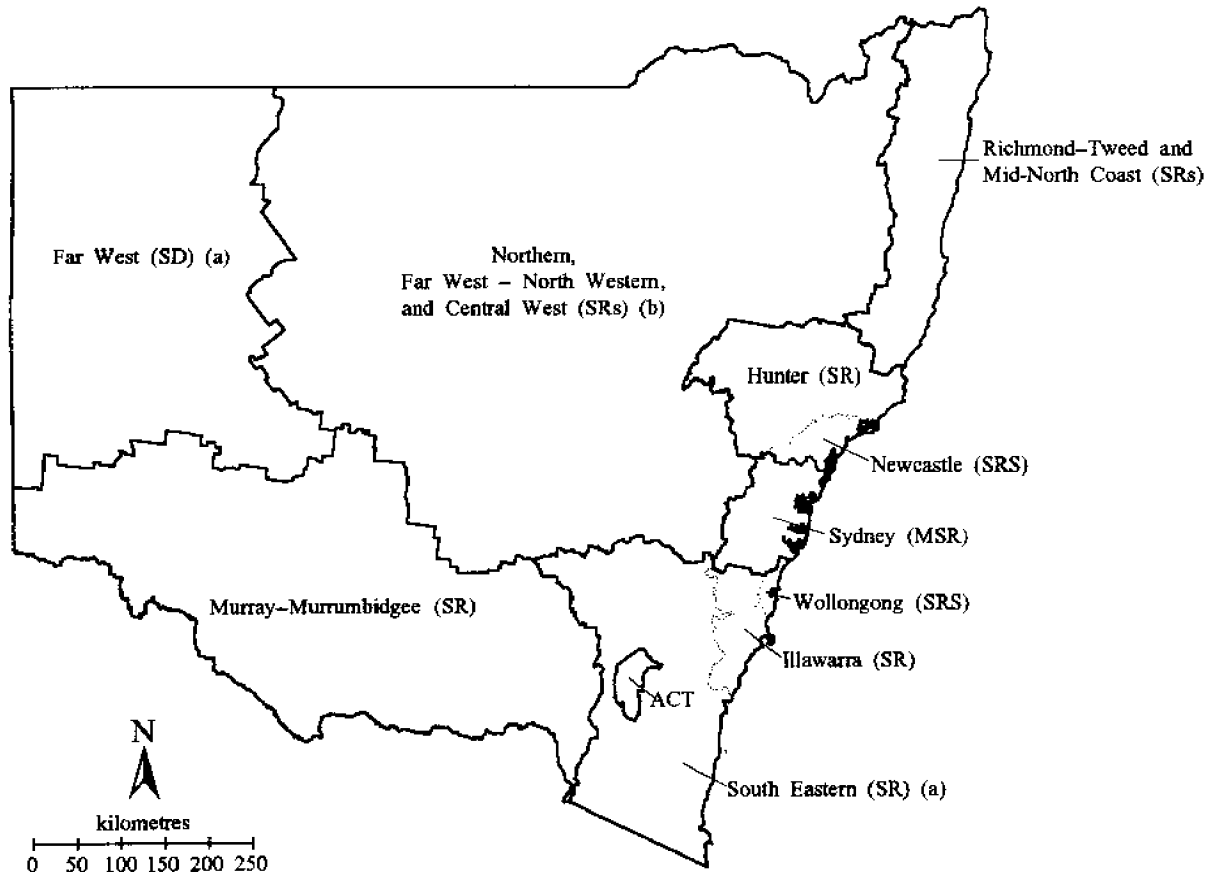
Forbes (A)  
Gilgandra (A)  
Glen Innes (A)  
Greater Lithgow (C)  
Gunnedah (A)  
Guyra (A)  
Inverell (A) — Part A  
Inverell (A) — Part B  
Lachlan (A)  
Manilla (A)  
Moree Plains (A)  
Mudgee (A)  
Narrabri (A)  
Narromine (A)  
Nundle (A)  
Oberon (A)  
Orange (C)  
Parkes (A)  
Parry (A)  
Quirindi (A)  
Rylstone (A)  
Severn (A)  
Tamworth (C)  
Tenterfield (A)  
Uralla (A)  
Walcha (A)  
Walgett (A)  
Warren (A)  
Weddin (A)  
Wellington (A)  
Yallaro (A)

**Murray-Murrumbidgee (SR)**

Albury (C)  
Balranald (A)  
Berrigan (A)  
Carrathool (A)  
Conargo (A)  
Coolamon (A)  
Cootamundra (A)  
Corowa (A)  
Culcairn (A)  
Deniliquin (A)  
Griffith (C)  
Gundagai (A)  
Hay (A)  
Holbrook (A)  
Hume (A)  
Jerilderie (A)  
Jonee (A)  
Leeton (A)  
Lockhart (A)  
Murray (A)  
Murrumbidgee (A)  
Narrandera (A)  
Temora (A)  
Tumbarumba (A)  
Tumut (A)  
Urana (A)  
Wagga Wagga (C)  
Wakool (A)  
Wentworth (A)  
Windouran (A)

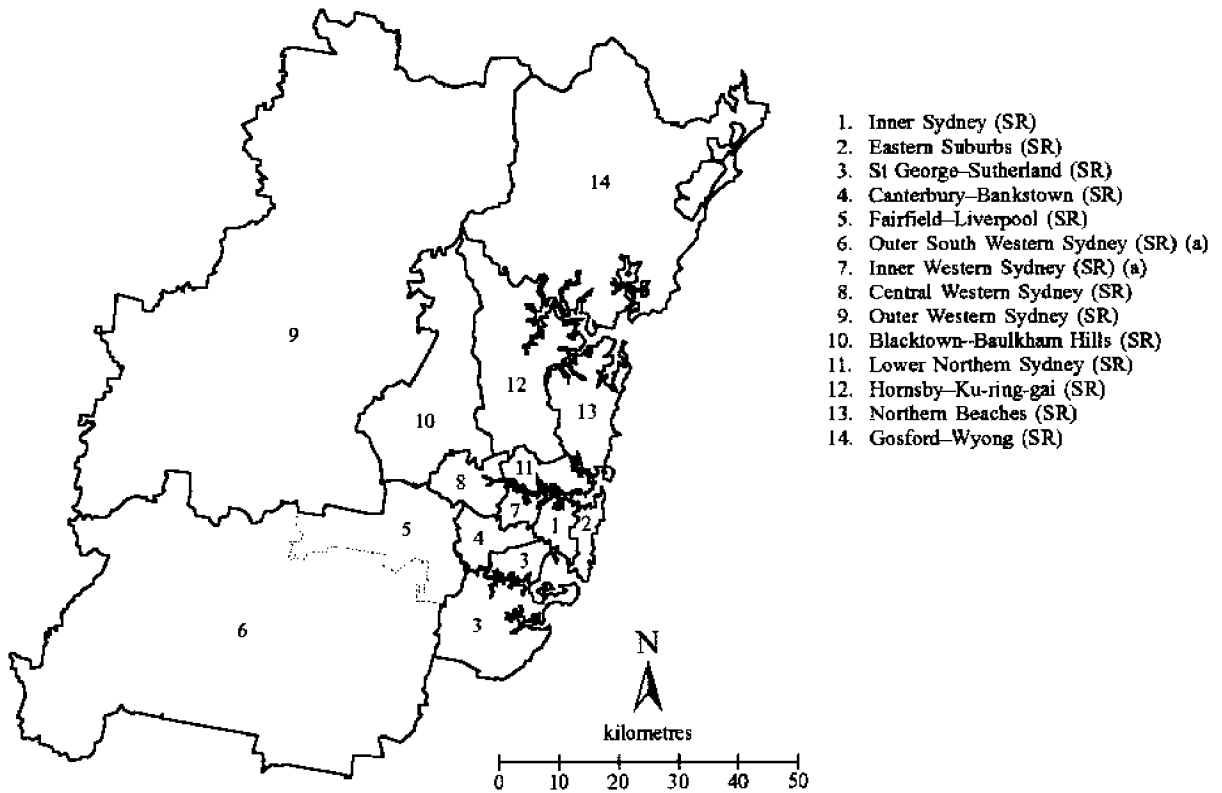
(a) Previously Manly-Warringah (SR). (b) The statistical local areas which comprise Far West (SD)—Broken Hill (C), Central Darling (A), and Unincorporated Far West—are included in Balance of NSW (MSR), but excluded from Northern, Far West-North Western and Central West (SRs).

REGIONS OF NSW



(a) Not published separately. (b) Excludes Far West (SD).

REGIONS OF SYDNEY (MSR)



(a) Not published separately.





## For more information ...

The ABS publishes a wide range of statistics and other information on Australia's economic and social conditions. Details of what is available in various publications and other products can be found in the *ABS Catalogue of Publications and Products* available at all ABS Offices (see below for contact details).

### Information Consultancy Service

Information tailored to special needs of clients can be obtained from the Information Consultancy Service available at ABS Offices (see Information Inquiries below for contact details).

### National Dial-a-Statistic Line

0055 86 400

(Steadycom P/L: premium rate 25c/21.4 secs.)

This number gives you 24 hour access, 365 days a year for a range of statistics.

### Electronic Data Services

A large range of data is available via on-line services, diskette, magnetic tape, tape cartridge and CD ROM. For more details about these electronic data services, contact any ABS Office (see below).

### Bookshops and Subscriptions

There is a large number of ABS publications available from ABS bookshops (see below Bookshop Sales for contact details). The ABS also provides a subscription service through which nominated publications are supplied by mail on a regular basis (telephone Subscription Service toll free on 008 02 0608 Australia wide).

## Sales and Inquiries

Regional Offices	Information Inquiries	Bookshop Sales
SYDNEY (02)	268 4611	268 4620
MELBOURNE (03)	615 7000	615 7829
BRISBANE (07)	222 6351	222 6350
PERTH (09)	360 5140	360 5307
ADELAIDE (08)	237 7100	237 7582
HOBART (002)	205 800	205 800
CANBERRA (06)	207 0326	207 0326
DARWIN (089)	432 111	432 111
<b>National Office</b>		
ACT (06)	252 6007	008 020 608

### ABS Email Addresses

Keylink	STAT.INFO/ABS
X.400	(C:AU,A:TELMEMO,O:ABS,SN:INFO,FN:STAT)
Internet	STAT.INFO@ABS. TELEMEMO.AU



Information Services, ABS, GPO Box 796, Sydney NSW 2001  
or any ABS office



2620110011949

ISSN 1322-0179