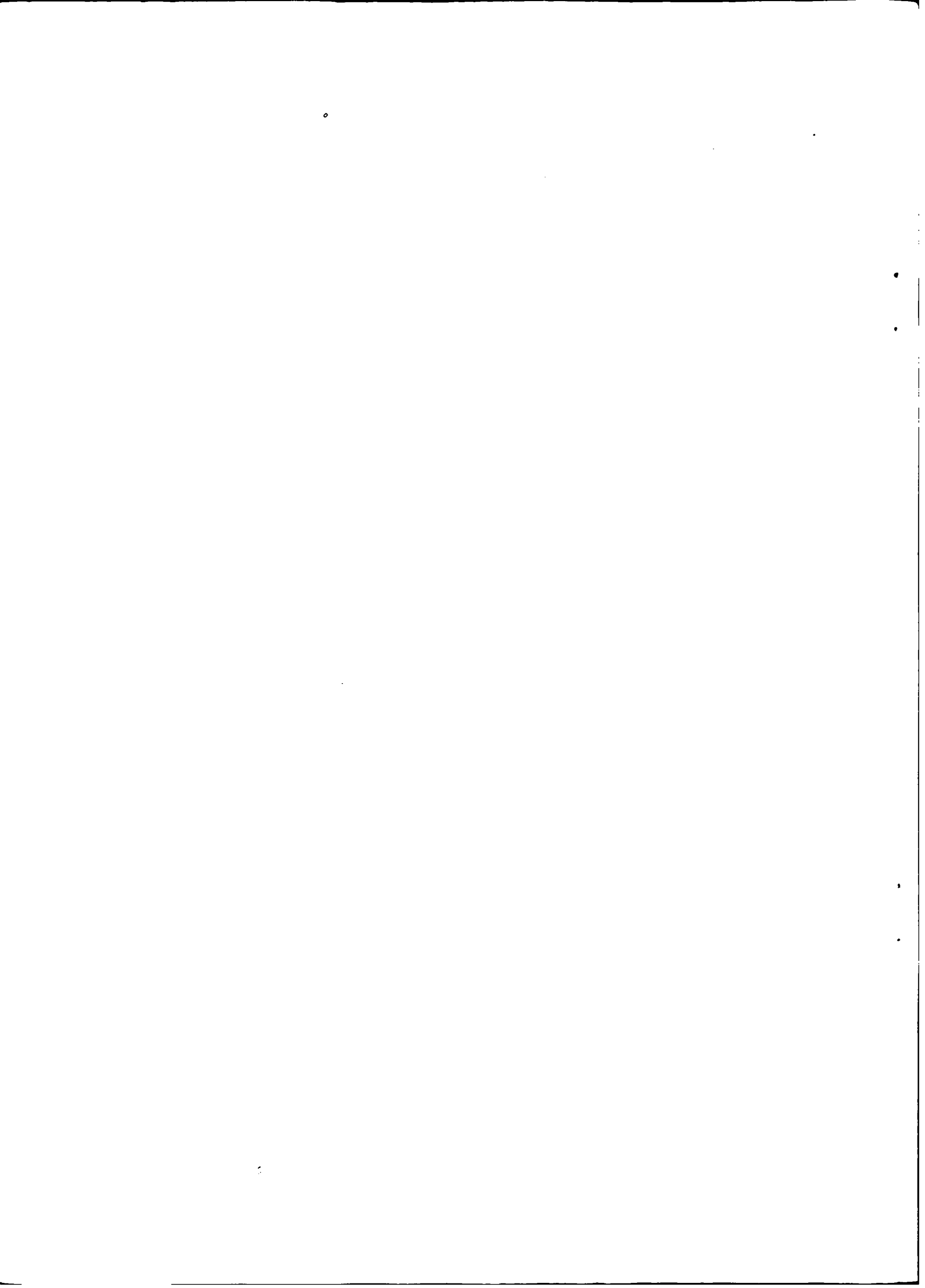


**THE LABOUR FORCE
EDUCATIONAL ATTAINMENT
AUSTRALIA**

R. J. CAMERON
Australian Statistician

Catalogue No. 6235.0

AUSTRALIAN BUREAU OF STATISTICS



INQUIRIES

If you want to know more about these statistics ring Mr Eric Hubbard on Canberra 526507 or our State Office, or write to Information Services, ABS, P.O. 10, Belconnen, A.C.T. 2616

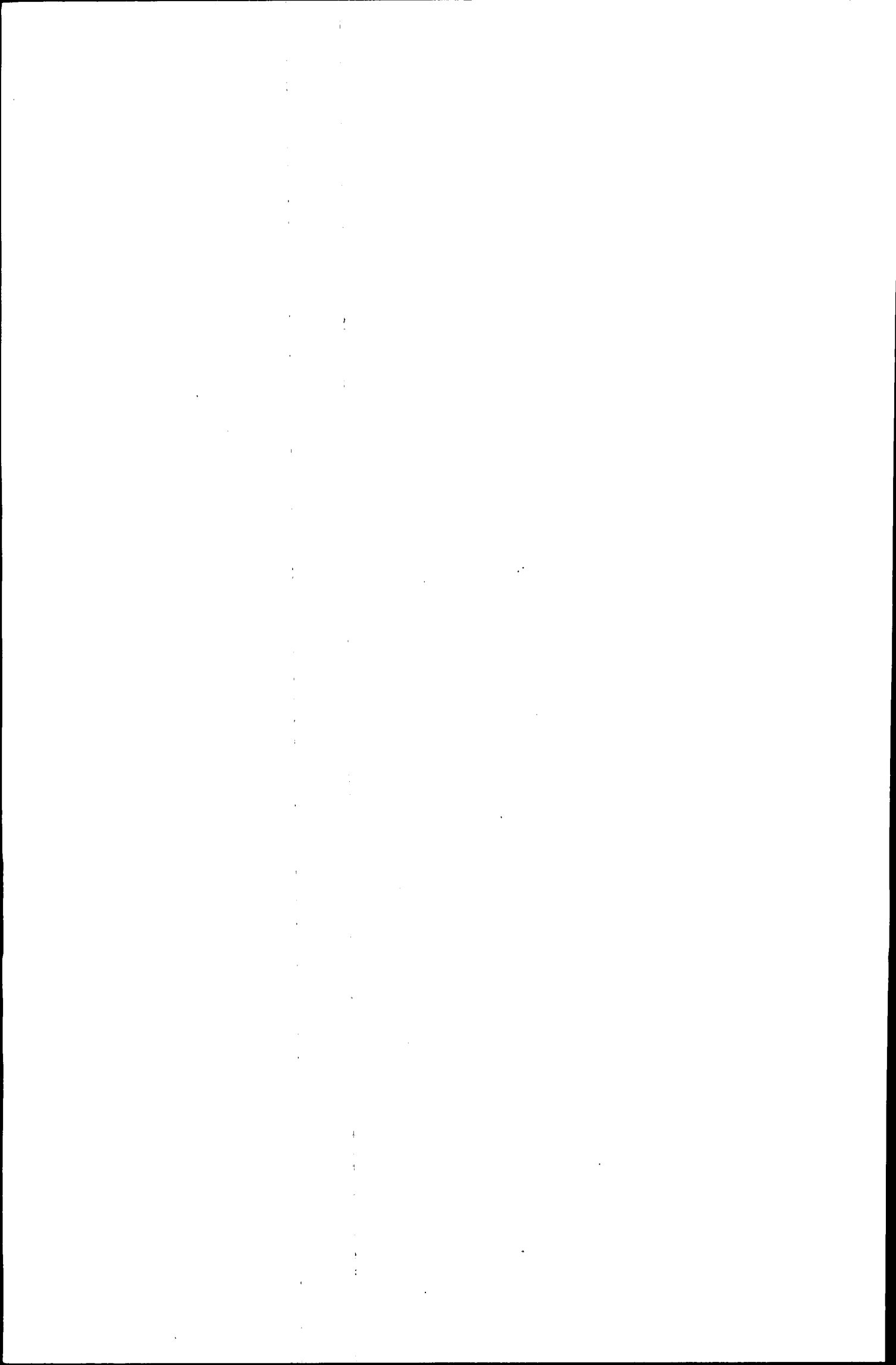
For copies of this publication contact Information Services, Canberra 526627 or State offices.

CATALOGUE NO. 6235.0

NOON 22 NOVEMBER 1979

**THE LABOUR FORCE : EDUCATIONAL ATTAINMENT, AUSTRALIA
FEBRUARY 1979****CONTENTS**

<i>Table</i>		<i>Page</i>
..	Main Features	2
..	Explanatory Notes	2
	Persons in the labour force : Educational attainment and sex —	
1	Employment status, full-time or part-time status	4
2	States and Territories, employment status	6
3	Birthplace and period of arrival in Australia	7
4	Occupation	8
5	Industry	9
	Unemployed persons : Educational attainment and sex —	
6	Duration of current period of unemployment	10
7	Age and unemployment rate	11
	Main field of study, age and sex —	
8	Persons in the labour force with a degree or equivalent qualification	12
9	Persons in the labour force with a trade or technical level qualification; employment status	13
..	Technical note	14



MAIN FEATURES

Note: Survey estimates are subject to sampling variability, as explained in paragraph 11 below.

Of the 6,494,700 persons in the labour force in February 1979:

36.1 per cent (2,346,400 persons) had a post-school qualification

- 437,300 had a degree or equivalent
- 1,860,700 had a trade or technical level qualification

62.6 per cent (4,063,400 persons) did not have a post-school qualification

- 754,800 had attended the highest level of secondary school available
- 2,302,500 of the remainder had left school at age 15 years or under.

1.3 per cent (85,000 persons) were still at school.

Percentages with post-school qualifications were:

Males 39.3
Females 30.5
Employed persons 37.2
Unemployed persons 22.5

Unemployment rates and average duration of unemployment were:

	Unemploy- ment rate (per cent)	Duration of unemploy- ment (weeks)
Persons with post-school qualifications	4.4	22.6
Persons without post-school qualifications	8.3	31.4

EXPLANATORY NOTES

Introduction

In February 1979 a survey, based on the monthly population survey, was conducted throughout Australia in order to obtain information about the highest educational qualifications attained by persons in the labour force. For persons with post-school qualifications, the information included the field of study and for those who did not complete their schooling, it included the age at which they had left school.

2. The survey was based on a multi-stage area sample of private dwellings (about 15,000 houses, flats etc.) and non-private dwellings (hotels, motels, institutions, etc.) and covered about one third of one per cent of the population of Australia. The information was obtained from the occupants of selected dwellings by carefully chosen and specially trained interviewers, the interviews being conducted during the two weeks beginning on Monday, 12th February, 1979.

Scope

3. The survey included all persons aged fifteen years and over except:

- (a) members of the permanent defence forces
- (b) certain diplomatic personnel of overseas governments, customarily excluded from census and estimated populations
- (c) overseas visitors holidaying in Australia
- (d) members of non-Australian defence forces (and their dependants) stationed in Australia, and
- (e) boarding school students, patients in hospitals and sanatoria and inmates of reformatories, gaols, etc.

Definitions

4. The labour force category to which a person is assigned depends on his *actual activity* (i.e. whether working, looking for work, etc.) during a specified week known as *the survey week* which is the week immediately preceding that in which the interview takes place. Definitions of the principal labour force categories appearing in this publication are given in *The Labour Force, Australia* (6203.0), but it should be noted that there are slight differences in the estimates for labour force categories shown in these publications. This is due to (i) the different sizes of the samples used (the labour force survey was approximately twice the size of the educational qualifications survey) and (ii) the inability to obtain, from a small number of persons, the additional information required for the educational qualifications survey; although the estimation procedures take account of this, estimates for some characteristics will be affected.

5. *Persons with a post-school qualification* are those who had left school and answered "Yes" to the question: "Since leaving school have you obtained a certificate, diploma, degree or any other qualification?"

6. *Classification of post-school qualifications.* Respondents indicated which one of the following groups best described their highest qualification:

- (i) *Degree or equivalent:* a bachelor degree (including honours), a graduate or post-graduate diploma, a masters degree or a doctorate
- (ii) *Trade, technical:* completion of an approved trade/technician apprenticeship or training course, other certificate or diploma in secretarial or business studies, administration, teaching, nursing, etc.
- (iii) *Other:* completion of other post-secondary education e.g. adult education, preparatory/bridging course or hobby course.

7. *Classification of field of study.* Respondents with a degree, trade or technical qualification (i.e. (i) or (ii) in paragraph 6) indicated the field of study for their highest qualification. (See Tables 8 and 9)

8. *Highest level of secondary school available* refers to the highest level of secondary schooling (or equivalent) offered by the education system at the time the respondent left school.

Classification of industry and occupation

9. Industry is classified according to the 1969 *Australian Standard Industrial Classification (ASIC)* and occupation according to the *Classification and Classified List of Occupations, Revised, June 1976*.

Comparability of the estimates

10. In this survey respondents were asked to indicate the group in which their highest qualification was included. For this reason the estimates are not strictly comparable with those from previous population surveys and censuses in which respondents were asked to provide full name of their highest qualification, and the institution at which it was obtained. The main population survey reports containing details of educational qualifications are *Income Distribution 1973-74*, (6502.0, 6504.0), the May 1976, May 1977, and July 1979 issues of *Persons Looking for Work*, (6222.0) and *Migrants in the Labour Force, 1972 to 1976* (6230.0) in which information on the educational attainment of persons in the labour force at November 1974 is shown in Tables 3, 4 and 5.

Reliability of the estimates

11. Since the estimates in this publication are based on information obtained from occupants of a sample of dwellings they are subject to sampling variability; that is they may differ from the figures that

would have been produced if all dwellings had been included in the survey. More information on this topic will be found in the Technical Note, page 14.

Related publications

12. Other ABS publications which may be of interest include:

The Labour Force, Australia (6203.0)

Leavers from Schools, Universities and Other Educational Institutions (6227.0)

Income Distribution, 1973-74 –

Part 1 (Tables on Individuals) (6502.0)

Part 3 (Supplementary Tables) (6504.0)

Migrants in the Labour Force, 1972 to 1976 (6230.0)

Persons Looking for Work (6222.0)

13. All current publications produced by the ABS are listed in *Catalogue of Publications* (1101.0) which is available free of charge from any ABS office.

Symbols and other usages

* Subject to sampling variability too high for most practical uses. See paragraph 11 above.

14. Because figures have been rounded, discrepancies may occur between sums of the component items and totals.

R.J. CAMERON
Australian Statistician

TABLE 1. PERSONS IN THE LABOUR FORCE : EDUCATIONAL ATTAINMENT, EMPLOYMENT STATUS AND FULL-TIME OR PART-TIME STATUS, FEBRUARY 1979

Educational attainment	Employed				Unemployed				Total labour force			
	Number ('000)			Proportion (per cent)	Number ('000)			Proportion (per cent)	Number ('000)			Proportion (per cent)
	Full time	Part time	Total		Looking for -		Total		Full time	Part time	Total	
				Full-time work	Part-time work							
MALES												
With post-school qualifications	1,529.4	46.2	1,575.6	40.4	50.4	*	53.4	22.1	1,579.8	49.2	1,629.0	39.3
Degree or equivalent	303.2	10.3	313.6	8.0	6.4	*	6.6	2.7	309.7	10.5	320.2	7.7
Trade, technical level	1,200.0	35.1	1,235.1	31.7	43.1	*	45.4	18.8	1,243.2	37.4	1,280.6	30.9
Other	26.1	*	26.9	0.7	*	*	*	*	26.9	*	28.2	0.7
Without post-school qualifications	2,187.8	107.5	2,295.3	58.9	171.4	6.0	177.4	73.6	2,359.2	113.6	2,472.8	59.7
Attended highest level of secondary school available	408.1	33.5	441.6	11.3	27.0	*	30.8	12.8	435.1	37.3	472.4	11.4
Did not attend highest level of secondary school available and left at age -												
18 years or over	24.1	*	26.2	0.7	*	*	*	*	25.6	*	27.6	0.7
16 or 17 years	486.2	22.0	508.2	13.0	44.9	*	46.2	19.2	531.2	23.3	554.5	13.4
14 or 15 years	1,043.0	35.1	1,078.0	27.6	82.7	*	83.0	34.4	1,125.7	35.4	1,161.0	28.0
13 years or under	220.4	13.3	233.7	6.0	14.4	*	15.0	6.2	234.8	13.9	248.7	6.0
Total	1,773.8	72.3	1,846.1	47.3	143.4	*	145.7	60.4	1,917.2	74.6	1,991.8	48.1
Never went to school (a)	6.0	*	7.6	0.2	*	*	*	*	6.9	*	8.6	0.2
Still at school (b)	*	27.1	29.1	0.7	*	*	10.3	4.3	7.8	31.6	39.4	1.0
Total	3,719.1	180.9	3,900.0	100.0	227.6	13.4	241.1	100.0	3,946.8	194.3	4,141.1	100.0
MARRIED WOMEN (c)												
With post-school qualifications	256.9	174.1	431.0	31.7	14.1	12.8	26.9	30.7	271.0	186.8	457.9	31.7
Degree or equivalent	46.7	21.5	68.3	5.0	*	*	*	*	47.6	22.5	70.1	4.8
Trade, technical level	203.1	146.6	349.7	25.7	12.5	11.5	24.0	27.5	215.6	158.1	373.8	25.8
Other	7.1	*	13.0	1.0	*	*	*	*	7.8	6.1	14.0	1.0
Without post-school qualifications (d)	518.9	408.2	927.1	68.2	33.7	27.0	60.7	69.3	552.7	435.2	987.8	68.3
Attended highest level of secondary school available	69.2	34.3	103.5	7.6	*	*	6.8	7.8	73.7	36.6	110.3	7.6
Did not attend highest level of secondary school available and left at age -												
18 years or over	*	*	8.5	0.6	*	*	*	*	6.2	*	8.9	0.6
16 or 17 years	108.4	88.5	197.0	14.5	6.8	*	10.7	12.2	115.3	92.4	207.7	14.4
14 or 15 years	273.4	252.6	526.0	38.7	17.3	17.3	34.6	39.5	290.7	269.9	560.6	38.8
13 years or under	60.2	28.7	88.9	6.5	*	*	8.2	9.3	64.8	32.2	97.0	6.7
Total	447.8	372.6	820.3	60.4	29.2	24.6	53.8	61.5	477.0	397.2	874.2	60.4
Still at school (b)	*	*	*	*	*	*	*	*	*	*	*	*
Total	775.8	582.7	1,358.6	100.0	47.8	39.7	87.6	100.0	823.7	622.4	1,446.1	100.0

For footnotes see next page.

TABLE 1. PERSONS IN THE LABOUR FORCE : EDUCATIONAL ATTAINMENT, EMPLOYMENT STATUS AND FULL-TIME OR PART-TIME STATUS, FEBRUARY 1979 - continued

Educational attainment	Employed				Unemployed				Total labour force			
	Number ('000)			Proportion (per cent)	Number ('000)			Proportion (per cent)	Number ('000)			Proportion (per cent)
	Full time	Part time	Total		Looking for -		Total		Full-time	Part-time	Total	
				Full-time work	Part-time work							
ALL FEMALES												
With post-school qualifications	467.6	199.5	667.1	31.3	34.9	15.4	50.3	23.0	502.5	214.9	717.4	30.5
Degree or equivalent	85.0	26.4	111.4	5.2	*	*	*	*	88.4	28.6	117.1	5.0
trade, technical level	372.7	166.1	538.8	25.2	28.4	13.0	41.4	18.9	401.2	179.0	580.2	24.7
Other	9.9	7.0	16.9	0.8	*	*	*	*	12.9	7.2	20.1	0.9
Without post-school qualifications (d)	936.2	493.7	1,430.0	67.0	121.5	39.2	160.7	73.4	1,057.7	532.9	1,590.6	67.6
Attended highest level of secondary school available	183.8	69.1	252.9	11.8	21.3	8.2	29.5	13.5	205.2	77.2	282.4	12.0
Did not attend highest level of secondary school available and left at age -												
18 years or over	8.3	*	11.9	0.6	*	*	*	*	11.1	*	14.8	0.6
16 or 17 years	249.1	105.3	354.4	16.6	36.6	*	41.9	19.1	285.7	110.6	396.3	16.8
14 or 15 years	423.4	280.8	704.2	33.0	55.4	21.9	77.3	35.3	478.8	302.7	781.5	33.2
13 years or under	68.6	33.7	102.3	4.8	*	*	9.1	4.1	73.9	37.4	111.3	4.7
Total	749.4	423.3	1,172.7	54.9	100.2	31.0	131.2	59.9	849.6	454.3	1,303.9	55.4
Still at school (b)	*	37.6	37.6	1.8	*	*	8.1	3.7	*	43.3	45.6	1.9
Total	1,403.8	730.8	2,134.6	100.0	158.8	60.3	219.0	100.0	1,562.6	791.1	2,353.6	100.0
PERSONS												
With post-school qualifications	1,996.9	245.8	2,242.7	37.2	85.4	18.3	103.7	22.5	2,082.3	264.1	2,346.4	36.1
Degree or equivalent	388.2	36.8	425.0	7.0	9.9	*	12.3	2.7	398.1	39.2	437.3	6.7
Trade, technical level	1,572.8	201.1	1,773.9	29.4	71.6	15.3	86.8	18.9	1,644.3	216.4	1,860.7	28.6
Other	35.9	7.8	43.8	0.7	*	*	*	*	39.8	8.5	48.4	0.7
Without post-school qualifications	3,124.0	601.3	3,725.3	61.7	292.9	45.2	338.1	73.5	3,416.9	646.5	4,063.4	62.6
Attended highest level of secondary school available	591.9	102.6	694.5	11.5	48.3	11.9	60.3	13.1	640.2	114.5	754.8	11.6
Did not attend highest level of secondary school available and left at age -												
18 years or over	32.4	*	38.0	0.6	*	*	*	*	36.7	*	42.4	0.7
16 or 17 years	735.3	127.3	862.6	14.3	81.5	6.7	88.2	19.2	816.8	133.9	950.8	14.6
14 or 15 years	1,466.4	315.9	1,782.2	29.5	138.1	22.2	160.3	34.8	1,604.4	338.1	1,942.5	29.9
13 years or under	289.0	46.9	335.9	5.6	19.7	*	24.1	5.2	308.7	51.3	360.0	5.5
Total	2,523.1	495.7	3,018.8	50.0	243.6	33.3	276.9	60.2	2,766.7	529.0	3,295.7	50.7
Never went to school (a)	9.0	*	12.0	0.2	*	*	*	*	9.9	*	12.9	0.2
Still at school (b)	*	64.7	66.6	1.1	8.2	10.2	18.4	4.0	10.1	74.9	85.0	1.3
Total	5,122.9	911.7	6,034.6	100.0	386.4	73.7	460.1	100.0	5,509.3	985.4	6,494.7	100.0

(a) Persons with no formal education. (b) Persons who, although still at school, had a job or were actively seeking work. (c) Includes permanently separated. (d) Includes persons with no formal education.

TABLE 2. PERSONS IN THE LABOUR FORCE : EDUCATIONAL ATTAINMENT AND EMPLOYMENT STATUS, FEBRUARY 1979 ('000)

	With post-school qualifications				Without post-school qualifications							Still at school	Total
	Degree or equivalent	Trade, technical level	Other	Total	Attended highest secondary level	Did not attend highest level of secondary school and left at (years)				Total (a)	Total (b)		
						16-17	14-15	Under 14	Total (a)				
MALES													
N.S.W.	124.8	451.0	7.1	582.9	181.1	188.7	402.0	67.6	667.3	851.6	11.6	1,446.0	
Vic.	83.1	322.1	7.6	412.8	114.6	167.2	294.8	86.6	560.1	676.0	15.7	1,104.6	
Qld	38.1	190.8	*	232.1	65.5	75.3	192.0	46.1	315.0	382.1	*	618.6	
S.A.	25.0	122.9	4.4	152.4	40.1	63.1	100.3	21.5	188.2	229.1	*	383.9	
W.A.	24.5	128.4	3.1	156.0	41.3	34.2	117.6	16.4	168.8	210.7	*	369.4	
Tas.	8.9	32.0	*	41.4	18.7	15.6	38.6	4.6	59.4	78.2	*	120.3	
N.T.	2.9	15.0	*	18.8	2.4	5.3	5.3	3.5	14.6	18.0	*	37.1	
A.C.T.	12.9	18.3	*	32.7	8.6	5.1	10.4	*	18.4	27.0	*	61.3	
<i>Australia</i>	<i>320.2</i>	<i>1,280.6</i>	<i>28.2</i>	<i>1,629.0</i>	<i>472.4</i>	<i>554.5</i>	<i>1,161.0</i>	<i>248.7</i>	<i>1,991.8</i>	<i>2,472.8</i>	<i>39.4</i>	<i>4,141.1</i>	
FEMALES													
N.S.W.	40.6	213.7	*	259.3	96.4	131.5	270.5	33.2	440.0	537.7	13.3	810.3	
Vic.	36.5	159.0	*	198.5	75.3	122.9	198.4	44.4	372.0	449.1	16.4	664.0	
Qld	17.8	67.5	*	89.6	36.4	51.2	125.2	15.7	193.6	230.3	5.0	324.9	
S.A.	7.3	54.1	3.5	64.8	28.4	49.5	74.4	9.5	134.6	163.2	4.6	232.6	
W.A.	6.7	56.2	*	65.7	23.4	25.4	79.8	5.5	111.1	135.0	3.8	204.5	
Tas.	2.8	13.7	*	17.0	12.0	9.6	20.3	*	31.9	44.1	*	62.2	
N.T.	*	4.4	*	5.5	3.4	*	3.6	*	5.1	8.5	*	14.2	
A.C.T.	4.4	11.6	*	17.0	7.2	4.9	9.3	*	15.5	22.7	*	41.0	
<i>Australia</i>	<i>117.1</i>	<i>580.2</i>	<i>20.1</i>	<i>717.4</i>	<i>282.4</i>	<i>396.3</i>	<i>781.5</i>	<i>111.3</i>	<i>1,303.9</i>	<i>1,590.6</i>	<i>45.6</i>	<i>2,353.6</i>	
PERSONS													
Employed -													
N.S.W.	162.5	636.8	11.1	810.4	255.4	287.2	620.4	94.7	1,013.9	1,273.8	18.7	2,102.9	
Vic.	115.3	462.5	9.7	587.5	174.5	268.8	453.1	121.5	859.8	1,037.0	26.4	1,650.9	
Qld	53.4	245.7	6.7	305.8	95.1	111.3	287.3	57.7	459.6	556.3	8.0	870.1	
S.A.	31.1	166.0	7.0	204.1	63.4	102.5	160.1	28.3	295.0	359.2	6.1	569.4	
W.A.	30.2	172.0	5.5	207.7	58.5	55.9	179.2	20.8	256.6	316.4	4.2	528.3	
Tas.	11.7	44.0	*	56.6	28.4	22.3	55.5	6.1	84.3	112.9	*	170.9	
N.T.	3.8	18.7	*	23.3	5.0	6.0	8.7	3.5	19.0	25.1	*	48.7	
A.C.T.	16.9	28.1	*	47.2	14.1	8.7	17.9	3.3	30.6	44.6	*	93.4	
<i>Australia</i>	<i>425.0</i>	<i>1,773.9</i>	<i>43.8</i>	<i>2,242.7</i>	<i>694.5</i>	<i>862.6</i>	<i>1,782.2</i>	<i>335.9</i>	<i>3,018.8</i>	<i>3,725.3</i>	<i>66.7</i>	<i>6,034.6</i>	
Unemployed -													
N.S.W.	*	27.9	*	31.8	22.1	32.9	52.1	*	93.4	115.5	*	153.4	
Vic.	*	18.6	*	23.8	15.4	21.3	40.1	9.5	72.2	88.1	*	117.6	
Qld	*	12.5	*	15.8	6.8	15.3	29.8	*	49.1	56.2	*	73.4	
S.A.	*	11.1	*	13.1	5.1	10.2	14.6	*	27.8	33.1	*	47.1	
W.A.	*	12.6	*	14.0	6.1	3.8	18.2	*	23.3	29.4	*	45.6	
Tas.	*	*	*	*	2.3	3.0	3.4	*	7.0	9.4	*	11.5	
<i>Australia (c)</i>	<i>12.3</i>	<i>86.8</i>	<i>*</i>	<i>103.7</i>	<i>60.3</i>	<i>88.2</i>	<i>160.3</i>	<i>24.1</i>	<i>276.9</i>	<i>338.1</i>	<i>18.4</i>	<i>460.1</i>	
Total -													
N.S.W.	165.5	664.7	12.0	842.2	277.5	320.1	672.5	100.9	1,107.3	1,389.3	24.8	2,256.3	
Vic.	119.7	481.1	10.5	611.3	189.9	290.1	493.2	131.0	932.0	1,125.1	32.1	1,768.6	
Qld	55.9	258.2	7.5	321.7	101.9	126.5	317.1	61.8	508.7	612.5	9.4	943.5	
S.A.	32.3	177.1	7.9	217.2	68.5	112.6	174.7	31.1	322.8	392.3	7.0	616.5	
W.A.	31.2	184.6	5.9	221.7	64.6	59.7	197.4	21.8	279.9	345.7	6.5	573.9	
Tas.	11.7	45.7	*	58.5	30.8	25.2	59.0	6.6	91.4	122.3	*	182.4	
N.T.	3.8	19.4	*	24.2	5.7	6.5	8.9	3.5	19.7	26.5	*	51.2	
A.C.T.	17.3	29.9	2.5	49.7	15.8	10.0	19.8	3.3	33.9	49.7	2.9	102.3	
<i>Australia</i>	<i>437.3</i>	<i>1,860.7</i>	<i>48.4</i>	<i>2,346.4</i>	<i>754.8</i>	<i>950.8</i>	<i>1,942.5</i>	<i>360.0</i>	<i>3,295.7</i>	<i>4,063.4</i>	<i>85.0</i>	<i>6,494.7</i>	

(a) Includes 42,400 persons (38,000 males) who left school at 18 years or over. (b) Includes 12,900 persons (8,600 males) with no formal education. (c) Includes the Northern Territory and the Australian Capital Territory.

TABLE 3. PERSONS IN THE LABOUR FORCE : EDUCATIONAL ATTAINMENT,
BIRTHPLACE AND PERIOD OF ARRIVAL IN AUSTRALIA, FEBRUARY 1979
(^{'000})

Birthplace and period of arrival	With post-school qualifications			Without post-school qualifications				
	Degree or equivalent	Trade, technical level	Total (a)	Attended highest secondary level	Did not attend highest level of secondary school and left at age (years)			
					16 or over	15 or under	Total (b)	Total (c)
MALES								
Born in Australia	224.3	919.2	1,165.8	342.8	460.9	1,026.2	1,833.0	3,033.8
Born in main English-speaking countries (d)	51.3	185.1	239.4	44.7	49.1	143.7	237.8	479.6
Arrived before 1961	13.1	59.7	73.4	11.2	12.2	51.9	75.3	148.7
1961-1969	16.4	67.1	85.1	17.6	22.4	51.6	92.0	178.5
1970-1977	16.0	50.4	67.2	15.4	12.0	38.1	65.5	133.8
1978-Feb. 1979	*	8.0	13.7	*	*	*	*	18.7
Born in other countries	44.6	176.3	223.8	84.8	72.0	239.8	402.0	627.7
Arrived before 1961	23.7	94.4	120.9	36.3	31.3	131.9	202.4	323.4
1961-1969	*	46.6	51.2	19.8	21.5	69.9	113.1	164.9
1970-1977	13.8	33.4	47.3	25.8	18.3	36.9	81.5	130.2
1978-Feb. 1979	*	*	*	*	*	*	*	9.3
Total born overseas	95.9	361.4	463.2	129.5	121.2	383.5	639.8	1,107.3
Arrived before 1961	36.8	154.1	194.4	47.5	43.4	183.8	277.7	472.1
1961-1969	21.0	113.7	136.3	37.4	43.9	121.5	205.0	343.3
1970-1977	29.8	83.8	114.6	41.2	30.3	75.0	147.0	263.9
1978-Feb. 1979	8.2	9.7	18.0	*	*	*	10.1	28.0
Total	320.2	1,280.6	1,629.0	472.4	582.1	1,409.7	2,472.8	4,141.1
FEMALES								
Born in Australia	82.6	431.3	528.4	212.6	329.5	649.7	1,192.8	1,759.9
Born in main English-speaking countries (d)	14.9	85.9	104.3	25.9	45.7	98.3	170.4	278.8
Arrived before 1961	7.6	24.0	28.6	*	11.0	31.0	47.9	76.5
1961-1969		33.5	39.5	9.9	21.1	42.0	73.4	116.4
1970-1977	7.3	23.8	29.5	8.5	12.7	21.9	43.1	73.3
1978-Feb. 1979		*	6.6	*	*	*	*	12.6
Born in other countries	19.6	63.0	84.7	43.9	35.8	144.8	227.5	315.0
Arrived before 1961	8.2	23.6	33.0	13.0	13.6	68.9	96.1	129.1
1961-1969	*	22.2	25.6	11.7	9.5	45.7	67.3	94.7
1970-1977	7.6	14.6	22.6	18.8	11.8	29.3	61.8	85.4
1978-Feb. 1979	*	*	*	*	*	*	*	*
Total born overseas	34.5	148.9	188.9	69.8	81.6	243.1	397.9	593.7
Arrived before 1961	11.7	47.5	61.6	18.9	24.6	99.9	144.0	205.6
1961-1969	7.1	55.7	65.1	21.6	30.5	87.7	140.7	211.1
1970-1977	13.1	38.4	52.2	27.3	24.5	51.2	105.0	158.7
1978-Feb. 1979	*	7.2	10.1	*	*	*	8.2	18.3
Total	117.1	580.2	717.4	282.4	411.1	892.8	1,590.6	2,353.6
PERSONS								
Born in Australia	306.9	1,350.5	1,694.2	555.5	790.4	1,675.9	3,025.8	4,793.7
Born in main English-speaking countries (d)	66.2	271.0	343.7	70.5	94.9	242.0	408.1	758.4
Arrived before 1961	16.5	83.7	102.1	17.1	23.1	82.9	123.1	225.2
1961-1969	20.6	100.6	124.5	27.5	43.5	93.6	165.4	294.9
1970-1977	21.5	74.2	96.8	23.9	24.8	60.0	108.6	207.0
1978-Feb. 1979	7.5	12.6	20.3	*	*	*	10.9	31.3
Born in other countries	64.2	239.3	308.4	128.8	107.9	384.6	629.5	942.6
Arrived before 1961	31.9	118.0	153.9	49.3	44.9	200.8	298.5	452.4
1961-1969	7.6	68.8	76.9	31.5	30.9	115.6	180.3	259.6
1970-1977	21.3	48.0	70.0	44.7	30.0	66.1	143.3	215.6
1978-Feb. 1979	*	*	7.7	*	*	*	7.4	15.1
Total born overseas	130.4	510.2	652.2	199.3	202.7	626.6	1,037.6	1,701.0
Arrived before 1961	48.5	201.7	256.0	66.4	68.0	283.8	421.7	677.7
1961-1969	28.2	169.4	201.4	59.0	74.5	209.2	345.7	554.4
1970-1977	42.9	122.2	166.7	68.5	54.8	126.2	251.9	422.6
1978-Feb. 1979	10.9	17.0	28.1	*	*	7.4	18.3	46.4
Total	437.3	1,860.7	2,346.4	754.8	993.2	2,302.5	4,063.4	6,494.7

(a) Includes 48,400 persons with other post-school qualifications. (b) Includes 12,900 persons (8,600 males) with no formal education. (c) Includes 85,000 persons still at school who had a job or were actively seeking work. (d) Comprises UK, Ireland, Canada, New Zealand, U.S.A. and South Africa.

TABLE 4. PERSONS IN THE LABOUR FORCE : EDUCATIONAL ATTAINMENT AND OCCUPATION (a), FEBRUARY 1979 ('000)

Occupation group	With post-school qualifications			Without post-school qualifications				Total (d)	
	Degree or equivalent	Trade, technical level	Total (b)	Attended highest secondary level	Did not attend highest level of secondary school and left at age (years)		Total (c)		
					16 or over	15 or under			
MALES									
Professional, technical, etc.	229.0	170.2	400.9	41.4	18.6	19.8	80.1	481.0	
Administrative, executive and managerial	30.0	118.9	151.4	44.2	47.1	84.5	175.7	327.1	
Clerical	23.0	51.7	79.8	115.2	64.6	66.4	246.5	326.7	
Sales	8.8	69.8	81.6	48.0	51.5	86.8	186.3	280.2	
Farmers, fishermen, timber-getters, etc.	} 7.6	{ 44.6	52.8	43.0	67.7	190.6	303.1	361.2	
Miners, quarrymen, etc.			10.4	10.7	*	*	18.3	28.6	39.3
Transport and communication			60.2	64.7	25.7	42.3	172.2	240.7	308.2
Tradesmen, production-process workers and labourers, n.e.c.	13.6	688.7	710.2	108.7	238.0	660.6	1,011.5	1,729.6	
Service, sport and recreation	*	58.8	66.9	31.2	33.1	85.1	150.7	219.7	
Had not worked for two weeks or more in a full-time job in the last two years (e)	*	7.2	9.9	10.2	13.7	25.5	49.6	68.0	
<i>Total</i>	<i>320.2</i>	<i>1,280.6</i>	<i>1,629.0</i>	<i>472.4</i>	<i>582.1</i>	<i>1,409.7</i>	<i>2,472.8</i>	<i>4,141.1</i>	
FEMALES									
Professional, technical, etc.	88.3	212.1	301.3	45.1	20.3	24.7	90.0	391.6	
Administrative, executive and managerial	*	10.7	12.5	6.6	8.4	18.6	33.7	46.1	
Clerical	17.0	189.9	213.0	116.1	166.8	232.7	516.0	738.2	
Sales	*	38.4	44.6	32.0	65.7	135.8	233.6	297.9	
Farmers, etc.	*	11.0	15.2	8.3	14.2	47.5	70.4	86.0	
Transport and communication	*	8.3	9.8	*	14.2	21.9	39.9	49.7	
Tradeswomen, production-process workers and labourers, n.e.c.	*	21.1	23.9	17.4	47.2	167.8	234.1	261.1	
Service, sport and recreation	*	69.5	74.0	35.7	49.2	197.6	284.1	363.9	
Had not worked for two weeks or more in a full-time job in the last two years (e)	*	19.0	23.0	17.5	25.1	46.3	88.9	119.1	
<i>Total (f)</i>	<i>117.1</i>	<i>580.2</i>	<i>717.4</i>	<i>282.4</i>	<i>411.1</i>	<i>892.8</i>	<i>1,590.6</i>	<i>2,353.6</i>	
PERSONS									
Professional, technical, etc.	317.2	382.3	702.2	86.5	39.0	44.5	170.1	872.6	
Administration, executive and managerial	31.6	129.7	163.9	50.8	55.5	103.1	209.4	373.3	
Clerical	40.0	241.7	292.9	231.3	231.3	299.1	762.4	1,064.9	
Sales	10.6	108.2	126.3	80.0	117.2	222.5	419.9	578.2	
Farmers, fishermen, timber-getters, etc.	7.6	55.7	68.0	51.3	81.9	238.1	373.5	447.2	
Miners, quarrymen, etc.	*	10.4	10.7	*	*	18.7	29.0	39.7	
Transport and communication	*	68.5	74.5	29.5	56.5	194.1	280.6	357.8	
Tradesmen, production-process workers and labourers, n.e.c.	14.6	709.8	734.1	126.0	285.1	828.0	1,245.1	1,990.4	
Service, sport and recreation	7.5	128.3	140.9	66.9	82.3	282.7	434.8	583.6	
Had not worked for two weeks or more in a full-time job in the last two years (e)	*	26.3	32.9	27.7	38.7	71.8	138.5	187.0	
<i>Total</i>	<i>437.3</i>	<i>1,860.7</i>	<i>2,346.4</i>	<i>754.8</i>	<i>993.2</i>	<i>2,302.5</i>	<i>4,063.4</i>	<i>6,494.7</i>	

(a) Relates to last full-time job for persons unemployed at the time of the survey. (b) Includes 48,400 persons with other post-school qualifications. (c) Includes 12,900 persons (8,600 males) with no formal education. (d) Includes 85,000 persons still at school who had a job or were actively seeking work. (e) Includes persons who had never worked in a full-time job lasting two weeks or more. (f) Includes miners, etc.

TABLE 5. PERSONS IN THE LABOUR FORCE : EDUCATIONAL ATTAINMENT AND INDUSTRY (a), FEBRUARY 1979 ('000)

Industry division	With post-school qualifications			Without post-school qualifications				
	Degree or equivalent	Trade, technical level	Total (b)	Attended highest secondary level	Did not attend highest level of secondary school and left at age (years)		Total (c)	Total (d)
					16 or over	15 or under		
MALES								
Agriculture and services to agriculture	8.0	38.1	49.2	37.9	60.2	165.8	265.6	318.3
Mining	*	29.0	32.7	9.1	8.4	28.0	45.5	78.2
Manufacturing	32.9	322.9	361.2	81.6	132.5	372.0	587.9	950.2
Electricity, gas and water	7.3	46.4	54.2	8.1	11.6	34.8	54.5	108.7
Construction	13.4	199.6	214.7	32.3	50.8	162.8	247.6	462.8
Wholesale and retail trade	27.1	220.1	251.7	91.6	133.4	256.0	481.5	753.4
Transport and storage	*	81.5	86.6	26.4	40.3	133.1	200.4	287.3
Communication	6.5	37.5	47.3	12.3	11.5	32.3	56.2	103.8
Finance, insurance, real estate and business services	58.5	75.4	135.0	60.2	45.1	39.7	145.0	281.1
Public administration and defence (e)	32.5	57.3	92.5	41.3	22.2	54.8	118.3	210.8
Community services	117.6	117.8	238.9	31.5	23.9	53.9	111.4	350.7
Entertainment, recreation, restaurants, hotels and personal services	6.6	47.7	55.1	29.8	28.5	50.9	109.3	167.8
Had not worked for two weeks or more in a full-time job in the last two years (f)	*	7.2	9.9	10.2	13.7	25.5	49.6	68.0
Total	320.2	1,280.6	1,629.0	472.4	582.1	1,409.7	2,472.7	4,141.1
FEMALES								
Agriculture and services to agriculture	*	12.6	16.4	8.1	15.8	45.4	69.7	87.3
Mining	*	*	*	*	*	*	*	7.0
Manufacturing	*	48.8	53.9	31.2	57.2	182.5	272.7	327.5
Electricity, gas and water	*	*	*	*	*	*	*	8.5
Construction	*	14.2	15.1	*	9.1	20.2	35.0	50.0
Wholesale and retail trade	6.8	79.3	90.9	59.1	114.4	241.3	414.9	534.8
Transport and storage	*	10.3	12.1	6.7	12.5	23.8	43.1	55.6
Communication	*	6.2	7.4	*	6.7	14.0	26.5	33.8
Finance, insurance, real estate and business services	*	58.2	65.2	38.5	55.5	70.9	164.8	230.7
Public administration and defence (e)	7.2	20.8	29.2	14.3	14.6	25.5	54.3	83.6
Community services	83.5	261.0	348.7	64.7	60.7	118.8	246.3	596.8
Entertainment, recreation, restaurants, hotels and personal services	*	45.4	50.4	29.1	36.0	99.0	164.1	218.8
Had not worked for two weeks or more in a full-time job in the last two years (f)	*	19.0	23.0	17.5	25.1	46.3	88.9	119.1
Total	117.1	580.2	717.4	282.4	411.1	892.8	1,590.6	2,353.6
PERSONS								
Agriculture and services to agriculture	10.5	50.7	65.6	46.0	76.1	211.2	335.3	405.7
Mining	*	30.7	35.1	10.4	9.5	30.1	50.1	85.2
Manufacturing	35.4	371.8	415.1	112.8	189.7	554.5	860.6	1,277.7
Electricity, gas and water	7.6	48.8	56.9	8.5	13.9	37.8	60.3	117.2
Construction	13.4	213.8	229.7	38.0	59.9	182.9	282.6	512.9
Wholesale and retail trade	33.9	299.4	342.6	150.7	247.8	497.3	896.4	1,288.2
Transport and storage	*	91.9	98.7	33.1	52.8	156.9	243.5	342.9
Communication	7.4	43.7	54.6	18.1	18.1	46.4	82.7	137.6
Finance, insurance, real estate and business services	64.4	133.6	200.3	98.7	100.5	110.5	309.8	511.8
Public administration and defence (e)	39.7	78.2	121.7	55.6	36.8	80.3	172.7	294.4
Community services	201.1	378.8	587.6	96.1	84.6	172.8	357.6	947.4
Entertainment, recreation, restaurants, hotels and personal services	9.5	93.1	105.4	58.9	64.6	149.9	273.4	386.6
Had not worked for two weeks or more in a full-time job in the last two years (f)	*	26.3	32.9	27.7	38.7	71.8	138.5	187.0
Total	437.3	1,860.7	2,346.4	754.8	993.1	2,302.5	4,063.4	6,494.7

(a) - (d) See notes to Table 4. (e) Excludes permanent defence forces. (f) Includes persons who had never worked in a full-time job lasting two weeks or more.

TABLE 6. UNEMPLOYED PERSONS: EDUCATIONAL ATTAINMENT AND DURATION OF CURRENT PERIOD OF UNEMPLOYMENT, FEBRUARY 1979

Educational attainment	Duration of current period of unemployment (weeks)						Total	Average duration of current period of unemployment (weeks)
	1 and under 4	4 and under 8	8 and under 13	13 and under 26	26 and under 52	52 and over		
				1000			1000	
MALES								
With post-school qualifications (a)	11.9	9.2	8.2	7.6	8.3	8.3	53.4	24.0
Degree or equivalent	*	*	*	*	*	*	6.6	12.3
Trade, technical level	11.0	6.3	6.4	6.1	7.8	7.9	45.4	26.1
Without post-school qualifications (a) (b)	28.0	25.7	27.4	27.7	27.1	41.5	177.4	36.1
Attended highest level of secondary school available	7.6	*	*	6.4	*	*	30.8	19.8
Did not attend highest level of secondary school available	20.2	20.3	23.6	21.3	22.8	37.5	145.7	39.3
Total (c)	42.5	36.1	38.5	37.7	35.9	50.3	241.1	32.4
FEMALES								
With post-school qualifications (a)	14.3	12.0	7.7	*	*	6.5	50.3	21.0
Degree or equivalent	*	*	*	*	*	*	*	11.8
Trade, technical level	12.4	10.1	*	*	*	*	41.4	21.6
Without post-school qualifications (b)	41.0	27.7	26.6	21.4	18.5	25.5	160.7	26.3
Attended highest level of secondary school available	7.8	6.1	7.2	*	*	*	29.5	19.4
Did not attend highest level of secondary school available	33.1	21.6	19.4	17.4	16.8	22.8	131.2	27.8
Total (c)	57.5	41.1	36.4	28.3	23.6	32.0	219.0	24.5
PERSONS								
With post-school qualifications (a)	26.2	21.2	15.9	12.2	13.4	14.8	103.7	22.6
Degree or equivalent	*	6.7		*	*	*	12.3	12.1
Trade, technical level	23.3	16.4	12.0	10.0	12.2	12.9	86.8	24.0
Without post-school qualifications (b)	69.0	53.4	54.0	49.1	45.5	67.1	338.1	31.4
Attended highest level of secondary school available	15.5	11.5	11.0	10.4	*	6.5	60.3	19.6
Did not attend highest level of secondary school available	53.3	41.9	43.0	38.7	39.6	60.3	276.9	33.9
Total (c)	100.1	77.3	75.0	65.9	59.5	82.4	460.1	28.6

(a) Includes a small number of persons with other post-school qualifications. (b) Includes a small number of persons with no formal education. (c) Includes 18,400 persons (10,300 males) at school who were actively seeking work.

TABLE 7. UNEMPLOYED PERSONS: EDUCATIONAL ATTAINMENT, AGE AND UNEMPLOYMENT RATE, FEBRUARY 1979

Educational attainment	Age group (years)						Total	Unemployment rate (d) per cent
	15-19	20-24	25-34	35-44	45-54	55 and over		
- '000 -								
MALES								
With post-school qualifications (a)	*	14.0	14.2	9.0	7.9	6.6	53.4	3.3
Degree or equivalent	*	*	*	*	*	*	6.6	2.1
Trade, technical level	*	10.4	12.0	7.4	7.7	6.2	45.4	3.5
Without post-school qualifications (b)	64.6	33.5	29.1	16.3	17.4	16.5	177.4	7.2
Attended highest level of secondary school available	11.1	9.6	*	*	*	*	30.8	6.5
Did not attend highest level of secondary school available	53.5	23.9	24.0	13.4	15.7	15.2	145.7	7.3
Total (c)	76.5	47.5	43.4	25.3	25.3	23.1	241.1	5.8
FEMALES								
With post-school qualifications (a)	9.4	12.7	19.4	*	*	*	50.3	7.0
Degree or equivalent	*	*	*	*	*	*	*	*
Trade, technical level	7.4	10.0	16.0	*	*	*	41.4	7.1
Without post-school qualifications (b)	69.9	35.0	25.1	19.6	9.1	*	160.7	10.1
Attended highest level of secondary school available	16.8	8.3	*	*	*	*	29.5	10.4
Did not attend highest level of secondary school available	53.1	26.7	22.5	18.1	8.7	*	131.2	10.1
Total (c)	87.4	47.7	44.5	25.5	9.9	*	219.0	9.3
PERSONS								
With post-school qualifications (a)	11.0	26.7	33.6	14.8	8.7	8.8	103.7	4.4
Degree or equivalent	*	10.2	*	*	*	*	12.3	2.8
Trade, technical level	9.1	20.4	28.0	13.0	8.2	8.2	86.8	4.7
Without post-school qualifications (b)	134.5	68.5	54.2	35.9	26.6	18.4	338.1	8.3
Attended highest level of secondary school available	27.9	17.9	7.7	*	*	*	60.3	8.0
Did not attend highest level of secondary school available	106.6	50.6	46.6	31.6	24.4	17.2	276.9	8.4
Total (c)	163.9	95.2	87.8	50.7	35.2	27.2	460.1	7.1

(a)-(c) See notes to Table 6. (d) Unemployed persons as a proportion of persons in the labour force in the same group.

TABLE 8. PERSONS IN THE LABOUR FORCE WHOSE HIGHEST EDUCATIONAL ATTAINMENT WAS A DEGREE OR EQUIVALENT LEVEL QUALIFICATION: MAIN FIELD OF STUDY AND AGE, FEBRUARY 1979 ('000)

Main field of study	Age group (years)				Total
	15-24	25-44	45-54	55 and over	
MALES					
Administration, business studies, commerce, economics etc. (a)	9.9	32.0	10.2	6.8	58.9
Law	6.8	{ 15.1 }	8.3	*	{ 22.7 }
Education, teacher training		{ 17.7 }			{ 30.2 }
Medicine, dentistry, pharmacy, nursing	*	20.6	7.8	6.1	36.6
Science, mathematics, computing, etc. (b)	9.0	43.6	*	6.8	63.6
Engineering, telecommunication, transport, surveying	{ 10.8 }	{ 37.5 }	9.7	{ 8.0 }	{ 57.9 }
Arts, humanities, social studies, etc. (c)		{ 23.8 }	{ 7.6 }		{ 36.8 }
Architecture, town planning	*	6.1		*	9.7
Other	*	*	*	*	*
Total	39.9	198.8	48.1	33.4	320.2
FEMALES					
Administration, business studies, commerce, economics etc. (a)	*	6.3	*	*	8.3
Law	*	*	*	*	*
Education, teacher training	9.5	19.7	{ 6.4 }		{ 32.9 }
Medicine, dentistry, pharmacy, nursing	{ 10.5 }	{ 8.2 }		*	{ 17.9 }
Science, mathematics, computing, etc. (b)		{ 9.5 }			{ 15.5 }
Engineering, telecommunication, transport, surveying	*	*	*	*	*
Arts, humanities, social studies, etc. (c)	9.3	23.3	*	*	36.3
Architecture, town planning	*	*	*	*	*
Other	*	*	*	*	*
Total	31.1	71.3	9.5	*	117.1
PERSONS					
Administration, business studies, commerce, economics etc. (a)	10.9	38.4	10.6	7.3	67.2
Law	*	16.8	*	*	25.7
Education, teacher training	15.0	37.4	8.8	*	63.1
Medicine, dentistry, pharmacy, nursing	8.0	28.8	9.7	8.0	54.5
Science, mathematics, computing, etc. (b)	13.7	53.1	*	7.3	79.1
Engineering, telecommunication, transport, surveying	*	38.5	9.7	{ 9.8 }	{ 58.8 }
Arts, humanities, social studies, etc. (c)	14.8	47.1	6.8		{ 73.0 }
Architecture, town planning	*	6.5	*	*	10.1
Other	*	*	*	*	*
Total	71.0	270.1	57.6	38.6	437.3

(a) Includes accounting and secretarial studies. (b) Includes veterinary and agricultural science, statistics, computer programming, chemistry and physics. (c) Includes languages, history, politics, philosophy, psychology, social welfare, religion, geography, art and music.

TABLE 9. PERSONS IN THE LABOUR FORCE WHOSE HIGHEST EDUCATIONAL ATTAINMENT WAS A TRADE OR TECHNICAL LEVEL QUALIFICATION : MAIN FIELD OF STUDY BY EMPLOYMENT STATUS AND AGE, FEBRUARY 1979 ('000)

Main field of study	Total labour force						
	Employed	Unemployed	Age group (years)				Total
			15-24	25-44	45-55	55 and over	
MALES							
All trades –							
Metal	202.0	6.2	27.9	115.9	43.9	20.4	208.2
Electrical	107.6	*	20.7	63.6	17.7	10.5	112.4
Building	194.9	12.0	31.0	117.8	42.0	16.1	206.9
Automotive	133.9	*	31.6	76.4	20.8	9.9	138.6
Other	195.7	*	34.0	104.3	36.5	25.7	200.4
Total	834.1	32.4	145.2	477.8	160.9	82.6	866.5
Teacher training	50.0	*	*	33.1	7.3	*	51.2
Typing, secretarial studies, data processing	7.8	*	*	*	*	*	8.3
Health, para-medical, etc. (a)	23.7	*	*	10.1	8.2	*	25.5
Engineering, telecommunication etc. (b)	111.5	*	11.2	61.4	25.7	16.4	114.8
Administration, law, commerce, etc. (c)	114.5	*	8.5	59.9	32.4	16.2	117.0
Science, computing, humanities, etc. (d)	38.9	*	8.8	22.8	*	*	39.4
Other	54.5	*	8.3	27.8	12.7	8.9	57.8
Total	1,235.1	45.4	192.6	696.4	252.0	139.5	1,280.6
FEMALES							
All trades	63.5	*	17.9	38.8	7.8	*	67.1
Teacher training	93.1	7.2	23.5	58.9	12.1	*	100.4
Typing, secretarial studies, data processing	179.1	19.2	80.5	89.2	20.5	8.1	198.3
Health, para-medical, etc. (a)	144.1	9.0	38.2	81.9	22.8	10.3	153.1
Engineering, telecommunication etc. (b)	9.3	*	*	*	*	*	9.9
Administration, law, commerce, etc. (c)	15.5	*	*	8.6	*	*	15.7
Science, computing, humanities etc. (d)	16.5	*	*	8.6	*	*	16.6
Other	17.7	*	*	12.0	*	*	19.2
Total	538.8	41.4	173.9	303.5	71.3	31.4	580.2
PERSONS							
All trades –							
Metal	208.6	6.7	31.1	118.0	44.7	21.5	215.3
Electrical	109.1	*	22.0	64.3	17.7	10.5	114.4
Building	202.6	12.0	34.2	121.8	42.5	16.1	214.6
Automotive	142.5	*	33.8	82.1	21.4	10.1	147.4
Other	234.9	7.0	42.1	130.5	42.5	26.9	241.9
Total	897.6	36.0	163.1	516.6	168.7	85.1	933.6
Teacher training	143.1	8.5	28.9	92.0	19.4	11.2	151.6
Typing, secretarial studies, data processing	186.9	19.7	82.7	92.5	21.6	9.7	206.6
Health, para-medical, etc. (a)	167.7	10.8	41.0	91.9	31.0	14.7	178.6
Engineering, telecommunication, etc. (b)	120.9	*	13.6	66.9	27.3	16.9	124.7
Administration, law, commerce, etc. (c)	130.1	*	11.7	68.5	34.0	18.5	132.7
Science, computing, humanities, etc. (d)	55.4	*	12.2	31.5	6.8	*	56.0
Other	72.2	*	13.4	39.8	14.5	9.3	77.0
Total	1,773.9	86.8	366.6	999.9	323.4	170.9	1,860.7

(a) Includes nursing and health therapy. (b) Includes architecture, surveying, drafting and town planning. (c) Includes business administration, economics and bookkeeping. (d) Includes social studies, social welfare, veterinary and agricultural science, chemistry, languages, arts, crafts and music.

