

CHAPTER 4

UNEMPLOYMENT

The unemployment statistics presented in this chapter have been derived from ABS sources, primarily the ABS Monthly Labour Force Survey and associated supplementary surveys. Some summary statistics on job vacancies, which are an indicator of the demand for labour, are also included in this chapter.

For a full definition of unemployed as it relates to the Labour Force Survey, see the Glossary of this publication. Broadly speaking, a person is considered to be unemployed if he or she satisfies three criteria—not employed, available for work, and taking active steps to find work. The employed and the unemployed together make up the labour force.

Measures of unemployment provide an indicator of the unused capacity in the labour force. The two most important measures are the number of unemployed persons and the unemployment rate. The unemployment rate for any group is the number unemployed expressed as a percentage of the labour force in the same group. Characteristics of the unemployed presented in this chapter include their demographic composition, duration of unemployment, educational qualifications and difficulties experienced in finding work. The unemployment characteristics of families, i.e. unemployment rates of different family members and number of families with some unemployment are also shown.

Unemployment

There were 906,400 unemployed persons in Australia in August 1992, of whom 564,400 were males and 342,000 were females. About 84 per cent of unemployed persons were looking for full-time work. From August 1982 to August 1983, the estimated number of unemployed persons increased by 224,900. Between August 1983 and August 1990, the estimated number of unemployed persons fell by 98,900. Between August 1990 and August 1992, the number of unemployed persons rose by 319,000.

The unemployment rate for persons rose by 3.9 percentage points from 6.7 per cent in August 1982 to 10.6 per cent in August 1992. In August 1992 the unemployment rate for males aged 15 to 19 years was 25.1 per cent, while for females aged 15 to 19 years the unemployment rate was 24.8 per cent.

The average duration of unemployment rose from 33 weeks in August 1982 to a peak of 51.3 weeks in August 1988 before falling to 43 weeks in August 1991. The median duration of unemployment in August 1992 was 30 weeks, compared with 24 weeks in 1991. Between August 1991 and August 1992 the average duration of unemployment increased to 51.2 weeks.



Indicates break in series. Estimates from August 1986 are based on a revised definition introduced in April 1986. See the Technical Notes for further information.
 Source: *The Labour Force, Australia* (6203.0).

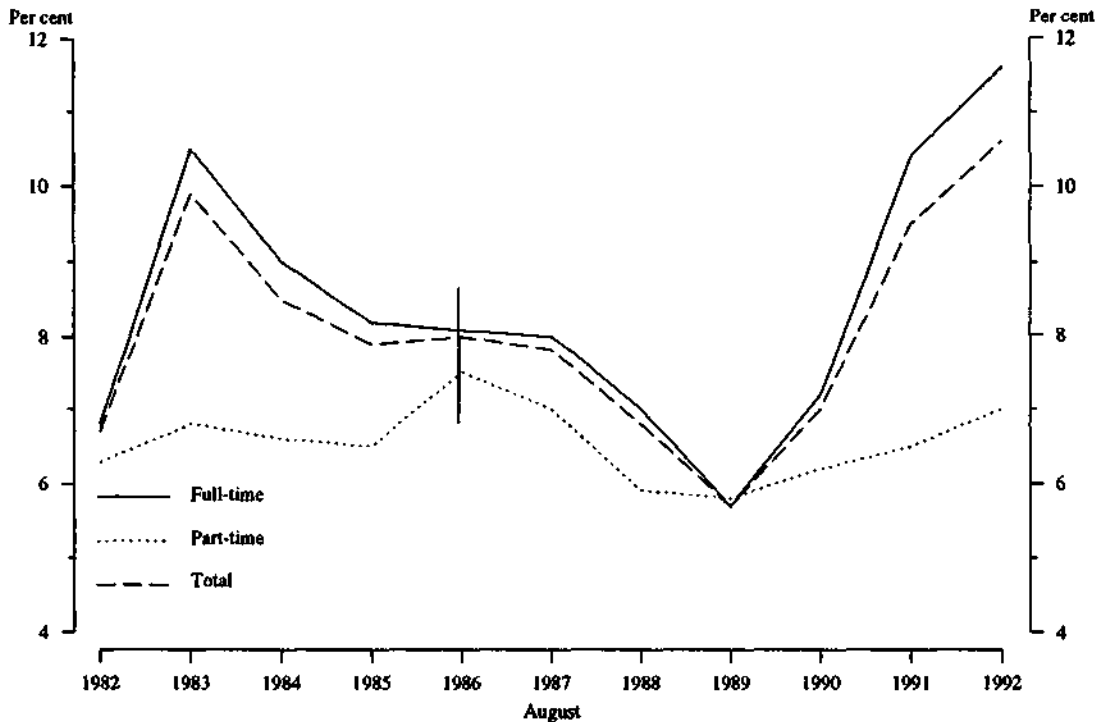
TABLE 4.1. UNEMPLOYED PERSONS: WHETHER LOOKING FOR FULL-TIME OR PART-TIME WORK, AUSTRALIA, AUGUST 1982 TO AUGUST 1992

August	Males		Females			Persons			Total
	Looking for full-time work	Looking for part-time work	Looking for full-time work	Looking for part-time work	Total	Looking for full-time work	Looking for part-time work	Total	
	NUMBER ('000)								
1982	250.4	21.3	271.7	137.2	52.5	189.7	387.6	73.8	461.4
1983	409.5	20.2	429.7	197.9	59.3	257.1	607.4	79.5	686.8
1984	358.6	22.6	381.2	165.0	57.9	222.8	523.5	80.5	604.0
1985	325.4	23.7	349.1	162.7	60.9	223.6	488.0	84.7	572.7
1986(a)	320.9	28.3	349.3	170.9	77.5	248.4	491.8	105.8	597.6
1987	317.2	29.8	347.1	177.8	77.1	255.0	495.1	107.0	602.0
1988	279.9	25.8	305.7	165.5	67.4	233.0	445.4	93.3	538.7
1989	230.7	30.0	260.7	139.4	69.3	208.7	370.1	99.3	469.4
1990	305.1	32.8	338.0	173.2	76.3	249.5	478.3	109.1	587.4
1991	465.4	37.2	502.6	221.6	81.8	303.4	687.0	119.1	806.0
1992	521.0	43.4	564.4	244.0	97.9	342.0	765.1	141.3	906.4
UNEMPLOYMENT RATE (per cent)									
1982	6.2	8.1	6.3	8.4	5.8	7.5	6.8	6.3	6.7
1983	10.1	7.7	9.9	11.7	6.5	9.9	10.5	6.8	9.9
1984	8.7	8.4	8.7	9.6	6.0	8.3	9.0	6.6	8.5
1985	7.8	8.5	7.8	9.2	6.0	8.0	8.2	6.5	7.9
1986(a)	7.6	9.2	7.7	9.2	7.0	8.4	8.1	7.5	8.0
1987	7.4	8.6	7.5	9.4	6.5	8.3	8.0	7.0	7.8
1988	6.4	7.8	6.5	8.4	5.4	7.3	7.0	5.9	6.8
1989	5.2	7.8	5.4	6.9	5.2	6.2	5.7	5.8	5.7
1990	6.7	8.2	6.9	8.2	5.5	7.1	7.2	6.2	7.0
1991	10.3	8.1	10.2	10.4	5.8	8.6	10.4	6.5	9.5
1992	11.6	8.5	11.3	11.7	6.5	9.5	11.6	7.0	10.6

(a) Estimates from August 1986 are based on a revised definition introduced in April 1986. See the Technical Notes for further information.

Source: *The Labour Force, Australia* (6203.0).

CHART 4.2 UNEMPLOYMENT RATES: WHETHER LOOKING FOR FULL-TIME OR PART-TIME WORK, AUSTRALIA



Indicates a break in series. Estimates from August 1986 are based on a revised definition introduced in April 1986. See the Technical Notes for further information.

Source: *The Labour Force, Australia* (6203.0)

TABLE 4.2. UNEMPLOYED PERSONS: UNEMPLOYMENT RATES, BY AGE, AUSTRALIA, AUGUST 1982 TO AUGUST 1992
(per cent)

August	Age group						Total
	15-19	20-24	25-34	35-44	45-54	55 and over	
	MALES						
1982	16.3	11.2	5.5	3.6	3.6	3.3	6.3
1983	23.0	17.3	9.1	6.0	5.9	6.5	9.9
1984	22.1	14.2	7.6	5.0	5.7	5.8	8.7
1985	19.3	12.4	7.2	4.4	4.8	6.7	7.8
1986(a)	18.7	12.3	6.8	4.6	5.5	5.5	7.7
1987	18.0	12.6	7.0	4.8	4.2	5.5	7.5
1988	15.1	10.8	5.6	3.8	4.5	6.3	6.5
1989	12.9	8.0	5.1	3.5	3.0	5.0	5.4
1990	16.6	12.1	7.0	3.8	3.2	5.7	6.9
1991	21.8	16.3	9.9	7.4	6.0	8.9	10.2
1992	25.2	18.3	10.8	7.5	7.2	10.6	11.3
	FEMALES						
1982	17.0	8.8	6.9	4.8	3.6	2.7	7.5
1983	22.2	11.5	9.5	6.8	4.8	2.5	9.9
1984	19.7	10.3	7.1	5.6	4.6	2.6	8.3
1985	17.1	10.4	7.5	5.3	4.4	2.7	8.0
1986(a)	19.5	9.9	7.6	6.0	4.5	3.1	8.4
1987	19.4	10.5	7.5	6.1	4.5	2.2	8.3
1988	15.9	10.9	6.6	4.8	3.9	2.7	7.3
1989	14.6	7.9	5.8	3.9	4.1	2.4	6.2
1990	16.5	9.6	7.1	4.7	4.0	2.8	7.1
1991	20.2	12.9	7.8	5.5	5.7	3.9	8.6
1992	24.8	13.7	8.6	6.5	5.8	2.7	9.5
	PERSONS						
1982	16.6	10.2	6.0	4.0	3.6	3.1	6.7
1983	22.6	14.7	9.2	6.3	5.5	5.5	9.9
1984	20.9	12.5	7.4	5.3	5.3	5.0	8.5
1985	18.2	11.5	7.3	4.7	4.7	5.7	7.9
1986(a)	19.1	11.2	7.1	5.2	5.1	4.9	8.0
1987	18.7	11.6	7.2	5.3	4.3	4.6	7.8
1988	15.5	10.9	6.0	4.2	4.2	5.3	6.8
1989	13.7	8.0	5.4	3.6	3.4	4.4	5.7
1990	16.5	11.0	7.1	4.2	3.5	4.9	7.0
1991	21.0	14.7	9.0	6.6	5.9	7.5	9.5
1992	25.0	16.2	9.9	7.1	6.7	8.4	10.6

(a) Estimates from August 1986 are based on a revised definition introduced in April 1986. See the Technical Notes for further information.

Source: The Labour Force, Australia (6203 0).

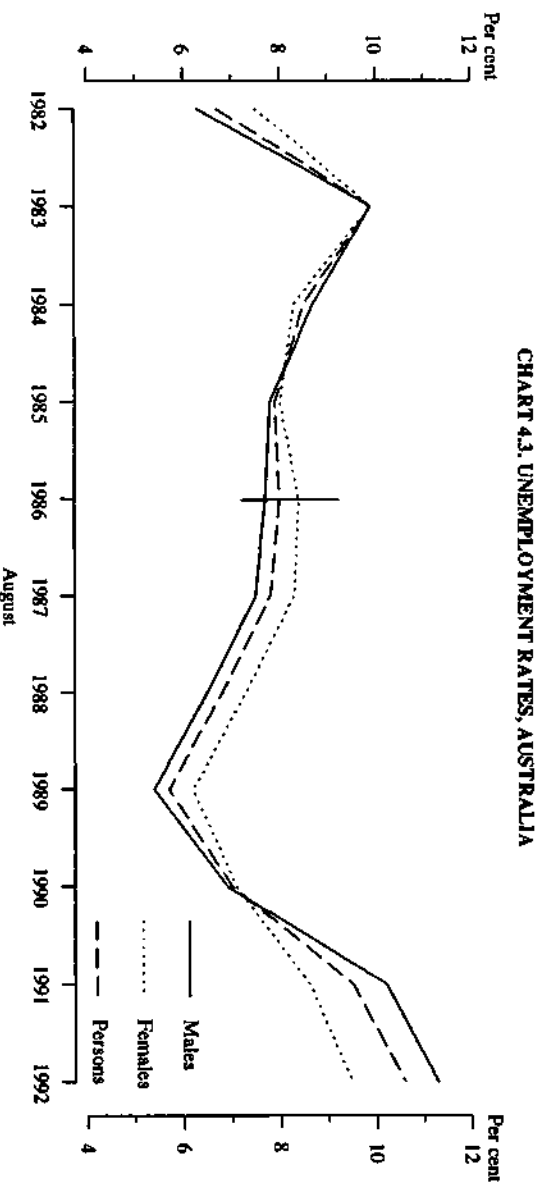
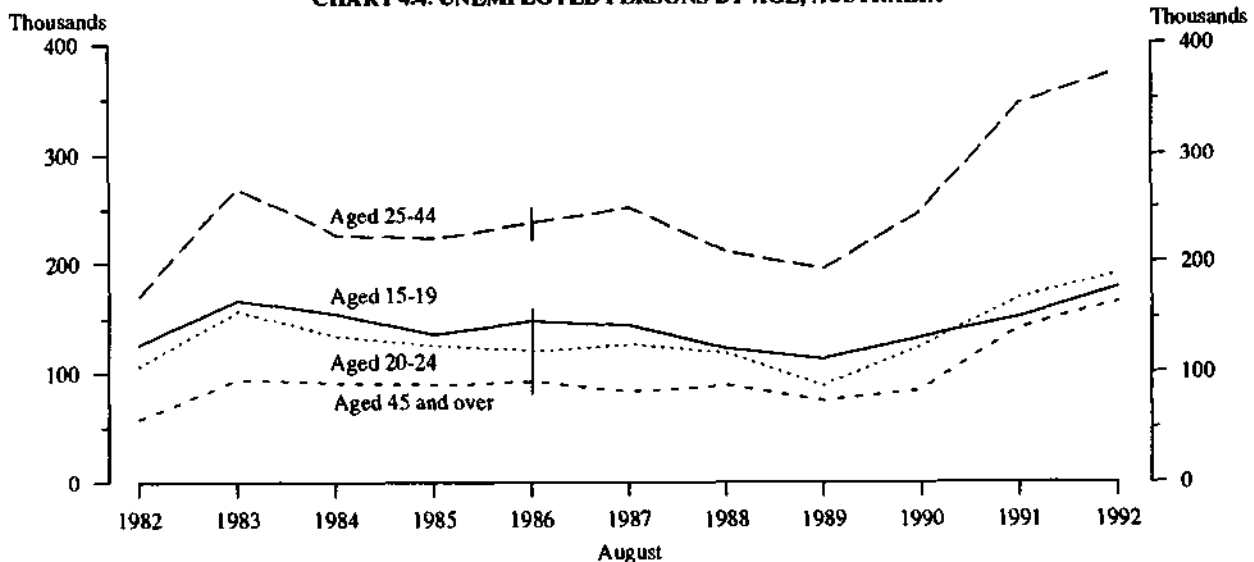


TABLE 4.3. UNEMPLOYED PERSONS: BIRTHPLACE BY AGE, AUSTRALIA, AUGUST 1992

	Number unemployed ('000)			Unemployment rate (per cent)		
	Males	Females	Persons	Males	Females	Persons
BORN IN AUSTRALIA						
Total	391.7	242.9	634.6	10.7	8.9	9.9
Looking for full-time work	358.2	168.2	526.4	10.9	10.8	10.9
Looking for part-time work	33.5	74.7	108.2	8.5	6.3	6.9
Aged 15-19	82.1	78.2	160.3	24.6	24.5	24.5
Aged 20 and over	309.6	164.7	474.3	9.3	6.8	8.2
20-24	94.0	59.3	153.3	17.1	12.7	15.1
25-34	99.9	48.1	148.0	9.9	7.0	8.7
35-44	54.7	37.4	92.1	6.4	5.5	6.0
45-54	33.7	17.3	51.1	5.7	4.1	5.0
55 and over	27.3	* 2.6	29.9	7.9	* 1.7	6.0
Aged 15-64	390.8	242.3	633.1	10.8	8.9	10.0
BORN OUTSIDE AUSTRALIA						
Total	172.7	99.0	271.8	13.1	11.6	12.5
Looking for full-time work	162.8	75.8	238.6	13.5	14.3	13.7
Looking for part-time work	9.9	23.2	33.1	8.6	7.1	7.5
Aged 15-19	9.0	7.9	17.0	32.2	28.0	30.1
Aged 20 and over	163.7	91.1	254.8	12.7	11.0	12.0
20-24	21.9	14.2	36.0	25.8	20.6	23.5
25-34	41.8	30.6	72.4	13.7	13.7	13.7
35-44	38.3	24.3	62.5	9.9	8.8	9.4
45-54	32.3	19.3	51.6	10.0	9.4	9.7
55 and over	29.4	* 2.9	32.2	15.5	* 5.2	13.2
Aged 15-64	172.3	99.0	271.4	13.2	11.6	12.6
TOTAL						
Total	564.4	342.0	906.4	11.3	9.5	10.6
Looking for full-time work	521.0	244.0	765.1	11.6	11.7	11.6
Looking for part-time work	43.4	97.9	141.3	8.5	6.5	7.0
Aged 15-19	91.1	86.2	177.3	25.1	24.8	25.0
Aged 20 and over	473.3	255.8	729.1	10.2	7.9	9.3
20-24	115.9	73.4	189.3	18.3	13.7	16.2
25-34	141.7	78.7	220.4	10.8	8.6	9.9
35-44	93.0	61.6	154.6	7.5	6.5	7.1
45-54	66.0	36.6	102.7	7.2	5.8	6.6
55 and over	56.7	5.5	62.1	10.6	2.6	8.4
Aged 15-64	563.1	341.4	904.5	11.5	9.6	10.7

Source: The Labour Force, Australia (6203.0).

CHART 44. UNEMPLOYED PERSONS BY AGE, AUSTRALIA



Indicates break in series. Estimates from August 1986 are based on a revised definition introduced in April 1986. See the Technical Notes for further information.

Source: The Labour Force, Australia (6203.0).

TABLE 4.4. UNEMPLOYED PERSONS: DURATION OF UNEMPLOYMENT, AUSTRALIA, AUGUST 1982 TO AUGUST 1992

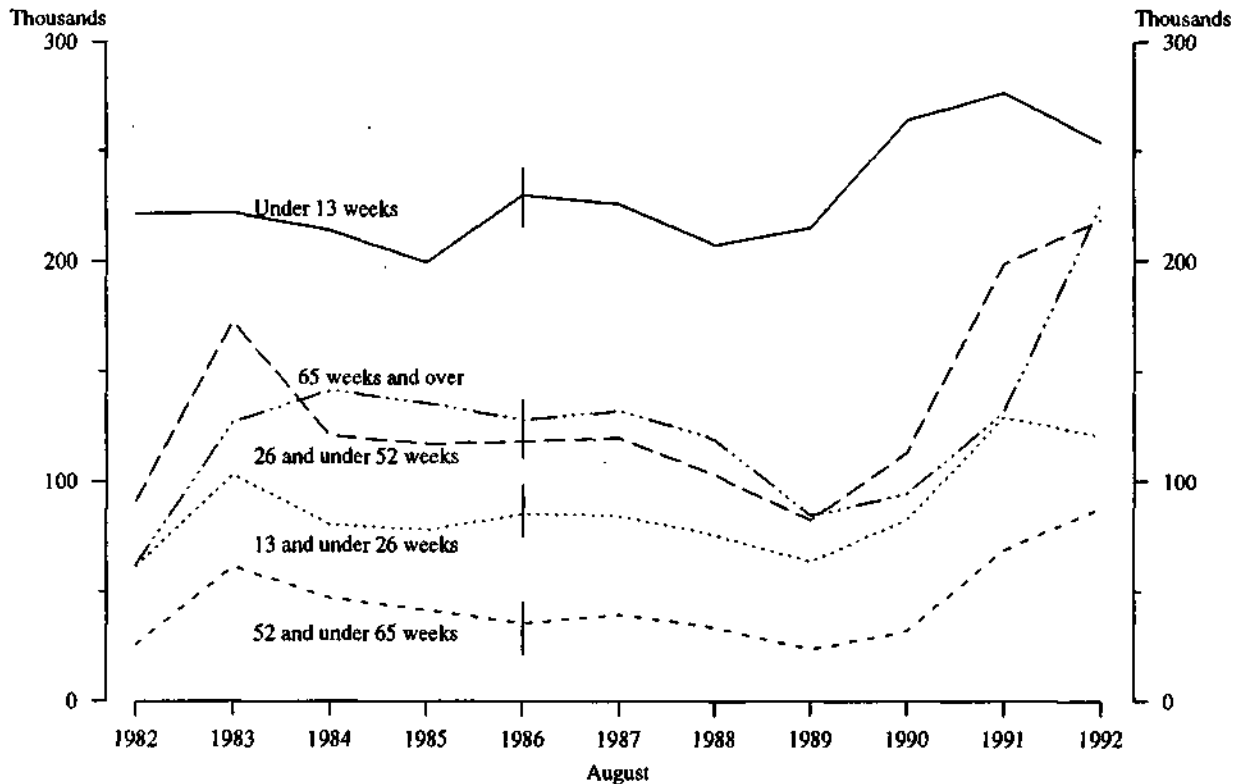
Duration of unemployment (weeks)	August										
	1982	1983	1984	1985	1986(a)	1987	1988	1989	1990	1991	1992
	—'000—										
Under 2	38.7	32.4	34.2	38.8	47.3	41.7	41.3	47.3	40.3	39.7	44.4
2 and under 4	58.2	49.7	56.8	55.6	56.7	59.6	54.9	54.8	68.2	66.8	58.1
4 and under 8	72.4	73.9	64.0	57.6	67.3	67.9	60.6	68.8	88.0	87.5	83.4
8 and under 13	52.3	65.9	58.8	47.6	58.4	56.4	50.6	44.6	67.5	82.5	68.1
13 and under 26	61.2	103.1	80.5	78.2	85.3	84.2	75.7	63.8	82.9	129.4	120.4
26 and under 39	73.3	123.5	94.9	87.9	91.3	94.6	78.3	62.5	89.3	144.7	154.9
39 and under 52	17.8	49.6	26.2	29.7	27.6	25.5	24.4	19.9	24.3	54.4	64.0
52 and under 65	25.7	61.3	46.9	41.3	35.7	39.6	33.6	23.7	32.3	69.1	87.8
65 and under 104	18.6	43.3	49.2	30.7	32.1	36.7	29.7	19.4	24.6	49.7	90.2
104 and over	43.4	84.2	92.4	105.1	96.1	95.7	89.6	65.1	70.2	82.2	135.2
Total	461.4	686.8	604.0	572.7	597.6	602.0	538.7	469.4	587.4	806.0	906.4
	—weeks—										
Average duration	32.6	41.4	45.5	49.5	48.6	48.3	51.3	44.5	43.7	43.0	51.2
Median duration	13	26	26	26	21	23	22	15	15	25	30

(a) Estimates from August 1986 are based on a revised definition introduced in April 1986. See the Technical Notes for further information.

Note: Estimates for average and median durations of unemployment refer to current period of unemployment, not completed periods. See the Glossary for further information.

Source: *The Labour Force, Australia* (6203.0).

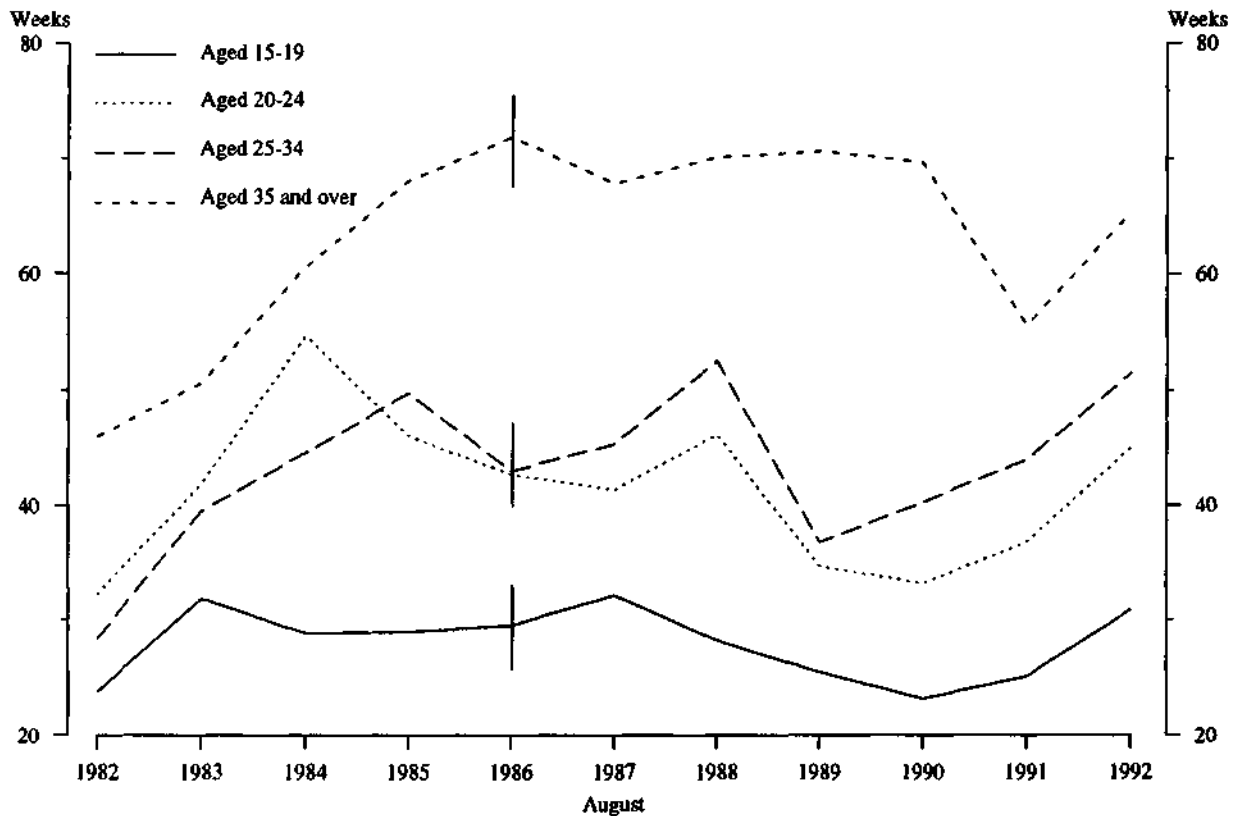
CHART 4.5. UNEMPLOYED PERSONS: DURATION OF UNEMPLOYMENT, AUSTRALIA



Indicates break in series. Estimates from August 1986 are based on a revised definition introduced in April 1986. See the Technical Notes for further information.

Source: *The Labour Force, Australia* (6203.0).

CHART 4.6. UNEMPLOYED PERSONS: AVERAGE DURATION OF UNEMPLOYMENT AND AGE, AUSTRALIA



Indicates break in series. Estimates from August 1986 are based on a revised definition introduced in April 1986. See the Technical Notes for more information.
 Note: Estimates for average duration of unemployment refer to current periods of unemployment, not completed periods. See the Glossary for further information.
 Source: *The Labour Force, Australia (6203.0)*.

TABLE 4.5. UNEMPLOYED PERSONS: DURATION OF UNEMPLOYMENT, AGE, MARITAL STATUS AND WHETHER LOOKING FOR FULL-TIME OR PART-TIME WORK, AUSTRALIA, AUGUST 1992

Duration of unemployment (weeks)	Age group				Total(a)	Married	Not married	Looking for—	
	15-19	20-24	25-34	35-54				Full-time work	Part-time work
	—'000—								
Under 52	141.4	127.7	143.8	150.4	593.2	222.3	371.0	477.6	115.6
under 2	15.4	8.7	9.2	8.7	44.4	15.3	29.1	22.7	21.7
2 and under 4	13.4	13.0	12.4	17.4	58.1	21.5	36.6	37.4	20.7
4 and under 8	20.6	18.1	15.5	25.2	83.4	33.1	50.2	68.2	15.2
8 and under 13	20.0	12.8	16.5	14.8	68.1	25.3	42.8	54.1	14.1
13 and under 26	23.2	28.1	35.2	28.9	120.4	45.2	75.2	105.1	15.3
26 and under 39	35.8	34.8	35.3	40.7	154.9	54.8	100.0	130.2	24.7
39 and under 52	13.0	12.3	19.6	14.6	64.0	27.0	37.0	60.0	4.0
52 and over	35.9	61.6	76.6	106.9	313.2	144.8	168.3	287.5	25.7
52 and under 65	12.3	19.7	23.0	26.3	87.8	36.8	50.9	78.2	9.6
65 and under 104	14.4	17.2	23.2	29.2	90.2	40.3	49.9	82.9	7.3
104 and over	9.2	24.8	30.5	51.4	135.2	67.7	67.5	126.5	8.8
Total	177.3	189.3	220.4	257.3	906.4	367.1	539.3	765.1	141.3
	—weeks—								
Average duration	30.9	45.0	51.5	59.9	51.2	58.8	46.1	55.2	29.5
Median duration	22	30	31	35	30	34	28	34	12

(a) Includes persons aged 55 and over, details for whom are not shown separately.

Source: *The Labour Force, Australia (6203.0)*.

TABLE 4.6. UNEMPLOYED PERSONS: REASON FOR UNEMPLOYMENT, AUSTRALIA

Month	Reason for unemployment					Total	Per cent of unemployed					
	Job loser	Job leaver	Stood down	Looking for first job	Former workers		Job loser	Job leaver	Stood down	Looking for first job	Former workers	
	—'000—						—per cent—					
1990—												
August	219.0	127.8	14.3	91.5	134.8	587.4	37.3	21.8	2.4	15.6	22.9	
1991—												
August	381.8	131.4	21.2	110.6	161.0	806.0	47.4	16.3	2.6	13.7	20.0	
September	375.0	149.3	30.6	126.8	185.6	867.2	43.2	17.2	3.5	14.6	21.4	
October	357.7	134.4	19.0	110.9	179.6	801.6	44.6	16.8	2.4	13.8	22.4	
November	363.1	126.1	20.8	127.5	180.1	817.5	44.4	15.4	2.5	15.6	22.0	
December	368.1	130.9	19.6	205.6	196.1	920.4	40.0	14.2	2.1	22.3	21.3	
1992—												
January	394.1	135.2	24.8	196.6	208.9	959.7	41.1	14.1	2.6	20.5	21.8	
February	409.9	134.6	23.3	185.6	244.3	997.7	41.1	13.5	2.3	18.6	24.5	
March	390.5	126.8	28.1	164.4	239.5	949.1	41.1	13.4	3.0	17.3	25.2	
April	383.0	120.7	21.3	147.0	238.9	910.9	42.0	13.3	2.3	16.1	26.2	
May	391.9	120.9	20.6	152.3	234.8	920.4	42.6	13.1	2.2	16.5	25.5	
June	378.2	123.6	23.4	150.3	238.7	914.2	41.4	13.5	2.6	16.4	26.1	
July	389.6	123.4	24.8	142.3	246.2	926.3	42.1	13.3	2.7	15.4	26.6	
August	369.3	119.4	19.1	163.5	235.0	906.4	40.7	13.2	2.1	18.0	25.9	

Source: *The Labour Force, Australia* (6203.0).

TABLE 4.7. UNEMPLOYED PERSONS: INDUSTRY AND OCCUPATION OF LAST FULL-TIME JOB, AUSTRALIA AUGUST 1992

	Number unemployed ('000)			Unemployment rate (per cent)		
	Males	Females	Persons	Males	Females	Persons
<i>Had worked full time for two weeks or more in the last two years</i>	354.7	134.0	488.7	7.4	4.0	6.0
Industry division or subdivision —						
Agriculture, forestry, fishing & hunting	26.9	4.8	31.7	8.8	3.9	7.4
Agriculture & services to agriculture	22.0	4.6	26.6	7.8	3.9	6.6
Forestry & logging, fishing & hunting	4.9	* 0.3	5.1	19.7	* 5.9	17.6
Mining	8.4	* 1.0	9.4	9.2	* 10.0	9.3
Manufacturing	90.8	23.9	114.7	10.1	7.4	9.4
Food, beverages and tobacco	17.5	6.2	23.7	11.7	8.9	10.8
Metal products	16.7	* 1.6	18.4	9.6	* 6.6	9.2
Other manufacturing	56.6	16.1	72.7	9.9	7.0	9.1
Electricity, gas and water	* 2.4	* 1.2	3.6	* 2.6	* 7.8	3.3
Construction	64.3	* 2.4	66.6	12.3	* 3.3	11.2
Wholesale and retail trade	66.2	35.9	102.0	7.1	4.7	6.0
Wholesale trade	18.8	6.1	25.0	5.4	3.9	5.0
Retail trade	47.3	29.8	77.1	8.1	4.9	6.5
Transport and storage	21.6	* 3.2	24.8	6.7	* 4.2	6.2
Communication	3.6	* 1.0	4.5	4.3	* 2.7	3.8
Finance, property & business services	22.2	14.4	36.6	4.6	3.2	3.9
Public administration and defence	6.5	4.9	11.4	2.9	3.7	3.2
Community services	15.2	20.9	36.1	2.9	2.1	2.4
Recreation, personal & other services	26.6	20.6	47.2	8.7	5.5	7.0
Occupation group —						
Managers and administrators	18.5	5.9	24.4	2.8	2.6	2.7
Professionals	19.8	8.1	27.8	3.1	1.8	2.6
Para-professionals	9.4	* 2.6	12.0	3.6	* 1.2	2.5
Tradespersons	97.0	8.4	105.4	8.6	6.6	8.4
Clerks	11.5	33.0	44.5	3.9	3.2	3.4
Salespersons and personal service workers	33.9	39.7	73.7	7.7	4.9	5.9
Plant and machine operators, and drivers	40.5	9.4	50.0	7.9	10.9	8.4
Labourers and related workers	124.0	26.8	150.8	14.5	6.3	11.8
Other	202.4	196.2	398.6
Looking for first job	76.1	87.5	163.5
Looking for full-time work	52.9	52.4	105.4
Former workers	126.3	108.8	235.0
Stood down	7.4	11.7	19.1
Total	564.4	342.0	906.4	11.3	9.5	10.6

Source: *The Labour Force, Australia* (6203.0).

Job Search Experience of Unemployed Persons

In July 1992, the labour force numbered 8,667,900 persons, of whom 900,000 were unemployed persons taking active steps to find work. Of these, 87 per cent were persons looking for full-time work.

The most frequently reported difficulty in finding work was the belief that there are 'no vacancies at all'. The number of persons reporting this as the main difficulty had fallen from 33 per cent in June 1991 to 32 per cent in July 1992.

In July 1992, 82 per cent of unemployed persons reported that they were registered with the Commonwealth Employment Service (CES). Over the last decade, this percentage has been within the range of 73 per cent (July 1982) to 82 per cent (July 1992). The July 1992 percentage registered with the CES is the highest recorded since the survey was first conducted in May 1976.

There were 331,300 persons (37 per cent of total unemployed) whose current period of unemployment (at July 1992) was one year or more. For this group the most frequently reported main difficulties in finding work were 'no vacancies at all', 'considered too young or too old by employers', 'lacked the necessary skills/education' and 'no vacancies in line of work'.

TABLE 4.8. UNEMPLOYED PERSONS: MAIN DIFFICULTY IN FINDING WORK, AUSTRALIA, JULY 1982 TO JULY 1992

	July 1982	July 1984	June 1986	July 1988	July 1990	June 1991	July 1992	
<i>Main difficulty in finding work</i>	— per cent —							('000)
No vacancies at all	26.9	23.8	19.0	16.1	16.7	33.4	31.9	287.1
No vacancies in line of work	16.3	16.0	16.0	12.0	14.5	18.4	17.1	154.3
Considered too young or too old by employers	15.3	15.5	16.3	16.5	15.3	11.7	13.8	124.2
Lacked necessary skills/education	7.3	10.5	10.0	12.0	13.4	8.9	9.5	85.7
Insufficient work experience	9.7	9.8	10.1	10.9	9.3	7.9	8.0	71.7
Own ill health or disability	3.8	4.1	5.8	6.6	6.7	3.8	4.2	38.1
Too far to travel/transport problems	4.7	4.9	5.7	6.9	5.2	3.6	3.9	35.1
Language difficulties	2.4	2.8	2.1	3.2	4.4	2.2	2.6	23.4
Unsuitable hours	4.0	2.8	4.0	3.6	3.4	2.2	1.9	17.5
Difficulties with childcare/other family responsibilities(a)	1.2	10.9
Other difficulties(b)	5.5	5.3	5.0	6.1	5.5	5.1	2.6	23.7
No difficulties reported	4.0	4.4	6.1	6.2	5.6	2.7	3.2	28.4
Total	100.0	100.0	100.0	100.0	100.0	100.0	100.0	900.0

(a) Collected separately for the first time in 1992. (b) Includes persons who reported difficulties with ethnic background.

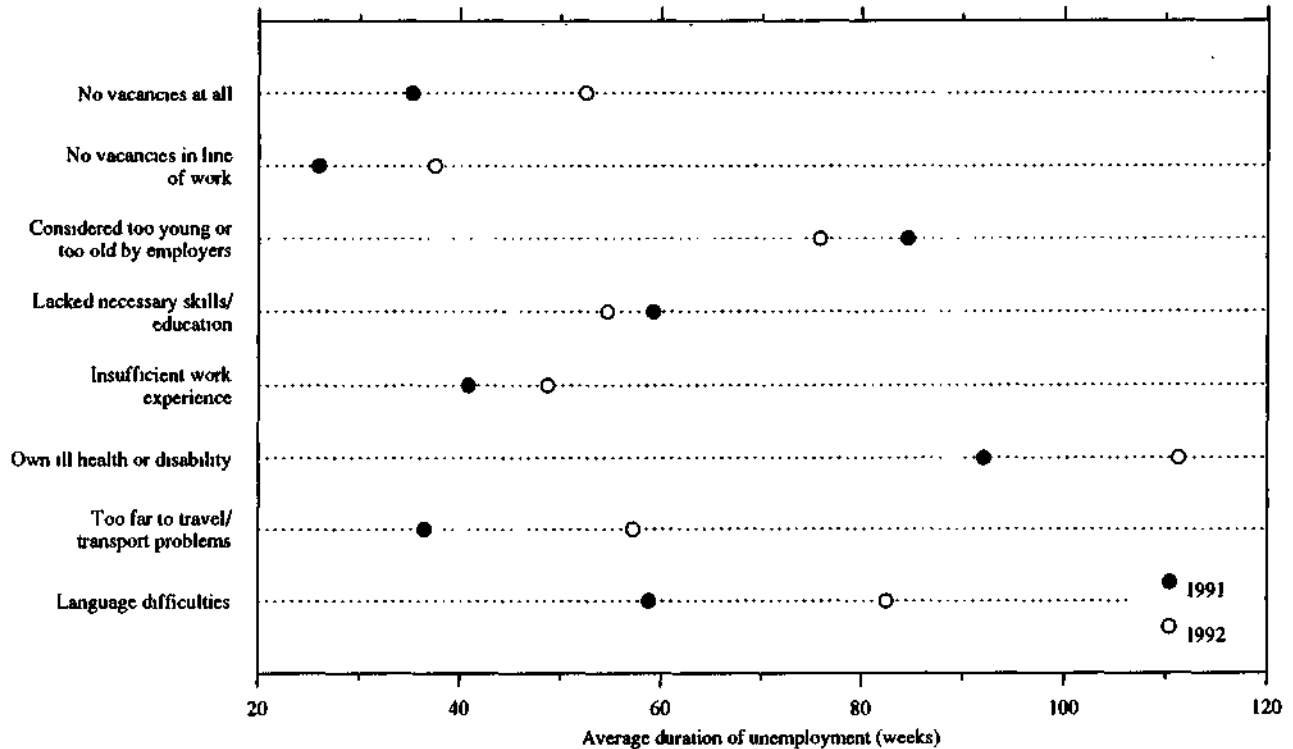
Source: *Job Search Experience of Unemployed Persons, Australia (6222.0)*.

TABLE 4.9. UNEMPLOYED PERSONS: ACTIVE STEPS TAKEN TO FIND WORK, AUSTRALIA, JULY 1982 TO JULY 1992

	July 1982	July 1984	June 1986	July 1988	July 1990	June 1991	July 1992	
<i>Active steps taken to find work</i>	— per cent —							('000)
Registered with the CES and—								
Took no other active steps	0.8	1.3	1.5	1.4	1.5	0.6	0.7	6.6
Contacted prospective employers	66.9	73.8	70.4	71.7	69.7	74.5	77.9	701.0
Took other active steps	5.0	6.7	6.9	6.1	4.7	3.4	3.8	33.9
Total	72.7	81.8	78.8	79.2	75.8	78.5	82.4	741.5
Not registered with the CES and—								
Contacted prospective employers	24.8	16.4	19.3	19.0	22.2	19.5	15.5	139.6
Took other active steps	2.5	1.8	1.9	1.8	2.0	2.0	2.1	18.9
Total	27.3	18.2	21.2	20.8	24.2	21.5	17.6	158.5
Total	100.0	100.0	100.0	100.0	100.0	100.0	100.0	900.0

Source: *Job Search Experience of Unemployed Persons, Australia (6222.0)*.

CHART 4.7. UNEMPLOYED PERSONS: AVERAGE DURATION OF UNEMPLOYMENT BY SELECTED MAIN DIFFICULTIES IN FINDING WORK, AUSTRALIA, JUNE 1991 AND JULY 1992



Source: *Job Search Experience of Unemployed Persons, Australia (6222.0)*

TABLE 4.10. UNEMPLOYED PERSONS: WHETHER WOULD MOVE INTERSTATE OR INTRASTATE IF OFFERED A SUITABLE JOB, AUSTRALIA, JULY 1982 TO JULY 1992

	July 1982	July 1984	June 1986	July 1988	July 1990	June 1991	July 1992	
— per cent —								('000)
WHETHER WOULD MOVE INTERSTATE IF OFFERED A SUITABLE JOB								
Would move interstate	27.9	26.9	26.0	24.9	24.7	28.9	31.5	283.3
Would not move interstate	60.4	61.2	63.0	63.3	65.1	58.3	55.0	494.6
Moving interstate would depend—								
On job conditions	4.0	5.4	4.0	5.1	4.1	5.0	4.6	41.3
On other conditions	5.4	4.4	4.9	4.3	4.2	5.2	5.8	52.3
Total	9.4	9.8	8.9	9.5	8.3	10.2	10.4	93.6
Undecided	2.2	2.2	2.1	2.3	2.0	2.7	3.2	28.5
Total	100.0	100.0	100.0	100.0	100.0	100.0	100.0	900.0
WHETHER WOULD MOVE INTRASTATE IF OFFERED A SUITABLE JOB								
Would move intrastate	41.1	40.5	37.2	37.4	38.4	42.6	44.9	404.3
Would not move intrastate	46.2	45.5	49.8	48.5	49.5	43.3	39.9	358.7
Moving intrastate would depend—								
On job conditions	3.3	5.7	3.8	4.6	4.0	4.7	5.0	41.8
On other conditions	7.8	6.6	7.4	7.5	6.5	7.5	8.0	71.6
Total	11.0	12.2	11.2	12.1	10.5	12.2	12.9	116.4
Undecided	1.7	1.8	1.9	2.0	1.7	2.0	2.3	20.6
Total	100.0	100.0	100.0	100.0	100.0	100.0	100.0	900.0

Source: *Job Search Experience of Unemployed Persons, Australia (6222.0)*

Successful and Unsuccessful Job Search Experience

In July 1992 there were an estimated 1,453,000 persons who had started a job for wages or salary (lasting two weeks or more) in the previous twelve months. Of these persons, 1,029,200 had been out of work before starting their job, while 423,800 persons changed employer to start the job.

There were a further 970,800 persons who had looked for, but not started, a job for wages or salary in the last year.

Of the persons who started a job for wages or salary, 39 per cent (563,500) obtained their job by approaching the employer without prior knowledge that the job was available, while 37 per cent (537,300) approached the employer to obtain a job they knew was available. The remaining 24 per cent (352,200) of jobs had been obtained as a result of the employer approaching the jobseeker.

Persons aged 20 years and over were more likely to have started a job in their preferred occupation (67%) than persons aged 15 to 19 years (55%). Persons who changed employer to start their job were far more likely to be working in their preferred occupation (77%) than those who were out of work prior to starting the job (59%). This was the case for all age groups tabulated, except those aged 55 years and over.

TABLE 4.11. PERSONS WHO STARTED A JOB FOR WAGES OR SALARY DURING THE PREVIOUS TWELVE MONTHS
METHOD OF JOB ATTAINMENT AND WHETHER OUT OF WORK PRIOR TO STARTING JOB
AUSTRALIA, JULY 1992

Method of job attainment	Out of work prior to starting job			Changed employer to start job			Total			Total (per cent)
	Males	Females	Persons	Males	Females	Persons	Males	Females	Persons	
Jobseeker approached employer	422.6	392.7	815.4	141.0	144.5	285.4	563.6	537.2	1,100.8	75.8
Had no prior knowledge that job was available	222.4	198.7	421.1	69.7	72.7	142.4	292.1	271.4	563.5	38.8
First step taken —										
Tendered/advertised for work	6.6	*3.1	9.7	*3.4	*1.8	5.2	10.0	4.9	15.0	1.0
Contacted likely employers	130.6	115.9	246.5	39.7	42.5	82.2	170.2	158.5	328.7	22.6
Contacted friends/relatives	47.2	33.1	80.3	12.6	12.4	25.0	59.8	45.5	105.3	7.2
Checked CES noticeboards/registered with CES	18.2	14.1	32.3	*2.2	*2.8	5.0	20.4	16.9	37.2	2.6
Other	19.8	32.5	52.3	11.8	13.2	25.0	31.7	45.7	77.3	5.3
Had prior knowledge that job was available	200.3	194.0	394.3	71.2	71.8	143.0	271.5	265.8	537.3	37.0
Through CES	22.9	16.5	39.5	*1.3	3.8	5.0	24.2	20.3	44.5	3.1
Through private employment agency	*1.5	4.7	6.2	*0.5	*2.3	*2.8	*2.0	7.0	9.0	0.6
Through school programs	*2.2	3.9	6.2	*2.2	*0.4	*2.5	4.4	4.3	8.7	0.6
Through newspaper advertisements	60.1	66.8	126.9	22.6	27.6	50.1	82.7	94.4	177.0	12.2
Through friends, relatives, company contacts	95.3	82.5	177.8	38.4	28.7	67.2	133.7	111.2	244.9	16.9
Through other sources	18.3	19.6	37.9	6.4	9.0	15.3	24.6	28.6	53.2	3.7
Employer approached jobseeker	96.2	117.6	213.8	71.4	67.0	138.4	167.5	184.7	352.2	24.2
Total	518.8	510.4	1,029.2	212.3	211.5	423.8	731.1	721.9	1,453.0	100.0

Source: Successful and Unsuccessful Job Search Experience, Australia (6245.0).

TABLE 4.12. PERSONS WHO STARTED A JOB FOR WAGES OR SALARY DURING THE PREVIOUS TWELVE MONTHS:
AGE, WHETHER OUT OF WORK PRIOR TO STARTING JOB AND WHETHER JOB STARTED WAS IN
PREFERRED OCCUPATION, AUSTRALIA, JULY 1992
(*000)

Age group	Out of work prior to starting job			Changed employer to start job			Total		
	Job was in preferred occupation	Job was not in preferred occupation	Total(a)	Job was in preferred occupation	Job was not in preferred occupation	Total(a)	Job was in preferred occupation	Job was not in preferred occupation	Total(a)
15-19	132.5	52.3	254.8	34.6	7.2	51.6	167.1	59.5	306.4
20-24	134.5	54.0	228.2	70.4	16.3	94.2	205.0	70.3	322.4
25-34	164.8	57.0	269.3	114.3	18.6	143.4	279.2	75.7	412.7
35-44	109.8	37.9	172.0	70.2	8.6	87.7	180.0	46.5	259.7
45-54	51.1	15.9	77.2	30.3	*3.2	37.5	81.4	19.1	114.7
55 and over	18.5	*3.6	27.6	6.4	*1.5	9.5	24.9	5.1	37.0
Total	611.3	220.7	1,029.2	326.3	55.4	423.8	937.6	276.2	1,453.0

(a) Includes persons who did not have a preferred occupation.

Source: Successful and Unsuccessful Job Search Experience, Australia (6245.0).

TABLE 4.13. PERSONS WHO STARTED A JOB FOR WAGES OR SALARY DURING THE PREVIOUS TWELVE MONTHS, AND PERSONS WHO HAD LOOKED FOR, BUT NOT STARTED, A JOB FOR WAGES OR SALARY DURING THE PREVIOUS TWELVE MONTHS: SUMMARY OF CHARACTERISTICS, AUSTRALIA, JULY 1990 AND JULY 1992 ('000)

	<i>Persons who started a job for wages or salary during the previous twelve months</i>						<i>Persons who had looked for, but not started, a job for wages or salary during the previous twelve months</i>	
	<i>Out of work prior to starting job</i>		<i>Changed employer to start job</i>		<i>Total</i>		<i>July 1990</i>	<i>July 1992</i>
	<i>July 1990</i>	<i>July 1992</i>	<i>July 1990</i>	<i>July 1992</i>	<i>July 1990</i>	<i>July 1992</i>		
<i>Age group —</i>								
15-19	287.7	254.8	160.2	51.6	447.9	306.4	102.2	168.4
20-24	217.3	228.2	166.0	94.2	383.3	322.4	85.0	170.6
25-34	286.4	269.3	248.9	143.4	535.3	412.7	130.0	242.7
35-44	174.5	172.0	157.8	87.7	332.2	259.7	98.0	184.1
45-54	77.1	77.2	60.5	37.5	137.6	114.7	59.6	125.3
55 and over	26.1	27.6	17.9	9.5	44.0	37.0	40.7	79.8
<i>Family status —</i>								
Member of a family	840.9	793.8	623.3	319.5	1,464.1	1,113.3	422.1	779.9
Husband or wife	414.6	399.5	364.4	204.0	779.0	603.5	230.2	429.0
With dependents present	280.5	256.2	225.1	126.7	505.6	382.9	160.2	278.3
Without dependents present	134.1	143.3	139.3	77.3	273.4	220.6	70.0	150.7
Sole parent	40.2	34.1	19.0	12.3	59.2	46.4	33.8	57.9
Other family head	10.8	10.4	10.2	*3.5	20.9	14.0	8.7	14.8
Full-time student aged 15-24	125.5	124.6	60.8	23.4	186.3	148.1	45.4	74.2
Other child of married couple or family head	229.3	204.7	158.8	70.9	388.1	275.6	93.4	186.4
Other relative of married couple or family head	20.5	20.4	10.2	5.4	30.7	25.8	10.5	17.7
Not a member of a family	165.6	169.8	145.9	79.0	311.5	248.8	64.4	140.8
Living alone	52.1	51.8	34.7	28.5	86.7	80.4	29.8	65.4
Not living alone	113.5	117.9	111.3	50.5	224.8	168.4	34.6	75.4
Family status not determined	62.6	65.7	42.1	25.3	104.6	91.0	29.1	50.0
<i>Birthplace and period of arrival —</i>								
Born in Australia	812.8	801.9	627.1	330.3	1,439.9	1,132.2	352.7	671.3
Born outside Australia	256.2	227.3	184.2	93.6	440.4	320.9	162.9	299.5
Arrived before 1961	23.0	20.2	20.0	8.0	43.0	28.3	21.8	36.4
Arrived 1961-1970	53.6	47.1	43.7	26.2	97.2	73.3	36.0	67.7
Arrived 1971-1980	61.3	55.1	45.1	22.9	106.4	78.0	37.8	68.7
Arrived 1981-1990	118.3	75.3	75.5	28.9	193.8	104.2	67.2	101.7
Arrived 1991 to survey date	..	29.5	..	7.5	..	37.1	..	25.0
Born in main English-speaking countries	124.4	113.4	104.2	56.8	228.6	170.2	53.8	99.1
Born in other countries	131.8	113.9	80.0	36.8	211.8	150.6	109.0	200.3
<i>State or Territory of usual residence —</i>								
New South Wales	321.4	324.1	264.6	128.6	586.0	452.7	165.4	313.6
Victoria	256.7	233.3	214.0	90.9	470.7	324.1	117.9	269.5
Queensland	220.3	218.9	141.1	87.3	361.4	306.2	100.1	168.8
South Australia	85.9	81.1	66.1	35.1	152.0	116.2	47.4	87.5
Western Australia	122.1	115.4	81.9	54.5	203.9	169.9	54.9	83.9
Tasmania	26.8	23.4	15.8	9.7	42.6	33.1	17.7	27.2
Northern Territory	13.1	12.5	8.1	7.8	21.3	20.3	3.9	7.0
Australian Capital Territory	22.8	20.6	19.6	9.8	42.4	30.5	8.2	13.3
<i>Labour force status —</i>								
In the labour force	937.9	918.5	766.9	406.3	1,704.8	1,324.9	391.7	762.2
Employed	793.1	743.4	736.6	390.2	1,529.7	1,133.7	32.2	76.7
Unemployed	144.8	175.1	30.3	16.1	175.1	191.2	359.5	685.4
Not in the labour force	131.2	110.7	44.4	17.5	175.6	128.2	123.8	208.6
<i>Sex —</i>								
Males	510.4	518.8	444.2	212.3	954.6	731.1	260.9	562.1
Females	558.6	510.4	367.1	211.5	925.8	721.9	254.6	408.7
<i>Persons</i>	<i>1,069.0</i>	<i>1,029.2</i>	<i>811.3</i>	<i>423.8</i>	<i>1,880.3</i>	<i>1,453.0</i>	<i>515.6</i>	<i>970.8</i>

For footnotes see end of table

TABLE 4.13. PERSONS WHO STARTED A JOB FOR WAGES OR SALARY DURING THE PREVIOUS TWELVE MONTHS, AND PERSONS WHO HAD LOOKED FOR, BUT NOT STARTED, A JOB FOR WAGES OR SALARY DURING THE PREVIOUS TWELVE MONTHS: SUMMARY OF CHARACTERISTICS, AUSTRALIA, JULY 1990 AND JULY 1992 — *continued*
(*000)

	<i>Persons who started a job for wages or salary during the previous twelve months</i>						<i>Persons who had looked for, but not started, a job for wages or salary during the previous twelve months</i>	
	<i>Out of work prior to starting job</i>		<i>Changed employer to start job</i>		<i>Total</i>		<i>July 1990</i>	<i>July 1992</i>
	<i>July 1990</i>	<i>July 1992</i>	<i>July 1990</i>	<i>July 1992</i>	<i>July 1990</i>	<i>July 1992</i>		
<i>Educational attainment —</i>								
With post-school qualifications	386.7	434.8	392.8	238.2	779.5	673.0	155.7	366.3
Degree	75.6	91.7	99.0	65.8	174.6	157.5	23.5	54.6
Trade qualification/apprenticeship	102.0	122.0	107.3	58.7	209.3	180.7	48.3	125.9
Certificate or diploma	201.0	214.5	179.7	109.8	380.8	324.4	76.9	177.0
Other	8.1	6.7	6.7	3.8	14.8	10.5	7.0	8.8
Without post-school qualifications(a)	594.0	507.4	380.0	176.9	974.0	684.3	325.9	552.3
Attended highest level of secondary school available	186.1	192.5	142.0	73.5	328.0	266.0	71.7	136.6
Did not attend highest level of secondary school available	405.3	312.5	235.3	102.9	640.6	415.4	250.9	412.3
Left at age —								
18 and over	10.2	4.9	7.2	*2.6	17.5	7.5	5.5	13.0
16 or 17	190.4	152.8	116.4	51.8	306.8	204.6	88.9	162.4
14 or 15	189.2	145.0	105.0	45.4	294.2	190.3	139.5	204.2
13 and under	15.5	9.8	6.6	3.2	22.1	13.0	17.0	32.7
Still at school	88.3	86.9	38.5	8.8	126.8	95.7	34.0	52.2
<i>Active steps taken in the previous twelve months to find work in preferred occupation/ occupation being sought —</i>								
Had a preferred occupation	884.0	832.1	738.0	381.8	1,622.0	1,213.8	314.1	563.5
This job was in preferred occupation	671.4	611.3	653.5	326.3	1,324.9	937.6
This job was not in preferred occupation	212.6	220.7	84.5	55.4	297.1	276.2
Registered with the CES and —								
Took no other active steps	7.6	*3.6	*2.6	*0.7	10.2	4.3	12.1	16.8
Contacted prospective employers	74.7	95.3	12.6	10.2	87.3	105.5	147.3	328.8
Took other active steps	14.8	16.1	*2.5	*1.0	17.3	17.2	27.6	38.2
Total	97.1	115.0	17.6	12.0	114.7	127.0	187.0	383.8
Not registered with the CES and —								
Took only inactive steps	13.1	9.5	10.0	4.9	23.1	14.4	9.9	17.5
Contacted prospective employers	51.8	51.3	25.1	18.1	76.8	69.4	92.2	119.3
Took other active steps	17.3	17.6	10.8	7.3	28.1	24.9	23.6	40.5
Total	82.2	78.4	45.8	30.2	128.0	108.7	125.6	177.3
Had not looked for work in preferred occupation	33.4	27.3	21.0	13.2	54.4	40.5	*1.5	*2.4
Preferred occupation not specified	..	26.3	..	6.6	..	32.9
Did not have a preferred occupation(b)	185.0	170.9	73.3	35.5	258.3	206.3	201.4	407.4
<i>Full-time or part-time status of job when started/whether looked for full-time or part-time work in the previous twelve months —</i>								
Full-time	617.1	547.1	569.8	271.7	1,186.9	818.8	358.2	411.9
Part-time	451.9	482.1	241.5	152.1	693.4	634.2	138.4	191.7
Varied/both	18.9	367.2
Total	1,069.0	1,029.2	811.3	423.9	1,880.3	1,453.0	515.6	970.8

(a) Includes persons who never attended school and those for whom secondary school qualifications could not be determined. (b) Includes persons for whom a preferred occupation was not specified in July 1990.

Source: *Successful and Unsuccessful Job Search Experience, Australia (6245.0)*.

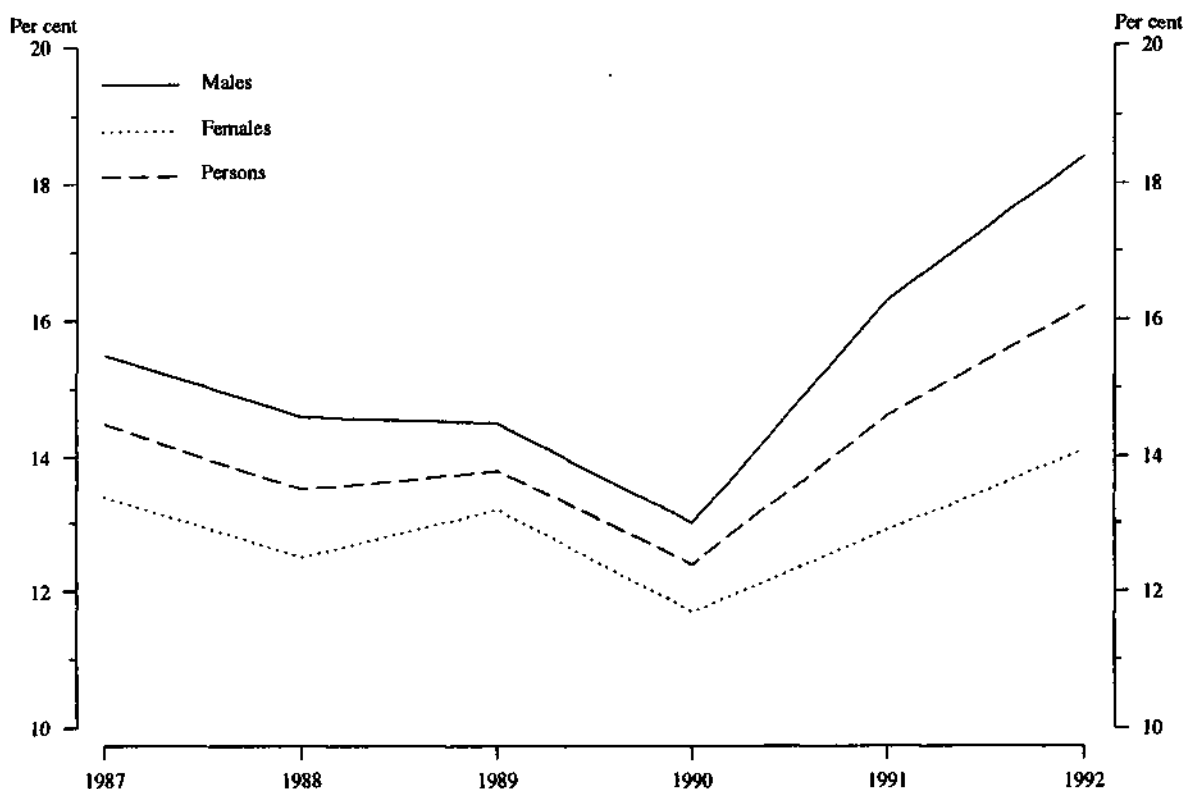
Labour Force Experience

An estimated 1,971,800 persons looked for work at some time during the year ending March 1992. The proportion of males who looked for work at some time during that year increased from 13 per cent in 1990 to 18 per cent in 1992 and for females there was an increase from 12 per cent in 1990 to 14 per cent in 1992.

Of the 1,971,800 persons who looked for work during the year ending March 1992, 81 per cent had only one spell of looking for work with an average duration of 25 weeks.

An estimated 395,500 persons had looked for work for 52 weeks, and 802,600 persons had looked for work for less than 13 weeks.

CHART 4.8. ALL PERSONS: PROPORTION WHO HAD LOOKED FOR WORK AT SOME TIME IN THE PREVIOUS TWELVE MONTHS, AUSTRALIA



Source: Labour Force Experience, Australia (6206.0).

TABLE 4.14. PERSONS IN THE LABOUR FORCE AT SOME TIME DURING THE YEAR ENDING MARCH 1992 PROPORTION WHO LOOKED FOR WORK AT SOME TIME, AGE AND MARITAL STATUS, AUSTRALIA (per cent)

Age group	Married			Not-married			Total		
	Males	Females	Persons	Males	Females	Persons	Males	Females	Persons
15-19	*58.1	61.5	60.6	42.7	42.7	42.7	42.9	43.3	43.1
20-24	34.5	28.0	30.6	32.6	30.8	31.8	32.9	30.0	31.6
25-34	18.8	18.8	18.8	27.7	24.6	26.4	22.2	20.7	21.6
35-44	14.0	13.6	13.8	22.8	23.5	23.2	15.5	15.6	15.6
45-54	11.6	9.6	10.8	20.9	20.5	20.7	13.0	11.9	12.6
55-59	13.3	7.0	11.4	22.2	11.3	17.0	14.6	8.1	12.3
60-64	18.0	*2.3	14.9	22.8	*10.8	18.0	18.7	*5.0	15.5
65-69	6.9	*1.9	6.0	*8.5	*5.3	*6.8	7.2	*3.6	6.2
Total	15.5	15.0	15.3	31.2	29.8	30.6	21.4	21.0	21.2

Source: Labour Force Experience, Australia (6206.0)

Educational Attainment

As a percentage of the total unemployed, persons with post-school qualifications rose from 26 per cent to 35 per cent between February 1987 and February 1992. In contrast, the proportion of total unemployed persons who were without post-school qualifications fell from 68 per cent to 61 per cent. Persons without post-school qualifications who had not attended the highest level of secondary schooling available fell from 52 per cent of total unemployed persons in February 1987 to 42 per cent in February 1992.

The unemployment rate for persons with post-school qualifications decreased from 5.2 per cent in February 1987 to 4.4 per cent in February 1990, then increased to 8.3 per cent in February 1992. For persons with a degree, the unemployment rate rose from 3.6 per cent in February 1987 to 5.9 per cent in February 1992. Between February 1991 and February 1992 the unemployment rate for persons without post-school qualifications increased from 11.5 to 14.2 per cent.

TABLE 4.15. UNEMPLOYED PERSONS AGED 15 TO 69 : EDUCATIONAL ATTAINMENT AND UNEMPLOYMENT RATES, AUSTRALIA, FEBRUARY 1987 TO FEBRUARY 1992

February	With post-school qualifications				Without post-school qualifications		Total(b)	Total(c)
	Degree	Trade qualification	Certificate or diploma	Total(a)	Attended highest level of secondary school	Did not attend highest level of secondary school		
UNEMPLOYED ('000)								
1987	25.4	64.2	85.3	178.1	109.1	r 358.8	468.0	687.3
1988	27.2	61.8	89.5	181.8	97.2	r 313.6	410.9	633.0
1989	32.3	46.6	83.6	165.9	r 97.0	r 287.8	384.8	588.0
1990	37.5	46.3	80.5	168.3	r 97.0	r 280.4	377.4	581.8
1991	44.2	88.2	131.2	269.3	r 133.1	r 353.3	486.4	800.7
1992	59.4	118.6	161.9	344.6	r 181.5	r 415.1	596.6	986.1
UNEMPLOYMENT RATE (per cent)								
1987	3.6	5.0	6.2	5.2	11.0	11.6	11.5	9.0
1988	3.6	4.8	6.1	5.1	9.5	10.2	10.0	8.1
1989	4.0	3.6	5.3	4.5	9.0	9.2	9.2	7.3
1990	4.3	3.6	5.0	4.4	8.3	9.0	8.8	7.0
1991	4.8	6.6	7.6	6.7	10.8	11.7	11.5	9.5
1992	5.9	8.7	9.1	8.3	14.1	r 14.3	14.2	11.5
AVERAGE DURATION OF UNEMPLOYMENT (weeks)								
1987	37.0	54.6	29.2	39.3	30.9	r 58.2	51.8	46.4
1988	24.9	47.5	33.9	37.8	27.7	r 57.5	50.5	44.4
1989	23.4	63.6	31.7	39.4	r 22.6	r 59.4	50.1	44.8
1990	27.6	37.4	33.5	33.1	r 23.4	r 48.2	41.9	37.4
1991	17.9	36.0	30.0	30.2	20.5	r 49.6	41.7	36.3
1992	26.4	43.0	38.1	37.8	29.1	r 58.8	49.8	44.3
MEDIAN DURATION OF UNEMPLOYMENT (weeks)								
1987	11	15	10	12	11	r 25	18	14
1988	7	15	8	9	9	24	17	13
1989	8	19	8	9	8	18	13	11
1990	8	8	7	8	6	13	10	9
1991	8	13	11	11	9	18	13	13
1992	12	26	15	17	12	33	26	21

(a) Includes persons with other post-school qualifications. (b) Includes persons who never attended school. (c) Includes persons aged 15 to 20 still at school.

Source: Labour Force Status and Educational Attainment, Australia (6235.0).

**TABLE 4.16. UNEMPLOYED PERSONS AGED 15 TO 69: EDUCATIONAL ATTAINMENT AND AGE, AUSTRALIA
FEBRUARY 1992
(^{'000})**

Educational attainment	Age						Total
	15 - 19	20 - 24	25 - 34	35 - 44	45 - 54	55 - 69	
MALES							
With post-school qualifications	8.7	36.3	61.9	47.2	23.9	21.8	199.8
Degree	* 0.2	6.4	12.1	9.2	* 2.0	* 2.1	32.2
Trade qualification	* 2.2	18.3	33.3	24.7	17.0	13.1	108.7
Certificate or diploma	6.2	11.3	15.1	12.7	4.7	6.3	56.5
Other	* 0.0	* 0.3	* 1.3	* 0.5	* 0.1	* 0.3	* 2.5
Without post-school qualifications	76.9	79.3	88.8	52.2	36.3	30.6	364.1
Attended highest level of secondary school available	37.5	27.7	15.9	12.3	5.7	3.6	102.9
Did not attend highest level of secondary school available	r 39.4	51.6	r 72.9	r 39.9	r 30.6	r 26.9	r 261.2
Left at age —							
18 and over	* 0.4	* 2.3	* 2.1	* 1.8	* 0.8	* 0.4	7.7
16 or 17	21.3	28.0	27.9	8.2	r 3.6	* 3.2	r 92.2
14 or 15	r 17.4	19.9	r 39.1	r 24.8	r 19.9	r 16.9	r 138.0
13 and under	* 0.2	* 1.4	* 3.4	4.8	6.3	r 5.4	r 21.5
Never attended school	* 0.0	* 0.0	* 0.4	* 0.3	* 0.0	* 1.1	* 1.7
Still at school	23.7	* 0.0	23.7
Total	109.2	115.7	150.6	99.4	60.2	52.4	587.6
FEMALES							
With post-school qualifications	12.9	33.8	48.0	31.1	17.0	* 2.1	144.8
Degree	* 0.2	8.9	9.0	7.4	* 1.8	* 0.0	27.3
Trade qualification	* 1.1	* 2.2	* 2.8	* 1.6	* 2.0	* 0.3	9.9
Certificate or diploma	11.5	22.1	35.4	21.4	13.2	* 1.8	105.5
Other	* 0.0	* 0.6	* 0.8	* 0.8	* 0.0	* 0.0	* 2.1
Without post-school qualifications	64.3	49.8	48.5	40.3	24.8	4.8	232.5
Attended highest level of secondary school available	35.9	r 20.4	10.6	7.2	3.9	r * 0.8	r 78.7
Did not attend highest level of secondary school available	r 28.3	29.4	r 38.0	r 33.2	r 20.9	r 4.1	r 153.8
Left at age —							
18 and over	* 0.3	* 0.4	* 1.2	* 0.2	* 0.0	* 0.0	* 2.2
16 or 17	13.9	16.2	19.0	r 9.4	r 4.1	* 0.4	r 63.0
14 or 15	r 13.8	11.1	r 15.7	r 19.9	r 13.2	r * 3.0	r 76.7
13 and under	* 0.3	* 1.7	* 1.6	* 3.4	3.7	* 0.6	11.3
Never attended school	* 0.0	* 0.0	* 0.4	* 0.3	* 0.0	* 0.0	* 0.7
Still at school	21.3	* 0.0	21.3
Total	98.4	83.5	96.5	71.4	41.8	6.9	398.5
PERSONS							
With post-school qualifications	21.5	70.1	109.8	78.3	40.9	23.9	344.6
Degree	* 0.5	15.3	21.1	16.6	3.8	* 2.1	59.4
Trade qualification	* 3.3	20.5	36.1	26.3	19.1	13.4	118.6
Certificate or diploma	17.8	33.5	50.5	34.1	18.0	8.1	161.9
Other	* 0.0	* 0.9	* 2.1	* 1.3	* 0.1	* 0.3	4.6
Without post-school qualifications	141.1	129.1	137.3	92.6	61.1	35.4	596.6
Attended highest level of secondary school available	73.5	r 48.1	26.5	19.5	9.6	4.4	r 181.5
Did not attend highest level of secondary school available	r 67.7	81.0	r 110.8	r 73.1	r 51.5	r 31.0	r 415.1
Left at age —							
18 and over	* 0.7	* 2.7	* 3.3	* 2.0	* 0.8	* 0.4	9.9
16 or 17	35.2	44.2	47.0	r 17.6	r 7.7	3.6	r 155.2
14 or 15	r 31.2	31.0	r 54.7	r 44.7	r 33.0	r 20.0	r 214.7
13 and under	* 0.5	* 3.1	5.0	8.2	10.0	r 6.0	r 32.8
Never attended school	* 0.0	* 0.0	* 0.8	* 0.5	* 0.0	* 1.1	* 2.4
Still at school	44.9	* 0.0	44.9
Total	207.6	199.2	247.1	170.8	102.1	59.3	986.1

Source : Labour Force Status and Educational Attainment, Australia (6235.0).

Families

In June 1992, of the 611,400 families with one or more members unemployed, 42 per cent had no member employed, 35 per cent had one employed and 23 per cent had two or more employed. Dependents were present in 59 per cent of the 611,400 families with one or more members unemployed.

Unemployment rates varied from 18 per cent for full-time students aged 15-24 to 17 per cent for sole parents to 7 per cent for husband or wife in married couple families. For persons who were not a member of a family the unemployment rate was 12 per cent. The average duration of unemployment for husbands or wives who were members of a family was 59 weeks. For sole parents it was 39 weeks and for those who were not members of a family, 47 weeks (living alone 57 weeks, not living alone 41 weeks).

TABLE 4.17. FAMILIES WITH ONE OR MORE MEMBERS UNEMPLOYED: TYPE OF FAMILY, LABOUR FORCE STATUS(a) OF FAMILY MEMBERS AND WHETHER DEPENDENTS PRESENT, AUSTRALIA, JUNE 1992
(*000 families)

	None employed			One employed			Two or more employed			Total		
	Two or more		Total	Two or more		Total	Two or more		Total	Two or more		Total
	One unemp-loyed	more unemp-loyed		One unemp-loyed	more unemp-loyed		One unemp-loyed	more unemp-loyed		One unemp-loyed	more unemp-loyed	
Married-couple families	139.1	45.0	184.1	159.7	17.5	177.2	115.1	11.6	126.7	413.9	74.1	488.0
With dependents present	91.3	24.6	115.9	98.4	9.6	108.0	67.2	6.1	73.3	256.8	40.4	297.2
Without dependents present	47.8	20.4	68.1	61.3	7.9	69.2	48.0	5.5	53.4	157.1	33.7	190.8
One-parent families	36.9	3.8	40.7	14.3	* 1.7	16.0	5.8	* 0.1	5.9	57.0	5.6	62.5
Other families	24.2	6.0	30.1	22.2	* 1.3	23.5	7.1	* 0.0	7.1	53.5	7.3	60.8
All families	200.1	54.8	254.9	196.2	20.5	216.7	128.0	11.7	139.7	524.4	87.0	611.4
With dependents present	129.5	28.5	158.0	113.0	11.3	124.3	73.3	6.3	79.5	315.8	46.0	361.8
Without dependents present	70.6	26.3	96.9	83.2	9.2	92.4	54.7	5.5	60.2	208.5	41.0	249.6

(a) Labour force status refers to persons aged 15 and over only.

Source: *Labour Force Status and Other Characteristics of Families, Australia (6224.0)*.

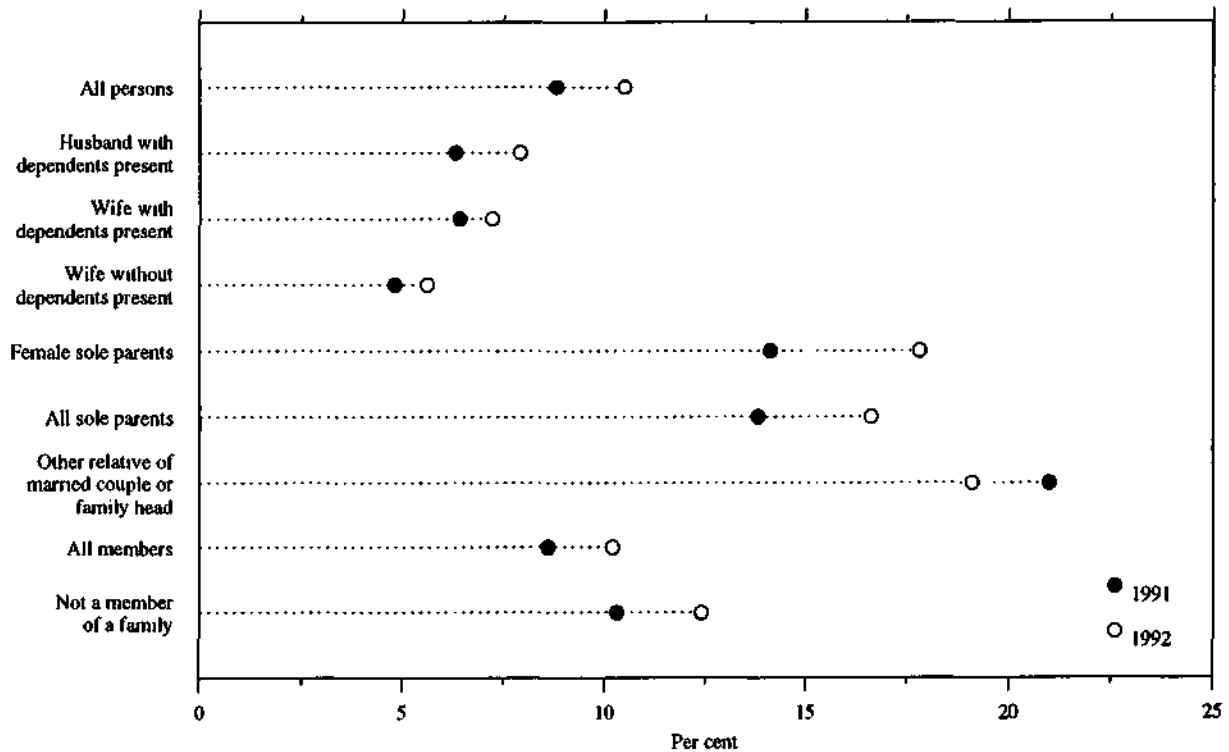
TABLE 4.18. UNEMPLOYMENT RATES: FAMILY STATUS, AUSTRALIA, JUNE 1990 TO 1992
(per cent)

	Males			Females			Persons		
	June 1990	June 1991	June 1992	June 1990	June 1991	June 1992	June 1990	June 1991	June 1992
Member of a family	5.6	8.8	10.6	6.7	8.2	9.6	6.1	8.6	10.2
Husband or wife	3.6	6.2	7.6	4.7	5.7	6.6	4.1	6.0	7.2
With dependents present	3.8	6.3	7.9	5.5	6.4	7.2	4.5	6.3	7.6
Without dependents present	3.3	5.9	7.1	3.6	4.8	5.6	3.4	5.5	6.5
Sole parent	*4.2	12.7	10.3	13.5	14.1	17.8	11.8	13.8	16.6
Other family head	8.2	13.0	11.2	9.2	7.9	11.6	8.8	9.9	11.5
Full-time student aged 15-21(b)	14.3	17.8	19.3	10.4	15.9	17.0	12.1	16.8	18.0
Other child (c) of married couple or family head	11.5	16.7	20.7	10.4	13.6	16.5	11.1	15.5	19.1
Other relative of married couple or family head	13.6	21.5	20.2	17.9	20.2	17.0	15.3	21.0	19.1
Not a member of a family	7.4	10.8	13.4	7.7	9.5	11.0	7.5	10.3	12.4
Living alone	7.2	10.4	12.1	6.7	8.0	8.4	7.0	9.4	10.7
Not living alone	7.5	11.2	14.5	8.5	10.6	13.0	7.9	10.9	13.9
Total	5.9	9.1	11.0	6.8	8.4	9.8	6.3	8.8	10.5

(a) Civilians who were residents of households where family status was determined. See the Technical Notes for further information. (b) Excludes persons aged 20-24 attending school. Also excludes full-time students aged 15-24 who are classified as husbands, wives, sole parents or other family heads. (c) Aged 15 and over.

Source: *Labour Force Status and Other Characteristics of Families, Australia, (6224.0)*.

CHART 4.9. UNEMPLOYMENT RATES: FAMILY STATUS,
AUSTRALIA, JUNE 1991 AND JUNE 1992



Source: Labour Force Status and Other Characteristics of Families, Australia (6224.0).

TABLE 4.19. FAMILY STATUS OF UNEMPLOYED PERSONS^(a): DURATION OF UNEMPLOYMENT
AUSTRALIA, JUNE 1992

	Duration of unemployment (weeks)							Total	Average duration	Median duration
	Under 2	2 and under 4	4 and under 8	8 and under 13	13 and under 26	26 and under 52	52 and over			
	— '000 —									— weeks —
Member of a family	33.9	50.4	55.4	55.3	131.1	150.5	243.3	719.8	51.6	26
Husband or wife	14.9	26.6	27.2	26.0	60.0	75.0	140.3	370.1	58.6	30
With dependents present	11.2	16.9	17.4	17.4	41.4	48.2	85.8	238.5	53.3	28
Without dependents present	3.7	9.7	9.8	8.6	18.5	26.8	54.5	131.6	68.2	35
Sole parent	* 2.0	4.2	4.2	* 2.2	7.4	8.5	9.0	37.5	38.8	22
Other family head	* 0.9	* 1.2	* 0.7	* 1.1	* 1.9	* 2.8	5.6	14.2	60.3	30
Full-time student aged 15-24 ^(b)	7.8	6.9	6.4	4.4	14.9	11.1	9.3	60.9	25.5	17
Other child ^(c) of married couple or family head	7.1	10.8	16.0	19.0	43.3	49.5	71.1	216.7	48.9	27
Other relative of married couple or family head	* 1.2	* 0.7	* 0.9	* 2.5	3.7	3.5	8.0	20.4	48.0	32
Not a member of a family	5.5	9.8	14.6	13.3	28.6	26.0	49.3	147.1	47.4	26
Living alone	* 2.7	4.0	6.2	6.2	7.4	6.5	25.2	58.2	56.8	31
Not living alone	* 2.8	5.8	8.4	7.0	21.2	19.5	24.2	88.9	41.2	25
Total	39.4	60.1	70.0	68.5	159.8	176.5	292.7	866.9	50.9	26

(a) Civilians who were residents of households where family status was determined. (b) Excludes persons aged 20-24 attending school. Also excludes full-time students aged 15-24 who are classified as husbands, wives, sole parents or other family heads. (c) Aged 15 and over.

Source: Labour Force Status and Other Characteristics of Families, Australia (6224.0).

Job Vacancies

A job vacancy is a job available for immediate filling on the survey reference date and for which recruitment action has been taken. For a full definition of a job vacancy refer to the Glossary. Vacancies available only to persons already employed by the organisation are excluded.

The number of job vacancies in Australia at November 1992 was estimated at 29,200 — an increase of 4,300 since November 1991.

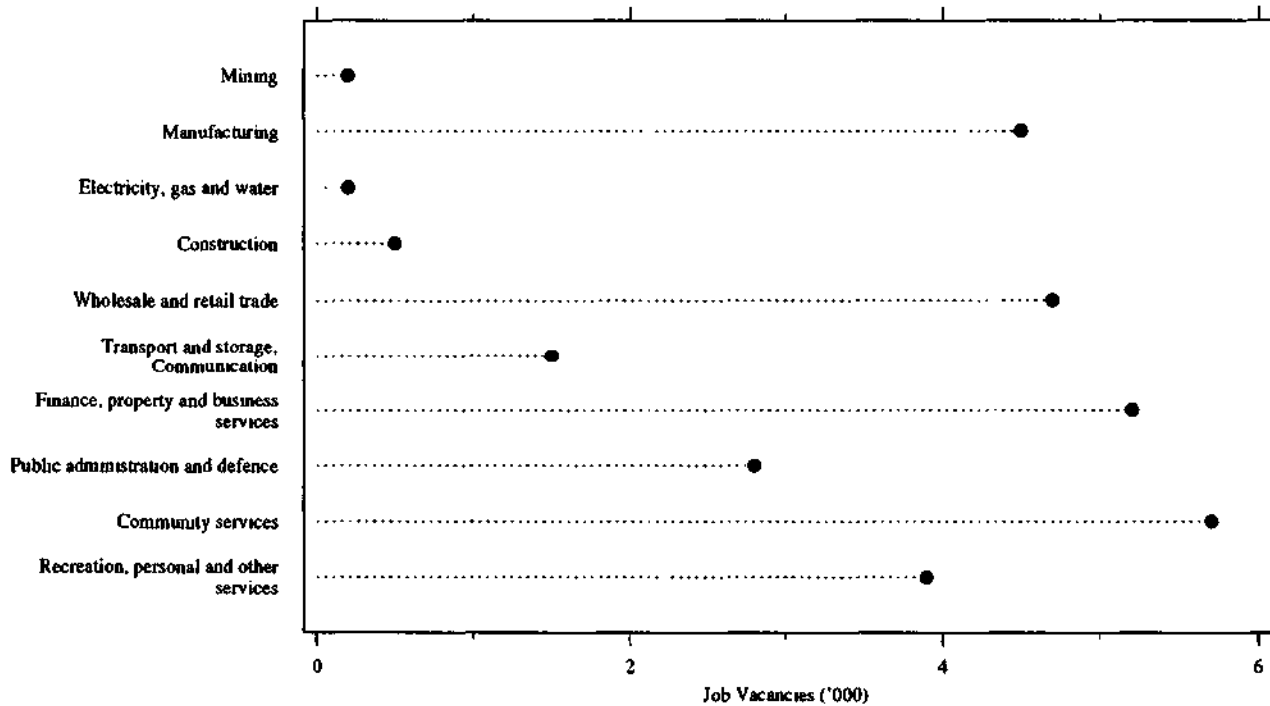
The greatest increases in numbers of vacancies since November 1991 were recorded in the Finance, property and business services (2,900) and Recreation, personal and other services (2,000) industries.

TABLE 4.20. JOB VACANCIES : INDUSTRY, AUSTRALIA, NOVEMBER 1987 TO NOVEMBER 1992 ('000)

Industry	November					
	1987	1988	1989	1990	1991	1992
Mining	1.5	0.7	0.4	0.3	0.3	0.2
Manufacturing—	10.0	15.1	11.7	3.7	*3.3	4.5
Electricity, gas and water	0.5	0.8	0.7	0.4	0.2	0.2
Construction	2.0	3.5	3.3	1.1	1.8	0.5
Wholesale and retail trade	12.3	15.5	14.1	6.0	5.3	4.7
Transport and storage; Communication	1.6	2.0	2.3	*1.0	*1.0	1.5
Finance, property and business services	4.4	7.5	6.4	4.1	2.3	5.2
Public administration and defence	3.8	4.3	4.9	3.7	2.5	2.8
Community services	12.6	13.2	12.8	10.3	6.4	5.7
Recreation, personal and other services	3.5	4.0	6.1	3.4	1.9	3.9
Total all industries	52.2	66.6	62.7	34.1	24.9	29.2

Source: *Job Vacancies and Overtime, Australia (6354.0)*.

CHART 4.10. JOB VACANCIES: INDUSTRY, AUSTRALIA, NOVEMBER 1992



Source: *Job Vacancies and Overtime, Australia (6354.0)*