

CATALOGUE NUMBER 6202.2

13 JANUARY 1992

THE LABOUR FORCE, VICTORIA, NOVEMBER 1991

SUMMARY OF FINDINGS

THE LABOUR FORCE, VICTORIA: ORIGINAL SERIES

<i>Labour force status</i>	<i>Unit</i>	<i>November 1990</i>	<i>September 1991</i>	<i>October 1991</i>	<i>November 1991</i>	<i>Annual percentage change</i>
Employed	('000)	2,056.4	2,000.0	1,985.3	1,964.6	-4.5
Unemployed	('000)	168.8	238.2	214.5	222.4	39.6
Labour force	('000)	2,225.2	2,238.1	2,199.8	2,187.0	-1.7
Unemployment rate	(per cent)	7.6	10.6	9.8	10.2	34.2
Participation rate	(per cent)	64.5	64.2	63.1	62.7	-2.8

Employment

Employment in Victoria declined from 2,056,400 in November 1990 to 1,964,600 in November 1991, a fall of 91,800 or 4.5 per cent (original data). Full time workers were affected most, with a fall in employment of 93,800 (5.8 per cent), comprising 74,500 males (down 6.9 per cent) and 19,300 females (down 3.7 per cent). There was no significant change in the number of part time workers.

In seasonally adjusted terms the number of employed persons fell by 23,100 (1.2 per cent) in the period October 1991 to November 1991. Overall employment decreased by 15,800 persons (0.8 per cent) in the November quarter.

Unemployment

Unemployment rose from 168,800 in November 1990 to 222,400 in November 1991, an increase of 53,600 or 31.8 per cent (original data). The majority of this rise occurred among males, with an increase of 40,100 or 40.9 per cent. The unemployment rate for males rose from 7.7 per cent to 11.0 per cent, a rise of 3.3 percentage points.

The unemployment rate for all persons rose from 7.6 per cent to 10.2 per cent over the twelve month period.

Seasonally adjusted, the number of unemployed persons increased from 229,200 in October 1991

to 242,200 in November 1991, an increase of 13,000 or 5.7 per cent. Overall, during the quarter, unemployment increased by 17,900 persons, a rise of 8.0 per cent.

During the twelve month period ending November 1991 the Labour Force decreased by 38,200 or 1.7 per cent (original data).

Youth

The number of employed persons aged 15-19 fell from 155,300 in November 1990 to 126,100 in November 1991, a decrease of 29,200 or 18.8 per cent. Full time employed persons comprised 24,200 of this decrease.

The number of unemployed persons in the 15-19 age group did not rise significantly over the twelve month period. However, the labour force decreased by 26,100 persons (13.5 per cent), resulting in a rise in the unemployment rate of 4.9 percentage points (to 24.6 per cent).

Regions

In the Melbourne Statistical Division unemployment increased from 118,300 in November 1990 to 158,200 in November 1991, a rise of 39,900 (33.7 per cent). This rise predominantly affected males, where the increase was 25,700, up 36.0 per cent on the November 1990 figure.

INQUIRIES

- for further information about statistics in this publication and the availability of related unpublished statistics, contact Carol Soloff on Melbourne (03) 615 7000; or any ABS State office.
- for information about other ABS statistics and services please contact Information Services Melbourne (03) 615 7000; or any ABS State office.

Regional Victoria had a corresponding rise in unemployment of 13,700, from 50,500 to 64,200 (or 27.1 per cent). Again the increase was predominantly among males, with an annual change of 14,400 (to 41,100 in November 1991), a 53.9 per cent increase.

The North Western Melbourne region had the highest rate of unemployment, at 15.3 per cent. The Outer Western Melbourne Region had the largest number of unemployed with 30,800, an increase of 9,300 (43.3 per cent) on the November 1990 total of 21,500. The unemployment rate for this region was 13.0 per cent.

In country Victoria, the highest unemployment rate of 11.8 per cent occurred in the Northern Victoria region. This region also had the highest number of unemployed persons at 23,700.

Occupation

For the period November 1990 to November 1991 a significant fall in employment was experienced in four occupation groups; Para-professional (decreased by 20,300 persons or 16.4 per cent), Tradespersons (decreased by 22,000 persons or 6.9 per cent),

Salespersons (decreased by 31,500 persons or 10.0 per cent) and Labourers (decreased by 27,900 persons or 9.4 per cent). In the same period, employment in the Managers and administrators occupational group increased marginally, by 12,000 persons (5.0 per cent).

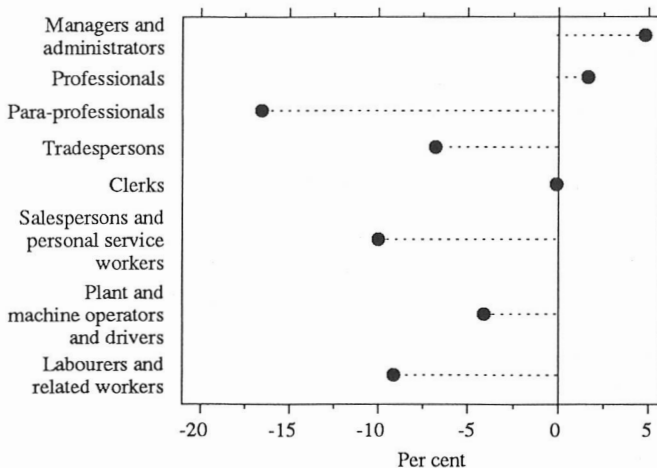
Industry

The largest change in the number of employed persons occurred in the Construction industry with a 20.9 per cent fall, from 142,900 in November 1990 to 113,100 in November 1991.

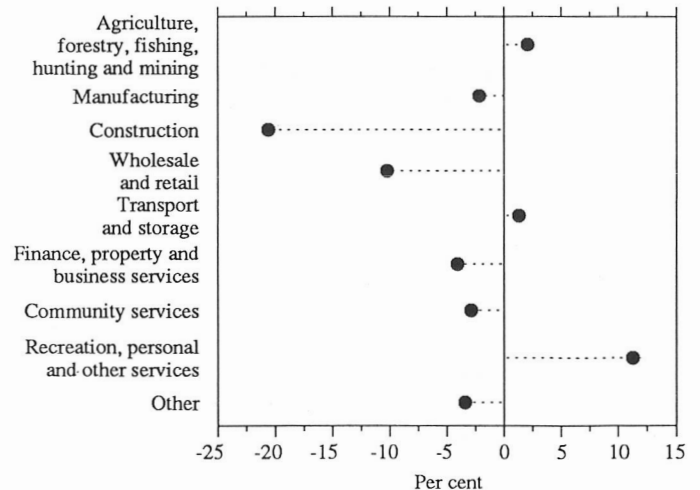
Wholesale and retail trade also showed a significant change with a reduction in employment of 45,100 (to 392,800), a decrease of 10.3 per cent.

Employment increased in the Recreation and personal services sector by 14,400 persons (to 135,000), a rise of 11.9 per cent.

**EMPLOYED PERSONS BY OCCUPATION:
ANNUAL PERCENTAGE CHANGE
NOVEMBER 1990 - NOVEMBER 1991**



**EMPLOYED PERSONS BY INDUSTRY:
ANNUAL PERCENTAGE CHANGE
NOVEMBER 1990 - NOVEMBER 1991**



CONTENTS

Table		Page
	Graphs	2, 8, 9, 10, 11, 13, 15, 17
	Civilian population aged 15 years and over -	
1	Labour force status, time series, original series	4
2	Labour force status, time series, seasonally adjusted series	6
3	Labour force status, time series, trend series	7
4	Labour force status, age, and attendance at an educational institution, November 1991	8
5	Labour force status, birthplace, and period of arrival in Australia, November 1991	9
6	Labour force status and family status, November 1991	10
7	Labour force status by regions, September 1991	12
8	Labour force status by regions, October 1991	14
9	Labour force status by regions, November 1991	16
10	Labour force status and age by regions, November 1991	18
	Employed persons -	
11	Industry by regions, November 1991	22
12	Occupation by regions, November 1991	24
13	Industry and occupation by age, November 1991	26
14	Average weekly hours worked by industry, and occupation, November 1991	27
15	Status of worker and hours worked, November 1991	28
	Unemployed persons -	
16	Industry and occupation of last job, November 1991	28
17	Duration of unemployment, November 1991	29
	Explanatory notes	30
	Standard errors -	
A	Standard errors of estimates	33
B	Standard errors of estimates of month to month movements	34
	MAPS	35, 36

TABLE 1. CIVILIAN POPULATION AGED 15 YEARS AND OVER BY
LABOUR FORCE STATUS, VICTORIA: ORIGINAL SERIES

LABOUR FORCE STATUS, VICTORIA: ORIGINAL SERIES										
Month	Employed		Unemployed			Labour force (^{'000})	Not in labour force (^{'000})	Civilian population 15 years and over (^{'000})	Unemp- loyment rate (per cent)	Partici- pation rate (per cent)
	Full-time (^{'000})	Total (^{'000})	Full-time (^{'000})	Part-time (^{'000})	Total (^{'000})					
MALES										
1990 -										
September	1,100.7	1,198.0	74.2	13.6	87.8	1,285.8	403.7	1,689.5	6.8	76.1
October	1,098.1	1,193.9	75.6	12.1	87.7	1,281.6	410.1	1,691.8	6.8	75.8
November	1,084.3	1,181.4	88.0	10.0	98.0	1,279.4	414.6	1,694.0	7.7	75.5
December	1,099.4	1,193.3	90.4	15.7	106.1	1,299.3	396.9	1,696.3	8.2	76.6
1991 -										
January	1,068.9	1,164.3	103.3	11.6	114.9	1,279.2	418.9	1,698.1	9.0	75.3
February	1,071.2	1,170.5	98.4	17.4	115.8	1,286.3	413.7	1,700.0	9.0	75.7
March	1,050.4	1,145.8	102.9	17.9	120.8	1,266.6	435.3	1,701.9	9.5	74.4
April	1,035.2	1,137.8	112.9	20.8	133.7	1,271.6	432.0	1,703.5	10.5	74.6
May	1,035.8	1,135.8	111.3	16.0	127.3	1,263.0	442.1	1,705.1	10.1	74.1
June	1,023.5	1,126.0	119.0	9.9	129.0	1,254.9	451.8	1,706.7	10.3	73.5
July	1,020.3	1,122.0	115.4	12.4	127.8	1,249.8	458.4	1,708.1	10.2	73.2
August	1,020.9	1,120.8	125.3	11.1	136.5	1,257.2	452.3	1,709.5	10.9	73.5
September	1,024.3	1,131.2	133.1	12.8	145.9	1,277.1	433.9	1,710.9	11.4	74.6
October	1,031.7	1,137.9	122.1	8.8	130.9	1,268.8	443.6	1,712.5	10.3	74.1
November	1,009.8	1,120.0	127.6	10.6	138.1	1,258.1	455.9	1,714.0	11.0	73.4
MARRIED FEMALES										
1990 -										
September	294.9	536.7	14.3	11.1	25.5	562.2	447.5	1,009.7	4.5	55.7
October	293.2	528.1	14.3	10.0	24.3	552.4	459.5	1,011.9	4.4	54.6
November	282.0	524.0	18.2	11.5	29.7	553.7	451.1	1,004.8	5.4	55.1
December	282.8	520.6	17.7	9.9	27.6	548.2	451.8	1,000.0	5.0	54.8
1991 -										
January	284.3	495.9	20.1	9.6	29.7	525.6	476.9	1,002.5	5.7	52.4
February	270.4	510.4	24.3	14.5	38.8	549.1	458.0	1,007.2	7.1	54.5
March	277.2	517.0	22.8	13.4	36.2	553.2	464.3	1,017.5	6.5	54.4
April	269.2	507.6	30.2	13.2	43.4	551.0	455.8	1,006.9	7.9	54.7
May	271.2	511.4	25.7	9.5	35.2	546.6	464.7	1,011.3	6.4	54.0
June	275.4	516.9	20.8	13.9	34.7	551.6	469.9	1,021.4	6.3	54.0
July	274.1	511.2	25.8	8.7	34.5	545.7	489.7	1,035.4	6.3	52.7
August	278.0	514.4	23.4	8.6	32.1	546.5	478.7	1,025.2	5.9	53.3
September	284.0	529.9	25.9	11.6	37.5	567.4	459.3	1,026.8	6.6	55.3
October	288.2	514.5	26.8	8.8	35.5	550.1	477.1	1,027.1	6.5	53.6
November	283.1	510.2	26.3	9.9	36.2	546.4	479.8	1,026.2	6.6	53.2
OTHER FEMALES										
1990 -										
September	244.9	344.8	26.7	12.5	39.2	384.0	356.8	740.8	10.2	51.8
October	244.6	345.2	31.0	12.7	43.7	388.9	351.8	740.7	11.2	52.5
November	244.3	351.0	30.2	10.9	41.1	392.1	357.9	750.0	10.5	52.3
December	252.2	361.4	36.1	12.4	48.5	409.9	347.1	757.0	11.8	54.1
1991 -										
January	243.6	343.4	37.6	16.6	54.2	397.5	358.9	756.4	13.6	52.6
February	236.6	342.3	41.2	14.8	55.9	398.3	355.4	753.6	14.0	52.8
March	227.5	334.0	39.8	18.2	58.0	392.1	353.2	745.2	14.8	52.6
April	230.2	339.9	43.1	17.1	60.2	400.1	357.4	757.5	15.1	52.8
May	223.5	332.6	44.0	15.1	59.1	391.7	363.1	754.7	15.1	51.9
June	215.8	327.3	39.7	10.6	50.3	377.6	368.7	746.3	13.3	50.6
July	220.8	321.4	37.0	12.2	49.2	370.6	363.4	734.0	13.3	50.5
August	223.3	336.9	33.4	10.2	43.7	380.6	365.2	745.8	11.5	51.0
September	224.5	338.9	38.6	16.1	54.7	393.6	352.2	745.8	13.9	52.8
October	224.5	332.9	33.9	14.2	48.1	380.9	366.3	747.3	12.6	51.0
November	223.9	334.4	36.6	11.5	48.1	382.5	367.5	750.0	12.6	51.0

**TABLE 1. CIVILIAN POPULATION AGED 15 YEARS AND OVER BY
LABOUR FORCE STATUS, VICTORIA: ORIGINAL SERIES - continued**

LABOUR FORCE STATUS, VICTORIA: ORIGINAL SERIES - continued										
Month	Employed		Unemployed			Labour force (^{'000})	Not in labour force (^{'000})	Civilian population 15 years and over (^{'000})	Unemp- loyment rate (per cent)	Partici- pation rate (per cent)
	Full-time (^{'000})	Total (^{'000})	Full-time (^{'000})	Part-time (^{'000})	Total (^{'000})					
ALL FEMALES										
1990 -										
September	539.8	881.5	41.0	23.6	64.6	946.2	804.3	1,750.4	6.8	54.1
October	537.8	873.3	45.3	22.7	68.0	941.3	811.3	1,752.6	7.2	53.7
November	526.3	875.0	48.4	22.4	70.8	945.8	809.0	1,754.8	7.5	53.9
December	535.0	882.0	53.8	22.3	76.1	958.1	798.9	1,757.0	7.9	54.5
1991 -										
January	527.9	839.2	57.6	26.2	83.9	923.1	835.8	1,758.9	9.1	52.5
February	506.9	852.7	65.4	29.3	94.7	947.4	813.4	1,760.8	10.0	53.8
March	504.8	851.0	62.7	31.5	94.2	945.2	817.5	1,762.7	10.0	53.6
April	499.4	847.5	73.3	30.3	103.7	951.2	813.2	1,764.4	10.9	53.9
May	494.7	844.0	69.6	24.6	94.2	938.3	827.8	1,766.1	10.0	53.1
June	491.2	844.2	60.4	24.6	85.0	929.2	838.6	1,767.8	9.1	52.6
July	494.8	832.6	62.8	20.9	83.7	916.3	853.1	1,769.4	9.1	51.8
August	501.3	851.3	56.9	18.9	75.7	927.1	843.9	1,771.0	8.2	52.3
September	508.6	868.8	64.5	27.7	92.3	961.1	811.5	1,772.6	9.6	54.2
October	512.7	847.4	60.6	22.9	83.6	931.0	843.4	1,774.4	9.0	52.5
November	507.0	844.6	62.8	21.4	84.3	928.9	847.3	1,776.2	9.1	52.3
PERSONS										
1990 -										
September	1,640.5	2,079.6	115.2	37.3	152.4	2,232.0	1,208.0	3,440.0	6.8	64.9
October	1,635.9	2,067.2	120.9	34.8	155.8	2,223.0	1,221.4	3,444.4	7.0	64.5
November	1,610.6	2,056.4	136.4	32.4	168.8	2,225.2	1,223.6	3,448.8	7.6	64.5
December	1,634.4	2,075.2	144.2	38.0	182.2	2,257.4	1,195.9	3,453.3	8.1	65.4
1991 -										
January	1,596.8	2,003.6	161.0	37.8	198.8	2,202.3	1,254.7	3,457.0	9.0	63.7
February	1,578.1	2,023.2	163.8	46.7	210.5	2,233.7	1,227.1	3,460.8	9.4	64.5
March	1,555.1	1,996.8	165.5	49.5	215.0	2,211.8	1,252.8	3,464.6	9.7	63.8
April	1,534.5	1,985.4	186.3	51.1	237.4	2,222.7	1,245.2	3,467.9	10.7	64.1
May	1,530.5	1,979.8	180.9	40.6	221.5	2,201.3	1,269.9	3,471.2	10.1	63.4
June	1,514.8	1,970.2	179.4	34.5	213.9	2,184.1	1,290.4	3,474.5	9.8	62.9
July	1,515.1	1,954.5	178.2	33.3	211.5	2,166.0	1,311.5	3,477.5	9.8	62.3
August	1,522.2	1,972.1	182.2	30.0	212.2	2,184.3	1,296.2	3,480.5	9.7	62.8
September	1,532.8	2,000.0	197.6	40.5	238.2	2,238.1	1,245.4	3,483.5	10.6	64.2
October	1,544.3	1,985.3	182.8	31.7	214.5	2,199.8	1,287.0	3,486.9	9.8	63.1
November	1,516.8	1,964.6	190.4	32.0	222.4	2,187.0	1,303.2	3,490.2	10.2	62.7

**TABLE 2. CIVILIAN POPULATION AGED 15 YEARS AND OVER BY
LABOUR FORCE STATUS, VICTORIA: SEASONALLY ADJUSTED SERIES**

<i>Month</i>	<i>Employed ('000)</i>	<i>Unemployed ('000)</i>	<i>Labour force ('000)</i>	<i>Unemployment rate (per cent)</i>	<i>Participation rate (per cent)</i>
MALES					
<i>1990 -</i>					
September	1,197.6	88.5	1,286.1	6.9	76.1
October	1,198.1	93.0	1,291.1	7.2	76.3
November	1,188.7	104.4	1,293.1	8.1	76.3
December	1,184.9	98.1	1,283.0	7.6	75.6
<i>1991 -</i>					
January	1,181.4	105.4	1,286.9	8.2	75.8
February	1,170.4	104.1	1,274.5	8.2	75.0
March	1,140.6	118.8	1,259.3	9.4	74.0
April	1,132.2	132.9	1,265.0	10.5	74.3
May	1,131.6	127.1	1,258.7	10.1	73.8
June	1,121.0	141.1	1,262.0	11.2	73.9
July	1,117.7	134.3	1,252.0	10.7	73.3
August	1,125.8	143.3	1,269.1	11.3	74.2
September	1,131.1	147.2	1,278.4	11.5	74.7
October	1,142.0	138.6	1,280.6	10.8	74.8
November	1,126.7	147.0	1,273.7	11.5	74.3
FEMALES					
<i>1990 -</i>					
September	869.7	67.7	937.4	7.2	53.6
October	872.1	73.7	945.8	7.8	54.0
November	869.0	80.0	948.9	8.4	54.1
December	867.3	76.9	944.2	8.1	53.7
<i>1991 -</i>					
January	867.9	82.2	950.1	8.7	54.0
February	864.2	79.6	943.8	8.4	53.6
March	845.0	83.4	928.4	9.0	52.7
April	844.2	97.9	942.1	10.4	53.4
May	841.6	93.4	935.0	10.0	52.9
June	846.1	87.6	933.7	9.4	52.8
July	832.2	89.1	921.3	9.7	52.1
August	855.4	81.0	936.4	8.7	52.9
September	856.8	96.9	953.7	10.2	53.8
October	846.5	90.6	937.2	9.7	52.8
November	838.7	95.2	933.9	10.2	52.6
PERSONS					
<i>1990 -</i>					
September	2,067.3	156.2	2,223.6	7.0	64.6
October	2,070.2	166.7	2,236.9	7.5	64.9
November	2,057.6	184.4	2,242.0	8.2	65.0
December	2,052.2	175.0	2,227.2	7.9	64.5
<i>1991 -</i>					
January	2,049.3	187.7	2,237.0	8.4	64.7
February	2,034.7	183.7	2,218.4	8.3	64.1
March	1,985.6	202.1	2,187.7	9.2	63.1
April	1,976.4	230.8	2,207.2	10.5	63.6
May	1,973.2	220.5	2,193.7	10.1	63.2
June	1,967.0	228.7	2,195.7	10.4	63.2
July	1,949.9	223.4	2,173.3	10.3	62.5
August	1,981.2	224.3	2,205.5	10.2	63.4
September	1,987.9	244.1	2,232.0	10.9	64.1
October	1,988.5	229.2	2,217.8	10.3	63.6
November	1,965.4	242.2	2,207.6	11.0	63.3

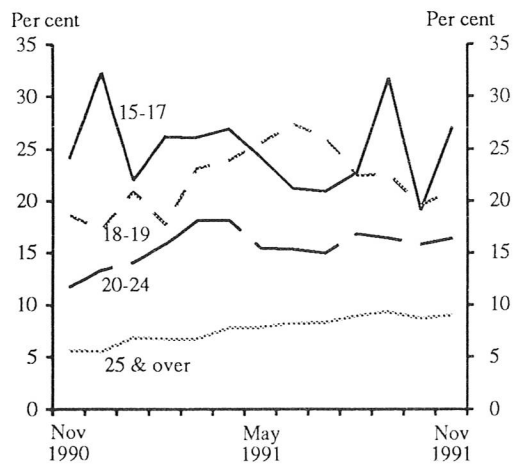
**TABLE 3. CIVILIAN POPULATION AGED 15 YEARS AND OVER BY
LABOUR FORCE STATUS, VICTORIA: TREND SERIES**

<i>Month</i>	<i>Employed ('000)</i>	<i>Unemployed ('000)</i>	<i>Labour force ('000)</i>	<i>Unemployment rate (per cent)</i>	<i>Participation rate (per cent)</i>
MALES					
1990 -					
September	1,201.6	87.1	1,288.7	6.8	76.3
October	1,196.9	92.7	1,289.6	7.2	76.2
November	1,191.4	97.4	1,288.8	7.6	76.1
December	1,184.0	101.6	1,285.6	7.9	75.8
1991 -					
January	1,174.3	106.2	1,280.5	8.3	75.4
February	1,162.4	111.8	1,274.2	8.8	75.0
March	1,149.4	118.1	1,267.5	9.3	74.5
April	1,137.1	124.9	1,262.0	9.9	74.1
May	1,128.1	131.3	1,259.4	10.4	73.9
June	1,123.9	136.1	1,260.0	10.8	73.8
July	1,124.1	139.1	1,263.3	11.0	74.0
August	1,126.4	141.2	1,267.5	11.1	74.1
September	1,128.8	142.9	1,271.7	11.2	74.3
October	1,131.0	144.3	1,275.3	11.3	74.5
November	1,132.9	145.7	1,278.5	11.4	74.6
FEMALES					
1990 -					
September	875.0	71.1	946.1	7.5	54.0
October	872.4	73.9	946.4	7.8	54.0
November	870.1	76.1	946.3	8.0	53.9
December	867.1	78.5	945.6	8.3	53.8
1991 -					
January	863.2	81.2	944.4	8.6	53.7
February	857.9	84.4	942.3	9.0	53.5
March	851.6	87.2	938.8	9.3	53.3
April	846.2	89.1	935.3	9.5	53.0
May	843.3	90.1	933.4	9.6	52.8
June	843.2	90.0	933.2	9.6	52.8
July	844.9	89.6	934.6	9.6	52.8
August	846.8	89.6	936.4	9.6	52.9
September	847.7	90.3	937.9	9.6	52.9
October	847.6	91.3	938.9	9.7	52.9
November	847.1	92.8	939.9	9.9	52.9
PERSONS					
1990 -					
September	2,076.6	158.2	2,234.8	7.1	65.0
October	2,069.3	166.6	2,236.0	7.5	64.9
November	2,061.5	173.5	2,235.0	7.8	64.8
December	2,051.1	180.0	2,231.1	8.1	64.6
1991 -					
January	2,037.6	187.4	2,225.0	8.4	64.4
February	2,020.3	196.2	2,216.5	8.9	64.0
March	2,001.0	205.3	2,206.3	9.3	63.7
April	1,983.3	214.1	2,197.4	9.7	63.4
May	1,971.4	221.3	2,192.7	10.1	63.2
June	1,967.1	226.1	2,193.3	10.3	63.1
July	1,969.1	228.8	2,197.8	10.4	63.2
August	1,973.2	230.7	2,203.9	10.5	63.3
September	1,976.5	233.1	2,209.6	10.6	63.4
October	1,978.6	235.6	2,214.2	10.6	63.5
November	1,980.0	238.5	2,218.5	10.8	63.6

TABLE 4. CIVILIAN POPULATION AGED 15 YEARS AND OVER BY LABOUR FORCE STATUS, AGE, AND ATTENDANCE AT AN EDUCATIONAL INSTITUTION, VICTORIA, NOVEMBER 1991

Particulars	Employed			Unemp- loyed (^{'000})	Labour force (^{'000})	Not in labour force (^{'000})	Unemp- loyment rate (per cent)	Partici- pation rate (per cent)
	Full- time (^{'000})	Part- time (^{'000})	Total (^{'000})					
Age (years) -								
15 - 19	10.5	44.1	54.6	19.6	74.2	121.4	26.4	37.9
18 - 19	44.8	26.6	71.5	21.5	93.0	52.1	23.1	64.1
Attending school	*1.2	48.2	49.4	15.2	64.6	139.6	23.5	31.6
Not attending school -								
Left before 1987	*0.5	*0.0	*0.5	*0.3	*0.8	*0.0	*31.8	*100.0
Left from 1987 to survey date	53.6	22.6	76.2	25.6	101.8	33.2	25.2	75.4
Total aged 15 - 19 years	55.4	70.7	126.1	41.1	167.2	173.5	24.6	49.1
Age (years) -								
20 - 24	207.4	51.7	259.1	46.0	305.1	68.1	15.1	81.8
25 - 34	442.6	91.7	534.2	50.0	584.3	140.0	8.6	80.7
35 - 44	400.7	108.3	509.0	42.6	551.6	117.1	7.7	82.5
45 - 54	283.0	71.7	354.7	23.1	377.9	111.5	6.1	77.2
55 and over	127.7	53.7	181.4	19.6	201.0	693.1	9.7	22.5
Attending tertiary educational institution full-time								
Age (years) -								
15 - 19	*0.0	11.2	11.2	*4.1	15.3	23.0	*26.8	39.9
20 - 24	*1.7	24.8	26.5	4.8	31.4	36.8	15.5	46.0

UNEMPLOYMENT RATES OF MALES BY AGE GROUP, VICTORIA



UNEMPLOYMENT RATES OF FEMALES BY AGE GROUP, VICTORIA

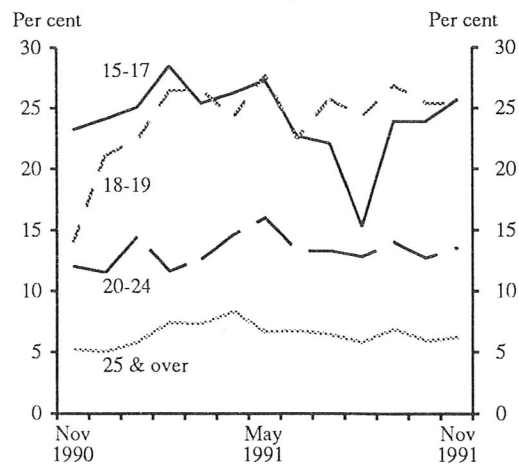


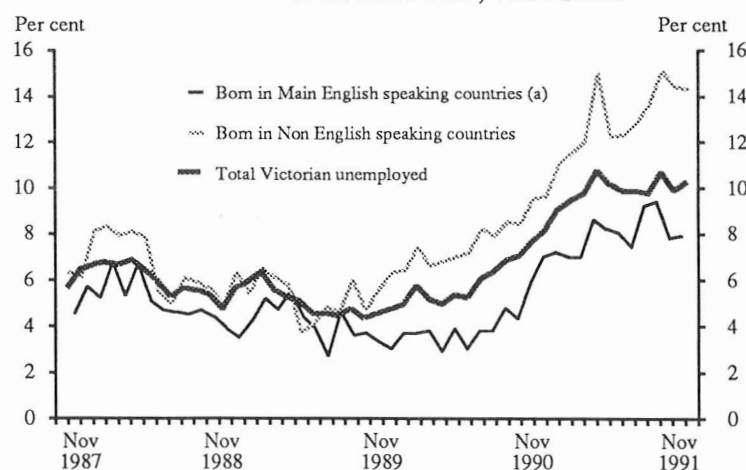
TABLE 5. CIVILIAN POPULATION AGED 15 YEARS AND OVER BY LABOUR FORCE STATUS, BIRTHPLACE, AND PERIOD OF ARRIVAL IN AUSTRALIA, VICTORIA, NOVEMBER 1991

<i>Birthplace particulars (b)</i>	<i>Employed</i>			<i>Unemp- loyed (^{'000})</i>	<i>Labour force (^{'000})</i>	<i>Not in labour force (^{'000})</i>	<i>Unemp- loyment rate (per cent)</i>	<i>Partici- pation rate (a) (per cent)</i>
	<i>Full- time (^{'000})</i>	<i>Part- time (^{'000})</i>	<i>Total (^{'000})</i>					
Born in Australia	1,089.8	344.5	1,434.3	148.2	1,582.5	844.4	9.4	65.2
Born outside Australia -								
Africa	11.8	*3.2	15.1	*1.3	16.4	7.0	*7.9	70.2
America	12.6	*3.2	15.8	*1.8	17.6	10.7	*10.2	62.2
Asia	71.6	15.8	87.4	18.4	105.8	56.9	17.4	65.0
The Middle East and North Africa	17.7	4.8	22.4	5.8	28.2	19.5	20.4	59.1
Europe -								
Germany	14.7	5.1	19.8	*2.4	22.2	10.7	*10.9	67.5
Greece	33.7	7.1	40.8	6.2	47.0	34.8	13.3	57.5
Italy	44.0	6.9	50.9	6.2	57.2	59.7	10.9	48.9
Malta	11.1	*3.3	14.4	*2.0	16.4	10.6	*12.4	60.7
Netherlands	12.5	*4.0	16.5	*1.2	17.7	11.5	*6.9	60.6
Poland	6.0	*1.0	6.9	*1.8	8.7	11.1	*20.7	44.1
UK and Ireland	103.3	33.6	136.9	10.1	147.0	93.1	6.8	61.2
Yugoslavia	36.7	4.5	41.2	7.1	48.3	22.5	14.6	68.2
Other Europe	28.2	5.5	33.7	5.9	39.6	32.9	14.9	54.7
Total Europe	290.1	71.0	361.1	43.0	404.1	286.9	10.6	58.5
New Zealand	18.0	*4.4	22.3	*3.7	26.1	8.8	*14.3	74.9
Total Oceania	20.3	4.8	25.1	*3.7	28.8	10.3	*12.9	73.6
Main English speaking countries (c)	130.9	42.7	173.5	14.8	188.4	107.1	7.9	63.8
Other	296.1	60.6	356.7	59.4	416.1	286.0	14.3	59.3
Period of arrival -								
Before 1961	98.2	28.8	127.0	13.2	140.3	168.1	9.4	45.5
1961 - 1965	48.0	11.2	59.2	6.8	66.0	39.5	10.2	62.5
1966 - 1970	84.5	16.8	101.3	9.5	110.8	48.5	8.6	69.6
1971 - 1975	54.8	11.5	66.3	8.9	75.2	30.8	11.8	71.0
1976 - 1980	41.3	12.3	53.6	6.9	60.6	28.0	11.5	68.4
1981 - 1985	39.5	7.5	47.0	6.8	53.8	23.6	12.6	69.5
1986 to survey date	60.5	15.1	75.7	22.1	97.8	54.5	22.6	64.2
Total overseas born	427.0	103.3	530.3	74.2	604.5	393.1	12.3	60.6

(a) Because it is not practicable to ascertain the birthplace of persons in institutions (who are classified as 'not in the labour force'), labour force participation rates for persons classified by birthplace are calculated by using population estimates which exclude those in institutions.

(b) Country of birth data are now grouped according to the Australian Standard Classification of Countries for Social Statistics. See Explanatory Notes for more details. (c) Comprises United Kingdom and Ireland, Canada, United States of America, South Africa and New Zealand.

UNEMPLOYMENT RATES OF MIGRANTS (BY BIRTHPLACE) AND TOTAL UNEMPLOYED, VICTORIA



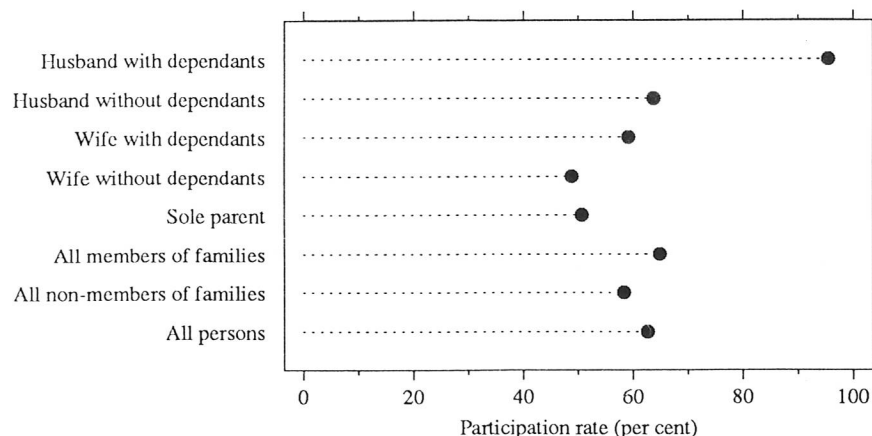
(a) Comprises United Kingdom and Ireland, Canada, United States of America, South Africa, and New Zealand.

TABLE 6. CIVILIAN POPULATION AGED 15 YEARS AND OVER BY LABOUR FORCE STATUS AND FAMILY STATUS, VICTORIA, NOVEMBER 1991

Family status	Employed		Total (<i>'000</i>)	Unemp- loyed (<i>'000</i>)	Labour force (<i>'000</i>)	Not in labour force (<i>'000</i>)	Civilian popu- lation 15 years and over (<i>'000</i>)	Unemp- loyment rate (per cent)	Partici- pation rate (per cent)
	Full- time (<i>'000</i>)	Part- time (<i>'000</i>)							
Member of a family -									
Married -									
Husband -									
With children (a)	371.7	10.1	381.8	33.8	415.6	20.2	435.8	8.1	95.4
Without children (a)	300.4	29.1	329.5	27.7	357.2	202.7	559.9	7.7	63.8
Wife -									
With children (a)	105.1	126.0	231.1	19.4	250.5	171.6	422.1	7.7	59.3
Without children (a)	166.4	94.5	260.9	15.5	276.4	288.4	564.7	5.6	48.9
Not-married family head -									
Male -									
With children (a)	*3.2	*0.3	*3.5	*1.2	4.6	*1.8	6.4	*25.1	72.3
Without children (a)	13.3	*1.7	15.0	*1.4	16.4	7.4	23.8	*8.3	68.8
Female -									
With children (a)	11.3	15.3	26.6	*4.5	31.0	31.6	62.6	*14.4	49.5
Without children (a)	17.4	6.5	23.9	*1.2	25.1	33.8	58.9	*4.8	42.7
Child of family head (b) -									
Males	148.8	44.7	193.5	45.5	239.0	106.2	345.2	19.0	69.2
Females	90.4	61.8	152.2	29.3	181.5	89.1	270.6	16.2	67.1
Other relative of family head	16.2	*3.4	19.5	*4.2	23.8	33.8	57.5	*17.8	41.3
Total	1,244.1	393.5	1,637.6	183.6	1,821.2	986.5	2,807.7	10.1	64.9
Not a member of a family -									
Living alone -									
Males	59.6	8.2	67.8	8.8	76.6	43.9	120.6	11.5	63.5
Females	40.7	13.4	54.2	*3.8	58.0	127.0	185.0	*6.6	31.3
Not living alone -									
Males	73.3	11.6	84.9	10.9	95.7	18.1	113.8	11.4	84.1
Females	47.0	9.1	56.2	6.0	62.2	19.3	81.4	9.6	76.4
Total	220.7	42.3	263.0	29.5	292.5	208.3	500.8	10.1	58.4
Not family coded	52.0	12.0	64.0	9.3	73.3	108.4	181.7	12.6	40.3
Total	1,516.8	447.8	1,964.6	222.4	2,187.0	1,303.2	3,490.2	10.2	62.7

(a) Aged 0 - 14 present in household. (b) Aged 15 and over.

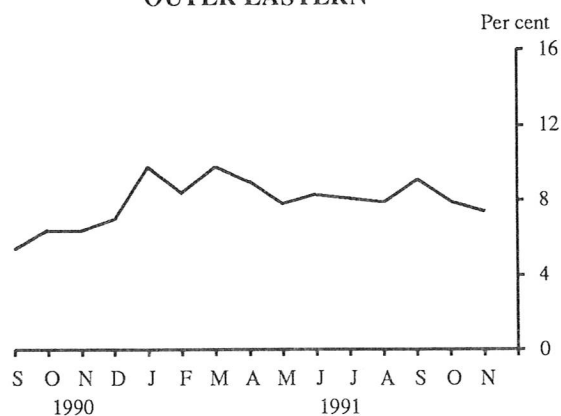
PARTICIPATION RATES BY FAMILY STATUS, VICTORIA, NOVEMBER 1991



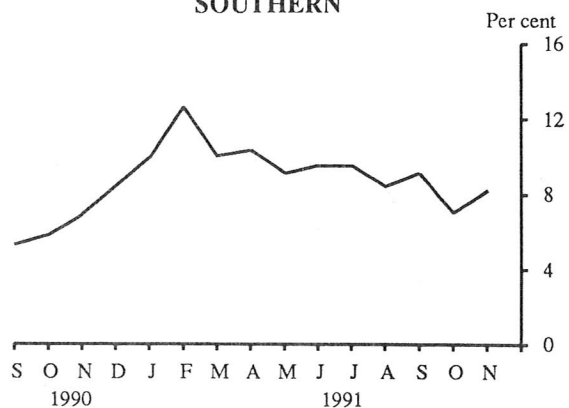
MELBOURNE STATISTICAL DIVISION LABOUR FORCE REGIONS

(UNEMPLOYMENT RATE)

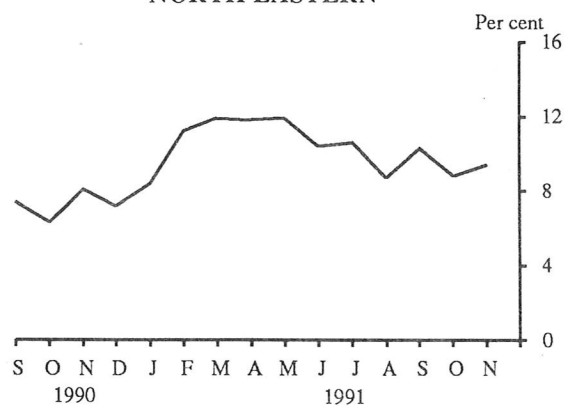
OUTER EASTERN



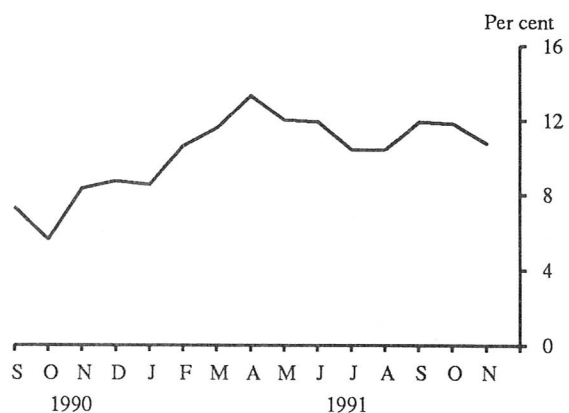
SOUTHERN



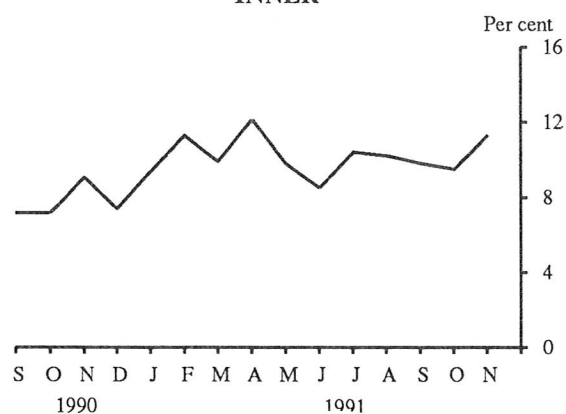
NORTH EASTERN



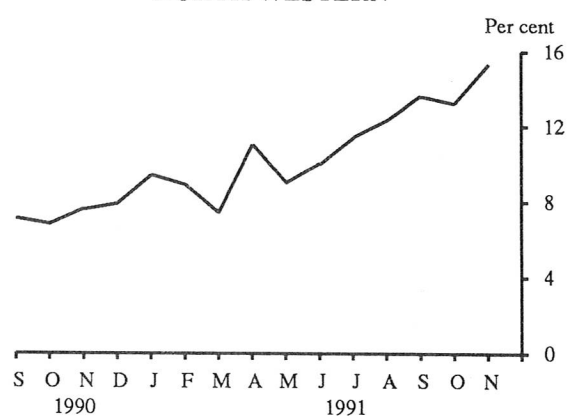
MORNINGTON PENINSULA



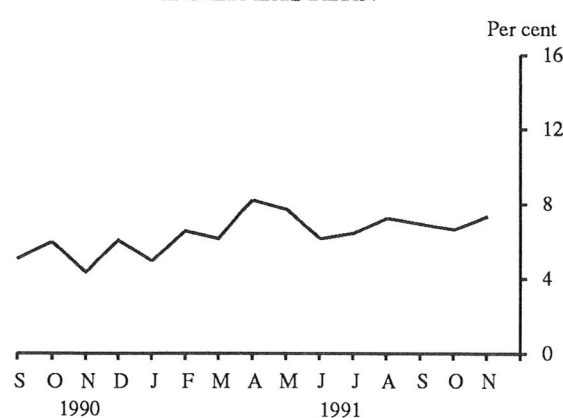
INNER



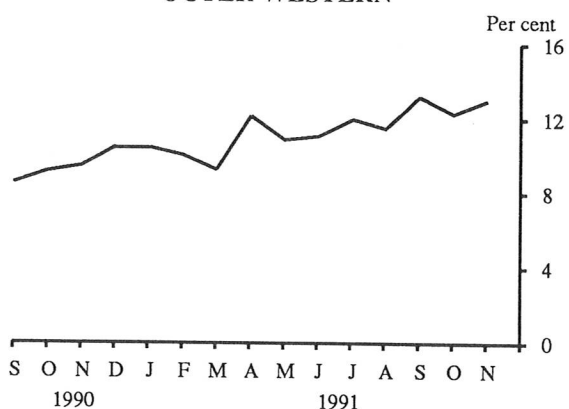
NORTH WESTERN



INNER EASTERN



OUTER WESTERN



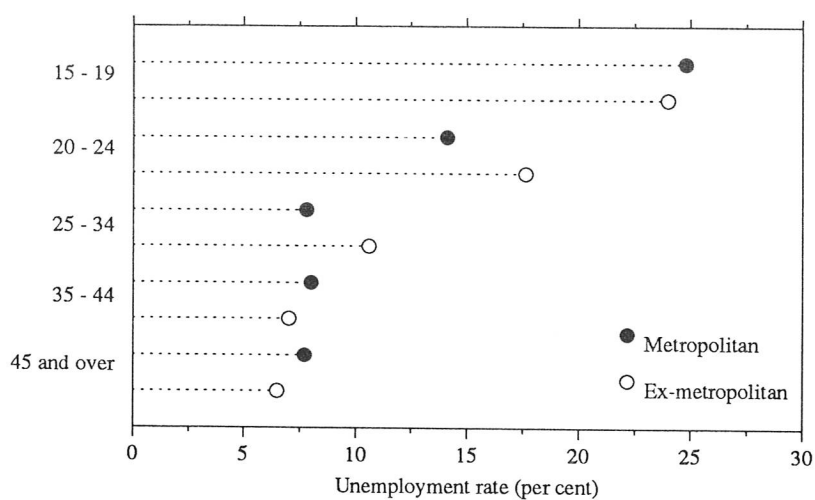
**TABLE 7. CIVILIAN POPULATION AGED 15 YEARS AND OVER BY LABOUR FORCE STATUS,
VICTORIAN REGIONS, SEPTEMBER 1991**

VICTORIAN REGIONS, SEPTEMBER 1991								
Region	Employed			Unemp- loyed (<i>'000</i>)	Labour force (<i>'000</i>)	Not in labour force (<i>'000</i>)	Unemp- loyment rate (per cent)	Partici- pation rate (per cent)
	Full- time (<i>'000</i>)	Part- time (<i>'000</i>)	Total (<i>'000</i>)					
MALES								
Melbourne Statistical Division-	727.2	74.7	801.9	101.6	903.5	309.1	11.2	74.5
Outer Western Melbourne	108.7	7.9	116.6	20.9	137.5	48.3	15.2	74.0
North Western Melbourne	48.1	4.8	52.9	9.3	62.2	29.1	15.0	68.1
Inner Melbourne	48.2	7.0	55.2	6.3	61.5	28.9	10.3	68.0
North Eastern Melbourne	94.0	8.2	102.2	12.7	114.9	37.9	11.1	75.2
Inner Eastern Melbourne	100.8	17.4	118.3	8.3	126.5	40.7	6.5	75.6
Southern Melbourne	84.3	6.8	91.1	9.5	100.7	39.8	9.5	71.6
Outer Eastern Melbourne	112.1	12.1	124.2	13.3	137.5	32.9	9.6	80.7
Mornington Peninsula	130.9	10.5	141.4	21.3	162.7	51.4	13.1	76.0
Balance of Victoria-	297.1	32.2	329.3	44.3	373.6	124.7	11.9	75.0
South Western Victoria	75.3	7.3	82.6	11.3	93.9	33.1	12.0	74.0
Western Victoria	64.3	6.5	70.8	8.4	79.2	28.1	10.6	73.8
Northern Victoria	94.7	11.5	106.2	16.9	123.1	42.4	13.7	74.4
Eastern Victoria	62.7	7.0	69.7	7.7	77.4	21.2	10.0	78.5
Total	1,024.3	106.9	1,131.2	145.9	1,277.1	433.9	11.4	74.6
MARRIED FEMALES								
Melbourne Statistical Division-	211.6	164.9	376.5	27.2	403.8	310.4	6.7	56.5
Outer Western Melbourne	32.9	22.8	55.7	5.4	61.2	52.3	8.9	53.9
North Western Melbourne	14.0	9.2	23.2	*2.1	25.3	26.6	*8.1	48.7
Inner Melbourne	12.9	4.1	16.9	*1.0	17.9	11.6	*5.5	60.6
North Eastern Melbourne	28.9	19.2	48.1	3.6	51.7	44.2	6.9	53.9
Inner Eastern Melbourne	29.4	27.1	56.5	*2.5	59.0	42.8	*4.2	57.9
Southern Melbourne	21.4	19.0	40.4	*3.1	43.5	37.6	*7.1	53.6
Outer Eastern Melbourne	30.0	30.2	60.2	*2.5	62.7	37.3	*4.0	62.7
Mornington Peninsula	42.2	33.3	75.5	7.1	82.6	57.9	8.6	58.8
Balance of Victoria-	72.4	80.9	153.3	10.3	163.7	149.0	6.3	52.4
South Western Victoria	15.6	19.3	34.9	*3.0	37.9	36.7	*7.8	50.8
Western Victoria	13.8	16.8	30.6	*3.4	33.9	29.1	*9.9	53.8
Northern Victoria	27.9	25.8	53.7	*2.7	56.4	51.6	*4.8	52.2
Eastern Victoria	15.1	19.1	34.2	*1.3	35.5	31.5	*3.7	53.0
Total	284.0	245.8	529.9	37.5	567.4	459.3	6.6	55.3
ALL FEMALES								
Melbourne Statistical Division-	392.3	248.8	641.1	66.0	707.1	557.6	9.3	55.9
Outer Western Melbourne	57.9	34.1	92.0	10.9	102.8	85.0	10.6	54.8
North Western Melbourne	29.2	12.5	41.7	5.6	47.3	44.8	11.8	51.3
Inner Melbourne	40.3	11.1	51.4	5.3	56.7	34.3	9.3	62.3
North Eastern Melbourne	51.1	28.0	79.1	8.1	87.2	76.5	9.3	53.3
Inner Eastern Melbourne	56.7	45.3	102.0	7.9	109.9	82.9	7.2	57.0
Southern Melbourne	43.6	28.0	71.6	6.8	78.4	73.2	8.7	51.7
Outer Eastern Melbourne	49.4	41.6	91.0	8.4	99.4	66.0	8.4	60.1
Mornington Peninsula	64.1	48.2	112.3	13.0	125.3	94.9	10.4	56.9
Balance of Victoria-	116.3	111.4	227.7	26.3	254.0	253.9	10.4	50.0
South Western Victoria	28.1	28.6	56.7	5.4	62.1	67.2	8.7	48.0
Western Victoria	24.5	22.7	47.3	8.9	56.2	53.1	15.9	51.4
Northern Victoria	41.8	35.1	76.9	8.2	85.0	84.7	9.6	50.1
Eastern Victoria	21.9	25.0	46.9	*3.8	50.7	49.0	*7.5	50.9
Total	508.6	360.2	868.8	92.3	961.1	811.5	9.6	54.2

**TABLE 7. CIVILIAN POPULATION AGED 15 YEARS AND OVER BY LABOUR FORCE STATUS,
VICTORIAN REGIONS, SEPTEMBER 1991 - *continued***

VICTORIAN REGIONS, SEPTEMBER 1991 - <i>continued</i>								
Region	Employed			Unemp- loyed (<i>'000</i>)	Labour force (<i>'000</i>)	Not in labour force (<i>'000</i>)	Unemp- loyment rate (per cent)	Partici- pation rate (per cent)
	Full- time (<i>'000</i>)	Part- time (<i>'000</i>)	Total (<i>'000</i>)					
PERSONS								
Melbourne Statistical Division-	1,119.4	323.6	1,443.0	167.5	1,610.5	866.8	10.4	65.0
Outer Western Melbourne	166.6	42.0	208.6	31.7	240.3	133.3	13.2	64.3
North Western Melbourne	77.3	17.3	94.6	14.9	109.5	73.9	13.6	59.7
Inner Melbourne	88.5	18.1	106.6	11.6	118.2	63.2	9.8	65.2
North Eastern Melbourne	145.2	36.2	181.3	20.8	202.2	114.4	10.3	63.9
Inner Eastern Melbourne	157.5	62.7	220.2	16.2	236.4	123.6	6.9	65.7
Southern Melbourne	128.0	34.8	162.8	16.3	179.1	113.1	9.1	61.3
Outer Eastern Melbourne	161.5	53.8	215.2	21.6	236.8	98.9	9.1	70.5
Mornington Peninsula	195.0	58.8	253.7	34.3	288.0	146.3	11.9	66.3
Balance of Victoria-	413.4	143.6	557.0	70.6	627.6	378.6	11.3	62.4
South Western Victoria	103.4	35.9	139.3	16.7	156.0	100.2	10.7	60.9
Western Victoria	88.9	29.2	118.0	17.3	135.4	81.2	12.8	62.5
Northern Victoria	136.5	46.6	183.1	25.1	208.1	127.0	12.0	62.1
Eastern Victoria	84.6	32.0	116.6	11.5	128.1	70.2	9.0	64.6
Total	1,532.8	467.1	2,000.0	238.2	2,238.1	1,245.4	10.6	64.2

**UNEMPLOYMENT RATES: METROPOLITAN AND EX-METROPOLITAN AREAS
BY AGE GROUP, VICTORIA, NOVEMBER 1991**



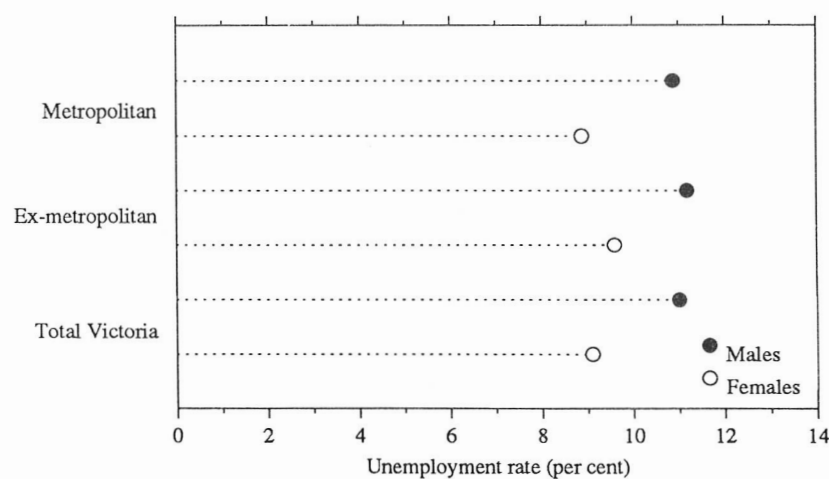
**TABLE 8. CIVILIAN POPULATION AGED 15 YEARS AND OVER BY LABOUR FORCE STATUS,
VICTORIAN REGIONS, OCTOBER 1991**

VICTORIAN REGIONS, OCTOBER 1991								
Region	Employed			Unemp- loyed (<i>'000</i>)	Labour force (<i>'000</i>)	Not in labour force (<i>'000</i>)	Unemp- loyment rate (per cent)	Partici- pation rate (per cent)
	Full- time (<i>'000</i>)	Part- time (<i>'000</i>)	Total (<i>'000</i>)					
MALES								
Melbourne Statistical Division-	730.9	75.9	806.8	91.5	898.3	315.2	10.2	74.0
Outer Western Melbourne	112.1	7.9	119.9	16.8	136.8	51.0	12.3	72.8
North Western Melbourne	49.1	*3.0	52.1	10.0	62.1	27.1	16.2	69.7
Inner Melbourne	50.8	9.3	60.1	6.5	66.6	27.6	9.7	70.7
North Eastern Melbourne	93.2	9.6	102.8	12.5	115.3	36.2	10.8	76.1
Inner Eastern Melbourne	100.8	15.4	116.2	9.1	125.3	41.1	7.3	75.3
Southern Melbourne	84.6	7.7	92.3	6.8	99.1	44.1	6.9	69.2
Outer Eastern Melbourne	112.9	11.9	124.8	9.9	134.7	37.2	7.3	78.4
Mornington Peninsula	127.4	11.2	138.6	19.9	158.5	51.0	12.5	75.7
Balance of Victoria-	300.8	30.3	331.1	39.4	370.5	128.4	10.6	74.3
South Western Victoria	79.8	5.7	85.5	9.8	95.3	33.8	10.3	73.8
Western Victoria	63.2	7.1	70.2	7.0	77.2	28.4	9.0	73.1
Northern Victoria	95.2	10.8	106.1	15.2	121.3	43.3	12.6	73.7
Eastern Victoria	62.6	6.7	69.3	7.4	76.7	22.9	9.7	77.0
Total	1,031.7	106.3	1,137.9	130.9	1,268.8	443.6	10.3	74.1
MARRIED FEMALES								
Melbourne Statistical Division-	211.1	153.0	364.0	27.2	391.2	324.3	7.0	54.7
Outer Western Melbourne	34.4	20.6	55.0	6.7	61.7	51.4	10.8	54.5
North Western Melbourne	13.6	8.1	21.7	*1.7	23.4	28.6	*7.4	45.0
Inner Melbourne	12.3	*3.2	15.6	*1.5	17.1	11.9	*8.9	58.9
North Eastern Melbourne	29.2	19.3	48.4	*2.2	50.7	45.3	*4.4	52.8
Inner Eastern Melbourne	28.7	26.2	54.9	*3.0	58.0	43.4	*5.2	57.2
Southern Melbourne	22.8	18.1	40.9	*2.0	42.9	41.2	*4.8	51.0
Outer Eastern Melbourne	27.9	28.4	56.4	*2.9	59.3	42.8	*4.9	58.1
Mornington Peninsula	42.2	29.0	71.2	7.1	78.3	59.8	9.0	56.7
Balance of Victoria-	77.1	73.4	150.5	8.3	158.8	152.7	5.2	51.0
South Western Victoria	17.9	16.8	34.7	*1.9	36.5	38.9	*5.1	48.4
Western Victoria	14.6	13.9	28.6	*2.3	30.9	30.3	*7.5	50.5
Northern Victoria	29.2	22.9	52.0	*2.7	54.8	52.3	*5.0	51.2
Eastern Victoria	15.4	19.8	35.2	*1.4	36.6	31.3	*3.9	53.9
Total	288.2	226.3	514.5	35.5	550.1	477.1	6.5	53.6
ALL FEMALES								
Melbourne Statistical Division-	391.6	232.8	624.3	60.1	684.4	581.4	8.8	54.1
Outer Western Melbourne	57.3	32.6	89.9	12.7	102.5	88.2	12.4	53.7
North Western Melbourne	28.9	12.3	41.2	4.1	45.3	47.9	9.1	48.6
Inner Melbourne	42.3	10.6	52.9	5.4	58.3	33.4	9.3	63.6
North Eastern Melbourne	49.4	27.6	77.0	4.9	81.9	77.1	6.0	51.5
Inner Eastern Melbourne	57.9	42.2	100.1	6.2	106.3	83.0	5.9	56.2
Southern Melbourne	44.5	25.4	70.0	5.4	75.4	81.4	7.2	48.1
Outer Eastern Melbourne	45.6	38.7	84.4	8.0	92.4	74.4	8.7	55.4
Mornington Peninsula	65.5	43.3	108.9	13.4	122.2	96.0	10.9	56.0
Balance of Victoria-	121.1	102.0	223.1	23.5	246.6	262.0	9.5	48.5
South Western Victoria	32.1	25.8	57.9	4.9	62.8	68.3	7.8	47.9
Western Victoria	23.2	20.4	43.6	6.6	50.2	56.2	13.2	47.2
Northern Victoria	42.5	32.0	74.4	8.5	82.9	87.7	10.2	48.6
Eastern Victoria	23.4	23.8	47.2	*3.5	50.7	49.7	*6.8	50.5
Total	512.7	334.7	847.4	83.6	931.0	843.4	9.0	52.5

**TABLE 8. CIVILIAN POPULATION AGED 15 YEARS AND OVER BY LABOUR FORCE STATUS,
VICTORIAN REGIONS, OCTOBER 1991 - *continued***

VICTORIAN REGIONS, OCTOBER 1991 - <i>continued</i>								
Region	Employed			Unemp- loyed (<i>'000</i>)	Labour force (<i>'000</i>)	Not in labour force (<i>'000</i>)	Unemp- loyment rate (per cent)	Partici- pation rate (per cent)
	Full- time (<i>'000</i>)	Part- time (<i>'000</i>)	Total (<i>'000</i>)					
PERSONS								
Melbourne Statistical Division-	1,122.4	308.7	1,431.1	151.6	1,582.7	896.7	9.6	63.8
Outer Western Melbourne	169.3	40.5	209.8	29.5	239.3	139.3	12.3	63.2
North Western Melbourne	78.0	15.2	93.3	14.1	107.4	75.0	13.2	58.9
Inner Melbourne	93.1	19.9	113.0	11.9	124.9	61.0	9.5	67.2
North Eastern Melbourne	142.6	37.3	179.9	17.3	197.2	113.4	8.8	63.5
Inner Eastern Melbourne	158.7	57.6	216.3	15.4	231.7	124.1	6.6	65.1
Southern Melbourne	129.1	33.2	162.3	12.2	174.5	125.5	7.0	58.2
Outer Eastern Melbourne	158.6	50.6	209.2	17.9	227.1	111.5	7.9	67.1
Mornington Peninsula	193.0	54.5	247.4	33.3	280.7	147.0	11.8	65.6
Balance of Victoria-	421.9	132.3	554.2	62.9	617.1	390.4	10.2	61.3
South Western Victoria	111.9	31.5	143.4	14.7	158.1	102.1	9.3	60.7
Western Victoria	86.4	27.5	113.8	13.6	127.4	84.6	10.7	60.1
Northern Victoria	137.7	42.8	180.5	23.7	204.2	131.0	11.6	60.9
Eastern Victoria	86.0	30.5	116.5	10.9	127.4	72.7	8.6	63.7
Total	1,544.3	441.0	1,985.3	214.5	2,199.8	1,287.0	9.8	63.1

**UNEMPLOYMENT RATES: METROPOLITAN AND EX-METROPOLITAN
AREAS BY GENDER, VICTORIA, NOVEMBER 1991**



**TABLE 9. CIVILIAN POPULATION AGED 15 YEARS AND OVER BY LABOUR FORCE STATUS,
VICTORIAN REGIONS, NOVEMBER 1991**

VICTORIAN REGIONS, NOVEMBER 1991								
Region	Employed			Unemp- loyed (^{'000})	Labour force (^{'000})	Not in labour force (^{'000})	Unemp- loyment rate (per cent)	Partici- pation rate (per cent)
	Full- time (^{'000})	Part- time (^{'000})	Total (^{'000})					
MALES								
Melbourne Statistical Division-	720.0	74.8	794.8	97.0	891.9	322.6	10.9	73.4
Outer Western Melbourne	110.4	6.5	116.9	18.1	135.0	51.8	13.4	72.3
North Western Melbourne	47.5	*2.8	50.3	11.8	62.1	26.5	19.0	70.1
Inner Melbourne	53.7	10.2	63.9	8.2	72.1	30.0	11.4	70.7
North Eastern Melbourne	92.8	8.0	100.9	12.4	113.3	37.8	10.9	75.0
Inner Eastern Melbourne	102.1	11.7	113.8	10.3	124.1	44.2	8.3	73.7
Southern Melbourne	78.1	11.1	89.3	8.0	97.3	41.4	8.2	70.1
Outer Eastern Melbourne	111.2	11.4	122.6	9.7	132.3	36.5	7.4	78.4
Mornington Peninsula	124.1	13.0	137.1	18.5	155.6	54.4	11.9	74.1
Balance of Victoria-	289.8	35.4	325.1	41.1	366.2	133.2	11.2	73.3
South Western Victoria	77.7	5.9	83.6	12.4	96.0	33.1	12.9	74.3
Western Victoria	58.9	8.1	67.0	5.5	72.5	29.3	7.6	71.2
Northern Victoria	91.3	14.7	106.1	15.8	121.9	47.8	13.0	71.8
Eastern Victoria	61.8	6.6	68.4	7.4	75.8	23.0	9.8	76.8
Total	1,009.8	110.2	1,120.0	138.1	1,258.1	455.9	11.0	73.4
MARRIED FEMALES								
Melbourne Statistical Division-	207.6	156.6	364.2	28.1	392.3	322.6	7.2	54.9
Outer Western Melbourne	34.0	20.8	54.8	6.2	61.0	51.2	10.1	54.4
North Western Melbourne	13.1	8.8	21.9	*2.8	24.7	26.6	*11.2	48.1
Inner Melbourne	12.3	4.3	16.5	*3.0	19.5	12.0	*15.2	62.0
North Eastern Melbourne	27.2	19.0	46.2	*2.6	48.8	45.8	*5.3	51.5
Inner Eastern Melbourne	28.0	28.1	56.1	*3.5	59.6	43.7	*5.9	57.7
Southern Melbourne	22.6	18.1	40.7	*2.0	42.7	39.2	*4.7	52.2
Outer Eastern Melbourne	29.7	26.8	56.5	*2.5	58.9	45.4	*4.2	56.5
Mornington Peninsula	40.8	30.5	71.4	5.7	77.0	58.7	7.4	56.7
Balance of Victoria-	75.5	70.5	146.0	8.1	154.1	157.2	5.2	49.5
South Western Victoria	17.0	17.9	34.9	*2.3	37.2	39.5	*6.2	48.5
Western Victoria	15.1	13.7	28.7	*1.7	30.4	30.1	*5.5	50.3
Northern Victoria	28.2	22.4	50.6	*2.7	53.3	53.5	*5.0	49.9
Eastern Victoria	15.2	16.6	31.7	*1.4	33.2	34.1	*4.4	49.3
Total	283.1	227.1	510.2	36.2	546.4	479.8	6.6	53.2
ALL FEMALES								
Melbourne Statistical Division-	388.2	239.1	627.2	61.2	688.4	578.5	8.9	54.3
Outer Western Melbourne	56.6	32.7	89.3	12.7	102.0	85.0	12.5	54.6
North Western Melbourne	28.3	13.9	42.2	4.9	47.1	45.3	10.4	51.0
Inner Melbourne	38.0	12.1	50.0	6.3	56.3	32.8	11.1	63.2
North Eastern Melbourne	48.2	27.4	75.6	6.0	81.6	77.5	7.4	51.3
Inner Eastern Melbourne	60.2	44.1	104.2	7.0	111.2	86.1	6.3	56.4
Southern Melbourne	44.1	25.5	69.6	6.1	75.7	81.4	8.1	48.2
Outer Eastern Melbourne	49.1	37.7	86.8	7.1	93.9	76.1	7.5	55.2
Mornington Peninsula	63.6	45.8	109.4	11.1	120.6	94.4	9.2	56.1
Balance of Victoria-	118.8	98.5	217.4	23.1	240.4	268.8	9.6	47.2
South Western Victoria	32.0	25.4	57.4	7.0	64.5	70.1	10.9	47.9
Western Victoria	24.4	22.1	46.6	*4.0	50.6	54.6	*7.9	48.1
Northern Victoria	41.1	30.5	71.6	7.9	79.5	90.3	9.9	46.8
Eastern Victoria	21.3	20.5	41.8	*4.2	45.9	53.8	*9.1	46.0
Total	507.0	337.6	844.6	84.3	928.9	847.3	9.1	52.3

**TABLE 9. CIVILIAN POPULATION AGED 15 YEARS AND OVER BY LABOUR FORCE STATUS,
VICTORIAN REGIONS, NOVEMBER 1991 - *continued***

VICTORIAN REGIONS, NOVEMBER 1991 - <i>continued</i>								
Region	Employed			Unemp- loyed ('000)	Labour force ('000)	Not in labour force ('000)	Unemp- loyment rate (per cent)	Partici- pation rate (per cent)
	Full- time ('000)	Part- time ('000)	Total ('000)					
PERSONS								
Melbourne Statistical Division-	1,108.2	313.9	1,422.1	158.2	1,580.3	901.2	10.0	63.7
Outer Western Melbourne	167.1	39.2	206.2	30.8	237.1	136.8	13.0	63.4
North Western Melbourne	75.9	16.7	92.6	16.7	109.2	71.8	15.3	60.3
Inner Melbourne	91.7	22.3	113.9	14.5	128.4	62.7	11.3	67.2
North Eastern Melbourne	141.0	35.4	176.4	18.4	194.8	115.3	9.4	62.8
Inner Eastern Melbourne	162.3	55.8	218.1	17.2	235.3	130.2	7.3	64.4
Southern Melbourne	122.3	36.6	158.9	14.1	173.0	122.8	8.2	58.5
Outer Eastern Melbourne	160.3	49.1	209.4	16.8	226.2	112.7	7.4	66.7
Mornington Peninsula	187.7	58.8	246.6	29.6	276.2	148.8	10.7	65.0
Balance of Victoria-	408.6	133.9	542.5	64.2	606.7	402.1	10.6	60.1
South Western Victoria	109.7	31.3	141.0	19.4	160.5	103.2	12.1	60.9
Western Victoria	83.3	30.3	113.6	9.5	123.1	83.9	7.7	59.5
Northern Victoria	132.5	45.2	177.7	23.7	201.3	138.1	11.8	59.3
Eastern Victoria	83.1	27.1	110.2	11.6	121.8	76.8	9.5	61.3
Total	1,516.8	447.8	1,964.6	222.4	2,187.0	1,303.2	10.2	62.7

**PARTICIPATION RATES: METROPOLITAN AND EX-METROPOLITAN AREAS
BY GENDER, VICTORIA, NOVEMBER 1991**

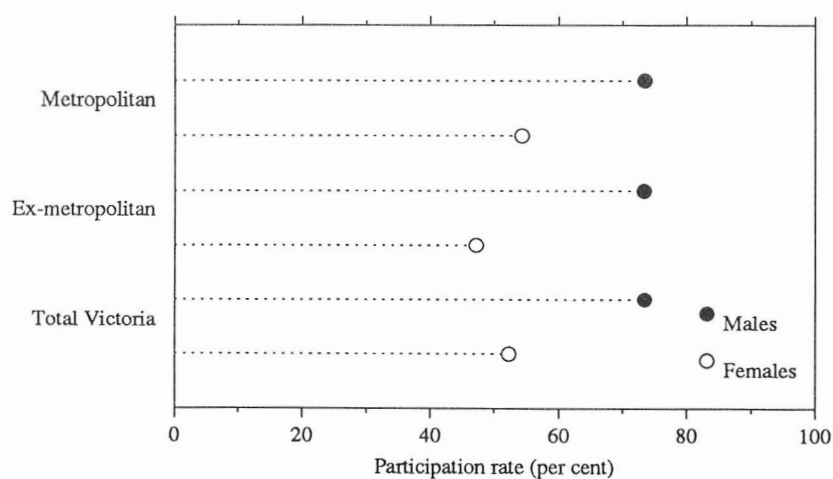


TABLE 10. CIVILIAN POPULATION AGED 15 YEARS AND OVER BY LABOUR FORCE STATUS AND AGE,
VICTORIAN REGIONS, NOVEMBER 1991

Age (years)	Males				Females				Persons			
	Employed (^{'000})	Labour force (^{'000})	Not in labour force (^{'000})	Partici- pation rate (per cent)	Employed (^{'000})	Labour force (^{'000})	Not in labour force (^{'000})	Partici- pation rate (per cent)	Employed (^{'000})	Labour force (^{'000})	Not in labour force (^{'000})	Partici- pation rate (per cent)
OUTER WESTERN MELBOURNE												
15 - 24	19.3	26.0	14.4	64.4	20.9	26.4	13.5	66.2	40.2	52.4	27.9	65.3
25 - 34	35.0	39.0	*2.5	93.9	22.8	26.4	12.7	67.5	57.8	65.4	15.2	81.1
35 - 44	33.2	36.1	3.3	91.6	30.4	33.9	11.3	75.0	63.7	69.9	14.6	82.8
45 - 54	22.3	24.8	4.0	86.2	11.6	11.9	9.4	55.7	33.9	36.7	13.4	73.2
55 and over	7.2	9.2	27.6	24.9	3.5	3.5	38.1	8.4	10.6	12.6	65.7	16.1
Total	116.9	135.0	51.8	72.3	89.3	102.0	85.0	54.6	206.2	237.1	136.8	63.4
NORTH WESTERN MELBOURNE												
15 - 24	7.3	10.6	5.0	67.9	10.2	13.3	7.8	63.0	17.5	23.9	12.9	65.1
25 - 34	20.1	23.3	*2.7	89.8	15.0	16.3	6.5	71.4	35.0	39.6	9.2	81.2
35 - 44	10.4	12.4	*1.6	88.9	7.4	7.6	6.1	55.5	17.7	20.0	7.6	72.4
45 - 54	8.1	9.1	*2.8	76.6	6.7	6.9	6.7	50.8	14.8	16.0	9.5	62.8
55 and over	4.4	6.7	14.5	31.4	3.0	3.0	18.1	14.2	7.4	9.7	32.7	22.8
Total	50.3	62.1	26.5	70.1	42.2	47.1	45.3	51.0	92.6	109.2	71.8	60.3
INNER MELBOURNE												
15 - 24	10.8	13.3	7.8	63.1	11.9	14.4	4.3	77.0	22.7	27.7	12.1	69.6
25 - 34	25.8	28.1	*2.8	90.8	22.6	24.2	4.4	84.7	48.4	52.3	7.2	87.9
35 - 44	14.5	15.8	3.6	81.3	8.3	9.7	*1.9	83.4	22.8	25.5	5.6	82.1
45 - 54	9.1	10.5	*2.6	80.4	5.0	5.4	*3.5	61.1	14.0	15.9	6.0	72.5
55 and over	3.7	4.5	13.2	25.3	*2.3	*2.5	18.7	*12.0	6.0	7.0	31.8	18.0
Total	63.9	72.1	30.0	70.7	50.0	56.3	32.8	63.2	113.9	128.4	62.7	67.2
NORTH EASTERN MELBOURNE												
15 - 24	19.7	24.0	9.4	71.8	18.1	19.4	12.7	60.4	37.9	43.4	22.1	66.2
25 - 34	27.3	29.4	*1.8	94.1	21.7	24.5	9.4	72.4	49.1	53.9	11.2	82.8
35 - 44	23.3	26.5	*1.8	93.6	20.3	21.6	9.1	70.4	43.7	48.0	10.9	81.5
45 - 54	19.4	19.8	*1.6	92.3	12.1	12.6	7.5	62.9	31.5	32.4	9.1	78.1
55 and over	11.1	13.6	23.1	37.0	*3.2	*3.5	38.9	*8.2	14.3	17.1	62.0	21.6
Total	100.9	113.3	37.8	75.0	75.6	81.6	77.5	51.3	176.4	194.8	115.3	62.8
INNER EASTERN MELBOURNE												
15 - 24	25.0	28.6	15.6	64.7	23.0	26.0	15.8	62.2	48.1	54.6	31.4	63.5
25 - 34	20.9	22.2	*2.5	89.9	20.8	21.3	6.9	75.6	41.8	43.5	9.3	82.3
35 - 44	25.4	27.5	*0.8	97.3	25.8	28.3	7.4	79.3	51.2	55.8	8.2	87.2
45 - 54	25.4	26.8	*1.1	95.9	24.3	25.0	7.7	76.5	49.7	51.8	8.8	85.4
55 and over	17.0	19.0	24.2	43.9	10.3	10.6	48.3	18.0	27.3	29.6	72.5	29.0
Total	113.8	124.1	44.2	73.7	104.2	111.2	86.1	56.4	218.1	235.3	130.2	64.4

TABLE 10. CIVILIAN POPULATION AGED 15 YEARS AND OVER BY LABOUR FORCE STATUS AND AGE,
VICTORIAN REGIONS, NOVEMBER 1991 - *continued*

Age (years)	Males				Females				Persons			
	Employed (<i>'000</i>)	Labour force (<i>'000</i>)	Not in labour force (<i>'000</i>)	Partici- pation rate (per cent)	Employed (<i>'000</i>)	Labour force (<i>'000</i>)	Not in labour force (<i>'000</i>)	Partici- pation rate (per cent)	Employed (<i>'000</i>)	Labour force (<i>'000</i>)	Not in labour force (<i>'000</i>)	Partici- pation rate (per cent)
SOUTHERN MELBOURNE												
15 - 24	12.7	15.7	9.4	62.5	10.9	13.9	11.5	54.8	23.5	29.6	20.9	58.6
25 - 34	24.2	25.0	*1.7	93.8	19.0	20.6	6.8	75.2	43.2	45.6	8.5	84.3
35 - 44	21.0	23.6	*2.6	90.1	19.1	19.9	7.4	73.0	40.1	43.5	9.9	81.4
45 - 54	15.4	16.8	*2.6	86.8	13.6	14.1	6.2	69.3	29.0	30.9	8.8	77.8
55 and over	16.0	16.3	25.2	39.2	7.0	7.3	49.5	12.8	23.0	23.5	74.7	23.9
Total	89.3	97.3	41.4	70.1	69.6	75.7	81.4	48.2	158.9	173.0	122.8	58.5
OUTER EASTERN MELBOURNE												
15 - 24	22.0	25.5	10.7	70.4	19.1	23.4	10.8	68.5	41.1	48.9	21.5	69.5
25 - 34	31.7	33.6	*0.8	97.6	20.7	22.2	11.2	66.6	52.4	55.8	12.0	82.3
35 - 44	37.6	39.6	*1.0	97.5	26.7	27.4	9.6	74.2	64.3	67.0	10.6	86.4
45 - 54	22.2	23.1	*1.9	92.5	16.8	17.3	7.2	70.6	39.0	40.4	9.1	81.6
55 and over	9.1	10.6	22.1	32.4	*3.5	*3.5	37.4	*8.5	12.6	14.1	59.6	19.1
Total	122.6	132.3	36.5	78.4	86.8	93.9	76.1	55.2	209.4	226.2	112.7	66.7
MORNINGTON PENINSULA												
15 - 24	24.2	30.8	13.9	68.8	24.6	29.2	12.5	70.0	48.8	60.0	26.4	69.4
25 - 34	37.9	41.8	*2.2	95.0	31.5	33.1	15.8	67.6	69.4	74.9	18.0	80.6
35 - 44	34.7	38.1	*3.4	91.8	27.4	29.6	11.3	72.5	62.1	67.7	14.6	82.2
45 - 54	26.3	28.4	*3.2	89.8	18.9	20.9	9.9	67.8	45.2	49.3	13.2	78.9
55 and over	14.1	16.6	31.6	34.4	7.0	7.8	44.9	14.8	21.1	24.4	76.5	24.1
Total	137.1	155.6	54.4	74.1	109.4	120.6	94.4	56.1	246.6	276.2	148.8	65.0
TOTAL MELBOURNE STATISTICAL DIVISION												
15 - 19 -	44.0	59.4	64.0	48.1	44.8	58.6	60.8	49.1	88.7	118.0	124.7	48.6
15 - 17	18.9	26.2	44.8	36.9	19.8	26.7	41.6	39.1	38.7	52.9	86.4	38.0
18 - 19	25.1	33.2	19.1	63.5	25.0	31.9	19.2	62.4	50.0	65.1	38.3	63.0
20 - 24	97.0	115.0	22.2	83.8	94.0	107.4	28.1	79.3	191.0	222.4	50.4	81.5
25 - 34	223.0	242.4	17.1	93.4	174.1	188.5	73.6	71.9	397.1	430.9	90.6	82.6
35 - 44	200.2	219.6	18.1	92.4	165.4	177.9	63.9	73.6	365.6	397.5	82.0	82.9
45 - 54	148.1	159.2	19.7	89.0	109.0	114.3	58.2	66.3	257.2	273.5	77.9	77.8
55 - 59	43.3	51.5	16.8	75.4	23.3	24.9	41.6	37.5	66.7	76.4	58.4	56.7
60 - 64	28.3	33.4	31.2	51.7	10.3	10.3	54.7	15.8	38.6	43.7	85.9	33.7
65 and over	10.9	11.3	133.6	7.8	6.3	6.5	197.7	3.2	17.2	17.9	331.3	5.1
Total	794.8	891.9	322.6	73.4	627.2	688.4	578.5	54.3	1,422.1	1,580.3	901.2	63.7

TABLE 10. CIVILIAN POPULATION AGED 15 YEARS AND OVER BY LABOUR FORCE STATUS AND AGE,
VICTORIAN REGIONS, NOVEMBER 1991 - *continued*

Age (years)	Males				Females				Persons			
	Employed (<i>'000</i>)	Labour force (<i>'000</i>)	Not in labour force (<i>'000</i>)	Partici- pation rate (per cent)	Employed (<i>'000</i>)	Labour force (<i>'000</i>)	Not in labour force (<i>'000</i>)	Partici- pation rate (per cent)	Employed (<i>'000</i>)	Labour force (<i>'000</i>)	Not in labour force (<i>'000</i>)	Partici- pation rate (per cent)
SOUTH WESTERN VICTORIA												
15 - 24	14.4	18.5	10.2	64.5	14.1	18.6	10.0	65.2	28.5	37.1	20.1	64.8
25 - 34	23.4	26.4	*0.3	98.7	13.2	14.7	8.5	63.5	36.6	41.1	8.8	82.4
35 - 44	18.8	21.4	*0.8	96.4	15.7	16.3	8.7	65.0	34.5	37.6	9.5	79.8
45 - 54	15.5	16.5	*1.8	90.3	10.7	11.2	6.4	63.7	26.2	27.7	8.1	77.3
55 and over	11.5	13.2	20.0	39.8	*3.7	*3.7	36.6	*9.2	15.2	16.9	56.6	23.0
Total	83.6	96.0	33.1	74.3	57.4	64.5	70.1	47.9	141.0	160.5	103.2	60.9
WESTERN VICTORIA												
15 - 24	11.4	13.3	6.9	65.7	12.5	14.0	7.5	65.0	23.9	27.2	14.5	65.3
25 - 34	16.9	18.2	*1.9	90.6	10.1	11.5	7.4	60.8	26.9	29.7	9.3	76.2
35 - 44	17.9	18.9	*1.1	94.5	15.0	15.8	*4.1	79.4	32.9	34.8	5.2	87.0
45 - 54	11.3	12.4	*2.0	85.8	5.6	5.8	7.2	44.5	16.9	18.1	9.3	66.2
55 and over	9.5	9.8	17.4	36.0	*3.5	*3.5	28.3	*10.9	13.0	13.2	45.7	22.4
Total	67.0	72.5	29.3	71.2	46.6	50.6	54.6	48.1	113.6	123.1	83.9	59.5
NORTHERN VICTORIA												
15 - 24	21.5	25.4	10.3	71.1	13.2	18.0	13.0	58.0	34.8	43.4	23.3	65.0
25 - 34	20.7	25.8	*3.2	89.0	14.4	15.0	16.2	48.0	35.2	40.8	19.4	67.7
35 - 44	28.6	32.6	*2.6	92.7	21.1	22.1	9.1	70.8	49.7	54.7	11.7	82.4
45 - 54	18.2	19.5	*2.6	88.3	15.9	17.2	8.9	65.8	34.1	36.7	11.5	76.1
55 and over	17.0	18.7	29.2	39.0	6.9	7.2	43.0	14.3	23.9	25.9	72.2	26.4
Total	106.1	121.9	47.8	71.8	71.6	79.5	90.3	46.8	177.7	201.3	138.1	59.3
EASTERN VICTORIA												
15 - 24	11.4	14.8	*2.5	85.7	7.1	9.3	6.1	60.3	18.4	24.1	8.6	73.7
25 - 34	23.4	25.0	*1.0	96.2	15.0	16.7	10.8	60.7	38.4	41.8	11.8	77.9
35 - 44	15.5	16.3	*2.1	88.7	10.7	10.7	6.6	61.9	26.2	27.0	8.6	75.7
45 - 54	13.7	15.0	*0.8	95.1	6.7	6.9	*3.9	63.9	20.4	21.9	4.7	82.4
55 and over	*4.5	4.7	16.6	22.1	*2.3	*2.3	26.4	*8.1	6.8	7.1	43.1	14.1
Total	68.4	75.8	23.0	76.8	41.8	45.9	53.8	46.0	110.2	121.8	76.8	61.3

**TABLE 10. CIVILIAN POPULATION AGED 15 YEARS AND OVER BY LABOUR FORCE STATUS AND AGE,
VICTORIAN REGIONS, NOVEMBER 1991 - continued**

Age (years)	Males				Females				Persons			
	Employed (<i>'000</i>)	Labour force (<i>'000</i>)	Not in labour force (<i>'000</i>)	Partici- pation rate (per cent)	Employed (<i>'000</i>)	Labour force (<i>'000</i>)	Not in labour force (<i>'000</i>)	Partici- pation rate (per cent)	Employed (<i>'000</i>)	Labour force (<i>'000</i>)	Not in labour force (<i>'000</i>)	Partici- pation rate (per cent)
TOTAL BALANCE OF VICTORIA												
15 - 19 -	21.5	26.4	24.6	51.8	15.9	22.8	24.2	48.5	37.4	49.2	48.8	50.2
15 - 17	8.4	11.3	18.1	38.4	7.5	10.0	16.9	37.3	15.9	21.3	35.0	37.8
18 - 19	13.1	15.1	6.4	70.1	8.3	12.8	7.3	63.6	21.5	27.9	13.8	67.0
20 - 24	37.2	45.5	5.3	89.6	31.0	37.1	12.4	74.9	68.1	82.7	17.7	82.4
25 - 34	84.4	95.4	6.4	93.7	52.8	57.9	42.9	57.4	137.2	153.4	49.3	75.7
35 - 44	80.8	89.2	6.6	93.2	62.5	64.9	28.5	69.5	143.3	154.1	35.1	81.5
45 - 54	58.7	63.3	7.2	89.8	38.9	41.0	26.4	60.8	97.6	104.4	33.6	75.6
55 - 59	18.9	20.5	8.3	71.2	9.0	9.0	19.4	31.6	27.9	29.5	27.7	51.6
60 - 64	13.2	15.2	14.0	52.0	4.8	4.8	24.3	16.4	18.0	20.0	38.4	34.2
65 and over	10.4	10.7	60.9	14.9	*2.6	*2.9	90.5	*3.1	13.1	13.6	151.5	8.2
Total	325.1	366.2	133.2	73.3	217.4	240.4	268.8	47.2	542.5	606.7	402.1	60.1
TOTAL VICTORIA												
15 - 19 -	65.5	85.8	88.5	49.2	60.6	81.4	85.0	48.9	126.1	167.2	173.5	49.1
15 - 17	27.3	37.4	62.9	37.3	27.3	36.8	58.5	38.6	54.6	74.2	121.4	37.9
18 - 19	38.2	48.3	25.6	65.4	33.3	44.7	26.5	62.8	71.5	93.0	52.1	64.1
20 - 24	134.2	160.5	27.5	85.4	124.9	144.5	40.5	78.1	259.1	305.1	68.1	81.8
25 - 34	307.4	337.8	23.5	93.5	226.9	246.4	116.5	67.9	534.2	584.3	140.0	80.7
35 - 44	281.0	308.7	24.6	92.6	227.9	242.9	92.5	72.4	509.0	551.6	117.1	82.5
45 - 54	206.8	222.6	26.9	89.2	147.9	155.3	84.6	64.7	354.7	377.9	111.5	77.2
55 - 59	62.3	72.0	25.1	74.1	32.3	33.9	61.0	35.7	94.6	105.9	86.1	55.2
60 - 64	41.5	48.6	45.2	51.8	15.0	15.0	79.0	16.0	56.5	63.6	124.3	33.9
65 and over	21.3	22.0	194.5	10.2	8.9	9.4	288.2	3.2	30.2	31.4	482.7	6.1
Total	1,120.0	1,258.1	455.9	73.4	844.6	928.9	847.3	52.3	1,964.6	2,187.0	1,303.2	62.7

TABLE 11. EMPLOYED PERSONS BY INDUSTRY, VICTORIAN REGIONS, NOVEMBER 1991
(’000)

(000)									
Melbourne Statistical Division									
Industry	Outer Western	North Western	Inner	North Eastern	Inner Eastern	Southern	Outer Eastern	Mornington Peninsula	Total
MALES									
Agriculture, forestry, fishing, hunting and mining	*0.8	*0.5	*0.2	*1.0	*0.5	*0.5	*1.2	5.2	10.0
Manufacturing	37.8	16.4	10.4	23.7	20.8	19.8	27.2	42.2	198.4
Construction	10.6	3.5	*1.9	11.2	7.9	6.0	15.4	14.2	70.7
Wholesale and retail	19.4	7.2	10.4	17.7	27.7	21.4	24.6	30.4	159.0
Transport and storage	12.7	5.5	3.6	10.0	4.9	*3.5	8.2	6.9	55.3
Finance, property, and business services	9.3	4.3	13.0	12.7	23.4	13.6	15.9	11.7	103.9
Community services (a)	10.4	5.0	8.6	13.5	13.0	10.7	13.2	10.9	85.4
Recreational, personal, and other services	4.6	*1.9	10.2	*3.0	5.8	6.7	4.7	6.9	43.9
Other industries (b)	11.4	5.9	5.4	8.0	9.9	6.9	12.1	8.6	68.3
Total	116.9	50.3	63.9	100.9	113.8	89.3	122.6	137.1	794.8
FEMALES									
Agriculture, forestry, fishing, hunting and mining	*0.0	*0.8	*0.2	*0.5	*0.0	*0.5	*1.0	4.2	7.2
Manufacturing	17.2	7.3	4.4	11.4	9.3	10.5	12.4	18.2	90.8
Construction	*1.3	*0.5	*0.3	*1.2	*1.5	*1.0	*2.7	*1.0	9.5
Wholesale and retail	21.0	6.3	7.1	14.3	24.8	14.3	22.7	27.2	137.7
Transport and storage	4.2	*1.3	*1.8	*2.3	*1.2	*0.8	*2.3	*2.3	16.2
Finance, property, and business services	12.4	5.6	10.4	10.5	16.6	11.8	13.4	12.3	93.1
Community services (a)	22.6	13.0	12.5	26.8	33.4	18.8	20.9	27.2	175.2
Recreational, personal, and other services	5.6	*2.8	9.8	*2.9	10.0	6.2	7.0	9.1	53.4
Other industries (b)	5.0	4.8	3.5	5.5	7.3	5.8	4.3	7.9	44.1
Total	89.3	42.2	50.0	75.6	104.2	69.6	86.8	109.4	627.2
PERSONS									
Agriculture, forestry, fishing, hunting and mining	*0.8	*1.3	*0.5	*1.5	*0.5	*1.1	*2.2	9.4	17.2
Manufacturing	55.0	23.7	14.9	35.1	30.1	30.3	39.7	60.4	289.3
Construction	11.8	4.1	*2.2	12.5	9.4	7.0	18.1	15.2	80.2
Wholesale and retail	40.4	13.5	17.5	32.1	52.5	35.7	47.3	57.7	296.7
Transport and storage	16.9	6.8	5.4	12.3	6.1	4.3	10.6	9.2	71.5
Finance, property, and business services	21.7	9.9	23.4	23.3	40.0	25.4	29.3	24.0	197.0
Community services (a)	33.0	18.0	21.1	40.3	46.5	29.5	34.2	38.1	260.7
Recreational, personal, and other services	10.1	4.7	20.1	5.9	15.8	12.9	11.7	16.1	97.3
Other industries (b)	16.4	10.6	9.0	13.5	17.2	12.7	16.4	16.5	112.3
Total	206.2	92.6	113.9	176.4	218.1	158.9	209.4	246.6	1,422.1

TABLE 11. EMPLOYED PERSONS BY INDUSTRY, VICTORIAN REGIONS, NOVEMBER 1991 - continued
('000)

Industry	Balance of Victoria					Total Victoria		
	South Western	Western	Northern	Eastern	Total	Married	Other	Total
MALES								
Agriculture, forestry, fishing, hunting and mining	16.0	16.7	25.3	14.2	72.2	54.6	27.6	82.2
Manufacturing	21.0	8.7	16.7	10.0	56.4	173.1	81.8	254.8
Construction	7.4	4.9	9.0	7.1	28.4	64.1	35.0	99.1
Wholesale and retail	10.1	11.5	17.1	13.1	51.8	120.2	90.5	210.7
Transport and storage	4.3	*3.4	8.6	*3.3	19.7	52.2	22.8	75.0
Finance, property, and business services	*3.7	*3.4	*2.9	*4.3	14.2	78.6	39.5	118.1
Community services (a)	10.4	9.8	10.0	5.0	35.2	87.1	33.6	120.7
Recreational, personal, and other services	4.6	*2.8	6.7	*2.3	16.4	29.3	30.9	60.3
Other industries (b)	6.1	5.9	9.8	9.1	30.8	70.2	28.9	99.1
Total	83.6	67.0	106.1	68.4	325.1	729.4	390.5	1,120.0
FEMALES								
Agriculture, forestry, fishing, hunting and mining	6.4	6.2	11.4	8.0	31.9	33.3	5.8	39.1
Manufacturing	5.9	*3.5	9.8	*3.5	22.7	78.3	35.2	113.5
Construction	*0.6	*0.5	*2.3	*1.1	4.6	11.4	*2.7	14.0
Wholesale and retail	10.9	10.0	14.4	9.0	44.3	95.7	86.3	182.0
Transport and storage	*0.5	*0.3	*1.1	*0.5	*2.4	11.2	7.4	18.6
Finance, property, and business services	6.8	*4.1	*2.2	5.3	18.4	59.7	51.8	111.5
Community services (a)	15.2	12.9	19.9	8.6	56.6	149.2	82.7	231.9
Recreational, personal, and other services	5.8	5.9	6.1	*3.6	21.3	35.5	39.3	74.8
Other industries (b)	5.3	*3.3	4.4	*2.1	15.1	36.1	23.1	59.1
Total	57.4	46.6	71.6	41.8	217.4	510.2	334.4	844.6
PERSONS								
Agriculture, forestry, fishing, hunting and mining	22.3	22.8	36.8	22.2	104.1	87.9	33.4	121.3
Manufacturing	26.9	12.2	26.4	13.6	79.1	251.4	117.0	368.3
Construction	8.0	5.4	11.4	8.3	33.0	75.5	37.7	113.1
Wholesale and retail	21.0	21.5	31.5	22.0	96.1	215.9	176.9	392.8
Transport and storage	4.9	*3.7	9.6	*3.9	22.1	63.4	30.3	93.6
Finance, property, and business services	10.5	7.4	5.1	9.6	32.7	138.3	91.3	229.6
Community services (a)	25.7	22.7	29.9	13.6	91.9	236.3	116.3	352.5
Recreational, personal, and other services	10.4	8.7	12.8	5.9	37.7	64.8	70.2	135.0
Other industries (b)	11.3	9.2	14.2	11.2	45.9	106.3	51.9	158.2
Total	141.0	113.6	177.7	110.2	542.5	1,239.6	724.9	1,964.6

(a) Comprises health; education, libraries, etc.; welfare and religious institutions; and other community services. (b) Comprises electricity, gas, and water; communication; and public administration and defence.

TABLE 12. EMPLOYED PERSONS BY OCCUPATION, VICTORIAN REGIONS, NOVEMBER 1991
(^{'000})

(000)									
Melbourne Statistical Division									
Occupation	Outer Western	North Western	Inner	North Eastern	Inner Eastern	Southern	Outer Eastern	Mornington Peninsula	Total
MALES									
Managers, and administrators	9.7	3.8	9.1	10.8	18.5	19.7	18.3	16.3	106.2
Professionals	12.8	5.1	18.3	13.8	29.0	20.0	17.6	11.9	128.5
Para-professionals	5.4	*2.5	*3.0	4.8	4.1	*2.8	7.2	6.0	35.8
Tradespersons	31.6	13.3	7.0	24.8	22.2	12.6	34.0	41.7	187.2
Clerks	9.8	4.5	5.8	8.2	10.8	7.4	9.8	8.8	65.1
Salespersons, and personal service workers	8.2	3.1	8.6	10.4	12.1	10.4	12.0	11.9	76.7
Plant, and machine operators and drivers	19.8	7.7	4.2	12.0	5.5	5.6	10.1	15.1	80.1
Labourers, and related workers	19.7	10.3	7.8	16.1	11.6	10.9	13.5	25.4	115.2
Total	116.9	50.3	63.9	100.9	113.8	89.3	122.6	137.1	794.8
FEMALES									
Managers, and administrators	*2.3	*1.5	4.2	*1.7	5.5	5.2	*3.0	6.7	30.1
Professionals	10.1	5.3	11.7	11.2	20.4	12.7	10.8	9.5	91.7
Para-professionals	4.3	3.1	4.3	5.3	7.8	4.0	4.2	5.0	38.0
Tradespersons	*2.5	*2.3	*1.7	*1.8	*2.4	4.2	*3.7	*3.1	21.7
Clerks	28.3	14.7	10.9	27.7	38.3	21.4	32.9	35.6	209.7
Salespersons, and personal service workers	25.2	6.3	12.0	15.9	21.3	12.1	22.8	25.5	141.1
Plant, and machine operators and drivers	5.5	*2.5	*1.7	5.0	*2.5	*3.3	*2.0	4.0	26.5
Labourers, and related workers	11.1	6.5	3.5	7.0	6.1	6.6	7.4	20.1	68.3
Total	89.3	42.2	50.0	75.6	104.2	69.6	86.8	109.4	627.2
PERSONS									
Managers, and administrators	11.9	5.4	13.3	12.5	24.0	24.9	21.3	23.0	136.3
Professionals	22.8	10.3	30.0	25.0	49.5	32.8	28.4	21.4	220.2
Para-professionals	9.7	5.6	7.4	10.1	11.9	6.8	11.5	11.0	73.9
Tradespersons	34.1	15.6	8.7	26.6	24.6	16.9	37.7	44.8	209.0
Clerks	38.1	19.2	16.6	35.9	49.1	28.7	42.7	44.4	274.8
Salespersons, and personal service workers	33.4	9.4	20.6	26.3	33.3	22.5	34.8	37.4	217.7
Plant, and machine operators and drivers	25.3	10.3	5.9	17.0	8.0	8.9	12.1	19.1	106.6
Labourers, and related workers	30.8	16.8	11.3	23.1	17.7	17.5	20.9	45.5	183.5
Total	206.2	92.6	113.9	176.4	218.1	158.9	209.4	246.6	1,422.1

TABLE 12. EMPLOYED PERSONS BY OCCUPATION, VICTORIAN REGIONS, AUGUST 1991 - continued
(*'000*)

Occupation	Balance of Victoria					Total Victoria		
	South Western	Western	Northern	Eastern	Total	Married	Other	Total
MALES								
Managers, and administrators	15.0	18.1	27.8	14.3	75.3	149.1	32.4	181.5
Professionals	9.5	7.6	7.9	5.7	30.6	116.1	43.0	159.1
Para-professionals	6.2	*4.0	5.6	*3.2	19.0	37.8	17.0	54.8
Tradespersons	21.4	12.2	24.9	20.3	78.8	160.6	105.3	266.0
Clerks	*3.0	*4.0	*2.1	*1.9	10.9	39.7	36.3	76.0
Salespersons, and personal service workers	*3.7	4.7	8.0	*2.4	18.8	49.2	46.2	95.4
Plant, and machine operators and drivers	10.6	8.0	11.1	8.4	38.1	87.8	30.3	118.1
Labourers, and related workers	14.3	8.4	18.8	12.2	53.7	88.9	80.0	168.9
Total	83.6	67.0	106.1	68.4	325.1	729.4	390.5	1,120.0
FEMALES								
Managers, and administrators	7.2	8.1	15.3	8.1	38.7	58.4	10.4	68.8
Professionals	6.1	5.9	7.9	*3.7	23.6	69.3	46.0	115.3
Para-professionals	*3.4	*2.0	*3.8	*1.5	10.7	27.7	21.0	48.7
Tradespersons	*2.5	*2.6	*3.7	*1.4	10.2	16.7	15.2	31.9
Clerks	12.9	7.9	14.1	12.6	47.5	160.9	96.3	257.2
Salespersons, and personal service workers	15.6	11.7	12.6	7.2	47.1	84.5	103.6	188.1
Plant, and machine operators and drivers	*2.6	*0.9	*3.6	*1.1	8.2	25.7	9.0	34.7
Labourers, and related workers	7.0	7.6	10.6	6.2	31.5	66.8	33.0	99.8
Total	57.4	46.6	71.6	41.8	217.4	510.2	334.4	844.6
PERSONS								
Managers, and administrators	22.1	26.3	43.2	22.4	114.0	207.5	42.8	250.3
Professionals	15.6	13.5	15.7	9.4	54.2	185.5	89.0	274.5
Para-professionals	9.6	6.0	9.4	4.7	29.7	65.5	38.0	103.5
Tradespersons	23.9	14.8	28.6	21.7	88.9	177.4	120.5	297.9
Clerks	15.9	11.8	16.1	14.5	58.4	200.6	132.6	333.2
Salespersons, and personal service workers	19.3	16.3	20.6	9.6	65.9	133.7	149.8	283.6
Plant, and machine operators and drivers	13.2	8.9	14.6	9.5	46.3	113.6	39.3	152.9
Labourers, and related workers	21.3	16.0	29.5	18.4	85.2	155.8	113.0	268.7
Total	141.0	113.6	177.7	110.2	542.5	1,239.6	724.9	1,964.6

**TABLE 13. EMPLOYED PERSONS BY INDUSTRY AND OCCUPATION BY AGE,
VICTORIA, NOVEMBER 1991**
(^{'000})

	Age group (years)							
Classification	15 - 19	20 - 24	25 - 34	35 - 44	45 - 54	55 - 59	60 and over	Total
INDUSTRY DIVISION OR SUB-DIVISION								
Agriculture, and services to agriculture	5.8	8.6	25.5	20.8	24.2	11.3	17.3	113.5
Forestry, fishing, and hunting	*0.0	*0.3	*2.3	*0.8	*0.6	*0.3	*0.0	*4.2
Mining	*0.3	*0.5	*0.6	*1.4	*0.4	*0.0	*0.5	*3.6
Manufacturing -	18.3	44.5	101.5	94.9	76.7	18.5	14.0	368.3
Food, beverages, and tobacco	*3.3	*2.9	12.9	17.5	9.5	*2.3	*2.6	51.1
Metal products	*2.1	*4.1	11.1	11.9	7.3	*3.3	*1.9	41.8
Other manufacturing	12.8	37.5	77.5	65.5	59.9	12.8	9.6	275.5
Construction	4.8	14.7	33.0	25.2	22.1	8.0	5.2	113.1
Wholesale and retail	65.9	64.5	85.6	87.8	63.7	13.2	12.0	392.8
Transport and storage	*1.4	10.5	31.3	27.6	15.1	*4.1	*3.5	93.6
Finance, property, and business services	8.9	40.8	76.9	54.7	33.5	6.2	8.7	229.6
Community services (a)	6.2	31.8	94.4	113.4	74.3	18.6	13.8	352.5
Recreational, personal, and other services	12.2	28.1	36.5	28.6	15.4	5.8	8.5	135.0
Other industries (b)	*2.2	14.8	46.5	53.8	28.8	8.8	*3.3	158.2
Total	126.1	259.1	534.2	509.0	354.7	94.6	86.8	1,964.6
OCCUPATION								
Managers, and administrators	*0.5	8.1	46.7	74.4	73.3	20.3	27.0	250.3
Professionals	*0.9	22.2	82.1	86.7	59.3	14.0	9.2	274.5
Para-professionals	*0.6	10.6	34.9	31.5	18.3	5.5	*2.1	103.5
Tradespersons	24.3	54.3	87.9	60.5	46.3	15.7	8.9	297.9
Clerks	14.5	56.5	99.0	93.1	49.8	10.8	9.5	333.2
Salespersons, and personal service workers	51.3	62.2	69.9	55.2	30.5	6.8	7.6	283.6
Plant, and machine operators and drivers	*1.9	14.5	44.5	46.5	31.0	7.7	6.8	152.9
Labourers, and related workers	32.1	30.9	69.2	60.9	46.2	13.8	15.6	268.7
Total	126.1	259.1	534.2	509.0	354.7	94.6	86.8	1,964.6

(a) Comprises health; education, libraries, etc.; welfare and religious institutions; and other community services. (b) Comprises electricity, gas, and water; communication; and public administration and defence.

**TABLE 14. EMPLOYED PERSONS: AVERAGE WEEKLY HOURS WORKED (a) BY INDUSTRY, AND
OCCUPATION, VICTORIA, NOVEMBER 1991**
(hours)

Classification	Males			Females			Persons		
	Married	Other	Total	Married	Other	Total	Married	Other	Total
INDUSTRY DIVISION OR SUB-DIVISION									
Agriculture, and services to agriculture	59.9	51.3	57.0	30.6	27.7	30.2	48.4	47.2	48.1
Forestry, fishing, and hunting	*36.5	*56.0	44.2	*19.0	*7.0	*14.1	34.0	*48.6	39.8
Mining	*40.5	*32.2	38.1	*0.0	*32.0	*15.8	36.4	*32.2	35.1
Manufacturing -	37.7	33.4	36.3	29.0	32.2	30.0	35.0	33.0	34.3
Food, beverages, and tobacco	40.5	31.7	37.8	30.3	27.5	29.8	36.9	30.8	35.3
Metal products	41.3	32.1	38.7	26.9	25.1	26.3	38.2	30.4	36.0
Other manufacturing	36.4	33.8	35.6	28.9	33.4	30.4	34.0	33.7	33.9
Construction	36.1	32.2	34.8	13.0	26.3	15.5	32.6	31.8	32.4
Wholesale and retail	45.4	29.6	38.6	29.1	23.8	26.6	38.2	26.8	33.0
Transport and storage	40.4	38.9	40.0	29.9	32.3	30.9	38.6	37.3	38.2
Finance, property, and business services	39.3	33.6	37.4	25.7	32.1	28.7	33.5	32.7	33.2
Community services (b)	39.5	36.0	38.5	27.6	29.3	28.2	32.0	31.2	31.7
Recreational, personal, and other services	40.8	29.6	35.1	25.1	25.9	25.5	32.2	27.5	29.8
Other industries (c)	32.7	29.4	31.7	24.7	30.9	27.1	30.0	30.1	30.0
Total	40.6	33.6	38.2	27.4	28.3	27.8	35.2	31.2	33.7
OCCUPATION									
Managers, and administrators	52.9	53.4	53.0	40.7	42.5	41.0	49.5	50.8	49.7
Professionals	40.0	38.5	39.6	30.1	34.1	31.7	36.3	36.2	36.3
Para-professionals	35.2	30.0	33.6	23.0	32.1	26.9	30.0	31.1	30.4
Tradespersons	36.7	33.2	35.3	30.3	33.6	31.9	36.1	33.2	34.9
Clerks	35.2	32.9	34.1	24.8	30.2	26.8	26.9	30.9	28.5
Salespersons, and personal service workers	42.1	26.3	34.4	25.4	22.5	23.8	31.5	23.7	27.4
Plant, and machine operators and drivers	39.1	36.2	38.4	29.4	32.7	30.2	36.9	35.4	36.5
Labourers, and related workers	33.1	27.9	30.6	22.0	22.8	22.3	28.3	26.4	27.5
Total	40.6	33.6	38.2	27.4	28.3	27.8	35.2	31.2	33.7

(a) Persons with jobs who did not work during the survey week have been included in the calculation of average weekly hours worked.

The relative standard errors of these estimates are obtained by first finding the relative standard error of the estimate of the total number of persons in the estimate (see Table A), and then multiplying by a factor of 0.7. For further information refer technical notes in The Labour Force, Australia (6203.0)(monthly). (b) Comprises health; education, libraries, etc.; welfare and religious institutions; and other community services. (c) Comprises electricity, gas, and water; communication; and public administration and defence.

**TABLE 15. EMPLOYED PERSONS: STATUS OF WORKER AND HOURS WORKED,
VICTORIA, NOVEMBER 1991**

Status of worker	Males			Females			Persons		
	Married	Other	Total	Married	Other	Total	Married	Other	Total
	'000								
Employers	49.3	8.0	57.3	23.9	*2.2	26.2	73.2	10.3	83.5
Self-employed	105.2	33.1	138.3	61.9	11.6	73.4	167.0	44.7	211.7
Wage and salary earners	572.3	343.1	915.3	416.4	317.2	733.6	988.6	660.3	1,649.0
Unpaid family helpers (a)	*2.7	6.3	9.0	8.0	*3.3	11.4	10.7	9.7	20.4
Total	729.4	390.5	1,120.0	510.2	334.4	844.6	1,239.6	724.9	1,964.6
HOURS WORKED									
Employers	56.3	51.8	55.7	40.9	*44.6	41.2	51.3	50.2	51.2
Self-employed	47.2	41.0	45.8	27.8	32.5	28.6	40.0	38.8	39.8
Wage and salary earners	38.1	32.6	36.0	26.8	28.1	27.3	33.3	30.4	32.2
Unpaid family helpers (a)	21.1	28.6	26.3	15.3	26.1	18.5	16.7	27.7	21.9
Total	40.6	33.6	38.2	27.4	28.3	27.8	35.2	31.2	33.7

(a) Unpaid family helpers who worked 1 hour or more a week in a family business or farm.

**TABLE 16. UNEMPLOYED PERSONS: INDUSTRY AND OCCUPATION OF LAST JOB,
VICTORIA, NOVEMBER 1991**

Particulars	Number ('000)			Unemployment rate (per cent)		
	Males	Females	Persons	Males	Females	Persons
Employed (a) in the past two years -						
Industry -						
Manufacturing	31.7	10.7	42.4	11.1	8.6	10.3
Construction	20.3	*0.7	21.0	17.0	*4.8	15.7
Wholesale and retail	18.2	9.1	27.3	8.0	4.7	6.5
Community services (b)	4.6	4.7	9.3	3.7	2.0	2.6
Recreational, personal, and other services	*3.8	*3.9	7.7	*5.9	*4.9	5.4
Other industries (c)	19.3	7.4	26.7	4.9	3.1	4.2
Occupation -						
Tradespersons	28.7	*1.6	30.3	9.8	*4.7	9.2
Clerical	5.1	10.2	15.2	6.2	3.8	4.4
Salespersons, and personal service workers	8.2	10.4	18.6	7.9	5.2	6.1
Labourers, and related workers	30.9	8.0	38.9	15.5	7.4	12.6
Other occupations (d)	24.8	6.4	31.2	4.6	2.3	3.8
Total	97.7	36.5	134.2	8.0	4.1	6.4
Not employed (a) in the past two years	22.4	30.7	53.1
Stood down	*4.1	*3.4	7.5
Looking for first job	13.6	13.7	27.3
Total	138.1	84.3	222.4	11.0	9.1	10.2

(a) Having held a full-time job for two weeks. (b) Comprises health; education, libraries, etc.; welfare and religious institutions; and other community services. (c) Comprises agriculture and services to agriculture; forestry, fishing and hunting; mining; transport and storage; finance, property, and business services; electricity, gas, and water; communication; and public administration and defence. (d) Comprises managers and administrators; professionals; para-professionals; plant and machine operators and drivers.

**TABLE 17. UNEMPLOYED PERSONS BY DURATION OF UNEMPLOYMENT (a),
VICTORIA, NOVEMBER 1991**

<i>Particulars</i>	<i>Number ('000)</i>			<i>Percentage distribution</i>		
	<i>Males</i>	<i>Females</i>	<i>Persons</i>	<i>Males</i>	<i>Females</i>	<i>Persons</i>
Duration of unemployment (weeks) -						
Under 2	5.6	6.6	12.1	4.0	7.8	5.5
2 and under 4	9.8	9.3	19.1	7.1	11.0	8.6
4 and under 8	11.8	8.8	20.6	8.6	10.4	9.3
8 and under 13	10.0	4.9	14.9	7.3	5.8	6.7
13 and under 26	22.8	11.1	33.9	16.5	13.2	15.2
26 and under 52	39.9	19.8	59.8	28.9	23.5	26.9
52 and under 104	26.6	15.8	42.4	19.3	18.7	19.1
104 and over	11.6	8.1	19.7	8.4	9.6	8.8
Age (years) -						
15 - 19						
Under 13 weeks	6.8	8.7	15.5	4.9	10.4	7.0
13 weeks and under 52	10.4	7.5	17.8	7.5	8.9	8.0
52 weeks and over	*3.2	4.6	7.8	*2.3	5.5	3.5
Total	20.3	20.8	41.1	14.7	24.7	18.5
20 - 24						
Under 13 weeks	7.5	7.5	15.0	5.4	8.9	6.7
13 weeks and under 52	11.8	6.2	18.0	8.6	7.3	8.1
52 weeks and over	7.0	5.9	13.0	5.1	7.1	5.8
Total	26.4	19.6	46.0	19.1	23.3	20.7
25 and over						
Under 13 weeks	22.9	13.3	36.2	16.6	15.8	16.3
13 weeks and under 52	40.6	17.3	57.9	29.4	20.5	26.0
52 weeks and over	28.0	13.3	41.3	20.3	15.8	18.6
Total	91.5	43.9	135.3	66.2	52.0	60.9
Total	138.1	84.3	222.4	100.0	100.0	100.0
DURATION OF UNEMPLOYMENT (WEEKS)						
Average (mean) duration-						
Aged 15 - 19	27.2	30.1	28.6
Aged 20 - 24	37.9	36.0	37.1
Aged 25 and over	49.8	43.5	47.7
All ages	44.2	38.4	42.0
Median duration (b)-						
Aged 15 - 19	26.0	16.0	23.0
Aged 20 - 24	29.0	26.0	26.0
Aged 25 and over	31.0	26.0	29.0
All ages	30.0	26.0	28.0

(a) Period from the time a person began looking for work, or was laid off to the end of the survey week. Periods of unemployment are recorded in complete weeks resulting in a slight understatement of duration of unemployment. (b) For information regarding the calculation of standard errors, refer to technical notes in The Labour Force, Australia (6203.0)(monthly)

Information Paper: Labour Force Survey - Measuring Teenage Unemployment (6270.0)

Information Paper: Comparison of Employment Estimates From the Labour Force Survey and the Survey of Employment and Earnings (6263.0)

A Guide to Smoothing Time Series - Estimates of 'Trend' (1316.0)

Time Series Decomposition - An Overview (1317.0)

Information Paper: Revised Labour Force Survey Estimates (6276.0) (January 1984 to January 1989)

Information Paper: Measuring Employment and Unemployment (6279.0)

15. Current publications produced by the ABS are listed in the *Catalogue of Publications, Australia* (1101.0) which is available from any ABS Office.

16. Other unpublished data from labour force surveys on aspects of the Victorian labour force are held by the Victorian Office of the ABS, and may be available on request.

Statistics on DISCOVERY

17. Selected economic, social, and population statistics are available on *DISCOVERY* *656#.

Symbols and other usages

n.a. not available

n.e.c. not elsewhere classified

.. not applicable

r revised

* subject to sampling variability too high for most practical purposes

Where figures have been rounded, discrepancies may occur between sums of the component items and totals.

R. A. CROCKETT

Deputy Commonwealth Statistician

MORE LABOUR FORCE DATA

Much more information about the labour force can be made available, subject to statistical reliability. Time series are available for \$5.00 per series. Tailor-made tables can be provided in various media (cost depends on table complexity). Data items available include:

Employed persons
Unemployed persons
Participation rate
Unemployment rate
Persons not in the labour force

These items can be further classified by:

Sex	Hours worked
Age	Industry
Marital status	Occupation
Country of birth	Duration of Unemployment
Period of arrival	School attendance
Status of worker	Dissemination region
Full-time/part-time status	and more...

Contact: Andrew Brown (03) 615 7679

TABLE A: STANDARD ERRORS OF ESTIMATES, STATISTICAL REGIONS, VICTORIA (a)

Size of estimate	Victoria; Melbourne; Balance of Victoria	Outer Western Melbourne	North Western Melbourne	Inner Melbourne	North Eastern Melbourne	Inner Eastern Melbourne	Southern Melbourne	Outer Eastern Melbourne	Mornington Peninsula	South Western Victoria	Western Victoria	Northern Victoria	Eastern Victoria
500	370	290	290	320	320	300	350	330	310	340	370	340	360
1,000	530	410	420	450	450	430	490	460	440	490	520	490	520
2,000	750	590	600	640	640	620	700	660	630	690	740	700	740
2,500	840	660	670	720	720	690	790	740	700	780	830	780	830
3,000	910	720	730	790	790	760	860	810	770	850	910	860	910
3,500	980	780	790	860	860	820	930	880	840	920	990	930	980
4,000	1,050	840	850	920	920	880	1,000	940	900	990	1,050	1,000	1,050
4,500	1,100	890	900	980	980	940	1,050	1,000	950	1,050	1,100	1,050	1,100
5,000	1,150	940	960	1,050	1,050	990	1,100	1,050	1,000	1,100	1,200	1,100	1,200
6,000	1,250	1,050	1,050	1,150	1,150	1,100	1,250	1,150	1,100	1,200	1,300	1,250	1,300
8,000	1,450	1,200	1,200	1,300	1,300	1,250	1,450	1,350	1,300	1,400	1,500	1,450	1,500
10,000	1,600	1,350	1,350	1,500	1,500	1,400	1,600	1,500	1,450	1,600	1,700	1,600	1,700
20,000	2,200	1,950	1,950	2,100	2,100	2,050	2,300	2,200	2,050	2,300	2,450	2,300	2,400
30,000	2,600	2,400	2,450	2,600	2,600	2,500	2,850	2,700	2,550	2,800	3,000	2,850	3,000
40,000	2,950	2,800	2,800	3,050	3,050	2,900	3,300	3,150	2,950	3,300	3,500	3,300	3,500
50,000	3,250	3,150	3,150	3,450	3,450	3,300	3,750	3,500	3,350	3,700	3,950	3,700	3,900
100,000	4,300	4,500	4,550	4,950	4,950	4,750	5,400	5,100	4,800	5,300	5,700	5,400	5,600
200,000	5,600	6,500	6,600	7,100	7,100	6,800	7,800	7,300	7,000	7,700	8,200	7,700	8,200
300,000	6,600	8,100	8,200	8,900	8,900	8,500	9,600	9,100	8,600	9,500	10,200	9,600	10,100
400,000	7,300	9,400	9,600	10,300	10,300	9,900	11,200	10,600	10,100	11,100	11,900	11,200	11,800
500,000	7,900	10,600	10,800	11,600	11,700	11,100	12,700	11,900	11,400	12,500	13,400	12,600	13,300
1,000,000	10,100	15,400	15,600	16,900	16,900	16,200	18,400	17,300	16,500	18,200	19,400	18,300	19,300
2,000,000	12,800	22,400	22,700	24,600	24,600	23,500	26,700	25,200	24,000	26,400	28,300	26,600	28,100
5,000,000	17,100	36,900	37,400	40,400	40,500	38,700	44,000	41,500	39,500	43,500	46,500	43,800	46,200

(a) From March 1989, standard errors have been revised consistent with the new labour force sample introduced over the period September to December 1987.

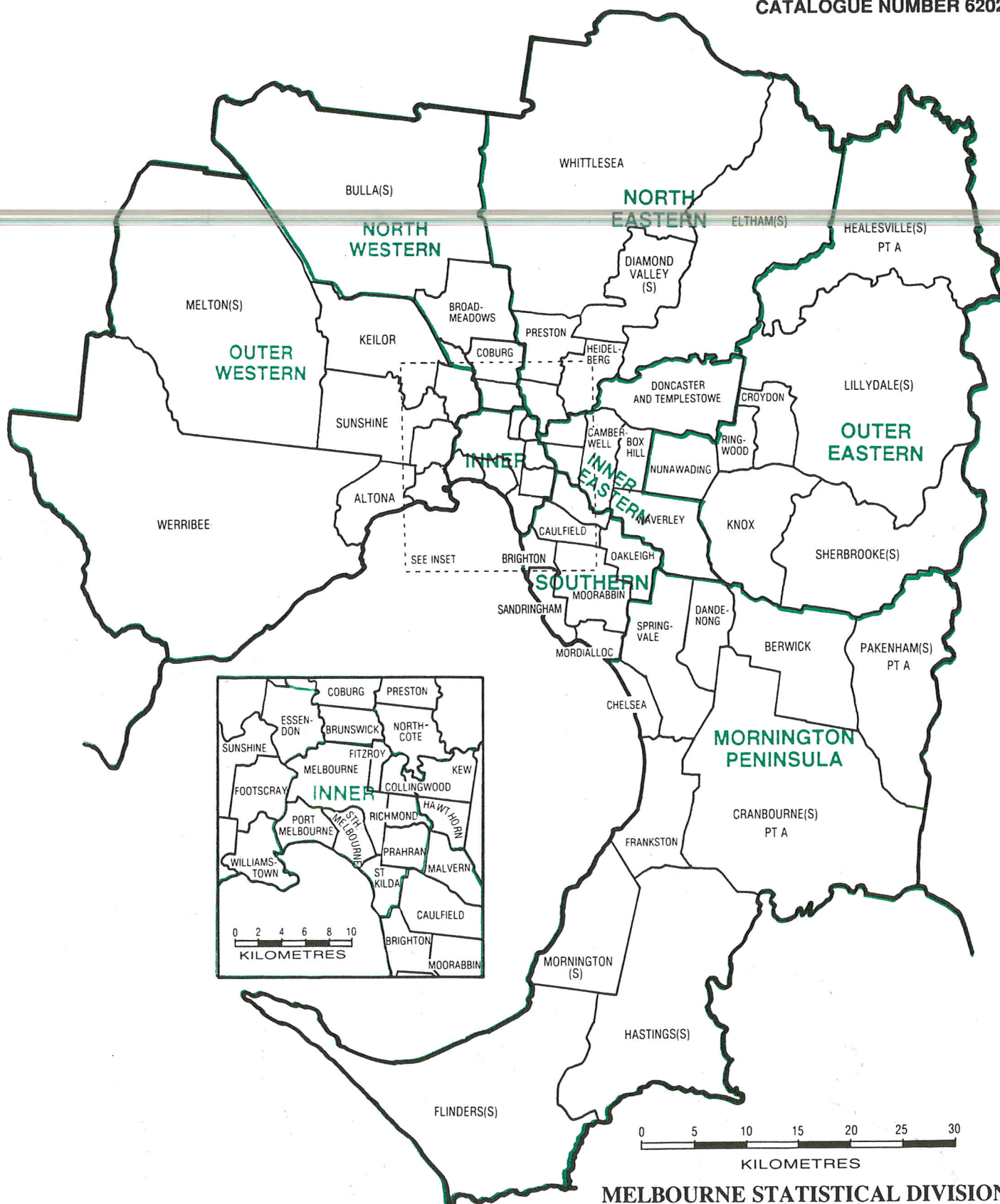
TABLE B: STANDARD ERRORS OF ESTIMATES OF MONTH TO MONTH MOVEMENTS, STATISTICAL REGIONS, VICTORIA (a)

Size of estimate	Victoria; Melbourne; Balance of Victoria	Outer Western Melbourne	North Western Melbourne	Inner Melbourne	North Eastern Melbourne	Inner Eastern Melbourne	Southern Melbourne	Outer Eastern Melbourne	Mornington Peninsula	South Western Victoria	Western Victoria	Northern Victoria	Eastern Victoria
500	440	250	210	260	240	260	250	250	280	250	280	280	280
1,000	570	340	280	360	330	350	340	340	370	340	380	370	380
2,000	740	460	380	480	450	480	460	460	500	460	510	510	510
2,500	800	510	420	530	490	530	510	510	550	510	560	560	560
3,000	860	550	460	580	530	570	550	550	600	550	600	600	610
3,500	910	590	490	620	570	610	590	590	640	580	650	650	650
4,000	950	620	520	650	600	640	630	630	680	620	680	680	690
4,500	1,000	660	540	690	630	680	660	660	710	650	720	720	730
5,000	1,050	690	570	720	660	710	690	690	750	680	750	750	760
6,000	1,100	740	620	780	720	770	750	750	810	740	820	820	820
8,000	1,250	840	700	880	810	870	850	850	920	840	920	920	930
10,000	1,350	930	770	970	900	960	930	930	1,000	920	1,000	1,000	1,050
20,000	1,700	1,250	1,050	1,300	1,200	1,300	1,250	1,250	1,350	1,250	1,400	1,350	1,400
30,000	2,000	1,500	1,250	1,550	1,450	1,550	1,500	1,500	1,650	1,500	1,650	1,650	1,650
40,000	2,200	1,700	1,400	1,750	1,650	1,750	1,700	1,700	1,850	1,700	1,850	1,850	1,850
50,000	2,400	1,850	1,550	1,950	1,800	1,900	1,900	1,850	2,050	1,850	2,050	2,050	2,050
100,000	3,100	2,500	2,100	2,650	2,450	2,600	2,550	2,550	2,750	2,500	2,750	2,750	2,800
200,000	4,000	3,400	2,800	3,550	3,300	3,500	3,100	3,400	3,700	3,400	3,750	3,750	3,750
300,000	4,650	4,050	3,350	4,250	3,900	4,200	4,100	4,050	4,400	4,050	4,450	4,450	4,500
400,000	5,200	4,600	3,800	4,800	4,450	4,750	4,600	4,600	5,000	4,550	5,000	5,000	5,100
500,000	5,600	5,100	4,200	5,300	4,900	5,200	5,100	5,100	5,500	5,000	5,600	5,500	5,600
1,000,000	7,300	6,800	5,700	7,200	6,600	7,100	6,900	6,900	7,400	6,800	7,500	7,500	7,600
2,000,000	9,400	9,200	7,700	9,700	8,900	9,500	9,300	9,300	10,000	9,200	10,100	10,100	10,200
5,000,000	13,100	13,700	11,400	14,400	13,300	14,200	13,800	13,800	14,900	13,600	15,100	15,100	15,200

(a) From March 1989, standard errors have been revised consistent with the new labour force sample introduced over the period September to December 1987.

Statistical Local Areas

[illegible]



MELBOURNE STATISTICAL DIVISION
Statistical Local Areas
LABOUR FORCE REGIONS



2062022011912

ISSN 1030-536X