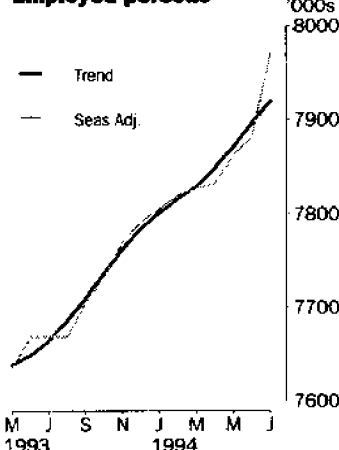


LABOUR FORCE

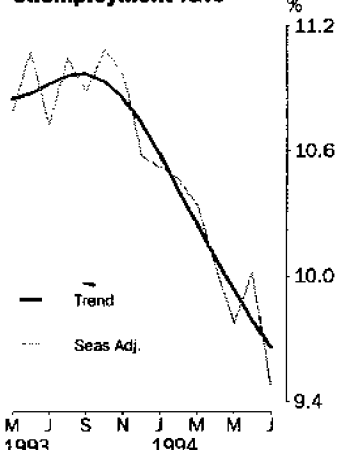
AUSTRALIA
PRELIMINARY

EMBARGOED UNTIL 11:30AM THURS 11 AUGUST 1994

Employed persons



Unemployment rate



JULY KEY ESTIMATES

TREND ESTIMATES

	Jun 94	Jul 94	monthly change
Employed persons (no. in '000s)	7 896.0	7 919.4	0.3 %
Unemployed persons (no. in '000s)	857.1	847.2	-1.2 %
Unemployment rate (%)	9.8	9.7	-0.1 pts
Participation rate (%)	62.8	62.9	0.0 pts

SEASONALLY ADJUSTED

	Jun 94	Jul 94	monthly change
Employed persons (no. in '000s)	7 882.0	7 972.2	90.2
Unemployed persons (no. in '000s)	877.7	833.9	-43.7
Unemployment rate (%)	10.0	9.5	-0.5 pts
Participation rate (%)	62.9	63.2	0.3 pts

JULY KEY POINTS

TREND ESTIMATES

EMPLOYMENT

- continues to increase and is now 4.0% higher than the January 1993 low point.

UNEMPLOYMENT

- fell for the tenth successive month to 847,200, the lowest level since August 1991.

UNEMPLOYMENT RATE

- has decreased in each of the last ten months and now stands at 9.7%.

PARTICIPATION RATE

- now stands at 62.9%, after remaining at 62.8% for the previous four months.

SEASONALLY ADJUSTED ESTIMATES

EMPLOYMENT

- increased by 90,200 to 7,972,200, which exceeds the previous peak of 7,910,200 in July 1990. Part-time employment increased by 67,600 to 1,937,500, with a rise of 43,900 in female part-time employment.

UNEMPLOYMENT

- Unemployment fell by 43,700 to 833,900 mainly due to a fall of 40,200 in the number of males seeking full-time work.

UNEMPLOYMENT RATE

- for males, the rate fell by 0.9 percentage points to 9.5% while for females, the rate fell by 0.1 percentage points to 9.4%.
- NSW 9.5% (10.0% last month); Vic. 10.2% (10.7%); Qld 9.0% (9.3%); SA 10.4% (11.2%); WA 8.1% (8.9%); Tas. 10.9% (9.9%).

PARTICIPATION RATE

- increased by 0.3 percentage points to 63.2%, mainly due to a rise of 0.6 percentage points in the female participation rate.

INQUIRIES

- For further information about these and related statistics, contact Sylvia Sajler on 06 252 6525 or any ABS office.

FORTHCOMING ISSUES

ISSUE	RELEASE DATE
August 1994	8 September 1994
September 1994	13 October 1994
October 1994	10 November 1994
November 1994	8 December 1994
December 1994	12 January 1995
January 1995	9 February 1995

ROUNDING

Estimates of monthly change shown on page 1 have been calculated using unrounded estimates, and may be different from, but are more accurate than, movements obtained from the rounded estimates. The graphs on page 1 also depict movements calculated from unrounded estimates.

SAMPLING ERRORS

The estimates in this publication are based on a sample survey. Because the entire population is not enumerated, the published estimates and the movements derived from them are subject to sampling variability. Standard errors give a measure of this variability and appear on pages 30 and 31.

The 95% confidence intervals below provide another way of looking at the variability inherent in estimates from sample surveys. The interval bounded by the two limits is the 95% confidence interval. A 95% confidence interval indicates that we are 95% confident that the upper and lower limits enclose the true value of the estimate.

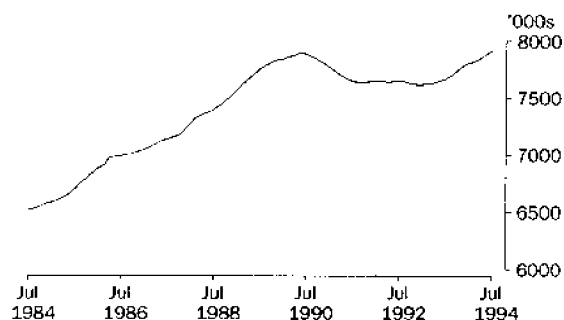
SEASONALLY ADJUSTED DATA SERIES	MOVEMENTS JUNE 1994 TO JULY 1994		
	Monthly change	95% Confidence interval	
Total employment	90 200	51 800	to 128 600
Total unemployment	-43 700	-60 300	to -27 100
Unemployment rate	-0.5 pts	-0.7 pts	to -0.3 pts
Participation rate	0.3 pts	0.1 pts	to 0.5 pts

IAN CASTLES
AUSTRALIAN STATISTICIAN

PRINCIPAL LABOUR FORCE SERIES: Trend estimates

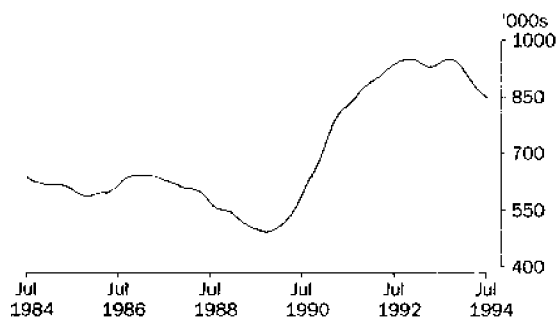
EMPLOYED PERSONS

The trend in employment continues to increase and in July 1994 stood at 7,919,400, 0.3% higher than the peak of 7,894,100 four years earlier and 4.0% higher than the January 1993 low of 7,617,800.



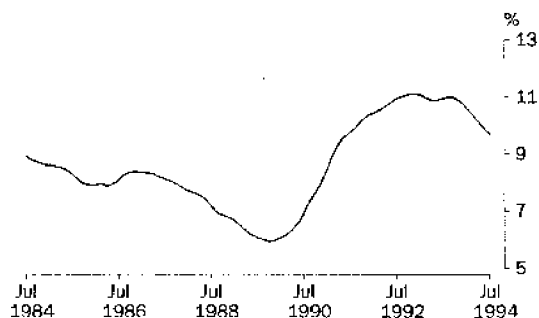
UNEMPLOYED PERSONS

The trend estimate of unemployment has fallen in each of the last ten months and in July 1994 it stood at 847,200, the lowest level since August 1991.



UNEMPLOYMENT RATE

The trend unemployment rate has been falling since September 1993, to stand at 9.7% in July 1994 (1.4 percentage points lower than the October to December 1992 peak).

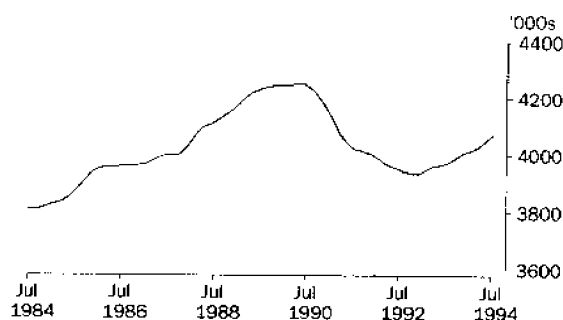


EMPLOYED PERSONS: Trend estimates

MALES EMPLOYED FULL TIME

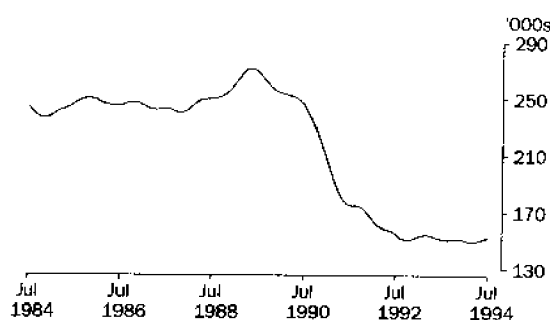
TOTAL

After falling to 3,935,300 in November 1992, trend estimates of males employed full time have been steadily increasing. In July 1994, male full-time employment stood at 4,069,900, 3.4% higher than the November 1992 low point.



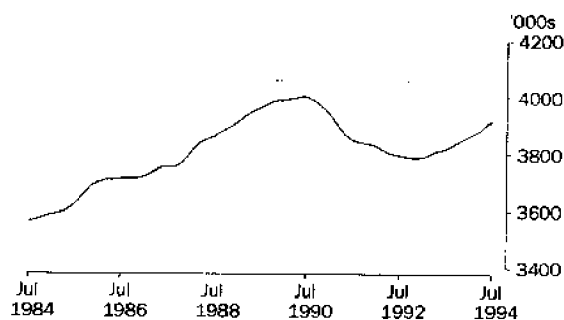
MALES AGED 15-19

The trend estimate of males aged 15 to 19 employed full time has remained relatively flat over the past two years, after falling markedly from a peak of 271,300 in May 1989. In July 1994, the trend stood at 152,300.



MALES AGED 20 AND OVER

After falling from a peak of 4,000,900 in June 1990 to a low of 3,784,400 in December 1992, the full-time employment trend for males aged 20 and over has been steadily increasing and now stands at 3,917,600, 2.1% lower than the June 1990 peak.

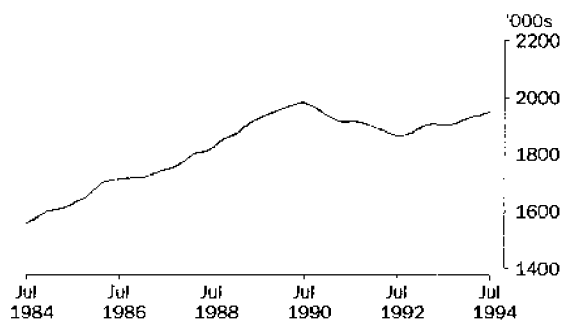


EMPLOYED PERSONS: Trend estimates

FEMALES EMPLOYED FULL TIME

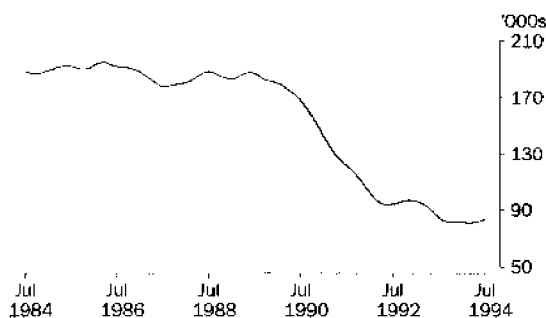
TOTAL

After reaching a peak of 1,980,100 in June 1990, trend estimates of the number of females employed full time fell to 1,865,200 in August 1992. Since then, the trend has been generally increasing and in July 1994 stood at 1,948,700, 1.6% lower than the June 1990 peak.



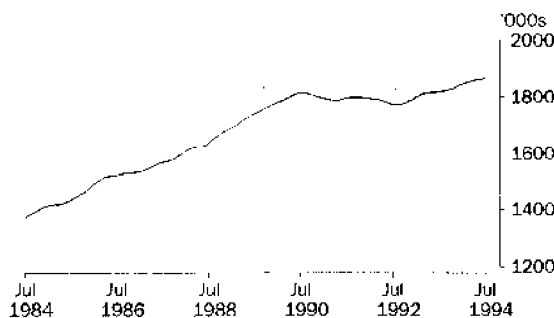
FEMALES AGED 15-19

After falls between December 1992 and October 1993, the trend in full-time employment for females aged 15 to 19 has begun to increase, rising in each of the last four months and now stands at 84,600.



FEMALES AGED 20 AND OVER

Trend estimates of full-time employment for females aged 20 and over have been increasing since September 1992, and the trend now stands at 1,864,100, the highest level recorded by the survey.



LABOUR FORCE STATUS (AGED 15 AND OVER): Original

EMPLOYED.....

UNEMPLOYED.....

Month	Employed full time '000s	Employed part time '000s	Total employed '000s	Unemp. looking for f/t work '000s	Unemp. looking for p/t work '000s	Total unemployed '000s	Labour force '000s	Not in labour force '000s	Civilian population aged 15 and over '000s	Unemp- loyment rate %	Partic- ipation rate %
MALES											
1993											
May	3 955.6	444.2	4 399.9	529.4	51.7	581.2	4 981.0	1 787.3	6 768.3	11.7	73.6
June	3 973.6	449.6	4 423.2	521.0	45.2	566.2	4 989.4	1 785.7	6 775.1	11.3	73.6
July	3 981.3	453.0	4 434.3	509.7	41.5	551.2	4 985.5	1 795.7	6 781.2	11.1	73.5
August	3 933.4	449.3	4 382.7	518.5	46.0	564.5	4 947.2	1 840.5	6 787.6	11.4	72.9
September	3 986.6	476.3	4 462.9	508.9	50.6	559.5	5 022.4	1 771.7	6 794.1	11.1	73.9
October	4 009.0	455.7	4 464.7	491.6	48.0	539.6	5 004.3	1 796.6	6 800.8	10.8	73.6
November	4 000.2	454.1	4 454.3	488.8	41.1	530.0	4 984.3	1 823.3	6 807.6	10.6	73.2
December	4 071.6	448.7	4 520.3	513.2	51.1	564.3	5 084.6	1 729.7	6 814.3	11.1	74.6
1994											
January	3 995.3	453.5	4 448.8	537.6	55.8	593.4	5 042.2	1 779.3	6 821.5	11.8	73.9
February	4 009.4	451.2	4 460.6	538.7	53.2	591.9	5 052.5	1 776.2	6 828.7	11.7	74.0
March	4 003.3	485.7	4 488.9	497.9	63.0	560.9	5 049.9	1 786.0	6 835.9	11.1	73.9
April	4 022.4	478.2	4 500.6	478.7	44.7	523.4	5 024.0	1 818.5	6 842.5	10.4	73.4
May	4 041.4	473.0	4 514.4	465.5	45.3	510.9	5 025.3	1 823.8	6 849.1	10.2	73.4
June	4 053.4	481.4	4 534.8	450.5	48.2	498.7	5 033.5	1 822.2	6 855.7	9.9	73.4
July	4 095.4	490.4	4 585.7	422.0	45.8	467.8	5 053.5	1 809.5	6 863.1	9.3	73.6
FEMALES											
1993											
May	1 890.4	1 359.7	3 250.1	248.0	94.3	342.3	3 592.4	3 391.1	6 983.5	9.5	51.4
June	1 899.6	1 354.2	3 253.8	254.9	93.4	348.3	3 602.1	3 388.0	6 990.1	9.7	51.5
July	1 905.9	1 341.2	3 247.1	249.7	90.8	340.5	3 587.6	3 409.2	6 996.8	9.5	51.3
August	1 867.2	1 371.1	3 238.3	255.9	95.6	351.6	3 589.8	3 413.8	7 003.7	9.8	51.3
September	1 901.8	1 416.1	3 317.9	267.1	105.2	372.2	3 690.1	3 320.4	7 010.6	10.1	52.6
October	1 915.6	1 385.6	3 301.1	258.8	104.0	362.8	3 663.9	3 353.8	7 017.7	9.9	52.2
November	1 907.9	1 406.8	3 314.7	259.8	103.9	363.7	3 678.4	3 346.4	7 024.8	9.9	52.4
December	1 970.0	1 384.9	3 354.9	272.6	104.5	377.1	3 732.0	3 299.9	7 031.9	10.1	53.1
1994											
January	1 929.9	1 297.2	3 227.1	286.3	100.4	386.7	3 613.8	3 425.1	7 038.9	10.7	51.3
February	1 940.3	1 351.2	3 291.5	296.5	118.5	415.0	3 706.6	3 339.2	7 045.7	11.2	52.6
March	1 936.9	1 412.4	3 349.3	269.7	118.6	388.3	3 737.6	3 315.1	7 052.7	10.4	53.0
April	1 909.1	1 425.8	3 334.9	252.0	107.8	359.8	3 694.7	3 365.0	7 059.7	9.7	52.3
May	1 922.6	1 442.2	3 364.8	238.6	100.4	339.0	3 703.8	3 363.0	7 066.8	9.2	52.4
June	1 937.1	1 420.9	3 357.9	240.2	100.3	340.5	3 698.4	3 375.4	7 073.9	9.2	52.3
July	1 962.7	1 436.5	3 399.2	234.2	101.8	336.1	3 735.3	3 346.1	7 081.5	9.0	52.7
PERSONS											
1993											
May	5 846.0	1 803.9	7 649.9	777.4	146.1	923.5	8 573.4	5 178.3	13 751.8	10.8	62.3
June	5 873.2	1 803.8	7 677.0	775.9	138.6	914.5	8 591.5	5 173.7	13 765.2	10.6	62.4
July	5 887.2	1 794.2	7 681.4	759.4	132.3	891.7	8 573.1	5 204.9	13 778.0	10.4	62.2
August	5 800.5	1 820.5	7 621.0	774.4	141.6	916.0	8 537.0	5 254.3	13 791.3	10.7	61.9
September	5 888.3	1 892.5	7 780.8	776.0	155.7	931.7	8 712.5	5 092.2	13 804.7	10.7	63.1
October	5 924.6	1 841.3	7 765.9	750.4	152.0	902.4	8 668.2	5 150.3	13 818.6	10.4	62.7
November	5 908.1	1 860.9	7 769.0	748.7	145.0	893.7	8 662.7	5 169.7	13 832.4	10.3	62.6
December	6 041.5	1 833.6	7 875.2	785.8	155.6	941.5	8 816.7	5 029.6	13 846.3	10.7	63.7
1994											
January	5 925.2	1 750.7	7 675.9	823.9	156.2	980.1	8 656.0	5 204.4	13 860.4	11.3	62.5
February	5 949.7	1 802.4	7 752.1	835.2	171.7	1 006.9	8 759.0	5 115.4	13 874.4	11.5	63.1
March	5 940.1	1 898.1	7 838.2	767.6	181.6	949.2	8 787.4	5 101.1	13 888.5	10.8	63.3
April	5 931.5	1 904.0	7 835.5	730.7	152.5	883.2	8 718.7	5 183.5	13 902.2	10.1	62.7
May	5 964.0	1 915.2	7 879.2	704.2	145.7	849.9	8 729.1	5 186.8	13 915.9	9.7	62.7
June	5 990.4	1 902.3	7 892.7	690.7	148.5	839.2	8 731.9	5 197.7	13 929.6	9.6	62.7
July	6 058.1	1 926.9	7 985.0	656.2	147.7	803.9	8 788.9	5 155.7	13 944.5	9.1	63.0

LABOUR FORCE STATUS (AGED 15 AND OVER): Seasonally adjusted

Month	EMPLOYED.....			UNEMPLOYED.....					
	Employed full time	Employed part time	Total employed	Unemp. looking for f/t work	Unemp. looking for p/t work	Total unemployed	Labour force	Unemp- loyment rate	Partic- ipation rate
	'000s	'000s	'000s	'000s	'000s	'000s	'000s	%	%
MALES									
1993									
May	3 965.0	435.2	4 400.1	526.9	51.5	578.4	4 978.5	11.6	73.6
June	3 979.4	439.1	4 418.5	540.2	52.9	593.1	5 011.6	11.8	74.0
July	3 967.1	456.1	4 423.2	516.0	47.4	563.4	4 986.6	11.3	73.5
August	3 962.9	448.2	4 411.1	525.1	53.1	578.2	4 989.3	11.6	73.5
September	3 975.6	459.8	4 435.5	518.4	50.0	568.4	5 003.9	11.4	73.7
October	3 988.7	453.8	4 442.5	524.9	49.9	574.8	5 017.3	11.5	73.8
November	4 013.3	458.1	4 471.5	512.5	50.0	562.6	5 034.0	11.2	73.9
December	4 016.1	460.9	4 477.0	504.8	44.8	549.6	5 026.6	10.9	73.8
1994									
January	4 011.5	479.5	4 491.0	495.1	50.3	545.4	5 036.5	10.8	73.8
February	4 012.5	470.1	4 482.6	501.4	47.4	548.9	5 031.5	10.9	73.7
March	4 013.8	474.0	4 487.8	491.1	54.0	545.1	5 033.0	10.8	73.6
April	4 036.5	466.4	4 502.9	481.9	41.9	523.8	5 026.8	10.4	73.5
May	4 051.1	463.5	4 514.6	463.8	45.2	509.0	5 023.6	10.1	73.3
June	4 059.1	469.9	4 528.9	467.5	56.3	523.7	5 052.7	10.4	73.7
July	4 080.4	493.6	4 574.0	427.2	52.4	479.6	5 053.6	9.5	73.6
FEMALES									
1993									
May	1 898.5	1 336.7	3 235.2	247.5	97.5	344.9	3 580.1	9.6	51.3
June	1 915.4	1 334.3	3 249.7	262.7	99.4	362.1	3 611.8	10.0	51.7
July	1 897.9	1 348.1	3 246.0	256.6	101.3	357.9	3 603.9	9.9	51.5
August	1 900.4	1 356.7	3 257.1	270.4	103.8	374.2	3 631.3	10.3	51.8
September	1 894.1	1 377.0	3 271.0	276.3	96.4	372.7	3 643.8	10.2	52.0
October	1 913.7	1 376.7	3 290.4	280.7	108.9	389.6	3 680.1	10.6	52.4
November	1 910.9	1 389.0	3 299.9	281.1	114.0	395.1	3 695.0	10.7	52.6
December	1 925.4	1 389.6	3 315.0	265.7	106.2	371.9	3 686.9	10.1	52.4
1994									
January	1 909.0	1 405.2	3 314.2	263.6	108.6	372.3	3 686.5	10.1	52.4
February	1 947.8	1 389.3	3 337.1	260.0	105.1	365.1	3 702.1	9.9	52.5
March	1 937.6	1 401.3	3 339.0	259.7	97.9	357.6	3 696.6	9.7	52.4
April	1 923.7	1 405.9	3 329.6	250.6	100.6	351.3	3 680.9	9.5	52.1
May	1 930.6	1 417.8	3 348.4	238.5	104.3	342.8	3 691.2	9.3	52.2
June	1 953.0	1 400.1	3 353.1	247.4	106.6	353.9	3 707.0	9.5	52.4
July	1 954.3	1 443.9	3 398.2	240.6	113.7	354.3	3 752.5	9.4	53.0
PERSONS									
1993									
May	5 863.5	1 771.8	7 635.3	774.3	149.0	923.4	8 558.7	10.8	62.2
June	5 894.8	1 773.4	7 668.2	802.9	152.2	955.2	8 623.3	11.1	62.6
July	5 865.0	1 804.1	7 669.2	772.7	148.7	921.3	8 590.5	10.7	62.3
August	5 863.4	1 804.9	7 668.2	795.5	156.9	952.4	8 620.6	11.0	62.5
September	5 869.7	1 836.8	7 706.5	794.7	146.4	941.1	8 647.6	10.9	62.6
October	5 902.4	1 830.5	7 733.0	805.7	158.8	964.4	8 697.4	11.1	62.9
November	5 924.2	1 847.1	7 771.3	793.6	164.0	957.7	8 729.0	11.0	63.1
December	5 941.5	1 850.5	7 792.0	770.6	150.9	921.5	8 713.5	10.6	62.9
1994									
January	5 920.5	1 884.7	7 805.3	758.7	159.0	917.7	8 723.0	10.5	62.9
February	5 960.3	1 859.4	7 819.7	761.4	152.5	913.9	8 733.6	10.5	62.9
March	5 951.4	1 875.3	7 826.8	750.8	151.9	902.7	8 729.5	10.3	62.9
April	5 960.2	1 872.3	7 832.5	732.6	142.6	875.1	8 707.7	10.1	62.6
May	5 981.7	1 881.3	7 863.0	702.3	149.5	851.8	8 714.8	9.8	62.6
June	6 012.1	1 869.9	7 882.0	714.8	162.9	877.7	8 759.7	10.0	62.9
July	6 034.7	1 937.5	7 972.2	667.8	166.1	833.9	8 806.1	9.5	63.2

LABOUR FORCE STATUS (AGED 15 AND OVER): Trend¹

Month	EMPLOYED.....			UNEMPLOYED.....					
	Employed full time	Employed part time	Total employed	Unemp. looking for f/t work	Unemp. looking for p/t work	Total unemployed	Labour force	Unemp- loyment rate	Partic- ipation rate
	'000s	'000s	'000s	'000s	'000s	'000s	'000s	%	%
MALES									
1993									
May	3 963.2	437.9	4 401.1	527.4	51.2	578.6	4 979.6	11.6	73.6
June	3 965.4	441.8	4 407.3	526.5	51.7	578.2	4 985.4	11.6	73.6
July	3 968.6	446.6	4 415.2	525.9	51.4	577.3	4 992.5	11.6	73.6
August	3 974.2	451.0	4 425.2	524.4	50.7	575.1	5 000.3	11.5	73.7
September	3 982.2	454.5	4 436.7	521.3	50.0	571.4	5 008.0	11.4	73.7
October	3 991.3	458.2	4 449.6	517.1	49.5	566.6	5 016.1	11.3	73.8
November	4 000.0	462.0	4 462.0	512.7	49.2	561.8	5 023.8	11.2	73.8
December	4 007.4	465.7	4 473.1	507.7	48.7	556.4	5 029.6	11.1	73.8
1994									
January	4 013.0	468.3	4 481.4	502.5	48.2	550.7	5 032.0	10.9	73.8
February	4 018.1	469.7	4 487.8	495.9	47.9	543.9	5 031.7	10.8	73.7
March	4 025.2	470.2	4 495.4	488.1	48.1	536.2	5 031.5	10.7	73.6
April	4 035.3	470.7	4 506.0	478.7	48.6	527.3	5 033.3	10.5	73.6
May	4 047.2	472.2	4 519.4	468.0	49.4	517.4	5 036.7	10.3	73.5
June	4 059.0	474.6	4 533.6	457.1	50.4	507.5	5 041.2	10.1	73.5
July	4 069.9	477.0	4 547.0	447.1	51.3	498.4	5 045.4	9.9	73.5
FEMALES									
1993									
May	1 905.2	1 331.7	3 236.8	255.3	95.6	351.0	3 587.8	9.8	51.4
June	1 903.3	1 338.0	3 241.4	257.7	97.3	355.0	3 596.3	9.9	51.4
July	1 902.1	1 347.4	3 249.5	262.8	99.6	362.4	3 611.9	10.0	51.6
August	1 901.9	1 358.6	3 260.5	268.9	102.2	371.1	3 631.7	10.2	51.9
September	1 903.2	1 369.8	3 273.1	273.9	104.8	378.7	3 651.8	10.4	52.1
October	1 907.1	1 379.4	3 286.5	276.1	106.8	383.0	3 669.5	10.4	52.3
November	1 913.0	1 386.5	3 299.5	275.2	107.9	383.1	3 682.6	10.4	52.4
December	1 919.4	1 392.1	3 311.4	271.7	107.8	379.4	3 690.8	10.3	52.5
1994									
January	1 924.9	1 395.5	3 320.5	266.4	106.3	372.7	3 693.2	10.1	52.5
February	1 929.0	1 398.3	3 327.3	260.4	104.3	364.8	3 692.1	9.9	52.4
March	1 932.4	1 401.7	3 334.1	255.1	103.0	358.1	3 692.2	9.7	52.4
April	1 936.0	1 406.4	3 342.4	250.6	103.0	353.6	3 696.0	9.6	52.4
May	1 940.1	1 412.0	3 352.1	246.7	104.3	351.0	3 703.0	9.5	52.4
June	1 944.2	1 418.2	3 362.4	243.4	106.2	349.6	3 711.9	9.4	52.5
July	1 948.7	1 423.7	3 372.5	240.7	108.1	348.8	3 721.2	9.4	52.5
PERSONS									
1993									
May	5 868.3	1 769.6	7 637.9	782.7	146.9	929.5	8 567.4	10.8	62.3
June	5 868.8	1 779.9	7 648.6	784.2	148.9	933.1	8 581.8	10.9	62.3
July	5 870.7	1 794.0	7 664.7	788.7	151.0	939.7	8 604.4	10.9	62.5
August	5 876.1	1 809.7	7 685.7	793.3	153.0	946.3	8 632.0	11.0	62.6
September	5 885.4	1 824.4	7 709.7	795.3	154.8	950.1	8 659.8	11.0	62.7
October	5 898.4	1 837.6	7 736.1	793.3	156.3	949.6	8 685.6	10.9	62.9
November	5 912.9	1 848.5	7 761.4	787.9	157.0	944.9	8 706.3	10.9	62.9
December	5 926.8	1 857.8	7 784.6	779.4	156.5	935.8	8 720.4	10.7	63.0
1994									
January	5 938.0	1 863.9	7 801.8	768.9	154.5	923.4	8 725.2	10.6	63.0
February	5 947.1	1 868.0	7 815.1	756.4	152.3	908.6	8 723.8	10.4	62.9
March	5 957.6	1 871.9	7 829.5	743.2	151.0	894.2	8 723.8	10.3	62.8
April	5 971.3	1 877.1	7 848.4	729.3	151.6	880.9	8 729.3	10.1	62.8
May	5 987.2	1 884.2	7 871.4	714.7	153.7	868.3	8 739.8	9.9	62.8
June	6 003.2	1 892.8	7 896.0	700.5	156.6	857.1	8 753.1	9.8	62.8
July	6 018.7	1 900.8	7 919.4	687.8	159.4	847.2	8 766.6	9.7	62.9

¹ Estimates for January 1994 to June 1994 have been revised.

UNEMPLOYED PERSONS: Original

NUMBER OF UNEMPLOYED PERSONS.....

UNEMPLOYMENT RATE.....

Month	Aged 15-19 seeking first f/t job '000s	Aged 15-19 looking for f/t work '000s	Aged 20 and over looking for f/t work '000s	Total looking for f/t work '000s	Looking for p/t work '000s	Total unemployed '000s	Aged 15-19 looking for f/t work %	Aged 20 and over looking for f/t work %	Total looking for f/t work %	Looking for p/t work %	Total unemp-loyed %
MALES											
1993											
May	29.8	60.4	469.0	529.4	51.7	581.2	29.2	11.0	11.8	10.4	11.7
June	26.0	57.1	463.8	521.0	45.2	566.2	27.5	10.8	11.6	9.1	11.3
July	26.4	54.8	454.9	509.7	41.5	551.2	26.5	10.6	11.3	8.4	11.1
August	30.6	60.7	457.8	518.5	46.0	564.5	30.1	10.8	11.6	9.3	11.4
September	29.9	57.8	451.1	508.9	50.6	559.5	28.3	10.5	11.3	9.6	11.1
October	27.7	54.5	437.1	491.6	48.0	539.6	26.8	10.2	10.9	9.5	10.8
November	29.2	51.2	437.6	488.8	41.1	530.0	25.7	10.2	10.9	8.3	10.6
December	45.1	72.0	441.3	513.2	51.1	564.3	30.7	10.1	11.2	10.2	11.1
1994											
January	45.7	72.9	464.6	537.6	55.8	593.4	31.1	10.8	11.9	11.0	11.8
February	41.9	75.4	463.3	538.7	53.2	591.9	32.3	10.7	11.8	10.6	11.7
March	34.6	65.2	432.7	497.9	63.0	560.9	31.1	10.1	11.1	11.5	11.1
April	34.1	62.3	416.4	478.7	44.7	523.4	29.8	9.7	10.6	8.6	10.4
May	29.7	60.7	404.8	465.5	45.3	510.9	30.0	9.4	10.3	8.7	10.2
June	30.3	56.5	394.0	450.5	48.2	498.7	27.8	9.2	10.0	9.1	9.9
July	24.9	45.7	376.3	422.0	45.8	467.8	22.3	8.7	9.3	8.5	9.3
FEMALES											
1993											
May	26.8	44.5	203.5	248.0	94.3	342.3	33.4	10.1	11.6	6.5	9.5
June	27.4	50.1	204.8	254.9	93.4	348.3	37.0	10.1	11.8	6.5	9.7
July	24.7	41.9	204.8	249.7	90.8	340.5	33.8	10.1	11.6	6.3	9.5
August	22.7	42.2	213.7	255.9	95.6	351.6	35.2	10.7	12.1	6.5	9.8
September	24.6	45.5	221.6	267.1	105.2	372.2	37.5	10.8	12.3	6.9	10.1
October	24.0	39.7	219.1	258.8	104.0	362.8	32.5	10.7	11.9	7.0	9.9
November	26.1	43.7	216.1	259.8	103.9	363.7	36.6	10.6	12.0	6.9	9.9
December	44.8	62.9	209.7	272.6	104.5	377.1	39.6	10.1	12.2	7.0	10.1
1994											
January	44.1	63.9	222.4	286.3	100.4	386.7	41.8	10.8	12.9	7.2	10.7
February	37.8	58.5	238.0	296.5	118.5	415.0	41.2	11.4	13.3	8.1	11.2
March	33.3	50.3	219.4	269.7	118.6	388.3	39.1	10.6	12.2	7.7	10.4
April	27.8	44.1	207.9	252.0	107.8	359.8	35.2	10.2	11.7	7.0	9.7
May	28.3	43.6	195.0	238.6	100.4	339.0	36.7	9.5	11.0	6.5	9.2
June	25.8	44.9	195.3	240.2	100.3	340.5	35.8	9.5	11.0	6.6	9.2
July	23.3	45.1	189.2	234.2	101.8	336.1	33.1	9.2	10.7	6.6	9.0
PERSONS											
1993											
May	56.6	104.9	672.6	777.4	146.1	923.5	30.8	10.7	11.7	7.5	10.8
June	53.4	107.3	668.6	775.9	138.6	914.5	31.3	10.6	11.7	7.1	10.6
July	51.2	99.7	659.7	759.4	132.3	891.7	29.3	10.5	11.4	6.9	10.4
August	53.3	102.9	671.5	774.4	141.6	916.0	32.0	10.7	11.8	7.2	10.7
September	54.5	103.4	672.6	776.0	155.7	931.7	31.7	10.6	11.6	7.6	10.7
October	51.7	94.2	656.1	750.4	152.0	902.4	28.9	10.3	11.2	7.6	10.4
November	55.4	94.9	653.8	748.7	145.0	893.7	29.8	10.3	11.2	7.2	10.3
December	89.9	134.9	651.0	785.8	155.6	941.5	34.3	10.1	11.5	7.8	10.7
1994											
January	89.8	136.9	687.0	823.9	156.2	980.1	35.3	10.8	12.2	8.2	11.3
February	79.7	133.9	701.3	835.2	171.7	1006.9	35.6	10.9	12.3	8.7	11.5
March	67.9	115.5	652.2	767.6	181.6	949.2	34.1	10.2	11.4	8.7	10.8
April	61.8	106.4	624.3	730.7	152.5	883.2	31.8	9.9	11.0	7.4	10.1
May	58.0	104.3	599.9	704.2	145.7	849.9	32.5	9.5	10.6	7.1	9.7
June	56.1	101.4	589.3	690.7	148.5	839.2	30.9	9.3	10.3	7.2	9.6
July	48.2	90.8	565.5	656.2	147.7	803.9	26.6	8.9	9.8	7.1	9.1

UNEMPLOYED PERSONS: Seasonally adjusted

NUMBER OF UNEMPLOYED PERSONS.....

UNEMPLOYMENT RATE.....

Month	Aged 15-19 seeking first f/t job '000s	Aged 15-19 looking for f/t work '000s	Aged 20 and over looking for f/t work '000s	Total looking for f/t work '000s	Looking for p/t work '000s	Total unemployed '000s	Aged 15-19 looking for f/t work %	Aged 20 and over looking for f/t work %	Total looking for f/t work %	Looking for p/t work %	Total unemployed %
MALES											
1993											
May	34.4	63.5	463.4	526.9	51.5	578.4	29.4	10.8	11.7	10.6	11.6
June	33.9	62.5	477.7	540.2	52.9	593.1	28.7	11.1	12.0	10.7	11.8
July	33.3	59.1	457.0	516.0	47.4	563.4	28.3	10.7	11.5	9.4	11.3
August	35.5	63.3	461.8	525.1	53.1	578.2	30.0	10.8	11.7	10.6	11.6
September	33.9	61.5	457.0	518.4	50.0	568.4	28.9	10.7	11.5	9.8	11.4
October	35.0	63.3	461.6	524.9	49.9	574.8	29.6	10.7	11.6	9.9	11.5
November	31.7	56.9	455.7	512.5	50.0	562.6	27.0	10.6	11.3	9.8	11.2
December	31.1	59.8	445.1	504.8	44.8	549.6	28.5	10.3	11.2	8.9	10.9
1994											
January	30.5	58.1	437.0	495.1	50.3	545.4	27.8	10.2	11.0	9.5	10.8
February	33.2	66.8	434.6	501.4	47.4	548.9	30.5	10.1	11.1	9.2	10.9
March	34.9	67.4	423.8	491.1	54.0	545.1	31.5	9.9	10.9	10.2	10.8
April	37.5	63.3	418.6	481.9	41.9	523.8	29.8	9.7	10.7	8.3	10.4
May	34.3	63.6	400.2	463.8	45.2	509.0	30.2	9.3	10.3	8.9	10.1
June	39.5	61.9	405.6	467.5	56.3	523.7	29.0	9.4	10.3	10.7	10.4
July	31.3	49.3	378.0	427.2	52.4	479.6	23.9	8.8	9.5	9.6	9.5
FEMALES											
1993											
May	29.1	46.6	200.8	247.5	97.5	344.9	33.9	10.0	11.5	6.8	9.6
June	30.1	53.6	209.1	262.7	99.4	362.1	37.6	10.3	12.1	6.9	10.0
July	29.2	46.8	209.9	256.6	101.3	357.9	35.3	10.4	11.9	7.0	9.9
August	28.2	46.7	223.7	270.4	103.8	374.2	35.7	11.0	12.5	7.1	10.3
September	31.4	48.4	227.9	276.3	96.4	372.7	38.6	11.1	12.7	6.5	10.2
October	30.7	48.3	232.4	280.7	108.9	389.6	36.9	11.3	12.8	7.3	10.6
November	32.1	51.1	230.0	281.1	114.0	395.1	39.0	11.2	12.8	7.6	10.7
December	31.1	49.8	215.9	265.7	106.2	371.9	36.4	10.5	12.1	7.1	10.1
1994											
January	31.2	51.7	211.9	263.6	108.6	372.3	39.2	10.4	12.1	7.2	10.1
February	28.2	48.5	211.4	260.0	105.1	365.1	36.9	10.2	11.8	7.0	9.9
March	32.3	51.4	208.3	259.7	97.9	357.6	39.0	10.1	11.8	6.5	9.7
April	30.6	46.8	203.9	250.6	100.6	351.3	36.2	10.0	11.5	6.7	9.5
May	30.5	45.8	192.7	238.5	104.3	342.8	37.2	9.4	11.0	6.9	9.3
June	28.3	47.9	199.4	247.4	106.6	353.9	36.2	9.6	11.2	7.1	9.5
July	27.4	46.8	193.8	240.6	113.7	354.3	34.5	9.4	11.0	7.3	9.4
PERSONS											
1993											
May	63.5	110.1	664.2	774.3	149.0	923.4	31.2	10.6	11.7	7.8	10.8
June	64.0	116.1	686.8	802.9	152.2	955.2	32.2	10.8	12.0	7.9	11.1
July	62.4	105.8	666.9	772.7	148.7	921.3	31.0	10.6	11.6	7.6	10.7
August	63.7	110.0	685.5	795.5	156.9	952.4	32.2	10.9	11.9	8.0	11.0
September	65.3	109.9	684.8	794.7	146.4	941.1	32.5	10.8	11.9	7.4	10.9
October	65.7	111.6	694.1	805.7	158.8	964.4	32.4	10.9	12.0	8.0	11.1
November	63.8	107.9	685.7	793.6	164.0	957.7	31.6	10.8	11.8	8.2	11.0
December	62.3	109.6	661.0	770.6	150.9	921.5	31.6	10.4	11.5	7.5	10.6
1994											
January	61.7	109.8	649.0	758.7	159.0	917.7	32.2	10.2	11.4	7.8	10.5
February	61.4	115.3	646.1	761.4	152.5	913.9	32.9	10.1	11.3	7.6	10.5
March	67.2	118.7	632.1	750.8	151.9	902.7	34.4	9.9	11.2	7.5	10.3
April	68.2	110.0	622.5	732.6	142.6	875.1	32.2	9.8	10.9	7.1	10.1
May	64.8	109.4	592.9	702.3	149.5	851.8	32.8	9.3	10.5	7.4	9.8
June	67.8	109.8	605.0	714.8	162.9	877.7	31.8	9.5	10.6	8.0	10.0
July	58.7	96.1	571.7	667.8	166.1	833.9	28.1	9.0	10.0	7.9	9.5

UNEMPLOYED PERSONS: Trend¹

NUMBER OF UNEMPLOYED PERSONS.....

UNEMPLOYMENT RATE.....

Month	Aged 15-19 seeking first f/t job '000s	Aged 15-19 looking for f/t work '000s	Aged 20 and over looking for f/t work '000s	Total looking for f/t work '000s	Looking for p/t work '000s	Total unemployed '000s	Aged 15-19 looking for f/t work %	Aged 20 and over looking for f/t work %	Total looking for f/t work %	Looking for p/t work %	Total unemployed %
MALES											
1993											
May	35.2	63.8	463.6	527.4	51.2	578.6	29.5	10.8	11.7	10.5	11.6
June	34.8	62.8	463.7	526.5	51.7	578.2	29.3	10.8	11.7	10.5	11.6
July	34.5	62.0	463.9	525.9	51.4	577.3	29.1	10.8	11.7	10.3	11.6
August	34.2	61.4	463.0	524.4	50.7	575.1	28.9	10.8	11.7	10.1	11.5
September	33.8	60.8	460.6	521.3	50.0	571.4	28.8	10.7	11.6	9.9	11.4
October	33.1	60.2	456.9	517.1	49.5	566.6	28.5	10.6	11.5	9.7	11.3
November	32.4	60.2	452.5	512.7	49.2	561.8	28.5	10.5	11.4	9.6	11.2
December	32.0	60.8	447.0	507.7	48.7	556.4	28.7	10.4	11.2	9.5	11.1
1994											
January	32.3	62.1	440.4	502.5	48.2	550.7	29.2	10.2	11.1	9.3	10.9
February	33.2	63.5	432.5	495.9	47.9	543.9	29.8	10.1	11.0	9.3	10.8
March	34.4	64.2	423.9	488.1	48.1	536.2	30.1	9.9	10.8	9.3	10.7
April	35.3	63.7	415.0	478.7	48.6	527.3	29.9	9.6	10.6	9.4	10.5
May	35.8	62.0	406.0	468.0	49.4	517.4	29.3	9.4	10.4	9.5	10.3
June	35.9	59.7	397.4	457.1	50.4	507.5	28.3	9.2	10.1	9.6	10.1
July	35.7	57.3	389.8	447.1	51.3	498.4	27.3	9.1	9.9	9.7	9.9
FEMALES											
1993											
May	29.2	48.5	206.8	255.3	95.6	351.0	35.0	10.2	11.8	6.7	9.8
June	29.1	48.4	209.3	257.7	97.3	355.0	35.5	10.3	11.9	6.8	9.9
July	29.3	48.3	214.5	262.8	99.6	362.4	36.1	10.6	12.1	6.9	10.0
August	29.8	48.3	220.6	268.9	102.2	371.1	36.7	10.8	12.4	7.0	10.2
September	30.4	48.5	225.4	273.9	104.8	378.7	37.2	11.0	12.6	7.1	10.4
October	30.8	49.0	227.1	276.1	106.8	383.0	37.6	11.1	12.6	7.2	10.4
November	31.0	49.7	225.5	275.2	107.9	383.1	37.9	11.0	12.6	7.2	10.4
December	31.1	50.2	221.4	271.7	107.8	379.4	38.0	10.8	12.4	7.2	10.3
1994											
January	31.1	50.4	216.0	266.4	106.3	372.7	38.1	10.5	12.2	7.1	10.1
February	30.8	49.8	210.6	260.4	104.3	364.8	37.9	10.2	11.9	6.9	9.9
March	30.5	49.0	206.1	255.1	103.0	358.1	37.6	10.0	11.7	6.8	9.7
April	30.2	48.2	202.4	250.6	103.0	353.6	37.2	9.8	11.5	6.8	9.6
May	29.7	47.5	199.2	246.7	104.3	351.0	36.6	9.7	11.3	6.9	9.5
June	29.1	46.9	196.5	243.4	106.2	349.6	36.1	9.5	11.1	7.0	9.4
July	28.5	46.5	194.2	240.7	108.1	348.8	35.4	9.4	11.0	7.1	9.4
PERSONS											
1993											
May	64.3	112.3	670.4	782.7	146.9	929.5	31.6	10.6	11.8	7.7	10.8
June	63.9	111.1	673.1	784.2	148.9	933.1	31.7	10.7	11.8	7.7	10.9
July	63.8	110.2	678.4	788.7	151.0	939.7	31.8	10.7	11.8	7.8	10.9
August	64.0	109.7	683.6	793.3	153.0	946.3	31.9	10.8	11.9	7.8	11.0
September	64.2	109.3	686.0	795.3	154.8	950.1	32.0	10.8	11.9	7.8	11.0
October	63.9	109.3	684.0	793.3	156.3	949.6	32.0	10.8	11.9	7.8	10.9
November	63.5	109.9	678.0	787.9	157.0	944.9	32.1	10.7	11.8	7.8	10.9
December	63.1	111.0	668.4	779.4	156.5	935.8	32.3	10.5	11.6	7.8	10.7
1994											
January	63.4	112.4	656.4	768.9	154.5	923.4	32.6	10.3	11.5	7.7	10.6
February	64.1	113.3	643.1	756.4	152.3	908.6	32.9	10.1	11.3	7.5	10.4
March	64.9	113.2	630.0	743.2	151.0	894.2	33.0	9.9	11.1	7.5	10.3
April	65.5	111.8	617.4	729.3	151.6	880.9	32.7	9.7	10.9	7.5	10.1
May	65.5	109.5	605.2	714.7	153.7	868.3	32.1	9.5	10.7	7.5	9.9
June	65.0	106.7	593.8	700.5	156.6	857.1	31.3	9.3	10.4	7.6	9.8
July	64.2	103.8	584.0	687.8	159.4	847.2	30.5	9.2	10.3	7.7	9.7

¹ Estimates for January 1994 to June 1994 have been revised.

PERSONS AGED 15 TO 19—Education and Labour Force: **Original**—July 1994

EMPLOYED.....

UNEMPLOYED.....

	<i>Employed full time</i>	<i>Employed part time</i>	<i>Total employed</i>	<i>Unemp. looking for fit work</i>	<i>Unemp. looking for pit work</i>	<i>Total unemployed</i>	<i>Labour force</i>	<i>Not in labour force</i>	<i>Civilian population aged 15-19</i>	<i>Unemp- loyment rate</i>	<i>Partic- ipation rate</i>
	'000s	'000s	'000s	'000s	'000s	'000s	'000s	'000s	'000s	%	%
ATTENDING NEITHER SCHOOL NOR A TERTIARY EDUCATIONAL INSTITUTION FULL TIME											
Males	147.6	28.4	176.0	41.3	* 1.1	42.4	218.4	21.3	239.7	19.4	91.1
Females	86.3	45.5	131.8	41.3	* 2.3	43.6	175.4	24.2	199.5	24.9	87.9
Persons	233.9	73.9	307.8	82.6	* 3.5	86.0	393.8	45.4	439.2	21.8	89.7
ATTENDING A TERTIARY EDUCATIONAL INSTITUTION FULL TIME											
Males	5.8	26.1	31.9	* 2.6	5.0	7.6	39.5	40.2	79.7	19.3	49.6
Females	* 3.0	37.7	40.7	* 1.3	8.9	10.2	50.9	45.4	96.3	20.0	52.8
Persons	8.9	63.8	72.7	* 3.9	13.9	17.8	90.4	85.6	176.1	19.7	51.4
ATTENDING SCHOOL											
Males	5.8	84.3	90.0	* 1.8	15.7	17.5	107.5	225.1	332.6	16.3	32.3
Females	* 1.8	111.1	112.9	* 2.5	21.5	24.1	136.9	188.4	325.3	17.6	42.1
Persons	7.6	195.3	202.9	4.3	37.2	41.5	244.5	413.5	657.9	17.0	37.2
TOTAL											
Males	159.2	138.8	298.0	45.7	21.8	67.5	365.5	286.6	652.1	18.5	56.1
Females	91.2	194.2	285.4	45.1	32.8	77.8	363.2	258.0	621.2	21.4	58.5
Persons	250.3	333.0	583.3	90.8	54.6	145.4	728.7	544.5	1 273.2	19.9	57.2

LABOUR FORCE STATUS (AGED 15 & OVER)–States & Territories: **Original**–July 1994

EMPLOYED.....

UNEMPLOYED.....

	<i>Employed full time</i>	<i>Employed part time</i>	<i>Total employed</i>	<i>Unemp. looking for f/t work</i>	<i>Unemp. looking for p/t work</i>	<i>Total unemployed</i>	<i>Labour force</i>	<i>Not in labour force</i>	<i>Civilian population aged 15 and over</i>	<i>Unemp- loyment rate</i>	<i>Partic- ipation rate</i>
	'000s	'000s	'000s	'000s	'000s	'000s	'000s	'000s	'000s	%	%
MALES											
New South Wales	1 367.3	161.5	1 528.8	142.4	12.8	155.2	1 684.0	647.0	2 331.0	9.2	72.2
Victoria	1 026.0	124.7	1 150.7	112.2	13.8	126.0	1 276.7	448.8	1 725.5	9.9	74.0
Queensland	746.8	87.0	833.8	70.0	9.7	79.7	913.6	312.2	1 225.7	8.7	74.5
South Australia	325.5	40.5	366.0	40.2	* 2.3	42.5	408.5	163.9	572.4	10.4	71.4
Western Australia	416.4	50.1	466.5	36.7	4.5	41.2	507.7	147.1	654.8	8.1	77.5
Tasmania	100.9	12.2	113.1	12.8	* 1.2	14.0	127.1	52.8	179.9	11.0	70.7
Northern Territory	39.4	4.0	43.4	3.0	* 0.4	3.4	46.8	15.1	61.9	7.3	75.7
Australian Capital Territory	73.1	10.3	83.4	4.6	1.2	5.7	89.1	22.8	111.9	6.4	79.7
Australia	4 095.4	490.4	4 585.7	422.0	45.8	467.8	5 053.5	1 809.5	6 863.1	9.3	73.6
FEMALES											
New South Wales	696.4	441.1	1 137.6	81.1	30.4	111.5	1 249.1	1 166.7	2 415.8	8.9	51.7
Victoria	476.5	377.6	854.1	62.6	29.4	92.0	946.1	854.2	1 800.3	9.7	52.6
Queensland	349.8	252.0	601.9	42.3	17.7	59.9	661.8	588.3	1 250.1	9.1	52.9
South Australia	146.7	136.3	283.0	20.6	9.8	30.4	313.3	280.2	593.6	9.7	52.8
Western Australia	181.0	154.7	335.6	16.2	10.1	26.3	361.9	298.7	660.6	7.3	54.8
Tasmania	41.3	41.5	82.8	6.9	2.3	9.1	91.9	94.3	186.2	9.9	49.4
Northern Territory	23.8	9.3	33.1	1.9	* 0.3	2.2	35.3	23.3	58.6	6.2	60.2
Australian Capital Territory	47.2	24.0	71.2	2.8	1.9	4.7	75.9	40.4	116.3	6.2	65.3
Australia	1 962.7	1 436.5	3 399.2	234.2	101.8	336.1	3 735.3	3 346.1	7 081.5	9.0	52.7
PERSONS											
New South Wales	2 063.7	602.7	2 666.4	223.5	43.2	266.7	2 933.1	1 813.7	4 746.8	9.1	61.8
Victoria	1 502.4	502.3	2 004.7	174.9	43.2	218.0	2 222.8	1 303.1	3 525.8	9.8	63.0
Queensland	1 096.6	339.0	1 435.7	112.3	27.4	139.7	1 575.4	900.5	2 475.9	8.9	63.6
South Australia	472.2	176.8	649.0	60.8	12.1	72.8	721.8	441.1	1 166.0	10.1	61.9
Western Australia	597.4	204.7	802.1	52.9	14.5	67.5	869.6	445.8	1 315.4	7.8	66.1
Tasmania	142.2	53.7	195.9	19.7	3.5	23.2	219.0	147.0	366.1	10.6	59.8
Northern Territory	63.2	13.4	76.5	4.9	* 0.7	5.6	82.2	38.4	120.5	6.8	68.2
Australian Capital Territory	120.3	34.3	154.6	7.4	3.1	10.5	165.0	63.1	228.2	6.3	72.3
Australia	6 058.1	1 926.9	7 985.0	656.2	147.7	803.9	8 788.9	5 155.7	13 944.5	9.1	63.0

UNEMPLOYED PERSONS—New South Wales, Victoria and Queensland: Original

NUMBER OF UNEMPLOYED PERSONS.....

UNEMPLOYMENT RATE.....

Month	Aged 15-19 seeking first f/t job '000s	Aged 15-19 looking for f/t work '000s	Aged 20 and over looking for f/t work '000s	Total looking for f/t work '000s	Looking for p/t work '000s	Total unemployed '000s	Aged 15-19 looking for f/t work %	Aged 20 and over looking for f/t work %	Total looking for f/t work %	Looking for p/t work %	Total unemployed %
NEW SOUTH WALES											
1993											
May	16.4	28.0	223.6	251.7	44.3	296.0	25.6	10.5	11.3	7.2	10.4
June	16.1	30.6	227.4	257.9	43.8	301.7	27.2	10.7	11.5	7.0	10.5
July	16.6	27.4	219.6	247.0	41.2	288.2	25.8	10.3	11.0	6.8	10.1
August	17.1	27.6	224.2	251.8	46.9	298.7	27.7	10.6	11.3	7.5	10.5
September	15.2	28.6	226.2	254.8	50.5	305.3	28.4	10.6	11.4	7.7	10.5
October	15.2	27.3	223.3	250.6	52.9	303.4	26.3	10.3	11.0	8.4	10.5
November	18.0	26.4	219.1	245.6	45.5	291.1	25.8	10.1	10.8	7.2	10.0
December	28.0	39.4	221.2	260.6	49.6	310.3	32.1	10.1	11.3	7.8	10.6
1994											
January	31.9	42.7	229.7	272.4	47.7	320.1	34.6	10.6	11.9	8.0	11.1
February	28.8	39.6	235.5	275.1	51.4	326.5	32.9	10.8	11.9	8.3	11.2
March	23.6	37.8	221.4	259.2	50.9	310.1	33.2	10.2	11.3	7.8	10.5
April	21.0	35.7	212.4	248.1	42.5	290.5	32.6	9.8	10.9	6.6	9.9
May	18.8	34.5	199.8	234.3	41.9	276.2	32.6	9.2	10.3	6.4	9.5
June	18.9	32.5	203.3	235.8	45.3	281.1	30.7	9.4	10.4	7.0	9.6
July	16.9	29.2	194.3	223.5	43.2	266.7	27.1	8.9	9.8	6.7	9.1
VICTORIA											
1993											
May	17.7	28.1	197.6	225.7	46.0	271.7	37.8	12.2	13.3	9.3	12.4
June	17.7	27.2	193.7	220.9	41.8	262.8	36.3	12.0	13.0	8.5	12.0
July	17.0	27.5	195.8	223.2	36.4	259.6	34.4	12.1	13.1	7.5	11.9
August	15.6	27.9	199.4	227.3	38.8	266.1	36.7	12.4	13.5	7.9	12.2
September	17.0	27.3	197.5	224.9	43.2	268.1	37.4	12.0	13.1	8.4	12.0
October	15.5	24.7	196.0	220.7	37.7	258.4	35.0	12.0	12.9	7.6	11.7
November	15.4	24.3	189.4	213.7	42.7	256.3	36.9	11.7	12.6	8.3	11.6
December	22.9	33.7	190.5	224.2	44.1	268.3	39.3	11.6	12.9	8.8	12.0
1994											
January	19.6	29.9	195.1	225.0	46.9	271.9	38.6	12.1	13.3	9.7	12.5
February	20.3	36.2	204.8	241.0	47.4	288.4	43.7	12.6	14.1	9.5	13.0
March	18.0	27.7	190.0	217.7	54.5	272.3	39.5	11.7	12.9	10.2	12.2
April	18.4	26.5	175.6	202.1	45.1	247.2	37.2	11.0	12.1	8.4	11.2
May	17.0	25.2	176.1	201.3	39.7	240.9	38.2	10.9	12.0	7.5	10.9
June	16.2	25.4	160.4	185.8	43.1	228.9	37.9	10.0	11.2	8.0	10.4
July	13.3	23.0	151.9	174.9	43.2	218.0	30.5	9.5	10.4	7.9	9.8
QUEENSLAND											
1993											
May	8.8	23.2	115.8	139.0	21.4	160.4	32.3	10.5	11.9	6.2	10.6
June	8.3	24.5	111.1	135.7	21.0	156.7	33.7	10.0	11.5	6.2	10.3
July	6.3	20.3	108.6	128.9	24.7	153.6	29.6	9.8	10.9	7.2	10.1
August	7.9	20.6	112.7	133.3	26.2	159.5	31.5	10.3	11.5	7.4	10.5
September	9.6	21.7	112.4	134.2	27.6	161.8	31.3	10.1	11.4	7.5	10.5
October	7.3	16.1	101.1	117.2	27.9	145.1	23.9	9.1	10.0	7.6	9.4
November	7.8	18.5	111.7	130.2	24.3	154.5	26.4	10.0	11.0	6.9	10.0
December	17.4	27.2	103.2	130.4	28.3	158.7	31.2	9.1	10.7	7.9	10.1
1994											
January	15.0	27.7	113.0	140.7	27.9	168.6	31.5	10.0	11.6	8.1	10.8
February	12.0	25.9	113.6	139.5	33.1	172.6	34.3	10.1	11.6	9.0	11.0
March	10.5	23.5	106.5	130.1	37.1	167.2	34.8	9.4	10.9	9.8	10.6
April	9.7	19.0	109.1	128.1	30.6	158.8	28.0	9.7	10.8	8.2	10.2
May	7.5	18.6	98.9	117.5	29.5	147.0	28.3	8.8	9.8	7.9	9.4
June	6.0	17.3	98.1	115.3	28.1	143.5	24.8	8.6	9.5	7.8	9.1
July	6.4	15.5	96.8	112.3	27.4	139.7	22.0	8.5	9.3	7.5	8.9

UNEMPLOYED PERSONS—South Australia, Western Australia and Tasmania: Original

NUMBER OF UNEMPLOYED PERSONS.....

UNEMPLOYMENT RATE.....

Month	Aged 15-19 seeking first f/t job '000s	Aged 15-19 looking for f/t work '000s	Aged 20 and over looking for f/t work '000s	Total looking for f/t work '000s	Looking for p/t work '000s	Total unemployed '000s	Aged 15-19 looking for f/t work %	Aged 20 and over looking for f/t work %	Total looking for f/t work %	Looking for p/t work %	Total unemployed %
SOUTH AUSTRALIA											
1993											
May	5.8	9.7	52.6	62.3	12.3	74.6	35.3	10.4	11.7	6.8	10.5
June	5.2	10.7	53.4	64.1	9.8	73.9	39.7	10.5	11.9	5.7	10.4
July	6.2	10.2	52.8	63.0	9.7	72.7	37.6	10.4	11.8	5.6	10.3
August	5.1	9.4	50.1	59.6	10.5	70.0	39.1	10.1	11.4	5.9	10.0
September	5.4	9.9	53.2	63.1	11.7	74.8	39.3	10.6	11.9	6.5	10.5
October	5.9	10.0	55.3	65.2	13.3	78.6	37.7	10.9	12.3	7.5	11.1
November	5.8	10.2	53.2	63.3	13.1	76.4	39.7	10.5	12.0	7.1	10.7
December	8.9	11.7	55.1	66.8	13.3	80.1	36.9	10.7	12.2	7.3	11.0
1994											
January	9.2	13.4	61.2	74.5	13.2	87.8	42.7	12.0	13.8	7.5	12.2
February	7.6	12.6	57.2	69.8	13.9	83.6	40.3	11.2	12.9	8.0	11.7
March	7.6	10.4	54.1	64.5	15.5	80.0	37.1	10.7	12.1	8.3	11.2
April	5.4	9.9	51.1	60.9	11.0	71.9	37.1	10.2	11.6	6.1	10.2
May	6.4	11.3	51.3	62.6	12.2	74.8	40.6	10.3	11.9	6.6	10.5
June	6.5	11.0	52.4	63.4	12.3	75.7	38.2	10.4	11.9	7.0	10.6
July	4.9	9.3	51.4	60.8	12.1	72.8	34.6	10.2	11.4	6.4	10.1
WESTERN AUSTRALIA											
1993											
May	4.8	11.2	54.2	65.3	14.8	80.2	28.1	9.1	10.3	7.3	9.5
June	3.2	8.7	49.9	58.6	14.5	73.0	22.9	8.4	9.3	6.9	8.7
July	2.3	8.5	51.0	59.6	13.3	72.8	21.6	8.6	9.4	6.4	8.7
August	4.2	11.0	52.6	63.7	11.6	75.3	28.6	8.9	10.1	5.7	9.0
September	3.6	9.4	51.9	61.2	14.5	75.8	24.5	8.6	9.6	6.7	8.9
October	4.4	10.5	50.3	60.8	11.8	72.6	25.8	8.4	9.5	5.8	8.6
November	5.8	10.9	48.4	59.2	12.7	71.9	28.1	8.1	9.3	6.1	8.5
December	7.2	14.7	50.7	65.3	13.7	79.0	33.0	8.2	9.9	6.7	9.2
1994											
January	8.0	15.1	53.6	68.7	13.6	82.3	32.8	8.8	10.5	6.6	9.6
February	5.1	11.8	56.6	68.4	15.8	84.2	27.2	9.2	10.4	7.7	9.8
March	4.1	10.0	51.1	61.1	15.1	76.3	24.9	8.5	9.5	7.0	8.9
April	4.2	10.1	47.1	57.2	15.2	72.4	24.7	7.9	8.9	6.9	8.4
May	5.6	10.1	48.2	58.3	13.6	71.9	25.9	7.9	9.0	6.5	8.4
June	5.5	10.7	49.0	59.7	12.8	72.5	26.5	8.1	9.2	6.0	8.4
July	2.9	8.1	44.8	52.9	14.5	67.5	19.4	7.4	8.1	6.6	7.8
TASMANIA											
1993											
May	2.3	3.5	18.1	21.6	3.4	25.0	31.5	11.8	13.2	6.3	11.5
June	1.7	3.3	21.3	24.6	3.9	28.5	30.8	13.6	14.7	7.3	12.9
July	2.2	3.6	20.3	23.9	3.1	27.0	33.1	13.1	14.4	5.9	12.3
August	2.5	4.2	20.6	24.9	3.8	28.7	40.1	13.4	15.1	7.2	13.2
September	1.8	3.8	20.7	24.5	3.4	27.9	35.6	13.3	14.7	6.4	12.7
October	2.3	3.7	20.1	23.8	4.0	27.8	36.4	13.1	14.6	7.3	12.7
November	2.0	3.7	20.3	24.0	3.1	27.0	36.8	13.3	14.8	5.5	12.4
December	3.9	5.8	18.7	24.4	3.0	27.4	44.2	11.8	14.2	5.3	12.1
1994											
January	4.3	5.6	19.5	25.1	3.0	28.1	43.3	12.7	15.0	5.6	12.7
February	3.9	4.9	18.4	23.3	4.4	27.7	36.5	11.9	13.8	8.0	12.4
March	2.8	4.0	17.6	21.5	4.4	26.0	35.5	11.6	13.3	7.5	11.7
April	2.0	3.1	17.6	20.7	4.0	24.7	29.0	11.7	12.9	6.9	11.3
May	1.8	2.6	16.7	19.3	4.1	23.4	24.7	11.0	11.9	7.0	10.6
June	1.6	2.3	17.0	19.4	2.8	22.2	23.5	11.3	12.1	4.9	10.2
July	1.7	2.7	16.9	19.7	3.5	23.2	25.7	11.2	12.2	6.1	10.6

UNEMPLOYED PERSONS—Northern Territory and Australian Capital Territory: Original

NUMBER OF UNEMPLOYED PERSONS.....

UNEMPLOYMENT RATE.....

Month	Aged 15-19 seeking first f/t job '000s	Aged 15-19 looking for f/t work '000s	Aged 20 and over looking for f/t work '000s	Total looking for f/t work '000s	Looking for p/t work '000s	Total unemployed '000s	Aged 15-19 looking for f/t work %	Aged 20 and over looking for f/t work %	Total looking for f/t work %	Looking for p/t work %	Total unemployed %
NORTHERN TERRITORY											
1993											
May	* 0.2	* 0.3	4.2	4.5	* 1.1	5.6	* 12.3	6.7	6.9	* 7.8	7.0
June	* 0.7	* 1.0	4.2	5.1	* 1.1	6.2	* 27.1	6.6	7.8	* 6.9	7.6
July	* 0.1	* 0.7	4.4	5.1	* 1.1	6.2	* 23.2	7.0	7.7	* 6.7	7.5
August	* 0.3	* 0.6	4.5	5.2	1.4	6.5	* 23.8	7.2	7.9	7.3	7.7
September	* 0.7	* 0.9	3.8	4.7	* 1.0	5.7	* 24.9	6.0	7.0	* 4.8	6.5
October	* 0.3	* 0.9	3.6	4.4	* 0.8	5.2	* 28.9	5.7	6.7	* 4.2	6.2
November	* 0.2	* 0.4	4.4	4.8	* 1.0	5.8	* 12.9	7.3	7.5	* 6.1	7.2
December	* 0.3	* 0.8	4.1	4.9	* 0.8	5.7	* 26.2	6.6	7.6	* 5.0	7.1
1994											
January	* 0.2	* 0.2	5.4	5.6	* 0.9	6.5	* 8.5	9.4	9.4	* 5.9	8.7
February	* 0.4	* 0.8	5.4	6.2	1.6	7.8	* 23.9	8.6	9.4	12.5	9.9
March	* 0.3	* 0.9	4.3	5.2	* 0.4	5.6	* 30.7	6.9	8.0	* 3.2	7.2
April	* 0.4	* 0.7	4.4	5.0	* 0.9	6.0	* 24.9	7.1	7.9	* 7.0	7.7
May	* 0	* 0.5	3.6	4.1	* 0.6	4.7	* 22.6	5.9	6.4	* 4.6	6.1
June	* 0.4	* 0.6	2.9	3.5	1.4	4.9	* 22.8	4.6	5.3	9.1	6.0
July	* 0.8	1.3	3.6	4.9	* 0.7	5.6	44.6	5.5	7.2	* 5.1	6.8
AUSTRALIAN CAPITAL TERRITORY											
1993											
May	* 0.6	* 0.8	6.4	7.2	2.9	10.1	* 21.3	5.3	5.8	7.4	6.2
June	* 0.4	1.2	7.7	8.9	2.8	11.6	32.0	6.4	7.1	7.4	7.2
July	* 0.5	1.5	7.1	8.7	2.8	11.5	31.6	6.0	7.1	7.2	7.1
August	* 0.7	1.4	7.3	8.8	2.5	11.3	33.6	6.2	7.2	6.2	6.9
September	1.2	1.7	6.9	8.5	3.9	12.4	37.7	5.8	7.0	9.3	7.5
October	* 0.9	1.1	6.6	7.7	3.5	11.2	28.7	5.5	6.2	8.8	6.9
November	* 0.5	* 0.7	7.2	7.9	2.7	10.6	* 18.5	6.1	6.5	6.5	6.5
December	1.3	1.6	7.5	9.2	2.9	12.0	30.1	6.2	7.2	7.0	7.2
1994											
January	1.5	2.3	9.4	11.7	3.1	14.8	35.9	7.7	9.1	8.5	8.9
February	1.6	2.0	9.8	11.9	4.3	16.1	36.5	7.9	9.1	11.0	9.5
March	1.0	1.1	7.0	8.2	3.6	11.7	26.2	5.8	6.5	9.1	7.1
April	* 0.7	1.5	7.0	8.5	3.2	11.7	29.7	5.8	6.8	8.4	7.2
May	1.0	1.5	5.2	6.7	4.2	10.9	34.6	4.3	5.4	10.6	6.6
June	1.0	1.6	6.2	7.8	2.6	10.4	37.1	5.0	6.1	7.2	6.3
July	1.3	1.7	5.7	7.4	3.1	10.5	29.6	4.7	5.8	8.3	6.3

LABOUR FORCE STATUS (AGED 15 AND OVER)—New South Wales¹

SEASONALLY ADJUSTED.....

TREND.....

Month	Employed full time '000s	Total employed '000s	Total unemployed '000s	Unemp- loyment rate %	Partic- ipation rate %	Employed full time '000s	Total employed '000s	Total unemployed '000s	Unemp- loyment rate %	Partic- ipation rate %	Civilian population aged 15 and over '000s
MALES											
1993											
May	1 322.9	1 465.5	192.2	11.6	71.9	1 322.5	1 462.7	194.7	11.7	71.9	2 305.2
June	1 326.3	1 473.8	201.6	12.0	72.6	1 322.4	1 463.8	194.5	11.7	71.9	2 306.6
July	1 325.8	1 465.1	192.4	11.6	71.8	1 324.0	1 467.0	194.2	11.7	72.0	2 308.4
August	1 325.6	1 464.7	191.9	11.6	71.7	1 326.8	1 471.0	193.9	11.6	72.1	2 310.2
September	1 327.2	1 474.7	192.2	11.5	72.1	1 330.2	1 475.2	193.3	11.6	72.2	2 312.0
October	1 332.0	1 483.2	194.6	11.6	72.5	1 333.9	1 480.1	192.1	11.5	72.3	2 313.9
November	1 339.9	1 485.3	188.4	11.3	72.3	1 337.7	1 485.6	190.5	11.4	72.4	2 315.7
December	1 343.5	1 491.8	192.2	11.4	72.7	1 341.3	1 491.1	188.5	11.2	72.5	2 317.6
1994											
January	1 346.8	1 494.1	186.8	11.1	72.5	1 344.0	1 495.3	186.3	11.1	72.5	2 319.4
February	1 344.9	1 501.8	178.3	10.6	72.4	1 345.7	1 498.1	183.8	10.9	72.5	2 321.1
March	1 342.5	1 501.1	183.4	10.9	72.5	1 347.1	1 500.5	181.1	10.8	72.4	2 322.9
April	1 350.8	1 503.0	177.3	10.6	72.3	1 348.8	1 503.2	178.3	10.6	72.3	2 324.9
May	1 352.1	1 499.2	178.1	10.6	72.1	1 350.9	1 506.2	175.2	10.4	72.3	2 326.9
June	1 349.1	1 509.4	176.4	10.5	72.4	1 353.2	1 509.5	172.0	10.2	72.2	2 329.0
July	1 360.8	1 520.5	160.3	9.5	72.1	1 355.4	1 512.6	169.2	10.1	72.1	2 331.0
FEMALES											
1993											
May	661.5	1 080.1	110.4	9.3	49.9	661.6	1 076.7	112.1	9.4	49.8	2 387.0
June	664.6	1 087.2	113.3	9.4	50.3	661.0	1 081.6	111.3	9.3	49.9	2 388.8
July	658.8	1 083.9	107.4	9.0	49.8	663.0	1 088.4	112.4	9.4	50.2	2 390.7
August	665.7	1 097.3	115.4	9.5	50.7	666.9	1 096.2	114.6	9.5	50.6	2 392.6
September	662.6	1 100.4	114.2	9.4	50.7	671.3	1 103.3	116.9	9.6	51.0	2 394.5
October	680.4	1 112.8	125.2	10.1	51.7	675.5	1 109.5	118.3	9.6	51.2	2 396.6
November	695.2	1 118.3	123.4	9.9	51.8	679.1	1 114.4	118.4	9.6	51.4	2 398.7
December	677.7	1 115.3	109.8	9.0	51.0	681.4	1 118.4	117.2	9.5	51.5	2 400.7
1994											
January	669.0	1 122.7	115.6	9.3	51.5	682.5	1 120.9	115.1	9.3	51.4	2 402.6
February	685.5	1 119.0	114.3	9.3	51.3	682.8	1 122.5	112.9	9.1	51.4	2 404.5
March	690.4	1 127.4	110.5	8.9	51.4	683.4	1 123.7	111.8	9.1	51.3	2 406.4
April	684.2	1 121.3	113.8	9.2	51.3	684.7	1 125.0	111.9	9.0	51.3	2 408.7
May	682.0	1 131.2	104.9	8.5	51.3	686.3	1 126.3	112.5	9.1	51.4	2 411.1
June	687.1	1 122.2	117.1	9.4	51.3	687.8	1 127.5	113.6	9.2	51.4	2 413.5
July	691.1	1 131.2	118.2	9.5	51.7	689.0	1 128.3	114.4	9.2	51.4	2 415.8
PERSONS											
1993											
May	1 984.4	2 545.6	302.6	10.6	60.7	1 984.1	2 539.4	306.8	10.8	60.7	4 692.2
June	1 990.9	2 561.0	315.0	11.0	61.3	1 983.4	2 545.3	305.8	10.7	60.7	4 695.5
July	1 984.6	2 549.0	299.8	10.5	60.6	1 987.0	2 555.4	306.6	10.7	60.9	4 699.2
August	1 991.3	2 562.0	307.3	10.7	61.0	1 993.7	2 567.2	308.5	10.7	61.1	4 702.9
September	1 989.8	2 575.1	306.4	10.6	61.2	2 001.5	2 578.5	310.2	10.7	61.4	4 706.6
October	2 012.4	2 596.1	319.8	11.0	61.9	2 009.4	2 589.6	310.4	10.7	61.6	4 710.5
November	2 035.1	2 603.6	311.8	10.7	61.8	2 016.8	2 600.1	308.9	10.6	61.7	4 714.4
December	2 021.2	2 607.1	302.1	10.4	61.7	2 022.7	2 609.5	305.7	10.5	61.8	4 718.3
1994											
January	2 015.8	2 616.8	302.3	10.4	61.8	2 026.5	2 616.2	301.4	10.3	61.8	4 722.0
February	2 030.3	2 620.8	292.6	10.0	61.7	2 028.5	2 620.5	296.7	10.2	61.7	4 725.6
March	2 032.9	2 628.4	293.9	10.1	61.8	2 030.5	2 624.1	292.9	10.0	61.7	4 729.2
April	2 035.0	2 624.4	291.1	10.0	61.6	2 033.5	2 628.2	290.2	9.9	61.7	4 733.6
May	2 034.1	2 630.4	283.0	9.7	61.5	2 037.2	2 632.5	287.7	9.9	61.6	4 738.0
June	2 036.2	2 631.6	293.5	10.0	61.7	2 041.0	2 637.0	285.6	9.8	61.6	4 742.4
July	2 051.9	2 651.7	278.5	9.5	61.7	2 044.3	2 640.9	283.6	9.7	61.6	4 746.8

¹ Trend estimates for January 1994 to June 1994 have been revised.

LABOUR FORCE STATUS (AGED 15 AND OVER)-Victoria¹

SEASONALLY ADJUSTED.....

TREND.....

Month	Employed full time '000s	Total employed '000s	Total unemployed '000s	Unemp- loyment rate %	Partic- ipation rate %	Employed full time '000s	Total employed '000s	Total unemployed '000s	Unemp- loyment rate %	Partic- ipation rate %	Civilian population aged 15 and over '000s
MALES											
1993											
May	994.7	1 103.6	165.2	13.0	73.9	997.1	1 106.7	161.6	12.7	73.9	1 717.0
June	999.4	1 106.9	162.7	12.8	73.9	998.0	1 107.5	163.0	12.8	74.0	1 717.7
July	1 000.5	1 111.6	162.2	12.7	74.1	999.1	1 109.0	163.3	12.8	74.0	1 718.3
August	994.7	1 103.5	168.2	13.2	74.0	1 000.8	1 111.4	162.1	12.7	74.1	1 718.9
September	1 004.0	1 119.9	154.6	12.1	74.1	1 002.8	1 114.2	159.3	12.5	74.1	1 719.5
October	1 006.2	1 113.8	159.6	12.5	74.0	1 004.2	1 116.5	156.0	12.3	74.0	1 720.1
November	1 006.8	1 122.8	153.0	12.0	74.1	1 004.5	1 117.3	153.2	12.1	73.8	1 720.7
December	1 006.4	1 120.2	144.9	11.5	73.5	1 004.0	1 117.4	151.2	11.9	73.7	1 721.3
1994											
January	1 005.2	1 118.3	147.9	11.7	73.5	1 003.3	1 117.3	150.2	11.9	73.6	1 722.0
February	994.2	1 105.7	154.2	12.2	73.1	1 003.4	1 113.2	149.8	11.8	73.6	1 722.7
March	1 002.7	1 123.0	153.0	12.0	74.0	1 005.2	1 120.9	148.8	11.7	73.7	1 723.4
April	1 014.3	1 129.6	144.6	11.3	73.9	1 008.6	1 125.3	146.9	11.5	73.8	1 723.9
May	1 011.3	1 128.4	143.1	11.3	73.7	1 012.9	1 130.6	144.1	11.3	73.9	1 724.3
June	1 014.7	1 132.9	145.5	11.4	74.1	1 017.3	1 136.0	141.0	11.0	74.0	1 724.8
July	1 028.5	1 149.3	130.2	10.2	74.2	1 021.5	1 141.1	137.8	10.8	74.1	1 725.5
FEMALES											
1993											
May	486.5	819.8	101.4	11.0	51.5	485.6	818.7	101.2	11.0	51.4	1 789.7
June	485.9	816.0	107.9	11.7	51.6	485.5	818.3	105.5	11.4	51.6	1 790.3
July	483.4	815.4	108.9	11.8	51.6	483.3	818.7	110.2	11.9	51.9	1 791.1
August	477.0	815.9	114.2	12.3	51.9	479.7	819.6	114.3	12.2	52.1	1 791.9
September	480.2	823.4	119.6	12.7	52.6	475.8	820.5	117.0	12.5	52.3	1 792.7
October	471.6	829.2	117.6	12.4	52.8	472.7	821.1	117.9	12.6	52.4	1 793.5
November	468.6	823.0	118.2	12.6	52.4	470.6	821.3	117.0	12.5	52.3	1 794.4
December	467.6	817.6	115.4	12.4	52.0	469.8	821.8	114.9	12.3	52.2	1 795.2
1994											
January	466.2	814.1	111.0	12.0	51.5	470.1	823.4	111.5	11.9	52.1	1 795.9
February	477.8	828.4	104.8	11.2	51.9	471.1	826.7	107.5	11.5	52.0	1 796.7
March	476.4	837.3	105.6	11.2	52.5	472.4	831.7	103.5	11.1	52.0	1 797.4
April	466.0	836.8	102.6	10.9	52.2	473.6	837.3	99.9	10.7	52.1	1 798.1
May	476.5	842.2	93.0	9.9	52.0	474.6	842.5	96.9	10.3	52.2	1 798.7
June	473.8	844.4	90.3	9.7	51.9	475.7	847.0	94.4	10.0	52.3	1 799.4
July	480.2	854.5	97.2	10.2	52.9	476.7	850.8	92.8	9.8	52.4	1 800.3
PERSONS											
1993											
May	1 481.2	1 923.3	266.6	12.2	62.4	1 482.8	1 925.4	262.8	12.0	62.4	3 506.8
June	1 485.4	1 922.9	270.6	12.3	62.5	1 483.5	1 925.9	268.5	12.2	62.6	3 508.1
July	1 483.9	1 927.0	271.0	12.3	62.6	1 482.4	1 927.6	273.6	12.4	62.7	3 509.5
August	1 471.7	1 919.4	282.4	12.8	62.7	1 480.5	1 930.9	276.4	12.5	62.9	3 510.8
September	1 484.2	1 943.3	274.2	12.4	63.1	1 478.6	1 934.7	276.3	12.5	63.0	3 512.2
October	1 477.8	1 942.9	277.2	12.5	63.2	1 476.9	1 937.6	273.9	12.4	62.9	3 513.6
November	1 475.3	1 945.7	271.1	12.2	63.1	1 475.1	1 938.6	270.2	12.2	62.8	3 515.1
December	1 474.0	1 937.7	260.3	11.8	62.5	1 473.8	1 939.3	266.1	12.1	62.7	3 516.5
1994											
January	1 471.4	1 932.4	258.9	11.8	62.3	1 473.4	1 940.7	261.8	11.9	62.6	3 518.0
February	1 472.0	1 934.1	259.0	11.8	62.3	1 474.4	1 944.9	257.3	11.7	62.6	3 519.4
March	1 479.1	1 960.3	258.6	11.7	63.0	1 477.5	1 952.5	252.3	11.4	62.6	3 520.8
April	1 480.3	1 966.4	247.2	11.2	62.9	1 482.2	1 962.6	246.8	11.2	62.7	3 521.9
May	1 487.8	1 970.6	235.2	10.7	62.6	1 487.5	1 973.1	241.0	10.9	62.8	3 523.0
June	1 488.5	1 977.3	235.8	10.7	62.8	1 493.0	1 983.1	235.5	10.6	63.0	3 524.2
July	1 508.6	2 003.7	227.5	10.2	63.3	1 498.2	1 991.9	230.5	10.4	63.0	3 525.8

¹ Trend estimates for January 1994 to June 1994 have been revised.

LABOUR FORCE STATUS (AGED 15 AND OVER)—Queensland¹

SEASONALLY ADJUSTED.....

TREND.....

Month	Employed full time '000s	Total employed '000s	Total unemployed '000s	Unemp- loyment rate %	Partic- ipation rate %	Employed full time '000s	Total employed '000s	Total unemployed '000s	Unemp- loyment rate %	Partic- ipation rate %	Civilian population aged 15 and over '000s
MALES											
1993											
May	711.4	792.2	99.0	11.1	75.1	712.2	792.8	97.4	10.9	75.1	1 186.1
June	717.5	796.9	97.6	10.9	75.2	713.5	794.5	97.7	10.9	75.0	1 189.1
July	717.3	801.5	90.6	10.2	74.9	714.0	795.4	98.4	11.0	75.0	1 191.7
August	709.8	792.9	101.2	11.3	74.9	714.4	796.1	99.2	11.1	75.0	1 194.3
September	710.7	791.4	108.1	12.0	75.2	715.4	797.4	99.3	11.1	74.9	1 196.9
October	717.3	802.0	96.5	10.7	74.9	717.1	799.9	98.6	11.0	74.9	1 199.6
November	724.7	803.5	96.3	10.7	74.8	719.1	803.1	97.2	10.8	74.9	1 202.3
December	719.8	802.4	92.3	10.3	74.2	721.1	806.9	95.3	10.6	74.9	1 205.1
1994											
January	725.2	820.0	91.7	10.1	75.5	723.2	811.0	93.0	10.3	74.8	1 208.1
February	724.1	815.1	93.6	10.3	75.0	725.6	814.9	90.8	10.0	74.8	1 211.1
March	725.5	813.6	90.7	10.0	74.5	728.8	818.7	88.8	9.8	74.7	1 214.1
April	729.4	817.1	87.6	9.7	74.3	733.0	822.6	86.5	9.5	74.7	1 217.0
May	741.5	834.3	79.7	8.7	74.9	737.6	826.5	84.1	9.2	74.7	1 219.8
June	746.0	831.5	81.8	9.0	74.7	742.0	830.2	82.1	9.0	74.6	1 222.7
July	745.4	832.3	81.3	8.9	74.5	745.6	832.6	80.3	8.8	74.5	1 225.7
FEMALES											
1993											
May	320.9	569.8	56.9	9.1	51.7	330.0	570.7	59.3	9.4	52.0	1 211.7
June	329.9	567.6	61.3	9.7	51.8	328.2	569.3	61.2	9.7	51.9	1 214.5
July	332.5	568.9	66.3	10.4	52.2	327.5	569.0	63.7	10.1	52.0	1 217.2
August	325.8	567.2	68.9	10.8	52.1	328.5	570.5	66.0	10.4	52.2	1 219.9
September	328.5	575.8	63.8	10.0	52.3	331.0	573.6	67.7	10.6	52.4	1 222.7
October	333.5	579.7	66.8	10.3	52.8	334.6	578.3	68.3	10.6	52.8	1 225.4
November	336.5	575.7	74.4	11.4	52.9	338.3	583.3	67.8	10.4	53.0	1 228.0
December	348.0	596.0	63.8	9.7	53.6	341.5	587.8	66.8	10.2	53.2	1 230.7
1994											
January	343.0	590.0	66.4	10.1	53.2	343.5	591.2	65.5	10.0	53.2	1 233.5
February	344.4	594.8	62.1	9.5	53.1	344.2	593.2	64.4	9.8	53.2	1 236.2
March	347.5	597.4	63.4	9.6	53.3	344.2	594.4	63.6	9.7	53.1	1 238.9
April	339.7	590.1	62.5	9.6	52.6	344.3	595.4	63.1	9.6	53.0	1 241.7
May	338.5	595.7	64.3	9.7	53.0	345.0	596.5	62.9	9.5	53.0	1 244.5
June	353.2	597.5	63.9	9.7	53.0	346.1	597.8	62.8	9.5	53.0	1 247.3
July	349.0	603.8	61.0	9.2	53.2	347.6	599.7	62.4	9.4	53.0	1 250.1
PERSONS											
1993											
May	1 032.3	1 362.0	155.9	10.3	63.3	1 042.2	1 363.5	156.7	10.3	63.4	2 397.7
June	1 047.4	1 364.6	158.9	10.4	63.4	1 041.7	1 363.7	158.8	10.4	63.3	2 403.5
July	1 049.8	1 370.4	156.8	10.3	63.4	1 041.5	1 364.4	162.1	10.6	63.4	2 408.9
August	1 035.5	1 360.2	170.2	11.1	63.4	1 042.9	1 366.6	165.2	10.8	63.4	2 414.2
September	1 039.2	1 367.2	172.0	11.2	63.6	1 046.4	1 371.0	167.0	10.9	63.6	2 419.6
October	1 050.8	1 381.7	163.3	10.6	63.7	1 051.6	1 378.1	166.9	10.8	63.7	2 425.0
November	1 061.3	1 379.2	170.7	11.0	63.8	1 057.4	1 386.4	165.0	10.6	63.8	2 430.4
December	1 067.9	1 398.4	156.1	10.0	63.8	1 062.5	1 394.7	162.0	10.4	63.9	2 435.8
1994											
January	1 068.2	1 410.0	158.1	10.1	64.2	1 066.7	1 402.2	158.6	10.2	63.9	2 441.5
February	1 068.5	1 409.8	155.8	9.9	64.0	1 069.8	1 408.1	155.3	9.9	63.9	2 447.3
March	1 073.0	1 410.9	154.2	9.8	63.8	1 073.0	1 413.1	152.4	9.7	63.8	2 453.0
April	1 069.1	1 407.2	150.0	9.6	63.3	1 077.3	1 418.0	149.6	9.5	63.8	2 458.7
May	1 080.0	1 430.0	144.0	9.1	63.9	1 082.7	1 423.1	147.0	9.4	63.7	2 464.3
June	1 099.2	1 429.0	145.7	9.3	63.8	1 088.1	1 428.0	144.8	9.2	63.7	2 470.0
July	1 094.4	1 436.2	142.3	9.0	63.8	1 093.2	1 432.3	142.8	9.1	63.6	2 475.9

¹ Trend estimates for January 1994 to June 1994 have been revised.

LABOUR FORCE STATUS (AGED 15 AND OVER)-South Australia¹

SEASONALLY ADJUSTED.....

TREND.....

Month	SEASONALLY ADJUSTED.....					TREND.....					Civilian population aged 15 and over
	Employed full time	Total employed	Total unemployed	Unemp-loyment rate	Partic-ipation rate	Employed full time	Total employed	Total unemployed	Unemp-loyment rate	Partic-ipation rate	
	'000s	'000s	'000s	%	%	'000s	'000s	'000s	%	%	'000s
MALES											
1993											
May	327.9	366.7	49.1	11.8	73.1	322.6	362.6	49.8	12.1	72.5	568.5
June	324.2	362.0	50.7	12.3	72.6	322.9	362.8	48.9	11.9	72.4	568.8
July	321.8	360.7	47.9	11.7	71.8	322.7	362.6	48.1	11.7	72.2	569.0
August	322.0	364.6	44.6	10.9	71.9	322.0	362.3	47.7	11.6	72.0	569.3
September	319.8	360.8	47.1	11.6	71.6	321.3	362.2	47.8	11.6	72.0	569.5
October	320.7	360.8	50.2	12.2	72.1	320.8	362.1	48.1	11.7	72.0	569.9
November	321.2	362.4	49.7	12.0	72.3	320.7	362.1	48.6	11.8	72.0	570.2
December	321.8	364.2	47.7	11.6	72.2	320.9	362.2	48.7	11.9	72.0	570.5
1994											
January	320.4	362.5	49.1	11.9	72.1	321.2	362.0	48.5	11.8	71.9	570.8
February	321.7	359.8	46.6	11.5	71.2	321.8	361.8	47.8	11.7	71.7	571.1
March	322.5	362.3	48.9	11.9	72.0	322.4	361.9	47.0	11.5	71.5	571.4
April	321.7	361.5	45.2	11.1	71.1	323.2	362.1	46.2	11.3	71.4	571.7
May	325.9	363.7	44.3	10.9	71.3	323.9	362.7	45.4	11.1	71.4	571.9
June	324.7	361.0	46.5	11.4	71.2	324.6	363.4	44.7	11.0	71.3	572.1
July	324.8	367.3	42.6	10.4	71.6	325.2	364.3	44.0	10.8	71.3	572.4
FEMALES											
1993											
May	146.6	270.8	26.4	8.9	50.4	146.0	271.9	27.6	9.2	50.8	590.0
June	149.7	272.9	27.2	9.1	50.9	147.3	272.8	27.2	9.1	50.8	590.2
July	150.5	279.2	27.5	9.0	51.9	148.1	273.5	27.3	9.1	50.9	590.5
August	147.6	271.6	27.6	9.2	50.6	148.1	273.9	27.8	9.2	51.1	590.7
September	147.6	273.7	27.7	9.2	51.0	147.6	273.9	28.7	9.5	51.2	591.0
October	144.2	270.8	30.5	10.1	51.0	146.9	273.7	29.6	9.8	51.3	591.3
November	144.9	273.5	30.6	10.1	51.4	146.4	273.4	30.2	10.0	51.3	591.6
December	150.5	276.4	30.8	10.0	51.9	146.1	273.1	30.5	10.0	51.3	591.9
1994											
January	144.3	273.3	31.1	10.2	51.4	145.8	272.7	30.4	10.0	51.2	592.2
February	147.2	271.6	29.3	9.7	50.8	145.4	272.3	30.1	10.0	51.0	592.4
March	143.0	269.9	31.3	10.4	50.8	145.1	272.3	30.1	9.9	51.0	592.7
April	145.2	273.4	27.1	9.0	50.7	145.1	273.0	30.4	10.0	51.2	592.9
May	143.7	274.0	31.3	10.3	51.5	145.4	274.5	31.1	10.2	51.5	593.1
June	147.1	272.7	33.5	10.9	51.6	145.9	276.5	31.8	10.3	52.0	593.3
July	148.2	286.0	33.4	10.5	53.8	146.7	278.7	32.6	10.5	52.4	593.6
PERSONS											
1993											
May	474.5	637.6	75.5	10.6	61.6	468.6	634.6	77.4	10.9	61.5	1 158.5
June	473.9	634.9	78.0	10.9	61.5	470.2	635.6	76.1	10.7	61.4	1 159.0
July	472.3	639.9	75.3	10.5	61.7	470.7	636.1	75.4	10.6	61.4	1 159.5
August	469.6	636.2	72.2	10.2	61.1	470.2	636.2	75.6	10.6	61.4	1 160.0
September	467.3	634.5	74.8	10.6	61.1	468.9	636.1	76.4	10.7	61.4	1 160.5
October	464.9	631.7	80.7	11.3	61.4	467.7	635.8	77.7	10.9	61.4	1 161.2
November	466.0	636.0	80.3	11.2	61.7	467.1	635.5	78.8	11.0	61.5	1 161.8
December	472.3	640.6	78.4	10.9	61.9	467.0	635.3	79.2	11.1	61.5	1 162.4
1994											
January	464.7	635.8	80.3	11.2	61.6	467.0	634.7	78.8	11.0	61.4	1 163.0
February	468.8	631.4	75.9	10.7	60.8	467.2	634.1	77.9	10.9	61.2	1 163.6
March	465.5	632.2	80.2	11.3	61.2	467.6	634.1	77.1	10.8	61.1	1 164.2
April	466.8	634.9	72.3	10.2	60.7	468.3	635.2	76.6	10.8	61.1	1 164.6
May	469.6	637.7	75.7	10.6	61.2	469.3	637.3	76.5	10.7	61.3	1 165.0
June	471.9	633.8	80.1	11.2	61.2	470.5	639.9	76.5	10.7	61.5	1 165.5
July	473.0	653.3	76.1	10.4	62.6	472.0	643.0	76.6	10.6	61.7	1 166.0

¹ Trend estimates for January 1994 to June 1994 have been revised.

LABOUR FORCE STATUS (AGED 15 AND OVER)-Western Australia¹

SEASONALLY ADJUSTED.....

TREND.....

Month	Employed full time '000s	Total employed '000s	Total unemployed '000s	Unemp- loyment rate %	Partic- ipation rate %	Employed full time '000s	Total employed '000s	Total unemployed '000s	Unemp- loyment rate %	Partic- ipation rate %	Civilian population aged 15 and over '000s
MALES											
1993											
May	400.4	445.6	47.6	9.7	76.8	401.9	446.9	45.7	9.3	76.7	642.3
June	404.2	449.6	44.0	8.9	76.7	403.3	449.2	45.4	9.2	76.9	643.2
July	403.0	450.9	44.6	9.0	76.9	404.3	450.8	45.3	9.1	77.0	644.0
August	405.9	451.9	45.5	9.2	77.2	405.1	452.1	45.3	9.1	77.1	644.7
September	407.6	454.0	45.1	9.0	77.3	405.8	453.0	45.5	9.1	77.2	645.5
October	405.3	452.9	45.3	9.1	77.1	406.6	453.7	45.8	9.2	77.3	646.3
November	406.2	455.3	46.6	9.3	77.5	407.5	454.3	46.1	9.2	77.3	647.2
December	409.0	453.5	47.1	9.4	77.3	408.6	455.1	45.8	9.2	77.3	648.0
1994											
January	407.7	455.1	45.5	9.1	77.1	409.7	456.1	45.0	9.0	77.2	649.0
February	414.3	457.9	43.5	8.7	77.2	410.6	457.2	43.7	8.7	77.1	650.0
March	411.9	459.8	42.5	8.5	77.2	411.4	458.3	42.6	8.5	76.9	651.0
April	411.1	459.5	40.0	8.0	76.6	411.8	459.3	41.7	8.3	76.9	651.9
May	411.2	460.3	39.9	8.0	76.6	412.3	460.3	41.2	8.2	76.8	652.8
June	410.5	457.5	42.6	8.5	76.5	412.9	461.2	40.9	8.2	76.8	653.7
July	417.0	465.2	41.8	8.2	77.4	413.5	461.9	41.0	8.1	76.8	654.8
FEMALES											
1993											
May	171.6	314.0	32.2	9.3	53.4	169.8	314.1	32.3	9.3	53.5	647.9
June	170.2	315.8	32.7	9.4	53.7	169.9	314.6	32.1	9.3	53.4	648.8
July	169.2	315.5	32.0	9.2	53.5	169.8	315.1	32.0	9.2	53.4	649.6
August	168.6	314.1	32.2	9.3	53.2	169.9	316.0	31.9	9.2	53.5	650.4
September	168.6	317.1	31.2	9.0	53.5	170.3	317.4	31.9	9.1	53.6	651.3
October	174.4	320.1	31.7	9.0	53.9	171.2	319.1	32.0	9.1	53.8	652.2
November	171.0	321.0	32.7	9.2	54.2	172.0	321.0	32.0	9.1	54.1	653.0
December	173.1	320.3	31.8	9.0	53.9	172.9	322.8	31.8	9.0	54.2	653.9
1994											
January	174.4	328.9	31.8	8.8	55.1	173.7	324.1	31.5	8.9	54.3	654.8
February	173.4	323.9	33.1	9.3	54.4	174.6	324.9	31.2	8.8	54.3	655.8
March	175.3	323.8	28.3	8.0	53.6	175.7	325.7	31.0	8.7	54.3	656.7
April	176.8	329.0	29.5	8.2	54.5	176.9	326.7	30.9	8.6	54.4	657.6
May	179.7	325.1	31.8	8.9	54.2	178.1	328.1	30.9	8.6	54.5	658.6
June	178.3	327.1	33.7	9.3	54.7	179.1	329.7	30.9	8.6	54.7	659.6
July	180.3	337.1	29.1	8.0	55.4	179.9	331.0	31.0	8.6	54.8	660.6
PERSONS											
1993											
May	572.0	759.6	79.8	9.5	65.1	571.7	761.0	78.0	9.3	65.0	1 290.3
June	574.4	765.4	76.7	9.1	65.2	573.2	763.7	77.5	9.2	65.1	1 291.9
July	572.3	766.4	76.6	9.1	65.2	574.1	766.0	77.3	9.2	65.2	1 293.6
August	574.5	766.0	77.8	9.2	65.1	575.0	768.1	77.2	9.1	65.3	1 295.2
September	576.2	771.2	76.3	9.0	65.4	576.2	770.3	77.4	9.1	65.4	1 296.8
October	579.7	773.0	77.0	9.1	65.5	577.8	772.9	77.9	9.2	65.5	1 298.5
November	577.2	776.3	79.2	9.3	65.8	579.5	775.3	78.2	9.2	65.6	1 300.2
December	582.1	773.9	78.9	9.3	65.5	581.5	777.9	77.7	9.1	65.7	1 301.9
1994											
January	582.1	784.0	77.4	9.0	66.1	583.5	780.2	76.5	8.9	65.7	1 303.8
February	587.7	781.9	76.7	8.9	65.8	585.3	782.1	74.9	8.7	65.6	1 305.7
March	587.2	783.6	70.8	8.3	65.3	587.0	784.0	73.5	8.6	65.6	1 307.6
April	587.9	788.5	69.5	8.1	65.5	588.7	786.0	72.5	8.4	65.6	1 309.5
May	590.9	785.5	71.8	8.4	65.4	590.4	788.3	72.0	8.4	65.6	1 311.4
June	588.8	784.7	76.2	8.9	65.6	592.0	790.8	71.9	8.3	65.7	1 313.3
July	597.2	802.3	70.9	8.1	66.4	593.4	792.9	71.9	8.3	65.7	1 315.4

¹ Trend estimates for January 1994 to June 1994 have been revised.

LABOUR FORCE STATUS (AGED 15 AND OVER)-Tasmania¹

SEASONALLY ADJUSTED.....

TREND.....

Month	Employed full time '000s	Total employed '000s	Total unemployed '000s	Unemp- loyment rate %	Partic- ipation rate %	Employed full time '000s	Total employed '000s	Total unemployed '000s	Unemp- loyment rate %	Partic- ipation rate %	Civilian population aged 15 and over '000s
MALES											
1993											
May	99.6	110.8	17.2	13.4	71.6	99.0	109.9	17.5	13.7	71.3	178.7
June	98.6	109.9	17.7	13.9	71.3	98.8	109.7	17.6	13.8	71.2	178.8
July	98.5	109.8	18.1	14.1	71.5	98.6	109.5	17.7	13.9	71.1	178.9
August	98.2	109.0	18.2	14.3	71.0	98.5	109.5	17.7	13.9	71.0	179.1
September	98.9	109.8	16.6	13.2	70.6	98.6	109.7	17.6	13.8	71.1	179.2
October	98.5	110.1	18.0	14.1	71.5	98.9	110.2	17.5	13.7	71.2	179.3
November	98.0	109.0	17.8	14.1	70.7	99.3	110.9	17.4	13.6	71.5	179.4
December	101.7	113.4	16.6	12.8	72.4	99.6	111.6	17.4	13.5	71.9	179.6
1994											
January	99.3	112.3	16.9	13.1	71.9	99.7	112.2	17.5	13.5	72.2	179.6
February	100.5	113.3	17.9	13.6	73.0	99.8	112.4	17.4	13.4	72.2	179.7
March	98.7	112.2	18.0	13.9	72.4	99.8	112.4	17.1	13.2	72.0	179.8
April	99.9	111.2	16.8	13.1	71.2	100.0	112.3	16.6	12.9	71.7	179.8
May	99.8	112.4	16.0	12.5	71.4	100.2	112.2	15.9	12.4	71.3	179.8
June	101.4	112.5	14.1	11.1	70.4	100.5	112.2	15.3	12.0	70.9	179.9
July	101.0	112.6	14.5	11.4	70.7	100.9	112.3	14.6	11.5	70.6	179.9
FEMALES											
1993											
May	42.6	81.6	9.8	10.8	49.4	42.7	81.7	9.7	10.6	49.3	185.1
June	44.2	84.3	10.3	10.9	51.0	43.1	82.0	10.0	10.9	49.7	185.2
July	43.5	82.3	9.8	10.7	49.7	43.2	82.0	10.4	11.2	49.8	185.3
August	42.7	81.6	10.8	11.7	49.8	43.0	81.8	10.5	11.4	49.8	185.4
September	43.0	81.3	10.9	11.8	49.7	42.8	81.5	10.5	11.5	49.6	185.5
October	41.5	79.3	10.5	11.7	48.4	42.6	81.5	10.3	11.3	49.5	185.6
November	42.5	82.2	9.9	10.8	49.6	42.6	81.8	10.0	10.9	49.5	185.7
December	43.3	83.4	9.4	10.1	49.9	42.7	82.3	9.6	10.4	49.5	185.8
1994											
January	42.7	83.0	9.0	9.8	49.5	42.7	82.8	9.2	10.0	49.5	185.9
February	43.2	84.2	9.1	9.8	50.2	42.5	83.0	8.9	9.7	49.4	186.0
March	42.0	82.4	8.4	9.2	48.8	42.1	83.1	8.7	9.5	49.4	186.0
April	40.4	81.5	8.7	9.6	48.4	41.7	83.1	8.7	9.4	49.3	186.1
May	42.4	83.8	9.2	9.9	50.0	41.3	83.2	8.6	9.4	49.3	186.1
June	40.1	84.1	7.5	8.2	49.2	41.0	83.3	8.6	9.4	49.4	186.1
July	41.3	83.4	9.4	10.1	49.9	40.8	83.5	8.7	9.4	49.5	186.2
PERSONS											
1993											
May	142.2	192.4	27.0	12.3	60.3	141.8	191.5	27.2	12.4	60.1	363.8
June	142.9	194.1	27.9	12.6	61.0	141.9	191.7	27.6	12.6	60.2	364.0
July	142.1	192.1	27.9	12.7	60.4	141.7	191.5	28.0	12.8	60.3	364.2
August	140.8	190.6	28.9	13.2	60.2	141.5	191.3	28.3	12.9	60.2	364.4
September	141.9	191.1	27.5	12.6	60.0	141.4	191.2	28.2	12.8	60.2	364.7
October	139.9	189.3	28.6	13.1	59.7	141.5	191.7	27.8	12.7	60.2	364.9
November	140.6	191.2	27.8	12.7	60.0	141.9	192.7	27.4	12.5	60.3	365.2
December	145.0	196.8	26.0	11.7	61.0	142.2	194.0	27.0	12.2	60.5	365.4
1994											
January	142.0	195.3	25.9	11.7	60.5	142.4	195.0	26.7	12.0	60.6	365.5
February	143.7	197.5	27.0	12.0	61.4	142.3	195.4	26.3	11.9	60.6	365.7
March	140.7	194.6	26.4	11.9	60.4	141.9	195.5	25.8	11.7	60.5	365.8
April	140.3	192.6	25.4	11.7	59.6	141.6	195.4	25.2	11.4	60.3	365.9
May	142.2	196.3	25.2	11.4	60.5	141.5	195.4	24.5	11.2	60.1	365.9
June	141.5	196.6	21.6	9.9	59.6	141.4	195.6	23.9	10.9	60.0	366.0
July	142.3	196.1	23.9	10.9	60.1	141.7	195.9	23.3	10.6	59.9	366.1

¹ Trend estimates for January 1994 to June 1994 have been revised.

LABOUR FORCE STATUS (AGED 15 AND OVER)-Northern Territory¹

TREND.....

	Employed full time	Total employed	Total unemployed	Unemp- loyment rate	Partic- ipation rate	Civilian population aged 15 and over
Month	'000s	'000s	'000s	%	%	'000s
MALES						
1993						
May	37.8	41.9	4.1	9.0	75.0	61.4
June	37.8	42.3	4.0	8.7	75.5	61.5
July	37.8	42.8	3.9	8.4	75.9	61.5
August	37.8	43.2	3.7	7.9	76.2	61.6
September	37.7	43.4	3.5	7.4	76.2	61.6
October	37.6	43.4	3.3	7.1	75.7	61.7
November	37.5	43.0	3.2	6.9	74.9	61.7
December	37.3	42.3	3.2	7.0	73.7	61.8
1994						
January	37.1	41.5	3.3	7.3	72.4	61.8
February	37.0	40.9	3.4	7.6	71.6	61.9
March	37.1	40.7	3.4	7.8	71.3	61.9
April	37.4	40.9	3.5	7.9	71.7	61.9
May	37.7	41.3	3.5	7.8	72.4	61.9
June	38.0	41.9	3.5	7.6	73.3	61.8
July	38.5	42.5	3.4	7.4	74.3	61.9
FEMALES						
1993						
May	23.9	33.2	2.9	8.0	62.7	57.6
June	23.5	33.5	2.8	7.8	62.9	57.7
July	23.3	33.9	2.7	7.4	63.3	57.8
August	23.0	34.2	2.5	6.9	63.5	57.8
September	22.7	34.3	2.5	6.7	63.5	57.9
October	22.4	34.1	2.4	6.6	62.9	58.0
November	22.2	33.5	2.4	6.7	61.8	58.1
December	22.1	32.7	2.4	6.9	60.4	58.1
1994						
January	22.1	31.9	2.5	7.2	59.0	58.2
February	22.3	31.4	2.5	7.4	58.1	58.3
March	22.5	31.3	2.5	7.4	57.9	58.4
April	22.7	31.6	2.5	7.2	58.3	58.4
May	23.0	31.9	2.4	7.0	58.8	58.5
June	23.1	32.3	2.4	6.9	59.4	58.5
July	23.3	32.8	2.4	6.7	60.0	58.6
PERSONS						
1993						
May	61.7	75.2	7.0	8.6	69.0	119.1
June	61.3	75.8	6.9	8.3	69.4	119.2
July	61.0	76.7	6.6	7.9	69.8	119.3
August	60.7	77.4	6.2	7.5	70.1	119.4
September	60.4	77.7	5.9	7.1	70.0	119.5
October	60.1	77.5	5.7	6.9	69.5	119.7
November	59.7	76.5	5.6	6.8	68.6	119.8
December	59.4	75.0	5.6	7.0	67.2	119.9
1994						
January	59.2	73.4	5.8	7.3	65.9	120.1
February	59.2	72.3	5.9	7.5	65.0	120.2
March	59.6	72.0	6.0	7.6	64.8	120.4
April	60.1	72.5	5.9	7.6	65.1	120.3
May	60.6	73.3	5.9	7.5	65.8	120.3
June	61.2	74.2	5.9	7.3	66.5	120.3
July	61.8	75.4	5.8	7.1	67.3	120.5

¹ Trend estimates for January 1994 to June 1994 have been revised. Estimates for the most recent three months may be subject to significant revisions as data for later months become available.

LABOUR FORCE STATUS (AGED 15 AND OVER)—Australian Capital Territory¹

TREND.....

Month	Employed full time '000s	Total employed '000s	Total unemployed '000s	Unemp- loyment rate %	Partic- ipation rate %	Civilian population aged 15 and over '000s
MALES						
1993						
May	71.3	80.7	6.4	7.3	79.8	109.1
June	71.0	80.5	6.7	7.6	79.7	109.4
July	70.9	80.6	6.8	7.8	80.0	109.3
August	71.0	80.9	6.9	7.8	80.1	109.6
September	71.2	81.2	6.9	7.8	80.3	109.8
October	71.5	81.7	6.8	7.7	80.4	110.0
November	71.8	82.0	6.8	7.6	80.5	110.3
December	72.1	82.3	6.8	7.6	80.6	110.5
1994						
January	72.3	82.5	6.8	7.6	80.6	110.8
February	72.6	82.8	6.7	7.5	80.5	111.1
March	72.8	83.0	6.6	7.3	80.4	111.4
April	73.0	83.2	6.4	7.1	80.3	111.5
May	73.1	83.3	6.2	6.9	80.2	111.6
June	73.1	83.4	6.1	6.8	80.0	111.8
July	73.1	83.4	6.0	6.7	79.9	111.9
FEMALES						
1993						
May	44.8	69.6	5.2	6.9	65.4	114.5
June	44.8	70.0	5.2	6.9	65.6	114.7
July	44.6	70.3	5.3	7.0	66.0	114.6
August	44.3	70.6	5.5	7.2	66.3	114.8
September	43.9	70.7	5.7	7.5	66.5	115.0
October	43.5	70.9	5.9	7.6	66.6	115.2
November	43.2	71.0	5.8	7.6	66.6	115.4
December	43.2	70.9	5.7	7.5	66.3	115.6
1994						
January	43.4	70.6	5.6	7.3	65.8	115.7
February	43.9	70.2	5.4	7.1	65.2	115.9
March	44.6	69.9	5.2	7.0	64.7	116.1
April	45.4	69.8	5.1	6.8	64.5	116.1
May	46.2	69.9	5.0	6.7	64.5	116.2
June	46.8	70.1	5.0	6.7	64.6	116.2
July	47.3	70.4	4.9	6.5	64.8	116.3
PERSONS						
1993						
May	116.1	150.3	11.6	7.2	72.4	223.5
June	115.8	150.5	11.9	7.3	72.5	224.1
July	115.5	150.9	12.2	7.5	72.8	223.9
August	115.3	151.4	12.4	7.6	73.0	224.4
September	115.1	152.0	12.6	7.7	73.2	224.8
October	115.0	152.5	12.7	7.7	73.4	225.2
November	115.0	153.0	12.6	7.6	73.4	225.6
December	115.3	153.2	12.5	7.5	73.3	226.1
1994						
January	115.7	153.1	12.3	7.4	73.0	226.5
February	116.4	153.0	12.1	7.3	72.7	227.0
March	117.4	152.9	11.8	7.2	72.4	227.5
April	118.4	153.0	11.5	7.0	72.3	227.6
May	119.2	153.2	11.3	6.8	72.2	227.8
June	119.9	153.4	11.1	6.7	72.2	227.9
July	120.4	153.8	10.9	6.6	72.2	228.2

¹ Trend estimates for January 1994 to June 1994 have been revised. Estimates for the most recent three months may be subject to significant revisions as data for later months become available.

EXPLANATORY NOTES

INTRODUCTION

1 This publication contains preliminary estimates of the civilian labour force derived from the labour force survey component of the monthly population survey. Estimates for the current month are preliminary and subject to revision. Revised estimates for the current month and more detailed estimates will be published in *The Labour Force, Australia* (6203.0).

MONTHLY POPULATION SURVEY

2 The population survey is based on a multi-stage area sample of private dwellings (currently about 29,000 houses, flats, etc.) and a list sample of non-private dwellings (hotels, motels, etc.), and covers about 0.5% of the population of Australia. The information is obtained from the occupants of selected dwellings by specially trained interviewers. The interviews are generally conducted during the two weeks beginning on the Monday between the 6th and 12th of each month. The information obtained relates to the week before the interview (i.e. the reference week).

SCOPE OF SURVEY

3 The Labour Force Survey includes all persons aged 15 and over except members of the permanent defence forces, certain diplomatic personnel of overseas governments customarily excluded from census and estimated populations, overseas residents in Australia, and members of non-Australian defence forces (and their dependants) stationed in Australia.

COVERAGE

4 In the Labour Force Survey, coverage rules are applied which aim to ensure that each person is associated with only one dwelling, and hence has only one chance of selection. The coverage rules are necessarily a balance between theoretical and operational considerations. Nevertheless, the chance of a person being enumerated at two separate dwellings in the survey is considered to be negligible.

POPULATION BENCHMARKS

5 Labour Force Survey estimates are calculated in such a way as to add up to independent estimates of the civilian population aged 15 and over (population benchmarks). From February 1994, labour force estimates have been compiled using benchmarks based on the results of the 1991 Census of Population and Housing. Small revisions were made to many of the historical estimates from January 1989 to January 1994.

REVISION OF SERIES

6 From April 1986, the definition of employed persons was changed to include persons who worked without pay between 1 and 14 hours per week in a family business or on a farm (i.e. unpaid family helpers). For further information, see paragraphs 36 and 37 of the Explanatory Notes to the February 1987 issue of *The Labour Force, Australia* (6203.0).

SURVEY SAMPLE REDESIGN

7 The Labour Force Survey sample was redesigned and reselected using information collected in the 1991 Census of Population and Housing. The new sample was phased in over the period September to December 1992. For details, see *Information Paper: Labour Force Survey Sample Design* (6269.0).

8 For the most part, one quarter of the new sample was introduced each month so that, by December 1992, the entire new sample was in place. Replacement generally occurred at the rotation group level with two groups being substituted each month. Such a pattern of implementation meant that any changes to labour force estimates due to differences between the two samples, or any other influences, were spread over the four months rather than being concentrated in one inter-month period.

9 This phase-in scheme applied to the private dwelling sample in urban areas. The new sample for non-private dwellings and private dwellings in rural areas was introduced in a single stage in November 1992.

RELIABILITY OF ESTIMATES

10 Two types of error are possible in an estimate based on a sample survey: sampling error and non-sampling error.

Sampling error occurs because a sample, rather than the entire population, is surveyed. One measure of the likely difference resulting from not including all dwellings in the survey is given by the standard error. There are about two chances in three that a sample estimate will differ by less than one standard error from the figure that would have been obtained if all dwellings had been included in the survey, and about nineteen chances in twenty that the difference will be less than two standard errors. Standard errors of estimates for the latest month and of estimates of movements since the previous month are shown on pages 30 and 31. Standard errors of other estimates and other movements may be determined by using information in the Technical Notes in *The Labour Force, Australia* (6203.0).

Non sampling error arises from inaccuracies in collecting, recording and processing the data. Every effort is made to minimise reporting error by the careful design of questionnaires, intensive training and supervision of interviewers, and efficient data processing procedures.

SEASONAL ADJUSTMENT AND TREND ESTIMATION

11 Seasonally adjusted series are published in Tables 2, 5 and 12 to 17. Seasonal factors are reviewed annually to take account of each additional year's original data. The results of the latest review were used to compile the revised seasonally adjusted and trend estimates given in this publication. Information about the method of adjustment and revised seasonally adjusted and trend estimates for all months from January 1989 were published in an appendix to the February 1994 issue of *The Labour Force, Australia* (6203.0).

12 Seasonal adjustment is a means of removing the estimated effects of normal seasonal variation from the series so that the effects of other influences on the series can be more clearly recognised. Seasonal adjustment does not aim to remove the irregular or non-seasonal influences which may be present in any particular month. This means that month-to-month movements of the seasonally adjusted estimates may not be reliable indicators of trend behaviour. For example, irregular factors unrelated to the trend account for more than half the seasonally adjusted movement with the following frequency:

- Employment: 5 in 10 monthly movements
- Unemployment: 7 in 10 monthly movements
- Unemployment rate: 7 in 10 monthly movements
- Participation rate: 9 in 10 monthly movements

13 The smoothing of seasonally adjusted series reduces the impact of the irregular component of the seasonally adjusted series, and creates trend estimates. These trend estimates are derived by applying a 13-term Henderson-weighted moving average to all months except the last six. The last six monthly trend estimates are obtained by applying surrogates of the Henderson average to the seasonally adjusted series. Trend series are used to analyse the underlying behaviour of the series over time. These are published in Tables 3, 6 and 12 to 19.

14 While this smoothing technique enables estimates to be produced for the latest month, it does result in revisions to the most recent months as additional observations become available. Generally, subsequent revisions become smaller, and after three months have a negligible impact on the series. There will also be revisions as a result of the annual review of seasonal factors.

SEASONAL ADJUSTMENT AND
TREND ESTIMATION (continued)

15 Trend estimates are published for the Northern Territory in Table 18 and for the Australian Capital Territory in Table 19. Unadjusted series for the two Territories have shown, historically, a high degree of variability, which can lead to considerable revisions to the seasonally adjusted estimates after each annual seasonal factor re-analysis. Seasonally adjusted estimates are not currently published for the two Territories. The most recent six months trend estimates are subject to revision. For the three most recent months, the revision may be relatively large. Inferences about trends drawn from smoothed seasonally adjusted (trend) estimates for months earlier than the latest three months are unlikely to be affected by month to month revisions. They may be affected by revision resulting from the annual re-analysis of seasonal factors.

16 Users may wish to refer to the ABS Information Papers *A Guide to Smoothing Time Series - Estimates of 'Trend'* (1316.0), and *Time Series Decomposition - an Overview* (1317.0) for more detailed information on smoothing of seasonally adjusted time series data.

RELATED PUBLICATIONS

17 Users may also wish to refer to *The Labour Force, Australia* (6203.0). This publication contains a detailed list of related publications which are available from ABS Bookshops.

18 Current publications produced by the ABS are listed in the *Catalogue of Publications and Products, Australia* (1101.0). The ABS also issues, on Tuesdays and Fridays, a *Publications Advice* (1105.0) which lists publications to be released in the next few days. The Catalogue and Publications Advice are available from any ABS office.

UNPUBLISHED STATISTICS

19 As well as the statistics included in this and related publications, the ABS may have other relevant unpublished data available. Inquiries should be made to Sylvia Sajler on 06 252 6633 or to any ABS office.

EFFECTS OF ROUNDING

20 Estimates have been rounded and discrepancies may occur between sums of the component items and totals.

21 Estimates of movement shown in this publication are obtained by taking the difference of unrounded estimates. The movement estimate is then rounded to one decimal place. Therefore where a discrepancy occurs between the reported movement and the difference of the rounded estimates, the reported movement will be more accurate.

SYMBOLS AND OTHER USAGES

- * subject to sampling variability too high for most practical uses. See the Technical Notes in 6203.0 for more details.
- .. not applicable
- r revised
- pts percentage points

GLOSSARY

Actively looking for work	Includes writing, telephoning or applying in person to an employer for work; answering a newspaper advertisement for a job; checking factory or Commonwealth Employment Service noticeboards; being registered with the Commonwealth Employment Service; checking or registering with any other employment agency; advertising or tendering for work; and contacting friends or relatives.
Attending school	Persons aged 15 to 19 enrolled full time at secondary or high schools in the reference week.
Attending tertiary educational institution full time	Persons aged 15 to 24 enrolled full time at a TAFE college, university, or other educational institution in the reference week.
Employed	Persons aged 15 and over who, during the reference week: <ul style="list-style-type: none"> ■ worked for one hour or more for pay, profit, commission or payment in kind in a job or business, or on a farm (comprising employees, employers and self-employed persons); or ■ worked for one hour or more without pay in a family business or on a farm (i.e. unpaid family helpers); or ■ were employees who had a job but were not at work and were: <ul style="list-style-type: none"> ■ on paid leave, on leave without pay for less than four weeks up to the end of the reference week, ■ stood down without pay because of bad weather or plant breakdown at their place of employment for less than four weeks up to the end of the reference week, ■ on strike or locked out, ■ on workers' compensation and expected to be returning to their job, or ■ receiving wages or salary while undertaking full-time study; or ■ were employers, self-employed persons or unpaid family helpers who had a job, business or farm, but were not at work.
Full-time workers	Employed persons who usually worked 35 hours or more a week (in all jobs) and those who, although usually working less than 35 hours a week, worked 35 hours or more during the reference week
Labour force	For any group, persons who were employed or unemployed, as defined.
Labour force status	A classification of the civilian population aged 15 and over into employed, unemployed or not in the labour force, as defined. The definitions conform closely to the international standard definitions adopted by the International Conferences of Labour Statisticians.
Not in the labour force	Persons who were not in the categories employed or unemployed as defined.
Participation rate	For any group, the labour force expressed as a percentage of the civilian population aged 15 and over in the same group.
Part-time workers	Employed persons who usually worked less than 35 hours a week and who did so during the reference week.
Seasonally adjusted series	A time series of estimates with the estimated effects of normal seasonal variation removed. See Explanatory Note 11 to 12 for more detail.
Trend series	A smoothed seasonally adjusted series of estimates. See Explanatory Notes 13 to 15 for more detail.

.....

Unemployed	Persons aged 15 and over who were not employed during the reference week, and: <ul style="list-style-type: none"> ■ had actively looked for full-time or part-time work at any time in the four weeks up to the end of the reference week and: <ul style="list-style-type: none"> ⌘ were available for work in the reference week, or would have been available except for temporary illness (i.e. lasting for less than four weeks to the end of the reference week), or ⌘ were waiting to start a new job within four weeks from the end of the reference week and would have started in the reference week if the job had been available then; or ■ were waiting to be called back to a full-time or part-time job from which they had been stood down without pay for less than four weeks up to the end of the reference week (including the whole of the reference week) for reasons other than bad weather or plant breakdown.
Unemployed looking for first full-time job	Unemployed persons looking for full-time work (as defined above) who had never worked full time for two weeks or more
Unemployed looking for full-time work	Unemployed persons who actively looked for full-time work, or were to resume a full-time job from which they had been stood down.
Unemployed looking for part-time work	Unemployed persons who had actively looked for part-time work only, or were to resume a part-time job from which they had been stood down.
Unemployment rate	For any group, the number of unemployed persons expressed as a percentage of the labour force in the same group.

STANDARD ERRORS

The estimates in this publication are based on information gained from the occupants of a sample survey of dwellings. Because the entire population is not surveyed, the published estimates are subject to sampling error. The most common way of quantifying such sampling error is to calculate the standard error for the published estimate or statistic.

LEVEL ESTIMATES

To illustrate, let us say the published level estimate for employed persons aged 15 to 19 is 500,000. The calculated standard error in this case is 9,000. The standard error is then used to interpret the level estimate of 500,000. For instance, the standard error of 9,000 indicates that:

- ☛ There are approximately two chances in three that the real value falls within the range 491,000 to 509,000 ($500,000 \pm 9,000$)
- ☛ There are approximately nineteen chances in twenty that the real value falls within the range 482,000 to 518,000 ($500,000 \pm 18,000$)

The real value in this case is the result we would obtain if we could enumerate the total population.

The following tables show the standard errors for this month's level estimates.

	EMPLOYED.....			UNEMPLOYED.....						
	Employed full time	Employed part time	Total employed	Unemp. looking for f/t work	Unemp. looking for p/t work	Total unemployed	Labour force	Not in labour force	Unemp- loyment rate	Partic- ipation rate
	'000s	'000s	'000s	'000s	'000s	'000s	'000s	'000s	pts	pts
NSW	14.4	9.4	15.7	6.5	3.4	6.9	16.2	13.8	0.2	0.3
Vic.	11.9	8.1	13.1	5.5	3.1	6.0	13.6	11.4	0.3	0.4
Qld	9.2	6.0	10.1	3.9	2.2	4.3	10.5	8.6	0.3	0.4
SA	5.1	3.6	5.7	2.4	1.2	2.6	5.9	5.0	0.4	0.5
WA	6.2	4.2	6.9	2.5	1.5	2.7	7.1	5.6	0.3	0.5
Tas.	1.7	1.3	1.8	0.9	0.5	1.0	1.8	1.7	0.5	0.5
NT	2.0	0.9	2.1	0.6	0.2	0.6	2.2	1.5	0.8	1.8
ACT	1.6	1.0	1.8	0.6	0.4	0.7	1.8	1.3	0.4	0.8
→ Males	19.6	8.9	20.4	8.4	3.3	8.8	21.1	14.7	0.2	0.3
Females	15.1	13.5	18.4	6.6	4.6	7.7	19.0	18.3	0.2	0.3
Persons	22.4	15.0	24.6	10.0	5.4	10.8	25.4	21.3	0.1	0.2

	NUMBER OF UNEMPLOYED PERSONS.....						UNEMPLOYMENT RATE.....				
	Aged 15-19 seeking first f/t job	Aged 15-19 looking for f/t work	Aged 20 and over looking for f/t work	Total looking for f/t work	Looking for p/t work	Total unemployed	Aged 15-19 looking for f/t work	Aged 20 and over looking for f/t work	Total looking for f/t work	Looking for p/t work	Total unemp- loyed
	'000s	'000s	'000s	'000s	'000s	'000s	pts	pts	pts	pts	pts
NSW	2.2	2.8	6.1	6.5	3.4	6.9	2.6	0.3	0.3	0.5	0.2
Vic.	1.9	2.4	5.2	5.5	3.1	6.0	3.2	0.3	0.3	0.6	0.3
Qld	1.2	1.7	3.7	3.9	2.2	4.3	2.5	0.3	0.3	0.6	0.3
SA	0.8	1.1	2.3	2.4	1.2	2.6	4.1	0.4	0.5	0.7	0.4
WA	0.7	1.1	2.3	2.5	1.5	2.7	2.7	0.4	0.4	0.7	0.3
Tas.	0.4	0.5	0.9	0.9	0.5	1.0	4.2	0.6	0.6	0.9	0.5
NT	0.3	0.3	0.5	0.6	0.2	0.6	11.3	0.8	0.9	1.8	0.8
ACT	0.3	0.3	0.5	0.6	0.4	0.7	5.4	0.4	0.4	1.1	0.4
Males	2.4	3.2	8.0	8.4	3.3	8.8	1.6	0.2	0.2	0.6	0.2
Females	2.4	3.2	6.1	6.6	4.6	7.7	2.4	0.3	0.3	0.3	0.2
Persons	3.3	4.4	9.5	10.0	5.4	10.8	1.3	0.1	0.1	0.3	0.1

STANDARD ERRORS (continued)

MOVEMENT ESTIMATES

The following example illustrates how to use the standard error to interpret a movement estimate. Let us say that one month the published level estimate for females employed part time in Australia is 1,387,000; the next month the published level estimate is 1,400,000. The calculated standard error for the level estimates is 9,800. The standard error is then used to interpret the published movement estimate of 13,000. For instance, the standard error of 9,800 indicates that:

- There are approximately two chances in three that the real movement over the two month period falls within the range 3,200 to 22,800 (13,000 + or - 9,800)
- There are approximately nineteen chances in twenty that the real movement falls within the range -6,400 to 32,600 (13,000 + or - 19,600).

The following tables show the standard errors for this month's movement estimates.

EMPLOYED.....				UNEMPLOYED.....						
	Employed full time	Employed part time	Total employed	Unemp. looking for f/t work	Unemp. looking for p/t work	Total unemployed	Labour force	Not in labour force	Unemp- loyment rate	Partic- ipation rate
	'000s	'000s	'000s	'000s	'000s	'000s	'000s	'000s	pts	pts
NSW	11.2	7.2	12.3	5.1	2.8	5.4	12.7	10.7	0.2	0.3
Vic.	8.6	5.8	9.6	4.0	2.3	4.3	10.0	8.2	0.2	0.3
Qld	6.4	4.3	7.0	2.9	1.8	3.2	7.2	6.0	0.2	0.3
SA	3.5	2.4	3.9	1.7	0.9	1.8	4.0	3.4	0.3	0.3
WA	4.5	3.0	5.0	2.0	1.2	2.1	5.1	4.0	0.2	0.4
Tas.	1.5	1.0	1.7	0.7	0.4	0.8	1.7	1.5	0.4	0.5
NT	1.2	0.7	1.4	0.4	0.2	0.4	1.4	1.0	0.5	1.2
ACT	1.2	0.8	1.4	0.5	0.3	0.5	1.4	1.0	0.3	0.6
Males	14.9	6.8	15.6	6.5	2.8	6.8	16.2	11.0	0.1	0.2
Females	11.3	10.1	13.9	5.2	3.7	5.9	14.4	13.9	0.2	0.2
Persons	17.3	11.3	19.2	7.7	4.3	8.3	19.9	16.3	0.1	0.1

NUMBER OF UNEMPLOYED PERSONS.....							UNEMPLOYMENT RATE.....				
	Aged 15-19 seeking first f/t job	Aged 15-19 looking for f/t work	Aged 20 and over looking for f/t work	Total looking for f/t work	Looking for p/t work	Total unemployed	Aged 15-19 looking for f/t work	Aged 20 and over looking for f/t work	Total looking for f/t work	Looking for p/t work	Total unemp- loyed
	'000s	'000s	'000s	'000s	'000s	'000s	pts	pts	pts	pts	pts
NSW	2.0	2.5	4.8	5.1	2.8	5.4	2.3	0.2	0.2	0.4	0.2
Vic.	1.6	1.9	3.8	4.0	2.3	4.3	2.9	0.2	0.2	0.4	0.2
Qld	1.1	1.5	2.8	2.9	1.8	3.2	2.2	0.2	0.2	0.5	0.2
SA	0.7	0.9	1.6	1.7	0.9	1.8	3.1	0.3	0.3	0.5	0.3
WA	0.8	1.1	1.8	2.0	1.2	2.1	2.6	0.3	0.3	0.5	0.2
Tas.	0.3	0.4	0.7	0.7	0.4	0.8	3.3	0.5	0.4	0.7	0.4
NT	0.2	0.2	0.4	0.4	0.2	0.4	8.0	0.6	0.6	1.5	0.5
ACT	0.2	0.3	0.4	0.5	0.3	0.5	5.8	0.3	0.4	0.9	0.3
Males	2.4	3.0	6.2	6.5	2.8	6.8	1.5	0.1	0.1	0.5	0.1
Females	2.2	2.8	4.8	5.2	3.7	5.9	2.2	0.2	0.2	0.2	0.2
Persons	3.0	3.7	7.2	7.7	4.3	8.3	1.1	0.1	0.1	0.2	0.1

WHAT IF...? REVISIONS TO TREND ESTIMATES

EFFECT OF NEW SEASONALLY ADJUSTED ESTIMATES ON TREND ESTIMATES

Each time new seasonally adjusted estimates become available, trend estimates are revised (see paragraphs 13 and 14 of Explanatory Notes).

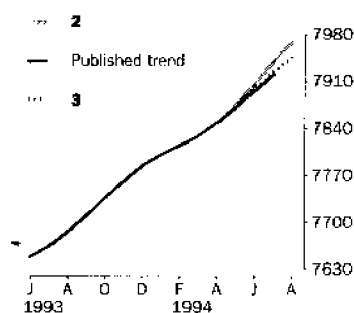
TREND REVISIONS

The examples in the tables below show four illustrative scenarios and the consequent revisions to previous trend estimates of employment and unemployment rate.

- 1** The August seasonally adjusted estimate is the same as the July estimate.
- 2** The August seasonally adjusted estimate is higher than the July estimate by:
 - +0.33% for employment
 - +2.3% for the unemployment rate
- 3** The August seasonally adjusted estimate is lower than the July estimate by:
 - -0.33% for employment
 - -2.3% for the unemployment rate
- 4** The August seasonally adjusted estimate results in a revised July trend estimate which is identical to the new August trend estimate.

The percentage changes of 0.33% and 2.3% were chosen because they represent the average absolute monthly percentage changes in employment and the unemployment rate respectively.

EMPLOYMENT ('000)



1994

May

June

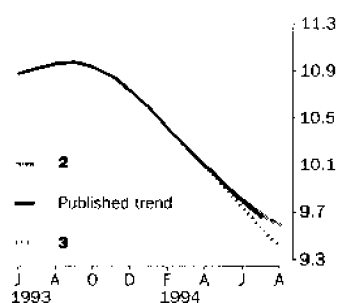
July

August
(new)

WHAT IF NEXT MONTH'S SEASONALLY ADJUSTED ESTIMATE IS:

	1	2	3	4
TREND as PUBLISHED	7 972.2 <i>i.e. the same as Jul 1994</i>	7 998.6 <i>i.e. rises by 0.33%</i>	7 945.8 <i>i.e. falls by 0.33%</i>	7 788.8 <i>i.e. same trend for Jul & Aug</i>
May	7 871.4	7 873.4	7 874.6	7 872.3
June	7 896.0	7 902.7	7 906.6	7 898.8
July	7 919.4	7 931.9	7 939.2	7 924.5
August (new)	7 957.9	7 969.0	7 946.8	7 880.6

UNEMPLOYMENT RATE (%)



1994

May

June

July

August
(new)

WHAT IF NEXT MONTH'S SEASONALLY ADJUSTED ESTIMATE IS:

	1	2	3	4
TREND as PUBLISHED	9.5 <i>i.e. the same as Jul 1994</i>	9.7 <i>i.e. rises by 2.3%</i>	9.3 <i>i.e. falls by 2.3%</i>	10.3 <i>i.e. same trend for Jul & Aug</i>
May	9.9	9.9	9.9	10.0
June	9.8	9.8	9.7	9.9
July	9.7	9.6	9.6	9.9
August (new)	9.5	9.6	9.4	9.9

FOR MORE INFORMATION . . .

The ABS publishes a wide range of information on Australia's economic and social conditions. A catalogue of publications and products is available from any of our offices (see below).

INFORMATION CONSULTANCY SERVICES

Special tables or in-depth data investigations are provided by the ABS Information Consultancy Service in each of our offices (see below).

ELECTRONIC DATA SERVICES

A large range of data is available via on-line services, diskette, magnetic tape, tape cartridge and CD ROM. For more details about our electronic data services, contact any ABS office (see below).

BOOKSHOP AND SUBSCRIPTIONS

There are over 500 titles available from the ABS Bookshops in each of our offices. You can also receive any of our publications on a regular basis. Join our subscription mailing service and have your publications mailed to you in Australia at no additional cost. Telephone our Publications Subscription Service toll free Australia wide on 008 0206 08.

GENERAL SALES AND INQUIRIES

- | | |
|-------------------------|------------------------|
| ■ Sydney 02 268 4611 | ■ Adelaide 08 237 7100 |
| ■ Melbourne 03 615 7000 | ■ Hobart 002 20 5800 |
| ■ Brisbane 07 222 6351 | ■ Darwin 089 43 2111 |
| ■ Perth 09 360 5140 | ■ Canberra 06 252 6007 |
- Information Services, ABS
PO Box 10, Belconnen ACT 2616



2620200007944

ISSN 1031-038X

RRP \$11.00

