

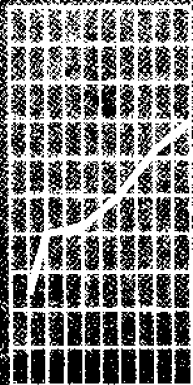


June 1997

EMBARGO: 11:30 AM (CANBERRA TIME) MON 23 JUN 1997

Business Indicators

Australian Capital Territory



NOTES

FORTHCOMING ISSUES

<i>ISSUE</i>	<i>RELEASE DATE</i>
July 1997	21 July 1997
August 1997	18 August 1997

SYMBOLS AND OTHER USAGES

ACT	Australian Capital Territory
n.a.	not available
n.p.	not available for publication
p	preliminary
*	Represents data with a standard error of greater than 25%. Caution should be exercised when using this data.
—	nil or rounded to zero

INQUIRIES

For further information about statistics in this publication and the availability of related unpublished statistics, contact Kingsley Green on Canberra (06) 207 0286 or any ABS State office.

For information about other ABS statistics and services, please refer to the back of this publication.

Dalma Jacobs
Regional Director
Australian Capital Territory

SUMMARY OF FINDINGS

UPDATED SERIES

Series updated since the May 1997 issue are: population; labour force, industrial disputes; housing finance, building approvals, house price indexes; tourism indicators; retail turnover; average weekly earnings; and new motor vehicle registrations. A feature article on labour force status and other characteristics of migrants in the ACT is included on pages 7 and 8.

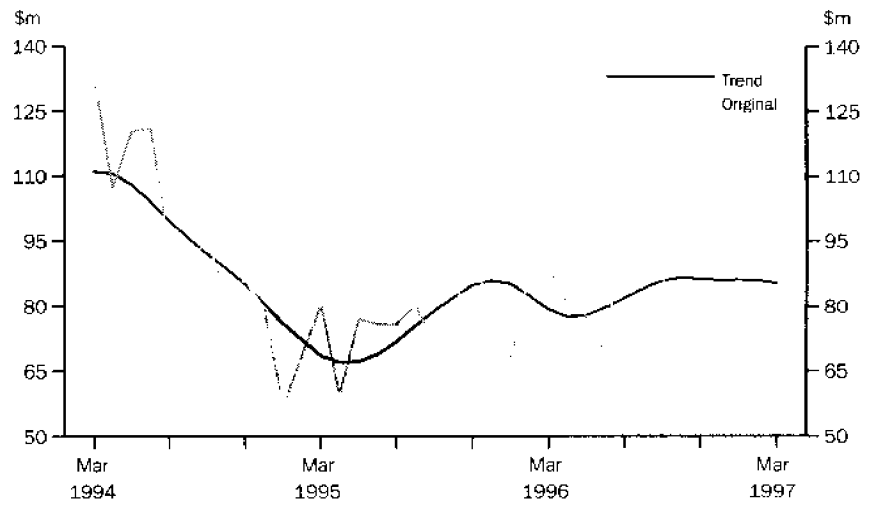
NOTABLE MOVEMENTS

- Population** The estimated resident population of the ACT at 31 December 1996 was 308,500, a decrease of 200 since the September quarter 1996 and an increase of 3,100 since 31 December 1995. The growth rate during the 12 months to December 1996 was 1.0%, which is slightly below the 1.1% growth rate for the preceding 12 months.
- Labour force** Trend employment in the ACT is at an all time high with the growth rate slowing in May. The number of persons employed has continued to increase for each of the last six months from a trough of 152,200 persons in November 1996 to 159,500 persons in May 1997 (up 4.8%). The trend number of persons unemployed has fallen from 14,400 in October 1996 to 11,600 in May 1997, with the trend unemployment rate decreasing from 8.6% to 6.8%, the lowest recorded since September 1991 (May and June 1994 and October 1991 also recorded 6.8%). The trend participation rate has increased for each of the past five months, rising 1.8 percentage points from 71.1% in December 1996 to 72.9% in May 1997.
- Industrial disputes** In February 1997, there were 129 working days lost per 1,000 employees in the ACT and Australia. This represented a fall of 12.8% for the ACT and 3.0% for Australia from the previous month's figure.
- Housing finance** The trend number of dwelling units financed (includes refinancing) in the ACT during March 1997 decreased to 796 dwellings, a fall of 1.8%. The trend estimate for the value of commitments in the ACT was \$85.2 million, a decrease of 0.8% on the previous month. Refinancing of existing dwellings comprised 24.4% of the total number of dwelling units financed in March 1997, which was up 0.8 percentage points on the previous month.
- Housing and construction** The trend number of dwelling units approved in the ACT decreased by 5.8% to 163 dwelling units in April 1997. Nationally the total number of dwelling units approved increased by 0.2% in April 1997. The national trend in the number of dwelling units has increased for each of the last 16 months.
- The value of non-residential building approvals was \$13.1 million in April 1997; an increase of \$9.5 million (or 271.1%) from the previous month but a decrease of \$5.3 million (28.9%) from April 1996.

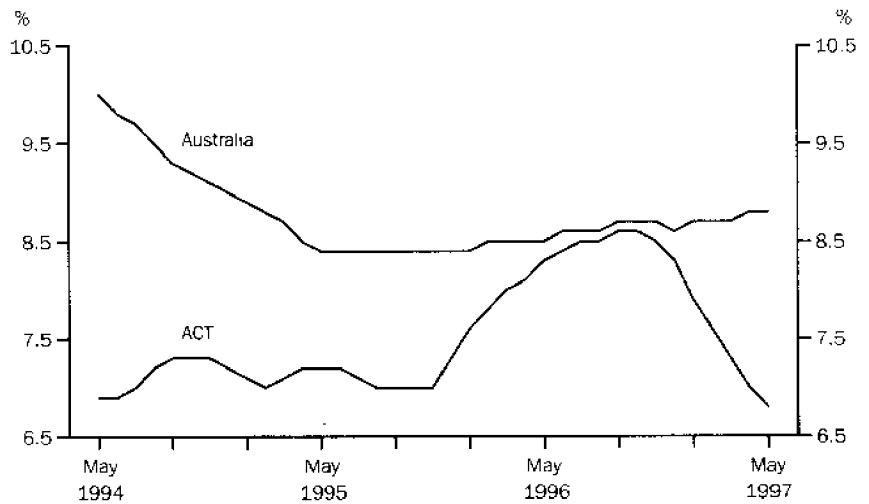
Housing prices	The quarterly established house price index for Canberra fell by 1.8% in the March quarter 1997 after a fall of 0.5% in the December quarter 1996. In contrast the weighted average of the six capital cities increased 0.9% in the March quarter 1997. In the 12 months to March 1997, the price index fell by 2.1% for Canberra compared with a 2.8% increase for the capital cities' weighted average.
Tourism indicators	Room occupancy rates for ACT hotels, motels and guest houses in the March quarter 1997 was 58.0%, down 5.1 percentage points on the previous quarter and 1.8 percentage points on 12 months ago.
Retail turnover	The trend estimate for retail turnover in the ACT for April 1997 was \$191.4 million, down 0.7% on the previous month's figure of \$192.7 million. The hospitality and services industry, down 1.4%, and the food and retailing industry, down 1.1%, largely contributed to this fall. The national trend retail turnover experienced an increase of 0.2% on the previous month.
Average weekly earnings	The trend average weekly earnings for February quarter 1997 was \$675.30, an increase of 1.7% from the November quarter 1996 figure. Nationally the trend average weekly earnings increased by 0.8% to \$577.00.
Motor vehicle registrations	The trend estimate for new motor vehicle registrations for the ACT in April 1997 was 1,029, up 2.5% on the previous month, and up 1.7% on 12 months ago. The series has now recorded six consecutive months of increase. Nationally, the trend for total new registrations in April 1997 recorded a 1.0% increase on the previous month's figure.

SELECTED BUSINESS INDICATORS

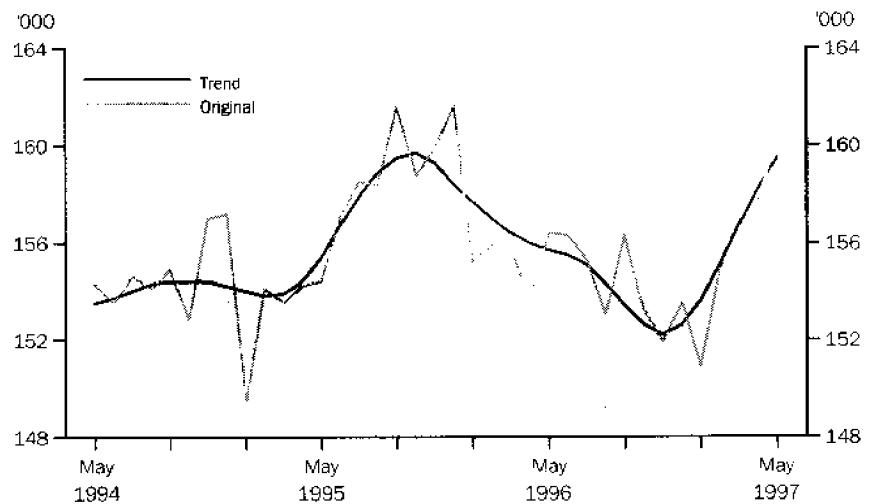
HOUSING FINANCE COMMITMENTS



LABOUR FORCE — TREND UNEMPLOYMENT RATE

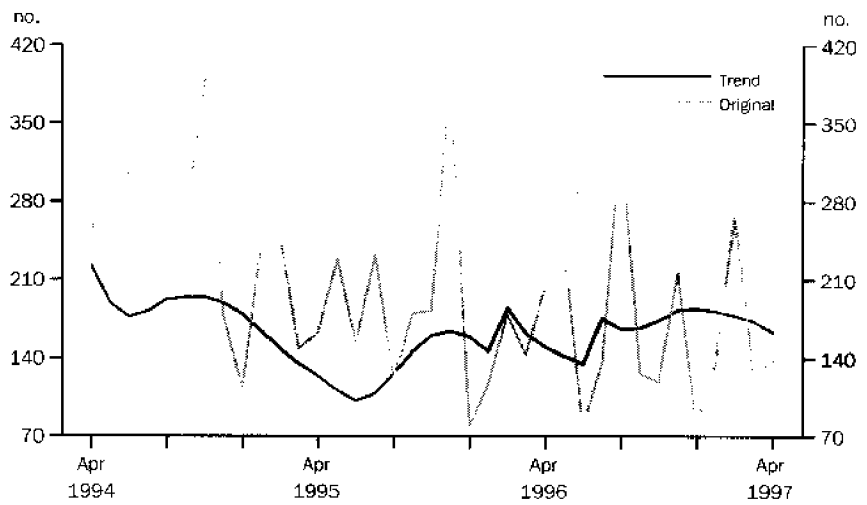


LABOUR FORCE — EMPLOYMENT

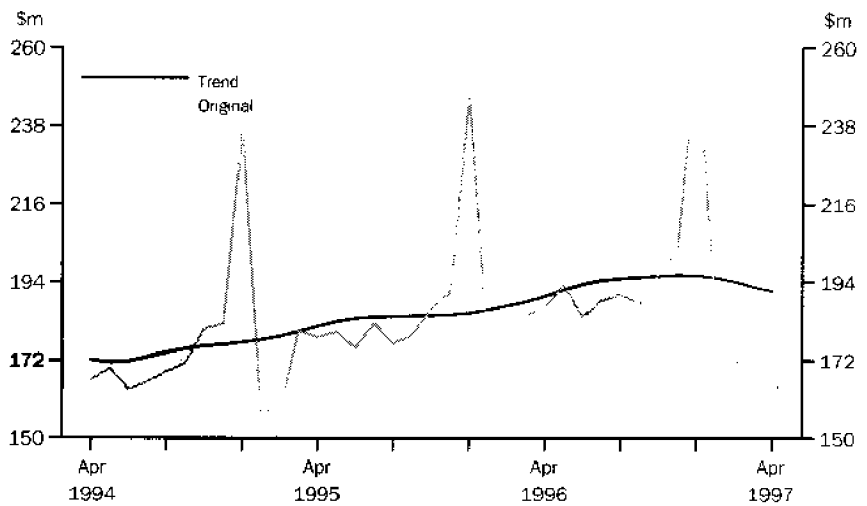


SELECTED BUSINESS INDICATORS continued

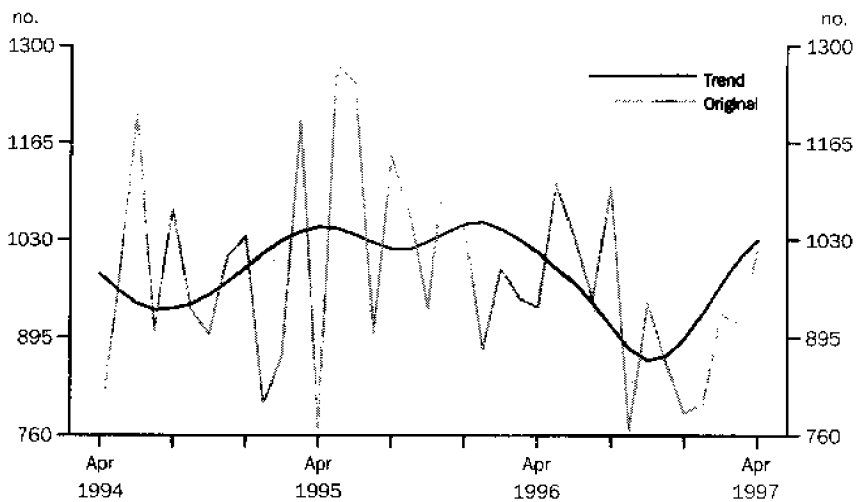
**BUILDING APPROVAL —
DWELLING UNITS APPROVED**



RETAIL TURNOVER



**NEW MOTOR VEHICLE
REGISTRATIONS**



LABOUR FORCE STATUS AND OTHER CHARACTERISTICS OF MIGRANTS IN THE ACT

In November 1996 the civilian population aged 15 years and over was 233,900 persons. Of these persons, 27.4% were born outside Australia, compared with the national proportion of 26.6%. In this summary, that group of persons who had been born outside Australia, arrived after 1970, were aged 18 years and over on arrival, and had obtained permanent resident status, are referred to simply as 'migrants'.

There were 19,136 migrants, 8.2% of the civilian population aged 15 years and over in November 1996, which compared with the national proportion of 10.0%. Of these, 11,330 (59.2%) were employed, 1,529 (11.9%) were unemployed and 6,277 (32.8%) were not in the labour force.

In September 1993, of the 11,076 migrants in the ACT who came from non-English speaking countries, 35.1% originated from Southeast Asia, *22.8% from Europe and the former USSR, *11.4% from Northeast Asia, *11.2% from Southern Asia and *11.1% from the Middle East and North Africa. In contrast, by November 1996, of the 12,400 migrants in the ACT born in non-English speaking countries, 28.2% were born in Northeast Asia, with more than half (66.9%) of that group being born in either Hong Kong (38.8%) or China (*28.1%). A further 23.6% and 23.1% were born in Southeast Asia, and Europe and the former USSR respectively.

At November 1996 the unemployment rate for migrants in the ACT was 11.9%, which was slightly above the national average of 9.7%. This compared to 7.7% for all persons residing in the ACT. The unemployment rate for females (15.0%) and male migrants (9.4%) compared with the September 1993 rate of *11.4% and *9.8% respectively. The highest unemployment rates were experienced by those migrants from Southeast Asia (*18.3%), Europe and the former USSR (*14.9%) and Northeast Asia (*10.5%).

The labour force participation rate for migrants was 67.2% (down from 73.6% in September 1993) compared with 70.4% for the ACT population, with rates much higher for males (79.5%) than females (56.4%) and compared with the September 1993 rates of 86.2% and 64.2% respectively. Nationally the migrant participation rate was 68.0%, with a higher rate for males (81.2%) than females (55.4%).

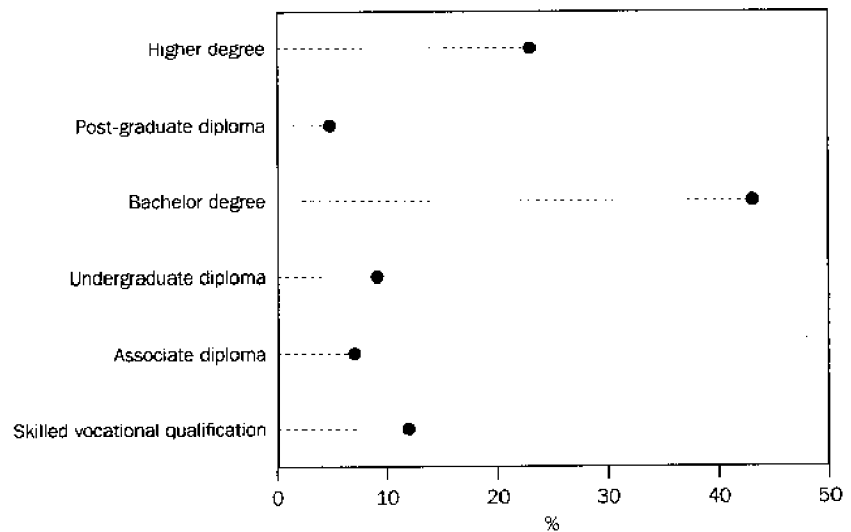
The proportion of migrants residing in the ACT who had arrived in Australia with post-school qualifications was 53.9% (or 10,314 persons). Nationally the proportion was 49.0%. Of these migrants, a bachelor's degree or higher (60.9%) and a skilled vocational qualification (16.5%) were the two most common types of qualification attained before migration. Of this group 69.2% had their qualifications recognised in Australia (migrants from Europe and the former USSR had the highest level of skills recognition with 39.7%).

Of the total migrants (aged over 18 years) settling in Canberra since 1970, 5,437 (28.4%) had gained a post-school qualification since arrival of which 70.1% had gained a bachelor's degree or higher. A further 9.2% had obtained an undergraduate diploma, 5.5% an associate diploma, 6.6% a skilled vocational qualification and 8.6% a basic vocational qualification. For Australia, the proportion of migrants who obtained a post-school qualification after arrival was 15.3%.

The majority (64.8%) of ACT migrants were born in a non-English speaking country. Of this group, 36.4% usually spoke only English at home, which was well above the national average of 29.0%.

Of those 7,889 who spoke a language other than English at home, 67.4% reported they spoke English well or very well. Some 28.5% reported they could not speak English well and 4.1% could not speak English at all. For Australia, 28.9% of migrants reported that they usually spoke English, a further 40.4% reported that they spoke English well or very well, 24.3% reported not speaking English well and 6.4% reported not being able to speak English at all.

ACT RESIDENTS WITH POST-SCHOOL QUALIFICATIONS RECOGNISED IN AUSTRALIA



1**BUSINESS EXPECTATIONS: SALES, JUNE QUARTER 1997/MARCH QUARTER 1998, EXPECTED AGGREGATE CHANGE**

<i>Period</i>	<i>ACT</i>	<i>Australia</i>
	%	%
Short-term		
Mar qtr 1996-Jun qtr 1996	1.8	2.3
Jun qtr 1996-Sep qtr 1996	0.4	1.6
Sep qtr 1996-Dec qtr 1996	-0.3	1.6
Dec qtr 1996-Mar qtr 1997	-1.1	0.4
Mar qtr 1997-Jun qtr 1997	1.3	1.6
Medium-term		
Mar qtr 1996-Mar qtr 1997	2.3	4.1
Jun qtr 1996-Jun qtr 1997	1.4	3.6
Sep qtr 1996-Sep qtr 1997	1.5	3.1
Dec qtr 1996-Dec qtr 1997	2.2	3.1
Mar qtr 1997-Mar qtr 1998	1.7	2.9

Indicator	Unit	ACT			Australia		
		% change from			% change from		
		Latest figure	Previous period	Same period previous year	Latest figure	Previous period	Same period previous year
POPULATION, VITAL AND LABOUR							
POPULATION Dec qtr 96	'000	308.5	-0.1	1.0	18 426.9	0.3	1.3
Natural increase	no.	781	4.6	-19.0	31 085	11.6	1.1
Net migration	no.	-991	3 439.3	6.9	24 834	-21.6	12.6
Total increase	no.	-210	-129.2	667.6	55 919	-6.1	-5.5
LABOUR FORCE, May 97							
Original series							
Employed	'000	160.0	1.4	2.3	8 389.3	-0.3	0.6
Unemployed	'000	11.7	1.7	-13.3	791.9	1.0	4.4
Unemployment rate(a)	%	6.8	-0.2	-1.1	8.6	-0.1	0.3
Participation rate(a)	%	73.1	0.8		63.1	-0.3	-0.4
Long-term unemployed (Apr 97)	no.	3 042	20.3	1.9	239 808	2.0	9.7
Long-term unemployed as percentage total unemployed (Apr 97)(a)	%	25.5	5.9	5.4	30.0	1.0	2.4
Trend series							
Employed	'000	159.5	0.8	2.4	8 398.7	-0.1	1.0
Unemployed	'000	11.6	-2.5	-17.1	809.2	0.4	4.1
Unemployment rate(a)	%	6.8	-0.2	-1.5	8.8	---	0.3
Participation rate(a)	%	72.9	0.4	-0.2	63.3	-0.1	-0.2
JOB VACANCIES, Feb 97	'000	1.0	28.6	-37.5	62.6	0.5	-2.0
INDUSTRIAL DISPUTES IN PROGRESS, Feb 97							
Working days lost	'000	0.0		-100.0	17.2	-26.8	-62.3
Days lost per '000 employees (year ended Feb 97)	no.	129.0	-12.8	396.2	129.0	-3.0	63.3
BUILDING AND CONSTRUCTION							
HOUSING FINANCE, Mar 97							
Secured commitments to individuals for							
Original series							
Construction of dwellings	\$m	6.7	8.1	8.1	565.6	-0.8	-0.8
Purchase of new dwellings	\$m	7.9	31.7	-6.0	224.0	4.5	14.2
Purchase of established dwellings	\$m	46.9	-0.8	-16.5	2 593.1	5.1	4.1
Refinancing	\$m	18.2	7.1	3.4	854.5	9.9	6.6
Total housing commitments	\$m	79.7	4.2	-9.8	4 237.3	5.1	4.4
Seasonally adjusted series							
Total housing commitments	\$m	82.9	6.1	-0.5	4 185.3	1.4	12.4
Trend series							
Dwelling units financed	no.	796	1.8	-0.1	39 834	-0.4	4.5
Total housing commitments	\$m	85.2	-0.8	7.4	4 279.2	0.4	15.4
BUILDING APPROVALS, Apr 97							
Original series							
Dwelling units	no.	138	13.1	-33.0	11 924	14.5	20.5
Value of new residential	\$m	16.6	31.7	1.8	1 208.6	18.2	27.2
Value of residential alterations and additions	\$m	5.8	65.7	52.5	202.4	5.7	2.0
Value of non-residential	\$m	13.1	274.3	-28.8	707.4	13.0	15.8
Value of total building	\$m	35.4	80.6	-24.4	2 118.4	15.1	6.5
Trend series							
Dwelling units	no.	163	-5.8	8.7	11 692	0.2	12.7
BUILDING COMMENCEMENTS, Dec qtr 96							
New houses	no.	280	1.1	-27.3	21 397	3.1	-4.1
Value of houses commenced	\$m	31.8	-6.2	29.3	2 347.7	5.1	3.2
Value of non-residential building commenced	\$m	111.1	1.6	91.2	3 156.8	11.2	26.3
Value of total commencements	\$m	170.1	0.9	11.2	7 057.3	8.3	15.4
PRICE INDEXES							
Established house price index, Mar qtr 97	(1989-90 = 100.0)	124.3	-1.8	-2.1	115.3	0.9	2.8

For footnotes see end of table.

Indicator	Unit	ACT			Australia		
		Latest figure	Previous period	% change from Same period previous year	Latest figure	Previous period	% change from Same period previous year
PRICES, WAGES AND CONSUMER SPENDING							
CONSUMER PRICE INDEX, Mar qtr 97							
Food	(1989-90=100.0)	122.0	—	2.3	120.2	0.7	3.7
Housing	(1989-90=100.0)	103.4	-4.2	-7.8	100.2	-2.9	-5.2
Transportation	(1989-90=100.0)	131.9	1.3	3.5	125.2	0.6	2.3
All groups	(1989-90=100.0)	121.4	.	0.5	120.5	0.2	1.3
AVERAGE WEEKLY EARNINGS, Feb 97							
Original series							
Males	\$	777.3	1.0	2.3	688.7	1.3	3.1
Females	\$	576.5	2.7	9.6	457.8	2.4	4.2
Persons	\$	679.3	2.3	6.2	581.6	2.0	3.4
Trend series							
Males	\$	777.6	1.1	3.6	685.0	0.7	2.7
Females	\$	574.0	1.9	9.4	454.2	0.9	4.1
Persons	\$	675.3	1.7	6.1	577.0	0.8	3.1
RETAIL TURNOVER, Apr 97							
Original series							
Food retailing	\$m	71.4	-4.9	-5.8	4 131.7	-4.2	3.1
Department stores	\$m	20.6	-3.3	-12.7	849.2	-1.0	-5.1
Hospitality and services	\$m	29.9	8.7	2.0	1 701.7	-1.5	-2.1
All other retailing	\$m	65.5	7.4	12.5	3 273.4	4.5	5.9
Total	\$m	187.4	1.4	0.3	9 956.0	-0.8	2.3
Trend series							
Food retailing	'000	72.9	-1.1	-7.6	4 270.6	0.2	3.8
Department stores	\$m	23.0	-2.1	-2.1	965.0	-1.2	—
Hospitality and services	\$m	28.9	-1.4	-0.7	1 760.0	0.8	-1.1
All other retailing	%	66.6	0.6	13.8	3 439.4	0.3	3.0
Total	'000	191.4	-0.7	0.7	10 435.0	0.2	2.3
TOURISM AND TRANSPORT							
HOTELS, MOTELS AND GUEST HOUSE ACCOMMODATION, Dec qtr 96							
Original series							
Room nights	'000	221.0	11.8	2.3	9 551.6	2.7	2.8
Takings at current prices	\$m	20.7	13.7	7.8	946.1	5.5	8.3
Takings at 1989-90 prices	\$m	17.1	14.0	6.9	785.6	5.3	6.5
Room occupancy rate (Mar qtr 97)(a)	%	58.0	-5.1	-1.8	59.9	1.1	0.2
Seasonally adjusted series							
Room nights	'000	211.1	7.5	3.1	9 334.3	3.3	2.7
Takings at current prices	\$m	20.1	9.8	9.8	912.3	4.1	8.5
Takings at 1989-90 prices	\$m	16.5	9.3	7.8	757.5	3.9	6.7
Trend series							
NEW MOTOR VEHICLE REGISTRATIONS, Apr 97							
Motor vehicles	no.	1 016	11.3	8.4	57 156	3.9	14.2
Seasonally adjusted motor vehicles	no.	1 019	0.1	-5.6	55 763	-6.0	2.0
Trend motor vehicles	no.	1 029	2.5	1.7	58 144	1.0	7.4

For footnotes see end of table.

Indicator	Unit	ACT			Australia		
		Latest figure	Previous period	Same period previous year	% change from		Same period previous year
					Latest figure	Previous period	
AGGREGATE INDICATORS							
STATE ACCOUNTS, Dec qtr 96(b)							
Original series							
Gross State product at av. 1989-90 prices	\$m	2 306	8.0	-0.9	107 918	-9.7	2.4
Gross State product at current prices	\$m	2 848	7.0	3.6	124 332	-8.7	1.0
State final demand at av. 1989-90 prices	\$m	2 907	4.8	-7.2	104 913	-8.1	3.3
Private final consumption expenditure	\$m	1 523	5.5	4.2	75 903	-7.6	3.6
Private gross fixed capital expenditure	\$m	221	12.2	-5.2	19 270	-13.0	7.5
Trend series							
Gross State product at av. 1989-90 prices	\$m	2 173	-1.0	1.4	112 956	1.1	3.6
Gross State product at current prices	\$m	2 721	0.3	4.8	129 156	1.2	4.8
State final demand at av. 1989-90 prices	\$m	2 795	-2.1	-7.2	110 912	1.1	3.6
Private final consumption expenditure	\$m	1 444	1.0	4.0	79 120	0.9	3.8
Private gross fixed capital expenditure	\$m	199	0.5	2.1	21 206	1.1	7.0

(a) Change shown in terms of percentage points.

(b) State estimates are not comparable to national estimates from the June quarter 1995 due to revised methodology used in *Australian National Accounts, State Accounts* (Cat. no. 5242.0).

Source: ABS Catalogue nos: 3101.0, 5242.0, 5609.0, 6202.0, 6203.0, 6302.0, 6321.0, 6354.0, 6401.0, 6408.0, 6416.0, 8501.0, 8634.0, 8635.8, 8731.0, 8752.0, 9214.0, 9301.0.

Indicator	Unit	Latest period	NSW	Vic.	Qld	SA	WA	Tas.	NT	ACT	Aust.
POPULATION	'000	Dec qtr 96	6 240.9	4 581.6	3 374.3	1 476.8	1 782.7	474.2	184.9	308.5	18 426.9
LABOUR FORCE											
Employed persons (trend)	'000	May 97	2 811.6	2 091.8	1 546.5	662.2	849.5	194.6	84.7	159.5	8 398.7
Unemployment rate (trend)	%	May 97	8.2	9.1	9.7	9.7	7.2	10.8	6.4	6.8	8.8
STATE ACCOUNTS(a)											
Gross State product at 1989-90 prices (trend)	\$m	Dec qtr 96	38 033	29 150	18 326	7 705	12 760	2 210	1 195	2 173	112 956
Gross State product at current prices (trend)	\$m	Dec qtr 96	44 518	33 424	20 467	8 949	13 601	2 651	1 318	2 721	129 156
BUILDING APPROVALS											
Dwelling units approved	no.	Apr 97	4 272	2 082	2 748	628	1 626	196	234	138	11 924
Dwelling units approved (trend)	no.	Apr 97	4 221	2 209	2 862	560	1 443	165	166	163	11 692
Value of non-residential building approved	\$m	Apr 97	307.3	121.1	122.5	39.2	78.8	5.5	19.9	13.1	707.4
Value of all buildings approved	\$m	Apr 97	847.3	402.6	404.3	102.8	254.8	25.5	45.7	35.4	2 118.4
ENGINEERING CONSTRUCTION											
Value of engineering construction work done	\$m	Dec qtr 96	1 209.0	564.7	907.4	186.1	750.9	58.1	54.4	31.8	3 762.3
AVERAGE WEEKLY EARNINGS											
Full-time adult ordinary time (trend)	\$	Feb 97	720.7	687.5	655.2	647.2	690.2	659.8	700.7	797.6	692.9
RETAIL TRADE											
Retail turnover (trend)	\$m	Apr 97	3 661.7	2 485.4	1 912.2	765.1	1 057.7	250.8	110.6	191.4	10 435.0
HOTELS, MOTELS & GUEST HOUSE ACCOMMODATION											
Room nights occupied (trend)	'000	Dec qtr 96	3 129.9	1 492.9	2 454.6	523.0	840.7	263.1	307.9	207.2	9 219.1
Room occupancy rate (original)	%	Dec qtr 96	60.9	56.0	62.7	54.9	60.3	54.8	58.5	58.0	59.9
NEW MOTOR VEHICLE REGISTRATIONS											
Trend	no.	Apr 97	20 041	14 529	10 670	3 959	5 976	1 189	751	1 029	58 144
	Unit	Latest period	Syd.	Melb.	Bris.	Adel.	Perth	Hob.	Dar.	Canb.	Aust.
CONSUMER PRICE INDEX											
Food	(b)	Mar qtr 97	121.1	118.8	119.8	121.2	121.2	120.7	120.3	122.0	120.2
Housing	(b)	Mar qtr 97	104.9	93.5	106.4	97.5	94.8	101.9	117.8	103.4	100.2
Transportation	(b)	Mar qtr 97	125.9	125.1	124.4	125.6	122.9	122.8	122.7	131.9	125.2
All Groups	(b)	Mar qtr 97	120.6	120.1	121.5	122.6	118.2	121.9	121.6	121.4	120.5
Average retail prices (cents)											
Milk, carton, supermarket sales	1 litre	Mar qtr 97	115	130	116	116	127	125	117	112	n.a.
Bread, white loaf, sliced, supermarket sales	680 g	Mar qtr 97	201	193	194	153	177	175	194	193	n.a.
Beef, rump steak	1 kg	Mar qtr 97	1 202	1 079	1 053	1 157	1 094	1 051	1 272	1 071	n.a.
Chicken, frozen	1 kg	Mar qtr 97	361	379	343	351	357	393	416	362	n.a.
Potatoes	1 kg	Mar qtr 97	105	115	93	78	119	89	112	98	n.a.
Coffee, instant (jar)	150 g	Mar qtr 97	552	533	546	500	561	573	538	559	n.a.
Scotch nip, public bar	30 ml	Mar qtr 97	318	285	252	345	340	247	315	287	n.a.
Private motoring petrol											
Leaded	1 litre	Mar qtr 97	77.1	75.2	68.2	77.5	77.4	80.0	82.0	80.3	n.a.
Unleaded	1 litre	Mar qtr 97	74.9	73.0	66.0	75.2	75.2	77.9	80.0	78.1	n.a.

(a) State estimates are not comparable to national estimates from the June quarter 1995 due to revised methodology used in *Australian National Accounts, State Accounts* (Cat. no. 5242.0).

(b) Base year: 1989-90=100.0.

4

ACT IN RELATION TO THE REST OF AUSTRALIA — PERCENTAGE CHANGES

Indicator	Latest period	NSW	Vic.	Qld	SA	WA	Tas.	NT	ACT	Aust.
POPULATION	Dec qtr 96	0.3	0.2	0.5	0.1	0.5	-0.1	0.5	-0.1	0.3
LABOUR FORCE										
Employed persons (trend)	May 97	-0.1	-0.2	—	—	-0.2	-0.2	1.0	0.8	-0.1
Unemployment rate (trend)	May 97	—	—	—	0.1	0.1	—	0.2	-0.2	—
STATE ACCOUNTS(a)										
Gross State product at 1989-90 prices (trend)	Dec qtr 96	0.9	0.7	1.1	0.1	0.6	-0.5	1.0	-1.0	1.1
Gross State product at current prices (trend)	Dec qtr 96	1.4	1.5	1.3	0.5	0.4	0.1	1.3	0.3	1.2
BUILDING APPROVALS										
Dwelling units approved	Apr 97	20.6	11.7	3.4	15.7	33.7	56.8	51.9	13.1	14.5
Dwelling units approved (trend)	Apr 97	0.6	1.6	-0.9	4.5	4.0	1.9	1.8	5.8	0.2
Value of non-residential building approved	Apr 97	51.8	-11.6	-15.0	10.7	-12.8	45.5	521.9	274.3	13.0
Value of all buildings approved	Apr 97	30.6	7.1	-6.6	19.4	10.3	2.8	118.7	80.6	15.1
ENGINEERING CONSTRUCTION										
Value of engineering construction work done	Dec qtr 96	-7.0	1.8	2.0	23.2	-4.5	14.6	-19.5	11.9	-1.9
AVERAGE WEEKLY EARNINGS										
Full-time adult ordinary time (trend)	Feb 97	0.5	1.5	1.8	1.0	0.2	1.9	1.7	0.6	1.0
RETAIL TRADE										
Retail turnover (trend)	Apr 97	0.2	0.4	0.8	0.1	0.2	0.2	—	-0.7	0.2
HOTELS, MOTELS & GUEST HOUSE ACCOMMODATION										
Room nights occupied (trend)	Dec qtr 96	0.1	-0.4	1.2	0.5	0.7	1.3	3.6	-0.6	0.5
Room occupancy rate (original)	Dec qtr 96	1.8	4.0	2.8	6.0	-1.7	16.1	-11.9	-5.1	1.1
NEW MOTOR VEHICLE REGISTRATIONS										
Trend	Apr 97	1.0	0.7	0.8	2.1	0.8	0.5	4.3	2.5	1.0
	Latest period	Syd.	Melb.	Bris.	Adel.	Perth	Hob.	Dar.	Canb.	Aust.
CONSUMER PRICE INDEX										
Food	Mar qtr 97	0.9	0.3	1.5	0.4	0.3	0.1	1.3	0.0	0.7
Housing	Mar qtr 97	-2.6	3.3	-2.9	-3.0	-3.4	-2.8	-2.5	-4.2	-2.9
Transportation	Mar qtr 97	0.4	0.8	0.9	0.1	0.2	0.8	0.3	1.3	0.6
All Groups	Mar qtr 97	0.2	0.2	0.6	—	-0.2	0.5	0.1	0.0	0.2
Average retail prices (cents)										
Milk, carton, supermarket sales	Mar qtr 97	—	3.2	0.9	—	1.6	4.2	0.9	0.0	n.a.
Bread, white loaf, sliced, supermarket sales	Mar qtr 97	-1.0	-4.5	4.3	-2.5	1.7	2.9	—	0.5	n.a.
Beef, rump steak	Mar qtr 97	1.4	-0.2	1.2	9.0	4.1	-3.4	2.8	4.8	n.a.
Chicken, frozen	Mar qtr 97	3.4	3.8	4.3	6.4	5.6	—	16.9	9.7	n.a.
Potatoes	Mar qtr 97	8.2	12.7	13.4	6.8	-4.0	2.3	7.7	6.5	n.a.
Coffee, instant (jar)	Mar qtr 97	-4.0	-5.3	3.0	-2.5	0.4	9.3	-7.1	-1.8	n.a.
Scotch nip, public bar	Mar qtr 97	0.3	—	—	0.6	2.1	0.4	1.0	4.4	n.a.
Private motoring petrol										
Leaded	Mar qtr 97	2.0	1.1	2.2	1.8	0.3	2.2	2.1	3.2	n.a.
Unleaded	Mar qtr 97	2.0	1.1	2.3	2.0	0.1	2.2	2.2	3.3	n.a.

(a) State estimates are not comparable to national estimates from the June quarter 1995 due to revised methodology used in *Australian National Accounts, State Accounts* (Cat. no. 5242.0).

(b) Base year: 1989-90=100.0.

For more information . . .

The ABS publishes a wide range of statistics and other information on Australia's economic and social conditions. Details of what is available in various publications and other products can be found in the ABS Catalogue of Publications and Products available from all ABS Offices.

ABS Products and Services

Many standard products are available from ABS bookshops located in each State and Territory. In addition to these products, information tailored to the needs of clients can be obtained on a wide range of media by contacting your nearest ABS Office. The ABS also provides a Subscription Service for standard products and some tailored information services.

National Dial-a-Statistic Line

0055 86 400

Steadycom P/L: premium rate 25c/20 secs.

This number gives 24-hour access, 365 days a year, for a range of important economic statistics including the CPI.

Internet

<http://www.abs.gov.au>

A wide range of ABS information is available via the Internet, with basic statistics available for each State, Territory and Australia. We also have Key National Indicators, ABS product release details and other information of general interest.

Sales and Inquiries

client.service@abs.gov.au

National Mail Order Service

(06) 252 5249

Subscription Service

1800 02 0608

Information Inquiries

Bookshop Sales

SYDNEY

(02) 9268 4611

(02) 9268 4620

MELBOURNE

(03) 9615 7755

(03) 9615 7755

BRISBANE

(07) 3222 6351

(07) 3222 6350

PERTH

(08) 9360 5140

(08) 9360 5307

ADELAIDE

(08) 8237 7100

(08) 8237 7582

CANBERRA

(06) 252 6627

(06) 207 0326

HOBART

(03) 6222 5800

(03) 6222 5800

DARWIN

(08) 8943 2111

(08) 8943 2111



Client Services, ABS, PO Box 10, Belconnen ACT 2616

Produced by the Australian Government Publishing Service
© Commonwealth of Australia 1997



2130380006977

ISSN 1320-808X

Recommended retail price: \$14.00