



## 2006 Census Output Strategic Directions.

As part of the development of the 2006 Census Output Program we will be conducting face-to-face seminars with Census users in October 2005. The seminars will concentrate on the proposed products and services from the 2006 Census, providing the ABS with an opportunity to inform and obtain feedback about proposals for the 2006 Census with users. Listed below is a table showing the dates and locations for each of the seminars:

Location	Date of seminar
Melbourne	4/10/2005
Hobart	7/10/2005
Brisbane	11/10/2005 & 12/10/2005
Townsville	13/10/2005
Darwin	14/10/2005
Perth	17/10/2005 & 18/10/2005
Adelaide	19/10/2005 & 20/10/2005
Sydney	25/10/2005 & 26/10/2005
Canberra	31/10/2005 & 2/11/2005

To reserve your place at a seminar or for more information about the 2006 Census Output Program and user consultation process including ; seminar dates & times, information paper: *ABS Views on Census Products and Services* (cat. no. 2011.0) and accompanying questionnaire visit the Census homepage, [www.abs.gov.au/census](http://www.abs.gov.au/census).

If you have any further questions about the upcoming seminars email [marketing@abs.gov.au](mailto:marketing@abs.gov.au) and type "2006 Census Output – Seminars" in the subject field.

The user consultation process plays a significant role in the development of the 2006 Census Output program by ensuring the Census products are relevant and responsive to the needs of users.

The ABS greatly appreciates the feedback users contribute to the process.

Michael Beahan  
Director  
Census Products & Services

## Product of the Month New South Wales in Focus

The product of the month for June 2005 was the NSW in Focus publication. If you have ever needed to find out anything about the state of New South Wales, an extensive array of statistical information is now available in *NSW In Focus 2005, (cat. no. 1338.1)* a new publication released on 10 June 2005.



Drawing on data from a range of ABS and non-ABS sources it contains nine chapters in all, presenting an overview of current social, economic and environmental indicators. *NSW In Focus* presents data in easy to read tables for a wide range of state issues such as health, education and training, crime and justice and transport.

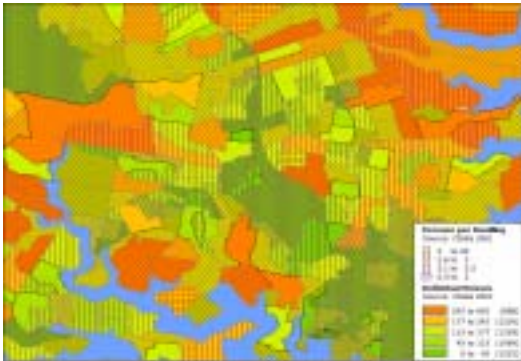
Features also include a summary of findings for each chapter detailing the change in headline indicators over the last five years. This publication also includes some selected data for regional NSW. Essentially this is a useful easy to use reference for government agencies, universities, other education facilities, research organisations and the general community.

For further information contact Allan McLean on (02) 9268 4795, or email [allan.mclean@abs.gov.au](mailto:allan.mclean@abs.gov.au).

## Using CDATA 2001 - Full GIS with MapInfo Professional V8.0



MapInfo Australia Pty Ltd released MapInfo Professional Version 8.0 in June 2005. The theme of the release was Increased Flexibility, Greater Collaboration and More Power. There is a raft of new features, but of specific interest for CDATA 2001-Full GIS users are the new bivariate thematic mapping and the enhanced legend control.



Full details on the functionality of MapInfo Professional V8.0 can be obtained from the MapInfo website, <http://www.mapinfo.com.au>

The ABS has undertaken software compliance testing of CDATA 2001 with MapInfo Professional Version 8.0 on the Windows 98 Second Edition, Windows 2000, Windows NT 4.0 and Windows XP platforms. Some problems were encountered and these were passed onto MapInfo for resolution. MapInfo subsequently developed a patch file in July which can be accessed from directly within MapInfo Professional Version 8.0 by selecting the menu Help > Check for Update. Note: you will need to be connected to the internet to access this update.

After installation of this patch file, CDATA 2001 performs normally with no operating conflicts identified through the ABS compliance testing.

Disclaimer: Only major software functions are tested each time a new version of MapInfo Professional is released (Reports, Thematic Maps, Dataviews, Graphs etc). As all software functions cannot be tested, CDATA support will be limited to offering CDATA 2001 - Full GIS users 'work around' solutions to any problems that are directly related to the use of CDATA 2001 - Full GIS with future versions of MapInfo Professional.

To upgrade your copy of MapInfo Professional please contact your local MapInfo representative or MapInfo partner for further assistance.

CDATA 2001 Full GIS Clients who upgrade to MapInfo Professional Version 8.0 will also need to contact the Census Technical Helpline on 1800 676 646, to obtain a new CDATA 2001 installer, as the current CDATA 2001 installer searches for a installed copy of MapInfo Version 7.0

### Contact Us

Census Technical Helpline **1800 676 646**  
Email: [census.software@abs.gov.au](mailto:census.software@abs.gov.au)  
(for help with CDATA 2001, SEIFA 2001 and CLIB2001)

National Information Service **1300 135 070**  
(for all other ABS inquiries)

Newsprint Editor – Stephen O'Connor  
Phone 02 6252 6013  
[stephen.oconnor@abs.gov.au](mailto:stephen.oconnor@abs.gov.au)

CDATA User Group Manager - Simon Jarman  
Phone 02 6252 6015  
[simon.jarman@abs.gov.au](mailto:simon.jarman@abs.gov.au)