

## CHAPTER 2

### THE LABOUR FORCE

Fundamental to the measurement of employment and unemployment is the concept of the labour force. The labour force is defined broadly as those persons who, during a particular week, are either employed or unemployed. The labour force represents the total supply of labour available to the labour market during a given week.

This chapter presents some summary statistics on the civilian labour force. An important labour force measure is the participation rate, which represents the proportion of the working age population (defined to be those aged 15 and over) who are in the labour force. Analysis of the participation rates provides a basis for monitoring changes in the size and composition of labour supply, particularly in terms of age, sex and marital status. Other characteristics such as birthplace, educational attainment and family characteristics also have to be taken into account in an analysis of the labour force.

The principal source for statistics on the civilian labour force is the ABS population survey, which consists of the monthly labour force survey and attached supplementary surveys. The labour force survey collects information on the labour force status of individuals (i.e. whether they are employed, unemployed or not in the labour force) together with a range of demographic and other characteristics. It has provided the basis for an analysis of underemployment and labour underutilisation, a topic addressed in Chapter 3. The supplementary surveys cover a range of topics. For example the Survey of Labour Force Experience examines the movements into and out of the labour force over twelve months.

Members of the permanent Defence Forces are excluded from the labour force survey. Their numbers totalled 62,147 males and 7,482 females at the end of June 1989.

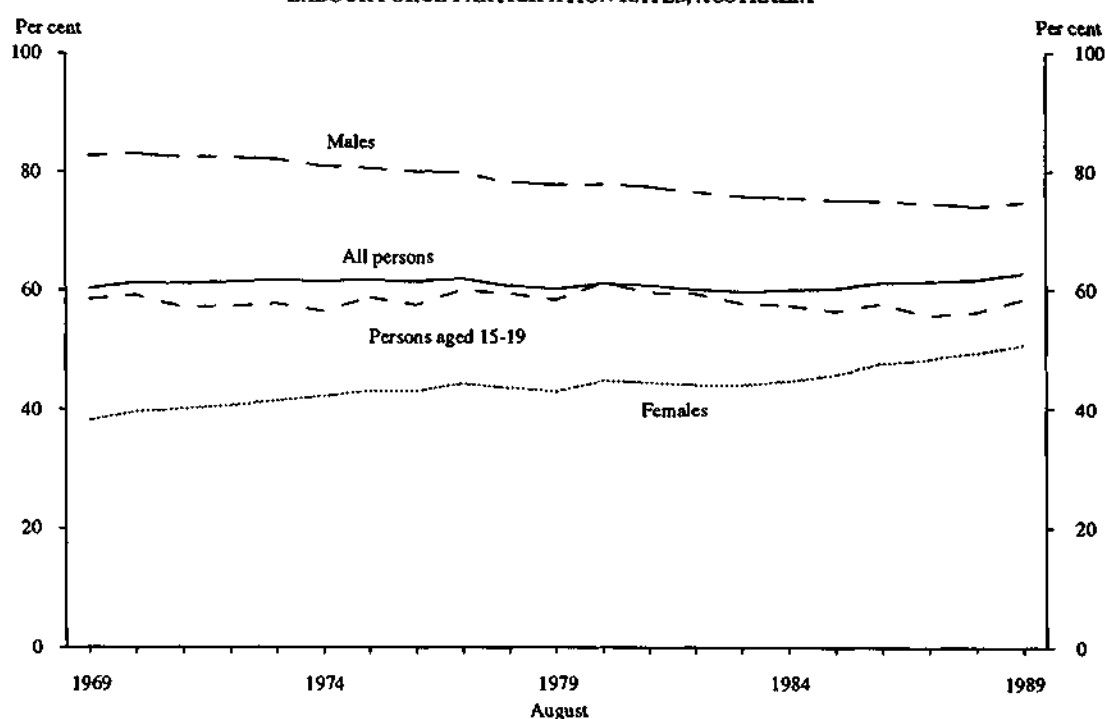
#### Labour force

In August 1989, of the 8,197,000 persons in the labour force, 4,832,600 were males and 3,364,400 were females.

The labour force participation rate for persons increased by 2.6 percentage points over the period August 1979 to August 1989 to 62.7 per cent. This increase was attributable to an increase of 7.9 percentage points in the female participation rate. The labour force participation rate for males has decreased by 2.9 percentage points to 74.9 per cent.

There was a large increase in the labour force participation rate for females in the 25 to 34 age group, 14.7 percentage points to 65.0 per cent. The participation rate for females aged 35 to 44 and 45 to 54 also increased by 12.7 and 12.5 percentage points respectively.

CHART 2.1. CIVILIAN POPULATION AGED 15 AND OVER:  
LABOUR FORCE PARTICIPATION RATES, AUSTRALIA



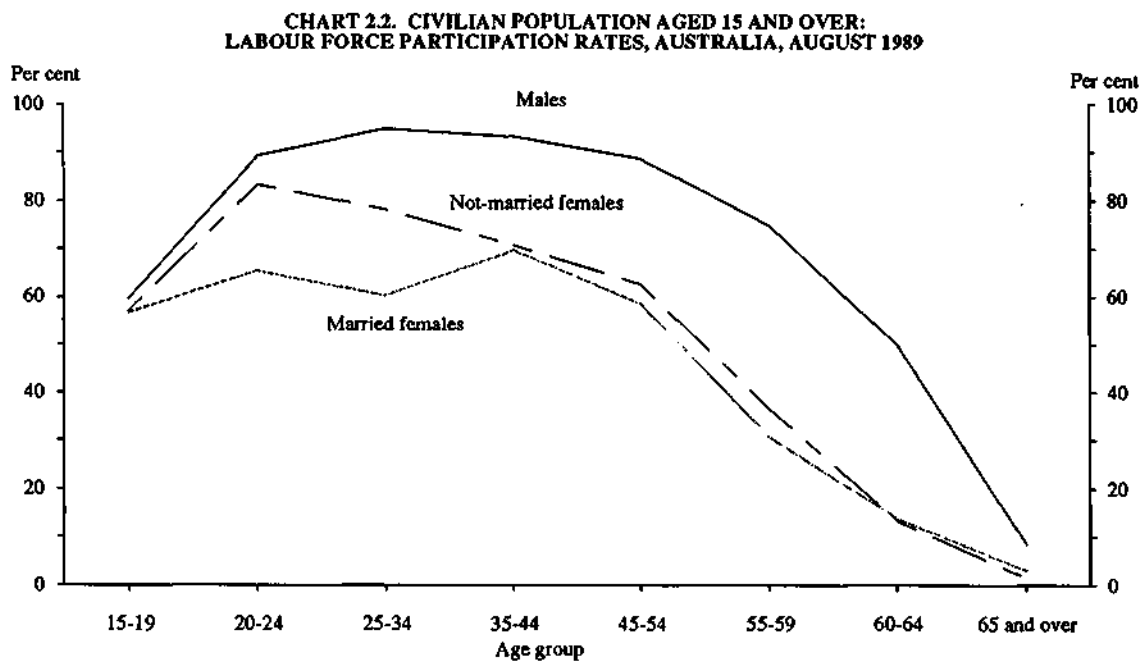
Source: *The Labour Force, Australia* (6203.0).

TABLE 2.1. LABOUR FORCE PARTICIPATION RATES BY AGE, AUSTRALIA, AUGUST 1979 TO AUGUST 1989  
(per cent)

August	Age group								Total
	15-19	20-24	25-34	35-44	45-54	55-59	60-64	65 and over	
<b>MALES</b>									
1979	61.4	90.2	95.8	95.6	91.2	82.0	53.5	11.5	77.8
1980	62.8	90.5	95.5	95.9	91.4	83.3	50.2	11.1	77.9
1981	61.8	91.3	95.3	95.2	91.3	81.1	51.2	10.6	77.5
1982	62.4	89.3	94.9	95.1	90.0	79.1	47.7	9.2	76.6
1983	58.2	89.6	95.4	95.0	90.4	78.2	42.8	8.6	75.9
1984	59.0	89.4	95.1	94.7	90.0	76.7	43.4	9.0	75.6
1985	57.7	89.7	94.5	94.8	90.0	76.4	42.6	8.9	75.2
1986(a)	58.5	89.1	94.8	94.4	90.0	75.7	45.1	8.4	75.1
1987	57.4	89.4	94.6	94.4	89.5	74.5	44.7	8.5	74.7
1988	56.4	90.1	93.7	94.2	87.3	73.6	47.2	8.4	74.2
1989	59.6	89.2	94.8	93.3	88.7	74.9	49.8	8.5	74.9
<b>FEMALES</b>									
1979	55.0	69.2	50.3	57.1	46.8	26.2	13.2	2.4	42.9
1980	59.2	71.1	52.8	58.7	47.6	29.1	13.5	2.9	44.7
1981	57.1	70.7	52.9	58.1	49.0	29.8	12.0	2.6	44.4
1982	56.1	70.0	53.6	58.0	49.5	26.0	9.1	2.5	44.0
1983	57.0	70.8	52.8	58.0	48.5	28.3	12.1	2.1	44.0
1984	55.6	71.8	54.9	58.7	50.1	27.6	11.5	2.5	44.6
1985	56.0	73.6	57.6	61.4	50.2	27.1	11.2	2.0	45.7
1986(a)	56.6	74.6	60.1	64.7	54.4	28.7	12.7	1.9	47.6
1987	53.6	75.6	61.9	65.8	55.3	30.4	13.2	2.6	48.3
1988	56.0	75.8	62.0	68.2	57.0	31.4	14.5	2.5	49.4
1989	57.1	77.4	65.0	69.8	59.3	32.1	13.6	2.2	50.8
<b>PERSONS</b>									
1979	58.3	79.7	73.1	76.7	69.5	53.8	32.5	6.2	60.1
1980	61.1	80.8	74.2	77.6	70.0	56.0	31.0	6.4	61.0
1981	59.5	81.0	74.2	76.9	70.6	55.4	30.7	5.9	60.7
1982	59.3	79.6	74.3	76.9	70.2	52.5	27.9	5.3	60.0
1983	57.6	80.2	74.1	76.8	69.9	53.4	26.9	4.8	59.7
1984	57.3	80.6	74.9	77.0	70.5	52.5	27.0	5.2	59.9
1985	56.9	81.7	76.0	78.4	70.6	52.1	26.5	4.9	60.2
1986(a)	57.6	81.9	77.4	79.7	72.7	52.6	28.6	4.7	61.1
1987	55.6	82.6	78.2	80.3	72.8	52.8	28.6	5.1	61.3
1988	56.2	83.0	77.9	81.3	72.5	52.8	30.6	5.0	61.6
1989	58.4	83.4	79.9	81.7	74.4	53.8	31.6	4.9	62.7

(a) Estimates from August 1986 are based on a revised definition introduced in April 1986. See paragraph 22 of the Technical Notes for further information.

Source: *The Labour Force, Australia* (6203.0).



Source: *The Labour Force, Australia* (6203.0).

TABLE 2.2. CIVILIAN POPULATION AGED 15 AND OVER : LABOUR FORCE STATUS, AUSTRALIA, AUGUST 1969 TO AUGUST 1989

August	Employed		Unemployed			Labour force	Not in labour force	Civilian population aged 15 and over	Un-employment rate —per cent—	Participation rate
	Full-time workers	Total	Looking for full-time work	Looking for part-time work	Total —'000—					
MALES										
1969	3,409.2	3,546.7	30.9	*	34.1	3,580.8	750.4	4,331.2	1.0	82.7
1970	3,533.4	3,647.7	33.4	*	36.7	3,684.4	749.0	4,433.4	1.0	83.0
1971	3,600.4	3,712.7	39.9	*	43.8	3,756.5	799.6	4,556.1	1.2	82.5
1972	3,632.3	3,757.7	67.7	7.0	74.8	3,832.5	813.8	4,646.2	2.0	82.5
1973	3,697.5	3,839.6	38.3	13.0	51.3	3,891.0	847.9	4,738.8	1.3	82.1
1974	3,710.9	3,847.1	60.0	7.9	67.9	3,914.9	920.5	4,835.4	1.7	81.0
1975	3,668.4	3,820.6	122.5	16.3	138.8	3,959.4	956.6	4,916.0	3.5	80.5
1976	3,665.6	3,836.3	142.7	13.9	156.6	3,992.9	1,000.1	4,993.0	3.9	80.0
1977	3,682.6	3,866.8	168.5	21.6	190.1	4,056.9	1,024.9	5,081.8	4.7	79.8
1978	3,642.5	3,850.9	207.9	14.3	222.2	4,073.1	1,137.7	5,210.8	5.5	78.2
1979	3,715.9	3,921.2	184.0	13.5	197.5	4,118.7	1,177.6	5,296.3	4.8	77.8
1980	3,773.8	3,982.8	193.9	15.7	209.6	4,192.4	1,193.2	5,385.6	5.0	77.9
1981	3,835.6	4,057.9	187.8	12.7	200.5	4,258.4	1,236.6	5,494.9	4.7	77.5
1982	3,782.5	4,024.3	250.4	21.3	271.7	4,296.0	1,314.6	5,610.6	6.3	76.6
1983	3,663.4	3,903.6	409.5	20.2	429.7	4,333.3	1,379.2	5,712.5	9.9	75.9
1984	3,772.5	4,018.0	358.6	22.6	381.2	4,399.2	1,418.8	5,818.0	8.7	75.6
1985	3,856.7	4,111.1	325.4	23.7	349.1	4,460.2	1,469.5	5,929.8	7.8	75.2
1986(a)	3,922.3	4,202.6	320.9	28.3	349.3	4,551.9	1,509.4	6,061.2	7.7	75.1
1987	3,960.0	4,277.1	317.2	29.8	347.1	4,624.2	1,565.4	6,189.6	7.5	74.7
1988	4,076.4	4,382.1	279.9	25.8	305.7	4,687.8	1,633.9	6,321.7	6.5	74.2
1989	4,217.5	4,571.9	230.7	30.0	260.7	4,832.6	1,619.7	6,452.3	5.4	74.9
FEMALES										
1969	1,201.1	1,636.2	27.4	17.5	44.8	1,681.1	2,731.1	4,412.2	2.7	38.1
1970	1,292.5	1,747.8	24.5	17.0	41.5	1,783.9	2,728.1	4,517.5	2.3	39.6
1971	1,339.2	1,803.0	30.2	18.7	48.9	1,851.9	2,783.1	4,635.0	2.6	40.0
1972	1,356.1	1,852.1	43.4	25.9	69.3	1,921.4	2,811.6	4,733.0	3.6	40.6
1973	1,395.4	1,943.3	28.8	25.6	54.5	1,997.8	2,826.8	4,824.6	2.7	41.4
1974	1,416.9	2,008.1	45.8	27.2	73.1	2,081.2	2,851.8	4,933.0	3.5	42.2
1975	1,378.5	2,020.8	93.0	46.6	139.7	2,160.3	2,859.6	5,019.9	6.5	43.0
1976	1,371.3	2,061.5	94.1	42.0	136.1	2,197.6	2,909.8	5,107.4	6.2	43.0
1977	1,411.9	2,128.6	114.8	54.4	169.2	2,297.8	2,904.3	5,202.1	7.4	44.2
1978	1,402.9	2,154.4	126.5	49.6	176.1	2,330.5	3,029.1	5,359.7	7.6	43.5
1979	1,397.2	2,157.4	131.8	48.1	179.9	2,337.4	3,117.0	5,454.4	7.7	42.9
1980	1,477.3	2,298.5	140.7	44.2	184.9	2,483.4	3,071.7	5,555.1	7.4	44.7
1981	1,501.5	2,335.8	135.9	44.2	180.1	2,515.9	3,154.6	5,670.5	7.2	44.4
1982	1,503.4	2,355.0	137.2	52.5	189.7	2,544.7	3,242.8	5,787.5	7.5	44.0
1983	1,486.9	2,337.4	197.9	59.3	257.1	2,594.6	3,299.1	5,893.7	9.9	44.0
1984	1,546.3	2,448.1	165.0	57.9	222.8	2,671.0	3,319.9	5,990.9	8.3	44.6
1985	1,607.3	2,564.5	162.7	60.9	223.6	2,788.1	3,313.6	6,101.6	8.0	45.7
1986(a)	1,686.5	2,716.0	170.9	77.5	248.4	2,964.4	3,266.3	6,230.6	8.4	47.6
1987	1,711.1	2,815.2	177.8	77.1	255.0	3,070.2	3,291.4	6,361.6	8.3	48.3
1988	1,798.1	2,971.3	165.5	67.4	233.0	3,204.2	3,288.6	6,492.9	7.3	49.4
1989	1,891.5	3,155.7	139.4	69.3	208.7	3,364.4	3,258.7	6,623.1	6.2	50.8
PERSONS										
1969	4,610.3	5,183.0	58.3	20.6	78.9	5,261.9	3,481.5	8,743.3	1.5	60.2
1970	4,825.9	5,395.6	57.9	20.3	78.2	5,473.8	3,477.1	8,950.9	1.4	61.2
1971	4,939.6	5,515.7	70.1	22.6	92.7	5,608.4	3,582.7	9,191.1	1.7	61.0
1972	4,988.4	5,609.9	111.1	32.9	144.0	5,753.9	3,625.3	9,379.2	2.5	61.3
1973	5,092.9	5,783.0	67.2	38.6	105.8	5,888.7	3,674.7	9,563.4	1.8	61.6
1974	5,127.8	5,855.2	105.8	35.1	140.9	5,996.1	3,772.3	9,768.4	2.4	61.4
1975	5,046.8	5,841.3	215.5	62.9	278.4	6,119.7	3,816.2	9,935.9	4.6	61.6
1976	5,036.9	5,897.8	236.8	55.9	292.7	6,190.5	3,909.8	10,100.4	4.7	61.3
1977	5,049.6	5,995.4	283.3	76.0	359.3	6,354.7	3,929.2	10,283.9	5.7	61.8
1978	5,045.3	6,005.4	334.4	63.9	398.3	6,403.7	4,166.8	10,570.5	6.2	60.6
1979	5,113.1	6,078.5	315.8	61.7	377.5	6,456.0	4,294.6	10,750.7	5.9	60.1
1980	5,251.1	6,281.4	334.6	59.9	394.5	6,675.9	4,264.9	10,940.7	5.9	61.0
1981	5,337.1	6,393.7	323.7	56.9	380.6	6,774.3	4,391.2	11,165.5	5.6	60.7
1982	5,285.9	6,379.3	387.6	73.8	461.4	6,840.7	4,557.4	11,398.1	6.7	60.0
1983	5,150.3	6,241.1	607.4	79.5	686.8	6,927.9	4,678.3	11,606.2	9.9	59.7
1984	5,318.8	6,466.1	523.5	80.5	604.0	7,070.1	4,738.7	11,808.8	8.5	59.9
1985	5,464.0	6,675.6	488.0	84.7	572.7	7,248.3	4,783.1	12,031.4	7.9	60.2
1986(a)	5,608.8	6,918.6	491.8	105.8	597.6	7,516.2	4,775.7	12,291.9	8.0	61.1
1987	5,671.1	7,092.3	495.1	107.0	602.0	7,694.4	4,856.8	12,551.2	7.8	61.3
1988	5,874.6	7,353.4	445.4	93.3	538.7	7,892.1	4,922.5	12,814.5	6.8	61.6
1989	6,108.9	7,727.6	370.1	99.3	469.4	8,197.0	4,878.5	13,075.4	5.7	62.7

(a) Estimates from August 1986 are based on a revised definition introduced in April 1986. See paragraph 22 of the Technical Notes for further information.

Source: The Labour Force, Australia (6203.0).

TABLE 2.3. LABOUR FORCE STATUS OF THE CIVILIAN POPULATION AGED 15 AND OVER:  
STATES AND TERRITORIES, AUGUST 1989

State or Territory	Employed		Unemployed			Labour force	Not in labour force	Civilian population aged 15 and over	Unemployment rate —per cent—	Participation rate
	Full-time workers	Total	Looking for full-time work	Looking for part-time work - '000 -	Total					
MALES										
New South Wales	1,426.6	1,543.7	79.7	10.4	90.0	1,633.7	575.5	2,209.2	5.5	73.9
Victoria	1,108.2	1,197.8	42.5	7.2	49.7	1,247.5	414.8	1,662.3	4.0	75.0
Queensland	701.2	764.2	43.1	6.1	49.3	813.5	268.3	1,081.7	6.1	75.2
South Australia	353.4	384.2	25.7	2.2	27.8	412.0	143.1	555.1	6.8	74.2
Western Australia	415.7	448.4	22.2	3.1	25.3	473.8	141.0	614.8	5.3	77.1
Tasmania	106.3	115.8	9.9	* 0.5	10.3	126.1	44.3	170.3	8.2	74.0
Northern Territory	37.7	40.3	4.4	* 0.1	4.5	44.8	13.3	58.1	10.0	77.1
Australian Capital Territory	68.4	77.4	3.4	* 0.5	3.9	81.3	19.5	100.7	4.7	80.7
<i>Australia</i>	<i>4,217.5</i>	<i>4,571.9</i>	<i>230.7</i>	<i>30.0</i>	<i>260.7</i>	<i>4,832.6</i>	<i>1,619.7</i>	<i>6,452.3</i>	<i>5.4</i>	<i>74.9</i>
FEMALES										
New South Wales	654.0	1,036.9	50.2	23.5	73.7	1,110.6	1,170.2	2,280.8	6.6	48.7
Victoria	516.8	852.0	24.8	19.1	43.9	895.9	826.8	1,722.7	4.9	52.0
Queensland	301.8	517.0	29.6	11.6	41.2	558.1	543.3	1,101.4	7.4	50.7
South Australia	147.7	271.2	13.4	5.0	18.4	289.7	281.7	571.3	6.4	50.7
Western Australia	164.9	302.9	12.4	7.0	19.3	322.2	290.3	612.6	6.0	52.6
Tasmania	40.9	77.3	5.5	1.4	6.9	84.2	91.9	176.2	8.2	47.8
Northern Territory	22.9	31.3	* 1.8	* 0.7	2.5	33.8	19.3	53.1	7.3	63.6
Australian Capital Territory	42.5	67.2	1.6	* 1.0	2.7	69.8	35.1	105.0	3.8	66.5
<i>Australia</i>	<i>1,891.5</i>	<i>3,155.7</i>	<i>139.4</i>	<i>69.3</i>	<i>208.7</i>	<i>3,364.4</i>	<i>3,258.7</i>	<i>6,623.1</i>	<i>6.2</i>	<i>50.8</i>
PERSONS										
New South Wales	2,080.6	2,580.6	129.9	33.8	163.7	2,744.3	1,745.7	4,490.0	6.0	61.1
Victoria	1,625.1	2,049.8	67.2	26.3	93.6	2,143.4	1,241.6	3,385.0	4.4	63.3
Queensland	1,003.0	1,281.2	72.7	17.7	90.4	1,371.6	811.6	2,183.2	6.6	62.8
South Australia	501.1	655.4	39.1	7.2	46.3	701.7	424.7	1,126.4	6.6	62.3
Western Australia	580.5	751.4	34.6	10.1	44.7	796.0	431.4	1,227.4	5.6	64.9
Tasmania	147.2	193.0	15.4	1.9	17.2	210.3	136.2	346.5	8.2	60.7
Northern Territory	60.6	71.6	6.2	* 0.8	6.9	78.6	32.6	111.2	8.8	70.6
Australian Capital Territory	110.9	144.6	5.0	1.5	6.5	151.1	54.6	205.7	4.3	73.4
<i>Australia</i>	<i>6,108.9</i>	<i>7,727.6</i>	<i>370.1</i>	<i>99.3</i>	<i>469.4</i>	<i>8,197.0</i>	<i>4,878.5</i>	<i>13,075.4</i>	<i>5.7</i>	<i>62.7</i>

Source: *The Labour Force, Australia* (6203.0).

TABLE 2.4. CIVILIAN LABOUR FORCE BY EMPLOYMENT STATUS AND BIRTHPLACE, AUSTRALIA, AUGUST 1989

	Employed		Unemployed		Labour force	Unemployment rate - per cent -	Participation rate
	Full-time workers	Total	Looking for full-time work - '000 -	Total			
Born in Australia	4,480.4	5,741.7	262.6	337.1	6,078.8	5.5	64.6
Born outside Australia	1,628.5	1,985.9	107.5	132.3	2,118.2	6.2	61.5
Africa	60.4	70.7	* 3.4	4.9	75.6	6.5	67.4
America	62.3	76.3	* 2.8	3.6	80.0	4.5	71.0
Asia	301.9	361.4	31.1	38.6	399.9	9.6	61.8
India	32.9	39.3	* 1.6	* 2.2	41.5	* 5.2	71.3
Lebanon	23.7	28.6	8.3	9.0	37.5	23.9	52.1
Malaysia	28.5	36.7	* 0.9	* 1.3	38.0	* 3.3	67.2
Vietnam	43.8	47.5	6.7	6.8	54.3	12.5	63.5
Europe	1,038.1	1,277.9	61.6	74.6	1,352.6	5.5	58.9
Germany	49.3	59.4	* 3.2	3.8	63.2	6.0	62.1
Greece	70.0	83.5	* 3.0	4.1	87.6	4.7	57.4
Italy	122.4	147.6	* 2.6	3.9	151.5	2.6	52.2
Malta	24.7	29.3	* 0.7	* 1.3	30.6	* 4.4	57.5
Netherlands	45.3	53.8	* 1.6	* 1.9	55.7	* 3.4	58.3
Poland	20.7	25.0	* 2.3	* 3.4	28.4	* 11.8	39.3
UK and Ireland	525.4	666.6	32.7	39.0	705.6	5.5	61.6
Yugoslavia	89.1	101.5	5.7	6.0	107.5	5.6	63.8
Oceania	165.8	199.5	8.6	10.6	210.1	5.0	75.8
New Zealand	132.6	160.9	6.2	7.8	168.7	4.6	76.9

Source: *The Labour Force, Australia* (6203.0).

### Labour Force Experience

An estimated 8,745,700 persons aged 15 and over had participated in the labour force at some time during the twelve months ending February 1989. The proportion of persons who had participated in the labour force at some time in the twelve months to February has increased from 68 per cent in 1981 to 70 per cent in 1989. Over this eight year period, male participation in the labour force fell from 83 per cent in February 1981 to 80 per cent in February 1989, whereas female participation increased from 54 per cent in February 1981 to 59 per cent in February 1989.

Aggregate participation rates for married persons and not-married persons were each 70 per cent, but significant differences emerged for particular age and sex groups.

Married males had higher participation rates than not-married males in all age groups. In the 45-54 age group the participation rate for married males was 93 per cent compared with 85 per cent for not-married males.

Conversely, married females had lower participation rates than not-married females in almost all age groups. The largest difference was in the 20-24 age group, where married females had a participation rate of 75 per cent compared with 92 per cent for not-married females.

TABLE 2.5. CIVILIAN POPULATION AGED 15 AND OVER: PROPORTION WHO PARTICIPATED IN THE LABOUR FORCE AT SOME TIME DURING THE REFERENCE PERIOD(a) AND AGE, AUSTRALIA, FEBRUARY 1981 TO FEBRUARY 1989 (Per cent)

Survey conducted in February—	Age group at time of survey								Total
	15-19	20-24	25-34	35-44	45-54	55-59	60-64	65 and over	
MALES									
1981	78.4	97.2	98.4	97.3	93.3	85.6	59.8	15.7	83.2
1982	76.8	98.0	98.2	97.5	93.2	87.9	56.7	13.6	82.8
1983	75.8	97.6	98.4	97.1	94.0	84.1	59.4	12.9	82.4
1984	73.8	96.3	98.1	97.7	94.3	83.5	54.6	13.3	81.8
1985	72.3	95.9	97.6	96.9	92.7	82.1	53.4	12.3	80.8
1986	74.0	97.0	97.6	96.9	92.6	83.4	51.1	11.1	80.8
1987	74.7	96.7	98.0	96.6	92.1	85.4	54.1	12.7	81.2
1988	70.1	95.6	97.3	96.4	90.8	81.2	54.5	10.9	79.3
1989	73.9	96.1	97.2	96.7	92.1	79.8	57.7	11.4	80.4
FEMALES									
1981	73.5	81.8	65.9	65.8	54.0	34.0	17.7	3.8	53.6
1982	73.7	81.8	65.5	67.9	58.1	34.7	14.8	3.6	54.1
1983	72.4	81.7	66.8	67.7	54.7	36.0	16.7	3.8	54.3
1984	71.1	82.2	65.9	66.7	55.9	34.7	15.9	3.1	53.9
1985	72.0	82.4	68.4	69.3	57.9	33.6	15.6	2.8	54.5
1986	72.8	84.5	71.1	71.9	58.7	35.8	16.3	3.4	56.3
1987	73.4	85.2	72.1	72.6	61.8	37.1	17.5	3.8	57.3
1988	68.5	86.4	73.1	73.8	61.8	35.1	15.9	3.3	56.2
1989	73.9	86.4	74.6	76.4	64.7	39.4	19.0	3.2	59.2
PERSONS									
1981	76.0	89.6	82.1	81.9	74.1	59.7	38.1	9.0	68.2
1982	75.3	89.9	81.7	83.0	76.0	61.4	35.2	7.9	68.3
1983	74.1	89.7	82.5	82.7	74.9	59.9	37.2	7.8	68.2
1984	72.5	89.2	82.0	82.0	75.7	59.3	34.4	7.7	67.7
1985	72.1	89.2	83.0	83.3	75.6	58.0	34.0	6.9	67.5
1986	73.4	90.7	84.3	84.5	76.0	59.8	33.4	6.7	68.4
1987	74.1	91.0	85.0	84.7	77.3	60.5	34.9	7.3	68.9
1988	69.3	91.0	85.2	85.2	76.6	58.3	35.0	6.5	67.5
1989	73.9	91.3	85.9	86.6	78.7	59.9	38.1	6.8	69.7

(a) Persons who participated in the labour force at some time during the reference period as a proportion of all persons in each group.

Source: Labour Force Experience, Australia, During the Year Ending February 1989 (6206.0).

TABLE 2.6. CIVILIAN POPULATION AGED 15 AND OVER : LABOUR FORCE EXPERIENCE DURING THE YEAR ENDING FEBRUARY 1989 AND MARITAL STATUS, AUSTRALIA ('000)

	Married			Not-married			Total		
	Males	Females	Persons	Males	Females	Persons	Males	Females	Persons
<i>Not in the labour force at any time during the year</i>	744.1	1,598.8	2,342.9	480.9	990.4	1,471.3	1,225.0	2,589.2	3,814.2
<i>In the labour force at some time during the year</i>	3,137.9	2,243.0	5,380.9	1,885.2	1,519.7	3,404.8	5,023.0	3,762.7	8,785.7
Time in the labour force during the year (weeks)—									
1 and under 4	10.8	63.4	74.3	51.6	64.2	115.8	62.4	127.6	190.0
4 and under 13	27.2	117.8	145.0	132.3	126.6	259.0	159.5	244.4	404.0
13 and under 26	30.7	116.7	147.3	64.7	69.0	133.6	95.4	185.6	281.0
26 and under 39	49.8	173.1	222.9	71.7	81.4	153.1	121.6	254.5	376.1
39 and under 49	156.8	249.6	406.4	136.3	122.9	259.2	293.1	372.5	665.6
49 and under 52	147.3	142.3	289.6	103.1	84.6	187.7	250.4	226.8	477.3
52	2,715.2	1,380.1	4,095.4	1,325.4	971.0	2,296.4	4,040.7	2,351.1	6,391.8
Worked at some time during the year	3,054.4	2,108.9	5,163.4	1,744.0	1,370.9	3,115.0	4,798.5	3,479.9	8,278.3
Full-time/part-time status of weeks worked—									
All were full-time	2,831.4	1,027.6	3,859.0	1,403.8	870.9	2,274.7	4,235.2	1,898.5	6,133.7
More full-time than part-time	97.1	100.4	197.5	91.1	73.9	165.1	188.2	174.4	362.5
More part-time than full-time	16.7	57.9	74.6	35.7	49.5	85.2	52.4	107.4	159.8
All were part-time	109.2	923.0	1,032.3	213.4	376.6	590.0	322.7	1,299.6	1,622.3
Number of jobs held during the year—									
One	2,520.0	1,780.5	4,300.4	1,311.5	1,035.6	2,347.1	3,831.5	2,816.1	6,647.5
Two	404.5	261.8	666.3	304.3	239.0	543.3	708.8	500.8	1,209.6
Three	77.6	41.1	118.7	70.3	64.5	134.8	147.9	105.7	253.5
Four or more	52.4	25.5	77.9	57.9	31.9	89.7	110.3	57.4	167.6
Time worked during the year (weeks)—									
1 and under 4	12.6	37.3	50.0	48.4	43.6	92.0	61.0	80.9	142.0
4 and under 13	41.2	99.0	140.2	120.7	99.6	220.3	161.9	198.6	360.5
13 and under 26	49.8	113.5	163.3	79.5	71.9	151.4	129.3	185.4	314.7
26 and under 39	98.3	182.3	280.7	124.0	105.5	229.5	222.4	287.8	510.2
39 and under 49	225.6	268.4	494.0	199.1	171.1	370.2	424.7	439.4	864.2
49 and under 52	157.5	139.0	296.5	95.9	84.2	180.1	253.4	223.1	476.6
52	2,469.4	1,269.4	3,738.8	1,076.3	795.2	1,871.5	3,545.8	2,064.5	5,610.3
Looked for work at some time during the year	356.7	334.1	690.7	489.0	423.5	912.5	845.7	757.5	1,603.2
Number of spells of looking for work during the year—									
One	290.0	267.7	557.7	389.4	338.3	727.8	679.5	606.0	1,285.5
Two	26.5	24.3	50.8	46.4	40.2	86.6	72.9	64.5	137.4
Three	17.5	17.8	35.3	20.5	15.8	36.3	38.0	33.7	71.6
Four or more	22.6	24.3	47.0	32.8	29.0	61.8	55.4	53.3	108.8
<b>Total</b>	<b>3,882.0</b>	<b>3,841.9</b>	<b>7,723.8</b>	<b>2,366.0</b>	<b>2,510.1</b>	<b>4,876.1</b>	<b>6,248.0</b>	<b>6,351.9</b>	<b>12,599.9</b>

Source: Labour Force Experience, Australia, During the Year Ending February 1989 (6206.0).

### Transition from Education to Work

In May 1989, 2,208,200 persons were identified as having attended an educational institution in the previous year (1988) — 1,288,200 attended full-time and 920,000 attended part-time.

Of those who attended full-time in 1988, 335,600 had left full-time education by May 1989. Just over 80 per cent (269,200) of this group were employed in May 1989, while 13 per cent (43,000) were unemployed and 7 per cent (23,400) were not in the labour force.

Of those who attended part-time in 1988, 43 per cent (396,400) continued part-time study, 3 per cent (25,000) were attending full-time in May 1989 and 54 per cent (498,600) were not attending an educational institution at all in May 1989.

TABLE 2.7. CIVILIAN POPULATION AGED 15 TO 64 (a): AGE, WHETHER ATTENDED AN EDUCATIONAL INSTITUTION AND TYPE OF ATTENDANCE IN PREVIOUS YEAR, WHETHER ATTENDING FULL-TIME EDUCATION AND LABOUR FORCE STATUS, AUSTRALIA, MAY 1984 TO MAY 1989 ('000)

	1984	1985	1986	1987	1988	1989
<b>AGED 15 TO 24</b>						
Attended an educational institution in previous year	1,257.3	1,304.6	1,328.3	1,369.7	1,423.7	1,483.0
Attended full-time in previous year	1,003.7	1,047.2	1,088.7	1,124.9	1,261.9	1,196.5
Attending full-time education in May	716.7	743.2	778.3	837.4	870.8	907.2
Leavers	287.0	304.0	310.4	287.6	291.0	289.3
Employed	208.5	230.9	237.0	216.0	232.0	234.0
Full-time workers	179.6	200.7	206.2	182.0	196.1	199.9
Part-time workers	28.9	30.2	30.8	34.0	35.9	34.1
Unemployed	62.6	58.6	55.7	53.9	42.6	38.3
Not in labour force	15.9	14.6	17.6	17.6	16.4	17.0
Attended part-time in previous year	253.6	257.5	239.6	244.7	261.7	286.5
Attending an educational institution in May	139.4	133.8	123.5	133.6	144.6	147.6
Full-time	7.3	6.7	10.1	12.3	12.5	12.3
Part-time	132.1	127.1	113.4	121.3	132.3	135.3
Not attending an educational institution in May	114.2	123.7	116.2	111.1	117.1	138.9
Did not attend an educational institution in previous year	1,340.5	1,289.1	1,302.7	1,301.4	1,271.6	1,233.8
<b>Total</b>	<b>2,597.7</b>	<b>2,593.7</b>	<b>2,631.0</b>	<b>2,671.0</b>	<b>2,695.2</b>	<b>2,716.8</b>
<b>AGED 25 TO 64</b>						
Attended an educational institution in previous year	570.8	592.6	667.7	653.1	703.2	725.3
Attended full-time in previous year	65.7	67.8	74.7	76.0	92.5	91.8
Attending full-time education in May	24.6	26.5	28.7	34.3	42.5	45.5
Leavers	41.2	41.3	46.0	41.6	50.0	46.3
Employed	28.6	33.2	36.2	31.6	36.5	35.2
Full-time workers	23.6	27.4	29.7	25.6	26.9	29.8
Part-time workers	5.1	5.9	6.5	6.1	9.6	5.3
Unemployed	5.3	4.1	4.3	5.1	7.0	4.7
Not in labour force	7.2	4.1	5.5	4.9	6.5	6.4
Attended part-time in previous year	505.1	524.8	593.0	577.1	610.7	633.5
Attending an educational institution in May	220.6	220.7	244.1	246.3	253.3	273.8
Full-time	6.9	9.2	7.8	9.3	7.9	12.7
Part-time	213.6	211.5	236.2	237.0	245.4	261.1
Not attending an educational institution in May	284.5	304.0	348.9	330.8	357.4	359.7
Did not attend an educational institution in previous year	6,943.2	7,051.6	7,128.3	7,328.3	7,464.7	7,651.1
<b>Total</b>	<b>7,514.0</b>	<b>7,644.2</b>	<b>7,796.0</b>	<b>7,981.3</b>	<b>8,167.9</b>	<b>8,376.3</b>
<b>TOTAL</b>						
Attended an educational institution in previous year	1,828.1	1,897.1	1,995.9	2,022.7	2,126.8	2,208.2
Attended full-time in previous year	1,069.4	1,114.9	1,163.3	1,200.9	1,254.4	1,288.2
Attending full-time education in May	741.3	769.6	807.0	871.7	913.3	952.6
Leavers	328.1	345.3	356.3	329.2	341.1	335.6
Employed	237.2	264.1	273.3	247.7	268.5	269.2
Full-time workers	203.2	228.1	235.9	207.6	223.0	229.7
Part-time workers	34.0	36.0	37.4	40.1	45.5	39.5
Unemployed	67.8	62.6	60.0	59.1	49.7	43.0
Not in labour force	23.1	18.6	23.1	22.4	22.9	23.4
Attended part-time in previous year	758.7	782.2	832.6	821.8	872.4	920.0
Attending an educational institution in May	359.9	354.4	367.5	379.9	398.0	421.4
Full-time	14.2	15.8	17.8	21.6	20.3	25.0
Part-time	345.7	338.6	349.7	358.3	377.7	396.4
Not attending an educational institution in May	398.8	427.8	465.1	442.0	474.5	498.6
Did not attend an educational institution in previous year	8,283.6	8,340.7	8,431.1	8,629.7	8,736.3	8,884.9
<b>Total</b>	<b>10,111.7</b>	<b>10,237.9</b>	<b>10,427.0</b>	<b>10,652.4</b>	<b>10,863.1</b>	<b>11,093.1</b>

(a) Includes boarding school students but excludes institutionalised and persons permanently unable to work.

Source: Transition from Education to Work, Australia, May 1989 (6227.0).

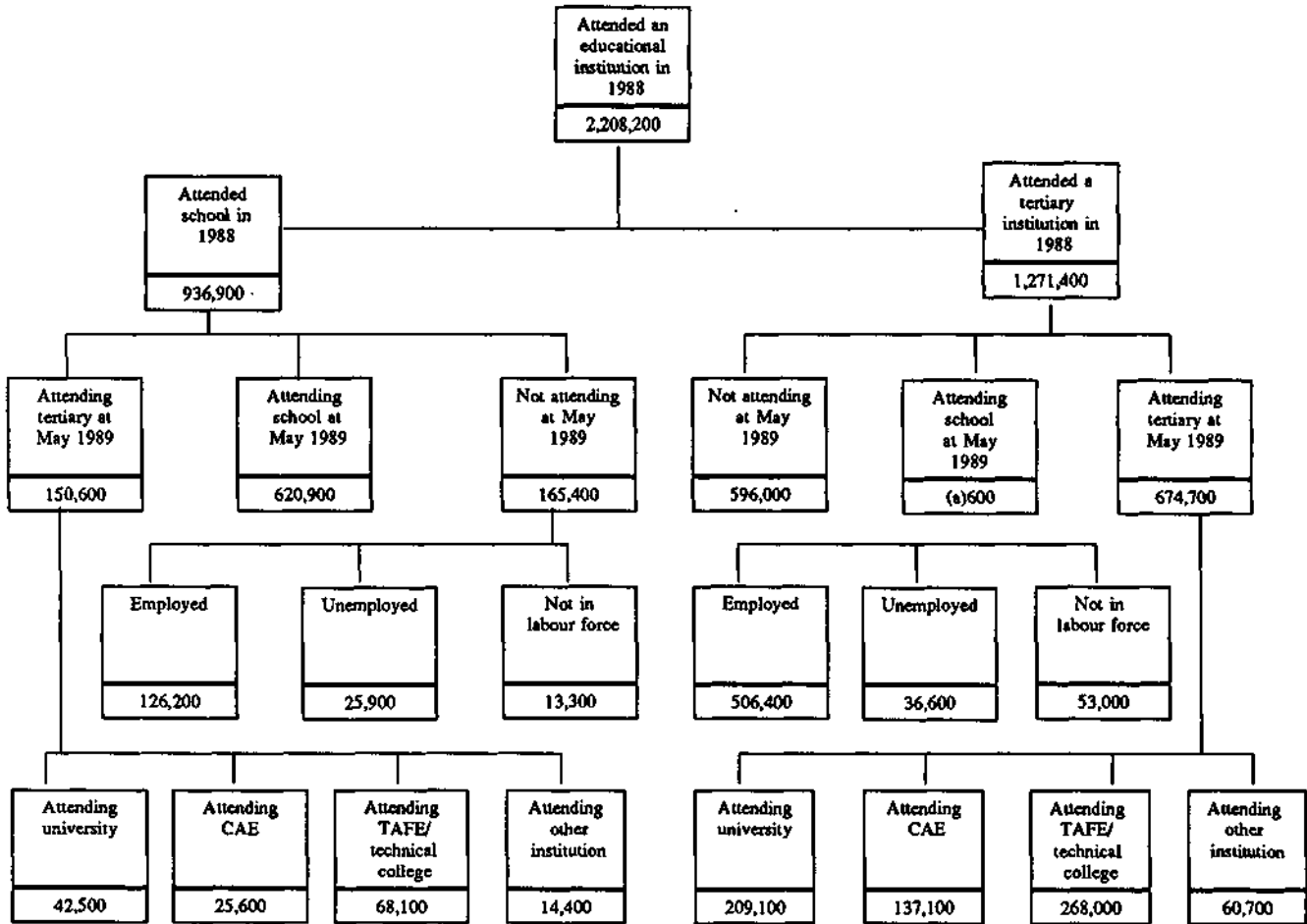
TABLE 2.8. PERSONS AGED 15 TO 19 : AGE, WHETHER ATTENDING AN EDUCATIONAL INSTITUTION FULL-TIME AND TYPE OF INSTITUTION ATTENDING.  
AUSTRALIA, MAY 1984 TO MAY 1989

	Males					Females					Persons					
	15	16	17	18	19	15	16	17	18	19	15	16	17	18	19	Total
	ATTENDING SCHOOL FULL-TIME															
May 1984	121.7	86.4	42.0	9.5	*1.9	113.4	85.5	43.7	8.1	*2.6	235.0	171.9	85.7	17.6	4.7	514.8
May 1985	130.8	89.2	45.9	6.9	*3.1	127.6	85.3	46.8	7.7	*1.7	258.4	174.5	92.7	14.6	4.8	545.0
May 1986	132.5	93.1	49.5	7.6	*3.2	133.0	84.4	49.0	7.6	*1.7	265.5	177.5	98.5	15.3	4.8	561.6
May 1987	135.3	99.1	60.3	10.6	*1.6	131.8	110.6	55.4	5.9	*1.6	267.2	209.7	115.7	16.5	*3.2	612.3
May 1988	135.9	104.5	65.4	9.7	*2.0	125.3	111.6	61.4	6.2	*2.1	261.2	216.1	126.8	15.9	4.1	624.1
May 1989	126.9	100.1	65.6	10.2	*2.1	120.5	105.6	67.4	13.9	*2.4	247.3	205.7	133.0	24.1	4.6	614.7
	ATTENDING TERTIARY FULL-TIME															
May 1984	*2.1	4.2	10.5	17.4	16.3	*1.9	7.4	10.7	25.0	19.8	4.1	11.6	21.2	42.4	36.0	115.4
May 1985	*1.9	4.8	7.8	19.5	16.8	*1.4	6.0	11.5	27.5	22.7	*3.2	10.8	19.3	47.0	39.5	119.8
May 1986	*1.1	4.8	11.6	26.4	22.4	*1.5	7.3	14.0	30.6	23.6	*2.6	12.1	25.6	57.0	46.0	143.3
May 1987	*1.2	6.0	13.1	23.4	22.9	*1.6	7.1	15.0	29.3	27.0	*2.7	13.1	28.1	52.8	49.9	146.6
May 1988	*1.9	5.5	12.3	28.5	23.2	*1.4	7.2	15.1	30.5	33.8	*3.3	12.7	27.4	59.0	57.0	159.3
May 1989	*0.3	4.0	12.4	33.6	32.4	*1.7	4.8	16.4	38.6	35.8	*2.0	8.8	28.8	72.2	68.3	180.1
	NOT ATTENDING AN EDUCATIONAL INSTITUTION FULL-TIME															
May 1984	13.4	46.3	75.1	97.4	104.1	11.4	33.9	67.4	90.9	107.7	24.8	80.3	142.6	188.3	211.8	647.7
May 1985	13.0	46.0	76.0	94.7	102.6	10.4	35.1	66.2	91.3	95.7	23.5	81.1	142.1	186.0	198.3	631.1
May 1986	11.9	45.6	75.3	98.3	93.3	10.7	38.1	68.8	90.5	92.4	22.6	83.7	144.1	188.8	185.8	624.9
May 1987	13.2	46.6	67.7	89.0	103.9	9.5	31.6	63.1	86.3	97.6	22.7	78.2	130.9	175.3	201.5	608.5
May 1988	12.6	35.3	77.0	96.3	96.3	9.6	29.6	58.4	92.9	99.3	22.2	64.9	135.4	189.3	195.6	607.3
May 1989	9.7	38.6	70.2	104.2	104.9	7.6	25.4	59.2	92.4	97.1	17.3	64.1	129.4	196.7	202.0	609.4
	TOTAL															
May 1984	137.2	137.0	127.6	124.3	122.3	126.7	126.8	121.8	124.0	130.1	263.9	263.8	249.5	248.3	252.5	1,277.9
May 1985	145.7	140.0	129.7	121.1	122.5	139.4	126.4	124.5	126.4	120.1	285.1	266.4	254.2	247.5	242.6	1,295.8
May 1986	145.5	143.5	136.5	132.3	118.9	145.2	129.8	131.7	128.7	117.7	290.7	273.3	268.2	261.0	236.6	1,329.8
May 1987	149.7	151.6	141.1	123.1	128.4	142.9	149.4	133.5	121.5	126.2	292.6	301.0	274.6	244.6	254.6	1,367.4
May 1988	150.3	145.2	154.7	134.6	121.5	136.4	148.4	135.0	129.5	135.2	286.7	293.6	289.7	264.1	256.7	1,390.7
May 1989	136.8	142.8	148.1	148.1	139.4	129.8	135.8	143.1	144.9	135.4	266.7	278.6	291.2	293.0	274.8	1,404.2
	PROPORTION ATTENDING AN EDUCATIONAL INSTITUTION FULL-TIME															
May 1984	90.2	66.2	41.1	21.7	14.9	91.0	73.2	44.7	26.6	17.2	90.6	69.6	42.9	24.1	16.1	49.3
May 1985	91.0	67.1	41.4	21.8	16.2	92.5	72.2	46.9	27.8	20.3	91.8	69.5	44.1	24.9	18.2	51.3
May 1986	91.8	68.2	44.8	25.7	21.5	92.7	70.6	47.8	29.7	21.5	92.2	69.4	46.3	27.7	21.5	53.0
May 1987	91.2	69.3	52.0	27.7	19.1	93.4	78.8	52.7	29.0	22.7	92.3	74.0	52.3	28.3	20.9	55.5
May 1988	91.6	75.7	50.2	28.4	20.8	92.9	80.1	56.7	28.3	26.5	92.3	77.9	53.2	28.3	23.8	56.3
May 1989	92.9	72.9	52.6	29.6	24.8	94.2	81.3	58.6	36.2	28.3	93.5	77.0	55.6	32.9	26.5	56.6

Source: Transition from Education to Work, Australia, May 1989 (6227.0).



CHART 2.3. PERSONS AGED 15 TO 64 WHO ATTENDED AN EDUCATIONAL INSTITUTION IN 1988: TYPE OF EDUCATIONAL INSTITUTION ATTENDED IN 1988, WHETHER ATTENDING AN EDUCATIONAL INSTITUTION, TYPE OF EDUCATIONAL INSTITUTION ATTENDING AND LABOUR FORCE STATUS, AUSTRALIA, MAY 1989



(a) Estimate subject to sampling variability too high for most practical uses.

Source: *Transition from Education to Work, Australia, May 1989* (6227.0).

TABLE 2.9. LEAVERS AGED 15 TO 64 : TYPE OF EDUCATIONAL INSTITUTION ATTENDED FULL TIME IN PREVIOUS YEAR AND LABOUR FORCE STATUS, AUSTRALIA, MAY 1984 TO MAY 1989

	1984	1985	1986	1987	1988	1989
	— '000 —					
Attended school full-time in previous year	188.1	199.1	212.2	194.5	194.6	198.1
Labour force	176.7	190.2	198.8	181.4	183.2	184.7
Employed	133.3	152.2	157.4	141.1	148.6	158.2
Unemployed	43.4	38.0	41.4	40.3	34.7	26.4
Not in labour force	11.4	8.9	13.4	13.2	11.3	13.5
	— per cent —					
Unemployment rate	24.5	20.0	20.8	22.2	18.9	14.3
Participation rate	93.9	95.5	93.7	93.2	94.2	93.2
	— '000 —					
Attended tertiary full-time in previous year	140.0	146.1	144.2	134.7	146.5	137.5
Labour force	128.3	136.5	134.5	125.4	134.9	127.5
Employed	103.9	111.9	115.8	106.6	119.9	110.9
Unemployed	24.4	24.5	18.7	18.8	15.0	16.6
Not in labour force	11.7	9.7	9.7	9.3	11.6	9.9
	— per cent —					
Unemployment rate	19.1	18.0	13.9	15.0	11.1	13.0
Participation rate	91.7	93.4	93.3	93.1	92.1	92.8
	— '000 —					
<b>Total</b>	<b>328.1</b>	<b>345.3</b>	<b>356.3</b>	<b>329.2</b>	<b>341.1</b>	<b>335.6</b>

Source: *Transition from Education to Work, Australia, May 1989* (6227.0).

TABLE 2.10. PERSONS AGED 15 TO 24 WHO ATTENDED SCHOOL IN 1988 BUT WERE NOT ATTENDING SCHOOL IN MAY 1989 : LABOUR FORCE STATUS, WHETHER ATTENDING A TERTIARY INSTITUTION, TYPE OF ATTENDANCE AND TYPE OF SCHOOL LAST ATTENDED, AUSTRALIA, MAY 1989

Type of school last attended	Employed			Unem- ployed - '000 -	Labour force	Not in labour force	Total	Unem- ployment rate - per cent -	Partici- pation rate	
	Full-time	Part-time	Total							
ATTENDING TERTIARY FULL-TIME										
Males	Government	* 1.4	6.8	8.2	* 1.9	10.1	16.9	27.0	* 18.9	37.3
	Non-government	* 0.4	6.3	6.6	* 2.5	9.1	8.5	17.5	* 27.1	51.8
	Total(a)	* 1.8	13.3	15.0	4.4	19.4	25.8	45.2	22.5	42.9
Females	Government	* 0.1	9.9	10.0	* 3.1	13.0	22.8	35.8	* 23.4	36.4
	Non-government	* 0.0	8.2	8.2	* 2.0	10.2	9.4	19.6	* 19.7	52.1
	Total(a)	* 0.3	18.2	18.5	5.1	23.6	32.9	56.4	21.5	41.7
Persons	Government	* 1.5	16.6	18.1	5.0	23.1	39.7	62.8	21.5	36.8
	Non-government	* 0.4	14.5	14.8	4.5	19.3	17.9	37.1	23.2	51.9
	Total(a)	* 2.1	31.5	33.5	9.4	43.0	58.7	101.7	21.9	42.3
ATTENDING TERTIARY PART-TIME										
Males	Government	20.7	* 3.0	23.6	* 0.2	23.9	* 0.1	24.0	* 1.0	99.5
	Non-government	4.3	* 0.8	5.1	* 0.1	5.3	* 0.0	5.3	* 2.0	100.0
	Total(a)	25.2	3.8	29.0	* 0.3	29.4	* 0.1	29.5	* 1.1	99.6
Females	Government	7.3	4.1	11.4	* 0.8	12.2	* 0.6	12.8	* 6.3	95.0
	Non-government	* 2.2	* 0.5	* 2.7	* 0.5	* 3.2	* 0.5	3.7	* 16.0	* 86.9
	Total(a)	10.1	4.6	14.7	* 1.3	16.0	* 1.1	17.1	* 8.0	93.4
Persons	Government	28.0	7.0	35.0	* 1.0	36.0	* 0.8	36.8	* 2.8	97.9
	Non-government	6.5	* 1.4	7.8	* 0.6	8.5	* 0.5	8.9	* 7.3	94.6
	Total(a)	35.3	8.4	43.7	* 1.6	45.3	* 1.2	46.6	* 3.6	97.3
NOT ATTENDING TERTIARY										
Males	Government	44.4	4.2	48.6	12.2	60.8	4.6	65.3	20.1	93.0
	Non-government	11.1	* 1.2	12.3	* 0.7	13.1	* 0.8	13.9	* 5.7	93.9
	Total(a)	55.7	5.9	61.6	13.1	74.7	5.4	80.1	17.5	93.2
Females	Government	32.8	8.3	41.1	11.2	52.3	5.4	57.8	21.4	90.6
	Non-government	11.9	* 1.6	13.5	* 1.0	14.5	* 0.7	15.1	* 6.8	95.7
	Total(a)	46.1	10.3	56.4	12.3	68.7	6.2	75.0	18.0	91.7
Persons	Government	77.2	12.5	89.7	23.4	113.1	10.0	123.1	20.7	91.9
	Non-government	23.0	* 2.8	25.8	* 1.7	27.5	* 1.5	29.0	* 6.3	94.8
	Total(a)	101.9	16.1	118.0	25.4	143.4	11.7	155.1	17.7	92.5
TOTAL										
Males	Government	66.5	13.9	80.4	14.3	94.7	21.6	116.3	15.1	81.4
	Non-government	15.8	8.3	24.1	* 3.3	27.4	9.3	36.7	* 12.1	74.7
	Total(a)	82.7	23.0	105.7	17.8	123.5	31.4	154.8	14.4	79.7
Females	Government	40.3	22.3	62.5	15.0	77.6	28.9	106.4	19.4	72.9
	Non-government	14.1	10.3	24.4	3.5	27.9	10.5	38.4	12.5	72.6
	Total(a)	56.5	33.1	89.6	18.7	108.3	40.2	148.5	17.3	72.9
Persons	Government	106.7	36.2	142.9	29.4	172.2	50.5	222.7	17.0	77.3
	Non-government	29.9	18.6	48.5	6.8	55.3	19.8	75.1	12.3	73.6
	Total(a)	139.2	56.0	195.2	36.5	231.7	71.6	303.4	15.7	76.4

(a) Includes 5,500 persons who were not asked the type of school they last attended.

Source: *Transition from Education to Work, Australia, May 1989* (6227.0).

### Educational Attainment

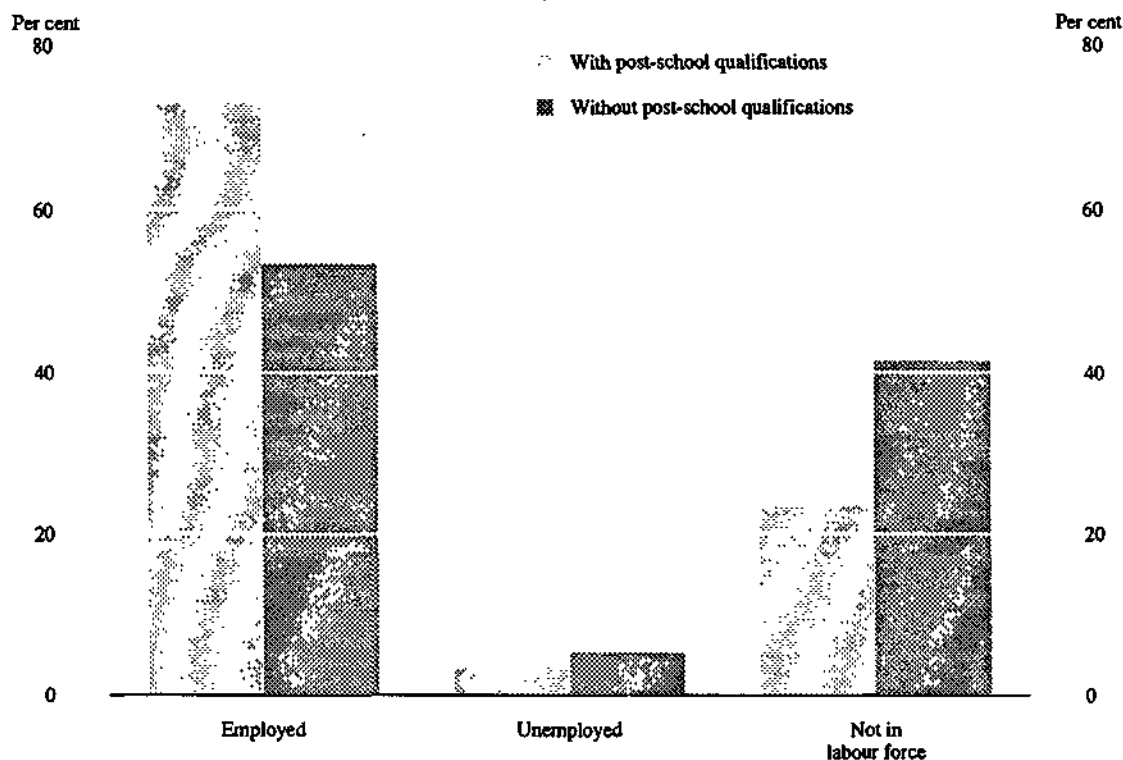
In February 1989 there were an estimated 8,103,800 persons in the labour force, of whom 3,703,300 (46%) had post-school qualifications, 4,218,600 (52%) were without post-school qualifications and 181,900 (2%) were still at school. Persons in the labour force with a post-school qualification comprised 1,580,100 (43%) with a certificate or diploma, 1,297,100 (35%) with a Trade qualification or apprenticeship, 806,400 (21%) with a degree and 19,700 (1%) with other qualifications.

TABLE 2.11. CIVILIAN POPULATION AGED 15 TO 69(a) : LABOUR FORCE STATUS AND EDUCATIONAL ATTAINMENT, AUSTRALIA, FEBRUARY 1989

Educational attainment	Employed			Unem- ployed	Labour force	Not in labour force	Total	Unem- ployment rate	Partic- ipation rate
	Full-time	Part-time	Total						
	-- '000 --							-- per cent --	
MALES									
With post-school qualifications	2,163.1	97.9	2,261.0	86.6	2,347.6	452.9	2,800.5	3.7	83.8
Degree	490.6	28.1	518.7	18.1	536.9	69.1	606.0	3.4	88.6
Trade qualification	1,128.6	38.2	1,166.7	45.4	1,212.1	275.7	1,487.8	3.7	81.5
Certificate or diploma	537.9	30.7	568.5	22.1	590.6	106.6	697.3	3.7	84.7
Other	6.1	* 0.9	7.0	* 1.0	8.0	* 1.4	9.4	* 12.7	84.7
Without post-school qualifications(b)	2,004.5	151.3	2,155.9	217.6	2,373.5	800.0	3,173.5	9.2	74.8
Attended highest level of secondary school available	488.7	60.8	549.6	52.9	602.4	127.8	730.2	8.8	82.5
Did not attend highest level of secondary school available	1,500.6	90.5	1,591.1	163.2	1,754.3	656.4	2,410.7	9.3	72.8
Left at age —									
18 and over	30.4	* 2.2	32.7	* 2.6	35.2	6.1	41.3	* 7.3	85.3
16 or 17	617.8	26.4	644.2	59.9	704.0	90.3	794.3	8.5	88.6
14 or 15	731.3	47.2	778.5	87.0	865.6	402.9	1,268.4	10.1	68.2
13 and under	121.1	14.6	135.7	13.7	149.4	157.2	306.7	9.2	48.7
Never attended school	5.4	* 0.0	5.4	* 0.7	6.1	13.3	19.3	* 11.7	31.3
Still at school	* 1.6	60.8	62.4	15.7	78.1	195.9	274.1	20.1	28.5
Total	4,169.3	310.0	4,479.3	319.9	4,799.2	1,448.8	6,248.0	6.7	76.8
FEMALES									
With post-school qualifications	844.3	457.9	1,302.2	81.0	1,383.2	704.4	2,087.6	5.9	66.3
Degree	198.3	76.1	274.4	10.8	285.2	76.2	361.4	3.8	78.9
Trade qualification	49.2	34.9	84.1	5.1	89.2	109.2	198.4	5.7	44.9
Certificate or diploma	592.5	342.7	935.1	62.4	997.5	509.3	1,506.8	6.3	66.2
Other	4.3	4.2	8.6	* 2.8	11.4	9.7	21.1	* 24.7	53.9
Without post-school qualifications(b)	991.6	662.8	1,654.5	168.4	1,822.9	2,176.0	3,999.0	9.2	45.6
Attended highest level of secondary school available	281.6	152.0	433.5	58.1	491.6	261.8	753.4	11.8	65.3
Did not attend highest level of secondary school available	701.8	504.5	1,206.3	107.6	1,313.9	1,882.2	3,196.1	8.2	41.1
Left at age —									
18 and over	16.4	6.6	23.0	* 1.9	24.9	20.3	45.2	* 7.6	55.0
16 or 17	317.4	186.6	504.0	50.5	554.4	395.5	950.0	9.1	58.4
14 or 15	328.5	284.0	612.6	52.7	665.3	1,162.8	1,828.1	7.9	36.4
13 and under	39.5	27.3	66.8	* 2.6	69.3	303.5	372.8	* 3.7	18.6
Never attended school	3.6	* 1.9	5.5	* 1.4	6.9	24.0	30.9	* 20.2	22.4
Still at school	* 0.3	79.2	79.5	18.7	98.2	167.2	265.4	19.1	37.0
Total	1,836.3	1,199.9	3,036.1	268.2	3,304.4	3,047.6	6,351.9	8.1	52.0
PERSONS									
With post-school qualifications	3,007.4	555.7	3,563.2	167.6	3,730.8	1,157.3	4,888.1	4.5	76.3
Degree	688.9	104.2	793.2	28.9	822.1	145.3	967.4	3.5	85.0
Trade qualification	1,177.7	73.1	1,250.8	50.5	1,301.3	384.9	1,686.2	3.9	77.2
Certificate or diploma	1,130.3	373.3	1,503.7	84.5	1,588.1	615.9	2,204.0	5.3	72.1
Other	10.4	5.1	15.5	3.8	19.3	11.2	30.5	19.7	63.4
Without post-school qualifications(b)	2,996.2	814.2	3,810.3	386.1	4,196.4	2,976.0	7,172.4	9.2	58.5
Attended highest level of secondary school available	770.3	212.8	983.1	110.9	1,094.0	389.6	1,483.6	10.1	73.7
Did not attend highest level of secondary school available	2,202.4	595.0	2,797.4	270.8	3,068.2	2,538.6	5,606.9	8.8	54.7
Left at age —									
18 and over	46.9	8.8	55.7	4.4	60.1	26.4	86.5	7.4	69.5
16 or 17	935.1	213.0	1,148.2	110.3	1,258.5	485.8	1,744.3	8.8	72.1
14 or 15	1,059.9	331.2	1,391.1	139.8	1,530.9	1,565.7	3,096.6	9.1	49.4
13 and under	160.6	41.9	202.5	16.3	218.7	460.7	679.5	7.4	32.2
Never attended school	8.9	* 1.9	10.9	* 2.1	13.0	37.3	50.3	* 16.2	25.9
Still at school	* 2.0	140.0	141.9	34.4	176.3	363.1	539.4	19.5	32.7
Total	6,005.6	1,509.9	7,515.4	588.1	8,103.6	4,496.4	12,599.9	7.3	64.3

(a) Excluding persons in institutions and visitors to private dwellings. Details of educational attainment were not obtained for these persons. (b) Includes persons for whom attendance at a secondary school could not be determined.

CHART 2.4. CIVILIAN POPULATION AGED 15 AND OVER :  
LABOUR FORCE STATUS AND EDUCATIONAL ATTAINMENT,  
AUSTRALIA, FEBRUARY 1989



Source: Labour Force Status and Educational Attainment, Australia, February 1989 (6235.0).

TABLE 2.12. PERSONS IN THE LABOUR FORCE : FAMILY STATUS AND EDUCATIONAL ATTAINMENT,  
AUSTRALIA, FEBRUARY 1989  
(\*000)

Educational attainment	Family status							Total	Family status not determined	Total
	Member of a family									
	With dependents present	Without dependents present	Not married family head	Full-time student aged 15-24(a)	Other child of family head	Other relative of family head				
With post-school qualifications	1,593.7	908.8	129.2	12.9	368.3	32.9	3,045.8	529.6	127.9	3,703.3
Degree	346.4	177.3	25.9	4.0	63.7	6.5	623.8	153.1	29.4	806.4
Trade qualification or apprenticeship	581.7	359.4	21.5	* 1.4	116.9	10.7	1,091.6	165.0	40.6	1,297.1
Certificate or diploma	658.1	368.5	80.7	7.3	183.8	15.5	1,313.9	209.0	57.1	1,580.1
Without post-school qualifications(c)	1,363.2	964.2	156.3	117.9	866.7	60.0	3,528.3	532.9	157.3	4,218.6
Attended highest level of secondary school available	263.3	167.9	29.5	106.1	281.7	13.3	861.8	173.3	42.6	1,077.7
Did not attend highest level of secondary school available	1,088.8	787.2	125.1	11.8	581.2	45.6	2,639.7	355.4	113.4	3,108.5
Left at age —										
16 and over	421.0	230.3	44.1	8.2	363.7	19.6	1,086.9	169.9	50.8	1,307.7
14 or 15	576.9	461.3	72.8	3.6	214.6	23.8	1,353.1	167.9	56.4	1,577.4
13 and under	90.8	95.6	8.1	* 0.0	* 2.9	* 2.2	199.7	17.6	6.1	223.4
Still at school	* 0.0	* 0.0	* 0.0	175.3	* 0.2	* 0.0	175.5	* 0.7	5.7	181.9
Total	2,956.9	1,873.0	285.5	306.1	1,235.2	92.9	6,749.7	1,063.2	291.0	8,103.8

( a ) Excludes persons aged 20 to 24 attending school ( c ) Includes persons who never attended school and those for whom secondary school qualifications could not be determined.

Source: Labour Force Status and Educational Attainment, Australia, February 1989 (6235.0).

## Families

In June 1989, 80 per cent of *married-couple families* had at least one partner in the labour force, 56 per cent of *one-parent families* had the parent in the labour force while 44 per cent of family heads of *other families* were in the labour force.

Of the 78 per cent of *married-couple families* where at least one partner was employed, almost 32 per cent had both partners employed full time. Of those *married-couple families* with both partners employed, 60 per cent had dependents present. About 31 per cent of *married-couple families* had only one partner employed. In 92 per cent of these families the employed person was the husband.

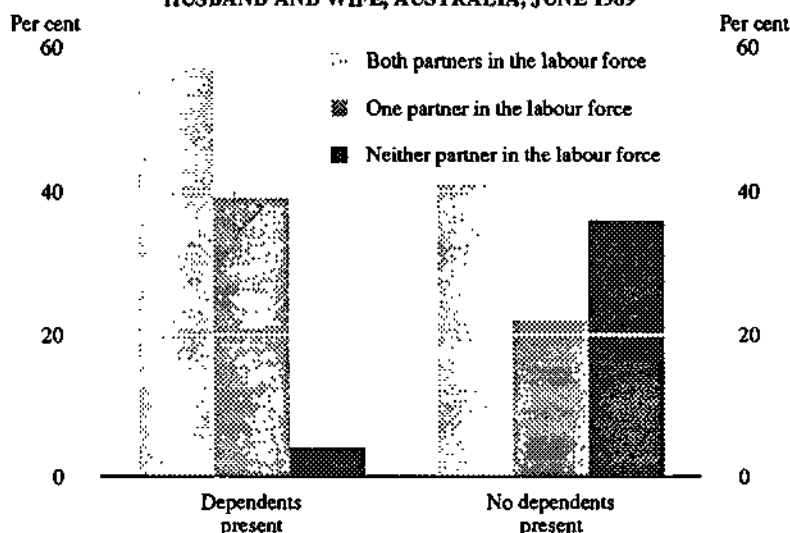
Almost 5 per cent of *married-couple families* had at least one partner unemployed. 48 per cent of these families had one partner employed, and of these 85 per cent were employed full time.

In about half of *one-parent families*, the parent was employed, and 82 per cent of employed parents were female. Approximately 80 per cent of male parents of *one-parent families* were employed, compared with 46 per cent of female parents of *one-parent families*. The percentage of *one-parent families* with the parent employed was greater where the parent was a male irrespective of the age of youngest dependent.

Of the 6 per cent of parents of *one-parent families* who were unemployed, 89 per cent were females. Where the parent was female, the percentage of *one-parent families* with the parent unemployed decreased as the age of the youngest dependent increased.

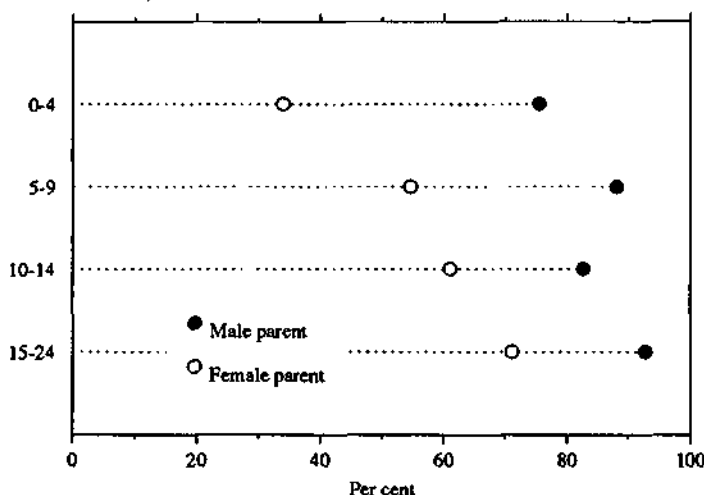
For *other families*, 41 per cent of family heads were employed and only 3 per cent were unemployed.

CHART 2.5. PERCENTAGE OF MARRIED-COUPLE FAMILIES (WITH OR WITHOUT DEPENDENTS PRESENT) BY LABOUR FORCE STATUS OF HUSBAND AND WIFE, AUSTRALIA, JUNE 1989



Source: *Labour Force Status and Other Characteristics of Families, Australia, June 1989* (6224.0).

CHART 2.6. PERCENTAGE OF ONE-PARENT FAMILIES WITH THE PARENT IN THE LABOUR FORCE BY AGE OF YOUNGEST DEPENDENT, AUSTRALIA, JUNE 1989



Source: *Labour Force Status and Other Characteristics of Families, Australia, June 1989* (6224.0).

TABLE 2.13. FAMILY STATUS AND LABOUR FORCE STATUS OF PERSONS AGED 15 AND OVER(a)  
AUSTRALIA, JUNE 1989

	Employed		Unemployed Looking for		Labour force	Not in labour force	Civilian popu- lation aged 15 and over	Unemp- loyment rate	Partici- pation rate	
	Full- time workers	Part- time workers	Total	full- time work						Total
	- '000 -							- per	cent -	
<b>MALES</b>										
Member of a family	3,463.1	276.4	3,739.5	173.2	196.1	3,935.6	1,186.8	5,122.4	5.0	76.8
Husband	2,725.5	124.6	2,850.1	103.5	109.4	2,959.5	812.7	3,772.2	3.7	78.5
With dependents present	1,731.0	47.5	1,778.5	68.9	72.0	1,850.5	112.1	1,962.6	3.9	94.3
Without dependents present	994.6	77.1	1,071.6	34.6	37.4	1,109.0	700.5	1,809.6	3.4	61.3
Sole parent	28.3	* 2.0	30.2	* 1.8	* 2.0	32.2	5.5	37.7	* 6.2	85.5
Other family head	42.3	3.7	46.0	* 2.6	* 2.6	48.6	23.2	71.8	* 5.4	67.7
Full-time student aged 15-24(b)	7.3	105.8	113.1	* 3.4	16.8	129.9	263.7	393.7	12.9	33.0
Other child(c) of married couple or family head	607.8	37.3	645.1	55.9	59.4	704.6	50.1	754.7	8.4	93.4
Other relative of married couple or family head	51.8	* 3.0	54.9	5.9	5.9	60.7	31.6	92.4	9.7	65.7
Not a member of a family	575.5	50.3	625.8	37.2	41.9	667.7	218.3	886.0	6.3	75.4
Living alone	251.9	19.9	271.8	16.7	17.7	289.6	165.4	455.0	6.1	63.6
Not living alone	323.6	30.4	354.0	20.6	24.1	378.1	52.9	431.0	6.4	87.7
<b>Total</b>	<b>4,038.6</b>	<b>326.7</b>	<b>4,365.3</b>	<b>210.5</b>	<b>238.0</b>	<b>4,603.3</b>	<b>1,405.1</b>	<b>6,008.4</b>	<b>5.2</b>	<b>76.6</b>
<b>FEMALES</b>										
Member of a family	1,458.4	1,116.4	2,574.7	111.5	173.2	2,748.0	2,433.4	5,181.4	6.3	53.0
Wife	963.8	857.8	1,821.6	49.7	84.4	1,906.1	1,795.0	3,701.0	4.4	51.5
With dependents present	453.1	617.4	1,070.5	28.3	56.3	1,126.9	784.9	1,911.7	5.0	58.9
Without dependents present	510.7	240.4	751.1	21.4	28.1	779.2	1,010.1	1,789.3	3.6	43.5
Sole parent	74.6	61.2	135.8	10.0	16.2	152.0	140.9	292.9	10.7	51.9
Other family head	42.7	17.5	60.2	3.7	5.4	65.6	121.0	186.6	8.2	35.1
Full-time student aged 15-24(b)	4.2	128.2	132.4	4.2	21.6	154.0	244.8	398.8	14.0	38.6
Other child(c) of married couple or family head	346.1	47.2	393.2	38.4	39.7	433.0	38.9	471.9	9.2	91.8
Other relative of married couple or family head	27.0	4.5	31.5	5.4	5.9	37.3	92.9	130.3	15.7	28.7
Not a member of a family	345.6	73.0	418.6	28.1	32.2	450.8	506.0	956.9	7.2	47.1
Living alone	137.7	33.5	171.2	9.4	10.9	182.1	453.1	635.2	6.0	28.7
Not living alone	207.9	39.5	247.4	18.7	21.4	268.8	52.9	321.7	7.9	83.5
<b>Total</b>	<b>1,804.0</b>	<b>1,189.4</b>	<b>2,993.3</b>	<b>139.6</b>	<b>205.5</b>	<b>3,198.8</b>	<b>2,939.5</b>	<b>6,138.3</b>	<b>6.4</b>	<b>52.1</b>
<b>PERSONS</b>										
Member of a family	4,921.4	1,392.8	6,314.2	284.7	369.3	6,683.6	3,620.3	10,303.8	5.5	64.9
Husband or wife	3,689.3	982.4	4,671.8	153.3	193.8	4,865.6	2,607.6	7,473.2	4.0	65.1
With dependents present	2,184.0	665.0	2,849.0	97.2	128.3	2,977.3	897.0	3,874.3	4.3	76.8
Without dependents present	1,505.3	317.5	1,822.8	56.0	65.5	1,888.3	1,710.6	3,598.9	3.5	52.5
Sole parent	102.8	63.2	166.0	11.8	18.2	184.2	146.4	330.6	9.9	55.7
Other family head	85.0	21.3	106.2	6.3	8.0	114.2	144.2	258.4	7.0	44.2
Full-time student aged 15-24(b)	11.6	234.0	245.5	7.6	38.4	283.9	508.5	792.4	13.5	35.8
Other child(c) of married couple or family head	953.9	84.5	1,038.3	94.4	99.2	1,137.5	89.0	1,226.6	8.7	92.7
Other relative of married couple or family head	78.8	7.5	86.3	11.3	11.8	98.1	124.6	222.7	12.0	44.1
Not a member of a family	921.1	123.3	1,044.4	65.4	74.1	1,118.6	724.4	1,842.9	6.6	60.7
Living alone	389.6	53.5	443.0	26.1	28.6	471.6	618.5	1,090.2	6.1	43.3
Not living alone	531.6	69.9	601.4	39.3	45.5	646.9	105.8	752.7	7.0	85.9
<b>Total</b>	<b>5,842.6</b>	<b>1,516.1</b>	<b>7,358.7</b>	<b>350.1</b>	<b>443.4</b>	<b>7,802.1</b>	<b>4,344.6</b>	<b>12,146.7</b>	<b>5.7</b>	<b>64.2</b>

(a) Civilians who were residents of households where family status was determined. (b) Excludes persons aged 20-24 attending school. Also excludes full-time students aged 15-24 who were classified as husbands, wives, sole parents or other family heads. (c) Aged 15 and over.

Source: Labour Force Status and Other Characteristics of Families, Australia, June 1989 (6224.0).

TABLE 2.14. FAMILY STATUS OF EMPLOYED PERSONS: FULL-TIME AND PART-TIME WORKERS(a)  
AUSTRALIA, JUNE 1989  
(\*000)

	Full-time workers	Part-time workers			Total	Total workers	Average weekly hours worked		Total
		Weekly hours worked					By	By	
		0(b)	1-14	15-34			full-time workers	part-time workers	
<b>MALES</b>									
Member of a family	3,463.1	14.9	134.0	127.5	276.4	3,739.5	40.9	14.5	39.0
Husband	2,725.5	6.1	40.2	78.3	124.6	2,850.1	41.7	17.9	40.7
With dependents present	1,731.0	* 2.4	12.3	32.9	47.5	1,778.5	42.2	19.7	41.6
Without dependents present	994.6	3.8	28.0	45.4	77.1	1,071.6	40.9	16.7	39.2
Sole parent	28.3	* 0.5	* 0.4	* 1.1	* 2.0	30.2	40.0	15.9	38.4
Other family head	42.3	* 0.0	* 1.0	* 2.8	3.7	46.0	39.1	19.6	37.5
Full-time student aged 15-24(c)	7.3	6.9	83.2	15.8	105.8	113.1	30.0	8.4	9.8
Other child(d) of married couple or family head	607.8	* 1.4	8.2	27.7	37.3	645.1	37.9	19.6	36.8
Other relative of married couple or family head	51.8	* 0.0	* 1.1	* 1.9	* 3.0	54.9	39.4	16.6	38.1
Not a member of a family	575.5	* 3.4	17.3	29.7	50.3	625.8	40.8	16.8	38.9
Living alone	251.9	* 1.6	7.5	10.8	19.9	271.8	40.7	15.3	38.9
Not living alone	323.6	* 1.8	9.7	18.9	30.4	354.0	40.9	17.8	38.9
<b>Total</b>	<b>4,038.6</b>	<b>18.3</b>	<b>151.3</b>	<b>157.2</b>	<b>326.7</b>	<b>4,365.3</b>	<b>40.9</b>	<b>14.8</b>	<b>39.0</b>
<b>FEMALES</b>									
Member of a family	1,458.4	53.4	484.9	578.0	1,116.4	2,574.7	36.6	15.0	27.2
Wife	963.8	40.1	334.6	483.1	857.8	1,821.6	36.9	15.8	27.0
With dependents present	453.1	24.5	251.1	341.8	617.4	1,070.5	37.4	15.5	24.8
Without dependents present	510.7	15.6	83.4	141.3	240.4	751.1	36.6	16.4	30.1
Sole parent	74.6	* 2.2	26.3	32.8	61.2	135.8	37.7	15.8	27.9
Other family head	42.7	* 0.6	5.0	11.9	17.5	60.2	36.6	18.1	31.2
Full-time student aged 15-24(c)	4.2	8.4	106.8	12.9	128.2	132.4	30.8	7.7	8.5
Other child(d) of married couple or family head	346.1	* 1.4	11.2	34.5	47.2	393.2	35.6	19.2	33.6
Other relative of married couple or family head	27.0	* 0.7	* 1.0	* 2.7	4.5	31.5	35.4	15.1	32.6
Not a member of a family	345.6	4.3	27.0	41.7	73.0	418.6	37.2	16.7	33.6
Living alone	137.7	* 2.1	13.6	17.8	33.5	171.2	37.1	15.9	33.0
Not living alone	207.9	* 2.2	13.4	24.0	39.5	247.4	37.2	17.3	34.1
<b>Total</b>	<b>1,804.0</b>	<b>57.7</b>	<b>511.9</b>	<b>619.8</b>	<b>1,189.4</b>	<b>2,993.3</b>	<b>36.7</b>	<b>15.1</b>	<b>28.1</b>
<b>PERSONS</b>									
Member of a family	4,921.4	68.3	619.0	705.5	1,392.8	6,314.2	39.6	14.9	34.2
Husband or wife	3,689.3	46.2	374.8	561.4	982.4	4,671.8	40.5	16.0	35.3
With dependents present	2,184.0	26.8	263.4	374.8	665.0	2,849.0	41.2	15.8	35.3
Without dependents present	1,505.3	19.4	111.4	186.7	317.5	1,822.8	39.4	16.4	35.4
Sole parent	102.8	* 2.7	26.7	33.9	63.2	166.0	38.3	15.8	29.8
Other family head	85.0	* 0.6	6.0	14.7	21.3	106.2	37.9	18.3	34.0
Full-time student aged 15-24(c)	11.6	15.2	190.0	28.7	234.0	245.5	30.3	8.0	9.1
Other child(d) of married couple or family head	953.9	* 2.9	19.4	62.2	84.5	1,038.3	37.0	19.4	35.6
Other relative of married couple or family head	78.8	* 0.7	* 2.1	4.6	7.5	86.3	38.0	15.7	36.1
Not a member of a family	921.1	7.7	44.3	71.4	123.3	1,044.4	39.5	16.7	36.8
Living alone	389.6	3.7	21.1	28.6	53.5	443.0	39.5	15.7	36.6
Not living alone	531.6	3.9	23.1	42.8	69.9	601.4	39.5	17.5	36.9
<b>Total</b>	<b>5,842.6</b>	<b>75.9</b>	<b>663.2</b>	<b>776.9</b>	<b>1,516.1</b>	<b>7,358.7</b>	<b>39.6</b>	<b>15.1</b>	<b>34.6</b>

(a) Civilians who were residents of households where family status was determined. (b) Persons who had a job in which they usually worked part time, i.e. less than 35 hours per week, but were not at work during the reference week. (c) Excludes persons aged 20-24 attending school. Also excludes full-time students aged 15-24 who are classified as husbands, wives, sole parents or other family heads. (d) Aged 15 and over.

Source: Labour Force Status and Other Characteristics of Families, Australia, June 1989 (622A.0).

**TABLE 2.15. ALL FAMILIES: TYPE OF FAMILY, NUMBER OF DEPENDENTS PRESENT, AND NUMBER OF FAMILY MEMBERS EMPLOYED(a), AUSTRALIA, JUNE 1988 AND JUNE 1989**  
(\*000 families)

Number of dependents present	None employed		One employed		Two or more employed		Total	
	June 1988(b)	June 1989	June 1988(b)	June 1989	June 1988(b)	June 1989	June 1988(b)	June 1989
<b>MARRIED-COUPLE FAMILIES</b>								
None	583.2	609.1	346.9	348.4	796.0	841.0	1,726.1	1,798.5
One or more	120.5	109.8	703.4	651.3	1,110.2	1,169.4	1,934.2	1,930.5
One	38.2	36.3	213.5	189.0	392.1	407.5	643.8	632.7
Two	42.0	35.1	300.2	265.2	465.3	491.9	807.5	792.2
Three	20.6	24.8	136.8	144.8	196.8	203.2	354.2	372.7
Four or more	19.8	13.6	53.0	52.4	55.9	66.9	128.7	132.9
<b>Total</b>	<b>703.7</b>	<b>718.9</b>	<b>1,050.4</b>	<b>999.8</b>	<b>1,906.2</b>	<b>2,010.4</b>	<b>3,660.2</b>	<b>3,729.0</b>
<b>ONE-PARENT FAMILIES WITH A MALE PARENT</b>								
One	5.3	4.6	14.9	13.2	5.8	4.9	26.0	22.8
Two	* 3.1	* 1.4	7.4	7.9	* 0.4	* 1.3	11.0	10.6
Three or more	* 0.5	* 0.6	* 2.4	* 2.7	* 0.7	* 0.6	3.6	4.0
<b>Total</b>	<b>8.9</b>	<b>6.7</b>	<b>24.8</b>	<b>23.9</b>	<b>6.9</b>	<b>6.9</b>	<b>40.6</b>	<b>37.4</b>
<b>ONE-PARENT FAMILIES WITH A FEMALE PARENT</b>								
One	83.1	66.8	61.0	68.8	17.0	19.0	161.0	154.6
Two	47.8	43.8	34.6	36.7	10.6	12.0	93.0	92.4
Three	17.0	16.6	10.3	12.6	* 1.8	3.7	29.1	32.9
Four or more	9.9	9.4	* 2.9	* 2.2	* 0.5	* 1.3	13.4	12.9
<b>Total</b>	<b>157.8</b>	<b>136.6</b>	<b>108.8</b>	<b>120.2</b>	<b>30.0</b>	<b>36.1</b>	<b>296.6</b>	<b>292.9</b>
<b>ONE-PARENT FAMILIES: TOTAL</b>								
One	88.3	71.4	75.9	82.0	22.8	24.0	187.1	177.4
Two	51.0	45.2	42.0	44.6	11.0	13.3	104.0	103.0
Three	17.3	17.3	12.3	14.9	* 2.4	4.1	31.9	36.3
Four or more	10.2	9.4	* 3.4	* 2.6	* 0.6	* 1.6	14.2	13.6
<b>Total</b>	<b>166.8</b>	<b>143.3</b>	<b>133.5</b>	<b>144.1</b>	<b>36.8</b>	<b>43.0</b>	<b>337.2</b>	<b>330.3</b>
<b>OTHER FAMILIES</b>								
None	53.8	55.8	87.7	90.3	91.5	102.3	233.1	248.4
One or more	* 1.3	* 2.6	* 2.8	5.5	* 1.2	* 2.9	5.4	11.1
<b>Total</b>	<b>55.1</b>	<b>58.4</b>	<b>90.5</b>	<b>95.8</b>	<b>92.7</b>	<b>105.2</b>	<b>238.4</b>	<b>259.4</b>
<b>ALL FAMILIES</b>								
None	637.0	664.9	434.6	438.7	887.5	943.3	1,959.1	2,046.9
One or more	288.6	255.6	839.8	801.0	1,148.3	1,215.3	2,276.7	2,271.9
One	127.6	109.8	292.2	276.3	415.9	434.4	835.7	820.5
Two	93.1	80.8	342.2	310.0	476.5	505.1	911.8	895.9
Three	37.9	42.1	149.0	159.6	199.3	207.3	386.3	409.0
Four or more	30.0	23.0	56.4	55.0	56.6	68.4	142.9	146.4
<b>Total</b>	<b>925.6</b>	<b>920.5</b>	<b>1,274.5</b>	<b>1,239.7</b>	<b>2,035.8</b>	<b>2,158.5</b>	<b>4,235.8</b>	<b>4,318.8</b>

(a) Employment status refers to persons aged 15 and over only. (b) These estimates are based on 1981 census benchmarks.

Source: *Labour Force Status and Other Characteristics of Families, Australia, June 1989* (6224.0).



TABLE 2.16. MARRIED-COUPLE FAMILIES: LABOUR FORCE STATUS OF HUSBAND AND WIFE  
AND AGE OF YOUNGEST DEPENDENT PRESENT, AUSTRALIA, JUNE 1989  
(\*000 families)

	Wife employed			Wife unemp- loyed	Wife in the labour force	Wife not in the labour force	Total
	Full time	Part time	Total				
HUSBAND EMPLOYED FULL TIME							
Families with dependents present	421.2	589.6	1,010.8	40.2	1,051.0	651.1	1,702.1
Age of youngest dependent —							
0-4	104.5	224.4	328.9	14.5	343.4	388.8	732.2
5-9	110.7	159.4	270.1	15.9	286.0	108.8	394.8
10-14	126.3	134.3	260.6	6.9	267.5	95.4	362.9
15-24	79.6	71.6	151.2	* 2.9	154.1	58.1	212.2
Families without dependents present	473.9	198.4	672.4	18.7	691.1	294.4	985.5
<b>Total</b>	<b>895.1</b>	<b>788.1</b>	<b>1,683.1</b>	<b>59.0</b>	<b>1,742.1</b>	<b>945.5</b>	<b>2,687.6</b>
HUSBAND EMPLOYED: TOTAL							
Families with dependents present	433.9	604.5	1,038.4	41.4	1,079.8	668.9	1,748.8
Age of youngest dependent —							
0-4	107.6	230.1	337.7	15.0	352.7	397.6	750.2
5-9	114.2	162.8	277.1	16.3	293.4	111.6	405.0
10-14	129.1	137.0	266.1	7.2	273.4	99.4	372.8
15-24	83.0	74.5	157.5	* 2.9	160.4	60.3	220.8
Families without dependents present	488.4	218.8	707.1	20.3	727.5	334.6	1,062.1
<b>Total</b>	<b>922.3</b>	<b>823.3</b>	<b>1,745.5</b>	<b>61.8</b>	<b>1,807.3</b>	<b>1,003.6</b>	<b>2,810.9</b>
HUSBAND IN THE LABOUR FORCE							
Families with dependents present	439.6	611.0	1,050.6	53.9	1,104.5	715.0	1,819.6
Age of youngest dependent —							
0-4	108.3	232.3	340.6	21.7	362.3	427.4	789.7
5-9	116.0	164.8	280.8	20.2	301.0	120.1	421.1
10-14	131.2	138.1	269.2	8.5	277.7	105.4	383.1
15-24	84.1	75.9	160.0	3.5	163.5	62.1	225.7
Families without dependents present	494.7	222.1	716.8	25.2	742.0	357.5	1,099.4
<b>Total</b>	<b>934.3</b>	<b>833.1</b>	<b>1,767.4</b>	<b>79.1</b>	<b>1,846.5</b>	<b>1,072.5</b>	<b>2,919.0</b>
TOTAL							
Families with dependents present	457.0	623.9	1,080.9	57.0	1,137.9	792.6	1,930.5
Age of youngest dependent —							
0-4	113.1	235.2	348.3	23.2	371.5	450.0	821.6
5-9	119.7	168.2	287.8	21.3	309.1	135.5	444.6
10-14	133.9	142.2	276.1	8.8	285.0	123.4	408.4
15-24	90.3	78.3	168.6	3.7	172.3	83.6	255.9
Families without dependents present	516.9	242.1	759.0	28.1	787.1	1,011.4	1,798.5
<b>Total</b>	<b>974.0</b>	<b>866.0</b>	<b>1,839.9</b>	<b>85.2</b>	<b>1,925.1</b>	<b>1,804.0</b>	<b>3,729.0</b>

Source: Labour Force Status and Other Characteristics of Families, Australia, June 1989 (6224.0).

TABLE 2.17. ONE-PARENT FAMILIES: LABOUR FORCE STATUS OF PARENT AND AGE OF YOUNGEST DEPENDENT PRESENT,  
AUSTRALIA, JUNE 1989  
(\*000 families)

Age of youngest dependent —	Parent employed			Parent unemployed	Parent in the labour force	Parent not in the labour force	Total
	Full time	Part time	Total				
0-4	13.9	16.4	30.3	6.3	36.6	65.2	101.8
5-9	25.5	20.5	46.0	5.0	51.0	37.5	88.4
10-14	31.9	17.4	49.2	3.7	53.0	29.1	82.0
15-24	31.2	9.2	40.5	* 3.1	43.6	14.4	58.0
<b>Total</b>	<b>102.4</b>	<b>63.5</b>	<b>165.9</b>	<b>18.2</b>	<b>184.1</b>	<b>146.2</b>	<b>330.3</b>

Source: Labour Force Status and Other Characteristics of Families, Australia, June 1989 (6224.0).

### Persons Who Had Re-entered the Labour Force

In May 1987 there were 7,798,600 persons in the labour force (63% of the civilian population aged 15 and over). About 498,500 of these persons were not in the labour force twelve months ago, and of these, 297,900 persons had never worked continuously for a period of twelve months or more.

Of those who had worked continuously for a period of twelve months or more, 154,800 had been not in the labour force for a period of twelve months or more and are defined as persons who had re-entered the labour force. Thus 2 per cent of the labour force had re-entered the labour force within the last twelve months.

TABLE 2.18. PERSONS WHO HAD RE-ENTERED THE LABOUR FORCE : AGE, BIRTHPLACE AND PERIOD OF ARRIVAL, SELECTED DETAILS OF PREVIOUS JOB AND WHETHER WORKING OR LOOKING FOR WORK, AUSTRALIA, MAY 1985 AND MAY 1987 ('000)

	May 1985			May 1987		
	Working	Looking for work	Total	Working	Looking for work	Total
<i>Age group—</i>						
15-24	9.6	4.6	14.2	13.0	4.2	17.2
25-34	57.1	23.5	80.6	54.1	18.8	72.9
35-44	32.1	11.8	43.9	27.4	13.1	40.5
45-54	8.8	} 5.1	{ 12.2	11.4	4.6	16.0
55 and over	4.2			6.0	6.5	*
<i>Birthplace and period of arrival—</i>						
Born in Australia	84.0	32.1	116.0	91.4	28.8	120.2
Born outside Australia	27.9	12.9	40.8	21.0	13.5	34.6
Arrived before 1971	16.6	8.2	24.8	13.7	7.4	21.1
Arrived 1971 — survey date	11.3	4.7	16.0	7.3	6.2	13.5
Born in main English speaking countries(a)	16.3	7.5	23.8	10.7	5.1	15.8
Born in other countries	11.6	5.5	17.0	10.3	8.5	18.8
<i>Full-time or part-time worker in previous job—</i>						
Previous job less than 20 years ago(b)	107.4	43.5	150.9	107.2	40.9	148.0
Full-time workers	88.1	38.8	126.9	82.7	34.8	117.5
Part-time workers	17.2	4.5	21.7	23.1	4.6	27.7
Previous job 20 or more years ago	4.4	*	5.9	5.2	*	6.7
<i>Time in previous job (years)—</i>						
1-2	32.5	12.9	45.3	32.7	14.5	47.2
3-9	57.5	25.1	82.6	59.3	20.9	80.2
3-4	22.3	8.6	31.0	21.3	9.6	30.9
5-9	35.2	16.4	51.6	37.9	11.3	49.3
10 or more	21.9	7.1	29.0	20.4	6.9	27.4
10-19	18.9	5.5	24.4	15.5	4.8	20.3
20 or more	*	*	4.6	4.9	*	7.1
<i>Time since previous job (years)—</i>						
1-2	37.6	12.9	50.5	38.8	10.4	49.2
3-9	52.1	21.8	73.9	48.0	20.8	68.8
3-4	25.4	6.4	31.8	19.7	8.8	28.6
5-9	26.7	15.4	42.1	28.3	12.0	40.2
10 or more	22.2	10.3	32.4	25.6	11.2	36.8
10-19	17.7	8.8	26.5	20.3	9.7	30.1
20 or more	4.4	*	5.9	5.2	*	6.7
<b>Total</b>	<b>111.8</b>	<b>45.0</b>	<b>156.8</b>	<b>112.4</b>	<b>42.4</b>	<b>154.8</b>

(a) Comprises UK, Ireland, Canada, South Africa, USA and New Zealand. (b) Includes varied/did not know.

Source: Persons Who Had Re-entered the Labour Force, Australia, May 1987 (6264.0).

TABLE 2.19. PERSONS WHO HAD RE-ENTERED THE LABOUR FORCE : AGE, FAMILY STATUS, SELECTED DETAILS OF PREVIOUS JOB AND WHETHER WORKING OR LOOKING FOR WORK, AUSTRALIA, MAY 1987  
(\*000)

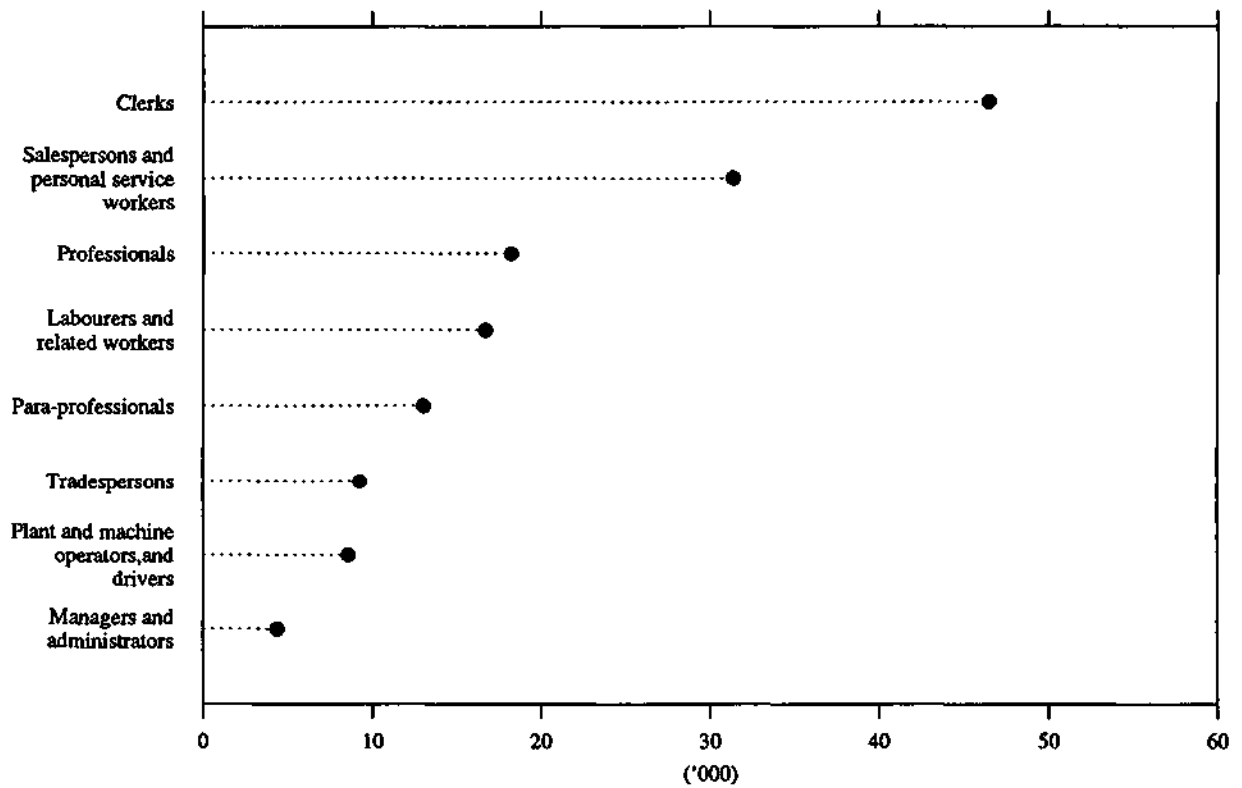
	Whether working or looking for work								
	Working			Looking for work			Total		
	Males	Females	Persons	Males	Females	Persons	Males	Females	Persons
<i>Age group—</i>									
15-24	3.9	9.1	13.0	4.2	*	4.2	5.7	11.5	17.2
25-34	6.6	47.5	54.1		16.4	18.8	9.0	63.9	72.9
35-44	*	26.2	27.4	*	11.9	13.1	4.5	38.0	40.5
45-54	*	9.7	11.4	*	4.3	4.6		14.0	16.0
55 and over	3.5	*	6.5	*	*	*	4.7	*	8.0
<i>Family status—</i>									
Member of a family(a)	13.1	85.2	98.3	5.8	32.0	37.7	18.9	117.1	136.0
Husband or wife	8.8	73.8	82.6	3.5	26.3	29.8	12.3	100.0	112.3
With dependents present	3.5	63.2	66.7	*	24.1	25.9	5.3	87.3	92.6
Without dependents present	5.3	10.6	15.8	*	*	3.8	7.0	12.7	19.7
Not-married family head	*	9.7	10.2	*	5.3	5.8	*	15.1	16.0
Not a member of a family	*	4.1	7.0	*	*	*	4.0	5.9	9.9
Family status not determined	*	6.1	7.1	*	*	*	*	7.8	8.9
<i>Occupation in previous job—</i>									
Previous job less than 20 years ago	17.0	90.2	107.2	7.0	33.9	40.9	24.0	124.1	148.0
Managers and administrators	*	*	3.9	*	*	*	*	*	4.4
Professionals	*	12.1	15.2	*	*	*	3.7	14.5	18.2
Para-professionals	*	8.6	10.2	*	*	*	*	10.9	13.0
Tradespersons	3.7	3.5	7.3	*	*	*	4.9	4.4	9.3
Clerks	*	28.2	30.3	*	15.1	16.2	*	43.2	46.5
Salespersons and personal service workers	*	22.8	23.7	*	7.1	7.7	*	29.8	31.4
Plant and machine operators, and drivers	*	4.6	5.9	*	*	*	*	6.3	8.6
Labourers and related workers	*	8.7	10.8	*	4.1	5.9	3.9	12.7	16.7
Previous job 20 or more years ago	*	5.2	5.2	*	*	*	*	6.7	6.7
<i>Status of worker in previous job—</i>									
Previous job less than 20 years ago(b)	17.0	90.2	107.2	7.0	33.9	40.9	24.0	124.1	148.0
Self-employed	*	*	4.0	*	*	*	*	*	4.4
Wage and salary earners	14.1	86.5	100.6	6.8	33.0	39.7	20.9	119.5	140.3
Previous job 20 or more years ago	*	5.2	5.2	*	*	*	*	6.7	6.7
<i>Reason for ceasing previous job—</i>									
Job loser(c)	4.0	7.1	11.1	3.8	5.1	8.9	7.8	12.1	19.9
Retrenched	*	*	4.4	*	*	*	*	5.5	7.8
Own ill health or injury	*	*	4.6	*	*	4.6	4.8	4.4	9.2
Job leaver	13.0	88.4	101.3	*	30.3	33.5	16.2	118.7	134.8
Unsatisfactory work arrangements	*	4.6	5.6	*	*	*	*	5.8	7.1
Retired/didn't want to work any longer	*	4.4	7.2	*	*	*	*	5.4	8.3
Returned to studies	3.7	*	6.7	*	*	*	4.4	*	7.4
To get married	*	9.7	9.7	*	3.7	3.7	*	13.0	13.0
Pregnancy/to have children	*	48.0	48.1	*	17.3	17.3	*	65.3	65.4
To look after family, house or someone else	*	4.5	4.9	*	*	*	*	6.2	6.9
To have holiday/to move house/spouse transferred	*	10.8	13.9	*	4.5	5.1	3.6	15.3	18.9
Other	*	3.5	5.3	*	*	*	*	4.7	7.7
<i>Educational attainment when ceased previous job—</i>									
With post-school qualifications(d)	7.7	34.0	41.7	*	12.1	14.8	10.4	46.2	56.5
Degree	*	6.2	8.2	*	*	*	*	7.9	10.3
Trade qualification or apprenticeship	3.6	*	6.7	*	*	*	4.7	4.0	8.7
Certificate or diploma	*	24.5	26.6	*	9.5	10.7	*	34.0	37.3
Without post-school qualifications(e)	9.3	61.4	70.7	4.3	23.3	27.6	13.6	84.6	98.3
Attended highest level of secondary school available	5.0	13.6	18.6	*	*	4.2	5.9	16.9	22.8
Did not attend highest level of secondary school available	4.3	47.8	52.1	*	19.9	23.4	7.7	67.7	75.4
Left at age—									
16 or over	*	18.8	20.3	*	6.7	7.9	*	25.6	28.2
15 or under	*	28.9	31.8	*	13.2	15.2	4.9	42.1	47.0
Still at school	*	*	*	*	*	*	*	*	*
<b>Total</b>	<b>17.0</b>	<b>95.4</b>	<b>112.4</b>	<b>7.0</b>	<b>35.4</b>	<b>42.4</b>	<b>24.0</b>	<b>130.8</b>	<b>154.8</b>

(a) Includes full-time students aged 15 to 24; other child of family head; and other relative of family head. (b) Includes employers and unpaid family helpers.

(c) Includes job was temporary or seasonal and did not leave to return to studies; and business closed down for economic reasons. (d) Includes persons with other post-school qualifications. (e) Includes persons who never attended school.

Source: Persons Who Had Re-entered the Labour Force, Australia, May 1987 (6264.0).

**CHART 2.7. PERSONS WHO HAD RE-ENTERED THE LABOUR FORCE:  
PREVIOUS JOB LESS THAN TWENTY YEARS AGO  
BY OCCUPATION, AUSTRALIA, MAY 1987**



Source: *Persons Who Had Re-entered the Labour Force, Australia, May 1987* (6264.0).

### Persons Who Have Left the Labour Force

This survey covered persons not in the labour force at April 1988 who left the labour force within the previous twelve months. It provided information on their reasons for leaving the labour force, their past labour force experience, their current activities and whether or not they intend to return to the labour force.

In April 1988 there were an estimated 4,669,600 persons who were not in the labour force (37% of the civilian population aged 15 and over). Of these persons 529,600 had left the labour force within the last twelve months.

The majority of persons who have left the labour force in the twelve months to April 1988 were female (364,100 or 69%), of whom more than half were in the age group 25 to 44 years.

Persons born in Australia comprised 75 per cent of those who left the labour force in the twelve months to April 1988 — much the same as the percentage of Australian-born persons in the labour force at April 1988.

The main activities in April 1988 of those who left the labour force in the previous twelve months, were home duties/child care (50%) and attending an educational institution (22%).

Almost half (48%) of those who left had had a continuous period in the labour force of less than twelve months.

Of the 105,100 males aged 15 to 44 who left the labour force in the twelve months to April 1988, 79 per cent intended to return to the labour force. For females aged 15 to 44, 296,800 left the labour force and 67 per cent intended to return.

Of the persons who had been working before leaving the labour force and who intended to return, 63 per cent (120,500) had left their jobs voluntarily. Of the 140,600 persons who had looked for work prior to leaving the labour force who intended to return to the labour force, and for whom reasons for having stopped looking were reported, 71 per cent cited personal or family reasons.

TABLE 2.20. PERSONS WHO HAVE LEFT THE LABOUR FORCE : SUMMARY OF CHARACTERISTICS, AUSTRALIA, NOVEMBER 1985 AND APRIL 1988 ('000)

	November 1985			April 1988		
	Males	Females	Persons	Males	Females	Persons
<i>Age-group—</i>						
15-24	47.6	83.9	131.5	66.8	102.3	169.1
25-44	31.0	177.3	208.2	38.3	194.5	232.7
45-59	21.9	46.2	68.2	29.9	56.0	85.9
60 and over	37.4	16.0	53.4	30.6	11.4	41.9
<i>Birthplace—</i>						
Born in Australia	99.7	246.3	346.0	122.2	275.9	398.0
Born outside Australia	38.2	77.0	115.3	43.4	88.2	131.6
<i>Marital status—</i>						
Married	64.6	233.1	297.6	68.9	245.3	314.2
Not-married	73.4	90.3	163.6	96.7	118.7	215.4
<i>Main source of income—</i>						
Investments/savings	26.2	18.9	45.1	26.1	15.5	41.6
Superannuation	10.4	*3.2	13.7	13.3	*3.3	16.6
TEAS/AUSTUDY	10.7	6.7	17.4	17.7	15.7	33.4
Unemployment/sickness benefit	20.1	13.8	33.9	22.6	16.0	38.6
Invalid/age/supporting parent's/widow's pension	17.4	37.9	55.3	15.9	36.0	51.9
War disability/repatriation/service/war widow's pension	6.3	*2.7	8.9	*3.3	*1.3	4.5
Dependent on someone else's income	32.7	229.4	262.1	44.1	246.7	290.8
Other(a)	14.2	10.8	24.9	11.4	7.1	18.5
Not asked	..	..	..	11.3	22.5	33.8
<b>Total</b>	<b>137.9</b>	<b>323.4</b>	<b>461.3</b>	<b>165.5</b>	<b>364.1</b>	<b>529.6</b>

(a) Includes life assurance, other retirement schemes; and persons permanently unable to work who were not asked their main source of income.

Source: *Persons Who Have Left the Labour Force, Australia, April 1988* (6267.0).

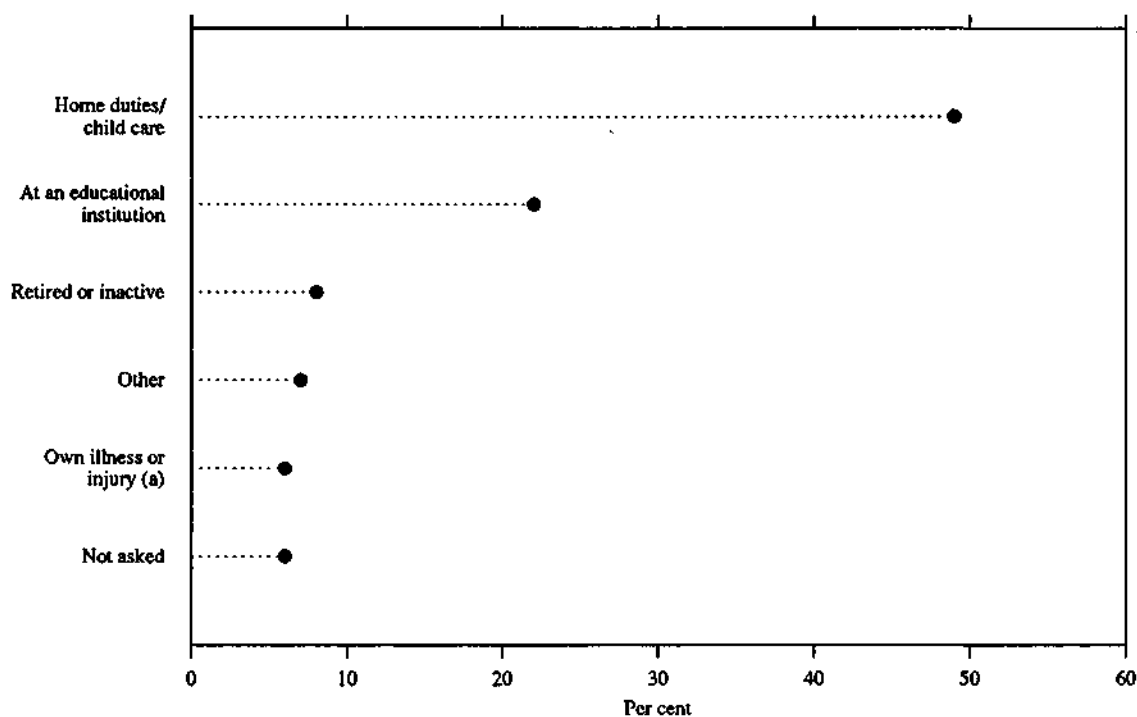
TABLE 2.21. PERSONS WHO HAVE LEFT THE LABOUR FORCE : DURATION OF CONTINUOUS PERIOD IN THE LABOUR FORCE BEFORE LEAVING AND WHETHER INTENDED TO RETURN TO THE LABOUR FORCE, AUSTRALIA, NOVEMBER 1985 AND APRIL 1988  
(\*000)

Whether intended to return to the labour force	November 1985			April 1988		
	Males	Females	Persons	Males	Females	Persons
<b>CONTINUOUS PERIOD OF LESS THAN TWELVE MONTHS IN THE LABOUR FORCE BEFORE LEAVING</b>						
Intended to return	45.3	99.1	144.4	62.4	120.1	182.4
Did not intend to return	8.7	41.8	50.5	8.9	24.9	33.8
Undecided	5.8	29.5	35.3	4.8	13.9	18.8
Not asked	..	..	..	7.0	12.7	19.6
<b>Total</b>	<b>59.9</b>	<b>170.3</b>	<b>230.2</b>	<b>83.0</b>	<b>171.6</b>	<b>254.6</b>
<b>CONTINUOUS PERIOD OF AT LEAST TWELVE MONTHS IN THE LABOUR FORCE BEFORE LEAVING</b>						
Intended to return	31.1	67.8	98.9	40.6	107.8	148.4
Did not intend to return	34.7	57.5	92.2	28.4	45.7	74.1
Undecided	12.2	27.8	40.0	9.2	29.2	38.4
Not asked	..	..	..	*1.9	8.1	10.0
<b>Total</b>	<b>78.0</b>	<b>153.0</b>	<b>231.1</b>	<b>80.1</b>	<b>190.8</b>	<b>270.9</b>
<b>TOTAL(a)</b>						
Intended to return	76.4	166.8	243.3	103.0	227.9	330.9
Did not intend to return	43.5	99.2	142.7	37.3	70.6	107.8
Undecided	18.0	57.3	75.3	14.0	43.1	57.1
Not asked	..	..	..	11.3	22.5	33.8
<b>Total</b>	<b>137.9</b>	<b>323.4</b>	<b>461.3</b>	<b>165.5</b>	<b>364.1</b>	<b>529.6</b>

(a) Includes persons whose duration of continuous period in the labour force could not be determined.

Source: *Persons Who Have Left the Labour Force, Australia, April 1988* (6267.0).

CHART 2.8. PERSONS WHO HAVE LEFT THE LABOUR FORCE WITHIN THE LAST TWELVE MONTHS: MAIN ACTIVITY SINCE LEAVING THE LABOUR FORCE, AUSTRALIA, APRIL 1988



(a) Includes own disability/handicap.

Source: *Persons Who Have Left the Labour Force, Australia, April 1988* (6267.0).

### Retirement and Retirement Intentions

In November 1989 there were an estimated 4,863,400 persons aged 45 and over. Of these persons 2,641,900 (54%) had retired from full-time work, 1,584,500 (33%) intended to retire from full-time work, 461,700 (9%) had never worked full-time and did not intend to work full-time and a further 175,300 (4%) did not intend to retire from full-time work.

Of the estimated 2,641,900 persons who had retired from full-time work, 1,040,000 (39%) were males and 1,602,000 (61%) were females.

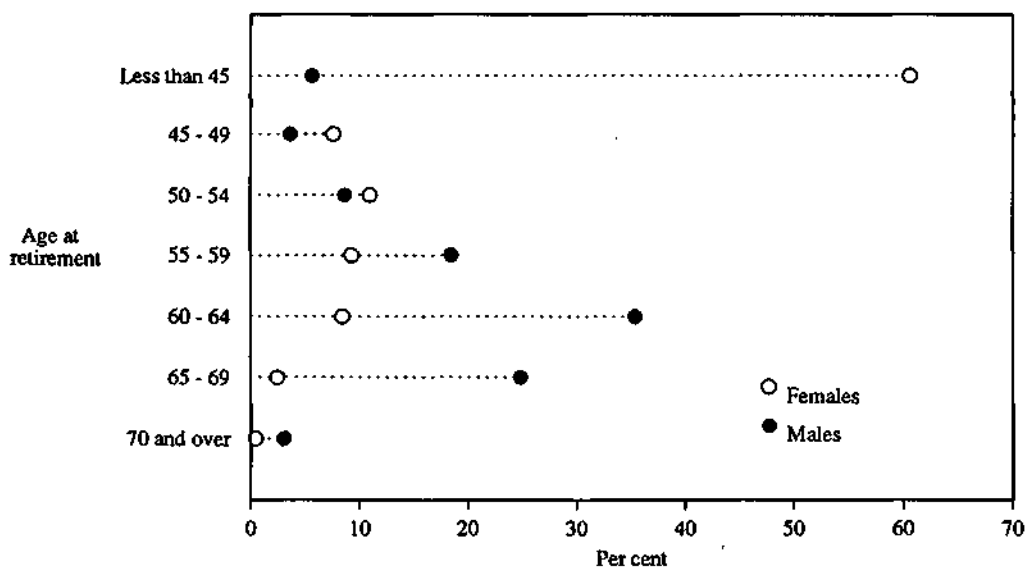
#### Persons Who Had Retired From Full-time Work

- A large number of persons (1,031,900) had retired from full-time work before reaching the age of 45 years, representing 39 per cent of all persons aged 45 and over who had retired from full-time work.
- Males generally retire from full-time work at an older age than females. For females, 60 per cent retired from full-time work before reaching the age of 45, compared with only 6 per cent of males. Some 60 per cent of males retired between the age of 60 to 69, while only 11 per cent of females had retired between those ages.
- Approximately 20 per cent of persons in the occupations Clerks and Salespersons and personal services works retired before age 45, whereas, for Managers and administrators 6 per cent retired before age 45. Of the occupation groups, Managers and administrators and Tradespersons were least likely to retire before age 65 (some 25 and 24 per cent respectively retired at age 65 or older).
- In the Agriculture, forestry, fishing and hunting industry approximately 66 per cent of persons had retired before age 65 compared with the Recreation, personal and other services industry with 88 per cent.

#### Persons Aged 45 And Over Who Intended To Retire From Full-time Work

- Approximately 43 per cent of males intended to retire between the age of 65 to 69. Some 24 per cent reported that they did not know at what age they intended to retire.
- For females, 33 per cent reported that they did not know their intended age at retirement, while 32 per cent intended to retire between 60 to 64 years.
- For males, 78 per cent of those who intended to retire belonged to a retirement scheme, compared with 61 per cent of females.
- A majority of persons expected to receive a large sum payment from a retirement scheme. About 16 per cent of males reported that they would invest the lump sum they received from a retirement scheme, and a further 11 per cent reported they would invest in an approved deposit fund, deferred annuity.

CHART 2.9. PERSONS AGED 45 AND OVER WHO HAD RETIRED FROM FULL-TIME WORK: AGE AT RETIREMENT BY SEX, AUSTRALIA, NOVEMBER 1989



Source: Retirement and Retirement Intentions, Australia (6238.0).

TABLE 2.22. PERSONS AGED 45 AND OVER: COMPARATIVE PROFILE AND WHETHER HAD RETIRED OR INTENDED TO RETIRE FROM FULL-TIME WORK(a), NOVEMBER 1989

	Whether had retired or intended to retire from full-time work							
	Had retired	Intended to retire	Did not intend to retire	Had never had a full-time job and did not intend to work full-time	Total	Had retired	Intended to retire	Total
	— '000 —				— per cent —			
<i>Age at November 1989—</i>								
45-49	236.6	614.6	46.3	36.8	934.4	9.0	38.8	19.2
50-54	252.5	462.0	42.3	44.8	801.5	9.6	29.2	16.5
55-59	320.5	309.9	30.1	46.9	707.5	12.1	19.6	14.5
60-64	467.5	169.4	30.7	67.2	734.8	17.7	10.7	15.1
65-69	535.8	21.6	13.7	70.3	641.4	20.3	1.4	13.2
70 and over	829.0	6.9	12.1	195.7	1,043.8	31.4	0.4	21.5
<i>Marital status—</i>								
Married	1,877.0	1,296.9	136.1	259.7	3,569.8	71.0	81.9	73.4
Not-married	764.9	287.5	39.1	202.1	1,293.6	29.0	18.1	26.6
<i>Family status—</i>								
Member of a family	2,040.0	1,352.5	143.9	331.0	3,867.3	77.2	85.4	79.5
Husband or wife	1,827.4	1,247.8	130.3	252.2	3,457.8	69.2	78.8	71.1
With dependents present	202.8	493.2	43.8	29.3	769.1	7.7	31.1	15.8
Without dependents present	1,624.7	754.6	86.5	222.9	2,688.6	61.5	47.6	55.3
Other family head	128.1	72.3	9.6	39.7	249.6	4.8	4.6	5.1
With dependents present	21.9	32.8	* 3.1	6.2	64.0	0.8	2.1	1.3
Without dependents present	106.1	39.5	6.5	33.5	185.6	4.0	2.5	3.8
Other child(b) of married couple or family head	13.9	19.6	* 1.2	* 3.9	38.6	0.5	1.2	0.8
Other relative of married couple or family head	70.6	12.8	* 2.8	35.2	121.4	2.7	0.8	2.5
Not a member of a family	518.8	165.0	23.4	113.9	821.1	19.6	10.4	16.9
Living alone	479.3	128.0	18.1	107.8	733.1	18.1	8.1	15.1
Not living alone	39.5	37.0	5.4	6.2	88.0	1.5	2.3	1.8
Family status not determined	83.1	67.0	8.0	16.8	174.9	3.1	4.2	3.6
<i>Birthplace and period of arrival—</i>								
Born in Australia	1,876.1	1,015.5	126.0	298.6	3,316.2	71.0	64.1	68.2
Born outside Australia	765.8	568.9	49.3	163.1	1,547.2	29.0	35.9	31.8
Arrived before 1961	455.2	220.1	20.2	76.1	771.5	17.2	13.9	15.9
Arrived 1961-1970	187.9	190.5	16.0	38.0	432.4	7.1	12.0	8.9
Arrived 1971-1980	73.4	95.1	6.4	24.1	199.0	2.8	6.0	4.1
Arrived 1981-1989	49.4	63.3	6.7	25.0	144.3	1.9	4.0	3.0
<i>Area—</i>								
Metropolitan	1,639.4	1,027.6	79.9	251.6	2,998.5	62.1	64.9	61.7
Non-metropolitan	1,002.5	556.8	95.4	210.2	1,864.9	37.9	35.1	38.3
<b>Total</b>	<b>2,641.9</b>	<b>1,584.5</b>	<b>175.3</b>	<b>461.7</b>	<b>4,863.4</b>	<b>100.0</b>	<b>100.0</b>	<b>100.0</b>
Males	1,040.0	1,155.7	134.9	16.8	2,347.4	39.4	72.9	48.3
Females	1,602.0	428.8	40.3	444.9	2,516.0	60.6	27.1	51.7

(a) Excludes persons who were institutionalised or permanently unable to work who were not in the scope of the survey. (b) Aged 15 and over.

Source: Retirement and Retirement Intentions, Australia November 1989 (6238.0).



**TABLE 2.23. PERSONS AGED 45 AND OVER WHO HAD RETIRED FROM FULL-TIME WORK: STATUS OF WORKER IN LAST FULL-TIME JOB, OCCUPATION AND INDUSTRY OF LAST FULL-TIME JOB AND AGE AT RETIREMENT, AUSTRALIA, NOVEMBER 1989 ('000)**

	Age at retirement							Total
	Less than 45	45 - 49	50 - 54	55 - 59	60 - 64	65 - 69	70 and over	
Last full-time job less than 20 years ago(a)	236.0	133.4	231.1	312.0	471.4	277.5	37.8	1,699.2
<i>Status of worker in last full-time job—</i>								
Wage and salary earners	215.0	118.6	195.7	273.5	411.1	233.2	22.0	1,468.9
Employers	9.5	7.4	15.7	17.4	24.7	17.2	5.3	97.2
Self-employed	11.4	7.4	19.3	21.1	35.5	26.9	10.3	131.7
<i>Occupation in last full-time job—</i>								
Managers and administrators	15.1	13.9	30.2	46.8	74.3	44.6	14.9	239.8
Professionals	13.5	6.7	11.3	27.8	43.4	24.6	* 4.3	131.7
Para-professionals	13.0	5.0	10.3	21.5	30.7	12.8	* 1.5	95.0
Tradespersons	21.0	17.3	27.0	47.8	83.6	55.7	* 4.4	256.9
Clerks	47.0	20.2	35.8	47.4	61.8	23.3	* 2.7	238.2
Salespersons and personal service workers	35.1	19.4	34.5	26.9	32.6	15.7	* 3.2	167.3
Plant and machine operators, and drivers	32.1	18.1	25.1	34.3	48.2	36.5	* 1.1	195.5
Labourers and related workers	59.2	32.7	56.9	59.5	96.8	64.2	5.6	374.8
<i>Industry of last full-time job—</i>								
Agriculture, forestry, fishing and hunting	6.1	* 4.1	11.9	10.9	24.0	18.8	10.4	86.2
Mining	* 1.9	* 0.4	* 2.4	5.1	6.5	* 2.4	* 0.1	18.8
Manufacturing	71.0	39.9	58.3	74.2	111.3	78.8	6.5	440.0
Electricity, gas and water	* 1.2	* 1.4	* 1.5	8.6	19.6	8.6	* 0.3	41.1
Construction	9.5	6.9	11.4	17.0	31.6	21.4	* 1.4	99.3
Wholesale and retail trade	49.1	27.3	49.1	54.8	70.8	36.1	8.1	295.3
Transport and storage	8.6	5.0	11.0	23.2	41.0	25.5	* 1.3	115.7
Communication	* 3.6	* 2.7	7.1	9.6	13.7	7.5	* 0.3	44.4
Finance, property and business services	13.8	5.7	9.5	18.3	30.1	12.6	* 2.8	92.9
Public administration and defence	9.0	* 3.7	11.7	17.9	30.9	22.3	* 0.4	95.8
Community services	40.2	23.4	39.8	51.6	69.2	32.3	* 3.8	260.2
Recreation, personal and other services	22.0	13.0	17.4	20.8	22.8	11.2	* 2.4	109.5
Last full-time job 20 or more years ago	795.9	27.2	35.2	29.2	33.1	20.7	* 1.4	942.7
<b>Total</b>	<b>1,031.9</b>	<b>160.6</b>	<b>266.3</b>	<b>341.2</b>	<b>504.4</b>	<b>298.2</b>	<b>39.2</b>	<b>2,641.9</b>
<b>Males</b>	<b>59.7</b>	<b>38.4</b>	<b>90.6</b>	<b>192.2</b>	<b>368.5</b>	<b>258.7</b>	<b>31.9</b>	<b>1,040.0</b>
<b>Females</b>	<b>972.2</b>	<b>122.2</b>	<b>175.7</b>	<b>149.0</b>	<b>135.9</b>	<b>39.5</b>	<b>7.4</b>	<b>1,602.0</b>

(a) Includes unpaid family helpers and excludes persons whose last full-time job was unpaid voluntary work.

Source: Retirement and Retirement Intentions, Australia, November 1989 (6238.0).

TABLE 2.24. PERSONS AGED 45 AND OVER WHO INTENDED TO RETIRE FROM FULL-TIME WORK: INTENDED DISBURSEMENT OF LUMP SUM PAYMENT FROM RETIREMENT SCHEME AND AGE INTENDED TO RETIRE, AUSTRALIA, NOVEMBER 1989

Intended disbursement of lump sum payment from retirement scheme	Age intended to retire					Did not know	Total	
	45 - 54	55 - 59	60 - 64	65 - 69 '000-	70 and over		(per cent)	
<b>MALES</b>								
Belonged to a retirement scheme	9.2	112.4	197.1	381.4	14.7	182.6	897.4	77.7
Expected to receive a lump sum payment	5.4	78.0	128.8	235.8	10.0	89.3	547.3	47.4
Purchase an annuity	* 0.0	* 0.3	* 1.1	* 2.6	* 0.3	* 0.5	4.8	0.4
Invest in an approved deposit fund/deferred annuity	* 1.6	28.6	37.8	42.7	* 2.2	17.1	129.9	11.2
Invest the money	* 2.7	29.5	43.6	75.3	* 3.8	25.5	180.3	15.6
Pay off home/pay for improvements	* 0.4	* 4.2	10.1	30.2	* 1.0	5.8	51.5	4.5
Pay for a holiday	* 0.1	* 2.3	11.1	13.9	* 0.5	* 3.6	31.5	2.7
Other(a)	* 0.0	* 3.4	8.7	15.4	* 0.2	6.3	33.9	2.9
Did not know	* 0.6	9.7	16.5	55.7	* 2.1	30.6	115.3	10.0
Did not expect to receive a lump sum payment	* 1.6	12.9	20.0	44.0	* 2.2	20.6	101.2	8.8
Did not know	* 2.3	21.5	48.3	101.6	* 2.5	72.7	248.9	21.5
Did not belong to a retirement scheme	* 3.8	9.2	24.2	115.8	8.6	96.7	258.2	22.3
<b>Total</b>	<b>13.0</b>	<b>121.6</b>	<b>221.3</b>	<b>497.2</b>	<b>23.3</b>	<b>279.3</b>	<b>1,155.7</b>	<b>100.0</b>
<b>FEMALES</b>								
Belonged to a retirement scheme	17.1	62.7	83.1	28.4	* 1.7	70.0	263.0	61.3
Expected to receive a lump sum payment	10.8	41.7	52.0	16.1	* 1.2	36.6	158.5	37.0
Purchase an annuity	* 0.1	* 0.2	* 0.3	* 0.3	* 0.0	* 0.0	* 0.8	* 0.2
Invest in an approved deposit fund/deferred annuity	* 1.7	9.0	10.6	* 3.1	* 0.0	4.6	29.0	6.8
Invest the money	* 3.5	15.6	18.1	4.7	* 0.2	9.3	51.5	12.0
Pay off home/pay for improvements	* 1.3	5.6	6.3	* 3.2	* 0.6	* 1.6	18.7	4.4
Pay for a holiday	* 2.1	* 4.1	* 3.4	* 0.6	* 0.3	* 2.9	13.5	3.2
Other(a)	* 0.7	* 2.5	* 2.8	* 2.0	* 0.0	* 1.8	9.7	2.3
Did not know	* 1.4	4.8	10.5	* 2.1	* 0.1	16.3	35.2	8.2
Did not expect to receive a lump sum payment	* 1.6	5.7	11.7	* 3.4	* 0.0	7.7	30.1	7.0
Did not know	4.7	15.3	19.4	8.8	* 0.5	25.7	74.4	17.4
Did not belong to a retirement scheme	12.9	12.8	54.0	14.8	* 1.0	70.3	165.8	38.7
<b>Total</b>	<b>30.0</b>	<b>75.5</b>	<b>137.1</b>	<b>43.2</b>	<b>* 2.7</b>	<b>140.3</b>	<b>428.8</b>	<b>100.0</b>
<b>PERSONS</b>								
Belonged to a retirement scheme	26.3	175.1	280.2	409.8	16.4	252.6	1,160.5	73.2
Expected to receive a lump sum payment	16.2	119.7	180.8	252.0	11.2	125.9	705.8	44.5
Purchase an annuity	* 0.1	* 0.5	* 1.3	* 2.9	* 0.3	* 0.5	5.6	0.4
Invest in an approved deposit fund/deferred annuity	* 3.3	37.5	48.4	45.8	* 2.2	21.7	158.9	10.0
Invest the money	6.2	45.1	61.7	80.1	* 4.0	34.8	231.8	14.6
Pay off home/pay for improvements	* 1.7	9.8	16.4	33.4	* 1.6	7.4	70.2	4.4
Pay for a holiday	* 2.3	6.4	14.5	14.5	* 0.8	6.5	45.1	2.8
Other(a)	* 0.7	5.8	11.6	17.4	* 0.2	8.1	43.7	2.8
Did not know	* 2.0	14.5	27.0	57.9	* 2.2	46.9	150.5	9.5
Did not expect to receive a lump sum payment	* 3.1	18.6	31.7	47.4	* 2.2	28.3	131.3	8.3
Did not know	7.0	36.8	67.7	110.4	* 3.1	98.4	323.3	20.4
Did not belong to a retirement scheme	16.7	22.0	78.2	130.6	9.5	167.0	424.0	26.8
<b>Total</b>	<b>43.0</b>	<b>197.1</b>	<b>358.4</b>	<b>540.4</b>	<b>26.0</b>	<b>419.6</b>	<b>1,584.5</b>	<b>100.0</b>

(a) Includes the category 'clear other outstanding debts'.

Source: Retirement and Retirement Intentions, Australia, November 1989 (6238.0).

### Superannuation

In November 1988, an estimated 7,303,600 persons aged 15 to 74 were employed, and of these, 3,746,100 persons (51%) were covered by a superannuation scheme. A further 70,100 persons, not employed in November 1988, had superannuation coverage. Of full-time workers, 58 per cent had superannuation coverage, and for part-timers, 19 per cent had coverage.

An estimated 2,959,400 persons aged 15 to 74 contributed personally to their superannuation scheme and their average weekly contribution was \$28.

Of the 3,356,600 employees covered by a superannuation scheme, 80 per cent reported that their scheme was provided by their current employer.

For persons aged 45 to 74, 30 per cent reported that they expected superannuation to be their main source of income after ceasing full-time work. A further 26 per cent of those persons reported that invalid/ age/ supporting parents'/ widows' pension would be their main source of income and 12 per cent expected that it would be from investments, etc.

Occupation groups with a high proportion of full-time workers covered by superannuation were Professionals (69%), Para-professionals (63%), Plant and machine operators, and drivers (58%), Managers and administrators (55%), and Tradespersons (54%).

An estimated 452,100 employees were eligible for, but had not joined, a superannuation scheme provided by their employer. Some 39 per cent of these people reported their reason for not joining as 'had not bothered/not interested/not necessary'.

TABLE 2.25. PERSONS AGED 15 TO 74: COMPARATIVE PROFILE OF PERSONS COVERED BY A SUPERANNUATION SCHEME AND PERSONS NOT COVERED BY A SUPERANNUATION SCHEME, AUSTRALIA, NOVEMBER 1988 ('000)

	Covered			Not covered			Total		
	Males	Females	Persons	Males	Females	Persons	Males	Females	Persons
<b>Labour force status —</b>									
Employed	2,673.3	1,072.8	3,746.1	1,692.1	1,865.4	3,557.5	4,365.4	2,938.2	7,303.6
Full-time workers	2,626.4	865.4	3,491.8	1,509.6	983.1	2,492.7	4,136.1	1,848.5	5,984.5
Part-time workers	46.9	207.4	254.3	182.5	882.3	1,064.8	229.4	1,089.7	1,319.1
Unemployed	7.8	* 4.3	12.1	238.7	195.0	433.7	246.5	199.3	445.8
Not in labour force	19.2	38.8	57.9	1,048.8	2,509.2	3,558.0	1,067.9	2,548.0	3,615.9
<b>Age group —</b>									
15-19	70.2	29.3	99.6	302.5	303.8	606.3	372.8	333.1	705.8
20-24	224.7	153.8	378.5	422.1	506.2	928.3	646.8	659.9	1,306.8
25-34	786.6	326.6	1,113.2	558.9	1,027.3	1,586.2	1,345.5	1,353.9	2,699.4
35-44	812.1	344.1	1,156.2	426.3	872.5	1,298.8	1,238.4	1,216.6	2,455.0
45-54	547.4	192.6	740.0	308.9	629.4	938.3	856.3	822.0	1,678.4
55-64	247.5	68.1	315.5	473.5	657.5	1,131.0	721.0	725.5	1,446.5
65-74	11.8	* 1.4	13.2	487.2	573.0	1,060.2	499.0	574.4	1,073.4
<b>Family status —</b>									
Member of a family(a)	2,281.9	902.9	3,184.8	2,334.8	3,793.6	6,128.5	4,616.7	4,696.6	9,313.3
Husband or wife	1,961.7	695.0	2,656.7	1,667.9	2,912.1	4,580.0	3,629.6	3,607.1	7,236.7
With dependents present	1,286.5	372.8	1,659.3	699.9	1,557.1	2,257.0	1,986.5	1,929.8	3,916.3
Without dependents present	675.2	322.2	997.4	967.9	1,355.0	2,323.0	1,643.1	1,677.3	3,320.4
Not-married family head	46.6	76.5	123.1	46.1	370.3	416.4	92.8	446.7	539.5
With dependents present	24.6	53.0	77.5	17.6	251.1	268.7	42.2	304.1	346.3
Without dependents present	22.1	23.5	45.5	28.5	119.1	147.7	50.6	142.6	193.2
Other child/ relative of family head	269.2	129.8	399.0	545.8	435.0	980.8	815.0	564.7	1,379.8
Not a member of a family	325.9	155.0	480.9	483.5	543.3	1,026.8	809.3	698.3	1,507.6
Living alone	175.3	79.0	254.3	236.5	350.6	587.1	411.9	429.6	841.5
Not living alone	150.6	76.0	226.5	246.9	192.7	439.6	397.5	268.7	666.2
Family status not determined	92.5	57.9	150.5	161.2	232.7	393.9	253.8	290.6	544.4
<b>Total</b>	<b>2,700.3</b>	<b>1,115.9</b>	<b>3,816.2</b>	<b>2,979.5</b>	<b>4,569.6</b>	<b>7,549.2</b>	<b>5,679.9</b>	<b>5,685.5</b>	<b>11,365.4</b>

(a) Includes full-time students aged 15 to 24.

Source: Superannuation, Australia, November 1988 (6319.0).

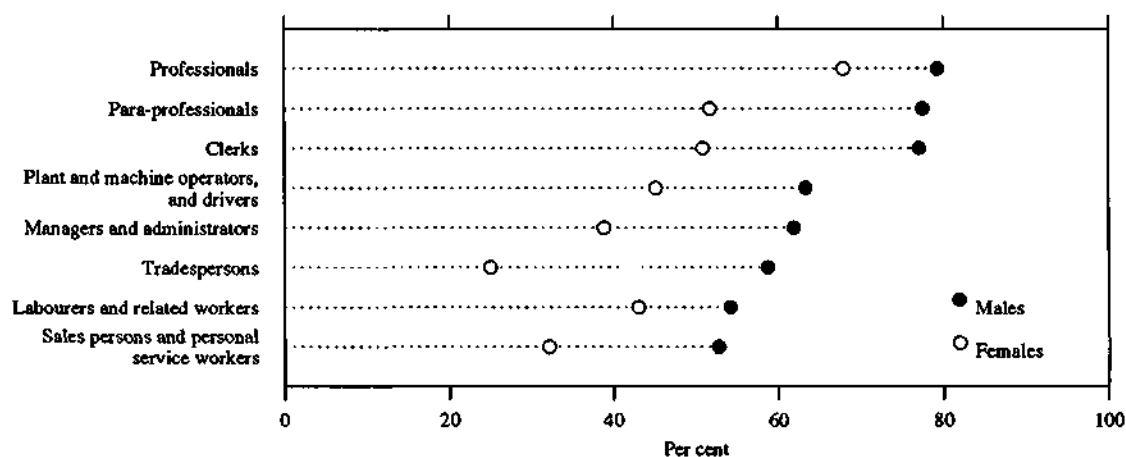
**TABLE 2.26. PERSONS AGED 45 TO 74 COVERED BY A SUPERANNUATION SCHEME: AGE INTENDED TO CEASE FULL-TIME WORK AND EXPECTED TYPE OF PAYMENT FROM SUPERANNUATION SCHEME, NOVEMBER 1988**  
(\*000)

	Expected type of payment				Total(a)
	Lump sum only	Regular payments only	Lump sum and regular payments	Did not know all payment types	
<b>MALES</b>					
Age intended to cease full-time work	300.8	48.9	167.5	243.1	767.1
45-54	*1.8	*0.4	*1.5	*2.2	*5.8
55-59	30.1	*6.0	33.4	20.5	91.1
60-64	59.1	15.4	43.6	32.1	150.8
65 and over	125.8	14.6	45.3	71.8	260.2
Did not know	84.0	12.5	43.8	116.5	259.2
Will never cease full-time work	12.8	*0.8	*2.1	12.4	29.3
Had already ceased full-time work	*6.7	*0.6	*1.1	*2.0	10.3
<b>Total</b>	<b>320.3</b>	<b>50.4</b>	<b>170.7</b>	<b>257.5</b>	<b>806.7</b>
<b>FEMALES</b>					
Age intended to cease full-time work	113.3	11.9	32.2	69.8	230.9
45-54	9.9	*0.7	*1.1	*2.7	15.0
55-59	22.5	*1.6	9.6	12.0	46.3
60-64	33.0	*2.5	*5.4	9.7	51.0
65 and over	14.1	*2.7	*5.8	*4.8	27.4
Did not know	33.8	*4.3	10.4	40.6	91.2
Will never cease full-time work	*2.9	*0.0	*1.1	*1.5	*6.1
Had already ceased full-time work	11.4	*0.8	*3.0	9.4	25.1
<b>Total</b>	<b>127.7</b>	<b>12.7</b>	<b>36.4</b>	<b>80.7</b>	<b>262.1</b>
<b>PERSONS</b>					
Age intended to cease full-time work	414.2	60.9	199.8	312.9	997.9
45-54	11.7	*1.1	*2.5	*4.9	20.8
55-59	52.7	7.7	43.0	32.5	137.4
60-64	92.1	18.0	49.0	41.9	201.9
65 and over	139.9	17.4	51.1	76.6	287.5
Did not know	117.8	16.8	54.2	157.1	350.4
Will never cease full-time work	15.7	*0.8	*3.1	13.9	35.3
Had already ceased full-time work	18.1	*1.4	*4.1	11.4	35.5
<b>Total</b>	<b>447.9</b>	<b>63.1</b>	<b>207.0</b>	<b>338.2</b>	<b>1,068.8</b>

(a) Includes persons who expected to receive neither a lump sum nor regular payments.

Source: Superannuation, Australia, November 1988 (6319.0)

**CHART 2.10. FULL-TIME WORKERS AGED 15 TO 74: PERCENTAGE COVERED BY A SUPERANNUATION SCHEME AND OCCUPATION, AUSTRALIA, NOVEMBER 1988**



Source: Superannuation, Australia, November 1988 (6319.0).