



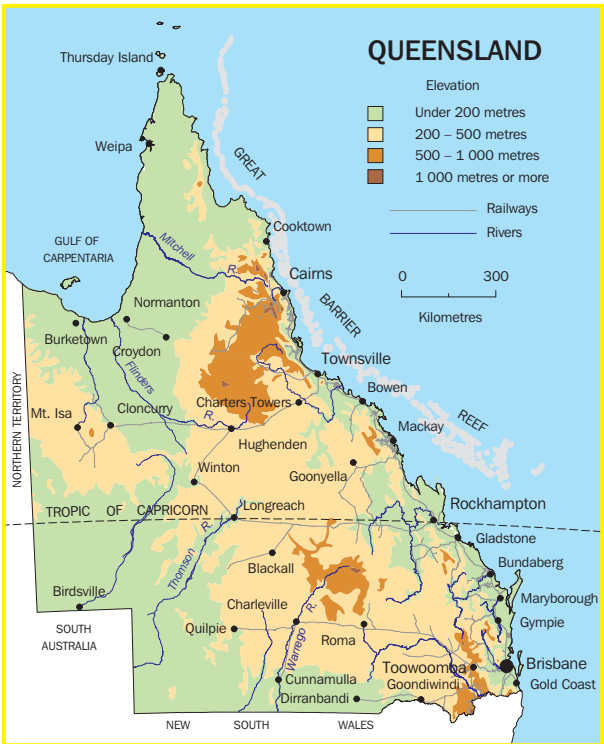
2004
QUEENSLAND
AT A
GLANCE



Situated generally between 10° and 29° south latitude and between 138° and 154° east longitude, Queensland occupies the north-eastern portion of the Australian continent. Of the total area — 1,734,157 square kilometres — just over half is north of the Tropic of Capricorn. Of the six states of Australia, Queensland ranks second in area and third in population.

Queensland is a constituent state of the Commonwealth of Australia, and observes the Australian Constitution. While returning elected members to both upper and lower houses of the Federal Parliament, Queensland is unique in that its own State Parliament has only one house — the House of Representatives. Local government derives its powers from Acts passed by the State Parliament. The capital city is Brisbane.

Figures in this publication are subject to revision.



Source: AUSLIG 1996.

QUEENSLAND AND PROPORTION OF AUSTRALIA

Area	sq km	Date or period	Queensland	%
		1 July 2002	1 734 157	22.5
Population(p)	'000	30 June 2003	3 796.8	19.1
Births	'000	2002–03	47.2	19.0
Natural increase	'000	2002–03	23.8	20.6
Cause of death — melanoma of skin	no.	2002	195	18.5
Agricultural production				
Beef and veal	tonnes	2002–03	951 152	45.9
Mutton and lamb	tonnes	2002–03	27 025	4.5
Sugar cane(a)	'000 tonnes	2001–02	28 250	89.9
Cotton	tonnes	2001–02	197	29.2
Mining, value added(b)	\$m	2000–01	5 599.0	17.0
Manufacturing sales and service income	\$m	2000–01	40 292.3	16.0
New houses completed	no.	2002–03	24 143	22.2
Foreign merchandise imports	\$m	2002–03	16 339.6	12.3
Foreign merchandise exports	\$m	2002–03	21 379.1	18.5
New motor vehicle sales(c)	'000	2002–03	164.7	19.1
Retail trade, turnover(d)	\$m	2002–03	33 341.8	19.1
Takings from accommodation(e)	\$m	2002–03	1 343.8	27.1
Industrial disputes(f)	no.	2002–03	108	16.5
Working days lost(f)	'000	2002–03	45.1	16.4

(a) Cut for crushing. (b) Excluding ANZSIC subdivision 15 (Services to Mining).

(c) Excluding motor cycles, plant, equipment and unpowered vehicles.

(d) Excluding motor vehicles, parts, petrol, etc. (e) Hotels, motels and guest houses with facilities and serviced apartments. Establishments with 15 or more rooms or units. (f) Twelve months ending August 2003.

AVERAGE EARNINGS(a)

		2002	2003
Average weekly earnings of employees			
	Males	\$770.90	\$802.70
	Females	\$511.00	\$521.70

(a) August quarter.

CLIMATIC DATA, BRISBANE

Month		2002		2003	
		Dec	Mar	Jun	Sep
Mean daily maximum	°C	28.6	26.9	21.8	26.3
Mean daily minimum	°C	19.5	18.5	10.9	12.3
Rainfall, total	mm	177.4	102.6	80.6	5.8
Rain days	no.	10	16	9	2
Mean daily sunshine	hours	10.3	7.8	6.4	10.3
Windy days, over 63 km/h	days	4	—	—	2

AGRICULTURE(a)		2000-01(b)	2001-02(b)
Agricultural establishments(c)	no.	29 643	27 900
Area	'000 ha	145 955	141 338
Total area of crops	'000 ha	2 955	2 683
Agricultural production			
Sugar cane cut for crushing	'000 tonnes	25 867	28 250
Wheat	'000 tonnes	1 157	901
Barley	'000 tonnes	115	171
Grain sorghum	'000 tonnes	1 156	1 247
Sunflower seed	'000 tonnes	57	33
Cotton	'000 kg	211	197
Peanuts	'000 tonnes	37	^27
Pineapples	'000 tonnes	120	119
Bananas	'000 tonnes	302	266
Citrus fruit	'000 tonnes	75	86
Avocados	tonnes	21	21
Mangoes	tonnes	28	32
Livestock			
Meat cattle	'000	11 008	11 284
Milk cattle	'000	288	260
Sheep and lambs	'000	8 660	6 752
Pigs	'000	597	643
Brokers and dealers receipts of taxable wool	'000 kg	52 590	38 743
Value of agricultural production(d)			
	\$m	7 250	8 081
Crops	\$m	3 391	3 883
Livestock disposals	\$m	3 368	3 697
Livestock products(d)	\$m	490	501

(a) Establishments with an estimated value of agricultural operations of \$5,000 or more. (b) Year ended 30 June. (c) At 30 June. (d) Excluding honey and beeswax for 2001-02.

BUILDING		2001-02	2002-03
Dwelling units completed(a)	no.	30 918	33 245
New houses	no.	21 679	24 143
New other residential buildings	no.	8 869	8 663
<i>Value of building work completed</i>	\$m	7 428	8 197
New houses	\$m	3 023	3 667
New other residential buildings	\$m	1 174	1 294
Alterations and additions to residential buildings	\$m	528	675
Non-residential building	\$m	2 704	2 561
Value of work done during year	\$m	7 464	8 795

(a) Including conversions.

CONSUMER PRICE INDEX, BRISBANE(a)		2001-02	2002-03
Food	no.	143.6	149.1
Alcohol and tobacco	no.	202.3	207.3
Clothing and footwear	no.	106.5	106.6
Housing	no.	114.8	120.3
Household furnishings, supplies and services	no.	122.3	122.7
Health	no.	165.5	181.2
Transportation	no.	136.9	139.3
Communication	no.	108.4	111.9
Recreation	no.	127.7	129.6
Education	no.	219.8	231.4
Miscellaneous	no.	178.2	187.2
All groups	no.	136.3	140.7

(a) Base of each index: Year 1989-90 = 100.0.

CRIME AND JUSTICE

		2000-01	2001-02
Total police strength at 30 June(a)	no.	8 082	8 368
Proven offences in Children's Courts	no.	20 073	19 497
Summary convictions in Magistrates Courts(b)	no.	149 461	nya
Convictions in higher courts	no.	5 329	5 787

(a) Including recruits in training. (b) Excluding ticketable offences processed through the electronic court.

DEMOGRAPHY

		2001	2002
Estimated resident population 30 June			
Queensland	'000	3 629	3 711
Brisbane Statistical Division	'000	1 650	1 689
Bundaberg Statistical District	'000	57	58
Gladstone Statistical District	'000	39	40
Gold Coast-Tweed (Queensland component)	'000	378	391
Rockhampton Statistical District	'000	64	64
Sunshine Coast Statistical District	'000	185	192
Townsville Statistical District	'000	134	137
Major centres — ERP(a)(b)			
Brisbane City (state capital)	'000	897	917
Cairns City	'000	118	119
Gold Coast City	'000	424	438
Hervey Bay City	'000	43	44
Ipswich City	'000	127	129
Logan City	'000	168	169
Mackay City	'000	76	77
Redcliffe City	'000	50	51
Toowoomba City	'000	90	91
Age groups (proportion of Queensland ERP at 30 June)			
0-14 years	%	21.3	21.1
15-19 years	%	7.2	7.2
20-64 years	%	59.8	60.0
65 years or more	%	11.6	11.8

(a) Local government areas. (b) Data for 2002 are preliminary estimates.

VITAL STATISTICS

		2001	2002
Births	no.	47 967	46 908
Rate per 1,000 mean population		13.2	12.6
Deaths	no.	22 850	23 584
Rate per 1,000 mean population		6.3	6.4
Marriages	no.	20 314	21 264
Rate per 1,000 mean population		5.6	5.7

EDUCATION

		2001	2002
Schools, August	no.	1 721	1 726
Government	no.	1 293	1 291
Non-government	no.	428	435
Students, August	'000	615.5	624.5
Government	'000	439.6	444.8
Non-government	'000	175.9	179.7

EXTERNAL MERCHANDISE TRADE

		2001-02	2002-03
Exports			
Foreign, total	\$m	23 151	21 379
Interstate, total	\$m	8 340	8 148
Imports			
Foreign, total	\$m	14 206	16 340
Interstate, total	\$m	19 190	20 762

RETAIL TRADE

		2001-02	2002-03
Turnover, total(a)	\$m	30 841	33 342

(a) Excluding motor vehicles, parts, petrol, etc.

STATE GOVERNMENT FINANCE

		2000-01	2001-02
Total GFS revenue	\$m	23 149	24 941
Total GFS expenses	\$m	23 677	25 812

LABOUR FORCE

		2002	2003
Civilian labour force, October	'000	1 906.6	1 967.5
Employed	'000	1 779.2	1 854.4
Males	'000	987.9	1 021.4
Females	'000	791.3	833.0
Unemployed	'000	127.4	113.2
Unemployment rate	%	6.7	5.8
Participation rate	%	65.0	65.1

MANUFACTURING

		1999-2000	2000-01
Employment at 30 June(a)	'000	148.0	152.7
Sales and service income(b)	\$m	36 327	40 292

(a) Including working proprietors. (b) Including rent, leasing and hiring.

MINING

		2000-01	2001-02
Employment at 30 June	no.	18 377	19 268
Value at mine	\$m	10 913	12 129
Black coal (saleable)	'000 tonnes	138 352	148 363
Bauxite(a)	'000 tonnes	11 731	11 276
Copper (content)	'000 tonnes	459	468
Gold (content)	kg	33 476	25 413

(a) Including beneficiated and calcined bauxite.

Source: Department of Natural Resources and Mines.

TOURIST ACCOMMODATION

		2002	2003
Licensed hotels with facilities			
Establishments at 30 June	no.	170	170
Takings from accommodation(a)	\$m	622.4	655.2
Number of guest rooms at 30 June	'000	20.8	20.7
Room nights occupied(a)	'000	4 642	4 726
Room occupancy rate(a)	%	61.1	62.6
Motels and guest houses with facilities			
Establishments at 30 June	no.	513	516
Takings from accommodation(a)	\$m	311.7	328.0
Number of guest rooms at 30 June	'000	18.4	18.4
Room nights occupied(a)	'000	3 844	3 918
Room occupancy rate(a)	%	56.9	58.7
Serviced apartments			
Establishments at 30 June	no.	286	322
Takings from accommodation(a)	\$m	320.8	360.6
Number of guest rooms at 30 June	'000	13.6	15.4
Room nights occupied(a)	'000	3 124	3 322
Room occupancy rate(a)	%	62.3	64.6

(a) Twelve months ended 30 June.

TRANSPORT

		2001–02	2002–03
New motor vehicles sales(a)	'000	144.4	164.7
State railways			
Passenger journeys	'000	46 523	47 265
Freight carried	'000 tonnes	153 449	156 450
Total earnings	\$m	2 187.8	2 226.8

(a) Excluding motor cycles, plant, equipment and unpowered vehicles.

SYMBOLS AND ABBREVIATIONS USED

ANZSIC	— Australian and New Zealand Standard Industrial Classification	p	— preliminary
°C	— degrees Celsius	RSE	— relative standard error
ERP	— Estimated resident population	^	— RSE 10%–25%
GFS	— government finance statistics	—	— nil or rounded to zero
ha	— hectares	sq km	— square kilometres
kg	— kilograms	\$m	— dollar millions
km/h	— kilometres per hour	no.	— number
mm	— millimetres	%	— per cent
nya	— not yet available	'000	— thousands

ACKNOWLEDGMENTS

ABS publications draw extensively on information provided freely by individuals, businesses, governments and other organisations. Their continued cooperation is very much appreciated; without it the wide range of statistics published by the ABS would not be available for general use by the community. Information received by the ABS is treated in strict confidence as required by the *Census and Statistics Act 1905*.

Cover: Southbank, Brisbane.

Photo: *Queensland Tourism*.

FOR MORE INFORMATION...

- INTERNET** www.abs.gov.au The ABS web site is the best place to start for access to summary data from our latest publications, information about the ABS, advice about upcoming releases, our catalogue, and Australia Now — a statistical profile.
- LIBRARY** A range of ABS publications is available from public and tertiary libraries Australia-wide. Contact your nearest library to determine whether it has the ABS statistics you require, or visit our web site for a list of libraries.
- CPI INFOLINE** For current and historical Consumer Price Index data, call 1902 981 074 (call cost 77c per minute).
- DIAL-A-STATISTIC** For the latest figures for National Accounts, Balance of Payments, Labour Force, Average Weekly Earnings, Estimated Resident Population and the Consumer Price Index call 1900 986 400 (call cost 77c per minute).

INFORMATION SERVICE

Data that is already published and can be provided within five minutes is free of charge. Our information consultants can also help you to access the full range of ABS information — ABS user pays services can be tailored to your needs, time frame and budget. Publications may be purchased. Specialists are on hand to help you with analytical or methodological advice.

- PHONE** **1300 135 070**
- EMAIL** client.services@abs.gov.au
- FAX** 1300 135 211
- POST** Client Services, ABS, GPO Box 796, Sydney 2001

WHY NOT SUBSCRIBE?

ABS subscription services provide regular, convenient and prompt deliveries of ABS publications and products as they are released. Email delivery of monthly and quarterly publications is available.

- PHONE** 1300 366 323
- EMAIL** subscriptions@abs.gov.au
- FAX** (03) 9615 7848
- POST** Subscription Services, ABS, GPO Box 2796Y, Melbourne 3001



2131230001043

ISSN 0157-3713

© Commonwealth of Australia 2004

Produced by the Australian Bureau of Statistics