



May 1997

EMBARGO: 11:30 AM (CANBERRA TIME) MON 19 MAY 1997

Business Indicators

Australian Capital Territory

NOTES

FORTHCOMING ISSUES

<i>ISSUE</i>	<i>RELEASE DATE</i>
June 1997	23 June 1997
July 1997	21 July 1997

SYMBOLS AND OTHER USAGES

ACT	Australian Capital Territory
n.a.	not available
n.p.	not available for publication
p	preliminary
*	Represents data with a standard error of greater than 25%. Caution should be exercised when using this data.
—	nil or rounded to zero

INQUIRIES

For further information about statistics in this publication and the availability of related unpublished statistics, contact Kingsley Green on Canberra (06) 207 0286 or any ABS State office.

For information about other ABS statistics and services, please refer to the back of this publication.

Daima Jacobs
Regional Director
Australian Capital Territory

SUMMARY OF FINDINGS

UPDATED SERIES

Series updated since the April 1997 issue are: labour force, industrial disputes; housing finance, building approvals, building commencements; retail turnover; new motor vehicle registrations; consumer price index; average retail prices; and engineering construction. A feature article on participation in education in the ACT is included on pages 7 and 8.

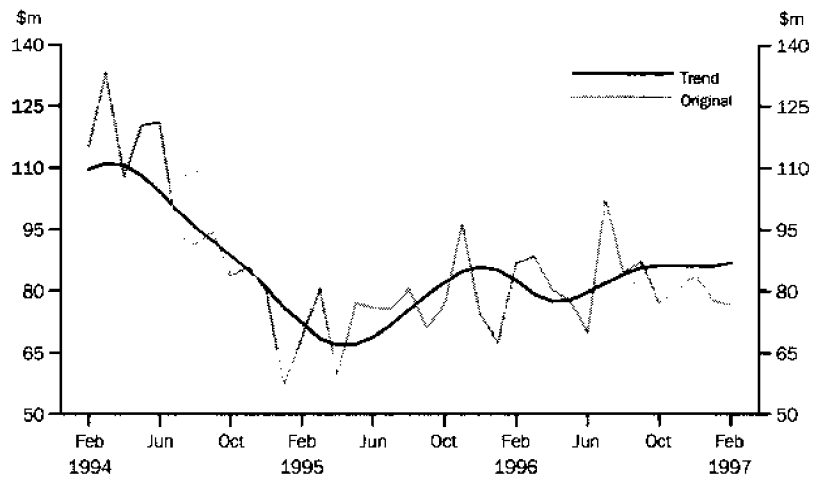
NOTABLE MOVEMENTS

- Labour force** The trend number of persons employed in the ACT has continued to increase for each of the last five months from 152,300 persons in November 1996 to 157,900 persons in April 1997 (up 3.7%). The trend number of persons unemployed has fallen from 14,400 in October 1996 to 11,600 in April 1997, with the trend unemployment rate decreasing from 8.6% to 6.8%. The trend participation rate has increased for each of the past four months, rising 1.1 percentage points from 71.1% in December 1996 to 72.2% in April 1997.
- Industrial disputes** In January 1997, there were 148 working days lost per 1,000 employees in the ACT compared with 131 working days lost per 1,000 employees nationally. For both the ACT and Australia there was no change from the previous month's figure.
- Housing finance** The trend number of dwelling units financed (includes refinancing) in the ACT during February 1997 increased to 831 dwellings, a slight rise of 0.8%. The trend estimate for the value of commitments in the ACT was \$86.9 million, an increase of 1.0% on the previous month. Refinancing of existing dwellings comprised 23.6% of the total number of dwelling units financed in February 1997, which was down 5.8 percentage points on the previous month.
- Housing and construction** The trend number of dwelling units approved in the ACT increased by 2.8% to 186 dwelling units in March 1997. Nationally the total number of dwelling units approved increased by 1.0% in March 1997. The national trend in the number of dwelling units has increased for each of the last 15 months.
- The value of non-residential building approvals was only \$3.5 million in March 1997; a decrease of 71.2% from the previous month and 76.2% from March 1996.
- Retail turnover** The trend estimate for retail turnover in the ACT for March 1997 was \$194.5 million, down 0.3% on the previous month's figure of \$195.1 million. The hospitality and services industry, down 1.3%, and the food and retailing industry, down 0.9%, largely contributed to this fall. The national trend retail turnover experienced an increase of 0.9% on the previous month.

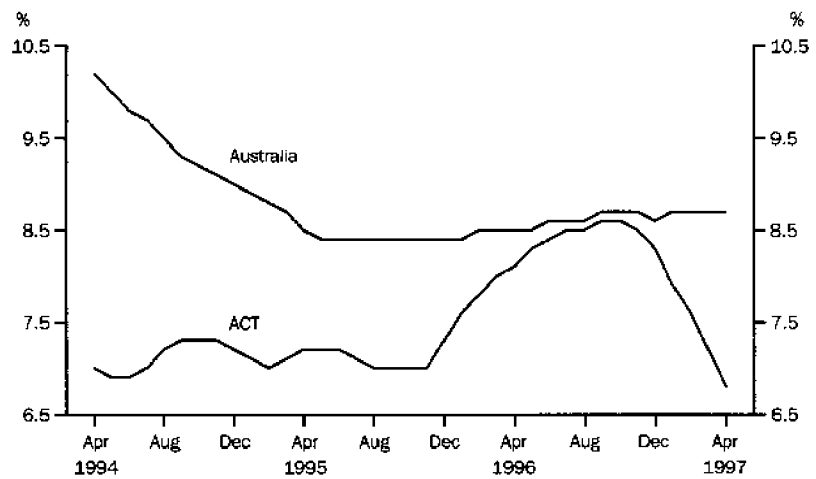
- Motor vehicle registrations The trend estimate for new motor vehicle registrations for the ACT in March 1997 was 1,003, up 4.4% on the previous month, but down 2.6% on 12 months ago. The series has now recorded five consecutive months of increase. Nationally, the trend for total new registrations in March 1997 recorded a 2.0% increase on the previous month's figure.
- Consumer price index The ACT experienced no change for the All Groups CPI for the March quarter 1997. There has been no change in the All Groups CPI since September quarter 1996. The ACT annual increase to March 1997 was 0.5%, compared to the weighted average of the eight capital cities of 1.3%.
- Engineering construction The value of engineering construction work done during the December quarter 1996 fell by 11.9% in the ACT and 1.9% for Australia from the previous quarter. This decline follows a 9.5% decline in the September quarter 1996 for the ACT and a 6.9% fall for Australia.

SELECTED BUSINESS INDICATORS

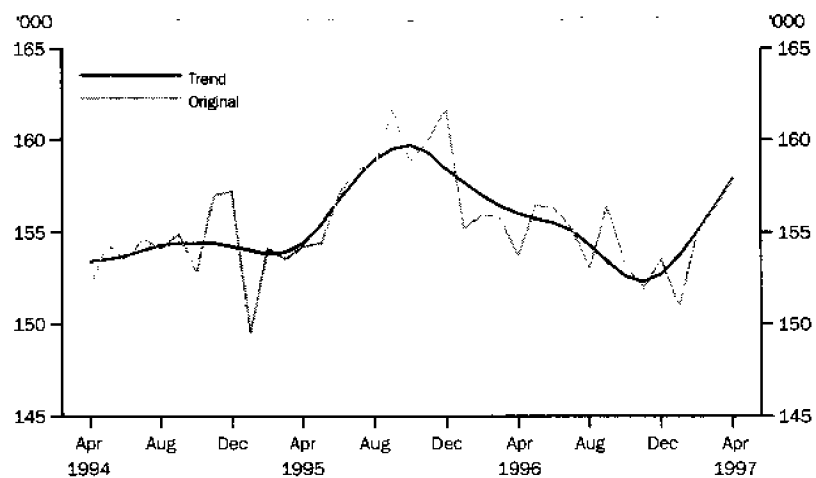
HOUSING FINANCE COMMITMENTS



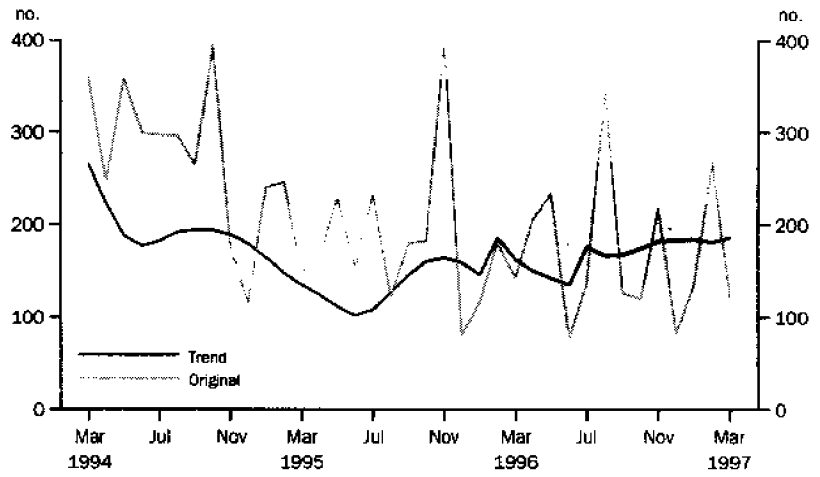
LABOUR FORCE — TREND UNEMPLOYMENT RATE



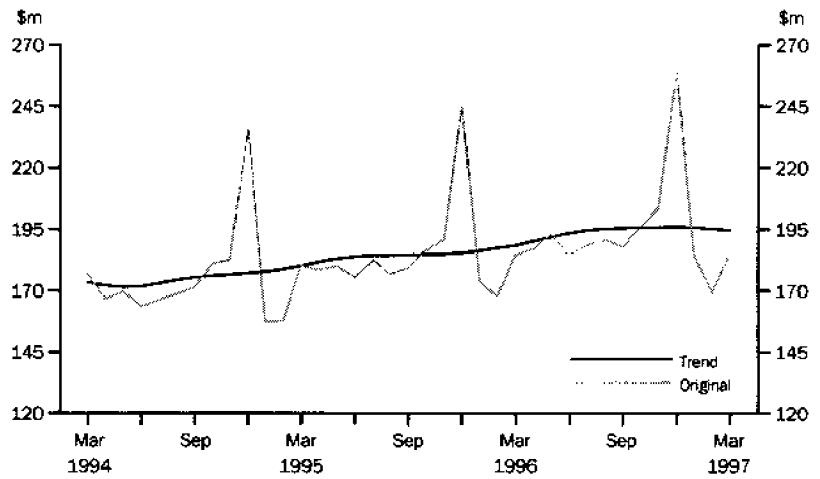
LABOUR FORCE — EMPLOYMENT



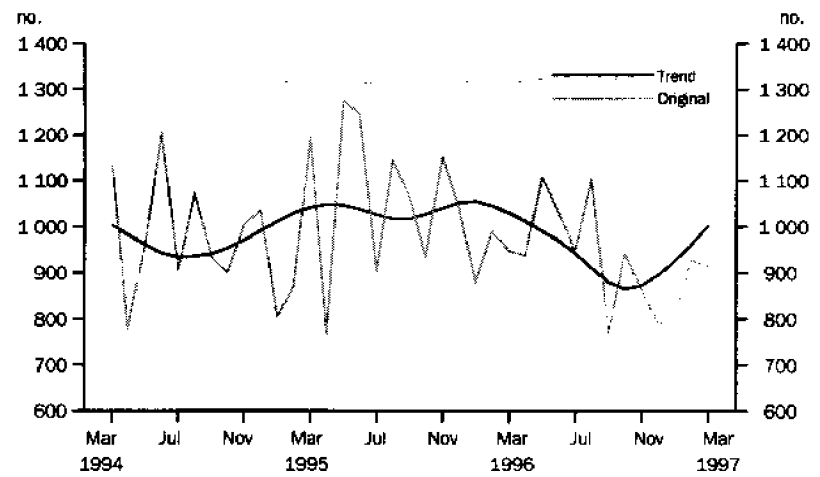
**BUILDING APPROVALS —
DWELLING UNITS APPROVED**



RETAIL TURNOVER



**NEW MOTOR VEHICLE
REGISTRATIONS**



There were 30,562 persons aged 15–24 years attending an educational institution in the ACT in September 1996. They represented 58.4% of the 15–24 year old population which numbered 52,342. Some 14,417 persons in this population group were attending school. The next largest group of 11,605 persons were attending higher education institutions followed by 3,508 persons attending TAFE. The remaining 1,031 persons were at business college (*289), industry skills centres (*160) with the remaining *582 at other educational institutions.

Of the 5,390 female tertiary students who were employed, 3,326 (61.7%) were employed part time and studying full time, 1,410 (26.2%) were employed full time and studying part time, 512 (9.5%) were employed part time and studying part time, and *141 (2.6%) were employed full time and studying full time. Of the 5,062 male tertiary students employed, 2,377 (47.0%) were employed part time and studying full time, 2,043 (40.4%) were employed full time and studying part time, *416 (8.2%) were employed full time and studying full time and 225 were employed part time and studying part time.

The proportion of participants in tertiary education seeking a recognised educational qualification, who had attended government schools, was 63.3% in September 1996. In higher education institutions, 58.4% of students seeking a recognised educational qualification were from government schools while at TAFE the proportion was 75.7%.

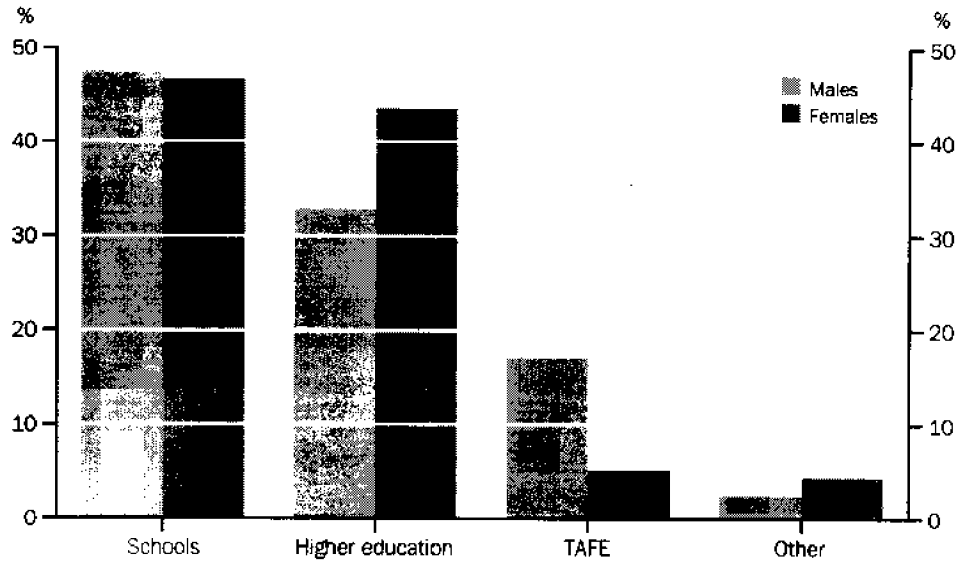
Education participation rates for 15–24 year olds were highest in the ACT at 58.5%, while Victoria (55.3%) and New South Wales (52.8%) were also above the national average of 51.0%. The mix of institutions attended varied, with the ACT recording 22.2% at higher education institutions and 6.7% at TAFE. This compares with the national figures of 13.9% attending higher education institution and 9.0% at TAFE.

Approximately 60.9% of 15–24 year olds born overseas were attending an educational institution in September 1996 compared to 58.0% of Australian-born persons in the same age group.

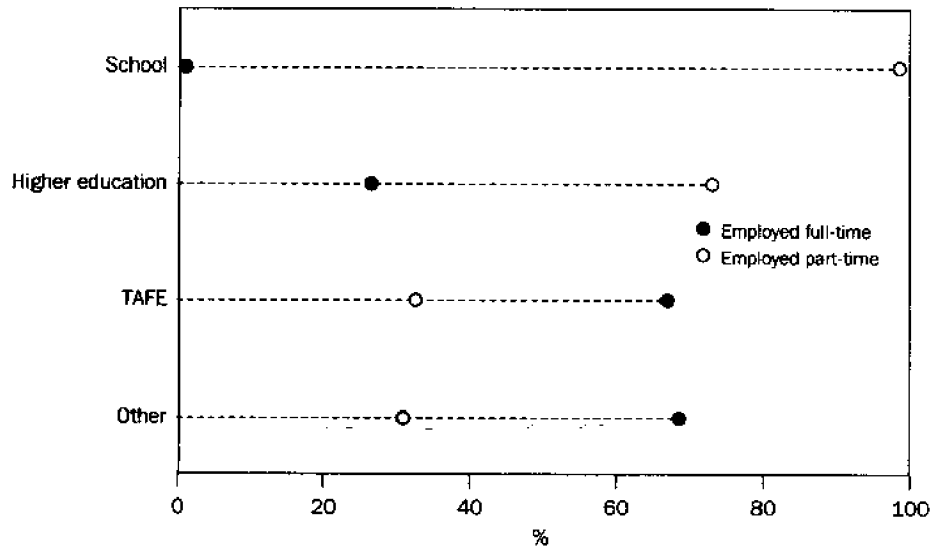
In September 1996 there were 15,093 persons studying for a recognised educational qualification at a tertiary institution. Over 9,000 (60.0%) of these were studying for a bachelor degree. A further 1,509 (10.0%) were in skilled vocational courses, 1,448 (9.6%) in associate diploma courses and the remaining 3,085 (20.4%) in masters, postgraduate, undergraduate and basic vocational courses.

Of the former non-government school students studying for a recognised educational qualification, 83.0% (4,599) were studying for a bachelor degree or higher qualification. The figure for the former government school students was 62.5% (5,972).

PERSONS AGED 15-24: PARTICIPATION IN EDUCATION



PERSONS IN EDUCATION EMPLOYED FULL TIME AND PART TIME



1**BUSINESS EXPECTATIONS: SALES, MARCH QUARTER 1997/MARCH QUARTER 1997, EXPECTED AGGREGATE CHANGE**

<i>Period</i>	<i>Australian Capital Territory</i>	<i>Australia</i>
	%	%
Short-term		
Mar qtr 1996–Jun qtr 1996	1.8	2.3
Jun qtr 1996–Sep qtr 1996	0.4	1.6
Sep qtr 1996–Dec qtr 1996	-0.3	1.6
Dec qtr 1996–Mar qtr 1997	-1.1	0.4
Mar qtr 1997–Jun qtr 1997	1.3	1.6
Medium-term		
Mar qtr 1996–Mar qtr 1997	2.3	4.1
Jun qtr 1996–Jun qtr 1997	1.4	3.6
Sep qtr 1996–Sep qtr 1997	1.5	3.1
Dec qtr 1996–Dec qtr 1997	2.2	3.1
Mar qtr 1997–Mar qtr 1998	1.7	2.9

Indicator	Unit	Australian Capital Territory			Australia		
		Change from			Change from		
		Latest figure	Previous period	Same period previous year	Latest figure	Previous period	Same period previous year
POPULATION, VITAL AND LABOUR							
POPULATION Sep qtr 96	'000	308.2	0.2	1.1	18 348.7	0.3	1.3
Natural increase	no.	747	-12.9	6.4	27 850	-10.7	-5.0
Net migration	no.	-28	-113.7	-133.7	31 671	63.8	1.9
Total increase	no.	719	-32.4	-8.4	59 521	17.8	-1.5
LABOUR FORCE, Apr 97							
Original series							
Employed	'000	157.8	1.0	2.7	8 411.2	0.2	1.6
Unemployed	'000	11.9	-7.8	-19.6	799.6	-5.4	0.8
Unemployment rate(a)	%	7.0	-0.6	-1.8	8.7	-0.5	—
Participation rate(a)	%	72.3	0.2	-0.3	63.4	-0.3	—
Long-term unemployed (Mar 97)	no.	2 528	-26.6	-25.8	244 750	-7.3	6.4
Long-term unemployed as percentage total unemployed (Feb 97)(a)	%	19.6	-2.8	-2.2	29.0	-0.2	0.6
Trend series							
Employed	'000	157.9	1.0	1.2	8 413.0	—	1.2
Unemployed	'000	11.6	-4.1	-15.9	804.3	0.3	3.9
Unemployment rate(a)	%	6.8	-0.4	-1.3	8.7	—	0.2
Participation rate(a)	%	72.2	0.4	-0.9	63.5	—	—
JOB VACANCIES, Feb 97	'000	1.0	-28.6	-37.5	62.6	0.5	-2.0
INDUSTRIAL DISPUTES IN PROGRESS, Jan 97							
Working days lost	'000	0.0	-100.0	-100.0	23.3	-15.6	16.5
Days lost per '000 employees (year ended Jan 97)	no.	148.0	—	1 380.0	131.0	—	63.8
BUILDING AND CONSTRUCTION							
HOUSING FINANCE, Feb 97							
Secured commitments to individuals for							
Original series							
Construction of dwellings	\$m	6.2	67.6	10.7	570.0	20.3	8.8
Purchase of new dwellings	\$m	6.0	36.4	-23.1	214.9	5.6	12.7
Purchase of established dwellings	\$m	47.4	—	-11.7	3 246.5	5.4	2.4
Refinancing	\$m	178.0	-19.1	-11.0	8 021.0	5.8	-13.4
Total housing commitments	\$m	76.5	-1.5	-11.9	4 031.4	7.3	3.8
Seasonally adjusted series							
Total housing commitments	\$m	78.1	-18.8	-3.7	4 129.8	-10.5	8.4
Trend series							
Dwelling units financed	no.	831	0.8	0.7	40 363	0.1	4.8
Total housing commitments	\$m	86.9	1.0	5.3	4 295.0	1.1	14.9
BUILDING APPROVALS, Mar 97							
Original series							
Dwelling units	no.	122	-54.3	-14.7	10 412	-2.1	2.5
Value of new residential	\$m	12.6	-53.7	4.1	1 022.5	-3.4	10.4
Value of residential alterations and additions	\$m	3.5	2.9	29.6	191.4	-2.9	-6.1
Value of non-residential	\$m	3.5	-71.3	-76.4	626.1	-33.1	-17.5
Value of total building	\$m	19.6	-54.1	-33.8	1 840.0	-16.0	-2.6
Trend series							
Dwelling units	no.	186	2.8	14.8	11 669	1.0	13.2
BUILDING COMMENCEMENTS, Dec qtr 96							
New houses	no.	280	-1.1	-27.3	21 397	3.1	-4.1
Value of houses commenced	\$m	31.8	-6.2	-29.3	2 347.7	5.1	3.2
Value of non-residential building commenced	\$m	111.1	1.6	91.2	3 156.8	11.2	26.3
Value of total commencements	\$m	170.1	0.9	11.2	7 057.3	8.3	15.4
PRICE INDEXES							
Established house price index, Dec qtr 96	(1989-90 =100.0)	126.6	-0.5	-1.6	114.3	0.3	1.7

For footnotes see end of table.

Indicator	Unit	Australian Capital Territory			Australia		
		Latest figure	Previous period	Change from	Latest figure	Previous period	Change from
				Same period previous year			Same period previous year
PRICES, WAGES AND CONSUMER SPENDING							
CONSUMER PRICE INDEX, Mar qtr 97							
Food	(1989-90=100.0)	122.0	—	2.3	120.2	0.7	3.7
Housing	(1989-90=100.0)	103.4	-4.2	-7.8	100.2	-2.9	-5.2
Transportation	(1989-90=100.0)	131.9	1.3	3.5	125.2	0.6	2.3
All groups	(1989-90=100.0)	121.4	—	0.5	120.5	0.2	1.3
AVERAGE WEEKLY EARNINGS, Nov 96							
Original series							
Males	\$	769.9	1.0	2.8	679.8	0.9	2.6
Females	\$	561.6	2.9	8.8	447.1	0.4	4.0
Persons	\$	663.9	2.5	5.0	570.0	0.6	2.8
Trend series							
Males	\$	770.7	1.4	3.0	680.2	0.6	2.8
Females	\$	566.2	2.7	9.2	450.1	1.0	4.0
Persons	\$	664.5	1.9	5.0	571.9	0.6	3.1
RETAIL TURNOVER, Mar 97							
Original series							
Food retailing	\$m	75.1	8.7	-5.7	4 315.0	9.2	5.0
Department stores	\$m	21.3	17.7	6.0	858.1	17.9	5.7
Hospitality and services	\$m	27.5	3.4	-8.0	1 727.5	9.5	-2.7
All other retailing	\$m	61.0	10.3	11.1	3 131.4	4.7	0.5
Total	\$m	184.9	9.3	0.2	10 032.0	8.5	2.2
Trend series							
Food retailing	'000	74.1	-0.9	-4.8	4 301.2	0.8	5.1
Department stores	\$m	24.7	0.8	5.1	1 007.5	1.2	4.4
Hospitality and services	\$m	29.3	-1.3	1.4	1 748.3	1.1	-1.9
All other retailing	%	66.4	0.5	14.1	3 432.5	0.7	3.2
Total	'000	194.5	-0.3	3.2	10 489.5	0.9	3.2
TOURISM AND TRANSPORT							
HOTELS, MOTELS AND GUEST HOUSE ACCOMMODATION, Sep qtr 96							
Original series							
Room nights	'000	197.6	-8.5	-6.1	9 297.6	5.8	-0.1
Takings at current prices	\$m	18.2	-10.3	-4.2	897.1	7.3	5.3
Takings at 1989-90 prices	\$m	15.0	-10.2	-5.7	746.2	7.1	3.0
Room occupancy rate (Dec qtr 96)(a)	%	63.1	5.6	-1.5	59.9	1.1	0.2
Seasonally adjusted series							
Room nights	'000	196.3	-12.2	-6.4	9 037.5	-1.5	0.2
Takings at current prices	\$m	18.3	-11.6	-4.7	876.2	-1.4	5.5
Takings at 1989-90 prices	\$m	15.1	-11.7	-6.2	728.9	-1.6	3.2
Trend series							
Room nights	'000	207.1	-1.0	-1.4	9 100.8	-0.5	0.9
Takings at current prices	\$m	19.3	0.5	1.6	887.4	0.8	7.4
Takings at 1989-90 prices	\$m	15.9	0.6	-0.6	737.0	0.3	4.9
NEW MOTOR VEHICLE REGISTRATIONS, Mar 97							
Motor vehicles	no.	915	-1.3	-3.5	54 972	0.2	0.3
Seasonally adjusted motor vehicles	no.	1 020	2.1	8.7	59 321	1.3	10.9
Trend motor vehicles	no.	1 003	4.4	-2.6	58 382	2.0	8.2

For footnotes see end of table.

Indicator	Unit	Australian Capital Territory			Australia		
		Latest figure	Previous period	Change from Same period previous year	Latest figure	Previous period	Change from Same period previous year
AGGREGATE INDICATORS							
STATE ACCOUNTS, Dec qtr 96(b)							
Original series							
Gross State product at av. 1989-90 prices	\$m	2 306	8.0	-0.9	119 502	9.5	3.8
Gross State product at current prices	\$m	2 848	7.0	3.6	135 799	9.9	5.3
State final demand at av. 1989-90 prices	\$m	2 907	4.8	-7.2	114 162	6.5	3.5
Private final consumption expenditure	\$m	1 523	5.5	4.2	81 884	5.9	3.7
Private gross fixed capital expenditure	\$m	221	12.2	-5.2	22 500	9.6	9.9
Trend series							
Gross State product at av. 1989-90 prices	\$m	2 173	-1.0	-1.4	111 471	0.6	3.2
Gross State product at current prices	\$m	2 721	0.3	4.8	127 373	1.0	4.9
State final demand at av. 1989-90 prices	\$m	2 795	-2.1	-7.2	109 105	0.5	3.1
Private final consumption expenditure	\$m	1 444	1.0	4.0	77 983	0.6	3.9
Private gross fixed capital expenditure	\$m	199	0.5	2.1	21 077	1.4	9.1

(a) Change shown in terms of percentage points.

(b) State estimates are not comparable to national estimates for the June quarter 1995 due to revised aggregates in *Australian National Accounts, State Accounts* (Cat. no. 5242.0).

Source: ABS Catalogue nos: 3101.0, 5242.0, 5609.0, 6202.0, 6203.0, 6302.0, 6321.0, 6354.0, 6401.0, 6408.0, 6416.0, 8501.0, 8634.0, 8635.8, 8731.0, 8752.0, 9214.0, 9301.0.

AUSTRALIAN CAPITAL TERRITORY IN RELATION TO THE REST OF AUSTRALIA

Indicator	Unit	Latest period	NSW	Vic.	Qld	SA	WA	Tas.	NT	ACT	Aust.
POPULATION	'000	Sep qtr 96	6 190.2	4 541.0	3 354.7	1 479.2	1 762.7	473.4	177.7	308.2	18 348.7
LABOUR FORCE											
Employed persons (trend)	'000	Apr 97	2 819.2	2 099.5	1 545.0	663.6	852.1	195.0	82.6	157.9	8 413.0
Unemployment rate (trend)	%	Apr 97	8.1	9.1	9.8	9.5	7.5	10.9	6.2	6.8	8.7
STATE ACCOUNTS(a)											
Gross State product at 1989-90 prices (trend)	\$m	Dec qtr 96	38 033	29 150	18 326	7 705	12 760	2 210	1 195	2 173	111 471
Gross State product at current prices (trend)	\$m	Dec qtr 96	44 518	33 424	20 467	8 949	13 601	2 651	1 318	2 721	127 373
BUILDING APPROVALS											
Dwelling units approved	no.	Mar 97	3 542	1 864	2 846	543	1 216	125	154	122	10 412
Dwelling units approved (trend)	no.	Mar 97	4 242	2 283	3 074	493	1 232	151	152	186	11 669
Value of non-residential building approved	\$m	Mar 97	202.4	137.0	144.1	35.4	90.4	10.1	3.2	3.5	626.1
Value of all buildings approved	\$m	Mar 97	648.7	375.9	432.8	86.1	231.1	24.8	20.9	19.6	1 840.0
ENGINEERING CONSTRUCTION											
Value of engineering construction work done	\$m	Dec qtr 96	1 209.0	564.7	907.4	186.1	750.9	58.1	54.4	31.8	3 762.3
AVERAGE WEEKLY EARNINGS											
Full-time adult ordinary time (trend)	\$	Nov 96	720.7	675.4	643.2	637.8	687.2	644.3	687.3	798.1	686.5
RETAIL TRADE											
Retail turnover (trend)	\$m	Mar 97	3 705.2	2 490.5	1 903.2	769.8	1 066.3	250.4	109.6	194.5	10 489.5
HOTELS, MOTELS & GUEST HOUSE ACCOMMODATION											
Room nights occupied (trend)	'000	Sep qtr 96	3 105.2	1 503.0	2 394.9	513.3	835.2	255.2	286.8	207.1	9 100.8
Room occupancy rate (original)	%	Dec qtr 96	60.9	56.0	62.7	54.9	60.3	54.8	58.5	63.1	59.9
NEW MOTOR VEHICLE REGISTRATIONS											
Trend	no.	Mar 97	20 218	14 836	10 824	3 864	5 805	1 149	683	1 003	58 382
	Unit	Latest period	Syd.	Melb.	Bris.	Adef.	Perth	Hob.	Dar.	Canb.	Aust.
CONSUMER PRICE INDEX											
Food	(b)	Mar qtr 97	121.1	118.8	119.8	121.2	121.2	120.7	120.3	122.0	120.2
Housing	(b)	Mar qtr 97	104.9	93.5	106.4	97.5	94.8	101.9	117.8	103.4	100.2
Transportation	(b)	Mar qtr 97	125.9	125.1	124.4	125.6	122.9	122.8	122.7	131.9	125.2
All Groups	(b)	Mar qtr 97	120.6	120.1	121.5	122.6	118.2	121.9	121.6	121.4	120.5
Average retail prices (cents)											
Milk, carton, supermarket sales	1 litre	Mar qtr 97	115	130	116	116	127	125	117	112	n.a.
Bread, white loaf, sliced, supermarket sales	680 g	Mar qtr 97	201	193	194	153	177	175	194	193	n.a.
Beef, rump steak	1 kg	Mar qtr 97	1 202	1 079	1 053	1 157	1 094	1 051	1 272	1 071	n.a.
Chicken, frozen	1 kg	Mar qtr 97	361	379	343	351	357	393	416	362	n.a.
Potatoes	1 kg	Mar qtr 97	105	115	93	78	119	89	112	98	n.a.
Coffee, instant (jar)	150 g	Mar qtr 97	552	533	546	500	561	573	538	559	n.a.
Scotch nip, public bar	30 ml	Mar qtr 97	318	285	252	345	340	247	315	287	n.a.
Private motoring petrol											
Leaded	1 litre	Mar qtr 97	77.1	75.2	68.2	77.5	77.4	80.0	82.0	80.3	n.a.
Unleaded	1 litre	Mar qtr 97	74.9	73.0	66.0	75.2	75.2	77.9	80.0	78.1	n.a.

(a) State estimates are not comparable to national estimates for the June quarter 1995 due to revised aggregates in *Australian National Accounts, State Accounts* (Cat. no. 5242.0).

(b) Base year: 1989-90=100.0.

Indicator	Latest period	NSW	Vic.	Qld	SA	WA	Tas.	NT	ACT	Aust.
POPULATION	Sep qtr 96	0.3	0.2	0.5	0.1	0.4	—	0.1	0.2	0.3
LABOUR FORCE										
Employed persons (trend)	Apr 97	—	-0.1	—	0.1	—	-0.3	0.1	1.0	—
Unemployment rate (trend)	Apr 97	0.1	0.1	—	—	—	0.1	0.3	-0.4	—
STATE ACCOUNTS(a)										
Gross State product at 1989-90 prices (trend)	Dec qtr 96	0.9	0.7	1.1	0.1	0.6	-0.5	1.0	-1.0	0.6
Gross State product at current prices (trend)	Dec qtr 96	1.4	1.5	1.3	0.5	0.4	0.1	1.3	0.3	1.0
BUILDING APPROVALS										
Dwelling units approved	Mar 97	-3.6	-15.0	5.4	15.0	16.1	-18.3	17.6	-54.3	2.1
Dwelling units approved (trend)	Mar 97	2.0	2.0	3.2	1.0	-2.0	-1.3	-2.6	2.8	1.0
Value of non-residential building approved	Mar 97	-16.2	-59.1	2.8	-33.3	-23.3	-19.2	-86.5	-71.3	-33.1
Value of all buildings approved	Mar 97	-10.3	-39.0	6.7	-16.1	-0.1	-15.9	-47.8	-54.1	-16.0
ENGINEERING CONSTRUCTION										
Value of engineering construction work done	Dec qtr 96	-7.0	1.8	2.0	23.2	-4.5	14.6	-19.5	-11.9	-1.9
AVERAGE WEEKLY EARNINGS										
Full-time adult ordinary time (trend)	Nov 96	1.2	1.0	1.7	0.4	-0.1	1.2	1.2	1.7	1.1
RETAIL TRADE										
Retail turnover (trend)	Mar 97	0.6	1.1	1.1	0.7	1.4	0.4	-0.5	-0.3	0.9
HOTELS, MOTELS & GUEST HOUSE ACCOMMODATION										
Room nights occupied (trend)	Sep qtr 96	-0.8	0.1	-0.5	-1.1	0.7	-1.8	-1.3	-1.0	-0.5
Room occupancy rate (original)	Dec qtr 96	1.8	4.0	-2.8	6.0	-1.7	16.1	-11.9	5.6	1.1
NEW MOTOR VEHICLE REGISTRATIONS										
Trend	Mar 97	2.2	2.3	2.4	2.4	-0.2	-1.4	2.7	4.4	2.0

	Latest period	Syd.	Melb.	Bris.	Adel.	Perth	Hob.	Dar.	Canb.	Aust.
CONSUMER PRICE INDEX										
Food	Mar qtr 96	0.9	0.3	1.5	0.4	0.3	0.1	1.3	0.0	0.7
Housing	Mar qtr 96	-2.6	-3.3	-2.9	-3.0	-3.4	-2.8	-2.5	4.2	-2.9
Transportation	Mar qtr 96	0.4	0.8	0.9	0.1	0.2	0.8	0.3	1.3	0.6
All Groups	Mar qtr 96	0.2	0.2	0.6	—	-0.2	0.5	-0.1	0.0	0.2
Average retail prices (cents)										
Milk, carton, supermarket sales	Mar qtr 96	—	3.2	0.9	—	1.6	4.2	0.9	0.0	n.a.
Bread, white loaf, sliced, supermarket sales	Mar qtr 96	-1.0	-4.5	4.3	-2.5	1.7	2.9	-	0.5	n.a.
Beef, rump steak	Mar qtr 96	1.4	-0.2	1.2	9.0	4.1	-3.4	2.8	4.8	n.a.
Chicken, frozen	Mar qtr 96	3.4	3.8	4.3	-6.4	5.6	—	16.9	9.7	n.a.
Potatoes	Mar qtr 96	8.2	12.7	13.4	6.8	-4.0	2.3	7.7	6.5	n.a.
Coffee, instant (jar)	Mar qtr 96	-4.0	-5.3	3.0	-2.5	0.4	-9.3	-7.1	-1.8	n.a.
Scotch nip, public bar	Mar qtr 96	0.3	—	—	0.6	2.1	0.4	1.0	4.4	n.a.
Private motoring petrol										
Leaded	Mar qtr 96	2.0	1.1	2.2	1.8	0.3	2.2	2.1	3.2	n.a.
Unleaded	Mar qtr 96	2.0	1.1	2.3	2.0	0.1	2.2	2.2	3.3	n.a.

(a) State estimates are not comparable to national estimates for the June quarter 1995 due to revised aggregates in *Australian National Accounts, State Accounts* (Cat. no. 5242.0).



For more information . . .

The ABS publishes a wide range of statistics and other information on Australia's economic and social conditions. Details of what is available in various publications and other products can be found in the ABS Catalogue of Publications and Products available from all ABS Offices.

ABS Products and Services

Many standard products are available from ABS bookshops located in each State and Territory. In addition to these products, information tailored to the needs of clients can be obtained on a wide range of media by contacting your nearest ABS Office. The ABS also provides a Subscription Service for standard products and some tailored information services.

National Dial-a-Statistic Line

0055 86 400

Steadycom P/L: premium rate 25c/20 secs.

This number gives 24-hour access, 365 days a year, for a range of important economic statistics including the CPI.

Internet

<http://www.abs.gov.au>

A wide range of ABS information is available via the Internet, with basic statistics available for each State, Territory and Australia. We also have Key National Indicators, ABS product release details and other information of general interest.

Sales and Inquiries

client.service@abs.gov.au

National Mail Order Service
Subscription Service

(06) 252 5249
1800 02 0608

Information Inquiries

SYDNEY	(02) 9268 4611
MELBOURNE	(03) 9615 7755
BRISBANE	(07) 3222 6351
PERTH	(08) 9360 5140
ADELAIDE	(08) 8237 7100
CANBERRA	(06) 252 6627
HOBART	(03) 6222 5800
DARWIN	(08) 8943 2111

Bookshop Sales

(02) 9268 4620
(03) 9615 7755
(07) 3222 6350
(08) 9360 5307
(08) 8237 7582
(06) 207 0326
(03) 6222 5800
(08) 8943 2111



Client Services, ABS, PO Box 10, Belconnen ACT 2616

