

EMBARGOED UNTIL 11.30 A.M. 17 DECEMBER 1987

NEW ISSUE

CENSUS OF POPULATION AND HOUSING, 30 JUNE 1986

CENSUS 86 — AUSTRALIA IN BRIEF

IAN CASTLES
Australian Statistician

AUSTRALIAN BUREAU OF STATISTICS

CATALOGUE NO. 2501.0

(P)

© Commonwealth of Australia 1987

Printed by C. J. THOMPSON, Commonwealth Government Printer, Canberra

PHONE INQUIRIES • *about these statistics* and other ABS services—contact Information Services on Canberra (062) 52 6007, 52 6627, 52 5402 or any ABS State office.

MAIL INQUIRIES • *write to Information Services, ABS, P.O. Box 10, Belconnen, A.C.T. 2616* or any ABS State office.

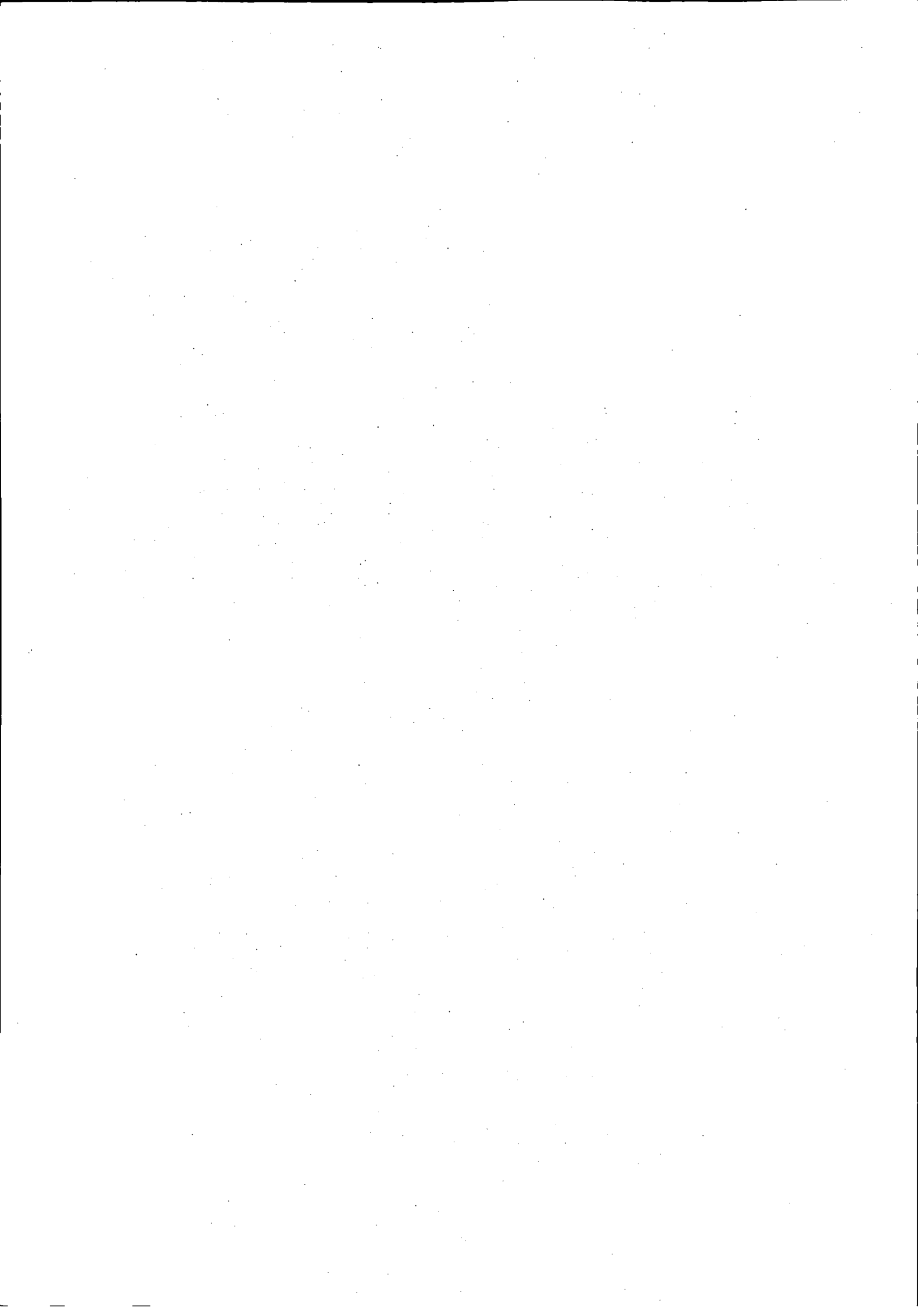
ELECTRONIC SERVICES • on VIATEL — key *656#. • on AUSSTATS — phone (062) 52 6017.
• on TELESTATS — phone (062) 52 5404.

CONTENTS

<i>Table</i>	Page
.. Explanatory Notes	1
.. Summary of initial findings	4
C01-C04 Demographic characteristics	7
C05 Religion	7
C06-C07 Aboriginals and Torres Strait Islanders	7
C08-C12 Birthplace and languages	8
C13-C18 Family characteristics	9
C19-C20 Education and qualifications	10
C23 Incomes	10
C24-C35 Labour force characteristics	11
C36-C46 Dwelling characteristics and nature of occupancy	13

APPENDIX

A	Inquiries	15
---	-----------	----



EXPLANATORY NOTES

Introduction

This publication provides Australia-wide results from the 1986 Census of Population and Housing.

2. The detailed data are presented in a seven page summary, comprising 46 tables, on pages 7 to 13.

3. Summary results in this form, on magnetic tape, compact disk (CD-ROM), and microfiche are available for each of the 29,632 collection districts in Australia. Some printed summaries at this level of detail are also available for aggregated geographic areas including legal local government areas in statistical divisions containing major urban centres, capital city statistical divisions, statistical districts, and States and Territories.

4. Printed census publications contain broad summaries only, and represent a very small amount of the total census data released. More detailed cross-tabulations for the larger geographic levels (e.g. State or statistical regions), and somewhat less detailed tabulations for small areas (e.g. collection districts or statistical local areas), are available on microfiche and magnetic tape. For further information see *Census 86 — Data Release Plans* (2173.0).

Scope and coverage

5. The 1986 Census of Population and Housing aimed at counting every person who spent census night, 30 June 1986, in Australia, including persons on vessels in or between Australian ports, or on board long-distance trains, buses or aircraft. All private dwellings were also counted, whether occupied or unoccupied. Occupied non-private dwellings, such as hospitals, prisons, hotels, etc. were also included. People were counted where they were on census night, which may not have been where they usually lived. This is the basis for the counts in this publication. Place of usual residence was asked of each person, and answers, where they differed from enumeration address, were coded to statistical local area level. Census counts based on place of usual residence are available in other output products. Visitors to Australia were enumerated regardless of how long ago they had arrived or how long they planned to stay. They are included in the counts based on place of enumeration but not in those counts based on usual residence. Australian residents out of the country on census night were excluded from the count.

6. Diplomatic personnel and their families are out of the scope of the census, as are diplomatic residences.

Definitions

Census Count — Place of Enumeration(C)

7. Persons were counted where they were actually located on census night. Overseas visitors are included and Australians overseas are excluded. No adjustment is made for census underenumeration.

Census Count — Place of Usual Residence(U)

8. Persons were also counted according to their stated place of usual residence. Overseas visitors and Australians overseas are excluded, and no adjustment is made for census underenumeration. Statistics on a place of usual residence basis are not included in this publication.

Dwelling

9. For the 1986 Census, dwellings are classified into four basic groups: occupied private dwellings; occupied caravans etc. in caravan parks; unoccupied private dwellings; and non-private dwellings.

- (a) An *occupied private dwelling* is defined as the premises occupied by a household (see below) on census night (except households occupying caravans etc. in caravan parks — see (b)). A private dwelling is normally a house, flat, part of a house or even a room, but can also be a house above shops or offices, a boat, a tent, houseboat, or caravan if standing on its own block of land and not occupied by members of the same household resident in an adjacent dwelling.

It is important to remember that the census definition of a private dwelling means that the total number of dwellings may be more than the total number of known structures in any given area (see 'household' below).

- (b) For the 1986 Census, an *occupied caravan etc. in a caravan park* is treated as a separate household. This category also includes occupied boats in marinas. In previous censuses, caravans etc. in caravan parks were considered to be parts of a non-private dwelling (the caravan park) which meant that no family relationship data were collected for them. This change in classification will affect some comparisons made between censuses, and care should be taken when comparing family and non-private dwelling data with previous censuses.
- (c) An *unoccupied private dwelling* is a structure built specifically for private living purposes and capable of being lived in, but unoccupied at the time of the census. Vacant houses, holiday homes, huts, cabins (other than seasonal workers' quarters) and houseboats are counted as unoccupied dwellings; but vacant tents, garages and caravans if not on a separate block (and if not normally occupied) are not. Only private dwellings can be classified as unoccupied (i.e. unoccupied caravans etc. in caravan parks, and unoccupied non-private dwellings are not counted). Unoccupied dwellings include: dwellings which are vacant because they have been newly completed; dwellings which are vacant for demolition or repair; dwellings to let; and dwellings where all members of the household were absent on census night.

(d) *Non-private dwellings* (NPDs) are dwellings with accommodation not in the dwelling categories listed above, and are classified according to their function. These dwellings include schools, hotels, motels, guest houses, boarding houses, gaols, religious and charitable institutions, hospitals, nursing homes, defence establishments and other communal dwellings. Usually, occupants of such dwellings use communal facilities (such as hotel dining-rooms or mess halls) attached to the particular establishment. Self-contained units provided by commercial enterprises such as hotels, motels, homes for the elderly, or guest houses are treated as part of a non-private dwelling, not as separate dwellings. Campers out and persons classed as migratory on census night were also included in the NPD count.

Household

10. For census purposes, a household is either a person living alone, or a group of people living together as a single domestic unit with common eating arrangements. It is possible for more than one household to live in one house or structure. For example, a lodger who lives with a family and provides all his own food is not a member of the family's household but constitutes a separate household and, therefore, completes a separate household form. The premises occupied by households are classified as either occupied private dwellings or as caravans etc. in a caravan park.

Campers out

11. Persons who spent census night in the open in cars, caravans or trucks pulled up at the side of the road for that night only, or persons in other temporary camps or accommodation erected for that night only, are classified as campers out. Such persons are included in the population of the statistical local areas in which they were enumerated.

Data quality

12. Statistical collections such as the census are subject to a number of sources of error. While some errors (such as deliberate misreporting) mostly defy detection and correction procedures, the overall amount of error of this type in census results is considered to be insignificant. Information on data quality will be released from late 1987.

13. Main sources of error in the census are:

- (a) *Underenumeration*. Despite efforts to obtain full coverage of persons and dwellings (other than those associated with overseas diplomatic missions), some undercounting still occurs. A measure of the extent of underenumeration is obtained from a small survey of households undertaken very shortly after the census. Undercounting of persons in the 1986 Census has been estimated to be 1.8 per cent for Australia as a whole.

(b) *Partial response*. In those instances where the householder omitted to provide a response to a question, a 'not stated' code was allocated; with the exception of non-response to age, sex and marital status, and statistical local area of usual residence. These variables were imputed using other information on the census form, and specially constructed random tables.

(c) *Respondent error*. Computer editing procedures are used to detect obvious errors made by individuals in completing the form (e.g. a six year old male who was married). Such procedures cannot detect all respondent errors and some remain in final output.

(d) *Processing error*. Errors created during the processing of the census are kept at an acceptable level by means of a quality control system, which involves sample checking at different stages of the coding and keying operations, and taking corrective action where necessary.

Comparability with other ABS data sources

14. Some data collected in the census are also obtained by other statistical collections undertaken by the ABS. Of particular relevance are results obtained from the monthly labour force surveys which collect information from a sample of households on characteristics of the labour force and other household and person characteristics. Comparisons of figures obtained from the various sources indicate that the results can differ. Users wishing to make such comparisons are cautioned to take note of differences in collection procedures, question wording, processing methodology (e.g. methods of editing and imputation), non-response levels, and conceptual differences. Comparisons with data obtained from sample surveys should also take into account differences in the population bases for the estimates, and sampling error.

Further information

15. Further information about 1986 Census statistics is available from the nearest ABS office (see Appendix A for addresses and telephone numbers). The information paper *Census 86 - Data Release Plans* (2173.0) describes standard output products to be released from the 1986 Census. Details of tabulations are contained in the *Catalogue of 1986 Census Tables* (2175.0).

Census 86 publications

16. Other statistical publications (standard series) currently planned from the 1986 Census of Population and Housing are:

Census 86 — Age and Sex of Persons in Statistical Local Areas and Statistical Divisions (2454.0-2461.0) (A series of separate publications for each State and Territory)

Census 86 — Persons and Dwellings in Legal Local Government Areas, Statistical Local Areas and Urban Centres/(Rural) Localities (2462.0-2468.0) (A series of separate publications for each State and the Northern Territory)

Census 86 — Profile of Legal Local Government Areas — Usual Residents Counts (2470.0-2476.0) (A series of separate publications for each State and the Northern Territory)

Census 86 — Profile of Statistical Local Areas — Usual Residents Counts: Australian Capital Territory (2477.0)

Census 86 — Profile of Statistical Local Areas — Usual Residents Counts: Brisbane Statistical Division (2478.0)

Census 86 — Summary Characteristics of Persons and Dwellings (2479.0-2489.0) (A series of separate publications for each State, Territory, Australia and the external Territories of the Cocos (Keeling) Islands and Christmas Island)

Census 86 — Cross-classified Characteristics of Persons and Dwellings (2490.0-2498.0) (A series of separate publications for each State, Territory and Australia)

Census 86 — Aboriginals and Torres Strait Islanders: Australia, States and Territories (2499.0)

Census 86 — Characteristics of Persons in Hobart Suburbs, 30 June 1986 (2201.6)

Census 86 — Characteristics of Persons in Launceston Suburbs, 30 June 1986 (2202.6)

Census 86 — Characteristics of Persons in Burnie-Devonport Suburbs, 30 June 1986 (2203.6)

17. In addition, a series of national census reports, providing information and analysis of the census results is planned. For more details see *Census 86 — Data Release Plans (2173.0)*.

18. Users may request non-standard census output from the ABS. For more details see *Census 86 — Special Data Services (2181.0)*.

19. The following information papers are being published:

Census 86 — New South Wales Publishing Information (2101.1)

Census 86 — Data Release Plans (2173.0)

The 1986 Census Dictionary (2174.0)

Catalogue of 1986 Census Tables (2175.0)

Census 86 — How Australia Takes a Census (2176.0)

Census 86 — Census Products Price List (2177.0)

Census 86 — Collection District Master File (2179.0)

Census 86 — Census Data for Microcomputers (2180.0)

Census 86 — Special Data Services (2181.0)

Census 86 — Australian Standard Classification of Occupations/Classification and Classified List of Occupations: Link (2182.0)

Census 86 — Maps (2183.0)

Census 86 — Sample Files on Magnetic Tape (2184.0)

Census 86 — Microfiche (2185.0)

Census 86 — Standard Tables on Magnetic Tape (2186.0)

Census 86 — Australian Standard Geographical Classification: Geographic Code List, Volumes 1 and 2 (2188.0)

Related ABS publications

20. Current publications produced by the ABS are listed in the *Catalogue of Publications, Australia (1101.0)*. The ABS also issues, on Tuesdays and Fridays, a *Publications Advice (1105.0)* which lists publications to be released in the next few days. The Catalogue and Publications Advice are available from any ABS office.

Electronic services

VIATEL. Key *656# for selected current economic, social and demographic statistics.

AUSSTATS. Thousands of up-to-date time series are available on this ABS on-line service through CSIRONET.

For further information phone the AUSSTATS Help Desk on (062) 52 6017.

TELESTATS. This service provides foreign trade statistics tailored to users' requirements.

Further information is available on (062) 52 5404.

SUMMARY OF FINDINGS

Population growth

The 1986 Census of Population and Housing counted 15,602,156 persons in Australia on census night, 30 June 1986. This represented an increase of 7.0 per cent since the 1981 Census. During the past decade, the average rate of growth in Australia's population has been almost 1.5 per cent per annum.

The census count of the population must be distinguished from the estimated resident population, which at 30 June 1986 had reached 16 million and was over 416,000 greater than the number counted in the census. The estimated resident population incorporates upward adjustments to allow for census underenumeration and for persons usually resident in Australia but temporarily overseas, and a downward adjustment to exclude persons who are temporary visitors to Australia. This publication provides census results only — i.e., the figures have not been adjusted to a 'usual residence' basis or for underenumeration.

Marital status (see also Table C02)

The proportion of persons married has declined considerably over the past decade, falling from 63.3 per cent of the population aged 15 years and over in 1976 to 57.8 per cent in 1986. There were substantial increases during the same period in the proportions of never married and divorced persons.

**TABLE 1 : MARITAL STATUS OF PERSONS
AGED 15 YEARS AND OVER 1976-86**

Marital Status	1976	1981	1986
	— '000 —		
Total persons	9,858.1	10,919.4	11,965.3
	—Per cent of total—		
Never married	25.1	26.8	28.4
Married	63.3	60.1	57.8
Separated not divorced	2.5	2.5	2.6
Divorced	2.2	3.7	4.7
Widowed	6.9	6.9	6.5
Total	100.0	100.0	100.0

Age composition (see also Table C03)

The median age of the population increased from 29.7 years in 1981 to 31.0 years in 1986. The increase of 1.3 years in the median age during the 1981-86 intercensal period followed a similar increase during the 1976-81 intercensal period.

The number of children (persons aged 0-14 years) has declined somewhat in recent years, whilst the number of elderly people has been increasing steeply. Between 1976 and 1986 the number of people aged 75 years and over increased by 44 per cent. Further details are shown in Table 2.

TABLE 2 : POPULATION IN AGE GROUPS 1976-86

Age group	Number of persons	Per cent increase or decrease	
		1981-86	1976-86
	'000	%	%
0-14	3,636.8	-0.5	-1.4
15-64	10,318.6	+8.7	+19.3
65-74	1,021.0	+11.1	+31.8
75 and over	625.7	+22.6	+44.1
Total	15,602.2	+7.0	+15.2

Usual residence (see also Table C04)

At the 1986 Census, 95.4 per cent of the persons counted were at their usual residence. Of the persons so enumerated, 80.2 per cent were living at the same address as they had been one year earlier, and 51.2 per cent were living at the same address as they had been five years earlier.

Religion (see also Table C05)

Answers to the optional question on religion reveal a continuing increase in the proportion of persons answering 'no religion' — from 8.3 per cent in 1976 to 10.8 per cent in 1981 and 12.7 per cent in 1986.

Among those reporting a religious affiliation, the number of Catholics has increased by 16.7 per cent since 1976 whilst the number of Anglicans has decreased slightly over the same period. Catholics outnumbered Anglicans for the first time at the 1986 Census.

Aboriginals and Torres Strait Islanders (see also Tables C06, C07)

The 1986 Census count revealed 206,104 persons of aboriginal origin and 21,541 persons of Torres Strait Islander (TSI) origin. The combined figure was 42.4 per cent greater than the 1981 count. This is a much larger increase than could be accounted for by the excess of births over deaths. Improved census procedures and a stronger inclination to identify as an Aboriginal or Torres Strait Islander are thought to have contributed. These and other possible reasons for the large increase are to be discussed in a census evaluation paper due for release in early 1988.

A notable feature of the Aboriginal and Torres Strait Islander population is the high proportion of young people. As Table 3 indicates, more than half of the Aboriginal and Torres Strait Islander population is aged under 20 years, compared with less than one-third of the total population.

TABLE 3 : AGE STRUCTURE - ABORIGINALS AND TORRES STRAIT ISLANDERS 1986

	Aboriginal and TSI population	Total population
	— '000—	
	—Per cent of total—	
Total persons	227.6	15,602.2
Age group		
0-19	52.5	31.8
20-39	31.3	32.4
40-59	12.0	20.9
60 and over	4.2	15.0
Total	100.0	100.0

The overseas born (see also Tables C08,C09,C12)

At the 1986 Census, the overseas born represented 20.8 per cent of the total population - virtually the same proportion as at the 1981 Census.

Of those counted in the 1986 Census who were born overseas, by far the largest group was born in the United Kingdom and Ireland (34.7 per cent). The largest groups among the recent immigrants — i.e., the overseas born resident in Australia for less than 5 years — were from South East Asia (21.4 per cent), United Kingdom and Ireland (19.3 per cent) and other countries in the Oceania region (17.4 per cent).

Among the Australian-born population, some 25 per cent had either one or both parents born overseas. Over 40 per cent of the population counted at the 1986 Census were either born overseas or had one or both parents born overseas.

Proficiency in English (see also Table C10)

At the 1986 Census there were 1,380,430 persons aged 5 years and over who were born in non-English speaking countries and who spoke a language other than English at home. Some 74.8 per cent of these persons spoke English well or very well, 21.3 per cent could *not* speak English well and 4.0 per cent could not speak English at all.

Taken together the last two groups — i.e., those who could not speak English well and those who could not speak English at all — represented 2.6 per cent of the census count of those aged 15-64 years and 4.1 per cent of those aged 65 years and over.

Language spoken at home (see also Table C11)

One in every seven persons in Australia aged 5 years and over speaks a language other than English at home. Table 4 shows the main languages spoken by those who spoke a language other than English at home.

TABLE 4 : LANGUAGES OTHER THAN ENGLISH SPOKEN AT HOME (EXCLUDES PERSONS AGED 0-4 YEARS)

Language	Number of persons	Per cent of total
	'000	%
Italian	405.0	20.0
Greek	267.1	13.2
Chinese	130.8	6.5
German	109.4	5.4
Arabic/Lebanese	106.0	5.2
All other and not stated	1,004.5	49.7
Total	2,022.8	100.0

Labour force status of couples (see also Table C14)

At the 1986 Census, the number of two-worker couples exceeded the number of one-worker couples by a large margin. Details are shown in Table 5.

TABLE 5 : EMPLOYMENT STATUS OF COUPLES (a)

Employment status	Per cent of total
Male and female both employed	44.0
Male employed, female not employed	30.7
Female employed, male not employed	2.3
Neither male nor female employed	23.1
Total	100.0

(a) Only couples where spouse present on census night included. Excludes persons whose labour force status was not stated.

Income of families (see also Table C15)

The median family income reported at the 1986 Census was \$24,680, but there were large differences in the median income of families of different types. Single parent families with one dependent child had a median income of \$7,780, whereas families consisting of a couple and one dependent child had a median income of \$24,880.

Attendance at educational institutions (see also Table C20)

Due to a problem with processing procedures, the published results obtained from the census question asking about current attendance at an educational institution should be taken as preliminary. A special publication on this topic will be released during 1988.

The preliminary figures indicate that almost 3.7 million persons, or 23.5 per cent of the total population, were attending an educational institution. Some 70 per cent of all students were reported as being at infant, primary or secondary school, whilst nearly 19.0 per cent were reported to be attending a tertiary institution.

Of students at infant or primary schools, 24.2 per cent attended non-government schools. At the secondary level, 30.4 per cent of students attended non-government schools.

Occupations (see also Tables C26,C31 and C34)

The two largest occupational groups amongst the 6.5 million employed persons counted in the census were 'Clerks' and 'Tradespersons' with 17.1 per cent and 11.3 per cent of the employed labour force respectively. These results (see Table 6 below) are based on the newly developed Australian Standard Classification of Occupations first used for the 1986 Census.

Table 6 also reveals that males dominate the 'Tradespersons' occupation with over nine males for every female. Males also dominate the 'Management and Administration' and 'Plant and Machine Operators' occupations. Females, on the other hand, outnumber men by nearly three to one in the 'Clerical' occupations, and by three to two in the 'Sales and Personal Services' occupations.

TABLE 6 : MAJOR OCCUPATIONAL GROUPS OF THE EMPLOYED

<i>Occupational group</i>	<i>Per cent of total</i>	<i>Sex ratio(a)</i>
Managers and administrators	11.7	301
Professionals	11.8	150
Para-professionals	6.5	134
Tradespersons	15.3	935
Clerks	17.1	36
Sales and personal services	12.4	65
Plant and machine operators	8.2	526
Labourers and related workers	14.4	184
Inadequately described and n.e.i.	1.5	—
Not stated	1.1	—
Total	100.0	154

(a) males per 100 females

Industry of employment (see also Table C27)

Between the 1981 and 1986 Censuses there were large increases in the number of persons employed in 'Finance, Property and Business Services' (24.6 per cent), 'Community Services' (20.3 per cent), and 'Recreation, Personal and Other Services' (19.8 per cent). There were decreases in the numbers of persons employed in 'Manufacturing' (12.4 per cent) and 'Agriculture, Forestry, Fishing and Hunting' (4.0 per cent).

Method of travel to work (see also Table C30)

Most Australians drive to work. Between 1976 and 1986 there was a large increase in the number of persons travelling to work by car as driver, and decreases in the numbers travelling to work by most other modes. There has, however, been a noticeable increase in the number of persons travelling to work by bicycle, with the numbers now exceeding those travelling by motor bike. Further details are shown in Table 7.

TABLE 7 : METHOD OF TRAVEL TO WORK (a)

	<i>Number of persons</i>	<i>Percentage increase or decrease</i>	
		<i>1981-86</i>	<i>1976-86</i>
	'000		
Train	386.4	-1.1	-0.4
Bus	335.7	-10.1	-23.8
Ferry/tram	68.1	-8.6	-25.5
Taxi	36.4	-0.4	-0.9
Car as driver	3,635.0	+10.2	+21.6
Car as passenger	574.0	-6.6	-8.8
Motor bike	83.7	-12.0	+3.4
Bicycle	92.7	+14.1	+64.5
Walked only	340.6	+1.1	-20.2

(a) A person can have used more than one mode.

Hours worked (see also Tables C32, C35)

At the 1986 Census the proportion of employed persons stated as working 35 hours or more per week was 74.7 per cent. The proportion was substantially higher in the industry groups of 'Electricity, Gas and Water' (89.2 per cent), 'Mining' (87.0 per cent), 'Manufacturing' (85.7 per cent) and 'Public Administration and Defence' (84.3 per cent); and substantially lower in 'Recreation, Personal and Other Services' (60.0 per cent) and 'Community Services' (62.4 per cent).

Nature of occupancy of dwelling (see also Tables C36, C38)

Of the total population counted in the 1986 Census, 3.4 per cent of persons were in non-private dwellings (hospitals, homes for the aged, motels, etc.) and 1.0 per cent were in caravans, etc. in parks. Thus 95.6 per cent of persons counted in the census were in private dwellings other than caravans, etc. in parks. The nature of occupancy of these dwellings is shown in Table 8.

TABLE 8 : NATURE OF OCCUPANCY OF DWELLINGS

	<i>Number of persons</i>	<i>Per cent of total</i>
	'000	
Owned	1,981.9	38.2
Being purchased	1,604.4	30.9
Rented	1,334.4	25.7
Other and not stated	266.7	5.1
Total	5,187.4	100.0

Structure of occupied private dwellings (see also Table C37, C43, C44)

Almost 80 per cent of households in occupied private dwellings resided in a separate or semidetached house, with most of the remainder living in medium density housing (row and terrace housing and units in buildings of three storeys or less).

Of the separate or semidetached houses, 17.5 per cent were being rented and 35.5 per cent were being purchased by their occupiers. By contrast, 65.1 per cent of the medium density dwellings were being rented and only 10.8 per cent were being purchased by their occupiers.

Number of vehicles (see also Table C46)

Some 42 per cent of all households stated that they had two or more vehicles, and the same percentage had just one vehicle. The proportion of households stating that they had no vehicle was only 12.6 per cent, compared with 15.7 per cent in 1976.

CO1	SUMMARY OF PERSONS	MALES	FEMALES	PERSONS	PROPX
	TOTAL PERSONS COUNTED	7768313	7833843	15602156	100.0
	AUST CITIZENS AGED 18 YRS+	4756798	4930451	9687249	62.1
CO2	MARITAL STATUS (EXCLUDES PERSONS AGED 0-14 YEARS)				
	NEVER MARRIED	1918030	1480705	3398735	28.4
	MARRIED	3454756	3460803	6915559	57.8
	SEPARATED NOT DIVORCED	141924	167859	309783	2.6
	DIVORCED	248427	311341	559768	4.7
	WIDOWED	141155	640311	781466	6.5
	TOTAL	5904292	6061019	11965311	100.0
CO3	AGE IN YEARS				
	0	120288	114332	234620	1.5
	1	120210	115576	235786	1.5
	2	121655	116656	238311	1.5
	3	123671	117254	240925	1.5
	4	122499	115905	238404	1.5
	0-4	608323	579723	1188046	7.6
	5	120205	114530	234735	1.5
	6	118290	111752	230042	1.5
	7	117738	111649	229387	1.5
	8	119159	113725	232884	1.5
	9	119512	113475	232987	1.5
	5-9	594904	565131	1160035	7.4
	10	122605	116226	238831	1.5
	11	126178	119774	245952	1.6
	12	131335	124226	255561	1.6
	13	136976	130385	267361	1.7
	14	143700	137359	281059	1.8
	10-14	660794	627970	1288764	8.3
	15	145866	139661	285527	1.8
	16	136720	130425	267145	1.7
	17	134751	128950	263701	1.7
	18	129544	123644	253188	1.6
	19	126301	121402	247703	1.6
	15-19	673182	644082	1317264	8.4
	20-24	648532	633133	1281665	8.2
	25-29	649287	648677	1297964	8.3
	30-39	1237709	1230130	2467839	15.8
	40-49	924086	881697	1805783	11.6
	50-54	363662	349065	712727	4.6
	55-59	373365	362606	735971	4.7
	60-64	341142	358236	699378	4.5
	65-69	259594	298185	557779	3.6
	70-74	204208	258988	463196	3.0
	75-79	130118	187602	317720	2.0
	80-84	65214	116069	181283	1.2
	85 AND OVER	34193	92549	126742	0.8
	TOTAL	7768313	7833843	15602156	100.0

CO4	USUAL RESIDENCE PERSONS COUNTED AT HOME VISITORS FROM -	MALES	FEMALES	PERSONS
	TOTAL	7397914	7482350	14880264
	NEW SOUTH WALES	101601	96611	198212
	VICTORIA	71039	71422	142461
	QUEENSLAND	65125	57020	122145
	SOUTH AUSTRALIA	25408	22952	48360
	WESTERN AUSTRALIA	57583	55324	112907
	TASMANIA	9506	8714	18220
	NORTHERN TERRITORY	4868	3627	8495
	AUST CAPITAL TERRITORY	5976	5527	11503
	OVERSEAS	29293	30296	59589
	TOTAL VISITORS	370399	351493	721892
	PERSONS COUNTED AT HOME ON 30 JUNE 1986; AND AT: SAME ADDRESS, 30 JUNE 1985	5901311	6025624	11926935
	SAME ADDRESS, 30 JUNE 1981	3763336	3861794	7625130

CO5	RELIGION	MALES	FEMALES	PERSONS	PROPX
	ANGLICAN	1788867	1934552	3723419	23.9
	BAPTIST	92328	104454	196782	1.3
	CATHOLIC	1988013	2076400	4064413	26.1
	CHURCH OF CHRIST	40095	48416	88511	0.6
	LUTHERAN	100905	107399	208304	1.3
	ORTHODOX	218511	208934	427445	2.7
	PRESBYTERIAN	266055	293970	560025	3.6
	UNITING CHURCH	550535	631775	1182310	7.6
	OTHER CHRISTIAN	440523	490176	930699	6.0
	MUSLIM	58229	51294	109523	0.7
	OTHER	108213	103366	211579	1.4
	NO RELIGION(SO DESCRIBED)	1113993	863471	1977464	12.7
	INAD DESCRIBED&NOT STATED	1002046	919636	1921682	12.3
	TOTAL	7768313	7833843	15602156	100.0

CO6	ABORIGINALS AND TORRES STRAIT ISLANDERS	MALES	FEMALES	PERSONS	PROPX
	ABORIGINALS	102043	104061	206104	1.3
	TORRES STRAIT ISLANDERS	10612	10929	21541	0.1
	TOTAL	112655	114990	227645	1.5
	OTHER PERSON	7520278	7586201	15106479	96.8
	NOT STATED	135380	132652	268032	1.7
	TOTAL	7768313	7833843	15602156	100.0

CO7	AGE OF ABORIGINALS AND TORRES STRAIT ISLANDERS	MALES	FEMALES	PERSONS	PROPX
	0-4 YEARS	16193	15656	31849	14.0
	5-14 YEARS	30043	28620	58663	25.8
	15-19 YEARS	14475	14631	29106	12.8
	20-39 YEARS	34574	36710	71284	31.3
	40-59 YEARS	13034	14185	27219	12.0
	60 AND OVER	4336	5188	9524	4.2
	TOTAL	112655	114990	227645	100.0

ABS 1986 CENSUS OF POPULATION AND HOUSING AUSTRALIA
SMALL AREA DATA, FORMAT CSC 07 PAGE

AREA SQKM MALES FEMALES PERSONS SHEET 02/07
7713364 7768313 7833843 15602156

CO8 BIRTHPLACE	MALES	FEMALES	PERSONS	PROPX
AUSTRALIA	5976281	6134175	12110456	77.6
ENGLAND(INCL UK UNDEFINED)	445162	435728	880890	5.6
GERMANY	57043	57767	114810	0.7
GREECE	70690	66947	137637	0.9
INDIA	23752	24068	47820	0.3
IRELAND(REPUBLIC)	23072	21064	44136	0.3
ITALY	141383	120495	261878	1.7
LEBANON	29901	26440	56341	0.4
MALAYSIA	23806	23999	47805	0.3
MALTA	30028	26204	56232	0.4
NETHERLANDS	50920	44175	95095	0.6
NEW ZEALAND	107321	104349	211670	1.4
POLAND	35829	31847	67676	0.4
SCOTLAND	74419	74716	149135	1.0
SOUTH AFRICA(REPUBLIC)	18113	18948	37061	0.2
USA	22207	20176	42383	0.3
VIETNAM	45908	37136	83044	0.5
YUGOSLAVIA	81441	68599	150040	1.0
OTHER	383522	380206	763728	4.9
TOTAL(INCL NOT STATED)	7768313	7833843	15602156	100.0

CO9 BIRTHPLACE OF OVERSEAS BORN BY PERIOD OF RESIDENCE	TOTAL		
	0-4 YEARS	5 YEARS OR MORE	(INCL NS)
OTHER OCEANIA	79613	175964	264421
UK & IRELAND	88308	1011223	1127196
SOUTHERN EUROPE	20892	596552	638242
OTHER EUROPE & USSR	43646	401582	456364
EASTERN ASIA	35683	50497	88293
SOUTH EASTERN ASIA	97862	138176	240560
SOUTHERN ASIA	21615	61109	84305
WESTERN ASIA(MIDDLE EAST)	15554	103787	122994
SOUTH AMERICA	9517	36394	46697
OTHER AMERICA	23727	44575	69762
AFRICA	21283	85144	108547
TOTAL	457700	2705003	3247381

C12 BIRTHPLACE OF PARENTS OF AUSTRALIAN BORN PERSONS

FATHER	MOTHER										
	AUSTRALIA	OTHER OCEANIA	UK&IRE	STH EUR	OTH EUR & USSR	WESTERN ASIA	OTHER ASIA	SOUTH AMERICA	OTHER AMERICA	AFRICA	TOTAL (INC N/S)
AUSTRALIA	9070739	50896	363980	28202	64983	3425	26631	1614	11881	11017	9663956
OTHER OCEANIA	69824	18729	7079	541	1409	118	1311	66	371	345	100241
UK & IRELAND	567432	9795	329994	4321	13846	576	7139	602	2735	3619	943452
SOUTHERN EUROPE	120371	1864	11336	411259	14768	2715	2151	1273	704	4012	572838
OTHER EUROPE & USSR	147904	3501	21179	7455	147848	1233	5569	466	858	1679	339049
WESTERN ASIA(MIDDLE EAST)	9868	415	1158	2360	1239	64314	400	200	170	862	81363
OTHER ASIA	32814	1422	5499	683	3009	283	53841	98	227	441	98702
SOUTH AMERICA	1997	115	465	509	244	71	124	6723	68	75	10454
OTHER AMERICA	19369	561	2694	336	811	88	341	65	2518	167	27049
AFRICA	17352	593	3284	3336	1420	848	575	98	157	16104	43934
TOTAL(INCL NOT STATED)	10135070	89026	752666	461865	251775	74233	99007	11317	19832	38663	12110456

C10 PROFICIENCY IN ENGLISH BY AGE(PERSONS AGED 5 YEARS & OVER BORN IN NON ENGLISH SPEAKING COUNTRIES)	5-14 YEARS	15-64 YEARS	65 YEARS & OVER	TOTAL
	SPEAKS ENGLISH ONLY	26852	335236	
USES OTHER LANGUAGES AND SPEAKS ENGLISH:				
VERY WELL	39471	467431	31439	538341
WELL	25205	416111	52400	493716
NOT WELL	10804	237688	45180	293672
NOT AT ALL	1862	29828	23011	54701
NOT STATED(PROFICIENCY)	379	5257	924	6560
NOT STATED(QUESTION)	865	7381	2111	10357
TOTAL	105438	1498932	186900	1791270

C11 LANGUAGES OTHER THAN ENGLISH,SPOKEN AT HOME (EXCLUDES PERSONS AGED 0-4 YEARS)	MALES	FEMALES	PERSONS	PROPX
	ARABIC/LEBANESE	55152	50886	106038
CHINESE	65183	65586	130769	6.5
DUTCH	29398	32037	61435	3.0
FRENCH	24764	26633	51397	2.5
GERMAN	52863	56583	109446	5.4
GREEK	135187	131881	267068	13.2
ITALIAN	206011	199027	405038	20.0
MALTESE	29676	28161	57837	2.9
POLISH	32629	33556	66185	3.3
SERBIAN,CROATIAN	34398	32211	66609	3.3
SPANISH	35166	34909	70075	3.5
VIETNAMESE	34147	25261	59408	2.9
OTHER	259205	255350	514555	25.4
NOT STATED	28579	28392	56971	2.8
TOTAL	1022358	1000473	2022831	100.0

C13 COUPLES BY TYPE OF UNION(ALL COUPLES)

	MARRIED	DE FACTO	TOTAL	PROPX
COUPLE	1154954	116918	1271872	35.6
COUPLE&DEPENDENT CHILD(REN)	1411694	64572	1476266	41.3
COUPLE&ADULT FAMILY MEMB	437108	12100	449208	12.6
COUPLE&D/CHLD&ADULT F/MEMB	366370	11356	377726	10.6
TOTAL	3370126	204946	3575072	100.0

C14 LABOUR FORCE STATUS OF COUPLES

	MALE		FEMALE		TOTAL
	EMPLOYED	UNEMPLD	EMPLOYED	UNEMPLD	
EMPLOYED	1485829	65810	969877	2521516	
UNEMPLOYED	25938	37893	86232	150063	
NOT IN LABOUR FORCE	50398	4591	651075	706064	
TOTAL	1562165	108294	1707184	3377643	

NOTE: ONLY COUPLES WHERE SPOUSE PRESENT ON CENSUS NIGHT INCLUDED.
TABLE EXCLUDES PERSONS WHOSE LABOUR FORCE STATUS WAS NOT STATED.

C15 FAMILY TYPE BY FAMILY INCOME BY NUMBER OF DEPENDENT CHILDREN

	FAMILY INCOME							NOT STATED	SPOUSE ABSENT	TOTAL	PROPX
	\$0-\$9000	\$9001-\$15000	\$15001-\$22000	\$22001-\$32000	\$32001-\$40000	\$40001 AND OVER					
PARENT&1 DEPENDENT CHILD &2 OR MORE D/CHILDREN	67828	19652	17745	9075	1732	1284	6850	N	124166	3.0	
COUPLE	74828	389345	177864	180831	150115	171034	92124	35731	1271872	30.6	
COUPLE&1 DEPENDENT CHILD &2 OR MORE D/CHILDREN	13096	51307	82871	92186	49757	58347	43071	12663	403298	9.7	
RELATED ADULTS	15265	112460	203671	263036	138786	173120	128274	30842	1072968	25.8	
PARENT&1 D/CHLD&ADLT F/MEMB &2+D/CHLD&ADLT F/MEMB	2769	10770	10032	10156	3943	4217	6167	N	258768	6.2	
COUPLE&ADULT FAMILY MEMB &1 D/CHLD&ADLT F/MEMB &2+D/CHLD&ADLT F/MEMB	1648	6454	6987	5101	1734	1828	5183	N	28935	0.7	
TOTAL	257108	722553	642329	779475	489655	746915	417952	102024	4158011	100.0	

C16 SINGLE PARENTS-MARITAL AND LABOUR FORCE STATUS

	NEVER MAR	MARRIED	SEPARATD	DIVORCED	WIDOWED	TOTAL	EMPLOYED	UNEMPLD	NILF	N/STATED
MALE PARENT	6496	5899	11744	15865	6330	46334	32963	4017	8421	933
FEMALE PARENT	60033	17118	72220	99300	29166	277837	95105	20830	157324	4578
TOTAL	66529	23017	83964	115165	35496	324171	128068	24847	165745	5511

C17 PRIMARY FAMILIES-FAMILY TYPE BY NATURE OF OCCUPANCY OF DWELLING BY FAMILY INCOME(EXCLUDES CARAVANS,ETC IN PARKS)

	OWNER/BUYING					RENTING DWELLING					TOTAL (INC OTHER&NS)
	\$0-\$12000	\$12001-\$32000	\$32001 AND OVER	SPOUSE ABSENT	TOTAL (INC NS)	\$0-\$12000	\$12001-\$32000	\$32001 AND OVER	SPOUSE ABSENT	TOTAL (INC NS)	
PARENT &DEPENDNT CHILD(REN)	40600	36148	4096	N	87092	84608	25535	1259	N	117380	212296
COUPLE	252638	343458	230392	25318	903808	47041	94403	72150	7731	234136	1199441
COUPLE &DEPENDNT CHILD(REN)	61510	537981	349962	30897	1094759	37090	155459	56126	10542	292503	1450347
RELATED ADULTS	27002	88488	41162	N	167869	13448	39400	13861	N	71840	252127
PARENT&D/CHLD&ADLT F/MEMB	3720	22427	8432	N	40064	4799	20355	2933	N	32916	75713
COUPLE&ADULT FAMILY MEMB	8829	119933	203276	9656	376385	1736	21460	21595	1541	52041	445470
COUPLE&D/CHLD&ADLT F/MEMB	4726	79239	162242	8553	300430	1996	25140	21278	2141	61474	375989
TOTAL	399025	1227674	999562	74424	2970407	190718	381752	180202	21955	862290	4011383

C18 PRIMARY FAMILIES-FAMILY TYPE BY STRUCTURE OF DWELLING

	SEPARATE HOUSE	SEMI-DETACHED	ROW/ TERRACE	OTH MED DENSITY	FLAT 3 STRYS	OVER IN PARK	C'VAN,ETC	OTHER	NOT STATED	TOTAL
PARENT &DEPENDNT CHILD(REN)	149024	9444	2676	41227	4644	2909	2303	2978	215205	
COUPLE	961445	26448	10754	148367	22603	27434	12707	17117	1226875	
COUPLE &DEPENDNT CHILD(REN)	1317251	19484	6489	64148	8329	10062	15507	19139	1460409	
RELATED ADULTS	191239	8209	3405	38042	5832	2007	2229	3171	254134	
PARENT&D/CHLD&ADLT F/MEMB	61822	2401	662	7869	1167	437	735	1057	76150	
COUPLE&ADULT FAMILY MEMB	407966	6963	2311	16752	2894	1915	3222	5362	447385	
COUPLE&D/CHLD&ADLT F/MEMB	349673	4579	1482	10008	1722	1202	3768	4757	377191	
TOTAL	3438420	77528	27779	326413	47191	45966	40471	53581	4057349	

C19	AGE LEFT SCHOOL	MALES	FEMALES	PERSONS	PROPX
	UNDER 15 YEARS OF AGE	1185268	1259515	2444783	20.4
	15	1298149	1465049	2763198	23.1
	16	1164918	1222120	2387038	19.9
	17	851571	878963	1730534	14.5
	18	533917	437628	971545	8.1
	19	84632	52601	137233	1.1
	20 YEARS AND OVER	133445	81272	214717	1.8
	STILL AT SCHOOL	283635	279809	563444	4.7
	DID NOT GO TO SCHOOL	42578	54365	96943	0.8
	NOT STATED	326179	329697	655876	5.5
	TOTAL	5904292	6061019	11965311	100.0

C20	TYPE OF EDUCATIONAL INSTITUTION BEING ATTENDED	MALES	FEMALES	PERSONS	PROPX
	PRE SCHOOL	105189	98332	203521	5.5
	INFANT/PRIMARY:				
	GOVT	555859	520109	1075968	29.3
	NON GOVT	174008	169286	343294	9.3
	TOTAL	729867	689395	1419262	38.6
	SECONDARY:				
	GOVT	402849	392893	795742	21.7
	NON GOVT	172072	175181	347253	9.5
	TOTAL	574921	568074	1142995	31.1
	TAFE COLLEGE:				
	FULL TIME	25916	26406	52322	1.4
	PART TIME	146690	101280	247970	6.8
	TOTAL	172606	127686	300292	8.2
	CAE:				
	FULL TIME	26016	38490	64506	1.8
	PART TIME	35655	32477	68132	1.9
	TOTAL	61671	70967	132638	3.6
	UNIVERSITY:				
	FULL TIME	61632	50469	112101	3.1
	PART TIME	37038	34242	71280	1.9
	TOTAL	98670	84711	183381	5.0
	OTHER:				
	FULL TIME	15513	18360	33873	0.9
	PART TIME	21226	20539	41765	1.1
	TOTAL	36739	38899	75638	2.1
	NOT STATED	108137	107372	215509	5.9
	TOTAL	1887800	1785436	3673236	100.0

C23	INCOME (ANNUAL)	MALES	INDIVIDUAL FEMALES	PERSONS	PROPX
	NIL	349032	977820	1326852	11.1
	\$1-\$2000	88326	435046	523372	4.4
	\$2001-\$4000	159324	313602	472926	4.0
	\$4001-\$6000	756534	1136771	1893305	15.8
	\$6001-\$9000	433005	733146	1166151	9.7
	\$9001-\$12000	457136	533197	990333	8.3
	\$12001-\$15000	528943	439756	968699	8.1
	\$15001-\$18000	718446	406246	1124692	9.4
	\$18001-\$22000	720912	293670	1014582	8.5
	\$22001-\$26000	447646	150574	598220	5.0
	\$26001-\$32000	444149	110498	554647	4.6
	\$32001-\$40000	251277	38451	289728	2.4
	\$40001-\$50000	109893	12203	122096	1.0
	\$50001 AND OVER	98312	12261	110573	0.9
	NOT STATED	341357	467778	809135	6.8
	SPOUSE(S) TEMPORARILY ABSENT	N	N	N	0.0
	TOTAL	5904292	6061019	11965311	100.0

C21	LEVEL OF QUALIFICATION	MALES	FEMALES	PERSONS	PROPX
	DEGREE OR HIGHER	369844	233605	603449	5.0
	DIPLOMA	189507	230145	419652	3.5
	TRADE	1054483	118211	1172694	9.8
	OTHER	592808	821521	1414329	11.8
	NOT QUALIFIED	3171036	4029740	7200776	60.2
	NOT STATED	526614	627797	1154411	9.6
	TOTAL	5904292	6061019	11965311	100.0

C22	FIELD OF QUALIFICATION	MALES	FEMALES	PERSONS	PROPX
	MANAGEMENT	175507	281170	456677	3.8
	NATURAL&MATH SCIENCES	83467	39639	123106	1.0
	ENGINEERING&TECHNOLOGY	162940	5695	168635	1.4
	ARCHITECTURE&BUILDING	317769	8351	326120	2.7
	SOCIAL SCIENCES	75001	71877	146878	1.2
	HUMANITIES	24719	38554	63273	0.5
	RELIGION	10374	2438	12812	0.1
	EDUCATION	88170	229787	317957	2.7
	MEDICAL	81462	330608	412070	3.4
	VETERINARY	3558	2154	5712	0.0
	ARTS	21422	34276	55698	0.5
	AGRICULTURE	56273	9915	66188	0.6
	MANUFACTURING	724614	45780	770394	6.4
	SERVICES	124400	80648	205048	1.7
	MILITARY	4930	148	5078	0.0
	OTHER	252036	222442	474478	4.0
	NOT QUALIFIED	3171036	4029740	7200776	60.2
	TOTAL (INCL NOT STATED)	5904292	6061019	11965311	100.0

C24 MARITAL STATUS OF LABOUR FORCE BY AGE

	15-19 YEARS		20-34 YEARS		35-54 YEARS		55 YEARS AND OVER		MALES	TOTAL	
	MALES	FEMALES	MALES	FEMALES	MALES	FEMALES	MALES	FEMALES		MALES	FEMALES
NEVER MARRIED	353897	320217	848832	531701	142510	70063	34636	15012	1379875	936993	2316868
MARRIED	2046	6817	807341	602253	1409419	858396	417716	133452	2636522	1600918	4237440
OTHER	456	558	87883	85099	182361	165529	55229	45240	325929	296426	622355
TOTAL	356399	327592	1744056	1219053	1734290	1093988	507581	193704	4342326	2834337	7176663

C25 LABOUR FORCE STATUS BY AGE

EMPLOYED:											
WAGE/SALARY EARNER	275321	255313	1361103	992119	1239656	823408	328344	126168	3204424	2197008	5401432
SELF EMPLOYED	4273	1473	130646	53021	226917	108817	91618	34469	453454	197780	651234
EMPLOYER	829	367	66670	31437	164997	74082	45770	16007	278266	121893	400159
UNPAID HELPER	4606	2816	5139	14523	2545	19612	3470	7979	15760	44930	60690
TOTAL	285029	259969	1563558	1091100	1634115	1025919	469202	184623	3951904	2561611	6513515
UNEMPLOYED:											
LOOKING FOR FULL TIME WORK	59711	51522	165168	85403	91525	38307	31027	4595	347431	179827	527258
LOOKING FOR PART TIME WORK	11659	16101	15330	42550	8650	29762	7352	4486	42991	92899	135890
TOTAL UNEMPLOYED	71370	67623	180498	127953	100175	68069	38379	9081	390422	272726	663148
TOTAL LABOUR FORCE	356399	327592	1744056	1219053	1734290	1093988	507581	193704	4342326	2834337	7176663
NOT IN LABOUR FORCE	300455	302905	127421	632047	137204	705165	874247	1454403	1439327	3094520	4533847
TOTAL(INCL NOT STATED)	673182	644082	1913328	1899870	1909948	1842832	1407834	1674235	5904292	6061019	11965311

C26 OCCUPATION BY AGE

MANAGERS&ADMINISTRATORS	8565	2046	144906	50328	314052	105040	104275	32743	571798	190157	761955
PROFESSIONALS	4348	4072	194275	161139	215433	125715	48167	16550	462223	307476	769699
PARA-PROFESSIONALS	6626	7301	106695	94982	106792	69016	21085	9147	241198	180446	421644
TRADESPERSONS	100338	15666	399865	38246	318210	35705	82057	6723	900470	96340	996810
CLERKS	20633	82413	135724	382487	104434	303678	32553	50857	293344	819435	1112779
SALES&PERSONAL SERVICES	37801	113185	125009	203822	122052	151458	32759	22840	317621	491305	808926
PLANT&MACHINE OPERATORS	14000	5445	180025	32143	204001	42838	51476	5091	449502	85517	535019
LABOURERS & RELATED WORKERS	83201	24633	240538	108366	203647	165058	79522	31055	606908	329112	936020
INAD DESCRIBED & NEI	4958	1715	23243	9408	29633	13641	10239	4874	68073	29638	97711
TOTAL(INCL NOT STATED)	285029	259969	1563558	1091100	1634115	1025919	469202	184623	3951904	2561611	6513515

C27 INDUSTRY BY AGE

AGRIC, FORESTRY, FISH&HUNTING	16085	3072	78050	26538	100191	56753	57513	26180	251839	112543	364382
MINING	3308	746	35615	4899	38094	3104	5632	342	82649	9091	91740
MANUFACTURING	56405	19371	282992	105363	289861	119398	85093	17778	714351	261910	976261
ELECTRICITY, GAS, WATER	4734	1511	42892	7938	49843	3182	15351	559	112820	13190	126010
CONSTRUCTION	26479	2264	154903	21687	157587	27320	32511	3927	371480	55198	426678
WHOLESALE&RETAIL TRADE	91785	109204	269378	196890	260923	197167	67788	31926	689874	535187	1225061
TRANSPORT&STORAGE	9201	4207	106521	30028	131466	23929	37663	3895	284851	62059	346910
COMMUNICATION	2479	1514	44528	16526	42706	14300	10543	2894	100256	35234	135490
FINANCE, PROP&BUS SERVICES	18267	40592	139554	162738	148146	96752	39473	16720	345440	316802	662242
PUBLIC ADMIN, DEFENCE	12659	10238	119012	68812	105499	41351	28008	6480	265178	126881	392059
COMMUNITY SERVICES	9707	28174	158458	319404	187065	326034	49423	52042	404653	725654	1130307
REC, PERSONAL, OTHER SERVICES	17655	27489	76241	95599	65331	78434	20709	12780	179936	214302	394238
NON-CLASSIFIABLE ECON UNIT	3539	1895	16965	8128	19214	9028	5267	1574	44985	20625	65610
TOTAL(INCL NOT STATED)	285029	259969	1563558	1091100	1634115	1025919	469202	184623	3951904	2561611	6513515

C28 HOUSEHOLD TYPE OF THE UNEMPLOYED

	MALES	FEMALES	PERSONS
1 FAMILY HOUSEHOLD	293973	216068	510041
2+ FAMILY HOUSEHOLD	19702	14367	34069
GROUP HOUSEHOLD	35745	24604	60349
LONE PERSON HOUSEHOLD	29595	12990	42585
NON PRIVATE DWELLING	11407	4697	16104
TOTAL UNEMPLOYED	390422	272726	663148

C29 INDUSTRY SECTOR

	MALES	FEMALES	PERSONS
AUSTRALIAN GOVERNMENT	335080	166327	501407
STATE GOVERNMENT	562491	461379	1023870
LOCAL GOVERNMENT	107653	35956	143609
PRIVATE SECTOR	2872362	1836532	4708894
NOT STATED	74318	61417	135735
TOTAL	3951904	2561611	6513515

C30 METHOD OF TRAVEL TO WORK

	MALES	FEMALES	PERSONS
TRAIN	216584	169784	386368
BUS	161162	174560	335722
FERRY/TRAM	32994	35119	68113
TAXI	20898	15488	36386
CAR AS DRIVER	2431584	1203418	3635002
CAR AS PASSENGER	274720	299245	573965
MOTOR BIKE	79225	4509	83734
BICYCLE	73157	19532	92689
WALKED ONLY	202617	137980	340597
WORKED AT HOME	175418	194575	369993
DID NOT GO TO WORK	295222	324241	619463
NOT STATED	106278	82168	188446
TOTAL NOT SUPPLIED AS QUESTION ALLOWED MULTIPLE ANSWERS.			

C31 OCCUPATION BY BIRTHPLACE

	TOTAL		
	AUSTRALIA	OVERSEAS (INC NS)	
MANAGERS&ADMINISTRATORS	598327	160340	761955
PROFESSIONALS	578399	188849	769699
PARA-PROFESSIONALS	320254	99815	421644
TRADEPERSONS	706735	284214	996810
CLERKS	872449	236232	1112779
SALES & PERSONAL SERVICES	630546	174947	808926
PLANT & MACHINE OPERATORS	366865	164692	535019
LABOURERS & RELATED WORKERS	636948	292194	936020
INAD DESCRIBED & NEI	69536	27185	97711
TOTAL(INCL NOT STATED)	4832773	1647274	6513515

C32 INDUSTRY BY HOURS WORKED

	NONE	1-15 HOURS	16-34 HOURS	35 HRS & OVER	TOTAL (INC NS)
AGRIC, FORESTRY, FISH&HUNTING	10394	20172	27892	293328	364382
MINING	5914	1630	3079	79777	91740
MANUFACTURING	29049	32098	65064	836839	976261
ELECTRICITY, GAS, WATER	5776	1585	4912	112382	126010
CONSTRUCTION	13415	20238	36723	348074	426678
WHOLESALE&RETAIL TRADE	29096	144954	141942	890978	1225061
TRANSPORT&STORAGE	18529	12594	24927	284300	346910
COMMUNICATION	7532	3533	9890	112858	135490
FINANCE, PROP&BUS SERVICES	20684	44695	76739	512641	662242
PUBLIC ADMIN, DEFENCE	18319	13642	25116	330379	392059
COMMUNITY SERVICES	80016	104781	226148	705448	1130307
REC, PERSONAL, OTHER SERVICES	11469	67772	71567	236720	394238
NON-CLASSIFIABLE ECON UNIT	2125	4550	6630	50586	65610
TOTAL(INCL NOT STATED)	261581	486207	733616	4862639	6513515

C33 HOURS WORKED BY EMPLOYED COUPLES WITH 1 OR MORE DEP. CHILD AGED 0-14YRS*

	MALE - HOURS WORKED				FEMALE - HOURS WORKED			
	NONE	1-15	16-34	35 OR MORE	NONE	1-15	16-34	35 OR MORE
TOTAL	36459	153643	219753	296905	730723			

* NOTE: ONLY COUPLES WHERE SPOUSE PRESENT ON CENSUS NIGHT INCLUDED

C34 OCCUPATION BY STATUS OF WORKER

	WAGE/ SALARY	SELF EMPLOYED	EMPLOYER	UNPAID HELPER	TOTAL
MANAGERS&ADMINISTRATORS	365388	225623	157431	13513	761955
PROFESSIONALS	665948	47772	54682	1297	769699
PARA-PROFESSIONALS	404518	12142	4576	408	421644
TRADEPERSONS	792344	133887	67981	2598	996810
CLERKS	1030648	35584	33857	12690	1112779
SALES & PERSONAL SERVICES	690560	71954	40122	6290	808926
PLANT & MACHINE OPERATORS	463526	55709	14354	1430	535019
LABOURERS & RELATED WORKERS	855814	50164	18898	11144	936020
INAD DESCRIBED & NEI	77496	10283	4888	5044	97711
TOTAL(INCL NOT STATED)	5401432	651234	400159	60690	6513515

C35 HOURS WORKED

	MALES	FEMALES	PERSONS	PROP%
NONE	N	N	261581	4.0
1-15	129876	356331	486207	7.5
16-24	78792	274146	352938	5.4
25-34	135323	245355	380678	5.8
35-39	1012266	616148	1628414	25.0
40 OR MORE	2354678	879547	3234225	49.7
NOT STATED	N	N	169472	2.6
TOTAL	N	N	6513515	100.0

C36	SUMMARY OF DWELLINGS	HLDS/DWGS	PERSONS
	OCCUPIED PRIVATE DWELLINGS	5187422	14920230
	UNOCCUPIED PRIVATE DWELLING	543539	N
	TOTAL PRIVATE DWELLINGS	5730961	14920230
	CARAVANS,ETC IN PARKS	77094	158257
	NON PRIVATE DWELLINGS	21054	523669
	TOTAL DWELLINGS	5829109	15602156

C37	STRUCTURE OF OCCUPIED PRIVATE DWELLINGS	HLDS/DWGS	PERSONS
	SEPARATE HOUSE	4081850	12639603
	SEMI DETACHED HOUSE	119553	288313
	ROW/TERRACE HOUSE	53814	120160
	OTHER MEDIUM DENSITY	691187	1306584
	FLATS OVER 3 STOREYS	102766	192325
	CARAVAN,ETC IN PARK	77094	158257
	OTHER CARAVAN,HOUSEBOAT,ETC	16547	35672
	IMPROVISED DWELLING	9215	26790
	HOUSE/FLAT ATTCH SHOP/OFFCE	36649	102970
	NOT STATED	75841	207813
	TOTAL	5264516	15078487

C38	NATURE OF OCCUPANCY *	HLDS/DWGS	PERSONS
	OWNED	1981919	5248677
	BEING PURCHASED	1604405	5450044
	RENTED:HOUSING AUTHORITY	278637	834729
	OTHER GOVT AGENCY	68551	224227
	PRIVATE&N/S	987177	2478070
	OTHER & NOT STATED	266733	684483
	TOTAL	5187422	14920230

C39	NUMBER OF BEDROOMS *	HLDS/DWGS	PERSONS
	0	1278	3221
	1	296192	430581
	2	1349616	2818089
	3	2638256	8237962
	4 OR MORE	778256	3167792
	TOTAL(INCL NOT STATED)	5187422	14920230

C40	REASON UNOCCUPIED *	HLDS/DWGS	PERSONS
	FOR SALE	35398	
	TO LET,NOT HOLIDAY HOME	61198	
	NEW AWAITING OCCUPANCY	20687	
	VACANT FOR REPAIR	23859	
	HOLIDAY HOME	134151	
	CONDEMNED FOR DEMOLITION	6445	
	RESIDENT ABSENT	188479	
	OTHER REASONS	48145	
	NOT STATED	25177	
	TOTAL	543539	

* NOTE: TABLE EXCLUDES CARAVANS, ETC IN PARKS.

C41	PERSONS AGED 60 YEARS AND OVER, BY HOUSEHOLD TYPE	MALES	FEMALES	PERSONS	PROPX
	ONE FAMILY	774927	767660	1542587	71.6
	TWO OR MORE FAMILIES	39951	36383	76334	3.5
	GROUP HOUSEHOLD	21901	27318	49219	2.3
	LONE PERSON HOUSEHOLD	130695	355118	485813	22.6
	TOTAL	967474	1186479	2153953	100.0

NOTE : "FAMILY" CAN INCLUDE NON FAMILY MEMBERS

C42	HOUSEHOLD SIZE BY STRUCTURE OF DWELLING	SEP HSE/ SEMI DET	ALL MED DENSITY	FLATS OVER 3 ST	C'VAN,ETC IN PARK	TOTAL (INC OTHER&NS)
	PERSONS					
	1-2	1817885	588452	82911	60448	2627048
	3-4	1659644	132389	16597	13073	1864349
	5-6	638144	21180	2841	3208	680359
	7 OR MORE PERSONS	85730	2980	417	365	92760
	TOTAL	4201403	745001	102766	77094	5264516

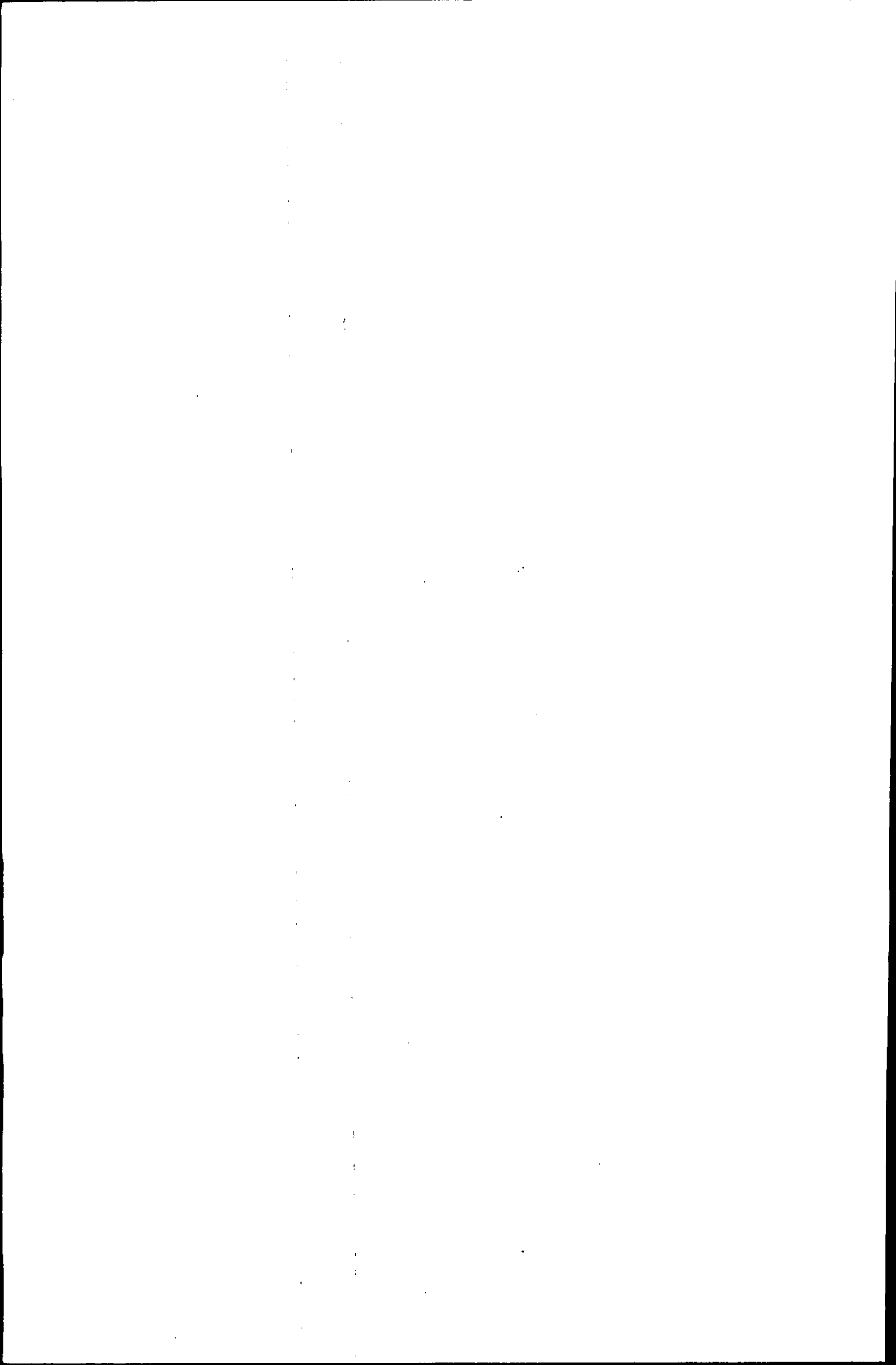
C43	MONTHLY MORTGAGE PAYMENTS BY STRUCTURE OF DWELLING *	\$1-\$99	\$100-\$199	\$200-\$299	\$300-\$399	\$400-\$499	\$500-\$599	\$600 AND OVER	TOTAL(INCL NOT STATED)
		182188	158328	247292	267673	218991	138245	225206	1490218
		4694	5716	11707	14952	14306	10176	16038	80347
		627	573	1068	1412	1461	1071	2134	8709
		N	N	N	N	N	N	N	N
		189478	166984	263818	287912	238094	151796	249265	1604405

C44	WEEKLY RENT BY STRUCTURE OF DWELLING *	\$0-\$49	\$50-\$99	\$100-\$149	\$150-\$199	\$200 AND OVER	TOTAL(INCL NOT STATED)
		230971	287837	144017	26495	17155	736105
		105171	264909	82000	14392	10252	485324
		15882	26172	12789	5402	3907	65856
		N	N	N	N	N	N
		364757	597629	245673	48566	34813	1334365

C45	HOUSEHOLD TYPE BY STRUCTURE OF DWELLING	1 FAMILY HOUSEHOLD	2 FAMILY HOUSEHOLD	3 + FAMILY HOUSEHOLD	GROUP HOUSEHOLD	LONE PERSON HOUSEHOLD	TOTAL HOUSEHOLDS
		3428647	84449	2853	126313	559142	4201404
		348937	5147	108	71048	319761	745001
		46321	855	16	9395	46180	102767
		45341	619	6	4555	26573	77094
		3960361	93675	3315	219188	987979	5264518

NOTE: "FAMILY" CAN INCLUDE NON FAMILY MEMBERS

C46	NUMBER OF VEHICLES BY STRUCTURE OF DWELLING	0	1	2	3	4 OR MORE	TOTAL(INCL NOT STATED)
		377909	1698929	1490405	386520	149441	4201403
		214912	369729	105582	12577	2844	745001
		36143	46510	11213	1245	300	102766
		12471	45543	7972	871	244	77094
		661757	2216718	1648158	409404	156175	5264516



APPENDIX A**INQUIRIES****NEW SOUTH WALES**

Information Services
 St Andrew's House
 Sydney, N.S.W. 2000
 (Box 796, G.P.O. Sydney 2001)
 Phone (02) 268 4611
 Telex AA20819
 Minerva Box ABS187

VICTORIA

Information Services
 Rialto North Tower
 525 Collins Street
 Melbourne, VIC. 3000
 (Box 2796Y, G.P.O. Melbourne 3001)
 Phone (03) 615 7840
 Telex AA30086
 Minerva Box ABS257

QUEENSLAND

Information Services
 345 Ann Street
 Brisbane, QLD 4000
 (Box 9817, G.P.O. Brisbane 4001)
 Phone (07) 222 6351
 Telex AA40271
 Minerva Box ABS359

WESTERN AUSTRALIA

Information Services
 Merlin Centre
 30 Terrace Road
 Perth, W.A. 6000
 (Box K881, G.P.O. Perth 6001)
 Phone (09) 323 5140
 Telex AA92041
 Minerva Box ABS588

SOUTH AUSTRALIA

Information Services
 Capita Centre
 10-20 Pulteney Street
 Adelaide, S.A. 5000
 (Box 2272, G.P.O. Adelaide 5001)
 Phone (08) 228 9439
 Telex AA82106
 Minerva Box ABS454

TASMANIA

Information Services
 175 Collins Street
 Hobart, TAS. 7000
 (Box 66A, G.P.O. Hobart 7001)
 Phone (002) 20 9409
 Telex AA58098
 Minerva Box ABS657

NORTHERN TERRITORY

The Statistician—Northern Territory
 6th Floor, MLC Building
 81 Smith Street
 Darwin, N.T. 5790
 (Box 3796, P.O. Darwin 5794)
 Phone (089) 81 5222
 Telex AA85075
 Minerva Box ABS708

AUSTRALIAN CAPITAL TERRITORY

Information Services
 Australian Bureau of Statistics
 Unit 5, Cameron Offices
 Belconnen, A.C.T. 2617
 Phone (062) 52 6627
 Telex AA62020
 Box 10, P.O.
 Belconnen, A.C.T. 2616
 Minerva Box ABS875

