

**PRINCIPAL AGRICULTURAL COMMODITIES  
AUSTRALIA (PRELIMINARY) 1993-94,  
AGRICULTURAL PRODUCTION AND FARMERS' INTENTIONS  
FOR THE 1994-95 SEASON**

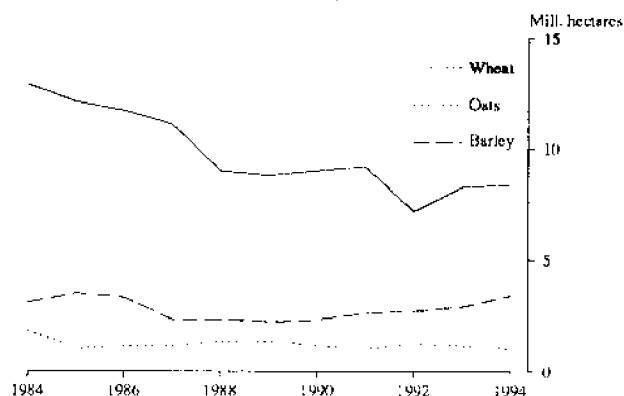
**SUMMARY OF FINDINGS**

Preliminary results from the Agricultural Census for the 1993-94 season show:

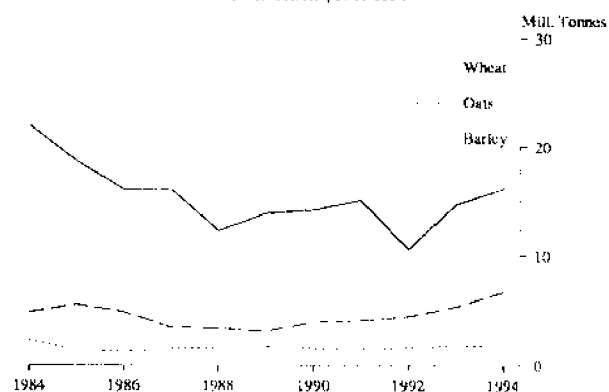
**Crops**

- The area of wheat for grain increased marginally to 8.4 million hectares. Production increased by 10.2 percent to 16.2 million tonnes, with significant rises in NSW and WA. On farm stocks of wheat increased by 17.5 percent to 1.3 million tonnes.
- The area of oats sown for grain fell 16.2 percent to 1.0 million hectares. Production decreased by 13.2 percent to 1.7 million tonnes, with yield unchanged from 1992-93, at 1.7 tonnes per hectare nationally. On farm stocks of oats decreased marginally to 1.5 million tonnes.
- The area sown to barley for grain rose by 14.3 percent to 3.4 million hectares. Production increased by 24.2 percent to a record 6.7 million tonnes with a yield of 2.0 tonnes per hectare.
- Whilst the area sown to rice remained at 106 thousand hectares, production fell by 3.3 percent to 830 thousand tonnes.
- Sugar cane production increased by 9.1 percent, with 30.5 million tonnes cut from a planting of 330 thousand hectares (up 0.6 percent).
- For the 1994-95 season, Australia's farmers (excluding Queensland) indicated an increase of 4.9 percent in intended plantings of wheat, compared to their 1993-94 intentions.
- Intended plantings of oats (excluding Queensland) in 1994-95 are 9.7 percent lower than 1993-94 intentions.
- 1994-95 intended plantings of barley (excluding Queensland) are 21.6 percent lower than 1993-94 intentions and 18.6 percent lower than actual plantings. This is due to a movement to canola and wheat, in response to low feed grain returns.

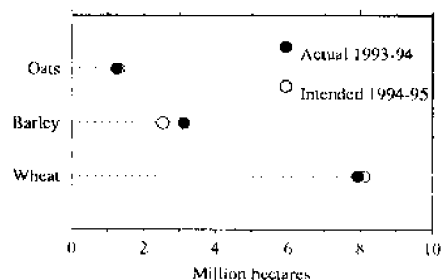
**AREA PLANTED TO WHEAT, OATS AND BARLEY FOR GRAIN, 1984-1994**



**PRODUCTION OF WHEAT, OATS AND BARLEY FOR GRAIN, 1984-1994**



**ACTUAL SOWINGS FOR 1993-94 AND INTENDED SOWINGS FOR 1994-95 AUSTRALIA(a)**



Note: (a) Excludes Queensland.

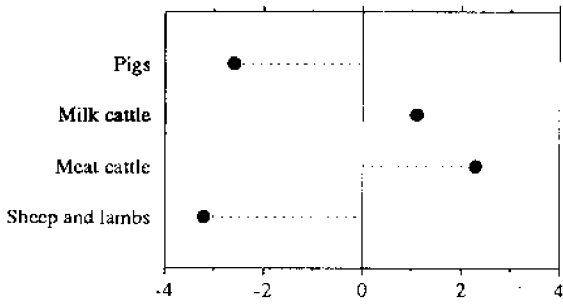
**INQUIRIES**

- for further information about statistics in this publication and the availability of related unpublished statistics, contact Henry Stefanik on 008 801 520 or any ABS State office.
- for information about other ABS statistics and services please contact Information Services on Canberra (06) 252 6627, 252 5402, 252 6007 or any ABS State office.

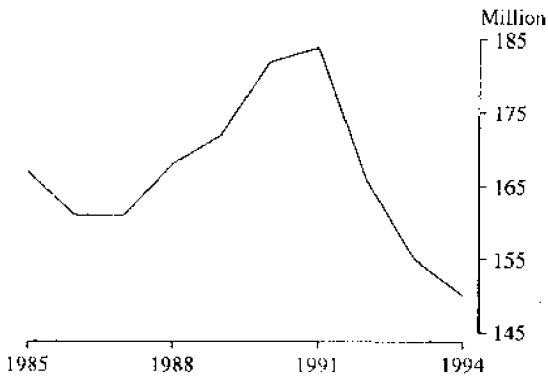
**Livestock**

- The size of Australia's dairy herd at 31 March 1994 was 2.5 million, up 1.1 percent when compared with 31 March 1993.
- Meat cattle numbers increased by 2.3 percent to 22.0 million. This continues the trend which has seen the meat cattle herd increase in size each year since 1989.
- Sheep and lamb numbers at 31 March 1994 declined to 133.7 million, a fall of 3.2 percent compared with the previous year. Breeding ewes decreased by 3.2 percent to 59.5 million, wethers decreased by 13.5 percent to 34.8 million, whilst lambs and hoggets increased by 7.3 percent to 30.5 million.
- Pig numbers decreased to 2.6 million, a fall of 2.6 percent when compared with 31 March 1993.

**LIVESTOCK NUMBERS**  
Percentage change 1993-94(p) on 1992-93



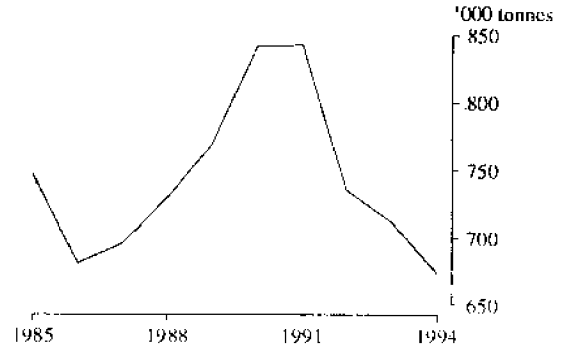
**SHEEP AND LAMBS SHORN**  
YEAR ENDED 31 MARCH



**Wool production**

- In the year ending 31 March 1994, wool production decreased by 5.4 percent to 673.7 thousand tonnes, with an average cut per head of 4.5 kilograms.

**WOOL PRODUCED**  
YEAR ENDING 31 MARCH

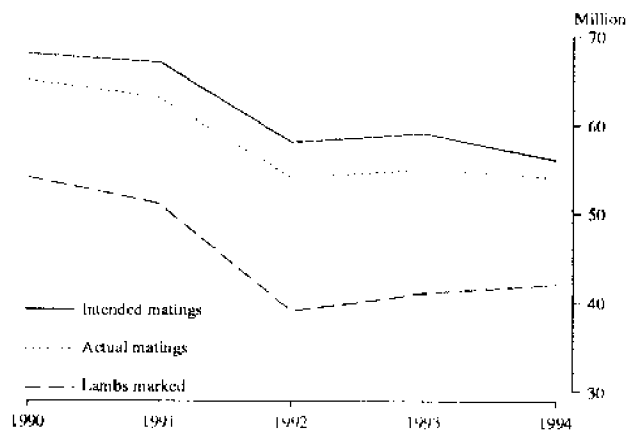


**Ewe mating intentions, matings and lambings**

- The number of ewes intended to be mated in the year ending 31 March 1995 is 57.3 million, 3.3 percent higher than the intended matings at 31 March 1994, and 6.0 percent higher than actual matings for the year ended 31 March 1994.

Actual matings for the year ended 31 March 1994 were 2.5 percent lower than the 55.5 million intended matings reported in the previous year, of which 97 percent (54.1 million) were realised. There were 41.9 million lambs marked during the year, and a lambing ratio of 77 percent of actual matings.

**INTENTIONS, MATINGS AND LAMBINGS**



## PRINCIPAL CROPS

TABLE 1. AREA AND PRODUCTION OF PRINCIPAL CROPS, YEARS ENDED 31 MARCH 1992 TO 1994

	Australia			1994(p)					
	1992	1993	1994(p)	NSW	Vic.	Qld	SA	WA	Tas.
AREA ('000 hectares)									
Cereals									
Wheat for grain	7,183	8,275	8,448	2,053	790	536	1,209	3,859	1
for hay	30	21	27	27	n.c.	n.c.	n.c.	n.c.	n.c.
Oats for grain	1,160	1,149	963	391	179	11	101	275	6
for hay	327	247	242	78	44	n.c.	46	74	n.c.
for green feed/silage	271	277	222	n.c.	n.c.	164	24	34	n.c.
Barley for grain	2,744	2,947	3,367	608	629	239	1,098	776	17
Rice	114	106	106	106	n.c.	—	n.c.	n.c.	n.c.
Sugar cane (cut for crushing)	329	328	330	16	n.c.	314	n.c.	n.c.	n.c.
PRODUCTION ('000 tonnes)									
Cereals for grain									
Wheat	10,557	14,739	16,249	4,773	2,011	558	2,201	6,702	4
Oats	1,690	1,937	1,681	652	356	6	142	514	11
Barley	4,530	5,397	6,703	1,350	1,430	266	2,260	1,356	41
Rice	957	858	830	830	n.c.	—	n.c.	n.c.	n.c.
Sugar cane (cut for crushing)	20,640	27,958	30,495	1,579	n.c.	28,916	n.c.	n.c.	n.c.

n.c. = not collected

TABLE 2. AREA INTENDED TO BE SOWN TO CEREAL CROPS FOR ALL PURPOSES, YEARS ENDED 31 MARCH 1993 TO 1995  
(\*000 hectares)

		1993		1994		1995(p)
		Intended	Actual	Intended	Actual(p)	Intended
NSW	Wheat	1,713	1,715	1,896	2,080	1,966
	Oats	696	513	599	469	552
	Barley	573	560	625	608	519
Vic	Wheat	795	821	778	790	830
	Oats	301	273	233	223	177
	Barley	549	551	621	629	444
Qld	Wheat	(a)(b)r652	669	(a)(b)487	536	n.y.a.
	Oats	n.a.	229	n.a.	175	n.a.
	Barley	(a)(b)r185	189	(a)(b)283	239	n.y.a.
SA	Wheat	1,406	1,419	1,333	1,209	1,430
	Oats	208	192	200	171	203
	Barley	1,026	1,023	1,155	1,098	935
WA	Wheat	3,452	3,669	3,729	3,859	3,893
	Oats	457	458	398	383	360
	Barley	574	611	833	776	634
Australia	Wheat	r8,019	8,296	8,226	8,475	(c)8,121
	Oats	(c)1,680	1,673	(c)1,447	1,427	(c)1,306
	Barley	r2,916	2,947	3,531	3,367	(c)2,547

(a) For grain only. (b) Source: Queensland Department of Primary Industries. (c) Excludes Queensland.

TABLE 3. FARM STOCKS OF CEREAL GRAINS, AT 31 MARCH 1992 TO 1994(a)  
(\*000 tonnes)

	Australia			1994(p)				
	1992	1993	1994(p)	NSW	Vic	Qld	SA	WA
Wheat	1,035	1,110	1,304	550	247	n.c.	157	349
Oats	1,378	1,582	1,509	798	268	n.c.	118	312
Barley	868	825	1,192	446	315	n.c.	268	150

(a) Excludes Queensland.

## LIVESTOCK

TABLE 4. LIVESTOCK NUMBERS, AT 31 MARCH 1992 TO 1994  
(\*000)

	Australia			1994(p)						
	1992	1993	1994p	NSW	Vic.	Qld	SA	WA	Tas.	NT
Milk Cattle(a)—										
Bulls and bull calves intended for service	31	31	34	4	21	3	2	1	3	—
Cows in milk and dry	1,652	1,697	1,696	203	1,042	180	95	71	105	—
Heifers and heifer calves	749	776	802	113	451	88	50	47	53	—
<b>Total (a)</b>	<b>2,432</b>	<b>2,504</b>	<b>2,532</b>	<b>320</b>	<b>1,514</b>	<b>271</b>	<b>147</b>	<b>119</b>	<b>161</b>	<b>—</b>
Meat Cattle—										
Beef bulls and bull calves intended for service	522	526	529	133	62	207	27	41	11	48
Cows and heifers 1 yr+	10,748	11,171	11,329	3,148	1,122	4,574	538	880	215	847
Heifers and other calves	5,128	5,064	5,113	1,614	658	1,754	258	393	143	291
Other cattle 1 year & over	5,050	4,795	5,077	1,244	463	2,563	192	280	91	244
<b>Total</b>	<b>21,447</b>	<b>21,555</b>	<b>22,048</b>	<b>6,139</b>	<b>2,305</b>	<b>9,098</b>	<b>1,015</b>	<b>1,594</b>	<b>460</b>	<b>1,430</b>
<b>Total cattle and calves (a)</b>	<b>23,880</b>	<b>24,062</b>	<b>24,580</b>	<b>6,459</b>	<b>3,819</b>	<b>9,369</b>	<b>1,162</b>	<b>1,713</b>	<b>621</b>	<b>1,430</b>
Sheep, 1 year and over—										
Rams	1,564	1,444	1,442	501	222	123	188	368	39	n.c.
Ewes—breeding	65,476	61,424	59,460	21,498	9,762	5,176	7,130	14,180	1,681	n.c.
other	7,855	6,568	7,554	2,668	1,423	204	992	2,026	236	n.c.
Wethers	45,473	40,269	34,816	10,938	6,784	4,197	3,195	8,472	1,200	n.c.
<b>Total sheep</b>	<b>120,368</b>	<b>109,705</b>	<b>103,272</b>	<b>35,605</b>	<b>18,191</b>	<b>9,700</b>	<b>11,505</b>	<b>25,046</b>	<b>3,156</b>	<b>n.c.</b>
Lambs and hoggets under 1 year	27,835	28,397	30,475	11,323	5,191	1,699	3,513	7,647	1,084	n.c.
<b>Total sheep and lambs</b>	<b>148,203</b>	<b>138,102</b>	<b>133,747</b>	<b>46,928</b>	<b>23,382</b>	<b>11,399</b>	<b>15,018</b>	<b>32,693</b>	<b>4,240</b>	<b>n.c.</b>
Pigs—										
Boars	21	21	19	6	3	4	3	3	—	—
Breeding sows and gilts intended for breeding	324	312	293	86	52	67	49	35	4	—
Other pigs (incl. suckers, weaners, growers, etc)	2,225	2,314	2,266	709	372	527	375	250	31	2
<b>Total pigs</b>	<b>2,570</b>	<b>2,646</b>	<b>2,578</b>	<b>801</b>	<b>427</b>	<b>598</b>	<b>427</b>	<b>288</b>	<b>35</b>	<b>2</b>

(a) Excludes house cows.

TABLE 5. MATINGS AND LAMBINGS, YEARS ENDED 31 MARCH 1992 TO 1994

	Unit	Australia(a)			1994(p)					
		1992	1993	1994p	NSW	Vic.	Qld	SA	WA	Tas.
Actual matings	'000	53,536	54,612	54,115	19,766	9,315	3,537	6,788	13,078	1,601
Lambs marked	'000	38,857	41,268	41,855	15,500	7,547	1,897	5,566	9,967	1,354
Percentage of lambs marked to actual matings	%	73	76	77	78	81	54	82	76	85

(a) Excludes the Northern Territory.

TABLE 6. SHEARING AND WOOL PRODUCTION YEARS ENDED 31 MARCH 1992 TO 1994

	Unit	Australia(a)			1994(p)					
		1992	1993	1994p	NSW	Vic.	Qld	SA	WA	Tas.
<i>Sheep—</i>										
Number shorn	'000	141,850	130,167	123,099	41,719	21,385	10,763	13,848	31,494	3,803
Wool produced (incl. crutchings)	tonnes	694,453	669,364	629,300	212,759	101,913	49,502	80,825	167,718	16,233
Average cut per head	kg	4.90	5.14	5.11	5.10	4.77	4.60	5.84	5.33	4.27
<i>Lambs—</i>										
Number shorn	'000	24,532	25,103	26,442	8,576	4,732	1,256	3,794	7,467	606
Wool produced	tonnes	41,763	42,594	44,363	15,522	6,889	2,469	6,615	11,888	963
Average cut per head	kg	1.70	1.70	1.68	1.81	1.46	1.97	1.74	1.59	1.59
<i>Total sheep and lambs—</i>										
Number shorn	'000	166,382	155,271	149,541	50,295	26,117	12,019	17,642	38,961	4,409
Wool produced	tonnes	736,209	711,960	673,663	228,281	108,802	51,971	87,440	179,606	17,196
Average cut per head	kg	4.42	4.59	4.50	4.54	4.17	4.32	4.96	4.61	3.90

(a) Excludes the Northern Territory.

TABLE 7. INTENDED MATINGS, YEARS ENDED 31 MARCH 1993 TO 1995

	Unit	Aust.	NSW	Vic.	Qld	SA	WA	Tas.
<i>1993—</i>								
Intended matings at start of season—								
To merino rams	'000	(a)38,292	14,957	5,369	n.c.	5,130	11,755	1,051
To other rams	'000	(a)15,717	6,773	4,555	n.c.	1,933	1,817	629
Total intended matings	'000	(b)58,700	21,731	9,924	4,691	7,063	13,572	1,680
Total actual matings	'000	(b)54,612	19,718	9,352	4,171	6,854	12,846	1,634
Percent of actual to intended mating	%	93	91	94	89	97	95	97
<i>1994—</i>								
Intended matings at start of season—								
To merino rams	'000	(a)35,807	13,621	5,087	n.c.	4,948	11,150	978
To other rams	'000	(a)16,098	6,661	4,631	n.c.	2,108	1,988	697
Total intended matings	'000	(b)55,520	20,282	9,717	3,615	7,056	13,138	1,675
Total actual matings(p)	'000	(b)54,115	19,766	9,315	3,537	6,788	13,078	1,601
Percent of actual to intended matings(p)	%	97	97	96	98	96	100	96
<i>1995p—</i>								
Intended matings at start of season—								
To merino rams	'000	(a)36,075	13,862	4,970	n.c.	4,730	11,578	911
To other rams	'000	(a)17,161	6,853	4,925	n.c.	2,244	2,425	707
Total intended matings	'000	(b)57,346	20,715	9,895	4,110	6,974	14,003	1,618
Total actual matings	'000	n.a.	n.a.	n.a.	n.a.	n.a.	n.a.	n.a.

(a) Excludes Queensland. (b) Includes Queensland. Excludes the Northern Territory where lambing information is not collected.

## EXPLANATORY NOTES

### Introduction

This publication contains preliminary agricultural estimates for the 1993-94 season, together with estimates of intended sowings of principal crops and intended ewe matings for the forthcoming season and comparative data for the earlier years. Because of possible changes in intentions caused by unforeseen circumstances, such as adverse climatic or economic conditions, estimates for the forthcoming season may not always agree with reported statistics from the following Agricultural Census.

### Scope and coverage

2. Estimates are based on a proportion of information obtained in all States, from the Agricultural Census conducted at 31 March 1994.

3. For the 1991-92 and 1992-93 Censuses, the scope was establishments undertaking agricultural activity having an estimated value of agricultural operations (EVAO) of \$22,500 or more. The scope of previous Censuses (from 1986-87) was establishments undertaking agricultural activity having an EVAO of \$20,000 or more.

4. The 1993-94 Census is based on a scope of \$5,000 or more EVAO. However, the estimates presented in the publication are based on the same scope as the previous two censuses to enable direct comparisons to be drawn. Final results from the Census will be available based on both \$5,000 and \$22,500 EVAO thresholds.

5. Information on cereal crop planting intentions is not collected in the Agricultural Census in Queensland and hence is not available for inclusion in this publication. However, information is made available later in the year by the Queensland Department of Primary Industries and is included in later ABS publications.

### General

6. Final figures will be published during the early part of 1995 when all Agricultural Census returns have been fully processed.

7. The ABS also has more detailed agricultural statistics on floppy disk, compact disk, microfiche and magnetic tape. AgStats on floppy disk and compact disk offers a wider range of data aggregated at smaller geographic areas than those generally available in printed publications, together with an easy-to-use, menu-driven interrogation facility.

8. Current publications and other standard products and services are listed in the Catalogue of Publications and Products, Australia (1101.0). The ABS also issues, on Tuesdays and Fridays, a Publications Advice (1105.0) which lists publications to be released in the next few days. The Catalogue and Publications Advice are available from any ABS office.

### Symbols and other usages

n.y.a.	not yet available
p	preliminary - figure or series
r	subject to revision
—	nil or rounded to zero
kg	kilograms
n.c.	not collected
n.a.	not available

9. The figures shown in this publication have been revised where necessary and as a consequence may not agree with similar data shown in previous publications.

10. Where figures have been rounded, discrepancies may occur between sums of the component items and totals.

11. Unless indicated otherwise, Australian totals include data for all States and both Territories.

IAN CASTLES  
Australian Statistician

