

KEY FACTS

	Units	Annual average	
		1989	1999
CIVILIAN POPULATION			
Aged 15 and over	million	13.0	15.0

LABOUR FORCE PARTICIPATION

Participation rates			
Males	%	75.4	72.6
Females	%	51.2	54.0
Persons	%	63.2	63.2

EMPLOYMENT

Males	'000	4 566.0	4 967.4
Females	'000	3 153.8	3 817.2
Persons	'000	7 719.8	8 784.6
Full-time	%	79.5	73.9
Part-time	%	20.5	26.1
Employment/population ratio	%	59.3	58.6

UNEMPLOYMENT

Unemployed persons	'000	507.8	685.5
Unemployment rate (Trend)			
Males	%	5.7	7.3
Females	%	6.8	7.1
Persons	%	6.2	7.2
Persons aged 15–19	%	15.2	23.0
Average duration of unemployment for August, persons	weeks	44.5	52.8

HOURS OF WORK

Average weekly hours worked by employed persons	hours	34.7	34.5
Full-time	hours	39.9	41.2
Part-time	hours	14.9	15.6

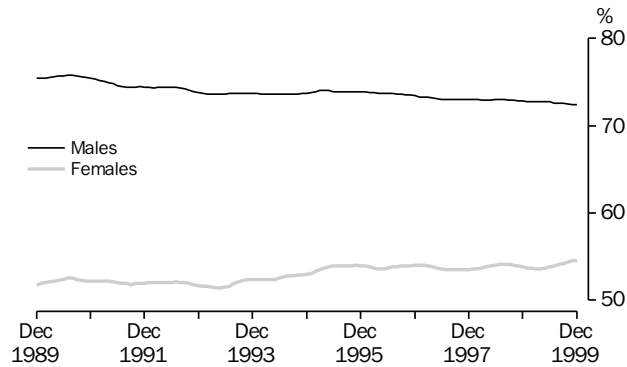
INDUSTRIAL RELATIONS

		12 months ended December	
		1989	1999
Industrial disputes			
Working days lost per thousand employees	no.	190	87
Working days lost	'000	1 202.4	649.6
Trade union members	'000	2 037.5	1 878.2

CHANGE IN WAGES AND PRICES

		12 months to Dec Qtr 1999	10 years to Dec Qtr 1999
Average weekly earnings, full-time adults	%	2.6	45.4
Wage Cost Index, total hourly rate of pay excluding bonuses	%	3.0	n.a.
Consumer Price Index, all groups	%	1.8	25.1

LABOUR FORCE PARTICIPATION RATES: Trend estimates



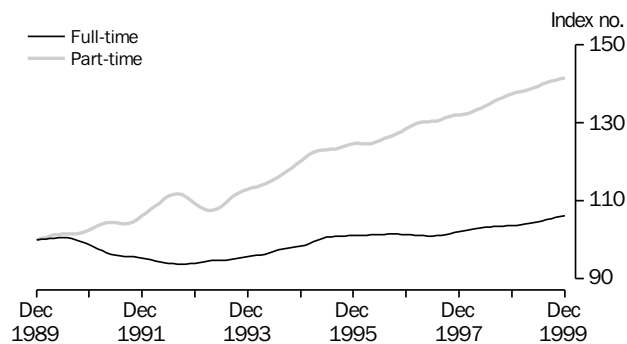
Source: Labour Force, Australia (6203.0).

EMPLOYED PERSONS: OCCUPATION

	Annual average 1999	
	'000	%
Managers and administrators	636.2	7.3
Professionals	1 559.4	17.8
Associate professionals	972.6	11.1
Tradespersons and related workers	1 168.3	13.4
Advanced clerical and service workers	378.3	4.3
Intermediate clerical, sales and service workers	1 500.2	17.2
Intermediate production and transport workers	782.9	9.0
Elementary clerical, sales and service workers	886.5	10.1
Labourers and related workers	863.1	9.9
Total	8 747.4	100.0

Source: Labour Force, Australia (6203.0).

FULL-TIME AND PART-TIME EMPLOYMENT INDEX: Trend estimates (December 1989=100)



Source: Labour Force, Australia (6203.0).

EMPLOYED PERSONS: STATUS IN EMPLOYMENT ('000)

	Annual average	
	1989	1999
Employees	6 546.0	7 483.4
Own account workers	741.3	844.2
Employers	365.6	348.9
Contributing family workers	63.3	70.9
Total	7 716.2	8 747.4

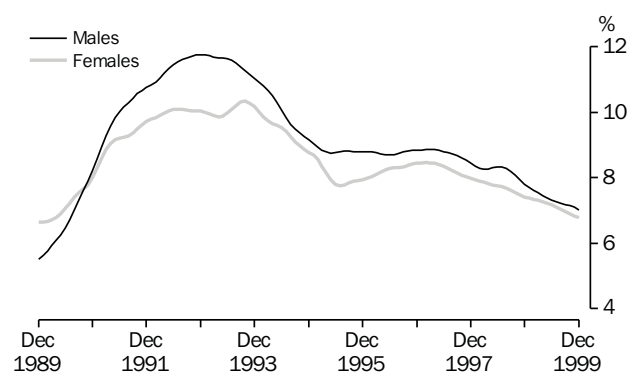
Source: Labour Force, Australia (6203.0).

EMPLOYED PERSONS: INDUSTRY

	Annual average 1999	
	'000	%
Agriculture, forestry and fishing	432.5	4.9
Mining	76.1	0.9
Manufacturing	1 075.1	12.3
Electricity, gas and water supply	64.4	0.7
Construction	663.1	7.6
Wholesale trade	521.2	6.0
Retail trade	1 319.7	15.1
Accommodation, cafes and restaurants	418.5	4.8
Transport and storage	416.1	4.8
Communication services	153.9	1.8
Finance and insurance	313.7	3.6
Property and business services	961.5	11.0
Government administration and defence	350.3	4.0
Education	613.5	7.0
Health and community services	815.8	9.3
Cultural and recreational services	211.5	2.4
Personal and other services	340.4	3.9
Total	8 747.4	100.0

Source: Labour Force, Australia (6203.0).

UNEMPLOYMENT RATES: Trend estimates



Source: Labour Force, Australia (6203.0).

UNEMPLOYED PERSONS BY AGE AND WHETHER LOOKING FOR FULL-TIME OR PART-TIME WORK ('000)

	Annual average 1999		Total
	Looking for full-time work	Looking for part-time work	
Males			
15-19	40.0	35.2	75.2
20 and over	291.5	26.7	318.2
Total	331.5	61.9	393.4
Females			
15-19	30.3	39.3	69.6
20 and over	153.9	68.5	222.4
Total	184.2	107.8	292.0
Persons			
15-19	70.3	74.5	144.8
20 and over	445.4	95.2	540.6
Total	515.7	169.7	685.4

Source: Labour Force, Australia (6203.0).

UNEMPLOYED PERSONS: DURATION OF UNEMPLOYMENT ('000)

Duration of unemployment (weeks)	Annual average	
	1989	1999
Under 52	382.3	478.6
Less than 4	114.7	134.1
4 and under 13	130.3	155.9
13 and under 52	137.3	188.5
52 and over (long-term unemployed)	125.8	206.8
Total	508.1	685.4

Source: Labour Force, Australia (6203.0).

EDUCATIONAL ATTAINMENT OF PERSONS AGED 15 TO 64 WHO WERE EMPLOYED IN MAY 1999

	'000	%
With post-school qualifications	4 386.6	51.4
Without post-school qualifications(a)	3 928.6	46.1
Completed highest level of school	1 577.7	18.5
Did not complete highest level of school	2 347.3	27.5
Still attending school	211.7	2.5
Total	8 526.9	100.0

(a) Includes persons who never attended school.

Source: Transition from Education to Work, Australia (6227.0).

FOR MORE INFORMATION...

- INTERNET** www.abs.gov.au The ABS web site is the best place to start for access to summary data from our latest publications, information about the ABS, advice about upcoming releases, our catalogue, and Australia Now—a statistical profile.
- LIBRARY** A range of ABS publications is available from public and tertiary libraries Australia-wide. Contact your nearest library to determine whether it has the ABS statistics you require, or visit our web site for a list of libraries.
- CPI INFOLINE** For current and historical Consumer Price Index data, call 1902 981 074 (call cost 75c per minute).
- DIAL-A-STATISTIC** For the latest figures for National Accounts, Balance of Payments, Labour Force, Average Weekly Earnings, Estimated Resident Population and the Consumer Price Index call 1900 986 400 (call cost 75c per minute).

INFORMATION SERVICE

Data which have been published and can be provided within five minutes are free of charge. Our information consultants can also help you to access the full range of ABS information—ABS user pays services can be tailored to your needs, time frame and budget. Publications may be purchased. Specialists are on hand to help you with analytical or methodological advice.

- PHONE** **1300 135 070**
- EMAIL** client.services@abs.gov.au
- FAX** 1300 135 211
- POST** Client Services, ABS, GPO Box 796, Sydney 1041

WHY NOT SUBSCRIBE?

ABS subscription services provide regular, convenient and prompt deliveries of ABS publications and products as they are released. Email delivery of monthly and quarterly publications is available.

- PHONE** 1300 366 323
- EMAIL** subscriptions@abs.gov.au
- FAX** (03) 9615 7848
- POST** Subscription Services, ABS, GPO Box 2796Y, Melbourne 3001



2610400001002
ISSN 1031-041X

RRP \$1.10

© Commonwealth of Australia 2000

.....
Produced by the Australian Bureau of Statistics

WAGE AND SALARY EARNERS: PRIVATE AND PUBLIC SECTORS

	'000	August 1999 %
Private(a)	5 812.0	79.9
Public		
Commonwealth	241.7	3.3
State	1 080.2	14.9
Local	137.0	1.9
Total	1 458.9	20.1
Total(a)	7 270.8	100.0

(a) Excludes private sector employees in Agriculture, forestry and fishing.

Source: *Wage and Salary Earners, Australia* (6248.0).

AVERAGE WEEKLY TOTAL EARNINGS (\$)

	Nov 1998	Nov 1999
Full-time adults		
Males	848.6	867.8
Females	676.7	698.8
Persons	784.9	805.0

Source: *Average Weekly Earnings, States and Australia* (6302.0).

STANDARD EMPLOYEE BENEFITS RECEIVED

	Full-time %	Part-time %	August 1999 All employees %
Males			
No standard benefit received	3.4	36.3	8.0
Superannuation	94.5	61.1	89.8
Holiday leave	86.1	18.2	76.5
Sick leave	85.7	18.2	76.1
Long service leave	72.6	12.8	64.1
Females			
No standard benefit received	1.8	21.2	10.8
Superannuation	96.3	76.8	87.3
Holiday leave	90.1	38.8	66.5
Sick leave	90.7	39.5	67.1
Long service leave	77.8	33.5	57.4

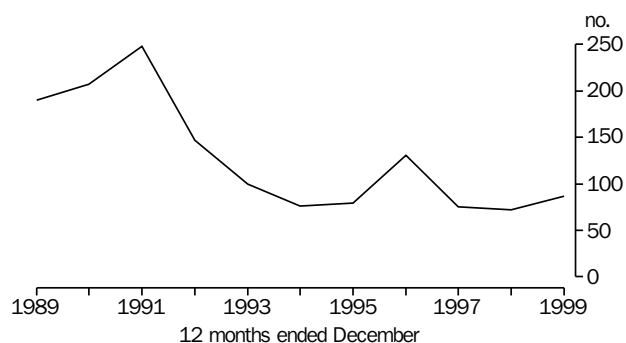
Source: *Employee Earnings, Benefits and Trade Union Membership, Australia* (6310.0).

JOB VACANCIES BY INDUSTRY ('000)

	20 Nov 1998	19 Nov 1999
Manufacturing	9.5	14.0
Wholesale trade; Retail trade	18.9	24.2
Accommodation, cafes and restaurants	12.2	9.3
Finance and insurance; Property and business services	22.0	22.4
Education; Health and community services	11.6	12.6
Other	23.1	20.7
Total	97.2	103.2

Source: *Job Vacancies, Australia* (6354.0).

INDUSTRIAL DISPUTES: WORKING DAYS LOST PER THOUSAND EMPLOYEES



Source: *Industrial Disputes, Australia (6321.0)*.

INTERNATIONAL COMPARISONS: SELECTED CHARACTERISTICS

	Population 1998 (million)	Participation rate Annual average(a) 1998 %	Unemployment rate Standardised(a) 1998 %
Australia	18.7	63.3	8.0
Canada	30.6	65.1	8.3
France	58.8	(b)55.0	11.7
Germany	82.3	57.3	9.4
Japan	126.4	63.3	4.1
Sweden	8.9	76.5	8.3
United Kingdom	59.1	62.3	6.3
United States of America	270.2	67.1	4.5

(a) ILO/OECD definition.

(b) 1997

Source: *1998 World Population Data Sheet; Yearbook of Labour Statistics 1999, International Labour Office, Geneva; Main Economic Indicators, January 2000, OECD Statistics.*

SYMBOLS AND ABBREVIATIONS USED

Values shown in Australian dollars (\$). Where figures have been rounded, discrepancies may occur between the sums of the component items and totals.

Qtr. — quarter	n.a. — not available	no. — number
Nov — November	% — per cent	'000 — thousand
Dec — December	\$ — dollars	= — equals
Aug — August		
OECD — Organisation for Economic Co-operation & Development		
ILO — International Labour Office		

ACKNOWLEDGMENTS

ABS publications draw extensively on information provided freely by individuals, businesses, governments and other organisations. Their continued cooperation is very much appreciated; without it the wide range of statistics published by the ABS would not be available for general use by the community. Information received by the ABS is treated in strict confidence as required by the *Census and Statistics Act 1905*.