

## CHAPTER 4

### UNEMPLOYMENT

The unemployment statistics presented in this chapter have been derived from ABS sources, primarily the ABS monthly labour force survey and its supplementaries. Some summary statistics on job vacancies are also included in this chapter.

For a concise definition of unemployed as it relates to the labour force survey, see the latest issue of the monthly publication *The Labour Force, Australia* (6203.0). Broadly speaking, a person is considered to be unemployed if he or she satisfies three criteria—not employed, available for work, and taking active steps to find work. The employed and the unemployed together make up the labour force.

Measures of unemployment provide an indicator of the unused capacity in the labour force. The two most important measures are the number of persons unemployed and the unemployment rate. The unemployment rate for any group is the number unemployed expressed as a percentage of the labour force in the same group. Characteristics of the unemployed presented include their demographic composition, duration of unemployment, educational qualifications and difficulties experienced in finding work. The unemployment characteristics of families, i.e. unemployment rates of different family members and number of families with some unemployment are also shown. The 1986 Income Distribution Survey contains data on persons with earned income and examines the relationship between levels of earned income and demographic and social characteristics of the recipients, e.g. age, sex, labour force attachment, educational qualifications, occupation, etc. See *1986 Income Distribution Survey, Persons with Earned Income* (6546.0).

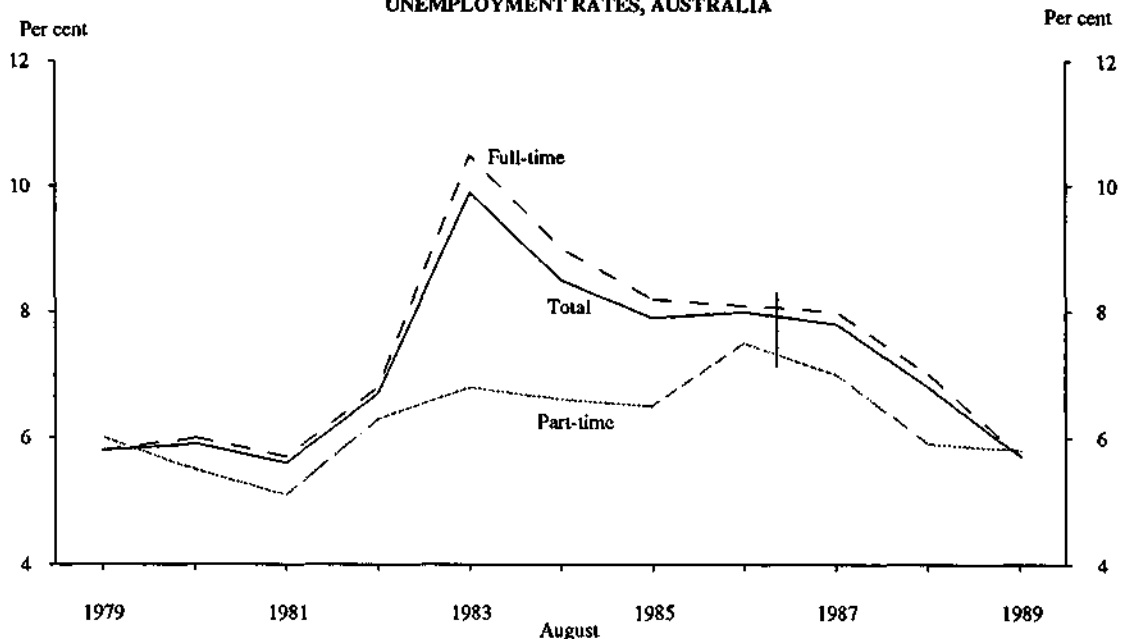
#### Unemployment

There were 469,400 unemployed persons in Australia in August 1989, of whom 260,700 were males and 208,700 were females. About 79 per cent of unemployed persons were looking for full-time employment. From August 1979 to August 1983, the estimated number of unemployed persons increased by 309,300. Between August 1983 and August 1989, the estimated number of unemployed persons fell by 217,400.

The unemployment rate for persons has fallen by 0.2 and 4.2 percentage points since August 1979 and August 1983 respectively to 5.7 per cent in August 1989. The unemployment rate for males aged 15 to 19 years in August 1989 was 12.9 per cent, the lowest since August 1981. For females aged 15 to 19 the unemployment rate in August 1989 was 14.6 per cent, the lowest since August 1978.

The average duration of unemployment was 28.4 weeks in August 1979, while in August 1989 it had increased by over 50 per cent to 44.5 weeks. The median duration of unemployment has also increased by one week since August 1979 to 15 weeks in August 1989. There has been a significant fall of 11 weeks in the median duration of unemployment from August 1983 to August 1989.

CHART 4.1. UNEMPLOYED PERSONS: FULL-TIME AND PART-TIME  
UNEMPLOYMENT RATES, AUSTRALIA



Indicates break in series. Estimates from August 1986 are based on a revised definition introduced in April 1986. See Technical Notes for further information.

Source: *The Labour Force, Australia* (6203.0).

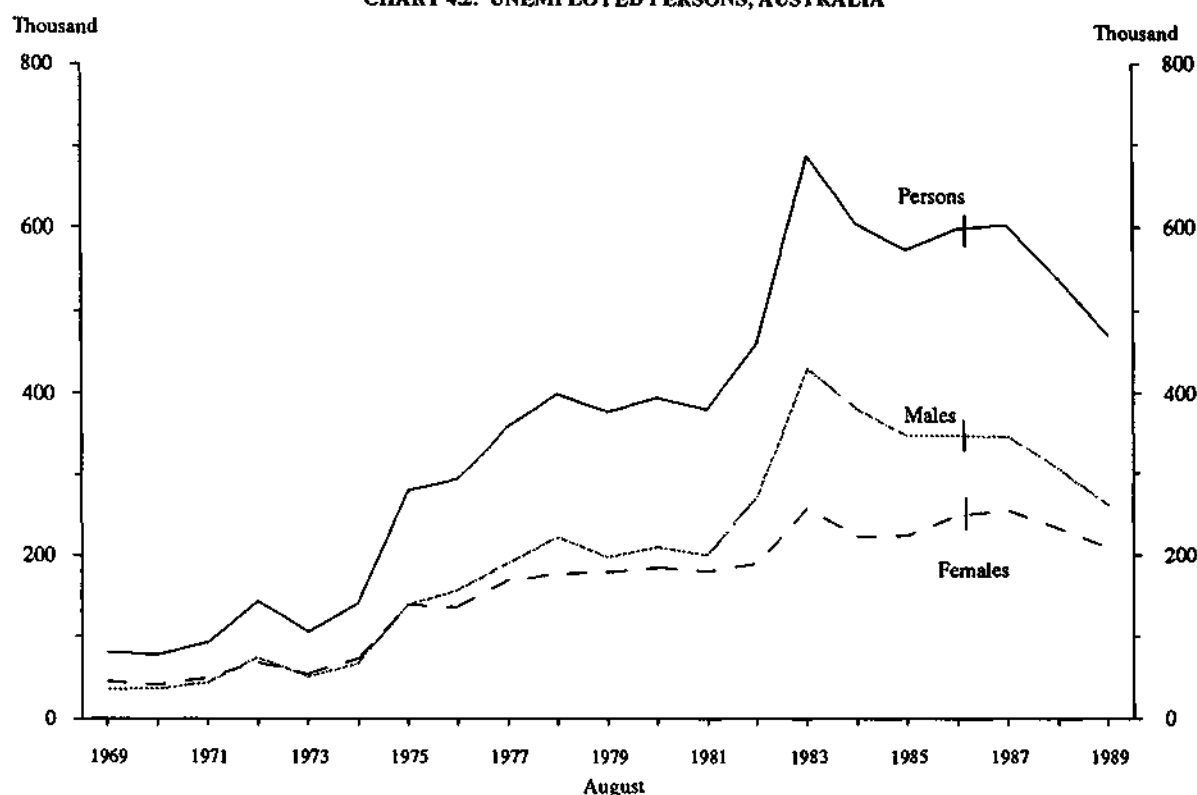
**TABLE 4.1. UNEMPLOYED PERSONS : WHETHER LOOKING FOR FULL-TIME OR PART-TIME WORK, AUSTRALIA, AUGUST 1979 TO AUGUST 1989**

| August                       | Males                      |                            | Females |                            |                            | Persons |                            |                            | Total |
|------------------------------|----------------------------|----------------------------|---------|----------------------------|----------------------------|---------|----------------------------|----------------------------|-------|
|                              | Looking for full-time work | Looking for part-time work | Total   | Looking for full-time work | Looking for part-time work | Total   | Looking for full-time work | Looking for part-time work |       |
| NUMBER ('000)                |                            |                            |         |                            |                            |         |                            |                            |       |
| 1979                         | 184.0                      | 13.5                       | 197.5   | 131.8                      | 48.1                       | 179.9   | 315.8                      | 61.7                       | 377.5 |
| 1980                         | 193.9                      | 15.7                       | 209.6   | 140.7                      | 44.2                       | 184.9   | 334.6                      | 59.9                       | 394.5 |
| 1981                         | 187.8                      | 12.7                       | 200.4   | 135.9                      | 44.2                       | 180.1   | 323.7                      | 56.9                       | 380.6 |
| 1982                         | 250.4                      | 21.3                       | 271.7   | 137.2                      | 52.5                       | 189.7   | 387.6                      | 73.8                       | 461.4 |
| 1983                         | 409.5                      | 20.2                       | 429.7   | 197.9                      | 59.3                       | 257.1   | 607.4                      | 79.5                       | 686.8 |
| 1984                         | 358.6                      | 22.6                       | 381.2   | 165.0                      | 57.9                       | 222.8   | 523.5                      | 80.5                       | 604.0 |
| 1985                         | 325.4                      | 23.7                       | 349.1   | 162.7                      | 60.9                       | 223.6   | 488.0                      | 84.7                       | 572.7 |
| 1986(a)                      | 320.9                      | 28.3                       | 349.3   | 170.9                      | 77.5                       | 248.4   | 491.8                      | 105.8                      | 597.6 |
| 1987                         | 317.2                      | 29.8                       | 347.1   | 177.8                      | 77.1                       | 255.0   | 495.1                      | 107.0                      | 602.0 |
| 1988                         | 279.9                      | 25.8                       | 305.7   | 165.5                      | 67.4                       | 233.0   | 445.4                      | 93.3                       | 538.7 |
| 1989                         | 230.7                      | 30.0                       | 260.7   | 139.4                      | 69.3                       | 208.7   | 370.1                      | 99.3                       | 469.4 |
| UNEMPLOYMENT RATE (per cent) |                            |                            |         |                            |                            |         |                            |                            |       |
| 1979                         | 4.7                        | 6.2                        | 4.8     | 8.6                        | 6.0                        | 7.7     | 5.8                        | 6.0                        | 5.9   |
| 1980                         | 4.9                        | 7.0                        | 5.0     | 8.7                        | 5.1                        | 7.4     | 6.0                        | 5.5                        | 5.9   |
| 1981                         | 4.7                        | 5.4                        | 4.7     | 8.3                        | 5.0                        | 7.2     | 5.7                        | 5.1                        | 5.6   |
| 1982                         | 6.2                        | 8.1                        | 6.3     | 8.4                        | 5.8                        | 7.5     | 6.8                        | 6.3                        | 6.7   |
| 1983                         | 10.1                       | 7.7                        | 9.9     | 11.7                       | 6.5                        | 9.9     | 10.5                       | 6.8                        | 9.9   |
| 1984                         | 8.7                        | 8.4                        | 8.7     | 9.6                        | 6.0                        | 8.3     | 9.0                        | 6.6                        | 8.5   |
| 1985                         | 7.8                        | 8.5                        | 7.8     | 9.2                        | 6.0                        | 8.0     | 8.2                        | 6.5                        | 7.9   |
| 1986(a)                      | 7.6                        | 9.2                        | 7.7     | 9.2                        | 7.0                        | 8.4     | 8.1                        | 7.5                        | 8.0   |
| 1987                         | 7.4                        | 8.6                        | 7.5     | 9.4                        | 6.5                        | 8.3     | 8.0                        | 7.0                        | 7.8   |
| 1988                         | 6.4                        | 7.8                        | 6.5     | 8.4                        | 5.4                        | 7.3     | 7.0                        | 5.9                        | 6.8   |
| 1989                         | 5.2                        | 7.8                        | 5.4     | 6.9                        | 5.2                        | 6.2     | 5.7                        | 5.8                        | 5.7   |

(a) Estimates from August 1986 are based on a revised definition introduced in April 1986. See paragraph 22 of the Technical Notes for further information.

Source: *The Labour Force, Australia* (6203.0).

**CHART 4.2. UNEMPLOYED PERSONS, AUSTRALIA**



Indicates break in series. Estimates from August 1986 are based on a revised definition introduced in April 1986. See Technical Notes for further information.

Source: *The Labour Force, Australia* (6203.0).

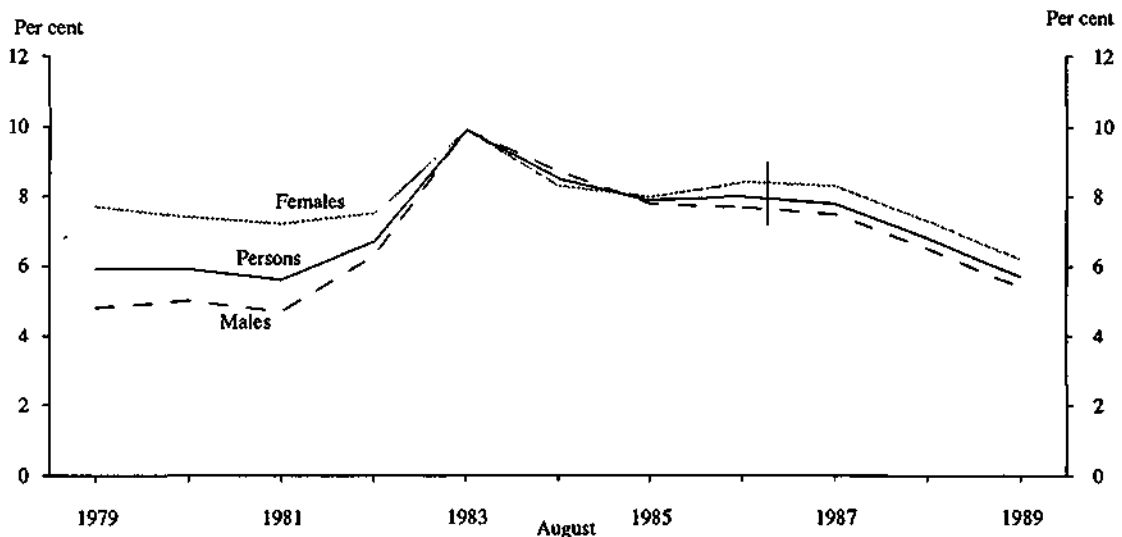
TABLE 4.2. UNEMPLOYED PERSONS : UNEMPLOYMENT RATES, BY AGE, AUSTRALIA, AUGUST 1979 TO AUGUST 1989  
(per cent)

| August         | Age group |       |       |       |       |             | Total |
|----------------|-----------|-------|-------|-------|-------|-------------|-------|
|                | 15-19     | 20-24 | 25-34 | 35-44 | 45-54 | 55 and over |       |
| <b>MALES</b>   |           |       |       |       |       |             |       |
| 1979           | 14.6      | 8.4   | 3.7   | 2.4   | 2.4   | 2.7         | 4.8   |
| 1980           | 14.7      | 8.5   | 3.9   | 2.5   | 2.8   | 2.9         | 5.0   |
| 1981           | 11.2      | 8.3   | 4.1   | 2.4   | 2.8   | 3.5         | 4.7   |
| 1982           | 16.3      | 11.2  | 5.5   | 3.6   | 3.6   | 3.3         | 6.3   |
| 1983           | 23.0      | 17.3  | 9.1   | 6.0   | 5.9   | 6.5         | 9.9   |
| 1984           | 22.1      | 14.2  | 7.6   | 5.0   | 5.7   | 5.8         | 8.7   |
| 1985           | 19.3      | 12.4  | 7.2   | 4.4   | 4.8   | 6.7         | 7.8   |
| 1986(a)        | 18.7      | 12.3  | 6.8   | 4.6   | 5.5   | 5.5         | 7.7   |
| 1987           | 18.0      | 12.6  | 7.0   | 4.8   | 4.2   | 5.5         | 7.5   |
| 1988           | 15.1      | 10.8  | 5.6   | 3.8   | 4.5   | 6.3         | 6.5   |
| 1989           | 12.9      | 8.0   | 5.1   | 3.5   | 3.0   | 5.0         | 5.4   |
| <b>FEMALES</b> |           |       |       |       |       |             |       |
| 1979           | 20.4      | 8.0   | 6.5   | 4.2   | 3.8   | *2.0        | 7.7   |
| 1980           | 18.7      | 9.1   | 5.7   | 4.3   | 3.4   | 2.2         | 7.4   |
| 1981           | 17.0      | 8.7   | 6.3   | 4.4   | 3.1   | 2.2         | 7.2   |
| 1982           | 17.0      | 8.8   | 6.9   | 4.8   | 3.6   | 2.7         | 7.5   |
| 1983           | 22.2      | 11.5  | 9.5   | 6.8   | 4.8   | 2.5         | 9.9   |
| 1984           | 19.7      | 10.3  | 7.1   | 5.6   | 4.6   | 2.6         | 8.3   |
| 1985           | 17.1      | 10.4  | 7.5   | 5.3   | 4.4   | 2.7         | 8.0   |
| 1986(a)        | 19.5      | 9.9   | 7.6   | 6.0   | 4.5   | 3.1         | 8.4   |
| 1987           | 19.4      | 10.5  | 7.5   | 6.1   | 4.5   | 2.2         | 8.3   |
| 1988           | 15.9      | 10.9  | 6.6   | 4.8   | 3.9   | 2.7         | 7.3   |
| 1989           | 14.6      | 7.9   | 5.8   | 3.9   | 4.1   | 2.4         | 6.2   |
| <b>PERSONS</b> |           |       |       |       |       |             |       |
| 1979           | 17.3      | 8.2   | 4.6   | 3.1   | 2.9   | 2.5         | 5.8   |
| 1980           | 16.6      | 8.7   | 4.6   | 3.2   | 3.0   | 2.7         | 5.9   |
| 1981           | 13.9      | 8.5   | 4.9   | 3.1   | 2.9   | 3.2         | 5.6   |
| 1982           | 16.6      | 10.2  | 6.0   | 4.0   | 3.6   | 3.1         | 6.7   |
| 1983           | 22.6      | 14.7  | 9.2   | 6.3   | 5.5   | 5.5         | 9.9   |
| 1984           | 20.9      | 12.5  | 7.4   | 5.3   | 5.3   | 5.0         | 8.5   |
| 1985           | 18.2      | 11.5  | 7.3   | 4.7   | 4.7   | 5.7         | 7.9   |
| 1986(a)        | 19.1      | 11.2  | 7.1   | 5.2   | 5.1   | 4.9         | 8.0   |
| 1987           | 18.7      | 11.6  | 7.2   | 5.3   | 4.3   | 4.6         | 7.8   |
| 1988           | 15.5      | 10.9  | 6.0   | 4.2   | 4.2   | 5.3         | 6.8   |
| 1989           | 13.7      | 8.0   | 5.4   | 3.6   | 3.4   | 4.4         | 5.7   |

(a) Estimates from August 1986 are based on a revised definition introduced in April 1986. See paragraph 22 of the Technical Notes for further information.

Source: *The Labour Force, Australia* (6203.0).

CHART 4.3. UNEMPLOYED PERSONS: UNEMPLOYMENT RATES, AUSTRALIA



Indicates break in series. Estimates from August 1986 are based on a revised definition introduced in April 1986. See Technical Notes for further information.

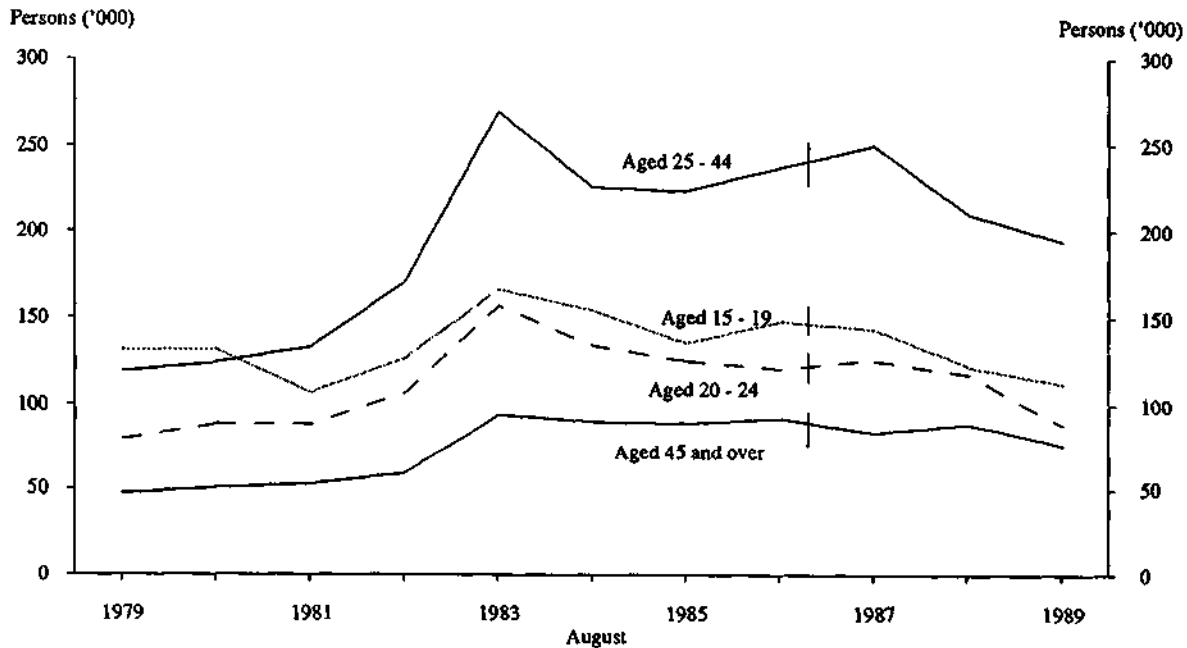
Source: *The Labour Force, Australia* (6203.0).

TABLE 4.3. UNEMPLOYED PERSONS: BIRTHPLACE BY AGE, AUSTRALIA, AUGUST 1989

|                               | Number unemployed ('000) |         |         | Unemployment rate (per cent) |         |         |
|-------------------------------|--------------------------|---------|---------|------------------------------|---------|---------|
|                               | Males                    | Females | Persons | Males                        | Females | Persons |
| <b>BORN IN AUSTRALIA</b>      |                          |         |         |                              |         |         |
| Total                         | 187.7                    | 149.4   | 337.1   | 5.3                          | 5.9     | 5.5     |
| Looking for full-time work    | 165.4                    | 97.2    | 262.6   | 5.1                          | 6.4     | 5.5     |
| Looking for part-time work    | 22.3                     | 52.1    | 74.4    | 7.3                          | 5.1     | 5.6     |
| Aged 15-19                    | 48.8                     | 49.9    | 98.6    | 12.5                         | 14.2    | 13.3    |
| Aged 20 and over              | 139.0                    | 99.5    | 238.4   | 4.4                          | 4.5     | 4.5     |
| 20-24                         | 40.5                     | 30.3    | 70.8    | 8.1                          | 7.2     | 7.7     |
| 25-34                         | 44.5                     | 36.3    | 80.8    | 4.5                          | 5.4     | 4.8     |
| 35-44                         | 22.6                     | 19.1    | 41.7    | 2.8                          | 3.1     | 3.0     |
| 45-54                         | 14.6                     | 11.7    | 26.3    | 2.9                          | 3.5     | 3.1     |
| 55 and over                   | 16.8                     | * 2.1   | 18.9    | 4.7                          | * 1.5   | 3.8     |
| Aged 15-64                    | 187.1                    | 149.1   | 336.2   | 5.4                          | 5.9     | 5.6     |
| <b>BORN OUTSIDE AUSTRALIA</b> |                          |         |         |                              |         |         |
| Total                         | 73.0                     | 59.3    | 132.3   | 5.7                          | 7.2     | 6.2     |
| Looking for full-time work    | 65.3                     | 42.2    | 107.5   | 5.4                          | 8.1     | 6.2     |
| Looking for part-time work    | 7.7                      | 17.2    | 24.9    | 9.7                          | 5.7     | 6.5     |
| Aged 15-19                    | 6.2                      | 7.5     | 13.7    | 17.4                         | 18.1    | 17.8    |
| Aged 20 and over              | 66.8                     | 51.8    | 118.6   | 5.3                          | 6.6     | 5.8     |
| 20-24                         | 7.1                      | 9.9     | 17.1    | 7.2                          | 11.2    | 9.1     |
| 25-34                         | 22.3                     | 16.1    | 38.4    | 7.0                          | 7.3     | 7.1     |
| 35-44                         | 18.7                     | 14.5    | 33.2    | 4.9                          | 5.6     | 5.2     |
| 45-54                         | 8.8                      | 8.8     | 17.6    | 3.1                          | 5.2     | 3.9     |
| 55 and over                   | 9.8                      | * 2.5   | 12.3    | 5.8                          | * 5.2   | 5.7     |
| Aged 15-64                    | 72.8                     | 59.3    | 132.1   | 5.7                          | 7.2     | 6.3     |

Source: The Labour Force, Australia (6203.0).

CHART 4.4. UNEMPLOYED PERSONS BY AGE, AUSTRALIA



Indicates break in series. Estimates from August 1986 are based on a revised definition introduced in April 1986. See Technical Notes for further information.

Source: The Labour Force, Australia(6203.0).

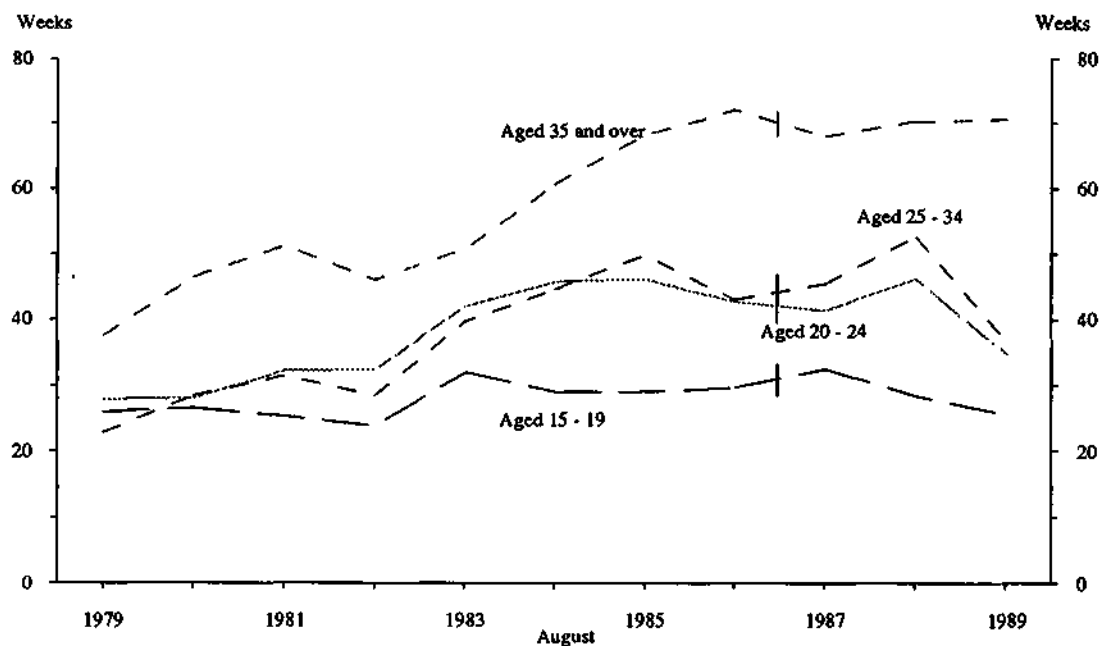
TABLE 4.4. UNEMPLOYED PERSONS : DURATION OF UNEMPLOYMENT, AUSTRALIA, AUGUST 1979 TO AUGUST 1989

| Duration of unemployment (weeks) | August       |              |              |              |              |              |              |              |              |              |              |
|----------------------------------|--------------|--------------|--------------|--------------|--------------|--------------|--------------|--------------|--------------|--------------|--------------|
|                                  | 1979         | 1980         | 1981         | 1982         | 1983         | 1984         | 1985         | 1986(a)      | 1987         | 1988         | 1989         |
|                                  | —'000—       |              |              |              |              |              |              |              |              |              |              |
| Under 2                          | 33.4         | 32.0         | 33.9         | 38.7         | 32.4         | 34.2         | 38.8         | 47.3         | 41.7         | 41.3         | 47.3         |
| 2 and under 4                    | 42.9         | 43.9         | 41.5         | 58.2         | 49.7         | 56.8         | 55.6         | 56.7         | 59.6         | 54.9         | 54.8         |
| 4 and under 8                    | 52.0         | 55.7         | 58.4         | 72.4         | 73.9         | 64.0         | 57.6         | 67.3         | 67.9         | 60.6         | 68.8         |
| 8 and under 13                   | 44.3         | 43.1         | 45.9         | 52.3         | 65.9         | 58.8         | 47.6         | 58.4         | 56.4         | 50.6         | 44.6         |
| 13 and under 26                  | 61.7         | 62.2         | 52.8         | 61.2         | 103.1        | 80.5         | 78.2         | 85.3         | 84.2         | 75.7         | 63.8         |
| 26 and under 39                  | 61.0         | 65.5         | 53.2         | 73.3         | 123.5        | 94.9         | 87.9         | 91.3         | 94.6         | 78.3         | 62.5         |
| 39 and under 52                  | 14.1         | 13.7         | 15.0         | 17.8         | 49.6         | 26.2         | 29.7         | 27.6         | 25.5         | 24.4         | 19.9         |
| 52 and under 65                  | 24.7         | 23.0         | 23.4         | 25.7         | 61.3         | 46.9         | 41.3         | 35.7         | 39.6         | 33.6         | 23.7         |
| 65 and under 104                 | 19.8         | 19.5         | 15.8         | 18.6         | 43.3         | 49.2         | 30.7         | 32.1         | 36.7         | 29.7         | 19.4         |
| 104 and over                     | 23.7         | 35.8         | 40.8         | 43.4         | 84.2         | 92.4         | 105.1        | 96.1         | 95.7         | 89.6         | 65.1         |
| <b>Total</b>                     | <b>377.5</b> | <b>394.5</b> | <b>380.6</b> | <b>461.4</b> | <b>686.8</b> | <b>604.0</b> | <b>572.7</b> | <b>597.6</b> | <b>602.0</b> | <b>538.7</b> | <b>469.4</b> |
|                                  | —weeks—      |              |              |              |              |              |              |              |              |              |              |
| Average duration—                |              |              |              |              |              |              |              |              |              |              |              |
| Mean                             | 28.4         | 32.0         | 34.9         | 32.6         | 41.4         | 45.5         | 49.5         | 48.6         | 48.3         | 51.3         | 44.5         |
| Median                           | 14           | 15           | 13           | 13           | 26           | 26           | 26           | 21           | 23           | 22           | 15           |

(a) Estimates from August 1986 are based on a revised definition introduced in April 1986. See paragraph 22 of the Technical Notes for further information.

Source: *The Labour Force, Australia* (6203.0).

CHART 4.5. UNEMPLOYED PERSONS: AVERAGE DURATION OF UNEMPLOYMENT AND AGE, AUSTRALIA

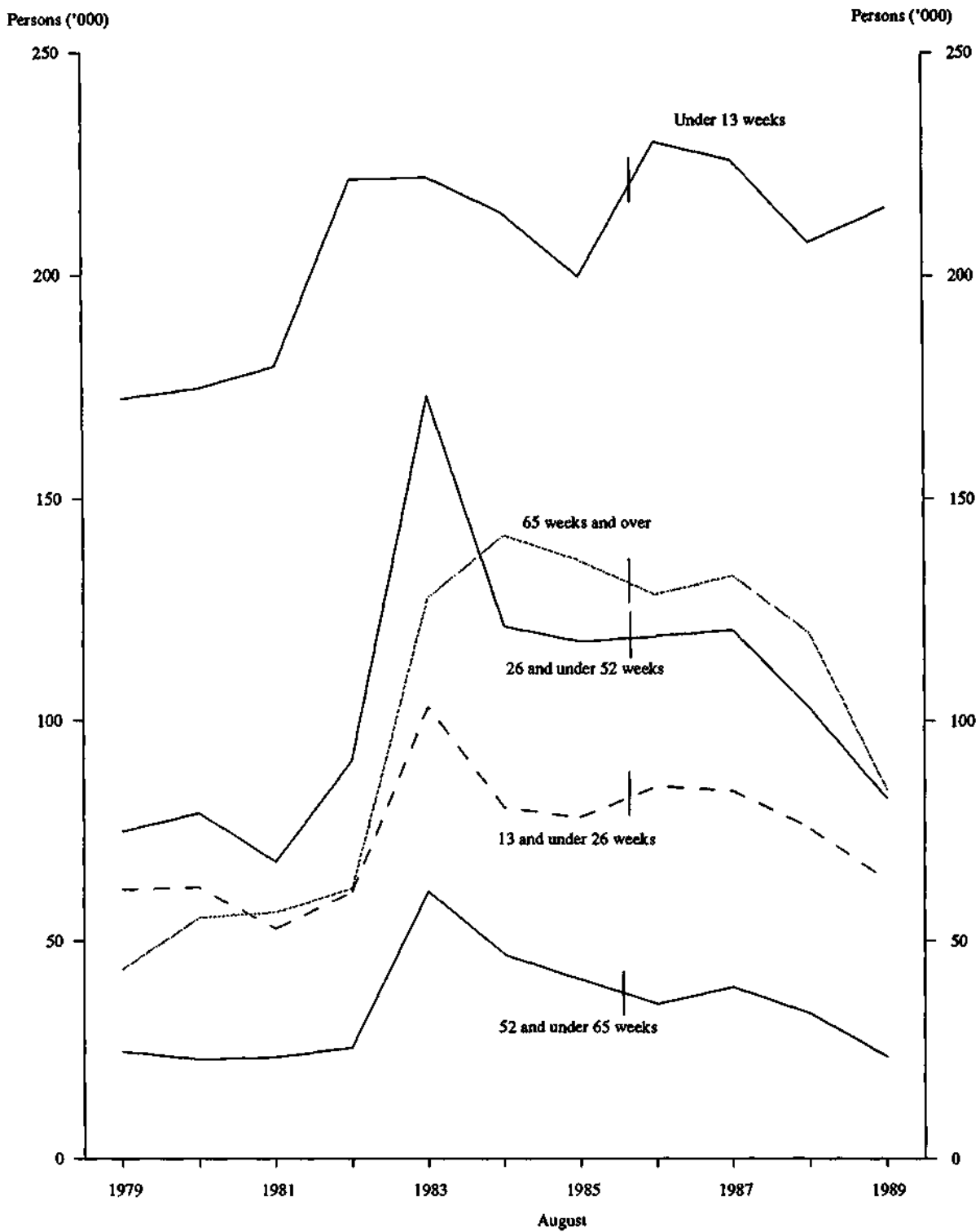


Indicates break in series. Estimates from August 1986 are based on a revised definition introduced in April 1986. See Technical Notes for further information.

Note: Estimates for average duration of unemployment refer to current periods of unemployment, not completed periods.

Source: *The Labour Force, Australia* (6203.0).

CHART 4.6. UNEMPLOYED PERSONS: DURATION OF UNEMPLOYMENT, AUSTRALIA



Indicates break in series. Estimates from August 1986 are based on a revised definition introduced in April 1986. See Technical Notes for further information.

Source: *The Labour Force, Australia* (6203.0).

TABLE 4.5. UNEMPLOYED PERSONS: REASON FOR LEAVING LAST FULL-TIME JOB, AUSTRALIA

| Month         | Reason for unemployment |            |                        |                       |                | Total | Percent of unemployed |            |                            |                       |                |
|---------------|-------------------------|------------|------------------------|-----------------------|----------------|-------|-----------------------|------------|----------------------------|-----------------------|----------------|
|               | Job loser               | Job leaver | Stood down<br>- '000 - | Looking for first job | Former workers |       | Job loser             | Job leaver | Stood down<br>- per cent - | Looking for first job | Former workers |
| <b>1988 —</b> |                         |            |                        |                       |                |       |                       |            |                            |                       |                |
| June          | 183.7                   | 110.0      | 11.9                   | 94.0                  | 169.4          | 569.1 | 32.3                  | 19.3       | 2.1                        | 16.5                  | 29.8           |
| July          | 172.9                   | 96.5       | 15.3                   | 82.5                  | 151.5          | 518.8 | 33.3                  | 18.6       | 3.0                        | 15.9                  | 29.2           |
| August        | 170.7                   | 113.5      | 8.6                    | 90.6                  | 155.3          | 538.7 | 31.7                  | 21.1       | 1.6                        | 16.8                  | 28.8           |
| September     | 169.8                   | 113.3      | 16.6                   | 98.3                  | 156.5          | 554.6 | 30.6                  | 20.4       | 3.0                        | 17.7                  | 28.2           |
| October       | 156.9                   | 95.9       | 12.3                   | 90.4                  | 152.3          | 507.9 | 30.9                  | 18.9       | 2.4                        | 17.8                  | 30.0           |
| November      | 152.0                   | 91.4       | 14.1                   | 85.2                  | 145.6          | 488.4 | 31.1                  | 18.7       | 2.9                        | 17.4                  | 29.8           |
| December      | 146.5                   | 109.6      | 11.7                   | 147.0                 | 148.6          | 563.3 | 26.0                  | 19.4       | 2.1                        | 26.1                  | 26.4           |
| <b>1989 —</b> |                         |            |                        |                       |                |       |                       |            |                            |                       |                |
| January       | 172.0                   | 110.6      | 19.1                   | 141.7                 | 149.0          | 592.4 | 29.0                  | 18.7       | 3.2                        | 23.9                  | 25.2           |
| February      | 164.7                   | 126.3      | 15.1                   | 128.0                 | 164.0          | 598.1 | 27.5                  | 21.1       | 2.5                        | 21.4                  | 27.4           |
| March         | 150.8                   | 124.3      | 15.8                   | 99.8                  | 155.6          | 546.3 | 27.6                  | 22.8       | 2.9                        | 18.3                  | 28.5           |
| April         | 140.0                   | 111.4      | 13.2                   | 94.5                  | 157.0          | 516.1 | 27.1                  | 21.6       | 2.6                        | 18.3                  | 30.4           |
| May           | 148.7                   | 109.6      | 14.2                   | 88.0                  | 158.1          | 518.5 | 28.7                  | 21.1       | 2.7                        | 17.0                  | 30.5           |
| June          | 150.0                   | 98.7       | 12.7                   | 77.9                  | 138.2          | 477.4 | 31.4                  | 20.7       | 2.7                        | 16.3                  | 28.9           |
| July          | 146.5                   | 100.2      | 16.4                   | 78.6                  | 141.7          | 483.4 | 30.3                  | 20.7       | 3.4                        | 16.3                  | 29.3           |
| August        | 149.9                   | 104.8      | 11.1                   | 79.5                  | 124.1          | 469.4 | 31.9                  | 22.3       | 2.4                        | 16.9                  | 26.4           |

Source: The Labour Force, Australia (6203.0).

TABLE 4.6. UNEMPLOYED PERSONS: INDUSTRY AND OCCUPATION OF LAST FULL-TIME JOB, AUSTRALIA  
AUGUST 1989  
(\*000)

|   | Number unemployed ('000) |         |         | Unemployment Rate (per cent) |         |         |
|---|--------------------------|---------|---------|------------------------------|---------|---------|
|   | Males                    | Females | Persons | Males                        | Females | Persons |
| <i>Had worked full time for two weeks or more in the last two years</i> | 158.6                    | 96.0    | 254.7   | 3.4                          | 3.0     | 3.2     |
| <b>Industry division or subdivision —</b>                               |                          |         |         |                              |         |         |
| Agriculture, forestry, fishing & hunting                                | 11.2                     | * 3.1   | 14.3    | 3.7                          | * 2.6   | 3.4     |
| Agriculture & services to agriculture                                   | 8.9                      | * 2.9   | 11.8    | 3.2                          | * 2.5   | 3.0     |
| Forestry & logging, fishing & hunting                                   | * 2.3                    | * 0.2   | * 2.5   | * 9.3                        | * 5.2   | * 8.7   |
| Mining  | 4.4                      | * 0.6   | 5.0     | 4.5                          | * 4.7   | 4.5     |
| Manufacturing   | 37.5                     | 15.4    | 52.9    | 4.0                          | 4.3     | 4.1     |
| Food, beverages and tobacco   | 6.1                      | 5.3     | 11.4    | 4.4                          | 8.1     | 5.6     |
| Metal products  | 9.5                      | * 1.0   | 10.4    | 5.3                          | * 2.8   | 4.9     |
| Other manufacturing   | 21.9                     | 9.2     | 31.1    | 3.6                          | 3.6     | 3.6     |
| Electricity, gas and water  | * 1.2                    | * 0.3   | * 1.6   | * 1.2                        | * 3.2   | * 1.4   |
| Construction  | 24.9                     | * 1.0   | 25.9    | 4.5                          | * 1.3   | 4.1     |
| Wholesale and retail trade  | 34.3                     | 30.0    | 64.3    | 3.8                          | 3.9     | 3.8     |
| Wholesale trade   | 11.4                     | 5.2     | 16.6    | 3.3                          | 3.3     | 3.3     |
| Retail trade  | 22.9                     | 24.8    | 47.7    | 4.1                          | 4.1     | 4.1     |
| Transport and storage   | 9.5                      | * 2.0   | 11.5    | 2.8                          | * 2.3   | 2.7     |
| Communication   | * 2.0                    | * 0.4   | * 2.4   | * 2.0                        | * 0.9   | * 1.7   |
| Finance, property & business services                                   | 8.6                      | 9.8     | 18.4    | 1.9                          | 2.3     | 2.1     |
| Public administration and defence                                       | 5.2                      | * 3.0   | 8.2     | 2.6                          | * 2.3   | 2.5     |
| Community services  | 7.9                      | 17.1    | 25.0    | 1.6                          | 1.9     | 1.8     |
| Recreation, personal & other services                                   | 11.8                     | 13.4    | 25.1    | 4.7                          | 4.1     | 4.3     |
| <b>Occupation group —</b>   |                          |         |         |                              |         |         |
| Managers and administrators   | 9.6                      | * 2.5   | 12.1    | 1.5                          | * 1.3   | 1.5     |
| Professionals   | 8.4                      | 5.0     | 13.4    | 1.4                          | 1.3     | 1.4     |
| Para-professionals  | 4.3                      | * 3.4   | 7.7     | 1.7                          | * 1.7   | 1.7     |
| Tradespersons   | 31.1                     | 4.9     | 36.0    | 2.7                          | 3.8     | 2.8     |
| Clerks  | 8.4                      | 24.6    | 33.0    | 2.7                          | 2.4     | 2.4     |
| Salespersons and personal service workers                               | 14.5                     | 31.1    | 45.5    | 3.5                          | 4.1     | 3.9     |
| Plant and machine operators, and drivers                                | 19.9                     | 4.8     | 24.7    | 3.8                          | 4.5     | 3.9     |
| Labourers and related workers   | 62.5                     | 19.7    | 82.2    | 7.4                          | 4.5     | 6.4     |
| <b>Other</b>  | 98.2                     | 105.4   | 203.6   | ..                           | ..      | ..      |
| Looking for first job   | 35.5                     | 44.1    | 79.5    | ..                           | ..      | ..      |
| Looking for full-time work  | 20.7                     | 22.6    | 43.3    | ..                           | ..      | ..      |
| Former workers  | 62.7                     | 61.3    | 124.1   | ..                           | ..      | ..      |
| Stood down  | 3.9                      | 7.3     | 11.1    | ..                           | ..      | ..      |
| <b>Total</b>  | 260.7                    | 208.7   | 469.4   | 5.4                          | 6.2     | 5.7     |

Source: The Labour Force, Australia (6203.0).

### Job Search Experience of Unemployed Persons

In July 1988, the labour force numbered 7,877,000 persons, of whom 503,500 were unemployed (excluding those who were stood down). Persons looking for full-time work outnumbered those looking for part-time work by more than five to one.

For many years the most frequently reported difficulty in finding work was the belief that there were 'no vacancies at all'. Ten years ago, 38 per cent of unemployed persons reported this as the main difficulty. By July 1988 however that proportion had fallen to 16 per cent. In recent years, a downward trend is evident for persons reporting 'no vacancies in line of work' as the main difficulty — 12 per cent in July 1988.

There were 156,700 persons (31 per cent of total unemployed) whose current period of unemployment (at July 1988) was one year or more. More than half of these people reported their main difficulty in finding work as being 'considered too young or too old by employers', 'no vacancies at all', or they 'lacked the necessary skills/education'.

TABLE 4.7. UNEMPLOYED PERSONS : MAIN DIFFICULTY IN FINDING WORK, DURING CURRENT PERIOD OF UNEMPLOYMENT, AUSTRALIA, JULY 1978 TO JULY 1988

| Main difficulty in finding work                 | July<br>1978 | July<br>1980 | July<br>1982 | July<br>1984 | June<br>1986 | July<br>1988 |              |
|---|--------------|--------------|--------------|--------------|--------------|--------------|--------------|
|   | — per cent — |              |              |              |              |              | ('000)       |
| Own ill health or injury                        | 3.7          | 3.9          | 3.8          | 4.1          | 5.8          | 6.6          | 33.2         |
| Considered too young or too<br>old by employers | 10.9         | 13.0         | 15.3         | 15.5         | 16.3         | 16.5         | 82.9         |
| Unsuitable hours                                | 2.4          | 2.8          | 4.0          | 2.8          | 4.0          | 3.6          | 18.2         |
| Too far to travel/transport problems            | 5.4          | 6.1          | 4.7          | 4.9          | 5.7          | 6.9          | 34.5         |
| Lacked necessary skills/education               | 6.4          | 8.0          | 7.3          | 10.5         | 10.0         | 12.0         | 60.3         |
| Language difficulties                           | n.a.         | 1.7          | 2.4          | 2.8          | 2.1          | 3.2          | 16.0         |
| Insufficient work experience                    | 7.9          | 10.9         | 9.7          | 9.8          | 10.1         | 10.9         | 54.8         |
| No vacancies in line of work                    | 15.1         | 16.5         | 16.3         | 16.0         | 16.0         | 12.0         | 60.5         |
| No vacancies at all                             | 38.2         | 27.5         | 26.9         | 23.8         | 19.0         | 16.1         | 81.3         |
| Other difficulties(a)                           | (b)6.4       | 5.1          | 5.5          | 5.3          | 5.0          | 6.1          | 30.5         |
| No difficulties reported                        | 3.6          | 4.4          | 4.0          | 4.4          | 6.1          | 6.2          | 31.3         |
| <b>Total</b>                                    | <b>100.0</b> | <b>100.0</b> | <b>100.0</b> | <b>100.0</b> | <b>100.0</b> | <b>100.0</b> | <b>503.5</b> |

(a) Includes persons who reported difficulties with ethnic background. (b) This estimate includes the category language difficulties.

Source: *Job Search Experience of Unemployed Persons, Australia, July 1988* (6222.0).

TABLE 4.8. UNEMPLOYED PERSONS : ACTIVE STEPS TAKEN TO FIND WORK, AUSTRALIA, JULY 1978 TO JULY 1988

| Active steps taken to find work  | July<br>1978 | July<br>1980 | July<br>1982 | July<br>1984 | June<br>1986 | July<br>1988 |              |
|----------------------------------|--------------|--------------|--------------|--------------|--------------|--------------|--------------|
|                                  | — per cent — |              |              |              |              |              | ('000)       |
| Registered with the CES and—     |              |              |              |              |              |              |              |
| Took no other active steps       | 7.1          | 5.5          | 0.8          | 1.3          | 1.5          | 1.4          | 7.2          |
| Contacted prospective employers  | 65.1         | 67.0         | 66.9         | 73.8         | 70.4         | 71.7         | 361.0        |
| Took other active steps          | 3.7          | 2.8          | 5.0          | 6.7          | 6.9          | 6.1          | 30.7         |
| <b>Total</b>                     | <b>75.9</b>  | <b>75.3</b>  | <b>72.7</b>  | <b>81.8</b>  | <b>78.8</b>  | <b>79.2</b>  | <b>398.8</b> |
| Not registered with the CES and— |              |              |              |              |              |              |              |
| Contacted prospective employers  | 21.3         | 22.7         | 24.8         | 16.4         | 19.3         | 19.0         | 95.5         |
| Took other active steps          | 2.8          | 2.1          | 2.5          | 1.8          | 1.9          | 1.8          | 9.2          |
| <b>Total</b>                     | <b>24.1</b>  | <b>24.7</b>  | <b>27.3</b>  | <b>18.2</b>  | <b>21.2</b>  | <b>20.8</b>  | <b>104.7</b> |
| <b>Total</b>                     | <b>100.0</b> | <b>100.0</b> | <b>100.0</b> | <b>100.0</b> | <b>100.0</b> | <b>100.0</b> | <b>503.5</b> |

Source: *Job Search Experience of Unemployed Persons, Australia, July 1988* (6222.0).

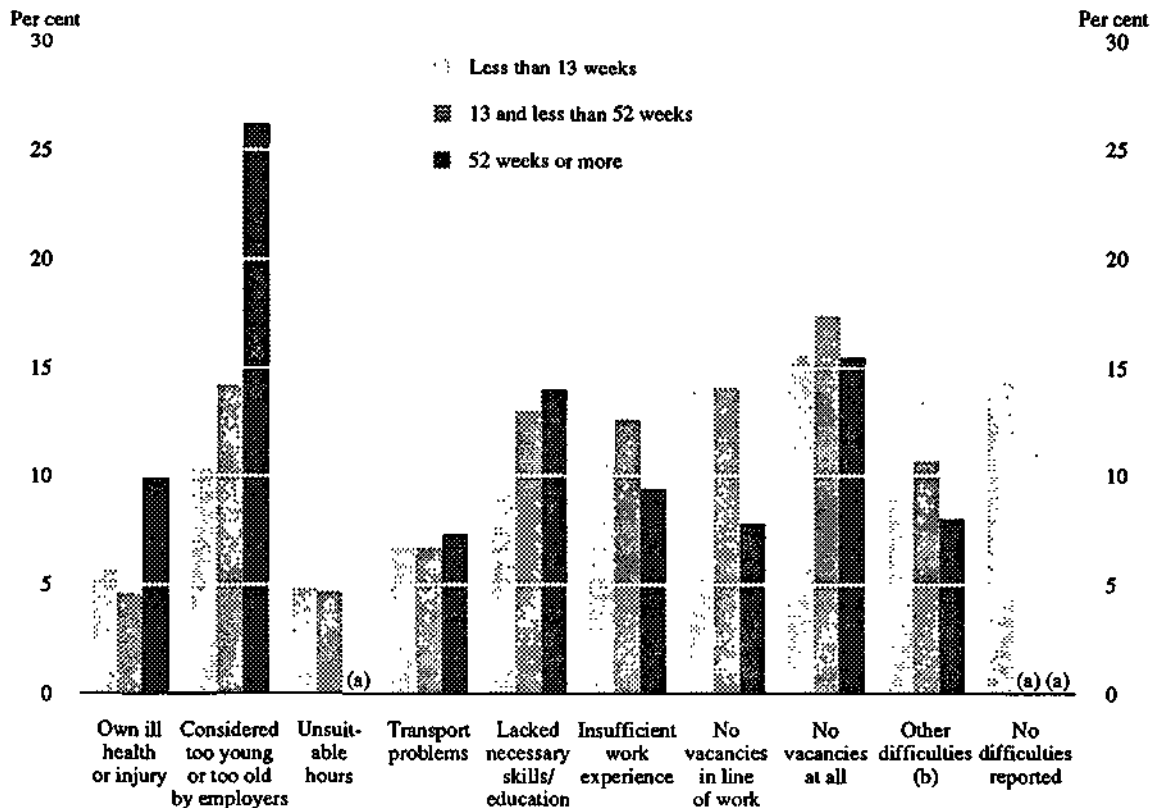


TABLE 4.9. UNEMPLOYED PERSONS : WHETHER WOULD MOVE INTERSTATE OR INTRASTATE IF OFFERED A SUITABLE JOB, AUSTRALIA, JULY 1980 TO JULY 1988

|   | July<br>1980 | July<br>1982 | July<br>1984 | June<br>1986 | July<br>1988 |                     |
|---|--------------|--------------|--------------|--------------|--------------|---------------------|
|   | — per cent — |              |              |              |              | ( <sup>'000</sup> ) |
| WHETHER WOULD MOVE INTERSTATE IF OFFERED A SUITABLE JOB |              |              |              |              |              |                     |
| Would move interstate                                   | 24.6         | 27.9         | 26.9         | 26.0         | 24.9         | 125.5               |
| Would not move interstate                               | 64.8         | 60.4         | 61.2         | 63.0         | 63.3         | 318.6               |
| Moving interstate would depend—                         |              |              |              |              |              |                     |
| On job conditions                                       | 3.8          | 4.0          | 5.4          | 4.0          | 5.1          | 25.9                |
| On other conditions                                     | 4.0          | 5.4          | 4.4          | 4.9          | 4.3          | 21.7                |
| Total   | 7.9          | 9.4          | 9.8          | 8.9          | 9.5          | 47.6                |
| Undecided   | 2.8          | 2.2          | 2.2          | 2.1          | 2.3          | 11.7                |
| <b>Total</b>  | <b>100.0</b> | <b>100.0</b> | <b>100.0</b> | <b>100.0</b> | <b>100.0</b> | <b>503.5</b>        |
| WHETHER WOULD MOVE INTRASTATE IF OFFERED A SUITABLE JOB |              |              |              |              |              |                     |
| Would move intrastate                                   | 38.6         | 41.1         | 40.5         | 37.2         | 37.4         | 188.1               |
| Would not move intrastate                               | 50.0         | 46.2         | 45.5         | 49.8         | 48.5         | 244.4               |
| Moving intrastate would depend—                         |              |              |              |              |              |                     |
| On job conditions                                       | 4.5          | 3.3          | 5.7          | 3.8          | 4.6          | 23.1                |
| On other conditions                                     | 4.5          | 7.8          | 6.6          | 7.4          | 7.5          | 37.8                |
| Total   | 9.0          | 11.0         | 12.2         | 11.2         | 12.1         | 60.9                |
| Undecided   | 2.4          | 1.7          | 1.8          | 1.9          | 2.0          | 10.1                |
| <b>Total</b>  | <b>100.0</b> | <b>100.0</b> | <b>100.0</b> | <b>100.0</b> | <b>100.0</b> | <b>503.5</b>        |

Source: Job Search Experience of Unemployed Persons, Australia, July 1988 (6222.0).

CHART 4.7. UNEMPLOYED PERSONS: MAIN DIFFICULTY IN FINDING WORK AND DURATION OF CURRENT PERIOD OF UNEMPLOYMENT, AUSTRALIA, JULY 1988



(a) Estimate subject to sampling variability too high for most practical uses. (b) Includes persons who reported difficulties with ethnic background.

Source: Job Search Experience of Unemployed Persons, Australia, July 1988 (6222.0).

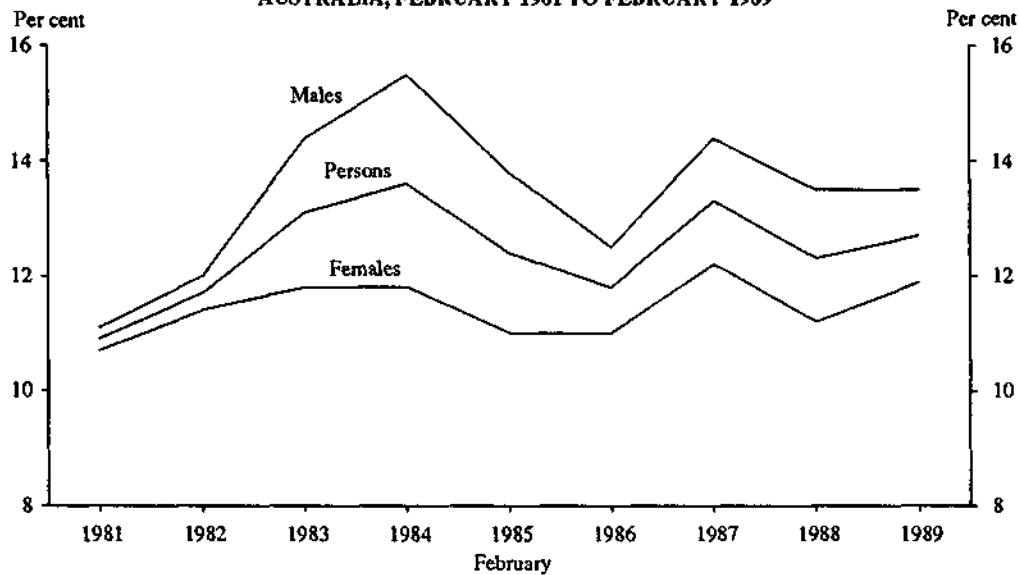
### Labour Force Experience

An estimated 1,603,200 persons looked for work at some time during the year ending February 1989. This represented 13 per cent of all persons aged 15 and over. The proportion of persons who had looked for work in the period prior to interview has varied considerably from the 1981 estimate of 11 per cent to 13 per cent in February 1989.

The proportion of males who had looked for work remained higher than the corresponding proportion of females for all years. These proportions were estimated at 14 per cent and 12 per cent respectively in February 1989.

The proportion of persons who had looked for work during the year decreased with age, and the average duration of looking for work increased. Thus, while 30 per cent of 15 to 19 year olds had looked for work with an average duration of 13.4 weeks, 3 per cent of persons aged 55 and over had looked for for work for an average 29.7 weeks.

CHART 4.8. ALL PERSONS : PROPORTION WHO HAD LOOKED FOR WORK AT SOME TIME IN THE TWELVE MONTHS PRIOR TO INTERVIEW, AUSTRALIA, FEBRUARY 1981 TO FEBRUARY 1989



Source: *Labour Force Experience, Australia* (6206.0).

TABLE 4.10. PERSONS WHO LOOKED FOR WORK AT SOME TIME DURING THE YEAR ENDING FEBRUARY 1989, AGE AND MARITAL STATUS, AUSTRALIA ('000)

| Age group    | Married      |              |              | Not-married  |              |              | Total        |              |                |
|--------------|--------------|--------------|--------------|--------------|--------------|--------------|--------------|--------------|----------------|
|              | Males        | Females      | Persons      | Males        | Females      | Persons      | Males        | Females      | Persons        |
| 15-19        | *3.2         | 8.8          | 11.9         | 204.6        | 193.3        | 397.9        | 207.8        | 202.1        | 409.8          |
| 20-24        | 32.5         | 39.7         | 72.2         | 129.4        | 100.4        | 229.8        | 161.9        | 140.1        | 302.0          |
| 25-34        | 127.1        | 126.7        | 253.8        | 95.3         | 65.7         | 160.9        | 222.3        | 192.4        | 414.7          |
| 35-44        | 99.4         | 110.5        | 209.8        | 23.2         | 36.5         | 59.7         | 122.6        | 147.0        | 269.6          |
| 45-54        | 47.9         | 38.4         | 86.3         | 21.4         | 20.9         | 42.2         | 69.3         | 59.3         | 128.6          |
| 55-59        | 25.2         | *6.6         | 31.8         | *7.9         | *6.0         | 13.9         | 33.1         | 12.6         | 45.7           |
| 60 and over  | 21.4         | *3.4         | 24.7         | *7.3         | *0.7         | 8.1          | 28.7         | *4.1         | 32.8           |
| <b>Total</b> | <b>356.7</b> | <b>334.1</b> | <b>690.7</b> | <b>489.0</b> | <b>423.5</b> | <b>912.5</b> | <b>845.7</b> | <b>757.5</b> | <b>1,603.2</b> |

Source: *Labour Force Experience, Australia, During the Year Ending February 1989* (6206.0).

### Educational Attainment

In February 1989 the number of unemployed persons was estimated at 588,400, a drop of 149,400 (20%) since February 1984. The number of unemployed persons with post-school qualifications fell 41,000 (20%) to 166,100, while for those without post-school qualifications there was a fall of 114,600 (23%) to 385,000. As a percentage of total unemployment, persons with a degree accounted for five per cent; persons with other post-school qualifications 23 per cent and persons who had attended only the highest level of secondary school 16 per cent. Persons who had not attended the highest level of secondary school were 48 per cent of all unemployed persons.

TABLE 4.11. UNEMPLOYED PERSONS : EDUCATIONAL ATTAINMENT AND UNEMPLOYMENT RATES, AUSTRALIA, FEBRUARY 1980 TO FEBRUARY 1989

| February                                 | With post-school qualifications |                     |                        | Without post-school qualifications |  |  | Total(b) | Total(c) |
|--|---------------------------------|---------------------|------------------------|------------------------------------|--|--|----------|----------|
|  | Degree                          | Trade qualification | Certificate or diploma | Total(a)                           | Attended highest level of secondary school | Did not attend highest level of secondary school |          |          |
| UNEMPLOYED ('000)                        |                                 |                     |                        |                                    |  |  |          |          |
| 1980                                     | 15.4                            |                     | 77.9                   | 96.9                               | 52.0                                       | 273.2  | 327.1    | 442.8    |
| 1981                                     | 19.6                            |                     | 72.8                   | 96.7                               | 53.2                                       | 251.9  | 306.4    | 422.4    |
| 1982                                     | 21.2                            |                     | 92.4                   | 116.1                              | 68.7                                       | 277.9  | 347.7    | 484.4    |
| 1983                                     | 29.5                            |                     | 175.4                  | 212.0                              | 102.4                                      | 404.5  | 509.7    | 746.7    |
| 1984                                     | 33.1                            |                     | 167.8                  | 207.1                              | 102.0                                      | 394.7  | 499.6    | 737.8    |
| 1985                                     | 23.7                            |                     | 131.4                  | 164.9                              | 101.5                                      | 374.6  | 476.8    | 673.6    |
| 1986                                     | 27.9                            |                     | 128.4                  | 169.2                              | 97.7                                       | 345.0  | 444.7    | 650.0    |
| 1987(d)                                  | 25.4                            | 64.2                | 85.3                   | 178.1                              | 109.1                                      | 355.2  | 468.0    | 687.3    |
| 1988(d)                                  | 27.2                            | 61.9                | 89.5                   | 182.0                              | 97.5                                       | 308.4  | 411.3    | 633.6    |
| 1989(d)                                  | 32.3                            | 46.8                | 83.6                   | 166.1                              | 96.9                                       | 283.9  | 385.0    | 588.4    |
| UNEMPLOYMENT RATE (per cent)             |                                 |                     |                        |                                    |  |  |          |          |
| 1980                                     | 3.5                             |                     | 4.0                    | 4.0                                | 6.8  | 8.2  | 8.0      | 6.7      |
| 1981                                     | 3.8                             |                     | 3.6                    | 3.7                                | 6.7  | 7.8  | 7.5      | 6.3      |
| 1982                                     | 3.9                             |                     | 4.3                    | 4.2                                | 8.2  | 8.7  | 8.6      | 7.0      |
| 1983                                     | 5.0                             |                     | 7.9                    | 7.4                                | 11.6                                       | 12.8   | 12.6     | 10.7     |
| 1984                                     | 5.2                             |                     | 7.3                    | 6.9                                | 11.5                                       | 12.8   | 12.6     | 10.4     |
| 1985                                     | 3.4                             |                     | 5.8                    | 5.4                                | 10.8                                       | 12.0   | 11.7     | 9.3      |
| 1986                                     | 3.9                             |                     | 5.4                    | 5.3                                | 10.3                                       | 11.1   | 10.9     | 8.7      |
| 1987(d)                                  | 3.6                             | 5.0                 | 6.1                    | 5.2                                | 11.0                                       | 11.6   | 11.4     | 9.0      |
| 1988(d)                                  | 3.6                             | 4.8                 | 6.1                    | 5.1                                | 9.5  | 10.1   | 10.0     | 8.1      |
| 1989(d)                                  | 4.0                             | 3.6                 | 5.3                    | 4.5                                | 9.0  | 9.1  | 9.1      | 7.3      |
| AVERAGE DURATION OF UNEMPLOYMENT (weeks) |                                 |                     |                        |                                    |  |  |          |          |
| 1980                                     | 20.1                            |                     | 22.5                   | 22.7                               | 18.5                                       | 31.4   | 29.6     | 27.5     |
| 1981                                     | 17.8                            |                     | 24.0                   | 22.2                               | 24.0                                       | 37.0   | 34.8     | 30.9     |
| 1982                                     | 15.9                            |                     | 25.2                   | 23.6                               | 21.2                                       | 35.0   | 32.4     | 29.4     |
| 1983                                     | 22.0                            |                     | 23.0                   | 23.4                               | 24.5                                       | 37.2   | 34.6     | 30.9     |
| 1984                                     | 24.9                            |                     | 31.6                   | 30.9                               | 35.6                                       | 51.1   | 48.1     | 41.9     |
| 1985                                     | 27.0                            |                     | 36.6                   | 35.7                               | 29.0                                       | 55.0   | 49.7     | 44.6     |
| 1986                                     | 23.1                            |                     | 37.9                   | 35.7                               | 29.4                                       | 52.3   | 47.4     | 42.6     |
| 1987(d)                                  | 37.0                            | 54.6                | 29.2                   | 39.3                               | 30.9                                       | 57.9   | 51.8     | 46.4     |
| 1988(d)                                  | 24.9                            | 48.2                | 33.9                   | 38.1                               | 27.6                                       | 57.6   | 50.6     | 44.6     |
| 1989(d)                                  | 23.4                            | 64.3                | 31.7                   | 39.6                               | 22.5                                       | 59.1   | 50.1     | 44.9     |
| MEDIAN DURATION OF UNEMPLOYMENT (weeks)  |                                 |                     |                        |                                    |  |  |          |          |
| 1980                                     | 10                              |                     | 9                      | 10                                 | 11   | 13   | 12       | 12       |
| 1981                                     | 10                              |                     | 10                     | 10                                 | 11   | 15   | 13       | 12       |
| 1982                                     | 9                               |                     | 10                     | 10                                 | 9  | 13   | 12       | 11       |
| 1983                                     | 9                               |                     | 10                     | 11                                 | 11   | 17   | 16       | 13       |
| 1984                                     | 10                              |                     | 15                     | 13                                 | 13   | 28   | 26       | 19       |
| 1985                                     | 9                               |                     | 13                     | 12                                 | 10   | 26   | 20       | 16       |
| 1986                                     | 8                               |                     | 11                     | 11                                 | 10   | 20   | 16       | 13       |
| 1987(d)                                  | 11                              | 15                  | 10                     | 12                                 | 11   | 24   | 18       | 14       |
| 1988(d)                                  | 7                               | 15                  | 8                      | 9                                  | 9  | 24   | 17       | 13       |
| 1989(d)                                  | 8                               | 19                  | 8                      | 9                                  | 8  | 18   | 13       | 11       |

(a) Includes persons with other post-school qualifications. (b) Includes persons who never attended school and those for whom secondary school qualifications could not be determined. (c) Includes persons aged 15 to 20 still at school. (d) Prior to February 1987 the data now published in the Educational Attainment categories 'Trade qualification' and 'Certificate or diploma' were published as 'Trade; technical or other certificate'.

Source: Labour Force Status and Educational Attainment, Australia, February 1989 (6235.0).

TABLE 4.12. UNEMPLOYED PERSONS : AGE AND EDUCATIONAL ATTAINMENT, AUSTRALIA, FEBRUARY 1989

| Educational attainment                                     | Age group    |              |              |             |             |             | Total        |              |
|--|--------------|--------------|--------------|-------------|-------------|-------------|--------------|--------------|
|  | 15 - 19      | 20 - 24      | 25 - 34      | 35 - 44     | 45 - 54     | 55 and over |              |              |
|  | - '000 -     |              |              |             |             |             | - per cent - |              |
| MALES  |              |              |              |             |             |             |              |              |
| With post-school qualifications(a)                         | * 2.9        | 9.2          | 28.1         | 17.3        | 11.4        | 13.5        | 82.5         | 25.8         |
| Degree   | * 0.0        | * 3.3        | 6.9          | 5.1         | * 1.9       | * 0.8       | 18.0         | 5.6          |
| Trade qualification or apprenticeship                      | * 0.7        | * 2.9        | 13.8         | 8.2         | 6.8         | 9.0         | 41.5         | 13.0         |
| Certificate or diploma                                     | * 2.2        | * 3.0        | 7.4          | 3.5         | * 2.7       | * 3.4       | 22.2         | 6.9          |
| Without post-school qualifications(b)                      | 56.2         | 44.4         | 55.5         | 23.4        | 19.3        | 21.0        | 219.8        | 68.7         |
| Attended highest level of secondary school available       | 20.1         | 12.1         | 9.9          | * 3.2       | * 1.7       | * 1.7       | 48.7         | 15.2         |
| Did not attend highest level of secondary school available | 35.7         | 32.0         | 44.7         | 20.0        | 17.6        | 18.7        | 168.8        | 52.7         |
| Left at age—   |              |              |              |             |             |             |              |              |
| 16 and over  | 17.6         | 16.9         | 20.4         | 5.2         | * 2.0       | 3.5         | 65.6         | 20.5         |
| 14 or 15   | 18.1         | 14.8         | 22.0         | 12.4        | 12.6        | 9.2         | 89.1         | 27.8         |
| 13 and under   | * 0.0        | * 0.3        | * 2.3        | * 2.4       | * 3.1       | 6.0         | 14.1         | 4.4          |
| Still at school  | 17.9         | * 0.0        | ..           | ..          | ..          | ..          | 17.9         | 5.6          |
| <b>Total</b>   | <b>77.0</b>  | <b>53.6</b>  | <b>83.6</b>  | <b>40.7</b> | <b>30.7</b> | <b>34.5</b> | <b>320.2</b> | <b>100.0</b> |
| FEMALES  |              |              |              |             |             |             |              |              |
| With post-school qualifications(a)                         | 7.5          | 15.9         | 27.6         | 20.5        | 10.7        | * 1.5       | 83.6         | 31.2         |
| Degree   | * 0.0        | * 1.8        | 5.5          | 4.4         | * 2.2       | * 0.4       | 14.2         | 5.3          |
| Trade qualification or apprenticeship                      | * 0.8        | * 0.9        | * 1.3        | * 1.1       | * 1.0       | * 0.3       | 5.3          | 2.0          |
| Certificate or diploma                                     | 6.7          | 12.3         | 20.2         | 14.4        | 7.0         | * 0.7       | 61.4         | 22.9         |
| Without post-school qualifications(b)                      | 54.3         | 31.2         | 32.7         | 29.9        | 12.3        | 4.7         | 165.2        | 61.6         |
| Attended highest level of secondary school available       | 24.4         | 10.9         | 5.6          | 5.5         | * 1.3       | * 0.6       | 48.3         | 18.0         |
| Did not attend highest level of secondary school available | 29.9         | 20.2         | 26.8         | 24.0        | 10.8        | * 3.4       | 115.1        | 42.9         |
| Left at age—   |              |              |              |             |             |             |              |              |
| 16 and over  | 17.2         | 11.6         | 12.4         | 9.7         | * 1.7       | * 0.1       | 52.6         | 19.6         |
| 14 or 15   | 12.6         | 8.7          | 13.6         | 13.2        | 7.1         | * 3.1       | 58.3         | 21.7         |
| 13 and under   | * 0.1        | * 0.0        | * 0.8        | * 1.1       | * 2.0       | * 0.2       | 4.2          | 1.6          |
| Still at school  | 19.4         | * 0.0        | ..           | ..          | ..          | ..          | 19.4         | 7.2          |
| <b>Total</b>   | <b>81.1</b>  | <b>47.1</b>  | <b>60.3</b>  | <b>50.3</b> | <b>23.1</b> | <b>6.2</b>  | <b>268.2</b> | <b>100.0</b> |
| PERSONS  |              |              |              |             |             |             |              |              |
| With post-school qualifications(a)                         | 10.4         | 25.1         | 55.7         | 37.8        | 22.1        | 15.0        | 166.1        | 28.2         |
| Degree   | * 0.0        | 5.1          | 12.4         | 9.5         | 4.1         | * 1.2       | 32.3         | 5.5          |
| Trade qualification or apprenticeship                      | * 1.5        | 3.7          | 15.1         | 9.3         | 7.8         | 9.3         | 46.8         | 8.0          |
| Certificate or diploma                                     | 8.9          | 15.3         | 27.6         | 18.0        | 9.7         | 4.1         | 83.6         | 14.2         |
| Without post-school qualifications(b)                      | 110.4        | 75.6         | 88.2         | 53.3        | 31.7        | 25.7        | 385.0        | 65.4         |
| Attended highest level of secondary school available       | 44.4         | 23.0         | 15.5         | 8.7         | * 3.0       | * 2.3       | 96.9         | 16.5         |
| Did not attend highest level of secondary school available | 65.6         | 52.2         | 71.6         | 44.0        | 28.5        | 22.1        | 283.9        | 48.3         |
| Left at age—   |              |              |              |             |             |             |              |              |
| 16 and over  | 34.8         | 28.5         | 32.8         | 14.9        | 3.7         | 3.6         | 118.3        | 20.1         |
| 14 or 15   | 30.6         | 23.5         | 35.6         | 25.6        | 19.8        | 12.3        | 147.4        | 25.0         |
| 13 and under   | * 0.1        | * 0.3        | * 3.2        | 3.5         | 5.0         | 6.2         | 18.3         | 3.1          |
| Still at school  | 37.3         | * 0.0        | ..           | ..          | ..          | ..          | 37.3         | 6.3          |
| <b>Total</b>   | <b>158.1</b> | <b>100.7</b> | <b>144.0</b> | <b>91.1</b> | <b>53.8</b> | <b>40.7</b> | <b>588.4</b> | <b>100.0</b> |

(a) Includes persons with other post-school qualifications. (b) Includes persons who never attended school and those for whom secondary school qualifications could not be determined.

Source: Labour Force Status and Educational Attainment, Australia, February 1989 (6235.0).

## Families

Of the 326,500 families with one or more members unemployed, 37.9 per cent had no member employed, 37.2 per cent had one employed and 24.8 per cent had two or more employed. Dependents were present in 59.4 per cent of the 326,500 families with one or more members unemployed.

Unemployment rates varied from 13.5 per cent for full time students aged 15-24 to 9.9 per cent for sole parents to 4.0 per cent for husband or wife in married couple families. For persons who were not a member of a family the unemployment rate was 6.6 per cent. The average duration of unemployment for husbands or wives who were members of a family was 60.8 weeks. For sole parents it was 43.3 weeks and for those who were not members of a family, 47.7 weeks (living alone 68.4 weeks, not living alone 34.6 weeks).

TABLE 4.13. FAMILIES WITH ONE OR MORE MEMBERS UNEMPLOYED: TYPE OF FAMILY, EMPLOYMENT STATUS(a) OF FAMILY MEMBERS AND WHETHER DEPENDENTS PRESENT, AUSTRALIA, JUNE 1989 ('000 families)

|                            | None employed   |             |       | One employed    |             |       | Two or more employed |             |       | Total           |             |       |
|----------------------------|-----------------|-------------|-------|-----------------|-------------|-------|----------------------|-------------|-------|-----------------|-------------|-------|
|                            | Two or more     |             | Total | Two or more     |             | Total | Two or more          |             | Total | Two or more     |             | Total |
|                            | One unemp-loyed | unemp-loyed |       | One unemp-loyed | unemp-loyed |       | One unemp-loyed      | unemp-loyed |       | One unemp-loyed | unemp-loyed |       |
| Married-couple families    | 73.0            | 19.5        | 92.5  | 91.4            | 6.1         | 97.4  | 67.9                 | 5.2         | 73.1  | 232.3           | 30.7        | 263.0 |
| With dependents present    | 44.8            | 14.0        | 58.7  | 52.9            | 5.1         | 58.1  | 42.8                 | * 2.7       | 45.5  | 140.6           | 21.8        | 162.3 |
| Without dependents present | 28.2            | 5.5         | 33.7  | 38.4            | * 0.9       | 39.4  | 25.1                 | * 2.5       | 27.6  | 91.7            | 8.9         | 100.7 |
| One-parent families        | 17.8            | * 0.8       | 18.6  | 8.0             | * 0.7       | 8.7   | * 3.2                | * 0.0       | * 3.2 | 29.1            | * 1.5       | 30.6  |
| Other families             | 11.1            | * 1.7       | 12.8  | 14.7            | * 0.6       | 15.3  | 4.2                  | * 0.6       | 4.8   | 30.1            | * 2.8       | 32.9  |
| All families               | 102.0           | 22.0        | 123.9 | 114.1           | 7.3         | 121.5 | 75.3                 | 5.7         | 81.1  | 291.4           | 35.0        | 326.5 |
| With dependents present    | 63.0            | 14.8        | 77.8  | 61.7            | 5.8         | 67.5  | 46.0                 | * 2.7       | 48.7  | 170.7           | 23.3        | 194.0 |
| Without dependents present | 38.9            | 7.2         | 46.1  | 52.5            | * 1.5       | 54.0  | 29.3                 | * 3.1       | 32.3  | 120.7           | 11.7        | 132.5 |

(a) Employment status refers to persons aged 15 and over only.

Source: Labour Force Status and Other Characteristics of Families, June 1989 (6224.0).

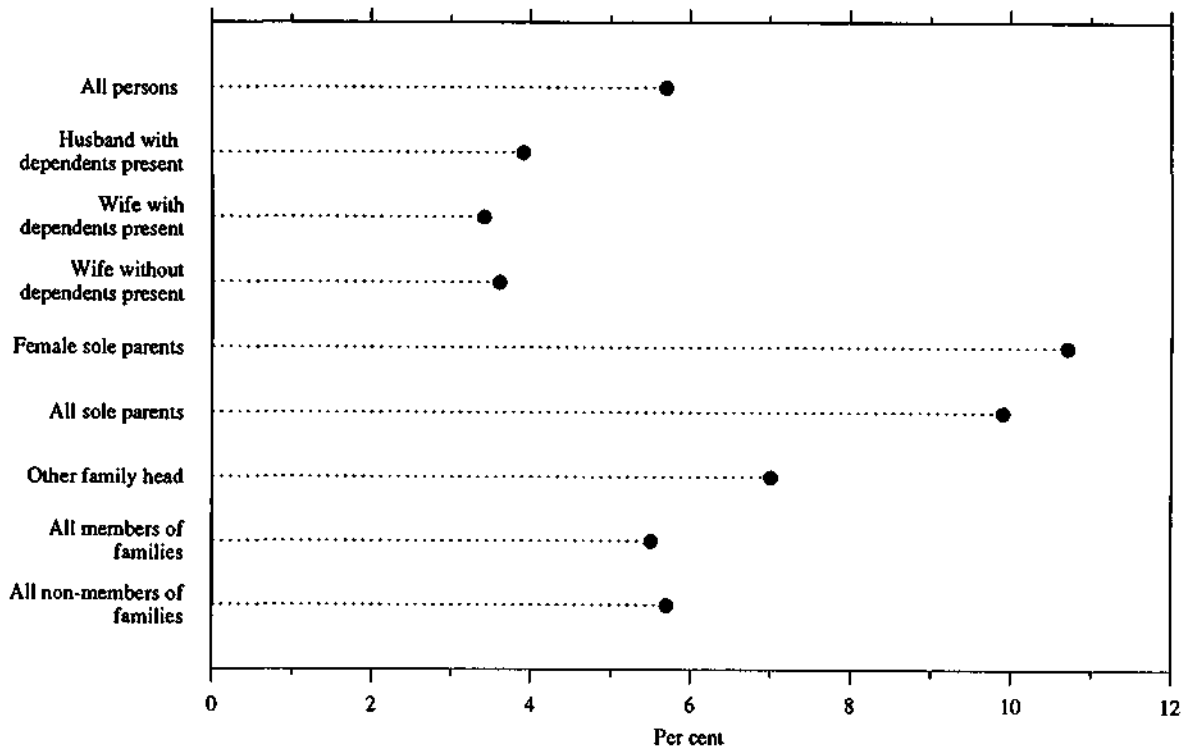
TABLE 4.14. FAMILY STATUS OF UNEMPLOYED PERSONS(a): UNEMPLOYMENT RATES, AUSTRALIA, JUNE 1988 AND JUNE 1989 (per cent)

|   | Males        |           | Females      |           | Persons      |           |
|---|--------------|-----------|--------------|-----------|--------------|-----------|
|   | June 1988(d) | June 1989 | June 1988(d) | June 1989 | June 1988(d) | June 1989 |
| Member of a family                              | 6.3          | 5.0       | 7.7          | 6.3       | 6.8          | 5.5       |
| Husband or wife                                 | 4.3          | 3.7       | 5.2          | 4.4       | 4.7          | 4.0       |
| With dependents present                         | 4.5          | 3.9       | 6.2          | 5.0       | 5.2          | 4.3       |
| Without dependents present                      | 3.9          | 3.4       | 3.8          | 3.6       | 3.8          | 3.5       |
| Sole parent                                     | * 8.2        | * 6.2     | 16.4         | 10.7      | 14.8         | 9.9       |
| Other family head                               | * 7.6        | * 5.4     | 10.5         | 8.2       | 9.3          | 7.0       |
| Full-time student aged 15-24(b)                 | 19.1         | 12.9      | 17.1         | 14.0      | 18.0         | 13.5      |
| Other child(c) of married couple or family head | 11.5         | 8.4       | 10.8         | 9.2       | 11.2         | 8.7       |
| Other relative of married couple or family head | 14.1         | 9.7       | 19.6         | 15.7      | 16.1         | 12.0      |
| Not a member of a family                        | 7.9          | 6.3       | 8.5          | 7.2       | 8.1          | 6.6       |
| Living alone                                    | 7.8          | 6.1       | 7.5          | 6.0       | 7.7          | 6.1       |
| Not living alone                                | 8.0          | 6.4       | 9.2          | 7.9       | 8.5          | 7.0       |
| Total   | 6.5          | 5.2       | 7.8          | 6.4       | 7.0          | 5.7       |

(a) Civilians who were residents of households where family status was determined. See paragraph 22 of the Technical Notes for further information. (b) Excludes persons aged 20-24 attending school. Also excludes full-time students aged 15-24 who are classified as husbands, wives, sole parents or other family heads. (c) Aged 15 and over. (d) These estimates are based on 1981 census benchmarks.

Source: Labour Force Status and Other Characteristics of Families, Australia, June 1989 (6224.0).

CHART 4.9. UNEMPLOYED PERSONS: FAMILY STATUS, UNEMPLOYMENT RATES, AUSTRALIA, JUNE 1989



Source: *Labour Force Status and Other Characteristics of Families, Australia, June 1989* (6224.0).

TABLE 4.15. FAMILY STATUS OF UNEMPLOYED PERSONS(a): DURATION OF UNEMPLOYMENT, AUSTRALIA, JUNE 1989

|   | Duration of unemployment (weeks) |               |               |                |                 |                 |              | Total        | Average duration | Median duration |
|---|----------------------------------|---------------|---------------|----------------|-----------------|-----------------|--------------|--------------|------------------|-----------------|
|   | Under 2                          | 2 and under 4 | 4 and under 8 | 8 and under 13 | 13 and under 26 | 26 and under 52 | 52 and over  |              |                  |                 |
|   | - '000 -                         |               |               |                |                 |                 |              |              |                  | weeks           |
| Member of a family                              | 28.9                             | 44.2          | 41.4          | 42.2           | 58.5            | 51.7            | 102.5        | 369.3        | 54.5             | 18              |
| Husband or wife                                 | 14.9                             | 21.8          | 21.6          | 21.1           | 28.4            | 24.4            | 61.7         | 193.8        | 60.8             | 20              |
| With dependents present                         | 10.6                             | 15.2          | 13.4          | 14.4           | 18.7            | 17.6            | 38.3         | 128.3        | 57.5             | 20              |
| Without dependents present                      | 4.3                              | 6.6           | 8.1           | 6.7            | 9.7             | 6.8             | 23.4         | 65.5         | 67.1             | 21              |
| Sole parent                                     | * 0.8                            | * 2.3         | * 2.7         | * 3.0          | 3.7             | * 1.7           | 4.0          | 18.2         | 43.3             | 14              |
| Other family head                               | * 1.2                            | * 0.9         | * 1.0         | * 0.7          | * 0.8           | * 0.5           | * 2.9        | 8.0          | 84.9             | * 17            |
| Full-time student aged 15-24(b)                 | 5.4                              | 5.8           | 4.7           | 6.0            | 8.3             | 5.2             | * 3.0        | 38.4         | 18.3             | 9               |
| Other child(c) of married couple or family head | 5.9                              | 11.7          | 10.7          | 10.2           | 16.0            | 17.1            | 27.7         | 99.2         | 55.1             | 20              |
| Other relative of married couple or family head | * 0.7                            | * 1.8         | * 0.8         | * 1.3          | * 1.2           | * 2.8           | * 3.2        | 11.8         | 60.6             | * 26            |
| Not a member of a family                        | 5.8                              | 7.8           | 9.1           | 9.7            | 12.6            | 9.8             | 19.2         | 74.1         | 47.7             | 16              |
| Living alone                                    | * 1.9                            | * 2.2         | * 2.4         | * 2.7          | 3.9             | 4.3             | 11.2         | 28.6         | 68.4             | 26              |
| Not living alone                                | 3.9                              | 5.6           | 6.7           | 7.1            | 8.7             | 5.5             | 8.0          | 45.5         | 34.6             | 12              |
| <b>Total</b>                                    | <b>34.7</b>                      | <b>52.0</b>   | <b>50.5</b>   | <b>52.0</b>    | <b>71.2</b>     | <b>61.5</b>     | <b>121.7</b> | <b>443.4</b> | <b>53.3</b>      | <b>18.0</b>     |

(a) Civilians who were residents of households where family status was determined. (b) Excludes persons aged 20-24 attending school. Also excludes full-time students aged 15-24 who are classified as husbands, wives, sole parents or other family heads. (c) Aged 15 and over.

Source: *Labour Force Status and Other Characteristics of Families, Australia, June 1989* (6224.0).

### Job vacancies

For a concise definition of a job vacancy see the latest issue of the quarterly publication *Job vacancies and overtime, Australia* (6354.0). Broadly speaking, a job vacancy is a job available for immediate filling on the survey reference date and for which recruitment action has been taken. Vacancies available only to persons already employed by the organisation are excluded.

The estimated number of job vacancies in Australia at November 1989 on a seasonally adjusted basis was 66,000 a 4.2 per cent decrease on November 1988. In original terms, November 1989 vacancies were estimated at 62,700 – a decrease of 3,900 since November 1988.

The greatest decreases since November 1988 were recorded in Manufacturing (3,400) and Community services (2,100).

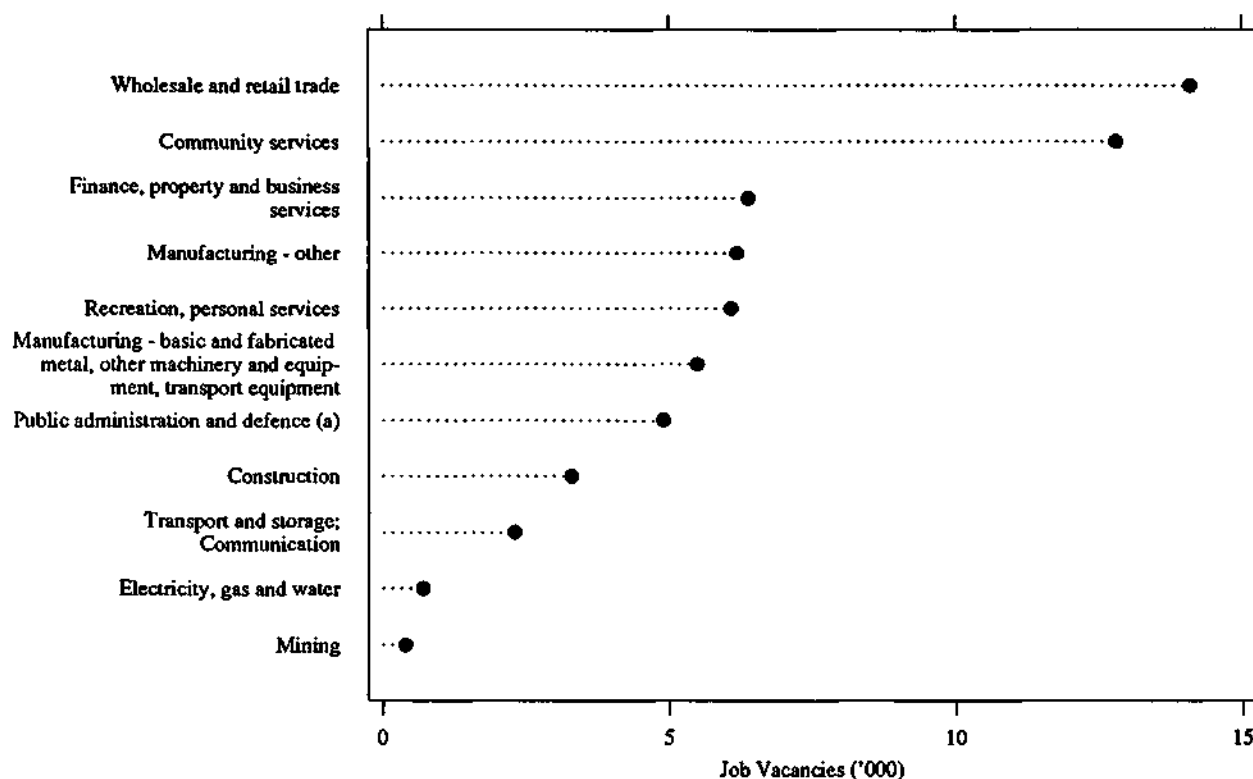
TABLE 4.16. JOB VACANCIES : INDUSTRY, AUSTRALIA ('000)

| Industry  | 1988        |             | 1989        |             |             |             |
|---|-------------|-------------|-------------|-------------|-------------|-------------|
|   | 19 Aug.     | 18 Nov.     | 17 Feb.     | 19 May      | 18 Aug.     | 17 Nov.     |
| Manufacturing—  | 13.3        | 15.1        | 14.4        | 15.4        | 13.7        | 11.7        |
| Basic and fabricated metal products, other machinery and equipment, transport equipment | 6.5         | 6.9         | 6.4         | 6.8         | 6.7         | 5.5         |
| Other manufacturing   | 6.8         | 8.2         | 7.9         | 8.6         | 6.9         | 6.2         |
| Non-manufacturing—  |             |             |             |             |             |             |
| Electricity, gas and water  | 0.5         | 0.8         | 0.7         | 0.8         | 0.7         | 0.7         |
| Wholesale and retail trade  | 13.1        | 15.5        | 16.1        | 13.4        | 13.9        | 14.1        |
| Transport and storage; Communication  | 1.8         | 2.0         | *2.3        | 3.5         | *2.2        | 2.3         |
| Public administration and defence(a)  | 4.7         | 4.3         | 4.7         | 5.0         | 5.0         | 4.9         |
| Community services  | 14.9        | 13.2        | 17.3        | 14.4        | 14.7        | 12.8        |
| Other(b)  | 17.5        | 15.8        | 17.0        | 20.4        | 14.1        | 16.2        |
| <b>Total all industries</b>   | <b>65.8</b> | <b>66.6</b> | <b>72.5</b> | <b>73.1</b> | <b>64.3</b> | <b>62.7</b> |

(a) Excludes permanent defence forces. (b) Includes Mining; Construction; Finance, property and business services; and Recreation, personal and other services.

Source: *Job Vacancies, Australia* (6231.0).

CHART 4.10. JOB VACANCIES: INDUSTRY, AUSTRALIA, NOVEMBER 1989



(a) Excludes permanent defence forces.

Source: *Job Vacancies and Overtime, Australia* (6345.0)