

**NEW ISSUE**



# **WORKING HOURS ARRANGEMENTS AUSTRALIA FEBRUARY TO MAY 1981**

CATALOGUE NO. 6338.0

**AUSTRALIAN BUREAU OF STATISTICS Canberra**



**NOON 5 AUGUST 1982**

**WORKING HOURS ARRANGEMENTS, AUSTRALIA  
FEBRUARY TO MAY 1981**

**R. J. CAMERON**

**Australian Statistician**

© Commonwealth of Australia 1982

PHONE INQUIRIES	<i>for more information about these statistics—contact Mr Geoff Winter on Canberra (062) 52 6576 or any of our State offices.</i>
	<i>other inquiries including copies of publications—contact Information Services on Canberra (062) 52 6627 or in any of our State offices.</i>
MAIL INQUIRIES	<i>write to Information Services, ABS, P.O. Box 10, Belconnen, A.C.T. 2616 or any of our State offices.</i>

## CONTENTS

Table	Page
.. Explanatory notes	1
.. Summary of findings	4
 <b>PART A. ALL EMPLOYED PERSONS</b>	
1. Whether nightworker and whether employee, States and Territories and sex	5
 <b>PART B. ALL EMPLOYEES IN MAIN JOB, BY SEX</b>	
2. Age, marital status and whether nightworker	6
3. Age, occupation and whether nightworker	7
4. Age, industry and whether nightworker	8
5. Main form of transport to work, whether used second form of transport and whether nightworker, States and Territories	9
6. Main form of transport to work, travel time to work and whether nightworker, State capital cities and rest of State/Territories	10
 <b>EMPLOYEES IN MAIN JOB WHO WORKED DURING THE FOUR WEEKS PRIOR TO THE SURVEY DATE</b>	
 <b>PART C. EMPLOYEES IN MAIN JOB, EXCLUDING 'HANDICAPPED' WORKERS</b>	
7. Usual hours worked in all jobs each week, whether nightworker, whether shiftworker, and whether holding more than one job	11
 <b>PART D. EMPLOYEES IN MAIN JOB WHO WERE NIGHTWORKERS IN MAIN JOB</b>	
8. Age, usual hours worked in main job each week and sex	12
 <b>PART E. EMPLOYEES IN MAIN JOB WHO WERE NIGHTWORKERS IN MAIN JOB, EXCLUDING 'HANDICAPPED' WORKERS</b>	
9. Age, hours of nightwork and sex	13
10. Usual hours worked in all jobs each week, hours of nightwork and birthplace	14
11. Usual hours worked in all jobs each week, usual hours of sleep, State capital cities and other areas	15
12. Educational attainment, usual weekly earnings and whether holding more than one job	16
13. Type of nightwork in ordinary time, type of nightwork in additional time, hours of nightwork and sex	17
14. Type of nightwork in ordinary time, type of nightwork in additional time, birthplace and period of arrival and sex	18
15. Type of nightwork in ordinary time, type of nightwork in additional time, benefits of nightwork and disadvantages of nightwork	19
16. Benefits of nightwork, disadvantages of nightwork, usual weekly earnings, marital status and sex	20
17. Benefits of nightwork, disadvantages of nightwork, duration of current nightworking arrangement, birthplace and sex	21
18. Benefits of nightwork, disadvantages of nightwork, usual hours of sleep and whether shiftworker	22
 <b>PART F. SHIFTWORKERS IN MAIN JOB, EXCLUDING 'HANDICAPPED' WORKERS</b>	
19. Age, marital status, whether nightworker and sex	23
20. Industry, birthplace and period of arrival, whether nightworker and sex	24
21. Industry, States and sex	25
22. Frequency of change in shifts, occupation and number of different shifts worked	26
23. Age, usual hours worked in main job each week, number of days worked, whether worked double shifts and sex	27
 <b>PART G. EMPLOYEES IN MAIN JOB, EXCLUDING SHIFTWORKERS, BY SEX</b>	
24. Days in week usually worked in main job, States and Territories	28
25. Days in week usually worked in main job and usual hours worked in main job each week	30
26. Days in week usually worked in main job, age and whether nightworker	32
27. Days in week usually worked in main job, birthplace and period of arrival	34
28. Days in week usually worked in main job, marital status and whether nightworker	36
.. Technical note	38



## EXPLANATORY NOTES

### Introduction

During the period February to May 1981 a survey was conducted throughout Australia in order to obtain information about the different types of working patterns of employed persons. Persons defined as 'handicapped' (see *Survey of Handicapped Persons, Australia, February to May 1981 (Preliminary)* (4342.0)) were not asked some of the questions relating to working patterns. However, a limited amount of data about the working hours arrangements of handicapped persons is included in some of the tables in this publication. A further publication which will include tables for some groups not included in this publication, such as 'day' workers and multiple jobholders, will be released as soon as possible.

2. A survey of evening and night work, and work patterns of employees, was conducted in November 1976. Results were published in *Work Patterns of Employees, November 1976* (6328.0) and *Evening and Night Work, November 1976* (6329.0). The results contained in these publications are not directly comparable with the results in the following tables, as information obtained in the November 1976 survey was less extensive and differently defined. A preliminary publication *Working Hours Arrangements, Australia, February to May 1981 (Preliminary)* (6337.0) containing a summary of results of the current survey, was released on 19 February 1982.

3. The current survey was based on a multi-stage area sample of private dwellings (about 30,000 houses, flats, etc.) and non-private dwellings (hotels, motels, etc.) and covered about two thirds of one per cent of the population in Australia. Information was obtained from the occupants of selected dwellings by carefully chosen and specially trained interviewers. Some data obtained related only to the four weeks prior to the interviews, which commenced on 2 February 1981.

### Scope

4. The survey included all persons aged fifteen years and over except:

- (a) members of the permanent defence forces;
- (b) certain diplomatic personnel of overseas governments, customarily excluded from census and estimated populations;
- (c) overseas visitors holidaying in Australia;
- (d) members of non-Australian defence forces (and their dependants) stationed in Australia;
- (e) boarding school students, some patients in hospitals and sanatoria, or inmates of gaols, reformatories, etc.

### Definitions

5. A *nightworker* was defined as an employed person who in any one of the four weeks prior to the survey date worked a total of 15 hours or more between 7.00 p.m. and 7.00 a.m. in either their main or second job. Persons who worked these hours in all jobs combined but not in their main or second jobs individually were not classified as nightworkers. ('Main job' was defined as the job in which respondents usually worked the most hours.) Persons,

especially employed wage and salary earners (i.e. employees), 'on call' or 'on standby' (see paragraph 10) for the hours described above but who did not actually *work* those hours were not classified as nightworkers.

6. *Other workers* (i.e. 'day' workers) were, therefore, persons who did not work the hours described in paragraph 5 above.

7. *Shiftworkers* were employees who in the four weeks prior to the date of the interview worked two or more different work shifts; for the purposes of this survey, work shifts were two or more distinct periods of work within a 24-hour day between which employees were regularly rotated. Typically the periods of time covered by the work shifts operating in any given establishment or workshop vary appreciably and often do not overlap with each other. Persons who worked fixed hours, i.e. those who did not work rotating shifts whether during the day or at night, were not classified as shiftworkers. Persons who, in establishments working several 'shifts', worked the 'night shift' only were, therefore, not classified as shiftworkers but were generally classified as nightworkers.

8. *Weekend workers* were persons who usually worked at some time on either Saturdays or Sundays (or both). However, those persons for whom any regular working period ended early on Saturday morning or started late on Sunday night were generally not included as weekend workers.

9. *Multiple jobholders* were persons who usually worked in two or more jobs each week and who were employed in at least one of their jobs as wage or salary earners.

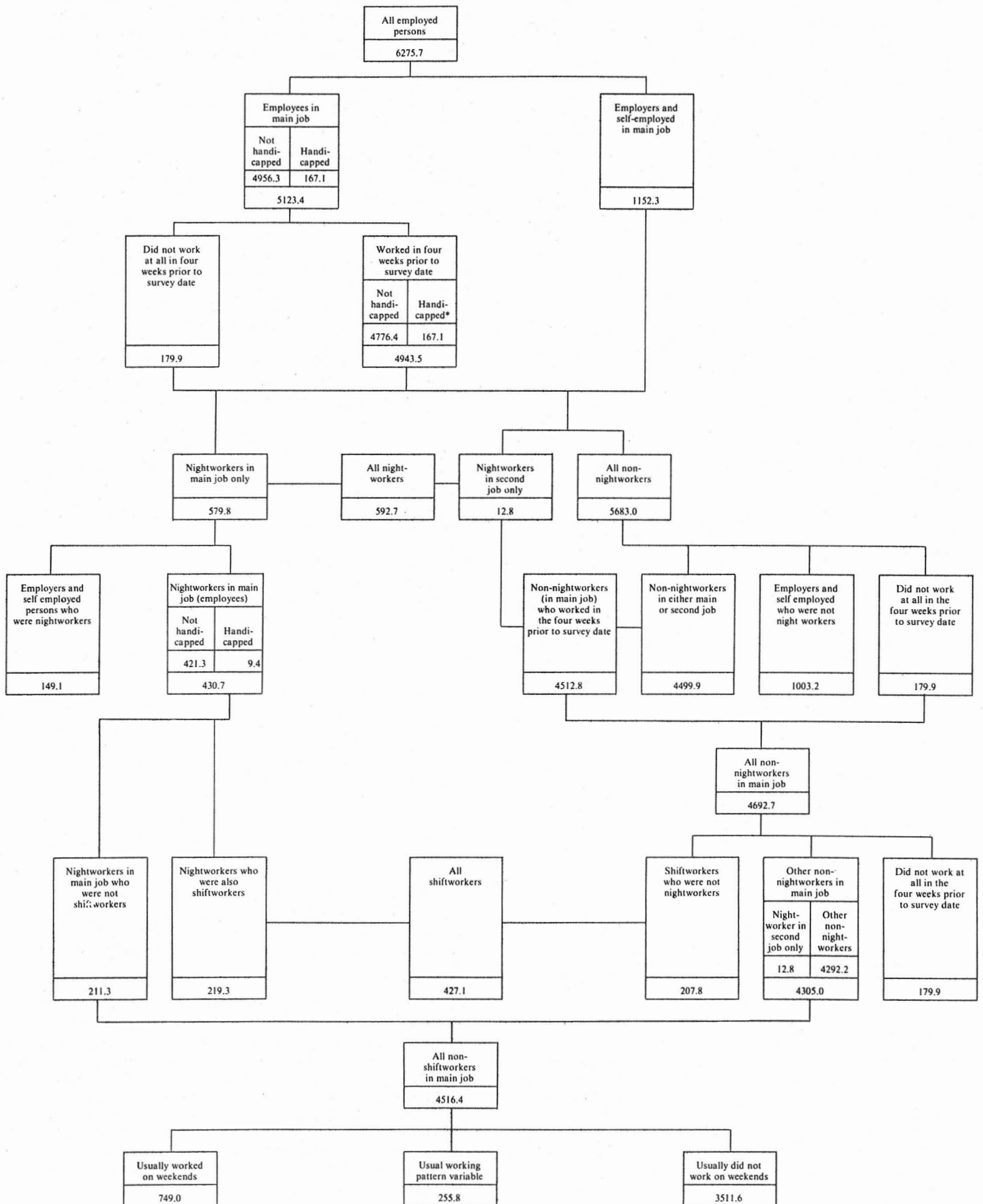
10. An employee was *on call* if he/she was paid a separate additional amount for being available, when not at work, to be contacted to do work. Employees who had a (regular) loading added to their pay for being similarly available were deemed to be *on standby*. Employees who did not receive either a separate payment or a loading while being available were not included as being 'on call' or 'on standby'.

11. A *rostered* employee was scheduled to start work at the same time on each working day but worked on varying days each week.

12. Employees working *flextime* were able, within limits, to choose to some extent the times at which they started and/or finished work each day, while still working the award or agreed hours on average over a longer period.

13. It should be noted that some of these groups of persons are not necessarily mutually exclusive and the same data have not been obtained for all of them, e.g. employees who worked rotating shifts were not asked whether they worked on weekends. The inter-relationships between the various groups are shown in the following diagram. This diagram indicates that the questionnaire used in the survey first established respondents' nightwork status, then their shiftwork status and for those respondents who were not deemed to be shiftworkers, the days on which they usually worked.

**ALL EMPLOYED PERSONS : TYPE OF WORKING HOURS ARRANGEMENTS**  
(\* 000)



\* Handicapped persons were not asked whether they had worked during the four weeks prior to the survey date.

### Classification of industry and occupation

14. Industry is classified according to the *Australian Standard Industrial Classification* (ASIC) 1978 and occupation according to the *Classification and Classified List of Occupations*, Revised June 1976.

### Reliability of the estimates

15. Since the estimates are based on information obtained from occupants of a sample of dwellings they are subject to sampling variability; that is they may differ by chance from the figures that would have been produced if all dwellings had been included in the survey. More information on this topic is given in the Technical note.

### Related publications

16. Other ABS publications which may be of interest include:

*The Labour Force, Australia* (6203.0)—issued monthly

*Work Patterns of Employees, Australia, November 1976* (6328.0)

*Evening and Night Work, Australia, November 1976* (6329.0)

*Working Conditions, Australia, February to May 1979* (6335.0)

*Working Hours Arrangements, Australia, February to May 1981 (Preliminary)* (6337.0)

17. Current publications produced by the ABS are listed in the *Catalogue of Publications, Australia* (1101.0). The ABS also issues, on Tuesdays and Fridays, a *Publications Advice* (1105.0) which lists publications to be released in the next few days. The Catalogue and Publications Advice are available from any ABS office.

### Symbols and other usages

- \* Subject to sampling variability too high for most practical uses. See paragraph 15 above.
- .. not applicable

18. Figures have been rounded and discrepancies may occur between sums of the component items and totals.

## SUMMARY OF FINDINGS

Of 6,275,700 employed persons during February to May 1981, 9.4 per cent (592,700) were nightworkers (as defined). The proportion for employees (employed wage and salary earners) was 8.7 per cent (443,600) and for others (employers and self-employed persons), 12.9 per cent (149,100). Approximately 8.3 per cent (427,100) of all employees were shiftworkers (of whom 51.4 per cent were also nightworkers) and 16.6 per cent (749,000) of employees who were not shiftworkers usually worked at some time during weekends. 14.9 per cent of male employers and self-employed persons were nightworkers; of male employees 10.5 per cent (333,200) were nightworkers, 9.2 per cent (290,300) were shiftworkers and 17.0 per cent (469,400) of male employees who were not shiftworkers usually worked at some time during weekends. The corresponding estimates for female employees were 5.9 per cent (135,200), 5.6 per cent (110,400), 6.9 per cent (136,800) and 16.0 per cent (279,600) respectively. In the States nightworking amongst employees varied from 11.9 per cent in Tasmania to 8.1 per cent in Queensland and shiftworking was most prevalent in Tasmania where 12.1 per cent of employees were shiftworkers compared with only 7.1 per cent in Victoria. The Northern Territory had the highest incidence of weekend workers (26.7 per cent) compared with 11.2 per cent in Tasmania.

### Nightworkers

There were significant differences between age categories in the incidence of nightworking: 6.3 per cent of employees under 25 years of age were nightworkers in their main job compared with 10.2 per cent aged 25-44 years and 7.6 per cent aged 45 years and over.

Nightworkers were more prevalent in certain occupations: 29.3 per cent of mining and quarrying workers, 18.2 per cent of transport and communication workers and 16.8 per cent of service, sport and recreation workers were nightworkers, whereas only 2.0 per cent of sales workers and 1.6 per cent of clerical workers were nightworkers.

Of the 430,700 nightworkers in their main job 79.3 per cent travelled to work mainly by car, compared with 72.0 per cent for other employees. Only 8.7 per cent of nightworkers used either train, bus, ferry or tram compared with 16.6 per cent for other employees. Of employees taking at least an hour to travel to work, the figures were 3.4 per cent for nightworkers and 6.0 per cent for others.

Approximately 40.0 per cent usually worked more than 40 hours per week compared with 20.5 per cent for other employees. In terms of hours of nightwork, i.e. working after 7.00 p.m. and before 7.00 a.m. about one-third worked 20-29 hours in the last week of the survey period in which they were nightworkers and about 7.4 per cent worked at least 49 hours of nightwork so defined.

Earnings patterns revealed by the survey show that 54.0 per cent of nightworkers usually earned between \$200 and \$349 per week, and a further 21.6 per cent earned \$350 or more per week. About 23.4 per cent usually earned less than \$200 per week.

Nightworkers were asked whether they saw any benefits and/or disadvantages in working at night and the results show that 26.7 per cent of them claimed that there were no benefits to be gained, while 34.4 per cent claimed that there were no disadvantages. For family or personal reasons, 42.5 per cent indicated that there were benefits whilst 22.6 per cent claimed that there were distinct disadvantages in working at night. The survey found that 30.2 per cent of nightworkers claimed they had 6 hours sleep a night and 22.3 per cent claimed they had less than 6 hours a night.

### Shiftworkers

The highest incidence of male shiftworking occurred in the transport and storage industry (29.3 per cent), in mining (26.4 per cent) and in community services (16.1 per cent). For females, the communications industry (22.4 per cent) and community services industry (15.6 per cent) had the highest proportion of shiftworkers.

Amongst shiftworkers, 43.0 per cent changed shifts every seven days and another 36.9 per cent changed more frequently; 61.5 per cent worked at least 3 different shifts.

Of the 26.7 per cent of nightworkers who claimed that there were no benefits gained from working at night, 54.7 per cent were shiftworkers and of the 42.5 per cent who indicated that there were benefits for family or personal reasons, 51.3 per cent were shiftworkers.

### Weekend workers

Of employees who were not shiftworkers and were under 25 years of age 19.9 per cent worked on weekends whilst the figure was 15.9 per cent for 25-44 year-olds and 13.9 per cent for employees 45 years of age and over.

### Other

The survey showed that about 2.3 per cent of employees who were not shiftworkers usually worked at some time on every day of the week; 73.0 per cent usually worked on Mondays to Fridays only, and 8.0 per cent usually worked on less than five days of each week.

## PART A. ALL EMPLOYED PERSONS

TABLE 1. ALL EMPLOYED PERSONS : WHETHER NIGHTWORKER AND WHETHER EMPLOYEE(a)  
( ' 000)

	Males			Females			Persons		
	Employ- ees(a)	Other	Total	Employ- ees(a)	Other	Total	Employ- ees(a)	Other	Total
NIGHTWORKERS									
New South Wales	120.6	36.4	156.9	39.8	10.0	49.8	160.3	46.4	206.7
Victoria	83.4	41.3	124.7	30.1	7.5	37.7	113.5	48.9	162.4
Queensland	45.2	21.9	67.1	15.0	3.7	18.7	60.2	25.6	85.8
South Australia	29.5	10.5	40.0	10.4	1.3	11.7	39.9	11.8	51.7
Western Australia	31.2	9.8	41.0	8.3	1.5	9.8	39.5	11.3	50.8
Tasmania	13.1	3.1	16.2	4.1	*	4.6	17.2	3.6	20.7
Northern Territory	5.5	*	5.7	1.3	*	1.3	6.8	*	7.1
Australian Capital Territory	4.8	1.2	6.0	1.3	*	1.5	6.2	1.4	7.5
<i>Australia</i>	<i>333.2</i>	<i>124.3</i>	<i>457.5</i>	<i>110.4</i>	<i>24.8</i>	<i>135.2</i>	<i>443.6</i>	<i>149.1</i>	<i>592.7</i>
OTHER WORKERS									
New South Wales	1,004.1	243.6	1,247.7	664.8	89.1	753.9	1,668.9	332.7	2,001.6
Victoria	746.3	181.1	927.4	516.4	80.5	596.8	1,262.6	261.6	1,524.2
Queensland	429.6	121.5	551.0	252.1	56.0	308.1	681.6	177.5	859.1
South Australia	249.4	58.8	308.3	172.3	24.9	197.2	421.7	83.7	505.5
Western Australia	241.6	75.0	316.6	154.6	29.6	184.2	396.2	104.5	500.7
Tasmania	79.2	18.2	97.5	47.3	6.2	53.6	126.5	24.5	151.0
Northern Territory	23.3	4.9	28.3	15.7	2.8	18.4	39.0	7.7	46.7
Australian Capital Territory	46.7	7.4	54.1	36.4	3.6	40.1	83.1	11.0	94.2
<i>Australia</i>	<i>2,820.3</i>	<i>710.5</i>	<i>3,530.8</i>	<i>1,859.5</i>	<i>292.7</i>	<i>2,152.2</i>	<i>4,679.8</i>	<i>1,003.2</i>	<i>5,683.0</i>
TOTAL									
New South Wales	1,124.7	280.0	1,404.7	704.6	99.1	803.7	1,829.2	379.1	2,208.4
Victoria	829.6	222.4	1,052.1	546.5	88.0	634.5	1,376.1	310.4	1,686.5
Queensland	474.8	143.3	618.1	267.1	59.8	326.8	741.9	203.1	945.0
South Australia	278.9	69.3	348.2	182.7	26.2	208.9	461.6	95.5	557.1
Western Australia	272.8	84.7	357.5	162.9	31.1	194.0	435.7	115.8	551.5
Tasmania	92.3	21.3	113.6	51.4	6.7	58.1	143.7	28.0	171.7
Northern Territory	28.8	5.2	34.0	17.0	2.8	19.8	45.8	8.0	53.8
Australian Capital Territory	51.5	8.5	60.1	37.7	3.9	41.6	89.3	12.4	101.7
<i>Australia</i>	<i>3,153.5</i>	<i>834.8</i>	<i>3,988.3</i>	<i>1,969.9</i>	<i>317.5</i>	<i>2,287.4</i>	<i>5,123.4</i>	<i>1,152.3</i>	<i>6,275.7</i>

(a) In main job.

## PART B. ALL EMPLOYEES

TABLE 2. ALL EMPLOYEES : AGE, MARITAL STATUS AND WHETHER NIGHTWORKER  
( ' 000)

Age group (years)	Nightworkers			Other workers			Total		
	Males	Females	Persons	Males	Females	Persons	Males	Females	Persons
MARRIED									
15-24	12.9	8.1	21.0	112.2	141.6	253.8	125.1	149.7	274.7
25-34	82.3	24.1	106.5	565.0	315.6	880.6	647.3	339.7	987.0
35-44	64.0	20.2	84.2	460.5	298.9	759.3	524.4	319.1	843.5
45-54	46.6	8.1	54.7	393.7	205.8	599.5	440.3	214.0	654.2
55-59	14.7	*	16.0	170.2	57.1	227.3	184.9	58.4	243.3
60 and over	5.4	*	6.1	94.3	15.9	110.3	99.8	16.6	116.4
Total	225.9	62.5	288.4	1,795.9	1,034.8	2,830.7	2,021.8	1,097.3	3,119.2
NOT MARRIED(a)									
15-19	16.9	7.3	24.3	318.9	278.1	597.1	335.9	285.5	621.3
20-24	33.1	16.3	49.4	327.0	233.5	560.5	360.0	249.8	609.8
25-34	25.0	12.0	37.0	202.1	143.7	345.8	227.1	155.8	382.8
35-44	10.6	4.2	14.8	79.6	71.5	151.1	90.1	75.7	165.8
45-54	6.8	3.2	10.1	57.8	52.6	110.4	64.6	55.9	120.5
55-59	3.4	*	4.3	29.5	28.2	57.7	32.9	29.0	62.0
60 and over	*	*	2.5	19.1	20.3	39.4	21.1	20.8	41.9
Total	97.7	44.5	142.2	1,034.0	828.0	1,862.0	1,131.7	872.5	2,004.2
TOTAL									
15-19	17.1	7.7	24.8	322.1	290.0	612.1	339.3	297.6	636.9
20-24	45.7	24.1	69.8	435.9	363.3	799.2	481.7	387.3	869.0
25-34	107.3	36.2	143.5	767.1	459.3	1,226.4	874.4	495.5	1,369.9
35-44	74.5	24.4	99.0	540.0	370.4	910.4	614.5	394.8	1,009.3
45-54	53.4	11.4	64.8	451.5	258.4	709.9	504.9	269.8	774.7
55-59	18.2	2.1	20.3	199.7	85.3	285.0	217.9	87.4	305.3
60 and over	7.3	*	8.6	113.5	36.2	149.7	120.8	37.4	158.3
Total	323.6	107.1	430.7	2,829.9	1,862.8	4,692.7	3,153.5	1,969.9	5,123.4

(a) Includes never married, widowed, divorced and permanently separated.

TABLE 3. ALL EMPLOYEES : OCCUPATION, AGE AND WHETHER NIGHTWORKER  
( ' 000)

Occupation	Nightworkers			Other workers			Total		
	Males	Females	Persons	Males	Females	Persons	Males	Females	Persons
UNDER 25 YEARS									
Professional, technical, etc.	4.9	15.5	20.4	57.8	99.6	157.4	62.8	115.0	177.8
Administrative, executive and managerial	*	*	*	8.7	3.8	12.5	9.8	4.0	13.8
Clerical	2.5	*	4.1	82.8	288.0	370.9	85.4	289.6	374.9
Sales	*	*	2.7	64.3	106.8	171.1	66.3	107.5	173.7
Farming, fishing and timber-getting, etc.	2.2	*	2.2	46.9	8.1	55.0	49.1	8.1	57.1
Mining and quarrying	*	*	*	6.1	*	6.1	7.1	*	7.1
Transport and communication	7.1	*	8.3	30.5	12.1	42.7	37.6	13.3	51.0
Trades and production-process workers and labourers, n.e.c.	26.4	*	28.3	415.9	57.2	473.1	442.3	59.1	501.4
Service, sport and recreation	15.7	10.7	26.4	44.9	77.6	122.5	60.6	88.4	148.9
Total	62.9	31.7	94.6	758.1	653.2	1,411.3	820.9	685.0	1,505.9
25-44 YEARS									
Professional, technical, etc.	20.8	26.6	47.4	237.7	198.4	436.1	258.5	225.0	483.5
Administrative, executive and managerial	10.1	*	11.3	113.8	18.7	132.5	123.9	19.9	143.8
Clerical	5.5	2.9	8.4	144.3	279.4	423.7	149.9	282.2	432.1
Sales	3.5	*	3.8	96.2	72.2	168.5	99.7	72.5	172.3
Farming, fishing and timber-getting, etc.	4.5	*	4.6	47.9	12.9	60.8	52.4	13.0	65.4
Mining and quarrying	9.0	*	9.2	13.4	*	13.7	22.3	*	22.9
Transport and communication	27.1	3.6	30.7	94.2	26.1	120.4	121.3	29.8	151.1
Trades and production-process workers and labourers, n.e.c.	67.4	11.5	79.0	494.5	92.0	586.5	561.9	103.6	665.5
Service, sport and recreation	33.8	14.2	48.0	65.2	129.5	194.7	99.0	143.7	242.7
Total	181.8	60.6	242.4	1,307.1	829.7	2,136.8	1,489.0	890.3	2,379.2
45 YEARS AND OVER									
Professional, technical, etc.	6.5	6.8	13.3	94.2	61.9	156.1	100.7	68.7	169.4
Administrative, executive and managerial	5.4	*	6.1	79.4	9.2	88.6	84.8	9.9	94.7
Clerical	2.2	*	3.2	69.8	108.1	177.9	72.0	109.1	181.1
Sales	2.1	*	2.1	50.6	38.4	89.0	52.7	38.4	91.1
Farming, fishing and timber-getting, etc.	*	*	*	37.3	5.6	42.9	38.2	5.6	43.8
Mining and quarrying	2.7	*	2.7	9.9	*	10.8	12.6	*	13.5
Transport and communication	13.4	*	14.7	63.8	15.3	79.1	77.2	16.6	93.8
Trades and production-process workers and labourers, n.e.c.	31.0	*	32.7	311.6	50.0	361.7	342.6	51.8	394.4
Service, sport and recreation	14.7	3.2	17.9	48.0	90.5	138.4	62.7	93.7	156.3
Total	78.9	14.7	93.6	764.7	379.9	1,144.6	843.6	394.7	1,238.3
TOTAL									
Professional, technical, etc.	32.2	48.9	81.1	389.7	359.9	749.6	421.9	408.8	830.7
Administrative, executive and managerial	16.6	2.1	18.7	201.9	31.7	233.6	218.5	33.7	252.3
Clerical	10.3	5.4	15.7	297.0	675.5	972.5	307.2	680.9	988.2
Sales	7.6	*	8.6	211.1	217.4	428.6	218.7	218.5	437.2
Farming, fishing and timber-getting, etc.	7.5	*	7.7	132.1	26.6	158.6	139.6	26.7	166.3
Mining and quarrying	12.7	*	12.9	29.5	*	30.7	42.2	*	43.7
Transport and communication	47.6	6.2	53.8	188.5	53.6	242.1	236.2	59.7	295.9
Trades and production-process workers and labourers, n.e.c.	124.8	15.1	139.9	1,222.1	199.3	1,421.4	1,346.9	214.4	1,561.3
Service, sport and recreation	64.2	28.1	92.3	158.0	297.6	455.6	222.3	325.7	548.0
Total	323.6	107.1	430.7	2,829.9	1,862.8	4,692.7	3,153.5	1,969.9	5,123.4

TABLE 4. ALL EMPLOYEES : AGE, INDUSTRY AND WHETHER NIGHTWORKER  
( ' 000)

Industry division	Nightworkers			Other workers			Total		
	Males	Females	Persons	Males	Females	Persons	Males	Females	Persons
UNDER 25 YEARS									
Agriculture, forestry, fishing and hunting	2.7	*	2.7	36.1	7.8	43.9	38.8	7.8	46.6
Mining	*	*	2.0	13.2	2.3	15.5	15.2	2.4	17.6
Manufacturing	21.4	*	23.3	196.6	78.1	274.7	218.0	80.0	298.0
Electricity, gas and water	*	*	*	19.2	7.6	26.8	20.7	7.6	28.3
Construction	*	*	*	82.4	5.8	88.2	82.8	5.8	88.7
Wholesale and retail trade	6.2	*	8.0	192.5	190.4	382.9	198.8	192.2	391.0
Transport and storage	6.1	*	6.3	35.9	14.3	50.2	41.9	14.5	56.5
Communication	*	*	2.7	16.4	9.2	25.6	18.2	10.2	28.3
Finance, property and business services	*	*	2.1	54.6	107.2	161.8	55.9	108.0	163.9
Public administration and defence	2.2	*	2.6	45.0	36.3	81.3	47.2	36.7	83.9
Community services	8.2	18.7	26.9	38.0	138.1	176.0	46.2	156.7	202.9
Recreation, personal and other services	9.2	7.0	16.2	28.2	56.1	84.2	37.3	63.0	100.4
Total	62.9	31.7	94.6	758.1	653.2	1,411.3	820.9	685.0	1,505.9
25-44 YEARS									
Agriculture, forestry, fishing and hunting	4.4	*	4.7	38.0	9.5	47.5	42.4	9.8	52.2
Mining	18.0	*	18.6	37.5	3.8	41.4	55.6	4.4	60.0
Manufacturing	52.8	10.9	63.8	300.0	131.5	431.5	352.8	142.4	495.3
Electricity, gas and water	2.6	*	2.6	55.2	2.0	57.2	57.8	2.0	59.8
Construction	*	*	*	111.0	10.1	121.1	112.2	10.1	122.3
Wholesale and retail trade	12.5	3.3	15.8	204.1	145.1	349.1	216.5	148.4	364.9
Transport and storage	25.5	*	26.7	88.9	22.4	111.3	114.4	23.6	138.0
Communication	4.3	2.5	6.7	46.0	15.2	61.2	50.3	17.6	67.9
Finance, property and business services	5.9	*	7.6	111.8	84.4	196.3	117.7	86.2	203.9
Public administration and defence	7.7	*	8.2	126.9	43.0	169.8	134.6	43.5	178.1
Community services	32.1	31.3	63.3	156.5	290.9	447.4	188.6	322.2	510.8
Recreation, personal and other services	14.7	8.3	23.0	31.2	71.8	103.1	46.0	80.1	126.1
Total	181.8	60.6	242.4	1,307.1	829.7	2,136.8	1,489.0	890.3	2,379.2
45 YEARS AND OVER									
Agriculture, forestry, fishing and hunting	*	*	*	17.1	5.1	22.3	17.6	5.1	22.7
Mining	4.7	*	4.7	16.7	*	17.4	21.4	*	22.1
Manufacturing	25.8	2.4	28.2	213.9	67.0	280.9	239.6	69.5	309.1
Electricity, gas and water	3.5	*	3.5	41.8	2.0	43.8	45.2	2.0	47.2
Construction	*	*	*	48.3	3.1	51.3	48.8	3.1	51.9
Wholesale and retail trade	4.9	*	5.4	102.8	73.1	175.8	107.7	73.5	181.2
Transport and storage	15.0	*	15.4	61.0	4.6	65.6	76.1	4.9	81.0
Communication	*	*	2.4	27.1	6.3	33.4	28.5	7.3	35.8
Finance, property and business services	2.7	*	3.3	51.0	31.3	82.3	53.7	32.0	85.7
Public administration and defence	2.6	*	2.6	68.6	17.2	85.8	71.2	17.2	88.4
Community services	11.2	7.8	19.0	89.5	135.7	225.2	100.7	143.5	244.2
Recreation, personal and other services	6.0	2.1	8.1	27.0	33.8	60.8	33.0	35.9	68.9
Total	78.9	14.7	93.6	764.7	379.9	1,144.6	843.6	394.6	1,238.3
TOTAL									
Agriculture, forestry, fishing and hunting	7.6	*	7.9	91.2	22.4	113.6	98.8	22.7	121.5
Mining	24.7	*	25.4	67.5	6.8	74.3	92.1	7.5	99.6
Manufacturing	100.0	15.2	115.2	710.5	276.6	987.1	810.5	291.9	1,102.4
Electricity, gas and water	7.5	*	7.5	116.2	11.6	127.8	123.7	11.6	135.3
Construction	2.3	*	2.3	241.6	19.0	260.6	243.9	19.0	262.9
Wholesale and retail trade	23.7	5.5	29.2	499.3	408.6	907.9	523.0	414.1	937.1
Transport and storage	46.6	*	48.4	185.8	41.3	227.1	232.4	43.1	275.5
Communication	7.4	4.4	11.8	89.5	30.7	120.2	97.0	35.1	132.1
Finance, property and business services	9.9	3.1	13.1	217.5	222.9	440.4	227.4	226.1	453.4
Public administration and defence	12.5	*	13.4	240.5	96.5	337.0	253.0	97.4	350.3
Community services	51.5	57.8	109.2	284.0	564.6	848.6	335.5	622.4	957.9
Recreation, personal and other services	29.9	17.3	47.3	86.4	161.7	248.1	116.3	179.1	295.4
Total	323.6	107.1	430.7	2,829.9	1,862.8	4,692.7	3,153.5	1,969.9	5,123.4

**TABLE 5. ALL EMPLOYEES : MAIN FORM OF TRANSPORT TO WORK, WHETHER USED SECOND FORM OF TRANSPORT AND WHETHER NIGHTWORKER**  
( ' 000)

<i>Main form of transport</i>	<i>N.S.W.</i>	<i>Vic.</i>	<i>Qld</i>	<i>S.A.</i>	<i>W.A.</i>	<i>Tas.</i>	<i>N.T.</i>	<i>A.C.T.</i>	<i>Aust.</i>
<b>NIGHTWORKERS</b>									
Train	9.8	5.0	*	*	*	*	*	*	16.5
Bus	5.6	3.8	2.2	1.9	2.8	0.7	*	*	17.9
Ferry or tram	*	3.2	*	*	*	*	*	*	3.2
Car or motorcycle	123.2	83.9	48.1	31.3	30.8	14.7	4.0	5.4	341.5
Bicycle	*	*	*	1.6	1.2	*	*	*	7.5
Walk or wheelchair	9.4	7.4	3.3	1.7	2.0	0.7	*	*	25.5
Other(a)	2.5	*	*	*	*	*	*	*	6.3
Worked at home	3.7	3.1	2.7	1.3	*	*	*	*	12.3
<b>Total</b>	<b>155.2</b>	<b>110.1</b>	<b>58.2</b>	<b>39.2</b>	<b>38.5</b>	<b>16.7</b>	<b>6.7</b>	<b>6.0</b>	<b>430.7</b>
<b>OTHER WORKERS</b>									
Train	216.3	114.8	29.4	12.4	5.8	*	*	*	378.9
Bus	145.1	45.7	37.8	45.0	37.1	13.1	2.4	11.7	338.1
Ferry or tram	8.9	50.4	*	2.2	*	*	*	*	62.7
Car or motorcycle	1,130.4	909.1	520.7	313.3	308.0	100.4	29.6	65.1	3,376.5
Bicycle	19.7	38.1	20.0	12.9	9.7	1.5	*	2.9	105.8
Walk or wheelchair	105.6	76.2	44.4	24.0	22.9	9.2	4.1	2.6	288.9
Other(a)	19.2	7.1	9.3	3.4	4.6	1.1	*	*	45.4
Worked at home	28.8	24.7	20.9	9.3	8.9	1.6	2.1	*	96.3
<b>Total</b>	<b>1,674.0</b>	<b>1,266.0</b>	<b>683.6</b>	<b>422.5</b>	<b>397.2</b>	<b>127.0</b>	<b>39.1</b>	<b>83.3</b>	<b>4,692.7</b>
<b>TOTAL</b>									
Train	226.1	119.8	30.0	13.3	6.1	*	*	*	395.4
Bus	150.6	49.5	40.2	46.9	40.0	13.8	3.0	12.1	356.0
Ferry or tram	8.9	53.6	*	2.2	*	*	*	*	65.9
Car or motorcycle	1,253.6	993.0	568.8	344.6	338.8	115.2	33.6	70.4	3,718.0
Bicycle	20.8	40.1	20.6	14.5	11.0	1.6	1.4	3.1	113.3
Walk or wheelchair	115.0	83.7	47.7	25.8	24.8	9.9	4.9	2.7	314.4
Other(a)	21.6	8.8	10.0	3.8	5.4	1.2	*	*	51.7
Worked at home	32.5	27.8	23.5	10.6	9.5	1.9	2.7	*	108.6
<b>Total</b>	<b>1,829.2</b>	<b>1,376.1</b>	<b>741.9</b>	<b>461.6</b>	<b>435.7</b>	<b>143.7</b>	<b>45.8</b>	<b>89.3</b>	<b>5,123.4</b>
<b>USED A SECOND FORM OF TRANSPORT</b>									
Train	143.4	79.9	21.5	9.1	5.0	*	*	*	258.8
Bus	34.9	16.6	9.5	8.7	7.5	1.9	*	1.3	80.8
Ferry or tram	4.5	12.1	*	*	*	*	*	*	18.6
Car or motorcycle	65.2	56.4	32.3	16.5	18.9	5.6	1.4	2.9	199.2
Walk or wheelchair	3.6	3.9	2.0	1.4	1.8	*	*	*	13.5
Other(a)	2.2	3.1	1.9	1.6	1.7	*	*	*	11.0
<b>Total</b>	<b>253.6</b>	<b>171.9</b>	<b>68.1</b>	<b>38.5</b>	<b>35.0</b>	<b>8.2</b>	<b>2.0</b>	<b>4.5</b>	<b>581.9</b>
<b>DID NOT USE A SECOND FORM OF TRANSPORT</b>									
Train	82.7	39.9	8.5	4.2	*	*	*	*	136.5
Bus	115.8	32.9	30.6	38.2	32.5	12.0	2.6	10.8	275.2
Ferry or tram	4.4	41.4	*	*	*	*	*	*	47.3
Car or motorcycle	1,188.5	936.5	536.5	328.1	319.9	109.6	32.3	67.5	3,518.8
Bicycle	20.4	38.4	20.3	13.5	10.4	1.6	1.4	3.1	109.2
Walk or wheelchair	111.4	79.8	45.7	24.3	23.0	9.4	4.6	2.6	300.9
Other(a)	19.9	7.3	8.4	3.3	4.2	1.0	*	*	44.9
Worked at home	32.5	27.8	23.5	10.6	9.5	1.9	2.7	*	108.6
<b>Total</b>	<b>1,575.6</b>	<b>1,204.2</b>	<b>673.8</b>	<b>423.2</b>	<b>400.6</b>	<b>135.5</b>	<b>43.8</b>	<b>84.8</b>	<b>4,541.5</b>

(a) Includes 'taxi'.

**TABLE 6. ALL EMPLOYEES : MAIN FORM OF TRANSPORT TO WORK, TRAVEL TIME TO WORK, AND WHETHER NIGHTWORKER, STATE CAPITAL CITIES AND REST OF STATE/TERRITORIES (' 000)**

Main form of transport to work and State capital cities and other areas	Travel time to work								Total (a)
	Less than 15 minutes	15 minutes and less than 30 minutes	30 minutes and less than 60 minutes	60 minutes and less than 90 minutes	90 minutes or more	Variable	Worked at home	No set place of work	
NIGHTWORKERS									
Train	*	2.9	6.8	3.4	*	*	..	*	16.5
Bus	3.5	8.2	4.7	*	*	*	..	*	17.9
Car or motorcycle	149.6	122.4	51.9	6.7	*	5.2	..	4.0	341.5
Walk or wheelchair	21.5	2.9	*	*	*	*	..	*	25.5
Other(b)	8.2	4.4	2.1	*	*	*	..	*	17.0
Worked at home	..	..	..	..	..	..	12.3	..	12.3
Total	184.6	140.7	66.1	11.7	3.0	6.4	12.3	5.7	430.7
OTHER WORKERS									
Train	6.9	49.1	170.2	119.5	25.8	4.7	..	2.5	378.9
Bus	42.9	119.6	133.8	33.1	3.5	2.4	..	2.6	338.1
Ferry or tram	4.5	21.1	29.1	6.6	*	*	..	*	62.7
Car or motorcycle	1,423.3	1,123.0	573.5	77.4	12.4	95.8	..	67.3	3,376.5
Bicycle	69.7	28.1	6.0	*	*	*	..	*	105.8
Walk or wheelchair	236.1	42.0	7.0	*	*	*	..	*	288.9
Other(b)	14.5	10.3	4.2	*	*	7.3	..	5.5	45.4
Worked at home	..	..	..	..	..	..	96.3	..	96.3
Total	1,797.9	1,393.1	923.9	239.4	43.6	112.6	96.3	80.8	4,692.7
TOTAL									
Train	8.7	52.0	176.9	122.9	27.1	5.1	..	2.5	395.4
Bus	46.4	127.8	138.5	34.5	3.6	2.4	..	2.7	356.0
Ferry or tram	5.3	22.0	30.5	6.6	*	*	..	*	65.9
Car or motorcycle	1,573.0	1,245.4	625.4	84.1	14.0	101.0	..	71.3	3,718.0
Bicycle	75.1	29.8	6.5	*	*	*	..	*	113.3
Walk or wheelchair	257.6	44.9	7.7	*	*	*	..	*	314.4
Other(b)	16.4	12.0	4.4	*	*	8.0	..	6.8	51.7
Worked at home	..	..	..	..	..	..	108.6	..	108.6
Total	1,982.5	1,533.7	990.0	251.2	46.6	118.9	108.6	86.4	5,123.4
Sydney	312.5	364.2	341.5	124.3	29.0	25.5	13.9	26.1	1,238.6
Rest of N.S.W.	323.6	148.6	60.1	8.9	2.9	17.5	18.6	10.4	590.6
Total N.S.W.	636.1	512.8	401.6	133.2	31.9	43.0	32.5	36.5	1,829.2
Melbourne	303.1	336.5	276.4	70.6	5.2	26.8	14.2	17.6	1,051.4
Rest of Vic.	195.0	70.0	25.9	6.5	3.1	6.9	13.6	3.2	324.8
Total Vic.	498.0	406.5	302.3	77.1	8.3	33.8	27.8	20.7	1,376.1
Brisbane	110.9	137.6	93.2	16.8	*	8.1	7.7	5.5	381.1
Rest of Qld	222.7	79.3	21.1	3.8	1.7	9.9	15.8	6.1	360.7
Total Qld	333.6	216.9	114.3	20.6	2.7	18.1	23.5	11.6	741.9
Adelaide	111.4	139.4	72.2	8.0	*	4.6	4.6	6.0	347.5
Rest of S.A.	77.9	19.7	6.2	1.6	*	2.0	6.1	*	114.1
Total S.A.	189.3	159.1	78.4	9.6	*	6.6	10.6	6.6	461.6
Perth	113.0	116.1	65.7	7.8	*	10.1	3.1	6.0	323.5
Rest of W.A.	78.9	15.9	5.6	*	*	2.6	6.4	2.2	112.1
Total W.A.	191.9	132.0	71.2	8.2	*	12.7	9.5	8.1	435.7
Hobart	27.5	26.4	5.0	*	*	0.9	*	1.3	62.3
Rest of Tas.	46.6	21.2	7.2	1.1	1.2	1.6	1.3	1.1	81.4
Total Tas.	74.2	47.7	12.2	1.4	1.4	2.5	1.9	2.4	143.7
Northern Territory	26.8	14.9	*	*	*	*	2.7	*	45.8
Australian Capital Territory	32.6	44.0	8.9	*	*	2.3	*	*	89.3

(a) Includes employees who didn't know their travel time to work. (b) Includes 'taxi'.

# **PART C. EMPLOYEES IN MAIN JOB WHO WORKED DURING THE FOUR WEEKS PRIOR TO THE SURVEY DATE, EXCLUDING 'HANDICAPPED' WORKERS**

**TABLE 7. EMPLOYEES WHO WORKED : USUAL HOURS WORKED IN ALL JOBS EACH WEEK, WHETHER NIGHTWORKER, WHETHER SHIFTWORKER AND WHETHER HOLDING MORE THAN ONE JOB (' 000)**

<i>Usual hours worked in all jobs each week</i>	<i>Nightworkers</i>			<i>Other workers</i>			<i>Total</i>		
	<i>Shift-workers</i>	<i>Other</i>	<i>Total</i>	<i>Shift-workers</i>	<i>Other</i>	<i>Total</i>	<i>Shift-workers</i>	<i>Other</i>	<i>Total</i>
<b>ONE JOB ONLY</b>									
Less than 20	*	8.7	9.0	6.9	302.4	309.4	7.2	311.1	318.4
20-29	2.4	13.8	16.1	6.9	169.3	176.2	9.2	183.1	192.3
30-34	*	5.9	7.5	6.1	102.1	108.3	7.8	108.0	115.8
<i>Under 35</i>	<i>4.3</i>	<i>28.4</i>	<i>32.7</i>	<i>20.0</i>	<i>573.9</i>	<i>593.9</i>	<i>24.3</i>	<i>602.3</i>	<i>626.5</i>
35-39	17.3	12.7	30.1	19.2	662.3	681.5	36.5	675.1	711.6
40	105.4	58.7	164.1	112.5	1,872.2	1,984.7	217.9	1,930.9	2,148.7
41-48	39.4	26.8	66.1	23.8	433.8	457.6	63.2	460.6	523.8
49 and over	34.1	54.8	88.9	16.8	335.6	352.4	50.9	390.4	441.3
<i>35 and over</i>	<i>196.2</i>	<i>153.0</i>	<i>349.2</i>	<i>172.3</i>	<i>3,303.9</i>	<i>3,476.2</i>	<i>368.5</i>	<i>3,456.9</i>	<i>3,825.4</i>
Variable hours	12.5	11.7	24.2	10.2	125.3	135.5	22.7	137.0	159.7
<i>Total</i>	<i>213.0</i>	<i>193.1</i>	<i>406.1</i>	<i>202.5</i>	<i>4,003.0</i>	<i>4,205.6</i>	<i>415.5</i>	<i>4,196.1</i>	<i>4,611.6</i>
<b>MORE THAN ONE JOB</b>									
Less than 35	*	*	*	*	20.5	21.4	*	21.4	22.4
35-40	*	*	*	*	7.2	7.6	*	8.2	8.9
41-48	*	*	2.2	*	36.1	36.9	*	37.4	39.1
49 and over	3.9	12.6	16.5	*	42.6	43.9	5.2	55.2	60.4
<i>35 and over</i>	<i>5.2</i>	<i>14.8</i>	<i>20.0</i>	<i>2.4</i>	<i>86.0</i>	<i>88.4</i>	<i>7.7</i>	<i>100.8</i>	<i>108.4</i>
Variable hours	*	5.6	7.0	*	25.4	27.0	3.1	30.9	33.9
<i>Total</i>	<i>6.8</i>	<i>21.2</i>	<i>28.0</i>	<i>4.9</i>	<i>131.9</i>	<i>136.7</i>	<i>11.7</i>	<i>153.1</i>	<i>164.8</i>
<b>TOTAL</b>									
Less than 20	*	8.9	9.2	7.2	312.1	319.2	7.4	321.0	328.4
20-29	2.4	14.1	16.5	7.3	176.7	184.0	9.7	190.8	200.5
30-34	*	6.2	8.0	6.3	105.7	112.0	8.1	111.9	119.9
<i>Under 35</i>	<i>4.4</i>	<i>29.2</i>	<i>33.6</i>	<i>20.8</i>	<i>594.4</i>	<i>615.2</i>	<i>25.2</i>	<i>623.6</i>	<i>648.9</i>
35-39	17.7	13.3	31.0	19.6	666.8	686.5	37.3	680.2	717.5
40	105.4	59.1	164.4	112.5	1,874.9	1,987.4	217.9	1,933.9	2,151.8
41-48	40.4	28.0	68.4	24.5	470.0	494.5	64.9	498.0	562.9
49 and over	38.0	67.4	105.4	18.1	378.2	396.3	56.1	445.6	501.7
<i>35 and over</i>	<i>201.4</i>	<i>167.8</i>	<i>369.2</i>	<i>174.7</i>	<i>3,389.9</i>	<i>3,564.6</i>	<i>376.2</i>	<i>3,557.7</i>	<i>3,933.8</i>
Variable hours	13.9	17.3	31.3	11.8	150.6	162.5	25.8	167.9	193.7
<i>Total</i>	<i>219.8</i>	<i>214.3</i>	<i>434.1</i>	<i>207.4</i>	<i>4,134.9</i>	<i>4,342.3</i>	<i>427.1</i>	<i>4,349.2</i>	<i>4,776.4</i>

NOTE. Nightworkers who were not also shiftworkers, and total nightworkers, shown in this table include 12,800 employees who were nightworkers in their *second* job only, hence the difference in the estimate for nightworkers between this table and Tables 9-18 following.

**PART D. EMPLOYEES IN MAIN JOB WHO WORKED DURING THE FOUR WEEKS PRIOR TO THE SURVEY DATE AND WHO WERE NIGHTWORKERS IN THEIR MAIN JOB**

**TABLE 8. EMPLOYEES WHO WERE NIGHTWORKERS : AGE AND USUAL HOURS WORKED IN MAIN JOB EACH WEEK (' 000)**

	Usual hours worked in main job each week						
Age group (years)	Less than 35	35-39	40	41-48	49 and over	Variable hours	Total
MALES							
15-24	4.1	3.3	25.8	11.0	14.0	4.5	62.9
25-34	2.8	7.0	36.3	21.6	31.7	7.9	107.3
35-44	*	6.7	27.1	13.8	21.3	4.5	74.5
45-54	*	5.2	19.3	9.3	13.9	4.0	53.4
55 and over	*	2.6	11.9	5.2	4.5	*	25.5
Total	10.2	24.8	120.3	61.0	85.3	21.8	323.6
FEMALES							
15-24	5.1	*	18.9	2.7	2.0	*	31.7
25-34	10.7	2.6	13.7	4.3	3.7	*	36.2
35-44	7.2	2.0	10.3	*	2.8	*	24.4
45 and over	3.6	*	5.9	*	2.0	*	14.7
Total	26.7	7.5	48.8	9.9	10.6	3.7	107.1
PERSONS							
15-19	2.5	*	14.8	*	3.6	*	24.8
20-24	6.7	4.4	29.9	11.8	12.4	4.5	69.8
25-34	13.5	9.6	50.0	25.9	35.4	9.1	143.5
35-44	8.5	8.7	37.3	15.5	24.1	4.8	99.0
45-54	4.4	5.8	23.8	10.3	15.5	4.9	64.8
55 and over	*	3.0	13.2	5.5	4.9	*	28.9
Total	36.9	32.3	169.1	71.0	95.9	25.5	430.7

**PART E. EMPLOYEES IN MAIN JOB WHO WORKED DURING THE FOUR WEEKS PRIOR TO THE SURVEY DATE AND WHO WERE NIGHTWORKERS IN THEIR MAIN JOB, EXCLUDING 'HANDICAPPED' WORKERS**

**TABLE 9. EMPLOYEES WHO WERE NIGHTWORKERS : AGE AND HOURS OF NIGHTWORK(a)**  
( ' 000)

Hours of nightwork(a)	Age group (years)						Total
	15-19	20-24	25-34	35-44	45-54	55 and over	
MALES							
15-19	5.9	11.4	24.5	14.8	13.0	4.7	74.3
20-29	6.1	15.7	36.5	26.9	16.0	8.7	109.9
30-34	*	3.6	7.1	6.4	3.7	*	23.8
35-39	*	4.9	8.0	7.2	6.7	2.2	29.8
40	*	4.5	10.4	6.8	5.1	3.0	31.0
41-48	*	2.7	6.9	4.8	2.3	*	19.8
49 and over	*	2.2	12.1	5.7	5.4	*	27.7
Total	17.2	44.9	105.6	72.6	52.3	23.8	316.3
FEMALES							
15-19	3.3	9.5	13.0	9.6	4.3		39.8
20-29	*	7.2	11.7	6.0	5.7		31.8
30-39	*	2.2	2.9	2.7	*		10.1
40	*	3.9	5.1	4.0	2.2		15.7
41 and over	*	*	2.9	*	*		7.6
Total	7.5	23.9	35.6	23.9	14.0		105.0
PERSONS							
15-19	9.2	20.8	37.5	24.4	16.0	6.0	114.1
20-29	7.3	22.9	48.3	32.9	20.9	9.5	141.7
30-34	*	4.8	8.7	8.4	4.0	*	29.3
35-39	*	5.9	9.3	8.0	7.3	2.4	34.4
40	*	8.4	15.5	10.8	6.5	3.7	46.7
41-48	2.0	3.2	8.2	5.9	2.8	*	23.9
49 and over	*	2.8	13.7	6.1	5.5	*	31.3
Total	24.7	68.8	141.2	96.5	63.2	26.9	421.3

(a) In the *last* week in which respondents were nightworkers (as defined), i.e. not necessarily their usual hours of nightwork.

TABLE 10. EMPLOYEES WHO WERE NIGHTWORKERS : USUAL HOURS WORKED IN ALL JOBS EACH WEEK,  
HOURS OF NIGHTWORK(a) AND BIRTHPLACE  
( ' 000)

	Hours of nightwork(a)							
Usual hours worked in all jobs each week	15-19	20-29	30-34	35-39	40	41-48	49 and over	Total
BORN IN AUSTRALIA								
Less than 20	6.7	*	*	*	*	*	*	8.1
20-29	5.2	6.6	*	*	*	*	*	12.3
30-34	*	2.3	*	*	*	*	*	4.3
Under 35	12.9	10.2	*	*	*	*	*	24.6
35-39	6.8	6.2	*	5.4	*	*	*	21.6
40	24.0	36.4	6.8	9.1	23.7	5.8	6.3	112.1
41-48	11.4	17.8	2.8	4.6	5.4	3.0	2.6	47.7
49 and over	23.4	19.6	5.2	3.9	2.4	4.3	8.5	67.2
35 and over	65.5	80.0	16.6	23.0	31.9	13.6	17.8	248.5
Variable hours	5.9	7.0	*	*	*	*	2.4	21.5
Total	84.3	97.2	19.2	25.2	33.0	15.4	20.3	294.6
BORN IN MAIN ENGLISH-SPEAKING COUNTRIES(b)								
Less than 35	2.1	*	*	*	*	*	*	4.3
35-40	4.7	7.2	*	*	2.5	*	*	20.1
41-48	2.9	3.0	*	*	*	*	*	10.1
49 and over	4.3	4.8	*	*	*	*	2.9	14.8
35 and over	11.8	15.0	3.6	3.7	3.6	2.7	4.7	45.1
Variable hours	*	*	*	*	*	*	*	3.0
Total	15.1	17.1	4.6	3.7	3.7	3.1	5.1	52.3
BORN IN OTHER COUNTRIES								
Less than 35	2.3	*	*	*	*	*	*	4.4
35-40	5.9	17.9	*	4.0	8.1	*	2.1	41.6
41-48	*	3.7	*	*	*	*	*	9.8
49 and over	4.1	3.8	*	*	*	*	3.3	15.5
35 and over	11.9	25.3	4.3	5.0	9.4	5.3	5.7	66.9
Variable hours	*	*	*	*	*	*	*	3.0
Total	14.6	27.4	5.6	5.4	10.1	5.3	5.8	74.3
TOTAL								
Less than 20	7.8	*	*	*	*	*	*	9.2
20-29	7.4	8.6	*	*	*	*	*	16.5
30-34	2.2	2.8	2.0	*	*	*	*	7.6
Under 35	17.4	12.7	2.4	*	*	*	*	33.3
35-39	8.8	9.2	3.0	7.1	*	*	*	30.9
40	32.4	58.4	9.0	13.1	33.9	8.2	9.4	164.4
41-48	16.1	24.5	5.4	6.2	6.2	5.7	3.4	67.7
49 and over	31.8	28.1	7.1	5.3	4.0	6.4	14.6	97.5
35 and over	89.2	120.3	24.5	31.7	44.9	21.6	28.2	360.4
Variable hours	7.4	8.7	2.4	2.1	*	2.2	3.0	27.5
Total	114.1	141.7	29.3	34.4	46.7	23.9	31.3	421.3

(a) In the last week in which respondents were nightworkers (as defined) i.e. not necessarily their usual hours of nightwork. (b) Comprises U.K. and Ireland, U.S.A., Canada, New Zealand and South Africa.

**TABLE 11. EMPLOYEES WHO WERE NIGHTWORKERS : USUAL HOURS WORKED IN ALL JOBS EACH WEEK,  
USUAL HOURS OF SLEEP, STATE CAPITAL CITIES AND OTHER AREAS  
( ' 000)**

Usual hours worked in all jobs each week	Usual hours of sleep						Total
	Less than 5	5	6	7	8	9 and over	
STATE CAPITAL CITIES(a)							
Less than 35	2.6	3.8	5.2	4.5	5.5	*	23.1
35-39	*	2.5	4.6	3.8	4.4	*	17.6
40	7.4	12.4	28.5	18.7	21.5	6.4	94.8
41-48	*	4.2	10.9	8.3	9.5	3.0	37.7
49 and over	4.5	6.4	17.7	11.5	10.1	2.5	52.7
35 and over	14.1	25.5	61.7	42.3	45.5	13.8	202.8
Variable hours	2.9	*	4.6	2.4	*	*	14.6
Total	19.5	31.1	71.6	49.1	52.8	16.5	240.5
OTHER AREAS							
Less than 35	*	*	*	2.5	3.6	*	10.2
35-39	*	*	3.7	2.5	3.8	*	13.3
40	7.0	8.9	22.4	10.1	15.1	6.0	69.6
41-48	2.8	4.3	11.2	4.9	5.0	*	29.9
49 and over	4.7	7.5	12.6	10.4	7.4	2.2	44.8
35 and over	14.9	22.4	49.9	27.9	31.3	11.1	157.6
Variable hours	*	2.8	3.9	2.0	2.9	*	12.9
Total	16.6	26.7	55.5	32.4	37.8	11.7	180.7
TOTAL							
Less than 35	3.4	5.3	6.9	6.9	9.1	*	33.3
35-39	*	4.2	8.3	6.3	8.2	3.1	30.9
40	14.3	21.3	51.0	28.8	36.6	12.3	164.4
41-48	4.6	8.5	22.1	13.2	14.5	4.8	67.6
49 and over	9.2	13.9	30.4	21.9	17.5	4.7	97.5
35 and over	29.0	47.9	111.7	70.2	76.8	24.9	360.4
Variable hours	3.7	4.6	8.5	4.3	4.8	*	27.5
Total	36.0	57.8	127.1	81.5	90.6	28.2	421.3

(a) State Capital City Statistical Divisions (not including Darwin) as defined in *Census of Population and Housing, 30 June 1976, Local Government Area Code List* (2118.0).

TABLE 12. EMPLOYEES WHO WERE NIGHTWORKERS : EDUCATIONAL ATTAINMENT, USUAL WEEKLY EARNINGS(a) AND WHETHER HOLDING MORE THAN ONE JOB

	Educational attainment							Total
	With post-school qualifications				Without post-school qualifications			
	Bachelor or higher degree	Diploma or other tertiary certificate	Trade or appren- ticeship	Total	Attended highest level secondary	Other	Total	
ONE JOB								
Usual weekly earnings \$(a)—	—' 000—							
Under 140	*	5.1	*	7.2	5.0	18.7	23.8	31.0
140 and under 160	*	3.7	*	5.1	4.1	8.1	12.2	17.3
160 and under 180	*	3.5	*	4.9	5.3	9.1	14.4	19.3
180 and under 200	*	4.2	2.2	7.3	4.5	16.8	21.3	28.6
200 and under 220	*	8.0	4.2	12.4	5.2	19.5	24.7	37.1
220 and under 240	2.2	5.4	3.8	11.4	4.8	15.6	20.4	31.8
240 and under 260	2.6	10.0	7.1	19.6	4.1	16.4	20.5	40.1
260 and under 280	*	6.7	6.9	15.4	2.7	15.1	17.8	33.1
280 and under 300	2.8	5.2	5.4	13.4	2.5	11.3	13.8	27.3
300 and under 350	4.1	11.1	11.8	27.0	6.2	19.1	25.3	52.3
350 and over	13.2	14.2	18.1	45.5	8.3	30.3	38.6	84.1
Total(b)	30.7	77.8	62.2	170.6	53.2	182.2	235.5	406.1
Average (mean) earnings	344	274	312	—\$— 300	253	258	257	275
MORE THAN ONE JOB(c)								
Usual weekly earnings \$(a)—	—' 000—							
Under 300	*	*	*	*	2.1	3.4	5.5	6.9
300 and over	*	2.2	2.1	5.6	*	2.0	2.6	8.2
Total(b)	*	3.1	2.7	7.0	2.6	5.4	8.1	15.1
Average (mean) earnings	*	373	408	—\$— 420	244	280	268	339
TOTAL								
Usual weekly earnings \$(a)—	—' 000—							
Under 140	*	5.2	*	7.3	5.1	19.0	24.1	31.4
140 and under 160	*	3.9	*	5.3	4.3	8.3	12.6	17.9
160 and under 180	*	3.5	*	4.9	5.9	9.4	15.3	20.2
180 and under 200	*	4.2	2.3	7.4	4.6	17.0	21.6	29.0
200 and under 220	*	8.1	4.2	12.5	5.5	20.2	25.6	38.2
220 and under 240	2.2	5.4	3.9	11.5	5.1	15.9	21.0	32.6
240 and under 260	2.6	10.2	7.2	19.9	4.1	16.5	20.6	40.5
260 and under 280	*	6.8	7.1	15.7	2.7	15.8	18.5	34.1
280 and under 300	2.8	5.3	5.5	13.6	3.0	11.9	15.0	28.6
300 and under 350	4.1	11.2	12.0	27.3	6.4	19.9	26.3	53.6
350 and over	14.5	16.3	20.0	50.8	8.7	31.6	40.2	91.0
Total(b)	32.0	80.8	64.9	177.7	55.9	187.7	243.6	421.3
Average (mean) earnings	353	278	316	—\$— 305	253	259	258	277

(a) Usual earnings at the time of the survey. Earnings for employees not paid weekly have been converted to equivalent weekly amounts. (b) Includes employees who did not provide details of their earnings. (c) But nightworkers in main job.

TABLE 13. EMPLOYEES WHO WERE NIGHTWORKERS : TYPE OF NIGHTWORK IN ORDINARY TIME(a), TYPE OF NIGHTWORK IN ADDITIONAL TIME(b) AND HOURS OF NIGHTWORK(c)  
( ' 000)

Type of nightwork in ordinary time(a) and type of nightwork in additional time(b)	Hours of nightwork(c)							Total
	15-19	20-29	30-34	35-39	40	41-48	49 and over	
MALES								
Shiftwork—								
Standby/on call only	3.8	6.5	2.5	*	2.1	*	2.7	20.2
Combinations of standby/on call, paid overtime and unpaid work	3.2	3.1	*	*	*	*	2.3	13.9
Did not work additional time	21.0	47.6	10.5	15.1	19.3	9.5	15.5	138.3
Total(d)	28.5	57.7	15.2	18.6	22.1	12.2	21.1	175.4
Roster system—								
Worked additional time	2.2	4.8	*	*	*	*	*	9.7
Did not work additional time	4.3	5.9	*	*	*	*	*	14.5
Total	6.5	10.7	*	*	*	*	2.0	24.1
Other(e)—								
Standby/on call only	4.0	4.3	*	*	*	*	*	10.9
Combinations of standby/on call, paid overtime and unpaid work	5.5	4.8	*	*	*	*	*	12.5
Did not work additional time	29.5	32.1	6.1	8.9	7.5	5.5	2.6	92.2
Total(d)	39.4	41.4	7.4	10.0	7.5	6.3	4.6	116.7
All nightworkers—								
Standby/on call only	8.5	13.1	3.6	2.6	2.3	*	3.9	35.3
Combinations of standby/on call, paid overtime and unpaid work	10.2	10.1	2.2	*	*	2.7	4.0	31.6
Did not work additional time	54.7	85.6	17.4	25.2	27.9	15.5	18.8	245.0
Total(d)	74.3	109.9	23.8	29.8	31.0	19.8	27.7	316.3
FEMALES								
Shiftwork—								
Worked additional time	*	2.4	*	*	*	*	*	6.0
Did not work additional time	12.7	9.8	2.5	*	7.3	*	2.4	37.9
Total	14.4	12.1	2.8	*	8.0	2.2	2.7	43.9
Roster system	8.5	3.5	*	*	2.8	*	*	17.2
Other(e)	16.8	16.1	*	2.5	5.0	*	*	43.8
All nightworkers—								
Standby/on call only	2.5	3.4	*	*	*	*	*	8.6
Combinations of standby/on call, paid overtime and unpaid work	2.6	*	*	*	*	*	*	4.3
Did not work additional time	34.6	27.0	5.0	3.9	14.9	3.4	3.0	91.7
Total(d)	39.8	31.8	5.6	4.6	15.7	4.0	3.5	105.0
PERSONS								
Shiftwork—								
Standby/on call only	5.0	8.3	2.8	2.0	2.7	*	3.1	24.7
Combinations of standby/on call, paid overtime and unpaid work	3.8	3.6	*	*	*	2.1	2.3	15.4
Did not work additional time	33.6	57.3	13.0	16.6	26.6	11.2	17.8	176.3
Total(d)	42.9	69.9	18.1	20.3	30.0	14.3	23.8	219.3
Roster system—								
Worked additional time	4.0	5.5	*	*	*	*	*	13.1
Did not work additional time	11.0	8.8	*	*	3.6	*	*	28.3
Total	15.0	14.3	2.2	*	4.2	*	2.4	41.4
Other(e)—								
Standby/on call only	4.6	5.4	*	*	*	*	*	12.9
Combinations of standby/on call, paid overtime and unpaid work	6.5	5.4	*	*	*	*	*	14.0
Did not work additional time	44.7	46.4	7.7	11.0	12.5	6.9	3.0	132.2
Total(d)	56.2	57.5	9.1	12.5	12.5	7.7	5.1	160.5
All nightworkers—								
Standby/on call only	11.0	16.5	4.1	3.2	3.2	*	4.4	43.8
Combinations of standby/on call, paid overtime and unpaid work	12.8	11.3	2.2	*	*	3.1	4.0	35.8
Did not work additional time	89.3	112.6	22.4	29.0	42.8	18.9	21.8	336.7
Total(d)	114.1	141.7	29.3	34.4	46.7	23.9	31.3	421.3

(a) Type of nightwork *during* award, etc. agreed or standard hours of work. (b) Type of nightwork *after* award, etc. agreed or standard hours have been worked. (c) In the *last* week in which respondents were nightworkers (as defined), i.e. not necessarily their usual hours of nightwork. (d) Includes paid overtime and unpaid work. (e) Includes employees who were classified as nightworkers because of work done in 'additional' time, i.e. they were not nightworkers because of work done during 'ordinary' time.

TABLE 14. EMPLOYEES WHO WERE NIGHTWORKERS : TYPE OF NIGHTWORK IN ORDINARY TIME(a), TYPE OF NIGHTWORK IN ADDITIONAL TIME(b), BIRTHPLACE AND PERIOD OF ARRIVAL (' 000)

Type of nightwork in ordinary time(a) and type of nightwork in additional time(b)	Birthplace and period of arrival								Total
	Born overseas								
	Born in Australia	Born in main English- speaking countries(c)	Born in other countries	Total			Arrived 1976 to survey date	All employees born overseas	
				Arrived before 1961	Arrived 1961-1970	Arrived 1971-1975			
MALES									
Shiftwork—									
Standby/on call only	14.4	4.1	*	*	3.2	*	*	5.8	20.2
Combinations of standby/on call, paid overtime and unpaid work	10.2	*	2.1	2.2	*	*	*	3.7	13.9
Did not work additional time	94.4	18.1	25.8	15.2	18.1	5.9	4.8	43.9	138.3
Total(d)	121.5	24.2	29.8	19.2	22.6	6.8	5.4	54.0	175.4
Roster system—									
Worked additional time	7.2	*	*	*	*	*	*	2.4	9.7
Did not work additional time	10.1	2.2	2.1	*	*	*	*	4.3	14.5
Total	17.4	3.7	3.1	*	2.5	*	*	6.8	24.1
Other(e)—									
Standby/on call only	9.5	*	*	*	*	*	*	*	10.9
Combinations of standby/on call, paid overtime and unpaid work	9.8	*	*	*	*	*	*	2.6	12.5
Did not work additional time	60.5	10.3	21.4	9.2	10.7	6.3	5.5	31.7	92.2
Total(d)	80.4	12.8	23.5	11.1	12.5	6.6	6.1	36.3	116.7
All nightworkers—									
Standby/on call only	26.4	6.0	2.9	3.1	4.1	*	*	8.9	35.3
Combinations of standby/on call, paid overtime and unpaid work	24.4	3.3	3.8	3.8	2.1	*	*	7.1	31.6
Did not work additional time	165.1	30.7	49.3	24.9	30.7	12.5	12.0	80.0	245.0
Total(d)	219.2	40.7	56.4	32.0	37.6	14.1	13.4	97.1	316.3
FEMALES									
Shiftwork—									
Worked additional time	4.6	*	*	*	*	*	*	*	6.0
Did not work additional time	30.3	3.3	4.4	*	2.9	*	2.3	7.6	37.9
Total	34.9	4.1	5.0	*	3.9	*	2.3	9.1	43.9
Roster system—									
Worked additional time	2.3	*	*	*	*	*	*	*	3.5
Did not work additional time	11.3	*	*	*	*	*	*	2.5	13.8
Total	13.6	*	*	*	*	*	*	3.6	17.2
Other(e)—									
Worked additional time	2.8	*	*	*	*	*	*	*	3.8
Did not work additional time	24.1	5.5	10.4	4.1	6.5	2.3	3.0	15.9	40.0
Total	26.9	5.9	11.0	4.5	7.1	2.3	3.0	16.9	43.8
All nightworkers—									
Worked additional time	9.7	*	*	*	2.1	*	*	3.6	13.3
Did not work additional time	65.7	9.8	16.2	6.1	10.2	4.0	5.8	26.0	91.7
Total	75.4	11.7	17.9	7.6	12.2	4.0	5.8	29.6	105.0
PERSONS									
Shiftwork—									
Standby/on call only	17.9	4.7	2.1	*	4.0	*	*	6.8	24.7
Combinations of standby/on call, paid overtime and unpaid work	11.2	*	2.4	2.5	*	*	*	4.2	15.4
Did not work additional time	124.7	21.4	30.1	16.6	21.0	6.9	7.1	51.6	176.3
Total(d)	156.3	28.3	34.8	21.1	26.4	7.8	7.7	63.0	219.3
Roster system—									
Worked additional time	9.5	2.1	*	*	*	*	*	3.6	13.1
Did not work additional time	21.5	3.2	3.6	*	2.6	*	2.1	6.8	28.3
Total	31.0	5.4	5.0	2.9	3.8	*	2.3	10.4	41.4
Other(e)—									
Standby/on call only	10.9	*	*	*	*	*	*	2.0	12.9
Combinations of standby/on call, paid overtime and unpaid work	11.0	*	*	*	*	*	*	3.1	14.0
Did not work additional time	84.6	15.8	31.8	13.2	17.2	8.7	8.5	47.6	132.2
Total(d)	107.3	18.7	34.5	15.7	19.6	8.9	9.1	53.2	160.5
All nightworkers—									
Standby/on call only	32.5	7.5	3.8	4.2	5.4	*	*	11.3	43.8
Combinations of standby/on call, paid overtime and unpaid work	27.6	3.7	4.6	4.1	2.9	*	*	8.2	35.8
Did not work additional time	230.8	40.4	65.5	31.0	40.8	16.4	17.7	106.0	336.7
Total(d)	294.6	52.4	74.3	39.6	49.8	18.1	19.2	126.6	421.3

(a) Type of nightwork during award, etc. agreed or standard hours of work. (b) Type of nightwork after award, etc. agreed or standard hours have been worked. (c) Comprises U.K. and Ireland, U.S.A., Canada, New Zealand and South Africa. (d) Includes paid overtime and unpaid work. (e) Includes employees who were classified as nightworkers because of work done in 'additional' time, i.e. they were not nightworkers because of work done during 'ordinary' time.

TABLE 15. EMPLOYEES WHO WERE NIGHTWORKERS : TYPE OF NIGHTWORK IN ORDINARY TIME(a), TYPE OF NIGHTWORK IN ADDITIONAL TIME(b), BENEFITS OF NIGHTWORK AND DISADVANTAGES OF NIGHTWORK (' 000)

Benefits and disadvantages of nightwork	Type of nightwork in ordinary time			Total
	Shiftworker	Roster system	Other (c)	
STAND-BY/ON CALL ONLY				
Benefits—				
Financial reasons	6.7	*	2.1	10.0
Likes hours for family/personal reasons	9.4	2.4	3.5	15.4
Other	3.4	*	4.0	8.3
None	7.9	2.6	4.5	15.0
Disadvantages—				
Health/sleeping problems	10.8	*	4.1	16.6
Family reasons	7.4	*	3.6	12.9
Limits social life	9.0	*	3.3	14.0
Transport problems	*	*	*	2.3
Other	3.4	*	*	5.2
None	6.5	2.2	4.3	13.0
COMBINATIONS OF STAND-BY/ON CALL, PAID OVERTIME AND UNPAID WORK				
Benefits—				
Financial reasons	7.0	*	2.2	11.0
Likes hours for family/personal reasons	6.3	2.1	2.2	10.6
Other	3.1	*	6.1	9.9
None	3.2	2.2	4.9	10.2
Disadvantages—				
Health/sleeping problems	8.4	3.4	4.1	15.9
Family reasons	4.1	*	5.8	11.7
Limits social life	6.0	3.1	4.4	13.5
Transport problems	*	*	*	*
Other	2.2	*	3.0	5.7
None	3.9	*	3.3	8.5
NO ADDITIONAL TIME				
Benefits—				
Financial reasons	48.3	6.9	29.2	84.5
Likes hours for family/personal reasons	75.4	14.9	61.5	151.7
Other	27.9	3.8	26.4	58.1
None	49.8	6.0	30.5	86.3
Disadvantages—				
Health/sleeping problems	67.2	7.8	33.7	108.8
Family reasons	38.6	6.8	24.2	69.6
Limits social life	60.6	8.6	33.8	103.0
Transport problems	7.5	*	4.1	13.2
Other	19.4	2.4	12.6	34.4
None	54.2	10.6	56.8	121.6
TOTAL(d)				
Benefits—				
Financial reasons	63.4	10.0	33.9	107.3
Likes hours for family/personal reasons	91.9	19.8	67.6	179.3
Other	34.8	5.5	37.1	77.4
None	61.6	10.8	40.3	112.6
Disadvantages—				
Health/sleeping problems	87.2	13.3	42.2	142.7
Family reasons	50.7	10.5	34.1	95.3
Limits social life	76.5	13.4	41.6	131.5
Transport problems	10.6	*	4.8	17.1
Other	25.2	3.5	17.0	45.7
None	65.9	14.1	64.9	144.9

(a) Type of nightwork *during* award, etc. agreed or standard hours of work. (b) Type of nightwork *after* award, etc. agreed or standard hours have been worked. (c) Includes employees who were classified as nightworkers because of work done in 'additional' time, i.e. they were not nightworkers because of work done during 'ordinary' time. (d) Includes paid overtime only and unpaid work only.

NOTE. Employees who indicated more than one benefit and/or more than one disadvantage are counted more than once. Hence totals obtained from this table will exceed those in other tables not including benefits and disadvantages in this publication.

TABLE 16. EMPLOYEES WHO WERE NIGHTWORKERS : BENEFITS OF NIGHTWORK, DISADVANTAGES OF NIGHTWORK, USUAL WEEKLY EARNINGS(a) AND MARITAL STATUS (' 000)

Benefits and disadvantages of nightwork	Males			Females			Persons		
	Married	Not married(b)	Total	Married	Not married(b)	Total	Married	Not married(b)	Total
UNDER \$200									
Benefits—									
Financial reasons	3.8	6.5	10.3	6.4	4.6	11.0	10.2	11.2	21.3
Likes hours for family/personal reasons	8.3	10.9	19.2	21.8	8.0	29.8	30.1	18.9	49.0
Other	3.3	3.8	7.1	2.5	2.7	5.1	5.8	6.4	12.2
None	9.1	7.1	16.3	4.1	7.8	11.9	13.3	14.9	28.2
Disadvantages—									
Health/sleeping problems	7.6	4.7	12.3	9.0	6.1	15.1	16.6	10.8	27.4
Family reasons	6.9	*	7.4	7.6	*	8.3	14.5	*	15.7
Limits social life	5.7	9.2	14.9	3.3	9.1	12.4	9.0	18.3	27.3
Transport problems	*	*	*	*	2.1	2.4	*	3.4	4.3
Other	2.0	3.0	5.0	*	2.7	4.1	3.5	5.6	9.1
None	7.7	11.2	18.9	16.1	6.0	22.1	23.8	17.2	41.0
\$200 AND UNDER \$300									
Benefits—									
Financial reasons	27.5	11.2	38.7	4.8	3.5	8.3	32.3	14.7	47.0
Likes hours for family/personal reasons	37.6	17.6	55.2	14.3	6.7	21.0	51.9	24.4	76.2
Other	16.0	6.1	22.1	3.8	2.6	6.4	19.8	8.7	28.5
None	25.9	9.4	35.3	4.8	5.0	9.8	30.7	14.4	45.1
Disadvantages—									
Health/sleeping problems	33.5	10.4	44.0	8.6	6.9	15.5	42.2	17.3	59.5
Family reasons	31.2	*	32.2	8.1	*	9.6	39.3	2.5	41.8
Limits social life	29.6	15.1	44.7	5.3	7.6	12.9	34.9	22.7	57.6
Transport problems	2.5	2.0	4.5	*	*	2.2	3.9	2.8	6.7
Other	10.8	3.0	13.8	*	2.1	3.9	12.6	5.1	17.7
None	29.0	17.1	46.1	9.0	5.4	14.4	38.1	22.5	60.5
\$300 AND OVER									
Benefits—									
Financial reasons	28.1	7.5	35.7	*	*	2.6	29.8	8.5	38.3
Likes hours for family/personal reasons	36.8	11.6	48.4	*	*	3.5	38.5	13.4	51.9
Other	24.8	6.4	31.3	2.3	2.6	4.9	27.1	9.0	36.2
None	28.3	7.5	35.8	*	*	2.3	29.8	8.3	38.1
Disadvantages—									
Health/sleeping problems	40.0	10.6	50.5	2.5	*	4.4	42.5	12.4	54.9
Family reasons	33.8	*	34.7	2.0	*	2.5	35.8	*	37.2
Limits social life	32.5	10.1	42.6	*	2.2	3.4	33.7	12.3	45.9
Transport problems	4.8	*	6.0	*	*	*	4.8	*	6.0
Other	14.3	2.9	17.1	*	*	*	15.2	3.5	18.7
None	27.5	10.6	38.1	*	*	3.2	29.1	12.2	41.3
TOTAL									
Benefits—									
Financial reasons	60.0	25.3	85.3	12.9	9.1	22.0	73.0	34.3	107.3
Likes hours for family/personal reasons	83.7	40.2	123.9	38.5	16.9	55.4	122.1	57.1	179.3
Other	44.2	16.6	60.8	8.5	8.1	16.6	52.7	24.6	77.4
None	64.1	24.1	88.2	10.4	13.9	24.4	74.6	38.0	112.6
Disadvantages—									
Health/sleeping problems	81.7	25.7	107.4	20.3	15.0	35.3	102.0	40.7	142.7
Family reasons	72.3	2.5	74.7	17.8	2.7	20.6	90.1	5.2	95.3
Limits social life	68.0	34.6	102.7	9.8	19.1	28.8	77.8	53.7	131.5
Transport problems	8.0	4.5	12.4	*	2.9	4.6	9.7	7.4	17.1
Other	27.0	9.0	36.1	4.2	5.4	9.6	31.2	14.4	45.7
None	65.2	39.2	104.3	27.2	13.4	40.6	92.3	52.6	144.9

(a) Usual earnings at the time of the survey. Earnings for employees not paid weekly have been converted to equivalent weekly amounts. (b) Includes never married, widowed, divorced and permanently separated.

NOTE. Employees who indicated more than one benefit and/or more than one disadvantage are counted more than once. Hence totals obtained from this table will exceed those in other tables not including benefits and disadvantages in this publication.

**TABLE 17. EMPLOYEES WHO WERE NIGHTWORKERS : BENEFITS OF NIGHTWORK, DISADVANTAGES OF NIGHTWORK, DURATION OF CURRENT NIGHTWORKING ARRANGEMENT AND BIRTHPLACE**  
( ' 000)

Benefits and disadvantages of nightwork	Duration of current nightworking arrangement							Total
	Under 6 months	6 months and under 1 year	Total under 1 year	1 year and under 2 years	2 years and under 5 years	5 years and over	Total 1 year and over	
BORN IN AUSTRALIA								
Benefits—								
Financial reasons	11.5	6.5	17.9	7.0	19.2	28.9	55.1	73.0
Likes hours for family/personal reasons	17.1	9.6	26.6	13.0	31.7	53.7	98.5	125.1
Other	9.7	3.6	13.2	5.4	14.2	26.1	45.7	59.0
None	11.6	7.2	18.7	6.4	17.7	36.3	60.4	79.1
Disadvantages—								
Health/sleeping problems	13.8	6.0	19.9	9.0	23.5	45.5	78.0	97.8
Family reasons	8.0	4.4	12.4	4.0	15.6	32.6	52.2	64.6
Limits social life	12.9	8.4	21.4	9.4	24.5	45.2	79.1	100.5
Transport problems	*	*	3.0	*	2.7	5.9	9.7	12.6
Other	5.2	3.4	8.6	2.1	7.3	14.2	23.7	32.3
None	16.8	8.2	25.0	10.2	26.1	39.6	75.8	100.8
BORN IN MAIN ENGLISH-SPEAKING COUNTRIES(a)								
Benefits—								
Financial reasons	2.4	*	3.8	*	2.7	5.7	10.0	13.8
Likes hours for family/personal reasons	*	*	3.4	*	5.1	11.2	17.8	21.3
Other	2.1	*	3.0	*	*	5.5	7.4	10.4
None	2.6	*	3.2	*	4.2	5.2	10.1	13.4
Disadvantages—								
Health/sleeping problems	3.0	*	3.8	*	3.8	8.0	12.7	16.6
Family reasons	*	*	2.5	*	2.0	6.5	9.9	12.4
Limits social life	2.3	*	3.6	*	4.0	8.9	14.1	17.7
Transport problems	*	*	*	*	*	*	*	2.3
Other	*	*	*	*	*	2.7	5.3	6.8
None	2.8	*	4.4	*	4.0	6.6	11.5	15.9
BORN IN OTHER COUNTRIES								
Benefits—								
Financial reasons	4.5	*	5.3	*	5.3	7.9	15.2	20.5
Likes hours for family/personal reasons	4.9	3.0	7.9	3.4	7.2	14.2	24.9	32.8
Other	*	*	*	*	*	3.6	6.2	8.0
None	*	*	2.6	3.8	3.5	10.2	17.5	20.0
Disadvantages—								
Health/sleeping problems	3.8	2.0	5.8	2.3	5.0	15.1	22.4	28.2
Family reasons	2.4	*	4.1	2.0	2.8	9.3	14.1	18.2
Limits social life	*	*	2.5	2.0	3.4	5.2	10.7	13.2
Transport problems	*	*	*	*	*	*	*	2.1
Other	*	*	*	*	*	3.3	4.6	6.6
None	3.6	*	5.2	4.5	5.8	12.5	22.8	28.1
TOTAL								
Benefits—								
Financial reasons	18.4	8.6	27.0	10.5	27.3	42.5	80.3	107.3
Likes hours for family/personal reasons	23.8	14.1	37.9	17.9	44.1	79.2	141.3	179.3
Other	13.2	4.8	18.0	7.1	17.1	35.2	59.3	77.4
None	15.2	9.4	24.5	10.8	25.4	51.8	88.0	112.6
Disadvantages—								
Health/sleeping problems	20.6	8.9	29.5	12.2	32.3	68.5	113.1	142.7
Family reasons	11.8	7.2	19.0	7.3	20.4	48.5	76.2	95.3
Limits social life	17.0	10.5	27.5	12.6	31.9	59.4	103.9	131.5
Transport problems	2.3	*	3.9	*	4.1	7.5	13.2	17.1
Other	7.6	4.5	12.1	3.5	9.8	20.3	33.6	45.7
None	23.2	11.4	34.6	15.6	35.9	58.7	110.3	144.9

(a) Comprises U.K. and Ireland, U.S.A., Canada, New Zealand and South Africa.

NOTE. Employees who indicated more than one benefit and/or more than one disadvantage are counted more than once. Hence totals obtained from this table will exceed those in other tables not including benefits and disadvantages in this publication.

TABLE 18. EMPLOYEES WHO WERE NIGHTWORKERS : BENEFITS OF NIGHTWORK, DISADVANTAGES OF NIGHTWORK, USUAL HOURS OF SLEEP AND WHETHER SHIFTWORKER (' 000)

Benefits and disadvantages of nightwork	Usual hours of sleep						Total
	Less than 5	5	6	7	8	9 and over	
WORKED SHIFTWORK							
Benefits—							
Financial reasons	6.2	8.3	21.9	9.2	14.3	3.5	63.4
Likes hours for family/personal reasons	8.3	11.2	28.7	15.9	20.9	6.8	91.9
Other	3.2	3.7	11.5	6.5	7.0	2.9	34.8
None	6.7	13.7	20.0	7.1	9.1	5.1	61.6
Disadvantages—							
Health/sleeping problems	14.4	21.1	30.0	7.8	10.6	3.5	87.2
Family reasons	8.2	9.5	17.9	5.7	6.8	2.8	50.7
Limits social life	7.4	12.7	26.5	9.4	15.1	5.4	76.5
Transport problems	*	*	2.9	3.1	*	*	10.6
Other	*	5.2	8.4	3.6	3.7	2.4	25.2
None	2.9	5.1	19.7	13.7	18.4	6.2	65.9
DID NOT WORK SHIFTWORK							
Benefits—							
Financial reasons	3.6	4.8	11.8	9.4	11.0	3.4	43.9
Likes hours for family/personal reasons	7.2	9.9	25.0	19.5	21.2	4.6	87.3
Other	2.9	4.1	12.0	13.3	9.1	*	42.6
None	3.2	7.8	15.0	9.4	11.7	4.1	51.0
Disadvantages—							
Health/sleeping problems	5.4	10.6	19.2	9.0	9.2	2.0	55.5
Family reasons	3.1	5.5	13.8	11.2	9.0	*	44.6
Limits social life	3.7	7.7	14.7	12.8	11.7	4.2	55.0
Transport problems	*	*	2.3	*	*	*	6.4
Other	*	3.3	4.9	6.5	2.5	*	20.5
None	6.1	6.7	21.1	18.5	22.1	4.6	79.1
TOTAL							
Benefits—							
Financial reasons	9.8	13.1	33.7	18.6	25.3	6.9	107.3
Likes hours for family/personal reasons	15.5	21.1	53.7	35.5	42.1	11.4	179.3
Other	6.1	7.8	23.5	19.7	16.1	4.2	77.4
None	9.8	21.4	35.0	16.5	20.8	9.1	112.6
Disadvantages—							
Health/sleeping problems	19.8	31.7	49.2	16.8	19.8	5.4	142.7
Family reasons	11.3	15.0	31.7	16.9	15.7	4.8	95.3
Limits social life	11.1	20.4	41.2	22.3	26.8	9.7	131.5
Transport problems	*	2.4	5.2	4.6	2.7	*	17.1
Other	3.7	8.5	13.3	10.2	6.1	3.8	45.7
None	8.9	11.8	40.7	32.2	40.5	10.7	144.9

NOTE. Employees who indicated more than one benefit and/or more than one disadvantage are counted more than once. Hence totals obtained from this table will exceed those in other tables not including benefits and disadvantages in this publication.

**PART F. SHIFTWORKERS IN MAIN JOB WHO WORKED DURING THE FOUR WEEKS PRIOR TO THE SURVEY DATE, EXCLUDING 'HANDICAPPED' WORKERS**

**TABLE 19. EMPLOYEES WHO WERE SHIFTWORKERS : AGE, MARITAL STATUS AND WHETHER NIGHTWORKERS**  
( ' 000)

Age group (years)	Nightworkers			Other workers			Total		
	Married	Not married(a)	Total	Married	Not married(a)	Total	Married	Not married(a)	Total
MALES									
15-19	*	6.9	6.9	*	7.7	7.7	*	14.6	14.6
20-24	7.8	17.1	24.9	6.0	13.9	19.9	13.8	31.1	44.8
25-34	45.3	13.6	58.9	23.7	8.9	32.6	69.0	22.5	91.6
35-44	35.8	3.8	39.6	20.6	3.6	24.2	56.4	7.4	63.8
45-54	27.0	3.7	30.6	17.5	2.2	19.7	44.4	5.9	50.4
55 and over	11.1	3.4	14.4	8.7	2.0	10.8	19.8	5.4	25.2
Total	126.9	48.5	175.4	76.6	38.3	114.9	203.5	86.8	290.3
FEMALES									
15-19	*	5.3	5.4	*	12.3	12.4	*	17.6	17.8
20-24	4.5	10.2	14.7	6.6	21.5	28.1	11.0	31.7	42.8
25-34	6.7	7.8	14.5	13.5	11.2	24.8	20.3	19.0	39.3
35-44	4.4	*	5.9	12.6	4.9	17.5	17.0	6.3	23.4
45 and over	*	*	3.4	6.9	3.3	10.2	8.6	4.9	13.6
Total	17.5	26.4	43.9	39.7	53.2	92.9	57.2	79.6	136.8
PERSONS									
15-19	*	12.2	12.3	*	19.9	20.1	*	32.1	32.4
20-24	12.2	27.4	39.6	12.6	35.4	48.0	24.8	62.8	87.6
25-34	52.0	21.4	73.4	37.3	20.2	57.4	89.3	41.5	130.8
35-44	40.2	5.2	45.5	33.2	8.5	41.7	73.4	13.8	87.1
45-54	28.2	4.5	32.7	23.7	4.3	28.1	52.0	8.9	60.8
55 and over	11.6	4.2	15.7	9.4	3.2	12.6	21.0	7.3	28.3
Total	144.5	74.9	219.3	116.3	91.5	207.8	260.7	166.4	427.1

(a) Includes never married, widowed, divorced and permanently separated.

TABLE 20. EMPLOYEES WHO WERE SHIFTWORKERS : INDUSTRY, BIRTHPLACE AND PERIOD OF ARRIVAL AND WHETHER NIGHTWORKER  
( ' 000)

Industry	Birthplace and period of arrival							Total employees born overseas	Total
	Born overseas								
	Born in Australia	Born in English speaking countries(a)	Born in other countries	Total born overseas					
				Arrived before 1961	Arrived 1961-1970	Arrived 1971-1975	Arrived 1976 to survey date		
MALES									
Mining	16.2	3.8	3.0	2.1	*	*	*	6.8	23.0
Manufacturing	50.7	14.1	20.6	11.3	15.4	4.3	3.7	34.7	85.4
Transport and storage	47.9	6.0	11.7	7.8	6.4	2.3	*	17.7	65.6
Community services	39.9	7.9	3.9	3.6	4.9	2.8	*	11.8	51.7
Recreation, personal and other services	9.4	*	*	*	*	*	*	2.3	11.8
Other(b)	38.9	5.6	8.3	5.7	4.4	2.5	*	13.9	52.8
Total	203.0	38.6	48.7	31.1	33.7	13.6	8.9	87.3	290.3
FEMALES									
Community services	75.7	10.5	8.2	3.9	9.1	2.3	3.4	18.7	94.4
Recreation, personal and other services	13.3	*	*	*	*	*	*	3.0	16.3
Other(b)(c)	19.5	4.2	2.4	2.0	2.5	*	*	6.6	26.1
Total	108.5	16.5	11.9	6.6	12.0	3.9	5.9	28.3	136.8
TOTAL									
Mining	16.6	4.0	3.0	2.1	*	*	2.1	7.1	23.6
Manufacturing	53.7	15.1	21.7	11.9	16.4	4.4	4.1	36.8	90.5
Transport and storage	50.6	6.9	12.2	8.2	6.8	2.9	*	19.2	69.7
Community services	115.6	18.5	12.1	7.5	14.0	5.1	3.9	30.6	146.1
Recreation, personal and other services	22.7	3.0	2.3	*	*	*	*	5.3	28.0
Other(b)	52.5	7.5	9.2	6.8	5.3	2.6	*	16.7	69.1
Total	311.5	55.1	60.6	37.7	45.7	17.5	14.8	115.6	427.1
NIGHTWORKERS									
Mining	12.2	3.2	2.2	*	*	*	*	5.4	17.6
Manufacturing	37.8	10.9	16.4	9.5	12.1	3.0	2.7	27.3	65.1
Transport and storage	28.3	2.3	4.8	3.2	2.9	*	*	7.1	35.4
Community services	45.3	6.8	5.1	3.1	5.7	*	*	11.9	57.2
Recreation, personal and other services	7.9	*	*	*	*	*	*	*	9.8
Other(b)	24.8	4.1	5.3	3.5	3.7	*	*	9.4	34.2
Total	156.3	28.3	34.8	21.1	26.4	7.8	7.7	63.0	219.3
OTHER WORKERS									
Manufacturing	15.8	4.2	5.3	2.4	4.4	*	*	9.5	25.4
Transport and storage	22.3	4.6	7.4	5.0	3.9	2.2	*	12.0	34.3
Community services	70.3	11.6	7.0	4.5	8.2	3.5	2.5	18.6	88.9
Recreation, personal and other services	14.8	2.0	*	*	*	*	*	3.4	18.2
Other(b)(d)	32.1	4.3	4.7	3.7	2.3	*	*	9.0	41.1
Total	155.2	26.8	25.8	16.6	19.2	9.7	7.0	52.6	207.8

(a) Comprises U.K. and Ireland, U.S.A., Canada, New Zealand and South Africa. (b) Includes agriculture, forestry, fishing and hunting; electricity, gas and water; construction; wholesale and retail trade; communication; finance, property and business services; and public administration and defence. (c) Also includes mining; manufacturing; and transport and storage. (d) Also includes mining.

TABLE 21. EMPLOYEES WHO WERE SHIFTWORKERS : INDUSTRY  
( ' 000)

Industry	N.S.W.	Vic.	Qld	S.A.	W.A.	Tas.	Aust.(a)
MALES							
Mining	3.9	*	5.2	1.7	8.4	2.0	23.0
Manufacturing	34.7	18.4	8.3	11.8	5.6	6.6	85.4
Wholesale and retail trade	5.0	3.8	2.1	*	*	*	12.7
Transport and storage	23.0	19.3	9.5	5.5	5.6	1.5	65.6
Community services	17.9	10.0	8.3	5.7	5.3	1.7	51.7
Recreation, personal and other services	4.1	2.6	*	*	1.4	*	11.8
Other(b)	14.1	11.0	4.9	2.7	4.6	0.9	40.1
<b>Total</b>	<b>102.7</b>	<b>65.4</b>	<b>39.7</b>	<b>29.1</b>	<b>31.8</b>	<b>13.3</b>	<b>290.3</b>
FEMALES							
Community services	30.4	21.7	17.0	10.5	10.6	2.6	94.4
Recreation, personal and other services	6.8	2.9	3.3	*	1.4	*	16.3
Other(b)(c)	7.7	7.4	3.7	3.0	2.5	*	26.1
<b>Total</b>	<b>44.9</b>	<b>32.1</b>	<b>24.1</b>	<b>14.0</b>	<b>14.5</b>	<b>4.1</b>	<b>136.8</b>
PERSONS							
Mining	3.9	*	5.2	1.7	8.9	2.0	23.6
Manufacturing	36.0	19.6	9.0	12.8	5.7	7.4	90.5
Wholesale and retail trade	6.5	4.6	3.0	*	1.4	*	16.7
Transport and storage	24.3	21.1	10.0	5.6	5.8	1.5	69.7
Communication	5.4	3.0	2.4	1.8	1.8	0.7	15.8
Community services	48.3	31.8	25.3	16.2	15.9	4.3	146.1
Recreation, personal and other services	10.9	5.6	4.5	1.7	2.8	1.2	28.0
Other(b)	12.3	11.4	4.2	2.5	4.0	*	36.7
<b>Total</b>	<b>147.6</b>	<b>97.5</b>	<b>63.7</b>	<b>43.1</b>	<b>46.3</b>	<b>17.4</b>	<b>427.1</b>

(a) Includes the Northern Territory and the Australian Capital Territory. (b) Includes agriculture, forestry, fishing and hunting; electricity, gas and water; construction; communication (but not for 'persons'); finance, property and business services; and public administration and defence. (c) Also includes mining; manufacturing; wholesale and retail trade; and transport and storage.

TABLE 22. EMPLOYEES WHO WERE SHIFTWORKERS : FREQUENCY OF CHANGE IN SHIFTS,  
OCCUPATION AND NUMBER OF DIFFERENT SHIFTS WORKED  
( ' 000)

Frequency of change in shifts	Occupation group						Total
	Professional, technical, etc.	Clerical	Transport communication	Trades and production- process workers and labourers, n.e.c.	Service, sport and recreation	Other (a)	
2 SHIFTS							
Every day	9.9	*	*	*	6.1	*	20.0
2-6 days	10.7	*	2.3	3.6	13.3	*	33.1
7 days	6.6	6.2	9.8	23.5	12.6	6.5	65.1
8-14 days	3.2	2.0	2.7	7.3	6.6	*	22.7
15 days or more	3.9	*	2.8	8.2	5.8	*	23.6
Total	34.3	11.6	18.8	43.5	44.5	11.9	164.5
3 SHIFTS OR MORE							
Every day	21.6	*	11.5	4.7	15.1	*	55.8
2-6 days	10.6	*	6.4	13.3	13.5	3.7	48.8
7 days	8.6	6.6	21.6	52.7	21.6	7.6	118.7
8-14 days	3.2	*	2.8	4.7	3.6	*	15.5
15 days or more	3.7	2.5	3.5	7.4	5.6	*	23.8
Total	47.6	13.1	45.7	82.9	59.4	14.0	262.7
TOTAL							
Every day	31.5	*	12.7	5.7	21.2	3.1	75.9
2-6 days	21.3	2.9	8.6	16.9	26.8	5.4	81.9
7 days	15.1	12.7	31.4	76.2	34.2	14.1	183.8
8-14 days	6.3	3.1	5.5	12.0	10.2	*	38.2
15 days or more	7.6	4.4	6.3	15.6	11.4	2.2	47.4
Total	81.8	24.7	64.6	126.3	103.8	25.9	427.1

(a) Includes administrative, executive and managerial; sales; farming, fishing and timbergetting; and mining and quarrying occupations.

**TABLE 23. EMPLOYEES WHO WERE SHIFTWORKERS : AGE, USUAL HOURS WORKED IN MAIN JOB EACH WEEK, NUMBER OF DAYS WORKED(a) AND WHETHER WORKED DOUBLE SHIFTS(b)**  
( ' 000)

Usual hours worked in main job each week and number of days worked(a)	Age group (years)						Total
	15-19	20-24	25-34	35-44	45-54	55 and over	
WORKED DOUBLE SHIFTS(b)							
Under 40 hours	*		*	*		*	5.7
40 hours	4.7		5.7	4.8		4.3	19.6
41-48 hours	2.3		3.7	*		2.9	10.8
49 hours and over	3.7		7.5	3.2		2.4	16.8
Variable hours	*		3.0	*		*	5.9
Total	13.4		21.1	12.1		12.2	58.8
Under 20 days	3.4		5.2	2.3		2.4	13.4
20 days	4.7		5.0	2.7		4.3	16.6
21 days and over	5.3		10.8	7.2		5.5	28.8
DID NOT WORK DOUBLE SHIFTS							
Under 35 hours	2.8	4.7	8.3	4.9	3.0	*	24.4
35-39 hours	*	4.2	10.6	9.2	5.8	2.6	33.9
40 hours	21.0	47.9	53.6	37.7	27.0	14.6	201.7
41-48 hours	*	10.9	17.4	12.7	8.3	3.9	55.1
49 hours and over	*	7.1	14.5	7.1	4.6	*	36.0
Variable hours	*	2.7	5.3	3.5	3.5	*	17.2
Total	29.3	77.3	109.7	75.0	52.1	24.8	368.3
1-8 days	2.0	3.8	8.1	5.9	3.0	*	23.9
9-12 days	*	5.2	6.5	5.8	3.8	*	23.4
13-15 days	*	2.8	6.1	5.5	3.1	*	19.7
16-19 days	2.9	7.7	10.8	8.2	4.9	*	36.4
20 days	17.2	44.0	51.3	33.8	22.8	13.3	182.4
21 days and over	4.7	13.9	27.0	15.9	14.6	6.6	82.6
TOTAL							
Under 35 hours	3.2	5.3	8.7	4.9	3.3	*	26.3
35-39 hours	*	4.7	11.5	10.3	6.7	2.8	37.7
40 hours	22.3	51.3	59.3	42.4	29.9	16.1	221.3
41-48 hours	2.3	12.9	21.1	14.6	9.9	5.2	65.9
49 hours and over	*	10.0	22.0	10.3	6.5	2.2	52.8
Variable hours	*	3.5	8.2	4.6	4.5	*	23.1
Total	32.4	87.6	130.8	87.2	60.8	28.3	427.1
1-8 days	2.2	4.4	8.3	6.3	3.0	*	25.4
9-12 days	*	5.8	7.2	6.1	4.2	*	25.9
13-15 days	*	3.3	7.5	5.6	3.5	*	22.1
16-19 days	3.1	8.9	13.7	9.7	5.8	2.0	43.2
20 days	18.5	47.3	56.3	36.4	25.9	14.6	199.1
21 days and over	5.9	17.9	37.8	23.1	18.6	8.1	111.4

(a) During the four weeks prior to the survey date. (b) Full shifts of equal duration where the second commenced immediately after the first ended (except for meal break, etc. if any).

# **PART G. EMPLOYEES IN MAIN JOB WHO WORKED DURING THE FOUR WEEKS PRIOR TO THE SURVEY DATE, EXCLUDING SHIFTWORKERS**

**TABLE 24. EMPLOYEES (EXCLUDING SHIFTWORKERS) : DAYS IN WEEK USUALLY WORKED IN MAIN JOB (' 000)**

<i>Days in week usually worked in main job</i>	<i>N.S.W.</i>	<i>Vic.</i>	<i>Qld</i>	<i>S.A.</i>	<i>W.A.</i>	<i>Tas.</i>	<i>N.T.</i>	<i>A.C.T.</i>	<i>Aust.</i>
<b>MALES</b>									
Every day	26.6	15.1	15.2	7.8	11.0	1.8	*	1.3	79.8
Six days—									
Monday to Saturday	95.7	79.3	44.6	27.7	32.3	5.1	5.3	3.1	293.1
Total	108.0	84.0	48.5	29.1	33.6	5.5	6.0	3.7	318.4
Five days—									
Monday to Friday	767.6	580.8	325.4	183.0	168.0	64.4	14.9	39.1	2,143.1
Total	783.0	588.0	331.3	185.2	170.5	64.7	15.3	39.5	2,177.6
Four days—									
Weekdays only	9.7	3.2	1.9	*	1.6	*	*	*	18.0
Total	13.0	3.9	2.8	1.8	2.0	*	*	*	24.5
Three days									
Weekdays only	2.8	*	*	*	*	*	*	*	8.4
Total	4.6	4.5	*	1.5	1.6	*	*	*	14.6
Two days—									
Weekdays only	2.7	*	*	*	*	*	*	*	6.2
Total	9.3	5.4	2.8	2.1	1.3	*	*	*	21.4
One day—									
Weekday	2.5	2.6	*	*	*	*	*	*	7.4
Total	5.9	4.8	2.9	*	1.5	*	*	*	16.3
Variable days	45.3	29.0	16.3	11.8	8.2	2.5	*	*	115.0
Total	995.8	734.7	421.6	240.1	229.8	75.5	23.4	46.7	2,767.5
Weekend workers(a)	165.3	114.9	75.3	43.1	49.5	8.1	7.4	5.8	469.4
Saturday only(a)	113.3	89.2	51.7	32.1	35.2	5.7	5.5	3.6	336.3
Sunday only(a)	13.2	6.0	3.6	1.5	1.4	*	*	*	27.0
Saturday and Sunday(a)	38.7	19.6	20.0	9.4	12.9	2.2	1.3	1.8	106.1
Other than weekend workers(b)	785.2	590.8	329.9	185.3	172.1	64.9	15.1	39.8	2,183.1
<b>FEMALES</b>									
Every day	8.1	4.5	4.7	2.1	1.9	1.0	*	*	23.0
Six days—									
Monday to Saturday	29.6	22.1	15.8	11.5	12.2	1.7	1.5	*	95.1
Total	32.5	24.1	16.3	12.5	13.2	2.0	1.5	*	103.1
Five days—									
Monday to Friday	417.7	340.1	146.5	97.3	83.5	30.0	11.3	26.0	1,152.4
Total	439.3	347.3	152.8	99.7	88.0	30.6	11.4	26.9	1,196.1
Four days—									
Weekdays only	18.3	9.4	7.0	4.4	3.3	1.2	*	*	44.3
Total	25.2	13.5	9.6	5.9	5.5	1.6	*	*	62.1
Three days—									
Weekdays only	19.8	14.6	6.0	5.9	4.8	1.5	*	*	53.5
Total	25.6	20.8	9.5	7.5	7.2	2.1	*	*	73.9
Two days—									
Weekdays only	16.1	14.8	6.8	5.1	4.9	1.1	*	*	49.2
Total	34.2	24.9	16.0	10.3	9.2	1.8	*	*	98.4
One day—									
Weekday	11.1	5.7	4.3	3.5	2.8	1.3	*	*	29.1
Total	18.6	12.2	8.3	6.0	4.5	1.4	*	*	51.6
Variable days	52.8	33.3	18.1	18.0	10.0	5.3	*	2.5	140.8
Total	636.1	480.5	235.3	162.0	139.4	45.8	15.1	34.6	1,748.9
Weekend workers(a)	100.4	62.6	46.6	27.8	30.0	5.5	2.8	3.9	279.6
Saturday only(a)	64.2	44.3	32.3	21.1	21.3	3.1	2.0	3.1	191.5
Sunday only(a)	7.5	6.0	3.5	2.0	2.6	*	*	*	22.3
Saturday and Sunday(a)	28.6	12.2	10.8	4.7	6.1	2.0	*	*	65.8
Other than weekend workers(b)	483.0	384.6	170.7	116.2	99.4	35.0	11.5	28.1	1,328.5

For footnotes see end of table.

TABLE 24. EMPLOYEES (EXCLUDING SHIFTWORKERS) : DAYS IN WEEK USUALLY WORKED IN MAIN JOB—continued  
( ' 000)

<i>Days in week usually worked in main job</i>	<i>N.S.W.</i>	<i>Vic.</i>	<i>Qld</i>	<i>S.A.</i>	<i>W.A.</i>	<i>Tas.</i>	<i>N.T.</i>	<i>A.C.T.</i>	<i>Aust.</i>
TOTAL									
Every day	34.7	19.5	19.8	9.9	12.9	2.8	1.6	1.6	102.8
Six days—									
Monday to Saturday	125.2	101.4	60.4	39.2	44.5	6.8	6.9	3.8	388.2
Total	140.4	108.1	64.8	41.7	46.8	7.5	7.5	4.6	421.5
Five days—									
Monday to Friday	1,185.3	920.9	471.9	280.2	251.5	94.3	26.2	65.2	3,295.5
Total	1,222.4	935.3	484.1	284.9	258.5	95.3	26.7	66.4	3,373.7
Four days—									
Weekdays only	28.0	12.6	8.9	5.3	5.0	1.4	*	*	62.3
Total	38.2	17.4	12.4	7.6	7.5	1.8	*	1.3	86.6
Three days—									
Weekdays only	22.6	16.9	7.1	6.5	5.9	1.7	*	*	61.9
Total	30.1	25.2	11.3	9.0	8.8	2.5	*	1.2	88.5
Two days—									
Weekdays only	18.8	16.7	7.4	5.6	5.4	1.2	*	*	55.4
Total	43.5	30.3	18.8	12.4	10.6	2.0	*	1.7	119.7
One day—									
Weekday	13.6	8.3	5.3	3.7	3.7	1.3	*	*	36.5
Total	24.5	16.9	11.2	6.8	6.0	1.6	*	*	67.9
Variable days	98.1	62.3	34.5	29.8	18.1	7.8	1.6	3.7	255.8
<b>Total</b>	<b>1,631.9</b>	<b>1,215.1</b>	<b>656.9</b>	<b>402.2</b>	<b>369.1</b>	<b>121.3</b>	<b>38.5</b>	<b>81.3</b>	<b>4,516.4</b>
Weekend workers(a)	265.6	177.5	121.8	70.9	79.5	13.6	10.3	9.7	749.0
Saturday only(a)	177.6	133.5	83.9	53.3	56.5	8.8	7.5	6.6	527.7
Sunday only(a)	20.7	12.0	7.1	3.6	4.0	*	*	*	49.3
Saturday and Sunday(a)	67.3	31.9	30.8	14.1	19.0	4.2	2.0	2.6	171.9
Other than weekend workers(b)	1,268.2	975.4	500.6	301.4	271.5	99.9	26.6	67.9	3,511.6

(a) Includes employees who also worked on one or more weekdays but excludes those who worked on a varying number of days each week. (b) Excludes employees who worked on a varying number of days each week.

**TABLE 25. EMPLOYEES (EXCLUDING SHIFTWORKERS) : DAYS IN WEEK USUALLY WORKED IN MAIN JOB AND USUAL HOURS WORKED IN MAIN JOB EACH WEEK**  
( ' 000)

Days in week usually worked in main job	Usual hours worked in main job each week								Total
	Less than 20	20-29	30-34	Total less than 35	35-39	40	41 and over	Variable hours	
MALES									
Every day	*	*	*	*	*	7.8	59.3	9.9	79.8
Six days—									
Monday to Saturday	3.0	*	2.1	5.9	7.4	63.2	205.6	11.0	293.1
Total	3.2	*	2.3	7.1	7.8	66.4	223.7	13.4	318.4
Five days—									
Monday to Friday	4.8	10.3	20.9	36.0	367.5	1,250.5	442.2	47.0	2,143.1
Total	4.8	11.3	22.0	38.1	370.1	1,269.9	452.1	47.4	2,177.6
Four days	2.3	2.9	4.9	10.1	4.5	6.5	2.5	*	24.5
Three days	7.6	4.2	*	12.5	*	*	*	*	14.6
Two days	19.0	*	*	20.0	*	*	*	*	21.4
One day	16.1	*	..	16.1	..	..	..	*	16.3
Variable days	8.4	4.9	3.8	17.1	17.2	33.9	26.9	19.9	115.0
Total	61.6	26.5	34.2	122.3	401.5	1,385.6	764.7	93.3	2,767.5
Weekend workers(a)	31.6	6.7	4.9	43.1	12.2	94.8	294.0	25.1	469.4
Saturday only(a)	26.8	3.5	3.3	33.6	9.1	71.7	210.1	11.9	336.3
Sunday only(a)	2.3	*	*	3.5	*	7.2	13.7	*	27.0
Saturday and Sunday(a)	2.5	2.5	*	6.1	*	15.9	70.3	11.8	106.1
Other than weekend workers(b)	21.5	15.0	25.5	62.1	372.1	1,256.9	443.7	48.3	2,183.1
FEMALES									
Every day	3.0	2.0	*	5.4	*	4.3	10.4	2.1	23.0
Six days—									
Monday to Saturday	3.7	7.2	3.8	14.7	6.8	43.3	29.0	*	95.1
Total	4.5	9.0	4.1	17.6	7.0	44.7	32.1	*	103.1
Five days—									
Monday to Friday	38.1	83.0	58.0	179.1	310.3	560.1	95.5	7.5	1,152.4
Total	40.7	87.8	60.9	189.4	312.6	585.3	99.8	8.9	1,196.1
Four days—									
Weekdays only	10.5	16.9	10.5	38.0	2.5	2.6	*	*	44.3
Total	15.6	23.1	14.3	53.0	2.9	4.0	*	2.0	62.1
Three days—									
Weekdays only	25.8	23.8	*	50.4	*	*	*	*	53.5
Total	37.9	31.3	*	70.0	*	*	*	2.6	73.9
Two days—									
Weekdays only	44.4	2.4	*	47.0	*	*	*	2.2	49.2
Total	90.3	3.9	*	94.4	*	*	*	3.6	98.4
One day—									
Weekday	28.3	*	..	28.3	..	..	..	*	29.1
Total	50.8	*	..	50.8	..	..	..	*	51.6
Variable days	39.1	19.7	5.7	64.6	7.1	29.9	6.0	33.2	140.8
Total	281.8	176.9	86.4	545.1	330.7	669.2	148.8	55.0	1,748.9
Weekend workers(a)	95.6	31.1	11.1	137.8	10.5	76.0	46.8	8.5	279.6
Saturday only(a)	67.9	19.0	7.2	94.2	8.8	53.7	31.2	3.7	191.5
Sunday only(a)	8.0	3.8	*	12.8	*	5.6	3.3	*	22.3
Saturday and Sunday(a)	19.7	8.3	2.9	30.9	*	16.6	12.4	4.7	65.8
Other than weekend workers(b)	147.1	126.1	69.5	342.7	313.1	563.3	96.0	13.3	1,328.5

For footnotes see end of table.

**TABLE 25. EMPLOYEES (EXCLUDING SHIFTWORKERS): DAYS IN WEEK USUALLY WORKED IN MAIN JOB AND USUAL HOURS WORKED IN MAIN JOB EACH WEEK—continued**  
( ' 000)

Days in week usually worked in main job	Usual hours worked in main job each week								Total
	Less than 20	20-29	30-34	Total less than 35	35-39	40	41 and over	Variable hours	
	PERSONS								
Every day	3.2	2.7	*	6.8	2.2	12.1	69.8	12.0	102.8
Six days—									
Monday to Saturday	6.7	8.0	5.9	20.5	14.2	106.5	234.6	12.4	388.2
Total	7.7	10.5	6.4	24.7	14.8	111.1	255.8	15.1	421.5
Five days—									
Monday to Friday	42.9	93.3	78.9	215.1	677.8	1,810.5	537.7	54.5	3,295.5
Total	45.5	99.2	82.9	227.5	682.7	1,855.2	551.9	56.4	3,373.7
Four days—									
Weekdays only	12.0	18.3	14.7	45.0	6.6	7.9	*	*	62.3
Total	17.8	26.0	19.1	63.0	7.4	10.5	2.9	2.9	86.6
Three days—									
Weekdays only	29.4	26.6	*	57.2	*	*	*	2.4	61.9
Total	45.5	35.5	*	82.4	*	*	*	3.5	88.5
Two days—									
Weekdays only	49.0	2.9	*	52.1	*	*	*	2.9	55.4
Total	109.2	5.0	*	114.4	*	*	*	4.5	119.7
One day—									
Weekday	35.5	*	..	35.5	..	..	..	*	36.5
Total	66.8	*	..	66.8	..	..	..	*	67.9
Variable days	47.6	24.6	9.6	81.7	24.3	63.8	32.9	53.2	255.8
<b>Total</b>	<b>343.4</b>	<b>203.4</b>	<b>120.6</b>	<b>667.5</b>	<b>732.2</b>	<b>2,054.8</b>	<b>913.5</b>	<b>148.4</b>	<b>4,516.4</b>
Weekend workers(a)	127.2	37.7	16.0	181.0	22.7	170.8	340.9	33.7	749.0
Saturday only(a)	94.7	22.5	10.6	127.7	17.8	125.4	241.2	15.6	527.7
Sunday only(a)	10.4	4.5	*	16.3	*	12.8	16.9	*	49.3
Saturday and Sunday(a)	22.2	10.8	4.0	37.0	3.1	32.6	82.7	16.5	171.9
Other than weekend workers(b)	168.6	141.1	95.0	404.8	685.3	1,820.3	539.7	61.6	3,511.6

(a) Includes employees who also worked on one or more weekdays but excludes those who worked on a varying number of days each week. (b) Excludes employees who worked on a varying number of days each week.

**TABLE 26. EMPLOYEES (EXCLUDING SHIFTWORKERS) : DAYS IN WEEK USUALLY WORKED IN MAIN JOB,  
AGE AND WHETHER NIGHTWORKER  
( ' 000)**

<i>Days in week usually worked in main job</i>	<i>Nightworkers</i>			<i>Other workers</i>			<i>Total</i>		
	<i>Males</i>	<i>Females</i>	<i>Persons</i>	<i>Males</i>	<i>Females</i>	<i>Persons</i>	<i>Males</i>	<i>Females</i>	<i>Persons</i>
<b>UNDER 25 YEARS</b>									
Every day	3.6	*	5.2	14.2	4.1	18.3	17.8	5.7	23.5
Six days—									
Monday to Saturday	4.2	*	4.7	77.9	50.0	128.0	82.2	50.5	132.7
Total	5.4	*	6.5	80.9	50.9	131.2	86.3	52.0	138.3
Five days—									
Monday to Friday	12.5	2.7	15.2	534.4	421.2	955.6	546.9	423.8	970.8
Total	15.5	4.5	20.0	541.0	431.0	972.0	556.4	435.5	992.0
Four days or less	2.0	3.0	4.9	46.0	71.4	112.4	48.0	74.4	122.3
Variable days	4.6	*	6.1	25.2	32.2	57.4	30.0	33.6	63.4
<b>Total</b>	<b>31.0</b>	<b>11.6</b>	<b>42.6</b>	<b>707.3</b>	<b>589.5</b>	<b>1,296.8</b>	<b>738.4</b>	<b>601.1</b>	<b>1,339.5</b>
Weekend workers(a)	13.4	6.8	20.1	130.2	116.1	246.3	143.5	122.9	266.4
Saturday only(a)	5.9	*	7.6	104.6	99.7	204.3	110.5	101.4	211.9
Sunday only (a)	*	*	3.3	5.3	5.8	11.1	6.8	7.5	14.4
Saturday and Sunday(a)	6.0	3.3	9.3	20.3	10.6	30.8	26.2	13.9	40.2
Other than weekend workers(b)	13.0	3.4	16.4	551.9	441.2	993.2	564.9	444.7	1,009.6
<b>25-44 YEARS</b>									
Every day	11.3	2.0	13.3	31.1	8.9	40.0	42.3	10.9	53.2
Six days—									
Monday to Saturday	9.1	2.2	11.3	140.7	27.9	168.6	149.8	30.1	179.9
Total	13.4	3.2	16.6	149.4	31.5	180.9	162.8	34.6	197.4
Five days—									
Monday to Friday	39.3	16.1	55.4	967.3	483.8	1,451.1	1,006.6	499.9	1,506.5
Total	46.0	19.6	65.6	975.2	498.8	1,474.0	1,021.2	518.5	1,539.7
Four days—									
Weekdays only	*	*	*	4.5	22.9	27.4	4.7	23.8	28.5
Total	*	2.5	4.2	5.4	31.8	37.2	7.1	34.2	41.3
Three days—									
Weekdays only	*	*	*	2.2	31.1	33.3	2.4	32.3	34.7
Total	*	3.2	3.8	2.5	38.7	41.2	3.1	41.9	45.0
Two days—									
Weekdays only	*	3.0	3.2	*	28.3	29.0	*	31.2	32.2
Total	*	4.4	4.6	*	44.1	45.5	*	48.5	50.1
One day—									
Weekday	*	*	*	*	15.7	16.8	*	15.7	16.8
Total	*	*	*	*	20.1	21.2	*	20.3	21.4
Variable days	10.2	5.1	15.2	42.2	68.3	110.5	52.4	73.4	125.8
<b>Total</b>	<b>83.3</b>	<b>40.2</b>	<b>123.5</b>	<b>1,208.4</b>	<b>742.2</b>	<b>1,950.5</b>	<b>1,291.6</b>	<b>782.4</b>	<b>2,074.1</b>
Weekend workers(a)	33.2	14.0	47.2	190.3	92.1	282.4	223.5	106.1	329.5
Saturday only(a)	12.2	5.6	17.8	146.8	57.9	204.7	159.0	63.5	222.5
Sunday only(a)	4.7	3.1	7.9	7.6	6.8	14.4	12.4	9.9	22.3
Saturday and Sunday(a)	16.2	5.3	21.5	35.8	27.4	63.2	52.0	32.7	84.7
Other than weekend workers(b)	40.0	21.1	61.1	975.8	581.8	1,557.6	1,015.8	602.9	1,618.7

For footnotes see end of table.

**TABLE 26. EMPLOYEES (EXCLUDING SHIFTWORKERS) : DAYS IN WEEK USUALLY WORKED IN MAIN JOB, AGE AND WHETHER NIGHTWORKER—continued**  
( ' 000)

Days in week usually worked in main job	Nightworkers			Other workers			Total		
	Males	Females	Persons	Males	Females	Persons	Males	Females	Persons
45 YEARS AND OVER									
Every day	4.8	*	5.6	14.8	5.7	20.5	19.6	6.4	26.1
Six days—									
Monday to Saturday	4.0	*	5.1	57.2	13.4	70.5	61.2	14.4	75.6
Total	6.4	*	7.7	62.9	15.1	78.7	69.3	16.5	85.8
Five days—									
Monday to Friday	16.2	3.6	19.9	573.4	225.0	798.4	589.6	228.7	818.3
Total	18.6	4.1	22.7	581.3	237.9	819.2	599.9	242.0	842.0
Four days or less	*	2.2	2.8	15.2	64.4	84.7	15.8	66.6	82.4
Variable days	3.4	2.9	6.3	29.4	30.9	60.3	32.8	33.8	66.6
Total	33.8	11.4	45.2	703.6	354.0	1,057.6	737.4	365.3	1,102.8
Weekend workers(a)	14.0	3.6	17.6	88.4	46.7	135.1	102.4	50.3	152.6
Saturday only(a)	5.1	*	6.5	61.7	25.2	86.9	66.8	26.6	93.3
Sunday only(a)	2.4	*	3.2	5.4	4.0	9.4	7.8	4.9	12.6
Saturday and Sunday(a)	6.5	*	8.2	21.3	17.5	38.8	27.8	19.2	47.0
Other than weekend workers(b)	16.4	4.5	20.9	585.8	276.4	862.3	602.2	280.9	883.2
TOTAL									
Every day	19.7	4.4	24.1	60.1	18.7	78.8	79.8	23.0	102.8
Six days—									
Monday to Saturday	17.3	3.8	21.1	275.8	91.3	367.1	293.1	95.1	388.2
Total	25.2	5.6	30.8	293.2	97.5	390.7	318.4	103.1	421.4
Five days—									
Monday to Friday	68.1	22.3	90.5	2,075.0	1,130.0	3,205.0	2,143.1	1,152.4	3,295.5
Total	80.1	28.3	108.4	2,097.5	1,167.8	3,265.3	2,177.6	1,196.1	3,373.7
Four days—									
Weekdays only	*	*	2.1	17.5	42.8	60.3	18.0	44.3	62.3
Total	2.8	4.4	7.2	21.7	57.7	79.4	24.5	62.1	86.6
Three days—									
Weekdays only	*	*	2.3	7.8	51.7	59.6	8.4	53.5	61.9
Total	1.5	5.2	6.6	13.2	68.7	81.8	14.6	73.9	88.5
Two days—									
Weekdays only	*	3.3	3.6	5.9	45.9	51.8	6.2	49.2	55.4
Total	*	5.5	6.3	20.6	92.9	113.4	21.4	98.4	119.7
One day—									
Weekday	*	*	*	7.4	29.1	36.5	7.4	29.1	36.5
Total	*	*	*	16.3	51.2	67.5	16.3	51.6	67.9
Variable days	18.2	9.4	27.6	96.8	131.3	228.2	115.0	140.8	255.8
Total	148.2	63.2	211.3	2,619.3	1,685.7	4,305.0	2,767.5	1,748.9	4,516.4
Weekend workers(a)	60.5	24.7	85.2	408.8	254.9	663.7	469.4	279.6	749.0
Saturday only(a)	23.2	8.6	31.8	313.1	182.8	495.9	336.3	191.5	527.7
Sunday only(a)	8.7	5.7	14.4	18.3	16.6	35.0	27.0	22.3	49.3
Saturday and Sunday(a)	28.7	10.4	39.1	77.4	55.4	132.8	106.1	65.8	171.9
Other than weekend workers(b)	69.4	29.0	98.5	2,113.7	1,299.5	3,413.1	2,183.1	1,328.5	3,511.6

(a) Includes employees who also worked on one or more weekdays but excludes those who worked on a varying number of days each week. (b) Excludes employees who worked on a varying number of days each week.

TABLE 27. EMPLOYEES (EXCLUDING SHIFTWORKERS) : DAYS IN WEEK USUALLY WORKED IN MAIN JOB, BIRTHPLACE AND PERIOD OF ARRIVAL (' 000)

Days in week usually worked in main job	Birthplace and period of arrival								Total
	Born overseas								
	Born in Australia	Born in English- speaking countries(a)	Born in other countries	Total born overseas				Total employees born overseas	
				Arrived before 1961	Arrived 1961-1970	Arrived 1971-1975	Arrived 1976 to survey date		
MALES									
Every day	60.9	9.5	9.4	7.5	6.0	3.5	*	18.9	79.8
Six days— Monday to Saturday Total	215.5 232.5	41.3 44.4	36.3 41.5	24.8 27.6	29.2 31.9	11.6 12.3	12.0 14.1	77.7 85.9	293.1 318.4
Five days— Monday to Friday Total	1,596.2 1,619.9	258.4 263.3	288.5 294.4	203.8 206.2	206.1 210.7	79.6 80.9	57.4 59.9	546.9 557.7	2,143.1 2,177.6
Four days— Weekdays only Total	13.7 18.1	2.1 3.7	2.3 2.6	2.5 3.2	* *	* *	* *	4.4 6.4	18.0 24.5
Three days	11.3	*	*	*	*	*	*	3.3	14.6
Two days	17.5	2.1	*	*	2.2	*	*	3.9	21.4
One day	13.8	*	*	*	*	*	*	2.4	16.3
Variable days	85.8	17.5	11.8	12.0	10.7	3.4	3.1	29.2	115.0
Total	2,059.7	343.0	364.8	258.5	265.1	102.2	82.0	707.8	2,767.5
Weekend workers(b)	346.7	62.7	59.9	38.2	45.8	18.1	20.5	122.7	469.4
Saturday only(b)	249.8	45.4	41.0	25.9	33.4	12.7	14.4	86.4	336.3
Sunday only(b)	19.5	3.6	3.9	2.4	3.3	*	*	7.5	27.0
Saturday and Sunday(b)	77.3	13.7	15.0	10.0	9.1	5.0	4.7	28.7	106.1
Other than weekend workers(c)	1,627.2	262.8	293.1	208.3	208.6	80.6	58.4	555.9	2,183.1
FEMALES									
Every day	17.0	2.4	3.7	2.1	2.3	*	*	6.1	23.0
Six days— Monday to Saturday Total	76.2 82.4	9.0 10.0	9.9 10.6	4.6 5.0	8.0 8.8	3.6 3.7	2.7 3.1	18.9 20.6	95.1 103.1
Five days— Monday to Friday Total	845.2 875.9	143.0 148.6	164.2 171.5	86.8 91.0	120.9 126.0	54.5 56.5	45.0 46.6	307.2 320.1	1,152.4 1,196.1
Four days— Weekdays only Total	34.6 46.3	6.2 8.6	3.5 7.2	4.6 7.6	2.2 3.9	* 2.1	* 2.1	9.7 15.8	44.3 62.1
Three days— Weekdays only Total	44.8 60.3	5.9 7.7	2.8 5.9	4.1 5.7	2.8 5.0	* *	* *	8.7 13.6	53.5 73.9
Two days— Weekdays only Total	42.1 83.9	3.7 7.8	3.3 6.7	3.4 5.5	2.6 5.5	* 2.5	* *	7.0 14.5	49.2 98.4
One day— Weekday Total	23.7 42.7	3.1 5.2	2.4 3.7	2.7 4.1	* 2.5	* *	* *	5.5 8.9	29.1 51.6
Variable days	109.7	15.3	15.8	10.4	11.6	4.2	4.9	31.1	140.8
Total	1,318.2	205.6	225.0	131.2	165.6	73.4	60.4	430.7	1,748.9
Weekend workers(b)	218.1	28.4	33.1	19.3	24.2	10.3	7.7	61.5	279.6
Saturday only(b)	154.5	17.7	19.3	10.5	14.3	7.5	4.7	37.0	191.5
Sunday only(b)	17.0	2.7	2.7	*	2.4	*	*	5.4	22.3
Saturday and Sunday(b)	46.6	8.0	11.1	6.9	7.6	2.5	2.2	19.2	65.8
Other than weekend workers(c)	990.4	161.9	176.2	101.6	129.8	58.9	47.8	338.1	1,328.5

For footnotes see end of table.

**TABLE 27. EMPLOYEES (EXCLUDING SHIFTWORKERS): DAYS IN WEEK USUALLY WORKED IN MAIN JOB, BIRTHPLACE AND PERIOD OF ARRIVAL—continued**  
( ' 000)

Days in week usually worked in main job	Birthplace and period of arrival								Total
	Born overseas								
	Born in Australia	Born in English-speaking countries(a)	Born in other countries	Total born overseas				Total employees born overseas	
				Arrived before 1961	Arrived 1961-1970	Arrived 1971-1975	Arrived 1976 to survey date		
TOTAL									
Every day	77.8	11.9	13.0	9.7	8.3	4.2	2.8	25.0	102.8
Six days—									
Monday to Saturday	291.7	50.3	46.2	29.4	37.2	15.2	14.8	96.5	388.2
Total	314.9	54.5	52.1	32.5	40.7	16.0	17.3	106.6	421.5
Five days—									
Monday to Friday	2,441.4	401.4	452.7	290.6	327.0	134.1	102.4	854.1	3,295.5
Total	2,495.8	411.9	465.9	297.2	336.8	137.3	106.6	877.8	3,373.7
Four days—									
Weekdays only	48.3	8.3	5.8	7.1	3.3	2.1	*	14.1	62.3
Total	64.4	12.3	9.9	10.8	5.6	2.7	3.0	22.2	86.6
Three days—									
Weekdays only	51.5	7.4	3.1	4.9	3.0	*	*	10.5	61.9
Total	71.5	9.6	7.3	6.5	5.8	2.6	2.0	16.9	88.5
Two days—									
Weekdays only	46.7	4.2	4.5	3.8	3.6	*	*	8.6	55.4
Total	101.4	9.9	8.4	5.8	7.7	3.1	*	18.3	119.7
One day—									
Weekday	29.7	3.5	3.2	3.5	*	*	*	6.8	36.5
Total	56.5	5.8	5.6	4.9	3.5	2.0	*	11.4	67.9
Variable days	195.5	32.8	27.5	22.3	22.3	7.7	8.0	60.3	255.8
Total	3,377.9	548.6	589.8	389.8	430.7	175.6	142.4	1,138.5	4,516.4
Weekend workers(b)	564.8	91.2	93.0	57.6	70.0	28.4	28.2	184.2	749.0
Saturday only(b)	404.3	63.1	60.3	36.4	47.7	20.2	19.1	123.4	527.7
Sunday only(b)	36.5	6.3	6.6	4.3	5.7	*	2.2	12.8	49.3
Saturday and Sunday(b)	124.0	21.7	26.2	16.8	16.6	7.5	6.9	47.9	171.9
Other than weekend workers(c)	2,617.6	424.7	469.3	309.9	338.4	139.5	106.2	894.0	3,511.6

(a) Comprises U.K. and Ireland, U.S.A., Canada, New Zealand and South Africa. (b) Includes employees who also worked on one or more week days but excludes those who worked on a varying number of days each week. (c) Excludes employees who worked on a varying number of days each week.

TABLE 28. EMPLOYEES (EXCLUDING SHIFTWORKERS): DAYS IN WEEK USUALLY WORKED IN MAIN JOB, MARITAL STATUS AND WHETHER NIGHTWORKER  
( ' 000)

Days in week usually worked in main job	Males			Females			Persons		
	Married	Not married(a)	Total	Married	Not married(a)	Total	Married	Not married(a)	Total
NIGHTWORKERS									
Every day	14.9	4.7	19.7	2.4	2.0	4.4	17.3	6.8	24.1
Six days—									
Monday to Saturday	11.0	6.4	17.3	2.1	*	3.8	13.1	8.0	21.1
Total	16.3	8.8	25.2	3.3	2.4	5.6	19.6	11.2	30.8
Five days—									
Monday to Friday	47.7	20.4	68.1	16.5	5.9	22.3	64.2	26.3	90.5
Total	54.2	25.9	80.1	19.8	8.4	28.3	74.1	34.3	108.4
Four days or less	2.9	2.2	5.0	12.5	3.0	15.5	15.4	5.1	20.5
Variable days	10.6	7.6	18.2	7.0	2.4	9.4	17.7	9.9	27.6
Total	99.0	49.2	148.2	45.0	18.2	63.2	144.0	67.4	211.3
Weekend workers(b)	39.7	20.8	60.5	16.0	8.7	24.7	55.7	29.6	85.2
Saturday only(b)	13.3	9.9	23.2	5.1	3.5	8.6	18.4	13.4	31.8
Sunday only(b)	5.8	2.8	8.7	4.4	*	5.7	10.2	4.2	14.4
Saturday and Sunday(b)	20.6	8.1	28.7	6.5	3.8	10.4	27.1	12.0	39.1
Other than weekend workers(c)	48.7	20.8	69.4	22.0	7.1	29.0	70.6	27.9	98.5
OTHER WORKERS									
Every day	39.1	21.0	60.1	12.7	6.0	18.7	51.8	27.0	78.8
Six days—									
Monday to Saturday	173.3	102.5	275.8	38.1	53.2	91.3	211.4	155.7	367.1
Total	186.3	106.9	293.2	41.4	56.1	97.5	227.7	163.0	390.7
Five days—									
Monday to Friday	1,338.2	736.8	2,075.0	598.6	531.4	1,130.0	1,936.8	1,268.2	3,205.0
Total	1,351.7	745.8	2,097.5	617.1	550.6	1,167.8	1,968.8	1,296.5	3,265.3
Four days—									
Weekdays only	8.3	9.2	17.5	31.4	11.4	42.8	39.7	20.6	60.3
Total	10.1	11.6	21.7	42.8	14.9	57.7	53.0	26.4	79.4
Three days—									
Weekdays only	4.2	3.7	7.8	43.0	8.7	51.7	47.2	12.4	59.6
Total	4.4	8.7	13.2	54.3	14.4	68.7	58.7	23.1	81.8
Two days—									
Weekdays only	2.0	3.9	5.9	37.3	8.5	45.9	39.3	12.5	51.7
Total	2.7	17.8	20.6	56.3	36.6	92.9	59.0	54.4	113.4
One day—									
Weekday	2.7	4.6	7.4	20.1	9.0	29.1	22.8	13.7	36.5
Total	3.1	13.2	16.3	26.1	25.1	51.2	29.2	38.3	67.5
Variable days	61.0	35.9	96.8	88.0	43.3	131.3	149.0	79.2	228.2
Total	1,658.5	960.9	2,619.3	938.7	747.0	1,685.7	2,597.2	1,707.8	4,305.0
Weekend workers(b)	242.1	166.8	408.8	120.4	134.5	254.9	362.4	301.3	663.7
Saturday only(b)	181.4	131.7	313.1	77.4	105.4	182.8	258.8	237.1	495.9
Sunday only(b)	13.7	4.7	18.3	8.1	8.5	16.6	21.8	13.2	35.0
Saturday and Sunday(b)	47.0	30.4	77.4	34.8	20.6	55.4	81.8	51.0	132.8
Other than weekend workers(c)	1,355.4	758.2	2,113.7	730.4	569.1	1,299.5	2,085.8	1,327.3	3,413.1

For footnotes see end of table.

**TABLE 28. EMPLOYEES (EXCLUDING SHIFTWORKERS) : DAYS IN WEEK USUALLY WORKED IN MAIN JOB, MARITAL STATUS AND WHETHER NIGHTWORKER—continued**  
( ' 000)

<i>Days in week usually worked in main job</i>	<i>Males</i>			<i>Females</i>			<i>Persons</i>		
	<i>Married</i>	<i>Not married(a)</i>	<i>Total</i>	<i>Married</i>	<i>Not married(a)</i>	<i>Total</i>	<i>Married</i>	<i>Not married(a)</i>	<i>Total</i>
<b>TOTAL</b>									
Every day	54.1	25.7	79.8	15.0	8.0	23.0	69.1	33.7	102.8
Six days— Monday to Saturday	184.2	108.9	293.1	40.3	54.8	95.1	224.5	163.7	388.2
Total	202.6	115.8	318.4	44.6	58.4	103.1	247.3	174.2	421.4
Five days— Mondays to Friday	1,385.9	757.2	2,143.1	615.0	537.3	1,152.4	2,001.0	1,294.5	3,295.5
Total	1,405.9	771.7	2,177.6	637.0	559.1	1,196.1	2,042.9	1,330.8	3,373.7
Four days— Weekdays only	8.8	9.2	18.0	32.6	11.7	44.3	41.4	20.9	62.3
Total	11.8	12.7	24.5	46.0	16.1	62.1	57.8	28.7	86.6
Three days— Weekdays only	4.4	3.9	8.4	44.1	9.4	53.5	48.5	13.4	61.9
Total	5.4	9.2	14.6	58.3	15.5	73.9	63.7	24.7	88.5
Two days— Weekdays only	2.2	4.0	6.2	40.5	8.7	49.2	42.6	12.7	55.4
Total	2.9	18.4	21.4	61.2	37.2	98.4	64.1	55.6	119.7
One day— Weekday	2.7	4.6	7.4	20.1	9.0	29.1	22.8	13.7	36.5
Total	3.1	13.2	16.3	26.5	25.1	51.6	29.6	38.3	67.9
Variable days	71.6	43.4	115.0	95.1	45.7	140.8	166.7	89.1	255.8
<b>Total</b>	<b>1,757.4</b>	<b>1,010.1</b>	<b>2,767.5</b>	<b>983.7</b>	<b>765.1</b>	<b>1,748.9</b>	<b>2,741.1</b>	<b>1,775.2</b>	<b>4,516.4</b>
Weekend workers(b)	281.7	187.6	469.4	136.4	143.3	279.6	418.1	330.9	749.0
Saturday only(b)	194.7	141.6	336.3	82.5	108.9	191.5	277.2	250.5	527.7
Sunday only(b)	19.5	7.5	27.0	12.5	9.8	22.3	32.0	17.4	49.3
Saturday and Sunday(b)	67.6	38.5	106.1	41.3	24.5	65.8	108.9	63.0	171.9
Other than weekend workers(c)	1,404.1	779.0	2,183.1	752.3	576.2	1,328.5	2,156.4	1,355.2	3,511.6

(a) Includes never married, widowed, divorced and permanently separated. (b) Includes employees who also worked on one or more week days but excludes those who worked on a varying number of days each week. (c) Excludes employees who worked on a varying number of days each week.

## TECHNICAL NOTE

## Estimation procedure

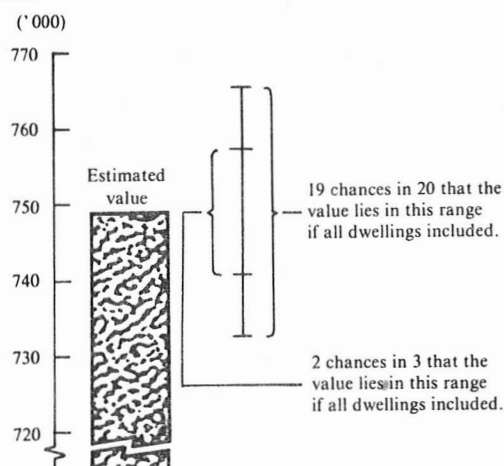
The estimates are derived from the population survey by use of a ratio estimation procedure which ensures that the estimates conform to an independently estimated distribution of the population for each capital city and remainder of State by age and sex, rather than to the corresponding distribution within the sample itself.

## Reliability of the estimates

2. Since the estimates in this publication are based on information obtained from occupants of a sample of dwellings, they are subject to sampling variability; that is, they may differ from the figures that would have been produced if all dwellings had been included in the survey. One measure of the likely difference is given by the *standard error*, which indicates the extent to which an estimate might have varied by chance because only a sample of dwellings was included. There are about two chances in three that a sample estimate will differ by less than one standard error from the figure that would have been obtained if all dwellings had been included, and about nineteen chances in twenty that the difference will be less than two standard errors. Another measure of the likely difference is the *relative standard error*, which is obtained by expressing the standard error as a percentage of the estimate.

3. Space does not allow for the separate indication of the standard errors of all estimates in this publication. A table of standard errors for general application is given on the following page. Since they are averages based on calculations for a limited number of past surveys over a wide range of labour force characteristics, these figures will not give a precise measure of the standard error of a particular estimate but they will provide an indication of its magnitude.

4. An example of the calculation and the use of standard errors in relation to estimates of persons is as follows. Table 24 shows the estimated number of weekend workers was 749,000. Since this estimate is between 500,000 and 1,000,000 in the standard error table, the standard error for Australia will be between 7,200 and 9,100 and can be approximated as 8,200 (rounded to the nearest 100). Therefore there are about two chances in three that the value that would have been produced if all dwellings had been included in the survey will fall in the range 740,800 to 757,200 and about nineteen chances in twenty that the value will fall within the range 732,600 to 765,400. This example is illustrated in the following diagram.



5. As can be seen from the standard error table, *the smaller the estimate the higher is the relative standard error*. Very small estimates are thus subject to such high standard errors (relative to the size of the estimate) as to detract seriously from their value for most reasonable uses. In the tables in this publication, estimates less than the lowest levels shown in the standard error table have not been published. Although figures for these small components can in some cases be derived by subtraction, they should not be regarded as reliable.

6. Proportions and percentages formed from the ratio of two estimates are also subject to sampling error. The size of the error depends on the accuracy of both the numerator and the denominator. The formula for the relative standard error (RSE) of a proportion is given below:

$$RSE(x/y) = \sqrt{[RSE(x)]^2 + [RSE(y)]^2}$$

7. Considering the example from paragraph 4 above, the 749,000 weekend workers represent 16.6 per cent of the 4,516,400 employees who were not shiftworkers. The standard error of 4,516,400 is approximately 14,500 so the relative standard error is 0.3 per cent. The relative standard error for 749,000 is 1.1 per cent. Applying the above formula, the relative standard error of 16.6 per cent is  $\sqrt{(1.1)^2 + (0.3)^2}$  or 1.1 per cent, giving a standard error of about 0.2 per cent. Therefore, there are about two chances in three that the proportion of employees who were not shiftworkers and who were weekend workers is between 16.4 per cent and 16.8 per cent and nineteen chances in twenty the proportion is within the range 16.2 per cent to 17.0 per cent.

8. Published figures may also be used to estimate the difference between two survey estimates (of numbers or percentages). Such a figure is itself an estimate and is therefore subject to sampling error. The sampling error of the difference between two estimates depends on their standard errors and the relationship (correlation) between them. An approximate standard error (SE) of the difference between two estimates (x-y) may be calculated by the following formula:

$$SE(x-y) = \sqrt{[SE(x)]^2 + [SE(y)]^2}$$

While this formula will only be exact for differences between separate and uncorrelated characteristics or subpopulations it is expected to provide a good approximation for all differences likely to be of interest in this publication.

9. The imprecision due to sampling variability, which is measured by the standard error, should not be confused with inaccuracies that may occur because of imperfections in reporting by interviewers and respondents and errors made in the coding and processing of data. Inaccuracies of this kind are referred to as the *non-sampling error*, and they may occur in any enumeration, whether it be a full count or only a sample.







