



11 JULY 1997

**May 1997
Motor Vehicle
Registrations
Australia**

Product No. 9303.0.40.003

© Commonwealth of Australia 1997

Produced by the Australian Government publishing Service

CONTENTS

Table	Page
1. New motor vehicles by type of vehicle, original, seasonally adjusted and trend estimate: Australia, latest 15 months	1
2. New motor vehicles by type of vehicle: Australia, latest 15 months and previous three years	1
3. New motor vehicles, original, seasonally adjusted and trend estimate: State/Territory, latest 15 months	2
4. New motor vehicles by type of vehicle: State/Territory and capital cities, May 1997	3
5. New plant and equipment, caravans and trailers: State/Territory and capital cities, May 1997	3
6. New motor vehicles by type of vehicle: State/Territory and capital cities, Eleven months ended May 1996, 1997	3
7. New passenger vehicles by make of vehicle: Australia, May 1996, March, April and May 1997	4
8. New light commercial vehicles, trucks and buses by make of vehicle: March, April and May 1997	5
9. New passenger vehicles by make of vehicle: State/Territory and capital cities, May 1997	6
10. New passenger vehicles by selected make and model of vehicle: Australia, May 1997	7
11. New light commercial vehicles by make of vehicle: State/Territory and capital cities, May 1997	8
12. New light commercial vehicles by tare weight and make of vehicle: Australia, May 1997	8
13. New rigid trucks by make of vehicle: State/Territory and capital cities, May 1997	8
14. New rigid trucks by gross vehicle mass and make of vehicle: Australia, May 1997	9
15. New articulated trucks by make of vehicle: State/Territory and capital cities, May 1997	9
16. New articulated trucks by gross combination mass and make of vehicle: Australia, May 1997	9
17. New non-freight carrying trucks by make of vehicle: State/Territory and capital cities, May 1997	10
18. New buses by make of vehicle: State/Territory and capital cities, May 1997	10
19. New buses by tare weight and make of vehicle: Australia, May 1997	10
20. New motor cycles by make of vehicle: State/Territory and capital cities, May 1997	11
21. New motor vehicles by fuel type and type of vehicle: Australia, May 1997	11

INQUIRIES

- for further information about statistics in this data service and the availability of related unpublished statistics, contact Clare O'Loughlin phone (07) 3222 6180.
 - for information about other ABS statistics and services please refer to the back page of this data service.
-

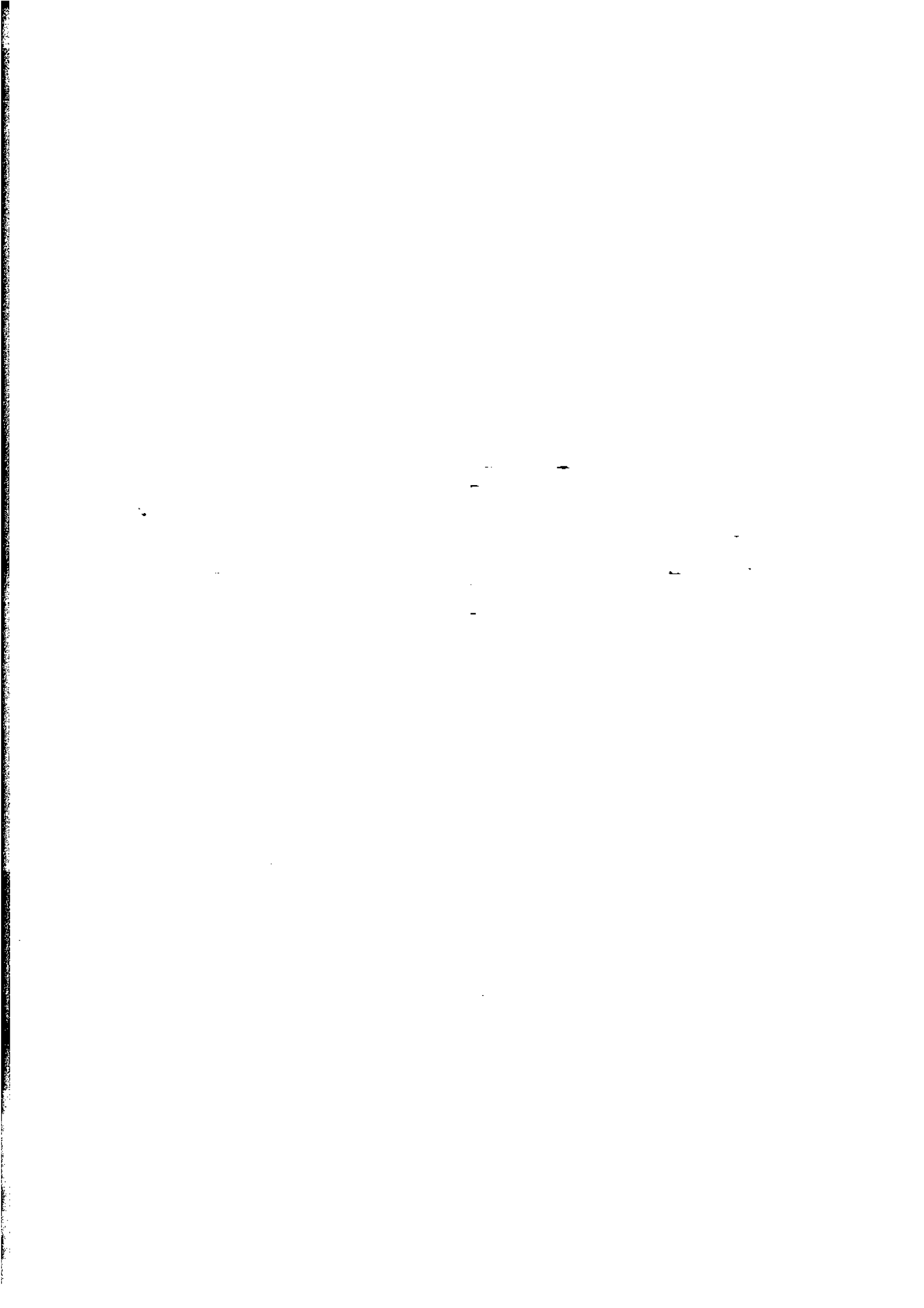


TABLE 1. NEW MOTOR VEHICLES BY TYPE OF VEHICLE,
ORIGINAL, SEASONALLY ADJUSTED AND TREND ESTIMATE, AUSTRALIA

Period	Passenger vehicles			Other vehicles(a)			Total(a)		
	Original	Seasonally adjusted	Trend estimate	Original	Seasonally adjusted	Trend estimate	Original	Seasonally adjusted	Trend estimate
	<i>1995-96 —</i>								
March	45,564	44,584	44,922	9,239	8,930	9,011	54,803	53,514	53,933
April	41,606	45,573	45,095	8,461	9,107	9,043	50,067	54,680	54,137
May	47,713	43,762	45,058	10,131	8,624	9,021	57,844	52,387	54,080
June	52,082	50,950	44,863	11,611	9,449	8,966	63,693	60,398	53,829
<i>1996-97 —</i>									
July	45,971	43,012	44,626	9,027	8,219	8,915	54,998	51,231	53,541
August	45,574	44,716	44,407	8,783	9,405	8,845	54,357	54,121	53,252
September	42,893	45,057	44,338	8,210	9,001	8,745	51,103	54,058	53,083
October	47,131	43,292	44,610	8,613	8,403	8,668	55,744	51,694	53,278
November	45,253	45,785	45,314	8,355	8,320	8,663	53,608	54,105	53,977
December	46,165	45,129	46,264	8,423	8,914	8,728	54,588	54,043	54,993
January	39,604	47,213	47,169	6,566	8,381	8,831	46,170	55,594	55,999
February	46,563	49,231	47,816	8,308	9,349	8,930	54,871	58,580	56,746
March	46,366	49,766	48,171	8,628	9,579	8,982	54,994	59,345	57,153
April	47,959	47,191	48,281	9,162	8,537	8,983	57,121	55,728	57,264
May	48,932	46,696	48,104	9,689	8,672	8,941	58,621	55,368	57,045

(a) Excludes motor cycles, plant and equipment, caravans and trailers.

TABLE 2. NEW MOTOR VEHICLES BY TYPE OF VEHICLE, AUSTRALIA

Period	Passenger vehicles	Light commercial vehicles	Trucks			Buses	Total (excludes motor cycles)	Motor cycles
			Rigid	Articulated	Non-freight carrying			
			<i>1993-94</i>					
1993-94	475,982	80,718	9,810	3,146	796	3,814	574,267	17,425
1994-95	528,501	88,840	11,392	4,814	866	4,495	638,908	20,505
1995-96	531,785	86,667	9,725	2,909	1,080	4,376	636,542	22,345
<i>1995-96 —</i>								
March	45,564	7,804	743	234	103	355	54,803	2,025
April	41,606	7,082	725	247	74	333	50,067	1,810
May	47,713	8,531	876	278	79	367	57,844	1,893
June	52,082	9,994	834	295	63	425	63,693	1,578
<i>1996-97 —</i>								
July	45,971	7,361	831	306	174	355	54,998	1,760
August	45,574	7,236	793	304	105	345	54,357	1,653
September	42,893	6,890	727	238	72	283	51,103	1,562
October	47,131	7,100	777	307	96	333	55,744	2,052
November	45,253	6,814	833	275	95	338	53,608	2,369
December	46,165	6,893	851	255	128	296	54,588	2,002
January	39,604	5,506	515	157	55	333	46,170	1,881
February	46,563	7,069	674	186	58	321	54,871	1,926
March	46,366	7,227	772	241	94	294	54,994	1,913
April	47,959	7,567	886	298	58	353	57,121	1,868
May	48,932	8,067	897	276	96	353	58,621	2,111

TABLE 3. NEW MOTOR VEHICLES, ORIGINAL, SEASONALLY ADJUSTED AND TREND ESTIMATE

Period	NSW			Vic.			Qld		
	Original	Seasonally adjusted	Trend estimate	Original	Seasonally adjusted	Trend estimate	Original	Seasonally adjusted	Trend estimate
1995-96 —									
March	18,318	17,647	18,355	13,142	12,851	13,010	10,992	10,947	10,491
April	18,348	19,594	18,267	11,519	12,774	13,060	9,471	10,018	10,635
May	19,411	17,185	18,157	14,868	13,165	13,039	10,388	9,674	10,687
June	23,395	22,129	18,052	14,355	13,521	12,991	13,157	12,783	10,648
1996-97 —									
July	18,861	17,577	18,006	13,478	12,693	12,949	10,585	9,079	10,579
August	18,213	18,086	17,989	12,880	12,572	12,954	10,903	11,351	10,459
September	17,335	18,746	18,026	12,553	13,194	13,003	9,789	10,300	10,283
October	18,877	18,025	18,198	14,098	12,970	13,162	10,298	9,166	10,151
November	18,455	17,875	18,526	13,399	13,758	13,457	9,823	10,749	10,123
December	17,793	18,534	18,904	13,737	13,553	13,803	10,544	10,123	10,228
January	16,047	19,426	19,275	10,975	13,714	14,077	8,552	9,928	10,370
February	18,926	20,232	19,546	13,958	14,533	14,230	9,823	10,813	10,482
March	19,390	20,602	19,680	13,559	15,529	14,280	10,619	11,206	10,545
April	19,916	18,917	19,692	14,167	13,503	14,248	10,521	10,040	10,563
May	20,717	18,918	19,610	14,508	13,580	14,129	10,546	10,364	10,482
	SA			WA			Tas.		
Period	Original	Seasonally adjusted	Trend estimate	Original	Seasonally adjusted	Trend estimate	Original	Seasonally adjusted	Trend estimate
1995-96 —									
March	3,867	3,741	3,725	5,909	5,684	5,555	961	1,073	1,113
April	3,286	3,738	3,709	5,072	5,749	5,675	818	1,090	1,129
May	3,792	3,621	3,658	6,252	5,835	5,758	1,202	1,207	1,149
June	3,932	3,668	3,576	6,030	5,646	5,792	994	1,055	1,174
1996-97 —									
July	3,457	3,384	3,479	5,692	5,761	5,775	1,341	1,299	1,205
August	3,569	3,453	3,389	5,753	5,740	5,734	1,336	1,264	1,231
September	3,437	3,431	3,344	5,338	5,776	5,727	1,348	1,232	1,244
October	3,365	3,077	3,357	6,296	5,884	5,729	1,307	1,150	1,239
November	3,515	3,456	3,437	5,677	5,447	5,748	1,267	1,344	1,222
December	3,582	3,563	3,559	5,903	5,739	5,782	1,737	1,169	1,202
January	2,942	3,673	3,681	5,397	5,919	5,827	935	1,215	1,188
February	3,827	4,012	3,771	5,961	6,234	5,877	898	1,093	1,186
March	3,627	3,750	3,821	5,224	5,414	5,922	958	1,165	1,190
April	3,716	3,935	3,842	5,886	6,222	5,958	1,047	1,270	1,201
May	3,640	3,600	3,821	6,164	5,934	6,001	1,211	1,236	1,207
	NT			ACT			Australia		
Period	Original	Seasonally adjusted	Trend estimate	Original	Seasonally adjusted	Trend estimate	Original	Seasonally adjusted	Trend estimate
1995-96 —									
March	666	632	654	948	938	1,030	54,803	53,514	53,933
April	616	637	650	937	1,080	1,012	50,067	54,680	54,137
May	823	688	641	1,108	1,011	990	57,844	52,387	54,080
June	798	647	626	1,032	949	970	63,693	60,398	53,829
1996-97 —									
July	637	551	606	947	886	942	54,998	51,231	53,541
August	599	627	587	1,104	1,027	910	54,357	54,121	53,252
September	535	571	576	768	808	880	51,103	54,058	53,083
October	561	526	578	942	895	864	55,744	51,694	53,278
November	610	626	594	862	850	868	53,608	54,105	53,977
December	501	573	623	791	790	891	54,588	54,043	54,993
January	519	728	654	803	991	928	46,170	55,594	55,999
February	551	664	685	927	999	969	54,871	58,580	56,746
March	704	662	710	913	1,018	1,004	54,994	59,345	57,153
April	852	822	730	1,016	1,019	1,031	57,121	55,728	57,264
May	773	692	740	1,062	1,043	1,055	58,621	55,368	57,045

TABLE 4. REGISTRATIONS OF NEW MOTOR VEHICLES BY TYPE OF VEHICLE, MAY 1997

Type of vehicle	NSW	Vic.	Qld	SA	WA	Tas.	NT	ACT	Australia	Capital cities
Passenger vehicles	17,588	12,430	8,327	3,028	5,072	941	586	960	48,932	35,518
Light commercial vehicles	2,634	1,683	1,841	524	909	240	143	93	8,067	4,311
Trucks —										
Rigid	324	210	204	30	100	13	11	5	897	569
Articulated	77	84	63	24	18	6	3	1	276	90
Non-freight carrying	30	24	19	12	7	4	—	—	96	75
Buses	64	77	92	22	58	7	30	3	353	210
Total (excl. motor cycles)	20,717	14,508	10,546	3,640	6,164	1,211	773	1,062	58,621	40,773
Capital cities	14,364	11,094	5,827	2,914	4,819	693	..	1,062	40,773	40,773
Other areas	6,353	3,414	4,719	726	1,345	518	773	..	17,848	..
Motor cycles	629	597	406	118	234	36	48	43	2,111	1,254

TABLE 5. REGISTRATIONS OF NEW PLANT AND EQUIPMENT, CARAVANS AND TRAILERS, MAY 1997

Type of vehicle	NSW	Vic.	Qld	SA	WA	Tas.	NT	ACT	Australia	Capital cities
Plant and equipment	115	65	178	35	138	9	—	1	541	202
Caravans(a)	125	246	83	89	65	5	—	1	614	306
Trailers	1,417	1,142	1,491	533	643	148	142	47	5,563	2,754
Total	1,657	1,453	1,752	657	846	162	142	49	6,718	3,262

(a) Excludes self-propelled caravans.

TABLE 6. REGISTRATIONS OF NEW MOTOR VEHICLES BY TYPE OF VEHICLE, ELEVEN MONTHS ENDED MAY 1997

Type of vehicle	NSW	Vic.	Qld	SA	WA	Tas.	NT	ACT	Australia	Capital cities
Passenger vehicles	176,046	127,636	89,645	32,487	51,717	10,911	4,848	9,121	502,411	366,727
Light commercial vehicles	23,524	16,088	18,777	5,153	9,574	2,174	1,534	906	77,730	41,588
Trucks —										
Rigid	3,067	1,841	1,917	377	1,022	159	124	49	8,556	5,506
Articulated	783	817	630	275	225	71	34	8	2,843	1,217
Non-freight carrying	312	278	183	133	86	27	8	4	1,031	759
Buses	798	652	851	252	667	43	294	47	3,604	2,094
Total (excl. motor cycles)										
— 11 months ended May										
1997	204,530	147,312	112,003	38,677	63,291	13,385	6,842	10,135	596,175	417,891
1996	197,900	136,641	110,654	38,963	58,456	12,268	6,862	11,105	572,849	399,828
Capital cities	143,480	113,605	62,617	31,327	49,658	7,069	..	10,135	417,891	417,891
Other areas	61,050	33,707	49,386	7,350	13,633	6,316	6,842	..	178,284	..
Motor cycles										
— 11 months ended May										
1997	6,197	5,783	3,973	1,441	2,454	453	413	383	21,097	12,208
1996	6,242	5,538	3,964	1,568	2,283	380	470	322	20,767	11,806

TABLE 7. REGISTRATION OF NEW PASSENGER VEHICLES BY MAKE OF VEHICLE, AUSTRALIA

<i>Make</i>	<i>Mar. 1997</i>	<i>Apr. 1997</i>	<i>May 1997</i>	<i>May 1996</i>
Asia	4	6	4	2
Aston Martin	—	—	1	—
Audi	154	153	224	215
Bentley	—	3	1	2
B.M.W.	722	771	840	574
Chevrolet	—	—	5	1
Chrysler	331	274	213	—
Citroen	26	34	28	14
Daewoo	965	1,280	1,051	1,041
Daihatsu	693	571	504	593
Eunos	85	95	97	91
Ferrari	4	4	2	5
Ford	9,154	9,441	9,715	10,066
Holden	7,455	7,691	7,866	9,558
Honda	1,097	1,317	1,703	1,473
Hyundai	5,203	5,177	4,789	4,643
Isuzu	—	3	—	—
Jaguar	22	68	57	29
Jeep	452	638	604	567
Kia	520	512	652	—
Lada	10	18	23	5
Lamborghini	—	1	1	1
Land Rover	410	429	457	458
Lexus	114	122	97	40
Lotus	3	5	11	1
Maserati	2	2	1	2
Mazda	1,544	1,851	1,798	1,594
Mercedes-Benz	335	542	384	414
M.G.	41	76	43	—
Mitsubishi	5,177	4,870	5,125	4,513
Morgan	—	1	—	—
Nissan	1,969	2,019	2,163	1,719
Peugeot	234	217	206	199
Porsche	28	81	46	34
Proton	112	174	137	228
Range Rover	75	66	64	79
Renault	7	3	—	16
Rolls Royce	—	2	—	—
Saab	199	212	300	242
Seat	40	43	32	69
Ssangyong	123	136	139	—
Subaru	871	1,074	1,038	737
Suzuki	867	740	670	734
Toyota	6,705	6,388	7,127	7,208
Volkswagen	312	534	353	263
Volvo	249	361	348	247
Unknown	52	54	13	36
Total	46,366	47,959	48,932	47,713

TABLE 8. REGISTRATIONS OF NEW LIGHT COMMERCIAL VEHICLES, TRUCKS, AND BUSES BY MAKE OF VEHICLE, AUSTRALIA

Make	Mar. 1997	Apr. 1997	May 1997					Total
	Total	Total	Light commercial vehicles	Trucks			Buses	
				Rigid	Articulated	Non-freight carrying		
Asia	6	7	4	—	—	—	—	4
Chevrolet	2	6	3	1	—	—	—	4
Chrysler	—	1	—	—	—	—	—	—
Daewoo	23	25	28	—	—	—	—	28
Daihatsu	28	30	6	18	—	—	—	24
Ford	1,553	1,615	1,700	83	23	17	1	1,824
Freight Liner	48	69	—	18	29	2	—	49
G.M.C.	3	3	—	5	—	1	—	6
Hino	82	121	—	97	1	5	7	110
Holden	1,723	1,799	1,893	—	—	10	—	1,903
Hyundai	—	—	1	—	—	—	—	1
International	95	95	—	70	53	14	1	138
Isuzu	257	271	—	274	1	13	—	285
Kenworth	66	86	—	10	64	—	—	74
Kia	2	3	1	—	—	—	—	1
Land Rover	33	45	50	—	—	—	—	50
Leyland	—	1	—	2	—	—	—	2
Mack	37	50	—	13	37	—	—	50
Man	16	22	—	7	1	—	16	24
Mazda	444	452	490	42	—	3	3	538
MCA	3	2	—	—	—	—	5	5
Mercedes-Benz	18	34	—	3	2	2	17	24
Mitsubishi	811	932	732	147	1	4	1	885
Nissan	389	413	510	—	—	—	11	521
Nissan UD	43	63	—	41	5	1	—	47
Oka	—	3	—	2	—	—	2	4
Scania	30	38	—	3	24	3	9	39
Suzuki	27	41	31	—	—	—	—	31
Tata	12	13	10	—	—	—	—	10
Toyota	2,688	2,720	2,394	44	—	16	271	2,725
Volkswagen	115	145	214	—	—	2	—	216
Volvo	47	36	—	15	25	1	7	48
Western Star	24	14	—	2	9	—	—	11
Unknown	3	7	—	3	1	2	2	8
Total	8,628	9,162	8,067	897	276	96	353	9,689

TABLE 9. REGISTRATIONS OF NEW PASSENGER VEHICLES BY MAKE OF VEHICLE,
MAY 1997

<i>Make</i>	<i>NSW</i>	<i>Vic.</i>	<i>Qld</i>	<i>SA</i>	<i>WA</i>	<i>Tas.</i>	<i>NT</i>	<i>ACT</i>	<i>Australia</i>	<i>Capital cities</i>
Asia	2	1	1	—	—	—	—	—	4	3
Aston Martin	—	—	—	1	—	—	—	—	1	1
Audi	109	52	29	10	18	1	—	5	224	212
Bentley	1	—	—	—	—	—	—	—	1	1
B.M.W.	344	264	114	36	53	11	2	16	840	723
Chevrolet	1	3	1	—	—	—	—	—	5	3
Chrysler	67	49	52	9	22	4	5	5	213	150
Citroen	15	8	3	—	—	—	—	2	28	22
Daewoo	370	291	183	60	98	23	9	17	1,051	679
Daihatsu	262	50	82	41	42	20	3	4	504	331
Eunos	48	18	15	7	6	1	—	2	97	81
Ferrari	—	2	—	—	—	—	—	—	2	2
Ford	3,179	2,869	1,634	647	982	148	55	201	9,715	6,823
Holden	2,599	2,061	1,465	651	757	140	55	138	7,866	6,027
Honda	683	536	230	60	158	18	7	11	1,703	1,397
Hyundai	1,797	1,002	884	199	653	119	44	91	4,789	3,213
Jaguar	31	7	8	2	9	—	—	—	57	56
Jeep	248	117	108	25	83	7	9	7	604	432
Kia	174	228	94	56	56	32	8	4	652	469
Lada	1	2	2	1	17	—	—	—	23	12
Lamborghini	1	—	—	—	—	—	—	—	1	1
Land Rover	174	103	94	24	39	11	7	5	457	286
Lexus	49	20	19	2	7	—	—	—	97	87
Lotus	1	6	3	1	—	—	—	—	11	9
Maserati	1	—	—	—	—	—	—	—	1	1
Mazda	693	477	255	109	181	29	13	41	1,798	1,322
Mercedes-Benz	162	117	54	17	26	3	1	4	384	318
M.G.	12	15	5	6	5	—	—	—	43	38
Mitsubishi	1,632	1,352	876	456	506	111	58	134	5,125	3,894
Nissan	719	527	453	109	188	38	52	77	2,163	1,381
Peugeot	72	67	33	11	9	9	—	5	206	161
Porsche	19	16	3	3	2	2	—	1	46	41
Proton	70	10	22	7	12	2	8	6	137	94
Range Rover	27	19	7	3	6	—	—	2	64	52
Saab	134	87	31	13	29	—	—	6	300	256
Seat	19	8	2	1	2	—	—	—	32	27
Ssangyong	51	44	23	7	13	—	1	—	139	105
Subaru	495	249	136	31	86	26	—	15	1,038	722
Suzuki	287	97	117	34	91	14	21	9	670	411
Toyota	2,696	1,473	1,199	360	875	157	225	142	7,127	5,068
Volkswagen	162	97	44	13	18	10	3	6	353	312
Volvo	179	77	46	14	23	5	—	4	348	284
Unknown	2	9	—	2	—	—	—	—	13	11
Total	17,588	12,430	8,327	3,028	5,072	941	586	960	48,932	35,518

TABLE 10. REGISTRATIONS OF NEW PASSENGER VEHICLES BY SELECTED
MAKE AND MODEL OF VEHICLE,
MAY 1997

<i>Make/Model</i>	<i>NSW</i>	<i>Vic.</i>	<i>Qld</i>	<i>SA</i>	<i>WA</i>	<i>Tas.</i>	<i>NT</i>	<i>ACT</i>	<i>Australia</i>
Ford									
Falcon/Fairmont	2,096	1,921	1,069	416	683	93	39	133	6,450
Festiva	368	324	248	109	114	28	6	23	1,220
Laser	285	220	129	49	68	11	5	15	782
Other	430	404	188	73	117	16	5	30	1,263
Total	3,179	2,869	1,634	647	982	148	55	201	9,715
Holden									
Commodore/Calais	1,910	1,453	1,139	472	554	87	50	95	5,760
Barina	321	190	146	68	83	24	2	28	862
Statesman/Caprice	153	145	73	27	51	3	2	7	461
Other	215	273	107	84	69	26	1	8	783
Total	2,599	2,061	1,465	651	757	140	55	138	7,866
Hyundai									
Excel	944	542	450	109	364	71	18	57	2,558
Lantra	518	261	263	49	188	31	15	20	1,345
Sonata	260	154	131	29	78	11	10	11	684
Other	75	45	40	12	23	6	1	3	205
Total	1,797	1,002	884	199	653	119	44	91	4,789
Mazda									
323	357	273	132	59	75	14	4	23	937
121	227	122	89	29	84	11	9	12	583
626	61	52	20	12	16	4	0	3	168
Other	48	30	14	9	6	0	0	3	110
Total	693	477	255	109	181	29	13	41	1,798
Mitsubishi									
Magna	888	789	434	313	274	74	27	84	2,883
Lancer	196	206	116	56	62	5	7	12	660
Verada	216	142	76	45	46	7	8	13	553
Other	332	215	250	42	124	25	16	25	1,029
Total	1,632	1,352	876	456	506	111	58	134	5,125
Nissan									
Pulsar	307	229	186	54	71	17	30	47	941
Patrol	114	62	75	20	63	8	17	3	362
Micra	67	52	55	9	6	3	4	12	208
Other	231	184	137	26	48	10	1	15	652
Total	719	527	453	109	188	38	52	77	2,163
Toyota									
Corolla	673	396	249	114	222	58	61	82	1,855
Camry	513	340	293	81	196	44	31	13	1,511
Vienta	480	229	122	26	77	9	5	13	961
Other	1,030	508	535	139	380	46	128	34	2,800
Total	2,696	1,473	1,199	360	875	157	225	142	7,127

TABLE 11. REGISTRATIONS OF NEW LIGHT COMMERCIAL VEHICLES BY MAKE OF VEHICLE, MAY 1997

Make	NSW	Vic.	Qld	SA	WA	Tas.	NT	ACT	Australia	Capital cities
Asia	4	—	—	—	—	—	—	—	4	3
Chevrolet	1	2	—	—	—	—	—	—	3	3
Daewoo	15	3	4	1	5	—	—	—	28	19
Daihatsu	3	—	1	—	—	1	1	—	6	3
Ford	514	478	289	114	203	60	17	25	1,700	965
Holden	679	413	440	135	160	37	18	11	1,893	1,015
Hyundai	—	1	—	—	—	—	—	—	1	1
Kia	1	—	—	—	—	—	—	—	1	1
Land Rover	16	13	6	3	9	2	1	—	50	12
Mazda	121	118	121	30	70	18	6	6	490	273
Mitsubishi	212	143	197	70	68	23	14	5	732	379
Nissan	152	85	163	24	56	26	3	1	510	139
Suzuki	7	6	7	7	4	—	—	—	31	5
Tata	4	1	3	—	2	—	—	—	10	2
Toyota	801	360	585	133	324	73	81	37	2,394	1,307
Volkswagen	104	60	25	7	8	—	2	8	214	184
Total	2,634	1,683	1,841	524	909	240	143	93	8,067	4,311

TABLE 12. REGISTRATIONS OF NEW LIGHT COMMERCIAL VEHICLES BY TARE WEIGHT AND MAKE OF VEHICLE, AUSTRALIA, MAY 1997

Make	Tare weight (kg)						Total
	900 and under	901 to 1100	1101 to 1300	1301 to 1500	Over 1500	Not stated	
Asia	—	—	—	3	1	—	4
Chevrolet	—	—	—	—	2	1	3
Daewoo	1	27	—	—	—	—	28
Daihatsu	5	—	—	—	—	1	6
Ford	6	8	259	896	470	61	1,700
Holden	11	76	242	993	532	39	1,893
Hyundai	—	—	1	—	—	—	1
Kia	—	—	—	1	—	—	1
Land Rover	—	—	—	1	47	2	50
Mazda	5	3	112	209	143	18	490
Mitsubishi	1	9	179	226	296	21	732
Nissan	4	1	38	99	343	25	510
Suzuki	14	15	1	1	—	—	31
Tata	—	—	—	—	10	—	10
Toyota	4	34	556	637	1,092	71	2,394
Volkswagen	—	2	12	25	174	1	214
Total	51	175	1,403	3,091	3,108	239	8,067

TABLE 13. REGISTRATIONS OF NEW RIGID TRUCKS BY MAKE OF VEHICLE, MAY 1997

Make	NSW	Vic.	Qld	SA	WA	Tas.	NT	ACT	Australia	Capital cities
Chevrolet	—	1	—	—	—	—	—	—	1	—
Daihatsu	14	—	4	—	—	—	—	—	18	17
Ford	23	14	31	4	7	2	1	1	83	44
Freight Liner	8	4	4	1	1	—	—	—	18	11
G.M.C.	5	—	—	—	—	—	—	—	5	5
Hino	40	22	23	3	7	—	2	—	97	58
International	26	18	10	8	7	—	1	—	70	43
Isuzu	100	71	52	3	37	5	—	3	271	186
Kenworth	1	5	2	1	—	—	1	—	10	5
Leyland	—	1	—	1	—	—	—	—	2	1
Mack	6	2	5	—	—	—	—	—	13	3
Man	3	3	—	—	—	—	1	—	7	4
Mazda	7	11	9	7	7	1	—	—	42	30
Mercedes-Benz	1	1	1	—	—	—	—	—	3	3
Mitsubishi	50	33	32	1	22	5	4	—	147	99
Nissan UD	16	10	12	—	3	—	—	—	41	18
Oka	—	—	—	—	2	—	—	—	2	2
Scania	1	1	1	—	—	—	—	—	3	—
Toyota	17	10	12	1	2	—	1	1	44	27
Volvo	6	3	3	—	3	—	—	—	15	11
Western Star	—	—	2	—	—	—	—	—	2	1
Unknown	—	—	1	—	2	—	—	—	3	1
Total	324	210	204	30	100	13	11	5	897	569

TABLE 14. REGISTRATIONS OF NEW RIGID TRUCKS BY GROSS VEHICLE MASS AND MAKE OF VEHICLE, AUSTRALIA, MAY 1997

Make	Gross vehicle mass (tonnes)						Not stated	Total
	4 and under	Over 4 to 8	Over 8 to 12	Over 12 to 16	Over 16 to 20	Over 20		
Chevrolet	—	1	—	—	—	—	—	1
Daihatsu	5	13	—	—	—	—	—	18
Ford	5	62	—	—	—	16	—	83
Freight Liner	—	—	—	1	—	17	—	18
G.M.C.	5	—	—	—	—	—	—	5
Hino	—	—	66	21	3	7	—	97
International	—	14	—	12	1	43	—	70
Isuzu	—	137	81	40	—	13	—	271
Kenworth	—	—	—	—	—	10	—	10
Leyland	—	—	2	—	—	—	—	2
Mack	—	—	—	1	—	12	—	13
Man	—	—	3	3	—	1	—	7
Mazda	—	41	1	—	—	—	—	42
Mercedes-Benz	—	—	—	—	—	3	—	3
Mitsubishi	—	81	29	23	—	14	—	147
Nissan UD	—	—	24	12	—	5	—	41
Oka	—	2	—	—	—	—	—	2
Scania	—	—	—	1	—	2	—	3
Toyota	7	37	—	—	—	—	—	44
Volvo	—	—	—	1	2	12	—	15
Western Star	—	—	—	—	—	2	—	2
Unknown	1	—	—	—	—	2	—	3
Total	23	388	206	115	6	159	—	897

TABLE 15. REGISTRATIONS OF NEW ARTICULATED TRUCKS BY MAKE OF VEHICLE, MAY 1997

Make	NSW	Vic.	Qld	SA	WA	Tas.	NT	ACT	Australia	Capital cities
Ford	4	7	6	6	—	—	—	—	23	13
Freight Liner	8	7	8	—	3	3	—	—	29	7
Hino	1	—	—	—	—	—	—	—	1	1
International	19	17	7	7	3	—	—	—	53	17
Isuzu	—	1	—	—	—	—	—	—	1	—
Kenworth	14	27	14	4	3	1	1	—	64	12
Mack	8	10	11	2	4	1	1	—	37	15
Man	—	1	—	—	—	—	—	—	1	—
Mercedes-Benz	1	—	1	—	—	—	—	—	2	—
Mitsubishi	—	1	—	—	—	—	—	—	1	—
Nissan UD	2	1	—	—	1	—	—	1	5	3
Scania	8	9	3	3	—	1	—	—	24	7
Volvo	8	3	10	1	3	—	—	—	25	11
Western Star	3	—	3	1	1	—	1	—	9	3
Unknown	1	—	—	—	—	—	—	—	1	1
Total	77	84	63	24	18	6	3	1	276	90

TABLE 16. REGISTRATIONS OF NEW ARTICULATED TRUCKS BY GROSS COMBINATION MASS AND MAKE OF VEHICLE, AUSTRALIA, MAY 1997

Make	Gross combination mass (tonnes)					Not stated	Total
	24 and under	Over 24 to 30	Over 30 to 34	Over 34 to 40	Over 40		
Ford	—	—	—	—	23	—	23
Freight Liner	—	—	—	2	27	—	29
Hino	—	—	—	—	1	—	1
International	—	1	1	2	49	—	53
Isuzu	1	—	—	—	—	—	1
Kenworth	—	1	—	—	60	3	64
Mack	—	—	—	—	37	—	37
Man	1	—	—	—	—	—	1
Mercedes-Benz	—	—	—	1	1	—	2
Mitsubishi	—	—	—	1	—	—	1
Nissan UD	—	1	1	1	2	—	5
Scania	—	—	—	—	22	2	24
Volvo	—	—	—	—	25	—	25
Western Star	—	1	—	—	8	—	9
Unknown	—	—	—	—	1	—	1
Total	2	4	2	7	256	5	276

TABLE 17. REGISTRATIONS OF NEW NON-FREIGHT CARRYING TRUCKS BY MAKE OF VEHICLE, MAY 1997

Make										Capital cities
	NSW	Vic.	Qld	SA	WA	Tas.	NT	ACT	Australia	
Ford	5	1	7	2	2	—	—	—	17	14
Freight Liner	2	—	—	—	—	—	—	—	2	—
G.M.C.	1	—	—	—	—	—	—	—	1	—
Hino	—	1	—	3	—	1	—	—	5	3
Holden	3	4	3	—	—	—	—	—	10	6
International	—	11	1	—	2	—	—	—	14	14
Isuzu	1	3	2	4	2	1	—	—	13	12
Mazda	1	1	1	—	—	—	—	—	3	3
Mercedes-Benz	—	1	1	—	—	—	—	—	2	—
Mitsubishi	3	1	—	—	—	—	—	—	4	4
Nissan UD	—	—	1	—	—	—	—	—	1	1
Scania	—	—	—	3	—	—	—	—	3	3
Toyota	13	—	2	—	1	—	—	—	16	12
Volkswagen	—	—	—	—	—	2	—	—	2	2
Volvo	—	—	1	—	—	—	—	—	1	—
Unknown	1	1	—	—	—	—	—	—	2	1
Total	30	24	19	12	7	4	—	—	96	75

TABLE 18. REGISTRATIONS OF NEW BUSES BY MAKE OF VEHICLE, MAY 1997

Make										Capital cities
	NSW	Vic.	Qld	SA	WA	Tas.	NT	ACT	Australia	
Ford	—	—	—	—	1	—	—	—	1	—
Hino	2	1	3	—	1	—	—	—	7	4
International	—	—	—	—	1	—	—	—	1	—
Man	5	—	5	6	—	—	—	—	16	13
Mazda	—	—	—	1	1	1	—	—	3	3
MCA	—	2	2	—	—	—	—	1	5	1
Mercedes-Benz	5	3	7	1	1	—	—	—	17	7
Mitsubishi	—	—	1	—	—	—	—	—	1	—
Nissan	3	5	2	—	1	—	—	—	11	9
Oka	—	1	—	—	—	—	1	—	2	—
Scania	7	1	1	—	—	—	—	—	9	8
Toyota	38	63	68	14	51	6	29	2	271	160
Volvo	4	1	2	—	—	—	—	—	7	4
Unknown	—	—	1	—	1	—	—	—	2	1
Total	64	77	92	22	58	7	30	3	353	210

TABLE 19. REGISTRATIONS OF NEW BUSES BY TARE WEIGHT AND MAKE OF VEHICLE, AUSTRALIA, MAY 1997

Make	Tare weight (kg)					Total
	1500 and under	1501 to 5000	5001 to 10000	Over 10000	Not stated	
Ford	—	1	—	—	—	1
Hino	—	—	—	5	2	7
International	—	1	—	—	—	1
Man	—	1	8	7	—	16
Mazda	—	2	—	—	—	3
MCA	—	—	—	5	—	5
Mercedes-Benz	—	3	13	1	—	17
Mitsubishi	—	1	—	—	—	1
Nissan	—	11	—	—	—	11
Oka	—	1	—	—	1	2
Scania	—	—	—	9	—	9
Toyota	3	266	—	—	2	271
Volvo	—	—	—	7	—	7
Unknown	—	1	1	—	—	2
Total	4	287	27	31	4	353

TABLE 20. REGISTRATIONS OF NEW MOTOR CYCLES BY MAKE OF VEHICLE, MAY 1997

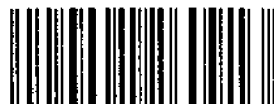
Make	State/Territory									Capital cities
	NSW	Vic.	Qld	SA	WA	Tas.	NT	ACT	Australia	
A.T.K.	1	2	—	—	—	—	—	—	3	1
B.M.W.	11	11	8	2	2	—	2	1	37	23
Cagiva	1	—	1	1	1	—	—	—	4	3
Ducati	22	10	4	4	3	2	6	—	51	27
Harley-Davidson	69	51	39	13	24	8	9	4	217	116
Honda	171	192	124	35	80	7	3	4	616	447
Husaberg	1	—	1	—	—	—	—	—	2	1
Husqvarna	2	3	—	—	—	—	—	—	5	4
Kawasaki	72	62	34	9	24	6	8	22	237	138
K.T.M.	20	18	8	4	4	—	3	3	60	22
Laverda	2	1	—	1	—	—	—	—	4	4
Moto Guzzi	6	3	2	1	8	—	—	—	20	16
Suzuki	116	122	69	19	31	7	7	6	377	205
Triumph	15	15	10	7	7	—	4	—	58	41
Vespa	—	7	1	1	3	—	—	1	13	12
Yamaha	113	100	105	21	46	6	6	2	399	190
Unknown	7	—	—	—	1	—	—	—	8	4
Total	629	597	406	118	234	36	48	43	2,111	1,254

TABLE 21. REGISTRATIONS OF NEW MOTOR VEHICLES BY FUEL TYPE AND TYPE OF VEHICLE, AUSTRALIA, MAY 1997

Type of Vehicle	Fuel type				Total
	Petrol	Diesel	Gas	Other (incl. dual fuel)	
Passenger vehicles	47,610	1,112	46	164	48,932
Light commercial vehicles	5,479	2,528	6	54	8,067
Trucks —					
Rigid	19	878	—	—	897
Articulated	—	276	—	—	276
Non-freight carrying	34	62	—	—	96
Buses	110	243	—	—	353
Total (excl. motor cycles)	53,252	5,099	52	218	58,621
Motor Cycles	2,111	—	—	—	2,111

Produced by the Australian Bureau of Statistics
© Commonwealth of Australia 1997

Recommended retail price: \$40.00



2000001260913