



AUSTRALIAN BUREAU OF STATISTICS

CANBERRA

**PERSONS NOT IN THE
LABOUR FORCE,
AUSTRALIA**

SEPTEMBER 1985

CATALOGUE NO. 6220.0

EMBARGOED UNTIL 11.30 A.M. 10 APRIL 1986

PERSONS NOT IN THE LABOUR FORCE, AUSTRALIA

SEPTEMBER 1985

W. McLENNAN

Acting Australian Statistician

AUSTRALIAN BUREAU OF STATISTICS

(F)

CATALOGUE NO. 6220.0

© Commonwealth of Australia 1986

Printed by C. J. THOMPSON, Commonwealth Government Printer, Canberra

PHONE INQUIRIES	<i>for more information about these statistics</i> —contact Ms Gail Carters on Canberra (062) 52 6503 or any of our State offices. <i>other inquiries including copies of publications</i> —contact Information Services on Canberra (062) 52 6627 or in any of our State offices.
MAIL INQUIRIES	<i>write to</i> Information Services, ABS, P.O. Box 10, Belconnen, A.C.T. 2616 or any of our State offices.

CONTENTS

<i>Table</i>	<i>Page</i>
. . Explanatory notes	1
. . Summary of findings	4
Civilian population aged 15 and over, September 1983 to September 1985—	
1 Labour force status	7
Persons not in the labour force with marginal attachment to the labour force, September 1983 to September 1985—	
2 Main reason for not actively looking for work	7
Persons not in the labour force—	
3 Occupation in last job, main activity and sex	8
Persons who had had a job—	
4 Reason for leaving last job, time since last job and sex	9
5 Reason for leaving last job, status of worker in last job, full-time or part-time status in last job and sex	10
Persons who wanted to work—	
6 Intention to look for work in the next twelve months, type of work preferred, age and sex	11
Persons with marginal attachment to the labour force—	
7 Main reason for not actively looking for work and intention to look for work in the next twelve months	12
8 Whether looked for work in the last twelve months—	
9 Time since last job	12
9 Type of work preferred, family status and sex	13
10 Summary of characteristics	14
Persons who wanted to work but were not actively looking for work and were available to start work within four weeks—	
11 Main reason for not actively looking for work, age and sex	15
12 Whether looked for work in the last twelve months, time since last job, intention to look for work in the next twelve months and sex	16
Discouraged jobseekers—	
13 Whether looked for work in the last twelve months, time since last job, intention to look for work in the next twelve months and sex	17
Persons who wanted to work but were not actively looking for work and were not available to start work within four weeks—	
Reason not available to start work within four weeks—	
14 Intention to look for work in the next twelve months and type of work preferred	18
15 Age	18
16 Family status	18
. . Additional tables	19
. . Technical note	20

EXPLANATORY NOTES

Introduction

The monthly Population Survey (which is described in *The Labour Force, Australia* (6203.0)) comprises the monthly labour force survey and supplementary topics. This publication contains some results of a supplementary survey run in association with the September 1985 labour force survey conducted throughout Australia.

2. Of the respondents to the labour force survey, those who fell within the scope of the supplementary survey were asked additional questions. This subset of respondents was asked about their labour force aspirations and, if appropriate, their reasons for not actively looking for work and their availability for work.

Scope

3. The scope of this supplementary survey was the same as that used for the labour force survey (described in full in *The Labour Force, Australia* (6203.0)) except that it was restricted to persons not in the labour force.

Definitions

4. Persons not in the labour force are by definition those persons who do not meet the criteria that would enable them to be classified as being in the labour force. To be classified as being in the labour force, a person must be aged 15 or over and be either *employed* or *unemployed*.

5. *Persons not in the labour force*, therefore, include all persons aged 15 and over who are not employed, who want work but do not meet the criteria to be classified as unemployed; who do not want to work; or who, through incapacity or infirmity cannot work.

6. The criteria determining those in the labour force are based on actual activity (i.e. working or looking for work) during the survey week. The criteria associated with marginal attachment to the labour force, in particular the concepts of wanting to work, reasons for not actively looking for work and availability to start work, are more subjective and are not based on respondents' actual activity. Hence, the measurement of these criteria is affected by the respondents' own interpretation of the concepts used. Individual respondent's interpretation is affected by such factors as the respondent's work aspirations, as well as family, economic and other commitments.

7. *Persons with marginal attachment to the labour force* are those who were not in the labour force in the survey week, wanted to work and:

- (a) were actively looking for work but do not meet the criteria to be classified as unemployed; or
- (b) were not actively looking for work but were available to start work within four weeks.

8. *Persons not in the labour force who wanted to work* are those who:

- (a) in the four weeks up to the end of the survey week had taken *active steps* to find work but do not meet the criteria to be classified as unemployed; or
- (b) although claiming to have looked for work in the four weeks up to the end of the survey week, had not taken *active steps* to find work; or
- (c) in the four weeks up to the end of the survey week had not looked for work but in the survey answered 'yes' or 'maybe' to the question '*Even though you have not been looking for work would you like a full-time or part-time job?*'.

9. *Discouraged jobseekers* are those persons with marginal attachment to the labour force who wanted to work and were available to start work within four weeks but whose main reason for not taking active steps to find work was that they believed they would not be able to find a job for any of the following reasons: considered to be too young or too old by employers; difficulties with language or ethnic background; lacked the necessary schooling, training, skills or experience; no jobs in their locality or line of work; or no jobs at all.

10. *Active steps taken to find work* comprise writing, telephoning or applying in person to an employer for work; answering a newspaper advertisement; checking factory or Commonwealth Employment Service noticeboards; being registered with the Commonwealth Employment Service; checking or registering with any other employment agency; advertising or tendering for work; and contacting friends or relatives.

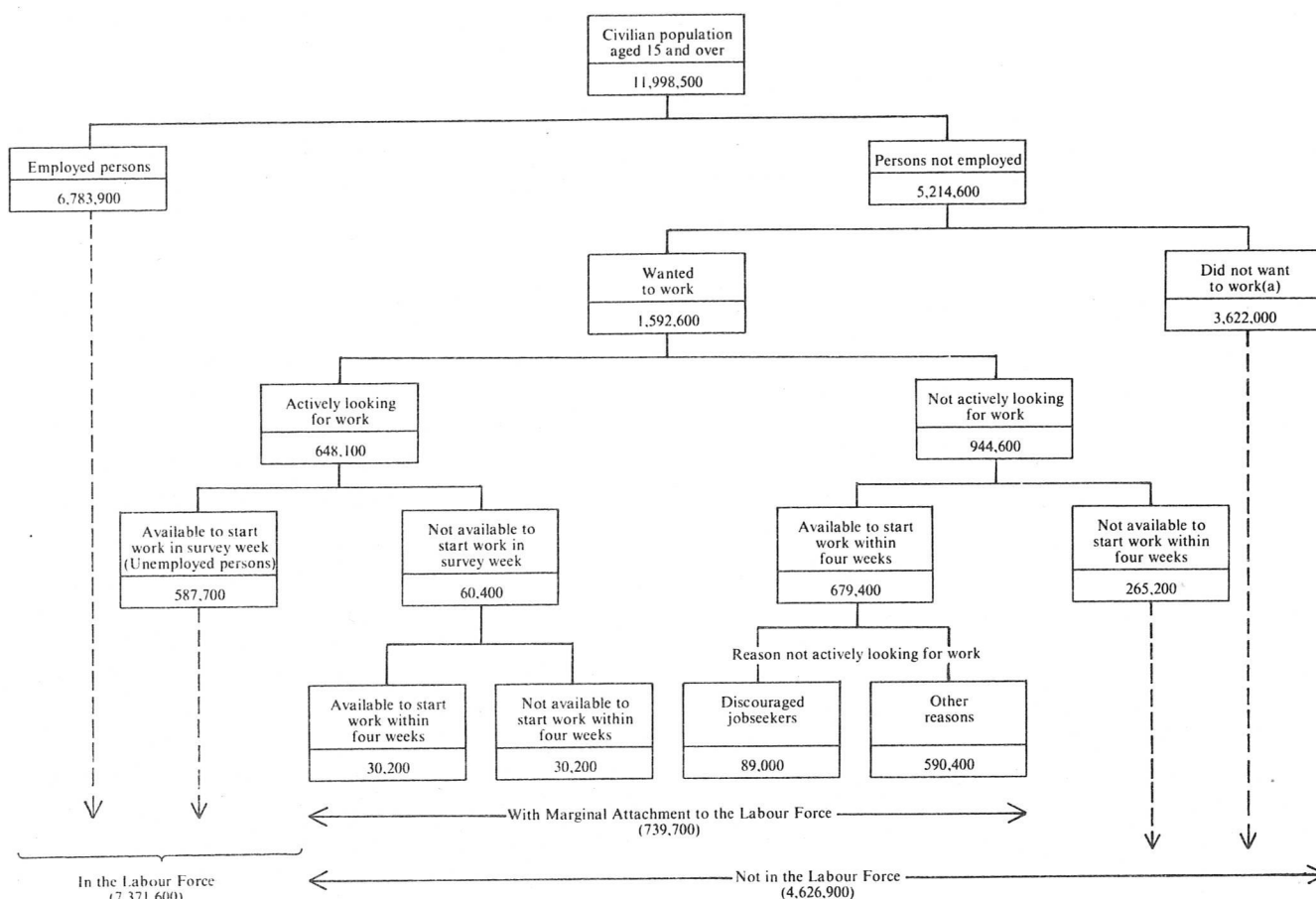
11. A *job* is any paid employment, full-time or part-time lasting two weeks or more.

12. Unless otherwise stated, all characteristics referenced in this publication are as at the survey week.

13. Further definitions of labour force and demographic classifications appearing in this publication are given in *The Labour Force, Australia* (6203.0).

14. The various groups of persons either in the labour force or not in the labour force, including those marginally attached to the labour force, are shown schematically in the diagram on the following page.

RELATIONSHIP OF PERSONS WITH MARGINAL ATTACHMENT TO THE LABOUR FORCE TO PERSONS IN OR NOT IN THE LABOUR FORCE, SEPTEMBER 1985



(a) Includes institutionalised, boarding school pupils and persons permanently unable to work.

Results of the survey

15. Estimates of persons not in the labour force are also published in *The Labour Force, Australia* (6203.0). However, more detailed information is contained in this publication.

16. Due to differences in the method of estimation used in this supplementary survey and that used in the Labour Force Survey, there are some small variations between estimates in this publication and those in the September issue of *The Labour Force, Australia* (6203.0).

17. The estimates in this publication refer to information collected in the survey month and, due to seasonal factors, may not be representative of other months of the year.

18. Additional tables available but not included in this publication are listed on page 19. A preliminary publication (6219.0) containing a summary of the results of the survey was issued on 25 November 1985.

19. Results of similar surveys, which have been conducted each March and September since March 1979 and also in May 1977 and November 1975, have been given in previous issues of this publication.

20. It is proposed that this survey will next be conducted in March 1986.

Discontinuities in the series

21. New or amended concepts were introduced in the September 1983 survey, causing a break in series. These modifications included the addition of certain groups of persons excluded from previous *Persons Not in the Labour Force* surveys and several alterations to the order and wording of questions used in the survey. These modifications are described in paragraphs 22 to 27.

22. Only those respondents who reported that they were available to start work within the next four weeks were asked their reasons for not actively looking for work. Hence persons classified as discouraged jobseekers in this survey must have been available to start work within four weeks. This availability criterion was not applied to the definition of discouraged jobseekers in surveys prior to September 1983. The application of this criterion removes the previous anomaly that persons were classified as discouraged jobseekers regardless of whether or not they were available to start work in the near future.

23. Persons not in the labour force aged 65 and over were added to the September 1983 survey and may be classified as being discouraged jobseekers or as otherwise having marginal attachment to the labour force.

24. Persons belonging to two other groups were added to the survey in September 1983:

- (a) persons who were actively looking for work but who were unable to start in survey week for reasons other than their own temporary illness or injury. These persons are classified as having marginal attachment to the labour force, but not as discouraged jobseekers; and
- (b) persons who had been away from work without pay for four weeks or longer and had not been actively looking for work. Of these persons, those who wanted to work and were available to start work within four weeks are classified as having marginal attachment to the labour force, but not as discouraged jobseekers.

25. Respondents not in the labour force who wanted to work and were available to start work within four weeks were asked their *main* reason for not actively looking for work to determine, among other things, whether the respondents should be classified as discouraged jobseekers. In surveys prior to September 1983, the *main* reason was not asked, and respondents were classified as discouraged jobseekers or otherwise according to the 'highest ranked reason' given for not actively looking for work.

26. An extra reason for not actively looking for work ('no jobs at all') was added to the discouraged jobseeker list.

27. A change was made to the ordering of the questions. The responses to some questions may differ from responses in previous surveys because of this change to the question order and the subjective nature of some of the questions.

Reliability of the estimates

28. Estimates in this publication are subject to two sources of error:

- (a) *sampling error*: since the estimates are based on information obtained from occupants of a sample of dwellings, they may differ from the figures that would have been produced if all dwellings had been included in the survey. More information on this topic is given in the Technical note.

- (b) *non-sampling error*: inaccuracies may occur because of imperfections in reporting by interviewers and respondents and errors made in the coding and processing of data. These inaccuracies may occur in any enumeration, whether it be a full count or only a sample. Every effort is made to reduce the non-sampling error to a minimum by careful design of questionnaires, intensive training and supervision of interviewers and efficient operating procedures.

Related publications

29. Other ABS publications which may be of interest include:

The Labour Force, Australia (6203.0)—issued monthly (\$1.20, \$2.10 incl. postage)

Labour Force Experience, Australia, during the year ending February 1985 (6206.0)

Underemployed Workers, Australia, May 1985 (6265.0)

Job Search Experience of Unemployed Persons, Australia, July 1985 (6222.0)

Employment, Underemployment and Unemployment 1966-1983, Australia (6246.0) (\$1.70, \$2.40 incl. postage)

30. Current publications produced by the ABS are listed in the *Catalogue of Publications, Australia* (1101.0). The ABS also issues, on Tuesdays and Fridays, a *Publications Advice* (1105.0) which lists publications to be released in the next few days. The Catalogue and Publications Advice are available from any ABS office.

Symbols and other usages

- * subject to sampling variability too high for most practical uses. See paragraph 28 above.
- . . not applicable.
- n.e.c. not elsewhere classified.

31. Because figures have been rounded, discrepancies may occur between sums of the component items and totals.

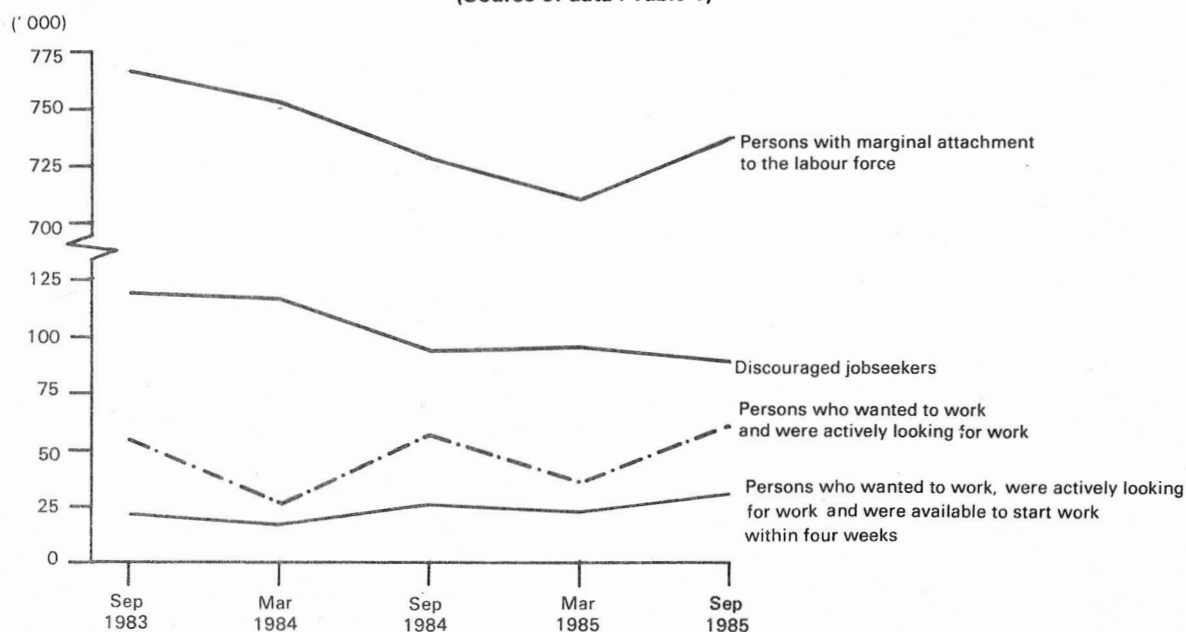
SUMMARY OF FINDINGS

In September 1985 there were 4,626,900 persons aged 15 and over who were not in the labour force (38.6 per cent of the civilian population of the same age group). Most (69.8 per cent) of these were females.

There were 739,700 (16.0 per cent) persons not in the labour force who were considered to have marginal attachment to the labour force in September 1985, which is an increase from 708,300 persons in March 1985. Despite this increase in the most recent period, the number of persons with marginal attachment has decreased between September 1983 and September 1985 while the number of persons not in the labour force has increased over the same period.

The number of discouraged jobseekers decreased from 118,200 in September 1983 to 89,000 in September 1985. There were 30,200 persons not in the labour force who wanted to work, were actively looking for work and were available to start work within four weeks in September 1985, which is an increase from 21,900 persons in September 1983.

DIAGRAM 1. PERSONS WITH MARGINAL ATTACHMENT TO THE LABOUR FORCE, SEPTEMBER 1983 TO SEPTEMBER 1985
(Source of data : Table 1)



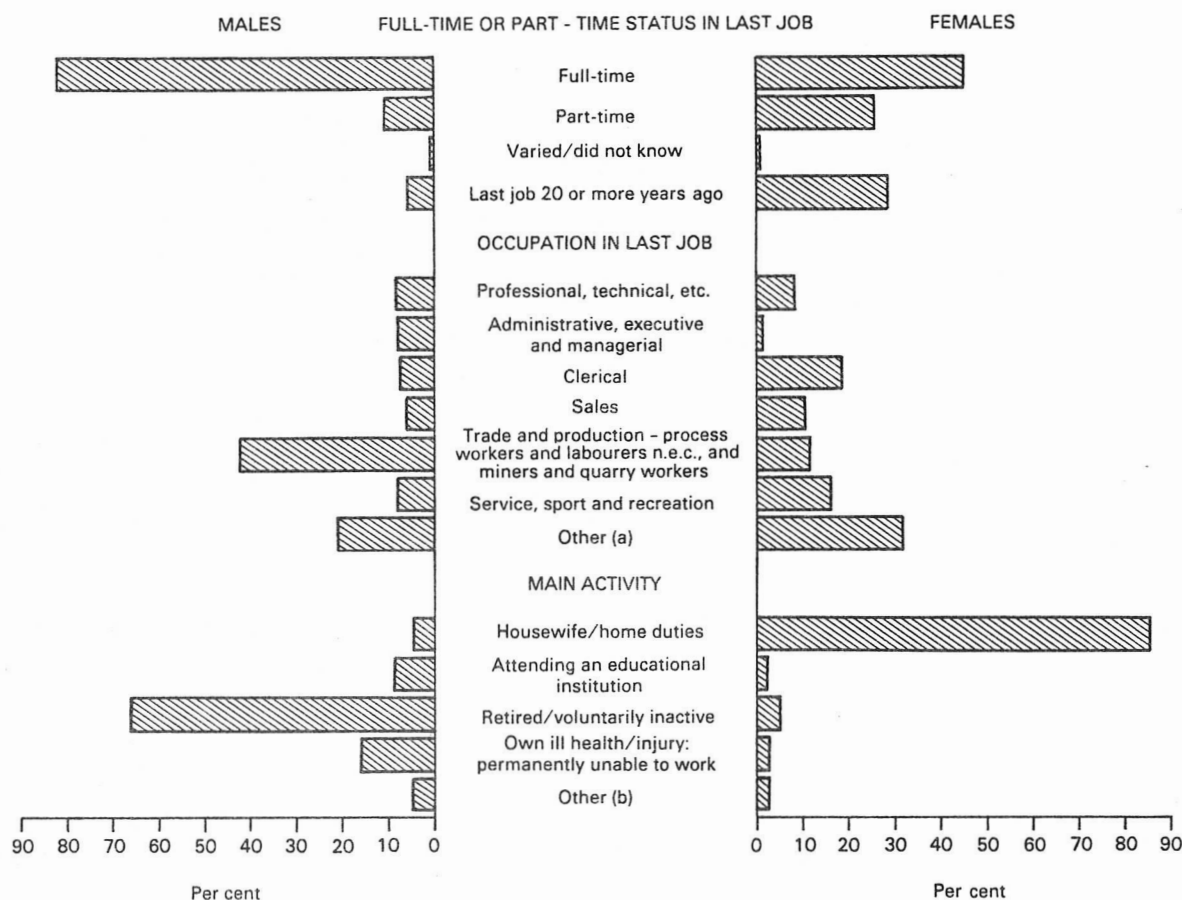
Persons not in the labour force who had had a job

Of the 4,432,800 persons not in the labour force (excluding institutionalised and boarding school pupils) 3,714,400 or 83.8 per cent had had a job. This comprised 1,090,300 males and 2,624,100 females. Diagram 2 following illustrates that characteristics of last job were different for males and females.

83.3 per cent of males who had had a job last worked full-time in their last job, compared with 45.3 per cent of females. 42.9 per cent of males who had had a job last worked in the 'trades and production-process workers and labourers n.e.c., and miners and quarry workers' occupations, while only 11.8 per cent of females last worked in such occupations. The most common occupations in last job amongst females were clerical (18.7 per cent) and service, sport and recreation (16.3 per cent).

The main activity most commonly reported by females who had had a job was housewife or home duties (85.5 per cent). This contrasts with males who had had a job, the majority of whom reported their main activity as retirement or being voluntarily inactive (66.1 per cent).

DIAGRAM 2. PERSONS NOT IN THE LABOUR FORCE WHO HAD HAD A JOB : SUMMARY OF CHARACTERISTICS, SEPTEMBER 1985
(Source of data : Tables 3 and 5)



(a) Comprises farmers, fisherpersons and timbergetters; transport and communication; and last job 20 or more years ago.
(b) Includes unpaid leave and worked in unpaid voluntary job.

Other characteristics of persons not in the labour force who had had a job also varied according to sex.

Only 13.0 per cent of persons who had had a job had last worked less than 12 months ago. Approximately half the females (1,233,300 or 47.0 per cent) had had their last job 10 years or more ago, while only 26.4 per cent (287,700) of males had had their last job 10 years or more ago. The majority (630,500 or 57.8 per cent) of males last worked from 1 to 10 years ago.

Approximately half (551,800 or 50.6 per cent) the males gave retired or did not want to work any longer as their reason for leaving their last job while only 18.6 per cent (488,300) of females gave this as their reason. Other commonly reported reasons for leaving last job amongst females were pregnancy or to have children (19.6 per cent) and to get married (19.1 per cent).

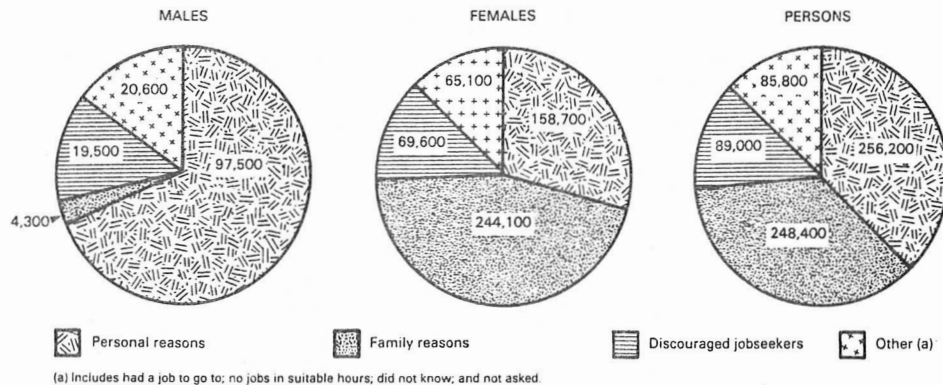
Persons who wanted to work but were not actively looking for work and were available to start work within four weeks

Persons with marginal attachment to the labour force comprised 60,400 persons who wanted to work and were actively looking for work and 679,400 persons who wanted to work but were not actively looking for work and were available to start work within four weeks.

537,500 females and 141,900 males indicated that they wanted to work but were not actively looking for work and were available to start work within four weeks. Some 68.7 per cent (97,500) of males indicated a personal reason as their main reason for not actively looking for work, while only 29.5 per cent (158,700) of females reported a personal reason. 52.7 per cent (51,400) of males and 32.1 per cent (50,900) of females who gave a personal reason reported that they were attending an educational institution. Other personal reasons commonly reported by females were own ill health, disability, pregnancy (24.9 per cent) and had no need to work (21.4 per cent). However, family reasons were the most commonly reported main reason for not actively looking for work amongst females, with 45.4 per cent (244,100) reporting such reasons.

The proportion of males who wanted to work, were not actively looking for work and were available to start work within four weeks who were discouraged was 13.7 per cent (19,500), which was similar to the proportion of females in this population who were discouraged (12.9 per cent or 69,600).

DIAGRAM 3. PERSONS NOT IN THE LABOUR FORCE WHO WANTED TO WORK BUT WERE NOT ACTIVELY LOOKING FOR WORK AND WERE AVAILABLE TO START WORK WITHIN FOUR WEEKS: MAIN REASON FOR NOT ACTIVELY LOOKING FOR WORK, SEPTEMBER 1985
(Source of data: Table 7)



There were other substantial gender differences within this population. Although males contributed only 20.9 per cent (141,900) of persons not in the labour force who wanted to work but were not actively looking for work and were available to start work within four weeks, 48.4 per cent (54,900) of persons in this population who were aged 15 to 19 were male. Females accounted for 93.1 per cent (308,900) of persons in this population aged 25 to 44, with approximately half these women (50.2 per cent or 155,200) reporting children too young/preferred to look after children (32.4 per cent) or unable to find suitable childcare (17.8 per cent) as their main reason for not actively looking for work.

These gender differences persisted when one examined the group's intention to look for work in the next twelve months. 49.8 per cent of males reported that they intended to look for work in the next twelve months, while only 38.1 per cent of females stated the same intention.

Discouraged jobseekers

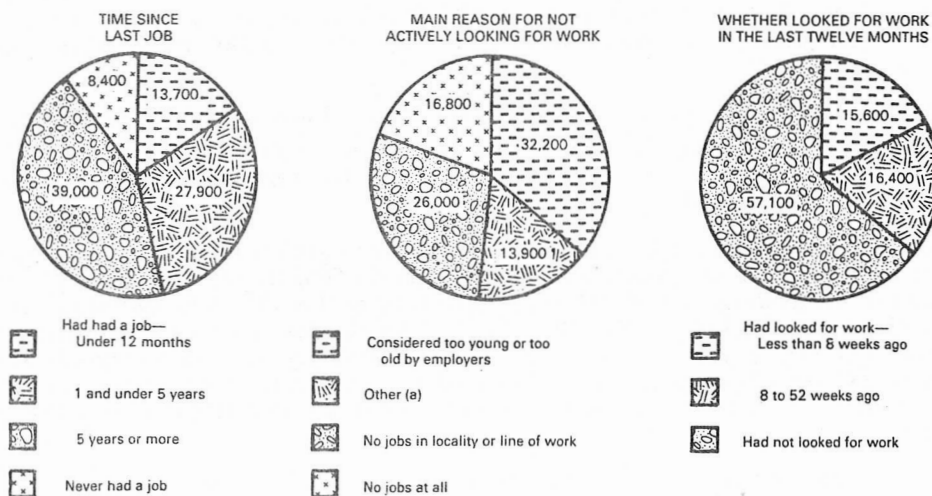
12.0 per cent (89,000) of persons with marginal attachment to the labour force were discouraged jobseekers. 69,600 of these were women.

Although most discouraged job seekers had had a job (80,600 or 90.6 per cent), only 13,700 (15.4 per cent) had had one within the last twelve months. This compares with 43.8 per cent (39,000 persons) who had had their last job 5 years or more ago.

The most commonly reported main reasons for not actively looking for work by discouraged jobseekers were that they were considered too young or too old by employers (36.2 per cent) or that there were no jobs in their locality or line of work (29.2 per cent). That they were considered too young or too old by employers was reported by 50.3 per cent of discouraged male jobseekers compared with 32.2 per cent of discouraged female jobseekers.

Only 36.0 per cent (32,000 persons) of discouraged jobseekers had looked for work in the last twelve months. However, of these almost half (15,600 persons or 48.8 per cent) had looked for work less than 8 weeks ago.

DIAGRAM 4. PERSONS NOT IN THE LABOUR FORCE WHO WERE DISCOURAGED JOBSEEKERS: SUMMARY OF CHARACTERISTICS, SEPTEMBER 1985
(Source of data: Tables 11 and 13)



**TABLE 1. CIVILIAN POPULATION AGED 15 AND OVER : LABOUR FORCE STATUS,
SEPTEMBER 1983 TO SEPTEMBER 1985**
(' 000)

	Sept. 1983	March 1984	Sept. 1984	March 1985	Sept. 1985		
					Males	Females	Persons
Civilian population aged 15 and over	11,585.5	11,718.5	11,808.0	11,897.3	5,906.0	6,092.4	11,998.5
Employed	6,350.0	6,504.2	6,572.9	6,634.5	4,166.4	2,617.5	6,783.9
Unemployed	718.7	701.0	621.3	671.7	341.6	246.1	587.7
Persons not in the labour force	4,516.8	4,513.2	4,613.8	4,591.1	1,398.0	3,228.9	4,626.9
With marginal attachment to the labour force	765.6	750.0	726.3	708.3	166.8	573.0	739.7
Wanted to work and were actively looking for work	53.8	25.7	56.4	32.1	24.9	35.5	60.4
Were available to start work within four weeks	21.9	18.7	26.2	22.2	9.2	20.9	30.2
Were not available to start work within four weeks	31.9	7.0	30.2	9.9	15.7	14.6	30.2
Wanted to work but were not actively looking for work and were available to start work within four weeks	711.8	724.3	669.9	676.3	141.9	537.5	679.4
Discouraged jobseekers	118.2	116.1	93.7	96.0	19.5	69.6	89.0
Other	593.6	608.2	576.2	580.3	122.4	468.0	590.4
Without marginal attachment to the labour force	3,751.2	3,763.3	3,887.6	3,882.8	1,231.2	2,655.9	3,887.1
Wanted to work but were not actively looking for work and were not available to start work within four weeks	244.2	224.0	264.1	222.7	72.8	192.4	265.2
Did not want to work	3,225.4	3,275.2	3,365.6	3,399.1	1,054.7	2,325.4	3,380.1
Permanently unable to work	77.3	52.3	56.5	54.4	27.9	19.9	47.8
Institutionalised(a) and boarding school pupils	204.3	211.8	201.4	206.6	75.9	118.2	194.1

(a) Includes some patients in hospitals and sanatoria and inmates of reformatories, jails etc.

**TABLE 2. PERSONS NOT IN THE LABOUR FORCE WITH MARGINAL ATTACHMENT TO THE LABOUR FORCE:
MAIN REASON FOR NOT ACTIVELY LOOKING FOR WORK, SEPTEMBER 1983 TO SEPTEMBER 1985**
(' 000)

	Sept. 1983	March 1984	Sept. 1984	March 1985	Sept. 1985		
					Males	Females	Persons
Wanted to work and were actively looking for work	53.8	25.7	56.4	32.1	24.9	35.5	60.4
Were available to start work within four weeks	21.9	18.7	26.2	22.2	9.2	20.9	30.2
Were not available to start work within four weeks	31.9	7.0	30.2	9.9	15.7	14.6	30.2
Wanted to work but were not actively looking for work and were available to start work within four weeks	711.8	724.3	669.9	676.3	141.9	537.5	679.4
Main reason for not actively looking for work							
Had a job to go to	11.4	10.3	8.8	9.1	*	8.4	11.2
Personal reasons	243.8	265.5	241.8	263.5	97.5	158.7	256.2
Own ill health, disability, pregnancy	61.9	62.2	60.6	65.8	29.6	39.5	69.1
Attending an educational institution	82.9	104.8	93.4	104.9	51.4	50.9	102.3
Had no need to work	50.5	49.5	41.5	44.7	7.2	34.0	41.3
Give others a chance	11.2	11.0	9.3	9.1	*	6.0	6.2
Welfare payments/pension may be affected	22.1	21.7	17.4	24.2	4.9	14.7	19.6
Moved house/holidays	15.2	16.3	19.6	14.7	4.2	13.6	17.8
Family reasons	277.2	262.5	263.1	238.2	4.3	244.1	248.4
Ill health of other than self	13.4	10.1	15.2	11.0	*	13.2	14.8
Unable to find suitable childcare	222.4	212.1	76.3	73.6	*	71.8	72.5
Children too young/preferred to look after children			132.9	115.0	*	124.6	126.1
Other family considerations	41.4	40.3	38.7	38.6	*	34.4	34.9
Discouraged jobseekers	118.2	116.1	93.7	96.0	19.5	69.6	89.0
Considered too young or too old by employers	29.0	34.5	26.9	31.0	9.8	22.4	32.2
Difficulties with language or ethnic background	*	*	5.7	4.7	*	4.2	5.0
Lacked necessary schooling, training, skills or experience	8.4	10.0	8.9	11.2	*	7.4	8.9
No jobs in locality or line of work	38.2	40.7	29.0	33.0	4.5	21.6	26.0
No jobs at all	39.7	27.1	23.2	16.1	*	14.0	16.8
No jobs in suitable hours	15.1	22.9	19.3	17.7	*	15.6	18.4
Other reasons	27.2	28.2	29.5	29.7	10.6	25.6	36.3
Did not know	8.1	9.5	4.2	10.3	*	7.2	8.0
Not asked(a)	10.9	9.3	9.5	11.9	*	8.3	12.0
Total	765.6	750.0	726.3	708.3	166.8	573.0	739.7

(a) Persons who had a job but, up to the end of the survey week, had been away from work without pay for four weeks or longer and had not been actively looking for work.

**TABLE 3. PERSONS NOT IN THE LABOUR FORCE^(a) : OCCUPATION IN LAST JOB AND MAIN ACTIVITY,
SEPTEMBER 1985
(' 000)**

Occupation in last job	Main activity							Total
	Housewife/ home duties	Attending an educational institution	Retired/ voluntarily inactive	Unpaid leave	Own ill health/injury; permanently unable to work	Worked in unpaid voluntary job	Other	
MALES								
Last job less than 20 years ago—								
Professional, technical, etc.	*	9.9	58.0	*	6.4	*	*	84.5
Administrative, executive and managerial	*	*	65.8	*	8.1	*	*	83.9
Clerical	4.0	8.7	55.5	*	6.3	*	*	77.2
Sales	*	14.4	37.7	*	7.6	*	*	65.4
Farmers, fisherpersons and timbergetters	5.4	7.4	64.5	*	12.8	*	*	93.9
Transport and communication	*	*	46.4	*	15.4	*	*	72.3
Trades and production-process workers and labourers n.e.c., and miners and quarry workers	21.2	29.9	291.5	*	104.0	6.4	12.9	467.7
Service, sport and recreation	*	12.4	50.7	*	12.6	*	*	82.2
Total	45.5	86.8	670.1	*	173.1	16.5	31.2	1,027.2
Last job 20 or more years ago	*	*	50.4	*	8.7	*	*	63.1
Had never had a job	*	214.8	*	*	8.3	*	*	231.8
Total	49.1	301.9	724.1	*	190.1	17.6	35.6	1,322.1
FEMALES								
Last job less than 20 years ago—								
Professional, technical, etc.	175.3	9.5	13.0	*	5.1	5.1	5.7	216.8
Administrative, executive and managerial	41.8	*	8.4	*	*	*	*	55.7
Clerical	424.1	22.3	19.0	*	9.9	10.2	5.5	491.7
Sales	249.7	19.8	11.0	*	6.8	*	*	292.7
Farmers, fisherpersons and timbergetters	50.6	*	*	*	*	*	*	58.0
Transport and communication	29.5	*	*	*	*	*	*	34.7
Trades and production-process workers and labourers n.e.c., and miners and quarry workers	272.3	5.6	12.3	*	13.2	*	*	309.4
Service, sport and recreation	368.0	13.4	23.9	*	12.0	5.9	5.1	428.8
Total	1,611.1	73.5	92.5	5.3	52.4	29.9	23.2	1,888.0
Last job 20 or more years ago	632.9	*	60.1	*	27.6	10.8	*	736.1
Had never had a job	224.9	217.7	20.4	*	17.4	*	*	486.5
Total	2,468.9	292.4	173.1	5.3	97.4	43.2	30.4	3,110.6
PERSONS								
Last job less than 20 years ago—								
Professional, technical, etc.	178.4	19.4	71.1	*	11.5	7.6	9.6	301.3
Administrative, executive and managerial	44.4	*	74.2	*	10.2	4.2	4.2	139.6
Clerical	428.1	31.0	74.5	*	16.2	11.5	6.8	568.9
Sales	252.2	34.1	48.8	*	14.4	4.1	4.3	358.1
Farmers, fisherpersons and timbergetters	56.0	8.8	67.1	*	15.0	*	*	151.9
Transport and communication	32.4	*	48.7	*	16.4	*	*	107.1
Trades and production-process workers and labourers n.e.c., and miners and quarry workers	293.5	35.5	303.8	*	117.1	9.0	15.9	777.1
Service, sport and recreation	371.6	25.8	74.5	*	24.6	6.7	7.3	511.0
Total	1,656.6	160.4	762.7	9.2	225.5	46.3	54.5	2,915.1
Last job 20 or more years ago	635.9	*	110.4	*	36.3	11.1	4.2	799.3
Had never had a job	225.4	432.6	24.1	*	25.7	*	7.3	718.4
Total	2,517.9	594.2	897.2	9.2	287.5	60.8	66.0	4,432.8

(a) Excludes students boarding at school, some patients in hospitals and sanatoria and inmates of reformatories, jails, etc.

TABLE 4. PERSONS NOT IN THE LABOUR FORCE WHO HAD HAD A JOB : REASON FOR LEAVING LAST JOB AND TIME SINCE LAST JOB, SEPTEMBER 1985
(' 000)

Reason for leaving last job	Time since last job							Total
	Under 6 months	6 and under 12 months	1 and under 3 years	3 and under 5 years	5 and under 10 years	10 and under 20 years	20 years or more	
MALES								
Retrenched/made redundant/lost job	6.4	5.0	16.0	15.1	14.5	7.8	*	66.8
Seasonal or temporary job	10.8	12.1	7.0	4.7	5.5		*	40.6
Returned to studies	9.5	32.7	10.5	*	*	*	*	55.4
Retired/did not want to work any longer	17.9	20.0	81.2	80.8	164.3	148.5	39.1	551.8
Unsatisfactory work arrangements	5.5		4.7		4.7		*	15.0
Own ill health or injury	13.7	14.6	59.1	44.0	89.4	56.8	17.7	295.3
To look after family, house or someone else	*	*	5.4		*	*	*	11.4
Travelled, moved house, spouse transferred	5.6		5.2		4.8		*	16.0
Sold business/farm	4.6		5.0		4.5	*	*	18.7
Other reasons(a)	4.0	*	*	*	*	*	*	13.1
Not asked(b)	6.4	*	*	*	*	*	*	6.4
Total	80.3	91.7	187.3	155.9	287.3	224.6	63.1	1,090.3
FEMALES								
Retrenched/made redundant/lost job	12.0	10.6	32.7	28.0	39.1	30.1	13.1	165.7
Seasonal or temporary job	28.0	24.4	25.9	15.3	19.8	18.2	9.9	141.5
Returned to studies	7.3	19.1	9.8	*	*	*	*	40.9
Retired/did not want to work any longer	15.5	17.3	51.7	52.8	123.2	135.4	92.4	488.3
Unsatisfactory work arrangements	7.6	6.5	11.3	10.5	9.5	6.2	*	54.6
Own ill health or injury	12.5	10.7	35.5	32.5	55.5	50.5	29.1	226.4
To get married	*	*	6.4	10.1	27.6	61.0	393.2	501.6
Pregnancy/to have children	27.5	28.2	78.7	75.5	117.4	100.6	86.8	514.6
To look after family, house or someone else	10.9	8.7	23.9	20.2	42.1	42.8	68.0	216.5
Travelled, moved house, spouse transferred	12.2	10.4	20.7	24.8	31.6	32.3	26.5	158.4
Sold business/farm	4.8	*	6.8	6.9	12.4	12.9	8.9	55.7
Other reasons	4.9	*	7.3	5.2	6.5	6.4	5.0	38.5
Not asked(b)	21.5	*	*	*	*	*	*	21.5
Total	165.7	144.0	310.7	284.2	486.1	497.2	736.1	2,624.1
PERSONS								
Retrenched/made redundant/lost job	18.4	15.6	48.7	43.1	53.6	37.9	15.2	232.5
Seasonal or temporary job	38.8	36.5	32.9	20.0	23.0	20.4	10.4	182.1
Returned to studies	16.7	51.8	20.3	4.1	*	*	*	96.3
Retired/did not want to work any longer	33.5	37.3	132.8	133.6	287.5	283.9	131.5	1,040.0
Unsatisfactory work arrangements	11.4	8.2	14.2	12.3	12.4	8.1	*	69.6
Own ill health or injury	26.2	25.2	94.6	76.5	144.9	107.3	46.8	521.6
To get married	*	*	6.4	10.1	27.6	61.0	394.2	502.5
Pregnancy/to have children	27.5	28.2	78.7	75.5	117.4	100.6	86.8	514.6
To look after family, house or someone else	12.3	9.4	26.3	23.2	43.9	44.3	68.0	227.9
Travelled, moved house, spouse transferred	15.5	12.6	23.8	26.9	34.5	34.1	26.9	174.4
Sold business/farm	7.9	4.4	10.1	8.6	16.9	16.2	10.2	74.3
Other reasons	8.9	4.4	9.2	6.3	9.4	7.2	5.1	50.6
Not asked(b)	27.9	*	*	*	*	*	*	27.9
Total	246.0	235.7	498.0	440.1	773.4	721.8	799.3	3,714.4

(a) Includes reasons not shown separately. (b) Persons who had a job but, up to the end of the survey week, had been away from work without pay for four weeks or longer and had not been actively looking for work.

TABLE 5. PERSONS NOT IN THE LABOUR FORCE WHO HAD HAD A JOB : REASON FOR LEAVING LAST JOB, STATUS OF WORKER IN LAST JOB AND FULL-TIME OR PART-TIME STATUS IN LAST JOB, SEPTEMBER 1985 ('000)

Reason for leaving last job	Status of worker in last job				Full-time or part-time status in last job				Total
	Employers	Self-employed	Wage and salary earners	Unpaid family helpers	Full-time	Part-time	Varied/ did not know	Last job 20 or more years ago	
MALES									
Retrenched/made redundant/lost job	*	*	62.7	*	54.6	10.1	*	*	66.8
Seasonal or temporary job	*	*	37.6	*	17.2	21.8	*	*	40.6
Returned to studies	*	*	53.6	*	34.1	20.4	*	*	55.4
Retired/did not want to work any longer	30.8	48.5	432.4	*	485.4	25.0	*	39.1	551.8
Unsatisfactory work arrangements	*	*	13.8	*	8.3	5.9	*	*	15.0
Own ill health or injury	9.0	30.4	238.1	*	254.7	21.8	*	17.7	295.3
To look after family, house or someone else	*	*	9.8	*	9.1	*	*	*	11.4
Travelled, moved house, spouse transferred	*	*	13.4	*	12.4	*	*	*	16.0
Sold business/farm	6.2	7.8	*	*	16.7	*	*	*	18.7
Other reasons(a)	*	*	7.9	*	9.9	*	*	*	13.1
Not asked(b)	*	*	6.4	*	5.4	*	*	*	6.4
Total	48.4	98.4	879.0	*	907.9	112.9	6.3	63.1	1,090.3
FEMALES									
Retrenched/made redundant/lost job	*	*	148.8	*	81.4	68.7	*	13.1	165.7
Seasonal or temporary job	*	*	128.4	*	45.8	83.1	*	9.9	141.5
Returned to studies	*	*	40.4	*	18.2	21.9	*	*	40.9
Retired/did not want to work any longer	16.3	27.7	350.2	*	240.1	151.5	4.3	92.4	488.3
Unsatisfactory work arrangements	*	*	48.8	*	18.0	32.8	*	*	54.6
Own ill health or injury	*	9.4	184.5	*	130.4	64.5	*	29.1	226.4
To get married	*	*	106.9	*	97.5	10.3	*	393.2	501.6
Pregnancy/to have children	*	5.3	420.8	*	333.0	91.5	*	86.8	514.6
To look after family, house or someone else	*	4.7	141.9	*	84.8	62.7	*	68.0	216.5
Travelled, moved house, spouse transferred	*	5.4	124.8	*	74.5	56.3	*	26.5	158.4
Sold business/farm	16.7	19.3	10.2	*	34.7	11.3	*	8.9	55.7
Other reasons	*	6.4	25.3	*	18.5	14.6	*	5.0	38.5
Not asked(b)	*	*	21.5	*	11.9	8.8	*	*	21.5
Total	44.3	86.5	1,752.4	4.8	1,189.1	678.1	20.8	736.1	2,624.1
PERSONS									
Retrenched/made redundant/lost job	*	4.1	211.5	*	136.0	78.9	*	15.2	232.5
Seasonal or temporary job	*	4.4	166.0	*	63.0	104.8	*	10.4	182.1
Returned to studies	*	*	93.9	*	52.3	42.3	*	*	96.3
Retired/did not want to work any longer	47.2	76.2	782.6	*	725.5	176.6	6.5	131.5	1,040.0
Unsatisfactory work arrangements	*	*	62.7	*	26.3	38.8	*	*	69.6
Own ill health or injury	12.1	39.8	422.6	*	385.2	86.2	*	46.8	521.6
To get married	*	*	106.9	*	97.5	10.3	*	394.2	502.5
Pregnancy/to have children	*	5.3	420.8	*	333.0	91.5	*	86.8	514.6
To look after family, house or someone else	*	5.3	151.7	*	93.9	64.4	*	68.6	227.9
Travelled, moved house, spouse transferred	*	6.8	138.2	*	86.9	59.3	*	26.9	174.4
Sold business/farm	22.9	27.1	13.6	*	51.4	11.8	*	10.2	74.3
Other reasons	*	9.8	33.2	*	28.5	16.5	*	5.1	50.6
Not asked(b)	*	*	27.9	*	17.4	9.7	*	*	27.9
Total	92.7	184.9	2,631.4	6.1	2,097.0	791.0	27.1	799.3	3,714.4

(a) Includes reasons not shown separately. (b) Persons who had a job but, up to end of the survey week, had been away from work without pay for four weeks or longer and had not been actively looking for work.

TABLE 6. PERSONS NOT IN THE LABOUR FORCE WHO WANTED TO WORK : INTENTION TO LOOK FOR WORK IN THE NEXT TWELVE MONTHS, TYPE OF WORK PREFERRED AND AGE, SEPTEMBER 1985 ('000)

	Age group (years)								
	15-19	20-24	25-34	35-44	45-54	55-59	60-64	65 and over	Total
MALES									
Intention to look for work in the next 12 months—									
Intended to look	53.9	14.2	10.6	8.8	6.6	*	4.0	*	104.8
Might look	11.1	*	*	4.4	6.1	5.1	6.6	*	39.1
Would not look	15.1	*	*	5.1	4.3	5.2	8.5	12.8	52.9
Did not know	*	*	*	*	*	*	*	*	8.8
Not asked(a)	13.8	6.9	4.4	*	*	*	*	*	34.0
Type of work preferred—									
Full-time	55.2	19.4	16.6	13.5	13.4	6.2	4.9	*	132.4
Part-time	39.6	4.8	4.7	5.3	4.9	9.1	10.7	16.8	95.9
No preference	*	*	*	*	*	*	*	*	11.3
Total	96.3	25.1	21.6	20.3	20.9	17.0	17.1	21.3	239.6
MARRIED FEMALES									
Intention to look for work in the next 12 months—									
Intended to look	*	17.0	64.8	45.0	17.0	4.1	*	*	151.6
Might look	*	8.3	42.4	29.7	14.5	6.6	*	*	103.8
Would not look	*	19.0	84.0	48.5	27.0	10.7	6.2	*	199.4
Did not know	*	*	10.6	6.5	5.0	*	*	*	25.7
Not asked(a)	*	4.1	19.5	9.5	4.3	*	*	*	38.1
Type of work preferred—									
Full-time	*	8.0	23.4	12.0	5.9	*	*	*	53.0
Part-time	*	41.4	191.0	121.2	56.7	21.5	8.3	*	447.2
No preference	*	*	6.9	5.9	4.0	*	*	*	18.4
Total	4.6	50.7	221.3	139.1	65.6	23.6	9.4	4.3	518.6
NOT-MARRIED FEMALES									
Intention to look for work in the next 12 months—									
Intended to look	51.0	14.7	18.9	12.9	6.2	*	*	*	107.7
Might look	12.5	4.1	10.9	*	5.3	*	*	*	39.8
Would not look	12.6	5.2	12.3	7.4	6.8	4.4	*	6.3	57.3
Did not know	5.5	*	5.6	*	*	*	*	*	14.7
Not asked(a)	13.0	5.8	6.9	*	*	*	*	*	27.3
Type of work preferred—									
Full-time	38.8	13.3	13.7	8.8	4.4	*	*	*	80.7
Part-time	50.3	16.8	33.3	18.7	14.0	9.0	*	8.2	154.1
No preference	5.1	*	4.2	*	*	*	*	*	11.9
Total	92.6	31.7	49.2	29.5	18.4	10.7	5.1	9.5	246.7
ALL FEMALES									
Intention to look for work in the next 12 months—									
Intended to look	53.2	31.6	83.7	57.9	23.2	6.5	*	*	259.3
Might look	13.2	12.4	53.2	33.5	17.4	9.0	4.8	*	143.6
Would not look	13.5	24.2	96.3	55.9	33.7	15.0	8.6	9.4	256.7
Did not know	*	4.2	14.0	8.8	4.9	*	*	*	40.3
Not asked(a)	13.4	10.0	23.3	12.5	4.8	*	*	*	65.4
Type of work preferred—									
Full-time	40.2	21.2	37.1	20.8	9.3	*	*	*	133.7
Part-time	53.5	58.2	224.3	139.9	70.7	30.5	12.3	12.0	601.2
No preference	6.4	*	9.2	7.9	4.0	*	*	*	30.4
Total	97.1	82.4	270.5	168.6	84.0	34.3	14.5	13.9	765.3
PERSONS									
Intention to look for work in the next 12 months—									
Intended to look	107.1	45.8	94.3	66.7	29.9	9.9	5.4	5.0	364.1
Might look	24.4	14.3	57.0	37.9	23.5	14.1	5.7	5.8	182.7
Would not look	28.6	26.1	98.4	58.9	38.0	20.3	17.1	22.2	309.6
Did not know	6.2	4.4	14.7	10.1	5.9	4.3	*	*	49.1
Not asked(a)	27.2	16.9	27.6	15.3	7.6	*	*	*	99.4
Type of work preferred—									
Full-time	95.4	40.6	53.6	34.3	22.7	8.3	6.3	4.9	266.1
Part-time	93.1	63.0	229.0	145.2	75.5	39.5	23.0	28.8	697.1
No preference	4.9	*	9.6	9.3	6.7	*	*	*	41.6
Total	193.4	107.5	292.1	188.8	105.0	51.3	31.6	35.2	1,004.9

(a) Comprises persons who had a job to go to, persons who took active steps to find work and persons who had a job but, up to the end of the survey week, had been away from work without pay for four weeks or longer and had not been actively looking for work.

**TABLE 7. PERSONS NOT IN THE LABOUR FORCE WITH MARGINAL ATTACHMENT TO THE LABOUR FORCE:
MAIN REASON FOR NOT ACTIVELY LOOKING FOR WORK AND INTENTION TO LOOK FOR WORK
IN THE NEXT TWELVE MONTHS, SEPTEMBER 1985**
(' 000)

	<i>Intention to look for work in the next twelve months</i>					<i>Total</i>		
	<i>Intended to look</i>	<i>Might look</i>	<i>Would not look</i>	<i>Did not know</i>	<i>Not asked(a)</i>	<i>Males</i>	<i>Females</i>	<i>Persons</i>
Wanted to work and were actively looking for work	60.4	24.9	35.5	60.4
Were available to start work within four weeks	30.2	9.2	20.9	30.2
Were not available to start work within four weeks	30.2	15.7	14.6	30.2
Wanted to work but were not actively looking for work and were available to start work within four weeks	275.6	134.8	208.5	37.2	23.2	141.9	537.5	679.4
<i>Main reason for not actively looking for work</i>								
Had a job to go to	11.2	*	8.4	11.2
Personal reasons	124.1	47.9	70.5	13.7	..	97.5	158.7	256.2
Own ill health, disability, pregnancy	28.0	16.6	20.2	4.4	..	29.6	39.5	69.1
Attending an educational institution	67.0	14.5	17.0	*	..	51.4	50.9	102.3
Had no need to work	9.2	8.9	20.8	*	..	7.2	34.0	41.3
Give others a chance	*	*	*	*	..	*	6.0	6.2
Welfare payments/pension may be affected	4.7	4.1	8.3	*	..	4.9	14.7	19.6
Moved house/holidays	14.3	*	*	*	..	4.2	13.6	17.8
Family reasons	82.8	53.4	96.8	15.5	..	4.3	244.1	248.4
Ill health of other than self	5.1	*	4.6	*	..	*	13.2	14.8
Unable to find suitable childcare	19.0	13.1	35.1	5.4	..	*	71.8	72.5
Children too young/ preferred to look after children	45.5	28.3	46.4	5.8	..	*	124.6	126.1
Other family considerations	13.2	8.4	10.7	*	..	*	34.4	34.9
Discouraged jobseekers	37.7	20.8	25.6	5.0	..	19.5	69.6	89.0
Considered too young or too old by employers	8.6	5.8	15.4	*	..	9.8	22.4	32.2
Difficulties with language or ethnic background	*	*	*	*	..	*	4.2	5.0
Lacked necessary schooling, training, skills or experience	*	*	*	*	..	*	7.4	8.9
No jobs in locality or line of work	13.1	6.9	4.8	*	..	4.5	21.6	26.0
No jobs at all	9.9	*	*	*	..	*	14.0	16.8
No jobs in suitable hours	10.9	4.3	*	*	..	*	15.6	18.4
Other reasons	17.8	6.5	10.6	*	..	10.6	25.6	36.3
Did not know	*	*	*	*	..	*	7.2	8.0
Not asked(b)	12.0	*	8.3	12.0
Total	275.6	134.8	208.5	37.2	83.6	166.8	573.0	739.7

(a) Comprises persons who had a job to go to, persons who took active steps to find work and persons as defined in footnote(b). (b) Persons who had a job but, up to the end of the survey week, had been away from work without pay for four weeks or longer and had not been actively looking for work.

**TABLE 8. PERSONS NOT IN THE LABOUR FORCE WITH MARGINAL ATTACHMENT TO THE LABOUR FORCE :
TIME SINCE LAST JOB AND WHETHER LOOKED FOR WORK IN THE LAST TWELVE MONTHS(a), SEPTEMBER 1985**
(' 000)

<i>Time since last job</i>	<i>Had looked for work in the last 12 months</i>					<i>Had not looked for work in the last 12 months</i>	<i>Total</i>
	<i>Less than 5 weeks ago</i>	<i>5 and less than 8 weeks ago</i>	<i>8 and less than 13 weeks ago</i>	<i>13 to 52 weeks ago</i>	<i>Total</i>		
Had had a job	74.2	31.3	24.0	34.3	163.8	448.3	612.0
Under 12 months	35.7	12.9	5.8	5.3	59.6	100.6	160.2
Under 6 months	20.4	7.6	*	*	31.5	60.2	91.7
6 and under 12 months	15.3	5.3	*	4.2	28.1	40.4	68.5
1 and under 3 years	17.1	6.9	6.7	9.4	40.2	78.8	119.0
3 and under 5 years	7.6	*	*	5.6	18.3	74.1	92.4
5 and under 10 years	7.5	5.0	4.0	8.0	24.5	97.8	122.3
10 and under 20 years	4.9	4.3	4.6	4.9	16.4	75.7	92.1
20 years or more	*			*	4.8	21.3	26.1
Had never had a job	26.4	8.0	6.9	8.9	50.2	77.4	127.7
Total	100.6	39.3	30.9	43.1	214.0	525.7	739.7

(a) Persons who had left a job in the last twelve months were only asked whether they had looked for work since that job.

TABLE 9. PERSONS NOT IN THE LABOUR FORCE WITH MARGINAL ATTACHMENT TO THE LABOUR FORCE : TYPE OF WORK PREFERRED, WHETHER LOOKED FOR WORK IN THE LAST TWELVE MONTHS(a) AND FAMILY STATUS, SEPTEMBER 1985 (' 000)

	Family status									
	Member of a family									
	Husband or wife			Not-married family head	Child of family head	Other relative of family head	Total	Not a member of a family	Not family coded	Total
	With children aged 0-14 present	Without children aged 0-14 present	Total							
MALES										
Type of work preferred—										
Full-time	10.2	9.7	19.9	*	43.1	*	67.4	11.8	6.5	85.8
Part-time	*	19.7	22.4	*	32.0	*	58.3	11.2	5.1	74.6
No preference	*	*	*	*	*	*	4.5	*	*	6.4
Whether looked for work in the last 12 months(a)—										
Had looked for work	6.0	6.1	12.1	*	34.3	*	49.1	8.4	4.7	62.2
Less than 5 weeks ago	*	*	5.4	*	20.0	*	26.3	4.3	*	33.5
5 and less than 8 weeks ago	*	*	*	*	6.0	*	9.1	*	*	11.6
8 and less than 13 weeks ago	*	*	*	*	*	*	5.6	*	*	7.1
13 to 52 weeks ago	*	*	*	*	5.1	*	8.1	*	*	10.0
Had not looked for work	8.1	25.2	33.2	4.2	41.9	*	81.1	15.8	7.7	104.5
Total	14.1	31.3	45.4	5.3	76.3	*	130.2	24.2	12.4	166.8
FEMALES										
Type of work preferred—										
Full-time	24.3	9.5	33.8	18.9	26.6	*	81.2	6.1	6.6	93.9
Part-time	238.5	80.8	319.3	55.1	38.3	*	415.0	19.2	22.3	456.6
No preference	8.8	*	12.5	4.5	*	*	19.1	*	*	22.6
Whether looked for work in the last 12 months(a)—										
Had looked for work	58.3	19.3	77.7	21.1	31.6	*	131.1	9.6	11.0	151.8
Less than 5 weeks ago	22.3	7.1	29.3	9.2	17.2	*	56.5	5.2	5.4	67.1
5 and less than 8 weeks ago	12.2	*	16.0	*	5.7	*	24.8	*	*	27.8
8 and less than 13 weeks ago	10.0	*	13.4	*	*	*	20.4	*	*	23.8
13 to 52 weeks ago	13.9	5.1	19.0	5.0	5.3	*	29.5	*	*	33.1
Had not looked for work	213.2	74.6	287.8	57.5	35.4	*	84.1	18.2	18.9	421.2
Total	271.6	93.9	365.5	78.6	66.9	4.3	515.3	27.8	29.9	573.0
PERSONS										
Type of work preferred—										
Full-time	34.5	19.2	53.7	21.2	69.6	4.0	148.6	18.0	13.1	179.7
Part-time	241.2	100.5	341.7	57.9	70.2	*	473.3	30.4	27.4	531.1
No preference	9.9	5.5	15.5	4.7	*	*	23.5	*	*	28.9
Whether looked for work in the last 12 months(a)—										
Had looked for work	64.4	25.4	89.8	22.2	65.9	*	180.3	18.1	15.7	214.0
Less than 5 weeks ago	25.1	9.6	34.7	9.7	37.1	*	82.8	9.5	8.4	100.6
5 and less than 8 weeks ago	13.4	5.1	18.4	*	11.7	*	33.9	*	*	39.3
8 and less than 13 weeks ago	10.7	4.2	15.0	4.2	6.7	*	26.0	*	*	30.9
13 to 52 weeks ago	15.2	6.5	21.7	5.1	10.4	*	37.6	*	*	43.1
Had not looked for work	221.3	99.8	321.1	61.7	77.3	5.1	465.2	33.9	26.6	525.7
Total	285.7	125.2	410.9	83.9	143.2	7.5	645.5	52.0	42.3	739.7

(a) Persons who had left a job in the last twelve months were only asked whether they had looked for work since that job.

TABLE 10. PERSONS NOT IN THE LABOUR FORCE WITH MARGINAL ATTACHMENT TO THE LABOUR FORCE :
SUMMARY OF CHARACTERISTICS, SEPTEMBER 1985
(' 000)

	Persons who wanted to work and were actively looking for work			Persons who wanted to work but were not actively looking for work and were available to start work within four weeks			Persons with marginal attachment to the labour force		
	Were available to start work within four weeks	Were not available to start work within four weeks	Total	Discouraged jobseekers	Other	Total	Males	Females	Persons
Age group (years)—									
15-19	5.8	19.2	24.9	5.3	108.1	113.4	67.3	70.9	138.3
20-24	5.3	6.5	11.8	5.4	58.5	63.9	17.4	58.3	75.7
25-34	9.4	*	11.7	14.0	178.2	192.2	13.8	190.0	203.8
35-44	5.1	*	6.4	17.2	122.6	139.7	12.7	133.4	146.1
45-54	} 4.1 {	} * {	} 4.9 {	} 17.9 {	61.1	79.0	14.0	68.6	82.6
55-59									
60-64	*	*	*	5.7	17.9	23.6	13.0	11.2	24.2
65 and over	*	*	*	12.0	17.1	29.1	17.7	11.4	29.1
Family status—									
Member of a family	22.9	25.2	48.1	74.1	523.2	597.3	130.2	515.3	645.5
Husband or wife	12.0	*	15.4	55.1	340.3	395.5	45.4	365.5	410.9
With children aged 0-14 present	8.6	*	11.1	22.4	252.1	274.6	14.1	271.6	285.7
Without children aged 0-14 present	*	*	4.3	32.7	88.2	120.9	31.3	93.9	125.2
Not-married family head	*	*	4.1	9.6	70.2	79.8	5.3	78.6	83.9
With children aged 0-14 present	*	*	*	5.0	60.0	65.0	*	65.1	68.2
Without children aged 0-14 present	*	*	*	4.6	10.2	14.9	*	13.5	15.7
Child of family head	7.0	20.4	27.4	7.1	108.6	115.8	76.3	66.9	143.2
Other relative of family head	*	*	*	*	4.0	6.3	*	4.3	7.5
Not a member of a family	*	*	6.0	12.2	33.8	46.0	24.2	27.8	52.0
Living alone	*	*	*	9.9	21.1	31.0	15.4	18.1	33.5
Not living alone	*	*	*	*	12.7	15.0	8.8	9.7	18.5
Not family coded	*	*	6.3	*	33.3	36.0	12.4	29.9	42.3
Type of work preferred—									
Full-time	14.8	21.2	36.0	21.2	122.5	143.6	85.8	93.9	179.7
Part-time	14.1	7.7	21.9	59.9	449.4	509.3	74.6	456.6	531.1
No preference	*	*	*	7.9	18.5	26.4	6.4	22.6	28.9
Whether looked for work in the last 12 months(a)—									
Had looked for work	30.2	30.2	60.4	32.0	121.7	153.6	62.2	151.8	214.0
Less than 5 weeks ago	30.2	30.2	60.4	7.5	32.7	40.2	33.5	67.1	100.6
5 and less than 8 weeks ago	8.1	31.3	39.3	11.6	27.8	39.3
8 and less than 13 weeks ago	7.0	24.0	30.9	7.1	23.8	30.9
13 to 52 weeks ago	9.4	33.7	43.1	10.0	33.1	43.1
Had not looked for work	57.1	468.7	525.7	104.5	421.2	525.7
Time since last job—									
Had had a job	26.2	15.3	41.5	80.6	490.0	570.6	112.9	499.2	612.0
Under 12 months	13.5	9.7	23.2	13.7	123.3	137.0	48.9	111.4	160.2
Under 6 months	8.8	*	12.6	6.4	72.7	79.1	28.4	63.4	91.7
6 and under 12 months	4.7	5.9	10.6	7.3	50.6	57.9	20.5	48.0	68.5
1 and under 3 years	5.8	*	9.3	14.6	95.2	109.7	27.4	91.6	119.0
3 and under 5 years	} 5.0 {	} * {	} 6.6 {	} 13.3 {	75.4	88.7	15.7	76.7	92.4
5 and under 10 years									
10 and under 20 years	*	*	*	15.7	103.7	119.4	15.0	107.3	122.3
20 years or more	*	*	*	15.8	74.3	90.0	5.8	86.3	92.1
Had never had a job	4.0	14.9	18.9	7.5	18.2	25.7	*	26.0	26.1
Reason for leaving last job—									
Retrenched/made redundant/lost job	*	*	5.4	8.4	100.4	108.8	53.9	73.8	127.7
Seasonal or temporary job	4.8	*	6.3	14.8	51.5	66.3	17.5	54.3	71.7
Returned to studies	*	7.2	8.9	10.2	47.3	57.6	10.6	53.3	63.9
Retired/did not want to work any longer	*	*	*	13.3	14.2	14.2	14.5	8.6	23.1
Unsatisfactory work arrangements	*	*	*	9.7	27.6	37.3	17.3	20.4	37.8
Own ill health or injury	*	*	*	4.1	28.7	32.8	8.2	26.3	34.5
To get married	*	*	*	5.6	47.1	52.7	24.5	31.7	56.2
Pregnancy/to have children	*	*	4.6	5.7	35.3	40.9	*	42.5	42.5
To look after family, house or someone else	*	*	*	9.2	132.9	142.1	*	146.7	146.7
Travelled, moved house, spouse transferred	4.3	*	5.3	5.4	33.9	39.3	*	39.0	41.3
Sold business/farm	*	*	*	10.3	37.8	48.1	6.6	46.8	53.4
Other reasons	*	*	*	*	10.3	12.0	*	9.6	12.7
Had never had a job	4.0	14.9	18.9	12.3	15.3	15.3	4.4	11.8	16.3
Not asked(b)	12.0	100.4	108.8	53.9	73.8	127.7
Total	30.2	30.2	60.4	89.0	590.4	679.4	166.8	573.0	739.7

(a) Persons who had left a job in the last twelve months were only asked whether they had looked for work since that job. (b) Persons who had a job but, up to the end of the survey week, had been away from work without pay for four weeks or longer and had not been actively looking for work.

TABLE 11. PERSONS NOT IN THE LABOUR FORCE WHO WANTED TO WORK BUT WERE NOT ACTIVELY LOOKING FOR WORK AND WERE AVAILABLE TO START WORK WITHIN FOUR WEEKS: MAIN REASON FOR NOT ACTIVELY LOOKING FOR WORK AND AGE, SEPTEMBER 1985
(' 000)

	Age group (years)								
Main reason for not actively looking for work	15-19	20-24	25-34	35-44	45-54	55-59	60-64	65 and over	Total
MALES									
Personal reasons(a)	46.2	8.2	5.7	6.8	6.9	6.8	7.7	9.2	97.5
Own ill health, disability	*	*	*	4.5	5.6	4.8	4.4	*	29.6
Attending an educational institution	44.2	4.9	*	*	*	*	*	*	51.4
Had no need to work	*	*	*	*	*	*	*	*	7.2
Welfare payments/pension may be affected	*	*	*	*	*	*	*	*	4.9
Family reasons(a)	*	*	*	*	*	*	*	*	4.3
Discouraged jobseekers(a)	4.5	*	*	*	*	*	*	6.4	19.5
Considered too young or too old by employers	*	*	*	*	*	*	*	5.7	9.8
No jobs in locality or line of work	*	*	*	*	*	*	*	*	4.5
Other reasons	*	*	*	*	*	*	*	*	10.6
Not asked(b)	*	*	*	*	*	*	*	*	*
Total(a)	54.9	11.6	10.9	12.0	12.2	9.9	12.5	17.7	141.9
FEMALES									
Had a job to go to	*	*	*	*	*	*	*	*	8.4
Personal reasons	46.9	8.7	25.8	30.3	26.6	11.9	4.7	*	158.7
Own ill health, disability, pregnancy	4.0	*	9.8	8.0	11.0	*	*	*	39.5
Attending an educational institution	43.4	*	*	*	*	*	*	*	50.9
Had no need to work	*	*	5.3	11.3	9.8	*	*	*	34.0
Give others a chance	*	*	*	*	*	*	*	*	6.0
Welfare payments/pension may be affected	*	*	7.2	*	4.2	*	*	*	14.7
Moved house/holidays	*	*	4.4	*	*	*	*	*	13.6
Family reasons	4.6	34.5	120.7	62.4	14.8	4.5	*	*	244.1
Ill health of other than self	*	*	*	4.4	5.1	*	*	*	13.2
Unable to find suitable childcare	*	14.3	42.8	12.2	*	*	*	*	71.8
Children too young/preferred to look after children	*	19.4	68.0	32.2	*	*	*	*	124.6
Other family considerations	*	*	7.4	13.6	8.9	*	*	*	34.4
Discouraged jobseekers	6.2	*	12.7	16.2	16.2	9.3	*	5.6	69.6
Considered too young or too old by employers	*	*	*	*	6.8	5.0	*	4.8	22.4
Difficulties with language or ethnic background	*	*	*	*	*	*	*	*	4.2
Lacked necessary schooling, training, skills or experience	*	*	*	*	*	*	*	*	7.4
No jobs in locality or line of work	*	*	7.1	6.8	5.4	*	*	*	21.6
No jobs at all	*	*	*	4.5	4.4	*	*	*	14.0
No jobs in suitable hours	*	*	6.1	6.2	*	*	*	*	15.6
Other reasons	*	*	6.8	6.8	5.0	*	*	*	25.6
Did not know	*	*	5.0	*	*	*	*	*	7.2
Not asked(b)	*	*	5.6	*	*	*	*	*	8.3
Total	58.4	52.3	181.2	127.7	66.8	28.6	11.1	11.4	537.5
PERSONS									
Had a job to go to	*	*	5.5	*	*	*	*	*	11.2
Personal reasons	93.0	16.8	31.5	37.2	33.5	18.6	12.4	13.2	256.2
Own ill health, disability, pregnancy	*	4.5	12.6	12.5	16.7	8.6	6.0	5.1	69.1
Attending an educational institution	87.5	8.4	4.3	*	*	*	*	*	102.3
Had no need to work	*	*	5.5	11.6	10.3	4.6	6.7	*	41.3
Give others a chance	*	*	*	*	*	*	*	*	6.2
Welfare payments/pension may be affected	*	*	4.1	*	*	*	6.0	*	19.6
Moved house/holidays	*	*	4.9	4.9	4.1	*	*	*	17.8
Family reasons	4.6	34.7	122.2	63.4	15.6	4.5	*	*	248.4
Ill health of other than self	*	*	*	4.6	5.9	*	*	*	14.8
Unable to find suitable childcare	*	14.5	43.2	12.3	*	*	*	*	72.5
Children too young/preferred to look after children	*	19.4	68.9	32.8	*	*	*	*	126.1
Other family considerations	*	*	7.4	13.7	8.9	*	*	*	34.9
Discouraged jobseekers	5.3	5.4	14.0	17.2	17.9	11.5	5.7	12.0	89.0
Considered too young or too old by employers	*	*	*	*	7.4	6.5	*	10.5	32.2
Difficulties with language or ethnic background	*	*	*	*	*	*	*	*	5.0
Lacked necessary schooling, training, skills or experience	*	*	*	*	*	*	*	*	8.9
No jobs in locality or line of work	*	*	7.2	7.3	4.2	*	*	*	26.0
No jobs at all	*	*	*	4.9	5.2	*	*	*	16.8
No jobs in suitable hours	4.1	*	6.2	6.4	*	*	*	*	18.4
Other reasons	4.6	*	7.7	8.4	6.7	*	4.4	*	36.3
Did not know	*	*	5.2	*	*	*	*	*	8.0
Not asked(b)	*	*	4.1	*	*	*	*	*	12.0
Total	113.4	63.9	192.2	139.7	79.0	38.5	23.6	29.1	679.4

(a) Includes reasons not shown separately. (b) Persons who had a job but, up to the end of the survey week, had been away from work without pay for four weeks or longer and had not been actively looking for work.

TABLE 12. PERSONS NOT IN THE LABOUR FORCE WHO WANTED TO WORK BUT WERE NOT ACTIVELY LOOKING FOR WORK AND WERE AVAILABLE TO START WORK WITHIN FOUR WEEKS : WHETHER LOOKED FOR WORK IN THE LAST TWELVE MONTHS(a), TIME SINCE LAST JOB AND INTENTION TO LOOK FOR WORK IN THE NEXT TWELVE MONTHS, SEPTEMBER 1985 (' 000)

	Intention to look for work in the next twelve months					
	Intended to look	Might look	Would not look	Did not know	Not asked(b)	Total
MALES						
Whether looked for work in the last 12 months(a)—						
Had looked for work	27.8	4.9	*	*	*	37.3
Less than 5 weeks ago	6.1	*	*	*	*	8.7
5 and less than 8 weeks ago	10.4	*	*	*	*	11.6
8 and less than 13 weeks ago	5.5	*	*	*	*	7.1
13 to 52 weeks ago	5.9	*	*	*	*	10.0
Had not looked for work	42.9	19.9	30.6	5.9	5.2	104.5
Time since last job—						
Had had a job	43.0	17.7	24.7	5.6	6.5	97.5
Under 12 months	25.3	4.0	*	*	6.3	38.7
Under 6 months	15.2	*	*	*	5.9	23.9
6 and under 12 months	10.1	*	*	*	*	14.7
1 and under 3 years	10.9	5.6	5.2	*	*	23.7
3 and under 5 years	} 6.2	6.8 {	7.6	*	*	14.8
5 and under 10 years			6.2	*	*	14.5
10 and under 20 years			*	*	*	5.8
20 years or more	*	*	*	*	*	*
Had never had a job	27.7	7.2	8.0	*	*	44.4
Total	70.7	24.9	32.7	7.1	6.5	141.9
FEMALES						
Whether looked for work in the last 12 months(a)—						
Had looked for work	79.7	17.6	12.2	*	*	116.3
Less than 5 weeks ago	26.2	*	*	*	*	31.6
5 and less than 8 weeks ago	19.5	4.7	} 4.9 {	*	*	27.8
8 and less than 13 weeks ago	16.2	*		*	*	23.8
13 to 52 weeks ago	17.8	6.9	6.2	*	*	33.1
Had not looked for work	125.2	92.3	163.6	27.0	13.0	421.2
Time since last job—						
Had had a job	167.4	99.6	163.3	26.4	16.4	473.1
Under 12 months	46.3	17.0	19.0	*	13.0	98.4
Under 6 months	24.6	8.6	8.3	*	11.9	55.2
6 and under 12 months	21.7	8.4	10.8	*	*	43.2
1 and under 3 years	37.1	20.1	23.6	4.0	*	86.1
3 and under 5 years	23.7	15.3	29.9	4.3	*	74.0
5 and under 10 years	31.0	23.5	43.1	6.7	*	104.9
10 and under 20 years	22.5	17.7	37.3	6.2	*	84.2
20 years or more	6.8	6.1	10.4	*	*	25.6
Had never had a job	37.5	10.3	12.5	*	*	64.4
Total	204.9	109.9	175.8	30.1	16.7	537.5
PERSONS						
Whether looked for work in the last 12 months(a)—						
Had looked for work	107.5	22.6	14.3	4.2	5.0	153.6
Less than 5 weeks ago	32.3	*	*	*	*	40.2
5 and less than 8 weeks ago	29.9	5.1	} 5.5 {	*	*	39.3
8 and less than 13 weeks ago	21.7	4.2		*	*	30.9
13 to 52 weeks ago	23.7	9.4	7.1	*	*	43.1
Had not looked for work	168.1	112.2	194.2	33.0	18.2	525.7
Time since last job—						
Had had a job	210.4	117.3	188.0	31.9	22.9	570.6
Under 12 months	71.6	21.1	21.2	*	19.3	137.0
Under 6 months	39.8	10.8	8.6	*	17.8	79.1
6 and under 12 months	31.7	10.2	12.6	*	*	57.9
1 and under 3 years	48.0	25.7	28.8	5.7	*	109.7
3 and under 5 years	27.0	18.2	37.5	5.3	*	88.7
5 and under 10 years	33.9	27.3	49.3	8.3	*	119.4
10 and under 20 years	23.1	18.9	40.8	6.6	*	90.0
20 years or more	6.8	6.1	10.5	*	*	25.7
Had never had a job	65.2	17.5	20.5	5.3	*	108.8
Total	275.6	134.8	208.5	37.2	23.2	679.4

(a) Persons who had left a job in the last twelve months were only asked whether they had looked for work since that job. (b) Comprises persons who had a job to go to and persons who had a job but, up to the end of the survey week, had been away from work without pay for four weeks or longer and had not been actively looking for work.

TABLE 13. PERSONS NOT IN THE LABOUR FORCE WHO WERE DISCOURAGED JOBSEEKERS:
WHETHER LOOKED FOR WORK IN THE LAST TWELVE MONTHS(a), TIME SINCE LAST JOB
AND INTENTION TO LOOK FOR WORK IN THE NEXT TWELVE MONTHS, SEPTEMBER 1985
(^{'000})

	Intention to look for work in the next twelve months				
	Intended to look	Might look	Would not look	Did not know	Total
MALES					
Whether looked for work in the last 12 months(a)—					
Had looked for work	5.0	*	*	*	7.4
Less than 5 weeks ago	*	*	*	*	4.2
5 and less than 8 weeks ago	*	*	*	*	
8 and less than 13 weeks ago	*	*	*	*	
13 to 52 weeks ago	*	*	*	*	*
Had not looked for work	*	*	6.0	*	12.1
Time since last job—					
Had had a job	6.4	*	6.1	*	16.8
Under 12 months	*	*	*	*	*
Under 6 months	*	*	*	*	*
6 and under 12 months	*	*	*	*	*
1 and under 3 years	*	*	*	*	7.4
3 and under 5 years	*	*	4.2	*	
5 and under 10 years	*	*		*	
10 and under 20 years	*	*		*	5.5
20 years or more	*	*	*	*	
Had never had a job	*	*	*	*	*
Total	8.6	*	6.1	*	19.5
FEMALES					
Whether looked for work in the last 12 months(a)—					
Had looked for work	17.2	5.2	*	*	24.6
Less than 5 weeks ago	5.4	*	*	*	6.2
5 and less than 8 weeks ago	4.3	*	*	*	5.2
8 and less than 13 weeks ago	4.0	*	*	*	5.6
13 to 52 weeks ago	*	*	*	*	7.6
Had not looked for work	11.9	12.0	18.0	*	44.9
Time since last job—					
Had had a job	26.4	16.0	18.0	*	63.8
Under 12 months	6.2	*	*	*	9.8
Under 6 months	*	*	*	*	4.3
6 and under 12 months	*	*	*	*	5.5
1 and under 3 years	5.6	6.3	4.3	*	10.8
3 and under 5 years	*			*	9.7
5 and under 10 years	*			*	11.8
10 and under 20 years	5.6	6.3	4.1	*	14.1
20 years or more	*		*	*	7.5
Had never had a job	*	*	*	*	5.7
Total	29.1	17.2	19.5	*	69.6
PERSONS					
Whether looked for work in the last 12 months(a)—					
Had looked for work	22.2	6.9	*	*	32.0
Less than 5 weeks ago	6.3	*	*	*	7.5
5 and less than 8 weeks ago	6.9	*	*	*	8.1
8 and less than 13 weeks ago	4.8	*	*	*	7.0
13 to 52 weeks ago	4.2	*	*	*	9.4
Had not looked for work	15.5	13.9	23.9	*	57.1
Time since last job—					
Had had a job	32.8	19.0	24.2	4.6	80.6
Under 12 months	9.3	*	*	*	13.7
Under 6 months	4.6	*	*	*	6.4
6 and under 12 months	4.8	*	*	*	7.3
1 and under 3 years	7.6	7.3	*	*	14.6
3 and under 5 years	*		5.1	*	13.3
5 and under 10 years	4.7		5.9	*	15.7
10 and under 20 years	5.8	5.4	5.4	*	15.8
20 years or more	*		*	*	7.5
Had never had a job	4.9	*	*	*	8.4
Total	37.7	20.8	25.6	5.0	89.0

(a) Persons who had left a job in the last twelve months were only asked whether they had looked for work since that job.

TABLE 14. PERSONS NOT IN THE LABOUR FORCE WHO WANTED TO WORK BUT WERE NOT ACTIVELY LOOKING FOR WORK AND WERE NOT AVAILABLE TO START WORK WITHIN FOUR WEEKS: REASON NOT AVAILABLE TO START WORK WITHIN FOUR WEEKS, INTENTION TO LOOK FOR WORK IN THE NEXT TWELVE MONTHS AND TYPE OF WORK PREFERRED, SEPTEMBER 1985
('000)

Reason not available to start work within four weeks	Intention to look for work in the next twelve months					Type of work preferred			Total
	Intended to look	Might look	Would not look	Did not know	Not asked(a)	Full-time	Part-time	No preference	
Personal reasons	63.5	28.0	45.8	5.8	6.7	70.1	70.8	8.9	149.8
Own ill health, etc.	17.9	16.4	28.5	*	5.6	29.9	35.7	6.3	71.9
Studying	40.2	8.7	12.9	*	*	39.4	23.0	*	64.4
At school	33.5	7.9	12.1	*	*	34.5	19.8	*	56.1
Other educational institution	6.7	*	*	*	*	4.8	*	*	8.3
Moved house/holidays	5.5	*	4.4	*	*	*	12.1	*	13.6
Family reasons	19.2	17.0	44.8	4.5	7.8	11.8	78.8	*	93.3
Ill health of other than self	*	*	4.0	*	*	*	6.8	*	9.9
Unable to find suitable childcare	*	*	4.7	*	*	*	10.3	*	12.4
Children too young/preferred to look after children	14.5	10.3	36.1	*	7.2	7.2	61.7	*	70.9
Other reasons	5.7	*	10.5	*	*	4.5	16.4	*	22.1
Total									
Males	34.2	14.2	20.1	*	*	46.6	21.3	4.9	72.8
Females	54.3	33.7	80.9	10.2	13.2	39.8	144.7	7.8	192.4
Persons	88.5	47.9	101.0	12.0	15.8	86.5	166.0	12.7	265.2

(a) Persons who had a job but, up to the end of the survey week, had been away from work without pay for four weeks or longer and had not been actively looking for work.

TABLE 15. PERSONS NOT IN THE LABOUR FORCE WHO WANTED TO WORK BUT WERE NOT ACTIVELY LOOKING FOR WORK AND WERE NOT AVAILABLE TO START WORK WITHIN FOUR WEEKS: REASON NOT AVAILABLE TO START WORK WITHIN FOUR WEEKS AND AGE, SEPTEMBER 1985
('000)

Reason not available to start work within four weeks	Age group (years)								Total
	15-19	20-24	25-34	35-44	45-54	55-59	60-64	65 and over	
Personal reasons	53.0	18.7	27.3	17.7	14.5	10.1	5.3	*	149.8
Own ill health, etc.	*	10.3	19.7	14.2	11.3	7.7	6.1	*	71.9
Studying	50.0	7.9	5.8	*	*	*	*	*	64.4
At school	46.5	4.8	4.3	*	*	*	*	*	56.1
Other educational institution	6.5	*	*	*	*	*	*	*	8.3
Moved house/holidays	*	*	5.3	*	5.0	*	*	*	13.6
Family reasons	*	12.0	54.6	19.0	4.5	*	*	*	93.3
Ill health of other than self	*	*	4.5	*	*	*	*	*	9.9
Unable to find suitable childcare	*	*	8.3	*	*	*	*	*	12.4
Children too young/preferred to look after children	*	10.0	43.6	15.4	*	*	*	*	70.9
Other reasons	*	*	6.3	6.1	4.2	*	*	*	22.1
Total									
Males	29.0	7.7	7.8	7.5	6.9	6.3	4.1	*	72.8
Females	26.2	24.1	80.5	35.2	15.4	5.2	5.8	*	192.4
Persons	55.2	31.7	88.3	42.7	22.3	11.5	7.4	6.1	265.2

TABLE 16. PERSONS NOT IN THE LABOUR FORCE WHO WANTED TO WORK BUT WERE NOT ACTIVELY LOOKING FOR WORK AND WERE NOT AVAILABLE TO START WORK WITHIN FOUR WEEKS: REASON NOT AVAILABLE TO START WORK WITHIN FOUR WEEKS AND FAMILY STATUS, SEPTEMBER 1985
('000)

Reason not available to start work within four weeks	Family status									Total
	Member of a family					Total(a)	Not a member of a family	Not family coded		
	Husband or wife		Total	Not- married family head	Child of family head					
	With children aged 0-14 present	Without children aged 0-14 present								
Personal reasons	34.3	25.1	59.4	5.9	57.3	125.0	12.9	12.0	149.8	
Own ill health, etc.	27.1	18.1	45.2	4.2	7.6	57.6	8.3	6.0	71.9	
Studying	*	*	5.1	*	49.6	57.6	*	*	64.4	
At school	*	*	*	*	46.1	51.5	*	*	56.1	
Other educational institution	*	*	*	*	*	6.1	*	*	8.3	
Moved house/holidays	4.9	4.1	9.1	*	*	9.8	*	*	13.6	
Family reasons	72.4	*	76.1	12.1	*	88.8	*	*	93.3	
Ill health of other than self	*	*	6.8	*	*	8.8	*	*	9.9	
Unable to find suitable childcare	9.1	*	9.1	*	*	11.5	*	*	12.4	
Children too young/preferred to look after children	60.1	*	60.2	8.0	*	68.5	*	*	70.9	
Other reasons	8.6	6.9	15.5	*	*	18.4	*	*	22.1	
Total										
Males	10.2	13.2	23.4	*	33.2	59.8	6.5	6.5	72.8	
Females	105.1	22.5	127.6	18.8	24.8	172.4	9.7	10.2	192.4	
Persons	115.3	35.7	151.0	20.2	58.0	232.2	16.2	16.7	265.2	

(a) Includes other relative of family head.

ADDITIONAL TABLES

The following is a list of additional tables of results from the survey which are available to users on request. These tables show a selection of estimates on an Australia-wide basis. Tables disaggregated by State/Territory and other tables may also be available. Most tables are dissected by sex.

Persons not in the labour force—

A1 Age, marital status and labour force status

Persons not in the labour force (excluding institutionalised and boarding school pupils)—

Age—

A2 Occupation in last job
 A3 Reason for leaving last job
 A4 Main activity
 A5 Time since last job
 A6 Whether wanted to work
 A7 Status of worker in last job
 A8 Full-time or part-time status in last job

Family status—

A9 Occupation in last job
 A10 Reason for leaving last job
 A11 Main activity
 A12 Time since last job
 A13 Reason for leaving last job and whether wanted to work

Persons who wanted to work—

Age—

A14 Reason for leaving last job and status of worker in last job
 A15 Occupation in last job and full-time or part-time status in last job
 A16 Intention to look for work in the next twelve months and family status

Persons with marginal attachment to the labour force—

Main reason for not actively looking for work—

A17 Age
 A18 Family status
 A19 Type of work preferred and intention to look for work in the next twelve months

Persons who wanted to work but were not actively looking for work and were available to start work within four weeks—

All reasons for not actively looking for work—

A20 Time since last job
 A21 Marital status and age
 A22 Main reason for not actively looking for work, birthplace and year of arrival

Persons who wanted to work, but were not actively looking for work and were not available to start work within four weeks—

A23 Reason not available to start work within four weeks, birthplace and year of arrival

TECHNICAL NOTE

Estimation procedure

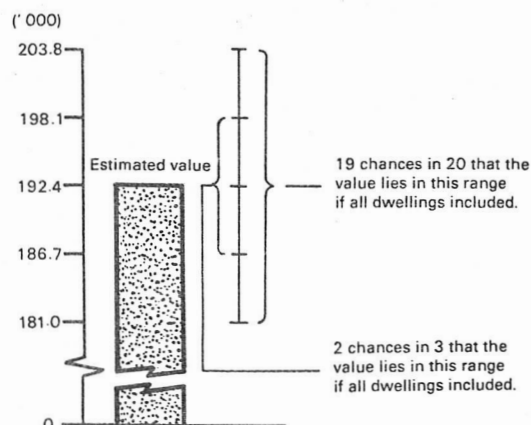
The estimates are derived from the population survey by use of a ratio estimation procedure, which ensures that the estimates conform to an independently estimated distribution of the population for each capital city and remainder of State by age and sex, rather than to the corresponding distribution within the sample itself.

Reliability of the estimates

2. Since the estimates in this publication are based on information obtained from occupants of a sample of dwellings, they are subject to sampling variability: that is, they may differ from the figures that would have been produced if all dwellings had been included in the survey. One measure of the likely difference is given by the *standard error*, which indicates the extent to which an estimate might have varied by chance because only a sample of dwellings was included. There are about two chances in three that a sample estimate will differ by less than one standard error from the figure that would have been obtained if all dwellings had been included, and about nineteen chances in twenty that the difference will be less than two standard errors. Another measure of the likely difference is the *relative standard error*, which is obtained by expressing the standard error as a percentage of the estimate.

3. Space does not allow for the separate indication of the standard errors of all estimates in this publication. A table of standard errors for general application is given on the following page. Since they are averages based on calculations for a limited number of past surveys over a wide range of labour force characteristics these figures will not give a precise measure of the standard error of a particular estimate but they will provide an indication of its magnitude.

4. An example of the calculation and the use of standard errors in relation to estimates of persons is as follows. Table 15 shows the estimated number of females in Australia who were not in the labour force and who wanted to work but were not actively looking for work and were not available to start work within four weeks was 192,400. Since this estimate is between 100,000 and 200,000 the standard error for Australia will be between 4,400 and 5,800 in the standard error table and can be approximated as 5,700 (rounded to the nearest 100). Therefore, there are about two chances in three that the value that would have been produced if all dwellings had been included in the survey will fall in the range 186,700 to 198,100 and about nineteen chances in twenty that the value will fall within the range 181,000 to 203,800. This example is illustrated in the following diagram.



5. As can be seen from the standard error table, *the smaller the estimate the higher is the relative standard error*. Very small estimates are thus subject to such high standard errors (relative to the size of the estimate) as to detract seriously from their value for most reasonable uses. In the tables in this publication, estimates less than the lowest levels shown in the standard error table have not been published. Although figures for these small components can in some cases be derived by subtraction, they should not be regarded as reliable.

6. Proportions and percentages formed from the ratio of two estimates are also subject to sampling errors. The size of the error depends on the accuracy of both the numerator and the denominator. The formula for the relative standard error (RSE) of a proportion is given below:

$$RSE (x/y) = \sqrt{[RSE (x)]^2 + [RSE (y)]^2}$$

7. Considering the example from paragraph 4 above, of the 192,400 females who wanted to work but were not actively looking for work and were not available to start work within four weeks only 24,100 or 12.5 per cent were aged between 20 and 24. The standard error of 24,100 is approximately 2,300 so the relative standard error is 9.5 per cent. The relative standard error for 192,400 is 3.0 per cent. Applying the above formula, the relative standard error of the proportion is $\sqrt{(9.5)^2 + (3.0)^2}$ or 9.9 per cent, giving a standard error for the proportion (12.5 per cent) of 1.1 percentage points. Therefore, there are about two chances in three that the proportion of females who were aged between 20 and 24 and who wanted to work but were not actively looking for work and were not available to start work within four weeks was between 11.4 per cent and 13.6 per cent and nineteen chances in twenty the proportion was within the range 10.3 per cent to 14.7 per cent.

8. Published figures may also be used to estimate the difference between two survey estimates (of numbers or percentages). Such a figure is itself an estimate and is therefore subject to sampling error. The sampling error of the difference between two estimates depends on their standard errors and the relationship (correlation) between them. An approximate standard error (SE) of the difference between two estimates (x-y) may be calculated by the following formula:

$$SE (x-y) = \sqrt{[SE (x)]^2 + [SE (y)]^2}$$

While this formula will only be exact for differences between separate and uncorrelated characteristics or sub-populations it is expected to provide a good approximation for all differences likely to be of interest in this publication.

9. The imprecision due to sampling variability, which is measured by the standard error, should not be confused with inaccuracies that may occur because of imperfections in reporting by interviewers and respondents and errors made in the coding and processing of data. Inaccuracies of this kind are referred to as the *non-sampling error*, and they may occur in any enumeration, whether it be a full count or only a sample.

STANDARD ERRORS OF ESTIMATES

Size of estimate	N.S.W.	Vic.	Qld	S.A.	W.A.	Tas.	N.T.	A.C.T.	Australia	
	—number—								Relative standard error (per cent)	
1,500						360		350		
1,800						390		380		
2,000						400		390		
2,500				560	580	450		430		
3,000			740	610	630	480	700	460		
3,500			790	650	680	510	740	480		
4,000			840	690	720	540	780	510	970	24.3
4,500	1,100	1,100	890	730	750	570	810	530	1,050	23.3
5,000	1,150	1,200	940	760	790	600	850	550	1,100	22.0
6,000	1,250	1,300	1,000	820	850	640	910	590	1,200	20.0
10,000	1,600	1,600	1,300	1,000	1,050	780	1,100	700	1,550	15.5
20,000	2,150	2,150	1,750	1,350	1,400	1,000	1,450	870	2,150	10.8
50,000	3,200	3,150	2,500	1,900	1,950	1,400	2,000	1,150	3,250	6.5
100,000	4,250	4,100	3,250	2,400	2,550	1,700		1,350	4,400	4.4
200,000	5,600	5,300	4,150	3,050	3,200	2,100			5,800	2.9
300,000	6,500	6,100	4,800	3,450	3,650				6,800	2.3
500,000	7,900	7,200	5,600	4,050	4,250				8,300	1.7
1,000,000	10,100	8,900	7,000						10,700	1.1
2,000,000	12,800	11,000							13,600	0.7
5,000,000									18,300	0.4

