

EXPLANATORY NOTESUrban centres and other bounded localities

A detailed description of the concepts and methods used in 1971 in defining urban centres is contained in Appendix C. These methods were similar to those used at the 1966 Census, the main changes being:

1. The elimination of the "indentation" provision. At the 1966 Census an indented area was included within the urban centre if the distance across the "neck" was less than one mile.
2. A re-interpretation of the "enclosure" rule. At the 1966 Census land was included within the urban centre if it was completely surrounded by the urban centre itself (or in part by the sea or a wide unbridged river). In 1971 if one part of this surround is the sea or a wide unbridged river this rule is not applied.

At the 1971 Census these concepts were used to determine the urban boundaries of Hobart and Launceston.

Around other urban centres and non-urban localities, boundaries were delineated, where possible, where the population was expected to reach at least 200 by 1971. For this purpose, the most recent available aerial photography was used in order to identify as closely as possible the periphery of the built up area. Those centres with a population of 200 or more persons are included in the tables in this bulletin.

Gowrie Park and Strathgordon have not been classified as urban although each had populations greater than 1,000 at 30 June 1971. These centres are construction sites and therefore are not permanent townships.

Notes on the composition of certain of the urban centres are given in Appendix B to this statement.

1966 Census population. For comparative purposes the population of statistical divisions, local government areas and urban and rural centres at the 1966 Census is shown.

For those urban centres where the density criteria for determining urban boundaries have been used, the 1966 population shown is that resulting from the application of these same criteria at the time of the 1966 Census.

For most of the bounded towns and for some urban components of local government areas it has not been possible to make satisfactory estimates of 1966 population. These cases are shown in the tables as "N.A."

Major urban population. This term has been applied to population enumerated in urban centres with a total population of 100,000 or more and supersedes the use of "metropolitan" at previous Censuses.

Abbreviations. The following abbreviations have been used in the tables and appendices

U - urban, R - rural, C - City, M - Municipality

N.A. - not available

A minus sign, appearing after a figure, indicates a decrease in population, e.g. 125-.

J. P. O'NEILL
ACTING COMMONWEALTH STATISTICIAN

COMMONWEALTH BUREAU OF CENSUS AND STATISTICS

CANBERRA, A.C.T.

3 FEBRUARY 1972

NOTE. Inquiries concerning these statistics may be made in Canberra by telephoning 490211 extension 254.

TABLE 1. - INDEX OF LOCAL GOVERNMENT AREAS

LOCAL GOVERNMENT AREA	AREA (SQ. MILES)	POPULATION CENSUS, 30TH, JUNE, 1971	PAGE REFERENCE TABLE 3
BEACONSFIELD (M)	246,29	10,920	7
BOTHWELL (M)	1,006,97	815	8
BRIGHTON (M) (PART)	28,16	1,333	6,9
BRIGHTON (M) (PART)	142,00	996	8,9
BRUNY (M)	139,80	311	8
BURNIE (M)	238,51	19,943	6
CAMPBELL TOWN (M)	554,24	1,640	8
CIRCULAR HEAD (M)	1,898,58	7,958	6
CLARENCE (M)	96,99	37,013	6
DELORAINÉ (M)	1,126,07	4,805	6
DEVONPORT (M)	44,84	19,761	6
ESPERANCE (M)	2,388,37	3,526	8
EVANDALE (M)	382,05	1,462	7
FINGAL (M)	1,054,61	3,438	7
FLINDERS (M)	788,93	967	7
GEORGE TOWN (M)	292,52	6,027	7
GLAMORGAN (M)	592,70	1,118	8
GLENORCHY (C)	46,24	42,620	6
GORMANSTON (M)	1,108,79	465	9
GREEN PONDS (M)	160,67	871	8
HAMILTON (M)	2,258,53	4,033	8
HOBART (C)	30,82	52,425	6
HUON (M)	298,91	4,752	8
KENTISH (M)	458,49	5,310	6
KINGBOROUGH (M) (PART)	103,13	9,740	6,9
KINGBOROUGH (M) (PART)	33,87	1,027	8,9
KING ISLAND (M)	424,40	2,801	6
LATROBE (M)	211,89	5,096	6
LAUNCESTON (C)	10,90	35,001	6
LILYDALE (M)	264,04	8,301	7
LONGFORD (M)	385,16	5,132	7
NEW NORFOLK (M) (PART)	24,18	7,343	6,9
NEW NORFOLK (M) (PART)	483,82	3,259	8,9
OATLANDS (M)	594,56	2,131	8
PENGUIN (M)	166,74	4,777	6
PORT CYGNET (M)	92,79	2,066	9
PORTLAND (M)	610,60	1,495	7
QUEENSTOWN (M)	54,64	5,081	9
RICHMOND (M)	219,36	1,568	8
RINGAROOMA (M)	630,06	2,461	7
ROSS (M)	478,89	550	8
ST. LEONARDS (M)	344,07	16,196	7
SCOTTSDALE (M)	498,66	3,598	7
SORELL (M) (PART)	32,81	2,550	6,9
SORELL (M) (PART)	269,06	1,059	8,9
SPRING BAY (M)	433,12	1,412	8
STRAHAN (M)	1,441,18	442	9
TASMAN (M)	185,27	1,044	9
ULVERSTONE (M)	197,41	11,047	7
WARATAH (M)	1,045,90	1,935	9
WESTBURY (M)	349,05	4,860	7
WYNYARD (M)	313,71	10,597	7
ZEEHAN (M)	1,159,39	4,373	9
MIGRATORY		423	9

TABLE 2. - URBAN CENTRES AND BOUNDED LOCALITIES WITH 200 OR MORE PERSONS, IN ALPHABETICAL ORDER

URBAN CENTRE OR BOUNDED LOCALITY	POPULATION, 1966 CENSUS	TASMANIA		1971 PERSONS	INTERCENSAL NUMERICAL	VARIATION PERCENTAGE	PAGE REF. TABLE 3
		GENSUS, MALES	30TH JUNE, FEMALES				
AVOCA (R)	N/A	129	121	250	N/A	N/A	7
BEACONSFIELD (R)	1,028	492	458	990	78-	7,59-	7
BEAUTY POINT (U)	873	432	437	849	4-	0,46-	7
BICHENO (R)	N/A	151	135	284	N/A	N/A	8
BOTHWELL (R)	293	202	187	349	96	32,76	8
BRACKNELL (R)	N/A	129	143	272	N/A	N/A	7
BRANXHOLM (R)	N/A	129	133	262	N/A	N/A	7
BRIDGEWATER (R)	N/A	170	107	227	N/A	N/A	6
BRIDPORT (R)	477	293	294	587	110	23,06	7
BRIGHTON (R)	N/A	246	236	482	N/A	N/A	6
BURNIE-SHERSET (U)	18,042	10,205	9,883	20,088	2,046	11,34	6,7,10
CAMPBELL TOWN (R)	951	441	474	915	36-	3,79-	8
CRESSY (R)	557	323	306	629	72	12,93	7
CURRIE (R)	560	490	423	913	453	63,04	6
CYGNET (R)	790	340	364	704	86-	10,89-	9
DELORAINIE (U)	1,793	873	943	1,816	23	1,26	6
DERBY (R)	N/A	117	126	243	N/A	N/A	7
DEVONPORT (U)	14,875	8,978	9,172	18,190	3,275	22,02	6
DOVER (R)	N/A	244	218	462	N/A	N/A	8
DUNALLEY (R)	N/A	136	134	270	N/A	N/A	8
ELECTRONA (R)	N/A	131	112	243	N/A	N/A	6
EVANDALE (R)	478	251	221	472	6-	1,26-	7
EXETER (R)	N/A	161	163	324	N/A	N/A	7
FINGAL (R)	479	234	212	446	32-	6,69-	7
FORTH (R)	N/A	171	170	341	N/A	N/A	6,7,10
FRANKLIN (R)	N/A	280	301	581	N/A	N/A	8
GEEVESTON (R)	774	468	483	991	177	22,87	8
GEORGE TOWN (U)	4,086	2,901	2,336	4,837	751	18,30	8
GORMANSTON (R)	N/A	220	145	385	N/A	N/A	9
GOHKIE PARK (R)	1,357	818	668	1,486	129	9,51	6
GRASSY (R)	541	470	297	767	226	41,77	6
GRAVELLY BEACH (R)	N/A	231	233	464	N/A	N/A	7
HADSPEN (R)	N/A	204	195	399	N/A	N/A	7
HAMILTON (R)	N/A	108	104	212	N/A	N/A	8
HEYBRIDGE (R)	N/A	202	185	387	N/A	N/A	6
HOBART (U)	119,469	63,967	65,841	129,808	10,339	8,65	6,10
HUONVILLE (R)	965	469	494	963	2-	0,21-	8
KEMPTON (R)	N/A	118	134	292	N/A	N/A	8
KETTERING (R)	N/A	118	114	232	N/A	N/A	3
KINGSTON (U)	3,263	1,831	1,842	3,673	410	12,57	6
LANANA-BLACKHALL (R)	N/A	226	238	464	N/A	N/A	7
LATHOBE (U)	2,241	1,161	1,290	2,491	210	9,37	6
LAUDERDALE (U)	916	662	659	1,321	405	44,21	6
LAUNGESTON (U)	60,456	30,032	32,149	62,181	1,725	2,85	6,7,10
LILYDALE (R)	N/A	198	149	307	N/A	N/A	7
LONUPORD (U)	1,688	829	883	1,712	24	1,42	7
LOW HEAD (R)	N/A	133	130	263	N/A	N/A	7
LUINA (R)	N/A	274	178	492	N/A	N/A	9
MARUATE (R)	N/A	187	166	393	N/A	N/A	6
MAYBENA (R)	652	282	245	527	125-	19,17-	9
MOLE CREEK (R)	N/A	144	143	287	N/A	N/A	6
NEW NORFOLK (U)	5,770	3,449	3,390	6,839	1,069	18,53	6,9,10
OATLANDS (R)	636	267	281	548	86-	13,84-	8
ORFORD (R)	N/A	168	143	311	N/A	N/A	8
PENGUIN (U)	2,149	1,170	1,117	2,287	138	6,42	6
PERTH (U)	1,002	569	539	1,108	106	10,58	7
POATINA (R)	N/A	107	106	213	N/A	N/A	7
PORT SORELL (R)	N/A	271	291	562	N/A	N/A	6
QUEENSTON (U)	4,295	2,672	2,312	4,984	689	16,04	9
RAILTON (R)	979	470	463	933	46-	4,70-	6
RANBLAUGH (R)	N/A	178	175	353	N/A	N/A	8
RICHMOND (R)	480	258	233	491	11	2,29	8
RIDGLEY (R)	N/A	231	240	471	N/A	N/A	6
RINGAROOHA (R)	N/A	134	136	270	N/A	N/A	7
ROSEBERRY (U)	1,774	1,497	884	2,381	607	34,22	9
ROSS (R)	N/A	143	145	288	N/A	N/A	8
ROSSARDEN (R)	687	352	269	621	66-	9,61-	7
SAVAGE RIVER (U)	N/A	643	525	1,168	N/A	N/A	9
SCOTTSDALE (U)	1,698	905	895	1,800	102	6,01	7
SEVEN HILL BEACH (R)	N/A	174	171	345	N/A	N/A	6
SHEPPFIELD (R)	672	397	398	795	123	18,38	6
SHINTON (U)	2,698	1,664	1,539	3,203	695	18,72	6
SNOW (R)	527	279	251	530	3	0,57	6
SORELL-MIDWAY POINT (U)	1,652	1,003	1,007	2,010	398	21,67	6
ST MARYS (R)	579	362	383	745	166	28,67	7
STANLEY (R)	691	379	335	714	23	3,33	6
ST.MELENS (R)	714	395	429	824	110	15,41	7
STONEYS CREEK (R)	N/A	122	99	221	N/A	N/A	7
STRAHAN (R)	442	226	198	424	18-	4,07-	9
STRATHGORDON (R)	N/A	843	402	1,245	N/A	N/A	8
SULPHUR CREEK (R)	N/A	199	222	421	N/A	N/A	6
SHANSEA (R)	N/A	182	188	370	N/A	N/A	8
TARMALEAH (R)	650	301	222	523	127-	19,54-	8
TRIABUNNA (R)	N/A	315	276	591	N/A	N/A	8
TURNERS BEACH (R)	N/A	235	222	497	N/A	N/A	7
ULVERSTONE (U)	6,842	3,892	4,113	8,005	1,163	17,00	7
WARATAH (R)	N/A	114	102	216	N/A	N/A	9
HAYATINAH (R)	1,140	123	88	211	929-	81,49-	8
WESTBURY (R)	997	462	503	965	32-	3,21-	7
WESTERWAY (R)	N/A	127	128	255	N/A	N/A	8,9,10
WOODBRIIDGE (R)	N/A	186	141	327	N/A	N/A	8
WYNARD (U)	3,355	1,969	2,044	4,013	658	19,61	7
ZEHAN (U)	1,017	836	640	1,476	459	45,13	9

TABLE 3 - POPULATION IN LOCAL GOVERNMENT AREAS - TASMANIA

LOCAL GOVERNMENT AREAS	POPULATION 1966 PERSONS	POPULATION - 1971			INTERCENSAL VARIATION	
		MALES	FEMALES	PERSONS	NUMERICAL	PERCENTAGE
HOBART STATISTICAL DIVISION						
BRIGHTON (M) (PART)-						
BRIDGEWATER (R)	N.A.	120	107	227	N.A.	N.A.
BRIGHTON (R)	N.A.	246	236	482	N.A.	N.A.
BALANCE (R)	N.A.	304	320	624	N.A.	N.A.
TOTAL MUNICIPALITY PART	1,150	670	663	1,333	183	15.91
CLARENCE (M)-						
HOBART (U)	26,986	16,840	16,743	33,583	6,597	24.45
LAUDERDALE (U)	916	662	659	1,321	405	44.21
SEVEN MILE BEACH (R)	N.A.	174	171	345	N.A.	N.A.
BALANCE (R)	N.A.	882	882	1,764	N.A.	N.A.
TOTAL MUNICIPALITY	30,236	18,558	18,455	37,013	6,777	22.41
GLENORCHY (C)-						
HOBART (U)	37,770	20,920	20,715	41,635	3,865	10.23
BALANCE (R)	1,283	514	471	985	298	23.23
TOTAL CITY	39,053	21,434	21,186	42,620	3,567	9.13
HOBART (C)-						
HOBART (U)	52,139	24,865	26,877	51,742	397	0.76
BALANCE (R)	1,118	346	337	683	435	38.81
TOTAL CITY	53,257	25,211	27,214	52,425	832	1.56
KINGBOROUGH (M) (PART)-						
ELECTRONA (R)	N.A.	131	112	243	N.A.	N.A.
HOBART (U)	2,574	1,342	1,506	2,848	274	10.64
KINGSTON (U)	3,263	1,831	1,842	3,673	410	12.57
MARGATE (R)	N.A.	187	166	353	N.A.	N.A.
SNUG (R)	527	279	251	530	3	0.57
BALANCE (R)	N.A.	1,083	1,010	2,093	N.A.	N.A.
TOTAL MUNICIPALITY PART	9,200	4,853	4,887	9,740	540	5.87
NEW NORFOLK (M) (PART)-						
NEW NORFOLK (U)	5,770	3,449	3,390	6,839	1,069	18.53
BALANCE (R)	534	277	227	504	30	5.62
TOTAL MUNICIPALITY PART	6,304	3,726	3,617	7,343	1,039	16.48
SORELL (M) (PART)-						
SORELL-MIDWAY POINT (U)	1,652	1,003	1,007	2,010	358	21.67
BALANCE (R)	459	274	266	540	81	17.65
TOTAL MUNICIPALITY PART	2,111	1,277	1,273	2,550	439	20.80
TOTAL URBAN	131,070	70,912	72,739	143,651	12,581	9.60
TOTAL RURAL	10,241	4,817	4,556	9,373	868	8.48
TOTAL DIVISION	141,311	75,729	77,295	153,024	11,713	8.29
NORTH CENTRAL STATISTICAL DIVISION						
LAUNCESTON (C)-LAUNCESTON (U)-PART	37,217	16,539	18,462	35,001	2,216	5.95
TOTAL URBAN	37,217	16,539	18,462	35,001	2,216	5.95
TOTAL RURAL	N.A.	0	0	0	N.A.	N.A.
TOTAL DIVISION	37,217	16,539	18,462	35,001	2,216	5.95
NORTH WESTERN STATISTICAL DIVISION						
BURNIE (M)-						
BURNIE-SOMERSET (U)-PART	15,806	8,810	8,512	17,322	1,516	9.59
RIDGLEY (R)	N.A.	231	240	471	N.A.	N.A.
BALANCE (R)	N.A.	1,124	1,026	2,150	N.A.	N.A.
TOTAL MUNICIPALITY	18,611	10,165	9,778	19,943	1,332	7.16
CIRCULAR HEAD (M)-						
SMITHTON (U)	2,698	1,664	1,539	3,203	505	18.72
STANLEY (R)	691	379	335	714	23	3.33
BALANCE (R)	4,495	2,108	1,933	4,041	454	10.10
TOTAL MUNICIPALITY	7,884	4,151	3,807	7,958	74	0.94
DELORAIN (M)-						
DELORAIN (U)	1,793	873	943	1,816	23	1.28
MOLE CREEK (R)	N.A.	144	143	287	N.A.	N.A.
BALANCE (R)	N.A.	1,445	1,257	2,702	N.A.	N.A.
TOTAL MUNICIPALITY	5,205	2,462	2,343	4,805	400	7.68
DEVONPORT (M)-						
DEVONPORT (U)	14,875	8,978	9,172	18,150	3,275	22.02
FORTH (R)-PART	N.A.	52	58	110	N.A.	N.A.
BALANCE (R)	N.A.	789	712	1,501	N.A.	N.A.
TOTAL MUNICIPALITY	16,758	9,819	9,942	19,761	3,003	17.92
KENTISH (M)-						
GOWHIE PARK (R)	1,357	818	668	1,486	129	9.51
RAILTON (R)	979	470	463	933	46	4.70
SHEFFIELD (R)	672	397	398	795	123	18.30
BALANCE (R)	2,606	1,100	996	2,096	510	19.57
TOTAL MUNICIPALITY	5,614	2,785	2,525	5,310	304	5.42
KING ISLAND (M)-						
CURRIE (R)	560	490	423	913	353	63.04
GRASSY (R)	541	470	297	767	226	41.77
BALANCE (R)	1,361	602	519	1,121	240	17.63
TOTAL MUNICIPALITY	2,462	1,562	1,239	2,801	339	13.77
LATROBE (M)-						
LATROBE (U)	2,241	1,161	1,290	2,451	210	9.37
PORT SORELL (R)	N.A.	271	291	562	N.A.	N.A.
BALANCE (R)	N.A.	1,072	1,011	2,083	N.A.	N.A.
TOTAL MUNICIPALITY	4,807	2,504	2,592	5,096	289	6.01
PENGUIN (M)-						
MEYBRIDGE (R)	N.A.	202	185	387	N.A.	N.A.
PENGUIN (U)	2,149	1,170	1,117	2,287	338	15.42
SULPHUR CREEK (R)	N.A.	199	222	421	N.A.	N.A.

TABLE 3 - POPULATION IN LOCAL GOVERNMENT AREAS - TASMANIA

LOCAL GOVERNMENT AREAS	POPN.- 1966 PERSONS	POPULATION - 1971			INTERCENSAL VARIATION	
		MALES	FEMALES	PERSONS	NUMERICAL	PERCENTAGE
NORTH WESTERN STATISTICAL DIVISION (CONT.)						
BALANCE (R)	N.A.	892	790	1,682	N.A.	N.A.
TOTAL MUNICIPALITY	4,677	2,463	2,314	4,777	100	2,14
ULVERSTONE (M)- FORTH (R)-PART	N.A.	119	112	231	N.A.	N.A.
TURNERS BEACH (R)	N.A.	235	222	457	N.A.	N.A.
ULVERSTONE (U)	6,842	3,892	4,113	8,005	1,163	17,00
BALANCE (R)	N.A.	1,239	1,115	2,354	N.A.	N.A.
TOTAL MUNICIPALITY	10,150	5,485	5,562	11,047	897	8,84
WYNYARD (M)- WYNYARD (U)-PART	2,236	1,395	1,371	2,766	530	23,70
WYNYARD (U)	3,355	1,949	2,044	4,013	658	19,61
BALANCE (R)	3,973	2,029	1,789	3,818	155-	3,90-
TOTAL MUNICIPALITY	9,564	5,393	5,204	10,597	1,033	10,80
TOTAL URBAN	51,995	29,912	30,101	60,013	8,018	15,42
TOTAL RURAL	33,737	16,877	15,205	32,082	1,655-	4,91-
TOTAL DIVISION	85,732	46,789	45,306	92,095	6,363	7,42
NORTH EASTERN STATISTICAL DIVISION						
BEACONSFIELD (M)- BEACONSFIELD (R)	1,028	492	458	950	78-	7,59-
BEAUTY POINT (U)	873	432	437	869	4-	0,46-
EXETER (R)	N.A.	161	163	324	N.A.	N.A.
GRAVELLY BEACH (R)	N.A.	231	233	464	N.A.	N.A.
LANENA-BLACKHALL (R)	N.A.	226	238	464	N.A.	N.A.
LAUNCESTON (U)-PART	3,903	2,341	2,401	4,742	839	21,50
BALANCE (R)	N.A.	1,563	1,544	3,107	N.A.	N.A.
TOTAL MUNICIPALITY	9,983	5,446	5,474	10,920	937	9,39
FINGAL (M)- AVOCA (R)	N.A.	129	121	250	N.A.	N.A.
FINGAL (R)	478	234	212	446	32-	6,69-
ROSSARDEN (R)	687	352	269	621	66-	9,61-
ST MARYS (R)	579	362	383	745	166	28,67
STOREYS CREEK (R)	N.A.	122	99	221	N.A.	N.A.
BALANCE (R)	N.A.	607	548	1,155	N.A.	N.A.
TOTAL MUNICIPALITY	3,791	1,806	1,632	3,438	353-	9,31-
FLINDERS (M)-RURAL	1,234	534	433	967	267-	21,64-
GEORGE TOWN (M)- GEORGE TOWN (U)	4,086	2,501	2,336	4,837	751	18,38
LOW HEAD (R)	N.A.	133	130	263	N.A.	N.A.
BALANCE (R)	N.A.	509	418	927	N.A.	N.A.
TOTAL MUNICIPALITY	5,101	3,143	2,884	6,027	926	18,15
LILYDALE (M)- LAUNCESTON (U)-PART	5,587	3,001	3,071	6,072	485	8,68
LILYDALE (R)	N.A.	158	149	307	N.A.	N.A.
BALANCE (R)	N.A.	1,013	909	1,922	N.A.	N.A.
TOTAL MUNICIPALITY	7,841	4,172	4,129	8,301	460	9,87
PORTLAND (M)- ST, HELENS (R)	714	395	429	824	110	15,41
BALANCE (R)	677	352	319	671	6-	0,89-
TOTAL MUNICIPALITY	1,391	747	748	1,495	104	7,48
RINGAROOMA (M)- BRANXHOLM (R)	N.A.	129	133	262	N.A.	N.A.
DERBY (R)	N.A.	117	126	243	N.A.	N.A.
RINGAROOMA (R)	N.A.	134	136	270	N.A.	N.A.
BALANCE (R)	N.A.	891	795	1,686	N.A.	N.A.
TOTAL MUNICIPALITY	2,866	1,271	1,190	2,461	405-	14,13-
SCOTTSDALE (M)- BRIDPORT (R)	477	293	294	587	110	23,06
SCOTTSDALE (U)	1,698	905	895	1,800	102	6,01
BALANCE (R)	1,453	628	583	1,211	242-	16,66-
TOTAL MUNICIPALITY	3,628	1,826	1,772	3,598	30-	0,83-
TOTAL URBAN	17,175	9,180	9,140	18,320	1,145	6,67
TOTAL RURAL	18,660	9,765	9,122	18,887	227	0,12
TOTAL DIVISION	35,835	18,945	18,262	37,207	1,372	3,83
NORTH MIDLAND STATISTICAL DIVISION						
EVANDALE (M)- EVANDALE (R)	478	251	221	472	6-	1,26-
LAUNCESTON (U)-PART	27	30	29	59	32	118,52
BALANCE (R)	1,049	471	460	931	118-	11,25-
TOTAL MUNICIPALITY	1,554	752	710	1,462	92-	5,92-
LONGFORD (M)- CRESSY (R)	557	323	306	629	72	12,93
LONGFORD (U)	1,688	829	883	1,712	24	1,42
PERTH (U)	1,002	569	539	1,108	106	10,58
POATINA (R)	N.A.	107	106	213	N.A.	N.A.
BALANCE (R)	N.A.	746	724	1,470	N.A.	N.A.
TOTAL MUNICIPALITY	5,354	2,574	2,558	5,132	222-	4,15-
ST, LEONARDS (M)- LAUNCESTON (U)-PART	12,783	7,628	7,659	15,287	2,504	19,59
BALANCE (R)	877	487	422	909	32	3,65
TOTAL MUNICIPALITY	13,660	8,115	8,081	16,196	2,536	18,57
WESTBURY (M)- BRACKNELL (R)	N.A.	129	143	272	N.A.	N.A.
HADSPEN (R)	N.A.	204	195	399	N.A.	N.A.
LAUNCESTON (U)-PART	939	493	527	1,020	81	8,63
WESTBURY (R)	997	462	503	965	32-	3,21-
BALANCE (R)	N.A.	1,109	1,095	2,204	N.A.	N.A.

TABLE 3 - POPULATION IN LOCAL GOVERNMENT AREAS - TASMANIA

LOCAL GOVERNMENT AREAS	POPULATION 1966 PERSONS	POPULATION = 1971			INTERCENSAL VARIATION	
		MALES	FEMALES	PERSONS	NUMERICAL	PERCENTAGE
NORTH MIDLAND STATISTICAL DIVISION (CONT.)						
TOTAL MUNICIPALITY	4,964	2,397	2,463	4,860	104=	2.10=
TOTAL URBAN	16,439	9,549	9,637	19,186	2,747	16.71
TOTAL RURAL	9,093	4,289	4,175	8,464	629=	6.92=
TOTAL DIVISION	25,532	13,838	13,812	27,650	2,118	8.29
MIDLAND STATISTICAL DIVISION						
BOTHWELL (M)- BOTHWELL (R) BALANCE (R) TOTAL MUNICIPALITY	293 715 1,008	202 224 426	187 202 389	389 426 815	96 289=	32.76 40.42=
CAMPBELL TOWN (M)- CAMPBELL TOWN (R) BALANCE (R) TOTAL MUNICIPALITY	951 802 1,753	441 394 835	474 331 805	915 725 1,640	36=	3.79=
HAMILTON (M)- HAMILTON (R) STRATHGORDON (R) TARRALEAH (R) WAYATINAH (R) WESTERWAY (R)-PART BALANCE (R) TOTAL MUNICIPALITY	N.A. N.A. 650 1,140 N.A. N.A. 4,329	108 843 301 123 51 916 2,342	104 402 222 88 57 818 1,691	212 1,245 523 211 108 1,734 4,033	N.A. N.A. 127=	N.A. N.A. 19.84=
OATLANDS (M)- OATLANDS (R) BALANCE (R) TOTAL MUNICIPALITY	636 1,865 2,501	267 856 1,123	281 727 1,008	548 1,583 2,131	88=	13.84=
ROSS (M)- ROSS (R) BALANCE (R) TOTAL MUNICIPALITY	N.A. N.A. 617	143 139 282	145 123 268	288 262 550	N.A. N.A. 67=	N.A. N.A. 10.86=
TOTAL URBAN	N.A.	0	0	0	N.A.	N.A.
TOTAL RURAL	10,208	5,008	4,161	9,169	1,039=	10.18=
TOTAL DIVISION	10,208	5,008	4,161	9,169	1,039=	10.18=
SOUTH EASTERN STATISTICAL DIVISION						
BRIGHTON (M) (PART)-RURAL	1,057	542	454	996	61=	5.77=
GLAMORGAN (M)- BICHENO (R) SWANSEA (R) BALANCE (R) TOTAL MUNICIPALITY	N.A. N.A. N.A. 1,125	151 182 241 574	133 188 223 544	284 370 464 1,118	N.A. N.A. N.A. 7=	N.A. N.A. N.A. 0.62=
GREEN PONDS (M)- KEMPTON (R) BALANCE (R) TOTAL MUNICIPALITY	N.A. N.A. 880	118 340 458	134 279 413	252 619 871	N.A. N.A. 9=	N.A. N.A. 1.02=
RICHMOND (M)- RICHMOND (R) BALANCE (R) TOTAL MUNICIPALITY	480 1,178 1,658	258 579 837	233 498 731	491 1,077 1,568	11 101=	2.29 8.57=
SORELL (M) (PART)- DUNALLEY (R) BALANCE (R) TOTAL MUNICIPALITY PART	N.A. N.A. 1,198	136 413 549	134 376 510	270 789 1,059	N.A. N.A. 139=	N.A. N.A. 13.60=
SPRING BAY (M)- ORFORD (R) TRIABUNNA (R) BALANCE (R) TOTAL MUNICIPALITY	N.A. N.A. N.A. 1,205	168 315 269 752	143 276 241 660	311 591 510 1,412	N.A. N.A. N.A. 207	N.A. N.A. N.A. 17.18
TOTAL URBAN	N.A.	0	0	0	N.A.	N.A.
TOTAL RURAL	7,123	3,712	3,312	7,024	99=	1.39=
TOTAL DIVISION	7,123	3,712	3,312	7,024	99=	1.39=
SOUTHERN STATISTICAL DIVISION						
BRUNY (M)- RURAL	400	163	148	311	89=	22.25=
ESPERANCE (M)- DOVER (R) GEEVESTON (R) BALANCE (R) TOTAL MUNICIPALITY	N.A. 774 N.A. 3,740	244 468 1,213 1,925	218 483 900 1,601	462 951 2,113 3,526	N.A. 177 N.A. 214=	N.A. 22.87 N.A. 5.72=
HUON (M)- FRANKLIN (R) HUONVILLE (R) RANELAGH (R) BALANCE (R) TOTAL MUNICIPALITY	N.A. 965 N.A. N.A. 5,264	280 469 178 1,450 2,377	301 494 175 1,405 2,375	581 963 353 2,855 4,752	N.A. 2=	N.A. 0.21=
KINGBOROUGH (M) (PART)- KETTERING (R) WOODBRIDGE (R) BALANCE (R) TOTAL MUNICIPALITY PART	N.A. N.A. N.A. 1,122	118 186 246 550	114 141 222 477	232 327 468 1,027	N.A. N.A. N.A. 95=	N.A. N.A. N.A. 8.47=

TABLE 3 - POPULATION IN LOCAL GOVERNMENT AREAS - TASMANIA

LOCAL GOVERNMENT AREAS	POPULATION - 1966		POPULATION - 1971			INTERCENSAL VARIATION	
	PERSONS	MALES	FEMALES	PERSONS	NUMERICAL	PERCENTAGE	
SOUTHERN STATISTICAL DIVISION (CONT.)							
NEW NORFOLK (M) (PART)-							
MAYDEN (R)	652	282	245	527	125	19.17	
WESTERHAY (R)-PART	N.A.	76	71	147	N.A.	N.A.	
BALANCE (R)	3,185	1,373	1,212	2,585	600	18.84	
TOTAL MUNICIPALITY PART	4,011	1,731	1,528	3,259	752	18.75	
PORT CYGNET (M)-							
CYGNET (R)	790	340	364	704	86	10.89	
BALANCE (R)	1,760	715	647	1,362	398	22.61	
TOTAL MUNICIPALITY	2,550	1,055	1,011	2,066	484	18.98	
TASMAN (M)-RURAL	1,126	535	509	1,044	82	7.28	
TOTAL URBAN	N.A.	0	0	0	N.A.	N.A.	
TOTAL RURAL	18,213	8,336	7,649	15,985	2,228	12.23	
TOTAL DIVISION	18,213	8,336	7,649	15,985	2,228	12.23	
WESTERN STATISTICAL DIVISION							
GORMANSTON (M)-							
GORMANSTON (R)	N.A.	220	165	385	N.A.	N.A.	
BALANCE (R)	N.A.	53	27	80	N.A.	N.A.	
TOTAL MUNICIPALITY	540	273	192	465	75	13.89	
QUEENSTOWN (M)-							
QUEENSTOWN (U)	4,295	2,672	2,312	4,984	689	16.04	
BALANCE (R)	98	64	33	97	1	1.02	
TOTAL MUNICIPALITY	4,393	2,736	2,345	5,081	688	15.86	
STRAHAN (M)-							
STRAHAN (R)	442	226	198	424	18	4.07	
BALANCE (R)	28	11	7	18	10	35.71	
TOTAL MUNICIPALITY	470	237	205	442	28	5.96	
WARATAH (M)-							
LUINA (R)	N.A.	274	178	452	N.A.	N.A.	
SAVAGE RIVER (U)	N.A.	643	525	1,168	N.A.	N.A.	
WARATAH (R)	N.A.	114	102	216	N.A.	N.A.	
BALANCE (R)	N.A.	65	34	99	N.A.	N.A.	
TOTAL MUNICIPALITY	698	1,096	839	1,935	1,237	177.22	
ZEEHAN (M)-							
ROSEBERY (U)	1,774	1,497	884	2,381	607	34.22	
ZEEHAN (U)	1,017	836	640	1,476	459	45.33	
BALANCE (R)	698	301	215	516	182	26.07	
TOTAL MUNICIPALITY	3,489	2,634	1,739	4,373	884	25.34	
TOTAL URBAN	7,086	5,648	4,361	10,009	2,923	41.25	
TOTAL RURAL	2,504	1,328	959	2,287	217	8.67	
TOTAL DIVISION	9,590	6,976	5,320	12,296	2,706	28.22	
MIGRATORY							
MIGRATORY	675	412	11	423	252	37.33	
STATE SUMMARY							
STATISTICAL DIVISIONS							
HOBART	141,311	75,729	77,295	153,024	11,713	8.29	
NORTH CENTRAL	37,217	16,539	18,462	35,001	2,216	5.95	
NORTH WESTERN	85,732	46,789	45,306	92,095	6,363	7.42	
NORTH EASTERN	35,835	18,945	18,262	37,207	1,372	3.83	
NORTH MIDLAND	25,532	13,838	13,812	27,650	2,118	8.29	
MIDLAND	10,208	5,008	4,161	9,169	1,039	10.18	
SOUTH EASTERN	7,123	3,712	3,312	7,024	99	1.39	
SOUTHERN	18,213	8,336	7,649	15,985	2,228	12.23	
WESTERN	9,590	6,976	5,320	12,296	2,706	28.22	
MIGRATORY	675	412	11	423	252	37.33	
TOTAL TASMANIA	371,436	196,284	193,590	389,874	18,438	4.96	
SECTIONS OF STATE							
MAJOR URBAN	119,469	63,967	65,841	129,808	10,339	8.65	
OTHER URBAN	141,513	77,773	78,599	156,372	14,859	10.50	
TOTAL URBAN	260,982	141,740	144,440	286,180	25,198	9.66	
RURAL	109,779	54,132	49,139	103,271	6,508	5.93	
MIGRATORY	675	412	11	423	252	37.33	
TOTAL TASMANIA	371,436	196,284	193,590	389,874	18,438	4.96	
AREA TOTALS NOT ELSEWHERE LISTED							
MUNICIPALITIES-							
BRIGHTON (M)	2,207	1,212	1,117	2,329	122	5.53	
KINGBOROUGH (M)	10,322	5,403	5,364	10,767	445	4.31	
NEW NORFOLK (M)	10,315	5,457	5,145	10,602	287	2.78	
SORELL (M)	3,309	1,826	1,783	3,609	300	9.07	

TABLE 3 - POPULATION IN LOCAL GOVERNMENT AREAS - TASMANIA

LOCAL GOVERNMENT AREAS	POPULATION 1966 PERSONS	POPULATION - 1971			INTERCENSAL VARIATION	
		MALES	FEMALES	PERSONS	NUMERICAL	PERCENTAGE
URBAN CENTRES AND LOCALITIES						
BURNIE-SOMERSET (U)	18,042	10,205	9,883	20,088	2,046	11.34
FORTH (R)	N.A.	171	170	341	N.A.	N.A.
HOBART (U)	119,469	63,967	65,841	129,808	10,339	8.65
LAUNCESTON (U)	60,456	30,032	32,149	62,181	1,725	2.85
WESTERWAY (R)	N.A.	127	128	255	N.A.	N.A.

TABLE 4. - URBAN CENTRES AND BOUNDED LOCALITIES WITH 200 OR MORE PERSONS, IN SIZE ORDER

TASMANIA		
URBAN CENTRE OR BOUNDED LOCALITY	POPULATION, 1966 CENSUS	POPULATION, 1971 CENSUS
HOBART (U)	119,469	129,808
LAUNCESTON (U)	60,456	62,181
BURNIE-SOMERSET (U)	18,042	20,088
DEVONPORT (U)	14,875	18,150
ULVERSTONE (U)	6,842	8,005
NEW NORFOLK (U)	5,770	6,839
QUEENSTOWN (U)	4,295	4,984
GEORGE TOWN (U)	4,086	4,837
WYNYARD (U)	3,355	4,013
KINGSTON (U)	3,263	3,673
SMITHTON (U)	2,698	3,203
LATROBE (U)	2,241	2,451
ROSEBERY (U)	1,774	2,381
PENGUIN (U)	2,149	2,287
SORELL-MIDWAY POINT (U)	1,652	2,010
DELORAINÉ (U)	1,793	1,816
SCOTTSDALE (U)	1,698	1,800
LONGFORD (U)	1,688	1,712
GOWRIE PARK (R)	1,357	1,486
ZEEHAN (U)	1,017	1,476
LAUDERDALE (U)	916	1,321
STRATHGORDON (R)	N/A	1,245
SAVAGE RIVER (U)	N/A	1,168
PERTH (U)	1,002	1,108
WESTBURY (R)	997	965
HUONVILLE (R)	965	963
GEEVESTON (R)	774	951
BEACONSFIELD (R)	1,028	950
RAILTON (R)	979	933
CAMPBELL TOWN (R)	951	915
CURRIE (R)	560	913
BEAUTY POINT (U)	873	869
ST. HELENS (R)	714	824
SHEFFIELD (R)	672	795
GRASSY (R)	541	767
ST MARYS (R)	579	745
STANLEY (R)	691	714
CYGNET (R)	790	704
CRESSY (R)	557	629
ROSSARDEN (R)	687	621
TRIABUNNA (R)	N/A	591
BRIDPORT (R)	477	587
FRANKLIN (R)	N/A	581
PORT SORELL (R)	N/A	562
OATLANDS (R)	636	548
SNUG (R)	527	530
MAYDENÁ (R)	652	527
TARRALEAH (R)	650	523
RICHMOND (R)	480	491
BRIGHTON (R)	N/A	482
EVANDALE (R)	478	472
RIDGLEY (R)	N/A	471
GRAVELLY BEACH (R)	N/A	464
LANENA-BLACKHALL (R)	N/A	464
DOVER (R)	N/A	462
TURNERS BEACH (R)	N/A	457
LUINA (R)	N/A	452
FINGAL (R)	478	446
STRAHAN (R)	442	424
SULPHUR CREEK (R)	N/A	421
HADSPEN (R)	N/A	399
BOTHWELL (R)	293	389
HEYBRIDGE (R)	N/A	387
GORMANSTON (R)	N/A	385
SWANSEA (R)	N/A	370
RANELAGH (R)	N/A	353
MARGATE (R)	N/A	353
SEVEN MILE BEACH (R)	N/A	345
FORTH (R)	N/A	341
WOODBRIDGE (R)	N/A	327
EXETER (R)	N/A	324
ORFORD (R)	N/A	311
LILYDALE (R)	N/A	307
ROSS (R)	N/A	288
HOLE CREEK (R)	N/A	287
BICHENO (R)	N/A	284
BRACKNELL (R)	N/A	272
DUNALLEY (R)	N/A	270
RINGAROOHA (R)	N/A	270
LOW HEAD (R)	N/A	263
BRANXHOLM (R)	N/A	262
WESTERWAY (R)	N/A	255
KEMPTON (R)	N/A	252
AVOCA (R)	N/A	250
DERBY (R)	N/A	243
ELECTRONA (R)	N/A	243
KETTERING (R)	N/A	232
BRIDGEWATER (R)	N/A	227
STOREYS CREEK (R)	N/A	221
WARATAH (R)	N/A	216
POATINA (R)	N/A	213
HAMILTON (R)	N/A	212
WAYATINAH (R)	1,140	211

TABLE 5. - URBAN CENTRES : NUMBER AND POPULATION IN SIZE GROUPS, TASMANIA, 1966 AND 1971

Population Size of Urban Centres	Census, 30 June 1966			Census, 30 June 1971			Intercensal Change	
	No. of Urban Centres	Population	Proportion of State Population %	No. of Urban Centres	Population	Proportion of State Population %	Numerical	Percentage %
500,000 and over
100,000 - 499,999	1	119,469	32.16	1	129,808	33.29	10,339	8.65
75,000 - 99,999
50,000 - 74,999	1	60,456	16.28	1	62,181	15.95	1,725	2.85
25,000 - 49,999
20,000 - 24,999	1	20,088	5.15	20,088	..
15,000 - 19,999	1	18,042	4.86	1	18,150	4.66	108	0.60
10,000 - 14,999	1	14,875	4.00	14,875-	..
5,000 - 9,999	2	12,612	3.40	2	14,844	3.81	2,232	17.70
2,500 - 4,999	5	17,697	4.76	5	20,710	5.31	3,013	17.03
2,000 - 2,499	2	4,390	1.18	4	9,129	2.34	4,739	107.95
1,000 - 1,999	8	11,652	3.14	7	10,401	2.67	1,251-	10.74-
Less than 1,000 (a)	2	1,789	0.48	1	869	0.22	920-	51.43-
<u>TOTAL URBAN POPULATION</u>	23	260,982	70.26	23	286,180	73.40	25,198	9.66
500,000 and over
100,000 " "	1	119,469	32.16	1	129,808	33.29	10,339	8.65
75,000 " "	1	119,469	32.16	1	129,808	33.29	10,339	8.65
50,000 " "	2	179,925	48.44	2	191,989	49.24	12,064	6.71
25,000 " "	2	179,925	48.44	2	191,989	49.24	12,064	6.71
20,000 " "	2	179,925	48.44	3	212,077	54.39	32,152	17.87
15,000 " "	3	197,967	53.30	4	230,227	59.05	32,260	16.30
10,000 " "	4	212,842	57.30	4	230,227	59.05	17,385	8.17
5,000 " "	6	225,454	60.70	6	245,071	62.86	19,617	8.70
2,500 " "	11	243,151	65.46	11	265,781	68.17	22,630	9.31
2,000 " "	13	247,541	66.64	15	274,910	70.51	27,369	11.06
1,000 " "	21	259,193	69.78	22	285,311	73.18	26,118	10.08
<u>TOTAL URBAN POPULATION</u>	23	260,982	70.26	23	286,180	73.40	25,198	9.66

(a) Urban centres classified as such on grounds other than population and density.

APPENDIX AField Count Statements to be Issued

<u>Reference No.</u>	<u>F.C. No.</u>	<u>Title</u>	<u>Date of Issue</u>
2.71	No. 1	Population: States and Territories	25 October 1971
2.72	No. 2	Population: Principal Urban Centres Population: Local Government Areas and Towns -	
2.73	No. 3	New South Wales	
2.74	No. 4	Victoria	
2.75	No. 5	Queensland	
2.76	No. 6	South Australia	
2.77	No. 7	Western Australia	3 February 1972
2.78	No. 8	Tasmania	3 February 1972
2.79	No. 9	Northern Territory and Australian Capital Territory	
2.80	No. 10	Population: Commonwealth Electoral Divisions	

APPENDIX B

The rural locality of Beaconsfield was urban at the 1966 Census but failed to meet urban criteria for the 1971 Census. Conversely, Savage River met the urban criteria for the first time in 1971.

The composition of urban centres which have absorbed rural localities is shown below.

URBAN CENTRE

Burnie-Somerset:	includes Camdale, Cooe and Wivenhoe
Devonport:	includes Don and Quoiba
Launceston:	includes St Leonards

APPENDIX CCRITERIA FOR THE DELIMITATION OF URBAN BOUNDARIES

The criteria used for delimiting urban centres, as determined by the Thirty-First Conference of Statisticians, October 1969, were:

1. At each Census of Population and Housing a boundary shall be defined in accordance with these Resolutions for each population cluster of 1,000 or more population (and, for known holiday resorts of less population, if they contain 250 or more dwellings of which at least 100 are occupied). These clusters shall be named "urban centres" and the population and dwellings enumerated in them shall be classified as urban for statistical purposes.
2. Around each urban centre with a population of at least 100,000, a further boundary shall be defined, after consultation with planners, to contain the anticipated development of the urban centre and associated smaller urban centres for a period of at least twenty years. Such a boundary should delimit an area which is now, or is expected to be, socially and economically oriented towards the urban centre. It shall consist of complete Local Government Areas if possible. This fixed boundary (as distinct from the urban boundary which is moving) will delimit an area which, for general statistical purposes, is free from the practical problems imposed by the moving boundary, but which nevertheless represents the city in a wider sense.
3. In delimiting urban centres with 25,000 or more population:
 - (a) All contiguous Census Collector's Districts which have a population density of 500 or more persons per square mile shall be included. Consequently, State, Statistical Division, Local Government Area and other administrative boundaries shall be disregarded;
 - (b) A Collector's District which is known to contain a high proportion of holiday homes shall be classified as urban if the dwelling density is 125 dwellings per square mile or greater;
 - (c) A Collector's District consisting mainly of land used for factories, airports, small sports areas, cemeteries, hostels, institutions, prisons, military camps or certain research stations shall be classified as urban if contiguous with Collector's Districts which are themselves urban;
 - (d) Any Collector's District which consists mainly of land used for large sporting areas, large parks, explosives handling and munitions areas, or holding yards associated with meatworks and abattoirs shall be classified as urban only if it is bordered on three sides by Collector's Districts which are themselves urban;
 - (e) Any area which is completely surrounded by Collector's Districts which are urban must itself be classified as urban;

- (f) Where an urban centre of 25,000 or more population is separated from another urban centre by a gap in actual development of less than two miles (by the shortest rail or road distance), the gap shall be bridged by classifying a connecting Collector's District or Districts as urban, and therefore treating the urban centres as one; if the gap is two or more miles (and whether or not it is comprised mainly of reserved land or a natural barrier) the urban centres shall remain separate;
- (g) Any area included in an urban centre in 1971 or thereafter under the provisions of this Resolution shall continue to be so included unless the population of the urban centre falls below 25,000, in which case this Resolution will cease to apply;
- (h) Large peripheral Collector's Districts in growth areas shall be fragmented; and so far as the availability of visible boundary features allows, the fragments so created shall be as near square-shaped as possible and of such a size that they will contain a collector's workload when fully developed. For the purposes of delimiting urban centres such fragments shall be regarded as Collector's Districts.

4. In delimiting urban centres with less than 25,000 population:

- (a) The urban centres shall be delimited subjectively (by the inspection of aerial photographs, by field inspection and/or by consideration of any other information that is available);
- (b) All continuous urban growth is to be included (which, in small urban centres, would not necessarily occur if the density criterion were applied), together with any close but non-contiguous development which could be clearly regarded as part of the centre. However, cognisance shall be taken of Resolution 3, where appropriate, particularly in urban centres which are approaching a population of 25,000.

5. In selecting the boundaries for the splitting of Collector's Districts, cognisance shall be taken, where appropriate, of the boundaries of land-use zones.

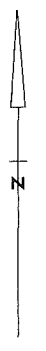
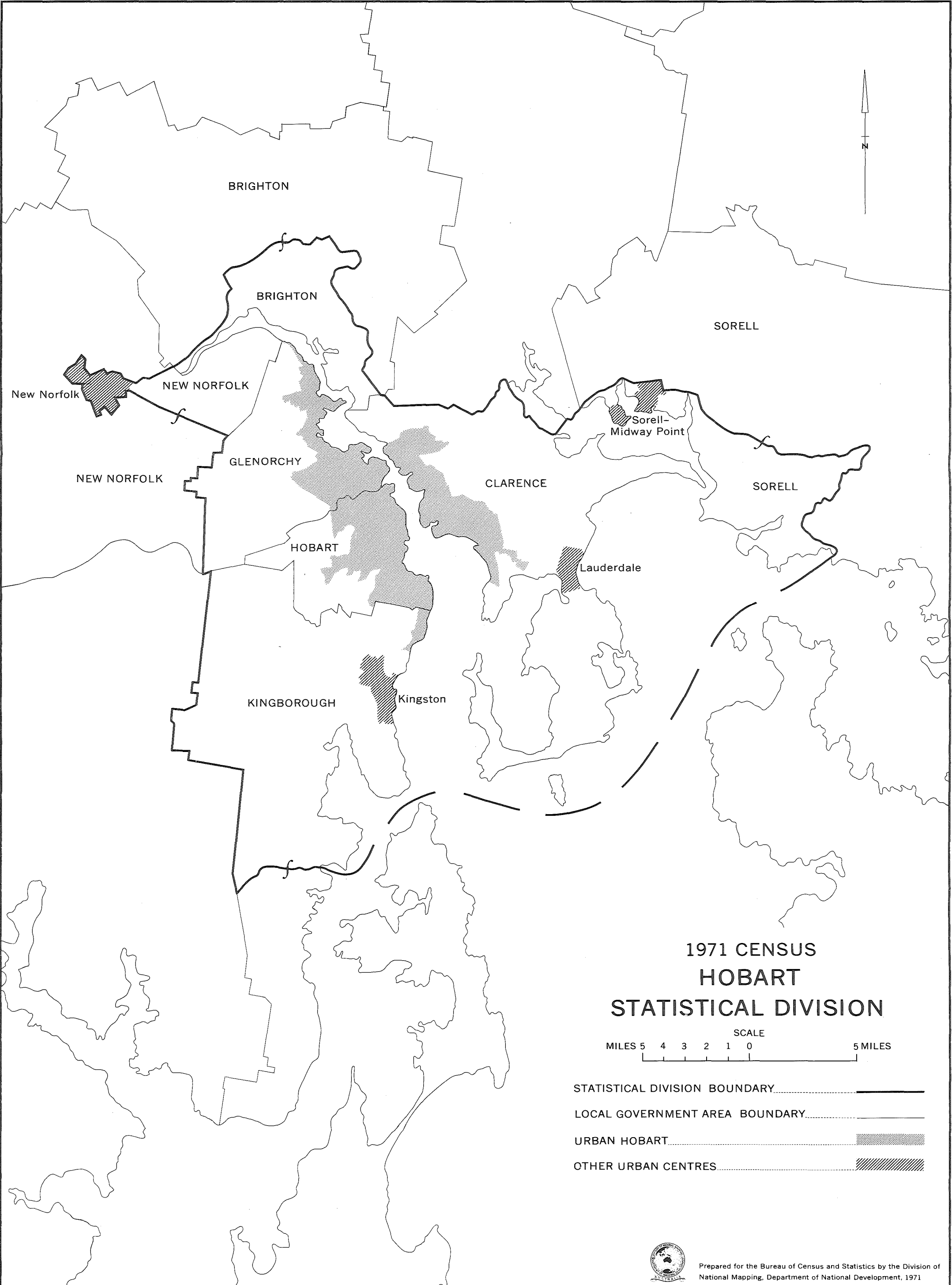
6. (a) For State capital cities, nomenclature for the area delimited by

- (i) the urban, and
- (ii) the outer boundary

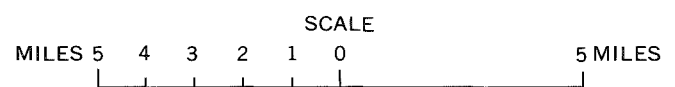
shall be (using Melbourne as the example) -

- (i) Urban Melbourne, and
- (ii) Melbourne Statistical Division;

- (b) In other cases where the dual boundary concept is employed and nomenclature shall be (using Newcastle as the example) -
 - (i) Urban Newcastle, and
 - (ii) Newcastle Statistical District;
- (c) In cases where only a single boundary is delineated, the nomenclature shall be (using Cairns as the example) Urban Cairns;
- (d) Where an urban centre is formed by the coalescence of two or more named localities, the urban centre shall be assigned a name agreed upon after consultation with the Deputy Commonwealth Statistician of the State concerned.



1971 CENSUS HOBART STATISTICAL DIVISION



- STATISTICAL DIVISION BOUNDARY.....
- LOCAL GOVERNMENT AREA BOUNDARY.....
- URBAN HOBART.....
- OTHER URBAN CENTRES.....



Prepared for the Bureau of Census and Statistics by the Division of National Mapping, Department of National Development, 1971
Distributed by the Bureau of Census and Statistics, Canberra