



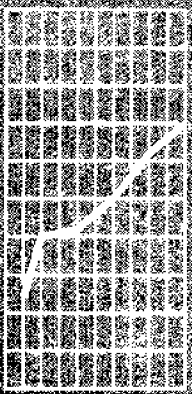
October 1996

EMBARGOED UNTIL 11:30 AM MON 21 OCTOBER 1996

Business Indicators

Australian Capital Territory

Statistics ■



NOTES

FORTHCOMING ISSUES

<i>ISSUE</i>	<i>RELEASE DATE</i>
November 1996	18 November 1996
December 1996	23 December 1996

SYMBOLS AND OTHER USAGES

ACT	Australian Capital Territory
n.a.	not available
n.p.	not available for publication
p	preliminary
—	nil or rounded to zero

INQUIRIES

For further information about statistics in this publication and the availability of related unpublished statistics, contact Kingsley Green on Canberra (06) 207 0286 or any ABS State office.

For information about other ABS statistics and services, please contact Information Services on Canberra (06) 252 6627, or 252 6007 or any ABS State office.

Dalma Jacobs
Regional Director, Australian Capital Territory

SUMMARY OF FINDINGS

UPDATED SERIES

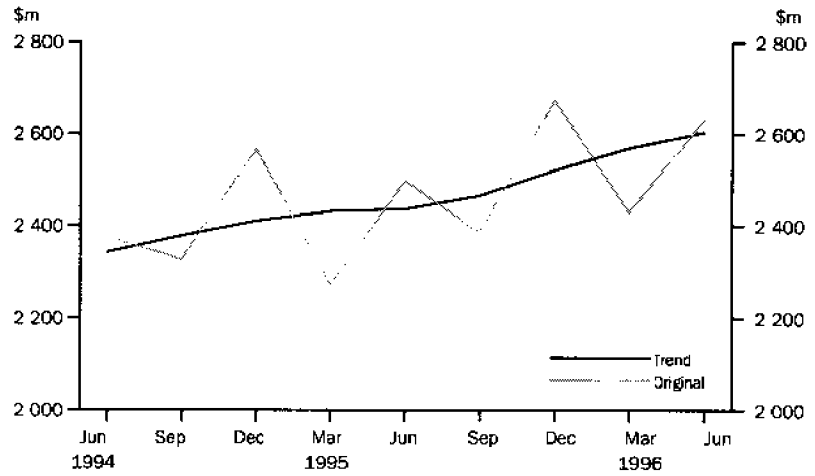
Series updated since the September 1996 issue are: population; State accounts; labour force, job vacancies, industrial disputes; housing finance, building approvals; retail turnover; tourism; and new motor vehicle registrations. A feature article on finance commitments in the ACT is included on page 6.

NOTABLE MOVEMENTS

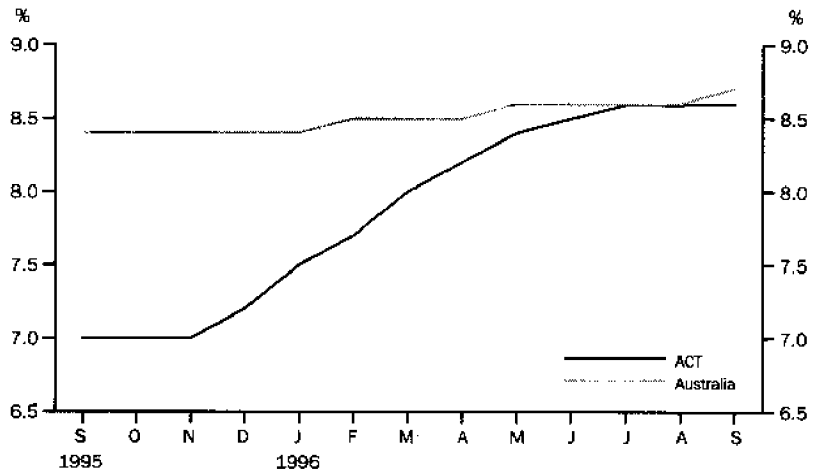
Population	The estimated resident population of the ACT as at 31 March 1996 was 306,400 an increase of 0.5% from the December quarter 1995. The ACT population growth rate during the 12 months to 31 March 1996 was 0.9%, compared to 1.4% nationally.
State accounts	Trend gross State product at average 1989-90 prices for the ACT increased by 0.2% in the June quarter 1996 to \$2,164m an increase of 4.0% over the year. The trend gross State product at current prices increased by 1.4% to \$2,604m in the June quarter 1996 and by 6.9% over the year.
Unemployment	The trend number of persons employed in the ACT has fallen for each of the last eleven months from a peak of 159,700 persons in October 1995 to 154,900 persons in September 1996 (of this 4,800 decline in persons employed, 2,500 were in full-time jobs). Over the same period, the trend unemployment rate increased from 7.0% to 8.6% and the trend participation rate decreased from 72.9% to 72.6%.
Industrial disputes	In June 1996, there were 68 working days lost per 1,000 employees in the ACT compared with 114 working days lost per 1,000 employees nationally. Industrial disputes in the Construction industry accounted for the majority of the increase in the ACT during May and June 1996.
Housing and construction	<p>The trend number of dwelling units financed (includes refinancing) in the ACT during August 1996 increased to 844 dwellings (an increase of 3.6%). Refinancing of existing dwellings comprised 39% of the total number of dwelling units financed (original terms) in August 1996, which was up from 34% in the previous month. The trend estimate for the value of commitments in the ACT in August 1996 was \$83.7m, an increase of 3.6% on the previous month.</p> <p>The 8 month decline in the trend number of dwelling units approved has been arrested in August with a 1.7% increase to 148 dwelling units approved.</p>
Retail turnover	The trend estimate for retail turnover in the ACT for August 1996 was \$196.7m, up on the previous month's figure of \$194.9m. Nationally, trend retail turnover has increased by 5.2% over the last 12 months compared to 6.7% for the ACT.
Tourism — room occupancy rates	Room occupancy rates for hotels, motels and guest houses in the June quarter 1996 was 63.5%, up 3.7 percentage points on the previous month and down 0.5 percentage points over the last 12 months. For 4 and 5 star hotels, motels and guest houses, the room occupancy rate rose to 76.7% in the June quarter 1996 compared with 79.1% in the June quarter 1995.
Motor vehicle registrations	The trend estimate for new motor vehicle registrations for the ACT in August 1996 was 964. The series has declined for each of the months since January 1996 which recorded 1,069 new vehicles registered. Nationally, the trend for total new registrations in August 1996 recorded its third consecutive monthly fall.

SELECTED BUSINESS INDICATORS

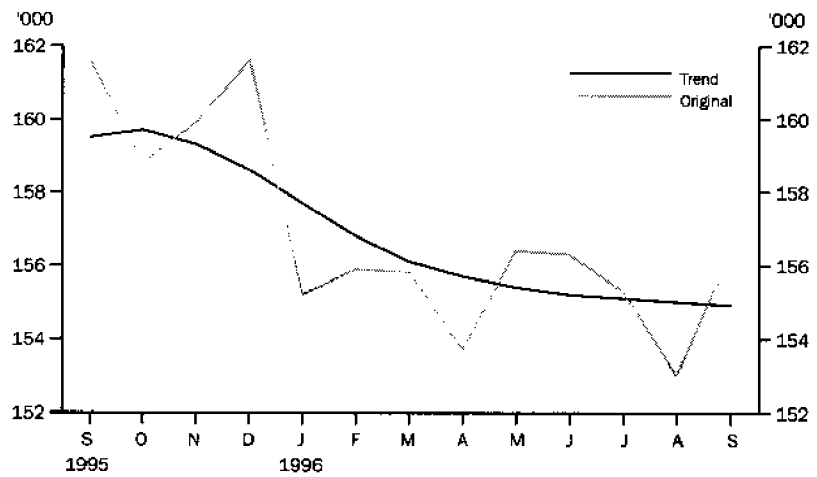
GROSS STATE PRODUCT —
CURRENT PRICES



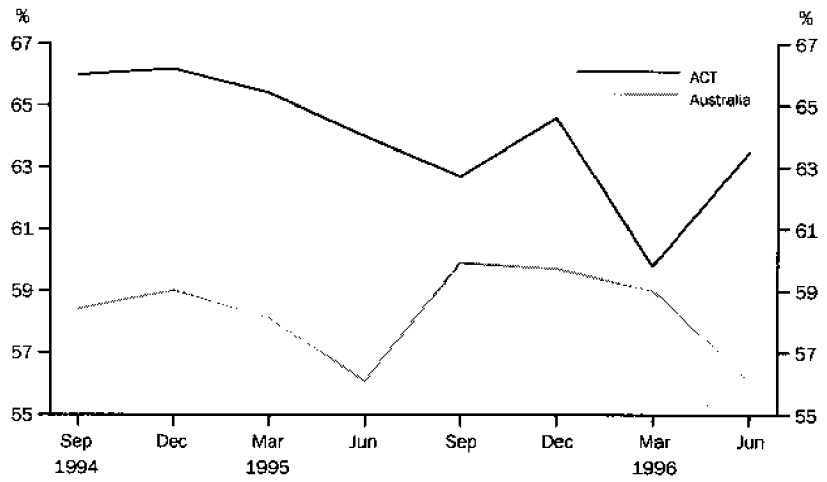
LABOUR FORCE — TREND
UNEMPLOYMENT RATE



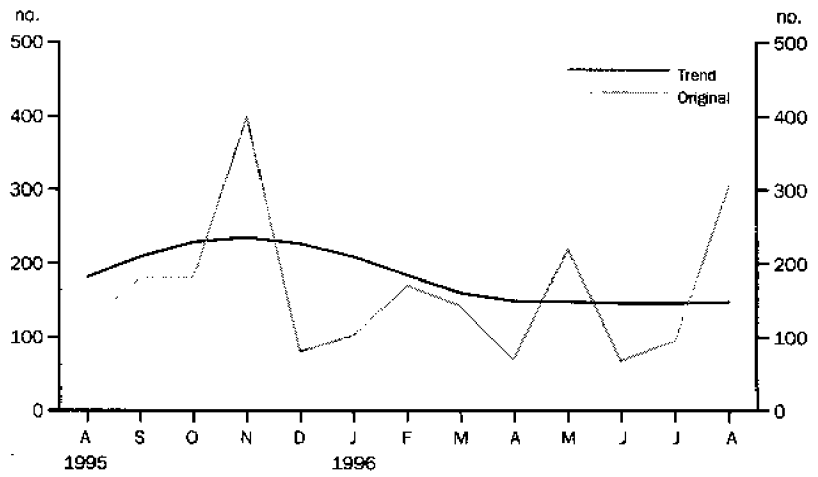
LABOUR FORCE —
EMPLOYMENT



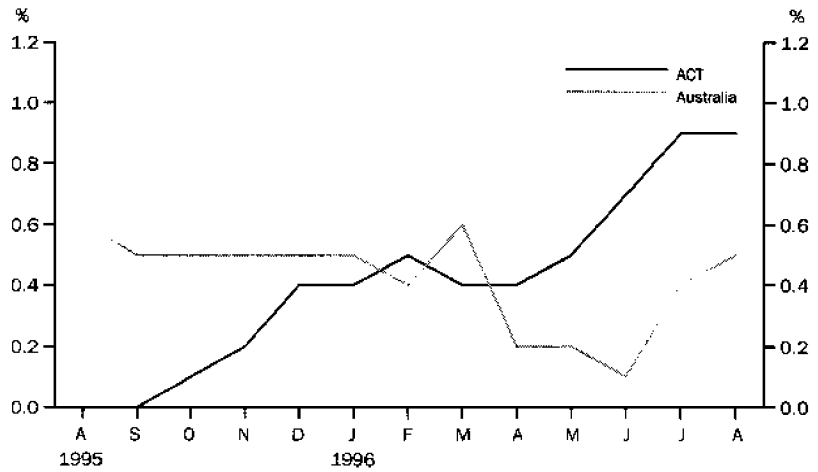
HOTELS, MOTELS AND GUEST HOUSES — ROOM OCCUPANCY RATE



BUILDING APPROVALS — DWELLING UNITS APPROVED



RETAIL TURNOVER — TREND PERCENTAGE CHANGE FROM PREVIOUS MONTH



FEATURE ARTICLE

FINANCE COMMITMENTS IN THE ACT

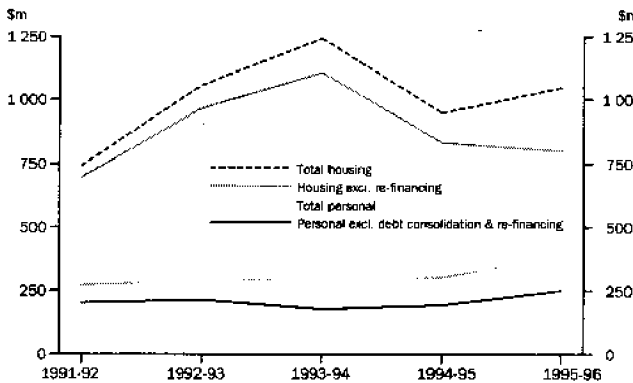
Housing finance for owner occupation was \$1,047.0m in 1995-96. However this includes \$247.8m relating to re-financing of housing loans. The remaining \$799.2m was \$31.6m (or 3.8%) below that for 1994-95. Financing for house construction was \$85.6m in 1995-96 (down 12.2% on 1994-95), for the purchase of newly erected dwellings \$113.4m (down 37.7%) and for the purchase of established dwellings \$600.2m (up 8.9%).

Fixed personal finance commitments were \$386.7m in 1995-96, which included \$135.9m relating to debt consolidation and re-financing. The remaining \$250.8m was \$57.3m (or 29.6%) up on that for 1994-95, which was mainly due to the increase of \$44.0m (or 39.0%) in financing for the purchase of motor vehicles, boats, etc.

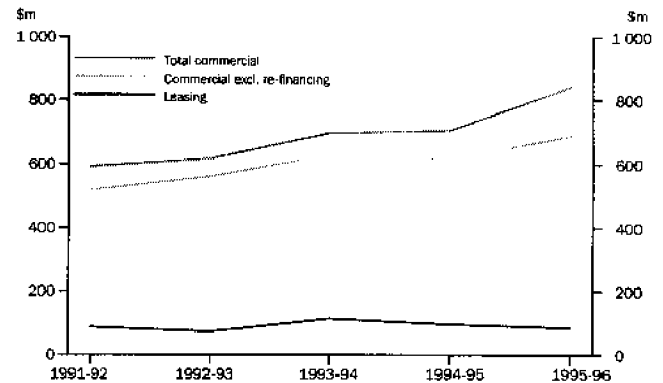
Fixed commercial finance commitments were \$840.8m in 1995-96 which included \$153.5m relating to re-financing. The remaining \$687.3m was \$69.9m (or 11.3%) up on that for 1994-95. Construction finance increased \$26.7m, finance for the purchase of real property increased \$35.5m, finance for the purchase of plant and equipment decreased \$9.2m and other finance (including factoring and wholesale finance) increased \$16.7m.

Lease finance commitments were \$86.1m in 1995-96, down 11.1% (or \$10.7m) on the level for 1994-95. This decline was mainly due to a fall in leasing of agricultural, manufacturing and construction equipment (\$10.7m).

HOUSING AND PERSONAL FINANCE COMMITMENTS



LEASING AND COMMERCIAL FINANCE COMMITMENTS



1**AUSTRALIAN BUSINESS EXPECTATIONS: SALES, DECEMBER
QUARTER 1996/SEPTEMBER QUARTER 1997, EXPECTED
AGGREGATE CHANGE**

<i>Period</i>	<i>Australian Capital Territory</i>	<i>Australia</i>
	<i>%</i>	<i>%</i>
Short-term		
Sept. qtr 1995-Dec. qtr 1995	2.0	2.1
Dec. qtr 1995-Mar. qtr 1996	0.5	-0.2
Mar. qtr 1996-June qtr 1996	1.8	2.3
June qtr 1996-Sept. qtr 1996	0.4	1.6
Sept. qtr 1996-Dec. qtr 1996	-0.3	1.6
Medium-term		
Sept. qtr 1995-Sept. qtr 1996	3.1	3.4
Dec. qtr 1995-Dec. qtr 1996	3.8	4.4
Mar. qtr 1996-Mar. qtr 1997	2.3	4.1
June qtr 1996-June qtr 1997	1.4	3.6
Sept. qtr 1996-Sept. qtr 1997	1.5	3.1

Indicator	Unit	Australian Capital Territory			Australia		
		Latest figure	Change from		Latest figure	Change from	
			Previous period	Same period previous		Previous period	Same period previous
POPULATION, VITAL AND LABOUR							
POPULATION, March qtr 96	'000	306.4	0.5	0.9	18 238.6	0.4	1.4
Natural increase	no.	740	-23.2	-12.3	34 715	12.9	-4.2
Net migration	no.	822	-188.7	-29.5	35 322	24.3	43.0
Total increase	no.	1 562	4 121.6	-22.3	70 037	18.4	15.0
LABOUR FORCE, September 96							
Original series							
Employed	'000	156.3	2.2	-3.3	8 429.6	1.3	1.1
Unemployed	'000	13.1	-9.0	23.6	800.2	3.8	4.8
Unemployment rate(a)	%	7.8	-0.8	1.6	8.7	0.2	0.3
Participation rate(a)	%	72.6	0.8	-2.0	64.1	0.9	-0.1
Long-term unemployed (June 96)	no.	3 098	-3.5	24.3	219 360	5.0	-1.3
Long-term unemployed as percentage total unemployed (June 96)(a)	%	21.2	-3.0	0.6	28.5	-0.1	-2.3
Trend series							
Employed	'000	154.9	-0.1	-2.9	8 365.6	0.1	1.1
Unemployed	'000	14.6	—	22.7	792.3	0.6	4.0
Unemployment rate(a)	%	8.6	—	1.6	8.7	0.1	0.3
Participation rate(a)	%	72.6	-0.1	-1.7	63.6	—	-0.2
JOB VACANCIES, August 96	'000	0.5	150.0	66.7	55.3	26.0	5.3
INDUSTRIAL DISPUTES IN PROGRESS, June 96							
Working days lost	'000	4	81.8	—	133.4	-18.7	241.2
Days lost per '000 employees (year ended June 96)	no.	68.0	70.0	1 033.3	114.0	12.9	32.6
BUILDING AND CONSTRUCTION							
HOUSING FINANCE, August 96							
Secured commitments to individuals for							
Original series							
Construction of dwellings	\$m	6.6	-19.5	-25.8	510.1	-4.8	-12.3
Purchase of new dwellings	\$m	7.0	-39.7	-27.8	198.4	-2.7	3.7
Purchase of established dwellings	\$m	40.4	-20.0	-9.2	3 377.9	-2.4	13.2
Total housing commitments	\$m	84.1	-17.8	4.6	40 865.0	-2.7	8.7
Seasonally adjusted series							
Total housing commitments	\$m	82.1	-20.7	11.1	4 031.7	0.8	13.8
Trend series							
Dwelling units financed	no.	844	3.6	8.2	38 784	1.4	4.5
Total housing commitments	\$m	83.7	3.6	10.1	3 849.3	2.0	8.1
BUILDING APPROVALS, August 96							
Original series							
Dwelling units	no.	304	220.0	149.2	11 229.0	-4.4	-3.6
Value of new residential	\$m	23.7	125.7	69.3	1 113.3	-5.4	1.2
Value of residential alterations and additions	\$m	3.0	-30.2	-50.8	202.7	-2.7	2.6
Value of non-residential	\$m	12.9	-63.7	-63.1	1 133.1	29.7	1.5
Value of total building	\$m	39.6	-21.4	-27.6	2 449.1	8.4	1.5
Trend series							
Dwelling units	no.	148	1.4	-18.2	10 515	0.4	-2.9
BUILDING COMMENCEMENTS, March qtr 96							
New houses	no.	217	-43.6	-34.0	19 072.0	-14.5	-21.6
Value of houses commenced	\$m	24.5	-45.6	-36.7	2 007.8	-11.7	-15.4
Value of non-residential building commenced	\$m	99.3	70.9	78.9	2 610.6	4.5	-8.7
Value of total commencements	\$m	149.5	-2.3	14.7	6 074.8	-0.6	-11.3
PRICE INDEXES							
Established house price index, June qtr 96	(1989-90=100.0)	127.4	0.3	-0.5	113.6	1.2	1.1

For footnotes see end of table.

Indicator	Unit	Australian Capital Territory			Australia		
		Latest figure	Previous period	Change from Same period previous	Latest figure	Previous period	Change from Same period previous
PRICES, WAGES AND CONSUMER SPENDING							
CONSUMER PRICE INDEX, June qtr 96							
Food	(1989-90=100.0)	119.6	0.3	2.5	117.1	1.0	3.0
Housing	(1989-90=100.0)	112.5	0.3	1.6	106.3	0.6	1.5
Transportation	(1989-90=100.0)	129.9	1.9	6.4	123.8	1.1	4.2
All groups	(1989-90=100.0)	121.4	0.5	3.2	119.8	0.7	3.1
AVERAGE WEEKLY EARNINGS, May 96							
Original series							
Males	\$	742.6	-2.3	3.4	671.5	0.5	2.9
Females	\$	541.3	2.9	4.8	441.1	0.4	2.6
Persons	\$	641.4	0.3	4.1	564.4	0.3	3.0
Trend series							
Males	\$	747.8	-0.4	4.2	672.0	0.8	2.9
Females	\$	531.4	1.3	3.8	440.1	0.9	2.5
Persons	\$	639.1	0.4	3.9	564.6	0.9	3.0
RETAIL TURNOVER, August 96							
Original series							
Food retailing	\$m	82.0	3.8	9.9	4 230.7	3.4	7.9
Department stores	\$m	20.8	-6.3	4.5	889.1	-2.1	1.7
Hospitality and services	\$m	30.7	-1.0	7.7	1 716.5	1.0	1.3
All other retailing	\$m	57.1	1.2	6.5	3 276.8	-2.0	5.2
Total	\$m	190.6	1.1	7.9	10 113.1	0.7	5.3
Trend series							
Food retailing	'000	82.1	0.9	10.2	4 197.6	0.5	6.8
Department stores	\$m	24.4	1.2	1.2	1 000.5	1.4	4.2
Hospitality and services	\$m	30.2	1.0	4.5	1 745.3	-0.4	0.6
All other retailing	%	60.0	0.8	5.6	3 421.5	0.8	6.0
Total	'000	196.7	0.9	6.7	10 364.9	0.5	5.2
TOURISM AND TRANSPORT							
HOTELS, MOTELS AND GUEST HOUSE ACCOMMODATION, March qtr 96							
Original series							
Room nights	'000	198.3	-8.2	-6.8	9 142.7	-1.6	4.5
Takings at current prices	\$m	18.0	-6.3	-4.3	873.5	—	12.5
Takings at 1989-90 prices	\$m	14.9	-6.9	-8.0	733.3	-0.6	8.4
Room occupancy rate (June qtr 96)(a)	%	63.5	3.7	-0.5	56.1	-2.9	—
Seasonally adjusted series							
Room nights	'000	201.6	-1.0	-7.9	9 194.7	1.2	3.2
Takings at current prices	\$m	18.0	-1.6	-5.8	872.6	3.8	11.1
Takings at 1989-90 prices	\$m	14.9	-1.3	-9.7	732.5	3.2	7.1
Trend series							
Room nights	'000	200.9	-1.9	-6.9	9 181.9	0.9	3.3
Takings at current prices	\$m	18.0	-2.7	-5.8	868.5	2.5	10.5
Takings at 1989-90 prices	\$m	15.0	-3.2	-8.5	727.1	1.6	6.0
NEW MOTOR VEHICLE REGISTRATIONS, August 96							
Motor vehicles	no.	1 103	16.5	-3.8	54 334	-1.2	0.4
Seasonally adjusted motor vehicles	no.	1 066	24.8	7.2	54 156	6.9	6.5
Trend motor vehicles	no.	964	-0.3	-4.3	54 393	-0.6	4.4

For footnotes see end of table.

Indicator	Unit	Australian Capital Territory			Australia		
		Latest figure	Change from		Latest figure	Change from	
			Previous period	Same period previous		Previous period	Same period previous
AGGREGATE INDICATORS							
STATE ACCOUNTS, March qtr 96(b)							
Original series							
Gross State product at av. 1989-90 prices	\$m	2 183	7.1	2.4	107 516	2.5	4.3
Gross State product at current prices	\$m	2 630	8.2	5.3	122 332	3.2	6.5
State final demand at av. 1989-90 prices	\$m	3 073	6.9	0.1	109 714	7.7	3.5
Private final consumption expenditure	\$m	1 410	5.4	4.1	76 344	3.6	6.2
Private gross fixed capital expenditure	\$m	192	9.1	7.3	20 256	16.2	3.5
Trend series							
Gross State product at av. 1989-90 prices	\$m	2 164	0.2	4.0	109 367	0.7	4.2
Gross State product at current prices	\$m	2 604	1.4	6.9	124 235	1.4	6.8
State final demand at av. 1989-90 prices	\$m	3 004	-0.6	1.9	108 280	0.9	3.8
Private final consumption expenditure	\$m	1 419	0.6	3.8	77 521	1.3	6.5
Private gross fixed capital expenditure	\$m	193	-2.5	2.1	19 524	1.5	2.3

(a) Change shown in terms of percentage points.

(b) State estimates are not comparable to national estimates for June quarter 1995 due to revised aggregates in *Australian National Accounts, State Accounts* (5242.0).

Source: ABS Catalogue Nos: 3101.0, 5242.0, 5609.0, 6202.0, 6203.0, 6302.0, 6321.0, 6354.0, 6401.0, 6408.0, 6416.0, 8501.0, 8634.0, 8635.8, 8731.0, 8752.0, 9214.0, 9301.0.

3

AUSTRALIAN CAPITAL TERRITORY IN RELATION TO THE REST OF AUSTRALIA

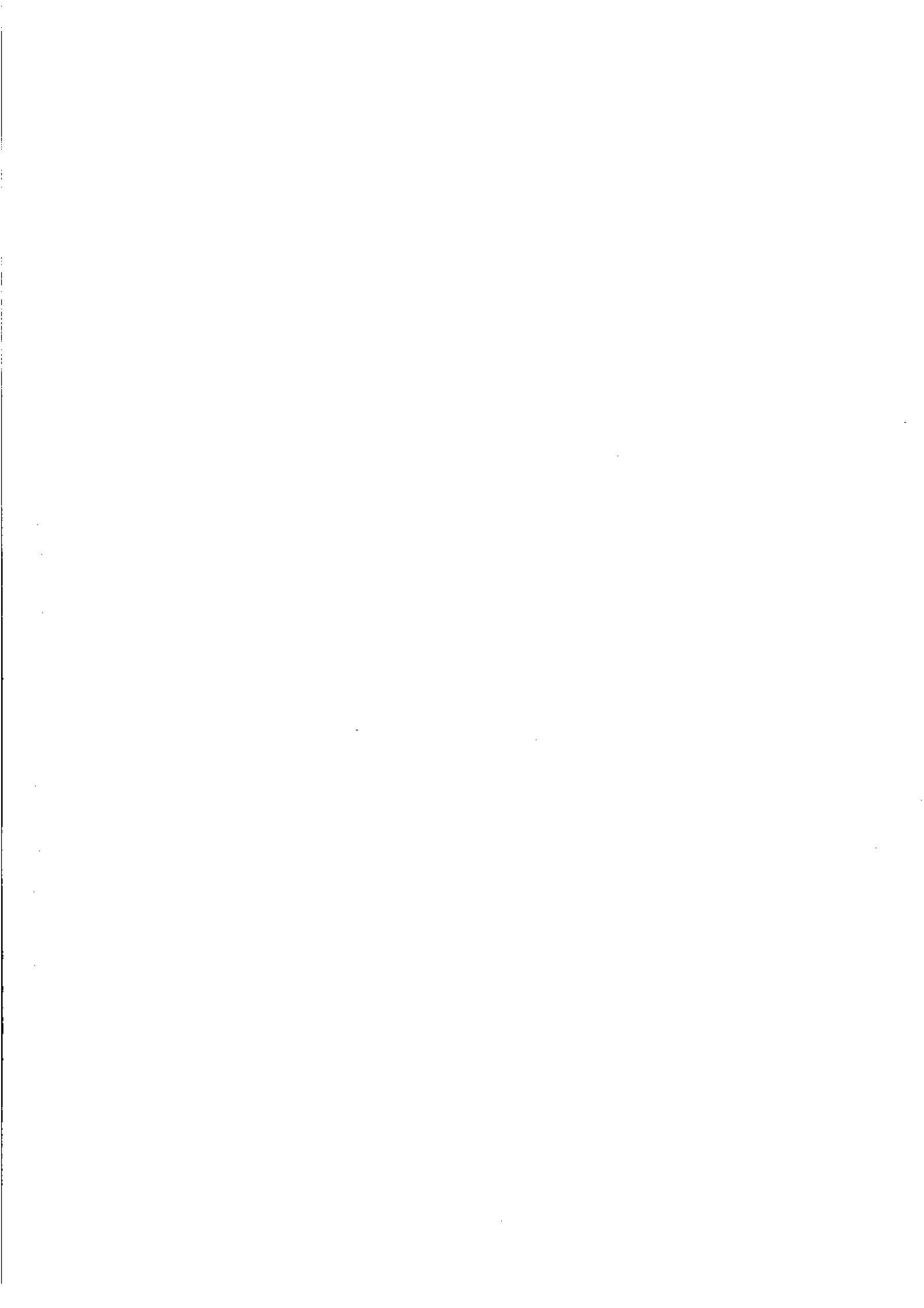
Indicator	Unit	Latest period	NSW	Vic.	Qld	SA	WA	Tas.	NT	ACT	Aust.
POPULATION	'000	March qtr 96	6 173.0	4 533.3	3 339.0	1 477.7	1 755.5	473.2	177.5	306.4	18 238.6
LABOUR FORCE											
Employed persons (trend)	'000	September 96	2 794.8	2 082.0	1 543.3	659.5	847.7	200.8	84.1	154.9	8 365.6
Unemployment rate (trend)	%	September 96	8.0	9.0	9.5	9.5	7.7	10.6	5.3	8.6	8.7
STATE ACCOUNTS(a)											
Gross State product at 1989-90 prices (trend)	\$m	June qtr 96	37 172	28 787	17 985	7 607	12 414	2 187	1 224	2 164	109 367
Gross State product at current prices (trend)	\$m	June qtr 96	43 143	32 352	19 993	8 932	13 340	2 588	1 331	2 604	124 235
BUILDING APPROVALS											
Dwelling units approved	no.	August 96	3 426	2 445	2 925	547	1 239	177	166	304	11 229
Dwelling units approved (trend)	no.	August 96	3 710	2 115	2 749	474	1 136	165	167	148	10 515
Value of non-residential building approved	\$m	August 96	480.0	198.8	197.9	60.9	133.4	17.5	31.8	12.9	1 133.1
Value of all buildings approved	\$m	August 96	928.6	512.2	497.4	116.4	268.1	35.6	51.4	39.6	2 449.1
ENGINEERING CONSTRUCTION											
Value of engineering construction work done	\$m	March qtr 96	1 218.9	604.9	688.8	198.8	584.3	78.2	42.5	29.8	3 446.2
AVERAGE WEEKLY EARNINGS											
Full-time adult ordinary time (trend)	\$	May qtr 96	700.20	666.00	619.50	634.00	688.50	631.50	667.80	774.50	670.70
RETAIL TRADE											
Retail turnover (trend)	\$m	August 96	3 744.5	2 337.7	1 905.5	784.3	1 032.6	248.4	115.3	196.7	10 364.9
HOTELS, MOTELS & GUEST HOUSE ACCOMMODATION											
Room nights occupied (trend)	'000	March qtr 96	3 167.5	1 493.1	2 414.6	519.7	815.6	271.6	296.9	200.9	9 179.9
NEW MOTOR VEHICLE REGISTRATIONS											
Trend	no.	August 96	18 676	12 787	10 975	3 424	5 690	1 268	609	964	54 393
CONSUMER PRICE INDEX											
Food	Unit	Latest period	Syd.	Melb.	Bris.	Adel.	Perth	Hob.	Dar.	Canb.	Aust.
(1989-90=100.0)	(1989-90=100.0)	June qtr 96	117.7	115.4	117.8	118.4	117.8	118.4	118.6	119.6	117.1
Housing	(1989-90=100.0)	June qtr 96	110.0	100.4	112.5	103.9	101.6	107.6	121.7	112.5	106.3
Transportation	(1989-90=100.0)	June qtr 96	124.2	123.5	122.1	125.3	123.9	119.8	119.3	129.9	123.8
All Groups	(1989-90=100.0)	June qtr 96	119.9	119.2	120.4	122.0	117.9	120.6	120.8	121.4	119.8
Average retail prices (cents)											
Milk, carton, supermarket sales	1 litre	June qtr 96	113.0	121.0	114.0	113.0	120.0	120.0	115.0	106.0	n.a.
Bread, white loaf, sliced, supermarket sales	680 g	June qtr 96	194.0	174.0	190.0	141.0	180.0	152.0	190.0	185.0	n.a.
Beef, rump steak	1 kg	June qtr 96	1 283.0	1 116.0	1 089.0	1 168.0	1 089.0	1 143.0	1 271.0	1 097.0	n.a.
Chicken, frozen	1 kg	June qtr 96	330.0	348.0	311.0	348.0	331.0	372.0	382.0	302.0	n.a.
Potatoes	1 kg	June qtr 96	83.0	99.0	86.0	70.0	113.0	77.0	113.0	78.0	n.a.
Coffee, instant (jar)	150 g	June qtr 96	569.0	569.0	594.0	528.0	571.0	633.0	598.0	571.0	n.a.
Scotch nip, public bar	30 ml	June qtr 96	316.0	274.0	251.0	321.0	324.0	234.0	307.0	278.0	n.a.
Private motoring petrol, leaded	1 litre	June qtr 96	75.0	74.1	66.3	75.9	76.4	77.4	79.4	78.7	n.a.
Private motoring petrol, unleaded	1 litre	June qtr 96	73.0	71.9	64.1	73.6	74.3	75.4	77.4	76.5	n.a.

(a) State estimates are not comparable to national estimates for June quarter 1995 due to revised aggregates in Australian National Accounts, State Accounts (5242.0).

Indicator	Latest period	NSW	Vic.	Qld	SA	WA	Tas.	NT	ACT	Aust.
POPULATION	March qtr 96	0.3	0.3	0.7	0.1	-0.5	—	0.3	0.5	0.4
LABOUR FORCE										
Employed persons (trend)	Sept. 96	0.1	0.1	0.2	-0.1	0.4	—	0.5	-0.1	0.1
Unemployment rate (trend)(a)	Sept. 96	—	0.1	0.1	0.1	—	—	-0.4	—	0.1
STATE ACCOUNTS(b)										
Gross State product at 1989-90 prices (trend)	June qtr 96	1.0	0.4	1.7	0.7	2.0	0.1	-0.6	0.2	0.7
Gross State product at current prices (trend)	June qtr 96	1.9	0.9	1.7	0.8	2.0	0.8	0.9	1.4	1.4
BUILDING APPROVALS										
Dwelling units approved	August 96	-23.4	16.7	-2.9	3.6	-2.1	46.3	2.5	220.0	-4.4
Dwelling units approved (trend)	August 96	2.9	-0.4	2.4	0.3	-5.4	-6.3	8.6	-16.5	0.2
Value of non-residential building approved	August 96	66.1	48.5	-11.9	45.3	83.7	-54.2	-15.9	-63.7	29.7
Value of all buildings approved	August 96	9.2	26.5	-10.9	25.8	35.1	-28.8	-5.9	-21.4	8.4
ENGINEERING CONSTRUCTION										
Value of engineering construction work done	March qtr 96	-5.4	5.3	-18.0	17.9	-20.1	15.9	-29.9	-23.0	-8.6
AVERAGE WEEKLY EARNINGS										
Full-time adult ordinary time (trend)	May qtr 96	0.7	1.1	0.5	1.4	1.1	1.5	0.3	0.6	0.8
RETAIL TRADE										
Retail turnover (trend)	August 96	0.6	0.4	0.8	0.6	0.1	0.1	-0.7	0.9	0.5
HOTELS, MOTELS & GUEST HOUSE ACCOMMODATION										
Room nights occupied (trend)	March qtr 96	1.0	1.0	1.0	1.4	0.6	—	1.3	-1.9	0.9
NEW MOTOR VEHICLE REGISTRATIONS										
Trend	August 96	-1.0	-1.0	1.3	-2.3	-1.4	3.3	-1.8	-0.3	-0.6
	Latest period	Syd.	Melb.	Bris.	Adel.	Perth	Hob.	Dar.	Canb.	Aust.
CONSUMER PRICE INDEX (1989-90=100.0)										
Food	June qtr 96	0.9	1.6	0.7	0.2	0.8	0.3	1.0	0.3	1.0
Housing	June qtr 96	0.7	0.6	0.4	—	0.4	0.4	1.2	0.3	0.6
Transportation	June qtr 96	1.1	1.3	1.3	1.1	0.6	0.7	1.2	1.9	1.1
All Groups	June qtr 96	0.7	0.8	0.7	0.3	0.7	0.4	0.8	0.5	0.7
Average retail prices (cents)										
Milk, carton, supermarket sales	June qtr 96	—	0.8	—	-0.9	—	—	3.6	—	n.a.
Bread, white loaf, sliced, supermarket sales	June qtr 96	4.9	6.1	6.1	-7.2	5.9	—	—	3.4	n.a.
Beef, rump steak	June qtr 96	-1.8	-3.0	-1.1	4.1	-0.2	-2.9	3.3	-4.0	n.a.
Chicken, frozen	June qtr 96	19.1	3.3	15.6	-0.6	-0.6	9.4	0.5	-2.6	n.a.
Potatoes	June qtr 96	-13.5	-11.6	-14.9	-2.8	-3.4	-12.5	-8.9	-16.1	n.a.
Coffee, instant	June qtr 96	-1.0	-0.5	1.7	-4.3	2.7	-0.8	2.9	-2.6	n.a.
Scotch nip, public bar	June qtr 96	1.0	1.9	0.8	0.9	-13.8	7.3	0.3	3.0	n.a.
Private motoring petrol, leaded	June qtr 96	3.4	3.1	3.4	3.1	1.6	1.8	3.3	4.1	n.a.
Private motoring petrol, unleaded	June qtr 96	3.5	3.0	3.2	3.2	1.6	1.9	3.3	4.1	n.a.

(a) Change shown in terms of percentage points.

(b) State estimates are not comparable to national estimates for June quarter 1995 due to revised aggregates in *Australian National Accounts, State Accounts* (5242.0).



For more information . . .

The ABS publishes a wide range of statistics and other information on Australia's economic and social conditions. Details of what is available in various publications and other products can be found in the ABS Catalogue of Publications and Products available from all ABS Offices.

ABS Products and Services

Many standard products are available from ABS bookshops located in each State and Territory. In addition to these products, information tailored to the needs of clients can be obtained on a wide range of media by contacting your nearest ABS Office. The ABS also provides a Subscription Service for standard products and some tailored information services.

National Dial-a-Statistic Line

0055 86 400

Steadycom P/L: premium rate 25c/20 secs.

This number gives 24-hour access, 365 days a year, for a range of important economic statistics including the CPI.

Internet

<http://www.abs.gov.au>

A wide range of ABS information is available via the Internet, with basic statistics available for each State, Territory and Australia. We also have Key National Indicators, ABS product release details and other information of general interest.

Sales and Inquiries

Keylink STAT.INFO/ABS
X.400 (C:Australia,PUB:Telememo,O:ABS,FN:STAT,SN:INFO)
Internet stat.info@abs.telememo.au

National Mail Order Service (06) 252 5249
Subscription Service 1800 02 0608

	Information Inquiries	Bookshop Sales
SYDNEY	(02) 9268 4611	(02) 9268 4620
MELBOURNE	(03) 9615 7755	(03) 9615 7755
BRISBANE	(07) 3222 6351	(07) 3222 6350
PERTH	(09) 360 5140	(09) 360 5307
ADELAIDE	(08) 8237 7100	(08) 8237 7582
CANBERRA	(06) 252 6627	(06) 207 0326
HOBART	(03) 6220 5800	(03) 6220 5800
DARWIN	(08) 8943 2111	(08) 8943 2111



Client Services, ABS, PO Box 10, Belconnen ACT 2616

Produced by the Australian Government Publishing Service
© Commonwealth of Australia 1996

Recommended retail price: \$13.00



2130380010967
ISSN 1320-808X

ABS Catalogue No. 1303.8

Australian Capital Territory Business Indicators

October 1996