



# LABOUR FORCE

AUSTRALIA  
PRELIMINARY

EMBARGO: 11:30AM (CANBERRA TIME) THURS 14 JAN 1999

## DECEMBER KEY FIGURES

### TREND

	Nov 98	Dec 98	monthly change
Employed persons ('000)	8 670.8	8 681.0	0.1 %
Unemployed persons ('000)	732.3	722.8	- 1.3 %
Unemployment rate (%)	7.8	7.7	- 0.1 pts
Participation rate (%)	63.3	63.2	- 0.1 pts

### SEASONALLY ADJUSTED

	Nov 98	Dec 98	monthly change
Employed persons ('000)	8 637.9	8 691.5	53.6
Unemployed persons ('000)	750.8	706.5	- 44.3
Unemployment rate (%)	8.0	7.5	- 0.5 pts
Participation rate (%)	63.2	63.2	0.0 pts

## DECEMBER KEY POINTS

### TREND ESTIMATES

#### EMPLOYMENT

- has continued to rise steadily, reaching 8,681,000.

#### UNEMPLOYMENT

- has been falling steadily since July 1998, to stand at 722,800.

#### UNEMPLOYMENT RATE

- fell by 0.1 percentage points to 7.7%.

#### PARTICIPATION RATE

- fell by 0.1 percentage points to 63.2%.

### SEASONALLY ADJUSTED ESTIMATES

#### EMPLOYMENT

- rose by 53,600 to 8,691,500. Full-time employment rose by 31,700 to 6,432,800, while part-time employment rose by 21,900 to 2,258,700.

#### UNEMPLOYMENT

- fell by 44,300 to 706,500, with the number of persons looking for full-time work falling by 25,200 to 553,500.

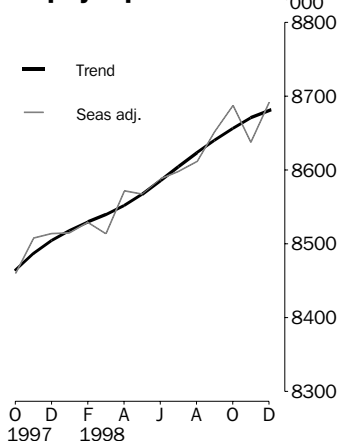
#### UNEMPLOYMENT RATE

- fell by 0.5 percentage points to 7.5%. The male rate fell by 0.3 percentage points to 7.8%, while the female rate fell by 0.7 percentage points to 7.2%.
- NSW 6.7% (7.8% last month); Vic. 7.4% (7.8%); Qld 8.4% (8.2%); SA 9.2% (9.8%); WA 7.3% (7.1%); Tas. 10.3% (9.8%).

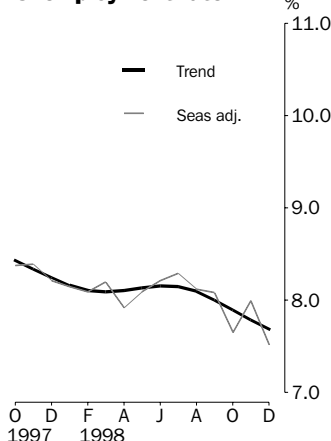
#### PARTICIPATION RATE

- remained at 63.2%, with the male rate falling by 0.3 percentage points to 72.7%, while the female rate rose by 0.2 percentage points to 54.0%.

### Employed persons



### Unemployment rate



- For further information about these and related statistics, contact Michael Sleep on 02 6252 6525 or any ABS office shown on the back cover of this publication.

# NOTES

## FORTHCOMING ISSUES

<i>ISSUE</i>	<i>RELEASE DATE</i>
January 1999	11 February 1999
February 1999	11 March 1999
March 1999	8 April 1999
April 1999	13 May 1999
May 1999	10 June 1999
June 1999	8 July 1999



## ROUNDING

Estimates of monthly change shown on page 1 have been calculated using unrounded estimates, and may be different from, but are more accurate than, movements obtained from the rounded estimates. The graphs on page 1 also depict movements calculated from unrounded estimates.



## SAMPLING ERRORS

The estimates in this publication are based on a sample survey. Because the entire population is not enumerated, the published estimates and the movements derived from them are subject to sampling variability. Standard errors give a measure of this variability and appear on pages 30 and 31.

The 95% confidence intervals below provide another way of looking at the variability inherent in estimates from sample surveys. The interval bounded by the two limits is the 95% confidence interval. A 95% confidence interval indicates that we are 95% confident that the upper and lower limits enclose the true value of the estimate.

<i>SEASONALLY ADJUSTED DATA SERIES</i>	<i>MOVEMENTS NOVEMBER 1998 TO DECEMBER 1998</i>	
	<i>Monthly change</i>	<i>95% Confidence interval</i>
Total employment	+53 600	13 800 to 93 400
Total unemployment	-44 300	-59 900 to -28 700
Unemployment rate	-0.5 pts	-0.7 pts to -0.3 pts
Participation rate	0.0 pts	-0.2 pts to 0.2 pts

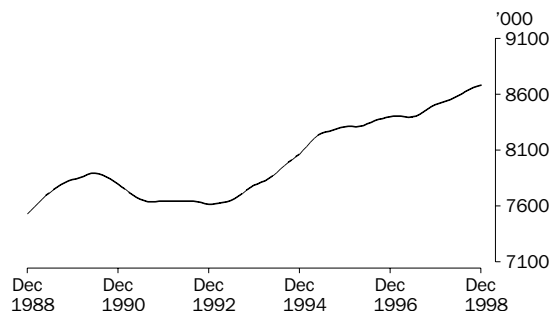


W. McLennan  
Australian Statistician

# PRINCIPAL LABOUR FORCE SERIES: Trend estimates

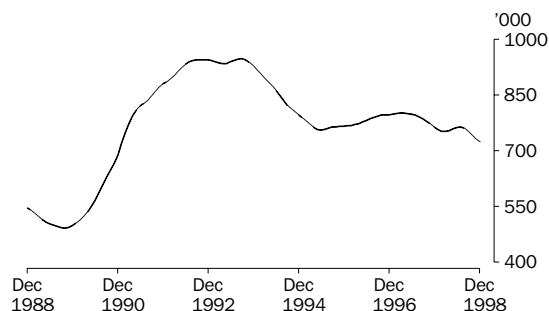
## EMPLOYED PERSONS

The trend estimate of employed persons rose strongly from a low of 7,616,000 in January 1993, until mid 1995. Over the next two years, growth slowed, with the trend estimate reaching 8,403,600 in July 1997. The trend estimate has been increasing steadily over the past 17 months and stood at 8,681,000 in December 1998.



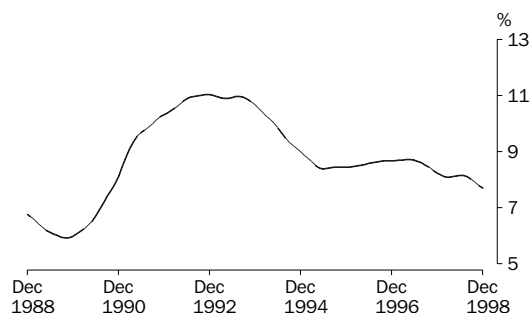
## UNEMPLOYED PERSONS

From a high of 947,800 in September 1993, the trend estimate of unemployed persons fell rapidly to 755,200 in June 1995. The trend then rose slowly for almost two years, reaching 801,400 in April 1997. After falling to 751,300 in March 1998, the trend rose to 763,300 in July 1998, before falling again to 722,800 in December 1998.



## UNEMPLOYMENT RATE

From a high of 11.0% in mid 1993, the trend unemployment rate fell rapidly to 8.4% in May 1995. The trend then rose slowly, remaining steady at 8.7% from September 1996 to June 1997. Since this time, apart from a small increase in mid 1998, the trend has declined. It stood at 7.7% in December 1998.

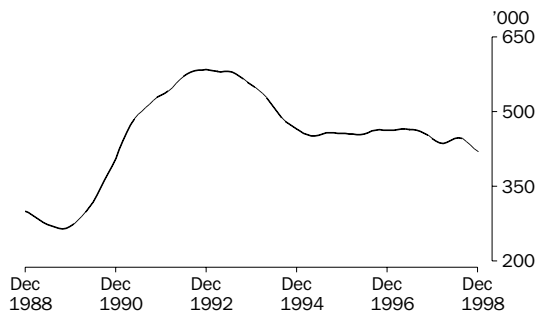


# UNEMPLOYED PERSONS: Trend estimates

## UNEMPLOYED MALES

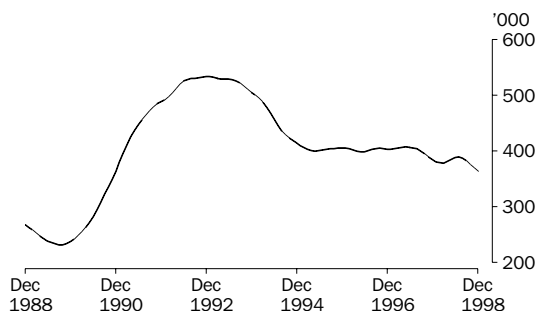
### TOTAL

After reaching a peak of 584,000 in December 1992, the trend estimate for unemployed males fell to 450,800 in May 1995. It remained relatively steady over the next two years, before falling to 436,100 in March 1998. The trend estimate rose to 447,500 in July 1998, and has since fallen to 419,500 in December 1998.



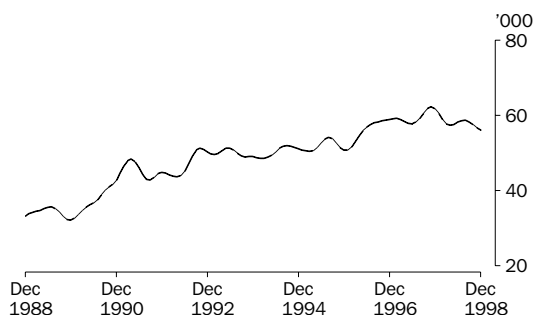
### MALES LOOKING FOR FULL TIME WORK

The trend estimate of unemployed males looking for full-time work fell from 533,700 in December 1992 to 399,400 in May 1995. The trend estimate remained relatively steady over the next two years, before falling to 378,400 in March 1998. After rising to 388,900 in July 1998, the trend has again fallen, to stand at 363,600 in December 1998.



### MALES LOOKING FOR PART TIME WORK

The trend estimate of unemployed males looking for part-time work has generally been rising over the last ten years. In December 1988, the trend estimate stood at 33,200. The trend estimate has fallen over the last four months and stood at 55,900 in December 1998.

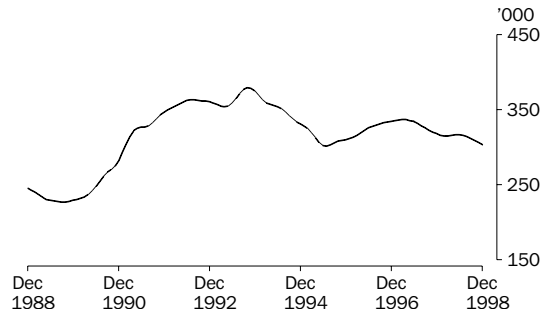


# UNEMPLOYED PERSONS: Trend estimates

## UNEMPLOYED FEMALES

### TOTAL

From a peak of 379,400 in October 1993, the trend estimate of unemployed females fell to 301,400 in July 1995. The trend then rose steadily, reaching 336,600 in March 1997. Since then, the trend estimate has again declined, and stood at 303,300 in December 1998.



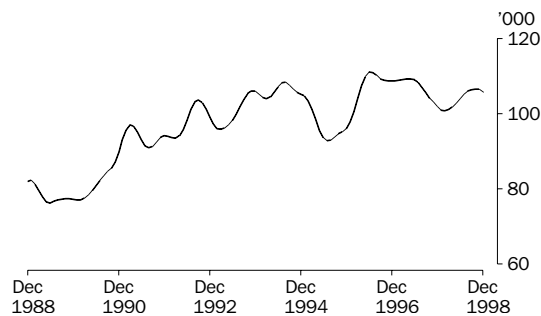
### FEMALES LOOKING FOR FULL TIME WORK

The trend estimate of unemployed females looking for full-time work fell from a peak of 274,100 in October 1993 to 208,700 in July 1995. The trend rose to 227,500 in March 1997, before falling to 197,700 in December 1998.



### FEMALES LOOKING FOR PART TIME WORK

From a low of 76,200 in June 1989, the trend estimate for females looking for part-time work reached a high of 111,100 in June 1996. The trend remained steady over the next year, before falling to 100,700 in February 1998. After rising to 106,600 in November 1998, the trend has since fallen, to stand at 105,600 in December 1998.



# LABOUR FORCE STATUS (AGED 15 AND OVER): Original

Month	EMPLOYED.....			UNEMPLOYED.....			Labour force	Not in labour force	Civilian population aged 15 and over	Unemployment rate	Participation rate
	Full time	Part time	Total	Looking for f/t work	Looking for p/t work	Total					
	'000	'000	'000	'000	'000	'000					
MALES											
<b>1997</b>											
October	4 234.5	577.3	4 811.8	370.2	56.5	426.7	5 238.5	1 961.2	7 199.7	8.1	72.8
November	4 238.8	582.6	4 821.4	378.3	59.0	437.2	5 258.7	1 950.6	7 209.3	8.3	72.9
December	4 309.7	586.8	4 896.5	380.0	66.5	446.5	5 343.0	1 875.9	7 218.9	8.4	74.0
<b>1998</b>											
January	4 270.0	541.9	4 811.9	417.8	59.9	477.8	5 289.7	1 936.9	7 226.6	9.0	73.2
February	4 261.2	554.5	4 815.7	412.9	70.0	482.9	5 298.7	1 935.6	7 234.3	9.1	73.2
March	4 246.0	587.4	4 833.4	396.2	63.3	459.5	5 292.9	1 949.1	7 242.0	8.7	73.1
April	4 268.7	587.1	4 855.8	359.0	59.2	418.2	5 274.0	1 976.4	7 250.4	7.9	72.7
May	4 249.0	598.8	4 847.8	377.4	56.1	433.5	5 281.3	1 977.6	7 258.9	8.2	72.8
June	4 254.4	606.5	4 860.9	381.3	50.9	432.2	5 293.1	1 974.3	7 267.4	8.2	72.8
July	4 298.1	575.3	4 873.4	382.2	50.5	432.7	5 306.1	1 969.2	7 275.3	8.2	72.9
August	4 230.1	582.5	4 812.6	378.7	58.6	437.2	5 249.8	2 033.4	7 283.2	8.3	72.1
September	4 319.9	609.1	4 929.0	386.5	58.9	445.4	5 374.4	1 916.8	7 291.2	8.3	73.7
October	4 307.8	608.6	4 916.4	342.7	53.8	396.6	5 313.0	1 989.7	7 302.7	7.5	72.8
November	4 284.9	610.3	4 895.2	361.2	51.7	412.9	5 308.1	2 006.0	7 314.2	7.8	72.6
December	4 351.1	620.6	4 971.7	356.8	57.3	414.1	5 385.8	1 939.8	7 325.7	7.7	73.5
FEMALES											
<b>1997</b>											
October	2 072.2	1 579.8	3 652.1	208.1	101.7	309.8	3 961.8	3 467.4	7 429.2	7.8	53.3
November	2 081.6	1 618.5	3 700.0	204.2	95.3	299.6	3 999.6	3 438.7	7 438.3	7.5	53.8
December	2 133.9	1 584.9	3 718.8	218.0	99.1	317.1	4 035.9	3 411.5	7 447.4	7.9	54.2
<b>1998</b>											
January	2 085.9	1 488.5	3 574.4	236.0	103.1	339.1	3 913.6	3 540.8	7 454.3	8.7	52.5
February	2 086.7	1 559.7	3 646.4	244.8	114.7	359.5	4 005.9	3 455.3	7 461.2	9.0	53.7
March	2 083.9	1 603.1	3 687.0	230.5	112.0	342.5	4 029.5	3 438.6	7 468.2	8.5	54.0
April	2 098.2	1 622.4	3 720.6	209.0	109.5	318.6	4 039.2	3 436.7	7 475.9	7.9	54.0
May	2 076.8	1 643.0	3 719.8	212.4	92.6	304.9	4 024.7	3 459.0	7 483.7	7.6	53.8
June	2 095.7	1 653.2	3 748.8	199.7	103.7	303.4	4 052.2	3 439.3	7 491.5	7.5	54.1
July	2 157.1	1 606.3	3 763.3	199.3	95.9	295.1	4 058.5	3 440.4	7 498.9	7.3	54.1
August	2 098.6	1 624.8	3 723.4	196.9	93.8	290.7	4 014.1	3 492.1	7 506.2	7.2	53.5
September	2 141.5	1 663.4	3 804.9	207.9	112.3	320.2	4 125.1	3 388.5	7 513.5	7.8	54.9
October	2 125.2	1 648.6	3 773.7	184.0	105.0	289.0	4 062.7	3 461.6	7 524.3	7.1	54.0
November	2 112.3	1 645.7	3 757.9	191.0	106.6	297.6	4 055.5	3 479.6	7 535.1	7.3	53.8
December	2 189.7	1 633.9	3 823.6	195.5	96.9	292.4	4 116.0	3 429.9	7 545.9	7.1	54.5
PERSONS											
<b>1997</b>											
October	6 306.7	2 157.2	8 463.9	578.3	158.1	736.4	9 200.3	5 428.6	14 628.9	8.0	62.9
November	6 320.4	2 201.1	8 521.5	582.5	154.3	736.8	9 258.3	5 389.3	14 647.6	8.0	63.2
December	6 443.6	2 171.7	8 615.2	598.0	165.7	763.6	9 378.9	5 287.4	14 666.3	8.1	63.9
<b>1998</b>											
January	6 355.9	2 030.4	8 386.3	653.9	163.0	816.9	9 203.2	5 477.7	14 680.9	8.9	62.7
February	6 347.9	2 114.2	8 462.1	657.7	184.8	842.5	9 304.6	5 390.9	14 695.5	9.1	63.3
March	6 329.9	2 190.5	8 520.4	626.7	175.3	802.0	9 322.4	5 387.7	14 710.1	8.6	63.4
April	6 366.9	2 209.5	8 576.4	568.0	168.8	736.8	9 313.2	5 413.2	14 726.4	7.9	63.2
May	6 325.8	2 241.8	8 567.6	589.8	148.7	738.5	9 306.1	5 436.6	14 742.6	7.9	63.1
June	6 350.1	2 259.7	8 609.8	581.0	154.6	735.6	9 345.4	5 413.6	14 758.9	7.9	63.3
July	6 455.2	2 181.6	8 636.8	581.4	146.4	727.8	9 364.6	5 409.6	14 774.2	7.8	63.4
August	6 328.7	2 207.2	8 535.9	575.6	152.4	727.9	9 263.9	5 525.6	14 789.4	7.9	62.6
September	6 461.5	2 272.4	8 733.9	594.4	171.2	765.6	9 499.5	5 305.3	14 804.7	8.1	64.2
October	6 432.9	2 257.2	8 690.2	526.7	158.9	685.6	9 375.7	5 451.3	14 827.0	7.3	63.2
November	6 397.1	2 256.0	8 653.1	552.2	158.3	710.5	9 363.7	5 485.6	14 849.3	7.6	63.1
December	6 540.8	2 254.5	8 795.3	552.3	154.2	706.5	9 501.8	5 369.7	14 871.6	7.4	63.9

LABOUR FORCE STATUS (AGED 15 AND OVER): **Seasonally adjusted**

Month	EMPLOYED.....			UNEMPLOYED.....					
	Full time '000	Part time '000	Total '000	Looking for f/t work	Looking for p/t work	Total '000	Labour force '000	Unemp- loyment rate %	Partic- ipation rate %
				'000	'000		'000	'000	%
<b>MALES</b>									
<b>1997</b>									
October	4 233.3	574.3	4 807.6	391.4	59.6	451.0	5 258.6	8.6	73.0
November	4 247.0	584.5	4 831.5	391.5	66.4	457.9	5 289.4	8.7	73.4
December	4 248.4	587.8	4 836.3	382.5	62.6	445.1	5 281.4	8.4	73.2
<b>1998</b>									
January	4 271.4	572.1	4 843.5	378.6	54.9	433.5	5 277.0	8.2	73.0
February	4 257.3	580.6	4 837.8	379.2	64.8	444.0	5 281.9	8.4	73.0
March	4 263.3	577.8	4 841.1	387.9	54.0	441.8	5 282.9	8.4	72.9
April	4 281.1	576.1	4 857.2	365.8	56.7	422.5	5 279.7	8.0	72.8
May	4 259.8	593.8	4 853.5	379.9	58.9	438.8	5 292.3	8.3	72.9
June	4 264.6	593.0	4 857.6	391.5	56.3	447.8	5 305.3	8.4	73.0
July	4 274.0	582.1	4 856.1	401.8	57.2	459.0	5 315.0	8.6	73.1
August	4 273.1	573.1	4 846.2	387.1	66.3	453.3	5 299.6	8.6	72.8
September	4 307.9	594.6	4 902.5	386.9	54.2	441.1	5 343.6	8.3	73.3
October	4 307.0	605.4	4 912.3	362.3	56.9	419.2	5 331.5	7.9	73.0
November	4 293.1	611.8	4 904.9	373.9	58.0	431.9	5 336.8	8.1	73.0
December	4 288.9	621.2	4 910.1	359.8	54.1	413.9	5 324.0	7.8	72.7
<b>FEMALES</b>									
<b>1997</b>									
October	2 066.0	1 586.7	3 652.7	218.7	103.8	322.6	3 975.2	8.1	53.5
November	2 077.3	1 598.4	3 675.7	219.0	101.8	320.8	3 996.5	8.0	53.7
December	2 089.3	1 588.4	3 677.7	215.2	101.2	316.4	3 994.1	7.9	53.6
<b>1998</b>									
January	2 086.1	1 585.0	3 671.1	214.5	106.9	321.3	3 992.5	8.0	53.6
February	2 093.3	1 598.2	3 691.5	209.5	97.4	306.9	3 998.5	7.7	53.6
March	2 087.3	1 585.5	3 672.8	221.6	97.0	318.6	3 991.4	8.0	53.4
April	2 111.9	1 603.0	3 714.9	208.0	106.8	314.7	4 029.7	7.8	53.9
May	2 089.2	1 624.6	3 713.8	219.5	95.6	315.1	4 028.9	7.8	53.8
June	2 112.9	1 617.0	3 730.0	207.8	112.2	320.1	4 050.0	7.9	54.1
July	2 136.0	1 606.0	3 742.0	212.0	106.0	318.1	4 060.0	7.8	54.1
August	2 134.5	1 630.5	3 765.0	207.2	100.5	307.6	4 072.6	7.6	54.3
September	2 127.7	1 622.3	3 750.0	212.8	106.6	319.5	4 069.4	7.9	54.2
October	2 119.2	1 656.2	3 775.4	193.4	107.2	300.6	4 076.0	7.4	54.2
November	2 108.0	1 625.0	3 733.0	204.8	114.1	318.9	4 051.9	7.9	53.8
December	2 143.9	1 637.5	3 781.4	193.8	98.9	292.7	4 074.1	7.2	54.0
<b>PERSONS</b>									
<b>1997</b>									
October	6 299.3	2 161.0	8 460.3	610.1	163.4	773.5	9 233.8	8.4	63.1
November	6 324.3	2 182.9	8 507.2	610.5	168.2	778.7	9 285.9	8.4	63.4
December	6 337.8	2 176.2	8 514.0	597.7	163.8	761.5	9 275.5	8.2	63.2
<b>1998</b>									
January	6 357.5	2 157.1	8 514.6	593.1	161.8	754.8	9 269.5	8.1	63.1
February	6 350.6	2 178.8	8 529.4	588.7	162.2	751.0	9 280.3	8.1	63.2
March	6 350.5	2 163.3	8 513.9	609.4	151.0	760.4	9 274.3	8.2	63.0
April	6 393.0	2 179.1	8 572.1	573.8	163.4	737.2	9 309.3	7.9	63.2
May	6 349.0	2 218.4	8 567.4	599.4	154.4	753.9	9 321.2	8.1	63.2
June	6 377.5	2 210.0	8 587.5	599.3	168.5	767.8	9 355.4	8.2	63.4
July	6 409.9	2 188.1	8 598.0	613.8	163.2	777.0	9 375.1	8.3	63.5
August	6 407.6	2 203.6	8 611.2	594.2	166.7	761.0	9 372.2	8.1	63.4
September	6 435.6	2 216.9	8 652.5	599.7	160.9	760.6	9 413.1	8.1	63.6
October	6 426.2	2 261.5	8 687.7	555.7	164.1	719.8	9 407.5	7.7	63.4
November	6 401.1	2 236.8	8 637.9	578.7	172.1	750.8	9 388.7	8.0	63.2
December	6 432.8	2 258.7	8 691.5	553.5	153.0	706.5	9 398.1	7.5	63.2

LABOUR FORCE STATUS (AGED 15 AND OVER): Trend(a)

Month	EMPLOYED.....			UNEMPLOYED.....					
	Full time '000	Part time '000	Total '000	Looking for f/t work	Looking for p/t work	Total '000	Labour force	Unemp- loyment rate	Partic- ipation rate
				'000	'000		'000	'000	%
MALES									
<b>1997</b>									
October	4 231.7	575.3	4 807.0	394.9	61.8	456.7	5 263.7	8.7	73.1
November	4 243.1	577.6	4 820.7	389.6	62.2	451.8	5 272.5	8.6	73.1
December	4 253.0	579.1	4 832.0	384.6	61.7	446.3	5 278.3	8.5	73.1
<b>1998</b>									
January	4 260.3	579.8	4 840.1	380.5	60.5	441.0	5 281.1	8.4	73.1
February	4 264.6	580.4	4 845.1	378.4	58.9	437.3	5 282.4	8.3	73.0
March	4 266.1	581.3	4 847.4	378.4	57.7	436.1	5 283.5	8.3	72.9
April	4 266.3	582.2	4 848.5	380.8	57.4	438.1	5 286.7	8.3	72.9
May	4 267.3	583.2	4 850.5	384.5	57.6	442.1	5 292.6	8.4	72.9
June	4 270.8	584.1	4 855.0	387.9	58.2	446.1	5 301.0	8.4	73.0
July	4 276.9	585.8	4 862.7	388.9	58.6	447.5	5 310.2	8.4	73.0
August	4 284.0	589.0	4 873.1	386.7	58.7	445.4	5 318.5	8.4	73.0
September	4 290.6	594.3	4 885.0	381.9	58.3	440.2	5 325.2	8.3	73.0
October	4 295.7	601.1	4 896.8	375.7	57.5	433.2	5 330.0	8.1	73.0
November	4 298.9	608.2	4 907.1	369.4	56.7	426.1	5 333.2	8.0	72.9
December	4 300.0	615.1	4 915.1	363.6	55.9	419.5	5 334.6	7.9	72.9
FEMALES									
<b>1997</b>									
October	2 072.5	1 585.3	3 657.8	218.5	104.2	322.7	3 980.5	8.1	53.6
November	2 077.7	1 588.6	3 666.3	217.1	103.1	320.2	3 986.4	8.0	53.6
December	2 082.7	1 590.0	3 672.8	215.9	102.0	317.9	3 990.6	8.0	53.6
<b>1998</b>									
January	2 086.9	1 591.5	3 678.4	215.0	101.0	316.0	3 994.4	7.9	53.6
February	2 090.6	1 593.8	3 684.4	214.5	100.7	315.2	3 999.6	7.9	53.6
March	2 094.6	1 597.9	3 692.5	214.1	101.1	315.2	4 007.7	7.9	53.7
April	2 100.3	1 603.1	3 703.5	213.9	101.9	315.7	4 019.2	7.9	53.8
May	2 108.0	1 609.1	3 717.2	213.4	102.8	316.2	4 033.4	7.8	53.9
June	2 115.8	1 615.3	3 731.2	212.4	104.0	316.4	4 047.6	7.8	54.0
July	2 121.8	1 620.8	3 742.6	210.6	105.2	315.9	4 058.5	7.8	54.1
August	2 125.1	1 625.6	3 750.7	208.2	106.1	314.2	4 065.0	7.7	54.2
September	2 126.3	1 629.8	3 756.1	205.5	106.4	311.9	4 068.0	7.7	54.1
October	2 126.6	1 633.7	3 760.2	202.6	106.6	309.1	4 069.4	7.6	54.1
November	2 127.1	1 636.7	3 763.7	199.7	106.6	306.3	4 070.0	7.5	54.0
December	2 126.5	1 639.4	3 765.9	197.7	105.6	303.3	4 069.2	7.5	53.9
PERSONS									
<b>1997</b>									
October	6 304.2	2 160.6	8 464.8	613.4	166.0	779.4	9 244.2	8.4	63.2
November	6 320.8	2 166.2	8 487.0	606.7	165.3	772.0	9 258.9	8.3	63.2
December	6 335.7	2 169.1	8 504.8	600.4	163.7	764.2	9 269.0	8.2	63.2
<b>1998</b>									
January	6 347.2	2 171.3	8 518.5	595.5	161.5	757.0	9 275.4	8.2	63.2
February	6 355.2	2 174.3	8 529.5	592.9	159.6	752.5	9 282.0	8.1	63.2
March	6 360.6	2 179.2	8 539.9	592.5	158.8	751.3	9 291.2	8.1	63.2
April	6 366.6	2 185.4	8 552.0	594.7	159.2	753.9	9 305.9	8.1	63.2
May	6 375.3	2 192.3	8 567.7	597.9	160.4	758.3	9 325.9	8.1	63.3
June	6 386.7	2 199.4	8 586.1	600.3	162.2	762.5	9 348.6	8.2	63.3
July	6 398.7	2 206.6	8 605.3	599.5	163.9	763.3	9 368.6	8.1	63.4
August	6 409.1	2 214.7	8 623.8	594.9	164.8	759.7	9 383.5	8.1	63.4
September	6 416.9	2 224.2	8 641.1	587.4	164.7	752.1	9 393.1	8.0	63.4
October	6 422.2	2 234.8	8 657.0	578.3	164.1	742.4	9 399.4	7.9	63.4
November	6 426.0	2 244.8	8 670.8	569.1	163.2	732.3	9 403.2	7.8	63.3
December	6 426.4	2 254.6	8 681.0	561.3	161.5	722.8	9 403.8	7.7	63.2

(a) Trend estimates for June 1998 to November 1998 have been revised.



## UNEMPLOYED PERSONS: Original

Month	NUMBER OF UNEMPLOYED PERSONS.....					UNEMPLOYMENT RATE.....					UNEMPLOYMENT TO POPULATION RATIO	
	Aged 15-19 looking for f/t work	Aged 20 and over looking for f/t work	Total looking for f/t work	Looking for p/t work	Total	Aged 15-19 looking for f/t work	Aged 20 and over looking for f/t work	Total looking for f/t work	Looking for p/t work	Total	Aged 15-19 looking for f/t work	Aged 20 and over looking for f/t work
	'000	'000	'000	'000	'000	%	%	%	%	%	%	%
MALES												
<b>1997</b>												
October	44.7	325.5	370.2	56.5	426.7	23.3	7.4	8.0	8.9	8.1	6.8	5.0
November	43.7	334.5	378.3	59.0	437.2	23.9	7.5	8.2	9.2	8.3	6.6	5.1
December	56.9	323.1	380.0	66.5	446.5	27.2	7.2	8.1	10.2	8.4	8.6	4.9
<b>1998</b>												
January	59.2	358.6	417.8	59.9	477.8	26.9	8.0	8.9	10.0	9.0	8.9	5.5
February	52.3	360.7	412.9	70.0	482.9	25.3	8.1	8.8	11.2	9.1	7.8	5.5
March	54.5	341.7	396.2	63.3	459.5	26.8	7.7	8.5	9.7	8.7	8.2	5.2
April	44.6	314.4	359.0	59.2	418.2	23.5	7.1	7.8	9.2	7.9	6.7	4.8
May	49.9	327.5	377.4	56.1	433.5	25.8	7.4	8.2	8.6	8.2	7.5	5.0
June	48.4	332.9	381.3	50.9	432.2	25.8	7.5	8.2	7.7	8.2	7.2	5.0
July	48.1	334.0	382.2	50.5	432.7	25.4	7.4	8.2	8.1	8.2	7.2	5.1
August	46.9	331.7	378.7	58.6	437.2	25.5	7.5	8.2	9.1	8.3	7.0	5.0
September	48.1	338.4	386.5	58.9	445.4	25.8	7.5	8.2	8.8	8.3	7.2	5.1
October	41.8	300.9	342.7	53.8	396.6	22.7	6.7	7.4	8.1	7.5	6.2	4.5
November	43.1	318.1	361.2	51.7	412.9	23.8	7.1	7.8	7.8	7.8	6.4	4.8
December	52.6	304.2	356.8	57.3	414.1	24.7	6.8	7.6	8.4	7.7	7.8	4.6
FEMALES												
<b>1997</b>												
October	30.9	177.2	208.1	101.7	309.8	28.6	8.2	9.1	6.0	7.8	4.9	2.6
November	34.1	170.2	204.2	95.3	299.6	33.6	7.8	8.9	5.6	7.5	5.4	2.5
December	45.1	172.9	218.0	99.1	317.1	34.5	7.8	9.3	5.9	7.9	7.1	2.5
<b>1998</b>												
January	52.3	183.8	236.0	103.1	339.1	36.9	8.4	10.2	6.5	8.7	8.3	2.7
February	43.3	201.5	244.8	114.7	359.5	34.2	9.1	10.5	6.9	9.0	6.8	3.0
March	41.1	189.4	230.5	112.0	342.5	35.1	8.6	10.0	6.5	8.5	6.5	2.8
April	35.0	174.0	209.0	109.5	318.6	31.4	7.9	9.1	6.3	7.9	5.5	2.5
May	35.9	176.4	212.4	92.6	304.9	33.7	8.1	9.3	5.3	7.6	5.7	2.6
June	30.7	169.0	199.7	103.7	303.4	30.7	7.7	8.7	5.9	7.5	4.8	2.5
July	31.1	168.2	199.3	95.9	295.1	29.1	7.5	8.5	5.6	7.3	4.9	2.5
August	30.2	166.7	196.9	93.8	290.7	30.7	7.6	8.6	5.5	7.2	4.7	2.4
September	30.0	177.9	207.9	112.3	320.2	29.6	7.9	8.8	6.3	7.8	4.7	2.6
October	29.0	155.0	184.0	105.0	289.0	28.9	7.0	8.0	6.0	7.1	4.6	2.2
November	31.3	159.7	191.0	106.6	297.6	30.2	7.3	8.3	6.1	7.3	4.9	2.3
December	37.2	158.3	195.5	96.9	292.4	29.6	7.0	8.2	5.6	7.1	5.8	2.3
PERSONS												
<b>1997</b>												
October	75.6	502.7	578.3	158.1	736.4	25.2	7.6	8.4	6.8	8.0	5.9	3.8
November	77.8	504.7	582.5	154.3	736.8	27.4	7.6	8.4	6.6	8.0	6.0	3.8
December	102.0	496.0	598.0	165.7	763.6	30.0	7.4	8.5	7.1	8.1	7.9	3.7
<b>1998</b>												
January	111.5	542.4	653.9	163.0	816.9	30.8	8.2	9.3	7.4	8.9	8.6	4.1
February	95.5	562.2	657.7	184.8	842.5	28.7	8.4	9.4	8.0	9.1	7.4	4.2
March	95.6	531.1	626.7	175.3	802.0	29.8	8.0	9.0	7.4	8.6	7.3	4.0
April	79.7	488.4	568.0	168.8	736.8	26.4	7.4	8.2	7.1	7.9	6.1	3.6
May	85.9	503.9	589.8	148.7	738.5	28.6	7.6	8.5	6.2	7.9	6.6	3.7
June	79.1	501.9	581.0	154.6	735.6	27.5	7.6	8.4	6.4	7.9	6.1	3.7
July	79.2	502.2	581.4	146.4	727.8	26.8	7.5	8.3	6.3	7.8	6.1	3.7
August	77.1	498.4	575.6	152.4	727.9	27.3	7.5	8.3	6.5	7.9	5.9	3.7
September	78.1	516.3	594.4	171.2	765.6	27.1	7.6	8.4	7.0	8.1	6.0	3.8
October	70.8	455.8	526.7	158.9	685.6	24.9	6.8	7.6	6.6	7.3	5.4	3.4
November	74.4	477.8	552.2	158.3	710.5	26.1	7.2	7.9	6.6	7.6	5.7	3.5
December	89.8	462.5	552.3	154.2	706.5	26.5	6.8	7.8	6.4	7.4	6.8	3.4

## UNEMPLOYED PERSONS: Seasonally adjusted

Month	NUMBER OF UNEMPLOYED PERSONS....					UNEMPLOYMENT RATE.....					UNEMPLOYMENT TO POPULATION RATIO	
	Aged 15-19 looking for f/t work	Aged 20 and over looking for f/t work	Total looking for f/t work	Looking for p/t work	Total	Aged 15-19 looking for f/t work	Aged 20 and over looking for f/t work	Total looking for f/t work	Looking for p/t work	Total	Aged 15-19 looking for f/t work	Aged 20 and over looking for f/t work
	'000	'000	'000	'000	'000	%	%	%	%	%	%	%
MALES												
<b>1997</b>												
October	50.2	341.1	391.4	59.6	451.0	24.9	7.7	8.5	9.4	8.6	7.6	5.2
November	48.2	343.3	391.5	66.4	457.9	24.6	7.7	8.4	10.2	8.7	7.3	5.2
December	48.2	334.3	382.5	62.6	445.1	25.6	7.5	8.3	9.6	8.4	7.2	5.1
<b>1998</b>												
January	47.4	331.2	378.6	54.9	433.5	24.5	7.4	8.1	8.8	8.2	7.1	5.0
February	45.8	333.4	379.2	64.8	444.0	23.8	7.5	8.2	10.0	8.4	6.9	5.1
March	54.2	333.7	387.9	54.0	441.8	26.7	7.5	8.3	8.5	8.4	8.1	5.1
April	45.8	320.1	365.8	56.7	422.5	24.4	7.2	7.9	9.0	8.0	6.8	4.9
May	49.2	330.6	379.9	58.9	438.8	24.7	7.4	8.2	9.0	8.3	7.4	5.0
June	49.8	341.7	391.5	56.3	447.8	25.1	7.7	8.4	8.7	8.4	7.4	5.2
July	53.3	348.5	401.8	57.2	459.0	27.7	7.8	8.6	8.9	8.6	8.0	5.3
August	53.4	333.6	387.1	66.3	453.3	26.8	7.5	8.3	10.4	8.6	8.0	5.0
September	54.4	332.5	386.9	54.2	441.1	27.7	7.4	8.2	8.4	8.3	8.1	5.0
October	47.0	315.3	362.3	56.9	419.2	24.3	7.0	7.8	8.6	7.9	7.0	4.8
November	47.5	326.4	373.9	58.0	431.9	24.5	7.3	8.0	8.7	8.1	7.1	4.9
December	44.6	315.2	359.8	54.1	413.9	23.2	7.1	7.7	8.0	7.8	6.6	4.7
FEMALES												
<b>1997</b>												
October	35.9	182.9	218.7	103.8	322.6	32.0	8.4	9.6	6.1	8.1	5.7	2.7
November	37.9	181.1	219.0	101.8	320.8	34.6	8.3	9.5	6.0	8.0	6.0	2.7
December	36.9	178.3	215.2	101.2	316.4	32.5	8.1	9.3	6.0	7.9	5.8	2.6
<b>1998</b>												
January	41.1	173.4	214.5	106.9	321.3	34.7	7.9	9.3	6.3	8.0	6.5	2.5
February	35.4	174.2	209.5	97.4	306.9	30.7	8.0	9.1	5.7	7.7	5.6	2.6
March	40.1	181.4	221.6	97.0	318.6	33.3	8.3	9.6	5.8	8.0	6.3	2.7
April	37.1	170.8	207.9	106.8	314.7	31.4	7.8	9.0	6.2	7.8	5.9	2.5
May	37.6	181.9	219.5	95.6	315.1	33.6	8.3	9.5	5.6	7.8	5.9	2.7
June	32.7	175.1	207.8	112.2	320.1	30.7	7.9	9.0	6.5	7.9	5.1	2.6
July	36.6	175.5	212.0	106.0	318.1	33.6	7.8	9.0	6.2	7.8	5.8	2.6
August	33.0	174.1	207.2	100.5	307.6	30.9	7.8	8.8	5.8	7.6	5.2	2.5
September	33.5	179.3	212.8	106.6	319.5	31.7	8.0	9.1	6.2	7.9	5.3	2.6
October	33.5	159.9	193.4	107.2	300.6	32.2	7.2	8.4	6.1	7.4	5.3	2.3
November	34.7	170.1	204.8	114.1	318.9	31.0	7.7	8.9	6.6	7.9	5.4	2.5
December	30.5	163.3	193.8	98.9	292.7	27.8	7.3	8.3	5.7	7.2	4.8	2.4
PERSONS												
<b>1997</b>												
October	86.1	524.0	610.1	163.4	773.5	27.4	7.9	8.8	7.0	8.4	6.7	3.9
November	86.1	524.4	610.5	168.2	778.7	28.1	7.9	8.8	7.2	8.4	6.7	3.9
December	85.1	512.6	597.7	163.8	761.5	28.2	7.7	8.6	7.0	8.2	6.6	3.8
<b>1998</b>												
January	88.5	504.6	593.1	161.8	754.8	28.4	7.6	8.5	7.0	8.1	6.8	3.8
February	81.2	507.6	588.7	162.2	751.0	26.4	7.7	8.5	6.9	8.1	6.2	3.8
March	94.3	515.1	609.4	151.0	760.4	29.2	7.8	8.8	6.5	8.2	7.3	3.8
April	82.9	490.9	573.8	163.4	737.2	27.1	7.4	8.2	7.0	7.9	6.4	3.7
May	86.9	512.6	599.4	154.4	753.9	27.9	7.7	8.6	6.5	8.1	6.7	3.8
June	82.5	516.8	599.3	168.5	767.8	27.1	7.7	8.6	7.1	8.2	6.3	3.8
July	89.9	523.9	613.8	163.2	777.0	29.9	7.8	8.7	6.9	8.3	6.9	3.9
August	86.5	507.8	594.2	166.7	761.0	28.2	7.6	8.5	7.0	8.1	6.6	3.8
September	87.9	511.8	599.7	160.9	760.6	29.1	7.6	8.5	6.8	8.1	6.7	3.8
October	80.5	475.2	555.7	164.1	719.8	27.0	7.1	8.0	6.8	7.7	6.1	3.5
November	82.2	496.5	578.7	172.1	750.8	26.9	7.4	8.3	7.1	8.0	6.3	3.7
December	75.1	478.5	553.5	153.0	706.5	24.8	7.2	7.9	6.3	7.5	5.7	3.5

## UNEMPLOYED PERSONS: Trend(a)

Month	NUMBER OF UNEMPLOYED PERSONS.....					UNEMPLOYMENT RATE.....					UNEMPLOYMENT TO POPULATION RATIO	
	<i>Aged 15-19 looking for f/t work</i>	<i>Aged 20 and over looking for f/t work</i>	<i>Total looking for f/t work</i>	<i>Looking for p/t work</i>	<i>Total</i>	<i>Aged 15-19 looking for f/t work</i>	<i>Aged 20 and over looking for f/t work</i>	<i>Total looking for f/t work</i>	<i>Looking for p/t work</i>	<i>Total</i>	<i>Aged 15-19 looking for f/t work</i>	<i>Aged 20 and over looking for f/t work</i>
	'000	'000	'000	'000	'000	%	%	%	%	%	%	%
MALES												
<b>1997</b>												
October	49.5	345.5	394.9	61.8	456.7	25.3	7.8	8.5	9.7	8.7	7.5	5.3
November	48.8	340.8	389.6	62.2	451.8	25.0	7.7	8.4	9.7	8.6	7.4	5.2
December	48.3	336.2	384.6	61.7	446.3	24.9	7.6	8.3	9.6	8.5	7.3	5.1
<b>1998</b>												
January	48.1	332.4	380.5	60.5	441.0	24.8	7.5	8.2	9.5	8.4	7.2	5.1
February	48.1	330.3	378.4	58.9	437.3	24.8	7.4	8.2	9.2	8.3	7.2	5.0
March	48.4	330.0	378.4	57.7	436.1	24.9	7.4	8.1	9.0	8.3	7.2	5.0
April	49.1	331.7	380.8	57.4	438.1	25.1	7.5	8.2	9.0	8.3	7.3	5.0
May	50.1	334.4	384.5	57.6	442.1	25.5	7.5	8.3	9.0	8.4	7.5	5.1
June	51.2	336.6	387.9	58.2	446.1	26.1	7.5	8.3	9.1	8.4	7.6	5.1
July	51.9	337.0	388.9	58.6	447.5	26.4	7.5	8.3	9.1	8.4	7.7	5.1
August	51.8	334.9	386.7	58.7	445.4	26.4	7.5	8.3	9.1	8.4	7.7	5.1
September	51.1	330.9	381.9	58.3	440.2	26.1	7.4	8.2	8.9	8.3	7.6	5.0
October	49.7	326.0	375.7	57.5	433.2	25.5	7.3	8.0	8.7	8.1	7.4	4.9
November	48.1	321.4	369.4	56.7	426.1	24.8	7.2	7.9	8.5	8.0	7.1	4.8
December	46.5	317.1	363.6	55.9	419.5	24.0	7.1	7.8	8.3	7.9	6.9	4.8
FEMALES												
<b>1997</b>												
October	35.6	182.9	218.5	104.2	322.7	31.9	8.4	9.5	6.2	8.1	5.7	2.7
November	36.8	180.3	217.1	103.1	320.2	32.7	8.3	9.5	6.1	8.0	5.8	2.6
December	37.8	178.0	215.9	102.0	317.9	33.1	8.2	9.4	6.0	8.0	6.0	2.6
<b>1998</b>												
January	38.4	176.5	215.0	101.0	316.0	33.1	8.1	9.3	6.0	7.9	6.1	2.6
February	38.5	176.0	214.5	100.7	315.2	32.9	8.0	9.3	5.9	7.9	6.1	2.6
March	38.1	176.0	214.1	101.1	315.2	32.6	8.0	9.3	5.9	7.9	6.0	2.6
April	37.4	176.5	213.9	101.9	315.7	32.3	8.0	9.2	6.0	7.9	5.9	2.6
May	36.4	177.0	213.4	102.8	316.2	32.2	8.0	9.2	6.0	7.8	5.7	2.6
June	35.5	176.9	212.4	104.0	316.4	32.2	8.0	9.1	6.0	7.8	5.6	2.6
July	34.7	175.9	210.6	105.2	315.9	32.2	7.9	9.0	6.1	7.8	5.5	2.6
August	34.2	174.0	208.2	106.1	314.2	32.0	7.8	8.9	6.1	7.7	5.4	2.5
September	33.7	171.7	205.5	106.4	311.9	31.6	7.7	8.8	6.1	7.7	5.3	2.5
October	33.3	169.3	202.6	106.6	309.1	31.0	7.6	8.7	6.1	7.6	5.2	2.5
November	32.9	166.8	199.7	106.6	306.3	30.4	7.5	8.6	6.1	7.5	5.2	2.4
December	32.6	165.1	197.7	105.6	303.3	29.9	7.5	8.5	6.1	7.5	5.1	2.4
PERSONS												
<b>1997</b>												
October	85.1	528.4	613.4	166.0	779.4	27.7	8.0	8.9	7.1	8.4	6.6	4.0
November	85.6	521.0	606.7	165.3	772.0	27.8	7.9	8.8	7.1	8.3	6.6	3.9
December	86.2	514.3	600.4	163.7	764.2	27.9	7.8	8.7	7.0	8.2	6.6	3.8
<b>1998</b>												
January	86.5	508.9	595.5	161.5	757.0	27.9	7.7	8.6	6.9	8.2	6.7	3.8
February	86.6	506.3	592.9	159.6	752.5	27.8	7.6	8.5	6.8	8.1	6.7	3.8
March	86.5	506.0	592.5	158.8	751.3	27.8	7.6	8.5	6.8	8.1	6.6	3.8
April	86.5	508.2	594.7	159.2	753.9	27.8	7.6	8.5	6.8	8.1	6.6	3.8
May	86.6	511.4	597.9	160.4	758.3	28.0	7.7	8.6	6.8	8.1	6.6	3.8
June	86.7	513.6	600.3	162.2	762.5	28.3	7.7	8.6	6.9	8.2	6.6	3.8
July	86.6	512.8	599.5	163.9	763.3	28.5	7.7	8.6	6.9	8.1	6.6	3.8
August	86.0	508.9	594.9	164.8	759.7	28.4	7.6	8.5	6.9	8.1	6.6	3.8
September	84.8	502.6	587.4	164.7	752.1	28.0	7.5	8.4	6.9	8.0	6.5	3.7
October	83.0	495.3	578.3	164.1	742.4	27.5	7.4	8.3	6.8	7.9	6.3	3.7
November	80.9	488.2	569.1	163.2	732.3	26.8	7.3	8.1	6.8	7.8	6.2	3.6
December	79.0	482.2	561.3	161.5	722.8	26.1	7.2	8.0	6.7	7.7	6.0	3.6

(a) Trend estimates for June 1998 to November 1998 have been revised.

PERSONS AGED 15 TO 19, Education and Labour Force: **Original**—December 1998

	EMPLOYED.....			UNEMPLOYED.....			Labour force	Not in labour force	Civilian population aged 15-19	Unemployment rate	Participation rate
	Full time	Part time	Total	Looking for f/t work	Looking for p/t work	Total					
	'000	'000	'000	'000	'000	'000	'000	'000	'000	%	%
ATTENDING NEITHER SCHOOL NOR A TERTIARY EDUCATIONAL INSTITUTION FULL TIME											
Males	142.2	56.1	198.3	44.2	7.2	51.4	249.7	48.1	297.7	20.6	83.9
Females	76.6	79.9	156.5	29.7	9.3	38.9	195.4	57.0	252.5	19.9	77.4
Persons	218.8	136.0	354.8	73.9	16.4	90.3	445.1	105.1	550.2	20.3	80.9
ATTENDING A TERTIARY EDUCATIONAL INSTITUTION FULL TIME											
Males	9.6	29.8	39.3	* 3.9	* 3.3	7.2	46.5	27.2	73.7	15.5	63.1
Females	7.5	48.3	55.8	4.1	4.3	8.5	64.3	21.5	85.7	13.2	74.9
Persons	17.1	78.0	95.1	8.0	7.6	15.7	110.8	48.7	159.5	14.1	69.5
ATTENDING SCHOOL											
Males	8.6	83.5	92.1	4.5	28.1	32.6	124.7	177.3	302.1	26.1	41.3
Females	4.5	110.7	115.2	* 3.4	27.5	30.8	146.0	154.2	300.2	21.1	48.7
Persons	13.1	194.2	207.3	7.9	55.6	63.5	270.8	331.5	602.3	23.4	45.0
TOTAL											
Males	160.4	169.3	329.7	52.6	38.6	91.2	420.9	252.6	673.5	21.7	62.5
Females	88.6	238.9	327.5	37.2	41.1	78.3	405.7	232.7	638.4	19.3	63.6
<b>Persons</b>	<b>249.0</b>	<b>408.2</b>	<b>657.2</b>	<b>89.8</b>	<b>79.6</b>	<b>169.4</b>	<b>826.6</b>	<b>485.3</b>	<b>1 311.9</b>	<b>20.5</b>	<b>63.0</b>

	EMPLOYED.....			UNEMPLOYED.....			Labour force '000	Not in labour force '000	Civilian population aged 15 and over '000	Unemp- loyment rate %	Partic- ipation rate %
	Full time	Part time	Total	Looking for f/t work	Looking for p/t work	Total					
	'000	'000	'000	'000	'000	'000					
MALES											
New South Wales	1 467.5	190.2	1 657.8	108.6	13.9	122.5	1 780.3	691.6	2 471.9	6.9	72.0
Victoria	1 073.6	159.7	1 233.3	80.6	19.2	99.7	1 333.0	483.5	1 816.6	7.5	73.4
Queensland	819.1	124.9	944.0	73.0	10.6	83.6	1 027.5	336.6	1 364.2	8.1	75.3
South Australia	327.8	51.0	378.8	38.8	3.6	42.5	421.3	166.5	587.8	10.1	71.7
Western Australia	448.5	62.8	511.4	37.3	6.3	43.6	555.0	164.4	719.3	7.9	77.2
Tasmania	96.1	14.3	110.4	12.4	2.1	14.4	124.8	56.5	181.3	11.6	68.9
Northern Territory	45.1	5.9	51.0	1.8	* 0.2	2.0	53.0	15.6	68.6	3.7	77.3
Australian Capital Territory	73.3	11.8	85.1	4.4	1.4	5.9	90.9	25.1	116.1	6.4	78.3
<b>Australia</b>	<b>4 351.1</b>	<b>620.6</b>	<b>4 971.7</b>	<b>356.8</b>	<b>57.3</b>	<b>414.1</b>	<b>5 385.8</b>	<b>1 939.8</b>	<b>7 325.7</b>	<b>7.7</b>	<b>73.5</b>
FEMALES											
New South Wales	759.6	513.8	1 273.4	57.9	29.5	87.4	1 360.7	1 196.0	2 556.8	6.4	53.2
Victoria	542.4	408.2	950.6	48.3	26.8	75.1	1 025.8	868.8	1 894.6	7.3	54.1
Queensland	403.9	310.5	714.4	45.8	17.8	63.6	778.1	610.0	1 388.0	8.2	56.1
South Australia	150.7	141.6	292.3	17.7	7.1	24.8	317.1	291.5	608.6	7.8	52.1
Western Australia	212.9	177.3	390.2	16.9	10.0	26.9	417.2	307.5	724.7	6.5	57.6
Tasmania	41.3	43.4	84.7	6.4	3.2	9.7	94.4	93.1	187.5	10.2	50.3
Northern Territory	29.8	13.1	42.9	* 0.9	* 0.3	* 1.2	44.1	21.7	65.8	* 2.7	67.0
Australian Capital Territory	49.0	26.0	75.0	1.6	2.1	3.7	78.8	41.2	120.0	4.8	65.7
<b>Australia</b>	<b>2 189.7</b>	<b>1 633.9</b>	<b>3 823.6</b>	<b>195.5</b>	<b>96.9</b>	<b>292.4</b>	<b>4 116.0</b>	<b>3 429.9</b>	<b>7 545.9</b>	<b>7.1</b>	<b>54.5</b>
PERSONS											
New South Wales	2 227.2	704.0	2 931.2	166.5	43.4	209.9	3 141.0	1 887.6	5 028.7	6.7	62.5
Victoria	1 616.0	568.0	2 183.9	128.9	46.0	174.9	2 358.8	1 352.3	3 711.1	7.4	63.6
Queensland	1 223.0	435.4	1 658.4	118.8	28.4	147.2	1 805.6	946.6	2 752.2	8.2	65.6
South Australia	478.5	192.6	671.1	56.5	10.8	67.3	738.3	458.1	1 196.4	9.1	61.7
Western Australia	661.5	240.2	901.6	54.2	16.3	70.5	972.1	471.9	1 444.0	7.3	67.3
Tasmania	137.4	57.7	195.1	18.8	5.3	24.1	219.2	149.6	368.8	11.0	59.4
Northern Territory	74.9	18.9	93.9	2.7	* 0.5	3.2	97.0	37.3	134.4	3.3	72.2
Australian Capital Territory	122.3	37.8	160.1	6.1	3.5	9.6	169.7	66.4	236.1	5.7	71.9
<b>Australia</b>	<b>6 540.8</b>	<b>2 254.5</b>	<b>8 795.3</b>	<b>552.3</b>	<b>154.2</b>	<b>706.5</b>	<b>9 501.8</b>	<b>5 369.7</b>	<b>14 871.6</b>	<b>7.4</b>	<b>63.9</b>

## UNEMPLOYED PERSONS—New South Wales, Victoria and Queensland: Original

Month	NUMBER OF UNEMPLOYED PERSONS.....					UNEMPLOYMENT RATE.....					UNEMPLOYMENT TO POPULATION RATIO	
	Aged 15-19 looking for f/t work	Aged 20 and over looking for f/t work	Total looking for f/t work	Looking for p/t work	Total	Aged 15-19 looking for f/t work	Aged 20 and over looking for f/t work	Total looking for f/t work	Looking for p/t work	Total	Aged 15-19 looking for f/t work	Aged 20 and over looking for f/t work
	'000	'000	'000	'000	'000	%	%	%	%	%	%	%
NEW SOUTH WALES												
<b>1997</b>												
October	24.7	164.6	189.3	46.9	236.2	24.9	7.4	8.1	6.8	7.8	5.8	3.6
November	22.0	159.0	181.1	44.8	225.9	23.2	7.1	7.7	6.1	7.4	5.2	3.5
December	27.5	155.6	183.1	47.6	230.8	25.6	6.9	7.7	6.5	7.4	6.4	3.4
<b>1998</b>												
January	35.2	163.3	198.5	45.8	244.3	29.0	7.3	8.4	6.7	8.0	8.2	3.6
February	28.3	173.1	201.4	61.1	262.4	26.2	7.8	8.6	8.6	8.6	6.6	3.8
March	27.9	169.2	197.1	48.7	245.8	25.6	7.6	8.4	6.7	8.0	6.5	3.7
April	23.1	144.7	167.9	51.2	219.1	22.6	6.5	7.2	6.9	7.1	5.4	3.2
May	31.0	153.3	184.2	43.0	227.2	29.2	6.9	7.9	5.8	7.4	7.2	3.4
June	26.4	148.5	174.9	48.1	223.0	27.3	6.6	7.5	6.5	7.2	6.1	3.3
July	25.3	150.3	175.5	41.4	216.9	26.2	6.5	7.3	5.8	7.0	5.9	3.3
August	24.7	154.8	179.5	41.8	221.3	25.9	6.9	7.7	5.9	7.3	5.7	3.4
September	23.2	157.2	180.3	52.4	232.7	24.4	6.8	7.5	7.0	7.4	5.4	3.4
October	22.3	130.8	153.1	49.1	202.2	23.1	5.8	6.5	6.6	6.5	5.2	2.9
November	21.6	153.3	174.9	53.6	228.4	23.1	6.8	7.5	7.2	7.4	5.0	3.3
December	28.5	138.0	166.5	43.4	209.9	26.6	6.0	7.0	5.8	6.7	6.6	3.0
VICTORIA												
<b>1997</b>												
October	16.7	124.7	141.4	42.5	183.9	26.1	7.6	8.3	7.1	8.0	5.3	3.7
November	18.0	124.7	142.7	41.8	184.5	33.2	7.6	8.4	6.9	8.0	5.7	3.7
December	26.4	115.9	142.3	49.3	191.7	34.8	7.0	8.2	8.1	8.2	8.3	3.5
<b>1998</b>												
January	26.2	136.6	162.8	48.9	211.8	35.9	8.2	9.4	8.7	9.2	8.3	4.1
February	23.1	135.9	159.0	48.5	207.5	32.1	8.1	9.1	8.5	8.9	7.3	4.1
March	25.1	133.4	158.5	51.9	210.4	37.3	8.0	9.1	8.5	9.0	7.9	4.0
April	19.8	127.8	147.6	47.3	194.9	31.5	7.6	8.5	7.8	8.3	6.2	3.8
May	18.1	130.8	149.0	40.3	189.3	31.2	7.8	8.6	6.6	8.1	5.7	3.9
June	17.3	127.9	145.2	43.2	188.3	31.9	7.7	8.5	6.9	8.0	5.4	3.8
July	17.5	125.5	143.1	42.5	185.5	29.5	7.5	8.2	7.0	7.9	5.5	3.7
August	17.6	120.2	137.7	47.3	185.0	31.5	7.2	8.0	7.7	7.9	5.5	3.6
September	19.0	127.2	146.2	50.2	196.4	33.0	7.5	8.4	7.9	8.2	6.0	3.8
October	15.2	113.3	128.5	44.2	172.7	26.8	6.8	7.5	7.3	7.4	4.8	3.4
November	16.9	116.5	133.4	41.0	174.4	28.6	7.1	7.8	6.6	7.5	5.3	3.4
December	18.5	110.4	128.9	46.0	174.9	24.8	6.6	7.4	7.5	7.4	5.8	3.3
QUEENSLAND												
<b>1997</b>												
October	16.1	99.6	115.7	34.9	150.6	27.0	8.1	9.0	7.5	8.6	6.5	4.1
November	18.3	103.9	122.2	33.6	155.9	31.8	8.4	9.5	7.4	8.9	7.3	4.2
December	23.1	102.0	125.0	31.3	156.3	32.4	8.1	9.4	7.1	8.9	9.2	4.2
<b>1998</b>												
January	22.6	111.8	134.4	30.8	165.2	30.5	9.0	10.2	7.3	9.5	9.0	4.6
February	18.0	122.9	140.9	35.5	176.5	26.7	9.8	10.6	7.8	9.9	7.1	5.0
March	17.9	105.1	123.0	34.5	157.5	28.0	8.5	9.5	7.4	9.0	7.1	4.3
April	18.4	100.0	118.4	35.1	153.5	28.2	8.1	9.1	7.6	8.7	7.3	4.1
May	15.6	101.5	117.1	30.2	147.3	25.3	8.3	9.1	6.4	8.4	6.2	4.1
June	16.6	103.2	119.8	32.4	152.2	26.3	8.3	9.2	6.8	8.6	6.5	4.2
July	16.6	105.7	122.3	28.9	151.2	25.0	8.5	9.3	6.4	8.6	6.5	4.3
August	15.9	100.0	115.9	31.6	147.5	27.0	8.1	9.0	6.8	8.4	6.2	4.0
September	16.8	104.9	121.7	35.4	157.1	26.3	8.4	9.3	7.5	8.8	6.6	4.2
October	15.5	98.1	113.6	34.1	147.7	24.8	7.8	8.7	7.1	8.2	6.0	3.9
November	16.5	90.3	106.8	33.6	140.4	26.8	7.2	8.1	7.2	7.8	6.5	3.6
December	19.9	98.8	118.8	28.4	147.2	27.3	7.8	8.9	6.1	8.2	7.8	4.0

UNEMPLOYED PERSONS—South Australia, Western Australia and Tasmania: **Original**

Month	NUMBER OF UNEMPLOYED PERSONS.....					UNEMPLOYMENT RATE.....					UNEMPLOYMENT TO POPULATION RATIO	
	Aged 15-19 looking for f/t work	Aged 20 and over looking for f/t work	Total looking for f/t work	Looking for p/t work	Total	Aged 15-19 looking for f/t work	Aged 20 and over looking for f/t work	Total looking for f/t work	Looking for p/t work	Total	Aged 15-19 looking for f/t work	Aged 20 and over looking for f/t work
	'000	'000	'000	'000	'000	%	%	%	%	%	%	%
SOUTH AUSTRALIA												
<b>1997</b>												
October	7.4	49.8	57.1	12.7	69.8	32.3	9.9	10.9	6.2	9.5	7.5	4.6
November	6.5	50.8	57.4	11.9	69.3	28.8	10.0	10.8	5.8	9.5	6.6	4.7
December	8.9	49.7	58.5	12.5	71.0	35.0	9.6	10.8	6.4	9.7	9.0	4.6
<b>1998</b>												
January	9.2	55.0	64.2	14.7	78.9	32.5	10.8	12.0	7.9	10.9	9.3	5.0
February	8.5	52.9	61.4	15.5	76.9	34.4	10.5	11.6	7.9	10.6	8.6	4.9
March	8.8	50.5	59.3	14.4	73.6	37.6	10.1	11.3	7.4	10.2	8.9	4.6
April	8.7	47.1	55.8	11.8	67.6	38.0	9.5	10.8	6.0	9.4	8.7	4.3
May	9.1	50.3	59.5	12.9	72.4	38.2	10.2	11.5	6.7	10.2	9.2	4.6
June	6.5	50.5	56.9	11.2	68.1	29.7	10.2	11.0	5.8	9.6	6.5	4.6
July	7.9	49.0	56.9	12.3	69.2	35.5	9.8	10.9	6.6	9.8	8.0	4.5
August	8.4	53.3	61.7	10.4	72.1	36.6	10.6	11.7	5.5	10.1	8.4	4.9
September	8.5	53.5	62.0	10.5	72.6	36.7	10.4	11.6	5.5	10.0	8.6	4.9
October	7.6	45.5	53.1	12.3	65.4	35.4	9.0	10.1	6.2	9.1	7.6	4.2
November	8.3	50.1	58.4	10.1	68.4	36.2	9.9	11.0	5.1	9.4	8.3	4.6
December	7.7	48.8	56.5	10.8	67.3	31.4	9.6	10.6	5.3	9.1	7.7	4.5
WESTERN AUSTRALIA												
<b>1997</b>												
October	5.9	36.9	42.8	12.6	55.4	15.3	5.8	6.3	5.2	6.0	4.5	2.9
November	8.4	39.2	47.6	13.7	61.4	21.5	6.1	6.9	5.7	6.6	6.4	3.1
December	10.9	43.3	54.1	14.1	68.2	26.0	6.5	7.7	5.8	7.2	8.2	3.4
<b>1998</b>												
January	11.7	47.9	59.5	13.4	73.0	26.2	7.2	8.4	5.9	7.8	8.8	3.7
February	11.9	47.5	59.5	14.5	74.0	27.9	7.3	8.5	5.9	7.9	9.0	3.7
March	10.1	45.0	55.2	15.4	70.6	25.2	6.9	7.9	6.3	7.5	7.7	3.5
April	5.9	43.4	49.4	14.2	63.5	17.9	6.6	7.2	5.6	6.7	4.5	3.4
May	7.8	43.4	51.2	13.9	65.1	22.6	6.6	7.4	5.5	6.9	5.9	3.4
June	8.2	46.4	54.6	13.1	67.7	22.7	7.0	7.8	5.2	7.1	6.2	3.6
July	7.7	44.0	51.8	13.8	65.6	22.2	6.6	7.4	5.5	6.9	5.8	3.4
August	6.9	43.5	50.4	13.0	63.4	20.0	6.6	7.2	5.2	6.7	5.2	3.3
September	5.6	47.7	53.3	15.8	69.1	17.2	7.1	7.6	6.0	7.2	4.2	3.7
October	6.3	44.4	50.6	11.1	61.7	19.7	6.7	7.3	4.3	6.5	4.7	3.4
November	6.9	44.3	51.1	12.9	64.0	21.1	6.7	7.4	5.0	6.7	5.1	3.4
December	9.2	45.0	54.2	16.3	70.5	22.1	6.7	7.6	6.4	7.3	6.8	3.4
TASMANIA												
<b>1997</b>												
October	3.3	17.1	20.4	4.3	24.7	36.0	11.4	12.8	7.4	11.4	9.5	5.1
November	2.9	16.3	19.2	4.6	23.8	32.1	11.0	12.2	7.6	10.9	8.3	4.9
December	3.0	18.7	21.7	6.1	27.9	30.5	12.3	13.4	10.0	12.5	8.8	5.6
<b>1998</b>												
January	3.7	16.5	20.2	4.9	25.1	34.7	11.0	12.6	8.5	11.5	10.7	4.9
February	3.5	17.2	20.7	3.9	24.6	35.1	11.3	12.7	6.7	11.1	10.0	5.1
March	3.9	16.1	20.1	4.3	24.4	40.3	10.7	12.5	7.0	11.0	11.4	4.8
April	2.3	15.4	17.7	4.5	22.2	25.8	10.3	11.1	7.1	10.0	6.6	4.6
May	2.7	15.4	18.1	3.5	21.6	28.1	10.6	11.7	5.2	9.7	7.8	4.6
June	2.4	16.6	19.0	3.6	22.7	27.1	11.5	12.4	5.8	10.4	7.0	5.0
July	2.8	16.1	18.9	4.1	23.1	29.3	11.2	12.3	6.5	10.6	8.2	4.8
August	2.2	17.6	19.8	4.8	24.6	25.3	12.2	13.0	7.5	11.3	6.5	5.3
September	3.0	15.7	18.7	3.4	22.1	34.9	10.9	12.3	5.2	10.2	8.7	4.7
October	2.5	16.5	19.0	3.8	22.7	27.7	11.4	12.3	5.9	10.5	7.1	4.9
November	2.5	14.6	17.1	3.4	20.6	29.2	10.1	11.2	5.6	9.6	7.3	4.4
December	3.9	14.9	18.8	5.3	24.1	39.6	10.2	12.0	8.4	11.0	11.3	4.5

## UNEMPLOYED PERSONS—Northern Territory and Australian Capital Territory: Original

Month	NUMBER OF UNEMPLOYED PERSONS.....					UNEMPLOYMENT RATE.....					UNEMPLOYMENT TO POPULATION RATIO	
	Aged 15-19 looking for f/t work	Aged 20 and over looking for f/t work	Total looking for f/t work	Looking for p/t work	Total	Aged 15-19 looking for f/t work	Aged 20 and over looking for f/t work	Total looking for f/t work	Looking for p/t work	Total	Aged 15-19 looking for f/t work	Aged 20 and over looking for f/t work
	'000	'000	'000	'000	'000	%	%	%	%	%	%	%
<b>NORTHERN TERRITORY</b>												
<b>1997</b>												
October	* 0.4	1.5	1.8	* 0.9	2.7	* 11.9	2.1	2.5	* 4.7	3.0	* 2.9	1.3
November	* 0.1	3.2	3.2	* 0.3	3.5	* 2.9	4.4	4.3	* 1.6	3.8	* 0.6	2.7
December	* 0.3	2.8	3.1	* 1.1	4.3	* 8.9	3.9	4.2	* 6.3	4.6	* 2.6	2.4
<b>1998</b>												
January	* 0.6	2.6	3.2	1.3	4.5	* 12.3	3.9	4.5	7.2	5.0	* 4.2	2.2
February	* 0.6	3.5	4.1	1.8	5.9	* 17.2	5.1	5.7	10.8	6.6	* 4.3	3.0
March	* 0.6	3.9	4.5	1.5	6.0	* 16.6	5.5	6.0	8.8	6.6	* 4.3	3.3
April	* 0.2	2.7	3.0	1.5	4.5	* 7.7	3.9	4.0	8.9	4.9	* 1.7	2.3
May	* 0.4	2.7	3.1	* 1.2	4.3	* 13.4	3.8	4.2	* 6.5	4.7	* 3.3	2.2
June	* 0.5	2.7	3.2	* 0.5	3.6	* 15.4	3.8	4.4	* 2.6	4.0	* 3.6	2.2
July	* 0.3	3.4	3.7	* 0.8	4.5	* 7.8	4.7	4.8	* 4.8	4.8	* 2.1	2.9
August	* 0.4	2.5	2.9	* 0.4	3.3	* 11.5	3.5	3.9	* 2.3	3.6	* 2.7	2.1
September	* 0.8	3.1	3.9	* 0.7	4.6	* 22.4	4.1	4.9	* 3.5	4.7	* 6.0	2.6
October	* 0.3	1.7	2.0	* 0.9	2.9	* 10.4	2.4	2.7	* 3.8	3.0	* 2.5	1.4
November	* 0.8	2.7	3.5	* 0.9	4.5	* 20.5	3.8	4.6	* 4.4	4.6	* 5.7	2.3
December	* 0.8	1.8	2.7	* 0.5	3.2	* 21.2	2.5	3.4	* 2.6	3.3	* 6.0	1.5
<b>AUSTRALIAN CAPITAL TERRITORY</b>												
<b>1997</b>												
October	1.2	8.5	9.7	3.4	13.1	32.2	6.8	7.5	8.4	7.7	5.3	4.0
November	1.5	7.5	9.1	3.5	12.5	37.4	6.0	7.0	8.9	7.4	7.0	3.5
December	1.9	8.1	10.0	3.5	13.5	43.3	6.5	7.7	8.8	8.0	8.5	3.8
<b>1998</b>												
January	2.4	8.7	11.1	3.1	14.2	51.7	7.1	8.7	8.3	8.6	10.7	4.1
February	1.7	9.0	10.8	3.9	14.7	33.0	7.2	8.2	9.6	8.5	7.8	4.2
March	1.1	7.9	9.0	4.6	13.6	34.9	6.3	7.0	10.8	7.9	4.9	3.7
April	1.2	7.2	8.4	3.0	11.5	41.7	5.9	6.7	7.1	6.8	5.3	3.4
May	1.2	6.5	7.7	3.7	11.3	38.7	5.2	6.0	8.7	6.7	5.2	3.0
June	1.3	6.2	7.4	2.6	10.0	40.4	5.0	5.9	5.9	5.9	5.7	2.9
July	1.1	8.1	9.2	2.6	11.8	32.3	6.4	7.1	6.1	6.9	4.9	3.8
August	1.1	6.6	7.7	3.0	10.7	39.7	5.5	6.3	6.6	6.3	4.9	3.1
September	1.1	7.0	8.2	2.8	11.0	35.2	5.8	6.6	6.5	6.5	5.0	3.3
October	1.2	5.5	6.7	3.5	10.2	32.4	4.7	5.5	7.8	6.1	5.2	2.6
November	1.0	6.0	7.0	2.8	9.8	34.6	4.9	5.6	6.6	5.9	4.6	2.8
December	1.4	4.7	6.1	3.5	9.6	31.4	3.8	4.7	8.5	5.7	6.2	2.2



## LABOUR FORCE STATUS (AGED 15 AND OVER)—New South Wales(a)

SEASONALLY ADJUSTED.....

TREND.....

Month	SEASONALLY ADJUSTED.....					TREND.....					Civilian population aged 15 and over '000
	Employed full time '000	Total employed '000	Total unemployed '000	Unemp- loyment rate %	Partic- ipation rate %	Employed full time '000	Total employed '000	Total unemployed '000	Unemp- loyment rate %	Partic- ipation rate %	
<b>MALES</b>											
<b>1997</b>											
October	1 430.7	1 598.9	145.0	8.3	71.7	1 428.3	1 603.8	142.4	8.2	71.8	2 432.3
November	1 437.7	1 614.8	143.6	8.2	72.2	1 432.1	1 609.3	140.1	8.0	71.8	2 435.2
December	1 435.0	1 618.6	132.8	7.6	71.8	1 434.4	1 613.3	137.5	7.9	71.8	2 438.1
<b>1998</b>											
January	1 438.5	1 627.1	129.8	7.4	72.0	1 435.2	1 615.1	135.2	7.7	71.7	2 440.3
February	1 425.9	1 597.8	141.0	8.1	71.2	1 435.8	1 615.9	133.7	7.6	71.6	2 442.4
March	1 436.0	1 616.6	135.0	7.7	71.7	1 437.3	1 616.6	133.1	7.6	71.6	2 444.6
April	1 444.6	1 621.4	125.7	7.2	71.4	1 439.9	1 617.8	134.0	7.6	71.6	2 447.3
May	1 440.5	1 616.7	135.3	7.7	71.5	1 443.3	1 619.9	135.3	7.7	71.6	2 450.1
June	1 449.2	1 627.0	138.0	7.8	72.0	1 447.1	1 623.2	136.1	7.7	71.7	2 452.9
July	1 456.1	1 637.4	136.6	7.7	72.2	1 450.1	1 626.8	135.8	7.7	71.8	2 455.5
August	1 439.2	1 608.0	142.7	8.2	71.2	1 451.8	1 629.9	134.4	7.6	71.8	2 458.1
September	1 458.0	1 636.7	131.1	7.4	71.8	1 452.5	1 632.9	132.0	7.5	71.7	2 460.6
October	1 462.1	1 651.2	116.1	6.6	71.7	1 452.5	1 635.7	129.0	7.3	71.6	2 464.4
November	1 447.4	1 631.3	135.6	7.7	71.6	1 452.0	1 638.2	126.2	7.2	71.5	2 468.1
December	1 445.3	1 638.2	120.8	6.9	71.2	1 450.6	1 639.5	123.9	7.0	71.3	2 471.9
<b>FEMALES</b>											
<b>1997</b>											
October	716.5	1 188.8	99.1	7.7	51.1	718.7	1 205.8	97.4	7.5	51.7	2 522.1
November	722.4	1 217.1	95.1	7.2	52.0	718.2	1 209.0	96.5	7.4	51.7	2 524.7
December	715.8	1 218.0	95.2	7.2	52.0	717.1	1 211.3	95.8	7.3	51.7	2 527.4
<b>1998</b>											
January	720.2	1 216.2	97.3	7.4	51.9	715.3	1 213.0	95.3	7.3	51.7	2 529.3
February	708.5	1 207.6	93.5	7.2	51.4	714.6	1 215.3	95.2	7.3	51.8	2 531.1
March	717.7	1 213.7	95.7	7.3	51.7	715.9	1 218.1	95.3	7.3	51.9	2 533.0
April	720.1	1 229.0	94.8	7.2	52.2	719.9	1 222.1	95.5	7.2	52.0	2 535.3
May	713.2	1 218.8	96.6	7.3	51.8	726.7	1 228.0	95.5	7.2	52.2	2 537.7
June	735.6	1 237.6	96.3	7.2	52.5	734.2	1 234.6	95.6	7.2	52.4	2 540.0
July	758.7	1 249.2	96.3	7.2	52.9	740.2	1 239.6	95.8	7.2	52.5	2 542.3
August	735.7	1 231.2	92.4	7.0	52.0	743.2	1 242.2	96.0	7.2	52.6	2 544.5
September	751.0	1 256.0	98.3	7.3	53.2	743.6	1 243.2	96.1	7.2	52.6	2 546.8
October	742.9	1 248.5	92.6	6.9	52.6	742.4	1 243.5	96.0	7.2	52.5	2 550.1
November	726.7	1 220.2	106.1	8.0	51.9	740.9	1 243.8	95.6	7.1	52.5	2 553.4
December	743.9	1 255.6	86.8	6.5	52.5	738.2	1 243.1	95.1	7.1	52.3	2 556.8
<b>PERSONS</b>											
<b>1997</b>											
October	2 147.2	2 787.7	244.1	8.1	61.2	2 147.1	2 809.6	239.7	7.9	61.5	4 954.3
November	2 160.1	2 831.9	238.7	7.8	61.9	2 150.4	2 818.3	236.6	7.7	61.6	4 959.9
December	2 150.7	2 836.6	228.0	7.4	61.7	2 151.4	2 824.7	233.3	7.6	61.6	4 965.6
<b>1998</b>											
January	2 158.7	2 843.3	227.1	7.4	61.8	2 150.4	2 828.2	230.5	7.5	61.5	4 969.5
February	2 134.4	2 805.4	234.5	7.7	61.1	2 150.4	2 831.2	228.9	7.5	61.5	4 973.5
March	2 153.7	2 830.3	230.7	7.5	61.5	2 153.2	2 834.6	228.4	7.5	61.5	4 977.5
April	2 164.8	2 850.4	220.5	7.2	61.6	2 159.8	2 839.9	229.5	7.5	61.6	4 982.7
May	2 153.7	2 835.4	231.9	7.6	61.5	2 170.0	2 847.9	230.7	7.5	61.7	4 987.8
June	2 184.8	2 864.6	234.3	7.6	62.1	2 181.3	2 857.8	231.6	7.5	61.9	4 992.9
July	2 214.8	2 886.7	232.9	7.5	62.4	2 190.3	2 866.3	231.6	7.5	62.0	4 997.7
August	2 175.0	2 839.2	235.1	7.6	61.5	2 195.0	2 872.1	230.4	7.4	62.0	5 002.6
September	2 209.0	2 892.6	229.4	7.3	62.3	2 196.1	2 876.0	228.1	7.3	62.0	5 007.4
October	2 205.0	2 899.7	208.7	6.7	62.0	2 194.9	2 879.3	225.0	7.2	61.9	5 014.5
November	2 174.1	2 851.5	241.7	7.8	61.6	2 192.8	2 882.0	221.8	7.1	61.8	5 021.6
December	2 189.1	2 893.8	207.6	6.7	61.7	2 188.8	2 882.6	218.9	7.1	61.7	5 028.7

(a) Trend estimates for June 1998 to November 1998 have been revised.

## LABOUR FORCE STATUS (AGED 15 AND OVER)—Victoria(a)

SEASONALLY ADJUSTED.....

TREND.....

Month	SEASONALLY ADJUSTED.....					TREND.....					Civilian population aged 15 and over '000
	Employed full time '000	Total employed '000	Total unemployed '000	Unemployment rate %	Participation rate %	Employed full time '000	Total employed '000	Total unemployed '000	Unemployment rate %	Participation rate %	
<b>MALES</b>											
<b>1997</b>											
October	1 043.5	1 195.6	105.0	8.1	72.8	1 042.0	1 190.9	111.9	8.6	72.9	1 786.5
November	1 048.5	1 194.4	109.0	8.4	72.9	1 046.7	1 194.0	110.3	8.5	72.9	1 788.4
December	1 049.6	1 200.6	110.5	8.4	73.2	1 051.7	1 197.2	109.7	8.4	73.0	1 790.4
<b>1998</b>											
January	1 056.5	1 193.3	114.0	8.7	72.9	1 056.0	1 200.5	110.2	8.4	73.1	1 792.2
February	1 061.3	1 203.5	105.5	8.1	73.0	1 058.8	1 204.2	111.0	8.4	73.3	1 794.0
March	1 061.3	1 208.2	114.5	8.7	73.7	1 059.6	1 207.4	111.6	8.5	73.5	1 795.8
April	1 059.2	1 213.2	112.8	8.5	73.7	1 059.1	1 210.6	111.6	8.4	73.5	1 798.0
May	1 060.5	1 217.0	111.2	8.4	73.8	1 058.3	1 213.2	110.7	8.4	73.5	1 800.1
June	1 051.3	1 213.4	107.7	8.2	73.3	1 057.8	1 215.2	109.3	8.3	73.5	1 802.2
July	1 055.8	1 212.7	108.7	8.2	73.2	1 057.8	1 216.3	107.5	8.1	73.4	1 804.1
August	1 057.8	1 211.0	106.0	8.1	72.9	1 058.4	1 216.8	105.6	8.0	73.2	1 805.9
September	1 067.3	1 230.8	102.2	7.7	73.7	1 058.9	1 217.1	103.8	7.9	73.1	1 807.7
October	1 059.6	1 213.7	102.3	7.8	72.7	1 059.0	1 217.0	102.4	7.8	72.9	1 810.7
November	1 052.6	1 214.6	101.3	7.7	72.6	1 058.8	1 216.5	101.3	7.7	72.7	1 813.6
December	1 058.7	1 213.3	100.8	7.7	72.3	1 058.6	1 216.0	100.5	7.6	72.5	1 816.6
<b>FEMALES</b>											
<b>1997</b>											
October	512.1	913.2	87.9	8.8	53.7	510.9	914.9	86.2	8.6	53.7	1 864.8
November	508.3	921.0	84.4	8.4	53.9	513.2	918.6	84.4	8.4	53.7	1 866.8
December	519.6	924.9	79.1	7.9	53.7	516.8	922.1	83.2	8.3	53.8	1 868.7
<b>1998</b>											
January	517.6	923.5	85.3	8.5	53.9	521.1	925.1	82.5	8.2	53.9	1 870.5
February	527.7	925.7	79.3	7.9	53.7	524.7	927.1	82.6	8.2	53.9	1 872.2
March	525.5	926.4	87.7	8.6	54.1	527.3	928.9	83.4	8.2	54.0	1 873.9
April	537.7	936.9	84.4	8.3	54.4	528.8	931.2	84.6	8.3	54.1	1 876.2
May	525.8	932.2	81.2	8.0	53.9	529.4	933.9	86.0	8.4	54.3	1 878.4
June	526.2	934.6	88.4	8.6	54.4	529.4	936.6	87.1	8.5	54.4	1 880.7
July	521.5	930.7	89.8	8.8	54.2	529.2	938.6	87.5	8.5	54.5	1 882.6
August	542.3	954.9	87.1	8.4	55.3	528.9	939.6	86.8	8.5	54.5	1 884.5
September	525.3	938.1	89.1	8.7	54.5	528.7	939.8	85.0	8.3	54.3	1 886.4
October	529.4	936.3	78.6	7.7	53.7	528.5	939.7	82.5	8.1	54.1	1 889.1
November	521.6	935.6	81.5	8.0	53.8	528.3	939.3	79.8	7.8	53.9	1 891.8
December	531.5	940.5	72.4	7.1	53.5	528.0	938.8	76.8	7.6	53.6	1 894.6
<b>PERSONS</b>											
<b>1997</b>											
October	1 555.5	2 108.7	192.8	8.4	63.0	1 552.9	2 105.7	198.2	8.6	63.1	3 651.3
November	1 556.8	2 115.4	193.4	8.4	63.2	1 559.9	2 112.6	194.7	8.4	63.1	3 655.2
December	1 569.2	2 125.5	189.6	8.2	63.3	1 568.5	2 119.2	192.9	8.3	63.2	3 659.2
<b>1998</b>											
January	1 574.1	2 116.8	199.3	8.6	63.2	1 577.2	2 125.7	192.7	8.3	63.3	3 662.7
February	1 589.0	2 129.2	184.8	8.0	63.1	1 583.6	2 131.3	193.6	8.3	63.4	3 666.2
March	1 586.8	2 134.6	202.2	8.7	63.7	1 586.9	2 136.3	195.0	8.4	63.5	3 669.7
April	1 596.9	2 150.1	197.2	8.4	63.9	1 587.8	2 141.8	196.2	8.4	63.6	3 674.1
May	1 586.3	2 149.2	192.4	8.2	63.7	1 587.7	2 147.2	196.7	8.4	63.7	3 678.5
June	1 577.5	2 148.0	196.1	8.4	63.6	1 587.2	2 151.8	196.5	8.4	63.8	3 682.9
July	1 577.2	2 143.4	198.5	8.5	63.5	1 587.0	2 154.9	195.1	8.3	63.7	3 686.7
August	1 600.1	2 165.9	193.2	8.2	63.9	1 587.3	2 156.4	192.3	8.2	63.6	3 690.4
September	1 592.5	2 169.0	191.3	8.1	63.9	1 587.6	2 156.9	188.8	8.0	63.5	3 694.1
October	1 589.0	2 150.0	180.9	7.8	63.0	1 587.5	2 156.7	184.9	7.9	63.3	3 699.8
November	1 574.2	2 150.3	182.8	7.8	63.0	1 587.1	2 155.8	181.0	7.7	63.1	3 705.5
December	1 590.2	2 153.8	173.1	7.4	62.7	1 586.6	2 154.7	177.3	7.6	62.8	3 711.1

(a) Trend estimates for June 1998 to November 1998 have been revised.

## LABOUR FORCE STATUS (AGED 15 AND OVER)—Queensland(a)

SEASONALLY ADJUSTED.....

TREND.....

Month	SEASONALLY ADJUSTED.....					TREND.....					Civilian population aged 15 and over '000
	Employed full time '000	Total employed '000	Total unemployed '000	Unemployment rate %	Participation rate %	Employed full time '000	Total employed '000	Total unemployed '000	Unemployment rate %	Participation rate %	
<b>MALES</b>											
<b>1997</b>											
October	782.9	900.4	92.8	9.3	74.5	781.1	894.9	94.6	9.6	74.2	1 332.8
November	780.9	895.4	95.2	9.6	74.2	783.6	898.8	94.1	9.5	74.4	1 335.4
December	783.2	899.8	94.6	9.5	74.3	787.0	902.8	92.9	9.3	74.4	1 338.0
<b>1998</b>											
January	795.7	910.8	89.2	8.9	74.6	790.5	906.2	91.1	9.1	74.4	1 340.1
February	792.4	909.1	93.2	9.3	74.7	793.2	908.4	89.5	9.0	74.3	1 342.3
March	797.5	911.3	85.9	8.6	74.2	794.4	909.1	88.4	8.9	74.2	1 344.4
April	797.9	906.7	85.8	8.6	73.7	794.3	908.4	88.4	8.9	74.0	1 346.6
May	787.4	908.0	88.3	8.9	73.9	793.5	907.4	89.7	9.0	73.9	1 348.8
June	792.8	908.7	90.1	9.0	73.9	793.2	907.1	91.7	9.2	73.9	1 351.1
July	796.5	904.3	98.9	9.9	74.1	794.6	909.0	93.2	9.3	74.1	1 353.0
August	794.4	909.0	91.9	9.2	73.9	797.6	913.1	93.5	9.3	74.3	1 354.9
September	796.7	917.3	98.1	9.7	74.8	801.6	918.5	92.4	9.1	74.5	1 356.8
October	810.1	928.9	88.6	8.7	74.9	805.5	924.1	90.5	8.9	74.6	1 359.3
November	816.6	933.2	84.0	8.3	74.7	808.9	929.3	88.3	8.7	74.7	1 361.7
December	806.1	932.8	85.5	8.4	74.6	811.3	933.7	86.1	8.4	74.8	1 364.2
<b>FEMALES</b>											
<b>1997</b>											
October	381.0	691.7	68.4	9.0	56.0	384.4	687.2	67.6	9.0	55.6	1 357.6
November	386.2	690.3	67.5	8.9	55.7	386.8	689.1	67.0	8.9	55.6	1 360.1
December	397.7	688.0	64.4	8.6	55.2	388.8	691.3	66.0	8.7	55.6	1 362.7
<b>1998</b>											
January	384.9	690.5	64.9	8.6	55.4	390.2	694.0	64.6	8.5	55.6	1 364.7
February	392.4	702.0	65.2	8.5	56.1	391.2	697.1	63.6	8.4	55.7	1 366.7
March	385.4	695.5	60.4	8.0	55.2	391.5	700.4	63.0	8.3	55.8	1 368.7
April	398.8	705.8	64.1	8.3	56.2	391.1	703.4	62.6	8.2	55.9	1 370.8
May	390.2	708.1	59.3	7.7	55.9	390.1	705.2	62.5	8.1	55.9	1 373.0
June	385.7	706.4	67.2	8.7	56.3	388.7	705.5	62.8	8.2	55.9	1 375.1
July	390.5	703.6	62.9	8.2	55.7	387.4	704.9	63.3	8.2	55.8	1 377.0
August	384.0	707.1	60.1	7.8	55.6	386.9	704.4	63.8	8.3	55.7	1 378.8
September	386.9	695.9	64.7	8.5	55.1	387.6	704.2	64.3	8.4	55.7	1 380.7
October	383.5	706.1	69.1	8.9	56.0	389.4	704.7	64.6	8.4	55.6	1 383.1
November	397.2	710.3	62.4	8.1	55.8	391.6	705.4	64.8	8.4	55.6	1 385.6
December	397.2	705.5	64.4	8.4	55.5	393.9	706.2	64.6	8.4	55.5	1 388.0
<b>PERSONS</b>											
<b>1997</b>											
October	1 163.9	1 592.1	161.2	9.2	65.2	1 165.5	1 582.0	162.2	9.3	64.8	2 690.4
November	1 167.1	1 585.6	162.8	9.3	64.9	1 170.5	1 588.0	161.1	9.2	64.9	2 695.5
December	1 180.9	1 587.8	159.0	9.1	64.7	1 175.8	1 594.1	158.8	9.1	64.9	2 700.6
<b>1998</b>											
January	1 180.6	1 601.3	154.2	8.8	64.9	1 180.6	1 600.2	155.7	8.9	64.9	2 704.8
February	1 184.8	1 611.1	158.3	8.9	65.3	1 184.4	1 605.5	153.1	8.7	64.9	2 709.0
March	1 182.9	1 606.9	146.4	8.3	64.6	1 185.9	1 609.5	151.3	8.6	64.9	2 713.1
April	1 196.7	1 612.5	149.9	8.5	64.9	1 185.4	1 611.9	150.9	8.6	64.9	2 717.5
May	1 177.6	1 616.1	147.6	8.4	64.8	1 183.5	1 612.5	152.2	8.6	64.8	2 721.8
June	1 178.5	1 615.0	157.3	8.9	65.0	1 181.8	1 612.5	154.5	8.7	64.8	2 726.2
July	1 186.9	1 607.9	161.8	9.1	64.8	1 182.0	1 613.9	156.5	8.8	64.9	2 729.9
August	1 178.4	1 616.2	152.1	8.6	64.7	1 184.6	1 617.5	157.4	8.9	64.9	2 733.7
September	1 183.7	1 613.2	162.8	9.2	64.9	1 189.2	1 622.7	156.7	8.8	65.0	2 737.5
October	1 193.5	1 635.0	157.7	8.8	65.4	1 194.8	1 628.7	155.0	8.7	65.0	2 742.4
November	1 213.8	1 643.5	146.5	8.2	65.2	1 200.5	1 634.6	153.1	8.6	65.1	2 747.3
December	1 203.3	1 638.3	149.9	8.4	65.0	1 205.2	1 640.0	150.8	8.4	65.1	2 752.2

(a) Trend estimates for June 1998 to November 1998 have been revised.

## LABOUR FORCE STATUS (AGED 15 AND OVER)—South Australia(a)

SEASONALLY ADJUSTED.....

TREND.....

Month	SEASONALLY ADJUSTED.....					TREND.....					Civilian population aged 15 and over '000
	Employed full time '000	Total employed '000	Total unemployed '000	Unemployment rate %	Participation rate %	Employed full time '000	Total employed '000	Total unemployed '000	Unemployment rate %	Participation rate %	
<b>MALES</b>											
<b>1997</b>											
October	323.3	374.0	43.6	10.4	71.6	324.7	374.2	43.4	10.4	71.6	583.1
November	323.6	372.8	43.8	10.5	71.4	324.2	373.1	43.4	10.4	71.4	583.6
December	323.5	371.9	43.0	10.4	71.1	323.4	371.8	43.2	10.4	71.1	584.0
<b>1998</b>											
January	325.9	370.8	42.3	10.2	70.7	322.3	370.4	42.8	10.4	70.7	584.3
February	318.6	369.4	43.6	10.6	70.6	320.9	369.1	42.2	10.3	70.4	584.5
March	319.5	366.1	42.0	10.3	69.8	319.4	367.9	41.7	10.2	70.0	584.8
April	319.6	369.6	39.3	9.6	69.9	318.4	367.2	41.6	10.2	69.9	585.1
May	315.4	364.3	42.9	10.5	69.6	318.3	367.0	41.8	10.2	69.8	585.4
June	318.4	368.7	40.1	9.8	69.8	319.3	367.3	42.3	10.3	69.9	585.6
July	321.2	366.6	45.2	11.0	70.3	320.8	368.1	42.8	10.4	70.1	585.9
August	323.0	369.8	43.4	10.5	70.5	322.3	369.2	43.2	10.5	70.4	586.1
September	326.4	371.5	44.2	10.6	70.9	323.3	370.2	43.4	10.5	70.5	586.4
October	322.5	370.7	41.3	10.0	70.2	323.8	371.2	43.4	10.5	70.6	586.9
November	324.4	371.1	44.3	10.7	70.7	324.0	372.1	43.2	10.4	70.7	587.3
December	321.5	373.7	42.7	10.3	70.9	323.7	372.6	43.2	10.4	70.7	587.8
<b>FEMALES</b>											
<b>1997</b>											
October	145.2	289.5	27.3	8.6	52.5	145.8	288.1	27.9	8.8	52.3	603.7
November	146.5	288.8	28.2	8.9	52.5	146.1	287.2	28.0	8.9	52.2	604.1
December	148.2	285.3	27.6	8.8	51.8	146.9	285.8	28.3	9.0	52.0	604.5
<b>1998</b>											
January	147.1	283.2	30.1	9.6	51.8	147.6	283.9	28.7	9.2	51.7	604.8
February	146.2	281.3	28.1	9.1	51.1	147.7	281.4	29.1	9.4	51.3	605.1
March	150.1	278.3	30.3	9.8	51.0	147.1	278.5	29.4	9.6	50.9	605.3
April	147.9	279.1	28.2	9.2	50.7	146.1	275.8	29.8	9.7	50.5	605.6
May	142.6	273.8	31.0	10.2	50.3	145.3	273.8	30.0	9.9	50.1	605.9
June	142.8	269.4	30.6	10.2	49.5	145.0	273.1	30.0	9.9	50.0	606.2
July	145.0	271.6	27.9	9.3	49.4	145.2	274.2	29.6	9.7	50.1	606.5
August	146.4	276.1	31.3	10.2	50.6	145.9	276.8	28.8	9.4	50.4	606.8
September	148.0	282.3	27.8	9.0	51.1	146.7	280.2	27.9	9.1	50.7	607.0
October	148.6	286.6	25.0	8.0	51.3	147.2	283.6	26.9	8.7	51.1	607.6
November	145.9	284.5	26.9	8.6	51.2	147.6	286.6	25.9	8.3	51.4	608.1
December	147.1	290.2	24.3	7.7	51.7	147.7	289.2	25.1	8.0	51.6	608.6
<b>PERSONS</b>											
<b>1997</b>											
October	468.5	663.5	70.9	9.6	61.9	470.5	662.2	71.3	9.7	61.8	1 186.9
November	470.2	661.6	72.0	9.8	61.8	470.3	660.4	71.5	9.8	61.6	1 187.7
December	471.7	657.3	70.6	9.7	61.2	470.3	657.7	71.6	9.8	61.4	1 188.5
<b>1998</b>											
January	473.0	654.0	72.4	10.0	61.1	469.9	654.4	71.5	9.8	61.0	1 189.1
February	464.9	650.7	71.7	9.9	60.7	468.6	650.5	71.3	9.9	60.7	1 189.6
March	469.6	644.4	72.3	10.1	60.2	466.5	646.5	71.2	9.9	60.3	1 190.1
April	467.6	648.7	67.4	9.4	60.1	464.5	642.9	71.4	10.0	60.0	1 190.7
May	458.0	638.2	73.9	10.4	59.8	463.6	640.8	71.8	10.1	59.8	1 191.3
June	461.2	638.1	70.8	10.0	59.5	464.2	640.5	72.2	10.1	59.8	1 191.9
July	466.2	638.2	73.1	10.3	59.7	466.0	642.4	72.4	10.1	59.9	1 192.4
August	469.4	645.8	74.7	10.4	60.4	468.1	646.0	72.1	10.0	60.2	1 192.9
September	474.4	653.9	72.0	9.9	60.8	470.0	650.4	71.3	9.9	60.5	1 193.4
October	471.1	657.3	66.3	9.2	60.6	471.1	654.7	70.2	9.7	60.7	1 194.4
November	470.3	655.6	71.1	9.8	60.8	471.5	658.7	69.1	9.5	60.9	1 195.4
December	468.6	663.9	67.0	9.2	61.1	471.3	661.8	68.3	9.4	61.0	1 196.4

(a) Trend estimates for June 1998 to November 1998 have been revised.

## LABOUR FORCE STATUS (AGED 15 AND OVER)—Western Australia(a)

SEASONALLY ADJUSTED.....

TREND.....

Month	SEASONALLY ADJUSTED.....					TREND.....					Civilian population aged 15 and over '000
	Employed full time '000	Total employed '000	Total unemployed '000	Unemp-loyment rate %	Partic-ipation rate %	Employed full time '000	Total employed '000	Total unemployed '000	Unemp-loyment rate %	Partic-ipation rate %	
<b>MALES</b>											
<b>1997</b>											
October	439.9	498.7	33.6	6.3	75.8	442.5	499.5	37.8	7.0	76.5	702.4
November	443.7	501.7	38.2	7.1	76.7	443.5	500.7	37.4	7.0	76.5	703.8
December	445.5	502.7	38.7	7.1	76.8	444.0	501.5	37.1	6.9	76.4	705.1
<b>1998</b>											
January	447.0	503.0	37.2	6.9	76.5	444.2	501.9	36.8	6.8	76.3	706.1
February	441.0	500.2	36.3	6.8	75.9	443.9	502.0	36.9	6.8	76.2	707.1
March	443.0	499.9	37.9	7.0	75.9	443.5	501.8	37.4	6.9	76.1	708.1
April	443.1	502.2	36.0	6.7	75.9	443.0	501.2	38.4	7.1	76.1	709.1
May	443.4	504.3	37.7	7.0	76.3	442.7	500.8	39.7	7.3	76.1	710.1
June	442.6	500.7	45.0	8.2	76.7	442.8	500.6	41.0	7.6	76.2	711.1
July	442.0	496.5	43.3	8.0	75.8	443.0	500.9	41.9	7.7	76.2	712.3
August	443.8	499.8	41.7	7.7	75.9	443.1	501.7	42.3	7.8	76.2	713.4
September	443.6	506.0	41.2	7.5	76.6	443.3	502.8	42.4	7.8	76.3	714.6
October	443.7	505.4	42.4	7.7	76.5	443.6	504.1	42.3	7.7	76.3	716.2
November	442.6	503.8	41.5	7.6	76.0	443.9	505.4	42.3	7.7	76.3	717.7
December	445.3	507.4	43.5	7.9	76.6	444.2	506.6	42.1	7.7	76.3	719.3
<b>FEMALES</b>											
<b>1997</b>											
October	196.6	367.1	26.6	6.7	55.5	197.9	367.3	27.0	6.9	55.6	709.3
November	197.7	365.7	26.7	6.8	55.2	198.4	367.4	27.5	7.0	55.6	710.6
December	197.6	364.5	29.1	7.4	55.3	198.5	367.3	28.1	7.1	55.5	711.8
<b>1998</b>											
January	201.8	367.5	29.2	7.4	55.7	198.6	367.7	28.6	7.2	55.6	712.8
February	195.4	372.1	28.9	7.2	56.2	198.8	369.4	28.8	7.2	55.8	713.7
March	202.7	371.0	28.0	7.0	55.8	199.4	372.4	28.6	7.1	56.1	714.7
April	196.6	373.7	28.8	7.2	56.3	200.3	376.2	28.0	6.9	56.5	715.5
May	199.8	379.3	28.0	6.9	56.9	201.4	380.0	27.4	6.7	56.9	716.4
June	205.6	386.0	24.7	6.0	57.3	202.1	383.3	26.8	6.5	57.2	717.3
July	202.6	389.1	27.3	6.6	58.0	202.4	385.6	26.3	6.4	57.4	718.3
August	206.7	384.9	24.9	6.1	57.0	202.5	386.7	26.1	6.3	57.4	719.3
September	198.0	386.7	28.0	6.7	57.6	202.7	386.8	26.1	6.3	57.3	720.3
October	201.0	387.6	24.7	6.0	57.1	203.2	386.5	26.1	6.3	57.2	721.8
November	202.3	384.8	26.2	6.4	56.8	204.0	386.0	26.1	6.3	57.0	723.2
December	211.0	384.6	26.6	6.5	56.7	204.9	385.2	26.3	6.4	56.8	724.7
<b>PERSONS</b>											
<b>1997</b>											
October	636.5	865.8	60.2	6.5	65.6	640.4	866.8	64.8	7.0	66.0	1 411.7
November	641.4	867.4	64.9	7.0	65.9	641.9	868.1	65.0	7.0	66.0	1 414.3
December	643.1	867.2	67.8	7.2	66.0	642.5	868.8	65.2	7.0	65.9	1 416.9
<b>1998</b>											
January	648.8	870.5	66.4	7.1	66.0	642.7	869.7	65.4	7.0	65.9	1 418.9
February	636.4	872.3	65.2	7.0	66.0	642.7	871.5	65.7	7.0	66.0	1 420.8
March	645.7	870.8	65.9	7.0	65.8	642.8	874.2	66.0	7.0	66.1	1 422.8
April	639.8	875.9	64.8	6.9	66.0	643.3	877.4	66.4	7.0	66.3	1 424.7
May	643.2	883.7	65.8	6.9	66.6	644.1	880.8	67.0	7.1	66.4	1 426.5
June	648.2	886.7	69.6	7.3	66.9	644.9	883.9	67.7	7.1	66.6	1 428.4
July	644.6	885.5	70.6	7.4	66.8	645.4	886.5	68.3	7.2	66.7	1 430.6
August	650.5	884.8	66.6	7.0	66.4	645.7	888.4	68.5	7.2	66.8	1 432.7
September	641.6	892.7	69.1	7.2	67.0	646.0	889.6	68.4	7.1	66.8	1 434.9
October	644.7	893.1	67.2	7.0	66.8	646.8	890.6	68.4	7.1	66.7	1 437.9
November	644.9	888.6	67.8	7.1	66.4	647.8	891.4	68.4	7.1	66.6	1 441.0
December	656.2	891.9	70.1	7.3	66.6	649.0	891.9	68.4	7.1	66.5	1 444.0

(a) Trend estimates for June 1998 to November 1998 have been revised.

## LABOUR FORCE STATUS (AGED 15 AND OVER)—Tasmania(a)

SEASONALLY ADJUSTED.....

TREND.....

Month	SEASONALLY ADJUSTED.....					TREND.....					Civilian population aged 15 and over '000
	Employed full time '000	Total employed '000	Total unemployed '000	Unemployment rate %	Participation rate %	Employed full time '000	Total employed '000	Total unemployed '000	Unemployment rate %	Participation rate %	
<b>MALES</b>											
<b>1997</b>											
October	99.3	112.4	15.6	12.2	70.4	97.5	111.9	15.2	12.0	69.9	181.8
November	96.6	111.9	15.6	12.3	70.2	97.2	111.7	15.5	12.2	70.0	181.8
December	96.2	109.9	16.9	13.3	69.7	96.9	111.6	15.7	12.3	70.0	181.8
<b>1998</b>											
January	96.6	112.2	15.2	11.9	70.1	96.6	111.7	15.7	12.3	70.1	181.7
February	95.4	112.0	14.7	11.6	69.8	96.5	112.0	15.5	12.1	70.2	181.6
March	96.4	111.2	16.1	12.6	70.1	96.4	112.1	15.2	11.9	70.1	181.5
April	98.2	113.5	14.8	11.6	70.7	96.2	112.0	15.1	11.9	70.0	181.4
May	96.0	112.8	14.4	11.3	70.2	95.7	111.4	15.2	12.0	69.8	181.3
June	94.3	110.3	14.7	11.7	69.0	95.0	110.7	15.4	12.2	69.5	181.3
July	93.7	107.8	16.4	13.2	68.5	94.4	110.0	15.5	12.3	69.2	181.2
August	94.0	109.8	16.5	13.0	69.7	94.1	109.6	15.4	12.3	69.0	181.2
September	93.2	109.2	14.5	11.7	68.3	94.1	109.5	15.0	12.1	68.7	181.2
October	94.8	110.2	15.0	12.0	69.0	94.4	109.5	14.5	11.7	68.4	181.2
November	95.8	110.4	13.1	10.6	68.1	94.7	109.6	14.0	11.3	68.2	181.2
December	94.8	109.0	13.0	10.7	67.3	95.1	109.7	13.4	10.9	67.9	181.3
<b>FEMALES</b>											
<b>1997</b>											
October	40.7	80.9	9.5	10.5	48.1	40.3	80.9	9.6	10.6	48.1	188.0
November	42.0	82.5	8.8	9.6	48.6	41.3	81.6	9.2	10.1	48.3	188.0
December	41.8	82.5	8.6	9.4	48.4	42.2	82.4	8.7	9.6	48.5	188.0
<b>1998</b>											
January	42.9	82.3	8.2	9.1	48.2	42.8	83.3	8.4	9.1	48.8	187.9
February	42.8	84.8	7.9	8.5	49.4	43.0	84.1	8.2	8.9	49.2	187.8
March	43.9	84.8	8.4	9.0	49.7	42.9	84.7	8.2	8.8	49.5	187.7
April	42.9	85.3	8.4	8.9	50.0	42.5	85.2	8.3	8.9	49.8	187.6
May	40.9	85.4	8.5	9.0	50.1	42.1	85.5	8.3	8.9	50.1	187.5
June	41.1	85.4	8.8	9.3	50.3	41.7	85.7	8.3	8.8	50.2	187.4
July	42.2	86.1	7.2	7.7	49.8	41.4	85.7	8.2	8.8	50.2	187.4
August	41.1	85.5	9.1	9.6	50.5	41.3	85.6	8.2	8.7	50.0	187.4
September	41.2	85.5	7.8	8.3	49.8	41.2	85.3	8.2	8.7	49.9	187.3
October	41.3	85.4	8.2	8.7	49.9	41.1	84.9	8.2	8.8	49.7	187.4
November	41.1	84.2	8.0	8.6	49.2	40.9	84.4	8.3	9.0	49.5	187.5
December	40.2	83.1	9.1	9.8	49.2	40.7	84.0	8.4	9.1	49.3	187.5
<b>PERSONS</b>											
<b>1997</b>											
October	140.1	193.3	25.1	11.5	59.1	137.8	192.8	24.8	11.4	58.8	369.8
November	138.6	194.4	24.4	11.2	59.2	138.5	193.3	24.7	11.3	59.0	369.8
December	138.0	192.3	25.5	11.7	58.9	139.1	194.0	24.4	11.2	59.1	369.8
<b>1998</b>											
January	139.6	194.5	23.4	10.8	59.0	139.4	195.0	24.1	11.0	59.3	369.6
February	138.3	196.9	22.6	10.3	59.4	139.5	196.1	23.7	10.8	59.5	369.4
March	140.2	196.0	24.5	11.1	59.7	139.3	196.9	23.4	10.6	59.7	369.2
April	141.1	198.8	23.2	10.5	60.2	138.7	197.2	23.4	10.6	59.8	369.0
May	136.8	198.2	22.9	10.4	60.0	137.7	197.0	23.5	10.7	59.8	368.8
June	135.3	195.7	23.5	10.7	59.5	136.6	196.4	23.7	10.8	59.7	368.6
July	135.8	193.8	23.6	10.8	59.0	135.8	195.7	23.7	10.8	59.5	368.6
August	135.2	195.3	25.5	11.6	59.9	135.4	195.2	23.5	10.8	59.3	368.6
September	134.3	194.7	22.3	10.3	58.9	135.3	194.7	23.2	10.6	59.1	368.5
October	136.1	195.5	23.1	10.6	59.3	135.5	194.4	22.7	10.5	58.9	368.6
November	136.8	194.6	21.1	9.8	58.5	135.6	194.0	22.3	10.3	58.7	368.7
December	135.0	192.1	22.1	10.3	58.1	135.8	193.7	21.8	10.1	58.4	368.8

(a) Trend estimates for June 1998 to November 1998 have been revised.

## LABOUR FORCE STATUS (AGED 15 AND OVER)—Northern Territory(a)

TREND.....

Month	Employed full time '000	Total employed '000	Total unemployed '000	Unemployment rate %	Participation rate %	Civilian population aged 15 and over '000
MALES						
<b>1997</b>						
October	41.7	47.1	2.2	4.5	75.6	65.2
November	42.6	47.6	2.1	4.3	76.0	65.4
December	43.4	48.1	2.2	4.4	76.7	65.6
<b>1998</b>						
January	43.8	48.4	2.4	4.8	77.1	65.9
February	43.8	48.4	2.7	5.4	77.2	66.1
March	43.5	48.2	3.0	5.9	77.1	66.4
April	43.3	48.0	3.2	6.3	76.8	66.8
May	43.3	48.2	3.3	6.4	76.7	67.1
June	43.4	48.6	3.2	6.2	76.8	67.4
July	43.6	49.2	3.0	5.8	77.1	67.7
August	43.9	49.8	2.8	5.4	77.4	67.9
September	44.1	50.3	2.7	5.1	77.6	68.2
October	44.3	50.7	2.5	4.7	77.8	68.3
November	44.5	50.9	2.3	4.4	77.9	68.4
December	44.5	51.1	2.2	4.2	77.8	68.6
FEMALES						
<b>1997</b>						
October	27.1	39.2	1.7	4.1	63.7	64.2
November	27.5	39.4	1.7	4.2	63.8	64.4
December	27.4	39.3	1.9	4.5	63.9	64.5
<b>1998</b>						
January	27.0	39.2	2.0	4.8	63.7	64.6
February	26.7	39.0	2.0	4.8	63.3	64.7
March	26.5	38.8	1.9	4.6	62.8	64.8
April	26.7	38.9	1.7	4.2	62.4	64.9
May	27.1	39.1	1.5	3.6	62.3	65.1
June	27.4	39.4	1.3	3.1	62.4	65.2
July	27.7	39.8	1.2	2.9	62.7	65.3
August	28.1	40.2	1.2	2.8	63.2	65.4
September	28.5	40.6	1.2	3.0	63.9	65.5
October	28.9	41.2	1.3	3.2	64.8	65.6
November	29.4	41.7	1.4	3.3	65.6	65.7
December	29.8	42.2	1.5	3.5	66.5	65.8
PERSONS						
<b>1997</b>						
October	68.8	86.3	3.9	4.3	69.7	129.4
November	70.1	87.0	3.9	4.2	70.0	129.8
December	70.7	87.5	4.1	4.4	70.3	130.1
<b>1998</b>						
January	70.8	87.6	4.4	4.8	70.5	130.5
February	70.4	87.4	4.7	5.1	70.3	130.9
March	70.0	87.0	4.9	5.4	70.0	131.3
April	70.0	86.9	4.9	5.4	69.7	131.7
May	70.3	87.2	4.7	5.1	69.6	132.2
June	70.8	88.0	4.5	4.8	69.7	132.6
July	71.4	88.9	4.2	4.5	70.0	133.0
August	71.9	89.9	4.0	4.3	70.5	133.3
September	72.6	90.9	3.9	4.1	70.9	133.7
October	73.3	91.8	3.9	4.0	71.5	133.9
November	73.8	92.6	3.8	3.9	71.9	134.1
December	74.3	93.4	3.8	3.9	72.3	134.4

(a) Trend estimates for June 1998 to November 1998 have been revised. Estimates for the most recent three months may be subject to significant revisions as data for later months become available.



## LABOUR FORCE STATUS (AGED 15 AND OVER)—Australian Capital Territory(a)

TREND.....

Month	Employed full time	Total employed	Total unemployed	Unemp- loyment rate	Partic- ipation rate	Civilian population aged 15 and over
	'000	'000	'000	%	%	'000
MALES						
<b>1997</b>						
October	72.9	84.4	7.6	8.3	79.6	115.6
November	72.6	84.1	7.6	8.3	79.3	115.7
December	72.4	84.0	7.5	8.2	79.0	115.8
<b>1998</b>						
January	72.3	83.9	7.4	8.1	78.7	116.0
February	72.5	83.8	7.2	7.9	78.4	116.1
March	72.7	83.9	7.2	7.9	78.3	116.3
April	72.9	83.9	7.2	8.0	78.5	116.1
May	72.9	83.9	7.3	8.0	78.7	115.9
June	72.6	83.9	7.3	8.0	78.8	115.7
July	72.2	83.9	7.2	7.9	78.7	115.7
August	71.9	83.9	7.1	7.8	78.7	115.7
September	71.6	84.0	6.9	7.6	78.5	115.7
October	71.4	84.0	6.7	7.4	78.3	115.8
November	71.3	84.0	6.5	7.2	78.1	115.9
December	71.3	84.0	6.3	7.0	77.8	116.1
FEMALES						
<b>1997</b>						
October	46.8	71.3	6.3	8.1	64.9	119.5
November	46.6	71.1	6.1	7.9	64.6	119.6
December	46.4	71.3	5.9	7.6	64.5	119.7
<b>1998</b>						
January	46.3	71.8	5.5	7.1	64.6	119.8
February	46.2	72.6	5.2	6.6	64.8	119.9
March	46.3	73.5	4.8	6.2	65.3	120.0
April	46.4	74.4	4.6	5.8	65.8	119.9
May	46.3	74.9	4.4	5.6	66.3	119.8
June	46.0	75.0	4.4	5.6	66.4	119.7
July	45.6	74.6	4.5	5.6	66.1	119.6
August	45.5	74.1	4.4	5.6	65.7	119.6
September	45.6	73.5	4.4	5.6	65.1	119.5
October	45.9	73.1	4.2	5.5	64.6	119.7
November	46.2	72.8	4.1	5.3	64.1	119.8
December	46.7	72.6	4.0	5.2	63.8	120.0
PERSONS						
<b>1997</b>						
October	119.7	155.6	13.9	8.2	72.1	235.1
November	119.2	155.3	13.7	8.1	71.8	235.3
December	118.8	155.3	13.4	7.9	71.6	235.6
<b>1998</b>						
January	118.6	155.7	12.9	7.6	71.5	235.8
February	118.7	156.4	12.4	7.3	71.5	236.1
March	119.0	157.4	12.0	7.1	71.7	236.3
April	119.3	158.2	11.8	6.9	72.1	236.0
May	119.2	158.8	11.7	6.9	72.4	235.7
June	118.6	158.9	11.7	6.9	72.5	235.4
July	117.9	158.5	11.7	6.9	72.3	235.3
August	117.3	158.0	11.5	6.8	72.1	235.3
September	117.2	157.5	11.3	6.7	71.7	235.2
October	117.3	157.0	10.9	6.5	71.3	235.5
November	117.6	156.8	10.6	6.3	71.0	235.8
December	118.1	156.6	10.3	6.2	70.7	236.1

(a) Trend estimates for June 1998 to November 1998 have been revised. Estimates for the most recent three months may be subject to significant revisions as data for later months become available.



## EXPLANATORY NOTES

- 1** This publication contains preliminary estimates of the civilian labour force derived from the Labour Force Survey component of the monthly population survey. Estimates for the current month are preliminary and subject to revision. Revised estimates for the current month and more detailed estimates will be published in *Labour Force, Australia* (6203.0).
- 2** The population survey is based on a multi-stage area sample of private dwellings (currently about 30,000 houses, flats, etc.) and a list sample of non-private dwellings (hotels, motels, etc.), and covers about 0.5% of the population of Australia. The information is obtained from the occupants of selected dwellings by specially trained interviewers. The interviews are generally conducted during the two weeks beginning on the Monday between the 6th and 12th of each month. The information obtained relates to the week before the interview (i.e. the reference week).
- 3** The ABS has introduced the use of telephone interviewing into the Labour Force Survey. Households selected for the Labour Force Survey are interviewed each month for 8 months, with one eighth of the sample being replaced each month. The first interview is conducted face-to-face. Subsequent interviews are conducted by telephone (if acceptable to the respondent). Telephone interviewing was phased in for each new sample group from August 1996 to February 1997.
- 4** During the period of implementation, the new method produced different estimates than would have been obtained under the old methodology. The effect peaked in November 1996, when it is estimated that the published estimate of total employment was about 36,000 to 48,000 lower than would have been measured under the old methodology. The effect dissipated over the final months of implementation and was no longer discernible from February 1997. Therefore, the estimates for February 1997 and onwards are directly comparable to estimates for periods prior to August 1996.
- 5** The Labour Force Survey includes all persons aged 15 and over except members of the permanent defence forces, certain diplomatic personnel of overseas governments customarily excluded from census and estimated populations, overseas residents in Australia, and members of non-Australian defence forces (and their dependants) stationed in Australia.
- 6** In the Labour Force Survey, coverage rules are applied which aim to ensure that each person is associated with only one dwelling, and hence has only one chance of selection. The coverage rules are necessarily a balance between theoretical and operational considerations. Nevertheless, the chance of a person being enumerated at two separate dwellings in the survey is considered to be negligible.
- 7** Labour Force Survey estimates are calculated in such a way as to add up to independent estimates of the civilian population aged 15 and over (population benchmarks). From February 1994, labour force estimates have been compiled using benchmarks based on the results of the 1991 Census of Population and Housing. Small revisions were made to many of the historical estimates from January 1989 to January 1994.
- 8** From April 1986, the definition of employed persons was changed to include persons who worked without pay between 1 and 14 hours per week in a family business or on a farm (i.e. contributing family workers). For further information, see paragraphs 36 and 37 of the Explanatory Notes to the February 1987 issue of *Labour Force, Australia* (6203.0).

## EXPLANATORY NOTES

### SURVEY SAMPLE REDESIGN

**9** The Labour Force Survey sample has been reselected using information collected in the 1996 Census of Population and Housing.

**10** The bulk of the new sample was phased in over the period September 1997 to April 1998, with one eighth of this portion of the sample being introduced every month. The remainder of the sample (about 15% of the total), which covers less settled areas of Australia and non-private dwellings was rotated in full for New South Wales, Victoria, Tasmania, Northern Territory and Australian Capital Territory in September 1997, and for Queensland, South Australia and Western Australia in October 1997. Such a pattern of implementation means that any changes to labour force estimates due to differences between the two samples, or any other influences, was spread over the eight months.

**11** For further details, see *Information Paper: Labour Force Survey Sample Design* (6269.0).

### RELIABILITY OF ESTIMATES

**12** Two types of error are possible in an estimate based on a sample survey: sampling error and non-sampling error.

*Sampling error* occurs because a sample, rather than the entire population, is surveyed. One measure of the likely difference resulting from not including all dwellings in the survey is given by the standard error. There are about two chances in three that a sample estimate will differ by less than one standard error from the figure that would have been obtained if all dwellings had been included in the survey, and about nineteen chances in twenty that the difference will be less than two standard errors. Standard errors of estimates for the latest month and of estimates of movements since the previous month are shown on pages 30 and 31. Standard errors of other estimates and other movements may be determined by using information in the Technical Notes in *Labour Force, Australia* (6203.0).

*Non sampling error* arises from inaccuracies in collecting, recording and processing the data. Every effort is made to minimise reporting error by the careful design of questionnaires, intensive training and supervision of interviewers, and efficient data processing procedures.

### SEASONAL ADJUSTMENT AND TREND ESTIMATION

**13** Seasonally adjusted series are published in Tables 2, 5 and 12 to 17. Seasonal factors are reviewed annually to take account of each additional year's original data. The results of the latest review were used to compile the revised seasonally adjusted and trend estimates given in this publication. Information about the method of adjustment and revised seasonally adjusted and trend estimates for all months from January 1991 were published in an appendix to the February 1996 issue of *Labour Force, Australia* (6203.0).

**14** Seasonal adjustment is a means of removing the estimated effects of normal seasonal variation from the series so that the effects of other influences on the series can be more clearly recognised. Seasonal adjustment does not aim to remove the irregular or non-seasonal influences which may be present in any particular month. This means that month-to-month movements of the seasonally adjusted estimates may not be reliable indicators of trend behaviour. For example, irregular factors unrelated to the trend account for more than half the seasonally adjusted movement with the following frequency:

- Employment: 5 in 10 monthly movements
- Unemployment: 7 in 10 monthly movements
- Unemployment rate: 7 in 10 monthly movements
- Participation rate: 9 in 10 monthly movements.

## EXPLANATORY NOTES

### SEASONAL ADJUSTMENT AND TREND ESTIMATION *continued*

**15** The smoothing of seasonally adjusted series reduces the impact of the irregular component of the seasonally adjusted series, and creates trend estimates. These trend estimates are derived by applying a 13-term Henderson-weighted moving average to all months except the last six. The last six monthly trend estimates are obtained by applying surrogates of the Henderson average to the seasonally adjusted series. Trend series are used to analyse the underlying behaviour of the series over time. These are published in tables 3, 6 and 12 to 19.

**16** While this smoothing technique enables estimates to be produced for the latest month, it does result in revisions to the most recent months as additional observations become available. Generally, subsequent revisions become smaller, and after three months have a negligible impact on the series. There will also be revisions as a result of the annual review of seasonal factors.

**17** Trend estimates are published for the Northern Territory in table 18 and for the Australian Capital Territory in table 19. Unadjusted series for the two Territories have shown, historically, a high degree of variability, which can lead to considerable revisions to the seasonally adjusted estimates after each annual seasonal factor re-analysis. Seasonally adjusted estimates are not currently published for the two Territories. The most recent six months trend estimates are subject to revision. For the three most recent months, the revision may be relatively large. Inferences about trends drawn from smoothed seasonally adjusted (trend) estimates for months earlier than the latest three months are unlikely to be affected by month to month revisions. They may be affected by revision resulting from the annual re-analysis of seasonal factors.

**18** For further information, see *A Guide to Interpreting Time Series—Monitoring 'Trends': an Overview* (1348.0) or contact the Assistant Director, Time Series Analysis on (02) 6252 6345.

### RELATED PUBLICATIONS

**19** Users may also wish to refer to *Labour Force, Australia* (6203.0). This publication contains a detailed list of related publications which are available from ABS Bookshops.

**20** Current publications produced by the ABS are listed in the *Catalogue of Publications and Products* (1101.0). The ABS also issues, on Tuesdays and Fridays, a *Release Advice* (1105.0) which lists publications to be released in the next few days. The Catalogue and Release Advice are available from any ABS office.

### UNPUBLISHED STATISTICS

**21** As well as the statistics included in this and related publications, the ABS may have other relevant unpublished data available. Inquiries should be made to Michael Sleep on 02 6252 6525 or to any ABS office.

### EFFECTS OF ROUNDING

**22** Estimates have been rounded and discrepancies may occur between sums of the component items and totals.

**23** Estimates of movement shown in this publication are obtained by taking the difference of unrounded estimates. The movement estimate is then rounded to one decimal place. Therefore where a discrepancy occurs between the reported movement and the difference of the rounded estimates, the reported movement will be more accurate.

### SYMBOLS AND OTHER USAGES

- \* subject to sampling variability too high for most practical uses. See the Technical Notes in 6203.0 for more details.
- .. not applicable
- r revised
- pts percentage points

## GLOSSARY

<b>Actively looking for work</b>	Includes writing, telephoning or applying in person to an employer for work; answering an advertisement for a job; checking factory noticeboards or the touchscreens at the Centrelink offices; being registered with Centrelink as a jobseeker; checking or registering with any other employment agency; advertising or tendering for work; and contacting friends or relatives.
<b>Attending school</b>	Persons aged 15 to 19 enrolled full time at secondary or high schools in the reference week.
<b>Attending tertiary educational institution full time</b>	Persons aged 15 to 24 enrolled full time at a TAFE college, university, or other educational institution in the reference week.
<b>Employed</b>	Persons aged 15 and over who, during the reference week: <ul style="list-style-type: none"><li>■ worked for one hour or more for pay, profit, commission or payment in kind in a job or business, or on a farm (comprising employees, employers and own account workers); or</li><li>■ worked for one hour or more without pay in a family business or on a farm (i.e. contributing family workers); or</li><li>■ were employees who had a job but were not at work and were:<ul style="list-style-type: none"><li>■ on paid leave, on leave without pay for less than four weeks up to the end of the reference week,</li><li>■ stood down without pay because of bad weather or plant breakdown at their place of employment for less than four weeks up to the end of the reference week,</li><li>■ on strike or locked out,</li><li>■ on workers' compensation and expected to be returning to their job, or</li><li>■ receiving wages or salary while undertaking full-time study; or</li></ul></li><li>■ were employers, own account workers or contributing family workers who had a job, business or farm, but were not at work.</li></ul>
<b>Full-time workers</b>	Employed persons who usually worked 35 hours or more a week (in all jobs) and those who, although usually working less than 35 hours a week, worked 35 hours or more during the reference week
<b>Labour force</b>	For any group, persons who were employed or unemployed, as defined.
<b>Labour force status</b>	A classification of the civilian population aged 15 and over into employed, unemployed or not in the labour force, as defined. The definitions conform closely to the international standard definitions adopted by the International Conferences of Labour Statisticians.
<b>Not in the labour force</b>	Persons who were not in the categories employed or unemployed as defined.
<b>Participation rate</b>	For any group, the labour force expressed as a percentage of the civilian population aged 15 and over in the same group.
<b>Part-time workers</b>	Employed persons who usually worked less than 35 hours a week and who did so during the reference week.
<b>Seasonally adjusted series</b>	A time series of estimates with the estimated effects of normal seasonal variation removed. See Explanatory Notes 13 to 14 for more detail.
<b>Trend series</b>	A smoothed seasonally adjusted series of estimates. See Explanatory Notes 15 to 17 for more detail.

## G L O S S A R Y

<b>Unemployed</b>	Persons aged 15 and over who were not employed during the reference week, and: <ul style="list-style-type: none"><li>■ had actively looked for full-time or part-time work at any time in the four weeks up to the end of the reference week and:<ul style="list-style-type: none"><li>■ were available for work in the reference week, or would have been available except for temporary illness (i.e. lasting for less than four weeks to the end of the reference week), or</li><li>■ were waiting to start a new job within four weeks from the end of the reference week and would have started in the reference week if the job had been available then; or</li></ul></li><li>■ were waiting to be called back to a full-time or part-time job from which they had been stood down without pay for less than four weeks up to the end of the reference week (including the whole of the reference week) for reasons other than bad weather or plant breakdown.</li></ul>
<b>Unemployed looking for first full-time job</b>	Unemployed persons looking for full-time work (as defined above) who had never worked full time for two weeks or more
<b>Unemployed looking for full-time work</b>	Unemployed persons who actively looked for full-time work, or were to resume a full-time job from which they had been stood down.
<b>Unemployed looking for part-time work</b>	Unemployed persons who had actively looked for part-time work only, or were to resume a part-time job from which they had been stood down.
<b>Unemployment rate</b>	For any group, the number of unemployed persons expressed as a percentage of the labour force in the same group.
<b>Unemployment to population ratio</b>	For any group, the number of unemployed persons expressed as a percentage of the civilian population in the same group.

## STANDARD ERRORS

The estimates in this publication are based on information gained from the occupants of a sample survey of dwellings. Because the entire population is not surveyed, the published estimates are subject to sampling error. The most common way of quantifying such sampling error is to calculate the standard error for the published estimate or statistic.

### LEVEL ESTIMATES

To illustrate, let us say the published level estimate for employed persons aged 15 to 19 is 500,000. The calculated standard error in this case is 9,000. The standard error is then used to interpret the level estimate of 500,000. For instance, the standard error of 9,000 indicates that:

- There are approximately two chances in three that the real value falls within the range 491,000 to 509,000 (500,000 + or - 9,000)
- There are approximately nineteen chances in twenty that the real value falls within the range 482,000 to 518,000 (500,000 + or - 18,000).

The real value in this case is the result we would obtain if we could enumerate the total population.

The following tables show the standard errors for this month's level estimates.

	EMPLOYED.....			UNEMPLOYED.....			Labour force	Not in labour force	Unemployment rate	Participation rate
	Full time	Part time	Total	Looking for f/t work	Looking for p/t work	Total				
	'000	'000	'000	'000	'000	'000				
NSW	14.8	9.9	16.2	5.8	3.4	6.3	16.6	14.0	0.2	0.3
Vic.	12.2	8.5	13.5	4.9	3.2	5.5	13.9	11.5	0.2	0.4
Qld	9.6	6.6	10.6	4.0	2.2	4.4	11.0	8.8	0.2	0.4
SA	5.1	3.7	5.8	2.3	1.2	2.5	5.9	5.1	0.3	0.5
WA	6.4	4.5	7.2	2.5	1.5	2.8	7.4	5.7	0.3	0.5
Tas.	1.7	1.3	1.8	0.9	0.6	1.0	1.8	1.7	0.5	0.5
NT	2.1	1.1	2.4	0.5	0.2	0.5	2.4	1.5	0.5	1.8
ACT	1.7	1.1	1.8	0.5	0.4	0.6	1.9	1.3	0.4	0.8
Males	20.1	9.8	21.0	7.9	3.6	8.4	21.6	15.1	0.2	0.3
Females	15.8	14.2	19.2	6.1	4.5	7.3	19.7	18.5	0.2	0.3
Persons	23.0	15.9	25.4	9.4	5.6	10.3	26.0	21.5	0.1	0.2

	NUMBER OF UNEMPLOYED PERSONS.....					UNEMPLOYMENT RATE.....				
	Aged 15-19 looking for f/t work	Aged 20 and over looking for f/t work	Total looking for f/t work	Looking for p/t work	Total	Aged 15-19 looking for f/t work	Aged 20 and over looking for f/t work	Total looking for f/t work	Looking for p/t work	Total
	'000	'000	'000	'000	'000	pts	pts	pts	pts	pts
NSW	2.8	5.4	5.8	3.4	6.3	2.6	0.2	0.2	0.4	0.2
Vic.	2.2	4.6	4.9	3.2	5.5	2.9	0.3	0.3	0.5	0.2
Qld	1.9	3.7	4.0	2.2	4.4	2.6	0.3	0.3	0.5	0.2
SA	1.0	2.2	2.3	1.2	2.5	4.2	0.4	0.4	0.6	0.3
WA	1.2	2.3	2.5	1.5	2.8	2.9	0.3	0.4	0.6	0.3
Tas.	0.5	0.9	0.9	0.6	1.0	5.3	0.6	0.6	0.9	0.5
NT	0.3	0.4	0.5	0.2	0.5	6.8	0.5	0.6	1.1	0.5
ACT	0.3	0.5	0.5	0.4	0.6	6.4	0.4	0.4	1.0	0.4
Males	3.5	7.4	7.9	3.6	8.4	1.6	0.2	0.2	0.5	0.2
Females	3.0	5.6	6.1	4.5	7.3	2.3	0.2	0.3	0.3	0.2
Persons	4.4	8.7	9.4	5.6	10.3	1.3	0.1	0.1	0.2	0.1

## STANDARD ERRORS *continued*

### MOVEMENT ESTIMATES

The following example illustrates how to use the standard error to interpret a movement estimate. Let us say that one month the published level estimate for females employed part time in Australia is 1,387,000; the next month the published level estimate is 1,400,000. The calculated standard error for the movement estimate is 10,600. The standard error is then used to interpret the published movement estimate of 13,000. For instance, the standard error of 10,600 indicates that:

- There are approximately two chances in three that the real movement over the two month period falls within the range 2,400 to 23,600 (13,000 + or - 10,600)
- There are approximately nineteen chances in twenty that the real movement falls within the range -8,200 to 34,200 (13,000 + or - 21,200).

The following tables show the standard errors for this month's movement estimates.

	EMPLOYED.....			UNEMPLOYED.....			Labour force	Not in labour force	Unemployment rate	Participation rate
	Full time	Part time	Total	Looking for f/t work	Looking for p/t work	Total				
	'000	'000	'000	'000	'000	'000				
NSW	11.5	7.6	12.7	4.5	3.0	5.0	13.1	10.9	0.2	0.3
Vic.	8.9	6.1	9.9	3.5	2.4	3.9	10.2	8.4	0.2	0.3
Qld	6.6	4.6	7.3	3.0	1.9	3.2	7.6	6.1	0.2	0.3
SA	3.5	2.5	3.9	1.6	0.9	1.7	4.1	3.5	0.2	0.3
WA	4.6	3.2	5.2	1.9	1.2	2.1	5.3	4.2	0.2	0.4
Tas.	1.5	1.1	1.7	0.7	0.5	0.8	1.7	1.5	0.4	0.5
NT	1.3	0.8	1.5	0.4	0.2	0.4	1.5	1.0	0.4	1.1
ACT	1.2	0.8	1.4	0.4	0.3	0.5	1.4	1.0	0.3	0.6
Males	15.3	7.4	16.1	6.0	3.0	6.3	16.6	11.4	0.1	0.2
Females	11.8	10.6	14.6	4.8	3.8	5.6	15.0	14.1	0.1	0.2
Persons	17.8	12.0	19.9	7.1	4.4	7.8	20.5	16.7	0.1	0.1

	NUMBER OF UNEMPLOYED PERSONS.....					UNEMPLOYMENT RATE.....				
	Aged 15-19 looking for f/t work	Aged 20 and over looking for f/t work	Total looking for f/t work	Looking for p/t work	Total	Aged 15-19 looking for f/t work	Aged 20 and over looking for f/t work	Total looking for f/t work	Looking for p/t work	Total
	'000	'000	'000	'000	'000	pts	pts	pts	pts	pts
NSW	2.3	4.3	4.5	3.0	5.0	2.2	0.2	0.2	0.4	0.2
Vic.	1.7	3.4	3.5	2.4	3.9	2.7	0.2	0.2	0.4	0.2
Qld	1.6	2.8	3.0	1.9	3.2	2.2	0.2	0.2	0.4	0.2
SA	0.8	1.5	1.6	0.9	1.7	3.5	0.3	0.3	0.4	0.2
WA	1.0	1.8	1.9	1.2	2.1	2.4	0.3	0.3	0.5	0.2
Tas.	0.4	0.7	0.7	0.5	0.8	4.1	0.4	0.5	0.7	0.4
NT	0.2	0.3	0.4	0.2	0.4	4.9	0.4	0.5	1.0	0.4
ACT	0.2	0.4	0.4	0.3	0.5	6.2	0.3	0.4	0.8	0.3
Males	2.9	5.7	6.0	3.0	6.3	1.4	0.1	0.1	0.4	0.1
Females	2.6	4.4	4.8	3.8	5.6	2.1	0.2	0.2	0.2	0.1
Persons	3.6	6.7	7.1	4.4	7.8	1.1	0.1	0.1	0.2	0.1

# WHAT IF...? REVISIONS TO TREND ESTIMATES

## EFFECT OF NEW SEASONALLY ADJUSTED ESTIMATES ON TREND ESTIMATES

Each time new seasonally adjusted estimates become available, trend estimates are revised (see paragraphs 13 and 14 of Explanatory Notes).

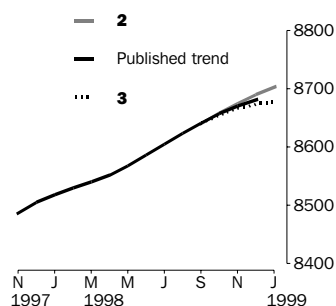
### TREND REVISIONS

The examples in the tables below show four illustrative scenarios and the consequent revisions to previous trend estimates of employment and unemployment rate.

- 1** The January seasonally adjusted estimate is the same as the December estimate.
- 2** The January seasonally adjusted estimate is higher than the December estimate by:
  - +0.33% for employment
  - +2.1% for the unemployment rate
- 3** The January seasonally adjusted estimate is lower than the December estimate by:
  - -0.33% for employment
  - -2.1% for the unemployment rate
- 4** The January seasonally adjusted estimate results in a revised December trend estimate which is identical to the new January trend estimate.

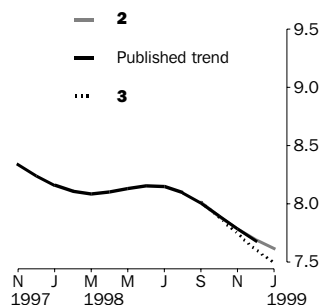
The percentage changes of 0.33% and 2.1% were chosen because they represent the average absolute monthly percentage changes in employment and the unemployment rate respectively.

### EMPLOYMENT ('000)



		WHAT IF NEXT MONTH'S SEASONALLY ADJUSTED ESTIMATE IS:				
		<b>1</b>	<b>2</b>	<b>3</b>	<b>4</b>	
		8 691.5	8 720.6	8 662.5	8 629.9	
		<i>i.e. the same as Dec 1998</i>	<i>i.e. rises by 0.33%</i>	<i>i.e. falls by 0.33%</i>	<i>i.e. same trend for Dec &amp; Jan</i>	
		TREND AS PUBLISHED				
1998	October	8 657.0	8 657.0	8 658.3	8 655.7	8 654.3
	November	8 670.8	8 670.8	8 675.1	8 666.5	8 661.7
	December	8 681.0	8 682.0	8 690.1	8 673.9	8 664.9
	January (new)	—	8 690.8	8 703.0	8 678.6	8 664.9

### UNEMPLOYMENT RATE (%)



		WHAT IF NEXT MONTH'S SEASONALLY ADJUSTED ESTIMATE IS:				
		<b>1</b>	<b>2</b>	<b>3</b>	<b>4</b>	
		7.5	7.7	7.4	8.2	
		<i>i.e. the same as Dec 1998</i>	<i>i.e. rises by 2.1</i>	<i>i.e. falls by 2.1</i>	<i>i.e. same trend for Dec &amp; Jan</i>	
		TREND AS PUBLISHED				
1998	October	7.9	7.9	7.9	7.9	
	November	7.8	7.8	7.7	7.9	
	December	7.7	7.7	7.6	7.8	
	January (new)	—	7.6	7.6	7.5	7.8









## SELF-HELP ACCESS TO STATISTICS

*PHONE* Call 1900 986 400 for the latest statistics on CPI, Labour Force, Earnings, National Accounts, Balance of Payments and other topics (call cost is 75c per minute).

*INTERNET* <http://www.abs.gov.au>

*LIBRARY* A range of ABS publications is available from public and tertiary libraries Australia wide. Contact your nearest library to determine whether it has the ABS statistics you require.

## WHY NOT SUBSCRIBE?

*PHONE* +61 1300 366 323

*FAX* +61 03 9615 7848

## CONTACTING THE ABS

ABS provides a range of services, including: a telephone inquiry service; information consultancy tailored to your needs; survey, sample and questionnaire design; survey evaluation and methodological reviews; and statistical training.

<i>INQUIRIES</i>	<i>By phone</i>	<i>By fax</i>
Canberra	02 6252 6627	02 6253 1404
Sydney	02 9268 4611	02 9268 4668
Melbourne	03 9615 7755	03 9615 7798
Brisbane	07 3222 6351	07 3222 6283
Perth	08 9360 5140	08 9360 5955
Adelaide	08 8237 7100	08 8237 7566
Hobart	03 6222 5800	03 6222 5995
Darwin	08 8943 2111	08 8981 1218

*POST* Client Services, ABS, PO Box 10, Belconnen, ACT 2616

*EMAIL* [client.services@abs.gov.au](mailto:client.services@abs.gov.au)



2620200012986

ISSN 1031-038X

**Recommended retail price \$17.50**