



# AUSTRALIAN WINE AND GRAPE INDUSTRY

EMBARGO: 11.30AM (CANBERRA TIME) MON 29 JAN 2007

## CONTENTS

	<i>page</i>
Notes .....	2
Summary of findings .....	3
Feature Article - <i>Changes to the collection of inventory data</i> .....	12
List of tables .....	13

## TABLES

Viticulture .....	15
Vineyard irrigation .....	29
Wine production and grapes crushed .....	31
Wine inventories .....	34
Brandy and grape spirit .....	35
Domestic wine sales .....	36
International trade .....	37
Grape and wine prices .....	43
Wine consumption .....	43
Wine expenditure .....	44
World comparisons .....	45

## ADDITIONAL INFORMATION

Explanatory Notes .....	49
Glossary .....	53
Bibliography .....	54

## INQUIRIES

For further information about these and related statistics, contact the National Information and Referral Service on 1300 135 070 or Damian Sparkes on Adelaide (08) 8237 7425.

# NOTES

**ABOUT THIS PUBLICATION** This publication presents a summary of statistics on grape and wine production and related activities collected by the Australian Bureau of Statistics (ABS) and from other sources.

**CHANGES IN THIS ISSUE** This publication includes a Feature Article describing changes to the collection of inventory data. This article is presented on page 12.

**SOURCE MATERIAL** With the exception of the tables and graphs relating to world comparisons, all sources cited refer to ABS publications and/or ABS data available on request.

**ACKNOWLEDGMENT** The continuing collection of varietal data is supported by Australia's grape-growers and winemakers and the Australian government through the Grape and Wine Research and Development Corporation.

**ROUNDING** Where figures have been rounded, discrepancies may occur between sums of the component items and totals.



## ABBREVIATIONS

- \$b billion (thousand million) dollars
- \$m million dollars
- ABS Australian Bureau of Statistics
- ACT Australian Capital Territory
- Aust. Australia
- cat. no. Catalogue number
- ha hectare
- L litre
- L al litres of alcohol
- ML megalitre
- n.f.d. not further defined
- nec not elsewhere classified
- NSW New South Wales
- NT Northern Territory
- Qld Queensland
- SA South Australia
- t tonne
- Tas. Tasmania
- Vic. Victoria
- WA Western Australia

Susan Linacre  
Acting Australian Statistician

## SUMMARY OF FINDINGS

### INTRODUCTION

There were 1,901,560 tonnes of grapes crushed in 2005-06, a decrease of 23,930 tonnes (1.2%) on the record crop of last year. Beverage wine production was 1,434.5 million litres, a drop of 0.6% on the record high from 2004-05. There was continued growth in the export of Australian produced wine, which reached 722.2 million litres during 2005-06, an increase of 7.8% from last year. The value of these exports increased 1.6%, to \$2.8b. Domestic sales of Australian wine increased slightly, rising by 0.2% to 431.1 million litres.

### WINE AND GRAPE INDUSTRY—2005–06

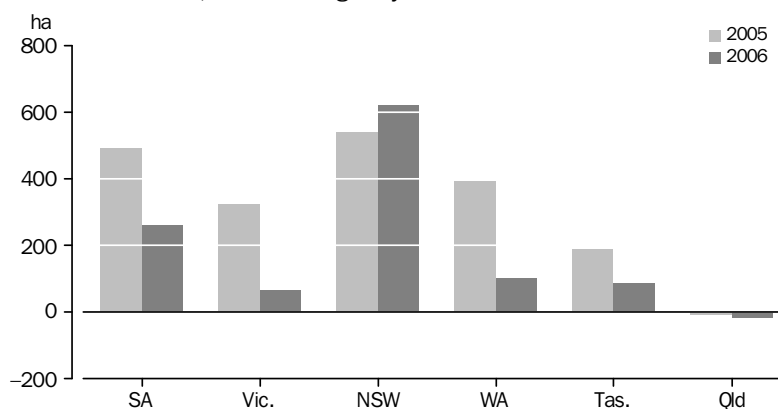
	Value	% change from 2004–05
Area of bearing vines (ha)	158 167	3.2
Total grape production (t)	1 981 198	-2.2
Fresh grapes crushed (t)	1 901 560	-1.2
Beverage wine production (million L)	1 434.5	-0.6
Beverage wine inventories (million L)	2 106.9	2.1
Domestic sales of Australian wine (million L)	431.1	0.2
Domestic sales value of Australian wine (\$m)	1 899.9	-9.4
Exports of Australian wine (million L)	722.2	7.8
Exports of Australian wine (\$m)	2 757.9	1.6
Imports of wine (million L)	27.2	22.7
Imports of wine (\$m)	234.2	24.4

### AREA OF VINES

The area of vines being cultivated increased again, from the record area last year of 166,665 hectares, to 168,791 hectares in 2006. The total area of vines bearing grapes increased from 153,204 hectares to 158,167 hectares, a rise of 3.2%. The area of non-bearing grapes fell 21.1% in 2006 to 10,624 hectares from 13,462 hectares in 2005.

The net increase in area planted under vines for 2005-06 (derived from vines planted and vines lost during the year) was 1,103 hectares, which was 39.5% less than the net increase recorded in 2004-05 (1,823 hectares).

### VINE PLANTING, Net change by state



Source: ABS data available on request, Vineyards Survey.

## SUMMARY OF FINDINGS *continued*

### VINEYARD IRRIGATION

There were 6,583 vineyards that irrigated in 2006. This was 83.5% of the total number of vineyards in Australia (7,861). The area of grapevines irrigated was 148,660 hectares, with South Australia (65,597 hectares) accounting for 44.1%. New South Wales (35,876 hectares) and Victoria (33,575 hectares) collectively had 46.7% of the area of grapevines irrigated nationally. The average usage of water was 3.66 megalitres per hectare. Victoria averaged 5.10 megalitres per hectare, New South Wales 4.38 megalitres per hectare and South Australia 2.91 megalitres per hectare.

The most common watering method continues to be drip or micro spray with 116,822 hectares, or 78.6% of the total area irrigated. There were 56,487 hectares of vineyard land watered by this method in South Australia.

Spray excluding micro spray was the second most utilised method with 17.4% of irrigated vineyards (25,928 hectares). In Victoria, 32.4% (10,872 hectares) of all area irrigated was watered by spray excluding micro spray. The third most common method of watering was furrow or flood (12,017 hectares) with New South Wales accounting for 7,462 hectares, or 20.8% of their total area irrigated.

Surface water from either state owned or private irrigation schemes was the most common source of water used by vineyards in Australia. There were 87,761 hectares drawing from this source. South Australia (30,493 hectares), New South Wales (28,349) and Victoria (26,047) collectively have 96.7% of the vineyard land sourcing water from state owned or private irrigation schemes. Nationally, the next most important water source for vineyards was underground water supply (32,587 hectares), followed by other surface water (29,820 hectares).

### GRAPE PRODUCTION

The weight of grapes harvested in 2006 was 1,981,198 tonnes which was a 2.2% decrease on 2005. Red grape production was down 2.0% to 1,026,301 tonnes, but still represented more than half (51.8%) of the total grapes harvested. The production of white grapes was 954,897 tonnes, a 2.5% decrease on the tonnage harvested in 2005.

There were 1,781,668 tonnes of grapes harvested for winemaking, a decrease of 2.0% on the 1,818,426 tonnes harvested in 2005. The production of grapes for drying decreased by 13.0%, to 117,819 tonnes which was almost counter-balanced by the 12.5% increase in the amount of table and other grapes harvested (81,710 tonnes).

### GRAPE PRODUCTION AND INTENDED USAGE



Source: ABS data available on request, Vineyards Survey.

## SUMMARY OF FINDINGS *continued*

### WINEMAKING LOCATIONS AND GRAPES CRUSHED

For the 2006 vintage there were 435 locations around Australia which crushed 50 tonnes or more of grapes owned by 392 winemaking businesses, compared with the 2005 vintage which had 413 locations owned by 366 winemaking businesses. There were 1,901,560 tonnes of grapes crushed in 2005-06, a decrease of 23,930 tonnes (1.2%) from last year.

Almost 30% of all locations were in South Australia and they accounted for 48.0% of the national wine grape crush, a slight rise from the 47.3% recorded in 2005. New South Wales/Australian Capital Territory (NSW/ACT) had 21.1% of the total number of locations with 34.6% of the total wine crush, followed by Victoria (24.8% of all locations and 13.6% of all grapes crushed) and Western Australia (18.9% of locations and 3.5% of the grape crush).

The 392 winemaking businesses, in terms of crush capacity, are diverse in size. There were 215 businesses that each crushed from 50 to 400 tonnes of grapes, producing a combined crush of 34,309 tonnes. Of these smaller businesses, the 115 smallest winemakers accounted for only 0.6% of all grapes crushed and averaged 93 tonnes each.

The 177 businesses that each crushed more than 400 tonnes of grapes crushed a total of 1,867,251 tonnes (98.2% of the national total) of grapes. There were 16 winemakers that crushed more than 20,000 tonnes each, accounting for a total of 1,411,396 tonnes of grapes or 74.2% of the total crush. These 16 businesses averaged 88,212 tonnes each.

### BEVERAGE WINE PRODUCTION

There were 1,410.5 million litres of beverage wine produced by winemakers that crushed more than 400 tonnes of grapes, or had sales of more than 250,000 litres. This beverage wine production figure was 9.9 million litres (0.7%) less than the total for 2004-05.

Production of unfortified wine accounted for 99.1% of the total beverage wine produced by these winemakers. Red/rosé wine made up 776.0 million litres (55.0%) of the beverage wine produced in 2005-06. This was an increase of 15.3 million litres (2.0%) on the Red/rosé wine produced in 2004-05. White wine accounted for 621.7 million litres, a fall of 17.6 million litres (2.8%) on the previous year.

The fortified wine production total of 12.7 million litres was 37.2% lower than the figure for 2004-05 (20.3 million litres).

### BEVERAGE WINE PRODUCTION



Source: ABS data available on request, Wine and Spirit Production Survey.

## SUMMARY OF FINDINGS *continued*

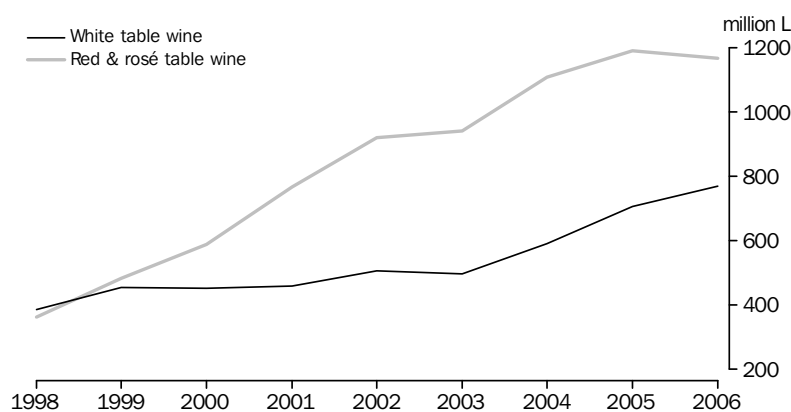
### WINE INVENTORIES

Inventories of Australian beverage wine held by winemakers continued to grow in 2006, reaching 2,106.9 million litres at 30 June 2006. This was a 2.1% increase on the record high of last year (2,063.2 million litres) which rose 11.3% on the inventories held at 30 June 2004 (1,854.5 million litres).

Table wine inventories rose 2.1% to 1,934.3 million litres at 30 June 2006. Once again, stocks of white table wine showed the largest increase of 9.0% (63.4 million litres) giving a total of 768.9 million litres of white wine held as stock by winemakers. White table wine made up 36.5% of the stock of total beverage wine stored by winemakers this year compared to 34.2% last year.

Red/rosé table wine fell by 2.0% (23.7 million litres) from 1,189.1 million litres in 2005 to 1,165.4 million litres at 30 June 2006. Red/rosé table wine still represented more than half (55.3%) of the beverage wine stock held by winemakers.

### INVENTORIES OF AUSTRALIAN TABLE WINE—At 30 June



Source: ABS data available on request, *Inventories of Australian Wine and Brandy Survey*.

### BRANDY

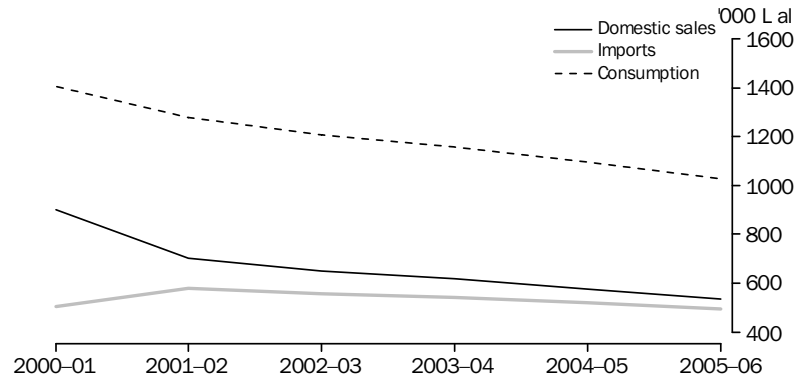
The domestic sales of Australian brandy have continued to fall, dropping to 535,000 litres of alcohol in 2005-06. This was the fifth consecutive year to show a downward movement since the high in 2000-01 (901,000 litres of alcohol).

The volume of imported brandy cleared for home consumption decreased for the fourth consecutive year, falling a further 4.8% to 494,000 litres of alcohol. Exports of Australian brandy rose sharply to 38,000 litres of alcohol (a rise of 111.1%), continuing the positive movement shown last year.

## SUMMARY OF FINDINGS *continued*

### BRANDY *continued*

### DOMESTIC SALES, IMPORTS AND CONSUMPTION (a) OF BRANDY



(a) Available for consumption in Australia - Domestic sales plus Imports.

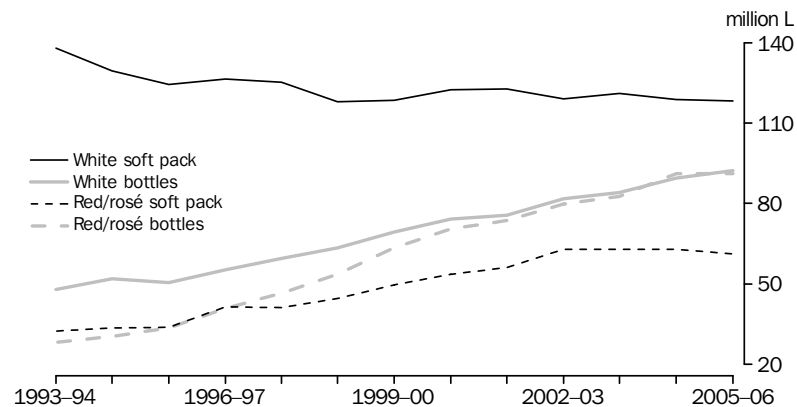
Source: *Sales of Australian Wine and Brandy by Winemakers* (cat. no. 8504.0).

### DOMESTIC WINE SALES

Domestic sales of Australian wine in 2005-06 were 431.1 million litres, a slight increase (0.2%) on the previous year's total of 430.1 million litres. In terms of volume, the components that recorded the largest increases were white table wine (2.6 million litres) and bulk fermented sparkling wine (1.3 million litres). The domestic sales for Red/rosé table wine fell by 1.9 million litres. Fortified wines also continued to fall, dropping to 18.5 million litres in 2005-06, which was 1.4 million litres less than last year and 7.4 million litres less than ten years ago.

The quantity of table wine sold in glass containers of less than two litres continued to increase. In 2005-06, 183.5 million litres of table wine were sold in glass containers less than two litres, comprising 91.2 million litres of red/rosé wine (up 0.1%) and 92.3 million litres of white wine (up 3.1%). The amount of table wine sold in soft packs fell again to 179.3 million litres, 2.5 million litres (1.4%) less than 2004-05. Other containers accounted for 2.7 million litres, higher than the total for 2004-05 (2.4 million litres).

### DOMESTIC SALES OF AUSTRALIAN RED AND WHITE TABLE WINE



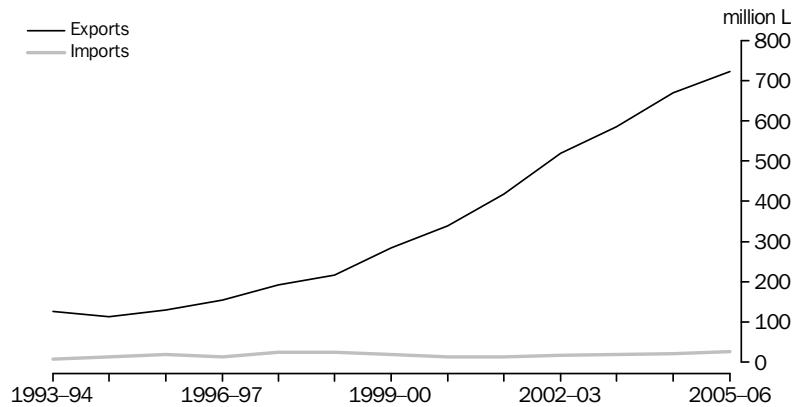
Source: *Sales of Australian Wine and Brandy by Winemakers* (cat. no. 8504.0).

## SUMMARY OF FINDINGS *continued*

### WINE EXPORTS

Australian wine exports continued to grow in 2005-06 with 722.2 million litres of wine exported to world markets, a rise of 7.8% on last year. The value of these exports rose by \$42.6m (1.6%) to \$2,757.9m. However, the average price per litre fell 5.7% from \$4.05 in 2004-05 to \$3.82 in 2005-06. For the 2005-06 period Australia imported 27.2 million litres of wine, significantly less than the volume exported.

### EXPORTS OF AUSTRALIAN WINE AND IMPORTS OF WINE

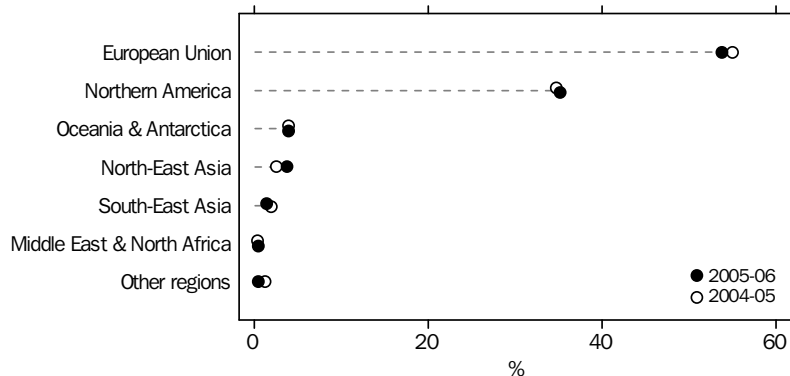


Source: *Sales of Australian Wine and Brandy by Winemakers* (cat. no. 8504.0).

### DESTINATION OF AUSTRALIAN WINE EXPORTS

The European Union continued to be the major regional destination for Australian wine exports in 2005-06. It accounted for 388.3 million litres (53.8% of total exports by volume), valued at \$1,302.9m (47.2% of total exports by value). Exports to Northern America accounted for 253.9 million litres (35.2%) and were valued at \$1,110.6m (40.3%). The United Kingdom was the major country of destination for Australian wine, taking more than one third (36.2%) of the Australian wine exported during 2005-06. There were 261.5 million litres (valued at \$945.8m) of Australian wine exported to the United Kingdom, followed by the United States of America which imported 204.9 million litres (\$864.2m) and Canada with 48.9 million litres of wine valued at \$245.7m.

### DESTINATION OF AUSTRALIAN WINE EXPORTS (a)



(a) Proportion of total wine exports, by volume.

Source: ABS data available on request, *International Trade database*.

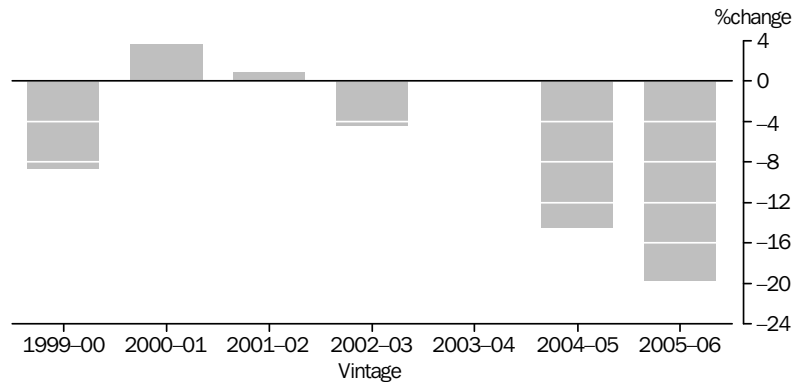


## SUMMARY OF FINDINGS *continued*

### GRAPE AND WINE PRICES

The wine grape price index showed another significant fall in 2005-06, down 19.8%. The index of prices received by winemakers also fell in 2005-06, dropping 0.5%. The price received for wine for domestic consumption remained steady, while the price received for wine for export decreased by 1.7%. The consumer price index for wine increased by 0.8% in 2005-06, compared with the annual increase of 3.2% in the All groups consumer price index.

#### PRICE INDEX OF GRAPES USED IN WINE PRODUCTION, Change on previous vintage



Source: ABS data available on request, *Price Indexes of Materials used in Manufacturing Industries*.

### WINE CONSUMPTION

Apparent per capita consumption of wine has continued to increase, rising to 28.1 litres in 2004-05. In 1998-99 per capita consumption was 25.2 litres. The level of per capita consumption rose to 26.0 litres in 1999-2000 and remained relatively unchanged for three years until 2002-03 when it rose to 26.8 litres. The level of per capita consumption continued to rise in 2003-04 to reach 27.5 litres. This latest increase is more in line with the movements of the past decade and to the longer term trend which has seen per capita consumption of wine climb steadily over the last 50 years.

#### PER CAPITA CONSUMPTION OF WINE (a)



(a) Apparent consumption of wine by persons aged 15 years and over.

Source: *Apparent Consumption of Alcohol, Australia* (cat. no. 4307.0.55.001).

### HOUSEHOLD EXPENDITURE

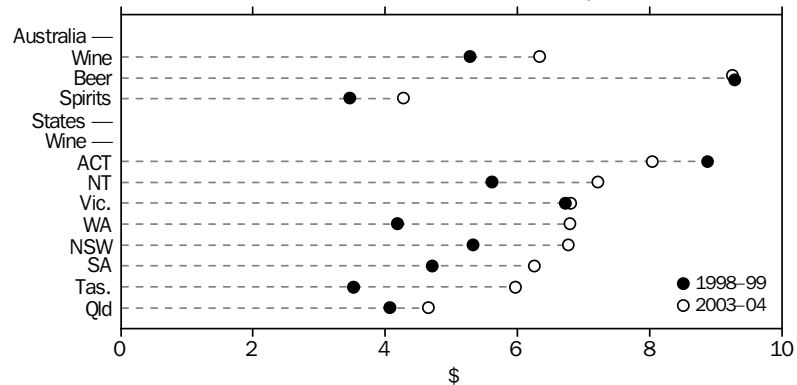
The most current details of household expenditure show that during 2003-04 Australian households spent an average of \$6.33 per week on wine. Households in the Australian Capital Territory spent the most with \$8.04 and those in Queensland the least with \$4.65. Australian Capital Territory households spent the highest proportion of

## SUMMARY OF FINDINGS *continued*

### HOUSEHOLD EXPENDITURE *continued*

their total weekly alcohol expenditure on wine (33.0%), while Northern Territory (NT) households spent the lowest (19.2%). Households in New South Wales (29.0%), Victoria (28.7%) and South Australia (27.8%) spent more than one quarter of their total weekly alcohol expenditure on wine. From 1998–99 to 2003–04 there was a 19.9% increase in weekly expenditure on wine nationally.

#### AVERAGE WEEKLY HOUSEHOLD EXPENDITURE, Alcoholic beverages

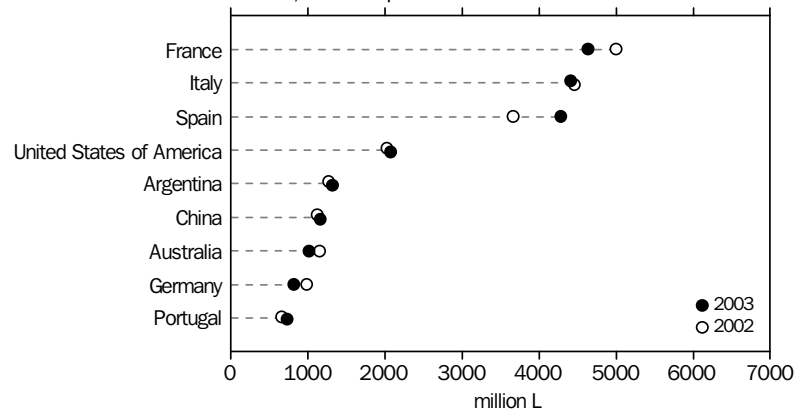


Source: Household Expenditure Survey, Australia: Detailed Expenditure Items, 2003-04 (cat. no. 6535.0.55.001).

### WORLD COMPARISONS

Of the countries for which 2003 data are available, Australia's ranking for area of vines planted (157 thousand hectares) was twelfth, the same position as the previous year. Spain (1,207 thousand hectares), France (887 thousand hectares) and Italy (868 thousand hectares) had the greatest areas under vine. Australia was ranked eleventh in terms of total grape production (1,497 thousand tonnes). The top two countries with the highest grape production were Italy (7,484 thousand tonnes) and Spain (6,817 thousand tonnes), followed closely by France (6,307 thousand tonnes). France (4,636 million litres), Italy (4,409 million litres) and Spain (4,280 million litres) were the largest producers of wine. Australia produced 1,019 million litres of wine and was ranked seventh in the world for wine production.

#### PRODUCTION OF WINE, Principal countries



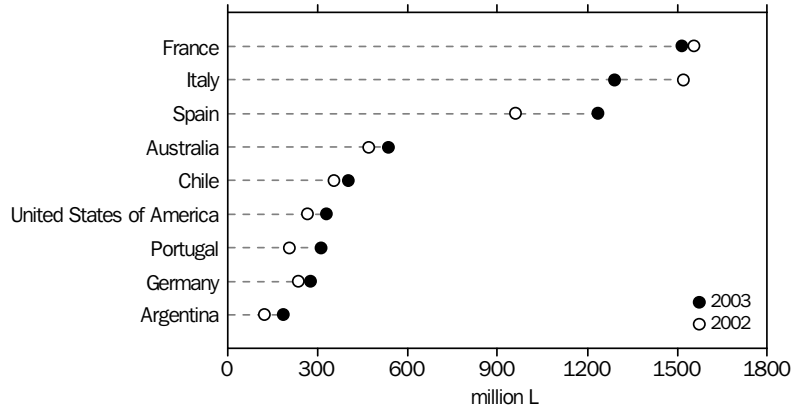
Source: Office International de la Vigne et du Vin (O.I.V.) 2006.

## SUMMARY OF FINDINGS *continued*

### WORLD COMPARISONS *continued*

The top seven countries exporting the largest volumes of wine in 2003 were France, Italy, Spain, Australia, Chile, United States of America and Portugal. These seven countries accounted for 77.1% of total world wine exports. Australia, with 536.5 million litres of wine exported, was ranked the fourth largest exporter of wine. Australia exported 52.6% of its wine production, which was the second highest proportion, when compared to the other leading wine producing countries. The highest proportion was recorded by Chile which exported 60.3% of the wine it made. Australia's per capita consumption of wine in 2003 increased to 21.3 litres (20.5 litres in 2002), but was still well below the leading countries of France (55.4 litres), Portugal (52.6 litres) and Italy (51.1 litres).

EXPORTS OF WINE, Principal countries



Source: Office International de la Vigne et du Vin (O.I.V.) 2006.

## FEATURE ARTICLE

### CHANGES TO THE COLLECTION OF INVENTORY DATA

#### INTRODUCTION

The annual inventory data presented in this publication are sourced from the *Inventories of Australian Wine and Brandy* survey which includes all winemakers who have domestic wine sales in excess of 250,000 litres. After consultation with wine industry bodies, the coverage for the annual inventory figure has been expanded from just a sales basis to include all winemakers who crush more than 400 tonnes annually.

For this purpose inventory questions were included in the *2005-06 Wine and Spirit Production* survey that was sent to those winemakers that did not have sales greater than 250,000 litres, but still had a grape crush greater than 400 tonnes. These added questions asked for detail on the inventories held of beverage wine, including white table wine, red/rosé table wine and other wine products. In order to lessen the burden of filling out the survey form, breakdowns were not asked for the other wine categories, i.e. sparkling, fortified etc.

#### INVENTORIES OF BEVERAGE WINE

The following table shows the total inventory figure, as collected from all winemakers that crushed more than 400 tonnes of grapes annually.

There were 2,255.7 million litres of beverage wine held by winemakers at 30 June 2006.

The volume of white table wine held was 809.8 million litres. White table wine made up 35.9% of the total beverage wine stock this year.

The inventory figure for red/rosé table wine held by winemakers was 1,269.7 million litres or 56.2% of the total beverage wine stock.

#### INVENTORIES OF AUSTRALIAN BEVERAGE WINE, Winemakers with a grape crush greater than 400 tonnes—2005–06

TABLE WINE

	<i>White</i>	<i>Red and rosé</i>	<i>Total</i>	<i>Other</i>	<i>Total</i>
<i>Sales volume</i>	<small>million L</small>	<small>million L</small>	<small>million L</small>	<small>million L</small>	<small>million L</small>
Greater than 250,000 litres	768.9	1 165.4	1 934.3	172.6	2 106.9
Less than 250,000 litres	40.9	104.3	145.2	3.6	148.8
<b>Total</b>	<b>809.8</b>	<b>1 269.7</b>	<b>2 079.5</b>	<b>176.2</b>	<b>2 255.7</b>

Source: Inventories of Australian Wine and Brandy 2005-06; Wine and Spirit Production Survey, 2005-06.

#### COMPARISON WITH PREVIOUS PUBLICATIONS

In order to maintain comparability with previous releases of this publication, the source data for Table 18 and the section in the SUMMARY OF FINDINGS titled "WINE INVENTORIES" is only taken from the *Inventories of Australian Wine and Brandy* survey, i.e. the information in Table 18 and "WINE INVENTORIES" is only gathered from those winemakers that sell more than 250,000 litres of wine annually.

## LIST OF TABLES

*page*

### VITICULTURE

<b>1</b>	Area of vines, By state, 2002 to 2006 . . . . .	15
<b>2</b>	Production of grapes, By state, 2002 to 2006 . . . . .	16
<b>3</b>	Area of vines by grape variety, At harvest, 2006 . . . . .	17
<b>4</b>	Production and yield of grape varieties, At harvest, 2006 . . . . .	18
<b>5</b>	Area of vines, Gains and losses by variety, 2006 . . . . .	19
<b>6</b>	Area of vines, Gains and losses by state, 2006 . . . . .	20
<b>7</b>	Area of vines, By Australian Geographical Indications, 2006 . . . . .	21
<b>8</b>	Production of grapes, By Australian Geographical Indications, 2006 . . . . .	25

### VINEYARD IRRIGATION

<b>9</b>	Irrigation of grapevines, By state, 2006 . . . . .	29
<b>10</b>	Watering method used, By state, 2006 . . . . .	29
<b>11</b>	Sources of water, By state, 2006 . . . . .	30

### WINE PRODUCTION AND GRAPES CRUSHED

<b>12</b>	Size of grape crush and number of wineries, State and territory, 2005–06 . . . . .	31
<b>13</b>	Winemakers, Size of production, 2005–06 . . . . .	31
<b>14</b>	Wine production, 2001–02 to 2005–06 . . . . .	32
<b>15</b>	Wine production, By state, 2005–06 . . . . .	32
<b>16</b>	Grape crush, 2003–04 to 2005–06 . . . . .	33
<b>17</b>	Grape spirit used in current vintage wine, 2001–02 to 2005–06 . . . . .	34

### WINE INVENTORIES

<b>18</b>	Inventories of Australian wine and grape juice held by winemakers, 2002 to 2006 . . . . .	34
-----------	--	----

### BRANDY AND GRAPE SPIRIT

<b>19</b>	Inventories of Australian brandy and grape spirit, 2002 to 2006 . . . . .	35
<b>20</b>	Domestic sales, exports and imports of brandy, 2000–01 to 2005–06 . . . . .	35

### DOMESTIC WINE SALES

<b>21</b>	Domestic sales of Australian wine by winemakers, 1993–94 to 2005–06 . . . . .	36
<b>22</b>	Domestic sales and domestic sales value of Australian wine, 2000–01 to 2005–06 . . . . .	36
<b>23</b>	Domestic sales of Australian table wine, By container type, 1993–94 to 2005–06 . . . . .	37

### INTERNATIONAL TRADE

<b>24</b>	Exports of Australian wine, 1993–94 to 2005–06 . . . . .	37
<b>25</b>	Disposals of Australian-produced wine, 1993–94 to 2005–06 . . . . .	38
<b>26</b>	Exports of Australian wine, By destination, 2005–06 . . . . .	39
<b>27</b>	Exports of Australian wine, By state and territory of origin, 1993–94 to 2005–06 . . . . .	40

## LIST OF TABLES *continued*

*page*

### INTERNATIONAL TRADE *continued*

<b>28</b>	Wine imports cleared for home consumption, By wine type, 1993–94 to 2005–06 . . . . .	40
<b>29</b>	Wine imports cleared for home consumption, By country of origin, 2003–04 to 2005–06 . . . . .	41
<b>30</b>	Exports and imports cleared of fresh and dried grapes, 1993–94 to 2005–06 . . . . .	41
<b>31</b>	Exports and imports of fresh and dried grapes, By country, 2003–04 to 2005–06 . . . . .	42

### GRAPE AND WINE PRICES

<b>32</b>	Selected price indexes, Percentage change, 1998–99 to 2005–06 . . . . .	43
-----------	---	----

### WINE CONSUMPTION

<b>33</b>	Wine available for consumption in Australia, 1998–99 to 2005–06 . . . . .	43
<b>34</b>	Apparent consumption of alcohol per capita, 1998–99 to 2004–05 . . . . .	44

### WINE EXPENDITURE

<b>35</b>	Average Weekly Household Expenditure, Alcoholic Beverages, 2003–04 . . . . .	44
-----------	---	----

### WORLD COMPARISONS

<b>36</b>	Grape production, Area of vines and yield of selected countries, 2003 . . . . .	45
<b>37</b>	Wine production, exports and consumption, Selected countries, 2003 . . . . .	46
<b>38</b>	Production and exports of table and dried grapes, Selected countries, 2003 . . . . .	47
<b>39</b>	Imports of wine, table and dried grapes, Selected countries, 2003 . . . . .	48

## AREA OF VINES, By state—2002 to 2006

	NOT YET BEARING (PLANTED OR GRAFTED)			
	<i>Bearing</i>	<i>Prior to collection year</i>	<i>During collection year</i>	<i>Total</i>
	ha	ha	ha	ha
<b>New South Wales</b>				
2002	34 005	2 050	1 326	37 381
2003	34 291	1 614	1 134	37 039
2004	35 975	1 841	1 221	39 036
2005	35 777	2 118	1 383	39 278
2006	36 632	2 235	1 331	40 198
<b>Victoria</b>				
2002	35 035	2 087	1 531	38 653
2003	34 446	2 026	1 813	38 284
2004	34 929	1 775	1 825	38 529
2005	35 049	2 219	1 496	38 764
2006	36 597	1 537	846	38 980
<b>Queensland</b>				
2002	2 092	161	60	2 312
2003	1 996	149	41	2 186
2004	2 150	218	195	2 562
2005	2 307	157	92	2 556
2006	2 449	147	17	2 613
<b>South Australia</b>				
2002	60 526	3 090	3 423	67 039
2003	59 956	3 877	2 821	66 654
2004	64 961	3 202	2 149	70 312
2005	66 979	2 254	2 180	71 413
2006	69 771	2 130	1 187	73 088
<b>Western Australia</b>				
2002	10 260	682	439	11 381
2003	10 730	579	427	11 736
2004	11 068	659	357	12 085
2005	11 747	477	747	12 971
2006	11 375	531	370	12 276
<b>Tasmania</b>				
2002	909	187	71	1 167
2003	978	116	51	1 144
2004	1 048	85	72	1 206
2005	981	94	194	1 269
2006	999	150	105	1 254
<b>Australia<sup>(a)</sup></b>				
2002	143 373	8 264	6 958	158 594
2003	142 793	8 412	6 288	157 492
2004	150 561	7 800	5 819	164 181
2005	153 204	7 369	6 093	166 665
2006	158 167	6 768	3 856	168 791

(a) Includes Australian Capital Territory (ACT) and Northern Territory (NT).

Source: ABS data available on request, Vineyards Survey.

## PRODUCTION OF GRAPES, By state—2002 to 2006

## GRAPE PRODUCTION(a)

	Winemaking(b)	Drying	Table and other	Total	Yield(c)
	t	t	t	t	t/ha
<b>New South Wales</b>					
2002	415 026	26 193	11 078	452 297	13.3
2003	362 526	14 121	10 240	386 887	11.3
2004	450 516	19 748	12 299	482 563	13.4
2005	475 974	21 332	10 980	508 286	14.2
2006	473 580	17 996	18 327	509 903	13.9
<b>Victoria</b>					
2002	338 536	119 156	56 428	514 119	14.7
2003	282 439	74 305	48 665	405 409	11.8
2004	384 896	104 860	42 495	532 251	15.2
2005	392 963	109 544	48 707	551 214	15.7
2006	354 796	96 623	45 755	497 174	13.6
<b>Queensland</b>					
2002	4 363	147	7 864	12 375	5.9
2003	3 211	185	7 465	10 860	5.4
2004	5 162	68	7 283	12 513	5.8
2005	6 689	136	5 325	12 149	5.3
2006	4 764	—	10 301	15 064	6.2
<b>South Australia</b>					
2002	689 643	5 428	2 679	697 750	11.5
2003	612 095	2 790	2 108	616 992	10.3
2004	880 075	3 822	2 101	885 999	13.6
2005	856 038	3 343	2 137	861 518	12.9
2006	881 346	2 847	1 621	885 814	12.7
<b>Western Australia</b>					
2002	63 559	1 800	4 621	69 981	6.8
2003	62 683	864	4 288	67 836	6.3
2004	87 523	991	3 556	92 070	8.3
2005	79 948	1 058	4 046	85 052	7.2
2006	60 840	354	4 163	65 357	5.7
<b>Tasmania</b>					
2002	3 147	—	1	3 148	3.5
2003	6 390	—	—	6 390	6.5
2004	7 861	—	—	7 861	7.5
2005	6 136	—	—	6 136	6.3
2006	5 571	—	—	5 571	5.6
<b>Australia(d)</b>					
2002	1 514 501	152 863	86 524	1 753 888	12.2
2003	1 329 595	92 264	75 080	1 496 939	10.5
2004	1 816 556	129 489	68 920	2 014 965	13.4
2005	1 818 426	135 412	72 662	2 026 500	13.2
2006	1 781 668	117 819	81 710	1 981 198	12.5

— nil or rounded to zero (including null cells)

(a) Fresh weight.

(b) Wine-grape production data are less than grape-crushings data in wine manufacturing and production tables (see Explanatory Notes, paragraph 4).

(c) Yield represents the quantity of grapes produced per hectare of bearing vines.

(d) Includes Australian Capital Territory (ACT) and Northern Territory (NT).

Source: ABS data available on request, Vineyards Survey.



## AREA OF VINES BY GRAPE VARIETY, At harvest—2006

	NOT YET BEARING (PLANTED OR GRAFTED)			Total
	Bearing	Prior to collection year	During collection year	
	ha	ha	ha	
<b>Red grapes</b>				
Barbera	151	4	1	156
Cabernet Franc	565	11	—	575
Cabernet Sauvignon	27 639	394	70	28 103
Durif	329	67	7	402
Grenache	2 001	20	4	2 025
Malbec	391	27	7	424
Mataro (Mourvedre)	842	29	4	875
Merlot	10 032	228	333	10 593
Meunier	181	2	1	184
Muscat a Petit Grains Rouge/Rosé	255	6	4	265
Nebbiolo	80	5	3	88
Petit Verdot	1 409	44	4	1 456
Pinot Noir	4 039	125	90	4 254
Ruby Cabernet	1 433	32	4	1 468
Sangiovese	405	17	3	425
Shiraz	39 087	1 457	571	41 115
Tarrango	164	7	—	172
Tempranillo	293	23	12	328
Touriga	51	1	—	53
Zinfadel	105	5	3	114
All other red grapes	4 344	211	192	4 748
Red grapes nec(a)	172	29	88	289
<i>Total red grapes</i>	<i>93 967</i>	<i>2 744</i>	<i>1 400</i>	<i>98 111</i>
<b>White grapes</b>				
Chardonnay	28 240	2 243	737	31 219
Chenin Blanc	686	10	13	710
Colombard	2 655	68	44	2 767
Crouchen	104	1	—	106
Doradillo	105	—	—	105
Marsanne	186	6	3	196
Muscadelle (Tokay)	161	—	1	162
Muscat a Petit Grains Blanc	150	41	5	197
Muscat Gordo Blanco	2 232	74	128	2 433
Palomino	65	—	1	66
Pinot Gris	659	214	480	1 352
Riesling	4 092	163	144	4 400
Roussane	39	9	9	57
Sauvignon Blanc	3 874	451	336	4 661
Semillon	5 874	181	182	6 236
Sultana	6 446	97	67	6 611
Traminer	730	30	21	781
Trebbiano	312	—	3	315
Verdelho	1 634	34	29	1 697
Viognier	743	147	137	1 026
All other white grapes	4 989	186	79	5 254
White grapes nec(a)	225	67	38	330
<i>Total white grapes</i>	<i>64 199</i>	<i>4 024</i>	<i>2 457</i>	<i>70 680</i>
<b>Total grapes</b>	<b>158 167</b>	<b>6 768</b>	<b>3 856</b>	<b>168 791</b>

— nil or rounded to zero (including null cells)

(a) Varieties not specified

Source: ABS data available on request, Vineyards Survey, 2006.

## GRAPE PRODUCTION(a)

	Winemaking(c)	Drying	Table and other	Total	Yield(b)
	t	t	t	t	t/ha
<b>Red grapes</b>					
Barbera	1 191	5	—	1 196	7.9
Cabernet Franc	4 346	—	—	4 346	7.7
Cabernet Sauvignon	274 305	44	22	274 370	9.9
Durif	4 442	—	—	4 442	13.5
Grenache	22 697	—	56	22 753	11.4
Malbec	3 203	—	—	3 203	8.2
Mataro (Mourvedre)	10 882	—	40	10 921	13.0
Merlot	123 084	—	—	123 085	12.3
Meunier	2 211	—	—	2 211	12.2
Muscat a Petit Grains Rouge/Rosé	1 628	—	237	1 865	7.3
Nebbiolo	302	—	1	303	3.8
Petit Verdot	26 228	—	—	26 228	18.6
Pinot Noir	33 921	13	—	33 933	8.4
Ruby Cabernet	26 382	—	—	26 382	18.4
Sangiovese	4 716	—	13	4 729	11.7
Shiraz	422 430	52	85	422 567	10.8
Tarrango	2 538	—	1	2 539	15.5
Tempranillo	2 736	—	—	2 736	9.3
Touriga	442	—	2	444	8.6
Zinfadel	1 062	—	11	1 073	10.2
All other red grapes	10 967	10 319	34 879	56 166	12.9
Red grapes nec(d)	496	15	299	810	4.7
<b>Total red grapes</b>	<b>980 209</b>	<b>10 447</b>	<b>35 645</b>	<b>1 026 301</b>	<b>10.9</b>
<b>White grapes</b>					
Chardonnay	397 322	1	119	397 441	14.1
Chenin Blanc	11 497	—	1	11 498	16.8
Colombard	74 827	—	—	74 827	28.2
Crouchen	1 994	—	—	1 994	19.1
Doradillo	1 854	—	—	1 854	17.6
Marsanne	1 731	—	—	1 731	9.3
Muscadelle (Tokay)	1 338	—	—	1 338	8.3
Muscat a Petit Grains Blanc	1 715	—	2	1 717	11.4
Muscat Gordo Blanco	50 320	3 896	210	54 425	24.4
Palomino	901	—	—	901	13.9
Pinot Gris	5 778	—	—	5 778	8.8
Riesling	38 329	52	—	38 380	9.4
Roussane	234	—	—	234	6.0
Sauvignon Blanc	40 501	1	12	40 513	10.5
Semillon	96 785	106	43	96 934	16.5
Sultana	14 516	92 968	16 527	124 011	19.2
Traminer	11 051	—	7	11 057	15.1
Trebbiano	4 399	—	—	4 399	14.1
Verdelho	19 857	—	1	19 858	12.2
Viognier	6 710	—	4	6 714	9.0
All other white grapes	19 170	10 341	29 020	58 530	11.7
White grapes nec(d)	631	9	121	760	3.4
<b>Total white grapes</b>	<b>801 460</b>	<b>107 372</b>	<b>46 065</b>	<b>954 896</b>	<b>14.9</b>
<b>Total Grapes</b>	<b>1 781 668</b>	<b>117 819</b>	<b>81 710</b>	<b>1 981 198</b>	<b>12.5</b>

— nil or rounded to zero (including null cells)

(a) Fresh weight.

(b) Yield represents the quantity of grapes produced per hectare of bearing vines.

(c) Wine-grape production data are less than grape-crushings data in wine manufacturing and production tables (see Explanatory Notes, paragraph 4).

(d) Varieties not specified.

Source: ABS data available on request, Vineyards Survey 2006.

## AREA OF VINES, Gains and losses by variety—2006

	CHANGES TO TOTAL AREA DURING 2005-06			<i>Intended planting 2006 to 2007</i>
	<i>Planted</i>	<i>Lost(a)</i>	<i>Net change</i>	
	ha	ha	ha	
<b>Red grapes</b>				
Barbera	1	4	-3	—
Cabernet Franc	—	49	-49	3
Cabernet Sauvignon	70	557	-487	47
Durif	7	1	6	3
Grenache	4	37	-33	5
Malbec	7	4	3	5
Mataro (Mourvedre)	4	32	-28	7
Merlot	333	238	95	44
Meunier	1	9	-8	1
Muscat a Petit Grains Rouge/Rosé	4	1	3	1
Nebbiolo	3	1	2	—
Petit Verdot	4	20	-17	10
Pinot Noir	90	80	10	41
Ruby Cabernet	4	178	-174	5
Sangiovese	3	16	-14	6
Shiraz	571	311	260	285
Tarrango	—	6	-6	8
Tempranillo	12	3	10	3
Touriga	—	1	-1	2
Zinfadel	3	9	-6	2
All other red grapes	192	106	87	90
Red grapes nec(b)	88	57	32	36
<i>Total red grapes</i>	<i>1 400</i>	<i>1 716</i>	<i>-317</i>	<i>604</i>
<b>White grapes</b>				
Chardonnay	737	258	479	113
Chenin Blanc	13	19	-5	8
Colombard	44	28	16	9
Crouchen	—	2	-2	—
Doradillo	—	6	-6	—
Marsanne	3	12	-8	4
Muscadelle (Tokay)	1	2	-1	1
Muscat a Petit Grains Blanc	5	1	5	9
Muscat Gordo Blanco	128	40	88	87
Palomino	1	4	-3	—
Pinot Gris	480	6	473	207
Riesling	144	61	83	50
Roussane	9	—	9	6
Sauvignon Blanc	336	35	301	198
Semillon	182	101	81	98
Sultana	67	279	-212	62
Traminer	21	11	10	4
Trebbiano	3	10	-7	1
Verdelho	29	15	14	11
Viognier	137	13	124	116
All other white grapes	79	110	-30	104
White grapes nec(b)	38	27	11	22
<i>Total white grapes</i>	<i>2 457</i>	<i>1 037</i>	<i>1 420</i>	<i>1 110</i>
<b>Total grapes</b>	<b>3 856</b>	<b>2 753</b>	<b>1 103</b>	<b>1 714</b>

— nil or rounded to zero (including null cells)

(a) Area lost due to vines being pulled out or changed to another variety e.g. grafted.

(b) Varieties not specified.

Source: ABS data available on request, Vineyards Survey, 2006.

## AREA OF VINES, Gains and losses by state—2006

	CHANGES TO TOTAL AREA DURING 2005–06			<i>Intended planting 2006 to 2007</i>
	<i>Planted</i>	<i>Lost(a)</i>	<i>Net change</i>	
	ha	ha	ha	
<b>New South Wales</b>				
Total red grapes	542	367	174	159
Total white grapes	790	346	444	226
<i>Total</i>	<i>1 331</i>	<i>713</i>	<i>619</i>	<i>386</i>
<b>Victoria</b>				
Total red grapes	322	369	-47	163
Total white grapes	524	412	112	273
<i>Total</i>	<i>846</i>	<i>780</i>	<i>65</i>	<i>436</i>
<b>Queensland</b>				
Total red grapes	7	19	-12	3
Total white grapes	10	16	-6	4
<i>Total</i>	<i>17</i>	<i>35</i>	<i>-18</i>	<i>7</i>
<b>South Australia</b>				
Total red grapes	431	718	-286	213
Total white grapes	755	210	546	371
<i>Total</i>	<i>1 187</i>	<i>928</i>	<i>259</i>	<i>584</i>
<b>Western Australia</b>				
Total red grapes	64	236	-173	36
Total white grapes	306	33	273	163
<i>Total</i>	<i>370</i>	<i>270</i>	<i>101</i>	<i>199</i>
<b>Tasmania</b>				
Total red grapes	34	8	26	29
Total white grapes	71	11	61	72
<i>Total</i>	<i>105</i>	<i>18</i>	<i>87</i>	<i>101</i>
<b>Australia(b)</b>				
Total red grapes	1 400	1 716	-317	604
Total white grapes	2 457	1 037	1 420	1 110
<b>Total</b>	<b>3 856</b>	<b>2 753</b>	<b>1 103</b>	<b>1 714</b>

(a) Area lost due to vines being pulled out or changed to another variety e.g. grafted.

(b) Includes Australian Capital Territory and Northern Territory.

Source: ABS data available on request, Vineyards Survey 2006.

	NOT YET BEARING (PLANTED OR GRAFTED)			<i>Total</i>
	<i>Bearing</i>	<i>Prior to</i>	<i>During</i>	
		<i>collection</i>	<i>collection</i>	
ha	year	year	ha	
NEW SOUTH WALES				
<b>Big Rivers</b>				
Red grapes	11 106	588	481	12 175
White grapes	12 116	1 188	717	14 021
<i>Total</i>	23 222	1 776	1 199	26 196
<b>Western Plains</b>				
Red grapes	78	33	—	110
White grapes	77	—	1	77
<i>Total</i>	154	33	1	188
<b>Central Ranges</b>				
Red grapes	4 115	59	17	4 191
White grapes	2 667	156	23	2 847
<i>Total</i>	6 782	216	40	7 037
<b>Southern New South Wales</b>				
Red grapes	1 179	41	8	1 228
White grapes	512	34	12	558
<i>Total</i>	1 691	75	20	1 786
<b>South Coast</b>				
Red grapes	110	11	5	126
White grapes	125	11	11	146
<i>Total</i>	235	22	15	272
<b>Northern Slopes</b>				
Red grapes	194	—	4	198
White grapes	68	9	5	82
<i>Total</i>	262	9	9	280
<b>Northern Rivers</b>				
Red grapes	26	—	1	26
White grapes	22	—	1	23
<i>Total</i>	48	—	1	49
<b>Hunter Valley</b>				
Red grapes	1 590	24	26	1 641
White grapes	2 648	80	21	2 750
<i>Total</i>	4 239	105	47	4 390
<b>New South Wales</b>				
Red grapes	18 397	756	542	19 695
White grapes	18 235	1 479	790	20 504
<i>Total</i>	36 632	2 235	1 331	40 198

— nil or rounded to zero (including null cells)

(a) At harvest, 2006.

Source: ABS data available on request, Vineyards Survey 2006.

	NOT YET BEARING (PLANTED OR GRAFTED)			<i>Total</i> ha
	<i>Bearing</i> ha	<i>Prior to</i> <i>collection</i> <i>year</i>	<i>During</i> <i>collection</i> <i>year</i>	
		ha	ha	
..... VICTORIA				
<b>North West Victoria</b>				
Red grapes	9 456	311	224	9 991
White grapes	14 250	694	416	15 359
<i>Total</i>	23 706	1 005	640	25 350
<b>North East Victoria</b>				
Red grapes	2 240	40	15	2 295
White grapes	928	98	45	1 071
<i>Total</i>	3 167	138	60	3 365
<b>Central Victoria</b>				
Red grapes	2 777	134	54	2 964
White grapes	1 092	34	32	1 158
<i>Total</i>	3 868	168	86	4 122
<b>Western Victoria</b>				
Red grapes	1 409	36	7	1 452
White grapes	360	15	2	376
<i>Total</i>	1 769	51	8	1 828
<b>Port Phillip</b>				
Red grapes	2 492	78	22	2 591
White grapes	1 407	79	28	1 515
<i>Total</i>	3 899	157	50	4 106
<b>Gippsland</b>				
Red grapes	119	11	1	130
White grapes	70	9	1	79
<i>Total</i>	189	19	1	209
<b>Victoria</b>				
Red grapes	18 491	609	322	19 422
White grapes	18 106	928	524	19 558
<i>Total</i>	36 597	1 537	846	38 980
..... QUEENSLAND				
<b>Queensland</b>				
Red grapes	1 140	87	7	1 234
White grapes	1 309	60	10	1 380
<i>Total</i>	2 449	147	17	2 613

(a) At harvest, 2006.

Source: ABS data available on request, Vineyards Survey 2006.

	NOT YET BEARING (PLANTED OR GRAFTED)			<i>Total</i> ha
	<i>Bearing</i> ha	<i>Prior to</i> <i>collection</i> <i>year</i>	<i>During</i> <i>collection</i> <i>year</i>	
		ha	ha	
SOUTH AUSTRALIA				
<b>Mount Lofty Ranges</b>				
Red grapes	5 686	99	32	5 817
White grapes	3 019	239	72	3 330
<i>Total</i>	8 705	338	104	9 147
<b>Barossa</b>				
Red grapes	8 001	180	96	8 276
White grapes	3 180	118	108	3 406
<i>Total</i>	11 181	298	203	11 683
<b>Fleurieu</b>				
Red grapes	10 412	370	94	10 876
White grapes	2 547	153	90	2 790
<i>Total</i>	12 959	523	184	13 666
<b>Limestone Coast</b>				
Red grapes	11 732	205	61	11 997
White grapes	2 809	161	151	3 120
<i>Total</i>	14 540	366	211	15 118
<b>Lower Murray</b>				
Red grapes	12 912	194	149	13 255
White grapes	9 130	392	334	9 855
<i>Total</i>	22 043	585	482	23 110
<b>The Peninsulas</b>				
Red grapes	57	12	—	69
White grapes	8	5	1	14
<i>Total</i>	65	17	1	83
<b>Far North</b>				
Red grapes	220	3	—	223
White grapes	59	—	—	59
<i>Total</i>	279	3	—	282
<b>South Australia</b>				
Red grapes	49 019	1 063	431	50 513
White grapes	20 753	1 067	755	22 575
<i>Total</i>	69 771	2 130	1 187	73 088

— nil or rounded to zero (including null cells)

(a) At harvest, 2006.

Source: ABS data available on request, Vineyards Survey 2006.

	NOT YET BEARING (PLANTED OR GRAFTED)			
	Bearing	Prior to	During	Total
		collection	collection	
	ha	year	year	ha
.....				
WESTERN AUSTRALIA				
<b>Greater Perth</b>				
Red grapes	808	27	8	842
White grapes	837	42	26	905
<i>Total</i>	1 645	68	34	1 747
<b>Central Western Australia</b>				
Red grapes	114	6	8	128
White grapes	66	1	—	67
<i>Total</i>	180	8	8	195
<b>South West Australia</b>				
Red grapes	5 329	130	48	5 507
White grapes	4 148	325	280	4 754
<i>Total</i>	9 477	455	328	10 261
<b>Western Australian South East Coastal</b>				
Red grapes	7	—	—	8
White grapes	5	—	—	5
<i>Total</i>	13	—	—	13
<b>Eastern Plains, Inland and North of WA</b>				
Red grapes	46	—	—	46
White grapes	14	—	—	14
<i>Total</i>	60	—	—	60
<b>Western Australia</b>				
Red grapes	6 304	163	64	6 530
White grapes	5 071	369	306	5 746
<i>Total</i>	11 375	531	370	12 276
.....				
TASMANIA				
<b>Tasmania</b>				
Red grapes	532	66	34	632
White grapes	467	84	71	623
<i>Total</i>	999	150	105	1 254
.....				
AUSTRALIA (b)				
<b>Australia(b)</b>				
Red grapes	93 967	2 744	1 400	98 111
White grapes	64 199	4 024	2 457	70 680
<b>Total</b>	<b>158 167</b>	<b>6 768</b>	<b>3 856</b>	<b>168 791</b>

— nil or rounded to zero (including null cells)

(a) At harvest, 2006.

(b) Includes Australian Capital Territory and Northern Territory.

Source: ABS data available on request, Vineyards Survey 2006.



## GRAPE PRODUCTION(a)

	Wine-making	Drying	Table and other	Total	Area of vines bearing	Yield(b)
	t	t	t	t	ha	t/ha
NEW SOUTH WALES						
<b>Big Rivers</b>						
Red grapes	172 655	2 195	6 008	180 858	11 106	16.3
White grapes	203 304	15 677	11 493	230 474	12 116	19.0
Total	375 959	17 872	17 501	411 332	23 222	17.7
<b>Western Plains</b>						
Red grapes	754	—	1	755	78	9.7
White grapes	735	—	68	803	77	10.5
Total	1 489	—	69	1 558	154	10.1
<b>Central Ranges</b>						
Red grapes	31 374	1	54	31 428	4 115	7.6
White grapes	25 329	—	680	26 009	2 667	9.8
Total	56 703	1	734	57 438	6 782	8.5
<b>Southern New South Wales</b>						
Red grapes	8 309	38	1	8 348	1 179	7.1
White grapes	4 087	84	3	4 174	512	8.1
Total	12 396	122	4	12 522	1 691	7.4
<b>South Coast</b>						
Red grapes	259	—	—	259	110	2.4
White grapes	454	—	—	454	125	3.6
Total	713	—	—	713	235	3.0
<b>Northern Slopes</b>						
Red grapes	878	1	—	878	194	4.5
White grapes	310	—	—	310	68	4.6
Total	1 187	1	—	1 188	262	4.5
<b>Northern Rivers</b>						
Red grapes	99	—	—	99	26	3.9
White grapes	89	—	—	89	22	4.0
Total	187	—	—	187	48	3.9
<b>Hunter Valley</b>						
Red grapes	7 308	—	15	7 323	1 590	4.6
White grapes	17 638	1	3	17 642	2 648	6.7
Total	24 945	1	18	24 965	4 239	5.9
<b>New South Wales</b>						
Red grapes	221 636	2 233	6 079	229 948	18 397	12.5
White grapes	251 944	15 763	12 247	279 955	18 235	15.4
Total	473 580	17 996	18 327	509 903	36 632	13.9

— nil or rounded to zero (including null cells)

(b) Yield represents the quantity of grapes produced per hectare of bearing vines.

(a) Fresh weight at harvest, 2006.

Source: ABS data available on request, Vineyards Survey 2006.

## GRAPE PRODUCTION(a)

	Wine-making	Drying	Table and other	Total	Area of vines bearing	Yield(b)
	t	t	t	t	ha	t/ha
VICTORIA						
<b>North West Victoria</b>						
Red grapes	116 609	6 708	21 921	145 238	9 456	15.4
White grapes	158 782	89 857	23 637	272 277	14 250	19.1
<i>Total</i>	275 391	96 565	45 559	417 515	23 706	17.6
<b>North East Victoria</b>						
Red grapes	18 293	1	11	18 305	2 240	8.2
White grapes	7 626	—	69	7 695	928	8.3
<i>Total</i>	25 919	1	80	26 000	3 167	8.2
<b>Central Victoria</b>						
Red grapes	15 661	—	109	15 770	2 777	5.7
White grapes	7 886	11	5	7 902	1 092	7.2
<i>Total</i>	23 547	11	114	23 672	3 868	6.1
<b>Western Victoria</b>						
Red grapes	5 351	37	—	5 388	1 409	3.8
White grapes	1 988	—	2	1 990	360	5.5
<i>Total</i>	7 338	37	2	7 377	1 769	4.2
<b>Port Phillip</b>						
Red grapes	13 184	9	—	13 194	2 492	5.3
White grapes	8 845	—	—	8 845	1 407	6.3
<i>Total</i>	22 029	9	—	22 038	3 899	5.7
<b>Gippsland</b>						
Red grapes	397	—	—	397	119	3.4
White grapes	174	—	—	174	70	2.5
<i>Total</i>	571	—	—	571	189	3.0
<b>Victoria</b>						
Red grapes	169 496	6 754	22 042	198 292	18 491	10.7
White grapes	185 301	89 868	23 713	298 882	18 106	16.5
<i>Total</i>	354 796	96 623	45 755	497 174	36 597	13.6
QUEENSLAND						
<b>Queensland</b>						
Red grapes	3 116	—	3 422	6 538	1 140	5.7
White grapes	1 648	—	6 878	8 526	1 309	6.5
<i>Total</i>	4 764	—	10 301	15 064	2 449	6.2

— nil or rounded to zero (including null cells)

(b) Yield represents the quantity of grapes produced per hectare of bearing vines.

Source: ABS data available on request, Vineyards Survey 2006.

## GRAPE PRODUCTION(a)

	Wine-making	Drying	Table and other	Total	Area of vines bearing	Yield(b)
	t	t	t	t	ha	t/ha
SOUTH AUSTRALIA						
<b>Mount Lofty Ranges</b>						
Red grapes	42 398	70	53	42 520	5 686	7.5
White grapes	24 769	107	21	24 897	3 019	8.2
<i>Total</i>	67 167	176	73	67 417	8 705	7.7
<b>Barossa</b>						
Red grapes	62 932	1	14	62 947	8 001	7.9
White grapes	30 826	3	13	30 842	3 180	9.7
<i>Total</i>	93 759	3	27	93 789	11 181	8.4
<b>Fleurieu</b>						
Red grapes	106 476	6	2	106 484	10 412	10.2
White grapes	27 520	—	—	27 520	2 547	10.8
<i>Total</i>	133 996	6	2	134 004	12 959	10.3
<b>Limestone Coast</b>						
Red grapes	94 034	1	2	94 037	11 732	8.0
White grapes	34 095	—	4	34 098	2 809	12.1
<i>Total</i>	128 129	1	6	128 135	14 540	8.8
<b>Lower Murray</b>						
Red grapes	248 360	1 061	755	250 176	12 912	19.4
White grapes	207 996	1 600	757	210 353	9 130	23.0
<i>Total</i>	456 356	2 661	1 513	460 529	22 043	20.9
<b>The Peninsulas</b>						
Red grapes	260	—	—	260	57	4.6
White grapes	55	—	—	55	8	6.6
<i>Total</i>	315	—	—	315	65	4.8
<b>Far North</b>						
Red grapes	1 258	—	—	1 258	220	5.7
White grapes	367	—	1	367	59	6.2
<i>Total</i>	1 625	—	1	1 625	279	5.8
<b>South Australia</b>						
Red grapes	555 718	1 138	826	557 682	49 019	11.4
White grapes	325 628	1 709	795	328 132	20 753	15.8
<i>Total</i>	881 346	2 847	1 621	885 814	69 771	12.7

— nil or rounded to zero (including null cells)

(b) Yield represents the quantity of grapes produced per hectare of bearing vines.

(a) Fresh weight at harvest, 2006.

Source: ABS data available on request, Vineyards Survey 2006.

## GRAPE PRODUCTION(a)

	Wine-making	Drying	Table and other	Total	Area of vines bearing	Yield(b)
	t	t	t	t	ha	t/ha
WESTERN AUSTRALIA						
<b>Greater Perth</b>						
Red grapes	3 430	259	1 076	4 766	808	5.9
White grapes	6 305	23	1 159	7 488	837	8.9
<i>Total</i>	9 736	283	2 236	12 254	1 645	7.4
<b>Central Western Australia</b>						
Red grapes	258	39	595	892	114	7.8
White grapes	318	8	87	412	66	6.3
<i>Total</i>	576	46	682	1 304	180	7.2
<b>South West Australia</b>						
Red grapes	23 295	25	458	23 778	5 329	4.5
White grapes	27 128	—	105	27 232	4 148	6.6
<i>Total</i>	50 423	25	563	51 010	9 477	5.4
<b>Western Australian South East Coastal</b>						
Red grapes	40	—	—	40	7	5.5
White grapes	30	—	—	30	5	5.6
<i>Total</i>	70	—	—	70	13	5.5
<b>Eastern Plains, Inland and North of Western Australia</b>						
Red grapes	22	—	581	603	46	13.3
White grapes	14	—	102	115	14	8.0
<i>Total</i>	36	—	683	719	60	12.0
<b>Western Australia</b>						
Red grapes	27 046	322	2 711	30 079	6 304	4.8
White grapes	33 794	31	1 452	35 278	5 071	7.0
<i>Total</i>	60 840	354	4 163	65 356	11 375	5.7
TASMANIA						
<b>Tasmania</b>						
Red grapes	2 831	—	—	2 831	532	5.3
White grapes	2 740	—	—	2 740	467	5.9
<i>Total</i>	5 571	—	—	5 571	999	5.6
AUSTRALIA (c)						
<b>Australia(c)</b>						
Red grapes	980 209	10 448	35 645	1 026 301	93 967	10.9
White grapes	801 460	107 372	46 065	954 897	64 199	14.9
<b>Total</b>	<b>1 781 668</b>	<b>117 819</b>	<b>81 710</b>	<b>1 981 198</b>	<b>158 167</b>	<b>12.5</b>

— nil or rounded to zero (including null cells)

(c) Includes Australian Capital Territory and Northern Territory.

(a) Fresh weight at harvest, 2006.

Source: ABS data available on request, Vineyards Survey 2006.

(b) Yield represents the quantity of grapes produced per hectare of bearing vines.

## IRRIGATION OF GRAPEVINES, By state—2006

	NSW	Vic.	SA	Other states	Aust.
Total vineyards (no.)	1 493	2 343	2 805	1 220	7 861
Vineyards irrigated with any other water but rainfall (no.)	1 296	1 963	2 437	867	6 563
Proportion of vineyards using irrigation (%)	86.8	83.8	86.9	71.1	83.5
Area of grapevines watered by irrigation (ha)	35 876	33 575	65 597	13 613	148 660
Quantity of water used for irrigation of grapevines (ML)	156 989	171 135	190 963	25 570	544 657
Usage (ML per ha)	4.38	5.10	2.91	1.88	3.66

Source: ABS data available on request, Vineyards Survey, 2006.

## WATERING METHOD USED (a), By state—2006

	NSW	Vic.	SA	Other states	Aust.
<b>Spray excluding micro spray</b>					
Vineyards (no.)	236	802	801	50	1 889
Area (ha)	3 725	10 872	10 389	941	25 928
Proportion of total irrigated area (%)	10.4	32.4	15.8	6.9	17.4
<b>Drip or micro spray</b>					
Vineyards (no.)	907	1 008	1 891	858	4 664
Area (ha)	26 795	20 630	56 487	12 910	116 822
Proportion of total irrigated area (%)	74.7	61.4	86.1	94.8	78.6
<b>Furrow or flood</b>					
Vineyards (no.)	377	521	140	10	1 048
Area (ha)	7 462	3 661	845	49	12 017
Proportion of total irrigated area (%)	20.8	10.9	1.3	0.4	8.1
<b>Other(b)</b>					
Vineyards (no.)	6	8	6	3	23
Area (ha)	28	90	18	2	138
Proportion of total irrigated area (%)	0.1	0.3	—	—	0.1

— nil or rounded to zero (including null cells)

(a) More than one method may be used.

(b) Includes method not specified.

Source: ABS data available on request, Vineyards Survey, 2006.

	NSW	Vic.	SA	Other states	Aust.
<b>Surface water from state/private irrigation schemes</b>					
Vineyards (no.)	979	1 499	1 313	175	3 966
Area (ha)	28 349	26 047	30 493	2 872	87 761
Proportion of total irrigated area (%)	79.0	77.6	46.5	21.1	59.0
<b>Other surface water</b>					
Vineyards (no.)	259	403	350	449	1 461
Area (ha)	4 681	7 456	9 643	8 041	29 820
Proportion of total irrigated area (%)	13.0	22.2	14.7	59.1	20.1
<b>Underground water supply</b>					
Vineyards (no.)	200	88	798	252	1 338
Area (ha)	5 144	1 850	23 014	2 579	32 587
Proportion of total irrigated area (%)	14.3	5.5	35.1	18.9	21.9
<b>Reticulated water supply</b>					
Vineyards (no.)	16	65	283	61	425
Area (ha)	118	771	3 308	296	4 493
Proportion of total irrigated area (%)	0.3	2.3	5.0	2.2	3.0
<b>Recycled water</b>					
Vineyards (no.)	6	28	75	5	114
Area (ha)	103	606	2 123	446	3 278
Proportion of total irrigated area (%)	0.3	1.8	3.2	3.3	2.2
<b>Other(b)</b>					
Vineyards (no.)	8	10	27	6	51
Area (ha)	63	32	117	7	219
Proportion of total irrigated area (%)	0.2	0.1	0.2	0.1	0.1

(a) More than one source may be used.

(b) Includes method not specified.

Source: ABS data available on request, Vineyards Survey, 2006.

# 12

## SIZE OF GRAPE CRUSH AND NUMBER OF WINERIES, States and territory—2005–06

	NSW/ACT	Vic.	Qld	SA	WA	Tas.	Aust.
Grapes crushed ('000 t)	657.1	257.9	4.1	912.6	66.1	3.9	1 901.6
Proportion (%)	34.6	13.6	0.2	48.0	3.5	0.2	100.0
Wineries crushing							
50–400 t (no.)	47	62	11	41	48	6	215
More than 400 t (no.)	45	46	2	89	34	4	220
Total wineries (no.)	92	108	13	130	82	10	435
Proportion of total wineries (%)	21.1	24.8	3.0	29.9	18.9	2.3	100.0

Source: ABS data available on request, Wine Statistics Survey, 2005–06; Wine and Spirit Production Survey, 2005–06.

# 13

## WINEMAKERS, Size of production—2005–06

Size (tonnes crushed)	Winemakers no.	Grapes crushed t	Beverage wine produced '000 L
50–99	69	5 093	na
100–149	46	5 558	na
150–199	33	5 748	na
200–400	67	17 910	na
401–1,000	65	42 198	28 478
1,001–3,000	56	90 584	62 099
3,001–5,000	13	47 319	30 426
5,001–10,000	18	130 762	90 355
10,001–20,000	9	144 992	99 738
20,001 or more	16	1 411 396	1 099 388
<b>Total</b>	<b>392</b>	<b>1 901 560</b>	<b>(a) 1 434 499</b>

na not available

(a) Total beverage wine includes production from those crushing less than 400 tonnes. This is estimated to be 24.0 million litres.

Source: ABS data available on request, Wine Statistics Survey, 2005–06; Wine and Spirit Production Survey, 2005–06.

## WINE PRODUCTION (a)

Type	2001-02 '000 L	2002-03 '000 L	2003-04 '000 L	2004-05 '000 L	2005-06 '000 L
Beverage Wine					
Fortified(b)	23 247	18 170	20 025	20 275	12 729
Unfortified	1 150 854	1 019 393	1 381 064	1 400 074	1 397 754
<b>Total</b>	<b>1 174 101</b>	<b>1 037 562</b>	<b>1 401 089</b>	<b>1 420 348</b>	<b>1 410 483</b>
Distillation Wine(c)	46 271	48 423	70 139	13 479	19 305
<b>Gross total wine</b>	<b>1 220 372</b>	<b>1 085 985</b>	<b>1 471 228</b>	<b>1 433 827</b>	<b>1 429 788</b>
Net total wine(d)	1 216 782	1 083 517	1 467 857	1 430 129	1 426 346

(a) Production by winemakers crushing more than 400 tonnes annually or with sales of more than 250,000 litres.

(b) Relates only to production from unfortified wine of the same vintage.

(c) For manufacturing brandy and grape spirit. Includes wine obtained from marc.

(d) Excludes grape spirit used for fortifying (assumes 95.6% alcohol by volume).

Source: ABS data available on request, Wine and Spirit Production Survey

## WINE PRODUCTION (a), By State—2005–06

Type	NSW/ACT '000 L	Vic. '000 L	Qld '000 L	SA '000 L	WA '000 L	Tas. '000 L	Aust. '000 L
Beverage wine							
Fortified(b)	5 513	2 634	38	4 528	15	—	12 729
Unfortified							
Red and rosé	214 014	81 713	1 152	458 112	20 205	831	776 027
White	253 661	90 989	624	252 488	22 904	1 060	621 727
<b>Total</b>	<b>467 675</b>	<b>172 702</b>	<b>1 776</b>	<b>710 601</b>	<b>43 109</b>	<b>1 892</b>	<b>1 397 754</b>
<b>Total beverage wine</b>	<b>473 188</b>	<b>175 336</b>	<b>1 815</b>	<b>715 129</b>	<b>43 124</b>	<b>1 892</b>	<b>1 410 483</b>
Distillation wine(c)	8 557	1 717	—	9 032	—	—	19 305
<b>Gross total wine</b>	<b>481 745</b>	<b>177 053</b>	<b>1 815</b>	<b>724 160</b>	<b>43 124</b>	<b>1 892</b>	<b>1 429 788</b>
Net total wine(d)	480 435	176 648	981	723 271	43 120	1 892	1 426 346

— nil or rounded to zero (including null cells)

(a) Production by winemakers crushing more than 400 tonnes annually or with sales of more than 250,000 litres.

(b) Relates only to production from unfortified wine of the same vintage.

(c) For manufacturing brandy and grape spirit. Includes wine obtained from marc.

(d) Excludes grape spirit used for fortifying (assumes 95.6% alcohol by volume).



<i>Fresh grapes crushed by</i>	2003-04	2004-05	2005-06		
	<i>Total</i>	<i>Total</i>	<i>Red</i>	<i>White</i>	<i>Total</i>
	t	t	t	t	t
WINEMAKERS CRUSHING MORE THAN 400 TONNES					
New South Wales(b)	615 409	r637 979	318 396	330 680	649 076
Victoria	274 233	276 725	125 649	123 785	249 434
Queensland	1 074	854	1 616	857	2 473
South Australia	915 287	r904 820	560 603	343 757	904 360
Western Australia	73 709	r69 082	26 000	32 781	58 781
Tasmania	4 121	3 711	1 494	1 633	3 127
Australia	1 883 833	r1 893 171	1 033 758	833 493	1 867 251
WINEMAKERS CRUSHING 50 TO 400 TONNES					
New South Wales(b)	8 027	r6 913	3 948	4 050	7 998
Victoria	8 394	8 579	5 863	2 568	8 431
Queensland	1 628	2 005	981	611	1 592
South Australia	6 167	r6 605	7 005	1 260	8 265
Western Australia	8 152	r7 385	3 738	3 545	7 283
Tasmania	1 037	832	353	387	740
Australia	33 405	r32 319	21 888	12 421	34 309
TOTAL OF WINEMAKERS CRUSHING 50 TONNES OR MORE					
New South Wales(b)	623 436	644 892	322 344	334 730	657 074
Victoria	282 627	285 304	131 512	126 353	257 865
Queensland	2 702	2 859	2 597	1 468	4 065
South Australia	921 454	911 425	567 608	345 017	912 625
Western Australia	81 861	76 467	29 738	36 326	66 064
Tasmania	5 158	4 543	1 847	2 020	3 867
Australia	1 917 238	1 925 490	1 055 646	845 914	1 901 560

r revised

(a) Grape crush data are greater than wine grape production data in the viticulture tables (see paragraph 4 of the Explanatory Notes).

(b) Includes Australian Capital Territory.

Source: ABS data available on request, Wine Statistics Survey, 2005-06; Wine and Spirit Production Survey, 2005-06.

## GRAPE SPIRIT USED IN CURRENT VINTAGE WINE

	2001-02	2002-03	2003-04	2004-05	2005-06
	'000 L al	'000 L al	'000 L al	'000 L al	'000 L al
New South Wales	1 403	515	1 167	1 101	1 310
Victoria	474	504	675	584	405
South Australia	1 706	1 445	1 523	2 006	889
Other states	8	5	6	6	838
<b>Australia</b>	<b>3 591</b>	<b>2 468</b>	<b>3 371</b>	<b>3 698</b>	<b>3 442</b>

Source: ABS data available on request, Wine and Spirit Production Survey.

## INVENTORIES OF AUSTRALIAN WINE AND GRAPE JUICE HELD BY WINEMAKERS(a)

	2002	2003	2004	2005	2006
<i>Inventories at 30 June</i>	'000 L	'000 L	'000 L	'000 L	'000 L
<b>Beverage wine</b>					
Fortified					
Sherry	16 521	13 147	12 238	13 912	12 945
Port	43 431	42 007	50 188	49 423	51 558
Other(b)	7 623	7 817	7 257	12 092	10 514
Total	67 576	62 971	69 683	75 427	75 017
Sparkling wine(c)					
Bottle fermentation	52 045	50 982	59 299	54 314	54 190
Bulk fermentation	20 421	26 513	22 131	33 247	30 891
Total	72 466	77 495	81 430	87 561	85 081
Carbonated	1 642	382	532	638	3 558
Flavoured(d)	1 681	2 641	4 889	4 753	8 852
Vermouth	308	313	180	156	98
<b>Table wine</b>					
White	506 574	497 338	589 645	705 544	768 921
Red and rosé	919 889	940 705	1 108 146	1 189 107	1 165 373
Total	1 426 463	1 438 043	1 697 791	1 894 650	1 934 295
<b>Total beverage wine</b>	<b>1 570 136</b>	<b>1 581 843</b>	<b>1 854 506</b>	<b>2 063 185</b>	<b>2 106 900</b>
Distillation wine	1 639	716	976	1 230	4 456
<b>Unfermented grape juice</b>					
Unfermented Grape Juice	19 348	17 507	17 175	24 030	29 512
Concentrated must (single strength)	4 889	8 471	13 482	9 347	15 179

(a) See paragraph 12 of the Explanatory Notes.

(b) Includes muscat, maderia, tokay and white port.

(c) Spritzig wines are included with table wines.

(d) Includes wine cocktails, marsala, aperitif and tonic wines, de-alcoholised wine and low and reduced alcohol wines.

Source: ABS data available on request, Inventories of Australian Wine and Brandy Survey.

## INVENTORIES OF AUSTRALIAN BRANDY AND GRAPE SPIRIT

	2002	2003	2004	2005	2006
<i>Inventories at 30 June</i>	'000 L al	'000 L al	'000 L al	'000 L al	'000 L al
Brandy in bond by age					
Under 2 years	873	670	757	1 015	749
2 years and over	2 704	2 420	2 482	2 040	2 098
Total	3 577	3 090	3 238	3 055	2 847
Rectified grape spirit for fortifying wine and grape spirit unused	np	np	np	4 237	np
Spirit held in work in progress (feints and low wine)	np	np	np	2 511	np
<b>Total inventories</b>	<b>11 311</b>	<b>9 452</b>	<b>10 699</b>	<b>9 803</b>	<b>11 585</b>

np not available for publication but included in totals where applicable, unless otherwise indicated

Source: ABS data available on request, Inventories of Australian Wine and Brandy Survey.

## DOMESTIC SALES, EXPORTS AND IMPORTS OF BRANDY

	2000-01	2001-02	2002-03	2003-04	2004-05	2005-06
	'000 L al	'000 L al	'000 L al	'000 L al	'000 L al	'000 L al
Australian brandy						
Domestic sales	901	701	651	618	576	535
Exports	19	24	21	11	18	38
Total disposals	920	725	672	629	594	573
Imported brandy	504	577	557	540	519	494
Consumption(a)	1 405	1 278	1 208	1 158	1 095	1 029

(a) Available for consumption in Australia, Domestic sales plus Imports.

Source: Sales of Australian Wine and Brandy by Winemakers (cat. no. 8504.0).

## DOMESTIC SALES OF AUSTRALIAN WINE BY WINEMAKERS

TABLE

SPARKLING

	<i>White</i>	<i>Red/rosé(a)</i>	<i>Total</i>	<i>Fortified</i>	<i>Bottle fermented</i>	<i>Bulk fermented</i>	<i>Total</i>	<i>Other(a)(b)</i>	<i>Total</i>
	million L	million L	million L	million L	million L	million L	million L	million L	million L
1993-94	192.5	62.2	254.7	27.0	26.3	4.3	30.6	7.2	319.5
1994-95	186.2	65.4	251.6	27.0	23.6	4.4	28.0	6.8	313.4
1995-96	178.7	68.6	247.3	25.9	22.9	7.2	30.1	6.2	309.5
1996-97	185.0	83.7	268.8	25.6	23.4	9.2	32.6	6.6	333.6
1997-98	189.5	88.9	278.4	24.6	22.3	8.8	31.1	4.7	338.8
1998-99	188.3	99.1	287.4	23.9	20.3	12.3	32.6	4.4	348.3
1999-00	193.0	114.1	307.1	23.0	18.2	14.4	32.6	6.6	369.3
2000-01	199.8	125.6	325.3	22.2	16.7	14.0	30.7	6.7	384.8
2001-02	199.9	130.4	330.3	20.4	17.7	12.0	29.7	5.9	386.2
2002-03	201.6	142.8	344.5	20.8	23.0	8.6	31.6	5.5	402.5
2003-04	208.0	147.1	355.0	21.2	21.6	13.1	34.7	6.5	417.4
2004-05	209.3	155.5	364.8	19.9	23.0	15.4	38.4	7.0	430.1
2005-06	211.9	153.6	365.5	18.5	23.1	16.7	39.8	7.3	431.1

(a) Prior to 1997-98, some spritzig style wine was reported as non-table wine.

(b) Includes vermouth, carbonated wines and flavoured wines including cocktails, marsala, aperitif and tonic wines, de-alcoholised wine and low and reduced alcohol wines.

Source: Sales of Australian Wine and Brandy by Winemakers (cat. no. 8504.0).

## DOMESTIC SALES AND DOMESTIC SALES VALUE OF AUSTRALIAN WINE

	2000-01	2001-02	2002-03	2003-04	2004-05	2005-06
Domestic sales of Australian wine ( <i>million L</i> )	385	386	403	417	430	431
Domestic sales value of Australian wine ( <i>\$m</i> )	1 831	1 946	2 098	1 971	2 097	1 900

Source: Sales of Australian Wine and Brandy by Winemakers (cat. no. 8504.0) and ABS data available on request, Inventories of Australian Wine and Brandy Survey.

## DOMESTIC SALES OF AUSTRALIAN TABLE WINE, By container type

Period	GLASS CONTAINER LESS THAN 2 LITRES (a)			SOFT PACKS			OTHER CONTAINERS		
	White	Red/rosé(b)	Total	White	Red/rosé(b)	Total	White	Red/rosé(b)	Total
	million L	million L	million L	million L	million L	million L	million L	million L	million L
1993-94	48.1	28.2	76.3	137.8	32.6	170.3	6.6	1.5	8.1
1994-95	51.9	30.6	82.4	129.3	33.5	162.9	5.0	1.3	6.3
1995-96	50.6	33.7	84.3	124.4	34.0	158.4	3.8	0.8	4.6
1996-97	55.2	41.1	96.4	126.5	41.6	168.1	3.3	1.0	4.3
1997-98	59.4	46.7	106.1	125.3	41.3	166.6	4.9	0.9	5.8
1998-99	63.4	53.7	117.1	118.0	44.6	162.5	7.0	0.8	7.8
1999-00	69.4	63.5	132.8	118.4	49.8	168.2	5.3	0.8	6.0
2000-01	74.1	70.5	144.6	122.5	53.5	176.0	3.2	1.5	4.7
2001-02	75.7	73.6	149.3	122.8	56.1	178.9	1.4	0.7	2.1
2002-03	81.7	79.8	161.4	118.9	62.8	181.7	1.1	0.3	1.4
2003-04	84.2	82.8	167.1	120.9	62.8	183.7	2.8	1.4	4.3
2004-05	89.5	91.1	180.6	118.8	63.0	181.8	1.1	1.3	2.4
2005-06	92.3	91.2	183.5	118.2	61.2	179.3	1.4	1.3	2.7

(a) Prior to July 1998, data were collected for glass containers one litre and under.

(b) Prior to 1997-98, some spritzig style wine was reported as non-table wine.

Source: Sales of Australian Wine and Brandy by Winemakers (cat.no. 8504.0).

## EXPORTS OF AUSTRALIAN WINE

Period	WINE TYPE				TOTAL WINE	
	Table	Fortified	Sparkling	Other	Quantity	Value
	'000 L	'000 L	'000 L	'000 L	'000 L	\$'000
1993-94	116 655	2 873	5 042	893	125 464	366 574
1994-95	105 542	2 475	5 110	537	113 663	385 706
1995-96	121 037	2 506	5 489	639	129 671	471 576
1996-97	144 892	2 490	6 046	966	154 393	603 297
1997-98	183 024	2 505	6 110	764	192 404	873 847
1998-99	191 728	2 092	6 434	627	200 881	986 822
1999-00	272 842	2 287	9 088	717	284 935	1 372 768
2000-01	328 620	2 032	6 546	1 091	338 289	1 752 082
2001-02	406 207	2 698	8 050	1 438	418 393	2 105 139
2002-03	506 662	3 035	7 933	1 012	518 642	2 423 468
2003-04	571 324	2 512	9 806	755	584 397	2 494 089
2004-05	654 534	2 069	12 445	694	669 741	2 715 290
2005-06	704 498	2 587	14 341	733	722 159	2 757 923

Source: ABS data available on request, International Trade database.

DISPOSALS OF AUSTRALIAN-PRODUCED WINE

<i>Period</i>	<i>Domestic sales of Australian-produced wine</i> '000 L	<i>Exports of Australian-produced wine</i> '000 L	<i>Total disposals</i> '000 L
1993-94	319 532	125 464	444 996
1994-95	313 357	113 663	427 020
1995-96	309 463	129 671	439 134
1996-97	333 591	154 393	487 984
1997-98	338 814	192 404	531 218
1998-99	348 349	216 149	564 498
1999-00	369 271	284 935	654 206
2000-01	384 847	r338 286	r723 133
2001-02	386 232	418 393	804 625
2002-03	402 479	518 642	921 121
2003-04	417 378	584 397	1 001 775
2004-05	430 131	669 741	1 099 872
2005-06	431 099	722 159	1 153 258

r revised

Source: Sales of Australian Wine and Brandy by Winemakers (cat. no. 8504.0) and ABS data available on request, International Trade database.

<i>Principal country/region</i>	WINE TYPE				TOTAL WINE			
	Table	Fortified	Sparkling	Other	Quantity		Value	
	'000 L	'000 L	'000 L	'000 L	'000 L	%	\$'000	%
New Zealand	24 400	194	1 928	177	26 700	3.7	96 123	3.5
<i>Total Oceania and Antarctica</i>	26 008	253	2 101	182	28 544	4.0	104 559	3.8
Belgium	17 074	7	153	48	17 281	2.4	36 204	1.3
Denmark	20 468	55	94	—	20 617	2.9	52 235	1.9
France	7 036	393	30	27	7 486	1.0	13 781	0.5
Germany, Federal Republic of	30 021	14	12	2	30 049	4.2	63 724	2.3
Ireland	11 827	2	442	—	12 271	1.7	56 304	2.0
Netherlands	22 514	63	122	—	22 699	3.1	66 673	2.4
Sweden	8 759	9	290	—	9 058	1.3	42 339	1.5
United Kingdom	253 490	511	7 334	176	261 511	36.2	945 770	34.3
<i>Total European Union</i>	378 430	1 087	8 572	253	388 341	53.8	1 302 921	47.2
Switzerland	1 633	4	23	—	1 660	0.2	7 605	0.3
<i>Total Europe and the Former USSR</i>	383 993	1 094	8 728	253	394 068	54.6	1 329 496	48.2
<i>Total Middle East and North Africa</i>	3 035	30	191	2	3 258	0.5	12 211	0.4
Singapore	4 918	29	107	49	5 103	0.7	40 499	1.5
<i>Total Southeast Asia</i>	10 395	77	237	144	10 853	1.5	76 475	2.8
Hong Kong (SAR of China)	3 363	25	99	26	3 514	0.5	23 753	0.9
Japan	7 677	66	746	18	8 507	1.2	43 767	1.6
<i>Total Northeast Asia</i>	26 458	148	954	97	27 656	3.8	109 251	4.0
Canada	48 004	433	398	25	48 859	6.8	245 715	8.9
United States of America	202 678	539	1 661	29	204 907	28.4	864 199	31.3
<i>Total Northern America</i>	250 785	971	2 061	54	253 872	35.2	1 110 567	40.3
<i>Total other regions</i>	3 823	14	69	2	3 909	0.5	15 364	0.6
<b>Total All Countries</b>	<b>704 498</b>	<b>2 587</b>	<b>14 341</b>	<b>733</b>	<b>722 159</b>	<b>100.0</b>	<b>2 757 923</b>	<b>100.0</b>

— nil or rounded to zero (including null cells)

Source: ABS data available on request, International Trade database.

## EXPORTS OF AUSTRALIAN WINE, By state and territory of origin

Period	NSW	Vic.	Qld	SA	WA	Tas.	NT/ACT	Aust.
QUANTITY ('000 L)								
1993-94	25 825	11 629	40	87 370	547	31	21	125 464
1994-95	21 480	8 600	3	82 823	724	31	2	113 663
1995-96	22 410	10 331	155	96 146	596	32	—	129 671
1996-97	25 400	13 548	149	114 408	842	45	—	154 393
1997-98	36 292	16 748	77	138 327	910	49	—	192 404
1998-99	40 302	18 452	36	155 903	1 269	188	—	216 149
1999-00	60 547	23 569	42	198 761	1 893	119	4	284 935
2000-01	79 955	r27 871	91	226 941	3 257	148	24	r338 286
2001-02	95 512	39 069	89	279 643	3 917	161	1	418 393
2002-03	150 932	48 308	332	313 816	5 014	238	1	518 642
2003-04	160 607	90 036	483	326 779	6 227	261	5	584 397
2004-05	141 476	118 995	298	399 027	9 342	478	125	669 741
2005-06	148 308	146 686	403	417 230	8 866	410	256	722 159
VALUE (\$'000)								
2005-06	510 148	649 619	2 612	1 539 929	50 711	3 702	1 202	2 757 923

— nil or rounded to zero (including null cells)

r revised

Source: ABS data available on request, International Trade database.

## WINE IMPORTS CLEARED FOR HOME CONSUMPTION(a), By wine type

Period	WINE TYPE				TOTAL WINE	
	Table	Fortified	Sparkling	Other	Quantity	Value
	'000 L	'000 L	'000 L	'000 L	'000 L	\$'000
1993-94	4 432	152	2 301	1 456	8 341	47 637
1994-95	9 398	272	3 065	1 322	14 057	61 057
1995-96	16 649	105	2 673	830	20 256	60 478
1996-97	10 105	105	2 387	993	13 589	66 503
1997-98	21 447	135	2 996	1 044	25 622	92 926
1998-99	20 136	92	2 915	1 113	24 255	102 498
1999-00	14 099	685	3 827	995	19 607	113 868
2000-01	7 298	106	2 913	2 457	r12 774	r92 218
2001-02	8 589	201	3 282	2 407	14 479	115 560
2002-03	11 070	190	3 851	2 001	17 113	139 213
2003-04	11 817	734	4 787	1 399	18 737	152 405
2004-05	14 782	253	5 187	1 918	22 139	188 246
2005-06	19 596	133	5 924	1 511	27 164	234 196

r revised

(a) Includes litres of wine and litres of alcohol.

Source: Sales of Australian Wine and Brandy by Winemakers (cat. no. 8504.0).



## WINE IMPORTS CLEARED FOR HOME CONSUMPTION(a), By country of origin

	2003-04		2004-05		2005-06	
	Quantity	Value	Quantity	Value	Quantity	Value
	'000 L	\$'000	'000 L	\$'000	'000 L	\$'000
New Zealand	5 629	49 143	9 479	80 088	13 227	108 523
Italy	4 672	22 496	4 937	25 105	5 450	28 290
France	3 064	62 794	3 492	66 960	4 563	79 934
Portugal	621	2 103	418	1 535	894	2 658
Spain	564	2 981	684	3 868	796	3 925
Chile	249	839	387	1 314	476	1 961
Germany	354	1 832	448	1 965	411	2 163
South Africa	132	548	179	779	299	1 175
Greece	313	835	285	817	231	564
United States of America	2 495	3 651	1 084	1 850	158	790
Argentina	7	36	149	409	105	349
United Kingdom	20	323	31	605	73	1 795
Other	r617	r4 824	r565	r2 951	482	2 068
<b>Total</b>	<b>18 737</b>	<b>152 405</b>	<b>22 139</b>	<b>188 246</b>	<b>27 164</b>	<b>234 196</b>

r revised

(a) Includes litres of wine and litres of alcohol.

Source: ABS data available on request, International Trade database.

## EXPORTS AND IMPORTS CLEARED OF FRESH AND DRIED GRAPES

Period	FRESH GRAPES				DRIED GRAPES			
	Exports		Imports		Exports		Imports	
	t	\$'000	t	\$'000	t	\$'000	t	\$'000
1993-94	11 702	28 695	7	8	41 158	73 431	4 725	6 070
1994-95	13 363	32 349	2	12	14 719	29 713	7 369	9 090
1995-96	21 042	46 706	—	—	15 240	34 329	9 265	12 158
1996-97	26 806	67 065	5	32	25 260	52 173	10 282	14 162
1997-98	27 085	52 639	1	8	12 277	29 829	11 852	19 604
1998-99	28 940	67 337	—	—	13 687	36 806	16 229	27 773
1999-00	33 485	74 160	1	4	4 929	13 347	17 077	28 908
2000-01	30 776	71 780	—	—	6 433	17 018	16 908	29 007
2001-02	56 634	135 855	—	—	5 860	13 859	21 050	31 289
2002-03	39 923	96 466	1 015	4 130	9 664	19 898	19 081	28 285
2003-04	44 952	84 867	1 150	4 721	6 799	14 691	25 036	37 167
2004-05	51 753	108 882	4 435	19 064	6 626	15 380	21 258	29 918
2005-06	47 759	115 485	4 528	22 072	7 319	17 625	12 046	19 480

— nil or rounded to zero (including null cells)

Source: ABS data available on request, International Trade database.

	2003-04		2004-05		2005-06	
	Quantity	Value	Quantity	Value	Quantity	Value
	t	\$'000	t	\$'000	t	\$'000
<b>Exports of fresh grapes</b>						
Hong Kong (SAR of China)	13 035	25 274	16 020	33 388	17 010	41 888
Indonesia	8 868	14 718	8 105	16 124	6 383	14 080
Malaysia	7 601	12 670	6 430	13 162	4 882	11 137
Singapore	4 249	9 701	4 047	9 352	4 532	11 420
Thailand	2 410	4 903	3 472	7 628	3 686	9 845
New Zealand	1 188	2 328	2 913	5 675	1 804	4 330
Bangladesh	1 490	2 741	974	1 734	1 147	2 285
Other countries	6 110	12 532	9 792	21 819	8 315	20 500
<i>Total</i>	<i>44 952</i>	<i>84 867</i>	<i>51 753</i>	<i>108 882</i>	<i>47 759</i>	<i>115 485</i>
<b>Imports of fresh grapes</b>						
United States of America	1 150	4 721	4 414	19 038	4 519	22 057
Other countries	—	—	21	26	9	15
<i>Total</i>	<i>1 150</i>	<i>4 721</i>	<i>4 435</i>	<i>19 064</i>	<i>4 528</i>	<i>22 072</i>
<b>Exports of dried grapes</b>						
Germany, Federal Republic of	1 567	3 140	1 721	3 811	2 608	5 927
United Kingdom	1 538	3 571	1 188	2 950	1 195	3 130
Canada	828	1 769	530	1 191	776	1 779
Italy	684	1 388	561	1 254	725	1 674
New Zealand	553	1 446	466	1 188	591	1 635
Other countries	1 629	3 378	2 160	4 987	1 424	3 479
<i>Total</i>	<i>6 799</i>	<i>14 691</i>	<i>6 626</i>	<i>15 380</i>	<i>7 319</i>	<i>17 625</i>
<b>Imports of dried grapes</b>						
Turkey	13 219	19 418	13 801	17 320	7 327	10 897
Greece	3 146	5 678	2 974	5 492	2 426	4 335
United States of America	2 004	3 359	1 375	2 780	784	1 802
Iran	5 075	6 035	2 118	2 413	746	910
Other countries	1 591	2 677	990	1 912	762	1 537
<i>Total</i>	<i>25 036</i>	<i>37 167</i>	<i>21 258</i>	<i>29 918</i>	<i>12 046</i>	<i>19 480</i>

— nil or rounded to zero (including null cells)

Source: ABS data available on request, International Trade database.

## SELECTED PRICE INDEXES, Percentage Change

Period	Wine grapes (a)	SALES BY MANUFACTURERS (b)				CONSUMER PRICE INDEX	
		Domestic	Export	Total wine	Import	Wine	All groups
1998-99	-3.7	-1.0	10.2	-1.2	5.2	1.3	1.2
1999-00	-8.7	1.8	2.2	1.3	1.0	0.3	2.4
2000-01	3.6	-1.4	4.9	0.1	-1.6	5.4	6.0
2001-02	0.9	2.5	3.6	2.9	0.4	2.9	2.9
2002-03	-4.4	0.7	0.7	0.7	0.5	0.8	3.1
2003-04	0.1	0.5	-13.9	-4.4	-5.3	1.5	2.4
2004-05	-14.5	-0.1	1.7	0.4	—	2.1	2.4
2005-06	-19.8	—	-1.7	-0.5	—	0.8	3.2

— nil or rounded to zero (including null cells)

(a) The Wine grapes index represents the price grape growers receive for wine grapes.

(b) The Sales by manufacturers index represents the price wine manufacturers receive for wines.

Note: For more detail on the indexes used in Table 32 refer to paragraphs 16-18 in the Explanatory Notes.

Source: ABS data available on request, Price Indexes of Materials Used in Manufacturing Industries, Price Indexes of Articles Produced by Manufacturing Industries, Export Price Index Survey, Import Price Index Survey, Consumer Price Index.

## WINE AVAILABLE FOR CONSUMPTION IN AUSTRALIA

Period	Domestic sales of Australian-produced wine '000 L	Imports cleared for home consumption (a) '000 L	Available for consumption '000 L
1998-99	348 349	24 255	372 604
1999-00	369 271	19 607	388 878
2000-01	384 847	r12 774	r397 621
2001-02	386 232	14 479	400 711
2002-03	402 479	17 113	419 592
2003-04	417 378	18 737	436 115
2004-05	430 131	22 139	452 270
2005-06	431 099	27 164	458 263

r revised

(a) Includes litres of wine and litres of alcohol.

Source: Sales of Australian Wine and Brandy by Winemakers (cat.no. 8504.0).

ABS data available on request, International Trade database.

## APPARENT CONSUMPTION OF ALCOHOL PER CAPITA (a)

	1998-99	1999-00	2000-01	2001-02	2002-03	2003-04	2004-05
BEVERAGE ( <i>litres</i> )							
Wine	25.2	26.0	26.2	26.0	26.8	27.5	28.1
Beer(b)	118.3	116.8	116.9	113.4	114.6	110.0	107.7
ALCOHOL ( <i>litres of alcohol</i> )							
Wine	2.9	2.9	3.0	2.9	3.0	3.1	3.1
Beer(b)	5.2	5.1	5.1	4.8	5.0	4.7	4.6
Spirits	1.8	1.7	1.8	1.9	2.0	2.1	2.1
Total alcohol	9.8	9.6	9.8	9.6	10.0	9.8	9.8

r revised

(a) Apparent per person consumption by persons 15 years and over.

(b) Mid strength and full strength excise data for 2002 have been adjusted by the ABS to account for reporting errors in beer strength classification. Beer available for consumption in 2003-04 may not be directly comparable with previous years data.

Source: Apparent Consumption of Alcohol, Australia (cat. no. 4307.0.55.001).

## AVERAGE WEEKLY HOUSEHOLD EXPENDITURE, Alcoholic Beverages—2003-04

	NSW	Vic.	Qld	SA	WA	Tas.	NT(a)	ACT(b)	Aust.
	\$	\$	\$	\$	\$	\$	\$	\$	\$
Wine	6.77	6.81	4.65	6.26	6.79	5.97	7.22	8.04	6.33
Beer	9.18	8.76	7.95	8.15	13.08	12.45	15.56	7.98	9.25
Spirits	4.06	4.27	4.37	3.91	5.36	3.54	6.80	3.08	4.28
Total(c)	23.41	23.69	20.06	22.49	27.08	26.79	37.63	24.51	23.32

(a) Households in collection districts defined as very remote or Indigenous communities were excluded, accounting for about 23% of the population in the Northern Territory.

(b) Estimates for the ACT are the same as those for Canberra.

(c) Including alcoholic beverages n.f.d.

Source: Household Expenditure Survey, Australia: Detailed Expenditure Items, 2003-04 (cat. no. 6535.0.55.001).

Country (a)	Total grapes	Area of vines(b)	Yield
	'000 t	'000 ha	t/ha
Italy	7 484	868	8.6
Spain	6 817	1 207	5.6
France	6 307	887	7.1
United States of America	5 963	415	14.4
China (excludes Hong Kong)	5 176	453	11.4
Turkey	3 600	570	6.3
Iran	2 800	300	9.3
Argentina	2 302	211	10.9
Chile	2 165	185	11.7
South Africa	1 642	132	12.4
<b>Australia (c)</b>	<b>1 497</b>	<b>157</b>	<b>9.5</b>
Romania	1 054	239	4.4
Portugal	945	249	3.8
Other Countries	16 607	2 214	7.5
<b>World total</b>	<b>62 717</b>	<b>7 955</b>	<b>7.9</b>

(a) The selection is based on those countries which exceed Australian figures in any of the first two categories.

(b) Includes area of vines not yet bearing.

(c) This table contains details for Australia as reported by Office International de la Vigne et du Vin (O.I.V.). Other tables in this publication contain revised figures for Australia as reported by the ABS.

Source: Office International de la Vigne et du Vin (O.I.V.) 2006

Country (a)	Wine production	Share of world production	Wine exports	Exports as a proportion of production	Wine consumption	Per capita consumption
	million L	%	million L	%	million L	L
France	4 636.0	17.4	1 514.8	32.7	3 334.0	55.4
Italy	4 408.6	16.5	1 291.6	29.3	2 934.3	51.1
Spain	4 280.2	16.0	1 235.9	28.9	1 379.8	33.6
United States of America	2 077.0	7.8	329.3	15.9	2 380.1	8.1
Argentina	1 322.5	5.0	185.2	14.0	1 233.8	32.1
China (excludes Hong Kong)	1 160.0	4.3	2.0	0.2	1 158.6	0.9
<b>Australia (b)</b>	<b>1 019.4</b>	<b>3.8</b>	<b>536.5</b>	<b>52.6</b>	<b>419.6</b>	<b>21.3</b>
Germany	819.1	3.1	277.3	33.9	2 015.0	24.4
Portugal	734.0	2.8	311.3	42.4	529.0	52.6
Chile	668.2	2.5	402.9	60.3	255.2	16.1
Romania	555.5	2.1	41.1	7.4	505.0	22.6
Russia	453.0	1.7	1.2	0.3	868.2	6.1
United Kingdom	1.5	—	na	na	1 062.2	17.9
Other countries	5 206.0	19.5	1 544.5	29.7	5 653.6	na
<b>World total</b>	<b>26 672.8</b>	<b>100.0</b>	<b>7 295.1</b>	<b>27.4</b>	<b>23 473.2</b>	na

— nil or rounded to zero (including null cells)

na not available

(a) The selection is based on those countries which exceed Australian figures in any of the categories of wine production, exports (including exports as a proportion of production) and consumption.

(b) This table contains details for Australia as reported by Office International de la Vigne et du Vin (O.I.V.). Other tables in this publication contain revised figures for Australia as reported by the ABS.

Source: Office International de la Vigne et du Vin (O.I.V.) 2006.

Region (a)	TABLE GRAPES		DRIED GRAPES	
	Production	Exports	Production	Exports
	'000 t	'000 t	'000 t	'000 t
<i>Africa</i>	1 790.2	217.3	37.6	34.4
Egypt	987.0	7.4	na	na
Morocco	258.1	3.3	0.4	—
South Africa	260.9	198.3	36.7	34.1
<i>America</i>	2 701.8	1 511.6	372.3	177.5
United States of America	732.0	366.2	300.9	119.4
Chile	928.5	888.5	56.3	44.9
<i>Asia</i>	9 113.0	296.9	604.6	370.9
China (excludes Hong Kong)	3 374.2	13.4	6.3	7.8
Iran	1 445.0	6.3	206.9	143.6
Turkey	1 505.9	98.7	338.4	196.0
Afghanistan	256.9	35.0	21.5	15.0
<i>Europe</i>	3 710.0	1 037.0	96.6	68.7
Italy	1 472.0	513.3	na	0.9
Spain	320.8	127.1	1.8	0.6
Greece	257.5	68.8	60.7	20.5
<i>Oceania</i>	72.2	38.8	20.5	8.3
<b>Australia (b)</b>	<b>72.2</b>	<b>38.7</b>	<b>20.5</b>	<b>8.2</b>
<b>World total</b>	<b>17 387.2</b>	<b>3 101.6</b>	<b>1 131.6</b>	<b>659.8</b>

— nil or rounded to zero (including null cells)

na not available

(a) The selection of country is based on the top two contributors to each category.

(b) This table contains details for Australia as reported by Office International de la Vigne et du Vin (O.I.V.). Other tables in this publication contain revised figures for Australia as reported by the ABS.

Source: Office International de la Vigne et du Vin (O.I.V.) 2006.

<i>Region (a)</i>	<i>Wine</i> million L	<i>Table grapes</i> '000 t	<i>Dried grapes</i> '000 t
<i>Africa</i>	209.2	8.2	16.4
Angola	49.7	na	na
Ivory Coast	28.0	na	na
Mauritius	1.5	1.7	0.3
Morocco	7.4	0.2	4.5
Egypt	—	0.5	2.7
<i>America</i>	1 058.9	806.0	92.8
United States of America	601.8	482.5	12.7
Canada	269.7	167.2	34.3
Brazil	29.3	7.6	15.0
<i>Asia</i>	285.8	409.2	124.1
Japan	161.2	12.8	29.7
China (excludes Hong Kong)	41.4	53.4	7.9
Hong Kong	11.2	88.5	2.8
United Arab Emirates	3.9	na	26.9
Pakistan	na	54.6	7.4
<i>Europe</i>	5 318.1	1 567.9	439.2
Germany	1 190.6	323.1	67.8
United Kingdom	1 130.7	202.2	105.0
<i>Oceania</i>	74.7	10.9	25.2
<b>Australia (b)</b>	<b>15.3</b>	na	<b>18.1</b>
New Zealand	47.2	8.5	6.9
<b>World total</b>	<b>6 946.8</b>	<b>2 802.3</b>	<b>697.7</b>

— nil or rounded to zero (including null cells)

na not available

(a) The selection of country is based on the top two contributors to each category.

(b) This table contains details for Australia as reported by Office International de la Vigne et du Vin (O.I.V.). Other tables in this publication contain revised figures for Australia as reported by the ABS.

Source: Office International de la Vigne et du Vin (O.I.V.) 2006.



## EXPLANATORY NOTES

### INTRODUCTION

**1** This publication presents final estimates from the ABS collections: Inventories of Australian Wine and Brandy, 2005–06; Wine and Spirit Production, 2005–06; Wine Statistics, 2005–06 and Vineyards, 2006. Not all data from these collections are published here. Some further data are available for a charge, on application to the ABS.

**2** This publication is a summary of statistics on grape and wine production and related activities collected by the ABS and from other sources. Some of the data used in this publication were obtained from various ABS collections for which publications with appropriate Explanatory Notes are already available. The bibliography contains a list of these publications. However, much of the data are only available in this publication and the following notes are provided to assist users.

**3** The Viticulture tables replace the previous publication *Viticulture, Australia* (cat. no. 7310.0) and contain information on area of vines and production of red and white grapes for the 2006 season. The continuing collection of varietal data is supported by Australia's grape-growers and winemakers and the Australian government through the Grape and Wine Research and Development Corporation.

**4** Differences exist between the grape production intended for winemaking reported by grape growers in the viticulture collection and the quantity of fresh grapes crushed by winemakers reported in the Wine and Spirit Production Collection. Differences in the collection methodologies, as outlined below, mean some difference should always be apparent between the series.

### SCOPE AND COVERAGE OF VITICULTURE SURVEY

**5** Viticultural statistics relate to the year in which the harvest occurred and are derived from information obtained in a collection of all known growers.

**6** Prior to the 1999 collection, an exercise was undertaken to increase the number of known growers included in the collection. The improved coverage, of over 1,000 growers, means that the data presented for 1999 and later years are not directly comparable with data for previous years.

**7** The scope of the 2006 collection is based on establishments undertaking vineyards activity.

**8** Tasmanian data are collected in partnership with the *Department of Primary Industries and Water*. The scope of the collected data is the same as for other states.

**9** Viticultural statistics are presented on an Australian Geographical Indications basis in this issue. The Geographical Indications are official descriptions of Australian wine zones, regions and sub-regions which are defined in the *Australian Wine and Brandy Act 1980*. The zones and regions listed in the following table were provided to the ABS by the Australian Wine and Brandy Corporation. The list includes those regions which had been determined at the time of the Vineyards 2006 Survey.

**10** For more detail on Australian Geographical Indications including maps of the zones and regions contact the Australian Wine and Brandy Corporation web site <<http://www.awbc.com.au>>.

## EXPLANATORY NOTES *continued*

### AUSTRALIAN GEOGRAPHICAL INDICATIONS

Zone – Region

#### NEW SOUTH WALES

Big Rivers – Murray Darling (NSW), Perricoota, Riverina, Swan Hill (NSW), Other  
Central Ranges – Cowra, Mudgee, Orange, Other  
Hunter Valley – Hunter, Other  
Northern Rivers – Hastings River, Other  
Northern Slopes  
South Coast – Shoalhaven Coast, Southern Highlands, Other  
Southern New South Wales – Canberra District, Gundagai, Hilltops, Tumbarumba, Other  
Western Plains

#### VICTORIA

Central Victoria – Bendigo, Goulburn Valley, Heathcote, Strathbogie Ranges, Upper Goulburn, Other  
Gippsland  
North East Victoria – Alpine Valleys, Beechworth, Glenrowan, Rutherglen, Other  
North West Victoria – Murray Darling (Vic.), Swan Hill (Vic.), Other  
Port Phillip – Geelong, Macedon Ranges, Mornington Peninsula, Sunbury, Yarra Valley, Other  
Western Victoria – Grampians, Henty, Pyrenees, Other

#### QUEENSLAND

Queensland – Granite Belt, South Burnett, Other

#### SOUTH AUSTRALIA

Barossa – Barossa Valley, Eden Valley, Other  
Far North – Southern Flinders Ranges, Other  
Fleurieu – Currency Creek, Kangaroo Island, Langhorne Creek, McLaren Vale, Southern Fleurieu, Other  
Limestone Coast – Coonawarra, Mount Benson, Padthaway, Robe, Wrattobully, Other  
Lower Murray – Riverland, Other  
Mount Lofty Ranges – Adelaide Hills, Adelaide Plains, Clare Valley, Other  
The Peninsulas

#### WESTERN AUSTRALIA

Central Western Australia  
Eastern Plains, Inland and North of Western Australia  
Greater Perth – Peel, Perth Hills, Swan Districts, Other  
South West Australia – Blackwood Valley, Geopraphe, Great Southern, Manjimup, Margaret River, Pemberton, Other  
West Australian South East Coastal

#### TASMANIA

Tasmania

#### NORTHERN TERRITORY

Northern Territory

#### AUSTRALIAN CAPITAL TERRITORY

Australian Capital Territory

## EXPLANATORY NOTES *continued*

### SCOPE AND COVERAGE OF WINE SURVEYS

**11** Winemakers who crush more than 400 tonnes of grapes are included in the Wine and Spirit Production Survey. Wine production data are collected from these winemakers on a winery (location) basis to allow for state and regional data output. The grapes crushed by these wineries includes grapes owned by others and crushed on a commission or contract basis, often for wine producers who do not have their own crushing facilities. These wineries account for approximately 98% of total crushings by all winemakers crushing 50 or more tonnes of fresh grapes. Limited information on the quantity of grapes crushed and domestic wine sales are also obtained from wineries crushing between 50 and 400 tonnes. These data are collected on a winery (location) basis in the Wine Statistics Survey. The main purpose for this supplementary collection is to establish the scope and coverage of both the main production collection and the monthly wine sales collection.

**12** Winemakers who crush more than 400 tonnes of grapes and have domestic wine sales of 250,000 litres or more in either of the two previous years are included in the Inventories of Australian Wine and Brandy Survey. These details on inventories of Australian beverage wine by wine type are collected at 30 June. For those winemakers that have sales less than 250,000 litres and have a grape crush of 400 tonnes or more, a freestanding set of inventory questions have been included in the Wine and Spirit Production Survey.

**13** All inventories data are collected on an Australia-wide basis only and state figures are therefore not available. Inventories data collected from 1996 include all Australian-produced wines owned by these winemakers and held anywhere in Australia. In years previous to 1996, inventories included only those Australian-produced wines held by winemakers on any of their own premises, regardless of ownership. This change in the measurement of inventories means that data for 1996 and later are not directly comparable with earlier years.

**14** The number of winemakers who fall within the scope of the wine inventories collection may vary from year to year as sales vary and individual wineries are included in, or excluded from, the wine sales collection. It is possible that inventories data may vary slightly each year as new wineries, with either large or small inventories, come into the scope of the collection. In particular, the published (i.e. closing) inventories figures for any one year may not equate with the opening inventories for the following year.

**15** The wine content of products consisting of a mixture of wine and fruit juice, commonly known as 'coolers', is included in the appropriate wine category of the wine from which it is made, which is generally table wine.

### PRICE INDEXES

**16** The index for 'Wine grapes' is from the Producer Price Index (PPI) for materials used in manufacturing industries (specifically, wine grapes used in *ANZSIC Subdivision 21*). The valuation basis for PPI indexes is purchasers' prices, defined as the amount paid by the purchaser inclusive of any non-deductible taxes on products and transport and trade margins. The 'Wine grapes' index is calculated by using the base weighted movement in prices for each of the grape varieties included in the survey. The index does not allow for price movements caused by a change in the mix of varieties. Refer *Producer Price Indexes, Australia* (cat. no. 6427.0), unpublished data. The index for 'Wine grapes' is the comparison of the respective June quarter indexes. All other series represented in Table 32 are the average annual movements.

**17** The Sales by manufacturers index consists of three components: 'Domestic' represents the price manufacturers receive for wines manufactured for domestic consumption; 'Export' represents the price manufacturers receive for wines that are exported and are priced on a 'free on board' (f.o.b.) basis at the main Australian ports of export; and, 'Total wine' which represents the combined index of Domestic and Export. The valuation basis for these indexes is basic prices, defined as the amount received by

## EXPLANATORY NOTES *continued*

---

### PRICE INDEXES *continued*

the producer exclusive of any taxes on products and transport and trade margins. Refer *Producer Price Indexes, Australia* (cat. no. 6427.0), unpublished data and *International Trade Price Indexes, Australia* (cat. no. 6457.0), unpublished data.

**18** The Import index for 'Wine' is the import price index for wine and priced on a f.o.b. country of origin basis. Refer *International Trade Price Indexes, Australia* (cat. no. 6457.0), unpublished data. The Consumer index for 'Wine' is the Consumer Price Index (CPI) for wine, while the 'All groups' index is the All groups CPI. Refer *Consumer Price Index, Australia* (cat. no. 6401.0).

### ACKNOWLEDGMENT

**19** ABS publications draw extensively on information provided freely by individuals, businesses, governments and other organisations. Their continued cooperation is very much appreciated: without it, the wide range of statistics published by the ABS would not be available. Information received by the ABS is treated in strict confidence as required by the *Census and Statistics Act 1905*.

### ABS PUBLICATIONS

**20** Current publications and other products released by the ABS are listed in the *Catalogue of Publications and Products* (cat. no. 1101.0). The Catalogue is available from any ABS office or the ABS web site <<http://www.abs.gov.au>>. The ABS also issues a daily Release Advice on the web site which details products to be released in the week ahead.

## GLOSSARY

<b>Beverage wine</b>	Table, sparkling and fortified wine produced for direct consumption and not for distillation.
<b>Brandy</b>	The spirit obtained by the distillation of wine in such a manner as to ensure that the spirit possesses the taste, aroma and other characteristics generally attributed to brandy, in accordance with the requirements set out in the Schedule to this Standard.
<b>De-alcoholised wine</b>	Normally fermented wine in which the alcohol has been removed and which retains all other components.
<b>Distillation wine</b>	Wine used for the purpose of distillation into grape spirit.
<b>Domestic sales</b>	All sales of Australian produced wine by winemakers within the scope of the <i>Sales of Australian Wine by Winemakers</i> survey, whether they be wholesale or retail sales, or bulk sales to other wineries outside of the scope of the survey. Excluded are inter-winery sales, sales where the wine will be exported, sales to other winemakers with on-site crushing facilities, sales for ship and aircraft stores, sales of imported wine and the volume of imported wine blended with Australian wine sold domestically.
<b>Exports</b>	Exports of wine to overseas ports including sales made by exporters and wine producers.
<b>Feints and low wine</b>	Parts of the distillate which are not useable.
<b>Fortified wine</b>	Wine to which grape spirit has been added, thereby adding alcoholic strength and precluding further fermentation. Fortified wine must contain at least 150 millilitres/litre and not more than 200 millilitres/litre of ethanol at 20° Centigrade.
<b>Grafted/grafting</b>	The connection of two pieces of living plant tissue, so that they unite and grow as one plant.
<b>Grape spirit</b>	Alcohol spirit of vinous origin used in fortification or as a base for grape flavoured spirits. The spirit is obtained from the distillation of wine, by-products of winemaking or the fermented liquor of a mash of dried grapes and contains methanol in a proportion not exceeding 3 grams per litre at 20° Centigrade of the ethanol content.
<b>Imports cleared for home consumption</b>	Imported goods brought into the country for consumption or further processing, but excluding goods imported with the reasonable expectation of re-export within a limited time.
<b>Intended planting</b>	The area of vines, reported on the ABS Vineyards collection form, grape growers intend to plant or graft after the current harvest, but before the next harvest.
<b>Low alcohol wine</b>	Wine in which the alcohol content has been deliberately reduced or wine which has been produced with a lower alcohol level using either dilution or partial fermentation.
<b>Marc</b>	The residue of grape skins and seeds after the juice has been extracted.
<b>Table and other grapes</b>	This category refers to grape production that is not used for either winemaking or drying.
<b>Table wine</b>	A product of the complete or partial fermentation of fresh grapes or products derived solely from grapes.
<b>Sparkling wine</b>	The product of complete or partial fermentation of wine with contained sugars that has become surcharged with carbon dioxide.
<b>Unfermented grape juice</b>	A sweet, clear, non-alcoholic liquid. Winemakers use the term to refer to must which has undergone clarification and stabilisation.
<b>Unfortified wine</b>	Table or sparkling wine which must contain at least 80 millilitres/litre of ethanol at 20° Centigrade. Unfortified wines rely solely on fermentation for their alcoholic strength.

## BIBLIOGRAPHY

---

### ABS PUBLICATIONS

*Apparent Consumption of Alcohol, Australia*, cat. no. 4307.0.55.001.

*Consumer Price Index, Australia*, cat. no. 6401.0.

*Household Expenditure Survey, Australia: Detailed Expenditure Items, 2003–04*,  
cat. no. 6530.0.

*International Merchandise Trade, Australia*, cat. no. 5422.0.

*International Trade Price Indexes, Australia*, cat. no. 6457.0.

*Producer Price Indexes, Australia*, cat. no. 6427.0.

*Sales of Australian Wine and Brandy by Winemakers*, cat. no. 8504.0.

### ABS SURVEYS AND DATABASES

*Export Price Index.*

*Import Price Index.*

*International Trade database.*

*Inventories of Australian Wine and Brandy, 30 June 2006.*

*Sales of Australian Wine by Winemakers.*

*Vineyards, 2006.*

*Wine and Spirit Production, 2005–06.*

*Wine Statistics, 2005–06.*

### NON-ABS SOURCES

*The State of Vitiviniculture in the World and the Statistical Information in 2003*, Office  
International de la Vigne et du Vin, Paris.



## FOR MORE INFORMATION . . .

*INTERNET*      **www.abs.gov.au** the ABS web site is the best place for data from our publications and information about the ABS.

*LIBRARY*      A range of ABS publications are available from public and tertiary libraries Australia wide. Contact your nearest library to determine whether it has the ABS statistics you require, or visit our web site for a list of libraries.

## INFORMATION AND REFERRAL SERVICE

Our consultants can help you access the full range of information published by the ABS that is available free of charge from our web site, or purchase a hard copy publication. Information tailored to your needs can also be requested as a 'user pays' service. Specialists are on hand to help you with analytical or methodological advice.

*PHONE*            1300 135 070

*EMAIL*            client.services@abs.gov.au

*FAX*                1300 135 211

*POST*                Client Services, ABS, GPO Box 796, Sydney NSW 2001

## FREE ACCESS TO STATISTICS

All statistics on the ABS web site can be downloaded free of charge.

*WEB ADDRESS*    [www.abs.gov.au](http://www.abs.gov.au)



2132900001066

ISSN 1320 6486

RRP \$28.00