



**CORRECTIVE SERVICES**

AUSTRALIA

EMBARGO: 11.30AM (CANBERRA TIME) THURS 15 MAR 2012

**C O N T E N T S**

	<i>page</i>
Notes .....	2
Summary of findings .....	3

**TABLES**

<b>1</b> Persons in corrective services, summary .....	10
<b>2</b> Persons in full-time custody .....	12
<b>3</b> Imprisonment rates .....	13
<b>4</b> Persons in full-time custody, by sex .....	14
<b>5</b> Imprisonment rates, by sex .....	15
<b>6</b> Persons in full-time custody, by type of custody .....	16
<b>7</b> Imprisonment rates, by type of custody .....	17
<b>8</b> Persons in full-time custody, by legal status .....	18
<b>9</b> Imprisonment rates, by legal status .....	19
<b>10</b> Sentenced prisoner receptions into full-time custody .....	20
<b>11</b> Persons in periodic detention, by sex .....	21
<b>12</b> Federal sentenced persons in full-time custody, by sex .....	22
<b>13</b> Aboriginal and Torres Strait Islander persons in full-time custody, by sex ..	23
<b>14</b> Aboriginal and Torres Strait Islander imprisonment rates, by sex .....	24
<b>15</b> Aboriginal and Torres Strait Islander persons in full-time custody, by legal status .....	25
<b>16</b> Aboriginal and Torres Strait Islander imprisonment rates, by legal status ..	26
<b>17</b> Persons in community-based corrections, by sex .....	27
<b>18</b> Community-based corrections rates, by sex .....	28
<b>19</b> Persons in community-based corrections, by type of order .....	29
<b>20</b> Persons in community-based corrections, by Aboriginal and Torres Strait Islander status .....	31
<b>21</b> Proportion of persons in community-based corrections, by Aboriginal and Torres Strait Islander status .....	33

**ADDITIONAL INFORMATION**

Explanatory Notes .....	34
Glossary .....	41

**I N Q U I R I E S**

For further information about these and related statistics, contact the National Information and Referral Service on 1300 135 070 or Lydia Rutter on Melbourne (03) 9615 7646.

# NOTES

## FORTHCOMING ISSUES

*ISSUE (Quarter)*

*RELEASE DATE*

March 2012

14 June 2012

## ABOUT THIS PUBLICATION

This publication presents information on persons in custody and community-based corrections. The statistics are derived from information provided to the Australian Bureau of Statistics (ABS) from administrative records held by corrective services agencies in each state and territory, and from the Australian Government Attorney-General's Department for details on federal prisoners. Details are provided for each state and territory on: prisoner numbers and imprisonment rates by type of custody; prisoner numbers by legal status for all prisoners and for Aboriginal and Torres Strait Islander prisoners; the number of sentenced receptions into custody; the number of federal prisoners; the numbers and rates of persons serving community-based corrections orders; and data on the Aboriginal and Torres Strait Islander status of persons in community-based corrections.

The ABS acknowledges the valuable contribution of the Board of Management and the Advisory Group of the National Corrective Services Statistics Unit as well as the staff of the various agencies that provide the statistics that are presented in this publication.

## FURTHER INFORMATION

More information about ABS activities in the field of crime and justice statistics is available from the Crime and Justice theme page on the ABS website <[www.abs.gov.au](http://www.abs.gov.au)>. Details of other ABS publications relating to Crime and Justice statistics can be found in paragraphs 40–41 of the Explanatory Notes.

## ABBREVIATIONS

ABS Australian Bureau of Statistics  
ACT Australian Capital Territory  
Aust. Australia  
ERP estimated resident population  
NCCJS National Centre for Crime and Justice Statistics, Australian Bureau of Statistics  
NSW New South Wales  
NT Northern Territory  
Qld Queensland  
SA South Australia  
Tas. Tasmania  
Vic. Victoria  
WA Western Australia

Brian Pink  
Australian Statistician

## SUMMARY OF FINDINGS

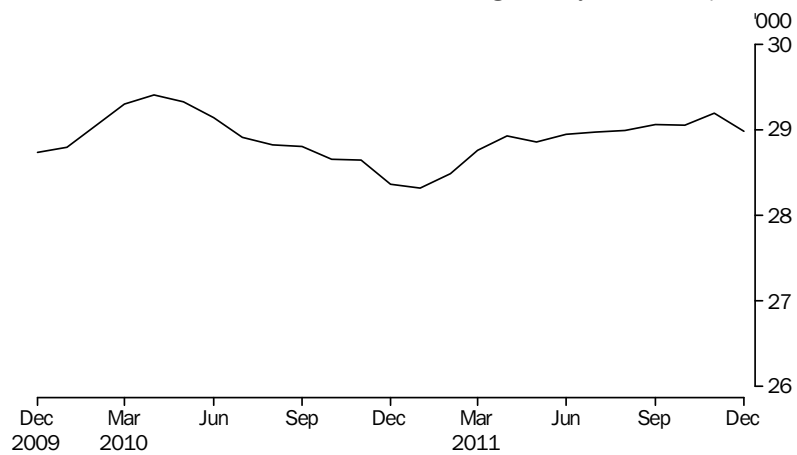
### PERSONS IN CORRECTIVE SERVICES

Based on first day of the month averages, for the December quarter 2011 there were 29,188 persons in full-time custody and 54,611 persons in community-based corrections. This comprises an increase of 532 persons (2%) in full-time custody and a decrease of 1,196 persons in community-based corrections. This represents a decrease of 664 persons (1%) in corrective services from the December quarter 2010.

#### *Number of prisoners*

During the December quarter 2011, the average daily number of full-time prisoners in Australia was 29,074 persons. This was an increase of 66 persons (less than 1%) from the September quarter 2011.

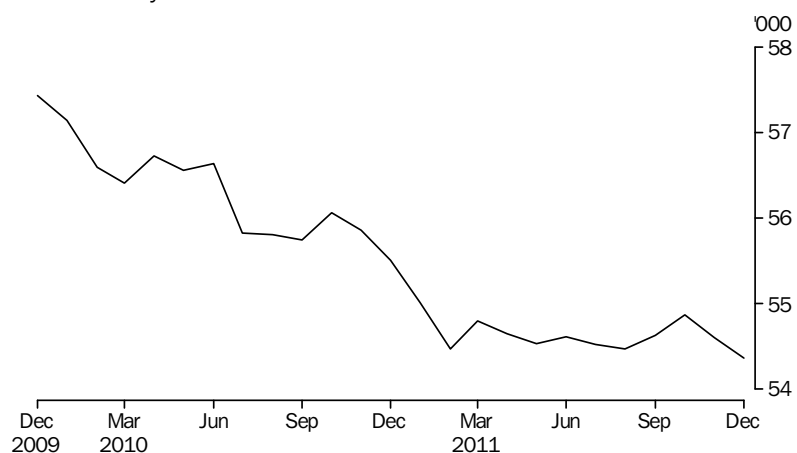
PERSONS IN PRISON CUSTODY, Average daily number per month



#### *Number of persons in community-based corrections*

Community-based corrections orders are non-custodial orders served under the authority of adult corrective services agencies and include restricted movement, reparations (fine options and community service) and supervision orders (parole, bail, and sentenced probation). In the December quarter 2011, there were 54,611 persons in community-based corrections in Australia based on first day of the month averages, an increase of 66 persons (less than 1%) from the September quarter 2011.

PERSONS IN COMMUNITY-BASED CORRECTIONS, Average number on the first day of the month



## SUMMARY OF FINDINGS *continued*

### PERSONS IN CUSTODY

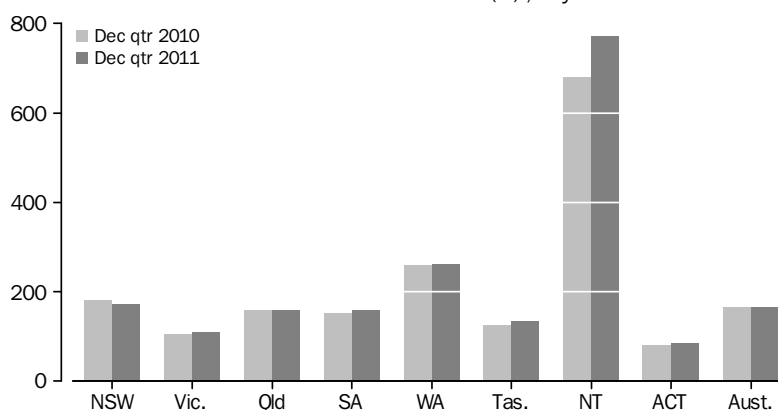
#### *Rates per 100,000 adults*

Nationally, the December quarter 2011 average daily imprisonment rate was 166 prisoners per 100,000 adult population, an increase of less than 1% from the December quarter 2010. The Northern Territory had the highest imprisonment rate (772 prisoners per 100,000 adult population), followed by Western Australia (263) and New South Wales (171).

The Australian Capital Territory and Victoria had the lowest imprisonment rates (86 and 110 prisoners per 100,000 adult population respectively).

The Northern Territory recorded the largest proportional increase in imprisonment rates from the December quarter 2010 (14%). The largest proportional decrease over the same period was recorded in New South Wales (5%).

#### AVERAGE DAILY IMPRISONMENT RATE(a), By states and territories



(a) Rate per 100,000 adult population.

### Sex

Of the average daily number of full-time prisoners in Australia in the December quarter 2011, 27,054 (93%) were male and 2,021 (7%) were female. The average daily imprisonment rate for males was 313 prisoners per 100,000 adult male population; 14 times more than the rate for females (23 female prisoners per 100,000 adult female population).

### Type of full-time custody

The average daily number of prisoners in secure prison custody in the December quarter 2011 was 22,715 (78% of prisoners in full-time custody). Open prison custody comprised 6,359 prisoners (22%).

The Australian Capital Territory had the highest proportion of prisoners in secure custody (97%), followed by Queensland and Tasmania (both 91%).

### Legal status

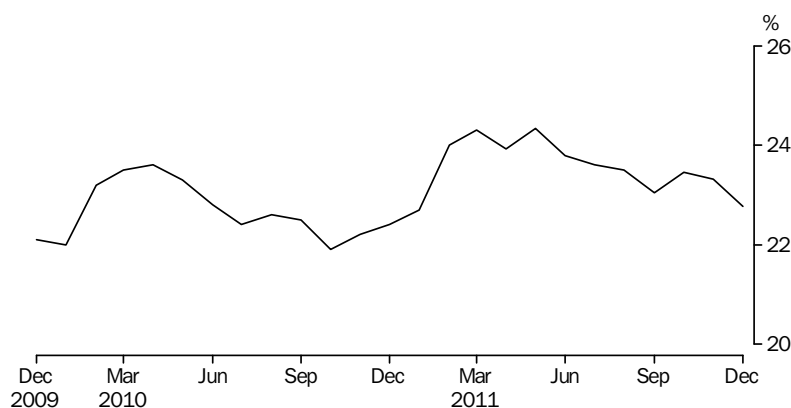
The average number of prisoners in full-time custody on the first day of each month in the December quarter 2011 was 29,188, comprising an average of 22,422 (77%) sentenced and 6,766 (23%) unsentenced prisoners. Sentenced prisoners increased by 1% from the previous quarter and by 1% from the December quarter 2010.

Unsentenced prisoners decreased by less than 1% from the previous quarter and increased by 6% from the December quarter 2010. The Australian Capital Territory and South Australia had the highest proportions of unsentenced prisoners (33% and 30% respectively). The lowest proportions of unsentenced prisoners were recorded in Western Australia, Victoria and Tasmania (all 19%).

## SUMMARY OF FINDINGS *continued*

*Legal status continued*

PROPORTION OF UNSENTENCED PERSONS IN PRISON CUSTODY (a),  
Per month



(a) Based on average number on the first day of the month

*Sentenced prisoner  
receptions*

There were 8,154 sentenced prisoner receptions into full-time custody in Australia in the December quarter 2011; an increase of 1% (87) from the September quarter 2011 and of 10% (725) from the December quarter 2010.

*Periodic detention*

Periodic detention is a form of custody or order where a sentenced prisoner is required to be held in custody on a part-time basis. This type of custody order is currently only used in New South Wales and the Australian Capital Territory. This program has ceased in New South Wales from October 2010, but some prisoners are still undertaking pre-existing sentences.

During the September quarter 2011 there was an average daily number of 64 persons in New South Wales and 67 persons in the Australian Capital Territory held in periodic detention. The rate of imprisonment for periodic detainees decreased by 31% in New South Wales from the September quarter 2010 (from 1.6 per 100,000 to 1.1 per 100,000), and decreased by 1% in the Australian Capital Territory (from 23.9 per 100,000 to 23.6 per 100,000).

*Federal prisoners*

In the December quarter 2011, there were 950 federal sentenced prisoners in Australia based on first day of the month figures, an increase of 13% from the December quarter 2010. Just under half (433) of the federal prisoners were sentenced in New South Wales.

The two states with the largest increase in numbers over the twelve months to the December quarter 2011 were Western Australia 59 persons (46%) and the Northern Territory 27 persons (182%).

*Aboriginal and Torres  
Strait Islander prisoners*

The average daily number of full-time Aboriginal and Torres Strait Islander adult prisoners in Australia in the December quarter 2011 was 7,619, comprising 6,998 (92%) males and 621 (8%) females. Aboriginal and Torres Strait Islander prisoners represented 26% of the total full-time prisoner population in the December quarter 2011, the same proportion as for the September quarter 2011. The total Aboriginal and Torres Strait Islander population aged 18 years and over at 30 June 2010 was 2% of the Australian population.

## SUMMARY OF FINDINGS *continued*

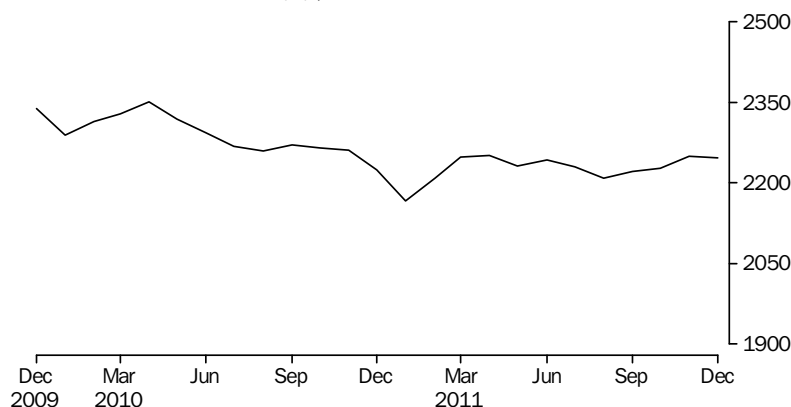
### *Aboriginal and Torres Strait Islander prisoners continued*

Three states accounted for approximately 74% of the total Aboriginal and Torres Strait Islander prisoner population: New South Wales (2,164), Western Australia (1,825) and Queensland (1,667).

The national average daily Aboriginal and Torres Strait Islander imprisonment rate in the December quarter 2011 was 2,241 per 100,000 adult Aboriginal and Torres Strait Islander population, an increase of 1% from the previous quarter and a decrease of less than 1% from the December quarter 2010.

The imprisonment rate for males was 4,207 per 100,000 adult male Aboriginal and Torres Strait Islander population; 12 times more than the rate for females (358 females per 100,000 adult female Aboriginal and Torres Strait Islander population).

#### AVERAGE DAILY ABORIGINAL AND TORRES STRAIT ISLANDER IMPRISONMENT RATE (a), Per month



(a) Rate per 100,000 adult Aboriginal and Torres Strait Islander population.

Different age profiles of the Aboriginal and Torres Strait Islander and non-Indigenous population can affect imprisonment rate numbers. While this quarterly statistical collection is unable to take age into account, data from the Prisoner Census collection can provide this level of detail.

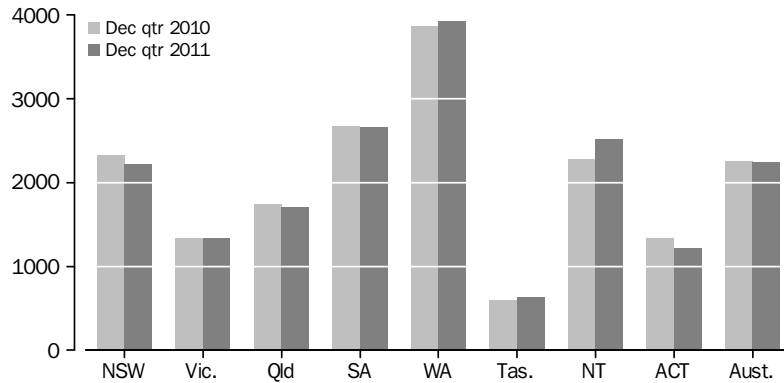
The national age standardised Aboriginal and Torres Strait Islander imprisonment rate from the annual Prisoner Census conducted at June 2011 was 14 times higher (1,868 per 100,000 adult Aboriginal and Torres Strait Islander population) than the rate for non-Indigenous persons (130 per 100,000 adult non-Indigenous population). Further information on the comparison of imprisonment rates between Aboriginal and Torres Strait Islander and non-Indigenous populations can be found in *Prisoners in Australia, 2011* (cat. no. 4517.0).

The highest Aboriginal and Torres Strait Islander imprisonment rate was recorded in Western Australia (3,924 Aboriginal and Torres Strait Islander prisoners per 100,000 adult Aboriginal and Torres Strait Islander population), followed by South Australia (2,654) and the Northern Territory (2,513). The lowest Aboriginal and Torres Strait Islander imprisonment rate was recorded in Tasmania (629), followed by the Australian Capital Territory (1,217).

## SUMMARY OF FINDINGS *continued*

Aboriginal and Torres  
Strait Islander prisoners  
*continued*

### AVERAGE DAILY ABORIGINAL AND TORRES STRAIT ISLANDER IMPRISONMENT RATE(a), By states and territories



(a) Rate per 100,000 adult Aboriginal and Torres Strait Islander population.

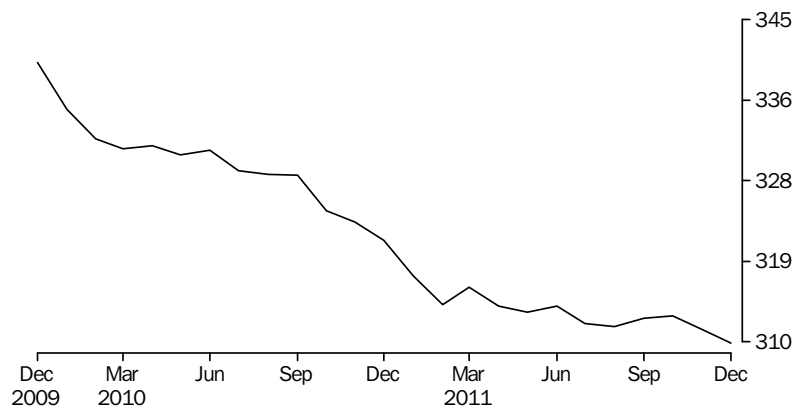
The largest proportional increase in the Aboriginal and Torres Strait Islander imprisonment rate from the December quarter 2010 was recorded in the Northern Territory (10%), followed by Tasmania (5%). The Australian Capital Territory (9%) and New South Wales (5%) recorded the largest proportional decreases over the same period.

### PERSONS IN COMMUNITY-BASED CORRECTIONS

*Rates per 100,000 adults*

Nationally, the rate of persons in community-based corrections was 311 persons per 100,000 adult population for the December quarter 2011 based on first day of the month figures. This was a decrease of 4% from the December quarter 2010 (323 persons per 100,000 adults). The largest decrease from the December quarter 2010 was recorded in Western Australia (11%), while the largest increase was recorded in Tasmania (7%).

### COMMUNITY-BASED CORRECTIONS RATE(a), Per month

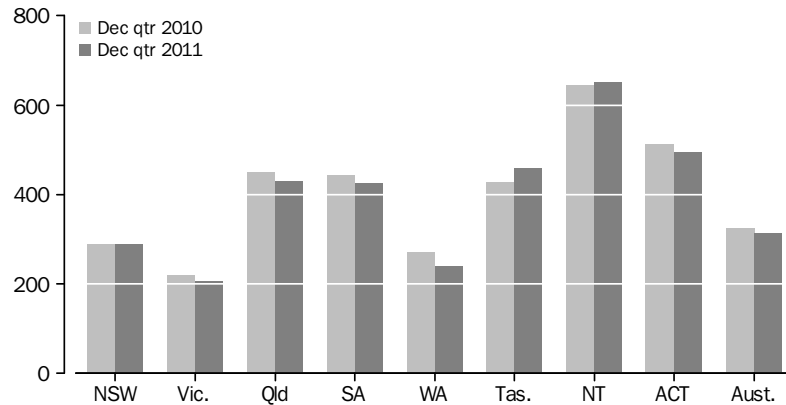


(a) Rate per 100,000 adult population, based on average number on the first day of the month

## SUMMARY OF FINDINGS *continued*

Rates per 100,000 adults  
*continued*

### COMMUNITY-BASED CORRECTIONS RATE(a), By states and territories



(a) Rate per 100,000 adult population, based on average number on the first day of the month

Sex

Of the average number of persons in community-based corrections in Australia in the December quarter 2011, 44,736 (82%) were male and 9,837 (18%) were female.

In the December quarter 2011, the rate of community-based corrections for males was 517 per 100,000 adult male population compared to 111 females per 100,000 adult female population. The community-based corrections rate for males was more than four times that of females.

Type of orders

In the December quarter 2011, there were 12,327 persons on parole following a period of imprisonment. Three states accounted for approximately 87% of persons serving parole orders: New South Wales (4,471 persons or 36%), Queensland (4,552 or 37%), and Victoria (1,693 or 14%). The largest proportional decrease in parole orders from the September quarter 2011 was recorded in Western Australia (9%).

For this same period, there were 32,606 persons under sentenced probation and 8,841 persons serving community service orders; a decrease in the number of persons under sentenced probation of 1% (177 persons), and a decrease in the number of persons on community service orders of 3% (240 persons) from the September quarter 2011.

Aboriginal and Torres  
Strait Islanders in  
community-based  
corrections

Based on first day of the month averages, the number of Aboriginal and Torres Strait Islanders in community-based corrections for the December quarter was 10,809; an increase of 1% (131 persons) from the previous quarter. The numbers of Aboriginal and Torres Strait Islanders in community-based corrections increased from the September quarter by 5% (27 persons) in Victoria and 5% (9 persons) in the Australian Capital Territory. The largest proportional decreases were in South Australia (1% or 12) and Western Australia (1% or 9). Aboriginal and Torres Strait Islanders represented 20% of the total number of persons in community-based corrections in the December quarter 2011.

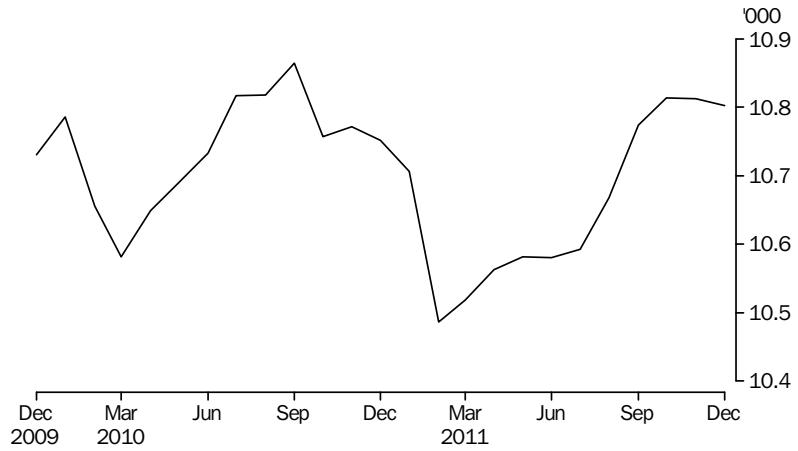
Approximately 75% of the total Aboriginal and Torres Strait Islander community-based corrections population was located in three states: New South Wales (3,261), Queensland (3,363) and Western Australia (1,489).



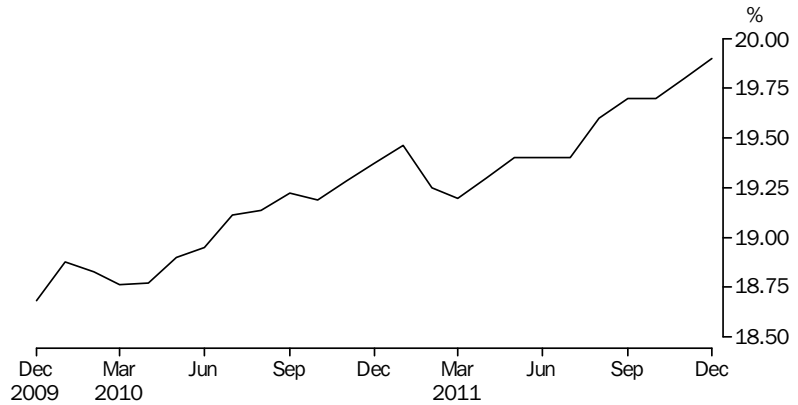
**SUMMARY OF FINDINGS** *continued*

*Aboriginal and Torres Strait Islanders in community-based corrections continued*

**ABORIGINAL AND TORRES STRAIT ISLANDERS IN COMMUNITY-BASED CORRECTIONS, Number on first day of month**



**ABORIGINAL AND TORRES STRAIT ISLANDERS, PROPORTION OF PERSONS IN COMMUNITY-BASED CORRECTIONS (a), Per month**



(a) Based on average number on the first day of the month

PERSONS IN CORRECTIVE SERVICES, Summary(a)

	NSW	Vic.	Qld	SA	WA	Tas.	NT	ACT	Aust.
AVERAGE DAILY NUMBER									
<b>Males in full-time custody</b>									
Dec Qtr 10	9 337	4 272	5 124	1 837	4 187	450	1 084	209	26 500
Sep Qtr 11	9 226	4 444	5 196	1 900	4 295	487	1 192	225	26 966
Dec Qtr 11	9 063	4 507	5 239	1 920	4 366	486	1 236	237	27 054
<b>Females in full-time custody</b>									
Dec Qtr 10	743	309	407	125	375	32	47	13	2 053
Sep Qtr 11	694	324	438	132	343	39	59	13	2 042
Dec Qtr 11	649	329	441	130	368	39	58	8	2 021
<b>Persons in full-time custody</b>									
Dec Qtr 10	10 080	4 581	5 531	1 962	4 562	483	1 132	222	28 553
Sep Qtr 11	9 921	4 768	5 634	2 032	4 638	527	1 251	239	29 008
Dec Qtr 11	9 712	4 836	5 680	2 051	4 734	524	1 294	245	29 074
<b>Aboriginal &amp; Torres Strait Islander persons in full-time custody</b>									
Dec Qtr 10	2 200	288	1 649	475	1 749	71	944	37	7 413
Sep Qtr 11	2 238	298	1 663	472	1 754	70	1 021	33	7 549
Dec Qtr 11	2 164	299	1 667	487	1 825	77	1 065	35	7 619
AVERAGE NUMBER ON FIRST DAY OF MONTH									
<b>Unsentenced persons in full-time custody</b>									
Dec Qtr 10	2 524	828	1 164	662	752	93	254	81	6 357
Sep Qtr 11	2 771	894	1 203	610	841	107	287	77	6 790
Dec Qtr 11	2 704	907	1 184	621	896	101	275	77	6 766
<b>Sentenced persons in full-time custody</b>									
Dec Qtr 10	7 577	3 780	4 391	1 311	3 820	398	885	137	22 299
Sep Qtr 11	7 195	3 870	4 407	1 433	3 790	418	975	163	22 251
Dec Qtr 11	7 103	3 939	4 531	1 428	3 829	428	1 006	158	22 422
<b>Persons in full-time custody</b>									
Dec Qtr 10	10 100	4 608	5 555	1 973	4 572	491	1 139	218	28 656
Sep Qtr 11	9 965	4 764	5 610	2 042	4 631	526	1 263	240	29 041
Dec Qtr 11	9 807	4 846	5 715	2 050	4 725	529	1 281	235	29 188
<b>Males in community-based corrections(b)</b>									
Dec Qtr 10	13 590	7 741	12 520	4 597	3 636	1 329	926	1 213	45 553
Sep Qtr 11	13 733	7 270	12 224	4 530	3 424	1 364	897	1 203	44 645
Dec Qtr 11	13 835	7 310	12 204	4 490	3 361	1 423	918	1 195	44 736
<b>Females in community-based corrections(b)</b>									
Dec Qtr 10	2 489	1 687	3 146	1 092	1 094	331	145	216	10 200
Sep Qtr 11	2 448	1 667	3 024	1 025	955	366	162	214	9 862
Dec Qtr 11	2 449	1 668	3 001	1 023	939	373	170	214	9 837
<b>Persons in community-based corrections(b)(c)</b>									
Dec Qtr 10	16 127	9 433	15 665	5 691	4 730	1 660	1 072	1 430	55 807
Sep Qtr 11	16 215	8 937	15 248	5 558	4 380	1 730	1 059	1 417	54 545
Dec Qtr 11	16 320	8 978	15 205	5 514	4 300	1 796	1 089	1 409	54 611

(a) For the calculation of quarterly figures – see Explanatory Notes, paragraph 5.

(b) Figures include persons with breached or suspended orders, with the exception of Vic. and Tas.

(c) Includes persons whose sex is unknown.

PERSONS IN CORRECTIVE SERVICES, Summary(a) *continued*

	NSW	Vic.	Qld	SA	WA	Tas.	NT	ACT	Aust.
PERCENTAGE CHANGE (AVERAGE DAILY NUMBER)									
<b>Males in full-time custody</b>									
Dec Qtr 10 to Dec Qtr 11	-2.9	5.5	2.2	4.5	4.3	8.0	14.0	13.4	2.1
Sep Qtr 11 to Dec Qtr 11	-1.8	1.4	0.8	1.1	1.7	-0.2	3.7	5.3	0.3
<b>Females in full-time custody</b>									
Dec Qtr 10 to Dec Qtr 11	-12.7	6.5	8.4	4.0	-1.9	21.9	23.4	-38.5	-1.6
Sep Qtr 11 to Dec Qtr 11	-6.5	1.5	0.7	-1.5	7.3	—	-1.7	-38.5	-1.0
<b>Persons in full-time custody</b>									
Dec Qtr 10 to Dec Qtr 11	-3.7	5.6	2.7	4.5	3.8	8.5	14.3	10.4	1.8
Sep Qtr 11 to Dec Qtr 11	-2.1	1.4	0.8	0.9	2.1	-0.6	3.4	2.5	0.2
<b>Aboriginal &amp; Torres Strait Islander persons in full-time custody</b>									
Dec Qtr 10 to Dec Qtr 11	-1.6	3.8	1.1	2.5	4.3	8.5	12.8	-5.4	2.8
Sep Qtr 11 to Dec Qtr 11	-3.3	0.3	0.2	3.2	4.0	10.0	4.3	6.1	0.9
PERCENTAGE CHANGE (AVERAGE NUMBER ON FIRST DAY OF MONTH)									
<b>Unsentenced persons in full-time custody</b>									
Dec Qtr 10 to Dec Qtr 11	7.1	9.5	1.7	-6.2	19.1	8.6	8.3	-4.9	6.4
Sep Qtr 11 to Dec Qtr 11	-2.4	1.5	-1.6	1.8	6.5	-5.6	-4.2	—	-0.4
<b>Sentenced persons in full-time custody</b>									
Dec Qtr 10 to Dec Qtr 11	-6.3	4.2	3.2	8.9	0.2	7.5	13.7	15.3	0.6
Sep Qtr 11 to Dec Qtr 11	-1.3	1.8	2.8	-0.3	1.0	2.4	3.2	-3.1	0.8
<b>Persons in full-time custody</b>									
Dec Qtr 10 to Dec Qtr 11	-2.9	5.2	2.9	3.9	3.3	7.7	12.5	7.8	1.9
Sep Qtr 11 to Dec Qtr 11	-1.6	1.7	1.9	0.4	2.0	0.6	1.4	-2.1	0.5
<b>Males in community-based corrections<sup>(b)</sup></b>									
Dec Qtr 10 to Dec Qtr 11	1.8	-5.6	-2.5	-2.3	-7.6	7.1	-0.9	-1.5	-1.8
Sep Qtr 11 to Dec Qtr 11	0.7	0.6	-0.2	-0.9	-1.8	4.3	2.3	-0.7	0.2
<b>Females in community-based corrections<sup>(b)</sup></b>									
Dec Qtr 10 to Dec Qtr 11	-1.6	-1.1	-4.6	-6.3	-14.2	12.7	17.2	-0.9	-3.6
Sep Qtr 11 to Dec Qtr 11	—	0.1	-0.8	-0.2	-1.7	1.9	4.9	—	-0.3
<b>Persons in community-based corrections<sup>(b)(c)</sup></b>									
Dec Qtr 10 to Dec Qtr 11	1.2	-4.8	-2.9	-3.1	-9.1	8.2	1.6	-1.5	-2.1
Sep Qtr 11 to Dec Qtr 11	0.6	0.5	-0.3	-0.8	-1.8	3.8	2.8	-0.6	0.1

— nil or rounded to zero (including null cells)

(a) For the calculation of quarterly figures – see Explanatory Notes, paragraph 5.

(b) Figures include persons with breached or suspended orders, with the exception of Vic. and Tas.

(c) Includes persons whose sex is unknown.

## PERSONS IN FULL-TIME CUSTODY

	NSW(a)	Vic.	Qld	SA	WA	Tas.	NT	ACT(b)	Aust.(c)
AVERAGE DAILY NUMBER									
<b>2009</b>	10 310	4 367	5 622	1 951	4 402	513	1 073	170	28 390
<b>2010</b>	10 255	4 553	5 624	1 961	4 734	480	1 113	212	28 932
<b>2011</b>	9 926	4 698	5 584	2 021	4 663	498	1 250	240	28 881
<b>2010</b>									
Dec Qtr	10 080	4 581	5 531	1 962	4 562	483	1 132	222	28 553
<b>2011</b>									
Mar Qtr	10 018	4 526	5 459	1 998	4 632	455	1 203	233	28 523
Jun Qtr	10 057	4 657	5 562	2 004	4 647	487	1 251	244	28 909
Sep Qtr	9 921	4 768	5 634	2 032	4 638	527	1 251	239	29 008
Dec Qtr	9 712	4 836	5 680	2 051	4 734	524	1 294	245	29 074
<b>2010</b>									
Oct	10 125	4 605	5 555	1 955	4 560	485	1 152	214	28 652
Nov	10 130	4 590	5 545	1 965	4 584	490	1 117	227	28 648
Dec	9 988	4 547	5 493	1 966	4 543	473	1 125	225	28 361
<b>2011</b>									
Jan	9 994	4 495	5 401	1 989	4 580	457	1 165	235	28 317
Feb	9 995	4 508	5 445	2 000	4 637	460	1 207	237	28 489
Mar	10 063	4 574	5 531	2 004	4 677	447	1 236	230	28 762
Apr	10 137	4 597	5 581	2 004	4 647	467	1 254	241	28 929
May	10 041	4 661	5 557	1 983	4 644	487	1 238	245	28 856
Jun	9 995	4 713	5 547	2 027	4 650	507	1 261	245	28 945
Jul	9 948	4 753	5 586	2 035	4 629	516	1 265	243	28 975
Aug	9 913	4 767	5 645	2 044	4 613	532	1 241	238	28 992
Sep	9 900	4 786	5 672	2 015	4 672	533	1 246	235	29 059
Oct	9 772	4 839	5 676	2 023	4 709	539	1 264	232	29 053
Nov	9 765	4 858	5 717	2 056	4 746	517	1 290	246	29 193
Dec	9 601	4 812	5 647	2 073	4 747	517	1 327	256	28 981

- (a) Data prior to the September quarter 2009 includes ACT prisoners held in NSW prisons. From the September quarter 2009 ACT prisoners are no longer held in NSW prisons – see Explanatory Notes, paragraph 35.
- (b) Data prior to the September quarter 2009 includes ACT prisoners held in ACT as well as ACT prisoners that were held in NSW – see Explanatory Notes, paragraph 35.
- (c) For the period prior to the September quarter 2009, ACT Prisoners held in NSW prisons are included in both NSW and ACT figures. The sum of the state/territory columns will therefore be greater than the Australian total – see Explanatory Notes, paragraph 35.

## IMPRISONMENT RATES (a)

	NSW(b)	Vic.	Qld	SA	WA	Tas.	NT	ACT(c)	Aust.
RATE PER 100,000 ADULT POPULATION									
<b>2009</b>	189.4	104.8	167.2	154.7	260.7	134.2	670.3	62.7	169.7
<b>2010</b>	184.2	106.3	162.4	153.0	271.8	123.9	673.2	76.5	168.5
<b>2011</b>	176.0	107.8	158.4	156.0	261.7	127.5	747.3	85.0	165.6
<b>2010</b>									
Dec Qtr	180.0	106.1	158.4	152.3	259.6	124.1	679.1	79.5	165.1
<b>2011</b>									
Mar Qtr	178.5	104.5	155.8	154.7	262.4	116.6	718.8	83.4	164.5
Jun Qtr	178.5	107.1	158.1	154.9	261.8	124.7	747.8	86.5	166.1
Sep Qtr	175.6	109.2	159.5	156.5	259.5	134.6	750.1	84.2	166.0
Dec Qtr	171.4	110.3	160.1	157.7	263.1	133.7	771.8	86.0	165.7
<b>2010</b>									
Oct	180.7	106.7	159.1	151.8	259.5	124.7	691.5	76.7	165.7
Nov	180.8	106.3	158.9	152.5	260.9	125.9	670.2	81.1	165.7
Dec	178.3	105.3	157.3	152.6	258.5	121.6	675.3	80.7	164.0
<b>2011</b>									
Jan	178.0	103.7	154.1	154.1	259.5	117.3	696.6	83.8	163.3
Feb	178.0	104.0	155.4	154.9	262.7	118.1	721.4	84.5	164.3
Mar	179.3	105.6	157.9	155.2	264.9	114.6	738.8	82.1	165.8
Apr	180.0	105.7	158.6	154.9	261.8	119.5	749.6	85.6	166.2
May	178.2	107.2	158.0	153.3	261.6	124.7	740.0	87.1	165.8
Jun	177.4	108.3	157.7	156.7	262.0	129.8	754.0	86.9	166.3
Jul	176.1	108.8	158.2	156.8	259.0	131.8	758.5	85.6	165.8
Aug	175.5	109.1	159.8	157.5	258.2	135.8	744.3	83.9	165.9
Sep	175.2	109.6	160.6	155.3	261.4	136.2	747.3	82.9	166.3
Oct	172.5	110.4	160.0	155.6	261.7	137.4	754.0	81.6	165.6
Nov	172.4	110.8	161.1	158.1	263.8	131.8	769.5	86.3	166.4
Dec	169.5	109.8	159.2	159.4	263.8	132.0	791.8	90.1	165.2

(a) Imprisonment rates are based on Estimated Resident Population counts – see Explanatory Notes, paragraphs 17–21.

(b) Excludes ACT prisoners that were held in NSW prisons prior to September quarter 2009 – see Explanatory Notes, paragraph 35.

(c) Includes ACT prisoners held in ACT as well as ACT prisoners that were held in NSW prior to the September quarter 2009 – see Explanatory Notes, paragraph 35.

## PERSONS IN FULL-TIME CUSTODY(a), By sex

	NSW(b)	Vic.	Qld	SA	WA	Tas.	NT	ACT(c)	Aust.(d)
MALES (AVERAGE DAILY NUMBER)									
<b>2009</b>	9 537	4 081	5 199	1 823	4 055	475	1 026	155	26 336
<b>2010</b>	9 491	4 238	5 194	1 835	4 342	446	1 064	197	26 807
<b>2011</b>	9 240	4 377	5 158	1 895	4 303	461	1 192	228	26 852
<b>2010</b>									
Dec Qtr	9 337	4 272	5 124	1 837	4 187	450	1 084	209	26 500
<b>2011</b>									
Mar Qtr	9 313	4 215	5 051	1 872	4 260	425	1 147	219	26 503
Jun Qtr	9 359	4 337	5 141	1 885	4 289	445	1 192	229	26 877
Sep Qtr	9 226	4 444	5 196	1 900	4 295	487	1 192	225	26 966
Dec Qtr	9 063	4 507	5 239	1 920	4 366	486	1 236	237	27 054
Oct	9 107	4 512	5 229	1 893	4 346	501	1 200	225	27 013
Nov	9 114	4 525	5 269	1 925	4 377	478	1 232	239	27 159
Dec	8 969	4 485	5 219	1 943	4 376	478	1 275	247	26 992
FEMALES (AVERAGE DAILY NUMBER)									
<b>2009</b>	773	286	423	128	346	38	47	14	2 054
<b>2010</b>	764	315	431	125	392	34	49	15	2 125
<b>2011</b>	686	321	427	127	360	37	58	13	2 029
<b>2010</b>									
Dec Qtr	743	309	407	125	375	32	47	13	2 053
<b>2011</b>									
Mar Qtr	705	311	408	126	372	30	55	14	2 020
Jun Qtr	698	320	421	119	358	42	59	15	2 032
Sep Qtr	694	324	438	132	343	39	59	13	2 042
Dec Qtr	649	329	441	130	368	39	58	8	2 021
Oct	665	328	447	130	363	37	63	7	2 040
Nov	651	333	448	131	369	39	58	7	2 035
Dec	632	327	428	130	371	39	52	9	1 988
PERSONS (AVERAGE DAILY NUMBER)									
<b>2009</b>	10 310	4 367	5 622	1 951	4 402	513	1 073	170	28 390
<b>2010</b>	10 255	4 553	5 624	1 961	4 734	480	1 113	212	28 932
<b>2011</b>	9 926	4 698	5 584	2 021	4 663	498	1 250	240	28 881
<b>2010</b>									
Dec Qtr	10 080	4 581	5 531	1 962	4 562	483	1 132	222	28 553
<b>2011</b>									
Mar Qtr	10 018	4 526	5 459	1 998	4 632	455	1 203	233	28 523
Jun Qtr	10 057	4 657	5 562	2 004	4 647	487	1 251	244	28 909
Sep Qtr	9 921	4 768	5 634	2 032	4 638	527	1 251	239	29 008
Dec Qtr	9 712	4 836	5 680	2 051	4 734	524	1 294	245	29 074
Oct	9 772	4 839	5 676	2 023	4 709	539	1 264	232	29 053
Nov	9 765	4 858	5 717	2 056	4 746	517	1 290	246	29 193
Dec	9 601	4 812	5 647	2 073	4 747	517	1 327	256	28 981

- (a) For the calculation of annual and quarterly figures – see Explanatory Notes, paragraph 5.
- (b) Data prior to the September quarter 2009 includes ACT prisoners held in NSW prisons. The ACT in NSW figures are a subset of the NSW figures and are not separately counted in the Australian totals. From the September quarter 2009, ACT prisoners are no longer held in NSW prisons – see Explanatory Notes, paragraph 35.
- (c) Data prior to the September quarter 2009 includes ACT prisoners held in ACT as well as ACT prisoners that were held in NSW – see Explanatory Notes, paragraph 35.
- (d) For the period prior to the September quarter 2009, ACT Prisoners held in NSW prisons are included in both NSW and ACT figures. The sum of the state/territory columns will therefore be greater than the Australian total – see Explanatory Notes, paragraph 35.

## IMPRISONMENT RATES(a), By sex

	NSW(b)	Vic.	Qld	SA	WA	Tas.	NT	ACT(c)	Aust.
MALES (RATE PER 1000,000 ADULT POPULATION)									
<b>2009</b>	357.3	199.7	311.7	295.7	476.2	255.1	1 232.0	116.5	319.3
<b>2010</b>	347.2	201.3	302.5	292.6	494.2	236.4	1 239.4	144.3	316.4
<b>2011</b>	333.8	204.6	295.1	298.6	478.4	242.1	1 373.4	163.1	312.0
<b>2010</b>									
Dec Qtr	339.5	201.5	296.1	291.2	472.2	237.7	1 251.7	151.3	310.6
<b>2011</b>									
Mar Qtr	338.0	198.1	290.8	296.2	478.2	224.0	1 319.6	158.5	309.7
Jun Qtr	338.5	203.1	294.8	297.7	478.9	233.8	1 370.6	164.3	312.9
Sep Qtr	332.8	207.4	296.8	299.0	476.0	255.8	1 379.1	161.1	312.8
Dec Qtr	326.0	209.5	297.8	301.5	480.4	254.5	1 423.2	168.6	312.6
Oct	327.5	209.7	297.3	297.2	478.1	262.5	1 382.2	160.2	312.1
Nov	327.8	210.3	299.5	302.3	481.6	250.3	1 418.9	169.9	313.8
Dec	322.6	208.5	296.7	305.1	481.4	250.4	1 468.4	175.7	311.9
FEMALES (RATE PER 1000,000 ADULT POPULATION)									
<b>2009</b>	27.9	13.4	24.9	19.8	41.4	19.4	61.7	10.6	24.2
<b>2010</b>	27.0	14.5	24.7	19.2	45.4	17.2	61.1	10.5	24.4
<b>2011</b>	23.9	14.5	24.0	19.2	40.8	18.7	71.8	8.8	23.0
<b>2010</b>									
Dec Qtr	26.1	14.1	23.1	19.1	43.1	16.3	58.9	9.4	23.4
<b>2011</b>									
Mar Qtr	24.7	14.1	23.1	19.1	42.5	14.8	68.9	10.2	23.0
Jun Qtr	24.3	14.5	23.7	18.0	40.7	21.1	73.4	10.7	23.0
Sep Qtr	24.1	14.6	24.6	19.9	38.7	19.6	73.4	9.1	23.1
Dec Qtr	22.5	14.7	24.6	19.6	41.3	19.2	71.4	5.3	22.7
Oct	23.0	14.7	25.0	19.6	40.8	18.6	78.6	4.8	23.0
Nov	22.6	14.9	25.0	19.7	41.5	19.3	71.2	4.7	22.9
Dec	21.9	14.6	23.9	19.6	41.7	19.6	64.3	6.4	22.4
PERSONS (RATE PER 1000,000 ADULT POPULATION)									
<b>2009</b>	189.4	104.8	167.2	154.7	260.7	134.2	670.3	62.7	169.7
<b>2010</b>	184.2	106.3	162.4	153.0	271.8	123.9	673.2	76.5	168.5
<b>2011</b>	176.0	107.8	158.4	156.0	261.7	127.5	747.3	85.0	165.6
<b>2010</b>									
Dec Qtr	180.0	106.1	158.4	152.3	259.6	124.1	679.1	79.5	165.1
<b>2011</b>									
Mar Qtr	178.5	104.5	155.8	154.7	262.4	116.6	718.8	83.4	164.5
Jun Qtr	178.5	107.1	158.1	154.9	261.8	124.7	747.8	86.5	166.1
Sep Qtr	175.6	109.2	159.5	156.5	259.5	134.6	750.1	84.2	166.0
Dec Qtr	171.4	110.3	160.1	157.7	263.1	133.7	771.8	86.0	165.7
Oct	172.5	110.4	160.0	155.6	261.7	137.4	754.0	81.6	165.6
Nov	172.4	110.8	161.1	158.1	263.8	131.8	769.5	86.3	166.4
Dec	169.5	109.8	159.2	159.4	263.8	132.0	791.8	90.1	165.2

- (a) Imprisonment rates are based on Estimated Resident Population counts – see Explanatory Notes, paragraphs 17–21.
- (b) Excludes ACT prisoners that were held in NSW prisons prior to September quarter 2009 – see Explanatory Notes, paragraph 35.
- (c) Includes ACT prisoners held in ACT as well as ACT prisoners that were held in NSW prior to the September quarter 2009 – see Explanatory Notes, paragraph 35.

## PERSONS IN FULL-TIME CUSTODY(a), By type of custody

	NSW(b)(c)	Vic.	Qld	SA	WA(d)	Tas.	NT	ACT(e)	Aust. (f)(g)
PERSONS IN SECURE CUSTODY (AVERAGE DAILY NUMBER)									
<b>2009</b>	6 734	3 911	4 977	1 736	3 344	460	750	157	22 064
<b>2010</b>	6 596	4 063	5 039	1 761	3 427	432	771	136	22 224
<b>2011</b>	6 328	4 155	5 090	1 809	3 668	450	830	238	22 568
<b>2010</b>									
Dec Qtr	6 442	4 059	5 011	1 764	3 593	434	767	222	22 292
<b>2011</b>									
Mar Qtr	6 418	4 029	4 970	1 788	3 651	408	813	233	22 311
Jun Qtr	6 408	4 120	5 070	1 793	3 661	435	831	244	22 562
Sep Qtr	6 332	4 207	5 145	1 820	3 635	477	826	239	22 680
Dec Qtr	6 157	4 260	5 173	1 835	3 726	479	848	237	22 715
Oct	6 239	4 262	5 168	1 809	3 702	489	833	228	22 730
Nov	6 195	4 277	5 202	1 843	3 732	473	851	237	22 811
Dec	6 037	4 241	5 150	1 854	3 744	476	861	245	22 607
PERSONS IN OPEN CUSTODY (AVERAGE DAILY NUMBER)									
<b>2009</b>	3 576	456	645	214	1 061	54	323	13	6 329
<b>2010</b>	3 658	490	585	200	1 307	49	342	77	6 708
<b>2011</b>	3 598	543	494	212	994	48	420	2	6 312
<b>2010</b>									
Dec Qtr	3 639	522	520	198	969	48	365	..	6 261
<b>2011</b>									
Mar Qtr	3 599	498	489	210	981	46	390	..	6 213
Jun Qtr	3 650	537	492	211	986	52	420	..	6 347
Sep Qtr	3 589	561	489	212	1 002	50	425	..	6 329
Dec Qtr	3 555	576	507	215	1 008	45	445	8	6 359
Oct	3 533	577	508	214	1 006	49	431	4	6 323
Nov	3 569	581	515	213	1 014	44	438	8	6 382
Dec	3 564	571	497	219	1 003	42	466	11	6 373
PERSONS IN CUSTODY (AVERAGE DAILY NUMBER)									
<b>2009</b>	10 310	4 367	5 622	1 951	4 402	513	1 073	170	28 390
<b>2010</b>	10 255	4 553	5 624	1 961	4 734	480	1 113	212	28 932
<b>2011</b>	9 926	4 698	5 584	2 021	4 663	498	1 250	240	28 881
<b>2010</b>									
Dec Qtr	10 080	4 581	5 531	1 962	4 562	483	1 132	222	28 553
<b>2011</b>									
Mar Qtr	10 018	4 526	5 459	1 998	4 632	455	1 203	233	28 523
Jun Qtr	10 057	4 657	5 562	2 004	4 647	487	1 251	244	28 909
Sep Qtr	9 921	4 768	5 634	2 032	4 638	527	1 251	239	29 008
Dec Qtr	9 712	4 836	5 680	2 051	4 734	524	1 294	245	29 074
Oct	9 772	4 839	5 676	2 023	4 709	539	1 264	232	29 053
Nov	9 765	4 858	5 717	2 056	4 746	517	1 290	246	29 193
Dec	9 601	4 812	5 647	2 073	4 747	517	1 327	256	28 981
..	not applicable								
(a)	For the calculation of annual and quarterly figures – see Explanatory Notes, paragraph 5.								
(b)	For the period prior to the September quarter 2009, ACT prisoners held in NSW prisons are included in both NSW and ACT figures. The sum of the state/territory columns will therefore be greater than the Australian total – see Explanatory Notes, paragraph 35.								
(c)	The classification of some NSW correctional facilities changed from March 2008 – see Explanatory Notes, paragraph 29.								
(d)	Data for the period prior to September quarter 2009 are not comparable – see Explanatory Notes, paragraphs 30.								
(e)	Data prior to the September quarter 2009 includes ACT prisoners held in ACT as well as ACT prisoners that were held in NSW – see Explanatory Notes, paragraph 35.								
(f)	See footnotes b–c.								
(g)	For the period prior to the September quarter 2009, ACT prisoners held in NSW prisons are included in both NSW and ACT figures. The sum of the state/territory columns will therefore be greater than the Australian total – see Explanatory Notes, paragraph 35.								



## IMPRISONMENT RATES(a), By type of custody

	NSW(b)(c)	Vic.	Qld	SA	WA(d)	Tas.	NT	ACT(e)	Aust.(f)	
PERSONS IN SECURE CUSTODY (RATE PER 100,000 ADULT POPULATION)										
<b>2009</b>	123.8	93.8	148.0	137.7	198.2	120.1	468.3	57.9	131.9	
<b>2010</b>	118.5	94.8	145.5	137.4	196.6	111.4	466.4	48.8	129.4	
<b>2011</b>	112.2	95.3	144.4	139.6	205.9	115.1	496.0	84.3	129.4	
<b>2010</b>										
Dec Qtr	115.0	94.0	143.5	136.9	204.5	111.7	460.3	79.5	128.9	
<b>2011</b>										
Mar Qtr	114.3	93.0	141.9	138.5	206.8	104.7	485.9	83.4	128.6	
Jun Qtr	113.7	94.7	144.1	138.6	206.2	111.4	496.7	86.5	129.6	
Sep Qtr	112.1	96.3	145.7	140.2	203.4	121.8	495.2	84.2	129.8	
Dec Qtr	108.7	97.2	145.8	141.1	207.1	122.3	506.1	83.2	129.5	
Oct	110.1	97.2	145.7	139.1	205.7	124.8	496.8	80.1	129.6	
Nov	109.4	97.6	146.6	141.7	207.4	120.6	507.9	83.4	130.0	
Dec	106.6	96.7	145.1	142.6	208.1	121.4	513.5	86.2	128.9	
PERSONS IN OPEN CUSTODY (RATE PER 100,000 ADULT POPULATION)										
<b>2009</b>	65.6	10.9	19.2	17.0	62.9	14.0	202.0	4.9	37.8	
<b>2010</b>	65.7	11.4	16.9	15.6	75.2	12.5	206.9	27.8	39.1	
<b>2011</b>	63.8	12.5	14.0	16.4	55.8	12.4	251.3	0.7	36.2	
<b>2010</b>										
Dec Qtr	65.0	12.1	14.9	15.4	55.1	12.4	218.8	..	36.2	
<b>2011</b>										
Mar Qtr	64.1	11.5	14.0	16.2	55.6	11.9	232.9	..	35.8	
Jun Qtr	64.8	12.3	14.0	16.3	55.6	13.2	251.1	..	36.5	
Sep Qtr	63.5	12.9	13.9	16.3	56.1	12.8	254.9	..	36.2	
Dec Qtr	62.8	13.1	14.3	16.6	56.0	11.5	265.7	2.7	36.3	
Oct	62.4	13.2	14.3	16.5	55.9	12.6	257.2	1.5	36.0	
Nov	63.0	13.2	14.5	16.4	56.4	11.2	261.6	2.8	36.4	
Dec	62.9	13.0	14.0	16.8	55.7	10.6	278.3	3.9	36.3	
PERSONS IN CUSTODY (RATE PER 100,000 ADULT POPULATION)										
<b>2009</b>	189.4	104.8	167.2	154.7	260.7	134.2	670.3	62.7	169.7	
<b>2010</b>	184.2	106.3	162.4	153.0	271.8	123.9	673.2	76.5	168.5	
<b>2011</b>	176.0	107.8	158.4	156.0	261.7	127.5	747.3	85.0	165.6	
<b>2010</b>										
Dec Qtr	180.0	106.1	158.4	152.3	259.6	124.1	679.1	79.5	165.1	
<b>2011</b>										
Mar Qtr	178.5	104.5	155.8	154.7	262.4	116.6	718.8	83.4	164.5	
Jun Qtr	178.5	107.1	158.1	154.9	261.8	124.7	747.8	86.5	166.1	
Sep Qtr	175.6	109.2	159.5	156.5	259.5	134.6	750.1	84.2	166.0	
Dec Qtr	171.4	110.3	160.1	157.7	263.1	133.7	771.8	86.0	165.7	
Oct	172.5	110.4	160.0	155.6	261.7	137.4	754.0	81.6	165.6	
Nov	172.4	110.8	161.1	158.1	263.8	131.8	769.5	86.3	166.4	
Dec	169.5	109.8	159.2	159.4	263.8	132.0	791.8	90.1	165.2	
..	not applicable									
(a)	Imprisonment rates are based on Estimated Resident Population counts – see Explanatory Notes, paragraphs 17–21.				(d) Data prior to the September quarter 2009 are not comparable – see Explanatory Notes, paragraphs 30.					
(b)	Excludes ACT prisoners that were held in NSW prisons prior to September quarter 2009 – see Explanatory Notes, paragraph 35.				(e) Includes ACT prisoners held in ACT as well as ACT prisoners that were held in NSW prior to the September quarter 2009 – see Explanatory Notes, paragraph 35.					
(c)	The classification of some NSW correctional facilities changed from March 2008 – see Explanatory Notes, paragraph 29.				(f) See footnotes c-d.					

## PERSONS IN FULL-TIME CUSTODY(a), By legal status

	NSW(b)	Vic.	Qld	SA	WA	Tas.	NT	ACT(c)	Aust.(d)
UNSENTENCED (NUMBER ON FIRST DAY OF MONTH)									
<b>2009</b>	2 686	856	1 152	671	718	110	258	79	6 529
<b>2010</b>	2 657	834	1 186	678	770	98	249	85	6 557
<b>2011</b>	2 774	886	1 187	638	856	95	290	85	6 810
<b>2010</b>									
Dec Qtr	2 524	828	1 164	662	752	93	254	81	6 357
<b>2011</b>									
Mar Qtr	2 755	847	1 170	673	825	84	283	93	6 730
Jun Qtr	2 865	896	1 190	647	862	90	314	93	6 956
Sep Qtr	2 771	894	1 203	610	841	107	287	77	6 790
Dec Qtr	2 704	907	1 184	621	896	101	275	77	6 766
SENTENCED (NUMBER ON FIRST DAY OF MONTH)									
<b>2009</b>	7 620	3 499	4 452	1 294	3 647	404	814	88	21 800
<b>2010</b>	7 604	3 719	4 439	1 288	3 973	380	862	126	22 391
<b>2011</b>	7 200	3 805	4 394	1 387	3 798	401	952	151	22 089
<b>2010</b>									
Dec Qtr	7 577	3 780	4 391	1 311	3 820	398	885	137	22 299
<b>2011</b>									
Mar Qtr	7 251	3 667	4 257	1 326	3 771	369	893	139	21 673
Jun Qtr	7 253	3 746	4 380	1 359	3 802	387	935	146	22 008
Sep Qtr	7 195	3 870	4 407	1 433	3 790	418	975	163	22 251
Dec Qtr	7 103	3 939	4 531	1 428	3 829	428	1 006	158	22 422
TOTAL (NUMBER ON FIRST DAY OF MONTH)									
<b>2009</b>	10 306	4 355	5 604	1 964	4 365	514	1 072	167	28 329
<b>2010</b>	10 261	4 553	5 625	1 966	4 743	478	1 112	211	28 948
<b>2011</b>	9 974	4 692	5 581	2 024	4 654	496	1 242	236	28 899
<b>2010</b>									
Dec Qtr	10 100	4 608	5 555	1 973	4 572	491	1 139	218	28 656
<b>2011</b>									
Mar Qtr	10 006	4 514	5 428	1 999	4 596	453	1 175	232	28 404
Jun Qtr	10 118	4 641	5 570	2 005	4 664	477	1 250	238	28 964
Sep Qtr	9 965	4 764	5 610	2 042	4 631	526	1 263	240	29 041
Dec Qtr	9 807	4 846	5 715	2 050	4 725	529	1 281	235	29 188
Oct	9 892	4 827	5 638	2 005	4 678	531	1 261	225	29 057
Nov	9 775	4 842	5 683	2 044	4 734	523	1 273	232	29 106
Dec	9 753	4 870	5 825	2 100	4 764	532	1 309	248	29 401

- (a) Figures for the quarter and year for first day of month counts are calculated as a simple average – see Explanatory Notes, paragraph 5.
- (b) Data prior to the September quarter 2009 includes ACT prisoners held in NSW prisons. From the September quarter 2009 ACT prisoners are no longer held in NSW prisons – see Explanatory Notes, paragraph 35.
- (c) Data prior to the September quarter 2009 includes ACT prisoners held in ACT as well as ACT prisoners that were held in NSW – see Explanatory Notes, paragraph 35.
- (d) For the period prior to the September quarter 2009, ACT Prisoners held in NSW prisons are included in both NSW and ACT figures. The sum of the state/territory columns will therefore be greater than the Australian total – see Explanatory Notes, paragraph 35.

## IMPRISONMENT RATES(a), By legal status

	NSW(b)	Vic.	Qld	SA	WA	Tas.	NT	ACT(c)(d)	Aust.
UNSENTENCED (RATE PER 100,000 ADULT POPULATION)									
<b>2009</b>	49.4	20.5	34.3	53.2	42.5	28.8	160.9	29.1	39.0
<b>2010</b>	47.7	19.5	34.2	52.9	44.2	25.3	150.9	30.6	38.2
<b>2011</b>	49.2	20.3	33.7	49.2	48.0	24.4	173.3	30.1	39.0
<b>2010</b>									
Dec Qtr	45.1	19.2	33.3	51.4	42.8	23.9	152.6	28.9	36.8
<b>2011</b>									
Mar Qtr	49.1	19.6	33.4	52.1	46.8	21.5	169.0	33.2	38.8
Jun Qtr	50.9	20.6	33.8	50.0	48.5	23.0	187.9	32.9	40.0
Sep Qtr	49.0	20.5	34.1	47.0	47.1	27.4	172.3	27.1	38.9
Dec Qtr	47.7	20.7	33.4	47.8	49.8	25.8	163.9	27.2	38.6
SENTENCED (RATE PER 100,000 ADULT POPULATION)									
<b>2009</b>	139.9	84.0	132.4	102.6	216.0	105.5	508.6	32.4	130.3
<b>2010</b>	136.6	86.8	128.2	100.5	228.1	98.0	521.8	45.4	130.4
<b>2011</b>	127.7	87.3	124.6	107.0	213.2	102.4	569.5	53.6	126.6
<b>2010</b>									
Dec Qtr	135.3	87.6	125.8	101.8	217.3	102.3	530.9	49.2	129.0
<b>2011</b>									
Mar Qtr	129.2	84.6	121.5	102.7	213.6	94.8	533.6	49.7	125.0
Jun Qtr	128.8	86.1	124.5	105.0	214.2	99.1	559.1	51.7	126.4
Sep Qtr	127.4	88.6	124.8	110.4	212.1	106.8	584.8	57.5	127.3
Dec Qtr	125.4	89.8	127.7	109.8	212.8	109.1	600.4	55.4	127.8
TOTAL (RATE PER 100,000 ADULT POPULATION)									
<b>2009</b>	189.3	104.5	166.6	155.8	258.5	134.3	669.5	61.6	169.4
<b>2010</b>	184.3	106.3	162.4	153.4	272.3	123.3	672.7	76.0	168.6
<b>2011</b>	176.8	107.6	158.3	156.2	261.2	126.8	742.7	83.7	165.7
<b>2010</b>									
Dec Qtr	180.3	106.7	159.1	153.2	260.1	126.2	683.6	78.1	165.7
<b>2011</b>									
Mar Qtr	178.3	104.2	154.9	154.8	260.3	116.2	702.5	82.9	163.8
Jun Qtr	179.6	106.7	158.3	155.0	262.8	122.0	747.0	84.6	166.4
Sep Qtr	176.4	109.1	158.8	157.4	259.2	134.3	757.1	84.6	166.2
Dec Qtr	173.1	110.5	161.1	157.6	262.6	134.9	764.3	82.6	166.4
Oct	174.6	110.1	158.9	154.2	260.0	135.5	752.4	79.1	165.6
Nov	172.5	110.4	160.2	157.2	263.1	133.4	759.5	81.5	165.9
Dec	172.1	111.1	164.2	161.5	264.8	135.7	781.0	87.2	167.6

(a) Imprisonment rates are based on Estimated Resident Population counts – see Explanatory Notes, paragraphs 17–21.

(b) Excludes ACT prisoners that were held in NSW prisons prior to September quarter 2009 – see Explanatory Notes, paragraph 35.

(c) Includes ACT prisoners held in ACT as well as ACT prisoners that were held in NSW prior to the September quarter 2009 – see Explanatory Notes, paragraph 35.

(d) Data prior to the June quarter 2009 mainly included unsentenced persons in ACT prison custody – see Explanatory Notes, paragraph 35.

## SENTENCED PRISONER RECEPTIONS INTO FULL-TIME CUSTODY(a)

	NSW(b)	Vic.	Qld	SA	WA	Tas.	NT(c)	ACT(d)	Aust.(e)
NUMBER									
<b>2009</b>	8 848	4 190	7 728	1 583	5 372	635	1 674	123	30 153
<b>2010</b>	8 175	4 230	7 711	1 613	5 551	546	2 055	182	30 063
<b>2011</b>	7 627	4 295	8 733	1 685	5 208	610	2 483	219	30 860
<b>2010</b>									
Dec Qtr	2 003	1 011	1 832	420	1 431	133	559	40	7 429
<b>2011</b>									
Mar Qtr	1 848	932	1 952	407	1 363	148	611	37	7 298
Jun Qtr	1 715	1 110	2 134	406	1 151	171	594	60	7 341
Sep Qtr	2 104	1 171	2 253	451	1 239	160	627	62	8 067
Dec Qtr	1 960	1 082	2 394	421	1 455	131	651	60	8 154

- (a) The count of sentenced prisoner receptions is an addition of the total number for each month within the reference period – see Explanatory Notes, paragraphs 2–5.
- (b) Data prior to the September quarter 2009 includes ACT prisoners held in NSW prisons. From the September quarter 2009 ACT prisoners are no longer held in NSW prisons – see Explanatory Notes, paragraph 35.
- (c) A new processing system was introduced in September 2009 resulting in increased counts from the December Quarter 2009 – see Explanatory Notes, paragraph 34.
- (d) Data prior to the September quarter 2009 includes ACT prisoners held in ACT as well as ACT prisoners that were held in NSW – see Explanatory Notes, paragraph 35.
- (e) For the period prior to the September quarter 2009, ACT Prisoners held in NSW prisons are included in both NSW and ACT figures. The sum of the state/territory columns will therefore be greater than the Australian total – see Explanatory Notes, paragraph 35.

	NSW		ACT	
	no.(c)	rate(d)	no.(c)	rate(d)
MALES				
<b>2009</b>	740	27.8	44	33.0
<b>2010</b>	636	23.3	47	34.6
<b>2011</b>	136	4.9	57	40.9
<b>2010</b>				
Dec Qtr	435	15.8	49	35.6
<b>2011</b>				
Mar Qtr	263	9.5	55	39.8
Jun Qtr	144	5.2	50	36.2
Sep Qtr	83	3.0	61	43.6
Dec Qtr	56	2.0	62	43.7
Oct	63	2.3	64	45.7
Nov	55	2.0	61	43.6
Dec	52	1.9	59	42.0
FEMALES				
<b>2009</b>	67	2.4	7	4.9
<b>2010</b>	53	1.9	7	4.7
<b>2011</b>	15	0.5	6	4.1
<b>2010</b>				
Dec Qtr	39	1.4	5	3.2
<b>2011</b>				
Mar Qtr	27	0.9	6	4.1
Jun Qtr	17	0.6	5	3.8
Sep Qtr	9	0.3	7	4.8
Dec Qtr	7	0.2	6	3.8
Oct	8	0.3	7	4.5
Nov	8	0.3	5	3.5
Dec	6	0.2	5	3.5
PERSONS				
<b>2009</b>	806	14.8	51	18.7
<b>2010</b>	689	12.4	54	19.4
<b>2011</b>	151	2.7	63	22.3
<b>2010</b>				
Dec Qtr	475	8.5	54	19.2
<b>2011</b>				
Mar Qtr	289	5.2	61	21.7
Jun Qtr	161	2.9	56	19.8
Sep Qtr	93	1.6	68	23.9
Dec Qtr	64	1.1	67	23.6
Oct	70	1.2	71	24.9
Nov	63	1.1	66	23.3
Dec	58	1.0	64	22.5

- (a) Periodic detention is a form of custody only used in NSW and the ACT. This order type has ceased from October 2010 in New South Wales.
- (b) Imprisonment rates are based on Estimated Resident Population counts – see Explanatory Notes, paragraphs 17–21.
- (c) Average daily number.
- (d) Rate per 100,000 adult population.

	NSW	Vic.	Qld	SA	WA	Tas.	NT	ACT	Aust.
MALES (NUMBER ON FIRST DAY OF MONTH)									
<b>2009</b>	351	89	80	16	51	9	12	—	608
<b>2010</b>	343	102	91	18	80	4	15	1	653
<b>2011</b>	355	100	72	12	155	4	35	1	734
<b>2010</b>									
Dec Qtr	351	111	87	17	113	5	14	1	698
<b>2011</b>									
Mar Qtr	348	98	77	16	137	5	24	1	706
Jun Qtr	352	93	85	14	155	2	39	1	741
Sep Qtr	353	104	94	13	160	3	38	1	766
Dec Qtr	365	105	111	14	169	6	40	2	812
FEMALES (NUMBER ON FIRST DAY OF MONTH)									
<b>2009</b>	68	7	20	4	12	4	2	—	117
<b>2010</b>	68	27	26	3	15	2	2	—	142
<b>2011</b>	65	27	16	2	17	1	1	—	129
<b>2010</b>									
Dec Qtr	67	29	29	2	17	1	1	—	146
<b>2011</b>									
Mar Qtr	63	29	23	3	17	1	—	—	136
Jun Qtr	63	27	23	3	15	—	1	—	133
Sep Qtr	66	26	21	1	16	—	3	—	133
Dec Qtr	68	25	19	1	20	3	2	—	138
PERSONS (NUMBER ON FIRST DAY OF MONTH)									
<b>2009</b>	420	97	100	20	62	12	14	—	726
<b>2010</b>	411	128	117	20	94	7	17	1	795
<b>2011</b>	419	127	88	13	173	5	37	1	863
<b>2010</b>									
Dec Qtr	418	140	115	19	130	6	15	1	844
<b>2011</b>									
Mar Qtr	411	127	100	19	154	5	24	1	841
Jun Qtr	415	121	108	18	171	2	39	1	874
Sep Qtr	419	130	115	14	176	3	41	1	900
Dec Qtr	433	129	130	15	189	9	42	2	950
Oct	431	125	128	15	188	np	42	np	938
Nov	429	132	127	15	190	np	43	np	948
Dec	438	131	136	16	189	np	42	np	963

— nil or rounded to zero (including null cells)

np not available for publication but included in totals where applicable, unless otherwise indicated

- (a) Counts reflect the state or territory in which a prisoner was sentenced, not where they were held in custody.
- (b) Figures for the quarter and year for the first day of the month counts are calculated as a simple average – see Explanatory Notes, paragraph 5.

	NSW(c)	Vic.	Qld	SA	WA	Tas.	NT	ACT(d)	Aust.(e)
MALES (AVERAGE DAILY NUMBER)									
<b>2009</b>	2 033	233	1 435	416	1 635	60	842	23	6 673
<b>2010</b>	2 049	257	1 527	426	1 668	62	871	33	6 892
<b>2011</b>	2 027	270	1 511	441	1 627	63	978	33	6 949
<b>2010</b>									
Dec Qtr	2 004	260	1 508	440	1 579	63	905	35	6 795
<b>2011</b>									
Mar Qtr	2 012	264	1 493	445	1 617	60	943	37	6 872
Jun Qtr	2 077	264	1 517	447	1 618	64	978	32	6 997
Sep Qtr	2 041	276	1 512	433	1 607	61	971	29	6 929
Dec Qtr	1 980	276	1 520	438	1 664	69	1 018	34	6 998
Oct	1 986	269	1 527	437	1 647	66	989	31	6 952
Nov	1 997	275	1 531	442	1 670	67	1 013	34	7 028
Dec	1 957	284	1 503	434	1 674	75	1 052	36	7 016
FEMALES (AVERAGE DAILY NUMBER)									
<b>2009</b>	226	19	123	31	165	7	38	3	612
<b>2010</b>	210	26	136	34	187	7	41	2	643
<b>2011</b>	192	24	152	39	158	8	49	3	625
<b>2010</b>									
Dec Qtr	196	28	141	34	170	8	40	2	618
<b>2011</b>									
Mar Qtr	194	28	157	33	165	6	48	3	634
Jun Qtr	193	24	153	34	157	9	50	3	624
Sep Qtr	197	22	152	38	147	9	50	4	620
Dec Qtr	184	23	147	49	161	8	47	1	621
Oct	184	22	150	46	156	7	53	2	619
Nov	189	24	146	50	156	8	47	—	621
Dec	179	22	146	51	172	8	43	1	622
PERSONS (AVERAGE DAILY NUMBER)									
<b>2009</b>	2 259	252	1 557	447	1 800	66	880	25	7 285
<b>2010</b>	2 258	284	1 663	460	1 855	68	912	35	7 534
<b>2011</b>	2 219	294	1 663	479	1 784	72	1 027	36	7 574
<b>2010</b>									
Dec Qtr	2 200	288	1 649	475	1 749	71	944	37	7 413
<b>2011</b>									
Mar Qtr	2 205	292	1 650	478	1 782	66	991	40	7 506
Jun Qtr	2 270	288	1 671	481	1 775	73	1 029	36	7 621
Sep Qtr	2 238	298	1 663	472	1 754	70	1 021	33	7 549
Dec Qtr	2 164	299	1 667	487	1 825	77	1 065	35	7 619
Oct	2 170	291	1 676	483	1 803	73	1 042	33	7 571
Nov	2 186	299	1 677	492	1 826	74	1 060	35	7 649
Dec	2 136	306	1 649	485	1 846	83	1 095	38	7 638

— nil or rounded to zero (including null cells)

- (a) Excludes persons whose Aboriginal and Torres Strait Islander status is unknown – see Explanatory Notes, paragraph 28.
- (b) For the calculation of quarterly figures – see Explanatory Notes, paragraph 5.
- (c) Data prior to the September quarter 2009 includes ACT prisoners held in NSW prisons. From the September quarter 2009 ACT prisoners are no longer held in NSW prisons – see Explanatory Notes, paragraph 35.

- (d) Data prior to the September quarter 2009 includes ACT prisoners held in ACT as well as ACT prisoners that were held in NSW – see Explanatory Notes, paragraph 35.
- (e) For the period prior to the September quarter 2009, ACT Prisoners held in NSW prisons are included in both NSW and ACT figures. The sum of the state/territory columns will therefore be greater than the Australian total – see Explanatory Notes, paragraph 35.

	NSW(c)	Vic.	Qld	SA	WA	Tas.	NT	ACT(d)	Aust.
MALES (RATE PER 100,000 ADULT ABORIGINAL AND TORRES STRAIT ISLANDER POPULATION)									
<b>2009</b>	4 648.1	2 337.5	3 324.5	4 954.0	7 519.9	1 072.0	4 393.7	1 676.9	4 360.2
<b>2010</b>	4 430.0	2 428.0	3 311.4	4 958.7	7 428.0	1 056.3	4 383.3	2 393.7	4 279.2
<b>2011</b>	4 249.3	2 455.4	3 160.3	4 980.5	7 032.8	1 050.5	4 793.5	2 287.5	4 177.3
<b>2010</b>									
Dec Qtr	4 334.5	2 454.7	3 272.0	5 126.9	7 031.5	1 076.5	4 554.9	2 549.4	4 219.1
<b>2011</b>									
Mar Qtr	4 216.6	2 401.3	3 124.0	5 032.7	6 991.9	991.1	4 625.4	2 561.5	4 130.6
Jun Qtr	4 353.9	2 397.9	3 174.1	5 049.9	6 996.8	1 054.7	4 795.9	2 241.8	4 206.2
Sep Qtr	4 277.4	2 511.4	3 162.3	4 896.9	6 948.3	1 007.2	4 758.6	1 984.5	4 165.0
Dec Qtr	4 149.5	2 509.3	3 180.3	4 944.3	7 193.0	1 147.8	4 990.3	2 367.5	4 206.7
Oct	4 162.1	2 447.3	3 194.1	4 937.3	7 121.5	1 095.4	4 846.5	2 182.5	4 178.7
Nov	4 185.5	2 498.0	3 203.0	4 993.8	7 219.6	1 103.6	4 965.7	2 391.4	4 224.7
Dec	4 102.1	2 582.2	3 144.4	4 903.4	7 238.7	1 242.9	5 157.8	2 529.5	4 217.2
FEMALES (RATE PER 100,000 ADULT ABORIGINAL AND TORRES STRAIT ISLANDER POPULATION)									
<b>2009</b>	492.1	186.9	266.2	343.5	731.4	121.2	188.3	198.2	379.1
<b>2010</b>	434.1	239.4	281.9	366.0	821.7	112.8	191.1	148.8	381.6
<b>2011</b>	385.1	212.6	305.2	406.2	674.7	130.5	222.5	202.9	359.8
<b>2010</b>									
Dec Qtr	405.4	250.5	291.9	372.1	746.9	139.5	184.9	132.6	367.2
<b>2011</b>									
Mar Qtr	388.0	249.8	314.7	347.8	707.2	102.9	216.1	225.4	365.4
Jun Qtr	387.1	210.3	307.6	355.0	672.5	144.4	228.5	226.1	359.3
Sep Qtr	395.8	191.1	303.8	403.5	629.5	152.3	229.5	291.5	357.3
Dec Qtr	369.5	200.0	295.1	516.4	690.3	121.9	215.9	69.3	357.5
Oct	369.8	190.1	299.9	484.9	666.6	113.6	240.8	107.3	356.6
Nov	379.2	212.8	293.5	527.0	668.6	121.7	212.7	18.7	357.5
Dec	359.8	197.5	291.8	537.6	735.0	130.3	194.0	80.3	358.4
PERSONS (RATE PER 100,000 ADULT ABORIGINAL AND TORRES STRAIT ISLANDER POPULATION)									
<b>2009</b>	2 517.7	1 244.6	1 746.1	2 561.0	4 058.0	590.2	2 227.9	933.0	2 316.4
<b>2010</b>	2 387.8	1 314.2	1 762.3	2 581.0	4 104.6	578.0	2 204.0	1 265.6	2 286.9
<b>2011</b>	2 274.3	1 316.8	1 702.4	2 614.0	3 836.3	584.9	2 421.7	1 244.1	2 227.9
<b>2010</b>									
Dec Qtr	2 326.4	1 332.9	1 748.2	2 665.2	3 869.9	601.5	2 283.2	1 334.9	2 250.2
<b>2011</b>									
Mar Qtr	2 259.8	1 309.0	1 689.4	2 609.0	3 832.3	541.7	2 337.5	1 392.2	2 207.9
Jun Qtr	2 326.5	1 287.3	1 710.3	2 621.1	3 817.3	594.0	2 425.9	1 232.9	2 241.8
Sep Qtr	2 293.5	1 333.5	1 702.6	2 572.3	3 771.6	574.6	2 408.6	1 137.1	2 220.6
Dec Qtr	2 217.5	1 336.9	1 706.9	2 653.6	3 923.8	628.6	2 512.9	1 217.2	2 241.1
Oct	2 223.8	1 301.4	1 716.2	2 633.9	3 876.4	598.5	2 456.7	1 143.8	2 227.0
Nov	2 240.1	1 337.9	1 717.2	2 683.0	3 926.1	606.7	2 499.5	1 203.8	2 249.9
Dec	2 189.4	1 371.6	1 687.7	2 644.8	3 969.0	679.8	2 582.2	1 303.6	2 246.7

(a) Rates are based on Aboriginal and Torres Strait Islander adult population estimates and projections for 30 June of the relevant calendar year – see Explanatory Notes, paragraphs 22–25.

(b) Excludes persons whose Aboriginal and Torres Strait Islander status is unknown – see Explanatory Notes, paragraph 28.

(c) Excludes ACT prisoners that were held in NSW prisons prior to September quarter 2009 – see Explanatory Notes, paragraph 35.

(d) Includes ACT prisoners held in ACT as well as ACT prisoners held in NSW – see Explanatory Notes, paragraph 35.



	NSW(c)	Vic.	Qld	SA	WA	Tas.	NT	ACT(d)	Aust.(e)
UNSENTENCED (NUMBER ON FIRST DAY OF MONTH)									
<b>2009</b>	537	52	299	189	297	18	210	15	1 615
<b>2010</b>	529	55	339	197	313	18	209	19	1 678
<b>2011</b>	569	61	335	191	374	14	241	17	1 803
<b>2010</b>									
Dec Qtr	483	53	343	205	298	20	225	19	1 646
<b>2011</b>									
Mar Qtr	543	60	336	191	350	15	237	20	1 752
Jun Qtr	583	60	343	202	382	11	268	19	1 869
Sep Qtr	585	57	343	179	359	13	234	15	1 787
Dec Qtr	567	66	319	190	405	15	226	15	1 802
SENTENCED (NUMBER ON FIRST DAY OF MONTH)									
<b>2009</b>	1 718	198	1 248	262	1 493	49	671	10	5 647
<b>2010</b>	1 744	228	1 322	265	1 549	50	701	16	5 874
<b>2011</b>	1 653	233	1 324	292	1 406	57	780	18	5 763
<b>2010</b>									
Dec Qtr	1 740	234	1 320	275	1 456	53	725	17	5 819
<b>2011</b>									
Mar Qtr	1 639	230	1 296	287	1 414	48	740	21	5 675
Jun Qtr	1 691	229	1 333	284	1 404	61	756	16	5 773
Sep Qtr	1 668	243	1 316	298	1 395	58	804	18	5 801
Dec Qtr	1 615	231	1 349	297	1 413	59	822	17	5 803
TOTAL (NUMBER ON FIRST DAY OF MONTH)									
<b>2009</b>	2 255	250	1 547	450	1 789	66	881	25	7 262
<b>2010</b>	2 273	283	1 661	462	1 862	67	910	35	7 552
<b>2011</b>	2 223	294	1 659	482	1 781	70	1 022	35	7 566
<b>2010</b>									
Dec Qtr	2 224	287	1 663	480	1 754	73	949	35	7 465
<b>2011</b>									
Mar Qtr	2 182	290	1 632	478	1 763	64	977	41	7 427
Jun Qtr	2 274	289	1 676	485	1 786	72	1 024	35	7 642
Sep Qtr	2 254	300	1 659	478	1 754	71	1 038	34	7 588
Dec Qtr	2 181	297	1 667	487	1 818	74	1 048	32	7 605

- (a) Figures for the quarter and year for first day of the month counts are calculated as a simple average – see Explanatory Notes, paragraph 5.
- (b) Excludes persons whose Aboriginal and Torres Strait Islander status is unknown – see Explanatory Notes, paragraph 28.
- (c) Data prior to the September quarter 2009 includes ACT prisoners held in NSW prisons. From the September quarter 2009 ACT prisoners are no longer held in NSW prisons – see Explanatory Notes, paragraph 35.

- (d) Data prior to the September quarter 2009 includes ACT prisoners held in ACT as well as ACT prisoners that were held in NSW – see Explanatory Notes, paragraph 35.
- (e) For the period prior to the September quarter 2009, ACT Prisoners held in NSW prisons are included in both NSW and ACT figures. The sum of the state/territory columns will therefore be greater than the Australian total – see Explanatory Notes, paragraph 35.

	NSW(d)	Vic.	Qld	SA	WA	Tas.	NT	ACT(e)	Aust.
UNSENTENCED (RATE PER 100,000 ADULT ABORIGINAL AND TORRES STRAIT ISLANDER POPULATION)									
<b>2009</b>	599.6	254.9	335.9	1 080.7	667.8	156.4	532.5	548.1	514.1
<b>2010</b>	558.8	254.2	359.8	1 103.8	692.5	148.8	505.7	666.4	509.2
<b>2011</b>	583.5	273.1	343.2	1 038.8	804.3	111.1	569.4	597.9	530.2
<b>2010</b>									
Dec Qtr	511.0	244.1	363.9	1 151.1	659.3	169.3	543.2	672.4	499.5
<b>2011</b>									
Mar Qtr	556.1	270.1	344.0	1 039.7	751.8	125.4	559.8	693.2	515.4
Jun Qtr	597.5	270.1	351.1	1 099.7	822.0	90.0	632.9	658.6	549.7
Sep Qtr	599.9	255.2	351.5	977.9	772.6	106.3	552.7	531.5	525.7
Dec Qtr	580.7	297.0	326.2	1 037.9	870.8	122.7	532.3	508.4	530.2
SENTENCED (RATE PER 100,000 ADULT ABORIGINAL AND TORRES STRAIT ISLANDER POPULATION)									
<b>2009</b>	1 913.8	979.2	1 398.8	1 499.6	3 365.7	432.1	1 697.5	382.4	1 795.1
<b>2010</b>	1 843.9	1 057.3	1 400.9	1 488.9	3 426.2	421.8	1 694.5	582.4	1 783.1
<b>2011</b>	1 694.2	1 044.3	1 355.0	1 589.6	3 023.8	463.4	1 840.5	629.7	1 695.2
<b>2010</b>									
Dec Qtr	1 840.0	1 084.7	1 398.9	1 542.3	3 221.4	448.6	1 752.0	600.4	1 766.2
<b>2011</b>									
Mar Qtr	1 679.7	1 028.2	1 327.1	1 566.9	3 039.4	395.3	1 744.6	727.9	1 669.3
Jun Qtr	1 732.6	1 025.3	1 364.9	1 546.9	3 018.6	496.1	1 782.4	554.6	1 698.2
Sep Qtr	1 709.7	1 089.4	1 347.2	1 626.9	2 998.6	477.0	1 896.4	635.5	1 706.5
Dec Qtr	1 654.7	1 034.2	1 380.6	1 617.8	3 038.7	485.2	1 938.8	600.8	1 707.0
TOTAL (RATE PER 100,000 ADULT ABORIGINAL AND TORRES STRAIT ISLANDER POPULATION)									
<b>2009</b>	2 513.4	1 234.1	1 734.7	2 580.3	4 033.5	588.4	2 230.0	930.5	2 309.1
<b>2010</b>	2 402.8	1 311.4	1 760.7	2 592.8	4 118.7	570.6	2 200.2	1 248.8	2 292.3
<b>2011</b>	2 277.7	1 317.4	1 698.2	2 628.4	3 828.1	574.5	2 410.0	1 227.6	2 225.4
<b>2010</b>									
Dec Qtr	2 351.0	1 328.8	1 762.8	2 693.4	3 880.7	617.9	2 295.1	1 272.8	2 265.7
<b>2011</b>									
Mar Qtr	2 235.8	1 298.4	1 671.0	2 606.6	3 791.2	520.7	2 304.4	1 421.1	2 184.7
Jun Qtr	2 330.1	1 295.4	1 716.1	2 646.6	3 840.7	586.1	2 415.3	1 213.2	2 247.8
Sep Qtr	2 309.6	1 344.6	1 698.7	2 604.8	3 771.2	583.4	2 449.1	1 167.0	2 232.1
Dec Qtr	2 235.5	1 331.2	1 706.9	2 655.7	3 909.5	607.9	2 471.1	1 109.2	2 237.1

(a) Rates are based on the Aboriginal and Torres Strait Islander adult population estimates and projections for 30 June of the relevant calendar year – see Explanatory Notes, paragraphs 22–25.

(b) Figures for the quarter and year for first day of the month counts are calculated as a simple average – see Explanatory Notes, paragraph 5.

(c) Excludes persons whose Aboriginal and Torres Strait Islander status is unknown – see Explanatory Notes, paragraph 28.

(d) Excludes ACT prisoners that were in NSW prisons – see Explanatory Notes, paragraph 35.

(e) Includes ACT prisoners held in ACT as well as ACT prisoners that were held in NSW – see Explanatory Notes, paragraph 35.

## PERSONS IN COMMUNITY-BASED CORRECTIONS(a)(b), By sex

	NSW	Vic.	Qld	SA	WA(c)	Tas.	NT(d)	ACT	Aust.(e)
MALES (NUMBER ON FIRST DAY OF MONTH)									
<b>2009</b>	15 254	6 943	11 629	4 902	4 377	1 015	971	1 167	46 258
<b>2010</b>	14 175	7 573	12 338	4 627	3 882	1 208	983	1 213	46 000
<b>2011</b>	13 689	7 333	12 205	4 551	3 437	1 369	900	1 200	44 682
<b>2010</b>									
Dec Qtr	13 590	7 741	12 520	4 597	3 636	1 329	926	1 213	45 553
<b>2011</b>									
Mar Qtr	13 490	7 429	12 255	4 597	3 489	1 330	918	1 212	44 720
Jun Qtr	13 697	7 322	12 136	4 585	3 474	1 357	864	1 191	44 625
Sep Qtr	13 733	7 270	12 224	4 530	3 424	1 364	897	1 203	44 645
Dec Qtr	13 835	7 310	12 204	4 490	3 361	1 423	918	1 195	44 736
Oct	13 929	7 403	12 247	4 471	3 407	1 401	924	1 207	44 989
Nov	13 818	7 290	12 198	4 517	3 366	1 422	915	1 198	44 724
Dec	13 758	7 236	12 167	4 483	3 309	1 447	916	1 179	44 495
FEMALES (NUMBER ON FIRST DAY OF MONTH)									
<b>2009</b>	2 806	1 533	2 979	1 118	1 215	257	148	227	10 283
<b>2010</b>	2 617	1 671	3 113	1 097	1 180	301	154	229	10 363
<b>2011</b>	2 454	1 671	3 035	1 039	977	357	159	213	9 906
<b>2010</b>									
Dec Qtr	2 489	1 687	3 146	1 092	1 094	331	145	216	10 200
<b>2011</b>									
Mar Qtr	2 449	1 684	3 077	1 060	1 011	345	154	209	9 988
Jun Qtr	2 469	1 666	3 039	1 050	1 002	344	152	214	9 936
Sep Qtr	2 448	1 667	3 024	1 025	955	366	162	214	9 862
Dec Qtr	2 449	1 668	3 001	1 023	939	373	170	214	9 837
Oct	2 465	1 688	2 997	1 015	931	360	163	221	9 840
Nov	2 443	1 666	2 989	1 027	950	376	173	214	9 838
Dec	2 438	1 651	3 016	1 027	936	383	175	207	9 833
PERSONS (NUMBER ON FIRST DAY OF MONTH) (f)									
<b>2009</b>	18 137	8 479	14 608	6 021	5 595	1 272	1 119	1 394	56 625
<b>2010</b>	16 851	9 248	15 451	5 725	5 063	1 510	1 138	1 442	56 426
<b>2011</b>	16 182	9 005	15 240	5 592	4 414	1 726	1 059	1 413	54 630
<b>2010</b>									
Dec Qtr	16 127	9 433	15 665	5 691	4 730	1 660	1 072	1 430	55 807
<b>2011</b>									
Mar Qtr	15 982	9 115	15 332	5 660	4 501	1 675	1 072	1 421	54 757
Jun Qtr	16 210	8 989	15 175	5 637	4 476	1 700	1 016	1 405	54 609
Sep Qtr	16 215	8 937	15 248	5 558	4 380	1 730	1 059	1 417	54 545
Dec Qtr	16 320	8 978	15 205	5 514	4 300	1 796	1 089	1 409	54 611
Oct	16 433	9 091	15 244	5 487	4 338	1 761	1 087	1 428	54 869
Nov	16 298	8 957	15 187	5 545	4 316	1 798	1 088	1 412	54 601
Dec	16 230	8 887	15 183	5 511	4 245	1 830	1 091	1 386	54 363

(a) Figures include persons with breached or suspended orders, with the exception of Vic. and Tas.

(b) Figures for the quarter and year for first day of the month counts are calculated as a simple average – see Explanatory Notes, paragraph 5.

(c) Data are subject to processing delays of 4 to 6 weeks – see Explanatory Notes, paragraph 32.

(d) Excludes bail data for the December quarter 2009 – see Explanatory Notes, paragraph 34.

(e) See footnotes c–d.

(f) Includes persons whose sex is unknown.

## COMMUNITY-BASED CORRECTIONS RATES, By sex(a)

	NSW	Vic.	Qld	SA	WA	Tas.	NT	ACT	Aust.
MALES (RATE PER 100,000 ADULT POPULATION)									
<b>2009</b>	572.5	339.7	697.2	795.2	514.4	545.0	1 166.4	875.1	560.9
<b>2010</b>	518.7	359.8	718.5	737.6	441.9	640.3	1 145.6	887.0	543.0
<b>2011</b>	494.5	342.8	698.3	717.3	382.2	718.9	1 036.4	860.5	519.2
<b>2010</b>									
Dec Qtr	494.2	365.1	723.4	729.0	410.1	701.6	1 069.2	879.9	533.9
<b>2011</b>									
Mar Qtr	489.5	349.1	705.6	727.3	391.7	701.0	1 056.2	876.5	522.5
Jun Qtr	495.4	342.9	695.9	724.0	387.9	713.1	993.5	856.1	519.5
Sep Qtr	495.4	339.2	698.1	713.0	379.5	715.8	1 038.2	859.5	517.9
Dec Qtr	497.6	339.8	693.8	705.1	369.8	745.7	1 057.5	849.8	516.9
Oct	501.0	344.1	696.2	702.1	374.9	734.0	1 064.1	858.6	519.8
Nov	497.0	338.9	693.4	709.3	370.4	745.0	1 053.7	852.2	516.8
Dec	494.8	336.4	691.7	703.9	364.1	758.1	1 054.8	838.7	514.1
FEMALES (RATE PER 100,000 ADULT POPULATION)									
<b>2009</b>	101.3	72.1	175.6	173.5	145.3	130.7	192.6	165.4	121.2
<b>2010</b>	92.3	76.6	178.2	167.6	136.7	151.5	194.3	163.4	119.2
<b>2011</b>	85.4	75.3	170.8	157.2	110.7	177.9	198.1	148.8	112.1
<b>2010</b>									
Dec Qtr	87.3	76.8	178.7	166.1	125.6	165.7	181.7	153.0	116.5
<b>2011</b>									
Mar Qtr	85.7	76.4	174.2	160.8	115.6	172.5	191.2	147.4	113.7
Jun Qtr	86.1	75.3	171.3	158.9	114.0	171.5	189.3	150.1	112.7
Sep Qtr	85.1	74.9	169.8	154.8	108.0	182.2	201.2	149.2	111.4
Dec Qtr	84.9	74.7	167.8	154.2	105.4	185.5	210.9	148.7	110.7
Oct	85.4	75.6	167.6	153.0	104.5	179.0	201.8	153.6	110.7
Nov	84.7	74.6	167.1	154.8	106.7	187.0	214.2	148.7	110.7
Dec	84.5	73.9	168.6	154.8	105.1	190.4	216.7	143.8	110.6
PERSONS (RATE PER 100,000 ADULT POPULATION) (b)									
<b>2009</b>	333.8	203.4	434.3	477.6	331.6	332.4	699.0	515.0	338.5
<b>2010</b>	302.7	215.8	446.1	446.7	290.7	389.5	688.5	520.4	328.7
<b>2011</b>	286.9	206.6	432.3	431.6	247.8	441.3	633.2	500.4	313.2
<b>2010</b>									
Dec Qtr	287.9	218.5	448.8	441.7	269.2	426.7	643.2	511.9	322.8
<b>2011</b>									
Mar Qtr	284.7	210.3	437.6	438.4	254.9	429.8	640.7	507.6	315.7
Jun Qtr	287.8	206.7	431.3	435.7	252.2	435.2	607.4	498.8	313.7
Sep Qtr	287.0	204.6	431.7	428.3	245.1	442.0	635.0	500.1	312.1
Dec Qtr	288.1	204.8	428.6	424.1	238.9	458.3	649.6	495.1	311.3
Oct	290.0	207.4	429.7	422.0	241.1	449.3	648.6	501.9	312.8
Nov	287.7	204.3	428.1	426.4	239.9	458.7	649.2	496.3	311.3
Dec	286.5	202.7	428.0	423.8	235.9	466.9	651.0	487.2	309.9

(a) With the exception of Vic. and Tas., the number of persons in community-based corrections includes those persons with breached or suspended orders.

(b) Includes persons whose sex is unknown.

NSW Vic. Qld SA WA(d) Tas.(e) NT(f) ACT(g) Aust.(h)

RESTRICTED MOVEMENT (NUMBER ON FIRST DAY OF MONTH)

<b>2009</b>	164	34	..	445	4	..	34	..	681
<b>2010</b>	136	38	..	415	1	..	28	..	618
<b>2011</b>	110	37	..	398	—	..	32	..	576
<b>2010</b>									
Dec Qtr	130	40	..	410	—	..	24	..	605
<b>2011</b>									
Mar Qtr	125	41	..	393	—	..	25	..	584
Jun Qtr	121	33	..	395	—	..	29	..	579
Sep Qtr	100	31	..	389	—	..	33	..	553
Dec Qtr	92	44	..	414	—	..	40	..	589
Oct	93	41	..	417	—	..	37	..	588
Nov	88	47	..	411	—	..	40	..	586
Dec	95	43	..	414	—	..	42	..	594

REPARATION-FINE OPTION (NUMBER ON FIRST DAY OF MONTH)

<b>2009</b>	21	1 846	498	581	353	26	..	..	3 326
<b>2010</b>	11	2 274	780	489	304	15	..	..	3 874
<b>2011</b>	2	1 917	824	582	289	11	..	..	3 625
<b>2010</b>									
Dec Qtr	7	2 282	841	489	227	12	..	..	3 858
<b>2011</b>									
Mar Qtr	3	2 100	802	502	206	13	..	..	3 627
Jun Qtr	2	1 948	815	545	289	11	..	..	3 610
Sep Qtr	2	1 791	830	623	329	11	..	..	3 585
Dec Qtr	2	1 828	848	658	332	10	..	..	3 677
Oct	np	1 896	848	649	355	np	..	..	3 759
Nov	np	1 849	841	659	339	np	..	..	3 700
Dec	np	1 738	854	665	303	np	..	..	3 573

REPARATION-COMMUNITY SERVICE (NUMBER ON FIRST DAY OF MONTH)

<b>2009</b>	4 180	741	1 943	1 146	1 449	584	158	190	10 391
<b>2010</b>	3 836	686	2 236	1 113	1 330	752	124	204	10 280
<b>2011</b>	3 050	623	1 977	1 129	1 085	962	138	206	9 169
<b>2010</b>									
Dec Qtr	3 491	657	2 164	1 138	1 196	877	123	192	9 838
<b>2011</b>									
Mar Qtr	3 296	618	2 048	1 148	1 130	877	132	203	9 451
Jun Qtr	3 142	601	2 028	1 151	1 095	948	128	209	9 302
Sep Qtr	2 932	643	1 964	1 131	1 068	991	145	208	9 081
Dec Qtr	2 831	629	1 867	1 085	1 048	1 030	147	203	8 841
Oct	2 935	656	1 903	1 077	1 061	1 016	146	214	9 008
Nov	2 805	633	1 844	1 096	1 043	1 028	146	199	8 794
Dec	2 753	598	1 855	1 082	1 040	1 047	148	197	8 720

.. not applicable

— nil or rounded to zero (including null cells)

np not available for publication but included in totals where applicable, unless otherwise indicated

(a) If a person has more than one type of order, they are counted against each order in this table. If a person has more than one order of the same order type, they are counted only once in the order type.

(b) Figures for the quarter and year for first day of the month counts are calculated as a simple average – see Explanatory Notes, paragraph 5.

(c) Figures include persons with breached or suspended orders, with the exception of Vic. and Tas.

(d) Data are subject to processing delays of 4 to 6 weeks – see Explanatory Notes, paragraph 32.

(e) A trial of new bail orders was conducted in the 2007–08 financial year – see Explanatory Notes, paragraph 33.

(f) Caution should be exercised as a new processing system was introduced by the NT in September 2009 resulting in significant changes to some community-based order counts. Bail counts were unable to be supplied in December quarter 2009 – see Explanatory Notes, paragraph 34.

(g) Data movements for bail orders may have been influenced by data quality checks during the December quarter 2008 – see Explanatory Notes, paragraph 38.

(h) See footnotes d–g.

	NSW	Vic.	Qld	SA	WA(d)	Tas.(e)	NT(f)	ACT(g)	Aust.(h)
SUPERVISION (COMPLIANCE)–PAROLE (NUMBER ON FIRST DAY OF MONTH)									
<b>2009</b>	4 286	1 502	4 173	981	1 173	128	80	100	12 423
<b>2010</b>	4 304	1 533	4 256	990	592	117	98	108	11 998
<b>2011</b>	4 366	1 650	4 441	942	445	102	82	106	12 134
<b>2010</b>									
Dec Qtr	4 330	1 557	4 329	994	514	118	93	116	12 049
<b>2011</b>									
Mar Qtr	4 354	1 604	4 326	964	488	115	89	113	12 051
Jun Qtr	4 318	1 636	4 371	940	462	104	85	107	12 024
Sep Qtr	4 321	1 668	4 514	928	434	94	70	106	12 135
Dec Qtr	4 471	1 693	4 552	938	396	94	85	98	12 327
Oct	4 443	1 700	4 577	924	406	86	81	100	12 317
Nov	4 445	1 691	4 536	945	402	96	88	99	12 302
Dec	4 526	1 687	4 542	945	381	100	85	95	12 361

	NSW	Vic.	Qld	SA	WA(d)	Tas.(e)	NT(f)	ACT(g)	Aust.(h)
SUPERVISION (COMPLIANCE)–BAIL (NUMBER ON FIRST DAY OF MONTH)									
<b>2009</b>	207	..	..	829	310	..	na	206	1 568
<b>2010</b>	199	..	..	738	304	..	24	251	1 516
<b>2011</b>	191	..	..	607	357	..	12	269	1 436
<b>2010</b>									
Dec Qtr	204	..	..	656	315	..	20	257	1 452
<b>2011</b>									
Mar Qtr	185	..	..	650	317	..	13	264	1 429
Jun Qtr	198	..	..	627	351	..	14	267	1 457
Sep Qtr	194	..	..	593	372	..	14	276	1 449
Dec Qtr	186	..	..	557	388	..	7	270	1 409
Oct	179	..	..	555	387	..	6	273	1 400
Nov	195	..	..	554	384	..	7	279	1 419
Dec	184	..	..	563	394	..	8	259	1 408

	NSW	Vic.	Qld	SA	WA(d)	Tas.(e)	NT(f)	ACT(g)	Aust.(h)
SUPERVISION (COMPLIANCE)–SENTENCED PROBATION (NUMBER ON FIRST DAY OF MONTH)									
<b>2009</b>	11 073	4 645	9 123	3 185	3 616	735	867	1 139	34 383
<b>2010</b>	9 923	5 032	9 512	3 027	3 620	915	926	1 154	34 108
<b>2011</b>	9 524	5 083	9 265	2 875	3 167	991	839	1 086	32 831
<b>2010</b>									
Dec Qtr	9 386	5 240	9 690	2 973	3 456	1 003	884	1 114	33 747
<b>2011</b>									
Mar Qtr	9 271	5 073	9 453	2 959	3 316	1 023	870	1 088	33 053
Jun Qtr	9 575	5 058	9 232	2 905	3 208	1 023	799	1 082	32 881
Sep Qtr	9 646	5 088	9 189	2 840	3 114	983	835	1 087	32 783
Dec Qtr	9 605	5 112	9 185	2 798	3 031	936	853	1 086	32 606
Oct	9 705	5 117	9 168	2 798	3 034	950	861	1 088	32 721
Nov	9 627	5 069	9 210	2 814	3 040	942	849	1 089	32 640
Dec	9 484	5 150	9 177	2 782	3 019	916	848	1 082	32 458

.. not applicable

na not available

- (a) If a person has more than one type of order, they are counted against each order in this table. If a person has more than one order of the same order type, they are counted only once in the order type.
- (b) Figures for the quarter and year for first day of the month counts are calculated as a simple average – see Explanatory Notes, paragraph 5.
- (c) Figures include persons with breached or suspended orders, with the exception of Vic. and Tas.
- (d) Data are subject to processing delays of 4 to 6 weeks – see Explanatory Notes, paragraph 32.

(e) A trial of new bail orders was conducted in the 2007–08 financial year – see Explanatory Notes, paragraph 33.

(f) Caution should be exercised as a new processing system was introduced by the NT in September 2009 resulting in significant changes to some community-based order counts. Bail counts were unable to be supplied in December quarter 2009 – see Explanatory Notes, paragraph 34.

(g) Data movements for bail orders may have been influenced by data quality checks during the December quarter 2008 – see Explanatory Notes, paragraph 38.

(h) See footnotes d–g.

PERSONS IN COMMUNITY-BASED CORRECTIONS(a)(b), By Aboriginal and Torres Strait Islander status

	NSW	Vic.	Qld	SA	WA(c)(d)	Tas.	NT(e)	ACT	Aust.(f)
ABORIGINAL AND TORRES STRAIT ISLANDER (NUMBER ON FIRST DAY OF MONTH)									
<b>2009</b>	3 169	439	2 823	1 001	1 949	161	860	153	10 555
<b>2010</b>	3 112	512	3 242	1 026	1 687	192	819	149	10 740
<b>2011</b>	3 165	519	3 349	953	1 486	227	797	162	10 658
<b>2010</b>									
Dec Qtr	3 136	536	3 375	1 012	1 552	209	785	155	10 760
<b>2011</b>									
Mar Qtr	3 082	541	3 364	956	1 446	220	802	160	10 570
Jun Qtr	3 122	516	3 336	953	1 511	217	772	148	10 575
Sep Qtr	3 196	496	3 335	958	1 498	230	800	166	10 678
Dec Qtr	3 261	523	3 363	946	1 489	240	812	175	10 809
Oct	3 252	514	3 366	943	1 509	243	812	174	10 813
Nov	3 257	523	3 347	963	1 491	240	815	176	10 812
Dec	3 274	533	3 375	931	1 467	238	810	174	10 802
NON-INDIGENOUS (NUMBER ON FIRST DAY OF MONTH)									
<b>2009</b>	13 119	7 220	11 785	4 956	3 626	1 067	258	1 166	43 197
<b>2010</b>	12 235	8 295	12 208	4 651	3 366	1 275	319	1 174	43 523
<b>2011</b>	12 347	8 222	11 891	4 579	2 922	1 469	262	1 227	42 918
<b>2010</b>									
Dec Qtr	12 146	8 501	12 290	4 647	3 171	1 419	287	1 141	43 602
<b>2011</b>									
Mar Qtr	12 145	8 293	11 968	4 658	3 041	1 422	270	1 248	43 045
Jun Qtr	12 366	8 188	11 839	4 622	2 964	1 448	244	1 228	42 900
Sep Qtr	12 406	8 200	11 913	4 532	2 879	1 475	259	1 221	42 886
Dec Qtr	12 469	8 206	11 842	4 504	2 804	1 529	276	1 213	42 843
Oct	12 549	8 309	11 878	4 477	2 826	1 492	275	1 241	43 047
Nov	12 470	8 196	11 840	4 519	2 818	1 530	273	1 213	42 859
Dec	12 389	8 112	11 808	4 516	2 768	1 564	281	1 186	42 624
UNKNOWN (NUMBER ON FIRST DAY OF MONTH)									
<b>2009</b>	1 849	820	—	64	20	44	1	75	2 873
<b>2010</b>	1 504	441	—	47	10	43	—	119	2 164
<b>2011</b>	670	264	—	60	6	30	—	23	1 054
<b>2010</b>									
Dec Qtr	846	396	—	32	7	31	—	134	1 445
<b>2011</b>									
Mar Qtr	755	281	—	46	14	33	—	13	1 142
Jun Qtr	722	284	—	62	2	35	—	30	1 134
Sep Qtr	614	241	—	67	3	26	—	30	981
Dec Qtr	590	249	—	65	7	27	—	21	959
Oct	632	268	—	67	3	26	—	13	1 009
Nov	571	238	—	63	7	28	—	23	930
Dec	567	242	—	64	10	28	—	26	937

— nil or rounded to zero (including null cells)

(a) Figures include persons with breached or suspended orders, with the exception of Vic. and Tas.

(b) Figures for the quarter and year for first day of the month counts are calculated as a simple average – see Explanatory Notes, paragraph 5.

(c) Data is subject to processing delays of 4 to 6 weeks – see Explanatory Notes, paragraph 32.

(d) Aboriginal and Torres Strait Islander status is determined using a combination of self-identification, previously collected information and judgement by the recording officer – see Explanatory Notes, paragraphs 26–28.

(e) Excludes bail data for the December quarter 2009 – see Explanatory Notes, paragraph 34.

(f) See footnotes c–e.

	NSW	Vic.	Qld	SA	WA(c)(d)	Tas.	NT(e)	ACT	Aust.(f)
PERSONS (NUMBER ON FIRST DAY OF MONTH)									
<b>2009</b>	18 137	8 479	14 608	6 021	5 595	1 272	1 119	1 394	56 625
<b>2010</b>	16 851	9 248	15 451	5 725	5 063	1 510	1 138	1 442	56 426
<b>2011</b>	16 182	9 005	15 240	5 592	4 414	1 726	1 059	1 413	54 630
<b>2010</b>									
Dec Qtr	16 127	9 433	15 665	5 691	4 730	1 660	1 072	1 430	55 807
<b>2011</b>									
Mar Qtr	15 982	9 115	15 332	5 660	4 501	1 675	1 072	1 421	54 757
Jun Qtr	16 210	8 989	15 175	5 637	4 476	1 700	1 016	1 405	54 609
Sep Qtr	16 215	8 937	15 248	5 558	4 380	1 730	1 059	1 417	54 545
Dec Qtr	16 320	8 978	15 205	5 514	4 300	1 796	1 089	1 409	54 611
Oct	16 433	9 091	15 244	5 487	4 338	1 761	1 087	1 428	54 869
Nov	16 298	8 957	15 187	5 545	4 316	1 798	1 088	1 412	54 601
Dec	16 230	8 887	15 183	5 511	4 245	1 830	1 091	1 386	54 363

- (a) Figures include persons with breached or suspended orders, with the exception of Vic. and Tas.
- (b) Figures for the quarter and year for first day of the month counts are calculated as a simple average – see Explanatory Notes, paragraph 5.
- (c) Data is subject to processing delays of 4 to 6 weeks – see Explanatory Notes, paragraph 32.

- (d) Aboriginal and Torres Strait Islander status is determined using a combination of self-identification, previously collected information and judgement by the recording officer – see Explanatory Notes, paragraphs 26–28.
- (e) Excludes bail data for the December quarter 2009 – see Explanatory Notes, paragraph 34.
- (f) See footnotes c–e.



PROPORTION OF PERSONS IN COMMUNITY-BASED CORRECTIONS(a)(b), By Aboriginal and Torres Strait Islander status

	NSW	Vic.	Qld	SA	WA(c)(d)	Tas.	NT(e)	ACT	Aust.(f)
ABORIGINAL AND TORRES STRAIT ISLANDER (%)									
<b>2009</b>	17.5	5.2	19.3	16.6	34.8	12.7	76.8	11.0	18.6
<b>2010</b>	18.5	5.5	21.0	17.9	33.3	12.7	72.0	10.3	19.0
<b>2011</b>	19.6	5.8	22.0	17.0	33.7	13.1	75.2	11.5	19.5
<b>2010</b>									
Dec Qtr	19.4	5.7	21.5	17.8	32.8	12.6	73.2	10.9	19.3
<b>2011</b>									
Mar Qtr	19.3	5.9	21.9	16.9	32.1	13.1	74.8	11.2	19.3
Jun Qtr	19.3	5.7	22.0	16.9	33.7	12.8	76.0	10.5	19.4
Sep Qtr	19.7	5.5	21.9	17.2	34.2	13.3	75.5	11.7	19.6
Dec Qtr	20.0	5.8	22.1	17.1	34.6	13.4	74.6	12.4	19.8
Oct	19.8	5.7	22.1	17.2	34.8	13.8	74.7	12.2	19.7
Nov	20.0	5.8	22.0	17.4	34.5	13.3	74.9	12.5	19.8
Dec	20.2	6.0	22.2	16.9	34.6	13.0	74.2	12.6	19.9
NON-INDIGENOUS (%)									
<b>2009</b>	72.3	85.2	80.7	82.3	64.8	83.9	23.1	83.7	76.3
<b>2010</b>	72.6	89.7	79.0	81.3	66.5	84.4	28.0	81.4	77.1
<b>2011</b>	76.3	91.3	78.0	81.9	66.2	85.1	24.8	86.9	78.6
<b>2010</b>									
Dec Qtr	75.3	90.1	78.5	81.7	67.0	85.5	26.8	79.8	78.1
<b>2011</b>									
Mar Qtr	76.0	91.0	78.1	82.3	67.6	84.9	25.2	87.8	78.6
Jun Qtr	76.3	91.1	78.0	82.0	66.2	85.2	24.0	87.4	78.6
Sep Qtr	76.5	91.8	78.1	81.6	65.7	85.2	24.5	86.1	78.6
Dec Qtr	76.4	91.4	77.9	81.7	65.2	85.1	25.4	86.1	78.5
Oct	76.4	91.4	77.9	81.6	65.1	84.7	25.3	86.9	78.5
Nov	76.5	91.5	78.0	81.5	65.3	85.1	25.1	85.9	78.5
Dec	76.3	91.3	77.8	81.9	65.2	85.5	25.8	85.6	78.4
UNKNOWN (%)									
<b>2009</b>	10.2	9.7	—	1.1	0.4	3.4	0.1	5.3	5.1
<b>2010</b>	8.9	4.8	—	0.8	0.2	2.9	—	8.2	3.8
<b>2011</b>	4.1	2.9	—	1.1	0.1	1.8	—	1.7	1.9
<b>2010</b>									
Dec Qtr	5.2	4.2	—	0.6	0.1	1.9	—	9.3	2.6
<b>2011</b>									
Mar Qtr	4.7	3.1	—	0.8	0.3	2.0	—	0.9	2.1
Jun Qtr	4.5	3.2	—	1.1	—	2.0	—	2.1	2.1
Sep Qtr	3.8	2.7	—	1.2	0.1	1.5	—	2.1	1.8
Dec Qtr	3.6	2.8	—	1.2	0.2	1.5	—	1.5	1.8
Oct	3.8	2.9	—	1.2	0.1	1.5	—	0.9	1.8
Nov	3.5	2.7	—	1.1	0.2	1.6	—	1.6	1.7
Dec	3.5	2.7	—	1.2	0.2	1.5	—	1.9	1.7

— nil or rounded to zero (including null cells)

- (a) With the exception of Vic. and Tas., includes persons with breached or suspended orders.  
 (b) Figures for the quarter and year for first day of the month counts are calculated as a simple average – see Explanatory Notes, paragraph 5.  
 (c) Data is subject to processing delays of 4 to 6 weeks – see Explanatory Notes, paragraph 32.

- (d) Aboriginal and Torres Strait Islander status is determined using a combination of self-identification, previously collected information and judgement by the recording officer – see Explanatory Notes, paragraphs 26–28.  
 (e) Excludes bail orders for the December quarter 2009 – see Explanatory Notes, paragraph 34.  
 (f) See footnotes c–e.

## EXPLANATORY NOTES

### INTRODUCTION

**1** This publication presents statistical series about persons either held in adult corrective services custody or who are serving adult community-based orders in Australia. It contains data on the number of persons in custody by sex, Aboriginal and Torres Strait Islander status, type of custody, legal status and sentence type; the number of sentenced persons received into corrective services custody each month; the number of federal prisoners; and data about the number of persons in community-based corrections by sex, Aboriginal and Torres Strait Islander status and type of order.

**2** Statistics presented in this publication are compiled in three ways:

- Average daily prisoner population: Counts taken on each day of the month are summed and divided by the number of days in that month to determine the average daily prisoner population for that month. The average daily periodic detainee population is a count of persons on periodic detention on each day a centre is open, divided by the number of days a centre is open.
- Sentenced prisoner reception figures: Counts are provided each month on the number of receptions where a prisoner is received as a sentenced prisoner. This includes prisoners with a change of legal status from unsentenced to sentenced.
- First day of the month prisoner population: Counts of prisoners and persons serving community-based corrections orders, taken on or near the first day of the month (see paragraphs 4 and 5).

**3** Although national standards and classifications are used in the compilation of these statistics, some discrepancies remain between the states and territories. These are due to legislative and procedural differences between jurisdictions and the way that these differences are reflected in agencies' administrative data systems. As part of its quality assurance strategy, the ABS is working with corrective services agencies to minimise the effect of these differences.

### REFERENCE PERIOD

**4** The reference period for average daily prisoner population statistics and sentenced reception counts is the complete reference month. The reference date for all other figures is the first day of the reference month. However, not all states and territories report strictly according to this 'first day of the month' rule:

- The Western Australian and Australian Capital Territory prisoners in New South Wales prisons populations are counted as at midnight on the last day of the month. In these cases the figures provided are taken to represent the prison population at the beginning of the following month.

**5** Calculation of figures for the entire quarter and entire year varies depending on the counting unit and method of counting prisoners:

- Average daily figures: Figures are calculated by weighting the average according to the number of days in each month, quarter or year.
- First day of the month: Figures are simple averages. For quarterly figures, the sum of the monthly data is divided by three; for yearly figures, the figures for each month are added and the total divided by twelve.
- Sentenced receptions: Figures are totals of each month.
- These figures may be subject to rounding.

### SCOPE

**6** The scope of the statistics in this publication includes all persons remanded or sentenced to adult custodial facilities (including Work Camps and Community Custody Centres in Queensland), or who are serving adult community-based orders in each state and territory in Australia.

## EXPLANATORY NOTES *continued*

### SCOPE *continued*

**7** Counts of prisoners in the following custodial facilities are included in the collection:

- gazetted prisons in all jurisdictions;
- periodic detention centres in New South Wales and the Australian Capital Territory;
- community custody centres and work camps in Queensland;
- cells in court complexes administered by corrective services in New South Wales;
- transitional centres in New South Wales; and
- lock-ups in Western Australia operated by the police but designated as a prison by the Chief Executive Officer of Corrective Services.

**8** The prisons and community-based corrections collection excludes the following custodial facilities:

- police lockups, police prisons and cells in court complexes not administered and controlled by corrective services;
- gazetted police prisons in the Northern Territory;
- juvenile detention centres, including those under the authority of adult corrective services;
- immigration detention centres; and
- military prisons.

**9** This collection includes counts of persons remanded or sentenced to adult custody facilities, or directed to serve community-based orders administered by adult corrective services agencies. In all states and territories except Queensland, persons are considered adults if aged 18 years and over. In Queensland persons are considered adults if aged 17 years and over. The vast majority of persons counted in the collection are adults. However, juveniles may be included in exceptional circumstances.

**10** Since December 2004, the Kariong Juvenile Correctional Centre in New South Wales has operated under the authority of adult corrective services. The population at Kariong Juvenile Correctional Centre may include adult persons as well as juveniles. New South Wales includes juveniles based in Kariong in this collection, however, this facility accounts for less than 0.5% of the New South Wales prisoner population.

**11** Federal prisoners include those persons charged and sentenced under a Commonwealth statute, and those persons who are charged and sentenced under the laws of another country but transferred to an Australian prison to serve their sentence under the *International Transfer of Prisoners Act 1997* (Cwlth). To give practical effect to this legislation in Australia, the framework was introduced in January 2003. For the purposes of this publication, federal sentenced prisoners are those persons who are recognised by the Criminal Law Division of the Australian Government Attorney-General's Department as having been charged and sentenced under a Commonwealth statute, or transferred from another country to serve their sentence in Australia.

**12** With the exception of Victoria and Tasmania, community-based corrections includes those persons with breached or suspended orders.

### DATA SOURCE

**13** Statistics in this publication are derived from information provided to the ABS from administrative records held by corrective services agencies within each state and territory. Statistics on federal prisoners are derived from records kept by the Criminal Law Division of the Australian Government Attorney-General's Department.

### COUNTING RULES

**14** Statistics for persons held in custody are presented by the state or territory in which they were held, however, this may not be the same as the original sentencing jurisdiction. The only exception to this are data for federal sentenced prisoners. These are presented by the state or territory in which they were sentenced, not where they were held in custody.

## EXPLANATORY NOTES *continued*

### COUNTING RULES *continued*

**15** Sentenced prisoners who have other offences that are unsentenced are counted as sentenced. Prisoners may be unsentenced because they are awaiting the outcome of their trial, convicted but awaiting sentence, or awaiting deportation.

**16** If an offender has two or more different types of community-based orders operating simultaneously, then each order will be counted. If two or more community-based orders are of the same type, these orders together will only be counted as one order.

### RATES

**17** Imprisonment and community-based corrections rates enable comparisons of prisoner numbers to be made across states and territories. Prisoner and community-based corrections rates are expressed per 100,000 adult population. Imprisonment rates are calculated based on two different counting concepts (average daily and first day of the month), as a result there may be variations in imprisonment rates presented in this publication.

**18** In this publication the population figures used in the calculation of rates are for persons aged 18 years and over for all states and territories except Queensland where the population is persons aged 17 years and over (see paragraph 9).

**19** Rates for the total adult prisoner population and persons in community-based corrections are calculated using the estimated resident population (ERP) for each of the states and territories. All estimates for the Australian Capital Territory exclude Jervis Bay Territory. All estimates for Australia exclude the external territories of Christmas Island and the Cocos (Keeling) Island. As the population changes over time the denominator used for the calculation of rates varies, depending on the reference period. The most current ERP data available at the time of publication are used to calculate rates as follows:

- for the March quarter, ERP is from the previous September quarter;
- for the June quarter, ERP is from the previous December quarter;
- for the September quarter, ERP is from the previous March quarter;
- for the December quarter, ERP is from the previous June quarter; and
- annual rates are an average of the rates of the contributing quarters.

**20** The ERP series are revised every five years to incorporate additional information available from the latest Census of Population and Housing. The rates per 100,000 adult persons presented in this issue have been calculated using different ERP counts as follows:

- Rates from the June 2007 quarter (excluding Aboriginal and Torres Strait Islander rates) are calculated using rebased data from the intercensal period (2001-2006) sourced from the 2006 Census of Population and Housing;
- All other rates (excluding Aboriginal and Torres Strait Islander rates) are calculated using ERP data based on the 2001 Census of Population and Housing.

**21** For population estimates and information on the methodology used to produce the ERP, see *Australian Demographic Statistics* (cat. no. 3101.0).

### *Aboriginal and Torres Strait Islander imprisonment rates*

**22** Rates for the Aboriginal and Torres Strait Islander adult population are calculated using rebased estimates (for the period 1986 - 2006) and projections (2007 - 2021) of the Aboriginal and Torres Strait Islander population. These data are based on data from the 2006 Census of Population and Housing and use assumptions about future fertility, paternity, life expectancy at birth and migration. For more information see *Experimental Estimates and Projections, Aboriginal and Torres Strait Islander Australians, 1991 to 2021* (cat. no. 3238.0).

## EXPLANATORY NOTES *continued*

*Aboriginal and Torres Strait  
Islander imprisonment rates  
continued*

**23** The projections used in this publication are based on Series B projections for 30 June of the relevant calendar year. Series B is one of two main projection series (Series A and B) that have been published for the years 2007 to 2021. Both of these series assume an annual decline of 0.5% in fertility rates; an annual increase of 1% in paternity rates; constant interstate migration at levels observed in the 2006 Census; and zero net overseas migration with no arrivals and no departures. Further, two different assumptions were made about future Aboriginal and Torres Strait Islander life expectancy at birth for Australia:

- In Series A, Aboriginal and Torres Strait Islander life expectancy at birth will remain constant; and
- In Series B, Aboriginal and Torres Strait Islander life expectancy at birth will increase by 0.3 years per year for both males and females.

**24** The impact of re-basing Aboriginal and Torres Strait Islander imprisonment rate data using Series B projections, instead of the previous "low series" of projections, is minimal at the national level. Differences of no greater than 5% are seen in the state and territory data, and generally the result has been a decrease in the imprisonment rate. This is because the assumptions used by Series B result in higher population estimates and projections than those through the use of the previous "low series".

**25** The decision to use Series B as the denominator in the calculation of Aboriginal and Torres Strait Islander imprisonment rates followed consultation with the National Corrective Services Statistics Advisory Group and other stakeholders.

ABORIGINAL AND TORRES  
STRAIT ISLANDER  
IDENTIFICATION

**26** The ABS conducts an ongoing programme of quality assurance to monitor and improve the quality of Aboriginal and Torres Strait Islander Status data in Corrective Services agencies (both custodial and community-based corrections). Whilst the ABS has published Aboriginal and Torres Strait Islander status data in Corrective Services collections for a number of years, ongoing quality assurance enables better understanding of accuracy over time.

**27** The quality of the Aboriginal and Torres Strait Islander status information collected and recorded in Corrective Service agencies is assessed against the ABS Standard Indigenous Question (SIQ). The SIQ is based upon self-identification by the individual who comes into contact with Corrective Service agencies. In 2010, the ABS conducted a comprehensive quality assurance review across all jurisdictions and sectors of the criminal justice system to confirm our understanding of the processes involved in recording Aboriginal and Torres Strait Islander status and the barriers to producing quality statistics. The results of the review concluded that corrective services data are of acceptable quality and comparability for all states and territories, with the exception of Western Australia. In Western Australia, Aboriginal and Torres Strait Islander status is determined by asking two questions rather than asking the ABS SIQ at the first meeting. This is at the discretion of the case manager and in some instances Aboriginal and Torres Strait Islander status may be recorded from information previously collected or otherwise determined by the case manager. For this reason, caution should be exercised when comparing Aboriginal and Torres Strait Islander data across the states and territories.

**28** Some persons in custody are recorded with an unknown Aboriginal and Torres Strait Islander status on the information systems of corrective agencies as their status has not been able to be obtained. Persons with Aboriginal and Torres Strait Islander status unknown are excluded from tables 13–16. Counts of persons with an unknown Aboriginal and Torres Strait Islander status are included in all other tables. Unknowns account for just over 2% of all records.

## EXPLANATORY NOTES *continued*

### SIGNIFICANT EVENTS

#### *New South Wales*

**29** In March 2008, the administrative classification of the Wellington Correctional Centre was altered. The classification was changed from 'open' to 'secure' for 75% of the facility to reflect the change in the profile of inmates held. As such, the proportion of persons in secure and open custody altered in the March quarter 2008 compared to previous quarters.

#### *Western Australia*

**30** Prior to the September quarter 2009, Western Australian data on type of custody are not comparable. Data prior to this period were based on a prisoner's security rating rather than the rating of the prison (see Glossary). As a result, prisoners with a minimum security rating and located in a medium or maximum security prison were classified as open custody. Data for prisoners in secure custody are understated, whilst data for persons in open custody are overstated prior to September quarter 2009.

**31** The large increase in prisoners from early 2009 was due to fewer offenders being granted parole by the Prisoner Review Board, increased incarcerations by the courts and the impact of the Truth in Sentencing legislation. Implemented on 23 September 2008, the Truth in Sentencing legislation refers to the *Sentencing Act* (WA) 1995, Transitional Provisions which removes the automatic 1/3 discount for each and every criminal offence that appears in WA Statute books.

**32** Data for community-based correction orders extracted from the Western Australian information system are subject to data processing time lags of 4-6 weeks. Fine option orders are most likely to be impacted by the lag, with approximately 10% of each month's data entry delayed.

#### *Tasmania*

**33** Tasmania trialled new orders for bail, suspended sentences and drug treatment as part of the Court Mandated Diversion program (CMD) from 1 July 2007 to 30 June 2008. Counts for supervision (compliance) - bail orders during the September quarter 2008 represent the transitional period concluding this trial. These orders are now being handled by alternative service providers and are therefore no longer included.

#### *Northern Territory*

**34** In September 2009 a new offender management system was implemented - the Integrated Offender Management System (IOMS). The transition to the new system resulted in a number of data impacts, and as such caution should be exercised in comparing current data with that prior to December 2009. The impacts included:

- significantly increased counts for sentenced receptions and some community-based orders following the introduction of the system,
- overstated community-based orders for the period from December quarter 2009 to September quarter 2010 (due to difficulties in identifying persons who have been in breach for 3 years or more), and
- bail counts for December quarter 2009 were also unable to be supplied, impacting the territory totals for community-based orders and to a lesser extent on the Australian total.

#### *Australian Capital Territory*

**35** From the September quarter 2009, all ACT sentenced and unsentenced prisoners are held within the ACT. From the June quarter 2009 all sentenced prisoner receptions were detained within the Australian Capital Territory. For this same period nearly all ACT prisoners held in New South Wales prisons were transferred to a new custodial facility (Alexander Maconochie Centre) which commenced taking prisoners in March 2009. This prison is a secure facility. Between 2000 and March quarter 2009, persons sentenced to full-time custody by the Australian Capital Territory were usually held in New South Wales prisons as the Australian Capital Territory only had two remand centres for unsentenced prisoners and a periodic detention centre. Unsentenced Australian Capital Territory prisoners may have also been detained in New South Wales prisons. The exception was for persons sentenced for fine default; these prisoners were detained in Australian Capital Territory remand.

## EXPLANATORY NOTES *continued*

Australian Capital Territory  
*continued*

**36** A backlog of prisoners sentenced in the ACT awaiting transfer to NSW remained in the ACT during the transition of the opening of the new ACT prison. These sentenced prisoners were classified as 'unsentenced' prior to the December quarter 2009. With the opening of the new prison, sentenced reception counts better reflect accurate recording of sentenced and unsentenced prisoners, resulting in an increase in sentenced prisoner receptions from the September quarter 2009.

**37** Figures relating to prisoners from the ACT held in NSW prior to September quarter 2009 have been presented in this publication as ACT prisoner counts rather than NSW.

**38** The decline in supervision bail compliance orders in December 2008 may have been partly influenced by data quality checks. Records with no completion or expiry date that should have been finalised on the system were marked as completed during this period.

**39** Imprisonment rate data for the Australian Capital Territory are calculated on the basis of the total number of Australian Capital Territory prisoners (i.e. Australian Capital Territory prisoners that were held in New South Wales prisons, prior to September quarter 2009, and Australian Capital Territory prisoners held in the Australian Capital Territory) divided by the estimated resident Australian Capital Territory adult population and multiplied by 100,000. For New South Wales, the imprisonment rate is based on the count of New South Wales prisoners, excluding Australian Capital Territory prisoners held in New South Wales prisons prior to September quarter 2009, divided by the estimated resident New South Wales adult population and multiplied by 100,000. Time series data have also been derived on this basis.

### RELATED PUBLICATIONS

*ABS Publications*

- 40** Other ABS publications that may be of interest include:
- Australian Demographic Statistics* (cat. no. 3101.0) – issued quarterly
  - Australian Social Trends* (cat. no. 4102.0) – issued quarterly
  - Australian and New Zealand Standard Offence Classification (third edition)* (cat. no. 1234.0) – released 2 June 2011
  - Crime Victimisation, Australia* (cat. no. 4530.0) – issued annually
  - Criminal Courts, Australia* (cat. no. 4513.0) – issued annually
  - Directory of Family and Domestic Violence Statistics, 2011* (cat. no. 4533.0) – released 22 November 2011
  - Experimental Estimates and Projections, Aboriginal and Torres Strait Islander Australians, 1991 to 2021* (cat. no. 3238.0) – released 8 September 2009
  - Federal Defendants, Selected States and Territories*, (cat. no. 4515.0) – issued annually
  - General Social Survey: Summary Results, Australia* (cat. no. 4159.0) – irregular
  - In Focus: Crime and Justice Statistics* (cat. no. 4524.0) – irregular
  - Information Paper: Measuring Crime Victimisation, Australia: The Impact of Different Collection Methodologies* (cat. no. 4522.0.55.001) – single issue
  - Information Paper: National Criminal Justice Statistical Framework* (cat. no. 4525.0) – single issue
  - Information Paper: National Information Development Plan for Crime and Justice Statistics 2005* (cat. no. 4520.0) – single issue
  - Measures of Australia's Progress* (cat. no. 1370.0) – released 15 September 2010
  - Measuring Victims of Crime: A Guide to using Administrative and Survey data* (cat. no. 4500.0.55.001) – single issue
  - Personal Fraud Survey* (cat. no. 4528.0) – released 27 June 2008
  - Personal Safety Survey* (cat. no. 4906.0) – released 21 August 2006
  - Prisoners in Australia* (cat. no. 4517.0) – issued annually
  - Recorded Crime – Victims, Australia* (cat. no. 4510.0) – issued annually
  - Recorded Crime – Offenders, Selected states and territories* (cat. no. 4519.0) – issued annually

## EXPLANATORY NOTES *continued*

### ABS Publications *continued*

*Sexual Assault in Australia: A Statistical Overview* (cat. no. 4523.0) – single issue

**41** Current publications and other products released by the ABS are available from the ABS website <<http://www.abs.gov.au>>. The ABS also issues a daily Release Advice on the website that details products to be released in the week ahead. The National Centre for Crime and Justice Statistics releases *Crime and Justice News* (cat. no. 4500.0), an annual newsletter that is published on the ABS website. The Centre can be contacted by email through <[crime.justice@abs.gov.au](mailto:crime.justice@abs.gov.au)>.

### Non-ABS Publications

**42** Non-ABS sources that may be of interest include:

Australian Institute of Criminology, *List of Publications* – irregular

<<http://www.aic.gov.au>>

Crime Research Centre, University of Western Australia, *Crime and Justice Statistics for Western Australia* – issued annually

<<http://www.crc.law.uwa.edu.au>>

Department of Corrective Services, New South Wales, *NSW Inmate Census* – irregular

<<http://www.dcs.nsw.gov.au>>

Department of Justice, Northern Territory, *Northern Territory Quarterly Crime and Justice Statistics* – issued quarterly

<<http://www.nt.gov.au/justice/>>

Department of Justice, Victoria, *Statistical Profile of the Victorian Prison System* – issued annually

<<http://www.justice.vic.gov.au>>

NSW Bureau of Crime Statistics and Research, *New South Wales Criminal Courts Statistics* – issued annually

<<http://www.lawlink.nsw.gov.au>>

Office of Crime Statistics and Research, *South Australia, Crime and Justice in South Australia* – issued annually

<<http://www.ocsar.sa.gov.au>>

Steering Committee for the Review of Commonwealth/State Service Provision, *Report on Government Services* – issued annually

<<http://www.pc.gov.au>>



## GLOSSARY

<b>Aboriginal and Torres Strait Islander prisoner</b>	A prisoner who self-identifies as being of Aboriginal or Torres Strait Islander origin, or both.
<b>Bail</b>	This is generally a pre-sentence option where a person is released into the community for a period before they appear in court for trial or final sentencing. Bail orders can require a financial surety to be lodged with the court, and a number of conditions including supervision and residential requirements designed to ensure the re-appearance of the person at court. Bail counts are available only in states and territories where bail orders are supervised by corrective services. Bail is a sub-category of Supervision where the person is under the supervision of corrective services ( <i>see</i> Supervision).
<b>Community-based corrections</b>	This refers to the community-based management of court-ordered sanctions, post-prison administrative arrangements and fine conversions, which principally involve the provision of one or more of the following activities: supervision, programs or community work.
<b>Community service</b>	This category of community-based corrections orders includes sentencing options requiring offenders to undertake a specified number of hours of unpaid, supervised work to benefit the community on an approved project. Community service is a sub-category of Reparation ( <i>see</i> Reparation).
<b>Corrective services custody</b>	Confinement in a place intended primarily for the purpose of confining prisoners, such as a prison, prison farm, Periodic Detention Centre or Community Custody Centre.
<b>Federal sentenced prisoner</b>	Persons charged and sentenced under a Commonwealth statute or transferred from another country to serve their sentence in Australia.
<b>Fine option</b>	A community-based sentence type where the offender is serving a sentence for default of a fine. In most jurisdictions this order type requires an offender to complete community service as a reparatory act. Fine option is a sub-category of Reparation ( <i>see</i> Reparation).
<b>Full-time prison custody</b>	A type of custody where a prisoner is required to be held in custody on a full-time basis. This includes prisons, Queensland Community Custody Centres and work outreach camps. Full-time prison custody excludes periodic detention ( <i>see</i> Periodic detention).
<b>Home detention</b>	( <i>see</i> Restricted movement)
<b>Legal status</b>	A person may be either sentenced or unsentenced depending on the warrant(s) or court order(s) that provide the legal basis for the administration of the person through the criminal justice system.
<b>Non-Indigenous</b>	A prisoner who does not identify as being of Aboriginal and/or Torres Strait Islander origin.
<b>Open custody</b>	Refers to prisoners housed in minimum security custodial facilities that do not require them to be confined by a secure perimeter physical barrier, irrespective of whether a physical barrier exists.
<b>Parole</b>	A parole order is made following a period of imprisonment and requires an offender to be subject to supervision in the community. Additional conditions may also be applied such as programs, counselling or drug testing. Parole is a sub-category of Supervision ( <i>see</i> Supervision).
<b>Periodic detention</b>	A type of custody or order where a sentenced prisoner is required to be held in custody on a part-time basis. Currently this consists of two consecutive days in a one-week period, while remaining at liberty during the rest of the week.
<b>Prisoner</b>	A person held in custody. For the purposes of this collection, prisoners are those whose confinement is the responsibility of a corrective services agency.
<b>Remand</b>	( <i>see</i> Unsented)

## GLOSSARY *continued*

<b>Reparation</b>	Reparation refers to all offenders with an order that requires them to undertake unpaid, justice agency-approved community service work.
<b>Restricted movement</b>	This refers to persons who are subject to a system of restricted movement, including supervision and/or electronic monitoring. This category includes home detention that may restrict residence to a nominated place. Restricted movement can be either a pre-sentence or post-sentence order.
<b>Secure custody</b>	Refers to prisoners housed in medium or maximum security custodial facilities requiring them to be confined by a secure physical barrier.
<b>Sentenced</b>	A legal status indicating that a person has received a custodial or community-based order from a court in response to a conviction for an offence.
<b>Sentenced prisoner reception</b>	Refers to entry into corrective services custody from the community, having received a sentence of imprisonment as an outcome of a court proceeding; or persons who are sentenced to custody while in custody on remand (i.e. changed status from a remand to a sentenced prisoner); or persons entering custody as a result of defaulting on the payment of a fine. Sentenced prisoners in custody who receive a further sentence of imprisonment are not counted as sentenced receptions.
<b>Sentenced probation</b>	A supervision order made following an original sentence handed down in court following conviction. A probation order generally requires 'good behaviour' and compliance with the directions of supervisors. The order may also require compliance with conditions such as program attendance and residential requirements.
<b>Supervision (compliance)</b>	This includes community-based orders other than those categorised as restricted movement or reparation (e.g. parole, bail and sentenced probation).
<b>Unsentenced</b>	A legal status indicating that a person is confined to custody or supervision while awaiting the outcome of their trial.



## FOR MORE INFORMATION . . .

*INTERNET*      **www.abs.gov.au** the ABS website is the best place for data from our publications and information about the ABS.

### INFORMATION AND REFERRAL SERVICE

Our consultants can help you access the full range of information published by the ABS that is available free of charge from our website. Information tailored to your needs can also be requested as a 'user pays' service. Specialists are on hand to help you with analytical or methodological advice.

*PHONE*                      1300 135 070

*EMAIL*                      [client.services@abs.gov.au](mailto:client.services@abs.gov.au)

*FAX*                              1300 135 211

*POST*                              Client Services, ABS, GPO Box 796, Sydney NSW 2001

## FREE ACCESS TO STATISTICS

All statistics on the ABS website can be downloaded free of charge.

*WEB ADDRESS*      [www.abs.gov.au](http://www.abs.gov.au)