

CORRECTIVE SERVICES

AUSTRALIA

EMBARGO: 11.30AM (CANBERRA TIME) THURS 15 SEP 2011

C O N T E N T S

	<i>page</i>
Notes	2
Summary of findings	3

T A B L E S

1 Persons in corrective services, summary	10
2 Persons in full-time custody	12
3 Imprisonment rates	13
4 Persons in full-time custody, by sex	14
5 Imprisonment rates, by sex	15
6 Persons in full-time custody, by type of custody	16
7 Imprisonment rates, by type of custody	17
8 Persons in full-time custody, by legal status	18
9 Imprisonment rates, by legal status	19
10 Sentenced prisoner receptions into full-time custody	20
11 Persons in periodic detention, by sex	21
12 Federal sentenced persons in full-time custody, by sex	22
13 Aboriginal and Torres Strait Islander persons in full-time custody, by sex ..	23
14 Aboriginal and Torres Strait Islander imprisonment rates, by sex	24
15 Aboriginal and Torres Strait Islander persons in full-time custody, by legal status	25
16 Aboriginal and Torres Strait Islander imprisonment rates, by legal status ..	26
17 Persons in community-based corrections, by sex	27
18 Community-based corrections rates, by sex	28
19 Persons in community-based corrections, by type of order	29
20 Persons in community-based corrections, by Aboriginal and Torres Strait Islander status	31
21 Proportion of persons in community-based corrections, by Aboriginal and Torres Strait Islander status	33

A D D I T I O N A L I N F O R M A T I O N

Explanatory Notes	34
Glossary	41

I N Q U I R I E S

For further information
about these and related
statistics, contact the
National Information and
Referral Service on
1300 135 070 or
Lydia Rutter on Melbourne
(03) 9615 7646.

NOTES

FORTHCOMING ISSUES

ISSUE (Quarter)

RELEASE DATE

September 2011

24 November 2011

December 2011

15 March 2012

.....

ABOUT THIS PUBLICATION

This publication presents information on persons in custody and community-based corrections. The statistics are derived from information provided to the Australian Bureau of Statistics (ABS) from administrative records held by corrective services agencies in each state and territory, and from the Australian Government Attorney-General's Department for details on federal prisoners. Details are provided for each state and territory on: prisoner numbers and imprisonment rates by type of custody; prisoner numbers by legal status for all prisoners and for Aboriginal and Torres Strait Islander prisoners; the number of sentenced receptions into custody; the number of federal prisoners; the numbers and rates of persons serving community-based corrections orders; and data on the Aboriginal and Torres Strait Islander status of persons in community-based corrections.

The ABS acknowledges the valuable contribution of the Board of Management and the Advisory Group of the National Corrective Services Statistics Unit as well as the staff of the various agencies that provide the statistics that are presented in this publication.

FURTHER INFORMATION

More information about ABS activities in the field of crime and justice statistics is available from the Crime and Justice theme page on the ABS website <www.abs.gov.au>. Details of other ABS publications relating to Crime and Justice statistics can be found in paragraphs 40–41 of the Explanatory Notes.

.....

ABBREVIATIONS

ABS	Australian Bureau of Statistics
ACT	Australian Capital Territory
Aust.	Australia
ERP	estimated resident population
NCCJS	National Centre for Crime and Justice Statistics, Australian Bureau of Statistics
NSW	New South Wales
NT	Northern Territory
Qld	Queensland
SA	South Australia
Tas.	Tasmania
Vic.	Victoria
WA	Western Australia

Brian Pink
Australian Statistician

SUMMARY OF FINDINGS

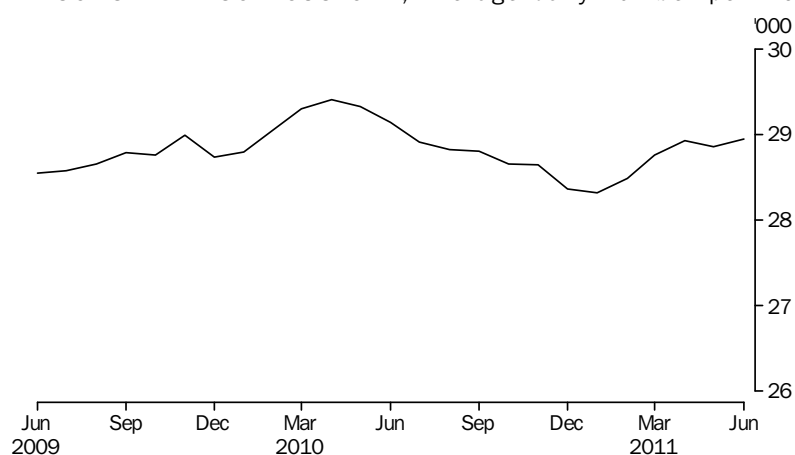
PERSONS IN CORRECTIVE SERVICES

Based on first day of the month averages, for the June quarter 2011, there were 83,573 persons under the authority of corrective services (excluding those in periodic detention). The total comprised 28,964 persons in full-time custody and 54,609 persons in community-based corrections. This represents a decrease of 3% (2,429 persons) from the June quarter 2010. Over the same period, persons in full-time custody decreased by 1% (397 persons) and persons in community-based corrections decreased by 4% (2,032 persons).

Number of prisoners

During the June quarter 2011, the average daily number of full-time prisoners in Australia was 28,909 persons. This was an increase of 1% from the March quarter 2011.

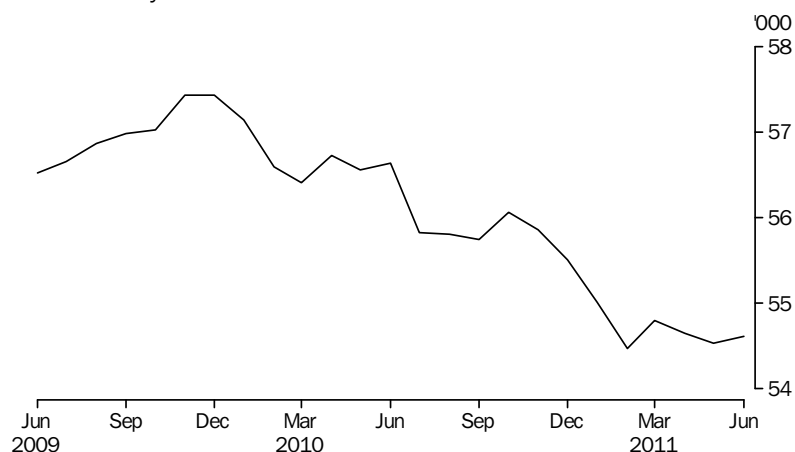
PERSONS IN PRISON CUSTODY, Average daily number per month



Number of persons in community-based corrections

Community-based corrections orders are non-custodial orders served under the authority of adult corrective services agencies and include restricted movement, reparations (fine options and community service) and supervision orders (parole, bail, and sentenced probation). In the June quarter 2011, there were 54,609 persons in community-based corrections in Australia based on first day of the month averages, a decrease of 148 persons from the March quarter 2011.

PERSONS IN COMMUNITY-BASED CORRECTIONS, Average number on the first day of the month



SUMMARY OF FINDINGS *continued*

PERSONS IN CUSTODY

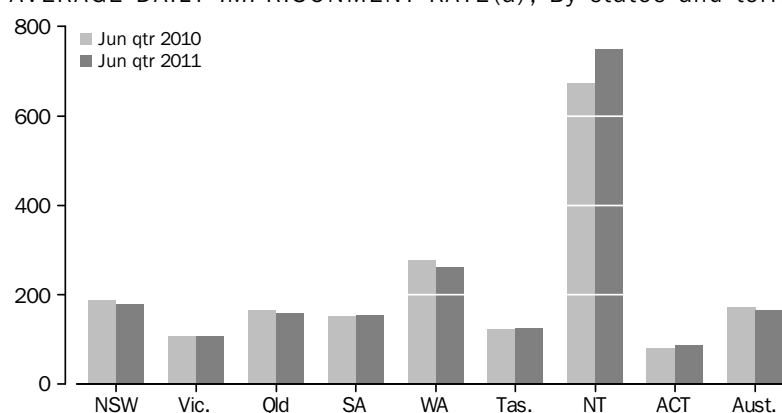
Rates per 100,000 adults

Nationally, the June quarter 2011 average daily imprisonment rate was 166 prisoners per 100,000 adult population, a decrease of 3% from the June quarter 2010. The Northern Territory had the highest imprisonment rate (748 prisoners per 100,000 adult population), followed by Western Australia (262) and New South Wales (179).

The Australian Capital Territory and Victoria had the lowest imprisonment rates (87 and 107 prisoners per 100,000 adult population respectively).

The Northern Territory recorded the largest proportional increase in imprisonment rates from the June quarter 2010 (11%). The largest proportional decreases over the same period were recorded in Western Australia (6%), New South Wales and Queensland (both 5%).

AVERAGE DAILY IMPRISONMENT RATE(a), By states and territories



(a) Rate per 100,000 adult population.

Sex

Of the average daily number of full-time prisoners in Australia in the June quarter 2011, 26,877 (93%) were male and 2,032 (7%) were female. The average daily imprisonment rate for males was 313 prisoners per 100,000 adult male population; 13 times more than the rate for females (23 female prisoners per 100,000 adult female population).

Type of full-time custody

The average daily number of prisoners in secure prison custody in the June quarter 2011 was 22,562 (78% of prisoners in full-time custody). Open prison custody comprised 6,347 prisoners (22%).

All prisoners in the Australian Capital Territory are in secure prison custody. Queensland had the next highest proportions of prisoners in secure custody (91%), followed by South Australia and Tasmania (both 89%); and Victoria (88%).

Legal status

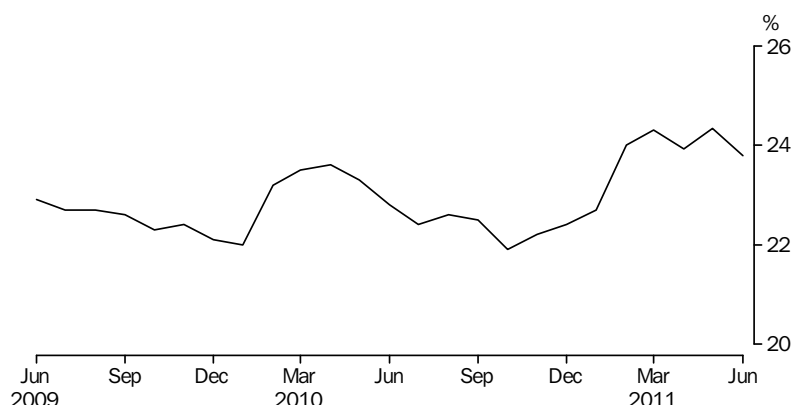
The average number of prisoners in full-time custody on the first day of each month in the June quarter 2011 was 28,964, comprising an average of 22,008 (76%) sentenced and 6,956 (24%) unsentenced prisoners. Sentenced prisoners increased by 2% from the previous quarter and decreased by 2% from the June quarter 2010.

Unsentenced prisoners increased by 3% from the previous quarter and by 2% from the June quarter 2010. The Australian Capital Territory and South Australia had the highest proportions of unsentenced prisoners (39% and 32% respectively). The lowest proportions of unsentenced prisoners were recorded in Western Australia (18%), Victoria and Tasmania (both 19%).

SUMMARY OF FINDINGS *continued*

Legal status continued

PROPORTION OF UNSENTENCED PERSONS IN PRISON CUSTODY (a), Per month



(a) Based on average number on the first day of the month

Sentenced prisoner receptions

There were 7,341 sentenced prisoner receptions into full-time custody in Australia in the June quarter 2011; an increase of 1% (43) from the March quarter 2011 and a decrease of 1% (86) from the June quarter 2010.

Periodic detention

Periodic detention is a form of custody or order where a sentenced prisoner is required to be held in custody on a part-time basis. This type of custody order is currently only used in New South Wales and the Australian Capital Territory. This program has ceased in New South Wales from October 2010, but some prisoners are still undertaking pre-existing sentences.

During the June quarter 2011 there was an average daily number of 161 persons in New South Wales and 56 persons in the Australian Capital Territory held in periodic detention. The rate of imprisonment for periodic detainees decreased by 44% in New South Wales (from 5.2 per 100,000 to 2.9 per 100,000) from the March quarter 2011, and decreased by 9% in the Australian Capital Territory (from 22 per 100,000 to 20 per 100,000).

Federal prisoners

In the June quarter 2011, there were 874 federal sentenced prisoners in Australia based on first day of the month figures, an increase of 13% from the June quarter 2010. Just under half (415) of the federal prisoners were sentenced in New South Wales.

Aboriginal and Torres Strait Islander prisoners

The average daily number of full-time Aboriginal and Torres Strait Islander adult prisoners in Australia in the June quarter 2011 was 7,621, comprising 6,997 (92%) males and 624 (8%) females. Aboriginal and Torres Strait Islander prisoners represented 26% of the total full-time prisoner population in the June quarter 2011, the same proportion as for the March quarter 2011. The total Aboriginal and Torres Strait Islander population aged 18 years and over at 30 June 2010 was 2% of the Australian population.

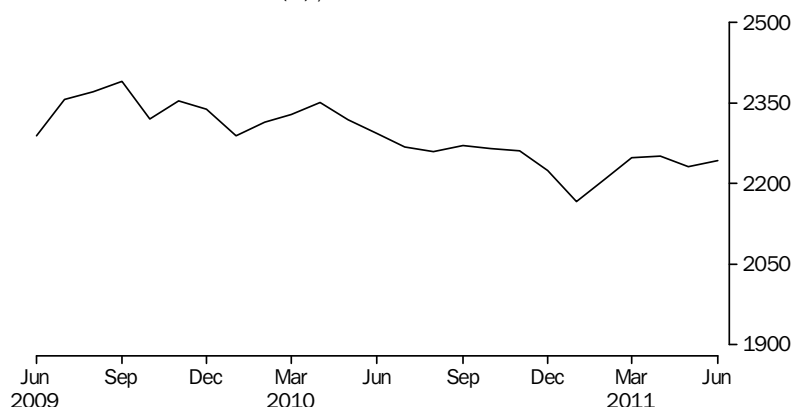
Approximately 75% of the total Aboriginal and Torres Strait Islander prisoner population was located in the states of New South Wales (2,270), Western Australia (1,775) and Queensland (1,671) combined.

SUMMARY OF FINDINGS *continued*

Aboriginal and Torres Strait Islander prisoners continued

The national average daily Aboriginal and Torres Strait Islander imprisonment rate in the June quarter 2011 was 2,242 per 100,000 adult Aboriginal and Torres Strait Islander population, an increase of 2% from the previous quarter and a decrease of 3% from the June quarter 2011.

AVERAGE DAILY ABORIGINAL AND TORRES STRAIT ISLANDER IMPRISONMENT RATE (a), Per month



(a) Rate per 100,000 adult Aboriginal and Torres Strait Islander population.

Different age profiles of the Aboriginal and Torres Strait Islander and non-Indigenous population can affect imprisonment rate numbers. The quarterly collection is unable to take age into account; however, data from the Prisoner Census collection can provide this level of detail.

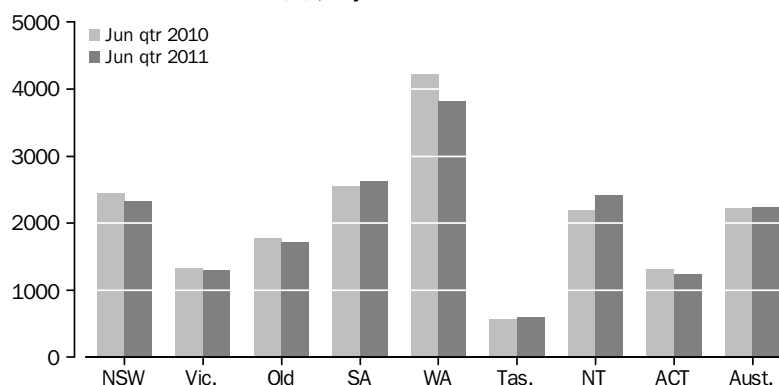
The national age standardised Aboriginal and Torres Strait Islander imprisonment rate from the annual Prisoner Census conducted at June 2010 was 14 times higher (1,892 per 100,000 adult Aboriginal and Torres Strait Islander population) than the rate for non-Indigenous persons (134 per 100,000 adult non-Indigenous population). Further information on the comparison of imprisonment rates between Aboriginal and Torres Strait Islander and non-Indigenous populations can be found in *Prisoners in Australia, 2010* (cat. no. 4517.0).

The highest Aboriginal and Torres Strait Islander imprisonment rate was recorded in Western Australia (3,817 Aboriginal and Torres Strait Islander prisoners per 100,000 adult Aboriginal and Torres Strait Islander population), followed by South Australia (2,621) and the Northern Territory (2,426). The lowest Aboriginal and Torres Strait Islander imprisonment rate was recorded in Tasmania (594), followed by the Australian Capital Territory (1,233).

SUMMARY OF FINDINGS *continued*

Aboriginal and Torres Strait Islander prisoners *continued*

AVERAGE DAILY ABORIGINAL AND TORRES STRAIT ISLANDER IMPRISONMENT RATE(a), By states and territories



(a) Rate per 100,000 adult Aboriginal and Torres Strait Islander population.

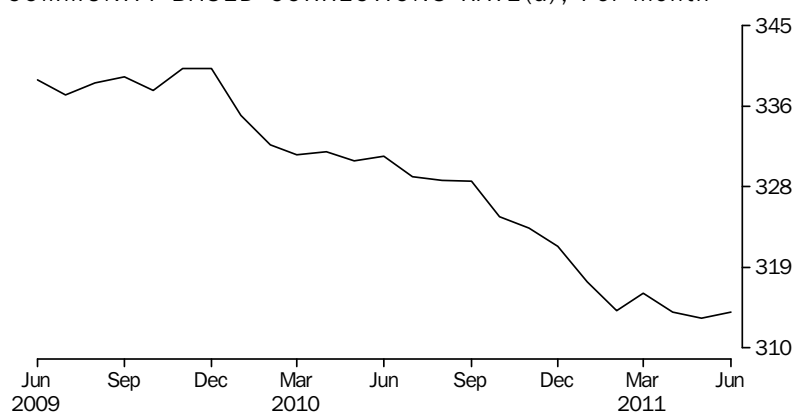
The largest proportional increase in the Aboriginal and Torres Strait Islander imprisonment rate from the June quarter 2010 was recorded in the Northern Territory (11%), followed by Tasmania (4%) and South Australia (3%). Western Australia (10%), and Australian Capital Territory (6%) recorded the largest proportional decreases over the same period.

PERSONS IN COMMUNITY-BASED CORRECTIONS

Rates per 100,000 adults

Nationally, the rate of persons in community-based corrections was 314 persons per 100,000 adult population for the June quarter 2011 based on first day of the month figures. This was a decrease of 5% from the June quarter 2010 (331 persons per 100,000 adults). The largest decrease from the June quarter 2010 was recorded in Western Australia (16%), while the largest increase was recorded in Tasmania (14%).

COMMUNITY-BASED CORRECTIONS RATE(a), Per month

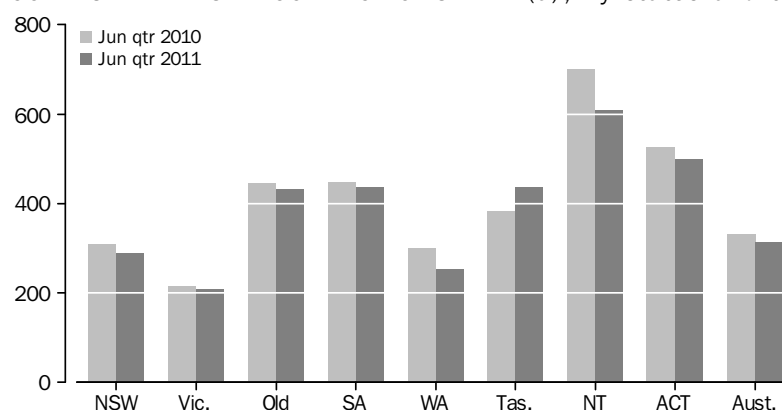


(a) Rate per 100,000 adult population, based on average number on the first day of the month

SUMMARY OF FINDINGS *continued*

*Rates per 100,000 adults
continued*

COMMUNITY-BASED CORRECTIONS RATE(a), By states and territories



(a) Rate per 100,000 adult population, based on average number on the first day of the month

Sex

Of the average number of persons in community-based corrections in Australia in the June quarter 2011, 44,625 (82%) were male and 9,936 (18%) were female.

In the June quarter 2011, the rate of community-based corrections for males was 520 per 100,000 adult male population compared to 113 females per 100,000 adult female population. The community-based corrections rate for males was more than four times that of females.

Type of orders

In the June quarter 2011, there were 12,024 persons on parole following a period of imprisonment. Three states accounted for approximately 86% of persons serving parole orders: New South Wales (4,318 or 36%), Queensland (4,371 persons or 36%), and Victoria (1,636 or 14%). The largest proportional decrease in parole orders from the March quarter 2011 was recorded in Tasmania (10%).

For this same period, there were 32,881 persons under sentenced probation and 9,302 persons serving community service orders; a decrease in the number of persons under sentenced probation of 1%, and of those on community service orders of 2% from the March quarter 2011.

Aboriginal and Torres Strait Islanders in community-based corrections

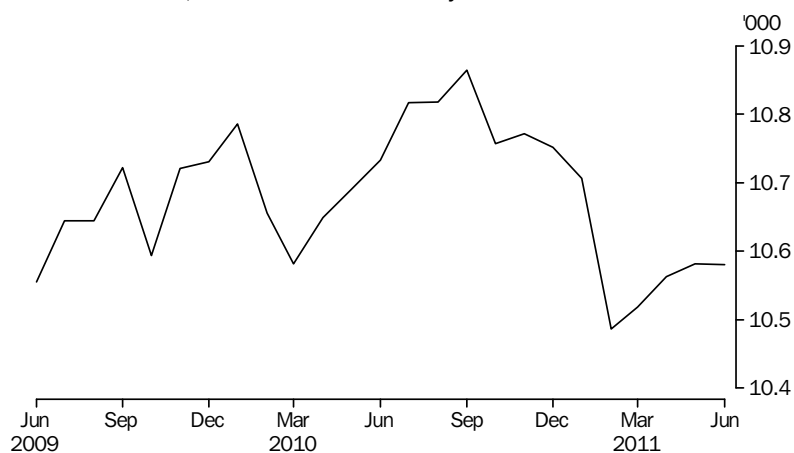
Based on first day of the month averages, the number of Aboriginal and Torres Strait Islanders in community-based corrections for the June quarter was 10,575; five persons more than the previous quarter. The numbers of Aboriginal and Torres Strait Islanders in community-based corrections increased from the March quarter by 4% (65) in Western Australia and by 1% (40) in New South Wales. The largest proportional decreases were in the Australian Capital Territory (8% or 12), Victoria (5% or 25) and the Northern Territory (4% or 30). Aboriginal and Torres Strait Islanders represented 19% of the total number of persons in community-based corrections in the June quarter 2011.

Approximately 75% of the total Aboriginal and Torres Strait Islander community-based corrections population was located in the states of New South Wales (3,122), Queensland (3,336) and Western Australia (1,511).

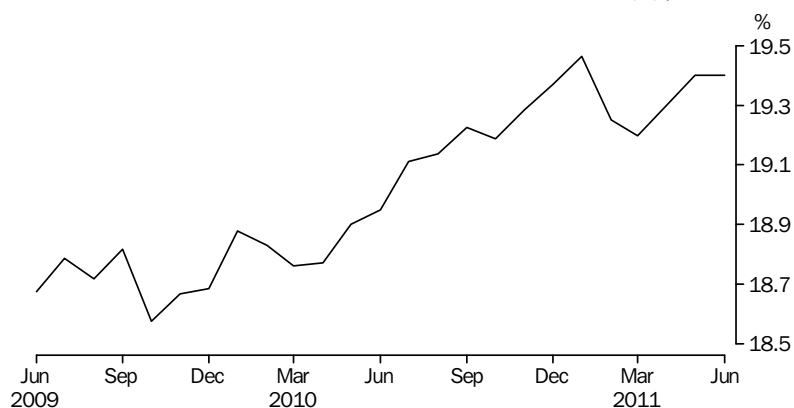
SUMMARY OF FINDINGS *continued*

Aboriginal and Torres
Strait Islanders in
community-based
corrections *continued*

ABORIGINALS AND TORRES STRAIT ISLANDERS IN COMMUNITY BASED
CORRECTIONS, Number on first day of month



ABORIGINAL AND TORRES STRAIT ISLANDER PROPORTION OF
PERSONS IN COMMUNITY BASED CORRECTIONS (a), Per month



(a) Based on average number on the first day of the month

PERSONS IN CORRECTIVE SERVICES, Summary(a)

	NSW	Vic.	Qld	SA	WA	Tas.	NT	ACT	Aust.
AVERAGE DAILY NUMBER									
Males in full-time custody									
Jun Qtr 10	9 630	4 232	5 271	1 841	4 428	437	1 061	200	27 101
Mar Qtr 11	9 313	4 215	5 051	1 872	4 260	425	1 147	219	26 503
Jun Qtr 11	9 359	4 337	5 141	1 885	4 289	445	1 192	229	26 877
Females in full-time custody									
Jun Qtr 10	787	317	451	122	404	39	48	20	2 188
Mar Qtr 11	705	311	408	126	372	30	55	14	2 020
Jun Qtr 11	698	320	421	119	358	42	59	15	2 032
Persons in full-time custody									
Jun Qtr 10	10 417	4 549	5 723	1 963	4 832	476	1 109	220	29 289
Mar Qtr 11	10 018	4 526	5 459	1 998	4 632	455	1 203	233	28 523
Jun Qtr 11	10 057	4 657	5 562	2 004	4 647	487	1 251	244	28 909
Aboriginal & Torres Strait Islander persons in full-time custody									
Jun Qtr 10	2 310	286	1 676	455	1 909	67	908	36	7 647
Mar Qtr 11	2 205	292	1 650	478	1 782	66	991	40	7 506
Jun Qtr 11	2 270	288	1 671	481	1 775	73	1 029	36	7 621
AVERAGE NUMBER ON FIRST DAY OF MONTH									
Unsentenced persons in full-time custody									
Jun Qtr 10	2 778	861	1 215	715	829	99	238	92	6 826
Mar Qtr 11	2 755	847	1 170	673	825	84	283	93	6 730
Jun Qtr 11	2 865	896	1 190	647	862	90	314	93	6 956
Sentenced persons in full-time custody									
Jun Qtr 10	7 648	3 700	4 534	1 264	4 010	378	875	124	22 535
Mar Qtr 11	7 251	3 667	4 257	1 326	3 771	369	893	139	21 673
Jun Qtr 11	7 253	3 746	4 380	1 359	3 802	387	935	146	22 008
Persons in full-time custody									
Jun Qtr 10	10 426	4 561	5 749	1 980	4 839	477	1 113	216	29 361
Mar Qtr 11	10 006	4 514	5 428	1 999	4 596	453	1 175	232	28 404
Jun Qtr 11	10 118	4 641	5 570	2 005	4 664	477	1 250	238	28 964
Males in community-based corrections(b)									
Jun Qtr 10	14 423	7 454	12 306	4 621	3 987	1 181	996	1 220	46 189
Mar Qtr 11	13 490	7 429	12 255	4 597	3 489	1 330	918	1 212	44 720
Jun Qtr 11	13 697	7 322	12 136	4 585	3 474	1 357	864	1 191	44 625
Females in community-based corrections(b)									
Jun Qtr 10	2 642	1 651	3 082	1 094	1 230	297	160	232	10 387
Mar Qtr 11	2 449	1 684	3 077	1 060	1 011	345	154	209	9 988
Jun Qtr 11	2 469	1 666	3 039	1 050	1 002	344	152	214	9 936
Persons in community-based corrections(b)(c)									
Jun Qtr 10	17 127	9 108	15 388	5 715	5 217	1 478	1 156	1 452	56 641
Mar Qtr 11	15 982	9 115	15 332	5 660	4 501	1 675	1 072	1 421	54 757
Jun Qtr 11	16 210	8 989	15 175	5 637	4 476	1 700	1 016	1 405	54 609

(a) For the calculation of quarterly figures – see Explanatory Notes, paragraph 5.

(b) Figures include persons with breached or suspended orders, with the exception of Vic. and Tas.

(c) Includes persons whose sex is unknown.

PERSONS IN CORRECTIVE SERVICES, Summary(a) *continued*

	NSW	Vic.	Qld	SA	WA	Tas.	NT	ACT	Aust.
PERCENTAGE CHANGE (AVERAGE DAILY NUMBER)									
Males in full-time custody									
Jun Qtr 10 to Jun Qtr 11	-2.8	2.5	-2.5	2.4	-3.1	1.8	12.3	14.5	-0.8
Mar Qtr 11 to Jun Qtr 11	0.5	2.9	1.8	0.7	0.7	4.7	3.9	4.6	1.4
Females in full-time custody									
Jun Qtr 10 to Jun Qtr 11	-11.3	0.9	-6.7	-2.5	-11.4	7.7	22.9	-25.0	-7.1
Mar Qtr 11 to Jun Qtr 11	-1.0	2.9	3.2	-5.6	-3.8	40.0	7.3	7.1	0.6
Persons in full-time custody									
Jun Qtr 10 to Jun Qtr 11	-3.5	2.4	-2.8	2.1	-3.8	2.3	12.8	10.9	-1.3
Mar Qtr 11 to Jun Qtr 11	0.4	2.9	1.9	0.3	0.3	7.0	4.0	4.7	1.4
Aboriginal & Torres Strait Islander persons in full-time custody									
Jun Qtr 10 to Jun Qtr 11	-1.7	0.7	-0.3	5.7	-7.0	9.0	13.3	—	-0.3
Mar Qtr 11 to Jun Qtr 11	2.9	-1.4	1.3	0.6	-0.4	10.6	3.8	-10.0	1.5
PERCENTAGE CHANGE (AVERAGE NUMBER ON FIRST DAY OF MONTH)									
Unsentenced persons in full-time custody									
Jun Qtr 10 to Jun Qtr 11	3.1	4.1	-2.1	-9.5	4.0	-9.1	31.9	1.1	1.9
Mar Qtr 11 to Jun Qtr 11	4.0	5.8	1.7	-3.9	4.5	7.1	11.0	—	3.4
Sentenced persons in full-time custody									
Jun Qtr 10 to Jun Qtr 11	-5.2	1.2	-3.4	7.5	-5.2	2.4	6.9	17.7	-2.3
Mar Qtr 11 to Jun Qtr 11	—	2.2	2.9	2.5	0.8	4.9	4.7	5.0	1.5
Persons in full-time custody									
Jun Qtr 10 to Jun Qtr 11	-3.0	1.8	-3.1	1.3	-3.6	—	12.3	10.2	-1.4
Mar Qtr 11 to Jun Qtr 11	1.1	2.8	2.6	0.3	1.5	5.3	6.4	2.6	2.0
Males in community-based corrections(b)									
Jun Qtr 10 to Jun Qtr 11	-5.0	-1.8	-1.4	-0.8	-12.9	14.9	-13.3	-2.4	-3.4
Mar Qtr 11 to Jun Qtr 11	1.5	-1.4	-1.0	-0.3	-0.4	2.0	-5.9	-1.7	-0.2
Females in community-based corrections(b)									
Jun Qtr 10 to Jun Qtr 11	-6.5	0.9	-1.4	-4.0	-18.5	15.8	-5.0	-7.8	-4.3
Mar Qtr 11 to Jun Qtr 11	0.8	-1.1	-1.2	-0.9	-0.9	-0.3	-1.3	2.4	-0.5
Persons in community-based corrections(b)(c)									
Jun Qtr 10 to Jun Qtr 11	-5.4	-1.3	-1.4	-1.4	-14.2	15.0	-12.1	-3.2	-3.6
Mar Qtr 11 to Jun Qtr 11	1.4	-1.4	-1.0	-0.4	-0.6	1.5	-5.2	-1.1	-0.3

— nil or rounded to zero (including null cells)

(a) For the calculation of quarterly figures – see Explanatory Notes, paragraph 5.

(b) Figures include persons with breached or suspended orders, with the exception of Vic. and Tas.

(c) Includes persons whose sex is unknown.

PERSONS IN FULL-TIME CUSTODY

	NSW(a)	Vic.	Qld	SA	WA	Tas.	NT	ACT(b)	Aust. (c)
AVERAGE DAILY NUMBER									
2008	9 804	4 240	5 549	1 908	3 824	526	939	179	26 885
2009	10 310	4 367	5 622	1 951	4 402	513	1 073	170	28 390
2010	10 255	4 553	5 624	1 961	4 734	480	1 113	212	28 932
2010									
Jun Qtr	10 417	4 549	5 723	1 963	4 832	476	1 109	220	29 289
Sep Qtr	10 213	4 578	5 590	1 968	4 691	491	1 100	212	28 843
Dec Qtr	10 080	4 581	5 531	1 962	4 562	483	1 132	222	28 553
2011									
Mar Qtr	10 018	4 526	5 459	1 998	4 632	455	1 203	233	28 523
Jun Qtr	10 057	4 657	5 562	2 004	4 647	487	1 251	244	28 909
2010									
Apr	10 442	4 571	5 758	1 966	4 864	472	1 114	219	29 406
May	10 428	4 548	5 738	1 964	4 834	479	1 108	221	29 320
Jun	10 382	4 527	5 671	1 960	4 798	477	1 105	220	29 140
Jul	10 278	4 554	5 595	1 966	4 724	492	1 088	211	28 907
Aug	10 197	4 573	5 585	1 967	4 708	487	1 093	212	28 822
Sep	10 163	4 609	5 589	1 972	4 639	495	1 120	213	28 800
Oct	10 125	4 605	5 555	1 955	4 560	485	1 152	214	28 652
Nov	10 130	4 590	5 545	1 965	4 584	490	1 117	227	28 648
Dec	9 988	4 547	5 493	1 966	4 543	473	1 125	225	28 361
2011									
Jan	9 994	4 495	5 401	1 989	4 580	457	1 165	235	28 317
Feb	9 995	4 508	5 445	2 000	4 637	460	1 207	237	28 489
Mar	10 063	4 574	5 531	2 004	4 677	447	1 236	230	28 762
Apr	10 137	4 597	5 581	2 004	4 647	467	1 254	241	28 929
May	10 041	4 661	5 557	1 983	4 644	487	1 238	245	28 856
Jun	9 995	4 713	5 547	2 027	4 650	507	1 261	245	28 945

- (a) Data prior to the September quarter 2009 includes ACT prisoners held in NSW prisons. From the September quarter 2009 ACT prisoners are no longer held in NSW prisons – see Explanatory Notes, paragraph 35.
- (b) Data prior to the September quarter 2009 includes ACT prisoners held in ACT as well as ACT prisoners that were held in NSW – see Explanatory Notes, paragraph 35.
- (c) For the period prior to the September quarter 2009, ACT Prisoners held in NSW prisons are included in both NSW and ACT figures. The sum of the state/territory columns will therefore be greater than the Australian total – see Explanatory Notes, paragraph 35.

IMPRISONMENT RATES(a)

	NSW(b)	Vic.	Qld	SA	WA	Tas.	NT	ACT(c)	Aust.
RATE PER 100,000 ADULT POPULATION									
2008	182.6	104.4	169.9	153.5	234.9	138.9	601.6	67.5	164.7
2009	189.4	104.8	167.2	154.7	260.7	134.2	670.3	62.7	169.7
2010	184.2	106.3	162.4	153.0	271.8	123.9	673.2	76.5	168.5
2010									
Jun Qtr	187.5	106.5	165.7	153.5	278.3	123.0	672.9	79.7	171.1
Sep Qtr	182.9	106.5	160.9	153.2	268.2	126.5	664.5	76.2	167.5
Dec Qtr	180.0	106.1	158.4	152.3	259.6	124.1	679.1	79.5	165.1
2011									
Mar Qtr	178.5	104.5	155.8	154.7	262.4	116.6	718.8	83.4	164.5
Jun Qtr	178.5	107.1	158.1	154.9	261.8	124.7	747.8	86.5	166.1
2010									
Apr	188.0	107.0	166.7	153.7	280.2	121.9	676.1	79.3	171.7
May	187.7	106.5	166.2	153.6	278.5	123.7	672.1	80.0	171.2
Jun	186.9	106.0	164.2	153.3	276.4	123.3	670.6	79.8	170.2
Jul	184.0	105.9	161.0	153.0	270.1	126.6	657.0	75.9	167.8
Aug	182.6	106.4	160.7	153.1	269.2	125.4	660.2	76.3	167.3
Sep	182.0	107.2	160.8	153.5	265.2	127.6	676.6	76.5	167.2
Oct	180.7	106.7	159.1	151.8	259.5	124.7	691.5	76.7	165.7
Nov	180.8	106.3	158.9	152.5	260.9	125.9	670.2	81.1	165.7
Dec	178.3	105.3	157.3	152.6	258.5	121.6	675.3	80.7	164.0
2011									
Jan	178.0	103.7	154.1	154.1	259.5	117.3	696.6	83.8	163.3
Feb	178.0	104.0	155.4	154.9	262.7	118.1	721.4	84.5	164.3
Mar	179.3	105.6	157.9	155.2	264.9	114.6	738.8	82.1	165.8
Apr	180.0	105.7	158.6	154.9	261.8	119.5	749.6	85.6	166.2
May	178.2	107.2	158.0	153.3	261.6	124.7	740.0	87.1	165.8
Jun	177.4	108.3	157.7	156.7	262.0	129.8	754.0	86.9	166.3

- (a) Imprisonment rates are based on Estimated Resident Population counts – see Explanatory Notes, paragraphs 17–21.
- (b) Excludes ACT prisoners that were held in NSW prisons prior to September quarter 2009 – see Explanatory Notes, paragraph 35.

- (c) Includes ACT prisoners held in ACT as well as ACT prisoners that were held in NSW prior to the September quarter 2009 – see Explanatory Notes, paragraph 35.

PERSONS IN FULL-TIME CUSTODY(a), By sex

	NSW(b)	Vic.	Qld	SA	WA	Tas.	NT	ACT(c)	Aust.(d)
MALES (AVERAGE DAILY NUMBER)									
2008	9 078	3 997	5 122	1 782	3 538	489	895	163	24 986
2009	9 537	4 081	5 199	1 823	4 055	475	1 026	155	26 336
2010	9 491	4 238	5 194	1 835	4 342	446	1 064	197	26 807
2010									
Jun Qtr	9 630	4 232	5 271	1 841	4 428	437	1 061	200	27 101
Sep Qtr	9 459	4 260	5 158	1 841	4 294	459	1 052	200	26 723
Dec Qtr	9 337	4 272	5 124	1 837	4 187	450	1 084	209	26 500
2011									
Mar Qtr	9 313	4 215	5 051	1 872	4 260	425	1 147	219	26 503
Jun Qtr	9 359	4 337	5 141	1 885	4 289	445	1 192	229	26 877
Apr	9 429	4 282	5 153	1 885	4 281	428	1 196	226	26 879
May	9 346	4 343	5 138	1 866	4 287	441	1 176	230	26 827
Jun	9 305	4 386	5 132	1 906	4 300	466	1 204	230	26 928
FEMALES (AVERAGE DAILY NUMBER)									
2008	726	243	427	126	286	37	44	15	1 899
2009	773	286	423	128	346	38	47	14	2 054
2010	764	315	431	125	392	34	49	15	2 125
2010									
Jun Qtr	787	317	451	122	404	39	48	20	2 188
Sep Qtr	754	318	432	127	397	32	48	12	2 120
Dec Qtr	743	309	407	125	375	32	47	13	2 053
2011									
Mar Qtr	705	311	408	126	372	30	55	14	2 020
Jun Qtr	698	320	421	119	358	42	59	15	2 032
Apr	709	316	428	119	367	39	58	15	2 049
May	695	318	419	117	357	46	62	16	2 029
Jun	690	327	415	121	350	41	57	15	2 017
PERSONS (AVERAGE DAILY NUMBER)									
2008	9 804	4 240	5 549	1 908	3 824	526	939	179	26 885
2009	10 310	4 367	5 622	1 951	4 402	513	1 073	170	28 390
2010	10 255	4 553	5 624	1 961	4 734	480	1 113	212	28 932
2010									
Jun Qtr	10 417	4 549	5 723	1 963	4 832	476	1 109	220	29 289
Sep Qtr	10 213	4 578	5 590	1 968	4 691	491	1 100	212	28 843
Dec Qtr	10 080	4 581	5 531	1 962	4 562	483	1 132	222	28 553
2011									
Mar Qtr	10 018	4 526	5 459	1 998	4 632	455	1 203	233	28 523
Jun Qtr	10 057	4 657	5 562	2 004	4 647	487	1 251	244	28 909
Apr	10 137	4 597	5 581	2 004	4 647	467	1 254	241	28 929
May	10 041	4 661	5 557	1 983	4 644	487	1 238	245	28 856
Jun	9 995	4 713	5 547	2 027	4 650	507	1 261	245	28 945

(a) For the calculation of annual and quarterly figures – see Explanatory Notes, paragraph 5.

(b) Data prior to the September quarter 2009 includes ACT prisoners held in NSW prisons. The ACT in NSW figures are a subset of the NSW figures and are not separately counted in the Australian totals. From the September quarter 2009, ACT prisoners are no longer held in NSW prisons – see Explanatory Notes, paragraph 35.

(c) Data prior to the September quarter 2009 includes ACT prisoners held in ACT as well as ACT prisoners that were held in NSW – see Explanatory Notes, paragraph 35.

(d) For the period prior to the September quarter 2009, ACT Prisoners held in NSW prisons are included in both NSW and ACT figures. The sum of the state/territory columns will therefore be greater than the Australian total – see Explanatory Notes, paragraph 35.

IMPRISONMENT RATES(a), By sex

	NSW(b)	Vic.	Qld	SA	WA	Tas.	NT	ACT(c)	Aust.
MALES (RATE PER 1000,000 ADULT POPULATION)									
2008	345.0	201.0	316.6	293.2	432.4	265.3	1 097.6	125.5	310.9
2009	357.3	199.7	311.7	295.7	476.2	255.1	1 232.0	116.5	319.3
2010	347.2	201.3	302.5	292.6	494.2	236.4	1 239.4	144.3	316.4
2010									
Jun Qtr	353.1	201.7	308.0	294.1	505.8	232.0	1 239.9	147.0	320.8
Sep Qtr	345.0	201.7	299.4	292.8	486.8	242.8	1 223.4	145.6	314.4
Dec Qtr	339.5	201.5	296.1	291.2	472.2	237.7	1 251.7	151.3	310.6
2011									
Mar Qtr	338.0	198.1	290.8	296.2	478.2	224.0	1 319.6	158.5	309.7
Jun Qtr	338.5	203.1	294.8	297.7	478.9	233.8	1 370.6	164.3	312.9
Apr	341.0	200.5	295.5	297.6	477.9	225.0	1 375.5	162.4	312.9
May	338.0	203.4	294.7	294.6	478.6	231.7	1 352.5	165.3	312.3
Jun	336.5	205.4	294.3	300.9	480.0	244.8	1 384.5	165.2	313.5
FEMALES (RATE PER 1000,000 ADULT POPULATION)									
2008	26.5	11.7	25.9	19.8	35.3	19.1	59.5	11.4	22.9
2009	27.9	13.4	24.9	19.8	41.4	19.4	61.7	10.6	24.2
2010	27.0	14.5	24.7	19.2	45.4	17.2	61.1	10.5	24.4
2010									
Jun Qtr	27.8	14.6	25.9	18.7	46.9	19.4	60.5	14.2	25.2
Sep Qtr	26.5	14.5	24.7	19.4	45.8	16.2	60.3	8.6	24.3
Dec Qtr	26.1	14.1	23.1	19.1	43.1	16.3	58.9	9.4	23.4
2011									
Mar Qtr	24.7	14.1	23.1	19.1	42.5	14.8	68.9	10.2	23.0
Jun Qtr	24.3	14.5	23.7	18.0	40.7	21.1	73.4	10.7	23.0
Apr	24.7	14.3	24.1	18.0	41.7	19.3	72.0	10.7	23.2
May	24.2	14.4	23.6	17.7	40.6	23.2	76.8	10.9	23.0
Jun	24.1	14.8	23.4	18.3	39.9	20.6	71.4	10.4	22.9
PERSONS (RATE PER 1000,000 ADULT POPULATION)									
2008	182.6	104.4	169.9	153.5	234.9	138.9	601.6	67.5	164.7
2009	189.4	104.8	167.2	154.7	260.7	134.2	670.3	62.7	169.7
2010	184.2	106.3	162.4	153.0	271.8	123.9	673.2	76.5	168.5
2010									
Jun Qtr	187.5	106.5	165.7	153.5	278.3	123.0	672.9	79.7	171.1
Sep Qtr	182.9	106.5	160.9	153.2	268.2	126.5	664.5	76.2	167.5
Dec Qtr	180.0	106.1	158.4	152.3	259.6	124.1	679.1	79.5	165.1
2011									
Mar Qtr	178.5	104.5	155.8	154.7	262.4	116.6	718.8	83.4	164.5
Jun Qtr	178.5	107.1	158.1	154.9	261.8	124.7	747.8	86.5	166.1
Apr	180.0	105.7	158.6	154.9	261.8	119.5	749.6	85.6	166.2
May	178.2	107.2	158.0	153.3	261.6	124.7	740.0	87.1	165.8
Jun	177.4	108.3	157.7	156.7	262.0	129.8	754.0	86.9	166.3

(a) Imprisonment rates are based on Estimated Resident Population counts – see Explanatory Notes, paragraphs 17–21.

(b) Excludes ACT prisoners that were held in NSW prisons prior to September quarter 2009 – see Explanatory Notes, paragraph 35.

(c) Includes ACT prisoners held in ACT as well as ACT prisoners that were held in NSW prior to the September quarter 2009 – see Explanatory Notes, paragraph 35.

PERSONS IN FULL-TIME CUSTODY(a), By type of custody

	NSW(b)(c)	Vic.	Qld	SA	WA(d)	Tas.	NT	ACT(e)	Aust.(f)(g)
PERSONS IN SECURE CUSTODY (AVERAGE DAILY NUMBER)									
2008	6 229	3 797	4 952	1 703	2 794	468	663	120	20 701
2009	6 734	3 911	4 977	1 736	3 344	460	750	157	22 064
2010	6 596	4 063	5 039	1 761	3 427	432	771	136	22 224
2010									
Jun Qtr	6 717	4 072	5 113	1 760	3 876	429	778	220	22 965
Sep Qtr	6 510	4 083	5 030	1 766	3 746	444	764	212	22 557
Dec Qtr	6 442	4 059	5 011	1 764	3 593	434	767	222	22 292
2011									
Mar Qtr	6 418	4 029	4 970	1 788	3 651	408	813	233	22 311
Jun Qtr	6 408	4 120	5 070	1 793	3 661	435	831	244	22 562
Apr	6 444	4 067	5 090	1 789	3 679	417	832	241	22 560
May	6 394	4 124	5 065	1 779	3 643	438	825	245	22 514
Jun	6 385	4 169	5 056	1 812	3 661	451	836	245	22 614
PERSONS IN OPEN CUSTODY (AVERAGE DAILY NUMBER)									
2008	3 575	443	597	205	1 030	58	276	59	6 184
2009	3 576	456	645	214	1 061	54	323	13	6 329
2010	3 658	490	585	200	1 307	49	342	77	6 708
2010									
Jun Qtr	3 700	477	610	203	956	47	331	..	6 324
Sep Qtr	3 703	495	559	202	945	47	336	..	6 287
Dec Qtr	3 639	522	520	198	969	48	365	..	6 261
2011									
Mar Qtr	3 599	498	489	210	981	46	390	..	6 213
Jun Qtr	3 650	537	492	211	986	52	420	..	6 347
Apr	3 693	530	491	215	969	49	422	..	6 369
May	3 647	537	492	204	1 001	49	413	..	6 342
Jun	3 610	543	492	215	989	56	425	..	6 330
PERSONS IN CUSTODY (AVERAGE DAILY NUMBER)									
2008	9 804	4 240	5 549	1 908	3 824	526	939	179	26 885
2009	10 310	4 367	5 622	1 951	4 402	513	1 073	170	28 390
2010	10 255	4 553	5 624	1 961	4 734	480	1 113	212	28 932
2010									
Jun Qtr	10 417	4 549	5 723	1 963	4 832	476	1 109	220	29 289
Sep Qtr	10 213	4 578	5 590	1 968	4 691	491	1 100	212	28 843
Dec Qtr	10 080	4 581	5 531	1 962	4 562	483	1 132	222	28 553
2011									
Mar Qtr	10 018	4 526	5 459	1 998	4 632	455	1 203	233	28 523
Jun Qtr	10 057	4 657	5 562	2 004	4 647	487	1 251	244	28 909
Apr	10 137	4 597	5 581	2 004	4 647	467	1 254	241	28 929
May	10 041	4 661	5 557	1 983	4 644	487	1 238	245	28 856
Jun	9 995	4 713	5 547	2 027	4 650	507	1 261	245	28 945

.. not applicable

(a) For the calculation of annual and quarterly figures – see Explanatory Notes, paragraph 5.

(b) For the period prior to the September quarter 2009, ACT prisoners held in NSW prisons are included in both NSW and ACT figures. The sum of the state/territory columns will therefore be greater than the Australian total – see Explanatory Notes, paragraph 35.

(c) The classification of some NSW correctional facilities changed from March 2008 – see Explanatory Notes, paragraph 29.

(d) Data for the period prior to September quarter 2009 are not comparable – see Explanatory Notes, paragraphs 30.

(e) Data prior to the September quarter 2009 includes ACT prisoners held in ACT as well as ACT prisoners that were held in NSW – see Explanatory Notes, paragraph 35.

(f) See footnotes b–c.

(g) For the period prior to the September quarter 2009, ACT prisoners held in NSW prisons are included in both NSW and ACT figures. The sum of the state/territory columns will therefore be greater than the Australian total – see Explanatory Notes, paragraph 35.

IMPRISONMENT RATES(a), By type of custody

	NSW(b)(c)	Vic.	Qld	SA	WA(d)	Tas.	NT	ACT(e)	Aust.(f)
PERSONS IN SECURE CUSTODY (RATE PER 100,000 ADULT POPULATION)									
2008	116.5	93.5	151.6	137.0	171.6	123.7	424.8	45.2	126.8
2009	123.8	93.8	148.0	137.7	198.2	120.1	468.3	57.9	131.9
2010	118.5	94.8	145.5	137.4	196.6	111.4	466.4	48.8	129.4
2010									
Jun Qtr	120.9	95.3	148.1	137.6	223.3	110.9	472.0	79.7	134.1
Sep Qtr	116.6	95.0	144.8	137.5	214.2	114.4	461.5	76.2	131.0
Dec Qtr	115.0	94.0	143.5	136.9	204.5	111.7	460.3	79.5	128.9
2011									
Mar Qtr	114.3	93.0	141.9	138.5	206.8	104.7	485.9	83.4	128.6
Jun Qtr	113.7	94.7	144.1	138.6	206.2	111.4	496.7	86.5	129.6
Apr	114.4	93.5	144.7	138.3	207.2	106.8	497.4	85.6	129.6
May	113.5	94.8	144.0	137.5	205.2	112.1	492.9	87.1	129.3
Jun	113.3	95.9	143.7	140.1	206.3	115.4	499.9	86.9	129.9
PERSONS IN OPEN CUSTODY (RATE PER 100,000 ADULT POPULATION)									
2008	66.0	10.9	18.3	16.5	63.2	15.3	176.8	22.4	37.9
2009	65.6	10.9	19.2	17.0	62.9	14.0	202.0	4.9	37.8
2010	65.7	11.4	16.9	15.6	75.2	12.5	206.9	27.8	39.1
2010									
Jun Qtr	66.6	11.2	17.7	15.9	55.1	12.0	201.0	. .	36.9
Sep Qtr	66.3	11.5	16.1	15.7	54.0	12.1	202.9	. .	36.5
Dec Qtr	65.0	12.1	14.9	15.4	55.1	12.4	218.8	. .	36.2
2011									
Mar Qtr	64.1	11.5	14.0	16.2	55.6	11.9	232.9	. .	35.8
Jun Qtr	64.8	12.3	14.0	16.3	55.6	13.2	251.1	. .	36.5
Apr	65.6	12.2	14.0	16.6	54.6	12.7	252.3	. .	36.6
May	64.7	12.3	14.0	15.8	56.4	12.7	247.1	. .	36.4
Jun	64.1	12.5	14.0	16.6	55.7	14.3	254.2	. .	36.4
PERSONS IN CUSTODY (RATE PER 100,000 ADULT POPULATION)									
2008	182.6	104.4	169.9	153.5	234.9	138.9	601.6	67.5	164.7
2009	189.4	104.8	167.2	154.7	260.7	134.2	670.3	62.7	169.7
2010	184.2	106.3	162.4	153.0	271.8	123.9	673.2	76.5	168.5
2010									
Jun Qtr	187.5	106.5	165.7	153.5	278.3	123.0	672.9	79.7	171.1
Sep Qtr	182.9	106.5	160.9	153.2	268.2	126.5	664.5	76.2	167.5
Dec Qtr	180.0	106.1	158.4	152.3	259.6	124.1	679.1	79.5	165.1
2011									
Mar Qtr	178.5	104.5	155.8	154.7	262.4	116.6	718.8	83.4	164.5
Jun Qtr	178.5	107.1	158.1	154.9	261.8	124.7	747.8	86.5	166.1
Apr	180.0	105.7	158.6	154.9	261.8	119.5	749.6	85.6	166.2
May	178.2	107.2	158.0	153.3	261.6	124.7	740.0	87.1	165.8
Jun	177.4	108.3	157.7	156.7	262.0	129.8	754.0	86.9	166.3

. . not applicable

(a) Imprisonment rates are based on Estimated Resident Population counts – see Explanatory Notes, paragraphs 17–21.

(b) Excludes ACT prisoners that were held in NSW prisons prior to September quarter 2009 – see Explanatory Notes, paragraph 35.

(c) The classification of some NSW correctional facilities changed from March 2008 – see Explanatory Notes, paragraph 29.

(d) Data prior to the September quarter 2009 are not comparable – see Explanatory Notes, paragraphs 30.

(e) Includes ACT prisoners held in ACT as well as ACT prisoners that were held in NSW prior to the September quarter 2009 – see Explanatory Notes, paragraph 35.

(f) See footnotes c–d.

PERSONS IN FULL-TIME CUSTODY(a), By legal status

	NSW(b)	Vic.	Qld	SA	WA	Tas.	NT	ACT(c)	Aust. (d)
UNSENTENCED (NUMBER ON FIRST DAY OF MONTH)									
2008	2 545	836	1 223	650	752	112	213	92	6 423
2009	2 686	856	1 152	671	718	110	258	79	6 529
2010	2 657	834	1 186	678	770	98	249	85	6 557
2010									
Jun Qtr	2 778	861	1 215	715	829	99	238	92	6 826
Sep Qtr	2 591	812	1 160	676	765	108	245	79	6 437
Dec Qtr	2 524	828	1 164	662	752	93	254	81	6 357
2011									
Mar Qtr	2 755	847	1 170	673	825	84	283	93	6 730
Jun Qtr	2 865	896	1 190	647	862	90	314	93	6 956
SENTENCED (NUMBER ON FIRST DAY OF MONTH)									
2008	7 264	3 396	4 306	1 271	3 060	413	719	82	20 429
2009	7 620	3 499	4 452	1 294	3 647	404	814	88	21 800
2010	7 604	3 719	4 439	1 288	3 973	380	862	126	22 391
2010									
Jun Qtr	7 648	3 700	4 534	1 264	4 010	378	875	124	22 535
Sep Qtr	7 645	3 755	4 441	1 308	3 969	383	852	134	22 487
Dec Qtr	7 577	3 780	4 391	1 311	3 820	398	885	137	22 299
2011									
Mar Qtr	7 251	3 667	4 257	1 326	3 771	369	893	139	21 673
Jun Qtr	7 253	3 746	4 380	1 359	3 802	387	935	146	22 008
TOTAL (NUMBER ON FIRST DAY OF MONTH)									
2008	9 809	4 233	5 529	1 921	3 812	525	931	174	26 852
2009	10 306	4 355	5 604	1 964	4 365	514	1 072	167	28 329
2010	10 261	4 553	5 625	1 966	4 743	478	1 112	211	28 948
2010									
Jun Qtr	10 426	4 561	5 749	1 980	4 839	477	1 113	216	29 361
Sep Qtr	10 235	4 567	5 601	1 984	4 734	491	1 097	213	28 924
Dec Qtr	10 100	4 608	5 555	1 973	4 572	491	1 139	218	28 656
2011									
Mar Qtr	10 006	4 514	5 428	1 999	4 596	453	1 175	232	28 404
Jun Qtr	10 118	4 641	5 570	2 005	4 664	477	1 250	238	28 964
Apr	10 210	4 614	5 587	2 022	4 688	461	1 255	231	29 068
May	10 088	4 611	5 553	1 982	4 631	468	1 261	241	28 835
Jun	10 057	4 699	5 570	2 012	4 673	501	1 233	243	28 988

- (a) Figures for the quarter and year for first day of month counts are calculated as a simple average – see Explanatory Notes, paragraph 5.
- (b) Data prior to the September quarter 2009 includes ACT prisoners held in NSW prisons. From the September quarter 2009 ACT prisoners are no longer held in NSW prisons – see Explanatory Notes, paragraph 35.
- (c) Data prior to the September quarter 2009 includes ACT prisoners held in ACT as well as ACT prisoners that were held in NSW – see Explanatory Notes, paragraph 35.
- (d) For the period prior to the September quarter 2009, ACT Prisoners held in NSW prisons are included in both NSW and ACT figures. The sum of the state/territory columns will therefore be greater than the Australian total – see Explanatory Notes, paragraph 35.

IMPRISONMENT RATES(a), By legal status

	NSW(b)	Vic.	Qld	SA	WA	Tas.	NT	ACT(c)(d)	Aust.
UNSENTENCED (RATE PER 100,000 ADULT POPULATION)									
2008	47.8	20.6	37.5	52.3	46.2	29.5	136.2	34.7	39.4
2009	49.4	20.5	34.3	53.2	42.5	28.8	160.9	29.1	39.0
2010	47.7	19.5	34.2	52.9	44.2	25.3	150.9	30.6	38.2
2010									
Jun Qtr	50.0	20.2	35.2	55.9	47.7	25.5	144.6	33.3	39.9
Sep Qtr	46.4	18.9	33.4	52.6	43.8	27.9	148.2	28.5	37.4
Dec Qtr	45.1	19.2	33.3	51.4	42.8	23.9	152.6	28.9	36.8
2011									
Mar Qtr	49.1	19.6	33.4	52.1	46.8	21.5	169.0	33.2	38.8
Jun Qtr	50.9	20.6	33.8	50.0	48.5	23.0	187.9	32.9	40.0
SENTENCED (RATE PER 100,000 ADULT POPULATION)									
2008	134.9	83.6	131.9	102.2	187.9	109.1	460.6	31.1	125.2
2009	139.9	84.0	132.4	102.6	216.0	105.5	508.6	32.4	130.3
2010	136.6	86.8	128.2	100.5	228.1	98.0	521.8	45.4	130.4
2010									
Jun Qtr	137.7	86.6	131.3	98.9	231.0	97.8	530.6	45.1	131.6
Sep Qtr	136.9	87.3	127.8	101.8	226.9	98.6	514.4	48.2	130.5
Dec Qtr	135.3	87.6	125.8	101.8	217.3	102.3	530.9	49.2	129.0
2011									
Mar Qtr	129.2	84.6	121.5	102.7	213.6	94.8	533.6	49.7	125.0
Jun Qtr	128.8	86.1	124.5	105.0	214.2	99.1	559.1	51.7	126.4
TOTAL (RATE PER 100,000 ADULT POPULATION)									
2008	182.7	104.2	169.3	154.6	234.1	138.6	596.8	65.8	164.5
2009	189.3	104.5	166.6	155.8	258.5	134.3	669.5	61.6	169.4
2010	184.3	106.3	162.4	153.4	272.3	123.3	672.7	76.0	168.6
2010									
Jun Qtr	187.7	106.8	166.5	154.8	278.7	123.3	675.2	78.4	171.5
Sep Qtr	183.3	106.2	161.2	154.5	270.7	126.5	662.6	76.7	167.9
Dec Qtr	180.3	106.7	159.1	153.2	260.1	126.2	683.6	78.1	165.7
2011									
Mar Qtr	178.3	104.2	154.9	154.8	260.3	116.2	702.5	82.9	163.8
Jun Qtr	179.6	106.7	158.3	155.0	262.8	122.0	747.0	84.6	166.4
Apr	181.2	106.1	158.8	156.3	264.1	118.0	750.2	82.0	167.0
May	179.1	106.0	157.8	153.2	260.9	119.8	753.8	85.6	165.6
Jun	178.5	108.0	158.3	155.5	263.3	128.2	737.1	86.3	166.5

(a) Imprisonment rates are based on Estimated Resident Population counts – see Explanatory Notes, paragraphs 17–21.

(b) Excludes ACT prisoners that were held in NSW prisons prior to September quarter 2009 – see Explanatory Notes, paragraph 35.

(c) Includes ACT prisoners held in ACT as well as ACT prisoners that were held in NSW prior to the September quarter 2009 – see Explanatory Notes, paragraph 35.

(d) Data prior to the June quarter 2009 mainly included unsentenced persons in ACT prison custody – see Explanatory Notes, paragraph 35.

SENTENCED PRISONER RECEPTIONS INTO FULL-TIME CUSTODY(a)

	NSW(b)	Vic.	Qld	SA	WA	Tas.	NT(c)	ACT(d)	Aust.(e)
NUMBER									
2008	9 098	3 915	8 223	1 507	4 355	747	1 442	131	29 306
2009	8 848	4 190	7 728	1 583	5 372	635	1 674	123	30 153
2010	8 175	4 230	7 711	1 613	5 551	546	2 055	182	30 063
2010									
Jun Qtr	2 000	1 085	1 914	389	1 342	121	507	69	7 427
Sep Qtr	2 156	1 108	1 925	428	1 544	140	473	46	7 820
Dec Qtr	2 003	1 011	1 832	420	1 431	133	559	40	7 429
2011									
Mar Qtr	1 848	932	1 952	407	1 363	148	611	37	7 298
Jun Qtr	1 715	1 110	2 134	406	1 151	171	594	60	7 341

- (a) The count of sentenced prisoner receptions is an addition of the total number for each month within the reference period – see Explanatory Notes, paragraphs 2–5.
- (b) Data prior to the September quarter 2009 includes ACT prisoners held in NSW prisons. From the September quarter 2009 ACT prisoners are no longer held in NSW prisons – see Explanatory Notes, paragraph 35.
- (c) A new processing system was introduced in September 2009 resulting in increased counts from the December Quarter 2009 – see Explanatory Notes, paragraph 34.
- (d) Data prior to the September quarter 2009 includes ACT prisoners held in ACT as well as ACT prisoners that were held in NSW – see Explanatory Notes, paragraph 35.
- (e) For the period prior to the September quarter 2009, ACT Prisoners held in NSW prisons are included in both NSW and ACT figures. The sum of the state/territory columns will therefore be greater than the Australian total – see Explanatory Notes, paragraph 35.

PERSONS IN PERIODIC DETENTION(a)(b), By sex

	NSW		ACT	
	no.(c)	rate(d)	no.(c)	rate(d)
MALES				
2008	653	25.0	50	38.1
2009	740	27.8	44	33.0
2010	636	23.3	47	34.6
2010				
Jun Qtr	718	26.3	46	34.1
Sep Qtr	617	22.5	46	33.7
Dec Qtr	435	15.8	49	35.6
2011				
Mar Qtr	263	9.5	55	39.8
Jun Qtr	144	5.2	50	36.2
Apr	178	6.4	48	34.2
May	140	5.1	49	34.9
Jun	115	4.2	55	39.7
FEMALES				
2008	65	2.4	6	4.4
2009	67	2.4	7	4.9
2010	53	1.9	7	4.7
2010				
Jun Qtr	58	2.1	7	5.3
Sep Qtr	51	1.8	7	5.0
Dec Qtr	39	1.4	5	3.2
2011				
Mar Qtr	27	0.9	6	4.1
Jun Qtr	17	0.6	5	3.8
Apr	24	0.8	5	3.4
May	17	0.6	5	3.7
Jun	11	0.4	6	4.2
PERSONS				
2008	718	13.5	55	20.9
2009	806	14.8	51	18.7
2010	689	12.4	54	19.4
2010				
Jun Qtr	776	14.0	54	19.5
Sep Qtr	668	12.0	53	19.2
Dec Qtr	475	8.5	54	19.2
2011				
Mar Qtr	289	5.2	61	21.7
Jun Qtr	161	2.9	56	19.8
Apr	201	3.6	52	18.6
May	157	2.8	54	19.1
Jun	126	2.2	61	21.7

- (a) Periodic detention is a form of custody only used in NSW and the ACT.
This order type has ceased from October 2010 in New South Wales.
- (b) Imprisonment rates are based on Estimated Resident Population counts – see Explanatory Notes, paragraphs 17–21.
- (c) Average daily number.
- (d) Rate per 100,000 adult population.

FEDERAL SENTENCED PERSONS IN FULL-TIME CUSTODY(a)(b), By sex

	NSW	Vic.	Qld	SA	WA	Tas.	NT	ACT	Aust.
.....									
MALES (NUMBER ON FIRST DAY OF MONTH)									
2008	327	83	68	22	43	6	13	2	563
2009	351	89	80	16	51	9	12	—	608
2010	343	102	91	18	80	4	15	1	653
2010									
Jun Qtr	340	96	91	15	64	4	14	1	627
Sep Qtr	342	103	96	18	75	4	17	2	658
Dec Qtr	351	111	87	17	113	5	14	1	698
2011									
Mar Qtr	348	98	77	16	137	5	24	1	706
Jun Qtr	352	93	85	14	155	2	39	1	741
.....									
FEMALES (NUMBER ON FIRST DAY OF MONTH)									
2008	73	7	22	3	8	6	—	—	121
2009	68	7	20	4	12	4	2	—	117
2010	68	27	26	3	15	2	2	—	142
2010									
Jun Qtr	68	27	27	3	15	2	2	—	145
Sep Qtr	69	30	26	2	14	2	2	—	146
Dec Qtr	67	29	29	2	17	1	1	—	146
2011									
Mar Qtr	63	29	23	3	17	1	—	—	136
Jun Qtr	63	27	23	3	15	—	1	—	133
.....									
PERSONS (NUMBER ON FIRST DAY OF MONTH)									
2008	399	90	90	25	52	12	13	2	684
2009	420	97	100	20	62	12	14	—	726
2010	411	128	117	20	94	7	17	1	795
2010									
Jun Qtr	408	124	118	19	80	6	17	—	772
Sep Qtr	411	133	122	21	89	7	19	2	804
Dec Qtr	418	140	115	19	130	6	15	1	844
2011									
Mar Qtr	411	127	100	19	154	5	24	1	841
Jun Qtr	415	121	108	18	171	2	39	1	874
Apr	412	122	104	18	168	np	39	np	867
May	418	119	108	19	173	np	39	np	879
Jun	414	121	111	16	171	np	40	np	876

— nil or rounded to zero (including null cells)

np not available for publication but included in totals where applicable, unless otherwise indicated

(a) Counts reflect the state or territory in which a prisoner was sentenced, not where they were held in custody.

(b) Figures for the quarter and year for the first day of the month counts are calculated as a simple average – see Explanatory Notes, paragraph 5.

ABORIGINAL AND TORRES STRAIT ISLANDER PERSONS IN FULL-TIME CUSTODY(a)(b), By sex

	NSW(c)	Vic.	Qld	SA	WA	Tas.	NT	ACT(d)	Aust.(e)
MALES (AVERAGE DAILY NUMBER)									
2008	1 852	229	1 364	383	1 444	59	736	20	6 080
2009	2 033	233	1 435	416	1 635	60	842	23	6 673
2010	2 049	257	1 527	426	1 668	62	871	33	6 892
2010									
Jun Qtr	2 091	259	1 538	424	1 712	60	867	34	6 984
Sep Qtr	2 043	255	1 533	425	1 631	63	853	33	6 835
Dec Qtr	2 004	260	1 508	440	1 579	63	905	35	6 795
2011									
Mar Qtr	2 012	264	1 493	445	1 617	60	943	37	6 872
Jun Qtr	2 077	264	1 517	447	1 618	64	978	32	6 997
Apr	2 076	263	1 540	438	1 612	62	990	33	7 015
May	2 078	259	1 508	444	1 618	62	962	32	6 962
Jun	2 077	269	1 504	459	1 625	68	983	32	7 017
FEMALES (AVERAGE DAILY NUMBER)									
2008	213	17	115	28	143	8	36	3	561
2009	226	19	123	31	165	7	38	3	612
2010	210	26	136	34	187	7	41	2	643
2010									
Jun Qtr	219	27	139	31	197	7	41	2	663
Sep Qtr	201	24	138	35	186	6	40	2	633
Dec Qtr	196	28	141	34	170	8	40	2	618
2011									
Mar Qtr	194	28	157	33	165	6	48	3	634
Jun Qtr	193	24	153	34	157	9	50	3	624
Apr	192	25	163	34	162	10	49	3	638
May	191	24	152	35	156	9	53	3	624
Jun	196	22	145	32	154	8	49	4	609
PERSONS (AVERAGE DAILY NUMBER)									
2008	2 065	245	1 478	411	1 587	67	773	23	6 641
2009	2 259	252	1 557	447	1 800	66	880	25	7 285
2010	2 258	284	1 663	460	1 855	68	912	35	7 534
2010									
Jun Qtr	2 310	286	1 676	455	1 909	67	908	36	7 647
Sep Qtr	2 244	279	1 670	460	1 818	69	893	35	7 467
Dec Qtr	2 200	288	1 649	475	1 749	71	944	37	7 413
2011									
Mar Qtr	2 205	292	1 650	478	1 782	66	991	40	7 506
Jun Qtr	2 270	288	1 671	481	1 775	73	1 029	36	7 621
Apr	2 268	289	1 703	472	1 774	72	1 039	36	7 653
May	2 269	283	1 660	479	1 773	71	1 015	36	7 586
Jun	2 273	291	1 649	491	1 779	75	1 033	35	7 626

(a) Excludes persons whose Aboriginal and Torres Strait Islander status is unknown – see Explanatory Notes, paragraph 28.

(b) For the calculation of quarterly figures – see Explanatory Notes, paragraph 5.

(c) Data prior to the September quarter 2009 includes ACT prisoners held in NSW prisons. From the September quarter 2009 ACT prisoners are no longer held in NSW prisons – see Explanatory Notes, paragraph 35.

(d) Data prior to the September quarter 2009 includes ACT prisoners held in ACT as well as ACT prisoners that were held in NSW – see Explanatory Notes, paragraph 35.

(e) For the period prior to the September quarter 2009, ACT Prisoners held in NSW prisons are included in both NSW and ACT figures. The sum of the state/territory columns will therefore be greater than the Australian total – see Explanatory Notes, paragraph 35.

ABORIGINAL AND TORRES STRAIT ISLANDER IMPRISONMENT RATES(a)(b), By sex

	NSW(c)	Vic.	Qld	SA	WA	Tas.	NT	ACT(d)	Aust.
MALES (RATE PER 100,000 ADULT ABORIGINAL AND TORRES STRAIT ISLANDER POPULATION)									
2008	4 261.4	2 317.8	3 191.4	4 753.7	6 833.2	1 096.0	3 901.9	1 565.5	4 035.9
2009	4 648.1	2 337.5	3 324.5	4 954.0	7 519.9	1 072.0	4 393.7	1 676.9	4 360.2
2010	4 430.0	2 428.0	3 311.4	4 958.7	7 428.0	1 056.3	4 383.3	2 393.7	4 279.2
2010									
Jun Qtr	4 521.3	2 441.3	3 335.2	4 935.9	7 623.6	1 037.7	4 363.6	2 468.4	4 336.7
Sep Qtr	4 416.8	2 404.8	3 324.6	4 943.1	7 263.6	1 082.3	4 293.3	2 388.6	4 243.7
Dec Qtr	4 334.5	2 454.7	3 272.0	5 126.9	7 031.5	1 076.5	4 554.9	2 549.4	4 219.1
2011									
Mar Qtr	4 216.6	2 401.3	3 124.0	5 032.7	6 991.9	991.1	4 625.4	2 561.5	4 130.6
Jun Qtr	4 353.9	2 397.9	3 174.1	5 049.9	6 996.8	1 054.7	4 795.9	2 241.8	4 206.2
Apr	4 352.1	2 394.9	3 222.5	4 948.6	6 970.9	1 019.4	4 854.5	2 285.2	4 216.7
May	4 355.0	2 352.8	3 154.2	5 016.4	6 993.8	1 028.1	4 715.1	2 251.9	4 184.8
Jun	4 354.5	2 447.3	3 146.1	5 185.9	7 025.7	1 117.5	4 820.7	2 188.1	4 217.7
FEMALES (RATE PER 100,000 ADULT ABORIGINAL AND TORRES STRAIT ISLANDER POPULATION)									
2008	466.9	163.1	254.6	316.1	666.7	137.1	177.8	235.4	354.8
2009	492.1	186.9	266.2	343.5	731.4	121.2	188.3	198.2	379.1
2010	434.1	239.4	281.9	366.0	821.7	112.8	191.1	148.8	381.6
2010									
Jun Qtr	453.1	248.2	287.2	339.7	864.3	113.0	191.4	167.0	393.6
Sep Qtr	416.1	222.5	285.7	379.7	818.7	102.6	187.0	116.9	375.6
Dec Qtr	405.4	250.5	291.9	372.1	746.9	139.5	184.9	132.6	367.2
2011									
Mar Qtr	388.0	249.8	314.7	347.8	707.2	102.9	216.1	225.4	365.4
Jun Qtr	387.1	210.3	307.6	355.0	672.5	144.4	228.5	226.1	359.3
Apr	385.3	223.4	326.0	358.4	692.6	160.5	221.7	198.8	367.3
May	383.9	215.1	305.4	368.9	666.4	148.5	239.9	234.8	359.7
Jun	392.3	192.3	291.5	337.3	658.6	123.9	223.5	244.5	350.9
PERSONS (RATE PER 100,000 ADULT ABORIGINAL AND TORRES STRAIT ISLANDER POPULATION)									
2008	2 317.1	1 222.0	1 685.4	2 450.4	3 725.2	608.2	1 961.6	902.0	2 150.0
2009	2 517.7	1 244.6	1 746.1	2 561.0	4 058.0	590.2	2 227.9	933.0	2 316.4
2010	2 387.8	1 314.2	1 762.3	2 581.0	4 104.6	578.0	2 204.0	1 265.6	2 286.9
2010									
Jun Qtr	2 442.2	1 325.2	1 776.6	2 556.4	4 223.2	568.9	2 194.7	1 311.9	2 321.2
Sep Qtr	2 372.2	1 294.2	1 770.7	2 580.6	4 021.3	585.6	2 158.7	1 247.0	2 266.5
Dec Qtr	2 326.4	1 332.9	1 748.2	2 665.2	3 869.9	601.5	2 283.2	1 334.9	2 250.2
2011									
Mar Qtr	2 259.8	1 309.0	1 689.4	2 609.0	3 832.3	541.7	2 337.5	1 392.2	2 207.9
Jun Qtr	2 326.5	1 287.3	1 710.3	2 621.1	3 817.3	594.0	2 425.9	1 232.9	2 241.8
Apr	2 324.7	1 292.5	1 743.4	2 573.9	3 814.6	584.7	2 450.6	1 240.9	2 251.0
May	2 325.4	1 267.6	1 699.5	2 612.1	3 812.8	583.0	2 393.0	1 242.3	2 231.5
Jun	2 329.4	1 302.5	1 688.4	2 677.5	3 824.7	614.7	2 435.3	1 215.3	2 243.2

(a) Rates are based on Aboriginal and Torres Strait Islander adult population estimates and projections for 30 June of the relevant calendar year – see Explanatory Notes, paragraphs 22–25.

(b) Excludes persons whose Aboriginal and Torres Strait Islander status is unknown – see Explanatory Notes, paragraph 28.

(c) Excludes ACT prisoners that were held in NSW prisons prior to September quarter 2009 – see Explanatory Notes, paragraph 35.

(d) Includes ACT prisoners held in ACT as well as ACT prisoners held in NSW – see Explanatory Notes, paragraph 35.

	NSW(c)	Vic.	Qld	SA	WA	Tas.	NT	ACT(d)	Aust. (e)
UNSENTENCED (NUMBER ON FIRST DAY OF MONTH)									
2008	492	52	335	169	307	15	174	14	1 560
2009	537	52	299	189	297	18	210	15	1 615
2010	529	55	339	197	313	18	209	19	1 678
2010									
Jun Qtr	576	58	355	199	339	17	194	17	1 755
Sep Qtr	519	56	328	199	300	19	202	19	1 642
Dec Qtr	483	53	343	205	298	20	225	19	1 646
2011									
Mar Qtr	543	60	336	191	350	15	237	20	1 752
Jun Qtr	583	60	343	202	382	11	268	19	1 869
SENTENCED (NUMBER ON FIRST DAY OF MONTH)									
2008	1 563	192	1 140	243	1 274	53	592	9	5 056
2009	1 718	198	1 248	262	1 493	49	671	10	5 647
2010	1 744	228	1 322	265	1 549	50	701	16	5 874
2010									
Jun Qtr	1 755	228	1 335	262	1 573	51	720	19	5 943
Sep Qtr	1 741	224	1 338	264	1 539	48	680	16	5 850
Dec Qtr	1 740	234	1 320	275	1 456	53	725	17	5 819
2011									
Mar Qtr	1 639	230	1 296	287	1 414	48	740	21	5 675
Jun Qtr	1 691	229	1 333	284	1 404	61	756	16	5 773
TOTAL (NUMBER ON FIRST DAY OF MONTH)									
2008	2 056	244	1 475	413	1 581	67	766	23	6 616
2009	2 255	250	1 547	450	1 789	66	881	25	7 262
2010	2 273	283	1 661	462	1 862	67	910	35	7 552
2010									
Jun Qtr	2 331	286	1 691	461	1 912	68	914	36	7 698
Sep Qtr	2 260	280	1 666	463	1 839	67	882	35	7 492
Dec Qtr	2 224	287	1 663	480	1 754	73	949	35	7 465
2011									
Mar Qtr	2 182	290	1 632	478	1 763	64	977	41	7 427
Jun Qtr	2 274	289	1 676	485	1 786	72	1 024	35	7 642

- (a) Figures for the quarter and year for first day of the month counts are calculated as a simple average – see Explanatory Notes, paragraph 5.
- (b) Excludes persons whose Aboriginal and Torres Strait Islander status is unknown – see Explanatory Notes, paragraph 28.
- (c) Data prior to the September quarter 2009 includes ACT prisoners held in NSW prisons. From the September quarter 2009 ACT prisoners are no longer held in NSW prisons – see Explanatory Notes, paragraph 35.

- (d) Data prior to the September quarter 2009 includes ACT prisoners held in ACT as well as ACT prisoners that were held in NSW – see Explanatory Notes, paragraph 35.
- (e) For the period prior to the September quarter 2009, ACT Prisoners held in NSW prisons are included in both NSW and ACT figures. The sum of the state/territory columns will therefore be greater than the Australian total – see Explanatory Notes, paragraph 35.

	NSW(d)	Vic.	Qld	SA	WA	Tas.	NT	ACT(e)	Aust.
UNSENTENCED (RATE PER 100,000 ADULT ABORIGINAL AND TORRES STRAIT ISLANDER POPULATION)									
2008	554.7	260.9	382.4	1 010.7	720.9	133.3	442.9	541.0	505.0
2009	599.6	254.9	335.9	1 080.7	667.8	156.4	532.5	548.1	514.1
2010	558.8	254.2	359.8	1 103.8	692.5	148.8	505.7	666.4	509.2
2010									
Jun Qtr	609.3	270.4	376.7	1 115.5	750.0	141.1	468.2	612.4	532.7
Sep Qtr	548.4	259.6	347.7	1 117.4	664.5	158.0	488.4	696.4	498.4
Dec Qtr	511.0	244.1	363.9	1 151.1	659.3	169.3	543.2	672.4	499.5
2011									
Mar Qtr	556.1	270.1	344.0	1 039.7	751.8	125.4	559.8	693.2	515.4
Jun Qtr	597.5	270.1	351.1	1 099.7	822.0	90.0	632.9	658.6	549.7
SENTENCED (RATE PER 100,000 ADULT ABORIGINAL AND TORRES STRAIT ISLANDER POPULATION)									
2008	1 751.0	955.4	1 299.3	1 450.2	2 990.6	478.6	1 502.0	351.0	1 636.9
2009	1 913.8	979.2	1 398.8	1 499.6	3 365.7	432.1	1 697.5	382.4	1 795.1
2010	1 843.9	1 057.3	1 400.9	1 488.9	3 426.2	421.8	1 694.5	582.4	1 783.1
2010									
Jun Qtr	1 855.1	1 055.3	1 415.5	1 471.2	3 481.0	434.5	1 740.7	672.4	1 803.9
Sep Qtr	1 841.0	1 036.8	1 418.0	1 482.4	3 404.3	409.1	1 644.8	564.4	1 775.5
Dec Qtr	1 840.0	1 084.7	1 398.9	1 542.3	3 221.4	448.6	1 752.0	600.4	1 766.2
2011									
Mar Qtr	1 679.7	1 028.2	1 327.1	1 566.9	3 039.4	395.3	1 744.6	727.9	1 669.3
Jun Qtr	1 732.6	1 025.3	1 364.9	1 546.9	3 018.6	496.1	1 782.4	554.6	1 698.2
TOTAL (RATE PER 100,000 ADULT ABORIGINAL AND TORRES STRAIT ISLANDER POPULATION)									
2008	2 305.7	1 216.3	1 681.7	2 460.9	3 711.5	611.8	1 944.9	891.9	2 141.9
2009	2 513.4	1 234.1	1 734.7	2 580.3	4 033.5	588.4	2 230.0	930.5	2 309.1
2010	2 402.8	1 311.4	1 760.7	2 592.8	4 118.7	570.6	2 200.2	1 248.8	2 292.3
2010									
Jun Qtr	2 464.4	1 325.7	1 792.1	2 586.7	4 231.0	575.5	2 208.9	1 284.8	2 336.6
Sep Qtr	2 389.4	1 296.4	1 765.6	2 599.8	4 068.8	567.1	2 133.1	1 260.8	2 273.9
Dec Qtr	2 351.0	1 328.8	1 762.8	2 693.4	3 880.7	617.9	2 295.1	1 272.8	2 265.7
2011									
Mar Qtr	2 235.8	1 298.4	1 671.0	2 606.6	3 791.2	520.7	2 304.4	1 421.1	2 184.7
Jun Qtr	2 330.1	1 295.4	1 716.1	2 646.6	3 840.7	586.1	2 415.3	1 213.2	2 247.8

(a) Rates are based on the Aboriginal and Torres Strait Islander adult population estimates and projections for 30 June of the relevant calendar year – see Explanatory Notes, paragraphs 22–25.

(b) Figures for the quarter and year for first day of the month counts are calculated as a simple average – see Explanatory Notes, paragraph 5.

(c) Excludes persons whose Aboriginal and Torres Strait Islander status is unknown – see Explanatory Notes, paragraph 28.

(d) Excludes ACT prisoners that were in NSW prisons – see Explanatory Notes, paragraph 35.

(e) Includes ACT prisoners held in ACT as well as ACT prisoners that were held in NSW – see Explanatory Notes, paragraph 35.

PERSONS IN COMMUNITY-BASED CORRECTIONS(a)(b), By sex

	NSW	Vic.	Qld	SA	WA(c)	Tas.	NT(d)	ACT	Aust.(e)
MALES (NUMBER ON FIRST DAY OF MONTH)									
2008	15 075	6 431	11 283	4 752	4 326	908	963	1 100	44 838
2009	15 254	6 943	11 629	4 902	4 377	1 015	971	1 167	46 258
2010	14 175	7 573	12 338	4 627	3 882	1 208	983	1 213	46 000
2010									
Jun Qtr	14 423	7 454	12 306	4 621	3 987	1 181	996	1 220	46 188
Sep Qtr	13 924	7 751	12 535	4 638	3 812	1 215	1 020	1 233	46 127
Dec Qtr	13 590	7 741	12 520	4 597	3 636	1 329	926	1 213	45 553
2011									
Mar Qtr	13 490	7 429	12 255	4 597	3 489	1 330	918	1 212	44 720
Jun Qtr	13 697	7 322	12 136	4 585	3 474	1 357	864	1 191	44 625
Apr	13 632	7 377	12 119	4 597	3 513	1 340	851	1 200	44 629
May	13 737	7 314	12 079	4 558	3 465	1 360	864	1 183	44 560
Jun	13 721	7 274	12 209	4 601	3 445	1 370	877	1 190	44 687
FEMALES (NUMBER ON FIRST DAY OF MONTH)									
2008	2 812	1 501	2 838	1 135	1 219	235	137	200	10 078
2009	2 806	1 533	2 979	1 118	1 215	257	148	227	10 283
2010	2 617	1 671	3 113	1 097	1 180	301	154	229	10 363
2010									
Jun Qtr	2 642	1 651	3 082	1 094	1 230	297	160	232	10 388
Sep Qtr	2 566	1 683	3 179	1 091	1 154	295	156	230	10 354
Dec Qtr	2 489	1 687	3 146	1 092	1 094	331	145	216	10 200
2011									
Mar Qtr	2 449	1 684	3 077	1 060	1 011	345	154	209	9 988
Jun Qtr	2 469	1 666	3 039	1 050	1 002	344	152	214	9 936
Apr	2 445	1 685	3 056	1 056	1 016	345	150	213	9 966
May	2 469	1 661	3 035	1 044	1 010	341	149	216	9 925
Jun	2 494	1 653	3 027	1 049	980	345	157	213	9 918
PERSONS (NUMBER ON FIRST DAY OF MONTH) (f)									
2008	17 954	7 950	14 120	5 888	5 545	1 143	1 100	1 301	55 001
2009	18 137	8 479	14 608	6 021	5 595	1 272	1 119	1 394	56 625
2010	16 851	9 248	15 451	5 725	5 063	1 510	1 138	1 442	56 426
2010									
Jun Qtr	17 127	9 108	15 388	5 715	5 217	1 478	1 156	1 452	56 641
Sep Qtr	16 549	9 438	15 714	5 731	4 966	1 509	1 176	1 463	56 546
Dec Qtr	16 127	9 433	15 665	5 691	4 730	1 660	1 072	1 430	55 807
2011									
Mar Qtr	15 982	9 115	15 332	5 660	4 501	1 675	1 072	1 421	54 757
Jun Qtr	16 210	8 989	15 175	5 637	4 476	1 700	1 016	1 405	54 609
Apr	16 125	9 062	15 175	5 655	4 529	1 685	1 001	1 413	54 645
May	16 250	8 976	15 114	5 604	4 475	1 701	1 013	1 399	54 532
Jun	16 256	8 928	15 236	5 652	4 425	1 715	1 034	1 403	54 649

(a) Figures include persons with breached or suspended orders, with the exception of Vic. and Tas.

(b) Figures for the quarter and year for first day of the month counts are calculated as a simple average – see Explanatory Notes, paragraph 5.

(c) Data are subject to processing delays of 4 to 6 weeks – see Explanatory Notes, paragraph 32.

(d) Excludes bail data for the December quarter 2009 – see Explanatory Notes, paragraph 34.

(e) See footnotes c–d.

(f) Includes persons whose sex is unknown.

COMMUNITY-BASED CORRECTIONS RATES, By sex(a)

	NSW	Vic.	Qld	SA	WA	Tas.	NT	ACT	Aust.
MALES (RATE PER 100,000 ADULT POPULATION)									
2008	577.8	323.4	697.4	782.0	528.7	492.6	1 181.4	844.5	557.9
2009	572.5	339.7	697.2	795.2	514.4	545.0	1 166.4	875.1	560.9
2010	518.7	359.8	718.5	737.6	441.9	640.3	1 145.6	887.0	543.0
2010									
Jun Qtr	528.9	355.3	719.0	738.3	455.4	626.9	1 164.0	896.6	546.7
Sep Qtr	507.8	367.0	727.7	737.6	432.1	642.4	1 186.1	898.8	542.7
Dec Qtr	494.2	365.1	723.4	729.0	410.1	701.6	1 069.2	879.9	533.9
2011									
Mar Qtr	489.5	349.1	705.6	727.3	391.7	701.0	1 056.2	876.5	522.5
Jun Qtr	495.4	342.9	695.9	724.0	387.9	713.1	993.5	856.1	519.5
Apr	493.0	345.5	695.0	725.8	392.2	704.3	978.6	862.6	519.6
May	496.8	342.5	692.7	719.7	386.8	714.8	993.5	850.3	518.8
Jun	496.2	340.7	700.1	726.5	384.6	720.1	1 008.5	855.4	520.2
FEMALES (RATE PER 100,000 ADULT POPULATION)									
2008	103.6	72.4	172.2	178.7	150.5	121.0	184.1	148.9	121.7
2009	101.3	72.1	175.6	173.5	145.3	130.7	192.6	165.4	121.2
2010	92.3	76.6	178.2	167.6	136.7	151.5	194.3	163.4	119.2
2010									
Jun Qtr	93.4	76.0	177.0	167.5	142.9	149.6	201.5	165.9	119.7
Sep Qtr	90.3	76.9	181.5	166.3	133.1	147.9	195.7	163.2	118.7
Dec Qtr	87.3	76.8	178.7	166.1	125.6	165.7	181.7	153.0	116.5
2011									
Mar Qtr	85.7	76.4	174.2	160.8	115.6	172.5	191.2	147.4	113.7
Jun Qtr	86.1	75.3	171.3	158.9	114.0	171.5	189.3	150.1	112.7
Apr	85.2	76.1	172.2	159.9	115.5	172.2	186.8	149.4	113.0
May	86.1	75.0	171.0	158.1	114.9	170.2	185.5	151.5	112.5
Jun	87.0	74.7	170.6	158.8	111.5	172.2	195.5	149.4	112.5
PERSONS (RATE PER 100,000 ADULT POPULATION) (b)									
2008	337.3	195.7	432.4	473.7	340.6	301.9	704.9	491.1	337.0
2009	333.8	203.4	434.3	477.6	331.6	332.4	699.0	515.0	338.5
2010	302.7	215.8	446.1	446.7	290.7	389.5	688.5	520.4	328.7
2010									
Jun Qtr	308.3	213.2	445.6	446.9	300.5	382.1	701.3	526.2	330.8
Sep Qtr	296.3	219.5	452.2	446.1	283.9	388.7	710.1	526.0	328.3
Dec Qtr	287.9	218.5	448.8	441.7	269.2	426.7	643.2	511.9	322.8
2011									
Mar Qtr	284.7	210.3	437.6	438.4	254.9	429.8	640.7	507.6	315.7
Jun Qtr	287.8	206.7	431.3	435.7	252.2	435.2	607.4	498.8	313.7
Apr	286.3	208.4	431.3	437.1	255.2	431.3	598.4	501.7	313.9
May	288.5	206.4	429.6	433.2	252.1	435.4	605.6	496.7	313.2
Jun	288.6	205.3	433.1	436.9	249.3	439.0	618.1	498.1	313.9

(a) With the exception of Vic. and Tas., the number of persons in community-based corrections includes those persons with breached or suspended orders.

(b) Includes persons whose sex is unknown.

PERSONS IN COMMUNITY-BASED CORRECTIONS(a)(b)(c), By type of order

	NSW	Vic.	Qld	SA	WA(d)	Tas.(e)	NT(f)	ACT(g)	Aust.(h)
RESTRICTED MOVEMENT (NUMBER ON FIRST DAY OF MONTH)									
2008	151	31	..	421	6	..	32	..	640
2009	164	34	..	445	4	..	34	..	681
2010	136	38	..	415	1	..	28	..	618
2010									
Jun Qtr	137	36	..	417	2	..	26	..	618
Sep Qtr	126	36	..	424	—	..	29	..	616
Dec Qtr	130	40	..	410	—	..	24	..	605
2011									
Mar Qtr	125	41	..	393	—	..	25	..	584
Jun Qtr	121	33	..	395	—	..	29	..	579
Apr	123	39	..	387	np	..	np	..	581
May	125	34	..	408	np	..	np	..	594
Jun	115	26	..	391	—	..	29	..	561
REPARATION-FINE OPTION (NUMBER ON FIRST DAY OF MONTH)									
2008	16	1 763	542	646	208	50	3 224
2009	21	1 846	498	581	353	26	3 326
2010	11	2 274	780	489	304	15	3 874
2010									
Jun Qtr	12	2 239	776	476	342	17	3 862
Sep Qtr	11	2 358	852	477	291	13	4 002
Dec Qtr	7	2 282	841	489	227	12	3 858
2011									
Mar Qtr	3	2 100	802	502	206	13	3 627
Jun Qtr	2	1 948	815	545	289	11	3 610
Apr	3	2 017	782	527	296	11	3 636
May	np	1 965	816	536	291	np	3 621
Jun	np	1 863	846	571	281	np	3 574
REPARATION-COMMUNITY SERVICE (NUMBER ON FIRST DAY OF MONTH)									
2008	3 979	679	1 854	1 005	1 473	500	184	161	9 835
2009	4 180	741	1 943	1 146	1 449	584	158	190	10 391
2010	3 836	686	2 236	1 113	1 330	752	124	204	10 280
2010									
Jun Qtr	4 002	676	2 306	1 075	1 392	722	119	210	10 502
Sep Qtr	3 788	668	2 235	1 113	1 292	752	136	203	10 188
Dec Qtr	3 491	657	2 164	1 138	1 196	877	123	192	9 838
2011									
Mar Qtr	3 296	618	2 048	1 148	1 130	877	132	203	9 451
Jun Qtr	3 142	601	2 028	1 151	1 095	948	128	209	9 302
Apr	3 183	592	2 024	1 141	1 093	921	123	217	9 294
May	3 151	603	2 030	1 129	1 104	943	130	219	9 309
Jun	3 092	608	2 030	1 183	1 088	980	132	190	9 303

.. not applicable

— nil or rounded to zero (including null cells)

np not available for publication but included in totals where applicable, unless otherwise indicated

(a) If a person has more than one type of order, they are counted against each order in this table. If a person has more than one order of the same order type, they are counted only once in the order type.

(b) Figures for the quarter and year for first day of the month counts are calculated as a simple average – see Explanatory Notes, paragraph 5.

(c) Figures include persons with breached or suspended orders, with the exception of Vic. and Tas.

(d) Data are subject to processing delays of 4 to 6 weeks – see Explanatory Notes, paragraph 32.

(e) A trial of new bail orders was conducted in the 2007–08 financial year – see Explanatory Notes, paragraph 33.

(f) Caution should be exercised as a new processing system was introduced by the NT in September 2009 resulting in significant changes to some community-based order counts. Bail counts were unable to be supplied in December quarter 2009 – see Explanatory Notes, paragraph 34.

(g) Data movements for bail orders may have been influenced by data quality checks during the December quarter 2008 – see Explanatory Notes, paragraph 38.

(h) See footnotes d–g.

	NSW	Vic.	Qld	SA	WA(d)	Tas.(e)	NT(f)	ACT(g)	Aust.(h)
SUPERVISION (COMPLIANCE)–PAROLE (NUMBER ON FIRST DAY OF MONTH)									
2008	4 246	1 494	3 793	903	1 317	96	90	113	12 051
2009	4 286	1 502	4 173	981	1 173	128	80	100	12 423
2010	4 304	1 533	4 256	990	592	117	98	108	11 998
2010									
Jun Qtr	4 253	1 544	4 189	993	597	117	99	104	11 896
Sep Qtr	4 255	1 530	4 312	982	543	115	107	110	11 953
Dec Qtr	4 330	1 557	4 329	994	514	118	93	116	12 049
2011									
Mar Qtr	4 354	1 604	4 326	964	488	115	89	113	12 051
Jun Qtr	4 318	1 636	4 371	940	462	104	85	107	12 024
Apr	4 345	1 630	4 351	944	467	105	84	107	12 033
May	4 329	1 640	4 344	928	466	106	84	109	12 006
Jun	4 279	1 638	4 418	949	452	102	88	106	12 032

SUPERVISION (COMPLIANCE)–BAIL (NUMBER ON FIRST DAY OF MONTH)									
2008	226	858	275	18	5	229	1 612
2009	207	829	310	..	na	206	1 568
2010	199	738	304	..	24	251	1 516
2010									
Jun Qtr	198	765	302	..	31	246	1 542
Sep Qtr	206	725	300	..	22	269	1 522
Dec Qtr	204	656	315	..	20	257	1 452
2011									
Mar Qtr	185	650	317	..	13	264	1 429
Jun Qtr	198	627	351	..	14	267	1 457
Apr	185	619	352	..	21	275	1 452
May	199	632	340	..	9	255	1 435
Jun	209	631	360	..	12	272	1 484

SUPERVISION (COMPLIANCE)–SENTENCED PROBATION (NUMBER ON FIRST DAY OF MONTH)									
2008	11 098	4 184	9 040	3 161	3 645	636	819	1 026	33 609
2009	11 073	4 645	9 123	3 185	3 616	735	867	1 139	34 383
2010	9 923	5 032	9 512	3 027	3 620	915	926	1 154	34 108
2010									
Jun Qtr	10 145	4 897	9 471	3 052	3 722	895	935	1 167	34 284
Sep Qtr	9 685	5 171	9 676	3 054	3 622	928	951	1 143	34 229
Dec Qtr	9 386	5 240	9 690	2 973	3 456	1 003	884	1 114	33 747
2011									
Mar Qtr	9 271	5 073	9 453	2 959	3 316	1 023	870	1 088	33 053
Jun Qtr	9 575	5 058	9 232	2 905	3 208	1 023	799	1 082	32 881
Apr	9 482	5 077	9 265	2 938	3 254	1 030	783	1 079	32 908
May	9 591	5 030	9 198	2 886	3 201	1 028	803	1 076	32 813
Jun	9 653	5 066	9 233	2 890	3 168	1 010	811	1 092	32 923

.. not applicable

na not available

(a) If a person has more than one type of order, they are counted against each order in this table. If a person has more than one order of the same order type, they are counted only once in the order type.

(b) Figures for the quarter and year for first day of the month counts are calculated as a simple average – see Explanatory Notes, paragraph 5.

(c) Figures include persons with breached or suspended orders, with the exception of Vic. and Tas.

(d) Data are subject to processing delays of 4 to 6 weeks – see Explanatory Notes, paragraph 32.

(e) A trial of new bail orders was conducted in the 2007–08 financial year – see Explanatory Notes, paragraph 33.

(f) Caution should be exercised as a new processing system was introduced by the NT in September 2009 resulting in significant changes to some community-based order counts. Bail counts were unable to be supplied in December quarter 2009 – see Explanatory Notes, paragraph 34.

(g) Data movements for bail orders may have been influenced by data quality checks during the December quarter 2008 – see Explanatory Notes, paragraph 38.

(h) See footnotes d–g.

PERSONS IN COMMUNITY-BASED CORRECTIONS(a)(b), By Aboriginal and Torres Strait
Islander status

	NSW	Vic.	Qld	SA	WA(c)(d)	Tas.	NT(e)	ACT	Aust.(f)
ABORIGINAL AND TORRES STRAIT ISLANDER (NUMBER ON FIRST DAY OF MONTH)									
2008	3 178	353	2 556	928	1 815	132	847	125	9 935
2009	3 169	439	2 823	1 001	1 949	161	860	153	10 555
2010	3 112	512	3 242	1 026	1 687	192	819	149	10 740
2010									
Jun Qtr	3 033	507	3 202	1 026	1 750	191	833	149	10 691
Sep Qtr	3 146	522	3 297	1 039	1 653	195	834	148	10 833
Dec Qtr	3 136	536	3 375	1 012	1 552	209	785	155	10 760
2011									
Mar Qtr	3 082	541	3 364	956	1 446	220	802	160	10 570
Jun Qtr	3 122	516	3 336	953	1 511	217	772	148	10 575
Apr	3 090	533	3 328	962	1 521	220	760	149	10 563
May	3 146	511	3 319	943	1 532	214	771	145	10 581
Jun	3 131	504	3 361	953	1 479	218	785	149	10 580
NON-INDIGENOUS (NUMBER ON FIRST DAY OF MONTH)									
2008	13 793	6 946	11 564	4 919	3 715	970	252	1 075	43 234
2009	13 119	7 220	11 785	4 956	3 626	1 067	258	1 166	43 197
2010	12 235	8 295	12 208	4 651	3 366	1 275	319	1 174	43 523
2010									
Jun Qtr	12 066	8 130	12 186	4 630	3 460	1 247	323	1 193	43 235
Sep Qtr	12 257	8 375	12 417	4 650	3 309	1 285	342	1 197	43 832
Dec Qtr	12 146	8 501	12 290	4 647	3 171	1 419	287	1 141	43 602
2011									
Mar Qtr	12 145	8 293	11 968	4 658	3 041	1 422	270	1 248	43 045
Jun Qtr	12 366	8 188	11 839	4 622	2 964	1 448	244	1 228	42 900
Apr	12 300	8 232	11 847	4 643	3 006	1 431	241	1 242	42 942
May	12 337	8 171	11 795	4 596	2 941	1 453	242	1 225	42 760
Jun	12 462	8 162	11 875	4 628	2 944	1 461	249	1 216	42 997
UNKNOWN (NUMBER ON FIRST DAY OF MONTH)									
2008	983	651	—	41	15	41	1	101	1 833
2009	1 849	820	—	64	20	44	1	75	2 873
2010	1 504	441	—	47	10	43	—	119	2 164
2010									
Jun Qtr	2 029	471	—	60	6	39	—	111	2 716
Sep Qtr	1 146	542	—	41	4	30	—	118	1 881
Dec Qtr	846	396	—	32	7	31	—	134	1 445
2011									
Mar Qtr	755	281	—	46	14	33	—	13	1 142
Jun Qtr	722	284	—	62	2	35	—	30	1 134
Apr	735	297	—	50	2	34	—	22	1 140
May	767	294	—	65	2	34	—	29	1 191
Jun	663	262	—	71	2	36	—	38	1 072

— nil or rounded to zero (including null cells)

(a) Figures include persons with breached or suspended orders, with the exception of Vic. and Tas.

(b) Figures for the quarter and year for first day of the month counts are calculated as a simple average – see Explanatory Notes, paragraph 5.

(c) Data is subject to processing delays of 4 to 6 weeks – see Explanatory Notes, paragraph 32.

(d) Aboriginal and Torres Strait Islander status is determined using a combination of self-identification, previously collected information and judgement by the recording officer – see Explanatory Notes, paragraphs 26–28.

(e) Excludes bail data for the December quarter 2009 – see Explanatory Notes, paragraph 34.

(f) See footnotes c–e.

	NSW	Vic.	Qld	SA	WA(c)(d)	Tas.	NT(e)	ACT	Aust.(f)
PERSONS (NUMBER ON FIRST DAY OF MONTH)									
2008	17 954	7 950	14 120	5 888	5 545	1 143	1 100	1 301	55 001
2009	18 137	8 479	14 608	6 021	5 595	1 272	1 119	1 394	56 625
2010	16 851	9 248	15 451	5 725	5 063	1 510	1 138	1 442	56 426
2010									
Jun Qtr	17 127	9 108	15 388	5 715	5 217	1 478	1 156	1 452	56 641
Sep Qtr	16 549	9 438	15 714	5 731	4 966	1 509	1 176	1 463	56 546
Dec Qtr	16 127	9 433	15 665	5 691	4 730	1 660	1 072	1 430	55 807
2011									
Mar Qtr	15 982	9 115	15 332	5 660	4 501	1 675	1 072	1 421	54 757
Jun Qtr	16 210	8 989	15 175	5 637	4 476	1 700	1 016	1 405	54 609
Apr	16 125	9 062	15 175	5 655	4 529	1 685	1 001	1 413	54 645
May	16 250	8 976	15 114	5 604	4 475	1 701	1 013	1 399	54 532
Jun	16 256	8 928	15 236	5 652	4 425	1 715	1 034	1 403	54 649

- (a) Figures include persons with breached or suspended orders, with the exception of Vic. and Tas.
- (b) Figures for the quarter and year for first day of the month counts are calculated as a simple average – see Explanatory Notes, paragraph 5.
- (c) Data is subject to processing delays of 4 to 6 weeks – see Explanatory Notes, paragraph 32.

- (d) Aboriginal and Torres Strait Islander status is determined using a combination of self-identification, previously collected information and judgement by the recording officer – see Explanatory Notes, paragraphs 26–28.
- (e) Excludes bail data for the December quarter 2009 – see Explanatory Notes, paragraph 34.
- (f) See footnotes c–e.

PROPORTION OF PERSONS IN COMMUNITY-BASED CORRECTIONS(a)(b), By Aboriginal and Torres Strait Islander status

	NSW	Vic.	Qld	SA	WA(c)(d)	Tas.	NT(e)	ACT	Aust.(f)
ABORIGINAL AND TORRES STRAIT ISLANDER (%)									
2008	17.7	4.4	18.1	15.8	32.7	11.5	77.0	9.6	18.1
2009	17.5	5.2	19.3	16.6	34.8	12.7	76.8	11.0	18.6
2010	18.5	5.5	21.0	17.9	33.3	12.7	72.0	10.3	19.0
2010									
Jun Qtr	17.7	5.6	20.8	17.9	33.6	12.9	72.0	10.2	18.9
Sep Qtr	19.0	5.5	21.0	18.1	33.3	12.9	70.9	10.1	19.2
Dec Qtr	19.4	5.7	21.5	17.8	32.8	12.6	73.2	10.9	19.3
2011									
Mar Qtr	19.3	5.9	21.9	16.9	32.1	13.1	74.8	11.2	19.3
Jun Qtr	19.3	5.7	22.0	16.9	33.7	12.8	76.0	10.5	19.4
Apr	19.2	5.9	21.9	17.0	33.6	13.1	75.9	10.5	19.3
May	19.4	5.7	22.0	16.8	34.2	12.6	76.1	10.4	19.4
Jun	19.3	5.6	22.1	16.9	33.4	12.7	75.9	10.6	19.4
NON-INDIGENOUS (%)									
2008	76.8	87.4	81.9	83.5	67.0	84.9	22.9	82.6	78.6
2009	72.3	85.2	80.7	82.3	64.8	83.9	23.1	83.7	76.3
2010	72.6	89.7	79.0	81.3	66.5	84.4	28.0	81.4	77.1
2010									
Jun Qtr	70.4	89.3	79.2	81.0	66.3	84.4	28.0	82.1	76.3
Sep Qtr	74.1	88.7	79.0	81.1	66.6	85.1	29.1	81.8	77.5
Dec Qtr	75.3	90.1	78.5	81.7	67.0	85.5	26.8	79.8	78.1
2011									
Mar Qtr	76.0	91.0	78.1	82.3	67.6	84.9	25.2	87.8	78.6
Jun Qtr	76.3	91.1	78.0	82.0	66.2	85.2	24.0	87.4	78.6
Apr	76.3	90.8	78.1	82.1	66.4	84.9	24.1	87.9	78.6
May	75.9	91.0	78.0	82.0	65.7	85.4	23.9	87.6	78.4
Jun	76.7	91.4	77.9	81.9	66.5	85.2	24.1	86.7	78.7
UNKNOWN (%)									
2008	5.5	8.2	—	0.7	0.3	3.6	0.1	7.8	3.3
2009	10.2	9.7	—	1.1	0.4	3.4	0.1	5.3	5.1
2010	8.9	4.8	—	0.8	0.2	2.9	—	8.2	3.8
2010									
Jun Qtr	11.8	5.2	—	1.0	0.1	2.7	—	7.6	4.8
Sep Qtr	6.9	5.7	—	0.7	0.1	2.0	—	8.1	3.3
Dec Qtr	5.2	4.2	—	0.6	0.1	1.9	—	9.3	2.6
2011									
Mar Qtr	4.7	3.1	—	0.8	0.3	2.0	—	0.9	2.1
Jun Qtr	4.5	3.2	—	1.1	—	2.0	—	2.1	2.1
Apr	4.6	3.3	—	0.9	—	2.0	—	1.6	2.1
May	4.7	3.3	—	1.2	—	2.0	—	2.1	2.2
Jun	4.1	2.9	—	1.3	—	2.1	—	2.7	2.0

— nil or rounded to zero (including null cells)

(a) With the exception of Vic. and Tas., includes persons with breached or suspended orders.

(b) Figures for the quarter and year for first day of the month counts are calculated as a simple average – see Explanatory Notes, paragraph 5.

(c) Data is subject to processing delays of 4 to 6 weeks – see Explanatory Notes, paragraph 32.

(d) Aboriginal and Torres Strait Islander status is determined using a combination of self-identification, previously collected information and judgement by the recording officer – see Explanatory Notes, paragraphs 26–28.

(e) Excludes bail orders for the December quarter 2009 – see Explanatory Notes, paragraph 34.

(f) See footnotes c–e.

EXPLANATORY NOTES

INTRODUCTION

1 This publication presents statistical series on persons held in either adult corrective services custody or who are serving adult community-based orders in Australia. It contains data on the number of persons by their sex, Aboriginal and Torres Strait Islander status, type of custody, legal status and sentence type; the number of sentenced persons received into corrective services custody each month; and the number of federal prisoners. Experimental data on Aboriginal and Torres Strait Islander persons in community based corrections are also available in the Appendix.

2 Statistics presented in this publication are compiled in three ways:

- Average daily prisoner population: Counts taken on each day of the month are summed and divided by the number of days in that month to determine the average daily prisoner population for that month. The average daily periodic detainee population is a count of persons on periodic detention on each day a centre is open, divided by the number of days a centre is open.
- Sentenced prisoner reception figures: Counts are provided each month on the number of receptions where a prisoner is received as a sentenced prisoner. This includes prisoners with a change of legal status from unsentenced to sentenced.
- First day of the month prisoner population: Counts of prisoners and persons serving community-based corrections orders, taken on or near the first day of the month (see paragraphs 4 and 5).

3 Although national standards and classifications are used in the compilation of these statistics, some discrepancies remain between the states and territories. These are due to legislative and procedural differences between jurisdictions and the way that these differences are reflected in agencies' administrative data systems. As part of its quality assurance strategy, the ABS is working with corrective services agencies to minimise the effect of these differences.

REFERENCE PERIOD

4 The reference period for average daily prisoner population statistics and sentenced reception counts is the complete reference month. The reference date for all other figures is the first day of the reference month. However, not all states and territories report strictly according to this 'first day of the month' rule:

- The Western Australian and Australian Capital Territory prisoners in New South Wales prisons populations are counted as at midnight on the last day of the month. In these cases the figures provided are taken to represent the prison population at the beginning of the following month.

5 Calculation of figures for the entire quarter and entire year varies depending on the counting unit and method of counting prisoners:

- Average daily figures: Figures are calculated by weighting the average according to the number of days in each month, quarter or year.
- First day of the month: Figures are simple averages. For quarterly figures, the sum of the monthly data is divided by three; for yearly figures, the figures for each month are added and the total divided by twelve.
- Sentenced receptions: Figures are totals of each month.
- These figures may be subject to rounding.

SCOPE

6 The scope of the statistics in this publication includes all persons remanded or sentenced to adult custodial facilities (including Work Outreach Camps and Community Custody Centres in Queensland), or who are serving adult community-based orders in each state and territory in Australia.

EXPLANATORY NOTES *continued*

SCOPE *continued*

7 Counts of prisoners in the following custodial facilities are included in the collection:

- gazetted prisons in all jurisdictions;
- periodic detention centres in New South Wales and the Australian Capital Territory;
- community custody centres and work camps in Queensland;
- cells in court complexes administered by corrective services in New South Wales;
- transitional centres in New South Wales; and
- lock-ups in Western Australia operated by the police but designated as a prison by the Chief Executive Officer of Corrective Services.

8 The prisons and community corrections collection excludes the following custodial facilities:

- police lockups, police prisons and cells in court complexes not administered and controlled by corrective services;
- gazetted police prisons in the Northern Territory;
- juvenile detention centres, including those under the authority of adult corrective services;
- immigration detention centres; and
- military prisons.

9 This collection includes counts of persons remanded or sentenced to adult custody facilities, or directed to serve community based orders administered by adult corrective services agencies. In all states and territories except Queensland, persons are considered adults if aged 18 years and over. In Queensland persons are considered adults if aged 17 years and over. The vast majority of persons counted in the collection are adults. However, juveniles may be included in exceptional circumstances.

10 Since December 2004, the Kariong Juvenile Correctional Centre in New South Wales has operated under the authority of adult corrective services. The population at Kariong Juvenile Correctional Centre may include adult persons as well as juveniles. New South Wales includes juveniles based in Kariong in this collection, however, this facility accounts for less than 0.5% of the New South Wales prisoner population.

11 Federal prisoners include those persons charged and sentenced under a Commonwealth statute, and those persons who are charged and sentenced under the laws of another country but transferred to an Australian prison to serve their sentence under the *International Transfer of Prisoners Act 1997* (Cwlth). To give practical effect to this legislation in Australia, the framework was introduced in January 2003. For the purposes of this publication, federal sentenced prisoners are those persons who are recognised by the Criminal Law Division of the Australian Government Attorney-General's Department as having been charged and sentenced under a Commonwealth statute, or transferred from another country to serve their sentence in Australia.

12 With the exception of Victoria and Tasmania, community-based corrections includes those persons with breached or suspended orders.

DATA SOURCE

13 Statistics in this publication are derived from information provided to the ABS from administrative records held by corrective services agencies within each state and territory. Statistics on federal prisoners are derived from records kept by the Criminal Law Division of the Australian Government Attorney-General's Department.

COUNTING RULES

14 Statistics for persons held in custody are presented by the state or territory in which they were held, however, this may not be the same as the original sentencing jurisdiction. The only exception to this are data for federal sentenced prisoners. These are presented by the state or territory in which they were sentenced, not where they were held in custody.

EXPLANATORY NOTES *continued*

COUNTING RULES *continued*

15 Sentenced prisoners who have other offences that are unsentenced are counted as sentenced. Prisoners may be unsentenced because they are awaiting the outcome of their trial, convicted but awaiting sentence, or awaiting deportation.

16 If an offender has two or more different types of community-based orders operating simultaneously, then each order will be counted. If two or more community-based orders are of the same type, these orders together will only be counted as one order.

RATES

17 Imprisonment and community-based corrections rates enable comparisons of prisoner numbers to be made across states and territories. Prisoner and community-based corrections rates are expressed per 100,000 adult population. Imprisonment rates are calculated based on two different counting concepts (average daily and first day of the month), as a result there may be variations in imprisonment rates presented in this publication.

18 In this publication the population figures used in the calculation of rates are for persons aged 18 years and over for all states and territories except Queensland where the population is persons aged 17 years and over (see paragraph 9).

19 Rates for the total adult prisoner population and persons in community-based corrections are calculated using the estimated resident population (ERP) for each of the states and territories. All estimates for the Australian Capital Territory exclude Jervis Bay Territory. All estimates for Australia exclude the external territories of Christmas Island and the Cocos (Keeling) Island. As the population changes over time the denominator used for the calculation of rates varies, depending on the reference period. The most current ERP data available at the time of publication are used to calculate rates as follows:

- for the March quarter, ERP is from the previous September quarter;
- for the June quarter, ERP is from the previous December quarter;
- for the September quarter, ERP is from the previous March quarter;
- for the December quarter, ERP is from the previous June quarter; and
- annual rates are an average of the rates of the contributing quarters.

20 The ERP series are revised every five years to incorporate additional information available from the latest Census of Population and Housing. The rates per 100,000 adult persons presented in this issue have been calculated using different ERP counts as follows:

- Rates from the June 2007 quarter (excluding Aboriginal and Torres Strait Islander rates) are calculated using rebased data from the intercensal period (2001-2006) sourced from the 2006 Census of Population and Housing;
- All other rates (excluding Aboriginal and Torres Strait Islander rates) are calculated using ERP data based on the 2001 Census of Population and Housing.

21 For population estimates and information on the methodology used to produce the ERP, see *Australian Demographic Statistics* (cat. no. 3101.0).

Aboriginal and Torres Strait Islander imprisonment rates

22 Rates for the Aboriginal and Torres Strait Islander adult population are calculated using rebased estimates (for the period 1986 - 2006) and projections (2007 - 2021) of the Aboriginal and Torres Strait Islander population. These data are based on data from the 2006 Census of Population and Housing and use assumptions about future fertility, paternity, life expectancy at birth and migration. For more information see *Experimental Estimates and Projections, Aboriginal and Torres Strait Islander Australians, 1991 to 2021* (cat. no. 3238.0).

EXPLANATORY NOTES *continued*

Aboriginal and Torres Strait Islander imprisonment rates continued

23 The projections used in this publication are based on Series B projections for 30 June of the relevant calendar year. Series B is one of two main projection series (Series A and B) that have been published for the years 2007 to 2021. Both of these series assume an annual decline of 0.5% in fertility rates; an annual increase of 1% in paternity rates; constant interstate migration at levels observed in the 2006 Census; and zero net overseas migration with no arrivals and no departures. Further, two different assumptions were made about future Aboriginal and Torres Strait Islander life expectancy at birth for Australia:

- In Series A, Aboriginal and Torres Strait Islander life expectancy at birth will remain constant; and
- In Series B, Aboriginal and Torres Strait Islander life expectancy at birth will increase by 0.3 years per year for both males and females.

24 The impact of re-basing Aboriginal and Torres Strait Islander imprisonment rate data using Series B projections, instead of the previous "low series" of projections, is minimal at the national level. Differences of no greater than 5% are seen in the state and territory data, and generally the result has been a decrease in the imprisonment rate. This is because the assumptions used by Series B result in higher population estimates and projections than those through the use of the previous "low series".

25 The decision to use Series B as the denominator in the calculation of Aboriginal and Torres Strait Islander imprisonment rates followed consultation with the National Corrective Services Statistics Advisory Group and other stakeholders.

ABORIGINAL AND TORRES STRAIT ISLANDER IDENTIFICATION

26 The ABS conducts an ongoing programme of quality assurance to monitor and improve the quality of Aboriginal and Torres Strait Islander Status data in Corrective Services agencies (both custodial and community-based corrections). Whilst the ABS has published Aboriginal and Torres Strait Islander status data in Corrective Services collections for a number of years, ongoing quality assurance enables better understanding of accuracy over time.

27 The quality of the Aboriginal and Torres Strait Islander status information collected and recorded in Corrective Service agencies is assessed against the ABS Standard Indigenous Question (SIQ). The SIQ is based upon self-identification by the individual who comes into contact with Corrective Service agencies. In 2010, the ABS conducted a comprehensive quality assurance review across all jurisdictions and sectors of the criminal justice system to confirm our understanding of the processes involved in recording Aboriginal and Torres Strait Islander status and the barriers to producing quality statistics. The results of the review concluded that corrective services data are of acceptable quality and comparability for all states and territories, with the exception of Western Australia. In Western Australia, Aboriginal and Torres Strait Islander status is determined by asking two questions rather than asking the ABS SIQ at the first meeting. This is at the discretion of the case manager and in some instances Aboriginal and Torres Strait Islander status may be recorded from information previously collected or otherwise determined by the case manager. For this reason, caution should be exercised when comparing Aboriginal and Torres Strait Islander data across the states and territories.

28 Some persons in custody are recorded with an unknown Aboriginal and Torres Strait Islander status on the information systems of corrective agencies as their status has not been able to be obtained. Persons with Aboriginal and Torres Strait Islander status unknown are excluded from tables 13 -16. Counts of persons with an unknown Aboriginal and Torres Strait Islander status are included in all other tables. Unknowns account for just over 2% of all records.

EXPLANATORY NOTES *continued*

SIGNIFICANT EVENTS

New South Wales

29 In March 2008, the administrative classification of the Wellington Correctional Centre was altered. The classification was changed from 'open' to 'secure' for 75% of the facility to reflect the change in the profile of inmates held. As such, the proportion of persons in secure and open custody altered in the March quarter 2008 compared to previous quarters.

Western Australia

30 Prior to the September quarter 2009, Western Australian data on type of custody are not comparable. Data prior to this period were based on a prisoner's security rating rather than the rating of the prison (see Glossary). As a result, prisoners with a minimum security rating and located in a medium or maximum security prison were classified as open custody. Data for prisoners in secure custody are understated, whilst data for persons in open custody are overstated prior to September quarter 2009.

31 The large increase in prisoners from early 2009 was due to fewer offenders being granted parole by the Prisoner Review Board, increased incarcerations by the courts and the impact of the Truth in Sentencing legislation. Implemented on 23 September 2008, the Truth in Sentencing legislation refers to the *Sentencing Act* (WA) 1995, Transitional Provisions which removes the automatic 1/3 discount for each and every criminal offence that appears in WA Statute books.

32 Data for community-based correction orders extracted from the Western Australian information system are subject to data processing time lags of 4-6 weeks. Fine option orders are most likely to be impacted by the lag, with approximately 10% of each month's data entry delayed.

Tasmania

33 Tasmania trialled new orders for bail, suspended sentences and drug treatment as part of the Court Mandated Diversion program (CMD) from 1 July 2007 to 30 June 2008. Counts for supervision (compliance) - bail orders during the September quarter 2008 represent the transitional period concluding this trial. These orders are now being handled by alternative service providers and are therefore no longer included.

Northern Territory

34 In September 2009 a new offender management system was implemented - the Integrated Offender Management System (IOMS). The transition to the new system resulted in a number of data impacts, and as such caution should be exercised in comparing current data with that prior to December 2009. The impacts included:

- significantly increased counts for sentenced receptions and some community based orders following the introduction of the system,
- overstated community based orders for the period from December quarter 2009 to September quarter 2010 (due to difficulties in identifying persons who have been in breach for 3 years or more), and
- bail counts for December quarter 2009 were also unable to be supplied, impacting the territory totals for community based orders and to a lesser extent on the Australian total.

Australian Capital Territory

35 From the September quarter 2009, all ACT sentenced and unsentenced prisoners are held within the ACT. From the June quarter 2009 all sentenced prisoner receptions were detained within the Australian Capital Territory. For this same period nearly all ACT prisoners held in New South Wales prisons were transferred to a new custodial facility (Alexander Maconochie Centre) which commenced taking prisoners in March 2009. This prison is a secure facility. Between 2000 and March quarter 2009, persons sentenced to full-time custody by the Australian Capital Territory were usually held in New South Wales prisons as the Australian Capital Territory only had two remand centres for unsentenced prisoners and a periodic detention centre. Unsentenced Australian Capital Territory prisoners may have also been detained in New South Wales prisons. The exception was for persons sentenced for fine default; these prisoners were detained in Australian Capital Territory remand.

EXPLANATORY NOTES *continued*

Australian Capital Territory continued

36 A backlog of prisoners sentenced in the ACT awaiting transfer to NSW remained in the ACT during the transition of the opening of the new ACT prison. These sentenced prisoners were classified as 'unsentenced' prior to the December quarter 2009. With the opening of the new prison, sentenced reception counts better reflect accurate recording of sentenced and unsentenced prisoners, resulting in an increase in sentenced prisoner receptions from the September quarter 2009.

37 Figures relating to prisoners from the ACT held in NSW prior to September quarter 2009 have been presented in this publication as ACT prisoner counts rather than NSW.

38 The decline in supervision bail compliance orders in December 2008 may have been partly influenced by data quality checks. Records with no completion or expiry date that should have been finalised on the system were marked as completed during this period.

39 Imprisonment rate data for the Australian Capital Territory are calculated on the basis of the total number of Australian Capital Territory prisoners (i.e. Australian Capital Territory prisoners that were held in New South Wales prisons, prior to September quarter 2009, and Australian Capital Territory prisoners held in the Australian Capital Territory) divided by the estimated resident Australian Capital Territory adult population and multiplied by 100,000. For New South Wales, the imprisonment rate is based on the count of New South Wales prisoners, excluding Australian Capital Territory prisoners held in New South Wales prisons prior to September quarter 2009, divided by the estimated resident New South Wales adult population and multiplied by 100,000. Time series data have also been derived on this basis.

RELATED PUBLICATIONS

ABS Publications

40 Other ABS publications that may be of interest include:

Australian Demographic Statistics (cat. no. 3101.0) – issued quarterly

Australian Social Trends (cat. no. 4102.0) – issued quarterly

Australian and New Zealand Standard Offence Classification (third edition) (cat. no. 1234.0) – released 2 June 2011

Crime Victimisation, Australia (cat. no. 4530.0) – issued annually

Criminal Courts, Australia (cat. no. 4513.0) – issued annually

Experimental Estimates and Projections, Aboriginal and Torres Strait Islander Australians, 1991 to 2021 (cat. no. 3238.0) – released 8 September 2009

Federal Defendants, Selected States and Territories, (cat. no. 4515.0) - issued annually

General Social Survey: Summary Results, Australia (cat. no. 4159.0) – irregular

Information Paper: Measuring Crime Victimisation, Australia: The Impact of Different Collection Methodologies (cat. no. 4522.0.55.001) – single issue

Information Paper: National Criminal Justice Statistical Framework (cat. no. 4525.0) – single issue

Information Paper: National Information Development Plan for Crime and Justice Statistics 2005 (cat. no. 4520.0) – single issue

Measures of Australia's Progress (cat. no. 1370.0) – released 15 September 2010

Personal Fraud Survey (cat. no. 4528.0) – released 27 June 2008

Personal Safety Survey (cat. no. 4906.0) – released 21 August 2006

Prisoners in Australia (cat. no. 4517.0) – issued annually

Recorded Crime – Victims, Australia (cat. no. 4510.0) – issued annually

Recorded Crime – Offenders, Selected states and territories (cat. no. 4519.0) – issued annually

Sexual Assault in Australia: A Statistical Overview (cat. no. 4523.0) – single issue

EXPLANATORY NOTES *continued*

ABS Publications continued

41 Current publications and other products released by the ABS are available from the ABS website <<http://www.abs.gov.au>>. The ABS also issues a daily Release Advice on the website that details products to be released in the week ahead. The National Centre for Crime and Justice Statistics releases *Crime and Justice News* (cat. no. 4500.0), an annual newsletter that is published on the ABS website. The Centre can be contacted by email through <crime.justice@abs.gov.au>.

Non-ABS Publications

42 Non-ABS sources that may be of interest include:

Australian Institute of Criminology, *List of Publications* – irregular
<<http://www.aic.gov.au>>

Crime Research Centre, University of Western Australia, *Crime and Justice Statistics for Western Australia* – issued annually
<<http://www.crc.law.uwa.edu.au>>

Department of Corrective Services, New South Wales, *NSW Inmate Census* – irregular
<<http://www.dcs.nsw.gov.au>>

Department of Justice, Northern Territory, *Northern Territory Quarterly Crime and Justice Statistics* – issued quarterly
<<http://www.nt.gov.au/justice/>>

Department of Justice, Victoria, *Statistical Profile of the Victorian Prison System* – issued annually
<<http://www.justice.vic.gov.au>>

NSW Bureau of Crime Statistics and Research, *New South Wales Criminal Courts Statistics* – issued annually
<<http://www.lawlink.nsw.gov.au>>

Office of Crime Statistics and Research, *South Australia, Crime and Justice in South Australia* – issued annually
<<http://www.ocsar.sa.gov.au>>

Steering Committee for the Review of Commonwealth/State Service Provision, *Report on Government Services* – issued annually
<<http://www.pc.gov.au>>

GLOSSARY

Aboriginal and Torres Strait Islander prisoner	A prisoner who self-identifies as being of Aboriginal or Torres Strait Islander origin, or both.
Bail	This is generally a pre-sentence option where a person is released into the community for a period before they appear in court for trial or final sentencing. Bail orders can require a financial surety to be lodged with the court, and a number of conditions including supervision and residential requirements designed to ensure the re-appearance of the person at court. Bail counts are available only in states and territories where bail orders are supervised by corrective services. Bail is a sub-category of Supervision where the person is under the supervision of corrective services (<i>see</i> Supervision).
Community-based corrections	This refers to the community-based management of court-ordered sanctions, post-prison administrative arrangements and fine conversions, which principally involve the provision of one or more of the following activities: supervision, programs or community work.
Community service	This category of community-based corrections orders includes sentencing options requiring offenders to undertake a specified number of hours of unpaid, supervised work to benefit the community on an approved project. Community service is a sub-category of Reparation (<i>see</i> Reparation).
Corrective services custody	Confinement in a place intended primarily for the purpose of confining prisoners, such as a prison, prison farm, Periodic Detention Centre or Community Custody Centre.
Federal sentenced prisoner	Persons charged and sentenced under a Commonwealth statute or transferred from another country to serve their sentence in Australia.
Fine option	A community-based sentence type where the offender is serving a sentence for default of a fine. In most jurisdictions this order type requires an offender to complete community service as a reparatory act. Fine option is a sub-category of Reparation (<i>see</i> Reparation).
Full-time prison custody	A type of custody where a prisoner is required to be held in custody on a full-time basis. This includes prisons, Queensland Community Custody Centres and work outreach camps. Full-time prison custody excludes periodic detention (<i>see</i> Periodic detention).
Home detention	(<i>see</i> Restricted movement)
Legal status	A person may be either sentenced or unsentenced depending on the warrant(s) or court order(s) that provide the legal basis for the administration of the person through the criminal justice system.
Non-Indigenous	A prisoner who does not identify as being of Aboriginal and/or Torres Strait Islander origin.
Open custody	Refers to prisoners housed in minimum security custodial facilities that do not require them to be confined by a secure perimeter physical barrier, irrespective of whether a physical barrier exists.
Parole	A parole order is made following a period of imprisonment and requires an offender to be subject to supervision in the community. Additional conditions may also be applied such as programs, counselling or drug testing. Parole is a sub-category of Supervision (<i>see</i> Supervision).
Periodic detention	A type of custody or order where a sentenced prisoner is required to be held in custody on a part-time basis. Currently this consists of two consecutive days in a one-week period, while remaining at liberty during the rest of the week.
Prisoner	A person held in custody. For the purposes of this collection, prisoners are those whose confinement is the responsibility of a corrective services agency.
Remand	(<i>see</i> Unsentenced)

GLOSSARY *continued*

Reparation	Reparation refers to all offenders with an order that requires them to undertake unpaid, justice agency-approved community service work.
Restricted movement	This refers to persons who are subject to a system of restricted movement, including supervision and/or electronic monitoring. This category includes home detention that may restrict residence to a nominated place. Restricted movement can be either a pre-sentence or post-sentence order.
Secure custody	Refers to prisoners housed in medium or maximum security custodial facilities requiring them to be confined by a secure physical barrier.
Sentenced	A legal status indicating that a person has received a custodial or community-based order from a court in response to a conviction for an offence.
Sentenced prisoner reception	Refers to entry into corrective services custody from the community, having received a sentence of imprisonment as an outcome of a court proceeding; or persons who are sentenced to custody while in custody on remand (i.e. changed status from a remand to a sentenced prisoner); or persons entering custody as a result of defaulting on the payment of a fine. Sentenced prisoners in custody who receive a further sentence of imprisonment are not counted as sentenced receptions.
Sentenced probation	A supervision order made following an original sentence handed down in court following conviction. A probation order generally requires 'good behaviour' and compliance with the directions of supervisors. The order may also require compliance with conditions such as program attendance and residential requirements.
Supervision (compliance)	This includes community-based orders other than those categorised as restricted movement or reparation (e.g. parole, bail and sentenced probation).
Unsentenced	A legal status indicating that a person is confined to custody or supervision while awaiting the outcome of their trial.

FOR MORE INFORMATION . . .

INTERNET

www.abs.gov.au the ABS website is the best place for data from our publications and information about the ABS.

INFORMATION AND REFERRAL SERVICE

Our consultants can help you access the full range of information published by the ABS that is available free of charge from our website. Information tailored to your needs can also be requested as a 'user pays' service. Specialists are on hand to help you with analytical or methodological advice.

PHONE

1300 135 070

EMAIL

client.services@abs.gov.au

FAX

1300 135 211

POST

Client Services, ABS, GPO Box 796, Sydney NSW 2001

FREE ACCESS TO STATISTICS

All statistics on the ABS website can be downloaded free of charge.

WEB ADDRESS

www.abs.gov.au

ISBN 1440.5997