

EXPENDITURE ON EDUCATION

AUSTRALIA

EMBARGO: 11.30AM (CANBERRA TIME) FRI 17 SEPT 1999

CONTENTS

	<i>page</i>
Notes	2
Summary of findings	3

TABLES

1 Government and private economic transactions — 1992-93 to 1997-98	7
2 Outlays, by sector and economic transactions — 1992-93 to 1997-98 .	8
3 Government outlays, by economic transaction and government purpose — 1997-98	9
4 Commonwealth government total outlays, by government purpose — 1992-93 to 1997-98	10
5 State total outlays on education as a proportion of total outlays — 1992-93 to 1997-98	10
6 State and local government outlays, by economic transaction — 1992-93 to 1997-98	11
7 Commonwealth government grants to States and Universities — 1992-93 to 1997-98	12
8 State and local government current outlays — 1992-93 to 1997-98 .	17
9 State and local government capital outlays — 1992-93 to 1997-98 .	20

ADDITIONAL INFORMATION

Explanatory notes	23
Glossary	27

- For further information about these and related statistics, contact Donna Nicholson on Canberra 02 6252 5069, or Frances Pollard on 02 6252 5834, or any ABS office shown on the back cover of this publication.

NOTES

ABOUT THIS PUBLICATION This publication presents information on both government and private expenditure on education for the years 1992–93 to 1997–98. The emphasis is largely on public sector outlays, which reflects in part the relative importance of that sector in the provision of education services.

TERMINOLOGY In the context of this publication the term government relates to general government since most of the expenditure on education is undertaken by this sector. Wherever the term 'State' is used, this term includes the two Territories, and refers to 'State and Territory'.

CHANGES IN THIS ISSUE Since the last issue of this publication, a number of changes have been made relating to the implementation of the United Nations' System of National Accounts 1993 (SNA93).

The only SNA93 change that affects government outlays on education is the reclassification of social transfers in kind from personal benefit payments to final consumption expenditure. This has resulted in a drop in personal benefit payments and a compensating increase in final consumption expenditure.

The downward revision in total private expenditure on education is due to the implementation of SNA93 in the Australian National Accounts. Previously, the net expenditure overseas adjustment was not recorded directly to each category of private final consumption expenditure. The direct allocation of these adjustments to each category has led to this downward revision because non-residents spend more on education services in Australia than Australian residents spend on education services overseas. The revised treatment of some items such as computer software (previously current expenditure, but now capital expenditure) explains the increase in the capital component of total private expenditure on education.



ABBREVIATIONS

ABS	Australian Bureau of Statistics
ACT	Australian Capital Territory
GDP	Gross Domestic Product
GFS	Government Finance Statistics
GPC	Government Purpose Classification
GSP	Gross State Product
HECS	Higher Education Contribution Scheme
n.e.c.	not elsewhere classified

W. McLennan
Australian Statistician

SUMMARY OF FINDINGS

TOTAL FINAL EXPENDITURE

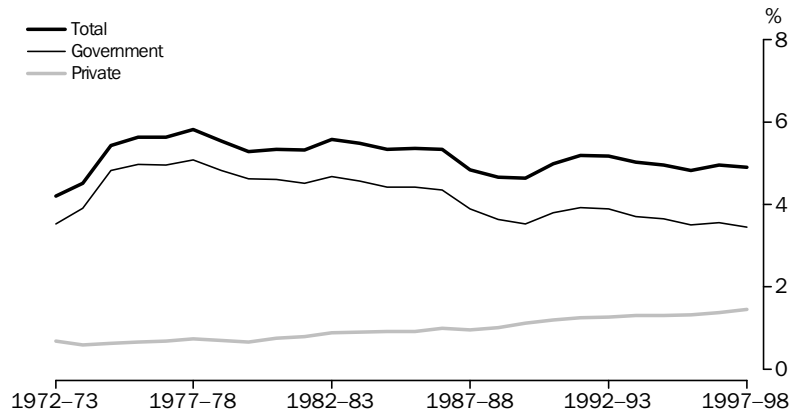
Total final expenditure on education, comprising the measures final consumption expenditure and gross fixed capital expenditure (by governments and the private sector) rose 4.9% from \$26,386 million in 1996–97 to \$27,686 million in 1997–98, and remained stable as a proportion of Gross Domestic Product (GDP) at 4.9%.

Government final expenditure rose 2.5% from \$18,999 million in 1996–97 to \$19,478 million in 1997–98, but decreased as a proportion of GDP from 3.6% in 1996–97 to 3.4% in 1997–98.

Private final expenditure on education rose 11.1% from \$7,387 million in 1996–97 to \$8,208 million in 1997–98, and increased as a proportion of GDP from 1.4% to 1.5%. Private final expenditure on education not financed by government increased 10.6%.

The following graph shows movements in final expenditure on education, as a proportion of GDP, from 1972–73 to 1997–98.

FINAL EXPENDITURE, as a proportion of GDP

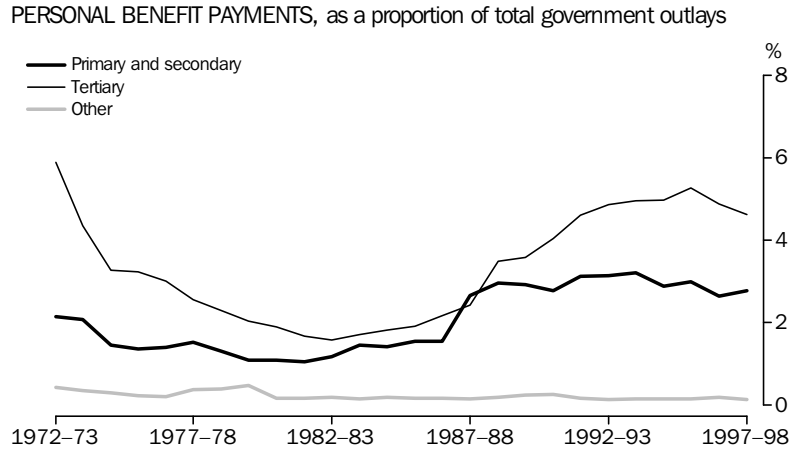


TOTAL OUTLAYS

Total outlays on education, which comprise, in addition to final expenditure as defined above, government benefit payments for education related services rose 4.7% from \$28,340 million to \$29,659 million between 1996–97 and 1997–98, and decreased from 5.3% to 5.2% of GDP.

SUMMARY OF FINDINGS *continued*

The following graph shows movements in personal benefit payments for education purposes as a proportion of total government outlays on education for the years 1972-73 through 1997-98.



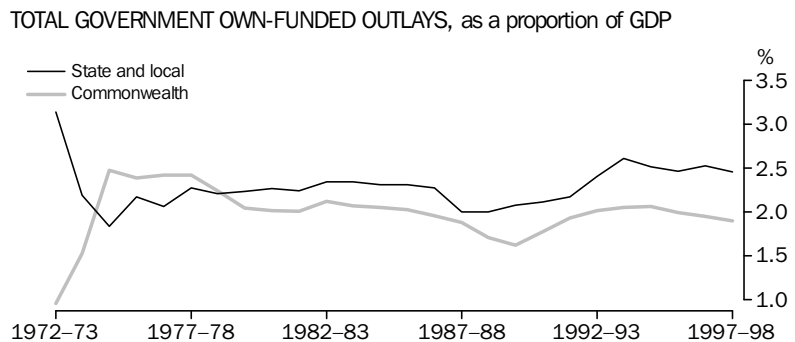
TOTAL GOVERNMENT OUTLAYS

Total government outlays on education (which includes payments to the private sector) increased 3.6% from \$24,203 million to \$25,082 million between 1996-97 and 1997-98 and decreased as a proportion of GDP from 4.5% to 4.4%. This change in total government outlays on education was comprised of the following movements:

- Commonwealth government outlays rose 3.2% from \$10,397 million in 1996-97 to \$10,730 million in 1997-98
- State and local government outlays rose 4.9% from \$18,038 million in 1996-97 to \$18,926 million in 1997-98; and
- University outlays rose 1.9% from \$4,151 million in 1996-97 to \$4,230 million in 1997-98.

Outlays on education by State and local governments from their own resources rose 3.1% during 1997-98, compared to a 7.2% increase during 1996-97.

Government outlays on education by level of government for the years 1972-73 to 1997-98 are illustrated in the following graph.



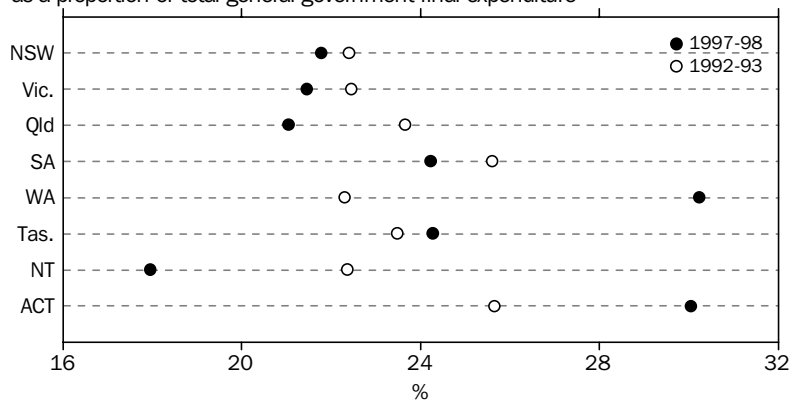
State and local government outlays are net of grants made by the Commonwealth Government to States. The change in the proportions of education financed by the Commonwealth and State Governments in 1975 is due to the takeover of university funding by the Commonwealth Government.

SUMMARY OF FINDINGS *continued*

STATE AND LOCAL GOVERNMENT OUTLAYS

State and local government outlays on education rose by 4.9% between 1996–97 and 1997–98. These outlays rose in all States with the largest increases occurring in the Northern Territory and Western Australia (11.4% and 9.0% respectively). Between 1992–93 and 1997–98, outlays on education fell as a proportion of Gross State Product (GSP) in all States except the Northern Territory where it increased from 6.0% in 1972–73 to 6.4% in 1997–98. Total general government final expenditure on education as a proportion of total general government final expenditure for all purposes fell in all States except Western Australia, Tasmania and the Australian Capital Territory between the years 1992–93 and 1997–98.

GENERAL GOVERNMENT FINAL EXPENDITURE ON EDUCATION,
as a proportion of total general government final expenditure



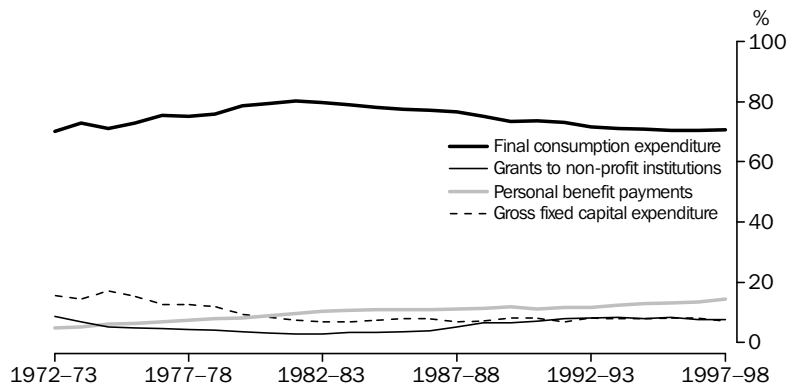
FINAL CONSUMPTION EXPENDITURE

Final consumption expenditure on education comprises wages, salaries and supplements and other purchases of goods and services by government and private providers of educational services.

Combined government and private final consumption expenditure on education rose 6.0% from \$23,844 million in 1996–97 to \$25,282 million in 1997–98.

The graph below illustrates changes in the economic composition of government expenditure on education between the years 1972–73 and 1997–98.

OUTLAYS, by economic transaction—
as a proportion of total government outlays on education



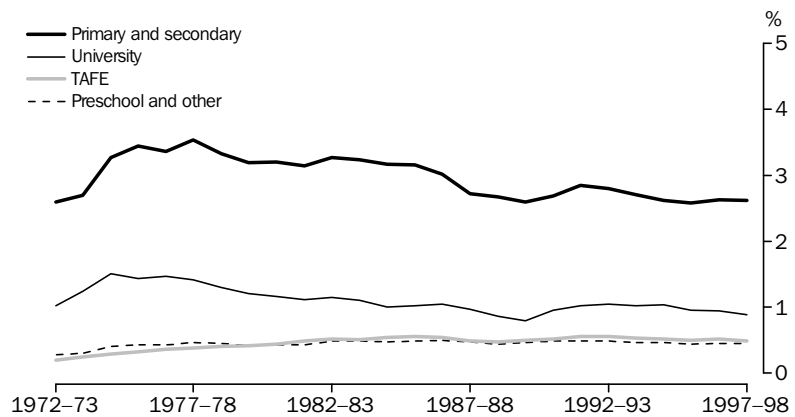
SUMMARY OF FINDINGS *continued*

Over the period 1992–93 to 1997–98, government outlays on tertiary education rose 16.4% while outlays on primary and secondary education increased by 23.0%. As a proportion of total government outlays on education, expenditure on primary and secondary education rose from 57.3% in 1992–93 to 58.6% in 1997–98 while outlays on tertiary education decreased from 32.8% in 1992–93 to 31.7% in 1997–98.

Approximately 68% of outlays on primary, secondary, technical and further education was funded from State and local governments' own resources in 1997–98, while approximately 92% of outlays on university education was funded by the Commonwealth Government in 1997–98.

The following graph shows total government outlays spent on selected educational purposes as a proportion of GDP for 1992–93 and 1997–98.

TOTAL GOVERNMENT OUTLAYS, by purpose—as a proportion of GDP



GOVERNMENT AND PRIVATE OUTLAYS ON EDUCATION

1992-93 1993-94 1994-95 1995-96 1996-97 1997-98

VALUE (\$ m)

General government

Final consumption expenditure	14 929	15 078	15 589	16 014	17 047	17 713
Gross fixed capital expenditure	1 701	1 663	1 743	1 828	1 952	1 765
<i>Government final expenditure</i>	16 630	16 741	17 332	17 842	18 999	19 478
Grants to non-profit institutions	2 424	2 624	2 842	2 979	3 250	3 631
Grants to persons	1 699	1 760	1 759	1 916	1 865	1 892
Other	110	54	80	26	89	81
Total	20 863	21 179	22 013	22 763	24 203	25 082

Private

Final consumption expenditure	5 006	5 341	5 679	6 156	6 797	7 569
Gross fixed capital expenditure	449	504	489	559	590	639
Total	5 455	5 845	6 168	6 715	7 387	8 208

Total outlays on education

Total government outlays	20 863	21 179	22 013	22 763	24 203	25 082
Total private outlays	5 455	5 845	6 168	6 715	7 387	8 208
Less private outlays financed by government	2 424	2 624	2 842	2 979	3 250	3 631

Total **23 894** **24 400** **25 339** **26 499** **28 340** **29 659**

Government advances

Advances to persons and non-profit institutions	17	14	-2	6	5	—
Advances to persons for HECS purposes	584	575	380	532	514	642
Total	601	589	378	538	519	642

Gross Domestic Product(a) 427 772 450 050 474 646 508 246 533 709 565 963

PROPORTION OF GROSS DOMESTIC PRODUCT (%)

Total government outlays	4.9	4.7	4.6	4.5	4.5	4.4
Total final expenditure on education	5.2	5.0	5.0	4.8	4.9	4.9
General government final consumption expenditure	3.5	3.4	3.3	3.2	3.2	3.1
Private final consumption expenditure	1.2	1.2	1.2	1.2	1.3	1.3
Government gross fixed capital expenditure	0.4	0.4	0.4	0.4	0.4	0.3
Private gross fixed capital expenditure	0.1	0.1	0.1	0.1	0.1	0.1
Total outlays on education	5.6	5.4	5.3	5.2	5.3	5.2
Total government advances	0.1	0.1	0.1	0.1	0.1	0.1

— nil or rounded to zero (including null cells)

(a) The figures for Gross Domestic Product are obtained from Australian National Accounts: National Income, Expenditure and Product, June Quarter 1999 (Cat. no. 5206.0).

OUTLAYS, by Sector and Economic Transactions

	1992-93	1993-94	1994-95	1995-96	1996-97	1997-98
	\$m	\$m	\$m	\$m	\$m	\$m
VALUE						
Commonwealth						
General government final consumption expenditure	299	328	384	373	447	397
Personal benefit payments	1 591	1 642	1 655	1 778	1 737	1 702
Current grants to non-profit institutions	55	56	67	64	115	91
Current grants to States and universities	5 740	6 445	7 071	7 313	7 535	7 997
Capital grants to States and universities	923	724	597	585	550	542
Other	11	12	8	3	13	1
<i>Total</i>	8 619	9 207	9 782	10 116	10 397	10 730
State						
General government final consumption expenditure	11 676	11 885	12 060	12 623	13 423	14 018
Personal benefit payments	82	89	73	104	92	146
Current grants to non-profit institutions	2 293	2 478	2 678	2 826	3 062	3 462
Current grants to local government and universities	1 616	174	133	186	192	169
Expenditure on new fixed assets	999	865	942	1 035	1 141	982
Expenditure on second-hand fixed assets (net)	-28	-40	-21	-40	-57	-52
Capital grants to non-profit institutions	75	86	84	73	69	67
Capital grants to local governments and universities	196	—	4	17	33	16
Other	103	34	50	32	57	90
<i>Total</i>	17 012	15 570	16 003	16 857	18 013	18 898
<i>Less grants from Commonwealth</i>	4 919	3 643	3 906	4 060	4 302	4 770
<i>State outlays financed from own resources</i>	12 093	11 927	12 097	12 797	13 711	14 128
Local						
<i>Total expenditure</i>	44	32	34	36	39	42
<i>Less grants from States</i>	24	15	17	15	13	14
<i>Local outlays financed from own resources</i>	20	17	17	21	26	28
Universities						
General government final consumption expenditure	2 915	2 837	3 115	2 983	3 143	3 259
Personal benefit payments	26	29	32	32	34	43
Grants	1	3	9	13	4	11
Expenditure on new fixed assets	741	858	867	870	936	894
Expenditure on second-hand fixed assets (net)	-17	-24	-49	-40	-74	-63
Other	63	85	100	87	108	86
<i>Total</i>	3 729	3 788	4 074	3 945	4 151	4 230
<i>Less grants from Commonwealth and States</i>	3 533	3 685	3 881	4 029	3 994	3 938
<i>Universities outlays financed from own resources</i>	196	103	193	-84	157	292
<i>Less inter-sector taxes</i>	65	75	76	87	88	95
Total government (1)	20 863	21 179	22 013	22 763	24 203	25 082
PRIVATE AND GOVERNMENT COMBINED						
Private final consumption expenditure	5 006	5 341	5 679	6 156	6 797	7 569
<i>Less current grants from government to non-profit institutions</i>	2 349	2 537	2 754	2 904	3 181	3 564
<i>Private final consumption expenditure not financed from government (2)</i>	2 657	2 804	2 925	3 252	3 616	4 005
Private gross fixed capital expenditure	449	504	489	559	590	639
<i>Less capital grants from government to persons and non-profit institutions</i>	77	87	88	76	70	67
<i>Private gross fixed capital expenditure not financed from government (3)</i>	372	417	401	483	520	572
Total expenditure (1) + (2) + (3)	23 894	24 400	25 339	26 499	28 340	29 659

— nil or rounded to zero (including null cells)

	<i>General government final consumption expenditure</i>	<i>Personal benefit payments</i>	<i>Expenditure on new fixed assets</i>	<i>Expenditure on secondhand fixed assets</i>	<i>Other(a)</i>	<i>Inter-sector transfers(b)</i>	<i>Own source outlays(c)</i>
	\$m	\$m	\$m	\$m (net)	\$m	\$m	\$m
Primary and secondary education							
Commonwealth	58	579	—	—	21	3 752	4 410
State and local	9 914	118	688	-13	3 353	-3 752	10 308
<i>Total</i>	9 972	697	688	-13	3 374	—	14 718
Tertiary education							
<i>University</i>							
Commonwealth	28	864	—	—	5	3 768	4 665
State and local	5	3	—	—	-1	171	178
Universities	3 259	43	894	-63	97	-3 938	292
<i>Total</i>	3 292	910	894	-63	102	—	5 135
<i>Technical and further</i>							
Commonwealth	9	229	—	—	64	885	1 187
State and local	2 156	1	276	-11	13	-885	1 550
<i>Total</i>	2 165	230	276	-11	77	—	2 737
<i>Tertiary education n.e.c.</i>							
Commonwealth	61	19	—	—	—	—	79
State and local	62	—	13	—	18	—	93
<i>Total</i>	122	19	13	—	18	—	172
<i>Total tertiary education</i>							
Commonwealth	98	1 112	—	—	68	4 653	5 931
State and local	2 223	4	289	-11	30	-713	1 822
Universities	3 259	43	894	-63	97	-3 938	292
<i>Total</i>	5 580	1 159	1 183	-74	195	2	8 045
Preschool, special and other							
Commonwealth	116	11	—	—	—	134	261
State and local	1 175	—	22	—	108	-134	1 172
<i>Total</i>	1 291	11	22	—	108	—	1 433
Transportation of students							
Commonwealth	—	—	—	—	—	—	—
State and local	702	23	—	—	15	—	740
<i>Total</i>	702	23	—	—	15	—	740
Education n.e.c.							
Commonwealth	126	—	—	—	1	—	128
State and local	43	1	-13	-28	113	—	115
<i>Total</i>	169	1	-13	-28	114	—	243
Total outlays							
Commonwealth	398	1 702	—	—	92	8 539	10 730
State and local	14 057	146	986	-52	3 619	-4 599	14 156
Universities	3 259	43	894	-63	96	-3 938	291
Inter-sector taxes	—	—	—	—	—	-95	-95
Total	17 714	1 891	1 880	-115	3 807	-95	25 082

— nil or rounded to zero (including null cells)

(a) Outlays on education less transfers (e.g. grants and taxes on education paid/received to/from sectors).

(b) Specific purpose grants from the Commonwealth Government to State Governments and universities, plus taxes paid by universities to State governments. The amounts concerned are shown as a deduction from outlays in the rows for State, local governments and universities

(c) Outlays on education less specific purpose grants received from other levels of government. In the case of the Commonwealth Government this simply represents their total outlays but in the case of State, local governments and universities it represents outlays financed from their own resources and non-specific Commonwealth grants.

4

COMMONWEALTH GOVERNMENT TOTAL OUTLAYS, by Government Purpose

	1992-93	1993-94	1994-95	1995-96	1996-97	1997-98
VALUE (\$ m)						
Primary and secondary	3 441	3 634	3 780	3 913	4 011	4 410
Tertiary						
University	4 037	4 336	4 628	4 793	4 725	4 665
Technical and further	788	855	967	1 036	1 198	1 187
Tertiary n.e.c.	12	17	27	63	82	79
Total	4 837	5 208	5 622	5 892	6 005	5 931
Preschool, special and other	149	147	138	143	170	261
Education n.e.c.	192	218	241	168	212	128
Total	8 619	9 207	9 781	10 116	10 398	10 730
Total general government outlays on all purposes	111 484	117 252	122 901	131 182	135 126	134 608
PROPORTION OF TOTAL OUTLAYS (%)						
Outlays on education	7.7	7.9	8.0	7.7	7.7	8.0

5

STATE TOTAL OUTLAYS ON EDUCATION, as a proportion of total outlays

	1992-93	1993-94	1994-95	1995-96	1996-97	1997-98
VALUE (\$ m)						
Total State general government outlays on all purposes(1)	61 978	61 672	63 066	65 256	69 156	73 336
Less grants from the Commonwealth Government intended to be used for a specific purpose	13 928	12 602	13 219	13 651	14 308	13 934
Outlays financed from States own resources and from general purpose Commonwealth Government payments (2)	48 050	49 070	49 847	51 605	54 848	59 402
Outlays on education (3)	17 012	15 570	16 003	16 857	18 013	18 898
Less grants from the Commonwealth Government for education purposes	4 919	3 643	3 906	4 060	4 302	4 770
Outlays on education financed from State resources and from general purpose Commonwealth Government grants (4)	12 093	11 927	12 097	12 797	13 711	14 128
PROPORTION (%)						
(3) as a proportion of (1)	27.4	25.2	25.4	25.8	26.0	25.8
(4) as a proportion of (2)	25.2	24.3	24.3	24.8	25.0	23.8

STATE AND LOCAL GOVERNMENT OUTLAYS, by Economic Transaction

	1992-93	1993-94	1994-95	1995-96	1996-97	1997-98
VALUE (\$ m)						
General government final consumption expenditure						
New South Wales	3 940	4 074	4 275	4 460	4 759	4 829
Victoria	2 725	2 604	2 583	2 733	2 957	2 954
Queensland	2 004	2 060	2 054	2 253	2 324	2 483
South Australia	1 048	1 144	1 108	1 047	1 090	1 274
Western Australia	1 177	1 189	1 211	1 289	1 401	1 528
Tasmania	346	367	371	385	401	416
Northern Territory	233	218	227	222	245	274
Australian Capital Territory	243	257	261	270	280	300
<i>Total</i>	<i>11 715</i>	<i>11 913</i>	<i>12 090</i>	<i>12 659</i>	<i>13 456</i>	<i>14 057</i>
Expenditure on new fixed assets						
New South Wales	335	280	296	260	252	224
Victoria	196	158	161	215	219	263
Queensland	243	206	228	264	338	284
South Australia	91	92	81	96	119	17
Western Australia	77	78	100	136	149	128
Tasmania	25	24	34	34	33	27
Northern Territory	15	14	17	12	18	30
Australian Capital Territory	25	17	29	23	19	14
<i>Total</i>	<i>1 005</i>	<i>869</i>	<i>946</i>	<i>1 038</i>	<i>1 147</i>	<i>986</i>
Current grants to non-profit institutions						
New South Wales	812	856	958	998	1 106	1 200
Victoria	613	680	707	701	725	873
Queensland	386	397	440	478	535	606
South Australia	154	168	182	186	208	232
Western Australia	202	237	235	287	305	352
Tasmania	52	57	61	61	63	71
Northern Territory	21	25	30	44	44	46
Australian Capital Territory	53	58	65	70	77	81
<i>Total</i>	<i>2 293</i>	<i>2 478</i>	<i>2 678</i>	<i>2 826</i>	<i>3 062</i>	<i>3 462</i>
Personal benefit payments						
New South Wales	1	1	1	1	1	55
Victoria	47	39	42	44	37	47
Queensland	10	26	12	41	34	19
South Australia	17	16	13	12	13	20
Western Australia	2	2	—	—	—	—
Tasmania	4	5	6	7	6	6
Northern Territory	—	—	—	—	—	—
Australian Capital Territory	—	—	—	—	—	—
<i>Total</i>	<i>82</i>	<i>89</i>	<i>73</i>	<i>104</i>	<i>92</i>	<i>146</i>
Expenditure on second-hand fixed assets (net)						
	-28	-40	-21	-40	-57	-52
Other	1 965	277	254	291	338	327
Total outlays on education						
New South Wales	5 696	5 252	5 561	5 761	6 129	6 369
Victoria	4 177	3 565	3 595	3 840	4 089	4 239
Queensland	2 975	2 759	2 790	3 077	3 293	3 450
South Australia	1 477	1 414	1 391	1 346	1 433	1 527
Western Australia	1 636	1 534	1 567	1 713	1 858	2 026
Tasmania	465	453	471	487	509	521
Northern Territory	276	266	281	284	342	381
Australian Capital Territory	331	342	363	371	385	413
Total	17 032	15 586	16 020	16 878	18 038	18 926
Total general government outlays on all purposes	67 650	67 064	68 715	71 802	76 033	80 353
OUTLAYS ON EDUCATION AS A PROPORTION OF TOTAL OUTLAYS (%)						
Outlays on education	25.2	23.2	23.3	23.5	23.7	23.6
— nil or rounded to zero (including null cells)						

COMMONWEALTH GOVERNMENT GRANTS TO STATES AND UNIVERSITIES

	1992-93	1993-94	1994-95	1995-96	1996-97	1997-98
	\$m	\$m	\$m	\$m	\$m	\$m
NEW SOUTH WALES						
Current grants						
Primary and secondary	833	881	949	975	1 028	1 147
Tertiary						
University	435	—	—	—	—	—
Technical and further	112	129	171	197	220	237
Tertiary n.e.c.	—	—	—	—	—	—
Total	547	129	171	197	220	237
Preschool, special and other	11	15	8	13	21	32
Education n.e.c.	—	—	—	—	—	—
Total	1 391	1 026	1 128	1 185	1 269	1 416
Capital grants						
Primary and secondary	125	119	105	109	107	102
Tertiary						
University	69	—	—	—	—	—
Technical and further	90	83	81	74	82	66
Tertiary n.e.c.	—	—	—	—	—	—
Total	160	83	81	74	82	66
Preschool, special and other	—	—	—	—	—	2
Education n.e.c.	—	—	—	—	—	—
Total	285	202	186	183	189	169
VICTORIA						
Current grants						
Primary and secondary	648	679	728	743	794	883
Tertiary						
University	372	—	—	—	—	—
Technical and further	82	101	125	140	159	172
Tertiary n.e.c.	—	—	—	—	—	—
Total	454	101	125	140	159	172
Preschool, special and other	4	6	7	6	3	9
Education n.e.c.	—	—	—	—	—	—
Total	1 106	786	859	890	956	1 065
Capital grants						
Primary and secondary	91	96	80	82	56	74
Tertiary						
University	50	—	—	—	—	—
Technical and further	59	55	65	58	44	45
Tertiary n.e.c.	—	—	—	—	—	—
Total	110	55	65	58	44	45
Preschool, special and other	—	—	—	—	—	—
Education n.e.c.	—	—	—	—	—	—
Total	201	151	145	140	100	119

— nil or rounded to zero (including null cells)

	1992-93	1993-94	1994-95	1995-96	1996-97	1997-98
	\$m	\$m	\$m	\$m	\$m	\$m
..... QUEENSLAND						
Current grants						
Primary and secondary	423	446	483	504	541	617
Tertiary						
University	213	—	—	—	—	—
Technical and further	48	63	85	94	107	125
Tertiary n.e.c.	—	—	—	—	—	—
<i>Total</i>	261	63	85	94	107	125
Preschool, special and other	12	7	15	10	16	23
Education n.e.c.	—	—	—	—	—	—
<i>Total</i>	696	517	582	608	664	765
Capital grants						
Primary and secondary	64	58	53	57	56	53
Tertiary						
University	36	—	—	—	—	—
Technical and further	38	31	36	36	43	32
Tertiary n.e.c.	—	—	—	—	—	—
<i>Total</i>	74	31	36	36	43	32
Preschool, special and other	2	—	—	—	—	4
Education n.e.c.	—	—	—	—	—	—
<i>Total</i>	140	89	89	93	99	89
..... SOUTH AUSTRALIA						
Current grants						
Primary and secondary	166	194	208	218	231	261
Tertiary						
University	121	—	—	—	—	—
Technical and further	30	38	39	47	52	57
Tertiary n.e.c.	—	—	—	—	—	—
<i>Total</i>	151	38	39	47	52	57
Preschool, special and other	6	8	5	9	7	11
Education n.e.c.	—	—	—	—	—	—
<i>Total</i>	323	240	252	275	290	329
Capital grants						
Primary and secondary	30	26	24	25	17	30
Tertiary						
University	12	—	—	—	—	—
Technical and further	20	16	18	19	17	14
Tertiary n.e.c.	—	—	—	—	—	—
<i>Total</i>	31	16	18	19	17	14
Preschool, special and other	—	—	—	—	—	—
Education n.e.c.	—	—	—	—	—	—
<i>Total</i>	61	42	42	44	34	44

.....
— nil or rounded to zero (including null cells)

	1992-93	1993-94	1994-95	1995-96	1996-97	1997-98
	\$m	\$m	\$m	\$m	\$m	\$m
WESTERN AUSTRALIA						
Current grants						
Primary and secondary	229	251	272	283	305	347
Tertiary						
University	127	—	—	—	—	—
Technical and further	29	34	45	53	60	65
Tertiary n.e.c.	—	—	—	—	—	—
<i>Total</i>	156	34	45	53	60	65
Preschool, special and other	8	12	8	8	18	20
Education n.e.c.	—	—	—	—	—	—
<i>Total</i>	393	297	325	345	384	433
Capital grants						
Primary and secondary	32	38	32	33	32	29
Tertiary						
University	17	—	—	—	—	—
Technical and further	19	22	21	19	21	16
Tertiary n.e.c.	—	—	—	—	—	—
<i>Total</i>	36	22	21	19	21	16
Preschool, special and other	—	—	—	—	—	2
Education n.e.c.	—	—	—	—	—	—
<i>Total</i>	68	60	53	52	52	47
TASMANIA						
Current grants						
Primary and secondary	62	67	72	71	75	83
Tertiary						
University	33	—	—	—	—	—
Technical and further	13	12	16	17	19	21
Tertiary n.e.c.	—	—	—	—	—	—
<i>Total</i>	46	12	16	17	19	21
Preschool, special and other	1	1	1	2	2	2
Education n.e.c.	—	—	—	—	—	—
<i>Total</i>	109	80	89	89	95	106
Capital grants						
Primary and secondary	9	10	9	9	9	8
Tertiary						
University	3	—	—	—	—	—
Technical and further	7	6	5	7	3	5
Tertiary n.e.c.	—	—	—	—	—	—
<i>Total</i>	10	6	5	7	3	5
Preschool, special and other	—	—	—	—	—	—
Education n.e.c.	—	—	—	—	—	—
<i>Total</i>	19	16	14	16	12	13

— nil or rounded to zero (including null cells)

	1992-93	1993-94	1994-95	1995-96	1996-97	1997-98
	\$m	\$m	\$m	\$m	\$m	\$m
NORTHERN TERRITORY						
Current grants						
Primary and secondary	24	27	29	31	33	38
Tertiary						
University	12	—	—	—	—	—
Technical and further	4	4	4	6	8	14
Tertiary n.e.c.	—	—	—	—	—	—
<i>Total</i>	15	4	4	6	8	14
Preschool, special and other	8	12	14	12	17	24
Education n.e.c.	—	—	—	—	—	—
<i>Total</i>	47	44	47	49	57	76
Capital grants						
Primary and secondary	5	5	4	3	8	3
Tertiary						
University	5	—	—	—	—	—
Technical and further	6	3	5	4	5	3
Tertiary n.e.c.	—	—	—	—	—	—
<i>Total</i>	11	3	5	4	5	3
Preschool, special and other	1	1	1	—	—	2
Education n.e.c.	—	—	—	—	—	—
<i>Total</i>	18	9	10	7	13	8
AUSTRALIAN CAPITAL TERRITORY						
Current grants						
Primary and secondary	51	56	60	61	64	72
Tertiary						
University	—	—	—	—	—	—
Technical and further	4	19	15	12	15	8
Tertiary n.e.c.	—	—	—	—	—	—
<i>Total</i>	5	19	15	12	15	8
Preschool, special and other	—	1	1	1	1	1
Education n.e.c.	—	—	—	—	—	—
<i>Total</i>	57	75	76	73	79	81
Capital grants						
Primary and secondary	5	9	6	6	6	6
Tertiary						
University	—	—	—	—	—	—
Technical and further	—	—	3	4	3	5
Tertiary n.e.c.	—	—	—	—	—	—
<i>Total</i>	—	—	3	4	3	5
Preschool, special and other	—	—	—	—	—	—
Education n.e.c.	—	—	—	—	—	—
<i>Total</i>	5	9	9	11	9	10

— nil or rounded to zero (including null cells)

COMMONWEALTH GOVERNMENT GRANTS TO STATES AND UNIVERSITIES *continued*

	1992-93	1993-94	1994-95	1995-96	1996-97	1997-98
	\$m	\$m	\$m	\$m	\$m	\$m
ALL STATES						
Current grants						
Primary and secondary	2 436	2 600	2 800	2 887	3 071	3 447
Tertiary						
University	1 314	—	—	—	—	—
Technical and further	321	401	499	566	639	699
Tertiary n.e.c.	—	—	—	—	—	—
Total	1 635	401	499	566	639	699
Preschool, special and other	50	63	59	59	85	124
Education n.e.c.	—	—	—	—	—	—
Total	4 122	3 064	3 358	3 513	3 794	4 270
Capital grants						
Primary and secondary	361	361	313	322	291	305
Tertiary						
University	193	—	—	—	—	—
Technical and further	239	216	234	222	217	186
Tertiary n.e.c.	—	—	—	—	—	—
Total	432	216	234	222	217	186
Preschool, special and other	3	1	1	—	—	10
Education n.e.c.	—	—	—	—	—	—
Total	796	578	549	544	508	500
UNIVERSITIES						
Current grants	1 618	3 381	3 713	3 801	3 741	3 727
Capital grants	127	145	48	40	42	41

— nil or rounded to zero (including null cells)

STATE AND LOCAL GOVERNMENT CURRENT OUTLAYS

	1992-93	1993-94	1994-95	1995-96	1996-97	1997-98
	\$m	\$m	\$m	\$m	\$m	\$m
NEW SOUTH WALES						
Primary and secondary	3 341	3 484	3 735	3 909	4 243	4 425
Tertiary						
University	475	1	—	—	1	—
Technical and further	671	744	772	787	883	889
Tertiary n.e.c.	—	—	—	—	—	39
Total	1 146	745	772	787	884	928
Preschool, special and other	360	309	316	342	402	375
Transportation of students	391	394	380	403	354	399
Education n.e.c.	18	18	36	23	—	—
Total	5 255	4 949	5 240	5 464	5 882	6 127
VICTORIA						
Primary and secondary	2 723	2 655	2 628	2 821	2 944	2 973
Tertiary						
University	499	149	143	136	147	116
Technical and further	334	311	325	330	363	417
Tertiary n.e.c.	19	—	—	—	—	14
Total	853	460	468	465	509	547
Preschool, special and other	190	195	213	236	260	263
Transportation of students	105	112	121	127	136	108
Education n.e.c.	21	21	13	-6	20	118
Total	3 892	3 443	3 444	3 643	3 870	4 008
QUEENSLAND						
Primary and secondary	1 825	1 893	1 918	2 138	2 238	2 419
Tertiary						
University	273	30	5	10	3	3
Technical and further	272	291	284	299	298	299
Tertiary n.e.c.	—	—	—	—	—	—
Total	544	321	289	310	301	302
Preschool, special and other	225	231	236	257	278	305
Transportation of students	79	82	85	95	98	103
Education n.e.c.	—	—	—	1	—	1
Total	2 674	2 528	2 528	2 801	2 915	3 130

— nil or rounded to zero (including null cells)

STATE AND LOCAL GOVERNMENT CURRENT OUTLAYS *continued*

	1992-93	1993-94	1994-95	1995-96	1996-97	1997-98
	\$m	\$m	\$m	\$m	\$m	\$m
SOUTH AUSTRALIA (a)						
Primary and secondary	936	1 028	1 015	962	1 007	1 167
Tertiary						
University	154	10	2	—	1	1
Technical and further	162	177	157	153	169	208
Tertiary n.e.c.	1	3	2	2	1	—
Total	317	190	160	155	171	208
Preschool, special and other	84	85	95	94	99	113
Transportation of students	35	35	33	33	34	39
Education n.e.c.	1	1	1	1	1	—
Total	1 373	1 338	1 305	1 246	1 312	1 526
WESTERN AUSTRALIA						
Primary and secondary	1 063	1 101	1 069	1 171	1 296	1 431
Tertiary						
University	144	1	—	—	—	15
Technical and further	183	209	231	256	244	255
Tertiary n.e.c.	1	1	—	-1	—	—
Total	327	210	230	255	244	270
Preschool, special and other	87	89	102	106	118	143
Transportation of students	59	42	56	44	49	51
Education n.e.c.	—	—	—	—	—	—
Total	1 536	1 441	1 457	1 576	1 706	1 895
TASMANIA						
Primary and secondary	310	321	322	327	344	358
Tertiary						
University	43	3	3	4	4	3
Technical and further	38	48	53	54	65	65
Tertiary n.e.c.	—	—	—	—	—	—
Total	82	51	57	57	69	68
Preschool, special and other	27	29	28	36	24	37
Transportation of students	20	25	24	25	26	20
Education n.e.c.	3	4	7	9	9	10
Total	441	429	438	454	472	494

— nil or rounded to zero (including null cells)

(a) Changes in accounting methodology in 1997-98 resulted in current and capital outlays not being comparable to previous years. Costs of a maintenance nature are included in the operating activities as the expenditure does not create an asset.

STATE AND LOCAL GOVERNMENT CURRENT OUTLAYS *continued*

	1992-93	1993-94	1994-95	1995-96	1996-97	1997-98
	\$m	\$m	\$m	\$m	\$m	\$m
.....						
NORTHERN TERRITORY						
Primary and secondary	193	195	206	207	217	247
Tertiary						
University	—	—	—	—	28	25
Technical and further	52	31	12	15	22	19
Tertiary n.e.c.	—	—	20	20	20	22
Total	52	31	32	35	70	65
Preschool, special and other	10	14	15	19	25	22
Transportation of students	3	4	1	2	1	5
Education n.e.c.	—	4	5	5	5	7
Total	258	248	259	268	318	346
.....						
AUSTRALIAN CAPITAL TERRITORY						
Primary and secondary	235	250	255	261	272	293
Tertiary						
University	—	—	—	—	—	—
Technical and further	48	51	53	58	61	62
Tertiary n.e.c.	—	—	—	—	—	—
Total	48	51	53	58	61	62
Preschool, special and other	13	13	18	21	24	26
Transportation of students	6	6	6	6	9	15
Education n.e.c.	—	—	—	—	—	—
Total	302	321	332	346	366	396
.....						
ALL STATES						
Primary and secondary	10 626	10 926	11 150	11 796	12 560	13 314
Tertiary						
University	1 588	193	153	150	183	162
Technical and further	1 759	1 862	1 887	1 953	2 104	2 214
Tertiary n.e.c.	22	4	21	20	21	74
Total	3 369	2 059	2 062	2 124	2 308	2 450
Preschool, special and other	996	964	1 023	1 111	1 231	1 284
Transportation of students	697	699	705	734	706	739
Education n.e.c.	43	48	63	33	35	135
Total	15 731	14 695	15 003	15 798	16 841	17 922

— nil or rounded to zero (including null cells)

STATE AND LOCAL GOVERNMENT CAPITAL OUTLAYS

	1992-93	1993-94	1994-95	1995-96	1996-97	1997-98
	\$m	\$m	\$m	\$m	\$m	\$m
NEW SOUTH WALES						
Primary and secondary	228	200	198	172	138	140
Tertiary						
University	69	—	—	—	—	—
Technical and further	139	103	135	117	109	86
Tertiary n.e.c.	—	—	—	—	—	17
Total	208	103	135	117	109	102
Preschool, special and other	11	1	-11	3	-4	—
Transportation of students	—	—	—	—	—	—
Education n.e.c.	-6	-1	-1	5	4	—
Total	441	303	321	297	247	242
VICTORIA						
Primary and secondary	125	36	62	85	121	174
Tertiary						
University	66	4	1	15	13	2
Technical and further	89	82	84	96	80	75
Tertiary n.e.c.	—	—	—	—	—	2
Total	155	86	85	111	93	79
Preschool, special and other	5	2	3	-1	9	2
Transportation of students	—	—	—	—	—	—
Education n.e.c.	-1	-1	1	2	-3	-24
Total	284	123	151	197	219	231
QUEENSLAND						
Primary and secondary	165	161	178	167	278	256
Tertiary						
University	40	5	9	30	21	14
Technical and further	72	53	63	71	63	34
Tertiary n.e.c.	—	—	—	—	—	—
Total	112	58	72	101	83	49
Preschool, special and other	25	11	11	7	16	14
Transportation of students	—	—	—	—	—	—
Education n.e.c.	—	2	2	1	1	1
Total	301	231	262	276	378	319

— nil or rounded to zero (including null cells)

STATE AND LOCAL GOVERNMENT CAPITAL OUTLAYS *continued*

	1992-93	1993-94	1994-95	1995-96	1996-97	1997-98
	\$m	\$m	\$m	\$m	\$m	\$m
SOUTH AUSTRALIA (a)						
Primary and secondary	69	48	56	72	90	-3
Tertiary						
University	9	—	—	—	—	—
Technical and further	26	22	26	21	23	3
Tertiary n.e.c.	—	—	—	—	—	—
Total	35	22	26	21	23	3
Preschool, special and other	—	5	4	6	7	1
Transportation of students	—	—	—	1	1	—
Education n.e.c.	—	—	—	—	—	—
Total	103	76	86	100	121	1
WESTERN AUSTRALIA						
Primary and secondary	61	89	98	111	132	117
Tertiary						
University	14	—	—	—	—	—
Technical and further	13	1	10	27	19	12
Tertiary n.e.c.	—	—	—	—	—	—
Total	27	1	10	27	19	12
Preschool, special and other	14	4	4	—	—	—
Transportation of students	—	—	—	—	—	—
Education n.e.c.	-2	—	-2	-1	1	3
Total	100	93	110	137	152	132
TASMANIA						
Primary and secondary	14	16	23	21	29	20
Tertiary						
University	—	—	—	—	—	—
Technical and further	7	6	9	10	7	4
Tertiary n.e.c.	—	—	—	—	—	—
Total	7	6	9	10	7	4
Preschool, special and other	1	—	—	—	—	2
Transportation of students	—	—	—	—	—	—
Education n.e.c.	2	2	2	2	1	1
Total	24	23	33	33	38	26

— nil or rounded to zero (including null cells)

(a) Changes in accounting methodology in 1997-98 resulted in current and capital outlays not being comparable to previous years. Costs of a maintenance nature are included in the operating activities as the expenditure does not create an asset.

STATE AND LOCAL GOVERNMENT CAPITAL OUTLAYS *continued*

	1992-93	1993-94	1994-95	1995-96	1996-97	1997-98
	\$m	\$m	\$m	\$m	\$m	\$m
.....						
NORTHERN TERRITORY						
Primary and secondary	11	15	17	12	20	31
Tertiary						
University	—	—	—	—	—	—
Technical and further	2	2	1	1	1	2
Tertiary n.e.c.	4	1	4	2	1	1
Total	6	3	5	3	3	2
Preschool, special and other	—	1	—	1	1	2
Transportation of students	—	—	—	—	—	—
Education n.e.c.	—	—	—	—	—	—
Total	18	19	22	16	24	35
.....						
AUSTRALIAN CAPITAL TERRITORY						
Primary and secondary	19	17	18	18	13	11
Tertiary						
University	—	—	—	—	—	—
Technical and further	10	5	14	7	6	6
Tertiary n.e.c.	—	—	—	—	—	—
Total	10	5	14	7	6	6
Preschool, special and other	—	—	—	—	—	—
Transportation of students	—	—	—	—	—	—
Education n.e.c.	—	—	—	—	—	—
Total	29	22	31	26	19	17
.....						
ALL STATES						
Primary and secondary	691	581	649	658	820	746
Tertiary						
University	198	9	9	44	33	16
Technical and further	358	274	341	350	308	221
Tertiary n.e.c.	4	1	4	2	1	19
Total	560	284	354	397	343	256
Preschool, special and other	56	23	11	16	29	21
Transportation of students	—	—	—	1	1	—
Education n.e.c.	-6	2	3	9	4	-20
Total	1 301	890	1 017	1 081	1 197	1 003

— nil or rounded to zero (including null cells)

EXPLANATORY NOTES

INTRODUCTION

1 This publication presents information on both government and private expenditure on education for the years 1992–93 to 1997–98.

2 The emphasis is largely on public sector outlays, which reflects in part the relative importance of that sector in the provision of education services, but also the lack of detailed information relating to educational activities in the private sector. Information which shows the order of magnitude of private sector spending is included, as are data on the aggregate supply of education services and facilities.

3 The data relating to the public sector are taken from the system of Government Financial Statistics (GFS), which is designed to provide statistics showing:

- consolidated transactions of the various public authorities presented so that their economic impact can be assessed;
- the purposes that are being served by government expenditure programs;
- the roles of the different levels of government in undertaking and financing these expenditure programs; and
- the transactions of the Commonwealth, each State Government individually, and local governments in total in each State, and universities, so that they may be used to indicate the comparative standing of each government in relation to its expenditure, its sources of revenue, and its financing transactions.

4 Information on private sector expenditure is obtained from component data of the Australian National Accounts (See *Australian National Accounts: Concepts, Sources and Methods* (Cat. no. 5216.0)). This publication is also available on CD-ROM as part of *Statistical Concepts Reference Library* (Cat. no. 1361.0.30.001).

MEASURES OF EXPENDITURE ON EDUCATION

5 Total expenditure on education can be measured in different ways. One measure is to sum final expenditures on education by the private sector and all levels of government. This provides a measure of the aggregate supply of education services and facilities and can therefore be related to the supply of goods and services available from domestic production i.e. GDP. This is shown as total final expenditure on education in table 1.

Total outlays

6 Government outlays on education include some payments which are intended to facilitate education, but which do not finance final expenditure on education services and facilities. These types of payments, termed personal benefit payments, include living allowances paid to students which are used to finance final expenditure on food, clothing, transport, rent, etc. The expenditure measure of total outlays on education in table 1 is composed of:

- total final expenditure on education services and facilities;
- government transfer payments paid for the purpose of facilitating education, but not intended to be spent directly on educational services; and
- other miscellaneous expenditure on education by government.

7 The method of measuring total outlays on education, outlined in the previous paragraph, does not measure the contribution of each sector and level of government to the financing of education services, facilities and education-related personal benefit payments. This is because expenditure on education by a sector can be financed by transfers from another sector or level of government. Thus, an alternative approach to deriving total outlays on education is to sum the outlays on education of the private sector and each level of

government, and then consolidate out transfer payments between them. The aggregate is the same as the measure of total outlays on education in table 1, but the distribution between the sectors and levels of government is different. This is shown in table 2.

CONCEPTS AND DEFINITIONS

Government outlays on education

8 To assist users in understanding the statistics presented in this and related publications, *Government Finance Statistics — Concepts, Sources and Methods* (Cat. no. 5514.0) has been published. This publication is also available on CD-ROM as part of *Statistical Concepts Reference Library* (Cat. no. 1361.30.001).

9 The figures presented here are essentially a reclassification of the conventional accounts of public authorities engaged in providing educational services which appear in budget documents or annual reports. The classification schemes used to reclassify the transactions in the conventional accounts into a national accounting presentation are the:

- *Economic Type Framework for GFS* (ETF) which is used to:
 - categorise outlays, revenue and grants received and financing transactions according to their economic character to facilitate study of the macro-economic effect of government activity on the economy; and
 - provide the basic building blocks for grouping transactions which need to be incorporated into the Australian National Accounts.
- *Government Purpose Classification* (GPC), which is used to group outlays with similar functions to facilitate the:
 - study of the broad purposes of public sector spending; and
 - assessment of the effectiveness of outlays in meeting government policy objectives.

10 The figures in this publication relate to public sector outlays which have been classified to GPC 24 — Education. However, there are some issues relating to the structure and application of the GPC that are relevant when interpreting the data. Nurse education carried out in hospitals is included in GPC 25 — Health, because of the difficulty in satisfactorily identifying these expenditures in the accounts of hospitals and because ‘on-the-job’ training is generally classified to the purpose of the activity. Expenditure on the education of nurses in Colleges of Advanced Education and expenditure on military colleges is classified to GPC 24. Expenditure on medical and dental services to students is classified to GPC 25.

11 Tables 8 and 9 provide a classification by purpose of current and capital outlays on education by State and local governments in each State. It should be noted that differences in institutional structure and accounting practices make it difficult to implement the GPC in a way which leads to fully comparable statistics between the States. For example, in some States expenditure on the education of disabled children (intended to be classified to special education) is included under primary and secondary education. Therefore, classification uncertainties make it difficult to compare the statistics between States as well as over time.

EXPLANATORY NOTES *continued*

Private expenditure on education

12 Final expenditure on education by the private sector consists of household final consumption expenditure on education services, and gross fixed capital formation mainly by private non-profit organisations.

13 Household final consumption expenditure on education services is estimated as fees paid by persons to government schools (including technical and agricultural colleges), fees (other than boarding fees) and gifts to universities, independent schools, business colleges, etc. plus current expenditure of non-profit educational institutions, net of fees and other current receipts. Current expenditure excludes interest and consumption of fixed capital and is financed by fees paid by households and current grants from general government. Expenditure on such items as school books, uniforms, etc. and expenditure by parents' associations on school equipment is not included, being treated in the Australian National Accounts as household final consumption expenditure on other goods and services (such as clothing, books, etc.). Fares paid by students to and from educational institutions are not counted as part of household final consumption expenditure on education, but are included in the Australian System of National Accounts as part of household final consumption expenditure — transport services. Payments to tertiary institutions made under the Higher Education Contribution Scheme, introduced in 1988–89, are classified as charges for the provision of service by the tertiary institution and are therefore included in household final consumption expenditure. The sources and methods used in estimating household final consumption expenditure are detailed in *Australian National Accounts: Concepts, Sources, and Methods* (Cat. no. 5216.0).

14 Private gross fixed capital formation in the field of education is estimated from statistics of the value of work done on new building and major additions to buildings of private educational institutions.

REVISIONS

15 GFS are revised progressively as new or improved data become available. For this reason differences can occur between equivalent aggregates published at different times.

EXPLANATORY NOTES *continued*

RELATED PUBLICATIONS

16 Readers may wish to refer to the following publications which contain related information:

A Directory of Education and Training Statistics (Cat. no. 1136.0) — latest edition October 1997, issued 1997

Australian National Accounts: Concepts, Sources, and Methods (Cat. no. 5216.0) — latest edition 1989 — issued May 1990

Australian National Accounts: National Income, Expenditure and Product (Cat. no. 5206.0) — issued quarterly

Australian System of National Accounts (Cat. no. 5204.0) — issued annually

Australian Social Trends (Cat. no. 4102.0) — issued annually

Education and Training in Australia (Cat. no. 4224.0) — latest edition 1998 — issued 1999

Government Financial Estimates, Australia (Cat. no. 5501.0) — issued annually

Government Finance Statistics, Australia (Cat. no. 5512.0) — issued annually

Government Finance Statistics — Concepts, Sources and Methods (Cat. no. 5514.0) — latest edition 1994, issued 1995

Information Paper: Government Finance Statistics (Cat. no. 5516.0) — latest edition 1997, issued 1997

Participation in Education, Australia (Cat. no. 6272.0) — issued annually

Statistical Concepts Reference Library (Cat. no. 1361.0.30.001) — latest edition 1997 — issued August 1997 on CD-ROM

Taxation Revenue, Australia (Cat. no. 5506.0) — issued annually

Transition from Education to Work, Australia (Cat. no. 6227.0) — issued annually

UNPUBLISHED STATISTICS

17 In some cases, the ABS can also make available information which is not published. This includes data for the years 1961–62 to 1991–92 prepared on a basis consistent with the data in this publication. This information may be made available in one or more of the following forms: photocopy, computer printout, floppy disk, CD-ROM and clerically extracted tabulation. Generally, a charge is made for providing unpublished information. Inquiries should be made to the officer whose name appears on the front cover of the publication, or to Information Services in the nearest ABS office.

GLOSSARY

Advances to persons for HECS purposes (net)	Applies to cases where students elect to defer payment of their HECS liability. Loans by the Commonwealth Government to students are classified as advances. Repayments of these loans through the tax system are classified as negative advances and netted out.
Capital grants	Unrequited payments (see definition below) intended to contribute towards the cost of capital expenditure or loan repayments for the purpose of developing or improving educational facilities.
Capital outlays	Includes: <ul style="list-style-type: none">■ expenditure on new fixed assets;■ net expenditure on second-hand fixed assets;■ net purchases of other capital assets;■ net expenditure on land;■ increase in stocks; and■ transfers to other bodies to fund capital expenditure such as school buildings and furniture and fittings.
Current grants	Unrequited payments (see definition below) intended to finance the current operations of other government or non-government bodies.
Current outlays	Net current expenditure on goods and services plus current transfer payments. Current expenditure on goods and services is expenditure by general government authorities which does not result in the creation of fixed assets or acquisition of land, buildings, intangible assets or second-hand plant and equipment. Sales of goods and services is offset against gross expenditure in calculating current outlays. Current transfer payments include payments for property rights (e.g. interest payments) and unrequited transfers for which there is no return for payment, such as subsidies, personal benefit payments and current grants.
Expenditure on new fixed assets	Expenditure on tangible assets which are intended to be used in the production process for more than a year. Within the context of education, such assets cover construction work and equipment (including transport equipment) and expenditure on school supplies or buildings.
Expenditure on second-hand assets (net)	Purchase of second-hand assets less sales of used capital assets. Generally comprises the acquisition and disposal of school buildings, previously rented dwellings and used plant and equipment. A negative value indicates that sales exceed purchases.
Government final consumption expenditure	General government's expenditure on provision of educational services less the value of its services sold to others (e.g. fees received from students).
Grants to persons and non-profit institutions	Current and capital unrequited payments (payments made for which nothing is received directly in return) from general government for the benefit of students or educational institutions. For education, this mainly relates to grants to non-government schools.
Gross Domestic Product (GDP)	Total market value of goods and services produced in Australia within a given period after deducting the cost of goods used up in the process of production, but before deducting allowances for the consumption of fixed capital (depreciation).

GLOSSARY *continued*

Gross fixed capital expenditure	Expenditure on new fixed assets such as the building of new schools, less net sales of second-hand assets. The term gross in the title indicates that no account is taken of depreciation in this category.
Higher education contribution scheme (HECS)	<p>The HECS scheme requires students to pay a contribution towards the cost of their higher education. The payments may be made direct to the institution attended (at a 25% discount) at the time the education course is undertaken, or students may enter a loan agreement with the Commonwealth Government to discharge their obligation to pay the contribution, the loan to be repaid at a later date through the taxation system. The proceeds of the loan are not paid to the students, but are paid to the institution on the student's behalf from a trust fund.</p> <p>In the statistics the loan is recorded as an advance from the Commonwealth Government to the students, and the payment of the contribution out of the trust fund is treated as a general government service charge paid by the student and is offset against government final consumption expenditure.</p>
Increase in stocks	Net increase in stocks of consumable educational supplies, such as text books and stationery.
Inter-governmental grants	Grants from the Commonwealth to State Governments and universities.
Other outlays	Mainly current grants to non-government schools and subsidies for teacher housing.
Own source outlays	Outlays on education less grants received from other levels of government. Because of consolidation between these levels of government, the total of own source outlays is not equal to the sum of Commonwealth, State, local and universities own source outlays.
Private final consumption expenditure	Outlays by the household sector on the consumption of educational services. These include expenditure on salaries paid to non-government school teachers. HECS payments (both up front and deferred) by students are also part of private final consumption expenditure.
Private gross fixed capital expenditure	Expenditure on fixed assets, e.g. new private school buildings, by the private sector.
Unrequited payments	Payments made for which nothing is received directly in return.

SELF-HELP ACCESS TO STATISTICS

- CPI INFOLINE* For current and historical Consumer Price Index data, call 1902 981 074 (call cost 75c per minute).
- DIAL-A-STATISTIC* For the latest figures for National Accounts, Balance of Payments, Labour Force, Average Weekly Earnings, Estimated Resident Population and the Consumer Price Index call 1900 986 400 (call cost 75c per minute).
- INTERNET* www.abs.gov.au
- LIBRARY* A range of ABS publications is available from public and tertiary libraries Australia-wide. Contact your nearest library to determine whether it has the ABS statistics you require.

WHY NOT SUBSCRIBE?

- PHONE* +61 1300 366 323
- FAX* +61 03 9615 7848

CONSULTANCY SERVICES

ABS offers consultancy services on a user pays basis to help you access published and unpublished data. Data that is already published and can be provided within 5 minutes is free of charge. Statistical methodological services are also available. Please contact:

<i>INQUIRIES</i>	<i>City</i>	<i>By phone</i>	<i>By fax</i>
	Canberra	02 6252 6627	02 6207 0282
	Sydney	02 9268 4611	02 9268 4668
	Melbourne	03 9615 7755	03 9615 7798
	Brisbane	07 3222 6351	07 3222 6283
	Perth	08 9360 5140	08 9360 5955
	Adelaide	08 8237 7400	08 8237 7566
	Hobart	03 6222 5800	03 6222 5995
	Darwin	08 8943 2111	08 8981 1218

POST Client Services, ABS, PO Box 10, Belconnen, ACT 2616

EMAIL client.services@abs.gov.au

© Commonwealth of Australia 1999



2551000001989

ISSN 1031-0282

RRP \$17.50