

**UNDEREMPLOYED WORKERS**

AUSTRALIA

EMBARGO: 11.30AM (CANBERRA TIME) WED 26 FEB 2014

C O N T E N T S

	<i>page</i>
Notes	2
Conceptual framework	3
Summary of findings	5

T A B L E S

List of tables	10
Employed persons	11
Part-time workers who would prefer more hours	12
Underemployed part-time workers	16
Populations	24

A D D I T I O N A L I N F O R M A T I O N

Explanatory Notes	25
Appendix 1: Educational attainment	29
Appendix 2: Populations and data items list	31
Appendix 3: Supplementary surveys	37
Technical Note: Data quality	38
Glossary	42

I N Q U I R I E S

For further information about these and related statistics, contact the National Information and Referral Service on 1300 135 070 or Labour Force and Supplementary Survey Section on Canberra (02) 6252 7206, email <labour.statistics@abs.gov.au>.

ABOUT THIS PUBLICATION

This publication presents information about underemployed workers. The number of underemployed workers is an important component of underutilised labour resources in the economy, along with the number of unemployed and those with marginal attachment to the labour force. Underemployed workers are defined as part-time workers who want, and are available for more hours of work than they currently have, and full-time workers who worked part-time hours during the reference week for economic reasons (such as being stood down or insufficient work being available).

The statistics in this publication were compiled from the Underemployed Workers Survey conducted throughout Australia in September 2013 as a supplement to the Australian Bureau of Statistics (ABS) monthly Labour Force Survey (LFS). A range of information is presented on underemployed workers including the number of hours usually worked, preferred number of hours, steps taken to find work with more hours and difficulties finding work with more hours. This publication presents information about the characteristics of underemployed workers aged 15 years and over.

For time series information on the number of underemployed workers, users are advised to use the quarterly Labour Force Survey estimates. Trend, seasonally adjusted and original estimates are published each quarter in Labour Force, Australia (cat. no. 6202.0), tables 22 to 23.

ROUNDING

As estimates have been rounded, discrepancies may occur between sums of the component items and totals.

CHANGES IN THIS ISSUE

The ABS is progressively introducing online data collection to the LFS. For September 2013 online data collection was offered to 56% of the Labour Force sample. Of the households responding to the Underemployed Workers Survey, approximately 14% submitted their data online. For more information see the article in the April 2013 issue of Labour Force, Australia (cat. no. 6202.0).

The September 2013 Underemployed Workers survey is fully based on the new sample introduced after the 2011 Census of Population and Housing. For more information see the article in the May 2013 issue of Labour Force, Australia (cat. no. 6202.0).

Jonathan Palmer
Acting Australian Statistician

CONCEPTUAL FRAMEWORK

CONCEPTUAL FRAMEWORK

The ABS conceptual framework for underemployment separates employed people into two mutually exclusive groups:

- workers who are considered to be fully employed, comprising:
 - employed people who worked full-time during the reference week (includes people who usually work part-time);
 - employed people who usually work full-time but worked part-time in the reference week for non-economic reasons (including illness or injury, leave, holiday or flextime, and personal reasons); and
 - part-time workers (usually work part-time and did so in the reference week) who would not prefer additional hours of work.
- workers who are not fully employed, comprising:
 - part-time workers who would prefer to work more hours; and
 - full-time workers who worked part-time in the reference week for economic reasons (such as being stood down or insufficient work being available).

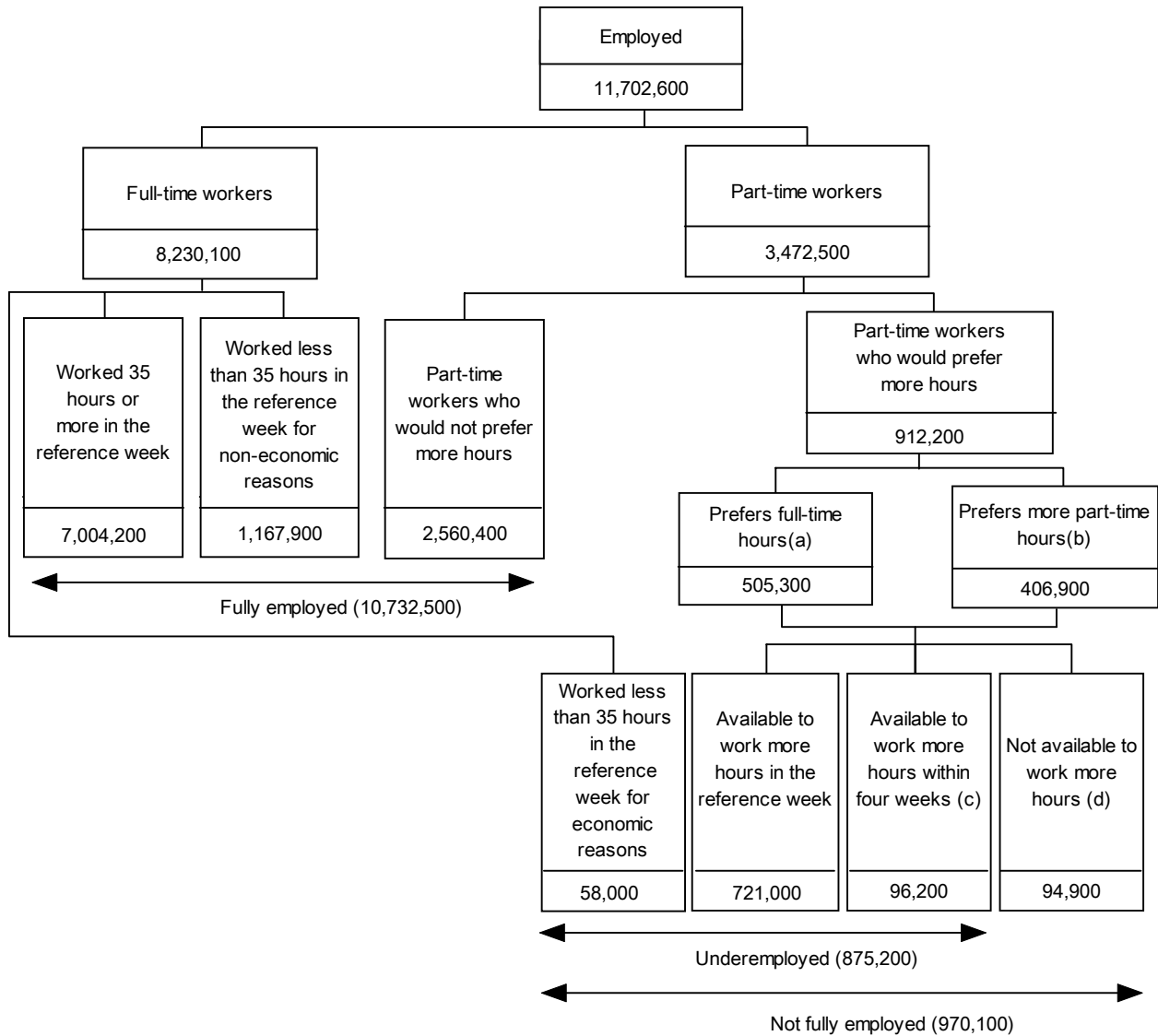
The conceptual framework further defines workers who are underemployed, comprising:

- part-time workers who would prefer to work more hours and were available to start work with more hours, either in the reference week or in the four weeks following the survey; and
- full-time workers who worked part-time hours in the reference week for economic reasons (such as being stood down or insufficient work being available).

CONCEPTUAL FRAMEWORK *continued*

CONCEPTUAL FRAMEWORK
continued

The following diagram presents estimates from the September 2013 Underemployed Workers Survey.



- (a) Total number of hours preferred to work each week are 35 hours or more.
- (b) Total number of hours preferred to work each week are between 1 to 34 hours.
- (c) Available within four weeks but not in the reference week.
- (d) Availability refers to 'in the reference week or within four weeks'.

SUMMARY OF FINDINGS

OVERVIEW

The Underemployed Workers Survey found that of the 11.7 million employed people aged 15 years and over in September 2013:

- 10.7 million (92%) were fully employed; and
- 970,100 (8%) were not fully employed, of whom 875,200 were underemployed.

Of the 875,200 underemployed workers (see Tables 1 and 2):

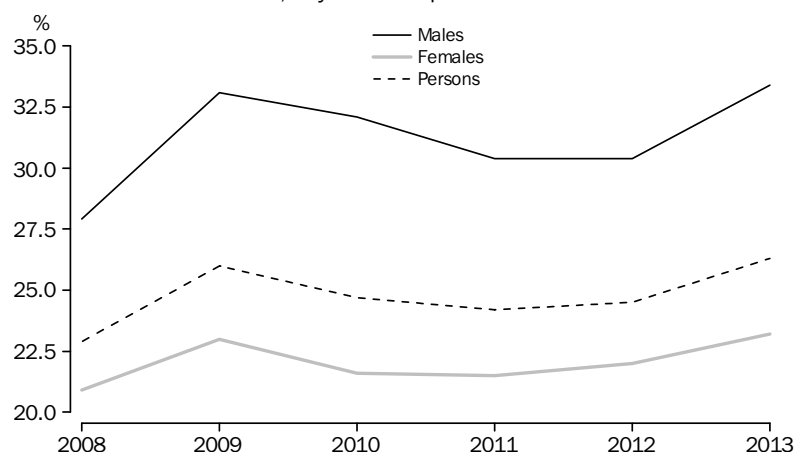
- 817,200 usually worked part-time, but would prefer more hours and were available to start work with more hours either in the reference week, or in the four weeks following the interview; and
- 58,000 usually worked full-time, but worked part-time hours in the reference week due to economic reasons (for example no work or not enough work available, been stood down, or on short time).

PART-TIME WORKERS WHO WOULD PREFER MORE HOURS

In September 2013, there were 3.5 million part-time workers, of which 70% (2.4 million) were women.

Just over a quarter (26%) of all part-time workers stated they would prefer to work more hours. This was a significant increase to the 24% of part-time workers who said they would prefer to work more hours in September 2011 and 2012.

UNDEREMPLOYED PART-TIME WORKERS AS A PROPORTION OF PART-TIME WORKERS, By sex—September 2013



Of the 912,200 part-time workers who would prefer more hours (see Tables 1, 2 and 3):

- 38% were men and 62% were women;
- just over half (55%) would prefer to work full-time;
- 90% (817,200) were available for work with more hours, and more than half of these (53%) were looking for more work hours; and
- 94,900 (10%) were not available for work with more hours, of whom 9% were looking for work with more hours.

UNDEREMPLOYED PART-TIME WORKERS

Underemployed part-time workers are people who usually work less than 35 hours a week, would prefer to work more hours and are available to start work with more hours within four weeks. In September 2013, there were 817,200 underemployed part-time workers, a significant increase of 86,300 from 2012.

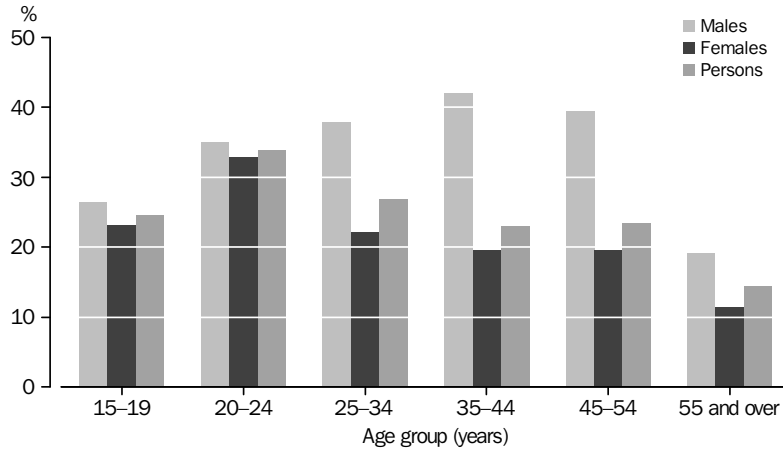
SUMMARY OF FINDINGS *continued*

UNDEREMPLOYED
PART-TIME WORKERS
continued

Of the underemployed part-time workers (see Tables 1 and 3):

- 60% were women; and
- 57% reported they would prefer not to change their employer to work more hours, 27% would prefer to change employer, while the remaining 15% had no preference.

UNDEREMPLOYED PART-TIME WORKERS AS A PROPORTION OF
PART-TIME WORKERS, By Age–By sex–September 2013



UNDEREMPLOYED PART-TIME WORKERS AND PART-TIME WORKERS,
BY AGE, BY SEX, By age–By sex–September 2013

Age group (years)	UNDEREMPLOYED PART-TIME WORKERS			PART-TIME WORKERS		
	<i>Males</i>	<i>Females</i>	<i>Persons</i>	<i>Males</i>	<i>Females</i>	<i>Persons</i>
	'000	'000	'000	'000	'000	'000
15-19	53.2	64.9	118.1	201.3	279.5	480.8
20-24	67.7	84.4	152.1	193.4	256.6	450.1
25-34	62.1	89.0	151.1	164.2	400.5	564.6
35-44	43.5	108.2	151.6	103.8	553.9	657.7
45-54	46.0	95.6	141.5	116.8	488.4	605.2
55 and over	51.0	51.8	102.8	265.8	448.3	714.1
Total	323.4	493.8	817.2	1 045.3	2 427.2	3 472.5

There were a higher number of women employed part-time than men. There were also a higher number of women employed part-time who were underemployed (493,800 compared with 323,400 men). However, the proportion of underemployment for part-time workers was higher for men (31%) than women (20%), with the greatest difference for those aged 35–44 years (42% for men and 20% for women) (see above).

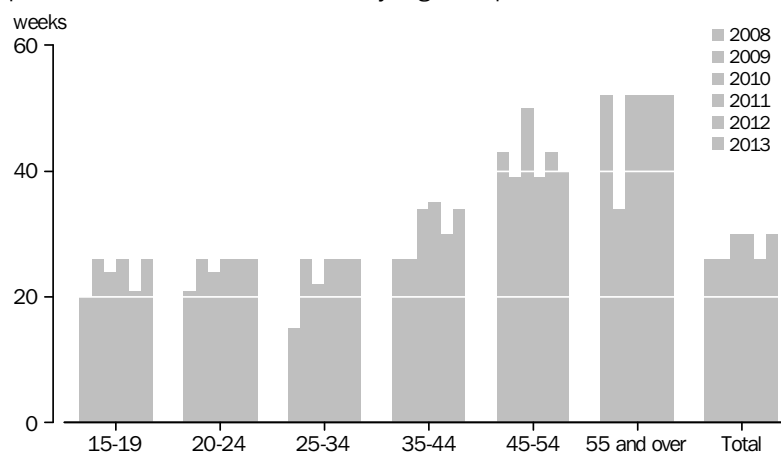
Underemployed part-time men were more likely to report that they would move to another part of their state if they were offered a suitable job (30%) than women (20%) (see Table 5). Just under one quarter (24%) of underemployed part-time men and 14% of women reported that they would move interstate if offered a suitable job.

SUMMARY OF FINDINGS *continued*

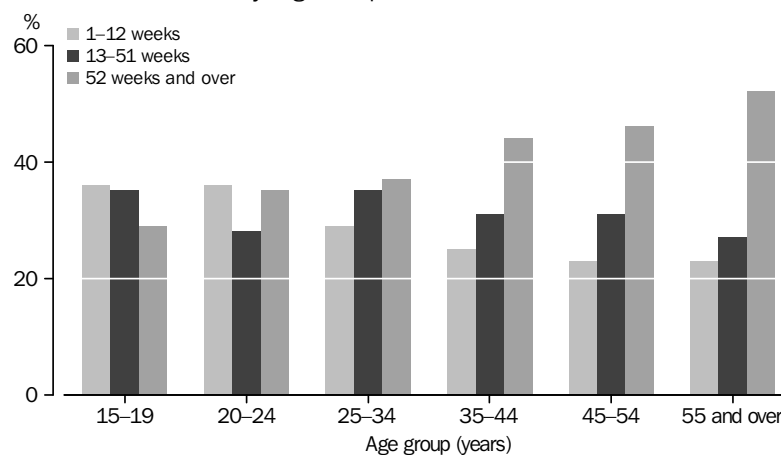
Duration of current period of insufficient work

The median duration of the current period of insufficient work for underemployed part-time workers was 30 weeks, up significantly from 26 weeks in 2012, and back to levels observed in 2010 and 2011. The mean duration of current period of insufficient work in September 2013 was 76.3 weeks compared to 69.0 weeks in 2012 (see Table 4). The median is the midpoint of the number of weeks of underemployment while the higher mean was influenced by people who had long spells of underemployment.

UNDEREMPLOYED PART-TIME WORKERS, Median duration of current period of insufficient work—By age—September 2013



UNDEREMPLOYED PART-TIME WORKERS, Duration of current period of insufficient work—By age—September 2013



Older people generally had a longer duration of underemployment than younger people (see Table 4). For example, 30% of 15–19 year old underemployed part-time workers had experienced insufficient work for one year or more. In contrast, around half of those aged 55 years and over (51%) and those aged 45–54 years (46%), had insufficient work for one year or more.

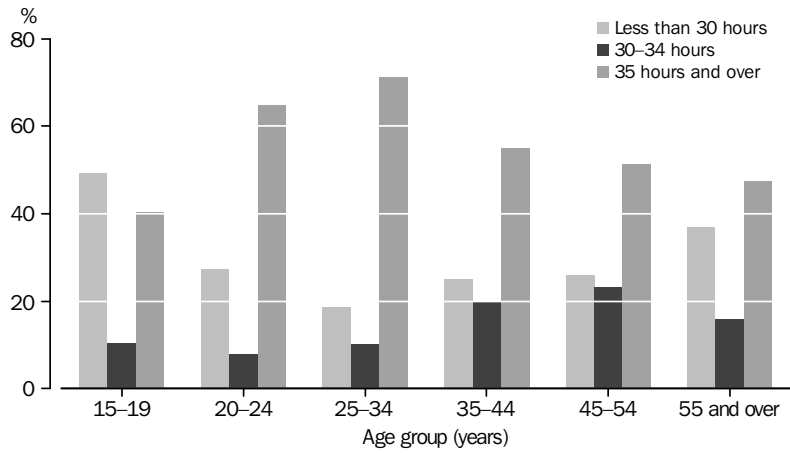
Preferred total number of hours

Over half (56%) of underemployed part-time workers would prefer to work full-time (35 hours or more per week) (see Table 4). A higher proportion of male underemployed part-time workers wanted to work 35 hours or more per week (71%) than women (46%). Those in the 20–24 and 25–34 age groups were more likely to want to work full-time (e.g. 71% of those aged 25–34 years), while those aged 15–19 years were most (49%) likely to prefer to work a total of less than 30 hours per week (see below).

SUMMARY OF FINDINGS *continued*

Preferred total number of hours continued

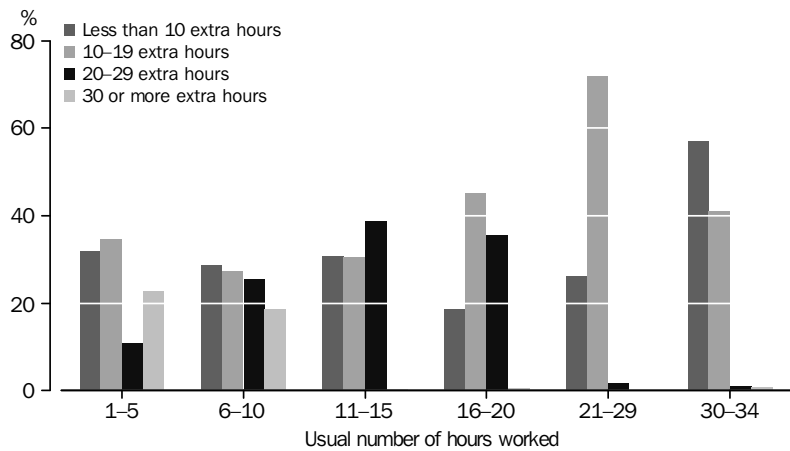
UNDEREMPLOYED PART-TIME WORKERS, Preferred total number of hours—By age—September 2013



Preferred number of extra hours

For underemployed part-time workers, the preferred number of extra hours varied with the number of hours they usually worked (see Table 5). For example, 68% of those who usually worked 1–5 hours a week preferred to work 10 or more extra hours per week, and of those who worked 30–34 hours a week, 57% preferred to work less than 10 extra hours per week.

UNDEREMPLOYED PART-TIME WORKERS, Preferred number of extra hours—By usual number of hours worked—September 2013

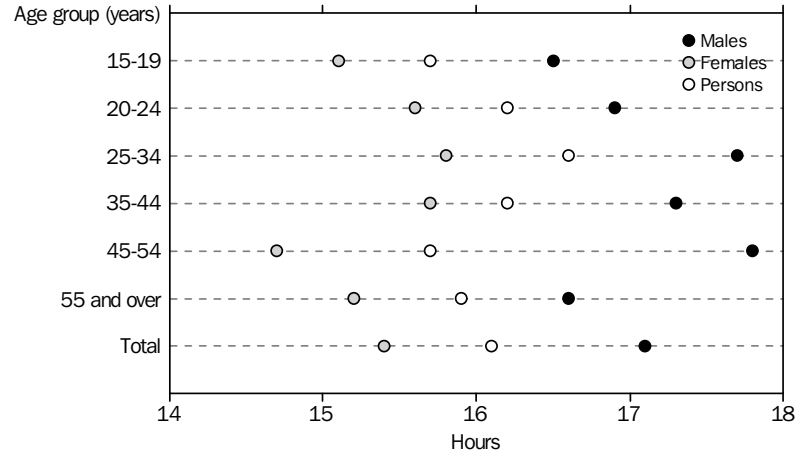


The mean preferred number of extra hours per week for underemployed part-time workers was 14 hours (see Table 5). The mean preferred number of extra hours was lowest for people aged 15–19 years (13.5 hours), and highest for those aged 25–34 years (15.3 hours). On average, men preferred to work an extra 15.6 hours per week, compared with women who preferred to work an extra 13.3 hours per week. Men preferred more hours than women in all age groups.

SUMMARY OF FINDINGS *continued*

Preferred number of extra hours continued

UNDEREMPLOYED PART-TIME WORKERS, Mean preferred number of extra hours—By age—September 2013



Looking for work with more hours

Of the 817,200 underemployed part-time workers, just over half (432,700) had looked for work with more hours at some time during the four weeks prior to the survey (see Table 6). For male underemployed part-time workers, 58% had been looking for work with more hours, compared with 50% for women.

The most common steps taken to look for work with more hours, in the last four weeks, by underemployed part-time workers, were 'asked current employer for more work' (63%), 'searched Internet sites' (61%) and 'contacted prospective employers' (57%) (see Table 7).

Underemployed workers who had looked for work most commonly reported that their main difficulty in finding work with more hours was that there was 'no vacancies in line of work' (22%) (see Table 6). It was the most commonly reported reason for both men (26%) and women (19%). The next most commonly reported specific reason was 'too many applicants for available jobs'. This was the case for both men (12%) and women (13%).

**UNDEREMPLOYED
FULL-TIME WORKERS**

There were 8.2 million full-time workers in September 2013, 70% of all employed people (see Table 1). Of those who usually worked full-time, 1.2 million people (15%) had worked less than 35 hours in the reference week in September 2013, with 58,000 (5%) of these people working fewer than 35 hours for economic reasons. Of these 58,000 people, 79% were men.

LIST OF TABLES

page

EMPLOYED PERSONS

- 1 Full-time or part-time status by sex for September 2008 to September 2013 11

PART-TIME WORKERS WHO WOULD PREFER MORE HOURS

- 2 Whether available and/or looking by sex for September 2008 to September 2013 12
- 3 Age group (years), relationship in household, level of highest educational attainment, status in employment, preferred total number of weekly hours, preferred number of extra weekly hours and whether would prefer to change employer to work more hours by whether available and/or looking, by sex 13

UNDEREMPLOYED PART-TIME WORKERS

- 4 Age group (years), relationship in household, level of highest educational attainment, status in employment, preferred total number of weekly hours, preferred number of extra weekly hours and whether would prefer to change employer to work more hours by duration of current period of insufficient work, mean duration and median duration of current period of insufficient work, by sex 16
- 5 Age group (years), status in employment, weekly hours usually worked, whether would move interstate if offered a suitable job, whether would move intrastate if offered a suitable job and state or territory of usual residence by preferred number of extra weekly hours and mean preferred number of extra weekly hours, by sex 19
- 6 Main difficulty in finding work with more hours, by sex and by mean preferred number of extra weekly hours 22
- 7 Preferred number of extra weekly hours by all steps taken to find work with more hours in the last four weeks, preferred number of extra weekly hours and mean preferred number of extra weekly hours, by sex 23

POPULATIONS

- 8 State or territory of usual residence, by sex 24

EMPLOYED PERSONS, Full-time or part-time status—By sex—September 2008 to September 2013

	2008	2009	2010	2011	2012	2013
	'000	'000	'000	'000	'000	'000
MALES						
Employed persons	5 886.4	5 915.5	6 220.9	6 242.3	6 251.8	6 325.2
Full-time workers	5 024.7	4 977.2	5 237.6	5 239.3	5 265.8	5 279.9
Worked 35 hours or more in the reference week	4 365.0	4 328.3	4 518.1	4 542.8	4 575.2	4 541.4
Worked less than 35 hours in the reference week	659.6	649.0	719.6	696.5	690.6	738.5
For non-economic reasons	618.5	585.1	662.8	649.9	647.6	692.6
For economic reasons	41.1	63.9	56.8	46.6	43.0	45.9
Part-time workers	861.8	938.3	983.2	1 002.9	986.0	1 045.3
Would not prefer to work more hours	621.2	627.8	667.9	697.9	686.6	695.7
Would prefer to work more hours	240.6	310.5	315.3	305.1	299.4	349.6
Prefers more part-time hours(a)	84.5	96.9	104.6	102.0	96.3	100.4
Prefers full-time hours(b)	156.1	213.6	210.8	203.1	203.2	249.2
FEMALES						
Employed persons	4 856.5	4 956.6	5 176.9	5 272.4	5 327.6	5 377.5
Full-time workers	2 715.4	2 726.2	2 856.8	2 902.0	2 945.6	2 950.2
Worked 35 hours or more in the reference week	2 275.7	2 272.7	2 386.7	2 409.4	2 428.2	2 462.8
Worked less than 35 hours in the reference week	439.7	453.5	470.0	492.6	517.4	487.4
For non-economic reasons	429.5	441.7	453.4	474.9	507.4	475.3
For economic reasons	10.2	11.8	16.6	17.7	10.0	12.1
Part-time workers	2 141.1	2 230.4	2 320.1	2 370.5	2 382.0	2 427.2
Would not prefer to work more hours	1 694.0	1 717.0	1 818.4	1 860.8	1 857.4	1 864.6
Would prefer to work more hours	447.1	513.4	501.8	509.7	524.6	562.6
Prefers more part-time hours(a)	254.0	285.0	266.9	267.6	274.8	306.5
Prefers full-time hours(b)	193.1	228.3	234.9	242.0	249.8	256.1
PERSONS						
Employed persons	10 742.9	10 872.1	11 397.7	11 514.7	11 579.4	11 702.6
Full-time workers	7 740.1	7 703.4	8 094.4	8 141.3	8 211.4	8 230.1
Worked 35 hours or more in the reference week	6 640.7	6 601.0	6 904.8	6 952.2	7 003.4	7 004.2
Worked less than 35 hours in the reference week	1 099.4	1 102.4	1 189.6	1 189.1	1 208.0	1 225.9
For non-economic reasons	1 048.0	1 026.8	1 116.2	1 124.8	1 154.9	1 167.9
For economic reasons	51.3	75.7	73.4	64.3	53.0	58.0
Part-time workers	3 002.9	3 168.7	3 303.3	3 373.4	3 368.0	3 472.5
Would not prefer to work more hours	2 315.2	2 344.9	2 486.2	2 558.7	2 544.0	2 560.4
Would prefer to work more hours	687.7	823.8	817.1	814.7	824.1	912.2
Prefers more part-time hours(a)	338.5	381.9	371.5	369.6	371.1	406.9
Prefers full-time hours(b)	349.2	442.0	445.6	445.2	452.9	505.3

(a) Total number of hours preferred to work each week are between 1 to 34 hours.

(b) Total number of hours preferred to work each week are 35 hours or more.

PART-TIME WORKERS WHO WOULD PREFER MORE HOURS, Whether available and/or looking—By sex—September 2008 to September 2013

	2008	2009	2010	2011	2012	2013
	'000	'000	'000	'000	'000	'000
MALES						
Available to start work with more hours(a)	213.9	283.8	288.0	276.6	273.3	323.4
Available in the reference week	191.0	259.9	259.9	248.2	243.7	292.9
Looking	98.2	147.9	142.2	134.8	133.3	173.9
Not looking	92.8	112.0	117.7	113.4	110.4	119.0
Available within four weeks(b)	22.9	23.9	28.2	28.4	29.6	30.5
Looking	6.8	8.1	12.9	8.3	10.0	14.2
Not looking	16.1	15.8	15.3	20.1	19.5	16.3
Not available to start work with more hours(c)	26.6	26.7	27.3	28.5	26.2	26.1
Looking	*3.0	*4.9	*2.9	*2.8	*5.7	*2.4
Not looking	23.6	21.8	24.4	25.7	20.5	23.7
Total	240.6	310.5	315.3	305.1	299.4	349.6
FEMALES						
Available to start work with more hours(a)	389.8	452.1	445.9	446.0	457.7	493.8
Available in the reference week	334.0	400.9	388.4	387.0	390.5	428.1
Looking	151.5	187.0	191.8	202.9	178.0	227.4
Not looking	182.5	213.9	196.6	184.1	212.4	200.8
Available within four weeks(b)	55.8	51.2	57.4	59.0	67.2	65.7
Looking	15.2	16.0	19.5	17.0	22.3	17.1
Not looking	40.6	35.3	38.0	42.0	44.8	48.5
Not available to start work with more hours(c)	57.3	61.3	55.9	63.6	66.9	68.8
Looking	*6.1	*6.6	*5.8	8.4	9.2	*6.5
Not looking	51.2	54.7	50.1	55.3	57.7	62.3
Total	447.1	513.4	501.8	509.7	524.6	562.6
PERSONS						
Available to start work with more hours(a)	603.7	735.9	733.9	722.6	730.9	817.2
Available in the reference week	525.0	660.7	648.3	635.2	634.2	721.0
Looking	249.7	334.9	334.0	337.7	311.4	401.3
Not looking	275.3	325.9	314.3	297.5	322.8	319.7
Available within four weeks(b)	78.8	75.2	85.6	87.4	96.7	96.2
Looking	22.0	24.1	32.4	25.3	32.4	31.4
Not looking	56.7	51.1	53.3	62.1	64.4	64.8
Not available to start work with more hours(c)	83.9	87.9	83.2	92.1	93.1	94.9
Looking	9.1	11.4	8.6	11.2	14.9	8.9
Not looking	74.8	76.5	74.6	80.9	78.2	86.0
Total	687.7	823.8	817.1	814.7	824.1	912.2

* estimate has a relative standard error of 25% to 50% and should be used with caution

(a) Underemployed part-time workers.

(b) Available within four weeks but not in the reference week.

(c) Availability refers to 'in the reference week or within four weeks'.

PART-TIME WORKERS WHO WOULD PREFER MORE HOURS, Whether available and/or looking—By selected characteristics—By sex

AVAILABLE IN THE REFERENCE
WEEK OR WITHIN FOUR WEEKS

Available and looking
'000

Available and not looking
'000

Total
'000

Not available
in the reference
week or within
four weeks

Total
'000

MALES

	Available and looking '000	Available and not looking '000	Total '000	Not available in the reference week or within four weeks	Total '000
Age group (years)					
15–19	27.8	25.4	53.2	*2.6	55.9
20–24	44.3	23.4	67.7	*6.2	73.9
25–34	39.0	23.1	62.1	*5.3	67.4
35–44	26.0	17.5	43.5	*5.3	48.7
45–54	24.6	21.4	46.0	*4.1	50.1
55 and over	26.5	24.6	51.0	*2.6	53.6
Relationship in household					
Family member	157.1	114.5	271.5	20.0	291.6
Husband, wife or partner	71.9	59.9	131.8	9.9	141.6
Lone parent	*5.7	**1.6	*7.3	**1.7	9.0
Dependent student	22.3	23.6	45.8	*3.9	49.8
Non-dependent child	51.3	27.3	78.6	*3.2	81.8
Other family person	*5.9	**2.1	*8.0	**1.3	9.4
Non-family member	28.2	19.1	47.2	*4.7	51.9
Relationship not determined	*3.0	**1.7	*4.7	**1.4	*6.0
Level of highest educational attainment					
Postgraduate Degree	10.7	*5.4	16.1	**2.2	18.2
Graduate Diploma/Graduate Certificate	np	np	np	np	*5.8
Bachelor Degree	21.6	12.2	33.8	*5.1	39.0
Advanced Diploma/Diploma	14.1	11.3	25.4	**2.1	27.5
Certificate III/IV	33.6	27.5	61.2	*3.1	64.3
Certificate I/II(a)	np	np	np	np	*4.6
Year 12	49.3	36.4	85.7	*5.2	90.9
Year 11	16.9	11.5	28.4	*2.8	31.2
Year 10 and below	31.9	26.6	58.5	*3.7	62.1
Status in employment					
Employees	156.9	109.7	266.6	20.6	287.2
Own account workers	30.1	24.8	54.9	*4.9	59.7
Preferred total number of weekly hours					
Less than 30 hours	25.5	36.8	62.3	*5.4	67.7
30–34 hours	17.6	12.7	30.3	**2.3	32.6
35–39 hours	64.3	40.6	104.9	*7.5	112.4
40 hours or more	80.8	45.2	126.0	10.9	136.8
Preferred number of extra weekly hours					
Less than 10 hours	31.4	45.3	76.7	*5.6	82.3
10–19 hours	78.3	64.1	142.4	12.9	155.2
20–29 hours	55.9	21.8	77.7	*4.5	82.2
30 hours or more	22.6	*4.1	26.7	*3.2	29.8
Whether would prefer to change employer to work more hours					
Would prefer to change employer	68.7	21.6	90.3	*7.5	97.8
Would prefer not to change employer	83.2	98.1	181.3	13.5	194.8
No preference	36.3	15.6	51.9	*5.1	57.0
Total(b)(c)	188.2	135.2	323.4	26.1	349.6

* estimate has a relative standard error of 25% to 50% and should be used with caution

** estimate has a relative standard error greater than 50% and is considered too unreliable for general use

np not available for publication but included in totals where applicable, unless otherwise indicated

(a) Includes 'Certificate not further defined'. Refer to Appendix 1 for more information.

(b) Includes 'No educational attainment', 'Level of education not determined' and 'Other education'.

(c) Includes 'Employers' and 'Contributing family workers'.

PART-TIME WORKERS WHO WOULD PREFER MORE HOURS, Whether available and/or looking—By selected characteristics—By sex *continued*

	AVAILABLE IN THE REFERENCE WEEK OR WITHIN FOUR WEEKS			Not available in the reference week or within four weeks	
	Available and looking	Available and not looking	Total		Total
	'000	'000	'000	'000	'000
FEMALES					
Age group (years)					
15–19	32.2	32.7	64.9	*8.3	73.2
20–24	50.7	33.7	84.4	*8.3	92.7
25–34	47.1	41.9	89.0	16.2	105.2
35–44	48.8	59.4	108.2	17.2	125.3
45–54	46.8	48.7	95.6	13.1	108.7
55 and over	18.9	32.9	51.8	*5.8	57.6
Relationship in household					
Family member	213.8	218.9	432.7	62.3	495.0
Husband, wife or partner	114.5	126.1	240.6	37.2	277.8
Lone parent	30.6	31.4	62.0	12.0	74.0
Dependent student	20.7	27.9	48.7	*8.0	56.6
Non-dependent child	39.0	29.6	68.6	*3.6	72.2
Other family person	8.9	*3.9	12.8	**1.6	14.4
Non-family member	30.4	27.9	58.3	*5.2	63.5
Relationship not determined	**0.3	*2.5	*2.7	**1.3	*4.1
Level of highest educational attainment					
Postgraduate Degree	11.5	9.0	20.5	*3.3	23.8
Graduate Diploma/Graduate Certificate	np	np	np	np	15.7
Bachelor Degree	42.8	34.6	77.4	14.4	91.7
Advanced Diploma/Diploma	25.8	30.7	56.4	9.5	66.0
Certificate III/IV	44.0	45.5	89.6	11.2	100.8
Certificate I/II(a)	np	np	np	np	*5.6
Year 12	60.4	63.8	124.2	13.2	137.3
Year 11	12.7	17.9	30.6	*8.2	38.8
Year 10 and below	31.8	35.5	67.4	*5.1	72.4
Status in employment					
Employees	227.3	215.2	442.5	60.5	503.0
Own account workers	16.2	30.6	46.8	*6.2	53.1
Preferred total number of weekly hours					
Less than 30 hours	75.8	102.1	177.9	24.6	202.6
30–34 hours	41.1	47.2	88.2	15.7	104.0
35–39 hours	87.7	65.3	153.0	16.1	169.1
40 hours or more	40.0	34.6	74.7	12.3	87.0
Preferred number of extra weekly hours					
Less than 10 hours	59.3	112.9	172.2	30.5	202.7
10–19 hours	106.7	105.4	212.1	25.7	237.8
20–29 hours	60.9	27.6	88.6	*8.5	97.0
30 hours or more	17.5	*3.4	20.9	*4.2	25.1
Whether would prefer to change employer to work more hours					
Would prefer to change employer	87.8	45.3	133.1	13.2	146.3
Would prefer not to change employer	107.8	179.7	287.6	45.3	332.9
No preference	48.9	24.2	73.1	10.3	83.4
Total(b)(c)	244.5	249.3	493.8	68.8	562.6

* estimate has a relative standard error of 25% to 50% and should be used with caution

** estimate has a relative standard error greater than 50% and is considered too unreliable for general use

np not available for publication but included in totals where applicable, unless otherwise indicated

(a) Includes 'Certificate not further defined'. Refer to Appendix 1 for more information.

(b) Includes 'No educational attainment', 'Level of education not determined' and 'Other education'.

(c) Includes 'Employers' and 'Contributing family workers'.

PART-TIME WORKERS WHO WOULD PREFER MORE HOURS, Whether available and/or looking—By selected characteristics—By sex *continued*

AVAILABLE IN THE REFERENCE
WEEK OR WITHIN FOUR WEEKS

Available and looking
'000

Available and not looking
'000

Total
'000

Not available
in the reference
week or within
four weeks
'000

Total
'000

PERSONS

	Available and looking '000	Available and not looking '000	Total '000	Not available in the reference week or within four weeks '000	Total '000
PERSONS					
Age group (years)					
15–19	60.0	58.1	118.1	10.9	129.0
20–24	95.0	57.1	152.1	14.5	166.6
25–34	86.1	65.0	151.1	21.5	172.5
35–44	74.8	76.8	151.6	22.4	174.1
45–54	71.4	70.1	141.5	17.2	158.7
55 and over	45.4	57.5	102.8	*8.4	111.2
Relationship in household					
Family member	370.9	333.4	704.3	82.4	786.6
Husband, wife or partner	186.4	186.0	372.4	47.0	419.4
Lone parent	36.3	33.0	69.3	13.8	83.0
Dependent student	43.0	51.5	94.5	11.9	106.4
Non-dependent child	90.3	57.0	147.3	*6.8	154.0
Other family person	14.8	*6.0	20.8	*2.9	23.7
Non-family member	58.6	47.0	105.6	9.9	115.4
Relationship not determined	*3.2	*4.2	*7.4	*2.7	10.1
Level of highest educational attainment					
Postgraduate Degree	22.1	14.4	36.6	*5.5	42.0
Graduate Diploma/Graduate Certificate	np	np	np	np	21.5
Bachelor Degree	64.4	46.8	111.2	19.5	130.7
Advanced Diploma/Diploma	39.9	41.9	81.8	11.7	93.4
Certificate III/IV	77.7	73.0	150.7	14.4	165.1
Certificate I/II(a)	np	np	np	np	10.2
Year 12	109.7	100.2	209.9	18.3	228.2
Year 11	29.7	29.4	59.1	11.0	70.0
Year 10 and below	63.8	62.1	125.9	*8.7	134.6
Status in employment					
Employees	384.2	324.9	709.1	81.1	790.2
Own account workers	46.3	55.4	101.7	11.1	112.8
Preferred total number of weekly hours					
Less than 30 hours	101.3	138.9	240.2	30.1	270.3
30–34 hours	58.7	59.9	118.5	18.0	136.6
35–39 hours	152.0	105.9	257.9	23.6	281.5
40 hours or more	120.8	79.8	200.6	23.2	223.8
Preferred number of extra weekly hours					
Less than 10 hours	90.7	158.2	248.9	36.1	285.0
10–19 hours	185.0	169.5	354.5	38.6	393.0
20–29 hours	116.9	49.4	166.3	12.9	179.2
30 hours or more	40.1	*7.4	47.6	*7.4	54.9
Whether would prefer to change employer to work more hours					
Would prefer to change employer	156.5	66.9	223.4	20.8	244.1
Would prefer not to change employer	191.0	277.8	468.8	58.9	527.7
No preference	85.2	39.8	125.0	15.3	140.4
Total(b)(c)	432.7	384.5	817.2	94.9	912.2

* estimate has a relative standard error of 25% to 50% and should be used with caution

np not available for publication but included in totals where applicable, unless otherwise indicated

(a) Includes 'Certificate not further defined'. Refer to Appendix 1 for more information.

(b) Includes 'No educational attainment', 'Level of education not determined' and 'Other education'.

(c) Includes 'Employers' and 'Contributing family workers'.

UNDEREMPLOYED PART-TIME WORKERS, Duration of current period of insufficient work—By selected characteristics—By sex

	DURATION OF CURRENT PERIOD OF INSUFFICIENT WORK (WEEKS)					
	1-12	13-51	52 and over	Total	Mean duration	Median duration
	'000	'000	'000	'000	weeks	weeks
MALES						
Age group (years)						
15-19	15.5	21.1	16.6	53.2	39.0	26.0
20-24	24.5	17.1	26.1	67.7	51.8	26.0
25-34	19.4	21.0	21.7	62.1	61.9	26.0
35-44	12.8	12.8	17.8	43.5	92.4	30.0
45-54	11.2	11.5	23.3	46.0	116.5	52.0
55 and over	13.8	14.4	22.8	51.0	88.0	39.0
Relationship in household						
Family member	76.5	85.9	109.2	271.5	72.7	34.0
Husband, wife or partner	38.6	39.2	54.0	131.8	77.7	32.0
Lone parent	**1.8	**1.0	*4.5	*7.3	*148.6	**90.0
Dependent student	11.9	16.3	17.6	45.8	53.3	39.0
Non-dependent child	22.1	26.9	29.6	78.6	70.1	26.0
Other family person	**2.1	*2.5	*3.4	*8.0	*58.3	**36.0
Non-family member	17.8	11.4	18.1	47.2	72.8	26.0
Relationship not determined	*3.0	**0.6	**1.1	*4.7	**23.8	**8.0
Level of highest educational attainment						
Bachelor Degree or above	14.4	16.5	24.6	55.5	84.2	39.0
Advanced Diploma/Diploma	8.9	*6.4	10.1	25.4	76.4	*35.0
Certificate III/IV	19.1	15.9	26.1	61.2	69.0	30.0
Certificate I/II(a)	*2.5	—	**1.6	*4.1	**68.8	**8.0
Year 12	23.7	30.1	31.9	85.7	59.6	32.0
Year 11	10.3	10.3	*7.9	28.4	56.8	*26.0
Year 10 and below	16.1	17.8	24.5	58.5	87.9	26.0
Status in employment						
Employees	84.5	83.3	98.9	266.6	66.1	26.0
Own account workers	12.6	13.6	28.6	54.9	101.6	52.0
Preferred total number of weekly hours						
Less than 30 hours	14.4	19.4	28.5	62.3	84.9	39.0
30-34 hours	*7.4	11.2	11.7	30.3	59.9	*26.0
35-39 hours	31.6	32.3	41.0	104.9	84.8	30.0
40 hours or more	43.8	35.0	47.1	126.0	57.9	26.0
Preferred number of extra weekly hours						
Less than 10 hours	23.7	22.4	30.6	76.7	78.0	34.0
10-19 hours	42.1	44.6	55.6	142.4	70.5	30.0
20-29 hours	20.4	23.4	33.9	77.7	72.8	26.0
30 hours or more	11.0	*7.5	*8.2	26.7	60.3	*21.0
Whether would prefer to change employer to work more hours						
Would prefer to change employer	27.4	28.6	34.2	90.3	63.7	30.0
Would prefer not to change employer	56.6	55.0	69.6	181.3	74.5	26.0
No preference	13.2	14.2	24.5	51.9	77.9	43.0
Total(b)(c)	97.2	97.9	128.3	323.4	72.0	30.0

* estimate has a relative standard error of 25% to 50% and should be used with caution

** estimate has a relative standard error greater than 50% and is considered too unreliable for general use

— nil or rounded to zero (including null cells)

(a) Includes 'Certificate not further defined'. Refer to Appendix 1 for more information.

(b) Includes 'No educational attainment', 'Level of education not determined' and 'Other education'.

(c) Includes 'Employers' and 'Contributing family workers'.

UNDEREMPLOYED PART-TIME WORKERS, Duration of current period of insufficient work—By selected characteristics—By sex *continued*

	DURATION OF CURRENT PERIOD OF INSUFFICIENT WORK (WEEKS)					
	1-12	13-51	52 and over	Total	Mean duration	Median duration
	'000	'000	'000	'000	weeks	weeks
FEMALES						
Age group (years)						
15-19	26.8	19.9	18.2	64.9	34.9	23.0
20-24	30.7	26.2	27.5	84.4	48.6	25.0
25-34	23.9	31.2	33.9	89.0	64.1	26.0
35-44	24.7	33.9	49.5	108.2	83.5	39.0
45-54	22.0	32.0	41.5	95.6	106.0	39.0
55 and over	9.3	13.3	29.2	51.8	151.9	52.0
Relationship in household						
Family member	115.1	140.7	176.9	432.7	78.3	30.0
Husband, wife or partner	54.9	80.1	105.7	240.6	92.4	36.0
Lone parent	15.8	17.5	28.7	62.0	89.3	34.0
Dependent student	20.8	14.7	13.2	48.7	38.1	23.0
Non-dependent child	21.2	23.8	23.7	68.6	50.9	27.0
Other family person	*2.5	*4.7	*5.6	12.8	*60.6	*39.0
Non-family member	21.9	14.5	22.0	58.3	86.4	21.0
Relationship not determined	**0.5	**1.3	**0.9	*2.7	**56.4	**35.0
Level of highest educational attainment						
Bachelor Degree or above	30.0	40.2	42.3	112.5	84.0	32.0
Advanced Diploma/Diploma	14.3	18.2	23.9	56.4	75.3	28.0
Certificate III/IV	22.5	27.8	39.3	89.6	81.8	34.0
Certificate I/II(a)	**1.5	—	*3.5	*5.0	**189.8	**156.0
Year 12	40.8	38.0	45.4	124.2	63.9	26.0
Year 11	*6.6	10.2	13.7	30.6	100.6	*40.0
Year 10 and below	19.6	18.9	28.9	67.4	84.1	38.0
Status in employment						
Employees	122.2	142.9	177.4	442.5	75.7	30.0
Own account workers	13.4	13.6	19.9	46.8	104.4	26.0
Preferred total number of weekly hours						
Less than 30 hours	53.5	55.4	69.0	177.9	88.4	26.0
30-34 hours	20.3	33.6	34.3	88.2	81.0	26.0
35-39 hours	43.1	42.0	67.9	153.0	73.5	34.0
40 hours or more	20.6	25.5	28.5	74.7	66.6	30.0
Preferred number of extra weekly hours						
Less than 10 hours	54.7	55.0	62.5	172.2	83.1	26.0
10-19 hours	51.6	66.5	93.9	212.1	82.6	35.0
20-29 hours	25.3	29.0	34.2	88.6	64.1	34.0
30 hours or more	*5.8	*6.0	9.1	20.9	75.3	*28.0
Whether would prefer to change employer to work more hours						
Would prefer to change employer	36.4	41.7	55.0	133.1	74.5	34.0
Would prefer not to change employer	86.5	86.9	114.1	287.6	80.3	26.0
No preference	14.6	27.9	30.7	73.1	83.2	39.0
Total(b)(c)	137.4	156.6	199.8	493.8	79.1	30.0

* estimate has a relative standard error of 25% to 50% and should be used with caution

** estimate has a relative standard error greater than 50% and is considered too unreliable for general use

— nil or rounded to zero (including null cells)

(a) Includes 'Certificate not further defined'. Refer to Appendix 1 for more information.

(b) Includes 'No educational attainment', 'Level of education not determined' and 'Other education'.

(c) Includes 'Employers' and 'Contributing family workers'.

UNDEREMPLOYED PART-TIME WORKERS, Duration of current period of insufficient work—By selected characteristics—By sex *continued*

	DURATION OF CURRENT PERIOD OF INSUFFICIENT WORK (WEEKS)					
	1-12	13-51	52 and over	Total	Mean duration	Median duration
	'000	'000	'000	'000	weeks	weeks
PERSONS						
Age group (years)						
15-19	42.3	41.0	34.8	118.1	36.7	26.0
20-24	55.2	43.3	53.7	152.1	50.0	26.0
25-34	43.3	52.2	55.6	151.1	63.2	26.0
35-44	37.6	46.7	67.3	151.6	86.0	34.0
45-54	33.2	43.5	64.8	141.5	109.4	40.0
55 and over	23.1	27.7	52.0	102.8	120.2	52.0
Relationship in household						
Family member	191.5	226.7	286.1	704.3	76.2	32.0
Husband, wife or partner	93.4	119.3	159.7	372.4	87.2	35.0
Lone parent	17.6	18.4	33.3	69.3	95.6	38.0
Dependent student	32.7	31.0	30.8	94.5	45.5	26.0
Non-dependent child	43.3	50.7	53.2	147.3	61.1	26.0
Other family person	*4.6	*7.2	9.0	20.8	59.7	*39.0
Non-family member	39.6	25.8	40.1	105.6	80.3	26.0
Relationship not determined	*3.5	**1.9	**2.0	*7.4	*35.9	**20.0
Level of highest educational attainment						
Bachelor Degree or above	44.5	56.7	66.8	168.0	84.1	34.0
Advanced Diploma/Diploma	23.2	24.5	34.0	81.8	75.6	28.0
Certificate III/IV	41.6	43.7	65.4	150.7	76.6	34.0
Certificate I/II(a)	*4.0	—	*5.1	9.1	*135.1	**104.0
Year 12	64.5	68.1	77.3	209.9	62.1	26.0
Year 11	16.9	20.5	21.6	59.1	79.5	30.0
Year 10 and below	35.7	36.7	53.5	125.9	85.9	34.0
Status in employment						
Employees	206.7	226.2	276.3	709.1	72.1	29.0
Own account workers	26.0	27.2	48.5	101.7	102.9	47.0
Preferred total number of weekly hours						
Less than 30 hours	67.9	74.8	97.5	240.2	87.5	30.0
30-34 hours	27.6	44.8	46.1	118.5	75.6	26.0
35-39 hours	74.7	74.3	108.9	257.9	78.1	34.0
40 hours or more	64.4	60.5	75.7	200.6	61.1	26.0
Preferred number of extra weekly hours						
Less than 10 hours	78.3	77.4	93.2	248.9	81.5	26.0
10-19 hours	93.8	111.1	149.6	354.5	77.7	34.0
20-29 hours	45.7	52.4	68.1	166.3	68.2	34.0
30 hours or more	16.8	13.5	17.2	47.6	66.9	26.0
Whether would prefer to change employer to work more hours						
Would prefer to change employer	63.8	70.4	89.2	223.4	70.1	30.0
Would prefer not to change employer	143.1	141.9	183.7	468.8	78.0	26.0
No preference	27.7	42.1	55.2	125.0	81.0	39.0
Total (b)(c)	234.6	254.4	328.1	817.2	76.3	30.0

* estimate has a relative standard error of 25% to 50% and should be used with caution

** estimate has a relative standard error greater than 50% and is considered too unreliable for general use

— nil or rounded to zero (including null cells)

(a) Includes 'Certificate not further defined'. Refer to Appendix 1 for more information.

(b) Includes 'No educational attainment', 'Level of education not determined' and 'Other education'.

(c) Includes 'Employers' and 'Contributing family workers'.

UNDEREMPLOYED PART-TIME WORKERS, Preferred number of extra weekly hours—By selected characteristics—By sex

	Less than 10 hours	10–19	20 or more	Total	Mean preferred number of extra weekly hours
	'000	'000	'000	'000	hours
MALES					
Age group (years)					
15–19	21.7	15.0	16.5	53.2	14.8
20–24	15.6	31.4	20.7	67.7	15.3
25–34	11.2	28.8	22.1	62.1	16.6
35–44	*7.9	21.1	14.5	43.5	16.2
45–54	*7.1	23.0	15.9	46.0	16.0
55 and over	13.2	23.1	14.7	51.0	14.6
Status in employment					
Employees	67.1	117.3	82.3	266.6	15.4
Own account workers	9.4	24.5	20.9	54.9	16.3
Weekly hours usually worked					
1–5	11.1	9.3	13.3	33.7	19.2
6–10	13.9	*7.0	24.1	44.9	19.2
11–15	10.4	13.2	25.3	48.8	18.1
16–20	*6.0	27.6	37.8	71.4	17.4
21–29	*7.3	np	np	66.2	13.3
30–34	28.1	np	np	58.4	8.9
Whether would move interstate if offered a suitable job					
Would move interstate	11.7	38.6	26.9	77.2	16.5
Would not move interstate	51.3	81.8	57.0	190.1	15.0
Might move interstate	11.0	16.0	15.2	42.2	16.0
Did not know	*2.7	*6.0	*5.3	14.0	17.4
Whether would move intrastate if offered a suitable job					
Would move intrastate	12.5	50.0	35.6	98.2	16.9
Would not move intrastate	45.2	69.7	44.8	159.7	14.5
Might move intrastate	15.7	17.9	17.5	51.0	15.8
Did not know	*3.3	*4.7	*6.4	14.5	17.6
State or territory of usual residence					
New South Wales	23.6	50.6	35.4	109.6	15.6
Victoria	21.8	35.2	24.7	81.8	14.9
Queensland	15.9	27.9	15.5	59.3	14.3
South Australia	7.5	12.7	7.4	27.6	14.8
Western Australia	*4.2	8.8	16.1	29.1	20.3
Tasmania	*1.4	4.1	3.8	9.3	18.4
Northern Territory	np	0.7	np	1.3	*14.6
Australian Capital Territory	np	2.3	np	5.5	13.0
Total(a)	76.7	142.4	104.4	323.4	15.6

* estimate has a relative standard error of 25% to 50% and should be used with caution

np not available for publication but included in totals where applicable, unless otherwise indicated

(a) Includes 'Employers' and 'Contributing family workers'.

	Less than 10 hours	10–19	20 or more	Total	Mean preferred number of extra weekly hours
	'000	'000	'000	'000	hours
FEMALES					
Age group (years)					
15–19	30.9	18.4	15.6	64.9	12.5
20–24	31.2	32.2	21.0	84.4	13.5
25–34	25.1	43.6	20.3	89.0	14.5
35–44	30.5	51.9	25.8	108.2	13.8
45–54	32.9	47.2	15.4	95.6	12.4
55 and over	21.6	18.8	11.4	51.8	12.8
Status in employment					
Employees	156.6	185.5	100.5	442.5	13.4
Own account workers	13.3	24.9	*8.6	46.8	13.3
Weekly hours usually worked					
1–5	15.9	20.1	15.2	51.2	15.9
6–10	24.7	30.0	35.8	90.4	16.4
11–15	34.4	31.4	31.6	97.3	14.0
16–20	26.8	51.7	25.8	104.3	13.8
21–29	36.1	np	np	99.5	10.6
30–34	34.4	np	np	51.0	8.3
Whether would move interstate if offered a suitable job					
Would move interstate	14.5	32.6	20.8	67.9	15.3
Would not move interstate	146.7	154.8	72.4	373.9	12.6
Might move interstate	9.8	16.7	13.6	40.0	15.7
Did not know	**1.2	*8.0	*2.8	11.9	14.9
Whether would move intrastate if offered a suitable job					
Would move intrastate	18.7	50.7	30.3	99.6	15.9
Would not move intrastate	132.1	132.9	59.6	324.6	12.4
Might move intrastate	18.3	24.0	16.1	58.3	14.1
Did not know	*3.1	*4.6	*3.6	11.2	14.9
State or territory of usual residence					
New South Wales	53.5	61.0	33.7	148.3	13.3
Victoria	52.3	55.7	26.0	133.9	12.4
Queensland	30.2	49.2	22.0	101.4	14.2
South Australia	14.4	17.3	9.2	40.8	13.4
Western Australia	13.3	20.9	12.8	46.9	14.1
Tasmania	5.7	4.6	4.3	14.6	13.5
Northern Territory	np	1.0	np	2.7	*15.7
Australian Capital Territory	np	2.5	np	5.2	11.8
Total(a)	172.2	212.1	109.5	493.8	13.3

* estimate has a relative standard error of 25% to 50% and should be used with caution

** estimate has a relative standard error greater than 50% and is considered too unreliable for general use

np not available for publication but included in totals where applicable, unless otherwise indicated

(a) Includes 'Employers' and 'Contributing family workers'.

	Less than 10 hours	10–19	20 or more	Total	Mean preferred number of extra weekly hours
	'000	'000	'000	'000	hours
PERSONS					
Age group (years)					
15–19	52.5	33.5	32.1	118.1	13.5
20–24	46.8	63.6	41.7	152.1	14.3
25–34	36.3	72.3	42.4	151.1	15.3
35–44	38.4	73.0	40.2	151.6	14.5
45–54	40.0	70.2	31.3	141.5	13.6
55 and over	34.8	41.9	26.1	102.8	13.7
Status in employment					
Employees	223.6	302.7	182.8	709.1	14.1
Own account workers	22.7	49.5	29.5	101.7	14.9
Weekly hours usually worked					
1–5	27.0	29.4	28.5	85.0	17.2
6–10	38.5	36.9	59.9	135.3	17.3
11–15	44.7	44.5	56.9	146.2	15.4
16–20	32.8	79.3	63.6	175.7	15.2
21–29	43.4	119.3	*3.0	165.7	11.7
30–34	62.4	45.0	**2.0	109.4	8.6
Whether would move interstate if offered a suitable job					
Would move interstate	26.2	71.2	47.7	145.2	16.0
Would not move interstate	198.0	236.6	129.4	564.0	13.4
Might move interstate	20.8	32.6	28.7	82.2	15.9
Did not know	*3.9	14.0	*8.1	25.9	16.2
Whether would move intrastate if offered a suitable job					
Would move intrastate	31.2	100.7	65.9	197.9	16.4
Would not move intrastate	177.3	202.6	104.4	484.3	13.1
Might move intrastate	34.0	41.8	33.6	109.4	14.9
Did not know	*6.4	9.3	10.0	25.7	16.4
State or territory of usual residence					
New South Wales	77.1	111.7	69.1	257.9	14.3
Victoria	74.1	90.9	50.7	215.7	13.3
Queensland	46.1	77.0	37.5	160.7	14.2
South Australia	21.9	29.9	16.7	68.5	14.0
Western Australia	17.4	29.7	28.9	76.0	16.5
Tasmania	7.1	8.7	8.1	23.9	15.4
Northern Territory	1.1	1.7	1.1	3.9	*15.3
Australian Capital Territory	4.0	4.9	*1.8	10.7	12.4
Total(a)	248.9	354.5	213.9	817.2	14.2

* estimate has a relative standard error of 25% to 50% and should be used with caution

** estimate has a relative standard error greater than 50% and is considered too unreliable for general use

(a) Includes 'Employers' and 'Contributing family workers'.

UNDEREMPLOYED PART-TIME WORKERS, Main difficulty in finding work with more hours—By sex

<i>Main difficulty in finding work with more hours (a)</i>				MEAN PREFERRED NUMBER OF EXTRA WEEKLY HOURS		
	<i>Males</i>	<i>Females</i>	<i>Persons</i>	<i>Males</i>	<i>Females</i>	<i>Persons</i>
	'000	'000	'000	hours	hours	hours
Had been looking for work with more hours	188.2	244.5	432.7	17.6	15.5	16.4
Own ill health or disability	11.0	*7.2	18.3	21.7	17.4	20.0
Considered too young by employers	np	np	np	*19.4	—	*19.4
Considered too old by employers	9.1	*8.8	17.9	17.2	16.2	16.7
Unsuitable hours	*6.4	21.4	27.8	11.3	12.7	12.3
Too far to travel/transport problems	*5.1	*5.1	10.2	24.0	14.2	19.1
Lacked necessary skills or education	*7.9	11.9	19.8	20.7	15.0	17.3
Language difficulties	*2.5	*3.6	*6.1	*20.3	*14.8	17.1
Insufficient work experience	12.3	12.8	25.0	23.5	19.5	21.5
No vacancies in line of work	49.1	47.5	96.6	15.4	15.0	15.2
Too many applicants for available jobs	22.2	32.0	54.2	18.7	16.8	17.6
No vacancies at all	20.9	26.3	47.2	18.7	17.4	18.0
Difficulties with ethnic background	np	np	np	—	**5.0	**5.0
Difficulties in finding child care	np	np	*8.1	38.0	14.3	14.7
Other family responsibilities	*2.6	13.6	16.3	*18.2	13.7	14.4
Other difficulties	23.5	30.5	54.0	14.5	14.6	14.6
No difficulties reported	12.9	15.2	28.1	16.1	16.5	16.3
Had not been looking for work with more hours	135.2	249.3	384.5	12.8	11.1	11.7
Total	323.4	493.8	817.2	15.6	13.3	14.2

* estimate has a relative standard error of 25% to 50% and should be used with caution

** estimate has a relative standard error greater than 50% and is considered too unreliable for general use

— nil or rounded to zero (including null cells)

np not available for publication but included in totals where applicable, unless otherwise indicated

(a) Refers to the current period of looking for work with more hours.

7

UNDEREMPLOYED PART-TIME WORKERS, Preferred number of extra hours—By all steps taken to find work in the last four weeks—By sex

All steps taken to find work with more hours(a)	Less than 10 hours	10–19 hours	20 or more	Total	Mean preferred number of extra weekly hours
	'000	'000	'000	'000	hours
MALES					
Had been looking for work with more hours	31.4	78.3	78.5	188.2	17.6
Asked current employer for more work	16.9	42.1	46.8	105.8	18.1
Contacted prospective employers	14.7	46.7	48.7	110.1	18.4
Registered with Centrelink	**1.5	11.9	20.0	33.4	21.0
Checked noticeboards	*2.8	9.1	17.2	29.0	20.6
Contacted an employment agency	**2.3	10.7	21.9	35.0	21.8
Looked in newspapers	*7.7	30.9	34.1	72.6	18.7
Searched Internet sites	12.1	44.9	49.4	106.4	18.8
Answered a newspaper advertisement for a job	*2.6	15.4	15.1	33.1	18.9
Advertised or tendered for work	*3.4	*5.7	9.1	18.3	18.0
Contacted friends or relatives	9.6	32.0	28.0	69.6	16.8
Other steps taken to find work	*6.0	9.0	*6.6	21.5	16.0
Had not been looking for work with more hours	45.3	64.1	25.9	135.2	12.8
Total	76.7	142.4	104.4	323.4	15.6
FEMALES					
Had been looking for work with more hours	59.3	106.7	78.5	244.5	15.5
Asked current employer for more work	40.0	75.5	50.7	166.2	15.4
Contacted prospective employers	25.6	63.1	49.6	138.3	17.0
Registered with Centrelink	*4.2	14.0	21.8	39.9	19.7
Checked noticeboards	*5.8	13.2	15.7	34.7	17.5
Contacted an employment agency	*5.3	18.8	15.9	40.0	17.7
Looked in newspapers	15.9	50.1	41.1	107.1	17.1
Searched Internet sites	28.7	70.2	58.7	157.5	16.9
Answered a newspaper advertisement for a job	*6.9	13.3	14.7	34.9	18.1
Advertised or tendered for work	*2.5	*4.7	*3.6	10.8	16.7
Contacted friends or relatives	13.7	30.9	22.0	66.6	15.9
Other steps taken to find work	*6.7	10.1	*7.7	24.5	15.1
Had not been looking for work with more hours	112.9	105.4	31.0	249.3	11.1
Total	172.2	212.1	109.5	493.8	13.3
PERSONS					
Had been looking for work with more hours	90.7	185.0	157.0	432.7	16.4
Asked current employer for more work	56.9	117.5	97.6	272.0	16.5
Contacted prospective employers	40.3	109.8	98.3	248.4	17.6
Registered with Centrelink	*5.7	25.8	41.8	73.3	20.3
Checked noticeboards	*8.6	22.3	32.8	63.7	18.9
Contacted an employment agency	*7.6	29.5	37.8	75.0	19.6
Looked in newspapers	23.6	81.0	75.2	179.8	17.8
Searched Internet sites	40.8	115.0	108.1	263.9	17.7
Answered a newspaper advertisement for a job	9.5	28.7	29.8	68.0	18.5
Advertised or tendered for work	*5.9	10.4	12.7	29.1	17.5
Contacted friends or relatives	23.4	62.9	50.0	136.3	16.4
Other steps taken to find work	12.6	19.0	14.4	46.1	15.5
Had not been looking for work with more hours	158.2	169.5	56.9	384.5	11.7
Total	248.9	354.5	213.9	817.2	14.2

* estimate has a relative standard error of 25% to 50% and should be used with caution

** estimate has a relative standard error greater than 50% and is considered too unreliable for general use

(a) Refers to all steps taken to find work during the four weeks prior to the survey, therefore people may appear in more than one category.

	NSW	Vic.	Qld	SA	WA	Tas.	NT	ACT	Aust.
	'000	'000	'000	'000	'000	'000	'000	'000	'000
MALES									
Population 1									
Employed persons	1 977.4	1 570.8	1 285.7	436.2	755.4	119.8	70.0	109.9	6 325.2
Population 2									
Full-time workers	1 631.1	1 306.7	1 098.3	351.0	644.3	94.1	63.2	91.1	5 279.9
Population 3									
Part-time workers	346.3	264.1	187.5	85.2	111.1	25.7	6.7	18.8	1 045.3
Population 4									
Part-time workers who would prefer more hours	119.2	89.4	62.2	29.1	32.3	10.1	1.5	5.9	349.6
Population 5									
Part-time workers who would prefer more hours who had been looking for work with more hours or were available to start work with more hours(a)	110.9	81.8	60.0	27.9	29.1	9.5	1.3	5.5	325.8
Population 6									
Underemployed part-time workers	109.6	81.8	59.3	27.6	29.1	9.3	1.3	5.5	323.4
Population 7									
Underemployed workers	124.2	90.3	71.4	31.3	34.7	10.2	1.5	5.7	369.3
FEMALES									
Population 1									
Employed persons	1 699.3	1 341.9	1 108.2	379.1	579.2	109.4	59.9	100.4	5 377.5
Population 2									
Full-time workers	943.7	702.0	629.7	195.0	321.9	50.5	44.4	63.1	2 950.2
Population 3									
Part-time workers	755.6	639.9	478.5	184.2	257.2	58.9	15.5	37.3	2 427.2
Population 4									
Part-time workers who would prefer more hours	167.3	156.0	114.0	46.6	54.2	15.4	3.2	5.9	562.6
Population 5									
Part-time workers who would prefer more hours who had been looking for work with more hours or were available to start work with more hours(a)	148.9	135.5	103.8	41.7	47.5	14.6	2.9	5.3	500.3
Population 6									
Underemployed part-time workers	148.3	133.9	101.4	40.8	46.9	14.6	2.7	5.2	493.8
Population 7									
Underemployed workers	150.1	135.8	106.9	42.2	47.3	15.0	3.0	5.6	505.9
PERSONS									
Population 1									
Employed persons	3 676.7	2 912.7	2 393.9	815.4	1 334.6	229.2	129.9	210.3	11 702.6
Population 2									
Full-time workers	2 574.9	2 008.7	1 727.9	546.0	966.2	144.6	107.6	154.2	8 230.1
Population 3									
Part-time workers	1 101.9	904.0	666.0	269.3	368.4	84.6	22.3	56.1	3 472.5
Population 4									
Part-time workers who would prefer more hours	286.5	245.4	176.1	75.7	86.6	25.4	4.7	11.8	912.2
Population 5									
Part-time workers who would prefer more hours who had been looking for work with more hours or were available to start work with more hours(a)	259.8	217.2	163.8	69.6	76.6	24.1	4.2	10.8	826.1
Population 6									
Underemployed part-time workers	257.9	215.7	160.7	68.5	76.0	23.9	3.9	10.7	817.2
Population 7									
Underemployed workers	274.3	226.1	178.2	73.5	82.1	25.2	4.5	11.2	875.2

(a) Availability refers to 'in the reference week or within four weeks'.

EXPLANATORY NOTES

INTRODUCTION

1 The statistics in this publication were compiled from data collected in the Underemployed Workers Survey conducted throughout Australia in September 2013 as a supplement to the Australian Bureau of Statistics (ABS) monthly Labour Force Survey (LFS). Respondents to the monthly LFS who were within the scope of the supplementary survey were asked further questions.

2 The publication *Labour Force, Australia* (cat. no. 6202.0) contains information about survey design, sample redesign, scope, coverage and population benchmarks relevant to the monthly LFS, which also apply to supplementary surveys. It also contains definitions of demographic and labour force characteristics, and information about telephone interviewing relevant to both the monthly LFS and supplementary surveys.

CONCEPTS, SOURCES AND METHODS

3 The conceptual framework used in Australia's LFS aligns closely with the standards and guidelines set out in the Resolutions of the International Conference of Labour Statisticians. Descriptions of the underlying concepts and structure of Australia's labour force statistics, and the sources and methods used in compiling these estimates, are presented in *Labour Statistics: Concepts, Sources and Methods* (cat. no. 6102.0.55.001).

SCOPE

4 The scope of the LFS is restricted to people aged 15 years and over and excludes the following people:

- members of the permanent defence forces;
- certain diplomatic personnel of overseas governments, customarily excluded from the census and estimated populations;
- overseas residents in Australia; and
- members of non-Australian defence forces (and their dependants).

5 Students at boarding schools, patients in hospitals, residents of homes (e.g. retirement homes, homes for people with disabilities), and inmates of prisons are excluded from all supplementary surveys.

6 This supplementary survey was conducted in both urban and rural areas in all states and territories but excluded people living in Indigenous communities in very remote parts of Australia.

COVERAGE

7 The estimates in this publication relate to people covered by the survey in September 2013. In the LFS, coverage rules are applied which aim to ensure that each person is associated with only one dwelling and hence has only one chance of selection in the survey. See *Labour Force, Australia* (cat. no. 6202.0) for more details.

SAMPLE SIZE

8 Supplementary surveys are not always conducted on the full LFS sample. Since August 1994, the sample for supplementary surveys has been restricted to no more than seven-eighths of the LFS sample.

9 The September 2013 Underemployed Workers survey is fully based on the new sample, introduced after the 2011 Census of Population and Housing. For more information, see the article in the May 2013 issue of *Labour Force, Australia* (cat. no. 6202.0).

10 The initial sample for the September 2013 LFS consisted of 34,104 private dwelling households and special dwelling units. Of the 25,498 private dwelling households and special dwelling units that remained in the survey after sample loss (e.g. households selected in the survey which had no residents in scope for the LFS, vacant or derelict dwellings and dwellings under construction), approximately 25,186 or 93.3% fully responded to the Underemployed Workers Survey. The number of completed interviews obtained from these private dwelling households and special dwelling units (after taking into account scope, coverage and subsampling exclusions) was 26,598.

EXPLANATORY NOTES *continued*

RELIABILITY OF THE ESTIMATES

- 11** Estimates in this publication are subject to sampling and non-sampling errors:
- Sampling error is the difference between the published estimate and the value that would have been produced if all dwellings had been included in the survey. For more information see the Technical Note.
 - Non-sampling errors are inaccuracies that occur because of imperfections in reporting by respondents and interviewers, and errors made in coding and processing data. These inaccuracies may occur in any enumeration, whether it be a full count or a sample. Every effort is made to reduce the non-sampling error to a minimum by careful design of questionnaires, intensive training and supervision of interviewers, and effective processing procedures.

SEASONAL FACTORS

- 12** The estimates are based on information collected in the survey month (September) and, due to seasonal factors, may not be representative of other months of the year.

CLASSIFICATIONS USED

- 13** Country of birth data are classified according to the *Standard Australian Classification of Countries (SACC), 2011* (cat. no. 1269.0).

- 14** Educational attainment data are classified according to *Australian Standard Classification of Education (ASCED), 2001* (cat. no. 1272.0). See Appendix 1 for further information.

COMPARABILITY WITH TIME SERIES

- 15** The Labour Force Survey estimates, and estimates from the supplementary surveys, are calculated in such a way as to sum to independent estimates of the civilian population aged 15 years and over (population benchmarks). These population benchmarks are based on Estimated Resident Population (ERP) data. Generally, revisions are made to population benchmarks for the LFS following the final rebasing of population estimates to the latest five-yearly Census of Population and Housing, or when the need arises.

- 16** From February 2009 Labour Force Estimates have been compiled using population benchmarks based on the 2006 Census of Population and Housing. Revisions were applied to the population benchmarks in the July 2010, November 2012 and April 2013 issues to take into account the latest available population estimates. The revision presented in the April 2013 issue is reflected in the estimates presented in this publication.

- 17** Changes to the LFS population benchmarks impact primarily on the magnitude of the Labour Force Survey estimates (i.e. employment and unemployment) that are directly related to the underlying size of the population. For more details on population benchmarks, see the Explanatory Notes in *Labour Force, Australia* (cat. no. 6202.0) and for details about the revisions made, see the article in the April 2013 issue of *Labour Force, Australia* (cat. no. 6202.0) and the article in the November 2012 issue of *Labour Force, Australia* (cat. no. 6202.0). These revisions have not been applied to the results of previous Underemployed Workers Surveys.

COMPARABILITY WITH PREVIOUS SURVEYS

- 18** In September 2008 there was a substantial increase in the number of part-time workers who preferred more hours and underemployed workers. This was due to a change in the question being asked of part-time workers. From September 2008, part-time workers were asked "Would you prefer to work more hours than you usually work?". In previous surveys part-time workers were asked "Would you prefer a job in which you worked more hours a week?". The question was altered to be consistent with the LFS and is now broader and more inclusive of people's situations as it relates to a preference for more hours of work.

EXPLANATORY NOTES *continued*

COMPARABILITY WITH PREVIOUS SURVEYS *continued*

19 This change contributed to an additional 115,800 people who were classified as part-time workers who preferred more hours and an additional 131,500 people who were classified as underemployed workers in 2008. Users need to exercise care when comparing the number of part-time workers who preferred more hours and unemployed workers from 2008 onwards with previous releases because of this break in the series.

20 From July 2004, a change was made to the category 'considered too young or too old by employers' for the items 'all difficulties in finding work with more hours' and 'main difficulty in finding work with more hours'. The category has been split into 'considered too young by employers' and 'considered to old by employers'.

21 From December 2012 to April 2013, the ABS conducted a trial of online data collection for the LFS. Respondents in one rotation group (i.e. one-eighth of the survey sample) were offered the option of self completing their labour force survey questionnaire online instead of via face-to-face or telephone interview. From May 2013, the ABS has commenced the expansion of the offer of online collection to each new incoming rotation group, and from September 2013 offered online self-completion for 56% of the Labour Force Sample. Of the households responding to the Underemployed Workers Survey, 14% submitted their data online. For more information see the article in the April 2013 issue of *Labour Force, Australia* (cat. no. 6202.0).

COMPARABILITY WITH MONTHLY LFS STATISTICS

22 Due to differences in the scope and sample size of this supplementary survey and that of the monthly LFS, the estimation procedure may lead to some small variations between labour force estimates from this survey and those from the monthly LFS.

COMPARABILITY WITH ILO GUIDELINES

23 The ABS definition of underemployment is consistent with the International Labour Organisation (ILO) guidelines of time-related underemployment adopted in 1998. According to these guidelines, time-related underemployment exists when the hours of work of an employed person are below a threshold, and are insufficient in relation to an alternative employment situation in which the person is willing and available to engage. More specifically, people in time-related underemployment comprise all employed people (as defined) who satisfy the following three criteria:

- willingness to work additional hours — want to work more hours than they currently work. The ILO recommends that those who have actively sought to work additional hours should be distinguished from those who have not
- availability to work additional hours, within a specified period
- worked less than a threshold (determined according to national circumstances) relating to working time — the ABS underemployment framework uses a threshold (35 hours in the reference week) based on the boundary between full-time and part-time work.

24 A more detailed discussion is included in *Labour Statistics: Concepts, Sources and Methods* (cat. no. 6102.0.55.001), Chapter 5.

PREVIOUS SURVEYS

25 The Underemployed Workers Survey was conducted in May 1985, 1988 and 1991. In 1994, the survey became an annual survey, collected each September. Results of previous surveys were published in *Underemployed Workers, Australia* (cat. no. 6265.0); and the standard data service *Underemployed Workers, Australia* (cat. no. 6265.0.40.001) for 1994 and 1995.

NEXT SURVEY

26 The ABS plans to conduct this survey again in February 2014.

ACKNOWLEDGMENT

27 The ABS draws extensively on information provided freely by individuals, businesses, governments and other organisations. Their continued cooperation is very much appreciated, without it, the wide range of statistics published by the ABS would not be available. Information received by the ABS is treated in strict confidence as required by the *Census and Statistics Act, 1905*.

EXPLANATORY NOTES *continued*

RELATED PUBLICATIONS

28 ABS publications which may be of interest include:

- *Australian Labour Market Statistics* (cat. no. 6105.0)
- *Barriers and Incentives to Labour Force Participation* (cat. no. 6239.0)
- *Job Search Experience, Australia* (cat. no. 6222.0)
- *Labour Force, Australia* (cat. no. 6202.0)
- *Labour Force Experience, Australia* (cat. no. 6206.0)
- *Labour Mobility, Australia* (cat. no. 6209.0)
- *Labour Statistics: Concepts, Sources and Methods* (cat. no. 6102.0.55.001)
- *Microdata: Longitudinal Labour Force, Australia, 2008–2010* (cat. no. 6602.0)
- *Persons Not in the Labour Force, Australia* (cat. no. 6220.0)
- *Working Time Arrangements, Australia* (cat. no. 6342.0)

29 Current publications and other products released by the ABS are available free of charge from the Statistics Page on the ABS website. The ABS also issues a daily Release Advice on the web site which details products to be released in the week ahead.

ABBREVIATIONS

'000	thousand
ABS	Australian Bureau of Statistics
ASCED	Australian Standard Classification of Education
ILO	International Labour Organization
LFS	Labour Force Survey
n.f.d.	not further defined
OMIE	owner manager of incorporated enterprise
RSE	relative standard error
SACC	Standard Australian Classification of Countries
SE	standard error

APPENDIX 1 EDUCATIONAL ATTAINMENT

CLASSIFICATION OF EDUCATION

In 2001, the *ABS Classification of Qualifications (ABSCQ)* (cat. no. 1262.0) was replaced by the *Australian Standard Classification of Education (ASCED)* (cat. no. 1272.0). The ASCED is a national standard classification which can be applied to all sectors of the Australian education system including schools, vocational education and training and higher education. ASCED replaces a number of classifications previously used in administrative and statistical systems, including the ABSCQ. The ASCED comprises two classifications: Level of Education and Field of Education.

Level of Highest Educational Attainment can be derived from information on Highest Year of School Completed and Level of Highest Non-school Qualification. The derivation process determines which of the 'non-school' or 'school' attainments will be regarded as the highest. Usually the higher ranking attainment will be self-evident, but in some cases some Secondary Education is regarded, for the purposes of obtaining a single measure, as higher than some Certificate level attainments.

The following decision table is used to determine which of the responses to questions on Highest Year of School Completed (coded to ASCED Broad Level 6) and Level of Highest Non-school Qualification (coded to ASCED Broad Level 5) will be regarded as the highest. It is emphasised that this table was designed for the purpose of obtaining a single value for the output variable Level of Highest Educational Attainment and is not intended to convey any other ordinality.

Decision Table: Level of Highest Educational Attainment							
ASCED LEVEL OF EDUCATION CODES	Certificate n.f.d. (500)	Certificate III or IV n.f.d. (510)	Certificate IV (511)	Certificate III (514)	Certificate I or II n.f.d. (520)	Certificate II (521)	Certificate I (524)
Secondary Education n.f.d. (600)	Certificate n.f.d.	Certificate III or IV n.f.d.	Certificate IV	Certificate III	Certificate I or II n.f.d.	Certificate II	Certificate I
Senior Secondary Education n.f.d. (610)	Senior Secondary n.f.d.	Certificate III or IV n.f.d.	Certificate IV	Certificate III	Senior Secondary n.f.d.	Senior Secondary n.f.d.	Senior Secondary n.f.d.
Year 12 (611)	Year 12	Certificate III or IV n.f.d.	Certificate IV	Certificate III	Year 12	Year 12	Year 12
Year 11 (613)	Year 11	Certificate III or IV n.f.d.	Certificate IV	Certificate III	Year 11	Year 11	Year 11
Junior Secondary Education n.f.d. (620)	Certificate n.f.d.	Certificate III or IV n.f.d.	Certificate IV	Certificate III	Certificate I or II n.f.d.	Certificate II	Certificate I
Year 10 (621)	Year 10	Certificate III or IV n.f.d.	Certificate IV	Certificate III	Year 10	Certificate II	Year 10
Year 9 (622)	Certificate n.f.d.	Certificate III or IV n.f.d.	Certificate IV	Certificate III	Certificate I or II n.f.d.	Certificate II	Certificate I
Year 8 (623)	Certificate n.f.d.	Certificate III or IV n.f.d.	Certificate IV	Certificate III	Certificate I or II n.f.d.	Certificate II	Certificate I
Year 7 (624)	Certificate n.f.d.	Certificate III or IV n.f.d.	Certificate IV	Certificate III	Certificate I or II n.f.d.	Certificate II	Certificate I

The decision table is also used to rank the information provided in a survey about the qualifications and attainments of a single individual. It does not represent any basis for comparison between differing qualifications. For example, a person whose Highest Year of School Completed was Year 12, and whose Level of Highest Non-school Qualification was a Certificate III, would have those responses crosschecked on the decision table and would as a result have their Level of Highest Educational Attainment output as

APPENDIX 1 EDUCATIONAL ATTAINMENT *continued*

CLASSIFICATION OF EDUCATION *continued*

Certificate III. However, if the same person answered 'Certificate n.f.d.' to the highest non-school qualification question, without offering any further detail, it would be crosschecked against Year 12 on the decision table as 'Certificate not further defined'. The output would then be 'Year 12'. The decision table, therefore, does not necessarily imply that one qualification is 'higher' than the other.

APPENDIX 2 POPULATIONS AND DATA ITEMS LIST

DATA AVAILABLE ON REQUEST

The ABS has a range of data available on request from the Underemployed Workers Survey. This section lists the data items and populations which relate to the survey. More detailed breakdowns of some data items may also be available on request.

The population(s) for a particular data item refers to the person in the survey to whom the data item relates. Where alternative output categories are available for the same data item, these are shown and the data item name is followed by a bracketed numeral (e.g. Country of birth (2)).

For more information about ABS data available on request, contact National Information and Referral Service in Canberra on 1300 135 070 or via email to <client.services@abs.gov.au>, or contact Labour Supplementary Survey Section on (02) 6252 7206 or via email to <labour.statistics@abs.gov.au>.

<i>Population 1:</i>	Employed persons
<i>Population 2:</i>	Full-time workers
<i>Population 3:</i>	Part-time workers
<i>Population 4:</i>	Part-time workers who would prefer more hours
<i>Population 5:</i>	Part-time workers who would prefer more hours who had been looking for work with more hours or were available to start work with more hours in the reference week or within four weeks
<i>Population 6:</i>	Underemployed part-time workers
<i>Population 7:</i>	Underemployed workers

APPENDIX 2 POPULATIONS AND DATA ITEMS LIST *continued*

<i>Data items</i>	<i>Populations</i>
1 State or territory of usual residence	All
New South Wales	
Victoria	
Queensland	
South Australia	
Western Australia	
Tasmania	
Northern Territory	
Australian Capital Territory	
2 Area of usual residence	All
State capital city	
Balance of state/territory	
3 Region of usual residence	All
Standard labour force dissemination regions	
4 Sex	All
Males	
Females	
5 Social marital status	All
Married	
Not married	
6 Relationship in household	All
Family member	
Husband, wife or partner	
With dependants	
Without dependants	
Lone parent	
With dependants	
Without dependants	
Dependent student	
Non-dependent child	
Other family person	
Non-family member	
Lone person	
Not living alone	
Relationship not determined	
7A Country of birth and period of arrival	All
Born in Australia	
Born overseas	
Arrived before 1971	
Arrived 1971–1980	
Arrived 1981–1990	
Arrived 1991–2000	
Arrived 2001–2010	
Arrived 2011 to survey date	
7B Country of birth (1)	All
Born in Australia	
Born overseas	
Born in main English-speaking countries	
Born in other than main English-speaking countries	
7C Country of birth (2)	All
Born in Australia	
Born overseas	
Oceania and Antarctica	
North-West Europe	
Southern and Eastern Europe	
North Africa and the Middle East	
South-East Asia	
North-East Asia	
Southern and Central Asia	
Americas	
Sub-Saharan Africa	

APPENDIX 2 POPULATIONS AND DATA ITEMS LIST *continued*

<i>Data items</i>	<i>Populations</i>
8 Age group (years)	All
15–19	
20–24	
25–34	
35–44	
45–54	
55–59	
60–64	
65–69	
70 and over	
Note: Age collected in single years	
9A Underemployment status	7
Worked less than 35 hours in the reference week for economic reasons	
Part-time workers who would prefer more hours who were available to start work with more hours in the reference week or within four weeks	
Looking and available to start	
Not looking but available to start	
9B Whether looking and/or available	4–6
Had been looking for work with more hours	
Looking and available to start	
Looking and available in the reference week	
Looking and not available in the reference week but available within four weeks	
Looking and not available to start	
Had not been looking for work with more hours	
Not looking but available to start	
Not looking but available in the reference week	
Not looking and not available in the reference week but available within four weeks	
Not looking and not available to start	
9C Whether available and/or looking	4–6
Available to start work with more hours	
Available in the reference week	
Looking	
Not looking	
Available within four weeks (but not in the reference week)	
Looking	
Not looking	
Not available to start work with more hours	
Looking	
Not looking	
10 Full-time or part-time status	All
Employed persons	
Full-time workers	
Worked 35 hours or more in the reference week	
Worked less than 35 hours in the reference week	
For non-economic reasons	
For economic reasons	
Part-time workers	
Would not prefer to work more hours	
Would prefer to work more hours	
Prefers more part-time hours	
Prefers full-time hours	
11 Whether fully employed	All
Fully employed	
Part-time workers who would prefer more hours and persons who worked less than 35 hours in the reference week for economic reasons	
12 Status in employment	All
Employees	
Employers	
Own account workers	
Contributing family workers	

APPENDIX 2 POPULATIONS AND DATA ITEMS LIST *continued*

<i>Data items</i>	<i>Populations</i>
13 Number of hours worked in the reference week	4-7
0-5	
6-10	
11-15	
16-20	
21-29	
30-34	
35 or more	
Note: Hours worked collected in single hours	
15 Duration of current period of insufficient work	4-7
1 week and under 4 weeks	
4 weeks and under 13 weeks	
13 weeks and under 52 weeks	
52 weeks and over	
Note: Period of insufficient work collected in single weeks	
16A Level of highest educational attainment	4-7
Postgraduate Degree	
Graduate Diploma/Graduate Certificate	
Bachelor Degree	
Advanced Diploma/Diploma	
Certificate III/IV	
Certificate I/II	
Certificate not further defined	
Year 12	
Year 11	
Year 10 or below	
Other education	
Level not determined	
No educational attainment	
16B Level of highest non-school qualification	4-7
With a non-school qualification	
Postgraduate Degree	
Graduate Diploma/Graduate Certificate	
Bachelor Degree	
Advanced Diploma/Diploma	
Certificate III/IV	
Certificate I/II	
Certificate not further defined	
Level not determined	
Without a non-school qualification	
16C Highest year of school completed	4-7
Year 12	
Year 11	
Year 10	
Year 9	
Year 8 or below	
Never attended school	
16D Highest non-school qualification and whether qualification obtained overseas or within Australia	4-7
Born in Australia	
Born overseas	
With a non-school qualification	
Qualification obtained overseas	
Qualification obtained in Australia	
Without a non-school qualification	
17 Whether would move interstate if offered a suitable job	4-7
Would move interstate	
Would not move interstate	
Might move interstate	
Did not know	

APPENDIX 2 POPULATIONS AND DATA ITEMS LIST *continued*

<i>Data items</i>	<i>Populations</i>
18 Whether would move intrastate if offered a suitable job	4-7
Would move intrastate	
Would not move intrastate	
Might move intrastate	
Did not know	
19 Whether would prefer to change occupation to work more hours	4-7
Would prefer to change occupation	
Would prefer not to change occupation	
No preference	
20 Whether would prefer to change employer to work more hours	4-7
Would prefer to change employer	
Would prefer not to change employer	
No preference	
21 All steps taken to find work with more hours in the last four weeks	4-6
Asked current employer for more work	
Contacted prospective employers	
Registered with Centrelink	
Checked noticeboards	
Contacted an employment agency	
Looked in newspapers	
Searched Internet sites	
Answered a newspaper advertisement for a job	
Advertised or tendered for work	
Contacted friends or relatives	
Other steps taken to find work	
Had not been looking for work with more hours	
22 Whether registered with Centrelink	4-6
Registered with Centrelink for job search assistance	
Not registered with Centrelink for job search assistance	
Had not been looking for work with more hours	
23 Preferred number of extra weekly hours	4-6
Less than 10 hours	
10-19 hours	
20-29 hours	
30 hours or more	
Note: Preferred extra hours collected in single hours	
24 Main difficulty in finding work with more hours	4-6
Had been looking for work with more hours	
Own ill health or disability	
Considered too young by employers	
Considered too old by employers	
Unsuitable hours	
Too far to travel/transport problems	
Lacked necessary skills or education	
Language difficulties	
Insufficient work experience	
No vacancies in line of work	
Too many applicants for available jobs	
No vacancies at all	
Difficulties with ethnic background	
Difficulties in finding child care	
Other family responsibilities	
Other difficulties	
No difficulties reported	
Had not been looking for work with more hours	
25 Weekly hours usually worked	4-6
1-5	
6-10	
11-15	
16-20	
21-29	
30-34	
Note: Hours usually worked collected in single hours	

APPENDIX 2 POPULATIONS AND DATA ITEMS LIST *continued*

Data items

Populations

26	Preferred total number of weekly hours	4-6
	Less than 30 hours	
	30-34 hours	
	35-39 hours	
	40 hours or more	
	Note: Preferred total hours collected in single hours	
27	Employment type	All
	Employees (excluding OMIEs)	
	Owner managers of incorporated enterprises	
	Owner managers of unincorporated enterprises	
	Contributing family workers	

APPENDIX 3 SUPPLEMENTARY SURVEYS

SUPPLEMENTARY SURVEYS

The Monthly Population Survey program and the Multi-Purpose Household Survey program collect data on particular aspects of the labour force. The following is an historical list of supplementary surveys to the monthly labour force surveys. Data from these surveys are available on request and can be obtained by contacting the ABS.

	<i>cat. no.</i>	<i>Frequency</i>	<i>Latest issue</i>
Monthly Population Supplementary Surveys			
Characteristics of Recent Migrants, Australia(a)	6250.0	Irregular	November 2010
Child Employment, Australia	6211.0	Irregular	June 2006
Childhood Education and Care, Australia	4402.0	Irregular	June 2011
Education and Work, Australia	6227.0	Annual	May 2012
Employee Earnings, Benefits, and Trade Union Membership, Australia	6310.0	Annual	August 2012
Forms of Employment, Australia	6359.0	Annual	November 2012
Job Search Experience, Australia	6222.0	Annual	July 2013
Labour Force Experience, Australia	6206.0	Biennial	February 2011
Labour Mobility, Australia	6209.0	Biennial	February 2013
Locations of Work, Australia	6275.0	Irregular	November 2008
Multiple Jobholding, Australia(b)	6216.0	Irregular	August 1997
Persons Not in the Labour Force, Australia	6220.0	Annual	September 2012
Underemployed Workers, Australia	6265.0	Annual	September 2013
Working Time Arrangements, Australia(c)	6342.0	Irregular	November 2012
Multi-Purpose Household Surveys			
Barriers and Incentives to Labour Force Participation, Australia	6239.0	Biennial	2012–2013
Retirement and Retirement Intentions, Australia	6238.0	Biennial	2012–2013
Work-Related Injuries, Australia	6324.0	Irregular	2009–2010

- (a) This product replaces the publication Labour Force Status and Other Characteristics of Migrants, Australia (cat. no. 6250.0).
- (b) Data available on request for July 2001 or see Employment Arrangements, Retirement and Superannuation, Australia, Apr to Jul 2007 (Re-issue) (cat. no. 6361.0).
- (c) This product replaces the publication Working Arrangements, Australia (cat. no. 6342.0).

INTRODUCTION

1 Estimates in this publication are based on information obtained from occupants of a sample of dwellings, and are subject to sampling variability. That is, they may differ from those estimates that would have been produced if all dwellings had been included in the survey. One measure of the likely difference is given by the standard error (SE), which indicates the extent to which an estimate might have varied by chance because only a sample of dwellings was included. There are about two chances in three (67%) that a sample estimate will differ by less than one SE from the number that would have been obtained if all dwellings had been included, and about 19 chances in 20 (95%) that the difference will be less than two SEs. Another measure of the likely difference is the relative standard error (RSE), which is obtained by expressing the SE as a percentage of the estimate.

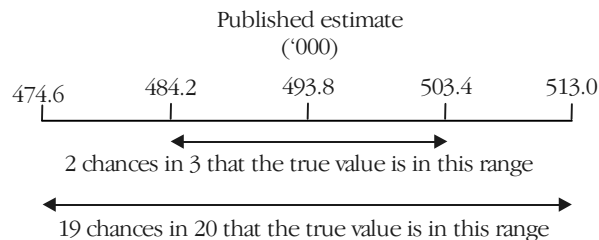
2 Due to space limitations, it is impractical to print the SE of each estimate in the publication. Instead, a table of SEs is provided to determine the SE for an estimate from the size of that estimate (see table T1). The SE table is derived from a mathematical model, referred to as the 'SE model', which is created using data from a number of past Labour Force Surveys. It should be noted that the SE model only gives an approximate value for the SE for any particular estimate, since there is some minor variation between SEs for different estimates of the same size.

CALCULATION OF STANDARD ERROR

3 An example of the calculation and the use of SEs in relation to estimates of persons is as follows. Table 4 shows the estimated number of female underemployed part-time workers was 493,800. Since this estimate is between 300,000 and 500,000, table T1 shows that the SE for Australia will lie between 7,700 and 9,650 and can be approximated by interpolation using the following general formula:

$$\begin{aligned}
 & SE \text{ of estimate} \\
 &= \text{lower SE} + \left(\left(\frac{\text{size of estimate} - \text{lower estimate}}{\text{upper estimate} - \text{lower estimate}} \right) \times (\text{upper SE} - \text{lower SE}) \right) \\
 &= 7,700 + \left(\left(\frac{493,800 - 300,000}{500,000 - 300,000} \right) \times (9,650 - 7,700) \right) \\
 &= 9,600 \text{ (rounded to the nearest 100)}
 \end{aligned}$$

4 Therefore, there are about two chances in three that the value that would have been produced if all dwellings had been included in the survey will fall within the range 484,200 to 503,400 and about 19 chances in 20 that the value will fall within the range 474,600 to 513,000. This example is illustrated in the following diagram.



CALCULATION OF STANDARD
ERROR *continued*

5 In general, the size of the SE increases as the size of the estimate increases. Conversely, the RSE decreases as the size of the estimate increases. Very small estimates are thus subject to such high RSEs that their value for most practical purposes is unreliable. In the tables in this publication, only estimates with RSEs of 25% or less are considered reliable for most purposes. Estimates with RSEs greater than 25% but less than or equal to 50% are preceded by an asterisk (e.g.*3.2) to indicate they are subject to high SEs and should be used with caution. Estimates with RSEs of greater than 50%, preceded by a double asterisk (e.g.**0.3), are considered too unreliable for general use and should only be used to aggregate with other estimates to provide derived estimates with RSEs of less than 25%.

MEANS AND MEDIANS

6 The RSEs of estimates of mean duration of insufficient work, median duration of insufficient work and mean preferred number of extra hours are obtained by first finding the RSE of the estimate of the total number of persons contributing to the mean or median (see table T1) and then multiplying the resulting number by the following factors:

- mean duration of insufficient work: 1.6
- median duration of insufficient work: 2.5
- mean preferred number of extra hours: 0.7

7 The following is an example of the calculation of SEs where the use of a factor is required. Table 4 shows that the estimated number of male underemployed part-time workers was 323,400 with a median duration of insufficient work of 30 weeks. The SE of 323,400 can be calculated from table T1 (by interpolation) as 7,700. To convert this to an RSE we express the SE as a percentage of the estimate or $7,700/323,400 = 2.4\%$.

8 The RSE of this estimate of median duration of insufficient work is calculated by multiplying this number (2.4%) by the appropriate factor shown in paragraph 6 (in this case 2.5): $2.5 \times 2.4 = 6.0\%$. The SE of this estimate of median duration of insufficient work is therefore 6.0% of 30, i.e. about 2 weeks (rounded to the nearest whole week). Therefore, there are two chances in three that the median duration of insufficient work for males that would have been obtained if all dwellings had been included in the survey would have been within the range 28–32 weeks, and about 19 chances in 20 that it would have been within the range 26–34 weeks.

PROPORTIONS AND
PERCENTAGES

9 Proportions and percentages formed from the ratio of two estimates are also subject to sampling errors. The size of the error depends on the accuracy of both the numerator and the denominator. A formula to approximate the RSE of a proportion is given below. This formula is only valid when x is a subset of y.

$$RSE\left(\frac{x}{y}\right) = \sqrt{[RSE(x)]^2 - [RSE(y)]^2}$$

10 Considering the example from paragraph 3, of the 493,800 female underemployed part-time workers, 199,800 or 40.5% had insufficient work for 52 weeks and over. The SE of 199,800 may be calculated by interpolation as 6,500. To convert this to an RSE we express the SE as a percentage of the estimate, or $6,500/199,800 = 3.3\%$. The SE for 493,800 was calculated previously as 9,600, which converted to an RSE is $9,600/493,800 = 1.9\%$. Applying the above formula, the RSE of the proportion is:

$$RSE = \sqrt{(3.3)^2 - (1.9)^2} = 2.7\%$$

TECHNICAL NOTE DATA QUALITY *continued*

PROPORTIONS AND PERCENTAGES *continued*

11 Therefore, the SE for the proportion of females who have a current period of insufficient work of 52 weeks or more is 1.1 percentage points $(= (40.5/100) \times 2.7)$. Therefore, there are about two chances in three that the proportion of females who have a current period of insufficient work of 52 weeks or more was between 39.4% and 41.6% and 19 chances in 20 that the proportion is within the range 38.3% and 42.7%.

DIFFERENCES

12 Published estimates may also be used to calculate the difference between two survey estimates (of numbers or percentages). Such an estimate is subject to sampling error. The sampling error of the difference between two estimates depends on their SEs and the relationship (correlation) between them. An approximate SE of the difference between two estimates $(x-y)$ may be calculated by the following formula:

$$SE(x-y) = \sqrt{[SE(x)]^2 + [SE(y)]^2}$$

13 While this formula will only be exact for differences between separate and uncorrelated characteristics or subpopulations, it is expected to provide a good approximation for all differences likely to be of interest in this publication.

STANDARD ERRORS

T1 STANDARD ERRORS OF ESTIMATES

Size of Estimate (persons)	NSW	Vic.	Qld.	SA	WA	Tas.	NT	ACT	AUST.	
									SE	RSE
	no.	no.	no.	no.	no.	no.	no.	no.	no.	%
100	360	250	250	190	240	110	50	120	130	130.0
200	480	320	360	260	320	150	80	200	220	110.0
300	570	380	440	310	380	190	100	250	310	103.3
500	700	470	560	380	460	230	130	320	440	88.0
700	810	530	650	430	530	270	150	360	560	80.0
1,000	930	610	760	490	610	310	170	400	700	70.0
1,500	1 100	710	900	580	710	350	200	430	900	60.0
2,000	1 230	800	1 010	640	790	390	220	460	1 070	53.5
2,500	1 350	850	1 100	700	850	400	250	500	1 200	48.0
3,000	1 450	950	1 200	750	900	450	250	500	1 350	45.0
3,500	1 550	1 000	1 250	800	1 000	450	250	550	1 450	41.4
4,000	1 600	1 050	1 300	850	1 050	500	300	550	1 550	38.8
5,000	1 750	1 150	1 400	900	1 100	500	300	600	1 700	34.0
7,000	2 000	1 300	1 600	1 000	1 250	600	350	700	2 000	28.6
10,000	2 300	1 450	1 800	1 150	1 450	700	450	800	2 300	23.0
15,000	2 650	1 700	2 000	1 300	1 650	850	650	1 000	2 700	18.0
20,000	2 950	1 900	2 200	1 450	1 850	950	800	1 150	3 000	15.0
30,000	3 400	2 200	2 500	1 700	2 100	1 250	1 150	1 500	3 350	11.2
40,000	3 800	2 400	2 800	1 950	2 350	1 450	1 450	1 750	3 650	9.1
50,000	4 100	2 600	3 050	2 200	2 550	1 650	1 700	2 000	3 950	7.9
100,000	5 200	3 450	4 200	3 300	3 750	2 400	3 000	2 650	4 950	5.0
150,000	6 100	4 150	5 150	4 250	4 950	2 850	4 100	3 000	5 800	3.9
200,000	7 050	4 850	6 000	4 950	5 950	3 150	5 150	3 150	6 500	3.3
300,000	8 850	6 250	7 650	6 100	7 500	3 650	7 000	3 300	7 700	2.6
500,000	12 400	8 650	10 300	7 650	9 550	4 200	..	3 300	9 650	1.9
1,000,000	18 400	13 150	14 700	9 750	12 150	4 800	13 600	1.4
2,000,000	24 800	19 450	19 800	11 600	14 100	19 750	1.0
5,000,000	31 600	31 100	26 700	13 050	14 700	32 950	0.7
10,000,000	33 850	42 900	31 200	44 000	0.4
15,000,000	49 600	0.3

.. not applicable

TECHNICAL NOTE DATA QUALITY *continued*

T2 LEVELS AT WHICH ESTIMATES HAVE RELATIVE STANDARD ERRORS OF 25% AND 50%(a)

	NSW	Vic.	Qld	SA	WA	Tas.	NT	ACT	Aust.
	no.	no.	no.	no.	no.	no.	no.	no.	no.
25% RSE									
Mean duration of insufficient work	18 300	9 800	13 000	5 800	9 400	2 500	1 100	3 000	19 200
Median duration of insufficient work	44 400	22 900	32 500	18 100	21 700	6 700	10 300	13 400	35 300
Mean preferred number of extra hours	5 300	3 100	3 800	2 000	2 900	1 000	400	1 100	5 000
All other estimates	8 600	4 200	6 100	3 000	4 200	1 400	500	1 800	8 800
50% RSE									
Mean duration of insufficient work	6 100	3 200	4 700	2 000	3 200	900	300	1 200	6 100
Median duration of insufficient work	15 000	7 600	11 800	6 300	7 400	2 400	2 600	4 000	12 600
Mean preferred number of extra hours	1 700	1 000	1 200	600	1 000	300	100	400	1 100
All other estimates	2 800	1 400	2 000	1 000	1 400	400	100	700	2 300

(a) Refers to the number of persons contributing to the estimate.

GLOSSARY

Available to start work	Refers to people who were available to start work with more hours either in the reference week, or in the four weeks subsequent to the interview.
Contributing family workers	People who work without pay in an economic enterprise operated by a relative.
Duration of current period of insufficient work	<p>For full-time workers who worked fewer than 35 hours in the reference week due to economic reasons, refers to the number of weeks they have been working fewer than 35 hours a week.</p> <p>For part-time workers who would prefer to work more hours, refers to the number of weeks they have been wanting to work more hours.</p> <p>As periods of insufficient work are recorded in full weeks and rounded down, this results in a slight understatement of duration.</p>
Economic reasons	<p>Economic reasons for full-time workers having worked fewer than 35 hours in the reference week are:</p> <ul style="list-style-type: none">■ there was no work or not enough work available, e.g. due to material shortages;■ they were stood down; or■ they were on short time.
Employed	<p>People aged 15 years and over who, during the reference week:</p> <ul style="list-style-type: none">■ worked for one hour or more for pay, profit, commission or payment in kind, in a job or business or on a farm (comprising employees, employers and own account workers); or■ worked for one hour or more without pay in a family business or on a farm (i.e. contributing family workers); or■ were employees who had a job but were not at work and were:<ul style="list-style-type: none">■ away from work for less than four weeks up to the end of the reference week; or■ away from work for more than four weeks up to the end of the reference week and received pay for some or all of the four-week period to the end of the reference week; or■ away from work as a standard work or shift arrangement; or■ on strike or locked out; or■ on workers' compensation and expected to return to their job; or■ were employers or own account workers who had a job, business or farm, but were not at work.
Employees	<p>People who:</p> <ul style="list-style-type: none">■ worked for a public or private employer; and■ received remuneration in wages, salary, or are paid a retainer fee by their employer and worked on a commission basis, or for tips or piece-rates or payment in kind; or■ operated their own incorporated enterprise with or without hiring employees.
Employers	People who operate their own unincorporated economic enterprise or engage independently in a profession or trade, and hire one or more employees.
Full-time workers	Employed people who usually worked 35 hours or more a week (in all jobs) or others who, although usually worked fewer than 35 hours a week, worked 35 hours or more during the reference week.
Fully employed workers	<p>Employed people who:</p> <ul style="list-style-type: none">■ worked full time during the reference week (including people who usually work part time but worked full time in the reference week); or■ usually work full time but worked fewer than 35 hours in the reference week for non-economic reasons (such as illness or injury, leave holiday or flextime, or personal reasons); or■ part-time workers who would not prefer to work additional hours.
Interstate	Refers to whether people were prepared to move to another state or territory if offered a suitable job.

GLOSSARY *continued*

Intrastate	Refers to whether people were prepared to move to another part of their state or territory if offered a suitable job.
Level of highest educational attainment	<p>Level of highest educational attainment identifies the highest achievement a person has attained in any area of study. It is not a measurement of the relative importance of different fields of study but a ranking of qualifications and other educational attainments regardless of the particular area of study or the type of institution in which the study was undertaken.</p> <p>Years 12, 11 and 10 include people who are currently undertaking school study (See Appendix 1 for more information).</p>
Looking for work with more hours	Looked for work with more hours at some time during the four weeks up to the end of the reference week.
Mean duration of insufficient work	The mean duration of insufficient work is obtained by dividing the total number of weeks a group has had insufficient work by the number of people in that group.
Mean preferred number of extra hours	The mean preferred number of extra hours is obtained by dividing the total preferred number of extra hours reported by a group by the number of people in that group.
Median duration of insufficient work	The median duration of insufficient work is obtained by dividing underemployed workers into two equal groups, one comprising people whose duration of insufficient work is above the mid point, and the other comprising people whose duration is below it.
Non-economic reasons	<p>Non-economic reasons for full-time workers having worked fewer than 35 hours in the reference week include:</p> <ul style="list-style-type: none"> ■ holiday, flextime or study leave; ■ own illness or injury or sick leave; ■ standard work arrangements, shift work or rostered day(s) off; ■ on strike, locked out or took part in an industrial dispute; ■ bad weather or plant breakdown; ■ began, left or lost job during the reference week; and ■ personal reasons.
Not available to start work	Refers to people who were not available to start work with more hours either in the reference week, or in the four weeks following the interview.
Not fully employed	People who are not fully employed comprise part-time workers who would prefer to work more hours, and full-time workers who worked part-time hours in the reference week for economic reasons.
Own account workers	People who operate his or her own unincorporated economic enterprise or engage independently in a profession or trade, and hires no employees.
Part-time workers	Employed people who usually worked fewer than 35 hours a week (in all jobs) and either did so during the reference week, or were not at work during the reference week.
Preferred number of extra hours	The number of extra hours a week an underemployed worker would have preferred to work.
Preferred total number of hours	The total number of hours per week an underemployed worker would prefer to work.
Reference week	The week preceding the week in which the interview was conducted.
Status in employment	Employed people classified by whether they were employees, employers, own account workers, or contributing family workers.

GLOSSARY *continued*

Suitable job	<p>A suitable job is:</p> <ul style="list-style-type: none">■ any job for which the person is qualified (if applicable), is capable of performing and which provides adequate job conditions (including pay, hours, travel to work, etc.).■ it is a job that would be accepted by the person irrespective of whether a move was required.
Underemployed workers	<p>Underemployed workers are employed people who would prefer, and are available for, more hours of work than they currently have. They comprise:</p> <ul style="list-style-type: none">■ part-time workers who would prefer to work more hours and were available to start work with more hours, either in the reference week or in the four weeks subsequent to the survey; and■ full-time workers who worked part-time hours in the reference week for economic reasons (such as being stood down or insufficient work being available). It is assumed that these people would prefer to work full time in the reference week and would have been available to do so.
Underemployment rate	<p>The number of underemployed workers expressed as a percentage of the labour force.</p>
Usual number of hours	<p>The number of hours usually worked in a week.</p>

FOR MORE INFORMATION . . .

INTERNET **www.abs.gov.au** the ABS website is the best place for data from our publications and information about the ABS.

INFORMATION AND REFERRAL SERVICE

Our consultants can help you access the full range of information published by the ABS that is available free of charge from our website. Information tailored to your needs can also be requested as a 'user pays' service. Specialists are on hand to help you with analytical or methodological advice.

PHONE 1300 135 070

EMAIL client.services@abs.gov.au

FAX 1300 135 211

POST Client Services, ABS, GPO Box 796, Sydney NSW 2001

FREE ACCESS TO STATISTICS

All statistics on the ABS website can be downloaded free of charge.

WEB ADDRESS www.abs.gov.au