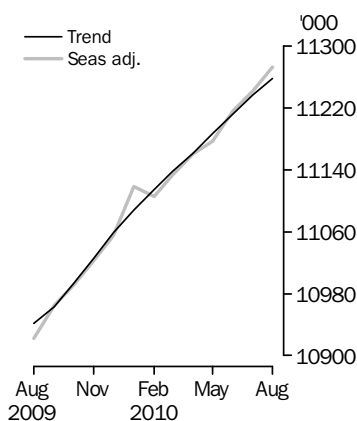


# LABOUR FORCE

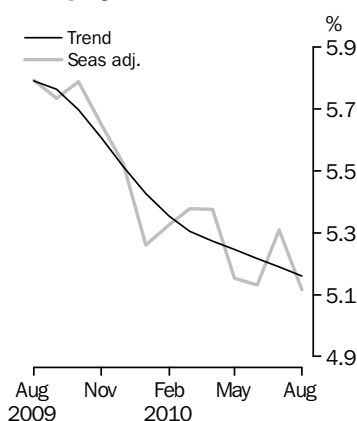
AUSTRALIA

EMBARGO: 11.30AM (CANBERRA TIME) THURS 9 SEP 2010

## Employed Persons



## Unemployment Rate



## INQUIRIES

For further information about these and related statistics, contact the National Information and Referral Service on 1300 135 070, email [client.services@abs.gov.au](mailto:client.services@abs.gov.au) or Meagan Leach on Canberra (02) 6252 6525, email [labourforce@abs.gov.au](mailto:labourforce@abs.gov.au).

## KEY FIGURES

	Jul 2010	Aug 2010	Jul 10 to Aug 10	Aug 09 to Aug 10
<b>Trend</b>				
Employed persons ('000)	11 236.1	11 258.2	22.1	2.9 %
Unemployed persons ('000)	615.0	612.6	-2.4	-8.9 %
Unemployment rate (%)	5.2	5.2	0.0 pts	-0.6 pts
Participation rate (%)	65.4	65.4	0.0 pts	0.0 pts
<b>Seasonally Adjusted</b>				
Employed persons ('000)	11 241.1	11 272.0	30.9	3.2 %
Unemployed persons ('000)	630.2	607.7	-22.5	-9.5 %
Unemployment rate (%)	5.3	5.1	-0.2 pts	-0.7 pts
Participation rate (%)	65.5	65.4	-0.1 pts	0.2 pts

## KEY POINTS

### TREND ESTIMATES (MONTHLY CHANGE)

- Employment increased to 11,258,200
- Unemployment decreased to 612,600
- Unemployment rate at 5.2%
- Participation rate at 65.4%
- Aggregate monthly hours worked increased to 1,589.7 million hours

### SEASONALLY ADJUSTED ESTIMATES (MONTHLY CHANGE)

- Employment increased 30,900 (0.3%) to 11,272,000. Full-time employment increased 53,100 to 7,920,400 and part-time employment decreased 22,100 to 3,351,600.
- Unemployment decreased 22,500 (-3.6%) to 607,700. The number of persons looking for full-time work decreased 17,600 to 429,300 and the number of persons looking for part-time work decreased 4,900 to 178,400.
- Unemployment rate decreased 0.2 pts to 5.1%. The male unemployment rate decreased 0.3 pts to 4.9% and the female unemployment rate decreased 0.1 pt to 5.3%.
- Participation rate decreased 0.1 pt to 65.4%.
- Aggregate monthly hours worked increased 14.8 million hours (0.9%) to 1,594.1 million hours.

### LABOUR UNDERUTILISATION (QUARTERLY CHANGE)

- Trend estimates: Labour force underutilisation rate decreased 0.2 pts to 12.3%.
- Seasonally adjusted estimates: Labour force underutilisation rate increased 0.2 pts to 12.5%. The male labour force underutilisation rate increased 0.2 pts to 10.7% and the female labour force underutilisation rate increased 0.3 pts to 14.7%.

# NOTES

## FORTHCOMING ISSUES

<i>ISSUE</i>	<i>RELEASE DATE</i>
September 2010	7 October 2010
October 2010	11 November 2010
November 2010	9 December 2010
December 2010	13 January 2011
January 2011	10 February 2011
February 2011	10 March 2011

.....

## ROUNDING

Estimates of monthly change shown on the front cover have been calculated using unrounded estimates, and may be different from, but are more accurate than, movements obtained from the rounded estimates. The graphs on the front cover also depict unrounded estimates.

## SAMPLING ERROR

The estimates in this publication are based on a sample survey. Therefore, published estimates and the movements derived from them are subject to sampling variability. Standard errors give a measure of this variability, see pages 33 and 34. The interval bounded by two standard errors is the 95% confidence interval, which provides a way of looking at the variability inherent in estimates. This represents a 95% chance that the true value of the estimate lies within that interval.

## MOVEMENTS IN SEASONALLY ADJUSTED SERIES BETWEEN JULY 2010 AND AUGUST 2010

.....

	<u><i>Monthly change</i></u>	<u><i>95% Confidence interval</i></u>	
Total Employment	30 900	-23 300	to 85 100
Total Unemployment	-22 500	-52 900	to 7 900
Unemployment rate	-0.2 pts	-0.4 pts	to 0.0 pts
Participation rate	-0.1 pts	-0.5 pts	to 0.3 pts

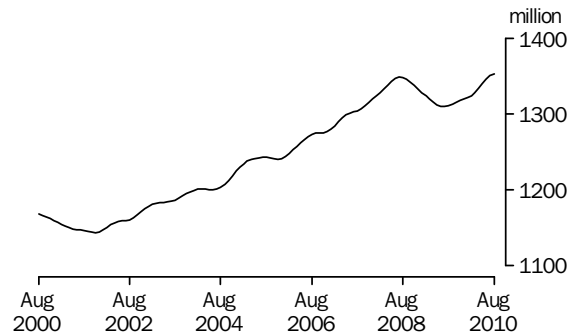
.....

Peter Harper  
Acting Australian Statistician

# AGGREGATE MONTHLY HOURS WORKED TREND ESTIMATES

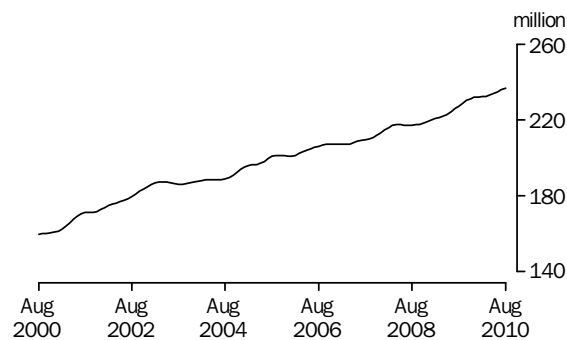
## FULL TIME

The trend estimate of full time aggregate monthly hours worked fell from 1,168 million hours in August 2000 to 1,143 million hours in November 2001. The trend then generally rose to 1,348 million hours in August 2008, before falling to 1,309 million hours in July 2009. Full time aggregate monthly hours worked has since risen to stand at 1,353 million hours in August 2010.



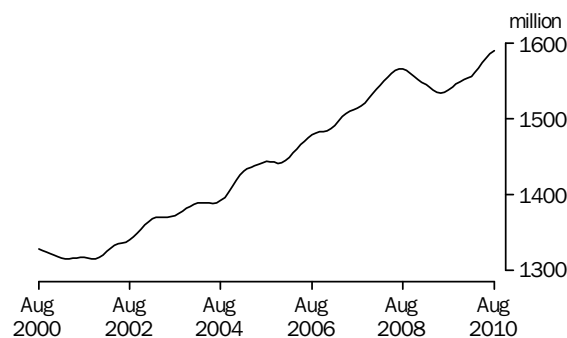
## PART TIME

The trend estimate of part time aggregate monthly hours worked has generally risen from 160 million hours in August 2000 to 237 million hours in August 2010.



## TOTAL

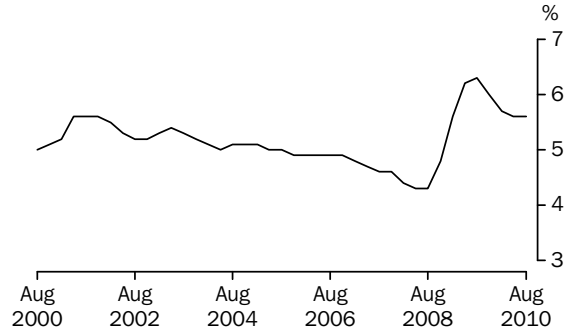
The trend estimate of total aggregate monthly hours worked generally fell from 1,328 million hours in August 2000 to 1,315 million hours in November 2001. The trend then generally rose to 1,565 million hours in July 2008 before falling to 1,534 million hours in June 2009. The trend has since risen to stand at 1,590 million hours in August 2010.



## UNDEREMPLOYMENT RATE TREND ESTIMATES

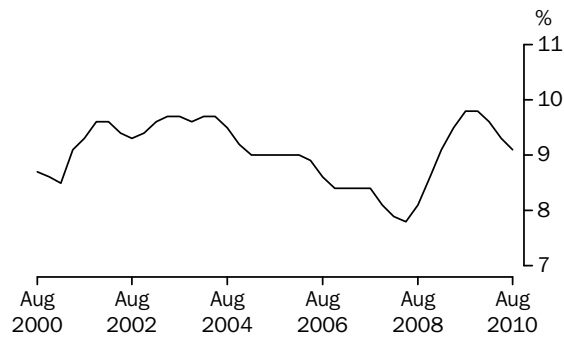
### MALES

The trend estimate of the underemployment rate for males generally rose from 5.0% in August 2000 to 5.6% in November 2001 before falling to 4.3% in August 2008. The trend then rose to 6.3% in August 2009 before falling to 5.6% in August 2010.



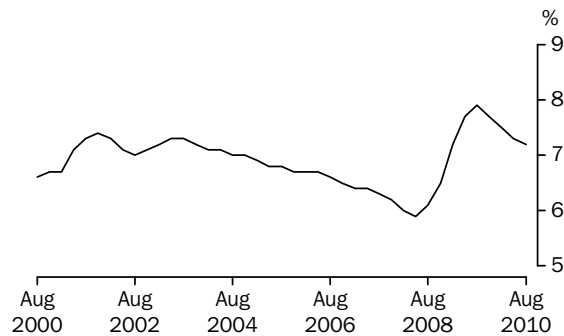
### FEMALES

The trend estimate of the underemployment rate for females fell from 8.7% in August 2000 to 8.5% in February 2001. The trend then generally rose to 9.7% in May 2004 before falling to 7.8% in May 2008. The trend then rose to 9.8% in November 2009 before falling to 9.1% in August 2010.



### PERSONS

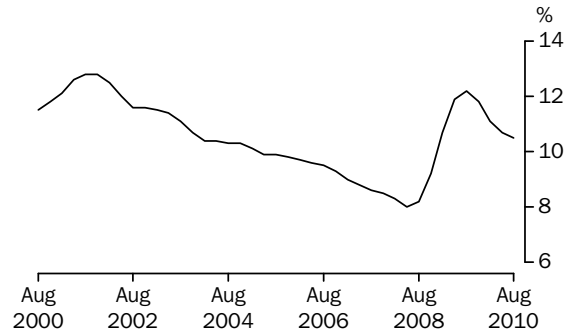
The trend estimate of the underemployment rate for persons rose from 6.6% in August 2000 to 7.4% in November 2001. The trend then generally fell to 5.9% in May 2008 before rising to 7.9% in August 2009. The trend has since fallen to 7.2% in August 2010.



# LABOUR FORCE UNDERUTILISATION RATE TREND ESTIMATES

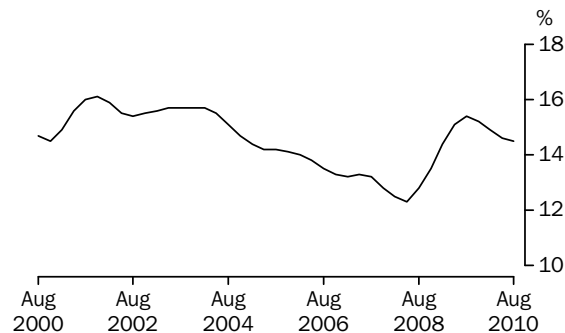
## MALES

The trend estimate of the underutilisation rate for males rose from 11.5% in August 2000 to 12.8% in November 2001. The trend then fell to 8.0% in May 2008 before rising to 12.2% in August 2009. The trend has since fallen to 10.5% in August 2010.



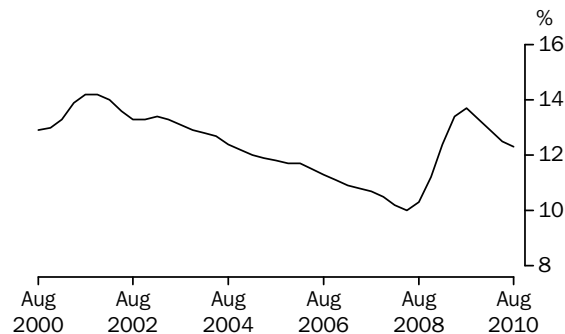
## FEMALES

The trend estimate of the underutilisation rate for females fell from 14.7% in August 2000 to 14.5% in November 2000. The trend then rose to 16.1% in November 2001, before generally falling to 12.3% in May 2008. The trend then rose to 15.4% in August 2009 before falling to 14.5% in August 2010.



## PERSONS

The trend estimate of the underutilisation rate for persons rose from 12.9% in August 2000 to 14.2% in November 2001. The trend then generally fell to 10.0% in May 2008 before rising to 13.7% in August 2009. The trend has since fallen to 12.3% in August 2010.



LABOUR FORCE STATUS (AGED 15 YEARS & OVER): Trend

	EMPLOYED			UNEMPLOYED		Labour force	UNEMPLOYMENT RATE		Participation rate
	Full time	Part time	Total	Looking for f/t work	Total		Looking for f/t work	Total	
	'000	'000	'000	'000	'000		'000	%	
MALES									
August 2007	4 958.8	871.5	5 830.3	183.5	240.2	6 070.6	3.6	4.0	72.6
August 2008	5 090.6	883.6	5 974.2	188.7	244.2	6 218.4	3.6	3.9	72.6
2009									
August	4 973.1	978.2	5 951.3	314.6	382.7	6 334.0	5.9	6.0	72.3
September	4 980.0	987.3	5 967.3	311.0	378.4	6 345.7	5.9	6.0	72.3
October	4 990.7	996.7	5 987.4	304.2	371.3	6 358.7	5.7	5.8	72.3
November	5 004.9	1 004.9	6 009.8	295.7	363.2	6 373.0	5.6	5.7	72.4
December	5 021.2	1 011.0	6 032.3	287.8	355.8	6 388.1	5.4	5.6	72.4
2010									
January	5 039.5	1 013.9	6 053.4	280.6	349.0	6 402.4	5.3	5.5	72.4
February	5 058.0	1 014.0	6 072.0	274.8	343.2	6 415.2	5.2	5.3	72.4
March	5 075.6	1 011.8	6 087.4	271.0	338.8	6 426.1	5.1	5.3	72.3
April	5 090.8	1 009.7	6 100.5	268.8	335.6	6 436.2	5.0	5.2	72.3
May	5 103.8	1 009.7	6 113.5	266.5	332.9	6 446.4	5.0	5.2	72.3
June	5 115.2	1 012.0	6 127.2	263.7	329.8	6 457.0	4.9	5.1	72.3
July	5 124.9	1 015.3	6 140.3	260.9	327.1	6 467.4	4.8	5.1	72.3
August	5 132.0	1 020.5	6 152.5	257.5	324.1	6 476.5	4.8	5.0	72.3
FEMALES									
August 2007	2 650.0	2 136.2	4 786.2	140.7	237.2	5 023.4	5.0	4.7	58.2
August 2008	2 733.7	2 198.0	4 931.7	141.2	237.9	5 169.7	4.9	4.6	58.7
2009									
August	2 712.6	2 277.7	4 990.3	189.6	289.9	5 280.2	6.5	5.5	58.6
September	2 709.1	2 286.5	4 995.6	190.7	291.9	5 287.5	6.6	5.5	58.6
October	2 709.4	2 295.0	5 004.4	190.2	292.6	5 297.0	6.6	5.5	58.6
November	2 711.6	2 303.7	5 015.4	188.2	291.4	5 306.8	6.5	5.5	58.6
December	2 713.9	2 312.0	5 025.8	185.4	289.5	5 315.4	6.4	5.4	58.6
2010									
January	2 716.5	2 318.1	5 034.6	182.0	287.2	5 321.8	6.3	5.4	58.6
February	2 720.1	2 322.2	5 042.3	179.2	285.4	5 327.7	6.2	5.4	58.5
March	2 726.1	2 324.4	5 050.5	177.7	285.1	5 335.6	6.1	5.3	58.5
April	2 735.6	2 325.4	5 061.0	177.2	285.6	5 346.7	6.1	5.3	58.5
May	2 746.3	2 326.6	5 072.9	176.9	286.4	5 359.3	6.1	5.3	58.5
June	2 756.4	2 328.5	5 084.9	176.7	287.2	5 372.0	6.0	5.3	58.6
July	2 764.9	2 330.9	5 095.8	176.6	287.9	5 383.7	6.0	5.3	58.6
August	2 772.9	2 332.8	5 105.7	176.9	288.6	5 394.3	6.0	5.3	58.7
PERSONS									
August 2007	7 608.8	3 007.7	10 616.5	324.1	477.5	11 094.0	4.1	4.3	65.3
August 2008	7 824.3	3 081.6	10 906.0	329.9	482.1	11 388.1	4.0	4.2	65.5
2009									
August	7 685.7	3 255.9	10 941.6	504.2	672.5	11 614.2	6.2	5.8	65.4
September	7 689.1	3 273.8	10 962.9	501.7	670.3	11 633.2	6.1	5.8	65.4
October	7 700.1	3 291.7	10 991.8	494.3	663.9	11 655.7	6.0	5.7	65.4
November	7 716.5	3 308.7	11 025.2	483.9	654.6	11 679.8	5.9	5.6	65.4
December	7 735.1	3 323.0	11 058.1	473.1	645.3	11 703.5	5.8	5.5	65.4
2010									
January	7 755.9	3 332.1	11 088.0	462.6	636.1	11 724.1	5.6	5.4	65.4
February	7 778.1	3 336.2	11 114.3	454.0	628.6	11 742.9	5.5	5.4	65.4
March	7 801.7	3 336.2	11 137.9	448.7	623.8	11 761.7	5.4	5.3	65.3
April	7 826.4	3 335.2	11 161.5	445.9	621.3	11 782.8	5.4	5.3	65.3
May	7 850.1	3 336.3	11 186.4	443.5	619.3	11 805.7	5.3	5.2	65.3
June	7 871.5	3 340.6	11 212.1	440.4	617.0	11 829.1	5.3	5.2	65.3
July	7 889.9	3 346.2	11 236.1	437.5	615.0	11 851.1	5.3	5.2	65.4
August	7 904.8	3 353.3	11 258.2	434.4	612.6	11 870.8	5.2	5.2	65.4

LABOUR FORCE STATUS (AGED 15 YEARS & OVER): **Seasonally Adjusted**

	EMPLOYED			UNEMPLOYED		Labour force	UNEMPLOYMENT RATE		Participation rate
	Full time	Part time	Total	Looking for f/t work	Total		Looking for f/t work	Total	
	'000	'000	'000	'000	'000		'000	%	
MALES									
August 2007	4 953.2	881.9	5 835.2	180.7	243.2	6 078.4	3.5	4.0	72.7
August 2008	5 104.4	869.0	5 973.4	190.5	237.8	6 211.2	3.6	3.8	72.5
2009									
August	4 971.7	983.0	5 954.6	308.2	380.4	6 335.0	5.8	6.0	72.3
September	4 989.6	985.9	5 975.6	306.0	369.8	6 345.4	5.8	5.8	72.3
October	4 984.4	993.0	5 977.4	311.6	378.1	6 355.5	5.9	5.9	72.3
November	5 004.7	995.6	6 000.3	300.8	369.9	6 370.2	5.7	5.8	72.3
December	5 021.9	1 009.1	6 031.0	290.0	355.6	6 386.7	5.5	5.6	72.4
2010									
January	5 034.4	1 040.1	6 074.6	264.2	332.6	6 407.2	5.0	5.2	72.5
February	5 063.6	1 010.3	6 073.8	276.7	343.9	6 417.8	5.2	5.4	72.4
March	5 073.4	1 005.2	6 078.5	272.0	348.4	6 426.9	5.1	5.4	72.3
April	5 096.3	1 007.3	6 103.6	273.6	339.8	6 443.4	5.1	5.3	72.4
May	5 109.1	999.7	6 108.8	268.1	323.7	6 432.4	5.0	5.0	72.1
June	5 110.8	1 016.0	6 126.8	257.0	325.3	6 452.1	4.8	5.0	72.2
July	5 121.4	1 018.4	6 139.8	266.5	337.5	6 477.3	4.9	5.2	72.4
August	5 137.6	1 026.8	6 164.4	252.9	319.4	6 483.8	4.7	4.9	72.3
FEMALES									
August 2007	2 653.4	2 127.8	4 781.2	141.5	235.7	5 016.9	5.1	4.7	58.1
August 2008	2 739.3	2 198.5	4 937.9	139.6	226.0	5 163.8	4.8	4.4	58.6
2009									
August	2 681.7	2 286.0	4 967.7	188.5	291.2	5 258.9	6.6	5.5	58.4
September	2 705.6	2 284.0	4 989.5	197.5	297.0	5 286.5	6.8	5.6	58.6
October	2 714.9	2 297.9	5 012.8	192.5	297.1	5 309.9	6.6	5.6	58.8
November	2 726.5	2 295.6	5 022.1	189.8	290.0	5 312.1	6.5	5.5	58.7
December	2 715.7	2 308.3	5 024.0	181.2	290.7	5 314.7	6.3	5.5	58.6
2010									
January	2 721.9	2 321.2	5 043.1	182.7	284.6	5 327.7	6.3	5.3	58.6
February	2 697.7	2 334.3	5 031.9	175.8	280.9	5 312.8	6.1	5.3	58.4
March	2 725.5	2 328.3	5 053.8	178.1	284.1	5 337.9	6.1	5.3	58.5
April	2 738.1	2 319.0	5 057.1	181.1	294.1	5 351.2	6.2	5.5	58.6
May	2 753.8	2 314.6	5 068.3	174.4	283.6	5 351.9	6.0	5.3	58.5
June	2 766.1	2 323.1	5 089.3	173.7	281.3	5 370.5	5.9	5.2	58.6
July	2 745.9	2 355.4	5 101.3	180.3	292.7	5 394.0	6.2	5.4	58.7
August	2 782.8	2 324.8	5 107.6	176.4	288.3	5 395.9	6.0	5.3	58.7
PERSONS									
August 2007	7 606.7	3 009.7	10 616.4	322.2	479.0	11 095.3	4.1	4.3	65.3
August 2008	7 843.8	3 067.5	10 911.2	330.0	463.8	11 375.0	4.0	4.1	65.5
2009									
August	7 653.3	3 269.0	10 922.3	496.7	671.6	11 593.9	6.1	5.8	65.2
September	7 695.2	3 269.9	10 965.1	503.5	666.8	11 631.9	6.1	5.7	65.3
October	7 699.3	3 290.9	10 990.2	504.1	675.2	11 665.4	6.1	5.8	65.4
November	7 731.2	3 291.2	11 022.4	490.6	660.0	11 682.3	6.0	5.6	65.4
December	7 737.6	3 317.4	11 055.1	471.1	646.3	11 701.4	5.7	5.5	65.4
2010									
January	7 756.3	3 361.4	11 117.7	446.9	617.2	11 734.9	5.4	5.3	65.5
February	7 761.3	3 344.5	11 105.8	452.5	624.8	11 730.6	5.5	5.3	65.3
March	7 798.9	3 333.4	11 132.3	450.1	632.5	11 764.8	5.5	5.4	65.3
April	7 834.4	3 326.3	11 160.7	454.7	633.9	11 794.6	5.5	5.4	65.4
May	7 862.8	3 314.2	11 177.1	442.5	607.3	11 784.3	5.3	5.2	65.2
June	7 877.0	3 339.1	11 216.1	430.7	606.6	11 822.7	5.2	5.1	65.3
July	7 867.4	3 373.8	11 241.1	446.9	630.2	11 871.3	5.4	5.3	65.5
August	7 920.4	3 351.6	11 272.0	429.3	607.7	11 879.7	5.1	5.1	65.4

**LABOUR FORCE STATUS (AGED 15 YEARS & OVER): Original**

	EMPLOYED			UNEMPLOYED			UNEMPLOYMENT RATE			Participation rate	
	Full time	Part time	Total	Looking for f/t work	Total	Labour force	Not in labour force	Civilian population aged 15 years and over	Looking for f/t work		Total
	'000	'000	'000	'000	'000	'000	'000	'000	%		%
MALES											
August 2007	4 919.1	875.7	5 794.8	169.3	227.4	6 022.1	2 343.4	8 365.6	3.3	3.8	72.0
August 2008	5 070.2	862.2	5 932.4	177.7	221.8	6 154.3	2 408.7	8 563.0	3.4	3.6	71.9
2009											
August	4 943.0	975.1	5 918.1	286.9	354.6	6 272.7	2 490.7	8 763.4	5.5	5.7	71.6
September	5 034.6	973.6	6 008.1	298.0	366.6	6 374.7	2 404.8	8 779.5	5.6	5.8	72.6
October	4 975.6	1 014.4	5 990.0	289.1	352.3	6 342.2	2 450.5	8 792.8	5.5	5.6	72.1
November	5 002.4	971.8	5 974.1	278.3	338.2	6 312.4	2 493.9	8 806.2	5.3	5.4	71.7
December	5 082.5	1 013.8	6 096.3	278.7	346.3	6 442.6	2 377.0	8 819.6	5.2	5.4	73.0
2010											
January	5 024.3	998.1	6 022.4	292.2	365.3	6 387.7	2 454.4	8 842.1	5.5	5.7	72.2
February	5 084.9	981.7	6 066.6	305.0	380.0	6 446.6	2 418.0	8 864.6	5.7	5.9	72.7
March	5 046.0	1 029.6	6 075.7	284.4	372.9	6 448.5	2 438.6	8 887.1	5.3	5.8	72.6
April	5 078.3	1 025.7	6 104.0	283.3	351.4	6 455.5	2 446.7	8 902.1	5.3	5.4	72.5
May	5 087.0	1 011.7	6 098.8	281.6	338.3	6 437.0	2 480.3	8 917.3	5.2	5.3	72.2
June	5 080.3	1 049.0	6 129.3	260.5	321.1	6 450.4	2 481.9	8 932.4	4.9	5.0	72.2
July	5 138.1	1 018.4	6 156.5	249.0	310.3	6 466.8	2 481.5	8 948.2	4.6	4.8	72.3
August	5 109.1	1 018.7	6 127.8	233.8	296.4	6 424.2	2 540.1	8 964.3	4.4	4.6	71.7
FEMALES											
August 2007	2 617.4	2 135.2	4 752.5	130.4	226.2	4 978.7	3 649.8	8 628.5	4.7	4.5	57.7
August 2008	2 705.4	2 205.4	4 910.8	128.9	216.9	5 127.7	3 685.1	8 812.9	4.5	4.2	58.2
2009											
August	2 650.4	2 291.3	4 941.7	174.9	280.2	5 222.0	3 785.0	9 007.0	6.2	5.4	58.0
September	2 761.8	2 271.8	5 033.6	192.4	295.2	5 328.9	3 694.1	9 023.0	6.5	5.5	59.1
October	2 689.0	2 324.2	5 013.1	176.7	274.7	5 287.8	3 749.1	9 036.9	6.2	5.2	58.5
November	2 733.8	2 284.6	5 018.4	175.8	265.4	5 283.8	3 767.1	9 050.9	6.0	5.0	58.4
December	2 771.8	2 318.5	5 090.3	176.7	283.3	5 373.6	3 691.2	9 064.8	6.0	5.3	59.3
2010											
January	2 728.0	2 238.2	4 966.2	205.9	301.5	5 267.7	3 817.2	9 084.9	7.0	5.7	58.0
February	2 713.0	2 304.4	5 017.5	201.4	323.9	5 341.3	3 763.6	9 105.0	6.9	6.1	58.7
March	2 704.6	2 355.3	5 059.9	186.8	305.2	5 365.1	3 759.9	9 125.0	6.5	5.7	58.8
April	2 708.2	2 338.8	5 047.0	185.6	304.4	5 351.4	3 787.7	9 139.1	6.4	5.7	58.6
May	2 744.9	2 326.7	5 071.6	171.7	279.6	5 351.3	3 802.0	9 153.3	5.9	5.2	58.5
June	2 739.1	2 360.5	5 099.6	170.7	273.8	5 373.4	3 793.9	9 167.4	5.9	5.1	58.6
July	2 751.0	2 352.3	5 103.4	173.3	276.6	5 380.0	3 803.2	9 183.2	5.9	5.1	58.6
August	2 751.1	2 329.4	5 080.5	164.0	279.0	5 359.5	3 839.6	9 199.1	5.6	5.2	58.3
PERSONS											
August 2007	7 536.5	3 010.9	10 547.3	299.7	453.5	11 000.9	5 993.2	16 994.1	3.8	4.1	64.7
August 2008	7 775.6	3 067.6	10 843.2	306.5	438.8	11 282.0	6 093.8	17 375.9	3.8	3.9	64.9
2009											
August	7 593.4	3 266.4	10 859.9	461.8	634.8	11 494.7	6 275.7	17 770.3	5.7	5.5	64.7
September	7 796.4	3 245.3	11 041.8	490.4	661.8	11 703.5	6 098.9	17 802.4	5.9	5.7	65.7
October	7 664.6	3 338.6	11 003.1	465.8	626.9	11 630.0	6 199.6	17 829.7	5.7	5.4	65.2
November	7 736.2	3 256.4	10 992.5	454.1	603.6	11 596.1	6 261.0	17 857.1	5.5	5.2	64.9
December	7 854.3	3 332.2	11 186.6	455.3	629.6	11 816.2	6 068.2	17 884.4	5.5	5.3	66.1
2010											
January	7 752.3	3 236.4	10 988.6	498.1	666.7	11 655.4	6 271.6	17 926.9	6.0	5.7	65.0
February	7 797.9	3 286.2	11 084.1	506.4	703.9	11 788.0	6 181.6	17 969.6	6.1	6.0	65.6
March	7 750.6	3 384.9	11 135.5	471.2	678.1	11 813.6	6 198.5	18 012.1	5.7	5.7	65.6
April	7 786.5	3 364.5	11 151.1	468.9	655.8	11 806.9	6 234.3	18 041.2	5.7	5.6	65.4
May	7 831.9	3 338.5	11 170.4	453.4	617.9	11 788.3	6 282.3	18 070.6	5.5	5.2	65.2
June	7 819.5	3 409.5	11 228.9	431.2	594.9	11 823.9	6 275.8	18 099.7	5.2	5.0	65.3
July	7 889.1	3 370.7	11 259.8	422.4	586.9	11 846.8	6 284.6	18 131.4	5.1	5.0	65.3
August	7 860.2	3 348.1	11 208.3	397.8	575.4	11 783.7	6 379.7	18 163.4	4.8	4.9	64.9



LABOUR FORCE STATUS (AGED 15 YEARS & OVER)—New South Wales

	TREND					SEASONALLY ADJUSTED					Civilian population aged 15 years and over
	Employed full time	Total employed	Total unemployed	Unemployment rate	Participation rate	Employed full time	Total employed	Total unemployed	Unemployment rate	Participation rate	
	'000	'000	'000	%	%	'000	'000	'000	%	%	
MALES											
August 2007	1 573.7	1 857.4	83.5	4.3	71.1	1 572.1	1 856.6	83.3	4.3	71.0	2 731.8
August 2008	1 605.1	1 887.3	91.6	4.6	71.0	1 600.7	1 873.7	95.0	4.8	70.7	2 785.9
2009											
August	1 573.2	1 884.4	123.7	6.2	70.7	1 573.3	1 882.6	123.7	6.2	70.7	2 839.6
September	1 576.3	1 886.6	122.9	6.1	70.7	1 577.3	1 886.8	112.1	5.6	70.3	2 844.1
October	1 579.3	1 889.0	122.3	6.1	70.6	1 576.2	1 887.4	127.3	6.3	70.7	2 848.2
November	1 583.0	1 892.6	121.7	6.0	70.6	1 579.3	1 887.3	124.7	6.2	70.5	2 852.4
December	1 587.6	1 897.6	120.5	6.0	70.6	1 591.6	1 897.3	124.8	6.2	70.8	2 856.6
2010											
January	1 592.4	1 903.4	118.1	5.8	70.6	1 590.9	1 901.4	117.7	5.8	70.6	2 861.9
February	1 596.2	1 908.6	115.2	5.7	70.6	1 596.8	1 918.2	109.4	5.4	70.7	2 867.2
March	1 598.6	1 912.7	112.4	5.5	70.5	1 600.1	1 911.1	112.9	5.6	70.5	2 872.5
April	1 599.8	1 916.2	110.4	5.4	70.5	1 604.3	1 919.7	112.9	5.6	70.7	2 876.3
May	1 600.7	1 920.0	109.0	5.4	70.4	1 599.0	1 912.8	104.6	5.2	70.0	2 880.2
June	1 601.9	1 924.4	107.7	5.3	70.5	1 597.3	1 921.1	108.9	5.4	70.4	2 884.0
July	1 603.5	1 929.4	106.4	5.2	70.5	1 598.9	1 928.2	113.3	5.5	70.7	2 888.4
August	1 604.9	1 933.7	105.2	5.2	70.5	1 613.5	1 945.5	98.3	4.8	70.6	2 892.9
FEMALES											
August 2007	853.3	1 514.1	82.4	5.2	56.2	855.9	1 510.6	82.6	5.2	56.1	2 839.9
August 2008	887.3	1 553.5	85.9	5.2	56.7	890.2	1 554.2	84.4	5.1	56.7	2 891.4
2009											
August	871.7	1 576.5	99.3	5.9	56.9	864.4	1 570.7	102.2	6.1	56.8	2 946.0
September	867.0	1 576.2	97.4	5.8	56.7	862.0	1 574.2	91.6	5.5	56.5	2 950.6
October	862.8	1 576.4	95.4	5.7	56.6	864.3	1 576.9	99.4	5.9	56.7	2 954.9
November	859.0	1 577.3	93.4	5.6	56.5	865.2	1 579.4	94.6	5.7	56.6	2 959.3
December	856.0	1 578.3	92.4	5.5	56.4	856.2	1 578.2	91.3	5.5	56.3	2 963.7
2010											
January	854.5	1 578.9	91.8	5.5	56.3	860.0	1 581.0	90.1	5.4	56.3	2 968.9
February	854.8	1 579.2	91.4	5.5	56.2	838.0	1 577.3	89.7	5.4	56.1	2 974.1
March	857.7	1 579.9	91.3	5.5	56.1	859.9	1 580.8	90.1	5.4	56.1	2 979.3
April	863.4	1 581.8	91.1	5.4	56.1	868.1	1 581.0	99.7	5.9	56.3	2 983.3
May	870.7	1 585.0	90.7	5.4	56.1	869.6	1 582.2	87.4	5.2	55.9	2 987.2
June	877.9	1 589.0	90.0	5.4	56.1	878.1	1 585.9	85.6	5.1	55.9	2 991.2
July	884.6	1 593.1	89.3	5.3	56.2	882.6	1 596.4	92.7	5.5	56.4	2 995.7
August	891.1	1 597.3	88.7	5.3	56.2	896.7	1 602.7	87.6	5.2	56.3	3 000.2
PERSONS											
August 2007	2 427.0	3 371.5	165.9	4.7	63.5	2 427.9	3 367.2	165.9	4.7	63.4	5 571.7
August 2008	2 492.4	3 440.8	177.5	4.9	63.7	2 490.9	3 427.9	179.3	5.0	63.5	5 677.3
2009											
August	2 444.8	3 460.9	223.0	6.1	63.7	2 437.7	3 453.3	225.9	6.1	63.6	5 785.6
September	2 443.3	3 462.9	220.3	6.0	63.6	2 439.3	3 461.1	203.7	5.6	63.2	5 794.6
October	2 442.0	3 465.4	217.7	5.9	63.5	2 440.4	3 464.3	226.7	6.1	63.6	5 803.2
November	2 442.0	3 469.9	215.2	5.8	63.4	2 444.6	3 466.7	219.3	5.9	63.4	5 811.7
December	2 443.6	3 475.9	212.9	5.8	63.4	2 447.7	3 475.5	216.2	5.9	63.4	5 820.3
2010											
January	2 446.8	3 482.3	209.9	5.7	63.3	2 450.9	3 482.5	207.9	5.6	63.3	5 830.8
February	2 451.0	3 487.8	206.6	5.6	63.3	2 434.8	3 495.5	199.1	5.4	63.3	5 841.3
March	2 456.3	3 492.5	203.6	5.5	63.2	2 460.0	3 491.9	203.0	5.5	63.1	5 851.8
April	2 463.2	3 498.1	201.4	5.4	63.1	2 472.4	3 500.8	212.6	5.7	63.4	5 859.6
May	2 471.4	3 505.0	199.7	5.4	63.1	2 468.6	3 495.0	192.0	5.2	62.8	5 867.4
June	2 479.9	3 513.4	197.8	5.3	63.2	2 475.5	3 507.0	194.4	5.3	63.0	5 875.2
July	2 488.1	3 522.5	195.7	5.3	63.2	2 481.4	3 524.6	206.0	5.5	63.4	5 884.1
August	2 496.0	3 531.0	193.9	5.2	63.2	2 510.2	3 548.2	185.9	5.0	63.4	5 893.1

LABOUR FORCE STATUS (AGED 15 YEARS & OVER)—Victoria

	TREND					SEASONALLY ADJUSTED					Civilian population aged 15 years and over
	Employed full time	Total employed	Total unemployed	Unemployment rate	Participation rate	Employed full time	Total employed	Total unemployed	Unemployment rate	Participation rate	
	'000	'000	'000	%	%	'000	'000	'000	%	%	
MALES											
August 2007	1 226.9	1 454.4	61.1	4.0	72.8	1 216.1	1 453.3	66.3	4.4	73.0	2 083.0
August 2008	1 234.5	1 478.7	61.2	4.0	72.2	1 235.9	1 476.3	58.4	3.8	71.9	2 133.2
2009											
August	1 217.0	1 478.1	100.2	6.4	72.2	1 214.1	1 479.7	105.2	6.6	72.5	2 187.2
September	1 222.0	1 485.9	96.2	6.1	72.2	1 220.4	1 479.9	92.3	5.9	71.7	2 191.7
October	1 227.4	1 495.5	91.1	5.7	72.3	1 223.6	1 497.1	92.1	5.8	72.4	2 195.1
November	1 232.3	1 505.2	86.7	5.4	72.4	1 244.7	1 507.0	87.5	5.5	72.5	2 198.4
December	1 236.4	1 513.4	84.2	5.3	72.5	1 232.5	1 510.0	79.1	5.0	72.2	2 201.8
2010											
January	1 240.5	1 519.1	83.9	5.2	72.6	1 239.0	1 529.8	81.4	5.1	73.0	2 207.8
February	1 244.2	1 522.1	85.0	5.3	72.6	1 242.1	1 522.4	85.2	5.3	72.6	2 213.9
March	1 247.6	1 523.4	86.7	5.4	72.6	1 247.0	1 520.5	90.3	5.6	72.6	2 219.9
April	1 251.0	1 524.7	88.0	5.5	72.5	1 253.5	1 522.6	89.8	5.6	72.5	2 224.0
May	1 254.6	1 527.1	88.5	5.5	72.5	1 257.1	1 524.8	90.4	5.6	72.5	2 228.1
June	1 257.7	1 530.7	88.3	5.5	72.5	1 257.5	1 528.3	84.0	5.2	72.2	2 232.2
July	1 260.4	1 534.8	87.8	5.4	72.6	1 254.2	1 535.3	88.6	5.5	72.6	2 236.7
August	1 262.6	1 539.3	87.3	5.4	72.6	1 267.9	1 547.4	87.1	5.3	72.9	2 241.1
FEMALES											
August 2007	645.7	1 186.6	64.0	5.1	57.8	647.7	1 187.4	65.6	5.2	57.9	2 163.2
August 2008	648.8	1 217.7	63.3	4.9	58.0	652.1	1 221.7	60.2	4.7	58.0	2 209.7
2009											
August	661.8	1 241.9	69.9	5.3	58.0	659.6	1 235.3	73.4	5.6	57.9	2 261.0
September	663.5	1 247.9	70.8	5.4	58.2	665.6	1 244.8	70.1	5.3	58.0	2 265.4
October	665.8	1 253.1	71.8	5.4	58.4	656.4	1 251.6	73.8	5.6	58.4	2 268.9
November	668.6	1 257.1	72.5	5.4	58.5	673.8	1 265.2	69.3	5.2	58.7	2 272.5
December	671.5	1 260.2	72.3	5.4	58.5	675.3	1 260.8	74.3	5.6	58.7	2 276.0
2010											
January	674.0	1 262.3	71.5	5.4	58.4	673.4	1 265.4	74.5	5.6	58.7	2 281.8
February	675.6	1 263.9	70.7	5.3	58.4	670.8	1 254.3	69.6	5.3	57.9	2 287.6
March	676.4	1 265.7	70.3	5.3	58.3	681.2	1 267.8	69.1	5.2	58.3	2 293.3
April	676.5	1 268.6	70.7	5.3	58.3	676.0	1 267.1	67.9	5.1	58.1	2 297.1
May	676.8	1 272.3	71.8	5.3	58.4	675.7	1 276.1	71.1	5.3	58.6	2 300.9
June	677.2	1 276.1	73.5	5.4	58.5	678.8	1 274.6	75.9	5.6	58.6	2 304.7
July	677.5	1 279.5	75.4	5.6	58.7	673.6	1 278.3	74.9	5.5	58.6	2 309.0
August	677.9	1 282.8	77.3	5.7	58.8	680.6	1 285.4	79.4	5.8	59.0	2 313.3
PERSONS											
August 2007	1 872.5	2 641.0	125.1	4.5	65.2	1 863.8	2 640.7	131.9	4.8	65.3	4 246.1
August 2008	1 883.3	2 696.3	124.5	4.4	65.0	1 888.1	2 698.0	118.7	4.2	64.9	4 342.9
2009											
August	1 878.8	2 720.0	170.1	5.9	65.0	1 873.7	2 715.0	178.6	6.2	65.1	4 448.2
September	1 885.6	2 733.8	167.0	5.8	65.1	1 886.0	2 724.7	162.4	5.6	64.8	4 457.1
October	1 893.1	2 748.6	163.0	5.6	65.2	1 880.0	2 748.7	165.9	5.7	65.3	4 464.0
November	1 900.9	2 762.3	159.1	5.4	65.3	1 918.4	2 772.2	156.8	5.4	65.5	4 470.9
December	1 907.9	2 773.6	156.5	5.3	65.4	1 907.8	2 770.8	153.4	5.2	65.3	4 477.8
2010											
January	1 914.5	2 781.4	155.4	5.3	65.4	1 912.4	2 795.3	155.9	5.3	65.7	4 489.6
February	1 919.8	2 786.0	155.7	5.3	65.4	1 912.9	2 776.7	154.8	5.3	65.1	4 501.4
March	1 923.9	2 789.1	157.0	5.3	65.3	1 928.2	2 788.3	159.5	5.4	65.3	4 513.3
April	1 927.6	2 793.2	158.7	5.4	65.3	1 929.5	2 789.7	157.7	5.3	65.2	4 521.2
May	1 931.4	2 799.4	160.3	5.4	65.3	1 932.8	2 800.9	161.5	5.5	65.4	4 529.0
June	1 934.9	2 806.9	161.8	5.5	65.4	1 936.3	2 802.9	159.9	5.4	65.3	4 536.9
July	1 937.9	2 814.2	163.2	5.5	65.5	1 927.8	2 813.5	163.5	5.5	65.5	4 545.7
August	1 940.5	2 822.1	164.6	5.5	65.6	1 948.5	2 832.8	166.4	5.5	65.9	4 554.4

LABOUR FORCE STATUS (AGED 15 YEARS & OVER)—Queensland

	TREND					SEASONALLY ADJUSTED					
	Employed full time	Total employed	Total unemp-loyed	Unemp-loyment rate	Partici-pation rate	Employed full time	Total employed	Total unemp-loyed	Unemp-loyment rate	Partici-pation rate	Civilian population aged 15 years and over
	'000	'000	'000	%	%	'000	'000	'000	%	%	'000
MALES											
August 2007	1 022.1	1 186.8	39.5	3.2	74.0	1 022.5	1 185.8	38.7	3.2	73.9	1 656.8
August 2008	1 050.1	1 213.6	42.0	3.3	73.7	1 051.1	1 212.8	40.5	3.2	73.6	1 703.1
2009											
August	1 037.5	1 215.8	79.1	6.1	74.0	1 040.4	1 219.6	73.4	5.7	73.9	1 749.4
September	1 035.7	1 216.7	79.2	6.1	74.0	1 041.9	1 221.3	80.1	6.2	74.2	1 752.9
October	1 034.0	1 217.4	78.7	6.1	73.8	1 035.5	1 216.8	81.0	6.2	73.9	1 755.8
November	1 033.3	1 217.8	77.9	6.0	73.7	1 030.0	1 214.9	77.4	6.0	73.5	1 758.8
December	1 034.3	1 219.2	76.7	5.9	73.5	1 029.3	1 218.1	78.7	6.1	73.6	1 761.7
2010											
January	1 037.7	1 222.9	75.1	5.8	73.4	1 034.7	1 223.3	70.8	5.5	73.2	1 767.0
February	1 043.8	1 229.9	73.4	5.6	73.6	1 044.5	1 226.3	75.6	5.8	73.5	1 772.3
March	1 051.1	1 238.4	71.8	5.5	73.7	1 054.6	1 235.6	72.2	5.5	73.6	1 777.5
April	1 057.2	1 246.2	70.7	5.4	73.9	1 057.2	1 245.6	69.9	5.3	73.9	1 781.2
May	1 061.1	1 251.8	69.8	5.3	74.0	1 063.5	1 260.9	69.2	5.2	74.5	1 784.9
June	1 063.0	1 255.2	69.2	5.2	74.0	1 065.7	1 263.0	68.3	5.1	74.4	1 788.6
July	1 063.5	1 256.7	68.9	5.2	74.0	1 068.9	1 255.8	69.6	5.3	74.0	1 792.1
August	1 062.8	1 256.7	68.4	5.2	73.9	1 050.7	1 243.4	69.3	5.3	73.1	1 795.6
FEMALES											
August 2007	557.3	986.2	43.0	4.2	60.8	554.7	984.5	43.9	4.3	60.7	1 693.9
August 2008	581.3	1 029.0	42.5	4.0	61.6	584.5	1 040.2	38.1	3.5	62.0	1 739.5
2009											
August	572.6	1 031.9	61.3	5.6	61.2	561.0	1 033.9	59.0	5.4	61.2	1 786.0
September	572.8	1 033.3	64.0	5.8	61.3	573.5	1 031.3	71.6	6.5	61.6	1 789.7
October	574.6	1 036.0	65.1	5.9	61.4	579.0	1 039.7	63.0	5.7	61.5	1 792.9
November	576.4	1 039.4	64.7	5.9	61.5	576.7	1 031.9	67.1	6.1	61.2	1 796.2
December	577.8	1 042.8	63.5	5.7	61.5	578.6	1 049.8	63.1	5.7	61.8	1 799.4
2010											
January	579.3	1 045.9	62.2	5.6	61.4	580.3	1 044.5	59.6	5.4	61.2	1 803.9
February	580.6	1 048.6	61.5	5.5	61.4	583.2	1 048.7	60.1	5.4	61.3	1 808.5
March	581.8	1 050.6	61.8	5.6	61.4	572.2	1 050.8	60.7	5.5	61.3	1 813.0
April	583.0	1 052.0	62.7	5.6	61.4	579.5	1 052.4	64.9	5.8	61.5	1 816.6
May	583.7	1 053.0	63.5	5.7	61.3	598.0	1 052.1	64.9	5.8	61.4	1 820.3
June	583.7	1 054.0	64.0	5.7	61.3	588.2	1 055.8	62.0	5.5	61.3	1 823.9
July	583.2	1 054.8	64.3	5.7	61.2	570.0	1 054.3	66.4	5.9	61.3	1 827.5
August	582.4	1 055.1	64.3	5.7	61.2	584.0	1 054.3	62.3	5.6	61.0	1 831.3
PERSONS											
August 2007	1 579.3	2 172.9	82.5	3.7	67.3	1 577.3	2 170.2	82.6	3.7	67.2	3 350.7
August 2008	1 631.4	2 242.7	84.5	3.6	67.6	1 635.6	2 253.0	78.7	3.4	67.7	3 442.6
2009											
August	1 610.1	2 247.6	140.4	5.9	67.6	1 601.4	2 253.5	132.4	5.5	67.5	3 535.4
September	1 608.5	2 250.1	143.2	6.0	67.6	1 615.5	2 252.6	151.7	6.3	67.9	3 542.6
October	1 608.6	2 253.3	143.9	6.0	67.6	1 614.5	2 256.6	144.0	6.0	67.6	3 548.7
November	1 609.7	2 257.2	142.6	5.9	67.5	1 606.7	2 246.8	144.5	6.0	67.3	3 555.0
December	1 612.1	2 262.0	140.2	5.8	67.4	1 607.9	2 268.0	141.8	5.9	67.7	3 561.1
2010											
January	1 617.0	2 268.9	137.3	5.7	67.4	1 615.0	2 267.8	130.5	5.4	67.2	3 570.9
February	1 624.4	2 278.5	134.9	5.6	67.4	1 627.6	2 275.1	135.7	5.6	67.3	3 580.8
March	1 632.9	2 289.0	133.6	5.5	67.5	1 626.7	2 286.4	132.9	5.5	67.4	3 590.5
April	1 640.2	2 298.2	133.3	5.5	67.6	1 636.7	2 298.0	134.8	5.5	67.6	3 597.8
May	1 644.7	2 304.9	133.3	5.5	67.6	1 661.5	2 312.9	134.2	5.5	67.9	3 605.2
June	1 646.7	2 309.2	133.2	5.5	67.6	1 653.9	2 318.8	130.3	5.3	67.8	3 612.5
July	1 646.7	2 311.5	133.2	5.4	67.5	1 638.9	2 310.1	136.0	5.6	67.6	3 619.6
August	1 645.2	2 311.8	132.7	5.4	67.5	1 634.7	2 297.7	131.6	5.4	67.0	3 626.8

LABOUR FORCE STATUS (AGED 15 YEARS & OVER)—South Australia

	TREND					SEASONALLY ADJUSTED					Civilian population aged 15 years and over
	Employed full time	Total employed	Total unemployed	Unemployment rate	Participation rate	Employed full time	Total employed	Total unemployed	Unemployment rate	Participation rate	
	'000	'000	'000	%	%	'000	'000	'000	%	%	
MALES											
August 2007	347.4	416.7	22.2	5.1	69.2	349.1	419.8	21.1	4.8	69.5	634.4
August 2008	366.1	434.3	21.9	4.8	70.9	367.1	435.1	17.7	3.9	70.4	643.1
2009											
August	344.9	425.4	27.6	6.1	69.4	339.9	421.3	28.1	6.2	68.8	652.8
September	345.6	427.8	27.2	6.0	69.6	353.8	432.7	28.4	6.2	70.5	653.8
October	347.8	430.8	26.3	5.8	69.9	346.7	429.8	25.2	5.5	69.5	654.5
November	350.8	434.0	25.3	5.5	70.1	347.9	432.2	26.1	5.7	69.9	655.2
December	353.5	436.7	24.3	5.3	70.3	354.7	435.2	23.5	5.1	69.9	655.9
2010											
January	355.3	438.2	23.8	5.1	70.3	355.6	443.8	17.9	3.9	70.3	656.9
February	356.4	438.5	23.6	5.1	70.2	359.6	438.6	22.3	4.8	70.1	657.9
March	357.3	437.9	23.8	5.2	70.1	356.9	437.6	24.2	5.2	70.1	658.9
April	357.7	437.0	24.1	5.2	69.9	355.5	435.4	25.1	5.5	69.8	659.6
May	357.9	436.2	24.4	5.3	69.7	357.6	435.2	24.7	5.4	69.6	660.4
June	358.4	435.8	24.7	5.4	69.6	358.2	434.9	24.1	5.2	69.4	661.2
July	358.8	435.7	24.8	5.4	69.6	361.3	437.4	24.5	5.3	69.8	662.1
August	359.1	436.1	25.0	5.4	69.6	358.1	436.7	25.4	5.5	69.7	663.1
FEMALES											
August 2007	182.9	356.0	17.8	4.7	56.4	182.1	357.0	17.7	4.7	56.5	663.0
August 2008	184.1	359.9	19.8	5.2	56.5	182.5	357.7	18.7	5.0	56.0	671.6
2009											
August	183.0	370.7	19.6	5.0	57.3	178.9	366.3	20.4	5.3	56.8	680.7
September	181.8	369.3	19.9	5.1	57.1	184.9	370.7	19.7	5.1	57.3	681.5
October	181.3	368.5	20.0	5.1	56.9	179.5	370.9	19.3	4.9	57.2	682.2
November	181.6	368.2	20.0	5.1	56.8	181.2	368.6	20.4	5.2	56.9	682.9
December	182.3	368.1	20.0	5.2	56.8	181.9	362.5	21.2	5.5	56.1	683.7
2010											
January	183.2	368.0	20.2	5.2	56.7	183.9	371.1	19.5	5.0	57.0	684.6
February	184.0	368.2	20.5	5.3	56.7	184.8	370.8	18.4	4.7	56.8	685.5
March	184.8	368.7	20.9	5.4	56.8	185.2	368.5	21.8	5.6	56.9	686.4
April	185.5	369.8	21.1	5.4	56.9	185.1	365.8	22.7	5.8	56.5	687.1
May	186.2	371.1	21.2	5.4	57.0	185.9	371.7	20.5	5.2	57.0	687.8
June	187.1	372.5	21.1	5.4	57.2	186.1	373.1	21.8	5.5	57.4	688.4
July	188.0	374.0	20.9	5.3	57.3	188.6	374.9	19.6	5.0	57.2	689.2
August	188.8	375.5	20.7	5.2	57.4	190.0	376.7	20.7	5.2	57.6	690.0
PERSONS											
August 2007	530.3	772.8	40.0	4.9	62.6	531.2	776.8	38.8	4.8	62.9	1 297.3
August 2008	550.2	794.2	41.7	5.0	63.6	549.5	792.8	36.4	4.4	63.1	1 314.7
2009											
August	527.9	796.1	47.2	5.6	63.2	518.8	787.6	48.4	5.8	62.7	1 333.5
September	527.4	797.0	47.0	5.6	63.2	538.8	803.3	48.1	5.7	63.8	1 335.3
October	529.2	799.3	46.3	5.5	63.3	526.2	800.7	44.5	5.3	63.2	1 336.7
November	532.4	802.2	45.2	5.3	63.3	529.0	800.7	46.5	5.5	63.3	1 338.1
December	535.7	804.8	44.3	5.2	63.4	536.6	797.7	44.8	5.3	62.9	1 339.5
2010											
January	538.5	806.2	44.0	5.2	63.4	539.5	814.9	37.4	4.4	63.5	1 341.5
February	540.5	806.7	44.2	5.2	63.3	544.4	809.4	40.7	4.8	63.3	1 343.4
March	542.1	806.7	44.7	5.2	63.3	542.0	806.1	46.0	5.4	63.3	1 345.3
April	543.2	806.8	45.2	5.3	63.3	540.7	801.3	47.8	5.6	63.0	1 346.7
May	544.2	807.3	45.6	5.3	63.3	543.5	806.9	45.2	5.3	63.2	1 348.2
June	545.4	808.3	45.7	5.4	63.3	544.3	807.9	45.9	5.4	63.3	1 349.6
July	546.8	809.7	45.8	5.3	63.3	549.9	812.3	44.1	5.1	63.4	1 351.4
August	547.9	811.5	45.7	5.3	63.4	548.1	813.4	46.1	5.4	63.5	1 353.1

	TREND					SEASONALLY ADJUSTED					Civilian population aged 15 years and over
	Employed full time	Total employed	Total unemployed	Unemployment rate	Participation rate	Employed full time	Total employed	Total unemployed	Unemployment rate	Participation rate	
	'000	'000	'000	%	%	'000	'000	'000	%	%	
MALES											
August 2007	544.6	630.0	21.0	3.2	76.4	542.5	628.9	20.2	3.1	76.1	852.7
August 2008	582.7	665.6	17.4	2.6	77.3	585.9	672.8	16.2	2.3	78.0	883.5
2009											
August	553.8	660.9	37.9	5.4	76.5	551.9	662.4	37.4	5.3	76.6	913.1
September	555.0	662.4	36.7	5.3	76.4	555.0	664.1	38.0	5.4	76.7	915.3
October	557.6	664.7	35.4	5.1	76.4	558.6	666.3	34.3	4.9	76.4	916.9
November	560.9	667.3	34.1	4.9	76.3	564.1	666.2	33.1	4.7	76.1	918.5
December	564.1	669.8	33.3	4.7	76.3	563.6	670.5	31.8	4.5	76.3	920.2
2010											
January	567.1	672.2	32.8	4.6	76.3	566.9	672.6	32.3	4.6	76.3	924.1
February	570.1	675.1	32.2	4.5	76.2	570.2	674.4	34.5	4.9	76.4	928.1
March	573.5	678.7	31.3	4.4	76.3	571.0	677.6	33.4	4.7	76.3	932.0
April	577.4	682.6	30.1	4.2	76.3	577.0	681.2	29.0	4.1	76.0	934.1
May	581.3	686.3	28.8	4.0	76.4	584.3	688.4	27.2	3.8	76.4	936.1
June	585.0	689.7	27.6	3.9	76.4	585.0	692.0	26.7	3.7	76.6	938.2
July	588.3	692.6	26.8	3.7	76.5	587.4	692.1	27.5	3.8	76.5	940.3
August	590.9	694.9	26.1	3.6	76.6	592.3	694.2	27.1	3.8	76.5	942.4
FEMALES											
August 2007	262.6	497.3	18.9	3.7	61.0	264.8	501.3	17.0	3.3	61.2	846.8
August 2008	279.9	515.8	17.1	3.2	61.1	279.1	515.4	17.0	3.2	61.0	872.2
2009											
August	269.3	511.2	30.3	5.6	60.3	269.5	513.5	29.4	5.4	60.5	897.8
September	269.0	510.4	30.7	5.7	60.2	272.6	504.5	33.2	6.2	59.8	899.8
October	269.4	511.3	30.9	5.7	60.2	271.0	511.2	28.3	5.2	59.9	901.4
November	270.0	513.3	30.8	5.7	60.2	270.1	514.6	31.7	5.8	60.5	903.0
December	270.4	515.4	30.6	5.6	60.3	269.8	516.5	31.9	5.8	60.6	904.6
2010											
January	270.6	516.9	30.0	5.5	60.3	268.7	516.7	29.5	5.4	60.2	907.5
February	271.3	518.1	29.1	5.3	60.1	271.1	521.8	28.3	5.1	60.4	910.4
March	272.5	519.4	28.1	5.1	60.0	273.6	521.9	28.6	5.2	60.3	913.4
April	273.8	521.1	27.4	5.0	60.0	274.0	512.5	29.4	5.4	59.2	914.9
May	274.9	523.6	27.1	4.9	60.1	275.1	518.8	24.6	4.5	59.3	916.5
June	275.9	526.3	27.2	4.9	60.3	276.7	535.0	24.8	4.4	61.0	918.1
July	276.6	528.9	27.6	5.0	60.5	274.7	531.4	29.0	5.2	60.9	920.0
August	277.2	530.9	28.2	5.0	60.7	278.4	528.9	30.6	5.5	60.7	922.0
PERSONS											
August 2007	807.3	1 127.3	39.9	3.4	68.7	807.3	1 130.2	37.2	3.2	68.7	1 699.6
August 2008	862.6	1 181.4	34.6	2.8	69.3	865.0	1 188.2	33.2	2.7	69.6	1 755.7
2009											
August	823.1	1 172.1	68.2	5.5	68.5	821.3	1 175.9	66.8	5.4	68.6	1 810.9
September	824.0	1 172.8	67.5	5.4	68.4	827.6	1 168.6	71.2	5.7	68.3	1 815.1
October	827.1	1 175.9	66.2	5.3	68.3	829.6	1 177.5	62.6	5.0	68.2	1 818.3
November	830.9	1 180.6	65.0	5.2	68.4	834.2	1 180.8	64.8	5.2	68.4	1 821.5
December	834.5	1 185.2	63.9	5.1	68.4	833.4	1 187.0	63.7	5.1	68.5	1 824.8
2010											
January	837.8	1 189.2	62.8	5.0	68.3	835.7	1 189.3	61.8	4.9	68.3	1 831.6
February	841.4	1 193.3	61.3	4.9	68.3	841.3	1 196.2	62.7	5.0	68.5	1 838.5
March	846.1	1 198.1	59.4	4.7	68.2	844.7	1 199.5	62.0	4.9	68.4	1 845.4
April	851.2	1 203.7	57.5	4.6	68.2	851.0	1 193.7	58.4	4.7	67.7	1 849.0
May	856.3	1 209.9	55.9	4.4	68.3	859.4	1 207.2	51.8	4.1	68.0	1 852.6
June	860.9	1 216.0	54.9	4.3	68.4	861.7	1 227.0	51.5	4.0	68.9	1 856.3
July	864.9	1 221.5	54.4	4.3	68.6	862.1	1 223.4	56.5	4.4	68.8	1 860.4
August	868.1	1 225.8	54.3	4.2	68.7	870.7	1 223.1	57.6	4.5	68.7	1 864.5

LABOUR FORCE STATUS (AGED 15 YEARS & OVER)—Tasmania

	TREND					SEASONALLY ADJUSTED					Civilian population aged 15 years and over
	Employed full time	Total employed	Total unemployed	Unemployment rate	Participation rate	Employed full time	Total employed	Total unemployed	Unemployment rate	Participation rate	
	'000	'000	'000	%	%	'000	'000	'000	%	%	
MALES											
August 2007	104.6	125.0	6.2	4.7	67.8	104.3	125.3	6.8	5.2	68.2	193.5
August 2008	111.4	133.2	4.4	3.2	70.3	113.5	136.1	4.4	3.1	71.7	195.9
2009											
August	103.0	123.6	6.8	5.2	65.8	102.9	122.8	7.1	5.5	65.5	198.3
September	102.7	123.3	7.1	5.4	65.7	103.1	123.9	7.6	5.8	66.3	198.5
October	102.4	123.1	7.4	5.7	65.7	101.8	122.7	8.1	6.2	65.9	198.7
November	102.1	123.2	7.7	5.9	65.8	102.7	122.9	7.3	5.6	65.5	198.8
December	101.9	123.4	7.8	6.0	65.9	101.2	123.5	7.7	5.9	65.9	199.0
2010											
January	101.9	123.7	7.9	6.0	66.0	102.0	124.1	7.4	5.6	65.9	199.3
February	101.8	123.8	8.2	6.2	66.1	101.6	124.1	8.8	6.6	66.5	199.7
March	101.5	123.9	8.5	6.4	66.3	101.9	123.8	8.4	6.4	66.1	200.0
April	101.1	123.9	8.9	6.7	66.4	101.9	124.0	8.6	6.5	66.3	200.1
May	100.6	124.0	9.1	6.8	66.4	100.9	123.9	8.7	6.6	66.2	200.3
June	100.2	124.1	9.2	6.9	66.5	98.8	123.9	10.4	7.7	67.0	200.4
July	99.8	124.2	9.3	6.9	66.5	99.2	123.5	9.6	7.2	66.4	200.6
August	99.5	124.4	9.2	6.9	66.6	100.4	125.5	8.0	6.0	66.5	200.8
FEMALES											
August 2007	51.2	103.1	6.3	5.7	53.8	51.4	102.8	6.2	5.7	53.6	203.4
August 2008	54.8	107.3	5.7	5.1	55.0	55.5	107.5	5.6	5.0	55.0	205.5
2009											
August	53.8	109.6	5.4	4.7	55.3	52.5	108.5	5.5	4.8	54.8	207.8
September	53.6	109.5	5.3	4.6	55.2	53.2	109.9	5.8	5.0	55.6	208.0
October	53.3	109.2	5.4	4.7	55.1	53.4	109.0	5.3	4.7	54.9	208.2
November	52.9	109.1	5.7	4.9	55.1	54.7	108.6	5.7	5.0	54.9	208.4
December	52.7	109.4	5.9	5.1	55.3	51.7	109.1	5.4	4.7	54.9	208.6
2010											
January	52.6	110.1	6.1	5.2	55.7	52.4	109.4	5.9	5.1	55.2	208.8
February	52.6	111.0	6.3	5.4	56.1	52.0	111.6	7.6	6.4	57.0	209.1
March	52.8	111.9	6.5	5.4	56.5	53.1	112.4	5.8	4.9	56.4	209.3
April	53.2	112.5	6.6	5.5	56.9	53.6	112.7	6.6	5.5	57.0	209.4
May	53.6	113.0	6.7	5.6	57.1	53.4	112.9	6.7	5.6	57.0	209.6
June	53.9	113.2	6.8	5.6	57.2	54.3	113.6	6.6	5.5	57.3	209.7
July	54.1	113.4	6.9	5.7	57.3	54.2	113.0	7.0	5.8	57.2	209.9
August	54.3	113.4	7.0	5.8	57.4	53.9	113.3	7.3	6.0	57.4	210.1
PERSONS											
August 2007	155.9	228.1	12.4	5.2	60.6	155.7	228.1	13.0	5.4	60.8	396.9
August 2008	166.2	240.5	10.1	4.0	62.4	169.0	243.6	10.0	4.0	63.2	401.4
2009											
August	156.7	233.2	12.2	5.0	60.4	155.4	231.2	12.6	5.2	60.0	406.1
September	156.3	232.8	12.4	5.1	60.3	156.3	233.8	13.4	5.4	60.8	406.5
October	155.7	232.3	12.8	5.2	60.3	155.2	231.8	13.4	5.5	60.3	406.8
November	155.1	232.3	13.3	5.4	60.3	157.4	231.5	13.1	5.3	60.1	407.2
December	154.7	232.8	13.7	5.6	60.5	152.8	232.6	13.1	5.3	60.3	407.5
2010											
January	154.5	233.8	14.0	5.7	60.7	154.4	233.5	13.2	5.4	60.5	408.1
February	154.4	234.9	14.5	5.8	61.0	153.6	235.7	16.4	6.5	61.7	408.7
March	154.4	235.8	15.0	6.0	61.3	155.0	236.2	14.2	5.7	61.2	409.3
April	154.3	236.5	15.4	6.1	61.5	155.5	236.8	15.2	6.0	61.5	409.6
May	154.3	236.9	15.8	6.2	61.7	154.3	236.7	15.4	6.1	61.5	409.8
June	154.1	237.3	16.0	6.3	61.8	153.1	237.5	17.0	6.7	62.0	410.1
July	153.9	237.6	16.2	6.4	61.8	153.4	236.6	16.6	6.6	61.7	410.4
August	153.8	237.9	16.1	6.4	61.9	154.3	238.8	15.3	6.0	61.9	410.8

	TREND					<i>Civilian population aged 15 years and over</i>
	<i>Employed full time</i>	<i>Total employed</i>	<i>Total unemployed</i>	<i>Unemployment rate</i>	<i>Participation rate</i>	
	'000	'000	'000	%	%	
MALES						
August 2007	51.8	59.4	2.9	4.6	77.7	80.2
August 2008	52.1	60.5	1.8	2.9	75.4	82.7
2009						
August	57.3	64.9	2.9	4.3	79.9	84.9
September	57.2	65.0	2.7	4.0	79.7	85.0
October	57.3	65.1	2.5	3.7	79.5	85.1
November	57.4	65.3	2.3	3.4	79.3	85.2
December	57.6	65.4	2.2	3.2	79.1	85.4
2010						
January	57.7	65.4	2.1	3.1	78.8	85.6
February	57.7	65.3	2.0	3.0	78.4	85.9
March	57.7	65.3	2.0	2.9	78.1	86.1
April	57.8	65.5	1.9	2.9	78.0	86.4
May	58.0	65.8	1.9	2.9	78.2	86.7
June	58.2	66.1	2.0	2.9	78.4	86.9
July	58.5	66.5	2.0	2.9	78.7	87.1
August	58.7	66.8	2.1	3.0	79.0	87.2
FEMALES						
August 2007	36.7	50.8	2.5	4.7	68.2	78.2
August 2008	36.3	53.7	1.8	3.2	68.8	80.5
2009						
August	38.9	54.4	2.1	3.6	68.2	82.8
September	38.8	54.5	2.0	3.6	68.1	83.0
October	39.1	54.9	2.0	3.5	68.5	83.2
November	39.4	55.4	2.0	3.5	68.9	83.3
December	39.6	55.6	2.0	3.4	69.0	83.4
2010						
January	39.3	55.4	2.0	3.4	68.7	83.6
February	38.8	55.0	1.9	3.4	67.9	83.8
March	38.4	54.6	1.9	3.3	67.2	83.9
April	38.4	54.5	1.7	3.1	66.8	84.2
May	38.8	54.8	1.7	3.0	66.9	84.4
June	39.4	55.3	1.6	2.9	67.3	84.6
July	40.1	55.9	1.6	2.8	67.8	84.8
August	40.8	56.5	1.7	2.9	68.5	85.0
PERSONS						
August 2007	88.5	110.2	5.4	4.7	73.0	158.4
August 2008	88.4	114.2	3.6	3.0	72.1	163.2
2009						
August	96.2	119.4	5.0	4.0	74.1	167.7
September	96.0	119.5	4.7	3.8	74.0	168.0
October	96.3	120.0	4.5	3.6	74.0	168.3
November	96.9	120.6	4.3	3.4	74.1	168.5
December	97.2	121.0	4.2	3.3	74.1	168.8
2010						
January	97.0	120.8	4.1	3.3	73.8	169.2
February	96.5	120.3	4.0	3.2	73.2	169.6
March	96.1	119.9	3.8	3.1	72.7	170.0
April	96.1	120.0	3.7	3.0	72.5	170.5
May	96.7	120.6	3.6	2.9	72.6	171.0
June	97.6	121.4	3.6	2.9	72.9	171.6
July	98.6	122.4	3.6	2.9	73.3	171.9
August	99.5	123.3	3.8	3.0	73.8	172.2

	TREND					<i>Civilian population aged 15 years and over</i>
	<i>Employed full time</i>	<i>Total employed</i>	<i>Total unemployed</i>	<i>Unemployment rate</i>	<i>Participation rate</i>	
	'000	'000	'000	%	%	
MALES						
August 2007	87.1	102.4	2.8	2.6	79.0	133.2
August 2008	87.1	102.7	3.4	3.2	78.2	135.7
2009						
August	86.0	101.5	4.4	4.1	76.6	138.1
September	86.2	101.7	4.4	4.2	76.7	138.4
October	86.6	102.2	4.5	4.2	77.0	138.6
November	87.0	102.8	4.6	4.3	77.3	138.8
December	87.4	103.3	4.6	4.3	77.6	139.0
2010						
January	87.6	103.8	4.6	4.2	77.7	139.4
February	87.7	104.0	4.5	4.1	77.7	139.8
March	87.8	104.1	4.3	4.0	77.4	140.1
April	88.0	104.1	4.1	3.8	77.1	140.3
May	88.3	104.0	3.8	3.5	76.7	140.5
June	88.6	104.1	3.5	3.3	76.4	140.8
July	88.8	104.1	3.2	3.0	76.2	141.0
August	89.0	104.2	2.9	2.8	75.9	141.1
FEMALES						
August 2007	60.2	92.1	2.6	2.8	67.6	140.2
August 2008	61.5	95.6	2.2	2.3	68.7	142.4
2009						
August	61.9	94.9	3.0	3.1	67.7	144.8
September	62.3	95.1	3.0	3.1	67.7	144.9
October	62.6	95.4	3.1	3.1	67.9	145.1
November	62.7	95.9	3.1	3.2	68.1	145.3
December	62.7	96.5	3.1	3.1	68.5	145.5
2010						
January	62.5	97.3	3.0	3.0	68.8	145.8
February	62.4	98.1	2.9	2.9	69.2	146.1
March	62.3	98.8	2.9	2.9	69.5	146.3
April	62.3	99.0	3.0	2.9	69.6	146.5
May	62.3	99.0	3.1	3.1	69.6	146.7
June	62.3	98.8	3.3	3.2	69.6	146.8
July	62.1	98.7	3.5	3.4	69.5	147.0
August	62.0	98.4	3.6	3.5	69.3	147.2
PERSONS						
August 2007	147.3	194.5	5.4	2.7	73.1	273.3
August 2008	148.6	198.3	5.6	2.8	73.3	278.1
2009						
August	147.9	196.4	7.4	3.6	72.0	282.9
September	148.5	196.9	7.5	3.7	72.1	283.3
October	149.2	197.6	7.6	3.7	72.3	283.7
November	149.7	198.7	7.7	3.7	72.6	284.1
December	150.0	199.9	7.7	3.7	72.9	284.6
2010						
January	150.1	201.1	7.6	3.7	73.2	285.2
February	150.1	202.2	7.4	3.5	73.3	285.8
March	150.1	202.8	7.2	3.4	73.4	286.5
April	150.3	203.1	7.1	3.4	73.3	286.8
May	150.6	203.0	6.9	3.3	73.1	287.2
June	150.9	202.9	6.8	3.2	72.9	287.6
July	151.0	202.8	6.7	3.2	72.7	288.0
August	151.0	202.6	6.5	3.1	72.5	288.3



Original—August 2010

	EMPLOYED			UNEMPLOYED			UNEMPLOYMENT RATE			Participation rate	
	Full time	Part time	Total	Looking for f/t work	Total	Labour force	Not in labour force	Civilian population aged 15 years and over	Looking for f/t work		Total
	'000	'000	'000	'000	'000	'000	'000	'000	%		%
MALES											
New South Wales	1 603.6	328.1	1 931.7	69.0	89.7	2 021.4	871.5	2 892.9	4.1	4.4	69.9
Victoria	1 261.8	275.8	1 537.6	64.5	83.4	1 621.0	620.2	2 241.1	4.9	5.1	72.3
Queensland	1 051.8	184.9	1 236.7	51.8	60.7	1 297.4	498.2	1 795.6	4.7	4.7	72.3
South Australia	356.7	78.5	435.2	18.2	24.8	460.0	203.1	663.1	4.9	5.4	69.4
Western Australia	588.1	102.3	690.5	20.9	25.5	715.9	226.5	942.4	3.4	3.6	76.0
Tasmania	99.3	25.0	124.3	6.4	7.9	132.2	68.6	200.8	6.1	6.0	65.8
Northern Territory	59.6	7.6	67.2	1.7	2.1	69.3	17.9	87.2	2.8	3.0	79.4
Australian Capital Territory	88.2	16.5	104.7	*1.2	2.4	107.0	34.1	141.1	*1.4	2.2	75.8
<b>Australia</b>	<b>5 109.1</b>	<b>1 018.7</b>	<b>6 127.8</b>	<b>233.8</b>	<b>296.4</b>	<b>6 424.2</b>	<b>2 540.1</b>	<b>8 964.3</b>	<b>4.4</b>	<b>4.6</b>	<b>71.7</b>
FEMALES											
New South Wales	881.9	704.7	1 586.6	51.3	84.0	1 670.6	1 329.7	3 000.2	5.5	5.0	55.7
Victoria	670.0	603.6	1 273.6	43.5	76.4	1 349.9	963.4	2 313.3	6.1	5.7	58.4
Queensland	578.1	472.7	1 050.9	35.2	58.1	1 109.0	722.2	1 831.3	5.7	5.2	60.6
South Australia	189.4	184.0	373.4	11.2	19.2	392.6	297.4	690.0	5.6	4.9	56.9
Western Australia	277.1	250.8	527.9	16.3	29.3	557.2	364.8	922.0	5.6	5.3	60.4
Tasmania	53.5	58.1	111.6	3.8	7.3	118.9	91.1	210.1	6.6	6.2	56.6
Northern Territory	41.1	16.4	57.6	*1.2	1.5	59.0	26.0	85.0	*2.8	2.5	69.4
Australian Capital Territory	60.0	39.0	99.0	*1.5	3.1	102.2	45.0	147.2	*2.5	3.1	69.4
<b>Australia</b>	<b>2 751.1</b>	<b>2 329.4</b>	<b>5 080.5</b>	<b>164.0</b>	<b>279.0</b>	<b>5 359.5</b>	<b>3 839.6</b>	<b>9 199.1</b>	<b>5.6</b>	<b>5.2</b>	<b>58.3</b>
PERSONS											
New South Wales	2 485.5	1 032.8	3 518.2	120.3	173.8	3 692.0	2 201.2	5 893.1	4.6	4.7	62.6
Victoria	1 931.8	879.4	2 811.2	108.0	159.7	2 970.9	1 583.5	4 554.4	5.3	5.4	65.2
Queensland	1 629.9	657.7	2 287.6	86.9	118.8	2 406.4	1 220.4	3 626.8	5.1	4.9	66.4
South Australia	546.1	262.5	808.6	29.5	44.0	852.6	500.5	1 353.1	5.1	5.2	63.0
Western Australia	865.2	353.2	1 218.4	37.2	54.8	1 273.2	591.3	1 864.5	4.1	4.3	68.3
Tasmania	152.7	83.1	235.9	10.2	15.2	251.1	159.7	410.8	6.3	6.1	61.1
Northern Territory	100.7	24.0	124.7	2.9	3.6	128.3	43.9	172.2	2.8	2.8	74.5
Australian Capital Territory	148.2	55.5	203.7	2.7	5.5	209.2	79.1	288.3	1.8	2.6	72.6
<b>Australia</b>	<b>7 860.2</b>	<b>3 348.1</b>	<b>11 208.3</b>	<b>397.8</b>	<b>575.4</b>	<b>11 783.7</b>	<b>6 379.7</b>	<b>18 163.4</b>	<b>4.8</b>	<b>4.9</b>	<b>64.9</b>

\* estimate is subject to sampling variability too high for most practical purposes

	EMPLOYED		UNEMPLOYED		UNEMPLOYMENT RATE		Participation rate	Employment to population ratio	Unemployment to population ratio – looking for full-time work
	Full time	Total	Looking for f/t work	Total	Looking for f/t work	Total			
	'000	'000	'000	'000	%	%			
MALES									
August 2007	167.0	369.6	32.6	62.0	16.3	14.4	58.0	49.7	4.4
August 2008	179.6	387.7	28.6	56.3	13.7	12.7	58.4	51.0	3.8
2009									
August	137.1	348.5	41.9	77.7	23.4	18.2	55.5	45.4	5.5
September	136.9	349.2	41.5	76.7	23.2	18.0	55.5	45.5	5.4
October	136.7	349.7	41.1	75.7	23.1	17.8	55.4	45.6	5.4
November	136.5	349.5	40.7	75.3	23.0	17.7	55.3	45.5	5.3
December	136.3	348.6	40.7	75.4	23.0	17.8	55.2	45.4	5.3
2010									
January	136.3	347.2	40.8	75.7	23.0	17.9	55.0	45.2	5.3
February	136.9	346.2	41.0	76.0	23.0	18.0	54.9	45.0	5.3
March	138.2	346.2	41.2	76.2	23.0	18.0	54.8	44.9	5.3
April	139.7	346.8	41.6	76.4	22.9	18.1	54.9	45.0	5.4
May	140.9	347.3	42.0	76.6	22.9	18.1	54.9	45.0	5.4
June	141.5	347.5	42.0	76.8	22.9	18.1	55.0	45.0	5.4
July	141.9	347.4	41.8	76.9	22.8	18.1	55.0	45.0	5.4
August	141.5	347.4	41.6	77.0	22.7	18.1	55.0	45.0	5.4
FEMALES									
August 2007	88.5	371.7	22.5	56.4	20.3	13.2	60.8	52.7	3.2
August 2008	83.9	377.1	23.9	54.0	22.2	12.5	60.0	52.5	3.3
2009									
August	80.0	356.2	30.2	64.0	27.4	15.2	57.7	48.9	4.1
September	79.9	358.1	30.0	63.2	27.3	15.0	57.8	49.2	4.1
October	80.5	360.3	29.7	62.6	26.9	14.8	58.0	49.4	4.1
November	81.0	361.9	29.2	62.2	26.5	14.7	58.2	49.6	4.0
December	80.9	363.0	28.6	62.3	26.1	14.6	58.3	49.7	3.9
2010									
January	80.3	363.3	27.9	62.7	25.8	14.7	58.3	49.7	3.8
February	79.2	363.0	27.3	63.4	25.6	14.9	58.3	49.6	3.7
March	77.8	361.7	27.1	64.7	25.8	15.2	58.2	49.4	3.7
April	76.7	359.6	27.3	66.4	26.3	15.6	58.1	49.1	3.7
May	76.1	357.0	27.8	68.5	26.8	16.1	58.0	48.7	3.8
June	75.6	354.1	28.3	70.4	27.2	16.6	57.9	48.3	3.9
July	75.3	351.3	28.7	72.2	27.6	17.1	57.7	47.9	3.9
August	75.2	348.7	29.1	73.4	27.9	17.4	57.5	47.5	4.0
PERSONS									
August 2007	255.5	741.3	55.1	118.5	17.7	13.8	59.3	51.2	3.8
August 2008	263.5	764.8	52.5	110.3	16.6	12.6	59.2	51.7	3.6
2009									
August	217.1	704.7	72.0	141.7	24.9	16.7	56.6	47.1	4.8
September	216.8	707.4	71.5	139.8	24.8	16.5	56.6	47.3	4.8
October	217.2	709.9	70.7	138.3	24.5	16.3	56.7	47.4	4.7
November	217.5	711.4	70.0	137.5	24.3	16.2	56.7	47.5	4.7
December	217.2	711.6	69.3	137.6	24.2	16.2	56.7	47.5	4.6
2010									
January	216.6	710.6	68.7	138.4	24.1	16.3	56.6	47.4	4.6
February	216.1	709.2	68.3	139.5	24.0	16.4	56.5	47.2	4.5
March	216.1	707.9	68.3	140.9	24.0	16.6	56.5	47.1	4.5
April	216.5	706.4	69.0	142.8	24.2	16.8	56.5	47.0	4.6
May	216.9	704.3	69.8	145.1	24.3	17.1	56.4	46.8	4.6
June	217.1	701.5	70.3	147.2	24.4	17.3	56.4	46.6	4.7
July	217.2	698.7	70.6	149.2	24.5	17.6	56.3	46.4	4.7
August	216.7	696.1	70.7	150.3	24.6	17.8	56.2	46.3	4.7

	EMPLOYED		UNEMPLOYED		UNEMPLOYMENT RATE		Participation rate	Employment to population ratio	Unemployment to population ratio – looking for full-time work
	Full time	Total	Looking for f/t work	Total	Looking for f/t work	Total			
	'000	'000	'000	'000	%	%			
MALES									
August 2007	170.1	370.8	33.6	69.5	16.5	15.8	59.2	49.8	4.5
August 2008	188.6	387.3	29.3	53.5	13.4	12.1	58.0	50.9	3.9
2009									
August	136.2	349.0	35.9	75.4	20.9	17.8	55.3	45.4	4.7
September	139.5	349.7	41.1	75.2	22.8	17.7	55.3	45.5	5.4
October	137.9	356.8	39.5	72.7	22.3	16.9	56.0	46.5	5.1
November	138.5	349.9	46.1	78.4	25.0	18.3	55.8	45.6	6.0
December	138.7	346.1	40.8	76.7	22.7	18.1	55.2	45.2	5.3
2010									
January	127.9	346.9	39.3	74.1	23.5	17.6	54.8	45.1	5.1
February	138.0	344.4	36.2	73.0	20.8	17.5	54.2	44.7	4.7
March	139.8	342.9	44.4	80.5	24.1	19.0	54.8	44.4	5.8
April	142.6	354.7	43.5	76.6	23.4	17.8	55.9	46.0	5.6
May	138.8	341.3	41.8	74.2	23.1	17.9	53.9	44.3	5.4
June	142.6	351.7	40.7	77.1	22.2	18.0	55.6	45.6	5.3
July	141.7	345.8	42.7	78.2	23.2	18.4	55.0	44.8	5.5
August	140.6	346.5	40.4	76.3	22.3	18.0	54.8	44.9	5.2
FEMALES									
August 2007	90.5	370.8	22.5	56.7	19.9	13.3	60.7	52.6	3.2
August 2008	81.0	375.9	24.6	45.2	23.3	10.7	58.6	52.3	3.4
2009									
August	80.6	356.8	26.9	62.5	25.1	14.9	57.6	49.0	3.7
September	74.5	356.0	30.8	63.3	29.3	15.1	57.5	48.8	4.2
October	82.3	363.0	31.2	60.0	27.5	14.2	58.0	49.8	4.3
November	82.4	361.7	31.2	66.1	27.5	15.5	58.7	49.6	4.3
December	81.9	365.2	26.4	63.6	24.4	14.8	58.9	50.1	3.6
2010									
January	81.0	360.8	26.9	57.4	24.9	13.7	57.3	49.4	3.7
February	79.7	362.3	28.4	66.6	26.3	15.5	58.6	49.5	3.9
March	75.5	364.0	26.8	62.9	26.2	14.7	58.2	49.6	3.7
April	76.0	359.1	27.2	67.1	26.3	15.7	58.1	49.0	3.7
May	77.8	359.2	26.9	69.3	25.7	16.2	58.4	49.0	3.7
June	74.8	353.8	28.7	68.3	27.7	16.2	57.6	48.3	3.9
July	75.2	348.8	29.3	74.4	28.1	17.6	57.7	47.6	4.0
August	75.6	347.5	29.4	73.9	28.0	17.5	57.4	47.3	4.0
PERSONS									
August 2007	260.6	741.6	56.1	126.3	17.7	14.5	59.9	51.2	3.9
August 2008	269.6	763.2	53.9	98.7	16.7	11.4	58.3	51.6	3.6
2009									
August	216.8	705.8	62.9	137.9	22.5	16.3	56.4	47.2	4.2
September	214.0	705.7	72.0	138.6	25.2	16.4	56.4	47.1	4.8
October	220.2	719.9	70.7	132.8	24.3	15.6	57.0	48.1	4.7
November	220.9	711.6	77.3	144.5	25.9	16.9	57.2	47.6	5.2
December	220.5	711.4	67.2	140.3	23.4	16.5	57.0	47.6	4.5
2010									
January	208.9	707.6	66.2	131.5	24.1	15.7	56.0	47.2	4.4
February	217.6	706.7	64.6	139.5	22.9	16.5	56.3	47.0	4.3
March	215.3	706.9	71.2	143.5	24.9	16.9	56.5	47.0	4.7
April	218.6	713.8	70.7	143.7	24.4	16.8	57.0	47.4	4.7
May	216.6	700.5	68.7	143.4	24.1	17.0	56.1	46.6	4.6
June	217.4	705.5	69.3	145.3	24.2	17.1	56.6	46.9	4.6
July	216.9	694.6	72.0	152.6	24.9	18.0	56.3	46.2	4.8
August	216.2	693.9	69.8	150.2	24.4	17.8	56.1	46.1	4.6

	EMPLOYED			UNEMPLOYED		Labour force	Not in labour force	Civilian population aged 15–19 years	UNEMPLOYMENT RATE		Participation rate	Unemployment to population ratio – looking for full-time work
	Full time	Part time	Total	Looking for f/t work	Total				Looking for f/t work	Total		
	'000	'000	'000	'000	'000				'000	'000		
NOT ATTENDING FULL-TIME EDUCATION												
<b>Males</b>												
August 2007	153.8	36.3	190.1	24.9	27.8	217.9	26.6	244.5	13.9	12.8	89.1	10.2
August 2008	166.6	26.9	193.5	19.8	19.8	213.3	24.0	237.3	10.6	9.3	89.9	8.3
August 2009	120.1	43.6	163.7	24.8	27.4	191.1	33.2	224.3	17.1	14.4	85.2	11.1
August 2010	126.1	45.8	171.9	28.6	30.5	202.3	28.4	230.8	18.5	15.1	87.7	12.4
<b>Females</b>												
August 2007	77.6	44.6	122.2	15.5	18.5	140.7	27.2	167.9	16.6	13.1	83.8	9.2
August 2008	71.7	59.0	130.7	19.8	20.4	151.2	32.6	183.8	21.7	13.5	82.3	10.8
August 2009	69.5	56.9	126.3	21.0	25.2	151.5	45.5	197.0	23.2	16.6	76.9	10.7
August 2010	63.3	50.5	113.8	23.9	27.0	140.8	30.6	171.4	27.4	19.2	82.1	13.9
<b>Persons</b>												
August 2007	231.4	80.9	312.3	40.4	46.3	358.6	53.8	412.4	14.9	12.9	87.0	9.8
August 2008	238.3	85.9	324.2	39.6	40.2	364.4	56.6	421.1	14.3	11.0	86.5	9.4
August 2009	189.5	100.5	290.0	45.8	52.6	342.6	78.7	421.3	19.5	15.4	81.3	10.9
August 2010	189.3	96.3	285.6	52.4	57.5	343.1	59.1	402.2	21.7	16.8	85.3	13.0
ATTENDING FULL-TIME EDUCATION												
<b>Males</b>												
August 2007	*3.8	159.3	163.1	*4.0	31.3	194.4	305.4	499.9	*51.2	16.1	38.9	*0.8
August 2008	8.1	166.9	175.0	*5.3	25.1	200.1	322.8	522.9	*39.4	12.5	38.3	*1.0
August 2009	*6.1	162.1	168.1	*5.7	35.3	203.4	340.3	543.6	*48.6	17.3	37.4	*1.1
August 2010	*4.1	153.3	157.4	*5.7	32.6	190.0	350.8	540.8	*58.1	17.2	35.1	*1.1
<b>Females</b>												
August 2007	6.5	227.0	233.5	5.0	35.5	269.0	268.0	537.1	43.8	13.2	50.1	0.9
August 2008	*3.2	226.0	229.2	*2.7	22.6	251.8	283.2	534.9	*45.8	9.0	47.1	*0.5
August 2009	*4.5	209.9	214.5	*3.6	34.1	248.6	282.9	531.5	*44.0	13.7	46.8	*0.7
August 2010	*5.8	211.8	217.6	*2.8	42.8	260.4	302.0	562.5	*32.3	16.5	46.3	*0.5
<b>Persons</b>												
August 2007	10.2	386.3	396.6	9.0	66.9	463.5	573.5	1 036.9	46.8	14.4	44.7	0.9
August 2008	11.3	392.9	404.2	7.9	47.7	451.9	606.0	1 057.8	41.3	10.5	42.7	0.7
August 2009	10.6	372.0	382.6	9.3	69.4	452.0	623.1	1 075.1	46.7	15.3	42.0	0.9
August 2010	9.9	365.1	375.0	8.5	75.5	450.4	652.9	1 103.3	46.1	16.8	40.8	0.8
TOTAL												
<b>Males</b>												
August 2007	157.6	195.6	353.2	28.9	59.1	412.3	332.0	744.4	15.5	14.3	55.4	3.9
August 2008	174.7	193.8	368.5	25.0	44.9	413.4	346.8	760.2	12.5	10.9	54.4	3.3
August 2009	126.1	205.7	331.8	30.5	62.7	394.5	373.5	767.9	19.5	15.9	51.4	4.0
August 2010	130.2	199.1	329.3	34.3	63.1	392.4	379.3	771.6	20.8	16.1	50.8	4.4
<b>Females</b>												
August 2007	84.0	271.7	355.7	20.5	54.0	409.7	295.2	704.9	19.6	13.2	58.1	2.9
August 2008	74.9	285.1	359.9	22.5	43.0	402.9	315.8	718.7	23.1	10.7	56.1	3.1
August 2009	74.0	266.8	340.8	24.6	59.3	400.1	328.4	728.5	24.9	14.8	54.9	3.4
August 2010	69.0	262.3	331.3	26.6	69.9	401.2	332.7	733.9	27.8	17.4	54.7	3.6
<b>Persons</b>												
August 2007	241.6	467.3	708.9	49.4	113.2	822.0	627.2	1 449.3	17.0	13.8	56.7	3.4
August 2008	249.6	478.9	728.4	47.5	87.9	816.3	662.6	1 478.9	16.0	10.8	55.2	3.2
August 2009	200.1	472.4	672.6	55.1	122.0	794.6	701.8	1 496.4	21.6	15.4	53.1	3.7
August 2010	199.2	461.4	660.6	60.9	133.0	793.6	711.9	1 505.5	23.4	16.8	52.7	4.0

\* estimate is subject to sampling variability too high for most practical purposes

	EMPLOYED			UNEMPLOYED		Labour force	Not in labour force	Civilian population aged 15–19 years	UNEMPLOYMENT RATE		Participation rate	Unemployment to population ratio – looking for full-time work
	Full time	Part time	Total	Looking for f/t work	Total				Looking for f/t work	Total		
	'000	'000	'000	'000	'000				'000	'000		
NOT ATTENDING FULL-TIME EDUCATION												
New South Wales	45.5	32.7	78.2	15.4	15.9	94.1	19.2	113.3	25.3	16.9	83.1	13.6
Victoria	39.1	14.9	54.0	12.8	14.1	68.1	8.9	77.0	24.6	20.7	88.4	16.6
Queensland	50.9	25.0	76.0	14.5	16.0	92.0	14.9	106.9	22.2	17.4	86.1	13.6
South Australia	13.1	6.5	19.7	4.1	4.1	23.8	4.6	28.3	23.7	17.2	83.8	14.4
Western Australia	29.5	12.4	41.9	*4.0	5.5	47.4	8.4	55.8	*12.0	11.6	85.0	*7.2
Tasmania	4.5	2.2	6.7	*0.7	*0.7	7.4	*1.2	8.6	*13.1	*9.2	86.4	*7.9
Northern Territory	4.5	1.0	5.5	*0.4	*0.5	6.0	1.1	7.1	*8.3	*8.1	83.8	*5.7
Australian Capital Territory	2.1	1.5	3.7	*0.6	*0.7	4.4	*0.8	5.2	*21.7	*16.6	84.8	*11.4
<b>Australia</b>	<b>189.3</b>	<b>96.3</b>	<b>285.6</b>	<b>52.4</b>	<b>57.5</b>	<b>343.1</b>	<b>59.1</b>	<b>402.2</b>	<b>21.7</b>	<b>16.8</b>	<b>85.3</b>	<b>13.0</b>
ATTENDING FULL-TIME EDUCATION												
New South Wales	*3.8	99.7	103.5	*1.9	23.7	127.2	241.6	368.8	*33.2	18.6	34.5	*0.5
Victoria	*1.4	97.4	98.8	*3.2	22.2	121.0	169.8	290.8	*69.3	18.3	41.6	*1.1
Queensland	*2.5	77.5	79.9	*1.4	11.7	91.7	116.0	207.7	*36.0	12.8	44.1	*0.7
South Australia	*0.9	28.6	29.5	*1.4	7.9	37.4	42.4	79.8	*60.2	21.2	46.8	*1.7
Western Australia	*0.7	41.1	41.7	*—	6.4	48.1	54.1	102.1	*—	13.2	47.1	*—
Tasmania	*0.1	9.4	9.6	*0.5	2.1	11.7	14.6	26.3	*76.0	17.8	44.4	*1.8
Northern Territory	*0.2	3.2	3.4	*0.1	*0.5	3.9	5.6	9.5	*41.1	*12.2	41.2	*1.5
Australian Capital Territory	*0.3	8.3	8.6	*—	*1.0	9.6	8.8	18.4	*—	*10.5	52.1	*—
<b>Australia</b>	<b>9.9</b>	<b>365.1</b>	<b>375.0</b>	<b>8.5</b>	<b>75.5</b>	<b>450.4</b>	<b>652.9</b>	<b>1 103.3</b>	<b>46.1</b>	<b>16.8</b>	<b>40.8</b>	<b>0.8</b>
TOTAL												
New South Wales	49.3	132.4	181.7	17.3	39.5	221.3	260.8	482.0	25.9	17.9	45.9	3.6
Victoria	40.5	112.3	152.8	16.0	36.3	189.1	178.7	367.8	28.3	19.2	51.4	4.3
Queensland	53.4	102.5	155.9	15.9	27.8	183.7	130.9	314.6	22.9	15.1	58.4	5.1
South Australia	14.0	35.1	49.1	5.4	12.0	61.1	47.0	108.2	27.9	19.7	56.5	5.0
Western Australia	30.1	53.5	83.6	*4.0	11.9	95.5	62.5	157.9	*11.8	12.4	60.5	*2.5
Tasmania	4.7	11.6	16.3	*1.2	2.8	19.1	15.8	34.9	*19.8	14.4	54.8	*3.3
Northern Territory	4.7	4.2	8.9	*0.5	*1.0	9.9	6.7	16.6	*10.4	*9.7	59.5	*3.3
Australian Capital Territory	2.4	9.8	12.2	*0.6	*1.7	13.9	9.6	23.5	*19.6	*12.4	59.3	*2.5
<b>Australia</b>	<b>199.2</b>	<b>461.4</b>	<b>660.6</b>	<b>60.9</b>	<b>133.0</b>	<b>793.6</b>	<b>711.9</b>	<b>1 505.5</b>	<b>23.4</b>	<b>16.8</b>	<b>52.7</b>	<b>4.0</b>

\* estimate is subject to sampling variability too high for most practical purposes

— nil or rounded to zero (including null cells)

LABOUR FORCE STATUS IN AUGUST 2010

<i>Labour force status in July 2010</i>	<i>Employed Full time</i>	<i>Employed Part time</i>	<i>Employed Total</i>	<i>Unemployed</i>	<i>Labour Force</i>	<i>Not in Labour Force</i>	<i>Matched Civilian Population</i>
	'000	'000	'000	'000	'000	'000	'000
MALES							
Employed Full time	4 038	136	4 173	25	4 198	47	4 245
Employed Part time	112	626	738	17	755	77	832
Employed Total	4 150	762	4 911	42	4 953	124	5 077
Unemployed Total	32	25	57	134	192	56	247
Labour Force	4 182	787	4 968	176	5 145	179	5 324
Not in Labour Force	34	49	84	56	139	1 769	1 908
Matched Civilian Population	4 216	836	5 052	232	5 284	1 948	7 232
FEMALES							
Employed Full time	2 047	161	2 208	12	2 220	32	2 252
Employed Part time	176	1 645	1 821	19	1 840	109	1 949
Employed Total	2 223	1 806	4 029	31	4 060	141	4 201
Unemployed Total	13	26	40	127	166	54	220
Labour Force	2 236	1 832	4 069	158	4 226	195	4 421
Not in Labour Force	19	99	118	65	183	2 752	2 936
Matched Civilian Population	2 256	1 932	4 187	222	4 409	2 947	7 357
PERSONS							
Employed Full time	6 085	297	6 381	37	6 418	79	6 497
Employed Part time	288	2 271	2 559	36	2 595	186	2 781
Employed Total	6 373	2 568	8 940	73	9 013	265	9 278
Unemployed Total	46	51	97	261	358	109	467
Labour Force	6 418	2 619	9 037	334	9 371	374	9 745
Not in Labour Force	53	149	202	120	323	4 521	4 844
Matched Civilian Population	6 472	2 768	9 239	454	9 694	4 895	14 589

(a) Gross flows figures do not match published labour force estimates. Refer to gross flows in Glossary.

	TREND			SEASONALLY ADJUSTED		
	<i>Full time</i>	<i>Part time</i>	<i>Total</i>	<i>Full time</i>	<i>Part time</i>	<i>Total</i>
	millions	millions	millions	millions	millions	millions
MALES						
August 2007	878.9	60.1	939.0	880.8	61.2	942.0
August 2008	906.2	61.7	967.9	905.4	60.3	965.8
2009						
August	875.4	67.3	942.6	872.3	68.1	940.4
September	877.8	68.1	945.9	880.7	68.7	949.5
October	880.9	69.0	949.9	879.8	68.5	948.3
November	883.9	69.6	953.5	885.9	69.5	955.3
December	886.4	69.9	956.3	888.9	69.9	958.8
2010						
January	888.7	70.0	958.8	881.3	70.7	952.0
February	891.2	70.0	961.2	899.3	70.5	969.8
March	894.3	70.0	964.3	893.2	69.5	962.7
April	897.9	70.1	968.0	889.0	69.0	958.0
May	901.8	70.3	972.1	905.6	70.9	976.6
June	905.6	70.7	976.3	911.1	70.3	981.5
July	909.0	71.0	980.1	905.9	71.3	977.2
August	911.2	71.5	982.6	912.7	72.0	984.7
FEMALES						
August 2007	425.1	149.3	574.4	427.4	148.9	576.3
August 2008	441.9	155.5	597.4	439.9	155.8	595.8
2009						
August	435.1	159.9	595.0	426.0	161.1	587.2
September	434.6	160.7	595.3	435.2	160.5	595.7
October	434.3	161.3	595.6	436.8	161.6	598.5
November	433.8	161.6	595.4	438.9	161.1	600.1
December	433.1	161.8	594.8	435.9	160.9	596.8
2010						
January	432.6	161.9	594.4	422.0	161.9	584.0
February	432.6	162.0	594.6	435.0	164.4	599.4
March	433.5	162.4	595.9	435.5	162.6	598.1
April	435.5	162.9	598.4	429.7	158.8	588.5
May	437.7	163.5	601.3	446.0	164.1	610.1
June	439.6	164.2	603.8	438.4	166.3	604.8
July	441.2	164.8	606.0	436.1	166.0	602.1
August	441.9	165.2	607.1	445.6	163.8	609.4
PERSONS						
August 2007	1 304.0	209.4	1 513.4	1 308.2	210.1	1 518.2
August 2008	1 348.1	217.2	1 565.3	1 345.4	216.2	1 561.5
2009						
August	1 310.5	227.2	1 537.7	1 298.4	229.2	1 527.6
September	1 312.4	228.8	1 541.2	1 315.9	229.3	1 545.2
October	1 315.2	230.2	1 545.5	1 316.6	230.1	1 546.8
November	1 317.7	231.2	1 549.0	1 324.8	230.6	1 555.4
December	1 319.4	231.7	1 551.2	1 324.8	230.8	1 555.6
2010						
January	1 321.3	231.9	1 553.2	1 303.3	232.7	1 536.0
February	1 323.8	232.1	1 555.9	1 334.2	234.9	1 569.2
March	1 327.8	232.4	1 560.2	1 328.7	232.1	1 560.8
April	1 333.4	233.0	1 566.4	1 318.7	227.8	1 546.5
May	1 339.5	233.9	1 573.4	1 351.6	235.0	1 586.6
June	1 345.2	234.9	1 580.0	1 349.6	236.7	1 586.2
July	1 350.2	235.8	1 586.1	1 342.0	237.3	1 579.3
August	1 353.1	236.6	1 589.7	1 358.3	235.8	1 594.1

	TREND			SEASONALLY ADJUSTED			ORIGINAL		
	<i>Under-employed workers</i>	<i>Under-employment rate</i>	<i>Labour force under-utilisation rate</i>	<i>Under-employed workers</i>	<i>Under-employment rate</i>	<i>Labour force under-utilisation rate</i>	<i>Under-employed workers</i>	<i>Under-employment rate</i>	<i>Labour force under-utilisation rate</i>
	'000	%	%	'000	%	%	'000	%	%
MALES									
August 2006	290.1	4.9	9.5	305.1	5.2	9.7	300.0	5.1	9.5
August 2007	281.6	4.6	8.6	285.9	4.7	8.7	281.5	4.7	8.4
August 2008	266.6	4.3	8.2	254.5	4.1	7.9	249.3	4.1	*7.7
2009									
February	348.6	5.6	10.7	342.2	5.5	10.8	360.8	5.7	*11.6
May	387.6	6.2	11.9	414.4	6.6	12.7	409.8	6.5	*12.7
August	397.7	6.3	12.2	382.8	6.1	12.0	374.7	6.0	*11.6
November	382.4	6.0	11.8	388.0	6.1	11.9	376.3	6.0	11.3
2010									
February	365.5	5.7	11.1	366.1	5.7	11.0	386.4	6.0	11.9
May	359.8	5.6	10.7	343.0	5.3	10.5	340.1	5.3	*10.5
August	359.0	5.6	10.5	375.0	5.8	10.7	368.9	5.7	10.4
FEMALES									
August 2006	419.1	8.6	13.5	423.6	8.7	13.6	404.3	8.3	13.0
August 2007	419.1	8.4	13.2	423.4	8.5	13.3	404.8	8.1	12.7
August 2008	419.8	8.1	12.8	412.0	8.0	12.5	392.8	7.7	11.9
2009									
February	479.4	9.1	14.4	503.5	9.6	14.9	526.0	9.9	16.1
May	503.0	9.5	15.1	484.5	9.2	14.7	484.0	9.1	14.5
August	515.2	9.8	15.4	522.2	9.9	15.6	498.6	9.5	14.9
November	515.5	9.8	15.2	517.4	9.8	15.3	520.4	9.8	14.9
2010									
February	508.1	9.6	14.9	513.1	9.7	14.9	538.2	10.1	16.1
May	497.2	9.3	14.6	484.4	9.1	14.4	481.2	9.0	14.2
August	492.3	9.1	14.5	499.1	9.3	14.7	477.0	8.9	14.1
PERSONS									
August 2006	709.3	6.6	11.3	728.6	6.8	11.5	704.3	6.6	11.1
August 2007	700.7	6.3	10.7	709.3	6.4	10.8	686.2	6.2	10.4
August 2008	686.5	6.1	10.3	666.5	5.9	10.0	642.1	5.7	*9.6
2009									
February	828.0	7.2	12.4	845.7	7.4	12.6	886.8	7.6	13.7
May	890.6	7.7	13.4	898.9	7.8	13.6	893.8	7.7	13.5
August	912.9	7.9	13.7	905.0	7.8	13.7	873.3	7.6	13.1
November	897.9	7.7	13.3	905.4	7.8	13.4	896.6	7.7	12.9
2010									
February	873.5	7.5	12.9	879.2	7.5	12.8	924.5	7.8	13.8
May	857.0	7.3	12.5	827.3	7.0	12.3	821.3	7.0	12.2
August	851.4	7.2	12.3	874.1	7.4	12.5	845.9	7.2	12.1

\* estimate is subject to sampling variability too high for most practical purposes

(a) Seasonally adjusted and trend data are compiled using estimates only from the quarter months (i.e. Feb, May, Aug and Nov), and therefore may differ from the official monthly estimates produced in *Labour Force, Australia* (cat. no. 6202.0).



—August 2010

	TREND			SEASONALLY ADJUSTED			ORIGINAL		
	<i>Under-employed workers</i>	<i>Under-employment rate</i>	<i>Labour force under-utilisation rate</i>	<i>Under-employed workers</i>	<i>Under-employment rate</i>	<i>Labour force under-utilisation rate</i>	<i>Under-employed workers</i>	<i>Under-employment rate</i>	<i>Labour force under-utilisation rate</i>
	'000	%	%	'000	%	%	'000	%	%
MALES									
New South Wales	122.6	6.0	10.9	129.6	6.4	11.2	128.2	6.3	10.8
Victoria	92.1	5.7	11.0	88.8	5.5	10.7	85.6	5.3	10.4
Queensland	69.4	5.3	10.5	73.9	5.6	10.9	70.6	5.4	10.1
South Australia	28.6	6.2	11.6	29.5	6.4	11.8	29.5	6.4	11.8
Western Australia	35.4	4.9	8.5	39.3	5.5	9.1	40.2	5.6	9.2
Tasmania	8.5	6.3	12.7	8.7	6.5	12.6	9.0	6.8	12.8
Northern Territory	1.8	2.6	5.9	2.0	2.9	6.6	1.9	2.7	5.7
Australian Capital Territory	4.3	4.1	6.9	4.0	3.8	6.2	3.9	3.7	5.9
<b>Australia</b>	<b>359.0</b>	<b>5.6</b>	<b>10.5</b>	<b>375.0</b>	<b>5.8</b>	<b>10.7</b>	<b>368.9</b>	<b>5.7</b>	<b>10.4</b>
FEMALES									
New South Wales	171.0	10.2	15.5	171.5	10.2	15.5	162.8	9.7	14.8
Victoria	113.9	8.4	14.1	118.2	8.7	14.5	116.8	8.7	14.3
Queensland	98.4	8.8	14.5	99.3	8.9	14.6	94.5	8.5	13.8
South Australia	42.2	10.7	15.7	42.6	10.8	15.8	39.6	10.1	15.0
Western Australia	43.9	8.0	13.0	42.2	7.5	13.1	42.1	7.5	12.8
Tasmania	12.7	10.6	17.0	13.0	10.9	17.4	13.1	11.1	17.2
Northern Territory	2.5	4.3	7.0	2.7	4.6	7.3	2.0	3.4	5.9
Australian Capital Territory	6.2	6.1	9.3	6.1	6.0	9.2	6.0	5.9	9.0
<b>Australia</b>	<b>492.3</b>	<b>9.1</b>	<b>14.5</b>	<b>499.1</b>	<b>9.3</b>	<b>14.7</b>	<b>477.0</b>	<b>8.9</b>	<b>14.1</b>
PERSONS									
New South Wales	293.7	7.9	12.9	301.1	8.1	13.2	291.0	7.9	12.6
Victoria	206.0	6.9	12.4	207.0	6.9	12.4	202.4	6.8	12.2
Queensland	167.8	6.9	12.3	173.2	7.1	12.6	165.1	6.9	11.8
South Australia	70.9	8.3	13.5	72.1	8.4	13.7	69.1	8.1	13.3
Western Australia	79.3	6.2	10.5	81.5	6.4	10.8	82.2	6.5	10.8
Tasmania	21.2	8.4	14.8	21.7	8.6	14.9	22.2	8.8	14.9
Northern Territory	4.2	3.4	6.4	4.7	3.7	6.9	3.9	3.0	5.8
Australian Capital Territory	10.6	5.0	8.1	10.1	4.8	7.7	9.9	4.8	7.4
<b>Australia</b>	<b>851.4</b>	<b>7.2</b>	<b>12.3</b>	<b>874.1</b>	<b>7.4</b>	<b>12.5</b>	<b>845.9</b>	<b>7.2</b>	<b>12.1</b>

(a) Seasonally adjusted and trend data are compiled using estimates only from the quarter months (i.e. Feb, May, Aug and Nov), and therefore may differ from the official monthly estimates produced in *Labour Force, Australia* (cat. no. 6202.0).

# WHAT IF...? REVISIONS TO TREND ESTIMATES

## EFFECT OF NEW SEASONALLY ADJUSTED ESTIMATES ON TREND ESTIMATES

### TREND REVISIONS

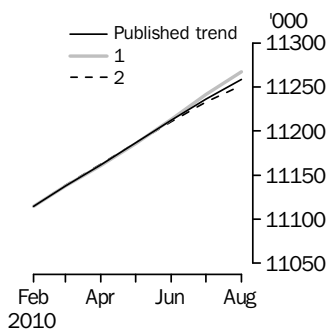
Each time new seasonally adjusted estimates become available, trend estimates are revised. This revision is a combined result of the concurrent seasonal adjustment process and the application of surrogates of the Henderson average to the seasonally adjusted series (see paragraphs 27 to 35 of the Explanatory Notes).

The examples in the tables below show two illustrative scenarios and the consequent revisions to previous trend estimates of employment and the unemployment rate. The revisions in the scenarios are due to the use of surrogates of the Henderson average, as the impact of revision of seasonally adjusted estimates can not be estimated in advance.

- (1) The September seasonally adjusted estimate is *higher* than the August estimate by:
  - 0.24% for employment
  - 2.10% for the unemployment rate
- (2) The September seasonally adjusted estimate is *lower* than the August estimate by:
  - 0.24% for employment
  - 2.10% for the unemployment rate

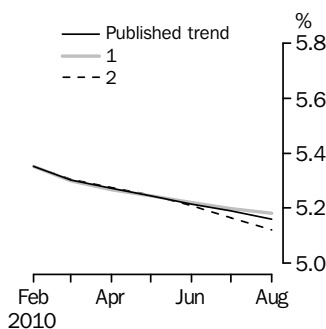
The percentage changes of 0.24% and 2.10% represent the average absolute monthly percentage changes in employment and the unemployment rate respectively. Estimates in the graphs have been calculated using unrounded estimates, and may be different from, but more accurate than, rounded estimates depicted in its corresponding table.

### EMPLOYMENT



	Trend as published	WHAT IF NEXT MONTH'S SEASONALLY ADJUSTED ESTIMATE IS:	
		(1) 11 299.1 i.e. rises by 0.24%	(2) 11 245.0 i.e. falls by 0.24%
<b>2010</b>			
May	11 186.4	11 186.0	11 187.0
June	11 212.1	11 213.3	11 210.9
July	11 236.1	11 241.0	11 233.0
August	11 258.2	11 266.7	11 251.6

### UNEMPLOYMENT RATE



	Trend as published	WHAT IF NEXT MONTH'S SEASONALLY ADJUSTED ESTIMATE IS:	
		(1) 5.2 i.e. rises by 2.10%	(2) 5.0 i.e. falls by 2.10%
<b>2010</b>			
May	5.2	5.2	5.2
June	5.2	5.2	5.2
July	5.2	5.2	5.2
August	5.2	5.2	5.1

## EXPLANATORY NOTES

### INTRODUCTION

**1** This publication contains estimates of the civilian labour force derived from the Labour Force Survey component of the Monthly Population Survey. The full time series for estimates from this publication are also available electronically. More detailed estimates are released one week after this publication in various electronic formats – see *Labour Force, Australia, Detailed – Electronic Delivery* (cat. no. 6291.0.55.001) and *Labour Force, Australia, Detailed, Quarterly* (cat. no. 6291.0.55.003).

### CONCEPTS, SOURCES AND METHODS

**2** The conceptual framework used in Australia's Labour Force Survey aligns closely with the standards and guidelines set out in Resolutions of International Conferences of Labour Statisticians. Descriptions of the underlying concepts and structure of Australia's labour force statistics, and the sources and methods used in compiling the estimates, are presented in *Labour Statistics: Concepts, Sources and Methods* (cat. no. 6102.0.55.001) which is available on the ABS website <<http://www.abs.gov.au>>.

### LABOUR FORCE SURVEY

**3** The Labour Force Survey is based on a multi-stage area sample of private dwellings (currently approximately 29,000 houses, flats, etc.) and a list sample of non-private dwellings (hotels, motels, etc.), and covers approximately 0.33% of the civilian population of Australia aged 15 years and over.

**4** Information is obtained from the occupants of selected dwellings by specially trained interviewers using computer-assisted interviewing (CAI).

**5** Households selected for the Labour Force Survey are interviewed each month for eight months, with one-eighth of the sample being replaced each month. The first interview is conducted face-to-face. Subsequent interviews are conducted by telephone (if acceptable to the respondent).

**6** The interviews are generally conducted during the two weeks beginning on the Sunday between the 5th and 11th of each month. The information obtained relates to the week before the interview (i.e. the reference week). Each year, to deal with operational difficulties involved with collecting and processing the Labour Force Survey around the Christmas and New Year holiday period, interviews for December start four weeks after November interviews start, and January interviews start five weeks after December interviews start. As a result, January interviewing may commence as early as the 7th or as late as the 13th, depending on the year. Occasionally, circumstances that present significant operational difficulties for survey collection can result in a change to the normal pattern for the start of interviewing.

**7** Estimates from the Labour Force Survey are published first in this publication 32 days after the commencement of interviews for that month, with the exception of estimates for each December which are published 39 days after the commencement of interviews.

### SCOPE OF SURVEY

**8** The Labour Force Survey includes all persons aged 15 years and over except members of the permanent defence forces, certain diplomatic personnel of overseas governments customarily excluded from census and estimated population counts, overseas residents in Australia, and members of non-Australian defence forces (and their dependants) stationed in Australia.

### COVERAGE

**9** In the Labour Force Survey, coverage rules are applied which aim to ensure that each person is associated with only one dwelling, and hence has only one chance of selection. The coverage rules are necessarily a balance between theoretical and operational considerations. Nevertheless, the chance of a person being enumerated at two separate dwellings in the survey is considered to be negligible.

### POPULATION BENCHMARKS

**10** Labour Force Survey estimates are calculated in such a way as to add up to independent estimates of the civilian population aged 15 years and over (population benchmarks). These population benchmarks are projections of the most recently released quarterly Estimated Resident Population (ERP) data. For information on the

## EXPLANATORY NOTES *continued*

### POPULATION BENCHMARKS

*continued*

methodology used to produce the ERP see *Australian Demographic Statistics* (cat.no. 3101.0). To create the population benchmarks for the Labour Force Survey, the most recently released quarterly ERP estimates are projected forward one quarter past the period for which they are required. The projection is based on the historical pattern of each population component - births, deaths, interstate migration and net overseas migration (NOM). By projecting one quarter past that needed for the current population benchmarks, demographic changes are smoothed in, thereby making them less noticeable in the population benchmarks.

**11** Commencing March 2010, the ERP series is revised twice-yearly in the March and September quarter issues of *Australian Demographic Statistics* (cat.no. 3101.0). This new biannual revision cycle incorporates more up to date information available for NOM. The revised ERP estimates are used to update the quarterly population projections used in creating the Labour Force Survey population benchmarks.

**12** Every five years, the ERP series are revised to incorporate additional information available from the latest Census of Population and Housing (Census). Following the incorporation of census information, the ERP series prior to the latest census are final and subject to no further revision. Labour Force Survey population benchmarks, and the estimates, are revised following this 5-yearly revision in the ERP. From the February 2009 issue of this publication, labour force estimates have been compiled using population benchmarks based on the results of the 2006 Census. Revisions were made in the February 2009 issue to historical labour force estimates from June 2001 to January 2009.

**13** While ABS ERP series are now revised on a six monthly basis, the Labour Force Survey population benchmarks have usually only been revised once every 5 years. Over time, it is possible that the time series of ERP and Labour Force Survey benchmarks may not be aligned in terms of level and change due to the differing revision cycles. However, in the July 2010 issue of this publication the LFS population benchmarks were revised back to July 2006 to accommodate earlier revisions to ERP.

### ESTIMATION METHOD

**14** The estimation method used in the Labour Force Survey is Composite Estimation, which was introduced in May 2007. Composite Estimation combines data collected in the previous six months with current month's data to produce the current month's estimates, thereby exploiting the high correlation between overlapping samples across months in the Labour Force Survey. The Composite Estimator combines the previous and current months' data by applying different factors according to length of time in the survey. After these factors are applied, the seven months of data are weighted to align with current month population benchmarks. For details see *Information Paper: Forthcoming Changes to Labour Force Statistics, 2007* (cat. no. 6292.0).

### COMPARABILITY OF SERIES

**15** From April 1986, the definition of employed persons was changed to include persons who worked without pay between 1 and 14 hours per week in a family business or on a farm (i.e. contributing family workers). For further information, see paragraphs 22 and 23 of the Explanatory Notes in the February 2003 issue of *Labour Force, Australia* (cat. no. 6203.0).

**16** The ABS introduced telephone interviewing into the Labour Force Survey in August 1996. Implementation was phased in for each new sample group from August 1996 to February 1997. During the period of implementation, the new method produced different estimates than would have been obtained under the old methodology. The effect dissipated over the final months of implementation and was no longer discernible from February 1997. The estimates for February 1997 and onwards are directly comparable to estimates for periods prior to August 1996. For further details, see the feature article in the June 1997 issue of *Labour Force, Australia* (cat. no. 6203.0).

## EXPLANATORY NOTES *continued*

### COMPARABILITY OF SERIES

*continued*

**17** From April 2001 the Labour Force Survey has been conducted using a redesigned questionnaire containing additional data items and some minor definitional changes. The definition of unemployed persons was changed to include all persons who were waiting to start work and were available to start in the reference week. This change was introduced in February 2004, when historical unit record data were revised from April 2001 to January 2004. This revision created a small trend break at April 2001 in unemployed persons and unemployment rate series. For further details, see *Information Paper: Forthcoming Changes to Labour Force Statistics* (cat. no. 6292.0), released in December 2003.

**18** Core labour force series were revised in April 2001 for the period April 1986 to March 2001 for the remaining definitional changes introduced with the redesigned questionnaire, to reduce the impact of the changes on labour force series. For further details, see *Information Paper: Implementing the Redesigned Labour Force Survey Questionnaire* (cat. no. 6295.0) and *Information Paper: Questionnaires Used in the Labour Force Survey* (cat. no. 6232.0).

**19** In May 2007, an improved method of estimation, known as composite estimation, was introduced into the Labour Force Survey. In introducing this change, the ABS revised unit record data from April 2001 to April 2007 based on the new estimation method. While estimates for periods prior to April 2001 are unrevised and were compiled using a different estimation method, no trend break was identified in the employed persons series. Also, no change was identified in the trend breaks in the unemployed persons and unemployment rate series which arose with the introduction of a redesigned survey form in April 2001 (as noted above in paragraph 16). For further details, see *Information Paper: Forthcoming Changes to Labour Force Statistics, 2007* (cat. no. 6292.0).

### LABOUR FORCE SURVEY SAMPLE

**20** The current Labour Force Survey sample has been selected using information collected in the 2006 Census of Population and Housing.

**21** The majority of this sample was phased in over the period November 2007 to June 2008, with one-eighth of this portion of the sample being introduced every month. The remainder of the sample (about 20% of the total), which covers less settled areas of Australia and non-private dwellings was rotated in full for New South Wales, Western Australia, Northern Territory and Australian Capital Territory in March 2008, and for Victoria, Queensland, South Australia and Tasmania in April 2008. Such a pattern of implementation means that any changes to labour force estimates due to differences between the two samples, or any other influences, were spread over the eight months.

**22** As one of a range of ABS savings initiatives for the 2008–09 financial year, there was a 24% reduction in the LFS sample size for the period July 2008 to August 2009, relative to the June 2008 sample size. The sample reduction was reinstated from September 2009 to December 2009, with December 2009 estimates being the first produced under the fully reinstated sample.

**23** For further details, see *Information Paper: Labour Force Survey Sample Design* (cat. no. 6269.0).

### RELIABILITY OF ESTIMATES

**24** Two types of error are possible in an estimate based on a sample survey: sampling error and non-sampling error.

**25** Sampling error occurs because a sample, rather than the entire population, is surveyed. One measure of the likely difference resulting from not including all dwellings in the survey is given by the standard error. There are about two chances in three that a sample estimate will differ by less than one standard error from the figure that would have been obtained if all dwellings had been included in the survey, and about nineteen chances in twenty that the difference will be less than two standard errors. Standard

## EXPLANATORY NOTES *continued*

### RELIABILITY OF ESTIMATES

*continued*

errors of key estimates for the latest month and of movements since the previous month of these estimates are shown in the standard errors section of this publication. Standard errors for other estimates and other movements may be calculated by using the spreadsheet contained in *Labour Force Survey Standard Errors, Data Cube* (cat. no. 6298.0.55.001) which is available free of charge on the ABS website <<http://www.abs.gov.au>>.

**26** Non-sampling error arises from inaccuracies in collecting, recording and processing the data. Every effort is made to minimise reporting error by the careful design of questionnaires, intensive training and supervision of interviewers, and efficient data processing procedures. Non-sampling error also arises because information cannot be obtained from all persons selected in the survey. The Labour Force Survey receives a high level of co-operation from individuals in selected dwellings, with the average response rate over the last year being 97%. See Glossary for definition of response rate.

### SEASONAL ADJUSTMENT AND TREND ESTIMATION

**27** Seasonal adjustment is a means of removing the estimated effects of normal seasonal variation from the series so that the effects of other influences on the series can be more clearly recognised. Seasonal adjustment does not aim to remove the irregular or non-seasonal influences which may be present in any particular month. This means that month-to-month movements of the seasonally adjusted estimates may not be reliable indicators of trend behaviour.

**28** The Labour Force Survey uses the concurrent seasonal adjustment method to derive seasonal factors. Concurrent seasonal adjustment uses data up to the current month to estimate seasonal factors for the current and all previous months. This process can result in revisions each month to estimates for earlier periods. However, in most instances, the only noticeable revisions will be to the seasonally adjusted estimates for the previous month and one year prior to the current month.

**29** The revision properties of the seasonally adjusted and trend estimates can be improved by the use of Autoregressive Integrated Moving Average (ARIMA) modelling. ARIMA modelling relies on the characteristics of the series being analysed to project future period data. The projected values are temporary, intermediate values, that are only used internally to improve the estimation of the seasonal factors. The projected data do not affect the original estimates and are discarded at the end of the seasonal adjustment process. The Labour Force Survey uses an ARIMA model for 95% of the individual time series. The ARIMA model is assessed as part of the annual reanalysis. For further details, see the feature article in *Australian Economic Indicators, Oct 2004* (cat. no. 1350.0).

**30** Seasonal adjustment is able to remove the effect of events which occur at the same time in the survey every year. However, there are some events, like holidays, which are not always at the same time in the survey cycle or which are not at the same time across Australia. The effects of these types of events on Labour Force Survey estimates cannot in all cases be removed, because the pattern of their effects cannot be determined. However, two events which are adjusted for in the seasonally adjusted series are the January interview start date and the timing of Easter. For further details, see *Information Paper: Forthcoming Changes to Labour Force Statistics* (cat. no. 6292.0) released in December 2003.

**31** While seasonal factors for the complete time series are estimated each month, they will continue to be reviewed annually at a more detailed level to take into account each additional year's original data. This annual review will not normally result in significant changes to published estimates. The review is usually conducted in February each year with the results released in the February issue of this publication.

## EXPLANATORY NOTES *continued*

### SEASONAL ADJUSTMENT AND TREND ESTIMATION *continued*

**32** The smoothing of seasonally adjusted series to produce 'trend' series reduces the impact of the irregular component of the seasonally adjusted series. These trend estimates are derived by applying a 13-term Henderson-weighted moving average to all months except the last six. The last six monthly trend estimates are obtained by applying surrogates of the Henderson average to the seasonally adjusted series. Trend estimates are used to analyse the underlying behaviour of a series over time.

**33** While this smoothing technique enables estimates to be produced for the latest month, it does result in revisions in addition to those caused by the revision of seasonally adjusted estimates. Generally, revisions due to the use of surrogates of the Henderson average become smaller, and after three months have a negligible impact on the series.

**34** Trend estimates are published for the Northern Territory in table 10 and for the Australian Capital Territory in table 11. Unadjusted series for the two Territories have shown, historically, a high degree of variability, which can lead to considerable revisions to the seasonally adjusted estimates each month when seasonal factors are estimated. For this reason, seasonally adjusted estimates are not currently published for the two Territories. In addition, caution should be exercised in the interpretation of trend estimates for the two Territories, particularly for the three most recent months, where revisions may be relatively large.

**35** For further information, see *A Guide to Interpreting Time Series – Monitoring Trends* (cat. no. 1349.0) or contact the Assistant Director, Time Series Analysis on (02) 6252 6345 or email [time.series.analysis@abs.gov.au](mailto:time.series.analysis@abs.gov.au).

### RELATED PUBLICATIONS

**36** Users may also wish to refer to the following publications:

- *Labour Force Survey Standard Products and Data Item Guide* (cat.no. 6103.0).

This publication is a reference guide for users of Labour Force Survey data standard products.

- *Australian Labour Market Statistics* (cat. no. 6105.0). This publication contains additional tables and a detailed list of related publications. For further information about this publication, please contact the Assistant Director, Labour Market Statistics on (02) 6252 7636.

**37** ABS Information about the labour market can be found on the Labour theme page on the ABS website <<http://www.abs.gov.au>> (Themes).

**38** Information about current publications and other products released by the ABS is available from the statistics page on the ABS website. The ABS also issues a daily release advice on the website, Upcoming Product Releases which details products to be released in the week ahead.

### DATA AVAILABLE ON REQUEST

**39** As well as the statistics included in this and related publications, the ABS may have other relevant data available. Inquiries should be made to the Labour Force contact officer on (02) 6252 6525, email [labourforce@abs.gov.au](mailto:labourforce@abs.gov.au) or to any ABS office.

## EXPLANATORY NOTES *continued*

### EFFECTS OF ROUNDING

**40** Estimates have been rounded and discrepancies may occur between sums of the component items and totals. Estimates of movement shown in this publication are obtained by taking the difference of unrounded estimates. The movement estimate is then rounded to one decimal place. Where a discrepancy occurs between the reported movement and the difference of the rounded estimates, the reported movement will be more accurate.

### SYMBOLS AND ABBREVIATIONS

#### 41 SYMBOLS AND ABBREVIATIONS

<i>Symbol</i>	<i>Definition</i>
'000	thousands
%	percentage
ABS	Australian Bureau of Statistics
CAI	computer assisted interviewing
cat. no.	catalogue number
ERP	estimated resident population
f/t	full time
LFS	Labour Force Survey
p/t	part time
pts	percentage points
Seas adj.	seasonally adjusted
TAFE	Technical and Further Education



## STANDARD ERRORS

### STANDARD ERRORS

The estimates in this publication are based on information gained from the occupants of a sample survey of dwellings. Because the entire population is not surveyed, the published estimates are subject to sampling error. The most common way of quantifying such sampling error is to calculate the standard error for the published estimate or statistic. For more information, see paragraphs 24 to 26 of the Explanatory Notes.

### LEVEL ESTIMATES

To illustrate, let us say the published level estimate for employed persons aged 15–19 years is 700,000 and the associated standard error is 8,300. The standard error is then used to interpret the level estimate of 700,000. For instance, the standard error of 8,300 indicates that:

- There are approximately two chances in three that the real value falls within the range 691,700 to 708,300 (700,000 + or – 8,300)
- There are approximately nineteen chances in twenty that the real value falls within the range 683,400 to 716,600 (700,000 + or – 16,600).

The real value in this case is the result we would obtain if we could enumerate the total population.

The following table shows the standard errors for this month's level estimates.

		AUSTRALIA										
		NSW	Vic.	Qld	SA	WA	Tas.	NT	ACT	Males	Females	Persons
<b>Aged 15 years and over</b>												
Employed												
Full time	'000	20.5	20.7	15.3	6.8	9.8	2.7	4.0	2.3	26.9	19.1	32.5
Part time	'000	14.3	13.2	10.0	4.9	6.9	2.1	1.3	1.6	11.1	17.4	21.5
Total	'000	22.5	25.3	17.4	7.8	10.8	3.2	4.8	2.5	29.3	26.8	36.9
Unemployed												
Looking for f/t work	'000	7.7	6.9	5.8	2.6	3.3	1.1	0.5	0.6	9.2	7.7	12.2
Looking for p/t work	'000	5.0	4.7	3.5	1.8	2.2	0.8	0.2	0.6	4.7	6.4	8.0
Total	'000	9.3	8.4	6.7	3.1	4.0	1.4	0.6	0.9	10.4	10.1	14.7
Labour force	'000	22.8	26.0	17.8	7.9	10.9	3.3	4.9	2.5	29.9	27.5	37.5
Not in labour force	'000	21.3	23.5	15.5	7.1	10.5	3.1	3.4	2.3	24.7	29.2	34.4
Unemployment rate												
Looking for f/t work	pts	0.3	0.3	0.3	0.4	0.4	0.7	0.5	0.4	0.2	0.3	0.1
Looking for p/t work	pts	0.5	0.5	0.5	0.7	0.6	0.9	0.9	1.0	0.4	0.3	0.2
Total	pts	0.3	0.3	0.3	0.4	0.3	0.5	0.4	0.4	0.2	0.2	0.1
Participation rate	pts	0.4	0.6	0.5	0.6	0.6	0.8	2.8	0.9	0.3	0.3	0.2
<b>Aged 15–19 years</b>												
Employed												
Full time	'000	3.1	2.6	2.6	1.1	1.8	0.5	0.4	0.4	4.4	3.5	5.2
Part time	'000	4.4	3.9	3.5	1.6	2.2	0.7	0.4	0.6	5.2	5.9	7.5
Total	'000	5.1	4.6	4.4	1.9	2.8	0.8	0.6	0.7	6.5	6.5	8.9
Unemployed												
Looking for f/t work	'000	2.7	2.5	2.4	1.1	1.1	0.4	0.2	0.3	3.5	3.1	4.7
Looking for p/t work	'000	3.1	2.8	2.0	1.2	1.5	0.4	0.2	0.4	3.2	3.9	5.1
Total	'000	4.3	3.9	3.3	1.7	1.8	0.6	0.3	0.5	4.7	5.0	6.9
Labour force	'000	5.7	5.1	4.8	2.1	3.1	0.9	0.6	0.8	7.0	7.1	9.8
Not in labour force	'000	8.9	6.8	5.6	2.5	3.6	1.0	0.8	0.9	8.9	8.3	12.6
Unemployment rate												
Looking for f/t work	pts	3.9	4.1	3.3	5.3	3.1	6.1	3.7	9.1	2.0	3.0	1.7
Looking for p/t work	pts	2.0	2.1	1.8	2.8	2.4	3.2	3.5	3.5	1.4	1.2	0.9
Total	pts	1.9	2.0	1.7	2.6	1.9	2.9	2.7	3.3	1.2	1.2	0.8
Participation rate	pts	1.2	1.4	1.5	1.9	2.0	2.6	3.7	3.2	0.9	1.0	0.6
Unemployment to population ratio – looking for f/t work	pts	0.6	0.7	0.8	1.0	0.7	1.1	1.2	1.2	0.5	0.4	0.3

## STANDARD ERRORS *continued*

### MOVEMENT ESTIMATES

The following example illustrates how to use the standard error to interpret a movement estimate. Let us say that one month the published level estimate for females employed part-time in Australia is 1,890,000; the next month the published level estimate is 1,900,000 and the associated standard error for the movement estimate is 9,500. The standard error is then used to interpret the published movement estimate of 10,000. For instance, the standard error of 9,500 indicates that:

- There are approximately two chances in three that the real movement between the two months falls within the range 500 to 19,500 (10,000 + or - 9,500)
- There are approximately nineteen chances in twenty that the real movement falls within the range -9,000 to 29,000 (10,000 + or - 19,000).

The following table shows the standard errors for this month's movement estimates.

		AUSTRALIA										
		NSW	Vic.	Qld	SA	WA	Tas.	NT	ACT	Males	Females	Persons
<b>Aged 15 years and over</b>												
Employed												
Full time	'000	13.7	11.1	10.0	3.9	6.2	1.7	1.3	1.6	17.5	12.7	22.1
Part time	'000	8.9	7.4	6.1	2.7	4.1	1.2	0.6	1.0	7.9	11.7	14.1
Total	'000	16.5	13.5	13.4	5.4	7.9	2.1	1.4	1.9	19.3	17.5	27.1
Unemployed												
Looking for f/t work	'000	8.2	6.7	6.6	2.5	3.4	1.2	0.4	0.9	9.8	8.1	12.8
Looking for p/t work	'000	5.0	4.6	3.7	1.7	2.4	0.8	0.2	0.7	4.9	6.6	8.2
Total	'000	9.7	8.2	7.6	3.1	4.2	1.3	0.5	1.1	10.9	10.4	15.2
Labour force	'000	17.0	13.9	14.1	5.7	8.2	2.2	1.5	1.9	19.9	18.0	27.9
Not in labour force	'000	15.9	12.8	12.2	5.1	7.1	2.1	1.2	1.9	15.3	19.1	25.4
Unemployment rate												
Looking for f/t work	pts	0.3	0.4	0.4	0.5	0.4	0.7	0.5	0.5	0.2	0.3	0.2
Looking for p/t work	pts	0.5	0.5	0.5	0.6	0.6	0.9	1.1	1.1	0.5	0.3	0.2
Total	pts	0.3	0.3	0.3	0.4	0.3	0.6	0.4	0.5	0.2	0.2	0.1
Participation rate	pts	0.3	0.3	0.4	0.4	0.4	0.5	0.8	0.7	0.2	0.2	0.2
<b>Aged 15-19 years</b>												
Employed												
Full time	'000	2.5	2.0	2.3	0.9	1.5	0.4	0.3	0.3	3.6	2.9	4.2
Part time	'000	3.6	3.0	2.7	1.2	1.8	0.5	0.3	0.5	4.0	4.5	5.6
Total	'000	4.1	3.4	3.3	1.4	2.2	0.6	0.4	0.6	5.0	5.0	6.6
Unemployed												
Looking for f/t work	'000	2.8	2.5	2.9	1.0	1.5	0.4	0.1	0.4	3.7	3.3	5.0
Looking for p/t work	'000	3.2	2.8	2.2	1.2	1.6	0.4	0.1	0.4	3.3	4.0	5.2
Total	'000	4.3	3.8	3.7	1.6	2.1	0.6	0.3	0.6	5.0	5.1	7.1
Labour force	'000	4.4	3.7	3.6	1.5	2.3	0.6	0.4	0.6	5.4	5.3	7.2
Not in labour force	'000	5.5	4.3	3.7	1.6	2.3	0.7	0.5	0.6	6.2	5.9	8.2
Unemployment rate												
Looking for f/t work	pts	4.0	4.5	3.4	5.3	3.5	6.5	4.0	9.7	2.1	3.2	1.8
Looking for p/t work	pts	2.0	2.1	1.9	2.8	2.5	3.3	3.9	3.7	1.4	1.3	1.0
Total	pts	1.9	2.1	1.8	2.6	2.0	3.0	2.9	3.6	1.2	1.3	0.9
Participation rate	pts	0.9	1.0	1.1	1.4	1.5	1.8	2.5	2.5	0.7	0.7	0.5
Unemployment to population ratio - looking for f/t work	pts	0.6	0.7	0.9	1.0	1.0	1.0	0.9	1.5	0.5	0.4	0.3

## GLOSSARY

<b>Actively looking for work</b>	Includes writing, telephoning or applying in person to an employer for work; answering an advertisement for a job; checking factory noticeboards or the touchscreens at the Centrelink offices; being registered with Centrelink as a jobseeker; checking or registering with any other employment agency; advertising or tendering for work; and contacting friends or relatives.
<b>Actual hours of work</b>	<p>Actual hours of work refers to a specified reference period and includes:</p> <ul style="list-style-type: none"><li>■ hours actually worked during normal periods of work;</li><li>■ time spent in addition to hours worked during normal periods of work (including overtime);</li><li>■ time spent at the place of work on activities such as the preparation of the workplace, repairs and maintenance, preparation and cleaning of tools, and the preparation of receipts, time sheets and reports;</li><li>■ time spent at the place of work waiting or standing by; and</li><li>■ time corresponding to short rest periods.</li></ul> <p>Excluded are:</p> <ul style="list-style-type: none"><li>■ hours paid for but not worked, such as paid annual leave, public holidays or paid sick leave;</li><li>■ meal breaks; and</li><li>■ time spent on travel to and from work (excluding some self-employed).</li></ul> <p>For multiple job holders actual hours worked should equal the hours worked at all jobs.</p>
<b>Aggregate monthly hours worked</b>	<p>Aggregate monthly hours worked measures the total number of actual hours worked by employed persons in a calendar month. It differs from the actual hours worked estimates (and the usual hours worked estimates) since these refer only to the hours worked in the reference week.</p> <p>Actual and usual hours worked cannot be aggregated across time to produce either quarterly or annual estimates as they relate to only a single week in the month. In contrast, aggregate monthly hours worked estimates are a true monthly measure, and may be aggregated across time to produce both quarterly and annual estimates.</p>
<b>Attending full time education</b>	Persons aged 15–24 years enrolled at secondary or high school or enrolled as a full time student at a Technical and Further Education (TAFE) college, university, or other educational institution in the reference week.
<b>Attending school</b>	Persons aged 15–19 years enrolled at secondary or high school in the reference week.
<b>Attending tertiary educational institution full time</b>	Persons aged 15–24 years enrolled full time at a TAFE college, university, or other educational institution in the reference week, except those persons aged 15–19 years who were still attending school.
<b>Civilian population aged 15 years and over</b>	All usual residents of Australia aged 15 years and over except members of the permanent defence forces, certain diplomatic personnel of overseas governments customarily excluded from census and estimated population counts, overseas residents in Australia, and members of non-Australian defence forces (and their dependants) stationed in Australia.
<b>Composite Estimation</b>	The estimation methodology used in the Labour Force Survey. Composite Estimation uses sample responses from nearby months as well as from the reference month to derive estimates for the reference month. This approach achieves gains in efficiency by exploiting the high similarity between the responses provided by the same respondent in previous months. For details see <i>Information Paper: Forthcoming Changes to Labour Force Statistics, 2007</i> (cat. no. 6292.0).

## GLOSSARY *continued*

<b>Employed</b>	<p>All persons aged 15 years and over who, during the reference week:</p> <ul style="list-style-type: none"><li>■ worked for one hour or more for pay, profit, commission or payment in kind in a job or business, or on a farm (comprising employees, employers and own account workers); or</li><li>■ worked for one hour or more without pay in a family business or on a farm (i.e. contributing family workers); or</li><li>■ were employees who had a job but were not at work and were:<ul style="list-style-type: none"><li>■ away from work for less than four weeks up to the end of the reference week; or</li><li>■ away from work for more than four weeks up to the end of the reference week and received pay for some or all of the four week period to the end of the reference week; or</li><li>■ away from work as a standard work or shift arrangement; or</li><li>■ on strike or locked out; or</li><li>■ on workers' compensation and expected to return to their job; or</li></ul></li><li>■ were employers or own account workers, who had a job, business or farm, but were not at work.</li></ul>
<b>Employment to population ratio</b>	<p>For any group, the number of employed persons expressed as a percentage of the civilian population in the same group.</p>
<b>Estimated resident population (ERP)</b>	<p>Estimated resident population (ERP), is Australia's official measure of the population of Australia and is based on the concept of usual residence. It refers to all people, regardless of nationality, citizenship or legal status, who usually live in Australia, with the exception of foreign diplomatic personnel and their families. It includes usual residents who are overseas for less than 12 months. It excludes overseas visitors who are in Australia for less than 12 months. Refer to <i>Australian Demographic Statistics</i> (cat. no. 3101.0).</p>
<b>Flow estimates</b>	<p>Flow estimates are a measure of activity over a given period. For example, aggregate monthly hours worked is a measure of the total number of hours worked in a calendar month.</p>
<b>Full time aggregate monthly hours worked</b>	<p>Full time aggregate monthly hours worked measures the total number of hours worked in a calendar month by employed persons who actually worked 35 hours or more during the reference week.</p>
<b>Full time workers</b>	<p>Employed persons who usually worked 35 hours or more a week (in all jobs) and those who, although usually working less than 35 hours a week, worked 35 hours or more during the reference week.</p>
<b>Gross flows</b>	<p>The matching of respondents who report in consecutive months enables analysis of the transition of individuals between the different labour force status classifications, referred to as the matched sample. The transition counts between the different labour force status classifications from one point in time to the next are commonly referred to as gross flows.</p> <p>The figures presented in gross flows are presented in original terms only and do not align with published labour force estimates. The gross flows figures are derived from the matched sample between consecutive months, which after taking account of the sample rotation and varying non-response in each month is approximately 80 percent of the sample.</p> <p>Caution should be exercised when analysing these gross flows data due to:</p> <ul style="list-style-type: none"><li>■ the figures presented sum to approximately 80 percent of the population values as the gross flows data are based on the matched sample only;</li><li>■ there is no adjustment applied to account for changes due to seasonal patterns (referred to commonly as seasonal adjustment); and</li><li>■ the relative sizes of each transition class are subject to bias due to the matched sample being a non-representative sample.</li></ul>

## GLOSSARY *continued*

<b>Labour force</b>	For any group, persons who were employed or unemployed, as defined.
<b>Labour force status</b>	A classification of the civilian population aged 15 years and over into employed, unemployed or not in the labour force, as defined. The definitions conform closely to the international standard definitions adopted by the International Conferences of Labour Statisticians.
<b>Labour force underutilisation rate</b>	The sum of the number of persons unemployed and the number of persons in underemployment, expressed as a proportion of the labour force.
<b>Market sector</b>	The market sector is an industry grouping comprising the following industries: Agriculture, forestry and fishing; Mining; Manufacturing; Electricity, gas, water and waste services; Construction; Wholesale trade; Retail trade; Accommodation and food services; Transport, postal and warehousing; Information media and telecommunications; Finance and insurance services; Rental, hiring and real estate services; Professional, scientific and technical services; Administrative and support services; Arts and recreation services and Other services. Refer to <i>Australian National Accounts: Concepts, Sources and Methods</i> (cat. no. 5216.0).
<b>Non-market Sector</b>	The non-market sector is an industry grouping comprising the following industries: Education and training; Public administration & safety and, Health care and social assistance. Refer to <i>Australian National Accounts: Concepts, Sources and Methods</i> (cat. no. 5216.0).
<b>Not in labour force</b>	Persons who were not in the categories employed or unemployed as defined.
<b>Participation rate</b>	For any group, the labour force expressed as a percentage of the civilian population aged 15 years and over in the same group.
<b>Part time aggregate monthly hours worked</b>	Part time aggregate monthly hours worked measures the total number of hours worked in a calendar month by employed persons who actually worked 1 to 34 hours during the reference week.
<b>Part time workers</b>	Employed persons who usually worked less than 35 hours a week (in all jobs) and either did so during the reference week, or were not at work during the reference week.
<b>Response rate</b>	The number of fully responding dwellings expressed as a percentage of the total number of dwellings excluding sample loss. Examples of sample loss include: dwellings where all persons are out of scope and/or coverage; vacant dwellings; dwellings under construction; dwellings converted to non-dwellings; derelict dwellings; and demolished dwellings.
<b>Seasonally adjusted series</b>	A time series of estimates with the estimated effects of normal seasonal variation removed. See Explanatory Notes 27 to 31 for more detail.
<b>Stock estimates</b>	Stock estimates are a measure of certain attributes at a point in time and can be thought of as <i>stocktakes</i> . For example, the total number of employed persons is an account of the number of people who were considered employed in the Labour Force Survey reference week.
<b>Trend series</b>	A smoothed seasonally adjusted series of estimates. See Explanatory Notes 32 to 35 for more detail.
<b>Underemployment rate</b>	The number of underemployed workers expressed as a percentage of the labour force.
<b>Underemployed workers</b>	Employed persons aged 15 years and over who want, and are available for, more hours of work than they currently have. They comprise: <ul style="list-style-type: none"><li>■ persons employed part time who want to work more hours and are available to start work with more hours, either in the reference week or in the four weeks subsequent to the survey; or</li></ul>

## GLOSSARY *continued*

---

<b>Underemployed workers</b> <i>continued</i>	<ul style="list-style-type: none"><li>■ persons employed full time who worked part time hours in the reference week for economic reasons (such as being stood down or insufficient work being available). It is assumed that these people wanted to work full time in the reference week and would have been available to do so.</li></ul>
<b>Unemployed</b>	Persons aged 15 years and over who were not employed during the reference week, and: <ul style="list-style-type: none"><li>■ had actively looked for full time or part time work at any time in the four weeks up to the end of the reference week and were available for work in the reference week; or</li><li>■ were waiting to start a new job within four weeks from the end of the reference week and could have started in the reference week if the job had been available then.</li></ul>
<b>Unemployed looking for full time work</b>	Unemployed persons who: <ul style="list-style-type: none"><li>■ actively looked for full time work; or</li><li>■ were waiting to start a new full time job.</li></ul>
<b>Unemployed looking for part time work</b>	Unemployed persons who: <ul style="list-style-type: none"><li>■ actively looked for part time work only; or</li><li>■ were waiting to start a new part time job.</li></ul>
<b>Unemployment rate</b>	For any group, the number of unemployed persons expressed as a percentage of the labour force in the same group.
<b>Unemployment to population ratio</b>	For any group, the number of unemployed persons expressed as a percentage of the civilian population in the same group.
<b>Usual hours of work</b>	Usual hours of work refers to a typical period rather than to a specified reference period. The concept of usual hours applies both to persons at work and to persons temporarily absent from work, and is defined as the hours worked during a typical week or day. Actual hours worked (for a specific reference period) may differ from usual hours worked due to illness, vacation, strike, overtime work, a change of job or similar reasons.



## FOR MORE INFORMATION . . .

*INTERNET*      **www.abs.gov.au** the ABS website is the best place for data from our publications and information about the ABS.

### INFORMATION AND REFERRAL SERVICE

Our consultants can help you access the full range of information published by the ABS that is available free of charge from our website. Information tailored to your needs can also be requested as a 'user pays' service. Specialists are on hand to help you with analytical or methodological advice.

*PHONE*                      1300 135 070

*EMAIL*                      [client.services@abs.gov.au](mailto:client.services@abs.gov.au)

*FAX*                              1300 135 211

*POST*                              Client Services, ABS, GPO Box 796, Sydney NSW 2001

## FREE ACCESS TO STATISTICS

All statistics on the ABS website can be downloaded free of charge.

*WEB ADDRESS*      [www.abs.gov.au](http://www.abs.gov.au)