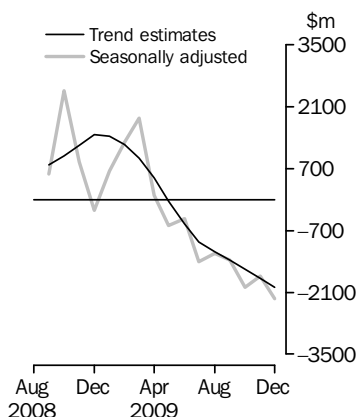


INTERNATIONAL TRADE IN GOODS AND SERVICES

AUSTRALIA

EMBARGO: 11.30AM (CANBERRA TIME) WED 3 FEB 2010

Balance on Goods and Services



KEY FIGURES

	Oct 2009	Nov 2009	Dec 2009	Nov 09 to Dec 09 %
	\$m	\$m	\$m	change
BALANCE ON GOODS AND SERVICES				
Trend estimates	-1 579	-1 790	-1 988	..
Seasonally adjusted	-1 994	-1 728	-2 252	..
CREDITS (Exports of goods & services)				
Trend estimates	19 525	19 495	19 457	—
Seasonally adjusted	19 425	19 092	19 767	4
DEBITS (Imports of goods & services)				
Trend estimates	21 105	21 285	21 444	1
Seasonally adjusted	21 419	20 820	22 018	6

.. not applicable

— nil or rounded to zero (including null cells)

KEY POINTS

BALANCE ON GOODS AND SERVICES

- The trend estimate of the *balance on goods and services* was a deficit of \$1,988m in December 2009, an increase of \$198m on a revised deficit in November 2009.
- In seasonally adjusted terms, the *balance on goods and services* was a deficit of \$2,252m in December 2009, an increase of \$524m on the revised deficit in November 2009.

CREDITS (EXPORTS OF GOODS & SERVICES)

- Seasonally adjusted, *goods and services credits* rose \$675m (4%) to \$19,767m. *Non-rural goods* rose \$571m (5%) with the *coal, coke and briquettes* component up \$256m (10%), the *metals (excl. non-monetary gold)* component up \$178m (25%) and the *other mineral fuels* component up \$174m (13%). *Rural goods* rose \$135m (7%) and *non-monetary gold* fell \$46m (4%). *Services credits* rose \$15m.

DEBITS (IMPORTS OF GOODS & SERVICES)

- Seasonally adjusted, *goods and services debits* rose \$1,198m (6%) to \$22,018m. *Intermediate and other merchandise goods* rose \$760m (11%) with the *fuels and lubricants* component up \$535m (26%), *capital goods* rose \$246m (7%), *non-monetary gold* rose \$224m (51%) and *consumption goods* fell \$74m (1%). *Services debits* rose \$42m (1%).

INQUIRIES

For further information contact Selvi Sekhar on Canberra (02) 6252 5540 for Goods, and Karen McGuigan on Canberra (02) 6252 5415 for Services.

NOTES

FORTHCOMING ISSUES

ISSUE	RELEASE DATE
January 2010	4 March 2010
February 2010	1 April 2010
March 2010	6 May 2010
April 2010	3 June 2010
May 2010	6 July 2010
June 2010	4 August 2010



REVISIONS

Table 17 summarises revisions, in original current price terms, since the last issue of this publication, for the last three financial years and last six months.

Revisions have been made to incorporate the latest available data relating to merchandise trade and international trade in services. In original terms, these revisions have:

- increased the deficit on goods and services for November 2009 by \$91m
- decreased the deficit on goods and services for the four months ending October 2009 by \$265m
- decreased the surplus on goods and services for 2008-09 by \$12m.

Seasonally adjusted and trend series are revised due to the incorporation of revised estimates, incorporation of estimates for the latest month and the rederivation of seasonal factors under the concurrent seasonal adjustment methodology.

FEATURE ARTICLE

A feature article *Import and Export Invoice Currencies, 2009* will be released on 19 February 2010 and will be accessible on the ABS web site <www.abs.gov.au>. This article will analyse the major invoice currencies used for Australia's international merchandise trade. It will identify compositional changes in the currencies used to invoice goods imported into and exported from Australia.

INFORMATION PAPER

The publication *Characteristics of Australian Exporters, 2008-09* (cat. no. 5368.0.55.006) will be released on 26 March 2010. This publication will analyse the number and characteristics of Australia's exporters. Estimates of exporters of merchandise trade are compiled from data sourced from the Australian Customs and Border Protection Service and from the Australian Taxation Office's Australian Business Register. Estimates on exporters of services are compiled largely from the ABS Survey of International Trade in Services.

CHANGES IN THE NEXT ISSUE

See page 4 for details of changes to industry statistics from the January 2010 issue of this publication.

Brian Pink
Australian Statistician

CONTENTS

page

Changes in the January 2010 issue	4
Time series data	5

ANALYSIS

Analysis and comments	6
-----------------------	---

TABLES

INTERNATIONAL TRADE IN GOODS AND SERVICES – BALANCE OF PAYMENTS BASIS

1 Goods and services, summary, seasonally adjusted and trend estimates	10
2 Goods and services, summary, original	11
3 Goods credits, original	12
4 Goods debits, original	13
5 Goods credits, seasonally adjusted	14
6 Goods debits, seasonally adjusted	15
7 Goods credits, trend estimates	16
8 Goods debits, trend estimates	17
9 Services, summary, original	18
10 Services, summary, seasonally adjusted and trend estimates	19
11 Services, original, quarterly	20

INTERNATIONAL MERCHANDISE TRADE – RECORDED TRADE BASIS

12 International merchandise exports, by commodity	21
13 International merchandise imports, by commodity	24
14 International merchandise trade, by country and country groups	27
15 International merchandise trade, by state	28

OTHER TABLES

16 Period average exchange rates per Australian dollar	29
17 Summary of revisions, goods and services, original	30

OTHER INFORMATION

Explanatory Notes	31
Appendix – Related articles	37

CHANGES IN THE JANUARY 2010 ISSUE

CHANGES TO STATISTICS PRESENTED ON AN ANZSIC BASIS

From the January 2010 issue, there will be changes to the availability of industry statistics.

The changes will affect data available by subscription or on an ad hoc basis:

- all data for June 2005 and earlier will only be available in accordance with Australian and New Zealand Standard Industrial Classification 1993 (ANZSIC93)
- data from July 2005 to June 2009 will be available in accordance with both ANZSIC93 and Australian and New Zealand Standard Industrial Classification 2006 (ANZSIC06)
- data from July 2009 will only be available on an ANZSIC06 basis.
- data from July 2009 to December 2009 previously released on as ANZSIC93 basis will no longer be available.

For further details about the introduction of ANZSIC06 and information on concordances, refer to the Information paper: *Changes to International Trade in Goods Industry Statistics, July 2009* (cat. no. 5368.0.55.011).

These changes will not change the statistics presented on a Balance of Payments basis nor result in revisions to the total value of goods and services credits and debits.

TIME SERIES DATA

TIME SERIES DATA

Data is available free on the ABS web site include longer time series of tables in this publication and the additional spreadsheets and data cubes listed below.

- 31 Merchandise exports by Broad Economic Category (BEC)
- 32 Merchandise exports by industry of origin (ANZSIC)
- 33 Merchandise imports by Broad Economic Category (BEC)
- 34 Merchandise imports by Balance of Payments Broad Economic Category (BoPBEC)
- 35 Merchandise imports by industry of origin (ANZSIC)
- 36 Merchandise exports, state by country and country groups
- 37 Merchandise imports, state by country and country groups
- 91 Monthly seasonal adjustment factors and forward factors for 12 months.

TRADE IN SERVICES DATA CUBES

Trade in Services data cubes are usually updated on an annual basis - with the March issue of this publication for calendar year (cat. no. 5368.0.55.004) and with the September issue for financial year (cat. no. 5368.0.55.003).

The following tables are included in both sets of data cubes:

- 1 International trade in services, credits, state by year
- 2 International trade in services, credits, year by state
- 3 International trade in services, debits, state by year
- 4 International trade in services, debits, year by state
- 5 International trade in services, credits, year by country and service
- 6 International trade in services, credits, service by year and by country
- 7 International trade in services, debits, year by country and service
- 8 International trade in services, debits, service by year and by country
- 10 International trade in services, credits, year by country and travel service
- 11 International trade in services, debits, year by country and travel service
- 12 International trade in services, credits, education related travel, by educational sector, by type of expenditure by year.

ANALYSIS AND COMMENTS

BALANCE ON GOODS AND SERVICES

The trend estimate of the balance on goods and services was a deficit of \$1,988m in December 2009, an increase of \$198m on a revised deficit in November 2009.

In seasonally adjusted terms, the balance on goods and services was a deficit of \$2,252m in December 2009, an increase of \$524m on a revised deficit in November 2009.

The sum of the seasonally adjusted balances for the three months to December 2009 was a deficit of \$5,974m, an increase of \$1,976m on the deficit of \$3,998m for the three months to September 2009. However, if the seasonal factors used in compiling quarterly Balance of Payments are applied, the December quarter 2009 deficit was \$6,062m, an increase of \$1,838m on the revised September quarter 2009 deficit of \$4,224m.

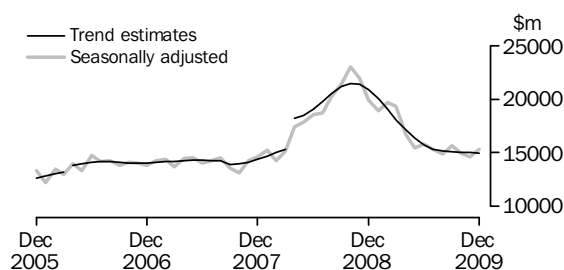
EXPORTS OF GOODS AND SERVICES

Between November 2009 and December 2009 the trend estimate of goods and services credits fell \$38m to \$19,457m.

In seasonally adjusted terms, goods and services credits rose \$675m (4%) to \$19,767m. Non-rural goods rose \$571m (5%), rural goods rose \$135m (7%) and non-monetary gold fell \$46m (4%). Services credits rose \$15m.

Exports of goods

GOODS CREDITS



(a) Trend breaks of \$500m to April 2006 and \$2,725m to April 2008 have been applied.

RURAL GOODS

In trend terms, exports of rural goods fell \$9m to \$1,948m.

In seasonally adjusted terms, export of rural goods rose \$135m (7%) to \$2,093m.

The main component contributing to the rise in seasonally adjusted estimates was other rural, up \$137m (16%).

NON-RURAL GOODS

In trend terms, exports of non-rural goods fell \$46m to \$11,840m.

In seasonally adjusted terms, exports of non-rural goods rose \$571m (5%) to \$12,092m.

The main components contributing to the rise in seasonally adjusted estimates were:

- coal, coke & briquettes, up \$256m (10%)
- metals (excl. non-monetary gold), up \$178m (25%)
- other mineral fuels, up \$174m (13%)
- other non-rural (incl. sugar and beverages), up \$54m (6%).

Partly offsetting these increases was the metal ores and minerals component, down \$76m (2%).

ANALYSIS AND COMMENTS *continued*

Exports of goods continued

NET EXPORTS OF GOODS UNDER MERCHANTING

In trend terms, net exports of goods under merchanting fell \$3m (10%) to \$28m.

In both original terms and seasonally adjusted terms, net exports of goods under merchanting remained steady at \$27m.

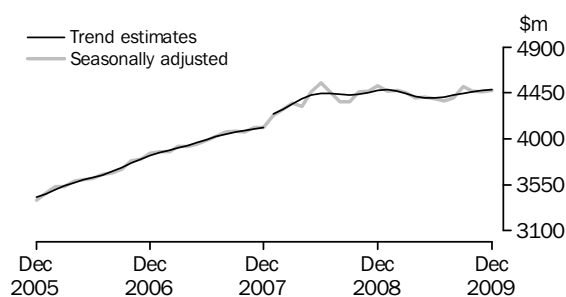
NON-MONETARY GOLD

In trend terms, exports of non-monetary gold rose \$9m (1%) to \$1,155m.

In both original terms and seasonally adjusted terms, non-monetary gold fell \$46m (4%) to \$1,079m.

Exports of services

SERVICES CREDITS



(a) A trend break of \$106m has been applied to January 2008.

In trend terms, services credits rose \$9m to \$4,485m.

In seasonally adjusted terms, services credits rose \$15m to \$4,476m.

The main component contributing to the rise in the seasonally adjusted estimates was other services, up \$7m (1%).

In seasonally adjusted terms, tourism related services credits rose \$4m to \$2,998m.

IMPORTS OF GOODS AND SERVICES

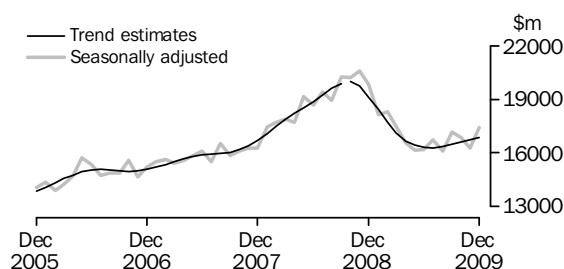
Between November 2009 and December 2009 the trend estimate of goods and services debits rose \$159m (1%) to \$21,444m.

In seasonally adjusted terms, goods and services debits rose \$1,198m (6%) to \$22,018m. Intermediate and other merchandise goods rose \$760m (11%), capital goods rose \$246m (7%), non-monetary gold rose \$224m (51%) and consumption goods fell \$74m (1%). Services debits rose \$42m (1%).

Preliminary analysis shows that goods imports volumes, in seasonally adjusted terms, increased about 7.1% during the December quarter 2009. The Chain Laspeyres price index fell about 4.4% and the implicit price deflator fell about 4.7%. The final volume and price outcomes will be published in the December quarter 2009 issue of *Balance of Payments and International Investment Position, Australia* (5302.0).

Imports of goods

GOODS DEBITS



(a) A trend break of \$167m has been applied to Capital goods n.e.s. debits and related aggregates in October 2008.

CONSUMPTION GOODS

In trend terms, imports of consumption goods fell \$25m to \$4,990m.

In seasonally adjusted terms, imports of consumption goods fell \$74m (1%) to \$4,971m.

The main components contributing to the fall in the seasonally adjusted estimates were:

- textiles, clothing and footwear, down \$69m (12%)
- toys, books and leisure goods, down \$29m (7%).

Partly offsetting these falls was the food and beverages, mainly for consumption component, up \$40m (6%).

CAPITAL GOODS

In trend terms, imports of capital goods rose \$28m (1%) to \$3,848m.

In seasonally adjusted terms, imports of capital goods rose \$246m (7%) to \$3,998m.

The main component contributing to the rise in the seasonally adjusted estimates was capital goods n.e.s., up \$336m (42%).

This rise was partly offset by the machinery and industrial equipment component, down \$132m (10%).

INTERMEDIATE AND OTHER MERCHANDISE GOODS

In trend terms, imports of intermediate and other merchandise goods rose \$81m (1%) to \$7,381m.

In seasonally adjusted terms, imports of intermediate and other merchandise goods rose \$760m (11%) to \$7,787m.

The main components contributing to the rise in the seasonally adjusted estimates were:

- fuels and lubricants, up \$535m (26%). In original terms, crude petroleum increased \$377m (33%) with prices up 2% and volumes up 31%. Refined petroleum increased \$146m (17%) with prices up 2% and volumes up 15%.
- other parts for capital goods, up \$127m (12%)
- parts for transport equipment, up \$42m (7%).

ANALYSIS AND COMMENTS *continued*

Imports of goods continued

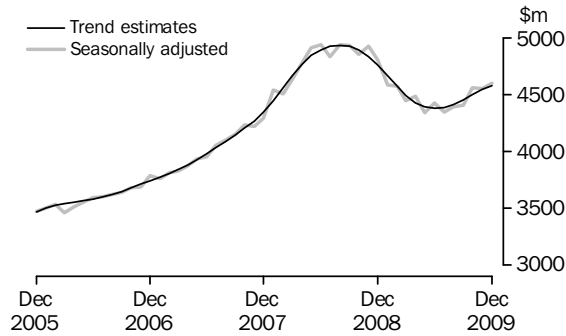
NON-MONETARY GOLD

In trend terms, imports of non-monetary gold rose \$41m (7%) to \$648m.

In both original terms and seasonally adjusted terms, non-monetary gold debits rose \$224m (51%) to \$665m.

Imports of services

SERVICES DEBITS



In trend terms, services debits rose \$35m (1%) to \$4,578m.

In seasonally adjusted terms, services debits rose \$42m (1%) to \$4,597m.

The main components contributing to the rise in the seasonally adjusted estimates were:

- travel, up \$45m (2%)
- transport, up \$20m (2%).

Partly offsetting these increases were the maintenance and repair services n.i.e. component, down \$12m (57%) and the other services component, down \$11m (1%).

In seasonally adjusted terms, tourism related services debits rose \$46m (2%) to \$2,524m.

GOODS AND SERVICES (a), Summary—Seasonally Adjusted and Trend Estimates

	Jan 2009	Feb 2009	Mar 2009	Apr 2009	May 2009	Jun 2009	Jul 2009	Aug 2009	Sep 2009	Oct 2009	Nov 2009	Dec 2009	
	\$m	\$m	\$m	\$m	\$m	\$m	\$m	\$m	\$m	\$m	\$m	\$m	
SEASONALLY ADJUSTED													
BALANCE													
On goods and services	649	1 295	1 846	91	-592	-431	-1 404	-1 216	-1 378	-1 994	-1 728	-2 252	
CREDITS													
Total goods and services	23 382	24 164	23 807	21 148	19 876	20 182	19 671	19 276	20 184	19 425	19 092	19 767	
Total goods	18 914	19 691	19 352	16 751	15 470	15 786	15 296	14 873	15 671	14 959	14 631	15 290	
Rural goods(b)	2 491	2 541	2 727	2 436	2 311	2 317	2 184	2 100	2 003	1 845	1 958	2 093	
Non-rural goods(b)	14 952	14 900	14 478	12 965	12 156	12 303	12 236	11 896	12 251	11 933	11 521	12 092	
Net exports of goods under merchandise(c)	38	38	38	25	25	25	41	41	40	27	27	27	
Non-monetary gold(c)	1 433	2 212	2 109	1 325	978	1 141	835	836	1 377	1 155	1 125	1 079	
Total services	4 468	4 473	4 455	4 398	4 406	4 396	4 375	4 403	4 513	4 465	4 461	4 476	
DEBITS													
Total goods and services	-22 733	-22 869	-21 961	-21 057	-20 468	-20 613	-21 075	-20 492	-21 561	-21 419	-20 820	-22 018	
Total goods	-18 151	-18 295	-17 514	-16 570	-16 130	-16 188	-16 727	-16 097	-17 157	-16 858	-16 265	-17 421	
Consumption goods	-5 147	-4 449	-5 151	-5 050	-5 018	-5 185	-5 236	-4 924	-5 101	-5 022	-5 045	-4 971	
Capital goods	-4 387	-4 938	-4 259	-3 784	-3 525	-3 691	-3 821	-3 934	-3 994	-4 059	-3 752	-3 998	
Intermediate and other merchandise goods	-7 516	-7 218	-7 041	-7 152	-6 704	-6 966	-7 415	-6 684	-7 325	-7 104	-7 027	-7 787	
Non-monetary gold(c)	-1 101	-1 691	-1 063	-584	-884	-346	-255	-555	-737	-672	-441	-665	
Total services	-4 582	-4 574	-4 446	-4 487	-4 338	-4 425	-4 348	-4 395	-4 404	-4 561	-4 555	-4 597	
TREND ESTIMATES (d)													
BALANCE													
On goods and services	1 423	1 245	931	486	-34	-559	-957	-1 194	-1 372	-1 579	-1 790	-1 988	
CREDITS													
Total goods and services	24 520	23 538	22 528	21 589	20 781	20 121	19 711	19 572	19 558	19 525	19 495	19 457	
Total goods	20 041	19 070	18 084	17 171	16 379	15 723	15 302	15 145	15 111	15 062	15 020	14 971	
Rural goods(b)	2 577	2 567	2 531	2 474	2 393	2 285	2 174	2 084	2 023	1 981	1 957	1 948	
Non-rural goods(b)	15 747	14 738	13 857	13 171	12 676	12 314	12 097	12 013	11 979	11 930	11 886	11 840	
Net exports of goods under merchandise	16	24	30	33	33	33	34	35	35	33	31	28	
Non-monetary gold	1 701	1 740	1 665	1 493	1 278	1 091	998	1 013	1 073	1 118	1 146	1 155	
Total services	4 479	4 468	4 444	4 418	4 402	4 399	4 409	4 427	4 447	4 463	4 476	4 485	
DEBITS													
Total goods and services	-23 097	-22 293	-21 597	-21 103	-20 815	-20 680	-20 668	-20 766	-20 930	-21 105	-21 285	-21 444	
Total goods	-18 434	-17 724	-17 107	-16 674	-16 425	-16 304	-16 284	-16 354	-16 477	-16 606	-16 742	-16 866	
Consumption goods	-5 101	-5 025	-4 990	-5 002	-5 049	-5 097	-5 114	-5 089	-5 061	-5 037	-5 015	-4 990	
Capital goods	-4 261	-4 127	-3 991	-3 867	-3 768	-3 704	-3 685	-3 705	-3 745	-3 781	-3 820	-3 848	
Intermediate and other merchandise goods	-7 856	-7 402	-7 089	-6 951	-6 934	-6 961	-7 003	-7 055	-7 122	-7 204	-7 300	-7 381	
Non-monetary gold	-1 216	-1 170	-1 038	-854	-673	-542	-482	-505	-550	-585	-607	-648	
Total services	-4 663	-4 569	-4 490	-4 429	-4 391	-4 376	-4 384	-4 412	-4 453	-4 498	-4 543	-4 578	
(a)	For sign conventions, see paragraph 15 of the Explanatory Notes.						(d)						Caution should be used when interpreting recent trend estimates as they may be affected by unusual economic factors. For more details on trend estimates, please see paragraph 19 of the explanatory notes.
(b)	For all time periods, estimates for sugar, sugar preparations and honey are included in Non-rural goods.												
(c)	These components are not seasonally adjusted.												

GOODS AND SERVICES (a), Summary—Original

	Jan 2009	Feb 2009	Mar 2009	Apr 2009	May 2009	Jun 2009	Jul 2009	Aug 2009	Sep 2009	Oct 2009	Nov 2009	Dec 2009
	\$m	\$m	\$m	\$m	\$m	\$m	\$m	\$m	\$m	\$m	\$m	\$m
BALANCE												
On goods and services	-513	2 191	2 768	266	560	-631	-1 841	-347	-2 477	-2 608	-2 731	-2 128
CREDITS												
Total goods and services	21 813	23 077	24 532	20 737	19 976	19 629	19 728	19 716	20 271	20 440	19 026	20 768
Total goods	17 394	18 524	19 920	16 244	15 684	15 586	15 325	15 212	15 939	15 766	14 527	16 345
Rural goods(b)	2 197	2 533	2 986	2 492	2 487	2 223	2 110	2 068	1 963	1 886	1 902	2 228
Non-rural goods(b)	13 726	13 741	14 787	12 402	12 194	12 197	12 339	12 267	12 559	12 698	11 473	13 011
Net exports of goods under merchanting	38	38	38	25	25	25	41	41	40	27	27	27
Non-monetary gold	1 433	2 212	2 109	1 325	978	1 141	835	836	1 377	1 155	1 125	1 079
Total services	4 419	4 553	4 612	4 493	4 292	4 043	4 403	4 504	4 332	4 674	4 499	4 423
DEBITS												
Total goods and services	-22 326	-20 886	-21 764	-20 471	-19 416	-20 260	-21 569	-20 063	-22 748	-23 048	-21 757	-22 896
Total goods	-17 480	-16 900	-17 554	-16 075	-15 298	-15 824	-16 990	-15 757	-18 030	-18 189	-17 350	-17 997
Consumption goods	-4 846	-4 039	-4 944	-4 730	-4 542	-4 927	-5 409	-4 918	-5 569	-5 785	-5 602	-5 076
Capital goods	-4 044	-4 353	-4 370	-3 617	-3 449	-3 759	-3 853	-3 738	-4 183	-4 261	-4 178	-4 266
Intermediate and other merchandise goods	-7 489	-6 817	-7 177	-7 144	-6 423	-6 792	-7 473	-6 546	-7 541	-7 471	-7 129	-7 990
Non-monetary gold	-1 101	-1 691	-1 063	-584	-884	-346	-255	-555	-737	-672	-441	-665
Total services	-4 846	-3 986	-4 210	-4 396	-4 118	-4 436	-4 579	-4 306	-4 718	-4 859	-4 407	-4 899

(a) For sign conventions, see paragraph 15 of the Explanatory Notes.

(b) For all time periods, estimates for sugar, sugar preparations and honey are included in Non-rural goods.

							6 MONTHS ENDED		Change
							DECEMBER		
	2006-07	2007-08	2008-09	Oct 2009	Nov 2009	Dec 2009	2008	2009	
	\$m	\$m	\$m	\$m	\$m	\$m	\$m	%	
Total goods credits	169 524	182 952	231 471	15 766	14 527	16 345	128 119	93 114	-27.3
General merchandise	158 570	170 471	213 662	14 584	13 375	15 239	119 697	86 504	-27.7
<i>Rural goods</i>	25 090	25 494	29 383	1 886	1 902	2 228	14 465	12 157	-16.0
Meat and meat preparations	7 080	6 542	7 454	546	527	554	4 028	3 217	-20.1
Cereal grains and cereal preparations	4 171	4 975	6 881	310	298	388	2 761	2 362	-14.5
Wool and sheepskins	3 065	2 796	2 322	217	230	205	1 237	1 034	-16.4
Other rural (a)	10 774	11 181	12 726	813	847	1 081	6 439	5 544	-13.9
<i>Non-rural goods</i>	133 480	144 977	184 279	12 698	11 473	13 011	105 232	74 347	-29.3
Metal ores and minerals	35 315	41 339	51 922	3 651	3 624	4 054	28 373	22 338	-21.3
Coal, coke and briquettes	21 928	24 599	54 957	2 722	2 467	2 810	32 494	16 882	-48.0
Other mineral fuels	15 641	18 889	20 707	1 697	1 315	1 619	12 562	8 853	-29.5
Metals (excl. non-monetary gold)	14 821	14 039	12 394	956	734	932	7 288	5 110	-29.9
Machinery	8 391	8 750	8 900	698	639	703	4 889	4 103	-16.1
Transport equipment	4 651	5 723	5 090	392	361	378	3 438	2 142	-37.7
Other manufactures	16 241	16 965	17 601	1 415	1 390	1 354	9 436	8 484	-10.1
Other non-rural (incl. sugar and beverages)	15 113	13 126	11 077	1 065	827	1 042	5 794	5 769	-0.4
Goods procured in ports by carriers	1 379	1 547	1 631	102	116	119	958	666	-30.5
Net exports of goods under merchanting	214	209	301	27	27	27	112	203	81.3
Goods acquired under merchanting									
(negative exports)	-1 303	-1 528	-2 387	-139	-139	-138	-1 385	-789	43.0
Goods sold under merchanting	1 517	1 737	2 688	166	166	165	1 497	992	-33.7
Non-monetary gold	10 740	12 272	17 508	1 155	1 125	1 079	8 310	6 407	-22.9

(a) For all time periods, estimates for sugar, sugar preparations and honey are included in Other non-rural.

GOODS DEBITS(a), Original

	6 MONTHS ENDED								
							DECEMBER		Change
	2006-07	2007-08	2008-09	Oct 2009	Nov 2009	Dec 2009	2008	2009	
\$m	\$m	\$m	\$m	\$m	\$m	\$m	\$m	%	
Total goods debits	-183 572	-204 846	-222 437	-18 189	-17 350	-17 997	-123 306	-104 313	15.4
General merchandise	-178 261	-197 253	-210 915	-17 517	-16 909	-17 332	-117 453	-100 988	14.0
Consumption goods	-54 913	-59 371	-61 419	-5 785	-5 602	-5 076	-33 391	-32 359	3.1
Food and beverages, mainly for consumption	-7 182	-7 840	-8 857	-828	-778	-824	-4 722	-4 734	-0.3
Household electrical items	-4 525	-5 051	-5 488	-542	-622	-475	-3 017	-3 209	-6.4
Non-industrial transport equipment	-14 894	-16 872	-13 247	-1 397	-1 429	-1 422	-7 927	-7 707	2.8
Textiles, clothing and footwear	-6 805	-7 051	-8 287	-622	-579	-442	-4 217	-3 681	12.7
Toys, books and leisure goods	-4 328	-4 561	-5 277	-553	-458	-326	-2 949	-2 693	8.7
Consumption goods n.e.s.	-17 179	-17 996	-20 263	-1 843	-1 736	-1 587	-10 559	-10 335	2.1
Capital goods	-41 774	-45 299	-51 457	-4 261	-4 178	-4 266	-27 865	-24 479	12.2
Machinery and industrial equipment	-15 330	-16 480	-18 488	-1 252	-1 516	-1 320	-10 029	-8 042	19.8
ADP equipment	-7 008	-7 074	-7 257	-606	-561	-652	-3 865	-3 601	6.8
Telecommunications equipment	-5 315	-5 790	-6 431	-558	-638	-519	-3 342	-3 228	3.4
Civil aircraft(b)	-1 667	-2 691	na	na	na	na	na	na	na
Industrial transport equipment n.e.s.	-6 463	-7 502	-6 527	-501	-590	-562	-4 278	-3 081	28.0
Capital goods n.e.s.(b)	-5 991	-5 762	-11 230	-1 344	-873	-1 213	-4 827	-6 527	-35.2
Intermediate and other merchandise goods	-81 574	-92 583	-98 039	-7 471	-7 129	-7 990	-56 197	-44 150	21.4
Food and beverages, mainly for industry	-819	-923	-1 186	-82	-81	-91	-634	-538	15.1
Primary industrial supplies n.e.s.	-1 552	-1 477	-1 901	-97	-114	-175	-1 189	-695	41.5
Fuels and lubricants	-21 470	-29 772	-28 213	-2 003	-2 089	-2 624	-17 235	-13 180	23.5
Parts for transport equipment	-8 355	-8 837	-8 599	-742	-640	-672	-4 949	-4 066	17.8
Parts for ADP equipment	-1 620	-1 115	-1 067	-73	-70	-87	-558	-459	17.7
Other parts for capital goods	-11 780	-11 990	-14 312	-1 239	-1 108	-1 307	-7 239	-7 127	1.5
Organic and inorganic chemicals	-4 406	-4 673	-5 384	-377	-343	-381	-2 975	-2 128	28.5
Paper and paperboard	-2 368	-2 359	-2 403	-216	-193	-183	-1 370	-1 166	14.9
Textile yarn and fabrics	-1 366	-1 334	-1 344	-107	-105	-86	-739	-622	15.8
Iron and steel	-3 817	-3 721	-5 528	-229	-244	-246	-3 438	-1 532	55.4
Plastics	-2 957	-3 064	-3 028	-247	-230	-223	-1 741	-1 367	21.5
Processed industrial supplies n.e.s.	-17 997	-20 132	-21 919	-1 731	-1 654	-1 650	-12 211	-9 823	19.6
Other merchandise goods(b)	-1 619	-1 415	-1 516	-139	-69	-79	-890	-538	39.6
Goods procured in ports by carriers	-1 448	-1 771	-1 639	-189	-189	-186	-1 029	-909	11.7
Non-monetary gold	-5 311	-7 593	-11 522	-672	-441	-665	-5 853	-3 325	43.2

na not available

(a) For sign conventions, see paragraph 15 of the Explanatory Notes.

(b) From December 2008, the Civil aircraft series and commodities subject to a 'no commodity details' or 'no value details' restriction are included in Capital goods n.e.s.. From September to November 2008 commodities with these restriction are included in Civil aircraft and for earlier periods are included in Other merchandise goods.

GOODS CREDITS, Seasonally Adjusted

	Mar 2009	Apr 2009	May 2009	Jun 2009	Jul 2009	Aug 2009	Sep 2009	Oct 2009	Nov 2009	Dec 2009
	\$m	\$m	\$m	\$m	\$m	\$m	\$m	\$m	\$m	\$m
Total goods credits	19 352	16 751	15 470	15 786	15 296	14 873	15 671	14 959	14 631	15 290
General merchandise	17 205	15 401	14 467	14 620	14 420	13 996	14 254	13 777	13 479	14 184
<i>Rural goods</i>	2 727	2 436	2 311	2 317	2 184	2 100	2 003	1 845	1 958	2 093
Meat and meat preparations	630	582	582	558	554	548	505	496	477	500
Cereal grains and cereal preparations	774	612	551	633	505	491	424	382	405	395
Wool and sheepskins	180	175	167	163	157	160	163	179	203	188
Other rural (a)	1 143	1 067	1 011	963	968	900	911	788	873	1 010
<i>Non-rural goods</i>	14 478	12 965	12 156	12 303	12 236	11 896	12 251	11 933	11 521	12 092
Metal ores and minerals	4 293	3 890	3 712	3 615	3 654	3 625	3 709	3 462	3 653	3 577
Coal, coke and briquettes(b)	4 104	3 630	3 031	3 136	3 025	2 767	3 028	2 673	2 503	2 759
Other mineral fuels(c)	1 504	1 317	1 286	1 357	1 357	1 322	1 259	1 456	1 344	1 518
Metals (excl. non-monetary gold)(c)	833	849	846	860	822	852	839	901	721	899
Machinery	756	675	659	690	668	639	667	648	642	640
Transport equipment	355	275	209	271	302	348	325	323	335	307
Other manufactures	1 491	1 381	1 393	1 397	1 390	1 370	1 342	1 351	1 331	1 337
Other non-rural (incl. sugar and beverages)	1 022	839	920	878	909	871	972	1 015	882	936
Goods procured in ports by carriers(c)	119	108	100	99	108	102	111	104	110	118
Net exports of goods under merchanting(d)	38	25	25	25	41	41	40	27	27	27
Non-monetary gold(d)	2 109	1 325	978	1 141	835	836	1 377	1 155	1 125	1 079

(a) For all time periods, estimates for sugar, sugar preparations and honey are included in Other non-rural.

(b) Only a length-of-month adjustment has been applied to this component.

(c) In using these seasonally adjusted series, care should be exercised because of the difficulties associated with reliably estimating the seasonal pattern.

(d) This component is not seasonally adjusted.

GOODS DEBITS(a), Seasonally Adjusted

	Mar 2009	Apr 2009	May 2009	Jun 2009	Jul 2009	Aug 2009	Sep 2009	Oct 2009	Nov 2009	Dec 2009
	\$m	\$m	\$m	\$m	\$m	\$m	\$m	\$m	\$m	\$m
Total goods debits	-17 514	-16 570	-16 130	-16 188	-16 727	-16 097	-17 157	-16 858	-16 265	-17 421
General merchandise	-16 451	-15 986	-15 246	-15 842	-16 472	-15 542	-16 420	-16 186	-15 824	-16 756
<i>Consumption goods</i>	-5 151	-5 050	-5 018	-5 185	-5 236	-4 924	-5 101	-5 022	-5 045	-4 971
Food and beverages, mainly for consumption	-796	-727	-734	-757	-784	-759	-742	-736	-682	-722
Household electrical items	-426	-491	-525	-537	-514	-501	-477	-418	-476	-472
Non-industrial transport equipment	-888	-909	-903	-1 089	-1 118	-1 033	-1 235	-1 266	-1 317	-1 310
Textiles, clothing and footwear	-784	-718	-668	-663	-668	-622	-620	-585	-568	-499
Toys, books and leisure goods	-470	-458	-456	-439	-433	-420	-395	-399	-389	-360
Consumption goods n.e.s.	-1 788	-1 747	-1 731	-1 701	-1 719	-1 588	-1 632	-1 618	-1 612	-1 608
<i>Capital goods</i>	-4 259	-3 784	-3 525	-3 691	-3 821	-3 934	-3 994	-4 059	-3 752	-3 998
Machinery and industrial equipment	-1 761	-1 436	-1 229	-1 369	-1 330	-1 279	-1 299	-1 214	-1 357	-1 225
ADP equipment	-582	-589	-510	-570	-665	-606	-552	-591	-561	-580
Telecommunications equipment	-591	-529	-523	-510	-513	-505	-526	-494	-492	-506
Civil aircraft(b)(c)	na	na	na	na	na	na	na	na	na	na
Industrial transport equipment n.e.s.	-428	-334	-293	-359	-423	-417	-515	-498	-535	-545
Capital goods n.e.s.(b)	-897	-896	-969	-882	-890	-1 128	-1 102	-1 261	-806	-1 142
<i>Intermediate and other merchandise goods</i>	-7 041	-7 152	-6 704	-6 966	-7 415	-6 684	-7 325	-7 104	-7 027	-7 787
Food and beverages, mainly for industry	-100	-96	-87	-89	-93	-99	-79	-80	-82	-88
Primary industrial supplies n.e.s.(d)	-127	-101	-99	-126	-85	-120	-106	-82	-112	-125
Fuels and lubricants(c)	-1 709	-1 792	-1 761	-2 021	-2 419	-1 796	-2 249	-2 003	-2 089	-2 624
Parts for transport equipment	-657	-643	-594	-599	-590	-622	-764	-680	-619	-661
Parts for ADP equipment	-90	-86	-76	-79	-94	-74	-60	-77	-75	-78
Other parts for capital goods	-1 241	-1 234	-1 185	-1 176	-1 160	-1 132	-1 157	-1 175	-1 093	-1 220
Organic and inorganic chemicals	-348	-402	-361	-397	-365	-354	-332	-368	-386	-370
Paper and paperboard	-189	-177	-168	-168	-172	-174	-185	-183	-186	-193
Textile yarn and fabrics	-113	-107	-99	-93	-101	-107	-102	-100	-94	-92
Iron and steel	-333	-347	-285	-272	-282	-268	-251	-203	-223	-245
Plastics	-251	-225	-201	-211	-234	-213	-211	-219	-212	-215
Processed industrial supplies n.e.s.	-1 706	-1 622	-1 599	-1 561	-1 633	-1 549	-1 600	-1 605	-1 599	-1 610
Other merchandise goods(b)(e)	-73	-220	-87	-73	-75	-62	-114	-139	-69	-79
Goods procured in ports by carriers(c)	-104	-100	-100	-100	-114	-114	-117	-189	-189	-186
Non-monetary gold(c)	-1 063	-584	-884	-346	-255	-555	-737	-672	-441	-665

na not available

(a) For sign conventions, see paragraph 15 of the Explanatory Notes.

(b) From December 2008, the Civil aircraft series and commodities subject to a 'no commodity details' or 'no value details' restriction are included in Capital goods n.e.s.. From September to November 2008 commodities with these restrictions are included in Civil aircraft and for earlier periods are included in Other merchandise goods.

(c) These components are not seasonally adjusted.

(d) In using these seasonally adjusted series, care should be exercised because of the difficulties associated with reliably estimating the seasonal pattern.

(e) From July 1981, this component is not seasonally adjusted.

GOODS CREDITS(a), Trend Estimates

	Mar 2009	Apr 2009	May 2009	Jun 2009	Jul 2009	Aug 2009	Sep 2009	Oct 2009	Nov 2009	Dec 2009
	\$m	\$m	\$m	\$m	\$m	\$m	\$m	\$m	\$m	\$m
Total goods credits	18 084	17 171	16 379	15 723	15 302	15 145	15 111	15 062	15 020	14 971
General merchandise	16 389	15 645	15 069	14 599	14 271	14 097	14 003	13 912	13 844	13 788
<i>Rural goods</i>	2 531	2 474	2 393	2 285	2 174	2 084	2 023	1 981	1 957	1 948
Meat and meat preparations	609	596	584	566	548	532	517	503	491	484
Cereal grains and cereal preparations	650	640	613	572	525	481	445	415	392	372
Wool and sheepskins	178	173	168	163	161	164	171	178	185	192
Other rural (b)	1 095	1 064	1 028	983	939	907	890	885	889	901
<i>Non-rural goods</i>	13 857	13 171	12 676	12 314	12 097	12 013	11 979	11 930	11 886	11 840
Metal ores and minerals	4 063	3 961	3 837	3 712	3 633	3 611	3 606	3 598	3 590	3 584
Coal, coke and briquettes	3 941	3 558	3 297	3 107	2 970	2 876	2 808	2 741	2 684	2 630
Other mineral fuels	1 489	1 392	1 336	1 312	1 311	1 328	1 352	1 378	1 406	1 432
Metals (excl. non-monetary gold)	847	836	839	844	844	843	840	838	837	837
Machinery	718	698	684	673	663	657	654	649	645	640
Transport equipment	321	287	273	275	291	310	323	330	331	327
Other manufactures	1 443	1 423	1 406	1 391	1 377	1 366	1 357	1 347	1 338	1 331
Other non-rural (incl. sugar and beverages)	919	907	898	899	907	919	933	941	944	947
Goods procured in ports by carriers	116	110	105	103	102	104	106	109	111	113
Net exports of goods under merchanting	30	33	33	33	34	35	35	33	31	28
Non-monetary gold	1 665	1 493	1 278	1 091	998	1 013	1 073	1 118	1 146	1 155

(a) Caution should be used when interpreting recent trend estimates as they may be affected by unusual economic factors. For more details on trend estimates, please see paragraph 19 of the explanatory notes.

(b) For all time periods, estimates for sugar, sugar preparations and honey are included in Other non-rural.

	Mar 2009	Apr 2009	May 2009	Jun 2009	Jul 2009	Aug 2009	Sep 2009	Oct 2009	Nov 2009	Dec 2009
	\$m	\$m	\$m	\$m	\$m	\$m	\$m	\$m	\$m	\$m
Total goods debits	-17 107	-16 674	-16 425	-16 304	-16 284	-16 354	-16 477	-16 606	-16 742	-16 866
General merchandise	-16 069	-15 820	-15 751	-15 762	-15 802	-15 849	-15 927	-16 022	-16 135	-16 218
Consumption goods	-4 990	-5 002	-5 049	-5 097	-5 114	-5 089	-5 061	-5 037	-5 015	-4 990
Food and beverages, mainly for consumption	-741	-744	-751	-758	-759	-752	-742	-731	-719	-708
Household electrical items	-457	-479	-501	-513	-511	-497	-480	-467	-458	-453
Non-industrial transport equipment	-899	-904	-944	-1 007	-1 077	-1 139	-1 195	-1 246	-1 292	-1 321
Textiles, clothing and footwear	-718	-702	-687	-673	-655	-631	-608	-584	-559	-536
Toys, books and leisure goods	-445	-446	-446	-442	-433	-419	-405	-393	-382	-373
Consumption goods n.e.s.	-1 730	-1 727	-1 720	-1 704	-1 680	-1 651	-1 630	-1 616	-1 606	-1 600
Capital goods	-3 991	-3 867	-3 768	-3 704	-3 685	-3 705	-3 745	-3 781	-3 820	-3 848
Machinery and industrial equipment	-1 525	-1 460	-1 395	-1 340	-1 304	-1 287	-1 284	-1 279	-1 273	-1 259
ADP equipment	-574	-568	-574	-583	-590	-592	-590	-584	-578	-569
Telecommunications equipment	-554	-547	-535	-522	-512	-508	-507	-504	-502	-500
Civil aircraft(c)	na	na	na	na	na	na	na	na	na	na
Industrial transport equipment n.e.s.	-398	-362	-350	-362	-394	-436	-475	-507	-532	-549
Capital goods n.e.s.(c)	np	np	np	np	np	np	np	np	np	np
Intermediate and other merchandise goods	-7 089	-6 951	-6 934	-6 961	-7 003	-7 055	-7 122	-7 204	-7 300	-7 381
Food and beverages, mainly for industry	-97	-94	-93	-91	-90	-88	-86	-85	-83	-82
Primary industrial supplies n.e.s.	-123	-110	-105	-103	-103	-103	-104	-105	-107	-110
Fuels and lubricants	-1 744	-1 793	-1 889	-1 970	-2 032	-2 080	-2 123	-2 173	-2 238	-2 296
Parts for transport equipment	-635	-618	-611	-615	-629	-646	-661	-670	-673	-672
Parts for ADP equipment	-87	-85	-83	-81	-78	-76	-75	-74	-74	-74
Other parts for capital goods	-1 221	-1 204	-1 190	-1 177	-1 163	-1 153	-1 149	-1 151	-1 157	-1 163
Organic and inorganic chemicals	-396	-379	-370	-366	-364	-361	-360	-362	-366	-369
Paper and paperboard	-185	-177	-173	-171	-172	-176	-180	-184	-187	-190
Textile yarn and fabrics	-108	-104	-102	-101	-101	-101	-100	-99	-97	-95
Iron and steel	-378	-331	-299	-279	-267	-255	-244	-235	-228	-223
Plastics	-229	-223	-219	-217	-216	-216	-216	-216	-215	-214
Processed industrial supplies n.e.s.	-1 679	-1 624	-1 597	-1 589	-1 585	-1 586	-1 592	-1 597	-1 601	-1 606
Other merchandise goods(c)	-106	-112	-106	-99	-92	-89	-91	-94	-96	-95
Goods procured in ports by carriers	-102	-98	-97	-101	-111	-125	-142	-160	-177	-191
Non-monetary gold	-1 038	-854	-673	-542	-482	-505	-550	-585	-607	-648

na not available

np not available for publication but included in totals where applicable, unless otherwise indicated

(a) For sign conventions, see paragraph 15 of the Explanatory Notes.

(b) Caution should be used when interpreting recent trend estimates as they may be affected by unusual economic factors. For more details on trend estimates, please see paragraph 19 of the explanatory notes.

(c) From December 2008, the Civil aircraft series and commodities subject to a 'no commodity details' or 'no value details' restriction are included in Capital goods n.e.s.. From September to November 2008 commodities with these restrictions are included in Civil aircraft and for earlier periods are included in Other merchandise goods. Trend estimates for the Capital goods n.e.s. series from December 2008 have been suppressed due to the change in the composition of the series.

							6 MONTHS ENDED DECEMBER		Change %
	2006-07	2007-08	2008-09	Oct 2009	Nov 2009	Dec 2009	2008	2009	
	\$m	\$m	\$m	\$m	\$m	\$m	\$m	\$m	
Services credits	45 956	50 645	53 206	4 674	4 499	4 423	26 794	26 835	0.2
Manufacturing services on physical inputs owned by others	121	77	258	32	28	27	88	159	80.7
Maintenance and repair services n.i.e.	90	103	86	5	4	5	52	35	-32.7
Transport	8 546	9 129	7 886	556	561	606	4 329	3 422	-21.0
Passenger(c)	4 237	4 118	3 653	233	238	280	1 936	1 403	-27.5
Freight	765	1 463	851	39	39	41	546	283	-48.2
Other	2 348	2 595	2 428	218	218	218	1 311	1 255	-4.3
Postal and courier services(d)	1 196	953	954	66	66	67	536	481	-10.3
Travel	25 161	28 252	31 027	2 909	2 734	2 607	15 051	16 582	10.2
Other services	12 038	13 084	13 949	1 172	1 172	1 178	7 274	6 637	-8.8
Services debits	-45 139	-53 330	-56 179	-4 859	-4 407	-4 899	-30 187	-27 768	8.0
Manufacturing services on physical inputs owned by others	-3	-7	-4	-1	—	-2	-4	-4	—
Maintenance and repair services n.i.e.	-131	-97	-197	-15	-21	-9	-78	-101	-29.5
Transport	-15 732	-16 797	-16 180	-1 207	-1 110	-1 208	-9 434	-6 800	27.9
Passenger(c)	-6 876	-7 278	-6 094	-404	-381	-439	-3 498	-2 478	29.2
Freight	-8 303	-8 923	-9 385	-756	-682	-723	-5 567	-4 006	28.0
Other	-385	-417	-527	-38	-38	-38	-266	-223	16.2
Postal and courier services(d)	-168	-179	-174	-9	-9	-8	-103	-93	9.7
Travel	-15 934	-20 153	-21 886	-2 232	-1 872	-2 273	-11 622	-12 688	-9.2
Other services	-13 339	-16 276	-17 912	-1 404	-1 404	-1 407	-9 049	-8 175	9.7
Memorandum items:									
Tourism related service credits(e)	29 398	32 370	34 680	3 142	2 972	2 887	16 987	17 985	5.9
Tourism related service debits(e)	-22 810	-27 431	-27 980	-2 636	-2 253	-2 712	-15 120	-15 166	-0.3

— nil or rounded to zero (including null cells)

(a) For sign conventions, see paragraph 15 of the Explanatory Notes.

(b) For more detailed trade in services components, see table 11.

(c) Passenger services includes agency fees and commissions for air transport.

(d) Postal and courier services includes indirect commissions for sea transport.

(e) For a more detailed explanation of tourism related services, see paragraph 27 of the Explanatory Notes.

	Mar 2009	Apr 2009	May 2009	Jun 2009	Jul 2009	Aug 2009	Sep 2009	Oct 2009	Nov 2009	Dec 2009
	\$m	\$m	\$m	\$m	\$m	\$m	\$m	\$m	\$m	\$m
SEASONALLY ADJUSTED										
Services credits	4 455	4 398	4 406	4 396	4 375	4 403	4 513	4 465	4 461	4 476
Manufacturing services on physical inputs owned by others(b)	27	31	28	27	28	24	20	32	28	27
Maintenance and repair services n.i.e.(b)	8	4	5	3	5	9	7	5	4	5
Transport	610	580	561	559	556	553	558	562	562	565
Passenger(c)	289	269	251	249	230	227	237	236	238	237
Freight(d)	52	51	52	51	53	53	50	39	40	39
Other(d)	193	189	189	189	195	196	194	213	212	216
Postal and courier services(e)	76	71	70	70	77	78	78	74	72	73
Travel	2 643	2 709	2 725	2 717	2 709	2 736	2 843	2 759	2 756	2 761
Other services	1 167	1 074	1 087	1 090	1 077	1 081	1 085	1 107	1 111	1 118
Services debits	-4 446	-4 487	-4 338	-4 425	-4 348	-4 395	-4 404	-4 561	-4 555	-4 597
Manufacturing services on physical inputs owned by others(b)	—	—	—	—	—	-1	—	-1	—	-2
Maintenance and repair services n.i.e.(b)	-25	-27	-14	-19	-17	-18	-21	-15	-21	-9
Transport	-1 205	-1 191	-1 046	-1 088	-1 076	-1 047	-1 071	-1 109	-1 084	-1 104
Passenger(c)	-458	-477	-369	-416	-399	-394	-397	-405	-409	-410
Freight	-691	-656	-618	-615	-625	-602	-625	-653	-626	-646
Other(b)	-44	-43	-43	-41	-37	-37	-35	-38	-38	-38
Postal and courier services(e)	-12	-15	-16	-16	-14	-14	-14	-13	-12	-10
Travel	-1 712	-1 816	-1 821	-1 835	-1 916	-1 976	-1 958	-2 063	-2 069	-2 114
Other services	-1 504	-1 453	-1 458	-1 482	-1 340	-1 352	-1 354	-1 374	-1 380	-1 369
Memorandum items:										
Tourism related service credits(f)	2 932	2 978	2 976	2 966	2 939	2 963	3 079	2 994	2 994	2 998
Tourism related service debits(f)	-2 170	-2 293	-2 190	-2 251	-2 315	-2 370	-2 355	-2 467	-2 478	-2 524

TREND ESTIMATES

Services credits	4 444	4 418	4 402	4 399	4 409	4 427	4 447	4 463	4 476	4 485
Manufacturing services on physical inputs owned by others	28	29	29	27	26	26	26	26	27	28
Maintenance and repair services n.i.e.	6	5	5	5	6	6	6	6	5	5
Transport	608	586	569	559	555	556	558	560	562	563
Passenger(c)	290	273	256	244	237	234	233	234	235	236
Freight	52	52	52	52	52	50	47	44	41	39
Other	191	189	189	190	193	197	202	207	211	215
Postal and courier services(e)	75	73	72	73	74	75	76	75	74	73
Travel	2 669	2 687	2 706	2 725	2 742	2 756	2 765	2 772	2 774	2 775
Other services	1 132	1 110	1 093	1 082	1 080	1 084	1 092	1 100	1 107	1 114
Services debits	-4 490	-4 429	-4 391	-4 376	-4 384	-4 412	-4 453	-4 498	-4 543	-4 578
Manufacturing services on physical inputs owned by others	—	—	—	—	—	—	—	-1	-1	-1
Maintenance and repair services n.i.e.	-20	-20	-20	-19	-19	-18	-18	-17	-16	-15
Transport	-1 200	-1 142	-1 102	-1 079	-1 068	-1 068	-1 075	-1 083	-1 092	-1 097
Passenger(c)	-456	-437	-420	-406	-399	-397	-399	-402	-406	-407
Freight	-685	-648	-626	-617	-616	-619	-625	-631	-637	-641
Other	-45	-43	-41	-40	-39	-38	-37	-37	-37	-37
Postal and courier services(e)	-14	-14	-15	-15	-15	-14	-14	-13	-12	-11
Travel	-1 783	-1 794	-1 820	-1 857	-1 902	-1 950	-1 994	-2 036	-2 073	-2 102
Other services	-1 487	-1 472	-1 448	-1 421	-1 395	-1 376	-1 365	-1 361	-1 361	-1 363
Memorandum items:										
Tourism related service credits(f)	2 959	2 960	2 963	2 969	2 979	2 989	2 999	3 006	3 010	3 012
Tourism related service debits(f)	-2 239	-2 232	-2 240	-2 264	-2 301	-2 347	-2 394	-2 438	-2 479	-2 509

— nil or rounded to zero (including null cells)

(a) For sign conventions, see paragraph 15 of the Explanatory Notes.

(b) This component is not seasonally adjusted.

(c) Passenger services includes agency fees and commissions for air transport.

(d) In using these seasonally adjusted series, care should be exercised because of the difficulties associated with reliably estimating the seasonal pattern.

(e) Postal and courier services includes indirect commissions for sea transport.

(f) For a more detailed explanation of tourism related services, see paragraph 27 of the Explanatory Notes.

	CREDITS				DEBITS			
	Mar Qtr	Jun Qtr	Sep Qtr	Dec Qtr	Mar Qtr	Jun Qtr	Sep Qtr	Dec Qtr
	2009	2009	2009	2009	2009	2009	2009	2009
	\$m	\$m	\$m	\$m	\$m	\$m	\$m	\$m
Services	13 584	12 828	13 239	13 596	-13 042	-12 950	-13 603	-14 165
Manufacturing services on physical inputs owned by others	84	86	72	87	—	—	-1	-3
Maintenance and repair services n.i.e.	22	12	21	14	-59	-60	-56	-45
Transport	1 982	1 575	1 699	1 723	-3 571	-3 175	-3 275	-3 525
Passenger(b)	1 058	659	652	751	-1 322	-1 274	-1 254	-1 224
Freight	154	151	164	119	-2 087	-1 731	-1 845	-2 161
Other	552	565	601	654	-134	-127	-109	-114
Postal and courier services(c)	218	200	282	199	-28	-43	-67	-26
Travel	8 126	7 850	8 332	8 250	-5 019	-5 245	-6 311	-6 377
Business	708	644	693	675	-728	-673	-712	-712
Personal	7 418	7 206	7 639	7 575	-4 291	-4 572	-5 599	-5 665
Education-related	4 210	4 457	4 870	4 172	-177	-168	-263	-211
Other(d)	3 208	2 749	2 769	3 403	-4 114	-4 404	-5 336	-5 454
Construction	21	12	13	14	—	—	—	—
Insurance and pension services	78	58	76	77	-145	-137	-135	-129
Financial services	343	279	290	320	-174	-190	-154	-165
Charges for the use of intellectual property n.i.e.	200	219	201	211	-897	-906	-871	-881
Telecommunications, computer and information services	507	513	459	503	-584	-560	-516	-574
Telecommunication services	76	63	62	65	-180	-139	-122	-126
Computer and information services	431	450	397	438	-404	-421	-394	-448
Computer services	356	362	313	347	-336	-358	-332	-371
Information services	9	12	8	12	-11	-10	-5	-12
Other services	66	76	76	79	-57	-53	-57	-65
Other business services	1 801	1 811	1 632	1 899	-2 028	-2 146	-1 789	-1 998
Research and development services	131	146	131	138	-60	-60	-51	-57
Professional and management consulting services	868	879	763	906	-896	-979	-691	-831
Legal, accounting, management consulting, public relations and other professional services	773	788	676	794	-844	-932	-671	-804
Advertising, market research and public opinion polling	95	91	87	112	-52	-47	-20	-27
Technical, trade-related and other business services	802	786	738	855	-1 072	-1 107	-1 047	-1 110
Architectural, engineering and other technical services	386	337	384	441	-414	-430	-386	-386
Waste treatment and de-pollution, agricultural and mining services	65	59	53	52	-152	-186	-130	-152
Operational leasing services	74	63	72	67	-229	-189	-197	-219
Trade-related commission services	178	220	123	171	-44	-57	-52	-56
Other business services n.i.e.	99	107	106	124	-233	-245	-282	-297
Personal, cultural and recreational services	204	196	234	288	-362	-291	-273	-246
Audiovisual and related services	53	24	30	41	-290	-269	-245	-214
Other personal, cultural and recreational services	151	172	204	247	-72	-22	-28	-32
Government goods and services n.i.e.	216	217	210	210	-203	-240	-222	-222
Memorandum items:								
Gross insurance premiums receivable / payable	201	165	168	173	-262	-245	-249	-264
Gross insurance claims payable / receivable	-133	-123	-114	-118	287	275	278	288
Tourism related services(e)	9 184	8 509	8 984	9 001	-6 341	-6 519	-7 565	-7 601

— nil or rounded to zero (including null cells)

(a) For sign conventions, see paragraph 15 of the Explanatory Notes.

(b) Passenger services includes agency fees and commissions for air transport.

(c) Postal and courier services includes indirect commissions for sea transport.

(d) Other personal travel includes health-related travel.

(e) For a more detailed explanation of tourism related services, see paragraph 27 of the Explanatory Notes.

				Per cent of total merchandise exports (b)	6 MONTHS ENDED DECEMBER	
	Oct 2009	Nov 2009	Dec 2009		2008	2009
	\$m	\$m	\$m	%	\$m	\$m
MAJOR COMMODITIES (c)						
011 Meat of bovine animals	344	320	344	2.1	2 815	2 075
041 Wheat and meslin	216	200	280	1.7	1 872	1 688
268 Wool and other animal hair	192	201	174	1.1	1 064	895
281 Iron ore and concentrates	2 239	2 227	2 356	14.4	18 302	14 001
283 Copper ores and concentrates	305	409	405	2.5	1 948	2 070
285 Aluminium ores and concentrates	395	372	472	2.9	3 633	2 351
321 Coal, not agglomerated	2 717	2 466	2 797	17.1	32 367	16 836
333 Crude petroleum oils	882	508	764	4.7	5 166	4 084
334 Refined petroleum oils	208	209	195	1.2	1 574	1 207
343 Natural gas	592	633	651	4.0	6 005	3 589
682 Copper	260	128	245	1.5	1 641	1 327
684 Aluminium	328	299	394	2.4	3 130	1 948
781 Motor vehicles for transport of people	191	164	179	1.1	1 999	920
971 Gold, non-monetary	1 122	1 092	1 016	6.2	8 006	6 167

SECTION AND DIVISION OF THE SITC

0	Food and live animals					
00	Live animals (excl. fish, crustaceans, molluscs and aquatic invertebrates)	94	110	116	0.7	639
01	Meat and meat preparations	546	527	554	3.4	4 029
02	Dairy products and birds' eggs	155	163	180	1.1	1 393
03	Fish (not marine mammals), crustaceans, molluscs and aquatic invertebrates, and preparations thereof	49	65	117	0.7	588
04	Cereals and cereal preparations	310	298	388	2.4	2 761
05	Vegetables and fruit	91	107	136	0.8	721
06	Sugars, sugar preparations and honey	32	23	16	0.1	133
07	Coffee, tea, cocoa, spices, and manufactures thereof	25	26	26	0.2	148
08	Feeding stuff for animals (excl. unmilled cereals)	84	70	68	0.4	673
09	Miscellaneous edible products and preparations	56	61	63	0.4	332
	<i>Total Food and live animals</i>	<i>1 441</i>	<i>1 451</i>	<i>1 665</i>	<i>10.2</i>	<i>11 416</i>
1	Beverages and tobacco					
11	Beverages	212	165	217	1.3	1 431
12	Tobacco and tobacco manufactures	10	10	13	0.1	70
	<i>Total Beverages and tobacco</i>	<i>223</i>	<i>175</i>	<i>230</i>	<i>1.4</i>	<i>1 501</i>
2	Crude materials, inedible, except fuels					
21	Hides, skins and furskins, raw	45	50	56	0.3	385
22	Oil-seeds and oleaginous fruits	7	17	93	0.6	111
23	Crude rubber (incl. synthetic and reclaimed)	1	1	1	—	7
24	Cork and wood	103	82	113	0.7	708
25	Pulp and waste paper	19	23	22	0.1	151
26	Textile fibres and their wastes (not manufactured into yarn or fabric)	244	251	234	1.4	1 365
27	Crude fertilizers (excl. those of Division 56) and crude minerals (excl. coal, petroleum and precious stones)	22	22	32	0.2	197
28	Metalliferous ores and metal scrap	3 629	3 602	4 022	24.6	28 368
29	Crude animal and vegetable materials, n.e.s.	16	19	17	0.1	134
	<i>Total Crude materials, inedible, except fuels</i>	<i>4 086</i>	<i>4 068</i>	<i>4 589</i>	<i>28.1</i>	<i>31 425</i>
3	Mineral fuels, lubricants and related materials					
32	Coal, coke and briquettes	2 722	2 467	2 810	17.2	32 494
33	Petroleum, petroleum products and related materials	1 090	718	960	5.9	6 749
34	Gas, natural and manufactured	703	705	769	4.7	6 635
	<i>Total Mineral fuels, lubricants and related materials</i>	<i>4 515</i>	<i>3 890</i>	<i>4 539</i>	<i>27.8</i>	<i>45 878</i>

— nil or rounded to zero (including null cells)

(a) Some SITC sections and divisions exclude commodities subject to a confidentiality restriction. These are included in Division 98. For more information see paragraph 26 of the Explanatory Notes.

(b) Per cent of total merchandise is calculated for the most recent month.

(c) The 'Major commodities' section lists commodities at the SITC Rev 4 3-digit level which are the most significant (by value) or are of particular interest. Abbreviated descriptors have been used. The list of 'Major commodities' is reviewed annually.

	Oct 2009	Nov 2009	Dec 2009	Per cent of total merchandise exports (b)	6 MONTHS ENDED DECEMBER	
					2008	2009
					\$m	\$m
SECTION AND DIVISION OF THE SITC						
4	Animal and vegetable oils, fats and waxes					
41	20	15	19	0.1	177	128
42	14	9	14	0.1	95	75
43	Fats and oils (processed), waxes and inedible mixtures or preparations, of animal or vegetable origin, n.e.s.					
	1	1	2	—	6	7
	<i>Total Animal and vegetable oils, fats and waxes</i>					
	35	25	35	0.2	278	210
5	Chemicals and related products, n.e.s.					
51	16	12	12	0.1	95	81
52	43	33	45	0.3	301	253
53	52	58	56	0.3	289	347
54	338	353	344	2.1	2 076	2 118
55	Essential oils and resinoids and perfume materials, toilet, polishing and cleansing preparations					
	52	56	51	0.3	318	311
56	42	15	15	0.1	551	234
57	22	20	23	0.1	172	132
58	30	29	25	0.2	193	191
59	82	80	79	0.5	569	491
	<i>Total Chemicals and related products, nes</i>					
	677	657	650	4.0	4 565	4 160
6	Manufactured goods classified chiefly by material					
61	20	19	26	0.2	151	127
62	17	16	16	0.1	147	96
63	15	8	11	0.1	84	75
64	52	52	50	0.3	347	323
65	26	24	24	0.1	195	151
66	73	73	39	0.2	444	384
67	85	74	79	0.5	925	438
68	871	660	852	5.2	6 361	4 670
69	103	84	94	0.6	595	568
	<i>Total Manufactured goods classified chiefly by material</i>					
	1 262	1 010	1 192	7.3	9 249	6 831
7	Machinery and transport equipment					
71	70	76	70	0.4	506	402
72	160	141	175	1.1	1 050	965
73	12	9	14	0.1	107	72
74	General industrial machinery and equipment, n.e.s. and machine parts, n.e.s.					
	140	125	156	1.0	1 007	885
75	82	87	82	0.5	658	491
76	Telecommunications and sound recording and reproducing apparatus and equipment					
	96	82	80	0.5	595	502
77	Electrical machinery, apparatus and appliances, parts (incl. non electrical counterparts of electrical domestic equip)					
	137	119	126	0.8	965	781
78	265	251	281	1.7	2 579	1 407
79	127	110	96	0.6	857	733
	<i>Total Machinery and transport equipment</i>					
	1 088	998	1 081	6.6	8 324	6 238

— nil or rounded to zero (including null cells)

(b) Per cent of total merchandise is calculated for the most recent month.

(a) Some SITC sections and divisions exclude commodities subject to a confidentiality restriction. These are included in Division 98. For more information see paragraph 26 of the Explanatory Notes.

	Oct 2009	Nov 2009	Dec 2009	Per cent of total merchandise exports (b)	6 MONTHS ENDED DECEMBER	
					2008	2009
					\$m	\$m
SECTION AND DIVISION OF THE SITC						
8	Miscellaneous manufactured articles					
81	Prefabricated buildings and sanitary, plumbing, heating and lighting fixtures and fittings, n.e.s.					
	12	18	17	0.1	78	80
82	Furniture and parts thereof; bedding, mattresses, mattress supports, cushions and similar stuffed furnishings					
	13	9	9	0.1	69	54
83	Travel goods, handbags and similar containers					
	3	4	4	—	16	19
84	Articles of apparel and clothing accessories					
	22	20	18	0.1	127	122
85	Footwear					
	3	3	4	—	29	23
87	Professional, scientific and controlling instruments and apparatus, n.e.s.					
	163	164	188	1.2	1 149	1 024
88	Photographic apparatus, equipment and supplies and optical goods, n.e.s., watches and clocks					
	25	25	24	0.1	192	156
89	Miscellaneous manufactured articles, n.e.s.					
	189	213	178	1.1	1 241	1 114
	<i>Total Miscellaneous manufactured articles</i>					
	431	455	441	2.7	2 902	2 591
9	Commodities and transactions not classified elsewhere in the SITC					
93	Special transactions and commodities not classified according to kind					
	185	166	166	1.0	791	966
95	Gold coin whether or not legal tender, and other coin being legal tender					
	33	33	63	0.4	306	240
96	Coin (excl. gold coin) not being legal tender					
	—	—	—	—	—	—
97	Gold, non-monetary (excl. gold ores and concentrates)					
	1 122	1 092	1 016	6.2	8 006	6 167
98	Combined confidential items excl. some of SITC 280 (exports only) and some of SITCs 510 and 520 (imports only)					
	659	483	656	4.0	2 984	3 420
	<i>Total Commodities and transactions not classified elsewhere in the SITC</i>					
	1 998	1 774	1 901	11.6	12 087	10 793
Total merchandise exports						
	15 757	14 504	16 323	100.0	127 624	92 886
Balance of Payments Adjustments						
	9	23	22	. .	495	228
Goods Credits (exports) on a Balance of Payments Basis						
	15 766	14 527	16 345	. .	128 119	93 114

. . not applicable
 — nil or rounded to zero (including null cells)

(a) Some SITC sections and divisions exclude commodities subject to a confidentiality restriction. These are included in Division 98. For more information see paragraph 26 of the Explanatory Notes.

(b) Per cent of total merchandise is calculated for the most recent month.

	Oct 2009	Nov 2009	Dec 2009	Per cent of total merchandise imports(b)	6 MONTHS ENDED DECEMBER	
					2008	2009
					\$m	\$m
	\$m	\$m	\$m	%	\$m	\$m

MAJOR COMMODITIES

333 Crude petroleum oils	874	1 132	1 509	8.5	9 189	7 008
334 Refined petroleum oils	1 029	859	1 005	5.7	7 479	5 572
542 Medicaments	678	597	543	3.1	3 471	3 726
641 Paper and paperboard	178	155	147	0.8	1 137	944
723 Civil engineering and contractors' plant and equipment	184	406	193	1.1	2 099	1 312
751 Office machines	176	143	149	0.8	1 050	989
752 Automatic data processing machines	471	435	537	3.0	3 108	2 839
761 Televisions	304	360	252	1.4	1 626	1 852
764 Telecommunications equipment	634	703	594	3.4	3 820	3 710
781 Motor vehicles for the transport of people	1 271	1 263	1 286	7.3	6 910	6 970
782 Motor vehicles for the transport of goods	506	521	521	3.0	3 315	2 698
784 Parts and accessories of motor vehicles	210	199	182	1.0	1 391	1 155
971 Gold, non-monetary	748	507	729	4.1	5 716	3 663

SECTION AND DIVISION OF THE SITC

0	Food and live animals					
00	Live animals other than fish, crustaceans, molluscs and aquatic invertebrates	7	6	9	—	42 38
01	Meat and meat preparations	37	37	45	0.3	269 266
02	Dairy products and birds' eggs	45	47	56	0.3	328 281
03	Fish (not marine mammals), crustaceans, molluscs and aquatic invertebrates, and preparations thereof	118	111	123	0.7	679 661
04	Cereals and cereal preparations	76	75	68	0.4	443 451
05	Vegetables and fruit	140	138	153	0.9	888 826
06	Sugars, sugar preparations and honey	24	22	26	0.1	132 152
07	Coffee, tea, cocoa, spices, and manufactures thereof	115	98	99	0.6	631 658
08	Feeding stuff for animals (excl. unmilled cereals)	33	40	67	0.4	323 330
09	Miscellaneous edible products and preparations	145	138	136	0.8	763 829
	<i>Total Food and live animals</i>	741	712	781	4.4	4 497 4 492
1	Beverages and tobacco					
11	Beverages	173	149	156	0.9	874 868
12	Tobacco and tobacco manufactures	21	23	20	0.1	99 130
	<i>Total Beverages and tobacco</i>	194	173	176	1.0	973 998
2	Crude materials, inedible, except fuels					
21	Hides, skins and furskins, raw	—	—	—	—	1 —
22	Oil-seeds and oleaginous fruits	2	3	7	—	34 24
23	Crude rubber (incl. synthetic and reclaimed)	14	12	11	0.1	119 69
24	Cork and wood	49	54	52	0.3	323 296
25	Pulp and waste paper	17	10	22	0.1	180 94
26	Textile fibres and their wastes (not manufactured into yarn or fabric)	15	14	10	0.1	73 76
27	Crude fertilizers (excl. those of Division 56) and crude minerals (excl. coal, petroleum and precious stones)	8	11	21	0.1	371 66
28	Metalliferous ores and metal scrap	26	43	95	0.5	387 274
29	Crude animal and vegetable materials, n.e.s.	29	27	32	0.2	178 164
	<i>Total Crude materials, inedible, except fuels</i>	160	173	250	1.4	1 666 1 063
3	Mineral fuels, lubricants and related materials					
32	Coal, coke and briquettes	9	1	1	—	18 14
33	Petroleum, petroleum products and related materials	1 939	2 020	2 561	14.5	17 075 12 794
34	Gas, natural and manufactured	142	141	155	0.9	1 153 868
	<i>Total Mineral fuels, lubricants and related materials</i>	2 091	2 162	2 717	15.4	18 246 13 675

— nil or rounded to zero (including null cells)

(a) Some SITC sections and divisions exclude commodities subject to a confidentiality restriction. These are included in Division 98. For more information see paragraph 26 of the Explanatory Notes.

(b) Per cent of total merchandise is calculated for the most recent month.

(c) The 'Major commodities' section lists commodities at the SITC Rev 4 3-digit level which are the most significant (by value) or are of particular interest. Abbreviated descriptors have been used. The list of 'Major commodities' is reviewed annually.

	Oct	Nov	Dec	Per cent	6 MONTHS ENDED	
	2009	2009	2009	of total	DECEMBER	
	\$m	\$m	\$m	merchandise	2008	2009
				imports(b)		
				%	\$m	\$m
SECTION AND DIVISION OF THE SITC						
4	Animal and vegetable oils, fats and waxes					
41	1	1	3	—	23	13
42	34	35	46	0.3	289	241
43	Fats and oils (processed), waxes and inedible mixtures or preparations, of animal or vegetable n.e.s.					
	7	7	4	—	37	38
	<i>Total Animal and vegetable oils, fats and waxes</i>					
	42	44	53	0.3	350	293
5	Chemicals and related products, n.e.s.					
51	291	267	292	1.7	1 800	1 567
52	87	77	88	0.5	1 179	564
53	55	53	54	0.3	387	317
54	823	734	677	3.8	4 284	4 579
55	Essential oils and resinoids and perfume materials; toilet, polishing and cleansing preparations					
	159	147	151	0.9	927	960
56	47	20	39	0.2	1 072	265
57	125	108	108	0.6	960	655
58	122	122	115	0.7	781	712
59	155	168	177	1.0	1 167	969
	<i>Total Chemicals and related products, n.e.s.</i>					
	1 864	1 696	1 700	9.6	12 558	10 587
6	Manufactured goods classified chiefly by material					
61	11	11	13	0.1	95	70
62	237	218	217	1.2	1 432	1 359
63	52	54	54	0.3	364	300
64	255	227	219	1.2	1 592	1 383
65	219	212	174	1.0	1 405	1 244
66	248	234	222	1.3	1 505	1 346
67	229	244	246	1.4	3 440	1 532
68	178	244	154	0.9	1 146	1 014
69	524	425	387	2.2	3 182	2 640
	<i>Total Manufactured goods classified chiefly by material</i>					
	1 955	1 870	1 685	9.5	14 160	10 888
7	Machinery and transport equipment					
71	451	370	442	2.5	2 834	2 305
72	481	759	587	3.3	4 544	3 503
73	46	48	48	0.3	420	300
74	General industrial machinery and equipment, n.e.s. and machine parts, n.e.s.					
	1 080	973	1 111	6.3	6 168	6 198
75	719	648	772	4.4	4 788	4 304
76	Telecommunications and sound recording and reproducing apparatus and equipment					
	1 076	1 225	950	5.4	6 241	6 279
77	Electrical machinery, apparatus, appliances, parts (incl. non-elec. counterparts of electrical domestic equip)					
	780	785	837	4.7	5 378	4 786
78	2 147	2 165	2 143	12.1	12 969	11 746
79	101	675	114	0.6	2 453	1 277
	<i>Total Machinery and transport equipment</i>					
	6 881	7 648	7 005	39.7	45 794	40 697

— nil or rounded to zero (including null cells)

(b) Per cent of total merchandise is calculated for the most recent month.

(a) Some SITC sections and divisions exclude commodities subject to a confidentiality restriction. These are included in Division 98. For more information see paragraph 26 of the Explanatory Notes.

	Oct 2009	Nov 2009	Dec 2009	Per cent of total merchandise imports(b)	6 MONTHS ENDED DECEMBER		
						
					2008	2009	
	\$m	\$m	\$m	%	\$m	\$m	
SECTION AND DIVISION OF THE SITC							
8	Miscellaneous manufactured articles						
81	Prefabricated buildings; sanitary, plumbing, heating and lighting fixtures and fittings, n.e.s.	75	65	62	0.3	455	412
82	Furniture, parts thereof; bedding, mattresses, mattress supports, cushions and similar stuffed furnishings	241	235	236	1.3	1 618	1 410
83	Travel goods, handbags and similar containers	82	78	65	0.4	474	428
84	Articles of apparel and clothing accessories	397	362	261	1.5	2 747	2 346
85	Footwear	102	98	84	0.5	738	651
87	Professional, scientific and controlling instruments and apparatus, n.e.s.	376	395	384	2.2	2 578	2 336
88	Photographic apparatus, equipment and supplies and optical goods, n.e.s., watches and clocks	134	133	129	0.7	797	761
89	Miscellaneous manufactured articles, n.e.s.	1 052	958	744	4.2	6 305	5 474
	<i>Total Miscellaneous manufactured articles</i>	2 459	2 323	1 964	11.1	15 714	13 819
9	Commodities and transactions not classified elsewhere in the SITC						
93	Special transactions and commodities not classified according to kind	2	4	3	—	25	19
95	Gold coin whether or not legal tender, and other coin being legal tender	—	2	1	—	3	5
96	Coin (excl. gold coin), not being legal tender	—	—	—	—	—	1
97	Gold, non-monetary (excl. gold ores and concentrates)	748	507	729	4.1	5 716	3 663
98	Combined confidential items excl. some of SITC 280 (exports only) and some of SITCs 510 and 520 (imports only)	791	236	597	3.4	2 139	2 756
	<i>Total Commodities and transactions not classified elsewhere in the SITC</i>	1 542	749	1 330	7.5	7 885	6 443
	Total merchandise imports	17 929	17 549	17 662	100.0	121 842	102 955
	Balance of Payments Adjustments	260	-199	335	..	1 464	1 358
	Goods Debits (imports) on a Balance of Payments Basis	18 189	17 350	17 997	..	123 306	104 313

.. not applicable
 — nil or rounded to zero (including null cells)

(a) Some SITC sections and divisions exclude commodities subject to a confidentiality restriction. These are included in Division 98. For more information see paragraph 26 of the Explanatory Notes.

(b) Per cent of total merchandise is calculated for the most recent month.

	EXPORTS				IMPORTS(b)				BALANCE OF MERCHANDISE TRADE	
	2008-09	Dec	6 months ended	6 months ended	2008-09	Dec	6 Months Ended	6 Months Ended	2008-09	6 Months Ended
		2009	December 2008	December 2009		2009	December 2008	December 2009		December 2009
	\$m	\$m	\$m	\$m	\$m	\$m	\$m	\$m	\$m	\$m
Belgium	1 301	83	917	439	1 719	132	984	833	-418	-394
Brazil	1 483	126	1 117	534	1 041	54	718	307	442	228
Canada	1 557	131	794	670	2 437	162	1 470	899	-880	-230
China	39 325	3 836	17 532	20 456	37 044	2 886	20 416	19 154	2 281	1 302
Denmark	176	15	77	71	1 070	117	545	582	-894	-511
Egypt(c)	453	44	206	187	33	3	15	16	420	171
Fiji	374	26	218	158	160	17	85	77	215	81
Finland	595	47	435	154	978	57	564	323	-383	-169
France	1 721	101	976	463	4 653	333	2 605	2 048	-2 932	-1 585
Germany	2 197	130	1 334	740	11 106	903	5 961	5 470	-8 909	-4 731
Hong Kong (Sar of China)	3 192	269	1 556	1 282	1 424	89	826	616	1 768	666
India	15 425	1 272	8 383	7 398	2 114	171	1 039	956	13 311	6 442
Indonesia	4 295	484	2 313	2 154	5 039	512	2 889	2 403	-744	-249
Iran	661	10	125	59	95	3	80	36	567	23
Iraq	194	1	61	156	31	—	31	—	163	156
Ireland	134	7	78	59	2 399	188	1 225	1 163	-2 265	-1 105
Israel	262	15	150	93	715	52	439	281	-453	-188
Italy	1 556	86	1 021	468	5 338	398	2 880	2 422	-3 783	-1 954
Japan	52 768	3 040	31 954	17 397	17 842	1 479	9 933	8 780	34 926	8 617
Korea, Republic of	19 274	1 251	11 139	7 445	6 523	680	3 357	3 463	12 751	3 982
Kuwait	428	55	233	294	426	42	285	213	2	80
Malaysia	3 730	210	2 136	1 533	8 335	744	4 759	3 972	-4 605	-2 439
Mexico	902	66	413	346	1 324	104	718	595	-422	-249
Netherlands	3 202	150	2 054	831	1 771	123	981	735	1 431	96
New Zealand	8 549	603	4 796	4 160	7 050	634	4 017	3 526	1 500	635
Pakistan	478	25	213	264	181	10	88	69	296	195
Papua New Guinea	1 611	257	826	1 047	3 013	316	1 594	1 505	-1 402	-458
Philippines	1 409	63	817	574	605	39	368	232	804	342
Saudi Arabia	2 250	123	1 247	721	935	45	532	225	1 315	496
Singapore	5 522	411	2 930	2 767	13 445	1 023	7 850	5 604	-7 923	-2 836
South Africa	2 056	145	1 382	803	1 258	76	828	483	798	320
Spain	612	37	426	197	1 731	138	1 003	877	-1 119	-680
Sweden	566	13	383	169	2 441	172	1 327	1 029	-1 875	-859
Switzerland	660	32	279	129	2 481	163	1 210	1 193	-1 821	-1 064
Taiwan	8 126	563	4 721	3 079	4 089	285	2 422	1 655	4 037	1 424
Thailand	4 951	491	2 851	2 136	10 749	988	5 445	6 322	-5 799	-4 187
Turkey	811	19	633	126	507	35	256	217	304	-91
United Arab Emirates	3 604	192	2 446	951	1 924	247	1 021	1 239	1 680	-288
United Kingdom	11 509	193	5 300	2 802	9 024	500	5 712	2 883	2 484	-81
United States of America	11 600	779	6 811	4 851	25 334	1 953	13 844	10 786	-13 734	-5 935
Viet Nam	1 234	123	566	715	4 402	195	2 739	1 453	-3 168	-738
Other Countries(b)	10 070	798	5 777	4 009	16 697	1 594	8 781	8 310	-6 626	-4 301
Total	230 829	16 323	127 624	92 886	219 485	17 662	121 842	102 955	11 344	-10 069
APEC	169 417	12 667	93 047	71 096	151 755	12 358	84 619	72 489	17 663	-1 392
ASEAN	21 286	1 797	11 685	9 953	43 640	3 635	24 876	20 505	-22 354	-10 552
Developing Countries	124 497	10 209	65 261	55 893	106 794	8 792	59 877	52 141	17 703	3 751
Least Developed Countries	2 144	183	962	862	281	23	116	137	1 862	725
European Union(d)	24 043	913	13 284	6 587	45 402	3 291	25 553	19 643	-21 358	-13 056
OECD	120 069	6 810	70 018	41 669	110 059	8 612	60 973	49 620	10 010	-7 952

— nil or rounded to zero (including null cells)

(a) See Time series spreadsheets for details of all countries.

(b) From September 2008 imports data with confidentiality restrictions 'no commodity details' or 'no value details' are included in Other countries.

(c) Exports of Alumina to Egypt are excluded from country total and included in the 'Other Countries' category.

(d) The European Union includes 27 member countries.

	6 MONTHS ENDED			
	DECEMBER			
	2008-09	Dec 2009	2008	2009
	\$m	\$m	\$m	\$m
EXPORTS (a)				
New South Wales	38 777	2 631	21 160	15 333
Victoria	20 375	1 653	11 369	9 090
Queensland	56 553	3 403	33 696	20 076
South Australia	9 527	673	5 245	4 022
Western Australia	86 880	6 513	46 066	36 045
Tasmania	3 511	262	1 832	1 375
Northern Territory	6 292	487	3 505	2 465
Australian Capital Territory	11	1	6	4
State not available for publication(b)	797	35	566	270
Re-exports	8 105	665	4 179	4 206
Total	230 829	16 323	127 624	92 886
IMPORTS				
New South Wales	78 994	6 353	43 041	38 359
Victoria	56 457	4 474	32 111	26 770
Queensland	33 972	2 687	20 006	15 437
South Australia	6 867	581	3 918	3 312
Western Australia	33 123	2 595	17 912	14 301
Tasmania	956	94	594	437
Northern Territory	4 347	281	2 229	1 580
Australian Capital Territory	7	—	5	3
State not available for publication(c)	4 761	597	2 025	2 756
Total	219 485	17 662	121 842	102 955

— nil or rounded to zero (including null cells)

(a) State in which the final stage of production or manufacture occurs.

(b) Exports of Alumina to Bahrain, Egypt and Iceland are excluded from the state totals and included in 'State not available for publication'.

(c) From September 2008 imports data with confidentiality restrictions 'no commodity details' or 'no value details' are included in State not available for publication.

PERIOD AVERAGE EXCHANGE RATES(a), Per Australian dollar

<i>Period</i>	<i>United States dollar</i>	<i>UK pound sterling</i>	<i>Euro</i>	<i>Japanese yen</i>	<i>Special Drawing Right</i>	<i>Trade-weighted index of value of the A\$(b)</i>
FINANCIAL YEAR						
2006-07	0.7863	0.4066	0.6018	93.21	0.5251	64.8
2007-08	0.8968	0.4479	0.6099	98.63	0.5664	69.7
2008-09	0.7456	0.4621	0.5414	73.99	0.4869	60.2
MONTHS						
2008						
October	0.6894	0.4070	0.5173	69.20	0.4542	56.1
November	0.6557	0.4279	0.5155	63.55	0.4421	54.4
December	0.6690	0.4480	0.4973	61.02	0.4407	54.6
2009						
January	0.6784	0.4678	0.5095	61.37	0.4478	55.4
February	0.6490	0.4503	0.5074	59.97	0.4386	54.2
March	0.6646	0.4680	0.5093	64.92	0.4483	56.0
April	0.7122	0.4846	0.5398	70.24	0.4773	59.1
May	0.7626	0.4954	0.5596	73.72	0.5022	61.7
June	0.8023	0.4898	0.5721	77.39	0.5194	64.2
July	0.8040	0.4913	0.5709	75.96	0.5180	64.0
August	0.8344	0.5047	0.5852	79.15	0.5349	66.0
September	0.8611	0.5275	0.5915	78.74	0.5461	67.2
October	0.9090	0.5613	0.6130	82.03	0.5716	70.0
November	0.9202	0.5540	0.6166	82.04	0.5754	70.6
December	0.9028	0.5552	0.6174	80.89	0.5693	69.6

(a) These exchange rates and the trade-weighted index are derived using rates provided by the Reserve Bank of Australia in respect of each trading day.

(b) May 1970 = 100. The Trade-weighted index is reweighted annually on 1 October and on special occasions as required.

	2006-07	2007-08	2008-09	Jun 2009	Jul 2009	Aug 2009	Sep 2009	Oct 2009	Nov 2009
	\$m	\$m	\$m	\$m	\$m	\$m	\$m	\$m	\$m
BALANCE									
On goods and services	—	—	-12	8	5	-10	121	149	-91
CREDITS									
Total goods and services	—	—	-4	16	4	-14	126	131	-60
<i>Total goods</i>	—	—	-4	16	4	-14	126	131	-77
Rural goods	—	—	2	2	—	-3	3	—	-52
Non-rural goods	—	—	-7	13	4	-11	123	127	-28
Net exports of goods under merchandising	—	—	—	—	—	—	—	—	—
Non-monetary gold	—	—	1	1	—	—	—	4	3
<i>Total services</i>	—	—	—	—	—	—	—	—	17
DEBITS									
Total goods and services	—	—	-8	-8	1	4	-5	18	-31
<i>Total goods</i>	—	—	-8	-8	1	4	-5	18	-18
Consumption goods	—	—	—	—	—	1	-1	—	5
Capital goods	—	—	—	—	2	1	—	5	7
Intermediate and other merchandise goods	—	—	-8	-8	-1	2	-4	13	-30
Non-monetary gold debits	—	—	—	—	—	—	—	—	—
<i>Total services</i>	—	—	—	—	—	—	—	—	-13

— nil or rounded to zero (including null cells)

(a) This table is presented consistent with BPM6 sign conventions. This means for the balance on goods and services a negative revision indicates a decrease in a surplus or an increase in a deficit. For debits a negative revision indicates an increase in debits while a positive revision indicates a decrease in debits.

EXPLANATORY NOTES

INTRODUCTION

1 This publication presents preliminary estimates of Australia's international trade in goods and services on a balance of payments basis (Tables 1–11 and 17) and merchandise import and export statistics on a recorded trade basis (Tables 12–15). In addition, Table 16 Exchange rates and trade-weighted indexes are derived by using exchange rates and indexes provided by the Reserve Bank.

2 Merchandise trade statistics on a recorded trade basis are compiled from information submitted by exporters and importers or their agents to the Australian Customs and Border Protection Service (Customs and Border Protection). Adjustments for coverage, timing and valuation are made to recorded trade data to convert them to a balance of payments basis. The services data are sourced from the quarterly Survey of International Trade in Services and a range of administrative data and indicator series.

3 More comprehensive quarterly estimates of Australia's trade in goods and services, together with comprehensive details of Australia's balance of payments are included in the quarterly publication, *Balance of Payments and International Investment Position, Australia* (cat. no. 5302.0). Detailed monthly statistics on merchandise trade are available in Time Series Spreadsheets on the ABS website or by subscription to tailored services. More information on the *International Trade in Services by country, by state and by detailed services category* are available on a financial year basis (cat. no. 5368.0.55.003) with the September issue of this publication and calendar year basis (cat. no. 5368.0.55.004) with the March issue of this publication.

CONCEPTS, SOURCES AND METHODS

4 The conceptual framework used in compiling Australia's merchandise trade statistics can be found in *International Merchandise Trade, Australia: Concepts, Sources and Methods, 2001* (cat. no. 5489.0).

5 The conceptual framework used in compiling Australia's balance of payments statistics is based on the *International Monetary Fund's Balance of Payments and International Investment Position Manual Sixth Edition* (BPM6). Descriptions of the underlying concepts and structure of the balance of payments and the sources, methods and terms used in compiling the estimates are presented in *Balance of Payments and International Investment Position, Australia: Concepts, Sources and Methods, 1998* (cat. no. 5331.0). The current version of this document reflects the international standards prior to BPM6. A revised Concepts, Sources and Methods publication is scheduled for release in late 2010. The *Information paper: Implementation of revised international statistical standards in the ABS National and International Accounts* (cat. no. 5310.0.55.002) describes the key changes introduced with BPM6.

6 To bring merchandise trade statistics on a recorded trade basis to a balance of payments basis, timing adjustments are made to ensure that the transaction is recorded in the period in which ownership changed, rather than in the period in which the transaction was recorded by Customs and Border Protection or the period in which the goods arrived in/departed from an Australian port. Adjustments are also made to account for the change of ownership of goods not included in merchandise trade statistics. Chapter 6 of cat. no. 5331.0 provides more detail on the relationship between statistics on international merchandise trade on a recorded trade basis and on a balance of payments basis.

7 Recorded trade exports data presented for recent months in tables 12–15 of this publication are based on information initially reported by exporters to Customs and Border Protection. At the time of initial reporting to Customs and Border Protection the final prices may not be known for some commodities. Therefore, the information recorded for recent months for commodities like iron ore and coal can include a variety of prices including previous or current contract prices and the prevailing spot prices. Newly negotiated contract prices may not be fully reflected in the data first reported to

EXPLANATORY NOTES *continued*

CONCEPTS, SOURCES AND METHODS *continued*

Customs and Border Protection, and to compensate for this, the Balance of Payments series may reflect adjusted price levels.

8 The Concepts, Sources and Methods publications and information papers are available to download for free from the ABS website. Select *Statistics*, then select *By Catalogue Number*, and then the catalogue numbers as above.

CLASSIFICATIONS

9 The merchandise trade data on a recorded trade basis are presented using the following commodity classifications:

- the Harmonised System 2007 (available on request)
- the Standard International Trade Classification (SITC Revision 4)
- the Classification by Broad Economic Categories (BEC)
- the industry classification: Australian and New Zealand Standard Industrial Classification, 2006 (ANZSIC 06).

10 The Balance of Payments Goods and Services series are presented according to three classifications with the goods classifications derived from SITC Revision 4 and BEC. The classifications are:

- for goods:
 - the Balance of Payments Commodities for Exports (BoPCE)
 - the Balance of Payments Broad Economic Categories for Imports (BoPBEC),
- for services:
 - the Extended Balance of Payments Services Classification (EBOPS).

ACCURACY, RELIABILITY AND REVISIONS

11 While every effort is made to ensure the accuracy and reliability of estimates, most series are subject to revision as more complete and accurate information becomes available. Care should be exercised in the use and interpretation of estimates in this publication. The transactions occurring in international trade in goods and services are of many different kinds, and therefore the compilation of trade estimates entails the use of a very wide range of statistical data of varying degrees of accuracy and timeliness. For further information on the monthly services series, see paragraph 25.

12 The revisions are applied differently for merchandise trade and Balance of Payments series. Each month, merchandise trade data are revised for the previous six months to incorporate latest available data.

13 For the Balance of Payments Goods and Services series, in original terms, no revisions are applied in the July, October, January or April issues. This is to ensure the monthly series align with the comparable series in the quarterly publication. In the September issue revisions can be applied to the four previous financial years. In other issues revisions can be applied to the previous and current financial years to incorporate the latest available survey and administrative data.

14 In seasonally adjusted and trend terms, revisions may occur at any time point but tend to focus on the most recent estimates. Please also refer to paragraphs 17 (seasonal adjustment) and 19 (trend estimates) below.

SIGN CONVENTION

15 In keeping with BPM6 conventions, balance of payments basis credit entries are shown with an implied positive sign and debit items are shown as negative entries. For statistics on a recorded trade basis, both imports and exports are shown without sign. The calculation of percentage changes on balance of payments debit items are made without regard to sign. References to balance of payments debit items in Key Figures, Key Points, and Analysis and Comments are also made without regard to sign.

SEASONALLY ADJUSTED AND TREND ESTIMATES

16 The estimates of international trade in goods and services on a balance of payments basis are seasonally adjusted, however the merchandise exports and imports statistics on a recorded trade basis are not. Monthly original estimates are volatile, being subject to calendar-related and large irregular influences. Seasonally adjusted estimates are derived

EXPLANATORY NOTES *continued*

SEASONALLY ADJUSTED AND TREND ESTIMATES *continued*

by estimating and removing from the original series systematic calendar related effects, such as seasonal (e.g. Christmas), trading day and moving holiday (e.g. Easter) influences. Seasonal adjustment does not aim to remove the irregular or non-seasonal influences which may be present in any particular month. These irregular influences may reflect both random economic events and difficulties of statistical recording.

17 The seasonally adjusted statistics in this publication use the concurrent seasonal adjustment technique and Autoregressive Integrated Moving Average (ARIMA) modelling to estimate factors for the current and previous months. Under concurrent seasonal adjustment, the estimates of seasonal factors are fine tuned as new or revised original estimates become available each period. The seasonally adjusted estimates are subject to revisions at each reference month as the estimates of seasonal factors are improved.

18 ARIMA modelling relies on the characteristics of the series being analysed to project future period data. ARIMA modelling is used on a case-by-case basis where it results in reduced revisions to seasonally adjusted series when subsequent data become available. The projected values are temporary, intermediate values, that are only used internally to improve the estimation of the seasonal factors. The projected data do not affect the original estimates and are discarded at the end of the seasonal adjustment process. The ARIMA model is assessed as part of the annual review and, following the 2009 annual review, 40 of the 45 directly seasonally adjusted trade in goods and services time series use an ARIMA model.

19 The month-to-month movements of the seasonally adjusted estimates may not be reliable indicators of underlying behaviour because they include irregular or non-seasonal movements. Trend estimates reduce the effect of these movements as they are derived by applying a 13-term Henderson moving average to the seasonally adjusted series. The 13-term Henderson moving average (like all Henderson averages) is symmetric, but as the end of a time series is approached, asymmetric forms of the average are applied. While the asymmetric weights enable trend estimates for recent months to be produced, it does result in revisions to the estimates for the most recent six months as additional observations become available. Revisions to trend estimates can also occur because of revisions to the original data and as a result of the re-estimation of the seasonal factors. Trend estimates should be used with caution, especially around the time of unusual influences, until these have been appropriately taken into account.

20 Information papers and articles on time series methods are available on the ABS website:

- for seasonal adjustment methods, see *Information Paper: An Introductory Course on Time Series Analysis, Jan 2005* (cat. no. 1346.0.55.001) and *Time Series Analysis Frequently Asked Questions, 2003* (cat. no. 1346.0.55.002)
- for ARIMA modelling, see *Feature article: Use of ARIMA modelling to reduce revisions* in the October 2004 issue of *Australian Economic Indicators* (cat. no. 1350.0)
- for trend estimates methods, see *Information Paper: A Guide to Interpreting Time Series – Monitoring Trends* (cat. no. 1349.0)
- alternatively contact the Assistant Director, Time Series Analysis on (02) 6252 6345 or e-mail <time.series.analysis@abs.gov.au>.

ECONOMIC TERRITORY

21 In accordance with BPM6 definitions, Australia's economic territory, on a balance of payments basis, is the area under the effective control of the Australian government. It includes the land area, airspace, territorial waters, including jurisdiction over fishing rights and rights to fuels and minerals. Australian economic territory also includes territorial enclaves in the rest of the world. These are clearly demarcated areas of land, located in other countries and which are owned or rented by the Australian government

EXPLANATORY NOTES *continued*

ECONOMIC TERRITORY

continued

for diplomatic, military, scientific or other purposes. Specifically, the economic territory of Australia consists of:

- Geographic Australia which includes Cocos (Keeling) Islands and Christmas Island;
- Norfolk Island;
- Australian Antarctic Territory;
- Heard Island and McDonald Islands;
- Territory of Ashmore Reef and Cartier Island;
- Coral Sea Islands;
- Australia's territorial enclaves overseas; and
- the Joint Petroleum Development Area (joint territory between Australia and East Timor (Timor-Leste)).

22 Because of administrative complexities and measurement difficulties, Norfolk Island transactions with the rest of the world will not always be captured in all relevant Balance of Payments statistics. Most of the transactions involving Norfolk Island are not material to Australia's trade performance and not capturing these transactions will not distort these statistics. However, any significant transactions will be identified and included in the relevant statistics.

COMMODITY BREAKDOWN OF GOODS

23 For details of the classifications used to present goods exports (credits) and imports (debits) on a balance of payments basis, see tables 6.6 and 6.7, respectively, in *Balance of Payments and International Investment Position, Australia: Concepts, Sources and Methods*, 1998 (cat. no. 5331.0).

24 The recorded trade statistics shown in tables 12 and 13 are classified by the Standard International Trade Classification (SITC). Imports and exports of goods at a more detailed level are available from the Time Series spreadsheets on the ABS website. All data from July 2005 are presented according to SITC Rev 4 and data prior to July 2005 are presented according to SITC Rev 3. For details refer to the 'Classifications and Standards Update' in the July 2008 issue of this publication.

MONTHLY SERVICES SERIES

25 Monthly indicators for many of the services components that are only surveyed quarterly are not available. Monthly estimates for the freight and other transportation components of services credits in table 9 are derived by dividing the quarterly estimate by three. Freight debits are derived directly from imports data for the reference month as a difference between total merchandise cost, insurance and freight (CIF) and free on board (FOB), adjusted to reflect timing and processing adjustments. For freight credits and other transportation credits and debits, estimates are derived by extrapolating the last quarter's data by an average of movements for the same quarter over the three previous years, and then dividing the estimate by three. Similarly other services estimates are derived by extrapolating the last quarter's data by an average of movements for the same quarter over the previous three years, and then dividing the estimate by three.

CONFIDENTIALITY OF MERCHANDISE TRADE STATISTICS

26 The release of statistics for certain merchandise trade commodities is restricted in order to prevent the identification of the activities of an individual business, where this is requested by the business concerned. These restrictions do not affect the total value of exports and imports, but they can affect statistics at the country, state and commodity levels. Imports data that have the confidentiality restrictions 'No commodity details' or 'No value details' are aggregated into a single confidential commodity code. For data prior to September 2008, these data are added back into the appropriate state total and country total (i.e. these totals show the correct level of trade). From September 2008 these confidential data are not added back. Instead the confidential data are published as 'No country details' in the country totals and 'State not available for publication' in the state totals. Therefore, country and state totals from September 2008 may not represent the actual amount of trade in each country/state but only the trade in commodities without a 'No commodity details' or 'No value details' restriction. For information on the

EXPLANATORY NOTES *continued*

CONFIDENTIALITY OF MERCHANDISE TRADE STATISTICS *continued*

confidentiality restrictions applied to the merchandise trade statistics in this publication, refer to the current issue of *International merchandise trade: Confidential Commodities List (CCL)* (cat. no. 5372.0.55.001).

TOURISM RELATED SERVICES

27 The tourism related services memorandum items provide timely indicators of the movements in tourism related activities, not an absolute measure of the level of these activities. The tourism related indicator has been derived by combining total travel services (business, education-related and other personal travel) and passenger transportation services (which includes agency fees and commissions for air transport).

SERVICES BY STATE AND BY PARTNER COUNTRY

28 Annual services data by state, by country and detailed services are released twice yearly. Calendar year data are usually released with the March issue of this publication and financial year data are usually released with the September issue. Refer to Time series data for details.

29 Services credits are classified by the state of provision, while services debits are classified by the state of consumption. The state allocations for transportation, travel, postal and courier, and telecommunication services are based on a number of indicators including merchandise trade statistics by state, overseas passenger arrivals and departures by state of clearance and data provided by the Department of Immigration and Citizenship. The allocation for other services (about 25% of all trade in services) is primarily based on the location of the business reporting the information, which serves as a proxy for the state of provision/consumption of that service. The data should be used with care but are considered suitable for analysis over time.

30 A comprehensive explanation of the data sources used and the methodology applied in the compilation of partner country statistics is provided in Chapter 17 of *Balance of Payments and International Investment Position, Australia – Concepts, Sources and Methods* (cat. no. 5331.0). Approximately 7% of total services credits and 5% of total services debits for both 2007–08 and 2008–09 were either confidential, or unable to be allocated to individual countries.

ABS DATA AVAILABLE

31 More detailed balance of payments and recorded merchandise trade data, including forward seasonal factors are available as time series spreadsheets or data cubes from the ABS web site. Merchandise trade data by commodity, country and state that are not on the ABS web site may be available on request. Inquiries should be made to the National Information and Referral Service as shown on the back of this publication.

RELATED PRODUCTS AND PUBLICATIONS

32 Users may also wish to refer to the following publications which can be downloaded free of charge from the ABS web site by using the 'Statistics' tab and selecting the relevant catalogue number:

- *Balance of Payments and International Investment Position, Australia* (cat. no. 5302.0) – issued quarterly
- *International Merchandise Imports, Australia* (cat. no. 5439.0) – issued monthly
- *International Trade Price Indexes, Australia* (cat. no. 6457.0) – issued quarterly
- *Balance of Payments and International Investment Position, Australia: Concepts, Sources and Methods* (cat. no. 5331.0)
- *Information Paper: Quality of Australian Balance of Payments Statistics* (cat. no. 5342.0)
- *International Merchandise Trade, Australia: Concepts, Sources and Methods* (cat. no. 5489.0)
- *A Guide to Australian Balance of Payments and International Investment Position Statistics* (cat. no. 5362.0.55.001).

EXPLANATORY NOTES *continued*

RELATED PRODUCTS AND PUBLICATIONS *continued*

33 Current publications and other products released by the ABS are available from the Statistics tab on the ABS web site. The ABS also issues a daily *Release Advice* on the web site which details products to be released in the week ahead. A *foreign trade theme page* and a *balance of payments theme page* are available on the ABS website. Select *Themes – Economy – Foreign Trade* or *Balance of Payments*. This page provides direct links to all foreign trade and balance of payments related data and publications, recent changes and forthcoming events, links to relevant web sites and a range of other information about the Australian International Accounts.

ROUNDING

34 Where figures have been rounded, discrepancies may occur between sums of the component items and totals. Percentage movements are calculated from data at the level of precision presented in this publication (i.e. \$m) except for international merchandise trade tables.

ABBREVIATIONS

\$b	billion (thousand million) dollars
\$m	million dollars
ABS	Australian Bureau of Statistics
APEC	Asia Pacific Economic Co-operation
ASEAN	Association of South-East Asian Nations
n.e.s.	not elsewhere specified
n.i.e.	not included elsewhere
OECD	Organisation for Economic Co-operation and Development
SAR	Special Administrative Region
SITC	Standard International Trade Classification

APPENDIX RELATED ARTICLES

<i>Article</i>	<i>Source(a)</i>	<i>Issue</i>
Investment		
Foreign ownership of equity	5302.0	Sep qtr 2007
Kangaroo bonds	1301.0	2006
Foreign currency exposure	5308.0	Mar qtr 2005
Gross external debt	5302.0	Sep qtr 2003
Balance of payments		
International comparison of balance of payments statistics	(b) 5363.0	1998–99
Merchandise trade		
Characteristics of Australian Exporters	5368.0.55.006	2007–08
Export and import invoice currencies, 2007	5368.0	Dec 2007
100 years of international trade statistics	5368.0	Oct 2007
New methodology for deriving counts of Australian exports	5368.0	Feb 2006
Australia's Importers, 2003–04	5368.0	Nov 2004
Australia's Exporters, 2003–04	5368.0	Oct 2004
Australia's trade with the USA	5368.0	Mar 2004
Foreign ownership of Australian exporters and importers	5496.0.55.001	2002–03
Major commodities traded by Australia, 1991 to 2000	(b) 5422.0	Dec qtr 2000
Trade in services		
International trade in services by partner country, 2006, preliminary	5368.0	Dec 2006
Changes to International trade in services statistics, August 2006	5368.0	Aug 2006
Changes to International trade in services travel statistics	5368.0	Aug 2005
Finance		
Impact of the farm season on Australian production in 2002–03 and 2003–04	1301.0	2005
Recent trends in construction and first home buyers finance	5609.0	Mar 2002
Household sector data in the financial accounts	5232.0	Mar qtr 2002
Technical information		
Implementation of new international statistical standards in ABS National and International Accounts, September 2009	5310.0.55.002	Oct 2009
Estimation of Workers' Remittances based on Balance of Payments and International Investment Position Manual, Sixth Edition	5302.0.55.003	Sep 2009
Impact of revised international standards on monthly International Trade in Goods and Services	5368.0.55.014	Aug 2009
Changes to International Trade in Goods Statistics - Countries and Ports	5368.0.55.013	Jul 2009
Revisions to international standards in quarterly Balance of Payments and International Investment Position statistics from September 2009	5302.0.55.002	2009
Revisions to international standards in monthly international trade in goods and services statistics from August 2009	5368.0.55.012	2009
Changes to International Trade in Goods Industry Statistics, July 2009	5368.0.55.011	Dec 2008
Technical note 1 - Income on debt	5302.0	Jun qtr 2008
Technical note 2 - Use of CDI data	5302.0	Jun qtr 2008
Impact of introducing Revision 4 of the Standard International Trade Classification	5368.0.55.010	2008
Changes to international trade statistics July 2008	5368.0.55.009	2007–08
Introduction of revised international standards in ABS economic statistics in 2009	5310.0.55.001	2007
Changes on 1 January 2007 to Statistical Codes in the AHECC and the Customs Tariff	1233.0.55.001	Nov 2006
ABS implementation in January 2007 of revisions to international trade classifications, 2007	5368.0.55.005	Jun 2006
Revised treatment of Goods for Processing in Merchandise Trade and Balance of Payments Statistics	5368.0	May 2006
Impact of Customs and ABS changes on import statistics from October 2005	5439.0	Oct 2005
ABS management of the impact of the implementation of the imports component of the New Customs System	5439.0	Aug 2005
Changes to country and port classifications	5368.0	May 2003
Implementation of New Customs Systems	5368.0	Aug 2004
The effect of customs changes on export statistics	5422.0	Jun qtr 2002
Data confidentiality	5422.0	Dec qtr 1999

- (a) In the ABS web site home page, select Statistics; By Catalogue Number; and click on the specified catalogue number and issue. Note: in some instances, a particular issue of the publication can be found in the Past & Future Releases page of the catalogue.
- (b) This article can be found in pdf format by referring to the Downloads page of the specified issue of this publication on the ABS web site.

FOR MORE INFORMATION . . .

INTERNET **www.abs.gov.au** the ABS website is the best place for data from our publications and information about the ABS.

INFORMATION AND REFERRAL SERVICE

Our consultants can help you access the full range of information published by the ABS that is available free of charge from our website. Information tailored to your needs can also be requested as a 'user pays' service. Specialists are on hand to help you with analytical or methodological advice.

PHONE 1300 135 070

EMAIL client.services@abs.gov.au

FAX 1300 135 211

POST Client Services, ABS, GPO Box 796, Sydney NSW 2001

FREE ACCESS TO STATISTICS

All statistics on the ABS website can be downloaded free of charge.

WEB ADDRESS www.abs.gov.au