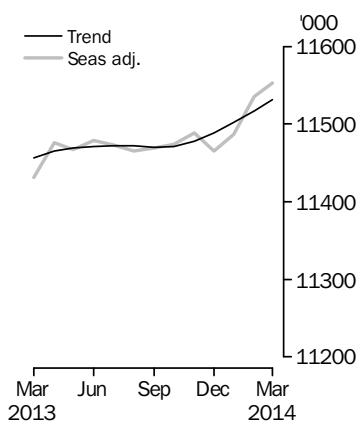


LABOUR FORCE

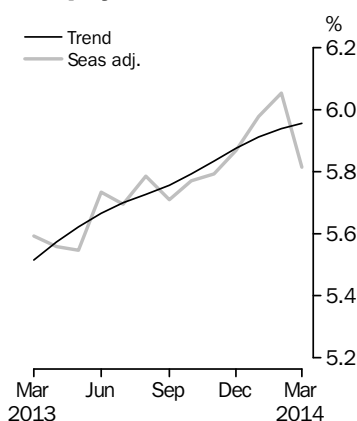
AUSTRALIA

EMBARGO: 11.30AM (CANBERRA TIME) THURS 10 APR 2014

Employed Persons



Unemployment Rate



KEY FIGURES

	Feb 2014	Mar 2014	Feb 14 to Mar 14	Mar 13 to Mar 14
Trend				
Employed persons ('000)	11 517.4	11 531.6	14.2	0.7 %
Unemployed persons ('000)	727.1	730.4	3.2	9.2 %
Unemployment rate (%)	5.9	6.0	0.0 pts	0.4 pts
Participation rate (%)	64.7	64.7	0.0 pts	-0.4 pts
Seasonally Adjusted				
Employed persons ('000)	11 535.0	11 553.2	18.1	1.1 %
Unemployed persons ('000)	743.1	713.2	-29.9	5.3 %
Unemployment rate (%)	6.1	5.8	-0.2 pts	0.2 pts
Participation rate (%)	64.9	64.7	-0.2 pts	-0.3 pts

KEY POINTS

TREND ESTIMATES (MONTHLY CHANGE)

- Employment increased to 11,531,600.
- Unemployment increased to 730,400 from a revised February 2014 estimate.
- Unemployment rate increased by less than 0.1 pts to 6.0%.
- Participation rate remained steady at 64.7%.
- Aggregate monthly hours worked increased 2.8 million hours (0.2%) to 1,615.6 million hours.

SEASONALLY ADJUSTED ESTIMATES (MONTHLY CHANGE)

- Employment increased 18,100 to 11,553,200. Full-time employment decreased 22,100 to 8,029,100 and part-time employment increased 40,200 to 3,524,000.
- Unemployment decreased 29,900 (4.0%) to 713,200. The number of unemployed persons looking for full-time work decreased 16,700 to 509,800 and the number of unemployed persons only looking for part-time work decreased 13,300 to 203,400.
- The unemployment rate decreased 0.2 pts to 5.8%, based on unrounded estimates.
- Participation rate decreased 0.2 pts to 64.7%.
- Aggregate monthly hours worked increased 8.0 million hours (0.5%) to 1,617.2 million hours.

INQUIRIES

For further information about these and related statistics, contact the National Information and Referral Service on 1300 135 070, email client.services@abs.gov.au or Labour Force on Canberra (02) 6252 6525, email labourforce@abs.gov.au.

NOTES

FORTHCOMING ISSUES

<i>ISSUE</i>	<i>RELEASE DATE</i>
April 2014	8 May 2014
May 2014	12 June 2014
June 2014	10 July 2014
July 2014	7 August 2014
August 2014	11 September 2014
September 2014	9 October 2014

ROUNDING

Estimates of monthly and quarterly changes shown on the front cover and used in the commentary have been calculated using unrounded estimates, and may be different from, but are more accurate than, movements obtained from the rounded estimates. The graphs on the front cover also depict unrounded estimates.

SAMPLING ERROR

The estimates in this publication are based on a sample survey. Published estimates and the movements derived from them are subject to sampling variability. Standard errors give a measure of sampling variability (see Standard Errors section). The interval bounded by two standard errors is the 95% confidence interval, which provides a way of looking at the variability inherent in estimates. There is a 95% chance that the true value of the estimate lies within that interval.

MOVEMENTS IN SEASONALLY ADJUSTED SERIES BETWEEN FEBRUARY 2014 AND MARCH 2014

	<u>Monthly change</u>	<u>95% Confidence interval</u>	
Total Employment	18 100	-39 300	to 75 500
Total Unemployment	-29 900	-70 300	to 10 500
Unemployment rate	-0.2 pts	-0.6 pts	to 0.2 pts
Participation rate	-0.2 pts	-0.6 pts	to 0.2 pts

Jonathan Palmer
Acting Australian Statistician

LABOUR FORCE COMMENTARY MARCH 2014

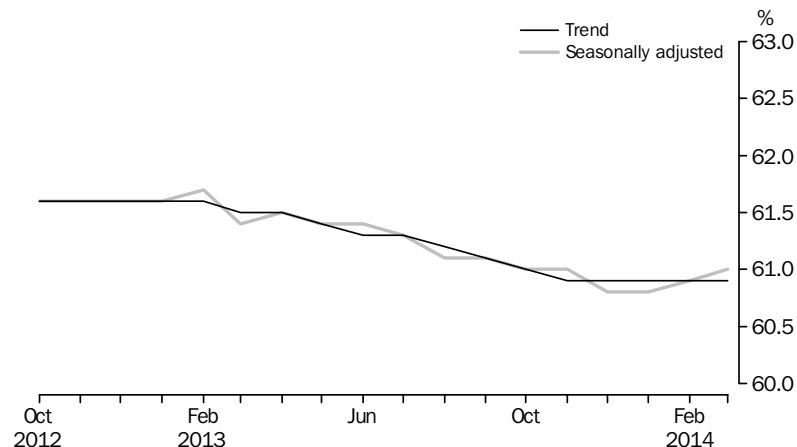
NATIONAL ESTIMATES

Australia's unemployment rate decreased by 0.2 percentage points to 5.8% in March 2014 (seasonally adjusted), while in trend terms the unemployment rate increased by less than 0.1 percentage points to 6.0%. The number of unemployed persons decreased by 29,900 to 713,200 in March 2014 (seasonally adjusted), while in trend terms the number of unemployed persons in March 2014 rose by 3,200 to 730,400.

March 2014 saw the seasonally adjusted participation rate decrease by 0.2 percentage points to 64.7%, following a revision to the February 2014 estimate. The trend participation rate remained steady at 64.7% in March 2014.

The seasonally adjusted number of employed persons increased by 18,100 in March 2014 to 11,553,200 persons. In trend terms, employment increased by 14,200 persons to 11,531,600 persons in March 2014. The employment to population ratio, which expresses the number of employed persons as a percentage of the civilian population aged 15 years and over, increased by less than 0.1 percentage points to 61.0% (seasonally adjusted). The trend employment to population ratio remained steady at 60.9%.

EMPLOYMENT TO POPULATION RATIO, PERSONS, October 2012 to March 2014



Seasonally adjusted part-time employment increased in March 2014, up 40,200 persons to 3,524,000 persons, while full-time employment decreased by 22,100 persons to 8,029,100 persons. The increase in total employment resulted from:

- an increase in female part-time employment, up 32,000 persons
- an increase in male part-time employment, up 8,300 persons
- a decrease in male full-time employment, down 8,700 persons
- a decrease in female full-time employment, down 13,400 persons.

Seasonally adjusted aggregate hours increased by 8.0 million hours (0.5%) in March 2014 to 1,617.2 million hours.

STATE ESTIMATES

The largest absolute increases in seasonally adjusted employment were in New South Wales (up 16,300 persons) and Queensland (up 12,000 persons). The largest absolute decreases in seasonally adjusted employment were in South Australia (down 1,800 persons) and Victoria (down 1,300 persons). Seasonally adjusted estimates are not published for the territories.

LABOUR FORCE COMMENTARY MARCH 2014 *continued*

STATE ESTIMATES *continued*

UNEMPLOYMENT RATE, STATE AND TERRITORIES, February 2014 and March 2014

	TREND		SEASONALLY ADJUSTED	
	
	<i>February</i>	<i>March</i>	<i>February</i>	<i>March</i>
	%	%	%	%
New South Wales	5.6	5.5	5.7	5.3
Victoria	6.4	6.5	6.4	6.4
Queensland	6.1	6.1	6.2	6.1
South Australia	6.8	6.9	6.7	7.1
Western Australia	5.1	5.3	5.9	4.9
Tasmania	7.5	7.4	7.3	7.5
Northern Territory	3.9	3.8	np	np
Australian Capital Territory	3.5	3.4	np	np
Australia	5.9	6.0	6.1	5.8

np not available for publication but included in totals where applicable, unless otherwise indicated

LABOUR FORCE STATUS (AGED 15 YEARS & OVER): Trend

	EMPLOYED		UNEMPLOYED			UNEMPLOYMENT RATE				
	Full time	Part time	Looking for f/t	Labour force	Looking for f/t	Total	Participation rate			
	'000	'000	Total	'000	'000	'000	%	%	%	
MALES										
March 2011	5 127.4	982.1	6 109.5	238.1	299.2	6 408.8	4.4	4.7	72.3	
March 2012	5 151.9	1 000.1	6 152.0	251.2	318.1	6 470.1	4.6	4.9	71.8	
2013										
March	5 182.0	1 029.8	6 211.8	292.5	362.9	6 574.7	5.3	5.5	71.6	
April	5 181.4	1 034.9	6 216.3	298.0	367.5	6 583.8	5.4	5.6	71.6	
May	5 180.9	1 038.5	6 219.5	302.1	371.3	6 590.8	5.5	5.6	71.6	
June	5 178.6	1 042.3	6 220.9	304.8	374.7	6 595.5	5.6	5.7	71.5	
July	5 173.6	1 047.0	6 220.6	306.8	377.9	6 598.5	5.6	5.7	71.4	
August	5 165.8	1 052.1	6 217.9	309.0	381.2	6 599.1	5.6	5.8	71.3	
September	5 157.3	1 056.8	6 214.1	312.2	384.9	6 599.1	5.7	5.8	71.2	
October	5 151.9	1 060.8	6 212.7	315.3	388.2	6 600.8	5.8	5.9	71.1	
November	5 150.7	1 065.4	6 216.0	316.9	390.0	6 606.0	5.8	5.9	71.1	
December	5 152.8	1 070.6	6 223.4	316.6	390.4	6 613.8	5.8	5.9	71.1	
2014										
January	5 157.1	1 076.1	6 233.2	314.3	389.1	6 622.3	5.7	5.9	71.0	
February	5 162.3	1 081.7	6 244.0	310.7	386.5	6 630.5	5.7	5.8	71.0	
March	5 167.4	1 087.1	6 254.5	306.5	383.4	6 637.8	5.6	5.8	71.0	
FEMALES										
March 2011	2 766.6	2 313.3	5 079.9	171.5	280.9	5 360.8	5.8	5.2	58.8	
March 2012	2 812.0	2 348.0	5 160.1	179.4	291.2	5 451.3	6.0	5.3	58.8	
2013										
March	2 839.9	2 404.7	5 244.6	194.8	305.8	5 550.4	6.4	5.5	58.8	
April	2 840.3	2 408.4	5 248.7	198.5	309.1	5 557.7	6.5	5.6	58.8	
May	2 841.0	2 409.0	5 250.0	201.8	312.0	5 562.0	6.6	5.6	58.8	
June	2 842.8	2 407.9	5 250.7	203.7	314.3	5 565.1	6.7	5.6	58.7	
July	2 844.9	2 406.9	5 251.8	203.7	315.7	5 567.4	6.7	5.7	58.7	
August	2 845.0	2 408.9	5 253.9	202.3	315.6	5 569.5	6.6	5.7	58.6	
September	2 842.5	2 413.7	5 256.2	201.2	315.6	5 571.7	6.6	5.7	58.5	
October	2 839.4	2 419.3	5 258.7	201.6	317.2	5 575.9	6.6	5.7	58.5	
November	2 837.6	2 424.2	5 261.8	204.2	321.0	5 582.8	6.7	5.7	58.5	
December	2 838.3	2 427.1	5 265.3	208.3	326.8	5 592.1	6.8	5.8	58.5	
2014										
January	2 841.5	2 427.8	5 269.3	212.7	333.8	5 603.1	7.0	6.0	58.5	
February	2 846.1	2 427.2	5 273.4	216.7	340.6	5 614.0	7.1	6.1	58.5	
March	2 851.9	2 425.2	5 277.1	220.1	347.0	5 624.1	7.2	6.2	58.6	
PERSONS										
March 2011	7 894.0	3 295.4	11 189.4	409.7	580.2	11 769.6	4.9	4.9	65.5	
March 2012	7 963.9	3 348.1	11 312.0	430.6	609.4	11 921.4	5.1	5.1	65.2	
2013										
March	8 021.8	3 434.6	11 456.4	487.2	668.7	12 125.1	5.7	5.5	65.1	
April	8 021.6	3 443.3	11 465.0	496.5	676.6	12 141.6	5.8	5.6	65.1	
May	8 022.0	3 447.5	11 469.5	503.8	683.4	12 152.8	5.9	5.6	65.1	
June	8 021.4	3 450.2	11 471.6	508.6	689.0	12 160.6	6.0	5.7	65.0	
July	8 018.5	3 453.9	11 472.4	510.6	693.6	12 165.9	6.0	5.7	65.0	
August	8 010.7	3 461.0	11 471.8	511.3	696.8	12 168.6	6.0	5.7	64.9	
September	7 999.8	3 470.5	11 470.3	513.4	700.5	12 170.8	6.0	5.8	64.8	
October	7 991.3	3 480.1	11 471.4	516.9	705.3	12 176.7	6.1	5.8	64.7	
November	7 988.3	3 489.5	11 477.8	521.0	710.9	12 188.8	6.1	5.8	64.7	
December	7 991.1	3 497.6	11 488.7	524.9	717.2	12 206.0	6.2	5.9	64.7	
2014										
January	7 998.5	3 503.9	11 502.5	527.0	722.9	12 225.4	6.2	5.9	64.7	
February	8 008.4	3 509.0	11 517.4	527.5	727.1	12 244.5	6.2	5.9	64.7	
March	8 019.3	3 512.2	11 531.6	526.6	730.4	12 261.9	6.2	6.0	64.7	

LABOUR FORCE STATUS (AGED 15 YEARS & OVER): **Seasonally Adjusted**

	EMPLOYED			UNEMPLOYED		Labour force	UNEMPLOYMENT RATE		Participation rate
	Full time	Part time	Total	Looking for f/t work	Total		Looking for f/t work	Total	
	'000	'000	'000	'000	'000		'000	%	
MALES									
March 2011	5 151.1	976.4	6 127.4	231.1	290.6	6 418.0	4.3	4.5	72.4
March 2012	5 161.0	988.7	6 149.7	256.4	324.0	6 473.7	4.7	5.0	71.8
2013									
March	5 176.3	1 020.2	6 196.5	302.4	371.1	6 567.7	5.5	5.7	71.5
April	5 187.9	1 027.7	6 215.6	296.9	361.6	6 577.3	5.4	5.5	71.5
May	5 187.0	1 040.9	6 227.9	299.3	365.0	6 592.9	5.5	5.5	71.6
June	5 179.8	1 046.0	6 225.8	311.2	383.7	6 609.5	5.7	5.8	71.7
July	5 176.0	1 045.1	6 221.1	305.8	378.7	6 599.7	5.6	5.7	71.5
August	5 161.1	1 052.1	6 213.2	306.0	382.7	6 595.9	5.6	5.8	71.3
September	5 166.7	1 047.7	6 214.4	307.8	376.5	6 591.0	5.6	5.7	71.2
October	5 137.7	1 074.5	6 212.1	315.6	386.5	6 598.6	5.8	5.9	71.1
November	5 157.2	1 067.0	6 224.2	317.1	391.9	6 616.1	5.8	5.9	71.2
December	5 143.4	1 063.1	6 206.4	325.1	400.2	6 606.6	5.9	6.1	71.0
2014									
January	5 146.7	1 068.4	6 215.1	318.9	390.1	6 605.2	5.8	5.9	70.9
February	5 180.2	1 086.8	6 267.0	308.8	388.1	6 655.2	5.6	5.8	71.3
March	5 171.5	1 095.1	6 266.6	293.4	369.4	6 636.1	5.4	5.6	71.0
FEMALES									
March 2011	2 795.9	2 298.3	5 094.3	173.3	286.6	5 380.9	5.8	5.3	59.0
March 2012	2 819.4	2 365.2	5 184.6	181.6	290.5	5 475.2	6.1	5.3	59.0
2013									
March	2 829.4	2 405.2	5 234.6	194.0	305.9	5 540.6	6.4	5.5	58.7
April	2 847.1	2 413.6	5 260.7	197.9	313.7	5 574.4	6.5	5.6	59.0
May	2 838.2	2 400.8	5 239.0	201.2	308.3	5 547.3	6.6	5.6	58.6
June	2 840.0	2 413.5	5 253.5	208.3	314.6	5 568.1	6.8	5.7	58.7
July	2 841.4	2 410.3	5 251.7	204.8	314.0	5 565.7	6.7	5.6	58.6
August	2 854.8	2 397.4	5 252.3	203.2	321.2	5 573.5	6.6	5.8	58.6
September	2 842.9	2 411.9	5 254.8	200.9	318.0	5 572.9	6.6	5.7	58.6
October	2 844.0	2 417.8	5 261.8	200.7	316.2	5 577.9	6.6	5.7	58.5
November	2 839.6	2 425.0	5 264.6	195.8	314.5	5 579.0	6.5	5.6	58.4
December	2 821.9	2 436.9	5 258.8	202.0	314.7	5 573.4	6.7	5.6	58.3
2014									
January	2 824.5	2 447.2	5 271.7	228.1	340.2	5 611.9	7.5	6.1	58.6
February	2 871.1	2 396.9	5 268.0	217.7	355.0	5 622.9	7.0	6.3	58.6
March	2 857.6	2 428.9	5 286.5	216.4	343.7	5 630.3	7.0	6.1	58.6
PERSONS									
March 2011	7 947.0	3 274.7	11 221.7	404.4	577.2	11 799.0	4.8	4.9	65.6
March 2012	7 980.4	3 354.0	11 334.3	438.0	614.6	11 948.9	5.2	5.1	65.3
2013									
March	8 005.7	3 425.5	11 431.2	496.4	677.1	12 108.2	5.8	5.6	65.0
April	8 035.0	3 441.3	11 476.3	494.9	675.4	12 151.7	5.8	5.6	65.2
May	8 025.2	3 441.7	11 466.9	500.5	673.3	12 140.1	5.9	5.5	65.0
June	8 019.8	3 459.5	11 479.3	519.4	698.3	12 177.6	6.1	5.7	65.1
July	8 017.3	3 455.4	11 472.8	510.6	692.7	12 165.5	6.0	5.7	65.0
August	8 015.9	3 449.5	11 465.4	509.2	703.9	12 169.3	6.0	5.8	64.9
September	8 009.7	3 459.6	11 469.3	508.7	694.6	12 163.9	6.0	5.7	64.8
October	7 981.6	3 492.3	11 473.9	516.3	702.6	12 176.6	6.1	5.8	64.7
November	7 996.8	3 492.0	11 488.7	512.9	706.4	12 195.1	6.0	5.8	64.7
December	7 965.3	3 499.9	11 465.2	527.1	714.9	12 180.1	6.2	5.9	64.5
2014									
January	7 971.2	3 515.6	11 486.8	547.1	730.3	12 217.1	6.4	6.0	64.6
February	8 051.2	3 483.8	11 535.0	526.5	743.1	12 278.1	6.1	6.1	64.9
March	8 029.1	3 524.0	11 553.2	509.8	713.2	12 266.3	6.0	5.8	64.7

LABOUR FORCE STATUS (AGED 15 YEARS & OVER): Original

	EMPLOYED			UNEMPLOYED			UNEMPLOYMENT RATE			Participation rate	
	Full time	Part time	Total	Looking for f/t work	Total	Labour force	Not in labour force	Civilian population aged 15 years and over	Looking for f/t work		Total
	'000	'000	'000	'000	'000	'000	'000	'000	%		%
MALES											
March 2011	5 130.6	989.7	6 120.3	239.4	307.3	6 427.6	2 433.3	8 860.9	4.5	4.8	72.5
March 2012	5 142.8	1 001.4	6 144.2	265.4	342.6	6 486.8	2 527.5	9 014.3	4.9	5.3	72.0
2013											
March	5 160.7	1 033.5	6 194.2	312.7	391.1	6 585.3	2 594.6	9 179.8	5.7	5.9	71.7
April	5 174.4	1 043.4	6 217.8	297.1	361.9	6 579.7	2 614.4	9 194.1	5.4	5.5	71.6
May	5 171.5	1 067.0	6 238.5	299.1	363.3	6 601.8	2 606.5	9 208.3	5.5	5.5	71.7
June	5 153.9	1 080.1	6 234.0	302.8	367.9	6 601.9	2 620.6	9 222.6	5.5	5.6	71.6
July	5 177.0	1 054.6	6 231.5	294.2	357.0	6 588.6	2 647.2	9 235.8	5.4	5.4	71.3
August	5 111.0	1 046.6	6 157.7	299.4	373.5	6 531.1	2 717.9	9 249.0	5.5	5.7	70.6
September	5 208.2	1 031.4	6 239.6	302.7	377.5	6 617.1	2 645.1	9 262.2	5.5	5.7	71.4
October	5 125.7	1 093.2	6 218.9	315.9	381.9	6 600.9	2 676.3	9 277.2	5.8	5.8	71.2
November	5 160.0	1 045.9	6 205.9	299.1	366.7	6 572.5	2 719.8	9 292.3	5.5	5.6	70.7
December	5 204.9	1 063.3	6 268.3	309.0	387.4	6 655.7	2 651.6	9 307.3	5.6	5.8	71.5
2014											
January	5 141.9	1 031.5	6 173.4	344.9	417.8	6 591.2	2 730.1	9 321.3	6.3	6.3	70.7
February	5 210.2	1 044.3	6 254.4	336.4	429.3	6 683.7	2 651.5	9 335.2	6.1	6.4	71.6
March	5 157.3	1 109.9	6 267.2	304.1	390.3	6 657.5	2 691.7	9 349.2	5.6	5.9	71.2
FEMALES											
March 2011	2 771.7	2 325.0	5 096.7	182.2	311.9	5 408.7	3 711.3	9 120.0	6.2	5.8	59.3
March 2012	2 794.9	2 393.3	5 188.2	190.1	316.7	5 504.9	3 771.5	9 276.4	6.4	5.8	59.3
2013											
March	2 806.7	2 435.4	5 242.1	203.0	334.4	5 576.5	3 863.0	9 439.5	6.7	6.0	59.1
April	2 822.4	2 442.1	5 264.5	199.1	320.4	5 584.9	3 867.4	9 452.3	6.6	5.7	59.1
May	2 838.4	2 418.6	5 257.1	203.9	312.7	5 569.7	3 895.4	9 465.2	6.7	5.6	58.8
June	2 819.8	2 443.9	5 263.7	203.0	305.1	5 568.8	3 909.2	9 478.0	6.7	5.5	58.8
July	2 846.8	2 407.7	5 254.5	189.8	289.9	5 544.4	3 946.9	9 491.3	6.3	5.2	58.4
August	2 814.8	2 396.6	5 211.4	188.6	305.9	5 517.3	3 987.3	9 504.6	6.3	5.5	58.0
September	2 918.8	2 388.6	5 307.3	195.9	315.0	5 622.4	3 895.5	9 517.9	6.3	5.6	59.1
October	2 826.2	2 454.2	5 280.4	190.8	297.9	5 578.3	3 954.6	9 532.9	6.3	5.3	58.5
November	2 848.7	2 417.0	5 265.7	187.7	290.3	5 555.9	3 991.9	9 547.8	6.2	5.2	58.2
December	2 858.3	2 444.2	5 302.5	202.7	307.9	5 610.3	3 952.5	9 562.8	6.6	5.5	58.7
2014											
January	2 816.5	2 363.7	5 180.1	247.8	355.1	5 535.2	4 041.4	9 576.6	8.1	6.4	57.8
February	2 880.3	2 358.3	5 238.6	245.7	408.5	5 647.1	3 943.4	9 590.5	7.9	7.2	58.9
March	2 834.9	2 460.2	5 295.1	226.0	376.5	5 671.6	3 932.7	9 604.3	7.4	6.6	59.1
PERSONS											
March 2011	7 902.3	3 314.7	11 217.0	421.6	619.2	11 836.3	6 144.7	17 980.9	5.1	5.2	65.8
March 2012	7 937.7	3 394.7	11 332.4	455.5	659.3	11 991.7	6 299.0	18 290.7	5.4	5.5	65.6
2013											
March	7 967.3	3 469.0	11 436.3	515.7	725.4	12 161.7	6 457.6	18 619.3	6.1	6.0	65.3
April	7 996.8	3 485.4	11 482.2	496.2	682.4	12 164.6	6 481.8	18 646.4	5.8	5.6	65.2
May	8 010.0	3 485.6	11 495.6	502.9	675.9	12 171.5	6 502.0	18 673.5	5.9	5.6	65.2
June	7 973.7	3 524.0	11 497.8	505.8	673.0	12 170.8	6 529.8	18 700.6	6.0	5.5	65.1
July	8 023.7	3 462.3	11 486.0	484.0	646.9	12 133.0	6 594.1	18 727.1	5.7	5.3	64.8
August	7 925.8	3 443.2	11 369.0	487.9	679.4	12 048.4	6 705.2	18 753.6	5.8	5.6	64.2
September	8 127.0	3 420.0	11 547.0	498.5	692.5	12 239.5	6 540.6	18 780.1	5.8	5.7	65.2
October	7 951.9	3 547.4	11 499.3	506.7	679.9	12 179.2	6 630.9	18 810.1	6.0	5.6	64.7
November	8 008.7	3 462.8	11 471.5	486.8	657.0	12 128.5	6 711.7	18 840.1	5.7	5.4	64.4
December	8 063.2	3 507.5	11 570.7	511.7	695.3	12 266.0	6 604.1	18 870.2	6.0	5.7	65.0
2014											
January	7 958.4	3 395.2	11 353.6	592.7	772.8	12 126.4	6 771.5	18 897.9	6.9	6.4	64.2
February	8 090.5	3 402.6	11 493.0	582.1	837.8	12 330.8	6 594.9	18 925.7	6.7	6.8	65.2
March	7 992.2	3 570.2	11 562.3	530.1	766.8	12 329.1	6 624.4	18 953.5	6.2	6.2	65.0

LABOUR FORCE STATUS (AGED 15 YEARS & OVER)—New South Wales

	TREND					SEASONALLY ADJUSTED					Civilian population aged 15 years and over '000
	Employed full time	Total employed	Total unemployed	Unemployment rate	Participation rate	Employed full time	Total employed	Total unemployed	Unemployment rate	Participation rate	
	'000	'000	'000	%	%	'000	'000	'000	%	%	
MALES											
March 2011	1 602.9	1 921.3	90.7	4.5	70.4	1 601.6	1 925.3	90.9	4.5	70.5	2 859.5
March 2012	1 605.8	1 921.3	98.9	4.9	69.8	1 610.5	1 918.5	98.2	4.9	69.7	2 894.7
2013											
March	1 625.3	1 958.8	111.9	5.4	70.6	1 622.9	1 955.7	116.8	5.6	70.6	2 934.2
April	1 624.6	1 961.6	113.1	5.5	70.6	1 631.2	1 965.0	109.9	5.3	70.6	2 937.8
May	1 622.6	1 961.7	113.3	5.5	70.5	1 621.1	1 963.6	119.2	5.7	70.8	2 941.5
June	1 618.1	1 959.4	113.3	5.5	70.4	1 619.9	1 961.9	107.7	5.2	70.3	2 945.1
July	1 611.5	1 955.5	113.6	5.5	70.2	1 614.9	1 958.5	110.7	5.4	70.2	2 948.4
August	1 603.5	1 950.4	115.0	5.6	70.0	1 603.5	1 944.2	119.0	5.8	69.9	2 951.7
September	1 595.9	1 945.1	117.3	5.7	69.8	1 594.2	1 942.0	113.5	5.5	69.6	2 955.0
October	1 590.5	1 941.4	119.1	5.8	69.6	1 584.7	1 943.9	119.3	5.8	69.7	2 958.7
November	1 588.1	1 940.3	119.4	5.8	69.5	1 590.0	1 947.0	121.6	5.9	69.8	2 962.4
December	1 588.1	1 941.4	117.8	5.7	69.4	1 582.6	1 931.8	122.1	5.9	69.2	2 966.1
2014											
January	1 589.4	1 943.8	114.9	5.6	69.3	1 590.7	1 934.0	116.7	5.7	69.1	2 969.6
February	1 591.4	1 947.1	111.3	5.4	69.2	1 594.1	1 955.5	111.3	5.4	69.5	2 973.1
March	1 593.7	1 950.6	107.8	5.2	69.2	1 597.2	1 958.7	98.1	4.8	69.1	2 976.6
FEMALES											
March 2011	874.3	1 590.3	92.6	5.5	56.9	890.8	1 597.7	97.0	5.7	57.3	2 960.2
March 2012	895.6	1 603.7	87.9	5.2	56.4	894.7	1 620.3	76.7	4.5	56.6	2 998.0
2013											
March	916.7	1 643.7	92.6	5.3	57.2	914.6	1 639.7	93.5	5.4	57.1	3 037.9
April	918.6	1 647.4	95.7	5.5	57.3	926.7	1 655.2	96.5	5.5	57.6	3 041.2
May	918.4	1 649.5	98.7	5.6	57.4	922.1	1 649.6	98.4	5.6	57.4	3 044.5
June	916.9	1 649.7	101.1	5.8	57.4	913.1	1 647.7	98.5	5.6	57.3	3 047.9
July	914.9	1 648.4	102.7	5.9	57.4	902.4	1 639.2	106.5	6.1	57.2	3 051.2
August	912.3	1 646.3	103.2	5.9	57.3	924.4	1 661.7	106.0	6.0	57.9	3 054.5
September	909.3	1 644.0	102.8	5.9	57.1	908.6	1 641.6	98.8	5.7	56.9	3 057.8
October	906.7	1 642.6	102.2	5.9	57.0	906.2	1 638.9	103.4	5.9	56.9	3 061.6
November	905.3	1 642.6	101.8	5.8	56.9	908.9	1 637.7	102.6	5.9	56.8	3 065.3
December	905.0	1 643.8	101.9	5.8	56.9	901.8	1 642.1	97.9	5.6	56.7	3 069.1
2014											
January	906.2	1 646.2	102.4	5.9	56.9	889.2	1 651.7	102.4	5.8	57.1	3 072.6
February	908.4	1 648.8	103.0	5.9	57.0	920.0	1 645.3	107.0	6.1	57.0	3 076.1
March	912.1	1 652.6	103.8	5.9	57.1	920.1	1 658.4	102.3	5.8	57.2	3 079.6
PERSONS											
March 2011	2 477.2	3 511.6	183.2	5.0	63.5	2 492.4	3 523.0	187.9	5.1	63.8	5 819.7
March 2012	2 501.3	3 525.0	186.8	5.0	63.0	2 505.1	3 538.8	174.9	4.7	63.0	5 892.6
2013											
March	2 541.9	3 602.5	204.5	5.4	63.7	2 537.5	3 595.4	210.3	5.5	63.7	5 972.1
April	2 543.2	3 609.0	208.8	5.5	63.9	2 557.9	3 620.1	206.5	5.4	64.0	5 979.0
May	2 541.0	3 611.2	212.0	5.5	63.9	2 543.3	3 613.2	217.5	5.7	64.0	5 986.0
June	2 535.0	3 609.1	214.4	5.6	63.8	2 533.0	3 609.6	206.2	5.4	63.7	5 993.0
July	2 526.4	3 603.9	216.4	5.7	63.7	2 517.3	3 597.7	217.3	5.7	63.6	5 999.6
August	2 515.8	3 596.7	218.2	5.7	63.5	2 527.9	3 606.0	225.0	5.9	63.8	6 006.2
September	2 505.1	3 589.1	220.1	5.8	63.3	2 502.9	3 583.5	212.3	5.6	63.1	6 012.8
October	2 497.3	3 584.0	221.3	5.8	63.2	2 490.9	3 582.8	222.7	5.9	63.2	6 020.3
November	2 493.4	3 582.9	221.2	5.8	63.1	2 498.8	3 584.7	224.2	5.9	63.2	6 027.7
December	2 493.1	3 585.2	219.7	5.8	63.0	2 484.4	3 573.9	220.0	5.8	62.9	6 035.2
2014											
January	2 495.6	3 590.0	217.2	5.7	63.0	2 479.9	3 585.7	219.1	5.8	63.0	6 042.2
February	2 499.7	3 595.9	214.3	5.6	63.0	2 514.2	3 600.8	218.4	5.7	63.1	6 049.2
March	2 505.8	3 603.2	211.6	5.5	63.0	2 517.3	3 617.1	200.5	5.3	63.0	6 056.2

	TREND					SEASONALLY ADJUSTED					Civilian population aged 15 years and over
	Employed full time	Total employed	Total unemployed	Unemployment rate	Participation rate	Employed full time	Total employed	Total unemployed	Unemployment rate	Participation rate	
	'000	'000	'000	%	%	'000	'000	'000	%	%	
MALES											
March 2011	1 284.1	1 543.0	73.5	4.5	73.3	1 296.0	1 549.5	64.1	4.0	73.1	2 206.9
March 2012	1 264.3	1 527.1	82.8	5.1	71.8	1 265.4	1 520.2	90.1	5.6	71.8	2 243.8
2013											
March	1 268.9	1 538.4	92.5	5.7	71.4	1 281.0	1 539.6	91.3	5.6	71.4	2 285.2
April	1 270.2	1 541.4	93.6	5.7	71.4	1 271.5	1 536.9	93.5	5.7	71.2	2 288.7
May	1 271.6	1 544.0	94.3	5.8	71.5	1 272.2	1 547.2	89.7	5.5	71.4	2 292.3
June	1 272.9	1 545.5	95.1	5.8	71.5	1 269.7	1 549.5	103.8	6.3	72.0	2 295.9
July	1 273.9	1 545.9	95.9	5.8	71.4	1 271.0	1 546.0	95.3	5.8	71.4	2 299.1
August	1 274.3	1 545.0	96.9	5.9	71.3	1 276.4	1 544.4	95.8	5.8	71.2	2 302.3
September	1 274.3	1 543.7	97.9	6.0	71.2	1 276.2	1 540.0	92.3	5.7	70.8	2 305.6
October	1 273.7	1 542.5	99.3	6.0	71.1	1 272.2	1 544.3	99.6	6.1	71.2	2 309.5
November	1 271.7	1 541.7	100.8	6.1	71.0	1 277.3	1 543.3	105.1	6.4	71.3	2 313.4
December	1 269.2	1 541.4	102.1	6.2	70.9	1 266.5	1 537.6	101.6	6.2	70.7	2 317.3
2014											
January	1 266.6	1 541.1	102.8	6.3	70.8	1 262.2	1 542.3	106.0	6.4	71.0	2 320.9
February	1 264.4	1 540.8	103.0	6.3	70.7	1 267.3	1 543.2	99.2	6.0	70.7	2 324.5
March	1 262.6	1 540.7	103.1	6.3	70.6	1 261.6	1 538.8	102.2	6.2	70.5	2 328.1
FEMALES											
March 2011	681.8	1 270.6	67.1	5.0	58.3	682.5	1 271.9	65.0	4.9	58.3	2 293.6
March 2012	677.2	1 297.3	80.0	5.8	59.0	676.3	1 300.2	83.4	6.0	59.3	2 334.3
2013											
March	682.6	1 311.0	81.3	5.8	58.6	676.1	1 305.3	79.8	5.8	58.3	2 375.4
April	682.9	1 314.3	80.4	5.8	58.6	691.0	1 315.4	85.0	6.1	58.9	2 378.7
May	682.4	1 316.7	79.7	5.7	58.6	684.0	1 313.7	77.9	5.6	58.4	2 381.9
June	681.8	1 318.6	79.3	5.7	58.6	678.8	1 324.1	78.1	5.6	58.8	2 385.2
July	681.7	1 319.6	79.5	5.7	58.6	682.0	1 321.3	78.1	5.6	58.6	2 388.5
August	682.1	1 320.2	80.4	5.7	58.6	677.4	1 318.3	80.0	5.7	58.5	2 391.8
September	682.7	1 320.6	82.0	5.8	58.6	680.8	1 315.2	84.5	6.0	58.4	2 395.2
October	683.6	1 320.6	84.2	6.0	58.6	691.2	1 323.1	83.6	5.9	58.6	2 399.1
November	684.7	1 320.5	86.8	6.2	58.6	690.0	1 324.3	85.8	6.1	58.7	2 403.0
December	685.7	1 320.4	89.2	6.3	58.6	675.2	1 317.4	88.6	6.3	58.4	2 407.0
2014											
January	686.8	1 320.1	91.5	6.5	58.6	687.3	1 323.0	91.5	6.5	58.7	2 410.5
February	688.2	1 319.5	93.6	6.6	58.5	687.2	1 316.1	96.9	6.9	58.5	2 414.2
March	689.5	1 319.0	95.3	6.7	58.5	695.0	1 319.3	94.3	6.7	58.5	2 417.7
PERSONS											
March 2011	1 965.9	2 813.6	140.6	4.8	65.7	1 978.5	2 821.4	129.1	4.4	65.6	4 500.5
March 2012	1 941.6	2 824.4	162.8	5.4	65.3	1 941.7	2 820.4	173.6	5.8	65.4	4 578.2
2013											
March	1 951.5	2 849.5	173.8	5.7	64.9	1 957.1	2 844.8	171.0	5.7	64.7	4 660.6
April	1 953.2	2 855.7	174.1	5.7	64.9	1 962.5	2 852.3	178.6	5.9	64.9	4 667.4
May	1 954.0	2 860.7	174.0	5.7	64.9	1 956.1	2 860.9	167.6	5.5	64.8	4 674.3
June	1 954.7	2 864.1	174.3	5.7	64.9	1 948.5	2 873.6	181.9	6.0	65.3	4 681.1
July	1 955.6	2 865.5	175.4	5.8	64.9	1 953.0	2 867.4	173.4	5.7	64.9	4 687.6
August	1 956.4	2 865.3	177.3	5.8	64.8	1 953.8	2 862.7	175.9	5.8	64.7	4 694.2
September	1 957.0	2 864.4	179.9	5.9	64.8	1 957.0	2 855.3	176.8	5.8	64.5	4 700.7
October	1 957.3	2 863.0	183.6	6.0	64.7	1 963.4	2 867.4	183.2	6.0	64.8	4 708.6
November	1 956.5	2 862.2	187.5	6.1	64.7	1 967.3	2 867.6	190.9	6.2	64.8	4 716.4
December	1 954.8	2 861.8	191.3	6.3	64.6	1 941.8	2 855.0	190.2	6.2	64.5	4 724.3
2014											
January	1 953.4	2 861.2	194.4	6.4	64.6	1 949.5	2 865.3	197.5	6.4	64.7	4 731.5
February	1 952.6	2 860.4	196.7	6.4	64.5	1 954.6	2 859.3	196.0	6.4	64.5	4 738.7
March	1 952.1	2 859.7	198.3	6.5	64.5	1 956.6	2 858.0	196.5	6.4	64.4	4 745.9

LABOUR FORCE STATUS (AGED 15 YEARS & OVER)—Queensland

	TREND					SEASONALLY ADJUSTED					Civilian population aged 15 years and over
	Employed full time	Total employed	Total unemployed	Unemployment rate	Participation rate	Employed full time	Total employed	Total unemployed	Unemployment rate	Participation rate	
	'000	'000	'000	%	%	'000	'000	'000	%	%	
MALES											
March 2011	1 033.1	1 217.9	68.6	5.3	73.3	1 036.0	1 216.2	69.3	5.4	73.2	1 755.2
March 2012	1 049.6	1 237.8	69.0	5.3	73.0	1 049.2	1 239.5	67.6	5.2	73.0	1 789.4
2013											
March	1 048.7	1 235.8	78.7	6.0	72.0	1 044.6	1 230.2	81.7	6.2	71.8	1 826.0
April	1 046.5	1 234.9	79.9	6.1	71.9	1 044.8	1 235.1	75.8	5.8	71.7	1 829.2
May	1 045.8	1 235.3	81.2	6.2	71.9	1 045.4	1 235.4	77.7	5.9	71.7	1 832.3
June	1 046.9	1 237.6	82.0	6.2	71.9	1 045.3	1 233.4	88.5	6.7	72.0	1 835.5
July	1 049.1	1 240.7	81.8	6.2	71.9	1 051.9	1 243.2	83.8	6.3	72.2	1 838.4
August	1 051.4	1 243.4	81.0	6.1	71.9	1 044.8	1 243.3	80.8	6.1	71.9	1 841.2
September	1 052.7	1 244.8	79.9	6.0	71.8	1 062.4	1 249.0	77.2	5.8	71.9	1 844.1
October	1 052.6	1 245.0	79.1	6.0	71.7	1 051.4	1 245.8	77.8	5.9	71.6	1 847.3
November	1 051.7	1 245.1	79.0	6.0	71.6	1 052.3	1 246.9	77.7	5.9	71.6	1 850.4
December	1 050.5	1 245.9	79.8	6.0	71.5	1 049.3	1 241.3	81.5	6.2	71.4	1 853.5
2014											
January	1 049.5	1 247.7	80.8	6.1	71.6	1 046.6	1 239.6	80.3	6.1	71.1	1 856.5
February	1 049.1	1 250.3	81.7	6.1	71.6	1 047.9	1 254.0	83.8	6.3	71.9	1 859.4
March	1 048.3	1 253.0	82.5	6.2	71.8	1 052.7	1 261.5	81.4	6.1	72.1	1 862.4
FEMALES											
March 2011	581.9	1 039.2	61.8	5.6	61.2	587.7	1 036.6	61.9	5.6	61.1	1 798.4
March 2012	594.8	1 049.4	63.8	5.7	60.7	602.0	1 050.7	65.9	5.9	60.8	1 835.3
2013											
March	584.5	1 060.0	62.1	5.5	59.9	577.1	1 058.5	61.2	5.5	59.7	1 874.0
April	585.1	1 060.5	62.0	5.5	59.8	580.6	1 060.0	62.0	5.5	59.8	1 877.0
May	587.8	1 061.1	62.2	5.5	59.7	584.0	1 061.1	63.3	5.6	59.8	1 880.0
June	591.8	1 062.5	62.7	5.6	59.8	594.7	1 059.5	65.8	5.8	59.8	1 883.0
July	595.4	1 065.3	63.1	5.6	59.8	600.9	1 067.5	58.5	5.2	59.7	1 886.1
August	597.4	1 069.0	63.4	5.6	59.9	600.7	1 065.4	63.3	5.6	59.7	1 889.3
September	596.8	1 071.9	63.9	5.6	60.0	596.3	1 074.6	65.4	5.7	60.2	1 892.5
October	594.8	1 074.2	64.6	5.7	60.1	594.2	1 075.1	67.7	5.9	60.3	1 895.8
November	592.6	1 075.7	65.7	5.8	60.1	588.0	1 079.1	62.5	5.5	60.1	1 899.1
December	591.1	1 077.1	66.9	5.9	60.1	590.3	1 080.1	64.3	5.6	60.2	1 902.5
2014											
January	590.2	1 078.6	68.2	5.9	60.2	591.8	1 065.6	70.2	6.2	59.6	1 905.6
February	589.6	1 080.5	69.3	6.0	60.3	593.1	1 083.7	71.0	6.1	60.5	1 908.7
March	589.2	1 082.0	70.3	6.1	60.3	586.4	1 088.2	70.4	6.1	60.6	1 911.8
PERSONS											
March 2011	1 614.9	2 257.1	130.4	5.5	67.2	1 623.7	2 252.9	131.2	5.5	67.1	3 553.6
March 2012	1 644.4	2 287.2	132.8	5.5	66.8	1 651.2	2 290.2	133.6	5.5	66.9	3 624.7
2013											
March	1 633.2	2 295.9	140.8	5.8	65.9	1 621.7	2 288.7	142.9	5.9	65.7	3 700.1
April	1 631.6	2 295.3	141.9	5.8	65.8	1 625.3	2 295.1	137.8	5.7	65.6	3 706.2
May	1 633.6	2 296.4	143.4	5.9	65.7	1 629.4	2 296.5	141.0	5.8	65.7	3 712.3
June	1 638.6	2 300.1	144.6	5.9	65.7	1 640.0	2 292.8	154.3	6.3	65.8	3 718.4
July	1 644.5	2 306.0	144.9	5.9	65.8	1 652.7	2 310.7	142.3	5.8	65.9	3 724.5
August	1 648.7	2 312.4	144.4	5.9	65.9	1 645.5	2 308.7	144.1	5.9	65.7	3 730.5
September	1 649.5	2 316.7	143.8	5.8	65.8	1 658.7	2 323.6	142.7	5.8	66.0	3 736.6
October	1 647.4	2 319.2	143.7	5.8	65.8	1 645.6	2 320.9	145.5	5.9	65.9	3 743.1
November	1 644.3	2 320.9	144.7	5.9	65.8	1 640.3	2 326.0	140.3	5.7	65.8	3 749.5
December	1 641.6	2 323.0	146.8	5.9	65.8	1 639.6	2 321.4	145.9	5.9	65.7	3 756.0
2014											
January	1 639.8	2 326.3	149.0	6.0	65.8	1 638.4	2 305.2	150.5	6.1	65.3	3 762.1
February	1 638.6	2 330.8	151.0	6.1	65.9	1 641.0	2 337.7	154.8	6.2	66.1	3 768.1
March	1 637.5	2 335.0	152.9	6.1	66.0	1 639.1	2 349.7	151.8	6.1	66.3	3 774.2

	TREND					SEASONALLY ADJUSTED					Civilian population aged 15 years and over '000
	Employed full time	Total employed	Total unemp-loyed	Unemp-loyment rate	Partici-pation rate	Employed full time	Total employed	Total unemp-loyed	Unemp-loyment rate	Partici-pation rate	
	'000	'000	'000	%	%	'000	'000	'000	%	%	
MALES											
March 2011	359.2	434.7	25.1	5.5	69.8	361.1	436.1	24.6	5.3	69.9	659.1
March 2012	354.0	436.1	25.3	5.5	69.4	354.8	437.2	24.7	5.4	69.4	665.2
2013											
March	352.8	434.6	27.8	6.0	68.9	346.7	430.3	28.1	6.1	68.2	671.7
April	353.3	435.3	28.2	6.1	69.0	353.5	436.1	25.9	5.6	68.7	672.2
May	353.3	435.8	28.8	6.2	69.1	361.3	442.0	28.6	6.1	70.0	672.7
June	352.4	435.5	29.6	6.4	69.1	354.0	436.8	28.7	6.2	69.1	673.3
July	350.6	434.3	30.6	6.6	69.0	350.1	431.1	33.8	7.3	69.0	673.7
August	348.2	432.5	31.4	6.8	68.8	343.3	431.6	31.6	6.8	68.7	674.1
September	346.6	430.8	32.0	6.9	68.6	347.1	432.3	29.2	6.3	68.4	674.6
October	346.6	430.0	32.2	7.0	68.5	346.6	428.2	33.7	7.3	68.4	675.2
November	348.2	430.1	32.3	7.0	68.4	347.0	429.3	32.0	6.9	68.3	675.8
December	350.4	430.5	32.3	7.0	68.4	349.1	430.8	33.3	7.2	68.6	676.4
2014											
January	352.4	430.9	32.5	7.0	68.5	353.8	431.5	32.3	7.0	68.5	676.9
February	354.1	431.2	32.7	7.0	68.5	358.3	432.8	30.9	6.7	68.5	677.5
March	355.3	431.4	32.8	7.1	68.5	352.6	430.0	33.9	7.3	68.4	678.0
FEMALES											
March 2011	185.4	370.9	21.7	5.5	57.4	184.9	372.0	21.0	5.3	57.5	684.0
March 2012	179.1	372.1	19.9	5.1	56.8	177.7	371.0	19.6	5.0	56.6	690.7
2013											
March	187.0	378.5	23.2	5.8	57.6	189.2	379.2	22.2	5.5	57.6	697.0
April	187.5	377.3	23.7	5.9	57.5	188.5	378.4	24.4	6.1	57.8	697.5
May	187.5	375.2	24.2	6.1	57.2	188.8	377.6	23.7	5.9	57.5	698.0
June	186.7	372.8	24.5	6.2	56.9	187.3	371.1	23.5	6.0	56.5	698.5
July	185.5	370.9	24.7	6.2	56.6	182.8	368.5	26.4	6.7	56.5	698.9
August	184.1	369.5	24.7	6.3	56.4	182.6	367.5	27.2	6.9	56.4	699.4
September	182.7	368.7	24.5	6.2	56.2	186.5	370.9	21.0	5.4	56.0	699.8
October	181.3	368.3	24.4	6.2	56.1	179.6	368.9	23.4	6.0	56.0	700.4
November	180.0	367.8	24.5	6.2	56.0	180.0	368.9	26.9	6.8	56.5	701.0
December	178.5	367.1	24.9	6.3	55.9	179.5	366.4	24.5	6.3	55.7	701.6
2014											
January	177.0	366.4	25.4	6.5	55.8	175.2	365.5	24.1	6.2	55.5	702.1
February	175.7	365.7	25.9	6.6	55.7	176.9	365.0	26.1	6.7	55.7	702.7
March	174.5	365.1	26.6	6.8	55.7	173.9	366.1	27.3	6.9	55.9	703.2
PERSONS											
March 2011	544.6	805.6	46.8	5.5	63.5	545.9	808.1	45.6	5.3	63.6	1 343.1
March 2012	533.2	808.2	45.2	5.3	62.9	532.6	808.3	44.4	5.2	62.9	1 355.9
2013											
March	539.8	813.1	51.0	5.9	63.1	535.9	809.5	50.3	5.8	62.8	1 368.7
April	540.8	812.6	51.9	6.0	63.1	542.0	814.5	50.3	5.8	63.1	1 369.7
May	540.8	811.0	53.0	6.1	63.0	550.1	819.6	52.2	6.0	63.6	1 370.8
June	539.1	808.4	54.1	6.3	62.9	541.3	807.9	52.2	6.1	62.7	1 371.8
July	536.1	805.2	55.3	6.4	62.7	532.9	799.7	60.3	7.0	62.6	1 372.7
August	532.3	802.0	56.1	6.5	62.5	525.9	799.0	58.8	6.9	62.5	1 373.5
September	529.3	799.5	56.5	6.6	62.3	533.6	803.2	50.2	5.9	62.1	1 374.4
October	527.9	798.3	56.6	6.6	62.1	526.2	797.1	57.1	6.7	62.1	1 375.6
November	528.2	798.0	56.8	6.6	62.1	527.0	798.3	58.8	6.9	62.3	1 376.8
December	528.9	797.7	57.2	6.7	62.0	528.6	797.2	57.8	6.8	62.1	1 378.0
2014											
January	529.4	797.2	57.8	6.8	62.0	529.0	797.1	56.5	6.6	61.9	1 379.1
February	529.8	796.8	58.5	6.8	62.0	535.2	797.9	57.0	6.7	61.9	1 380.2
March	529.8	796.4	59.4	6.9	62.0	526.5	796.1	61.3	7.1	62.1	1 381.3

	TREND					SEASONALLY ADJUSTED					Civilian population aged 15 years and over
	Employed full time	Total employed	Total unemployed	Unemployment rate	Participation rate	Employed full time	Total employed	Total unemployed	Unemployment rate	Participation rate	
	'000	'000	'000	%	%	'000	'000	'000	%	%	'000
MALES											
March 2011	593.4	688.1	28.6	4.0	76.0	599.9	688.8	28.1	3.9	76.0	943.4
March 2012	627.7	727.5	26.3	3.5	77.0	628.0	727.1	26.1	3.5	76.9	979.2
2013											
March	636.9	739.2	35.5	4.6	76.3	633.4	735.6	35.5	4.6	76.0	1 015.0
April	637.1	739.6	36.7	4.7	76.3	636.3	737.3	39.6	5.1	76.3	1 017.6
May	637.8	740.4	37.4	4.8	76.2	639.8	745.5	36.2	4.6	76.6	1 020.2
June	638.7	741.8	37.5	4.8	76.2	643.0	741.9	36.6	4.7	76.1	1 022.9
July	639.4	744.0	37.1	4.7	76.1	634.7	738.2	39.1	5.0	75.8	1 025.7
August	639.5	746.7	36.3	4.6	76.1	640.6	748.4	35.4	4.5	76.2	1 028.5
September	639.2	749.2	35.8	4.6	76.1	642.3	752.7	35.0	4.4	76.4	1 031.4
October	639.4	751.5	35.9	4.6	76.1	637.2	748.9	37.7	4.8	76.0	1 034.5
November	640.5	753.5	36.6	4.6	76.1	639.3	754.9	34.1	4.3	76.0	1 037.6
December	642.2	755.3	37.7	4.8	76.2	641.2	758.9	37.1	4.7	76.5	1 040.8
2014											
January	644.1	757.0	39.0	4.9	76.3	642.8	751.0	37.0	4.7	75.5	1 043.6
February	646.1	758.7	40.2	5.0	76.4	649.1	758.1	46.9	5.8	76.9	1 046.4
March	648.1	760.3	41.2	5.1	76.5	649.8	764.8	38.5	4.8	76.6	1 049.3
FEMALES											
March 2011	286.8	540.3	25.5	4.5	60.3	289.0	541.2	25.3	4.5	60.3	939.1
March 2012	307.5	568.6	25.4	4.3	61.3	306.5	569.6	26.6	4.5	61.5	969.0
2013											
March	313.2	583.5	29.7	4.8	61.3	315.8	584.6	30.1	4.9	61.4	1 001.0
April	312.1	581.6	30.0	4.9	61.0	310.4	583.1	32.2	5.2	61.3	1 003.4
May	312.1	580.2	30.1	4.9	60.7	310.5	574.1	31.5	5.2	60.2	1 005.8
June	313.2	579.7	29.6	4.9	60.4	312.9	583.5	28.0	4.6	60.7	1 008.2
July	314.7	580.1	28.6	4.7	60.2	315.2	583.1	24.2	4.0	60.1	1 010.8
August	315.8	581.4	27.2	4.5	60.1	317.1	574.1	33.4	5.5	59.9	1 013.5
September	316.3	583.4	26.4	4.3	60.0	316.0	581.1	28.6	4.7	60.0	1 016.1
October	316.6	585.3	26.6	4.3	60.0	320.4	594.8	21.1	3.4	60.4	1 019.0
November	316.9	586.6	27.7	4.5	60.1	316.2	584.2	25.0	4.1	59.6	1 021.8
December	317.5	587.3	29.3	4.7	60.2	310.7	585.4	28.1	4.6	59.9	1 024.7
2014											
January	318.6	587.5	31.1	5.0	60.2	317.7	590.8	35.1	5.6	60.9	1 027.3
February	319.8	587.4	32.7	5.3	60.2	327.8	585.5	36.8	5.9	60.4	1 030.0
March	321.0	586.7	34.4	5.5	60.2	319.0	585.7	30.8	5.0	59.7	1 032.6
PERSONS											
March 2011	880.1	1 228.4	54.1	4.2	68.1	889.0	1 230.0	53.4	4.2	68.2	1 882.5
March 2012	935.1	1 296.1	51.6	3.8	69.2	934.5	1 296.7	52.7	3.9	69.3	1 948.2
2013											
March	950.1	1 322.7	65.2	4.7	68.9	949.2	1 320.2	65.7	4.7	68.7	2 016.0
April	949.2	1 321.2	66.7	4.8	68.7	946.7	1 320.4	71.8	5.2	68.9	2 021.0
May	950.0	1 320.6	67.6	4.9	68.5	950.3	1 319.6	67.7	4.9	68.5	2 026.0
June	952.0	1 321.5	67.1	4.8	68.4	956.0	1 325.4	64.6	4.6	68.4	2 031.1
July	954.1	1 324.1	65.6	4.7	68.2	950.0	1 321.3	63.3	4.6	68.0	2 036.5
August	955.3	1 328.2	63.5	4.6	68.2	957.7	1 322.4	68.8	4.9	68.1	2 042.0
September	955.6	1 332.6	62.2	4.5	68.1	958.3	1 333.8	63.6	4.6	68.2	2 047.5
October	956.1	1 336.7	62.5	4.5	68.1	957.6	1 343.7	58.8	4.2	68.3	2 053.5
November	957.3	1 340.1	64.3	4.6	68.2	955.5	1 339.1	59.2	4.2	67.9	2 059.5
December	959.7	1 342.6	67.0	4.7	68.3	951.9	1 344.3	65.2	4.6	68.2	2 065.5
2014											
January	962.7	1 344.5	70.1	4.9	68.3	960.5	1 341.8	72.1	5.1	68.3	2 070.9
February	965.9	1 346.1	72.9	5.1	68.4	976.9	1 343.6	83.7	5.9	68.7	2 076.4
March	969.1	1 347.0	75.6	5.3	68.4	968.8	1 350.5	69.3	4.9	68.2	2 081.9

	TREND					SEASONALLY ADJUSTED					Civilian population aged 15 years and over
	Employed full time	Total employed	Total unemployed	Unemployment rate	Participation rate	Employed full time	Total employed	Total unemployed	Unemployment rate	Participation rate	
	'000	'000	'000	%	%	'000	'000	'000	%	%	
MALES											
March 2011	104.4	128.8	7.5	5.5	66.6	103.9	129.0	7.3	5.4	66.6	204.6
March 2012	100.5	125.0	9.8	7.3	65.6	101.3	125.3	9.8	7.2	65.7	205.6
2013											
March	99.1	125.5	9.5	7.0	65.4	98.5	125.2	9.4	7.0	65.2	206.4
April	98.8	125.1	9.6	7.2	65.3	98.1	125.3	8.8	6.6	65.0	206.4
May	98.4	124.7	10.0	7.5	65.3	99.3	125.3	9.8	7.2	65.4	206.4
June	97.8	124.0	10.6	7.9	65.2	97.8	123.6	11.1	8.3	65.3	206.5
July	97.2	123.2	11.2	8.3	65.1	98.3	123.9	11.1	8.2	65.4	206.5
August	96.8	122.4	11.5	8.6	64.9	95.9	121.5	12.0	9.0	64.6	206.6
September	96.6	121.9	11.6	8.7	64.6	95.4	121.8	12.0	9.0	64.8	206.7
October	96.6	121.6	11.4	8.5	64.3	96.8	122.2	11.1	8.3	64.5	206.7
November	97.0	121.9	11.1	8.3	64.3	97.9	121.2	11.1	8.4	64.0	206.8
December	97.5	122.4	10.9	8.1	64.4	97.1	121.4	10.6	8.0	63.8	206.9
2014											
January	98.0	123.1	10.7	8.0	64.7	98.2	123.7	10.3	7.7	64.7	207.0
February	98.5	123.9	10.7	7.9	65.0	97.9	123.7	10.8	8.0	65.0	207.0
March	98.8	124.6	10.7	7.9	65.3	99.5	125.9	11.2	8.2	66.2	207.1
FEMALES											
March 2011	52.6	111.0	6.6	5.6	56.0	52.6	111.6	6.7	5.6	56.3	210.2
March 2012	51.0	109.1	8.1	6.9	55.6	52.1	109.2	7.5	6.4	55.3	210.9
2013											
March	47.9	107.3	8.9	7.7	55.0	47.3	107.1	8.7	7.5	54.8	211.3
April	47.8	107.3	9.3	8.0	55.2	46.2	105.1	9.7	8.5	54.3	211.3
May	48.0	107.5	9.6	8.2	55.4	47.8	108.2	8.9	7.6	55.4	211.3
June	48.3	107.8	9.6	8.2	55.6	48.9	108.4	11.1	9.3	56.5	211.4
July	48.9	108.2	9.4	8.0	55.6	49.3	107.7	9.5	8.1	55.4	211.4
August	49.4	108.5	9.1	7.7	55.6	50.2	109.2	8.5	7.2	55.7	211.4
September	50.0	108.7	8.7	7.4	55.5	49.6	108.6	8.3	7.1	55.3	211.5
October	50.4	108.8	8.4	7.2	55.4	49.0	108.6	8.6	7.3	55.4	211.5
November	50.8	108.9	8.3	7.1	55.4	51.3	109.4	8.2	7.0	55.6	211.6
December	51.2	109.0	8.2	7.0	55.4	51.9	107.1	8.3	7.2	54.5	211.7
2014											
January	51.5	109.0	8.2	7.0	55.4	52.0	110.5	8.7	7.3	56.3	211.7
February	51.7	109.1	8.1	6.9	55.3	51.2	109.5	7.6	6.5	55.3	211.8
March	51.9	109.1	8.0	6.8	55.3	51.5	108.4	7.9	6.8	54.9	211.9
PERSONS											
March 2011	156.9	239.8	14.1	5.6	61.2	156.5	240.6	14.0	5.5	61.4	414.8
March 2012	151.5	234.1	17.9	7.1	60.5	153.5	234.5	17.3	6.9	60.4	416.6
2013											
March	146.9	232.8	18.4	7.3	60.2	145.8	232.3	18.1	7.2	60.0	417.6
April	146.6	232.5	18.9	7.5	60.2	144.2	230.4	18.6	7.5	59.6	417.7
May	146.3	232.1	19.6	7.8	60.3	147.0	233.5	18.7	7.4	60.4	417.8
June	146.1	231.8	20.2	8.0	60.3	146.7	232.0	22.2	8.7	60.9	417.9
July	146.1	231.4	20.6	8.2	60.3	147.5	231.6	20.6	8.2	60.3	418.0
August	146.3	230.9	20.6	8.2	60.2	146.1	230.7	20.4	8.1	60.1	418.0
September	146.6	230.6	20.3	8.1	60.0	145.0	230.4	20.3	8.1	60.0	418.1
October	147.0	230.4	19.8	7.9	59.8	145.8	230.8	19.7	7.9	59.9	418.3
November	147.8	230.7	19.4	7.7	59.8	149.2	230.6	19.3	7.7	59.7	418.4
December	148.7	231.3	19.1	7.6	59.8	149.0	228.5	18.8	7.6	59.1	418.6
2014											
January	149.5	232.1	18.9	7.5	60.0	150.1	234.2	19.0	7.5	60.5	418.7
February	150.2	232.9	18.8	7.5	60.1	149.2	233.2	18.5	7.3	60.1	418.8
March	150.8	233.7	18.7	7.4	60.3	151.0	234.3	19.1	7.5	60.5	418.9

	TREND					<i>Civilian population aged 15 years and over</i>
	<i>Employed full time</i>	<i>Total employed</i>	<i>Total unemployed</i>	<i>Unemployment rate</i>	<i>Participation rate</i>	
	'000	'000	'000	%	%	
MALES						
March 2011	58.0	65.9	1.8	2.7	76.3	88.4
March 2012	58.8	66.8	3.3	4.7	78.0	89.9
2013						
March	59.1	67.8	3.6	5.1	77.5	92.0
April	59.4	68.2	3.8	5.3	77.9	92.4
May	60.0	68.8	4.0	5.4	78.4	92.8
June	60.8	69.5	4.0	5.5	78.9	93.2
July	61.5	69.9	4.1	5.5	79.2	93.4
August	62.0	70.3	4.0	5.4	79.3	93.6
September	62.4	70.5	3.8	5.1	79.3	93.8
October	62.8	70.9	3.6	4.8	79.3	93.9
November	63.3	71.4	3.4	4.5	79.5	94.1
December	64.0	72.0	3.2	4.3	79.8	94.2
2014						
January	64.7	72.6	3.1	4.1	80.1	94.5
February	65.3	73.0	3.0	3.9	80.3	94.7
March	65.8	73.3	2.9	3.8	80.5	94.9
FEMALES						
March 2011	39.4	55.5	1.8	3.2	68.8	83.2
March 2012	41.7	57.3	2.3	3.9	70.3	84.8
2013						
March	40.9	56.5	3.0	5.0	68.9	86.4
April	40.7	56.7	3.2	5.3	69.2	86.5
May	40.7	57.0	3.4	5.6	69.6	86.7
June	41.0	57.3	3.5	5.8	70.1	86.9
July	41.3	57.6	3.6	5.8	70.4	87.0
August	41.7	57.8	3.5	5.7	70.4	87.1
September	42.0	58.0	3.3	5.5	70.3	87.2
October	42.3	58.1	3.1	5.0	70.1	87.3
November	42.6	58.4	2.8	4.6	70.0	87.4
December	42.8	58.7	2.6	4.3	70.0	87.6
2014						
January	43.1	59.1	2.5	4.0	70.2	87.7
February	43.3	59.4	2.4	3.8	70.3	87.9
March	43.6	59.7	2.3	3.8	70.5	88.0
PERSONS						
March 2011	97.4	121.3	3.6	2.9	72.7	171.7
March 2012	100.5	124.1	5.6	4.3	74.3	174.6
2013						
March	99.9	124.3	6.6	5.0	73.3	178.3
April	100.1	124.9	7.0	5.3	73.7	178.9
May	100.7	125.8	7.3	5.5	74.2	179.5
June	101.7	126.8	7.5	5.6	74.7	180.1
July	102.8	127.6	7.6	5.6	75.0	180.4
August	103.7	128.1	7.5	5.5	75.0	180.7
September	104.4	128.5	7.2	5.3	74.9	181.0
October	105.1	129.0	6.7	4.9	74.9	181.2
November	105.9	129.8	6.2	4.6	74.9	181.5
December	106.8	130.7	5.8	4.3	75.1	181.8
2014						
January	107.7	131.6	5.5	4.0	75.3	182.2
February	108.7	132.4	5.3	3.9	75.5	182.5
March	109.4	133.0	5.3	3.8	75.7	182.9

	TREND					<i>Civilian population aged 15 years and over</i>
	<i>Employed full time</i>	<i>Total employed</i>	<i>Total unemployed</i>	<i>Unemployment rate</i>	<i>Participation rate</i>	
	'000	'000	'000	%	%	
MALES						
March 2011	91.8	107.6	4.3	3.9	77.8	143.8
March 2012	90.3	108.2	4.2	3.7	76.7	146.4
2013						
March	90.0	109.2	5.2	4.6	76.5	149.4
April	90.3	109.7	4.9	4.2	76.5	149.7
May	90.8	110.3	4.6	4.0	76.6	150.0
June	91.1	110.8	4.5	3.9	76.7	150.3
July	91.3	110.9	4.6	4.0	76.8	150.5
August	91.3	110.9	4.8	4.1	76.7	150.8
September	91.1	110.8	4.9	4.2	76.5	151.1
October	91.0	110.8	4.8	4.2	76.3	151.4
November	91.1	111.1	4.6	3.9	76.2	151.8
December	91.2	111.5	4.3	3.7	76.2	152.1
2014						
January	91.3	112.1	4.1	3.5	76.2	152.3
February	91.5	112.6	3.9	3.4	76.4	152.6
March	91.6	113.0	3.8	3.2	76.4	152.8
FEMALES						
March 2011	63.9	100.0	3.5	3.4	68.4	151.2
March 2012	64.5	101.3	3.4	3.3	68.3	153.5
2013						
March	66.6	103.3	4.4	4.1	68.8	156.5
April	66.1	103.1	4.3	4.0	68.5	156.7
May	65.5	102.8	4.2	3.9	68.2	156.8
June	64.8	102.4	4.2	3.9	67.8	157.0
July	64.1	102.0	4.2	4.0	67.5	157.3
August	63.5	101.5	4.3	4.1	67.1	157.6
September	63.2	101.3	4.4	4.1	66.9	157.9
October	63.4	101.3	4.4	4.1	66.8	158.2
November	64.1	101.4	4.3	4.1	66.7	158.5
December	64.9	101.7	4.2	4.0	66.7	158.8
2014						
January	65.7	102.0	4.1	3.8	66.7	159.0
February	66.5	102.2	4.0	3.8	66.7	159.2
March	67.1	102.3	3.9	3.7	66.6	159.5
PERSONS						
March 2011	155.6	207.6	7.9	3.7	73.0	295.0
March 2012	154.8	209.5	7.6	3.5	72.4	299.9
2013						
March	156.6	212.4	9.6	4.3	72.6	305.9
April	156.4	212.8	9.2	4.1	72.4	306.4
May	156.3	213.1	8.8	4.0	72.3	306.8
June	155.9	213.1	8.7	3.9	72.2	307.3
July	155.4	212.9	8.8	4.0	72.0	307.8
August	154.7	212.4	9.1	4.1	71.8	308.4
September	154.3	212.1	9.2	4.2	71.6	309.0
October	154.4	212.1	9.2	4.1	71.5	309.6
November	155.1	212.5	8.9	4.0	71.4	310.2
December	156.1	213.3	8.5	3.8	71.3	310.9
2014						
January	157.1	214.0	8.1	3.7	71.4	311.3
February	158.0	214.8	7.9	3.5	71.4	311.8
March	158.7	215.3	7.7	3.4	71.4	312.3

	EMPLOYED			UNEMPLOYED		Labour force	Not in labour force	Civilian population aged 15 years and over	UNEMPLOYMENT RATE		Participation rate
	Full time	Part time	Total	Looking for f/t work	Total				Looking for f/t work	Total	
	'000	'000	'000	'000	'000				'000	'000	
MALES											
New South Wales	1 607.9	359.8	1 967.7	77.1	99.7	2 067.3	909.3	2 976.6	4.6	4.8	69.5
Victoria	1 254.0	282.3	1 536.4	81.2	107.9	1 644.3	683.8	2 328.1	6.1	6.6	70.6
Queensland	1 043.6	213.8	1 257.4	72.2	88.6	1 346.0	516.4	1 862.4	6.5	6.6	72.3
South Australia	353.9	78.2	432.1	27.8	34.8	466.8	211.2	678.0	7.3	7.4	68.8
Western Australia	642.8	119.8	762.6	31.5	40.6	803.3	246.0	1 049.3	4.7	5.1	76.6
Tasmania	99.9	26.6	126.5	8.9	11.4	137.8	69.2	207.1	8.1	8.2	66.6
Northern Territory	64.2	7.1	71.3	2.5	3.2	74.5	20.4	94.9	3.8	4.3	78.5
Australian Capital Territory	91.0	22.4	113.4	2.8	4.2	117.6	35.3	152.8	3.0	3.6	76.9
Australia	5 157.3	1 109.9	6 267.2	304.1	390.3	6 657.5	2 691.7	9 349.2	5.6	5.9	71.2
FEMALES											
New South Wales	917.9	748.0	1 665.9	67.6	112.2	1 778.1	1 301.5	3 079.6	6.9	6.3	57.7
Victoria	693.5	623.6	1 317.1	62.5	103.6	1 420.7	997.0	2 417.7	8.3	7.3	58.8
Queensland	577.1	512.0	1 089.1	44.7	78.7	1 167.8	744.0	1 911.8	7.2	6.7	61.1
South Australia	171.5	196.0	367.4	19.5	30.1	397.5	305.7	703.2	10.2	7.6	56.5
Western Australia	315.7	270.2	585.9	22.9	35.9	621.8	410.8	1 032.6	6.8	5.8	60.2
Tasmania	51.4	57.4	108.9	4.3	8.1	117.0	94.9	211.9	7.8	6.9	55.2
Northern Territory	42.7	16.0	58.6	1.6	2.6	61.2	26.7	88.0	3.7	4.3	69.6
Australian Capital Territory	65.1	37.0	102.1	2.8	5.3	107.4	52.0	159.5	4.1	4.9	67.4
Australia	2 834.9	2 460.2	5 295.1	226.0	376.5	5 671.6	3 932.7	9 604.3	7.4	6.6	59.1
PERSONS											
New South Wales	2 525.8	1 107.7	3 633.5	144.7	211.8	3 845.4	2 210.8	6 056.2	5.4	5.5	63.5
Victoria	1 947.5	906.0	2 853.5	143.7	211.6	3 065.0	1 680.8	4 745.9	6.9	6.9	64.6
Queensland	1 620.6	725.8	2 346.5	116.9	167.3	2 513.8	1 260.4	3 774.2	6.7	6.7	66.6
South Australia	525.3	274.1	799.5	47.3	64.8	864.3	517.0	1 381.3	8.3	7.5	62.6
Western Australia	958.6	390.0	1 348.5	54.5	76.5	1 425.1	656.8	2 081.9	5.4	5.4	68.5
Tasmania	151.3	84.0	235.4	13.2	19.4	254.8	164.1	418.9	8.0	7.6	60.8
Northern Territory	106.9	23.0	129.9	4.1	5.8	135.7	47.2	182.9	3.7	4.3	74.2
Australian Capital Territory	156.1	59.4	215.5	5.6	9.5	225.0	87.3	312.3	3.5	4.2	72.0
Australia	7 992.2	3 570.2	11 562.3	530.1	766.8	12 329.1	6 624.4	18 953.5	6.2	6.2	65.0

	EMPLOYED		UNEMPLOYED		UNEMPLOYMENT RATE		Participation rate	Employment to population ratio	Unemployment to population ratio – looking for full-time work
	Full time	Total	Looking for f/t work	Total	Looking for f/t work	Total			
	'000	'000	'000	'000	%	%			
MALES									
March 2011	130.5	332.9	32.4	66.6	19.9	16.7	53.7	44.7	4.4
March 2012	130.1	325.2	37.2	70.7	22.2	17.9	52.9	43.4	5.0
2013									
March	121.2	324.4	36.7	70.6	23.2	17.9	52.5	43.1	4.9
April	119.0	325.4	36.0	69.6	23.2	17.6	52.5	43.3	4.8
May	116.9	325.3	35.5	69.0	23.3	17.5	52.4	43.2	4.7
June	114.8	323.9	35.2	69.0	23.4	17.6	52.2	43.1	4.7
July	112.9	321.6	34.7	69.0	23.5	17.7	51.9	42.8	4.6
August	111.4	318.9	34.1	68.6	23.4	17.7	51.5	42.4	4.5
September	110.4	316.1	33.5	67.8	23.3	17.7	51.0	42.0	4.5
October	110.1	314.2	33.0	66.5	23.0	17.5	50.6	41.8	4.4
November	110.2	313.6	32.7	65.3	22.9	17.2	50.3	41.7	4.3
December	110.3	314.1	32.7	64.8	22.9	17.1	50.3	41.7	4.3
2014									
January	110.3	314.9	33.0	65.0	23.0	17.1	50.4	41.8	4.4
February	110.2	315.8	33.3	65.7	23.2	17.2	50.6	41.9	4.4
March	110.2	316.8	33.7	66.6	23.4	17.4	50.9	42.0	4.5
FEMALES									
March 2011	70.8	343.0	26.1	65.0	26.9	15.9	57.6	48.5	3.7
March 2012	68.9	340.2	26.1	63.1	27.5	15.6	56.9	48.0	3.7
2013									
March	57.5	343.4	24.3	57.7	29.7	14.4	56.3	48.2	3.4
April	57.1	343.9	24.6	57.3	30.1	14.3	56.3	48.3	3.5
May	57.0	343.6	24.9	57.6	30.3	14.3	56.3	48.2	3.5
June	57.0	342.3	25.4	59.0	30.8	14.7	56.3	48.0	3.6
July	56.7	339.9	26.1	61.3	31.5	15.3	56.3	47.7	3.7
August	56.1	336.9	26.6	63.2	32.1	15.8	56.1	47.3	3.7
September	55.5	334.2	26.5	64.0	32.3	16.1	55.8	46.9	3.7
October	55.2	332.3	26.0	63.9	32.0	16.1	55.5	46.6	3.6
November	55.1	331.2	25.6	63.4	31.7	16.0	55.3	46.4	3.6
December	55.3	330.4	25.4	63.0	31.4	16.0	55.1	46.2	3.5
2014									
January	55.5	329.9	25.4	63.1	31.4	16.1	55.0	46.2	3.6
February	55.8	329.5	25.7	63.7	31.5	16.2	55.0	46.1	3.6
March	56.0	329.1	26.2	64.4	31.8	16.4	55.0	46.0	3.7
PERSONS									
March 2011	201.4	676.0	58.5	131.6	22.5	16.3	55.6	46.5	4.0
March 2012	199.1	665.4	63.3	133.8	24.1	16.7	54.8	45.7	4.3
2013									
March	178.7	667.8	61.0	128.4	25.4	16.1	54.4	45.6	4.2
April	176.1	669.3	60.5	126.9	25.6	15.9	54.3	45.7	4.1
May	173.9	668.9	60.4	126.6	25.8	15.9	54.3	45.7	4.1
June	171.9	666.2	60.6	128.0	26.1	16.1	54.2	45.5	4.1
July	169.6	661.5	60.8	130.3	26.4	16.5	54.1	45.2	4.2
August	167.5	655.8	60.6	131.8	26.6	16.7	53.8	44.8	4.1
September	165.9	650.3	60.0	131.7	26.5	16.8	53.4	44.4	4.1
October	165.3	646.5	59.1	130.4	26.3	16.8	53.0	44.1	4.0
November	165.3	644.8	58.3	128.7	26.1	16.6	52.7	44.0	4.0
December	165.6	644.5	58.1	127.8	26.0	16.5	52.6	43.9	4.0
2014									
January	165.9	644.8	58.4	128.2	26.0	16.6	52.7	43.9	4.0
February	166.0	645.3	59.0	129.3	26.2	16.7	52.7	43.9	4.0
March	166.2	645.9	59.8	131.0	26.5	16.9	52.9	44.0	4.1

	EMPLOYED		UNEMPLOYED		UNEMPLOYMENT RATE		Participation rate	Employment to population ratio	Unemployment to population ratio – looking for full-time work
	Full time	Total	Looking for f/t work	Total	Looking for f/t work	Total			
	'000	'000	'000	'000	%	%			
MALES									
March 2011	130.3	332.3	32.2	64.2	19.8	16.2	53.2	44.6	4.3
March 2012	133.0	326.7	35.8	70.5	21.2	17.7	53.0	43.6	4.8
2013									
March	120.7	322.9	39.3	76.1	24.6	19.1	53.0	42.9	5.2
April	118.2	323.7	34.9	66.6	22.8	17.1	51.9	43.0	4.6
May	120.0	324.4	34.4	65.9	22.3	16.9	51.9	43.1	4.6
June	111.3	327.0	37.2	69.2	25.0	17.5	52.7	43.5	4.9
July	113.8	326.2	32.0	68.7	21.9	17.4	52.5	43.4	4.3
August	113.2	317.9	35.0	71.6	23.6	18.4	51.8	42.3	4.7
September	109.8	310.3	34.7	69.5	24.0	18.3	50.5	41.3	4.6
October	107.5	313.1	35.9	66.5	25.0	17.5	50.4	41.6	4.8
November	110.0	315.5	27.7	63.7	20.1	16.8	50.4	41.9	3.7
December	110.2	314.4	31.9	61.2	22.4	16.3	49.9	41.7	4.2
2014									
January	114.9	314.1	34.4	65.0	23.0	17.1	50.3	41.7	4.6
February	107.9	315.1	35.1	67.8	24.6	17.7	50.8	41.8	4.7
March	108.9	318.5	33.2	68.7	23.4	17.8	51.4	42.3	4.4
FEMALES									
March 2011	69.2	339.1	24.9	66.9	26.5	16.5	57.3	47.8	3.5
March 2012	70.5	344.5	30.0	64.2	29.8	15.7	57.6	48.6	4.2
2013									
March	57.2	343.2	23.8	55.2	29.4	13.8	55.9	48.1	3.3
April	58.0	347.8	22.9	58.7	28.3	14.4	57.0	48.8	3.2
May	57.8	346.0	24.7	55.4	29.9	13.8	56.3	48.6	3.5
June	56.7	340.4	25.9	58.6	31.3	14.7	56.0	47.8	3.6
July	56.7	340.6	24.5	58.4	30.1	14.6	56.0	47.8	3.4
August	56.8	335.0	28.8	65.4	33.7	16.3	56.2	47.0	4.0
September	55.5	334.4	27.7	67.9	33.3	16.9	56.4	46.9	3.9
October	55.5	335.6	25.2	66.0	31.2	16.4	56.3	47.0	3.5
November	52.8	326.3	26.3	63.0	33.2	16.2	54.5	45.7	3.7
December	55.4	327.2	22.5	55.8	28.8	14.6	53.6	45.8	3.1
2014									
January	57.1	336.4	25.9	63.0	31.2	15.8	55.9	47.1	3.6
February	56.3	328.8	26.3	67.6	31.8	17.1	55.4	46.0	3.7
March	55.2	327.9	27.5	66.0	33.2	16.8	55.1	45.8	3.8
PERSONS									
March 2011	199.5	671.3	57.1	131.1	22.3	16.3	55.2	46.2	3.9
March 2012	203.6	671.2	65.8	134.7	24.4	16.7	55.2	46.0	4.5
2013									
March	178.0	666.1	63.1	131.3	26.2	16.5	54.4	45.4	4.3
April	176.2	671.6	57.8	125.3	24.7	15.7	54.4	45.8	3.9
May	177.7	670.4	59.1	121.3	25.0	15.3	54.0	45.8	4.0
June	168.0	667.4	63.0	127.9	27.3	16.1	54.3	45.6	4.3
July	170.5	666.8	56.4	127.0	24.9	16.0	54.2	45.5	3.9
August	170.0	653.0	63.9	136.9	27.3	17.3	53.9	44.6	4.4
September	165.3	644.7	62.4	137.5	27.4	17.6	53.4	44.0	4.3
October	163.0	648.7	61.1	132.5	27.3	17.0	53.3	44.2	4.2
November	162.8	641.8	53.9	126.7	24.9	16.5	52.4	43.7	3.7
December	165.6	641.6	54.4	117.0	24.7	15.4	51.7	43.7	3.7
2014									
January	172.1	650.5	60.3	128.0	26.0	16.4	53.0	44.3	4.1
February	164.1	643.9	61.4	135.5	27.2	17.4	53.1	43.8	4.2
March	164.1	646.4	60.7	134.8	27.0	17.3	53.2	44.0	4.1

	EMPLOYED			UNEMPLOYED			Civilian population aged 15–19 years	UNEMPLOYMENT RATE		Participation rate	Unemployment to population ratio – looking for full-time work	
	Full time	Part time	Total	Looking for f/t work	Total	Labour force		Not in labour force	Looking for f/t work			Total
	'000	'000	'000	'000	'000	'000		'000	%			%
NOT ATTENDING FULL-TIME EDUCATION												
Males												
March 2011	124.1	40.5	164.6	29.2	32.9	197.5	35.7	233.2	19.0	16.7	84.7	12.5
March 2012	126.3	45.7	172.0	32.1	34.5	206.4	27.8	234.2	20.3	16.7	88.1	13.7
March 2013	111.5	40.2	151.7	35.3	36.5	188.2	32.6	220.8	24.0	19.4	85.3	16.0
March 2014	99.2	41.1	140.3	28.0	31.3	171.6	26.9	198.5	22.0	18.2	86.5	14.1
Females												
March 2011	60.5	63.0	123.5	18.9	23.2	146.7	31.5	178.2	23.8	15.8	82.3	10.6
March 2012	59.1	57.1	116.2	22.8	26.5	142.7	34.0	176.7	27.8	18.6	80.8	12.9
March 2013	50.3	55.5	105.7	19.3	21.7	127.5	30.8	158.3	27.8	17.1	80.5	12.2
March 2014	44.2	53.5	97.7	19.9	22.6	120.3	33.0	153.3	31.0	18.8	78.5	13.0
Persons												
March 2011	184.6	103.5	288.1	48.1	56.1	344.2	67.3	411.5	20.7	16.3	83.6	11.7
March 2012	185.4	102.8	288.2	54.9	60.9	349.2	61.7	410.9	22.9	17.5	85.0	13.4
March 2013	161.7	95.7	257.4	54.6	58.3	315.7	63.4	379.1	25.2	18.5	83.3	14.4
March 2014	143.4	94.6	238.0	47.9	53.9	291.9	59.9	351.8	25.0	18.5	83.0	13.6
ATTENDING FULL-TIME EDUCATION												
Males												
March 2011	6.5	159.0	165.5	*4.7	36.0	201.5	310.1	511.6	*42.1	17.9	39.4	*0.9
March 2012	7.1	145.2	152.3	*5.7	41.2	193.5	321.7	515.2	*44.5	21.3	37.6	*1.1
March 2013	9.8	159.4	169.2	5.9	45.2	214.4	317.5	531.9	37.5	21.1	40.3	1.1
March 2014	10.3	166.4	176.7	*6.7	42.5	219.2	335.7	554.9	*39.5	19.4	39.5	*1.2
Females												
March 2011	*4.5	212.1	216.6	*5.1	51.0	267.6	262.9	530.5	*53.1	19.0	50.4	*1.0
March 2012	6.5	222.9	229.4	6.3	44.7	274.1	258.7	532.8	49.0	16.3	51.4	1.2
March 2013	*2.8	236.1	238.9	*3.9	39.2	278.1	276.6	554.7	*58.4	14.1	50.1	*0.7
March 2014	*6.9	224.6	231.5	*7.1	50.3	281.8	280.1	561.9	*50.7	17.8	50.2	*1.3
Persons												
March 2011	11.0	371.1	382.1	9.8	86.9	469.0	573.0	1 042.1	47.2	18.5	45.0	0.9
March 2012	13.6	368.2	381.7	11.9	85.9	467.6	580.3	1 048.0	46.7	18.4	44.6	1.1
March 2013	12.6	395.4	408.1	9.8	84.4	492.5	594.1	1 086.6	43.7	17.1	45.3	0.9
March 2014	17.3	391.0	408.2	13.9	92.8	501.1	615.8	1 116.8	44.5	18.5	44.9	1.2
TOTAL												
Males												
March 2011	130.6	199.5	330.1	33.9	68.9	399.0	345.9	744.9	20.6	17.3	53.6	4.5
March 2012	133.4	190.9	324.3	37.8	75.7	400.0	349.4	749.4	22.1	18.9	53.4	5.0
March 2013	121.3	199.6	320.9	41.2	81.7	402.6	350.1	752.7	25.3	20.3	53.5	5.5
March 2014	109.5	207.5	317.0	34.8	73.8	390.8	362.5	753.4	24.1	18.9	51.9	4.6
Females												
March 2011	65.0	275.1	340.1	24.0	74.1	414.2	294.4	708.7	27.0	17.9	58.5	3.4
March 2012	65.6	280.0	345.7	29.1	71.2	416.8	292.6	709.5	30.7	17.1	58.8	4.1
March 2013	53.1	291.5	344.6	23.2	61.0	405.6	307.4	713.0	30.5	15.0	56.9	3.3
March 2014	51.1	278.1	329.2	27.0	72.9	402.1	313.1	715.2	34.5	18.1	56.2	3.8
Persons												
March 2011	195.5	474.7	670.2	57.9	143.0	813.2	640.3	1 453.5	22.8	17.6	55.9	4.0
March 2012	199.0	471.0	670.0	66.9	146.8	816.8	642.1	1 458.9	25.1	18.0	56.0	4.6
March 2013	174.4	491.1	665.5	64.4	142.7	808.2	657.5	1 465.7	27.0	17.7	55.1	4.4
March 2014	160.7	485.6	646.3	61.8	146.7	793.0	675.6	1 468.6	27.8	18.5	54.0	4.2

* estimate is subject to sampling variability too high for most practical purposes

	EMPLOYED			UNEMPLOYED			Labour force	Civilian population aged 15–19 years	UNEMPLOYMENT RATE			Unemployment to population ratio – looking for full-time work
	Full time	Part time	Total	Looking for f/t work	Total	Looking for f/t work			Total	Participation rate		
	'000	'000	'000	'000	'000	'000			'000	%	%	
NOT ATTENDING FULL-TIME EDUCATION												
New South Wales	38.8	23.0	61.8	16.1	17.6	79.4	22.6	102.0	29.3	22.2	77.9	15.8
Victoria	24.4	17.4	41.9	7.2	7.9	49.7	9.9	59.6	22.7	15.8	83.4	12.0
Queensland	38.0	25.7	63.8	12.7	15.8	79.6	13.3	92.8	25.0	19.9	85.7	13.6
South Australia	10.6	8.7	19.3	3.9	4.1	23.4	*3.2	26.7	27.0	17.7	87.9	14.8
Western Australia	23.8	14.2	37.9	*5.6	*5.6	43.5	7.2	50.7	*19.1	*12.9	85.9	*11.1
Tasmania	3.7	2.7	6.4	*1.1	*1.3	7.6	*1.3	8.9	*23.3	*16.6	85.6	*12.7
Northern Territory	3.6	0.5	4.1	*0.3	*0.3	4.3	2.2	6.5	*6.9	*6.1	66.4	*4.0
Australian Capital Territory	*0.5	2.4	2.9	*1.0	*1.3	4.2	*0.3	4.5	*67.2	*31.3	93.6	*23.0
Australia	143.4	94.6	238.0	47.9	53.9	291.9	59.9	351.8	25.0	18.5	83.0	13.6
ATTENDING FULL-TIME EDUCATION												
New South Wales	*4.9	116.3	121.3	*4.0	24.6	145.9	216.4	362.3	*44.9	16.9	40.3	*1.1
Victoria	4.9	103.8	108.6	*4.3	29.0	137.6	158.4	296.0	*46.7	21.1	46.5	*1.4
Queensland	*4.3	83.2	87.5	*3.1	19.2	106.6	109.9	216.6	*42.0	18.0	49.2	*1.4
South Australia	*1.3	28.5	29.8	*0.6	7.3	37.0	40.6	77.7	*32.8	19.6	47.7	*0.8
Western Australia	*1.2	39.8	41.0	*0.8	7.5	48.5	62.6	111.1	*41.8	15.5	43.6	*0.7
Tasmania	*0.2	7.7	7.9	*0.8	2.9	10.8	13.8	24.6	*81.4	26.9	43.8	*3.2
Northern Territory	0.5	3.6	4.1	*0.2	*0.6	4.7	4.9	9.7	*26.5	*13.7	49.1	*2.0
Australian Capital Territory	*—	8.1	8.1	*—	*1.7	9.8	9.1	18.9	*—	*17.5	52.0	*—
Australia	17.3	391.0	408.2	13.9	92.8	501.1	615.8	1 116.8	44.5	18.5	44.9	1.2
TOTAL												
New South Wales	43.7	139.4	183.1	20.1	42.2	225.3	239.0	464.3	31.5	18.7	48.5	4.3
Victoria	29.3	121.2	150.5	11.4	36.9	187.4	168.3	355.6	28.1	19.7	52.7	3.2
Queensland	42.3	108.9	151.3	15.8	35.0	186.2	123.2	309.4	27.1	18.8	60.2	5.1
South Australia	11.9	37.2	49.1	4.6	11.4	60.5	43.8	104.3	27.7	18.9	58.0	4.4
Western Australia	24.9	54.0	78.9	6.4	13.1	92.0	69.8	161.8	20.5	14.3	56.9	4.0
Tasmania	3.9	10.3	14.2	1.9	4.2	18.4	15.1	33.5	33.1	22.6	54.9	5.8
Northern Territory	4.1	4.1	8.2	*0.5	*0.9	9.1	7.1	16.2	*10.0	*10.1	56.1	*2.8
Australian Capital Territory	*0.5	10.5	11.0	*1.0	3.0	14.1	9.4	23.5	*67.2	21.6	60.1	*4.4
Australia	160.7	485.6	646.3	61.8	146.7	793.0	675.6	1 468.6	27.8	18.5	54.0	4.2

* estimate is subject to sampling variability too high for most practical purposes

— nil or rounded to zero (including null cells)

LABOUR FORCE STATUS IN MARCH 2014

<i>Labour force status in February 2014</i>	<i>Employed Full time</i>	<i>Employed Part time</i>	<i>Employed Total</i>	<i>Unemployed</i>	<i>Labour Force</i>	<i>Not in Labour Force</i>	<i>Matched Civilian Population</i>
	'000	'000	'000	'000	'000	'000	'000
MALES							
Employed Full time	3 941.2	148.7	4 089.9	28.6	4 118.4	56.4	4 174.9
Employed Part time	114.1	645.6	759.7	15.1	774.8	50.0	824.7
Employed Total	4 055.3	794.2	4 849.5	43.7	4 893.2	106.4	4 999.6
Unemployed Total	40.1	38.1	78.3	176.3	254.6	75.9	330.5
Labour Force	4 095.4	832.4	4 927.8	220.0	5 147.8	182.3	5 330.1
Not in Labour Force	23.6	57.5	81.1	64.8	145.9	1 833.6	1 979.5
Matched Civilian Population	4 119.1	889.8	5 008.9	284.8	5 293.7	2 015.8	7 309.5
FEMALES							
Employed Full time	2 045.0	187.4	2 232.4	11.2	2 243.6	37.3	2 280.9
Employed Part time	169.6	1 639.1	1 808.7	20.8	1 829.5	91.0	1 920.5
Employed Total	2 214.6	1 826.5	4 041.1	32.0	4 073.1	128.2	4 201.4
Unemployed Total	20.2	57.3	77.5	167.6	245.2	75.2	320.4
Labour Force	2 234.9	1 883.8	4 118.7	199.6	4 318.3	203.5	4 521.8
Not in Labour Force	26.3	93.4	119.7	88.1	207.7	2 757.4	2 965.1
Matched Civilian Population	2 261.1	1 977.2	4 238.4	287.7	4 526.0	2 960.9	7 486.9
PERSONS							
Employed Full time	5 986.2	336.1	6 322.3	39.7	6 362.1	93.7	6 455.7
Employed Part time	283.7	2 284.6	2 568.3	36.0	2 604.3	140.9	2 745.2
Employed Total	6 269.9	2 620.7	8 890.7	75.7	8 966.3	234.6	9 201.0
Unemployed Total	60.3	95.5	155.8	344.0	499.8	151.1	650.9
Labour Force	6 330.3	2 716.2	9 046.5	419.6	9 466.1	385.7	9 851.8
Not in Labour Force	49.9	150.9	200.8	152.8	353.6	4 590.9	4 944.6
Matched Civilian Population	6 380.2	2 867.0	9 247.3	572.5	9 819.7	4 976.7	14 796.4

(a) Gross flows figures do not match published labour force estimates. Refer to gross flows in Glossary.

	TREND			SEASONALLY ADJUSTED		
	<i>Full time workers</i>	<i>Part time workers</i>	<i>Total</i>	<i>Full time workers</i>	<i>Part time workers</i>	<i>Total</i>
	millions	millions	millions	millions	millions	millions
MALES						
March 2011	903.9	68.0	971.9	906.3	67.4	973.7
March 2012	912.4	68.9	981.3	916.5	69.3	985.7
2013						
March	907.4	70.8	978.2	906.2	69.7	975.8
April	907.4	71.2	978.6	910.0	70.3	980.4
May	907.9	71.5	979.3	903.1	71.8	974.9
June	908.5	71.7	980.2	907.5	72.3	979.7
July	908.4	72.2	980.6	914.0	71.7	985.7
August	907.7	72.9	980.6	909.8	72.6	982.4
September	906.7	73.7	980.4	904.1	73.3	977.4
October	906.2	74.3	980.5	906.4	75.2	981.6
November	906.4	75.0	981.3	902.7	75.4	978.2
December	907.5	75.6	983.0	903.7	75.1	978.8
2014						
January	909.1	76.1	985.2	916.4	75.9	992.2
February	910.8	76.6	987.4	910.1	76.3	986.4
March	912.4	77.1	989.4	912.1	77.9	990.0
FEMALES						
March 2011	442.7	164.1	606.8	446.5	162.6	609.2
March 2012	450.4	167.3	617.7	452.2	169.4	621.6
2013						
March	448.6	169.9	618.6	446.2	170.4	616.6
April	449.4	170.3	619.7	452.6	171.0	623.6
May	450.6	170.5	621.1	447.5	169.3	616.8
June	452.0	170.7	622.8	451.3	171.2	622.5
July	453.1	170.8	623.9	451.7	172.7	624.4
August	453.2	171.2	624.5	460.0	168.1	628.1
September	452.5	172.0	624.6	452.0	172.2	624.3
October	451.3	173.0	624.3	451.0	174.3	625.3
November	450.3	173.8	624.1	446.8	172.8	619.6
December	449.8	174.4	624.3	449.0	173.3	622.3
2014						
January	450.0	174.8	624.8	450.2	180.5	630.8
February	450.6	174.8	625.4	452.0	170.8	622.8
March	451.7	174.5	626.2	453.1	174.0	627.2
PERSONS						
March 2011	1 346.6	232.1	1 577.9	1 352.8	230.1	1 582.9
March 2012	1 362.8	236.2	1 599.0	1 368.6	238.7	1 607.3
2013						
March	1 356.0	240.8	1 596.8	1 352.3	240.1	1 592.4
April	1 356.7	241.5	1 598.2	1 362.6	241.3	1 604.0
May	1 358.4	242.0	1 600.4	1 350.6	241.1	1 591.7
June	1 360.5	242.5	1 603.0	1 358.8	243.4	1 602.2
July	1 361.5	243.1	1 604.5	1 365.6	244.5	1 610.1
August	1 360.9	244.2	1 605.1	1 369.8	240.7	1 610.5
September	1 359.2	245.7	1 605.0	1 356.1	245.6	1 601.7
October	1 357.5	247.3	1 604.8	1 357.4	249.5	1 606.9
November	1 356.7	248.8	1 605.5	1 349.5	248.2	1 597.8
December	1 357.3	250.0	1 607.3	1 352.8	248.4	1 601.1
2014						
January	1 359.2	250.9	1 610.0	1 366.6	256.4	1 623.0
February	1 361.4	251.5	1 612.8	1 362.0	247.1	1 609.2
March	1 364.1	251.6	1 615.6	1 365.2	251.9	1 617.2

HOURS WORKED

	New South Wales	Victoria	Queensland	South Australia	Western Australia	Tasmania	Northern Territory	Australian Capital Territory	Australia
	millions	millions	millions	millions	millions	millions	millions	millions	millions

SEASONALLY ADJUSTED

March 2011	498.3	393.4	323.4	111.3	176.7	31.9	np	np	1 582.9
March 2012	500.1	393.8	334.1	110.9	188.7	31.4	np	np	1 607.3
2013									
March	500.3	387.7	326.0	109.6	191.4	30.2	np	np	1 592.4
April	504.1	392.5	327.4	109.4	191.7	31.1	np	np	1 604.0
May	503.5	389.0	326.8	112.4	182.8	29.0	np	np	1 591.7
June	506.2	393.1	325.0	109.9	190.1	30.0	np	np	1 602.2
July	505.3	395.3	336.6	106.9	189.8	29.0	np	np	1 610.1
August	503.4	392.7	336.5	108.4	191.9	29.7	np	np	1 610.5
September	499.3	390.6	334.0	109.3	190.7	29.9	np	np	1 601.7
October	501.1	395.1	333.0	107.7	191.4	29.9	np	np	1 606.9
November	497.8	391.0	331.8	109.3	190.1	30.1	np	np	1 597.8
December	498.6	392.7	332.2	109.0	190.2	30.1	np	np	1 601.1
2014									
January	501.0	395.1	341.3	112.2	192.9	31.5	np	np	1 623.0
February	499.6	391.8	335.0	109.1	194.2	30.4	np	np	1 609.2
March	500.8	396.1	334.2	110.4	195.4	30.9	np	np	1 617.2

TREND

March 2011	494.7	392.2	322.9	111.6	177.2	31.9	18.5	28.9	1 577.9
March 2012	496.3	390.2	331.5	111.0	190.5	31.3	19.1	29.1	1 599.0
2013									
March	502.8	390.0	327.1	110.1	188.9	30.3	18.8	28.9	1 596.8
April	503.6	390.7	327.4	110.1	188.7	30.1	18.8	28.8	1 598.2
May	504.3	391.5	328.4	109.9	188.8	29.9	18.9	28.8	1 600.4
June	504.5	392.3	330.2	109.5	189.1	29.7	19.0	28.8	1 603.0
July	504.0	392.8	331.8	108.9	189.7	29.5	19.1	28.7	1 604.5
August	502.9	393.0	333.1	108.5	190.2	29.6	19.2	28.6	1 605.1
September	501.4	392.9	334.0	108.4	190.6	29.7	19.4	28.6	1 605.0
October	500.2	392.8	334.3	108.6	190.9	29.9	19.5	28.6	1 604.8
November	499.5	392.8	334.4	109.2	191.2	30.2	19.7	28.6	1 605.5
December	499.4	393.0	334.6	109.6	191.7	30.4	19.8	28.7	1 607.3
2014									
January	499.6	393.5	335.1	110.0	192.5	30.6	19.9	28.8	1 610.0
February	499.9	394.0	335.6	110.3	193.4	30.8	20.1	28.9	1 612.8
March	500.3	394.5	336.0	110.5	194.3	30.9	20.1	29.0	1 615.6

np not available for publication but included in totals where applicable, unless otherwise indicated

	TREND			SEASONALLY ADJUSTED			ORIGINAL		
	<i>Under-employed workers</i>	<i>Under-employment rate</i>	<i>Labour force under-utilisation rate</i>	<i>Under-employed workers</i>	<i>Under-employment rate</i>	<i>Labour force under-utilisation rate</i>	<i>Under-employed workers</i>	<i>Under-employment rate</i>	<i>Labour force under-utilisation rate</i>
	'000	%	%	'000	%	%	'000	%	%
MALES									
February 2010	356.1	5.7	11.1	362.2	5.8	11.1	375.8	5.9	11.8
February 2011	342.2	5.4	10.1	325.2	5.1	9.9	335.7	5.2	10.5
February 2012	355.1	5.5	10.5	367.9	5.7	10.8	377.6	5.8	11.4
2012									
August	344.6	5.3	10.5	338.8	5.2	10.5	331.8	5.2	10.2
November	344.4	5.3	10.6	347.9	5.3	10.7	343.7	5.3	10.3
2013									
February	357.5	5.5	10.9	352.1	5.4	10.8	361.8	5.5	11.5
May	373.5	5.7	11.3	374.5	5.7	11.2	375.7	5.7	11.2
August	381.7	5.8	11.6	391.0	5.9	11.8	383.6	5.9	11.6
November	381.7	5.8	11.7	378.1	5.7	11.7	375.4	5.7	11.3
2014									
February	376.9	5.7	11.6	373.8	5.6	11.5	383.1	5.7	12.2
FEMALES									
February 2010	499.7	9.6	14.9	502.9	9.6	14.9	526.7	10.0	16.1
February 2011	479.1	9.0	14.3	487.9	9.1	14.3	508.6	9.5	15.4
February 2012	510.0	9.4	14.8	501.0	9.2	14.6	519.9	9.5	15.7
2012									
August	512.3	9.4	14.6	504.6	9.2	14.4	487.7	9.0	13.9
November	509.2	9.3	14.6	513.5	9.4	14.7	517.4	9.4	14.3
2013									
February	513.5	9.3	14.7	508.1	9.2	14.6	523.4	9.4	15.6
May	528.6	9.5	15.1	524.0	9.5	15.1	518.4	9.3	14.9
August	539.5	9.7	15.5	551.0	9.9	15.8	533.8	9.7	15.2
November	542.4	9.7	15.7	543.5	9.8	15.5	548.8	9.9	15.1
2014									
February	538.4	9.6	15.8	530.2	9.5	15.8	545.2	9.7	16.9
PERSONS									
February 2010	855.8	7.5	12.8	865.1	7.5	12.8	902.5	7.8	13.8
February 2011	821.4	7.0	12.0	813.1	6.9	11.9	844.3	7.1	12.8
February 2012	865.1	7.3	12.5	868.9	7.3	12.5	897.5	7.5	13.4
2012									
August	856.9	7.2	12.4	843.4	7.1	12.3	819.5	6.9	11.9
November	853.6	7.1	12.4	861.4	7.2	12.5	861.1	7.2	12.1
2013									
February	871.1	7.2	12.7	860.2	7.1	12.5	885.1	7.3	13.4
May	902.1	7.4	13.1	898.5	7.4	13.0	894.1	7.3	12.9
August	921.2	7.6	13.4	942.0	7.8	13.6	917.4	7.6	13.3
November	924.1	7.6	13.5	921.5	7.6	13.4	924.2	7.6	13.0
2014									
February	915.3	7.5	13.5	903.9	7.4	13.5	928.3	7.5	14.3

	TREND			SEASONALLY ADJUSTED			ORIGINAL		
	<i>Under-employed workers</i>	<i>Under-employment rate</i>	<i>Labour force under-utilisation rate</i>	<i>Under-employed workers</i>	<i>Under-employment rate</i>	<i>Labour force under-utilisation rate</i>	<i>Under-employed workers</i>	<i>Under-employment rate</i>	<i>Labour force under-utilisation rate</i>
	'000	%	%	'000	%	%	'000	%	%
MALES									
New South Wales	122.0	5.9	11.6	119.8	5.8	11.2	124.2	6.0	11.7
Victoria	98.1	6.0	12.2	97.1	5.9	11.9	99.2	6.0	12.5
Queensland	71.8	5.4	11.5	72.9	5.5	11.7	75.0	5.6	12.9
South Australia	29.4	6.4	13.3	29.5	6.4	13.1	29.5	6.3	13.6
Western Australia	35.8	4.5	9.7	33.6	4.2	9.9	34.4	4.2	10.6
Tasmania	10.9	8.2	16.5	11.5	8.6	16.6	11.0	8.0	16.6
Northern Territory	1.7	2.2	6.2	1.7	2.2	5.6	1.5	2.0	5.6
Australian Capital Territory	7.0	6.1	9.8	7.5	6.5	10.1	8.3	7.1	11.0
Australia	376.9	5.7	11.6	373.8	5.6	11.5	383.1	5.7	12.2
FEMALES									
New South Wales	159.9	9.2	15.3	155.1	8.9	15.1	156.3	8.9	16.0
Victoria	143.0	10.1	16.7	145.9	10.3	17.2	148.6	10.4	18.4
Queensland	116.1	10.1	16.1	110.5	9.6	15.8	119.0	10.3	17.5
South Australia	42.9	10.9	17.7	43.6	11.2	17.7	46.0	11.7	19.0
Western Australia	52.3	8.5	13.8	51.1	8.2	14.3	52.0	8.3	15.0
Tasmania	15.1	12.9	19.7	15.2	13.0	19.7	14.5	12.4	20.1
Northern Territory	2.5	4.0	8.3	2.8	4.5	8.4	3.2	5.2	9.6
Australian Capital Territory	6.3	6.0	9.2	6.1	5.7	8.5	5.7	5.4	8.7
Australia	538.4	9.6	15.8	530.2	9.5	15.8	545.2	9.7	16.9
PERSONS									
New South Wales	281.9	7.4	13.3	275.0	7.2	13.0	280.5	7.3	13.7
Victoria	241.1	7.9	14.3	243.0	8.0	14.3	247.8	8.1	15.2
Queensland	187.8	7.6	13.6	183.4	7.4	13.6	194.0	7.7	15.0
South Australia	72.3	8.5	15.3	73.1	8.6	15.2	75.5	8.8	16.1
Western Australia	88.1	6.2	11.5	84.6	5.9	11.8	86.4	6.0	12.5
Tasmania	26.0	10.4	18.0	26.8	10.6	18.0	25.4	10.0	18.2
Northern Territory	4.2	3.0	7.1	4.5	3.2	6.9	4.8	3.5	7.4
Australian Capital Territory	13.4	6.1	9.5	13.6	6.1	9.4	14.0	6.3	9.9
Australia	915.3	7.5	13.5	903.9	7.4	13.5	928.3	7.5	14.3

WHAT IF...? REVISIONS TO TREND ESTIMATES

EFFECT OF NEW SEASONALLY ADJUSTED ESTIMATES ON TREND ESTIMATES

TREND REVISIONS

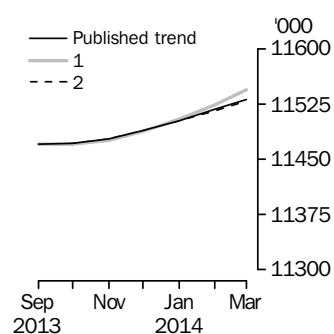
Each time new seasonally adjusted estimates become available, trend estimates are revised. This revision is a combined result of the concurrent seasonal adjustment process and the application of surrogates of the Henderson average to the seasonally adjusted series (see paragraphs 28 to 36 of the Explanatory Notes).

The examples in the tables below show two illustrative scenarios and the consequent revisions to previous trend estimates of employment and the unemployment rate. The revisions in the scenarios are due to the use of surrogates of the Henderson average, as the impact of revision of seasonally adjusted estimates can not be estimated in advance.

- (1) The April seasonally adjusted estimate is *higher* than the March estimate by:
0.24% for employment
2.20% for the unemployment rate
- (2) The April seasonally adjusted estimate is *lower* than the March estimate by:
0.24% for employment
2.20% for the unemployment rate

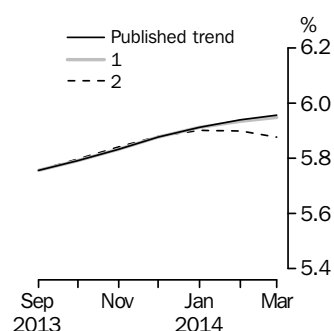
The percentage changes of 0.24% and 2.20% represent the average absolute monthly percentage changes in employment and the unemployment rate respectively. Estimates in the graphs have been calculated using unrounded estimates, and may be different from, but more accurate than, rounded estimates depicted in the corresponding table.

EMPLOYMENT



		WHAT IF NEXT MONTH'S SEASONALLY ADJUSTED ESTIMATE IS:		
		<i>Trend as published</i>	<i>(1) 11 580.9 i.e. rises by 0.24%</i>	<i>(2) 11 525.4 i.e. falls by 0.24%</i>
2013				
December	11 488.7	11 487.8	11 488.7	
2014				
January	11 502.5	11 504.7	11 502.3	
February	11 517.4	11 524.3	11 516.1	
March	11 531.6	11 544.2	11 528.7	

UNEMPLOYMENT RATE



		WHAT IF NEXT MONTH'S SEASONALLY ADJUSTED ESTIMATE IS:		
		<i>Trend as published</i>	<i>(1) 5.9 i.e. rises by 2.20%</i>	<i>(2) 5.7 i.e. falls by 2.20%</i>
2013				
December	5.9	5.9	5.9	
2014				
January	5.9	5.9	5.9	
February	5.9	5.9	5.9	
March	6.0	5.9	5.9	

EXPLANATORY NOTES

INTRODUCTION

1 This publication contains estimates of the civilian labour force derived from the Labour Force Survey component of the Monthly Population Survey. The full time series for estimates from this publication are also available electronically. More detailed estimates are released one week after this publication in various electronic formats – see *Labour Force, Australia, Detailed – Electronic Delivery* (cat. no. 6291.0.55.001) and *Labour Force, Australia, Detailed, Quarterly* (cat. no. 6291.0.55.003).

CONCEPTS, SOURCES AND METHODS

2 The conceptual framework used in Australia's Labour Force Survey aligns closely with the standards and guidelines set out in Resolutions of International Conferences of Labour Statisticians. Descriptions of the underlying concepts and structure of Australia's labour force statistics, and the sources and methods used in compiling the estimates, are presented in *Labour Statistics: Concepts, Sources and Methods* (cat. no. 6102.0.55.001) which is available on the ABS website <<http://www.abs.gov.au>>.

LABOUR FORCE SURVEY

3 The Labour Force Survey is based on a multi-stage area sample of private dwellings (currently approximately 26,000 houses, flats, etc.) and a list sample of non-private dwellings (hotels, motels, etc.), and covers approximately 0.32% of the civilian population of Australia aged 15 years and over.

4 Information is obtained from the occupants of selected dwellings by specially trained interviewers using computer-assisted interviewing, or self-completion online.

5 Households selected for the Labour Force Survey are interviewed each month for eight months, with one-eighth of the sample being replaced each month. The first interview is generally conducted face-to-face. Subsequent interviews are conducted by telephone (if acceptable to the respondent).

6 From December 2012 to April 2013, the ABS conducted a trial of online electronic data collection. Respondents in one rotation group (i.e. one-eighth of the survey sample) were offered the option of self completing their labour force survey questionnaire online instead of via a face-to-face or telephone interview. From May 2013, the ABS expanded the offer of online electronic collection to 50% of each new incoming rotation group. For more information see the article in the April 2013 issue of this publication. From September 2013 online electronic collection is offered to 100% of private dwellings in each incoming rotation group.

7 The interviews are generally conducted during the two weeks beginning on the Sunday between the 5th and 11th of each month. The information obtained relates to the week before the interview (i.e. the reference week). Each year, to deal with operational difficulties involved with collecting and processing the Labour Force Survey around the Christmas and New Year holiday period, interviews for December start four weeks after November interviews start (i.e. between the 3rd and 9th December), and January interviews start five weeks after December interviews start. As a result, January interviewing may commence as early as the 7th or as late as the 13th, depending on the year. Occasionally, circumstances that present significant operational difficulties for survey collection can result in a change to the normal pattern for the start of interviewing.

8 Estimates from the Labour Force Survey are usually published first in this publication 32 days after the commencement of interviews for that month, with the exception of estimates for each December which are usually published 39 days after the commencement of interviews.

SCOPE OF SURVEY

9 The Labour Force Survey includes all persons aged 15 years and over except members of the permanent defence forces, certain diplomatic personnel of overseas governments customarily excluded from census and estimated population counts, overseas residents in Australia, and members of non-Australian defence forces (and their dependants) stationed in Australia.

EXPLANATORY NOTES *continued*

COVERAGE

10 In the Labour Force Survey, coverage rules are applied which aim to ensure that each person is associated with only one dwelling, and hence has only one chance of selection. The coverage rules are necessarily a balance between theoretical and operational considerations. Nevertheless, the chance of a person being enumerated at two separate dwellings in the survey is considered to be negligible.

POPULATION BENCHMARKS

11 The Labour Force Survey estimates are calculated in such a way as to add to independent estimates of the civilian population aged 15 years and over (population benchmarks). These population benchmarks are based on the most recently released estimates of Final and Preliminary quarterly Estimated Resident Population (ERP). For information on the methodology used to produce the ERP see *Australian Demographic Statistics* (cat. no. 3101.0). Since the most recently released ERP estimates lag the current time period for Labour Force estimates by nine months, the Labour Force population benchmarks are created by projecting forward three quarters past the most recently released quarterly ERP estimates. The projection is based on the historical pattern of each population component – births, deaths, interstate migration and net overseas migration (NOM). Projected estimates of NOM are supplemented with other data sources to better forecast population changes in the short-term. The main data source is the forecasts published by the Department of Immigration & Border Protection in the publication *The Outlook for Net Overseas Migration*.

12 Commencing in March 2010, the ERP series has been revised twice-yearly, in the March and September quarter issues of *Australian Demographic Statistics* (cat. no. 3101.0). This biannual revision cycle incorporates more up to date information available for NOM. From November 2012, each biannual revision to ERP estimates have been used to update the population benchmarks used in creating the Labour Force Survey estimates, usually resulting in revisions to approximately the last two years of the historical time series.

13 Every five years, the ERP series are revised to incorporate additional information available from the latest Census of Population and Housing (Census). Labour Force Survey population benchmarks, and the estimates, are revised following this five-yearly revision in the ERP. The process of incorporating the revised population benchmarks is referred to as 'rebasings'. From the January 2014 issue of this publication, labour force estimates have been compiled using population benchmarks based on the results of the 2011 Census. Revisions were made to historical Labour Force estimates from June 2006 to December 2013. In addition, estimates from July 1991 to May 2006 were revised to reflect population benchmarks based on ERP revised following the 2011 Census. The next rebasing based on the Census will be following the release of the 2016 Census-based ERP estimates, which will incorporate revisions back five years. For more information on revised ERP estimates, refer to the June 2012 issue of *Australian Demographic Statistics* (cat. no. 3101.0) released in December 2012.

14 In between Censuses, the ABS revises the Labour Force population benchmarks using the latest ERP according to the paragraphs above. These were introduced in the July 2010, November 2012 and April 2013 issues. The revision planned for the October 2013 issue was not implemented, nor will the revision scheduled for the April 2014 issue be implemented, see *What's New in the Labour Force* in the September 2013 issue of this publication. From the October 2014 issue, after the Census rebasing has been published in the January 2014 issue, rebenchmarking will be undertaken quarterly in the April, July, October and January issues. For more information, refer to the article *Rebenchmarking of Labour Force Series* in the November 2012 issue of this publication.

EXPLANATORY NOTES *continued*

ESTIMATION METHOD

15 The estimation method used in the Labour Force Survey is Composite Estimation, which was introduced in May 2007. In January 2014 composite estimation was applied to all estimates from July 1991 as part of the 2011 Census rebenchmarking. Composite Estimation combines data collected in the previous six months with current month's data to produce the current month's estimates, thereby exploiting the high correlation between overlapping samples across months in the Labour Force Survey. The Composite Estimator combines the previous and current months' data by applying different factors according to length of time in the survey. After these factors are applied, the seven months of data are weighted to align with current month population benchmarks. For details see *Information Paper: Forthcoming Changes to Labour Force Statistics, 2007* (cat. no. 6292.0).

COMPARABILITY OF SERIES

16 From April 1986, the definition of employed persons was changed to include persons who worked without pay between 1 and 14 hours per week in a family business or on a farm (i.e. contributing family workers). For further information, see paragraphs 22 and 23 of the Explanatory Notes in the February 2003 issue of *Labour Force, Australia* (cat. no. 6203.0).

17 The ABS introduced telephone interviewing into the Labour Force Survey in August 1996. Implementation was phased in for each new sample group from August 1996 to February 1997. During the period of implementation, the new method produced different estimates than would have been obtained under the old methodology. The effect dissipated over the final months of implementation and was no longer discernible from February 1997. The estimates for February 1997 and onwards are directly comparable to estimates for periods prior to August 1996. For further details, see the feature article in the June 1997 issue of *Labour Force, Australia* (cat. no. 6203.0).

18 From April 2001 the Labour Force Survey has been conducted using a redesigned questionnaire containing additional data items and some minor definitional changes. The definition of unemployed persons was changed to include all persons who were waiting to start work and were available to start in the reference week. This change was introduced in February 2004, when historical unit record data were revised from April 2001 to January 2004. This revision created a small trend break at April 2001 in unemployed persons and unemployment rate series. For further details, see *Information Paper: Forthcoming Changes to Labour Force Statistics* (cat. no. 6292.0), released in December 2003.

19 Core labour force series were revised in April 2001 for the period April 1986 to March 2001 for the remaining definitional changes introduced with the redesigned questionnaire, to reduce the impact of the changes on labour force series. For further details, see *Information Paper: Implementing the Redesigned Labour Force Survey Questionnaire* (cat. no. 6295.0) and *Information Paper: Questionnaires Used in the Labour Force Survey* (cat. no. 6232.0).

20 In May 2007, an improved method of estimation, known as composite estimation, was introduced into the Labour Force Survey. In introducing this change, the ABS revised unit record data from April 2001 to April 2007 based on the new estimation method. No change was identified in the trend breaks in the unemployed persons and unemployment rate series which arose with the introduction of a redesigned survey form in April 2001 (as noted above in paragraph 19). For further details, see *Information Paper: Forthcoming Changes to Labour Force Statistics, 2007* (cat. no. 6292.0).

21 As one of a range of ABS savings initiatives for the 2008–09 financial year, there was a 24% reduction in the LFS sample size for the period July 2008 to August 2009, relative to the June 2008 sample size. The sample reduction was reversed from September 2009 to December 2009, with December 2009 estimates being the first produced under the fully reinstated sample.

EXPLANATORY NOTES *continued*

LABOUR FORCE SURVEY SAMPLE

22 The current Labour Force Survey sample has been selected using information collected in the 2011 Census of Population and Housing.

23 The sample was introduced over four months – May 2013 to August 2013. Two rotation groups (i.e. one-quarter of the survey sample) were introduced each month. During the sample phase-in, the increased sample rotation had an impact on the quality of estimates. Movement standard errors increased by approximately 10%, representing, for example, an increase on the standard error on the Australian monthly change in employment for May 2013 from 27,000 to approximately 29,700.

24 Due to the use of composite estimation, there was also a marginal impact on the quality of level estimates. Gross Flows analysis were impacted by the sample phase-in with between 60% to 70% of the sample available for matching between the current and previous months instead of the usual 80%. After full transition to the new sample, the quality of level and movement estimates is at the level designed for under the 2011 sample design and are of similar quality as the 2006 sample design. For further details, see *Information Paper: Labour Force Survey Sample Design* (cat. no. 6269.0) released on 30 May 2013.

RELIABILITY OF ESTIMATES

25 Two types of error are possible in an estimate based on a sample survey: sampling error and non-sampling error.

26 Sampling error occurs because a sample, rather than the entire population, is surveyed. One measure of the likely difference resulting from not including all dwellings in the survey is given by the standard error. There are about two chances in three that a sample estimate will differ by less than one standard error from the figure that would have been obtained if all dwellings had been included in the survey, and about nineteen chances in twenty that the difference will be less than two standard errors. Standard errors of key estimates for the latest month and of movements since the previous month of these estimates are shown in the standard errors section of this publication. Standard errors for other estimates and other movements may be calculated by using the spreadsheet contained in *Labour Force Survey Standard Errors, Data Cube* (cat. no. 6298.0.55.001) which is available free of charge on the ABS website <<http://www.abs.gov.au>>.

27 Non-sampling error arises from inaccuracies in collecting, recording and processing the data. Every effort is made to minimise reporting error by the careful design of questionnaires, intensive training and supervision of interviewers, and efficient data processing procedures. Non-sampling error also arises because information cannot be obtained from all persons selected in the survey. The Labour Force Survey receives a high level of co-operation from individuals in selected dwellings, with the average response rate over the last year being 95%. See Glossary for definition of response rate.

SEASONAL ADJUSTMENT AND TREND ESTIMATION

28 Seasonal adjustment is a means of removing the estimated effects of normal seasonal variation from the series so that the effects of other influences on the series can be more clearly recognised. Seasonal adjustment does not aim to remove the irregular or non-seasonal influences which may be present in any particular month. This means that month-to-month movements of the seasonally adjusted estimates may not be reliable indicators of trend behaviour.

29 The Labour Force Survey uses the concurrent seasonal adjustment method to derive seasonal factors. Concurrent seasonal adjustment uses data up to the current month to estimate seasonal factors for the current and all previous months. This process can result in revisions each month to estimates for earlier periods. However, in most instances, the only noticeable revisions will be to the seasonally adjusted estimates for the previous month and one year prior to the current month.

EXPLANATORY NOTES *continued*

SEASONAL ADJUSTMENT AND TREND ESTIMATION *continued*

30 The revision properties of the seasonally adjusted and trend estimates can be improved by the use of Autoregressive Integrated Moving Average (ARIMA) modelling. ARIMA modelling relies on the characteristics of the series being analysed to project future period data. The projected values are temporary, intermediate values, that are only used internally to improve the estimation of the seasonal factors. The projected data do not affect the original estimates and are discarded at the end of the seasonal adjustment process. The Labour Force Survey uses an ARIMA model for the majority of the individual time series. The ARIMA model is assessed as part of the annual reanalysis. For further details, see the feature article in the October 2004 issue of *Australian Economic Indicators* (cat. no. 1350.0).

31 Seasonal adjustment is able to remove the effect of events which occur at the same time in the survey every year. However, there are some events, like holidays, which are not always at the same time in the survey cycle or which are not at the same time across Australia. The effects of these types of events on Labour Force Survey estimates cannot in all cases be removed, because the pattern of their effects cannot be determined. However, two events for which adjustment is made in the seasonally adjusted series are the January interview start date and the timing of Easter. For further details, see *Information Paper: Forthcoming Changes to Labour Force Statistics* (cat. no. 6292.0) released in December 2003.

32 While seasonal factors for the complete time series are estimated each month, they will continue to be reviewed annually at a more detailed level to take into account each additional year's original data. This annual review will not normally result in significant changes to published estimates. The review is usually conducted in February each year with the results released in the February issue of this publication.

33 The smoothing of seasonally adjusted series to produce 'trend' series reduces the impact of the irregular component of the seasonally adjusted series. These trend estimates are derived by applying a 13-term Henderson-weighted moving average to all months except the last six. The last six monthly trend estimates are obtained by applying surrogates of the Henderson average to the seasonally adjusted series. Trend estimates are used to analyse the underlying behaviour of a series over time.

34 While this smoothing technique enables estimates to be produced for the latest month, it does result in revisions in addition to those caused by the revision of seasonally adjusted estimates. Generally, revisions due to the use of surrogates of the Henderson average become smaller, and after three months have a negligible impact on the series.

35 Trend estimates are published for the Northern Territory in table 10 and for the Australian Capital Territory in table 11. Unadjusted series for the two Territories have shown, historically, a high degree of variability, which can lead to considerable revisions to the seasonally adjusted estimates each month when seasonal factors are estimated. For this reason, seasonally adjusted estimates are not currently published for the two Territories. In addition, caution should be exercised in the interpretation of trend estimates for the two Territories, particularly for the three most recent months, where revisions may be relatively large.

36 For further information, see *A Guide to Interpreting Time Series – Monitoring Trends* (cat. no. 1349.0) or contact the Assistant Director, Time Series Analysis on (02) 6252 6345 or email time.series.analysis@abs.gov.au.

EXPLANATORY NOTES *continued*

RELATED PUBLICATIONS

37 Users may also wish to refer to the following publications:

- *Labour Force Survey Standard Products and Data Item Guide* (cat.no. 6103.0). This publication is a reference guide for users of Labour Force Survey data standard products.
- *Australian Labour Market Statistics* (cat. no. 6105.0). This publication presents key indicators of the labour market, articles on a range of labour market issues, and information about the latest developments in the labour statistics program. For further information about this publication, please contact Labour Market Statistics on (02) 6252 7206.

38 ABS information about the labour market can be found on the Topics @ a Glance page on the ABS website <<http://www.abs.gov.au>>.

39 Information about current publications and other products released by the ABS is available from the statistics page on the ABS website. The ABS also issues a daily release advice on the website, Upcoming Product Releases, which details products to be released in the week ahead.

DATA AVAILABLE ON REQUEST

40 As well as the statistics included in this and related publications, the ABS may have other relevant data available. Inquiries should be made to the Labour Force contact officer on (02) 6252 6525, email labourforce@abs.gov.au or to any ABS office.

EFFECTS OF ROUNDING

41 Estimates have been rounded and discrepancies may occur between sums of the component items and totals. Estimates of movement shown in this publication are obtained by taking the difference of unrounded estimates. The movement estimate is then rounded. Where a discrepancy occurs between the reported movement and the difference of the rounded estimates, the reported movement will be more accurate.

SYMBOLS AND ABBREVIATIONS

42 SYMBOLS AND ABBREVIATIONS

<i>Symbol</i>	<i>Definition</i>
'000	thousands
%	percentage
ABS	Australian Bureau of Statistics
CAI	computer assisted interviewing
cat. no.	catalogue number
ERP	estimated resident population
f/t	full time
LFS	Labour Force Survey
p/t	part time
pts	percentage points
Seas adj.	seasonally adjusted
TAFE	Technical and Further Education

STANDARD ERRORS

STANDARD ERRORS

The estimates in this publication are based on information gained from the occupants of a sample survey of dwellings. Because the entire population is not surveyed, the published original, seasonally adjusted and trend estimates are subject to sampling error. The most common way of quantifying such sampling error is to calculate the standard error for the published estimate or statistic. For more information, see paragraphs 25 to 27 of the Explanatory Notes.

LEVEL ESTIMATES

To illustrate, let us say the published level estimate for employed persons aged 15–19 years is 700,000 and the associated standard error is 9,000. The standard error is then used to interpret the level estimate of 700,000. For instance, the standard error of 9,000 indicates that:

- There are approximately two chances in three that the real value falls within the range 691,000 to 709,000 (700,000 + or – 9,000)
- There are approximately nineteen chances in twenty that the real value falls within the range 682,000 to 718,000 (700,000 + or – 18,000).

The real value in this case is the result we would obtain if we could enumerate the total population.

The following table shows the standard errors for this month's level estimates.

											AUSTRALIA											
											Males	Females	Persons									
											NSW	Vic.	Qld	SA	WA	Tas.	NT	ACT				
Aged 15 years and over																						
Employed																						
Full time											'000	25.3	18.1	17.2	7.4	11.4	2.9	2.4	2.8	31.6	22.8	38.3
Part time											'000	18.3	11.7	11.9	5.5	8.1	2.2	0.7	2.0	13.6	21.0	26.1
Total											'000	28.0	22.2	19.8	8.6	12.4	3.4	2.7	3.0	34.6	32.0	43.6
Unemployed																						
Looking for f/t work											'000	8.8	8.4	8.3	3.4	4.6	1.2	0.7	0.9	12.0	10.3	15.9
Looking for p/t work											'000	5.9	5.7	5.6	2.1	2.9	0.8	0.4	0.7	6.3	8.3	10.5
Total											'000	10.8	10.2	9.5	3.9	5.4	1.5	0.8	1.2	13.6	13.4	19.3
Labour force											'000	28.4	23.0	20.3	8.8	12.5	3.5	2.8	3.0	35.5	33.1	44.4
Not in labour force											'000	24.2	20.9	22.1	8.2	11.9	3.5	3.1	3.1	30.6	35.5	41.9
Unemployment rate																						
Looking for f/t work											pts	0.3	0.4	0.5	0.6	0.4	0.7	0.6	0.6	0.2	0.3	0.2
Looking for p/t work											pts	0.5	0.6	0.7	0.7	0.7	0.9	1.5	1.2	0.5	0.3	0.3
Total											pts	0.3	0.3	0.4	0.4	0.4	0.6	0.6	0.5	0.2	0.2	0.2
Participation rate											pts	0.5	0.5	0.5	0.6	0.6	0.8	1.6	1.0	0.4	0.3	0.2
Aged 15–19 years																						
Employed																						
Full time											'000	3.7	2.0	2.7	1.1	1.9	0.5	0.2	0.3	4.8	3.7	5.6
Part time											'000	5.6	3.5	4.1	1.8	2.5	0.7	0.2	0.8	6.2	7.0	9.0
Total											'000	6.4	3.9	4.9	2.1	3.1	0.8	0.3	0.8	7.4	7.6	10.3
Unemployed																						
Looking for f/t work											'000	3.1	2.2	3.0	1.0	1.5	0.5	0.2	0.4	4.0	3.5	5.3
Looking for p/t work											'000	3.3	3.4	3.3	1.3	1.6	0.5	0.2	0.5	4.2	4.6	6.2
Total											'000	4.6	4.1	4.6	1.7	2.2	0.7	0.3	0.7	5.8	5.8	8.2
Labour force											'000	7.1	4.4	5.5	2.3	3.4	0.9	0.3	0.9	8.2	8.3	11.4
Not in labour force											'000	9.7	5.7	7.6	2.7	4.2	1.1	0.7	1.2	10.5	9.7	14.7
Unemployment rate																						
Looking for f/t work											pts	4.4	5.2	4.9	6.0	4.7	7.2	4.0	17.8	2.6	4.0	2.2
Looking for p/t work											pts	2.0	2.2	2.5	2.9	2.5	3.8	4.0	4.1	1.6	1.4	1.1
Total											pts	2.0	2.1	2.4	2.7	2.3	3.5	3.0	4.5	1.4	1.4	1.0
Participation rate											pts	1.5	1.2	1.8	2.2	2.1	2.8	2.0	3.9	1.1	1.2	0.8
Unemployment to population ratio – looking for f/t work											pts	0.7	0.6	1.0	1.0	1.0	1.4	1.1	1.7	0.5	0.5	0.4

STANDARD ERRORS *continued*

MOVEMENT ESTIMATES

The following example illustrates how to use the standard error to interpret a movement estimate. Let us say that one month the published level estimate for females employed part-time in Australia is 1,890,000; the next month the published level estimate is 1,900,000 and the associated standard error for the movement estimate is 11,900. The standard error is then used to interpret the published movement estimate of 10,000. For instance, the standard error of 11,900 indicates that:

- There are approximately two chances in three that the real movement between the two months falls within the range – 1,900 to 21,900 (10,000 + or – 11,900)
- There are approximately nineteen chances in twenty that the real movement falls within the range – 13,800 to 33,800 (10,000 + or – 23,800).

The following table shows the standard errors for this month's movement estimates.

		AUSTRALIA										
		NSW	Vic.	Qld	SA	WA	Tas.	NT	ACT	Males	Females	Persons
Aged 15 years and over												
Employed												
Full time	'000	14.7	12.0	9.3	3.9	6.8	1.7	1.8	1.8	18.4	13.6	23.4
Part time	'000	9.7	8.1	5.9	2.8	4.2	1.3	0.8	1.1	8.6	12.5	15.1
Total	'000	17.8	14.6	12.7	5.4	8.6	2.2	2.0	2.1	20.4	18.6	28.7
Unemployed												
Looking for f/t work	'000	9.6	8.3	8.3	3.5	5.3	1.3	0.7	1.1	12.5	10.7	16.7
Looking for p/t work	'000	6.6	6.0	4.9	2.1	3.2	0.8	0.4	0.9	6.5	8.6	10.9
Total	'000	11.9	10.3	9.8	4.1	6.2	1.5	0.8	1.3	14.2	13.8	20.2
Labour force	'000	18.4	15.2	13.6	5.9	9.0	2.3	2.0	2.2	21.1	19.3	29.8
Not in labour force	'000	17.9	15.0	13.0	5.7	8.7	2.2	2.0	2.2	17.7	21.7	29.0
Unemployment rate												
Looking for f/t work	pts	0.4	0.4	0.5	0.6	0.5	0.8	0.6	0.6	0.2	0.4	0.2
Looking for p/t work	pts	0.6	0.6	0.8	0.8	0.8	0.9	1.6	1.2	0.6	0.3	0.3
Total	pts	0.3	0.3	0.4	0.5	0.4	0.6	0.6	0.6	0.2	0.3	0.2
Participation rate	pts	0.3	0.3	0.4	0.4	0.4	0.5	1.1	0.7	0.2	0.2	0.2
Aged 15–19 years												
Employed												
Full time	'000	2.6	1.9	1.8	0.8	1.3	0.4	0.4	0.2	3.5	2.8	4.0
Part time	'000	3.8	3.3	2.6	1.3	1.8	0.5	0.4	0.6	4.3	4.8	6.0
Total	'000	4.3	3.6	3.0	1.4	2.1	0.6	0.5	0.6	5.0	5.1	6.7
Unemployed												
Looking for f/t work	'000	3.5	2.4	3.0	1.3	1.9	0.5	0.2	0.4	4.4	3.8	5.9
Looking for p/t work	'000	3.6	3.6	3.0	1.3	1.7	0.5	0.2	0.6	4.2	4.7	6.3
Total	'000	5.1	4.3	4.3	1.7	2.5	0.7	0.3	0.8	6.1	6.0	8.6
Labour force	'000	4.7	3.9	3.3	1.5	2.3	0.7	0.5	0.6	5.5	5.6	7.4
Not in labour force	'000	6.0	4.7	3.7	1.7	2.8	0.7	0.8	0.7	6.9	6.4	9.0
Unemployment rate												
Looking for f/t work	pts	4.8	5.5	5.4	6.8	5.4	8.3	3.6	25.8	2.9	4.5	2.4
Looking for p/t work	pts	2.2	2.4	2.7	2.9	2.8	4.1	4.8	4.0	1.8	1.5	1.1
Total	pts	2.1	2.3	2.6	3.0	2.6	3.9	3.1	4.5	1.6	1.5	1.1
Participation rate	pts	1.0	1.1	1.1	1.5	1.4	1.9	3.3	2.7	0.7	0.8	0.5
Unemployment to population ratio – looking for f/t work	pts	0.8	0.7	1.0	1.2	1.2	1.5	1.0	1.8	0.6	0.5	0.4

GLOSSARY

Actively looking for work	Includes writing, telephoning or applying to an employer for work; answering an advertisement for a job; checking noticeboards; being registered with Centrelink as a jobseeker; checking or registering with any other employment agency; advertising or tendering for work; and contacting friends or relatives.
Actual hours of work	<p>Actual hours of work refers to a specified reference period and includes:</p> <ul style="list-style-type: none">■ hours actually worked during normal periods of work;■ time spent in addition to hours worked during normal periods of work (including overtime);■ time spent at the place of work on activities such as the preparation of the workplace, repairs and maintenance, preparation and cleaning of tools, and the preparation of receipts, time sheets and reports;■ time spent at the place of work waiting or standing by; and■ time corresponding to short rest periods. <p>Excluded are:</p> <ul style="list-style-type: none">■ hours paid for but not worked, such as paid annual leave, public holidays or paid sick leave;■ meal breaks; and■ time spent on travel to and from work (excluding some self-employed). <p>For multiple job holders actual hours worked should equal the hours worked at all jobs.</p>
Aggregate monthly hours worked	<p>Aggregate monthly hours worked measures the total number of actual hours worked by employed persons in a calendar month. It differs from the actual hours worked estimates (and the usual hours worked estimates) since these refer only to the hours worked in the reference week.</p> <p>The methodology used to produce aggregate monthly hours worked means that these are synthetic estimates. Seasonally adjusted and trend estimates of aggregate monthly hours worked are available for the period July 1978 onwards.</p> <p>Further information on the methodology used to produce the aggregate monthly hours worked estimates is available on the ABS website in <i>Information Paper: Expansion of Hours Worked Estimates from the Labour Force Survey</i> (cat. no. 6290.0.55.001).</p> <p>Actual and usual hours worked cannot be aggregated across time to produce either quarterly or annual estimates as they relate to only a single week in the month. In contrast, aggregate monthly hours worked estimates are a true monthly measure, and may be aggregated across time to produce both quarterly and annual estimates.</p>
Attending full time education	Persons aged 15–24 years enrolled at secondary or high school or enrolled as a full time student at a Technical and Further Education (TAFE) college, university, or other educational institution in the reference week.
Attending school	Persons aged 15–19 years enrolled at secondary or high school in the reference week.
Attending tertiary educational institution full time	Persons aged 15–24 years enrolled full time at a TAFE college, university, or other educational institution in the reference week, except those persons aged 15–19 years who were still attending school.
Civilian population aged 15 years and over	All usual residents of Australia aged 15 years and over except members of the permanent defence forces, certain diplomatic personnel of overseas governments customarily excluded from census and estimated population counts, overseas residents in Australia, and members of non-Australian defence forces (and their dependants) stationed in Australia.
Composite Estimation	The estimation methodology used in the Labour Force Survey. Composite Estimation uses sample responses from nearby months as well as from the reference month to derive estimates for the reference month. This approach achieves gains in efficiency by exploiting the high similarity between the responses provided by the same respondent in

GLOSSARY *continued*

previous months. For details see *Information Paper: Forthcoming Changes to Labour Force Statistics, 2007* (cat. no. 6292.0).

Employed All persons aged 15 years and over who, during the reference week:

- worked for one hour or more for pay, profit, commission or payment in kind in a job or business, or on a farm (comprising employees, employers and own account workers); or
- worked for one hour or more without pay in a family business or on a farm (i.e. contributing family workers); or
- were employees who had a job but were not at work and were:
 - away from work for fewer than four weeks up to the end of the reference week; or
 - away from work for more than four weeks up to the end of the reference week and received pay for some or all of the four week period to the end of the reference week; or
 - away from work as a standard work or shift arrangement; or
 - on strike or locked out; or
 - on workers' compensation and expected to return to their job; or
- were employers or own account workers, who had a job, business or farm, but were not at work.

Employment to population ratio For any group, the number of employed persons expressed as a percentage of the civilian population in the same group.

Estimated resident population (ERP) Estimated resident population (ERP), is Australia's official measure of the population of Australia and is based on the concept of usual residence. It refers to all people, regardless of nationality, citizenship or legal status, who usually live in Australia, with the exception of foreign diplomatic personnel and their families. It includes usual residents who are overseas for fewer than 12 months. It excludes overseas visitors who are in Australia for fewer than 12 months. Refer to *Australian Demographic Statistics* (cat. no. 3101.0).

Flow estimates Flow estimates are a measure of activity over a given period. For example, aggregate monthly hours worked is a measure of the total number of hours worked in a calendar month.

Full time workers Employed persons who usually worked 35 hours or more a week (in all jobs) and those who, although usually working fewer than 35 hours a week, worked 35 hours or more during the reference week.

Gross flows The matching of respondents who report in consecutive months enables analysis of the transition of individuals between the different labour force status classifications, referred to as the matched sample. The transition counts between the different labour force status classifications from one point in time to the next are commonly referred to as gross flows.

The figures presented in gross flows are presented in original terms only and do not align with published labour force estimates. The gross flows figures are derived from the matched sample between consecutive months, which after taking account of the sample rotation and varying non-response in each month is approximately 80 percent of the sample.

Caution should be exercised when analysing these gross flows data due to:

- the figures presented sum to approximately 80 percent of the population values as the gross flows data are based on the matched sample only;
- there is no adjustment applied to account for changes due to seasonal patterns (referred to commonly as seasonal adjustment); and
- the estimates of relative sizes of each transition class are subject to bias due to the matched sample being a non-representative sample.

Labour force For any group, persons who were employed or unemployed, as defined.

GLOSSARY *continued*

Labour force status	A classification of the civilian population aged 15 years and over into employed, unemployed or not in the labour force, as defined. The definitions conform closely to the international standard definitions adopted by the International Conferences of Labour Statisticians.
Labour force underutilisation rate	The sum of the number of persons unemployed and the number of persons in underemployment, expressed as a proportion of the labour force.
Long-term unemployed	The number of persons unemployed for 52 weeks or over.
Long-term unemployment ratio	The number of long-term unemployed persons, expressed as a percentage of the total unemployed population.
Market sector	The market sector is an industry grouping comprising the following industries: Agriculture, forestry and fishing; Mining; Manufacturing; Electricity, gas, water and waste services; Construction; Wholesale trade; Retail trade; Accommodation and food services; Transport, postal and warehousing; Information media and telecommunications; Finance and insurance services; Rental, hiring and real estate services; Professional, scientific and technical services; Administrative and support services; Arts and recreation services; and Other services. Refer to <i>Australian National Accounts: Concepts, Sources and Methods</i> (cat. no. 5216.0).
Non-market Sector	The non-market sector is an industry grouping comprising the following industries: Education and training; Public administration & safety; and Health care and social assistance. Refer to <i>Australian National Accounts: Concepts, Sources and Methods</i> (cat. no. 5216.0).
Not in labour force	Persons who were not in the categories employed or unemployed, as defined.
Participation rate	For any group, the labour force expressed as a percentage of the civilian population aged 15 years and over in the same group.
Part time workers	Employed persons who usually worked fewer than 35 hours a week (in all jobs) and either did so during the reference week or were not at work during the reference week.
Response rate	The number of fully responding dwellings expressed as a percentage of the total number of dwellings excluding sample loss. Examples of sample loss include: dwellings where all persons are out of scope and/or coverage; vacant dwellings; dwellings under construction; dwellings converted to non-dwellings; derelict dwellings; and demolished dwellings.
Seasonally adjusted series	A time series of estimates with the estimated effects of normal seasonal variation removed. See Explanatory Notes paragraphs 28 to 32 for more detail.
Stock estimates	Stock estimates are a measure of certain attributes at a point in time and can be thought of as <i>stocktakes</i> . For example, the total number of employed persons is an account of the number of people who were considered employed in the Labour Force Survey reference week.
Trend series	A smoothed seasonally adjusted series of estimates. See Explanatory Notes paragraphs 33 to 36 for more detail.
Underemployment rate	The number of underemployed workers expressed as a percentage of the labour force.
Underemployed workers	Employed persons aged 15 years and over who want, and are available for, more hours of work than they currently have. They comprise: <ul style="list-style-type: none">■ persons employed part time who want to work more hours and are available to start work with more hours, either in the reference week or in the four weeks subsequent to the survey; or■ persons employed full time who worked part time hours in the reference week for economic reasons (such as being stood down or insufficient work being available). It is assumed that these people wanted to work full time in the reference week and would have been available to do so.

GLOSSARY *continued*

Unemployed	Persons aged 15 years and over who were not employed during the reference week, and: <ul style="list-style-type: none">■ had actively looked for full time or part time work at any time in the four weeks up to the end of the reference week and were available for work in the reference week; or■ were waiting to start a new job within four weeks from the end of the reference week and could have started in the reference week if the job had been available then.
Unemployed looking for full time work	Unemployed persons who: <ul style="list-style-type: none">■ actively looked for full time work; or■ were waiting to start a new full time job.
Unemployed looking for part time work	Unemployed persons who: <ul style="list-style-type: none">■ actively looked for part time work only; or■ were waiting to start a new part time job.
Unemployment rate	For any group, the number of unemployed persons expressed as a percentage of the labour force in the same group.
Unemployment to population ratio	For any group, the number of unemployed persons expressed as a percentage of the civilian population in the same group.
Usual hours of work	Usual hours of work refers to a typical period rather than to a specified reference period. The concept of usual hours applies both to persons at work and to persons temporarily absent from work, and is defined as the hours worked during a typical week or day. Actual hours worked (for a specific reference period) may differ from usual hours worked due to illness, vacation, strike, overtime work, a change of job, or similar reasons.

FOR MORE INFORMATION . . .

INTERNET **www.abs.gov.au** the ABS website is the best place for data from our publications and information about the ABS.

INFORMATION AND REFERRAL SERVICE

Our consultants can help you access the full range of information published by the ABS that is available free of charge from our website. Information tailored to your needs can also be requested as a 'user pays' service. Specialists are on hand to help you with analytical or methodological advice.

PHONE 1300 135 070

EMAIL client.services@abs.gov.au

FAX 1300 135 211

POST Client Services, ABS, GPO Box 796, Sydney NSW 2001

FREE ACCESS TO STATISTICS

All statistics on the ABS website can be downloaded free of charge.

WEB ADDRESS www.abs.gov.au