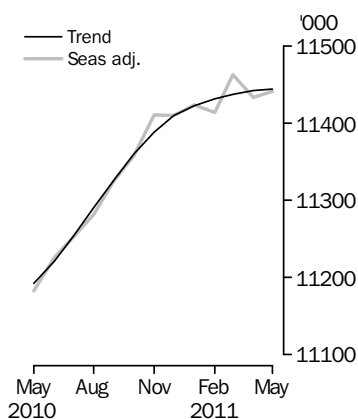


LABOUR FORCE

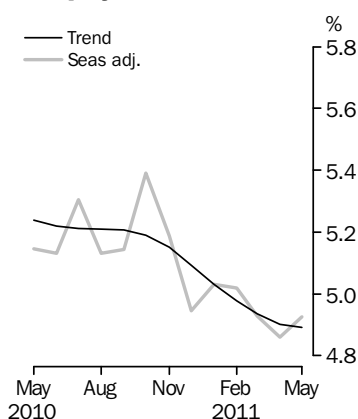
AUSTRALIA

EMBARGO: 11.30AM (CANBERRA TIME) THURS 9 JUN 2011

Employed Persons



Unemployment Rate



INQUIRIES

For further information about these and related statistics, contact the National Information and Referral Service on 1300 135 070, email client.services@abs.gov.au or Labour Force on Canberra (02) 6252 6525, email labourforce@abs.gov.au.

KEY FIGURES

	Apr 2011	May 2011	Apr 11 to May 11	May 10 to May 11
Trend				
Employed persons ('000)	11 442.4	11 444.2	1.8	2.3 %
Unemployed persons ('000)	589.8	588.4	-1.4	-4.9 %
Unemployment rate (%)	4.9	4.9	0.0 pts	-0.3 pts
Participation rate (%)	65.6	65.6	0.0 pts	0.2 pts
Seasonally Adjusted				
Employed persons ('000)	11 432.8	11 440.5	7.8	2.3 %
Unemployed persons ('000)	583.9	592.8	8.9	-2.3 %
Unemployment rate (%)	4.9	4.9	0.1 pts	-0.2 pts
Participation rate (%)	65.6	65.6	0.0 pts	0.3 pts

KEY POINTS

TREND ESTIMATES (MONTHLY CHANGE)

- Employment increased to 11,444,200.
- Unemployment decreased to 588,400.
- Unemployment rate steady at 4.9%.
- Participation rate steady at 65.6%.
- Aggregate monthly hours worked increased to 1,602.5 million hours.

SEASONALLY ADJUSTED ESTIMATES (MONTHLY CHANGE)

- Employment increased 7,800 (0.1%) to 11,440,500. Full-time employment decreased 22,000 to 8,027,100 and part-time employment increased 29,800 to 3,413,500.
- Unemployment increased 8,900 (1.5%) to 592,800. The number of persons looking for full-time work increased 6,700 to 421,800 and the number of persons looking for part-time work increased 2,200 to 171,100.
- The unemployment rate remained steady at 4.9%. The male unemployment rate decreased 0.2 pts to 4.5% and the female unemployment rate increased 0.4 pts to 5.4%.
- The participation rate remained steady at 65.6%.
- Aggregate monthly hours worked increased 6.4 million hours to 1,601.1 million hours.

LABOUR UNDERUTILISATION (QUARTERLY CHANGE)

- Trend estimates: The labour force underutilisation rate decreased 0.1 pts to 12.0%.
- Seasonally adjusted estimates: The labour force underutilisation rate increased 0.2 pts to 12.2%. The male labour force underutilisation rate increased 0.2 pts to 10.2%. The female labour force underutilisation rate increased 0.2 pts to 14.6%.

NOTES

FORTHCOMING ISSUES

<i>ISSUE</i>	<i>RELEASE DATE</i>
June 2011	7 July 2011
July 2011	11 August 2011
August 2011	8 September 2011
September 2011	13 October 2011
October 2011	10 November 2011
November 2011	8 December 2011

.....

ROUNDING

Estimates of monthly change shown on the front cover have been calculated using unrounded estimates, and may be different from, but are more accurate than, movements obtained from the rounded estimates. The graphs on the front cover also depict unrounded estimates.

SAMPLING ERROR

The estimates in this publication are based on a sample survey. Published estimates and the movements derived from them are subject to sampling variability. Standard errors give a measure of this variability (see pages 34 and 35). The interval bounded by two standard errors is the 95% confidence interval, which provides a way of looking at the variability inherent in estimates. There is a 95% chance that the true value of the estimate lies within that interval.

MOVEMENTS IN SEASONALLY ADJUSTED SERIES BETWEEN APRIL 2011 AND MAY 2011

.....

	<i>Monthly change</i>	<i>95% Confidence interval</i>	
	
Total Employment	7 800	-46 800	to 62 400
Total Unemployment	8 900	-22 100	to 39 900
Unemployment rate	0.1 pts	-0.1 pts	to 0.3 pts
Participation rate	0.0 pts	-0.4 pts	to 0.4 pts

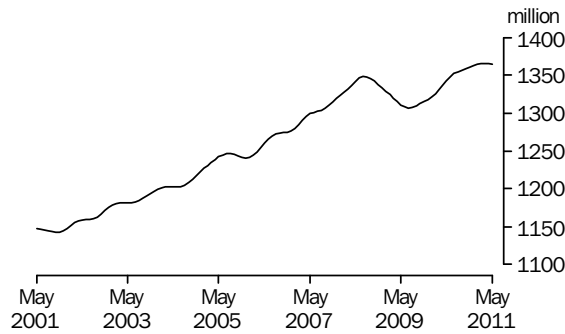
.....

Brian Pink
Australian Statistician

AGGREGATE MONTHLY HOURS WORKED TREND ESTIMATES

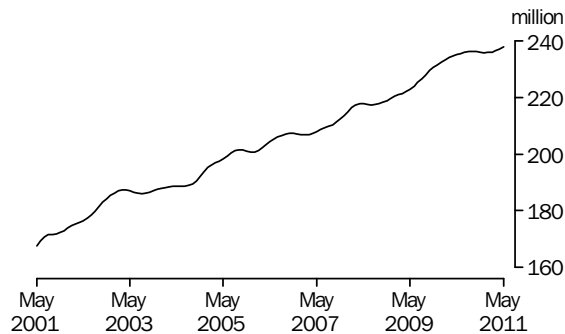
FULL TIME

The trend estimate of aggregate monthly hours worked by full time workers generally rose from 1,148 million hours in May 2001 to 1,348 million hours in July 2008. The trend then fell to 1,307 million hours in July 2009, before rising to 1,366 million hours in March 2011, and is at a similar level, 1,365 million hours, in May 2011.



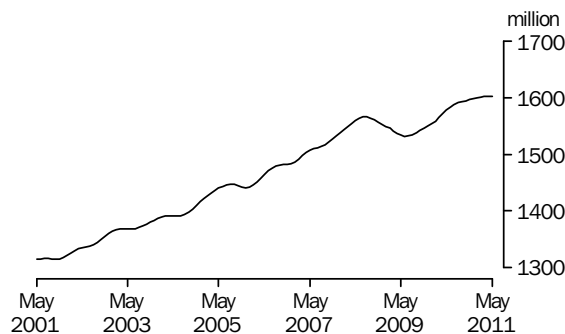
PART TIME

The trend estimate of aggregate monthly hours worked by part time workers generally rose from 168 million hours in May 2001 to 187 million hours in March 2003. The trend then fell to 186 million hours in August 2003 before generally rising to 238 million hours in May 2011.



TOTAL

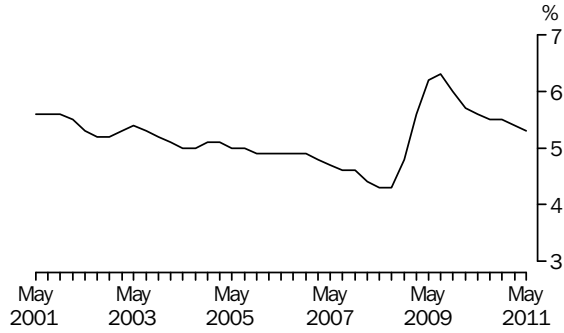
The trend total aggregate monthly hours worked followed a similar pattern to that of full time workers. It generally rose from 1,315 million hours in May 2001 to 1,565 million hours in July 2008 before falling to 1,532 million hours in June 2009. The trend has since risen to 1,602 million hours in May 2011.



UNDEREMPLOYMENT RATE TREND ESTIMATES

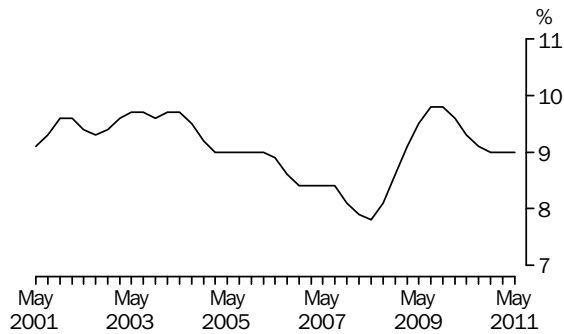
MALES

The trend estimate of the underemployment rate for males fell from 5.6% in May 2001 to 5.2% in August 2002 before rising to 5.4% in May 2003. The trend then generally fell to 4.3% in May 2008 before rising to 6.3% in August 2009. The trend has since fallen to 5.3% in May 2011.



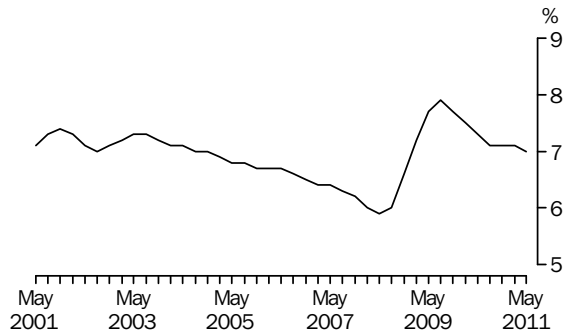
FEMALES

The trend estimate of the underemployment rate for females rose from 9.1% in May 2001 to 9.6% in February 2002. The trend then fell to 9.3% in August 2002 before rising to 9.7% in February 2004. The trend then fell to 7.8% in May 2008 before rising to 9.8% in November 2009. The trend has since fallen to 9.0% in May 2011.



PERSONS

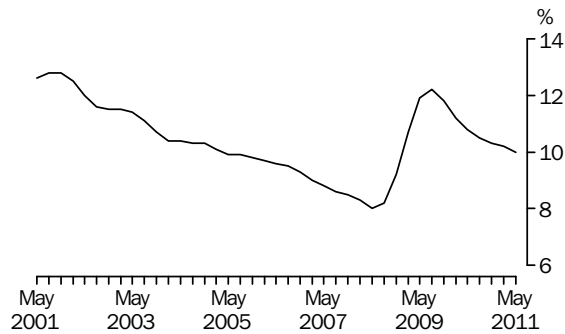
The trend estimate of the underemployment rate for persons rose from 7.1% in May 2001 to 7.4% in November 2001. The trend then fell to 7.0% in August 2002 before rising to 7.3% in May 2003. The trend then fell to 5.9% in May 2008 before rising to 7.9% in August 2009. The trend has since fallen to 7.0% in May 2011.



LABOUR FORCE UNDERUTILISATION RATE TREND ESTIMATES

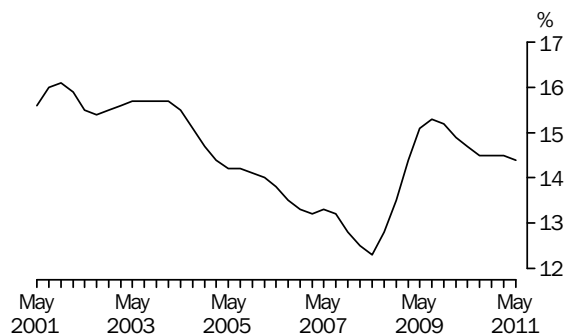
MALES

The trend estimate of the underutilisation rate for males has generally fallen from 12.8% in August 2001 to 8.0% in May 2008 before rising to 12.2% in August 2009. The trend has since fallen to 10.0% in May 2011.



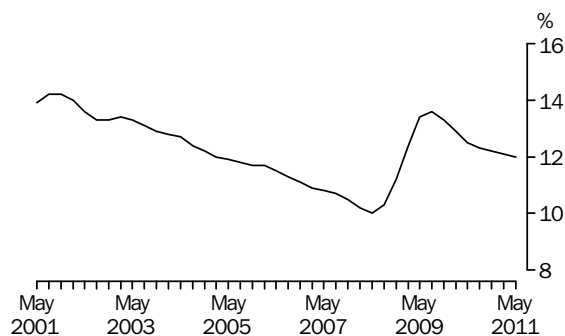
FEMALES

The trend estimate of the underutilisation rate for females rose from 15.6% in May 2001 to 16.1% in November 2001. The trend then fell to 15.4% in August 2002, before rising to 15.7% in February 2004. The trend then fell to 12.3% in May 2008 before rising to 15.3% in August 2009. The trend has since fallen to 14.4% in May 2011.



PERSONS

The trend estimate of the underutilisation rate for persons rose from 13.9% in May 2001 to 14.2% in November 2001. The trend then fell to 10.0% in May 2008 before rising to 13.6% in August 2009. The trend has since fallen to 12.0% in May 2011.



LABOUR FORCE STATUS (AGED 15 YEARS & OVER): Trend

	EMPLOYED			UNEMPLOYED		UNEMPLOYMENT RATE			Participation rate
	Full time	Part time	Total	Looking for f/t work	Total	Labour force	Looking for f/t work	Total	
	'000	'000	'000	'000	'000	'000	%	%	
MALES									
May 2008	5 051.5	901.0	5 952.5	186.0	240.5	6 193.1	3.6	3.9	72.7
May 2009	4 978.8	955.8	5 934.6	305.3	375.2	6 309.8	5.8	5.9	72.4
2010									
May	5 106.3	1 012.1	6 118.4	266.0	332.4	6 450.8	5.0	5.2	72.3
June	5 121.9	1 011.7	6 133.7	262.7	329.9	6 463.6	4.9	5.1	72.3
July	5 138.6	1 012.6	6 151.2	259.2	328.4	6 479.6	4.8	5.1	72.4
August	5 156.1	1 015.2	6 171.3	255.9	327.3	6 498.6	4.7	5.0	72.5
September	5 173.7	1 018.6	6 192.3	253.7	326.4	6 518.7	4.7	5.0	72.6
October	5 191.3	1 021.2	6 212.5	251.9	324.4	6 536.9	4.6	5.0	72.7
November	5 208.1	1 021.4	6 229.5	250.2	320.8	6 550.3	4.6	4.9	72.8
December	5 221.7	1 019.0	6 240.6	248.0	316.2	6 556.9	4.5	4.8	72.8
2011									
January	5 231.1	1 014.9	6 246.0	245.7	311.9	6 557.9	4.5	4.8	72.7
February	5 237.4	1 010.0	6 247.4	243.3	308.0	6 555.4	4.4	4.7	72.6
March	5 241.4	1 005.7	6 247.1	241.2	304.9	6 552.0	4.4	4.7	72.5
April	5 243.2	1 002.8	6 246.0	239.3	302.3	6 548.3	4.4	4.6	72.4
May	5 242.1	1 001.4	6 243.6	238.6	301.2	6 544.8	4.4	4.6	72.3
FEMALES									
May 2008	2 728.3	2 184.9	4 913.2	134.4	232.5	5 145.7	4.7	4.5	58.7
May 2009	2 742.3	2 251.7	4 993.9	184.9	289.5	5 283.5	6.3	5.5	59.0
2010									
May	2 746.2	2 327.4	5 073.6	176.7	286.3	5 359.9	6.0	5.3	58.6
June	2 757.7	2 329.3	5 087.0	176.6	287.9	5 374.9	6.0	5.4	58.6
July	2 769.2	2 333.1	5 102.3	177.6	290.3	5 392.6	6.0	5.4	58.7
August	2 780.0	2 338.7	5 118.6	179.7	293.2	5 411.8	6.1	5.4	58.8
September	2 789.1	2 345.0	5 134.1	181.8	295.7	5 429.8	6.1	5.4	58.9
October	2 797.4	2 350.2	5 147.7	183.2	297.6	5 445.3	6.1	5.5	59.0
November	2 805.2	2 353.9	5 159.1	182.9	297.8	5 456.9	6.1	5.5	59.1
December	2 811.2	2 357.4	5 168.6	181.1	295.9	5 464.5	6.1	5.4	59.1
2011									
January	2 814.8	2 361.8	5 176.6	179.0	293.3	5 469.9	6.0	5.4	59.1
February	2 817.1	2 366.5	5 183.7	177.3	290.7	5 474.4	5.9	5.3	59.1
March	2 818.3	2 372.1	5 190.4	176.5	288.8	5 479.2	5.9	5.3	59.1
April	2 818.1	2 378.3	5 196.4	176.5	287.5	5 483.9	5.9	5.2	59.0
May	2 815.8	2 384.9	5 200.6	177.4	287.2	5 487.9	5.9	5.2	59.0
PERSONS									
May 2008	7 779.8	3 085.9	10 865.7	320.5	473.0	11 338.7	4.0	4.2	65.6
May 2009	7 721.0	3 207.5	10 928.5	490.1	664.7	11 593.2	6.0	5.7	65.6
2010									
May	7 852.5	3 339.5	11 192.0	442.7	618.7	11 810.7	5.3	5.2	65.4
June	7 879.7	3 341.0	11 220.7	439.4	617.8	11 838.5	5.3	5.2	65.4
July	7 907.8	3 345.7	11 253.5	436.9	618.7	11 872.2	5.2	5.2	65.5
August	7 936.1	3 353.8	11 290.0	435.6	620.4	11 910.4	5.2	5.2	65.6
September	7 962.8	3 363.6	11 326.4	435.5	622.1	11 948.5	5.2	5.2	65.7
October	7 988.7	3 371.5	11 360.2	435.1	622.0	11 982.2	5.2	5.2	65.8
November	8 013.3	3 375.3	11 388.6	433.1	618.6	12 007.2	5.1	5.2	65.8
December	8 032.9	3 376.4	11 409.3	429.2	612.2	12 021.4	5.1	5.1	65.9
2011									
January	8 045.9	3 376.6	11 422.6	424.7	605.2	12 027.7	5.0	5.0	65.8
February	8 054.5	3 376.6	11 431.1	420.6	598.7	12 029.8	5.0	5.0	65.8
March	8 059.6	3 377.9	11 437.5	417.7	593.7	12 031.3	4.9	4.9	65.7
April	8 061.3	3 381.0	11 442.4	415.8	589.8	12 032.2	4.9	4.9	65.6
May	8 057.9	3 386.3	11 444.2	416.0	588.4	12 032.6	4.9	4.9	65.6

LABOUR FORCE STATUS (AGED 15 YEARS & OVER): **Seasonally Adjusted**

	EMPLOYED			UNEMPLOYED		Labour force	UNEMPLOYMENT RATE		Participation rate
	Full time	Part time	Total	Looking for f/t work	Total		Looking for f/t work	Total	
	'000	'000	'000	'000	'000		%	%	
MALES									
May 2008	5 028.0	911.5	5 939.5	187.4	244.6	6 184.1	3.6	4.0	72.6
May 2009	4 972.6	959.2	5 931.8	310.6	380.3	6 312.2	5.9	6.0	72.4
2010									
May	5 114.1	997.6	6 111.7	268.1	325.1	6 436.8	5.0	5.1	72.2
June	5 117.7	1 016.4	6 134.1	256.2	324.4	6 458.5	4.8	5.0	72.3
July	5 130.7	1 017.9	6 148.7	264.6	335.5	6 484.2	4.9	5.2	72.5
August	5 145.8	1 024.8	6 170.6	250.9	317.9	6 488.5	4.6	4.9	72.4
September	5 188.7	998.5	6 187.2	246.3	326.1	6 513.3	4.5	5.0	72.5
October	5 187.3	1 021.0	6 208.3	265.7	341.4	6 549.7	4.9	5.2	72.9
November	5 214.0	1 029.2	6 243.2	250.3	318.8	6 562.0	4.6	4.9	72.9
December	5 223.7	1 020.7	6 244.4	239.1	306.5	6 550.9	4.4	4.7	72.7
2011									
January	5 211.7	1 037.4	6 249.1	247.9	308.4	6 557.5	4.5	4.7	72.7
February	5 251.0	989.0	6 240.0	248.0	316.8	6 556.7	4.5	4.8	72.7
March	5 263.2	996.7	6 259.9	237.5	299.0	6 559.0	4.3	4.6	72.6
April	5 233.5	998.6	6 232.1	240.2	308.0	6 540.1	4.4	4.7	72.3
May	5 226.9	1 017.8	6 244.7	237.6	296.7	6 541.3	4.3	4.5	72.3
FEMALES									
May 2008	2 721.9	2 179.4	4 901.3	130.7	237.9	5 139.2	4.6	4.6	58.6
May 2009	2 755.6	2 248.3	5 003.9	186.1	288.0	5 291.9	6.3	5.4	59.1
2010									
May	2 757.0	2 313.6	5 070.6	173.5	281.7	5 352.3	5.9	5.3	58.5
June	2 767.2	2 323.9	5 091.0	173.9	282.7	5 373.7	5.9	5.3	58.6
July	2 745.4	2 357.5	5 102.9	181.0	294.8	5 397.7	6.2	5.5	58.8
August	2 784.9	2 325.7	5 110.6	177.5	292.4	5 403.0	6.0	5.4	58.7
September	2 799.1	2 338.7	5 137.8	176.2	287.9	5 425.7	5.9	5.3	58.9
October	2 789.3	2 360.6	5 149.9	189.5	305.9	5 455.7	6.4	5.6	59.1
November	2 817.0	2 350.5	5 167.4	186.0	305.4	5 472.8	6.2	5.6	59.2
December	2 807.1	2 358.1	5 165.2	184.4	287.2	5 452.4	6.2	5.3	59.0
2011									
January	2 805.7	2 368.9	5 174.5	176.6	296.9	5 471.4	5.9	5.4	59.1
February	2 813.1	2 360.7	5 173.9	169.7	286.3	5 460.2	5.7	5.2	58.9
March	2 843.1	2 359.2	5 202.3	178.2	295.0	5 497.3	5.9	5.4	59.2
April	2 815.6	2 385.1	5 200.7	174.8	275.9	5 476.6	5.8	5.0	59.0
May	2 800.2	2 395.7	5 195.9	184.1	296.2	5 492.0	6.2	5.4	59.1
PERSONS									
May 2008	7 749.9	3 090.8	10 840.7	318.1	482.5	11 323.2	3.9	4.3	65.5
May 2009	7 728.2	3 207.5	10 935.7	496.7	668.3	11 604.0	6.0	5.8	65.6
2010									
May	7 871.1	3 311.2	11 182.3	441.7	606.8	11 789.1	5.3	5.1	65.2
June	7 884.9	3 340.3	11 225.2	430.1	607.1	11 832.2	5.2	5.1	65.4
July	7 876.1	3 375.4	11 251.6	445.6	630.4	11 881.9	5.4	5.3	65.5
August	7 930.7	3 350.5	11 281.2	428.4	610.3	11 891.5	5.1	5.1	65.5
September	7 987.8	3 337.2	11 325.1	422.6	614.0	11 939.1	5.0	5.1	65.6
October	7 976.6	3 381.6	11 358.2	455.2	647.2	12 005.4	5.4	5.4	65.9
November	8 031.0	3 379.7	11 410.7	436.4	624.2	12 034.8	5.2	5.2	66.0
December	8 030.8	3 378.8	11 409.6	423.5	593.7	12 003.3	5.0	4.9	65.8
2011									
January	8 017.4	3 406.3	11 423.7	424.5	605.3	12 029.0	5.0	5.0	65.8
February	8 064.1	3 349.7	11 413.8	417.8	603.1	12 016.9	4.9	5.0	65.7
March	8 106.3	3 355.9	11 462.2	415.7	594.0	12 056.2	4.9	4.9	65.8
April	8 049.1	3 383.7	11 432.8	415.0	583.9	12 016.7	4.9	4.9	65.6
May	8 027.1	3 413.5	11 440.5	421.8	592.8	12 033.3	5.0	4.9	65.6

LABOUR FORCE STATUS (AGED 15 YEARS & OVER): Original

	EMPLOYED			UNEMPLOYED			UNEMPLOYMENT RATE			Participation rate	
	Full time	Part time	Total	Looking for f/t work	Total	Labour force	Not in labour force	Civilian population aged 15 years and over	Looking for f/t work		Total
	'000	'000	'000	'000	'000	'000	'000	'000	%		%
MALES											
May 2008	5 006.8	922.3	5 929.1	194.2	251.6	6 180.7	2 333.7	8 514.4	3.7	4.1	72.6
May 2009	4 949.5	971.8	5 921.3	324.6	394.1	6 315.4	2 400.6	8 716.0	6.2	6.2	72.5
2010											
May	5 087.0	1 011.7	6 098.8	281.6	338.3	6 437.0	2 480.3	8 917.3	5.2	5.3	72.2
June	5 080.3	1 049.0	6 129.3	260.5	321.1	6 450.4	2 481.9	8 932.4	4.9	5.0	72.2
July	5 138.1	1 018.4	6 156.5	249.0	310.3	6 466.8	2 481.5	8 948.2	4.6	4.8	72.3
August	5 109.1	1 018.7	6 127.8	233.8	296.4	6 424.2	2 540.1	8 964.3	4.4	4.6	71.7
September	5 239.4	985.1	6 224.5	239.3	325.8	6 550.3	2 429.8	8 980.2	4.4	5.0	72.9
October	5 176.6	1 042.3	6 218.9	247.5	321.1	6 540.0	2 449.0	8 989.0	4.6	4.9	72.8
November	5 217.8	1 008.2	6 226.0	232.8	292.6	6 518.6	2 479.3	8 997.9	4.3	4.5	72.4
December	5 295.1	1 026.8	6 321.9	225.2	294.8	6 616.7	2 390.1	9 006.8	4.1	4.5	73.5
2011											
January	5 202.2	1 012.7	6 214.9	273.3	337.1	6 552.0	2 463.7	9 015.7	5.0	5.1	72.7
February	5 282.4	953.4	6 235.9	274.7	351.9	6 587.7	2 437.0	9 024.7	4.9	5.3	73.0
March	5 238.4	1 011.7	6 250.1	246.7	316.7	6 566.8	2 466.9	9 033.6	4.5	4.8	72.7
April	5 214.2	1 008.7	6 222.9	247.6	317.8	6 540.7	2 502.4	9 043.1	4.5	4.9	72.3
May	5 197.2	1 032.2	6 229.4	251.0	309.5	6 538.9	2 513.8	9 052.7	4.6	4.7	72.2
FEMALES											
May 2008	2 704.7	2 199.9	4 904.6	128.9	235.2	5 139.8	3 629.2	8 769.0	4.5	4.6	58.6
May 2009	2 741.9	2 264.1	5 006.1	183.5	284.7	5 290.8	3 670.1	8 960.8	6.3	5.4	59.0
2010											
May	2 744.9	2 326.7	5 071.6	171.7	279.6	5 351.3	3 802.0	9 153.3	5.9	5.2	58.5
June	2 739.1	2 360.5	5 099.6	170.7	273.8	5 373.4	3 793.9	9 167.4	5.9	5.1	58.6
July	2 751.0	2 352.3	5 103.4	173.3	276.6	5 380.0	3 803.2	9 183.2	5.9	5.1	58.6
August	2 751.1	2 329.4	5 080.5	164.0	279.0	5 359.5	3 839.6	9 199.1	5.6	5.2	58.3
September	2 859.0	2 321.8	5 180.8	171.0	284.2	5 465.0	3 750.0	9 215.0	5.6	5.2	59.3
October	2 759.1	2 402.8	5 161.9	176.3	285.4	5 447.3	3 778.6	9 225.9	6.0	5.2	59.0
November	2 833.3	2 336.0	5 169.4	175.6	282.6	5 451.9	3 785.1	9 237.0	5.8	5.2	59.0
December	2 863.5	2 369.8	5 233.3	181.8	282.9	5 516.2	3 731.7	9 247.9	6.0	5.1	59.6
2011											
January	2 805.4	2 289.5	5 094.9	197.3	312.0	5 406.9	3 851.2	9 258.0	6.6	5.8	58.4
February	2 821.6	2 331.1	5 152.7	191.5	328.8	5 481.5	3 786.6	9 268.2	6.4	6.0	59.1
March	2 823.1	2 378.6	5 201.7	187.8	320.5	5 522.3	3 756.0	9 278.2	6.2	5.8	59.5
April	2 788.1	2 404.4	5 192.5	177.4	283.3	5 475.8	3 812.5	9 288.4	6.0	5.2	59.0
May	2 788.3	2 408.1	5 196.4	182.5	294.6	5 491.1	3 807.6	9 298.6	6.1	5.4	59.1
PERSONS											
May 2008	7 711.5	3 122.2	10 833.8	323.1	486.7	11 320.5	5 962.9	17 283.4	4.0	4.3	65.5
May 2009	7 691.4	3 235.9	10 927.3	508.1	678.8	11 606.2	6 070.7	17 676.8	6.2	5.8	65.7
2010											
May	7 831.9	3 338.5	11 170.4	453.4	617.9	11 788.3	6 282.3	18 070.6	5.5	5.2	65.2
June	7 819.5	3 409.5	11 228.9	431.2	594.9	11 823.9	6 275.8	18 099.7	5.2	5.0	65.3
July	7 889.1	3 370.7	11 259.8	422.4	586.9	11 846.8	6 284.6	18 131.4	5.1	5.0	65.3
August	7 860.2	3 348.1	11 208.3	397.8	575.4	11 783.7	6 379.7	18 163.4	4.8	4.9	64.9
September	8 098.5	3 306.9	11 405.4	410.3	610.0	12 015.3	6 179.8	18 195.1	4.8	5.1	66.0
October	7 935.7	3 445.0	11 380.7	423.7	606.5	11 987.3	6 227.6	18 214.9	5.1	5.1	65.8
November	8 051.1	3 344.2	11 395.4	408.4	575.2	11 970.5	6 264.4	18 235.0	4.8	4.8	65.6
December	8 158.6	3 396.6	11 555.2	407.0	577.7	12 132.9	6 121.9	18 254.7	4.8	4.8	66.5
2011											
January	8 007.6	3 302.2	11 309.7	470.6	649.1	11 958.8	6 314.9	18 273.7	5.6	5.4	65.4
February	8 104.0	3 284.5	11 388.6	466.2	680.7	12 069.3	6 223.6	18 292.9	5.4	5.6	66.0
March	8 061.5	3 390.3	11 451.9	434.5	637.2	12 089.0	6 222.8	18 311.8	5.1	5.3	66.0
April	8 002.3	3 413.1	11 415.4	425.0	601.1	12 016.6	6 314.9	18 331.5	5.0	5.0	65.6
May	7 985.5	3 440.3	11 425.8	433.5	604.2	12 030.0	6 321.4	18 351.3	5.1	5.0	65.6

LABOUR FORCE STATUS (AGED 15 YEARS & OVER)—New South Wales

	TREND					SEASONALLY ADJUSTED					Civilian population aged 15 years and over
	Employed full time	Total employed	Total unemployed	Unemployment rate	Participation rate	Employed full time	Total employed	Total unemployed	Unemployment rate	Participation rate	
	'000	'000	'000	%	%	'000	'000	'000	%	%	
MALES											
May 2008	1 611.5	1 898.7	87.9	4.4	71.6	1 606.3	1 900.1	90.7	4.6	71.8	2 773.6
May 2009	1 563.9	1 873.9	128.9	6.4	70.8	1 568.1	1 872.4	135.3	6.7	71.0	2 826.8
2010											
May	1 601.5	1 921.6	108.8	5.4	70.5	1 603.4	1 916.4	106.1	5.2	70.2	2 880.2
June	1 604.3	1 926.9	108.3	5.3	70.6	1 600.7	1 924.4	108.9	5.4	70.5	2 884.0
July	1 609.3	1 934.2	107.7	5.3	70.7	1 600.0	1 931.7	112.6	5.5	70.8	2 888.4
August	1 616.8	1 943.3	105.9	5.2	70.8	1 617.9	1 946.1	98.7	4.8	70.7	2 892.9
September	1 626.1	1 953.2	103.0	5.0	71.0	1 628.6	1 952.3	104.3	5.1	71.0	2 897.3
October	1 635.4	1 962.7	99.5	4.8	71.1	1 633.4	1 959.8	108.7	5.3	71.3	2 900.5
November	1 643.0	1 970.3	96.1	4.6	71.2	1 651.0	1 976.5	96.7	4.7	71.4	2 903.7
December	1 647.3	1 974.5	93.5	4.5	71.1	1 645.6	1 973.5	80.9	3.9	70.7	2 906.9
2011											
January	1 648.3	1 975.6	92.2	4.5	71.1	1 650.0	1 978.9	91.7	4.4	71.2	2 909.5
February	1 647.5	1 974.8	91.6	4.4	71.0	1 647.6	1 977.4	96.3	4.6	71.2	2 912.1
March	1 646.1	1 973.0	91.4	4.4	70.8	1 646.3	1 975.0	92.5	4.5	70.9	2 914.7
April	1 644.3	1 971.0	91.3	4.4	70.7	1 644.7	1 960.1	94.2	4.6	70.4	2 917.3
May	1 641.9	1 968.5	91.7	4.5	70.6	1 637.7	1 971.4	87.5	4.2	70.5	2 919.8
FEMALES											
May 2008	895.8	1 563.2	78.3	4.8	57.0	894.4	1 556.2	80.9	4.9	56.8	2 879.8
May 2009	889.4	1 577.5	106.5	6.3	57.4	896.2	1 583.2	102.6	6.1	57.5	2 932.9
2010											
May	871.5	1 584.7	90.5	5.4	56.1	872.8	1 584.5	87.5	5.2	56.0	2 987.2
June	880.7	1 590.1	90.2	5.4	56.2	879.4	1 587.6	86.6	5.2	56.0	2 991.2
July	889.6	1 597.2	90.2	5.3	56.3	883.2	1 598.1	93.6	5.5	56.5	2 995.7
August	897.1	1 605.0	91.1	5.4	56.5	897.3	1 605.1	88.5	5.2	56.4	3 000.2
September	901.7	1 612.9	92.1	5.4	56.8	914.0	1 610.2	89.5	5.3	56.6	3 004.8
October	904.2	1 621.1	93.0	5.4	57.0	901.1	1 626.0	96.7	5.6	57.3	3 008.2
November	904.6	1 628.7	93.5	5.4	57.2	905.1	1 627.2	96.7	5.6	57.2	3 011.7
December	903.0	1 634.2	93.5	5.4	57.3	903.7	1 634.7	93.2	5.4	57.3	3 015.1
2011											
January	900.7	1 637.1	93.8	5.4	57.4	893.1	1 629.3	92.8	5.4	57.1	3 017.9
February	898.4	1 637.8	94.3	5.4	57.3	896.2	1 652.8	85.9	4.9	57.6	3 020.8
March	896.2	1 636.8	95.3	5.5	57.3	910.8	1 646.0	101.8	5.8	57.8	3 023.7
April	894.0	1 634.9	96.4	5.6	57.2	889.3	1 617.1	97.6	5.7	56.7	3 026.4
May	891.3	1 632.6	97.6	5.6	57.1	885.0	1 631.4	97.8	5.7	57.1	3 029.2
PERSONS											
May 2008	2 507.2	3 461.8	166.2	4.6	64.2	2 500.7	3 456.2	171.6	4.7	64.2	5 653.4
May 2009	2 453.3	3 451.3	235.4	6.4	64.0	2 464.3	3 455.6	237.9	6.4	64.1	5 759.7
2010											
May	2 473.0	3 506.3	199.3	5.4	63.2	2 476.2	3 500.9	193.6	5.2	63.0	5 867.4
June	2 484.9	3 517.0	198.5	5.3	63.2	2 480.1	3 512.0	195.6	5.3	63.1	5 875.2
July	2 498.9	3 531.4	197.9	5.3	63.4	2 483.2	3 529.8	206.1	5.5	63.5	5 884.1
August	2 513.9	3 548.3	196.9	5.3	63.6	2 515.2	3 551.3	187.2	5.0	63.4	5 893.1
September	2 527.8	3 566.1	195.1	5.2	63.7	2 542.6	3 562.5	193.8	5.2	63.6	5 902.1
October	2 539.6	3 583.8	192.5	5.1	63.9	2 534.6	3 585.8	205.4	5.4	64.2	5 908.7
November	2 547.5	3 599.0	189.6	5.0	64.0	2 556.1	3 603.7	193.3	5.1	64.2	5 915.4
December	2 550.3	3 608.8	187.1	4.9	64.1	2 549.2	3 608.2	174.2	4.6	63.9	5 922.0
2011											
January	2 548.9	3 612.8	186.0	4.9	64.1	2 543.1	3 608.2	184.5	4.9	64.0	5 927.4
February	2 545.9	3 612.6	185.9	4.9	64.0	2 543.9	3 630.3	182.2	4.8	64.3	5 932.9
March	2 542.3	3 609.9	186.7	4.9	63.9	2 557.1	3 621.0	194.3	5.1	64.2	5 938.4
April	2 538.3	3 605.9	187.7	4.9	63.8	2 534.0	3 577.2	191.8	5.1	63.4	5 943.7
May	2 533.2	3 601.2	189.3	5.0	63.7	2 522.7	3 602.8	185.3	4.9	63.7	5 949.1

LABOUR FORCE STATUS (AGED 15 YEARS & OVER)—Victoria

	TREND					SEASONALLY ADJUSTED					Civilian population aged 15 years and over '000
	Employed full time	Total employed	Total unemployed	Unemployment rate	Participation rate	Employed full time	Total employed	Total unemployed	Unemployment rate	Participation rate	
	'000	'000	'000	%	%	'000	'000	'000	%	%	
MALES											
May 2008	1 235.8	1 479.5	62.1	4.0	72.7	1 237.5	1 486.5	58.8	3.8	72.9	2 120.5
May 2009	1 211.9	1 468.0	97.8	6.2	72.0	1 200.3	1 468.5	97.5	6.2	72.0	2 174.0
2010											
May	1 253.9	1 526.4	88.6	5.5	72.5	1 258.7	1 525.9	90.1	5.6	72.5	2 228.1
June	1 259.2	1 531.3	88.4	5.5	72.5	1 258.9	1 528.8	83.8	5.2	72.2	2 232.2
July	1 265.7	1 538.7	87.8	5.4	72.7	1 255.4	1 536.2	88.6	5.5	72.6	2 236.7
August	1 273.4	1 548.2	86.8	5.3	73.0	1 272.8	1 549.9	86.4	5.3	73.0	2 241.1
September	1 281.7	1 558.2	86.0	5.2	73.2	1 284.9	1 556.8	86.5	5.3	73.2	2 245.6
October	1 290.5	1 567.9	84.8	5.1	73.5	1 294.8	1 568.7	87.6	5.3	73.7	2 248.0
November	1 299.2	1 575.9	82.9	5.0	73.7	1 300.7	1 580.8	82.2	4.9	73.9	2 250.5
December	1 306.1	1 580.9	80.7	4.9	73.7	1 303.5	1 577.2	77.8	4.7	73.5	2 253.0
2011											
January	1 311.0	1 583.1	78.5	4.7	73.7	1 302.5	1 589.4	78.8	4.7	74.0	2 255.3
February	1 314.3	1 583.4	76.7	4.6	73.5	1 323.7	1 582.4	82.3	4.9	73.7	2 257.6
March	1 316.5	1 583.0	75.4	4.5	73.4	1 327.1	1 586.6	66.9	4.0	73.2	2 259.9
April	1 317.6	1 582.2	74.4	4.5	73.2	1 310.0	1 573.7	76.5	4.6	72.9	2 262.5
May	1 317.6	1 581.0	74.0	4.5	73.1	1 311.6	1 582.7	75.9	4.6	73.2	2 265.0
FEMALES											
May 2008	645.9	1 211.4	62.7	4.9	58.0	645.4	1 208.3	61.9	4.9	57.8	2 198.3
May 2009	654.7	1 225.9	72.6	5.6	57.7	661.1	1 227.6	72.4	5.6	57.8	2 248.6
2010											
May	676.4	1 272.3	72.1	5.4	58.4	676.5	1 276.1	71.3	5.3	58.6	2 300.9
June	677.5	1 275.9	73.6	5.5	58.5	678.1	1 274.3	75.8	5.6	58.6	2 304.7
July	678.4	1 278.7	75.3	5.6	58.6	673.6	1 277.4	75.2	5.6	58.6	2 309.0
August	679.2	1 280.4	76.6	5.6	58.7	681.2	1 282.8	79.2	5.8	58.9	2 313.3
September	680.2	1 281.7	77.1	5.7	58.6	685.9	1 284.3	71.9	5.3	58.5	2 317.7
October	681.7	1 283.2	76.8	5.6	58.6	678.5	1 279.3	78.8	5.8	58.5	2 320.6
November	683.7	1 285.2	75.5	5.6	58.6	680.7	1 285.7	81.4	6.0	58.8	2 323.5
December	686.2	1 287.8	73.7	5.4	58.5	685.2	1 284.9	68.5	5.1	58.2	2 326.4
2011											
January	689.0	1 290.8	71.8	5.3	58.5	689.6	1 292.1	74.3	5.4	58.7	2 329.2
February	691.7	1 294.0	70.5	5.2	58.5	695.2	1 296.1	69.1	5.1	58.5	2 332.0
March	694.1	1 297.0	69.8	5.1	58.5	694.3	1 297.1	68.5	5.0	58.5	2 334.8
April	695.9	1 299.6	69.8	5.1	58.6	695.6	1 298.5	64.0	4.7	58.3	2 337.7
May	696.9	1 301.5	70.4	5.1	58.6	695.2	1 302.6	79.2	5.7	59.0	2 340.6
PERSONS											
May 2008	1 881.7	2 690.8	124.8	4.4	65.2	1 882.9	2 694.8	120.7	4.3	65.2	4 318.9
May 2009	1 866.6	2 693.9	170.3	5.9	64.8	1 861.4	2 696.1	169.9	5.9	64.8	4 422.6
2010											
May	1 930.3	2 798.6	160.7	5.4	65.3	1 935.3	2 801.9	161.4	5.4	65.4	4 529.0
June	1 936.7	2 807.2	162.0	5.5	65.4	1 937.1	2 803.1	159.6	5.4	65.3	4 536.9
July	1 944.2	2 817.4	163.1	5.5	65.6	1 929.0	2 813.6	163.8	5.5	65.5	4 545.7
August	1 952.6	2 828.6	163.4	5.5	65.7	1 954.0	2 832.7	165.5	5.5	65.8	4 554.4
September	1 961.8	2 839.9	163.1	5.4	65.8	1 970.8	2 841.1	158.4	5.3	65.7	4 563.2
October	1 972.2	2 851.1	161.6	5.4	65.9	1 973.3	2 847.9	166.4	5.5	66.0	4 568.6
November	1 982.9	2 861.1	158.5	5.2	66.0	1 981.4	2 866.5	163.5	5.4	66.2	4 574.0
December	1 992.4	2 868.7	154.3	5.1	66.0	1 988.6	2 862.1	146.3	4.9	65.7	4 579.4
2011											
January	1 999.9	2 873.9	150.3	5.0	66.0	1 992.1	2 881.5	153.2	5.0	66.2	4 584.6
February	2 006.0	2 877.5	147.2	4.9	65.9	2 018.9	2 878.5	151.4	5.0	66.0	4 589.6
March	2 010.6	2 880.1	145.2	4.8	65.8	2 021.4	2 883.6	135.4	4.5	65.7	4 594.8
April	2 013.5	2 881.8	144.2	4.8	65.8	2 005.5	2 872.3	140.5	4.7	65.5	4 600.2
May	2 014.6	2 882.5	144.4	4.8	65.8	2 006.8	2 885.2	155.2	5.1	66.0	4 605.6

	TREND					SEASONALLY ADJUSTED					Civilian population aged 15 years and over '000
	Employed full time	Total employed	Total unemp-loyed	Unemp-loyment rate	Partici-pation rate	Employed full time	Total employed	Total unemp-loyed	Unemp-loyment rate	Partici-pation rate	
	'000	'000	'000	%	%	'000	'000	'000	%	%	
MALES											
May 2008	1 030.6	1 202.1	40.8	3.3	73.5	1 023.2	1 199.3	42.3	3.4	73.4	1 691.4
May 2009	1 042.3	1 216.1	74.5	5.8	74.2	1 042.3	1 215.5	76.5	5.9	74.3	1 738.7
2010											
May	1 061.9	1 252.9	69.7	5.3	74.1	1 064.2	1 260.4	69.4	5.2	74.5	1 784.9
June	1 063.9	1 255.3	68.8	5.2	74.0	1 066.2	1 262.9	68.3	5.1	74.4	1 788.6
July	1 064.6	1 255.9	68.3	5.2	73.9	1 069.7	1 256.2	69.3	5.2	74.0	1 792.1
August	1 064.5	1 255.9	68.5	5.2	73.8	1 051.1	1 243.2	68.3	5.2	73.0	1 795.6
September	1 064.3	1 256.3	69.3	5.2	73.7	1 070.1	1 255.1	66.9	5.1	73.5	1 799.0
October	1 064.1	1 257.4	70.5	5.3	73.8	1 063.6	1 258.3	71.5	5.4	73.9	1 800.6
November	1 064.2	1 258.4	71.6	5.4	73.8	1 063.5	1 260.3	70.4	5.3	73.8	1 802.1
December	1 064.6	1 258.7	72.3	5.4	73.8	1 072.5	1 267.9	75.8	5.6	74.5	1 803.6
2011											
January	1 065.0	1 257.9	72.4	5.4	73.7	1 053.5	1 256.6	72.9	5.5	73.6	1 805.6
February	1 065.3	1 256.5	71.9	5.4	73.5	1 068.3	1 249.4	70.6	5.3	73.0	1 807.7
March	1 065.8	1 255.8	71.1	5.4	73.3	1 067.8	1 252.6	71.3	5.4	73.2	1 809.6
April	1 066.4	1 255.7	70.4	5.3	73.2	1 067.6	1 258.0	69.6	5.2	73.3	1 811.7
May	1 066.8	1 256.1	69.8	5.3	73.1	1 065.5	1 260.9	69.7	5.2	73.4	1 813.9
FEMALES											
May 2008	571.8	1 015.4	45.0	4.2	61.3	569.6	1 019.6	45.5	4.3	61.6	1 728.7
May 2009	581.1	1 036.3	52.2	4.8	61.3	577.0	1 038.2	51.9	4.8	61.4	1 775.1
2010											
May	583.6	1 053.4	63.9	5.7	61.4	598.1	1 053.5	66.0	5.9	61.5	1 820.3
June	583.8	1 054.7	64.4	5.8	61.3	589.2	1 056.6	62.4	5.6	61.4	1 823.9
July	583.7	1 057.0	64.6	5.8	61.4	570.5	1 055.1	66.5	5.9	61.4	1 827.5
August	584.3	1 060.5	64.8	5.8	61.5	585.7	1 055.0	62.5	5.6	61.0	1 831.3
September	586.0	1 064.9	65.3	5.8	61.6	586.0	1 062.9	64.4	5.7	61.4	1 834.9
October	588.7	1 068.7	66.2	5.8	61.8	582.2	1 075.0	66.1	5.8	62.1	1 837.2
November	592.5	1 071.1	67.0	5.9	61.9	603.1	1 074.3	66.4	5.8	62.0	1 839.5
December	595.8	1 072.2	67.1	5.9	61.9	591.9	1 072.2	71.5	6.3	62.1	1 841.9
2011											
January	597.7	1 072.5	66.3	5.8	61.7	603.8	1 077.2	64.0	5.6	61.9	1 844.2
February	598.7	1 072.7	64.8	5.7	61.6	589.9	1 060.9	66.1	5.9	61.0	1 846.6
March	599.4	1 073.7	63.0	5.5	61.5	604.9	1 070.9	63.5	5.6	61.4	1 848.9
April	599.9	1 075.1	61.3	5.4	61.4	599.8	1 084.8	59.2	5.2	61.8	1 851.2
May	599.4	1 076.9	59.7	5.3	61.3	598.3	1 077.0	59.0	5.2	61.3	1 853.6
PERSONS											
May 2008	1 602.5	2 217.5	85.8	3.7	67.3	1 592.9	2 219.0	87.8	3.8	67.4	3 420.1
May 2009	1 623.3	2 252.4	126.6	5.3	67.7	1 619.3	2 253.6	128.4	5.4	67.8	3 513.8
2010											
May	1 645.5	2 306.3	133.6	5.5	67.7	1 662.2	2 313.8	135.4	5.5	67.9	3 605.2
June	1 647.7	2 310.0	133.2	5.5	67.6	1 655.4	2 319.5	130.7	5.3	67.8	3 612.5
July	1 648.3	2 312.8	132.8	5.4	67.6	1 640.2	2 311.4	135.8	5.5	67.6	3 619.6
August	1 648.9	2 316.4	133.3	5.4	67.5	1 636.9	2 298.2	130.9	5.4	67.0	3 626.8
September	1 650.2	2 321.2	134.7	5.5	67.6	1 656.1	2 318.0	131.3	5.4	67.4	3 633.9
October	1 652.8	2 326.0	136.7	5.5	67.7	1 645.8	2 333.3	137.6	5.6	67.9	3 637.8
November	1 656.7	2 329.5	138.6	5.6	67.8	1 666.6	2 334.6	136.8	5.5	67.9	3 641.7
December	1 660.4	2 330.9	139.4	5.6	67.8	1 664.4	2 340.1	147.4	5.9	68.2	3 645.5
2011											
January	1 662.7	2 330.4	138.6	5.6	67.6	1 657.3	2 333.8	136.9	5.5	67.7	3 649.8
February	1 664.0	2 329.2	136.7	5.5	67.5	1 658.2	2 310.2	136.6	5.6	67.0	3 654.2
March	1 665.1	2 329.5	134.1	5.4	67.3	1 672.7	2 323.5	134.8	5.5	67.2	3 658.5
April	1 666.3	2 330.9	131.6	5.3	67.2	1 667.4	2 342.8	128.7	5.2	67.5	3 662.9
May	1 666.2	2 332.9	129.4	5.3	67.2	1 663.8	2 338.0	128.7	5.2	67.3	3 667.5

LABOUR FORCE STATUS (AGED 15 YEARS & OVER)—South Australia

	TREND					SEASONALLY ADJUSTED					Civilian population aged 15 years and over
	Employed full time	Total employed	Total unemp-loyed	Unemp-loyment rate	Partici-pation rate	Employed full time	Total employed	Total unemp-loyed	Unemp-loyment rate	Partici-pation rate	
	'000	'000	'000	%	%	'000	'000	'000	%	%	'000
MALES											
May 2008	359.7	431.1	21.0	4.6	70.5	357.7	425.9	22.1	4.9	69.9	640.9
May 2009	351.3	422.5	27.9	6.2	69.3	354.6	424.4	27.0	6.0	69.4	650.1
2010											
May	357.9	435.9	24.4	5.3	69.7	358.0	435.0	24.9	5.4	69.6	660.4
June	358.8	435.8	24.8	5.4	69.6	358.1	434.7	24.2	5.3	69.4	661.2
July	360.3	436.4	25.3	5.5	69.7	362.2	437.1	24.6	5.3	69.7	662.1
August	361.8	437.3	25.7	5.5	69.8	358.3	436.9	25.6	5.5	69.7	663.1
September	362.9	437.7	26.0	5.6	69.9	366.0	438.8	26.3	5.7	70.0	664.0
October	363.5	437.7	26.2	5.7	69.8	363.8	440.7	27.8	5.9	70.5	664.7
November	363.8	437.7	26.2	5.6	69.7	364.4	435.8	25.4	5.5	69.3	665.4
December	363.9	437.9	26.0	5.6	69.6	363.6	436.0	26.4	5.7	69.4	666.0
2011											
January	364.2	438.6	25.7	5.5	69.6	361.3	438.1	24.1	5.2	69.3	666.6
February	364.5	439.7	25.5	5.5	69.7	364.9	439.1	26.5	5.7	69.8	667.2
March	365.0	441.0	25.3	5.4	69.8	366.9	443.0	24.9	5.3	70.1	667.8
April	365.5	442.3	25.1	5.4	69.9	366.3	442.7	26.0	5.6	70.1	668.3
May	365.8	443.5	25.1	5.4	70.1	364.5	443.2	24.3	5.2	69.9	668.9
FEMALES											
May 2008	186.3	358.0	18.5	4.9	56.2	188.8	358.7	20.2	5.3	56.6	669.7
May 2009	186.5	373.7	19.5	5.0	58.0	187.1	375.8	19.0	4.8	58.2	678.4
2010											
May	186.4	370.8	21.2	5.4	57.0	186.2	372.2	20.4	5.2	57.1	687.8
June	187.3	372.2	21.2	5.4	57.1	186.3	373.0	21.9	5.6	57.4	688.4
July	188.4	373.8	21.0	5.3	57.3	188.6	374.9	19.6	5.0	57.2	689.2
August	189.5	375.3	20.9	5.3	57.4	190.0	376.3	20.8	5.2	57.5	690.0
September	190.1	376.2	21.1	5.3	57.5	189.4	374.5	21.3	5.4	57.3	690.8
October	190.0	376.4	21.5	5.4	57.5	191.1	376.5	21.4	5.4	57.5	691.5
November	189.4	376.3	21.9	5.5	57.5	191.8	377.4	22.7	5.7	57.8	692.3
December	188.5	376.4	22.2	5.6	57.5	188.3	377.2	21.5	5.4	57.5	693.0
2011											
January	187.9	376.5	22.3	5.6	57.5	183.2	374.9	22.0	5.5	57.2	693.6
February	187.7	376.8	22.3	5.6	57.5	189.3	375.0	23.5	5.9	57.4	694.2
March	187.9	377.2	22.2	5.6	57.5	187.3	378.6	21.8	5.5	57.6	694.8
April	188.3	377.6	22.2	5.6	57.5	189.5	379.4	21.4	5.3	57.7	695.3
May	188.8	377.9	22.1	5.5	57.5	189.6	377.0	22.5	5.6	57.4	695.8
PERSONS											
May 2008	546.0	789.1	39.5	4.8	63.2	546.5	784.7	42.4	5.1	63.1	1 310.6
May 2009	537.8	796.2	47.4	5.6	63.5	541.7	800.2	46.0	5.4	63.7	1 328.4
2010											
May	544.3	806.7	45.6	5.4	63.2	544.2	807.3	45.3	5.3	63.2	1 348.2
June	546.1	808.0	46.0	5.4	63.3	544.4	807.7	46.1	5.4	63.3	1 349.6
July	548.7	810.3	46.3	5.4	63.4	550.8	812.1	44.2	5.2	63.4	1 351.4
August	551.2	812.6	46.6	5.4	63.5	548.3	813.2	46.3	5.4	63.5	1 353.1
September	553.0	813.9	47.1	5.5	63.6	555.4	813.3	47.6	5.5	63.5	1 354.9
October	553.5	814.1	47.7	5.5	63.5	554.9	817.2	49.2	5.7	63.9	1 356.2
November	553.1	814.0	48.1	5.6	63.5	556.2	813.2	48.1	5.6	63.4	1 357.6
December	552.4	814.2	48.1	5.6	63.5	551.9	813.2	48.0	5.6	63.4	1 359.0
2011											
January	552.0	815.1	48.0	5.6	63.4	544.6	813.0	46.1	5.4	63.2	1 360.2
February	552.2	816.5	47.7	5.5	63.5	554.2	814.1	50.0	5.8	63.5	1 361.4
March	552.9	818.3	47.5	5.5	63.5	554.2	821.7	46.7	5.4	63.7	1 362.6
April	553.8	819.9	47.4	5.5	63.6	555.7	822.2	47.5	5.5	63.8	1 363.6
May	554.6	821.5	47.2	5.4	63.7	554.2	820.2	46.9	5.4	63.5	1 364.6

	TREND					SEASONALLY ADJUSTED					Civilian population aged 15 years and over
	Employed full time	Total employed	Total unemployed	Unemployment rate	Participation rate	Employed full time	Total employed	Total unemployed	Unemployment rate	Participation rate	
	'000	'000	'000	%	%	'000	'000	'000	%	%	'000
MALES											
May 2008	566.3	648.4	20.2	3.0	76.4	557.6	642.1	23.9	3.6	76.1	875.4
May 2009	559.6	661.3	36.2	5.2	76.9	561.2	667.3	35.6	5.1	77.5	906.8
2010											
May	581.6	686.7	29.1	4.1	76.4	584.2	687.3	27.1	3.8	76.3	936.1
June	585.2	689.4	27.9	3.9	76.4	584.8	691.4	26.9	3.7	76.6	938.2
July	587.9	691.1	27.4	3.8	76.4	587.0	691.2	27.9	3.9	76.5	940.3
August	589.5	691.7	27.6	3.8	76.3	592.1	693.3	26.8	3.7	76.4	942.4
September	590.3	691.6	28.2	3.9	76.3	592.8	690.6	29.9	4.2	76.3	944.6
October	590.7	691.4	28.7	4.0	76.2	584.6	689.2	28.1	3.9	75.9	945.3
November	591.3	691.4	28.8	4.0	76.1	593.8	692.2	29.0	4.0	76.2	945.9
December	592.3	691.6	28.8	4.0	76.1	590.5	690.4	29.2	4.1	76.0	946.6
2011											
January	593.7	692.1	28.6	4.0	76.0	595.8	693.9	28.9	4.0	76.3	947.6
February	595.2	692.6	28.5	4.0	76.0	592.3	693.0	27.6	3.8	76.0	948.6
March	596.5	693.0	28.6	4.0	76.0	600.3	692.7	28.6	4.0	76.0	949.6
April	597.7	693.5	28.7	4.0	76.0	596.1	690.8	27.9	3.9	75.6	950.9
May	598.2	693.8	28.9	4.0	76.0	598.4	696.4	30.2	4.2	76.3	952.3
FEMALES											
May 2008	275.8	507.8	18.4	3.5	60.8	275.4	505.2	19.0	3.6	60.5	865.7
May 2009	274.8	518.3	28.8	5.3	61.3	282.3	520.8	29.7	5.4	61.7	892.2
2010											
May	274.8	523.4	27.3	5.0	60.1	275.1	517.6	24.9	4.6	59.2	916.5
June	275.4	526.1	27.6	5.0	60.3	276.6	534.8	24.7	4.4	60.9	918.1
July	276.0	528.9	28.0	5.0	60.5	274.7	531.6	29.6	5.3	61.0	920.0
August	276.6	531.5	28.6	5.1	60.7	278.7	528.8	30.4	5.4	60.7	922.0
September	277.1	533.0	28.9	5.1	60.8	274.7	533.9	28.3	5.0	60.8	924.0
October	277.4	533.0	28.9	5.1	60.7	274.6	529.6	29.8	5.3	60.5	925.1
November	278.0	532.1	28.4	5.1	60.5	284.0	535.6	28.3	5.0	60.9	926.2
December	278.8	531.6	27.6	4.9	60.3	280.0	534.1	25.5	4.6	60.3	927.3
2011											
January	279.9	532.0	27.0	4.8	60.2	273.6	533.2	29.0	5.2	60.6	928.3
February	281.3	533.2	26.4	4.7	60.2	280.3	522.1	25.5	4.7	58.9	929.4
March	282.7	535.1	25.9	4.6	60.3	286.0	536.3	26.5	4.7	60.5	930.4
April	284.0	537.6	25.5	4.5	60.4	286.6	542.3	24.9	4.4	60.9	931.8
May	284.7	539.8	25.2	4.5	60.6	283.2	543.3	25.2	4.4	60.9	933.0
PERSONS											
May 2008	842.0	1 156.2	38.6	3.2	68.6	833.0	1 147.3	42.9	3.6	68.4	1 741.1
May 2009	834.4	1 179.6	65.0	5.2	69.2	843.6	1 188.1	65.3	5.2	69.7	1 799.0
2010											
May	856.4	1 210.0	56.4	4.5	68.3	859.3	1 204.9	52.0	4.1	67.8	1 852.6
June	860.7	1 215.5	55.5	4.4	68.4	861.5	1 226.2	51.6	4.0	68.8	1 856.3
July	863.9	1 220.0	55.4	4.3	68.5	861.7	1 222.8	57.5	4.5	68.8	1 860.4
August	866.1	1 223.2	56.2	4.4	68.6	870.8	1 222.2	57.2	4.5	68.6	1 864.5
September	867.3	1 224.6	57.1	4.5	68.6	867.6	1 224.5	58.2	4.5	68.6	1 868.6
October	868.1	1 224.4	57.5	4.5	68.5	859.2	1 218.7	57.9	4.5	68.3	1 870.4
November	869.3	1 223.4	57.2	4.5	68.4	877.8	1 227.7	57.3	4.5	68.6	1 872.1
December	871.1	1 223.2	56.4	4.4	68.3	870.5	1 224.4	54.7	4.3	68.3	1 873.9
2011											
January	873.6	1 224.1	55.6	4.3	68.2	869.3	1 227.0	57.9	4.5	68.5	1 875.9
February	876.5	1 225.8	55.0	4.3	68.2	872.6	1 215.1	53.1	4.2	67.5	1 878.0
March	879.2	1 228.2	54.5	4.2	68.2	886.3	1 229.0	55.1	4.3	68.3	1 880.0
April	881.6	1 231.1	54.2	4.2	68.3	882.7	1 233.1	52.9	4.1	68.3	1 882.7
May	882.9	1 233.7	54.1	4.2	68.4	881.6	1 239.8	55.5	4.3	68.7	1 885.3

	TREND					SEASONALLY ADJUSTED					Civilian population aged 15 years and over
	Employed full time	Total employed	Total unemployed	Unemployment rate	Participation rate	Employed full time	Total employed	Total unemployed	Unemployment rate	Participation rate	
	'000	'000	'000	%	%	'000	'000	'000	%	%	
MALES											
May 2008	108.9	129.5	4.5	3.3	68.6	109.9	129.5	4.9	3.6	68.8	195.3
May 2009	103.7	125.9	6.5	4.9	66.9	103.6	126.2	7.3	5.5	67.5	197.7
2010											
May	100.3	123.9	9.0	6.8	66.4	101.0	123.9	8.5	6.4	66.1	200.3
June	100.0	124.1	8.9	6.7	66.4	98.3	124.0	9.8	7.3	66.8	200.4
July	99.9	124.4	8.6	6.5	66.3	99.6	123.7	9.0	6.8	66.2	200.6
August	100.3	124.7	8.1	6.1	66.2	100.9	125.8	8.0	6.0	66.6	200.8
September	100.9	125.1	7.6	5.7	66.1	100.5	124.9	7.2	5.4	65.7	200.9
October	101.7	125.6	7.3	5.5	66.1	101.1	124.9	7.1	5.4	65.7	201.1
November	102.4	126.0	7.2	5.4	66.2	104.0	126.3	7.0	5.3	66.2	201.2
December	102.8	126.4	7.2	5.4	66.4	102.7	126.8	6.3	4.7	66.1	201.4
2011											
January	102.9	126.7	7.4	5.5	66.6	102.4	126.1	9.2	6.8	67.1	201.5
February	103.0	127.0	7.5	5.6	66.7	103.2	127.5	7.1	5.3	66.7	201.6
March	102.9	127.1	7.6	5.7	66.8	102.5	127.1	7.4	5.5	66.7	201.7
April	102.8	127.1	7.7	5.7	66.8	103.8	127.7	7.4	5.5	66.9	201.8
May	102.6	126.9	7.8	5.8	66.7	101.9	125.9	8.1	6.1	66.4	201.9
FEMALES											
May 2008	54.4	106.2	5.9	5.3	54.7	54.7	108.5	5.0	4.4	55.4	205.0
May 2009	54.2	109.2	5.7	4.9	55.4	54.0	108.2	6.1	5.3	55.1	207.3
2010											
May	53.6	113.2	6.6	5.5	57.2	53.3	112.9	6.6	5.5	57.0	209.6
June	53.8	113.3	6.6	5.5	57.2	54.2	113.7	6.3	5.3	57.3	209.7
July	53.7	113.1	6.5	5.5	57.0	54.0	113.0	6.8	5.7	57.1	209.9
August	53.5	112.7	6.4	5.4	56.7	53.6	113.0	7.3	6.0	57.3	210.1
September	53.1	112.3	6.4	5.4	56.5	52.3	111.8	5.6	4.8	55.9	210.2
October	52.8	111.9	6.4	5.4	56.3	53.7	112.5	5.9	5.0	56.3	210.4
November	52.6	111.7	6.6	5.6	56.2	51.7	110.9	6.8	5.8	55.9	210.6
December	52.5	111.6	6.8	5.7	56.2	52.9	111.4	6.8	5.7	56.1	210.8
2011											
January	52.5	111.6	6.9	5.8	56.2	52.3	112.4	7.3	6.1	56.7	210.9
February	52.6	111.6	6.9	5.9	56.1	52.6	111.1	7.2	6.1	56.1	211.1
March	52.6	111.5	6.9	5.8	56.0	52.8	111.9	6.7	5.6	56.1	211.2
April	52.6	111.4	6.8	5.7	55.9	52.4	111.6	6.5	5.5	55.9	211.4
May	52.8	111.3	6.6	5.6	55.8	52.8	110.7	6.6	5.6	55.5	211.5
PERSONS											
May 2008	163.3	235.7	10.3	4.2	61.5	164.5	238.0	9.9	4.0	61.9	400.3
May 2009	157.9	235.1	12.2	4.9	61.0	157.6	234.4	13.4	5.4	61.2	405.1
2010											
May	154.0	237.1	15.6	6.2	61.7	154.3	236.8	15.1	6.0	61.5	409.8
June	153.8	237.4	15.6	6.1	61.7	152.5	237.7	16.2	6.4	61.9	410.1
July	153.6	237.5	15.1	6.0	61.5	153.6	236.7	15.9	6.3	61.5	410.4
August	153.7	237.5	14.6	5.8	61.3	154.5	238.8	15.2	6.0	61.8	410.8
September	154.1	237.5	14.0	5.6	61.2	152.7	236.7	12.8	5.1	60.7	411.2
October	154.5	237.5	13.7	5.5	61.1	154.9	237.4	13.1	5.2	60.9	411.5
November	155.0	237.7	13.7	5.5	61.1	155.6	237.1	13.8	5.5	60.9	411.8
December	155.3	238.0	14.0	5.5	61.1	155.6	238.2	13.1	5.2	61.0	412.2
2011											
January	155.5	238.3	14.3	5.7	61.3	154.7	238.5	16.5	6.5	61.8	412.4
February	155.5	238.5	14.5	5.7	61.3	155.8	238.6	14.3	5.7	61.3	412.7
March	155.5	238.6	14.5	5.7	61.3	155.3	239.0	14.1	5.6	61.3	413.0
April	155.5	238.4	14.5	5.7	61.2	156.2	239.3	13.9	5.5	61.3	413.2
May	155.4	238.3	14.4	5.7	61.1	154.7	236.6	14.7	5.8	60.8	413.4

	TREND					<i>Civilian population aged 15 years and over</i>
	<i>Employed full time</i>	<i>Total employed</i>	<i>Total unemployed</i>	<i>Unemployment rate</i>	<i>Participation rate</i>	
	'000	'000	'000	%	%	
MALES						
May 2008	51.6	60.4	2.1	3.3	76.0	82.2
May 2009	57.9	64.8	3.1	4.6	80.5	84.3
2010						
May	58.0	65.8	1.9	2.8	78.2	86.7
June	58.3	66.2	1.9	2.8	78.4	86.9
July	58.4	66.4	2.0	2.9	78.5	87.1
August	58.3	66.2	2.0	2.9	78.3	87.2
September	58.1	66.0	1.9	2.8	77.8	87.3
October	58.1	65.8	1.8	2.6	77.4	87.3
November	58.1	65.9	1.6	2.3	77.2	87.3
December	58.2	66.0	1.4	2.1	77.1	87.3
2011						
January	58.2	66.0	1.4	2.1	77.1	87.4
February	58.1	65.8	1.5	2.3	76.9	87.5
March	57.7	65.4	1.8	2.6	76.6	87.7
April	57.3	64.9	2.0	3.0	76.2	87.8
May	56.7	64.3	2.3	3.5	75.8	87.9
FEMALES						
May 2008	36.7	53.0	1.9	3.5	68.7	79.9
May 2009	40.2	55.6	2.0	3.4	70.0	82.2
2010						
May	38.7	54.7	1.6	2.9	66.8	84.4
June	39.5	55.5	1.6	2.9	67.5	84.6
July	40.3	56.3	1.7	2.9	68.4	84.8
August	40.9	56.8	1.7	3.0	68.9	85.0
September	41.2	57.0	1.8	3.0	69.0	85.2
October	41.1	56.9	1.8	3.0	68.8	85.3
November	40.9	56.8	1.7	2.9	68.6	85.3
December	40.7	56.8	1.7	2.9	68.5	85.4
2011						
January	40.6	57.0	1.7	2.9	68.6	85.5
February	40.5	57.1	1.8	3.0	68.8	85.6
March	40.5	57.2	1.8	3.1	68.9	85.7
April	40.4	57.1	2.0	3.3	68.8	85.8
May	40.4	56.9	2.1	3.5	68.7	85.9
PERSONS						
May 2008	88.3	113.4	4.0	3.4	72.4	162.1
May 2009	98.0	120.4	5.1	4.1	75.3	166.5
2010						
May	96.7	120.6	3.6	2.9	72.6	171.0
June	97.7	121.7	3.6	2.8	73.0	171.6
July	98.7	122.7	3.7	2.9	73.5	171.9
August	99.2	123.1	3.7	2.9	73.6	172.2
September	99.3	123.0	3.7	2.9	73.5	172.6
October	99.2	122.7	3.5	2.8	73.2	172.6
November	99.1	122.7	3.3	2.6	72.9	172.7
December	98.9	122.8	3.1	2.5	72.8	172.7
2011						
January	98.8	123.0	3.1	2.4	72.9	172.9
February	98.6	123.0	3.3	2.6	72.9	173.2
March	98.2	122.6	3.6	2.9	72.8	173.4
April	97.7	122.0	4.0	3.2	72.6	173.6
May	97.1	121.2	4.4	3.5	72.3	173.8

	TREND					<i>Civilian population aged 15 years and over</i>
	<i>Employed full time</i>	<i>Total employed</i>	<i>Total unemployed</i>	<i>Unemployment rate</i>	<i>Participation rate</i>	
	'000	'000	'000	%	%	
MALES						
May 2008	86.2	102.6	3.1	2.9	78.2	135.1
May 2009	86.5	101.4	3.8	3.6	76.6	137.5
2010						
May	88.3	104.1	3.7	3.4	76.7	140.5
June	88.7	104.1	3.4	3.2	76.4	140.8
July	88.9	104.3	3.3	3.1	76.3	141.0
August	89.1	104.7	3.3	3.0	76.5	141.1
September	89.1	105.1	3.4	3.2	76.8	141.3
October	89.3	105.6	3.6	3.3	77.2	141.5
November	89.6	106.1	3.8	3.4	77.5	141.7
December	90.1	106.5	3.9	3.5	77.8	141.9
2011						
January	90.7	106.8	4.0	3.6	77.9	142.2
February	91.1	106.9	4.0	3.6	77.9	142.4
March	91.3	106.9	4.1	3.7	77.8	142.6
April	91.5	106.8	4.3	3.8	77.8	142.8
May	91.4	106.6	4.4	4.0	77.7	143.0
FEMALES						
May 2008	61.4	95.2	2.4	2.5	68.8	141.9
May 2009	61.9	94.8	3.0	3.1	67.8	144.2
2010						
May	62.3	99.0	3.1	3.1	69.7	146.7
June	62.2	98.9	3.3	3.2	69.5	146.8
July	62.2	98.7	3.3	3.3	69.4	147.0
August	62.1	98.7	3.3	3.3	69.3	147.2
September	62.2	98.9	3.3	3.2	69.3	147.4
October	62.4	99.0	3.2	3.1	69.2	147.6
November	62.6	99.0	3.2	3.1	69.1	147.9
December	62.8	98.9	3.2	3.1	68.9	148.1
2011						
January	62.8	98.7	3.3	3.2	68.7	148.3
February	62.7	98.5	3.3	3.3	68.5	148.5
March	62.6	98.4	3.4	3.3	68.4	148.7
April	62.5	98.4	3.4	3.4	68.4	148.8
May	62.4	98.4	3.5	3.4	68.4	149.0
PERSONS						
May 2008	147.5	197.8	5.5	2.7	73.4	277.1
May 2009	148.4	196.3	6.8	3.3	72.1	281.7
2010						
May	150.6	203.1	6.8	3.2	73.1	287.2
June	150.9	203.0	6.7	3.2	72.9	287.6
July	151.1	203.0	6.6	3.2	72.8	288.0
August	151.2	203.4	6.6	3.1	72.8	288.3
September	151.3	204.0	6.7	3.2	73.0	288.7
October	151.7	204.6	6.8	3.2	73.1	289.2
November	152.2	205.1	6.9	3.3	73.2	289.6
December	152.9	205.4	7.1	3.3	73.3	290.1
2011						
January	153.5	205.4	7.2	3.4	73.2	290.5
February	153.8	205.3	7.3	3.4	73.1	290.9
March	153.9	205.2	7.5	3.5	73.0	291.3
April	153.9	205.1	7.7	3.6	73.0	291.6
May	153.8	205.0	8.0	3.7	73.0	292.0

	EMPLOYED			UNEMPLOYED		Labour force	Not in labour force	Civilian population aged 15 years and over	UNEMPLOYMENT RATE		Participation rate
	Full time	Part time	Total	Looking for f/t work	Total				Looking for f/t work	Total	
	'000	'000	'000	'000	'000				'000	'000	
MALES											
New South Wales	1 626.7	334.4	1 961.1	72.5	89.5	2 050.6	869.2	2 919.8	4.3	4.4	70.2
Victoria	1 306.6	273.0	1 579.7	62.1	78.4	1 658.1	607.0	2 265.0	4.5	4.7	73.2
Queensland	1 060.3	197.0	1 257.3	60.5	71.1	1 328.4	485.5	1 813.9	5.4	5.4	73.2
South Australia	361.2	80.5	441.7	20.1	24.7	466.5	202.4	668.9	5.3	5.3	69.7
Western Australia	595.9	99.6	695.5	23.4	29.6	725.1	227.1	952.3	3.8	4.1	76.1
Tasmania	101.4	24.6	126.0	6.1	7.7	133.7	68.2	201.9	5.7	5.8	66.2
Northern Territory	56.0	7.3	63.2	2.4	3.0	66.3	21.6	87.9	4.1	4.6	75.4
Australian Capital Territory	89.1	15.7	104.9	4.0	5.4	110.3	32.7	143.0	4.3	4.9	77.1
Australia	5 197.2	1 032.2	6 229.4	251.0	309.5	6 538.9	2 513.8	9 052.7	4.6	4.7	72.2
FEMALES											
New South Wales	874.8	754.7	1 629.5	62.4	96.8	1 726.3	1 302.9	3 029.2	6.7	5.6	57.0
Victoria	694.5	606.7	1 301.2	43.0	78.5	1 379.7	960.9	2 340.6	5.8	5.7	58.9
Queensland	591.0	486.7	1 077.7	41.6	60.0	1 137.7	715.9	1 853.6	6.6	5.3	61.4
South Australia	190.2	187.1	377.4	12.1	21.3	398.7	297.1	695.8	6.0	5.3	57.3
Western Australia	283.1	262.2	545.2	15.5	25.5	570.7	362.3	933.0	5.2	4.5	61.2
Tasmania	52.7	58.7	111.5	3.9	6.1	117.5	94.0	211.5	6.9	5.2	55.6
Northern Territory	40.0	15.0	54.9	1.8	2.4	57.3	28.6	85.9	4.3	4.2	66.7
Australian Capital Territory	61.9	37.1	99.0	2.1	4.1	103.1	45.9	149.0	3.3	4.0	69.2
Australia	2 788.3	2 408.1	5 196.4	182.5	294.6	5 491.1	3 807.6	9 298.6	6.1	5.4	59.1
PERSONS											
New South Wales	2 501.5	1 089.1	3 590.6	134.9	186.3	3 776.9	2 172.1	5 949.1	5.1	4.9	63.5
Victoria	2 001.2	879.7	2 880.9	105.1	156.9	3 037.8	1 567.8	4 605.6	5.0	5.2	66.0
Queensland	1 651.4	683.6	2 335.0	102.1	131.1	2 466.1	1 201.4	3 667.5	5.8	5.3	67.2
South Australia	551.5	267.7	819.1	32.2	46.0	865.1	499.5	1 364.6	5.5	5.3	63.4
Western Australia	878.9	361.8	1 240.7	38.9	55.1	1 295.8	589.5	1 885.3	4.2	4.3	68.7
Tasmania	154.2	83.3	237.5	10.1	13.8	251.2	162.2	413.4	6.1	5.5	60.8
Northern Territory	95.9	22.2	118.2	4.2	5.4	123.6	50.2	173.8	4.2	4.4	71.1
Australian Capital Territory	151.1	52.8	203.9	6.1	9.5	213.4	78.6	292.0	3.9	4.5	73.1
Australia	7 985.5	3 440.3	11 425.8	433.5	604.2	12 030.0	6 321.4	18 351.3	5.1	5.0	65.6

	EMPLOYED		UNEMPLOYED		UNEMPLOYMENT RATE		Participation rate	Employment to population ratio	Unemployment to population ratio – looking for full-time work
	Full time	Total	Looking for f/t work	Total	Looking for f/t work	Total			
	'000	'000	'000	'000	%	%			
MALES									
May 2008	180.4	392.5	28.5	55.3	13.6	12.3	59.1	51.8	3.8
May 2009	142.1	352.1	44.0	79.6	23.6	18.4	56.3	45.9	5.7
2010									
May	142.0	347.7	41.7	76.2	22.7	18.0	54.9	45.1	5.4
June	143.1	348.0	41.1	76.0	22.3	17.9	54.9	45.1	5.3
July	144.3	348.6	39.6	75.4	21.5	17.8	54.9	45.2	5.1
August	145.6	349.7	37.6	74.5	20.5	17.6	55.0	45.3	4.9
September	147.1	351.3	35.8	73.5	19.6	17.3	55.1	45.6	4.6
October	148.1	353.0	34.6	72.4	18.9	17.0	55.2	45.8	4.5
November	147.9	353.6	34.1	71.3	18.7	16.8	55.2	45.9	4.4
December	146.1	352.7	34.1	70.6	18.9	16.7	55.1	45.9	4.4
2011									
January	143.2	350.7	34.2	70.0	19.3	16.6	54.8	45.7	4.5
February	139.8	348.3	34.1	69.3	19.6	16.6	54.4	45.4	4.4
March	136.9	346.3	33.6	68.6	19.7	16.5	54.1	45.2	4.4
April	134.5	344.8	32.9	67.7	19.7	16.4	53.8	45.0	4.3
May	132.7	343.8	32.2	67.1	19.6	16.3	53.6	44.9	4.2
FEMALES									
May 2008	88.4	375.1	25.2	57.3	22.2	13.3	60.4	52.4	3.5
May 2009	82.7	357.6	30.8	65.9	27.2	15.6	58.2	49.2	4.2
2010									
May	75.9	356.9	28.1	68.9	27.0	16.2	58.0	48.7	3.8
June	75.3	354.1	28.7	70.8	27.6	16.7	57.9	48.3	3.9
July	75.1	351.9	29.6	71.9	28.3	17.0	57.8	48.0	4.0
August	75.0	350.3	30.9	72.4	29.2	17.1	57.6	47.7	4.2
September	74.8	350.0	32.2	72.4	30.0	17.1	57.6	47.7	4.4
October	74.6	350.6	33.0	72.2	30.6	17.1	57.6	47.8	4.5
November	74.4	351.7	33.0	71.9	30.7	17.0	57.8	48.0	4.5
December	74.2	353.0	32.2	71.2	30.2	16.8	57.9	48.2	4.4
2011									
January	73.9	354.0	30.7	70.2	29.3	16.5	58.0	48.4	4.2
February	73.6	354.8	29.0	68.7	28.2	16.2	57.9	48.5	4.0
March	73.5	355.4	27.6	66.9	27.3	15.8	57.8	48.6	3.8
April	73.3	355.8	26.3	64.9	26.5	15.4	57.6	48.7	3.6
May	73.2	355.9	25.7	63.1	26.0	15.1	57.4	48.7	3.5
PERSONS									
May 2008	268.8	767.6	53.7	112.6	16.6	12.8	59.7	52.1	3.6
May 2009	224.8	709.6	74.8	145.4	25.0	17.0	57.2	47.5	5.0
2010									
May	217.9	704.6	69.8	145.1	24.3	17.1	56.5	46.8	4.6
June	218.4	702.1	69.8	146.7	24.2	17.3	56.4	46.6	4.6
July	219.4	700.4	69.2	147.4	24.0	17.4	56.3	46.5	4.6
August	220.6	700.0	68.5	146.9	23.7	17.3	56.3	46.5	4.6
September	221.9	701.3	68.0	145.9	23.4	17.2	56.3	46.6	4.5
October	222.8	703.6	67.6	144.5	23.3	17.0	56.4	46.8	4.5
November	222.4	705.4	67.1	143.2	23.2	16.9	56.5	46.9	4.5
December	220.3	705.7	66.2	141.8	23.1	16.7	56.5	47.0	4.4
2011									
January	217.1	704.8	64.9	140.2	23.0	16.6	56.3	47.0	4.3
February	213.5	703.1	63.1	138.1	22.8	16.4	56.1	46.9	4.2
March	210.3	701.6	61.2	135.5	22.5	16.2	55.9	46.9	4.1
April	207.8	700.6	59.3	132.6	22.2	15.9	55.7	46.8	4.0
May	205.8	699.7	57.9	130.2	22.0	15.7	55.5	46.8	3.9

	EMPLOYED		UNEMPLOYED		UNEMPLOYMENT RATE		Participation rate	Employment to population ratio	Unemployment to population ratio – looking for full-time work
	Full time	Total	Looking for f/t work	Total	Looking for f/t work	Total			
	'000	'000	'000	'000	%	%			
MALES									
May 2008	179.7	390.0	28.1	53.6	13.5	12.1	58.6	51.5	3.7
May 2009	144.7	355.3	45.9	82.0	24.1	18.7	57.0	46.3	6.0
2010									
May	139.9	338.9	42.4	75.0	23.2	18.1	53.7	43.9	5.5
June	144.0	352.3	40.3	76.3	21.9	17.8	55.6	45.7	5.2
July	144.1	346.9	41.5	76.5	22.4	18.1	54.9	45.0	5.4
August	140.5	347.4	39.3	75.2	21.9	17.8	54.8	45.0	5.1
September	148.7	352.1	31.4	70.0	17.4	16.6	54.7	45.6	4.1
October	150.2	352.5	34.9	75.9	18.8	17.7	55.6	45.7	4.5
November	150.5	356.6	35.0	71.3	18.9	16.7	55.6	46.3	4.5
December	146.1	352.0	32.2	68.4	18.1	16.3	54.7	45.8	4.2
2011									
January	141.5	354.0	36.0	68.4	20.3	16.2	55.0	46.1	4.7
February	141.7	348.4	34.7	72.8	19.7	17.3	54.9	45.4	4.5
March	136.8	344.3	33.2	66.2	19.5	16.1	53.6	44.9	4.3
April	128.2	336.2	34.4	72.2	21.2	17.7	53.3	43.9	4.5
May	136.9	352.3	29.6	62.8	17.8	15.1	54.1	45.9	3.9
FEMALES									
May 2008	89.2	371.8	26.0	59.1	22.5	13.7	60.2	51.9	3.6
May 2009	81.6	356.6	30.4	62.1	27.2	14.8	57.6	49.1	4.2
2010									
May	77.9	359.3	27.4	70.2	26.0	16.3	58.6	49.0	3.7
June	74.7	354.2	28.9	68.1	27.9	16.1	57.6	48.3	3.9
July	75.0	349.1	29.6	74.3	28.3	17.5	57.7	47.6	4.0
August	75.3	348.0	30.2	73.8	28.6	17.5	57.5	47.4	4.1
September	74.1	353.4	29.6	70.3	28.6	16.6	57.7	48.1	4.0
October	73.6	348.1	37.6	72.1	33.8	17.2	57.3	47.4	5.1
November	77.6	353.2	32.3	72.4	29.4	17.0	58.1	48.2	4.4
December	73.3	352.6	32.9	70.0	31.0	16.6	57.7	48.2	4.5
2011									
January	71.9	353.9	30.9	70.2	30.1	16.6	58.0	48.4	4.2
February	75.5	357.6	28.2	71.2	27.2	16.6	58.6	48.9	3.9
March	71.6	352.6	26.6	69.0	27.1	16.4	57.7	48.3	3.6
April	75.0	357.5	26.0	61.2	25.7	14.6	57.3	48.9	3.6
May	72.9	355.0	26.5	61.8	26.7	14.8	57.1	48.6	3.6
PERSONS									
May 2008	269.0	761.8	54.0	112.7	16.7	12.9	59.3	51.7	3.7
May 2009	226.3	711.9	76.3	144.1	25.2	16.8	57.3	47.7	5.1
2010									
May	217.8	698.2	69.8	145.2	24.3	17.2	56.1	46.4	4.6
June	218.8	706.5	69.2	144.5	24.0	17.0	56.6	47.0	4.6
July	219.1	696.0	71.2	150.7	24.5	17.8	56.3	46.3	4.7
August	215.9	695.4	69.5	149.1	24.3	17.7	56.1	46.2	4.6
September	222.8	705.4	61.0	140.4	21.5	16.6	56.2	46.8	4.0
October	223.8	700.6	72.4	148.0	24.5	17.4	56.4	46.6	4.8
November	228.2	709.8	67.3	143.7	22.8	16.8	56.8	47.2	4.5
December	219.4	704.6	65.1	138.4	22.9	16.4	56.2	47.0	4.3
2011									
January	213.4	707.8	66.9	138.6	23.9	16.4	56.5	47.2	4.5
February	217.2	705.9	62.9	143.9	22.5	16.9	56.7	47.1	4.2
March	208.5	696.9	59.8	135.2	22.3	16.2	55.6	46.6	4.0
April	203.2	693.7	60.4	133.4	22.9	16.1	55.3	46.3	4.0
May	209.9	707.2	56.2	124.6	21.1	15.0	55.6	47.2	3.8

	EMPLOYED			UNEMPLOYED			Civilian population aged 15–19 years	UNEMPLOYMENT RATE			Unemployment to population ratio – looking for full-time work	
	Full time	Part time	Total	Looking for f/t work	Total	Labour force		Not in labour force	Looking for f/t work	Total		Participation rate
	'000	'000	'000	'000	'000	'000		'000	%	%		%
NOT ATTENDING FULL-TIME EDUCATION												
Males												
May 2008	166.8	39.8	206.6	23.0	24.8	231.4	22.4	253.9	12.1	10.7	91.2	9.0
May 2009	135.8	52.3	188.1	39.7	41.7	229.8	23.7	253.5	22.6	18.1	90.6	15.7
May 2010	132.1	46.5	178.6	37.7	41.3	219.9	35.6	255.5	22.2	18.8	86.1	14.7
May 2011	126.2	43.7	169.9	26.1	29.2	199.1	36.6	235.7	17.1	14.7	84.5	11.1
Females												
May 2008	79.1	57.3	136.4	19.9	22.9	159.3	30.0	189.3	20.1	14.4	84.1	10.5
May 2009	73.4	57.1	130.5	27.0	30.4	160.9	40.9	201.8	26.9	18.9	79.7	13.4
May 2010	68.9	63.2	132.1	23.0	26.6	158.7	33.6	192.2	25.0	16.8	82.5	11.9
May 2011	65.7	57.1	122.8	22.3	26.3	149.2	38.6	187.8	25.3	17.6	79.4	11.9
Persons												
May 2008	246.0	97.1	343.1	42.9	47.6	390.7	52.5	443.2	14.8	12.2	88.2	9.7
May 2009	209.2	109.4	318.7	66.7	72.0	390.7	64.6	455.3	24.2	18.4	85.8	14.6
May 2010	200.9	109.8	310.7	60.6	67.9	378.6	69.1	447.7	23.2	17.9	84.6	13.5
May 2011	191.9	100.8	292.8	48.4	55.5	348.3	75.2	423.4	20.1	15.9	82.2	11.4
ATTENDING FULL-TIME EDUCATION												
Males												
May 2008	8.5	172.0	180.5	*5.5	28.9	209.4	294.5	503.9	*39.3	13.8	41.6	*1.1
May 2009	*4.7	160.5	165.2	*6.7	39.8	205.0	308.4	513.4	*58.6	19.4	39.9	*1.3
May 2010	*3.4	155.5	158.9	*5.0	32.8	191.6	324.3	515.9	*59.7	17.1	37.1	*1.0
May 2011	*5.9	175.1	181.0	*3.7	32.4	213.4	317.7	531.1	*38.8	15.2	40.2	*0.7
Females												
May 2008	*4.7	228.7	233.4	6.1	34.2	267.6	258.9	526.5	56.6	12.8	50.8	1.2
May 2009	*3.9	220.2	224.1	*3.6	29.7	253.8	271.0	524.8	*47.9	11.7	48.4	*0.7
May 2010	*5.4	219.9	225.3	*4.5	41.0	266.3	274.6	540.9	*45.5	15.4	49.2	*0.8
May 2011	*4.0	226.1	230.1	*4.1	33.1	263.2	279.2	542.4	*50.7	12.6	48.5	*0.8
Persons												
May 2008	13.2	400.7	413.9	11.6	63.1	477.0	553.4	1 030.4	46.8	13.2	46.3	1.1
May 2009	8.6	380.7	389.3	10.3	69.5	458.8	579.5	1 038.3	54.4	15.1	44.2	1.0
May 2010	8.8	375.4	384.2	9.5	73.8	457.9	598.9	1 056.8	52.0	16.1	43.3	0.9
May 2011	9.9	401.3	411.1	7.8	65.5	476.7	596.9	1 073.6	44.2	13.7	44.4	0.7
TOTAL												
Males												
May 2008	175.4	211.8	387.2	28.5	53.6	440.8	316.9	757.7	14.0	12.2	58.2	3.8
May 2009	140.6	212.8	353.3	46.4	81.4	434.8	332.2	767.0	24.8	18.7	56.7	6.0
May 2010	135.5	202.0	337.5	42.7	74.0	411.5	359.8	771.4	24.0	18.0	53.3	5.5
May 2011	132.1	218.9	351.0	29.8	61.6	412.5	354.3	766.8	18.4	14.9	53.8	3.9
Females												
May 2008	83.8	286.0	369.8	26.0	57.1	426.9	288.9	715.8	23.7	13.4	59.6	3.6
May 2009	77.3	277.4	354.7	30.6	60.1	414.7	311.9	726.7	28.3	14.5	57.1	4.2
May 2010	74.3	283.1	357.4	27.5	67.6	425.0	308.1	733.1	27.0	15.9	58.0	3.7
May 2011	69.7	283.3	353.0	26.4	59.4	412.4	317.8	730.2	27.5	14.4	56.5	3.6
Persons												
May 2008	259.1	497.8	757.0	54.5	110.7	867.7	605.8	1 473.5	17.4	12.8	58.9	3.7
May 2009	217.8	490.2	708.0	76.9	141.5	849.5	644.1	1 493.6	26.1	16.7	56.9	5.2
May 2010	209.7	485.1	694.9	70.2	141.6	836.5	668.0	1 504.5	25.1	16.9	55.6	4.7
May 2011	201.8	502.1	703.9	56.2	121.0	824.9	672.1	1 497.0	21.8	14.7	55.1	3.8

* estimate is subject to sampling variability too high for most practical purposes

	EMPLOYED			UNEMPLOYED			Civilian population aged 15–19 years	UNEMPLOYMENT RATE		Participation rate	Unemployment to population ratio – looking for full-time work	
	Full time	Part time	Total	Looking for f/t work	Total	Labour force		Not in labour force	Looking for f/t work			Total
	'000	'000	'000	'000	'000	'000		'000	%			%
NOT ATTENDING FULL-TIME EDUCATION												
New South Wales	56.5	30.2	86.7	13.6	15.6	102.3	27.0	129.3	19.4	15.3	79.2	10.5
Victoria	31.4	20.4	51.8	8.8	11.1	62.8	14.5	77.3	21.8	17.6	81.3	11.3
Queensland	47.3	28.6	75.9	14.1	15.7	91.6	17.0	108.6	23.0	17.1	84.3	13.0
South Australia	11.7	8.1	19.8	*3.2	3.5	23.3	4.5	27.9	*21.6	15.0	83.8	*11.6
Western Australia	33.5	8.8	42.4	5.7	6.4	48.7	8.3	57.0	14.5	13.1	85.5	10.0
Tasmania	6.1	1.9	8.0	*1.1	*1.2	9.2	*0.7	9.8	*15.4	*12.8	93.3	*11.2
Northern Territory	2.8	1.3	4.1	*0.7	*0.7	4.8	3.2	7.9	*19.0	*13.8	60.1	*8.3
Australian Capital Territory	2.6	1.5	4.1	*1.2	*1.4	5.5	*0.1	5.6	*32.4	*25.1	97.5	*22.2
Australia	191.9	100.8	292.8	48.4	55.5	348.3	75.2	423.4	20.1	15.9	82.2	11.4
ATTENDING FULL-TIME EDUCATION												
New South Wales	*2.3	118.8	121.1	*2.0	17.1	138.2	209.9	348.1	*45.5	12.4	39.7	*0.6
Victoria	*1.9	104.6	106.5	*2.4	19.8	126.3	161.0	287.3	*56.1	15.7	44.0	*0.9
Queensland	*3.6	87.6	91.2	*1.0	12.7	103.9	102.3	206.2	*22.2	12.2	50.4	*0.5
South Australia	*1.1	31.6	32.7	*1.4	6.6	39.3	40.6	79.9	*57.9	16.8	49.2	*1.8
Western Australia	*0.6	39.1	39.7	—	5.3	45.0	55.7	100.8	—	11.7	44.7	—
Tasmania	*0.3	9.2	9.4	*0.4	1.9	11.3	13.5	24.9	*60.9	16.7	45.5	*1.7
Northern Territory	*0.1	2.7	2.8	*0.1	*0.3	3.1	5.4	8.6	*37.7	*10.7	36.7	*0.7
Australian Capital Territory	—	7.7	7.7	*0.5	*1.8	9.5	8.3	17.9	*100.0	*19.4	53.3	*2.6
Australia	9.9	401.3	411.1	7.8	65.5	476.7	596.9	1 073.6	44.2	13.7	44.4	0.7
TOTAL												
New South Wales	58.9	149.0	207.8	15.5	32.7	240.6	236.8	477.4	20.9	13.6	50.4	3.3
Victoria	33.3	125.0	158.3	11.2	30.9	189.2	175.5	364.7	25.2	16.3	51.9	3.1
Queensland	50.9	116.2	167.1	15.1	28.4	195.5	119.3	314.8	22.9	14.5	62.1	4.8
South Australia	12.8	39.8	52.5	4.7	10.1	62.6	45.2	107.8	26.8	16.1	58.1	4.3
Western Australia	34.1	48.0	82.1	5.7	11.6	93.7	64.0	157.8	14.3	12.4	59.4	3.6
Tasmania	6.3	11.1	17.4	*1.5	3.1	20.5	14.2	34.7	*19.4	15.0	59.1	*4.4
Northern Territory	2.9	4.0	6.9	*0.7	*1.0	7.9	8.6	16.5	*19.8	*12.6	48.0	*4.3
Australian Capital Territory	2.6	9.2	11.8	*1.7	3.2	15.0	8.5	23.4	*39.6	21.5	63.9	*7.3
Australia	201.8	502.1	703.9	56.2	121.0	824.9	672.1	1 497.0	21.8	14.7	55.1	3.8

* estimate is subject to sampling variability too high for most practical purposes

— nil or rounded to zero (including null cells)

LABOUR FORCE STATUS IN MAY 2011

<i>Labour force status in April 2011</i>	<i>Employed Full time</i>	<i>Employed Part time</i>	<i>Employed Total</i>	<i>Unemployed</i>	<i>Labour Force</i>	<i>Not in Labour Force</i>	<i>Matched Civilian Population</i>
	'000	'000	'000	'000	'000	'000	'000
MALES							
Employed Full time	4 110.3	124.8	4 235.1	23.0	4 258.1	39.8	4 297.8
Employed Part time	123.8	638.9	762.7	15.3	778.0	46.3	824.3
Employed Total	4 234.1	763.7	4 997.8	38.3	5 036.1	86.0	5 122.1
Unemployed Total	32.8	26.9	59.7	143.8	203.5	48.4	251.9
Labour Force	4 266.8	790.7	5 057.5	182.1	5 239.6	134.5	5 374.0
Not in Labour Force	28.8	49.8	78.6	50.4	129.0	1 763.5	1 892.6
Matched Civilian Population	4 295.7	840.4	5 136.1	232.5	5 368.6	1 898.0	7 266.6
FEMALES							
Employed Full time	2 069.9	162.8	2 232.8	8.2	2 241.0	32.7	2 273.6
Employed Part time	172.6	1 706.5	1 879.1	21.6	1 900.7	95.5	1 996.2
Employed Total	2 242.5	1 869.3	4 111.8	29.8	4 141.7	128.1	4 269.8
Unemployed Total	12.6	27.7	40.4	125.6	165.9	55.3	221.2
Labour Force	2 255.2	1 897.0	4 152.2	155.4	4 307.6	183.4	4 491.0
Not in Labour Force	24.3	87.8	112.1	71.2	183.3	2 769.7	2 953.0
Matched Civilian Population	2 279.4	1 984.9	4 264.3	226.7	4 491.0	2 953.1	7 444.1
PERSONS							
Employed Full time	6 180.2	287.6	6 467.8	31.2	6 499.0	72.4	6 571.5
Employed Part time	296.4	2 345.4	2 641.8	36.9	2 678.7	141.7	2 820.5
Employed Total	6 476.6	2 633.0	9 109.6	68.1	9 177.8	214.2	9 391.9
Unemployed Total	45.4	54.7	100.1	269.4	369.4	103.7	473.2
Labour Force	6 522.0	2 687.7	9 209.7	337.5	9 547.2	317.9	9 865.1
Not in Labour Force	53.1	137.6	190.7	121.7	312.4	4 533.2	4 845.6
Matched Civilian Population	6 575.1	2 825.3	9 400.4	459.2	9 859.6	4 851.1	14 710.7

(a) Gross flows figures do not match published labour force estimates. Refer to gross flows in Glossary.

	TREND			SEASONALLY ADJUSTED		
	Full time workers	Part time workers	Total	Full time workers	Part time workers	Total
	millions	millions	millions	millions	millions	millions
MALES						
May 2008	901.0	62.6	963.5	897.5	63.2	960.7
May 2009	872.4	65.4	937.8	869.1	65.4	934.5
2010						
May	903.4	70.2	973.5	904.3	70.5	974.8
June	906.9	70.2	977.1	910.3	70.6	980.9
July	909.4	70.3	979.9	907.3	70.6	977.9
August	910.8	70.4	981.4	910.9	71.5	982.4
September	911.5	70.4	981.9	910.8	68.4	979.1
October	912.4	70.3	982.1	914.2	70.3	984.5
November	913.8	70.1	982.8	913.8	71.0	984.8
December	915.5	69.8	983.7	910.0	70.3	980.3
2011						
January	916.9	69.6	984.7	910.4	68.9	979.3
February	917.8	69.3	985.6	923.5	68.6	992.0
March	918.2	69.1	986.2	922.0	68.7	990.7
April	918.3	68.9	986.6	911.4	69.3	980.7
May	918.1	68.9	986.9	917.9	69.3	987.2
FEMALES						
May 2008	440.9	155.1	596.0	439.0	154.8	593.9
May 2009	438.4	157.4	595.8	438.4	156.3	594.7
2010						
May	439.3	164.8	604.1	445.1	163.9	609.0
June	441.2	165.2	606.3	440.7	165.7	606.5
July	442.8	165.4	608.3	437.1	167.1	604.2
August	444.2	165.7	609.9	446.1	163.5	609.6
September	445.3	165.8	611.1	446.1	165.8	611.9
October	446.2	165.8	611.9	447.0	167.4	614.4
November	446.9	165.8	612.7	447.9	164.9	612.8
December	447.4	165.9	613.2	448.3	166.3	614.7
2011						
January	447.4	166.2	613.6	438.3	163.8	602.1
February	447.4	166.7	614.1	448.7	167.3	616.0
March	447.4	167.3	614.7	452.9	166.6	619.5
April	447.1	168.0	615.1	445.7	168.3	614.0
May	446.7	168.8	615.5	444.1	169.8	613.9
PERSONS						
May 2008	1 341.9	217.6	1 559.5	1 336.5	218.1	1 554.6
May 2009	1 310.9	222.7	1 533.6	1 307.5	221.7	1 529.2
2010						
May	1 342.7	235.0	1 577.7	1 349.5	234.4	1 583.8
June	1 348.1	235.4	1 583.5	1 351.1	236.3	1 587.4
July	1 352.2	235.8	1 588.0	1 344.4	237.7	1 582.1
August	1 355.0	236.1	1 591.1	1 357.0	235.0	1 592.0
September	1 356.8	236.1	1 592.9	1 356.8	234.2	1 591.0
October	1 358.5	236.0	1 594.5	1 361.1	237.7	1 598.8
November	1 360.7	235.8	1 596.6	1 361.8	235.8	1 597.6
December	1 362.8	235.7	1 598.5	1 358.3	236.7	1 595.0
2011						
January	1 364.2	235.8	1 600.0	1 348.7	232.7	1 581.4
February	1 365.2	236.0	1 601.2	1 372.2	235.8	1 608.0
March	1 365.6	236.4	1 602.0	1 374.9	235.3	1 610.2
April	1 365.4	236.9	1 602.3	1 357.1	237.6	1 594.7
May	1 364.8	237.7	1 602.5	1 362.0	239.2	1 601.1

HOURS WORKED

	New South Wales	Victoria	Queensland	South Australia	Western Australia	Tasmania	Northern Territory	Australian Capital Territory	Australia
	millions	millions	millions	millions	millions	millions	millions	millions	millions

SEASONALLY ADJUSTED

May 2008	497.3	376.4	324.8	110.2	168.2	33.2	np	np	1 554.6
May 2009	481.3	369.4	321.4	109.7	168.6	32.1	np	np	1 529.2
2010									
May	498.1	391.8	333.1	110.8	173.0	31.0	np	np	1 583.8
June	499.4	389.3	332.5	111.5	176.5	31.3	np	np	1 587.4
July	496.6	391.3	330.9	110.6	174.0	31.5	np	np	1 582.1
August	501.4	393.7	329.4	111.8	176.9	31.4	np	np	1 592.0
September	503.5	392.6	331.0	110.9	175.1	31.1	np	np	1 591.0
October	505.6	397.6	328.9	112.2	175.7	32.2	np	np	1 598.8
November	504.5	396.5	331.5	112.1	175.0	31.1	np	np	1 597.6
December	503.5	395.3	330.4	112.5	175.1	31.7	np	np	1 595.0
2011									
January	500.2	402.0	(a)316.7	110.4	174.0	30.6	np	np	1 581.4
February	506.9	405.9	328.3	113.4	174.7	31.3	np	np	1 608.0
March	508.3	403.0	330.3	112.7	176.9	31.4	np	np	1 610.2
April	503.1	394.4	332.3	113.7	174.4	31.7	np	np	1 594.7
May	504.2	400.9	328.5	113.0	176.8	30.9	np	np	1 601.1

TREND

May 2008	500.1	375.7	325.1	111.1	170.0	32.7	17.2	27.6	1 559.5
May 2009	486.1	370.0	322.7	108.8	168.4	31.6	18.2	27.9	1 533.6
2010									
May	494.6	391.6	330.2	110.6	173.0	31.2	18.3	28.2	1 577.7
June	497.1	392.1	331.0	110.8	174.4	31.2	18.5	28.3	1 583.5
July	499.6	392.4	331.3	111.1	175.4	31.3	18.7	28.3	1 588.0
August	501.6	392.8	331.1	111.4	175.8	31.4	18.8	28.2	1 591.1
September	502.9	393.6	330.6	111.6	175.7	31.5	18.8	28.1	1 592.9
October	503.6	395.3	330.0	111.7	175.5	31.5	18.8	28.2	1 594.5
November	504.0	397.4	329.8	111.8	175.1	31.4	18.7	28.2	1 596.6
December	504.4	399.2	329.7	112.0	175.0	31.3	18.7	28.3	1 598.5
2011									
January	504.5	400.4	329.7	112.2	174.9	31.3	18.6	28.4	1 600.0
February	504.7	401.0	329.7	112.5	175.1	31.3	18.5	28.5	1 601.2
March	504.9	401.1	329.8	112.8	175.4	31.3	18.4	28.5	1 602.0
April	505.0	400.8	329.9	113.0	175.6	31.3	18.3	28.5	1 602.3
May	505.1	400.4	329.9	113.3	175.9	31.3	18.1	28.4	1 602.5

np not available for publication but included in totals where applicable, unless otherwise indicated

(a) Use with caution; see note 28 in the Explanatory Notes, also refer to article in January 2011 issue.

	TREND			SEASONALLY ADJUSTED			ORIGINAL		
	<i>Under-employed workers</i>	<i>Under-employment rate</i>	<i>Labour force under-utilisation rate</i>	<i>Under-employed workers</i>	<i>Under-employment rate</i>	<i>Labour force under-utilisation rate</i>	<i>Under-employed workers</i>	<i>Under-employment rate</i>	<i>Labour force under-utilisation rate</i>
	'000	%	%	'000	%	%	'000	%	%
MALES									
May 2007	283.6	4.7	8.8	277.0	4.6	8.5	273.5	4.5	8.5
May 2008	262.4	4.3	8.0	268.9	4.4	8.4	266.6	4.3	8.4
May 2009	386.7	6.2	11.9	412.1	6.5	12.7	409.8	6.5	12.7
2009									
November	382.2	6.0	11.8	384.9	6.1	11.8	376.3	6.0	11.3
2010									
February	366.0	5.7	11.2	374.7	5.9	11.2	386.4	6.0	11.9
May	361.9	5.6	10.8	340.4	5.3	10.5	340.1	5.3	10.5
August	359.4	5.5	10.5	371.9	5.8	10.6	368.9	5.7	10.4
November	358.3	5.5	10.3	367.5	5.6	10.5	361.8	5.5	10.0
2011									
February	354.3	5.4	10.2	336.7	5.2	10.0	344.5	5.2	10.6
May	349.1	5.3	10.0	359.6	5.5	10.2	360.6	5.5	10.2
FEMALES									
May 2007	420.3	8.4	13.3	424.1	8.5	13.3	425.5	8.5	13.2
May 2008	401.5	7.8	12.3	411.8	8.0	12.7	412.5	8.0	12.6
May 2009	503.0	9.5	15.1	485.6	9.2	14.7	484.0	9.1	14.5
2009									
November	515.8	9.8	15.2	519.7	9.8	15.3	520.4	9.8	14.9
2010									
February	509.2	9.6	14.9	511.6	9.6	14.9	538.2	10.1	16.1
May	495.9	9.3	14.7	486.1	9.1	14.5	481.2	9.0	14.2
August	489.8	9.1	14.5	496.8	9.2	14.7	477.0	8.9	14.1
November	490.8	9.0	14.5	484.7	8.9	14.5	484.3	8.9	14.1
2011									
February	493.6	9.0	14.5	497.6	9.1	14.3	523.8	9.6	15.6
May	494.7	9.0	14.4	494.9	9.0	14.6	489.8	8.9	14.3
PERSONS									
May 2007	703.9	6.4	10.8	701.0	6.4	10.7	699.0	6.3	10.6
May 2008	663.9	5.9	10.0	680.8	6.0	10.4	679.0	6.0	10.3
May 2009	889.6	7.7	13.4	897.7	7.7	13.6	893.8	7.7	13.5
2009									
November	898.1	7.7	13.3	904.7	7.8	13.4	896.6	7.7	12.9
2010									
February	875.2	7.5	12.9	886.3	7.6	12.8	924.5	7.8	13.8
May	857.8	7.3	12.5	826.4	7.0	12.3	821.3	7.0	12.2
August	849.2	7.1	12.3	868.8	7.3	12.5	845.9	7.2	12.1
November	849.1	7.1	12.2	852.2	7.1	12.3	846.1	7.1	11.9
2011									
February	847.9	7.1	12.1	834.3	7.0	11.9	868.3	7.2	12.8
May	843.8	7.0	12.0	854.5	7.1	12.2	850.4	7.1	12.1

	TREND			SEASONALLY ADJUSTED			ORIGINAL		
	<i>Under-employed workers</i>	<i>Under-employment rate</i>	<i>Labour force under-utilisation rate</i>	<i>Under-employed workers</i>	<i>Under-employment rate</i>	<i>Labour force under-utilisation rate</i>	<i>Under-employed workers</i>	<i>Under-employment rate</i>	<i>Labour force under-utilisation rate</i>
	'000	%	%	'000	%	%	'000	%	%
MALES									
New South Wales	117.7	5.7	10.0	121.8	6.0	10.1	123.9	6.0	10.4
Victoria	87.7	5.3	9.9	94.3	5.7	10.2	86.8	5.2	10.0
Queensland	73.7	5.6	10.9	77.6	5.9	11.1	77.2	5.8	11.2
South Australia	24.9	5.3	10.8	24.6	5.3	10.6	24.6	5.3	10.6
Western Australia	30.6	4.3	8.3	32.9	4.5	8.6	32.1	4.4	8.5
Tasmania	9.3	7.0	12.7	9.0	6.7	12.7	9.6	7.1	12.9
Northern Territory	2.2	3.2	6.5	2.3	3.5	7.7	2.5	3.8	8.4
Australian Capital Territory	4.1	3.7	7.8	4.0	3.6	7.8	3.9	3.5	8.5
Australia	349.1	5.3	10.0	359.6	5.5	10.2	360.6	5.5	10.2
FEMALES									
New South Wales	160.9	9.3	14.8	158.5	9.2	14.9	154.8	9.0	14.6
Victoria	127.8	9.3	14.8	129.1	9.4	15.2	122.9	8.9	14.6
Queensland	106.5	9.4	14.8	106.7	9.4	14.6	106.7	9.4	14.7
South Australia	37.7	9.4	15.3	37.9	9.5	15.1	38.4	9.6	15.0
Western Australia	44.0	7.9	12.3	45.1	8.0	12.4	44.8	7.9	12.3
Tasmania	12.2	10.5	16.5	13.3	11.3	17.4	13.3	11.3	16.5
Northern Territory	2.2	3.7	7.7	2.3	4.0	8.3	2.6	4.5	8.8
Australian Capital Territory	6.2	6.1	9.9	6.5	6.3	10.3	6.3	6.1	10.1
Australia	494.7	9.0	14.4	494.9	9.0	14.6	489.8	8.9	14.3
PERSONS									
New South Wales	278.5	7.4	12.2	280.3	7.4	12.3	278.6	7.4	12.3
Victoria	215.5	7.1	12.1	223.4	7.4	12.4	209.7	6.9	12.1
Queensland	180.3	7.4	12.7	184.3	7.5	12.7	183.9	7.5	12.8
South Australia	62.5	7.2	12.9	62.5	7.2	12.7	63.0	7.3	12.6
Western Australia	74.6	5.8	10.0	78.0	6.0	10.3	76.9	5.9	10.2
Tasmania	21.5	8.6	14.5	22.2	8.9	14.9	22.8	9.1	14.6
Northern Territory	4.3	3.5	7.1	4.6	3.7	8.0	5.1	4.2	8.6
Australian Capital Territory	10.3	4.9	8.9	10.5	4.9	9.0	10.2	4.8	9.3
Australia	843.8	7.0	12.0	854.5	7.1	12.2	850.4	7.1	12.1

WHAT IF...? REVISIONS TO TREND ESTIMATES

EFFECT OF NEW SEASONALLY ADJUSTED ESTIMATES ON TREND ESTIMATES

TREND REVISIONS

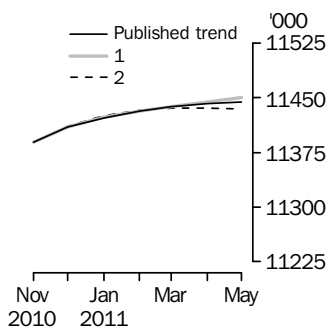
Each time new seasonally adjusted estimates become available, trend estimates are revised. This revision is a combined result of the concurrent seasonal adjustment process and the application of surrogates of the Henderson average to the seasonally adjusted series (see paragraphs 29 to 37 of the Explanatory Notes).

The examples in the tables below show two illustrative scenarios and the consequent revisions to previous trend estimates of employment and the unemployment rate. The revisions in the scenarios are due to the use of surrogates of the Henderson average, as the impact of revision of seasonally adjusted estimates can not be estimated in advance.

- (1) The June seasonally adjusted estimate is *higher* than the May estimate by:
 - 0.24% for employment
 - 2.10% for the unemployment rate
- (2) The June seasonally adjusted estimate is *lower* than the May estimate by:
 - 0.24% for employment
 - 2.10% for the unemployment rate

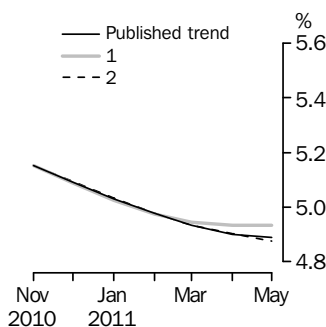
The percentage changes of 0.24% and 2.10% represent the average absolute monthly percentage changes in employment and the unemployment rate respectively. Estimates in the graphs have been calculated using unrounded estimates, and may be different from, but more accurate than, rounded estimates depicted in the corresponding table.

EMPLOYMENT



		WHAT IF NEXT MONTH'S SEASONALLY ADJUSTED FIGURE IS:	
		(1) 11 468.0 i.e. rises by 0.24%	(2) 11 413.1 i.e. falls by 0.24%
2011			
	<i>Trend as published</i>		
February	11 431.1	11 431.2	11 432.2
March	11 437.5	11 437.6	11 435.2
April	11 442.4	11 444.2	11 436.1
May	11 444.2	11 450.3	11 435.0

UNEMPLOYMENT RATE



		WHAT IF NEXT MONTH'S SEASONALLY ADJUSTED ESTIMATE IS:	
		(1) 5.0 i.e. rises by 2.10%	(2) 4.8 i.e. falls by 2.10%
2011			
	<i>Trend as published</i>		
February	5.0	5.0	5.0
March	4.9	4.9	4.9
April	4.9	4.9	4.9
May	4.9	4.9	4.9

EXPLANATORY NOTES

INTRODUCTION

1 This publication contains estimates of the civilian labour force derived from the Labour Force Survey component of the Monthly Population Survey. The full time series for estimates from this publication are also available electronically. More detailed estimates are released one week after this publication in various electronic formats – see *Labour Force, Australia, Detailed – Electronic Delivery* (cat. no. 6291.0.55.001) and *Labour Force, Australia, Detailed, Quarterly* (cat. no. 6291.0.55.003).

CONCEPTS, SOURCES AND METHODS

2 The conceptual framework used in Australia's Labour Force Survey aligns closely with the standards and guidelines set out in Resolutions of International Conferences of Labour Statisticians. Descriptions of the underlying concepts and structure of Australia's labour force statistics, and the sources and methods used in compiling the estimates, are presented in *Labour Statistics: Concepts, Sources and Methods* (cat. no. 6102.0.55.001) which is available on the ABS website <<http://www.abs.gov.au>>.

LABOUR FORCE SURVEY

3 The Labour Force Survey is based on a multi-stage area sample of private dwellings (currently approximately 29,000 houses, flats, etc.) and a list sample of non-private dwellings (hotels, motels, etc.), and covers approximately 0.33% of the civilian population of Australia aged 15 years and over.

4 Information is obtained from the occupants of selected dwellings by specially trained interviewers using computer-assisted interviewing.

5 Households selected for the Labour Force Survey are interviewed each month for eight months, with one-eighth of the sample being replaced each month. The first interview is conducted face-to-face. Subsequent interviews are conducted by telephone (if acceptable to the respondent).

6 The interviews are generally conducted during the two weeks beginning on the Sunday between the 5th and 11th of each month. The information obtained relates to the week before the interview (i.e. the reference week). Each year, to deal with operational difficulties involved with collecting and processing the Labour Force Survey around the Christmas and New Year holiday period, interviews for December start four weeks after November interviews start, and January interviews start five weeks after December interviews start. As a result, January interviewing may commence as early as the 7th or as late as the 13th, depending on the year. Occasionally, circumstances that present significant operational difficulties for survey collection can result in a change to the normal pattern for the start of interviewing.

7 Estimates from the Labour Force Survey are published first in this publication 32 days after the commencement of interviews for that month, with the exception of estimates for each December which are published 39 days after the commencement of interviews.

SCOPE OF SURVEY

8 The Labour Force Survey includes all persons aged 15 years and over except members of the permanent defence forces, certain diplomatic personnel of overseas governments customarily excluded from census and estimated population counts, overseas residents in Australia, and members of non-Australian defence forces (and their dependants) stationed in Australia.

COVERAGE

9 In the Labour Force Survey, coverage rules are applied which aim to ensure that each person is associated with only one dwelling, and hence has only one chance of selection. The coverage rules are necessarily a balance between theoretical and operational considerations. Nevertheless, the chance of a person being enumerated at two separate dwellings in the survey is considered to be negligible.

POPULATION BENCHMARKS

10 The Labour Force Survey estimates are calculated in such a way as to add up to independent estimates of the civilian population aged 15 years and over (population benchmarks). These population benchmarks are projections of the most recently released quarterly Estimated Resident Population (ERP) data. For information on the

EXPLANATORY NOTES *continued*

POPULATION BENCHMARKS

continued

methodology used to produce the ERP see *Australian Demographic Statistics* (cat. no. 3101.0). To create the population benchmarks for the Labour Force Survey, the most recently released quarterly ERP estimates are projected forward one quarter past the period for which they are required. The projection is based on the historical pattern of each population component - births, deaths, interstate migration and net overseas migration (NOM). By projecting one quarter past that needed for the current population benchmarks, demographic changes are smoothed in, thereby making them less noticeable in the population benchmarks.

11 Commencing March 2010, the ERP series is revised twice-yearly in the March and September quarter issues of *Australian Demographic Statistics* (cat. no. 3101.0). This biannual revision cycle incorporates more up to date information available for NOM. The revised ERP estimates are used to update the quarterly population projections used in creating the Labour Force Survey population benchmarks.

12 Every five years, the ERP series are revised to incorporate additional information available from the latest Census of Population and Housing (Census). Following the incorporation of census information, the ERP series prior to the latest census are final and subject to no further revision. Labour Force Survey population benchmarks, and the estimates, are revised following this 5-yearly revision in the ERP. From the February 2009 issue of this publication, labour force estimates have been compiled using population benchmarks based on the results of the 2006 Census. Revisions were made in the February 2009 issue to historical labour force estimates from June 2001 to January 2009.

13 As noted, Labour Force Survey population benchmarks are derived from ABS' ERP series. In the past, ABS has revised the Labour Force Survey population benchmarks every five years in order to incorporate additional information from the latest Census. However, in the July 2010 issue of this publication the Labour Force Survey population benchmarks were revised back to July 2006 to accommodate earlier revisions to ERP.

14 From October 2010 onwards, the net overseas migration component of the Labour Force Survey population benchmarks has been derived using assumptions that take into account a range of available supplementary data sources and relevant information to forecast population changes in the short-term. See articles in *Labour Force, Australia* (cat. no. 6202.0) titled: *Labour Force Survey Population Benchmarks* in the September 2010 issue; and *Changes in this issue* in the October 2010 issue. In the future, the ABS may occasionally rebenchmark and revise Labour Force Survey estimates to take account of changes in ERP as additional information becomes available. Where revisions are undertaken, these will be communicated in this publication.

ESTIMATION METHOD

15 The estimation method used in the Labour Force Survey is Composite Estimation, which was introduced in May 2007. Composite Estimation combines data collected in the previous six months with current month's data to produce the current month's estimates, thereby exploiting the high correlation between overlapping samples across months in the Labour Force Survey. The Composite Estimator combines the previous and current month's data by applying different factors according to length of time in the survey. After these factors are applied, the seven months of data are weighted to align with current month population benchmarks. For details see *Information Paper: Forthcoming Changes to Labour Force Statistics, 2007* (cat. no. 6292.0).

COMPARABILITY OF SERIES

16 From April 1986, the definition of employed persons was changed to include persons who worked without pay between 1 and 14 hours per week in a family business or on a farm (i.e. contributing family workers). For further information, see paragraphs 22 and 23 of the Explanatory Notes in the February 2003 issue of *Labour Force, Australia* (cat. no. 6203.0).

EXPLANATORY NOTES *continued*

COMPARABILITY OF SERIES

continued

17 The ABS introduced telephone interviewing into the Labour Force Survey in August 1996. Implementation was phased in for each new sample group from August 1996 to February 1997. During the period of implementation, the new method produced different estimates than would have been obtained under the old methodology. The effect dissipated over the final months of implementation and was no longer discernible from February 1997. The estimates for February 1997 and onwards are directly comparable to estimates for periods prior to August 1996. For further details, see the feature article in the June 1997 issue of *Labour Force, Australia* (cat. no. 6203.0).

18 From April 2001 the Labour Force Survey has been conducted using a redesigned questionnaire containing additional data items and some minor definitional changes. The definition of unemployed persons was changed to include all persons who were waiting to start work and were available to start in the reference week. This change was introduced in February 2004, when historical unit record data were revised from April 2001 to January 2004. This revision created a small trend break at April 2001 in unemployed persons and unemployment rate series. For further details, see *Information Paper: Forthcoming Changes to Labour Force Statistics* (cat. no. 6292.0), released in December 2003.

19 Core labour force series were revised in April 2001 for the period April 1986 to March 2001 for the remaining definitional changes introduced with the redesigned questionnaire, to reduce the impact of the changes on labour force series. For further details, see *Information Paper: Implementing the Redesigned Labour Force Survey Questionnaire* (cat. no. 6295.0) and *Information Paper: Questionnaires Used in the Labour Force Survey* (cat. no. 6232.0).

20 In May 2007, an improved method of estimation, known as composite estimation, was introduced into the Labour Force Survey. In introducing this change, the ABS revised unit record data from April 2001 to April 2007 based on the new estimation method. While estimates for periods prior to April 2001 are unrevised and were compiled using a different estimation method, no trend break was identified in the employed persons series. Also, no change was identified in the trend breaks in the unemployed persons and unemployment rate series which arose with the introduction of a redesigned survey form in April 2001 (as noted above in paragraph 18). For further details, see *Information Paper: Forthcoming Changes to Labour Force Statistics, 2007* (cat. no. 6292.0).

LABOUR FORCE SURVEY SAMPLE

21 The current Labour Force Survey sample has been selected using information collected in the 2006 Census of Population and Housing.

22 The majority of this sample was phased in over the period November 2007 to June 2008, with one-eighth of this portion of the sample being introduced every month. Such a pattern of implementation means that any changes to labour force estimates due to differences between the two samples, or any other influences, were spread over the eight months. The remainder of the sample (about 20% of the total), which covers less settled areas and non-private dwellings was rotated in full for New South Wales, Western Australia, Northern Territory and Australian Capital Territory in March 2008, and for Victoria, Queensland, South Australia and Tasmania in April 2008.

23 As one of a range of ABS savings initiatives for the 2008–09 financial year, there was a 24% reduction in the LFS sample size for the period July 2008 to August 2009, relative to the June 2008 sample size. The sample reduction was reversed from September 2009 to December 2009, with December 2009 estimates being the first produced under the fully reinstated sample.

24 For further details, see *Information Paper: Labour Force Survey Sample Design* (cat. no. 6269.0).

EXPLANATORY NOTES *continued*

RELIABILITY OF ESTIMATES

25 Two types of error are possible in an estimate based on a sample survey: sampling error and non-sampling error.

26 Sampling error occurs because a sample, rather than the entire population, is surveyed. One measure of the likely difference resulting from not including all dwellings in the survey is given by the standard error. There are about two chances in three that a sample estimate will differ by less than one standard error from the figure that would have been obtained if all dwellings had been included in the survey, and about nineteen chances in twenty that the difference will be less than two standard errors. Standard errors of key estimates for the latest month and of movements since the previous month of these estimates are shown in the standard errors section of this publication. Standard errors for other estimates and other movements may be calculated by using the spreadsheet contained in *Labour Force Survey Standard Errors, Data Cube* (cat. no. 6298.0.55.001) which is available free of charge on the ABS website <<http://www.abs.gov.au>>.

27 Non-sampling error arises from inaccuracies in collecting, recording and processing the data. Every effort is made to minimise reporting error by the careful design of questionnaires, intensive training and supervision of interviewers, and efficient data processing procedures. Non-sampling error also arises because information cannot be obtained from all persons selected in the survey. The Labour Force Survey receives a high level of co-operation from individuals in selected dwellings, with the average response rate over the last year being 97%. See Glossary for definition of response rate.

28 Due to flooding in Queensland, operational difficulties were experienced in conducting the Labour Force Survey in January 2011. While the disruption to survey operations will have slightly reduced the quality of some Queensland estimates, the impact on the estimates is not statistically significant for most series. However, a noticeable impact on aggregate monthly hours worked was observed for Queensland and a large extreme correction has been applied to stabilise the trend estimate. A similar treatment has been applied to the Australian total series. See article in January 2011 issue of *Labour Force, Australia* (cat. no. 6202.0) titled: *Impact of the Floods on the Labour Force Survey*.

SEASONAL ADJUSTMENT AND TREND ESTIMATION

29 Seasonal adjustment is a means of removing the estimated effects of normal seasonal variation from the series so that the effects of other influences on the series can be more clearly recognised. Seasonal adjustment does not aim to remove the irregular or non-seasonal influences which may be present in any particular month. This means that month-to-month movements of the seasonally adjusted estimates may not be reliable indicators of trend behaviour.

30 The Labour Force Survey uses the concurrent seasonal adjustment method to derive seasonal factors. Concurrent seasonal adjustment uses data up to the current month to estimate seasonal factors for the current and all previous months. This process can result in revisions each month to estimates for earlier periods. However, in most instances, the only noticeable revisions will be to the seasonally adjusted estimates for the previous month and one year prior to the current month.

31 The revision properties of the seasonally adjusted and trend estimates can be improved by the use of Autoregressive Integrated Moving Average (ARIMA) modelling. ARIMA modelling relies on the characteristics of the series being analysed to project future period data. The projected values are temporary, intermediate values, that are only used internally to improve the estimation of the seasonal factors. The projected data do not affect the original estimates and are discarded at the end of the seasonal adjustment process. The Labour Force Survey uses an ARIMA model for 95% of the individual time series. The ARIMA model is assessed as part of the annual reanalysis. For

EXPLANATORY NOTES *continued*

SEASONAL ADJUSTMENT AND TREND ESTIMATION *continued*

further details, see the feature article in the October 2004 issue of *Australian Economic Indicators* (cat. no. 1350.0).

32 Seasonal adjustment is able to remove the effect of events which occur at the same time in the survey every year. However, there are some events, like holidays, which are not always at the same time in the survey cycle or which are not at the same time across Australia. The effects of these types of events on Labour Force Survey estimates cannot in all cases be removed, because the pattern of their effects cannot be determined. However, two events for which adjustment is made in the seasonally adjusted series are the January interview start date and the timing of Easter. For further details, see *Information Paper: Forthcoming Changes to Labour Force Statistics* (cat. no. 6292.0) released in December 2003.

33 While seasonal factors for the complete time series are estimated each month, they will continue to be reviewed annually at a more detailed level to take into account each additional year's original data. This annual review will not normally result in significant changes to published estimates. Whilst the review is usually conducted in February each year with the results released in the February issue of this publication, for 2011 the review was conducted in May with the with the results released in the May issue.

34 The smoothing of seasonally adjusted series to produce 'trend' series reduces the impact of the irregular component of the seasonally adjusted series. These trend estimates are derived by applying a 13-term Henderson-weighted moving average to all months except the last six. The last six monthly trend estimates are obtained by applying surrogates of the Henderson average to the seasonally adjusted series. Trend estimates are used to analyse the underlying behaviour of a series over time.

35 While this smoothing technique enables estimates to be produced for the latest month, it does result in revisions in addition to those caused by the revision of seasonally adjusted estimates. Generally, revisions due to the use of surrogates of the Henderson average become smaller, and after three months have a negligible impact on the series.

36 Trend estimates are published for the Northern Territory in table 10 and for the Australian Capital Territory in table 11. Unadjusted series for the two Territories have shown, historically, a high degree of variability, which can lead to considerable revisions to the seasonally adjusted estimates each month when seasonal factors are estimated. For this reason, seasonally adjusted estimates are not currently published for the two Territories. In addition, caution should be exercised in the interpretation of trend estimates for the two Territories, particularly for the three most recent months, where revisions may be relatively large.

37 For further information, see *A Guide to Interpreting Time Series – Monitoring Trends* (cat. no. 1349.0) or contact the Assistant Director, Time Series Analysis on (02) 6252 6345 or email time.series.analysis@abs.gov.au.

RELATED PUBLICATIONS

38 Users may also wish to refer to the following publications:

- *Labour Force Survey Standard Products and Data Item Guide* (cat.no. 6103.0). This publication is a reference guide for users of Labour Force Survey data standard products.
- *Australian Labour Market Statistics* (cat. no. 6105.0). This publication presents key indicators of the labour market, articles on a range of labour market issues, and information about the latest developments in the labour statistics program. For further information about this publication, please contact Labour Market Statistics on (02) 6252 7206.

39 ABS Information about the labour market can be found on the Topics @ a Glance page on the ABS website <<http://www.abs.gov.au>>.

EXPLANATORY NOTES *continued*

RELATED PUBLICATIONS *continued*

40 Information about current publications and other products released by the ABS is available from the statistics page on the ABS website. The ABS also issues a daily release advice on the website, Upcoming Product Releases, which details products to be released in the week ahead.

DATA AVAILABLE ON REQUEST

41 As well as the statistics included in this and related publications, the ABS may have other relevant data available. Inquiries should be made to the Labour Force contact officer on (02) 6252 6525, email labourforce@abs.gov.au or to any ABS office.

EFFECTS OF ROUNDING

42 Estimates have been rounded and discrepancies may occur between sums of the component items and totals. Estimates of movement shown in this publication are obtained by taking the difference of unrounded estimates. The movement estimate is then rounded. Where a discrepancy occurs between the reported movement and the difference of the rounded estimates, the reported movement will be more accurate.

SYMBOLS AND ABBREVIATIONS

43 SYMBOLS AND ABBREVIATIONS

<i>Symbol</i>	<i>Definition</i>
'000	thousands
%	percentage
ABS	Australian Bureau of Statistics
CAI	computer assisted interviewing
cat. no.	catalogue number
ERP	estimated resident population
f/t	full time
LFS	Labour Force Survey
p/t	part time
pts	percentage points
Seas adj.	seasonally adjusted
TAFE	Technical and Further Education

STANDARD ERRORS

STANDARD ERRORS

The estimates in this publication are based on information gained from the occupants of a sample survey of dwellings. Because the entire population is not surveyed, the published estimates are subject to sampling error. The most common way of quantifying such sampling error is to calculate the standard error for the published estimate or statistic. For more information, see paragraphs 25 to 27 of the Explanatory Notes.

LEVEL ESTIMATES

To illustrate, let us say the published level estimate for employed persons aged 15–19 years is 700,000 and the associated standard error is 9,200. The standard error is then used to interpret the level estimate of 700,000. For instance, the standard error of 9,200 indicates that:

- There are approximately two chances in three that the real value falls within the range 690,800 to 709,200 (700,000 + or – 9,200)
- There are approximately nineteen chances in twenty that the real value falls within the range 681,600 to 718,400 (700,000 + or – 18,400).

The real value in this case is the result we would obtain if we could enumerate the total population.

The following table shows the standard errors for this month's level estimates.

		AUSTRALIA										
		NSW	Vic.	Qld	SA	WA	Tas.	NT	ACT	Males	Females	Persons
Aged 15 years and over												
Employed												
Full time	'000	20.5	21.1	15.4	6.8	9.9	2.7	3.9	2.4	27.1	19.3	32.7
Part time	'000	14.7	13.2	10.2	4.9	6.9	2.1	1.2	1.6	11.2	17.7	21.8
Total	'000	22.6	25.6	17.6	7.8	10.8	3.2	4.6	2.5	29.5	27.1	37.1
Unemployed												
Looking for f/t work	'000	8.2	6.8	6.3	2.7	3.3	1.1	0.6	0.9	9.6	8.1	12.7
Looking for p/t work	'000	4.9	4.7	3.3	1.8	2.1	0.7	0.3	0.7	4.6	6.4	7.9
Total	'000	9.6	8.3	6.9	3.2	4.0	1.3	0.8	1.2	10.7	10.4	15.1
Labour force	'000	22.9	26.3	17.9	8.0	10.9	3.3	4.7	2.5	30.1	27.8	37.7
Not in labour force	'000	21.3	23.3	15.4	7.1	10.5	3.1	3.8	2.3	24.6	29.1	34.3
Unemployment rate												
Looking for f/t work	pts	0.3	0.3	0.4	0.5	0.4	0.7	0.6	0.6	0.2	0.3	0.1
Looking for p/t work	pts	0.4	0.5	0.5	0.6	0.6	0.8	1.3	1.2	0.4	0.2	0.2
Total	pts	0.3	0.3	0.3	0.4	0.3	0.5	0.6	0.5	0.2	0.2	0.1
Participation rate	pts	0.4	0.6	0.5	0.6	0.6	0.8	2.7	0.9	0.3	0.3	0.2
Aged 15–19 years												
Employed												
Full time	'000	3.3	2.5	2.6	1.1	1.9	0.5	0.3	0.4	4.4	3.5	5.2
Part time	'000	4.7	4.1	3.8	1.7	2.1	0.7	0.4	0.6	5.4	6.1	7.8
Total	'000	5.5	4.6	4.6	1.9	2.8	0.9	0.5	0.7	6.6	6.7	9.2
Unemployed												
Looking for f/t work	'000	2.6	2.1	2.3	1.0	1.3	0.4	0.2	0.5	3.2	3.1	4.5
Looking for p/t work	'000	2.7	2.8	2.2	1.1	1.3	0.4	0.1	0.4	3.4	3.4	4.8
Total	'000	3.9	3.5	3.3	1.5	1.8	0.6	0.3	0.6	4.7	4.6	6.6
Labour force	'000	6.0	5.1	5.0	2.1	3.0	0.9	0.5	0.8	7.1	7.1	10.0
Not in labour force	'000	8.5	6.8	5.3	2.4	3.7	1.0	0.9	0.8	8.6	8.1	12.2
Unemployment rate												
Looking for f/t work	pts	3.3	4.4	3.4	5.4	3.1	5.2	6.2	10.1	1.9	3.0	1.7
Looking for p/t work	pts	1.6	1.9	1.6	2.3	2.4	3.3	2.9	4.1	1.3	1.1	0.8
Total	pts	1.6	1.8	1.6	2.3	1.9	2.9	3.5	4.2	1.1	1.1	0.8
Participation rate	pts	1.2	1.4	1.6	2.0	1.9	2.7	3.2	3.3	0.9	1.0	0.7
Unemployment to population ratio – looking for f/t work	pts	0.5	0.6	0.7	0.9	0.8	1.2	1.4	2.0	0.4	0.4	0.3

STANDARD ERRORS *continued*

MOVEMENT ESTIMATES

The following example illustrates how to use the standard error to interpret a movement estimate. Let us say that one month the published level estimate for females employed part-time in Australia is 1,890,000; the next month the published level estimate is 1,900,000 and the associated standard error for the movement estimate is 11,900. The standard error is then used to interpret the published movement estimate of 10,000. For instance, the standard error of 11,900 indicates that:

- There are approximately two chances in three that the real movement between the two months falls within the range – 1,900 to 21,900 (10,000 + or – 11,900)
- There are approximately nineteen chances in twenty that the real movement falls within the range – 13,800 to 33,800 (10,000 + or – 23,800).

The following table shows the standard errors for this month's movement estimates.

		AUSTRALIA										
		NSW	Vic.	Qld	SA	WA	Tas.	NT	ACT	Males	Females	Persons
Aged 15 years and over												
Employed												
Full time	'000	13.8	11.3	10.0	3.9	6.3	1.7	1.3	1.7	17.7	12.8	22.3
Part time	'000	9.0	7.4	6.2	2.8	4.0	1.3	0.6	1.0	7.9	11.9	14.2
Total	'000	16.7	13.7	13.5	5.5	8.0	2.1	1.4	1.9	19.5	17.6	27.3
Unemployed												
Looking for f/t work	'000	8.4	6.6	6.9	2.7	3.5	1.1	0.5	1.0	9.8	8.3	13.0
Looking for p/t work	'000	5.2	4.6	3.9	1.7	2.3	0.7	0.3	0.8	5.2	6.5	8.2
Total	'000	10.0	8.1	7.8	3.2	4.1	1.3	0.6	1.2	11.1	10.7	15.5
Labour force	'000	17.2	14.1	14.3	5.8	8.3	2.2	1.4	2.0	20.0	18.2	28.1
Not in labour force	'000	15.8	12.8	12.1	5.1	7.2	2.1	1.2	1.9	15.2	19.0	25.2
Unemployment rate												
Looking for f/t work	pts	0.3	0.3	0.4	0.5	0.4	0.7	0.6	0.6	0.2	0.3	0.2
Looking for p/t work	pts	0.5	0.5	0.5	0.7	0.6	0.8	1.2	1.3	0.5	0.3	0.2
Total	pts	0.3	0.3	0.3	0.4	0.3	0.5	0.6	0.6	0.2	0.2	0.1
Participation rate	pts	0.3	0.3	0.4	0.4	0.4	0.5	0.8	0.7	0.2	0.2	0.2
Aged 15–19 years												
Employed												
Full time	'000	2.5	2.0	2.1	0.9	1.5	0.4	0.3	0.3	3.5	2.9	4.1
Part time	'000	3.7	3.1	2.9	1.3	1.7	0.5	0.3	0.5	4.2	4.6	5.8
Total	'000	4.2	3.4	3.4	1.4	2.2	0.6	0.3	0.5	5.0	5.1	6.7
Unemployed												
Looking for f/t work	'000	3.1	2.1	2.6	1.0	1.5	0.4	0.2	0.5	3.6	3.2	4.8
Looking for p/t work	'000	3.0	2.8	2.7	1.2	1.5	0.5	0.1	0.5	3.8	3.7	5.3
Total	'000	4.4	3.6	3.8	1.4	2.1	0.6	0.2	0.7	5.3	4.9	7.2
Labour force	'000	4.6	3.7	3.6	1.5	2.3	0.7	0.4	0.6	5.4	5.4	7.2
Not in labour force	'000	5.3	4.2	3.6	1.6	2.4	0.7	0.6	0.6	6.1	5.8	8.0
Unemployment rate												
Looking for f/t work	pts	3.8	4.5	3.7	5.4	3.6	5.2	6.2	10.8	2.1	3.2	1.8
Looking for p/t work	pts	1.8	2.0	1.9	2.5	2.7	3.5	2.7	4.6	1.5	1.1	0.9
Total	pts	1.7	1.9	1.8	2.4	2.1	2.9	3.5	4.5	1.2	1.2	0.8
Participation rate	pts	1.0	1.0	1.1	1.4	1.5	1.9	2.2	2.6	0.7	0.7	0.5
Unemployment to population ratio – looking for f/t work	pts	0.7	0.6	0.8	0.9	0.9	1.2	1.1	2.2	0.5	0.4	0.3

GLOSSARY

Actively looking for work	Includes writing, telephoning or applying in person to an employer for work; answering an advertisement for a job; checking factory noticeboards or the touchscreens at the Centrelink offices; being registered with Centrelink as a jobseeker; checking or registering with any other employment agency; advertising or tendering for work; and contacting friends or relatives.
Actual hours of work	<p>Actual hours of work refers to a specified reference period and includes:</p> <ul style="list-style-type: none">■ hours actually worked during normal periods of work;■ time spent in addition to hours worked during normal periods of work (including overtime);■ time spent at the place of work on activities such as the preparation of the workplace, repairs and maintenance, preparation and cleaning of tools, and the preparation of receipts, time sheets and reports;■ time spent at the place of work waiting or standing by; and■ time corresponding to short rest periods. <p>Excluded are:</p> <ul style="list-style-type: none">■ hours paid for but not worked, such as paid annual leave, public holidays or paid sick leave;■ meal breaks; and■ time spent on travel to and from work (excluding some self-employed). <p>For multiple job holders actual hours worked should equal the hours worked at all jobs.</p>
Aggregate monthly hours worked	<p>Aggregate monthly hours worked measures the total number of actual hours worked by employed persons in a calendar month. It differs from the actual hours worked estimates (and the usual hours worked estimates) since these refer only to the hours worked in the reference week.</p> <p>The methodology used to produce aggregate monthly hours worked means that these are synthetic estimates. Seasonally adjusted and trend estimates of aggregate monthly hours worked are available for the period July 1978 onwards.</p> <p>Further information on the methodology used to produce the aggregate monthly hours worked estimates is available on the ABS website in <i>Information Paper: Expansion of Hours Worked Estimates from the Labour Force Survey</i> (cat. no. 6290.0.55.001).</p> <p>Actual and usual hours worked cannot be aggregated across time to produce either quarterly or annual estimates as they relate to only a single week in the month. In contrast, aggregate monthly hours worked estimates are a true monthly measure, and may be aggregated across time to produce both quarterly and annual estimates.</p>
Attending full time education	Persons aged 15–24 years enrolled at secondary or high school or enrolled as a full time student at a Technical and Further Education (TAFE) college, university, or other educational institution in the reference week.
Attending school	Persons aged 15–19 years enrolled at secondary or high school in the reference week.
Attending tertiary educational institution full time	Persons aged 15–24 years enrolled full time at a TAFE college, university, or other educational institution in the reference week, except those persons aged 15–19 years who were still attending school.
Civilian population aged 15 years and over	All usual residents of Australia aged 15 years and over except members of the permanent defence forces, certain diplomatic personnel of overseas governments customarily excluded from census and estimated population counts, overseas residents in Australia, and members of non-Australian defence forces (and their dependants) stationed in Australia.
Composite Estimation	The estimation methodology used in the Labour Force Survey. Composite Estimation uses sample responses from nearby months as well as from the reference month to derive estimates for the reference month. This approach achieves gains in efficiency by exploiting the high similarity between the responses provided by the same respondent in

GLOSSARY *continued*

Composite Estimation <i>continued</i>	previous months. For details see <i>Information Paper: Forthcoming Changes to Labour Force Statistics, 2007</i> (cat. no. 6292.0).
Employed	All persons aged 15 years and over who, during the reference week: <ul style="list-style-type: none">■ worked for one hour or more for pay, profit, commission or payment in kind in a job or business, or on a farm (comprising employees, employers and own account workers); or■ worked for one hour or more without pay in a family business or on a farm (i.e. contributing family workers); or■ were employees who had a job but were not at work and were:<ul style="list-style-type: none">■ away from work for fewer than four weeks up to the end of the reference week; or■ away from work for more than four weeks up to the end of the reference week and received pay for some or all of the four week period to the end of the reference week; or■ away from work as a standard work or shift arrangement; or■ on strike or locked out; or■ on workers' compensation and expected to return to their job; or■ were employers or own account workers, who had a job, business or farm, but were not at work.
Employment to population ratio	For any group, the number of employed persons expressed as a percentage of the civilian population in the same group.
Estimated resident population (ERP)	Estimated resident population (ERP), is Australia's official measure of the population of Australia and is based on the concept of usual residence. It refers to all people, regardless of nationality, citizenship or legal status, who usually live in Australia, with the exception of foreign diplomatic personnel and their families. It includes usual residents who are overseas for fewer than 12 months. It excludes overseas visitors who are in Australia for fewer than 12 months. Refer to <i>Australian Demographic Statistics</i> (cat. no. 3101.0).
Flow estimates	Flow estimates are a measure of activity over a given period. For example, aggregate monthly hours worked is a measure of the total number of hours worked in a calendar month.
Full time workers	Employed persons who usually worked 35 hours or more a week (in all jobs) and those who, although usually working fewer than 35 hours a week, worked 35 hours or more during the reference week.
Gross flows	<p>The matching of respondents who report in consecutive months enables analysis of the transition of individuals between the different labour force status classifications, referred to as the matched sample. The transition counts between the different labour force status classifications from one point in time to the next are commonly referred to as gross flows.</p> <p>The figures presented in gross flows are presented in original terms only and do not align with published labour force estimates. The gross flows figures are derived from the matched sample between consecutive months, which after taking account of the sample rotation and varying non-response in each month is approximately 80 percent of the sample.</p> <p>Caution should be exercised when analysing these gross flows data due to:</p> <ul style="list-style-type: none">■ the figures presented sum to approximately 80 percent of the population values as the gross flows data are based on the matched sample only;■ there is no adjustment applied to account for changes due to seasonal patterns (referred to commonly as seasonal adjustment); and■ the estimates of relative sizes of each transition class are subject to bias due to the matched sample being a non-representative sample.
Labour force	For any group, persons who were employed or unemployed, as defined.

GLOSSARY *continued*

Labour force status	A classification of the civilian population aged 15 years and over into employed, unemployed or not in the labour force, as defined. The definitions conform closely to the international standard definitions adopted by the International Conferences of Labour Statisticians.
Labour force underutilisation rate	The sum of the number of persons unemployed and the number of persons in underemployment, expressed as a proportion of the labour force.
Market sector	The market sector is an industry grouping comprising the following industries: Agriculture, forestry and fishing; Mining; Manufacturing; Electricity, gas, water and waste services; Construction; Wholesale trade; Retail trade; Accommodation and food services; Transport, postal and warehousing; Information media and telecommunications; Finance and insurance services; Rental, hiring and real estate services; Professional, scientific and technical services; Administrative and support services; Arts and recreation services; and Other services. Refer to <i>Australian National Accounts: Concepts, Sources and Methods</i> (cat. no. 5216.0).
Non-market Sector	The non-market sector is an industry grouping comprising the following industries: Education and training; Public administration & safety; and Health care and social assistance. Refer to <i>Australian National Accounts: Concepts, Sources and Methods</i> (cat. no. 5216.0).
Not in labour force	Persons who were not in the categories employed or unemployed, as defined.
Participation rate	For any group, the labour force expressed as a percentage of the civilian population aged 15 years and over in the same group.
Part time workers	Employed persons who usually worked fewer than 35 hours a week (in all jobs) and either did so during the reference week or were not at work during the reference week.
Response rate	The number of fully responding dwellings expressed as a percentage of the total number of dwellings excluding sample loss. Examples of sample loss include: dwellings where all persons are out of scope and/or coverage; vacant dwellings; dwellings under construction; dwellings converted to non-dwellings; derelict dwellings; and demolished dwellings.
Seasonally adjusted series	A time series of estimates with the estimated effects of normal seasonal variation removed. See Explanatory Notes 29 to 33 for more detail.
Stock estimates	Stock estimates are a measure of certain attributes at a point in time and can be thought of as <i>stocktakes</i> . For example, the total number of employed persons is an account of the number of people who were considered employed in the Labour Force Survey reference week.
Trend series	A smoothed seasonally adjusted series of estimates. See Explanatory Notes 34 to 37 for more detail.
Underemployment rate	The number of underemployed workers expressed as a percentage of the labour force.
Underemployed workers	Employed persons aged 15 years and over who want, and are available for, more hours of work than they currently have. They comprise: <ul style="list-style-type: none">■ persons employed part time who want to work more hours and are available to start work with more hours, either in the reference week or in the four weeks subsequent to the survey; or■ persons employed full time who worked part time hours in the reference week for economic reasons (such as being stood down or insufficient work being available). It is assumed that these people wanted to work full time in the reference week and would have been available to do so.
Unemployed	Persons aged 15 years and over who were not employed during the reference week, and: <ul style="list-style-type: none">■ had actively looked for full time or part time work at any time in the four weeks up to the end of the reference week and were available for work in the reference week; or

GLOSSARY *continued*

Unemployed <i>continued</i>	<ul style="list-style-type: none">■ were waiting to start a new job within four weeks from the end of the reference week and could have started in the reference week if the job had been available then.
Unemployed looking for full time work	Unemployed persons who: <ul style="list-style-type: none">■ actively looked for full time work; or■ were waiting to start a new full time job.
Unemployed looking for part time work	Unemployed persons who: <ul style="list-style-type: none">■ actively looked for part time work only; or■ were waiting to start a new part time job.
Unemployment rate	For any group, the number of unemployed persons expressed as a percentage of the labour force in the same group.
Unemployment to population ratio	For any group, the number of unemployed persons expressed as a percentage of the civilian population in the same group.
Usual hours of work	Usual hours of work refers to a typical period rather than to a specified reference period. The concept of usual hours applies both to persons at work and to persons temporarily absent from work, and is defined as the hours worked during a typical week or day. Actual hours worked (for a specific reference period) may differ from usual hours worked due to illness, vacation, strike, overtime work, a change of job, or similar reasons.

FOR MORE INFORMATION . . .

INTERNET **www.abs.gov.au** the ABS website is the best place for data from our publications and information about the ABS.

INFORMATION AND REFERRAL SERVICE

Our consultants can help you access the full range of information published by the ABS that is available free of charge from our website. Information tailored to your needs can also be requested as a 'user pays' service. Specialists are on hand to help you with analytical or methodological advice.

PHONE 1300 135 070

EMAIL client.services@abs.gov.au

FAX 1300 135 211

POST Client Services, ABS, GPO Box 796, Sydney NSW 2001

FREE ACCESS TO STATISTICS

All statistics on the ABS website can be downloaded free of charge.

WEB ADDRESS www.abs.gov.au