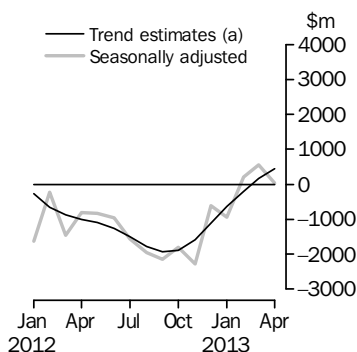


# INTERNATIONAL TRADE IN GOODS AND SERVICES

AUSTRALIA

EMBARGO: 11.30AM (CANBERRA TIME) THURS 6 JUN 2013

## Balance on Goods and Services



(a) A trend break has been applied to January 2012

## KEY FIGURES

	Feb 2013	Mar 2013	Apr 2013	Mar 13 to Apr 13 %
	\$m	\$m	\$m	change
<b>BALANCE ON GOODS AND SERVICES</b>				
Trend estimates	-191	172	445	159
Seasonally adjusted	203	555	28	-95
<b>CREDITS (Exports of goods and services)</b>				
Trend estimates	25 350	25 537	25 648	—
Seasonally adjusted	25 635	25 721	25 419	-1
<b>DEBITS (Imports of goods and services)</b>				
Trend estimates	25 541	25 365	25 204	-1
Seasonally adjusted	25 432	25 166	25 391	1

— nil or rounded to zero (including null cells)

## KEY POINTS

### BALANCE ON GOODS AND SERVICES

- In trend terms, the *balance on goods and services* was a surplus of \$445m in April 2013, an increase of \$273m (159%) on the surplus in March 2013.
- In seasonally adjusted terms, the *balance on goods and services* was a surplus of \$28m in April 2013, a decrease of \$527m (95%) on the surplus in March 2013.

### CREDITS (EXPORTS OF GOODS AND SERVICES)

- In seasonally adjusted terms, *goods and services credits* fell \$302m (1%) to \$25,419m. *Non-rural goods* fell \$463m (3%) and *net exports of goods under merchanting* fell \$7m (37%). *Non-monetary gold* rose \$138m (12%) and *rural goods* rose \$64m (2%). *Services credits* fell \$34m (1%).

### DEBITS (IMPORTS OF GOODS AND SERVICES)

- In seasonally adjusted terms, *goods and services debits* rose \$225m (1%) to \$25,391m. *Capital goods* rose \$733m (16%) and *non-monetary gold* rose \$67m (18%). *Intermediate and other merchandise goods* fell \$354m (4%) and *consumption goods* fell \$327m (6%). *Services debits* rose \$107m (2%).

## INQUIRIES

For further information contact Val Tot on Canberra (02) 6252 5540 for Goods, and Lauren Binns on Hobart (03) 6222 5926 for Services.

# NOTES

## FORTHCOMING ISSUES

ISSUE	RELEASE DATE
May 2013	3 July 2013
June 2013	6 August 2013
July 2013	5 September 2013
August 2013	2 October 2013
September 2013	6 November 2013
October 2013	5 December 2013



## REVISIONS

Since the previous issue of this publication revisions have been made to align with the data published in the March quarter 2013 issues of *Balance of Payments and International Investment Position, Australia* (cat. no. 5302.0) and *Australian National Accounts: National Income, Expenditure and Product* (cat. no. 5206.0). On an international merchandise trade basis, exports and imports have been revised back to October 2012. On a balance of payments basis goods and services have been revised back to April 2012.

See page 4 – *Revisions* for details.

## CHANGES IN THIS ISSUE

Changes in this issue:

- Australia's major trading partners
- Changes to country groupings.

See page 5 – *Changes in this issue* for details.

## VALUE ADJUSTMENTS

Adjustments have been made to the value of the 'metal ores and minerals' and 'capital goods n.e.s.' components in the balance of payments series.

See page 6 – *Value adjustments* for details.

## RELATED RELEASES

See page 7 – *Related releases* for details.

Brian Pink  
Australian Statistician

# CONTENTS

	<i>page</i>
Revisions . . . . .	4
Changes in this issue . . . . .	5
Value adjustments . . . . .	6
Related releases . . . . .	7
Time series data . . . . .	8

## ANALYSIS

Analysis and comments . . . . .	10
---------------------------------	----

## TABLES

### INTERNATIONAL TRADE IN GOODS AND SERVICES – ON A BALANCE OF PAYMENTS BASIS

<b>1</b> Goods and services, summary, seasonally adjusted and trend estimates . . . . .	18
<b>2</b> Goods and services, summary, original . . . . .	19
<b>3</b> Goods credits, original . . . . .	20
<b>4</b> Goods debits, original . . . . .	21
<b>5</b> Goods credits, seasonally adjusted . . . . .	22
<b>6</b> Goods debits, seasonally adjusted . . . . .	23
<b>7</b> Goods credits, trend estimates . . . . .	24
<b>8</b> Goods debits, trend estimates . . . . .	25
<b>9</b> Services, summary, original . . . . .	26
<b>10</b> Services, summary, seasonally adjusted and trend estimates . . . . .	27
<b>11</b> Services, original, quarterly . . . . .	28

### INTERNATIONAL MERCHANDISE TRADE – ON AN INTERNATIONAL MERCHANDISE TRADE BASIS

<b>12</b> International merchandise exports, by commodity . . . . .	29
<b>13</b> International merchandise imports, by commodity . . . . .	32
<b>14</b> International merchandise trade, by country and country groups . . . . .	35
<b>15</b> International merchandise trade, by state . . . . .	36

### OTHER TABLES

<b>16</b> Period average exchange rates per Australian dollar . . . . .	37
<b>17</b> Summary of revisions, goods and services, original . . . . .	38

## OTHER INFORMATION

Explanatory notes . . . . .	39
Appendix – Related articles . . . . .	45

## REVISIONS

---

### REVISIONS

The following goods and services debits components have been revised since the release of the March 2013 issue of *International Trade in Goods and Services, Australia* (cat. no. 5368.0):

- capital goods n.e.s. component of goods debits series, revised back to April 2012
- legal, accounting, management consulting, public relations and other professional services component of services debits, revised back to January 2013
- architectural, engineering and other technical services component of services debits, revised back to April 2012.

Data in this issue aligns with the data in the March quarter 2013 issues of *Balance of Payments and International Investment Position, Australia* (cat. no. 5302.0) released on 4 June 2013, and *Australian National Accounts: National Income, Expenditure and Product* (cat. no. 5206.0) released on 5 June 2013.

Table 17 summarises revisions to goods and services on a balance of payments basis, in original current price terms, since the last issue of this publication. In original terms, the revisions have decreased the deficit on goods and services for the nine months to March 2013 by \$643m.

## CHANGES IN THIS ISSUE

---

### AUSTRALIA'S MAJOR TRADING PARTNERS

The Australia's major trading partners (top 10 countries) for the calendar year 2012 information has been included in this issue. This coincides with the releases of *International Trade in Services by Country, by State and by Detailed Services Category, Calendar Year, 2012* (cat no. 5368.0.55.004).

### CHANGES TO COUNTRY GROUPINGS

From this issue the following changes have been applied to the composition of the Least Developed Countries, Developing Countries, and OPEC country groupings:

- South Sudan is included in the Least Developed Countries and Developing Countries groupings on advice from the Australian Customs and Border Protection Service. These changes impact on statistics in table 14 of this publication and time series spreadsheet tables 14a, 14b, 36a – 36j and 37a – 37i. The new composition applies to the whole time series. Time series IDs remain the same.
- The OPEC country grouping has been amended to include Angola and Ecuador and exclude Gabon, Indonesia and Niger to match current membership. The OPEC group includes Algeria, Angola, Ecuador, Iran, Iraq, Kuwait, Libya, Nigeria, Qatar, Saudi Arabia, United Arab Emirates and Venezuela. Time series spreadsheet tables and table 14 in this publication do not include the OPEC country group and are not affected. International merchandise trade data available on request including the OPEC country group is affected. The new composition applies to the whole time series.

## VALUE ADJUSTMENTS

### VALUE ADJUSTMENTS

International merchandise trade exports data presented in tables 12–15 of this publication are based on information provided by exporters to the *Australian Customs and Border Protection Service* (Customs and Border Protection). At the time of initial reporting to Customs and Border Protection, quantity and unit price information might be estimated for commodities such as iron ore and coal. Final quantity and/or unit price information is updated progressively in merchandise trade data as exporters revise the information provided to Customs and Border Protection. When additional information on quantity and/or unit price for these commodities is available, the ABS may adjust the balance of payments series in current price, original terms to reflect actual transaction values.

In most instances, transfer of ownership occurs when goods cross the customs frontier. In certain circumstances the ownership of large value capital expenditure items can occur prior to the items crossing the customs frontier. The ABS may adjust the relevant balance of payments series to record the timing when transfer of ownership was effected.

#### *Goods credits*

Iron ore (in original terms)

- No adjustment has been applied to the 'metal ores and minerals' component for April 2013. The previous negative adjustments of \$130m for December 2012, \$130m for January 2013, \$130m for February 2013 and \$130m for March 2013 remain.

#### *Goods debits*

Capital expenditure (in original terms)

- the 'capital goods n.e.s.' component includes an estimate of expenditure on capital goods that have changed ownership but have not yet crossed the customs frontier.

## RELATED RELEASES

---

### TRADE IN SERVICES DATA CUBES

*International Trade in Services by Country, by State and by Detailed Services Category, Calendar Year, 2012* (cat no. 5368.0.55.004) was released on 9 May 2013 and is accessible on the ABS website <[www.abs.gov.au](http://www.abs.gov.au)>.

### CHARACTERISTICS OF AUSTRALIAN EXPORTERS

The publication *Characteristics of Australian Exporters, 2011–12* (cat. no. 5368.0.55.006) was released on 28 May 2013 and is accessible on the ABS website <[www.abs.gov.au](http://www.abs.gov.au)>. This publication examines the number and characteristics of Australia's exporters. Estimates of exporters of merchandise trade are compiled from data sourced from the *Australian Customs and Border Protection Service* and from the *Australian Taxation Office's* Australian Business Register. Estimates of exporters of services are compiled largely from the ABS Survey of International Trade in Services.

## TIME SERIES DATA

### TIME SERIES DATA

Tables 1 to 16 of this publication are available free on the ABS website <[www.abs.gov.au](http://www.abs.gov.au)> from the 'Downloads' tab of this issue with longer time series. A number of these tables present more detailed breakdowns than included in the publication. A number of additional tables are available free on the ABS website.

#### *Tables with more detailed breakdowns:*

11a Services credits: Original – Quarter<sup>1</sup>

11b Services debits: Original – Quarter<sup>1</sup>

12b Merchandise exports by Standard International Trade Classification (3 digit), FOB Value

13b Merchandise imports by Standard International Trade Classification (3 digit), Customs Value

14a Merchandise exports, Country and Country Groups, FOB Value

14b Merchandise imports, Country and Country Groups, Customs Value

#### *Additional tables:*

31 Merchandise exports by Broad Economic Category (BEC)

32a Merchandise exports, Industry (ANZSIC 2006), FOB Value – from July 2005 onward

32b Merchandise exports, Industry (ANZSIC 1993), FOB Value – from January 1988 to June 2009

33 Merchandise imports by Broad Economic Category (BEC)

34 Merchandise imports by Balance of Payments Broad Economic Category (BoPBEC)

35a Merchandise imports, Industry (ANZSIC 2006), Customs Value – from July 2005 onward

35b Merchandise imports, Industry (ANZSIC 1993), Customs Value – from January 1988 to June 2009

36 Merchandise exports, State by Country and Country Groups

37 Merchandise imports, State by Country and Country Groups

91 Monthly seasonal adjustment factors and forward factors for 12 months.

---

<sup>1</sup> With a one quarter lag for the more detailed breakdowns.



## TIME SERIES DATA *continued*

---

### TRADE IN SERVICES DATA CUBES

Trade in services data cubes are usually updated on an annual basis. Calendar year (cat. no. 5368.0.55.004) statistics are updated following the March issue of this publication and financial year (cat. no. 5368.0.55.003) statistics are updated following the September issue of this publication.

The following tables were included in the calendar and financial year data cubes:

- 1 International trade in services, credits, state by year
- 2 International trade in services, credits, year by state
- 3 International trade in services, debits, state by year
- 4 International trade in services, debits, year by state
- 5 International trade in services, credits, year by country and service
- 6 International trade in services, credits, service by year and by country
- 7 International trade in services, debits, year by country and service
- 8 International trade in services, debits, service by year and by country
- 9 International trade in services, credits, year by country and travel service
- 10 International trade in services, debits, year by country and travel service
- 11 International trade in services, credits, education related travel, by educational sector, by type of expenditure by year.

## ANALYSIS AND COMMENTS

### BALANCE ON GOODS AND SERVICES

In trend terms, the balance on goods and services was a surplus of \$445m in April 2013, an increase of \$273m (159%) on the surplus in March 2013.

In seasonally adjusted terms, the balance on goods and services was a surplus of \$28m in April 2013, a decrease of \$527m (95%) on the surplus in March 2013.

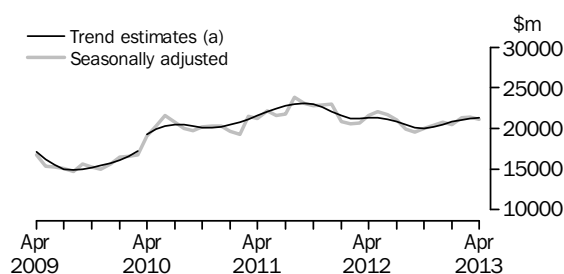
### EXPORTS OF GOODS AND SERVICES

Between March and April 2013, the trend estimate of goods and services credits rose \$111m to \$25,648m.

In seasonally adjusted terms, goods and services credits fell \$302m (1%) to \$25,419m. Non-rural goods fell \$463m (3%) and net exports of goods under merchanting fell \$7m (37%). Non-monetary gold rose \$138m (12%) and rural goods rose \$64m (2%). Services credits fell \$34m (1%).

#### Exports of goods

### GOODS CREDITS



(a) Trend breaks have been applied to April 2009 and April 2010

### RURAL GOODS

In trend terms, exports of rural goods rose \$31m (1%) to \$3,092m.

In seasonally adjusted terms, exports of rural goods rose \$64m (2%) to \$3,154m.

The main component contributing to the rise in seasonally adjusted estimates was other rural, up \$121m (9%).

Partly offsetting this rise was cereal grains and cereal preparations, down \$57m (7%).

### NON-RURAL GOODS

In trend terms, exports of non-rural goods rose \$104m (1%) to \$16,969m.

In seasonally adjusted terms, exports of non-rural goods fell \$463m (3%) to \$16,622m.

The main components contributing to the fall in seasonally adjusted estimates were:

- other mineral fuels, down \$191m (9%)
- coal, coke and briquettes, down \$174m (5%)
- other non-rural (incl. sugar and beverages), down \$71m (8%).

For price and volume details, see the *Selected commodities* section on page 14.

## ANALYSIS AND COMMENTS *continued*

### *Exports of goods continued*

#### NET EXPORTS OF GOODS UNDER MERCHANTING

In trend terms, net exports of goods under merchanting fell \$1m (6%) to \$16m.

In seasonally adjusted terms, net exports of goods under merchanting fell \$7m (37%) to \$12m.

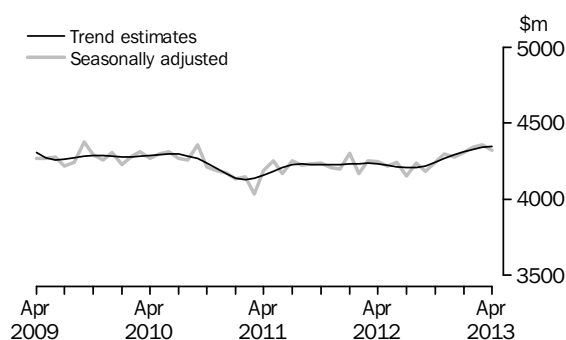
#### NON-MONETARY GOLD

In trend terms, exports of non-monetary gold fell \$27m (2%) to \$1,225m.

In original and seasonally adjusted terms, exports of non-monetary gold rose \$138m (12%) to \$1,307m.

### *Exports of services*

#### SERVICES CREDITS



In trend terms, services credits rose \$6m to \$4,347m.

In seasonally adjusted terms, services credits fell \$34m (1%) to \$4,324m.

The main component contributing to the fall in seasonally adjusted estimates was travel, down \$32m (1%).

In seasonally adjusted terms, tourism related services credits fell \$42m (2%) to \$2,752m.

### IMPORTS OF GOODS AND SERVICES

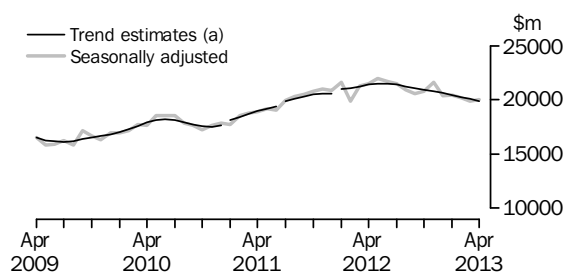
Between March and April 2013, the trend estimate of goods and services debits fell \$161m (1%) to \$25,204m.

In seasonally adjusted terms, goods and services debits rose \$225m (1%) to \$25,391m.

Capital goods rose \$733m (16%) and non-monetary gold rose \$67m (18%). Intermediate and other merchandise goods fell \$354m (4%) and consumption goods fell \$327m (6%). Services debits rose \$107m (2%).

Imports of goods

GOODS DEBITS



(a) Trend breaks have been applied to January 2011, July 2011 and January 2012

CONSUMPTION GOODS

In trend terms, imports of consumption goods fell \$45m (1%) to \$5,737m.

In seasonally adjusted terms, imports of consumption goods fell \$327m (6%) to \$5,500m.

The main components contributing to the fall in seasonally adjusted estimates were:

- consumption goods n.e.s., down \$146m (8%)
- non-industrial transport equipment, down \$90m (6%)
- food and beverages, mainly for consumption, down \$49m (5%).

CAPITAL GOODS

In trend terms, imports of capital goods fell \$100m (2%) to \$4,959m.

In seasonally adjusted terms, imports of capital goods rose \$733m (16%) to \$5,322m.

The main components contributing to the rise in seasonally adjusted estimates were:

- civil aircraft and confidentialised items, up \$303m (167%)
- capital goods n.e.s., up \$254m (29%)
- industrial transport equipment n.e.s., up \$104m (15%).

INTERMEDIATE AND OTHER MERCHANDISE GOODS

In trend terms, imports of intermediate and other merchandise goods fell \$34m to \$8,838m.

In seasonally adjusted terms, imports of intermediate and other merchandise goods fell \$354m (4%) to \$8,761m.

The main components contributing to the fall in seasonally adjusted estimates were:

- processed industrial supplies n.e.s., down \$213m (9%)
- iron and steel, down \$77m (21%)
- other parts for capital goods, down \$73m (6%).

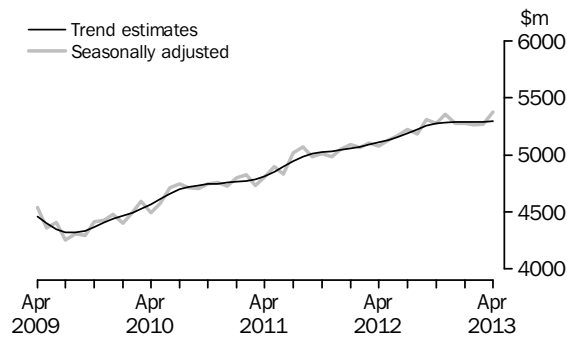
NON-MONETARY GOLD

In trend terms, imports of non-monetary gold rose \$13m (4%) to \$373m.

In original and seasonally adjusted terms, imports of non-monetary gold rose \$67m (18%) to \$434m.

Imports of services

SERVICES DEBITS



In trend terms, services debits rose \$6m to \$5,297m.

In seasonally adjusted terms, services debits rose \$107m (2%) to \$5,374m.

The main components contributing to the rise in seasonally adjusted estimates were:

- travel, up \$72m (3%)
- other services, up \$22m (1%).

In seasonally adjusted terms, tourism related services debits rose \$84m (3%) to \$2,802m.

## ANALYSIS AND COMMENTS *continued*

Selected commodities

### SELECTED COMMODITIES, Quantity and unit value analysis: International merchandise trade basis (a)— Original terms

		CHANGE IN					
		Nov 2012	Dec 2012	Jan 2013	Feb 2013	Mar 2013	Apr 2013
		%	%	%	%	%	%
.....							
<b>IRON ORE</b>							
<b>Lump</b>							
Quantity		-2	19	-16	-12	22	8
Unit value		3	1	15	4	—	3
<b>Fines</b>							
Quantity		-3	23	-19	-4	17	-1
Unit value		7	3	14	8	-1	-1
.....							
<b>COAL</b>							
<b>Hard coking</b>							
Quantity		20	8	-15	-4	-4	11
Unit value		-7	1	3	3	—	-2
<b>Semi-soft</b>							
Quantity		15	8	-15	-5	32	-19
Unit value		-9	2	2	2	1	1
<b>Thermal</b>							
Quantity		-16	21	-9	-14	-6	17
Unit value		-5	-3	—	1	-1	-3

— nil or rounded to zero (including null cells)

(a) Data in this table are on a revised international merchandise trade basis and exclude value adjustments applied to balance of payments series.

On an international merchandise trade basis, in original terms (noting the footnote in the above table), between March and April 2013 the largest movements recorded for the following selected commodities were:

Iron ore lump rose \$158m (11%), with quantities up 8% and unit values up 3%.

Exports to:

- Japan rose \$81m (33%), with quantities up 12% and unit values up 19%
- China rose \$80m (8%), with quantities up 10% and unit values down 2%.

Iron ore fines fell \$80m (2%), with quantities down 1% and unit values down 1%.

Exports to:

- China fell \$208m (6%), with quantities down 3% and unit values down 4%
- Japan rose \$67m (14%), with unit values up 15%
- Taiwan rose \$56m (75%), with quantities up 86% and unit values down 6%.

## ANALYSIS AND COMMENTS *continued*

---

### *Selected commodities continued*

Hard coking coal rose \$100m (9%), with quantities up 11% and unit values down 2%. Exports to the United Kingdom rose \$74m (100%) with quantities up 100%.

Semi-soft coal fell \$122m (18%), with quantities down 19% and unit values up 1%.

Exports to:

- China fell \$75m (40%), with quantities down 39% and unit values down 1%
- the Republic of Korea fell \$53m (50%), with quantities down 50% and unit values down 1%.

Thermal coal rose \$156m (14%), with quantities up 17% and unit values down 3%.

Exports to:

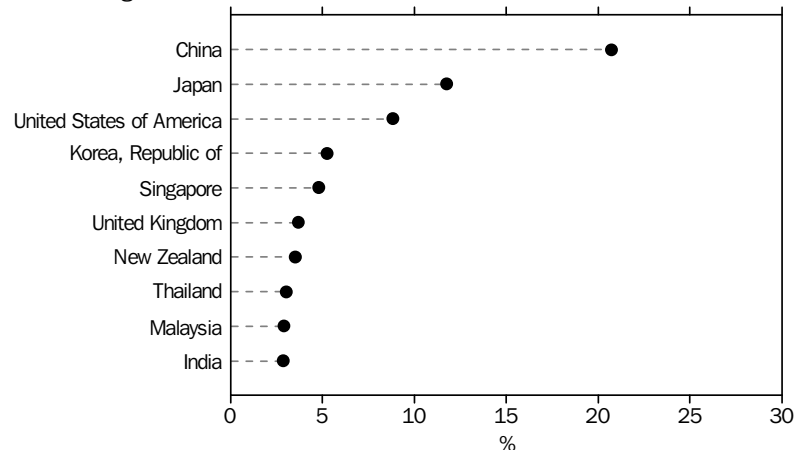
- China rose \$82m (46%), with quantities up 46%
- Japan rose \$57m (11%), with quantities up 14% and unit values down 3%.

## ANALYSIS AND COMMENTS *continued*

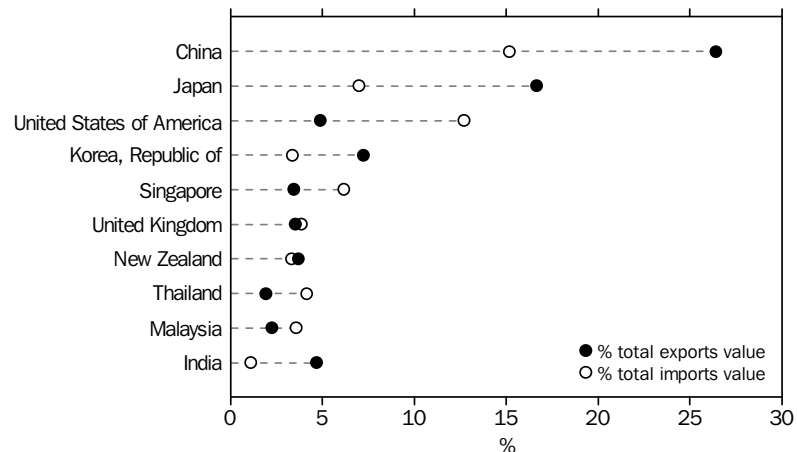
### COUNTRY BREAKDOWN

The following charts show Australia's major trading partners for the calendar year 2012. The charts include both trade in goods (on an international merchandise trade basis) and trade in services (on a balance of payments basis). The first chart shows the countries with the largest two-way trade, i.e., combined trade in both exports and imports of goods and services. The second chart shows total exports and total imports separately for the same ten countries.

TOTAL VALUE OF TWO-WAY TRADE, By major countries – 2012, Percentage share



EXPORTS AND IMPORTS OF GOODS AND SERVICES, By major countries – 2012



Combining trade in goods (on an international merchandise trade basis) and trade in services (on a balance of payments basis) provides a good approximation of total trade. Some components will be excluded (e.g. Merchanting credits and Goods procured in ports by carriers debits). The Manufacturing services on physical inputs owned by others component country information is already available in the Goods estimates and is therefore not included in the Services estimates to avoid double counting. These components are unlikely to impact on the broad analysis.



## ANALYSIS AND COMMENTS *continued*

---

### COUNTRY BREAKDOWN *continued*

Imports data with the confidentiality restrictions 'no commodity details' or 'no value details' are excluded from the individual country and included in 'no country details' in the detailed breakdown presented in the time series spreadsheet table 14b. In 2012, these restrictions represented 2% of the total imports value, however this figure does vary across individual countries. In table 14 of this publication, the 'no country details' data is included in 'other countries'.

## GOODS AND SERVICES(a), Summary—Seasonally Adjusted and Trend Estimates

	May 2012	Jun 2012	Jul 2012	Aug 2012	Sep 2012	Oct 2012	Nov 2012	Dec 2012	Jan 2013	Feb 2013	Mar 2013	Apr 2013
	\$m	\$m	\$m	\$m	\$m	\$m	\$m	\$m	\$m	\$m	\$m	\$m
SEASONALLY ADJUSTED												
<b>BALANCE</b>												
<b>On goods and services</b>	<b>-832</b>	<b>-950</b>	<b>-1 552</b>	<b>-1 964</b>	<b>-2 152</b>	<b>-1 799</b>	<b>-2 286</b>	<b>-603</b>	<b>-934</b>	<b>203</b>	<b>555</b>	<b>28</b>
<b>CREDITS</b>												
Total goods and services	26 245	25 884	25 162	24 168	23 738	24 278	24 659	25 018	24 800	25 635	25 721	25 419
<b>Total goods</b>	<b>22 025</b>	<b>21 639</b>	<b>21 007</b>	<b>19 929</b>	<b>19 556</b>	<b>20 033</b>	<b>20 360</b>	<b>20 740</b>	<b>20 492</b>	<b>21 293</b>	<b>21 363</b>	<b>21 095</b>
Rural goods(b)	2 883	3 003	2 953	2 934	2 868	2 991	3 025	2 958	2 850	3 060	3 090	3 154
Non-rural goods(b)	17 670	16 920	16 753	15 696	15 138	15 390	15 828	16 548	16 197	16 931	17 085	16 622
Net exports of goods under merchandise(c)	12	11	19	19	20	18	18	17	19	19	19	12
Non-monetary gold(c)	1 460	1 704	1 282	1 280	1 530	1 634	1 489	1 217	1 426	1 283	1 169	1 307
<b>Total services</b>	<b>4 220</b>	<b>4 246</b>	<b>4 155</b>	<b>4 239</b>	<b>4 182</b>	<b>4 245</b>	<b>4 300</b>	<b>4 278</b>	<b>4 309</b>	<b>4 342</b>	<b>4 358</b>	<b>4 324</b>
<b>DEBITS</b>												
Total goods and services	-27 078	-26 834	-26 714	-26 132	-25 890	-26 076	-26 945	-25 622	-25 735	-25 432	-25 166	-25 391
<b>Total goods</b>	<b>-21 945</b>	<b>-21 661</b>	<b>-21 495</b>	<b>-20 949</b>	<b>-20 582</b>	<b>-20 799</b>	<b>-21 589</b>	<b>-20 347</b>	<b>-20 461</b>	<b>-20 171</b>	<b>-19 899</b>	<b>-20 017</b>
Consumption goods	-5 752	-5 633	-5 673	-5 743	-5 511	-5 653	-5 800	-5 684	-5 931	-5 904	-5 827	-5 500
Capital goods	-6 326	-6 482	-5 846	-5 779	-5 455	-5 625	-6 028	-5 334	-5 393	-5 143	-4 589	-5 322
Intermediate and other merchandise goods	-9 355	-9 017	-9 444	-9 039	-8 934	-8 976	-9 396	-8 952	-8 766	-8 785	-9 115	-8 761
Non-monetary gold(c)	-511	-529	-531	-388	-683	-545	-366	-377	-371	-339	-367	-434
<b>Total services</b>	<b>-5 133</b>	<b>-5 173</b>	<b>-5 220</b>	<b>-5 183</b>	<b>-5 308</b>	<b>-5 278</b>	<b>-5 356</b>	<b>-5 274</b>	<b>-5 273</b>	<b>-5 261</b>	<b>-5 267</b>	<b>-5 374</b>
TREND ESTIMATES (d)												
<b>BALANCE</b>												
<b>On goods and services</b>	<b>-1 096</b>	<b>-1 257</b>	<b>-1 508</b>	<b>-1 785</b>	<b>-1 940</b>	<b>-1 890</b>	<b>-1 582</b>	<b>-1 117</b>	<b>-628</b>	<b>-191</b>	<b>172</b>	<b>445</b>
<b>CREDITS</b>												
Total goods and services	25 522	25 384	25 061	24 648	24 345	24 283	24 477	24 803	25 111	25 350	25 537	25 648
<b>Total goods</b>	<b>21 298</b>	<b>21 170</b>	<b>20 853</b>	<b>20 438</b>	<b>20 124</b>	<b>20 041</b>	<b>20 210</b>	<b>20 510</b>	<b>20 799</b>	<b>21 021</b>	<b>21 195</b>	<b>21 302</b>
Rural goods(b)	2 879	2 921	2 949	2 956	2 950	2 946	2 949	2 965	2 991	3 024	3 061	3 092
Non-rural goods(b)	17 027	16 802	16 422	15 995	15 683	15 615	15 806	16 129	16 447	16 688	16 865	16 969
Net exports of goods under merchandise	15	15	16	17	18	19	19	18	18	18	17	16
Non-monetary gold	1 377	1 432	1 466	1 470	1 472	1 461	1 436	1 397	1 342	1 292	1 252	1 225
<b>Total services</b>	<b>4 224</b>	<b>4 214</b>	<b>4 208</b>	<b>4 210</b>	<b>4 220</b>	<b>4 241</b>	<b>4 267</b>	<b>4 293</b>	<b>4 313</b>	<b>4 328</b>	<b>4 341</b>	<b>4 347</b>
<b>DEBITS</b>												
Total goods and services	-26 618	-26 641	-26 569	-26 434	-26 284	-26 173	-26 059	-25 920	-25 740	-25 541	-25 365	-25 204
<b>Total goods</b>	<b>-21 485</b>	<b>-21 483</b>	<b>-21 379</b>	<b>-21 210</b>	<b>-21 030</b>	<b>-20 898</b>	<b>-20 776</b>	<b>-20 634</b>	<b>-20 453</b>	<b>-20 254</b>	<b>-20 074</b>	<b>-19 907</b>
Consumption goods	-5 667	-5 680	-5 677	-5 660	-5 652	-5 684	-5 738	-5 784	-5 808	-5 805	-5 782	-5 737
Capital goods	-6 153	-6 098	-5 991	-5 865	-5 758	-5 663	-5 566	-5 456	-5 318	-5 176	-5 059	-4 959
Intermediate and other merchandise goods	-9 188	-9 205	-9 192	-9 156	-9 102	-9 064	-9 027	-8 987	-8 948	-8 908	-8 872	-8 838
Non-monetary gold	-478	-499	-519	-529	-519	-487	-445	-407	-379	-365	-360	-373
<b>Total services</b>	<b>-5 133</b>	<b>-5 159</b>	<b>-5 190</b>	<b>-5 223</b>	<b>-5 254</b>	<b>-5 274</b>	<b>-5 284</b>	<b>-5 286</b>	<b>-5 286</b>	<b>-5 287</b>	<b>-5 291</b>	<b>-5 297</b>

(a) For sign conventions, see paragraph 15 of the Explanatory Notes.

(b) For all time periods, estimates for sugar, sugar preparations and honey are included in Non-rural goods.

(c) This component is not seasonally adjusted.

(d) Caution should be used when interpreting recent trend estimates as they may be affected by unusual economic factors. For more details on trend estimates, please see paragraph 19 of the Explanatory Notes.

## GOODS AND SERVICES(a), Summary—Original

	May 2012	Jun 2012	Jul 2012	Aug 2012	Sep 2012	Oct 2012	Nov 2012	Dec 2012	Jan 2013	Feb 2013	Mar 2013	Apr 2013
	\$m	\$m	\$m	\$m	\$m	\$m	\$m	\$m	\$m	\$m	\$m	\$m
<b>BALANCE</b>												
<b>On goods and services</b>	<b>1</b>	<b>30</b>	<b>-1 591</b>	<b>-2 116</b>	<b>-2 302</b>	<b>-3 633</b>	<b>-4 496</b>	<b>1 070</b>	<b>-3 070</b>	<b>661</b>	<b>2 399</b>	<b>629</b>
<b>CREDITS</b>												
Total goods and services	26 829	26 403	25 862	25 085	23 785	24 789	24 124	26 297	22 390	23 608	26 036	25 449
<b>Total goods</b>	<b>22 638</b>	<b>22 418</b>	<b>21 735</b>	<b>20 786</b>	<b>19 742</b>	<b>20 370</b>	<b>19 805</b>	<b>22 033</b>	<b>18 245</b>	<b>19 207</b>	<b>21 559</b>	<b>20 986</b>
Rural goods(b)	3 237	3 151	2 964	2 900	2 754	2 918	2 815	3 073	2 422	2 984	3 360	3 186
Non-rural goods(b)	17 929	17 552	17 470	16 587	15 438	15 800	15 483	17 726	14 378	14 921	17 011	16 481
Net exports of goods under merchanting	12	11	19	19	20	18	18	17	19	19	19	12
Non-monetary gold	1 460	1 704	1 282	1 280	1 530	1 634	1 489	1 217	1 426	1 283	1 169	1 307
<b>Total services</b>	<b>4 191</b>	<b>3 985</b>	<b>4 127</b>	<b>4 299</b>	<b>4 043</b>	<b>4 419</b>	<b>4 319</b>	<b>4 264</b>	<b>4 145</b>	<b>4 401</b>	<b>4 477</b>	<b>4 463</b>
<b>DEBITS</b>												
Total goods and services	-26 828	-26 373	-27 453	-27 201	-26 087	-28 422	-28 620	-25 227	-25 460	-22 947	-23 637	-24 820
<b>Total goods</b>	<b>-21 982</b>	<b>-21 081</b>	<b>-21 942</b>	<b>-22 033</b>	<b>-20 382</b>	<b>-22 771</b>	<b>-23 369</b>	<b>-19 716</b>	<b>-19 984</b>	<b>-18 417</b>	<b>-18 753</b>	<b>-19 542</b>
Consumption goods	-5 578	-5 316	-5 759	-6 120	-5 536	-6 523	-6 678	-5 467	-5 665	-5 394	-5 275	-5 280
Capital goods	-6 365	-6 451	-6 040	-6 109	-5 360	-6 165	-6 593	-5 307	-5 096	-4 453	-4 336	-5 072
Intermediate and other merchandise goods	-9 528	-8 785	-9 612	-9 416	-8 803	-9 538	-9 732	-8 565	-8 852	-8 231	-8 775	-8 756
Non-monetary gold	-511	-529	-531	-388	-683	-545	-366	-377	-371	-339	-367	-434
<b>Total services</b>	<b>-4 846</b>	<b>-5 292</b>	<b>-5 511</b>	<b>-5 168</b>	<b>-5 705</b>	<b>-5 651</b>	<b>-5 251</b>	<b>-5 511</b>	<b>-5 476</b>	<b>-4 530</b>	<b>-4 884</b>	<b>-5 278</b>

(a) For sign conventions, see paragraph 15 of the Explanatory Notes.

(b) For all time periods, estimates for sugar, sugar preparations and honey are included in Non-rural goods.

							10 MONTHS ENDED APRIL		Change %
	2009-10	2010-11	2011-12	Feb 2013	Mar 2013	Apr 2013	2012	2013	
	\$m	\$m	\$m	\$m	\$m	\$m	\$m	\$m	
<b>Total goods credits</b>	<b>201 777</b>	<b>246 979</b>	<b>265 109</b>	<b>19 207</b>	<b>21 559</b>	<b>20 986</b>	<b>220 053</b>	<b>204 468</b>	<b>-7.1</b>
General merchandise	187 227	232 500	248 248	17 905	20 371	19 667	206 379	190 671	-7.6
<i>Rural goods</i>	25 589	30 473	34 728	2 984	3 360	3 186	28 340	29 376	3.7
Meat and meat preparations	6 350	6 930	7 121	597	705	665	5 862	6 232	6.3
Cereal grains and cereal preparations	5 266	7 351	9 061	837	989	839	7 359	7 488	1.8
Wool and sheepskins	2 303	3 048	3 123	297	338	253	2 645	2 383	-9.9
Other rural (a)	11 670	13 144	15 423	1 253	1 328	1 429	12 474	13 273	6.4
<i>Non-rural goods</i>	161 638	202 027	213 520	14 921	17 011	16 481	178 039	161 295	-9.4
Metal ores and minerals	53 610	79 448	85 426	6 455	7 308	7 362	71 038	64 813	-8.8
Coal, coke and briquettes	36 787	44 101	48 216	2 819	2 879	3 031	40 904	31 761	-22.4
Other mineral fuels	18 984	23 594	25 691	1 636	2 181	1 934	21 266	22 438	5.5
Metals (excl. non-monetary gold)	10 735	12 687	11 699	913	986	1 014	9 693	8 614	-11.1
Machinery	7 977	8 444	8 838	659	838	655	7 280	7 205	-1.0
Transport equipment	4 073	3 902	4 198	363	414	299	3 422	3 569	4.3
Other manufactures	16 375	16 289	16 916	1 231	1 367	1 226	13 923	13 249	-4.8
Other non-rural (incl. sugar and beverages) (a)	11 708	11 972	10 868	709	899	815	9 127	8 260	-9.5
Goods procured in ports by carriers	1 389	1 590	1 668	136	139	145	1 386	1 386	—
Net exports of goods under merchanting	250	223	211	19	19	12	188	180	-4.3
Goods acquired under merchanting (negative exports)	-1 799	-1 723	-1 533	-106	-106	-103	-1 246	-1 273	-2.2
Goods sold under merchanting	2 049	1 946	1 744	125	125	115	1 434	1 453	1.3
Non-monetary gold	14 300	14 256	16 650	1 283	1 169	1 307	13 486	13 617	1.0

— nil or rounded to zero (including null cells)

(a) For all time periods, estimates for sugar, sugar preparations and honey are included in Other non-rural.

## GOODS DEBITS(a), Original

							10 MONTHS ENDED APRIL		Change
	2009-10	2010-11	2011-12	Feb 2013	Mar 2013	Apr 2013	2012	2013	
	\$m	\$m	\$m	\$m	\$m	\$m	\$m	\$m	
<b>Total goods debits</b>	<b>-205 499</b>	<b>-218 751</b>	<b>-251 302</b>	<b>-18 417</b>	<b>-18 753</b>	<b>-19 542</b>	<b>-208 239</b>	<b>-206 909</b>	<b>0.6</b>
General merchandise	-198 636	-213 784	-244 594	-18 078	-18 386	-19 108	-202 571	-202 508	—
<i>Consumption goods</i>	-62 520	-63 776	-66 712	-5 394	-5 275	-5 280	-55 818	-57 697	-3.4
Food and beverages, mainly for consumption	-8 770	-9 017	-9 802	-785	-832	-789	-8 280	-8 638	-4.3
Household electrical items	-5 483	-4 837	-4 438	-272	-267	-324	-3 764	-3 533	6.1
Non-industrial transport equipment	-16 288	-15 953	-17 442	-1 425	-1 594	-1 509	-14 326	-15 607	-8.9
Textiles, clothing and footwear	-7 569	-8 478	-8 785	-949	-633	-742	-7 455	-7 949	-6.6
Toys, books and leisure goods	-4 675	-4 443	-4 307	-249	-241	-276	-3 629	-3 414	5.9
Consumption goods n.e.s.	-19 735	-21 048	-21 938	-1 714	-1 708	-1 640	-18 364	-18 556	-1.0
<i>Capital goods</i>	-47 923	-51 776	-69 125	-4 453	-4 336	-5 072	-56 309	-54 531	3.2
Machinery and industrial equipment	-15 560	-15 727	-20 340	-1 527	-1 405	-1 538	-16 568	-17 091	-3.2
ADP equipment	-7 633	-7 786	-8 214	-567	-597	-600	-6 537	-6 447	1.4
Telecommunications equipment	-6 073	-7 023	-7 835	-490	-628	-642	-6 518	-6 830	-4.8
Civil aircraft and confidentialised items(b)	-5 051	-5 254	-6 346	-163	-181	-484	-5 285	-3 746	29.1
Industrial transport equipment n.e.s.	-6 811	-6 859	-9 583	-717	-682	-752	-7 640	-8 255	-8.0
Capital goods n.e.s.	-6 795	-9 127	-16 807	-989	-843	-1 056	-13 761	-12 162	11.6
<i>Intermediate and other merchandise goods</i>	-88 193	-98 232	-108 757	-8 231	-8 775	-8 756	-90 444	-90 280	0.2
Food and beverages, mainly for industry	-1 035	-1 223	-1 251	-81	-87	-92	-1 068	-944	11.6
Primary industrial supplies n.e.s.	-1 346	-1 713	-1 678	-104	-84	-126	-1 482	-1 297	12.5
Fuels and lubricants	-26 626	-31 699	-38 288	-3 043	-3 238	-3 281	-31 909	-32 572	-2.1
Parts for transport equipment	-8 258	-8 924	-10 310	-685	-791	-799	-8 415	-8 186	2.7
Parts for ADP equipment	-973	-906	-701	-44	-42	-50	-578	-484	16.3
Other parts for capital goods	-13 792	-14 338	-14 101	-996	-1 112	-1 120	-11 538	-11 482	0.5
Organic and inorganic chemicals	-4 377	-4 495	-4 504	-308	-281	-283	-3 774	-3 612	4.3
Paper and paperboard	-2 299	-2 339	-2 165	-162	-171	-157	-1 827	-1 868	-2.2
Textile yarn and fabrics	-1 155	-1 114	-1 082	-73	-70	-78	-908	-816	10.1
Iron and steel	-3 280	-3 788	-4 002	-253	-325	-269	-3 208	-3 296	-2.7
Plastics	-2 755	-2 910	-3 055	-227	-233	-248	-2 566	-2 507	2.3
Processed industrial supplies n.e.s.	-20 083	-21 981	-24 868	-2 067	-2 114	-2 062	-20 764	-21 255	-2.4
Other merchandise goods(b)	-818	-1 135	-838	-21	-61	-42	-791	-418	47.2
Goods procured in ports by carriers	-1 396	-1 667	-1 914	-167	-166	-149	-1 616	-1 543	4.5
Non-monetary gold	-6 863	-4 967	-6 708	-339	-367	-434	-5 668	-4 401	22.4

— nil or rounded to zero (including null cells)

(a) For sign conventions, see paragraph 15 of the Explanatory Notes.

(b) From July 2008, commodities subject to a 'no commodity details' or 'no value details' restriction are included in Civil aircraft and confidentialised items. For earlier periods, commodities subject to a 'no commodity details' or 'no value details' restriction are included in Other merchandise goods.

## GOODS CREDITS, Seasonally Adjusted

	Jul 2012	Aug 2012	Sep 2012	Oct 2012	Nov 2012	Dec 2012	Jan 2013	Feb 2013	Mar 2013	Apr 2013
	\$m	\$m	\$m	\$m	\$m	\$m	\$m	\$m	\$m	\$m
<b>Total goods credits</b>	<b>21 007</b>	<b>19 929</b>	<b>19 556</b>	<b>20 033</b>	<b>20 360</b>	<b>20 740</b>	<b>20 492</b>	<b>21 293</b>	<b>21 363</b>	<b>21 095</b>
General merchandise	19 706	18 630	18 006	18 381	18 853	19 506	19 047	19 991	20 175	19 776
<i>Rural goods</i>	2 953	2 934	2 868	2 991	3 025	2 958	2 850	3 060	3 090	3 154
Meat and meat preparations	605	607	590	642	633	629	631	642	662	680
Cereal grains and cereal preparations	805	862	750	822	712	629	722	758	816	759
Wool and sheepskins	239	216	221	221	245	254	236	258	246	226
Other rural (a)	1 305	1 249	1 308	1 305	1 435	1 446	1 261	1 402	1 367	1 488
<i>Non-rural goods</i>	16 753	15 696	15 138	15 390	15 828	16 548	16 197	16 931	17 085	16 622
Metal ores and minerals	6 563	6 088	5 279	5 792	6 307	6 855	6 851	7 128	7 252	7 231
Coal, coke and briquettes (b)	3 458	3 015	3 344	3 184	3 085	3 186	3 051	3 408	3 305	3 131
Other mineral fuels (c)	2 358	2 398	2 410	2 269	2 208	2 212	2 257	1 981	2 156	1 965
Metals (excl. non-monetary gold) (c)	861	822	767	871	787	873	776	1 047	933	963
Machinery	728	727	722	677	775	715	721	721	759	708
Transport equipment	392	382	388	356	346	345	312	353	366	337
Other manufactures	1 388	1 374	1 331	1 307	1 296	1 395	1 295	1 334	1 290	1 328
Other non-rural (incl. sugar and beverages) (a)	864	755	763	797	887	829	794	818	886	815
Goods procured in ports by carriers (c)	141	134	134	136	137	139	141	141	138	145
Net exports of goods under merchanting (d)	19	19	20	18	18	17	19	19	19	12
Non-monetary gold (d)	1 282	1 280	1 530	1 634	1 489	1 217	1 426	1 283	1 169	1 307

(a) For all time periods, estimates for sugar, sugar preparations and honey are included in Other non-rural.

(b) From July 1971 to June 2005, only a length-of-month adjustment has been applied to this component. From July 2005, this component is seasonally adjusted using seasonal factors derived from a monthly volume series.

(c) In using these seasonally adjusted series, care should be exercised because of the difficulties associated with reliably estimating the seasonal pattern.

(d) This component is not seasonally adjusted.

## GOODS DEBITS(a), Seasonally Adjusted

	Jul 2012	Aug 2012	Sep 2012	Oct 2012	Nov 2012	Dec 2012	Jan 2013	Feb 2013	Mar 2013	Apr 2013
	\$m	\$m	\$m	\$m	\$m	\$m	\$m	\$m	\$m	\$m
<b>Total goods debits</b>	<b>-21 495</b>	<b>-20 949</b>	<b>-20 582</b>	<b>-20 799</b>	<b>-21 589</b>	<b>-20 347</b>	<b>-20 461</b>	<b>-20 171</b>	<b>-19 899</b>	<b>-20 017</b>
General merchandise	-20 964	-20 561	-19 899	-20 254	-21 223	-19 970	-20 090	-19 832	-19 532	-19 583
<i>Consumption goods</i>	-5 673	-5 743	-5 511	-5 653	-5 800	-5 684	-5 931	-5 904	-5 827	-5 500
Food and beverages, mainly for consumption	-838	-847	-827	-834	-841	-803	-856	-901	-908	-859
Household electrical items	-349	-339	-326	-373	-368	-356	-348	-353	-352	-337
Non-industrial transport equipment	-1 483	-1 635	-1 441	-1 444	-1 595	-1 610	-1 799	-1 585	-1 601	-1 511
Textiles, clothing and footwear	-790	-762	-776	-774	-781	-751	-748	-838	-758	-744
Toys, books and leisure goods	-344	-333	-347	-341	-342	-355	-352	-328	-336	-322
Consumption goods n.e.s.	-1 869	-1 827	-1 793	-1 887	-1 872	-1 809	-1 829	-1 899	-1 873	-1 727
<i>Capital goods</i>	-5 846	-5 779	-5 455	-5 625	-6 028	-5 334	-5 393	-5 143	-4 589	-5 322
Machinery and industrial equipment	-1 848	-1 859	-1 704	-1 718	-1 734	-1 701	-1 626	-1 706	-1 567	-1 617
ADP equipment	-674	-627	-580	-679	-666	-729	-724	-720	-610	-613
Telecommunications equipment	-687	-635	-719	-640	-768	-496	-763	-647	-692	-711
Civil aircraft and confidentialised items(b)(c)	-535	-565	-371	-419	-518	-215	-295	-163	-181	-484
Industrial transport equipment n.e.s.(d)	-784	-974	-843	-823	-880	-893	-750	-802	-676	-780
Capital goods n.e.s.	-1 317	-1 119	-1 238	-1 347	-1 462	-1 299	-1 235	-1 105	-863	-1 117
<i>Intermediate and other merchandise goods</i>	-9 444	-9 039	-8 934	-8 976	-9 396	-8 952	-8 766	-8 785	-9 115	-8 761
Food and beverages, mainly for industry	-97	-91	-103	-85	-105	-94	-92	-85	-92	-95
Primary industrial supplies n.e.s.(d)	-125	-138	-110	-144	-136	-110	-105	-143	-107	-126
Fuels and lubricants(c)	-3 495	-3 085	-3 136	-3 240	-3 438	-3 417	-3 199	-3 043	-3 238	-3 281
Parts for transport equipment	-891	-877	-815	-835	-800	-821	-784	-783	-787	-800
Parts for ADP equipment	-54	-52	-50	-51	-51	-47	-47	-52	-43	-46
Other parts for capital goods	-1 237	-1 232	-1 217	-1 141	-1 171	-1 013	-1 124	-1 145	-1 177	-1 104
Organic and inorganic chemicals	-394	-366	-426	-382	-457	-354	-308	-324	-285	-284
Paper and paperboard	-180	-181	-174	-188	-198	-190	-182	-182	-197	-168
Textile yarn and fabrics	-84	-83	-81	-82	-85	-77	-80	-81	-82	-76
Iron and steel	-384	-341	-357	-342	-342	-329	-281	-281	-361	-284
Plastics	-251	-256	-230	-239	-270	-226	-254	-258	-254	-253
Processed industrial supplies n.e.s.	-2 066	-2 119	-2 045	-2 066	-2 128	-2 098	-2 123	-2 221	-2 265	-2 052
Other merchandise goods(b)(d)(e)	-39	-71	-42	-30	-66	-25	-21	-21	-61	-42
Goods procured in ports by carriers(c)	-147	-147	-149	-150	-150	-151	-167	-167	-166	-149
Non-monetary gold(c)	-531	-388	-683	-545	-366	-377	-371	-339	-367	-434

(a) For sign conventions, see paragraph 15 of the Explanatory Notes.

(b) From July 2008, commodities subject to a 'no commodity details' or 'no value details' restriction are included in Civil aircraft and confidentialised items. For earlier periods, commodities subject to a 'no commodity details' or 'no value details' restriction are included in Other merchandise goods.

(c) This component is not seasonally adjusted.

(d) In using these seasonally adjusted series, care should be exercised because of the difficulties associated with reliably estimating the seasonal pattern.

(e) From July 1981, this component is not seasonally adjusted.

## GOODS CREDITS(a), Trend Estimates

	Jul 2012	Aug 2012	Sep 2012	Oct 2012	Nov 2012	Dec 2012	Jan 2013	Feb 2013	Mar 2013	Apr 2013
	\$m	\$m	\$m	\$m	\$m	\$m	\$m	\$m	\$m	\$m
<b>Total goods credits</b>	<b>20 853</b>	<b>20 438</b>	<b>20 124</b>	<b>20 041</b>	<b>20 210</b>	<b>20 510</b>	<b>20 799</b>	<b>21 021</b>	<b>21 195</b>	<b>21 302</b>
General merchandise	19 371	18 951	18 634	18 561	18 756	19 095	19 438	19 712	19 926	20 061
<i>Rural goods</i>	2 949	2 956	2 950	2 946	2 949	2 965	2 991	3 024	3 061	3 092
Meat and meat preparations	598	607	614	620	626	633	640	649	658	664
Cereal grains and cereal preparations	812	810	788	758	732	721	725	739	756	770
Wool and sheepskins	230	226	225	230	237	243	246	246	244	241
Other rural(b)	1 308	1 312	1 323	1 338	1 354	1 369	1 380	1 390	1 402	1 416
<i>Non-rural goods</i>	16 422	15 995	15 683	15 615	15 806	16 129	16 447	16 688	16 865	16 969
Metal ores and minerals	6 398	6 117	5 952	5 981	6 211	6 535	6 839	7 073	7 252	7 349
Coal, coke and briquettes	3 339	3 254	3 189	3 158	3 158	3 176	3 200	3 220	3 231	3 249
Other mineral fuels	2 337	2 352	2 343	2 313	2 264	2 209	2 157	2 110	2 066	2 033
Metals (excl. non-monetary gold)	863	834	812	808	824	853	886	918	947	968
Machinery	731	727	722	721	723	726	729	730	730	730
Transport equipment	378	379	372	362	351	344	341	341	343	346
Other manufactures	1 395	1 366	1 341	1 328	1 325	1 324	1 323	1 321	1 318	1 316
Other non-rural (incl. sugar and beverages)(b)	842	829	816	808	812	824	833	836	837	836
Goods procured in ports by carriers	139	137	136	136	137	138	140	141	142	142
Net exports of goods under merchanting	16	17	18	19	19	18	18	18	17	16
Non-monetary gold	1 466	1 470	1 472	1 461	1 436	1 397	1 342	1 292	1 252	1 225

(a) Caution should be used when interpreting recent trend estimates as they may be affected by unusual economic factors. For more details on trend estimates, please see paragraph 19 of the Explanatory Notes.

(b) For all time periods, estimates for sugar, sugar preparations and honey are included in Other non-rural.



## GOODS DEBITS(a)(b), Trend Estimates

	Jul 2012	Aug 2012	Sep 2012	Oct 2012	Nov 2012	Dec 2012	Jan 2013	Feb 2013	Mar 2013	Apr 2013
	\$m	\$m	\$m	\$m	\$m	\$m	\$m	\$m	\$m	\$m
<b>Total goods debits</b>	<b>-21 379</b>	<b>-21 210</b>	<b>-21 030</b>	<b>-20 898</b>	<b>-20 776</b>	<b>-20 634</b>	<b>-20 453</b>	<b>-20 254</b>	<b>-20 074</b>	<b>-19 907</b>
General merchandise	-20 860	-20 681	-20 511	-20 412	-20 331	-20 227	-20 075	-19 889	-19 714	-19 534
<i>Consumption goods</i>	-5 677	-5 660	-5 652	-5 684	-5 738	-5 784	-5 808	-5 805	-5 782	-5 737
Food and beverages, mainly for consumption	-836	-836	-832	-831	-835	-845	-858	-870	-881	-889
Household electrical items	-346	-344	-347	-352	-357	-357	-355	-352	-348	-342
Non-industrial transport equipment	-1 524	-1 515	-1 519	-1 543	-1 580	-1 611	-1 629	-1 630	-1 620	-1 598
Textiles, clothing and footwear	-781	-776	-770	-770	-772	-773	-774	-773	-771	-768
Toys, books and leisure goods	-335	-337	-340	-344	-347	-346	-343	-338	-334	-329
Consumption goods n.e.s.	-1 855	-1 851	-1 844	-1 845	-1 848	-1 851	-1 850	-1 841	-1 829	-1 810
<i>Capital goods</i>	-5 991	-5 865	-5 758	-5 663	-5 566	-5 456	-5 318	-5 176	-5 059	-4 959
Machinery and industrial equipment	-1 853	-1 821	-1 777	-1 738	-1 708	-1 685	-1 665	-1 644	-1 626	-1 607
ADP equipment	-679	-662	-654	-661	-677	-693	-695	-684	-667	-644
Telecommunications equipment	-680	-684	-680	-671	-664	-664	-668	-675	-684	-696
Civil aircraft and confidentialised items(c)	-530	-515	-481	-425	-362	-311	-279	-264	-267	-277
Industrial transport equipment n.e.s.	-917	-889	-872	-862	-848	-828	-801	-776	-755	-737
Capital goods n.e.s.	-1 333	-1 294	-1 293	-1 306	-1 306	-1 275	-1 210	-1 133	-1 061	-999
<i>Intermediate and other merchandise goods</i>	-9 192	-9 156	-9 102	-9 064	-9 027	-8 987	-8 948	-8 908	-8 872	-8 838
Food and beverages, mainly for industry	-93	-94	-95	-95	-95	-94	-92	-92	-91	-91
Primary industrial supplies n.e.s.	-127	-126	-126	-126	-126	-123	-121	-120	-120	-119
Fuels and lubricants	-3 223	-3 222	-3 241	-3 271	-3 284	-3 277	-3 259	-3 234	-3 213	-3 194
Parts for transport equipment	-895	-874	-849	-827	-811	-802	-796	-791	-789	-786
Parts for ADP equipment	-54	-53	-51	-50	-49	-49	-48	-47	-47	-46
Other parts for capital goods	-1 233	-1 219	-1 191	-1 159	-1 134	-1 119	-1 116	-1 120	-1 126	-1 134
Organic and inorganic chemicals	-391	-399	-404	-402	-389	-367	-342	-317	-295	-279
Paper and paperboard	-181	-182	-183	-186	-188	-189	-188	-186	-183	-180
Textile yarn and fabrics	-85	-84	-83	-82	-81	-81	-80	-80	-79	-79
Iron and steel	-377	-371	-357	-342	-328	-319	-313	-307	-303	-302
Plastics	-249	-247	-246	-245	-246	-248	-250	-252	-254	-255
Processed industrial supplies n.e.s.	-2 099	-2 093	-2 081	-2 084	-2 103	-2 128	-2 150	-2 165	-2 173	-2 172
Other merchandise goods(c)	-39	-45	-47	-45	-40	-36	-34	-35	-38	-41
Goods procured in ports by carriers	-147	-146	-148	-150	-153	-157	-160	-161	-162	-161
Non-monetary gold	-519	-529	-519	-487	-445	-407	-379	-365	-360	-373

(a) For sign conventions, see paragraph 15 of the Explanatory Notes.

(b) Caution should be used when interpreting recent trend estimates as they may be affected by unusual economic factors. For more details on trend estimates, please see paragraph 19 of the Explanatory Notes.

(c) From July 2008, commodities subject to a 'no commodity details' or 'no value details' restriction are included in Civil aircraft and confidentialised items. For earlier periods, commodities subject to a 'no commodity details' or 'no value details' restriction are included in Other merchandise goods.

							10 MONTHS ENDED APRIL		Change
	2009–10	2010–11	2011–12	Feb 2013	Mar 2013	Apr 2013	2012	2013	
	\$m	\$m	\$m	\$m	\$m	\$m	\$m	%	
<b>Services credits</b>	<b>51 359</b>	<b>50 343</b>	<b>50 835</b>	<b>4 401</b>	<b>4 477</b>	<b>4 463</b>	<b>42 659</b>	<b>42 957</b>	<b>0.7</b>
Manufacturing services on physical inputs owned by others	48	33	21	—	—	—	19	—	-100.0
Maintenance and repair services n.i.e.	57	49	47	4	4	4	37	43	16.2
Transport	6 189	6 330	6 333	513	508	468	5 396	5 068	-6.1
Passenger(c)	2 610	2 714	2 622	225	222	175	2 278	2 073	-9.0
Freight	436	394	374	28	26	17	315	269	-14.6
Other	2 188	2 253	2 276	183	184	196	1 902	1 899	-0.2
Postal and courier services(d)	955	969	1 061	77	76	80	901	827	-8.2
Travel	32 272	30 714	30 590	2 678	2 765	2 688	25 749	25 755	—
Other services	12 793	13 217	13 844	1 206	1 200	1 303	11 458	12 091	5.5
<b>Services debits</b>	<b>-53 399</b>	<b>-57 263</b>	<b>-60 872</b>	<b>-4 530</b>	<b>-4 884</b>	<b>-5 278</b>	<b>-50 734</b>	<b>-52 965</b>	<b>-4.4</b>
Manufacturing services on physical inputs owned by others	—	-1	—	—	—	—	—	—	—
Maintenance and repair services n.i.e.	-294	-342	-379	-36	-75	-75	-294	-533	-81.3
Transport	-13 727	-14 750	-16 119	-1 250	-1 344	-1 337	-13 346	-13 956	-4.6
Passenger(c)	-5 118	-6 103	-6 688	-501	-577	-553	-5 530	-5 780	-4.5
Freight	-8 142	-8 245	-8 947	-700	-718	-733	-7 416	-7 671	-3.4
Other	-309	-288	-378	-41	-41	-43	-301	-431	-43.2
Postal and courier services(d)	-158	-114	-106	-8	-8	-8	-99	-74	25.3
Travel	-23 285	-25 203	-26 567	-1 639	-1 850	-2 205	-22 154	-21 924	1.0
Other services	-16 093	-16 967	-17 807	-1 605	-1 615	-1 661	-14 940	-16 552	-10.8
<b>Memorandum items:</b>									
Tourism related service credits(e)	34 882	33 428	33 212	2 903	2 987	2 863	28 027	27 828	-0.7
Tourism related service debits(e)	-28 403	-31 306	-33 255	-2 140	-2 427	-2 758	-27 684	-27 704	-0.1

— nil or rounded to zero (including null cells)

(a) For sign conventions, see paragraph 15 of the Explanatory Notes.

(b) For more detailed trade in services components, see table 11.

(c) Passenger services includes agency fees and commissions for air transport.

(d) Postal and courier services includes indirect commissions for sea transport.

(e) For a more detailed explanation of tourism related services, see paragraph 27 of the Explanatory Notes.

	Jul 2012	Aug 2012	Sep 2012	Oct 2012	Nov 2012	Dec 2012	Jan 2013	Feb 2013	Mar 2013	Apr 2013
	\$m	\$m	\$m	\$m	\$m	\$m	\$m	\$m	\$m	\$m
SEASONALLY ADJUSTED										
<b>Services credits</b>	<b>4 155</b>	<b>4 239</b>	<b>4 182</b>	<b>4 245</b>	<b>4 300</b>	<b>4 278</b>	<b>4 309</b>	<b>4 342</b>	<b>4 358</b>	<b>4 324</b>
Manufacturing services on physical inputs owned by others(b)	—	—	—	—	—	—	—	—	—	—
Maintenance and repair services n.i.e.(b)	5	5	4	5	4	4	4	4	4	4
Transport	472	495	474	508	521	506	502	507	500	493
Passenger(c)	185	207	185	200	215	202	199	205	201	192
Freight(d)	28	29	29	30	30	28	29	29	26	17
Other	184	184	184	190	189	190	188	189	191	200
Postal and courier services(e)	74	75	75	88	87	85	86	84	82	84
Travel	2 507	2 565	2 531	2 536	2 572	2 563	2 556	2 574	2 592	2 560
Other services	1 172	1 174	1 173	1 196	1 202	1 205	1 247	1 256	1 262	1 267
<b>Services debits</b>	<b>-5 220</b>	<b>-5 183</b>	<b>-5 308</b>	<b>-5 278</b>	<b>-5 356</b>	<b>-5 274</b>	<b>-5 273</b>	<b>-5 261</b>	<b>-5 267</b>	<b>-5 374</b>
Manufacturing services on physical inputs owned by others(b)	—	—	—	—	—	—	—	—	—	—
Maintenance and repair services n.i.e.(b)	-27	-27	-98	-49	-46	-52	-48	-36	-75	-75
Transport	-1 383	-1 401	-1 388	-1 403	-1 437	-1 390	-1 375	-1 393	-1 381	-1 395
Passenger(c)	-556	-565	-595	-596	-592	-577	-573	-576	-579	-591
Freight	-776	-785	-743	-756	-795	-761	-751	-767	-751	-749
Other(b)	-47	-47	-46	-41	-41	-43	-41	-41	-41	-43
Postal and courier services(e)(d)	-4	-4	-4	-10	-9	-9	-9	-9	-9	-12
Travel	-2 188	-2 153	-2 204	-2 170	-2 212	-2 175	-2 183	-2 165	-2 139	-2 211
Other services(d)	-1 622	-1 602	-1 618	-1 656	-1 661	-1 658	-1 667	-1 667	-1 672	-1 694
<b>Memorandum items:</b>										
Tourism related service credits(f)	2 691	2 772	2 716	2 736	2 787	2 765	2 755	2 779	2 794	2 752
Tourism related service debits(f)	-2 744	-2 718	-2 798	-2 766	-2 804	-2 752	-2 757	-2 741	-2 718	-2 802

## TREND ESTIMATES

<b>Services credits</b>	<b>4 208</b>	<b>4 210</b>	<b>4 220</b>	<b>4 241</b>	<b>4 267</b>	<b>4 293</b>	<b>4 313</b>	<b>4 328</b>	<b>4 341</b>	<b>4 347</b>
Manufacturing services on physical inputs owned by others	—	—	—	—	—	—	—	—	—	—
Maintenance and repair services n.i.e.	5	5	5	4	4	4	4	4	4	4
Transport	495	491	493	498	504	507	507	504	502	497
Passenger(c)	201	198	198	200	202	204	203	202	200	197
Freight	28	28	29	30	30	29	28	26	25	23
Other	187	186	186	187	188	189	190	191	193	194
Postal and courier services(e)	79	78	80	82	84	85	85	85	84	83
Travel	2 542	2 542	2 543	2 548	2 555	2 562	2 567	2 571	2 575	2 576
Other services	1 167	1 172	1 180	1 191	1 204	1 220	1 235	1 249	1 261	1 270
<b>Services debits</b>	<b>-5 190</b>	<b>-5 223</b>	<b>-5 254</b>	<b>-5 274</b>	<b>-5 284</b>	<b>-5 286</b>	<b>-5 286</b>	<b>-5 287</b>	<b>-5 291</b>	<b>-5 297</b>
Manufacturing services on physical inputs owned by others	—	—	—	—	—	—	—	—	—	—
Maintenance and repair services n.i.e.	-33	-34	-36	-39	-43	-46	-48	-51	-55	-58
Transport	-1 392	-1 399	-1 403	-1 404	-1 402	-1 398	-1 393	-1 389	-1 386	-1 384
Passenger(c)	-566	-576	-583	-586	-585	-583	-581	-579	-579	-580
Freight	-778	-773	-769	-767	-765	-764	-762	-759	-756	-751
Other	-44	-45	-45	-44	-43	-42	-41	-41	-42	-42
Postal and courier services(e)	-5	-5	-6	-8	-8	-9	-9	-10	-10	-10
Travel	-2 213	-2 199	-2 189	-2 184	-2 181	-2 180	-2 177	-2 174	-2 172	-2 174
Other services	-1 552	-1 592	-1 625	-1 647	-1 658	-1 662	-1 667	-1 673	-1 678	-1 682
<b>Memorandum items:</b>										
Tourism related service credits(f)	2 742	2 741	2 741	2 747	2 757	2 766	2 770	2 773	2 775	2 773
Tourism related service debits(f)	-2 779	-2 774	-2 772	-2 770	-2 767	-2 764	-2 758	-2 753	-2 751	-2 754

— nil or rounded to zero (including null cells)

(a) For sign conventions, see paragraph 15 of the Explanatory Notes.

(b) This component is not seasonally adjusted.

(c) Passenger services includes agency fees and commissions for air transport.

(d) In using these seasonally adjusted series, care should be exercised because of the difficulties associated with reliably estimating the seasonal pattern.

(e) Postal and courier services includes indirect commissions for sea transport.

(f) For a more detailed explanation of tourism related services, see paragraph 27 of the Explanatory Notes.

	CREDITS				DEBITS			
	Jun Qtr	Sep Qtr	Dec Qtr	Mar Qtr	Jun Qtr	Sep Qtr	Dec Qtr	Mar Qtr
	2012	2012	2012	2013	2012	2012	2012	2013
	\$m	\$m	\$m	\$m	\$m	\$m	\$m	\$m
<b>Services</b>	<b>12 556</b>	<b>12 469</b>	<b>13 002</b>	<b>13 023</b>	<b>-15 073</b>	<b>-16 384</b>	<b>-16 413</b>	<b>-14 890</b>
Manufacturing services on physical inputs owned by others	4	—	—	—	—	—	—	—
Maintenance and repair services n.i.e.	14	14	13	12	-108	-152	-147	-159
Transport	1 426	1 466	1 575	1 559	-4 025	-4 297	-4 436	-3 886
Passenger(b)	537	538	662	698	-1 640	-1 796	-1 832	-1 599
Freight	87	85	86	81	-2 258	-2 337	-2 461	-2 140
Other	562	570	583	550	-116	-140	-125	-123
Postal and courier services(c)	240	273	244	230	-11	-24	-18	-24
Travel	7 536	7 555	7 671	7 841	-6 638	-7 109	-6 590	-6 020
Business	1 009	1 045	1 007	1 093	-824	-814	-778	-840
Personal	6 527	6 510	6 664	6 748	-5 814	-6 295	-5 812	-5 180
Education-related	3 896	3 865	3 379	3 494	-213	-339	-208	-251
Other(d)	2 631	2 645	3 285	3 254	-5 601	-5 956	-5 604	-4 929
Construction	13	6	9	12	—	—	—	—
Insurance and pension services	131	115	105	103	-184	-179	-177	-199
Financial services	329	371	480	446	-176	-212	-189	-170
Charges for the use of intellectual property n.i.e.	252	248	178	193	-1 016	-1 041	-1 097	-1 059
Telecommunications, computer and information services	428	420	458	435	-440	-475	-413	-386
Telecommunication services	30	57	59	51	-51	-64	-58	-56
Computer and information services	398	363	399	384	-389	-411	-355	-330
Computer services	331	290	314	300	-329	-355	-300	-273
Information services	21	19	20	19	-25	-20	-21	-21
Other services	46	54	65	65	-35	-36	-34	-36
Other business services	1 968	1 871	2 083	1 952	-1 951	-2 284	-2 697	-2 297
Research and development services	120	118	121	126	-57	-25	-57	-54
Professional and management consulting services	990	945	1 044	933	-757	-907	-1 169	-1 060
Legal, accounting, management consulting, public relations and other professional services	894	832	916	828	-706	-864	-1 109	-994
Advertising, market research and public opinion polling	96	113	128	105	-51	-43	-60	-66
Technical, trade-related and other business services	858	808	918	893	-1 137	-1 352	-1 471	-1 183
Architectural, engineering and other technical services	457	398	492	484	-664	-706	-824	-635
Waste treatment and de-pollution, agricultural and mining services	57	73	66	92	-99	-68	-104	-59
Operational leasing services	67	80	82	83	-161	-151	-170	-159
Trade-related commission services	184	156	171	135	-37	-45	-40	-40
Other business services n.i.e.	93	101	107	99	-176	-382	-333	-290
Personal, cultural and recreational services	239	193	220	254	-313	-413	-445	-492
Audiovisual and related services	35	50	36	62	-268	-354	-370	-378
Other personal, cultural and recreational services	204	143	184	192	-45	-59	-75	-114
Government goods and services n.i.e.	216	210	210	216	-222	-222	-222	-222
<b>Memorandum items:</b>								
Gross insurance premiums receivable / payable	338	306	309	295	-337	-341	-341	-384
Gross insurance claims payable / receivable	-198	-205	-216	-203	219	219	218	237
Tourism related services(e)	8 073	8 093	8 333	8 539	-8 278	-8 905	-8 422	-7 619

— nil or rounded to zero (including null cells)

(a) For sign conventions, see paragraph 15 of the Explanatory Notes.

(b) Passenger services includes agency fees and commissions for air transport.

(c) Postal and courier services includes indirect commissions for sea transport.

(d) Other personal travel includes health-related travel.

(e) For a more detailed explanation of tourism related services, see paragraph 27 of the Explanatory Notes.

	Feb	Mar	Apr	Percent	10 MONTHS	
	2013	2013	2013	of total	ENDED APRIL	
	\$m	\$m	\$m	merchandise	2012	2013
				exports(b)	\$m	\$m
				%		
MAJOR COMMODITIES (c)						
011 Meat of bovine animals	383	471	450	2.2	3 843	4 101
041 Wheat and meslin	641	685	576	2.8	5 108	5 515
281 Iron ore and concentrates	4 810	5 621	5 693	27.3	52 353	47 021
283 Copper ores and concentrates	449	454	344	1.6	4 476	4 378
285 Aluminium ores and concentrates	394	473	482	2.3	4 435	4 568
287 Ores and concentrates of base metals, n.e.s.	320	337	278	1.3	3 390	3 398
321 Coal, not agglomerated	2 842	2 891	3 010	14.4	40 667	31 607
333 Crude petroleum oils	439	725	626	3.0	9 307	8 335
334 Refined petroleum oils	213	214	218	1.0	2 667	2 450
343 Natural gas	1 034	1 279	1 159	5.6	9 738	12 049
542 Medicaments	272	266	208	1.0	2 885	2 884
682 Copper	256	314	308	1.5	3 000	2 599
684 Aluminium	345	303	307	1.5	3 461	3 003
971 Gold, non-monetary	1 255	1 119	1 149	5.5	12 743	12 819
SECTION AND DIVISION OF THE SITC						
0 Food and live animals						
00 Live animals (excl. fish, crustaceans, molluscs and aquatic invertebrates)	62	53	66	0.3	916	775
01 Meat and meat preparations	597	695	664	3.2	5 860	6 220
02 Dairy products and birds' eggs	193	164	152	0.7	1 788	1 735
03 Fish (not marine mammals), crustaceans, molluscs and aquatic invertebrates, and preparations thereof	93	72	70	0.3	879	859
04 Cereals and cereal preparations	839	986	839	4.0	7 361	7 487
05 Vegetables and fruit	148	180	193	0.9	1 439	1 817
06 Sugars, sugar preparations and honey	24	28	21	0.1	277	246
07 Coffee, tea, cocoa, spices, and manufactures thereof	19	17	15	0.1	231	202
08 Feeding stuff for animals (excl. unmilled cereals)	83	98	101	0.5	961	1 039
09 Miscellaneous edible products and preparations	88	96	96	0.5	767	822
<i>Total Food and live animals</i>	<i>2 147</i>	<i>2 391</i>	<i>2 216</i>	<i>10.6</i>	<i>20 479</i>	<i>21 202</i>
1 Beverages and tobacco						
11 Beverages	158	172	161	0.8	1 725	1 709
12 Tobacco and tobacco manufactures	3	3	3	—	91	57
<i>Total Beverages and tobacco</i>	<i>161</i>	<i>174</i>	<i>164</i>	<i>0.8</i>	<i>1 816</i>	<i>1 767</i>
2 Crude materials, inedible, except fuels						
21 Hides, skins and furskins, raw	70	85	82	0.4	706	703
22 Oil-seeds and oleaginous fruits	284	368	385	1.8	1 235	1 971
23 Crude rubber (incl. synthetic and reclaimed)	2	2	2	—	17	18
24 Cork and wood	70	60	76	0.4	846	697
25 Pulp and waste paper	20	19	17	0.1	202	199
26 Textile fibres and their wastes (not manufactured into yarn or fabric)	342	360	352	1.7	4 379	4 101
27 Crude fertilizers (excl. those of Division 56) and crude minerals (excl. coal, petroleum and precious stones)	39	23	29	0.1	353	313
28 Metalliferous ores and metal scrap	6 518	7 360	7 333	35.2	70 771	64 914
29 Crude animal and vegetable materials, n.e.s.	18	20	24	0.1	186	206
<i>Total Crude materials, inedible, except fuels</i>	<i>7 362</i>	<i>8 295</i>	<i>8 299</i>	<i>39.8</i>	<i>78 695</i>	<i>73 121</i>
3 Mineral fuels, lubricants and related materials						
32 Coal, coke and briquettes	2 852	2 925	3 031	14.5	40 906	31 839
33 Petroleum, petroleum products and related materials	655	942	845	4.1	11 986	10 807
34 Gas, natural and manufactured	1 110	1 364	1 228	5.9	10 604	12 942
<i>Total Mineral fuels, lubricants and related materials</i>	<i>4 618</i>	<i>5 231</i>	<i>5 104</i>	<i>24.5</i>	<i>63 496</i>	<i>55 589</i>

— nil or rounded to zero (including null cells)

(a) Some SITC sections and divisions exclude commodities subject to a confidentiality restriction. These are included in Division 98. For more information see paragraph 26 of the Explanatory Notes.

(b) Percent of total merchandise is calculated for the most recent month.

(c) The 'Major commodities' section lists commodities at the SITC Rev 4 3-digit level which are the most significant (by value) or are of particular interest. Abbreviated descriptors have been used. The list of 'Major commodities' is reviewed annually.

	Feb	Mar	Apr	Percent	10 MONTHS		
	2013	2013	2013	of total	ENDED APRIL		
	\$m	\$m	\$m	merchandise	2012	2013	
			exports(b)	%	\$m	\$m	
SECTION AND DIVISION OF THE SITC							
4	Animal and vegetable oils, fats and waxes						
41	Animal oils and fats	22	42	25	0.1	321	278
42	Fixed vegetable fats and oils, crude, refined or fractionated	24	16	19	0.1	137	144
43	Fats and oils (processed), waxes and inedible mixtures or preparations, of animal or vegetable origin, n.e.s.	2	1	2	—	9	11
	<i>Total Animal and vegetable oils, fats and waxes</i>	48	59	45	0.2	467	433
5	Chemicals and related products, n.e.s.						
51	Organic chemicals	12	16	10	0.1	152	184
52	Inorganic chemicals	47	77	70	0.3	521	613
53	Dyeing, tanning and colouring materials	53	59	57	0.3	653	502
54	Medicinal and pharmaceutical products	302	300	236	1.1	3 216	3 258
55	Essential oils and resinoids and perfume materials, toilet, polishing and cleansing preparations	56	55	52	0.3	513	534
56	Fertilisers (excl. crude)	13	2	3	—	305	210
57	Plastics in primary forms	25	25	25	0.1	250	268
58	Plastics in non-primary forms	25	29	28	0.1	263	271
59	Chemical materials and products, n.e.s.	81	80	81	0.4	795	774
	<i>Total Chemicals and related products, n.e.s.</i>	613	643	563	2.7	6 666	6 614
6	Manufactured goods classified chiefly by material						
61	Leather, leather manufactures and dressed furskins, n.e.s.	16	16	16	0.1	189	158
62	Rubber manufactures, n.e.s.	15	20	13	0.1	169	171
63	Cork and wood manufactures (excl. furniture)	5	7	8	—	97	68
64	Paper, paperboard and articles of paper pulp, of paper or of paperboard	73	86	78	0.4	693	696
65	Textile yarn, fabrics, made-up articles n.e.s. and related products	20	21	20	0.1	214	205
66	Non-metallic mineral manufactures, n.e.s.	49	45	39	0.2	533	487
67	Iron and steel	34	60	49	0.2	831	544
68	Non-ferrous metals	868	916	965	4.6	8 862	8 045
69	Manufactures of metals, n.e.s.	83	104	94	0.5	853	918
	<i>Total Manufactured goods classified chiefly by material</i>	1 163	1 275	1 282	6.1	12 441	11 291
7	Machinery and transport equipment						
71	Power generating machinery and equipment	79	90	69	0.3	734	758
72	Machinery specialized for particular industries	143	212	157	0.8	1 672	1 786
73	Metal working machinery	13	13	12	0.1	144	127
74	General industrial machinery and equipment, n.e.s. and machine parts, n.e.s.	142	170	159	0.8	1 547	1 532
75	Office machines and automatic data processing machines	100	114	81	0.4	954	908
76	Telecommunications and sound recording and reproducing apparatus and equipment	79	93	67	0.3	833	845
77	Electrical machinery, apparatus and appliances, parts (incl. non electrical counterparts of electrical domestic equip)	104	137	109	0.5	1 382	1 224
78	Road vehicles (incl. air-cushion vehicles)	248	300	171	0.8	2 235	2 389
79	Transport equipment (excl. road vehicles)	119	122	129	0.6	1 262	1 209
	<i>Total Machinery and transport equipment</i>	1 027	1 253	954	4.6	10 763	10 780

— nil or rounded to zero (including null cells)

(b) Percent of total merchandise is calculated for the most recent month.

(a) Some SITC sections and divisions exclude commodities subject to a confidentiality restriction. These are included in Division 98. For more information see paragraph 26 of the Explanatory Notes.

				Percent of total merchandise exports(b)	10 MONTHS ENDED APRIL	
	Feb	Mar	Apr		.....	
	2013	2013	2013		2012	2013
	\$m	\$m	\$m	%	\$m	\$m
SECTION AND DIVISION OF THE SITC						
8	Miscellaneous manufactured articles					
81	Prefabricated buildings and sanitary, plumbing, heating and lighting fixtures and fittings, n.e.s.					
	12	18	11	0.1	94	136
82	Furniture and parts thereof; bedding, mattresses, mattress supports, cushions and similar stuffed furnishings					
	8	7	7	—	77	70
83	Travel goods, handbags and similar containers					
	2	3	3	—	30	30
84	Articles of apparel and clothing accessories					
	22	23	21	0.1	221	208
85	Footwear					
	5	6	4	—	44	46
87	Professional, scientific and controlling instruments and apparatus, n.e.s.					
	137	157	138	0.7	1 592	1 436
88	Photographic apparatus, equipment and supplies and optical goods, n.e.s., watches and clocks					
	16	18	21	0.1	215	185
89	Miscellaneous manufactured articles, n.e.s.					
	152	181	188	0.9	2 209	1 784
	<i>Total Miscellaneous manufactured articles</i>					
	353	412	393	1.9	4 482	3 894
9	Commodities and transactions not classified elsewhere in the SITC					
93	Special transactions and commodities not classified according to kind					
	72	77	70	0.3	1 017	710
95	Gold coin whether or not legal tender, and other coin being legal tender					
	28	49	158	0.8	746	800
96	Coin (excl. gold coin) not being legal tender					
	—	—	—	—	—	1
97	Gold, non-monetary (excl. gold ores and concentrates)					
	1 255	1 119	1 149	5.5	12 743	12 819
98	Combined confidential items excluding some of SITC 28099 (exports only) and some of SITC 51099 (imports only)					
	349	505	450	2.2	5 212	4 473
	<i>Total Commodities and transactions not classified elsewhere in the SITC</i>					
	1 704	1 751	1 827	8.8	19 718	18 803
<b>Total merchandise exports</b>						
	<b>19 197</b>	<b>21 485</b>	<b>20 847</b>	<b>100.0</b>	<b>219 023</b>	<b>203 494</b>
Balance of Payments Adjustments						
	10	74	139	. .	1 030	974
Goods Credits (exports) on a Balance of Payments Basis						
	19 207	21 559	20 986	. .	220 053	204 468

. . not applicable  
 — nil or rounded to zero (including null cells)

(a) Some SITC sections and divisions exclude commodities subject to a confidentiality restriction. These are included in Division 98. For more information see paragraph 26 of the Explanatory Notes.

(b) Percent of total merchandise is calculated for the most recent month.

					Percentage of total merchandise imports(b)	10 MONTHS ENDED APRIL	
		Feb 2013	Mar 2013	Apr 2013		2012	2013
		\$m	\$m	\$m	%	\$m	\$m
MAJOR COMMODITIES (c)							
333	Crude petroleum oils	1 673	1 700	1 505	8.1	17 256	17 117
334	Refined petroleum oils	1 454	1 316	1 630	8.7	12 949	13 955
542	Medicaments	624	730	577	3.1	7 108	6 643
625	Rubber tyres, treads, flaps and inner tubes for wheels	212	227	253	1.4	2 375	2 503
723	Civil engineering and contractors' plant and equipment	293	258	310	1.7	5 603	3 983
752	Automatic data processing machines	484	511	503	2.7	5 472	5 461
764	Telecommunications equipment	536	676	700	3.7	7 265	7 412
781	Motor cars for the transport of persons	1 326	1 491	1 419	7.6	13 047	14 352
782	Motor vehicles for the transport of goods	639	538	534	2.9	6 060	6 606
784	Parts and accessories of the motor vehicles	212	218	202	1.1	2 299	2 355
821	Furniture, bedding, mattresses and supports, and stuffed furnishings	225	163	230	1.2	2 426	2 464
874	Measuring, checking, analysing and controlling instruments and apparatus, n.e.s.	201	217	212	1.1	2 328	2 256
971	Gold, non-monetary	339	367	434	2.3	5 835	4 400
SECTION AND DIVISION OF THE SITC							
0	Food and live animals						
00	Live animals other than fish, crustaceans, molluscs and aquatic invertebrates	18	9	6	—	87	80
01	Meat and meat preparations	56	58	57	0.3	493	549
02	Dairy products and birds' eggs	52	57	56	0.3	593	534
03	Fish (not marine mammals), crustaceans, molluscs and aquatic invertebrates, and preparations thereof	117	112	113	0.6	1 158	1 222
04	Cereals and cereal preparations	61	66	67	0.4	690	754
05	Vegetables and fruit	147	142	135	0.7	1 617	1 516
06	Sugars, sugar preparations and honey	23	25	25	0.1	310	287
07	Coffee, tea, cocoa, spices, and manufactures thereof	86	112	102	0.5	1 169	1 138
08	Feeding stuff for animals (excl. unmilled cereals)	60	48	30	0.2	456	555
09	Miscellaneous edible products and preparations	160	172	145	0.8	1 463	1 598
	<i>Total Food and live animals</i>	<i>779</i>	<i>800</i>	<i>737</i>	<i>3.9</i>	<i>8 036</i>	<i>8 233</i>
1	Beverages and tobacco						
11	Beverages	121	136	137	0.7	1 390	1 520
12	Tobacco and tobacco manufactures	21	28	32	0.2	219	279
	<i>Total Beverages and tobacco</i>	<i>142</i>	<i>164</i>	<i>169</i>	<i>0.9</i>	<i>1 609</i>	<i>1 800</i>
2	Crude materials, inedible, except fuels						
21	Hides, skins and furskins, raw	—	—	—	—	2	2
22	Oil-seeds and oleaginous fruits	4	7	5	—	43	52
23	Crude rubber (incl. synthetic and reclaimed)	7	7	8	—	125	88
24	Cork and wood	49	48	49	0.3	564	514
25	Pulp and waste paper	14	14	10	0.1	143	131
26	Textile fibres and their wastes (not manufactured into yarn or fabric)	7	7	8	—	83	74
27	Crude fertilizers (excl. those of Division 56) and crude minerals (excl. coal, petroleum and precious stones)	23	28	28	0.2	249	293
28	Metalliferous ores and metal scrap	37	7	60	0.3	818	567
29	Crude animal and vegetable materials, n.e.s.	37	34	39	0.2	307	347
	<i>Total Crude materials, inedible, except fuels</i>	<i>177</i>	<i>152</i>	<i>208</i>	<i>1.1</i>	<i>2 336</i>	<i>2 068</i>
3	Mineral fuels, lubricants and related materials						
32	Coal, coke and briquettes	1	1	3	—	39	21
33	Petroleum, petroleum products and related materials	3 203	3 099	3 188	17.1	30 849	31 687
34	Gas, natural and manufactured	180	235	213	1.1	2 402	2 305
	<i>Total Mineral fuels, lubricants and related materials</i>	<i>3 384</i>	<i>3 335</i>	<i>3 403</i>	<i>18.2</i>	<i>33 289</i>	<i>34 013</i>

— nil or rounded to zero (including null cells)

(a) Some SITC sections and divisions exclude commodities subject to a confidentiality restriction. These are included in Division 98. For more information see paragraph 26 of the Explanatory Notes.

(b) Percent of total merchandise is calculated for the most recent month.

(c) The 'Major commodities' section lists commodities at the SITC Rev 4 3-digit level which are the most significant (by value) or are of particular interest. Abbreviated descriptors have been used. The list of 'Major commodities' is reviewed annually.



					10 MONTHS ENDED APRIL		
	Feb 2013	Mar 2013	Apr 2013	Percentage of total merchandise imports(b)	2012	2013	
	\$m	\$m	\$m	%	\$m	\$m	
SECTION AND DIVISION OF THE SITC							
4	Animal and vegetable oils, fats and waxes						
41	Animal oils and fats	3	3	4	—	39	50
42	Fixed vegetable fats and oils, crude, refined or fractionated	29	25	38	0.2	371	340
43	Fats and oils (processed), waxes and inedible mixtures or preparations, of animal or vegetable n.e.s.	6	4	5	—	55	61
	<i>Total Animal and vegetable oils, fats and waxes</i>	39	32	47	0.3	465	452
5	Chemicals and related products, n.e.s.						
51	Organic chemicals	182	177	179	1.0	2 446	2 199
52	Inorganic chemicals	127	102	103	0.6	1 323	1 404
53	Dyeing, tanning and colouring materials	44	48	47	0.2	529	511
54	Medicinal and pharmaceutical products	843	922	810	4.3	8 909	8 692
55	Essential oils and resinoids and perfume materials; toilet, polishing and cleansing preparations	152	169	157	0.8	1 581	1 723
56	Fertilisers (excl. crude)	162	189	208	1.1	1 406	1 314
57	Plastics in primary forms	116	127	130	0.7	1 346	1 261
58	Plastics in non-primary forms	109	104	116	0.6	1 201	1 225
59	Chemical materials and products, n.e.s.	173	177	178	1.0	1 804	1 866
	<i>Total Chemicals and related products, n.e.s.</i>	1 907	2 017	1 927	10.3	20 546	20 194
6	Manufactured goods classified chiefly by material						
61	Leather, leather manufactures, and dressed furskins, n.e.s.	14	11	12	0.1	124	119
62	Rubber manufactures, n.e.s.	268	301	321	1.7	3 159	3 232
63	Cork and wood manufactures (excl. furniture)	71	66	60	0.3	652	679
64	Paper, paperboard and articles of paper pulp, of paper or of paperboard	195	201	188	1.0	2 147	2 193
65	Textile yarn, fabrics, made-up articles n.e.s., and related products	211	175	205	1.1	2 084	2 107
66	Non-metallic mineral manufactures, n.e.s.	189	189	181	1.0	1 994	1 996
67	Iron and steel	252	324	267	1.4	3 186	3 279
68	Non-ferrous metals	228	149	208	1.1	2 647	2 159
69	Manufactures of metals, n.e.s.	512	603	488	2.6	5 332	5 965
	<i>Total Manufactured goods classified chiefly by material</i>	1 941	2 019	1 930	10.3	21 325	21 729
7	Machinery and transport equipment						
71	Power generating machinery and equipment	278	388	348	1.9	4 012	3 843
72	Machinery specialized for particular industries	566	528	610	3.3	9 533	7 677
73	Metal working machinery	48	41	47	0.3	602	530
74	General industrial machinery and equipment, n.e.s., and machine parts, n.e.s.	1 120	1 048	1 072	5.7	9 449	10 794
75	Office machines and automatic data processing machines	652	675	695	3.7	7 638	7 352
76	Telecommunications and sound recording and reproducing apparatus and equipment	668	810	874	4.7	9 782	9 548
77	Electrical machinery, apparatus, appliances, parts (incl. non-elec. counterparts of electrical domestic equip)	804	925	918	4.9	8 995	9 187
78	Road vehicles (incl. air-cushion vehicles)	2 326	2 383	2 303	12.3	23 022	25 033
79	Transport equipment (excl. road vehicles)	102	189	246	1.3	3 012	3 131
	<i>Total Machinery and transport equipment</i>	6 564	6 987	7 114	38.1	76 044	77 094

— nil or rounded to zero (including null cells)

(b) Percent of total merchandise is calculated for the most recent month.

(a) Some SITC sections and divisions exclude commodities subject to a confidentiality restriction. These are included in Division 98. For more information see paragraph 26 of the Explanatory Notes.

				Percentage	10 MONTHS	
	Feb	Mar	Apr	of total	ENDED APRIL	
	2013	2013	2013	merchandise	2012	2013
	\$m	\$m	\$m	imports(b)	\$m	\$m
				%		
SECTION AND DIVISION OF THE SITC						
8	Miscellaneous manufactured articles					
81	Prefabricated buildings; sanitary, plumbing, heating and lighting fixtures and fittings, n.e.s.	114	77	107	0.6	1 079 1 145
82	Furniture, parts thereof; bedding, mattresses, mattress supports, cushions and similar stuffed furnishings	225	163	230	1.2	2 426 2 464
83	Travel goods, handbags and similar containers	74	54	67	0.4	724 821
84	Articles of apparel and clothing accessories	647	411	494	2.6	4 890 5 161
85	Footwear	146	97	99	0.5	1 199 1 285
87	Professional, scientific and controlling instruments and apparatus, n.e.s.	367	405	405	2.2	4 150 4 168
88	Photographic apparatus, equipment and supplies and optical goods, n.e.s., watches and clocks	105	102	106	0.6	1 172 1 205
89	Miscellaneous manufactured articles, n.e.s.	697	713	720	3.9	8 489 8 348
	<i>Total Miscellaneous manufactured articles</i>	<i>2 375</i>	<i>2 021</i>	<i>2 227</i>	<i>11.9</i>	<i>24 130 24 597</i>
9	Commodities and transactions not classified elsewhere in the SITC					
93	Special transactions and commodities not classified according to kind	3	1	1	—	38 34
95	Gold coin whether or not legal tender, and other coin being legal tender	4	5	6	—	25 42
96	Coin (excl. gold coin) not being legal tender	—	—	1	—	5 6
97	Gold, non-monetary (excl. gold ores and concentrates)	339	367	434	2.3	5 835 4 400
98	Combined confidential items excluding some of SITC 28099 (exports only) and some of SITC 51099 (imports only)	163	181	484	2.6	5 648 3 742
	<i>Total Commodities and transactions not classified elsewhere in the SITC</i>	<i>509</i>	<i>553</i>	<i>926</i>	<i>5.0</i>	<i>11 551 8 224</i>
	<b>Total merchandise imports</b>	<b>17 818</b>	<b>18 080</b>	<b>18 687</b>	<b>100.0</b>	<b>199 332 198 403</b>
	Balance of Payments Adjustments	599	673	855	. .	8 907 8 506
	Goods Debits (imports) on a Balance of Payments Basis	18 417	18 753	19 542	. .	208 239 206 909

. . not applicable  
 — nil or rounded to zero (including null cells)

(a) Some SITC sections and divisions exclude commodities subject to a confidentiality restriction. These are included in Division 98. For more information see paragraph 26 of the Explanatory Notes.  
 (b) Percent of total merchandise is calculated for the most recent month.

	EXPORTS				IMPORTS (b)				BALANCE OF MERCHANDISE TRADE	
	2011-12	Apr	10	10	2011-12	Apr	10	10	2011-12	10
		2013	April	months ended		months ended	2013	April		months ended
	\$m	\$m	\$m	\$m	\$m	\$m	\$m	\$m	\$m	\$m
Belgium	1 697	151	1 388	1 302	1 713	143	1 419	1 318	-16	-17
Brazil	1 294	35	1 103	598	722	45	608	469	572	129
Canada	1 579	105	1 256	1 349	2 038	180	1 634	1 843	-459	-494
China	76 766	7 390	62 256	62 996	43 405	3 206	36 092	37 272	33 362	25 724
Denmark	170	10	151	175	1 200	68	936	758	-1 029	-583
Egypt(c)	538	38	418	446	37	2	33	55	501	391
Fiji	303	20	257	252	187	12	159	140	116	113
Finland	268	10	245	138	973	61	825	720	-706	-582
France	1 146	81	893	1 005	3 806	309	3 182	3 185	-2 660	-2 180
Germany	2 118	281	1 792	1 661	11 156	966	9 179	9 099	-9 038	-7 438
Hong Kong (SAR of China)	2 839	182	2 430	2 030	1 132	85	950	1 040	1 708	991
India	13 120	936	11 127	9 522	2 494	189	2 093	2 017	10 626	7 505
Indonesia	5 284	399	4 408	3 880	6 204	426	4 918	5 048	-920	-1 169
Iran	206	41	185	495	63	3	57	24	142	472
Iraq	172	114	154	445	—	—	—	—	172	445
Ireland	85	6	71	60	1 923	128	1 685	1 251	-1 838	-1 191
Israel	253	14	204	172	654	45	541	549	-400	-378
Italy	1 143	40	965	573	5 223	413	4 356	4 641	-4 079	-4 068
Japan	51 152	3 666	42 771	38 485	20 296	1 516	16 975	15 099	30 857	23 386
Korea, Republic of	21 980	1 485	18 457	15 970	8 992	777	7 541	7 692	12 988	8 278
Kuwait	579	71	437	420	465	67	395	396	114	24
Malaysia	5 075	490	3 984	4 275	9 149	682	7 551	7 508	-4 073	-3 233
Mexico	1 027	26	941	554	1 877	196	1 593	1 785	-850	-1 232
Netherlands	3 533	256	3 107	2 138	1 801	126	1 469	1 529	1 732	609
New Zealand	7 669	545	6 368	6 074	7 505	553	6 234	5 897	164	177
Pakistan	529	16	389	544	177	18	150	149	352	395
Papua New Guinea	2 461	177	2 052	2 370	3 511	242	2 861	2 555	-1 050	-184
Philippines	1 542	121	1 309	1 510	453	37	372	429	1 089	1 081
Saudi Arabia	1 701	161	1 361	1 578	451	14	373	329	1 250	1 249
Singapore	6 559	378	5 565	5 549	14 869	1 155	12 659	12 450	-8 310	-6 901
South Africa	1 708	116	1 471	1 158	824	67	667	728	884	430
Spain	848	27	726	391	2 176	204	1 725	2 526	-1 329	-2 135
Sweden	388	18	265	208	2 519	193	2 112	1 946	-2 131	-1 738
Switzerland	792	42	655	487	3 056	259	2 581	2 353	-2 264	-1 865
Taiwan	8 689	745	7 208	6 424	3 863	320	3 250	3 128	4 826	3 297
Thailand	5 711	292	4 855	4 392	8 644	868	6 982	9 360	-2 933	-4 968
Turkey	679	54	571	516	469	45	389	474	210	43
United Arab Emirates	2 218	200	1 835	1 882	3 729	400	3 270	2 787	-1 510	-905
United Kingdom	8 009	342	6 927	4 700	6 918	438	5 886	5 402	1 090	-701
United States of America	9 850	776	8 211	7 471	27 492	1 916	22 603	21 758	-17 642	-14 287
Viet Nam	2 036	155	1 689	1 453	2 839	255	2 320	2 882	-803	-1 429
Other Countries(b)	10 308	837	8 566	7 844	24 946	2 060	20 704	19 812	-14 639	-11 969
<b>Total</b>	<b>264 027</b>	<b>20 847</b>	<b>219 023</b>	<b>203 494</b>	<b>239 951</b>	<b>18 687</b>	<b>199 332</b>	<b>198 403</b>	<b>24 075</b>	<b>5 090</b>
APEC	211 848	17 032	175 108	165 760	166 573	12 790	138 079	139 265	45 275	26 495
ASEAN	26 383	1 853	21 957	21 224	43 573	3 524	35 938	38 680	-17 190	-17 456
Developing Countries	168 061	14 129	138 573	133 569	126 387	10 095	104 829	109 004	41 675	24 566
Least Developed Countries	2 250	264	1 807	1 931	611	68	499	661	1 639	1 269
European Union(d)	19 833	1 257	16 901	12 788	42 341	3 326	35 192	34 908	-22 508	-22 120
OECD	115 451	8 010	96 856	84 129	116 631	8 985	96 810	94 446	-1 180	-10 318

— nil or rounded to zero (including null cells)

(a) See Time series spreadsheets for details of all countries.

(b) From September 2008 imports data with confidentiality restrictions 'no commodity details' or 'no value details' are included in Other countries.

(c) Exports of Alumina are excluded from the country total and included in the 'Other Countries' category up to December 2012.

(d) The European Union includes 27 member countries for all periods.

			10 MONTHS ENDED APRIL	
	2011-12	Apr 2013	2012	2013
	\$m	\$m	\$m	\$m
EXPORTS (a)				
New South Wales	40 540	2 977	33 609	30 623
Victoria	21 596	1 766	17 590	17 604
Queensland	52 868	3 515	44 428	36 342
South Australia	11 410	946	9 478	8 757
Western Australia	120 534	10 398	99 759	96 210
Tasmania	3 170	217	2 641	2 539
Northern Territory	5 278	453	4 470	4 864
Australian Capital Territory	12	—	5	7
State not available for publication(b)	513	—	446	172
Re-exports	8 104	576	6 598	6 375
<b>Total</b>	<b>264 027</b>	<b>20 847</b>	<b>219 023</b>	<b>203 494</b>
IMPORTS				
New South Wales	86 357	6 655	71 618	70 649
Victoria	59 621	4 675	49 524	48 879
Queensland	39 810	3 290	32 605	35 975
South Australia	7 261	534	6 042	5 863
Western Australia	35 081	2 627	29 380	28 350
Tasmania	935	56	828	585
Northern Territory	4 155	367	3 675	4 352
Australian Capital Territory	23	—	12	9
State not available for publication(c)	6 709	484	5 648	3 742
<b>Total</b>	<b>239 951</b>	<b>18 687</b>	<b>199 332</b>	<b>198 403</b>

— nil or rounded to zero (including null cells)

(a) State in which the final stage of production or manufacture occurs.

(b) Exports of Alumina to Bahrain, Egypt and Iceland are excluded from the state totals and included in 'State not available for publication' up to December 2012.

(c) From September 2008 imports data with confidentiality restrictions 'no commodity details' or 'no value details' are included in State not available for publication.

## PERIOD AVERAGE EXCHANGE RATES(a), Per Australian dollar

<i>Period</i>	<i>United States dollar</i>	<i>UK pound sterling</i>	<i>Euro</i>	<i>Japanese yen</i>	<i>Special Drawing Right</i>	<i>Trade-weighted index of value of the A\$(b)</i>
FINANCIAL YEAR						
<b>2009-10</b>	0.8830	0.5590	0.6362	80.77	0.5710	68.9
<b>2010-11</b>	0.9891	0.6213	0.7248	82.10	0.6346	74.0
<b>2011-12</b>	1.0319	0.6516	0.7712	81.14	0.6629	76.0
MONTHS						
<b>2012</b>						
February	1.0726	0.6789	0.8110	84.11	0.6925	78.6
March	1.0543	0.6662	0.7977	86.95	0.6842	78.1
April	1.0350	0.6467	0.7858	84.18	0.6706	76.6
May	0.9993	0.6270	0.7794	79.69	0.6521	74.6
June	0.9986	0.6421	0.7959	79.16	0.6590	75.2
July	1.0293	0.6600	0.8368	81.30	0.6829	77.4
August	1.0468	0.6664	0.8447	82.36	0.6922	78.3
September	1.0395	0.6455	0.8085	81.24	0.6766	76.9
October	1.0292	0.6405	0.7937	81.31	0.6681	75.9
November	1.0410	0.6517	0.8110	84.24	0.6807	77.0
December	1.0468	0.6487	0.7985	87.59	0.6805	77.5
<b>2013</b>						
January	1.0503	0.6572	0.7911	93.35	0.6842	78.2
February	1.0319	0.6658	0.7723	96.06	0.6752	77.6
March	1.0333	0.6854	0.7967	97.97	0.6870	78.4
April	1.0387	0.6789	0.7977	101.53	0.6906	78.8

(a) These exchange rates and the trade-weighted index are derived using rates provided by the Reserve Bank of Australia in respect of each trading day.

(b) May 1970 = 100. The Trade-weighted index is reweighted annually on 1 December.

	2009–10	2010–11	2011–12	Oct 2012	Nov 2012	Dec 2012	Jan 2013	Feb 2013	Mar 2013
	\$m	\$m	\$m	\$m	\$m	\$m	\$m	\$m	\$m
<b>BALANCE</b>									
<b>On goods and services</b>	—	—	—	—	—	<b>1</b>	<b>215</b>	<b>214</b>	<b>213</b>
<b>CREDITS</b>									
Total goods and services	—	—	—	—	—	—	—	—	—
<i>Total goods</i>	—	—	—	—	—	—	—	—	—
Rural goods	—	—	—	—	—	—	—	—	—
Non-rural goods	—	—	—	—	—	—	—	—	—
Net exports of goods under merchandising	—	—	—	—	—	—	—	—	—
Non-monetary gold	—	—	—	—	—	—	—	—	—
<i>Total services</i>	—	—	—	—	—	—	—	—	—
<b>DEBITS</b>									
Total goods and services	—	—	—	—	—	<b>1</b>	<b>215</b>	<b>214</b>	<b>213</b>
<i>Total goods</i>	—	—	<b>-516</b>	—	—	—	<b>197</b>	<b>196</b>	<b>196</b>
Consumption goods	—	—	—	—	—	—	—	—	—
Capital goods	—	—	<b>-516</b>	—	—	—	<b>197</b>	<b>196</b>	<b>196</b>
Intermediate and other merchandise goods	—	—	—	—	—	—	—	—	—
Non-monetary gold	—	—	—	—	—	—	—	—	—
<i>Total services</i>	—	—	<b>516</b>	—	—	<b>1</b>	<b>18</b>	<b>18</b>	<b>17</b>

— nil or rounded to zero (including null cells)

(a) This table is presented consistent with BPM6 sign conventions. This means for the balance on goods and services a negative revision indicates a decrease in a surplus or an increase in a deficit. For debits a negative revision indicates an increase in debits while a positive revision indicates a decrease in debits.

## EXPLANATORY NOTES

### INTRODUCTION

**1** This publication presents preliminary estimates of Australia's international trade in goods and services on a balance of payments basis (tables 1–11 and 17) and merchandise import and export statistics on an international merchandise trade basis (tables 12–15). In addition, table 16 Exchange rates and trade-weighted indexes (TWI) are derived by using exchange rates and indexes provided by the Reserve Bank of Australia (RBA). As of December 2011 the RBA has changed the methodology for compiling the TWI to include both merchandise and services trade, rather than merchandise trade only. This takes advantage of country-level services trade data that have been published by the Australian Bureau of Statistics (ABS).

**2** Merchandise trade statistics on an international merchandise trade basis are compiled from information submitted by exporters and importers or their agents to the Australian Customs and Border Protection Service (Customs and Border Protection). Adjustments for coverage, timing and valuation are made to international merchandise trade data to convert them to a balance of payments basis. The services data are sourced from the quarterly Survey of International Trade in Services and a range of administrative data and indicator series.

**3** More comprehensive quarterly estimates of Australia's trade in goods and services, together with comprehensive details of Australia's balance of payments are included in the quarterly publication, *Balance of Payments and International Investment Position, Australia* (cat. no. 5302.0). Detailed monthly statistics on merchandise trade are available in Time Series Spreadsheets on the ABS website or by subscription to tailored services. More information on the *International Trade in Services by Country, by State and by Detailed Services Category* are available on a financial year basis (cat. no. 5368.0.55.003) following the September issue of this publication and calendar year basis (cat. no. 5368.0.55.004) following the March issue of this publication.

### CONCEPTS, SOURCES AND METHODS

**4** The conceptual framework used in compiling Australia's merchandise trade statistics can be found in *International Merchandise Trade, Australia: Concepts, Sources and Methods, 2001* (cat. no. 5489.0).

**5** The conceptual framework used in compiling Australia's balance of payments statistics is based on the International Monetary Fund's *Balance of Payments and International Investment Position Manual, Sixth Edition* (BPM6). Descriptions of the underlying concepts and structure of the balance of payments and the sources, methods and terms used in compiling estimates are presented in the publication *Balance of Payments and International Investment Position, Australia: Concepts, Sources and Methods, 1998* (cat. no. 5331.0). This version reflects the international standards prior to BPM6 and is currently being revised. The first part of the revised document was released on 8 March 2011, featuring only the Goods Account. Other components will be released as they become available. Further information on the key changes introduced with BPM6 can be found in the *Information paper: Implementation of new international statistical standards in the ABS National and International Accounts, September 2009* (cat. no. 5310.0.55.002).

**6** To bring merchandise trade statistics on an international merchandise trade basis to a balance of payments basis, timing adjustments are made to ensure that the transaction is recorded in the period in which ownership changed, rather than in the period in which the transaction was recorded by Customs and Border Protection or the period in which the goods arrived in/departed from an Australian port. Adjustments are also made to account for the change of ownership of goods not included in merchandise trade statistics. Chapter 6 of cat. no. 5331.0 provides more detail on the relationship between statistics on an international merchandise trade basis and on a balance of payments basis.

## EXPLANATORY NOTES *continued*

### CONCEPTS, SOURCES AND METHODS *continued*

**7** International merchandise trade exports data presented for recent months in tables 12–15 of this publication are based on information initially reported by exporters to Customs and Border Protection. At the time of initial reporting to Customs and Border Protection the final prices may not be known for some commodities. Therefore, the information recorded for recent months for commodities like iron ore and coal can include a variety of prices including previous or current contract prices and the prevailing spot prices. Newly negotiated contract prices may not be fully reflected in the data first reported to Customs and Border Protection, and to compensate for this, the balance of payments series may reflect adjusted price levels.

**8** The Concepts, Sources and Methods publications and information papers are available to download for free from the ABS website. Select *Statistics*, then select *By Catalogue Number*, and then the catalogue numbers as above.

### CLASSIFICATIONS

**9** The merchandise trade data on an international merchandise trade basis are presented using the following commodity classifications:

- the Harmonized System 2012 (available on request)
- the Standard International Trade Classification (SITC Revision 4)
- the Classification by Broad Economic Categories (BEC)
- the industry classification: Australian and New Zealand Standard Industrial Classification, 2006 (ANZSIC 06) from July 2005.

**10** The balance of payments 'goods and services' series are presented according to three classifications with the goods classifications derived from SITC Revision 4 and BEC. The classifications are:

- for goods:
  - the Balance of Payments Commodities for Exports (BoPCE)
  - the Balance of Payments Broad Economic Categories (BoPBEC) for Imports
- for services:
  - the Extended Balance of Payments Services Classification (EBOPS).

### ACCURACY, RELIABILITY AND REVISIONS

**11** While every effort is made to ensure the accuracy and reliability of estimates, most series are subject to revision as more complete and accurate information becomes available. Care should be exercised in the use and interpretation of estimates in this publication. The transactions occurring in international trade in goods and services are of many different kinds, and therefore the compilation of trade estimates entails the use of a very wide range of statistical data of varying degrees of accuracy and timeliness. For further information on the monthly services series, see paragraph 25.

**12** The revisions are applied differently for merchandise trade and balance of payments series. Each month, merchandise trade data are revised for the previous six months to incorporate latest available data.

**13** For the balance of payments 'goods and services' series, in original terms, revisions in the July, October, January or April issues are limited to significant new and revised data from survey sources that have become available since the previous issue. This is to ensure the monthly series align with the comparable series in the most recent issue of the *Balance of Payments and International Investment Position, Australia* (cat. no. 5302.0). In the September issue revisions can be applied to the four previous financial years. In other issues revisions can be applied to the previous and current financial years to incorporate the latest available survey and administrative data.

**14** In seasonally adjusted and trend terms, revisions may occur at any time point but tend to focus on the most recent estimates. Please also refer to paragraphs 17 and 18 (seasonal adjustment), and 19 (trend estimates) below.



## EXPLANATORY NOTES *continued*

### SIGN CONVENTION

**15** In keeping with BPM6 conventions, balance of payments basis credit entries are shown with an implied positive sign and debit items are shown as negative entries. For statistics on an international merchandise trade basis, both imports and exports are shown without sign. The calculation of percentage changes on balance of payments debit items are made without regard to sign. References to balance of payments debit items in Key Figures, Key Points, and Analysis and Comments are also made without regard to sign.

### SEASONALLY ADJUSTED AND TREND ESTIMATES

**16** The estimates of international trade in goods and services on a balance of payments basis are seasonally adjusted, however the merchandise exports and imports statistics on an international merchandise trade basis are not. Monthly original estimates are volatile, being subject to calendar-related and large irregular influences. Seasonally adjusted estimates are derived by estimating and removing from the original series systematic calendar related effects, such as seasonal (e.g. Christmas), trading day and moving holiday (e.g. Easter) influences. Seasonal adjustment does not aim to remove the irregular or non-seasonal influences which may be present in any particular month. These irregular influences may reflect both random economic events and difficulties of statistical recording.

**17** The seasonally adjusted statistics in this publication use the concurrent seasonal adjustment technique and Autoregressive Integrated Moving Average (ARIMA) modelling to estimate factors for the current and previous months. Under concurrent seasonal adjustment, the estimates of seasonal factors are fine tuned as new or revised original estimates become available each period. The seasonally adjusted estimates are subject to revisions at each reference month as the estimates of seasonal factors are improved.

**18** ARIMA modelling relies on the characteristics of the series being analysed to project future period data. ARIMA modelling is used on a case-by-case basis where it results in reduced revisions to seasonally adjusted series when subsequent data becomes available. The projected values are temporary, intermediate values, that are only used internally to improve the estimation of the seasonal factors. The projected data do not affect the original estimates and are discarded at the end of the seasonal adjustment process. The ARIMA model is assessed as part of the annual review and, following the 2012 annual review, the majority of directly seasonally adjusted trade in goods and services time series use an ARIMA model.

**19** The month-to-month movements of the seasonally adjusted estimates may not be reliable indicators of underlying behaviour because they include irregular or non-seasonal movements. Trend estimates reduce the effect of these movements as they are derived by applying a 13-term Henderson moving average to the seasonally adjusted series. The 13-term Henderson moving average (like all Henderson averages) is symmetric, but as the end of a time series is approached, asymmetric forms of the average are applied. While the asymmetric weights enable trend estimates for recent months to be produced, it does result in revisions to the estimates for the most recent six months as additional observations become available. Revisions to trend estimates can also occur because of revisions to the original data and as a result of the re-estimation of the seasonal factors. Trend estimates should be used with caution, especially around the time of unusual influences, until these have been appropriately taken into account.

**20** Information papers and articles on time series methods are available on the ABS website:

- for seasonal adjustment methods, see *Information Paper: An Introductory Course on Time Series Analysis, Jan 2005* (cat. no. 1346.0.55.001) and *Time Series Analysis Frequently Asked Questions, 2003* (cat. no. 1346.0.55.002)

## EXPLANATORY NOTES *continued*

### SEASONALLY ADJUSTED AND TREND ESTIMATES *continued*

- for ARIMA modelling, see *Feature article: Use of ARIMA modelling to reduce revisions* in the October 2004 issue of *Australian Economic Indicators* (cat. no. 1350.0)
- for trend estimates methods, see *Information Paper: A Guide to Interpreting Time Series – Monitoring Trends* (cat. no. 1349.0)
- alternatively contact the Assistant Director, Time Series Analysis on (02) 6252 6345 or e-mail: [time.series.analysis@abs.gov.au](mailto:time.series.analysis@abs.gov.au).

### ECONOMIC TERRITORY

**21** In accordance with BPM6 definitions, Australia's economic territory, on a balance of payments basis, is the area under the effective control of the Australian government. It includes the land area, airspace, territorial waters, including jurisdiction over fishing rights and rights to fuels and minerals. Australian economic territory also includes territorial enclaves in the rest of the world. These are clearly demarcated areas of land, located in other countries and which are owned or rented by the Australian government for diplomatic, military, scientific or other purposes. Specifically, the economic territory of Australia consists of:

- Geographic Australia which includes Cocos (Keeling) Islands and Christmas Island;
- Norfolk Island;
- Australian Antarctic Territory;
- Heard Island and McDonald Islands;
- Territory of Ashmore Reef and Cartier Island;
- Coral Sea Islands;
- Australia's territorial enclaves overseas; and
- the Joint Petroleum Development Area (joint territory between Australia and Timor-Leste).

**22** Because of administrative complexities and measurement difficulties, Norfolk Island transactions with the rest of the world will not always be captured in all relevant balance of payments statistics. Most of the transactions involving Norfolk Island are not material to Australia's trade performance and not capturing these transactions will not distort these statistics. However, any significant transactions will be identified and included in the relevant statistics.

### COMMODITY BREAKDOWN OF GOODS

**23** For details of the classifications used to present goods exports (credits) and imports (debits) on a balance of payments basis, see tables 6.6 and 6.7, respectively, in *Balance of Payments and International Investment Position, Australia: Concepts, Sources and Methods* (cat. no. 5331.0).

**24** The international merchandise trade statistics shown in tables 12 and 13 are classified by the Standard International Trade Classification (SITC). Imports and exports of goods at a more detailed level are available from the time series spreadsheets on the ABS website. All data from July 2005 are presented according to SITC Rev 4 and data prior to July 2005 are presented according to SITC Rev 3. For details refer to the 'Classifications and Standards Update' in the July 2008 issue of this publication.

### MONTHLY SERVICES SERIES

**25** Monthly indicators for many of the services components that are only surveyed quarterly are not available. Monthly estimates for the freight and other transportation components of services credits in table 9 are derived by dividing the quarterly estimate by three. Freight debits are derived directly from imports data for the reference month as a difference between total merchandise cost, insurance and freight (CIF) and free on board (FOB), adjusted to reflect timing and processing adjustments. For freight credits and other transportation credits and debits, estimates are derived by extrapolating the last quarter's data by an average of movements for the same quarter over the three previous years, and then dividing the estimate by three. Similarly other services estimates are derived by extrapolating the last quarter's data by an average of movements for the same quarter over the previous three years, and then dividing the estimate by three.

## EXPLANATORY NOTES *continued*

### CONFIDENTIALITY OF MERCHANDISE TRADE STATISTICS

**26** The release of statistics for certain merchandise trade commodities is restricted in order to prevent the identification of the activities of an individual business, where this is requested by the business concerned. These restrictions do not affect the total value of exports and imports, but they can affect statistics at the country, state and commodity levels. Imports data that have the confidentiality restrictions 'No commodity details' or 'No value details' are aggregated into a single confidential commodity code. For data prior to September 2008, these data are added back into the appropriate state total and country total (i.e. these totals show the correct level of trade). From September 2008 these confidential data are not added back. Instead the confidential data are published as 'No country details' in the country totals and 'State not available for publication' in the state totals. Therefore, country and state totals from September 2008 may not represent the actual amount of trade in each country/state but only the trade in commodities without a 'No commodity details' or 'No value details' restriction. For information on the confidentiality restrictions applied to the merchandise trade statistics in this publication, refer to the current issue of *International Merchandise Trade: Confidential Commodities List (CCL)* (cat. no. 5372.0.55.001).

### TOURISM RELATED SERVICES

**27** The tourism related services memorandum items provide timely indicators of the movements in tourism related activities, not an absolute measure of the level of these activities. The tourism related indicator has been derived by combining total travel services (business, education-related and other personal travel) and passenger transportation services (which includes agency fees and commissions for air transport).

### SERVICES BY STATE AND BY PARTNER COUNTRY

**28** Annual services data by state, by country and detailed services are released twice yearly. Calendar year data are usually released following the March issue of this publication and financial year data are usually released following the September issue. Refer to time series data under trade in services data cubes for details.

**29** Services credits are classified by the state of provision, while services debits are classified by the state of consumption. The state allocations for transportation, travel, postal and courier, and telecommunication services are based on a number of indicators including merchandise trade statistics by state, overseas passenger arrivals and departures by state of clearance and data provided by the Department of Immigration and Citizenship. The allocation for other services (about 25% of all trade in services) is primarily based on the location of the business reporting the information, which serves as a proxy for the state of provision/consumption of that service. The data should be used with care but are considered suitable for analysis over time.

**30** A comprehensive explanation of the data sources used and the methodology applied in the compilation of partner country statistics is provided in Chapter 17 of *Balance of Payments and International Investment Position, Australia: Concepts, Sources and Methods* (cat. no. 5331.0). Approximately 5% of total services credits and debits for both 2009–10 and 2010–11 were either confidential, or unable to be allocated to individual countries.

### ABS DATA AVAILABLE

**31** More detailed balance of payments and international merchandise trade data, including forward seasonal factors are available as time series spreadsheets or data cubes from the ABS website. Merchandise trade data by commodity, country and state that are not on the ABS website may be available on request. Inquiries should be made to the National Information and Referral Service as shown on the back of this publication.

### RELATED PRODUCTS AND PUBLICATIONS

**32** Users may also wish to refer to the following publications which can be downloaded free of charge from the ABS website by using the 'Statistics' tab and selecting the relevant catalogue number:

- *Balance of Payments and International Investment Position, Australia* (cat. no. 5302.0) – issued quarterly

## EXPLANATORY NOTES *continued*

### RELATED PRODUCTS AND PUBLICATIONS *continued*

- *Balance of Payments – Goods and Services, Preliminary Quarterly Estimates* (cat. no. 5302.0.55.004) – issued quarterly
- *International Merchandise Imports, Australia* (cat. no. 5439.0) – issued monthly
- *International Trade Price Indexes, Australia* (cat. no. 6457.0) – issued quarterly
- *Balance of Payments and International Investment Position, Australia: Concepts, Sources and Methods* (cat. no. 5331.0)
- *Information Paper: Quality of Australian Balance of Payments Statistics* (cat. no. 5342.0)
- *International Merchandise Trade, Australia: Concepts, Sources and Methods* (cat. no. 5489.0)
- *A Guide to Australian Balance of Payments and International Investment Position Statistics* (cat. no. 5362.0.55.001).

**33** Current publications and other products released by the ABS are available from the 'Statistics' tab on the ABS website. The ABS also issues a daily *Release Advice* on the website which details products to be released in the week ahead. A *foreign trade theme page* and a *balance of payments theme page* are available on the ABS website. Select *Topics @ a Glance – Economy – Foreign Trade* or *Balance of Payments*. This page provides direct links to all foreign trade and balance of payments related data and publications, recent changes and forthcoming events, links to relevant websites and a range of other information about the Australian International Accounts.

### ROUNDING

**34** Where figures have been rounded, discrepancies may occur between sums of the component items and totals. Percentage movements are calculated from data at the level of precision presented in this publication (i.e. \$m) except for international merchandise trade tables.

### ABBREVIATIONS

\$b	billion (thousand million) dollars
\$m	million dollars
ABS	Australian Bureau of Statistics
ANZSIC	Australian and New Zealand Standard Industrial Classification
APEC	Asia Pacific Economic Co-operation
ARIMA	autoregressive integrated moving average
ASEAN	Association of South-East Asian Nations
BEC	Classification by Broad Economic Categories
BoPBEC	Balance of Payments Broad Economic Categories
BoPCE	Balance of Payments Commodities for Exports
BPM6	<i>Balance of Payments and International Investment Position Manual, Sixth Edition</i>
c.i.f.	cost, insurance and freight
EBOPS	Extended Balance of Payments Services Classification
f.o.b.	free on board
n.e.s.	not elsewhere specified
n.i.e.	not included elsewhere
OECD	Organisation for Economic Co-operation and Development
SAR	Special Administrative Region
SITC	Standard International Trade Classification

## APPENDIX RELATED ARTICLES

<i>Article</i>	<i>Source(a)</i>	<i>Issue / Release</i>
<b>Investment</b>		
Foreign currency exposure	5308.0	Mar qtr 2009
Foreign ownership of equity	5302.0	Sep qtr 2007
Kangaroo bonds	1301.0	2006
Gross external debt	5302.0	Sep qtr 2003
<b>Balance of payments</b>		
International comparison of balance of payments statistics	(b) 5363.0	1998–99
<b>Merchandise trade</b>		
Export and Import Invoice Currencies, June 2012	5368.0	Jun 2012
Characteristics of Australian Exporters, 2011–12	5368.0.55.006	May 2013
100 years of international trade statistics	5368.0	Oct 2007
New methodology for deriving counts of Australian exports	5368.0	Feb 2006
Australia's Importers, 2003–04	5368.0	Nov 2004
Australia's Exporters, 2003–04	5368.0	Oct 2004
Foreign ownership of Australian exporters and importers, 2002–03	5496.0.55.001	Jun 2004
Australia's trade with the USA	5368.0	Mar 2004
Major commodities traded by Australia, 1991 to 2000	(b) 5422.0	Dec qtr 2000
<b>Trade in services</b>		
ABS International Tourism Estimates	5302.0	Dec 2011
Australian outward finance and insurance foreign affiliate trade, 2009–10	5485.0	Jun 2011
International trade in services by partner country, 2006, preliminary	5368.0	Dec 2006
Changes to International trade in services statistics, August 2006	5368.0	Aug 2006
Changes to International trade in services travel statistics	5368.0	Aug 2005
<b>Finance</b>		
Impact of the farm season on Australian production in 2002–03 and 2003–04	1301.0	2005
Recent trends in construction and first home buyers finance	5609.0	Mar 2002
Household sector data in the financial accounts	5232.0	Mar qtr 2002
<b>Technical information</b>		
Changes to AHECC and Customs Tariff, 2012	5368.0.55.017	Dec 2011
Experimental Statistics on International Shipping Container Movements, 2009–10	5368.0.55.018	Sep 2011
Implementation of new international statistical standards in ABS National and International Accounts, September 2009	5310.0.55.002	Oct 2009
Impact of revised international standards on monthly International Trade in Goods and Services, August 2009	5368.0.55.014	Oct 2009
Estimation of Workers' Remittances based on Balance of Payments and International Investment Position Manual, Sixth Edition, September 2009	5302.0.55.003	Aug 2009
Revisions to international standards in quarterly Balance of Payments and International Investment Position statistics from September 2009, 2009	5302.0.55.002	Jul 2009
Changes to International Trade in Goods Statistics – Countries and Ports, July 2009	5368.0.55.013	Jul 2009
Revisions to international standards in monthly international trade in goods and services statistics from August 2009, 2009	5368.0.55.012	Jun 2009
Changes to International Trade in Goods Industry Statistics, July 2009	5368.0.55.011	Dec 2008
Technical note 1 – Income on debt	5302.0	Jun qtr 2008
Technical note 2 – Use of CDI data	5302.0	Jun qtr 2008
Impact of introducing Revision 4 of the Standard International Trade Classification, 2008	5368.0.55.010	May 2008
Changes to international trade statistics July 2008, 2007 to 2008	5368.0.55.009	Jan 2008
Introduction of revised international standards in ABS economic statistics in 2009, 2007	5310.0.55.001	Sep 2007
Changes on 1 January 2007 to Statistical Codes in the AHECC and the Customs Tariff, 2007	1233.0.55.001	Nov 2006
ABS implementation in January 2007 of revisions to international trade classifications, 2007	5368.0.55.005	Jun 2006
Revised treatment of Goods for Processing in Merchandise Trade and Balance of Payments Statistics	5368.0	May 2006
Impact of Customs and ABS changes on import statistics from October 2005	5439.0	Oct 2005
ABS management of the impact of the implementation of the imports component of the New Customs System	5439.0	Aug 2005
Changes to country and port classifications	5368.0	May 2003
Implementation of New Customs Systems	5368.0	Aug 2004
The effect of customs changes on export statistics	5422.0	Jun qtr 2002
Data confidentiality	5422.0	Dec qtr 1999

- (a) In the ABS website home page, select Statistics; By Catalogue Number; and click on the specified catalogue number and issue. Note: in some instances, a particular issue of the publication can be found in the Past & Future Releases page of the catalogue.
- (b) This article can be found in pdf format by referring to the Downloads page of the specified issue of this publication on the ABS website.





## FOR MORE INFORMATION . . .

*INTERNET*      **www.abs.gov.au** the ABS website is the best place for data from our publications and information about the ABS.

### INFORMATION AND REFERRAL SERVICE

Our consultants can help you access the full range of information published by the ABS that is available free of charge from our website. Information tailored to your needs can also be requested as a 'user pays' service. Specialists are on hand to help you with analytical or methodological advice.

*PHONE*                      1300 135 070

*EMAIL*                      [client.services@abs.gov.au](mailto:client.services@abs.gov.au)

*FAX*                              1300 135 211

*POST*                            Client Services, ABS, GPO Box 796, Sydney NSW 2001

## FREE ACCESS TO STATISTICS

All statistics on the ABS website can be downloaded free of charge.

*WEB ADDRESS*      [www.abs.gov.au](http://www.abs.gov.au)