

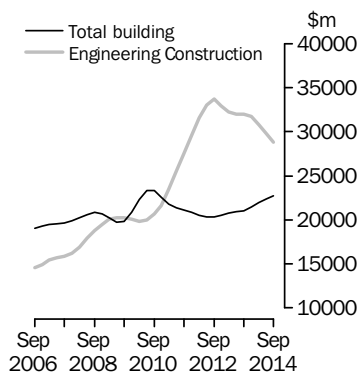
CONSTRUCTION WORK DONE AUSTRALIA
PRELIMINARY

EMBARGO: 11.30AM (CANBERRA TIME) WED 26 NOV 2014

KEY FIGURES

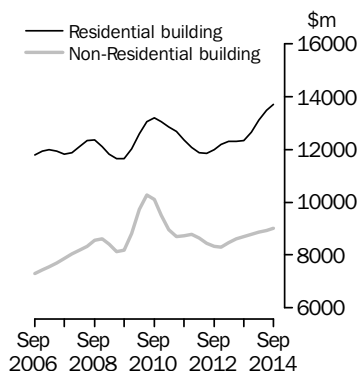
Value of construction work done

Chain Volume Measures
Trend estimates



Value of building work done

Chain Volume Measures
Trend estimates



	Sep qtr 14	Jun qtr 14 to Sep qtr 14	Sep qtr 13 to Sep qtr 14
	\$m	% change	% change

TREND ESTIMATES (a)

Value of work done

Building	22 730.8	1.5	8.0
Residential	13 716.1	1.8	11.2
Non-residential	9 009.3	0.9	3.5
Engineering	28 826.1	-3.0	-10.0
Total construction	51 492.9	-1.2	-3.0

SEASONALLY ADJUSTED ESTIMATES (a)

Value of work done

Building	22 435.8	-1.0	5.8
Residential	13 447.3	-1.6	8.6
Non-residential	8 988.4	-0.1	1.9
Engineering	28 710.6	-3.2	-12.1
Total construction	51 146.4	-2.2	-5.1

(a) Reference year for Chain Volume Measures is 2012-13.

KEY POINTS

VALUE OF WORK DONE, CHAIN VOLUME MEASURES

TOTAL CONSTRUCTION

- The trend estimate for total construction work done fell 1.2% in the September quarter 2014.
- The seasonally adjusted estimate for total construction work done fell 2.2% to \$51,146.4m in the September quarter.

BUILDING WORK DONE

- The trend estimate for total building work done rose 1.5% in the September quarter.
- The trend estimate for non-residential building work done rose 0.9%, while residential building work rose 1.8%.
- The seasonally adjusted estimate of total building work done fell 1.0% to \$22,435.8m in the September quarter.

ENGINEERING WORK DONE

- The trend estimate for engineering work done fell 3.0% in the September quarter.
- The seasonally adjusted estimate for engineering work done fell 3.2% to \$28,710.6m in the September quarter.

INQUIRIES

For further information about these and related statistics, contact the National Information and Referral Service on 1300 135 070.

NOTES

FORTHCOMING ISSUES

<i>ISSUE (Quarter)</i>	<i>RELEASE DATE</i>
December 2014	25 February 2015
March 2015	27 May 2015
June 2015	26 August 2015
September 2015	25 November 2015

.....

ABOUT THIS ISSUE

This publication provides an early indication of trends in building and engineering construction activity. The data are estimates based on a response rate of approximately 85% of the value of both building and engineering work done during the quarter. More comprehensive and updated results will be released in *Engineering Construction Activity, Australia* (cat.no. 8762.0) on 14 January 2015 and in *Building Activity, Australia* (cat. no. 8752.0) on 15 January 2015.

CHANGES IN THIS ISSUE

A new base year, 2012-13, has been introduced in the chain volume estimates resulting in revisions to growth rates in subsequent periods. In addition, the chain volume estimates have been re-referenced to 2012-13, preserving additivity in the quarters after the reference year. Re-referencing affects the levels of, but not the movements in, chain volume estimates. For further information, see the explanatory notes.

DATA NOTES

Trend estimates for quarterly work done on Engineering and Total Construction in the Northern Territory have not been released for September 2014. The ABS produces trend estimates to best represent the underlying behaviour of the series but the very large movements evident in the original and seasonally adjusted data between June and September prevent the reliable estimation of this behaviour. The ABS will review these trend estimates over the next few quarters with a view to re-establishing the series. The reliability of original and seasonally adjusted estimates are not affected.

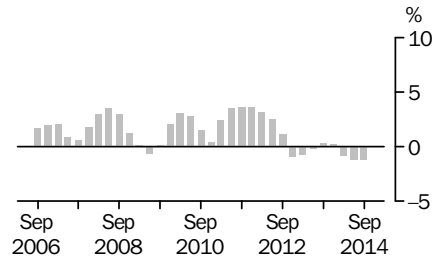
Trend estimates for other states should be used with caution due to the volatility caused by large engineering projects. For more details on trend estimates, please see paragraphs 24 to 26 of the explanatory notes.

Jonathan Palmer
Acting Australian Statistician

CONSTRUCTION WORK DONE CHAIN VOLUME MEASURES

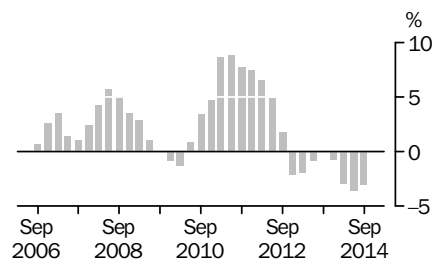
TREND PERCENTAGE CHANGE

TOTAL CONSTRUCTION



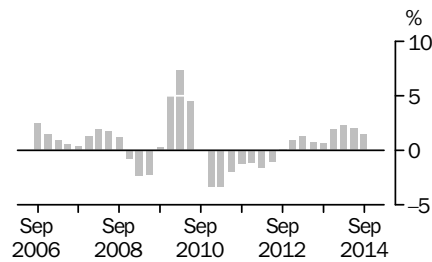
The trend estimate for total construction work done has fallen 1.2% this quarter, following falls in the previous two quarters.

ENGINEERING



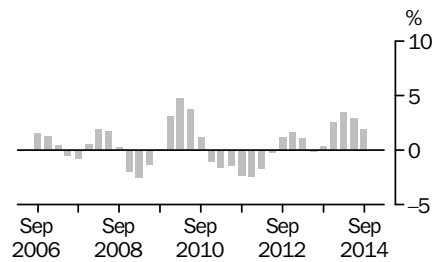
The trend estimate for engineering construction work done fell 3.0% this quarter and has fallen for four quarters.

BUILDING



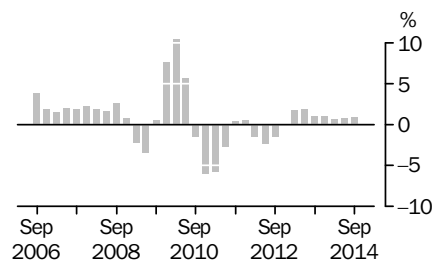
The trend estimate for total building work done rose 1.5% this quarter and has risen for nine quarters.

RESIDENTIAL



The trend estimate for residential building work done rose 1.8% this quarter and has risen for five quarters.

NON-RESIDENTIAL

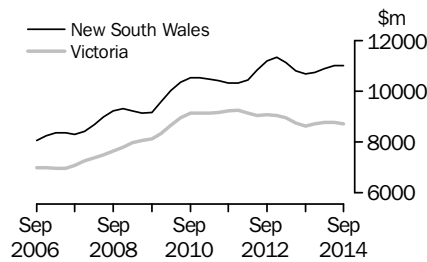


The trend estimate for non-residential building work done rose 0.9% and has now risen for seven quarters.

CONSTRUCTION WORK DONE STATES AND TERRITORIES

CHAIN VOLUME MEASURES—TREND ESTIMATES

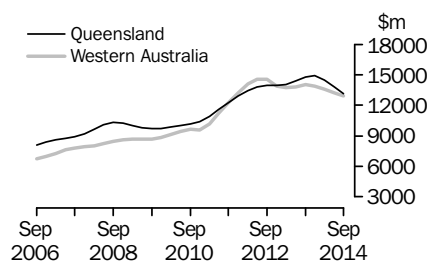
NEW SOUTH WALES
VICTORIA



Construction work done in New South Wales has risen for four quarters.

Construction work done in Victoria has fallen this quarter, following a flat previous quarter.

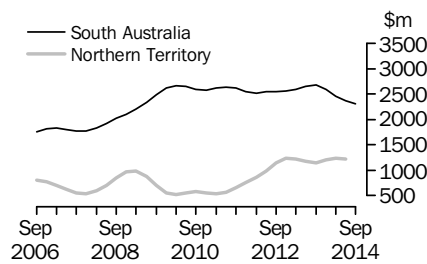
QUEENSLAND
WESTERN AUSTRALIA



Construction work done in Queensland has fallen for three quarters.

Construction work done in Western Australia has fallen for four quarters.

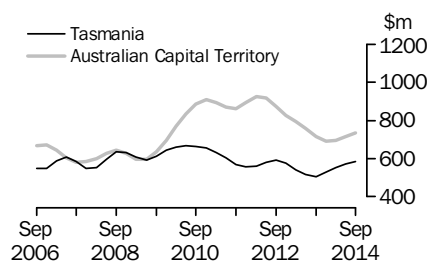
SOUTH AUSTRALIA
NORTHERN TERRITORY



Construction work done in South Australia has fallen for four quarters.

Construction work done estimates in the Northern Territory have not been released for September 2014. Please refer to the Data Notes for further information.

TASMANIA
AUSTRALIAN CAPITAL
TERRITORY



Construction work done in Tasmania has risen for four quarters.

Construction work done in the Australian Capital Territory has now risen for three quarters.

LIST OF TABLES

page

TABLES

1	Construction work done, chain volume measures	6
2	Construction work done, chain volume measures, change from previous period	7
3	Construction work done, states and territories, chain volume measures	8
4	Construction work done, states and territories, chain volume measures, change from previous period	9
5	Construction work done, states and territories, chain volume measures, original	10
6	Construction work done, states and territories, chain volume measures, original, change from previous period	11
7	Construction work done, current prices	12
8	Construction work done, current prices, change from previous period	13
9	Construction work done, states and territories, current prices, original	14
10	Construction work done, states and territories, current prices, original, change from previous period	15
11	Value of building work done, chain volume measures	16
12	Value of building work done, chain volume measures, change from previous period	17
13	Value of building work done, current prices	18
14	Value of building work done, current prices, change from previous period	19
15	Relative standard errors, states and territories	20
16	Relative standard errors, building work done	20

CONSTRUCTION WORK DONE, Chain volume measures(a)

Period	BUILDING WORK DONE			ENGINEERING WORK DONE			CONSTRUCTION WORK DONE		
	Private	Public	Total	Private	Public	Total	Private	Public	Total
	\$m	\$m	\$m	\$m	\$m	\$m	\$m	\$m	\$m
ORIGINAL									
2011-12	70 086.4	12 831.6	82 936.3	88 751.9	33 769.4	122 497.4	158 868.1	46 648.0	205 483.6
2012-13	72 036.1	10 359.9	82 396.0	97 405.6	32 939.5	130 345.1	169 441.7	43 299.4	212 741.1
2013-14	75 954.0	11 106.1	87 060.1	96 081.7	28 814.1	124 895.7	172 035.6	39 920.2	211 955.8
2013									
Jun Qtr	18 258.6	2 703.2	20 962.1	23 283.0	9 308.7	32 585.9	41 549.2	12 011.3	53 555.7
Sep Qtr	19 253.9	2 913.1	22 167.0	25 268.5	7 111.5	32 380.0	44 522.5	10 024.6	54 547.1
Dec Qtr	18 917.2	3 048.2	21 965.4	25 821.6	7 445.7	33 267.2	44 738.7	10 493.9	55 232.6
2014									
Mar Qtr	17 687.8	2 505.8	20 193.6	22 258.5	6 559.0	28 817.5	39 946.3	9 064.8	49 011.0
Jun Qtr	20 095.1	2 639.0	22 734.1	22 733.1	7 697.9	30 431.0	42 828.2	10 336.9	53 165.1
Sep Qtr	20 945.8	2 523.1	23 468.8	22 637.9	5 987.2	28 625.1	43 583.7	8 510.3	52 094.0
SEASONALLY ADJUSTED									
2013									
Jun Qtr	18 240.6	2 662.6	20 903.7	23 389.2	8 144.0	31 531.1	41 636.3	10 806.1	52 444.7
Sep Qtr	18 299.6	2 903.5	21 203.2	25 087.4	7 590.3	32 677.6	43 387.0	10 493.8	53 880.8
Dec Qtr	18 226.3	2 883.3	21 109.6	24 218.5	7 475.6	31 694.1	42 444.7	10 358.8	52 803.7
2014									
Mar Qtr	19 369.9	2 710.2	22 080.1	23 835.5	7 034.7	30 870.1	43 205.4	9 744.9	52 950.2
Jun Qtr	20 053.4	2 605.0	22 658.5	22 940.4	6 713.5	29 653.9	42 993.8	9 318.5	52 312.4
Sep Qtr	19 925.7	2 509.9	22 435.8	22 371.9	6 338.7	28 710.6	42 297.6	8 848.6	51 146.4
TREND									
2013									
Jun Qtr	18 190.6	2 718.4	20 909.1	24 019.4	7 995.5	32 013.2	42 214.3	10 714.8	52 929.2
Sep Qtr	18 209.8	2 835.8	21 045.8	24 329.0	7 712.7	32 041.1	42 540.9	10 548.5	53 090.3
Dec Qtr	18 600.7	2 848.6	21 449.4	24 366.9	7 406.9	31 773.8	42 967.8	10 255.3	53 223.4
2014									
Mar Qtr	19 206.8	2 742.5	21 949.7	23 776.0	7 049.5	30 828.6	42 984.9	9 795.1	52 782.5
Jun Qtr	19 782.5	2 612.4	22 395.2	23 020.7	6 707.0	29 728.9	42 805.3	9 320.7	52 127.3
Sep Qtr	20 229.1	2 509.3	22 730.8	22 446.7	6 405.2	28 826.1	42 635.3	8 888.7	51 492.9

(a) Reference year for Chain Volume Measures is 2012-13. Refer to paragraphs 27-31 of the Explanatory Notes.

CONSTRUCTION WORK DONE, Chain volume measures(a)—Change from previous period

Period	BUILDING WORK DONE			ENGINEERING WORK DONE			CONSTRUCTION WORK DONE		
	Private	Public	Total	Private	Public	Total	Private	Public	Total
	%	%	%	%	%	%	%	%	%
ORIGINAL									
2011-12	-0.7	-29.0	-6.5	54.0	2.4	35.6	23.6	-9.1	14.4
2012-13	2.8	-19.3	-0.7	9.8	-2.5	6.4	6.7	-7.2	3.5
2013-14	5.4	7.2	5.7	-1.4	-12.5	-4.2	1.5	-7.8	-0.4
2013									
Jun Qtr	10.9	13.0	11.2	4.8	24.1	9.7	7.4	21.4	10.3
Sep Qtr	5.5	7.8	5.7	8.5	-23.6	-0.6	7.2	-16.5	1.9
Dec Qtr	-1.7	4.6	-0.9	2.2	4.7	2.7	0.5	4.7	1.3
2014									
Mar Qtr	-6.5	-17.8	-8.1	-13.8	-11.9	-13.4	-10.7	-13.6	-11.3
Jun Qtr	13.6	5.3	12.6	2.1	17.4	5.6	7.2	14.0	8.5
Sep Qtr	4.2	-4.4	3.2	-0.4	-22.2	-5.9	1.8	-17.7	-2.0
SEASONALLY ADJUSTED									
2013									
Jun Qtr	0.9	3.0	1.2	-2.0	1.1	-1.2	-0.7	1.5	-0.3
Sep Qtr	0.3	9.0	1.4	7.3	-6.8	3.6	4.2	-2.9	2.7
Dec Qtr	-0.4	-0.7	-0.4	-3.5	-1.5	-3.0	-2.2	-1.3	-2.0
2014									
Mar Qtr	6.3	-6.0	4.6	-1.6	-5.9	-2.6	1.8	-5.9	0.3
Jun Qtr	3.5	-3.9	2.6	-3.8	-4.6	-3.9	-0.5	-4.4	-1.2
Sep Qtr	-0.6	-3.6	-1.0	-2.5	-5.6	-3.2	-1.6	-5.0	-2.2
TREND									
2013									
Jun Qtr	—	5.5	0.7	-0.4	-2.4	-0.9	-0.2	-0.5	-0.3
Sep Qtr	0.1	4.3	0.7	1.3	-3.5	0.1	0.8	-1.6	0.3
Dec Qtr	2.1	0.5	1.9	0.2	-4.0	-0.8	1.0	-2.8	0.3
2014									
Mar Qtr	3.3	-3.7	2.3	-2.4	-4.8	-3.0	—	-4.5	-0.8
Jun Qtr	3.0	-4.7	2.0	-3.2	-4.9	-3.6	-0.4	-4.8	-1.2
Sep Qtr	2.3	-3.9	1.5	-2.5	-4.5	-3.0	-0.4	-4.6	-1.2

— nil or rounded to zero (including null cells)

(a) Reference year for Chain Volume Measures is 2012-13. Refer to paragraphs 27-31 of the Explanatory Notes.

CONSTRUCTION WORK DONE, States and territories—Chain volume measures(a)

	NSW	Vic.	Qld	SA	WA	Tas.	NT	ACT	Aust.
<i>Period</i>	\$m	\$m	\$m	\$m	\$m	\$m	\$m	\$m	\$m
ORIGINAL									
2011-12	41 825.4	36 734.3	52 440.3	10 045.9	55 197.3	2 285.8	3 281.3	3 636.9	205 483.6
2012-13	44 809.5	35 745.9	55 777.2	10 390.7	55 871.1	2 183.3	4 740.7	3 222.7	212 741.1
2013-14	43 144.0	35 142.5	58 648.5	10 125.5	54 976.0	2 192.5	4 924.8	2 802.1	211 955.8
2013									
Jun Qtr	11 550.9	8 830.9	14 188.1	2 798.0	13 772.2	537.5	1 059.4	819.8	53 555.7
Sep Qtr	10 420.0	9 059.3	15 541.4	2 614.8	14 540.7	490.4	1 161.7	718.7	54 547.1
Dec Qtr	11 048.1	8 852.0	15 813.9	2 765.3	14 132.5	535.5	1 410.3	674.9	55 232.6
2014									
Mar Qtr	10 376.8	8 085.9	12 843.9	2 183.1	13 259.3	509.4	1 104.0	648.7	49 011.0
Jun Qtr	11 299.1	9 145.2	14 449.3	2 562.3	13 043.4	657.2	1 248.7	759.9	53 165.1
Sep Qtr	11 065.5	8 783.9	13 194.0	2 252.9	12 947.6	521.3	2 583.4	745.3	52 094.0
SEASONALLY ADJUSTED									
2013									
Jun Qtr	11 095.3	8 610.7	13 665.7	2 592.7	13 908.3	494.1	1 119.8	780.4	52 444.7
Sep Qtr	10 407.7	8 820.7	15 345.6	2 729.5	14 377.7	530.7	1 209.2	712.6	53 880.8
Dec Qtr	10 729.9	8 489.8	15 054.8	2 654.9	13 589.2	515.7	1 160.7	669.1	52 803.7
2014									
Mar Qtr	11 083.0	8 905.6	14 291.2	2 340.9	13 797.0	549.3	1 249.0	710.1	52 950.2
Jun Qtr	10 923.4	8 926.1	13 956.7	2 400.2	13 212.0	596.8	1 305.9	710.4	52 312.4
Sep Qtr	10 998.4	8 531.6	13 006.7	2 319.4	12 724.9	566.9	2 501.9	743.2	51 146.4
TREND									
2013									
Jun Qtr	10 800.9	8 742.0	14 417.2	2 650.2	13 857.8	516.5	1 174.0	760.2	52 929.2
Sep Qtr	10 675.8	8 629.4	14 803.3	2 674.0	14 015.5	506.3	1 152.4	715.6	53 090.3
Dec Qtr	10 749.9	8 718.8	14 932.7	2 586.8	13 937.5	530.1	1 209.6	692.0	53 223.4
2014									
Mar Qtr	10 891.6	8 789.3	14 491.6	2 461.7	13 588.8	553.8	1 238.2	696.3	52 782.5
Jun Qtr	11 004.0	8 785.5	13 791.2	2 359.9	13 212.5	572.4	1 226.8	716.9	52 127.3
Sep Qtr	11 013.7	8 733.3	13 157.7	2 311.2	12 905.0	584.5	np	736.4	51 492.9

np not available for publication but included in totals where applicable, unless otherwise indicated

(a) Reference year for Chain Volume Measures is 2012-13. See paragraphs 27-31 of the Explanatory Notes.

CONSTRUCTION WORK DONE, States and Territories—Chain volume measures(a)—Change from previous period

<i>Period</i>	<i>NSW</i>	<i>Vic.</i>	<i>Qld</i>	<i>SA</i>	<i>WA</i>	<i>Tas.</i>	<i>NT</i>	<i>ACT</i>	<i>Aust.</i>
	%	%	%	%	%	%	%	%	%
ORIGINAL									
2011-12	0.3	1.0	21.2	-4.1	40.0	-10.9	48.6	2.0	14.4
2012-13	7.1	-2.7	6.4	3.4	1.2	-4.5	44.5	-11.4	3.5
2013-14	-3.7	-1.7	5.1	-2.6	-1.6	0.4	3.9	-13.1	-0.4
2013									
Jun Qtr	13.7	10.2	10.1	13.4	7.3	9.6	5.0	14.5	10.3
Sep Qtr	-9.8	2.6	9.5	-6.5	5.6	-8.8	9.7	-12.3	1.9
Dec Qtr	6.0	-2.3	1.8	5.8	-2.8	9.2	21.4	-6.1	1.3
2014									
Mar Qtr	-6.1	-8.7	-18.8	-21.1	-6.2	-4.9	-21.7	-3.9	-11.3
Jun Qtr	8.9	13.1	12.5	17.4	-1.6	29.0	13.1	17.1	8.5
Sep Qtr	-2.1	-4.0	-8.7	-12.1	-0.7	-20.7	106.9	-1.9	-2.0
SEASONALLY ADJUSTED									
2013									
Jun Qtr	2.4	-2.6	-4.6	-1.6	3.4	-5.3	-4.6	—	-0.3
Sep Qtr	-6.2	2.4	12.3	5.3	3.4	7.4	8.0	-8.7	2.7
Dec Qtr	3.1	-3.8	-1.9	-2.7	-5.5	-2.8	-4.0	-6.1	-2.0
2014									
Mar Qtr	3.3	4.9	-5.1	-11.8	1.5	6.5	7.6	6.1	0.3
Jun Qtr	-1.4	0.2	-2.3	2.5	-4.2	8.7	4.6	—	-1.2
Sep Qtr	0.7	-4.4	-6.8	-3.4	-3.7	-5.0	91.6	4.6	-2.2
TREND									
2013									
Jun Qtr	-2.9	-2.3	2.6	2.1	0.7	-4.5	-4.2	-4.2	-0.3
Sep Qtr	-1.2	-1.3	2.7	0.9	1.1	-2.0	-1.8	-5.9	0.3
Dec Qtr	0.7	1.0	0.9	-3.3	-0.6	4.7	5.0	-3.3	0.3
2014									
Mar Qtr	1.3	0.8	-3.0	-4.8	-2.5	4.5	2.4	0.6	-0.8
Jun Qtr	1.0	—	-4.8	-4.1	-2.8	3.4	-0.9	3.0	-1.2
Sep Qtr	0.1	-0.6	-4.6	-2.1	-2.3	2.1	np	2.7	-1.2

— nil or rounded to zero (including null cells)

np not available for publication but included in totals where applicable, unless otherwise indicated

(a) Reference year for Chain Volume Measures is 2012-13. See paragraphs 27-31 of the Explanatory Notes.

CONSTRUCTION WORK DONE, States and territories—Chain volume measures(a): Original

	NSW	Vic.	Qld	SA	WA	Tas.	NT	ACT	Aust.
<i>Period</i>	\$m	\$m	\$m	\$m	\$m	\$m	\$m	\$m	\$m
BUILDING WORK DONE									
2011-12	18 957.3	24 547.7	16 266.4	5 004.7	12 689.2	1 233.6	1 439.9	2 779.9	82 936.3
2012-13	20 658.8	24 633.0	15 318.9	4 478.1	12 179.4	1 029.2	1 664.4	2 434.2	82 396.0
2013-14	23 095.6	24 834.9	16 145.6	4 838.1	13 253.4	1 026.2	1 878.8	1 987.5	87 060.1
2013									
Jun Qtr	5 410.2	6 077.2	3 891.4	1 227.0	3 058.4	242.0	461.5	598.8	20 962.1
Sep Qtr	5 621.3	6 503.0	4 168.4	1 256.7	3 354.8	272.2	459.6	531.1	22 167.0
Dec Qtr	5 685.8	6 277.8	4 165.7	1 235.5	3 319.5	262.9	535.4	482.8	21 965.4
2014									
Mar Qtr	5 543.2	5 616.0	3 611.7	1 031.2	3 248.8	234.2	438.9	469.6	20 193.6
Jun Qtr	6 245.3	6 438.1	4 199.9	1 314.7	3 330.4	256.9	444.9	504.0	22 734.1
Sep Qtr	6 671.0	6 546.3	4 310.2	1 269.5	3 453.2	296.4	394.2	528.1	23 468.8
ENGINEERING WORK DONE									
2011-12	22 870.3	12 207.2	36 151.8	5 033.1	42 501.2	1 043.5	1 836.6	855.8	122 497.4
2012-13	24 150.6	11 112.9	40 458.4	5 912.6	43 691.7	1 154.1	3 076.3	788.5	130 345.1
2013-14	20 048.4	10 307.5	42 502.9	5 287.4	41 722.5	1 166.3	3 046.0	814.7	124 895.7
2013									
Jun Qtr	6 140.4	2 752.2	10 297.3	1 570.2	10 712.2	295.6	597.1	221.5	32 585.9
Sep Qtr	4 798.8	2 556.3	11 373.0	1 358.1	11 185.9	218.2	702.2	187.6	32 380.0
Dec Qtr	5 362.3	2 574.2	11 648.3	1 529.8	10 813.1	272.6	874.9	192.1	33 267.2
2014									
Mar Qtr	4 833.6	2 469.9	9 232.2	1 151.9	10 010.5	275.2	665.2	179.1	28 817.5
Jun Qtr	5 053.8	2 707.1	10 249.4	1 247.7	9 713.1	400.4	803.7	255.8	30 431.0
Sep Qtr	4 394.6	2 237.6	8 883.9	983.4	9 494.4	224.9	2 189.2	217.2	28 625.1
CONSTRUCTION WORK DONE									
2011-12	41 825.4	36 734.3	52 440.3	10 045.9	55 197.3	2 285.8	3 281.3	3 636.9	205 483.6
2012-13	44 809.5	35 745.9	55 777.2	10 390.7	55 871.1	2 183.3	4 740.7	3 222.7	212 741.1
2013-14	43 144.0	35 142.5	58 648.5	10 125.5	54 976.0	2 192.5	4 924.8	2 802.1	211 955.8
2013									
Jun Qtr	11 550.9	8 830.9	14 188.1	2 798.0	13 772.2	537.5	1 059.4	819.8	53 555.7
Sep Qtr	10 420.0	9 059.3	15 541.4	2 614.8	14 540.7	490.4	1 161.7	718.7	54 547.1
Dec Qtr	11 048.1	8 852.0	15 813.9	2 765.3	14 132.5	535.5	1 410.3	674.9	55 232.6
2014									
Mar Qtr	10 376.8	8 085.9	12 843.9	2 183.1	13 259.3	509.4	1 104.0	648.7	49 011.0
Jun Qtr	11 299.1	9 145.2	14 449.3	2 562.3	13 043.4	657.2	1 248.7	759.9	53 165.1
Sep Qtr	11 065.5	8 783.9	13 194.0	2 252.9	12 947.6	521.3	2 583.4	745.3	52 094.0

(a) Reference year for Chain Volume Measures is 2012-13. Refer to paragraphs 27-31 of the Explanatory Notes.

CONSTRUCTION WORK DONE, States and territories—Chain volume measures(a):
Original—Change from previous period

	NSW	Vic.	Qld	SA	WA	Tas.	NT	ACT	Aust.
Period	%	%	%	%	%	%	%	%	%
.....									
BUILDING WORK DONE									
2011-12	-14.5	—	-10.2	-9.6	-1.8	-18.6	17.2	1.9	-6.5
2012-13	9.0	0.3	-5.8	-10.5	-4.0	-16.6	15.6	-12.4	-0.7
2013-14	11.8	0.8	5.4	8.0	8.8	-0.3	12.9	-18.4	5.7
2013									
Jun Qtr	14.3	10.2	11.0	18.5	3.6	7.0	28.4	12.4	11.2
Sep Qtr	3.9	7.0	7.1	2.4	9.7	12.5	-0.4	-11.3	5.7
Dec Qtr	1.1	-3.5	-0.1	-1.7	-1.1	-3.4	16.5	-9.1	-0.9
2014									
Mar Qtr	-2.5	-10.5	-13.3	-16.5	-2.1	-10.9	-18.0	-2.7	-8.1
Jun Qtr	12.7	14.6	16.3	27.5	2.5	9.7	1.4	7.3	12.6
Sep Qtr	6.8	1.7	2.6	-3.4	3.7	15.4	-11.4	4.8	3.2
.....									
ENGINEERING WORK DONE									
2011-12	17.4	3.0	44.5	2.4	61.1	1.6	89.9	2.6	35.6
2012-13	5.6	-9.0	11.9	17.5	2.8	10.6	67.5	-7.9	6.4
2013-14	-17.0	-7.2	5.1	-10.6	-4.5	1.1	-1.0	3.3	-4.2
2013									
Jun Qtr	13.1	10.2	9.8	9.7	8.4	11.9	-8.0	20.6	9.7
Sep Qtr	-21.8	-7.1	10.4	-13.5	4.4	-26.2	17.6	-15.3	-0.6
Dec Qtr	11.7	0.7	2.4	12.6	-3.3	24.9	24.6	2.4	2.7
2014									
Mar Qtr	-9.9	-4.1	-20.7	-24.7	-7.4	1.0	-24.0	-6.8	-13.4
Jun Qtr	4.6	9.6	11.0	8.3	-3.0	45.5	20.8	42.9	5.6
Sep Qtr	-13.0	-17.3	-13.3	-21.2	-2.3	-43.8	172.4	-15.1	-5.9
.....									
CONSTRUCTION WORK DONE									
2011-12	0.3	1.0	21.2	-4.1	40.0	-10.9	48.6	2.0	14.4
2012-13	7.1	-2.7	6.4	3.4	1.2	-4.5	44.5	-11.4	3.5
2013-14	-3.7	-1.7	5.1	-2.6	-1.6	0.4	3.9	-13.1	-0.4
2013									
Jun Qtr	13.7	10.2	10.1	13.4	7.3	9.6	5.0	14.5	10.3
Sep Qtr	-9.8	2.6	9.5	-6.5	5.6	-8.8	9.7	-12.3	1.9
Dec Qtr	6.0	-2.3	1.8	5.8	-2.8	9.2	21.4	-6.1	1.3
2014									
Mar Qtr	-6.1	-8.7	-18.8	-21.1	-6.2	-4.9	-21.7	-3.9	-11.3
Jun Qtr	8.9	13.1	12.5	17.4	-1.6	29.0	13.1	17.1	8.5
Sep Qtr	-2.1	-4.0	-8.7	-12.1	-0.7	-20.7	106.9	-1.9	-2.0

— nil or rounded to zero (including null cells)

(a) Reference year for Chain Volume Measures is 2012-13. Refer to paragraphs 27-31 of the Explanatory Notes.

CONSTRUCTION WORK DONE, Current prices

Period	BUILDING WORK DONE			ENGINEERING WORK DONE			CONSTRUCTION WORK DONE		
	Private	Public	Total	Private	Public	Total	Private	Public	Total
	\$m	\$m	\$m	\$m	\$m	\$m	\$m	\$m	\$m
ORIGINAL									
2011-12	69 623.7	12 844.2	82 467.8	87 145.0	32 876.7	120 021.7	156 768.7	45 720.8	202 489.5
2012-13	72 036.1	10 359.9	82 396.0	97 405.6	32 939.5	130 345.2	169 441.8	43 299.4	212 741.2
2013-14	77 465.0	11 201.7	88 666.7	97 149.8	29 432.4	126 582.2	174 614.8	40 634.2	215 248.9
2013									
Jun Qtr	18 411.0	2 711.2	21 122.2	23 357.9	9 374.4	32 732.2	41 768.9	12 085.6	53 854.4
Sep Qtr	19 504.9	2 927.5	22 432.4	25 408.8	7 210.5	32 619.3	44 913.7	10 138.0	55 051.7
Dec Qtr	19 226.6	3 067.2	22 293.8	26 131.2	7 599.7	33 730.9	45 357.8	10 666.8	56 024.6
2014									
Mar Qtr	18 052.1	2 524.9	20 577.0	22 534.2	6 709.1	29 243.3	40 586.3	9 234.0	49 820.3
Jun Qtr	20 681.4	2 682.2	23 363.6	23 075.6	7 913.1	30 988.7	43 757.0	10 595.3	54 352.3
Sep Qtr	21 780.7	2 583.9	24 364.6	23 045.2	6 133.2	29 178.4	44 825.9	8 717.1	53 542.9
SEASONALLY ADJUSTED									
2013									
Jun Qtr	18 401.7	2 669.8	21 071.5	23 454.1	8 206.7	31 660.8	41 855.8	10 876.4	52 732.3
Sep Qtr	18 551.7	2 918.2	21 469.9	25 226.1	7 715.2	32 941.3	43 777.9	10 633.4	54 411.3
Dec Qtr	18 537.5	2 901.4	21 439.0	24 515.7	7 658.0	32 173.7	43 053.3	10 559.4	53 612.7
2014									
Mar Qtr	19 799.4	2 731.5	22 530.8	24 142.5	7 226.1	31 368.5	43 941.8	9 957.5	53 899.4
Jun Qtr	20 661.9	2 648.0	23 309.9	23 299.6	6 932.4	30 232.0	43 961.5	9 580.4	53 541.9
Sep Qtr	20 725.9	2 571.7	23 297.6	22 787.7	6 523.0	29 310.7	43 513.6	9 094.7	52 608.3
TREND									
2013									
Jun Qtr	18 331.4	2 723.7	21 055.1	24 097.7	8 063.9	32 161.5	42 429.1	10 787.5	53 216.7
Sep Qtr	18 447.2	2 848.1	21 295.3	24 481.7	7 838.9	32 320.6	42 929.0	10 686.9	53 615.9
Dec Qtr	18 926.4	2 866.2	21 792.6	24 621.7	7 579.7	32 201.4	43 548.1	10 445.9	53 994.0
2014									
Mar Qtr	19 654.7	2 769.7	22 424.4	24 097.2	7 247.6	31 344.8	43 751.9	10 017.3	53 769.2
Jun Qtr	20 389.4	2 654.1	23 043.5	23 389.2	6 910.6	30 299.8	43 778.5	9 564.7	53 343.3
Sep Qtr	21 025.8	2 566.6	23 592.3	22 810.1	6 593.0	29 403.2	43 835.9	9 159.6	52 995.5

CONSTRUCTION WORK DONE, Current prices—Change from previous period

Period	BUILDING WORK DONE			ENGINEERING WORK DONE			CONSTRUCTION WORK DONE		
	Private	Public	Total	Private	Public	Total	Private	Public	Total
	%	%	%	%	%	%	%	%	%
ORIGINAL									
2011-12	—	-28.7	-5.9	56.5	6.4	38.6	25.1	-6.5	16.2
2012-13	3.5	-19.3	-0.1	11.8	0.2	8.6	8.1	-5.3	5.1
2013-14	7.5	8.1	7.6	-0.3	-10.6	-2.9	3.1	-6.2	1.2
2013									
Jun Qtr	11.7	13.5	12.0	5.2	24.6	10.1	8.0	21.9	10.8
Sep Qtr	5.9	8.0	6.2	8.8	-23.1	-0.3	7.5	-16.1	2.2
Dec Qtr	-1.4	4.8	-0.6	2.8	5.4	3.4	1.0	5.2	1.8
2014									
Mar Qtr	-6.1	-17.7	-7.7	-13.8	-11.7	-13.3	-10.5	-13.4	-11.1
Jun Qtr	14.6	6.2	13.5	2.4	17.9	6.0	7.8	14.7	9.1
Sep Qtr	5.3	-3.7	4.3	-0.1	-22.5	-5.8	2.4	-17.7	-1.5
SEASONALLY ADJUSTED									
2013									
Jun Qtr	1.7	3.5	1.9	-1.7	1.6	-0.8	-0.2	2.1	0.2
Sep Qtr	0.8	9.3	1.9	7.6	-6.0	4.0	4.6	-2.2	3.2
Dec Qtr	-0.1	-0.6	-0.1	-2.8	-0.7	-2.3	-1.7	-0.7	-1.5
2014									
Mar Qtr	6.8	-5.9	5.1	-1.5	-5.6	-2.5	2.1	-5.7	0.5
Jun Qtr	4.4	-3.1	3.5	-3.5	-4.1	-3.6	—	-3.8	-0.7
Sep Qtr	0.3	-2.9	-0.1	-2.2	-5.9	-3.0	-1.0	-5.1	-1.7
TREND									
2013									
Jun Qtr	0.6	5.8	1.2	-0.2	-1.7	-0.6	0.1	0.1	0.1
Sep Qtr	0.6	4.6	1.1	1.6	-2.8	0.5	1.2	-0.9	0.8
Dec Qtr	2.6	0.6	2.3	0.6	-3.3	-0.4	1.4	-2.3	0.7
2014									
Mar Qtr	3.8	-3.4	2.9	-2.1	-4.4	-2.7	0.5	-4.1	-0.4
Jun Qtr	3.7	-4.2	2.8	-2.9	-4.6	-3.3	0.1	-4.5	-0.8
Sep Qtr	3.1	-3.3	2.4	-2.5	-4.6	-3.0	0.1	-4.2	-0.7

— nil or rounded to zero (including null cells)

CONSTRUCTION WORK DONE, States and territories—Current prices: **Original**

	NSW	Vic.	Qld	SA	WA	Tas.	NT	ACT	Aust.
<i>Period</i>	\$m	\$m	\$m	\$m	\$m	\$m	\$m	\$m	\$m
BUILDING WORK DONE									
2011-12	18 679.4	24 633.1	16 127.5	4 953.4	12 585.3	1 267.2	1 433.9	2 788.1	82 467.8
2012-13	20 658.8	24 633.0	15 318.9	4 478.1	12 179.4	1 029.2	1 664.4	2 434.2	82 396.0
2013-14	23 639.7	25 174.0	16 423.0	4 869.1	13 575.4	1 023.0	1 951.7	2 010.9	88 666.7
2013									
Jun Qtr	5 441.8	6 155.5	3 904.6	1 231.2	3 081.5	240.8	466.2	600.6	21 122.2
Sep Qtr	5 684.9	6 588.5	4 211.4	1 263.6	3 404.0	270.8	475.0	534.1	22 432.4
Dec Qtr	5 801.5	6 335.6	4 219.5	1 242.8	3 389.0	261.5	556.4	487.3	22 293.8
2014									
Mar Qtr	5 690.0	5 663.8	3 679.6	1 037.9	3 340.0	233.4	456.2	475.9	20 577.0
Jun Qtr	6 463.3	6 586.0	4 312.4	1 324.7	3 442.4	257.3	463.9	513.6	23 363.6
Sep Qtr	6 999.7	6 749.7	4 510.2	1 279.8	3 574.3	297.5	413.6	539.7	24 364.6
ENGINEERING WORK DONE									
2011-12	22 386.3	11 928.9	35 421.5	4 922.5	41 717.7	1 015.9	1 799.1	829.8	120 021.7
2012-13	24 150.6	11 112.9	40 458.4	5 912.6	43 691.7	1 154.1	3 076.3	788.5	130 345.2
2013-14	20 448.2	10 504.0	43 020.9	5 394.8	42 146.4	1 168.3	3 067.8	831.8	126 582.2
2013									
Jun Qtr	6 177.6	2 771.4	10 336.0	1 582.8	10 746.9	297.5	596.8	223.2	32 732.2
Sep Qtr	4 850.6	2 589.6	11 450.7	1 378.2	11 234.6	220.0	705.7	190.0	32 619.3
Dec Qtr	5 464.1	2 619.3	11 804.2	1 559.9	10 930.6	275.9	881.3	^ 195.6	33 730.9
2014									
Mar Qtr	4 940.7	2 522.1	9 359.6	1 177.8	10 121.0	271.6	667.5	^ 183.0	29 243.3
Jun Qtr	5 192.9	2 773.1	10 406.4	1 278.9	9 860.2	^ 400.8	813.4	^ 263.2	30 988.7
Sep Qtr	4 505.2	2 279.8	9 038.2	1 011.0	9 653.1	^ 224.8	2 243.5	^ 222.8	29 178.4
CONSTRUCTION WORK DONE									
2011-12	41 065.7	36 562.0	51 548.9	9 876.0	54 303.0	2 283.1	3 233.0	3 617.9	202 489.5
2012-13	44 809.5	35 745.9	55 777.2	10 390.7	55 871.1	2 183.3	4 740.7	3 222.7	212 741.2
2013-14	44 087.9	35 678.0	59 443.9	10 263.9	55 721.8	2 191.3	5 019.4	2 842.7	215 248.9
2013									
Jun Qtr	11 619.4	8 926.9	14 240.6	2 814.0	13 828.4	538.4	1 063.0	823.8	53 854.4
Sep Qtr	10 535.5	9 178.1	15 662.1	2 641.8	14 638.6	490.8	1 180.7	724.0	55 051.7
Dec Qtr	11 265.6	8 954.9	16 023.7	2 802.7	14 319.6	537.5	1 437.7	682.9	56 024.6
2014									
Mar Qtr	10 630.6	8 185.9	13 039.2	2 215.7	13 461.0	505.1	1 123.7	659.0	49 820.3
Jun Qtr	11 656.2	9 359.1	14 718.8	2 603.7	13 302.6	658.0	1 277.3	776.7	54 352.3
Sep Qtr	11 504.8	9 029.5	13 548.4	2 290.8	13 227.3	522.3	2 657.2	762.6	53 542.9

^ estimate has a relative standard error of 10% to less than 25% and should be used with caution

<i>Period</i>	<i>NSW</i>	<i>Vic.</i>	<i>Qld</i>	<i>SA</i>	<i>WA</i>	<i>Tas.</i>	<i>NT</i>	<i>ACT</i>	<i>Aust.</i>
	%	%	%	%	%	%	%	%	%
.....									
BUILDING WORK DONE									
2011-12	-12.8	0.4	-9.6	-10.2	-1.8	-18.7	17.7	2.4	-5.9
2012-13	10.6	—	-5.0	-9.6	-3.2	-18.8	16.1	-12.7	-0.1
2013-14	14.4	2.2	7.2	8.7	11.5	-0.6	17.3	-17.4	7.6
2013									
Jun Qtr	14.7	11.5	11.5	18.7	4.4	7.1	29.7	12.9	12.0
Sep Qtr	4.5	7.0	7.9	2.6	10.5	12.4	1.9	-11.1	6.2
Dec Qtr	2.1	-3.8	0.2	-1.6	-0.4	-3.4	17.1	-8.7	-0.6
2014									
Mar Qtr	-1.9	-10.6	-12.8	-16.5	-1.4	-10.7	-18.0	-2.3	-7.7
Jun Qtr	13.6	16.3	17.2	27.6	3.1	10.2	1.7	7.9	13.5
Sep Qtr	8.3	2.5	4.6	-3.4	3.8	15.7	-10.8	5.1	4.3
.....									
ENGINEERING WORK DONE									
2011-12	21.2	6.6	46.8	5.4	63.8	5.8	93.9	7.9	38.6
2012-13	7.9	-6.8	14.2	20.1	4.7	13.6	71.0	-5.0	8.6
2013-14	-15.3	-5.5	6.3	-8.8	-3.5	1.2	-0.3	5.5	-2.9
2013									
Jun Qtr	13.6	10.6	10.3	10.5	8.8	12.1	-8.1	21.0	10.1
Sep Qtr	-21.5	-6.6	10.8	-12.9	4.5	-26.1	18.2	-14.9	-0.3
Dec Qtr	12.6	1.1	3.1	13.2	-2.7	25.5	24.9	3.0	3.4
2014									
Mar Qtr	-9.6	-3.7	-20.7	-24.5	-7.4	-1.6	-24.3	-6.4	-13.3
Jun Qtr	5.1	10.0	11.2	8.6	-2.6	47.5	21.9	43.8	6.0
Sep Qtr	-13.2	-17.8	-13.1	-21.0	-2.1	-43.9	175.8	-15.3	-5.8
.....									
CONSTRUCTION WORK DONE									
2011-12	2.9	2.4	22.8	-3.0	41.8	-9.3	50.6	3.6	16.2
2012-13	9.1	-2.2	8.2	5.2	2.9	-4.4	46.6	-10.9	5.1
2013-14	-1.6	-0.2	6.6	-1.2	-0.3	0.4	5.9	-11.8	1.2
2013									
Jun Qtr	14.1	11.2	10.6	13.9	7.8	9.8	5.4	15.0	10.8
Sep Qtr	-9.3	2.8	10.0	-6.1	5.9	-8.8	11.1	-12.1	2.2
Dec Qtr	6.9	-2.4	2.3	6.1	-2.2	9.5	21.8	-5.7	1.8
2014									
Mar Qtr	-5.6	-8.6	-18.6	-20.9	-6.0	-6.0	-21.8	-3.5	-11.1
Jun Qtr	9.6	14.3	12.9	17.5	-1.2	30.3	13.7	17.9	9.1
Sep Qtr	-1.3	-3.5	-8.0	-12.0	-0.6	-20.6	108.0	-1.8	-1.5

— nil or rounded to zero (including null cells)

VALUE OF BUILDING WORK DONE, Chain volume measures(a)

Period	NEW RESIDENTIAL BUILDING		ALTERATIONS AND ADDITIONS		RESIDENTIAL BUILDING		NON-RESIDENTIAL BUILDING		TOTAL BUILDING	
	Private	Total	Private	Total	Private	Total	Private	Total	Private	Total
	\$m	\$m	\$m	\$m	\$m	\$m	\$m	\$m	\$m	\$m
ORIGINAL										
2011-12	39 080.9	40 348.8	7 505.0	7 744.4	46 581.3	48 088.8	23 503.6	34 833.3	70 086.4	82 936.3
2012-13	41 046.2	41 767.7	6 948.6	7 113.2	47 994.9	48 880.8	24 041.2	33 515.2	72 036.1	82 396.0
2013-14	43 802.9	44 554.9	6 946.7	7 116.7	50 749.7	51 671.6	25 204.3	35 388.5	75 954.0	87 060.1
2013										
Jun Qtr	10 420.3	10 580.3	1 722.7	1 777.4	12 143.1	12 357.7	6 115.4	8 603.6	18 258.6	20 962.1
Sep Qtr	10 985.9	11 182.1	1 762.9	1 808.3	12 748.8	12 990.4	6 505.1	9 176.6	19 253.9	22 167.0
Dec Qtr	10 614.6	10 810.1	1 902.4	1 954.6	12 517.0	12 764.7	6 400.2	9 200.8	18 917.2	21 965.4
2014										
Mar Qtr	10 478.3	10 664.4	1 559.6	1 592.7	12 037.9	12 257.1	5 649.9	7 936.4	17 687.8	20 193.6
Jun Qtr	11 724.1	11 898.2	1 721.9	1 761.2	13 446.0	13 659.4	6 649.1	9 074.6	20 095.1	22 734.1
Sep Qtr	12 032.8	12 235.7	1 823.1	1 856.5	13 855.9	14 092.2	7 089.8	9 376.6	20 945.8	23 468.8
SEASONALLY ADJUSTED										
2013										
Jun Qtr	10 408.9	10 572.6	1 760.1	1 805.0	12 168.9	12 377.5	6 071.8	8 525.8	18 240.6	20 903.7
Sep Qtr	10 455.1	10 645.5	1 688.2	1 738.4	12 143.3	12 383.9	6 156.3	8 819.3	18 299.6	21 203.2
Dec Qtr	10 369.4	10 547.4	1 735.3	1 787.6	12 104.7	12 335.0	6 121.6	8 774.6	18 226.3	21 109.6
2014										
Mar Qtr	11 275.7	11 480.9	1 773.1	1 809.3	13 048.7	13 290.2	6 321.2	8 789.9	19 369.9	22 080.1
Jun Qtr	11 693.1	11 872.8	1 756.5	1 787.8	13 449.6	13 660.7	6 603.9	8 997.8	20 053.4	22 658.5
Sep Qtr	11 464.8	11 660.3	1 749.7	1 787.1	13 214.6	13 447.3	6 711.2	8 988.4	19 925.7	22 435.8
TREND										
2013										
Jun Qtr	10 368.8	10 537.5	1 709.5	1 755.4	12 078.5	12 293.0	6 111.8	8 615.6	18 190.6	20 909.1
Sep Qtr	10 391.7	10 569.3	1 718.1	1 767.7	12 109.9	12 337.1	6 100.0	8 708.5	18 209.8	21 045.8
Dec Qtr	10 678.6	10 867.6	1 738.5	1 785.5	12 417.1	12 653.1	6 183.7	8 796.3	18 600.7	21 449.4
2014										
Mar Qtr	11 108.8	11 299.9	1 752.2	1 792.3	12 861.0	13 092.2	6 345.8	8 858.0	19 206.8	21 949.7
Jun Qtr	11 479.7	11 670.8	1 761.4	1 796.3	13 241.0	13 467.0	6 541.4	8 928.4	19 782.5	22 395.2
Sep Qtr	11 734.9	11 927.2	1 756.5	1 789.0	13 491.6	13 716.1	6 737.5	9 009.3	20 229.1	22 730.8

(a) Reference year for chain volume measures is 2012-13. Refer to paragraphs 27-31 of the Explanatory notes

VALUE OF BUILDING WORK DONE, Chain volume measures(a)—Change from previous period

Period	NEW RESIDENTIAL BUILDING		ALTERATIONS AND ADDITIONS		RESIDENTIAL BUILDING		NON-RESIDENTIAL BUILDING		TOTAL BUILDING	
	Private	Total	Private	Total	Private	Total	Private	Total	Private	Total
	%	%	%	%	%	%	%	%	%	%
ORIGINAL										
2011-12	-3.8	-7.3	-3.0	-3.7	-3.7	-6.8	5.6	-6.2	-0.7	-6.5
2012-13	5.0	3.5	-7.4	-8.2	3.0	1.6	2.3	-3.8	2.8	-0.7
2013-14	6.7	6.7	—	—	5.7	5.7	4.8	5.6	5.4	5.7
2013										
Jun Qtr	8.8	8.8	17.8	18.7	10.0	10.2	12.8	12.7	10.9	11.2
Sep Qtr	5.4	5.7	2.3	1.7	5.0	5.1	6.4	6.7	5.5	5.7
Dec Qtr	-3.4	-3.3	7.9	8.1	-1.8	-1.7	-1.6	0.3	-1.7	-0.9
2014										
Mar Qtr	-1.3	-1.3	-18.0	-18.5	-3.8	-4.0	-11.7	-13.7	-6.5	-8.1
Jun Qtr	11.9	11.6	10.4	10.6	11.7	11.4	17.7	14.3	13.6	12.6
Sep Qtr	2.6	2.8	5.9	5.4	3.0	3.2	6.6	3.3	4.2	3.2
SEASONALLY ADJUSTED										
2013										
Jun Qtr	0.7	0.8	5.7	5.9	1.4	1.5	-0.1	0.7	0.9	1.2
Sep Qtr	0.4	0.7	-4.1	-3.7	-0.2	0.1	1.4	3.4	0.3	1.4
Dec Qtr	-0.8	-0.9	2.8	2.8	-0.3	-0.4	-0.6	-0.5	-0.4	-0.4
2014										
Mar Qtr	8.7	8.9	2.2	1.2	7.8	7.7	3.3	0.2	6.3	4.6
Jun Qtr	3.7	3.4	-0.9	-1.2	3.1	2.8	4.5	2.4	3.5	2.6
Sep Qtr	-2.0	-1.8	-0.4	—	-1.7	-1.6	1.6	-0.1	-0.6	-1.0
TREND										
2013										
Jun Qtr	-0.1	-0.1	-0.5	-0.2	-0.2	-0.1	0.3	1.9	—	0.7
Sep Qtr	0.2	0.3	0.5	0.7	0.3	0.4	-0.2	1.1	0.1	0.7
Dec Qtr	2.8	2.8	1.2	1.0	2.5	2.6	1.4	1.0	2.1	1.9
2014										
Mar Qtr	4.0	4.0	0.8	0.4	3.6	3.5	2.6	0.7	3.3	2.3
Jun Qtr	3.3	3.3	0.5	0.2	3.0	2.9	3.1	0.8	3.0	2.0
Sep Qtr	2.2	2.2	-0.3	-0.4	1.9	1.8	3.0	0.9	2.3	1.5

— nil or rounded to zero (including null cells)

(a) Reference year for chain volume measures is 2012-13. Refer to paragraphs 27-31 of the Explanatory Notes.

VALUE OF BUILDING WORK DONE, Current prices

Period	NEW RESIDENTIAL BUILDING		ALTERATIONS AND ADDITIONS		RESIDENTIAL BUILDING		NON-RESIDENTIAL BUILDING		TOTAL BUILDING	
	Private	Total	Private	Total	Private	Total	Private	Total	Private	Total
	\$m	\$m	\$m	\$m	\$m	\$m	\$m	\$m	\$m	\$m
ORIGINAL										
2011-12	38 689.9	39 943.9	7 384.9	7 622.3	46 074.8	47 566.2	23 548.9	34 901.7	69 623.7	82 467.8
2012-13	41 046.2	41 767.7	6 948.6	7 113.2	47 994.9	48 880.8	24 041.2	33 515.1	72 036.1	82 396.0
2013-14	44 885.9	45 655.0	7 184.1	7 359.3	52 070.0	53 014.3	25 395.0	35 652.5	77 465.0	88 666.7
2013										
Jun Qtr	10 530.6	10 692.0	1 750.7	1 806.3	12 281.2	12 498.3	6 129.8	8 623.9	18 411.0	21 122.2
Sep Qtr	11 165.8	11 365.1	1 806.6	1 852.9	12 972.4	13 218.0	6 532.5	9 214.4	19 504.9	22 432.4
Dec Qtr	10 838.6	11 038.7	1 962.1	2 015.8	12 800.7	13 054.5	6 425.8	9 239.3	19 226.6	22 293.8
2014										
Mar Qtr	10 749.2	10 939.8	1 615.5	1 649.7	12 364.7	12 589.5	5 687.4	7 987.5	18 052.1	20 577.0
Jun Qtr	12 132.2	12 311.4	1 799.9	1 840.8	13 932.2	14 152.3	6 749.2	9 211.3	20 681.4	23 363.6
Sep Qtr	12 579.0	12 789.5	1 933.6	1 968.9	14 512.5	14 758.4	7 268.1	9 606.2	21 780.7	24 364.6
SEASONALLY ADJUSTED										
2013										
Jun Qtr	10 526.0	10 690.3	1 787.2	1 832.8	12 313.2	12 523.1	6 088.5	8 548.4	18 401.7	21 071.5
Sep Qtr	10 638.7	10 831.8	1 728.7	1 780.4	12 367.4	12 612.2	6 184.3	8 857.8	18 551.7	21 469.9
Dec Qtr	10 600.2	10 782.8	1 789.8	1 844.3	12 390.0	12 627.1	6 147.5	8 811.9	18 537.5	21 439.0
2014										
Mar Qtr	11 584.9	11 796.3	1 837.4	1 875.7	13 422.3	13 671.9	6 377.0	8 858.9	19 799.4	22 530.8
Jun Qtr	12 120.4	12 306.8	1 837.3	1 870.8	13 957.7	14 177.6	6 704.2	9 132.3	20 661.9	23 309.9
Sep Qtr	11 990.1	12 191.4	1 851.0	1 890.3	13 841.1	14 081.7	6 884.8	9 215.9	20 725.9	23 297.6
TREND										
2013										
Jun Qtr	10 474.7	10 644.3	1 733.7	1 780.0	12 208.4	12 424.3	6 123.0	8 630.8	18 331.4	21 055.1
Sep Qtr	10 566.7	10 747.1	1 759.0	1 810.1	12 325.7	12 557.1	6 121.5	8 738.2	18 447.2	21 295.3
Dec Qtr	10 918.4	11 112.1	1 792.0	1 840.9	12 710.4	12 953.0	6 216.0	8 839.6	18 926.4	21 792.6
2014										
Mar Qtr	11 429.1	11 626.0	1 818.6	1 860.9	13 247.7	13 486.9	6 407.0	8 937.5	19 654.7	22 424.4
Jun Qtr	11 898.1	12 095.5	1 843.3	1 880.3	13 741.3	13 975.7	6 648.0	9 067.8	20 389.4	23 043.5
Sep Qtr	12 274.0	12 472.6	1 855.4	1 889.8	14 129.4	14 362.5	6 896.4	9 229.9	21 025.8	23 592.3

Period	NEW RESIDENTIAL BUILDING		ALTERATIONS AND ADDITIONS		RESIDENTIAL BUILDING		NON-RESIDENTIAL BUILDING		TOTAL BUILDING	
	Private	Total	Private	Total	Private	Total	Private	Total	Private	Total
	%	%	%	%	%	%	%	%	%	%
ORIGINAL										
2011-12	-3.0	-6.5	-1.6	-2.3	-2.8	-5.9	6.0	-5.9	—	-5.9
2012-13	6.1	4.6	-5.9	-6.7	4.2	2.8	2.1	-4.0	3.5	-0.1
2013-14	9.4	9.3	3.4	3.5	8.5	8.5	5.6	6.4	7.5	7.6
2013										
Jun Qtr	9.7	9.8	19.3	20.2	11.0	11.2	13.3	13.1	11.7	12.0
Sep Qtr	6.0	6.3	3.2	2.6	5.6	5.8	6.6	6.8	5.9	6.2
Dec Qtr	-2.9	-2.9	8.6	8.8	-1.3	-1.2	-1.6	0.3	-1.4	-0.6
2014										
Mar Qtr	-0.8	-0.9	-17.7	-18.2	-3.4	-3.6	-11.5	-13.5	-6.1	-7.7
Jun Qtr	12.9	12.5	11.4	11.6	12.7	12.4	18.7	15.3	14.6	13.5
Sep Qtr	3.7	3.9	7.4	7.0	4.2	4.3	7.7	4.3	5.3	4.3
SEASONALLY ADJUSTED										
2013										
Jun Qtr	1.6	1.7	7.1	7.3	2.4	2.5	0.2	1.1	1.7	1.9
Sep Qtr	1.1	1.3	-3.3	-2.9	0.4	0.7	1.6	3.6	0.8	1.9
Dec Qtr	-0.4	-0.5	3.5	3.6	0.2	0.1	-0.6	-0.5	-0.1	-0.1
2014										
Mar Qtr	9.3	9.4	2.7	1.7	8.3	8.3	3.7	0.5	6.8	5.1
Jun Qtr	4.6	4.3	—	-0.3	4.0	3.7	5.1	3.1	4.4	3.5
Sep Qtr	-1.1	-0.9	0.7	1.0	-0.8	-0.7	2.7	0.9	0.3	-0.1
TREND										
2013										
Jun Qtr	0.7	0.6	0.6	0.9	0.6	0.7	0.5	2.1	0.6	1.2
Sep Qtr	0.9	1.0	1.5	1.7	1.0	1.1	—	1.2	0.6	1.1
Dec Qtr	3.3	3.4	1.9	1.7	3.1	3.2	1.5	1.2	2.6	2.3
2014										
Mar Qtr	4.7	4.6	1.5	1.1	4.2	4.1	3.1	1.1	3.8	2.9
Jun Qtr	4.1	4.0	1.4	1.0	3.7	3.6	3.8	1.5	3.7	2.8
Sep Qtr	3.2	3.1	0.7	0.5	2.8	2.8	3.7	1.8	3.1	2.4

— nil or rounded to zero (including null cells)

15

RELATIVE STANDARD ERRORS, States and Territories

	NSW	Vic.	Qld	SA	WA	Tas.	NT	ACT	Aust.		
									Private	Public	Total
JUNE QUARTER 2014											
Building work done	1.4	1.5	2.0	1.5	2.2	2.0	7.9	1.5	0.9	1.5	0.8
Engineering work done	3.9	4.9	1.2	6.6	1.3	6.2	7.9	18.7	1.1	2.8	1.2
Construction work done	1.9	1.8	1.0	3.3	1.1	3.8	5.8	6.4	0.7	2.1	0.8
SEPTEMBER QUARTER 2014											
Building work done	1.3	1.5	2.1	1.5	1.6	1.9	5.5	1.5	0.8	1.2	0.7
Engineering work done	3.9	6.7	1.4	8.8	1.3	12.4	3.2	12.8	1.2	2.5	1.2
Construction work done	1.7	2.0	1.2	4.0	1.1	5.4	2.8	3.9	0.7	1.8	0.7

16

RELATIVE STANDARD ERRORS, Building work done—Australia

	Private	Total
	%	%
JUNE QUARTER 2014		
New residential building	1.0	1.0
Alterations and additions	1.8	1.8
Residential building	0.9	0.9
Non-residential building	1.8	1.4
Total building	0.9	0.8
SEPTEMBER QUARTER 2014		
New residential building	1.0	1.0
Alterations and additions	1.7	1.7
Residential building	0.9	0.9
Non-residential building	1.7	1.3
Total building	0.8	0.7

EXPLANATORY NOTES

INTRODUCTION

1 This publication contains preliminary estimates of building and engineering construction work done during the current quarter and revised estimates for the previous two quarters. The estimates of building work done and engineering work done are from the quarterly Building Activity Survey and the quarterly Engineering Construction Survey respectively. Estimates of work done are based upon a response from each survey of approximately 85% of the value of work done during the current quarter. More comprehensive and updated results will be available shortly in Building Activity, Australia (cat. no. 8752.0) and Engineering Construction Activity, Australia (cat. no. 8762.0).

SCOPE AND COVERAGE

2 The scope of the Building Activity Survey is all approved building activity involving the construction of new buildings or structural alterations, extensions or other additions made to existing buildings. Maintenance work is excluded but major repairs involving partial demolition and reconstruction are included.

3 As of the September quarter 2012, the survey consists of:

- an indirect, modelled component comprising residential building work with approval values from \$10,000 to less than \$50,000 and non-residential building work with approval values from \$50,000 to less than \$250,000. The contributions from these building jobs are modelled based on their building approval details.
- a direct collection of all identified building work having approval values of \$5,000,000 or more.
- a sample survey, selected from other identified building work.

4 For any particular quarter the Building Activity Survey includes newly selected jobs appearing in the survey for the first time and all incomplete building jobs which were selected in previous quarters. New selections are drawn from building jobs approved in the 3 month period prior to the last month in the quarter (e.g. up to the end of August for new selections in the September quarter survey) using the rules presented in paragraph 3, and any jobs otherwise identified to have commenced with approval values in excess of \$5 million, irrespective of the approval month. This may result in some jobs both approved and commencing in the last month of the quarter being shown as commencements in the following quarter.

5 The scope of the Engineering Construction Survey is all engineering construction activity undertaken in Australia. This incorporates all construction activity except the construction of new buildings or structural alterations, extensions or other additions made to existing buildings. Maintenance work is excluded but major repairs involving partial demolition and reconstruction are included. Since Engineering Construction Survey and Building Activity Survey are activity-based, there are a number of conceptual differences with other ABS surveys. For more information, see feature article "Mining Investment in ABS Publications" which was released with publication Private New Capital Expenditure and Expected Expenditure, Australia, March 2012 (cat. no. 5625.0).

6 In the Engineering Construction Survey, the statistical unit used to represent businesses, and for which statistics are reported, is the Australian Business Number (ABN) unit, in most cases. The ABN unit is the business unit which has registered for an ABN, and thus appears on the Australian Taxation Office (ATO) administered Australian Business Register. This unit is suitable for Australian Bureau of Statistics statistical needs when the business is simple in structure. For more significant and diverse businesses where the ABN unit is not suitable for Australian Bureau of Statistics statistical needs, the statistical unit used is the Type of Activity Unit (TAU). A TAU is comprised of one or more business entities, sub-entities or branches of a business entity within an enterprise group that can report production and employment data for similar economic activities. When a minimum set of data items is available, a TAU is created which covers all the operations within an industry subdivision – and the TAU is classified to the relevant

EXPLANATORY NOTES *continued*

SCOPE AND COVERAGE

continued

subdivision of the *Australian and New Zealand Standard Industrial Classification (ANZSIC)*. Where a business cannot supply adequate data for each industry, a TAU is formed which contains activity in more than one industry subdivision and the TAU is classified to the predominant ANZSIC subdivision.

7 Further details about the ABS economic statistical units used in the Engineering Construction Survey, and in other ABS economic surveys (both sample surveys and censuses), can be found in Chapter 2 of the *Standard Economic Sector Classifications of Australia (SESCA) 2008* (cat. no. 1218.0).

RELATIONSHIP WITH NATIONAL ACCOUNTS

8 Data on the value of work done on the construction of new private sector residential buildings, alterations and additions to private sector residential buildings, private sector non-residential buildings and the value of private sector engineering construction activity are the major sources of data which are used to compile the national accounts estimates for private gross fixed capital formation on dwellings, and other buildings and structures. However, there are some adjustments to the survey data which are made in the process of compiling these national accounts series. Allowances are made for the value of activity which is out of scope of the Building Activity Survey and the Engineering Construction Survey. Such activity includes work done on projects which fall below the size cut-offs used for the Building Activity survey and also the value of building work done which is undertaken without obtaining a building permit, either because such a permit is not required or because the requisite permit is not obtained. The national accounts estimates also make allowances for purchases (less sales) of buildings and other structures from (to) the public sector.

TREATMENT OF THE GST

9 Statistics on the value of work (current prices) show residential building work done on a GST inclusive basis and non-residential work and engineering construction work done on a GST exclusive basis. This approach is consistent with that adopted in the Australian National Accounts which is based on the conceptual framework described in the 2008 edition of the international statistical standard System of National Accounts (SNA08).

10 SNA08 requires value added taxes (VAT), such as the GST, to be recorded on a net basis where:

- (a) both outputs of goods and services and imports are valued excluding invoiced VAT
- (b) purchases of goods and services are recorded including non-deductible VAT.

11 Under the net system, VAT is recorded as being payable by purchasers, not sellers, and then only by those purchasers who are not able to deduct it. Almost all VAT is therefore recorded in the SNA08 as being paid on final uses – mainly on household consumption. Small amounts of VAT, may however, be paid by businesses in respect of certain kinds of purchases on which VAT may not be deductible.

12 The ABS records value of work done inclusive of GST in respect of residential construction and exclusive of GST in respect of non-residential construction and engineering construction. Purchasers of residential structures are unable to deduct GST from the purchase price. For non-residential structures and engineering construction, the reverse is true in most circumstances.

13 Total construction work is derived by adding total building work and total engineering construction work. To derive total building activity it is appropriate to add the residential and non-residential components. Valuation of the components of the total is consistent, since, for both components, the value of work done is recorded inclusive of non-deductible GST paid by the purchaser. As such, total building activity and total construction includes the non-deductible GST payable on residential building.

EXPLANATORY NOTES *continued*

TREATMENT OF THE GST

continued

14 As estimates for engineering work are provided on a GST exclusive basis, and the majority of construction materials used were exempt from Wholesale Sales Tax, the introduction of the GST had little direct effect on the estimates of engineering construction.

CLASSIFICATION

15 *Ownership.* The ownership of a building is classified as either *private sector* or *public sector*, according to the sector of the intended owner of the completed building as evident at the time of approval. Engineering projects are classified as either *private sector* or *public sector* according to the expected ownership of the project at the time of completion.

16 Building jobs are classified both by the *Type of building* ('residential' and 'non-residential') and by the *Type of work* involved ('new' and 'alterations and additions'). For residential buildings these classifications are used in conjunction with each other. The classes are defined in the Glossary.

RELIABILITY OF THE ESTIMATES

17 The estimates of both building activity and engineering activity are based on sample surveys. Because data are not collected for all building jobs nor for all engineering jobs, the published estimates are subject to sampling variability. Relative standard errors give a measure of this variability and therefore indicate the degree of confidence that can be attached to the data.

18 Estimates presented in the tables are subject to sampling error arising from the inclusion of a sample only; that is, they may differ from the figures that would have been obtained if all eligible building jobs and engineering businesses had been included in the surveys. The likely differences due to the sampling process can be characterised by the standard error (SE) of the estimate. To more easily determine the relative quality of an estimate or to compare the quality of different estimates, the relative standard error (RSE), which is obtained by expressing the SE as a percentage of the corresponding estimate, is commonly used. There are about two chances in three that an estimate from a sample of a group will differ by less than one RSE of the figure that would have been obtained if the entire group were surveyed, and about nineteen chances in twenty that the difference will be less than two RSEs of the estimate. Estimated RSEs for the value of work done in this quarter are given in tables 15 and 16 of this publication.

SEASONAL ADJUSTMENT

19 In the seasonally adjusted series, account has been taken of normal seasonal factors, 'trading day' effects arising from the varying numbers of working days in a quarter and the effect of movement in the date of Easter which may, in successive years, affect figures for different quarters.

20 Since seasonally adjusted statistics reflect both irregular and trend movements, an upward or downward movement in a seasonally adjusted series does not necessarily indicate a change of trend. Particular care should therefore be taken in interpreting individual quarter-to-quarter movements.

21 The seasonally adjusted estimates in this publication are produced by the concurrent seasonal adjustment method which takes account of the latest available original estimates. The concurrent method improves the estimation of seasonal factors and, therefore, the seasonally adjusted and trend estimates of the current and previous quarters.

22 A more detailed review of concurrent seasonal factors will be conducted annually, generally prior to the release of data for the March quarter.

23 The revision properties of the seasonally adjusted and trend estimates have been improved by the use of autoregressive integrated moving average (ARIMA) modelling. ARIMA modelling relies on the characteristics of the series being analysed to project future period data. The ARIMA model is assessed as part of the annual reanalysis. For

EXPLANATORY NOTES *continued*

SEASONAL ADJUSTMENT

continued

more information on the details of ARIMA modelling see feature article: *Use of ARIMA modelling to reduce revisions* in the October 2004 issue of *Australian Economic Indicators* (cat. no. 1350.0).

TREND ESTIMATES

24 Seasonally adjusted series can be smoothed to reduce the impact of the irregular component in the adjusted series. This smoothed seasonally adjusted series is called a trend estimate.

25 The trend estimates are derived by applying a 7-term Henderson moving average to the seasonally adjusted series. The 7-term Henderson average (like all Henderson averages) is symmetric but, as the end of a time series is approached, asymmetric forms of the average are applied. Unlike weights of the standard 7-term Henderson moving average, the weights employed here have been tailored to suit the particular characteristics of individual series.

26 While the smoothing technique described in paragraphs 24 and 25 enables trend estimates to be produced for recent quarters, it does result in revisions to the estimates for the most recent three quarters as additional observations become available. There may also be revisions because of changes in the original data. For further information, see *Information Paper: A Guide to Interpreting Time Series—Monitoring Trends, 2003* (cat. no. 1349.0) or contact Time Series Analysis Section on (02) 6252 6345 or email <time.series.analysis@abs.gov.au>.

CHAIN VOLUME MEASURES

27 Chain volume estimates of the value of work done are presented in original, seasonally adjusted and trend terms.

28 While current price estimates of value of work done reflect both price and volume changes, chain volume estimates measure changes in value after the direct effects of price changes have been eliminated and therefore only reflect volume changes. The direct impact of the GST is a price change, and hence is removed from chain volume estimates. The deflators used to revalue the current price estimates in this publication are derived from the same price data underlying the deflators compiled for the dwellings and new other building components, and the new engineering construction component, of the national accounts aggregate 'Gross fixed capital formation'.

29 The chain volume measures of work done appearing in this publication are annually reweighted chain Laspeyres indexes referenced to current price values in a chosen reference year. The reference year is updated annually in the September quarter publication. Each year's data in the value of work done series are based on the prices of the previous year, except for the quarters of the latest incomplete year which are based upon the current reference year. Comparability with previous years is achieved by linking (or chaining) the series together to form a continuous time series.

30 Chain volume measures do not, in general, sum exactly to the extrapolated total value of the components. Further information on the nature and concepts of chain volume measures is contained in the *ABS Information Paper: Australian National Accounts, Introduction of Chain Volume and Price Indexes* (cat. no. 5248.0).

31 The factors used to seasonally adjust the chain volume series are identical to those used to adjust the corresponding current price series.

ACKNOWLEDGMENT

32 ABS publications draw extensively on information provided freely by individuals, businesses, governments and other organisations. Their continued cooperation is very much appreciated: without it, the wide range of statistics published by the ABS would not be available. Information received by the ABS is treated in strict confidence as required by the *Census and Statistics Act 1905*.

RELATED PRODUCTS

33 All tables in this publication, plus some additional state and territory series are available in electronic form on the ABS web site.

EXPLANATORY NOTES *continued*

RELATED PRODUCTS *continued*

- 34** Users may also wish to refer to the following publications:
- Building Activity, Australia*, cat. no. 8752.0
 - Building Approvals, Australia*, cat. no. 8731.0
 - Engineering Construction Activity, Australia*, cat. no. 8762.0
 - House Price Indexes: Eight Capital Cities*, cat. no. 6416.0
 - Housing Finance, Australia*, cat. no. 5609.0
 - Private Sector Construction Industry, Australia*, cat. no. 8772.0
 - Producer Price Indexes, Australia*, cat. no. 6427.0.

ABS DATA AVAILABLE ON REQUEST

- 35** As well as the statistics included in this and related publications, the ABS may have other relevant data available on request. Inquiries should be made to the National Information and Referral Service on 1300 135 070. The ABS Privacy Policy outlines how the ABS will handle any personal information that you provide to us.

EXPLANATORY NOTES *continued*

ABBREVIATIONS

\$m	million dollars
ABN	Australian Business Number
ABS	Australian Bureau of Statistics
ACT	Australian Capital Territory
ANZSIC	Australian and New Zealand Standard Industrial Classification
ATO	Australian Taxation Office
Aust.	Australia
GST	goods and services tax
NSW	New South Wales
NT	Northern Territory
qtr	quarter
Qld	Queensland
SA	South Australia
Tas.	Tasmania
TAU	type of activity unit
VAT	value added tax
Vic.	Victoria
WA	Western Australia

APPENDIX LIST OF ELECTRONIC TABLES

ELECTRONIC TABLES

The following tables are available electronically via the ABS web site. Not all series in the table go back to the earliest start date.

WORK DONE

	<i>Publication table no.</i>	<i>Electronic table no.</i>	<i>Start date</i>
Construction work done, chain volume measures	1	1	September 1974
Construction work done, chain volume measures, change from previous period	2	n.a.	..
Construction work done, states and territories, chain volume measures	3	8	September 1986
Construction work done, states and territories, chain volume measures, change from previous period	4	n.a.	..
Construction work done, states and territories, chain volume measures, original	5	8	September 1974
Construction work done, states and territories, chain volume measures, original, change from previous period	6	n.a.	..
Construction work done, current prices	7	2	March 1957
Construction work done, current prices, change from previous period	8	n.a.	..
Construction work done, states and territories, current prices, original	9	9	March 1957
Construction work done, states and territories, current prices, original, change from previous period	10	n.a.	..
Value of building work done, chain volume measures	11	3	September 1974
Value of building work done, chain volume measures, states and territories, original	11	4	September 1974
Value of building work done, chain volume measures, states and territories, seasonally adjusted	11	5	September 1974
Value of building work done, chain volume measures, change from previous period	12	n.a.	..
Value of building work done, current prices, Australia	13	6	March 1957
Value of building work done, current prices, states and territories	13	7	September 1958
Value of building work done, current prices, change from previous period	14	n.a.	..
Relative standard errors, states and territories	15	Datacube	..
Relative standard errors, building work done, Australia	16	Datacube	..

GLOSSARY

Alterations and additions	Refer to Type of work. The term ' <i>Alterations and additions</i> ' in tables 11, 12, 13, 14 and 16 refers to alterations and additions to residential buildings only.
Building	A building is a rigid, fixed and permanent structure which has a roof. Its intended purpose is primarily to house people, plant, machinery, vehicles, goods or livestock. An integral feature of a building's design, to satisfy its intended use, is the provision for regular access by persons.
Building work done	The <i>Value of building work done</i> including only work carried out during the quarter
Construction work done	The sum of <i>building work done</i> and <i>engineering work done</i> .
Dwelling unit	A dwelling unit is a self-contained suite of rooms, including cooking and bathing facilities and intended for long-term residential use. Units (whether self-contained or not) within buildings offering institutional care, such as hospitals, or temporary accommodation such as motels, hostels and holiday apartments, are not defined as dwelling units. The value of units of this type is included in non-residential building.
Engineering work done	The <i>Value of engineering work done</i> including only work carried out during the quarter
New	Refer to Type of Work.
Non-residential building	Refer to Type of Building.
Residential building	Refer to Type of Building.
Type of building	Buildings are classified as either: <i>Residential building</i> A residential building is a building consisting of one or more dwelling units. Residential buildings can be either houses or other residential buildings. A <i>house</i> is a detached building primarily used for long term residential purposes. It consists of one dwelling unit. For instance, detached 'granny flats' and detached dwelling units (e.g. caretaker's residences) associated with a non-residential building are defined as houses. Also includes 'cottages', 'bungalows' and rectories. An other <i>residential building</i> is a building other than a house primarily used for long-term residential purposes. An other residential building contains more than one dwelling unit. Other residential buildings are coded to the following categories: semidetached, row or terrace house or townhouse with one storey; semidetached, row or terrace house or townhouse with two or more storeys; flat, unit or apartment in a building of one or two storeys; flat, unit or apartment in a building of three storeys; flat, unit or apartment in a building of four or more storeys; flat, unit or apartment attached to a house; other/number of storeys unknown. <i>Non-residential building</i> A non-residential building is primarily intended for purposes other than long term residential purposes. Note that, on occasions, one or more dwelling units may be created through non-residential building activity. The value of these dwelling units cannot be separated out from that of the non-residential building which they are part of, therefore the value associated with these remain in the appropriate non-residential category. Non-residential building's are further classified by their functional use at time of approval.
Type of work	The <i>Type of Work</i> classification refers to building activity approved to be carried out and

GLOSSARY *continued*

Type of work *continued*

consists of:

Alterations and additions

Building activity carried out on existing buildings excluding conversions.

Includes adding to or diminishing floor area, altering the structural design of a building and affixing rigid components which are integral to the functioning of the building. Total alterations and additions includes the conversion of non-residential buildings to residential buildings.

New

Building activity which will result in the creation of a building which previously did not exist.

Value of building work done

Includes the costs of materials fixed in place, labour, and architects fees. It excludes the value of land and landscaping and non-building components such as fencing, paving, roadworks, tennis courts, outdoor pools and car parks.

Value of engineering work done

The value of engineering work done for the private sector consists of the value of work done on prime contracts, plus speculative contracts, plus work done on own account. The value of engineering work done for the public sector is the work done by the organisation's own workforce and subcontractors. In each case, the value excludes the cost of land and repair and maintenance activity, as well as the value of any transfers of existing assets, the value of installed machinery and equipment not integral to the structure and the expenses for relocation of utility services. However, a contract for the installation of machinery and equipment which is an integral part of a construction project is included.

FOR MORE INFORMATION . . .

INTERNET **www.abs.gov.au** the ABS website is the best place for data from our publications and information about the ABS.

INFORMATION AND REFERRAL SERVICE

Our consultants can help you access the full range of information published by the ABS that is available free of charge from our website. Information tailored to your needs can also be requested as a 'user pays' service. Specialists are on hand to help you with analytical or methodological advice.

PHONE 1300 135 070

EMAIL client.services@abs.gov.au

FAX 1300 135 211

POST Client Services, ABS, GPO Box 796, Sydney NSW 2001

FREE ACCESS TO STATISTICS

All statistics on the ABS website can be downloaded free of charge.

WEB ADDRESS www.abs.gov.au