



CENSUS  
OF THE  
COMMONWEALTH OF AUSTRALIA  
TAKEN FOR THE NIGHT BETWEEN THE  
**3rd and 4th April, 1921.**

---

---

PART XV.  
TASMANIA.—POPULATION OF LOCAL  
GOVERNMENT AREAS.

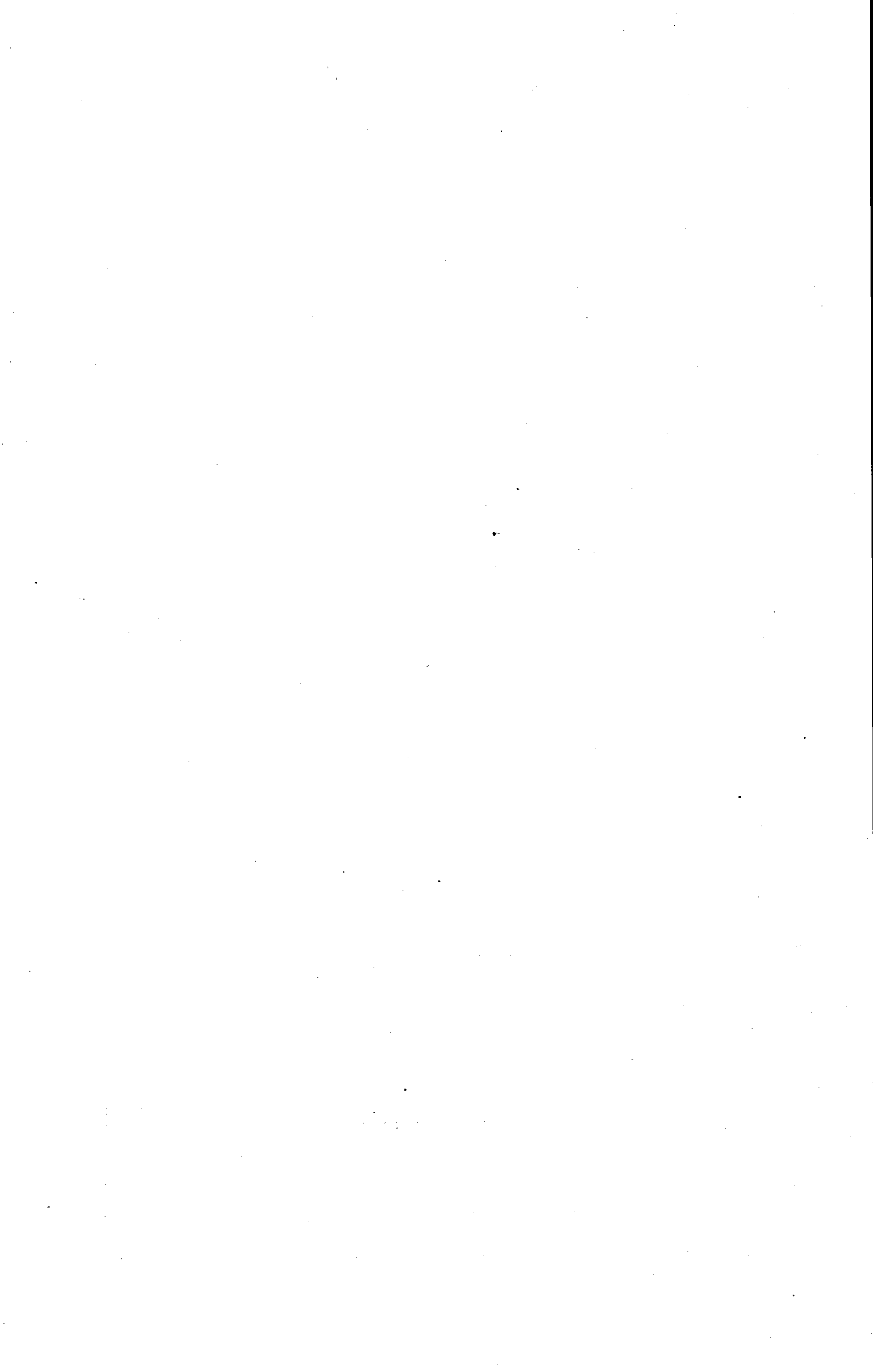
---

---

Prepared under instructions from the  
Minister of State for Home and Territories  
BY  
CHAS. H. WICKENS, F.I.A., F.S.S., HON. M.S.S. (PARIS),  
COMMONWEALTH STATISTICIAN.

---

By Authority:  
H. J. GREEN, GOVERNMENT PRINTER, MELBOURNE.



# CONTENTS.

CENSUS OF THE COMMONWEALTH OF AUSTRALIA, 4TH APRIL, 1921.

## TASMANIA.

Table No.	Population recorded in each Local Government Area.	PAGE
AGES—		
1	Males .. .. .	1108
2	Females .. .. .	1108
BIRTHPLACES—		
3	Males .. .. .	1110
4	Females .. .. .	1112
NATIONALITY (ALLEGIANCE)—		
5	Males .. .. .	1114
6	Females .. .. .	1116
LENGTH OF RESIDENCE IN AUSTRALIA OF PERSONS BORN ELSEWHERE—		
7	Males .. .. .	1118
8	Females .. .. .	1118
RACE—		
9	Males .. .. .	1120
10	Females .. .. .	1122
RELIGION—		
11	Males .. .. .	1124
12	Females .. .. .	1126
EDUCATION—		
13	Males .. .. .	1128
14	Females .. .. .	1129
SCHOOLING—		
15	Males .. .. .	1130
16	Females .. .. .	1131
CONJUGAL CONDITION—		
17	Males .. .. .	1132
18	Females .. .. .	1133
OCCUPATION—		
19	Males .. .. .	1134
20	Females .. .. .	1136
GRADE OF OCCUPATION—		
21	Males .. .. .	1138
22	Females .. .. .	1139
UNEMPLOYMENT—CAUSES OF—		
23	Males .. .. .	1140
24	Females .. .. .	1141
UNEMPLOYMENT—DURATION OF—		
25	Males .. .. .	1142
26	Females .. .. .	1143

## 1. TASMANIA.—AGES.—Number of MALES in Quinquennial

(Exclusive of

LOCAL GOVERNMENT AREA.	AGE LAST BIRTHDAY.												
	0-4	5-9	10-14	15-19	20-24	25-29	30-34	35-39	40-44	45-49	50-54	55-59	60-64
<b>MUNICIPALITIES.</b>													
Beaconsfield .. .. .	213	227	214	150	101	107	113	108	82	95	82	84	64
Bothwell .. .. .	100	104	99	188	301	214	195	150	147	104	99	72	52
Brighton .. .. .	146	128	123	87	79	76	72	49	49	48	51	48	47
Bruni .. .. .	30	45	45	24	22	27	19	19	13	13	17	12	18
Campbell Town .. .. .	86	85	81	71	59	45	40	49	42	42	52	48	26
Circular Head .. .. .	395	375	328	300	284	219	185	201	172	162	152	108	93
Clarence .. .. .	182	202	176	138	116	105	111	117	84	65	80	58	66
Deloraine .. .. .	385	361	388	298	245	204	203	156	148	151	132	137	98
Devonport .. .. .	338	377	325	301	233	177	179	176	129	162	135	117	99
Emu Bay .. .. .	389	387	336	309	213	205	195	193	146	168	130	115	76
Esperance .. .. .	214	242	218	163	134	124	134	102	82	80	64	70	69
Evandale .. .. .	111	108	82	74	43	64	55	64	43	33	31	28	36
Fingal .. .. .	240	236	205	151	127	92	117	103	99	80	85	62	53
Flinders Island .. .. .	77	51	49	55	43	44	36	35	25	29	19	20	20
George Town .. .. .	45	67	61	37	31	34	40	30	25	18	29	21	22
Glamorgan .. .. .	53	60	40	34	33	27	27	35	27	9	14	11	12
Glenorchy .. .. .	423	425	313	290	203	275	238	221	184	137	136	118	95
Gormanston .. .. .	112	93	87	76	114	64	80	71	57	65	61	50	36
Green Ponds .. .. .	76	78	68	45	33	43	44	29	33	25	39	32	25
Hamilton .. .. .	121	130	119	117	83	66	97	56	56	49	58	45	47
Hobart .. .. .	2,178	2,144	2,027	1,809	1,790	1,761	1,645	1,373	1,212	971	915	838	645
Huon .. .. .	292	271	231	207	159	150	155	133	120	79	90	71	37
Kentish .. .. .	370	340	323	285	242	192	184	149	138	123	140	115	78
Kingborough .. .. .	221	261	214	188	133	133	117	115	149	88	87	79	77
King Island .. .. .	61	73	52	58	57	40	45	39	34	34	28	23	17
Latrobe .. .. .	225	258	232	181	136	124	133	123	106	71	71	75	66
Launceston .. .. .	1,275	1,245	1,128	1,089	918	925	792	705	624	543	531	468	396
Leven .. .. .	411	375	361	326	234	207	219	158	158	139	134	122	81
Lilydale .. .. .	224	196	180	149	104	90	98	115	87	61	62	58	44
Longford .. .. .	251	227	231	165	128	116	115	112	97	110	88	89	72
New Norfolk .. .. .	470	486	414	330	255	236	245	238	225	164	159	138	115
Oatlands .. .. .	186	197	152	167	149	109	104	104	80	76	77	72	59
Penguin .. .. .	224	211	188	144	104	77	110	86	69	84	37	56	39
Port Cygnet .. .. .	185	199	154	142	105	96	91	101	64	64	65	49	40
Portland .. .. .	115	114	116	60	65	41	72	49	52	37	29	35	45
Queenstown .. .. .	185	168	168	165	160	115	90	124	112	134	95	63	68
Richmond .. .. .	117	139	109	76	64	75	81	53	43	33	39	44	38
Ringarooma .. .. .	330	324	246	238	195	169	178	159	147	108	113	92	86
Ross .. .. .	47	41	42	38	38	32	24	26	29	22	20	17	13
St. Leonards .. .. .	221	206	227	185	137	127	114	109	106	78	81	79	60
Scottsdale .. .. .	202	173	156	130	130	118	99	95	91	64	73	52	44
Sorell .. .. .	140	136	128	122	90	88	73	73	64	56	41	45	44
Spring Bay .. .. .	49	62	60	43	37	36	23	27	23	23	29	26	13
Strahan .. .. .	74	62	56	57	35	19	43	25	31	13	20	32	16
Table Cape .. .. .	387	382	326	305	228	227	188	172	147	121	131	93	99
Tasman .. .. .	110	109	99	85	74	53	44	54	45	39	27	36	22
Waratah .. .. .	161	128	115	69	57	64	71	88	57	59	61	58	43
Westbury .. .. .	253	242	201	174	142	123	134	125	93	96	95	74	91
Zeehan .. .. .	170	226	198	156	97	80	71	108	98	89	105	97	53
Total Municipalities .. .. .	12,870	12,776	11,491	10,051	8,560	7,835	7,538	6,802	5,944	5,114	4,909	4,352	3,555
Migratory* .. .. .	2	..	3	79	94	72	79	73	70	43	38	31	29
<b>TOTAL—TASMANIA</b> .. .. .	<b>12,872</b>	<b>12,776</b>	<b>11,494</b>	<b>10,130</b>	<b>8,654</b>	<b>7,907</b>	<b>7,617</b>	<b>6,875</b>	<b>6,014</b>	<b>5,157</b>	<b>4,947</b>	<b>4,383</b>	<b>3,584</b>

\* Mainly persons on ships.

## 2. TASMANIA.—AGES.—Number of FEMALES in Quinquennial

(Exclusive of

LOCAL GOVERNMENT AREA.	AGE LAST BIRTHDAY.												
	0-4	5-9	10-14	15-19	20-24	25-29	30-34	35-39	40-44	45-49	50-54	55-59	60-64
<b>MUNICIPALITIES.</b>													
Beaconsfield .. .. .	193	211	230	167	109	135	123	120	91	91	86	63	63
Bothwell .. .. .	101	99	73	67	58	45	57	50	32	25	23	18	20
Brighton .. .. .	111	128	89	78	80	87	77	55	49	46	40	34	35
Bruni .. .. .	39	44	42	33	26	21	18	23	11	13	12	13	11
Campbell Town .. .. .	91	100	70	76	73	67	47	42	28	42	43	28	23
Circular Head .. .. .	377	357	286	231	189	160	166	150	116	118	77	52	41
Clarence .. .. .	188	198	157	150	123	142	137	120	117	101	93	76	70
Deloraine .. .. .	372	375	323	258	221	233	206	153	152	107	106	96	91
Devonport .. .. .	349	354	366	372	266	251	230	191	174	150	135	130	119
Emu Bay .. .. .	355	396	332	293	275	225	200	173	154	122	114	79	66

Age Groups as recorded at the Census of the 4th April, 1921.

full-blood Aborigines.)

AGE LAST BIRTHDAY.									Total.	ADULTS AND MINORS.				LOCAL GOVERNMENT AREA.
65-69	70-74	75-79	80-84	85-89	90-94	95-99	100 and over.	Not stated.		Under 21 years of age.	Aged 21 years and over.	Age not stated.	Total.	
43	30	16	13	1	1	..	..	9	1,753	830	914	9	1,753	Beaconsfield
31	12	3	2	2	..	..	..	14	1,889	559	1,316	14	1,889	Bothwell
29	16	9	5	2	..	..	..	3	1,067	506	558	3	1,067	Brighton
11	3	..	1	..	..	..	..	..	319	149	170	..	319	Bruni
16	16	13	5	..	..	..	..	..	776	336	440	..	776	Campbell Town
50	23	6	8	4	1	..	..	8	3,074	1,465	1,601	8	3,074	Circular Head
29	23	20	10	2	1	..	..	5	1,590	718	867	5	1,590	Clarence
68	38	21	14	3	1	..	1	14	3,066	1,488	1,564	14	3,066	Deloraine
59	40	29	14	8	1	..	..	7	2,906	1,402	1,497	7	2,906	Devonport
48	30	18	6	5	1	..	..	6	2,976	1,467	1,503	6	2,976	Emu Bay
46	21	13	3	3	..	..	..	2	1,784	863	919	2	1,784	Esperance
32	7	8	..	1	..	..	..	2	822	386	434	2	822	Evandale
37	15	14	10	2	..	..	..	5	1,733	860	868	5	1,733	Fingal
11	5	1	1	..	..	..	..	1	522	244	277	1	522	Flinders Island
14	13	7	4	1	1	..	..	..	500	216	284	..	500	George Town
11	10	4	2	..	..	..	..	1	410	196	213	1	410	Glamorgan
57	46	10	6	4	..	..	..	8	3,189	1,493	1,688	8	3,189	Glenorchy
14	4	4	..	..	..	..	..	2	990	403	585	2	990	Gormanston
23	4	2	1	1	1	1	..	3	606	279	324	3	606	Green Ponds
17	19	5	5	..	..	..	..	5	1,095	508	582	5	1,095	Hamilton
452	286	165	82	31	6	2	..	60	20,392	8,509	11,823	60	20,392	Hobart
36	22	12	4	3	1	..	..	6	2,079	1,034	1,039	6	2,079	Huon
54	25	17	7	1	1	..	..	4	2,788	1,372	1,412	4	2,788	Kentish
34	23	13	7	1	1	..	..	4	1,945	916	1,025	4	1,945	Kingborough
11	4	2	1	..	..	..	..	..	579	257	322	..	579	King Island
51	31	17	7	5	1	..	..	5	1,918	925	988	5	1,918	Latrobe
255	169	90	58	17	1	2	1	36	11,268	4,947	6,285	36	11,268	Launceston
60	45	14	11	6	..	..	..	11	3,072	1,532	1,529	11	3,072	Leven
30	20	16	10	3	..	..	..	2	1,549	762	785	2	1,549	Lilydale
37	40	30	8	5	1	..	..	6	1,928	907	1,015	6	1,928	Longford
86	42	21	8	5	..	..	..	24	3,661	1,757	1,880	24	3,661	New Norfolk
40	25	12	5	2	..	..	..	3	1,619	732	884	3	1,619	Oatlands
32	19	3	6	1	2	..	..	1	1,493	792	700	1	1,493	Penguin
30	8	2	3	2	..	..	..	4	1,404	704	696	4	1,404	Port Cygnet
23	19	6	4	1	3	..	..	3	889	424	462	3	889	Portland
33	13	4	..	1	..	..	..	1	1,699	723	975	1	1,699	Queenstown
24	20	8	2	..	..	2	..	4	971	453	514	4	971	Richmond
54	31	11	3	1	1	..	..	15	2,501	1,177	1,309	15	2,501	Ringarooma
6	4	2	3	..	..	..	..	..	404	177	227	..	404	Ross
43	22	11	11	3	..	1	..	4	1,825	873	948	4	1,825	St. Leonards
33	17	12	3	2	..	..	..	2	1,496	688	806	2	1,496	Scottsdale
44	15	15	3	2	..	..	..	..	1,179	543	636	..	1,179	Sorell
5	12	2	3	1	..	..	..	..	474	222	252	..	474	Spring Bay
16	4	1	..	2	..	..	..	1	507	256	250	1	507	Strahan
54	23	9	7	2	1	1	..	7	2,910	1,453	1,450	7	2,910	Table Cape
16	10	6	..	1	..	..	..	..	830	419	411	..	830	Tasman
27	3	5	..	1	..	1	..	3	1,071	485	583	3	1,071	Waratah
55	30	19	17	2	1	..	..	8	1,975	899	1,068	8	1,975	Westbury
34	18	8	2	2	..	..	..	3	1,615	778	834	3	1,615	Zeehan
2,321	1,375	736	385	142	28	10	2	312	107,108	49,084	57,712	312	107,108	Total Municipalities
10	5	1	..	..	..	..	..	6	635	108	521	6	635	Migratory
2,331	1,380	737	385	142	28	10	2	318	107,743	49,192	58,233	318	107,743	TOTAL—TASMANIA

Age Groups as recorded at the Census of the 4th April, 1921.

full-blood Aborigines.)

AGE LAST BIRTHDAY.									Total.	ADULTS AND MINORS.				LOCAL GOVERNMENT AREA.
65-69	70-74	75-79	80-84	85-89	90-94	95-99	100 and over.	Not stated.		Under 21 years of age.	Aged 21 years and over.	Age not stated.	Total.	
46	21	13	7	2	1	..	..	1	1,773	835	937	1	1,773	Beaconsfield
18	7	11	3	1	..	..	..	2	710	351	357	2	710	Bothwell
24	12	8	7	2	1	..	..	2	965	416	547	2	965	Brighton
9	2	3	1	..	1	..	..	1	323	168	154	1	323	Bruni
13	7	10	11	2	..	..	..	..	773	354	419	..	773	Campbell Town
28	22	9	7	3	..	..	..	4	2,393	1,289	1,100	4	2,393	Circular Head
32	24	17	10	5	2	..	..	3	1,765	714	1,043	3	1,765	Clarence
55	42	23	16	6	1	..	..	2	2,838	1,387	1,449	2	2,838	Deloraine
66	40	36	21	9	1	..	..	2	3,262	1,494	1,766	2	3,262	Devonport
36	25	19	9	..	1	..	..	1	2,875	1,446	1,428	1	2,875	Emu Bay

2. TASMANIA.—AGES.—Number of FEMALES

LOCAL GOVERNMENT AREA.	AGE LAST BIRTHDAY.												
	0-4	5-9	10-14	15-19	20-24	25-29	30-34	35-39	40-44	45-49	50-54	55-59	60-64
MUNICIPALITIES—continued.													
Esperance .. .. .	237	230	187	139	129	117	103	108	76	52	66	43	62
Evandale .. .. .	124	118	83	62	77	69	60	59	44	26	32	31	26
Fingal .. .. .	242	235	194	135	126	120	114	105	92	69	64	63	42
Flinders Island .. .. .	66	50	46	29	43	30	34	13	24	13	9	7	12
George Town .. .. .	61	62	44	50	28	42	41	34	30	33	30	21	15
Glamorgan .. .. .	51	58	33	30	28	37	34	26	21	15	12	13	11
Glenorchy .. .. .	453	408	315	226	252	287	265	207	172	132	109	109	81
Gormanston .. .. .	100	88	68	54	44	58	36	37	45	26	17	8	10
Green Ponds .. .. .	76	69	69	53	49	38	36	33	31	25	22	23	23
Hamilton .. .. .	161	132	124	103	86	69	53	61	49	35	31	27	16
Hobart .. .. .	2,179	2,110	1,996	2,017	2,265	2,156	1,907	1,653	1,372	1,192	1,077	943	863
Huon .. .. .	301	249	221	163	149	163	156	121	99	78	58	53	46
Kentish .. .. .	350	313	323	256	215	200	174	141	114	94	90	83	65
Kingborough .. .. .	272	254	225	163	143	140	137	126	130	83	87	62	64
King Island .. .. .	71	50	54	34	41	35	50	29	25	20	15	16	10
Latrobe .. .. .	230	243	200	165	149	168	138	123	92	74	64	49	66
Launceston .. .. .	1,153	1,257	1,191	1,195	1,312	1,224	1,021	844	745	692	611	544	467
Leven .. .. .	398	401	358	311	240	231	214	178	135	128	121	102	72
Lilydale .. .. .	221	230	166	120	94	118	94	88	90	59	47	37	34
Longford .. .. .	210	215	201	181	150	137	147	142	119	93	72	93	68
New Norfolk .. .. .	492	432	388	310	276	260	244	246	204	130	135	116	112
Oatlands .. .. .	180	186	186	151	99	111	117	83	72	64	54	47	47
Penguin .. .. .	184	185	192	133	94	82	87	97	82	47	44	29	34
Port Cygnet .. .. .	182	153	157	130	108	100	104	84	81	57	28	45	36
Portland .. .. .	98	100	91	65	57	55	65	47	27	29	23	19	20
Queenstown .. .. .	187	191	216	157	125	119	95	85	100	69	66	46	27
Richmond .. .. .	101	97	88	79	56	60	64	57	41	26	32	35	30
Ringarooma .. .. .	328	321	256	221	162	167	164	143	99	61	58	77	36
Ross .. .. .	45	39	42	37	41	21	21	20	20	17	11	10	16
St. Leonards .. .. .	214	217	187	176	169	174	138	118	104	81	71	83	53
Scottsdale .. .. .	190	197	124	131	125	115	108	95	61	57	51	51	40
Sorell .. .. .	130	122	125	90	76	71	68	66	52	49	44	40	31
Spring Bay .. .. .	50	44	51	39	26	28	27	27	25	23	7	15	13
Strahan .. .. .	74	73	55	34	31	40	26	28	20	16	13	12	7
Table Cape .. .. .	398	392	324	274	253	213	191	160	135	102	100	88	62
Tasman .. .. .	98	106	78	65	44	61	47	43	37	23	21	18	14
Waratah .. .. .	152	136	98	62	62	72	64	47	53	28	23	22	15
Westbury .. .. .	240	274	194	194	169	148	140	116	106	87	87	78	67
Zeehan .. .. .	198	207	203	162	102	88	99	94	92	69	69	53	31
Total Municipalities .. .. .	12,673	12,506	11,121	9,721	9,115	8,790	7,944	6,861	5,840	4,789	4,300	3,800	3,283
Migratory* .. .. .	1	1	..	..	3	4	1	1	4	2	..	..	..
TOTAL—TASMANIA .. .. .	12,674	12,507	11,121	9,721	9,118	8,794	7,945	6,862	5,844	4,791	4,300	3,800	3,283

\* Mainly persons on ships.

3. TASMANIA.—BIRTHPLACES of MALES

(Exclusive of

LOCAL GOVERNMENT AREA.	AUSTRALASIA.				EUROPE.											
	Commonwealth of Australia.	New Zealand.	Other Australasian Countries.	Total Australasia.	British Isles.	Denmark.	France.	Germany.	Greece.	Italy.	Norway.	Russia.	Sweden.	Switzerland.	Other European Countries.	Total Europe.
MUNICIPALITIES.																
Beaconsfield .. .. .	1,544	8	..	1,552	165	2	1	..	..	..	..	2	..	1	171	
Bothwell .. .. .	1,707	15	..	1,722	124	1	..	..	..	1	..	2	..	1	129	
Brighton .. .. .	1,024	3	..	1,027	34	..	..	2	..	..	..	..	..	..	36	
Bruni .. .. .	272	6	..	278	28	..	..	5	..	..	..	2	..	..	35	
Campbell Town .. .. .	743	2	..	745	26	..	..	1	..	..	..	..	..	..	27	
Circular Head .. .. .	2,858	11	..	2,869	160	1	..	3	..	1	..	3	7	4	183	
Clarence .. .. .	1,422	22	..	1,444	118	2	1	1	..	..	1	..	..	1	124	
Deloraine .. .. .	2,914	4	..	2,918	122	1	..	3	..	..	..	..	1	1	128	
Devonport .. .. .	2,604	14	..	2,618	224	4	1	4	..	3	..	2	..	1	239	
Emu Bay .. .. .	2,732	15	..	2,747	176	..	..	4	..	1	1	2	..	2	186	
Esperance .. .. .	1,663	15	1	1,679	82	..	..	8	..	..	..	1	..	3	94	
Evandale .. .. .	793	3	1	797	23	..	..	..	..	..	..	..	..	..	23	
Fingal .. .. .	1,632	4	..	1,636	66	1	..	20	..	..	1	2	..	..	90	
Flinders Island .. .. .	482	3	..	485	30	1	..	..	..	..	1	..	..	..	33	
George Town .. .. .	434	8	..	442	45	..	..	2	..	..	..	..	..	1	48	
Glamorgan .. .. .	384	2	..	386	19	..	1	2	..	..	..	..	..	..	22	
Glenorchy .. .. .	2,878	32	..	2,910	212	8	1	11	..	..	..	1	1	4	238	
Gormanston .. .. .	822	12	1	835	92	3	..	3	..	12	..	3	1	3	146	
Green Ponds .. .. .	581	1	..	582	22	..	..	..	..	..	..	..	..	..	22	
Hamilton .. .. .	1,059	1	..	1,060	30	..	..	..	..	..	..	..	..	..	30	
Hobart .. .. .	18,082	211	2	18,295	1,714	16	4	46	6	7	3	5	17	1	1,836	
Huon .. .. .	1,956	7	..	1,963	90	2	..	11	..	..	..	1	..	1	105	
Kentish .. .. .	2,676	8	..	2,684	87	..	..	3	..	..	..	1	..	..	91	

in Quinquennial Age Groups—*continued.*

AGE LAST BIRTHDAY.									ADULTS AND MINORS.				LOCAL GOVERNMENT AREA.	
65-69	70-74	75-79	80-84	85-89	90-94	95-99	100 and over.	Not stated.	Total.	Under 21 years of age.	Aged 21 years and over.	Age not stated.	Total.	
32	11	13	2	2	..	..	..	3	1,612	819	790	3	1,612	Esperance
17	11	7	4	1	1	..	..	3	855	404	448	3	855	Evandale
31	16	8	5	6	..	..	..	4	1,671	840	827	4	1,671	Fingal
2	2	1	..	..	..	..	..	2	383	202	179	2	383	Flinders Island
18	13	9	5	1	1	..	..	2	538	225	312	1	538	George Town
9	6	3	5	1	..	..	..	1	395	183	210	2	395	Glamorgan
57	41	18	13	7	1	..	..	2	3,155	1,461	1,692	2	3,155	Glenorchy
3	2	2	1	..	..	..	..	1	599	317	282	..	599	Gormanston
11	9	11	3	..	..	..	..	1	582	276	305	1	582	Green Ponds
15	13	5	4	1	..	..	..	3	988	547	438	3	988	Hamilton
555	349	249	149	52	10	2	..	101	23,197	8,745	14,351	101	23,197	Hobart
30	15	8	6	5	2	..	..	11	1,932	967	954	11	1,932	Huon
34	22	14	12	2	2	..	..	3	2,507	1,289	1,215	3	2,507	Kentish
45	25	24	9	3	1	..	..	4	1,997	945	1,048	4	1,997	Kingborough
3	2	4	1	..	1	..	..	..	461	219	242	..	461	King Island
50	31	11	16	4	..	..	..	4	1,877	874	999	4	1,877	Latrobe
315	191	136	59	27	6	3	..	44	13,037	5,060	7,933	44	13,037	Launceston
54	30	21	12	4	1	..	..	5	3,016	1,526	1,485	5	3,016	Leven
32	20	5	7	..	..	..	..	1	1,463	762	700	1	1,463	Lilydale
39	48	28	13	3	1	..	..	4	1,964	840	1,120	4	1,964	Longford
72	35	19	9	9	..	..	..	16	3,505	1,680	1,809	16	3,505	New Norfolk
22	18	10	10	3	1	..	..	3	1,464	726	735	3	1,464	Oatlands
19	8	6	3	..	..	1	..	1	1,328	720	607	1	1,328	Penguin
16	15	5	5	1	..	..	..	3	1,310	644	663	3	1,310	Port Cygnet
11	8	8	2	..	..	..	..	2	727	368	357	2	727	Portland
13	6	4	1	..	..	..	..	..	1,507	787	720	..	1,507	Queenstown
25	9	13	2	2	1	..	..	2	820	377	441	2	820	Richmond
18	10	10	4	2	1	..	..	8	2,146	1,154	984	8	2,146	Ringarooma
5	2	3	5	2	1	..	..	..	358	175	183	..	358	Ross
34	28	14	7	1	2	1	..	3	1,875	834	1,038	3	1,875	St. Leonards
26	20	8	7	1	1	..	..	1	1,409	669	739	1	1,409	Scottsdale
24	16	7	4	2	..	..	..	1	1,018	488	529	1	1,018	Sorell
5	12	3	2	2	..	..	..	1	400	189	210	1	400	Spring Bay
2	3	2	..	..	..	..	..	..	436	241	195	..	436	Strahan
32	18	13	10	6	1	..	..	1	2,773	1,436	1,336	1	2,773	Table Cape
8	9	5	1	1	..	..	..	..	678	354	324	..	678	Tasman
6	4	1	..	1	..	..	..	2	848	461	385	2	848	Waratah
39	26	21	9	3	2	..	..	3	2,003	934	1,066	3	2,003	Westbury
21	11	6	3	1	..	..	..	..	1,509	795	714	..	1,509	Zeehan
2,077	1,317	884	502	183	44	7	..	263	106,020	47,987	57,770	263	106,020	Total Municipalities
..	..	..	..	..	..	..	..	..	17	2	15	..	17	Migratory
2,077	1,317	884	502	183	44	7	..	263	106,037	47,989	57,785	263	106,037	TOTAL—TASMANIA

as recorded at the Census of the 4th April, 1921.  
full-blood Aborigines.)

ASIA.						AFRICA.			AMERICA.				LOCAL GOVERNMENT AREA.				
British India.	China.	Japan.	Syria.	Other Asiatic Countries.	Total Asia.	Union of South Africa.	Other African Countries.	Total Africa.	Canada.	U.S.A.	Other American Countries.	Total America.	Polynesia.	At Sea.	Unspecified.	TOTAL.	
15	..	..	..	..	15	6	..	6	1	1	..	2	..	2	5	1,753	Beaconsfield
4	..	..	..	..	4	2	..	2	6	3	..	9	1	2	20	1,889	Bothwell
1	..	..	..	..	1	1	..	1	1	..	..	1	..	1	1	1,067	Brighton
..	..	..	..	..	..	..	..	..	1	2	..	3	..	1	1	319	Bruni
..	..	..	..	..	..	..	..	..	..	..	2	2	..	..	2	776	Campbell Town
6	3	..	..	..	9	1	..	1	2	..	..	2	1	1	8	3,074	Circular Head
4	..	..	..	1	5	3	1	4	..	1	..	2	1	..	10	1,590	Clarence
1	4	..	..	1	6	..	..	..	..	1	..	1	..	..	13	3,066	Deloraine
14	17	..	..	..	31	4	..	4	2	1	..	5	1	..	8	2,906	Devonport
3	25	..	..	2	30	1	..	1	1	1	2	4	1	1	6	2,976	Emu Bay
1	..	..	1	..	2	2	2	2	1	1	..	2	..	1	4	1,784	Esperance
1	..	..	..	2	1	..	..	1	..	..	..	..	..	1	..	822	Evandale
..	..	..	..	2	2	1	..	1	..	..	..	..	..	2	2	1,733	Fingal
1	..	..	..	1	2	..	1	1	..	..	..	..	..	1	1	522	Flinders Island
3	1	..	..	..	4	1	..	1	1	1	1	3	..	1	1	500	George Town
..	..	..	..	..	..	..	..	..	1	..	..	1	..	..	1	410	Glamorgan
4	15	..	2	1	22	1	2	3	2	7	..	9	3	1	3	3,189	Glenorchy
1	3	..	1	..	5	..	..	1	1	1	1	3	..	1	..	990	Gormanston
..	..	..	..	..	..	1	..	1	..	1	..	1	..	..	..	606	Green Ponds
1	..	..	..	..	1	..	..	..	..	1	..	1	..	3	3	1,095	Hamilton
46	54	1	4	6	111	22	6	28	9	20	6	35	5	16	66	20,392	Hobart
2	..	..	..	..	2	..	1	1	1	..	1	1	..	1	6	2,079	Huon
3	2	..	1	..	6	1	..	1	1	3	..	4	..	1	1	2,788	Kentish





of MALES—continued.

ASIA.						AFRICA.			AMERICA.				Polynesia.	At Sea.	Unspecified.	TOTAL.	LOCAL GOVERNMENT AREA.
British India.	China.	Japan.	Syria.	Other Asiatic Countries.	Total Asia.	Union of South Africa.	Other African Countries.	Total Africa.	Canada.	U.S.A.	Other American Countries.	Total America.					
3	..	..	..	..	3	4	..	4	..	2	..	2	..	1	4	1,945	Kingborough
2	..	..	..	1	3	1	..	1	2	..	..	2	1	..	..	579	King Island
8	..	..	5	..	13	3	..	3	1	1	..	4	..	1	3	1,918	Latrobe
21	37	1	7	5	71	4	1	5	4	8	2	14	1	2	40	11,268	Launceston
3	1	..	..	..	4	2	..	2	2	2	1	5	..	..	3	3,072	Leven
2	..	..	..	..	2	2	..	2	1	1	..	2	..	..	4	1,549	Lilydale
2	1	..	..	..	3	1	..	1	2	..	..	2	..	..	5	1,928	Longford
4	..	..	2	..	6	..	1	1	1	2	1	4	..	..	289	3,661	New Norfolk
1	..	..	..	1	2	..	..	..	..	..	..	..	..	..	3	1,619	Oatlands
2	..	..	..	..	2	1	..	1	..	3	1	4	..	..	..	1,493	Penguin
1	..	..	..	..	1	1	..	1	2	2	..	4	1	..	3	1,404	Port Cygnet
..	11	..	..	..	11	..	..	..	1	..	..	1	..	1	2	889	Portland
4	2	..	2	..	8	..	2	2	..	8	..	8	..	..	..	1,699	Queenstown
..	..	..	..	..	..	..	..	..	..	..	..	..	..	..	3	971	Richmond
..	39	..	..	..	39	..	..	..	1	1	..	2	1	1	8	2,501	Ringarooma
..	..	..	..	..	..	..	..	..	..	1	..	1	..	..	..	404	Ross
3	5	..	..	2	10	1	..	1	..	1	..	1	1	1	10	1,825	St Leonards
5	1	..	..	..	6	2	1	3	..	1	..	1	..	..	1	1,496	Scottsdale
1	..	..	..	..	1	1	..	1	2	..	..	2	..	..	2	1,179	Sorell
..	..	..	..	..	..	1	..	1	..	..	..	..	..	..	4	474	Spring Bay
1	1	..	..	..	2	..	..	..	1	1	..	2	..	1	1	507	Strahan
9	4	..	..	2	15	..	..	..	2	2	..	4	..	..	6	2,910	Table Cape
..	..	..	..	1	1	1	..	1	1	..	..	1	1	..	..	830	Tasman
..	1	..	..	..	3	..	..	..	1	2	..	3	..	..	1	1,071	Waratah
1	..	..	..	..	1	..	..	..	1	1	..	2	1	2	5	1,975	Westbury
3	..	..	1	..	4	..	..	..	1	1	1	3	..	1	1	1,615	Zeehan
187	227	2	28	26	470	71	18	89	56	85	25	166	20	46	560	107,108	Total Municipalities
..	1	1	..	3	5	4	1	5	4	1	2	7	3	..	5	635	Migratory
187	228	3	28	29	475	75	19	94	60	86	27	173	23	46	565	107,743	TOTAL—TASMANIA

as recorded at the Census of the 4th April, 1921.

full-blood Aboriginals.)

ASIA.						AFRICA.			AMERICA.				Polynesia.	At Sea.	Unspecified.	TOTAL.	LOCAL GOVERNMENT AREA.
British India.	China.	Japan.	Syria.	Other Asiatic Countries.	Total Asia.	Union of South Africa.	Other African Countries.	Total Africa.	Canada.	U.S.A.	Other American Countries.	Total America.					
9	1	..	..	..	10	5	..	5	1	1	..	2	2	3	5	1,773	Beaconsfield
..	..	..	..	..	..	5	..	..	..	1	..	1	..	..	..	710	Bothwell
..	..	..	..	1	1	2	..	2	..	1	..	1	..	..	3	965	Brighton
2	..	..	..	..	2	..	..	..	1	1	..	2	..	..	..	323	Bruni
1	..	..	1	..	2	..	2	..	..	..	..	..	..	..	..	773	Campbell Town
7	..	..	..	..	7	2	..	2	..	1	1	2	1	..	4	2,393	Circular Head
9	..	..	..	..	9	3	..	3	..	1	1	2	1	..	12	1,765	Clarence
..	..	..	..	..	..	..	..	..	1	..	..	1	..	1	4	2,838	Deloraine
23	..	..	..	3	26	5	..	5	..	1	..	1	..	..	4	3,262	Devonport
..	..	..	..	..	..	2	..	2	..	..	..	4	..	3	1	2,875	Emu Bay
2	..	..	1	..	3	..	..	..	..	..	..	..	..	..	..	1,612	Esperance
4	..	..	..	..	4	..	..	..	..	1	..	1	..	1	2	855	Evandale
2	..	..	..	1	3	..	..	..	..	..	..	..	..	..	..	1,671	Fingal
1	..	..	..	..	1	..	..	..	..	..	..	..	..	..	..	383	Flinders Island
1	..	..	..	..	1	1	..	1	2	..	1	3	1	..	2	538	George Town
2	..	..	..	..	2	..	..	..	..	..	..	..	..	..	..	395	Glamorgan
8	..	..	1	..	9	3	1	4	2	4	1	7	2	2	1	3,155	Glenorchy
..	..	..	..	..	..	..	..	..	..	..	..	..	..	..	..	599	Gormanston
..	..	..	..	..	..	..	..	..	..	..	..	..	..	..	1	582	Green Ponds
..	..	..	..	1	1	..	..	..	..	..	..	..	1	4	..	988	Hamilton
45	1	2	2	15	65	43	2	45	10	9	6	25	12	13	133	23,197	Hobart
1	..	..	..	1	1	..	..	..	..	1	..	1	..	1	9	1,932	Huon
..	..	..	..	1	1	1	1	2	..	1	..	1	..	..	2	2,507	Kentish
1	..	..	..	1	2	3	..	3	..	1	..	1	..	2	3	1,997	Kingborough
..	..	..	..	..	..	..	..	..	..	..	1	1	..	..	..	461	King Island
13	..	..	..	..	13	1	..	1	..	..	..	..	..	1	5	1,877	Latrobe
21	..	..	6	3	30	5	2	7	4	11	3	18	..	6	48	13,037	Launceston
2	..	..	..	1	3	1	1	1	2	4	1	5	..	..	3	3,016	Leven
3	..	..	..	..	3	1	..	1	..	..	..	..	..	..	4	1,463	Lilydale
1	..	..	..	..	1	..	..	..	..	..	..	..	..	..	..	1,964	Longford
3	..	..	..	..	3	1	1	2	..	..	..	..	2	1	..	3,505	New Norfolk
..	..	..	..	..	..	1	..	1	..	..	..	..	1	2	3	1,464	Oatlands



of FEMALES—continued.

ASIA.							AFRICA.			AMERICA.				Polynesia.	At Sea.	Unspecified.	TOTAL.	LOCAL GOVERNMENT AREA.
British India.	China.	Japan.	Syria.	Other Asiatic Countries.	Total Asia.	Union of South Africa.	Other African Countries.	Total Africa.	Canada.	U.S.A.	Other American Countries.	Total America.						
..	..	..	..	..	..	..	..	..	1	2	..	3	..	1	1	1,328	Penguin	
..	..	..	..	..	1	..	..	..	2	..	1	3	..	1	3	1,310	Port Cygnet	
..	1	..	..	..	3	..	..	..	1	1	..	2	..	1	..	727	Portland	
1	..	..	3	..	1	..	..	..	1	..	..	2	..	1	..	1,507	Queenstown	
..	1	..	..	..	1	1	..	1	1	..	..	1	..	3	..	820	Richmond	
..	..	..	..	..	1	1	..	1	1	..	..	1	..	1	3	2,146	Ringarooma	
..	..	..	..	..	10	2	..	2	1	4	1	6	1	1	..	358	Ross	
6	3	..	..	1	3	1	1	2	1	1	1	6	1	1	10	1,875	St. Leonards	
2	..	..	..	1	3	1	1	2	..	..	..	1	..	1	..	1,409	Scottsdale	
1	..	..	..	..	1	..	..	..	..	..	..	1	..	1	..	1,018	Sorell	
1	..	..	..	..	1	..	..	..	..	1	..	1	..	2	..	400	Spring Bay	
..	..	..	..	..	7	1	..	1	..	1	..	1	..	1	..	436	Strahan	
7	..	..	..	..	1	1	..	1	..	3	3	6	1	..	3	2,773	Table Cape	
1	..	..	..	..	1	2	..	2	..	1	..	1	..	..	..	678	Tasman	
..	..	..	..	..	1	..	..	..	..	1	..	1	..	1	..	848	Waratah	
1	..	..	..	..	1	..	..	..	..	..	1	1	..	..	..	2,003	Westbury	
2	..	..	..	1	3	..	..	..	..	1	..	1	..	..	..	1,503	Zeehan	
183	7	2	14	30	236	87	11	98	31	50	25	106	24	46	577	106,020	Total Municipalities	
..	..	..	..	..	..	..	..	..	..	..	..	..	..	..	..	17	17	Migratory
183	7	2	14	30	236	87	11	98	31	50	25	106	24	46	577	106,037	TOTAL—TASMANIA	

of MALES as recorded at the Census of the 4th April, 1921.

(full-blood Aborigines.)

Italian.	Japanese.	Jugo-Slavian.	Norwegian.	Polish.	Russian.	Spanish.	Swedish.	Swiss.	Turkish.	U.S.A.	Other.	Not stated.	Total.	LOCAL GOVERNMENT AREA.
..	..	..	..	..	..	..	..	..	..	..	..	..	1,753	Beaconsfield
..	..	..	1	..	..	..	..	1	..	2	..	3	1,889	Bothwell
..	..	..	..	..	..	..	1	..	..	..	..	..	1,067	Brighton
..	..	..	..	..	..	..	1	..	..	..	..	..	319	Bruni
..	..	..	..	..	..	..	2	1	..	1	..	2	776	Campbell Town
1	..	..	..	2	..	..	2	1	..	1	..	1	3,074	Circular Head
..	..	..	..	..	..	..	..	..	..	..	..	1	1,590	Clarence
..	..	..	..	..	..	..	..	1	..	..	..	2	3,066	Deloraine
2	..	..	..	..	..	..	..	..	..	..	1	1	2,906	Devonport
1	..	..	1	..	..	..	1	..	..	..	..	1	2,976	Emu Bay
..	..	..	..	..	..	..	..	..	1	..	1	1	1,784	Esperance
..	..	..	..	..	..	..	..	..	..	..	..	..	822	Evandale
..	..	..	..	..	..	..	..	..	..	..	..	1	1,733	Fingal
..	..	..	..	..	..	..	1	..	..	..	..	..	522	Flinders Island
..	..	..	..	..	..	..	..	..	..	..	..	..	500	George Town
..	..	..	..	..	..	..	..	1	..	..	..	..	410	Glamorgan
..	..	..	..	..	2	1	..	1	..	4	2	2	3,189	Glenorchy
..	..	..	..	..	..	..	..	1	..	..	..	..	990	Gormanston
10	..	..	..	..	..	..	..	..	..	..	..	..	606	Green Ponds
..	..	..	..	..	..	..	..	..	..	..	..	..	1,095	Hamilton
5	..	1	3	2	1	..	3	1	..	14	3	10	20,392	Hobart
..	..	..	..	..	..	..	..	..	..	..	..	4	2,079	Huon
..	..	..	..	..	..	..	..	..	..	..	1	..	2,788	Kentish
..	..	..	1	..	..	..	..	1	..	..	..	..	1,945	Kingborough
..	..	..	..	..	..	..	..	..	..	..	..	..	579	King Island
..	..	..	..	..	..	..	1	..	..	..	4	1	1,918	Latrobe
..	..	..	2	..	..	..	1	..	..	4	3	10	11,268	Launceston
..	..	..	..	..	..	..	..	..	..	1	..	..	3,072	Leven
..	..	..	..	..	..	..	..	..	..	..	..	..	1,549	Lilydale
..	..	..	..	..	..	..	..	..	..	..	..	..	1,928	Longford
..	..	..	..	..	1	..	1	..	..	1	1	10	3,661	New Norfolk
..	..	..	..	..	..	..	..	..	..	..	..	..	1,619	Oatlands
..	..	..	..	..	..	..	..	..	..	..	..	..	1,493	Penguin
..	..	..	1	..	..	..	..	..	..	..	..	1	1,404	Port Cygnet
..	..	..	..	..	..	..	..	..	..	..	..	..	889	Portland
1	..	..	..	..	..	..	1	..	..	4	2	..	1,699	Queenstown
..	..	..	..	..	..	..	..	..	..	..	..	..	971	Richmond
..	..	..	1	..	..	..	..	..	..	..	..	2	2,501	Ringarooma
..	..	..	..	..	..	..	..	..	..	..	..	..	404	Ross
..	..	..	..	..	..	..	..	..	..	..	..	..	1,825	St. Leonards
..	..	..	..	..	..	..	1	..	..	1	..	..	1,496	Scottsdale
..	..	..	..	..	..	..	..	..	..	..	..	..	1,179	Sorell
..	..	..	..	..	..	..	..	..	..	..	..	..	474	Spring Bay

## 5. TASMANIA.—NATIONALITY

LOCAL GOVERNMENT AREA.	Austrian.	Belgian.	British.	Bulgarian.	Chinese.	Czecho-Slovakian.	Danish.	Dutch.	Finnish.	French.	German.	Greek.	Hungarian.
MUNICIPALITIES—continued.													
Strahan .. .. .	..	..	507	..	..	..	..	..	..	..	..	..	..
Table Cape .. .. .	..	..	2,904	..	4	..	..	..	..	..	..	..	..
Tasman .. .. .	..	..	830	..	..	..	..	..	..	..	..	..	..
Waratah .. .. .	..	..	1,068	..	..	..	1	..	..	..	..	..	..
Westbury .. .. .	..	..	1,975	..	..	..	..	..	..	..	..	..	..
Zeehan .. .. .	..	..	1,614	..	..	..	..	..	..	..	1	..	..
Total Municipalities .. .. .	2	3	106,733	1	154	1	12	2	5	3	19	4	..
Migratory* .. .. .	..	2	596	..	1	..	..	..	6	..	..	4	..
TOTAL—TASMANIA .. .. .	2	5	107,329	1	155	1	12	2	11	3	19	8	..

\* Mainly persons on ships.

## 6. TASMANIA.—NATIONALITY (i.e., Allegiance)

(Exclusive of

LOCAL GOVERNMENT AREA.	Austrian.	Belgian.	British.	Bulgarian.	Chinese.	Czecho-Slovakian.	Danish.	Dutch.	Finnish.	French.	German.	Greek.	Hungarian.
MUNICIPALITIES.													
Beaconsfield .. .. .	..	..	1,773	..	..	..	..	..	..	..	..	..	..
Bothwell .. .. .	..	1	709	..	..	..	..	..	..	..	..	..	..
Brighton .. .. .	..	..	964	..	..	..	..	..	..	1	..	..	..
Bruni .. .. .	..	..	323	..	..	..	..	..	..	..	..	..	..
Campbell Town .. .. .	..	..	773	..	..	..	..	..	..	..	..	..	..
Circular Head .. .. .	..	..	2,391	..	..	..	..	..	..	..	..	..	..
Clarence .. .. .	..	..	1,764	..	..	..	..	..	..	..	..	..	..
Deloraine .. .. .	..	..	2,837	..	..	..	..	..	..	..	..	..	..
Devonport .. .. .	..	..	3,262	..	..	..	..	..	..	..	..	..	..
Emu Bay .. .. .	..	..	2,875	..	..	..	..	..	..	..	..	..	..
Esperance .. .. .	..	..	1,611	..	..	..	..	..	..	..	..	..	..
Evandale .. .. .	..	..	855	..	..	..	..	..	..	..	..	..	..
Fingal .. .. .	..	..	1,670	..	..	..	..	..	..	..	1	..	..
Flinders Island .. .. .	..	..	383	..	..	..	..	..	..	..	..	..	..
George Town .. .. .	..	..	536	..	..	..	..	..	..	..	..	..	..
Glamorgan .. .. .	..	..	395	..	..	..	..	..	..	..	..	..	..
Glenorchy .. .. .	..	..	3,148	..	..	..	1	..	..	..	2	..	..
Gormanston .. .. .	..	..	596	..	..	..	..	..	..	..	..	..	..
Green Ponds .. .. .	..	..	582	..	..	..	..	..	..	..	..	..	..
Hamilton .. .. .	..	..	987	..	..	..	..	..	..	..	..	..	..
Hobart .. .. .	..	..	23,136	..	..	..	3	..	..	4	2	..	..
Huon .. .. .	..	..	1,926	..	..	..	..	..	..	..	..	..	..
Kentish .. .. .	..	..	2,507	..	..	..	..	..	..	..	..	..	..
Kingborough .. .. .	..	..	1,993	..	..	..	..	..	..	..	3	..	..
King Island .. .. .	..	..	461	..	..	..	..	..	..	..	..	..	..
Latrobe .. .. .	..	..	1,877	..	..	..	..	..	..	..	..	..	..
Launceston .. .. .	..	1	13,014	..	..	..	..	..	..	1	..	..	..
Leven .. .. .	..	..	3,015	..	..	..	1	..	..	..	..	..	..
Lilydale .. .. .	..	..	1,463	..	..	..	..	..	..	..	..	..	..
Longford .. .. .	..	..	1,964	..	..	..	..	..	..	..	..	..	..
New Norfolk .. .. .	..	..	3,502	..	..	..	..	..	..	..	..	..	..
Oatlands .. .. .	..	..	1,463	..	..	..	..	..	..	..	1	..	..
Penguin .. .. .	..	..	1,328	..	..	..	..	..	..	..	..	..	..
Port Cygnet .. .. .	..	..	1,309	..	..	..	..	..	..	..	..	..	..
Portland .. .. .	..	..	724	..	1	..	..	..	..	..	2	..	..
Queenstown .. .. .	..	..	1,502	..	..	..	1	..	..	1	..	..	..
Richmond .. .. .	..	..	820	..	..	..	..	..	..	..	..	..	..
Ringarooma .. .. .	..	..	2,145	..	1	..	..	..	..	..	..	..	..
Ross .. .. .	..	..	358	..	..	..	..	..	..	..	..	..	..
St. Leonards .. .. .	..	..	1,875	..	..	..	..	..	..	..	..	..	..
Scottsdale .. .. .	..	..	1,408	..	..	..	..	..	..	..	1	..	..
Sorell .. .. .	..	..	1,018	..	..	..	..	..	..	..	..	..	..
Spring Bay .. .. .	..	..	400	..	..	..	..	..	..	..	..	..	..
Strahan .. .. .	..	..	436	..	..	..	..	..	..	..	..	..	..
Table Cape .. .. .	..	..	2,770	..	..	..	..	..	..	..	..	..	..
Tasman .. .. .	..	..	678	..	..	..	..	..	..	..	..	..	..
Waratah .. .. .	..	..	848	..	..	..	..	..	..	..	..	..	..
Westbury .. .. .	..	..	2,003	..	..	..	..	..	..	..	..	..	..
Zeehan .. .. .	..	..	1,508	..	..	..	1	..	..	..	..	..	..
Total Municipalities .. .. .	..	2	105,885	..	2	..	7	..	..	7	12	..	..
Migratory* .. .. .	..	..	17	..	..	..	..	..	..	..	..	..	..
TOTAL—TASMANIA .. .. .	..	2	105,902	..	2	..	7	..	..	7	12	..	..

\* Mainly persons on ships.

(i.e., Allegiance) of MALES—continued.

Italian.	Japanese.	Jugo-Slavian.	Norwegian.	Polish.	Russian.	Spanish.	Swedish.	Swiss.	Turkish.	U.S.A.	Other.	Not Stated.	Total.	LOCAL GOVERNMENT AREA.
..	..	..	..	..	..	..	..	..	..	..	..	..	507	MUNICIPALITIES—continued.
..	..	..	..	..	..	..	..	..	..	2	..	..	2,910	Strahan
..	..	..	..	..	..	..	..	..	..	..	..	..	830	Table Cape
..	..	1	..	..	..	..	1	..	..	..	..	..	1,071	Tasman
..	..	..	..	..	..	..	..	..	..	..	..	..	1,975	Waratah
..	..	..	..	..	..	..	..	..	..	..	..	..	1,615	Westbury
..	..	..	..	..	..	..	..	..	..	..	..	..	1,615	Zeehan
20	..	2	10	4	4	1	14	7	1	34	18	54	107,108	Total Municipalities
..	1	..	8	..	2	1	10	..	..	..	1	3	635	Migratory
20	1	2	18	4	6	2	24	7	1	34	19	57	107,743	TOTAL—TASMANIA

of FEMALES as recorded at the Census of the 4th April, 1921.

full-blood Aborigines.)

Italian.	Japanese.	Jugo-Slavian.	Norwegian.	Polish.	Russian.	Spanish.	Swedish.	Swiss.	Turkish.	U.S.A.	Other.	Not stated.	Total.	LOCAL GOVERNMENT AREA.
..	..	..	..	..	..	..	..	..	..	..	..	..	1,773	MUNICIPALITIES
..	..	..	..	..	..	..	..	..	..	..	..	..	710	Beaconsfield
..	..	..	..	..	..	..	..	..	..	..	..	..	965	Bothwell
..	..	..	..	..	..	..	..	..	..	..	..	..	323	Brighton
..	..	..	..	..	..	..	..	..	..	..	..	..	773	Bruni
..	..	..	..	..	1	..	1	..	..	..	..	..	2,393	Campbell Town
..	..	..	..	..	..	..	..	..	..	..	..	1	1,765	Circular Head
..	..	..	..	..	..	..	..	..	1	..	..	..	2,838	Clarence
..	..	..	..	..	..	..	..	..	..	..	..	..	3,262	Deloraine
..	..	..	..	..	..	..	..	..	..	..	..	..	2,875	Devonport
..	..	..	..	..	..	..	..	..	1	..	..	..	2,875	Emu Bay
..	..	..	..	..	..	..	..	..	..	..	..	..	1,612	Esperance
..	..	..	..	..	..	..	..	..	..	..	..	..	855	Evandale
..	..	..	..	..	..	..	..	..	..	..	..	..	1,671	Fingal
..	..	..	..	..	..	..	..	..	..	..	..	..	383	Flinders Island
..	..	..	..	..	..	..	..	..	..	..	..	2	538	George Town
..	..	..	..	..	..	..	..	..	..	..	..	..	395	Glamorgan
..	..	..	..	..	..	..	..	..	..	4	..	..	3,155	Glenorchy
3	..	..	..	..	..	..	..	..	..	..	..	..	599	Gormanston
..	..	..	..	..	..	..	..	..	..	..	..	..	582	Green Ponds
..	..	..	..	..	..	..	..	..	..	..	..	1	988	Hamilton
..	..	..	..	..	..	..	..	2	..	2	..	48	23,197	Hobart
..	..	..	..	..	..	..	..	..	..	..	..	6	1,932	Huon
..	..	..	..	..	..	..	..	1	..	..	..	..	2,507	Kentish
..	..	..	..	..	..	..	..	..	..	..	..	..	1,997	Kingborough
..	..	..	..	..	..	..	..	..	..	..	..	..	461	King Island
..	..	..	..	..	..	..	..	..	..	..	..	..	1,877	Latrobe
..	..	..	..	..	..	..	..	..	..	1	3	17	13,037	Launceston
..	..	..	..	..	..	..	..	..	..	..	..	..	3,016	Leven
..	..	..	..	..	..	..	..	..	..	..	..	..	1,463	Lilydale
..	..	..	..	..	..	..	..	..	..	..	..	3	1,964	Longford
..	..	..	..	..	..	..	..	..	..	..	..	..	3,505	New Norfolk
..	..	..	..	..	..	..	..	..	..	..	..	..	1,464	Oatlands
..	..	..	..	..	..	..	..	..	..	..	..	..	1,328	Penguin
..	..	..	..	..	..	..	..	..	..	..	..	1	1,310	Port Cygnet
..	..	..	..	..	..	..	..	..	..	..	..	..	727	Portland
..	..	..	..	..	..	..	..	..	..	3	..	..	1,507	Queenstown
..	..	..	..	..	..	..	..	..	..	..	..	..	820	Richmond
..	..	..	..	..	..	..	..	..	..	..	..	..	2,146	Ringarooma
..	..	..	..	..	..	..	..	..	..	..	..	..	358	Ross
..	..	..	..	..	..	..	..	..	..	..	..	..	1,875	St Leonards
..	..	..	..	..	..	..	..	..	..	..	..	..	1,409	Scottsdale
..	..	..	..	..	..	..	..	..	..	..	..	..	1,018	Sorell
..	..	..	..	..	..	..	..	..	..	..	..	..	400	Spring Bay
..	..	..	..	..	..	..	..	..	..	..	..	..	436	Strahan
..	..	..	..	..	..	..	..	..	..	3	..	..	2,773	Table Cape
..	..	..	..	..	..	..	..	..	..	..	..	..	678	Tasman
..	..	..	..	..	..	..	..	..	..	..	..	..	848	Waratah
..	..	..	..	..	..	..	..	..	..	..	..	..	2,003	Westbury
..	..	..	..	..	..	..	..	..	..	..	..	..	1,509	Zeehan
3	..	..	..	..	1	..	1	3	2	13	3	79	106,020	Total Municipalities
..	..	..	..	..	..	..	..	..	..	..	..	..	17	Migratory
3	..	..	..	..	1	..	1	3	2	13	3	79	106,037	TOTAL—TASMANIA

## 7. TASMANIA.—LENGTH OF RESIDENCE in Australia of MALES

LOCAL GOVERNMENT AREA.	COMPLETE YEARS OF												
	0	1	2	3	4	0-4	5-9	10-14	15-19	20-24	25-29	30-34	35-39
<b>MUNICIPALITIES.</b>													
Beaconsfield .. .. .	22	11	..	1	6	40	45	11	1	3	2	17	27
Bothwell .. .. .	29	4	6	1	..	40	30	15	9	7	6	22	11
Brighton .. .. .	2	1	..	..	1	4	10	3	3	2	3	5	2
Bruni .. .. .	4	1	..	4	1	10	2	9	..	2	1	3	8
Campbell Town .. .. .	1	1	..	..	..	2	3	3	2	3	1	..	..
Circular Head .. .. .	12	13	..	3	2	30	31	16	5	15	7	21	26
Clarence .. .. .	13	5	..	..	..	18	39	19	4	4	11	11	19
Deloraine .. .. .	7	6	1	..	1	15	9	11	7	1	10	11	14
Devonport .. .. .	13	11	1	..	3	28	39	20	6	15	16	32	41
Emu Bay .. .. .	7	3	1	..	13	24	31	19	12	6	12	41	35
Esperance .. .. .	2	2	3	1	1	9	17	8	7	4	6	8	18
Evandale .. .. .	1	1	..	..	..	2	..	2	..	4	2	5	1
Fingal .. .. .	4	1	..	..	1	6	4	3	5	..	4	10	19
Flinders Island .. .. .	2	1	..	..	..	3	10	5	4	1	2	4	2
George Town .. .. .	5	6	1	..	..	12	2	2	2	..	3	6	6
Glamorgan .. .. .	2	1	..	..	..	3	8	..	..	1	2	3	2
Glenorchy .. .. .	32	9	6	2	4	53	70	36	15	13	9	24	34
Gormanston .. .. .	8	2	3	4	8	25	44	12	7	13	7	18	14
Green Ponds .. .. .	6	..	..	..	..	6	1	1	1	..	1	5	1
Hamilton .. .. .	..	..	..	..	1	1	5	4	1	1	3	2	2
Hobart .. .. .	134	56	17	6	17	230	421	233	92	94	94	263	278
Huon .. .. .	9	3	..	..	..	12	18	18	4	1	3	6	12
Kentish .. .. .	6	3	..	..	..	9	9	7	2	4	5	12	13
Kingborough .. .. .	13	11	1	2	1	28	31	21	10	11	5	21	17
King Island .. .. .	2	2	1	..	..	5	28	10	4	4	8	18	8
Latrobe .. .. .	15	6	..	1	1	23	20	3	4	8	7	12	20
Launceston .. .. .	56	24	4	3	7	94	142	64	43	52	48	138	212
Leven .. .. .	20	..	..	..	1	21	11	10	9	7	9	18	21
Lilydale .. .. .	7	5	..	..	1	13	14	8	1	4	6	12	30
Longford .. .. .	4	..	..	..	..	4	6	3	2	2	5	12	13
New Norfolk .. .. .	4	13	2	1	..	20	21	13	9	9	6	21	17
Oatlands .. .. .	5	1	..	1	1	8	4	5	1	..	3	3	6
Penguin .. .. .	2	3	..	..	..	5	4	1	2	..	5	9	14
Port Cygnet .. .. .	8	2	2	..	..	12	15	4	4	4	3	9	4
Portland .. .. .	2	..	..	..	1	3	3	1	2	..	4	16	16
Queenstown .. .. .	2	1	..	..	3	6	39	14	7	10	12	28	25
Richmond .. .. .	7	..	..	..	..	7	5	2	..	1	..	1	2
Ringarooma .. .. .	7	1	..	..	..	8	9	7	7	8	9	27	15
Ross .. .. .	..	1	..	..	1	2	4	..	..	3	1	1	2
St. Leonards .. .. .	12	4	1	3	2	22	26	18	..	5	6	22	25
Scottsdale .. .. .	12	8	..	..	..	20	16	17	3	1	2	21	34
Sorell .. .. .	..	2	..	..	..	2	6	4	1	1	2	1	4
Spring Bay .. .. .	1	..	..	..	..	1	2	3	..	1	..	2	4
Strahan .. .. .	..	..	..	..	..	..	4	9	2	2	2	8	9
Table Cape .. .. .	10	10	1	1	2	24	15	18	9	5	13	34	33
Tasnan .. .. .	13	1	..	..	..	14	16	12	3	..	6	2	13
Waratah .. .. .	4	1	..	..	..	5	16	7	3	2	3	11	24
Westbury .. .. .	9	3	1	..	..	13	7	6	4	4	4	11	17
Zeehan .. .. .	1	..	1	..	..	2	10	10	4	15	14	39	17
Total Municipalities .. .. .	537	240	53	34	80	944	1,322	727	323	353	393	1,026	1,187
Migratory* .. .. .	158	9	3	2	6	178	41	44	18	12	3	11	9
TOTAL—TASMANIA .. .. .	695	249	56	36	86	1,122	1,363	771	341	365	396	1,037	1,196

\* Mainly persons on ships.

## 8. TASMANIA.—LENGTH OF RESIDENCE in Australia of FEMALES

LOCAL GOVERNMENT AREA.	COMPLETE YEARS OF												
	0	1	2	3	4	0-4	5-9	10-14	15-19	20-24	25-29	30-34	35-39
<b>MUNICIPALITIES.</b>													
Beaconsfield .. .. .	16	14	1	1	4	36	41	16	2	..	3	9	23
Bothwell .. .. .	6	2	2	..	..	10	7	..	1	1	2	2	1
Brighton .. .. .	5	3	..	..	1	9	10	..	2	..	3	5	4
Bruni .. .. .	4	2	..	2	..	8	2	5	..	..	1	2	6
Campbell Town .. .. .	..	4	..	..	1	5	3	3	1	1	..	1	2
Circular Head .. .. .	9	11	2	..	2	24	19	9	..	7	7	10	13
Clarence .. .. .	20	9	3	..	..	32	38	12	8	6	6	9	28
Deloraine .. .. .	8	8	1	..	2	19	6	8	4	2	7	4	13
Devonport .. .. .	25	16	2	..	3	46	36	20	3	4	8	28	42
Emu Bay .. .. .	16	19	1	..	..	36	32	15	5	2	6	21	17
Esperance .. .. .	3	9	1	..	..	13	15	5	..	3	1	7	17
Evandale .. .. .	1	2	2	1	..	6	1	2	..	3	3	8	3
Fingal .. .. .	6	2	..	..	..	8	5	6	2	3	1	11	12
Flinders Island .. .. .	1	3	..	..	..	4	8	2	1	..	..	1	2

born outside Australia† as recorded at the Census of the 4th April, 1921.

RESIDENCE IN AUSTRALIA.												Total.	LOCAL GOVERNMENT AREA.				
40-44	45-49	50-54	55-59	60-64	65-69	70-74	75-79	80-84	85-89	90-94	95 and over			Not stated.			
																	MUNICIPALITIES.
13	4	6	2	9	14	..	1	..	..	..	..	14	209	Beaconsfield			
4	4	1	2	5	2	..	..	..	..	..	..	24	182	Bothwell			
2	1	1	2	1	3	..	..	..	..	..	..	1	43	Brighton			
2	4	1	..	1	2	..	..	..	..	..	..	2	47	Bruni			
..	1	..	3	4	2	3	..	..	..	..	..	6	33	Campbell Town			
14	5	2	1	2	10	..	..	1	1	..	..	29	216	Circular Head			
5	3	3	..	5	5	1	..	..	..	..	..	21	168	Clarence			
7	2	4	4	12	23	4	3	..	..	..	..	15	152	Deloraine			
23	13	9	7	14	20	2	4	1	..	..	..	12	302	Devonport			
15	7	6	8	10	10	..	..	1	..	..	..	7	244	Emu Bay			
6	3	5	5	6	9	1	1	..	..	..	..	8	121	Esperance			
1	1	1	1	2	4	1	..	..	..	..	..	2	29	Evandale			
8	8	8	2	4	12	3	..	..	..	..	..	5	101	Fingal			
2	2	2	..	1	..	1	..	..	..	..	..	1	40	Flinders Island			
7	6	2	3	4	4	..	..	1	..	..	..	6	66	George Town			
..	..	1	2	..	3	..	..	..	..	..	..	1	26	Glamorgan			
10	5	15	4	2	10	1	1	..	..	..	..	9	311	Glenorchy			
10	4	5	3	1	1	..	..	..	..	..	..	4	168	Gormanston			
2	..	1	..	3	1	1	..	..	..	1	..	..	25	Green Ponds			
..	1	1	1	2	5	2	..	1	..	..	..	4	36	Hamilton			
109	67	51	37	55	88	22	12	2	1	..	1	160	2,310	Hobart			
5	2	5	2	9	9	1	2	..	..	..	..	14	123	Huon			
6	7	6	2	12	12	..	2	..	..	..	..	4	112	Kentish			
5	5	9	2	2	3	1	2	..	..	..	..	5	178	Kingborough			
5	3	2	..	3	..	..	..	..	..	..	..	1	99	King Island			
7	4	7	3	12	9	2	..	..	1	..	..	10	152	Latrobe			
68	40	32	32	48	45	4	3	3	1	..	..	68	1,137	Launceston			
12	7	4	4	13	13	1	..	2	..	..	..	7	169	Leven			
5	2	1	4	7	11	1	1	..	..	..	..	8	128	Lilydale			
4	3	1	1	11	7	1	2	1	..	..	..	11	89	Longford			
12	3	4	4	5	8	2	1	..	..	..	..	301	456	New Norfolk			
2	5	2	1	3	11	4	..	..	..	..	..	7	65	Oatlands			
4	5	4	3	7	10	1	..	..	..	..	..	4	78	Penguin			
4	7	4	..	2	4	1	..	..	..	..	..	5	82	Port Cygnet			
3	3	7	4	4	3	4	..	2	..	..	..	6	81	Portland			
21	6	7	3	1	1	1	..	..	..	..	..	5	186	Queenstown			
1	1	2	2	4	2	..	..	..	..	..	..	3	33	Richmond			
16	7	7	6	9	10	1	..	..	..	..	..	17	163	Ringarooma			
2	1	..	1	1	1	..	..	..	..	..	..	..	18	Ross			
10	4	6	2	7	7	1	2	..	..	..	..	6	169	St Leonards			
20	3	4	6	7	9	1	1	..	..	..	..	4	169	Scottsdale			
3	2	1	2	3	4	..	..	..	..	..	..	3	39	Sorell			
..	2	1	..	..	2	1	..	..	..	..	..	5	24	Spring Bay			
6	2	1	2	..	3	..	..	..	..	..	..	1	51	Strahan			
12	2	4	6	16	8	2	1	..	..	..	..	10	212	Table Cape			
5	..	1	..	..	2	..	..	..	..	..	..	5	79	Tasman			
7	5	4	3	3	4	..	..	..	..	..	..	2	99	Waratah			
5	1	2	3	15	7	3	..	..	..	1	..	6	109	Westbury			
15	10	4	4	5	9	1	..	..	..	..	..	5	164	Zeehan			
505	283	257	188	352	442	76	39	15	4	2	1	854	9,293	Total Municipalities			
10	3	4	2	1	1	..	..	..	..	..	..	11	348	Migratory			
515	286	261	190	353	443	76	39	15	4	2	1	865	9,641†	TOTAL—TASMANIA			

† Including cases in which birthplace was not stated.

born outside Australia† as recorded at the Census of the 4th April, 1921.

RESIDENCE IN AUSTRALIA.												Total.	LOCAL GOVERNMENT AREA.				
40-44	45-49	50-54	55-59	60-64	65-69	70-74	75-79	80-84	85-89	90-94	95 and over			Not stated.			
																	MUNICIPALITIES.
6	4	2	4	4	12	3	1	..	1	..	..	19	186	Beaconsfield			
1	1	..	4	3	..	..	..	..	..	..	..	1	34	Bothwell			
..	1	..	..	4	4	..	1	1	..	..	..	6	50	Brighton			
2	3	3	..	1	..	..	..	..	..	..	..	..	33	Bruni			
..	..	2	2	5	6	1	..	1	..	..	..	3	36	Campbell Town			
8	..	1	..	6	4	1	1	1	..	..	..	8	119	Circular Head			
6	8	5	..	2	5	3	1	..	..	..	..	18	187	Clarence			
8	1	1	10	14	15	2	2	1	1	..	..	17	135	Deloraine			
12	8	8	7	24	12	3	..	..	1	..	..	20	282	Devonport			
10	2	5	3	4	9	..	2	..	..	..	..	10	179	Emu Bay			
2	3	2	3	2	6	1	..	..	1	..	..	6	87	Esperance			
..	2	..	5	3	4	..	2	..	..	..	..	2	44	Evandale			
..	4	8	3	3	7	..	..	..	..	..	..	4	77	Fingal			
..	..	..	1	..	..	1	..	..	..	..	..	..	20	Flinders Island			

† Including cases in which birthplace was not stated.





born outside Australia†—continued.

RESIDENCE IN AUSTRALIA.													Total.	LOCAL GOVERNMENT AREA.		
40-44	45-49	50-54	55-59	60-64	65-69	70-74	75-79	80-84	85-89	90-94	95 and over	Not stated.				
1	1	1	4	3	1	2	..	1	..	..	..	3	40	George Town		
1	..	..	..	2	2	1	..	..	..	..	..	1	22	Glamorgan		
10	12	11	7	5	16	2	2	..	1	..	..	15	271	Glenorchy		
2	1	1	2	1	..	..	..	..	..	..	..	2	34	Gormanston		
2	..	..	..	3	2	..	..	..	..	..	..	4	22	Green Ponds		
..	..	1	3	2	3	1	..	..	..	..	..	6	34	Hamilton		
81	62	44	50	77	94	34	12	7	5	..	..	243	2,170	Hobart		
3	3	3	..	3	7	1	1	..	..	..	..	17	98	Huon		
3	3	3	1	12	9	1	..	..	..	..	..	8	108	Kentish		
1	4	6	3	2	6	..	..	..	..	..	..	8	175	Kingborough		
..	1	2	..	1	..	1	..	..	..	..	..	..	61	King Island		
2	1	1	5	16	17	1	1	..	..	..	..	9	125	Latrobe		
60	37	26	39	58	70	13	8	2	1	..	..	95	1,142	Launceston		
5	2	3	6	18	12	2	1	..	..	..	..	8	165	Leven		
1	4	3	2	7	12	2	..	..	..	..	..	10	98	Lilydale		
3	..	3	4	11	17	3	1	..	1	..	..	11	103	Longford		
5	9	5	2	5	10	5	..	..	..	..	..	314	457	New Norfolk		
..	3	2	6	3	8	2	2	3	1	..	..	10	65	Oatlands		
3	2	1	3	3	5	..	1	..	..	..	..	4	57	Penguin		
1	3	1	3	..	8	2	..	..	..	..	..	5	78	Port Cygnet		
5	1	1	2	3	..	1	..	..	..	..	..	1	45	Portland		
3	4	2	2	3	1	..	..	..	..	..	..	9	93	Queenstown		
3	1	1	1	1	3	2	1	..	..	..	..	5	38	Richmond		
5	3	2	4	2	4	..	1	..	..	..	..	8	78	Ringarooma		
1	1	..	..	..	3	..	1	1	..	..	..	1	17	Ross		
6	7	5	6	6	7	2	..	1	..	..	..	9	180	St Leonards		
8	5	..	1	5	5	1	1	1	..	..	..	6	133	Scottsdale		
2	2	..	..	3	5	..	..	..	..	..	..	1	36	Sorell		
2	..	1	..	..	2	..	2	1	..	..	..	2	23	Spring Bay		
..	1	2	..	..	1	..	..	..	..	..	..	3	21	Strahan		
2	3	4	6	6	8	..	..	..	..	..	..	16	159	Table Cape		
..	..	..	1	1	1	..	..	..	..	..	..	4	60	Tasman		
2	2	1	6	1	1	1	..	..	..	..	..	1	41	Waratah		
3	1	..	6	7	15	4	2	1	..	..	..	10	91	Westbury		
5	5	..	1	1	2	2	1	..	..	..	..	2	78	Zeehan		
286	221	173	215	346	441	101	48	22	13	..	..	965	7,887	Total Municipalities		
..	..	..	..	..	..	..	..	..	..	..	..	..	7	Migratory		
286	221	173	215	346	441	101	48	22	13	..	..	965	7,894†	TOTAL—TASMANIA		

† Including cases in which birthplace was not stated.

as recorded at the Census of the 4th April, 1921.

full-blood Aborigines.)

HALF-CASTE.											GRAND TOTAL.	LOCAL GOVERNMENT AREA.
Australian Aboriginal.	Chinese.	Hindu.	Japanese.	Malay.	Negro.	Polynesian.	Syrian.	Other.	Total Half-caste.			
..	..	..	..	..	..	..	..	..	..	..	1,753	Beaconsfield
..	..	..	..	..	..	..	..	..	..	..	1,889	Bothwell
..	..	..	..	..	..	..	..	..	..	..	1,067	Brighton
..	..	..	..	..	..	..	..	..	..	..	319	Bruni
..	..	..	..	..	..	..	..	..	..	..	776	Campbell Town
..	..	..	..	..	..	..	..	..	..	..	3,074	Circular Head
..	..	..	..	..	..	..	..	..	..	..	1,590	Clarence
..	..	..	..	..	..	..	..	..	..	..	3,066	Deloraine
..	..	2	..	..	..	..	..	..	..	2	2,906	Devonport
..	..	..	..	..	..	..	..	..	..	..	2,976	Emu Bay
..	..	..	..	..	..	..	..	..	..	..	1,784	Esperance
..	..	..	..	..	..	..	..	..	..	..	822	Evandale
..	..	..	..	..	..	..	..	..	..	..	1,733	Fingal
82	..	..	..	..	..	..	..	..	..	82	522	Flinders Island
..	2	..	..	..	..	..	..	..	..	2	500	George Town
..	..	..	..	..	..	..	..	..	..	..	410	Glamorgan
..	..	1	..	..	..	..	..	..	..	1	3,189	Glenorchy
..	..	..	..	..	..	..	..	..	..	..	990	Gormanston
..	..	..	..	..	..	..	..	..	..	..	606	Green Ponds
..	..	..	..	..	..	..	..	..	..	..	1,095	Hamilton
..	2	..	..	..	..	1	..	..	..	3	20,392	Hobart
..	..	..	..	..	..	..	..	..	..	..	2,079	Huon
..	..	..	..	..	..	..	..	..	..	..	2,788	Kentish
..	..	..	..	..	..	..	..	..	..	..	1,945	Kingborough
..	..	..	..	..	..	..	..	..	..	..	579	King Island



according to RACE—continued.

HALF-CASTE.										GRAND TOTAL.	LOCAL GOVERNMENT AREA.
Australian Aboriginal.	Chinese.	Hindu.	Japanese.	Malay.	Negro.	Polynesian.	Syrian.	Other.	Total Half-caste.		
1	12	..	..	..	..	..	1	..	14	1,918	Latrobe
..	2	..	..	..	..	..	..	..	2	11,268	Launceston
..	..	..	..	..	..	..	..	..	..	3,072	Leven
..	..	6	..	..	..	..	..	..	6	1,549	Lilydale
..	..	..	..	..	..	..	..	..	..	1,928	Longford
..	..	..	..	..	..	..	..	..	..	3,661	New Norfolk
..	..	..	..	..	..	..	..	..	..	1,619	Oatlands
..	..	..	..	..	..	..	..	..	..	1,493	Penguin
..	5	..	..	..	..	..	..	..	5	1,404	Port Cygnet
..	1	..	..	..	..	..	..	..	1	889	Portland
..	7	..	..	..	..	..	..	..	7	1,699	Queenstown
..	..	..	..	..	..	..	..	..	..	971	Richmond
..	3	..	..	..	..	..	..	..	3	2,501	Ringarooma
..	..	..	..	..	..	..	..	..	..	404	Ross
..	..	..	..	..	..	1	..	..	3	1,825	St. Leonards
..	..	2	..	..	..	..	..	..	2	1,496	Scottsdale
..	..	..	..	..	..	..	..	..	..	1,179	Sorell
..	..	..	..	..	..	..	..	..	..	474	Spring Bay
..	..	..	..	..	..	..	..	..	..	507	Strahan
..	..	..	..	..	..	..	..	..	..	2,910	Table Cape
..	..	..	..	..	..	..	..	..	..	830	Tasman
..	..	..	..	..	..	..	..	..	..	1,071	Waratah
..	..	..	..	..	..	..	..	..	..	1,975	Westbury
..	..	..	..	..	..	..	..	..	..	1,615	Zeehan
83	36	9	..	..	..	2	1	..	131	107,108	Total Municipalities
..	..	..	..	..	..	..	..	..	..	635	Migratory
83	36	9	..	..	..	2	1	..	131	107,743	TOTAL—TASMANIA

as recorded at the Census of the 4th April, 1921.  
full-blood Aboriginals.)

HALF-CASTE.										GRAND TOTAL.	LOCAL GOVERNMENT AREA.
Australian Aboriginal.	Chinese.	Hindu.	Japanese.	Malay.	Negro.	Polynesian.	Syrian.	Other.	Total Half-caste.		
..	..	..	..	..	..	..	..	..	..	1,773	Beaconsfield
..	..	..	..	..	..	..	..	..	..	710	Bothwell
..	..	..	..	..	..	..	..	..	..	965	Brighton
..	..	..	..	..	..	..	..	..	..	323	Bruni
..	..	..	..	..	..	..	..	..	..	773	Campbell Town
..	..	..	..	..	..	..	..	..	..	2,393	Circular Head
..	2	..	..	..	..	..	..	..	2	1,765	Clarence
..	1	..	..	..	..	..	..	..	1	2,838	Deloraine
..	..	..	..	..	..	..	..	..	..	3,262	Devonport
..	..	..	..	..	..	..	..	..	..	2,875	Emu Bay
..	..	..	..	..	..	..	..	..	..	1,612	Esperance
..	..	..	..	..	..	..	..	..	..	855	Evandale
68	1	..	..	..	..	..	..	..	1	1,671	Fingal
..	2	..	..	..	..	..	..	..	68	383	Flinders Island
..	..	..	..	..	..	..	..	..	2	538	George Town
..	..	..	..	..	..	..	..	..	..	395	Glamorgan
..	..	..	..	..	..	..	..	..	..	3,155	Glenorchy
..	..	..	..	..	..	..	..	..	..	599	Gormanston
..	..	..	..	..	..	..	..	..	..	582	Green Ponds
..	..	..	..	..	..	..	..	..	..	988	Hamilton
..	3	..	..	..	..	..	..	..	3	23,197	Hobart
..	..	..	..	..	..	..	..	..	..	1,932	Huon
..	..	..	..	..	..	..	..	..	..	2,507	Kentish
1	..	..	..	..	..	..	..	..	1	1,997	Kingborough
..	..	..	..	..	..	..	..	..	..	461	King Island
..	..	..	..	..	..	..	..	..	..	1,877	Latrobe
..	5	..	2	..	..	..	..	..	7	13,037	Launceston
..	1	..	..	..	..	..	..	..	1	3,016	Leven
..	..	..	..	..	..	..	..	..	..	1,463	Lilydale
..	..	2	..	..	..	..	..	..	2	1,964	Longford
..	..	..	..	..	..	..	..	..	..	3,505	New Norfolk
..	..	..	..	..	..	..	..	..	..	1,464	Oatlands
..	..	..	..	..	..	..	..	..	..	1,328	Penguin
..	1	..	..	..	..	..	..	..	1	1,310	Port Cygnet

10. TASMANIA.—FEMALES

LOCAL GOVERNMENT AREA.	European Race.	NON-EUROPEAN RACE—FULL BLOOD.										Total Full Blood.
		Afghan.	Chinese.	Chingalese.	Hindu.	Japanese.	Malay.	Negro.	Polynesian.	Syrian.	Other.	
<b>MUNICIPALITIES—continued.</b>												
Portland .. .. .	722	..	3	..	..	..	..	..	..	..	..	3
Queenstown .. .. .	1,500	..	..	..	..	..	..	..	..	6	..	6
Richmond .. .. .	820	..	..	..	..	..	..	..	..	..	..	..
Ringarooma .. .. .	2,137	..	6	..	..	..	..	..	..	..	..	6
Ross .. .. .	358	..	..	..	..	..	..	..	..	..	..	..
St. Leonards .. .. .	1,874	..	..	..	..	..	..	..	..	..	..	..
Scottsdale .. .. .	1,408	..	..	..	..	..	..	..	..	..	..	..
Sorell .. .. .	1,014	..	..	..	..	..	..	..	..	..	..	..
Spring Bay .. .. .	400	..	..	..	..	..	..	..	..	..	..	..
Strahan .. .. .	436	..	..	..	..	..	..	..	..	..	..	..
Table Cape .. .. .	2,773	..	..	..	..	..	..	..	..	..	..	..
Tasman .. .. .	678	..	..	..	..	..	..	..	..	..	..	..
Waratah .. .. .	848	..	..	..	..	..	..	..	..	..	..	..
Westbury .. .. .	2,003	..	..	..	..	..	..	..	..	..	..	..
Zeehan .. .. .	1,509	..	..	..	..	..	..	..	..	..	..	..
Total Municipalities .. .. .	105,884	..	15	..	..	..	..	..	..	20	..	35
Migratory* .. .. .	17	..	..	..	..	..	..	..	..	..	..	..
TOTAL—TASMANIA .. .. .	105,901	..	15	..	..	..	..	..	..	20	..	35

\* Mainly persons on ships.

11. TASMANIA.—RELIGIONS of MALES

(Exclusive of

LOCAL GOVERNMENT AREA.	CHRISTIAN.												
	Baptist.	Catholic, Roman.	Catholic, Undefined.	Church of Christ.	Church of England.	Congregational, Independent.	Lutheran.	Methodist.	Presbyterian.	Protestant, Undefined.	Salvation Army.	Seventh Day Adventist.	Unitarian.
<b>MUNICIPALITIES.</b>													
Beaconsfield .. .. .	17	146	12	3	837	8	..	351	272	21	33	2	..
Bothwell .. .. .	8	344	49	2	1,124	11	..	82	165	30	6	2	..
Brighton .. .. .	7	171	16	..	714	61	..	29	41	10	..	4	..
Bruni .. .. .	..	55	..	4	212	1	1	5	13	2	..	5	..
Campbell Town .. .. .	6	70	5	..	480	1	..	78	125	2	..	1	..
Circular Head .. .. .	54	571	37	10	1,488	6	2	200	273	41	12	9	..
Clarence .. .. .	8	143	22	1	1,074	120	..	59	56	32	1	..	..
Deloraine .. .. .	118	554	21	28	1,527	3	1	482	151	17	14	1	..
Devonport .. .. .	170	341	36	6	1,209	209	..	507	218	40	39	10	..
Emu Bay .. .. .	117	403	32	8	1,328	7	1	553	172	57	20	16	..
Esperance .. .. .	9	333	20	130	771	345	..	37	27	23	10	10	..
Evandale .. .. .	12	72	10	..	457	1	..	48	195	5	..	..	..
Fingal .. .. .	4	353	39	..	996	7	2	121	157	7	..	7	..
Flinders Island .. .. .	6	47	..	..	375	..	1	17	36	8	..	1	..
George Town .. .. .	4	35	..	..	338	1	..	90	17	3	..	..	..
Glamorgan .. .. .	3	31	4	2	264	1	1	3	85	..	..	5	..
Glenorchy .. .. .	79	378	50	18	1,794	55	1	379	194	38	21	58	1
Gormanston .. .. .	9	320	8	..	444	..	3	64	93	3	1	..	..
Green Ponds .. .. .	2	115	..	..	407	21	..	10	35	1	..	..	..
Hamilton .. .. .	..	216	9	..	790	3	..	18	23	8	3	2	..
Hobart .. .. .	302	3,253	328	163	11,687	441	15	1,672	1,296	288	91	46	10
Huon .. .. .	11	299	13	3	907	223	..	377	29	30	31	33	..
Kentish .. .. .	284	376	15	4	1,043	19	1	630	151	26	14	..	1
Kingborough .. .. .	17	277	9	14	1,216	39	5	251	52	12	1	6	1
King Island .. .. .	12	57	1	4	291	1	1	122	64	2	..	..	..
Latrobe .. .. .	152	257	40	8	924	35	..	365	56	18	12	3	..
Launceston .. .. .	355	1,754	89	80	5,590	172	9	1,552	1,045	157	106	9	3
Leven .. .. .	96	413	15	56	1,329	27	1	717	235	24	24	..	..
Lilydale .. .. .	15	233	13	..	663	1	1	341	187	22	21	4	..
Longford .. .. .	182	97	13	6	1,091	6	..	371	95	12	3	10	..
New Norfolk .. .. .	10	648	62	6	2,262	28	3	380	73	26	18	17	3
Oatlands .. .. .	4	381	15	1	892	6	..	20	262	3	1	..	..
Penguin .. .. .	33	186	19	17	597	9	3	502	64	9	4	7	1
Port Cygnet .. .. .	4	499	26	4	622	46	..	134	28	4	1	..	..
Portland .. .. .	4	99	7	..	658	1	2	43	24	14	..	..	..
Queenstown .. .. .	7	410	16	..	834	1	6	156	179	1	19	..	1
Richmond .. .. .	..	228	14	..	624	27	..	11	38	11	..	..	..
Ringarooma .. .. .	4	311	43	1	1,448	2	3	248	297	20	11	..	1
Ross .. .. .	2	30	..	1	273	..	..	66	25	3	..	..	..
St. Leonards .. .. .	30	207	14	17	1,074	11	1	249	117	25	8	..	2
Scottsdale .. .. .	6	100	3	4	731	7	..	227	249	33	31	3	..
Sorell .. .. .	6	83	2	121	777	56	..	17	70	3	..	6	..
Spring Bay .. .. .	1	49	4	6	363	7	..	12	13	6	4	..	..
Strahan .. .. .	3	93	5	..	283	..	1	63	31	6	1	..	..

according to RACE—continued.

Australian Aboriginal.	HALF-CASTE.									GRAND TOTAL.	LOCAL GOVERNMENT AREA.
	Chinese.	Hindu.	Japanese.	Malay.	Negro.	Polynesian.	Syrian.	Other.	Total Half-caste.		
..	2	..	..	..	..	..	..	..	2	727	Portland
..	..	..	..	..	..	..	1	..	1	1,507	Queenstown
..	3	..	..	..	..	..	..	..	3	820	Richmond
..	..	..	..	..	..	..	..	..	..	2,146	Ringarooma
..	1	..	..	..	..	..	..	..	1	358	Ross
..	1	..	..	..	..	..	..	..	1	1,875	St Leonards
..	..	4	..	..	..	..	..	..	4	1,409	Scottsdale
..	..	..	..	..	..	..	..	..	..	1,018	Sorell
..	..	..	..	..	..	..	..	..	..	400	Spring Bay
..	..	..	..	..	..	..	..	..	..	436	Strahan
..	..	..	..	..	..	..	..	..	..	2,773	Table Cape
..	..	..	..	..	..	..	..	..	..	678	Tasman
..	..	..	..	..	..	..	..	..	..	848	Waratah
..	..	..	..	..	..	..	..	..	..	2,003	Westbury
..	..	..	..	..	..	..	..	..	..	1,509	Zeehan
69	23	6	2	..	..	..	1	..	101	106,020	Total Municipalities
..	..	..	..	..	..	..	..	..	..	17	Migratory
69	23	6	2	..	..	..	1	..	101	106,037	TOTAL—TASMANIA

MUNICIPALITIES—continued.

Total Municipalities Migratory

TOTAL—TASMANIA

as recorded at the Census of the 4th April, 1991.

full-blood Aboriginals.)

CHRISTIAN.			NON-CHRISTIAN.							Indefinite.	No Religion.	Object to state.	No Reply.	Grand Total.	LOCAL GOVERNMENT AREA.
Other Christian.	Christian, Undefined.	Total Christian.	Buddhist.	Chinese.	Confucian.	Hebrew.	Moham-medan.	Others, Non-Christian.	Total Non-Christian.						
14	1	1,717	1	..	..	..	..	1	2	3	5	16	10	1,753	Beaconsfield
3	1	1,827	..	..	..	..	1	1	2	11	6	7	36	1,889	Bothwell
3	..	1,056	..	..	..	..	..	..	..	1	1	4	6	1,067	Brighton
13	1	312	..	..	..	..	..	..	..	2	..	4	1	319	Bruni
1	..	769	..	..	..	..	..	..	..	..	..	3	4	776	Campbell Town
165	20	2,888	..	..	..	..	..	1	1	19	17	105	44	3,074	Circular Head
16	7	1,539	..	..	..	..	..	..	..	5	6	13	27	1,590	Clarence
34	7	2,958	..	..	..	..	..	..	..	16	6	51	35	3,066	Deloraine
27	9	2,821	..	..	10	..	..	..	10	6	6	34	29	2,906	Devonport
56	3	2,773	..	..	15	1	..	..	16	14	13	130	30	2,976	Emu Bay
11	2	1,728	..	..	..	..	..	..	..	11	10	22	13	1,784	Esperance
4	..	804	..	..	..	..	..	2	2	1	1	4	10	822	Evandale
7	4	1,704	..	..	..	..	..	1	1	5	1	14	8	1,733	Fingal
4	..	495	..	..	..	..	..	..	..	5	5	17	5	522	Flinders Island
1	1	490	..	..	..	1	..	..	1	1	1	3	4	500	George Town
2	1	402	..	..	..	..	..	..	..	..	..	4	4	410	Glamorgan
41	2	3,109	..	..	4	1	..	..	5	6	10	37	22	3,189	Glenorchy
6	..	951	..	..	..	..	..	..	..	5	6	20	8	990	Gormanston
3	..	594	..	..	..	..	..	..	..	1	5	6	6	606	Green Ponds
2	..	1,074	..	..	..	..	1	..	1	3	1	2	14	1,095	Hamilton
193	22	19,807	..	2	18	50	1	3	74	71	86	154	200	20,392	Hobart
18	1	1,975	..	..	..	..	1	..	1	13	5	48	37	2,079	Huon
96	2	2,662	..	..	..	..	..	..	..	21	4	83	18	2,788	Kentish
3	3	1,906	..	..	..	..	..	..	..	8	4	19	8	1,945	Kingborough
4	..	559	..	..	..	..	..	1	1	1	4	11	3	579	King Island
11	6	1,887	..	..	..	1	5	..	6	4	3	8	10	1,918	Latrobe
75	8	11,004	..	2	4	11	4	6	27	38	28	96	75	11,268	Launceston
10	13	2,960	..	..	..	..	..	..	..	11	6	67	28	3,072	Leven
10	1	1,512	..	..	..	1	..	1	2	6	..	20	9	1,549	Lilydale
3	4	1,893	..	..	..	..	..	..	..	3	3	15	14	1,928	Longford
18	16	3,570	..	..	2	1	..	..	3	8	9	29	42	3,661	New Norfolk
12	1	1,598	..	..	..	..	..	..	..	1	..	10	10	1,619	Oatlands
8	3	1,462	..	..	..	..	..	..	..	3	2	21	5	1,493	Penguin
2	..	1,370	..	..	..	..	..	..	..	8	5	8	13	1,404	Port Cygnet
6	2	860	..	1	..	..	..	..	..	6	6	5	17	889	Portland
16	4	1,650	..	..	..	..	..	..	..	4	3	32	10	1,699	Queenstown
3	5	961	..	..	..	..	..	..	..	..	..	6	4	971	Richmond
16	5	2,410	..	..	..	..	..	..	..	6	5	45	35	2,501	Ringarooma
2	..	402	..	..	..	..	..	..	..	..	..	..	2	404	Ross
11	17	1,783	..	4	1	..	..	2	7	2	1	17	15	1,825	St. Leonards
40	6	1,440	..	..	..	..	..	..	..	1	3	38	14	1,496	Scottsdale
2	4	1,147	..	..	..	..	1	..	1	4	3	18	6	1,179	Sorell
..	..	465	..	..	..	..	..	..	..	1	1	1	6	474	Spring Bay
4	..	490	..	..	..	..	..	..	..	2	1	4	10	507	Strahan

## 11. TASMANIA.—RELIGIONS

LOCAL GOVERNMENT AREA.	CHRISTIAN.												
	Baptist.	Catholic, Roman.	Catholic, Undefined.	Church of Christ.	Church of England.	Congregational, Independent.	Lutheran.	Methodist.	Presbyterian.	Protestant, Undefined.	Salvation Army.	Seventh Day Adventist.	Unitarian.
<b>MUNICIPALITIES—continued.</b>													
Table Cape .. .. .	196	397	29	7	1,295	8	..	595	67	41	9	2	1
Tasman .. .. .	2	53	3	144	457	80	2	17	18	3	3	13	..
Waratah .. .. .	12	212	10	..	515	..	3	136	80	19	42	1	..
Westbury .. .. .	66	292	9	2	920	3	1	532	94	23	..	1	..
Zeehan .. .. .	2	426	15	7	787	8	5	211	105	4	7	..	..
Total Municipalities .. .. .	2,451	16,418	1,202	888	56,782	2,125	76	13,150	7,392	1,193	622	294	25
Migratory* .. .. .	7	89	10	3	331	8	22	25	46	35	..	..	..
<b>TOTAL—TASMANIA</b> .. .. .	<b>2,458</b>	<b>16,507</b>	<b>1,212</b>	<b>891</b>	<b>57,113</b>	<b>2,133</b>	<b>98</b>	<b>13,175</b>	<b>7,438</b>	<b>1,228</b>	<b>622</b>	<b>294</b>	<b>25</b>

\* Mainly persons on ships.

## 12. TASMANIA.—RELIGIONS of FEMALES

(Exclusive of

LOCAL GOVERNMENT AREA.	CHRISTIAN.												
	Baptist.	Catholic, Roman.	Catholic, Undefined.	Church of Christ.	Church of England.	Congregational, Independent.	Lutheran.	Methodist.	Presbyterian.	Protestant, Undefined.	Salvation Army.	Seventh Day Adventist.	Unitarian.
<b>MUNICIPALITIES.</b>													
Beaconsfield .. .. .	21	174	16	3	849	9	..	353	242	23	35	2	..
Bothwell .. .. .	6	105	3	..	499	3	..	14	71	4	..	..	..
Brighton .. .. .	1	154	19	3	628	61	..	30	34	9	..	4	..
Bruni .. .. .	2	54	1	4	220	2	1	9	7	..	..	3	..
Campbell Town .. .. .	2	89	2	..	451	1	..	72	150	1	..	2	..
Circular Head .. .. .	48	398	28	11	1,196	9	..	153	213	28	6	19	..
Clarence .. .. .	14	162	13	2	1,158	147	..	81	98	25	2	2	..
Deloraine .. .. .	124	515	16	34	1,418	8	..	458	134	10	22	1	..
Devonport .. .. .	210	379	34	6	1,314	223	..	623	263	40	58	14	..
Emu Bay .. .. .	151	388	22	16	1,208	5	..	594	172	64	26	17	..
Esperance .. .. .	9	283	15	155	659	346	..	37	25	17	18	8	..
Evandale .. .. .	18	78	5	..	475	..	..	56	191	6	1	..	..
Fingal .. .. .	4	344	37	..	964	3	1	133	141	3	..	10	..
Flinders Island .. .. .	2	38	..	..	305	..	..	10	13	2	..	2	..
George Town .. .. .	6	38	..	..	352	5	1	101	22	4	2	..	..
Glamorgan .. .. .	2	27	4	2	245	..	..	2	99	..	..	8	..
Glenorchy .. .. .	75	394	49	28	1,678	85	1	426	214	44	16	59	..
Gormanston .. .. .	9	190	7	..	285	..	..	59	35	1	3	..	..
Green Ponds .. .. .	4	114	..	..	380	19	..	5	47	4	..	..	..
Hamilton .. .. .	2	200	4	2	724	4	..	15	15	8	2	..	..
Hobart .. .. .	433	3,966	335	255	12,959	602	8	2,045	1,473	290	118	74	6
Huon .. .. .	12	287	7	5	835	204	..	364	23	21	30	45	..
Kentish .. .. .	271	342	15	5	883	14	..	594	149	26	12	2	..
Kingborough .. .. .	23	252	17	25	1,266	49	1	247	57	12	..	11	..
King Island .. .. .	8	58	..	2	250	..	..	91	44	..	..	..	..
Latrobe .. .. .	137	286	51	12	888	31	..	367	38	19	12	4	..
Launceston .. .. .	484	2,080	119	101	6,264	224	..	1,961	1,176	149	133	19	..
Leven .. .. .	116	363	15	79	1,294	32	..	745	215	24	38	4	..
Lilydale .. .. .	18	203	12	..	639	1	..	333	184	14	17	2	..
Longford .. .. .	225	109	15	3	1,043	7	..	402	103	13	3	14	..
New Norfolk .. .. .	21	662	76	3	2,112	30	..	357	86	26	22	26	1
Oatlands .. .. .	2	342	16	3	807	7	..	15	241	6	1	..	..
Penguin .. .. .	36	145	13	17	502	9	..	491	59	8	5	7	..
Port Cygnet .. .. .	5	480	21	4	578	50	..	107	28	3	..	2	..
Portland .. .. .	8	95	6	1	528	3	..	44	22	7	..	..	..
Queenstown .. .. .	7	404	14	1	724	4	..	142	168	1	15	..	..
Richmond .. .. .	1	209	14	..	519	26	..	14	23	3	..	..	..
Ringarooma .. .. .	4	297	27	1	1,236	3	..	232	262	17	14	..	1
Ross .. .. .	..	30	3	..	241	2	..	62	14	..	..	..	..
St. Leonards .. .. .	44	248	15	16	1,035	9	..	291	124	23	8	..	..
Scottsdale .. .. .	14	93	1	3	704	3	..	229	224	22	35	7	..
Sorell .. .. .	2	74	5	102	667	45	..	25	75	2	..	7	..
Spring Bay .. .. .	1	34	2	5	319	12	..	6	12	5	2	..	..
Strahan .. .. .	5	71	7	..	251	..	..	63	24	4	..	..	..
Table Cape .. .. .	196	408	21	7	1,188	9	..	583	81	33	7	7	..
Tasman .. .. .	4	47	..	122	365	91	..	10	9	..	3	11	..
Waratah .. .. .	12	172	14	..	393	..	..	135	57	5	47	..	..
Westbury .. .. .	71	315	18	1	878	5	..	581	106	14	..	..	..
Zeehan .. .. .	2	402	12	5	728	8	..	227	92	2	13	..	..
Total Municipalities .. .. .	2,872	16,598	1,146	1,044	55,104	2,410	13	13,994	7,355	1,043	735	393	8
Migratory* .. .. .	2	1	1	..	5	..	..	2	3	..	..	..	..
<b>TOTAL—TASMANIA</b> .. .. .	<b>2,874</b>	<b>16,599</b>	<b>1,147</b>	<b>1,044</b>	<b>55,109</b>	<b>2,410</b>	<b>13</b>	<b>13,996</b>	<b>7,358</b>	<b>1,043</b>	<b>735</b>	<b>393</b>	<b>8</b>

\* Mainly persons on ships.

of MALES—continued.

CHRISTIAN.			NON-CHRISTIAN.							Indefinite.	No Religion.	Object to state.	No Reply.	Grand Total.	LOCAL GOVERNMENT AREA.
Other Christian.	Christian, Undenied.	Total Christian.	Buddhist.	Chinese.	Confucian.	Hebrew.	Moham- medan.	Others, Non- Christian.	Total Non- Christian.						
134	10	2,791	..	..	..	..	..	2	2	7	17	58	35	2,910	Table Cape
1	1	797	..	..	..	1	..	..	1	4	5	17	6	830	Tasman
6	4	1,040	..	..	..	..	..	..	..	5	5	16	5	1,071	Waratah
..	..	1,943	..	..	..	..	..	..	..	3	..	11	18	1,975	Westbury
2	1	1,580	..	..	..	..	..	..	..	1	2	25	7	1,615	Zeehan
1,119	198	103,935	5	5	54	68	14	21	167	344	307	1,377	978	107,108	Total Municipalities
11	..	587	..	..	..	..	2	1	3	5	15	8	17	635	Migratory
1,130	198	104,522	5	5	54	68	16	22	170	349	322	1,385	995	107,743	TOTAL—TASMANIA

as recorded at the Census of the 4th April, 1921.

full-blood Aborigines.)

CHRISTIAN.			NON-CHRISTIAN.							Indefinite.	No Religion.	Object to state.	No Reply.	Grand Total.	LOCAL GOVERNMENT AREA.
Other Christian.	Christian, Undenied.	Total Christian.	Buddhist.	Chinese.	Confucian.	Hebrew.	Moham- medan.	Others, Non- Christian.	Total Non- Christian.						
20	2	1,749	..	..	..	..	..	1	1	..	..	11	12	1,773	Beaconsfield
2	..	707	..	..	..	..	..	1	1	..	..	2	..	710	Bothwell
11	..	954	..	..	..	..	..	..	..	..	..	9	2	965	Brighton
12	..	316	..	..	..	..	..	..	..	2	..	3	2	323	Bruni
2	..	772	..	..	..	..	..	..	..	..	..	..	1	773	Campbell Town
148	16	2,273	..	..	..	..	..	..	..	19	12	73	16	2,393	Circular Head
24	2	1,730	..	..	..	..	..	..	..	5	2	7	21	1,765	Clarence
25	3	2,768	..	..	..	..	..	..	..	10	..	38	22	2,838	Deloraine
37	7	3,208	..	..	..	..	..	..	..	2	2	30	20	3,262	Devonport
87	2	2,752	..	..	..	..	..	..	..	9	2	93	19	2,875	Emu Bay
11	3	1,586	..	..	..	..	..	..	..	1	2	15	8	1,612	Esperance
2	3	835	..	..	..	2	..	2	4	3	..	4	9	855	Evandale
3	5	1,648	..	..	..	..	..	..	..	3	1	14	5	1,671	Fingal
4	..	376	..	..	..	..	..	..	..	..	1	3	3	383	Flinders Island
2	..	533	..	..	..	..	..	..	..	..	..	3	2	538	George Town
2	..	391	..	..	..	..	..	..	..	..	..	2	2	395	Glamorgan
43	5	3,117	..	..	..	..	..	..	..	..	1	25	12	3,155	Glenorchy
3	..	592	..	..	..	..	..	..	..	..	..	7	..	599	Gormanston
2	..	575	..	..	..	..	..	..	..	..	..	1	6	582	Green Ponds
..	..	976	..	..	..	..	..	..	..	..	..	2	10	988	Hamilton
234	19	22,817	..	..	..	47	..	5	52	25	24	102	177	23,197	Hobart
11	..	1,853	..	..	..	..	..	..	..	7	5	30	37	1,932	Huon
102	4	2,419	..	..	..	..	..	..	..	17	..	53	18	2,507	Kentish
12	5	1,977	..	..	..	..	..	1	1	2	..	11	6	1,997	Kingborough
2	..	455	..	..	..	..	..	..	..	..	1	4	1	461	King Island
13	3	1,861	..	..	..	..	..	..	..	1	..	6	9	1,877	Latrobe
148	15	12,873	..	..	..	3	1	3	7	27	10	61	59	13,037	Launceston
6	10	2,941	..	..	..	..	..	..	..	3	..	52	20	3,016	Leven
9	1	1,433	..	..	..	..	..	..	..	3	..	15	12	1,463	Lilydale
6	5	1,948	..	..	..	..	..	..	..	2	..	7	7	1,964	Longford
19	8	3,449	..	..	..	..	..	..	..	2	..	26	28	3,505	New Norfolk
8	3	1,451	..	..	..	..	..	1	1	..	..	5	7	1,464	Oatlands
5	3	1,300	..	..	..	..	..	..	..	1	2	24	1	1,328	Penguin
5	..	1,283	..	..	..	..	..	..	..	9	3	6	9	1,310	Port Cygnet
3	..	717	..	..	..	..	..	..	..	1	..	4	5	727	Portland
9	2	1,491	..	..	..	..	..	..	..	..	1	10	5	1,507	Queenstown
1	6	816	..	..	..	..	..	..	..	..	..	2	2	820	Richmond
7	9	2,110	..	..	..	..	..	..	..	2	1	8	25	2,146	Ringarooma
..	..	352	..	..	..	..	..	..	..	..	..	5	1	358	Ross
18	17	1,848	6	..	..	..	..	1	7	..	..	15	5	1,875	St. Leonards
42	2	1,379	..	..	..	..	..	..	..	1	..	26	3	1,409	Scottsdale
3	1	1,008	..	..	..	..	..	..	..	..	..	7	3	1,018	Sorell
..	1	399	..	..	..	..	..	..	..	..	..	..	1	400	Spring Bay
3	1	429	..	..	..	..	..	..	..	1	..	3	3	436	Strahan
146	15	2,701	..	..	..	..	..	..	..	6	7	44	15	2,773	Table Cape
1	1	664	..	..	..	1	..	..	1	..	..	13	..	678	Tasman
..	1	836	..	..	..	..	..	..	..	4	..	4	4	848	Waratah
1	..	1,990	..	..	..	..	..	..	..	1	..	5	7	2,003	Westbury
2	1	1,494	..	..	..	..	..	..	..	..	..	12	3	1,509	Zeehan
1,256	181	104,152	6	..	..	53	1	15	75	169	77	902	645	106,020	Total Municipalities
..	1	15	..	..	..	..	..	..	..	2	..	..	..	17	Migratory
1,256	182	104,167	6	..	..	53	1	15	75	171	77	902	645	106,037	TOTAL—TASMANIA

## 13. TASMANIA.—EDUCATION of MALES as recorded at the Census of the 4th April, 1921.

(Exclusive of full-blood Aboriginals.)

LOCAL GOVERNMENT AREA.	CANNOT READ.			ENGLISH LANGUAGE.		FOREIGN LANGUAGE ONLY.		Not Stated.	TOTAL.
	Under 5 years of age.	Aged 5 years and over, and age not stated.	Total.	Read only.	Read and Write.	Read only.	Read and Write.		
MUNICIPALITIES.									
Beaconsfield .. .. .	213	99	312	2	1,401	..	..	38	1,753
Bothwell .. .. .	100	157	257	7	1,571	..	..	54	1,889
Brighton .. .. .	146	69	215	5	799	..	..	48	1,067
Bruni .. .. .	30	20	50	..	263	..	..	6	319
Campbell Town .. .. .	86	59	145	3	622	1	..	5	776
Circular Head .. .. .	395	187	582	7	2,410	..	1	74	3,074
Clarence .. .. .	182	75	257	2	1,283	..	..	48	1,590
Deloraine .. .. .	385	211	596	5	2,389	..	1	75	3,066
Devonport .. .. .	338	139	477	12	2,337	..	1	79	2,906
Emu Bay .. .. .	389	175	564	10	2,316	..	20	66	2,976
Esperance .. .. .	214	164	378	6	1,380	..	..	20	1,784
Evandale .. .. .	111	62	173	2	614	..	..	33	822
Fingal .. .. .	240	163	403	2	1,301	..	1	26	1,733
Flinders Island .. .. .	77	53	130	3	377	..	..	12	522
George Town .. .. .	45	33	78	2	413	..	1	6	500
Glamorgan .. .. .	53	35	88	5	306	..	..	11	410
Glenorchy .. .. .	423	211	634	5	2,479	1	3	67	3,189
Gormanston .. .. .	112	69	181	3	786	..	12	8	990
Green Ponds .. .. .	76	79	155	5	437	..	..	9	606
Hamilton .. .. .	121	157	278	1	786	..	1	29	1,095
Hobart .. .. .	2,178	959	3,137	49	16,832	..	17	357	20,392
Huon .. .. .	292	138	430	13	1,563	..	..	73	2,079
Kentish .. .. .	370	221	591	5	2,120	..	..	72	2,788
Kingborough .. .. .	221	178	399	8	1,496	..	1	41	1,945
King Island .. .. .	61	30	91	2	472	..	..	14	579
Latrobe .. .. .	225	149	374	7	1,470	..	..	67	1,918
Launceston .. .. .	1,275	541	1,816	16	9,256	1	20	159	11,268
Leven .. .. .	411	166	577	12	2,425	..	..	58	3,072
Lilydale .. .. .	224	120	344	2	1,175	..	..	28	1,549
Longford .. .. .	251	149	400	6	1,489	..	1	32	1,928
New Norfolk .. .. .	470	321	791	13	2,465	..	..	392	3,661
Oatlands .. .. .	186	158	344	8	1,233	..	..	34	1,619
Penguin .. .. .	224	129	353	2	1,123	..	..	15	1,493
Port Cygnet .. .. .	185	112	297	4	1,064	..	..	39	1,404
Portland .. .. .	115	54	169	2	693	..	..	25	889
Queenstown .. .. .	185	62	247	6	1,438	..	4	4	1,699
Richmond .. .. .	117	104	221*	8	713	..	..	29	971
Ringarooma .. .. .	330	198	528	6	1,903	..	15	49	2,501
Ross .. .. .	47	27	74	3	324	..	..	3	404
St. Leonards .. .. .	221	100	321	8	1,467	..	..	29	1,825
Scottsdale .. .. .	202	99	301	2	1,175	..	2	16	1,496
Sorel .. .. .	140	92	232	2	928	..	1	16	1,179
Spring Bay .. .. .	49	49	98	..	359	..	..	17	474
Strahan .. .. .	74	27	101	2	392	..	1	11	507
Table Cape .. .. .	387	180	567	8	2,272	..	2	61	2,910
Tasman .. .. .	110	79	189	3	634	..	..	4	830
Waratah .. .. .	161	76	237	..	819	..	..	15	1,071
Westbury .. .. .	253	117	370	5	1,539	1	..	60	1,975
Zeehan .. .. .	170	88	258	1	1,353	..	..	3	1,615
Total Municipalities .. .. .	12,870	6,940	19,810	290	84,462	4	105	2,437	107,108
Migratory* .. .. .	2	22	24	2	597	..	3	9	635
TOTAL—TASMANIA .. .. .	12,872	6,962	19,834	292	85,059	4	108	2,446	107,743

\* Mainly persons on ships.



## 14. TASMANIA.—EDUCATION of FEMALES as recorded at the Census of the 4th April, 1921.

(Exclusive of full-blood Aboriginals.)

LOCAL GOVERNMENT AREA.	CANNOT READ.			ENGLISH LANGUAGE.		FOREIGN LANGUAGE ONLY.		Not Stated.	TOTAL.
	Under 5 years of age.	Aged 5 years and over, and age not stated.	Total.	Read only.	Read and Write.	Read only.	Read and Write.		
MUNICIPALITIES.									
Beaconsfield .. .. .	193	69	262	4	1,464	..	..	43	1,773
Bothwell .. .. .	101	55	156	2	527	..	..	25	710
Brighton .. .. .	111	43	154	3	770	..	..	38	965
Bruni .. .. .	39	18	57	1	260	..	..	5	323
Campbell Town .. .. .	91	44	135	2	626	..	1	9	773
Circular Head .. .. .	377	120	497	2	1,831	..	1	62	2,393
Clarence .. .. .	188	63	251	5	1,466	..	..	43	1,765
Deloraine .. .. .	372	147	519	9	2,215	..	1	94	2,338
Devonport .. .. .	349	97	446	13	2,729	1	..	73	3,262
Emu Bay .. .. .	355	108	463	10	2,339	..	..	63	2,875
Esperance .. .. .	237	111	348	5	1,231	..	..	28	1,612
Evandale .. .. .	124	51	175	2	654	..	..	24	855
Fingal .. .. .	242	107	349	4	1,285	..	2	31	1,671
Flinders Island .. .. .	66	28	94	..	232	..	..	7	383
George Town .. .. .	61	23	84	2	440	..	..	12	538
Glamorgan .. .. .	51	32	83	1	305	..	..	6	395
Glenorchy .. .. .	453	145	598	11	2,483	..	..	63	3,155
Gormanston .. .. .	100	27	127	2	467	..	..	3	599
Green Ponds .. .. .	76	41	117	..	450	..	..	15	582
Hamilton .. .. .	161	83	244	1	698	..	..	45	988
Hobart .. .. .	2,179	909	3,088	67	19,539	..	1	502	23,197
Huon .. .. .	301	96	397	7	1,447	..	..	81	1,932
Kentish .. .. .	350	125	475	4	1,962	..	..	66	2,507
Kingborough .. .. .	272	131	403	5	1,551	..	..	38	1,997
King Island .. .. .	71	9	80	..	377	..	..	4	461
Latrobe .. .. .	230	97	327	7	1,473	..	..	70	1,877
Launceston .. .. .	1,153	436	1,589	28	11,223	..	2	195	13,037
Leven .. .. .	398	126	524	7	2,426	..	1	58	3,016
Lilydale .. .. .	221	107	328	5	1,107	..	..	23	1,463
Longford .. .. .	210	103	313	9	1,613	..	..	29	1,964
New Norfolk .. .. .	492	206	698	10	2,406	..	..	391	3,505
Oatlands .. .. .	180	76	256	1	1,163	..	..	44	1,464
Penguin .. .. .	184	72	256	2	1,061	..	..	9	1,328
Port Cygnet .. .. .	182	66	248	2	1,009	..	1	50	1,310
Portland .. .. .	98	31	129	1	583	..	..	14	727
Queenstown .. .. .	187	55	242	2	1,252	..	..	11	1,507
Richmond .. .. .	101	56	157	4	638	..	..	21	820
Ringarooma .. .. .	328	103	431	5	1,658	..	..	52	2,146
Ross .. .. .	45	29	74	..	279	..	..	5	358
St. Leonards .. .. .	214	70	284	8	1,555	..	..	28	1,875
Scottsdale .. .. .	190	67	257	2	1,129	..	1	20	1,409
Sorell .. .. .	130	43	173	4	826	..	..	15	1,018
Spring Bay .. .. .	50	26	76	2	313	..	..	9	400
Strahan .. .. .	74	12	86	..	340	..	..	10	436
Table Cape .. .. .	398	110	508	5	2,213	..	1	46	2,773
Tasman .. .. .	98	53	151	..	523	..	..	4	678
Waratah .. .. .	152	44	196	2	637	..	..	13	848
Westbury .. .. .	240	92	332	5	1,609	..	..	57	2,003
Zeehan .. .. .	198	72	270	1	1,235	..	..	3	1,509
Total Municipalities .. .. .	12,673	4,834	17,507	274	85,669	1	12	2,557	106,020
Migratory* .. .. .	1	..	1	..	15	..	..	1	17
TOTAL—TASMANIA .. .. .	12,674	4,834	17,508	274	85,684	1	12	2,558	106,037

\* Mainly persons on ships.

## 15. TASMANIA.—SCHOOLING of MALES as recorded at the Census of the 4th April, 1921.

(Exclusive of full-blood Aborigines.)

LOCAL GOVERNMENT AREA.	State School.	Private School.	Technical School.	At Home.	University.	Not Stated and Not at School.	Total.
<b>MUNICIPALITIES.</b>							
Beaconsfield .. .. .	333	36	2	13	..	1,369	1,753
Bothwell .. .. .	112	12	2	25	..	1,738	1,889
Brighton .. .. .	174	12	2	9	2	868	1,067
Bruni .. .. .	63	3	1	13	..	239	319
Campbell Town .. .. .	109	7	..	23	..	637	776
Circular Head .. .. .	486	10	2	17	..	2,559	3,074
Clarence .. .. .	246	42	11	13	1	1,277	1,590
Deloraine .. .. .	542	56	11	18	1	2,438	3,066
Devonport .. .. .	506	90	..	12	2	2,296	2,906
Emu Bay .. .. .	500	84	3	20	..	2,369	2,976
Esperance .. .. .	338	14	..	10	..	1,422	1,784
Evandale .. .. .	128	7	3	12	..	672	822
Fingal .. .. .	304	6	4	23	..	1,396	1,733
Flinders Island .. .. .	33	5	..	26	..	458	522
George Town .. .. .	101	9	2	5	..	383	500
Glamorgan .. .. .	50	3	..	12	..	345	410
Glenorchy .. .. .	490	85	26	15	1	2,572	3,189
Gormanston .. .. .	127	28	10	7	2	816	990
Green Ponds .. .. .	109	4	1	6	..	486	606
Hamilton .. .. .	136	7	..	21	..	931	1,095
Hobart .. .. .	2,641	1,082	153	76	75	16,365	20,392
Huon .. .. .	352	29	4	17	..	1,677	2,079
Kentish .. .. .	515	7	..	7	..	2,259	2,788
Kingborough .. .. .	354	24	5	19	..	1,543	1,945
King Island .. .. .	72	..	1	14	..	492	579
Latrobe .. .. .	331	45	..	13	1	1,528	1,918
Launceston .. .. .	1,634	450	80	32	4	9,068	11,268
Leven .. .. .	501	66	2	9	..	2,494	3,072
Lilydale .. .. .	258	28	..	12	..	1,251	1,549
Longford .. .. .	333	39	7	9	1	1,539	1,928
New Norfolk .. .. .	629	29	2	9	1	2,991	3,661
Oatlands .. .. .	196	28	2	18	1	1,374	1,619
Penguin .. .. .	307	6	1	4	..	1,175	1,493
Port Cygnet .. .. .	190	73	..	5	..	1,136	1,404
Portland .. .. .	178	2	..	20	..	689	889
Queenstown .. .. .	256	59	46	4	..	1,334	1,699
Richmond .. .. .	156	28	3	3	..	781	971
Ringarooma .. .. .	437	3	4	9	..	2,048	2,501
Ross .. .. .	59	15	..	9	..	321	404
St. Leonards .. .. .	304	73	12	14	..	1,422	1,825
Scottsdale .. .. .	249	6	..	12	..	1,229	1,496
Sorell .. .. .	190	9	1	14	..	965	1,179
Spring Bay .. .. .	80	6	2	5	..	381	474
Strahan .. .. .	94	1	5	2	..	405	507
Table Cape .. .. .	558	9	3	14	..	2,326	2,910
Tasman .. .. .	143	2	..	12	..	673	830
Waratah .. .. .	181	2	..	3	..	885	1,071
Westbury .. .. .	310	31	5	13	..	1,616	1,975
Zeehan .. .. .	288	79	23	13	..	1,212	1,615
Total Municipalities .. .. .	16,683	2,751	441	691	92	86,450	107,108
Migratory* .. .. .	1	..	..	..	..	634	635
<b>TOTAL—TASMANIA</b> .. .. .	<b>16,684</b>	<b>2,751</b>	<b>441</b>	<b>691</b>	<b>92</b>	<b>87,084</b>	<b>107,743</b>

\* Mainly persons on ships.

## 16. TASMANIA.—SCHOOLING of FEMALES as recorded at the Census of the 4th April, 1921.

(Exclusive of full-blood Aborigines.)

LOCAL GOVERNMENT AREA.	State School.	Private School.	Technical School.	At Home.	University.	Not Stated and Not at School.	Total.
MUNICIPALITIES.							
Beaconsfield .. .. .	296	61	..	24	..	1,392	1,773
Bothwell .. .. .	91	9	..	19	..	591	710
Brighton .. .. .	138	7	..	8	..	812	965
Bruni .. .. .	59	11	..	11	..	242	323
Campbell Town .. .. .	115	17	..	13	..	628	773
Circular Head .. .. .	459	10	1	29	..	1,894	2,393
Clarence .. .. .	237	64	2	18	2	1,442	1,765
Deloraine .. .. .	461	81	1	24	..	2,271	2,838
Devonport .. .. .	495	143	1	15	..	2,608	3,262
Emu Bay .. .. .	514	90	..	15	..	2,256	2,875
Esperance .. .. .	322	13	1	8	..	1,268	1,612
Evandale .. .. .	123	9	..	20	..	703	855
Fingal .. .. .	316	13	..	20	..	1,322	1,671
Flinders Island .. .. .	29	9	..	32	..	313	383
George Town .. .. .	84	17	1	9	..	427	538
Glamorgan .. .. .	50	5	..	9	..	331	395
Glenorchy .. .. .	462	128	1	25	2	2,537	3,155
Gormanston .. .. .	93	40	5	7	1	453	599
Green Ponds .. .. .	93	7	..	1	..	481	582
Hamilton .. .. .	139	4	..	35	..	810	988
Hobart .. .. .	2,359	1,265	7	71	31	19,464	23,197
Huon .. .. .	335	37	1	13	..	1,546	1,932
Kentish .. .. .	517	8	..	8	..	1,974	2,507
Kingborough .. .. .	333	35	..	20	1	1,608	1,997
King Island .. .. .	70	3	..	9	..	379	461
Latrobe .. .. .	245	72	1	17	..	1,542	1,877
Launceston .. .. .	1,616	567	12	46	2	10,794	13,037
Leven .. .. .	528	81	1	21	..	2,385	3,016
Lilydale .. .. .	280	30	..	15	..	1,138	1,463
Longford .. .. .	296	34	..	20	2	1,612	1,964
New Norfolk .. .. .	588	26	1	30	1	2,859	3,505
Oatlands .. .. .	231	41	..	22	..	1,170	1,464
Penguin .. .. .	281	8	..	12	..	1,027	1,328
Port Cygnet .. .. .	157	80	1	4	..	1,068	1,310
Portland .. .. .	134	6	..	26	1	560	727
Queenstown .. .. .	286	108	17	6	..	1,090	1,507
Richmond .. .. .	107	36	..	5	..	672	820
Ringarooma .. .. .	430	19	1	11	..	1,685	2,146
Ross .. .. .	54	7	..	8	..	289	358
St. Leonards .. .. .	289	57	3	10	1	1,515	1,875
Scottsdale .. .. .	232	18	..	25	..	1,134	1,409
Sorell .. .. .	196	8	..	12	..	802	1,018
Spring Bay .. .. .	61	7	..	13	..	319	400
Strahan .. .. .	98	6	1	6	1	324	436
Table Cape .. .. .	542	21	..	18	..	2,192	2,773
Tasman .. .. .	132	..	..	10	..	536	678
Waratah .. .. .	189	2	..	5	..	652	848
Westbury .. .. .	312	64	3	23	..	1,601	2,003
Zeehan .. .. .	301	69	9	20	..	1,110	1,509
Total Municipalities .. .. .	15,775	3,453	71	848	45	85,828	106,020
Migratory* .. .. .	..	..	..	1	..	16	17
TOTAL—TASMANIA .. .. .	15,775	3,453	71	849	45	85,844	106,037

\* Mainly persons on ships.

## 17. TASMANIA.—CONJUGAL CONDITION of MALES as recorded at the Census of the 4th April, 1921.

(Exclusive of full-blood Aborigines.)

LOCAL GOVERNMENT AREA.	NEVER MARRIED.			Married.	Widowed.	Divorced.	Not Stated.	Total.
	Under 15 years.	Aged 15 years and over.	Total.					
<b>MUNICIPALITIES.</b>								
Beaconsfield .. .. .	654	438	1,092	603	45	5	8	1,753
Bothwell .. .. .	303	924	1,227	576	64	4	18	1,889
Brighton .. .. .	397	292	689	354	22	2	..	1,067
Bruni .. .. .	120	75	195	117	6	..	1	319
Campbell Town .. .. .	252	209	461	285	29	1	..	776
Circular Head .. .. .	1,098	931	2,029	964	65	3	13	3,074
Clarence .. .. .	560	391	951	594	39	..	6	1,590
Deloraine .. .. .	1,134	893	2,027	974	59	..	6	3,066
Devonport .. .. .	1,040	723	1,763	1,044	88	1	10	2,906
Emu Bay .. .. .	1,112	710	1,822	1,088	56	1	9	2,976
Esperance .. .. .	674	425	1,099	626	57	..	2	1,784
Evandale .. .. .	301	220	521	275	26	..	..	822
Fingal .. .. .	681	435	1,116	574	40	..	3	1,733
Flinders Island .. .. .	177	154	331	169	16	1	5	522
George Town .. .. .	173	124	297	180	20	1	2	500
Glamorgan .. .. .	153	101	254	144	12	..	..	410
Glenorchy .. .. .	1,161	682	1,843	1,269	70	3	4	3,189
Gormanston .. .. .	292	344	636	317	36	1	..	990
Green Ponds .. .. .	222	163	385	200	21	..	..	606
Hamilton .. .. .	370	322	692	351	44	..	8	1,095
Hobart .. .. .	6,349	5,371	11,720	8,014	589	25	44	20,392
Huon .. .. .	794	540	1,334	695	36	1	13	2,079
Kentish .. .. .	1,033	772	1,805	899	73	3	8	2,788
Kingborough .. .. .	696	495	1,191	689	58	2	5	1,945
King Island .. .. .	186	187	373	197	9	..	..	579
Latrobe .. .. .	715	495	1,210	639	60	..	9	1,918
Launceston .. .. .	3,648	3,009	6,657	4,210	358	8	35	11,268
Leven .. .. .	1,147	802	1,949	1,046	67	1	9	3,072
Lilydale .. .. .	600	379	979	530	39	..	1	1,549
Longford .. .. .	709	485	1,194	676	56	..	2	1,928
New Norfolk .. .. .	1,370	991	2,361	1,185	88	3	24	3,661
Oatlands .. .. .	535	523	1,058	513	42	1	5	1,619
Penguin .. .. .	623	346	969	487	36	..	1	1,493
Port Cygnet .. .. .	538	359	897	470	31	..	6	1,404
Portland .. .. .	345	235	580	290	16	1	2	889
Queenstown .. .. .	521	473	994	650	50	2	3	1,699
Richmond .. .. .	365	270	635	303	32	1	..	971
Ringarooma .. .. .	900	672	1,572	857	59	3	10	2,501
Ross .. .. .	130	128	258	136	10	..	..	404
St. Leonards .. .. .	654	461	1,115	673	31	1	5	1,825
Scottsdale .. .. .	531	393	924	541	30	..	1	1,496
Sorell .. .. .	404	380	784	366	28	1	..	1,179
Spring Bay .. .. .	171	129	300	158	15	..	1	474
Strahan .. .. .	192	114	306	176	19	..	6	507
Table Cape .. .. .	1,095	774	1,869	961	74	1	5	2,910
Tasman .. .. .	318	220	538	259	30	1	2	830
Waratah .. .. .	404	248	652	399	18	..	2	1,071
Westbury .. .. .	696	521	1,217	681	70	1	6	1,975
Zeehan .. .. .	594	426	1,020	549	45	..	1	1,615
Total Municipalities .. .. .	37,137	28,754	65,891	37,953	2,884	79	301	107,108
Migratory* .. .. .	5	331	336	250	25	2	22	635
<b>TOTAL—TASMANIA .. .. .</b>	<b>37,142</b>	<b>29,085</b>	<b>66,227</b>	<b>38,203</b>	<b>2,909</b>	<b>81</b>	<b>323</b>	<b>107,743</b>

\* Mainly persons on ships.

## 18. TASMANIA.—CONJUGAL CONDITION of FEMALES as recorded at the Census of the 4th April, 1921.

(Exclusive of full-blood Aborigines.)

LOCAL GOVERNMENT AREA.	NEVER MARRIED.			Married.	Widowed.	Divorced.	Not Stated.	Total.
	Under 15 years.	Aged 15 years and over.	Total.					
MUNICIPALITIES.								
Beaconsfield .. .. .	634	372	1,006	636	126	1	4	1,773
Bothwell .. .. .	273	145	418	254	37	..	1	710
Brighton .. .. .	328	228	556	363	46	..	..	965
Bruni .. .. .	125	61	186	119	17	1	..	323
Campbell Town .. .. .	261	189	450	273	49	..	1	773
Circular Head .. .. .	1,020	406	1,426	869	94	..	4	2,393
Clarence .. .. .	543	457	1,000	649	108	2	6	1,765
Deloraine .. .. .	1,070	641	1,711	979	143	1	4	2,838
Devonport .. .. .	1,069	848	1,917	1,118	215	2	10	3,262
Emu Bay .. .. .	1,083	602	1,685	1,069	117	1	3	2,875
Esperance .. .. .	654	270	924	619	69	..	..	1,612
Evandale .. .. .	325	205	530	280	42	..	3	855
Fingal .. .. .	671	320	991	584	92	..	4	1,671
Flinders Island .. .. .	162	56	218	152	11	..	2	383
George Town .. .. .	167	128	295	199	40	..	4	538
Glamorgan .. .. .	142	92	234	134	27	..	..	395
Glenorchy .. .. .	1,176	572	1,748	1,250	154	..	3	3,155
Gormanston .. .. .	256	83	339	236	24	..	..	599
Green Ponds .. .. .	214	132	346	209	25	1	1	582
Hamilton .. .. .	417	203	620	326	40	..	2	988
Hobart .. .. .	6,285	6,722	13,007	8,417	1,670	19	84	23,197
Huon .. .. .	771	380	1,151	693	75	2	11	1,932
Kentish .. .. .	986	501	1,487	904	111	..	5	2,507
Kingborough .. .. .	751	396	1,147	730	120	..	..	1,997
King Island .. .. .	175	89	264	187	10	..	..	461
Latrobe .. .. .	673	448	1,121	645	106	..	5	1,877
Launceston .. .. .	3,601	3,897	7,498	4,564	930	3	42	13,037
Leven .. .. .	1,157	653	1,810	1,082	123	..	1	3,016
Lilydale .. .. .	617	242	859	542	62	..	..	1,463
Longford .. .. .	626	503	1,129	690	143	..	2	1,964
New Norfolk .. .. .	1,312	770	2,082	1,264	147	1	11	3,505
Oatlands .. .. .	552	337	889	496	75	..	4	1,464
Penguin .. .. .	561	237	798	476	54	..	..	1,328
Port Cygnet .. .. .	492	287	779	469	56	..	6	1,310
Portland .. .. .	289	133	422	271	31	..	3	727
Queenstown .. .. .	594	273	867	584	56	..	..	1,507
Richmond .. .. .	286	180	466	312	41	..	1	820
Ringarooma .. .. .	905	371	1,276	785	78	2	5	2,146
Ross .. .. .	126	93	219	117	22	..	..	358
St. Leonards .. .. .	618	468	1,086	692	96	1	..	1,875
Scottsdale .. .. .	511	292	803	549	57	..	..	1,409
Sorell .. .. .	377	203	580	375	63	..	..	1,018
Spring Bay .. .. .	145	90	235	143	21	..	1	400
Strahan .. .. .	202	59	261	164	10	..	1	436
Table Cape .. .. .	1,114	574	1,688	966	118	..	1	2,773
Tasman .. .. .	282	120	402	247	28	..	1	678
Waratah .. .. .	386	100	486	341	21	..	..	848
Westbury .. .. .	708	494	1,202	705	93	..	3	2,003
Zeehan .. .. .	608	286	894	545	70	..	..	1,509
Total Municipalities .. .. .	36,300	25,208	61,508	38,273	5,963	37	239	106,020
Migratory* .. .. .	2	4	6	6	2	..	3	17
TOTAL—TASMANIA .. .. .	36,302	25,212	61,514	38,279	5,965	37	242	106,037

\* Mainly persons on ships.

## 19. TASMANIA.—OCCUPATIONS of MALES

(Exclusive of

LOCAL GOVERNMENT AREA.	PROFESSIONAL.	DOMESTIC.	COMMERCIAL.	TRANSPORT AND COMMUNICATION.						INDUSTRIAL.					
				On Railways.	On Roads.	On Seas and Rivers.	Postal and Telegraph Service.	Others.	Total.	Manufacturing Industries.	Construction of Houses and Buildings.	Construction of Roads and Railways, Earthworks, &c.	Disposal of Dead or Refuse.	Undefined Industrial.	Total.
MUNICIPALITIES.															
Beaconsfield ..	32	15	59	2	12	10	9	..	33	46	36	23	4	115	224
Bothwell ..	38	37	24	8	14	2	2	..	26	296	14	817	3	64	1,194
Brighton ..	15	8	25	23	8	5	4	..	40	29	15	7	..	63	114
Bruni ..	4	..	4	..	..	7	3	..	10	4	3	4	..	18	29
Campbell Town ..	41	10	23	20	5	1	5	..	31	21	12	22	1	61	117
Circular Head ..	49	21	91	34	33	17	11	1	96	103	48	218	2	190	561
Clarence ..	114	9	148	6	25	40	9	..	80	141	90	9	1	61	302
Deloraine ..	60	28	120	39	29	..	8	..	76	100	38	30	1	222	391
Devonport ..	101	44	322	56	50	119	19	..	244	223	112	11	10	212	568
Emu Bay ..	79	37	255	73	29	77	22	..	201	230	80	17	9	158	494
Esperance ..	24	6	42	2	5	16	3	..	26	48	11	21	1	38	119
Evandale ..	14	5	21	17	4	..	3	..	24	25	5	2	1	48	81
Fingal ..	40	22	57	25	15	1	6	..	47	45	14	30	..	116	205
Flinders Island ..	8	1	10	..	..	10	2	..	12	10	3	3	..	18	34
George Town ..	18	8	23	1	6	13	3	..	23	13	7	6	..	23	49
Glamorgan ..	13	6	12	..	5	2	4	..	11	19	6	2	1	52	80
Glenorchy ..	145	34	213	40	52	21	14	2	129	544	220	31	7	177	979
Gormanston ..	6	16	22	16	3	3	4	..	26	15	4	4	2	9	34
Green Ponds ..	8	6	19	12	2	..	4	..	18	25	9	7	4	42	87
Hamilton ..	14	12	18	3	9	..	8	..	20	22	17	45	..	67	151
Hobart ..	1,589	408	2,769	263	677	598	211	24	1,773	3,545	1,231	70	152	1,121	6,119
Huon ..	40	6	52	..	11	1	9	..	21	82	22	25	1	63	193
Kentish ..	35	9	80	22	14	1	6	..	43	56	25	27	1	117	226
Kingborough ..	57	23	72	..	11	23	9	..	43	65	30	11	1	57	164
King Island ..	13	6	32	..	9	8	9	..	26	13	8	18	..	25	64
Latrobe ..	34	17	96	15	19	3	8	..	45	82	33	6	3	113	237
Launceston ..	636	222	1,786	280	305	251	129	13	978	2,092	599	52	86	487	3,316
Leven ..	63	29	151	34	40	5	20	..	99	127	93	19	6	144	389
Lilydale ..	16	6	29	27	10	7	2	..	46	131	15	13	..	78	237
Longford ..	52	35	72	16	19	..	8	..	43	93	29	12	4	125	263
New Norfolk ..	130	33	94	37	23	14	6	..	80	77	57	19	1	293	447
Oatlands ..	34	19	49	35	11	..	9	..	55	40	23	20	..	61	144
Penguin ..	15	7	37	5	8	2	10	..	25	45	17	11	..	56	129
Port Cygnet ..	17	8	57	..	10	6	3	..	19	41	13	9	..	82	145
Portland ..	16	19	34	..	4	6	7	..	17	24	13	12	2	22	73
Queenstown ..	31	43	79	39	5	1	12	..	57	114	27	10	4	37	192
Richmond ..	9	9	29	23	5	..	1	..	29	15	16	3	..	46	80
Ringarooma ..	35	30	100	28	24	4	14	..	70	92	21	21	4	81	219
Ross ..	37	13	16	10	6	..	1	..	17	16	3	5	..	5	29
St. Leonards ..	73	26	151	26	32	8	17	..	83	180	71	21	8	83	363
Scottsdale ..	33	14	70	17	20	1	12	..	50	60	31	15	3	34	143
Sorell ..	22	9	27	8	5	4	1	1	19	25	21	5	..	55	106
Spring Bay ..	14	5	13	..	5	1	..	..	6	34	7	6	..	28	75
Strahan ..	6	10	32	25	4	70	4	..	103	9	9	2	2	11	33
Table Cape ..	49	25	126	29	38	4	9	..	80	103	43	42	5	136	329
Tasman ..	11	5	17	1	1	7	1	..	10	14	2	11	..	7	34
Waratah ..	18	11	42	22	11	..	4	1	38	22	16	7	1	61	107
Westbury ..	38	11	59	10	7	..	10	1	28	65	22	10	1	159	257
Zeehan ..	43	27	96	53	11	1	15	..	80	80	22	27	3	89	221
Total Municipalities	3,989	1,410	7,775	1,402	1,651	1,370	690	43	5,156	9,301	3,263	1,818	335	5,430	20,147
Migratory*	1	1	7	..	..	559	..	..	559	3	..	22	..	2	27
TOTAL—TASMANIA	3,990	1,411	7,782	1,402	1,651	1,929	690	43	5,715	9,304	3,263	1,840	335	5,432	20,174

\* Mainly persons on ships.

as recorded at the Census of the 4th April, 1921.

full-blood Aborigines.)

PRIMARY PRODUCERS.								INDEPENDENT.	TOTAL BREADWINNERS.	DEPENDANTS.	UNSPECIFIED.	GRAND TOTAL.	LOCAL GOVERNMENT AREA.
Agric- cultural Pursuits.	Pastoral Pursuits.	Trapping, &c.	Fisheries.	Forestry.	Water Supply.	Mining and Quarrying.	Total.						
606	8	2	11	42	..	34	703	10	1,076	657	20	1,753	Beaconsfield
126	117	12	..	1	..	1	257	3	1,579	299	11	1,889	Bothwell
416	9	1	..	12	..	1	439	6	647	409	11	1,067	Brighton
114	2	1	3	31	..	..	151	..	198	117	4	319	Bruni
138	107	16	3	8	2	4	278	4	504	261	11	776	Campbell Town
836	99	11	1	183	..	17	1,147	10	1,975	1,082	17	3,074	Circular Head
312	12	..	4	3	..	3	334	8	995	568	27	1,590	Clarence
1,068	20	6	..	107	1	9	1,211	14	1,900	1,137	29	3,066	Deloraine
446	9	2	11	10	1	32	511	17	1,807	1,055	44	2,906	Devonport
623	56	2	6	47	..	22	756	9	1,831	1,126	19	2,976	Emu Bay
386	6	1	7	493	..	3	896	10	1,123	645	16	1,784	Esperance
266	63	3	..	1	..	12	345	9	499	311	12	822	Evangdale
336	50	9	..	9	..	235	639	28	1,038	689	6	1,733	Fingal
112	28	140	1	..	1	2	284	3	352	170	..	522	Flinders Island
141	18	..	8	4	..	19	190	7	318	179	3	500	George Town
104	16	1	..	2	..	4	127	..	249	156	5	410	Glamorgan
423	23	..	..	23	..	15	484	13	1,997	1,168	24	3,189	Glenorchy
1	5	..	..	31	..	557	594	..	698	291	1	990	Gormanston
190	23	6	..	7	..	1	227	7	372	229	5	606	Green Ponds
279	184	12	1	26	..	..	502	8	725	365	5	1,095	Hamilton
471	84	2	45	24	3	85	714	143	13,515	6,579	298	20,392	Hobart
903	10	..	..	43	..	..	956	5	1,273	791	15	2,079	Huon
1,200	7	3	..	40	..	74	1,324	9	1,726	1,030	32	2,788	Kentish
785	11	..	2	59	..	7	864	17	1,240	697	8	1,945	Kingborough
120	119	..	3	6	..	7	255	..	396	183	..	579	King Island
666	9	..	5	27	..	28	735	8	1,172	715	31	1,918	Latrobe
261	42	..	15	11	6	112	447	74	7,459	3,684	125	11,268	Launceston
1,089	11	7	4	30	..	10	1,151	12	1,894	1,138	40	3,072	Leven
517	14	..	..	48	..	19	598	9	941	595	13	1,549	Lilydale
615	71	6	1	2	2	7	704	7	1,176	722	30	1,928	Longford
1,113	32	1	..	224	..	24	1,394	19	2,197	1,451	13	3,661	New Norfolk
635	65	29	..	31	..	..	760	5	1,066	540	13	1,619	Oatlands
611	17	1	..	34	..	4	667	5	885	603	5	1,493	Penguin
542	..	..	..	63	..	9	614	3	863	532	9	1,404	Port Cygnet
174	30	..	10	10	..	140	364	14	537	346	6	889	Portland
4	1	..	..	21	..	724	750	3	1,155	540	4	1,699	Queenstown
390	5	..	..	21	..	5	421	13	590	370	11	971	Richmond
519	50	1	1	193	5	352	1,121	8	1,583	905	13	2,501	Ringarooma
44	65	32	..	2	..	2	145	2	259	142	3	404	Ross
348	65	3	..	19	1	5	441	4	1,141	671	13	1,825	St. Leonards
449	45	1	1	126	2	11	635	9	954	531	11	1,496	Scottsdale
441	20	..	8	89	..	..	558	3	744	421	14	1,179	Sorell
132	17	..	..	30	..	2	181	1	295	174	5	474	Spring Bay
9	1	1	3	85	..	13	112	3	299	204	4	507	Strahan
962	110	..	2	66	..	12	1,152	9	1,770	1,113	27	2,910	Table Cape
252	1	..	9	180	..	..	442	1	520	302	8	830	Tasman
15	6	..	..	20	..	392	433	3	652	411	8	1,071	Waratah
764	19	10	..	53	..	3	849	10	1,252	699	24	1,975	Westbury
14	13	..	2	118	..	371	518	9	994	614	7	1,615	Zeehan
20,968	1,795	322	167	2,715	24	3,389	29,380	574	68,431	37,617	1,060	107,108	Total Municipalities
2	..	1	29	3	..	..	35	1	631	3	1	635	Migratory
20,970	1,795	323	196	2,718	24	3,389	29,415	575	69,062	37,620	1,061	107,743	TOTAL—TASMANIA

## 20. TASMANIA.—OCCUPATIONS of FEMALES

(Exclusive of

LOCAL GOVERNMENT AREA.	PROFESSIONAL.	DOMESTIC.	COMMERCIAL.	TRANSPORT AND COMMUNICATION.						INDUSTRIAL.					
				On Railways.	On Roads.	On Seas and Rivers.	Postal and Telegraph Service.	Others.	Total.	Manufacturing Industries.	Construction of Houses and Buildings.	Construction of Roads and Railways, Earthworks, &c.	Disposal of Dead or Refuse.	Undefined Industrial.	Total.
<b>MUNICIPALITIES.</b>															
Beaconsfield ..	47	79	27	..	..	..	11	..	11	8	..	..	..	..	8
Bothwell ..	10	56	4	..	..	..	..	..	..	3	..	..	..	..	3
Brighton ..	18	48	8	..	..	..	8	..	8	3	..	..	..	..	3
Bruni ..	6	8	..	..	..	..	2	..	2	..	..	..	..	..	..
Campbell Town ..	22	64	7	..	..	..	2	..	2	6	..	..	..	..	6
Circular Head ..	23	103	16	..	1	..	3	..	4	12	..	..	..	..	12
Clarence ..	76	74	44	1	1	3	5	..	10	27	..	..	..	..	27
Deloraine ..	56	121	32	1	..	..	8	..	9	26	..	..	..	1	27
Devonport ..	96	211	89	..	2	1	7	..	10	59	1	..	..	1	61
Emu Bay ..	59	160	73	2	1	1	1	..	5	45	3	..	..	..	48
Esperance ..	28	46	9	..	..	..	5	..	5	17	..	..	..	..	17
Evandale ..	13	64	5	..	..	..	3	..	3	1	..	..	..	..	1
Fingal ..	21	80	13	..	..	..	8	..	8	8	..	..	..	..	8
Flinders Island ..	..	22	1	..	..	..	1	..	1	1	..	..	..	..	1
George Town ..	15	30	4	..	..	..	4	..	4	4	..	..	..	..	4
Glamorgan ..	5	32	4	..	1	..	5	..	6	2	..	..	..	..	2
Glenorchy ..	44	112	67	4	1	..	3	..	8	63	..	..	..	3	66
Gormanston ..	9	47	6	..	..	..	4	..	4	..	..	..	..	..	..
Green Ponds ..	10	34	3	..	..	..	4	..	4	2	..	..	..	..	2
Hamilton ..	10	65	4	..	..	..	9	..	9	1	..	..	..	..	1
Hobart ..	1,009	1,598	979	6	10	5	45	..	66	966	4	..	1	61	1,032
Huon ..	30	84	17	..	..	..	7	..	7	15	..	..	..	3	18
Kentish ..	30	87	21	1	..	..	9	..	10	13	..	..	..	..	13
Kingborough ..	36	82	19	..	..	..	14	..	14	12	..	..	..	1	13
King Island ..	12	28	7	..	..	..	2	..	2	..	..	..	..	..	..
Latrobe ..	72	96	26	..	..	..	4	..	4	27	..	..	..	..	27
Launceston ..	524	1,024	587	3	5	11	15	..	34	629	6	..	1	32	668
Leven ..	53	139	49	1	1	..	5	..	7	38	2	..	..	..	40
Lilydale ..	25	43	3	1	..	..	1	..	2	5	..	..	..	..	5
Longford ..	46	122	20	1	1	..	3	..	5	16	..	..	..	..	16
New Norfolk ..	111	123	25	1	..	..	4	..	5	30	..	..	..	..	30
Oatlands ..	32	84	16	1	..	..	6	..	7	6	..	..	..	..	6
Penguin ..	18	48	11	1	..	..	1	..	2	5	..	..	..	..	5
Port Cygnet ..	20	47	21	..	..	..	3	..	3	9	..	..	..	9	18
Portland ..	12	45	7	..	..	..	5	..	5	3	..	..	..	..	3
Queenstown ..	49	70	33	1	1	1	1	..	4	10	..	..	..	..	10
Richmond ..	25	29	7	1	..	..	4	..	5	6	..	..	..	1	7
Ringarooma ..	33	113	21	1	..	..	13	..	14	7	..	..	..	1	8
Ross ..	7	35	..	..	..	..	1	..	1	1	..	..	..	..	1
St. Leonards ..	38	85	29	..	..	..	4	..	4	72	..	..	..	3	75
Scottsdale ..	20	71	23	..	..	..	2	..	2	20	..	..	..	..	20
Sorell ..	21	43	6	..	..	..	7	..	7	4	..	..	..	..	4
Spring Bay ..	5	18	1	..	..	..	2	..	2	3	..	..	..	..	3
Strahan ..	6	13	11	..	..	..	1	..	1	3	..	..	..	..	3
Table Cape ..	51	111	28	..	..	..	7	..	7	24	..	..	..	1	25
Tasman ..	9	22	5	..	..	..	7	..	7	2	..	..	..	..	2
Waratah ..	17	20	11	..	..	..	1	..	1	2	..	..	..	1	3
Westbury ..	33	95	22	2	..	..	5	..	7	9	..	..	..	..	9
Zeehan ..	40	58	43	1	..	..	4	..	5	15	..	..	..	..	15
Total Municipalities	2,952	5,889	2,464	30	25	22	276	..	353	2,240	16	..	2	118	2,376
Migratory*	1	..	1	..	..	8	..	..	8	..	..	..	..	..	..
<b>TOTAL—TASMANIA</b>	<b>2,953</b>	<b>5,889</b>	<b>2,465</b>	<b>30</b>	<b>25</b>	<b>30</b>	<b>276</b>	<b>..</b>	<b>361</b>	<b>2,240</b>	<b>16</b>	<b>..</b>	<b>2</b>	<b>118</b>	<b>2,376</b>

\* Mainly persons on ships.



as recorded at the Census of the 4th April, 1921.

full-blood Aboriginals.)

PRIMARY PRODUCERS.								INDEPENDENT.	TOTAL BREADWINNERS.	DEPENDANTS.	UNSPECIFIED.	GRAND TOTAL.	LOCAL GOVERNMENT AREA.
Agri-cultural Pursuits.	Pastoral Pursuits.	Trapping, &c.	Fisheries.	Forestry.	Water Supply.	Mining and Quarrying.	Total.						
29	..	..	..	..	..	..	29	4	205	1,568	..	1,773	Beaconsfield
2	..	..	..	..	..	..	2	1	76	634	..	710	Bothwell
6	..	..	..	..	..	..	6	..	91	873	1	965	Brighton
1	..	..	..	..	..	..	1	..	17	306	..	323	Bruni
..	..	..	..	..	..	..	..	2	103	669	1	773	Campbell Town
6	5	..	..	..	..	..	11	2	171	2,222	..	2,393	Circular Head
6	3	..	..	..	..	..	9	4	244	1,519	2	1,765	Clarence
14	2	..	..	..	..	..	16	5	266	2,571	1	2,838	Deloraine
4	2	..	..	..	..	..	6	6	479	2,732	1	3,262	Devonport
1	2	..	..	..	1	..	4	3	352	2,523	..	2,875	Emu Bay
1	..	..	..	..	..	..	2	3	110	1,501	1	1,612	Esperance
2	..	..	..	..	..	..	2	2	90	762	3	855	Evandale
5	..	..	..	..	..	..	5	10	145	1,524	2	1,671	Fingal
1	2	..	7	..	..	..	10	..	35	348	..	383	Flinders Island
4	..	..	..	..	..	..	4	2	63	475	..	538	George Town
4	1	..	..	..	..	..	5	..	54	341	..	395	Glamorgan
4	1	..	..	..	..	..	5	8	310	2,843	2	3,155	Glenorchy
..	..	..	..	..	..	..	..	..	66	533	..	599	Gormanston
4	..	..	..	..	..	..	4	..	57	525	..	582	Green Ponds
6	..	..	..	..	..	..	6	..	95	892	1	988	Hamilton
11	4	..	..	..	1	..	16	85	4,785	18,387	25	23,197	Hobart
16	..	..	..	..	..	..	16	..	172	1,754	6	1,932	Huon
3	1	..	..	..	..	..	4	..	165	2,342	..	2,507	Kentish
17	3	..	..	..	..	..	20	7	191	1,806	..	1,997	Kingborough
..	4	..	..	..	..	..	4	..	53	406	2	461	King Island
7	..	..	..	..	..	..	7	2	234	1,631	12	1,877	Latrobe
6	1	..	..	..	1	2	10	32	2,879	10,140	18	13,037	Launceston
6	..	..	..	..	..	..	6	2	296	2,715	5	3,016	Leven
7	3	..	..	..	..	..	10	3	91	1,372	..	1,463	Lilydale
3	2	..	..	..	..	..	5	..	214	1,750	..	1,964	Longford
95	1	..	..	..	2	..	98	7	399	3,100	6	3,505	New Norfolk
7	2	..	..	..	..	..	9	1	155	1,308	1	1,464	Oatlands
9	3	..	..	..	..	..	12	1	97	1,231	..	1,328	Penguin
26	..	..	..	..	1	..	27	3	139	1,171	..	1,310	Port Cygnet
3	..	..	..	..	..	1	4	1	77	650	..	727	Portland
..	..	..	..	..	..	1	1	1	168	1,339	..	1,507	Queenstown
2	..	..	..	..	..	..	2	..	75	745	..	820	Richmond
6	4	..	..	..	..	..	10	..	199	1,945	2	2,146	Ringarooma
..	..	..	..	..	..	..	..	1	45	313	..	358	Ross
4	3	..	..	..	1	..	8	2	241	1,634	..	1,875	St. Leonards
9	1	..	..	..	..	..	10	3	149	1,260	..	1,409	Scottsdale
4	3	..	..	..	..	..	7	2	90	928	..	1,018	Sorell
1	1	1	..	..	..	..	3	4	36	364	..	400	Spring Bay
..	..	..	..	..	..	..	..	..	34	402	..	436	Strahan
11	7	..	..	..	..	..	18	4	244	2,525	4	2,773	Table Cape
3	..	..	..	..	..	..	3	..	48	630	..	678	Tasman
..	..	..	..	..	..	..	..	..	52	796	..	848	Waratah
8	2	..	..	..	..	..	10	4	180	1,822	1	2,003	Westbury
..	..	..	..	..	..	1	1	4	166	1,343	..	1,509	Zeehan
364	63	8	..	6	2	5	448	221	14,703	91,220	97	106,020	Total Municipalities
..	..	..	..	..	..	..	..	..	10	7	..	17	Migratory
364	63	8	..	6	2	5	448	221	14,713	91,227	97	106,037	TOTAL—TASMANIA

## 21. TASMANIA.—GRADES OF OCCUPATION of MALES as recorded at the Census of the 4th April, 1921.

(Exclusive of full-blood Aboriginals.)

LOCAL GOVERNMENT AREA.	GRADES OF OCCUPATION.							TOTAL.
	Employer.	Working on own Account.	Assisting, but not receiving Wages or Salary.	Receiving Wages or Salary.	Unemployed.	Grade not applicable.	Grade not stated.	
<b>MUNICIPALITIES.</b>								
Beaconsfield .. .. .	82	300	53	477	73	740	28	1,753
Bothwell .. .. .	34	57	2	1,439	32	320	5	1,889
Brighton .. .. .	68	199	51	269	24	444	12	1,067
Bruni .. .. .	9	75	10	82	7	124	12	319
Campbell Town .. .. .	40	63	6	321	38	300	8	776
Circular Head .. .. .	142	491	77	1,149	59	1,128	28	3,074
Clarence .. .. .	74	205	16	599	48	638	10	1,590
Deloraine .. .. .	125	464	149	961	54	1,216	97	3,066
Devonport .. .. .	128	260	39	1,089	92	1,183	115	2,906
Emu Bay .. .. .	118	350	50	1,131	99	1,186	42	2,976
Esperance .. .. .	33	254	50	689	32	719	7	1,784
Evandale .. .. .	48	73	8	314	33	341	5	822
Fingal .. .. .	56	194	27	590	107	753	6	1,733
Flinders Island .. .. .	23	84	11	218	6	178	2	522
George Town .. .. .	21	111	9	125	20	213	1	500
Glamorgan .. .. .	24	53	3	125	30	174	1	410
Glenorchy .. .. .	82	352	25	1,322	119	1,275	14	3,189
Gormanston .. .. .	8	23	..	638	20	301	..	990
Green Ponds .. .. .	31	103	19	185	18	250	..	606
Hamilton .. .. .	32	127	22	484	18	386	26	1,095
Hobart .. .. .	756	1,235	20	9,503	1,016	7,648	214	20,392
Huon .. .. .	120	354	66	634	16	836	53	2,079
Kentish .. .. .	138	481	117	801	34	1,101	116	2,788
Kingborough .. .. .	91	413	82	524	37	768	30	1,945
King Island .. .. .	41	97	12	221	12	188	8	579
Latrobe .. .. .	113	263	58	632	47	788	17	1,918
Launceston .. .. .	471	822	10	5,217	506	4,197	45	11,268
Leven .. .. .	158	528	135	894	66	1,246	45	3,072
Lilydale .. .. .	54	272	67	471	30	639	16	1,549
Longford .. .. .	112	241	46	609	86	825	9	1,928
New Norfolk .. .. .	109	403	33	1,270	117	1,711	18	3,661
Oatlands .. .. .	70	311	97	500	41	591	9	1,619
Penguin .. .. .	69	256	50	438	36	641	3	1,493
Port Cygnet .. .. .	68	215	55	436	32	548	50	1,404
Portland .. .. .	39	188	21	218	33	386	4	889
Queenstown .. .. .	30	50	1	1,022	32	556	8	1,699
Richmond.. .. .	34	242	26	251	9	409	..	971
Ringarooma .. .. .	74	397	38	918	80	949	45	2,501
Ross .. .. .	19	65	1	159	7	153	..	404
St. Leonards .. .. .	86	197	33	719	41	740	9	1,825
Scottsdale .. .. .	86	298	31	454	28	588	11	1,496
Sorell .. .. .	62	233	17	373	27	452	15	1,179
Spring Bay .. .. .	17	44	6	197	5	186	19	474
Strahan .. .. .	8	33	2	223	26	214	1	507
Table Cape .. .. .	152	537	96	856	50	1,184	35	2,910
Tasman .. .. .	27	167	38	277	4	315	2	830
Waratah .. .. .	15	253	5	307	55	430	6	1,071
Westbury .. .. .	106	380	70	545	62	787	25	1,975
Zeehan .. .. .	47	208	1	618	87	653	1	1,615
Total Municipalities .. .. .	4,350	13,021	1,861	41,494	3,551	41,598	1,233	107,108
Migratory* .. .. .	8	28	1	583	3	7	5	635
TOTAL—TASMANIA .. .. .	4,358	13,049	1,862	42,077	3,554	41,605	1,238	107,743

\* Mainly persons on ships.

## 22. TASMANIA.—GRADES OF OCCUPATION of FEMALES as recorded at the Census of the 4th April, 1921.

(Exclusive of full-blood Aborigines.)

LOCAL GOVERNMENT AREA.	GRADES OF OCCUPATION.							TOTAL.
	Employer.	Working on own Account.	Assisting, but not receiving Wages or Salary.	Receiving Wages or Salary.	Unemployed.	Grade not applicable.	Grade not stated.	
<b>MUNICIPALITIES.</b>								
Beaconsfield .. .. .	6	26	2	141	13	1,575	10	1,773
Bothwell .. .. .	2	10	..	59	1	638	..	710
Brighton .. .. .	4	7	2	75	1	875	1	965
Bruni .. .. .	..	2	..	12	2	306	1	323
Campbell Town .. .. .	1	9	..	86	3	671	3	773
Circular Head .. .. .	3	19	..	140	3	2,226	2	2,393
Clarence .. .. .	..	31	..	184	14	1,530	6	1,765
Deloraine .. .. .	6	42	1	193	9	2,582	5	2,838
Devonport .. .. .	17	60	8	344	20	2,804	9	3,262
Emu Bay .. .. .	8	37	1	278	8	2,537	6	2,875
Esperance .. .. .	1	14	..	86	4	1,506	1	1,612
Evandale .. .. .	3	9	..	74	3	764	2	855
Fingal .. .. .	3	16	1	106	5	1,539	1	1,671
Flinders Island .. .. .	1	3	1	30	..	348	..	383
George Town .. .. .	1	7	5	44	3	477	1	538
Glamorgan .. .. .	4	5	..	44	..	342	..	395
Glenorchy .. .. .	2	30	1	245	13	2,859	5	3,155
Gormanston .. .. .	4	8	..	50	2	534	1	599
Green Ponds .. .. .	1	6	..	48	3	524	..	582
Hamilton .. .. .	4	8	..	82	2	889	3	988
Hobart .. .. .	101	448	13	3,786	175	18,616	58	23,197
Huon .. .. .	6	20	1	133	4	1,760	8	1,932
Kentish .. .. .	3	11	3	134	6	2,344	6	2,507
Kingborough .. .. .	8	24	1	136	8	1,817	3	1,997
King Island .. .. .	1	6	1	42	1	409	1	461
Latrobe .. .. .	9	15	2	184	13	1,650	4	1,877
Launceston .. .. .	78	342	5	2,231	104	10,258	19	13,037
Leven .. .. .	4	38	..	239	3	2,723	9	3,016
Lilydale .. .. .	3	7	4	67	2	1,376	4	1,463
Longford .. .. .	5	20	3	169	7	1,759	1	1,964
New Norfolk .. .. .	2	24	1	317	17	3,141	3	3,505
Oatlands .. .. .	3	21	..	118	1	1,318	3	1,464
Penguin .. .. .	4	16	..	71	4	1,233	..	1,328
Port Cygnet .. .. .	7	24	2	96	3	1,177	1	1,310
Portland .. .. .	1	9	1	59	6	651	..	727
Queenstown .. .. .	..	26	1	122	7	1,350	1	1,507
Richmond .. .. .	..	12	..	55	3	750	..	820
Ringarooma .. .. .	8	26	..	148	8	1,950	6	2,146
Ross .. .. .	..	2	..	39	2	315	..	358
St. Leonards .. .. .	3	16	..	205	6	1,641	4	1,875
Scottsdale .. .. .	5	26	1	110	1	1,265	1	1,409
Sorell .. .. .	5	14	..	66	..	933	..	1,018
Spring Bay .. .. .	2	4	..	23	..	368	3	400
Strahan .. .. .	1	6	..	26	..	402	1	436
Table Cape .. .. .	6	25	3	199	3	2,533	4	2,773
Tasman .. .. .	1	7	..	35	2	633	..	678
Waratah .. .. .	..	9	..	40	1	798	..	848
Westbury .. .. .	6	20	3	136	6	1,831	1	2,003
Zeehan .. .. .	4	21	..	124	7	1,353	..	1,509
Total Municipalities .. .. .	347	1,588	67	11,431	509	91,880	198	106,020
Migratory* .. .. .	..	..	..	9	..	7	1	17
TOTAL—TASMANIA .. .. .	347	1,588	67	11,440	509	91,887	199	106,037

\* Mainly persons on ships.

## 23. TASMANIA.—CAUSES OF UNEMPLOYMENT of MALES as recorded at the Census of the 4th April, 1921.

(Exclusive of full-blood Aborigines.)

LOCAL GOVERNMENT AREA.	CAUSES OF UNEMPLOYMENT.							TOTAL.
	Scarcity of Employment.	Illness.	Accident.	Industrial Dispute.	Old Age.	Other Cause.	Cause Not Stated.	
MUNICIPALITIES.								
Beaconsfield .. .. .	41	15	..	..	1	10	6	73
Bothwell .. .. .	10	11	1	..	2	7	1	32
Brighton .. .. .	9	10	1	..	..	3	1	24
Bruni .. .. .	2	2	..	..	..	3	..	7
Campbell Town .. .. .	15	13	..	..	2	8	..	38
Circular Head .. .. .	26	17	4	..	..	9	3	59
Clarence .. .. .	19	18	3	..	..	6	2	48
Deloraine .. .. .	20	16	5	..	1	6	6	54
Devonport .. .. .	41	20	6	1	2	17	5	92
Emu Bay .. .. .	53	22	4	..	2	14	4	99
Esperance .. .. .	8	13	4	..	..	7	..	32
Evandale .. .. .	15	8	1	..	..	5	4	33
Fingal .. .. .	46	18	1	..	2	38	2	107
Flinders Island .. .. .	1	1	..	..	1	3	..	6
George Town .. .. .	10	4	2	..	..	2	2	20
Glamorgan .. .. .	24	3	2	..	..	..	1	30
Glenorchy .. .. .	56	27	4	1	1	23	7	119
Gormanston .. .. .	3	7	3	..	..	6	1	20
Green Ponds .. .. .	4	7	..	..	..	6	1	18
Hamilton .. .. .	8	2	1	..	..	4	3	18
Hobart .. .. .	422	343	23	9	9	175	35	1,016
Huon .. .. .	1	8	4	..	..	1	2	16
Kentish .. .. .	16	14	..	..	2	2	..	34
Kingborough .. .. .	19	13	..	..	..	5	..	37
King Island .. .. .	2	6	..	..	..	4	..	12
Latrobe .. .. .	6	27	1	..	..	5	8	47
Launceston .. .. .	215	166	24	8	5	71	17	506
Leven .. .. .	26	20	4	..	..	13	3	66
Lilydale .. .. .	5	13	4	..	..	5	3	30
Longford .. .. .	56	16	4	..	..	8	2	86
New Norfolk .. .. .	40	31	3	..	1	35	7	117
Oatlands .. .. .	15	19	1	..	..	2	4	41
Penguin .. .. .	23	6	2	..	1	3	1	36
Port Cygnet .. .. .	18	7	1	..	..	4	2	32
Portland .. .. .	19	6	..	..	..	7	1	33
Queenstown .. .. .	8	18	2	..	1	3	..	32
Richmond .. .. .	4	2	..	..	1	1	1	9
Ringarooma .. .. .	34	13	6	6	..	21	..	80
Ross .. .. .	2	2	..	..	..	2	1	7
St. Leonards .. .. .	17	12	5	..	1	3	3	41
Scottsdale .. .. .	10	10	1	..	1	5	1	28
Sorell .. .. .	10	7	1	..	1	7	1	27
Spring Bay .. .. .	2	2	..	..	..	1	..	5
Strahan .. .. .	9	4	..	..	..	13	..	26
Table Cape .. .. .	16	19	1	..	..	12	2	50
Tasman .. .. .	3	1	..	..	..	..	..	4
Waratah .. .. .	43	6	..	..	1	4	1	55
Westbury .. .. .	21	14	5	1	..	15	6	62
Zeehan .. .. .	61	16	4	..	2	4	..	87
Total Municipalities .. .. .	1,534	1,055	138	26	40	608	150	3,551
Migratory* .. .. .	2	..	..	..	..	1	..	3
TOTAL—TASMANIA .. .. .	1,536	1,055	138	26	40	609	150	3,554

\* Mainly persons on ships.

## 24. TASMANIA.—CAUSES OF UNEMPLOYMENT of FEMALES as recorded at the Census of the 4th April, 1921.

(Exclusive of full-blood Aborigines.)

LOCAL GOVERNMENT AREA.	CAUSES OF UNEMPLOYMENT.							TOTAL.
	Scarcity of Employment.	Illness.	Accident.	Industrial Dispute.	Old Age.	Other Cause.	Cause Not Stated.	
MUNICIPALITIES.								
Beaconsfield .. .. .	1	8	..	..	..	3	1	13
Bothwell .. .. .	..	..	..	..	..	1	..	1
Brighton .. .. .	..	..	..	..	..	1	..	1
Bruni .. .. .	..	..	..	..	..	2	..	2
Campbell Town .. .. .	..	2	..	..	..	1	..	3
Circular Head .. .. .	..	3	..	..	..	..	..	3
Clarence .. .. .	1	6	..	..	..	4	3	14
Deloraine .. .. .	1	4	..	..	..	2	2	9
Devonport .. .. .	6	10	..	..	..	4	..	20
Emu Bay .. .. .	1	5	..	..	..	1	1	8
Esperance .. .. .	..	2	..	..	..	2	..	4
Evdale .. .. .	..	1	1	..	..	1	..	3
Fingal .. .. .	..	4	..	..	..	1	..	5
George Town .. .. .	..	3	..	..	..	..	..	3
Glenorchy .. .. .	4	5	..	..	..	2	2	13
Gormanston .. .. .	..	2	..	..	..	..	..	2
Green Ponds .. .. .	..	2	..	..	..	1	..	3
Hamilton .. .. .	..	1	..	..	..	..	1	2
Hobart .. .. .	36	88	3	2	2	34	10	175
Huon .. .. .	1	2	..	1	..	..	..	4
Kentish .. .. .	2	4	..	..	..	..	..	6
Kingborough .. .. .	1	4	..	..	1	2	..	8
King Island .. .. .	..	1	..	..	..	..	..	1
Latrobe .. .. .	..	9	..	..	..	3	1	13
Launceston .. .. .	26	48	1	..	..	24	5	104
Leven .. .. .	..	1	..	..	..	2	..	3
Lilydale .. .. .	..	1	..	..	..	..	1	2
Longford .. .. .	1	4	..	..	..	2	..	7
New Norfolk .. .. .	..	5	..	..	..	11	1	17
Oatlands .. .. .	..	1	..	..	..	..	..	1
Penguin .. .. .	1	2	..	..	..	..	1	4
Port Cygnet .. .. .	..	1	..	..	1	..	1	3
Portland .. .. .	1	2	..	..	..	3	..	6
Queenstown .. .. .	..	5	..	..	..	2	..	7
Richmond .. .. .	..	1	..	..	..	2	..	3
Ringarooma .. .. .	5	3	..	..	..	..	..	8
Ross .. .. .	2	..	..	..	..	..	..	2
St. Leonards .. .. .	1	4	..	..	..	..	1	6
Scottsdale .. .. .	..	..	..	..	..	..	1	1
Table Cape .. .. .	..	1	..	..	..	2	..	3
Tasman .. .. .	..	2	..	..	..	..	..	2
Waratah .. .. .	..	..	..	..	..	..	1	1
Westbury .. .. .	1	4	..	..	..	1	..	6
Zeehan .. .. .	4	2	..	..	..	1	..	7
TOTAL—TASMANIA .. .. .	96	253	5	3	4	115	33	509

## 25. TASMANIA.—DURATION OF UNEMPLOYMENT (in Days) of MALES as recorded at the Census of the 4th April, 1921.

(Exclusive of full-blood Aborigines.)

LOCAL GOVERNMENT AREA.	NUMBER OF MALES WHOSE PERIOD OF UNEMPLOYMENT AT DATE OF CENSUS WAS—											Total number unemployed at date of Census.
	Under 10 days.	10 to 19 days.	20 to 29 days.	30 to 39 days.	40 to 49 days.	50 to 59 days.	60 to 69 days.	70 to 79 days.	80 to 89 days.	90 days or over.	Not stated.	
<b>MUNICIPALITIES.</b>												
Beaconsfield .. ..	10	19	4	3	1	..	4	2	1	14	15	73
Bothwell .. ..	3	6	2	4	1	1	4	..	1	8	2	32
Brighton .. ..	5	3	2	1	1	..	3	1	..	6	2	24
Bruni .. ..	1	2	1	2	..	1	..	..	..	..	..	7
Campbell Town .. ..	7	12	2	4	..	..	2	1	..	6	4	38
Circular Head .. ..	26	15	2	4	..	1	1	1	..	3	6	59
Clarence .. ..	9	5	5	3	3	1	1	..	3	11	7	48
Deloraine .. ..	11	13	7	2	2	1	..	1	..	10	7	54
Devonport .. ..	24	18	7	6	4	..	2	1	..	16	14	92
Emu Bay .. ..	27	21	9	12	3	4	3	2	..	12	6	99
Esperance .. ..	1	7	9	2	..	..	1	1	..	7	4	32
Evandale .. ..	4	9	4	2	1	2	3	1	..	4	3	33
Fingal .. ..	21	32	4	8	3	2	4	4	3	15	11	107
Flinders Island .. ..	2	1	..	..	..	..	1	..	..	1	1	6
George Town .. ..	4	3	4	2	1	..	1	..	1	3	1	20
Glamorgan .. ..	6	7	2	2	6	2	..	1	..	2	2	30
Glenorchy .. ..	32	19	8	9	3	3	5	3	2	21	14	119
Gormanston .. ..	10	2	..	1	1	..	..	1	..	5	..	20
Green Ponds .. ..	2	5	2	2	..	..	1	1	..	1	4	18
Hamilton .. ..	4	6	..	3	..	..	1	..	1	1	2	18
Hobart .. ..	179	163	81	65	38	28	36	14	10	180	222	1,016
Huon .. ..	1	5	1	1	..	2	..	1	1	2	2	16
Kentish .. ..	7	5	2	4	2	..	2	..	1	6	5	34
Kingborough .. ..	7	4	1	1	..	4	3	2	1	10	4	37
King Island .. ..	6	..	..	2	2	..	..	..	..	2	2	12
Latrobe .. ..	9	11	9	3	3	..	2	1	..	7	2	47
Launceston .. ..	88	65	53	42	14	4	21	11	8	129	71	506
Leven .. ..	21	11	3	4	6	..	..	2	..	11	8	66
Lilydale .. ..	5	6	..	2	1	1	1	..	..	12	2	30
Longford .. ..	15	24	13	6	5	3	3	2	1	11	3	86
New Norfolk .. ..	40	32	13	3	2	1	1	1	2	7	15	117
Oatlands .. ..	6	4	5	3	4	..	1	2	..	6	10	41
Penguin .. ..	9	10	7	3	1	3	1	..	1	..	1	36
Port Cygnet .. ..	6	10	5	4	..	..	..	2	1	1	3	32
Portland .. ..	4	4	7	2	1	..	..	2	..	7	6	33
Queenstown .. ..	14	4	4	1	..	..	..	..	..	7	2	32
Richmond .. ..	1	2	3	..	..	1	..	..	..	1	1	9
Ringarooma .. ..	14	20	4	8	2	8	4	4	..	11	5	80
Ross .. ..	..	..	..	1	1	..	..	..	..	3	2	7
St. Leonards .. ..	9	8	2	2	..	..	..	..	..	17	3	41
Scottsdale .. ..	4	5	1	3	1	2	2	..	1	4	5	28
Sorell .. ..	7	9	2	3	1	1	..	1	1	1	1	27
Spring Bay .. ..	1	2	..	..	..	..	..	..	..	..	2	5
Strahan .. ..	6	7	3	2	1	1	..	..	..	2	4	26
Table Cape .. ..	14	11	6	3	..	..	2	..	..	5	9	50
Tasman .. ..	2	1	..	..	..	..	1	..	..	..	..	4
Waratah .. ..	12	12	8	5	2	3	2	2	..	5	4	55
Westbury .. ..	13	20	7	6	3	1	2	..	..	5	5	62
Zeehan .. ..	13	11	10	11	3	4	5	3	3	18	6	87
Total Municipalities .. ..	722	671	324	260	123	85	126	71	43	616	510	3,551
Migratory* .. ..	1	2	..	..	..	..	..	..	..	..	..	3
<b>TOTAL—TASMANIA</b> .. ..	<b>723</b>	<b>673</b>	<b>324</b>	<b>260</b>	<b>123</b>	<b>85</b>	<b>126</b>	<b>71</b>	<b>43</b>	<b>616</b>	<b>510</b>	<b>3,554</b>

\* Mainly persons on ships.

## 26. TASMANIA.—DURATION OF UNEMPLOYMENT (in Days) of FEMALES as recorded at the Census of the 4th April, 1921.

(Exclusive of full-blood Aboriginals.)

LOCAL GOVERNMENT AREA.	NUMBER OF FEMALES WHOSE PERIOD OF UNEMPLOYMENT AT DATE OF CENSUS WAS—											Total number unemployed at date of Census.
	Under 10 days.	10 to 19 days.	20 to 29 days.	30 to 39 days.	40 to 49 days.	50 to 59 days.	60 to 69 days.	70 to 79 days.	80 to 89 days.	90 days or over.	Not stated.	
<b>MUNICIPALITIES.</b>												
Beaconsfield .. .. .	3	2	1	..	1	1	..	..	..	3	2	13
Bothwell .. .. .	..	..	..	..	..	..	..	..	..	..	1	1
Brighton .. .. .	..	1	..	..	..	..	..	..	..	..	..	1
Bruni .. .. .	1	..	..	..	..	..	..	..	..	1	..	2
Campbell Town .. .. .	1	1	..	..	..	..	..	..	1	..	..	3
Circular Head .. .. .	1	..	..	..	..	..	..	..	..	2	..	3
Clarence .. .. .	3	4	..	1	..	1	1	..	..	3	1	14
Deloraine .. .. .	3	1	1	2	1	..	..	..	..	1	..	9
Devonport .. .. .	2	4	3	1	..	1	..	..	..	5	4	20
Emu Bay .. .. .	..	..	2	1	..	1	..	2	1	1	..	8
Esperance .. .. .	..	1	..	..	2	..	..	..	..	1	..	4
Evandale .. .. .	..	1	..	..	..	1	..	..	..	..	1	3
Fingal .. .. .	1	..	..	1	..	..	1	..	..	2	..	5
George Town .. .. .	..	..	..	..	..	1	..	..	..	2	..	3
Glenorchy .. .. .	2	1	3	..	2	..	1	..	..	2	2	13
Gormanston .. .. .	1	..	1	..	..	..	..	..	..	..	..	2
Green Ponds .. .. .	1	..	1	..	..	..	1	..	..	..	..	3
Hamilton .. .. .	..	..	..	..	..	..	..	..	..	..	2	2
Hobart .. .. .	20	25	19	13	9	5	12	8	1	34	29	175
Huon .. .. .	2	1	..	..	..	..	..	..	..	1	..	4
Kentish .. .. .	..	..	..	2	..	..	1	1	1	..	1	6
Kingborough .. .. .	2	..	1	1	..	1	..	..	..	1	2	8
King Island .. .. .	..	..	..	..	..	..	..	..	..	1	..	1
Latrobe .. .. .	1	6	2	..	..	..	..	..	..	4	..	13
Launceston .. .. .	14	15	10	7	2	5	3	4	1	24	19	104
Leven .. .. .	..	..	..	1	..	1	..	..	..	1	..	3
Lilydale .. .. .	..	..	..	1	..	..	1	..	..	..	..	2
Longford .. .. .	1	..	..	1	1	..	..	..	..	2	2	7
New Norfolk .. .. .	8	1	2	1	..	..	..	..	..	3	2	17
Oatlands .. .. .	..	..	..	..	..	..	..	..	..	1	..	1
Penguin .. .. .	1	..	1	..	..	..	..	..	..	1	1	4
Port Cygnet .. .. .	..	..	..	..	..	..	..	..	..	1	2	3
Portland .. .. .	1	1	1	..	..	..	1	..	..	2	..	6
Queenstown .. .. .	2	..	2	..	1	..	..	..	..	2	..	7
Richmond .. .. .	3	..	..	..	..	..	..	..	..	..	..	3
Ringarooma .. .. .	1	..	..	1	1	1	1	..	..	1	2	8
Ross .. .. .	..	..	..	..	..	..	..	..	..	..	1	2
St. Leonards .. .. .	1	1	1	1	..	..	1	..	..	1	..	6
Scottsdale .. .. .	..	1	..	..	..	..	..	..	..	..	..	1
Table Cape .. .. .	3	..	..	..	..	..	..	..	..	..	..	3
Tasman .. .. .	..	..	1	..	..	..	..	..	..	1	..	2
Waratah .. .. .	1	..	..	..	..	..	..	..	..	..	..	1
Westbury .. .. .	1	..	1	..	..	..	..	1	..	2	1	6
Zeehan .. .. .	1	..	1	2	1	..	1	..	..	1	..	7
<b>TOTAL—TASMANIA ..</b>	<b>82</b>	<b>67</b>	<b>54</b>	<b>37</b>	<b>21</b>	<b>19</b>	<b>26</b>	<b>16</b>	<b>5</b>	<b>107</b>	<b>75</b>	<b>509</b>

CHAS. H. WICKENS,

Commonwealth Statistician.

Commonwealth Bureau of Census and Statistics,  
Melbourne, 4th April, 1925.

