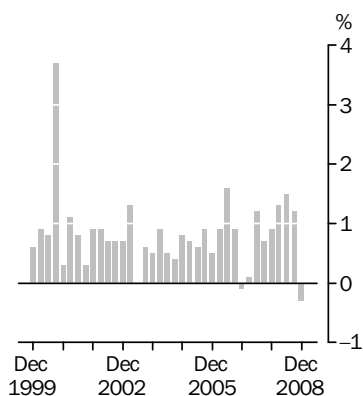


CONSUMER PRICE INDEX

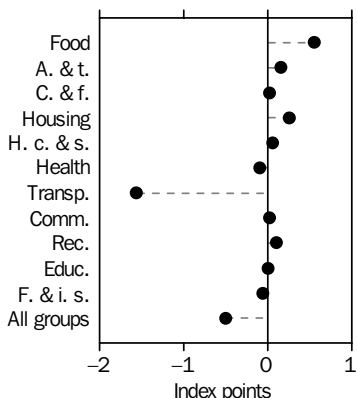
AUSTRALIA

EMBARGO: 11.30AM (CANBERRA TIME) WED 28 JAN 2009

All Groups
Quarterly change



Contribution to quarterly change
December quarter 2008



KEY FIGURES

WEIGHTED AVERAGE OF EIGHT CAPITAL CITIES	Sep Qtr 2008 to Dec Qtr 2008	Dec Qtr 2007 to Dec Qtr 2008
	% change	% change
Food	2.0	5.6
Alcohol and tobacco	1.4	5.8
Clothing and footwear	0.4	0.2
Housing	0.7	6.5
Household contents and services	0.3	0.4
Health	-1.2	4.9
Transportation	-6.9	-1.2
Communication	0.4	0.5
Recreation	0.5	1.3
Education	0.0	4.8
Financial and insurance services	-0.3	7.0
All groups	-0.3	3.7
All groups excluding Housing and Financial and insurance services	-0.7	2.4

KEY POINTS

THE ALL GROUPS CPI

- fell 0.3% in the December quarter 2008, compared with a rise of 1.2% in the September quarter. This is the largest quarterly fall since September quarter 1997.
- rose 3.7% through the year to December quarter 2008, compared to an annual rise of 5.0% to September quarter 2008.

OVERVIEW OF CPI MOVEMENTS

- The most significant price falls this quarter were for automotive fuel (-18.2%), motor vehicles (-2.4%), deposit and loan facilities (-1.9%) and pharmaceuticals (-4.7%).
- The contribution of automotive fuel fell 1.47 index points, providing a negative impact on the December quarter 2008 CPI movement, compared to a rise of 0.16 index points in the September quarter 2008.
- The most significant offsetting price increases were for rents (+1.8%), fruit (+8.0%), tobacco (+1.7%) and take away and fast foods (+1.5%).

INQUIRIES

For further information about these and related statistics, contact the National Information and Referral Service on 1300 135 070 or Lee Taylor on Canberra (02) 6252 6251.

NOTES

FORTHCOMING ISSUES

<i>ISSUE (Quarter)</i>	<i>RELEASE DATE</i>
March 2009	22 April 2009
June 2009	22 July 2009
September 2009	28 October 2009
December 2009	27 January 2010

ROUNDING

Any discrepancies between totals and sums of components in this publication are due to rounding.

LINKS TO OTHER PARTS OF THIS RELEASE ON THE WEBSITE

To access the 'Main Contributors to Change' data (on the website) use the link 'Main Contributors to Change' as shown below.

To access the 'Capital Cities Comparison' data (on the website) use the link 'Capital Cities Comparison' as shown below.

The standard way to access links to other parts of this or any release on the website is by selecting the required link from the links list in the box at the top left hand side of the 'Summary' page.



ABBREVIATIONS

ABS Australian Bureau of Statistics
CPI consumer price index

Brian Pink
Australian Statistician

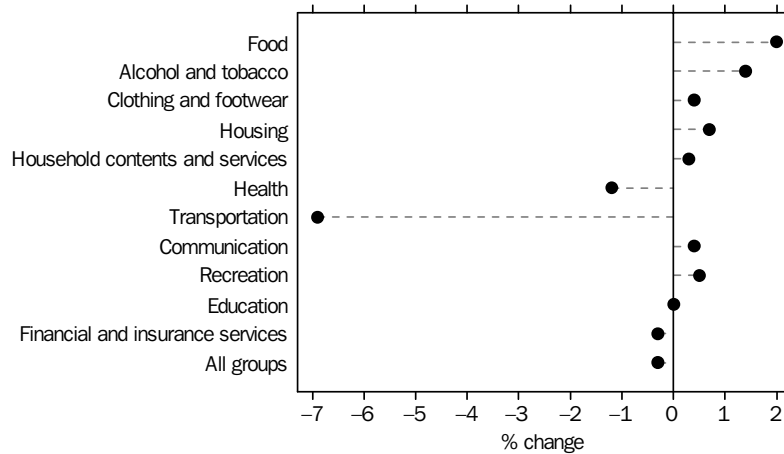
ANALYSES AND COMMENTS

MAIN CONTRIBUTORS TO CHANGE

CPI GROUPS

The discussion of the CPI groups below is ordered in terms of their absolute significance to the change in All groups index points for the quarter (see tables 6 and 7).

WEIGHTED AVERAGE OF EIGHT CAPITAL CITIES, Percentage change from previous quarter



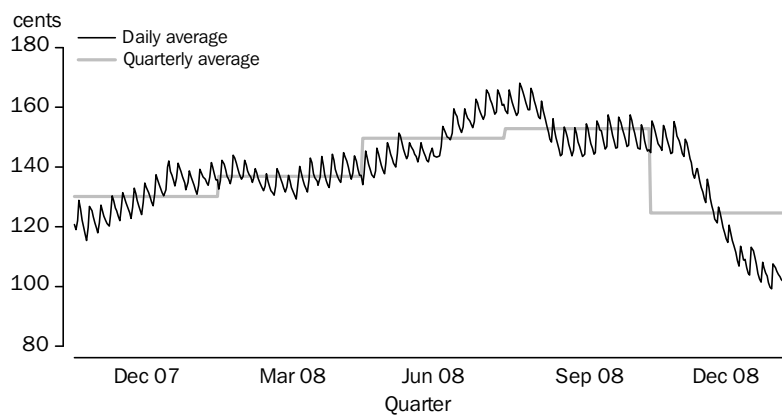
TRANSPORTATION (-6.9%)

The decrease in transportation costs this quarter was mainly due to the fall in the price of automotive fuel (-18.2%), with a smaller contribution from a fall in prices of motor vehicles (-2.4%). All other categories in transportation rose, with motor vehicle repair and servicing increasing by 0.9%, motor vehicle parts and accessories by 2.0%, other motoring charges by 0.6% and urban transport fares by 0.5%.

Automotive fuel prices rose in July (+0.3%), fell in August (-6.7%), rose again in September (+1.1%), then fell in October (-1.7%), November (-17.4%) and December (-13.5%).

The following graph shows the pattern of the average daily prices for unleaded petrol for the eight capital cities over the last fifteen months.

AVERAGE PRICE OF ULP, cents per litre



ANALYSES AND COMMENTS *continued*

TRANSPORTATION (-6.9%) *continued*

Over the twelve months to December quarter 2008, the transportation group fell 1.2% with the main contributors being automotive fuel (-4.4%) and motor vehicles (-3.5%). Motor vehicle repair and servicing (+3.7%), other motoring charges (+4.9%), motor vehicle parts and accessories (+6.0%) and urban transport fares (+3.3%) provided some offsetting increases.

FOOD (+2.0%)

Food prices rose in all capital cities, with increases in almost all categories this quarter. The most significant contributors to the increase were fruit (+8.0%), take away and fast foods (+1.5%) and vegetables (+3.3%). Seasonal factors and limited supply were contributing factors to price rises in both fruit and vegetables, with widespread price rises and the cessation of specials.

The rise in fruit prices was primarily due to increases in prices for stone fruit, with smaller contributions from citrus fruit and apples and pears.

Through the year to December quarter 2008, the food group rose 5.6%, with strong positive movements in all capital cities. The increase was predominantly due to rises in take away and fast foods (+7.0%), restaurant meals (+4.4%), cakes and biscuits (+9.4%) and bread (+8.2%).

HOUSING (+0.7%)

Most categories of housing recorded price rises this quarter with rents (+1.8%) and house repairs and maintenance (+1.2%) being the main contributors. The only offsetting price fall was in gas and other household fuels (-0.6%).

Rents rose in every capital city, ranging from 1.3% in Hobart to 3.4% in Darwin. House repairs and maintenance rose in all cities except Hobart (-0.3%).

Prices for gas and other household fuels fell in five cities due to a combination of seasonal pricing and the drop in world oil prices. The strongest fall was in Hobart (-1.8%), while Darwin showed an increase of 1.9%.

Through the year to December quarter 2008, the housing group rose 6.5% mainly due to rises in rents (+8.4%), house purchase (+4.3%) and electricity (+10.2%).

ALCOHOL AND TOBACCO (+1.4%)

The alcohol and tobacco group recorded a rise of 1.4% in the December quarter 2008. All components in the alcohol and tobacco group rose this quarter, with price increases in tobacco (+1.7%), beer (+1.8%), spirits (+1.4%) and wine (+0.2%).

The rises in tobacco, beer, spirits and wine were mainly due to widespread general price increases and the cessation of specials in some cities.

Through the year to December quarter 2008, the alcohol and tobacco group rose 5.8%, mainly due to rises in tobacco (+5.5%), spirits (+13.9%) and beer (+4.8%).

RECREATION (+0.5%)

The rise in recreation this quarter was mainly due to increased prices for domestic holiday travel and accommodation (+1.7%) and overseas holiday travel and accommodation (+1.6%). The major offsets were provided by audio, visual, media and services (-2.8%) and audio, visual and computing equipment (-3.0%).

The rise in domestic holiday travel and accommodation was driven mainly by widespread seasonal price rises for all categories of accommodation.

ANALYSES AND COMMENTS *continued*

RECREATION (+0.5%)

continued

Through the year to December quarter 2008, the recreation group rose 1.3%. This rise was mainly due to overseas holiday travel and accommodation (+8.4%) and other recreational activities (+7.1%). Audio, visual and computing equipment (-13.8%) provided the major offset.

HEALTH (-1.2%)

The major contributor to the fall in the health costs was pharmaceuticals (-4.7%), with a less significant decrease for hospital and medical services (-0.4%). This is the strongest negative movement for health since the March quarter 1999. Dental services (+0.8%) provided the only offsetting increase.

The fall in net prices of pharmaceuticals was due to the cyclical effect of the Pharmaceutical Benefits Scheme (PBS) safety net. The number of people accessing the PBS safety net benefits reaches a peak in the December quarter 2008. All capital cities saw significant falls due to the fall in the "out-of-pocket" cost of PBS prescription pharmaceuticals.

The fall in the net cost of hospital and medical services was due to the cyclical effect of the Medicare Plus safety net and the Medicare Rebate.

Through the year to December quarter 2008, the health group rose 4.9% due to increases in hospital and medical services (+6.1%), dental services (+4.4%) and pharmaceuticals (+2.7%).

HOUSEHOLD CONTENTS AND SERVICES (+0.3%)

Most categories of the household contents and services group recorded rises this quarter, with the most significant being other household supplies (+1.1%) and floor and window coverings (+1.4%). The largest offsetting price fall was in toiletries and personal care products (-0.6%).

The rise in other household supplies was due to price increases and discontinuation of specials in most cities.

Through the year to December quarter 2008, the household contents and services group rose 0.4%, with positive movements in five of the capital cities. The increase was predominantly due to rises in other household supplies (+4.5%) and other household services (+6.2%). Child care (-17.3%) recorded the largest annual negative movement due to the increase to the Child Care Tax Rebate implemented in September quarter 2008.

FINANCIAL AND INSURANCE SERVICES (-0.3%)

The major contributor to the fall in financial and insurance services this quarter was deposit and loan facilities (-1.9%). Other financial services (+1.1%) and insurance services (+1.7%) provided offsetting increases.

Through the year to December quarter 2008, financial and insurance services rose 7.0% due mainly to increases in the prices of deposit and loan facilities and insurance services.

CLOTHING AND FOOTWEAR (+0.4%)

The rise in clothing and footwear prices this quarter was mainly due to rises in men's outerwear (+1.3%). Women's outerwear (-1.6%) provided the major offsetting decrease, with falls in all capital cities driven by early specials on summer stock during the pre-Christmas sales period.

Through the year to December quarter 2008, the clothing and footwear index rose 0.2%.

ANALYSES AND COMMENTS *continued*

COMMUNICATION (+0.4%)

The rise in communication costs in the December quarter 2008 was due to increases in the cost of telecommunication (+0.3%) and postal services (+3.6%).

Through the year to December quarter 2008, the cost of communication rose 0.5%.

TRADABLES AND NON-TRADABLES

The tradables component (see table 8) of the All groups CPI fell 1.8% in the December quarter 2008. Prices for the goods and services in this component are largely determined on the world market. The tradables component represents approximately 42% of the weight of the CPI. The fall in the tradable goods component was driven by decreases in automotive fuel, motor vehicles and pharmaceuticals. The most significant offsetting rises were in fruit, tobacco and vegetables. The only tradable services component, overseas holiday travel and accommodation, rose 1.6%.

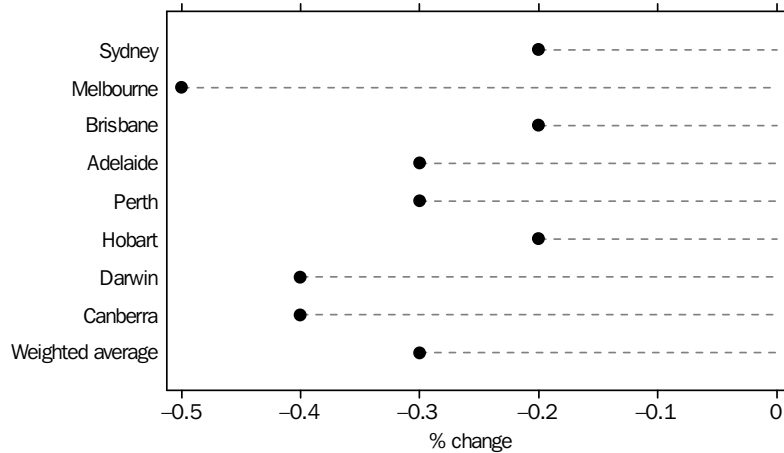
The non-tradables component of the All groups CPI rose 0.6% in the December quarter 2008. Prices for the goods and services in this component are largely determined by domestic price pressures. The non-tradables component represents approximately 58% of the CPI. Within non-tradables, the services component rose 0.5%, mainly due to rents, domestic holiday travel and accommodation and other financial services. The only significant offset was provided by deposit and loan facilities. The non-tradable goods component rose 0.8% mainly due to price increases for take away and fast foods and beer.

Through the year to December quarter 2008, non-tradables rose 5.4% and tradables rose 1.2%. This compares with rises of 6.1% and 3.4%, respectively, for these components through the year to September quarter 2008. The main drivers in non-tradables were deposit and loan facilities, rents and house purchase. Overseas holiday travel and accommodation, tobacco and spirits were the main contributors to the rise in tradables with the decrease in automotive fuel offering a partial offset.

CAPITAL CITIES COMPARISON

ALL GROUPS

ALL GROUPS: PERCENTAGE CHANGE FROM PREVIOUS QUARTER



At the All groups level, the CPI fell in all capital cities this quarter with Melbourne falling the most with a 0.5% decrease, while all other cities showed decreases in the range of 0.2% to 0.4%.

The transport group was the main contributor to the fall in all cities due to the impact of price decreases in automotive fuel. Health prices dropped in all cities and were the second most significant contributor in all cities except Perth, Darwin and Canberra. In Perth the second most significant contributor was finance and insurance services, while in Darwin it was recreation and in Canberra, clothing and footwear.

Partially offsetting some of this quarter's decreases were increases in the food, housing and alcohol and tobacco groups which recorded increases in all cities. Food prices provided the most significant overall offset, with a 2.0% increase in the weighted average of the 8 capital cities spread across all the cities with price increases ranging from 1.2% increase in Perth to 2.7% in Brisbane. In Darwin and Perth, housing was a stronger contributor than food.

The larger quarterly decrease for Melbourne was mainly due to a smaller increase in housing prices and a bigger decrease in health costs than other cities.

Over the twelve months to December quarter 2008, the All groups CPI rose in all capital cities with the increases ranging from 3.2% in Melbourne and to 4.3% in Brisbane. The higher result in Brisbane is largely due to stronger than average rises in housing prices.

ANALYSES AND COMMENTS *continued*

ALL GROUPS *continued*

CPI, All groups index numbers and percentage changes

	INDEX	PERCENTAGE CHANGE	
	NUMBER(a)		
	<i>Dec Qtr 2008</i>	<i>Dec 2007 to Dec 2008</i>	<i>Sep Qtr 2008 to Dec Qtr 2008</i>
Sydney	165.5	3.8	-0.2
Melbourne	163.5	3.2	-0.5
Brisbane	170.4	4.3	-0.2
Adelaide	169.3	3.8	-0.3
Perth	166.2	3.7	-0.3
Hobart	164.4	3.3	-0.2
Darwin	162.9	3.7	-0.4
Canberra	166.8	3.7	-0.4
Weighted average of eight capital cities	166.0	3.7	-0.3

(a) Base of each index: 1989-90 = 100.0.

LIST OF TABLES

page

CONSUMER PRICE INDEX

1	All groups, index numbers	10
2	All groups, percentage changes	11
3	CPI groups, weighted average of eight capital cities, index numbers . . .	12, 13
4	CPI groups, weighted average of eight capital cities, percentage changes	14, 15
5	CPI groups, index numbers	16 - 18
6	Contribution to change in all groups indexes	19 - 21
7	Group, sub-group and expenditure class, weighted average of eight capital cities	22 - 24
8	Special series, weighted average of eight capital cities	25
9	Analytical series, index numbers	26
10	Analytical series, percentage changes	27
11	International comparisons, all groups excluding housing and financial and insurance services, index numbers	28
12	International comparisons, all groups excluding housing and financial and insurance services, percentage changes	29

ADDITIONAL CPI TABLES AVAILABLE ON ABS WEBSITE

13	Group, sub-group and expenditure class, index numbers by capital city	
14	Group, sub-group and expenditure class, percentage change from corresponding quarter of previous year by capital city	
15	Group, sub-group and expenditure class, percentage change from previous quarter by capital city	
16	Group, sub-group and expenditure class, points contribution by capital city	

ALL GROUPS, Index numbers(a)

<i>Period</i>	<i>Sydney</i>	<i>Melbourne</i>	<i>Brisbane</i>	<i>Adelaide</i>	<i>Perth</i>	<i>Hobart</i>	<i>Darwin</i>	<i>Canberra</i>	<i>Weighted average of eight capital cities</i>
2004-05	147.7	145.7	148.5	150.4	144.0	147.1	141.8	146.7	147.0
2005-06	152.1	150.2	153.2	155.2	150.1	151.8	146.5	151.9	151.7
2006-07	156.2	154.2	158.3	159.2	156.1	155.7	152.9	156.4	156.1
2007-08	160.9	159.6	164.8	164.4	161.7	160.3	158.3	162.0	161.4
2004									
December	147.3	145.3	148.0	150.0	143.3	146.7	141.1	146.3	146.5
2005									
March	148.2	146.4	149.2	150.9	144.4	148.0	141.9	147.0	147.5
June	149.0	146.9	150.0	151.8	146.3	148.8	143.2	147.8	148.4
September	150.5	148.6	150.9	153.4	147.8	150.1	144.7	149.7	149.8
December	151.0	149.2	152.1	154.1	149.0	151.0	145.4	150.9	150.6
2006									
March	152.2	150.5	153.5	155.6	150.5	152.2	146.7	152.2	151.9
June	154.7	152.6	156.2	157.6	153.2	154.0	149.2	154.9	154.3
September	156.1	153.7	157.5	159.3	154.9	155.1	151.8	156.0	155.7
December	155.8	153.5	157.3	158.8	155.5	154.7	152.6	155.6	155.5
2007									
March	155.6	153.8	158.0	158.4	155.8	155.4	152.6	155.9	155.6
June	157.4	155.6	160.2	160.3	158.0	157.4	154.7	158.0	157.5
September	158.1	156.9	161.7	161.5	158.9	157.9	156.6	159.2	158.6
December	159.5	158.5	163.4	163.1	160.2	159.2	157.1	160.8	160.1
2008									
March	161.7	160.6	165.6	165.5	162.5	161.3	158.5	163.0	162.2
June	164.1	162.5	168.4	167.6	165.1	162.9	160.8	165.0	164.6
September	165.9	164.4	170.8	169.8	166.7	164.7	163.6	167.5	166.5
December	165.5	163.5	170.4	169.3	166.2	164.4	162.9	166.8	166.0

(a) Base of each index: 1989-90 = 100.0.

ALL GROUPS, Percentage changes

<i>Period</i>	<i>Sydney</i>	<i>Melbourne</i>	<i>Brisbane</i>	<i>Adelaide</i>	<i>Perth</i>	<i>Hobart</i>	<i>Darwin</i>	<i>Canberra</i>	<i>Weighted average of eight capital cities</i>
PERCENTAGE CHANGE (from previous financial year)									
2004-05	2.5	2.0	2.6	2.3	3.2	3.2	2.2	2.3	2.4
2005-06	3.0	3.1	3.2	3.2	4.2	3.2	3.3	3.5	3.2
2006-07	2.7	2.7	3.3	2.6	4.0	2.6	4.4	3.0	2.9
2007-08	3.0	3.5	4.1	3.3	3.6	3.0	3.5	3.6	3.4
PERCENTAGE CHANGE (from corresponding quarter of previous year)									
2004									
December	2.6	2.3	2.6	2.6	2.9	3.3	1.9	2.4	2.6
2005									
March	2.2	2.0	2.6	2.2	3.4	3.5	2.1	2.2	2.4
June	2.4	2.1	2.5	2.2	3.8	3.1	2.6	2.1	2.5
September	2.9	3.1	2.8	3.0	4.1	3.5	2.8	2.9	3.0
December	2.5	2.7	2.8	2.7	4.0	2.9	3.0	3.1	2.8
2006									
March	2.7	2.8	2.9	3.1	4.2	2.8	3.4	3.5	3.0
June	3.8	3.9	4.1	3.8	4.7	3.5	4.2	4.8	4.0
September	3.7	3.4	4.4	3.8	4.8	3.3	4.9	4.2	3.9
December	3.2	2.9	3.4	3.0	4.4	2.5	5.0	3.1	3.3
2007									
March	2.2	2.2	2.9	1.8	3.5	2.1	4.0	2.4	2.4
June	1.7	2.0	2.6	1.7	3.1	2.2	3.7	2.0	2.1
September	1.3	2.1	2.7	1.4	2.6	1.8	3.2	2.1	1.9
December	2.4	3.3	3.9	2.7	3.0	2.9	2.9	3.3	3.0
2008									
March	3.9	4.4	4.8	4.5	4.3	3.8	3.9	4.6	4.2
June	4.3	4.4	5.1	4.6	4.5	3.5	3.9	4.4	4.5
September	4.9	4.8	5.6	5.1	4.9	4.3	4.5	5.2	5.0
December	3.8	3.2	4.3	3.8	3.7	3.3	3.7	3.7	3.7
PERCENTAGE CHANGE (from previous quarter)									
2004									
December	0.8	0.8	0.8	0.7	0.9	1.2	0.2	0.5	0.8
2005									
March	0.6	0.8	0.8	0.6	0.8	0.9	0.6	0.5	0.7
June	0.5	0.3	0.5	0.6	1.3	0.5	0.9	0.5	0.6
September	1.0	1.2	0.6	1.1	1.0	0.9	1.0	1.3	0.9
December	0.3	0.4	0.8	0.5	0.8	0.6	0.5	0.8	0.5
2006									
March	0.8	0.9	0.9	1.0	1.0	0.8	0.9	0.9	0.9
June	1.6	1.4	1.8	1.3	1.8	1.2	1.7	1.8	1.6
September	0.9	0.7	0.8	1.1	1.1	0.7	1.7	0.7	0.9
December	-0.2	-0.1	-0.1	-0.3	0.4	-0.3	0.5	-0.3	-0.1
2007									
March	-0.1	0.2	0.4	-0.3	0.2	0.5	0.0	0.2	0.1
June	1.2	1.2	1.4	1.2	1.4	1.3	1.4	1.3	1.2
September	0.4	0.8	0.9	0.7	0.6	0.3	1.2	0.8	0.7
December	0.9	1.0	1.1	1.0	0.8	0.8	0.3	1.0	0.9
2008									
March	1.4	1.3	1.3	1.5	1.4	1.3	0.9	1.4	1.3
June	1.5	1.2	1.7	1.3	1.6	1.0	1.5	1.2	1.5
September	1.1	1.2	1.4	1.3	1.0	1.1	1.7	1.5	1.2
December	-0.2	-0.5	-0.2	-0.3	-0.3	-0.2	-0.4	-0.4	-0.3

CPI GROUPS, Weighted average of eight capital cities—Index numbers(a)

<i>Period</i>	<i>Food</i>	<i>Alcohol and tobacco</i>	<i>Clothing and footwear</i>	<i>Housing</i>	<i>Household contents and services</i>	<i>Health</i>
2004-05	154.8	225.4	110.8	124.8	120.7	204.3
2005-06	162.3	233.1	109.2	129.3	122.2	213.5
2006-07	172.4	240.6	108.4	133.7	124.6	223.5
2007-08	177.8	249.8	109.3	140.6	123.4	233.5
2004						
December	154.6	224.0	110.9	124.3	121.3	198.8
2005						
March	156.0	226.9	109.4	125.5	119.7	206.7
June	156.2	228.1	110.3	126.2	121.2	211.6
September	157.4	230.3	110.5	128.0	121.6	209.3
December	160.2	231.4	110.3	128.8	122.4	207.1
2006						
March	162.5	234.3	107.5	129.6	121.9	216.2
June	169.1	236.4	108.4	130.6	122.9	221.4
September	173.0	237.7	108.5	132.2	124.5	219.8
December	173.9	239.5	108.1	132.9	124.7	218.0
2007						
March	169.9	241.6	107.7	134.2	123.6	225.7
June	172.8	243.6	109.2	135.3	125.5	230.5
September	176.1	245.0	109.6	137.8	122.5	229.3
December	175.9	248.2	109.8	139.3	123.5	226.9
2008						
March	179.6	250.7	107.2	141.9	122.7	236.0
June	179.5	255.4	110.4	143.4	124.7	241.6
September	182.1	259.1	109.6	147.2	123.6	241.0
December	185.8	262.6	110.0	148.3	124.0	238.1

(a) Unless otherwise specified, base of each index: 1989-90 = 100.0.

CPI GROUPS, Weighted average of eight capital cities—Index numbers(a) *continued*

<i>Period</i>	<i>Transportation</i>	<i>Communication</i>	<i>Recreation</i>	<i>Education</i>	<i>Financial and insurance services(b)</i>	<i>All groups</i>
2004-05	146.8	111.1	130.7	238.7	..	147.0
2005-06	155.5	109.5	132.0	253.2	101.2	151.7
2006-07	158.0	110.8	133.8	264.6	103.0	156.1
2007-08	165.2	111.2	135.7	275.6	109.4	161.4
2004						
December	147.2	111.2	130.9	231.7	..	146.5
2005						
March	145.8	111.6	131.8	245.7	..	147.5
June	148.8	110.6	130.1	245.9	100.0	148.4
September	153.7	109.8	131.7	246.0	100.1	149.8
December	153.0	109.0	131.7	246.3	101.6	150.6
2006						
March	155.0	109.5	132.5	260.1	101.0	151.9
June	160.2	109.6	132.0	260.2	102.2	154.3
September	160.8	110.3	133.0	258.0	102.5	155.7
December	154.7	110.8	134.8	258.0	103.0	155.5
2007						
March	155.8	111.0	133.9	270.9	102.8	155.6
June	160.5	111.2	133.3	271.3	103.7	157.5
September	159.4	111.2	135.1	268.6	105.8	158.6
December	163.3	111.2	136.2	268.6	108.0	160.1
2008						
March	166.4	111.1	135.8	282.5	109.8	162.2
June	171.6	111.2	135.5	282.6	114.0	164.6
September	173.3	111.4	137.3	281.3	115.9	166.5
December	161.3	111.8	138.0	281.4	115.6	166.0

.. not applicable

(b) Base: June quarter 2005 = 100.0.

(a) Unless otherwise specified, base of each index: 1989-90 = 100.0.

CPI GROUPS, Weighted average of eight capital cities—Percentage changes

<i>Period</i>	<i>Food</i>	<i>Alcohol and tobacco</i>	<i>Clothing and footwear</i>	<i>Housing</i>	<i>Household contents and services</i>	<i>Health</i>
PERCENTAGE CHANGE (from previous financial year)						
2004–05	1.6	3.5	-1.7	3.8	-0.3	5.4
2005–06	4.8	3.4	-1.4	3.6	1.2	4.5
2006–07	6.2	3.2	-0.7	3.4	2.0	4.7
2007–08	3.1	3.8	0.8	5.2	-1.0	4.5

PERCENTAGE CHANGE (from corresponding quarter of previous year)						
2004						
December	1.7	3.5	-1.9	3.9	-0.1	5.0
2005						
March	0.8	3.7	-1.9	4.0	-0.8	5.7
June	1.9	3.4	-2.1	3.9	0.4	5.0
September	3.3	3.5	-1.8	3.9	0.8	4.6
December	3.6	3.3	-0.5	3.6	0.9	4.2
2006						
March	4.2	3.3	-1.7	3.3	1.8	4.6
June	8.3	3.6	-1.7	3.5	1.4	4.6
September	9.9	3.2	-1.8	3.3	2.4	5.0
December	8.6	3.5	-2.0	3.2	1.9	5.3
2007						
March	4.6	3.1	0.2	3.5	1.4	4.4
June	2.2	3.0	0.7	3.6	2.1	4.1
September	1.8	3.1	1.0	4.2	-1.6	4.3
December	1.2	3.6	1.6	4.8	-1.0	4.1
2008						
March	5.7	3.8	-0.5	5.7	-0.7	4.6
June	3.9	4.8	1.1	6.0	-0.6	4.8
September	3.4	5.8	0.0	6.8	0.9	5.1
December	5.6	5.8	0.2	6.5	0.4	4.9

PERCENTAGE CHANGE (from previous quarter)						
2004						
December	1.4	0.7	-1.4	0.9	0.6	-0.6
2005						
March	0.9	1.3	-1.4	1.0	-1.3	4.0
June	0.1	0.5	0.8	0.6	1.3	2.4
September	0.8	1.0	0.2	1.4	0.3	-1.1
December	1.8	0.5	-0.2	0.6	0.7	-1.1
2006						
March	1.4	1.3	-2.5	0.6	-0.4	4.4
June	4.1	0.9	0.8	0.8	0.8	2.4
September	2.3	0.5	0.1	1.2	1.3	-0.7
December	0.5	0.8	-0.4	0.5	0.2	-0.8
2007						
March	-2.3	0.9	-0.4	1.0	-0.9	3.5
June	1.7	0.8	1.4	0.8	1.5	2.1
September	1.9	0.6	0.4	1.8	-2.4	-0.5
December	-0.1	1.3	0.2	1.1	0.8	-1.0
2008						
March	2.1	1.0	-2.4	1.9	-0.6	4.0
June	-0.1	1.9	3.0	1.1	1.6	2.4
September	1.4	1.4	-0.7	2.6	-0.9	-0.2
December	2.0	1.4	0.4	0.7	0.3	-1.2

<i>Period</i>	<i>Transportation</i>	<i>Communication</i>	<i>Recreation</i>	<i>Education</i>	<i>Financial and insurance services</i>	<i>All groups</i>
PERCENTAGE CHANGE (from previous financial year)						
2004-05	3.4	1.0	0.5	6.9	..	2.4
2005-06	5.9	-1.4	1.0	6.1	..	3.2
2006-07	1.6	1.2	1.4	4.5	1.8	2.9
2007-08	4.6	0.4	1.4	4.2	6.2	3.4

<i>Period</i>	<i>Transportation</i>	<i>Communication</i>	<i>Recreation</i>	<i>Education</i>	<i>Financial and insurance services</i>	<i>All groups</i>
PERCENTAGE CHANGE (from corresponding quarter of previous year)						
2004						
December	4.6	1.2	-0.2	7.7	..	2.6
2005						
March	2.9	1.5	1.6	6.2	..	2.4
June	3.3	0.2	0.6	6.2	..	2.5
September	5.9	-1.0	1.4	6.3	..	3.0
December	3.9	-2.0	0.6	6.3	..	2.8
2006						
March	6.3	-1.9	0.5	5.9	..	3.0
June	7.7	-0.9	1.5	5.8	2.2	4.0
September	4.6	0.5	1.0	4.9	2.4	3.9
December	1.1	1.7	2.4	4.8	1.4	3.3
2007						
March	0.5	1.4	1.1	4.2	1.8	2.4
June	0.2	1.5	1.0	4.3	1.5	2.1
September	-0.9	0.8	1.6	4.1	3.2	1.9
December	5.6	0.4	1.0	4.1	4.9	3.0
2008						
March	6.8	0.1	1.4	4.3	6.8	4.2
June	6.9	0.0	1.7	4.2	9.9	4.5
September	8.7	0.2	1.6	4.7	9.5	5.0
December	-1.2	0.5	1.3	4.8	7.0	3.7

<i>Period</i>	<i>Transportation</i>	<i>Communication</i>	<i>Recreation</i>	<i>Education</i>	<i>Financial and insurance services</i>	<i>All groups</i>
PERCENTAGE CHANGE (from previous quarter)						
2004						
December	1.4	0.3	0.8	0.1	..	0.8
2005						
March	-1.0	0.4	0.7	6.0	..	0.7
June	2.1	-0.9	-1.3	0.1	..	0.6
September	3.3	-0.7	1.2	0.0	0.1	0.9
December	-0.5	-0.7	0.0	0.1	1.5	0.5
2006						
March	1.3	0.5	0.6	5.6	-0.6	0.9
June	3.4	0.1	-0.4	0.0	1.2	1.6
September	0.4	0.6	0.8	-0.8	0.3	0.9
December	-3.8	0.5	1.4	0.0	0.5	-0.1
2007						
March	0.7	0.2	-0.7	5.0	-0.2	0.1
June	3.0	0.2	-0.4	0.1	0.9	1.2
September	-0.7	0.0	1.4	-1.0	2.0	0.7
December	2.4	0.0	0.8	0.0	2.1	0.9
2008						
March	1.9	-0.1	-0.3	5.2	1.7	1.3
June	3.1	0.1	-0.2	0.0	3.8	1.5
September	1.0	0.2	1.3	-0.5	1.7	1.2
December	-6.9	0.4	0.5	0.0	-0.3	-0.3

.. not applicable

<i>Quarters</i>	<i>Sydney</i>	<i>Melbourne</i>	<i>Brisbane</i>	<i>Adelaide</i>	<i>Perth</i>	<i>Hobart</i>	<i>Darwin</i>	<i>Canberra</i>	<i>Weighted average of eight capital cities</i>
FOOD									
2006									
December	175.5	171.7	176.1	179.3	170.4	167.6	167.3	175.3	173.9
2007									
March	170.5	168.2	171.5	175.6	168.0	165.2	164.1	172.1	169.9
June	172.8	171.8	174.8	177.6	171.3	167.4	167.2	175.7	172.8
September	175.9	175.8	178.3	182.3	173.5	169.4	169.8	176.7	176.1
December	175.2	175.5	177.2	182.7	174.2	171.0	171.0	178.0	175.9
2008									
March	179.6	177.4	180.5	188.3	179.4	173.6	173.2	183.4	179.6
June	178.8	177.6	181.3	187.5	180.8	174.3	174.4	182.2	179.5
September	181.3	181.0	182.9	190.6	181.6	176.7	176.6	185.4	182.1
December	185.5	184.3	187.8	194.1	183.7	181.2	180.2	189.0	185.8
ALCOHOL AND TOBACCO									
2006									
December	245.9	241.2	233.4	245.9	224.3	225.4	231.6	224.8	239.5
2007									
March	247.2	243.4	236.2	250.2	225.7	226.5	233.5	227.7	241.6
June	249.3	244.6	239.6	252.4	228.3	229.7	235.0	228.6	243.6
September	249.1	247.3	240.1	253.6	231.4	231.3	235.4	230.5	245.0
December	252.3	251.5	241.4	257.9	232.8	234.3	240.3	234.6	248.2
2008									
March	255.0	254.2	243.7	259.7	235.3	236.5	242.1	239.1	250.7
June	259.3	259.1	249.2	264.2	239.1	241.7	246.4	244.3	255.4
September	262.6	260.8	255.4	269.5	244.3	244.2	251.7	247.2	259.1
December	265.2	265.5	258.2	275.5	247.4	246.4	253.3	248.5	262.6
CLOTHING AND FOOTWEAR									
2006									
December	111.1	109.0	102.0	108.1	102.8	102.3	104.0	110.2	108.1
2007									
March	110.8	108.4	103.8	105.6	101.7	102.2	103.6	110.4	107.7
June	111.1	112.0	103.6	107.5	102.3	102.6	105.1	113.4	109.2
September	111.5	111.1	106.7	108.0	101.8	102.8	104.4	114.7	109.6
December	111.5	111.3	107.2	108.9	102.2	102.6	104.9	114.5	109.8
2008									
March	110.8	106.7	104.8	105.2	98.9	102.1	103.4	113.4	107.2
June	114.1	110.3	107.2	109.0	102.0	102.8	103.9	115.3	110.4
September	114.2	108.9	107.3	107.0	99.7	103.7	105.5	115.2	109.6
December	114.8	109.9	106.6	106.8	100.8	104.0	106.6	112.8	110.0
HOUSING									
2006									
December	137.5	117.4	144.8	131.4	139.7	135.7	157.4	140.9	132.9
2007									
March	138.3	118.6	147.4	132.5	141.3	137.4	158.9	141.8	134.2
June	139.5	119.2	149.4	132.9	142.9	139.6	160.5	142.5	135.3
September	142.3	120.5	153.8	134.4	145.1	141.9	164.6	147.4	137.8
December	143.4	122.2	156.7	135.7	146.3	142.8	166.3	148.9	139.3
2008									
March	145.4	125.9	159.0	139.2	147.7	145.9	168.3	150.1	141.9
June	147.6	126.4	161.3	139.5	149.7	147.3	170.1	152.0	143.4
September	151.2	129.2	166.5	143.4	153.7	150.2	174.2	158.2	147.2
December	152.8	129.3	168.6	144.9	155.0	150.4	177.5	159.4	148.3

(a) Unless otherwise specified, base of each index: 1989-90 = 100.0.

<i>Quarters</i>	<i>Sydney</i>	<i>Melbourne</i>	<i>Brisbane</i>	<i>Adelaide</i>	<i>Perth</i>	<i>Hobart</i>	<i>Darwin</i>	<i>Canberra</i>	<i>Weighted average of eight capital cities</i>
HOUSEHOLD CONTENTS AND SERVICES									
2006									
December	122.5	125.6	128.0	124.1	122.4	132.0	117.3	132.3	124.7
2007									
March	121.5	124.8	127.3	122.6	120.6	132.2	117.2	130.4	123.6
June	122.9	126.3	129.3	125.2	123.2	133.8	118.6	133.7	125.5
September	119.7	123.9	125.3	123.0	121.0	129.5	116.2	129.0	122.5
December	121.0	124.2	127.1	123.8	121.2	132.3	116.7	130.1	123.5
2008									
March	119.4	124.1	126.5	123.2	120.2	131.7	116.7	131.2	122.7
June	121.9	125.6	129.3	125.7	121.4	130.9	117.7	133.0	124.7
September	120.2	124.4	127.7	125.0	121.7	131.6	116.9	132.0	123.6
December	120.5	124.3	128.3	126.3	123.0	133.3	117.9	132.4	124.0
HEALTH									
2006									
December	203.2	230.9	220.6	225.8	208.7	239.2	204.8	214.5	218.0
2007									
March	209.9	239.0	230.9	231.9	216.0	247.0	213.2	224.3	225.7
June	215.3	242.7	235.3	236.9	221.6	253.9	216.2	227.0	230.5
September	213.8	242.2	233.2	234.4	221.0	251.7	213.6	227.0	229.3
December	211.3	239.8	230.1	232.7	219.9	248.4	211.1	224.2	226.9
2008									
March	220.5	247.8	241.4	239.8	228.8	258.0	219.0	234.8	236.0
June	225.9	253.7	246.9	247.3	232.7	266.6	222.4	239.9	241.6
September	225.0	254.2	245.4	246.3	232.3	265.7	221.2	238.7	241.0
December	222.4	250.3	242.3	243.8	231.0	261.7	218.6	236.2	238.1
TRANSPORTATION									
2006									
December	155.2	154.9	154.0	157.6	154.7	146.9	148.4	152.1	154.7
2007									
March	156.3	155.8	154.9	158.4	156.0	149.4	148.4	152.7	155.8
June	160.7	160.5	159.6	163.8	161.5	154.6	153.5	159.1	160.5
September	159.3	159.7	158.7	162.6	160.4	153.3	153.2	157.3	159.4
December	163.4	163.9	162.3	166.9	162.9	155.1	156.3	161.2	163.3
2008									
March	166.8	166.5	166.1	169.3	166.7	159.1	158.8	163.6	166.4
June	171.0	171.8	172.1	175.5	172.0	164.4	163.7	169.7	171.6
September	172.1	174.2	174.8	177.3	172.6	166.7	167.2	170.5	173.3
December	160.5	161.7	162.9	164.2	161.3	155.8	157.0	158.0	161.3
COMMUNICATION									
2006									
December	110.4	110.3	114.4	112.2	109.2	111.8	102.5	109.5	110.8
2007									
March	110.6	110.5	114.7	112.4	109.4	112.0	102.7	109.7	111.0
June	110.7	110.7	114.8	112.6	109.5	112.2	102.8	109.9	111.2
September	110.7	110.7	114.9	112.6	109.5	112.2	102.8	109.9	111.2
December	110.8	110.8	114.9	112.7	109.5	112.2	102.9	109.9	111.2
2008									
March	110.7	110.7	114.8	112.6	109.5	112.1	102.8	109.8	111.1
June	110.8	110.8	114.9	112.7	109.6	112.2	102.9	109.9	111.2
September	111.0	111.0	115.2	113.0	109.8	112.5	103.1	110.2	111.4
December	111.4	111.3	115.7	113.4	110.2	113.0	103.5	110.6	111.8

(a) Unless otherwise specified, base of each index: 1989-90 = 100.0.

<i>Quarters</i>	<i>Sydney</i>	<i>Melbourne</i>	<i>Brisbane</i>	<i>Adelaide</i>	<i>Perth</i>	<i>Hobart</i>	<i>Darwin</i>	<i>Canberra</i>	<i>Weighted average of eight capital cities</i>
RECREATION									
2006									
December	137.5	134.3	130.1	135.7	134.3	134.0	113.1	133.1	134.8
2007									
March	136.5	134.6	129.2	133.1	132.2	133.6	110.7	132.2	133.9
June	136.8	132.8	128.7	132.9	131.3	131.7	111.7	131.4	133.3
September	137.7	135.5	130.4	135.3	133.3	133.0	116.7	133.7	135.1
December	138.8	136.6	132.0	136.7	135.2	132.5	111.2	134.6	136.2
2008									
March	138.0	136.5	130.6	136.7	135.9	131.9	110.2	132.8	135.8
June	138.3	135.4	131.6	136.2	134.5	128.9	111.6	131.7	135.5
September	140.3	137.2	133.5	138.5	135.1	129.0	116.3	133.9	137.3
December	140.9	138.3	133.7	138.9	136.3	129.9	111.5	135.8	138.0
EDUCATION									
2006									
December	271.0	245.8	271.0	296.0	241.2	254.0	174.8	234.2	258.0
2007									
March	284.2	255.2	288.5	308.8	260.5	263.6	184.8	249.1	270.9
June	284.4	255.8	289.2	308.8	260.5	263.6	184.8	249.1	271.3
September	280.0	253.6	286.9	307.4	260.3	261.0	184.8	246.4	268.6
December	280.0	253.7	287.0	307.5	260.3	261.0	184.8	246.5	268.6
2008									
March	293.9	265.2	303.0	322.7	280.6	272.7	192.4	261.2	282.5
June	294.0	265.3	303.1	322.7	280.6	272.7	192.6	261.3	282.6
September	291.8	264.2	301.9	322.0	280.5	271.8	192.6	259.9	281.3
December	292.0	264.2	301.9	322.1	280.6	271.8	192.6	260.0	281.4
FINANCIAL AND INSURANCE SERVICES (b)									
2006									
December	103.5	103.3	102.0	101.5	102.6	102.2	100.1	103.6	103.0
2007									
March	103.1	103.3	102.0	101.4	102.3	102.4	101.2	103.4	102.8
June	103.8	104.5	102.9	102.1	103.0	103.3	102.4	104.3	103.7
September	105.5	107.2	105.5	104.3	104.5	105.5	103.5	106.1	105.8
December	107.7	109.8	107.6	106.3	106.3	108.0	105.7	108.3	108.0
2008									
March	109.5	111.7	109.8	108.0	107.6	109.2	107.4	110.3	109.8
June	114.4	115.1	112.1	111.5	114.2	113.3	111.6	113.5	114.0
September	116.5	117.1	114.1	113.4	115.2	115.7	112.4	116.0	115.9
December	116.1	116.5	114.5	113.1	114.5	115.9	111.7	115.5	115.6

(a) Unless otherwise specified, base of each index: 1989-90 = 100.0.

(b) Base: June quarter 2005 = 100.0.

Group, sub-group and expenditure class									Weighted average of eight capital cities
	Sydney	Melbourne	Brisbane	Adelaide	Perth	Hobart	Darwin	Canberra	
Food	0.62	0.49	0.70	0.51	0.30	0.68	0.53	0.51	0.55
Dairy and related products	0.01	0.04	0.04	0.03	0.05	0.00	0.02	0.01	0.03
Milk	0.01	0.01	0.02	0.00	0.02	0.03	0.04	0.02	0.01
Cheese	0.00	0.03	0.03	0.01	0.01	-0.01	0.01	0.02	0.02
Ice cream and other dairy products	-0.01	0.01	0.01	0.00	0.01	-0.01	-0.02	-0.02	0.00
Bread and cereal products	0.01	0.09	0.05	0.02	0.00	0.08	0.07	0.04	0.04
Bread	-0.01	0.02	0.00	0.02	-0.03	0.03	0.05	0.00	0.00
Cakes and biscuits	0.01	0.04	0.04	-0.01	0.02	0.04	0.01	0.03	0.02
Breakfast cereals	0.01	0.00	0.00	0.00	0.01	0.02	0.01	0.00	0.01
Other cereal products	0.00	0.02	0.01	0.00	-0.01	0.00	0.00	0.00	0.01
Meat and seafoods	0.10	0.06	0.09	0.10	0.07	0.05	0.11	0.02	0.08
Beef and veal	0.02	0.00	0.02	0.00	-0.01	0.03	0.00	0.01	0.01
Lamb and mutton	0.00	0.02	0.01	0.01	0.00	0.01	0.01	0.00	0.01
Pork	0.01	0.00	0.00	0.00	0.00	0.01	0.03	0.01	0.01
Poultry	0.01	0.00	0.00	-0.01	0.02	-0.01	0.01	-0.03	0.00
Bacon and ham	0.03	0.02	0.03	0.02	0.04	0.01	0.01	0.02	0.03
Other fresh and processed meat	0.03	0.01	0.01	0.05	0.01	0.03	0.04	0.02	0.02
Fish and other seafood	0.00	0.00	0.01	0.01	0.02	-0.03	0.00	0.00	0.01
Fruit and vegetables	0.27	0.18	0.31	0.14	-0.01	0.24	0.16	0.23	0.21
Fruit	0.18	0.13	0.21	0.09	0.02	0.06	0.11	0.13	0.14
Vegetables	0.10	0.05	0.10	0.05	-0.04	0.18	0.05	0.09	0.06
Non-alcoholic drinks and snack food	0.06	0.04	0.04	0.11	0.08	0.09	0.05	0.03	0.06
Soft drinks, waters and juices	0.02	0.02	0.02	0.06	0.02	0.03	0.00	-0.01	0.02
Snacks and confectionery	0.04	0.04	0.01	0.04	0.07	0.06	0.04	0.04	0.04
Meals out and take away foods	0.13	0.05	0.12	0.09	0.09	0.16	0.07	0.14	0.09
Restaurant meals	0.05	0.00	0.03	0.04	0.00	0.06	0.01	0.07	0.03
Take away and fast foods	0.08	0.04	0.09	0.05	0.09	0.11	0.06	0.07	0.07
Other food	0.05	0.03	0.04	0.03	0.03	0.06	0.04	0.04	0.04
Eggs	0.00	0.00	0.00	-0.01	-0.01	-0.01	0.00	0.00	0.00
Jams, honey and sandwich spreads	0.01	0.01	0.00	0.00	0.00	0.01	0.00	0.00	0.01
Tea, coffee and food drinks	0.01	0.01	0.00	0.00	0.01	0.01	0.01	0.02	0.01
Food additives and condiments	0.00	0.01	0.01	-0.01	0.01	0.00	0.01	-0.01	0.00
Fats and oils	0.01	0.00	0.00	0.00	-0.01	-0.01	-0.01	-0.01	0.00
Food n.e.c.	0.03	0.02	0.04	0.03	0.03	0.05	0.02	0.02	0.02
Alcohol and tobacco	0.10	0.21	0.12	0.31	0.16	0.13	0.10	0.05	0.16
Alcoholic drinks	0.04	0.12	0.06	0.24	0.10	0.06	0.02	0.00	0.09
Beer	0.05	0.06	0.06	0.13	0.08	0.03	0.00	0.03	0.06
Wine	-0.01	0.03	-0.04	0.06	0.00	0.01	-0.02	-0.02	0.01
Spirits	0.01	0.03	0.03	0.05	0.02	0.02	0.04	0.00	0.02
Tobacco	0.06	0.10	0.07	0.07	0.06	0.07	0.08	0.06	0.07
Clothing and footwear	0.03	0.05	-0.04	-0.01	0.05	0.02	0.06	-0.14	0.02
Men's clothing	0.03	0.03	-0.05	-0.01	0.05	-0.01	0.00	-0.05	0.01
Men's outerwear	0.02	0.02	-0.04	-0.01	0.04	-0.01	0.00	-0.04	0.02
Men's underwear, nightwear and socks	0.01	0.01	0.00	0.00	0.01	0.00	0.00	-0.02	0.01
Women's clothing	-0.02	-0.03	-0.01	-0.08	0.01	-0.03	-0.01	-0.05	-0.02
Women's outerwear	-0.02	-0.02	-0.03	-0.10	-0.01	-0.04	-0.02	-0.04	-0.03
Women's underwear, nightwear and hosiery	0.00	-0.01	0.02	0.02	0.01	0.00	0.01	-0.01	0.00
Children's and infants' clothing	0.00	0.02	0.01	0.01	0.00	0.01	0.01	-0.01	0.01
Footwear	-0.02	0.07	-0.01	0.01	-0.03	0.04	0.01	-0.03	0.01
Men's footwear	-0.01	0.02	-0.01	-0.01	-0.02	0.00	0.00	-0.01	0.00
Women's footwear	-0.02	0.05	0.00	0.03	-0.01	0.02	0.01	-0.03	0.00
Children's footwear	0.00	0.00	0.00	-0.01	-0.01	0.01	0.00	0.00	0.00
Accessories and clothing services	0.04	-0.04	0.01	0.07	0.03	0.02	0.03	-0.01	0.01
Accessories	0.04	-0.04	0.01	0.07	0.02	0.02	0.03	-0.01	0.01
Clothing services and shoe repair	0.00	0.00	0.00	0.01	0.02	0.00	0.00	0.00	0.00

(a) All groups index points.

Group, sub-group and expenditure class									Weighted average of eight capital cities
	Sydney	Melbourne	Brisbane	Adelaide	Perth	Hobart	Darwin	Canberra	
Housing	0.34	0.03	0.47	0.32	0.32	0.04	0.72	0.27	0.26
Rents	0.21	0.12	0.24	0.11	0.14	0.07	0.34	0.24	0.17
Utilities	0.03	0.06	0.00	0.01	-0.01	-0.01	0.00	-0.02	0.02
Electricity	0.00	0.08	0.00	0.00	0.00	0.00	0.00	0.00	0.02
Gas and other household fuels	0.00	-0.01	0.00	0.00	-0.01	-0.02	0.01	-0.01	-0.01
Water and sewerage	0.03	0.00	0.00	0.00	0.00	0.00	0.00	0.00	0.01
Other housing	0.10	-0.14	0.23	0.21	0.19	-0.02	0.37	0.04	0.07
House purchase	0.07	-0.18	0.16	0.15	0.15	-0.01	0.31	-0.02	0.02
Property rates and charges	0.00	0.00	0.00	0.00	0.00	0.00	0.00	0.00	0.00
House repairs and maintenance	0.03	0.04	0.07	0.05	0.04	-0.01	0.06	0.06	0.04
Household contents and services	0.03	-0.01	0.07	0.17	0.16	0.21	0.12	0.04	0.06
Furniture and furnishings	-0.03	0.04	0.05	0.09	0.06	0.17	-0.02	0.02	0.02
Furniture	-0.05	0.02	0.10	0.11	-0.01	0.12	0.00	0.03	0.01
Floor and window coverings	0.03	0.01	0.00	0.00	0.04	0.02	0.01	-0.01	0.02
Towels and linen	-0.01	0.00	-0.05	-0.01	0.02	0.02	-0.03	0.00	-0.01
Household appliances, utensils and tools	-0.01	-0.04	0.01	0.01	-0.01	-0.01	0.01	-0.03	-0.02
Major household appliances	0.00	-0.02	0.03	0.02	0.00	0.00	0.00	-0.03	-0.01
Small electric household appliances	0.00	-0.01	0.00	0.01	0.01	-0.02	0.01	0.00	0.00
Glassware, tableware and household utensils	0.00	-0.03	-0.03	-0.01	-0.01	-0.01	0.00	0.00	-0.01
Tools	0.00	0.00	0.01	0.00	0.01	0.01	0.00	0.00	0.01
Household supplies	0.05	-0.02	-0.01	0.00	0.02	0.05	0.07	0.00	0.02
Household cleaning agents	-0.01	0.01	0.01	0.01	-0.02	0.00	0.01	0.00	0.00
Toiletries and personal care products	-0.01	-0.02	-0.03	0.00	-0.01	-0.01	0.00	0.00	-0.02
Other household supplies	0.06	-0.01	0.00	0.00	0.05	0.06	0.04	-0.01	0.03
Household services	0.04	0.00	0.04	0.07	0.08	0.00	0.07	0.06	0.03
Child care	0.01	0.00	0.01	0.01	0.02	0.00	0.01	0.01	0.00
Hairdressing and personal care services	0.01	-0.01	0.02	0.04	0.04	0.01	0.00	0.04	0.02
Other household services	0.01	0.00	0.00	0.02	0.04	-0.01	0.06	0.01	0.02
Health	-0.10	-0.12	-0.09	-0.08	-0.04	-0.12	-0.07	-0.09	-0.09
Health services	-0.01	-0.03	-0.01	0.00	0.00	-0.03	-0.01	-0.01	-0.01
Hospital and medical services	-0.01	-0.04	-0.03	-0.01	0.00	-0.01	-0.02	-0.01	-0.02
Optical services	-0.01	0.00	0.00	0.01	-0.01	-0.01	0.00	0.00	0.00
Dental services	0.01	0.01	0.02	0.01	0.01	0.00	0.01	0.01	0.01
Pharmaceuticals	-0.09	-0.08	-0.09	-0.09	-0.05	-0.09	-0.06	-0.08	-0.08
Transportation	-1.48	-1.64	-1.65	-1.74	-1.46	-1.48	-1.23	-1.59	-1.56
Private motoring	-1.49	-1.65	-1.66	-1.74	-1.47	-1.50	-1.23	-1.59	-1.57
Motor vehicles	-0.18	-0.17	-0.21	-0.05	-0.18	-0.27	-0.11	0.03	-0.17
Automotive fuel	-1.38	-1.51	-1.52	-1.75	-1.41	-1.29	-1.16	-1.67	-1.47
Motor vehicle repair and servicing	0.03	0.02	0.05	0.04	0.04	0.02	0.00	0.03	0.03
Motor vehicle parts and accessories	0.03	0.02	0.01	0.00	0.05	0.04	0.04	0.01	0.02
Other motoring charges	0.02	0.00	0.02	0.02	0.03	0.00	0.00	0.01	0.01
Urban transport fares	0.00	0.01	0.00	0.00	0.01	0.01	0.00	0.00	0.01
Communication	0.01	0.01	0.02	0.02	0.02	0.01	0.02	0.02	0.02
Postal	0.01	0.00	0.01	0.01	0.01	0.01	0.00	0.01	0.01
Telecommunication	0.01	0.01	0.02	0.01	0.01	0.01	0.01	0.01	0.02

(a) All groups index points.

Group, sub-group and expenditure class									Weighted average of eight capital cities
	Sydney	Melbourne	Brisbane	Adelaide	Perth	Hobart	Darwin	Canberra	
Recreation	0.09	0.14	0.03	0.06	0.16	0.13	-0.85	0.28	0.10
Audio, visual and computing	-0.09	-0.08	-0.12	-0.19	-0.13	-0.15	-0.12	-0.11	-0.10
Audio, visual and computing equipment	-0.05	-0.04	-0.04	-0.09	-0.05	-0.04	-0.01	-0.06	-0.05
Audio, visual and computing media and services	-0.04	-0.04	-0.06	-0.10	-0.09	-0.10	-0.09	-0.06	-0.06
Books, newspapers and magazines	0.02	0.01	0.01	0.01	0.02	0.02	0.00	0.03	0.02
Books	0.01	0.00	0.01	0.00	0.00	0.01	0.00	0.01	0.01
Newspapers and magazines	0.01	0.01	0.00	0.01	0.01	0.01	0.00	0.01	0.01
Sport and other recreation	0.06	0.05	0.05	0.09	0.11	0.06	0.11	0.14	0.07
Sports and recreational equipment	0.02	0.01	0.00	0.03	0.02	0.00	0.04	0.00	0.01
Toys, games and hobbies	0.00	0.00	-0.01	-0.02	0.02	-0.01	-0.02	-0.01	-0.01
Sports participation	-0.02	0.00	-0.01	0.01	0.00	0.01	0.00	0.03	0.00
Pets, pet foods and supplies	0.01	0.04	0.03	0.05	0.04	0.03	0.04	0.02	0.03
Pet services including veterinary	0.00	0.01	0.00	0.02	0.00	0.02	0.05	0.01	0.00
Other recreational activities	0.05	0.00	0.04	0.01	0.04	0.01	0.00	0.09	0.03
Holiday travel and accommodation	0.08	0.17	0.07	0.14	0.15	0.20	-0.84	0.22	0.11
Domestic holiday travel and accommodation	0.03	0.11	0.03	0.09	0.07	0.21	-0.75	0.21	0.06
Overseas holiday travel and accommodation	0.05	0.06	0.04	0.05	0.08	-0.02	-0.10	0.03	0.05
Education	0.01	0.00	0.00	0.00	0.00	0.00	0.00	0.00	0.00
Preschool and primary education	0.00	0.01	0.00	0.00	0.00	0.00	0.00	0.01	0.00
Secondary education	0.00	0.00	0.00	0.00	0.00	0.00	0.00	0.00	0.00
Tertiary education	0.00	0.00	0.00	0.00	0.00	0.00	0.00	0.00	0.00
Financial and insurance services	-0.05	-0.09	0.05	-0.05	-0.09	0.02	-0.08	-0.06	-0.06
Financial services	-0.10	-0.11	-0.06	-0.08	-0.14	-0.04	-0.10	-0.09	-0.10
Deposit and loan facilities	-0.18	-0.15	-0.14	-0.13	-0.14	-0.10	-0.11	-0.13	-0.16
Other financial services	0.09	0.05	0.08	0.05	0.01	0.06	0.03	0.04	0.06
Insurance services	0.03	0.02	0.11	0.03	0.05	0.06	0.02	0.02	0.04
All groups	-0.4	-0.9	-0.4	-0.5	-0.5	-0.3	-0.7	-0.7	-0.5

(a) All groups index points.

Group, sub-group and expenditure class	INDEX NUMBERS(a)			PERCENTAGE CHANGE		CONTRIBUTION TO TOTAL CPI (ALL GROUPS) INDEX POINTS)		CHANGE IN POINTS CONTRIBUTION
	Dec Qtr 2007	Sep Qtr 2008	Dec Qtr 2008	Sep Qtr 2008 to Dec Qtr 2008	Dec Qtr 2007 to Dec Qtr 2008	Sep Qtr 2008	Dec Qtr 2008	Sep Qtr 2008 to Dec Qtr 2008
Food	175.9	182.1	185.8	2.0	5.6	26.70	27.25	0.55
Dairy and related products	194.9	207.6	210.3	1.3	7.9	2.17	2.20	0.03
Milk	213.5	224.3	227.0	1.2	6.3	1.00	1.01	0.01
Cheese	177.1	192.3	196.7	2.3	11.1	0.63	0.65	0.02
Ice cream and other dairy products	174.1	186.4	186.7	0.2	7.2	0.54	0.54	0.00
Bread and cereal products	188.3	202.7	205.1	1.2	8.9	3.14	3.18	0.04
Bread	223.3	241.0	241.6	0.2	8.2	1.24	1.24	0.00
Cakes and biscuits	172.4	185.3	188.6	1.8	9.4	1.26	1.28	0.02
Breakfast cereals	154.1	156.5	159.0	1.6	3.2	0.32	0.33	0.01
Other cereal products	151.6	173.0	176.4	2.0	16.4	0.32	0.33	0.01
Meat and seafoods	152.8	157.3	160.8	2.2	5.2	3.90	3.98	0.08
Beef and veal	162.5	166.8	169.2	1.4	4.1	0.77	0.78	0.01
Lamb and mutton	213.4	223.0	228.5	2.5	7.1	0.43	0.44	0.01
Pork	173.7	180.8	185.0	2.3	6.5	0.26	0.27	0.01
Poultry	103.0	107.4	107.9	0.5	4.8	0.76	0.76	0.00
Bacon and ham	139.9	137.5	147.5	7.3	5.4	0.34	0.37	0.03
Other fresh and processed meat	164.7	169.9	176.5	3.9	7.2	0.63	0.65	0.02
Fish and other seafood	141.3	145.3	146.4	0.8	3.6	0.71	0.72	0.01
Fruit and vegetables	173.0	167.7	176.7	5.4	2.1	3.80	4.01	0.21
Fruit	189.2	182.0	196.5	8.0	3.9	1.74	1.88	0.14
Vegetables	163.4	159.4	164.6	3.3	0.7	2.07	2.13	0.06
Non-alcoholic drinks and snack food	179.5	185.7	188.9	1.7	5.2	3.36	3.42	0.06
Soft drinks, waters and juices	161.9	168.6	170.6	1.2	5.4	1.59	1.61	0.02
Snacks and confectionery	202.2	208.0	212.5	2.2	5.1	1.77	1.81	0.04
Meals out and take away foods	181.3	189.6	191.9	1.2	5.8	7.77	7.86	0.09
Restaurant meals	185.2	191.7	193.3	0.8	4.4	3.36	3.39	0.03
Take away and fast foods	180.2	190.0	192.8	1.5	7.0	4.40	4.47	0.07
Other food	161.7	168.8	171.4	1.5	6.0	2.57	2.61	0.04
Eggs	201.9	207.8	206.8	-0.5	2.4	0.18	0.18	0.00
Jams, honey and sandwich spreads	196.4	205.0	210.1	2.5	7.0	0.25	0.26	0.01
Tea, coffee and food drinks	150.7	155.4	157.7	1.5	4.6	0.41	0.42	0.01
Food additives and condiments	140.4	147.3	147.6	0.2	5.1	0.46	0.46	0.00
Fats and oils	173.3	192.0	191.8	-0.1	10.7	0.36	0.36	0.00
Food n.e.c.	158.9	163.2	168.2	3.1	5.9	0.91	0.93	0.02
Alcohol and tobacco	248.2	259.1	262.6	1.4	5.8	11.44	11.60	0.16
Alcoholic drinks	181.0	189.6	191.8	1.2	6.0	7.35	7.44	0.09
Beer	203.5	209.4	213.2	1.8	4.8	3.33	3.39	0.06
Wine	149.4	153.3	153.6	0.2	2.8	2.41	2.42	0.01
Spirits	182.2	204.8	207.6	1.4	13.9	1.61	1.63	0.02
Tobacco	436.2	452.6	460.4	1.7	5.5	4.09	4.16	0.07
Clothing and footwear	109.8	109.6	110.0	0.4	0.2	5.77	5.79	0.02
Men's clothing	106.7	106.2	107.8	1.5	1.0	1.09	1.10	0.01
Men's outerwear	103.8	103.7	105.0	1.3	1.2	0.92	0.94	0.02
Men's underwear, nightwear and socks	122.5	119.8	124.0	3.5	1.2	0.16	0.17	0.01
Women's clothing	109.2	109.1	107.8	-1.2	-1.3	2.02	2.00	-0.02
Women's outerwear	101.2	100.9	99.3	-1.6	-1.9	1.60	1.57	-0.03
Women's underwear, nightwear and hosiery	143.6	144.8	145.5	0.5	1.3	0.42	0.42	0.00
Children's and infants' clothing	116.7	114.0	115.1	1.0	-1.4	0.58	0.59	0.01
Footwear	98.5	96.8	97.5	0.7	-1.0	0.95	0.96	0.01
Men's footwear	91.6	88.8	89.1	0.3	-2.7	0.25	0.25	0.00
Women's footwear	103.6	101.5	102.9	1.4	-0.7	0.51	0.51	0.00
Children's footwear	99.2	100.1	99.8	-0.3	0.6	0.19	0.19	0.00
Accessories and clothing services(b)	111.1	113.4	115.0	1.4	3.5	1.14	1.15	0.01
Accessories(b)	94.7	96.3	97.6	1.3	3.1	0.87	0.88	0.01
Clothing services and shoe repair	188.6	194.2	197.0	1.4	4.5	0.27	0.27	0.00

(a) Unless otherwise specified, base of each index: 1989-90 = 100.0.

(b) Base: June quarter 1998 = 100.0.

continued

Group, sub-group and expenditure class	INDEX NUMBERS(a)			PERCENTAGE CHANGE		CONTRIBUTION TO TOTAL CPI (ALL GROUPS) INDEX POINTS)		CHANGE IN POINTS CONTRIBUTION
	Dec Qtr 2007	Sep Qtr 2008	Dec Qtr 2008	Sep Qtr 2008 to Dec Qtr 2008	Dec Qtr 2007 to Dec Qtr 2008	Sep Qtr 2008	Dec Qtr 2008	Sep Qtr 2008 to Dec Qtr 2008
Housing	139.3	147.2	148.3	0.7	6.5	33.79	34.05	0.26
Rents	160.2	170.5	173.6	1.8	8.4	9.21	9.38	0.17
Utilities	176.9	195.1	196.0	0.5	10.8	5.74	5.76	0.02
Electricity	167.3	183.0	184.3	0.7	10.2	2.95	2.97	0.02
Gas and other household fuels	195.0	214.9	213.7	-0.6	9.6	1.27	1.26	-0.01
Water and sewerage(b)	148.5	166.8	168.0	0.7	13.1	1.52	1.53	0.01
Other housing	131.8	137.0	137.5	0.4	4.3	18.84	18.91	0.07
House purchase(b)	159.0	165.4	165.8	0.2	4.3	13.22	13.24	0.02
Property rates and charges(b)	163.3	173.2	173.2	0.0	6.1	2.11	2.11	0.00
House repairs and maintenance	167.1	171.2	173.2	1.2	3.7	3.51	3.55	0.04
Household contents and services	123.5	123.6	124.0	0.3	0.4	14.53	14.59	0.06
Furniture and furnishings	130.7	129.6	130.2	0.5	-0.4	4.68	4.70	0.02
Furniture	132.4	129.9	130.6	0.5	-1.4	2.93	2.94	0.01
Floor and window coverings	146.2	148.1	150.2	1.4	2.7	1.21	1.23	0.02
Towels and linen	100.7	100.8	98.8	-2.0	-1.9	0.54	0.53	-0.01
Household appliances, utensils and tools	103.2	102.8	102.2	-0.6	-1.0	2.57	2.55	-0.02
Major household appliances	105.9	105.9	105.6	-0.3	-0.3	0.97	0.96	-0.01
Small electric household appliances	94.7	93.3	93.0	-0.3	-1.8	0.38	0.38	0.00
Glassware, tableware and household utensils	97.1	95.9	93.9	-2.1	-3.3	0.69	0.68	-0.01
Tools	110.2	110.9	111.5	0.5	1.2	0.52	0.53	0.01
Household supplies	137.7	140.3	140.8	0.4	2.3	4.53	4.55	0.02
Household cleaning agents	130.5	132.9	133.4	0.4	2.2	0.51	0.51	0.00
Toiletries and personal care products	144.4	144.4	143.5	-0.6	-0.6	1.78	1.76	-0.02
Other household supplies	143.6	148.5	150.1	1.1	4.5	2.24	2.27	0.03
Household services	216.1	214.6	217.2	1.2	0.5	2.76	2.79	0.03
Child care	172.3	140.5	142.5	1.4	-17.3	0.47	0.47	0.00
Hairdressing and personal care services	191.4	196.9	199.4	1.3	4.2	1.25	1.27	0.02
Other household services	231.6	243.4	246.0	1.1	6.2	1.04	1.06	0.02
Health	226.9	241.0	238.1	-1.2	4.9	7.94	7.85	-0.09
Health services	250.3	264.8	264.2	-0.2	5.6	6.22	6.21	-0.01
Hospital and medical services	262.3	279.5	278.3	-0.4	6.1	4.87	4.85	-0.02
Optical services	149.5	150.1	147.6	-1.7	-1.3	0.18	0.18	0.00
Dental services	238.5	247.1	249.0	0.8	4.4	1.17	1.18	0.01
Pharmaceuticals	150.0	161.7	154.1	-4.7	2.7	1.72	1.64	-0.08
Transportation	163.3	173.3	161.3	-6.9	-1.2	22.64	21.08	-1.56
Private motoring	159.6	169.8	157.3	-7.4	-1.4	21.42	19.85	-1.57
Motor vehicles	98.9	97.7	95.4	-2.4	-3.5	7.16	6.99	-0.17
Automotive fuel	225.4	263.3	215.5	-18.2	-4.4	8.10	6.63	-1.47
Motor vehicle repair and servicing	155.7	160.0	161.4	0.9	3.7	3.24	3.27	0.03
Motor vehicle parts and accessories	128.2	133.3	135.9	2.0	6.0	1.17	1.19	0.02
Other motoring charges	222.9	232.4	233.9	0.6	4.9	1.76	1.77	0.01
Urban transport fares	227.0	233.5	234.6	0.5	3.3	1.22	1.23	0.01
Communication	111.2	111.4	111.8	0.4	0.5	4.95	4.97	0.02
Postal	143.2	147.3	152.6	3.6	6.6	0.18	0.19	0.01
Telecommunication	108.7	108.9	109.2	0.3	0.5	4.77	4.79	0.02

(a) Unless otherwise specified, base of each index: 1989-90 = 100.0.

(b) Base: June quarter 1998 = 100.0.

continued

Group, sub-group and expenditure class	INDEX NUMBERS(a)			PERCENTAGE CHANGE		CONTRIBUTION TO TOTAL CPI (ALL GROUPS) INDEX POINTS)		CHANGE IN POINTS CONTRIBUTION
	Dec Qtr 2007	Sep Qtr 2008	Dec Qtr 2008	Sep Qtr 2008 to Dec Qtr 2008	Dec Qtr 2007 to Dec Qtr 2008	Sep Qtr 2008	Dec Qtr 2008	Sep Qtr 2008 to Dec Qtr 2008
Recreation	136.2	137.3	138.0	0.5	1.3	18.08	18.18	0.10
Audio, visual and computing	47.1	44.3	43.0	-2.9	-8.7	3.59	3.49	-0.10
Audio, visual and computing equipment	22.4	19.9	19.3	-3.0	-13.8	1.57	1.52	-0.05
Audio, visual and computing media and services	97.8	96.9	94.2	-2.8	-3.7	2.03	1.97	-0.06
Books, newspapers and magazines	215.8	219.3	222.1	1.3	2.9	1.34	1.36	0.02
Books(b)	126.9	128.5	130.1	1.2	2.5	0.68	0.69	0.01
Newspapers and magazines(b)	147.8	150.8	152.7	1.3	3.3	0.66	0.67	0.01
Sport and other recreation	174.6	179.8	181.9	1.2	4.2	6.14	6.21	0.07
Sports and recreational equipment(b)	86.0	85.4	86.5	1.3	0.6	0.79	0.80	0.01
Toys, games and hobbies(b)	93.8	94.5	94.0	-0.5	0.2	0.74	0.73	-0.01
Sports participation(b)	162.6	169.2	168.7	-0.3	3.8	1.26	1.26	0.00
Pets, pet foods and supplies	160.9	163.4	170.6	4.4	6.0	0.70	0.73	0.03
Pet services including veterinary	217.8	224.0	226.0	0.9	3.8	0.75	0.75	0.00
Other recreational activities(b)	152.7	160.9	163.5	1.6	7.1	1.90	1.93	0.03
Holiday travel and accommodation	148.8	152.2	154.6	1.6	3.9	7.01	7.12	0.11
Domestic holiday travel and accommodation	158.1	156.4	159.0	1.7	0.6	3.86	3.92	0.06
Overseas holiday travel and accommodation	137.3	146.5	148.8	1.6	8.4	3.15	3.20	0.05
Education	268.6	281.3	281.4	0.0	4.8	4.64	4.64	0.00
Preschool and primary education(c)	151.0	156.2	156.4	0.1	3.6	0.89	0.89	0.00
Secondary education(c)	158.3	168.7	168.7	0.0	6.6	1.71	1.71	0.00
Tertiary education(c)	130.2	135.1	135.1	0.0	3.8	2.04	2.04	0.00
Financial and insurance services(d)	108.0	115.9	115.6	-0.3	7.0	16.01	15.95	-0.06
Financial services(d)	107.9	115.8	114.9	-0.8	6.5	13.41	13.31	-0.10
Deposit and loan facilities(d)	106.6	120.4	118.1	-1.9	10.8	7.98	7.82	-0.16
Other financial services(d)	109.8	109.5	110.7	1.1	0.8	5.43	5.49	0.06
Insurance services	269.6	290.5	295.3	1.7	9.5	2.60	2.64	0.04
All groups	160.1	166.5	166.0	-0.3	3.7	166.5	166.0	-0.5

(a) Unless otherwise specified, base of each index: 1989-90 = 100.0.

(b) Base: June quarter 1998 = 100.0.

(c) Base: June quarter 2000 = 100.0.

(d) Base: June quarter 2005 = 100.0.

SPECIAL SERIES, Weighted average of eight capital cities(a)

	INDEX NUMBERS(b)			PERCENTAGE CHANGE		CONTRIBUTION TO TOTAL CPI (ALL GROUPS INDEX POINTS)		CHANGE IN POINTS CONTRIBUTION
	Dec Qtr 2007	Sep Qtr 2008	Dec Qtr 2008	Sep Qtr 2008 to Dec Qtr 2008	Dec Qtr 2007 to Dec Qtr 2008	Sep Qtr 2008	Dec Qtr 2008	Sep Qtr 2008 to Dec Qtr 2008
All groups	160.10	166.5	166.0	-0.3	3.7	166.5	166.0	-0.5
Selected components								
Goods component	157.7	163.4	161.7	-1.0	2.5	96.32	95.34	-0.98
Services component	164.9	172.4	173.4	0.6	5.2	70.19	70.61	0.42
Tradables component(c)	119.8	123.4	121.2	-1.8	1.2	67.44	66.25	-1.19
Non-tradables component(c)	143.6	150.4	151.3	0.6	5.4	99.08	99.70	0.62
All groups excluding								
Food	157.0	163.5	162.2	-0.8	3.3	139.81	138.70	-1.11
Alcohol and tobacco	153.9	160.1	159.3	-0.5	3.5	155.07	154.35	-0.72
Clothing and footwear	163.4	170.2	169.6	-0.4	3.8	160.74	160.16	-0.58
Housing	162.6	168.5	167.4	-0.7	3.0	132.72	131.90	-0.82
Household contents and services	165.5	172.8	172.1	-0.4	4.0	151.98	151.36	-0.62
Health	156.9	163.0	162.5	-0.3	3.6	158.57	158.11	-0.46
Transportation	159.7	165.5	166.7	0.7	4.4	143.87	144.88	1.01
Communication	161.3	167.9	167.3	-0.4	3.7	161.56	160.98	-0.58
Recreation	163.5	170.8	170.0	-0.5	4.0	148.43	147.77	-0.66
Education	158.7	165.0	164.4	-0.4	3.6	161.87	161.31	-0.56
Financial and insurance services	166.8	172.9	172.4	-0.3	3.4	150.50	150.00	-0.50
Housing and Financial and insurance services	162.7	167.7	166.6	-0.7	2.4	116.72	115.95	-0.77
Hospital and medical services	157.5	163.7	163.1	-0.4	3.6	161.64	161.10	-0.54

(a) Refer to paragraphs 11 and 12 of the Explanatory Notes for a description of these series.

(b) Unless otherwise specified, base of each index: 1989-90 = 100.0.

(c) Base: June quarter 1998 = 100.0.

ANALYTICAL SERIES, Index numbers(a)(b)

Period	All groups	All groups excluding Housing and Financial and insurance services	All groups excluding 'volatile items'	MARKET GOODS AND SERVICES EXCLUDING 'VOLATILE ITEMS'				
				Goods	Services	Total	Tradables(c)	Non-tradables(c)
2004-05	147.0	150.3	154.0	143.2	161.5	148.4	112.6	129.6
2005-06	151.7	155.2	157.6	145.6	165.2	151.2	116.0	133.9
2006-07	156.1	159.8	161.7	148.2	170.0	154.6	118.5	138.6
2007-08	161.4	163.8	167.2	151.8	177.8	159.7	120.7	144.9
2004								
December	146.5	149.9	153.4	143.1	161.2	148.2	112.6	128.8
2005								
March	147.5	150.8	154.7	143.4	162.5	148.8	112.5	130.5
June	148.4	151.7	155.3	144.2	162.4	149.3	113.4	131.1
September	149.8	153.2	156.2	144.9	163.4	150.2	114.8	132.2
December	150.6	153.7	156.9	145.3	164.8	150.9	114.8	133.3
2006								
March	151.9	155.4	158.1	145.7	165.6	151.4	115.7	134.5
June	154.3	158.4	159.1	146.4	166.8	152.3	118.8	135.6
September	155.7	159.7	160.3	147.3	168.2	153.4	119.8	136.9
December	155.5	159.2	161.1	147.8	170.1	154.4	118.1	138.0
2007								
March	155.6	159.0	162.1	148.3	170.3	154.8	116.9	139.2
June	157.5	161.2	163.3	149.5	171.3	155.9	119.2	140.2
September	158.6	161.5	164.4	149.9	174.1	157.2	119.4	141.7
December	160.1	162.7	166.0	151.3	176.7	159.0	119.8	143.6
2008								
March	162.2	164.5	168.0	152.1	178.6	160.2	120.8	146.1
June	164.6	166.6	170.2	153.9	181.7	162.4	122.6	148.1
September	166.5	167.7	172.0	154.7	184.9	164.1	123.4	150.4
December	166.0	166.6	172.8	155.3	186.3	165.0	121.2	151.3

(a) Unless otherwise specified, base of each index: 1989-90 = 100.0.

(c) Base: June quarter 1998 = 100.0.

(b) Refer to paragraphs 11-13 of the Explanatory Notes for a description of these series.

Period	All groups excluding Housing and Financial and insurance services			MARKET GOODS AND SERVICES EXCLUDING 'VOLATILE ITEMS'					RBA CONSUMER PRICE MEASURES	
	All groups		All groups excluding 'volatile items'	Goods	Services	Total	Tradables	Non-tradables	Weighted median	Trimmed mean
PERCENTAGE CHANGE (from previous financial year)										
2004-05	2.4	2.0	2.1	1.1	2.4	1.6	1.0	3.6	2.5	2.6
2005-06	3.2	3.3	2.3	1.7	2.3	1.9	3.0	3.3	2.6	2.6
2006-07	2.9	3.0	2.6	1.8	2.9	2.2	2.2	3.5	r2.9	2.8
2007-08	3.4	2.5	3.4	2.4	4.6	3.3	1.9	4.5	4.0	3.7
PERCENTAGE CHANGE (from corresponding quarter of previous year)										
2004										
December	2.6	2.3	2.1	1.2	2.1	1.4	1.4	3.5	2.6	2.7
2005										
March	2.4	2.0	2.4	1.3	2.8	1.8	0.6	3.7	2.4	2.6
June	2.5	2.1	2.3	1.5	2.4	1.8	1.3	3.5	2.5	2.6
September	3.0	3.0	2.4	1.9	2.2	2.0	2.6	3.4	r2.4	2.6
December	2.8	2.5	2.3	1.5	2.2	1.8	2.0	3.5	r2.4	2.3
2006										
March	3.0	3.1	2.2	1.6	1.9	1.7	2.8	3.1	2.7	2.6
June	4.0	4.4	2.4	1.5	2.7	2.0	4.8	3.4	2.9	2.8
September	3.9	4.2	2.6	1.7	2.9	2.1	4.4	3.6	3.0	2.8
December	3.3	3.6	2.7	1.7	3.2	2.3	2.9	3.5	2.9	2.9
2007										
March	2.4	2.3	2.5	1.8	2.8	2.2	1.0	3.5	2.9	2.7
June	2.1	1.8	2.6	2.1	2.7	2.4	0.3	3.4	2.9	2.7
September	1.9	1.1	2.6	1.8	3.5	2.5	-0.3	3.5	3.2	2.9
December	3.0	2.2	3.0	2.4	3.9	3.0	1.4	4.1	r3.9	r3.4
2008										
March	4.2	3.5	3.6	2.6	4.9	3.5	3.3	5.0	4.4	4.0
June	4.5	3.3	4.2	2.9	6.1	4.2	2.9	5.6	4.5	4.3
September	5.0	3.8	4.6	3.2	6.2	4.4	3.4	6.1	4.8	4.6
December	3.7	2.4	4.1	2.6	5.4	3.8	1.2	5.4	4.5	4.2
PERCENTAGE CHANGE (from previous quarter)										
2004										
December	0.8	0.7	0.6	0.6	0.8	0.7	0.6	0.8	0.6	0.7
2005										
March	0.7	0.6	0.8	0.2	0.8	0.4	-0.1	1.3	0.5	0.6
June	0.6	0.6	0.4	0.6	-0.1	0.3	0.8	0.5	0.7	0.7
September	0.9	1.0	0.6	0.5	0.6	0.6	1.2	0.8	0.6	0.6
December	0.5	0.3	0.4	0.3	0.9	0.5	0.0	0.8	0.6	0.5
2006										
March	0.9	1.1	0.8	0.3	0.5	0.3	0.8	0.9	0.8	0.8
June	1.6	1.9	0.6	0.5	0.7	0.6	2.7	0.8	0.9	0.9
September	0.9	0.8	0.8	0.6	0.8	0.7	0.8	1.0	0.7	0.7
December	-0.1	-0.3	0.5	0.3	1.1	0.7	-1.4	0.8	0.5	0.5
2007										
March	0.1	-0.1	0.6	0.3	0.1	0.3	-1.0	0.9	0.7	0.6
June	1.2	1.4	0.7	0.8	0.6	0.7	2.0	0.7	1.0	0.9
September	0.7	0.2	0.7	0.3	1.6	0.8	0.2	1.1	1.0	0.8
December	0.9	0.7	1.0	0.9	1.5	1.1	0.3	1.3	1.1	1.1
2008										
March	1.3	1.1	1.2	0.5	1.1	0.8	0.8	1.7	1.3	1.2
June	1.5	1.3	1.3	1.2	1.7	1.4	1.5	1.4	1.0	1.2
September	1.2	0.7	1.1	0.5	1.8	1.0	0.7	1.6	1.3	1.2
December	-0.3	-0.7	0.5	0.4	0.8	0.5	-1.8	0.6	0.9	0.6

r revised

(a) Refer to paragraphs 11 - 13 of the Explanatory Notes for a description of these series.

<i>Period</i>	<i>Australia</i>	<i>New Zealand</i>	<i>Hong Kong</i>	<i>Indonesia</i>	<i>Japan</i>	<i>Korea, Republic of</i>	<i>Singapore</i>	<i>Taiwan</i>	<i>Canada</i>	<i>United States of America</i>	<i>Germany</i>	<i>United Kingdom</i>
2004-05	150.3	132.9	161.2	560.2	106.2	204.9	125.6	134.7	139.3	146.2	131.1	149.7
2005-06	155.2	136.8	162.6	646.6	106.1	210.4	126.9	138.2	142.2	152.6	133.1	152.8
2006-07	159.8	139.6	164.7	700.5	106.4	215.4	127.8	138.4	143.8	155.6	135.0	157.6
2007-08	163.8	143.2	171.2	763.5	107.3	223.2	134.2	144.4	145.8	161.8	138.7	162.4
2004												
December	149.9	132.8	161.6	553.0	106.8	203.0	125.6	134.2	138.9	145.7	130.6	149.5
2005												
March	150.8	133.1	161.4	571.4	105.6	206.0	125.4	133.9	139.2	146.2	131.2	149.7
June	151.7	133.9	161.9	577.1	106.1	207.3	125.6	136.2	140.6	148.6	131.8	151.1
September	153.2	135.3	162.1	589.5	105.8	208.7	126.3	139.8	141.9	150.9	132.8	151.4
December	153.7	136.1	162.6	655.1	106.1	208.8	127.1	138.5	141.5	152.0	132.9	152.3
2006												
March	155.4	136.7	162.2	668.6	105.9	211.4	127.2	136.0	141.9	152.4	132.8	152.5
June	158.4	138.9	163.4	673.3	106.5	212.5	127.1	138.6	143.6	155.2	133.7	154.9
September	159.7	139.5	164.0	681.5	106.8	214.3	127.3	138.5	143.3	155.7	134.2	156.0
December	159.2	138.8	164.3	698.8	106.5	213.6	127.9	137.7	142.2	153.4	134.2	157.1
2007												
March	159.0	139.3	164.8	710.7	105.8	215.7	127.7	137.2	143.7	154.8	135.1	157.7
June	161.2	140.6	165.7	710.8	106.4	218.1	128.4	140.3	145.9	158.5	136.5	159.6
September	161.5	140.8	167.4	728.9	106.6	219.5	131.1	141.3	145.4	158.5	137.3	159.2
December	162.7	142.7	169.4	747.1	107.2	220.9	133.2	146.2	144.7	160.1	138.3	161.2
2008												
March	164.5	143.5	172.9	773.7	107.1	223.8	135.5	143.9	145.0	161.9	139.1	162.6
June	166.6	145.8	175.1	804.4	108.1	228.7	137.1	146.2	148.2	166.7	139.9	166.5
September	167.7	148.2	175.8	827.9	109.4	231.8	137.7	148.9	149.5	169.2	140.9	168.6
December	166.6	147.0	172.9	832.6	nya	231.2	nya	149.0	nya	162.2	139.8	168.1

nya not yet available

(a) Base of each index: 1989-90 = 100.0.

Period	Australia	New Zealand	Hong Kong	Indonesia	Japan	Korea, Republic of	Singapore	Taiwan	Canada	United States of America	Germany	United Kingdom
PERCENTAGE CHANGE (from previous financial year)												
2004-05	2.0	1.8	1.7	6.8	0.1	3.8	1.1	2.7	1.8	3.1	1.7	1.2
2005-06	3.3	2.9	0.9	15.4	-0.1	2.7	1.0	2.6	2.1	4.4	1.5	2.1
2006-07	3.0	2.0	1.3	8.3	0.3	2.4	0.7	0.1	1.1	2.0	1.4	3.1
2007-08	2.5	2.6	3.9	9.0	0.8	3.6	5.0	4.3	1.4	4.0	2.7	3.0

PERCENTAGE CHANGE (from corresponding quarter of previous year)

2004												
December	2.3	1.9	2.1	5.7	0.7	3.7	1.9	2.4	2.1	3.6	2.0	1.2
2005												
March	2.0	1.9	1.5	8.5	-0.2	3.5	0.2	2.1	1.7	3.1	1.5	1.2
June	2.1	2.0	1.2	7.2	-0.1	3.4	0.2	2.7	1.4	3.2	1.2	1.5
September	3.0	2.6	1.3	9.3	-0.4	2.7	0.5	3.9	2.5	4.6	1.7	1.9
December	2.5	2.5	0.6	18.5	-0.7	2.9	1.2	3.2	1.9	4.3	1.8	1.9
2006												
March	3.1	2.7	0.5	17.0	0.3	2.6	1.4	1.6	1.9	4.2	1.2	1.9
June	4.4	3.7	0.9	16.7	0.4	2.5	1.2	1.8	2.1	4.4	1.4	2.5
September	4.2	3.1	1.2	15.6	1.0	2.7	0.8	-0.9	1.0	3.2	1.1	3.0
December	3.6	1.9	1.0	6.5	0.4	2.3	0.6	-0.6	0.5	0.9	1.0	3.2
2007												
March	2.3	1.9	1.6	6.3	-0.1	2.0	0.4	0.9	1.3	1.6	1.7	3.4
June	1.8	1.2	1.4	5.6	-0.1	2.6	1.0	1.2	1.6	2.1	2.1	3.0
September	1.1	1.0	1.0	7.0	-0.2	2.4	3.0	1.7	1.5	1.8	2.3	2.1
December	2.2	2.8	3.1	7.1	0.6	3.4	4.1	5.8	1.8	4.4	3.1	2.6
2008												
March	3.5	3.0	4.9	8.9	1.2	3.8	6.1	4.9	0.9	4.6	3.0	3.1
June	3.3	3.8	5.7	13.2	1.6	4.9	6.8	4.2	1.6	5.2	2.5	4.3
September	3.8	5.2	5.0	13.6	2.6	5.6	5.0	5.4	2.8	6.8	2.6	5.9
December	2.4	3.0	2.1	11.4	nya	4.7	nya	1.9	nya	1.3	1.1	4.3

PERCENTAGE CHANGE (from previous quarter)

2004												
December	0.7	0.7	1.0	2.6	0.6	-0.1	-0.1	-0.2	0.3	1.0	0.0	0.6
2005												
March	0.6	0.2	-0.1	3.3	-1.1	1.5	-0.2	-0.2	0.2	0.3	0.5	0.1
June	0.6	0.6	0.3	1.0	0.5	0.6	0.2	1.7	1.0	1.6	0.5	0.9
September	1.0	1.0	0.1	2.1	-0.3	0.7	0.6	2.6	0.9	1.5	0.8	0.2
December	0.3	0.6	0.3	11.1	0.3	0.0	0.6	-0.9	-0.3	0.7	0.1	0.6
2006												
March	1.1	0.4	-0.2	2.1	-0.2	1.2	0.1	-1.8	0.3	0.3	-0.1	0.1
June	1.9	1.6	0.7	0.7	0.6	0.5	-0.1	1.9	1.2	1.8	0.7	1.6
September	0.8	0.4	0.4	1.2	0.3	0.8	0.2	-0.1	-0.2	0.3	0.4	0.7
December	-0.3	-0.5	0.2	2.4	-0.3	-0.3	0.5	-0.6	-0.8	-1.5	0.0	0.7
2007												
March	-0.1	0.4	0.3	1.9	-0.7	1.0	-0.2	-0.4	1.1	0.9	0.7	0.4
June	1.4	0.9	0.5	0.0	0.6	1.1	0.5	2.3	1.5	2.4	1.0	1.2
September	0.2	0.2	1.0	2.6	0.2	0.6	2.1	1.6	-0.3	0.0	0.6	-0.3
December	0.7	1.3	1.2	2.5	0.5	0.6	1.6	3.4	-0.5	1.0	0.7	1.3
2008												
March	1.1	0.6	2.1	3.6	-0.1	1.3	1.7	-1.6	0.2	1.1	0.6	0.9
June	1.3	1.6	1.3	4.0	1.0	2.2	1.2	1.6	2.2	3.0	0.6	2.4
September	0.7	1.6	0.4	2.9	1.2	1.4	0.4	1.8	0.9	1.5	0.7	1.3
December	-0.7	-0.8	-1.6	0.6	nya	-0.3	nya	0.1	nya	-4.1	-0.8	-0.3

nya not yet available

EXPLANATORY NOTES

BRIEF DESCRIPTION OF THE CPI

1 The Consumer Price Index (CPI) measures quarterly changes in the price of a 'basket' of goods and services which account for a high proportion of expenditure by the CPI population group (i.e. metropolitan households). This 'basket' covers a wide range of goods and services, arranged in the following eleven groups:

- Food
- Alcohol and tobacco
- Clothing and footwear
- Housing
- Household contents and services
- Health
- Transportation
- Communication
- Recreation
- Education
- Financial and insurance services.

2 The capital city indexes measure price movements over time in each city individually. They do not measure differences in retail price levels between cities.

3 Further information about the CPI is contained in *Australian Consumer Price Index: Concepts, Sources and Methods, 2005* (cat. no. 6461.0) which is available on the ABS website <<http://www.abs.gov.au>>.

PRICES

4 The frequency of price collection by item varies as necessary to obtain reliable price measures. Prices of some items are volatile (i.e. their prices may vary many times each quarter) and for these items frequent price observations are necessary to obtain a reliable measure of the average price for the quarter. Each month prices are collected at regular intervals for goods such as milk, bread, fresh meat and seafood, fresh fruit and vegetables, alcohol, tobacco, women's outerwear, project homes, motor vehicles, petrol and holiday travel and accommodation. For most other items, price volatility is not a problem and prices are collected once a quarter. There are a few items where prices are changed at infrequent intervals, for example education fees where prices are set once a year. In these cases, the frequency of price collection is modified accordingly.

5 In order to facilitate a more even spread of field collection workload, the number of items for which prices are collected quarterly is distributed roughly equally across each month of each quarter. In all cases, however, individual items are priced in the same month of each quarter. For example, items for which prices are collected in the first month of the September quarter, July, are also priced in the first month of subsequent quarters, namely October, January and April.

WEIGHTING PATTERN

6 There are 90 expenditure classes (that is, groupings of like items) in the fifteenth series CPI and each expenditure class has its own weight, or measure of relative importance. In calculating the index, price changes for the various expenditure classes are combined using these weights.

7 Changes in the weighting pattern have been made at approximately five-yearly intervals to take account of changes in household spending patterns. The CPI now comprises fifteen series of price indexes which have been linked to form a continuous series. The current and historical weighting patterns for the CPI for the weighted average of the eight capital cities is published in *Consumer Price Index: Historical Weighting Patterns (1948 to 2005)* (cat. no. 6431). The 15th series weighting pattern for the weighted average of eight capital cities and for each of the eight capital cities, as well as each city's percentage contribution to the weighted average, are also published in the *Consumer Price Index: 15th Series Weighting Pattern (Reissue)* (cat. no. 6430.0)

EXPLANATORY NOTES *continued*

WEIGHTING PATTERN *continued*

(electronic publication). Both publications are available on the ABS website <<http://www.abs.gov.au>>.

ANALYSIS OF CPI CHANGES

8 Movements in indexes from one period to another can be expressed either as changes in index points or as percentage changes. The following example illustrates the method of calculating changes in index points and percentage changes between any two periods:

All groups CPI: Weighted average of eight capital cities.

	Index numbers:
December Quarter 2008	166.0 (see table 1)
less September Quarter 2008	166.5 (see table 1)
Change in index points	-0.5
Percentage change	$-0.5/166.5 \times 100 = -0.3\%$

9 Percentage changes are calculated to illustrate three different kinds of movements in index numbers:

- movements between consecutive financial years (where the index numbers for financial years are simple averages of the quarterly index numbers)
- movements between corresponding quarters of consecutive years
- movements between consecutive quarters.

10 Table 7 provides a detailed analysis, for the weighted average of eight capital cities, of movements in the CPI since the previous quarter, including information on movements for groups, sub-groups and expenditure classes. It also shows the contribution which each makes to the total CPI. For instance, the dairy and related products sub-group contributed 2.17 index points to the total All groups index number of 166.5 for December Quarter 2008. The final column shows contributions to the change in All Groups index points by each group, sub-group and expenditure class.

SPECIAL SERIES

11 Various series are presented in tables 8, 9 and 10 in this publication which are helpful for analytical purposes. These series are compiled by taking subsets of the CPI basket. (A complete list of CPI groups, sub-groups and expenditure classes is contained in tables 6 and 7.)

12 Some of the compiled series are self explanatory, such as 'All groups excluding Food'. Other series and their composition are described below:

- *All groups excluding Financial and insurance services*: Reflecting the changing composition of the CPI, from September quarter 1989 to June quarter 1998, comprises the All groups CPI excluding house insurance, house contents insurance, vehicle insurance and mortgage interest charges and consumer credit charges; from September quarter 1998 to June quarter 2000 comprises the All groups CPI excluding house insurance, house contents insurance and vehicle insurance; from September quarter 2000 to June quarter 2005 comprises the All groups CPI excluding insurance services; from September quarter 2005 comprises the All groups CPI excluding Financial and insurance services.
- *All groups excluding Housing and Financial and insurance services*: Reflecting the changing composition of the CPI, from September quarter 1989 to June quarter 1998, comprises the All groups CPI excluding Housing, house contents insurance, vehicle insurance and consumer credit charges; from September quarter 1998 to June quarter 2000 comprises the All groups CPI excluding Housing, house insurance, house contents insurance and vehicle insurance; from September quarter 2000 to June quarter 2005 comprises the All groups CPI excluding Housing and insurance services; from September quarter 2005 comprises the All groups CPI excluding Housing and Financial and insurance services.

EXPLANATORY NOTES *continued*

SPECIAL SERIES *continued*

- *All groups, goods component*: comprises the Food group (except Restaurant meals expenditure class), Alcohol and tobacco group, Clothing and footwear group (except Clothing services and shoe repair expenditure class) and Household contents and services group (except Household services sub-group); the Utilities, Audio, visual and computing and Books, newspapers and magazines sub-groups; and the House purchase, Pharmaceuticals, Motor vehicles, Automotive fuel, Motor vehicle parts and accessories, Sports and recreational equipment, Toys, games and hobbies and Pets, pet foods and supplies expenditure classes.
- *All groups, services component*: comprises all items not included in the 'All groups, goods component'.
- *All groups, tradables component*: comprises all items whose prices are largely determined on the world market.
- *All groups, non-tradables component*: comprises all items not included in the 'All groups, tradables component'.
- *All groups excluding 'volatile items'*: comprises the All groups CPI excluding Fruit and vegetables and Automotive fuel.
- *RBA measures 'Weighted median' and 'Trimmed mean'*: These measures are calculated following the methodology adopted by the Reserve Bank of Australia. The 'Trimmed mean' is calculated by ordering the CPI expenditure class components by their price change in the quarter and taking the expenditure weighted average of the middle 70 per cent of these price changes. The 'Weighted median' is the price change of the component in the middle of this ordering. For calculating the 'Weighted median' and 'Trimmed mean' series, where CPI components are identified as having a seasonal pattern, quarterly price changes are estimated on a seasonally adjusted basis. Seasonal adjustment factors are calculated using the history of price changes up to the current quarter CPI and are revised each quarter. These revisions to the seasonal adjustment factors lead to revisions in the 'Weighted median' and 'Trimmed mean' series. Movements in the series from one period to another are expressed as percentage changes (see paragraph 9).

13 Market goods and services excluding 'volatile items': in addition to the items excluded from the series 'All groups excluding 'volatile items'', also excludes: Utilities, Property rates and charges, Child care, Health, Other motoring charges, Urban transport fares, Postal, and Education. A detailed description of the special and analytical series was published in Appendix 1 to the September quarter 2005 issue of *Consumer Price Index, Australia* (cat. no. 6401.0).

14 The ABS is grateful for the assistance of the Reserve Bank of Australia for specifying the items included in the 'All groups excluding 'volatile items'' and 'Market goods and services excluding 'volatile items''. The Reserve Bank of Australia does not accord any special policy status to these series.

ROUNDING

15 The CPI uses a hierarchy of rounding procedures to ensure consistency between published index numbers and percentage changes. However, rounding differences can arise in the 'points contributions' published in tables 6, 7 and 8 because of the different levels of precision required in those data.

INTERNATIONAL COMPARISONS

16 In analysing price movements in Australia, an important consideration is Australia's performance relative to other countries. However, a simple comparison of All groups (or headline) CPIs is often inappropriate because of the different measurement approaches used by countries for certain products, particularly housing and financial and insurance services. To provide a better basis for international comparisons, the Seventeenth International Conference of Labour Statisticians adopted a resolution which called for countries to 'if possible, compile and provide for dissemination to the international

EXPLANATORY NOTES *continued*

INTERNATIONAL COMPARISONS *continued*

community an index that excludes housing and financial services' in addition to the all-items index.

17 Table 11 aims to present indexes for selected countries on a basis consistent with the above resolution and comparable to the Australian series 'All groups excluding Housing and Financial services' (see paragraph 12). However, other than Australia and New Zealand, the countries represented in this table are yet to develop indexes on this basis, so the indexes presented here are consistent with the series previously published for All groups excluding Housing. To facilitate comparisons all indexes in this table have been converted, where necessary, to a quarterly basis and re-referenced to a base of 1989–90 = 100.0.

18 In producing table 11, the ABS is grateful for the assistance of the relevant national statistical agencies which have either directly supplied indexes for all items excluding housing and financial services or data to enable their derivation.

RELATED PUBLICATIONS

19 Current publications and other products released by the ABS are listed in the *Catalogue of Publications and Products* (cat. no. 1101.0). The Catalogue is available from any ABS office or the ABS website <<http://www.abs.gov.au>>. The ABS also issues a daily Release Advice on the website which details products to be released in the week ahead.

20 Users may also wish to refer to the following publications and other data products that are available free of charge from the ABS website:

- *Average Retail Prices of Selected Items, Eight Capital Cities* (cat. no. 6403.0.55.001)
- *Information Paper: Experimental Price Indexes for Financial Services* (cat. no. 6413.0)
- *House Price Indexes: Eight Capital Cities* (cat. no. 6416.0)
- *Consumer Price Index: 15th Series Weighting Pattern (Reissue)* (cat. no. 6430.0)
- *A Guide to the Consumer Price Index, 15th Series* (cat. no. 6440.0)
- *Consumer Price Index: Concordance with Household Expenditure Classification, Australia* (cat. no. 6446.0.55.001)
- *Information Paper: The Introduction of Hedonic Price Indexes for Personal Computers* (cat. no. 6458.0)
- *Australian Consumer Price Index: Concepts, Sources and Methods, 2005* (cat. no. 6461.0)
- *Information Paper: Introduction of the 15th Series Australian Consumer Price Index 2005 (Reissue)* (cat. no. 6462.0)
- *Information Paper: Consumer Price Index with Reserve Bank of Australia Consumer Price Measures, Australia, 2007* (cat. no. 6401.0.55.002)
- *Consumer Price Index: Historical Weighting Patterns (1948 to 2005)* (cat. no. 6431.0).

DATA AVAILABLE

21 As well as the statistics included in this publication, there is more detailed data for each capital city available on the ABS website. Inquiries should be made to the National Information and Referral Service on 1300 135 070 or to Lee Taylor on (02) 6252 6251.

FOR MORE INFORMATION . . .

INTERNET **www.abs.gov.au** the ABS website is the best place for data from our publications and information about the ABS.

INFORMATION AND REFERRAL SERVICE

Our consultants can help you access the full range of information published by the ABS that is available free of charge from our website. Information tailored to your needs can also be requested as a 'user pays' service. Specialists are on hand to help you with analytical or methodological advice.

PHONE 1300 135 070

EMAIL client.services@abs.gov.au

FAX 1300 135 211

POST Client Services, ABS, GPO Box 796, Sydney NSW 2001

FREE ACCESS TO STATISTICS

All statistics on the ABS website can be downloaded free of charge.

WEB ADDRESS www.abs.gov.au