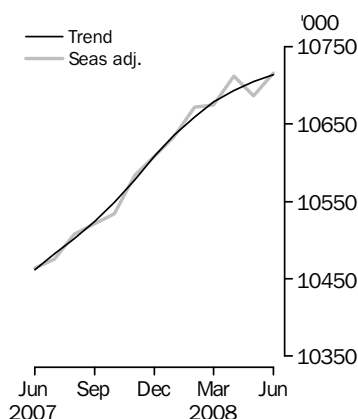


LABOUR FORCE

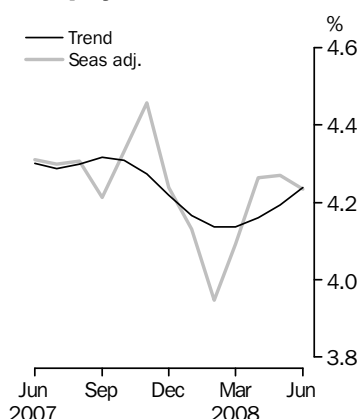
AUSTRALIA

EMBARGO: 11.30AM (CANBERRA TIME) THURS 10 JUL 2008

Employed Persons



Unemployment rate



INQUIRIES

For further information about these and related statistics, contact the National Information and Referral Service on 1300 135 070 or Mary Piechowski on Canberra (02) 6252 6525.

KEY FIGURES

	May 2008	Jun 2008	May 08 to Jun 08	Jun 07 to Jun 08
Trend				
Employed persons ('000)	10 704.8	10 713.3	8.5	2.4 %
Unemployed persons ('000)	468.7	474.2	5.6	0.9 %
Unemployment rate (%)	4.2	4.2	0.0 pts	-0.1 pts
Participation rate (%)	65.3	65.3	0.0 pts	0.4 pts
Seasonally Adjusted				
Employed persons ('000)	10 685.9	10 715.7	29.8	2.4 %
Unemployed persons ('000)	476.6	473.8	-2.8	0.5 %
Unemployment rate (%)	4.3	4.2	0.0 pts	-0.1 pts
Participation rate (%)	65.2	65.3	0.1 pts	0.3 pts

KEY POINTS

TREND ESTIMATES (MONTHLY CHANGE)

- EMPLOYMENT increased to 10,713,300
- UNEMPLOYMENT increased to 474,200
- UNEMPLOYMENT RATE remained steady at 4.2%
- PARTICIPATION RATE remained steady at 65.3%

SEASONALLY ADJUSTED ESTIMATES (MONTHLY CHANGE)

EMPLOYMENT

- increased by 29,800 to 10,715,700. Full-time employment increased by 24,000 to 7,664,600 and part-time employment increased by 5,800 to 3,051,100.

UNEMPLOYMENT

- decreased by 2,800 to 473,800. The number of persons looking for full-time work decreased by 300 to 317,100 and the number of persons looking for part-time work decreased by 2,600 to 156,700.

UNEMPLOYMENT RATE

- decreased slightly to 4.2%. The male unemployment rate remained steady at 4.0%, and the female unemployment rate decreased by 0.1 percentage point to 4.5%.

PARTICIPATION RATE

- increased by 0.1 percentage point to 65.3%.

NOTES

FORTHCOMING ISSUES

ISSUE	RELEASE DATE
July 2008	7 August 2008
August 2008	11 September 2008
September 2008	9 October 2008
October 2008	6 November 2008
November 2008	11 December 2008
December 2008	15 January 2009

.....

IMPLEMENTATION OF NEW SAMPLE DESIGN

Following each Census of Population and Housing, the ABS selects a new sample for the Labour Force Survey (LFS). This is done to ensure that the sample continues to accurately represent the distribution of the Australian population. Cost savings were made in the 2006 sample redesign by taking advantage of the sampling efficiencies related to the introduction of composite estimation. This enabled an 11% reduction in the LFS sample with only minor reductions in data quality relative to the previous design.

The new sample, based on the 2006 Census, has been phased in over the period November 2007 to June 2008. Detailed information about the new sample is provided in *Information Paper: Labour Force Survey Sample Design* (cat. no. 6269.0), which was released on 28 November 2007.

FORTHCOMING CHANGES

The ABS is facing a tight budget situation in 2008-09, which has led to a range of reductions in the ABS work program. One of the reductions is that from July 2008 the sample size of the LFS will be reduced by 24% when compared with the June 2008 sample implemented under the 2006 sample design.

The ABS will fully implement the sample reduction in July 2008. Implementing the full reduction in a single month will mean less common sample between June and July, and hence the standard error on movements will be slightly larger than if the reduction was phased in. However, in order to maximise the savings in 2008-09 the reduced sample needs to be fully implemented from July 2008.

The new sample, while smaller, will still be representative, with selections made in all parts of Australia. There will be increased volatility in the estimates, particularly the original and seasonally adjusted estimates, but this volatility will be random. Given the increased volatility in the original and seasonally adjusted estimates, the ABS would continue to encourage users to focus on trend estimates as the increased volatility seen in the original and seasonally adjusted estimates will be dampened through the 'trending' process.

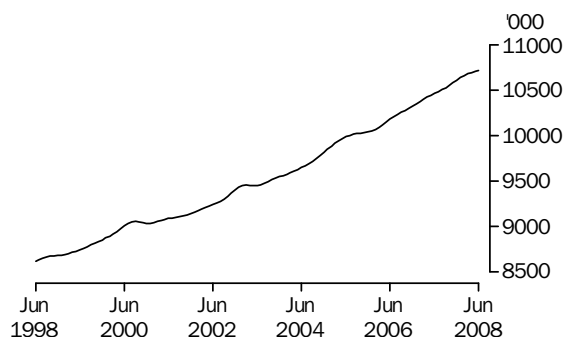
Further information about the sample reduction was provided in the April and May issues of this publication. Last month's issue included a Technical Note outlining some changes to the population benchmarks used in producing LFS estimates. The article in the April issue highlights the reasons for the reduction, expected sample size, the impact on the quality of estimates and the impact on LFS products and associated surveys.

Susan Linacre
Acting Australian Statistician

PRINCIPAL LABOUR FORCE SERIES TREND ESTIMATES

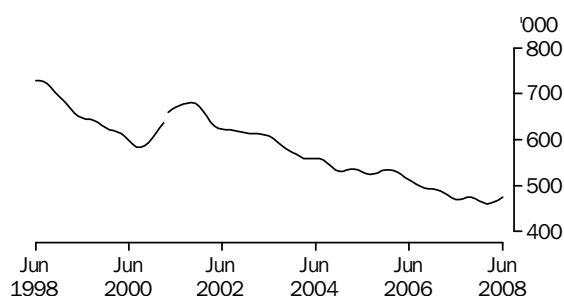
EMPLOYED PERSONS

The trend estimate of employed persons rose from 8,617,800 in June 1998 to 9,056,500 in September 2000. The trend then fell slightly to 9,037,500 in December 2000, before generally rising to stand at a high of 10,713,300 in June 2008.



UNEMPLOYED PERSONS

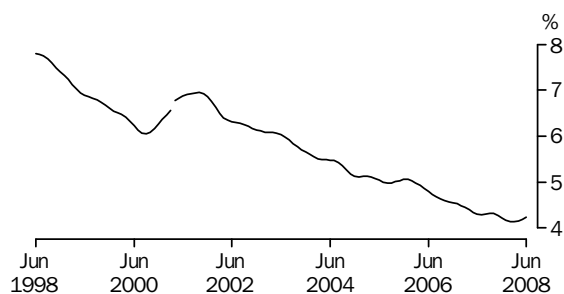
The trend estimate of unemployed persons generally fell from 728,300 in June 1998 to 582,800 in September 2000, before rising to 681,000 in October 2001. The trend generally fell to 460,000 in February 2008, before rising slightly to stand at 474,200 in June 2008.



Series break at April 2001; see paragraph 16 of Explanatory Notes.

UNEMPLOYMENT RATE

The trend unemployment rate generally fell from 7.8% in June 1998 to 6.0% in September 2000, before rising to 7.0% in October 2001. The trend generally fell to 4.1% in March 2008, before rising slightly to stand at 4.2% in June 2008.



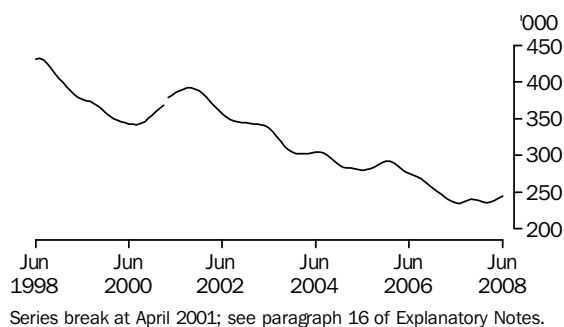
Series break at April 2001; see paragraph 16 of Explanatory Notes.

UNEMPLOYED PERSONS TREND ESTIMATES

UNEMPLOYED MALES

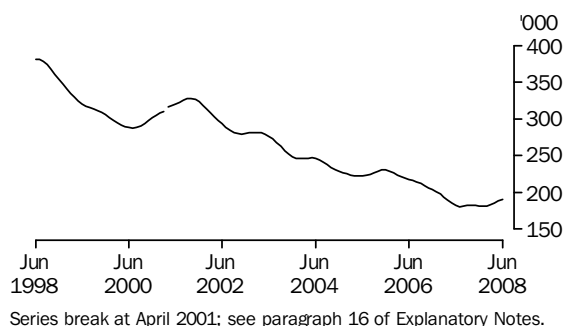
TOTAL

The trend estimate of unemployed males generally fell from 430,800 in June 1998 to 341,900 in August 2000, before rising to 391,500 in September 2001. The trend estimate then generally fell to 234,400 in July 2007, before generally rising to 244,900 in June 2008.



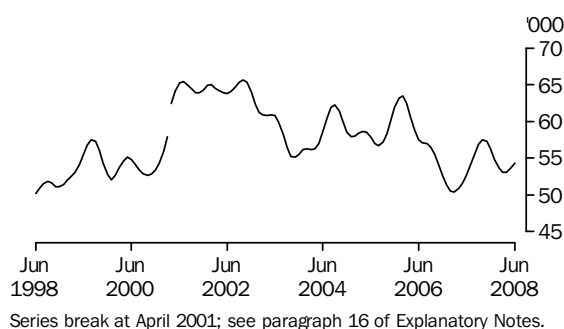
MALES LOOKING FOR FULL-TIME WORK

The trend estimate of males looking for full-time work decreased from 380,700 in June 1998 to 287,800 in July 2000. The trend then rose to 327,600 in October 2001, before generally falling to 180,400 in July 2007. The trend has since risen to stand at 190,600 in June 2008.



MALES LOOKING FOR PART-TIME WORK

The trend estimate of unemployed males looking for part-time work has fluctuated over the last 10 years, from 50,100 in June 1998 to a high of 65,700 in October 2002. The trend estimate now stands at 54,300 in June 2008.

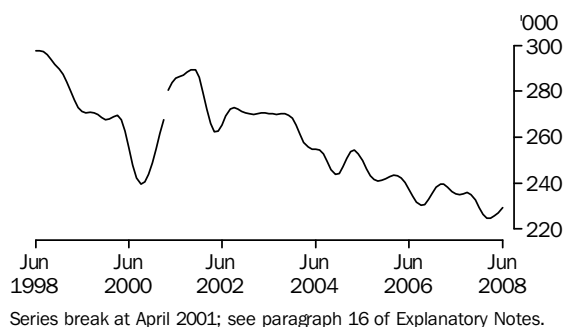


UNEMPLOYED PERSONS TREND ESTIMATES *continued*

UNEMPLOYED FEMALES

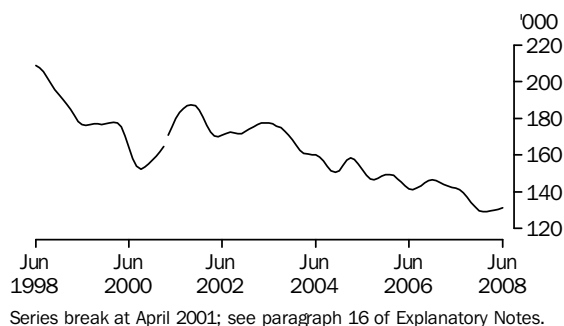
TOTAL

The trend estimate of unemployed females fell from 297,500 in June 1998 to 239,600 in September 2000, before rising to 289,500 in October 2001. Since then, the trend estimate has generally fallen to stand at 229,400 in June 2008.



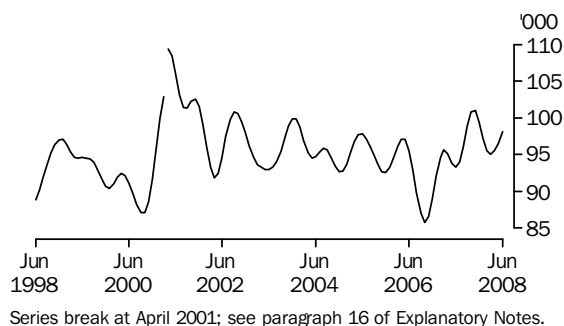
FEMALES LOOKING FOR FULL-TIME WORK

The trend estimate of females looking for full-time work fell from 208,700 in June 1998 to 152,500 in September 2000. The trend estimate then rose to 187,300 in October 2001, before generally falling to stand at 131,200 in June 2008.



FEMALES LOOKING FOR PART-TIME WORK

The trend estimate of unemployed females looking for part-time work has fluctuated over the last 10 years, from 88,800 in June 1998 to a high of 109,400 in April 2001. The trend estimate now stands at 98,100 in June 2008.



LABOUR FORCE STATUS (AGED 15 YEARS & OVER): Trend

	EMPLOYED			UNEMPLOYED		UNEMPLOYMENT RATE			
	Full time	Part time	Total	Looking for f/t work	Total	Labour force	Looking for f/t work	Total	Participation rate
	'000	'000	'000	'000	'000	'000	%	%	%
MALES									
June 2005	4 702.4	810.5	5 512.9	222.4	280.2	5 793.1	4.5	4.8	72.1
June 2006	4 756.2	841.9	5 598.1	217.6	275.1	5 873.2	4.4	4.7	72.1
2007									
June	4 908.2	861.7	5 769.9	182.2	234.8	6 004.8	3.6	3.9	72.3
July	4 917.2	861.7	5 779.0	180.4	234.4	6 013.4	3.5	3.9	72.3
August	4 925.1	861.3	5 786.4	180.8	236.4	6 022.7	3.5	3.9	72.3
September	4 932.5	862.7	5 795.1	182.1	238.9	6 034.0	3.6	4.0	72.4
October	4 939.5	867.4	5 806.9	182.6	240.1	6 047.0	3.6	4.0	72.4
November	4 946.3	875.2	5 821.5	182.3	239.6	6 061.1	3.6	4.0	72.4
December	4 952.5	884.4	5 836.9	181.7	237.9	6 074.8	3.5	3.9	72.5
2008									
January	4 957.9	892.6	5 850.6	181.3	236.2	6 086.7	3.5	3.9	72.5
February	4 963.3	897.6	5 861.0	181.6	235.4	6 096.3	3.5	3.9	72.5
March	4 969.0	899.1	5 868.1	183.1	236.2	6 104.4	3.6	3.9	72.5
April	4 975.0	898.3	5 873.4	185.6	238.7	6 112.0	3.6	3.9	72.5
May	4 980.9	896.7	5 877.6	188.1	241.6	6 119.2	3.6	3.9	72.5
June	4 986.3	894.7	5 881.1	190.6	244.9	6 125.9	3.7	4.0	72.5
FEMALES									
June 2005	2 445.1	2 030.1	4 475.2	152.0	249.9	4 725.0	5.9	5.3	57.0
June 2006	2 510.6	2 072.5	4 583.1	141.6	237.1	4 820.3	5.3	4.9	57.4
2007									
June	2 596.5	2 095.7	4 692.1	142.0	235.2	4 927.4	5.2	4.8	57.8
July	2 601.2	2 102.3	4 703.5	141.1	235.1	4 938.5	5.1	4.8	57.8
August	2 607.3	2 108.6	4 715.9	139.4	235.4	4 951.3	5.1	4.8	57.9
September	2 615.5	2 113.4	4 728.9	137.0	235.8	4 964.7	5.0	4.8	58.0
October	2 625.8	2 116.3	4 742.1	134.2	235.0	4 977.1	4.9	4.7	58.0
November	2 637.0	2 119.2	4 756.2	131.6	232.5	4 988.8	4.8	4.7	58.1
December	2 647.9	2 123.2	4 771.1	129.8	229.2	5 000.3	4.7	4.6	58.1
2008									
January	2 656.2	2 129.0	4 785.2	129.1	226.3	5 011.5	4.6	4.5	58.1
February	2 662.2	2 136.1	4 798.4	129.1	224.7	5 023.0	4.6	4.5	58.2
March	2 666.3	2 143.7	4 810.0	129.5	224.6	5 034.6	4.6	4.5	58.2
April	2 669.6	2 150.2	4 819.8	130.1	225.6	5 045.4	4.6	4.5	58.3
May	2 671.8	2 155.4	4 827.3	130.6	227.1	5 054.3	4.7	4.5	58.3
June	2 672.9	2 159.3	4 832.2	131.2	229.4	5 061.6	4.7	4.5	58.3
PERSONS									
June 2005	7 147.5	2 840.6	9 988.1	374.4	530.0	10 518.1	5.0	5.0	64.5
June 2006	7 266.8	2 914.4	10 181.2	359.2	512.3	10 693.5	4.7	4.8	64.6
2007									
June	7 504.7	2 957.4	10 462.1	324.2	470.1	10 932.2	4.1	4.3	65.0
July	7 518.5	2 964.0	10 482.5	321.4	469.5	10 951.9	4.1	4.3	65.0
August	7 532.4	2 969.9	10 502.2	320.2	471.8	10 974.0	4.1	4.3	65.0
September	7 548.0	2 976.0	10 524.0	319.1	474.7	10 998.8	4.1	4.3	65.1
October	7 565.3	2 983.7	10 549.0	316.8	475.1	11 024.1	4.0	4.3	65.1
November	7 583.3	2 994.4	10 577.8	313.9	472.1	11 049.9	4.0	4.3	65.2
December	7 600.4	3 007.6	10 608.0	311.5	467.1	11 075.1	3.9	4.2	65.2
2008									
January	7 614.1	3 021.7	10 635.8	310.4	462.4	11 098.2	3.9	4.2	65.2
February	7 625.6	3 033.8	10 659.3	310.7	460.0	11 119.4	3.9	4.1	65.3
March	7 635.4	3 042.8	10 678.1	312.6	460.8	11 138.9	3.9	4.1	65.3
April	7 644.6	3 048.5	10 693.1	315.7	464.3	11 157.4	4.0	4.2	65.3
May	7 652.7	3 052.1	10 704.8	318.7	468.7	11 173.5	4.0	4.2	65.3
June	7 659.2	3 054.1	10 713.3	321.8	474.2	11 187.5	4.0	4.2	65.3

LABOUR FORCE STATUS (AGED 15 YEARS & OVER): Seasonally Adjusted

	EMPLOYED			UNEMPLOYED			UNEMPLOYMENT RATE		
	Full time	Part time	Total	Looking for f/t work	Total	Labour force	Looking for f/t work	Total	Participation rate
	'000	'000	'000	'000	'000	'000	%	%	%
MALES									
June 2005	4 707.6	807.2	5 514.9	219.8	275.5	5 790.4	4.5	4.8	72.1
June 2006	4 749.5	845.2	5 594.7	217.5	274.3	5 869.0	4.4	4.7	72.0
2007									
June	4 903.5	870.4	5 773.8	187.6	237.8	6 011.6	3.7	4.0	72.4
July	4 918.4	860.1	5 778.5	180.8	234.3	6 012.8	3.5	3.9	72.3
August	4 922.7	868.0	5 790.7	177.1	238.2	6 028.9	3.5	4.0	72.4
September	4 929.0	866.8	5 795.8	175.8	228.6	6 024.5	3.4	3.8	72.3
October	4 944.4	844.7	5 789.1	181.8	239.7	6 028.8	3.5	4.0	72.2
November	4 950.1	874.2	5 824.2	194.6	252.4	6 076.6	3.8	4.2	72.6
December	4 947.1	884.7	5 831.9	191.5	249.9	6 081.8	3.7	4.1	72.6
2008									
January	4 954.0	911.4	5 865.5	171.2	225.9	6 091.3	3.3	3.7	72.6
February	4 972.2	897.6	5 869.8	164.5	217.4	6 087.2	3.2	3.6	72.4
March	4 962.5	900.5	5 863.0	188.4	240.5	6 103.5	3.7	3.9	72.5
April	4 983.4	888.4	5 871.8	196.4	246.2	6 118.0	3.8	4.0	72.5
May	4 964.5	902.4	5 866.9	190.0	244.5	6 111.4	3.7	4.0	72.3
June	5 000.5	890.3	5 890.8	186.6	245.0	6 135.8	3.6	4.0	72.5
FEMALES									
June 2005	2 456.2	2 018.3	4 474.5	150.6	246.7	4 721.2	5.8	5.2	57.0
June 2006	2 512.0	2 071.4	4 583.4	143.8	240.2	4 823.6	5.4	5.0	57.5
2007									
June	2 592.5	2 097.0	4 689.5	143.0	233.7	4 923.1	5.2	4.7	57.7
July	2 590.6	2 106.5	4 697.1	143.9	236.2	4 933.3	5.3	4.8	57.8
August	2 615.6	2 101.2	4 716.9	139.6	234.8	4 951.6	5.1	4.7	57.9
September	2 594.0	2 131.9	4 725.9	133.9	234.2	4 960.1	4.9	4.7	57.9
October	2 636.3	2 108.5	4 744.8	133.7	237.4	4 982.2	4.8	4.8	58.1
November	2 644.3	2 115.7	4 760.0	134.5	241.4	5 001.4	4.8	4.8	58.2
December	2 653.4	2 123.1	4 776.5	129.8	219.5	4 996.0	4.7	4.4	58.0
2008									
January	2 641.1	2 127.6	4 768.7	127.2	232.3	5 001.0	4.6	4.6	58.0
February	2 668.3	2 133.5	4 801.8	127.2	221.1	5 022.9	4.5	4.4	58.2
March	2 671.7	2 139.7	4 811.4	125.7	214.8	5 026.2	4.5	4.3	58.1
April	2 669.3	2 170.4	4 839.7	139.5	230.9	5 070.6	5.0	4.6	58.6
May	2 676.2	2 142.8	4 819.0	127.4	232.1	5 051.1	4.5	4.6	58.3
June	2 664.1	2 160.8	4 824.9	130.5	228.8	5 053.7	4.7	4.5	58.2
PERSONS									
June 2005	7 163.8	2 825.5	9 989.3	370.4	522.2	10 511.6	4.9	5.0	64.4
June 2006	7 261.5	2 916.6	10 178.1	361.2	514.5	10 692.6	4.7	4.8	64.6
2007									
June	7 495.9	2 967.4	10 463.3	330.6	471.4	10 934.8	4.2	4.3	65.0
July	7 509.0	2 966.6	10 475.6	324.8	470.5	10 946.1	4.1	4.3	64.9
August	7 538.4	2 969.2	10 507.6	316.8	473.0	10 980.6	4.0	4.3	65.1
September	7 523.0	2 998.7	10 521.7	309.8	462.9	10 984.6	4.0	4.2	65.0
October	7 580.7	2 953.2	10 533.9	315.5	477.1	11 011.0	4.0	4.3	65.0
November	7 594.3	2 989.8	10 584.2	329.1	493.8	11 078.0	4.2	4.5	65.3
December	7 600.5	3 007.8	10 608.3	321.3	469.4	11 077.7	4.1	4.2	65.2
2008									
January	7 595.1	3 039.0	10 634.1	298.4	458.2	11 092.3	3.8	4.1	65.2
February	7 640.5	3 031.1	10 671.6	291.7	438.5	11 110.1	3.7	3.9	65.2
March	7 634.3	3 040.2	10 674.4	314.1	455.3	11 129.8	4.0	4.1	65.2
April	7 652.7	3 058.8	10 711.5	335.9	477.1	11 188.6	4.2	4.3	65.5
May	7 640.6	3 045.3	10 685.9	317.4	476.6	11 162.5	4.0	4.3	65.2
June	7 664.6	3 051.1	10 715.7	317.1	473.8	11 189.5	4.0	4.2	65.3

LABOUR FORCE STATUS (AGED 15 YEARS & OVER): Original

	EMPLOYED			UNEMPLOYED			UNEMPLOYMENT RATE				
	Full time	Part time	Total	Looking for f/t work	Total	Labour force	Not in labour force	Civilian population aged 15 years and over	Looking for f/t work	Total	Participation rate
	'000	'000	'000	'000	'000	'000	'000	'000	%	%	%
MALES											
June 2005	4 682.6	829.9	5 512.5	217.8	268.6	5 781.1	2 247.7	8 028.7	4.4	4.6	72.0
June 2006	4 727.3	868.2	5 595.5	215.3	267.1	5 862.6	2 286.0	8 148.5	4.4	4.6	71.9
2007											
June	4 883.3	893.3	5 776.5	185.5	231.1	6 007.6	2 294.0	8 301.6	3.7	3.8	72.4
July	4 931.0	861.7	5 792.6	165.7	210.9	6 003.6	2 310.1	8 313.6	3.3	3.5	72.2
August	4 883.6	866.1	5 749.7	167.8	225.0	5 974.7	2 351.1	8 325.8	3.3	3.8	71.8
September	4 966.8	859.4	5 826.2	176.2	232.8	6 059.1	2 278.8	8 337.9	3.4	3.8	72.7
October	4 930.5	862.7	5 793.2	174.2	229.5	6 022.7	2 329.3	8 352.0	3.4	3.8	72.1
November	4 941.1	859.1	5 800.2	185.2	235.8	6 036.0	2 330.4	8 366.4	3.6	3.9	72.1
December	5 007.3	886.8	5 894.1	189.0	250.1	6 144.2	2 236.3	8 380.5	3.6	4.1	73.3
2008											
January	4 960.4	873.1	5 833.5	194.4	252.0	6 085.4	2 308.9	8 394.3	3.8	4.1	72.5
February	4 997.0	867.1	5 864.0	181.3	241.2	6 105.2	2 303.1	8 408.3	3.5	4.0	72.6
March	4 948.5	920.0	5 868.5	188.4	247.2	6 115.7	2 306.5	8 422.2	3.7	4.0	72.6
April	4 963.2	908.6	5 871.8	198.9	249.7	6 121.6	2 313.0	8 434.6	3.9	4.1	72.6
May	4 951.7	909.3	5 861.0	190.5	246.4	6 107.4	2 339.8	8 447.2	3.7	4.0	72.3
June	4 981.0	913.7	5 894.7	184.7	237.6	6 132.3	2 327.4	8 459.6	3.6	3.9	72.5
FEMALES											
June 2005	2 431.1	2 052.5	4 483.6	147.8	240.0	4 723.6	3 564.3	8 287.8	5.7	5.1	57.0
June 2006	2 487.5	2 104.8	4 592.3	141.2	234.1	4 826.5	3 568.5	8 395.0	5.4	4.9	57.5
2007											
June	2 565.4	2 131.4	4 696.8	140.7	228.8	4 925.5	3 604.5	8 530.1	5.2	4.6	57.7
July	2 593.9	2 101.4	4 695.3	132.9	215.7	4 911.1	3 630.8	8 541.9	4.9	4.4	57.5
August	2 574.2	2 111.9	4 686.1	127.9	222.6	4 908.7	3 645.2	8 553.9	4.7	4.5	57.4
September	2 650.2	2 135.3	4 785.5	128.6	232.6	5 018.1	3 547.6	8 565.7	4.6	4.6	58.6
October	2 625.2	2 127.3	4 752.6	122.4	219.8	4 972.4	3 607.3	8 579.7	4.5	4.4	58.0
November	2 651.4	2 111.9	4 763.3	122.1	217.1	4 980.4	3 613.3	8 593.6	4.4	4.4	58.0
December	2 718.8	2 124.4	4 843.2	131.7	220.2	5 063.4	3 544.1	8 607.6	4.6	4.3	58.8
2008											
January	2 668.6	2 043.2	4 711.8	146.6	250.4	4 962.3	3 657.7	8 620.0	5.2	5.0	57.6
February	2 692.6	2 079.7	4 772.4	149.3	257.4	5 029.7	3 602.9	8 632.6	5.3	5.1	58.3
March	2 647.1	2 162.5	4 809.6	132.3	232.0	5 041.6	3 603.4	8 645.0	4.8	4.6	58.3
April	2 633.6	2 196.5	4 830.1	140.6	235.0	5 065.0	3 591.6	8 656.7	5.1	4.6	58.5
May	2 648.3	2 169.4	4 817.7	126.2	230.5	5 048.2	3 620.2	8 668.4	4.6	4.6	58.2
June	2 634.0	2 197.8	4 831.7	128.5	224.0	5 055.7	3 624.4	8 680.1	4.7	4.4	58.2
PERSONS											
June 2005	7 113.6	2 882.4	9 996.0	365.6	508.6	10 504.7	5 811.9	16 316.6	4.9	4.8	64.4
June 2006	7 214.8	2 973.0	10 187.8	356.5	501.2	10 689.0	5 854.5	16 543.5	4.7	4.7	64.6
2007											
June	7 448.6	3 024.7	10 473.3	326.2	459.8	10 933.1	5 898.5	16 831.6	4.2	4.2	65.0
July	7 524.9	2 963.1	10 488.0	298.6	426.6	10 914.6	5 940.9	16 855.5	3.8	3.9	64.8
August	7 457.8	2 978.0	10 435.8	295.8	447.7	10 883.4	5 996.3	16 879.7	3.8	4.1	64.5
September	7 616.9	2 994.7	10 611.7	304.8	465.5	11 077.1	5 826.5	16 903.6	3.8	4.2	65.5
October	7 555.7	2 990.1	10 545.8	296.7	449.3	10 995.1	5 936.6	16 931.7	3.8	4.1	64.9
November	7 592.5	2 971.0	10 563.5	307.3	452.9	11 016.4	5 943.6	16 960.0	3.9	4.1	65.0
December	7 726.1	3 011.3	10 737.3	320.7	470.3	11 207.7	5 780.4	16 988.1	4.0	4.2	66.0
2008											
January	7 629.0	2 916.3	10 545.3	341.0	502.4	11 047.7	5 966.6	17 014.3	4.3	4.5	64.9
February	7 689.6	2 946.8	10 636.4	330.7	498.5	11 134.9	5 906.0	17 040.9	4.1	4.5	65.3
March	7 595.6	3 082.6	10 678.1	320.7	479.2	11 157.3	5 909.9	17 067.2	4.1	4.3	65.4
April	7 596.8	3 105.1	10 701.9	339.5	484.7	11 186.6	5 904.7	17 091.3	4.3	4.3	65.5
May	7 600.0	3 078.7	10 678.7	316.8	477.0	11 155.7	5 960.0	17 115.7	4.0	4.3	65.2
June	7 615.0	3 111.4	10 726.4	313.2	461.6	11 188.0	5 951.7	17 139.8	4.0	4.1	65.3

LABOUR FORCE STATUS (AGED 15 YEARS & OVER)—New South Wales

	TREND					SEASONALLY ADJUSTED					
	<i>Employed full time</i>	<i>Total employed</i>	<i>Total unemp-loyed</i>	<i>Unemp-loyment rate</i>	<i>Partici-pation rate</i>	<i>Employed full time</i>	<i>Total employed</i>	<i>Total unemp-loyed</i>	<i>Unemp-loyment rate</i>	<i>Partici-pation rate</i>	<i>Civilian population aged 15 years and over</i>
	'000	'000	'000	%	%	'000	'000	'000	%	%	'000
MALES											
June 2005	1 534.6	1 792.6	95.0	5.0	70.4	1 548.2	1 795.9	93.5	4.9	70.5	2 680.1
June 2006	1 538.7	1 811.5	101.1	5.3	70.7	1 536.8	1 802.4	101.4	5.3	70.3	2 706.6
2007											
June	1 574.4	1 857.4	83.6	4.3	70.8	1 571.6	1 859.8	85.0	4.4	70.9	2 742.4
July	1 577.6	1 860.8	82.7	4.3	70.8	1 573.8	1 861.7	83.6	4.3	70.9	2 745.4
August	1 580.9	1 862.6	82.8	4.3	70.8	1 579.3	1 862.7	82.5	4.2	70.8	2 748.5
September	1 583.7	1 863.7	83.6	4.3	70.8	1 580.9	1 865.4	80.9	4.2	70.7	2 751.5
October	1 586.0	1 865.1	84.2	4.3	70.8	1 595.2	1 864.3	81.3	4.2	70.6	2 755.0
November	1 588.4	1 867.8	84.5	4.3	70.8	1 592.3	1 865.1	89.4	4.6	70.9	2 758.4
December	1 590.8	1 872.1	84.6	4.3	70.9	1 584.7	1 868.9	88.1	4.5	70.9	2 761.8
2008											
January	1 593.3	1 877.5	84.6	4.3	71.0	1 586.4	1 875.8	86.1	4.4	71.0	2 765.0
February	1 596.3	1 883.0	84.8	4.3	71.1	1 594.6	1 887.2	76.7	3.9	70.9	2 768.3
March	1 599.7	1 887.8	85.4	4.3	71.2	1 609.7	1 892.1	83.2	4.2	71.3	2 771.4
April	1 603.1	1 891.6	86.5	4.4	71.3	1 606.0	1 891.2	90.8	4.6	71.4	2 774.5
May	1 605.8	1 894.5	87.7	4.4	71.4	1 597.8	1 891.6	91.0	4.6	71.4	2 777.5
June	1 608.2	1 896.4	89.0	4.5	71.4	1 610.0	1 896.1	87.6	4.4	71.3	2 780.5
FEMALES											
June 2005	811.9	1 450.2	76.3	5.0	55.2	828.3	1 449.2	76.0	5.0	55.2	2 765.2
June 2006	828.4	1 471.2	78.2	5.0	55.5	833.5	1 479.4	82.7	5.3	56.0	2 791.4
2007											
June	838.4	1 489.2	84.1	5.3	55.7	838.4	1 495.1	77.2	4.9	55.7	2 825.2
July	840.2	1 494.1	82.8	5.3	55.8	838.4	1 488.3	83.6	5.3	55.6	2 828.2
August	842.4	1 498.6	82.0	5.2	55.8	845.0	1 494.5	82.5	5.2	55.7	2 831.2
September	845.3	1 503.0	81.4	5.1	55.9	839.4	1 504.3	81.5	5.1	56.0	2 834.2
October	849.6	1 508.4	80.7	5.1	56.0	844.7	1 508.2	83.2	5.2	56.1	2 837.7
November	855.8	1 515.6	79.4	5.0	56.1	862.3	1 517.5	79.7	5.0	56.2	2 841.1
December	863.0	1 524.0	77.5	4.8	56.3	865.1	1 521.6	76.4	4.8	56.2	2 844.6
2008											
January	869.4	1 531.1	75.9	4.7	56.4	865.5	1 527.1	76.2	4.8	56.3	2 847.4
February	874.2	1 536.1	75.1	4.7	56.5	870.8	1 538.6	73.8	4.6	56.6	2 850.2
March	877.2	1 539.1	75.0	4.6	56.6	888.7	1 548.1	74.6	4.6	56.9	2 853.0
April	878.8	1 540.4	75.5	4.7	56.6	877.9	1 546.8	72.7	4.5	56.7	2 855.8
May	879.4	1 540.4	76.2	4.7	56.6	879.3	1 529.4	79.4	4.9	56.3	2 858.6
June	879.4	1 539.5	77.2	4.8	56.5	872.9	1 535.7	78.4	4.9	56.4	2 861.4
PERSONS											
June 2005	2 346.4	3 242.8	171.3	5.0	62.7	2 376.5	3 245.2	169.4	5.0	62.7	5 445.3
June 2006	2 367.1	3 282.7	179.3	5.2	63.0	2 370.2	3 281.8	184.1	5.3	63.0	5 498.0
2007											
June	2 412.8	3 346.6	167.6	4.8	63.1	2 410.0	3 354.9	162.2	4.6	63.2	5 567.6
July	2 417.8	3 354.9	165.5	4.7	63.2	2 412.2	3 350.0	167.2	4.8	63.1	5 573.6
August	2 423.4	3 361.2	164.8	4.7	63.2	2 424.3	3 357.3	165.0	4.7	63.1	5 579.7
September	2 429.0	3 366.6	165.0	4.7	63.2	2 420.3	3 369.7	162.4	4.6	63.2	5 585.8
October	2 435.6	3 373.4	165.0	4.7	63.3	2 439.9	3 372.5	164.5	4.7	63.2	5 592.6
November	2 444.2	3 383.4	164.0	4.6	63.4	2 454.6	3 382.6	169.1	4.8	63.4	5 599.5
December	2 453.8	3 396.1	162.1	4.6	63.5	2 449.8	3 390.5	164.4	4.6	63.4	5 606.4
2008											
January	2 462.7	3 408.5	160.5	4.5	63.6	2 451.9	3 402.8	162.3	4.6	63.5	5 612.4
February	2 470.5	3 419.1	159.9	4.5	63.7	2 465.5	3 425.8	150.5	4.2	63.7	5 618.4
March	2 476.9	3 426.9	160.4	4.5	63.8	2 498.4	3 440.2	157.9	4.4	64.0	5 624.5
April	2 481.8	3 432.0	162.0	4.5	63.8	2 483.9	3 438.0	163.5	4.5	64.0	5 630.3
May	2 485.2	3 434.9	163.9	4.6	63.9	2 477.1	3 421.1	170.4	4.7	63.7	5 636.1
June	2 487.6	3 435.9	166.1	4.6	63.9	2 482.9	3 431.8	166.0	4.6	63.8	5 641.9

LABOUR FORCE STATUS (AGED 15 YEARS & OVER)—Victoria

	TREND					SEASONALLY ADJUSTED					
	<i>Employed full time</i>	<i>Total employed</i>	<i>Total unemp-loyed</i>	<i>Unemp-loyment rate</i>	<i>Partici-pation rate</i>	<i>Employed full time</i>	<i>Total employed</i>	<i>Total unemp-loyed</i>	<i>Unemp-loyment rate</i>	<i>Partici-pation rate</i>	<i>Civilian population aged 15 years and over</i>
	'000	'000	'000	%	%	'000	'000	'000	%	%	'000
MALES											
June 2005	1 163.8	1 372.7	71.6	5.0	72.7	1 161.9	1 369.7	72.1	5.0	72.6	1 987.1
June 2006	1 167.9	1 386.5	70.6	4.8	72.4	1 163.2	1 388.8	69.6	4.8	72.4	2 013.8
2007											
June	1 207.6	1 428.6	60.6	4.1	72.6	1 209.2	1 428.1	57.6	3.9	72.4	2 052.0
July	1 209.0	1 430.6	59.7	4.0	72.5	1 209.5	1 431.2	59.6	4.0	72.6	2 054.5
August	1 209.7	1 432.3	59.7	4.0	72.5	1 201.3	1 432.3	65.3	4.4	72.8	2 057.1
September	1 210.6	1 434.8	60.4	4.0	72.6	1 217.3	1 436.4	54.3	3.6	72.4	2 059.6
October	1 211.9	1 438.4	61.2	4.1	72.7	1 212.4	1 431.7	58.5	3.9	72.2	2 063.0
November	1 213.2	1 442.3	61.8	4.1	72.8	1 209.6	1 443.0	64.3	4.3	72.9	2 066.4
December	1 214.1	1 445.8	61.8	4.1	72.8	1 210.9	1 442.4	69.0	4.6	73.0	2 069.8
2008											
January	1 214.2	1 448.2	61.5	4.1	72.8	1 220.0	1 460.1	60.2	4.0	73.3	2 073.2
February	1 213.4	1 449.4	61.0	4.0	72.7	1 217.6	1 452.9	54.3	3.6	72.6	2 076.5
March	1 212.4	1 449.6	60.7	4.0	72.6	1 208.5	1 439.5	62.3	4.1	72.2	2 079.9
April	1 211.3	1 449.4	60.8	4.0	72.5	1 207.8	1 446.4	62.9	4.2	72.5	2 082.9
May	1 210.3	1 449.3	61.3	4.1	72.4	1 211.9	1 456.1	58.2	3.8	72.6	2 086.0
June	1 209.3	1 449.3	62.0	4.1	72.4	1 209.8	1 447.8	66.2	4.4	72.5	2 089.0
FEMALES											
June 2005	597.3	1 104.9	68.1	5.8	56.4	597.5	1 109.2	64.0	5.5	56.4	2 080.7
June 2006	606.7	1 135.3	63.2	5.3	56.9	608.7	1 134.5	63.5	5.3	56.9	2 106.7
2007											
June	635.1	1 167.2	63.9	5.2	57.5	635.3	1 160.3	67.3	5.5	57.3	2 140.8
July	635.3	1 168.9	63.2	5.1	57.5	631.0	1 170.7	59.3	4.8	57.4	2 143.4
August	635.8	1 171.6	62.8	5.1	57.5	639.8	1 174.0	64.9	5.2	57.7	2 146.1
September	636.8	1 175.3	62.9	5.1	57.6	631.5	1 171.0	60.1	4.9	57.3	2 148.7
October	638.4	1 179.7	63.1	5.1	57.8	641.8	1 179.8	60.4	4.9	57.6	2 152.0
November	639.8	1 183.7	63.2	5.1	57.9	637.4	1 181.5	70.1	5.6	58.1	2 155.3
December	641.1	1 186.6	62.8	5.0	57.9	645.4	1 194.7	61.1	4.9	58.2	2 158.6
2008											
January	641.0	1 188.1	62.1	5.0	57.8	633.9	1 186.1	63.7	5.1	57.8	2 161.8
February	639.7	1 188.8	61.3	4.9	57.7	649.9	1 190.7	60.0	4.8	57.8	2 164.9
March	637.2	1 188.9	60.7	4.9	57.6	633.3	1 184.4	54.9	4.4	57.2	2 168.1
April	634.2	1 189.2	60.4	4.8	57.6	635.0	1 190.5	65.9	5.2	57.9	2 171.0
May	631.1	1 189.7	60.3	4.8	57.5	632.4	1 188.3	60.2	4.8	57.4	2 174.0
June	627.8	1 189.9	60.8	4.9	57.5	622.3	1 193.0	60.4	4.8	57.6	2 176.9
PERSONS											
June 2005	1 761.1	2 477.6	139.7	5.3	64.3	1 759.4	2 478.8	136.1	5.2	64.3	4 067.8
June 2006	1 774.6	2 521.9	133.8	5.0	64.5	1 771.8	2 523.3	133.1	5.0	64.5	4 120.5
2007											
June	1 842.6	2 595.8	124.5	4.6	64.9	1 844.5	2 588.4	124.9	4.6	64.7	4 192.8
July	1 844.4	2 599.5	122.9	4.5	64.9	1 840.5	2 601.9	118.8	4.4	64.8	4 198.0
August	1 845.5	2 603.8	122.5	4.5	64.9	1 841.1	2 606.3	130.2	4.8	65.1	4 203.2
September	1 847.4	2 610.2	123.3	4.5	64.9	1 848.7	2 607.5	114.3	4.2	64.7	4 208.3
October	1 850.2	2 618.1	124.3	4.5	65.1	1 854.2	2 611.5	118.9	4.4	64.8	4 215.0
November	1 853.0	2 626.0	124.9	4.5	65.2	1 847.0	2 624.5	134.4	4.9	65.3	4 221.7
December	1 855.2	2 632.4	124.7	4.5	65.2	1 856.3	2 637.1	130.2	4.7	65.4	4 228.4
2008											
January	1 855.2	2 636.4	123.6	4.5	65.2	1 853.8	2 646.2	123.9	4.5	65.4	4 234.9
February	1 853.1	2 638.2	122.4	4.4	65.1	1 867.5	2 643.6	114.3	4.1	65.0	4 241.5
March	1 849.7	2 638.5	121.4	4.4	65.0	1 841.8	2 623.9	117.2	4.3	64.5	4 248.0
April	1 845.5	2 638.7	121.3	4.4	64.9	1 842.8	2 636.9	128.8	4.7	65.0	4 254.0
May	1 841.4	2 639.0	121.7	4.4	64.8	1 844.3	2 644.5	118.4	4.3	64.9	4 260.0
June	1 837.1	2 639.2	122.8	4.4	64.8	1 832.1	2 640.8	126.6	4.6	64.9	4 266.0

LABOUR FORCE STATUS (AGED 15 YEARS & OVER)—Queensland

	TREND					SEASONALLY ADJUSTED					
	Employed full time	Total employed	Total unemployed	Unemployment rate	Participation rate	Employed full time	Total employed	Total unemployed	Unemployment rate	Participation rate	Civilian population aged 15 years and over
	'000	'000	'000	%	%	'000	'000	'000	%	%	'000
MALES											
June 2005	937.5	1 092.7	51.3	4.5	73.7	938.6	1 092.6	45.6	4.0	73.3	1 552.7
June 2006	958.2	1 117.8	48.4	4.1	73.3	961.1	1 119.8	48.2	4.1	73.4	1 591.3
2007											
June	1 010.6	1 171.7	37.6	3.1	74.0	1 007.5	1 170.1	38.5	3.2	73.9	1 634.6
July	1 011.3	1 172.8	37.9	3.1	73.9	1 008.0	1 169.0	35.8	3.0	73.5	1 638.1
August	1 012.0	1 174.0	38.7	3.2	73.9	1 015.2	1 173.7	36.7	3.0	73.7	1 641.6
September	1 013.1	1 175.7	39.4	3.2	73.9	1 011.0	1 177.4	40.7	3.3	74.0	1 645.1
October	1 014.0	1 177.9	39.6	3.2	73.8	1 014.0	1 176.6	43.2	3.5	74.0	1 648.9
November	1 014.1	1 180.1	39.1	3.2	73.8	1 015.8	1 180.9	40.9	3.4	73.9	1 652.9
December	1 013.3	1 181.9	38.4	3.1	73.7	1 015.1	1 182.8	37.6	3.1	73.7	1 656.7
2008											
January	1 012.1	1 183.0	38.0	3.1	73.5	1 011.7	1 182.7	32.0	2.6	73.2	1 660.5
February	1 011.6	1 183.8	38.3	3.1	73.4	1 013.5	1 184.8	39.5	3.2	73.6	1 664.3
March	1 012.0	1 184.7	39.2	3.2	73.4	1 001.9	1 184.0	39.9	3.3	73.4	1 668.1
April	1 013.2	1 185.6	40.5	3.3	73.4	1 018.5	1 185.0	41.7	3.4	73.4	1 671.2
May	1 015.0	1 186.7	41.6	3.4	73.4	1 011.8	1 184.3	42.5	3.5	73.3	1 674.5
June	1 017.0	1 187.7	42.6	3.5	73.4	1 023.9	1 191.6	41.6	3.4	73.5	1 677.7
FEMALES											
June 2005	492.2	895.7	52.1	5.5	59.6	496.6	896.0	52.3	5.5	59.7	1 589.6
June 2006	514.5	922.2	48.9	5.0	59.9	512.7	915.2	48.0	5.0	59.4	1 621.6
2007											
June	546.4	960.0	41.0	4.1	60.3	546.5	961.6	40.8	4.1	60.4	1 659.3
July	545.7	962.0	41.7	4.2	60.4	540.8	958.7	45.1	4.5	60.4	1 662.8
August	545.6	965.0	42.6	4.2	60.5	544.0	963.6	42.5	4.2	60.4	1 666.4
September	546.2	968.2	43.2	4.3	60.6	541.7	969.4	44.0	4.3	60.7	1 669.9
October	547.0	970.8	43.2	4.3	60.6	554.8	972.9	42.1	4.1	60.6	1 673.8
November	547.7	972.5	42.8	4.2	60.5	551.6	976.9	43.6	4.3	60.8	1 677.7
December	548.0	974.1	42.6	4.2	60.5	548.5	974.7	40.7	4.0	60.4	1 681.6
2008											
January	548.3	976.2	42.6	4.2	60.5	538.5	967.7	44.0	4.4	60.0	1 685.1
February	549.1	979.3	42.8	4.2	60.5	549.5	979.7	42.5	4.2	60.5	1 688.7
March	550.8	983.3	43.1	4.2	60.7	555.2	982.9	42.6	4.2	60.6	1 692.2
April	552.9	987.5	43.4	4.2	60.8	552.2	988.6	43.4	4.2	60.9	1 695.4
May	555.1	991.3	43.7	4.2	60.9	554.9	998.6	44.2	4.2	61.4	1 698.7
June	557.1	994.5	44.1	4.2	61.1	557.9	990.2	44.1	4.3	60.8	1 701.9
PERSONS											
June 2005	1 429.7	1 988.5	103.4	4.9	66.6	1 435.2	1 988.6	97.9	4.7	66.4	3 142.3
June 2006	1 472.7	2 040.0	97.3	4.6	66.5	1 473.8	2 035.0	96.2	4.5	66.3	3 212.9
2007											
June	1 556.9	2 131.7	78.6	3.6	67.1	1 554.0	2 131.7	79.3	3.6	67.1	3 293.9
July	1 557.0	2 134.8	79.6	3.6	67.1	1 548.8	2 127.7	80.9	3.7	66.9	3 300.9
August	1 557.6	2 139.0	81.3	3.7	67.1	1 559.1	2 137.3	79.2	3.6	67.0	3 308.0
September	1 559.3	2 143.9	82.6	3.7	67.2	1 552.7	2 146.8	84.7	3.8	67.3	3 315.0
October	1 561.0	2 148.7	82.7	3.7	67.2	1 568.9	2 149.5	85.2	3.8	67.3	3 322.7
November	1 561.8	2 152.7	81.9	3.7	67.1	1 567.4	2 157.8	84.6	3.8	67.3	3 330.6
December	1 561.3	2 156.0	81.0	3.6	67.0	1 563.6	2 157.5	78.3	3.5	67.0	3 338.3
2008											
January	1 560.4	2 159.2	80.6	3.6	66.9	1 550.2	2 150.4	76.1	3.4	66.5	3 345.6
February	1 560.7	2 163.1	81.1	3.6	66.9	1 563.0	2 164.4	82.0	3.7	67.0	3 353.0
March	1 562.7	2 168.0	82.3	3.7	67.0	1 557.1	2 167.0	82.5	3.7	66.9	3 360.3
April	1 566.1	2 173.2	83.9	3.7	67.0	1 570.7	2 173.6	85.1	3.8	67.1	3 366.7
May	1 570.0	2 178.0	85.3	3.8	67.1	1 566.7	2 182.9	86.7	3.8	67.3	3 373.2
June	1 574.1	2 182.3	86.7	3.8	67.2	1 581.8	2 181.8	85.7	3.8	67.1	3 379.6

LABOUR FORCE STATUS (AGED 15 YEARS & OVER)—South Australia

	TREND					SEASONALLY ADJUSTED					Civilian population aged 15 years and over
	Employed full time	Total employed	Total unemp- loyed	Unemp- loyment rate	Partici- pation rate	Employed full time	Total employed	Total unemp- loyed	Unemp- loyment rate	Partici- pation rate	
	'000	'000	'000	%	%	'000	'000	'000	%	%	
MALES											
June 2005	343.5	407.4	22.8	5.3	69.7	342.5	407.9	22.5	5.2	69.8	617.0
June 2006	342.4	408.9	21.3	5.0	69.1	341.4	408.3	20.4	4.8	68.8	623.1
2007											
June	343.7	412.0	21.9	5.0	68.8	344.5	411.9	22.1	5.1	68.8	630.4
July	344.3	413.0	21.9	5.0	68.9	343.9	410.3	23.2	5.4	68.7	631.1
August	345.1	414.1	22.1	5.1	69.0	346.8	417.7	21.1	4.8	69.5	631.8
September	345.9	415.4	22.1	5.1	69.2	345.1	413.9	20.1	4.6	68.6	632.5
October	346.8	417.1	22.0	5.0	69.3	343.8	414.1	25.2	5.7	69.4	633.3
November	347.8	419.3	21.7	4.9	69.6	351.1	421.3	20.7	4.7	69.7	634.1
December	349.2	421.6	21.4	4.8	69.8	348.2	421.4	22.4	5.1	69.9	634.9
2008											
January	350.5	423.5	21.1	4.8	70.0	350.3	424.7	20.2	4.5	70.0	635.5
February	351.8	424.8	21.0	4.7	70.1	352.2	424.6	18.8	4.2	69.7	636.1
March	353.0	425.6	21.1	4.7	70.1	353.1	425.9	23.3	5.2	70.5	636.8
April	354.1	426.0	21.3	4.8	70.2	354.4	428.0	20.8	4.6	70.4	637.4
May	355.1	426.3	21.5	4.8	70.2	354.6	422.8	21.9	4.9	69.7	638.0
June	356.0	426.5	21.6	4.8	70.2	356.7	427.6	21.4	4.8	70.3	638.6
FEMALES											
June 2005	168.9	334.2	17.3	4.9	55.0	167.5	333.2	19.4	5.5	55.2	639.3
June 2006	174.2	342.0	17.0	4.7	55.7	175.2	342.4	16.2	4.5	55.6	644.7
2007											
June	175.6	345.7	16.6	4.6	55.5	174.6	346.0	16.6	4.6	55.6	652.2
July	177.4	347.6	16.8	4.6	55.8	175.6	345.6	16.1	4.5	55.4	652.8
August	179.5	349.6	17.1	4.7	56.1	178.6	349.8	17.1	4.7	56.1	653.5
September	181.7	351.1	17.6	4.8	56.4	183.1	351.8	17.6	4.8	56.5	654.2
October	183.5	351.9	17.9	4.8	56.5	184.5	354.6	18.5	5.0	57.0	655.0
November	184.6	352.1	17.8	4.8	56.4	185.8	351.4	18.4	5.0	56.4	655.8
December	184.7	351.8	17.6	4.8	56.3	185.1	353.1	17.4	4.7	56.4	656.6
2008											
January	184.3	351.3	17.3	4.7	56.1	182.9	347.0	16.9	4.7	55.4	657.2
February	183.9	351.0	17.2	4.7	56.0	185.4	352.5	17.8	4.8	56.3	657.8
March	184.0	351.1	17.3	4.7	55.9	180.8	351.9	14.4	3.9	55.6	658.4
April	184.3	351.3	17.5	4.8	56.0	184.1	350.0	19.0	5.1	56.0	659.0
May	184.9	351.7	17.8	4.8	56.0	186.9	352.6	19.2	5.2	56.4	659.5
June	185.5	351.9	18.2	4.9	56.1	186.0	352.0	17.6	4.8	56.0	660.1
PERSONS											
June 2005	512.3	741.6	40.0	5.1	62.2	510.0	741.1	41.9	5.4	62.3	1 256.3
June 2006	516.6	750.8	38.3	4.9	62.3	516.6	750.8	36.6	4.7	62.1	1 267.8
2007											
June	519.3	757.7	38.5	4.8	62.1	519.1	757.9	38.7	4.9	62.1	1 282.6
July	521.7	760.6	38.7	4.8	62.3	519.5	755.9	39.4	4.9	61.9	1 283.9
August	524.6	763.7	39.2	4.9	62.5	525.4	767.5	38.3	4.7	62.7	1 285.3
September	527.6	766.5	39.7	4.9	62.7	528.2	765.7	37.7	4.7	62.4	1 286.6
October	530.3	769.1	39.8	4.9	62.8	528.3	768.7	43.8	5.4	63.1	1 288.2
November	532.4	771.5	39.5	4.9	62.9	536.9	772.7	39.1	4.8	62.9	1 289.9
December	533.9	773.4	38.9	4.8	62.9	533.3	774.5	39.9	4.9	63.1	1 291.5
2008											
January	534.8	774.7	38.4	4.7	62.9	533.2	771.7	37.1	4.6	62.6	1 292.7
February	535.8	775.8	38.2	4.7	62.9	537.6	777.2	36.6	4.5	62.9	1 294.0
March	537.0	776.7	38.3	4.7	62.9	533.9	777.8	37.6	4.6	63.0	1 295.2
April	538.5	777.4	38.8	4.8	63.0	538.5	778.1	39.8	4.9	63.1	1 296.4
May	539.9	777.9	39.3	4.8	63.0	541.5	775.4	41.0	5.0	62.9	1 297.5
June	541.5	778.4	39.8	4.9	63.0	542.6	779.6	39.0	4.8	63.0	1 298.7

LABOUR FORCE STATUS (AGED 15 YEARS & OVER)—Western Australia

	TREND					SEASONALLY ADJUSTED					Civilian population aged 15 years and over
	Employed full time	Total employed	Total unemp- loyed	Unemp- loyment rate	Partici- pation rate	Employed full time	Total employed	Total unemp- loyed	Unemp- loyment rate	Partici- pation rate	
	'000	'000	'000	%	%	'000	'000	'000	%	%	
MALES											
June 2005	501.2	583.9	26.4	4.3	76.2	492.4	579.0	27.8	4.6	75.8	800.2
June 2006	519.7	602.9	18.2	2.9	76.0	516.7	599.4	18.7	3.0	75.7	816.8
2007											
June	532.9	618.3	19.0	3.0	76.0	532.2	619.0	22.1	3.5	76.5	838.6
July	535.6	620.2	19.8	3.1	76.2	543.0	622.0	19.7	3.1	76.4	840.4
August	537.7	621.8	20.5	3.2	76.3	535.9	620.8	19.3	3.0	76.0	842.2
September	539.1	623.4	20.8	3.2	76.3	536.6	622.8	20.0	3.1	76.2	844.0
October	540.1	625.2	20.6	3.2	76.3	542.3	625.2	21.3	3.3	76.4	846.1
November	541.4	627.3	20.2	3.1	76.3	539.9	626.2	21.4	3.3	76.3	848.2
December	542.8	629.3	20.0	3.1	76.4	542.9	628.7	20.5	3.2	76.4	850.3
2008											
January	544.5	630.7	19.9	3.1	76.3	542.0	631.5	19.0	2.9	76.3	852.4
February	546.2	631.4	19.9	3.1	76.2	549.5	635.1	17.3	2.6	76.3	854.6
March	547.7	631.6	20.2	3.1	76.1	549.7	631.7	21.3	3.3	76.2	856.8
April	549.3	631.7	20.5	3.1	75.9	547.3	628.7	20.5	3.2	75.6	858.9
May	550.9	631.7	20.8	3.2	75.8	546.1	630.0	24.2	3.7	76.0	861.0
June	552.2	631.6	21.1	3.2	75.7	557.5	634.0	18.5	2.8	75.6	863.1
FEMALES											
June 2005	237.6	456.2	24.5	5.1	59.3	235.1	455.8	24.4	5.1	59.3	810.1
June 2006	242.3	469.2	19.2	3.9	59.3	241.1	470.7	18.7	3.8	59.5	823.1
2007											
June	257.0	488.9	18.6	3.7	60.4	256.0	486.7	20.9	4.1	60.4	840.5
July	258.9	491.2	18.9	3.7	60.6	259.8	492.4	18.4	3.6	60.7	842.1
August	260.4	493.0	18.9	3.7	60.7	262.5	498.4	17.1	3.3	61.1	843.6
September	262.0	494.1	18.7	3.6	60.7	261.3	493.4	19.8	3.9	60.7	845.2
October	263.6	494.6	18.2	3.6	60.5	263.8	494.4	19.6	3.8	60.7	847.1
November	265.0	495.1	17.8	3.5	60.4	262.7	489.1	16.9	3.3	59.6	848.9
December	266.3	496.0	17.6	3.4	60.4	264.5	496.4	15.2	3.0	60.1	850.8
2008											
January	267.5	497.1	17.4	3.4	60.4	272.5	502.0	20.9	4.0	61.3	852.5
February	268.7	498.3	17.5	3.4	60.4	268.9	497.4	15.7	3.1	60.1	854.3
March	269.8	499.2	17.8	3.4	60.4	268.5	498.2	17.3	3.4	60.2	856.1
April	270.9	499.7	18.2	3.5	60.4	268.4	500.4	18.6	3.6	60.5	857.8
May	272.0	500.2	18.5	3.6	60.4	271.8	498.9	18.8	3.6	60.2	859.6
June	273.0	500.2	18.8	3.6	60.3	276.2	501.2	19.0	3.7	60.4	861.3
PERSONS											
June 2005	738.9	1 040.0	50.8	4.7	67.7	727.5	1 034.8	52.2	4.8	67.5	1 610.3
June 2006	762.0	1 072.1	37.4	3.4	67.7	757.8	1 070.0	37.5	3.4	67.5	1 639.9
2007											
June	789.9	1 107.3	37.5	3.3	68.2	788.2	1 105.8	43.0	3.7	68.4	1 679.2
July	794.5	1 111.4	38.7	3.4	68.4	802.8	1 114.4	38.1	3.3	68.5	1 682.5
August	798.2	1 114.8	39.4	3.4	68.5	798.4	1 119.2	36.4	3.1	68.5	1 685.8
September	801.1	1 117.5	39.4	3.4	68.5	797.9	1 116.2	39.9	3.5	68.4	1 689.1
October	803.7	1 119.8	38.9	3.4	68.4	806.1	1 119.6	40.9	3.5	68.5	1 693.1
November	806.4	1 122.4	38.1	3.3	68.4	802.6	1 115.2	38.3	3.3	68.0	1 697.1
December	809.1	1 125.2	37.5	3.2	68.4	807.4	1 125.2	35.7	3.1	68.2	1 701.0
2008											
January	812.0	1 127.8	37.3	3.2	68.3	814.5	1 133.5	39.9	3.4	68.8	1 705.0
February	814.9	1 129.8	37.4	3.2	68.3	818.3	1 132.5	32.9	2.8	68.2	1 708.9
March	817.5	1 130.9	38.0	3.2	68.2	818.2	1 129.9	38.6	3.3	68.2	1 712.9
April	820.2	1 131.4	38.7	3.3	68.2	815.7	1 129.1	39.0	3.3	68.0	1 716.7
May	822.9	1 131.9	39.4	3.4	68.1	817.9	1 128.8	43.0	3.7	68.1	1 720.6
June	825.2	1 131.8	39.9	3.4	68.0	833.8	1 135.1	37.5	3.2	68.0	1 724.4

LABOUR FORCE STATUS (AGED 15 YEARS & OVER)—Tasmania

	TREND					SEASONALLY ADJUSTED					Civilian population aged 15 years and over
	Employed full time	Total employed	Total unemp- loyed	Unemp- loyment rate	Partici- pation rate	Employed full time	Total employed	Total unemp- loyed	Unemp- loyment rate	Partici- pation rate	
	'000	'000	'000	%	%	'000	'000	'000	%	%	
MALES											
June 2005	98.8	118.8	8.0	6.3	66.6	99.0	119.4	7.7	6.1	66.8	190.4
June 2006	101.2	120.7	9.4	7.2	67.9	101.0	120.7	9.8	7.5	68.1	191.7
2007											
June	104.1	124.7	6.3	4.8	67.7	104.3	124.3	5.7	4.4	67.2	193.5
July	104.6	125.1	6.1	4.7	67.8	104.9	125.4	5.6	4.3	67.7	193.6
August	105.0	125.3	6.1	4.7	67.8	104.8	125.6	6.4	4.9	68.2	193.7
September	105.3	125.5	6.2	4.7	67.9	106.0	124.9	6.4	4.9	67.7	193.9
October	105.6	125.6	6.2	4.7	68.0	105.0	125.8	6.7	5.1	68.3	194.0
November	105.8	125.7	6.1	4.6	67.9	105.4	125.9	5.6	4.3	67.7	194.2
December	106.0	125.9	5.8	4.4	67.8	106.4	125.5	6.0	4.6	67.6	194.3
2008											
January	106.3	126.1	5.5	4.2	67.7	106.1	126.8	5.5	4.2	68.0	194.5
February	106.7	126.4	5.2	3.9	67.6	107.4	126.4	5.3	4.0	67.7	194.7
March	106.9	126.9	4.9	3.8	67.7	105.9	125.5	4.8	3.7	66.9	194.8
April	107.1	127.4	4.8	3.6	67.8	107.0	128.0	4.1	3.1	67.7	195.0
May	107.2	127.9	4.6	3.5	67.9	108.9	128.3	5.3	3.9	68.5	195.2
June	107.2	128.4	4.5	3.4	68.1	105.9	128.6	4.5	3.4	68.2	195.3
FEMALES											
June 2005	50.4	100.4	6.3	5.9	53.5	50.0	100.1	6.1	5.8	53.3	199.4
June 2006	52.2	103.9	6.4	5.8	54.9	53.4	104.4	6.5	5.9	55.3	200.7
2007											
June	50.9	101.7	5.9	5.5	53.1	51.2	100.7	7.1	6.6	53.2	202.5
July	50.9	102.0	6.0	5.6	53.3	50.5	102.1	6.4	5.9	53.5	202.6
August	51.1	102.5	6.2	5.7	53.6	51.2	102.0	6.3	5.8	53.4	202.8
September	51.3	103.1	6.3	5.8	54.0	51.7	104.5	5.2	4.8	54.1	202.9
October	51.5	103.6	6.5	5.9	54.2	50.7	102.9	6.8	6.2	54.0	203.1
November	51.8	103.9	6.6	6.0	54.4	52.5	104.2	6.9	6.2	54.7	203.2
December	52.2	103.9	6.7	6.0	54.4	52.2	104.3	6.8	6.2	54.7	203.4
2008											
January	52.6	103.9	6.7	6.1	54.4	51.9	104.3	6.4	5.8	54.4	203.5
February	53.0	104.1	6.6	5.9	54.4	53.9	104.0	6.7	6.1	54.4	203.6
March	53.4	104.6	6.3	5.7	54.5	52.7	102.1	6.5	6.0	53.3	203.8
April	53.6	105.3	6.1	5.5	54.6	54.1	106.3	6.2	5.5	55.1	203.9
May	53.8	106.0	5.9	5.3	54.9	54.1	107.1	5.4	4.8	55.1	204.0
June	54.0	106.7	5.7	5.1	55.1	53.5	107.2	5.7	5.1	55.3	204.2
PERSONS											
June 2005	149.2	219.2	14.3	6.1	59.9	149.0	219.5	13.9	5.9	59.9	389.7
June 2006	153.4	224.6	15.8	6.6	61.2	154.4	225.2	16.3	6.8	61.5	392.4
2007											
June	155.0	226.4	12.1	5.1	60.2	155.5	224.9	12.8	5.4	60.0	396.0
July	155.5	227.1	12.2	5.1	60.4	155.4	227.5	12.0	5.0	60.4	396.2
August	156.0	227.8	12.3	5.1	60.6	155.9	227.6	12.7	5.3	60.6	396.5
September	156.6	228.6	12.5	5.2	60.8	157.8	229.4	11.7	4.8	60.8	396.8
October	157.1	229.3	12.7	5.2	60.9	155.8	228.7	13.5	5.6	61.0	397.1
November	157.6	229.6	12.7	5.2	61.0	157.8	230.1	12.5	5.1	61.1	397.4
December	158.3	229.8	12.5	5.2	60.9	158.7	229.8	12.8	5.3	61.0	397.7
2008											
January	159.0	230.0	12.2	5.0	60.9	158.0	231.1	11.9	4.9	61.1	398.0
February	159.7	230.6	11.7	4.8	60.8	161.3	230.4	12.1	5.0	60.9	398.3
March	160.3	231.5	11.3	4.6	60.9	158.6	227.7	11.3	4.7	59.9	398.6
April	160.7	232.7	10.9	4.5	61.1	161.1	234.2	10.2	4.2	61.3	398.9
May	161.0	233.9	10.5	4.3	61.2	163.0	235.4	10.7	4.3	61.7	399.2
June	161.2	235.1	10.2	4.2	61.4	159.4	235.9	10.3	4.2	61.6	399.5

	TREND					Civilian population aged 15 years and over
	Employed full time	Total employed	Total unemployed	Unemployment rate	Participation rate	
	'000	'000	'000	%	%	'000
MALES						
June 2005	43.1	51.0	2.8	5.2	71.2	75.4
June 2006	47.1	54.9	3.1	5.3	74.3	78.1
2007						
June	51.0	58.9	3.2	5.1	77.1	80.6
July	51.5	59.4	3.0	4.9	77.3	80.7
August	51.9	59.7	2.9	4.6	77.5	80.9
September	52.1	60.0	2.9	4.6	77.6	81.0
October	52.1	60.0	2.9	4.6	77.5	81.1
November	51.9	59.8	3.0	4.8	77.4	81.3
December	51.7	59.7	3.1	5.0	77.2	81.4
2008						
January	51.6	59.8	3.1	4.9	77.0	81.6
February	51.6	59.9	2.9	4.7	76.8	81.9
March	51.7	60.2	2.7	4.4	76.6	82.1
April	51.8	60.4	2.6	4.1	76.5	82.4
May	51.8	60.7	2.4	3.8	76.3	82.7
June	51.8	60.9	2.3	3.6	76.3	82.9
FEMALES						
June 2005	30.9	43.5	2.1	4.7	64.5	70.7
June 2006	33.0	46.8	2.1	4.4	67.5	72.5
2007						
June	33.9	47.1	1.9	4.0	66.5	73.7
July	34.2	47.5	2.1	4.2	67.1	73.8
August	34.4	47.9	2.3	4.5	67.8	74.0
September	34.4	48.2	2.5	4.9	68.4	74.1
October	34.4	48.4	2.7	5.2	68.8	74.3
November	34.4	48.7	2.7	5.3	69.0	74.5
December	34.6	48.9	2.6	5.1	69.1	74.7
2008						
January	34.8	49.1	2.5	4.8	68.9	74.9
February	35.0	49.3	2.3	4.4	68.8	75.1
March	35.1	49.5	2.1	4.1	68.6	75.3
April	35.1	49.8	2.0	3.9	68.6	75.5
May	35.0	50.0	1.9	3.7	68.7	75.6
June	34.9	50.3	1.9	3.7	68.9	75.8
PERSONS						
June 2005	74.0	94.4	4.9	5.0	68.0	146.1
June 2006	80.1	101.7	5.2	4.9	71.0	150.6
2007						
June	84.9	106.0	5.1	4.6	72.0	154.2
July	85.7	106.9	5.1	4.6	72.5	154.5
August	86.3	107.6	5.2	4.6	72.9	154.8
September	86.5	108.2	5.4	4.7	73.2	155.1
October	86.5	108.4	5.6	4.9	73.3	155.5
November	86.3	108.5	5.7	5.0	73.3	155.8
December	86.3	108.7	5.7	5.0	73.3	156.1
2008						
January	86.4	108.9	5.6	4.9	73.1	156.5
February	86.6	109.3	5.2	4.6	72.9	157.0
March	86.8	109.7	4.9	4.2	72.8	157.4
April	86.9	110.2	4.6	4.0	72.7	157.9
May	86.8	110.7	4.3	3.7	72.7	158.3
June	86.7	111.2	4.2	3.6	72.8	158.8

	TREND					Civilian population aged 15 years and over
	Employed full time	Total employed	Total unemployed	Unemployment rate	Participation rate	
	'000	'000	'000	%	%	'000
MALES						
June 2005	79.7	93.7	3.0	3.1	76.8	126.0
June 2006	81.2	95.3	3.5	3.5	77.7	127.1
2007						
June	84.0	99.0	2.9	2.9	78.7	129.5
July	84.3	99.2	2.8	2.8	78.6	129.8
August	84.5	99.4	2.7	2.6	78.5	130.1
September	84.8	99.5	2.6	2.5	78.3	130.3
October	85.0	99.5	2.5	2.5	78.1	130.6
November	85.0	99.5	2.5	2.5	77.9	131.0
December	84.8	99.3	2.6	2.5	77.6	131.3
2008						
January	84.5	99.3	2.6	2.6	77.4	131.6
February	84.2	99.4	2.6	2.6	77.4	131.9
March	84.0	99.6	2.7	2.7	77.5	132.2
April	83.9	99.8	2.8	2.7	77.6	132.3
May	84.0	100.2	2.8	2.7	77.8	132.4
June	84.2	100.4	2.9	2.8	78.0	132.4
FEMALES						
June 2005	54.6	86.9	2.8	3.1	67.6	132.7
June 2006	58.2	90.0	2.3	2.5	68.8	134.2
2007						
June	57.9	89.0	2.7	2.9	67.5	135.8
July	57.8	88.9	2.6	2.9	67.3	136.0
August	57.9	88.7	2.5	2.8	66.9	136.3
September	58.0	88.6	2.4	2.6	66.6	136.6
October	58.3	88.6	2.2	2.5	66.4	136.8
November	58.7	89.0	2.2	2.4	66.5	137.1
December	59.0	89.6	2.2	2.4	66.8	137.4
2008						
January	59.3	90.4	2.3	2.5	67.3	137.7
February	59.4	91.1	2.4	2.6	67.8	137.9
March	59.4	91.7	2.5	2.6	68.2	138.2
April	59.3	92.0	2.4	2.6	68.3	138.3
May	59.3	92.2	2.4	2.5	68.4	138.4
June	59.2	92.2	2.4	2.5	68.3	138.5
PERSONS						
June 2005	134.4	180.6	5.7	3.1	72.1	258.7
June 2006	139.4	185.3	5.8	3.0	73.1	261.3
2007						
June	141.9	188.1	5.6	2.9	73.0	265.3
July	142.1	188.1	5.5	2.8	72.8	265.8
August	142.4	188.1	5.2	2.7	72.6	266.4
September	142.8	188.1	5.0	2.6	72.3	266.9
October	143.3	188.2	4.8	2.5	72.1	267.5
November	143.7	188.5	4.7	2.4	72.1	268.1
December	143.8	189.0	4.8	2.5	72.1	268.7
2008						
January	143.7	189.7	4.9	2.5	72.3	269.2
February	143.5	190.5	5.1	2.6	72.5	269.8
March	143.4	191.3	5.2	2.6	72.7	270.3
April	143.3	191.9	5.2	2.6	72.9	270.6
May	143.3	192.4	5.2	2.6	73.0	270.7
June	143.4	192.6	5.2	2.6	73.0	270.9

	EMPLOYED			UNEMPLOYED		Labour force	Not in labour force	Civilian population aged 15 years and over	UNEMPLOYMENT RATE		Participation rate
	Full time	Part time	Total	Looking for f/t work	Total				Looking for f/t work	Total	
	'000	'000	'000	'000	'000	'000	'000	'000	%	%	%
MALES											
New South Wales	1 601.9	298.7	1 900.6	68.7	86.1	1 986.7	793.9	2 780.5	4.1	4.3	71.4
Victoria	1 203.3	245.6	1 448.9	47.3	63.8	1 512.7	576.3	2 089.0	3.8	4.2	72.4
Queensland	1 020.8	172.5	1 193.2	31.2	40.0	1 233.2	444.4	1 677.7	3.0	3.2	73.5
South Australia	357.0	70.6	427.6	15.1	20.2	447.8	190.8	638.6	4.1	4.5	70.1
Western Australia	556.1	77.7	633.8	14.7	18.2	652.0	211.1	863.1	2.6	2.8	75.5
Tasmania	106.4	22.4	128.8	3.7	4.4	133.2	62.1	195.3	3.3	3.3	68.2
Northern Territory	51.8	9.7	61.5	1.9	2.4	63.9	19.0	82.9	3.5	3.8	77.1
Australian Capital Territory	83.7	16.5	100.2	2.1	2.6	102.8	29.7	132.4	2.5	2.5	77.6
Australia	4 981.0	913.7	5 894.7	184.7	237.6	6 132.3	2 327.4	8 459.6	3.6	3.9	72.5
FEMALES											
New South Wales	861.1	678.9	1 539.9	45.6	77.1	1 617.0	1 244.4	2 861.4	5.0	4.8	56.5
Victoria	614.0	581.6	1 195.6	28.5	58.2	1 253.8	923.2	2 176.9	4.4	4.6	57.6
Queensland	555.6	439.2	994.8	25.4	43.9	1 038.7	663.2	1 701.9	4.4	4.2	61.0
South Australia	181.8	168.6	350.4	11.8	16.8	367.3	292.8	660.1	6.1	4.6	55.6
Western Australia	274.0	226.2	500.2	12.1	19.3	519.5	341.8	861.3	4.2	3.7	60.3
Tasmania	52.6	54.7	107.3	3.2	4.9	112.1	92.0	204.2	5.7	4.3	54.9
Northern Territory	34.8	16.7	51.5	*1.2	1.9	53.5	22.4	75.8	*3.3	3.6	70.5
Australian Capital Territory	60.0	32.0	92.0	*0.8	*2.0	93.9	44.6	138.5	*1.3	*2.1	67.8
Australia	2 634.0	2 197.8	4 831.7	128.5	224.0	5 055.7	3 624.4	8 680.1	4.7	4.4	58.2
PERSONS											
New South Wales	2 463.0	977.6	3 440.5	114.3	163.1	3 603.7	2 038.2	5 641.9	4.4	4.5	63.9
Victoria	1 817.4	827.2	2 644.5	75.8	121.9	2 766.5	1 499.5	4 266.0	4.0	4.4	64.8
Queensland	1 576.4	611.7	2 188.1	56.6	83.9	2 271.9	1 107.7	3 379.6	3.5	3.7	67.2
South Australia	538.8	239.2	778.0	27.0	37.1	815.1	483.6	1 298.7	4.8	4.5	62.8
Western Australia	830.1	303.8	1 134.0	26.8	37.5	1 171.4	553.0	1 724.4	3.1	3.2	67.9
Tasmania	159.0	77.1	236.1	6.9	9.3	245.4	154.1	399.5	4.1	3.8	61.4
Northern Territory	86.6	26.4	113.0	3.1	4.4	117.4	41.4	158.8	3.4	3.7	73.9
Australian Capital Territory	143.7	48.5	192.2	2.9	4.5	196.7	74.3	270.9	2.0	2.3	72.6
Australia	7 615.0	3 111.4	10 726.4	313.2	461.6	11 188.0	5 951.7	17 139.8	4.0	4.1	65.3

* estimate is subject to sampling variability too high for most practical purposes

	EMPLOYED		UNEMPLOYED		UNEMPLOYMENT RATE		Participation rate	Employment to population ratio	Unemployment to population ratio – looking for full-time work
	Full time	Total	Looking for f/t work	Total	Looking for f/t work	Total			
'000	'000	'000	'000	%	%	%	%	%	
MALES									
June 2005	160.3	359.2	35.6	65.0	18.2	15.3	59.4	50.3	5.0
June 2006	155.4	357.1	35.8	67.3	18.7	15.9	59.1	49.7	5.0
2007									
June	162.7	364.8	31.0	57.5	16.0	13.6	58.0	50.1	4.3
July	163.3	364.1	31.3	58.4	16.1	13.8	58.0	49.9	4.3
August	163.4	363.3	31.9	59.8	16.3	14.1	58.0	49.8	4.4
September	164.1	363.6	32.5	60.9	16.5	14.3	58.1	49.8	4.4
October	165.8	366.0	32.7	61.3	16.5	14.3	58.4	50.1	4.5
November	167.9	370.0	32.5	60.7	16.2	14.1	58.8	50.5	4.4
December	169.9	374.9	31.7	59.1	15.7	13.6	59.2	51.1	4.3
2008									
January	171.6	379.2	30.6	57.1	15.2	13.1	59.4	51.6	4.2
February	172.6	381.9	29.6	55.4	14.6	12.7	59.4	51.9	4.0
March	172.8	382.7	28.9	54.5	14.3	12.5	59.3	51.9	3.9
April	172.8	382.3	28.8	54.5	14.3	12.5	59.2	51.8	3.9
May	172.7	381.3	29.1	55.2	14.4	12.6	59.0	51.6	3.9
June	172.4	379.8	29.7	56.4	14.7	12.9	58.9	51.3	4.0
FEMALES									
June 2005	86.9	363.3	25.9	60.4	22.9	14.3	62.0	53.1	3.8
June 2006	82.0	359.7	26.0	60.5	24.1	14.4	61.2	52.4	3.8
2007									
June	86.4	368.8	22.5	54.9	20.7	13.0	60.9	53.0	3.2
July	86.6	367.6	22.5	55.1	20.6	13.0	60.7	52.8	3.2
August	87.1	366.4	22.6	55.9	20.6	13.2	60.6	52.5	3.2
September	88.0	366.2	22.9	57.1	20.6	13.5	60.6	52.4	3.3
October	89.2	367.0	23.0	57.9	20.5	13.6	60.8	52.5	3.3
November	90.4	368.5	23.0	57.9	20.3	13.6	60.9	52.6	3.3
December	91.2	369.8	23.1	57.5	20.2	13.4	60.9	52.7	3.3
2008									
January	91.4	370.3	23.4	56.9	20.3	13.3	60.9	52.7	3.3
February	91.0	370.3	23.7	56.6	20.7	13.3	60.7	52.7	3.4
March	90.4	370.0	24.1	56.7	21.1	13.3	60.6	52.6	3.4
April	89.5	369.6	24.5	57.2	21.5	13.4	60.6	52.4	3.5
May	88.7	369.3	24.9	57.8	21.9	13.5	60.5	52.3	3.5
June	88.0	368.6	25.4	58.8	22.4	13.8	60.5	52.2	3.6
PERSONS									
June 2005	247.2	722.5	61.5	125.4	19.9	14.8	60.6	51.7	4.4
June 2006	237.4	716.8	61.8	127.8	20.7	15.1	60.1	51.0	4.4
2007									
June	249.2	733.7	53.5	112.4	17.7	13.3	59.4	51.5	3.8
July	249.9	731.7	53.7	113.5	17.7	13.4	59.3	51.3	3.8
August	250.5	729.7	54.5	115.7	17.8	13.7	59.2	51.1	3.8
September	252.1	729.8	55.4	118.1	18.0	13.9	59.3	51.1	3.9
October	254.9	733.0	55.8	119.1	17.9	14.0	59.6	51.2	3.9
November	258.3	738.5	55.6	118.6	17.7	13.8	59.8	51.6	3.9
December	261.1	744.6	54.9	116.6	17.4	13.5	60.0	51.9	3.8
2008									
January	262.9	749.6	54.0	114.0	17.0	13.2	60.1	52.2	3.8
February	263.6	752.3	53.3	112.0	16.8	13.0	60.1	52.3	3.7
March	263.2	752.7	53.0	111.2	16.8	12.9	59.9	52.2	3.7
April	262.3	751.9	53.4	111.8	16.9	12.9	59.8	52.1	3.7
May	261.4	750.6	54.0	113.0	17.1	13.1	59.8	52.0	3.7
June	260.4	748.4	55.1	115.2	17.5	13.3	59.7	51.8	3.8

PERSONS AGED 15–19 YEARS, Labour Force Status: **Seasonally Adjusted**

	EMPLOYED		UNEMPLOYED		UNEMPLOYMENT RATE		Participation rate	Employment to population ratio	Unemployment to population ratio – looking for full-time work
	Full time	Total	Looking for f/t work	Total	Looking for f/t work	Total			
'000	'000	'000	'000	%	%	%	%	%	
MALES									
June 2005	160.3	361.6	34.5	63.2	17.7	14.9	59.4	50.6	4.8
June 2006	159.1	366.4	34.6	67.2	17.9	15.5	60.3	51.0	4.8
2007									
June	157.2	361.3	32.1	57.1	17.0	13.6	57.4	49.6	4.4
July	165.2	368.4	31.3	56.1	15.9	13.2	58.2	50.5	4.3
August	165.9	363.6	32.4	64.7	16.3	15.1	58.7	49.8	4.4
September	161.0	359.0	28.4	54.0	15.0	13.1	56.6	49.2	3.9
October	166.9	366.8	33.9	63.0	16.9	14.7	58.8	50.2	4.6
November	165.0	365.8	35.7	66.3	17.8	15.3	59.0	50.0	4.9
December	168.6	372.3	32.9	60.6	16.3	14.0	59.0	50.8	4.5
2008									
January	176.3	387.0	30.3	53.7	14.7	12.2	60.0	52.7	4.1
February	174.9	385.1	26.6	52.9	13.2	12.1	59.5	52.3	3.6
March	171.3	381.2	27.6	54.7	13.9	12.5	59.1	51.7	3.7
April	170.5	382.7	30.5	54.3	15.2	12.4	59.2	51.8	4.1
May	172.7	380.5	28.6	53.4	14.2	12.3	58.7	51.5	3.9
June	173.2	376.3	31.6	61.2	15.4	14.0	59.1	50.9	4.3
FEMALES									
June 2005	88.5	365.5	26.1	57.2	22.8	13.5	61.8	53.4	3.8
June 2006	76.5	358.5	28.7	62.9	27.3	14.9	61.3	52.2	4.2
2007									
June	87.3	370.2	21.3	52.5	19.6	12.4	60.7	53.2	3.1
July	82.5	361.5	24.3	56.4	22.8	13.5	60.0	51.9	3.5
August	88.5	365.4	22.6	56.5	20.3	13.4	60.5	52.4	3.2
September	90.1	366.8	22.5	54.2	20.0	12.9	60.3	52.5	3.2
October	87.3	368.0	19.7	57.4	18.4	13.5	60.8	52.6	2.8
November	89.2	365.6	27.9	65.0	23.8	15.1	61.5	52.2	4.0
December	92.3	372.4	22.9	55.1	19.9	12.9	61.0	53.1	3.3
2008									
January	92.4	372.5	22.3	57.1	19.4	13.3	61.2	53.0	3.2
February	91.1	368.5	22.6	53.2	19.9	12.6	60.0	52.4	3.2
March	93.0	370.3	21.9	54.1	19.1	12.7	60.3	52.6	3.1
April	85.1	369.9	28.5	62.4	25.1	14.4	61.3	52.5	4.0
May	89.5	368.3	25.3	58.0	22.1	13.6	60.4	52.2	3.6
June	88.4	369.1	23.8	57.8	21.2	13.5	60.4	52.2	3.4
PERSONS									
June 2005	248.8	727.1	60.7	120.4	19.6	14.2	60.6	52.0	4.3
June 2006	235.7	724.9	63.3	130.1	21.2	15.2	60.8	51.6	4.5
2007									
June	244.5	731.5	53.5	109.5	18.0	13.0	59.0	51.4	3.8
July	247.7	729.9	55.6	112.5	18.3	13.4	59.1	51.2	3.9
August	254.4	729.0	55.0	121.1	17.8	14.2	59.6	51.1	3.9
September	251.1	725.8	50.9	108.2	16.9	13.0	58.4	50.8	3.6
October	254.2	734.8	53.6	120.4	17.4	14.1	59.8	51.4	3.7
November	254.1	731.4	63.5	131.4	20.0	15.2	60.2	51.1	4.4
December	260.9	744.7	55.8	115.6	17.6	13.4	60.0	51.9	3.9
2008									
January	268.8	759.5	52.6	110.8	16.4	12.7	60.6	52.9	3.7
February	266.0	753.6	49.2	106.1	15.6	12.3	59.7	52.4	3.4
March	264.3	751.5	49.5	108.8	15.8	12.6	59.7	52.1	3.4
April	255.5	752.7	59.0	116.8	18.8	13.4	60.2	52.1	4.1
May	262.2	748.7	54.0	111.4	17.1	13.0	59.5	51.8	3.7
June	261.7	745.4	55.3	119.0	17.5	13.8	59.8	51.5	3.8

	EMPLOYED			UNEMPLOYED			Civilian population aged 15–19 years		UNEMPLOYMENT RATE		Participation rate	Unemployment to population ratio – looking for full-time work
	Full time	Part time	Total	Looking for f/t work	Total	Labour force			Looking for f/t work	Total		
	'000	'000	'000	'000	'000	'000	'000	'000	%	%	%	%
NOT ATTENDING FULL-TIME EDUCATION												
Males												
June 2005	149.2	38.3	187.4	26.2	27.8	215.2	23.4	238.7	15.0	12.9	90.2	11.0
June 2006	146.9	41.2	188.1	26.6	29.0	217.2	25.2	242.4	15.3	13.4	89.6	11.0
June 2007	148.3	39.6	187.9	25.0	27.6	215.5	24.4	239.9	14.4	12.8	89.8	10.4
June 2008	157.7	37.6	195.3	23.9	26.3	221.6	22.6	244.2	13.2	11.9	90.7	9.8
Females												
June 2005	78.8	58.1	136.9	20.0	22.4	159.2	30.9	190.2	20.3	14.0	83.7	10.5
June 2006	69.2	58.4	127.6	23.5	25.8	153.4	27.2	180.6	25.3	16.8	84.9	13.0
June 2007	74.0	49.0	123.0	16.2	19.3	142.3	28.3	170.5	17.9	13.5	83.4	9.5
June 2008	78.0	62.8	140.8	17.9	20.3	161.1	30.9	192.0	18.7	12.6	83.9	9.3
Persons												
June 2005	227.9	96.4	324.3	46.3	50.2	374.5	54.3	428.8	16.9	13.4	87.3	10.8
June 2006	216.0	99.7	315.7	50.0	54.9	370.6	52.4	423.0	18.8	14.8	87.6	11.8
June 2007	222.3	88.6	310.9	41.2	46.9	357.8	52.7	410.5	15.6	13.1	87.2	10.0
June 2008	235.7	100.3	336.1	41.8	46.6	382.7	53.5	436.2	15.1	12.2	87.7	9.6
ATTENDING FULL-TIME EDUCATION												
Males												
June 2005	5.6	163.2	168.8	5.0	28.6	197.4	278.5	475.9	46.9	14.5	41.5	1.0
June 2006	7.2	165.3	172.4	5.1	31.0	203.4	273.2	476.6	41.6	15.2	42.7	1.1
June 2007	*4.3	162.9	167.1	4.8	23.4	190.5	298.0	488.5	52.9	12.3	39.0	1.0
June 2008	10.8	163.3	174.1	5.7	28.5	202.6	293.1	495.7	34.4	14.1	40.9	1.1
Females												
June 2005	*4.9	218.7	223.6	5.8	29.3	252.9	241.0	493.9	54.5	11.6	51.2	1.2
June 2006	*3.0	224.0	227.0	*4.6	30.9	257.9	248.3	506.2	*61.0	12.0	51.0	*0.9
June 2007	7.8	235.8	243.6	*4.7	28.4	271.9	253.5	525.4	*37.5	10.4	51.8	*0.9
June 2008	*4.5	220.1	224.6	*5.2	32.2	256.8	257.6	514.5	*53.6	12.6	49.9	*1.0
Persons												
June 2005	10.5	381.9	392.4	10.8	57.9	450.3	519.4	969.7	50.7	12.9	46.4	1.1
June 2006	10.1	389.3	399.4	9.7	61.9	461.4	521.5	982.8	49.0	13.4	46.9	1.0
June 2007	12.1	398.6	410.7	9.5	51.8	462.5	551.5	1 014.0	44.0	11.2	45.6	0.9
June 2008	15.3	383.4	398.7	10.9	60.7	459.4	550.8	1 010.2	41.6	13.2	45.5	1.1
TOTAL												
Males												
June 2005	154.8	201.4	356.2	31.2	56.4	412.6	301.9	714.5	16.8	13.7	57.7	4.4
June 2006	154.0	206.5	360.5	31.7	60.0	420.6	298.4	719.0	17.1	14.3	58.5	4.4
June 2007	152.6	202.5	355.1	29.8	51.0	406.1	322.4	728.5	16.3	12.6	55.7	4.1
June 2008	168.5	200.9	369.4	29.5	54.8	424.2	315.7	739.9	14.9	12.9	57.3	4.0
Females												
June 2005	83.6	276.8	360.4	25.8	51.7	412.2	271.9	684.0	23.6	12.5	60.3	3.8
June 2006	72.1	282.4	354.6	28.1	56.8	411.3	275.5	686.8	28.0	13.8	59.9	4.1
June 2007	81.8	284.7	366.6	20.8	47.6	414.2	281.8	696.0	20.3	11.5	59.5	3.0
June 2008	82.6	282.8	365.4	23.1	52.5	417.9	288.5	706.4	21.9	12.6	59.2	3.3
Persons												
June 2005	238.4	478.3	716.7	57.0	108.1	824.8	573.8	1 398.6	19.3	13.1	59.0	4.1
June 2006	226.2	489.0	715.1	59.8	116.8	831.9	573.9	1 405.8	20.9	14.0	59.2	4.3
June 2007	234.4	487.2	721.7	50.7	98.6	820.3	604.2	1 424.5	17.8	12.0	57.6	3.6
June 2008	251.0	483.8	734.8	52.7	107.3	842.1	604.3	1 446.3	17.3	12.7	58.2	3.6

* estimate is subject to sampling variability too high for most practical purposes

	EMPLOYED			UNEMPLOYED			Civilian population aged 15–19 years	UNEMPLOYMENT RATE		Participation rate	Unemployment to population ratio – looking for full-time work	
	Full time	Part time	Total	Looking for f/t work	Total	Labour force		Not in labour force	Looking for f/t work			Total
'000	'000	'000	'000	'000	'000	'000	'000	%	%	%	%	
NOT ATTENDING FULL-TIME EDUCATION												
New South Wales	66.3	33.5	99.8	13.1	14.3	114.1	18.6	132.7	16.5	12.5	86.0	9.9
Victoria	43.6	19.2	62.9	7.4	8.1	70.9	7.3	78.2	14.4	11.4	90.7	9.4
Queensland	67.7	25.1	92.8	8.6	9.7	102.5	10.2	112.7	11.3	9.5	90.9	7.7
South Australia	13.5	8.3	21.8	4.6	4.8	26.6	*2.8	29.4	25.5	18.0	90.5	15.7
Western Australia	32.0	9.2	41.2	5.7	6.7	47.8	10.7	58.5	15.2	14.0	81.8	9.8
Tasmania	5.5	2.4	7.9	*1.2	*1.7	9.6	2.1	11.6	*18.1	*18.0	82.3	*10.4
Northern Territory	3.4	1.5	5.0	*0.6	*0.8	5.7	1.2	7.0	*15.0	*13.4	82.2	*8.7
Australian Capital Territory	3.8	*1.1	4.9	*0.6	*0.6	5.5	*0.6	6.1	*13.2	*10.5	89.9	*9.5
Australia	235.7	100.3	336.1	41.8	46.6	382.7	53.5	436.2	15.1	12.2	87.7	9.6
ATTENDING FULL-TIME EDUCATION												
New South Wales	*3.9	111.6	115.5	*4.5	21.7	137.2	199.4	336.7	*53.6	15.8	40.8	*1.3
Victoria	*2.9	97.5	100.4	*2.6	18.7	119.1	152.9	272.0	*47.5	15.7	43.8	*1.0
Queensland	*3.4	88.0	91.3	*1.3	10.2	101.5	83.3	184.9	*28.0	10.1	54.9	*0.7
South Australia	*0.8	29.4	30.2	*1.4	5.8	36.0	40.1	76.0	*63.2	16.0	47.3	*1.9
Western Australia	3.5	36.8	40.3	*0.4	*1.6	41.9	50.2	92.1	*10.5	*3.8	45.5	*0.4
Tasmania	*0.5	8.9	9.4	*0.2	*1.2	10.6	12.0	22.6	*30.0	*11.3	46.9	*1.0
Northern Territory	*—	3.4	3.4	*0.2	*0.6	4.1	4.6	8.7	*100.0	*16.0	46.6	*2.3
Australian Capital Territory	*0.2	7.9	8.2	*0.1	*0.9	9.1	8.2	17.3	*31.9	*10.1	52.6	*0.7
Australia	15.3	383.4	398.7	10.9	60.7	459.4	550.8	1 010.2	41.6	13.2	45.5	1.1
TOTAL												
New South Wales	70.2	145.1	215.3	17.6	36.0	251.3	218.0	469.4	20.1	14.3	53.5	3.8
Victoria	46.5	116.7	163.3	10.0	26.7	190.0	160.2	350.2	17.7	14.1	54.2	2.8
Queensland	71.0	113.0	184.1	9.9	19.9	204.0	93.5	297.5	12.3	9.8	68.6	3.3
South Australia	14.4	37.6	52.0	6.1	10.5	62.6	42.9	105.4	29.7	16.9	59.3	5.8
Western Australia	35.4	46.0	81.5	6.1	8.3	89.7	60.8	150.6	14.7	9.2	59.6	4.1
Tasmania	6.0	11.3	17.3	*1.4	2.9	20.2	14.1	34.2	*19.3	14.5	59.0	*4.2
Northern Territory	3.4	4.9	8.4	*0.8	1.4	9.8	5.9	15.7	*19.0	14.5	62.5	*5.1
Australian Capital Territory	4.0	9.0	13.1	*0.7	*1.5	14.5	8.8	23.3	*14.6	*10.3	62.3	*3.0
Australia	251.0	483.8	734.8	52.7	107.3	842.1	604.3	1 446.3	17.3	12.7	58.2	3.6

* estimate is subject to sampling variability too high for most practical purposes

— nil or rounded to zero (including null cells)

WHAT IF...? REVISIONS TO TREND ESTIMATES

EFFECT OF NEW SEASONALLY ADJUSTED ESTIMATES ON TREND ESTIMATES

TREND REVISIONS

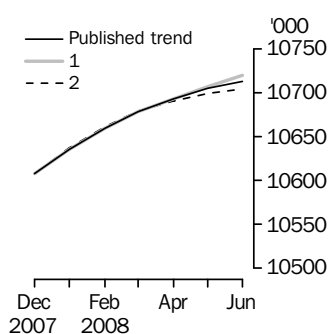
Each time new seasonally adjusted estimates become available, trend estimates are revised. This revision is a combined result of the concurrent seasonal adjustment process and the application of surrogates of the Henderson average to the seasonally adjusted series (see paragraphs 25 to 33 of the Explanatory Notes).

The examples in the tables below show two illustrative scenarios and the consequent revisions to previous trend estimates of employment and the unemployment rate. The revisions in the scenarios below are only due to the use of surrogates of the Henderson average, as the impact of revision of the seasonally adjusted estimates can not be estimated in advance.

- (1) The July seasonally adjusted estimate is *higher* than the June estimate by:
0.26% for employment
1.80% for the unemployment rate
- (2) The July seasonally adjusted estimate is *lower* than the June estimate by:
0.26% for employment
1.80% for the unemployment rate

The percentage changes of 0.26% and 1.80% were chosen because they represent the average absolute monthly percentage changes in employment and the unemployment rate respectively.

EMPLOYMENT



WHAT IF NEXT MONTH'S

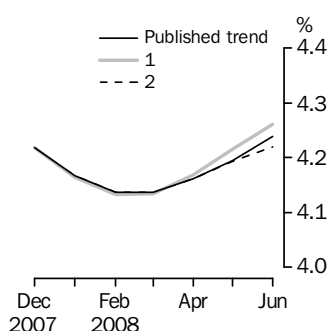
SEASONALLY ADJUSTED ESTIMATE IS:

(1) 10 743.6 i.e. rises by 0.26%
(2) 10 687.9 i.e. falls by 0.26%

2008

	Trend as published	(1) 10 743.6 i.e. rises by 0.26%	(2) 10 687.9 i.e. falls by 0.26%
March	10 678.1	10 678.2	10 679.1
April	10 693.1	10 693.4	10 690.9
May	10 704.8	10 707.1	10 698.9
June	10 713.3	10 719.5	10 704.0

UNEMPLOYMENT RATE



WHAT IF NEXT MONTH'S

SEASONALLY ADJUSTED ESTIMATE IS:

(1) 4.3 i.e. rises by 1.80%
(2) 4.2 i.e. falls by 1.80%

2008

	Trend as published	(1) 4.3 i.e. rises by 1.80%	(2) 4.2 i.e. falls by 1.80%
March	4.1	4.1	4.1
April	4.2	4.2	4.2
May	4.2	4.2	4.2
June	4.2	4.3	4.2

EXPLANATORY NOTES

INTRODUCTION

1 This publication contains estimates of the civilian labour force derived from the Labour Force Survey component of the Monthly Population Survey. The full time series for estimates from this publication are also available electronically – see *Labour Force, Australia, Spreadsheets* (cat. no. 6202.0.55.001). More detailed estimates are released one week after this publication in various electronic formats – see *Labour Force, Australia, Detailed – Electronic Delivery* (cat. no. 6291.0.55.001) and *Labour Force, Australia, Detailed, Quarterly* (cat. no. 6291.0.55.003).

CONCEPTS, SOURCES AND METHODS

2 The conceptual framework used in Australia's Labour Force Survey aligns closely with the standards and guidelines set out in Resolutions of International Conferences of Labour Statisticians. Descriptions of the underlying concepts and structure of Australia's labour force statistics, and the sources and methods used in compiling the estimates, are presented in *Labour Statistics: Concepts, Sources and Methods* (cat. no. 6102.0.55.001) which is available on the ABS website <<http://www.abs.gov.au>> (Methods, Classifications, Concepts & Standards).

LABOUR FORCE SURVEY

3 The Labour Force Survey is based on a multi-stage area sample of private dwellings (currently about 30,000 houses, flats, etc.) and a list sample of non-private dwellings (hotels, motels, etc.), and covers about 0.45% of the population of Australia. Information is obtained from the occupants of selected dwellings by specially trained interviewers.

4 The information is collected using computer-assisted interviewing (CAI), whereby responses are recorded directly onto an electronic questionnaire on a notebook computer. The CAI method was progressively implemented from October 2003 to August 2004, replacing the 'pen and paper' method previously used.

5 Households selected for the Labour Force Survey are interviewed each month for eight months, with one-eighth of the sample being replaced each month. The first interview is conducted face-to-face. Subsequent interviews are conducted by telephone (if acceptable to the respondent).

6 The interviews are generally conducted during the two weeks beginning on the Monday between the 6th and 12th of each month. The information obtained relates to the week before the interview (i.e. the reference week). Each year, to deal with operational difficulties involved with collecting and processing the Labour Force Survey around the Christmas and New Year holiday period, interviews for December start four weeks after November interviews start, and January interviews start five weeks after December interviews start. As a result, January interviewing may commence as early as the 8th or as late as the 14th, depending on the year. Occasionally, circumstances that present significant operational difficulties for survey collection can result in a change to the normal pattern for the start of interviewing.

7 Estimates from the Labour Force Survey are published first in this publication 31 days after the commencement of interviews for that month, with the exception of estimates for each December which are published 38 days after the commencement of interviews.

SCOPE OF SURVEY

8 The Labour Force Survey includes all persons aged 15 years and over except members of the permanent defence forces, certain diplomatic personnel of overseas governments customarily excluded from census and estimated population counts, overseas residents in Australia, and members of non-Australian defence forces (and their dependants) stationed in Australia.

COVERAGE

9 In the Labour Force Survey, coverage rules are applied which aim to ensure that each person is associated with only one dwelling, and hence has only one chance of selection. The coverage rules are necessarily a balance between theoretical and operational considerations. Nevertheless, the chance of a person being enumerated at two separate dwellings in the survey is considered to be negligible.

EXPLANATORY NOTES *continued*

POPULATION BENCHMARKS

10 Labour Force Survey estimates are calculated in such a way as to add up to independent estimates of the civilian population aged 15 years and over (population benchmarks). These population benchmarks are projections of the most recently released quarterly Estimated Resident Population (ERP) data. For information on the methodology used to produce the ERP see *Australian Demographic Statistics Quarterly* (cat. no. 3101.0). To create the population benchmarks for the Labour Force Survey, the most recently released quarterly ERP estimates are projected forward one quarter past the period for which they are required. The projection is based on the historical pattern of each population component - births, deaths, interstate migration and overseas migration. By projecting one quarter past that needed for the current population benchmarks, demographic changes are smoothed in, thereby making them less noticeable in the population benchmarks.

11 The ERP series are revised annually in the March quarter issue of *Australian Demographic Statistics Quarterly* (cat. no. 3101.0), released in September each year, to incorporate more up to date information available for the population components. The revised ERP estimates are used to update the quarterly population projections used in creating the Labour Force Survey population benchmarks. Benchmarks already used in producing Labour Force Survey estimates are not updated. A process of smoothing is used in the creation of population benchmarks to reduce the effect of these annual revisions to ERP estimates on the Labour Force Survey population benchmarks.

12 Every five years the ERP series are revised to incorporate additional information available from the latest Census of Population and Housing. Following the incorporation of Census information, the ERP series prior to the latest Census are final and subject to no further revision. Labour Force Survey population benchmarks, and the estimates, are revised following this 5-yearly revision in the ERP. From the February 2004 issue of this publication, labour force estimates have been compiled using population benchmarks based on the results of the 2001 Census of Population and Housing. Revisions were made in that issue to historical labour force estimates from January 1999 to January 2004.

ESTIMATION METHOD

13 The estimation method used in the Labour Force Survey is Composite Estimation, which was introduced in May 2007. Composite Estimation combines data collected in the previous six months with current month's data to produce the current month's estimates, thereby exploiting the high correlation between overlapping samples across months in the Labour Force Survey. The Composite Estimator combines the previous and current months' data by applying different factors according to length of time in the survey. After these factors are applied, the seven months of data are weighted to align with current month population benchmarks. For details see *Information Paper: Forthcoming Changes to Labour Force Statistics, 2007* (cat. no. 6292.0).

COMPARABILITY OF SERIES

14 From April 1986, the definition of employed persons was changed to include persons who worked without pay between 1 and 14 hours per week in a family business or on a farm (i.e. contributing family workers). For further information, see paragraphs 36 and 37 of the Explanatory Notes to the February 1987 issue of *Labour Force, Australia* (cat. no. 6203.0).

15 The ABS introduced telephone interviewing into the Labour Force Survey in August 1996. Implementation was phased in for each new sample group from August 1996 to February 1997. During the period of implementation, the new method produced different estimates than would have been obtained under the old methodology. The effect dissipated over the final months of implementation and was no longer discernible from February 1997. The estimates for February 1997 and onwards are directly comparable to estimates for periods prior to August 1996. For further details, see the feature article in the June 1997 issue of *Labour Force, Australia* (cat. no. 6203.0).

EXPLANATORY NOTES *continued*

COMPARABILITY OF SERIES

continued

16 From April 2001 the Labour Force Survey has been conducted using a redesigned questionnaire containing additional data items and some minor definitional changes. The definition of unemployed persons was changed to include all persons who were waiting to start work and were available to start in the reference week. This change was introduced in February 2004, when historical unit record data were revised from April 2001 to January 2004. This revision created a small trend break at April 2001 in unemployed persons and unemployment rate series. For further details, see *Information Paper: Forthcoming Changes to Labour Force Statistics* (cat. no. 6292.0), released in December 2003.

17 Core labour force series were revised in April 2001 for the period April 1986 to March 2001 for the remaining definitional changes introduced with the redesigned questionnaire, to reduce the impact of the changes on labour force series. For further details, see *Information Paper: Implementing the Redesigned Labour Force Survey Questionnaire* (cat. no. 6295.0) and *Information Paper: Questionnaires Used in the Labour Force Survey* (cat. no. 6232.0).

18 In May 2007, an improved method of estimation, known as composite estimation, was introduced into the Labour Force Survey. In introducing this change the ABS revised unit record data from April 2001 to April 2007 based on the new estimation method. While estimates for periods prior to April 2001 are unrevised and were compiled using a different estimation method, no trend break was identified in the employed persons series. Also, no change was identified in the trend breaks in the unemployed persons and unemployment rate series which arose with the introduction of a redesigned survey form in April 2001 (as noted above in paragraph 16). For further details, see *Information Paper: Forthcoming Changes to Labour Force Statistics, 2007* (cat. no. 6292.0), released on 21 May 2007.

SURVEY SAMPLE REDESIGN

19 The Labour Force Survey sample has been reselected using information collected in the 2006 Census of Population and Housing.

20 The bulk of the new sample was phased in over the period November 2007 to June 2008, with one-eighth of this portion of the sample being introduced every month. The remainder of the sample (about 20% of the total), which covers less settled areas of Australia and non-private dwellings was rotated in full for New South Wales, Western Australia, Northern Territory and Australian Capital Territory in March 2008, and for Victoria, Queensland, South Australia and Tasmania in April 2008. Such a pattern of implementation means that any changes to labour force estimates due to differences between the two samples, or any other influences, were spread over the eight months.

21 For further details, see *Information Paper: Labour Force Survey Sample Design* (cat. no. 6269.0), released on 28 November 2007.

RELIABILITY OF ESTIMATES

22 Two types of error are possible in an estimate based on a sample survey: sampling error and non-sampling error.

23 Sampling error occurs because a sample, rather than the entire population, is surveyed. One measure of the likely difference resulting from not including all dwellings in the survey is given by the standard error. There are about two chances in three that a sample estimate will differ by less than one standard error from the figure that would have been obtained if all dwellings had been included in the survey, and about nineteen chances in twenty that the difference will be less than two standard errors. Standard errors of key estimates for the latest month and of movements since the previous month of these estimates are shown on pages 28 and 29. Standard errors for other estimates and other movements may be calculated by using the spreadsheet contained in *Labour Force Survey Standard Errors, Data Cube* (cat. no. 6298.0.55.001) which is available free of charge on the ABS website <<http://www.abs.gov.au>> (Statistics).

EXPLANATORY NOTES *continued*

RELIABILITY OF ESTIMATES

continued

24 Non-sampling error arises from inaccuracies in collecting, recording and processing the data. Every effort is made to minimise reporting error by the careful design of questionnaires, intensive training and supervision of interviewers, and efficient data processing procedures. Non-sampling error also arises because information cannot be obtained from all persons selected in the survey. The Labour Force Survey receives a high level of co-operation from individuals in selected dwellings, with the average response rate over the last year being 97%. See Glossary for definition of response rate.

SEASONAL ADJUSTMENT AND TREND ESTIMATION

25 Seasonal adjustment is a means of removing the estimated effects of normal seasonal variation from the series so that the effects of other influences on the series can be more clearly recognised. Seasonal adjustment does not aim to remove the irregular or non-seasonal influences which may be present in any particular month. This means that month-to-month movements of the seasonally adjusted estimates may not be reliable indicators of trend behaviour.

26 The Labour Force Survey uses the concurrent seasonal adjustment method to derive seasonal factors. Concurrent seasonal adjustment uses data up to the current month to estimate seasonal factors for the current and all previous months. This process can result in revisions each month to estimates for earlier periods. However, in most instances, the only noticeable revisions will be to the seasonally adjusted estimates for the previous month and one year prior to the current month.

27 Seasonal adjustment is able to remove the effect of events which occur at the same time in the survey every year. However, there are some events, like holidays, which are not always at the same time in the survey cycle or which are not at the same time across Australia. The effects of these types of events on Labour Force Survey estimates cannot in all cases be removed, because the pattern of their effects cannot be determined. However, two events which are adjusted for in the seasonally adjusted series are the January interview start date and the timing of Easter.

28 For more information on concurrent seasonal adjustment and survey proximity to holiday periods, see *Information Paper: Forthcoming Changes to Labour Force Statistics* (cat. no. 6292.0) released in December 2003.

29 While seasonal factors for the complete time series are estimated each month, they will continue to be reviewed annually at a more detailed level to take into account each additional year's original data. This annual review will not normally result in significant changes to published estimates. The review is usually conducted in February each year with the results released in the February issue of this publication.

30 The smoothing of seasonally adjusted series to produce 'trend' series reduces the impact of the irregular component of the seasonally adjusted series. These trend estimates are derived by applying a 13-term Henderson-weighted moving average to all months except the last six. The last six monthly trend estimates are obtained by applying surrogates of the Henderson average to the seasonally adjusted series. Trend estimates are used to analyse the underlying behaviour of a series over time.

31 While this smoothing technique enables estimates to be produced for the latest month, it does result in revisions in addition to those caused by the revision of seasonally adjusted estimates. Generally, revisions due to the use of surrogates of the Henderson average become smaller, and after three months have a negligible impact on the series.

EXPLANATORY NOTES *continued*

SEASONAL ADJUSTMENT AND TREND ESTIMATION *continued*

32 Trend estimates are published for the Northern Territory in table 10 and for the Australian Capital Territory in table 11. Unadjusted series for the two territories have shown, historically, a high degree of variability, which can lead to considerable revisions to the seasonally adjusted estimates each month when seasonal factors are estimated. For this reason, seasonally adjusted estimates are not currently published for the two Territories. In addition, caution should be exercised in the interpretation of trend estimates for the two territories, particularly for the three most recent months, where revisions may be relatively large.

33 For further information, see *A Guide to Interpreting Time Series – Monitoring Trends* (cat. no. 1349.0) or contact the Assistant Director, Time Series Analysis on (02) 6252 6345.

RELATED PUBLICATIONS

34 Users may also wish to refer to *Australian Labour Market Statistics* (cat. no. 6105.0). This publication contains additional tables and a detailed list of related publications. For further information about this publication, please contact the Assistant Director, Labour Market Statistics on (02) 6252 7636.

35 ABS Information about the labour market can be found on the Labour theme page on the ABS website <<http://www.abs.gov.au>>(Themes), or from ABS Bookshops.

36 Information about current publications and other products released by the ABS is available from the statistics page on the ABS website. The ABS also issues a daily Release Advice on the website (Future Releases) which details products to be released in the week ahead.

DATA AVAILABLE ON REQUEST

37 As well as the statistics included in this and related publications, the ABS may have other relevant data available. Inquiries should be made to the Labour Force contact officer on (02) 6252 6525 or to any ABS office.

EFFECTS OF ROUNDING

38 Estimates have been rounded and discrepancies may occur between sums of the component items and totals.

39 Estimates of movement shown in this publication are obtained by taking the difference of unrounded estimates. The movement estimate is then rounded to one decimal place. Therefore where a discrepancy occurs between the reported movement and the difference of the rounded estimates, the reported movement will be more accurate.

SYMBOLS AND ABBREVIATIONS

40 SYMBOLS AND ABBREVIATIONS

'000	thousands
ABS	Australian Bureau of Statistics
CAI	computer assisted interviewing
cat. no.	catalogue number
ERP	estimated resident population
f/t	full-time
LFS	Labour Force Survey
p/t	part-time
pts	percentage points
Seas adj.	seasonally adjusted
TAFE	Technical and Further Education

STANDARD ERRORS

STANDARD ERRORS

The estimates in this publication are based on information gained from the occupants of a sample survey of dwellings. Because the entire population is not surveyed, the published estimates are subject to sampling error. The most common way of quantifying such sampling error is to calculate the standard error for the published estimate or statistic. For more information, see paragraph 23 of the Explanatory Notes.

LEVEL ESTIMATES

To illustrate, let us say the published level estimate for employed persons aged 15–19 years is 700,000 and the associated standard error is 8,300. The standard error is then used to interpret the level estimate of 700,000. For instance, the standard error of 8,300 indicates that:

- There are approximately two chances in three that the real value falls within the range 691,700 to 708,300 ($700,000 \pm 8,300$)
- There are approximately nineteen chances in twenty that the real value falls within the range 683,400 to 716,600 ($700,000 \pm 16,600$).

The real value in this case is the result we would obtain if we could enumerate the total population.

The following table shows the standard errors for this month's level estimates.

										AUSTRALIA		
		NSW	Vic.	Qld	SA	WA	Tas.	NT	ACT	Males	Females	Persons
Aged 15 years and over												
Employed												
Full time	'000	20.4	20.0	15.1	6.7	9.7	2.8	3.6	2.3	25.2	17.7	30.4
Part time	'000	14.0	12.8	9.6	4.7	6.4	2.0	1.4	1.5	9.9	15.9	19.5
Total	'000	22.4	24.5	17.2	7.7	10.6	3.2	4.4	2.5	27.3	24.8	34.5
Unemployed												
Looking for f/t work	'000	7.5	5.7	4.8	2.5	2.8	0.9	0.5	0.6	7.8	6.5	10.2
Looking for p/t work	'000	4.8	4.4	3.2	1.5	1.7	0.5	0.3	0.5	4.1	5.5	6.9
Total	'000	9.0	7.3	5.8	2.9	3.3	1.1	0.7	0.8	8.8	8.6	12.4
Labour force	'000	22.7	25.1	17.4	7.8	10.7	3.2	4.6	2.5	27.7	25.3	34.9
Not in labour force	'000	20.9	22.8	15.0	7.0	10.2	3.1	3.3	2.2	22.6	27.1	32.0
Unemployment rate												
Looking for f/t work	pts	0.3	0.3	0.3	0.4	0.3	0.5	0.6	0.4	0.1	0.2	0.1
Looking for p/t work	pts	0.5	0.5	0.5	0.6	0.5	0.7	1.1	0.9	0.4	0.2	0.2
Total	pts	0.2	0.3	0.3	0.4	0.3	0.4	0.6	0.4	0.1	0.2	0.1
Participation rate	pts	0.4	0.6	0.5	0.6	0.6	0.8	2.9	0.9	0.3	0.3	0.2
Aged 15–19 years												
Employed												
Full time	'000	3.5	2.8	3.0	1.1	1.9	0.5	0.4	0.4	4.6	3.5	5.4
Part time	'000	4.6	4.0	3.7	1.6	2.1	0.7	0.4	0.6	5.0	5.7	7.3
Total	'000	5.6	4.7	4.8	1.9	2.8	0.8	0.6	0.7	6.4	6.4	8.9
Unemployed												
Looking for f/t work	'000	2.8	1.9	1.9	1.1	1.3	0.4	0.3	0.3	3.1	2.7	4.1
Looking for p/t work	'000	2.8	2.5	1.9	1.0	0.8	0.4	0.2	0.3	2.8	3.1	4.2
Total	'000	4.1	3.3	2.7	1.5	1.5	0.6	0.3	0.4	4.2	4.1	5.9
Labour force	'000	6.1	5.1	5.1	2.1	3.0	0.9	0.6	0.8	6.9	6.8	9.5
Not in labour force	'000	8.1	6.4	4.6	2.4	3.6	1.0	0.7	0.8	7.7	7.4	10.9
Unemployment rate												
Looking for f/t work	pts	3.0	3.3	2.2	5.3	3.1	5.4	5.7	6.3	1.5	2.4	1.3
Looking for p/t work	pts	1.7	1.9	1.5	2.3	1.6	3.2	3.8	3.3	1.2	1.0	0.8
Total	pts	1.6	1.7	1.3	2.4	1.7	2.8	3.3	3.0	1.0	1.0	0.7
Participation rate	pts	1.3	1.5	1.7	2.0	2.0	2.7	3.9	3.3	0.9	1.0	0.7
Unemployment to population ratio – looking for f/t work												
	pts	0.6	0.6	0.6	1.1	0.9	1.2	1.6	1.3	0.4	0.4	0.3

STANDARD ERRORS *continued*

MOVEMENT ESTIMATES

The following example illustrates how to use the standard error to interpret a movement estimate. Let us say that one month the published level estimate for females employed part-time in Australia is 1,890,000; the next month the published level estimate is 1,900,000 and the associated standard error for the movement estimate is 9,500. The standard error is then used to interpret the published movement estimate of 10,000. For instance, the standard error of 9,500 indicates that:

- There are approximately two chances in three that the real movement between the two months falls within the range 500 to 19,500 (10,000 + or – 9,500)
- There are approximately nineteen chances in twenty that the real movement falls within the range –9,000 to 29,000 (10,000 + or – 19,000).

The following table shows the standard errors for this month's movement estimates.

										AUSTRALIA		
		NSW	Vic.	Qld	SA	WA	Tas.	NT	ACT	Males	Females	Persons
Aged 15 years and over												
Employed												
Full time	'000	13.4	10.9	9.0	3.8	5.9	1.7	1.1	1.7	16.9	12.2	21.3
Part time	'000	8.4	7.3	5.5	2.6	3.7	1.2	0.6	1.1	7.4	11.1	13.2
Total	'000	16.0	13.2	11.9	5.2	7.3	2.1	1.3	2.0	18.5	16.6	25.8
Unemployed												
Looking for f/t work	'000	7.6	5.5	4.9	2.4	2.8	0.9	0.5	0.7	8.3	6.8	10.8
Looking for p/t work	'000	4.7	4.4	3.3	1.6	2.1	0.5	0.3	0.5	4.5	6.1	7.6
Total	'000	9.1	7.0	6.1	2.9	3.4	1.0	0.6	0.9	9.5	9.2	13.3
Labour force	'000	16.4	13.6	12.3	5.5	7.4	2.1	1.3	2.0	18.9	17.0	26.4
Not in labour force	'000	14.9	12.4	10.4	4.9	6.4	2.0	1.2	1.9	14.2	17.9	23.6
Unemployment rate												
Looking for f/t work	pts	0.3	0.3	0.3	0.5	0.3	0.6	0.6	0.4	0.2	0.2	0.1
Looking for p/t work	pts	0.5	0.5	0.5	0.7	0.6	0.7	1.2	0.9	0.5	0.3	0.2
Total	pts	0.3	0.3	0.3	0.4	0.3	0.5	0.6	0.4	0.2	0.2	0.1
Participation rate	pts	0.3	0.3	0.4	0.4	0.4	0.5	0.8	0.7	0.2	0.2	0.2
Aged 15–19 years												
Employed												
Full time	'000	2.7	2.1	2.2	0.9	1.5	0.4	0.2	0.4	3.7	2.9	4.3
Part time	'000	3.6	3.0	2.7	1.2	1.7	0.5	0.3	0.5	4.0	4.5	5.6
Total	'000	4.3	3.5	3.3	1.4	2.1	0.6	0.4	0.6	5.1	5.0	6.7
Unemployed												
Looking for f/t work	'000	2.9	1.9	2.1	1.1	1.3	0.4	0.2	0.3	3.3	3.0	4.4
Looking for p/t work	'000	2.8	2.5	2.1	1.0	1.0	0.4	0.2	0.3	3.0	3.3	4.4
Total	'000	4.0	3.2	3.0	1.5	1.6	0.6	0.3	0.5	4.4	4.5	6.2
Labour force	'000	4.6	3.7	3.4	1.5	2.2	0.6	0.4	0.6	5.3	5.3	7.1
Not in labour force	'000	5.0	4.1	3.0	1.5	2.2	0.7	0.5	0.6	5.6	5.4	7.4
Unemployment rate												
Looking for f/t work	pts	3.2	3.6	2.5	5.4	3.2	5.3	6.0	6.2	1.6	2.7	1.4
Looking for p/t work	pts	1.7	1.9	1.7	2.6	1.8	3.2	3.7	3.5	1.3	1.0	0.8
Total	pts	1.6	1.8	1.5	2.6	1.7	2.8	3.4	3.0	1.0	1.0	0.7
Participation rate	pts	1.0	1.1	1.1	1.5	1.5	1.9	2.4	2.7	0.7	0.7	0.5
Unemployment to population ratio – looking for f/t work												
	pts	0.6	0.6	0.7	1.0	0.9	1.2	1.4	1.3	0.4	0.4	0.3

GLOSSARY

Actively looking for work	Includes writing, telephoning or applying in person to an employer for work; answering an advertisement for a job; checking factory noticeboards or the touchscreens at the Centrelink offices; being registered with Centrelink as a jobseeker; checking or registering with any other employment agency; advertising or tendering for work; and contacting friends or relatives.
Attending full-time education	Persons aged 15–24 years enrolled at secondary or high school or enrolled as a full-time student at a Technical and Further Education (TAFE) college, university, or other educational institution in the reference week.
Attending school	Persons aged 15–19 years enrolled at secondary or high school in the reference week.
Attending tertiary educational institution full time	Persons aged 15–24 years enrolled full time at a TAFE college, university, or other educational institution in the reference week, except those persons aged 15–19 years who were still attending school.
Civilian population aged 15 years and over	All usual residents of Australia aged 15 years and over except members of the permanent defence forces, certain diplomatic personnel of overseas governments customarily excluded from census and estimated population counts, overseas residents in Australia, and members of non-Australian defence forces (and their dependants) stationed in Australia.
Composite Estimation	The estimation methodology used in the Labour Force Survey. Composite Estimation uses sample responses from nearby months as well as from the reference month to derive estimates for the reference month. This approach achieves gains in efficiency by exploiting the high similarity between the responses provided by the same respondent in previous months. For details see <i>Information Paper: Forthcoming Changes to Labour Force Statistics, 2007</i> (cat. no. 6292.0).
Employed	<p>All persons aged 15 years and over who, during the reference week:</p> <ul style="list-style-type: none"> ■ worked for one hour or more for pay, profit, commission or payment in kind in a job or business, or on a farm (comprising employees, employers and own account workers); or ■ worked for one hour or more without pay in a family business or on a farm (i.e. contributing family workers); or ■ were employees who had a job but were not at work and were: <ul style="list-style-type: none"> ■ away from work for less than four weeks up to the end of the reference week; or ■ away from work for more than four weeks up to the end of the reference week and received pay for some or all of the four week period to the end of the reference week; or ■ away from work as a standard work or shift arrangement; or ■ on strike or locked out; or ■ on workers' compensation and expected to return to their job; or ■ were employers or own account workers, who had a job, business or farm, but were not at work.
Employment to population ratio	For any group, the number of employed persons expressed as a percentage of the civilian population in the same group.
Full-time workers	Employed persons who usually worked 35 hours or more a week (in all jobs) and those who, although usually working less than 35 hours a week, worked 35 hours or more during the reference week.
Labour force	For any group, persons who were employed or unemployed, as defined.
Labour force status	A classification of the civilian population aged 15 years and over into employed, unemployed or not in the labour force, as defined. The definitions conform closely to the international standard definitions adopted by the International Conferences of Labour Statisticians.
Not in labour force	Persons who were not in the categories employed or unemployed as defined.

GLOSSARY *continued*

Participation rate	For any group, the labour force expressed as a percentage of the civilian population aged 15 years and over in the same group.
Part-time workers	Employed persons who usually worked less than 35 hours a week (in all jobs) and either did so during the reference week, or were not at work in the reference week.
Response rate	The number of fully responding dwellings expressed as a percentage of the total number of dwellings excluding sample loss. Examples of sample loss include: dwellings where all persons are out of scope and/or coverage; vacant dwellings; dwellings under construction; dwellings converted to non-dwellings; derelict dwellings; and demolished dwellings.
Seasonally adjusted series	A time series of estimates with the estimated effects of normal seasonal variation removed. See Explanatory Notes 25 to 29 for more detail.
Trend series	A smoothed seasonally adjusted series of estimates. See Explanatory Notes 30 to 33 for more detail.
Unemployed	Persons aged 15 years and over who were not employed during the reference week, and: <ul style="list-style-type: none"> ■ had actively looked for full-time or part-time work at any time in the four weeks up to the end of the reference week and were available for work in the reference week; or ■ were waiting to start a new job within four weeks from the end of the reference week and could have started in the reference week if the job had been available then.
Unemployed looking for full-time work	Unemployed persons who: <ul style="list-style-type: none"> ■ actively looked for full-time work; or ■ were waiting to start a new full-time job.
Unemployed looking for part-time work	Unemployed persons who: <ul style="list-style-type: none"> ■ actively looked for part-time work only; or ■ were waiting to start a new part-time job.
Unemployment rate	For any group, the number of unemployed persons expressed as a percentage of the labour force in the same group.
Unemployment to population ratio	For any group, the number of unemployed persons expressed as a percentage of the civilian population in the same group.

FOR MORE INFORMATION . . .

INTERNET

www.abs.gov.au the ABS website is the best place for data from our publications and information about the ABS.

INFORMATION AND REFERRAL SERVICE

Our consultants can help you access the full range of information published by the ABS that is available free of charge from our website. Information tailored to your needs can also be requested as a 'user pays' service. Specialists are on hand to help you with analytical or methodological advice.

PHONE

1300 135 070

EMAIL

client.services@abs.gov.au

FAX

1300 135 211

POST

Client Services, ABS, GPO Box 796, Sydney NSW 2001

FREE ACCESS TO STATISTICS

All statistics on the ABS website can be downloaded free of charge.

WEB ADDRESS

www.abs.gov.au