

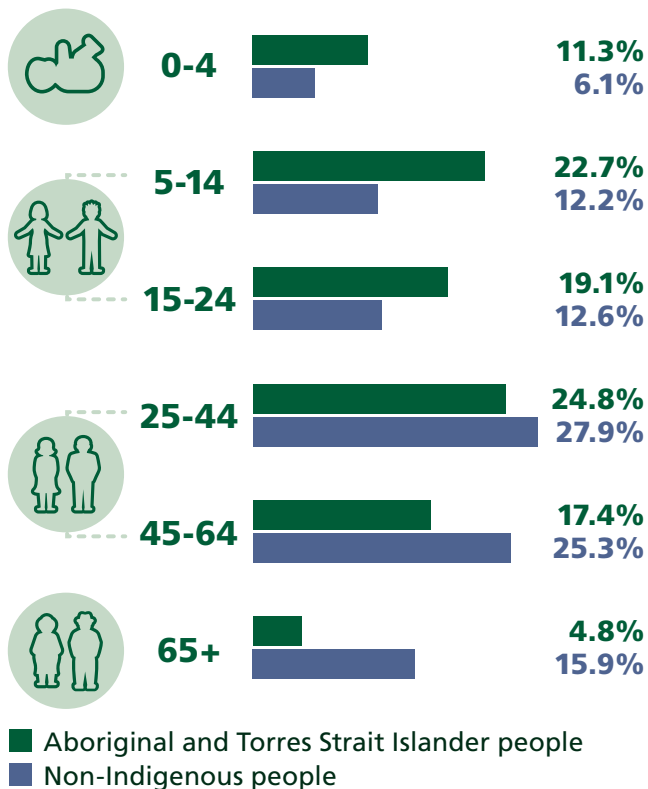
Population

Aboriginal and Torres Strait Islander people represented 2.8% of the population in the 2016 Census of Population and Housing – up from 2.5% in 2011, and 2.3% in 2006.



Of the 649,200 people who identified as being of Aboriginal and/or Torres Strait Islander origin, 91% were of Aboriginal origin, 5.0% were of Torres Strait Islander origin and 4.1% identified as being of both Aboriginal and Torres Strait Islander origin.

Age



Since the 1996 Census, median age for Aboriginal and Torres Strait Islander people has been on the rise. Twenty years ago in 1996, the median age was 20. This had increased to 21 years in 2011, and increased again to 23 years in the five years to 2016. The median age for non-Indigenous people was 38 in 2016.

Aboriginal and Torres Strait Islander people continue to have a much younger age profile and structure than the non-Indigenous population. In 2016, more than half (53%) Aboriginal and Torres Strait Islander people were aged under 25 years. In comparison, almost one in three (31%) non-Indigenous people were aged under 25.

The difference between the two populations was also marked in the 65 years and over age group. The proportion of Aboriginal and Torres Strait Islander people aged 65 years and over was considerably smaller than for non-Indigenous people (4.8% compared to 16%).

Households and families

Obligation and connection to family plays an important role in Aboriginal and Torres Strait Islander culture. This support can be in the form of sharing accommodation.

Households in which an Aboriginal and/or Torres Strait Islander lived were more likely than other households in 2016 to be family households (80% compared with 71%). They were less likely to be a person living alone (15% compared with 25%).

In 2016 it was also more common for Aboriginal and Torres Strait Islander households to have more than one family living together (5.1%) than for other households (1.8%).

74.7%	One family	69.2%
5.1%	Multiple family	1.8%
14.7%	Lone person	24.7%
5.5%	Group	4.2%

■ Households with Aboriginal and Torres Strait Islander person(s)
■ Other Households

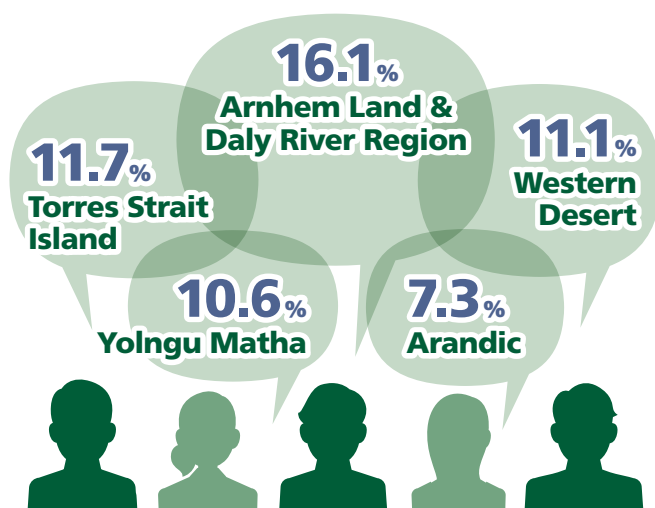
Aboriginal and Torres Strait Islander households, on average, were larger than non-Indigenous households (3.2 people, compared with an average of 2.6 people for other households).

ABORIGINAL AND TORRES STRAIT ISLANDER POPULATION

Language

One in 10 (10%) Aboriginal and Torres Strait Islander people reported speaking an Australian Indigenous language at home in the 2016 Census. Of the 63,800 Aboriginal and Torres Strait Islander people who spoke an Indigenous language at home, 85% reported speaking English well or very well.

Of the 150 Australian Indigenous languages spoken at home in 2016, the five most widely reported language groups spoken at home were:



Where Aboriginal and Torres Strait Islander people live

State and territory

In 2016, over 60% of Australia's Aboriginal and Torres Strait Islander population lived in NSW and Queensland.

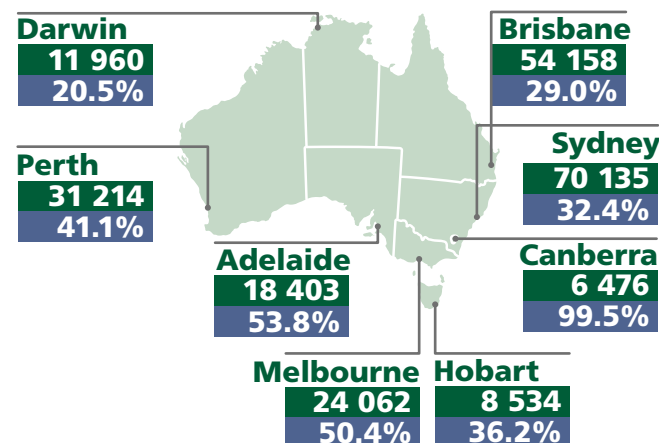
Aboriginal and Torres Strait Islander people made up over one quarter (26%) of the population of the Northern Territory. This was much higher than the next highest state, Tasmania (4.6%).

Aboriginal and Torres Strait Islander people			
	No.	%	(as a proportion of state/territory)
			%
NSW	216 176	33.3	2.9
Vic.	47 788	7.4	0.8
Qld	186 482	28.7	4.0
SA	34 184	5.3	2.0
WA	75 978	11.7	3.1
Tas.	23 572	3.6	4.6
NT	58 248	9.0	25.5
ACT	6 508	1.0	1.6
Australia	649 171	100.0	2.8

Capital city

In the 2016 Census, over one-third (35%) of the Aboriginal and Torres Strait Islander population reported living in capital city areas, compared with 68% for non-Indigenous people.

Around half of those living in South Australia and Victoria lived in the capital city areas. In contrast, four out of every five (79%) of the Aboriginal and Torres Strait Islander population in the Northern Territory lived outside the capital city area.



- No. of Aboriginal and Torres Strait Islander people within capital city
- Proportion of Aboriginal and Torres Strait Islander people within capital city

Income

Aboriginal and Torres Strait Islander people were half as likely as non-Indigenous people to report an equivalised weekly household income of \$1,000 or more in 2016 (20% compared with 41%). Both these percentages have increased (13% and 33% respectively) although the difference between the two groups has remained the same.

Education

Education is critical for overcoming disadvantage. The proportion of Aboriginal and Torres Strait Islander people aged 20 to 24 years who had completed Year 12 or its equivalent increased by more than a third between 2011 and 2016, from 37% to 47%. Over the same period, the proportion for non-Indigenous people increased slightly from 75% in 2011 to 79%.

Aboriginal and Torres Strait Islander people aged 25 to 64 years were more likely than non-Indigenous people of the same age to have left school at Year 9 or below (19% compared with 6.7%). This is an improvement from 2011 for both groups (24% and 8.6% respectively).

Source: All visual representations are based on data collected in the 2016 Census. For definitions of the terms used above, see the Census Dictionary. For more information about 2016 Census data release and products, go to www.abs.gov.au/census