

**LABOUR MOBILITY**

AUSTRALIA

EMBARGO: 11.30AM (CANBERRA TIME) FRI 3 SEP 2010

C O N T E N T S

	<i>page</i>
Notes	2
Conceptual framework	3
Summary of findings	5

T A B L E S

List of tables	10
Persons who were working at February — 2006 to 2010	12
Persons who were working at February 2010	13
Persons who worked at some time during the year ending February 2010	20
Persons who ceased a job during the year ending February 2010	28
Populations	29

A D D I T I O N A L I N F O R M A T I O N

Explanatory Notes	31
Appendix 1: Classification of education	35
Appendix 2: Populations and data items list	37
Appendix 3: Supplementary surveys	48
Technical Note: Data quality	49
Glossary	52

I N Q U I R I E S

For further information about these and related statistics, contact the National Information and Referral Service on 1300 135 070 or Labour Market Section on Canberra (02) 6252 7206.

NOTES

ABOUT THIS PUBLICATION

This publication presents information about people aged 15 years and over who, within the 12 months to February 2010, either had a change of employer/business in their main job, or had some change in work with their current employer/business, for whom they had worked for one year or more.

The statistics in this publication were compiled from the Labour Mobility Survey, conducted throughout Australia in February 2010 as a supplement to the Australian Bureau of Statistics (ABS) monthly Labour Force Survey (LFS).

ROUNDING

As estimates have been rounded, discrepancies may occur between sums of the component items and totals.

ABBREVIATIONS

'000	thousand
ABS	Australian Bureau of Statistics
ABSDL	Australian Bureau of Statistics Data Laboratory
ANZSCO	Australian and New Zealand Standard Classification of Occupations
ANZSIC	Australian and New Zealand Standard Industrial Classification
ASCED	Australian Standard Classification of Education
CURF	confidentialised unit record file
LFS	Labour Force Survey
OMIE	owner manager of incorporated enterprise
OMUE	owner manager of unincorporated enterprise
RADL	Remote Access Data Laboratory
RSE	relative standard error
SACC	Standard Australian Classification of Countries
SE	standard error

Peter Harper
Acting Australian Statistician

CONCEPTUAL FRAMEWORK

LABOUR MOBILITY

The following diagram illustrates the conceptual framework for the 2010 Labour Mobility Survey. People aged 15 years and over were classified according to the duration of their employment with their employer/business at February 2010 into two key groups:

- those who had been with their current employer/business for less than 12 months; or
- those who had been with their current employer/business for one year or more.

People who worked at February 2010, who had been with their current employer/business for less than 12 months, were asked whether they had changed their employer/business in the previous 12 months. Those who had changed employer/business were then asked if they had changed their occupation, industry, usual hours worked, or employment type, between their last and current employer/business.

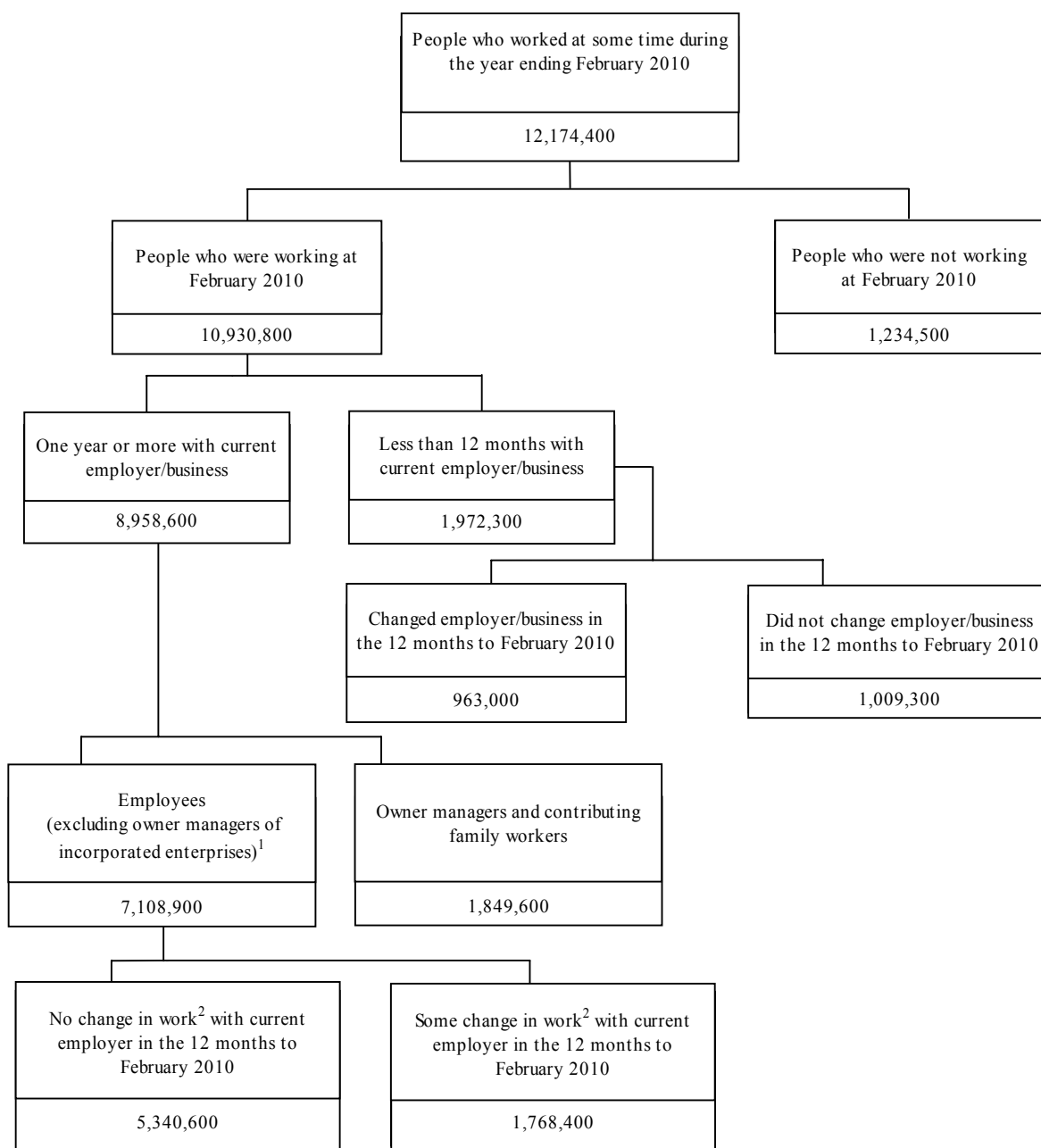
People who had not changed their employer/business in the 12 months ending February 2010, are comprised of those who were working with their employer/business at February 2010 for less than 12 months and reported they had not changed employer/business, and those who had worked with their employer/business at February 2010 for one year or more. Information about the latter group is presented separately.

Employees (excluding owner managers of incorporated enterprises)¹ who, at February 2010, had worked for their current employer/business for one year or more, were asked whether they had been promoted, transferred to a different position, changed occupation, or changed usual hours worked in the 12 months to February 2010.

Employees (excluding owner managers of incorporated enterprises)¹ who reported any of these changes, were considered to have had some change in work in the 12 months to February 2010.

Information was also collected from people who were not working at February 2010 who ceased a job in the previous 12 months.

CONCEPTUAL FRAMEWORK *continued*



END NOTES

1. Refer to the glossary definition 'Employment type' for further information.

2. Either promoted, transferred to a different position, changed usual hours worked or changed occupation. Refer to the glossary definition 'Change in work' for further information.

SUMMARY OF FINDINGS

OVERVIEW

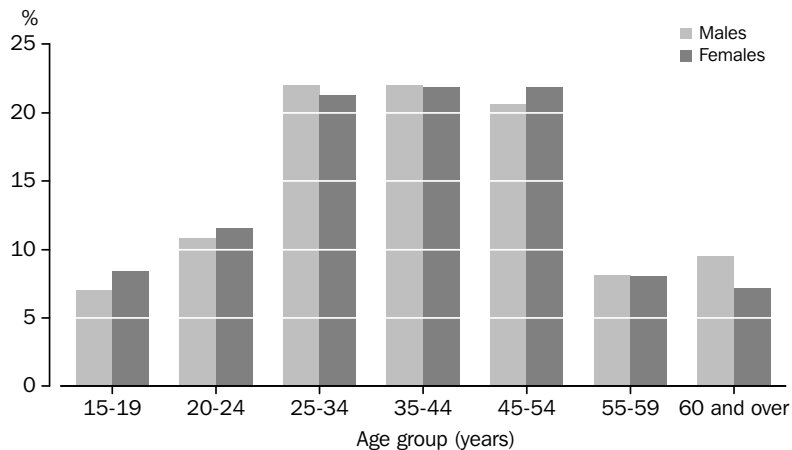
There were 10.9 million people working at February 2010. Of these, 82% had been with their current employer/business for one year or more and 18% had been with their current employer/business for less than 12 months.

There were 963,000 people (9% of people working at February 2010) who had changed their employer/business in the previous 12 months. The remaining 10 million people, who were working at February 2010, had not changed their employer/business in the last 12 months. This consisted of 1 million people, who were working with their employer/business at February 2010 for less than 12 months and reported that they had not changed employer/business, and 9 million people, who had worked with their employer/business at February 2010 for one year or more. This differs to 2008, where there were 1.2 million people (12% of people working at February 2008) who had changed their employer/business in the previous 12 months.

PEOPLE WHO WORKED AT SOME TIME DURING THE YEAR

Of the 12.2 million people who had worked at some time during the year ending February 2010, 54% (6.6 million) were men and 46% (5.6 million) were women. The majority (65%) were aged between 25 and 54 years.

PERSONS WHO WORKED AT SOME TIME DURING THE YEAR ENDING FEBRUARY 2010, Age—By sex



The distribution of age groups, for people who had worked at some time during the year ending February 2010, was similar for men and women. The most prevalent age groups being 35–44 years (representing 22% of men and 22% of women), 25–34 years (22% of men and 21% of women) and 45–54 years (21% of men and 22% of women).

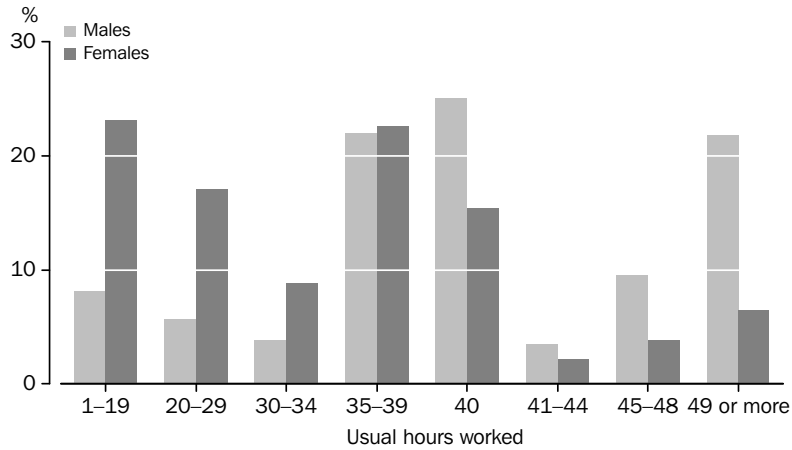
An estimated 2.2 million people (18%) of those who worked at some time during the year ending February 2010 had ceased a job during the year. Of these, there were 917,300 (42%) who had ceased a job involuntarily. Conversely, there were 1.3 million people (58%) who had ceased a job voluntarily. Almost one quarter (24%) of those who ceased their last job voluntarily, did so due to unsatisfactory working conditions.

SUMMARY OF FINDINGS *continued*

PEOPLE WORKING AT
FEBRUARY 2010

There were 10.9 million people aged 15 years and over who were working at February 2010.

PERSONS WHO WERE WORKING AT FEBRUARY 2010, Usual hours worked at February 2010—By sex

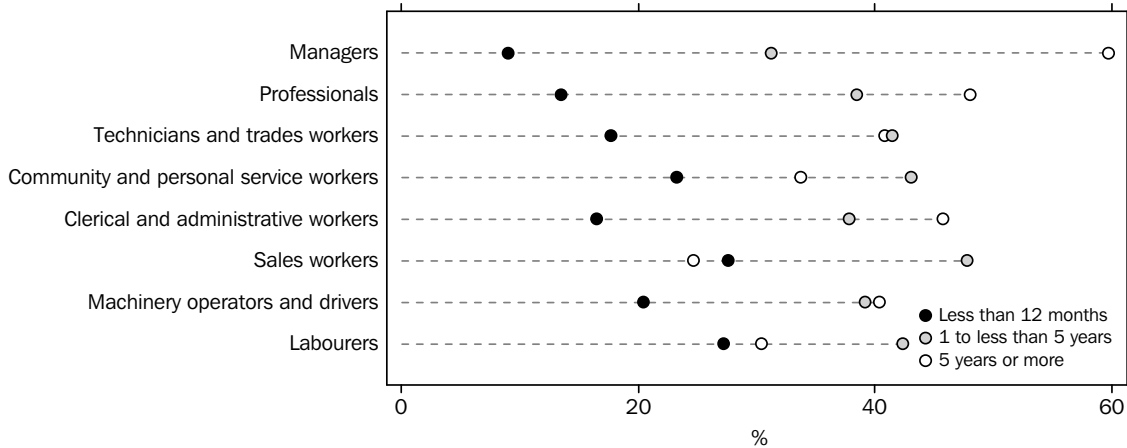


Of those working at February 2010, there were proportionally more women who worked less than 35 hours per week (49% of women compared to 18% of men) and more men who worked 40 hours or more per week (60% of men compared to 28% of women). For example 8% of men worked 1–19 hours, compared to 23% of women. Conversely, 6% of women worked 49 hours or more, compared to 22% of men.

*Duration with
employer/business*

There were 2 million people working at February 2010 who had been with their employer/business for less than 12 months, while 9 million people had been working with the same employer/business for one year or more.

PERSONS WORKING AT FEBRUARY 2010, Duration with employer/business—By occupation



Of those working at February 2010, the occupation groups with the highest proportion of people who had been with their employer/business for less than 12 months were Sales workers (28%) and Labourers (27%). The occupation group with the highest proportion of people who had been with their employer/business for one to less than five years were Sales workers (48%). The occupation group with the highest proportion of people who had been with their employer/business for five years or more were Managers (60%),

SUMMARY OF FINDINGS *continued*

Duration with employer/business continued

followed by Professionals (48%). The occupation group with the lowest proportion of people who had been with their employer/business for five years or more were Sales workers (25%).

There were 2.7 million people who were working at February 2010 and had been with their current employer/business for 10 years or more. This represents 27% of men and 22% of women who were working at February 2010. Industry groups with the highest proportion of people who had been with their current employer/business for 10 years or more were:

- Agriculture, forestry and fishing (56%);
- Education and training (35%);
- Public administration and safety (33%); and
- Electricity, gas, water and waste services (29%).

Working at February 2010 and have been with current employer/business for less than 12 months

There were 2 million people working at February 2010 who had been with their current employer for less than 12 months.

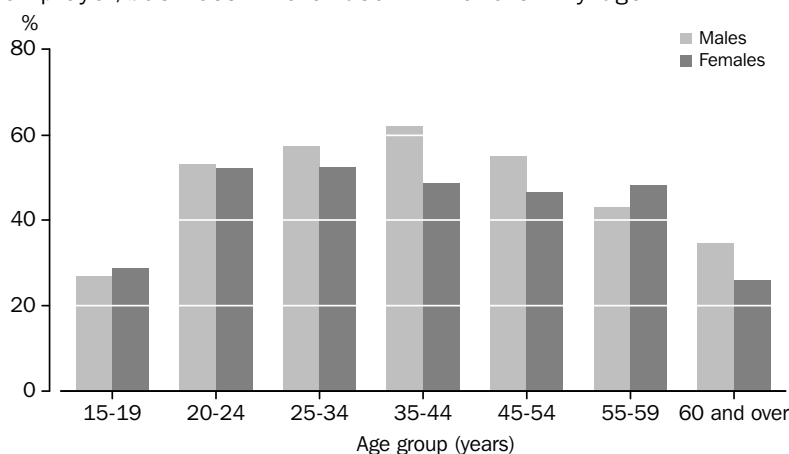
Characteristics for these people include:

- 27% were aged 25–34 years;
- 53% were men;
- 16% were Professionals, 16% were Labourers and a further 14% were Technicians and trades workers;
- 14% worked in the Retail trade industry and 12% worked in the Accommodation and food services industry;
- 40% usually worked 35–40 hours and 23% usually worked 1–19 hours; and
- 46% were without a non-school qualification, while a further 17% held a Bachelor degree.

Of the 2 million people working at February 2010, 963,000 people (51% of men and 46% of women) changed employer/business in the last 12 months. Of these people:

- 28% had changed Industry Division;
- 22% had changed Major occupation group; and
- 36% had changed usual hours worked.

PERSONS WORKING AT FEBRUARY 2010 AND HAVE BEEN WITH EMPLOYER/BUSINESS FOR LESS THAN 12 MONTHS, Changed employer/business in the last 12 months—By age



SUMMARY OF FINDINGS *continued*

Working at February 2010 and have been with current employer/business for less than 12 months continued

Of those who had been with their employer/business for less than 12 months, a higher proportion of men in each age group reported a change in employer/business than women, except for those aged 15–19 years (27% of men and 29% of women) and those aged 55–59 (43% of men, 48% of women).

For men working with their current employer/business at February 2010 for less than 12 months, the age groups where change in employer/business was most common were 35–44 years and 25–34 years (62% and 57% respectively). For women, the age groups where change in employer/business was most common were 20–24 years and 25–34 years (both 52%).

Working at February 2010 and have been with their current employer/business for one year or more

There were 9 million people who were employed at February 2010 and had been with their current employer/business for one year or more.

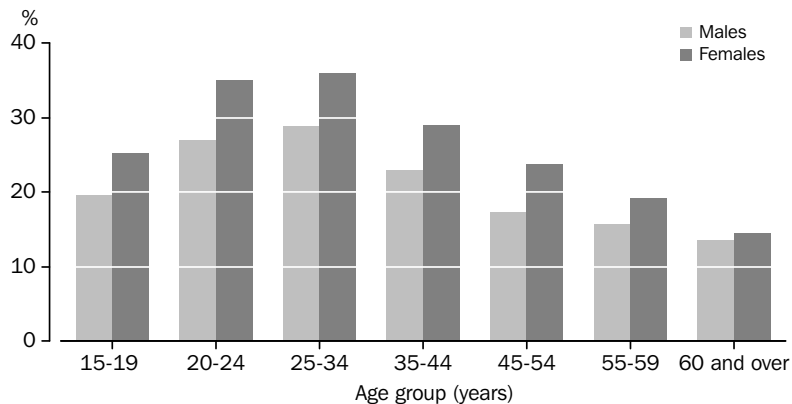
Characteristics for these people include:

- 24% were aged 45–54 years;
- 55% were men;
- 23% were Professionals;
- 11% worked in the Health care and social assistance industry and 10% worked in the Retail trade industry;
- 23% usually worked 35–39 hours each week;
- 39% were without a non-school qualification; and
- 19% held a Bachelor Degree and 19% held a Certificate III/IV.

EMPLOYEES¹ WHO HAD A CHANGE IN WORK

There were 7.1 million employees¹ working at February 2010, who had been with their current employer for one year or more (52% were men and 48% were women). A quarter (25%) of these people had experienced some change in work in the last 12 months, with 2% changing Major occupation group, 13% changing their usual hours worked, and 16% being promoted and/or transferred.

EMPLOYEES (a) WORKING AT FEBRUARY 2010 AND WITH EMPLOYER FOR ONE YEAR OR MORE, With some change in work—By age and sex



(a) Excluding owner managers of incorporated enterprises and contributing family workers.

SUMMARY OF FINDINGS *continued*

*Working at February 2010
and have been with their
current employer/business
for one year or more
continued*

EMPLOYEES¹ WHO HAD A CHANGE IN WORK *continued*

The age groups with the highest proportion of employees who reported a change in work, were those aged 25–34 years (29% of men and 36% of women) followed by the 20–24 year age group (27% of men and 36% of women). The occupation group with the highest proportion of men who reported a change in work was Professionals (26%) compared to Managers for women (37%). The least common occupation group reporting a change in work for both genders was Labourers (16% for men and 20% for women).

OWNER MANAGERS AND CONTRIBUTING FAMILY WORKERS WHO HAD A CHANGE IN WORK

There were 1.8 million owner managers and contributing family workers who were working at February 2010 and who had been working in their current business for one year or more. Of these, 12% (10% of men and 14% of women) had changed the hours they usually worked during the 12 months prior to February 2010.

END NOTES

1. Excludes owner managers of incorporated enterprises (OMIEs) and contributing family workers.

LIST OF TABLES

page

PERSONS WHO WERE WORKING AT FEBRUARY 2010

1	Duration with current employer/business and whether changed employer/business in the last 12 months, by sex, February 2006 to 2010	12
2	Duration with employer/business at February 2010, by whether changed employer business in the last 12 months, by whether changed Industry Division (last to current employer/business), whether changed Major occupation group (last to current employer/business), whether changed usual hours worked (last to current employer/business), whether changed employment type (last to current employer/business), employment type by, whether changed Major occupation group with current employer in the last 12 months, whether changed usual hours worked with current employer in the last 12 months, whether promoted with current employer in the last 12 months, whether transferred with employer in the last 12 months, whether promoted and/or transferred with current employer in the last 12 months, by sex	13
3	Occupation at February 2010, by duration with employer/business at February 2010, by sex	14
4	Industry at February 2010, by duration with employer/business at February 2010, by sex	15
5	Employment type at February 2010, occupation at February 2010, industry at February 2010, and usual hours worked at February 2010, by duration with employer/business at February 2010, by changes in employer/business or work, by sex	17

PERSONS WHO WORKED AT SOME TIME DURING THE YEAR ENDING FEBRUARY 2010

6	Age group (years), marital status, relationship in household, country of birth, and level of highest non-school qualification, by duration with employer/business at February 2010, by changes in employer/business or work, by sex	20
7	Industry at February 2009, by duration with employer/business at February 2010 and whether changed Industry Division (February 2009 to February 2010)	23
8	Whether working at February 2010, by duration with employer/business at February 2010, by whether changed employer/business in the last 12 months, by whether changed Industry Division (February 2009 and February 2010), whether changed Major occupation group (February 2009 and February 2010), whether changed usual hours worked (February 2009 and February 2010), whether changed employment type (February 2009 and February 2010), and whether changed Major occupation group with current employer in the last 12 months, whether changed usual hours worked with current employer in the last 12 months, whether promoted and/or transferred with current employer in the last 12 months, by occupation at February 2009	24
9	Whether working at February 2010, by occupation at February 2010, by occupation at February 2009	26

LIST OF TABLES *continued*

page

PERSONS WHO CEASED A JOB DURING THE YEAR ENDING FEBRUARY 2010

10 Duration of last job, by reason for ceasing last job, by sex 28

POPULATIONS

11 State or territory of usual residence, by sex 29

PERSONS WHO WERE WORKING AT FEBRUARY AGED 15 YEARS AND OVER, Duration and change in employer/business—By sex—2006 to 2010

	2006	2008	2010	2006	2008	2010
	'000	'000	'000	%	%	%
MALES						
Duration with current employer/business						
Under 12 months	1 091.2	1 215.2	1 046.7	19.9	21.0	17.5
Under 3 months	345.1	379.8	314.7	6.3	6.6	5.3
3 and under 6 months	308.9	354.1	305.8	5.6	6.1	5.1
6 and under 12 months	437.2	481.3	426.2	8.0	8.3	7.1
One year or more	4 387.0	4 570.2	4 934.4	80.1	79.0	82.5
1 and under 2 years	616.4	658.6	675.0	11.3	11.4	11.3
2 and under 3 years	559.7	617.0	700.7	10.2	10.7	11.7
3 and under 5 years	740.7	779.3	929.4	13.5	13.5	15.5
5 and under 10 years	961.6	979.8	1 044.2	17.6	16.9	17.5
10 and under 20 years	889.7	892.4	894.0	16.2	15.4	14.9
20 years and over	618.9	643.1	691.0	11.3	11.1	11.6
Whether changed employer/business in the last 12 months(a)						
Changed employer/business	634.6	672.9	538.6	11.6	11.6	9.0
Did not change employer/business	456.6	542.3	508.2	8.3	9.4	8.5
Total	5 478.1	5 785.4	5 981.1	100.0	100.0	100.0
FEMALES						
Duration with current employer/business						
Under 12 months	1 021.4	1 103.2	925.5	23.0	23.4	18.7
Under 3 months	295.7	317.5	291.1	6.7	6.7	5.9
3 and under 6 months	288.5	322.8	264.9	6.5	6.9	5.4
6 and under 12 months	437.2	462.9	369.6	9.8	9.8	7.5
One year or more	3 421.6	3 607.7	4 024.2	77.0	76.6	81.3
1 and under 2 years	556.6	606.7	628.0	12.5	12.9	12.7
2 and under 3 years	476.2	513.9	616.1	10.7	10.9	12.4
3 and under 5 years	635.8	663.3	779.6	14.3	14.1	15.8
5 and under 10 years	782.9	814.8	913.3	17.6	17.3	18.5
10 and under 20 years	667.0	662.2	700.9	15.0	14.1	14.2
20 years and over	303.1	346.8	386.3	6.8	7.4	7.8
Whether changed employer/business in the last 12 months(a)						
Changed employer/business	517.3	535.1	424.4	11.6	11.4	8.6
Did not change employer/business	504.1	568.2	501.1	11.3	12.1	10.1
Total	4 443.0	4 710.9	4 949.7	100.0	100.0	100.0
PERSONS						
Duration with current employer/business						
Under 12 months	2 112.5	2 318.4	1 972.3	21.3	22.1	18.0
Under 3 months	640.7	697.3	605.7	6.5	6.6	5.5
3 and under 6 months	597.4	676.9	570.8	6.0	6.4	5.2
6 and under 12 months	874.4	944.2	795.8	8.8	9.0	7.3
One year or more	7 808.6	8 177.9	8 958.6	78.7	77.9	82.0
1 and under 2 years	1 172.9	1 265.4	1 303.1	11.8	12.1	11.9
2 and under 3 years	1 035.9	1 130.9	1 316.8	10.4	10.8	12.0
3 and under 5 years	1 376.5	1 442.6	1 709.0	13.9	13.7	15.6
5 and under 10 years	1 744.5	1 794.6	1 957.5	17.6	17.1	17.9
10 and under 20 years	1 556.7	1 554.5	1 594.9	15.7	14.8	14.6
20 years and over	922.0	989.9	1 077.2	9.3	9.4	9.9
Whether changed employer/business in the last 12 months(a)						
Changed employer/business	1 151.8	1 207.9	963.0	11.6	11.5	8.8
Did not change employer/business	960.7	1 110.5	1 009.3	9.7	10.6	9.2
Total	9 921.1	10 496.3	10 930.8	100.0	100.0	100.0

(a) Refers only to persons who have worked with their current employer/business for less than 12 months.

PERSONS WHO WERE WORKING AT FEBRUARY 2010, Changes in employer/business or work—By sex

	Males	Females	Persons	Males	Females	Persons
	'000	'000	'000	%	%	%
Duration with current employer/business at February 2010						
Less than 12 months with current employer/business	1 046.7	925.5	1 972.3	100.0	100.0	100.0
Changed employer/business in the last 12 months	538.6	424.4	963.0	51.5	45.9	48.8
Whether changed Industry Division - (last to current employer/business)						
Same industry	242.6	172.8	415.4	23.2	18.7	21.1
Changed industry	295.9	251.7	547.6	28.3	27.2	27.8
Whether changed Major occupation group - (last to current employer/business)						
Same occupation	300.7	227.8	528.5	28.7	24.6	26.8
Changed occupation	237.9	196.7	434.5	22.7	21.3	22.0
Whether changed usual hours worked - (last to current employer/business)						
Same usual hours worked	157.6	102.4	260.0	15.1	11.1	13.2
Changed usual hours worked	381.0	322.0	703.0	36.4	34.8	35.6
Whether changed employment type - (last to current employer/business)						
Same employment type	336.7	280.4	617.1	32.2	30.3	31.3
Changed employment type	201.9	144.1	345.9	19.3	15.6	17.5
Did not change employer/business in the last 12 months	508.2	501.1	1 009.3	48.6	54.1	51.2
One year or more with current employer	4 934.4	4 024.2	8 958.6
Employees	3 674.8	3 434.1	7 108.9	100.0	100.0	100.0
Whether changed Major occupation group with current employer in the last 12 months						
Same occupation	3 589.6	3 350.9	6 940.5	97.7	97.6	97.6
Changed occupation	85.2	83.2	168.4	2.3	2.4	2.4
Whether changed usual hours worked with current employer in the last 12 months						
Same usual hours worked	3 060.5	2 626.9	5 687.4	83.3	76.5	80.0
Changed usual hours worked	362.6	547.5	910.1	9.9	15.9	12.8
Did not know or usual hours varied	251.7	259.7	511.4	6.8	7.6	7.2
Whether promoted with current employer in the last 12 months						
Promoted	397.2	371.6	768.8	10.8	10.8	10.8
Not promoted	3 277.6	3 062.5	6 340.1	89.2	89.2	89.2
Whether transferred with current employer in the last 12 months						
Transferred	341.2	327.6	668.8	9.3	9.5	9.4
Not transferred	3 333.6	3 106.5	6 440.1	90.7	90.5	90.6
Whether promoted and/or transferred with current employer in the last 12 months						
Promoted and/or transferred	566.8	549.6	1 116.5	15.4	16.0	15.7
Not promoted or transferred	3 108.0	2 884.5	5 992.5	84.6	84.0	84.3
Owner managers and contributing family workers	1 259.6	590.0	1 849.6	100.0	100.0	100.0
Same usual hours worked	897.1	408.9	1 306.0	71.2	69.3	70.6
Different usual hours worked	130.7	84.9	215.5	10.4	14.4	11.7
Did not know or usual hours worked varied	231.8	96.2	328.1	18.4	16.3	17.7
Total	5 981.1	4 949.7	10 930.8

.. not applicable

PERSONS WHO WERE WORKING AT FEBRUARY 2010, Duration with employer/business at February 2010—By occupation at February 2010

Occupation at February 2010		LESS THAN 12 MONTHS WITH EMPLOYER/BUSINESS AT FEBRUARY 2010				ONE YEAR OR MORE WITH EMPLOYER/BUSINESS AT FEBRUARY 2010						Total
		Under 3 months	3 and under 6 months	6 and under 12 months	Total	1 and under 2 years	2 and under 3 years	3 and under 5 years	5 and under 10 years	10 and under 20 years	20 years and over	
MALES												
Managers	'000	22.0	21.1	35.8	78.9	66.6	85.2	129.6	194.8	197.2	217.6	969.9
Professionals	'000	49.5	40.4	63.4	153.2	128.3	134.3	188.4	228.8	193.9	142.5	1 169.4
Technicians and trades workers	'000	74.1	64.2	95.3	233.6	164.0	168.2	236.0	239.5	206.4	139.9	1 387.7
Community and personal service workers	'000	17.9	22.7	31.1	71.8	39.1	34.5	38.7	50.5	31.7	28.3	294.6
Clerical and administrative workers	'000	22.3	18.1	29.3	69.7	38.6	46.2	57.7	73.6	62.1	43.2	391.2
Sales workers	'000	22.4	31.2	45.0	98.6	59.9	64.9	54.8	45.5	38.0	18.5	380.2
Machinery operators and drivers	'000	37.9	39.2	50.6	127.7	66.6	74.8	107.7	112.7	79.8	63.4	632.7
Labourers	'000	68.6	69.0	75.8	213.4	111.8	92.7	116.6	98.7	84.8	37.6	755.5
Total	'000	314.7	305.8	426.2	1 046.7	675.0	700.7	929.4	1 044.2	894.0	691.0	5 981.1
Proportion	%	5.3	5.1	7.1	17.5	11.3	11.7	15.5	17.5	14.9	11.6	100.0
FEMALES												
Managers	'000	15.2	14.9	21.4	51.4	46.6	53.5	71.3	113.9	78.8	62.7	478.2
Professionals	'000	61.0	33.1	75.3	169.4	132.4	143.3	194.0	248.4	204.4	132.5	1 224.4
Technicians and trades workers	'000	18.7	16.7	16.2	51.5	29.1	29.1	41.8	37.6	23.6	10.5	223.3
Community and personal service workers	'000	48.0	42.2	62.6	152.8	105.5	83.6	114.5	123.3	70.2	22.0	671.9
Clerical and administrative workers	'000	59.0	54.7	84.6	198.3	128.5	161.4	182.8	233.0	221.2	110.5	1 235.8
Sales workers	'000	49.9	62.7	72.2	184.9	118.7	89.2	103.6	79.4	48.8	23.1	647.8
Machinery operators and drivers	'000	*5.2	*5.8	*3.2	14.1	*4.1	9.1	9.3	14.5	*6.3	*3.0	60.3
Labourers	'000	34.1	34.8	34.1	103.0	63.0	46.8	62.3	63.2	47.7	22.0	408.0
Total	'000	291.1	264.9	369.6	925.5	628.0	616.1	779.6	913.3	700.9	386.3	4 949.7
Proportion	%	5.9	5.4	7.5	18.7	12.7	12.4	15.7	18.5	14.2	7.8	100.0
PERSONS												
Managers	'000	37.1	36.0	57.2	130.4	113.3	138.6	200.8	308.7	275.9	280.3	1 448.1
Professionals	'000	110.4	73.5	138.6	322.6	260.7	277.6	382.5	477.2	398.3	274.9	2 393.7
Technicians and trades workers	'000	92.7	80.9	111.5	285.1	193.1	197.4	277.8	277.1	230.0	150.4	1 611.0
Community and personal service workers	'000	65.9	64.9	93.7	224.6	144.6	118.1	153.2	173.8	101.9	50.3	966.6
Clerical and administrative workers	'000	81.3	72.8	113.8	268.0	167.2	207.7	240.4	306.6	283.3	153.8	1 627.0
Sales workers	'000	72.3	93.9	117.3	283.5	178.7	154.1	158.4	124.9	86.8	41.6	1 028.0
Machinery operators and drivers	'000	43.1	45.0	53.7	141.8	70.7	83.8	117.0	127.2	86.1	66.4	693.0
Labourers	'000	102.8	103.8	109.9	316.4	174.8	139.5	178.9	161.9	132.5	59.6	1 163.5
Total	'000	605.7	570.8	795.8	1 972.3	1 303.1	1 316.8	1 709.0	1 957.5	1 594.9	1 077.2	10 930.8
Proportion	%	5.5	5.2	7.3	18.0	11.9	12.0	15.6	17.9	14.6	9.9	100.0

* estimate has a relative standard error of 25% to 50% and should be used with caution

PERSONS WHO WERE WORKING AT FEBRUARY 2010, Duration with employer/business at February 2010—By industry at February 2010

Industry at February 2010	LESS THAN 12 MONTHS WITH EMPLOYER/BUSINESS AT FEBRUARY 2010				ONE YEAR OR MORE WITH EMPLOYER/BUSINESS AT FEBRUARY 2010					
	Under 3 months	3 and under 6 months	6 and under 12 months	Total	1 and under 2 years	2 and under 3 years	3 and under 5 years	5 and under 10 years	10 years and over	Total
	'000	'000	'000	'000	'000	'000	'000	'000	'000	'000
MALES										
Agriculture, forestry and fishing	11.1	9.4	*6.5	26.9	15.2	12.9	25.8	31.6	135.7	248.1
Mining	9.4	6.9	7.9	24.1	20.7	24.0	30.7	25.6	23.9	149.1
Manufacturing	31.4	36.3	45.0	112.7	70.4	80.4	123.4	136.8	212.2	735.8
Electricity, gas, water and waste services	*4.4	*2.4	*4.5	11.3	11.3	13.2	17.7	19.1	31.8	104.5
Construction	53.1	43.2	68.3	164.7	98.3	95.3	142.3	142.9	223.6	867.0
Wholesale trade	13.5	16.3	20.4	50.2	25.1	38.8	56.1	57.8	77.3	305.3
Retail trade	26.0	35.1	52.7	113.8	75.4	71.5	84.5	74.1	84.0	503.3
Accommodation and food services	28.1	31.6	42.5	102.1	68.5	39.7	43.8	37.1	25.0	316.3
Transport, postal and warehousing	26.0	22.0	32.4	80.4	38.4	54.2	60.6	78.0	127.8	439.4
Information media and telecommunications	*3.9	*3.5	*6.1	13.5	16.4	14.8	19.2	19.3	30.0	113.1
Financial and insurance services	*4.9	9.7	10.2	24.8	24.5	27.3	34.8	44.3	46.8	202.4
Rental, hiring and real estate services	*4.6	*4.2	*4.6	13.3	8.4	9.3	13.0	14.2	18.9	77.2
professional, scientific and technical services	16.8	20.9	30.2	67.9	57.6	66.3	71.1	101.6	133.3	498.0
Administrative and support services	16.4	10.3	20.1	46.8	26.0	26.7	28.4	30.7	33.6	192.2
Public administration and safety	10.2	15.7	23.1	49.0	29.1	29.5	51.6	70.7	133.5	363.4
Education and training	17.8	*5.6	8.5	32.0	23.4	24.9	34.9	46.0	88.8	249.9
Health care and social assistance	17.1	14.0	16.6	47.7	15.6	26.5	40.9	50.2	65.7	246.6
Arts and recreation services	*5.2	8.1	8.7	21.9	16.8	11.7	13.0	15.5	29.0	107.9
Other services	14.8	10.7	18.0	43.5	34.0	33.8	37.6	48.8	64.0	261.7
Total	314.7	305.8	426.2	1 046.7	675.0	700.7	929.4	1 044.2	1 585.0	5 981.1
FEMALES										
Agriculture, forestry and fishing	*3.8	*5.1	*2.6	11.4	9.5	*4.7	8.2	14.8	67.1	115.8
Mining	**1.1	*2.6	**1.4	*5.1	*3.5	*4.0	*3.7	*5.0	**1.3	22.6
Manufacturing	17.8	11.8	18.8	48.5	35.7	31.0	35.0	51.8	62.5	264.5
Electricity, gas, water and waste services	**1.2	**1.1	*2.7	*5.0	*2.8	*5.7	*3.4	*6.8	8.2	31.9
Construction	9.1	6.9	7.5	23.4	12.6	16.7	13.9	21.1	31.2	118.8
Wholesale trade	*6.4	*5.3	7.8	19.5	14.9	21.6	23.3	27.2	28.7	135.3
Retail trade	40.2	63.6	60.5	164.3	104.6	91.8	111.8	101.4	91.4	665.3
Accommodation and food services	41.2	37.7	48.3	127.2	69.1	60.3	58.5	49.5	34.2	398.7
Transport, postal and warehousing	*5.1	*6.8	8.5	20.4	17.4	13.8	19.8	25.3	27.8	124.5
Information media and telecommunications	*5.3	*4.9	*6.2	16.4	11.9	9.2	18.6	18.9	22.3	97.4
Financial and insurance services	7.2	*6.0	11.1	24.3	23.9	25.3	39.2	45.8	51.1	209.6
Rental, hiring and real estate services	*6.7	*4.4	11.3	22.5	14.3	11.3	16.5	15.0	7.6	87.1
Professional, scientific and technical services	19.6	15.6	29.9	65.1	43.6	55.3	64.4	66.9	71.5	366.9
Administrative and support services	19.0	16.3	20.0	55.3	31.0	27.3	35.2	34.5	22.6	206.0
Public administration and safety	11.1	10.2	14.4	35.7	29.7	37.7	53.0	68.0	90.7	314.9
Education and training	30.9	9.9	19.2	60.0	51.7	52.4	74.0	119.9	190.9	548.9
Health care and social assistance	47.6	37.9	69.1	154.6	110.5	108.5	152.3	195.0	223.6	944.5
Arts and recreation services	*6.1	*5.1	10.7	21.9	15.1	9.2	11.1	16.0	21.0	94.3
Other services	11.6	13.7	19.6	44.8	26.2	30.3	37.6	30.5	33.6	202.9
Total	291.1	264.9	369.6	925.5	628.0	616.1	779.6	913.3	1 087.2	4 949.7

* estimate has a relative standard error of 25% to 50% and should be used with caution

** estimate has a relative standard error greater than 50% and is considered too unreliable for general use

PERSONS WHO WERE WORKING AT FEBRUARY 2010, Duration with employer/business at February 2010—By industry at February 2010 *continued*

Industry at February 2010	LESS THAN 12 MONTHS WITH EMPLOYER/BUSINESS AT FEBRUARY 2010				ONE YEAR OR MORE WITH EMPLOYER/BUSINESS AT FEBRUARY 2010					
	Under 3 months	3 and under 6 months	6 and under 12 months	Total	1 and under 2 years	2 and under 3 years	3 and under 5 years	5 and under 10 years	10 years and over	Total
	'000	'000	'000	'000	'000	'000	'000	'000	'000	'000
PERSONS										
Agriculture, forestry and fishing	14.8	14.5	9.1	38.4	24.6	17.6	34.1	46.4	202.8	363.9
Mining	10.5	9.4	9.3	29.2	24.2	28.1	34.4	30.6	25.2	171.7
Manufacturing	49.2	48.1	63.8	161.2	106.1	111.4	158.4	188.6	274.7	1 000.2
Electricity, gas, water and waste services	*5.6	*3.5	7.1	16.3	14.1	18.9	21.2	25.9	40.0	136.3
Construction	62.2	50.1	75.8	188.1	110.9	111.9	156.2	164.0	254.8	985.9
Wholesale trade	19.9	21.6	28.2	69.7	40.0	60.4	79.4	85.0	106.0	440.6
Retail trade	66.3	98.7	113.2	278.1	180.0	163.3	196.3	175.5	175.4	1 168.6
Accommodation and food services	69.3	69.3	90.8	229.4	137.6	100.0	102.4	86.6	59.1	715.1
Transport, postal and warehousing	31.1	28.8	40.9	100.8	55.8	67.9	80.4	103.3	155.6	563.9
Information media and telecommunications	9.2	8.4	12.4	30.0	28.3	24.0	37.8	38.2	52.3	210.6
Financial and insurance services	12.1	15.7	21.2	49.1	48.4	52.6	74.0	90.0	98.0	412.0
Rental, hiring and real estate services	11.3	8.6	15.9	35.8	22.7	20.7	29.5	29.2	26.5	164.2
Professional, scientific and technical services	36.4	36.6	60.0	133.0	101.3	121.6	135.6	168.6	204.8	864.8
Administrative and support services	35.4	26.6	40.1	102.1	57.0	54.0	63.6	65.2	56.3	398.2
Public administration and safety	21.3	25.9	37.5	84.8	58.7	67.1	104.6	138.7	224.3	678.2
Education and training	48.7	15.6	27.7	92.0	75.1	77.3	108.9	165.9	279.7	798.8
Health care and social assistance	64.7	51.9	85.7	202.3	126.1	135.0	193.2	245.2	289.3	1 191.1
Arts and recreation services	11.3	13.1	19.4	43.8	31.9	20.9	24.0	31.6	50.0	202.2
Other services	26.4	24.4	37.6	88.3	60.2	64.1	75.2	79.2	97.5	464.6
Total	605.7	570.8	795.8	1 972.3	1 303.1	1 316.8	1 709.0	1 957.5	2 672.2	10 930.8

* estimate has a relative standard error of 25% to 50% and should be used with caution

PERSONS WHO WERE WORKING AT FEBRUARY 2010, Changes in employer/business or work—By selected employment characteristics

	LESS THAN 12 MONTHS WITH EMPLOYER/BUSINESS			ONE YEAR OR MORE WITH EMPLOYER/BUSINESS AT FEBRUARY 2010				
	Changed employer/ business	Did not change employer/ business (a)	Total	Employees with some change in work	Employees with no change in work	Owner managers and contributing family workers(b)	Total	Total
MALES								
Employment type at February 2010								
Employees (excluding OMIEs)	482.8	434.9	917.6	815.1	2 859.7	..	3 674.8	4 592.4
Without paid leave entitlements	179.2	246.2	425.4	105.3	468.3	..	573.6	999.0
With paid leave entitlements	303.5	188.7	492.2	709.8	2 391.4	..	3 101.2	3 593.4
Owner managers of incorporated enterprises	11.8	20.8	32.6	518.6	518.6	551.2
Owner managers of unincorporated enterprises	44.0	52.5	96.5	741.0	741.0	837.5
Contributing family workers	**2.2	**3.2	**5.4	8.9	8.9	14.3
Occupation at February 2010								
Managers	46.4	32.6	78.9	126.7	354.2	410.1	890.9	969.9
Professionals	80.4	72.8	153.2	207.3	575.7	233.2	1 016.2	1 169.4
Technicians and trades workers	128.0	105.6	233.6	164.5	657.4	332.2	1 154.1	1 387.7
Community and personal service workers	30.3	41.5	71.8	52.0	150.8	20.1	222.9	294.6
Clerical and administrative workers	39.9	29.8	69.7	75.7	211.4	34.4	321.5	391.2
Sales workers	43.4	55.1	98.6	54.5	185.5	41.7	281.6	380.2
Machinery operators and drivers	74.4	53.2	127.7	66.9	357.3	80.9	505.0	632.7
Labourers	95.7	117.6	213.4	67.6	367.5	107.1	542.1	755.5
Industry at February 2010								
Agriculture, Forestry and Fishing	13.7	13.2	26.9	10.7	64.7	145.7	221.2	248.1
Mining	17.6	**6.6	24.1	29.2	93.2	**2.5	124.9	149.1
Manufacturing	62.6	50.1	112.7	115.1	414.8	93.2	623.1	735.8
Electricity, Gas, Water and Waste Services	8.1	**3.2	11.3	22.1	64.2	**6.8	93.1	104.5
Construction	97.2	67.5	164.7	71.9	308.1	322.3	702.4	867.0
Wholesale Trade	32.1	18.1	50.2	34.0	168.6	52.5	255.1	305.3
Retail Trade	45.1	68.7	113.8	74.7	247.2	67.7	389.5	503.3
Accommodation and Food Services	38.1	64.1	102.1	40.4	130.8	42.9	214.2	316.3
Transport, Postal and Warehousing	43.2	37.2	80.4	46.5	228.7	83.7	359.0	439.4
Information Media and Telecommunications	**6.2	7.3	13.5	19.7	64.2	15.8	99.6	113.1
Financial and Insurance Services	15.8	9.0	24.8	45.3	100.0	32.3	177.6	202.4
Rental, Hiring and Real Estate Services	8.4	**4.9	13.3	7.7	30.7	25.4	63.8	77.2
Professional, Scientific and Technical Services	36.5	31.4	67.9	77.1	191.1	161.9	430.1	498.0
Administrative and Support Services	20.4	26.5	46.8	19.9	69.4	56.1	145.3	192.2
Public Administration and Safety	27.3	21.8	49.0	87.5	222.0	**4.8	314.4	363.4
Education and Training	14.4	17.6	32.0	44.3	152.1	21.6	218.0	249.9
Health Care and Social Assistance	19.3	28.3	47.7	38.3	126.0	34.7	198.9	246.6
Arts and Recreation Services	7.9	14.0	21.9	10.4	55.6	20.0	86.0	107.9
Other Services	24.7	18.8	43.5	20.1	128.3	69.8	218.2	261.7
Usual hours at February 2010(c)								
1–19	37.5	122.6	160.1	44.1	189.8	95.7	329.6	489.7
20–29	33.2	57.2	90.4	43.7	130.0	76.8	250.5	340.8
30–34	23.3	26.4	49.7	28.2	83.4	72.0	183.7	233.4
35–39	124.8	92.9	217.7	206.4	796.8	92.8	1 096.0	1 313.8
40	149.0	113.8	262.8	193.3	806.4	236.7	1 236.4	1 499.2
41–44	21.1	11.0	32.0	36.2	114.4	26.8	177.4	209.4
45–48	50.6	30.0	80.7	97.9	270.5	124.5	492.9	573.6
49 or more	97.0	51.0	148.0	164.7	464.8	532.4	1 161.9	1 309.9
Total	538.6	508.2	1 046.7	815.1	2 859.7	1 259.6	4 934.4	5 981.1

** estimate has a relative standard error greater than 50% and is considered too unreliable for general use

.. not applicable

(a) Comprises persons who started with their current employer/business during the year ending February 2010 and had no previous employer/business within the 12 months to February 2010.

(b) Includes owner managers of incorporated and unincorporated enterprises and contributing family workers.

(c) Excludes 'Less than 1 hour or no hours worked'.

PERSONS WHO WERE WORKING AT FEBRUARY 2010, Changes in employer/business or work—By selected employment characteristics *continued*

	LESS THAN 12 MONTHS WITH EMPLOYER/BUSINESS			ONE YEAR OR MORE WITH EMPLOYER/BUSINESS AT FEBRUARY 2010				
	Changed employer/ business	Did not change employer/ business (a)	Total	Employees with some change in work	Employees with no change in work	Owner managers and contributing family workers(b)	Total	Total
FEMALES								
Employment type at February 2010								
Employees (excluding OMIEs)	401.1	453.4	854.5	953.3	2 480.9	..	3 434.1	4 288.6
Without paid leave entitlements	161.8	279.9	441.7	173.2	578.5	..	751.6	1 193.4
With paid leave entitlements	239.2	173.6	412.8	780.1	1 902.4	..	2 682.5	3 095.3
Owner managers of incorporated enterprises	**6.6	11.1	17.7	217.2	217.2	234.9
Owner manager of unincorporated enterprises	16.8	36.6	53.4	372.8	372.8	426.2
Contributing family workers	**1.0	**2.8	**3.7	12.3	12.3	16.0
Occupation at February 2010								
Managers	29.2	22.2	51.4	104.1	180.0	142.7	426.7	478.2
Professionals	90.7	78.7	169.4	284.3	648.2	122.5	1 055.0	1 224.4
Technicians and trades workers	26.5	25.1	51.5	34.3	98.4	39.1	171.8	223.3
Community and personal service workers	69.4	83.5	152.8	141.5	340.7	36.9	519.1	671.9
Clerical and administrative workers	102.3	96.0	198.3	217.2	648.7	171.6	1 037.5	1 235.8
Sales workers	60.8	124.2	184.9	108.0	326.8	28.1	462.9	647.8
Machinery operators and drivers	10.0	**4.1	14.1	11.1	30.9	**4.2	46.2	60.3
Labourers	35.6	67.4	103.0	52.7	207.2	45.0	305.0	408.0
Industry at February 2010								
Agriculture, Forestry and Fishing	**4.2	7.3	11.4	**3.6	19.9	80.8	104.3	115.8
Mining	**4.0	**1.1	**5.1	**6.8	10.6	**0.1	17.5	22.6
Manufacturing	22.2	26.3	48.5	47.5	134.3	34.2	216.0	264.5
Electricity, Gas, Water and Waste Services	**4.0	**0.9	**5.0	7.0	17.1	**2.8	26.9	31.9
Construction	12.9	10.5	23.4	12.3	36.8	46.4	95.4	118.8
Wholesale Trade	8.8	10.7	19.5	25.1	72.4	18.2	115.7	135.3
Retail Trade	60.5	103.8	164.3	122.4	322.2	56.3	501.0	665.3
Accommodation and Food Services	45.9	81.4	127.2	61.9	174.8	34.8	271.5	398.7
Transport, Postal and Warehousing	10.1	10.3	20.4	20.3	64.9	18.9	104.1	124.5
Information Media and Telecommunications	9.5	6.9	16.4	22.0	53.7	**5.3	81.0	97.4
Financial and Insurance Services	14.5	9.8	24.3	50.7	122.4	12.3	185.3	209.6
Rental, Hiring and Real Estate Services	11.7	10.8	22.5	16.9	36.8	11.0	64.6	87.1
Professional, Scientific and Technical Services	38.4	26.7	65.1	58.9	165.8	77.1	301.8	366.9
Administrative and Support Services	23.9	31.4	55.3	28.1	79.6	43.0	150.7	206.0
Public Administration and Safety	20.2	15.6	35.7	91.4	184.8	**2.9	279.1	314.9
Education and Training	28.0	32.0	60.0	133.9	331.9	23.1	488.9	548.9
Health Care and Social Assistance	76.7	77.9	154.6	202.4	532.0	55.4	789.8	944.5
Arts and Recreation Services	9.1	12.8	21.9	17.8	37.0	17.6	72.4	94.3
Other Services	19.9	25.0	44.8	24.4	83.9	49.8	158.1	202.9
Usual hours at February 2010(c)								
1–19	83.8	216.0	299.8	168.1	473.0	205.3	846.4	1 146.2
20–29	66.7	95.4	162.1	167.0	414.0	103.0	683.9	846.1
30–34	37.7	31.6	69.4	99.6	223.3	45.0	367.8	437.2
35–39	115.9	72.5	188.4	224.6	665.9	40.8	931.3	1 119.7
40	72.7	54.6	127.3	149.5	424.4	63.6	637.5	764.7
41–44	8.6	**5.5	14.1	26.5	62.5	7.8	96.8	110.9
45–48	13.8	6.9	20.7	50.7	94.9	24.6	170.1	190.8
49 or more	23.0	12.3	35.4	67.3	120.3	97.8	285.4	320.7
Total	424.4	501.1	925.5	953.3	2 480.9	590.0	4 024.2	4 949.7

** estimate has a relative standard error greater than 50% and is considered too unreliable for general use

.. not applicable

(a) Comprises persons who started with their current employer/business during the year ending February 2010 and had no previous employer/business within the 12 months to February 2010.

(b) Includes owner managers of incorporated and unincorporated enterprises and contributing family workers.

(c) Excludes 'Less than 1 hour or no hours worked'.

PERSONS WHO WERE WORKING AT FEBRUARY 2010, Changes in employer/business or work—By selected employment characteristics *continued*

	LESS THAN 12 MONTHS WITH EMPLOYER/BUSINESS			ONE YEAR OR MORE WITH EMPLOYER/BUSINESS AT FEBRUARY 2010				
	Changed employer/ business	Did not change employer/ business (a)	Total	Employees with some change in work	Employees with no change in work	Owner managers and contributing family workers(b)	Total	Total
PERSONS								
Employment type at February 2010								
Employees (excluding OMIEs)	883.8	888.3	1 772.1	1 768.4	5 340.6	..	7 108.9	8 881.1
Without paid leave entitlements	341.1	526.1	867.1	278.5	1 046.7	..	1 325.2	2 192.3
With paid leave entitlements	542.7	362.2	905.0	1 489.9	4 293.8	..	5 783.7	6 688.7
Owner managers of incorporated enterprises	18.4	31.9	50.2	735.8	735.8	786.0
Owner managers of unincorporated enterprises	60.8	89.1	149.9	1 113.8	1 113.8	1 263.8
Contributing family workers	**3.2	**6.0	9.1	21.2	21.2	30.3
Occupation at February 2010								
Managers	75.6	54.8	130.4	230.8	534.2	552.7	1 317.7	1 448.1
Professionals	171.1	151.4	322.6	491.6	1 223.9	355.7	2 071.2	2 393.7
Technicians and trades workers	154.5	130.7	285.1	198.8	755.8	371.3	1 325.9	1 611.0
Community and personal service workers	99.6	124.9	224.6	193.5	491.5	57.0	742.0	966.6
Clerical and administrative workers	142.2	125.8	268.0	292.9	860.1	206.0	1 359.0	1 627.0
Sales workers	104.2	179.3	283.5	162.4	512.2	69.8	744.5	1 028.0
Machinery operators and drivers	84.5	57.3	141.8	78.0	388.1	85.1	551.2	693.0
Labourers	131.3	185.0	316.4	120.3	574.7	152.1	847.1	1 163.5
Industry at February 2010								
Agriculture, Forestry and Fishing	17.9	20.5	38.4	14.3	84.7	226.5	325.5	363.9
Mining	21.6	7.7	29.2	36.0	103.8	**2.6	142.4	171.7
Manufacturing	84.8	76.4	161.2	162.6	549.1	127.4	839.1	1 000.2
Electricity, Gas, Water and Waste Services	12.2	**4.1	16.3	29.1	81.3	9.6	120.0	136.3
Construction	110.1	78.0	188.1	84.1	344.9	368.7	797.8	985.9
Wholesale Trade	41.0	28.8	69.7	59.1	241.0	70.7	370.8	440.6
Retail Trade	105.7	172.5	278.1	197.1	569.4	124.0	890.5	1 168.6
Accommodation and Food Services	83.9	145.4	229.4	102.4	305.6	77.8	485.7	715.1
Transport, Postal and Warehousing	53.3	47.5	100.8	66.9	293.6	102.6	463.1	563.9
Information Media and Telecommunications	15.7	14.2	30.0	41.6	117.9	21.1	180.6	210.6
Financial and Insurance Services	30.3	18.7	49.1	96.0	222.4	44.6	363.0	412.0
Rental, Hiring and Real Estate Services	20.1	15.7	35.8	24.6	67.5	36.4	128.5	164.2
Professional, Scientific and Technical Services	74.9	58.1	133.0	136.0	356.9	239.0	731.8	864.8
Administrative and Support Services	44.3	57.8	102.1	48.0	149.0	99.1	296.0	398.2
Public Administration and Safety	47.4	37.3	84.8	179.0	406.7	7.8	593.5	678.2
Education and Training	42.3	49.6	92.0	178.2	484.0	44.7	706.8	798.8
Health Care and Social Assistance	96.0	106.3	202.3	240.7	658.0	90.1	988.8	1 191.1
Arts and Recreation Services	17.0	26.8	43.8	28.2	92.6	37.6	158.4	202.2
Other Services	44.6	43.7	88.3	44.4	212.2	119.6	376.3	464.6
Usual hours at February 2010(c)								
1–19	121.2	338.6	459.8	212.2	662.8	301.1	1 176.0	1 635.9
20–29	99.9	152.6	252.5	210.7	544.0	179.7	934.4	1 186.9
30–34	61.0	58.1	119.1	127.8	306.7	117.0	551.5	670.6
35–39	240.7	165.4	406.1	431.0	1 462.7	133.6	2 027.3	2 433.4
40	221.7	168.4	390.1	342.9	1 230.8	300.2	1 873.9	2 264.0
41–44	29.6	16.5	46.1	62.8	176.9	34.6	274.2	320.3
45–48	64.4	36.9	101.4	148.6	365.4	149.0	663.1	764.4
49 or more	120.1	63.3	183.4	232.0	585.2	630.1	1 447.3	1 630.7
Total	963.0	1 009.3	1 972.3	1 768.4	5 340.6	1 849.6	8 958.6	10 930.8

** estimate has a relative standard error greater than 50% and is considered too unreliable for general use

.. not applicable

(a) Comprises persons who started with their current employer/business during the year ending February 2010 and had no previous employer/business within the 12 months to February 2010.

(b) Includes owner managers of incorporated and unincorporated enterprises and contributing family workers.

(c) Excludes 'Less than 1 hour or no hours worked'.

PERSONS WHO WORKED AT SOME TIME DURING THE YEAR ENDING FEBRUARY 2010,
Changes in employer/business or work—By selected characteristics

	LESS THAN 12 MONTHS WITH EMPLOYER/BUSINESS AT FEBRUARY 2010			ONE YEAR OR MORE WITH EMPLOYER/BUSINESS AT FEBRUARY 2010			Total	Total(a)
	Changed employer/ business	Did not change employer/ business (b)	Total	Employees with some change in work	Employees with no change in work	Owner managers and contributing family workers(c)		
	'000	'000	'000	'000	'000	'000	'000	'000
MALES								
Age group (years)								
15–19	41.5	113.7	155.1	35.3	145.0	10.1	190.3	457.1
20–24	101.9	89.9	191.8	106.7	289.5	22.4	418.5	710.3
25–34	167.8	124.4	292.2	258.1	636.4	158.2	1 052.6	1 440.6
35–44	130.4	79.9	210.3	194.0	648.3	312.9	1 155.2	1 446.5
45–54	67.9	55.8	123.7	138.0	654.4	358.2	1 150.6	1 350.1
55–59	18.5	24.5	42.9	45.2	243.5	160.7	449.3	531.3
60 and over	10.6	20.1	30.6	37.9	242.7	237.3	517.8	620.6
Marital status								
Married	305.1	207.8	512.9	520.6	1 856.5	1 020.8	3 397.9	4 145.0
Not married	233.5	300.3	533.8	294.5	1 003.2	238.8	1 536.5	2 411.4
Relationship in household								
Family member	438.6	417.8	856.5	666.7	2 395.6	1 103.8	4 166.1	5 479.9
Husband, wife or partner	304.2	206.5	510.7	519.3	1 843.5	1 012.3	3 375.1	4 118.2
With dependants	165.9	101.6	267.5	288.9	974.0	546.9	1 809.8	2 176.0
Without dependants	138.4	104.8	243.2	230.4	869.5	465.4	1 565.3	1 942.3
Lone parent	7.4	9.1	16.5	10.7	48.4	27.6	86.6	116.7
With dependants	*5.7	7.2	12.9	9.8	31.6	18.4	59.8	84.6
Without dependants	*1.7	*1.9	*3.6	**0.9	16.8	9.2	26.8	32.1
Dependent student	20.7	73.3	93.9	23.3	97.9	8.1	129.4	307.3
Non-dependent child	91.0	110.7	201.7	92.4	336.7	47.8	476.8	785.5
Other family person	15.4	18.3	33.6	21.1	69.1	8.0	98.2	152.2
Non-family member	97.1	85.8	182.9	143.2	442.1	144.7	730.0	1 019.9
Lone person	48.2	34.2	82.4	79.1	288.8	115.6	483.6	624.4
Not living alone	48.9	51.6	100.4	64.1	153.3	29.1	246.5	395.5
Relationship not determined	*2.9	*4.5	7.4	*5.2	22.0	11.0	38.2	56.6
Country of birth(d)								
Born in Australia	406.4	347.2	753.6	605.7	2 061.8	928.0	3 595.5	4 779.7
Born overseas	131.8	160.5	292.3	209.4	797.9	331.1	1 338.4	1 775.5
Level of highest non-school qualification								
With a non-school qualification	311.9	248.6	560.5	558.9	1 693.7	814.6	3 067.2	3 883.7
Postgraduate Degree	20.8	24.1	44.9	59.3	149.7	45.8	254.8	325.4
Graduate Diploma/Graduate Certificate	*6.7	*4.6	11.4	20.8	47.0	11.3	79.1	94.8
Bachelor Degree	81.3	82.2	163.5	179.2	477.7	197.3	854.2	1 083.9
Advanced Diploma/Diploma	40.1	35.8	75.9	80.5	239.2	103.4	423.0	535.4
Certificate III/IV	132.9	76.8	209.7	171.5	624.3	375.4	1 171.2	1 473.4
Certificate I/II	15.0	9.5	24.5	20.7	73.5	43.0	137.2	182.5
Certificate not further defined	9.9	7.7	17.5	11.9	38.9	12.0	62.8	86.5
Level not determined	*5.2	7.9	13.2	15.1	43.3	26.5	84.9	101.7
Without a non-school qualification	226.7	259.6	486.3	256.2	1 166.0	444.9	1 867.2	2 672.7
Total	538.6	508.2	1 046.7	815.1	2 859.7	1 259.6	4 934.4	6 556.4

* estimate has a relative standard error of 25% to 50% and should be used with caution

** estimate has a relative standard error greater than 50% and is considered too unreliable for general use

(a) Includes persons who were not working at February 2010.

(b) Comprises persons who started with their current employer/business during the year ending February 2010 and had no previous employer/business within the 12 months to February 2010.

(c) Includes owner managers of incorporated and unincorporated enterprises and contributing family workers.

(d) Excludes 'Inadequately described'.

PERSONS WHO WORKED AT SOME TIME DURING THE YEAR ENDING FEBRUARY 2010,
Changes in employer/business or work—By selected characteristics *continued*

	LESS THAN 12 MONTHS WITH EMPLOYER/BUSINESS AT FEBRUARY 2010			ONE YEAR OR MORE WITH EMPLOYER/BUSINESS AT FEBRUARY 2010			Total	Total(a)
	Changed employer/ business	Did not change employer/ business (b)	Total	Employees with some change in work	Employees with no change in work	Owner managers and contributing family workers(c)		
	'000	'000	'000	'000	'000	'000	'000	'000
FEMALES								
Age group (years)								
15–19	50.6	125.2	175.8	46.7	138.4	**1.6	186.6	470.6
20–24	98.2	89.3	187.5	122.4	226.9	7.4	356.8	647.4
25–34	121.9	110.3	232.2	267.1	475.0	69.3	811.4	1 193.4
35–44	79.7	84.8	164.4	222.1	545.0	166.8	933.8	1 226.9
45–54	54.0	62.0	116.0	202.9	654.2	169.9	1 027.0	1 227.1
55–59	15.5	16.6	32.1	59.8	251.9	71.0	382.7	451.9
60 and over	*4.5	12.9	17.4	32.3	189.5	104.0	325.8	400.6
Marital status								
Married	205.2	214.4	419.7	594.2	1 541.7	495.2	2 631.1	3 393.6
Not married	219.2	286.7	505.9	359.0	939.2	94.9	1 393.1	2 224.4
Relationship in household								
Family member	338.8	435.8	774.6	819.4	2 128.0	536.3	3 483.7	4 835.7
Husband, wife or partner	204.3	211.8	416.1	592.1	1 533.6	486.4	2 612.1	3 368.5
With dependants	70.8	120.8	191.6	309.2	702.9	254.2	1 266.3	1 634.8
Without dependants	133.5	91.0	224.5	282.9	830.6	232.2	1 345.8	1 733.7
Lone parent	31.0	37.6	68.7	84.8	205.6	34.2	324.6	465.1
With dependants	28.1	33.8	62.0	67.9	145.1	26.4	239.4	365.7
Without dependants	*2.9	*3.8	*6.7	16.9	60.6	7.7	85.2	99.3
Dependent student	25.4	97.7	123.2	37.0	126.0	*2.6	165.5	369.6
Non-dependent child	66.7	75.6	142.4	85.8	204.8	9.6	300.2	515.1
Other family person	11.2	13.0	24.3	19.7	58.1	*3.5	81.4	117.4
Non-family member	81.0	59.2	140.2	129.0	336.8	44.3	510.2	729.5
Lone person	39.0	23.3	62.3	84.4	246.0	36.5	366.9	469.0
Not living alone	42.0	35.9	77.9	44.6	90.8	7.8	143.2	260.5
Relationship not determined	*4.6	*6.1	10.7	*4.8	16.1	9.4	30.3	52.8
Country of birth(d)								
Born in Australia	328.5	360.2	688.7	745.0	1 822.0	431.5	2 998.5	4 198.4
Born overseas	95.9	140.9	236.8	208.2	658.7	158.2	1 025.1	1 419.0
Level of highest non-school qualification								
With a non-school qualification	264.9	239.0	503.9	647.9	1 446.9	339.9	2 434.7	3 282.9
Postgraduate Degree	25.6	20.5	46.2	48.0	107.9	24.1	180.0	251.1
Graduate Diploma/Graduate Certificate	8.4	*5.8	14.2	43.6	79.1	17.5	140.1	166.4
Bachelor Degree	87.3	85.8	173.1	238.7	521.8	117.0	877.4	1 165.7
Advanced Diploma/Diploma	53.2	51.7	104.9	115.2	277.5	71.9	464.6	626.4
Certificate III/IV	64.2	45.7	109.9	136.7	282.2	69.1	488.0	670.5
Certificate I/II	16.9	17.9	34.9	38.1	119.4	28.4	185.9	255.5
Certificate not further defined	*5.9	7.8	13.7	15.8	31.6	*5.4	52.8	86.6
Level not determined	*3.3	*3.8	7.1	12.0	27.3	*6.6	45.8	60.7
Without a non-school qualification	159.6	262.1	421.7	305.3	1 034.0	250.2	1 589.4	2 335.1
Total	424.4	501.1	925.5	953.3	2 480.9	590.0	4 024.2	5 618.0

* estimate has a relative standard error of 25% to 50% and should be used with caution

** estimate has a relative standard error greater than 50% and is considered too unreliable for general use

(a) Includes persons who were not working at February 2010.

(b) Comprises persons who started with their current employer/business during the year ending February 2010 and had no previous employer/business within the 12 months to February 2010.

(c) Includes owner managers of incorporated and unincorporated enterprises and contributing family workers.

(d) Excludes 'Inadequately described'.

PERSONS WHO WORKED AT SOME TIME DURING THE YEAR ENDING FEBRUARY 2010,
Changes in employer/business or work—By selected characteristics *continued*

	LESS THAN 12 MONTHS WITH EMPLOYER/BUSINESS AT FEBRUARY 2010			ONE YEAR OR MORE WITH EMPLOYER/BUSINESS AT FEBRUARY 2010			Total	Total(a)	
	Changed employer/ business	Did not change employer/ business (b)	Total	Employees with some change in work	Employees with no change in work	Owner managers and contributing family workers(c)			Total
PERSONS									
Age group (years)									
15–19	92.1	238.9	331.0	81.9	283.3	11.7	376.9	927.7	
20–24	200.2	179.1	379.3	229.1	516.4	29.8	775.3	1 357.7	
25–34	289.7	234.7	524.4	525.2	1 111.4	227.5	1 864.0	2 634.0	
35–44	210.1	164.7	374.8	416.1	1 193.3	479.6	2 089.0	2 673.4	
45–54	121.9	117.8	239.7	340.8	1 308.7	528.1	2 177.6	2 577.2	
55–59	34.0	41.1	75.1	105.0	495.4	231.7	832.1	983.2	
60 and over	15.1	32.9	48.0	70.2	432.2	341.3	843.6	1 021.2	
Marital status									
Married	510.4	422.2	932.6	1 114.8	3 398.2	1 515.9	6 029.0	7 538.6	
Not married	452.7	587.0	1 039.7	653.6	1 942.3	333.7	2 929.6	4 635.8	
Relationship in household									
Family member	777.5	853.6	1 631.1	1 486.1	4 523.6	1 640.1	7 649.9	10 315.6	
Husband, wife or partner	508.6	418.2	926.8	1 111.3	3 377.1	1 498.7	5 987.2	7 486.8	
With dependants	236.7	222.4	459.1	598.1	1 676.9	801.1	3 076.1	3 810.7	
Without dependants	271.9	195.8	467.7	513.3	1 700.2	697.6	2 911.1	3 676.0	
Lone parent	38.4	46.7	85.1	95.5	254.0	61.8	411.2	581.7	
With dependants	33.8	41.0	74.8	77.7	176.6	44.8	299.2	450.3	
Without dependants	*4.6	*5.7	10.3	17.8	77.3	16.9	112.0	131.4	
Dependent student	46.1	171.0	217.1	60.3	223.9	10.7	294.9	676.8	
Non-dependent child	157.7	186.4	344.1	178.2	541.5	57.4	777.1	1 300.6	
Other family person	26.6	31.3	57.9	40.8	127.2	11.5	179.6	269.6	
Non-family member	178.1	144.9	323.0	272.3	778.9	189.0	1 240.2	1 749.4	
Lone person	87.2	57.5	144.7	163.6	534.8	152.1	850.5	1 093.4	
Not living alone	90.8	87.5	178.3	108.7	244.1	36.9	389.7	656.0	
Relationship not determined	7.5	10.7	18.1	10.0	38.0	20.5	68.5	109.4	
Country of birth(d)									
Born in Australia	734.9	707.5	1 442.4	1 350.7	3 883.8	1 359.5	6 594.0	8 978.0	
Born overseas	227.7	301.4	529.1	417.6	1 456.6	489.3	2 363.6	3 194.5	
Level of highest non-school qualification									
With a non-school qualification	576.8	487.5	1 064.3	1 206.8	3 140.6	1 154.5	5 502.0	7 166.6	
Postgraduate Degree	46.4	44.6	91.1	107.3	257.6	69.9	434.8	576.5	
Graduate Diploma/Graduate Certificate	15.2	10.4	25.6	64.4	126.1	28.7	219.3	261.2	
Bachelor Degree	168.5	168.0	336.5	417.8	999.5	314.3	1 731.6	2 249.7	
Advanced Diploma/Diploma	93.2	87.5	180.7	195.7	516.7	175.3	887.6	1 161.9	
Certificate III/IV	197.1	122.5	319.6	308.2	906.5	444.5	1 659.2	2 143.9	
Certificate I/II	31.9	27.4	59.4	58.7	192.9	71.5	323.1	438.0	
Certificate not further defined	15.8	15.4	31.2	27.7	70.5	17.3	115.6	173.0	
Level not determined	8.5	11.7	20.2	27.1	70.6	33.1	130.8	162.4	
Without a non-school qualification	386.2	521.7	907.9	561.5	2 200.0	695.1	3 456.6	5 007.8	
Total	963.0	1 009.3	1 972.3	1 768.4	5 340.6	1 849.6	8 958.6	12 174.4	

* estimate has a relative standard error of 25% to 50% and should be used with caution

(a) Includes persons who were not working at February 2010.

(b) Comprises persons who started with their current employer/business during the year ending February 2010 and had no previous employer/business within the 12 months to February 2010.

(c) Includes owner managers of incorporated and unincorporated enterprises and contributing family workers.

(d) Excludes 'Inadequately described'.

PERSONS WHO WORKED AT SOME TIME DURING THE YEAR ENDING FEBRUARY 2010,
Industry at February 2009—By duration with employer/business at February 2010

LESS THAN 12 MONTHS WITH
EMPLOYER/BUSINESS AT FEBRUARY 2010

	<i>Same Industry division at February 2010</i>	<i>Different Industry division at February 2010</i>	<i>Total</i>	<i>One year or more with employer/ business at February 2010</i>	<i>Not working at February 2010</i>	<i>Total</i>
	'000	'000		'000	'000	
Industry at February 2009	474.4	507.8	982.2	8 958.6	936.9	10 877.6
Agriculture, forestry and fishing	8.8	13.8	22.6	325.5	24.4	372.5
Mining	8.5	12.2	20.7	142.4	18.2	181.3
Manufacturing	38.2	44.7	82.9	839.1	89.1	1 011.2
Electricity, gas, water and waste services	**0.8	*5.5	*6.3	120.0	8.8	135.1
Construction	69.0	46.3	115.3	797.8	75.1	988.2
Wholesale trade	15.1	29.0	44.2	370.8	26.1	441.1
Retail trade	50.6	70.4	121.1	890.5	139.0	1 150.6
Accommodation and food services	54.4	55.6	110.0	485.7	109.5	705.1
Transport, postal and warehousing	27.5	20.9	48.4	463.1	34.3	545.8
Information media and telecommunications	*5.7	13.7	19.5	180.6	17.9	218.0
Financial and insurance services	17.6	12.4	30.0	363.0	25.0	418.0
Rental, hiring and real estate services	7.4	8.1	15.6	128.5	12.7	156.8
Professional, scientific and technical services	31.3	33.9	65.2	731.8	68.4	865.5
Administrative and support services	15.9	25.9	41.8	296.0	36.0	373.8
Public administration and safety	24.0	23.5	47.4	593.5	52.0	692.9
Education and training	17.1	26.3	43.4	706.8	66.1	816.3
Health care and social assistance	58.4	25.2	83.6	988.8	80.5	1 152.9
Arts and recreation services	*2.7	16.5	19.2	158.4	17.8	195.4
Other services	21.2	23.8	45.0	376.3	35.9	457.1
Not working at February 2009	990.1	..	306.7	1 296.8
Total	474.4	507.8	1 972.3	8 958.6	1 243.5	12 174.4

* estimate has a relative standard error of 25% to 50% and should be used with caution

** estimate has a relative standard error greater than 50% and is considered too unreliable for general use

.. not applicable

PERSONS WHO WORKED AT SOME TIME DURING THE YEAR ENDING FEBRUARY 2010,
Occupation at February 2009—By change in employer/business or work

OCCUPATION AT FEBRUARY 2009

	<i>Managers</i>	<i>Professionals</i>	<i>Technicians and trades workers</i>	<i>Community and personal service workers</i>	<i>Clerical and administrative workers</i>
	'000	'000	'000	'000	'000
Working at February 2010	1 384.6	2 237.4	1 484.1	852.2	1 495.3
Less than 12 months with employer/business at February 2010	91.3	173.0	157.5	109.1	127.1
Changed employer/business in the last 12 months(a)	80.6	149.9	143.4	96.4	109.7
Whether changed Industry Division (February 2009 and February 2010)					
Same industry	34.5	77.5	83.0	45.8	31.9
Different industry	46.1	72.4	60.4	50.6	77.8
Whether changed Major occupation group (February 2009 and February 2010)					
Same occupation	30.3	109.5	97.2	45.3	62.3
Different occupation	50.4	40.4	46.2	51.1	47.4
Whether changed usual hours worked (February 2009 and February 2010)					
Same usual hours worked	16.9	53.0	51.2	17.4	33.1
Different usual hours worked	63.7	97.0	92.2	78.8	75.6
Whether changed employment type (February 2009 and February 2010)					
Same employment type	51.2	112.5	88.5	57.7	72.4
Changed employment type	29.5	37.4	54.9	38.8	37.3
Didn't change employer/business in the last 12 months	10.6	23.0	14.1	12.6	17.4
One year or more with current employer/business	1 293.4	2 064.4	1 326.6	743.2	1 368.1
Employees					
Whether changed Major occupation group with current employer in the last 12 months					
Same occupation	720.2	1 677.6	939.5	674.9	1 123.4
Changed occupation	20.5	31.2	15.8	11.3	38.7
Whether changed usual hours with current employer in the last 12 months					
Same usual hours worked	629.1	1 394.1	804.6	477.3	970.3
Changed usual hours worked	81.7	223.0	92.5	125.3	147.5
Did not know or usual hours varied	29.8	91.7	58.2	83.6	44.4
Whether promoted and/or transferred with current employer in the last 12 months					
Promoted and/or transferred	154.4	331.8	131.7	103.0	196.3
Not promoted or transferred	586.2	1 377.0	823.6	583.1	965.9
Owner managers(b)	552.7	355.7	371.3	57.0	206.0
Not working at February 2010	82.5	156.2	115.7	108.5	136.9
Total	1 467.2	2 393.6	1 599.8	960.7	1 632.2

(a) Excludes persons who were not working at February 2009 or were not working at February 2010.

(b) Includes owner managers of incorporated and unincorporated enterprises and contributing family workers.

PERSONS WHO WORKED AT SOME TIME DURING THE YEAR ENDING FEBRUARY 2010,
Occupation at February 2009—By change in employer/business or work *continued*

OCCUPATION AT FEBRUARY 2009 *continued*

	Sales workers	Machinery operators and drivers	Labourers	Total	Not working at February 2009	Total
	'000	'000	'000	'000	'000	'000
Working at February 2010	867.7	632.7	986.7	9 940.7	990.1	10 930.8
Less than 12 months with employer/business at February 2010	118.7	83.1	122.3	982.2	990.1	1 972.3
Changed employer/business in the last 12 months(a)	108.4	73.5	107.4	869.5	93.5	963.0
Whether changed Industry Division (February 2009 and February 2010)						
Same industry	38.4	33.9	45.5	390.5	..	390.5
Different industry	70.1	39.6	62.0	479.0	..	479.0
Whether changed Major occupation group (February 2009 and February 2010)						
Same occupation	41.7	43.3	57.8	487.4	..	487.4
Different occupation	66.7	30.2	49.7	382.1	..	382.1
Whether changed usual hours worked (February 2009 and February 2010)						
Same usual hours worked	23.9	20.7	29.2	245.4	..	245.4
Different usual hours worked	83.7	52.8	78.3	622.1	..	622.1
Whether changed employment type (February 2009 and February 2010)						
Same employment type	71.7	45.2	63.9	563.1	..	563.1
Changed employment type	36.7	28.3	43.5	306.4	..	306.4
Didn't change employer/business in the last 12 months	10.3	9.7	14.9	112.7	896.6	1 009.3
One year or more with current employer/business Employees	749.0	549.5	864.4	8 958.6	..	8 958.6
Whether changed Major occupation group with current employer in the last 12 months						
Same occupation	660.2	456.2	688.5	6 940.5	..	6 940.5
Changed occupation	19.0	8.2	23.8	168.4	..	168.4
Whether changed usual hours with current employer in the last 12 months						
Same usual hours worked	494.9	379.5	537.6	5 687.4	..	5 687.4
Changed usual hours worked	109.1	44.3	86.8	910.1	..	910.1
Did not know or usual hours varied	75.1	40.7	87.9	511.4	..	511.4
Whether promoted and/or transferred with current employer in the last 12 months						
Promoted and/or transferred	86.0	44.0	69.2	1 116.5	..	1 116.5
Not promoted or transferred	593.2	420.4	643.0	5 992.5	..	5 992.5
Owner managers(b)	69.8	85.1	152.1	1 849.6	..	1 849.6
Not working at February 2010	131.0	55.5	150.4	936.9	306.7	1 243.5
Total	998.8	688.2	1 137.1	10 877.6	1 296.8	12 174.4

.. not applicable

(a) Excludes persons who were not working at February 2009 or were not working at February 2010.

(b) Includes owner managers of incorporated and unincorporated enterprises and contributing family workers.

PERSONS WHO WORKED AT SOME TIME DURING THE YEAR ENDING FEBRUARY 2010,
Occupation at February 2009 —By occupation at February 2010

OCCUPATION AT FEBRUARY 2009

	<i>Managers</i>	<i>Professionals</i>	<i>Technicians and trades workers</i>	<i>Community and personal service workers</i>	<i>Clerical and administrative workers</i>
	'000	'000	'000	'000	'000
Occupation at February 2010	1 384.6	2 237.4	1 484.1	852.2	1 495.3
Managers	1 310.8	24.0	8.3	8.1	19.4
Professionals	21.5	2 165.3	10.8	13.9	24.9
Technicians and trades workers	8.7	*5.2	1 420.1	*4.6	7.5
Community and personal service workers	6.9	8.1	*5.2	788.1	8.8
Clerical and administrative workers	18.2	22.0	7.4	15.1	1 405.6
Sales workers	10.4	8.4	*6.3	9.4	17.8
Machinery operators and drivers	*4.7	*1.8	7.7	*2.9	*5.4
Labourers	*3.4	*2.6	18.3	10.1	*5.8
Not working at February 2010	82.5	156.2	115.7	108.5	136.9
Unemployed at February 2010	39.1	65.2	68.2	56.7	64.9
Not in the Labour Force at February 2010	43.4	91.0	47.5	51.8	72.0
Total	1 467.2	2 393.6	1 599.8	960.7	1 632.2

* estimate has a relative standard error of 25% to 50% and should be used with caution

OCCUPATION AT FEBRUARY 2009 *continued*

	Sales workers	Machinery operators and drivers	Labourers	Total	Not working at February last year	Total
	'000	'000	'000	'000	'000	'000
Occupation at February 2010	867.7	632.7	986.7	9 940.7	990.1	10 930.8
Managers	17.8	*4.7	*5.1	1 398.2	49.9	1 448.1
Professionals	10.7	**1.4	*3.0	2 251.7	142.0	2 393.7
Technicians and trades workers	8.0	*6.5	23.7	1 484.3	126.7	1 611.0
Community and personal service workers	10.6	**1.3	7.6	836.5	130.1	966.6
Clerical and administrative workers	23.9	*5.7	8.2	1 506.2	120.8	1 627.0
Sales workers	781.9	*4.4	9.1	847.7	180.3	1 028.0
Machinery operators and drivers	*2.5	594.6	19.0	638.7	54.3	693.0
Labourers	12.2	14.0	911.0	977.5	186.0	1 163.5
Not working at February 2010	131.0	55.5	150.4	936.9	306.7	1 243.5
Unemployed at February 2010	65.4	31.3	91.0	481.7	167.4	649.1
Not in the Labour Force at February 2010	65.7	24.2	59.4	455.1	139.3	594.4
Total	998.8	688.2	1 137.1	10 877.6	1 296.8	12 174.4

* estimate has a relative standard error of 25% to 50% and should be used with caution

** estimate has a relative standard error greater than 50% and is considered too unreliable for general use

Duration of last job	INVOLUNTARY REASON FOR CEASING LAST JOB				VOLUNTARY REASON FOR CEASING LAST JOB				
	Retrenched, employer went out of business(a)	Job was temporary or seasonal	Own ill health or injury	Total	Unsatisfactory work conditions	Holiday job, returned to studies	Retired, new business, better job, family or other reasons(b)	Total	Total
	'000	'000	'000	'000	'000	'000	'000	'000	'000
MALES									
Under 12 months	97.0	128.3	13.8	239.0	70.8	32.8	95.9	199.5	438.5
Under 3 months	36.4	68.0	*6.2	110.6	22.0	11.1	31.1	64.3	174.9
3 months and under 6 months	28.3	29.8	*3.3	61.4	24.7	7.4	22.8	55.0	116.4
6 months and under 12 months	32.3	30.5	*4.2	67.0	24.0	14.3	41.9	80.2	147.2
1 and under 2 years	69.2	30.0	11.3	110.5	35.8	*6.6	84.0	126.4	236.9
2 and under 3 years	41.3	17.0	*4.3	62.6	18.2	*4.3	53.5	76.0	138.6
3 and under 5 years	31.5	8.9	*3.0	43.5	14.6	*4.4	52.1	71.1	114.6
5 and under 10 years	25.9	*4.4	*4.2	34.6	8.8	**1.4	47.5	57.7	92.3
10 and under 20 years	14.0	*2.8	*5.4	22.1	*2.7	**0.7	26.9	30.3	52.4
20 years and over	10.5	*1.8	*4.9	17.1	*2.8	**0.5	20.3	23.6	40.7
Total	289.4	193.1	46.9	529.4	153.8	50.7	380.0	584.5	1 113.9
FEMALES									
Under 12 months	68.6	114.0	13.9	196.5	73.6	26.8	137.5	238.0	434.5
Under 3 months	23.9	55.5	*5.1	84.4	27.9	11.1	35.9	74.8	159.3
3 months and under 6 months	18.3	28.6	*4.9	51.8	16.2	*4.6	29.1	49.9	101.7
6 months and under 12 months	26.5	30.0	*3.9	60.3	29.5	11.1	72.6	113.2	173.5
1 and under 2 years	36.6	26.2	9.9	72.7	32.6	15.4	102.4	150.4	223.1
2 and under 3 years	19.5	9.2	9.4	38.1	20.7	*5.9	74.7	101.3	139.5
3 and under 5 years	19.3	*6.3	7.8	33.4	11.0	*2.8	73.5	87.3	120.7
5 and under 10 years	12.1	8.1	*6.5	26.8	11.4	*3.7	60.2	75.3	102.0
10 and under 20 years	7.5	*4.3	*3.2	15.0	*4.2	**0.5	29.7	34.4	49.5
20 years and over	**1.0	*2.5	*1.9	*5.4	**0.6	**0.7	16.6	18.0	23.4
Total	164.8	170.6	52.6	387.9	154.2	55.8	494.8	704.7	1 092.7
PERSONS									
Under 12 months	165.6	242.3	27.6	435.6	144.4	59.6	233.4	437.4	873.0
Under 3 months	60.3	123.4	11.3	195.1	49.9	22.2	67.0	139.1	334.2
3 months and under 6 months	46.5	58.4	8.3	113.2	41.0	12.0	51.9	104.9	218.1
6 months and under 12 months	58.8	60.5	8.1	127.3	53.5	25.4	114.4	193.4	320.7
1 and under 2 years	105.8	56.2	21.1	183.1	68.5	22.0	186.4	276.9	460.0
2 and under 3 years	60.8	26.2	13.8	100.7	38.9	10.2	128.2	177.3	278.0
3 and under 5 years	50.8	15.2	10.9	76.9	25.6	7.2	125.7	158.4	235.3
5 and under 10 years	38.1	12.5	10.8	61.3	20.2	*5.1	107.7	133.0	194.4
10 and under 20 years	21.5	7.1	8.6	37.1	6.9	**1.2	56.6	64.7	101.8
20 years and over	11.5	*4.3	*6.7	22.5	*3.5	**1.2	36.9	41.5	64.1
Total	454.1	363.7	99.5	917.3	307.9	106.5	874.8	1 289.2	2 206.6

* estimate has a relative standard error of 25% to 50% and should be used with caution

** estimate has a relative standard error greater than 50% and is considered too unreliable for general use

(a) Includes all persons who were made redundant, dismissed or had no work available.

(b) Includes persons whose business closed or was sold for other reasons.

	NSW	Vic.	Qld	SA	WA	Tas.	NT	ACT	Aust.
	'000	'000	'000	'000	'000	'000	'000	'000	'000
MALES									
Population 1 Persons who worked at some time during the year ending February 2010	2 055.4	1 639.0	1 339.5	478.1	726.5	140.7	64.7	112.5	6 556.4
Population 2 Persons who were working at February 2010	1 884.9	1 500.0	1 207.4	437.8	664.5	123.9	60.1	102.6	5 981.1
Population 3 Employees (excluding owner managers of incorporated enterprises) who had worked with their current employer for one year or more	1 189.2	916.1	714.0	264.8	409.6	77.3	36.9	66.8	3 674.8
Population 4 Persons who ceased a job during the year ending February 2010	309.5	271.7	257.4	78.9	135.0	28.5	11.2	21.7	1 113.9
Population 5 Persons who ceased a job during the year ending February 2010 and were working at February 2010	138.9	132.8	125.3	38.5	73.1	11.6	6.7	11.7	538.6
Population 6 Persons who were working at February 2009	1 862.1	1 475.6	1 220.0	427.1	658.3	128.5	57.4	101.5	5 930.3
Population 7 Persons who were working at February 2009 and at February 2010	1 734.1	1 370.7	1 113.9	399.2	609.7	115.0	54.2	93.7	5 490.5
Population 8 Persons who had worked with their employer/business at February 2010 for one year or more	1 588.2	1 233.2	983.7	362.0	535.1	103.7	46.4	82.1	4 934.4
Population 9 Employees (excluding owner managers of incorporated enterprises) at February 2010 with paid leave entitlements	1 142.5	900.1	694.8	245.3	423.5	73.7	42.4	71.1	3 593.4
Population 10 Employees (excluding owner managers of incorporated enterprises) at February 2010 without paid leave entitlements	310.2	246.6	214.2	87.1	97.0	21.9	7.3	14.7	999.0
FEMALES									
Population 1 Persons who worked at some time during the year ending February 2010	1 744.4	1 415.3	1 166.5	418.5	586.3	124.9	55.3	106.9	5 618.0
Population 2 Persons who were working at February 2010	1 545.8	1 240.5	1 025.0	368.4	514.0	109.6	50.1	96.4	4 949.7
Population 3 Employees (excluding owner managers of incorporated enterprises) who had worked with their current employer for one year or more	1 077.8	883.1	678.5	258.8	355.8	75.1	32.6	72.4	3 434.1
Population 4 Persons who ceased a job during the year ending February 2010	321.3	277.8	240.6	77.7	118.5	24.9	11.7	20.1	1 092.7
Population 5 Persons who ceased a job during the year ending February 2010 and were working at February 2010	122.6	103.0	99.2	27.6	46.2	9.6	6.5	9.7	424.4
Population 6 Persons who were working at February 2009	1 527.0	1 252.2	1 022.4	376.1	513.8	110.7	48.4	96.7	4 947.2
Population 7 Persons who were working at February 2009 and at February 2010	1 387.2	1 124.9	915.0	333.5	457.7	99.2	43.9	88.7	4 450.2
Population 8 Persons who had worked with their employer/business at February 2010 for one year or more	1 266.3	1 019.8	816.4	304.3	411.9	89.6	37.3	78.5	4 024.2
Population 9 Employees (excluding owner managers of incorporated enterprises) at February 2010 with paid leave entitlements	968.3	811.0	599.8	214.6	329.4	64.4	35.5	72.2	3 095.3
Population 10 Employees (excluding owner managers of incorporated enterprises) at February 2010 without paid leave entitlements	365.0	280.4	266.6	102.1	122.8	29.9	9.1	17.5	1 193.4

	NSW	Vic.	Qld	SA	WA	Tas.	NT	ACT	Aust.
	'000	'000	'000	'000	'000	'000	'000	'000	'000
PERSONS									
Population 1									
Persons who worked at some time during the year ending February 2010	3 799.9	3 054.3	2 506.0	896.6	1 312.8	265.6	119.9	219.4	12 174.4
Population 2									
Persons who were working at February 2010	3 430.6	2 740.5	2 232.4	806.1	1 178.5	233.5	110.2	199.0	10 930.8
Population 3									
Employees (excluding owner managers of incorporated enterprises) who had worked with their current employer for one year or more	2 267.1	1 799.1	1 392.5	523.6	765.4	152.4	69.5	139.2	7 108.9
Population 4									
Persons who ceased a job during the year ending February 2010	630.7	549.5	498.0	156.6	253.6	53.4	23.0	41.7	2 206.6
Population 5									
Persons who ceased a job during the year ending February 2010 and were working at February 2010	261.5	235.8	224.5	66.2	119.3	21.2	13.2	21.4	963.0
Population 6									
Persons who were working at February 2009	3 389.1	2 727.8	2 242.4	803.2	1 172.1	239.2	105.7	198.1	10 877.6
Population 7									
Persons who were working at February 2009 and at February 2010	3 121.2	2 495.7	2 029.0	732.7	1 067.4	214.2	98.1	182.4	9 940.7
Population 8									
Persons who had worked with their employer/business at February 2010 for one year or more	2 854.5	2 253.0	1 800.1	666.3	947.0	193.3	83.7	160.6	8 958.6
Population 9									
Employees (excluding owner managers of incorporated enterprises) at February 2010 with paid leave entitlements	2 110.8	1 711.1	1 294.6	459.9	752.9	138.1	77.9	143.3	6 688.7
Population 10									
Employees (excluding owner managers of incorporated enterprises) at February 2010 without paid leave entitlements	675.2	527.1	480.8	189.1	219.7	51.8	16.4	32.2	2 192.3

EXPLANATORY NOTES

INTRODUCTION

1 The statistics in this publication were compiled from data collected in the Labour Mobility Survey, conducted throughout Australia in February 2010 as a supplement to the Australian Bureau of Statistics (ABS) monthly Labour Force Survey (LFS).

Respondents to the monthly LFS who were identified as being in scope of the Labour Mobility survey were asked further supplementary survey questions.

2 The publication *Labour Force, Australia* (cat. no. 6202.0) contains information about survey design, sample redesign, scope, coverage and population benchmarks relevant to the monthly LFS, which also apply to supplementary surveys. It also contains definitions of demographic and labour force characteristics, and information about telephone interviewing relevant to both the monthly LFS and supplementary surveys.

CONCEPTS, SOURCES AND METHODS

3 The conceptual framework used in Australia's LFS aligns closely with the standards and guidelines set out in Resolutions of the International Conference of Labour Statisticians. Descriptions of the underlying concepts and structure of Australia's labour force statistics, and the sources and methods used in compiling these estimates, are presented in *Labour Statistics: Concepts, Sources and Methods* (cat. no. 6102.0.55.001).

SCOPE

4 The scope of the LFS was restricted to people aged 15 years and over and excludes the following people:

- members of the permanent defence forces;
- certain diplomatic personnel of overseas governments, customarily excluded from the census and estimated population counts;
- overseas residents in Australia; and
- members of non-Australian defence forces (and their dependants).

5 Students at boarding schools, patients in hospitals, residents of homes (e.g. retirement homes, homes for people with disabilities), and inmates of prisons are excluded from all supplementary surveys.

6 This supplementary survey was conducted in both urban and rural areas in all states and territories, but excluded people living in Indigenous communities in very remote parts of Australia.

COVERAGE

7 The estimates in this publication relate to people covered by the survey in February 2010. In the LFS, coverage rules are applied which aim to ensure that each person is associated with only one dwelling, and hence has only one chance of selection in the survey. See *Labour Force, Australia* (cat. no. 6202.0) for more details.

SAMPLE SIZE

8 Supplementary surveys are not always conducted on the full LFS sample. Since August 1994 the sample for supplementary surveys has been restricted to no more than seven-eighths of the LFS sample.

9 The initial sample for the February 2010 LFS consisted of 36,155 private dwelling households and special dwelling units. Of the 29,134 private dwelling households and special dwelling units that remained in the survey after sample loss (e.g. households selected in the survey which had no residents in scope for the LFS, vacant or derelict dwellings and dwellings under construction), approximately 27,895 or 95.7% were fully responding to the Labour Mobility Survey. The number of completed interviews obtained from these private dwelling households and special dwelling units (after taking into account scope, coverage and sub-sampling exclusions) was 32,062.

EXPLANATORY NOTES *continued*

RELIABILITY OF THE ESTIMATES

- 10** Estimates in this publication are subject to sampling and non-sampling errors:
- Sampling error is the difference between the published estimate and the value that would have been produced if all dwellings had been included in the survey. For more information see the Technical Note.
 - Non-sampling errors are inaccuracies that occur because of imperfections in reporting by respondents and interviewers, and errors made in coding and processing data. These inaccuracies may occur in any enumeration, whether it be a full count or a sample. Every effort is made to reduce the non-sampling error to a minimum by careful design of questionnaires, intensive training and supervision of interviewers and effective processing procedures.

SEASONAL FACTORS

- 11** The estimates are based on information collected in the survey month and, due to seasonal factors, may not be representative of other months of the year.

CLASSIFICATIONS USED

- 12** Country of birth data are classified according to the *Standard Australian Classification of Countries (SACC), 1998* (cat. no. 1269.0).
- 13** Occupation data are classified according to the ANZSCO — *Australian and New Zealand Standard Classification of Occupations First Edition, 2006* (cat. no. 1220.0).
- 14** Industry data are classified according to the *Australian and New Zealand Standard Industrial Classification (ANZSIC), 2006* (cat. no. 1292.0).
- 15** Educational attainment data are classified according to *Australian Standard Classification of Education (ASCED)* (cat. no. 1272.0).

COMPARABILITY OF TIME SERIES

- 16** Revisions are made to population benchmarks for the LFS after each five-yearly Census of Population and Housing (Census). Estimates from the 2010 Labour Mobility Survey are based on the population benchmarks that take into account results from the 2006 Census, first published in the February 2009 issue of *Labour Force, Australia* (cat. no. 6202.0). Labour supplementary surveys conducted from July 2010 will include revised population benchmarks that incorporate revised Net Overseas Migration estimates, published in the September 2008 and September 2009 issues of *Australian Demographic Statistics* (cat. no. 3101.0). For details on population benchmarks, see *Labour Force, Australia* (cat. no. 6202.0).
- 17** The scope of the Labour Mobility Survey was expanded in February 2006 to include all people aged 15 years and over.
- 18** In 2008, the introduction of ANZSCO First Edition and ANZSIC 2006 meant that data relating to change in occupation and industry are not comparable with previous years. Consequently, time series data for 'Whether changed occupation (last to current employer/business)' and 'Whether changed industry (last to current employer/business)' was removed from the 2008 Table 1 and Table 12. In previous issues Table 2 presented time series data for 'Duration with current employer/business'. This information is now presented in Table 1. Users need to exercise care when comparing these estimates with publications prior to February 2008.

EXPLANATORY NOTES *continued*

COMPARABILITY OF TIME SERIES *continued*

19 From 2008, data item 23, 'Whether changed occupation group (with current employer for one year or more)' is derived and output based on change at Major and Minor occupation levels. In previous years, this was derived and output based on change at any level. The following table compares estimates for data items 23a and 23b with how data item 23 was derived in 2006.

EMPLOYEES (EXCLUDING OMIES) WHO HAD BEEN WITH THEIR CURRENT EMPLOYER FOR ONE YEAR OR MORE, Whether changed occupation group—comparison of 2008 and 2006 methods

	2008 <i>data</i> <i>item</i> 23A Major level	2008 <i>data</i> <i>item</i> 23B Minor level	2008 <i>using the</i> <i>2006</i> <i>method</i> (any level)
	'000	'000	'000
Whether changed occupation group (with current employer for one year or more)			
Same occupation	6 174.8	6 102.7	5 990.1
Changed occupation	182.2	254.3	366.9
Total	6 357.1	6 357.1	6 357.1

20 In 2008 and previous years, other data items relating to change in occupation and change in industry are derived and output based on change in Major occupation group and change in industry Division.

COMPARABILITY WITH MONTHLY LFS STATISTICS

21 Due to differences in the scope and sample size of this supplementary survey and that of the monthly LFS, the estimation procedure may lead to some small variations between labour force estimates from this survey and those from the LFS.

PREVIOUS SURVEYS

22 Similar surveys were conducted in November 1972, February 1975, February 1976 and annually from February 1979 to February 1992. Since then it has been conducted biennially. Results were published in *Labour Mobility, Australia* (cat. no. 6209.0).

PREVIOUS REVISIONS TO HISTORICAL DATA

23 Historical estimates of the number and proportion of people who were mobile in the labour market for the periods 1990 to 1996 were revised in the 1998 publication. Previously published estimates for reference periods from 1990 to 1996 will still contain incorrectly derived data. If you require further information about these revisions, please contact the National Information Referral Service on 1300 135 070 or the Labour Market Section on (02) 6252 7206.

NEXT SURVEY

24 The ABS plans to conduct this survey again in February 2012.

ACKNOWLEDGEMENT

25 ABS publications draw extensively on information provided freely by individuals, businesses, governments and other organisations. Their continued cooperation is very much appreciated: without it, the wide range of statistics published by the ABS would not be available. Information received by the ABS is treated in strict confidence as required by the *Census and Statistics Act 1905*.

EXPLANATORY NOTES *continued*

PRODUCTS AND SERVICES

*Confidentialised Unit Record
File (CURF)*

26 It is expected that a CURF will be produced from the Labour Mobility Survey subject to approval by the Australian Statistician. The Basic CURF will be available on CD-ROM, via the ABS Remote Access Data Laboratory (RADL) and the ABS Data Laboratory (ABSDL). The Expanded CURF will only be accessible through the RADL and ABSDL. The CURF will be available in SAS, STATA and SPSS format. A full range of up-to-date information about the availability of ABS CURF's and about applying for access to these is available via the ABS web site (see Services - CURF Microdata). For enquiries regarding CURF's, contact ABS CURF Management Unit via email at microdata.access@abs.gov.au or telephone (02) 6252 7714.

RELATED PUBLICATIONS

27 Other ABS publications which may be of interest include:

- *Australian Labour Market Statistics* (cat. no. 6105.0);
- *Labour Force, Australia* (cat. no. 6202.0);
- *Labour Force Experience, Australia* (cat. no. 6206.0);
- *Persons Not in the Labour Force, Australia* (cat. no. 6220.0);
- *Job Search Experience, Australia* (cat. no. 6222.0); and
- *Underemployed Workers, Australia* (cat. no. 6265.0).

28 Current publications and other products released by the ABS are available from the Statistics Page on the ABS website. The ABS also issues a daily Release Advice on the website which details products to be released in the week ahead.

APPENDIX 1 CLASSIFICATION OF EDUCATION

CLASSIFICATION OF EDUCATION

In 2001, the *ABS Classification of Qualifications (ABSCQ)* (cat. no. 1262.0) was replaced by the *Australian Standard Classification of Education (ASCED)* (cat. no.1272.0). The ASCED is a national standard classification which can be applied to all sectors of the Australian education system including schools, vocational education and training and higher education. ASCED replaces a number of classifications previously used in administrative and statistical systems, including the ABSCQ. The ASCED comprises two classifications: Level of Education and Field of Education.

Level of Highest Educational Attainment can be derived from information on Highest Year of School Completed and Level of Highest Non-school Qualification. The derivation process determines which of the 'non-school' or 'school' attainments will be regarded as the highest. Usually the higher ranking attainment will be self-evident, but in some cases some Secondary Education is regarded, for the purposes of obtaining a single measure, as higher than some Certificate level attainments.

The following decision table is used to determine which of the responses to questions on Highest Year of School Completed (coded to ASCED Broad Level 6) and Level of Highest Non-school Qualification (coded to ASCED Broad Level 5) will be regarded as the highest. It is emphasised that this table was designed for the purpose of obtaining a single value for the output variable Level of Highest Educational Attainment and is not intended to convey any other order.

Decision Table: Level of Highest Educational Attainment							
ASCED LEVEL OF EDUCATION CODES	Certificate n.f.d. (500)	Certificate III or IV n.f.d. (510)	Certificate IV (511)	Certificate III (514)	Certificate I or II n.f.d. (520)	Certificate II (521)	Certificate I (524)
Secondary Education n.f.d. (600)	Certificate n.f.d.	Certificate III or IV n.f.d.	Certificate IV	Certificate III	Certificate I or II n.f.d.	Certificate II	Certificate I
Senior Secondary Education n.f.d. (610)	Senior Secondary n.f.d.	Certificate III or IV n.f.d.	Certificate IV	Certificate III	Senior Secondary n.f.d.	Senior Secondary n.f.d.	Senior Secondary n.f.d.
Year 12 (611)	Year 12	Certificate III or IV n.f.d.	Certificate IV	Certificate III	Year 12	Year 12	Year 12
Year 11 (613)	Year 11	Certificate III or IV n.f.d.	Certificate IV	Certificate III	Year 11	Year 11	Year 11
Junior Secondary Education n.f.d. (620)	Certificate n.f.d.	Certificate III or IV n.f.d.	Certificate IV	Certificate III	Certificate I or II n.f.d.	Certificate II	Certificate I
Year 10 (621)	Year 10	Certificate III or IV n.f.d.	Certificate IV	Certificate III	Year 10	Certificate II	Year 10
Year 9 (622)	Certificate n.f.d.	Certificate III or IV n.f.d.	Certificate IV	Certificate III	Certificate I or II n.f.d.	Certificate II	Certificate I
Year 8 (623)	Certificate n.f.d.	Certificate III or IV n.f.d.	Certificate IV	Certificate III	Certificate I or II n.f.d.	Certificate II	Certificate I
Year 7 (624)	Certificate n.f.d.	Certificate III or IV n.f.d.	Certificate IV	Certificate III	Certificate I or II n.f.d.	Certificate II	Certificate I

APPENDIX 1 CLASSIFICATION OF EDUCATION *continued*

CLASSIFICATION OF EDUCATION *continued*

The decision table is used to rank the information provided in a survey about the qualifications and attainments of a single individual. It does not represent any basis for comparison between differing qualifications. For example, a person whose Highest Year of School Completed was Year 12, and whose Level of Highest Non-school Qualification was a Certificate III, would have those responses crosschecked on the decision table and would as a result have their Level of Highest Educational Attainment output as Certificate III. However, if the same person answered 'Certificate' to the highest non-school qualification question, without offering any further detail, it would be crosschecked against Year 12 on the decision table as 'Certificate not further defined'. The output would then be 'Year 12'. The decision table, therefore, does not necessarily imply that one qualification is 'higher' than the other.

APPENDIX 2 POPULATIONS AND DATA ITEMS LIST

DATA AVAILABLE ON REQUEST

The ABS has a range of data available on request from the Labour Mobility Survey. This section lists the data items and populations which relate to the survey. More detailed breakdowns of some data items may also be available on request.

The population(s) for a particular data item refers to the persons in the survey to whom the data item relates.

For more information about ABS data available on request, contact Client Services Section in Canberra on (02) 6252 7400, or via email <information.consultancy@abs.gov.au>.

- Population 1:* Persons who worked at some time during the year ending February 2010
- Population 2:* Persons who were working at February 2010
- Population 3:* Employees (excluding owner managers of incorporated enterprises) who had worked with their current employer for one year or more
- Population 4:* Persons who ceased a job during the year ending February 2010
- Population 5:* Persons who ceased a job during the year ending February 2010 and were working at February 2010
- Population 6:* Persons who were working at February 2009
- Population 7:* Persons who were working at February 2009 and at February 2010
- Population 8:* Persons who had worked with their employer/business at February 2010 for one year or more
- Population 9:* Employees (excluding owner managers of incorporated enterprises) at February 2010 with paid leave entitlements
- Population 10:* Employees (excluding owner managers of incorporated enterprises) at February 2010 without paid leave entitlements

APPENDIX 2 POPULATIONS AND DATA ITEMS LIST *continued*

<i>Data Items</i>	<i>Populations</i>
1 State or territory of usual residence	All
New South Wales	
Victoria	
Queensland	
South Australia	
Western Australia	
Tasmania	
Northern Territory	
Australian Capital Territory	
2 Area of usual residence	All
State capital city	
Balance of state/territory	
3 Region of usual residence	All
Standard labour force dissemination regions	
4 Sex	All
Males	
Females	
5 Marital status	All
Married	
Not married	
6 Relationship in household	All
Family member	
Husband, wife or partner	
With dependents	
Without dependents	
Lone parent	
With dependents	
Without dependents	
Dependent student	
Non-dependent child	
Other family person	
Non-family member	
Lone person	
Not living alone	
Relationship not determined	
7A Country of birth and period of arrival	All
Born in Australia	
Born overseas	
Arrived before 1971	
Arrived 1971–1980	
Arrived 1981–1990	
Arrived 1991–2000	
Arrived 2001 to survey date	
7B Country of birth (1)	All
Born in Australia	
Born overseas	
Born in main English-speaking countries	
Born in other than main English-speaking countries	

APPENDIX 2 POPULATIONS AND DATA ITEMS LIST *continued*

<i>Data Items</i>	<i>Populations</i>
7C Country of birth (2)	All
Born in Australia	
Born overseas	
Oceania and Antarctica	
North-West Europe	
Southern and Eastern Europe	
North Africa and the Middle East	
South-East Asia	
North-East Asia	
Southern and Central Asia	
Americas	
Sub-Saharan Africa	
8 Age group (years)	All
15–19	
20–24	
25–34	
35–44	
45–54	
55–59	
60–64	
65 and over	
Note: Age collected in single years.	
9 Level of highest educational attainment	All
Postgraduate Degree	
Graduate Diploma/Graduate Certificate	
Bachelor Degree	
Advanced Diploma/Diploma	
Certificate III/IV	
Certificate I/II	
Certificate not further defined	
Year 12	
Year 11	
Year 10 or below	
Level not determined	
No educational attainment	
10A Level of highest non-school qualification	All
With a non-school qualification	
Postgraduate Degree	
Graduate Diploma/Graduate Certificate	
Bachelor Degree	
Advanced Diploma/Diploma	
Certificate III/IV	
Certificate I/II	
Certificate not further defined	
Level not determined	
Without a non-school qualification	
10B Highest year of school completed	All
Year 12	
Year 11	
Year 10	
Year 9	
Year 8 or below	
Never attended school	

APPENDIX 2 POPULATIONS AND DATA ITEMS LIST *continued*

<i>Data Items</i>	<i>Populations</i>
10C Highest non-school qualification and whether qualification obtained overseas or within Australia	All
Born in Australia	
Born overseas	
With a non-school qualification	
Qualification obtained overseas	
Qualification obtained in Australia	
Without a non-school qualification	
11 Labour force status at February 2010	All
Employed	
Unemployed	
Not in the labour force	
12 Number of employers or businesses in the last 12 months	All
One	
Two	
Three	
Four or more	
13 Change in work	3,8
Same employer for one year or more	
Employees (excluding OMIEs) with some change in work	
Employees (excluding OMIEs) with no change in work	
Owner managers and contributing family workers	
14 Whether changed of employer/business in the last 12 months	4,5
Changed employer/business in the last 12 months	
Did not change employer/business in the last 12 months	
Currently not employed	
15 Whether working at February 2010	All
Working	
Not working	
16 Status in employment at February 2010	2,5,7,8
Employees	
Employers	
Own account workers	
Contributing family workers	
17 Full-time or part-time status at February 2010	2,3,5,7-10
Full-time workers	
Part-time workers	
18 Usual hours worked at February 2010	2,3,5,7-10
1-19	
20-29	
30-34	
35-39	
40	
41-44	
45-48	
49 or more	
Less than 1 hour or no hours worked	
Note: Collected in single hours.	

APPENDIX 2 POPULATIONS AND DATA ITEMS LIST *continued*

<i>Data Items</i>	<i>Populations</i>
19 Employment type at February 2010	2,3,5,7-10
Employees (excluding OMIEs)	
With paid leave entitlements	
Without paid leave entitlements	
Owner managers of incorporated enterprises	
Owner managers of unincorporated enterprises	
Contributing family workers	
20A Duration with employer/business at February 2010 (1)	2,3,5,7-10
Under 12 months	
Under 3 months	
3 and under 6 months	
6 and under 12 months	
1 and under 2 years	
2 and under 3 years	
3 and under 5 years	
5 and under 10 years	
10 and under 20 years	
20 years and over	
20B Duration with employer/business at February 2010 (2)	2,3,5,7-10
Less than 12 months with current employer/business	
One year or more with current employer/business	
21 Occupation at February 2010	2,3,5,7-10
Managers	
Professionals	
Technicians and trades workers	
Community and personal service workers	
Clerical and administrative workers	
Sales workers	
Machinery operators and drivers	
Labourers	
22 Industry at February 2010	2,3,5,7-10
Agriculture, forestry and fishing	
Mining	
Manufacturing	
Electricity, gas, water and waste services	
Construction	
Wholesale trade	
Retail trade	
Accommodation and food services	
Transport, postal and warehousing	
Information media and telecommunications	
Financial and insurance services	
Rental, hiring and real estate services	
Professional, scientific and technical services	
Administrative and support services	
Public administration and safety	
Education and training	
Health care and social assistance	
Arts and recreation services	
Other services	

APPENDIX 2 POPULATIONS AND DATA ITEMS LIST *continued*

<i>Data Items</i>	<i>Populations</i>
23A Whether changed Major occupation group (with current employer for one year or more) Same occupation Changed occupation	3
23B Whether changed Minor occupation group (with current employer for one year or more) Same occupation Changed occupation	3
24 Previous occupation with current employer/business Managers Professionals Technicians and trades workers Community and personal service workers Clerical and administrative workers Sales workers Machinery operators and drivers Labourers	3
25A Whether changed usual hours worked with current employer/business in the last 12 months - Employees (excluding OMIEs) Same usual hours worked Changed usual hours worked Changed hours still full-time Changed hours still part-time Full-time to part-time Part- time to full-time Did not know or usual hours worked varied	3
25B Whether changed usual hours worked with current employer/business in the last 12 months - Owner managers and contributing family workers Same usual hours worked Changed usual hours worked Changed hours still full-time Changed hours still part-time Full time to part-time Part time to full-time Did not know or usual hours worked varied Not applicable (Employees excluding OMIES)	8
26 Previous usual hours worked with current employer/business 1-19 20-29 30-34 35-39 40 41-44 45-48 49 or more Less than 1 hour or no hours worked Note: Collected in single hours.	3,8
27 Whether entitled to paid sick leave at February 2010 Entitled to paid sick leave Not entitled to paid sick leave Did not know	3,9,10

APPENDIX 2 POPULATIONS AND DATA ITEMS LIST *continued*

<i>Data Items</i>	<i>Populations</i>
28 Whether entitled to paid holiday leave at February 2010	3,9,10
Entitled to paid holiday leave	
Not entitled to paid holiday leave	
Did not know	
29 Whether had paid leave entitlements at February 2010	3,9,10
Had paid leave entitlements	
Did not have paid leave entitlements	
30 Whether promoted with current employer in the last 12 months	3
Promoted	
Not promoted	
31 Whether transferred with current employer in the last 12 months	3
Transferred	
Not transferred	
32 Whether promoted and/or transferred with current employer in the last 12 months	3
Promoted and/or transferred	
Promoted only	
Transferred only	
Promoted and transferred	
Not promoted or transferred	
33 Reason for ceasing last job	4,5
Lost a job	
Retrenched, made redundant, employer went out of business, dismissed, no work was available	
Job was temporary or seasonal	
Own ill health or injury	
Left a job	
Unsatisfactory work conditions	
Holiday job, returned to studies	
Retired	
New business, better job, family or other reasons	
Business closed or sold for other reasons	
34 Usual hours worked in last job	4,5
1–19	
20–29	
30–34	
35–39	
40	
41–44	
45–48	
49 or more	
Less than 1 hour or no hours worked	
Note: Collected in single hours.	
35 Employment type in last job	4,5
Employees (excluding OMIEs)	
With paid leave entitlements	
Without paid leave entitlements	
Owner managers of incorporated enterprises	
Owner managers of unincorporated enterprises	
Contributing family workers	

APPENDIX 2 POPULATIONS AND DATA ITEMS LIST *continued*

<i>Data Items</i>	<i>Populations</i>
36 Duration of last job	4,5
Under 12 months	
Under 3 months	
3 and under 6 months	
6 and under 12 months	
1 and under 2 years	
2 and under 3 years	
3 and under 5 years	
5 and under 10 years	
10 and under 20 years	
20 years and over	
37 When began last job	4,5
Began last job more than one year ago	
Began and ceased a job in the last 12 months	
38A Whether changed Major occupation group (last to current employer/business)	5
Same occupation	
Changed occupation	
38B Whether changed Minor occupation group (last to current employer/business)	5
Same occupation	
Changed occupation	
39A Whether changed Industry Division (last to current employer/business)	5
Same industry	
Changed industry	
39B Whether changed Industry Subdivision (last to current employer/business)	5
Same industry	
Changed industry	
40 Whether changed employment type (last to current employer/business)	5
Same employment type	
Changed employment type	
41 Whether changed usual hours worked (last to current employer/business)	5
Same usual hours worked	
Changed usual hours worked	
42 Occupation of last job	4,5
Managers	
Professionals	
Technicians and trades workers	
Community and personal service workers	
Clerical and administrative workers	
Sales workers	
Machinery operators and drivers	
Labourers	

APPENDIX 2 POPULATIONS AND DATA ITEMS LIST *continued*

<i>Data Items</i>	<i>Populations</i>
43 Industry of last job	4,5
Agriculture, forestry and fishing	
Mining	
Manufacturing	
Electricity, gas, water and waste services	
Construction	
Wholesale trade	
Retail trade	
Accommodation and food services	
Transport, postal and warehousing	
Information media and telecommunications	
Financial and insurance services	
Rental, hiring and real estate services	
Professional, scientific and technical services	
Administrative and support services	
Public administration and safety	
Education and training	
Health care and social assistance	
Arts and recreation services	
Other services	
44 Whether entitled to paid sick leave in last job	4,5
Entitled to paid sick leave	
Not entitled to paid sick leave	
Did not know	
45 Whether entitled to paid holiday leave in last job	4,5
Entitled to paid holiday leave	
Not entitled to paid holiday leave	
Did not know	
46 Whether had paid leave entitlements in last job	4,5
Had paid leave entitlements	
Did not have paid leave entitlements	
47 Whether working at February 2009	All
Working	
Not working	
48 Usual hours worked at February 2009	3,6-8
1-19	
20-29	
30-34	
35-39	
40	
41-44	
45-48	
49 or more	
Less than 1 hour or no hours worked	
Note: Collected in single hours.	
49 Employment type at February 2009	3,6-8
Employees (excluding OMIEs)	
With paid leave entitlements	
Without paid leave entitlements	
Owner managers of incorporated enterprises	
Owner managers of unincorporated enterprises	
Contributing family workers	

APPENDIX 2 POPULATIONS AND DATA ITEMS LIST *continued*

<i>Data Items</i>	<i>Populations</i>
50A Whether changed Major occupation group (February 2009 and February 2010)	3,7,8
Same occupation	
Different occupation	
50B Whether changed Minor occupation group (February 2009 and February 2010)	3,7,8
Same occupation	
Different occupation	
51A Whether changed Industry Division (February 2009 and February 2010)	3,7,8
Same industry	
Different industry	
51B Whether changed Industry Subdivision (February 2009 and February 2010)	3,7,8
Same industry	
Different industry	
52 Whether changed employment type (February 2009 and February 2010)	3,7,8
Same employment type	
Different employment type	
53 Whether changed usual hours worked (February 2009 and February 2010)	3,7,8
Same usual hours worked	
Different usual hours worked	
Currently not employed	
54 Occupation at February 2009	3,6-8
Managers	
Professionals	
Technicians and trades workers	
Community and personal service workers	
Clerical and administrative workers	
Sales workers	
Machinery operators and drivers	
Labourers	
55 Industry at February 2009	3,6-8
Agriculture, forestry and fishing	
Mining	
Manufacturing	
Electricity, gas, water and waste services	
Construction	
Wholesale trade	
Retail trade	
Accommodation and food services	
Transport, postal and warehousing	
Information media and telecommunications	
Financial and insurance services	
Rental, hiring and real estate services	
Professional, scientific and technical services	
Administrative and support services	
Public administration and safety	
Education and training	
Health care and social assistance	
Arts and recreation services	
Other services	
56 Whether entitled to paid sick leave at February 2009	3,6-8
Entitled to paid sick leave	
Not entitled to paid sick leave	
Did not know	

APPENDIX 2 POPULATIONS AND DATA ITEMS LIST *continued*

Data Items

Populations

57 Whether entitled to paid holiday leave at February 2009

3,6-8

Entitled to paid holiday leave

Not entitled to paid holiday leave

Did not know

58 Whether has paid leave entitlements at February 2009

3,6-8

Had paid leave entitlements

Did not have paid leave entitlements

APPENDIX 3 SUPPLEMENTARY SURVEYS

SUPPLEMENTARY SURVEYS

The Monthly Population Survey program and Multi-Purpose Household Survey program collect data on particular aspects of the labour force. The following is an historical list of labour surveys collected in these programs. Data from these surveys are available on request and can be obtained by contacting the ABS.

	<i>cat. no.</i>	<i>Frequency</i>	<i>Latest issue</i>
Monthly Population Supplementary Surveys			
Childhood Education and Care, Australia	4402.0	Irregular	June 2008
Child Employment, Australia	6211.0	Irregular	June 2006
Education and Work, Australia	6227.0	Annual	May 2009
Employee Earnings, Benefits, and Trade Union Membership, Australia	6310.0	Annual	August 2009
Forms of Employment, Australia	6359.0	Annual	November 2009
Job Search Experience, Australia	6222.0	Annual	July 2009
Labour Force Experience, Australia	6206.0	Biennial	February 2009
Labour Force Status and Other Characteristics of Recent Migrants, Australia	6250.0	Irregular	November 2007
Labour Mobility, Australia	6209.0	Biennial	February 2010
Locations of Work, Australia	6275.0	Irregular	November 2008
Multiple Jobholding, Australia(a)	6216.0	Irregular	August 1997
Persons Not in the Labour Force, Australia	6220.0	Annual	September 2009
Underemployed Workers, Australia	6265.0	Annual	September 2009
Working Time Arrangements, Australia(b)	6342.0	Irregular	November 2009
Multi-Purpose Household Surveys			
Barriers and Incentives to Labour Force Participation, Australia	6239.0	Biennial	2008–2009
Retirement and Retirement Intentions, Australia	6238.0	Biennial	2008–2009
Work-Related Injuries, Australia	6324.0	Irregular	2005–2006

(a) Latest data available on request July 2001.

(b) This product replaces the publication Working Arrangements, Australia (cat. no. 6342.0).

TECHNICAL NOTE DATA QUALITY

INTRODUCTION

1 Estimates in this publication are based on information obtained from occupants of a sample of dwellings, and are subject to sampling variability. That is, they may differ from those estimates that would have been produced if all dwellings had been included in the survey. One measure of the likely difference is given by the standard error (SE), which indicates the extent to which an estimate might have varied by chance because only a sample of dwellings was included. There are about two chances in three (67%) that a sample estimate will differ by less than one SE from the number that would have been obtained if all dwellings had been included, and about 19 chances in 20 (95%) that the difference will be less than two SEs. Another measure of the likely difference is the relative standard error (RSE), which is obtained by expressing the SE as a percentage of the estimate.

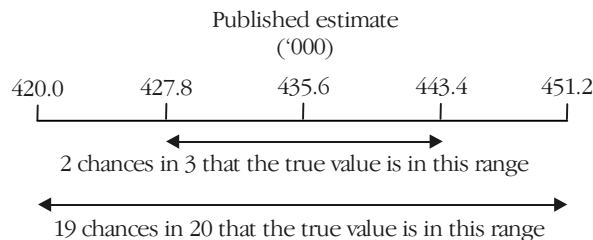
2 Due to space limitations, it is impractical to print the SE of each estimate in the publication. Instead, a table of SEs is provided to determine the SE for an estimate from the size of that estimate (see table T1). The SE table is derived from a mathematical model, referred to as the 'SE model', which is created using data from a number of past Labour Force Surveys. It should be noted that the SE model only gives an approximate value for the SE for any particular estimate, since there is some minor variation between SEs for different estimates of the same size.

CALCULATION OF STANDARD ERROR

3 An example of the calculation and the use of SEs in relation to estimates of persons is as follows. Table 10 shows that 435,600 people involuntarily ceased a job during the year and their duration in that job was less than 12 months. Since this estimate is between 300,000 and 500,000, table T1 shows that the SE for Australia will lie between 6,650 and 8,350 and can be approximated by interpolation using the following general formula:

$$\begin{aligned}
 & SE \text{ of estimate} \\
 &= \text{lower SE} + \left(\left(\frac{\text{size of estimate} - \text{lower estimate}}{\text{upper estimate} - \text{lower estimate}} \right) \times (\text{upper SE} - \text{lower SE}) \right) \\
 &= 6,650 + \left(\left(\frac{435,600 - 300,000}{500,000 - 300,000} \right) \times (8,350 - 6,650) \right) \\
 &= 7,800 \text{ (rounded to the nearest 100)}
 \end{aligned}$$

4 Therefore, there are about two chances in three that the value that would have been produced if all dwellings had been included in the survey will fall within the range 427,800 to 443,400 and about 19 chances in 20 that the value will fall within the range 420,000 to 451,200. This example is illustrated in the following diagram.



5 In general, the size of the SE increases as the size of the estimate increases. Conversely, the RSE decreases as the size of the estimate increases. Very small estimates are thus subject to such high RSEs that their value for most practical purposes is unreliable. In the tables in this publication, only estimates with RSEs of 25% or less are considered reliable for most purposes. Estimates with RSEs greater than 25% but less than or equal to 50% are preceded by an asterisk (e.g.*3.2) to indicate they are subject to high SEs and should be used with caution. Estimates with RSEs of greater than 50%,

CALCULATION OF STANDARD
ERROR *continued*

preceded by a double asterisk (e.g.**0.3), are considered too unreliable for general use and should only be used to aggregate with other estimates to provide derived estimates with RSEs of less than 25%.

PROPORTIONS AND
PERCENTAGES

6 Proportions and percentages formed from the ratio of two estimates are also subject to sampling errors. The size of the error depends on the accuracy of both the numerator and the denominator. A formula to approximate the RSE of a proportion is given below. This formula is only valid when x is a subset of y.

$$RSE\left(\frac{x}{y}\right) = \sqrt{[RSE(x)]^2 - [RSE(y)]^2}$$

7 Considering the previous example from table 10, of the 435,600 people who ceased a job involuntarily during the year ending February 2010, and their duration of last job was less than 12 months, 242,300 or 55.6% gave their reason as 'Job was temporary or seasonal'. The SE of 242,300 may be calculated by interpolation as 6,000. To convert this to an RSE we express the SE as a percentage of the estimate, or 6,000/242,300 = 2.5%. The SE for 435,600 was calculated previously as 7,800, which converted to an RSE 7,800/435,600=1.8%. Applying the above formula, the RSE of the proportion is:

$$RSE = \sqrt{(2.5)^2 - (1.8)^2} = 1.7\%$$

8 Therefore, the SE for the proportion of people who reported their reason for ceasing their last job as 'Job was temporary or seasonal' and their duration of last job was less than 12 months is 0.9 percentage points (= (55.6/100)x1.7). Therefore, there are about two chances in three that the proportion of people who reported their reason for ceasing their last job as 'Job was temporary or seasonal' and their duration of last job was less than 12 months or more was between 54.7% and 56.5% and 19 chances in 20 that the proportion is within the range 53.8% to 57.4%.

DIFFERENCES

9 Published estimates may also be used to calculate the difference between two survey estimates (of numbers or percentages). Such an estimate is subject to sampling error. The sampling error of the difference between two estimates depends on their SEs and the relationship (correlation) between them. An approximate SE of the difference between two estimates (x-y) may be calculated by the following formula:

$$SE(x-y) = \sqrt{[SE(x)]^2 + [SE(y)]^2}$$

10 While this formula will only be exact for differences between separate and uncorrelated characteristics or sub populations, it is expected to provide a good approximation for all differences likely to be of interest in this publication.

TECHNICAL NOTE DATA QUALITY *continued*

STANDARD ERRORS

T1 STANDARD ERRORS OF ESTIMATES

Size of Estimate (persons)	AUST.									SE	RSE
	NSW	Vic.	Qld.	SA	WA	Tas.	NT	ACT			
	no.	no.	no.	no.	no.	no.	no.	no.	no.		
100	290	290	220	180	220	110	80	100	110	110.0	
200	400	380	320	240	290	160	120	170	190	95.0	
300	470	440	390	280	340	190	150	210	260	86.7	
500	580	540	500	340	420	240	190	270	380	76.0	
700	660	620	580	390	480	270	220	300	480	68.6	
1,000	760	710	680	450	550	310	260	330	610	61.0	
1,500	900	830	810	530	640	360	300	360	780	52.0	
2,000	1 010	930	910	590	710	390	330	390	920	46.0	
2,500	1 100	1 000	1 000	650	800	400	350	400	1 050	42.0	
3,000	1 200	1 100	1 050	700	850	450	400	450	1 150	38.3	
3,500	1 250	1 150	1 100	700	900	450	400	450	1 250	35.7	
4,000	1 300	1 200	1 200	750	900	500	400	450	1 350	33.8	
5,000	1 450	1 300	1 250	800	1 000	500	450	500	1 500	30.0	
7,000	1 650	1 500	1 450	900	1 150	600	550	600	1 700	24.3	
10,000	1 850	1 700	1 600	1 050	1 300	700	700	700	2 000	20.0	
15,000	2 150	1 950	1 800	1 200	1 500	850	1 000	850	2 350	15.7	
20,000	2 400	2 200	1 950	1 350	1 650	1 000	1 250	1 000	2 550	12.8	
30,000	2 800	2 550	2 250	1 550	1 900	1 250	1 750	1 250	2 900	9.7	
40,000	3 100	2 800	2 500	1 800	2 100	1 500	2 200	1 500	3 150	7.9	
50,000	3 350	3 050	2 750	2 000	2 300	1 700	2 600	1 650	3 400	6.8	
100,000	4 250	4 000	3 750	3 000	3 400	2 400	4 550	2 250	4 300	4.3	
150,000	5 000	4 850	4 600	3 850	4 450	2 850	6 200	2 500	5 000	3.3	
200,000	5 750	5 650	5 400	4 550	5 350	3 200	7 800	2 650	5 600	2.8	
300,000	7 250	7 250	6 850	5 550	6 750	3 700	10 600	2 800	6 650	2.2	
500,000	10 150	10 050	9 250	7 000	8 600	4 250	..	2 800	8 350	1.7	
1,000,000	15 100	15 250	13 200	8 900	10 950	4 850	11 750	1.2	
2,000,000	20 350	22 550	17 700	10 600	12 700	17 050	0.9	
5,000,000	25 900	36 100	23 900	11 900	13 250	28 450	0.6	
10,000,000	27 750	49 750	27 950	37 950	0.4	
15,000,000	42 850	0.3	

.. not applicable

GLOSSARY

Ceased a job voluntarily	People who ceased a job voluntarily, because: <ul style="list-style-type: none">■ of unsatisfactory work arrangements/pay/hours; or■ the job was seasonal, temporary or a holiday job and they left that job to return to studies; or■ they retired, started a new business, got a better job, left for family reasons.
Ceased a job involuntarily	People who ceased a job involuntarily, because: <ul style="list-style-type: none">■ they were retrenched or their business closed down because of financial difficulties; or■ the job was seasonal, temporary or a holiday job and they did not leave that job to return to studies; or■ they left their job because of their own ill health or injury.
Change in employer/business	People who were employed at February 2010 and, within the 12 months to February 2010, ceased working with one employer/business and started working with another employer/business in relation to their main job.
Change in employment type	Any change in employment type in relation to main job.
Change in Industry division	Any change between Industry divisions as classified by the <i>Australian and New Zealand Standard Industrial Classification (ANZSIC), Second Edition, 2006</i> (cat. no. 1292.0).
Change in Industry subdivision	Any change between industry Subdivisions as classified by the <i>Australian and New Zealand Standard Industrial Classification (ANZSIC), Second Edition, 2006</i> (cat. no. 1292.0).
Change in Major occupation group	Any change between Major occupation groups as classified by the <i>Australian and New Zealand Standard Classification of Occupations, (ANZSCO), First Edition, 2006</i> (cat. no. 1220.0).
Change in Minor occupation group	Any change between Minor occupation groups as classified by the <i>Australian and New Zealand Standard Classification of Occupations, (ANZSCO), First Edition, 2006</i> (cat. no. 1220.0).
Change in usual hours	Any change in the number of usual hours worked in relation to main job.
Change in work	Employees (excluding owner managers of incorporated enterprises) were considered to have had some change in work if they had been with their current employer for one year or more at February 2010 and reported that, in the 12 months to February 2010, they had: <ul style="list-style-type: none">■ been promoted;■ transferred to a different position;■ changed usual hours worked; or■ changed occupation.
Contributing family workers	People who work without pay, in an economic enterprise operated by a relative.
Current employer/business	Refers to the employer/business which the person had in the week before the interview. Where the person had more than one employer/business, the employer/business for which most hours were usually worked, was regarded as the current employer/business.
Did not change employer/business	For this publication, mainly refers to people who were employed at February 2010 for less than 12 months, and did not work with a different employer/business in the previous 12 months. People who were working at February 2010 for one year or more could also be considered to have not changed employer/business, but are not included in data items in this survey.
Different employment type	See 'Change in employment type'.
Different industry	See 'Change in industry'.
Different occupation	See 'Change in occupation'.
Different usual hours worked	See 'Change in usual hours'.

GLOSSARY *continued*

Duration of last job	The period from the commencement of the last job up to the time the person ceased working in that job.
Duration with employer/business at February 2010	The period between the commencement with the current employer/business and the week before the interview.
Employed	<p>People aged 15 years and over who, during the reference week:</p> <ul style="list-style-type: none"> ■ worked for one hour or more for pay, profit, commission or payment in kind, in a job or business or on a farm (comprising employees, employers and own account workers); or ■ worked for one hour or more without pay in a family business or on a farm (i.e. contributing family workers); or ■ were employees who had a job but were not at work and were: <ul style="list-style-type: none"> ■ away from work for less than four weeks up to the end of the reference week; or ■ away from work for more than four weeks up to the end of the reference week and received pay for some or all of the four week period to the end of the reference week; or ■ away from work as a standard work or shift arrangement; or ■ on strike or locked out; or ■ on workers' compensation and expected to return to their job; or ■ were employers or own account workers who had a job, business of farm, but were not at work.
Employees	People who work for a public or private employer and receive remuneration in wages, salary, a retainer fee from their employer while working on a commission basis, tips, piece rates, or payment in kind, or people who operate their own incorporated enterprise with or without hiring employees.
Employer/business at February 2010	See 'Current employer/business'.
Employers	People who operate their own unincorporated economic enterprise or engage independently in a profession or trade, and hire one or more employees.
Employment type	<p>Classifies employed people according to the following categories on the basis of their main job (that is, the job in which they usually worked the most hours):</p> <ul style="list-style-type: none"> ■ Employees (excluding owner managers of incorporated enterprises): <ul style="list-style-type: none"> ■ with paid leave entitlements; ■ without paid leave entitlements; ■ Owner managers of incorporated enterprises; ■ Owner managers of unincorporated enterprises; ■ Contributing family workers.
Full-time workers in main job	Employed people who usually worked 35 hours or more a week (in their main job) and others who, although usually worked less than 35 hours a week, worked 35 hours or more during the reference week.
Industry	An industry is a group of businesses or organisations that undertake similar economic activities to produce both goods and services. In this publication, industry refers to ANZSIC Division as classified according to the <i>Australian and New Zealand Standard Industrial Classification (ANZSIC), Second Edition, 2006</i> (cat. no. 1292.0).
Last job	The last job in which employment ceased during the reference period.
Level of highest educational attainment	Level of highest educational attainment identifies the highest achievement a person has attained in any area of study. It is not a measurement of the relative importance of different fields of study but a ranking of qualifications and other educational attainments regardless of the particular area of study or the type of institution in which the study was undertaken. See Appendix 1 for an explanation of how highest level is derived.

GLOSSARY *continued*

Level of highest non-school qualification	Non-school qualifications are awarded for educational attainments other than those of pre-primary, primary or secondary education. They include qualifications at the Post Graduate Degree level, Master Degree level, Graduate Diploma and Graduate Certificate level, Bachelor Degree level, Advanced Diploma and Diploma level, and Certificates I, II, III and IV levels. Non-school qualifications may be attained concurrently with school qualifications.
Main English-speaking countries	The list of main English-speaking countries provided here is not an attempt to classify countries on the basis of whether or not English is the predominant or official language of each country. It is a list of the main countries from which Australia receives, or has received, significant numbers of overseas settlers who are likely to speak English. These countries comprise the United Kingdom, the Republic of Ireland, New Zealand, Canada, South Africa and the United States of America.
Main job	The job in which the most hours were usually worked.
Not employed	People who were either 'unemployed' or 'not in the labour force' as defined.
Not in the labour force	People who were not in the categories 'employed' or 'unemployed' as defined.
Not working at February 2010	See 'Not Employed'.
Occupation	An occupation is a collection of jobs that are sufficiently similar in their title and tasks, skill level and skill specialisation which are grouped together for the purposes of classification. In this publication occupation refers to Major Group as defined by ANZSCO— <i>Australian and New Zealand Standard Classification of Occupations, First Edition, 2006</i> (cat. no. 1220.0).
Own account workers	People who operated their own unincorporated economic enterprise or engaged independently in a profession or trade, and hired no employees.
Owner managers	People who work in their own business, with or without employees, whether or not the business is an incorporated enterprise. Comprises owner managers of incorporated enterprises and owner managers of unincorporated enterprises.
Owner managers of incorporated enterprises (OMIEs)	People who worked in their own incorporated enterprise, that is, a business entity which is registered as a separate legal entity to its members or owners (also known as a limited liability company). These people are classified as employees under 'status in employment'.
Owner managers of unincorporated enterprises (OMUEs)	People who operated their own unincorporated enterprise, that is, a business entity in which the owner and the business are legally inseparable, so that the owner is liable for any business debts that are incurred. Includes those engaged independently in a trade or profession. These people are classified as employers under 'status in employment' if their business has employees, or own account workers if it does not.
Part-time workers in main job	Employed people who usually worked less than 35 hours a week (in their main job) and who did so during the reference week.
Previous job	See 'Last job'.
Promoted	A permanent increase in wage or salary and an increase in responsibility or complexity of work. Temporary promotions, acting and temporary higher duties are excluded.
Reference period	The 52 weeks up to the end of the week prior to interview.
Reference week	The week preceding the week in which the interview was conducted.
Retrenched	People who ceased their last job because they were either: <ul style="list-style-type: none"> ■ employees who were laid off, including no work available, made redundant, employer went out of business or dismissed; and ■ self employed people whose business closed down for economic reasons, including 'went broke', liquidated, no work, or no supply or demand.

GLOSSARY *continued*

Status in employment	Employed people classified by whether they were employees, employers, own account workers, or contributing family workers.
Transferred	A change of position without a change in either the level of responsibility or wages or salary. Both employer-initiated and employee-initiated transfers are included.
Unemployed	People aged 15 years and over who were not employed during the reference week, and: <ul style="list-style-type: none">■ had actively looked for full-time or part-time work at any time in the four weeks up to the end of the reference week and were available for work in the reference week; or■ were waiting to start a new job within four weeks from the end of the reference week, and could have started in the reference week if the job had been available then.
Usual hours worked	The number of hours usually worked.
With paid leave entitlements	The entitlement of employees (excluding OMIEs) to either paid holiday leave or paid sick leave (or both) in their current job. People employed in their own business or who were contributing family workers were not asked questions about paid leave entitlements.
Without paid leave entitlements	Employees (excluding OMIEs) who were not entitled to paid holiday leave and paid sick leave, or did not know whether they were entitled to paid sick leave and paid holiday leave in their current job.
Worked at some time during the year ending February 2010	For practical reasons it was not possible to include all of the questions from the Labour Force Survey for previous periods. People who were either currently employed, or reported having worked for an employer or in their own business at some time in the previous year, were defined as having worked at some time during the year ending February 2010.
Working at February 2009	For practical reasons it was not possible to include all of the questions from the Labour Force Survey for previous periods. Therefore, people who reported that they had a job or business one year ago were defined as working at February 2009.
Working at February 2010	See 'Employed'.

FOR MORE INFORMATION . . .

INTERNET **www.abs.gov.au** the ABS website is the best place for data from our publications and information about the ABS.

INFORMATION AND REFERRAL SERVICE

Our consultants can help you access the full range of information published by the ABS that is available free of charge from our website. Information tailored to your needs can also be requested as a 'user pays' service. Specialists are on hand to help you with analytical or methodological advice.

PHONE 1300 135 070

EMAIL client.services@abs.gov.au

FAX 1300 135 211

POST Client Services, ABS, GPO Box 796, Sydney NSW 2001

FREE ACCESS TO STATISTICS

All statistics on the ABS website can be downloaded free of charge.

WEB ADDRESS www.abs.gov.au