

CORRECTIVE SERVICES

AUSTRALIA

EMBARGO: 11.30AM (CANBERRA TIME) THURS 23 MAR 2006

C O N T E N T S

	<i>page</i>
Notes	2
Summary of findings	3

TABLES

1 Persons in full-time custody	8
2 Imprisonment rates	9
3 Persons in full-time custody, by sex	10
4 Imprisonment rates, by sex	11
5 Persons in full-time custody, by type of custody	12
6 Imprisonment rates, by type of custody	13
7 Persons in full-time custody, by legal status	14
8 Imprisonment rates, by legal status	15
9 Sentenced prisoner receptions into full-time custody	16
10 Indigenous persons in full-time custody, by sex	17
11 Indigenous imprisonment rates, by sex	18
12 Indigenous persons in full-time custody, by legal status	19
13 Indigenous imprisonment rates, by legal status	20
14 Persons in periodic detention, by sex	21
15 Federal sentenced persons in full-time custody, by sex	22
16 Persons in community-based corrections, by sex	23
17 Community-based corrections rates, by sex	24
18 Persons in community-based corrections, by type of order	25

ADDITIONAL INFORMATION

Explanatory Notes	27
Glossary	33

I N Q U I R I E S

For further information about these and related statistics, contact the National Information and Referral Service on 1300 135 070 or Nick Skondreas on Melbourne (03) 9615 7375.

NOTES

FORTHCOMING ISSUES

<i>ISSUE (Quarter)</i>	<i>RELEASE DATE</i>
March 2006	22 June 2006



ABOUT THIS PUBLICATION

This publication presents information on persons in custody and community-based corrections. The statistics are derived from information provided to the Australian Bureau of Statistics (ABS) from administrative records held by corrective services agencies in each state and territory, and from the Australian Government Attorney-General's Department for details on federal prisoners. Details are provided for each state and territory on: numbers and imprisonment rates by type of custody (i.e. open or secure custody or periodic detention); prisoner numbers by legal status (sentenced or unsentenced) for all prisoners and for Indigenous prisoners; the number of sentenced receptions into custody; the number of federal prisoners; and the numbers and rates of persons serving community-based corrections orders.

The ABS acknowledges the valuable contribution of the Board of Management and the Advisory Group of the National Corrective Services Statistics Unit as well as the staff of the various agencies that provide the statistics that are presented in this publication.

FURTHER INFORMATION

More information about ABS activities in the field of crime and justice statistics is available from the Crime and Justice theme page on the ABS web site <www.abs.gov.au>. Details of other ABS publications relating to Crime and Justice statistics can be found in paragraphs 38–39 of the Explanatory Notes.



ABBREVIATIONS

ABS	Australian Bureau of Statistics
ACT	Australian Capital Territory
Aust.	Australia
ERP	estimated resident population
NCCJS	National Centre for Crime and Justice Statistics, Australian Bureau of Statistics
NSW	New South Wales
NT	Northern Territory
Qld	Queensland
SA	South Australia
Tas.	Tasmania
Vic.	Victoria
WA	Western Australia

Peter Harper
Acting Australian Statistician

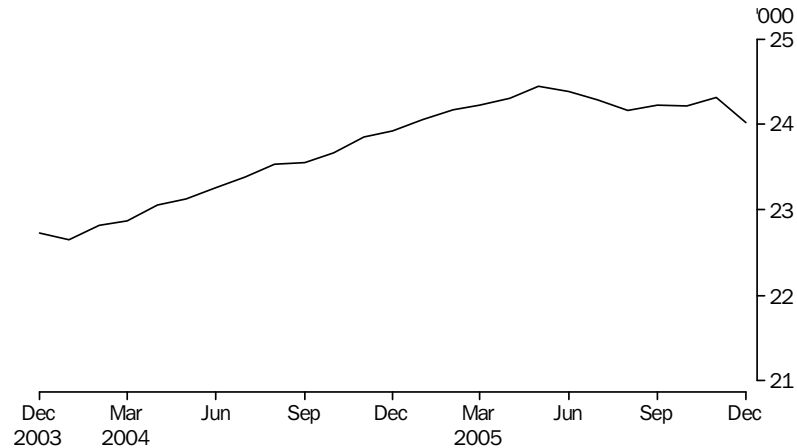
SUMMARY OF FINDINGS

PERSONS IN CORRECTIVE SERVICES

Based on first day of the month averages, for the December quarter 2005 there were 79,370 persons under the authority of corrective services (excluding those in periodic detention). This represents an increase of 5% (3,669 persons) since the December quarter 2004. The largest proportional increase was in South Australia (13%), followed by Queensland (6%) and the Northern Territory (5%). The total comprised 24,173 persons in full-time custody and 55,197 persons in community-based corrections.

NUMBER OF PRISONERS

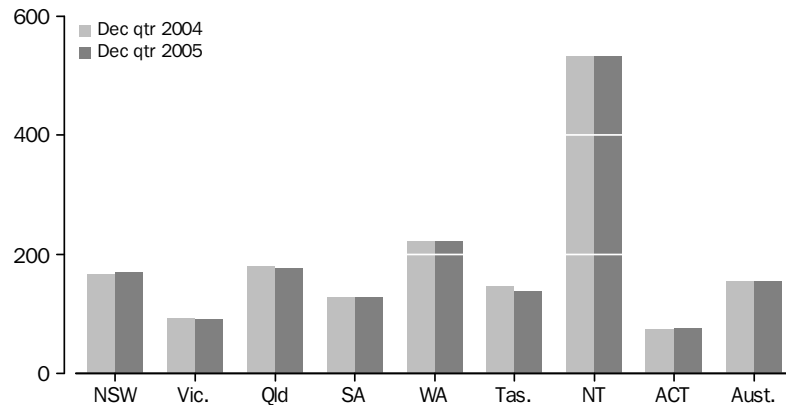
PERSONS IN PRISON CUSTODY, Average daily number per month



The average daily number of full-time prisoners in Australia in the December quarter 2005 was 24,184, a decrease of less than 1% on the previous quarter and an increase of 2% on the December quarter 2004.

RATES PER 100,000 ADULTS

AVERAGE DAILY IMPRISONMENT RATE (a), By State and Territory



(a) Rate per 100,000 adult population.

Nationally, the December quarter 2005 average daily imprisonment rate was 155 prisoners per 100,000 adult population, an increase of less than 1% (154 prisoners) since the December quarter 2004. The Northern Territory had the highest imprisonment rate (533 prisoners per 100,000 adult population), followed by Western Australia (223) and Queensland (177). The Australian Capital Territory (including Australian Capital Territory prisoners held in New South Wales prisons) and Victoria had the lowest imprisonment rates (76 and 92 prisoners per 100,000 adults respectively).

SUMMARY OF FINDINGS *continued*

**RATES PER 100,000
ADULTS *continued***

The largest proportional increases in imprisonment rates since the December quarter 2004 were recorded in the Australian Capital Territory (including Australian Capital Territory prisoners held in New South Wales prisons) (3%) and New South Wales (1%). The largest proportional decrease (5%) over the same period was recorded in Tasmania.

SEX

Of the average daily number of full-time prisoners in Australia in the December quarter 2005, 22,554 (93%) were male and 1,630 (7%) were female. The average daily imprisonment rate for males was 293 prisoners per 100,000 adult male population, while for females it was 21 prisoners per 100,000 adult female population. Males were 14 times more likely to be in prison than females.

**TYPE OF FULL-TIME
CUSTODY**

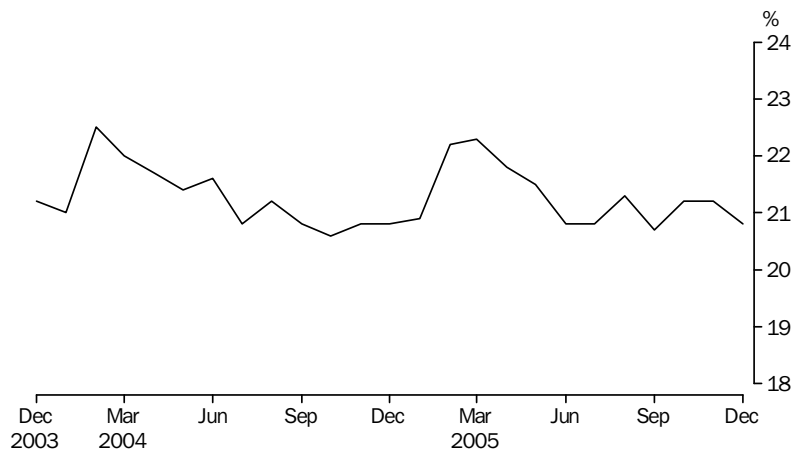
The average daily number of prisoners in secure prison custody in the December quarter 2005 was 18,177 (75% of prisoners in full-time custody). Open prison custody comprised 6,006 prisoners.

In the December quarter 2005, all prisoners held in full-time custody in the Australian Capital Territory were in secure custody. Of the other states and territories, Victoria and South Australia had the highest proportion of prisoners in secure custody (both 89%). New South Wales (including Australian Capital Territory prisoners held in New South Wales prisons) had the lowest proportion of prisoners in secure full-time custody (61%).

LEGAL STATUS

The average number of prisoners in full-time custody on the first day of each month in the December quarter 2005 was 24,173, comprising an average of 5,095 (21%) unsentenced and 19,078 sentenced (79%) prisoners. South Australia had the highest proportion of unsentenced prisoners (35%), followed by the Australian Capital Territory (including Australian Capital Territory prisoners held in New South Wales prisons) (33%). The lowest proportions of unsentenced prisoners were recorded in Western Australia (16%), Victoria and the Northern Territory (both 18%).

UNSENTENCED PERSONS IN PRISON CUSTODY, Proportion per month



**SENTENCED PRISONER
RECEPTIONS**

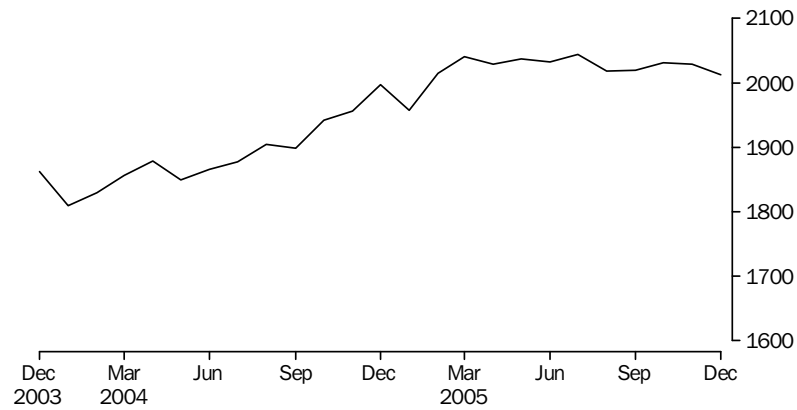
There were 6,258 sentenced prisoner receptions into full-time custody in Australia in the December quarter 2005. The number of sentenced receptions increased by 342 (6%) since the September quarter 2005, and decreased by 115 (2%) since the December quarter 2004.

SUMMARY OF FINDINGS *continued*

INDIGENOUS PRISONERS

In the December quarter 2005 there were 5,662 Indigenous adult prisoners in full-time custody in Australia, comprising 5,192 (92%) males and 470 (8%) females. Almost 80% of the total Indigenous prisoner population was located in three states: New South Wales (1,737 persons); Queensland (1,374); and Western Australia (1,345).

INDIGENOUS PERSONS IMPRISONMENT RATE (a)

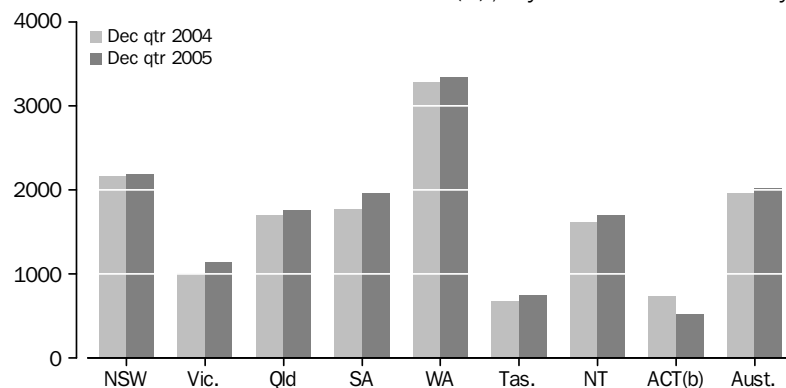


(a) Rate per 100,000 adult Indigenous population.

The national rate of imprisonment for Indigenous persons in the December quarter 2005 was 2,024 per 100,000 adult Indigenous population, an increase of 3% since the December quarter 2004 and a decrease of less than 1% since the previous quarter.

The highest rate of imprisonment for Indigenous prisoners was recorded in Western Australia (3,347 Indigenous prisoners per 100,000 adult Indigenous population), followed by New South Wales (2,183).

INDIGENOUS IMPRISONMENT RATE (a), By State and Territory



(a) Rate per 100,000 adult Indigenous population, based on first day of month.

(b) Apparent variations in ACT rates may be as a result of small counts, see tables 10 and 11.

The largest proportional increase (13%) in the rate of imprisonment of Indigenous persons since the December quarter 2004 was recorded in Victoria. The next highest increase was in South Australia (11%), followed by Tasmania (10%).

The age standardised national rate of imprisonment of Indigenous people from the National Prisoner Census at June 2005 was 12 times higher (1,561) than the rate for non-Indigenous persons (129). Imprisonment rates in the National Prisoner Census take into account the different age profiles of the Indigenous and non-Indigenous

SUMMARY OF FINDINGS *continued*

INDIGENOUS PRISONERS

continued

populations. Further information on the comparison of imprisonment rates between Indigenous and non-Indigenous populations can be found in *Prisoners in Australia 2005* (cat. no. 4517.0).

PERIODIC DETENTION

Periodic detention is a form of custody only used in New South Wales and the Australian Capital Territory. During the December quarter 2005 there was an average daily number of 841 persons in New South Wales and 106 persons in the Australian Capital Territory held in periodic detention. The rate of imprisonment for periodic detention increased in New South Wales by 8% and in the Australian Capital Territory by 7% between the December quarters of 2004 and 2005.

FEDERAL PRISONERS

In the December quarter 2005, there were 656 federal prisoners in Australia, a decrease of 19 (3%) since the December quarter 2004. More than half (57%) of these federal prisoners were sentenced in New South Wales.

PERSONS IN COMMUNITY-BASED CORRECTIONS

Community-based corrections orders are non-custodial orders under the authority of corrective services and include restricted movement, fine option, community service, parole, bail and sentenced probation. In the December quarter 2005, there were 55,197 persons in community-based corrections in Australia, an increase of less than 1% (291 persons) since the September quarter 2005 and an increase of 6% (3,275 persons) since the December quarter 2004.

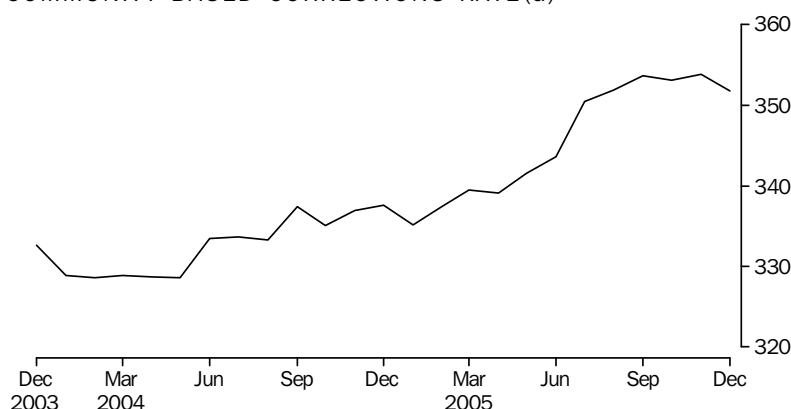
Sex

Of the average number of persons in community-based corrections in Australia on the first day of each month in the December quarter 2005, 45,109 (82%) were male and 9,948 (18%) were female.

Rates per 100,000 adults

Nationally, the rate of persons in community-based corrections was 353 persons per 100,000 adult population for the December quarter 2005. This was an increase of 5% since the December quarter 2004 (337 persons per 100,000 adults). The largest increases since the December quarter 2004 were recorded in South Australia (15%), followed by Queensland (7%) and Tasmania (5%).

COMMUNITY-BASED CORRECTIONS RATE(a)

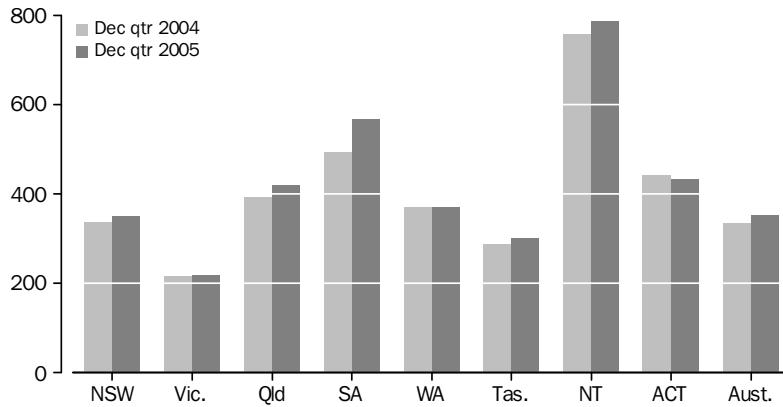


(a) Rate per 100,000 adult population.

SUMMARY OF FINDINGS *continued*

*Rates per 100,000 adults
continued*

COMMUNITY-BASED CORRECTIONS RATE(a), By State and Territory



(a) Rate per 100,000 adult population.

In the December quarter 2005, the rate of community-based corrections for males was 585 per 100,000 adult male population compared to 125 females per 100,000 adult female population. Males were almost five times more likely to be in community-based corrections than females.

Type of orders

In the December quarter 2005, there were 9,365 persons serving parole orders following a period of imprisonment. More than three quarters (76%) of the total persons serving parole orders were located in three states: New South Wales (4,161 persons); Victoria (1,608); and Western Australia (1,348).

PERSONS IN FULL-TIME CUSTODY

	NSW(a)	Vic.	Qld	SA	WA	Tas.	NT	ACT in ACT(b)	ACT in NSW(a)(c)	ACT Total(d)	Aust.(a)
AVERAGE DAILY NUMBER											
2003	8 012	3 718	5 217	1 480	2 915	445	727	64	124	189	22 578
2004	8 522	3 595	5 283	1 473	3 161	484	727	68	118	186	23 312
2005	8 925	3 610	5 351	1 521	3 445	526	791	66	119	185	24 235
2004											
Dec Qtr	8 709	3 597	5 346	1 512	3 303	535	748	66	117	183	23 816
2005											
Mar Qtr	8 939	3 535	5 305	1 536	3 453	520	798	67	112	178	24 152
Jun Qtr	8 962	3 608	5 350	1 484	3 543	545	820	69	114	182	24 380
Sep Qtr	8 899	3 674	5 357	1 525	3 390	529	783	68	121	189	24 226
Dec Qtr	8 899	3 623	5 392	1 538	3 396	511	764	62	128	190	24 184
2004											
Oct	8 639	3 617	5 326	1 511	3 268	531	713	66	115	181	23 669
Nov	8 685	3 596	5 390	1 510	3 319	539	753	63	116	179	23 855
Dec	8 801	3 579	5 325	1 514	3 324	536	778	69	119	189	23 926
2005											
Jan	8 952	3 576	5 272	1 524	3 372	519	777	68	120	188	24 060
Feb	8 934	3 511	5 316	1 559	3 471	515	802	67	109	176	24 174
Mar	8 932	3 516	5 328	1 526	3 517	525	815	65	106	170	24 222
Apr	8 951	3 552	5 342	1 501	3 538	533	822	69	111	181	24 308
May	8 985	3 605	5 352	1 494	3 561	551	829	68	115	183	24 446
Jun	8 949	3 667	5 356	1 457	3 528	550	808	68	114	183	24 383
Jul	8 920	3 692	5 351	1 487	3 446	535	798	59	116	175	24 288
Aug	8 883	3 665	5 335	1 542	3 367	525	778	69	124	193	24 165
Sep	8 893	3 665	5 386	1 546	3 356	527	774	76	124	201	24 224
Oct	8 902	3 666	5 352	1 550	3 388	524	766	70	126	195	24 219
Nov	8 921	3 645	5 429	1 547	3 431	512	765	61	122	183	24 311
Dec	8 875	3 558	5 396	1 516	3 369	498	760	54	136	190	24 026

- (a) Includes ACT prisoners held in NSW prisons. The ACT in NSW figures are a subset of the NSW figures and are not separately counted in the Australian totals – see Explanatory Notes, paragraph 20.
- (b) Refers to unsentenced persons in ACT prison custody and may include some sentenced fine default only prisoners – see Explanatory Notes, paragraph 20.

- (c) Prior to December quarter 2004, these figures are a single count taken on a specific day of the month and are not an average of the daily prisoner population for that month.
- (d) ACT in ACT figures and ACT in NSW figures may not add to ACT total due to rounding.

IMPRISONMENT RATES

	NSW(a)	Vic.	Qld	SA	WA	Tas.	NT	ACT(b)	Aust.
RATE PER 100,000 ADULT POPULATION									
2003	155.6	97.4	181.7	125.9	199.7	124.7	526.5	77.0	149.2
2004	164.2	93.1	179.2	124.4	212.6	133.3	520.0	75.5	151.9
2005	170.4	92.2	177.3	127.4	227.5	143.4	556.8	74.4	155.7
2004									
Dec Qtr	167.3	92.7	179.7	127.3	220.8	146.8	532.0	74.0	154.4
2005									
Mar Qtr	171.5	90.7	177.4	129.1	229.6	142.3	565.5	72.0	156.0
Jun Qtr	171.4	92.3	177.9	124.5	234.3	148.5	579.6	73.4	156.9
Sep Qtr	169.7	93.7	176.8	127.6	223.3	144.0	549.8	76.1	155.3
Dec Qtr	169.3	92.2	177.1	128.4	222.8	138.9	532.9	76.0	154.6
2004									
Oct	166.0	93.2	179.0	127.3	218.4	145.7	507.1	73.2	153.4
Nov	166.9	92.6	181.2	127.2	221.8	147.8	535.6	72.3	154.6
Dec	169.1	92.2	179.0	127.5	222.2	147.0	553.5	76.3	155.1
2005									
Jan	171.6	91.8	176.3	128.1	224.3	142.0	550.9	75.9	155.4
Feb	171.4	90.1	177.7	131.0	230.8	141.0	568.3	71.2	156.1
Mar	171.5	90.2	178.1	128.3	233.9	143.7	577.6	68.8	156.5
Apr	171.2	90.9	177.6	125.9	234.0	145.3	581.2	72.9	156.4
May	171.8	92.2	178.0	125.3	235.5	150.2	586.1	73.8	157.3
Jun	171.1	93.8	178.1	122.2	233.3	150.1	571.3	73.6	156.9
Jul	170.2	94.1	176.6	124.4	227.0	145.5	560.0	70.3	155.7
Aug	169.3	93.5	176.0	129.0	221.8	143.0	546.2	77.6	154.9
Sep	169.5	93.5	177.7	129.3	221.0	143.4	543.0	80.5	155.3
Oct	169.4	93.3	175.8	129.5	222.3	142.4	534.7	78.3	154.9
Nov	169.8	92.7	178.3	129.2	225.1	139.0	534.0	73.5	155.4
Dec	168.6	90.5	177.2	126.6	221.0	135.4	530.1	76.2	153.6

(a) Excludes ACT prisoners held in NSW prisons.

(b) Includes ACT prisoners held in ACT as well as ACT prisoners held in NSW – see Explanatory Notes, paragraph 22.

PERSONS IN FULL-TIME CUSTODY, By sex

	NSW(a)	Vic.	Qld	SA	WA	Tas.	NT	ACT in ACT(b)	ACT in NSW(a)(c)	ACT Total(d)	Aust.(a)
MALES (AVERAGE DAILY NUMBER)											
2003	7 497	3 449	4 874	1 386	2 695	416	706	61	118	180	21 084
2004	7 951	3 346	4 934	1 384	2 905	453	708	64	113	176	21 746
2005	8 310	3 358	4 988	1 425	3 190	495	766	63	113	176	22 594
2004											
Dec Qtr	8 131	3 341	4 986	1 427	3 039	501	727	65	112	177	22 217
2005											
Mar Qtr	8 306	3 279	4 952	1 446	3 182	492	772	64	106	170	22 492
Jun Qtr	8 345	3 349	4 990	1 393	3 276	516	793	66	108	174	22 727
Sep Qtr	8 302	3 416	4 995	1 423	3 144	496	760	65	116	181	22 602
Dec Qtr	8 288	3 385	5 012	1 439	3 158	477	737	57	121	178	22 554
Oct	8 290	3 414	4 968	1 446	3 161	487	742	64	120	184	22 573
Nov	8 301	3 408	5 040	1 450	3 189	476	738	58	115	173	22 659
Dec	8 273	3 335	5 031	1 420	3 125	466	732	50	127	178	22 433
FEMALES (AVERAGE DAILY NUMBER)											
2003	515	269	343	94	220	29	21	3	6	9	1 495
2004	572	249	349	88	255	31	18	4	5	10	1 566
2005	614	253	364	95	255	31	26	3	6	9	1 641
2004											
Dec Qtr	577	256	360	85	265	34	20	2	5	6	1 599
2005											
Mar Qtr	633	256	353	90	271	28	26	3	6	8	1 660
Jun Qtr	617	260	360	91	267	28	27	3	5	8	1 652
Sep Qtr	597	258	362	102	246	33	23	3	5	8	1 624
Dec Qtr	611	237	379	99	237	35	27	4	7	11	1 630
Oct	612	252	384	104	227	37	24	6	6	11	1 646
Nov	620	237	389	97	242	36	28	3	7	10	1 652
Dec	602	223	366	96	244	32	28	4	9	12	1 594
PERSONS (AVERAGE DAILY NUMBER)											
2003	8 012	3 718	5 217	1 480	2 915	445	727	64	124	189	22 578
2004	8 522	3 595	5 283	1 473	3 161	484	727	68	118	186	23 312
2005	8 925	3 610	5 351	1 521	3 445	526	791	66	119	185	24 235
2004											
Dec Qtr	8 709	3 597	5 346	1 512	3 303	535	748	66	117	183	23 816
2005											
Mar Qtr	8 939	3 535	5 305	1 536	3 453	520	798	67	112	178	24 152
Jun Qtr	8 962	3 608	5 350	1 484	3 543	545	820	69	114	182	24 380
Sep Qtr	8 899	3 674	5 357	1 525	3 390	529	783	68	121	189	24 226
Dec Qtr	8 899	3 623	5 392	1 538	3 396	511	764	62	128	190	24 184
Oct	8 902	3 666	5 352	1 550	3 388	524	766	70	126	195	24 219
Nov	8 921	3 645	5 429	1 547	3 431	512	765	61	122	183	24 311
Dec	8 875	3 558	5 396	1 516	3 369	498	760	54	136	190	24 026

(a) Includes ACT prisoners held in NSW prisons. The ACT in NSW figures are a subset of the NSW figures and are not separately counted in the Australian totals – see Explanatory Notes, paragraph 20.

(b) Refers to unsentenced persons in ACT prison custody and may include some sentenced fine default only prisoners – see Explanatory Notes, paragraph 20.

(c) Prior to the December quarter 2004, the figures are a single count taken on a specific day of the month and are not an average of the daily prisoner population for that month.

(d) ACT in ACT figures and ACT in NSW figures may not add to ACT total due to rounding.

IMPRISONMENT RATES, By sex

	NSW(a)	Vic.	Qld	SA	WA	Tas.	NT	ACT(b)	Aust.
MALES (RATE PER 100,000 ADULT POPULATION)									
2003	296.2	185.3	344.7	241.0	372.0	239.7	970.6	150.3	283.7
2004	311.4	177.6	338.4	238.6	393.5	256.5	957.5	146.3	288.0
2005	322.3	175.7	333.5	243.4	423.5	276.9	1 017.4	144.3	294.8
2004									
Dec Qtr	317.3	176.4	338.6	245.1	408.7	282.3	977.3	145.8	292.6
2005									
Mar Qtr	323.7	172.4	334.5	247.8	425.8	276.3	1 033.3	139.8	295.1
Jun Qtr	324.1	175.5	335.2	238.3	436.0	288.9	1 059.3	143.1	297.1
Sep Qtr	321.3	178.4	332.3	242.6	416.1	277.1	1 007.3	148.7	294.1
Dec Qtr	320.0	176.4	331.9	244.9	416.2	265.7	971.1	145.7	292.7
Oct	320.1	177.9	328.9	246.1	416.6	271.6	977.5	150.3	292.9
Nov	320.8	177.5	333.7	246.8	420.3	265.3	972.0	141.4	294.1
Dec	319.2	173.7	333.1	241.7	411.9	260.0	964.0	145.2	291.1
FEMALES (RATE PER 100,000 ADULT POPULATION)									
2003	19.8	13.7	23.6	15.6	29.9	15.9	32.7	7.0	19.4
2004	21.8	12.6	23.4	14.6	34.1	16.5	28.0	7.7	20.1
2005	23.2	12.6	23.9	15.7	33.5	16.5	38.3	7.1	20.8
2004									
Dec Qtr	22.0	12.9	24.0	14.0	35.2	18.2	30.6	4.9	20.4
2005									
Mar Qtr	24.0	12.8	23.4	14.8	35.9	15.0	39.4	6.7	21.1
Jun Qtr	23.3	13.0	23.7	15.0	35.1	15.2	40.2	6.3	20.9
Sep Qtr	22.5	12.9	23.7	16.7	32.3	17.5	34.3	6.3	20.5
Dec Qtr	23.0	11.8	24.7	16.2	31.0	18.5	39.6	9.0	20.5
Oct	23.1	12.5	25.0	17.1	29.6	19.6	36.1	9.0	20.7
Nov	23.3	11.8	25.3	15.9	31.6	18.9	41.0	8.1	20.8
Dec	22.5	11.1	23.8	15.7	31.9	16.9	41.6	9.8	20.1
PERSONS (RATE PER 100,000 ADULT POPULATION)									
2003	155.6	97.4	181.7	125.9	199.7	124.7	526.5	77.0	149.2
2004	164.2	93.1	179.2	124.4	212.6	133.3	520.0	75.5	151.9
2005	170.4	92.2	177.3	127.4	227.5	143.4	556.8	74.4	155.7
2004									
Dec Qtr	167.3	92.7	179.7	127.3	220.8	146.8	532.0	74.0	154.4
2005									
Mar Qtr	171.5	90.7	177.4	129.1	229.6	142.3	565.5	72.0	156.0
Jun Qtr	171.4	92.3	177.9	124.5	234.3	148.5	579.6	73.4	156.9
Sep Qtr	169.7	93.7	176.8	127.6	223.3	144.0	549.8	76.1	155.3
Dec Qtr	169.3	92.2	177.1	128.4	222.8	138.9	532.9	76.0	154.6
Oct	169.4	93.3	175.8	129.5	222.3	142.4	534.7	78.3	154.9
Nov	169.8	92.7	178.3	129.2	225.1	139.0	534.0	73.5	155.4
Dec	168.6	90.5	177.2	126.6	221.0	135.4	530.1	76.2	153.6

(a) Excludes ACT prisoners held in NSW prisons.

(b) Includes ACT prisoners held in ACT as well as ACT prisoners held in NSW – see Explanatory Notes, paragraph 22.

PERSONS IN FULL-TIME CUSTODY, By type of custody

	NSW(a) (b)	Vic. (c)	Qld	SA	WA	Tas.	NT	ACT in ACT(d)	ACT in NSW(a) (e)	ACT Total(f)	Aust. (a) (b)
PERSONS IN SECURE CUSTODY (AVERAGE DAILY NUMBER)											
2003	4 357	3 317	4 316	1 304	2 031	350	586	64	29	93	16 325
2004	4 517	3 240	4 407	1 308	2 204	394	571	68	24	92	16 708
2005	5 114	3 225	4 500	1 348	2 489	442	622	66	29	95	17 808
2004											
Dec Qtr	4 606	3 243	4 431	1 341	2 280	441	587	66	26	92	16 995
2005											
Mar Qtr	4 754	3 201	4 423	1 369	2 397	432	627	67	27	94	17 269
Jun Qtr	4 771	3 211	4 504	1 313	2 537	455	645	69	28	96	17 504
Sep Qtr	5 491	3 261	4 515	1 348	2 516	454	614	68	28	96	18 266
Dec Qtr	5 430	3 227	4 557	1 364	2 507	428	603	62	34	96	18 177
Oct	5 440	3 250	4 514	1 370	2 497	445	604	70	31	101	18 189
Nov	5 447	3 246	4 584	1 378	2 519	427	604	61	32	93	18 265
Dec	5 404	3 186	4 573	1 344	2 506	413	601	54	39	93	18 081
PERSONS IN OPEN CUSTODY (AVERAGE DAILY NUMBER)											
2003	3 655	400	901	175	884	96	141	..	95	95	6 253
2004	4 005	356	876	165	957	89	155	..	94	94	6 604
2005	3 810	385	851	172	956	84	169	..	89	89	6 428
2004											
Dec Qtr	4 102	354	915	171	1 023	94	161	..	91	91	6 821
2005											
Mar Qtr	4 185	334	882	167	1 056	88	171	..	84	84	6 883
Jun Qtr	4 191	397	846	171	1 006	90	175	..	86	86	6 876
Sep Qtr	3 407	414	842	176	875	75	170	..	93	93	5 959
Dec Qtr	3 469	395	835	174	889	83	161	..	94	94	6 006
Oct	3 462	416	839	180	891	80	162	..	94	94	6 030
Nov	3 475	399	845	169	912	85	161	..	90	90	6 046
Dec	3 471	372	823	172	863	85	159	..	97	97	5 945
PERSONS IN CUSTODY (AVERAGE DAILY NUMBER)											
2003	8 012	3 718	5 217	1 480	2 915	445	727	64	124	189	22 578
2004	8 522	3 595	5 283	1 473	3 161	484	727	68	118	186	23 312
2005	8 925	3 610	5 351	1 521	3 445	526	791	66	119	185	24 235
2004											
Dec Qtr	8 709	3 597	5 346	1 512	3 303	535	748	66	117	183	23 816
2005											
Mar Qtr	8 939	3 535	5 305	1 536	3 453	520	798	67	112	178	24 152
Jun Qtr	8 962	3 608	5 350	1 484	3 543	545	820	69	114	182	24 380
Sep Qtr	8 899	3 674	5 357	1 525	3 390	529	783	68	121	189	24 226
Dec Qtr	8 899	3 623	5 392	1 538	3 396	511	764	62	128	190	24 184
Oct	8 902	3 666	5 352	1 550	3 388	524	766	70	126	195	24 219
Nov	8 921	3 645	5 429	1 547	3 431	512	765	61	122	183	24 311
Dec	8 875	3 558	5 396	1 516	3 369	498	760	54	136	190	24 026

.. not applicable

- (a) Includes ACT prisoners held in NSW prisons. The ACT in NSW figures are a subset of the NSW figures and are not separately counted in the Australian totals – see Explanatory Notes, paragraph 20.
- (b) The classification of some NSW correctional facilities changed from July 2005 – see Explanatory Notes, paragraph 30.
- (c) Type of custody counts in Victoria have been affected by the closure of Beechworth Prison, and the opening of Beechworth Correctional Centre – see Explanatory Notes, paragraph 31.

- (d) Refers to unsentenced persons in ACT prison custody and may include some sentenced fine default only prisoners – see Explanatory Notes, paragraph 20.
- (e) Prior to December quarter 2004, the figures are a single count taken on a specific day of the month and are not an average of the daily prisoner population for that month.
- (f) ACT in ACT figures and ACT in NSW figures may not add to ACT total due to rounding.

IMPRISONMENT RATES, By type of custody

	NSW(a)(b)	Vic.(c)	Qld	SA	WA	Tas.	NT	ACT(d)	Aust.(b)
PERSONS IN SECURE CUSTODY (RATE PER 100,000 ADULT POPULATION)									
2003	85.4	86.9	150.3	111.0	139.1	97.9	424.5	38.1	107.9
2004	87.8	83.9	149.5	110.4	148.2	108.6	408.7	37.2	108.9
2005	98.4	82.4	149.1	113.0	164.4	120.5	437.7	38.4	114.4
2004									
Dec Qtr	89.2	83.5	148.9	112.9	152.4	121.1	417.5	37.2	110.2
2005									
Mar Qtr	91.8	82.2	147.9	115.0	159.4	118.1	444.1	37.9	111.5
Jun Qtr	91.9	82.1	149.8	110.1	167.8	124.1	455.8	38.8	112.6
Sep Qtr	105.6	83.2	149.0	112.8	165.7	123.4	430.7	38.5	117.1
Dec Qtr	104.1	82.1	149.6	113.9	164.5	116.3	420.6	38.3	116.2
Oct	104.4	82.7	148.2	114.4	163.8	120.8	421.4	40.4	116.3
Nov	104.5	82.6	150.5	115.1	165.2	116.0	421.5	37.2	116.8
Dec	103.5	81.1	150.2	112.3	164.4	112.1	419.0	37.3	115.6
PERSONS IN OPEN CUSTODY (RATE PER 100,000 ADULT POPULATION)									
2003	70.2	10.5	31.4	14.9	60.6	26.8	102.0	38.9	41.3
2004	76.4	9.2	29.7	13.9	64.4	24.7	111.2	38.4	43.0
2005	72.0	9.8	28.2	14.4	63.1	22.9	119.1	36.0	41.3
2004									
Dec Qtr	78.1	9.1	30.8	14.4	68.4	25.7	114.5	36.8	44.2
2005									
Mar Qtr	79.7	8.6	29.5	14.0	70.2	24.1	121.4	34.0	44.5
Jun Qtr	79.5	10.2	28.1	14.4	66.5	24.5	123.8	34.6	44.2
Sep Qtr	64.1	10.5	27.8	14.7	57.6	20.5	119.1	37.5	38.2
Dec Qtr	65.1	10.1	27.4	14.5	58.3	22.6	112.3	37.7	38.4
Oct	65.0	10.6	27.5	15.0	58.5	21.6	113.3	37.9	38.6
Nov	65.3	10.1	27.7	14.1	59.8	23.0	112.6	36.2	38.7
Dec	65.1	9.5	27.0	14.4	56.6	23.2	111.1	38.9	38.0
PERSONS IN CUSTODY (RATE PER 100,000 ADULT POPULATION)									
2003	155.6	97.4	181.7	125.9	199.7	124.7	526.5	77.0	149.2
2004	164.2	93.1	179.2	124.4	212.6	133.3	520.0	75.5	151.9
2005	170.4	92.2	177.3	127.4	227.5	143.4	556.8	74.4	155.7
2004									
Dec Qtr	167.3	92.7	179.7	127.3	220.8	146.8	532.0	74.0	154.4
2005									
Mar Qtr	171.5	90.7	177.4	129.1	229.6	142.3	565.5	72.0	156.0
Jun Qtr	171.4	92.3	177.9	124.5	234.3	148.5	579.6	73.4	156.9
Sep Qtr	169.7	93.7	176.8	127.6	223.3	144.0	549.8	76.1	155.3
Dec Qtr	169.3	92.2	177.1	128.4	222.8	138.9	532.9	76.0	154.6
Oct	169.4	93.3	175.8	129.5	222.3	142.4	534.7	78.3	154.9
Nov	169.8	92.7	178.3	129.2	225.1	139.0	534.0	73.5	155.4
Dec	168.6	90.5	177.2	126.6	221.0	135.4	530.1	76.2	153.6

(a) Excludes ACT prisoners held in NSW prisons.

(b) The classification of some NSW correctional facilities changed from July 2005 – see Explanatory Notes, paragraph 30.

(c) Type of custody rates in Victoria have been affected by the closure of Beechworth Prison, and the opening of Beechworth Correctional Centre – see Explanatory Notes, paragraph 31.

(d) Includes ACT prisoners held in ACT as well as ACT prisoners held in NSW – see Explanatory Notes, paragraph 22.

PERSONS IN FULL-TIME CUSTODY, By legal status(a)

	NSW(b)	Vic.	Qld	SA	WA	Tas.(c)	NT	ACT in ACT(d)	ACT in NSW(b)	ACT Total(e)	Aust.(b)(c)
UNSENTENCED (NUMBER ON FIRST DAY OF MONTH)											
2003	1 847	699	1 099	491	446	81	126	57	—	57	4 847
2004	1 920	661	1 099	479	498	96	136	63	—	63	4 950
2005	2 028	651	1 078	521	553	119	144	67	—	67	5 161
2004											
Dec Qtr	1 906	651	1 076	483	498	125	128	63	—	63	4 931
2005											
Mar Qtr	2 093	649	1 082	524	555	115	161	67	—	67	5 246
Jun Qtr	2 069	646	1 100	490	570	121	150	69	—	69	5 215
Sep Qtr	1 975	651	1 064	524	553	125	131	64	—	64	5 087
Dec Qtr	1 975	656	1 067	548	531	116	134	68	—	68	5 095
SENTENCED (NUMBER ON FIRST DAY OF MONTH)											
2003	6 166	3 024	4 120	995	2 460	340	604	1	123	124	17 710
2004	6 583	2 941	4 184	1 006	2 636	387	592	1	119	120	18 331
2005	6 895	2 963	4 255	1 016	2 890	409	647	1	120	121	19 074
2004											
Dec Qtr	6 750	2 955	4 281	1 047	2 789	416	609	1	119	120	18 848
2005											
Mar Qtr	6 817	2 885	4 214	1 028	2 854	407	626	1	111	112	18 832
Jun Qtr	6 892	2 947	4 245	1 023	2 980	418	671	—	113	113	19 176
Sep Qtr	6 943	3 026	4 303	1 005	2 862	404	665	1	122	123	19 209
Dec Qtr	6 926	2 994	4 256	1 009	2 861	406	625	1	135	136	19 078
TOTAL (NUMBER ON FIRST DAY OF MONTH)											
2003	8 013	3 724	5 219	1 486	2 906	421	729	59	123	181	22 556
2004	8 502	3 602	5 284	1 485	3 134	483	728	64	119	182	23 281
2005	8 923	3 614	5 333	1 537	3 442	528	791	68	120	188	24 234
2004											
Dec Qtr	8 656	3 606	5 357	1 530	3 287	541	738	63	119	183	23 779
2005											
Mar Qtr	8 910	3 534	5 295	1 551	3 409	523	787	68	111	178	24 078
Jun Qtr	8 961	3 593	5 345	1 512	3 550	539	821	69	113	182	24 391
Sep Qtr	8 918	3 677	5 367	1 528	3 416	529	796	65	122	187	24 296
Dec Qtr	8 901	3 650	5 323	1 557	3 393	521	759	68	135	204	24 173
Oct	8 899	3 652	5 292	1 568	3 362	522	767	78	129	207	24 140
Nov	8 912	3 673	5 318	1 551	3 423	520	760	68	140	208	24 225
Dec	8 892	3 624	5 360	1 552	3 393	522	751	59	137	196	24 153

— nil or rounded to zero (including null cells)

(a) Figures for the quarter and year for first day of month counts are calculated as a simple average – see Explanatory Notes, paragraph 5.

(b) Includes ACT prisoners held in NSW prisons. The ACT in NSW figures are a subset of the NSW figures and are not separately counted in the Australian totals – see Explanatory Notes, paragraph 20.

(c) Tas. data prior to the September quarter 2003 are under enumerated – see Explanatory Notes, paragraph 13.

(d) Refers to unsentenced persons in ACT prison custody and may include some sentenced fine default only prisoners – see Explanatory Notes, paragraph 20.

(e) ACT in ACT figures and ACT in NSW figures may not add to ACT total due to rounding.

IMPRISONMENT RATES, By legal status(a)

	NSW(b)	Vic.	Qld	SA	WA	Tas. (c)	NT	ACT(d)	Aust. (c)
UNSENTENCED (RATE PER 100,000 ADULT POPULATION)									
2003	36.4	18.3	38.3	41.8	30.5	22.5	91.0	23.5	32.0
2004	37.5	17.1	37.3	40.4	33.5	26.3	97.2	25.5	32.3
2005	39.3	16.6	35.7	43.7	36.5	32.5	101.3	26.9	33.2
2004									
Dec Qtr	37.1	16.8	36.2	40.7	33.3	34.3	91.3	25.3	32.0
2005									
Mar Qtr	40.7	16.7	36.2	44.0	36.9	31.6	113.9	26.9	33.9
Jun Qtr	40.1	16.5	36.6	41.1	37.7	33.1	105.8	27.8	33.6
Sep Qtr	38.2	16.6	35.1	43.8	36.4	34.0	91.9	25.7	32.6
Dec Qtr	38.1	16.7	35.0	45.8	34.9	31.4	93.7	27.1	32.6
SENTENCED (RATE PER 100,000 ADULT POPULATION)									
2003	119.2	79.2	143.5	84.6	168.5	95.3	436.9	50.6	117.0
2004	126.3	76.1	141.9	85.0	177.3	106.8	423.3	48.6	119.4
2005	131.1	75.7	140.9	85.1	190.8	111.4	455.1	48.7	122.5
2004									
Dec Qtr	129.1	76.1	143.9	88.2	186.4	114.2	433.5	48.5	122.2
2005									
Mar Qtr	130.3	74.0	140.9	86.4	189.8	111.5	443.9	45.1	121.6
Jun Qtr	131.3	75.4	141.1	85.8	197.1	114.0	474.2	45.5	123.4
Sep Qtr	131.9	77.2	142.0	84.1	188.5	109.9	466.5	49.5	123.2
Dec Qtr	131.1	76.2	139.8	84.2	187.7	110.2	436.1	54.5	122.0
TOTAL (RATE PER 100,000 ADULT POPULATION)									
2003	155.6	97.5	181.7	126.4	199.0	117.9	527.9	74.1	149.0
2004	163.8	93.2	179.2	125.4	210.8	133.1	520.4	74.0	151.7
2005	170.4	92.3	176.7	128.8	227.3	143.9	556.4	75.6	155.7
2004									
Dec Qtr	166.3	92.9	180.0	128.9	219.7	148.5	524.9	73.9	154.1
2005									
Mar Qtr	171.0	90.7	177.1	130.4	226.8	143.1	557.7	72.0	155.5
Jun Qtr	171.4	91.9	177.7	126.8	234.8	147.1	580.0	73.4	157.0
Sep Qtr	170.0	93.8	177.1	127.9	224.9	143.9	558.4	75.2	155.8
Dec Qtr	169.2	92.9	174.8	130.0	222.6	141.6	529.8	81.7	154.6
Oct	169.2	92.9	173.8	131.0	220.6	141.8	535.2	83.0	154.3
Nov	169.3	93.4	174.6	129.5	224.6	141.2	530.3	83.4	154.9
Dec	169.0	92.2	176.0	129.6	222.6	141.8	524.0	78.6	154.4

(a) Figures for the quarter and year for first day of month counts are calculated as a simple average – see Explanatory Notes, paragraph 5.

(b) Excludes ACT prisoners held in NSW prisons.

(c) Tas. data prior to the September quarter 2003 are under enumerated – see Explanatory Notes, paragraph 13.

(d) Includes ACT prisoners held in ACT as well as ACT prisoners held in NSW – see Explanatory Notes, paragraph 22.

SENTENCED PRISONER RECEPTIONS INTO FULL-TIME CUSTODY

	NSW(a)	Vic.	Qld	SA	WA(b)	Tas. (c)	NT	ACT in ACT	ACT in NSW(a)	ACT Total	Aust. (a)(b)(c)
NUMBER											
2003	6 979	4 039	6 300	1 259	3 658	540	1 037	71	98	169	23 883
2004	6 956	3 916	6 537	1 178	3 810	809	1 123	43	123	166	24 372
2005	7 143	3 630	6 833	1 068	3 799	771	1 249	39	142	181	24 532
2004											
Dec Qtr	1 856	963	1 654	311	1 036	217	329	7	35	42	6 373
2005											
Mar Qtr	1 634	791	1 658	266	1 171	151	330	6	17	23	6 007
Jun Qtr	1 776	1 041	1 703	235	1 062	219	308	7	39	46	6 351
Sep Qtr	1 818	922	1 653	276	752	187	290	18	39	57	5 916
Dec Qtr	1 915	876	1 819	291	814	214	321	8	47	55	6 258

(a) Includes ACT prisoners held in NSW prisons. The ACT in NSW figures are a subset of the NSW figures and are not separately counted in the Australian totals – see Explanatory Notes, paragraph 20.

(b) WA implemented a new fine default strategy in the June quarter 2005 – see Explanatory Notes, paragraph 36.

(c) Tas. data prior to January 2004 are under enumerated – see Explanatory Notes, paragraph 13.

	NSW(c)	Vic.	Qld	SA	WA	Tas. (d)	NT	ACT in ACT(e)	ACT in NSW(c)	ACT Total(f)	Aust. (c) (d)
MALES (NUMBER ON FIRST DAY OF MONTH)											
2003	1 324	159	1 123	230	927	53	555	8	11	19	4 380
2004	1 458	168	1 158	242	1 073	57	560	7	9	16	4 722
2005	1 565	177	1 236	265	1 259	63	608	8	4	12	5 179
2004											
Dec Qtr	1 518	160	1 206	253	1 142	59	554	9	8	17	4 902
2005											
Mar Qtr	1 576	161	1 191	280	1 247	57	599	7	5	12	5 116
Jun Qtr	1 556	169	1 233	243	1 311	62	625	7	3	10	5 205
Sep Qtr	1 561	189	1 256	253	1 248	65	623	9	4	13	5 203
Dec Qtr	1 565	188	1 265	282	1 229	67	586	9	3	12	5 192
FEMALES (NUMBER ON FIRST DAY OF MONTH)											
2003	145	13	87	21	92	5	14	—	1	1	377
2004	169	14	89	16	121	7	10	—	—	—	427
2005	178	17	99	25	132	6	19	—	—	—	477
2004											
Dec Qtr	168	16	94	18	139	8	12	1	—	1	456
2005											
Mar Qtr	185	16	94	22	149	5	18	—	—	—	490
Jun Qtr	182	16	96	22	137	5	21	1	—	1	480
Sep Qtr	171	20	98	26	128	6	18	—	—	—	467
Dec Qtr	172	17	109	28	116	8	20	—	—	—	470
PERSONS (NUMBER ON FIRST DAY OF MONTH)											
2003	1 469	172	1 210	251	1 019	58	569	9	12	20	4 757
2004	1 626	182	1 248	258	1 194	64	570	7	9	16	5 149
2005	1 742	194	1 335	289	1 391	69	627	8	4	12	5 656
2004											
Dec Qtr	1 686	176	1 300	271	1 281	67	567	10	8	17	5 358
2005											
Mar Qtr	1 762	177	1 285	302	1 395	61	617	7	5	12	5 606
Jun Qtr	1 739	185	1 329	265	1 448	67	646	7	3	10	5 686
Sep Qtr	1 732	209	1 354	279	1 375	71	641	9	4	13	5 670
Dec Qtr	1 737	205	1 374	310	1 345	75	606	9	3	13	5 662

— nil or rounded to zero (including null cells)

- (a) Persons in custody are asked their Indigenous status during reception into custody. Persons with Indigenous status unknown are excluded from this table – see Explanatory Notes, paragraphs 18-19.
- (b) Figures for the quarter and year for first day of the month counts are calculated as a simple average – see Explanatory Notes, paragraph 5.

- (c) Includes ACT prisoners held in NSW prisons. The ACT in NSW figures are a subset of the NSW figures and are not separately counted in the Australian totals – see Explanatory Notes, paragraph 20.
- (d) Tas. data prior to the September quarter 2003 are under enumerated – see Explanatory Notes, paragraph 13.
- (e) Refers to unsentenced persons in ACT prison custody and may include some sentenced fine default only prisoners – see Explanatory Notes, paragraph 20.
- (f) ACT in ACT figures and ACT in NSW figures may not add to ACT total due to rounding.

INDIGENOUS IMPRISONMENT RATES, By sex(a)(b)(c)

	NSW(d)	Vic.	Qld	SA	WA	Tas.	NT	ACT(e)	Aust.
MALES (RATE PER 100,000 ADULT INDIGENOUS POPULATION)									
2003	3 559.6	1 911.8	3 201.4	3 191.1	5 031.2	1 129.9	3 312.7	1 675.4	3 408.0
2004	3 841.8	1 960.8	3 211.0	3 270.6	5 681.0	1 174.4	3 280.2	1 353.5	3 586.0
2005	4 038.5	1 994.6	3 331.8	3 480.6	6 488.5	1 263.7	3 483.0	967.9	3 829.8
2004									
Dec Qtr	4 003.5	1 875.0	3 342.9	3 417.9	6 049.5	1 219.4	3 248.9	1 417.2	3 722.2
2005									
Mar Qtr	4 065.4	1 814.8	3 209.2	3 677.9	6 427.1	1 142.7	3 429.6	1 015.9	3 783.5
Jun Qtr	4 019.7	1 909.0	3 323.3	3 200.1	6 757.1	1 243.5	3 578.5	796.3	3 849.3
Sep Qtr	4 028.3	2 131.1	3 385.3	3 331.6	6 432.3	1 310.7	3 567.1	1 043.4	3 847.3
Dec Qtr	4 040.4	2 123.6	3 409.5	3 713.0	6 337.7	1 357.8	3 357.0	1 015.9	3 839.2
FEMALES (RATE PER 100,000 ADULT INDIGENOUS POPULATION)									
2003	371.9	153.9	222.5	272.5	469.3	94.0	78.7	94.4	274.4
2004	423.3	156.3	223.3	200.9	600.9	143.0	57.7	13.9	302.7
2005	436.0	190.0	242.4	300.1	636.6	114.7	105.8	20.2	330.0
2004									
Dec Qtr	422.9	180.8	235.4	227.2	686.7	157.8	68.8	55.6	323.6
2005									
Mar Qtr	454.4	179.0	229.8	273.6	714.7	90.4	100.4	—	339.0
Jun Qtr	447.0	171.7	233.8	269.5	660.2	103.4	116.8	53.8	332.5
Sep Qtr	420.1	222.8	239.5	318.5	613.7	109.8	98.5	—	323.3
Dec Qtr	422.5	186.3	266.4	338.9	557.6	155.0	107.7	26.9	325.4
PERSONS (RATE PER 100,000 ADULT INDIGENOUS POPULATION)									
2003	1 924.5	1 016.5	1 632.8	1 687.0	2 677.8	597.5	1 656.9	883.5	1 788.3
2004	2 086.4	1 042.9	1 641.4	1 684.6	3 055.8	645.2	1 629.5	677.2	1 888.9
2005	2 188.6	1 078.6	1 711.7	1 833.9	3 460.3	677.8	1 756.1	489.2	2 022.2
2004									
Dec Qtr	2 164.9	1 013.2	1 710.3	1 769.4	3 278.2	674.8	1 619.9	729.8	1 965.5
2005									
Mar Qtr	2 211.2	984.5	1 646.7	1 915.3	3 471.1	606.1	1 727.1	502.8	2 004.4
Jun Qtr	2 185.2	1 027.2	1 703.1	1 682.7	3 602.1	662.1	1 808.3	421.3	2 032.9
Sep Qtr	2 175.5	1 162.5	1 735.6	1 771.5	3 421.3	698.4	1 793.4	516.4	2 027.2
Dec Qtr	2 182.6	1 140.3	1 761.2	1 966.0	3 346.7	744.5	1 695.4	516.4	2 024.3

— nil or rounded to zero (including null cells)

(a) Persons in custody are asked their Indigenous status during reception into custody. Persons with Indigenous status unknown are excluded from this table – see Explanatory Notes, paragraphs 18-19.

(b) The rates calculation uses the Indigenous population projection for 30 June of that calendar year as the denominator – see Explanatory Notes, paragraphs 26-29.

(c) Figures for the quarter and year for first day of the month counts are calculated as a simple average – see Explanatory Notes, paragraph 5.

(d) Excludes ACT prisoners held in NSW prisons.

(e) Includes ACT prisoners held in ACT as well as ACT prisoners held in NSW – see Explanatory Notes, paragraph 22.

INDIGENOUS PERSONS IN FULL-TIME CUSTODY, By legal status(a)(b)

	NSW(c)	Vic.	Qld	SA	WA	Tas. (d)	NT	ACT in ACT(e)	ACT in NSW(c)	ACT Total(f)	Aust. (c)(d)
UNSENTENCED (NUMBER ON FIRST DAY OF MONTH)											
2003	333	40	214	89	165	11	100	9	—	9	961
2004	352	38	245	97	190	15	99	7	—	7	1 043
2005	383	44	249	118	210	18	105	8	—	8	1 134
2004											
Dec Qtr	365	34	247	108	175	18	86	10	—	10	1 043
2005											
Mar Qtr	395	38	240	125	223	15	112	7	—	7	1 155
Jun Qtr	391	44	250	104	210	17	106	7	—	7	1 128
Sep Qtr	370	49	250	117	206	22	99	9	—	9	1 122
Dec Qtr	375	46	255	124	200	19	103	9	—	9	1 132
SENTENCED (NUMBER ON FIRST DAY OF MONTH)											
2003	1 136	132	996	162	854	46	468	—	12	12	3 796
2004	1 275	144	1 002	161	1 005	49	471	—	9	9	4 106
2005	1 360	150	1 086	172	1 181	50	522	—	4	4	4 521
2004											
Dec Qtr	1 321	143	1 053	163	1 106	48	481	—	8	8	4 314
2005											
Mar Qtr	1 367	139	1 045	177	1 172	46	505	—	5	5	4 451
Jun Qtr	1 348	141	1 078	162	1 238	50	540	—	3	3	4 557
Sep Qtr	1 362	160	1 104	163	1 169	48	541	—	4	4	4 548
Dec Qtr	1 362	159	1 119	186	1 145	57	503	—	3	3	4 530
TOTAL (NUMBER ON FIRST DAY OF MONTH)											
2003	1 469	172	1 210	251	1 019	58	569	9	12	20	4 757
2004	1 626	182	1 248	258	1 194	64	570	7	9	16	5 149
2005	1 742	194	1 335	289	1 391	69	627	8	4	12	5 656
2004											
Dec Qtr	1 686	176	1 300	271	1 281	67	567	10	8	17	5 358
2005											
Mar Qtr	1 762	177	1 285	302	1 395	61	617	7	5	12	5 606
Jun Qtr	1 739	185	1 329	265	1 448	67	646	7	3	10	5 686
Sep Qtr	1 732	209	1 354	279	1 375	71	641	9	4	13	5 670
Dec Qtr	1 737	205	1 374	310	1 345	75	606	9	3	13	5 662

— nil or rounded to zero (including null cells)

- (a) Persons in custody are asked their Indigenous status during reception into custody. Persons with Indigenous status unknown are excluded from this table – see Explanatory Notes, paragraphs 18-19.
- (b) Figures for the quarter and year for first day of the month counts are calculated as a simple average – see Explanatory Notes, paragraph 5.
- (c) Includes ACT prisoners held in NSW prisons. The ACT in NSW figures are a subset of the NSW figures and are not separately counted in the Australian totals – see Explanatory Notes, paragraph 20.

(d) Tas. data prior to the September quarter 2003 are under enumerated – see Explanatory Notes, paragraph 13.

(e) Refers to unsentenced persons in ACT prison custody and may include some sentenced fine default only prisoners – see Explanatory Notes, paragraph 20.

(f) ACT in ACT figures and ACT in NSW figures may not add to ACT total due to rounding.

INDIGENOUS IMPRISONMENT RATES, By legal status(a)(b)(c)

	NSW(d)	Vic.	Qld	SA	WA	Tas.	NT	ACT(e)	Aust.
UNSENTENCED (RATE PER 100,000 ADULT INDIGENOUS POPULATION)									
2003	439.6	234.2	288.5	596.5	434.3	118.1	292.5	370.9	361.2
2004	453.6	216.4	322.7	634.2	485.2	153.5	284.2	305.3	382.7
2005	481.7	246.1	319.1	745.2	522.0	179.5	294.2	329.5	405.6
2004									
Dec Qtr	471.2	193.5	325.4	706.4	447.0	185.6	245.8	407.0	382.8
2005									
Mar Qtr	496.9	213.2	307.2	794.9	554.7	148.2	314.4	285.4	413.1
Jun Qtr	492.3	244.7	320.9	657.4	521.6	164.7	295.8	299.0	403.4
Sep Qtr	465.4	270.7	320.9	739.9	513.3	220.7	278.1	353.3	401.2
Dec Qtr	472.1	255.9	327.3	788.5	498.4	184.5	288.3	380.5	404.7
SENTENCED (RATE PER 100,000 ADULT INDIGENOUS POPULATION)									
2003	1 484.9	782.4	1 344.3	1 090.6	2 243.5	479.4	1 364.4	512.7	1 427.1
2004	1 632.8	826.5	1 318.7	1 050.4	2 570.6	491.7	1 345.3	371.9	1 506.2
2005	1 707.0	832.5	1 392.6	1 088.7	2 938.3	498.2	1 461.9	159.7	1 616.6
2004									
Dec Qtr	1 693.6	819.8	1 384.9	1 062.9	2 831.2	489.2	1 374.1	322.8	1 582.8
2005									
Mar Qtr	1 714.3	771.3	1 339.5	1 120.4	2 916.3	457.9	1 412.7	217.4	1 591.3
Jun Qtr	1 692.9	782.4	1 382.2	1 025.3	3 080.5	497.4	1 512.5	122.3	1 629.5
Sep Qtr	1 710.1	891.8	1 414.7	1 031.6	2 908.0	477.6	1 515.3	163.1	1 626.0
Dec Qtr	1 710.5	884.4	1 433.9	1 177.5	2 848.3	560.0	1 407.1	135.9	1 619.6
TOTAL (RATE PER 100,000 ADULT INDIGENOUS POPULATION)									
2003	1 924.5	1 016.5	1 632.8	1 687.0	2 677.8	597.5	1 656.9	883.5	1 788.3
2004	2 086.4	1 042.9	1 641.4	1 684.6	3 055.8	645.2	1 629.5	677.2	1 888.9
2005	2 188.6	1 078.6	1 711.7	1 833.9	3 460.3	677.8	1 756.1	489.2	2 022.2
2004									
Dec Qtr	2 164.9	1 013.2	1 710.3	1 769.4	3 278.2	674.8	1 619.9	729.8	1 965.5
2005									
Mar Qtr	2 211.2	984.5	1 646.7	1 915.3	3 471.1	606.1	1 727.1	502.8	2 004.4
Jun Qtr	2 185.2	1 027.2	1 703.1	1 682.7	3 602.1	662.1	1 808.3	421.3	2 032.9
Sep Qtr	2 175.5	1 162.5	1 735.6	1 771.5	3 421.3	698.4	1 793.4	516.4	2 027.2
Dec Qtr	2 182.6	1 140.3	1 761.2	1 966.0	3 346.7	744.5	1 695.4	516.4	2 024.3

(a) Persons in custody are asked their Indigenous status during reception into custody. Persons with Indigenous status unknown are excluded from this table – see Explanatory Notes, paragraphs 18-19.

(b) The rates calculation uses the Indigenous population projection for 30 June of that calendar year as the denominator – see Explanatory Notes, paragraphs 26-29.

(c) Figures for the quarter and year for first day of the month counts are calculated as a simple average – see Explanatory Notes, paragraph 5.

(d) Excludes ACT prisoners in NSW prisons.

(e) Includes ACT prisoners held in ACT as well as ACT prisoners held in NSW – see Explanatory Notes, paragraph 22.

PERSONS IN PERIODIC DETENTION, By sex(a)

	NSW		ACT	
	no.(b)	rate(c)	no.(b)	rate(c)
MALES				
2003	739	29.7	73	60.7
2004	687	27.3	89	73.7
2005	762	30.0	96	78.8
2004				
Dec Qtr	695	27.5	93	76.9
2005				
Mar Qtr	716	28.3	93	76.9
Jun Qtr	773	30.4	98	80.7
Sep Qtr	782	30.7	94	76.6
Dec Qtr	776	30.4	99	81.1
Oct	781	30.6	95	77.7
Nov	783	30.7	99	81.0
Dec	765	30.0	104	84.7
FEMALES				
2003	60	2.3	4	3.0
2004	62	2.4	4	3.3
2005	73	2.8	7	5.5
2004				
Dec Qtr	76	2.9	4	3.5
2005				
Mar Qtr	82	3.1	5	3.7
Jun Qtr	73	2.8	8	6.2
Sep Qtr	72	2.7	9	6.7
Dec Qtr	65	2.5	7	5.2
Oct	67	2.6	8	6.3
Nov	66	2.5	6	4.9
Dec	62	2.3	5	4.3
PERSONS				
2003	799	15.8	76	31.1
2004	749	14.6	93	37.8
2005	835	16.2	103	41.4
2004				
Dec Qtr	771	15.0	98	39.5
2005				
Mar Qtr	798	15.5	98	39.6
Jun Qtr	846	16.4	106	42.7
Sep Qtr	854	16.5	102	41.0
Dec Qtr	841	16.2	106	42.4
Oct	848	16.4	103	41.3
Nov	849	16.4	105	42.2
Dec	826	15.9	109	43.7

- (a) Periodic detention is a form of custody only used in NSW and the ACT.
 (b) Average daily number.
 (c) Rate per 100,000 adult population.

FEDERAL SENTENCED PERSONS IN FULL-TIME CUSTODY, By sex(a)(b)

	NSW	Vic.	Qld	SA	WA	Tas.	NT	ACT	Aust.
MALES (NUMBER ON FIRST DAY OF MONTH)									
2003	305	73	72	18	112	5	31	3	619
2004	319	70	79	13	94	6	12	4	596
2005	322	73	68	12	77	8	11	4	575
2004									
Dec Qtr	322	66	78	15	88	6	11	4	592
2005									
Mar Qtr	318	70	76	17	82	5	12	3	583
Jun Qtr	314	69	72	14	75	8	15	4	570
Sep Qtr	328	74	66	11	72	9	10	6	575
Dec Qtr	327	77	59	8	78	11	9	2	571
FEMALES (NUMBER ON FIRST DAY OF MONTH)									
2003	30	8	15	4	11	2	3	1	74
2004	40	7	12	1	11	3	3	1	79
2005	48	6	15	4	9	2	1	1	85
2004									
Dec Qtr	46	6	12	2	9	4	2	2	83
2005									
Mar Qtr	47	7	11	3	5	2	1	1	78
Jun Qtr	47	7	17	5	10	1	—	1	87
Sep Qtr	50	6	14	4	10	3	—	1	88
Dec Qtr	47	5	16	3	9	3	1	1	86
PERSONS (NUMBER ON FIRST DAY OF MONTH)									
2003	335	82	87	22	123	7	34	4	693
2004	358	77	91	15	105	9	15	5	675
2005	369	79	83	16	85	11	12	5	660
2004									
Dec Qtr	368	73	90	16	98	10	13	6	675
2005									
Mar Qtr	365	77	87	20	87	7	13	4	661
Jun Qtr	361	76	89	18	85	10	15	5	658
Sep Qtr	378	81	80	14	82	12	10	7	663
Dec Qtr	374	82	75	11	87	14	10	3	656
Oct	374	79	72	11	78	14	10	3	641
Nov	376	84	77	12	78	14	10	3	654
Dec	371	84	76	11	104	14	11	3	674

— nil or rounded to zero (including null cells)

- (a) This table shows prisoners by the state or territory in which they were sentenced, not where they were held in custody.
- (b) Figures for the quarter and year for the first day of the month counts are calculated as a simple average - see Explanatory Notes, paragraph 5.

PERSONS IN COMMUNITY-BASED CORRECTIONS, By sex(a)(b)

	NSW	Vic.	Qld	SA(c)	WA	Tas.	NT	ACT	Aust.(c)
MALES (NUMBER ON FIRST DAY OF MONTH)									
2003	14 436	6 100	9 239	5 016	3 936	762	859	989	41 337
2004	14 413	6 452	9 128	4 758	4 132	816	913	937	41 549
2005	15 419	6 805	9 480	5 188	4 314	850	975	954	43 985
2004									
Dec Qtr	14 702	6 735	9 172	4 725	4 290	844	924	931	42 324
2005									
Mar Qtr	15 147	6 700	9 103	4 762	4 274	823	945	960	42 714
Jun Qtr	15 551	6 702	9 149	4 809	4 288	841	982	976	43 299
Sep Qtr	15 647	6 851	9 605	5 610	4 307	853	983	963	44 819
Dec Qtr	15 331	6 967	10 062	5 570	4 386	882	991	919	45 109
Oct	15 493	6 935	9 936	5 580	4 389	869	982	926	45 110
Nov	15 318	7 042	10 090	5 570	4 408	886	995	925	45 234
Dec	15 183	6 924	10 159	5 561	4 360	892	997	906	44 982

	NSW	Vic.	Qld	SA(c)	WA	Tas.	NT	ACT	Aust.(c)
FEMALES (NUMBER ON FIRST DAY OF MONTH)									
2003	2 533	1 325	2 431	1 158	1 181	176	108	167	9 080
2004	2 522	1 386	2 449	1 082	1 198	188	129	164	9 118
2005	2 718	1 517	2 571	1 143	1 239	217	135	174	9 714
2004									
Dec Qtr	2 582	1 417	2 466	1 099	1 232	208	140	165	9 308
2005									
Mar Qtr	2 654	1 474	2 458	1 062	1 246	208	140	175	9 417
Jun Qtr	2 754	1 492	2 516	1 038	1 240	215	131	181	9 567
Sep Qtr	2 788	1 516	2 619	1 241	1 234	215	133	179	9 923
Dec Qtr	2 677	1 586	2 692	1 230	1 238	229	134	161	9 948
Oct	2 734	1 563	2 680	1 222	1 249	225	132	167	9 972
Nov	2 651	1 628	2 704	1 231	1 241	227	134	161	9 977
Dec	2 647	1 567	2 692	1 236	1 225	236	137	155	9 895

	NSW	Vic.	Qld	SA(c)	WA	Tas.	NT	ACT	Aust.(c)
PERSONS (NUMBER ON FIRST DAY OF MONTH) (d)									
2003	17 104	7 619	11 670	6 215	5 117	939	967	1 156	50 787
2004	17 005	8 119	11 577	5 870	5 330	1 004	1 042	1 102	51 049
2005	18 200	8 384	12 057	6 347	5 553	1 067	1 110	1 128	53 846
2004									
Dec Qtr	17 342	8 359	11 638	5 848	5 522	1 052	1 065	1 095	51 922
2005									
Mar Qtr	17 865	8 187	11 561	5 841	5 520	1 032	1 086	1 135	52 227
Jun Qtr	18 373	8 291	11 665	5 870	5 528	1 056	1 113	1 158	53 054
Sep Qtr	18 496	8 444	12 226	6 875	5 541	1 068	1 116	1 141	54 906
Dec Qtr	18 066	8 615	12 774	6 801	5 624	1 112	1 126	1 080	55 197
Oct	18 292	8 565	12 625	6 803	5 638	1 094	1 114	1 093	55 224
Nov	18 023	8 731	12 813	6 802	5 649	1 113	1 129	1 086	55 346
Dec	17 882	8 549	12 885	6 798	5 585	1 128	1 134	1 061	55 022

- (a) With the exception of Vic. and Tas., the number of persons in community-based corrections includes those persons with breached or suspended orders.
- (b) Figures for the quarter and year for first day of the month counts are calculated as a simple average – see Explanatory Notes, paragraph 5.
- (c) Data movements for the June quarter 2005 and September quarter 2005 may be influenced by data entry delays – see Explanatory Notes, paragraph 33.
- (d) Includes persons whose sex is unknown.

COMMUNITY-BASED CORRECTIONS RATES, By sex(a)(b)

	NSW	Vic.	Qld	SA(c)	WA	Tas.	NT	ACT	Aust.(c)
MALES (RATE PER 100,000 ADULT POPULATION)									
2003	579.5	327.7	653.4	872.2	543.3	439.3	1 180.9	826.9	556.2
2004	572.6	342.4	625.9	820.1	559.6	462.2	1 234.0	776.8	550.4
2005	606.2	356.0	633.8	886.1	572.7	475.4	1 296.4	783.2	573.8
2004									
Dec Qtr	581.8	355.5	622.9	811.8	577.0	475.6	1 241.8	767.9	557.4
2005									
Mar Qtr	597.8	352.2	614.9	816.2	572.1	462.7	1 265.2	790.3	560.5
Jun Qtr	611.9	351.2	614.6	822.6	570.7	470.7	1 311.6	802.4	566.0
Sep Qtr	614.2	357.8	639.1	956.7	570.0	476.3	1 302.2	788.7	583.3
Dec Qtr	600.8	362.9	666.2	948.2	578.0	491.8	1 306.1	751.5	585.4
Oct	607.1	361.3	657.9	949.8	578.4	484.4	1 293.8	757.3	585.4
Nov	600.2	366.8	668.1	948.1	580.9	493.9	1 310.9	756.4	587.0
Dec	595.0	360.7	672.7	946.6	574.6	497.2	1 313.6	740.9	583.7
FEMALES (RATE PER 100,000 ADULT POPULATION)									
2003	98.2	67.7	166.8	192.9	160.5	96.1	165.0	133.6	117.9
2004	97.0	70.0	164.3	179.1	160.1	101.2	196.6	130.7	116.9
2005	103.6	75.7	168.8	187.9	162.8	115.3	201.3	137.4	123.0
2004									
Dec Qtr	99.0	71.3	164.1	181.6	163.6	111.3	212.3	130.6	118.8
2005									
Mar Qtr	101.5	73.9	162.8	175.1	164.7	111.2	211.3	138.7	119.8
Jun Qtr	105.0	74.6	165.7	170.8	163.0	114.4	196.2	143.4	121.2
Sep Qtr	106.2	75.6	171.4	203.8	161.7	114.1	198.5	140.7	125.4
Dec Qtr	101.8	78.9	175.4	201.6	161.8	121.5	199.3	126.7	125.4
Oct	104.0	77.7	174.6	200.4	163.2	119.2	195.8	131.5	125.7
Nov	100.8	81.0	176.2	201.9	162.1	120.3	198.8	126.7	125.8
Dec	100.7	77.9	175.4	202.7	160.0	125.0	203.2	122.0	124.7
PERSONS (RATE PER 100,000 ADULT POPULATION) (d)									
2003	337.4	199.5	406.4	528.8	350.5	262.9	699.8	472.2	335.6
2004	332.4	210.2	392.6	495.7	358.5	276.9	745.7	447.1	332.6
2005	352.3	214.2	399.4	531.7	366.7	290.8	781.3	454.1	346.0
2004									
Dec Qtr	337.8	215.4	391.1	492.5	369.0	288.7	757.5	442.9	336.6
2005									
Mar Qtr	347.1	210.1	386.6	490.9	367.1	282.4	769.9	458.3	337.3
Jun Qtr	355.9	212.1	387.9	492.3	365.6	288.0	786.6	466.6	341.4
Sep Qtr	357.6	215.4	403.4	575.2	364.9	290.6	783.3	458.3	352.0
Dec Qtr	348.6	219.2	419.5	568.0	369.0	301.9	785.5	433.2	352.9
Oct	353.0	217.9	414.6	568.2	369.9	297.2	777.3	438.4	353.1
Nov	347.8	222.1	420.8	568.1	370.6	302.3	787.8	435.6	353.9
Dec	345.1	217.5	423.1	567.8	366.4	306.4	791.3	425.5	351.8

- (a) With the exception of Vic. and Tas., the number of persons in community-based corrections includes those persons with breached or suspended orders.
- (b) Figures for the quarter and year for the first day of the month are calculated as a simple average – see Explanatory Notes, paragraph 5.
- (c) Data movements for the June quarter 2005 and September quarter 2005 may be influenced by data entry delays – see Explanatory Notes, paragraph 33.
- (d) Includes persons whose sex is unknown.

	NSW(d)	Vic.	Qld	SA(e)	WA(f)	Tas.	NT	ACT	Aust.(d)(e)(f)
RESTRICTED MOVEMENT (NUMBER ON FIRST DAY OF MONTH)									
2003	218	..	65	245	71	..	57	2	658
2004	185	10	70	331	40	..	56	5	697
2005	218	21	91	363	20	..	52	2	767
2004									
Dec Qtr	176	16	76	340	13	..	58	7	686
2005									
Mar Qtr	192	20	69	336	20	..	60	4	701
Jun Qtr	231	23	77	343	19	..	57	3	753
Sep Qtr	227	23	103	371	20	..	47	1	793
Dec Qtr	220	18	116	401	20	..	45	—	820
Oct	220	19	129	399	24	..	44	—	835
Nov	211	18	117	396	18	..	46	—	806
Dec	229	17	102	408	18	..	45	—	819

	NSW(d)	Vic.	Qld	SA(e)	WA(f)	Tas.	NT	ACT	Aust.(d)(e)(f)
REPARATION-FINE OPTION (NUMBER ON FIRST DAY OF MONTH)									
2003	7	1 590	1 940	1 301	388	85	3	..	5 314
2004	91	1 585	1 633	943	322	100	2	..	4 677
2005	128	1 735	1 533	805	279	110	1	..	4 590
2004									
Dec Qtr	156	1 707	1 470	889	345	119	1	..	4 687
2005									
Mar Qtr	159	1 610	1 391	827	311	114	1	..	4 413
Jun Qtr	130	1 623	1 470	821	275	114	1	..	4 434
Sep Qtr	107	1 767	1 601	782	278	102	1	..	4 637
Dec Qtr	115	1 941	1 669	789	251	109	1	..	4 876
Oct	112	1 913	1 679	780	287	101	np	..	4 873
Nov	120	2 018	1 678	796	254	109	np	..	4 976
Dec	112	1 892	1 651	792	213	117	np	..	4 778

	NSW(d)	Vic.	Qld	SA(e)	WA(f)	Tas.	NT	ACT	Aust.(d)(e)(f)
REPARATION-COMMUNITY SERVICE (NUMBER ON FIRST DAY OF MONTH)									
2003	4 411	945	1 883	1 566	2 148	380	256	140	11 730
2004	4 430	1 088	1 896	1 447	2 179	421	254	116	11 830
2005	4 751	911	1 919	1 269	2 184	472	226	90	11 820
2004									
Dec Qtr	4 537	1 063	1 919	1 470	2 236	438	243	105	12 011
2005									
Mar Qtr	4 704	1 000	1 867	1 380	2 208	450	244	96	11 950
Jun Qtr	4 844	919	1 828	1 319	2 173	475	237	100	11 895
Sep Qtr	4 775	848	1 912	1 230	2 145	489	221	85	11 705
Dec Qtr	4 679	877	2 066	1 146	2 209	472	202	78	11 729
Oct	4 716	832	1 992	1 148	2 189	474	206	71	11 628
Nov	4 648	889	2 065	1 146	2 223	471	200	80	11 722
Dec	4 674	909	2 141	1 143	2 215	472	200	83	11 837

.. not applicable

— nil or rounded to zero (including null cells)

np not available for publication but included in totals where applicable, unless otherwise indicated

(a) If a person has more than one type of order, they are counted against each order in this table. If a person has more than one order of the same order type, they are counted once in the order type.

(b) With the exception of Vic. and Tas., the number of persons in community-based corrections includes those persons with breached or suspended orders.

(c) Figures for the quarter and year for first day of the month counts are calculated as a simple average – see Explanatory Notes, paragraph 5.

(d) Bail figures in NSW prior to September quarter 2003 are under enumerated – see Explanatory Notes, paragraph 14.

(e) Data movements for the June quarter 2005 and September quarter 2005 may be influenced by data entry delays – see Explanatory Notes, paragraph 33.

(f) Bail figures for WA became available from December quarter 2003 – see Explanatory Notes, paragraph 35. Prior to the September quarter 2004, counts of restricted movement included conditional bail orders. These are now included in bail orders.

	NSW(d)	Vic.	Qld	SA(e)	WA(f)	Tas.	NT	ACT	Aust. (d)(e)(f)
SUPERVISION (COMPLIANCE)-PAROLE (NUMBER ON FIRST DAY OF MONTH)									
2003	3 573	1 335	1 045	931	1 264	92	150	111	8 502
2004	3 756	1 465	932	949	1 255	95	153	113	8 719
2005	4 155	1 576	949	921	1 332	91	140	141	9 305
2004									
Dec Qtr	3 909	1 482	928	961	1 287	87	153	105	8 912
2005									
Mar Qtr	4 092	1 482	953	946	1 315	90	144	120	9 142
Jun Qtr	4 134	1 578	922	934	1 321	84	139	142	9 255
Sep Qtr	4 232	1 635	950	907	1 343	93	141	158	9 458
Dec Qtr	4 161	1 608	973	898	1 348	97	134	146	9 365
Oct	4 270	1 652	968	904	1 347	98	132	148	9 519
Nov	4 192	1 644	975	898	1 337	95	134	146	9 421
Dec	4 022	1 529	975	893	1 361	97	136	143	9 156

	NSW(d)	Vic.	Qld	SA(e)	WA(f)	Tas.	NT	ACT	Aust. (d)(e)(f)
SUPERVISION (COMPLIANCE)-BAIL (NUMBER ON FIRST DAY OF MONTH)									
2003	288	439	7	..	3	185	922
2004	275	571	154	..	5	179	1 184
2005	218	782	231	..	4	194	1 430
2004									
Dec Qtr	242	642	233	..	6	195	1 317
2005									
Mar Qtr	240	733	229	..	4	210	1 417
Jun Qtr	214	774	243	..	4	211	1 446
Sep Qtr	224	796	230	..	5	195	1 450
Dec Qtr	194	824	222	..	3	161	1 405
Oct	208	825	222	..	3	177	1 435
Nov	192	827	219	..	3	162	1 403
Dec	183	821	225	..	3	145	1 377

	NSW(d)	Vic.	Qld	SA(e)	WA(f)	Tas.	NT	ACT	Aust. (d)(e)(f)
SUPERVISION (COMPLIANCE)-SENTENCED PROBATION (NUMBER ON FIRST DAY OF MONTH)									
2003	10 618	3 940	7 607	2 642	3 212	500	528	842	29 888
2004	10 285	4 233	7 553	2 491	3 396	516	608	815	29 897
2005	10 861	4 361	8 289	2 602	3 617	539	721	817	31 806
2004									
Dec Qtr	10 387	4 366	7 690	2 547	3 490	544	641	819	30 484
2005									
Mar Qtr	10 586	4 302	7 631	2 591	3 523	517	668	827	30 645
Jun Qtr	10 958	4 295	7 648	2 616	3 562	523	709	837	31 149
Sep Qtr	11 109	4 410	8 742	2 621	3 616	531	736	814	32 578
Dec Qtr	10 791	4 439	9 133	2 578	3 767	587	771	788	32 854
Oct	10 893	4 408	9 010	2 585	3 708	565	762	793	32 724
Nov	10 747	4 430	9 165	2 580	3 805	593	773	794	32 887
Dec	10 733	4 478	9 223	2 570	3 788	602	778	778	32 950

.. not applicable

- (a) If a person has more than one type of order, they are counted against each order in this table. If a person has more than one order of the same order type, they are counted once in the order type.
- (b) With the exception of Vic. and Tas., the number of persons in community-based corrections includes those persons with breached or suspended orders.
- (c) Figures for the quarter and year for first day of the month counts are calculated as a simple average – see Explanatory Notes, paragraph 5.

- (d) Bail figures in NSW prior to September quarter 2003 are under enumerated – see Explanatory Notes, paragraph 14.
- (e) Data movements for the June quarter 2005 and September quarter 2005 may be influenced by data entry delays – see Explanatory Notes, paragraph 33.
- (f) Bail figures for WA became available from December quarter 2003 – see Explanatory Notes, paragraph 35. Prior to the September quarter 2004, counts of restricted movement included conditional bail orders. These are now included in bail orders.

EXPLANATORY NOTES

INTRODUCTION

1 This publication presents statistical series on persons held in either adult corrective services custody or who are serving adult community-based orders in Australia. It contains data on the number of persons by their sex, Indigenous status, type of custody, legal status and sentence type; the number of sentenced persons received into corrective services custody each month; and the number of federal prisoners.

2 Statistics presented in this publication are compiled in three ways:

- Average daily prisoner population: Counts taken on each day of the month are summed and divided by the number of days in that month to determine the average daily prisoner population for that month. The average daily periodic detainee population is a count of persons on periodic detention on each day a centre is open, divided by the number of days a centre is open.
- Sentenced prisoner reception figures: Counts are provided each month on the number of receptions where a prisoner is received as a sentenced prisoner. This includes prisoners with a change of legal status from unsentenced to sentenced.
- First day of the month prisoner population: Counts of prisoner populations, taken on or near the first day of the month (see Explanatory Notes, paragraphs 4 and 5), and counts of persons serving community-based corrections orders.

3 Although national standards and classifications are used in the compilation of these statistics, some discrepancies remain between the states and territories. These are due to legislative and procedural differences between jurisdictions and the way that these differences are reflected in agencies' administrative data systems. As part of its quality assurance strategy, the ABS is working with corrective services agencies to minimise the effect of these differences.

REFERENCE PERIOD/DATE

4 The reference period for average daily prisoner population statistics and sentenced reception counts is the complete reference month. Prior to the December quarter 2004, average daily statistics for Australian Capital Territory prisoners held in New South Wales could not be supplied, and a single count taken on a specific day of the month was used instead. The reference date for all other figures is the first day of the reference month. However, not all states and territories report strictly according to this 'first day of the month' rule:

- The Western Australian and Victorian prison population and Australian Capital Territory prisoners in New South Wales prisons are counted as at midnight on the last day of the month. In these cases the figures provided are taken to represent the prison population at the beginning of the following month to align with practices in other states and territories.
- Prior to the September quarter 2004, the New South Wales prison population was counted on the last Sunday of the month. The New South Wales community-based corrections population is counted on the first day of the month.

5 Calculation of figures for the entire quarter and entire year varies depending on the counting unit and method of counting prisoners:

- Average daily figures: Figures are calculated by weighting the average according to the number of days in each month or year.
- First day of the month: Figures are simple averages. For quarterly figures, the sum of the monthly data is divided by three; for yearly figures, the figures for each month are added and the total divided by twelve.
- Sentenced receptions: Figures are totals of each month.
- These figures may be subject to rounding.

SCOPE

6 The scope of the statistics in this publication includes all persons remanded or sentenced to adult custodial corrective services agencies (including Work Outreach Camps and Community Custody Centres in Queensland), or who are serving adult community-based orders in each state and territory in Australia.

EXPLANATORY NOTES *continued*

SCOPE *continued*

7 Counts of prisoners in the following custodial facilities are included in the collection:

- gazetted prisons in all jurisdictions
- periodic detention centres in New South Wales and the Australian Capital Territory
- Community Custody Centres and Work Outreach Camps in Queensland
- cells in court complexes administered by corrective services in New South Wales
- transitional centres in New South Wales
- lock-ups in Western Australia operated by the police but designated as a prison by the Chief Executive Officer of Corrective Services.

8 The prisons and community corrections collection excludes the following custodial facilities:

- police lockups, police prisons and cells in court complexes not administered and controlled by corrective services
- gazetted police prisons in the Northern Territory
- juvenile detention centres, including those under the authority of adult corrective services
- immigration detention centres
- military prisons.

9 This collection includes counts of persons remanded or sentenced to adult custody facilities, or directed to serve community based orders administered by adult corrective services agencies. In all states and territories except Victoria and Queensland, persons are considered adults if aged 18 years and over. In Victoria and Queensland persons are considered adults if aged 17 years and over. The vast majority of persons counted in the collection are adults. However, juveniles may be included in exceptional circumstances.

10 Federal prisoners include those persons charged and sentenced under a Commonwealth statute, and those persons who are charged and sentenced under the laws of another country but transferred to an Australian prison to serve their sentence under the *International Transfer of Prisoners Act 1997* (Cwlth). To give practical effect to this legislation in Australia, the framework was introduced in January 2003. For the purposes of this publication, federal sentenced prisoners are those persons who are recognised by the Criminal Law Division of the Australian Government Attorney-General's Department as having been charged and sentenced under a Commonwealth statute, or transferred from another country to serve their sentence in Australia.

11 Community-based corrections includes those persons with breached or suspended orders, with the exception of Victoria and Tasmania.

DATA SOURCE

12 Statistics in this publication are derived from information provided to the ABS from administrative records held by corrective services agencies within each state and territory. Statistics on federal prisoners are derived from records kept by the Criminal Law Division of the Australian Government Attorney-General's Department.

13 Tasmanian first day of month data for reference periods prior to the September quarter 2003 are under enumerated. Prior to January 2004, sentenced reception figures for Tasmania do not include all prisoners changing from unsentenced custody to sentenced custody.

14 New South Wales have implemented regular quality assurance processes on their community-based corrections data. Prior to the September quarter 2003, pre-sentence reports were omitted from reported bail figures, and therefore data for earlier reference periods are under enumerated.

EXPLANATORY NOTES *continued*

COUNTING RULES

15 Statistics for persons held in custody are presented by the state or territory in which they were held and therefore may not be the sentencing jurisdiction. The only exception to this are data for federal sentenced prisoners. These are presented by the state or territory in which they were sentenced, not where they were held in custody.

16 Sentenced prisoners who have other offences that are unsentenced are counted as sentenced. Prisoners may be unsentenced because they are awaiting the outcome of their trial, convicted but awaiting sentence, or awaiting deportation.

17 If an offender has two or more different types of community-based orders operating simultaneously, then each order will be counted. If two or more community-based orders are of the same type, these orders together will only be counted as one order.

INDIGENOUS IDENTIFICATION

18 In all states and territories persons are asked during entry into custody whether they are of Aboriginal or Torres Strait Islander origin. It is uncommon for corrective services agencies to collect Indigenous status information from sources other than the person's own identification.

19 Some persons in custody are recorded with an unknown Indigenous status on the information systems of corrective services agencies as their status has not been able to be obtained. Persons with Indigenous status unknown are excluded from tables 10–13. Counts of persons with an unknown Indigenous status are included in all other tables.

AUSTRALIAN CAPITAL TERRITORY PRISONERS

20 Persons sentenced to full-time custody by the Australian Capital Territory are usually held in New South Wales prisons. The Australian Capital Territory has two remand centres for unsentenced prisoners and a periodic detention centre. During 2000 the Australian Capital Territory commenced detaining prisoners sentenced for fine default only at their remand centres. Unsented Australian Capital Territory prisoners may also be detained in New South Wales prisons.

21 To provide greater understanding of the number of prisoners attributed to the Australian Capital Territory, while presenting an accurate picture of the New South Wales prisoner population, statistics relating to Australian Capital Territory prisoners in New South Wales prisons are presented as a subset of the New South Wales figures.

22 Imprisonment rate data for the Australian Capital Territory are included in the publication and are calculated on the basis of the total number of Australian Capital Territory prisoners (i.e. Australian Capital Territory prisoners held in New South Wales prisons, and Australian Capital Territory prisoners held in the Australian Capital Territory) divided by the estimated resident Australian Capital Territory adult population and multiplied by 100,000. For New South Wales, the imprisonment rate is based on the count of New South Wales prisoners, excluding Australian Capital Territory prisoners held in New South Wales prisons, divided by the estimated resident New South Wales adult population and multiplied by 100,000. Time series data have also been derived on this basis.

RATES

23 Imprisonment and community-based corrections rates enable comparisons of prisoner numbers to be made across states and territories. Prisoner and community-based corrections rates are expressed per 100,000 adult population.

24 In this publication the population figures used in the calculation of rates are for persons aged 18 years and over for all states and territories except Victoria and Queensland where the population is persons aged 17 years and over (see Explanatory Notes, paragraph 9).

25 Rates for the total adult prisoner population and persons in community-based corrections are calculated using the estimated resident population (ERP) for each of the states and territories (refer *Australian Demographic Statistics* (cat. no. 3101.0)). All estimates for the Australian Capital Territory exclude Jervis Bay Territory. All estimates

EXPLANATORY NOTES *continued*

RATES *continued*

for Australia exclude the external territories of Christmas Island and the Cocos (Keeling) Island. As the population changes over time the denominator used for the calculation of rates varies, depending on the reference period. The most current ERP data available at the time of publication are used to calculate rates as follows:

- for the March quarter, ERP is from the previous September quarter;
- for the June quarter, ERP is from the previous December quarter;
- for the September quarter, ERP is from the previous March quarter;
- for the December quarter, ERP is from the previous June quarter; and
- annual rates are an average of the rates of the contributing quarters.

Indigenous imprisonment rates

26 Rates for the Indigenous adult population in this publication are based on the low series projections for 30 June of the current calendar year (refer to *Experimental Estimates and Projections, Aboriginal and Torres Strait Islander Australians, 30 June 1991 to 30 June 2009* (cat. no. 3238.0)). These projections are based on the 2001 Census of Population and Housing.

27 The low series are one of two series of these projections that have been published for the years 2002 to 2009.

- The low series assumes no 'unexplained growth' – that is, the Indigenous population recorded in the 2001 Census of Population and Housing is projected to change only as a result of births and deaths (natural increase) and, for the states and territories, as a result of interstate migration.
- The high series assumes that there will be 'unexplained growth' in the Indigenous population – that is, the Indigenous population is projected to change as a result of an unexplained component in addition to the effects of natural increase and interstate migration. The size of the unexplained component is based on the 'unexplained growth' observed between the 1996 and 2001 censuses.

28 The decision to use the low series as the denominator in the calculation of Indigenous imprisonment rates from 2002 followed consultation with the National Corrective Services Statistics Unit Advisory Group and other stakeholders.

Revisions to historical Indigenous rates

29 Historical rates for Indigenous prisoners have been revised using Indigenous population projections based on the 2001 Census of Population and Housing (low series) for 2002 to 2004.

SIGNIFICANT EVENTS

30 The administrative classification of the following NSW correctional facilities was altered at 1 July 2005: Cooma, Dilwynia, Paramatta and Berrima. These facilities changed classification from 'open' to 'secure' to reflect alterations in the profile of inmates held, and the operational requirements of those centres. As such, the proportion of persons in secure and open custody altered in the September quarter 2005 compared to previous quarters.

31 In December 2004 Victoria's Beechworth Prison closed while a new correctional facility (Beechworth Correctional Centre) opened in February 2005. The old Beechworth Prison was classified as medium security and the new Correctional Centre is classified as minimum security. Data previously published for secure custody were overcounted and open custody were undercounted. Data for the March and June quarters have been revised to reflect this change.

32 The Maryborough Correctional Centre, Queensland, was officially opened in April 2003. The Centre has the capacity to hold 500 prisoners.

33 Data extracted from the South Australian information system for the June quarter 2005 and September quarter 2005 may be subject to data processing time lags. Procedures to overcome this have been implemented for the December quarter 2005.

EXPLANATORY NOTES *continued*

SIGNIFICANT EVENTS *continued*

34 During 2003 in Western Australia there was an increase in the number of Indigenous persons sentenced to imprisonment by the courts, mostly in relation to 'Driving/Traffic', 'Against the Person' and 'Justice/Good Order' offences.

35 A range of amendments to Western Australian corrections legislation came into effect in 2003 and 2004. As a result, bail figures were included for the first time in the December quarter 2003 for Western Australia. Prior to the September quarter 2004, counts of restricted movement orders included conditional bail orders (that may have a restricted movement condition). All conditional bail orders are now counted as bail orders.

36 In the June quarter 2005, Western Australia implemented a strategy to reduce the number of fine defaulters being taken into custody by offering alternative means of payment. This has resulted in a decrease in the number of sentenced receptions into custody for the September quarter 2005.

37 In the Northern Territory, over the 12 months to 30 June 2003, there was an increase in the number of Indigenous persons sentenced to imprisonment for a range of assault and driving offences.

RELATED PUBLICATIONS

ABS Publications

38 Other ABS publications that may be of interest include:
Australian Demographic Statistics (cat. no. 3101.0) – issued quarterly
Australian Social Trends (cat. no. 4102.0) – issued annually
Australian Standard Offence Classification (cat. no. 1234.0) – irregular
Crime and Safety, Australia (cat. no. 4509.0) – irregular
Criminal Courts, Australia (cat. no. 4513.0) – issued annually
Experimental Estimates and Projections, Aboriginal and Torres Strait Islander Australians, 30 June 1991 to 30 June 2009 (cat. no. 3280.0)
General Social Survey: Summary Results, Australia (cat. no. 4159.0) – irregular
Information Paper: Measuring Crime Victimisation, Australia: The Impact of Different Collection Methodologies (cat. no. 4522.0.55.001) – single issue
Information paper: National Information Development Plan for Crime and Justice Statistics 2005 (cat. no. 4520.0) – single issue
Measures of Australia's Progress (cat. no. 1370.0) – issued annually
Prisoners in Australia (cat. no. 4517.0) – issued annually
Recorded Crime – Victims, Australia (cat. no. 4510.0) – issued annually
Sexual Assault in Australia: A Statistical Overview (cat. no. 4523.0) – single issue
Year Book Australia (cat. no. 1301.0) – issued annually

39 Current publications and other products released by the ABS are listed in the *Catalogue of Publications and Products* (cat. no. 1101.0). The Catalogue is available from the ABS web site <<http://www.abs.gov.au>>. The ABS also issues a daily Release Advice on the web site that details products to be released in the week ahead. The National Centre for Crime and Justice Statistics releases a biannual newsletter that is published on the ABS web site. The Centre can be contacted by email through <crime.justice@abs.gov.au>.

Non-ABS Publications

40 Non-ABS sources that may be of interest include:
Australian Institute of Criminology, *List of Publications* – irregular
<<http://www.aic.gov.au>>
Crime Research Centre, University of Western Australia, *Crime and Justice Statistics for Western Australia* – issued bi-annually
<<http://www.crc.law.uwa.edu.au>>
Department of Corrective Services, New South Wales, *NSW Inmate Census* – irregular
<<http://www.dcs.nsw.gov.au>>

EXPLANATORY NOTES *continued*

Non-ABS Publications continued

Department of Justice, Northern Territory, *Northern Territory Quarterly Crime and Justice Statistics* – issued quarterly

<<http://www.nt.gov.au/justice/>>

Department of Justice, Victoria, *Statistical Profile of the Victorian Prison System* – issued annually

<<http://www.justice.vic.gov.au>>

NSW Bureau of Crime Statistics and Research, *New South Wales Criminal Courts Statistics* – issued annually

<<http://www.lawlink.nsw.gov.au>>

Office of Crime Statistics and Research, South Australia, *Crime and Justice in South Australia* – issued annually

<<http://www.ocsar.sa.gov.au>>

Steering Committee for the Review of Commonwealth/State Service Provision, *Report on Government Services* – issued annually

<<http://www.pc.gov.au/publications/index.html>>

GLOSSARY

Bail	This is generally a pre-sentence option where a person is released into the community for a period before they appear in court for trial or final sentencing. Bail orders can require a financial surety to be lodged with the court, and a number of conditions including supervision and residential requirements designed to ensure the re-appearance of the person at court. Bail counts are available only in states and territories where bail orders are supervised by corrective services. Bail is a sub-category of Supervision where the person is under the supervision of corrective services (<i>see</i> Supervision).
Community-based corrections	This refers to the community-based management of court-ordered sanctions, post-prison administrative arrangements and fine conversions, which principally involve the provision of one or more of the following activities: supervision, programs or community work.
Community service	This category of community-based corrections orders includes sentencing options requiring offenders to undertake a specified number of hours of unpaid, supervised work to benefit the community on an approved project. Community service is a sub-category of Reparation (<i>see</i> Reparation).
Corrective services custody	Confinement in a place intended primarily for the purpose of confining prisoners, such as a prison, prison farm, Periodic Detention Centre or Community Custody Centre.
Federal sentenced prisoner	Persons charged and sentenced under a Commonwealth statute or transferred from another country to serve their sentence in Australia.
Fine option	A community-based sentence type where the offender is serving a sentence for default of a fine. In most jurisdictions this order type requires an offender to complete community service as a reparatory act. Fine option is a sub-category of Reparation (<i>see</i> Reparation).
Full-time prison custody	A type of custody where a prisoner is required to be held in custody on a full-time basis. This includes prisons, Queensland Community Custody Centres and work outreach camps. Full-time prison custody excludes periodic detention (<i>see</i> Periodic detention).
Home detention	(<i>see</i> Restricted movement)
Indigenous prisoner	A prisoner who identifies as being of Aboriginal or Torres Strait Islander origin, or both.
Legal status	A person may be either sentenced or unsentenced depending on the warrant(s) or court order(s) that provide the legal basis for the administration of the person through the criminal justice system.
Open custody	Refers to prisoners housed in minimum security custodial facilities that do not require them to be confined by a secure perimeter physical barrier, irrespective of whether a physical barrier exists.
Parole	A parole order is made following a period of imprisonment and requires an offender to be subject to supervision in the community. Additional conditions may also be applied such as programs, counselling or drug testing. Parole is a sub-category of Supervision (<i>see</i> Supervision).
Periodic detention	A type of custody or order where a sentenced prisoner is required to be held in custody on a part-time basis. Currently this consists of two consecutive days in a one-week period, while remaining at liberty during the rest of the week.
Prisoner	A person held in custody. For the purposes of this collection, prisoners are those whose confinement is the responsibility of a corrective services agency.
Remand	(<i>see</i> Unsented)
Reparation	Reparation refers to all offenders with an order that requires them to undertake unpaid, justice agency-approved community service work.

GLOSSARY *continued*

Restricted movement	This refers to persons who are subject to a system of restricted movement, including supervision and/or electronic monitoring. This category includes home detention that may restrict residence to a nominated place. Restricted movement can be either a pre-sentence or post-sentence order.
Secure custody	Refers to prisoners housed in medium or maximum security custodial facilities requiring them to be confined by a secure physical barrier.
Sentenced	A legal status indicating that a person has received a custodial or community-based order from a court in response to a conviction for an offence.
Sentenced prisoner reception	Refers to entry into corrective services custody from the community, having received a sentence of imprisonment as an outcome of a court proceeding; or persons who are sentenced to custody while in custody on remand (i.e. changed status from a remand to a sentenced prisoner); or persons entering custody as a result of defaulting on the payment of a fine. Sentenced prisoners in custody who receive a further sentence of imprisonment are not counted as sentenced receptions.
Sentenced probation	A supervision order made following an original sentence handed down in court following conviction. A probation order generally requires 'good behaviour' and compliance with the directions of supervisors. The order may also require compliance with conditions such as program attendance and residential requirements.
Supervision (compliance)	This includes community-based orders other than those categorised as restricted movement or reparation (e.g. parole, bail and sentenced probation).
Unsentenced	A legal status indicating that a person is confined to custody or supervision while awaiting the outcome of their trial.

FOR MORE INFORMATION . . .

- INTERNET* **www.abs.gov.au** the ABS web site is the best place for data from our publications and information about the ABS.
- LIBRARY* A range of ABS publications are available from public and tertiary libraries Australia wide. Contact your nearest library to determine whether it has the ABS statistics you require, or visit our web site for a list of libraries.

INFORMATION AND REFERRAL SERVICE

Our consultants can help you access the full range of information published by the ABS that is available free of charge from our web site, or purchase a hard copy publication. Information tailored to your needs can also be requested as a 'user pays' service. Specialists are on hand to help you with analytical or methodological advice.

- PHONE* 1300 135 070
- EMAIL* client.services@abs.gov.au
- FAX* 1300 135 211
- POST* Client Services, ABS, GPO Box 796, Sydney NSW 2001

FREE ACCESS TO STATISTICS

All ABS statistics can be downloaded free of charge from the ABS web site.

- WEB ADDRESS* www.abs.gov.au



2451200012054

ISSN 1440 5997

RRP \$26.00