

# **WORK-RELATED INJURIES**

**AUSTRALIA**

EMBARGO: 11.30AM (CANBERRA TIME) WED 19 NOV 2014

## **C O N T E N T S**

	<i>page</i>
Notes . . . . .	2
Conceptual framework . . . . .	3
Summary of findings . . . . .	4

## **T A B L E S**

List of tables . . . . .	10
Persons aged 15 years and over who worked at some time in the last 12 months . . . . .	12
Persons aged 15 years and over who experienced a work-related injury or illness in the last 12 months . . . . .	19
Populations . . . . .	31

## **A D D I T I O N A L I N F O R M A T I O N**

Explanatory Notes . . . . .	32
Appendix 1: Work-related injury or illness classifications . . . . .	36
Appendix 2: Populations . . . . .	38
Technical Note: Data quality . . . . .	39
Glossary . . . . .	43

## **I N Q U I R I E S**

For further information about these and related statistics, contact the National Information and Referral Service on 1300 135 070 or Labour Market Section on Canberra (02) 6252 7206, email <labour.statistics@abs.gov.au>.

## ABOUT THIS PUBLICATION

This publication presents information about persons aged 15 years and over who worked at some time in the last 12 months and experienced their most recent work-related injury or illness in that period. The Work-related injuries topic collected information about whether the person experienced a work-related injury or illness in the last 12 months and the following details about their most recent work-related injury or illness:

- whether they suffered the injury or illness in their current job or a previous job;
- the type of injury or illness experienced;
- how the injury or illness occurred;
- the number of days/shifts absent from work due to the injury or illness;
- whether reported work-related injury or illness to someone in the workplace;
- sources of financial assistance;
- whether they applied for workers' compensation; and
- the reason they did not apply for workers' compensation.

This information can be cross-classified with labour force characteristics and demographics such as occupation, industry and sex.

The statistics in this publication were compiled from the Work-related injuries topic included in the Multipurpose Household Survey (MPHS), conducted throughout Australia from July 2013 to June 2014 as a supplement to the Australian Bureau of Statistics (ABS) monthly Labour Force Survey (LFS). Work-related injuries data were previously collected in the MPHS conducted throughout Australia from July 2009 to June 2010 and July 2005 to June 2006.

## NOTES ABOUT THE ESTIMATES

The MPHS is designed primarily to provide estimates at the Australia level. Broad estimates are also available for states and territories, although users should exercise caution when using estimates at this level, because of the presence of high sampling errors. For more information about the reliability of the estimates see paragraph 13 of the Explanatory Notes.

## ROUNDING

As estimates have been rounded, discrepancies may occur between sums of the component items and totals.

Jonathan Palmer  
Acting Australian Statistician

## CONCEPTUAL FRAMEWORK

### CONCEPTUAL FRAMEWORK

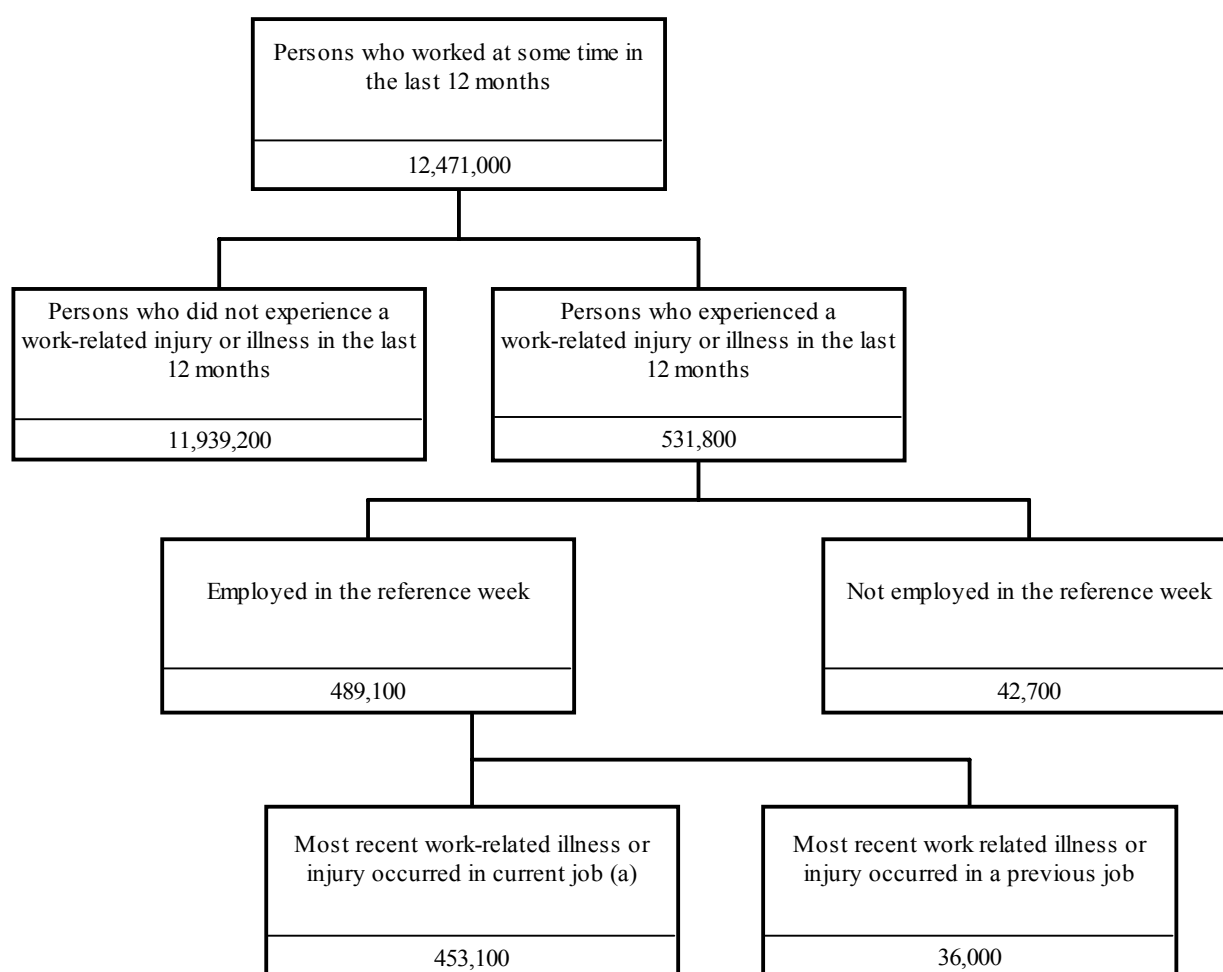
The following diagram illustrates the framework for statistics relating to Work-related injuries. Persons who worked at some time in the last 12 months were asked whether they experienced a work-related injury or illness in that period.

Work-related injuries and illnesses are broadly defined as any injury or illness or disease which first occurred, in the last 12 months, where a person suffers either physically or mentally from a condition that has arisen out of, or in the course of, employment. The injury or illness is in scope if the respondent first became aware of it in the last 12 months, even though it may have been caused before that. See glossary entry 'work-related injury or illness' and Appendix 1 for more information.

Included are:

- injuries or illnesses sustained by all categories of employed workers;
- injuries or illnesses that have been claimed under workers' compensation; and
- injuries or illnesses that have not been claimed under workers' compensation.

Work-related injuries or illnesses resulting in death are excluded.



(a) Comprised of 'Most recent work-related injury or illness occurred in current main job' and 'Most recent work-related injury or illness occurred in current other job'.

## SUMMARY OF FINDINGS

### OVERVIEW

Of the 12.5 million persons who had worked at some time in the last 12 months, 4.3% first experienced their most recent work-related injury or illness during that same period<sup>1</sup>. The majority (85%) of the 531,800 persons who experienced a work-related injury or illness continued to work in the job where their injury or illness occurred. Approximately 7% had changed jobs and the remaining 8% were not employed in the reference week (Table 1).

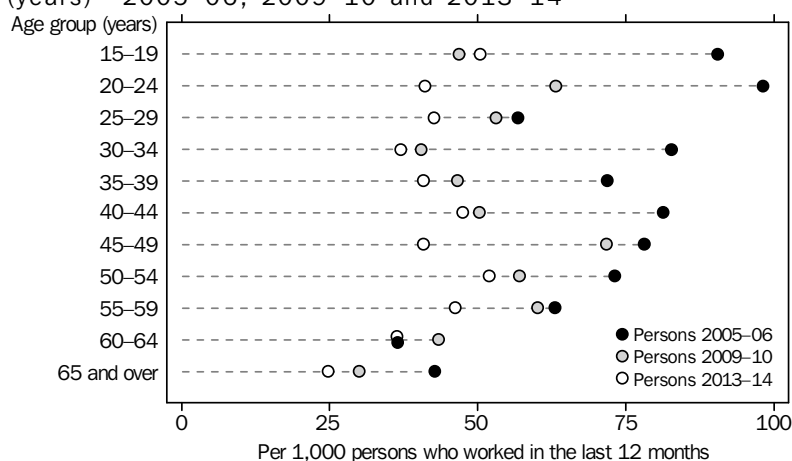
More than half the persons who experienced a work-related injury or illness were males (61%). In 2013-14, 4.9% of males who worked in the last 12 months experienced a work-related injury or illness, down from 5.5% in 2009-10. The proportion of females who experienced a work-related injury or illness in the last 12 months was 3.6%, down from 5.1% in 2009-10 (Table 1 and Table 4).

In 2013-14, approximately 43 persons experienced a work-related injury or illness in the last 12 months per 1,000 persons who had worked at some time in the last 12 months, a decrease from the 2009-10 estimate (53 people per 1000 persons) (Table 1).

The highest work-related injury or illness rates by age groups was in the 50-54 year age group with 52 per 1000 persons who had worked at some time in the last 12 months, followed by the 15-19 year age group with 50 per 1000 persons. Persons aged 65 years and over recorded the lowest rate of work-related injury or illness with 25 per 1000 persons.

The younger age group (15-19 years) experienced an increase in the rate of work-related injuries or illnesses compared with 2009-10 (50 per 1000 persons in 2013-14 compared to 47 per 1000 persons in 2009-10). All other age groups experienced a decreased rate of work-related injury or illness, with the largest decrease in the 45-49 year age group (41 per 1000 persons in 2013-14 compared to 72 per 1000 persons in 2009-10, a decrease of 31 per 1000 persons).

**WORK-RELATED INJURY/ILLNESS RATE, By age group (years)—2005-06, 2009-10 and 2013-14**



Tasmania had the highest work-related injury/illness rate with 66 per 1,000 persons who had worked at some time in the last 12 months. New South Wales recorded the lowest rate, with 37 per 1,000 persons who had worked in the last 12 months (Table 2).

## SUMMARY OF FINDINGS *continued*

### DETAILS OF THE JOB WHERE THE WORK-RELATED INJURY OR ILLNESS OCCURRED

Of the 531,800 persons who experienced a work-related injury or illness in 2013-14:

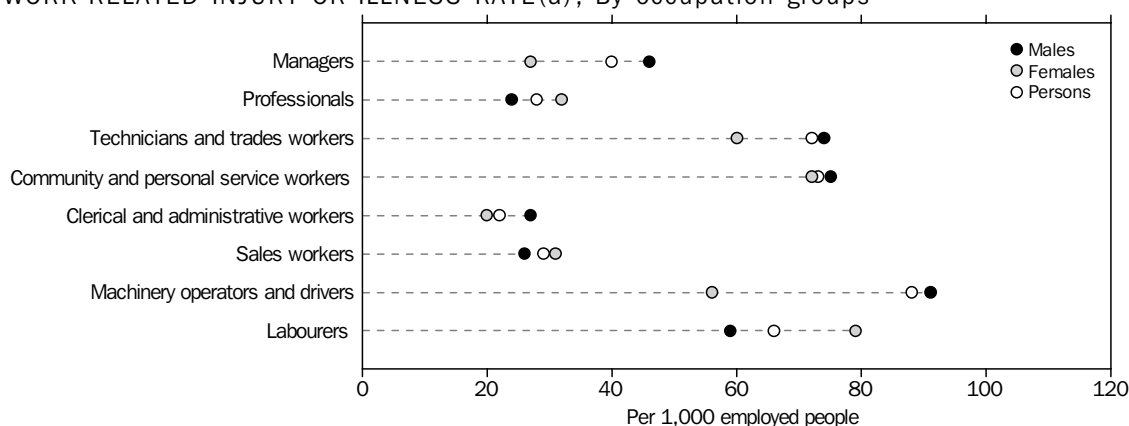
- 90% (477,900) were employees, excluding owner managers of incorporated enterprises (OMIEs), in the job where they experienced the injury or illness; and
- 10% (53,900) were owner managers.

Nearly one-third of persons who experienced a work-related injury or illness in the last 12 months were working under shift arrangements (30% or 157,600 persons) (Table 3).

### OCCUPATION AND INDUSTRY OF JOB WHERE WORK-RELATED INJURY OR ILLNESS OCCURRED

The occupation groups with the highest rates of people who experienced a work-related injury or illness were 'Machinery operators and drivers' (88 per 1,000 employed persons), 'Community and personal service workers' (73 per 1,000 employed persons), 'Technicians and trades workers' (72 per 1,000 employed persons) and 'Labourers' (66 per 1,000 employed persons) (Table 4).

### WORK-RELATED INJURY OR ILLNESS RATE(a), By occupation groups



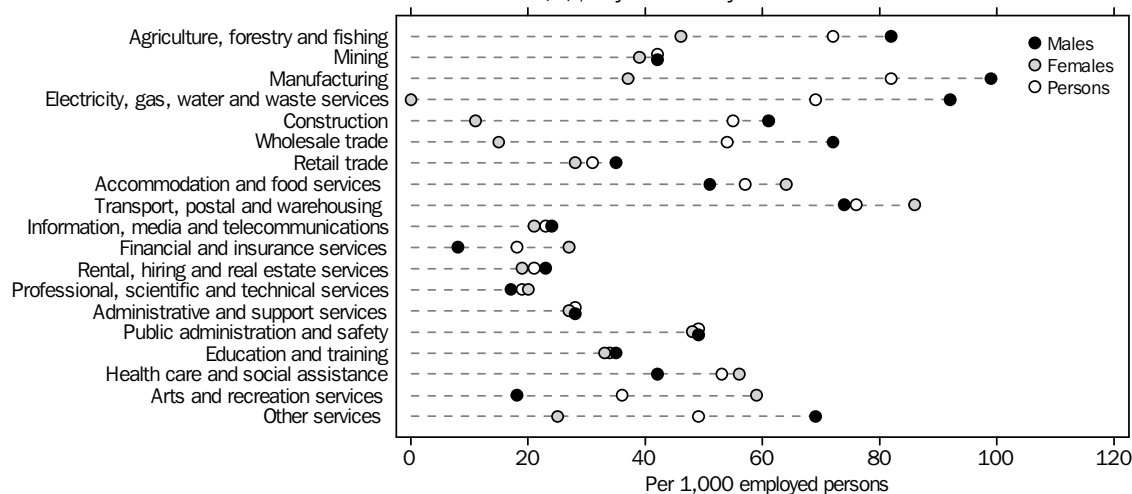
(a) Number of people who, in the last 12 months, experienced a work-related injury or illness while working in an occupation group per 1,000 people employed in that occupation group during the reference week. Note there is a difference in the reference periods used for the numerator and denominator of this rate.

The industries with the highest work-related injury or illness rates were 'Manufacturing' (82 per 1,000 employed persons), 'Transport, postal and warehousing' (76 per 1,000 employed persons) and 'Agriculture, forestry and fishing' (72 per 1,000 employed persons).

The industries with the lowest rates of work-related injuries and illnesses were 'Financial and insurance services' (18 per 1,000 employed persons), 'Professional, scientific and technical services' (19 per 1,000 employed persons), 'Rental, hiring and real estate services' (21 per 1,000 employed persons) and 'Information, media and telecommunications' (23 per 1,000 employed persons) (Table 4).

## SUMMARY OF FINDINGS *continued*

### WORK-RELATED INJURY OR ILLNESS RATE(a), By industry



(a) Number of persons who, in the last 12 months, experienced a work-related injury or illness while working in an industry per 1,000 persons employed in that industry during the reference week. Note there is a difference in the reference periods used for the numerator and denominator of this rate.

### OCCUPATION AND INDUSTRY OF JOB WHERE WORK-RELATED INJURY OR ILLNESS OCCURRED *continued*

Of the 323,700 males who experienced a work-related injury or illness in the last 12 months:

- 31% were 'Technicians and trades workers', 18% were 'Machinery operators and drivers' and 15% were 'Managers' when the injury or illness occurred; and
- 20% were employed in the 'Manufacturing' industry, 16% in 'Construction' and 10% in 'Transport, postal and warehousing' when the injury or illness occurred.

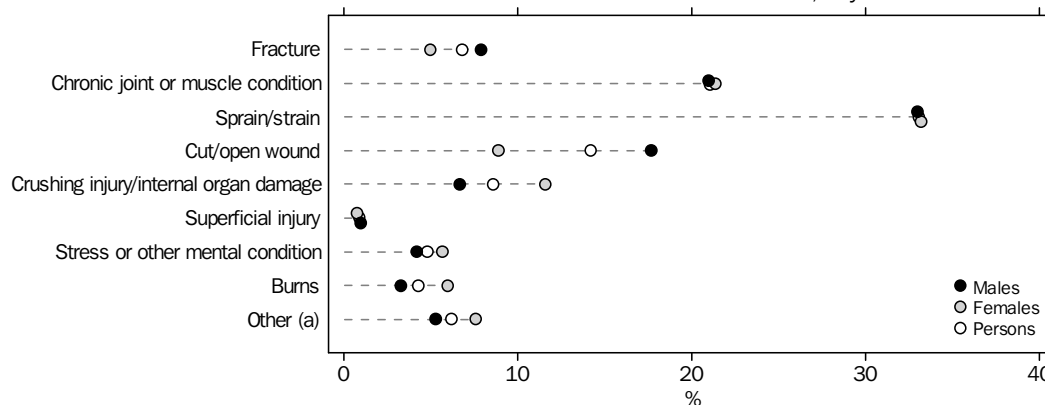
Among the 208,100 females who experienced work-related injuries or illnesses:

- 27% were 'Community and personal service workers', 21% were 'Professionals' and 14% were 'Labourers'; and
- 29% were employed in the 'Health care and social assistance' industry, 13% in 'Accommodation and food services', 10% in 'Education and training' and 10% in 'Retail trade' when the injury or illness occurred (Table 4).

### MOST RECENT WORK-RELATED INJURY OR ILLNESS SUSTAINED

The most common types of injuries or illnesses sustained were 'Sprain/strain' (33%), followed by 'Chronic joint or muscle conditions' (21%), and 'Cut/open wound' (14%) (Table 5).

### MOST RECENT WORK-RELATED INJURY OR ILLNESS SUSTAINED, By sex



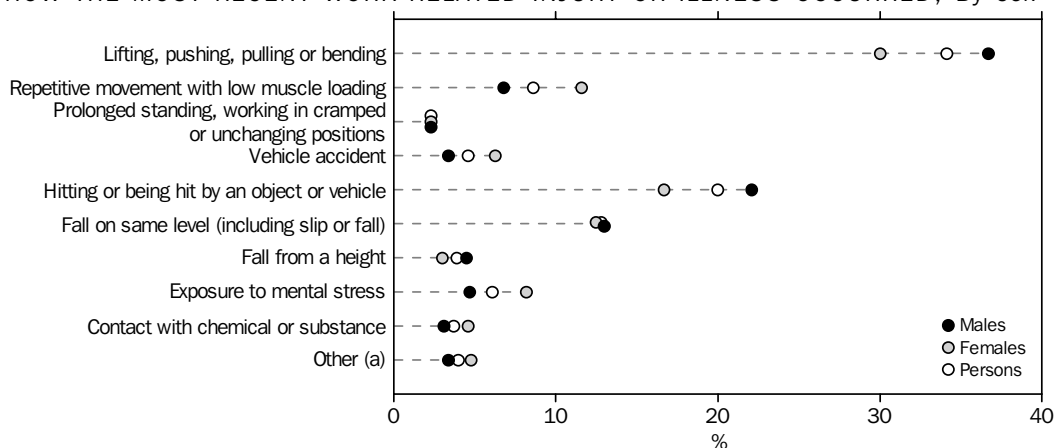
(a) 'Other' includes 'Amputation' and 'No further information'.

## SUMMARY OF FINDINGS *continued*

### MOST RECENT WORK-RELATED INJURY OR ILLNESS SUSTAINED *continued*

Of the 531,800 persons who experienced a work-related injury or illness, 34% (181,200) sustained their injury or illness through 'Lifting, pushing, pulling or bending', 20% (106,200) by 'Hitting, being hit or cut by an object or vehicle', 13% (68,200) through 'Fall on the same level' and 9% (46,000) through 'Repetitive movement with low muscle loading' (Table 5).

### HOW THE MOST RECENT WORK-RELATED INJURY OR ILLNESS OCCURRED, By sex



(a) 'Other' includes 'Long term exposure to sound' and 'No further information'.

### SOURCES OF FINANCIAL ASSISTANCE

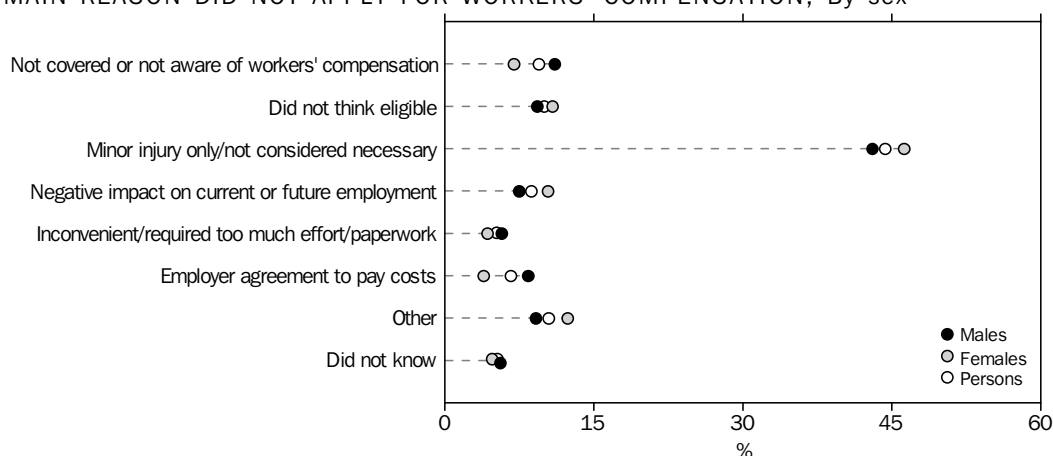
Of the 531,800 persons who experienced a work-related injury in the last 12 months, 326,200, or 61%, received some sort of financial assistance. Of those who received financial assistance, 56% received workers' compensation, 39% did not apply for workers' compensation and 4% applied for and did not receive workers' compensation.

In 2013-14, the number of persons who received workers' compensation as a proportion of the total number of people who experienced a work-related injury or illness in the last 12 months (183,200) (34%), has remained relatively steady with 2009-10 figures (36%) (230,100).

Of the 326,100 persons who did not apply for workers' compensation, approximately 44% reported that the main reason for not applying for workers' compensation was that they had a 'Minor injury only/not considered necessary', 10% 'Did not think eligible' and a further 10% said they were 'Not covered or not aware of workers' compensation' (Table 10).

## SUMMARY OF FINDINGS *continued*

### MAIN REASON DID NOT APPLY FOR WORKERS' COMPENSATION, By sex



### SOURCES OF FINANCIAL ASSISTANCE *continued*

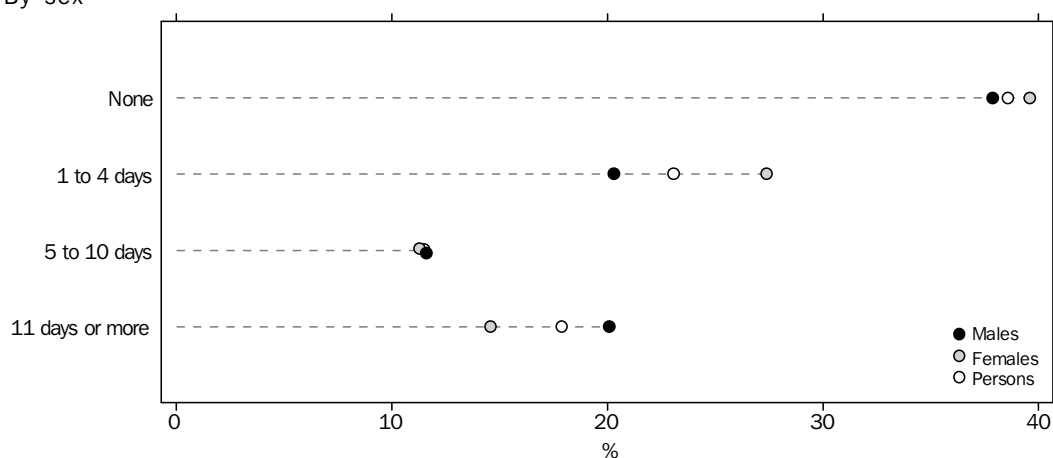
There were 477,900 employees (excluding OMIEs) who experienced a work-related injury or illness in the last 12 months. Of the 388,900 employed persons who had paid leave entitlements, 72% received financial assistance. Of the 89,000 employed persons without paid leave entitlements, 41% received financial assistance (Table 12).

### ABSENCES

Of the 531,800 persons who experienced a work-related injury or illness:

- 61% had some time off work (62% of males and 60% of females). Approximately 7% took off part of a day or shift and 23% took one to four days off (20% of males and 27% of females) and 29% had five days or more off work and 2% had not returned to work since the injury or illness occurred (Table 5);
- 205,100 persons did not have any time off work. Of these, the injuries and illnesses most often experienced were 'Sprain/strain' (32%) and 'Chronic joint or muscle condition' (21%) (Table 6); and
- 15% were no longer working in the job in which the work-related injury or illness occurred. Of these, 31% left because of their workplace injury or illness (Table 13).

### DAYS OR SHIFTS ABSENT FROM WORK DUE TO MOST RECENT WORK-RELATED INJURY OR ILLNESS, By sex





## SUMMARY OF FINDINGS *continued*

### REPORTED WORK-RELATED INJURY OR ILLNESS TO SOMEONE IN THE WORK PLACE

In 2013-14, 91% (485,100) of persons who experienced a work-related injury or illness reported it to someone in their work place (91% of males and 92% of females). Of the 485,100 persons who reported their most recent work-related injury or illness to someone in the work place:

- 72% (350,500) reported their injury or illness to their 'Supervisor/Line manager' (68% of males and 79% of females);
- 20% (98,900) reported their injury or illness to their 'Colleague' (19% of males and 23% of females); and
- 14% (69,500) reported their injury or illness to their 'Health and safety representative' (18% of males and 9% of females) (Table 5).

A person may report their most recent work-related injury or illness to more than one person in their work place.

### END NOTE

1. See glossary entry 'Work-related injury or illness' for more information.

## LIST OF TABLES

*page*

### PERSONS AGED 15 YEARS AND OVER WHO WORKED AT SOME TIME IN THE LAST 12 MONTHS

- |   |  |    |
|---|--|----|
| 1 | Whether experienced a work-related injury or illness in the last 12 months, by current or previous job, by sex, 2005–06, 2009–10 and 2013–14 . . . . .   | 12 |
| 2 | Age group, state or territory of usual residence, country of birth, period of arrival in Australia, labour force status, level of highest non-school qualification, self-assessed health status and long term health conditions, by whether experienced a work-related injury or illness in the last 12 months, and rate with a work-related injury or illness, by sex . . . . | 13 |

### PERSONS AGED 15 YEARS AND OVER WHO WORKED AT SOME TIME IN THE LAST 12 MONTHS AND EXPERIENCED A WORK-RELATED INJURY OR ILLNESS IN THAT PERIOD

- |    |  |    |
|----|--|----|
| 3  | Status in employment, employment type, full-time or part-time status of job, usual number of hours worked per week, duration of employment, and whether worked on contract, and whether worked shift work in job where most recent work-related injury or illness occurred, and whether injury or illness occurred within the first 6 months of starting job, by sex . . . . . | 19 |
| 4  | Occupation, industry and sector of job where most recent work-related injury or illness occurred, and occupation and industry of current main job for all employed persons and sector of current main job, by sex . . . . .  | 20 |
| 5  | How injury or illness occurred, injury or illness sustained, location where injury or illness occurred, days or shifts absent from work, all sources of financial assistance received and reported most recent work-related injury or illness to someone in the work place, by sex . . . . .   | 22 |
| 6  | All sources of financial assistance received, how injury or illness occurred, injury or illness sustained and reported most recent work-related injury or illness to someone in the work place, by days/shifts absent from work . . . . .  | 23 |
| 7  | How most recent work-related injury or illness occurred, how most recent work-related injury or illness sustained and whether received financial assistance for medical expenses or income loss for most recent work-related injury or illness, by reported most recent work-related injury or illness to someone in the work place . . . . .                                  | 24 |
| 8  | Status in employment, full-time or part-time status of job, occupation, industry and sector of job where most recent work-related injury or illness occurred, by whether received workers' compensation . . . . .  | 25 |
| 9  | Whether applied for workers' compensation, location where injury or illness occurred, injury or illness sustained, and how injury or illness occurred, by whether received workers' compensation . . . . .   | 26 |
| 10 | Whether applied for and whether received workers' compensation, main reason did not apply for workers' compensation, and injury or illness sustained, by whether received financial assistance . . . . .   | 27 |
| 11 | Whether received financial assistance, injury or illness sustained and reported most recent work-related injury or illness to someone in the work place, by main reason did not apply for workers' compensation . . . . .  | 28 |

## LIST OF TABLES *continued*

*page*

PERSONS AGED 15 YEARS AND OVER WHO WORKED AT SOME TIME IN THE LAST 12  
MONTHS AND EXPERIENCED A WORK-RELATED INJURY OR ILLNESS IN THAT PERIOD

*continued*

- |           |  |    |
|-----------|--|----|
| <b>12</b> | All sources of financial assistance received, main reason did not apply<br>for workers' compensation and sector of main job where most recent<br>work-related injury or illness occurred, by employment type . . . . . | 29 |
| <b>13</b> | Main reason for ceasing job where injury or illness occurred, and<br>whether returned to any work after work-related injury or illness, by<br>sex . . . . .  | 30 |

POPULATIONS

- |           |   |    |
|-----------|---|----|
| <b>14</b> | State or territory of usual residence, by sex . . . . . | 31 |
|-----------|---|----|

PERSONS WHO WORKED AT SOME TIME IN THE LAST 12 MONTHS, Whether experienced a work-related injury or illness in current job or previous job—By sex, 2005–06, 2009–10 and 2013–14

	July 2005 to June 2006		July 2009 to June 2010		July 2013 to June 2014	
	'000	%	'000	%	'000	%
MALES						
Persons who worked at some time in the last 12 months						
Persons who experienced a work-related injury or illness(a)	437.6	7.4	356.5	5.5	323.7	4.9
Employed in the reference week	410.8	7.0	334.8	5.2	297.9	4.5
Most recent work-related injury or illness occurred in a current job(b)	378.3	6.4	317.1	4.9	277.4	4.2
Most recent work-related injury or illness occurred in previous job	32.5	0.6	17.7	0.3	20.4	0.3
Not employed in the reference week	26.8	0.5	21.7	0.3	25.9	0.4
Persons who did not experience a work-related injury or illness(a)	5 456.7	92.6	6 136.7	94.5	6 301.7	95.1
<b>Total</b>	<b>5 894.3</b>	<b>100.0</b>	<b>6 493.2</b>	<b>100.0</b>	<b>6 625.5</b>	<b>100.0</b>
FEMALES						
Persons who worked at some time in the last 12 months						
Persons who experienced a work-related injury or illness(a)	251.9	5.1	284.3	5.1	208.1	3.6
Employed in the reference week	231.4	4.7	261.7	4.7	191.2	3.3
Most recent work-related injury or illness occurred in a current job(b)	211.6	4.3	245.7	4.4	175.7	3.0
Most recent work-related injury or illness occurred in previous job	19.8	0.4	15.9	0.3	15.6	0.3
Not employed in the reference week	20.5	0.4	22.5	0.4	16.8	0.3
Persons who did not experience a work-related injury or illness(a)	4 692.4	94.9	5 255.5	94.9	5 637.5	96.4
<b>Total</b>	<b>4 944.3</b>	<b>100.0</b>	<b>5 539.8</b>	<b>100.0</b>	<b>5 845.6</b>	<b>100.0</b>
PERSONS						
Persons who worked at some time in the last 12 months						
Persons who experienced a work-related injury or illness(a)	689.5	6.4	640.7	5.3	531.8	4.3
Employed in the reference week	642.2	5.9	596.5	5.0	489.1	3.9
Most recent work-related injury or illness occurred in a current job(b)	590.0	5.4	562.9	4.7	453.1	3.6
Most recent work-related injury or illness occurred in previous job	52.2	0.5	33.6	0.3	36.0	0.3
Not employed in the reference week	47.3	0.4	44.2	0.4	42.7	0.3
Persons who did not experience a work-related injury or illness(a)	10 149.1	93.6	11 392.2	94.7	11 939.2	95.7
<b>Total</b>	<b>10 838.6</b>	<b>100.0</b>	<b>12 033.0</b>	<b>100.0</b>	<b>12 471.0</b>	<b>100.0</b>

(a) In the last 12 months.

(b) Comprised of 'Most recent work-related injury or illness occurred in current main job' and 'Most recent work-related injury or illness occurred in current other job'.

PERSONS WHO WORKED AT SOME TIME IN THE LAST 12 MONTHS, Selected characteristics—By whether experienced a work-related injury or illness

WHETHER EXPERIENCED A WORK-RELATED  
INJURY OR ILLNESS IN THE LAST 12 MONTHS

<i>Experienced a work-related injury or illness</i>		<i>Did not experience a work-related injury or illness</i>		<i>Total</i>		<i>Rate with a work-related injury or illness</i>
'000	%	'000	%	'000	%	per 1000 persons

MALES

Age group (years)							
15–19	22.8	4.3	334.3	2.8	357.1	2.9	63.8
20–24	30.1	5.7	631.8	5.3	661.9	5.3	45.5
25–29	40.6	7.6	730.5	6.1	771.1	6.2	52.7
30–34	37.0	6.9	746.4	6.3	783.4	6.3	47.2
35–39	37.5	7.1	656.8	5.5	694.3	5.6	54.0
40–44	36.5	6.9	703.6	5.9	740.1	5.9	49.3
45–49	28.0	5.3	644.6	5.4	672.6	5.4	41.6
50–54	40.4	7.6	619.8	5.2	660.2	5.3	61.2
55–59	28.7	5.4	546.4	4.6	575.1	4.6	49.9
60–64	*13.4	*2.5	381.2	3.2	394.5	3.2	*33.9
65 and over	*8.9	*1.7	306.2	2.6	315.2	2.5	*28.3
State or territory of usual residence							
New South Wales	81.6	15.4	1 976.2	16.6	2 057.9	16.5	39.7
Victoria	91.2	17.2	1 586.3	13.3	1 677.6	13.5	54.4
Queensland	69.0	13.0	1 248.4	10.5	1 317.4	10.6	52.4
South Australia	30.4	5.7	437.0	3.7	467.4	3.7	65.0
Western Australia	32.4	6.1	759.1	6.4	791.5	6.3	40.9
Tasmania	10.4	2.0	125.1	1.0	135.5	1.1	76.6
Northern Territory	*3.0	*0.6	59.5	0.5	62.5	0.5	*48.5
Australian Capital Territory	*5.7	*1.1	110.0	0.9	115.7	0.9	*49.3
Country of birth							
Born in Australia	255.7	48.1	4 445.7	37.2	4 701.4	37.7	54.4
Born overseas	68.1	12.8	1 856.0	15.5	1 924.1	15.4	35.4
Oceania and Antarctica	*17.1	*3.2	242.1	2.0	259.2	2.1	*65.9
North-West Europe	25.2	4.7	514.6	4.3	539.7	4.3	46.6
Southern and Eastern Europe	np	np	np	np	169.8	1.4	*28.0
North Africa and the Middle East	**1.5	**0.3	79.5	0.7	81.1	0.7	**19.0
South-East Asia	**5.4	**1.0	225.8	1.9	231.2	1.9	**23.3
North-East Asia	**1.2	**0.2	158.2	1.3	159.4	1.3	**7.3
Southern and Central Asia	*10.1	*1.9	267.6	2.2	277.7	2.2	*36.4
Americas	np	np	np	np	83.2	0.7	**3.6
Sub-Saharan Africa	**2.6	**0.5	120.3	1.0	122.9	1.0	**21.0
Period of arrival							
Arrived before 1971	12.9	2.4	247.8	2.1	260.7	2.1	49.3
Arrived 1971 to 1980	*4.0	*0.8	179.2	1.5	183.2	1.5	*21.9
Arrived 1981 to 1990	11.6	2.2	323.6	2.7	335.1	2.7	34.6
Arrived 1991 to 2000	*12.9	*2.4	336.1	2.8	349.0	2.8	*36.9
Arrived 2001 to 2010	*16.1	*3.0	590.5	4.9	606.6	4.9	*26.6
2011 to survey date	*10.6	*2.0	178.9	1.5	189.5	1.5	*56.1
Labour force status							
Employed	297.9	56.0	5 828.0	48.8	6 125.9	49.1	48.6
Unemployed	*10.1	*1.9	186.7	1.6	196.8	1.6	*51.3
Not in the Labour Force	15.8	3.0	287.0	2.4	302.8	2.4	52.2

\* estimate has a relative standard error of 25% to 50% and should be used with caution

\*\* estimate has a relative standard error greater than 50% and is considered too unreliable for general use

np not available for publication but included in totals where applicable, unless otherwise indicated

PERSONS WHO WORKED AT SOME TIME IN THE LAST 12 MONTHS, Selected characteristics—By whether experienced a work-related injury or illness *continued*

WHETHER EXPERIENCED A WORK-RELATED INJURY OR ILLNESS IN THE LAST 12 MONTHS

<i>Experienced a work-related injury or illness</i>		<i>Did not experience a work-related injury or illness</i>		<i>Total</i>		<i>Rate with a work-related injury or illness</i>
'000	%	'000	%	'000	%	per 1000 persons

MALES *cont.*

Level of highest non-school qualification							
With a non-school qualification	201.0	37.8	4 173.9	35.0	4 374.9	35.1	45.9
Postgraduate degree	*11.1	2.1	397.0	3.3	408.1	3.3	*27.3
Graduate Diploma/Graduate Certificate	*4.3	*0.8	165.9	1.4	170.2	1.4	*25.3
Bachelor degree	26.5	5.0	1 146.7	9.6	1 173.2	9.4	22.6
Advanced Diploma/Diploma	26.4	5.0	619.9	5.2	646.3	5.2	40.8
Certificate III/IV	111.2	20.9	1 652.1	13.8	1 763.3	14.1	63.1
Certificate I/II	*16.4	*3.1	144.4	1.2	160.8	1.3	*102.0
Certificate not further defined	**1.8	**0.3	20.5	0.2	22.4	0.2	**82.3
Level not determined	**3.2	**0.6	27.3	0.2	30.5	0.2	**105.2
No non-school qualification	122.8	23.1	2 127.8	17.8	2 250.6	18.0	54.5
Self-assessed health status(a)							
Excellent	55.4	10.4	1 571.4	13.2	1 626.8	13.0	34.0
Very good	111.8	21.0	2 516.6	21.1	2 628.5	21.1	42.5
Good	109.8	20.7	1 653.1	13.8	1 762.9	14.1	62.3
Fair	38.1	7.2	411.4	3.4	449.6	3.6	84.8
Poor	*6.8	*1.3	74.3	0.6	81.1	0.7	*84.4
Long term health conditions							
Arthritis or osteoporosis	37.9	7.1	557.2	4.7	595.1	4.8	63.6
Asthma	36.2	6.8	445.5	3.7	481.7	3.9	75.1
Cancer	*6.2	*1.2	79.3	0.7	85.5	0.7	*72.9
Diabetes	*10.9	*2.1	231.3	1.9	242.2	1.9	*45.0
Heart or circulatory condition	35.1	6.6	540.0	4.5	575.1	4.6	61.0
Mental health condition	45.8	8.6	355.8	3.0	401.6	3.2	114.2
Long term injury	63.9	12.0	530.1	4.4	594.1	4.8	107.6
Other long term condition	38.1	7.2	586.4	4.9	624.5	5.0	61.0
No condition	164.0	30.8	4 020.6	33.7	4 184.5	33.6	39.2
<i>Total</i>	323.7	60.9	6 301.7	52.8	6 625.5	53.1	48.9

\* estimate has a relative standard error of 25% to 50% and should be used with caution

\*\* estimate has a relative standard error greater than 50% and is considered too unreliable for general use

(a) Excludes persons aged 15-17 years for whom proxy interviews were conducted. See paragraph 20 of the Explanatory Notes for more information.

PERSONS WHO WORKED AT SOME TIME IN THE LAST 12 MONTHS, Selected characteristics—By whether experienced a work-related injury or illness *continued*

WHETHER EXPERIENCED A WORK-RELATED INJURY OR ILLNESS IN THE LAST 12 MONTHS

<i>Experienced a work-related injury or illness</i>		<i>Did not experience a work-related injury or illness</i>		<i>Total</i>		<i>Rate with a work-related injury or illness</i>
	'000	%		'000	%	per 1000 persons

FEMALES

Age group (years)							
15–19	*15.4	*2.9	384.7	3.2	400.0	3.2	*38.4
20–24	22.9	4.3	604.6	5.1	627.5	5.0	36.6
25–29	21.4	4.0	664.4	5.6	685.7	5.5	31.2
30–34	16.0	3.0	632.0	5.3	648.0	5.2	24.7
35–39	14.9	2.8	574.8	4.8	589.7	4.7	25.2
40–44	29.4	5.5	618.1	5.2	647.5	5.2	45.4
45–49	25.1	4.7	598.0	5.0	623.1	5.0	40.2
50–54	26.3	4.9	597.7	5.0	624.0	5.0	42.2
55–59	20.6	3.9	471.7	4.0	492.3	3.9	41.8
60–64	12.6	2.4	305.9	2.6	318.5	2.6	39.5
65 and over	*3.6	*0.7	185.7	1.6	189.3	1.5	*18.9
State or territory of usual residence							
New South Wales	61.9	11.6	1 743.9	14.6	1 805.8	14.5	34.3
Victoria	47.2	8.9	1 448.9	12.1	1 496.2	12.0	31.6
Queensland	39.7	7.5	1 149.6	9.6	1 189.3	9.5	33.4
South Australia	14.2	2.7	394.7	3.3	408.9	3.3	34.8
Western Australia	30.0	5.6	631.2	5.3	661.2	5.3	45.4
Tasmania	6.4	1.2	114.1	1.0	120.6	1.0	53.5
Northern Territory	*2.1	*0.4	52.3	0.4	54.3	0.4	*37.9
Australian Capital Territory	6.5	1.2	102.8	0.9	109.3	0.9	59.6
Country of birth							
Born in Australia	150.3	28.3	4 042.5	33.9	4 192.8	33.6	35.9
Born overseas	57.7	10.9	1 595.0	13.4	1 652.7	13.3	34.9
Oceania and Antarctica	9.7	1.8	222.0	1.9	231.6	1.9	41.8
North-West Europe	20.5	3.9	432.4	3.6	453.0	3.6	45.3
Southern and Eastern Europe	np	np	np	np	103.8	0.8	**11.0
North Africa and the Middle East	*2.1	*0.4	50.2	0.4	52.2	0.4	*39.3
South-East Asia	*4.2	*0.8	262.2	2.2	266.5	2.1	*15.9
North-East Asia	**8.2	**1.5	187.5	1.6	195.7	1.6	**41.8
Southern and Central Asia	**4.4	**0.8	161.9	1.4	166.3	1.3	**26.4
Americas	np	np	np	np	73.7	0.6	*62.3
Sub-Saharan Africa	**3.0	**0.6	107.0	0.9	109.9	0.9	**27.0
Period of arrival							
Arrived before 1971	*5.4	*1.0	190.2	1.6	195.6	1.6	*27.4
Arrived 1971 to 1980	*7.5	*1.4	156.9	1.3	164.4	1.3	*45.7
Arrived 1981 to 1990	*10.4	*2.0	266.9	2.2	277.3	2.2	*37.5
Arrived 1991 to 2000	*6.1	*1.2	348.7	2.9	354.9	2.8	*17.2
Arrived 2001 to 2010	*21.2	4.0	498.4	4.2	519.6	4.2	*40.8
2011 to survey date	*7.2	*1.4	133.9	1.1	141.1	1.1	*50.9
Labour force status							
Employed	191.2	36.0	5 118.0	42.9	5 309.3	42.6	36.0
Unemployed	*5.1	*1.0	141.4	1.2	146.5	1.2	*34.8
Not in the Labour Force	*11.7	*2.2	378.0	3.2	389.8	3.1	*30.1

\* estimate has a relative standard error of 25% to 50% and should be used with caution

\*\* estimate has a relative standard error greater than 50% and is considered too unreliable for general use

np not available for publication but included in totals where applicable, unless otherwise indicated

PERSONS WHO WORKED AT SOME TIME IN THE LAST 12 MONTHS, Selected characteristics—By whether experienced a work-related injury or illness *continued*

WHETHER EXPERIENCED A WORK-RELATED  
INJURY OR ILLNESS IN THE LAST 12 MONTHS

<i>Experienced a work-related injury or illness</i>		<i>Did not experience a work-related injury or illness</i>		<i>Total</i>		<i>Rate with a work-related injury or illness</i>
'000	%	'000	%	'000	%	per 1000 persons

FEMALES *cont.*

Level of highest non-school qualification							
With a non-school qualification	150.7	28.3	3 812.4	31.9	3 963.1	31.8	38.0
Postgraduate degree	*10.0	*1.9	365.9	3.1	375.9	3.0	*26.7
Graduate Diploma/Graduate Certificate	*5.0	*0.9	244.7	2.0	249.7	2.0	*19.9
Bachelor degree	33.4	6.3	1 312.2	11.0	1 345.7	10.8	24.8
Advanced Diploma/Diploma	38.7	7.3	742.2	6.2	780.8	6.3	49.5
Certificate III/IV	53.0	10.0	871.3	7.3	924.4	7.4	57.4
Certificate I/II	*9.6	*1.8	212.4	1.8	222.0	1.8	*43.1
Certificate not further defined	**0.4	**0.1	29.4	0.2	29.8	0.2	**11.9
Level not determined	**0.6	**0.1	34.3	0.3	34.9	0.3	**16.6
No non-school qualification	57.4	10.8	1 825.1	15.3	1 882.5	15.1	30.5
Self-assessed health status(a)							
Excellent	41.8	7.9	1 410.4	11.8	1 452.2	11.6	28.8
Very good	82.1	15.4	2 337.8	19.6	2 419.9	19.4	33.9
Good	57.9	10.9	1 377.9	11.5	1 435.9	11.5	40.4
Fair	20.5	3.9	338.6	2.8	359.1	2.9	57.1
Poor	*4.9	*0.9	71.5	0.6	76.5	0.6	*64.4
Long term health conditions							
Arthritis or osteoporosis	34.1	6.4	619.1	5.2	653.2	5.2	52.2
Asthma	28.7	5.4	533.2	4.5	561.9	4.5	51.0
Cancer	*6.1	*1.1	89.2	0.7	95.3	0.8	*63.8
Diabetes	*9.5	*1.8	135.2	1.1	144.8	1.2	*65.9
Heart or circulatory condition	15.0	2.8	352.8	3.0	367.8	2.9	40.8
Mental health condition	49.1	9.2	600.4	5.0	649.5	5.2	75.5
Long term injury	47.2	8.9	359.8	3.0	407.0	3.3	115.9
Other long term condition	24.9	4.7	664.1	5.6	688.9	5.5	36.1
No condition	80.0	15.1	3 377.4	28.3	3 457.4	27.7	23.2
<i>Total</i>	208.1	39.1	5 637.5	47.2	5 845.6	46.9	35.6

\* estimate has a relative standard error of 25% to 50% and should be used with caution

\*\* estimate has a relative standard error greater than 50% and is considered too unreliable for general use

(a) Excludes persons aged 15-17 years for whom proxy interviews were conducted. See paragraph 20 of the Explanatory Notes for more information.



PERSONS WHO WORKED AT SOME TIME IN THE LAST 12 MONTHS, Selected characteristics—By whether experienced a work-related injury or illness *continued*

WHETHER EXPERIENCED A WORK-RELATED INJURY OR ILLNESS IN THE LAST 12 MONTHS

<i>Experienced a work-related injury or illness</i>		<i>Did not experience a work-related injury or illness</i>		<i>Total</i>		<i>Rate with a work-related injury or illness</i>
'000	%	'000	%	'000	%	per 1000 persons

PERSONS

Age group (years)							
15–19	38.2	7.2	719.0	6.0	757.1	6.1	50.4
20–24	53.1	10.0	1 236.4	10.4	1 289.4	10.3	41.1
25–29	62.0	11.7	1 394.9	11.7	1 456.9	11.7	42.6
30–34	52.9	10.0	1 378.4	11.5	1 431.4	11.5	37.0
35–39	52.4	9.8	1 231.6	10.3	1 283.9	10.3	40.8
40–44	65.9	12.4	1 321.7	11.1	1 387.6	11.1	47.5
45–49	53.0	10.0	1 242.6	10.4	1 295.6	10.4	40.9
50–54	66.7	12.5	1 217.5	10.2	1 284.2	10.3	51.9
55–59	49.3	9.3	1 018.1	8.5	1 067.4	8.6	46.2
60–64	26.0	4.9	687.0	5.8	713.0	5.7	36.4
65 and over	*12.5	*2.3	492.0	4.1	504.4	4.0	*24.8
State or territory of usual residence							
New South Wales	143.6	27.0	3 720.1	31.2	3 863.7	31.0	37.2
Victoria	138.5	26.0	3 035.3	25.4	3 173.7	25.4	43.6
Queensland	108.7	20.4	2 398.0	20.1	2 506.7	20.1	43.4
South Australia	44.6	8.4	831.7	7.0	876.3	7.0	50.9
Western Australia	62.4	11.7	1 390.3	11.6	1 452.7	11.6	42.9
Tasmania	16.8	3.2	239.2	2.0	256.1	2.1	65.7
Northern Territory	5.1	1.0	111.8	0.9	116.9	0.9	43.6
Australian Capital Territory	12.2	2.3	212.8	1.8	225.0	1.8	54.3
Country of birth							
Born in Australia	406.0	76.3	8 488.2	71.1	8 894.2	71.3	45.6
Born overseas	125.8	23.7	3 451.0	28.9	3 576.8	28.7	35.2
Oceania and Antarctica	26.7	5.0	464.1	3.9	490.8	3.9	54.5
North-West Europe	45.7	8.6	947.0	7.9	992.7	8.0	46.0
Southern and Eastern Europe	*5.9	*1.1	267.6	2.2	273.5	2.2	*21.6
North Africa and the Middle East	*3.6	*0.7	129.7	1.1	133.3	1.1	*27.0
South-East Asia	*9.6	*1.8	488.1	4.1	497.7	4.0	*19.4
North-East Asia	*9.3	*1.8	345.7	2.9	355.1	2.8	*26.3
Southern and Central Asia	*14.5	*2.7	429.6	3.6	444.0	3.6	*32.6
Americas	*4.9	*0.9	152.0	1.3	156.9	1.3	*31.2
Sub-Saharan Africa	*5.6	*1.0	227.2	1.9	232.8	1.9	*23.9
Period of arrival							
Arrived before 1971	18.2	3.4	438.1	3.7	456.3	3.7	39.9
Arrived 1971 to 1980	*11.5	*2.2	336.0	2.8	347.5	2.8	*33.2
Arrived 1981 to 1990	22.0	4.1	590.4	4.9	612.4	4.9	35.9
Arrived 1991 to 2000	*19.0	*3.6	684.9	5.7	703.8	5.6	*27.0
Arrived 2001 to 2010	37.3	7.0	1 088.8	9.1	1 126.2	9.0	33.1
2011 to survey date	17.8	3.4	312.8	2.6	330.6	2.7	*53.9
Labour force status							
Employed	489.1	92.0	10 946.1	91.7	11 435.2	91.7	42.8
Unemployed	*15.2	*2.9	328.2	2.7	343.4	2.8	*44.2
Not in the Labour Force	27.5	5.2	665.0	5.6	692.5	5.6	39.8

\* estimate has a relative standard error of 25% to 50% and should be used with caution

PERSONS WHO WORKED AT SOME TIME IN THE LAST 12 MONTHS, Selected characteristics—By whether experienced a work-related injury or illness *continued*

WHETHER EXPERIENCED A WORK-RELATED INJURY OR ILLNESS IN THE LAST 12 MONTHS

<i>Experienced a work-related injury or illness</i>		<i>Did not experience a work-related injury or illness</i>		<i>Total</i>		<i>Rate with a work-related injury or illness</i>
'000	%	'000	%	'000	%	per 1000 persons

PERSONS *cont.*

Level of highest non-school qualification							
With a non-school qualification	351.6	66.1	7 986.3	66.9	8 338.0	66.9	42.2
Postgraduate degree	21.2	4.0	762.9	6.4	784.0	6.3	27.0
Graduate Diploma/Graduate Certificate	9.3	*1.7	410.6	3.4	419.9	3.4	22.1
Bachelor degree	59.9	11.3	2 458.9	20.6	2 518.8	20.2	23.8
Advanced Diploma/Diploma	65.0	12.2	1 362.1	11.4	1 427.2	11.4	45.6
Certificate III/IV	164.3	30.9	2 523.4	21.1	2 687.7	21.6	61.1
Certificate I/II	*26.0	4.9	356.8	3.0	382.7	3.1	*67.9
Certificate not further defined	**2.2	**0.4	50.0	0.4	52.2	0.4	**42.1
Level not determined	**3.8	**0.7	61.6	0.5	65.4	0.5	**57.9
No non-school qualification	180.2	33.9	3 952.9	33.1	4 133.1	33.1	43.6
Self-assessed health status(a)							
Excellent	97.1	18.3	2 981.8	25.0	3 079.0	24.7	31.6
Very good	194.0	36.5	4 854.4	40.7	5 048.4	40.5	38.4
Good	167.8	31.5	3 031.0	25.4	3 198.8	25.6	52.5
Fair	58.6	11.0	750.0	6.3	808.6	6.5	72.5
Poor	11.8	2.2	145.8	1.2	157.6	1.3	74.7
Long term health conditions							
Arthritis or osteoporosis	72.0	13.5	1 176.3	9.9	1 248.3	10.0	57.7
Asthma	64.9	12.2	978.7	8.2	1 043.5	8.4	62.2
Cancer	*12.3	*2.3	168.5	1.4	180.8	1.5	*68.1
Diabetes	20.4	3.8	366.6	3.1	387.0	3.1	52.8
Heart or circulatory condition	50.1	9.4	892.8	7.5	942.9	7.6	53.1
Mental health condition	94.9	17.8	956.2	8.0	1 051.1	8.4	90.3
Long term injury	111.1	20.9	889.9	7.5	1 001.0	8.0	111.0
Other long term condition	62.9	11.8	1 250.5	10.5	1 313.5	10.5	47.9
No condition	244.0	45.9	7 397.9	62.0	7 641.9	61.3	31.9
<b>Total</b>	<b>531.8</b>	<b>100.0</b>	<b>11 939.2</b>	<b>100.0</b>	<b>12 471.0</b>	<b>100.0</b>	<b>42.6</b>

\* estimate has a relative standard error of 25% to 50% and should be used with caution

\*\* estimate has a relative standard error greater than 50% and is considered too unreliable for general use

(a) Excludes persons aged 15-17 years for whom proxy interviews were conducted. See paragraph 20 of the Explanatory Notes for more information.

# PERSONS WHO EXPERIENCED A WORK-RELATED INJURY OR ILLNESS(a), Details of job where most recent work-related injury or illness occurred—By sex

	Males		Females		Persons	
	'000	%	'000	%	'000	%
Status in employment of job where most recent work-related injury or illness occurred						
Employee	294.5	91.0	200.1	96.2	494.6	93.0
Employer	*5.9	*1.8	**0.7	**0.3	*6.6	*1.2
Own account worker	23.3	7.2	*7.2	*3.5	30.6	5.7
Employment type of job where most recent work-related injury or illness occurred						
Employees(b)	278.7	86.1	199.2	95.7	477.9	89.9
With paid leave entitlements	235.1	72.6	153.8	73.9	388.9	73.1
Without paid leave entitlements	43.6	13.5	45.4	21.8	89.0	16.7
Owner managers of incorporated enterprises	*15.7	*4.9	**1.0	**0.5	*16.7	3.1
Owner managers of unincorporated enterprises	29.3	9.0	*7.9	*3.8	37.2	7.0
Whether worked full-time or part-time in job where most recent work-related injury or illness occurred						
Worked full-time	283.4	87.5	127.8	61.4	411.2	77.3
Worked part-time	40.4	12.5	80.2	38.6	120.6	22.7
Hours usually worked in job where most recent work-related injury or illness occurred						
Less than 16	*11.7	*3.6	20.5	9.9	32.2	6.1
16–29	*22.0	*6.8	45.6	21.9	67.6	12.7
30–34	*6.7	*2.1	14.1	6.8	20.8	3.9
35–39	89.5	27.7	63.8	30.7	153.4	28.8
40	79.9	24.7	35.6	17.1	115.6	21.7
41–44	*16.9	*5.2	*5.3	*2.5	22.1	4.2
45–49	34.7	10.7	*10.0	*4.8	44.7	8.4
50–59	37.1	11.4	*9.4	*4.5	46.5	8.7
60 or more	25.3	7.8	*3.7	*1.8	29.0	5.4
Duration of employment in job where most recent work-related injury or illness occurred						
Less than 1 year	41.8	12.9	30.3	14.6	72.1	13.6
Under 3 months	*9.2	*2.8	**1.7	**0.8	*10.9	*2.0
3 to under 6 months	*12.5	*3.8	*12.3	*5.9	24.7	4.6
6 to under 12 months	20.1	6.2	16.4	7.9	36.5	6.9
1 to under 2 years	50.3	15.5	34.9	16.8	85.2	16.0
2 to under 5 years	78.8	24.4	57.5	27.6	136.3	25.6
5 to under 10 years	68.4	21.1	42.8	20.6	111.2	20.9
10 years and over	84.4	26.1	42.6	20.5	127.0	23.9
Whether worked on contract in job where most recent work-related injury or illness occurred						
Employees(b)	278.7	86.1	199.2	95.7	477.9	89.9
Worked on a fixed-term contract	*9.7	*3.0	*7.6	*3.6	*17.3	3.3
Did not work on a fixed-term contract	269.0	83.1	191.6	92.1	460.6	86.6
Owner-managers(c)	45.0	13.9	*8.9	*4.3	53.9	10.1
Worked on a contract basis	19.0	5.9	*3.6	*1.7	22.6	4.2
Did not work on contract basis	26.0	8.0	*5.3	*2.6	31.4	5.9
Whether worked shift work in job where most recent work-related injury or illness occurred						
Worked under shift arrangements	92.5	28.6	65.1	31.3	157.6	29.6
Did not work under shift arrangements	231.3	71.4	142.9	68.7	374.2	70.4
Whether injury or illness occurred within the first 6 months of starting job						
Injury or illness occurred within the first 6 months of starting job	51.8	16.0	35.1	16.9	86.9	16.3
Injury or illness did not occur within the first 6 months of starting job	272.0	84.0	172.9	83.1	444.9	83.7
<b>Total</b>	<b>323.7</b>	<b>100.0</b>	<b>208.1</b>	<b>100.0</b>	<b>531.8</b>	<b>100.0</b>

\* estimate has a relative standard error of 25% to 50% and should be used with caution

\*\* estimate has a relative standard error greater than 50% and is considered too unreliable for general use

(a) In the last 12 months.

(b) Excludes 'Owner managers of incorporated enterprises'.

(c) Includes 'Owner managers of incorporated enterprises' and 'Owner managers of unincorporated enterprises'.

# PERSONS WHO EXPERIENCED A WORK-RELATED INJURY OR ILLNESS IN THE LAST 12 MONTHS, AND ALL EMPLOYED PERSONS, Occupation, industry and sector of job—By sex

	Males		Females		Persons	
	'000	%	'000	%	'000	%
PERSONS WHO EXPERIENCED A WORK-RELATED INJURY OR ILLNESS IN THE LAST 12 MONTHS						
Occupation of job where most recent work-related injury or illness occurred						
Managers	47.1	14.5	*13.2	*6.3	60.3	11.3
Professionals	29.6	9.1	44.4	21.3	73.9	13.9
Technicians and trades workers	100.0	30.9	13.4	6.4	113.4	21.3
Community and personal service workers	26.3	8.1	56.8	27.3	83.0	15.6
Clerical and administrative workers	11.7	3.6	25.0	12.0	36.8	6.9
Sales workers	*10.6	*3.3	22.0	10.6	32.6	6.1
Machinery operators and drivers	59.2	18.3	**4.1	*2.0	63.3	11.9
Labourers	39.3	12.1	29.2	14.0	68.5	12.9
Industry of job where most recent work-related injury or illness occurred						
Agriculture, forestry and fishing	17.6	5.4	**3.6	**1.7	21.2	4.0
Mining	*7.6	*2.4	**1.6	**0.8	*9.3	*1.7
Manufacturing	65.4	20.2	*9.0	*4.3	74.4	14.0
Electricity, gas, water and waste services	*10.8	*3.3	—	—	*10.8	*2.0
Construction	51.0	15.7	**1.3	**0.6	52.3	9.8
Wholesale trade	*20.3	*6.3	**2.0	**1.0	*22.3	*4.2
Retail trade	19.1	5.9	20.7	10.0	39.8	7.5
Accommodation and food services	17.0	5.3	27.2	13.1	44.3	8.3
Transport, postal and warehousing	32.4	10.0	*10.7	*5.1	43.1	8.1
Information, media and telecommunications	**2.7	**0.8	**1.5	**0.7	*4.2	*0.8
Financial and insurance services	**1.7	**0.5	*6.5	*3.1	*8.1	*1.5
Rental, hiring and real estate services	**2.5	**0.8	**1.9	**0.9	*4.4	*0.8
Professional, scientific and technical services	*9.5	*2.9	*7.9	*3.8	17.4	3.3
Administrative and support services	*5.0	*1.5	*5.2	*2.5	*10.3	*1.9
Public administration and safety	20.4	6.3	17.9	8.6	38.3	7.2
Education and training	9.9	3.1	21.7	10.4	31.6	5.9
Health care and social assistance	*12.3	*3.8	59.4	28.6	71.7	13.5
Arts and recreation services	**1.9	**0.6	*4.9	*2.4	*6.8	*1.3
Other services	*16.6	*5.1	*4.9	*2.4	21.5	4.0
Sector of job where most recent work-related injury or illness occurred						
Public	40.4	12.5	46.5	22.4	87.0	16.4
Private	283.3	87.5	161.5	77.6	444.9	83.6
<b>Total(a)</b>	<b>323.7</b>	<b>100.0</b>	<b>208.1</b>	<b>100.0</b>	<b>531.8</b>	<b>100.0</b>

\* estimate has a relative standard error of 25% to 50% and should be used with caution

— nil or rounded to zero (including null cells)

(a) Includes 'Inadequately described'.

\*\* estimate has a relative standard error greater than 50% and is considered too unreliable for general use

PERSONS WHO EXPERIENCED A WORK-RELATED INJURY OR ILLNESS IN THE LAST 12 MONTHS, AND ALL EMPLOYED PERSONS, Occupation, industry and sector of job—By sex

*continued*

	<u>Males</u>		<u>Females</u>		<u>Persons</u>	
	'000	%	'000	%	'000	%
<b>ALL EMPLOYED PERSONS</b>						
Occupation of current main job						
Managers	1 017.8	16.6	496.1	9.3	1 513.8	13.2
Professionals	1 248.0	20.4	1 379.6	26.0	2 627.7	23.0
Technicians and trades workers	1 345.6	22.0	222.5	4.2	1 568.1	13.7
Community and personal service workers	351.5	5.7	786.5	14.8	1 138.1	10.0
Clerical and administrative workers	426.3	7.0	1 262.0	23.8	1 688.2	14.8
Sales workers	411.4	6.7	711.1	13.4	1 122.6	9.8
Machinery operators and drivers	650.3	10.6	73.2	1.4	723.5	6.3
Labourers	664.9	10.9	367.7	6.9	1 032.7	9.0
Industry of current main job						
Agriculture, forestry and fishing	214.5	3.5	78.5	1.5	293.1	2.6
Mining	182.5	3.0	41.0	0.8	223.5	2.0
Manufacturing	663.1	10.8	245.1	4.6	908.3	7.9
Electricity, gas, water and waste services	117.9	1.9	39.7	0.7	157.6	1.4
Construction	833.6	13.6	121.0	2.3	954.5	8.3
Wholesale trade	281.2	4.6	132.7	2.5	413.9	3.6
Retail trade	548.0	8.9	739.6	13.9	1 287.7	11.3
Accommodation and food services	333.3	5.4	422.5	8.0	755.8	6.6
Transport, postal and warehousing	440.0	7.2	124.8	2.4	564.8	4.9
Information, media and telecommunications	111.6	1.8	72.6	1.4	184.2	1.6
Financial and insurance services	214.0	3.5	236.7	4.5	450.8	3.9
Rental, hiring and real estate services	111.1	1.8	102.4	1.9	213.6	1.9
Professional, scientific and technical services	550.5	9.0	387.5	7.3	938.0	8.2
Administrative and support services	177.8	2.9	194.7	3.7	372.5	3.3
Public administration and safety	415.1	6.8	372.0	7.0	787.1	6.9
Education and training	283.8	4.6	657.8	12.4	941.5	8.2
Health care and social assistance	292.8	4.8	1 058.1	19.9	1 350.9	11.8
Arts and recreation services	105.1	1.7	83.6	1.6	188.8	1.7
Other services	241.6	3.9	194.6	3.7	436.2	3.8
Sector of current main job						
Public	752.8	12.3	1 107.1	20.9	1 859.9	16.3
Private	5 373.1	87.7	4 202.2	79.1	9 575.2	83.7
<b>Total(a)</b>	<b>6 125.9</b>	<b>100.0</b>	<b>5 309.3</b>	<b>100.0</b>	<b>11 435.2</b>	<b>100.0</b>

(a) Includes 'Inadequately described'.

# PERSONS WHO EXPERIENCED A WORK-RELATED INJURY OR ILLNESS(a), Selected details about the most recent work-related injury or illness—By sex

	Males		Females		Persons	
	'000	%	'000	%	'000	%
How most recent work-related injury or illness occurred(b)						
Lifting, pushing, pulling or bending	118.9	36.7	62.4	30.0	181.2	34.1
Repetitive movement with low muscle loading	21.9	6.8	24.1	11.6	46.0	8.6
Prolonged standing, working in cramped or unchanging positions	*7.5	*2.3	*4.7	*2.3	*12.2	*2.3
Vehicle accident	11.1	3.4	13.2	6.3	24.4	4.6
Hitting or being hit or cut by an object or vehicle	71.4	22.1	34.8	16.7	106.2	20.0
Fall on same level (including slip or fall)	42.1	13.0	26.1	12.5	68.2	12.8
Fall from a height	*14.6	*4.5	*6.2	*3.0	20.8	3.9
Exposure to mental stress	15.2	4.7	17.0	8.2	32.2	6.1
Contact with a chemical or substance	*10.0	*3.1	*9.5	*4.6	*19.5	*3.7
Other(c)	11.0	3.4	10.1	4.8	21.1	4.0
Most recent work-related injury or illness sustained(b)						
Fracture	25.7	7.9	*10.4	*5.0	36.1	6.8
Chronic joint or muscle condition	67.9	21.0	44.4	21.4	112.3	21.1
Sprain/strain	106.9	33.0	69.0	33.2	175.9	33.1
Cut/open wound	57.2	17.7	*18.5	*8.9	75.6	14.2
Crushing injury/internal organ damage	21.6	6.7	24.0	11.6	45.7	8.6
Superficial injury	**3.2	**1.0	*1.7	*0.8	*4.9	*0.9
Stress or other mental condition	13.6	4.2	11.8	5.7	25.4	4.8
Burns	*10.5	*3.3	*12.5	*6.0	23.0	4.3
Other(d)	*17.2	5.3	15.7	7.6	33.0	6.2
Location where most recent work-related injury or illness occurred						
Work place	301.1	93.0	182.4	87.7	483.6	90.9
Travelling on business	*13.2	*4.1	*10.3	*5.0	23.6	4.4
Travelling to or from work	**3.7	**1.1	*8.6	*4.1	12.3	2.3
Lunchtime or break activities	*5.7	*1.8	*6.7	*3.2	12.4	*2.3
Days or shifts absent from work in the last 12 months due to most recent work-related injury or illness						
None	122.8	37.9	82.3	39.6	205.1	38.6
Part of a day/shift	*26.7	8.3	*9.8	*4.7	36.5	6.9
1–4 days	65.7	20.3	56.9	27.4	122.6	23.1
5–10 days	37.7	11.6	23.4	11.3	61.1	11.5
11 days or more	65.0	20.1	30.3	14.6	95.4	17.9
Has not returned to work since illness or injury occurred	*5.8	*1.8	*5.3	*2.6	*11.1	*2.1
All sources of financial assistance for medical expenses or income loss for most recent work-related injury or illness						
Received financial assistance(e)	198.6	61.4	127.6	61.3	326.2	61.3
Workers' compensation	115.3	35.6	67.9	32.6	183.2	34.5
Employer - regular sick leave	61.6	19.0	43.9	21.1	105.4	19.8
Employer - other payment	16.7	5.2	14.1	6.8	30.7	5.8
Medicare/Social Security/Centrelink	22.6	7.0	*9.6	*4.6	32.2	6.1
Private health/income protection insurance	*9.0	*2.8	*7.3	*3.5	16.2	3.1
Other(f)	*5.7	*1.8	*9.3	*4.5	15.0	2.8
Did not know	*3.6	*1.1	**1.3	**0.6	*4.9	*0.9
Did not receive any financial assistance	125.1	38.6	80.5	38.7	205.6	38.7
Reported most recent work-related injury or illness to someone in the work place						
Did report most recent work-related injury or illness to someone in the work place(g)	294.3	90.9	190.8	91.7	485.1	91.2
Colleague	55.5	17.2	43.3	20.8	98.9	18.6
Supervisor/Line manager	200.2	61.8	150.3	72.2	350.5	65.9
Health and safety representative	52.6	16.2	17.0	8.1	69.5	13.1
Work health and safety coordinator	23.3	7.2	20.4	9.8	43.7	8.2
Human resources	*10.1	*3.1	*14.9	*7.1	24.9	4.7
First aid officer	22.5	6.9	*7.0	*3.4	29.5	5.5
Employer	45.6	14.1	19.3	9.3	64.9	12.2
Other	*12.5	*3.8	*4.4	*2.1	16.8	3.2
Did not report most recent work-related injury or illness to someone in the work place	29.4	9.1	17.3	8.3	46.7	8.8
<b>Total</b>	<b>323.7</b>	<b>100.0</b>	<b>208.1</b>	<b>100.0</b>	<b>531.8</b>	<b>100.0</b>

\* estimate has a relative standard error of 25% to 50% and should be used with caution

\*\* estimate has a relative standard error greater than 50% and is considered too unreliable for general use

(a) In the last 12 months.

(b) See Appendix 1 for more information.

(c) Includes 'Long term exposure to sound' and 'No further information'.

(d) Includes 'Amputation' and 'No further information'.

(e) Refers to all sources of financial assistance received, therefore persons may appear in more than one category.

(f) Includes 'Money from family and friends'.

(g) Respondents may record that they reported their most recent injury or illness to more than one person in their work place, therefore persons may appear in more than one category.

# PERSONS WHO EXPERIENCED A WORK-RELATED INJURY OR ILLNESS(a), Days or shifts absent due to most recent work-related injury or illness—By selected characteristics

DAYS OR SHIFTS ABSENT FROM WORK IN THE LAST 12 MONTHS DUE TO MOST RECENT WORK-RELATED INJURY OR ILLNESS								
	None		1–4 days		5 days or more		Total(b)	
	'000	%	'000	%	'000	%	'000	%
All sources of financial assistance for medical expenses or income loss for most recent work-related injury or illness								
Received financial assistance(c)	60.0	18.4	99.7	30.6	135.3	41.5	326.2	100.0
Workers' compensation	36.5	19.9	42.1	23.0	88.6	48.4	183.2	100.0
Employer - regular sick leave	**1.4	**1.3	53.9	51.1	40.2	38.1	105.4	100.0
Employer - other payment	*9.5	*31.0	*5.4	*17.5	*10.4	*33.8	30.7	100.0
Medicare/Social Security/Centrelink	*7.9	*24.5	*8.9	*27.5	*12.7	*39.3	32.2	100.0
Private health/income protection insurance	**4.4	*26.9	*4.7	*29.1	*5.7	*34.9	16.2	100.0
Other(d)	**2.9	**19.2	*3.3	*22.3	*7.4	49.6	15.0	100.0
Did not know	**2.0	*41.2	**1.7	*35.3	**0.3	**5.9	*4.9	100.0
Did not receive any financial assistance	145.1	70.6	22.9	11.1	21.1	10.3	205.6	100.0
How the most recent work-related injury or illness occurred(e)								
Lifting, pushing, pulling or bending	80.1	44.2	33.7	18.6	57.0	31.4	181.2	100.0
Repetitive movement with low muscle loading	21.3	46.3	*10.9	23.7	*10.3	*22.4	46.0	100.0
Prolonged standing, working in cramped or unchanging positions	*7.5	*61.6	**3.0	**24.7	**0.8	**6.9	*12.2	100.0
Vehicle accident	*3.6	*14.9	*11.5	47.1	*6.8	*27.9	24.4	100.0
Hitting or being hit by an object or vehicle	42.5	40.0	26.1	24.6	23.0	21.7	106.2	100.0
Fall on same level (including slip or fall)	19.9	29.1	20.8	30.5	24.8	36.4	68.2	100.0
Fall from a height	*4.1	*19.6	*4.4	*21.2	*9.6	46.2	20.8	100.0
Exposure to mental stress	*3.9	*12.0	**4.5	**14.0	16.1	50.0	32.2	100.0
Contact with a chemical or substance	*11.3	*58.3	*3.9	*20.1	*3.1	**15.7	*19.5	100.0
Other(f)	*10.9	51.9	*3.8	*17.9	*4.9	*23.4	21.1	100.0
Most recent work-related injury or illness sustained(e)								
Fracture	*4.1	*11.4	*9.0	*25.0	22.3	61.9	36.1	100.0
Chronic joint or muscle condition	43.9	39.1	26.0	23.2	35.3	31.5	112.3	100.0
Sprain/strain	66.3	37.7	48.1	27.4	47.6	27.0	175.9	100.0
Cut/open wound	34.7	45.9	*16.4	*21.6	*13.2	*17.4	75.6	100.0
Crushing injury/internal organ damage	22.6	49.4	*9.2	*20.0	*11.1	24.2	45.7	100.0
Superficial injury	**2.4	**48.5	**1.1	**21.9	—	—	*4.9	100.0
Stress or other mental condition	*2.7	*10.7	**2.8	**11.0	14.8	58.4	25.4	100.0
Burns	16.3	70.7	*5.0	*21.8	*1.2	**5.3	23.0	100.0
Other(g)	*12.2	36.9	*5.1	*15.4	*11.0	*33.2	33.0	100.0
Reported most recent work-related injury or illness to someone in the work place								
Did report most recent work-related injury or illness to someone in the work place(h)	176.5	36.4	117.1	24.1	148.3	30.6	485.1	100.0
Colleague	36.7	37.1	20.9	21.1	34.2	34.6	98.9	100.0
Supervisor/Line manager	126.9	36.2	90.3	25.8	104.2	29.7	350.5	100.0
Health and safety representative	28.2	40.6	*8.1	*11.7	27.6	39.7	69.5	100.0
Work health and safety coordinator	18.0	41.3	*4.7	*10.8	16.5	37.8	43.7	100.0
Human resources	*8.3	*33.2	*5.7	*22.7	*8.8	*35.4	24.9	100.0
First aid officer	15.9	53.9	**3.6	**12.1	*7.6	*25.7	29.5	100.0
Employer	18.3	28.1	18.1	27.9	24.0	37.0	64.9	100.0
Other	*7.1	*41.9	**3.0	**18.0	*3.9	*23.2	16.8	100.0
Did not report most recent work-related injury or illness to someone in the work place	28.6	61.2	*5.5	*11.7	*8.2	*17.6	46.7	100.0
<b>Total</b>	<b>205.1</b>	<b>38.6</b>	<b>122.6</b>	<b>23.1</b>	<b>156.5</b>	<b>29.4</b>	<b>531.8</b>	<b>100.0</b>

\* estimate has a relative standard error of 25% to 50% and should be used with caution

\*\* estimate has a relative standard error greater than 50% and is considered too unreliable for general use

— nil or rounded to zero (including null cells)

(a) In the last 12 months.

(b) Includes 25,500 persons who had reported 'Had not returned to work since injury or illness occurred' and 21,900 persons who reported 'Part of day/shift'.

(c) Refers to all sources of financial assistance received, therefore persons may appear in more than one category.

(d) Includes 'Money from family and friends'.

(e) See Appendix 1 for more information.

(f) Includes 'Long term exposure to sound' and 'No further information'.

(g) Includes 'Amputation' and 'No further information'.

(h) Respondents may record that they reported their most recent work-related injury or illness to more than one person in their work place, therefore persons may appear in more than one category.

PERSONS WHO EXPERIENCED A WORK-RELATED INJURY OR ILLNESS(a), Reported most recent work-related injury or illness to someone in the work place—By selected characteristics

REPORTED MOST RECENT WORK-RELATED INJURY OR ILLNESS TO SOMEONE IN THE WORK PLACE

	Colleague	Supervisor/ Line manager	Health and safety representative/ First aid officer	Work health and safety coordinator/ Human resources	Employer	Total(b)(c)
	'000	'000	'000	'000	'000	'000
How most recent work-related injury or illness occurred(d)						
Lifting, pushing, pulling or bending	29.4	120.8	28.8	23.0	*17.8	181.2
Repetitive movement with low muscle loading	*5.9	30.1	*6.3	*4.2	*4.8	46.0
Prolonged standing, working in cramped or unchanging positions	**0.5	*8.5	—	**0.7	**0.7	*12.2
Vehicle accident	*4.6	16.5	**1.3	**1.3	*4.2	24.4
Hitting or being hit by an object or vehicle	23.3	69.2	23.1	*11.0	*11.2	106.2
Fall on same level (including slip or fall)	15.6	44.7	*14.1	*8.4	*11.6	68.2
Fall from a height	*7.8	*10.0	**3.8	*2.3	*4.4	20.8
Exposure to mental stress	*6.9	22.5	*3.4	*7.4	*2.0	32.2
Contact with a chemical or substance	*2.3	*13.1	**5.5	**1.0	**3.8	*19.5
Other(e)	*2.7	15.0	**1.7	**1.8	*4.5	21.1
Most recent work-related injury or illness sustained(d)						
Fracture	*9.6	25.1	*8.6	**4.0	*7.8	36.1
Chronic joint or muscle condition	15.0	70.2	*14.2	12.0	*14.9	112.3
Sprain/strain	31.3	121.3	26.1	23.3	*11.1	175.9
Cut/open wound	*14.3	46.1	18.7	*6.8	*10.0	75.6
Crushing injury/internal organ damage	10.7	27.1	*7.7	**3.1	*8.6	45.7
Superficial injury	**2.6	*3.7	**1.4	—	—	*4.9
Stress or other mental condition	*5.8	18.1	*3.8	*3.4	*1.6	25.4
Burns	*3.0	17.4	**5.3	**1.7	*4.0	23.0
Other(f)	*6.6	21.4	**2.2	*6.8	*6.9	33.0
Whether received financial assistance for medical expenses or income loss for most recent work-related injury or illness						
Received financial assistance	58.5	241.3	63.4	45.0	41.6	326.2
Did not receive financial assistance	40.4	109.1	24.6	*16.1	23.3	205.6
<b>Total</b>	<b>98.9</b>	<b>350.5</b>	<b>88.0</b>	<b>61.1</b>	<b>64.9</b>	<b>531.8</b>

\* estimate has a relative standard error of 25% to 50% and should be used with caution

\*\* estimate has a relative standard error greater than 50% and is considered too unreliable for general use

— nil or rounded to zero (including null cells)

(a) In the last 12 months.

(b) Includes 16,800 persons who had reported 'Other' and 46,700 persons who 'Did not report most recent work-related injury or illness to someone in the work place'.

(c) Respondents may record that they reported their most recent work-related injury or illness to more than one person in their work place, therefore persons may appear in more than one category.

(d) See Appendix 1 for more information.

(e) Includes 'Long term exposure to sound' and 'No further information'.

(f) Includes 'Amputation' and 'No further information'.



PERSONS WHO EXPERIENCED A WORK-RELATED INJURY OR ILLNESS(a), Job where most recent work-related injury or illness occurred and selected characteristics—By whether received workers' compensation

	WHETHER RECEIVED WORKERS' COMPENSATION					
	Received workers' compensation.....		Did not receive workers' compensation.....		Total.....	
	'000	%	'000	%	'000	%
Status in employment where most recent work-related injury or illness occurred						
Employee	182.8	37.0	311.8	63.0	494.6	100.0
Employer/own account worker	**0.4	**1.1	36.8	98.9	37.2	100.0
Whether worked full-time or part-time in job where most recent work-related injury or illness occurred						
Worked full-time	145.2	35.3	266.0	64.7	411.2	100.0
Worked part-time	38.0	31.5	82.6	68.5	120.6	100.0
Occupation of job where most recent work-related injury or illness occurred						
Managers	*12.3	*20.4	48.0	79.6	60.3	100.0
Professionals	23.4	31.6	50.5	68.4	73.9	100.0
Technicians and trades workers	42.1	37.1	71.3	62.9	113.4	100.0
Community and personal service workers	32.6	39.3	50.4	60.7	83.0	100.0
Clerical and administrative workers	*9.6	*26.0	27.2	74.0	36.8	100.0
Sales workers	*8.3	25.4	24.3	74.6	32.6	100.0
Machinery operators and drivers	28.7	45.4	34.6	54.6	63.3	100.0
Labourers	26.3	38.4	42.2	61.6	68.5	100.0
Industry of job where most recent work-related injury or illness occurred						
Agriculture, forestry and fishing	*6.6	*31.0	*14.6	69.0	21.2	100.0
Mining	**2.3	**25.3	*6.9	74.7	*9.3	100.0
Manufacturing	30.4	40.9	44.0	59.1	74.4	100.0
Electricity, gas, water and waste services	*6.1	*56.9	**4.6	*43.1	*10.8	100.0
Construction	*10.9	*20.8	41.4	79.2	52.3	100.0
Wholesale trade	*5.4	*24.3	*16.9	75.7	*22.3	100.0
Retail trade	*14.6	36.8	25.2	63.2	39.8	100.0
Accommodation and food services	11.9	26.9	32.3	73.1	44.3	100.0
Transport, postal and warehousing	*14.1	*32.7	29.0	67.3	43.1	100.0
Information, media and telecommunications	**1.6	**38.4	**2.6	*61.6	*4.2	100.0
Financial and insurance services	*3.0	*36.9	*5.1	*63.1	*8.1	100.0
Rental, hiring and real estate services	*2.2	**50.5	**2.2	**49.5	*4.4	100.0
Professional, scientific and technical services	*8.0	*46.1	*9.4	*53.9	17.4	100.0
Administrative and support services	*3.3	*32.1	*7.0	67.9	*10.3	100.0
Public administration and safety	16.6	43.3	21.7	56.7	38.3	100.0
Education and training	11.9	37.5	19.7	62.5	31.6	100.0
Health care and social assistance	26.2	36.5	45.5	63.5	71.7	100.0
Arts and recreation services	**2.6	**38.2	**4.2	*61.8	*6.8	100.0
Other services	*5.4	*25.1	16.1	74.9	21.5	100.0
Sector of job where most recent work-related injury or illness occurred						
Public	35.7	41.1	51.2	58.9	87.0	100.0
Private	147.5	33.2	297.4	66.8	444.9	100.0
<b>Total</b>	<b>183.2</b>	<b>34.5</b>	<b>348.6</b>	<b>65.5</b>	<b>531.8</b>	<b>100.0</b>

\* estimate has a relative standard error of 25% to 50% and should be used with caution

\*\* estimate has a relative standard error greater than 50% and is considered too unreliable for general use

(a) In the last 12 months.

# PERSON WHO EXPERIENCED A WORK-RELATED INJURY OR ILLNESS(a), Details of most recent work-related injury or illness—By whether received workers' compensation

	WHETHER RECEIVED WORKERS' COMPENSATION					
	Received workers' compensation		Did not receive workers' compensation		Total	
	'000	%	'000	%	'000	%
Whether applied for workers' compensation as a result of most recent work-related injury or illness						
Applied for workers' compensation	183.2	89.1	22.4	10.9	205.7	100.0
Did not apply for workers' compensation	—	—	326.1	100.0	326.1	100.0
Location where most recent work-related injury or illness occurred						
Work place	165.6	34.2	318.0	65.8	483.6	100.0
Travelling on business	*10.5	*44.4	*13.1	55.6	23.6	100.0
Travelling to or from work	**3.1	*24.9	*9.2	75.1	12.3	100.0
Lunchtime or break activities	*4.2	*33.6	*8.3	66.4	12.4	100.0
Most recent work-related injury or illness sustained(b)						
Fracture	21.4	59.5	*14.6	40.5	36.1	100.0
Chronic joint or muscle condition	33.0	29.4	79.3	70.6	112.3	100.0
Sprain/strain	72.1	41.0	103.8	59.0	175.9	100.0
Cut/open wound	29.1	38.5	46.5	61.5	75.6	100.0
Crushing injury/internal organ damage	*11.3	*24.8	34.3	75.2	45.7	100.0
Superficial injury	**1.3	**27.1	*3.5	*72.9	*4.9	100.0
Stress or other mental condition	*4.4	*17.3	21.0	82.7	25.4	100.0
Burns	**3.2	*14.0	19.8	86.0	23.0	100.0
Other(c)	*7.4	*22.3	25.6	77.7	33.0	100.0
How the most recent work-related injury or illness occurred(b)						
Lifting, pushing, pulling or bending	65.3	36.1	115.9	63.9	181.2	100.0
Repetitive movement with low muscle loading	*12.4	*26.9	33.6	73.1	46.0	100.0
Prolonged standing, working in cramped or unchanging positions	**0.8	**6.5	*11.4	93.5	*12.2	100.0
Vehicle accident	*8.5	*35.0	15.8	65.0	24.4	100.0
Hitting or being hit by an object or vehicle	33.4	31.4	72.9	68.6	106.2	100.0
Fall on same level (including slip or fall)	35.2	51.7	33.0	48.3	68.2	100.0
Fall from a height	*12.3	59.5	*8.4	*40.5	20.8	100.0
Exposure to mental stress	*5.9	*18.3	26.3	81.7	32.2	100.0
Contact with a chemical or substance	**3.1	**15.7	*16.4	84.3	*19.5	100.0
Other(d)	*6.3	*30.0	14.8	70.0	21.1	100.0
<b>Total</b>	<b>183.2</b>	<b>34.5</b>	<b>348.6</b>	<b>65.5</b>	<b>531.8</b>	<b>100.0</b>

\* estimate has a relative standard error of 25% to 50% and should be used with caution

\*\* estimate has a relative standard error greater than 50% and is considered too unreliable for general use

— nil or rounded to zero (including null cells)

(a) In the last 12 months.

(b) See Appendix 1 for more information.

(c) Includes 'Amputation' and 'No further information'.

(d) Includes 'Long term exposure to sound' and 'No further information'.

# PERSONS WHO EXPERIENCED A WORK-RELATED INJURY OR ILLNESS(a), Main reason did not apply for workers' compensation—By whether received financial assistance

	WHETHER RECEIVED FINANCIAL ASSISTANCE					
	<i>Received financial assistance</i>		<i>Did not receive financial assistance</i>		<i>Total</i>	
	'000	%	'000	%	'000	%
Whether applied for and whether received workers' compensation as a result of most recent work-related injury or illness						
Applied for workers' compensation	197.6	60.6	*8.1	*3.9	205.7	38.7
Received workers' compensation	183.2	56.2	—	—	183.2	34.5
Did not receive workers' compensation	*14.4	*4.4	*8.1	*3.9	22.4	4.2
Did not apply for workers' compensation	128.6	39.4	197.5	96.1	326.1	61.3
Main reason did not apply for workers' compensation						
Did not apply for workers' compensation	128.6	39.4	197.5	96.1	326.1	61.3
Not covered or not aware of workers' compensation	*9.6	*3.0	21.2	10.3	30.9	5.8
Did not think eligible	*13.3	*4.1	19.2	9.3	32.5	6.1
Minor injury only/not considered necessary	49.7	15.3	94.7	46.1	144.5	27.2
Negative impact on current or future employment	*12.3	*3.8	16.0	7.8	28.3	5.3
Inconvenient/required too much effort/paperwork	*8.9	*2.7	*8.0	*3.9	16.9	3.2
Employer agreement to pay costs	*17.9	5.5	*3.8	*1.8	21.7	4.1
Other	13.5	4.1	20.6	10.0	34.1	6.4
Did not know	**3.3	**1.0	14.0	6.8	17.2	3.2
Applied for workers' compensation	197.6	60.6	*8.1	*3.9	205.7	38.7
Most recent work-related injury or illness sustained(b)						
Fracture	30.7	9.4	*5.4	*2.6	36.1	6.8
Chronic joint or muscle condition	64.6	19.8	47.7	23.2	112.3	21.1
Sprain/strain	121.3	37.2	54.6	26.6	175.9	33.1
Cut/open wound	42.8	13.1	32.8	16.0	75.6	14.2
Crushing injury/internal organ damage	18.7	5.7	27.0	13.1	45.7	8.6
Superficial injury	**1.9	**0.6	**3.0	*1.5	*4.9	*0.9
Stress or other mental condition	18.1	5.5	*7.3	*3.6	25.4	4.8
Burns	*6.7	*2.1	16.4	8.0	23.0	4.3
Other(c)	21.6	6.6	*11.4	*5.5	33.0	6.2
<b>Total</b>	<b>326.2</b>	<b>100.0</b>	<b>205.6</b>	<b>100.0</b>	<b>531.8</b>	<b>100.0</b>

\* estimate has a relative standard error of 25% to 50% and should be used with caution

\*\* estimate has a relative standard error greater than 50% and is considered too unreliable for general use

— nil or rounded to zero (including null cells)

(a) In the last 12 months.

(b) See Appendix 1 for more information.

(c) Includes 'Amputation' and 'No further information'.

PERSONS WHO EXPERIENCED A WORK-RELATED INJURY OR ILLNESS(a), Selected characteristics—By main reason did not apply for workers' compensation

MAIN REASON DID NOT APPLY FOR WORKERS' COMPENSATION

	<i>Not covered or not aware of workers' compensation</i>	<i>Did not think eligible</i>	<i>Minor injury only/not considered necessary</i>	<i>Negative impact on current or future employment</i>	<i>Inconvenient/ required too much effort/ paperwork</i>	<i>Other(c)</i>	<i>Total(b)</i>
	'000	'000	'000	'000	'000	'000	'000
Whether received financial assistance for medical expenses or income loss for most recent work-related injury or illness							
Received financial assistance	*9.6	*13.3	49.7	*12.3	*8.9	34.7	326.2
Did not receive financial assistance	21.2	19.2	94.7	16.0	*8.0	38.3	205.6
Most recent work-related injury or illness sustained(d)							
Fracture	**1.9	**1.1	*2.7	**2.4	**0.6	*3.6	36.1
Chronic joint or muscle condition	*7.8	*10.0	24.1	*8.4	*5.3	19.8	112.3
Sprain/strain	*9.3	*5.8	44.6	*10.1	*6.7	22.6	175.9
Cut/open wound	**3.3	**2.1	31.6	**2.3	**0.1	*6.2	75.6
Crushing injury/internal organ damage	*4.8	**1.3	19.8	**3.6	—	**2.9	45.7
Superficial injury	**1.1	—	*2.3	—	—	**0.1	*4.9
Stress or other mental condition	—	*4.4	*0.5	**0.9	**1.9	*7.6	25.4
Burns	**1.9	**2.6	*11.9	—	**1.5	**1.9	23.0
Other(e)	**1.0	**5.2	*6.8	**0.6	**0.8	*8.4	33.0
Reported most recent work-related injury or illness to someone in the work place							
Did report most recent work-related injury or illness to someone in the work place(f)	21.6	27.0	128.5	25.7	*14.0	62.9	485.1
Colleague	*8.2	*5.4	27.1	**2.5	*3.8	13.6	98.9
Supervisor/Line manager	11.6	*18.5	94.7	21.4	*8.7	38.2	350.5
Health and safety representative	**1.4	**5.5	15.9	**0.2	**0.7	**3.5	69.5
Work health and safety coordinator	**0.5	**0.9	*9.8	**1.7	—	**2.6	43.7
Human resources	—	—	*5.0	**0.1	—	*3.9	24.9
First aid officer	**0.6	—	*12.3	**0.2	**0.1	**0.3	29.5
Employer	**3.1	**5.4	15.5	*2.6	**1.7	*12.1	64.9
Other	**2.0	**0.8	*2.5	—	**1.7	*5.7	16.8
Did not report most recent work-related injury or illness to someone in the work place	*9.2	*5.5	*15.9	**2.6	**3.0	*10.2	46.7
<b>Total</b>	<b>30.9</b>	<b>32.5</b>	<b>144.5</b>	<b>28.3</b>	<b>16.9</b>	<b>73.1</b>	<b>531.8</b>

\* estimate has a relative standard error of 25% to 50% and should be used with caution

\*\* estimate has a relative standard error greater than 50% and is considered too unreliable for general use

— nil or rounded to zero (including null cells)

(a) In the 12 last months.

(b) Includes persons who 'Applied for workers compensation'.

(c) Includes 21,700 persons who reported 'Employer agreed to pay costs' and 17,200 persons who reported 'Did not know'.

(d) See Appendix 1 for more information.

(e) Includes 'Amputation' and 'No further information'.

(f) Respondents may record that they reported their most recent injury or illness to more than one person in their work place, therefore persons may appear in more than one category.

# PERSONS WHO EXPERIENCED A WORK-RELATED INJURY OR ILLNESS(a), Selected characteristics—By status of employment

	EMPLOYEES(b)							
	With paid leave entitlements				Without paid leave entitlements			
	'000	%	'000	%	Owner managers(c)		Total	
					'000	%	'000	%
All sources of financial assistance for medical expenses or income loss for most work-related injury or illness(d)								
Received financial assistance	279.5	71.9	36.8	41.4	*9.8	*18.2	326.2	61.3
Workers' compensation	155.3	39.9	26.7	30.0	**1.2	**2.3	183.2	34.5
Employer - regular sick leave	102.8	26.4	*2.7	**3.0	—	—	105.4	19.8
Employer - other payment	25.8	6.6	*5.0	*5.6	—	—	30.7	5.8
Medicare/Social Security/Centrelink	25.4	6.5	*3.8	*4.2	**3.1	**5.7	32.2	6.1
Private health/income protection insurance	*9.3	*2.4	**1.4	**1.6	*5.6	*10.3	16.2	3.1
Money from family and friends	*3.2	*0.8	—	—	—	—	*3.2	*0.6
Other	*10.0	*2.6	**1.7	**1.9	**0.7	**1.3	12.4	2.3
Did not know	*4.0	*1.0	**0.4	**0.4	**0.5	**1.0	*4.9	*0.9
Did not receive any financial assistance	109.3	28.1	52.2	58.6	44.1	81.8	205.6	38.7
Main reason did not apply for workers' compensation								
Did not apply for workers' compensation	215.0	55.3	58.4	65.6	52.7	97.7	326.1	61.3
Not covered or not aware of workers' compensation	*8.9	*2.3	*5.9	*6.6	16.1	29.9	30.9	5.8
Did not think eligible	20.9	5.4	*8.2	*9.2	*3.5	*6.5	32.5	6.1
Minor injury only/not considered necessary	108.7	28.0	26.0	29.3	*9.7	*18.0	144.5	27.2
Negative impact on current or future employment	23.8	6.1	*3.1	*3.5	**1.3	**2.5	28.3	5.3
Inconvenient/required too much effort/paperwork	*6.5	*1.7	*5.0	*5.6	*5.5	*10.3	16.9	3.2
Employer agreement to pay costs	17.9	4.6	*2.6	*2.9	**1.2	**2.2	21.7	4.1
Other	17.4	4.5	*6.2	*7.0	10.5	19.5	34.1	6.4
Did not know	*10.9	*2.8	**1.5	**1.7	*4.8	*9.0	17.2	3.2
Applied for workers' compensation	173.9	44.7	30.6	34.4	**1.2	**2.3	205.7	38.7
Sector of job where most recent work-related injury or illness occurred								
Public	82.3	21.2	*4.7	*5.3	—	—	87.0	16.4
Private	306.6	78.8	84.3	94.7	53.9	100.0	444.9	83.6
<b>Total</b>	<b>388.9</b>	<b>100.0</b>	<b>89.0</b>	<b>100.0</b>	<b>53.9</b>	<b>100.0</b>	<b>531.8</b>	<b>100.0</b>

- \* estimate has a relative standard error of 25% to 50% and should be used with caution
- \*\* estimate has a relative standard error greater than 50% and is considered too unreliable for general use
- nil or rounded to zero (including null cells)
- (a) In the last 12 months.

- (b) Excludes 'Owner managers of incorporated enterprises'.
- (c) Comprised of 'Owner managers of incorporated enterprises', 'Owner managers of unincorporated enterprises' and 'Contributing family workers'.
- (d) Refers to all sources of financial assistance received, therefore people may appear in more than one category.

	<i>Males</i>		<i>Females</i>		<i>Persons</i>	
	'000	%	'000	%	'000	%
Main reason for ceasing job where work-related injury or illness occurred						
Ceased working in job where injury or illness occurred	46.3	14.3	32.4	15.6	78.7	14.8
Result of workplace illness or injury	12.6	3.9	*12.0	*5.7	24.5	4.6
Other health or disability	**2.6	**0.8	**0.6	**0.3	**3.2	**0.6
Laid off or retrenched	**7.0	**2.2	*4.7	*2.3	*11.7	*2.2
Job was temporary or seasonal	**3.4	**1.0	**1.1	**0.5	**4.4	**0.8
Own business closed down for economic reasons	—	—	—	—	—	—
Unsatisfactory work arrangements	*10.9	*3.4	*5.0	*2.4	15.9	3.0
Holiday job/returned to studies	—	—	—	—	—	—
Other	*9.8	*3.0	*9.0	*4.3	*18.9	3.5
Still working in job where injury or illness occurred	277.4	85.7	175.7	84.4	453.1	85.2
Whether returned to any work at any time after work-related injury or illness						
Returned to work after illness or injury sustained	317.9	98.2	202.8	97.4	520.7	97.9
Did not return to work after illness or injury sustained	*5.8	*1.8	*5.3	*2.6	*11.1	*2.1
<b>Total</b>	<b>323.7</b>	<b>100.0</b>	<b>208.1</b>	<b>100.0</b>	<b>531.8</b>	<b>100.0</b>

\* estimate has a relative standard error of 25% to 50% and should be used with caution — nil or rounded to zero (including null cells)

(a) In the last 12 months.

\*\* estimate has a relative standard error greater than 50% and is considered too unreliable for general use

## STATE OR TERRITORY OF USUAL RESIDENCE, Populations

	NSW	Vic.	Qld.	SA	WA	Tas.	NT	ACT	Aust.
	'000	'000	'000	'000	'000	'000	'000	'000	'000
MALES									
<b>Population 1</b>									
Persons who worked some time in the last 12 months	2 057.9	1 677.6	1 317.4	467.4	791.5	135.5	62.5	115.7	6 625.5
<b>Population 2</b>									
Persons who worked at some time in the last 12 months and experienced a work-related injury or illness in that period	81.6	91.2	69.0	30.4	32.4	10.4	*3.0	*5.7	323.7
<b>Population 3</b>									
Persons who were employed in the reference week	1 904.0	1 534.7	1 224.0	434.9	733.9	124.0	60.0	110.4	6 125.9
FEMALES									
<b>Population 1</b>									
Persons who worked some time in the last 12 months	1 805.8	1 496.2	1 189.3	408.9	661.2	120.6	54.3	109.3	5 845.6
<b>Population 2</b>									
Persons who worked at some time in the last 12 months and experienced a work-related injury or illness in that period	61.9	47.2	39.7	14.2	30.0	6.4	*2.1	6.5	208.1
<b>Population 3</b>									
Persons who were employed in the reference week	1 640.6	1 356.3	1 089.1	372.0	590.4	111.7	50.0	99.2	5 309.3
PERSONS									
<b>Population 1</b>									
Persons who worked some time in the last 12 months	3 863.7	3 173.7	2 506.7	876.3	1 452.7	256.1	116.9	225.0	12 471.0
<b>Population 2</b>									
Persons who worked at some time in the last 12 months and experienced a work-related injury or illness in that period	143.6	138.5	108.7	44.6	62.4	16.8	5.1	12.2	531.8
<b>Population 3</b>									
Persons who were employed in the reference week	3 544.6	2 891.0	2 313.1	806.8	1 324.3	235.7	110.0	209.6	11 435.2

\* estimate has a relative standard error of 25% to 50% and should be used with caution

## EXPLANATORY NOTES

### INTRODUCTION

**1** The statistics presented in this publication were compiled from data collected in the Multipurpose Household Survey (MPHS) conducted throughout Australia in the 2013–14 financial year as a supplement to the monthly Labour Force Survey (LFS). The MPHS was designed to provide statistics annually for a small number of labour, social and economic topics. The topics collected in 2013–14 were:

- Work-Related Injuries
- Participation in Sport and Physical Recreation
- Attendance at Selected Cultural Venues and Events
- Patient Experience
- Crime Victimisation.

**2** For all topics, information on labour force characteristics, education, income and other demographics are also available.

**3** The publication *Labour Force, Australia* (cat. no. 6202.0) contains information about survey design, scope, coverage and population benchmarks relevant to the monthly LFS, which also applies to the MPHS. It also contains definitions of demographic and labour force characteristics, and information about interviewing relevant to both the monthly LFS and MPHS.

### CONCEPTS SOURCES AND METHODS

**4** The conceptual framework used in Australia's LFS aligns closely with the standards and guidelines set out in Resolutions of the International Conference of Labour Statisticians. Descriptions of the underlying concepts and structure of Australia's labour force statistics, and the sources and methods used in compiling these estimates, are presented in *Labour Statistics: Concepts, Sources and Methods* (cat. no. 6102.0.55.001).

### COLLECTION METHODOLOGY

**5** ABS interviewers conducted personal interviews by either telephone or at selected dwellings during the 2013–14 financial year. Each month a sample of dwellings were selected for the MPHS from the responding households in the LFS. In these dwellings, after the LFS had been fully completed for each person in the household, a usual resident aged 15 years and over was selected at random and asked the additional MPHS questions in a personal interview. Information for this survey was collected using Computer Assisted Interviewing (CAI), and responses are recorded directly onto an electronic questionnaire in a notebook computer.

### SCOPE

**6** The scope of the LFS is restricted to people aged 15 years and over and excludes the following:

- members of the permanent defence forces;
- certain diplomatic personnel of overseas governments, customarily excluded from census and estimated population estimates;
- overseas residents in Australia; and
- members of non-Australian defence forces (and their dependants).

**7** In addition the 2013–14 MPHS excluded the following:

- people living in Aboriginal and Torres Strait Islander communities in very remote parts of Australia; and
- people living in non-private dwellings such as hotels, university residences, students at boarding schools, patients in hospitals, inmates of prisons and residents of other institutions (e.g. retirement homes, homes for people with disabilities).

### COVERAGE

**8** In the LFS, coverage rules are applied which aim to ensure that each person is associated with only one dwelling and hence has only one chance of selection in the survey. See *Labour Force, Australia* (cat. no. 6202.0) for more details.



## EXPLANATORY NOTES *continued*

### SAMPLE SIZE

**9** The initial sample for the MPHS 2013–14 consisted of approximately 42,100 private dwellings. Of the 35,900 private dwellings that remained in the survey after sample loss (e.g. households with LFS non-response, no residents in scope for the LFS, vacant or derelict dwellings and dwellings under construction), approximately 77% were fully responding to the MPHS. The number of completed interviews obtained from these private dwelling households (after taking into account the scope, coverage and subsampling exclusions) was 27,300 for the work-related injuries survey.

### ESTIMATION METHODS

**10** Weighting is the process of adjusting results from a sample survey to infer results for the total in scope population. To do this, a 'weight' is allocated to each sample unit. For the data in this publication the sample unit is a person. The weight is a value which indicates how many population units are represented by the sample unit. The first step in calculating weights for each unit is to assign an initial weight, which is the inverse of the probability of being selected in the survey. The initial weights are then calibrated to align with independent estimates of the population of interest, referred to as 'benchmarks'. Weights are calibrated against population benchmarks to ensure that the survey estimates conform to the independently estimated distribution of the population rather than the distribution within the sample itself.

**11** The statistics presented in this publication have been benchmarked to the Estimated Resident Population for March 2014, independently produced according to the scope of the survey. This ensures that the survey estimates conform to person benchmarks by state, part of state, age and sex. The statistics have been further benchmarked to labour force survey estimates averaged over the 12 month MPHS reference period. This ensures that survey estimates are also consistent with the estimated in-scope population by state, part of state, sex, age and labour force status.

**12** LFS estimates are revised every five years to take into account the outcome of the 5-yearly rebasing of the Estimated Resident Population following the latest Census. LFS supplementary survey and MPHS estimates are not revised in this way. Small differences will therefore exist between the civilian population aged 15 years and over reflected in the Labour Force Survey's revised estimates and corresponding estimates from other household surveys.

### RELIABILITY OF THE ESTIMATES

**13** Estimates in this publication are subject to sampling and non-sampling errors:

- Sampling error is the difference between the published estimate and the value that would have been produced if all dwellings had been included in the survey. For more information see the Technical Note.
- Non-sampling errors are inaccuracies that occur because of imperfections in reporting by respondents and interviewers, and errors made in coding and processing data. These inaccuracies may occur in any enumeration, whether it be a full count or a sample. Every effort is made to reduce the non-sampling error to a minimum by careful design of questionnaires, intensive training and supervision of interviewers, and effective processing procedures.

### CLASSIFICATIONS USED

**14** Country of birth data are classified according to the *Standard Australian Classification of Countries (SACC), 2011* (cat. no. 1269.0).

**15** Occupation data are classified according to the ANZSCO — *Australian and New Zealand Standard Classification of Occupations, 2013, Version 1.2* (cat. no. 1220.0).

**16** Industry data are classified according to the ANZSIC — *Australian and New Zealand Standard Industrial Classification, 2006 (Revision 2.0)* (cat. no. 1292.0).

**17** Educational attainment data are classified according to the *Australian Standard Classification of Education (ASCED), 2001* (cat. no. 1272.0).

## EXPLANATORY NOTES *continued*

### CLASSIFICATIONS USED *continued*

**18** Work-related injuries data are classified according to SafeWork Australia's *Type of Occurrence Classifications System (TOOCS)*. See Appendix 1 for more information.

### COMPARABILITY WITH MONTHLY LFS STATISTICS

**19** Due to differences in the scope and sample size of the MPHS and that of the LFS, the estimation procedure may lead to some variations between labour force estimates from this survey and those from the LFS.

### DATA QUALITY

**20** Proxy interviews were conducted for persons aged 15-17 years, if an adult member of the household did not grant permission to allow the 15-17 year old respondent to personally respond to the interview. If permission was not granted, the adult member of the household would respond to the interview on behalf of the 15-17 year old. For some questions which called for personal opinions, such as self-assessed health, responses from proxy interviews were not collected.

### PREVIOUS SURVEYS

**21** The Work-related injuries topic was last conducted in the 2009-10 financial year. Results were published in *Work-Related Injuries, Australia*, (cat. no. 6324.0).

### CHANGES IN THIS ISSUE

**22** The following are new data items available on the work-related injuries topic in 2013-14:

- Whether reported most recent work-related injury or illness to someone in the work place;
- Did report most recent work-related injury or illness to someone in the work place;
- Sector of current main job;
- Sector of job where most recent work-related injury or illness occurred;
- Self-assessed health status; and
- Long term health conditions.

**23** For a more detailed list of available data items and their categories – Work-related injuries 2013–14 Data Items List, is available in a spreadsheet, on the ABS website under the Downloads section.

### NEXT SURVEY

**24** The ABS is planning to collect the Work-related injuries topic again during the 2017–18 financial year.

### ACKNOWLEDGEMENT

**25** ABS publications draw extensively on information provided freely by individuals, businesses, governments and other organisations. Their continued co-operation is very much appreciated: without it, the wide range of statistics published by the ABS would not be available. Information received by the ABS is treated in strict confidence as required by the *Census and Statistics Act 1905*.

### PRODUCTS AND SERVICES *Spreadsheets*

**26** An electronic version of the tables released in this publication are available on the ABS website in spreadsheets attached to this publication. The spreadsheets present the tables and the relative standard errors (RSEs) for each publication table.

### *Microdata record file*

**27** Work-related injuries 2013-14 microdata data file will also be available via TableBuilder in early 2015. The TableBuilder will be created instead of the Confidentialised Unit Record File that was accessible through RADL for the previous Work-related injuries surveys. Further information is available via the ABS website.

### RELATED PUBLICATIONS

**28** ABS publications which may also be of interest include:

- *National Health Survey* (cat. no. 4364.0);
- *National Health Survey: Injuries, Australia* (cat. no. 4384.0);
- *Labour Force, Australia* (cat. no. 6202.0);
- *Labour Statistics: Concepts, Sources and Methods* (cat. no. 6102.0.55.001);
- *Australian Labour Market Statistics* (cat. no. 6105.0);
- *Attendance at Selected Cultural Venues and Events* (cat. no. 4114.0);
- *Crime Victimisation* (cat. no. 4530.0);

## EXPLANATORY NOTES *continued*

### RELATED PUBLICATIONS

*continued*

- *Family Characteristics* (cat. no. 4442.0);
- *Health Services: Patient Experiences in Australia* (cat. no. 4839.0.55.001);
- *Participation in Sport and Physical Recreation, Australia* (cat. no. 4177.0); and
- *Spectator Attendance at Sporting Events* (cat. no. 4174.0).

**29** The following may also be of interest:

- *Compendium of Workers' Compensation Statistics Australia 2010-11*

**30** Current publications and other products released by the ABS are available from the *Statistics Page* on the ABS website. The ABS also issues a daily *Release Advice* on the website which details products to be released in the week ahead.

### ABBREVIATIONS

ABS	Australian Bureau of Statistics
ANZSCO	Australian and New Zealand Standard Classification of Occupations
ANZSIC	Australian and New Zealand Standard Industrial Classification
ASCED	Australian Standard Classification of Education
CAI	computer assisted interviewing
CURF	confidentialised unit record file
LFS	Labour Force Survey
MPHS	Multipurpose Household Survey
RADL	Remote Access Data Laboratory
RSE	relative standard error
SE	standard error

## APPENDIX 1 WORK-RELATED INJURY OR ILLNESS CLASSIFICATIONS

### WORK-RELATED INJURY OR ILLNESS CLASSIFICATIONS

Work-related injuries data are classified according to the *Type of Occurrence Classifications System (TOOCS)* which was developed by *SafeWork Australia* for coding workers' compensation claims.

The work-related injury or illness classification used in this survey was based on the TOOCS nature of injury codes. The classification of how work-related injury or illness occurred was based on the TOOCS mechanism of injury codes.

### WORK-RELATED INJURY OR ILLNESS

#### Fracture

Breaking of a bone, cartilage, etc.

#### Chronic joint or muscle condition

Arthritis

Disorders of the joints

Disorders of the spinal vertebrae and intervertebral discs

Disorders of muscle, tendons and other soft tissues (e.g.

Occupational Overuse Syndrome and Repetitive Strain

Injury if this is the only description given)

Acquired musculoskeletal deformities (e.g. flat feet, mallet finger, hammer toe)

#### Sprain/strain

Sprains and strains of joints and adjacent muscles

Acute trauma sprains and strains

Sprains and strains of cartilage

Dislocations

#### Cut/open wound

Open wound not involving traumatic amputation (e.g. broken tooth, cuts, punctures, dog bites, tearing away of fingernail, serious wounds containing glass, metal or other foreign body)

#### Crushing injury/internal organ damage

Internal injury of chest, abdomen and pelvis

Injury with intact skin surface and crushing injury (e.g. bruises, haematomas)

#### Superficial injury - covers minor injuries such as:

Needle stick puncture

#### Superficial injury - covers minor injuries such as: *cont.*

Abrasions, grazes, friction burns or blisters

Scratch injury from a foreign body in eye

Splinter or other foreign body in places other than eye

#### Stress or other mental condition

Stress

Anxiety

Depression

Nervous breakdown

Effects of witnessing traumatic events

Effects of involvement in a hold-up

Victim of harassment

Hyperventilation (hysterical, psychogenic)

Hysterical symptoms

Phobias

Obsessional and compulsive symptoms

Short term shock

#### Amputation

Traumatic amputation including loss of eyeball

#### Burns

Electrical burns, chemical burns, cold burns, hot burns, friction burns, combination burn or burns not elsewhere classified

#### Other

Responses that could not be included into one of the categories above such as asthma, cancer, concussion or heart attack

## APPENDIX 1 WORK-RELATED INJURY OR ILLNESS CLASSIFICATIONS

*continued*

### HOW WORK-RELATED INJURY OR ILLNESS OCCURRED

#### Lifting, pushing, pulling, bending

Muscular stress while lifting, carrying or putting down objects

Single or multiple events  
Lifting or carrying resulting in stress fractures  
Repetitive movement, high muscle loading

Muscular stress while handling objects

Single or multiple events  
Pushing or pulling objects  
Throwing or pressing objects  
Stress fractures from handling objects  
Continually shovelling  
Climbing ladders causing upper and lower limb injuries

Muscular stress with no objects being handled

Bending down, reaching, turning and twisting movements where no objects are being handled  
Stress fractures without objects being handled (e.g. from running)  
Continually twisting neck with no object being handled

#### Repetitive movement with low muscle loading

Occupational overuse and repetitive movement occurrences

#### Prolonged standing, working in cramped or unchanging positions

Working in cramped or unchanging positions  
Prolonged standing causing varicose veins

#### Vehicle accident

Any accident or incident on a private road, farm, mine site or footpath involving a vehicle where the most serious injury is sustained as a result of that accident or injury  
A vehicle catching on fire after the accident  
Any accident or incident in a factory, mine or car park involving a fall from a moving vehicle

#### Hitting, being hit or cut by object or vehicle

Hitting stationary objects or moving objects (e.g. cutting oneself while using a knife or other tool)  
Rubbing and chafing from wearing footwear or clothes, using tools or handling objects  
Being hit by falling objects  
Being bitten by an animal  
Being bitten by a snake  
Being trapped by moving machinery or equipment or between stationary and moving objects  
Exposure to mechanical vibration (e.g. from chain saws)  
Being assaulted by a person or persons

#### Fall on same level

All slips, trips, stumbles, steps and jumps, even if a fall does not follow  
Falls of short distances such as off a curb or into a gutter

#### Fall on same level *cont.*

Falls up stairs  
Fall with no further description

#### Fall from a height

A fall from ground level to below ground level  
Landing awkwardly after a jump from a height  
Falling off an animal  
A fall down stairs etc.

#### Exposure to mental stress

Exposure to a traumatic event  
Exposure to workplace or occupational violence (e.g. victim of assault or threatened assault by a person or persons, being a victim of or witnessing hold-ups etc.)  
Being a victim of sexual, racial, or other verbal harassment  
Work pressure (e.g. mental stress arising from work responsibilities, conflict with peers, performance counselling)  
Attempted suicide  
Other mental stress factors

#### Long term exposure to sound

Long term exposure to workshop or factory noise, sharp sudden sounds, or low frequency (subsonic pressure) sounds

#### Contact with a chemical or substance

Single contact with chemical or substance  
Immediate allergic reactions to a substance  
Splash with acid  
Caustic or corrosive substances in the eyes  
Contact dermatitis  
Swallowing chemical substances  
Exposure to smoke from a bush fire, chemical fire etc.

Long term contact with chemicals or substances

Acquired allergic reactions  
Slow poisoning, as with lead or other heavy metals  
Long term inhalation of dust or fibres, as with asbestos fibres  
Exposure to cigarette smoke  
Insect and spider bites and stings  
Contact with poisonous parts of plant or marine life (e.g. blue ringed octopus, bluebottles, stone fish etc.)  
Other and unspecified contact with chemical or substance

#### Other

Those responses that could not be included into one of the categories above such as contact with hot food/drink/beverages, exposure to extreme weather, jumping on objects, struck by lightning or sunburn

## APPENDIX 2 POPULATIONS

### DATA AVAILABLE ON REQUEST

The ABS has a range of data available on request from the work-related injuries topic. This section lists the populations which are used in the publication. Full details of the data items are available on the ABS website in a spreadsheet, under the Downloads section (Work-Related Injuries, Australia, 2013–14 Data Items List).

The population(s) for a particular data item refers to the people in the survey to whom the data relates. Where alternative output categories are available for the same data item, these are shown and the data item name is followed by a bracketed numeral (e.g. Country of birth (2)).

For more information about ABS data available on request, contact National Information and Referral Service in Canberra on 1300 135 070 or via email to <client.services@abs.gov.au> or contact Labour Market Statistics Section on (02) 6252 7206 or via email to <labour.statistics@abs.gov.au>.

#### *Population 1*

Persons who worked some time in the last 12 months

#### *Population 2*

Persons who worked at some time in the last 12 months and experienced a work-related injury or illness in that period

#### *Population 3*

Persons who were employed in the reference week

## INTRODUCTION

**1** Since the estimates in this publication are based on information obtained from occupants of a sample of dwellings, they are subject to sampling variability. That is, they may differ from those estimates that would have been produced if all dwellings had been included in the survey. One measure of the likely difference is given by the standard error (SE), which indicates the extent to which an estimate might have varied by chance because only a sample of dwellings was included. There are about two chances in three (67%) that a sample estimate will differ by less than one SE from the number that would have been obtained if all dwellings had been included, and about 19 chances in 20 (95%) that the difference will be less than two SEs.

**2** Another measure of the likely difference is the relative standard error (RSE), which is obtained by expressing the SE as a percentage of the estimate.

$$\text{RSE\%} = (\text{SE}/\text{estimate}) \times 100$$

**3** RSEs for Work-related injuries estimates have been calculated using the Jackknife method of variance estimation. This process involves the calculation of 30 'replicate' estimates based on 30 different subsamples of the original sample. The variability of estimates obtained from these subsamples is used to estimate the sample variability surrounding the main estimate.

**4** RSEs for all estimates in this publication are available free-of-charge on the ABS website, released in spreadsheet format from the Downloads tab. As a guide, the population estimates and RSEs for selected data from tables 2 and 3 are presented at table T1 and table T2 in this Technical Note.

**5** In the tables in this publication, only estimates (numbers, percentages and rates) with RSEs less than 25% are considered sufficiently reliable for most purposes. However, estimates with larger RSEs have been included and are preceded by an asterisk (e.g. \*13.5) to indicate they are subject to high SEs and should be used with caution. Estimates with RSEs greater than 50% are preceded by a double asterisk (e.g. \*\*2.1) to indicate that they are considered too unreliable for general use.

## CALCULATION OF STANDARD ERROR AND RELATIVE STANDARD ERROR

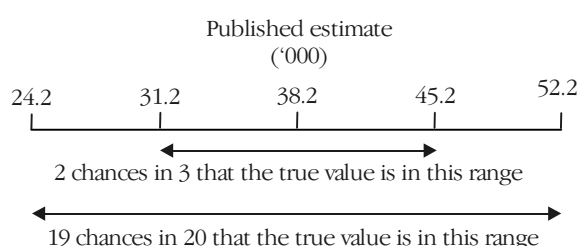
**6** RSEs are routinely presented as the measure of sampling error in this publication and related products. SEs can be calculated using the estimates (counts or rates) and the corresponding RSEs.

**7** An example of the calculation of the SE from an RSE follows. Table T1 shows that the estimated number of persons in Australia aged 15-19 who experienced a work-related injury or illness in the last 12 months is 38,200, and the RSE for this estimate is 18.3%.

The SE is:

$$\begin{aligned} \text{SE of estimate} &= (\text{RSE\%/100}) \times \text{estimate} \\ &= 0.183 \times 38,200 \\ &= 7,000 \text{ (rounded to the nearest 100)} \end{aligned}$$

**8** Therefore, there are about two chances in three that the value that would have been produced if all dwellings had been included in the survey will fall within the range 31,200 to 45,200 and about 19 chances in 20 that the value will fall within the range 24,200 to 52,200. This example is illustrated in the following diagram.



Proportions and percentages

**9** Proportions and percentages formed from the ratio of two estimates are also subject to sampling errors. The size of the error depends on the accuracy of both the numerator and the denominator. A formula to approximate the RSEs of proportions not provided in the spreadsheets is given below. This formula is only valid when x is a subset of y.

$$RSE\left(\frac{x}{y}\right) = \sqrt{[RSE(x)]^2 - [RSE(y)]^2}$$

**10** Considering table T2, of the 208,100 females who experienced a work-related injury or illness in the last 12 months, 80,200 or 38.6% worked part-time in the job where the work-related injury or illness occurred. The RSE of 80,200 is 12.1% and the RSE for 208,100 is 7.8%. Applying the above formula, the RSE for the proportion of females who worked part-time hours in job where most recent work-related injury or illness occurred is as follows. Please note, due to the Jackknife method of variance estimation being used to calculate the RSEs reported in the spreadsheet attachments to this publication (including some proportions), the method of estimation used below will result in slightly different RSEs compared with those RSEs reported in the spreadsheets.

$$RSE = \sqrt{(12.1)^2 - (7.8)^2} = 9.3\%$$

**11** Therefore, the SE for the proportion of the 208,100 females who experienced a work-related injury or illness, who worked part-time hours in the job where the work-related injury or illness occurred is 3.6 percentage points (= 38.6/100 x 9.3). Therefore, there are about two chances in three that the proportion of females who experienced a work-related injury or illness who worked part time is between 35.0% and 42.2%, and 19 chances in 20 that the proportion is within the range 31.4% and 45.8%.

Sums or Differences between estimates

**12** Published estimates may also be used to calculate the sum of, or difference between, two survey estimates (of numbers, rates or percentages) where these are not provided in the spreadsheets. Such estimates are also subject to sampling error.

**13** The sampling error of the difference between two estimates depends on their SEs and the relationship (correlation) between them. An approximate SE of the difference between two estimates (x-y) may be calculated by the following formula:

$$SE(x-y) = \sqrt{[SE(x)]^2 + [SE(y)]^2}$$

**14** The sampling error of the sum of two estimates is calculated in a similar way. An approximate SE of the sum of two estimates (x + y) may be calculated by the following formula:

$$SE(x+y) = \sqrt{[SE(x)]^2 + [SE(y)]^2}$$

**15** An example follows. From paragraph 7 the estimated number of persons aged 15-19 who experienced a work-related injury or illness in the last 12 months is 38,200 and the SE is 7,000. From table T1, the estimate of persons aged 20-24 who experienced a work-related injury or illness in the last 12 months is 53,100 and the SE is 9,300. The estimate of persons aged 15-24 who experienced a work-related injury or illness in the last 12 months is: 38,200 + 53,100 = 91,300

**16** The SE of the estimate of persons aged 15-24 who experienced a work-related injury or illness in the last 12 months is:

$$SE = \sqrt{(7,000)^2 + (9,300)^2} = 11,600(\text{rounded})$$

**17** Therefore, there are about two chances in three that the value that would have been produced if all dwellings had been included in the survey will fall within the range 79,700 to 102,900 and about 19 chances in 20 that the value will fall within the range 68,100 to 114,500.



# TECHNICAL NOTE DATA QUALITY *continued*

*Sums or Differences between estimates continued*

**18** While this formula will only be exact for sums of, or differences between, separate and uncorrelated characteristics or subpopulations, it is expected to provide a good approximation for all sums or differences likely to be of interest in this publication.

SELECTED ESTIMATES AND  
RSES

**T1: PERSONS WHO WORKED AT SOME TIME IN THE LAST 12 MONTHS,**  
Age group (years)—By whether experienced a work-related injury or illness(a)

WHETHER EXPERIENCED A WORK-RELATED INJURY OR ILLNESS IN THE LAST 12 MONTHS				
	<i>Experienced a work-related injury or illness</i>	<i>Did not experienced a work-related injury or illness</i>	<i>Total</i>	<i>Rate with a work-related injury or illness</i>
ESTIMATES ('000)				
Age group (years)				
15–19	38.2	719.0	757.1	50.4
20–24	53.1	1 236.4	1 289.4	41.1
24–29	62.0	1 394.9	1 456.9	42.6
30–34	52.9	1 378.4	1 431.4	37.0
35–39	52.4	1 231.6	1 283.9	40.8
40–44	65.9	1 321.7	1 387.6	47.5
45–49	53.0	1 242.6	1 295.6	40.9
50–54	66.7	1 217.5	1 284.2	51.9
55–59	49.3	1 018.1	1 067.4	46.2
60–64	26.0	687.0	713.0	36.4
65 and over	*12.5	492.0	504.4	*24.8
<b>Total</b>	<b>531.8</b>	<b>11 939.2</b>	<b>12 471.0</b>	<b>42.6</b>
RSES OF ESTIMATES (%)				
Age group (years)				
15–19	18.3	2.0	1.4	18.7
20–24	17.6	1.2	0.9	17.7
24–29	14.6	1.1	0.8	14.6
30–34	12.4	0.9	0.7	12.6
35–39	11.2	0.6	0.6	11.0
40–44	12.5	1.0	0.6	12.7
45–49	13.3	0.9	0.8	13.2
50–54	11.7	0.9	0.6	11.8
55–59	12.7	1.1	0.8	12.7
60–64	16.9	1.2	1.0	17.0
65 and over	26.2	2.8	2.7	26.1
<b>Total</b>	<b>4.9</b>	<b>0.4</b>	<b>0.3</b>	<b>4.9</b>

\* estimate has a relative standard error of 25% to 50% and should be used with caution

(a) In the last 12 months.

# TECHNICAL NOTE DATA QUALITY *continued*

T2: PERSONS WHO EXPERIENCED A WORK-RELATED INJURY OR ILLNESS(a), Details of job where most recent work-related injury or illness occurred—By sex

	<u>Males</u>		<u>Females</u>		<u>Persons</u>	
	'000	%	'000	%	'000	%
ESTIMATES ('000)						
Whether worked full-time or part-time in job where most recent work-related injury or illness occurred						
Worked full-time	283.4	87.5	127.8	61.4	411.2	77.3
Worked part-time	40.4	12.5	80.2	38.6	120.6	22.7
Hours usually worked in job where most recent work-related injury or illness occurred						
Less than 16	*11.7	*3.6	20.5	9.9	32.2	6.1
16–29	*22.0	*6.8	45.6	21.9	67.6	12.7
30–34	*6.7	*2.1	14.1	6.8	20.8	3.9
35–39	89.5	27.7	63.8	30.7	153.4	28.8
40	79.9	24.7	35.6	17.1	115.6	21.7
41–44	*16.9	*5.2	*5.3	*2.5	22.1	4.2
45–49	34.7	10.7	*10.0	*4.8	44.7	8.4
50–59	37.1	11.4	*9.4	*4.5	46.5	8.7
60 or more	25.3	7.8	*3.7	*1.8	29.0	5.4
Whether worked shift work in job where most recent work-related injury or illness occurred						
Worked under shift arrangements	92.5	28.6	65.1	31.3	157.6	29.6
Did not work under shift arrangements	231.3	71.4	142.9	68.7	374.2	70.4
<b>Total</b>	<b>323.7</b>	<b>100.0</b>	<b>208.1</b>	<b>100.0</b>	<b>531.8</b>	<b>100.0</b>

## RSES OF ESTIMATES (%)

Whether worked full-time or part-time in job where most recent work-related injury or illness occurred						
Worked full-time	6.5	2.0	7.9	4.6	5.0	2.3
Worked part-time	14.3	13.8	12.1	7.3	9.8	7.8
Hours usually worked in job where most recent work-related injury or illness occurred						
Less than 16	26.2	28.0	20.5	19.6	15.4	16.3
16–29	27.0	26.4	16.6	12.5	16.1	14.2
30–34	31.9	29.9	19.7	17.9	16.7	14.8
35–39	9.9	7.9	11.7	10.4	6.3	4.7
40	13.1	10.2	20.3	17.3	10.0	8.0
41–44	28.2	26.8	38.3	39.8	23.2	22.6
45–49	15.3	14.9	30.7	28.7	12.7	11.4
50–59	18.7	18.5	32.1	35.2	17.0	17.7
60 or more	21.6	21.7	39.3	38.0	20.5	20.2
Whether worked shift work in job where most recent work-related injury or illness occurred						
Worked under shift arrangements	11.7	10.1	13.4	8.2	9.1	7.1
Did not work under shift arrangements	7.2	4.0	7.2	3.7	5.4	3.0
<b>Total</b>	<b>6.0</b>	<b>—</b>	<b>7.8</b>	<b>—</b>	<b>4.9</b>	<b>—</b>

\* estimate has a relative standard error of 25% to 50% and should be used with caution

— nil or rounded to zero (including null cells)  
(a) In the last 12 months.

## GLOSSARY

<b>Applied for workers' compensation</b>	To have formally applied for workers' compensation by completing an application for compensation.
<b>Contributing family workers</b>	People who work without pay, in an economic enterprise operated by a relative.
<b>Current job</b>	A job that a person was working in during the reference week which had lasted or was likely to last for a period of two weeks or more.
<b>Current main job</b>	The job that a person was working in during the reference week in which most hours were usually worked.
<b>Current other job</b>	Refers to a current job other than the current main job.
<b>Days or shifts absent from work</b>	Includes all work hours spent on medical consultation, hospitalisation and rest due to the injury or illness. The days or shifts absent do not have to be consecutive.
<b>Duration of current main job</b>	Length of time worked in current main job.
<b>Duration of employment in job where most recent work-related injury or illness occurred</b>	Length of time worked in job where most recent work-related injury or illness occurred.
<b>Educational attainment</b>	Level of highest educational attainment identifies the highest achievement a person has attained in any area of study. It is defined as the highest educational attainment a person has achieved, and is not a measurement of relative importance of different fields of study. For further information please see paragraphs 38 to 41 of the chapter on 'Level of highest educational attainment', <i>Education Variables, 2002</i> (cat. no. 1246.0).
<b>Employed</b>	<p>People aged 15 years and over who, during the reference week:</p> <ul style="list-style-type: none"> <li>■ worked for one hour or more for pay, profit, commission or payment in kind, in a job or business or on a farm (comprising employees, employers and own account workers); or</li> <li>■ worked for one hour or more without pay in a family business or on a farm (i.e. contributing family workers); or</li> <li>■ were employees who had a job but were not at work and were: <ul style="list-style-type: none"> <li>■ away from work for less than four weeks up to the end of the reference week; or</li> <li>■ away from work for more than four weeks up to the end of the reference week and received pay for some or all of the four week period to the end of the reference week; or</li> <li>■ away from work as a standard work or shift arrangement; or</li> <li>■ on strike or locked out; or</li> <li>■ on workers' compensation and expected to return to their job; or</li> </ul> </li> <li>■ were employers or own account workers who had a job, business or farm, but were not at work.</li> </ul>
<b>Employees</b>	People who work for a public or private employer and receive remuneration in wages, salary, a retainer fee from their employer while working on a commission basis, tips, piece rates, or payment in kind, or people who operate their own incorporated enterprise with or without hiring employees.
<b>Employers</b>	People who operate their own unincorporated economic enterprise or engage independently in a profession or trade, and hire one or more employees.

## GLOSSARY *continued*

<b>Employment types</b>	<p>Classification of employed people according to the following employment type categories on the basis of their main job (that is, the job in which they usually work the most hours):</p> <ul style="list-style-type: none"> <li>■ Employees (excluding owner managers of incorporated enterprises): <ul style="list-style-type: none"> <li>■ with paid leave entitlements;</li> <li>■ without paid leave entitlements;</li> </ul> </li> <li>■ Owner managers: <ul style="list-style-type: none"> <li>■ owner managers of incorporated enterprises;</li> <li>■ owner managers of unincorporated enterprises;</li> </ul> </li> <li>■ Contributing family workers.</li> </ul>
<b>Financial assistance</b>	Monetary assistance received from any party to cover medical expenses or income loss, incurred due to their work-related injury or illness.
<b>Fixed term contract</b>	See 'Worked on a fixed-term contract'.
<b>Full-time workers</b>	Employed persons who usually worked 35 hours or more a week (in all jobs) and others who, although usually working less than 35 hours a week, worked 35 hours or more during the reference week.
<b>Incorporated enterprise</b>	An enterprise which is registered as a separate legal entity to its members or owners (also known as a limited liability company).
<b>Industry</b>	In this publication, industry relates to a group of businesses or organisations that perform similar sets of activities in terms of the production of goods or services. Industry is classified according to <i>Australian and New Zealand Standard Industrial Classification (ANZSIC), 2006</i> (cat. no. 1292.0).
<b>Injury or illness sustained</b>	See 'Work-related injury or illness'.
<b>Last 12 months</b>	The 12 months up to and including the survey reference week.
<b>Main job</b>	The job in which most hours are usually worked.
<b>Multiple jobholder</b>	People who worked in more than one job or business during the survey reference week, excluding those who only worked in more than one job because they had changed jobs during the reference week.
<b>Non-school qualification</b>	Non-school qualifications are awarded for educational attainments other than those of pre-primary, primary or secondary education. They include qualifications at the Postgraduate Degree Level, Master Degree Level, Graduate Diploma and Graduate Certificate Level, Bachelor Degree Level, Advanced Diploma and Diploma level, and Certificates I, II, III and IV levels. Non-school qualifications may be attained concurrently with school qualifications.
<b>Not employed</b>	People who are either unemployed or not in the labour force.
<b>Not in the labour force</b>	People who are not in the categories 'employed' or 'unemployed' as defined.
<b>Occupation</b>	In this publication, occupation relates to a collection of jobs that are sufficiently similar in their main tasks to be grouped together for the purposes of classification. Occupation is classified according to <i>ANZSCO — Australian and New Zealand Standard Classification of Occupations, First Edition, 2006</i> (cat. no. 1220.0).
<b>Own account worker</b>	A person who operates his or her own unincorporated economic enterprise or engages independently in a profession or trade, and hires no employees.
<b>Owner managers</b>	People who work in their own business, with or without employees, whether or not the business is of limited liability.
<b>Owner managers of incorporated enterprises</b>	People who work in their own incorporated enterprise, that is, a business entity which is registered as a separate legal entity to its members or owners (also known as a limited liability company).

## GLOSSARY *continued*

<b>Owner managers of unincorporated enterprises</b>	People who operate their own unincorporated enterprise, that is, a business entity in which the owner and the business are legally inseparable, so that the owner is liable for any business debts that are incurred. Includes those engaged independently in a trade or profession.
<b>Paid leave entitlements</b>	The entitlement of employees (excluding owner managers or incorporated enterprises) to either paid holiday leave or paid sick leave (or both) in their job. People employed in their own business or who were contributing family workers were not asked about their leave entitlements.
<b>Previous job</b>	The last job in which employment ceased during the last 12 months.
<b>Reference week</b>	The week preceding the week in which the interview was conducted.
<b>Shift arrangements</b>	A system of working whereby the daily hours of operation at the place of employment are split into at least two set work periods (shifts), for different groups of workers.
<b>Shift work</b>	Worked under shift arrangements.
<b>Status in employment</b>	Employed people classified by whether they were employees, employers, own account workers or contributing family workers.
<b>Unemployed</b>	People who were not employed during the reference week, and: <ul style="list-style-type: none"> <li>■ had actively looked for full-time or part-time work at any time in the four weeks up to the end of the reference week and were available for work in the reference week; or</li> <li>■ were waiting to start a new job within four weeks from the end of the reference week, and could have started in the reference week if the job had been available then.</li> </ul>
<b>Usual hours worked</b>	The number of hours usually worked in a week.
<b>Unincorporated enterprise</b>	A business entity in which the owner and the business are legally inseparable, so that the owner is liable for any business debts that are incurred.
<b>Worked at some time in the last 12 months</b>	People who worked in a job which lasted for two weeks or more, in the last 12 months, regardless of whether they worked full-time or part-time.
<b>Worked full-time</b>	People who usually worked 35 hours or more per week in the job in which the work-related injury or illness occurred.
<b>Worked part-time</b>	People who usually worked less than 35 hours or more per week in the job in which the work-related injury or illness occurred.
<b>Workers' compensation</b>	Workers' compensation includes: <ul style="list-style-type: none"> <li>■ payments by an insurer or other liable party for costs related to a work-related injury or illness;</li> <li>■ medical payments, incapacity payments (income maintenance and salary top-up), rehabilitation payments, travel payments and legal payments; and</li> <li>■ any 'settlement' or 'judgement of claim'.</li> </ul>
<b>Work-related injury or illness</b>	<p>Any injury or illness or disease which first occurred in the last 12 months, where a person suffers either physically or mentally from a condition that has arisen out of, or in the course of, employment.</p> <p>The injury or illness was considered to be in scope if the respondent first became aware of it in the last 12 months, even though the cause of the injury or illness may have occurred outside the 12 month reference period. Included are injuries or illnesses that occurred while commuting to and from work, outside the place of work but while on work duty, or during work breaks.</p> <p>Information was collected about the respondent's most recent work-related injury or illness if there was more than one work-related injury or illness in the reference period.</p> <p>For more details on the types of injury or illness, or how they occurred refer to Appendix 1.</p>

## GLOSSARY *continued*

<b>Works on a contract basis</b>	Owner managers who were engaged by an organisation to provide a particular service or undertake a particular task at an agreed price or rate, and generally for a specified period.
<b>Worked on a fixed-term contract</b>	Employees (excluding owner managers of incorporated enterprises) with a contract of employment which specifies that the employment will be terminated on a particular date or on completion of a specific task.



## FOR MORE INFORMATION . . .

## INTERNET

**www.abs.gov.au** the ABS website is the best place for data from our publications and information about the ABS.

## INFORMATION AND REFERRAL SERVICE

Our consultants can help you access the full range of information published by the ABS that is available free of charge from our website. Information tailored to your needs can also be requested as a 'user pays' service. Specialists are on hand to help you with analytical or methodological advice.

## PHONE

1300 135 070

## EMAIL

client.services@abs.gov.au

## FAX

1300 135 211

## POST

Client Services, ABS, GPO Box 796, Sydney NSW 2001

## FREE ACCESS TO STATISTICS

All statistics on the ABS website can be downloaded free of charge.

## WEB ADDRESS

**www.abs.gov.au**

ISBN 0 642 47778 7