

**CORRECTIVE SERVICES**

AUSTRALIA

EMBARGO: 11.30AM (CANBERRA TIME) THURS 18 MAR 2010

C O N T E N T S

	<i>page</i>
Notes	2
Summary of findings	3

T A B L E S

1 Persons in corrective services, summary	9
2 Persons in full-time custody	11
3 Imprisonment rates	12
4 Persons in full-time custody, by sex	13
5 Imprisonment rates, by sex	14
6 Persons in full-time custody, by type of custody	15
7 Imprisonment rates, by type of custody	16
8 Persons in full-time custody, by legal status	17
9 Imprisonment rates, by legal status	18
10 Sentenced prisoner receptions into full-time custody	19
11 Persons in periodic detention, by sex	20
12 Federal sentenced persons in full-time custody, by sex	21
13 Indigenous persons in full-time custody, by sex	22
14 Indigenous imprisonment rates, by sex	23
15 Indigenous persons in full-time custody, by legal status	24
16 Indigenous imprisonment rates, by legal status	25
17 Persons in community-based corrections, by sex	26
18 Community-based corrections rates, by sex	27
19 Persons in community-based corrections, by type of order	28

A D D I T I O N A L I N F O R M A T I O N

Explanatory Notes	30
Appendix Experimental Community-Based Corrections Data	37
Glossary	41

I N Q U I R I E S

For further information about these and related statistics, contact the National Information and Referral Service on 1300 135 070 or Paul Romanis on Melbourne (03) 9615 7362.

NOTES

FORTHCOMING ISSUES

ISSUE (Quarter)

RELEASE DATE

March 2010

17 June 2010



ABOUT THIS PUBLICATION

This publication presents information on persons in custody and community-based corrections. The statistics are derived from information provided to the Australian Bureau of Statistics (ABS) from administrative records held by corrective services agencies in each state and territory, and from the Australian Government Attorney-General's Department for details on federal prisoners. Details are provided for each state and territory on: prisoner numbers and imprisonment rates by type of custody; prisoner numbers by legal status for all prisoners and for Indigenous prisoners; the number of sentenced receptions into custody; the number of federal prisoners; and the numbers and rates of persons serving community-based corrections orders. Experimental data on the Indigenous status of persons in community-based corrections are also included in the Appendix.

The ABS acknowledges the valuable contribution of the Board of Management and the Advisory Group of the National Corrective Services Statistics Unit as well as the staff of the various agencies that provide the statistics that are presented in this publication.

FURTHER INFORMATION

More information about ABS activities in the field of crime and justice statistics is available from the Crime and Justice theme page on the ABS website <www.abs.gov.au>. Details of other ABS publications relating to Crime and Justice statistics can be found in paragraphs 48-50 of the Explanatory Notes.



ABBREVIATIONS

ABS	Australian Bureau of Statistics
ACT	Australian Capital Territory
Aust.	Australia
ERP	estimated resident population
NCCJS	National Centre for Crime and Justice Statistics, Australian Bureau of Statistics
NSW	New South Wales
NT	Northern Territory
Qld	Queensland
SA	South Australia
Tas.	Tasmania
Vic.	Victoria
WA	Western Australia

Brian Pink
Australian Statistician

SUMMARY OF FINDINGS

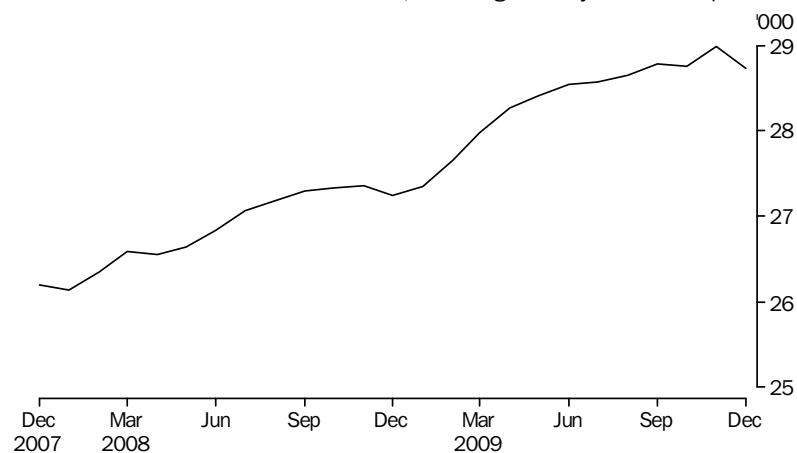
PERSONS IN CORRECTIVE SERVICES

Based on first day of the month averages, for the December quarter 2009, there were 86,282 persons under the authority of corrective services (excluding those in periodic detention). The total comprised 28,870 persons in full-time custody and 57,412 persons in community-based corrections. This represents an increase of 4% (3,111 persons) from the December quarter 2008. Over the same period, persons in full-time custody increased by 5% (1,505 persons) and persons in community-based corrections increased by 3% (1,606 persons).

Number of prisoners

During the December quarter 2009, the average daily number of full-time prisoners in Australia was 28,822 persons. This was an increase of less than 1% from the September quarter 2009, and of 6% on the December quarter 2008.

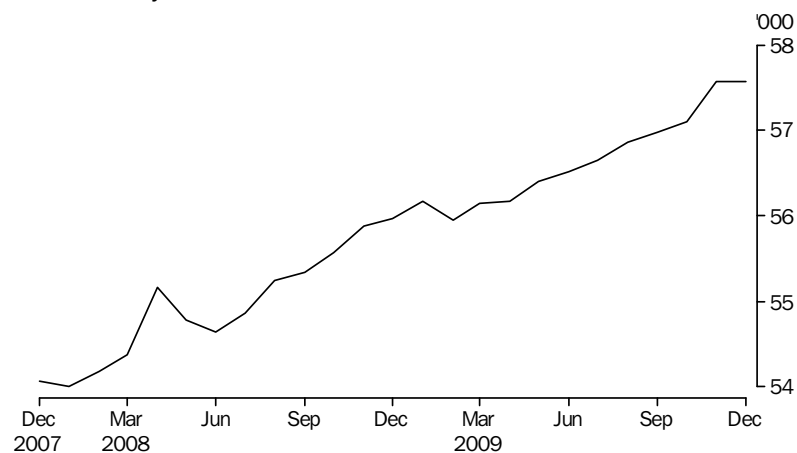
PERSONS IN PRISON CUSTODY, Average daily number per month



Number of persons in community-based corrections

Community-based corrections orders are non-custodial orders served under the authority of adult corrective services agencies and include restricted movement, reparations (fine options and community service) and supervision orders (parole, bail, and sentenced probation). In the December quarter 2009, there were 57,412 persons in community-based corrections in Australia based on first day of the month averages, an increase of 1% (580 persons) from the September quarter 2009.

PERSONS IN COMMUNITY-BASED CORRECTIONS, Average number on the first day of the month



SUMMARY OF FINDINGS *continued*

PERSONS IN CUSTODY

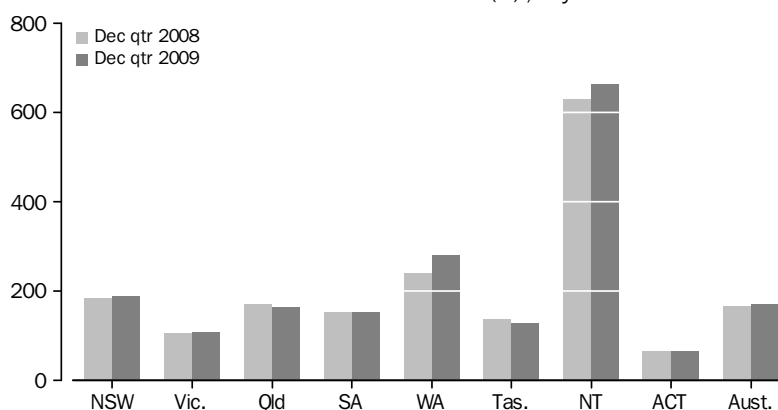
Rates per 100,000 adults

Nationally, the December quarter 2009 average daily imprisonment rate was 171 prisoners per 100,000 adult population, an increase of 3% from the December quarter 2008 (166 prisoners). The Northern Territory had the highest imprisonment rate (662 prisoners per 100,000 adult population), followed by Western Australia (280) and New South Wales (188).

The Australian Capital Territory and Victoria had the lowest imprisonment rates (65 and 107 prisoners per 100,000 adult population respectively).

Western Australia recorded the largest proportional increase in imprisonment rates from the December quarter 2008 (17%). The largest proportional decrease over the same period was recorded in the Tasmania (6%).

AVERAGE DAILY IMPRISONMENT RATE(a), By states and territories



(a) Rate per 100,000 adult population.

Sex

Of the average daily number of full-time prisoners in Australia in the December quarter 2009, 26,702 (93%) were male and 2,120 (7%) were female. The average daily imprisonment rate for males was 321 prisoners per 100,000 adult male population; almost 13 times more than the rate for females (25 female prisoners per 100,000 adult female population).

Type of full-time custody

The average daily number of prisoners in secure prison custody in the December quarter 2009 was 21,885 (76% of prisoners in full-time custody). Open prison custody comprised 6,937 prisoners (24%).

Tasmania, Victoria and South Australia had the highest proportion of prisoners in secure custody of those in full-time custody (90%, 89% and 89% respectively), followed by Queensland (87%).

Legal status

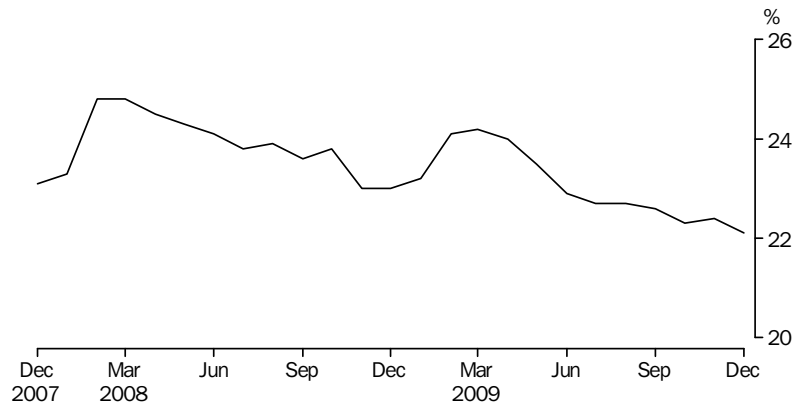
The average number of prisoners in full-time custody on the first day of each month in the December quarter 2009 was 28,870, comprising an average of 22,443 (78%) sentenced and 6,427 (22%) unsentenced prisoners. Sentenced prisoners increased by 1% from the previous quarter and by 7% from the December quarter 2008.

SUMMARY OF FINDINGS *continued*

Legal status continued

Unsentenced prisoners decreased by 1% from the previous quarter and increased by 1% from the December quarter 2008. The Australian Capital Territory and South Australia had the highest proportions of unsentenced prisoners (41% and 34% respectively). The lowest proportions of unsentenced prisoners were recorded in Western Australia (15%), Tasmania and Victoria (both 20%).

PROPORTION OF UNSENTENCED PERSONS IN PRISON CUSTODY (a),
Per month



(a) Based on average number on the first day of the month

Sentenced prisoner receptions

There were 7,614 sentenced prisoner receptions into full-time custody in Australia in the December quarter 2009; a decrease of 1% from the September quarter 2009, and an increase of less than 1% (15) from the December quarter 2008.

Periodic detention

Periodic detention is a form of custody or order where a sentenced prisoner is required to be held in custody on a part-time basis. This type of custody order is only used in New South Wales and the Australian Capital Territory. During the December quarter 2009 there was an average daily number of 865 persons in New South Wales and 56 persons in the Australian Capital Territory held in periodic detention. The rate of imprisonment for periodic detainees increased by 4% in New South Wales, and by 10% in the Australian Capital Territory from the September quarter 2009.

Federal prisoners

In the December quarter 2009, there were 761 federal sentenced prisoners in Australia based on first day of the month figures, an increase of 9% from the December quarter 2008. More than half (424) of the federal prisoners were sentenced in New South Wales.

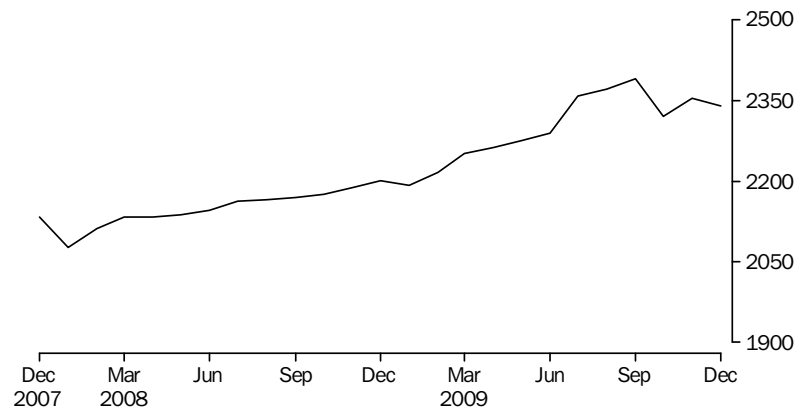
SUMMARY OF FINDINGS *continued*

Indigenous prisoners

The average daily number of full-time Indigenous adult prisoners in Australia in the December quarter 2009 was 7,458, comprising 6,815 (91%) males and 644 (9%) females. Indigenous prisoners represented 26% of the total full-time prisoner population in the December quarter 2009. The total Indigenous population aged 18 years and over at 30 June 2009 was 2% of the Australian population.

Over 77% of the total Indigenous prisoner population was located in New South Wales (2,256), Western Australia (1,949) and Queensland (1,568).

AVERAGE DAILY INDIGENOUS IMPRISONMENT RATE(a), Per month

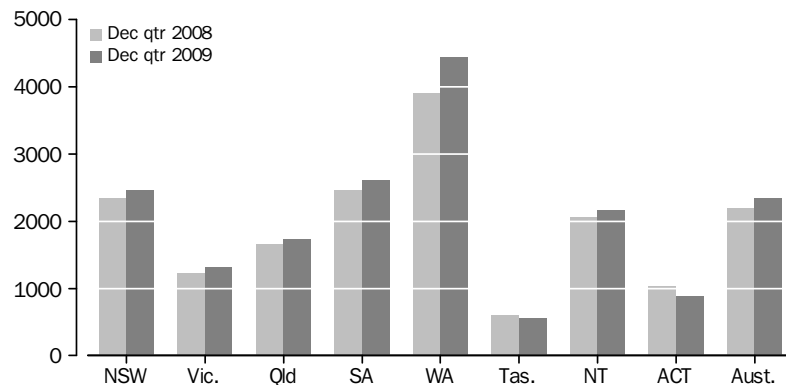


(a) Rate per 100,000 adult Indigenous population.

The national average daily Indigenous imprisonment rate in the December quarter 2009 was 2,338 per 100,000 adult Indigenous population, an increase of 1% from the previous quarter, and a 7% increase from the December quarter 2008.

The highest Indigenous imprisonment rate was recorded in Western Australia (4,438 Indigenous prisoners per 100,000 adult Indigenous population), followed by South Australia (2,602) and New South Wales (2,462). The lowest Indigenous imprisonment rate was recorded in Tasmania (551), followed by the Australian Capital Territory (880).

AVERAGE DAILY INDIGENOUS IMPRISONMENT RATE(a), By states and territories



(a) Rate per 100,000 adult Indigenous population.

SUMMARY OF FINDINGS *continued*

*Indigenous prisoners
continued*

The largest proportional increase in the Indigenous imprisonment rate from the December quarter 2008 was recorded in Western Australia (14%), followed by New South Wales (6%). The Australian Capital Territory (14%) and Tasmania (9%) were the only states/territories to record a proportional decrease over the same period.

Different age profiles of the Indigenous and non-Indigenous population can affect the imprisonment rate numbers. The quarterly collection is unable to take age into account; however, data from the Prisoner Census collection can provide this level of detail.

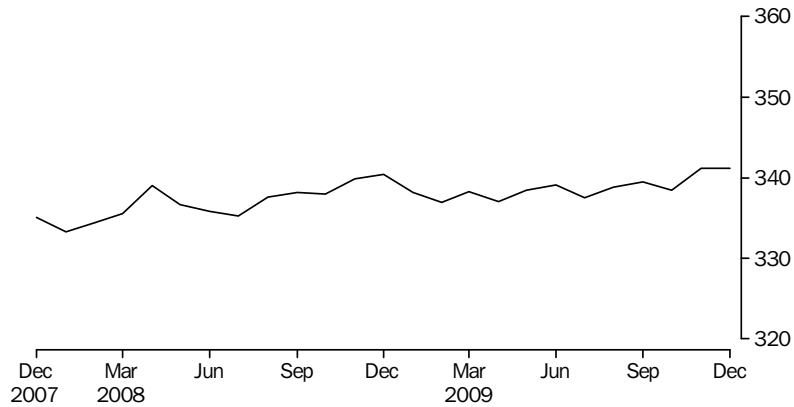
The national age standardised Indigenous imprisonment rate from the annual Prisoner Census conducted at June 2009 was over 14 times higher (1,891 per 100,000 adult Indigenous population) than the rate for non-Indigenous persons (136 per 100,000 adult non-Indigenous population). Further information on the comparison of imprisonment rates between Indigenous and non-Indigenous populations can be found in *Prisoners in Australia, 2009* (cat.no.4517.0).

**PERSONS IN
COMMUNITY-BASED
CORRECTIONS**

Rates per 100,000 adults

Nationally, the rate of persons in community-based corrections was 340 persons per 100,000 adult population for the December quarter 2009 based on first day of the month figures. This was an increase of less than 1% from the December quarter 2008 (339 persons per 100,000 adults). The largest increase from the December quarter 2008 was recorded in Tasmania (16%), while the largest decrease was recorded in Western Australia (5%).

COMMUNITY-BASED CORRECTIONS RATE(a), Per month

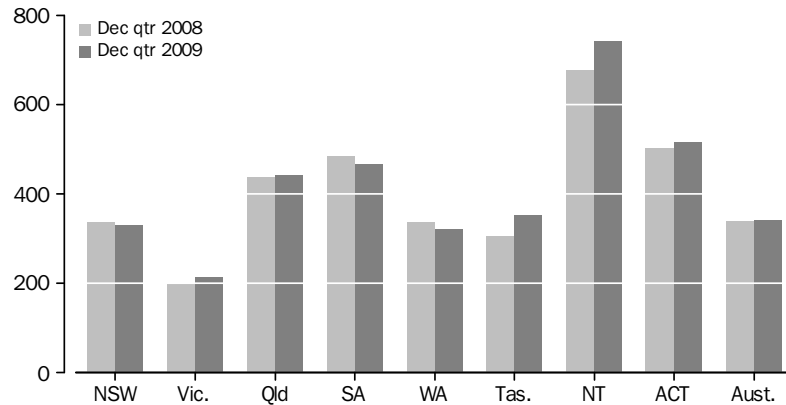


(a) Rate per 100,000 adult population, based on average number on the first day of the month

SUMMARY OF FINDINGS *continued*

Rates per 100,000 adults
continued

COMMUNITY-BASED CORRECTIONS RATE(a), By states and territories



(a) Rate per 100,000 adult population, based on average number on the first day of the month

Sex

Of the average number of persons in community-based corrections in Australia in the December quarter 2009, 46,768 (81%) were male and 10,571 (19%) were female.

In the December quarter 2009, the rate of community-based corrections for males was 562 per 100,000 adult male population compared to 124 females per 100,000 adult female population. The community-based corrections rate for males was almost five times that of females.

Type of orders

In the December quarter 2009, there were 12,415 persons on parole following a period of imprisonment, an increase of 2% from the September quarter 2009. Three states accounted for over 80% of persons serving parole orders: New South Wales (4,417 or 36%), Queensland (4,297 persons or 35%), and Victoria (1,521 or 12%). The largest proportional decrease in parole orders from the September quarter 2009 was recorded in Western Australia (19%).

For this same period, there were 34,709 persons under sentenced probation and 10,802 persons serving community service orders; an increase of less than 1% and 2% respectively from the September Quarter 2009.

PERSONS IN CORRECTIVE SERVICES, Summary(a)

	NSW(b)	Vic.	Qld	SA	WA	Tas.	NT	ACT in ACT(c)	ACT in NSW(b)	ACT Total(d)	Aust. (b)
AVERAGE DAILY NUMBER											
Males in full-time custody											
Dec Qtr 08	9 163	4 093	5 137	1 790	3 640	490	945	97	64	161	25 355
Sep Qtr 09	9 613	4 113	5 191	1 856	4 206	471	991	149	..	149	26 590
Dec Qtr 09	9 528	4 193	5 118	1 821	4 398	456	1 026	164	..	164	26 702
Females in full-time custody											
Dec Qtr 08	746	247	443	120	305	35	47	8	5	13	1 953
Sep Qtr 09	774	296	415	127	366	42	46	14	..	14	2 080
Dec Qtr 09	777	314	419	124	383	42	48	13	..	13	2 120
Persons in full-time custody											
Dec Qtr 08	9 909	4 340	5 580	1 911	3 945	525	993	106	68	174	27 308
Sep Qtr 09	10 387	4 409	5 606	1 983	4 571	513	1 037	163	..	163	28 670
Dec Qtr 09	10 304	4 507	5 537	1 944	4 781	498	1 074	177	..	177	28 822
Indigenous persons in full-time custody											
Dec Qtr 08	2 080	248	1 456	413	1 663	67	815	17	10	27	6 758
Sep Qtr 09	2 292	243	1 581	454	1 844	67	850	25	..	25	7 355
Dec Qtr 09	2 256	273	1 568	450	1 949	63	875	24	..	24	7 458
AVERAGE NUMBER ON FIRST DAY OF MONTH											
Unsentenced persons in full-time custody											
Dec Qtr 08	2 532	869	1 151	640	739	104	228	107	..	107	6 370
Sep Qtr 09	2 707	844	1 137	691	710	112	240	59	..	59	6 500
Dec Qtr 09	2 596	891	1 139	660	727	99	243	72	..	72	6 427
Sentenced persons in full-time custody											
Dec Qtr 08	7 399	3 490	4 440	1 288	3 210	424	745	—	66	66	20 996
Sep Qtr 09	7 692	3 546	4 475	1 301	3 821	403	798	103	..	103	22 138
Dec Qtr 09	7 752	3 613	4 393	1 304	4 045	408	824	103	..	103	22 443
Persons in full-time custody											
Dec Qtr 08	9 931	4 359	5 591	1 927	3 949	527	973	107	66	173	27 365
Sep Qtr 09	10 399	4 390	5 611	1 992	4 531	516	1 038	162	..	162	28 638
Dec Qtr 09	10 348	4 504	5 532	1 964	4 772	506	1 067	176	..	176	28 870
Males in community-based corrections(e)											
Dec Qtr 08	15 178	6 612	11 566	4 904	4 355	916	927	1 123	..	1 123	45 579
Sep Qtr 09	15 066	7 137	11 739	4 886	4 364	1 034	1 013	1 163	..	1 163	46 401
Dec Qtr 09	15 110	7 360	11 935	4 805	4 262	1 080	1 038	1 178	..	1 178	46 768
Females in community-based corrections(e)											
Dec Qtr 08	2 797	1 532	2 877	1 140	1 192	241	141	221	..	221	10 142
Sep Qtr 09	2 819	1 546	3 004	1 122	1 212	257	154	224	..	224	10 337
Dec Qtr 09	2 850	1 609	3 087	1 127	1 226	275	164	232	..	232	10 571
Persons in community-based corrections(e)(f)											
Dec Qtr 08	18 052	8 150	14 443	6 045	5 547	1 158	1 068	1 344	..	1 344	55 806
Sep Qtr 09	17 966	8 685	14 742	6 008	5 585	1 291	1 167	1 387	..	1 387	56 832
Dec Qtr 09	18 032	8 969	15 023	5 934	5 488	1 355	1 202	1 410	..	1 410	57 412

.. not applicable

— nil or rounded to zero (including null cells)

(a) For the calculation of quarterly figures – see Explanatory Notes, paragraph 5.

(b) Data prior to the September quarter 2009 includes ACT prisoners held in NSW prisons. The ACT in NSW figures are a subset of the NSW figures and are not separately counted in the Australian totals. From the September quarter 2009, ACT prisoners are no longer held in NSW prisons – see Explanatory Notes, paragraph 42.

(c) Data prior to the June quarter 2009 mainly included unsentenced persons in ACT prison custody – see Explanatory Notes, paragraph 42.

(d) ACT in ACT figures and ACT in NSW figures may not add to ACT total due to rounding.

(e) Figures include persons with breached or suspended orders, with the exception of Vic. and Tas.

(f) Includes persons whose sex is unknown.

	NSW(b)	Vic.	Qld	SA	WA	Tas.	NT	ACT in ACT(c)	ACT in NSW(b)	ACT Total(d)	Aust. (b)
PERCENTAGE CHANGE (AVERAGE DAILY NUMBER)											
Males in full-time custody											
Dec Qtr 08 to Dec Qtr 09	4.0	2.4	-0.4	1.7	20.8	-6.9	8.6	69.1	-100.0	1.9	5.3
Sep Qtr 09 to Dec Qtr 09	-0.9	1.9	-1.4	-1.9	4.6	-3.2	3.5	10.1	..	10.1	0.4
Females in full-time custody											
Dec Qtr 08 to Dec Qtr 09	4.2	27.1	-5.4	3.3	25.6	20.0	2.1	62.5	-100.0	—	8.6
Sep Qtr 09 to Dec Qtr 09	0.4	6.1	1.0	-2.4	4.6	—	4.3	-7.1	..	-7.1	1.9
Persons in full-time custody											
Dec Qtr 08 to Dec Qtr 09	4.0	3.8	-0.8	1.7	21.2	-5.1	8.2	67.0	-100.0	1.7	5.5
Sep Qtr 09 to Dec Qtr 09	-0.8	2.2	-1.2	-2.0	4.6	-2.9	3.6	8.6	..	8.6	0.5
Indigenous persons in full-time custody											
Dec Qtr 08 to Dec Qtr 09	8.5	10.1	7.7	9.0	17.2	-6.0	7.4	41.2	-100.0	-11.1	10.4
Sep Qtr 09 to Dec Qtr 09	-1.6	12.3	-0.8	-0.9	5.7	-6.0	2.9	-4.0	..	-4.0	1.4
PERCENTAGE CHANGE (AVERAGE NUMBER ON FIRST DAY OF MONTH)											
Unsentenced persons in full-time custody											
Dec Qtr 08 to Dec Qtr 09	2.5	2.5	-1.0	3.1	-1.6	-4.8	6.6	-32.7	..	-32.7	0.9
Sep Qtr 09 to Dec Qtr 09	-4.1	5.6	0.2	-4.5	2.4	-11.6	1.3	22.0	..	22.0	-1.1
Sentenced persons in full-time custody											
Dec Qtr 08 to Dec Qtr 09	4.8	3.5	-1.1	1.2	26.0	-3.8	10.6	na	-100.0	56.1	6.9
Sep Qtr 09 to Dec Qtr 09	0.8	1.9	-1.8	0.2	5.9	1.2	3.3	—	..	—	1.4
Persons in full-time custody											
Dec Qtr 08 to Dec Qtr 09	4.2	3.3	-1.1	1.9	20.8	-4.0	9.7	64.5	-100.0	1.7	5.5
Sep Qtr 09 to Dec Qtr 09	-0.5	2.6	-1.4	-1.4	5.3	-1.9	2.8	8.6	..	8.6	0.8
Males in community-based corrections(e)											
Dec Qtr 08 to Dec Qtr 09	-0.4	11.3	3.2	-2.0	-2.1	17.9	12.0	4.9	..	4.9	2.6
Sep Qtr 09 to Dec Qtr 09	0.3	3.1	1.7	-1.7	-2.3	4.4	2.5	1.3	..	1.3	0.8
Females in community-based corrections(e)											
Dec Qtr 08 to Dec Qtr 09	1.9	5.0	7.3	-1.1	2.9	14.1	16.3	5.0	..	5.0	4.2
Sep Qtr 09 to Dec Qtr 09	1.1	4.1	2.8	0.4	1.2	7.0	6.5	3.6	..	3.6	2.3
Persons in community-based corrections(e)(f)											
Dec Qtr 08 to Dec Qtr 09	-0.1	10.0	4.0	-1.8	-1.1	17.0	12.5	4.9	..	4.9	2.9
Sep Qtr 09 to Dec Qtr 09	0.4	3.3	1.9	-1.2	-1.7	5.0	3.0	1.7	..	1.7	1.0

.. not applicable

— nil or rounded to zero (including null cells)

na not available

(a) For the calculation of quarterly figures – see Explanatory Notes, paragraph 5.

(b) Data prior to the September quarter 2009 includes ACT prisoners held in NSW prisons. The ACT in NSW figures are a subset of the NSW figures and are not separately counted in the Australian totals. From the September quarter 2009, ACT prisoners are no longer held in NSW prisons – see Explanatory Notes, paragraph 42.

(c) Data prior to the June quarter 2009 mainly included unsentenced persons in ACT prison custody – see Explanatory Notes, paragraph 42.

(d) ACT in ACT figures and ACT in NSW figures may not add to ACT total due to rounding.

(e) Figures include persons with breached or suspended orders, with the exception of Vic. and Tas.

(f) Includes persons whose sex is unknown.

PERSONS IN FULL-TIME CUSTODY

	NSW(a)	Vic.	Qld(b)	SA	WA	Tas.	NT	ACT in ACT(c)	ACT in NSW(a)	ACT Total(d)	Aust. (a) (b)
AVERAGE DAILY NUMBER											
2007	9 576	4 144	5 571	1 776	3 774	537	856	71	101	172	26 305
2008	9 804	4 240	5 549	1 908	3 824	526	939	95	84	179	26 885
2009	10 310	4 367	5 622	1 951	4 402	513	1 073	152	18	170	28 390
2008											
Dec Qtr	9 909	4 340	5 580	1 911	3 945	525	993	106	68	174	27 308
2009											
Mar Qtr	10 131	4 223	5 615	1 928	4 010	511	1 105	121	52	173	27 643
Jun Qtr	10 415	4 325	5 732	1 948	4 234	532	1 078	147	20	167	28 409
Sep Qtr	10 387	4 409	5 606	1 983	4 571	513	1 037	163	..	163	28 670
Dec Qtr	10 304	4 507	5 537	1 944	4 781	498	1 074	177	..	177	28 822
2008											
Oct	9 907	4 360	5 613	1 913	3 936	543	950	106	65	171	27 328
Nov	9 925	4 366	5 578	1 916	3 954	521	985	112	70	182	27 357
Dec	9 896	4 295	5 548	1 903	3 946	512	1 042	99	70	169	27 242
2009											
Jan	10 004	4 190	5 546	1 907	3 938	501	1 093	110	62	172	27 289
Feb	10 153	4 210	5 617	1 920	4 017	511	1 107	126	50	177	27 661
Mar	10 239	4 268	5 681	1 956	4 075	521	1 116	126	44	169	27 982
Apr	10 382	4 297	5 737	1 959	4 125	526	1 109	132	37	169	28 267
May	10 438	4 334	5 751	1 938	4 210	533	1 062	148	22	170	28 414
Jun	10 425	4 343	5 707	1 946	4 367	535	1 063	161	1	162	28 547
Jul	10 407	4 361	5 661	1 950	4 476	524	1 039	158	..	158	28 576
Aug	10 358	4 399	5 596	2 001	4 585	512	1 036	164	..	164	28 652
Sep	10 397	4 470	5 561	1 998	4 655	502	1 037	167	..	167	28 787
Oct	10 366	4 478	5 492	1 947	4 738	515	1 051	169	..	169	28 757
Nov	10 340	4 528	5 574	1 962	4 807	506	1 088	181	..	181	28 986
Dec	10 207	4 516	5 545	1 925	4 799	473	1 083	181	..	181	28 728

.. not applicable

(a) Data prior to the September quarter 2009 includes ACT prisoners held in NSW prisons. The ACT in NSW figures are a subset of the NSW figures and are not separately counted in the Australian totals. From the September quarter 2009, ACT prisoners are no longer held in NSW prisons – see Explanatory Notes, paragraph 42.

(b) Data prior to the September quarter 2007 may be slightly overstated – see Explanatory Notes, paragraph 34.

(c) Data prior to the June quarter 2009 mainly included unsentenced persons in ACT prison custody – see Explanatory Notes, paragraph 42.

(d) ACT in ACT figures and ACT in NSW figures may not add to ACT total due to rounding.

IMPRISONMENT RATES (a)

	NSW(b)	Vic.	Qld(c)	SA	WA	Tas.	NT	ACT(d)	Aust.(c)
RATE PER 100,000 ADULT POPULATION									
2007	180.1	104.0	175.0	144.9	238.2	143.4	566.5	66.3	164.2
2008	182.6	104.4	169.9	153.5	234.9	138.9	601.6	67.5	164.7
2009	189.4	104.8	167.2	154.7	260.7	134.2	670.3	62.7	169.7
2008									
Dec Qtr	183.8	106.1	169.2	153.0	239.6	138.1	629.2	65.2	166.1
2009									
Mar Qtr	186.9	102.3	168.6	153.8	240.6	134.3	696.8	64.2	166.7
Jun Qtr	191.9	104.2	171.1	154.8	252.1	139.2	676.7	61.9	170.5
Sep Qtr	190.6	105.4	166.1	156.9	269.5	133.7	646.0	60.0	170.8
Dec Qtr	188.2	107.1	163.0	153.4	280.1	129.5	662.3	64.9	170.8
2008									
Oct	183.8	106.5	170.2	153.1	239.1	142.7	602.4	64.1	166.2
Nov	184.1	106.7	169.2	153.4	240.2	137.0	624.2	68.2	166.4
Dec	183.5	105.0	168.3	152.3	239.6	134.6	660.8	63.4	165.7
2009									
Jan	184.3	101.5	166.6	152.1	236.3	131.6	689.2	64.0	164.6
Feb	187.3	102.0	168.7	153.1	241.0	134.3	697.5	65.8	166.8
Mar	189.0	103.4	170.6	156.0	244.5	136.9	703.7	63.1	168.8
Apr	190.9	103.6	171.2	155.8	245.6	137.7	696.4	62.6	169.6
May	192.2	104.4	171.6	154.1	250.7	139.6	666.8	63.0	170.5
Jun	192.4	104.7	170.3	154.7	260.0	140.2	667.3	59.9	171.3
Jul	190.9	104.2	167.7	154.3	263.9	136.7	647.2	58.1	170.2
Aug	190.0	105.2	165.8	158.4	270.3	133.5	644.9	60.5	170.7
Sep	190.7	106.9	164.7	158.1	274.5	130.8	645.8	61.6	171.5
Oct	189.4	106.4	161.6	153.6	277.6	134.0	648.1	61.9	170.4
Nov	188.9	107.6	164.1	154.7	281.6	131.6	670.9	66.5	171.8
Dec	186.5	107.3	163.2	151.8	281.2	123.0	668.1	66.2	170.3

- (a) Imprisonment rates are based on Estimated Resident Population counts – see Explanatory Notes, paragraphs 17–21.
- (b) Excludes ACT prisoners that were held in NSW prisons.
- (c) Data prior to the September quarter 2007 may be slightly overstated – see Explanatory Notes, paragraph 34.
- (d) Includes ACT prisoners held in ACT as well as ACT prisoners that were held in NSW prior to the September quarter 2009 – see Explanatory Notes, paragraph 42.

PERSONS IN FULL-TIME CUSTODY, By sex

	NSW(a)	Vic.	Qld(b)	SA	WA	Tas.	NT	ACT in ACT(c)	ACT in NSW(a)	ACT Total(d)	Aust. (a) (b)
MALES (AVERAGE DAILY NUMBER)											
2007	8 867	3 894	5 151	1 658	3 459	502	817	65	96	162	24 415
2008	9 078	3 997	5 122	1 782	3 538	489	895	86	77	163	24 986
2009	9 537	4 081	5 199	1 823	4 055	475	1 025	139	17	155	26 336
2008											
Dec Qtr	9 163	4 093	5 137	1 790	3 640	490	945	97	64	161	25 355
2009											
Mar Qtr	9 372	3 964	5 191	1 797	3 700	480	1 059	110	48	158	25 672
Jun Qtr	9 634	4 053	5 298	1 818	3 909	495	1 026	132	19	150	26 364
Sep Qtr	9 613	4 113	5 191	1 856	4 206	471	991	149	..	149	26 590
Dec Qtr	9 528	4 193	5 118	1 821	4 398	456	1 026	164	..	164	26 702
Oct	9 585	4 166	5 076	1 823	4 361	466	1 007	156	..	156	26 640
Nov	9 557	4 216	5 147	1 833	4 422	464	1 037	169	..	169	26 846
Dec	9 442	4 197	5 131	1 806	4 413	437	1 034	167	..	167	26 626
FEMALES (AVERAGE DAILY NUMBER)											
2007	709	249	419	118	315	35	39	6	5	11	1 890
2008	726	243	427	126	286	37	44	9	6	15	1 899
2009	773	286	423	128	346	38	48	13	1	14	2 055
2008											
Dec Qtr	746	247	443	120	305	35	47	8	5	13	1 953
2009											
Mar Qtr	759	259	424	131	310	31	46	11	3	14	1 971
Jun Qtr	781	272	434	130	325	37	52	15	1	17	2 046
Sep Qtr	774	296	415	127	366	42	46	14	..	14	2 080
Dec Qtr	777	314	419	124	383	42	48	13	..	13	2 120
Oct	782	313	416	124	378	48	44	12	..	12	2 117
Nov	783	312	427	129	386	42	50	12	..	12	2 140
Dec	766	319	414	119	386	36	49	13	..	13	2 103
PERSONS (AVERAGE DAILY NUMBER)											
2007	9 576	4 144	5 571	1 776	3 774	537	856	71	101	172	26 305
2008	9 804	4 240	5 549	1 908	3 824	526	939	95	84	179	26 885
2009	10 310	4 367	5 622	1 951	4 402	513	1 073	152	18	170	28 390
2008											
Dec Qtr	9 909	4 340	5 580	1 911	3 945	525	993	106	68	174	27 308
2009											
Mar Qtr	10 131	4 223	5 615	1 928	4 010	511	1 105	121	52	173	27 643
Jun Qtr	10 415	4 325	5 732	1 948	4 234	532	1 078	147	20	167	28 409
Sep Qtr	10 387	4 409	5 606	1 983	4 571	513	1 037	163	..	163	28 670
Dec Qtr	10 304	4 507	5 537	1 944	4 781	498	1 074	177	..	177	28 822
Oct	10 366	4 478	5 492	1 947	4 738	515	1 051	169	..	169	28 757
Nov	10 340	4 528	5 574	1 962	4 807	506	1 088	181	..	181	28 986
Dec	10 207	4 516	5 545	1 925	4 799	473	1 083	181	..	181	28 728

.. not applicable

(a) Data prior to the September quarter 2009 includes ACT prisoners held in NSW prisons. The ACT in NSW figures are a subset of the NSW figures and are not separately counted in the Australian totals. From the September quarter 2009, ACT prisoners are no longer held in NSW prisons – see Explanatory Notes, paragraph 42.

(b) Data prior to the September quarter 2007 may be slightly overstated – see Explanatory Notes, paragraph 34.

(c) Data prior to the June quarter 2009 mainly included unsentenced persons in ACT prison custody – see Explanatory Notes, paragraph 42.

(d) ACT in ACT figures and ACT in NSW figures may not add to ACT total due to rounding.

IMPRISONMENT RATES(a), By sex

	NSW(b)	Vic.	Qld(c)	SA	WA	Tas.	NT	ACT(d)	Aust. (c)
MALES (RATE PER 100,000 ADULT POPULATION)									
2007	339.7	199.7	326.5	276.4	435.7	275.6	1 031.6	126.7	309.4
2008	345.0	201.0	316.6	293.2	432.4	265.3	1 097.6	125.5	310.9
2009	357.3	199.7	311.7	295.7	476.2	255.1	1 231.4	116.5	319.3
2008									
Dec Qtr	346.8	204.3	314.3	293.0	439.5	264.6	1 146.4	122.4	313.0
2009									
Mar Qtr	352.6	195.9	314.5	293.3	440.6	259.0	1 284.6	119.6	314.2
Jun Qtr	362.0	199.2	318.9	295.6	461.7	265.9	1 240.1	113.1	320.9
Sep Qtr	359.7	200.5	310.0	300.4	491.4	252.2	1 186.4	111.2	321.3
Dec Qtr	354.9	203.1	303.7	293.5	510.2	243.5	1 215.8	122.1	320.9
Oct	357.1	201.8	301.2	293.9	505.9	249.3	1 193.4	116.3	320.1
Nov	356.0	204.3	305.4	295.6	513.0	247.9	1 229.5	126.0	322.6
Dec	351.7	203.3	304.4	291.2	511.9	233.5	1 225.1	124.3	320.0
FEMALES (RATE PER 100,000 ADULT POPULATION)									
2007	26.3	12.3	26.1	18.9	39.8	18.2	53.6	8.0	23.2
2008	26.5	11.7	25.9	19.8	35.3	19.1	59.5	11.4	22.9
2009	27.9	13.4	24.9	19.8	41.4	19.4	62.4	10.6	24.2
2008									
Dec Qtr	27.2	11.8	26.6	18.9	37.3	18.1	62.7	9.7	23.4
2009									
Mar Qtr	27.5	12.3	25.2	20.4	37.5	15.9	60.9	10.6	23.4
Jun Qtr	28.3	12.9	25.7	20.2	39.1	18.9	67.3	12.2	24.2
Sep Qtr	27.9	13.9	24.4	19.7	43.5	21.2	59.9	10.3	24.4
Dec Qtr	27.8	14.7	24.5	19.1	45.4	21.4	61.5	9.1	24.8
Oct	28.0	14.6	24.3	19.1	44.7	24.6	56.2	9.0	24.8
Nov	28.1	14.5	24.9	19.9	45.6	21.3	64.6	8.6	25.0
Dec	27.4	14.9	24.2	18.4	45.7	18.2	63.7	9.8	24.6
PERSONS (RATE PER 100,000 ADULT POPULATION)									
2007	180.1	104.0	175.0	144.9	238.2	143.4	566.5	66.3	164.2
2008	182.6	104.4	169.9	153.5	234.9	138.9	601.6	67.5	164.7
2009	189.4	104.8	167.2	154.7	260.7	134.2	670.3	62.7	169.7
2008									
Dec Qtr	183.8	106.1	169.2	153.0	239.6	138.1	629.2	65.2	166.1
2009									
Mar Qtr	186.9	102.3	168.6	153.8	240.6	134.3	696.8	64.2	166.7
Jun Qtr	191.9	104.2	171.1	154.8	252.1	139.2	676.7	61.9	170.5
Sep Qtr	190.6	105.4	166.1	156.9	269.5	133.7	646.0	60.0	170.8
Dec Qtr	188.2	107.1	163.0	153.4	280.1	129.5	662.3	64.9	170.8
Oct	189.4	106.4	161.6	153.6	277.6	134.0	648.1	61.9	170.4
Nov	188.9	107.6	164.1	154.7	281.6	131.6	670.9	66.5	171.8
Dec	186.5	107.3	163.2	151.8	281.2	123.0	668.1	66.2	170.3

- (a) Imprisonment rates are based on Estimated Resident Population counts – see Explanatory Notes, paragraphs 17–21.
- (b) Excludes ACT prisoners that were held in NSW prisons.
- (c) Data prior to the September quarter 2007 may be slightly overstated – see Explanatory Notes, paragraph 34.
- (d) Includes ACT prisoners held in ACT as well as ACT prisoners that were held in NSW prior to the September quarter 2009 – see Explanatory Notes, paragraph 47.

PERSONS IN FULL-TIME CUSTODY, By type of custody

	NSW(a) (b)	Vic.	Qld(c)	SA	WA(d)	Tas.	NT	ACT in ACT(e) (d)	ACT in NSW(a)	ACT Total(f)	Aust. (g)
PERSONS IN SECURE CUSTODY (AVERAGE DAILY NUMBER)											
2007	5 893	3 743	4 853	1 581	2 771	477	621	71	26	97	20 010
2008	6 229	3 797	4 952	1 703	2 794	468	663	95	25	120	20 701
2009	6 734	3 911	4 977	1 736	3 066	460	750	80	5	85	21 714
2008											
Dec Qtr	6 436	3 886	5 000	1 686	2 814	468	699	106	20	126	21 095
2009											
Mar Qtr	6 630	3 802	5 083	1 713	2 845	454	776	121	14	135	21 424
Jun Qtr	6 767	3 876	5 118	1 730	2 972	479	747	69	5	75	21 758
Sep Qtr	6 796	3 935	4 875	1 766	3 166	459	721	67	..	67	21 785
Dec Qtr	6 743	4 028	4 837	1 736	3 276	446	756	63	..	63	21 885
Oct	6 795	3 988	4 782	1 735	3 264	461	740	61	..	61	21 828
Nov	6 778	4 048	4 871	1 752	3 302	454	767	70	..	70	22 042
Dec	6 655	4 048	4 859	1 722	3 264	423	761	59	..	59	21 791
PERSONS IN OPEN CUSTODY (AVERAGE DAILY NUMBER)											
2007	3 683	401	717	195	1 003	61	235	..	75	75	6 295
2008	3 575	443	597	205	1 030	58	276	..	59	59	6 184
2009	3 576	456	645	214	1 335	54	323	72	13	85	6 676
2008											
Dec Qtr	3 473	454	580	224	1 131	57	293	..	48	48	6 213
2009											
Mar Qtr	3 501	421	532	215	1 164	57	329	..	38	38	6 220
Jun Qtr	3 648	449	614	218	1 262	53	330	78	14	92	6 651
Sep Qtr	3 591	475	732	217	1 406	54	316	96	..	96	6 885
Dec Qtr	3 562	479	700	208	1 505	52	318	114	..	114	6 937
Oct	3 571	490	710	212	1 474	54	311	107	..	107	6 929
Nov	3 562	480	704	210	1 505	52	320	111	..	111	6 944
Dec	3 552	468	686	203	1 535	50	322	122	..	122	6 937
PERSONS IN CUSTODY (AVERAGE DAILY NUMBER)											
2007	9 576	4 144	5 571	1 776	3 774	537	856	71	101	172	26 305
2008	9 804	4 240	5 549	1 908	3 824	526	939	95	84	179	26 885
2009	10 310	4 367	5 622	1 951	4 402	513	1 073	152	18	170	28 390
2008											
Dec Qtr	9 909	4 340	5 580	1 911	3 945	525	993	106	68	174	27 308
2009											
Mar Qtr	10 131	4 223	5 615	1 928	4 010	511	1 105	121	52	173	27 643
Jun Qtr	10 415	4 325	5 732	1 948	4 234	532	1 078	147	20	167	28 409
Sep Qtr	10 387	4 409	5 606	1 983	4 571	513	1 037	163	..	163	28 670
Dec Qtr	10 304	4 507	5 537	1 944	4 781	498	1 074	177	..	177	28 822
Oct	10 366	4 478	5 492	1 947	4 738	515	1 051	169	..	169	28 757
Nov	10 340	4 528	5 574	1 962	4 807	506	1 088	181	..	181	28 986
Dec	10 207	4 516	5 545	1 925	4 799	473	1 083	181	..	181	28 728

.. not applicable

- (a) Data prior to the September quarter 2009 includes ACT prisoners held in NSW prisons. The ACT in NSW figures are a subset of the NSW figures and are not separately counted in the Australian totals. From the September quarter 2009, ACT prisoners are no longer held in NSW prisons – see Explanatory Notes, paragraph 42.
- (b) The classification of some NSW correctional facilities changed from March 2008 – see Explanatory Notes, paragraph 32.

- (c) Data prior to the September quarter 2007 may be slightly overstated – see Explanatory Notes, paragraph 34.
- (d) Data do not comply to the standard definition - see Explanatory Notes, paragraphs 37 and 44.
- (e) Data prior to the June quarter 2009 mainly included unsentenced persons in ACT prison custody – see Explanatory Notes, paragraph 42.
- (f) ACT in ACT figures and ACT in NSW figures may not add to ACT total due to rounding.
- (g) See footnotes a-d.

IMPRISONMENT RATES(a), By type of custody

NSW(b)(c) Vic. Qld(d) SA WA(e) Tas. NT ACT(e)(f) Aust.(g)

PERSONS IN SECURE CUSTODY (RATE PER 100,000 ADULT POPULATION)

2007	111.5	93.9	152.5	129.0	174.9	127.3	410.9	37.5	124.9
2008	116.5	93.5	151.6	137.0	171.6	123.7	424.8	45.2	126.8
2009	123.8	93.8	148.0	137.7	181.6	120.1	468.3	31.4	129.8
2008									
Dec Qtr	119.8	95.0	151.6	135.0	170.9	123.2	443.2	47.1	128.3
2009									
Mar Qtr	122.7	92.1	152.7	136.6	170.7	119.3	489.1	50.1	129.2
Jun Qtr	124.8	93.4	152.7	137.5	177.0	125.4	469.3	27.8	130.5
Sep Qtr	124.7	94.1	144.4	139.8	186.6	119.8	449.1	24.8	129.8
Dec Qtr	123.2	95.7	142.4	136.9	192.0	116.1	466.2	23.2	129.7
Oct	124.1	94.8	140.8	136.8	191.2	120.1	456.2	22.5	129.4
Nov	123.8	96.2	143.3	138.2	193.5	118.2	473.3	25.7	130.6
Dec	121.6	96.2	143.0	135.8	191.2	110.1	469.5	21.5	129.1

PERSONS IN OPEN CUSTODY (RATE PER 100,000 ADULT POPULATION)

2007	68.6	10.1	22.5	15.9	63.3	16.2	155.6	28.8	39.3
2008	66.0	10.9	18.3	16.5	63.2	15.3	176.8	22.4	37.9
2009	65.6	10.9	19.2	17.0	79.1	14.0	202.0	31.4	39.9
2008									
Dec Qtr	64.0	11.1	17.6	18.0	68.7	14.9	186.0	18.1	37.8
2009									
Mar Qtr	64.2	10.2	16.0	17.1	69.9	15.0	207.7	14.1	37.5
Jun Qtr	67.1	10.8	18.3	17.3	75.2	13.8	207.5	34.1	39.9
Sep Qtr	65.9	11.3	21.7	17.1	82.9	14.0	196.9	35.3	41.0
Dec Qtr	65.1	11.4	20.6	16.4	88.2	13.4	196.0	41.7	41.1
Oct	65.2	11.6	20.9	16.7	86.4	13.9	191.9	39.4	41.1
Nov	65.1	11.4	20.7	16.6	88.2	13.5	197.6	40.8	41.2
Dec	64.9	11.1	20.2	16.0	89.9	12.9	198.6	44.8	41.1

PERSONS IN CUSTODY (RATE PER 100,000 ADULT POPULATION)

2007	180.1	104.0	175.0	144.9	238.2	143.4	566.5	66.3	164.2
2008	182.6	104.4	169.9	153.5	234.9	138.9	601.6	67.5	164.7
2009	189.4	104.8	167.2	154.7	260.7	134.2	670.3	62.7	169.7
2008									
Dec Qtr	183.8	106.1	169.2	153.0	239.6	138.1	629.2	65.2	166.1
2009									
Mar Qtr	186.9	102.3	168.6	153.8	240.6	134.3	696.8	64.2	166.7
Jun Qtr	191.9	104.2	171.1	154.8	252.1	139.2	676.7	61.9	170.5
Sep Qtr	190.6	105.4	166.1	156.9	269.5	133.7	646.0	60.0	170.8
Dec Qtr	188.2	107.1	163.0	153.4	280.1	129.5	662.3	64.9	170.8
Oct	189.4	106.4	161.6	153.6	277.6	134.0	648.1	61.9	170.4
Nov	188.9	107.6	164.1	154.7	281.6	131.6	670.9	66.5	171.8
Dec	186.5	107.3	163.2	151.8	281.2	123.0	668.1	66.2	170.3

- (a) Imprisonment rates are based on Estimated Resident Population counts – see Explanatory Notes, paragraphs 17–21.
- (b) Excludes ACT prisoners that were held in NSW prisons.
- (c) The classification of some NSW correctional facilities changed from March 2008 – see Explanatory Notes, paragraph 32.
- (d) Data prior to the September quarter 2007 may be slightly overstated – see Explanatory Notes, paragraph 34.
- (e) Data do not comply to the standard definition - see Explanatory Notes, paragraphs 37 and 44.
- (f) Includes ACT prisoners held in ACT as well as ACT prisoners that were held in NSW prior to the September quarter 2009 – see Explanatory Notes, paragraph 47.
- (g) See footnotes c-e.

PERSONS IN FULL-TIME CUSTODY(a), By legal status

	NSW(b)	Vic.	Qld(c)	SA	WA	Tas.	NT	ACT in ACT(d)	ACT in NSW(b)	ACT Total(e)	Aust. (b) (c)
UNSENTENCED (NUMBER ON FIRST DAY OF MONTH)											
2007	2 400	785	1 251	619	682	115	170	67	..	67	6 089
2008	2 545	836	1 223	650	752	112	213	92	..	92	6 423
2009	2 686	856	1 152	671	718	110	258	79	..	79	6 530
2008											
Dec Qtr	2 532	869	1 151	640	739	104	228	107	..	107	6 370
2009											
Mar Qtr	2 727	813	1 162	654	688	107	279	112	..	112	6 543
Jun Qtr	2 714	877	1 170	677	746	123	271	71	..	71	6 649
Sep Qtr	2 707	844	1 137	691	710	112	240	59	..	59	6 500
Dec Qtr	2 596	891	1 139	660	727	99	243	72	..	72	6 427
SENTENCED (NUMBER ON FIRST DAY OF MONTH)											
2007	7 170	3 351	4 312	1 161	3 073	419	687	1	101	101	20 174
2008	7 264	3 396	4 306	1 271	3 060	413	719	—	82	82	20 429
2009	7 620	3 499	4 452	1 294	3 647	404	814	70	18	88	21 799
2008											
Dec Qtr	7 399	3 490	4 440	1 288	3 210	424	745	—	66	66	20 996
2009											
Mar Qtr	7 366	3 401	4 381	1 271	3 292	401	818	—	47	47	20 929
Jun Qtr	7 671	3 435	4 560	1 298	3 431	403	814	73	26	98	21 685
Sep Qtr	7 692	3 546	4 475	1 301	3 821	403	798	103	..	103	22 138
Dec Qtr	7 752	3 613	4 393	1 304	4 045	408	824	103	..	103	22 443
TOTAL (NUMBER ON FIRST DAY OF MONTH)											
2007	9 570	4 137	5 563	1 781	3 755	534	857	68	101	168	26 264
2008	9 809	4 233	5 529	1 921	3 812	525	931	92	82	174	26 852
2009	10 306	4 355	5 604	1 964	4 365	514	1 072	148	18	167	28 329
2008											
Dec Qtr	9 931	4 359	5 591	1 927	3 949	527	973	107	66	173	27 365
2009											
Mar Qtr	10 092	4 214	5 543	1 925	3 980	508	1 097	112	47	160	27 472
Jun Qtr	10 385	4 312	5 730	1 975	4 177	526	1 085	144	26	169	28 334
Sep Qtr	10 399	4 390	5 611	1 992	4 531	516	1 038	162	..	162	28 638
Dec Qtr	10 348	4 504	5 532	1 964	4 772	506	1 067	176	..	176	28 870
Oct	10 403	4 465	5 498	1 986	4 695	504	1 042	165	..	165	28 758
Nov	10 351	4 506	5 497	1 953	4 784	514	1 073	178	..	178	28 856
Dec	10 290	4 542	5 602	1 954	4 837	501	1 087	184	..	184	28 997

.. not applicable

— nil or rounded to zero (including null cells)

(a) Figures for the quarter and year for first day of month counts are calculated as a simple average – see Explanatory Notes, paragraph 5.

(b) Data prior to the September quarter 2009 includes ACT prisoners held in NSW prisons. The ACT in NSW figures are a subset of the NSW figures and are not separately counted in the Australian totals. From the September quarter 2009, ACT prisoners are no longer held in NSW prisons – see Explanatory Notes, paragraph 42.

(c) Data prior to the September quarter 2007 may be slightly overstated – see Explanatory Notes, paragraph 34.

(d) Data prior to the June quarter 2009 mainly included unsentenced persons in ACT prison custody – see Explanatory Notes, paragraph 42.

(e) ACT in ACT figures and ACT in NSW figures may not add to ACT total due to rounding.

IMPRISONMENT RATES(a), By legal status

	NSW(b)	Vic.	Qld(c)	SA	WA	Tas.	NT	ACT(d)(e)	Aust.(c)
UNSENTENCED (RATE PER 100,000 ADULT POPULATION)									
2007	45.6	19.7	39.3	50.5	43.0	30.7	112.7	25.8	38.0
2008	47.8	20.6	37.5	52.3	46.2	29.5	136.2	34.7	39.4
2009	49.4	20.5	34.3	53.2	42.5	28.8	161.5	29.1	39.0
2008									
Dec Qtr	47.3	21.2	34.9	51.2	44.9	27.3	144.7	40.2	38.7
2009									
Mar Qtr	50.5	19.7	34.9	52.2	41.3	28.0	176.1	41.8	39.5
Jun Qtr	50.1	21.1	34.9	53.9	44.4	32.2	170.2	26.3	39.9
Sep Qtr	49.7	20.2	33.7	54.7	41.9	29.3	149.7	21.7	38.7
Dec Qtr	47.4	21.2	33.5	52.1	42.6	25.7	149.9	26.5	38.1
SENTENCED (RATE PER 100,000 ADULT POPULATION)									
2007	134.4	84.1	135.5	94.7	194.0	111.8	454.8	39.1	125.9
2008	134.9	83.6	131.9	102.2	187.9	109.1	460.6	31.1	125.2
2009	139.9	84.0	132.4	102.6	216.0	105.5	508.0	32.4	130.3
2008									
Dec Qtr	137.0	85.3	134.6	103.1	195.0	111.4	472.3	24.6	127.7
2009									
Mar Qtr	135.7	82.4	131.6	101.4	197.5	105.4	515.4	17.6	126.2
Jun Qtr	141.1	82.8	136.1	103.2	204.3	105.4	511.1	36.5	130.1
Sep Qtr	141.1	84.8	132.5	103.0	225.2	105.2	496.9	37.8	131.9
Dec Qtr	141.6	85.9	129.3	102.9	237.0	106.1	508.5	37.9	133.0
TOTAL (RATE PER 100,000 ADULT POPULATION)									
2007	180.0	103.8	174.8	145.3	237.0	142.5	567.4	64.9	163.9
2008	182.7	104.2	169.3	154.6	234.1	138.6	596.8	65.8	164.5
2009	189.3	104.5	166.6	155.8	258.5	134.3	669.5	61.6	169.4
2008									
Dec Qtr	184.3	106.5	169.6	154.3	239.8	138.7	617.0	64.8	166.4
2009									
Mar Qtr	186.2	102.1	166.5	153.5	238.8	133.5	691.5	59.5	165.7
Jun Qtr	191.2	103.9	171.0	157.0	248.7	137.6	681.3	62.8	170.0
Sep Qtr	190.8	104.9	166.2	157.7	267.1	134.5	646.6	59.5	170.6
Dec Qtr	189.0	107.1	162.8	154.9	279.6	131.8	658.4	64.4	171.1
Oct	190.0	106.1	161.8	156.6	275.1	131.2	642.8	60.5	170.4
Nov	189.1	107.1	161.8	154.0	280.3	133.8	661.9	65.3	171.0
Dec	188.0	108.0	164.9	154.1	283.4	130.4	670.5	67.5	171.9

(a) Imprisonment rates are based on Estimated Resident Population counts – see Explanatory Notes, paragraphs 17–21.

(b) Excludes ACT prisoners that were held in NSW prisons.

(c) Data prior to the September quarter 2007 may be slightly overstated – see Explanatory Notes, paragraph 34.

(d) Includes ACT prisoners held in ACT as well as ACT prisoners that were held in NSW prior to the September quarter 2009 – see Explanatory Notes, paragraph 47.

(e) Data prior to the June quarter 2009 mainly included unsentenced persons in ACT prison custody – see Explanatory Notes, paragraph 42.

SENTENCED PRISONER RECEPTIONS INTO FULL-TIME CUSTODY(a)

	NSW(b)	Vic.	Qld	SA	WA	Tas.(c)	NT(d)	ACT in ACT(e)(f)	ACT in NSW(b)	ACT Total	Aust.(b)
NUMBER											
2007	8 625	3 914	7 027	1 457	3 805	753	1 394	30	128	158	27 005
2008	9 098	3 915	8 223	1 507	4 355	r747	1 442	19	112	131	29 306
2009	8 848	4 190	7 728	1 583	5 372	635	1 674	np	np	255	30 283
2008											
Dec Qtr	2 338	1 003	2 053	355	1 305	190	355	np	np	32	7 599
2009											
Mar Qtr	2 091	855	2 053	367	1 301	156	431	np	np	3	7 255
Jun Qtr	2 289	1 092	1 983	358	1 443	174	319	47	..	47	7 705
Sep Qtr	2 375	1 089	1 883	431	1 333	162	400	36	..	36	7 709
Dec Qtr	2 093	1 154	1 809	427	1 295	143	524	169	..	169	7 614

.. not applicable

np not available for publication but included in totals where applicable, unless otherwise indicated

r revised

(a) The count of sentenced prisoner receptions is an addition of the total number for each month within the reference period – see Explanatory Notes, paragraphs 2–5.

(b) Data prior to the September quarter 2009 includes ACT prisoners held in NSW prisons. The ACT in NSW figures are a subset of the NSW figures and are not separately counted in the Australian totals. From the September quarter 2009, ACT prisoners are no longer held in NSW prisons – see Explanatory Notes, paragraph 42.

(c) Data for sentenced prisoner receptions for the 2008 calendar year were incorrect and have been revised – see Explanatory Notes, paragraph 39.

(d) A new processing system was introduced in September 2009 resulting in increased counts from the December Quarter 2009 – see Explanatory Notes, paragraph 41.

(e) From the June quarter 2009, ACT sentenced prisoner receptions are no longer detained in NSW prisons - see Explanatory Notes, paragraph 42.

(f) The increase in counts from the December 2009 quarter is due to more accurate recording of prisoners on remand and custody since the opening of the ACT prison – see Explanatory Notes, paragraph 43.

	NSW		ACT	
	no.(c)	rate(d)	no.(c)	rate(d)
MALES				
2007	685	26.5	54	42.7
2008	653	25.0	50	38.1
2009	740	27.8	44	33.0
2008				
Dec Qtr	693	26.4	50	38.0
2009				
Mar Qtr	671	25.4	43	32.2
Jun Qtr	732	27.6	38	28.4
Sep Qtr	758	28.4	45	33.4
Dec Qtr	797	29.7	51	38.0
Oct	795	29.6	54	40.2
Nov	787	29.3	50	36.8
Dec	809	30.1	50	37.0
FEMALES				
2007	74	2.8	5	4.1
2008	65	2.4	6	4.4
2009	67	2.4	7	4.9
2008				
Dec Qtr	58	2.1	9	6.4
2009				
Mar Qtr	57	2.1	8	6.0
Jun Qtr	67	2.4	7	5.0
Sep Qtr	73	2.6	6	4.6
Dec Qtr	68	2.4	5	3.9
Oct	70	2.5	4	3.2
Nov	69	2.5	6	4.3
Dec	65	2.3	6	4.2
PERSONS				
2007	759	14.4	60	23.0
2008	718	13.5	55	20.9
2009	806	14.8	51	18.7
2008				
Dec Qtr	751	14.0	59	22.0
2009				
Mar Qtr	728	13.5	51	18.9
Jun Qtr	799	14.8	45	16.5
Sep Qtr	831	15.2	51	18.8
Dec Qtr	865	15.8	56	20.7
Oct	865	15.8	58	21.4
Nov	856	15.6	56	20.4
Dec	874	16.0	56	20.4

(a) Periodic detention is a form of custody only used in NSW and the ACT.

(b) Imprisonment rates are based on Estimated Resident Population counts – see Explanatory Notes, paragraphs 17–21.

(c) Average daily number.

(d) Rate per 100,000 adult population.

FEDERAL SENTENCED PERSONS IN FULL-TIME CUSTODY(a)(b), By sex

	NSW	Vic.	Qld	SA	WA	Tas.	NT	ACT	Aust.
MALES (NUMBER ON FIRST DAY OF MONTH)									
2007	338	76	66	14	52	5	16	5	572
2008	327	83	68	22	43	6	13	2	563
2009	351	89	80	16	51	9	12	—	608
2008									
Dec Qtr	336	87	67	21	39	9	12	2	572
2009									
Mar Qtr	345	82	79	16	42	8	12	1	584
Jun Qtr	344	86	82	16	46	8	12	—	595
Sep Qtr	358	93	75	18	52	9	12	—	616
Dec Qtr	358	97	82	15	61	9	15	—	637
FEMALES (NUMBER ON FIRST DAY OF MONTH)									
2007	58	5	16	2	7	3	—	—	93
2008	73	7	22	3	8	6	—	—	121
2009	68	7	20	4	12	4	2	—	117
2008									
Dec Qtr	73	7	23	4	10	7	1	—	124
2009									
Mar Qtr	70	6	19	4	11	4	2	—	117
Jun Qtr	66	7	19	4	10	3	1	—	110
Sep Qtr	71	8	18	4	13	3	2	—	119
Dec Qtr	66	10	25	4	12	5	2	—	124
PERSONS (NUMBER ON FIRST DAY OF MONTH)									
2007	396	81	82	16	59	9	16	5	664
2008	399	90	90	25	52	12	13	2	684
2009	420	97	100	20	62	12	14	—	726
2008									
Dec Qtr	409	94	89	25	48	15	13	2	696
2009									
Mar Qtr	416	87	98	20	54	12	14	1	701
Jun Qtr	410	93	101	21	56	11	13	—	705
Sep Qtr	429	101	93	21	65	12	13	—	735
Dec Qtr	424	106	107	19	74	14	17	—	761
Oct	435	100	103	17	73	15	16	—	759
Nov	424	106	107	20	73	16	16	—	762
Dec	412	113	111	21	75	12	18	—	762

— nil or rounded to zero (including null cells)

- (a) Counts reflect the state or territory in which a prisoner was sentenced, not where they were held in custody.
- (b) Figures for the quarter and year for the first day of the month counts are calculated as a simple average – see Explanatory Notes, paragraph 5.

	NSW(b)	Vic.	Q/d(c)	SA	WA	Tas.	NT	ACT in ACT(d)	ACT in NSW(b)	ACT Total(e)	Aust.(b)(c)
MALES (AVERAGE DAILY NUMBER)											
2007	1 771	214	1 355	349	1 420	59	671	8	11	19	5 847
2008	1 852	229	1 364	383	1 444	59	736	12	8	20	6 080
2009	2 033	233	1 435	416	1 635	60	842	21	2	23	6 673
2008											
Dec Qtr	1 874	231	1 341	386	1 520	60	776	14	9	24	6 202
2009											
Mar Qtr	1 970	231	1 378	412	1 532	61	875	18	6	24	6 476
Jun Qtr	2 061	226	1 460	404	1 574	63	845	19	2	21	6 652
Sep Qtr	2 069	225	1 459	425	1 672	59	814	22	..	22	6 746
Dec Qtr	2 031	249	1 441	421	1 759	56	835	23	..	23	6 815
Oct	2 048	237	1 416	429	1 743	57	819	24	..	24	6 772
Nov	2 028	255	1 449	423	1 777	55	844	23	..	23	6 852
Dec	2 017	256	1 459	410	1 758	55	844	22	..	22	6 821

	NSW(b)	Vic.	Q/d(c)	SA	WA	Tas.	NT	ACT in ACT(d)	ACT in NSW(b)	ACT Total(e)	Aust.(b)(c)
FEMALES (AVERAGE DAILY NUMBER)											
2007	209	15	115	29	175	7	32	1	—	1	584
2008	213	17	115	28	143	8	36	2	1	3	561
2009	226	19	123	31	165	7	39	2	—	3	612
2008											
Dec Qtr	206	17	115	27	143	6	40	2	1	3	556
2009											
Mar Qtr	221	19	121	36	146	7	36	2	1	3	588
Jun Qtr	236	17	121	31	151	6	42	4	1	4	608
Sep Qtr	224	17	121	29	172	8	36	2	..	2	609
Dec Qtr	225	24	127	29	190	7	40	1	..	1	644
Oct	219	23	129	29	185	8	35	1	..	1	630
Nov	228	25	128	31	194	9	42	—	..	—	658
Dec	227	25	123	28	193	5	42	1	..	1	644

	NSW(b)	Vic.	Q/d(c)	SA	WA	Tas.	NT	ACT in ACT(d)	ACT in NSW(b)	ACT Total(e)	Aust.(b)(c)
PERSONS (AVERAGE DAILY NUMBER)											
2007	1 980	229	1 471	378	1 594	66	703	9	11	20	6 430
2008	2 065	245	1 478	411	1 587	67	773	14	9	23	6 641
2009	2 259	252	1 557	447	1 800	66	881	23	2	25	7 286
2008											
Dec Qtr	2 080	248	1 456	413	1 663	67	815	17	10	27	6 758
2009											
Mar Qtr	2 191	250	1 499	448	1 678	67	911	20	7	27	7 064
Jun Qtr	2 296	243	1 581	435	1 725	69	887	23	2	26	7 261
Sep Qtr	2 292	243	1 581	454	1 844	67	850	25	..	25	7 355
Dec Qtr	2 256	273	1 568	450	1 949	63	875	24	..	24	7 458
Oct	2 267	260	1 546	458	1 928	65	854	25	..	25	7 402
Nov	2 256	280	1 577	454	1 970	64	886	23	..	23	7 510
Dec	2 244	281	1 582	438	1 950	60	886	23	..	23	7 465

.. not applicable

— nil or rounded to zero (including null cells)

(a) Excludes persons whose Indigenous status is unknown – see Explanatory Notes, paragraph 31.

(b) Data prior to the September quarter 2009 includes ACT prisoners held in NSW prisons. The ACT in NSW figures are a subset of the NSW figures and are not separately counted in the Australian totals. From the September quarter 2009, ACT prisoners are no longer held in NSW prisons – see Explanatory Notes, paragraph 42.

(c) Data prior to the September quarter 2007 may be slightly overstated – see Explanatory Notes, paragraph 34.

(d) Data prior to the June quarter 2009 mainly included unsentenced persons in ACT prison custody – see Explanatory Notes, paragraph 42.

(e) ACT in ACT figures and ACT in NSW figures may not add to ACT total due to rounding.

INDIGENOUS IMPRISONMENT RATES(a)(b)(c), By sex

	NSW(d)	Vic.	Qld(e)	SA	WA	Tas.	NT	ACT(f)	Aust.(e)
MALES (RATE PER 100,000 ADULT INDIGENOUS POPULATION)									
2007	4 200.0	2 250.6	3 292.6	4 457.2	6 912.5	1 130.8	3 659.1	1 501.3	4 012.2
2008	4 261.4	2 317.8	3 191.4	4 753.7	6 833.2	1 096.0	3 901.9	1 565.5	4 035.9
2009	4 648.1	2 337.5	3 324.5	4 954.0	7 519.9	1 072.0	4 393.7	1 676.9	4 360.2
2008									
Dec Qtr	4 309.3	2 343.7	3 136.9	4 787.9	7 192.3	1 113.9	4 110.8	1 826.2	4 117.2
2009									
Mar Qtr	4 388.3	2 267.5	3 109.2	4 945.1	7 021.5	1 079.5	4 521.4	1 763.4	4 158.4
Jun Qtr	4 601.3	2 216.9	3 293.0	4 849.8	7 214.5	1 119.1	4 368.4	1 578.1	4 271.3
Sep Qtr	r4 622.9	r2 210.6	r3 292.2	r5 101.8	r7 662.2	r1 046.1	r4 209.7	r1 661.7	r4 331.5
Dec Qtr	4 538.0	2 441.8	3 250.8	5 046.7	8 062.6	989.8	4 319.5	1 702.3	4 375.5
Oct	4 575.8	2 323.6	3 194.2	5 147.0	7 990.6	1 011.9	4 233.5	1 758.9	4 348.4
Nov	4 531.2	2 495.5	3 267.9	5 075.0	8 143.0	970.3	4 364.8	1 691.2	4 399.6
Dec	4 506.8	2 508.0	3 290.9	4 919.0	8 056.6	986.7	4 361.6	1 656.3	4 379.4
FEMALES (RATE PER 100,000 ADULT INDIGENOUS POPULATION)									
2007	473.2	150.1	265.9	343.9	836.9	137.9	159.1	71.4	380.1
2008	466.9	163.1	254.6	316.1	666.7	137.1	177.8	235.4	354.8
2009	492.1	186.9	266.2	343.5	731.4	121.2	189.4	198.2	379.2
2008									
Dec Qtr	450.7	164.1	256.1	306.7	667.4	113.4	193.5	220.5	351.2
2009									
Mar Qtr	470.2	174.6	258.7	397.7	661.6	115.8	172.6	249.1	359.9
Jun Qtr	501.6	162.7	260.3	346.2	684.4	100.3	201.0	330.6	372.6
Sep Qtr	r477.1	r161.3	r260.2	r319.9	r779.5	r134.9	r170.9	r165.3	r372.9
Dec Qtr	480.0	228.9	272.2	327.3	861.0	126.4	189.3	60.6	394.2
Oct	467.8	212.4	277.8	323.8	836.1	141.1	166.0	103.0	385.5
Nov	487.3	238.2	275.6	346.1	876.4	155.0	200.3	5.2	402.9
Dec	485.2	236.5	263.3	312.6	871.1	83.9	201.8	71.9	394.4
PERSONS (RATE PER 100,000 ADULT INDIGENOUS POPULATION)									
2007	2 285.8	1 181.0	1 739.1	2 321.0	3 850.6	623.4	1 833.9	787.7	2 148.9
2008	2 317.1	1 222.0	1 685.4	2 450.4	3 725.2	608.2	1 961.6	902.0	2 150.0
2009	2 517.7	1 244.6	1 746.1	2 561.0	4 058.0	590.2	2 228.4	933.0	2 316.4
2008									
Dec Qtr	2 332.1	1 235.3	1 659.6	2 462.0	3 903.6	604.9	2 069.8	1 025.2	2 187.8
2009									
Mar Qtr	2 383.8	1 201.2	1 648.2	2 589.6	3 820.7	590.0	2 257.5	1 004.8	2 214.1
Jun Qtr	2 503.8	1 170.3	1 738.6	2 517.0	3 928.0	601.5	2 199.0	953.2	2 275.8
Sep Qtr	r2 501.9	r1 166.4	r1 738.1	r2 624.9	r4 198.3	r583.3	r2 107.2	r912.1	r2 305.3
Dec Qtr	2 461.9	1 314.3	1 724.1	2 602.1	4 438.2	551.3	2 169.4	879.9	2 337.7
Oct	2 474.1	1 247.9	1 699.4	2 648.6	4 389.9	569.6	2 116.1	929.4	2 320.0
Nov	2 462.3	1 345.4	1 734.2	2 625.5	4 485.9	556.2	2 196.9	846.6	2 353.9
Dec	2 449.3	1 350.6	1 739.1	2 533.0	4 440.3	528.1	2 196.1	862.6	2 339.6

r revised

- (a) Rates are based on Indigenous adult population estimates and projections for 30 June of the relevant calendar year – see Explanatory Notes, paragraphs 22–26.
- (b) Excludes persons whose Indigenous status is unknown – see Explanatory Notes, paragraph 31.
- (c) Indigenous imprisonment rates for the September 2009 quarter were calculated using an incorrect denominator and have been revised – see Explanatory Notes, paragraph 22.
- (d) Excludes ACT prisoners that were held in NSW prisons.
- (e) Data prior to the September quarter 2007 may be slightly overstated – see Explanatory Notes, paragraph 34.
- (f) Includes ACT prisoners held in ACT as well as ACT prisoners that were held in NSW – see Explanatory Notes, paragraph 47.

	NSW(c)	Vic.	Qld(d)	SA	WA	Tas.	NT	ACT in ACT(e)	ACT in NSW(c)	ACT Total(f)	Aust. (c) (d)
UNSENTENCED (NUMBER ON FIRST DAY OF MONTH)											
2007	451	52	331	160	278	14	143	9	—	9	1 437
2008	492	52	335	169	307	15	174	14	—	14	1 560
2009	537	52	299	189	297	18	210	15	—	15	1 615
2008											
Dec Qtr	486	54	293	169	300	16	182	16	—	16	1 516
2009											
Mar Qtr	569	53	312	197	300	18	238	19	—	19	1 707
Jun Qtr	551	42	310	185	305	21	220	15	—	15	1 648
Sep Qtr	531	48	290	187	282	17	192	11	..	11	1 558
Dec Qtr	496	64	285	185	299	14	190	14	..	14	1 549
SENTENCED (NUMBER ON FIRST DAY OF MONTH)											
2007	1 520	176	1 135	217	1 311	53	564	—	10	10	4 975
2008	1 563	192	1 140	243	1 274	53	592	—	9	9	5 056
2009	1 718	198	1 248	262	1 493	49	671	8	2	10	5 647
2008											
Dec Qtr	1 592	196	1 155	240	1 363	53	620	—	10	10	5 220
2009											
Mar Qtr	1 596	196	1 164	249	1 372	48	668	—	6	6	5 293
Jun Qtr	1 736	203	1 264	260	1 407	49	675	8	3	11	5 602
Sep Qtr	1 763	191	1 285	267	1 546	48	659	14	..	14	5 774
Dec Qtr	1 778	203	1 279	270	1 646	50	682	11	..	11	5 918
TOTAL (NUMBER ON FIRST DAY OF MONTH)											
2007	1 971	228	1 466	377	1 589	67	706	9	10	19	6 412
2008	2 056	244	1 475	413	1 581	67	766	14	9	23	6 616
2009	2 255	250	1 547	450	1 789	66	881	23	2	25	7 262
2008											
Dec Qtr	2 077	251	1 448	410	1 663	69	802	16	10	26	6 736
2009											
Mar Qtr	2 165	249	1 476	447	1 672	66	906	19	6	25	7 000
Jun Qtr	2 287	245	1 573	445	1 712	70	896	23	3	26	7 250
Sep Qtr	2 294	239	1 575	455	1 828	65	851	25	..	25	7 332
Dec Qtr	2 274	268	1 564	455	1 946	64	872	25	..	25	7 467

.. not applicable

— nil or rounded to zero (including null cells)

(a) Figures for the quarter and year for first day of the month counts are calculated as a simple average – see Explanatory Notes, paragraph 5.

(b) Excludes persons whose Indigenous status is unknown – see Explanatory Notes, paragraph 31.

(c) Data prior to the September quarter 2009 includes ACT prisoners held in NSW prisons. The ACT in NSW figures are a subset of the NSW figures and are not separately counted in the Australian totals. From the September quarter 2009, ACT prisoners are no longer held in NSW prisons – see Explanatory Notes, paragraph 42.

(d) Data prior to the September quarter 2007 may be slightly overstated – see Explanatory Notes, paragraph 34.

(e) Data prior to the June quarter 2009 mainly included unsentenced persons in ACT prison custody – see Explanatory Notes, paragraph 42.

(f) ACT in ACT figures and ACT in NSW figures may not add to ACT total due to rounding.

INDIGENOUS IMPRISONMENT RATES(a)(b)(c)(d), By legal status

	NSW(e)	Vic.	Qld(f)	SA	WA	Tas.	NT	ACT(g)	Aust.(f)
UNSENTENCED (RATE PER 100,000 ADULT INDIGENOUS POPULATION)									
2007	523.1	268.0	391.9	982.6	670.4	133.0	371.7	344.6	480.2
2008	554.7	260.9	382.4	1 010.7	720.9	133.3	442.9	541.0	505.0
2009	599.6	254.9	335.9	1 080.7	667.8	156.4	532.7	548.1	514.1
2008									
Dec Qtr	547.2	270.8	333.6	1 010.2	704.1	142.4	462.1	618.2	490.7
2009									
Mar Qtr	621.4	253.2	343.1	1 141.2	683.0	160.4	590.7	717.9	535.1
Jun Qtr	601.0	201.9	340.5	1 068.0	694.4	180.9	546.1	544.6	516.4
Sep Qtr	r579.6	r230.8	r318.9	r1 083.4	r641.3	r148.7	r475.9	r408.5	r488.3
Dec Qtr	541.4	309.3	313.7	1 069.9	681.5	125.4	470.9	532.2	485.4
SENTENCED (RATE PER 100,000 ADULT INDIGENOUS POPULATION)									
2007	1 752.4	908.2	1 341.9	1 330.5	3 167.0	497.5	1 470.0	410.9	1 662.7
2008	1 751.0	955.4	1 299.3	1 450.2	2 990.6	478.6	1 502.0	351.0	1 636.9
2009	1 913.8	979.2	1 398.8	1 499.6	3 365.7	432.1	1 697.5	382.4	1 795.1
2008									
Dec Qtr	1 781.7	978.7	1 316.7	1 433.8	3 198.9	484.6	1 575.0	399.3	1 689.9
2009									
Mar Qtr	1 735.4	942.4	1 280.2	1 441.9	3 123.7	417.1	1 655.8	210.4	1 659.0
Jun Qtr	1 891.8	974.5	1 389.5	1 503.6	3 202.7	428.7	1 673.9	420.8	1 755.9
Sep Qtr	r1 923.9	r920.0	r1 412.9	r1 546.0	r3 520.6	r422.9	r1 633.5	r507.5	r1 809.7
Dec Qtr	1 941.0	977.7	1 406.0	1 559.5	3 748.3	434.6	1 689.6	396.1	1 855.0
TOTAL (RATE PER 100,000 ADULT INDIGENOUS POPULATION)									
2007	2 275.5	1 176.1	1 733.9	2 313.1	3 837.5	630.5	1 841.6	755.5	2 142.9
2008	2 305.7	1 216.3	1 681.7	2 460.9	3 711.5	611.8	1 944.9	891.9	2 141.9
2009	2 513.4	1 234.1	1 734.7	2 580.3	4 033.5	588.4	2 230.2	930.5	2 309.2
2008									
Dec Qtr	2 328.9	1 249.5	1 650.3	2 444.0	3 902.9	626.9	2 037.1	1 017.5	2 180.6
2009									
Mar Qtr	2 356.8	1 195.6	1 623.3	2 583.1	3 806.7	577.5	2 246.5	928.3	2 194.2
Jun Qtr	2 492.9	1 176.4	1 730.0	2 571.5	3 897.1	609.6	2 220.1	965.5	2 272.3
Sep Qtr	r2 503.4	r1 150.8	r1 731.8	r2 629.3	r4 161.9	r571.6	r2 109.4	r916.0	r2 298.0
Dec Qtr	2 482.3	1 287.0	1 719.7	2 629.3	4 429.8	560.0	2 160.6	928.3	2 340.4

r revised

- (a) Rates are based on the Indigenous adult population estimates and projections for 30 June of the relevant calendar year – see Explanatory Notes, paragraphs 22–26.
- (b) Figures for the quarter and year for first day of the month counts are calculated as a simple average – see Explanatory Notes, paragraph 5.
- (c) Excludes persons whose Indigenous status is unknown – see Explanatory Notes, paragraph 31.

- (d) Indigenous imprisonment rates for the September 2009 quarter were calculated using an incorrect denominator and have been revised – see Explanatory Notes, paragraph 22.
- (e) Excludes ACT prisoners that were in NSW prisons.
- (f) Data prior to the September quarter 2007 may be slightly overstated – see Explanatory Notes, paragraph 34.
- (g) Includes ACT prisoners held in ACT as well as ACT prisoners that were held in NSW – see Explanatory Notes, paragraph 47.

PERSONS IN COMMUNITY-BASED CORRECTIONS(a)(b), By sex

	NSW	Vic.	Qld	SA(c)	WA(d)	Tas.	NT(e)	ACT	Aust.(f)
MALES (NUMBER ON FIRST DAY OF MONTH)									
2007	15 195	6 245	9 928	4 586	4 071	913	1 036	977	42 950
2008	15 075	6 431	11 283	4 752	4 326	908	963	1 100	44 838
2009	15 254	6 943	11 629	4 902	4 377	1 015	995	1 167	46 281
2008									
Dec Qtr	15 178	6 612	11 566	4 904	4 355	916	927	1 123	45 579
2009									
Mar Qtr	15 452	6 539	11 487	4 961	4 405	951	955	1 162	45 913
Jun Qtr	15 387	6 735	11 413	4 956	4 475	996	973	1 164	46 100
Sep Qtr	15 066	7 137	11 739	4 886	4 364	1 034	1 013	1 163	46 401
Dec Qtr	15 110	7 360	11 935	4 805	4 262	1 080	1 038	1 178	46 768
Oct	15 094	7 327	11 785	4 835	4 299	1 060	998	1 173	46 571
Nov	15 221	7 339	11 978	4 781	4 285	1 074	1 046	1 174	46 898
Dec	15 014	7 414	12 043	4 800	4 203	1 105	1 069	1 186	46 834
FEMALES (NUMBER ON FIRST DAY OF MONTH)									
2007	2 739	1 438	2 656	1 084	1 158	246	138	161	9 619
2008	2 812	1 501	2 838	1 135	1 219	235	137	200	10 078
2009	2 806	1 533	2 979	1 118	1 215	257	154	227	10 288
2008									
Dec Qtr	2 797	1 532	2 877	1 140	1 192	241	141	221	10 142
2009									
Mar Qtr	2 755	1 466	2 924	1 129	1 203	243	145	228	10 092
Jun Qtr	2 802	1 509	2 925	1 093	1 222	251	153	224	10 178
Sep Qtr	2 819	1 546	3 004	1 122	1 212	257	154	224	10 337
Dec Qtr	2 850	1 609	3 087	1 127	1 226	275	164	232	10 571
Oct	2 859	1 571	3 047	1 117	1 220	262	156	220	10 452
Nov	2 874	1 604	3 090	1 131	1 226	278	164	231	10 598
Dec	2 817	1 653	3 125	1 134	1 231	286	172	246	10 664
PERSONS (NUMBER ON FIRST DAY OF MONTH) (g)									
2007	18 002	7 710	12 584	5 671	5 229	1 159	1 173	1 138	52 665
2008	17 954	7 950	14 120	5 888	5 545	1 143	1 100	1 301	55 001
2009	18 137	8 479	14 608	6 021	5 595	1 272	1 149	1 394	56 654
2008									
Dec Qtr	18 052	8 150	14 443	6 045	5 547	1 158	1 068	1 344	55 806
2009									
Mar Qtr	18 280	8 012	14 411	6 093	5 608	1 195	1 100	1 390	56 089
Jun Qtr	18 269	8 249	14 339	6 050	5 699	1 247	1 126	1 388	56 366
Sep Qtr	17 966	8 685	14 742	6 008	5 585	1 291	1 167	1 387	56 832
Dec Qtr	18 032	8 969	15 023	5 934	5 488	1 355	1 202	1 410	57 412
Oct	18 029	8 898	14 832	5 953	5 519	1 322	1 154	1 393	57 100
Nov	18 167	8 943	15 068	5 913	5 511	1 352	1 210	1 405	57 569
Dec	17 899	9 067	15 168	5 935	5 434	1 391	1 241	1 432	57 567

(a) Figures include persons with breached or suspended orders, with the exception of Vic. and Tas.

(b) Figures for the quarter and year for first day of the month counts are calculated as a simple average – see Explanatory Notes, paragraph 5.

(c) Data movements may be influenced by data entry delays – see Explanatory Notes, paragraph 36.

(d) Data are subject to processing delays of 4 to 6 weeks - see Explanatory Notes, paragraph 38.

(e) Bail data for the December quarter 2009 is excluded. See Explanatory Notes paragraph 41.

(f) See footnotes c-e.

(g) Includes persons whose sex is unknown.

COMMUNITY-BASED CORRECTIONS RATES(a)(b)(c), By sex

	NSW	Vic.	Qld	SA(d)	WA(e)	Tas.	NT(f)	ACT	Aust.(g)
MALES (RATE PER 100,000 ADULT POPULATION)									
2007	588.6	320.2	629.2	764.7	512.8	500.7	1 307.0	766.0	544.2
2008	577.8	323.4	697.4	782.0	528.7	492.6	1 181.4	844.5	557.9
2009	572.5	339.7	697.2	795.2	514.4	545.0	1 194.1	875.1	561.2
2008									
Dec Qtr	578.4	330.0	707.8	802.7	525.8	495.0	1 123.7	854.8	562.7
2009									
Mar Qtr	584.3	323.1	696.0	809.5	524.6	513.5	1 158.6	879.0	561.9
Jun Qtr	579.2	331.0	687.0	805.9	528.7	535.6	1 175.8	876.5	561.1
Sep Qtr	563.7	347.9	701.1	790.7	509.9	554.0	1 212.1	869.2	560.7
Dec Qtr	562.9	356.6	708.2	774.8	494.5	577.0	1 229.8	875.7	562.0
Oct	562.3	355.0	699.3	779.6	498.7	566.5	1 182.8	872.2	559.6
Nov	567.0	355.6	710.7	770.9	497.1	574.0	1 239.7	873.0	563.6
Dec	559.3	359.2	714.6	774.0	487.6	590.6	1 267.0	881.9	562.8
FEMALES (RATE PER 100,000 ADULT POPULATION)									
2007	102.3	70.7	165.5	173.2	146.5	127.7	191.4	121.7	118.3
2008	103.6	72.4	172.2	178.7	150.5	121.0	184.1	148.9	121.7
2009	101.3	72.1	175.6	173.5	145.3	130.7	200.3	165.4	121.3
2008									
Dec Qtr	102.5	73.4	173.0	178.7	145.7	123.7	187.3	163.1	121.6
2009									
Mar Qtr	100.2	69.7	174.1	176.1	145.4	124.6	190.3	167.2	120.0
Jun Qtr	101.4	71.3	173.2	170.0	146.7	127.9	199.6	163.7	120.4
Sep Qtr	101.5	72.5	176.5	173.8	144.2	130.7	200.3	162.4	121.5
Dec Qtr	102.1	75.1	180.3	174.1	145.1	139.7	211.0	168.1	123.6
Oct	102.5	73.3	177.9	172.5	144.4	132.9	200.7	159.2	122.2
Nov	103.0	74.8	180.4	174.6	145.1	141.0	211.0	167.1	123.9
Dec	101.0	77.1	182.5	175.1	145.7	145.1	221.3	178.0	124.7
PERSONS (RATE PER 100,000 ADULT POPULATION) (h)									
2007	342.3	193.5	395.3	462.7	330.1	309.3	776.4	438.4	328.7
2008	337.3	195.7	432.4	473.7	340.6	301.9	704.9	491.1	337.0
2009	333.8	203.4	434.3	477.6	331.6	332.4	717.1	515.0	338.7
2008									
Dec Qtr	337.2	199.2	438.0	483.9	336.9	304.4	676.8	503.6	339.4
2009									
Mar Qtr	338.9	194.1	432.8	486.0	336.4	313.9	693.4	517.6	338.3
Jun Qtr	337.2	198.8	427.9	481.0	339.4	326.4	706.8	514.8	338.2
Sep Qtr	329.6	207.6	436.7	475.5	329.3	336.8	726.7	510.8	338.6
Dec Qtr	329.4	213.2	442.1	468.0	321.5	352.7	741.3	517.1	340.3
Oct	329.3	211.5	436.5	469.5	323.3	344.1	711.9	510.8	338.4
Nov	331.9	212.6	443.5	466.4	322.9	351.9	746.4	515.2	341.2
Dec	327.0	215.5	446.4	468.1	318.4	362.0	765.5	525.1	341.2

- (a) Imprisonment rates are based on Estimated Resident Population counts – see Explanatory Notes, paragraphs 17–21.
- (b) Figures include persons with breached or suspended orders, with the exception of Vic. and Tas.
- (c) Figures for the quarter and year for the first day of the month are calculated as a simple average – see Explanatory Notes, paragraph 5.
- (d) Data movements may be influenced by data entry delays – see Explanatory Notes, paragraph 36.
- (e) Data are subject to processing delays of 4 to 6 weeks - see Explanatory Notes, paragraph 38.
- (f) Bail data for the December quarter 2009 is excluded. See Explanatory Notes paragraph 41.
- (g) See footnotes d-f.
- (h) Includes persons whose sex is unknown.

	NSW	Vic.	Qld	SA(d)	WA(e)	Tas.(f)	NT(g)	ACT(h)	Aust.(i)
RESTRICTED MOVEMENT (NUMBER ON FIRST DAY OF MONTH)									
2007	197	31	..	391	5	..	34	..	659
2008	151	31	..	421	6	..	32	..	640
2009	164	34	..	445	4	..	35	..	682
2008									
Dec Qtr	177	29	..	463	5	..	30	..	704
2009									
Mar Qtr	177	38	..	482	3	..	27	..	728
Jun Qtr	176	33	..	441	4	..	36	..	690
Sep Qtr	157	36	..	438	4	..	39	..	675
Dec Qtr	147	28	..	419	5	..	36	..	635
Oct	147	24	..	438	3	..	34	..	646
Nov	149	26	..	411	6	..	36	..	628
Dec	145	33	..	409	6	..	38	..	631

	NSW	Vic.	Qld	SA(d)	WA(e)	Tas.(f)	NT(g)	ACT(h)	Aust.(i)
REPARATION-FINE OPTION (NUMBER ON FIRST DAY OF MONTH)									
2007	49	1 710	843	702	192	85	—	..	3 580
2008	16	1 763	542	646	208	50	—	..	3 224
2009	21	1 846	498	581	353	26	—	..	3 326
2008									
Dec Qtr	23	1 613	454	614	210	37	—	..	2 952
2009									
Mar Qtr	20	1 673	410	599	240	36	—	..	2 978
Jun Qtr	22	1 751	460	594	330	29	—	..	3 186
Sep Qtr	22	1 904	549	575	422	23	—	..	3 494
Dec Qtr	21	2 054	586	558	421	17	—	..	3 658
Oct	21	1 929	566	563	454	19	—	..	3 552
Nov	24	2 063	569	557	436	16	—	..	3 665
Dec	17	2 171	624	554	374	17	—	..	3 757

	NSW	Vic.	Qld	SA(d)	WA(e)	Tas.(f)	NT(g)	ACT(h)	Aust.(i)
REPARATION-COMMUNITY SERVICE (NUMBER ON FIRST DAY OF MONTH)									
2007	4 160	672	1 857	1 033	1 622	495	221	115	10 174
2008	3 979	679	1 854	1 005	1 473	500	184	161	9 835
2009	4 180	741	1 943	1 146	1 449	584	166	190	10 399
2008									
Dec Qtr	4 014	678	1 852	1 043	1 408	527	172	169	9 863
2009									
Mar Qtr	4 046	697	1 823	1 090	1 377	555	172	172	9 932
Jun Qtr	4 252	740	1 887	1 116	1 406	579	172	195	10 347
Sep Qtr	4 230	765	1 982	1 165	1 470	592	179	193	10 577
Dec Qtr	4 192	762	2 142	1 212	1 541	610	142	201	10 802
Oct	4 230	780	2 079	1 189	1 531	595	133	184	10 721
Nov	4 231	743	2 164	1 177	1 558	608	141	208	10 830
Dec	4 114	763	2 184	1 271	1 534	628	151	210	10 855

.. not applicable

— nil or rounded to zero (including null cells)

- (a) If a person has more than one type of order, they are counted against each order in this table. If a person has more than one order of the same order type, they are counted only once in the order type.
- (b) Figures for the quarter and year for first day of the month counts are calculated as a simple average – see Explanatory Notes, paragraph 5.
- (c) Figures include persons with breached or suspended orders, with the exception of Vic. and Tas.
- (d) Data movements may be influenced by data entry delays – see Explanatory Notes, paragraph 36.

(e) Data are subject to processing delays of 4 to 6 weeks - see Explanatory Notes, paragraph 38.

(f) A trial of new bail orders was conducted in the 2007-08 financial year – see Explanatory Notes, paragraph 40.

(g) Caution should be exercised as a new processing system was introduced in September 2009 resulting in significant changes to community-based order counts. Bail counts were also not able to be provided – see Explanatory Notes paragraph 41.

(h) Data movements for bail orders may have been influenced by data quality checks during the December quarter 2008 – see Explanatory Notes, paragraph 46.

(i) See footnotes d-h.

	NSW	Vic.	Qld	SA(d)	WA(e)	Tas.(f)	NT(g)	ACT(h)	Aust.(i)
SUPERVISION (COMPLIANCE)-PAROLE (NUMBER ON FIRST DAY OF MONTH)									
2007	4 058	1 413	2 290	882	1 143	81	99	117	10 083
2008	4 246	1 494	3 793	903	1 317	96	90	113	12 051
2009	4 286	1 502	4 173	981	1 173	128	82	100	12 423
2008									
Dec Qtr	4 387	1 500	4 127	942	1 342	109	76	103	12 587
2009									
Mar Qtr	4 339	1 508	4 185	983	1 426	116	75	96	12 728
Jun Qtr	4 201	1 470	4 048	985	1 361	124	73	100	12 363
Sep Qtr	4 186	1 506	4 195	973	1 052	137	72	100	12 220
Dec Qtr	4 417	1 521	4 297	982	852	134	106	105	12 415
Oct	4 369	1 529	4 232	974	903	135	106	103	12 351
Nov	4 434	1 529	4 343	983	855	135	106	107	12 492
Dec	4 449	1 506	4 316	990	797	133	106	106	12 403

	NSW	Vic.	Qld	SA(d)	WA(e)	Tas.(f)	NT(g)	ACT(h)	Aust.(i)
SUPERVISION (COMPLIANCE)-BAIL (NUMBER ON FIRST DAY OF MONTH)									
2007	226	1 019	245	8	7	215	na
2008	226	858	275	18	5	229	1 612
2009	207	829	310	..	na	206	1 568
2008									
Dec Qtr	222	844	292	..	4	181	1 544
2009									
Mar Qtr	215	867	276	..	10	194	1 561
Jun Qtr	212	881	288	..	20	199	1 599
Sep Qtr	212	811	344	..	35	207	1 608
Dec Qtr	190	757	332	..	na	226	1 505
Oct	199	758	341	..	na	218	1 516
Nov	192	757	330	..	na	196	1 475
Dec	180	757	325	..	na	263	1 525

	NSW	Vic.	Qld	SA(d)	WA(e)	Tas.(f)	NT(g)	ACT(h)	Aust.(i)
SUPERVISION (COMPLIANCE)-SENTENCED PROBATION (NUMBER ON FIRST DAY OF MONTH)									
2007	11 198	4 093	8 680	2 803	3 485	645	853	840	32 598
2008	11 098	4 184	9 040	3 161	3 645	636	819	1 026	33 609
2009	11 073	4 645	9 123	3 185	3 616	735	892	1 139	34 408
2008									
Dec Qtr	10 988	4 250	9 097	3 271	3 600	663	810	1 107	33 785
2009									
Mar Qtr	11 212	4 428	9 081	3 267	3 557	683	841	1 146	34 217
Jun Qtr	11 299	4 502	9 033	3 198	3 582	711	855	1 131	34 310
Sep Qtr	10 989	4 743	9 175	3 156	3 606	735	877	1 133	34 415
Dec Qtr	10 790	4 906	9 222	3 118	3 719	812	995	1 148	34 709
Oct	10 825	4 921	9 124	3 148	3 673	787	956	1 135	34 569
Nov	10 868	4 881	9 223	3 101	3 725	817	1 005	1 152	34 772
Dec	10 676	4 915	9 320	3 105	3 758	831	1 025	1 157	34 787

.. not applicable

na not available

- (a) If a person has more than one type of order, they are counted against each order in this table. If a person has more than one order of the same order type, they are counted only once in the order type.
- (b) Figures for the quarter and year for first day of the month counts are calculated as a simple average – see Explanatory Notes, paragraph 5.
- (c) Figures include persons with breached or suspended orders, with the exception of Vic. and Tas.
- (d) Data movements may be influenced by data entry delays – see Explanatory Notes, paragraph 36.

(e) Data are subject to processing delays of 4 to 6 weeks - see Explanatory Notes, paragraph 38.

(f) A trial of new bail orders was conducted in the 2007-08 financial year – see Explanatory Notes, paragraph 40.

(g) Caution should be exercised as a new processing system was introduced in September 2009 resulting in significant changes to community-based order counts. Bail counts were also not able to be provided – see Explanatory Notes paragraph 41.

(h) Data movements for bail orders may have been influenced by data quality checks during the December quarter 2008 – see Explanatory Notes, paragraph 46.

(i) See footnotes d-h.

EXPLANATORY NOTES

INTRODUCTION

1 This publication presents statistical series on persons held in either adult corrective services custody or who are serving adult community-based orders in Australia. It contains data on the number of persons by their sex, Indigenous status, type of custody, legal status and sentence type; the number of sentenced persons received into corrective services custody each month; and the number of federal prisoners. Experimental data on Indigenous persons in community based corrections are also available in the Appendix.

2 Statistics presented in this publication are compiled in three ways:

- Average daily prisoner population: Counts taken on each day of the month are summed and divided by the number of days in that month to determine the average daily prisoner population for that month. The average daily periodic detainee population is a count of persons on periodic detention on each day a centre is open, divided by the number of days a centre is open.
- Sentenced prisoner reception figures: Counts are provided each month on the number of receptions where a prisoner is received as a sentenced prisoner. This includes prisoners with a change of legal status from unsentenced to sentenced.
- First day of the month prisoner population: Counts of prisoners and persons serving community-based corrections orders, taken on or near the first day of the month (see paragraphs 4 and 5).

3 Although national standards and classifications are used in the compilation of these statistics, some discrepancies remain between the states and territories. These are due to legislative and procedural differences between jurisdictions and the way that these differences are reflected in agencies' administrative data systems. As part of its quality assurance strategy, the ABS is working with corrective services agencies to minimise the effect of these differences.

REFERENCE PERIOD

4 The reference period for average daily prisoner population statistics and sentenced reception counts is the complete reference month. The reference date for all other figures is the first day of the reference month. However, not all states and territories report strictly according to this 'first day of the month' rule:

- The Western Australian and Australian Capital Territory prisoners in New South Wales prisons populations are counted as at midnight on the last day of the month. In these cases the figures provided are taken to represent the prison population at the beginning of the following month to align with practices in other states and territories.

5 Calculation of figures for the entire quarter and entire year varies depending on the counting unit and method of counting prisoners:

- Average daily figures: Figures are calculated by weighting the average according to the number of days in each month, quarter or year.
- First day of the month: Figures are simple averages. For quarterly figures, the sum of the monthly data is divided by three; for yearly figures, the figures for each month are added and the total divided by twelve.
- Sentenced receptions: Figures are totals of each month.
- These figures may be subject to rounding.

SCOPE

6 The scope of the statistics in this publication includes all persons remanded or sentenced to adult custodial corrective services agencies (including Work Outreach Camps and Community Custody Centres in Queensland), or who are serving adult community-based orders in each state and territory in Australia.

EXPLANATORY NOTES *continued*

SCOPE *continued*

7 Counts of prisoners in the following custodial facilities are included in the collection:

- gazetted prisons in all jurisdictions;
- periodic detention centres in New South Wales and the Australian Capital Territory;
- community custody centres and work outreach camps in Queensland;
- cells in court complexes administered by corrective services in New South Wales;
- transitional centres in New South Wales; and
- lock-ups in Western Australia operated by the police but designated as a prison by the Chief Executive Officer of Corrective Services.

8 The prisons and community corrections collection excludes the following custodial facilities:

- police lockups, police prisons and cells in court complexes not administered and controlled by corrective services;
- gazetted police prisons in the Northern Territory;
- juvenile detention centres, including those under the authority of adult corrective services;
- immigration detention centres; and
- military prisons.

9 This collection includes counts of persons remanded or sentenced to adult custody facilities, or directed to serve community based orders administered by adult corrective services agencies. In all states and territories except Queensland, persons are considered adults if aged 18 years and over. In Queensland persons are considered adults if aged 17 years and over. The vast majority of persons counted in the collection are adults. However, juveniles may be included in exceptional circumstances.

10 Since December 2004, the Kariong Juvenile Correctional Centre in New South Wales has operated under the authority of adult corrective services. The population at Kariong Juvenile Correctional Centre may include adult persons as well as juveniles. New South Wales includes juveniles based in Kariong in this collection, however, this facility accounts for less than 0.5% of the New South Wales prisoner population.

11 Federal prisoners include those persons charged and sentenced under a Commonwealth statute, and those persons who are charged and sentenced under the laws of another country but transferred to an Australian prison to serve their sentence under the *International Transfer of Prisoners Act 1997* (Cwlth). To give practical effect to this legislation in Australia, the framework was introduced in January 2003. For the purposes of this publication, federal sentenced prisoners are those persons who are recognised by the Criminal Law Division of the Australian Government Attorney-General's Department as having been charged and sentenced under a Commonwealth statute, or transferred from another country to serve their sentence in Australia.

12 With the exception of Victoria and Tasmania, community-based corrections includes those persons with breached or suspended orders.

DATA SOURCE

13 Statistics in this publication are derived from information provided to the ABS from administrative records held by corrective services agencies within each state and territory. Statistics on federal prisoners are derived from records kept by the Criminal Law Division of the Australian Government Attorney-General's Department.

COUNTING RULES

14 Statistics for persons held in custody are presented by the state or territory in which they were held and therefore may not be the sentencing jurisdiction. The only exception to this are data for federal sentenced prisoners. These are presented by the state or territory in which they were sentenced, not where they were held in custody.

EXPLANATORY NOTES *continued*

COUNTING RULES *continued*

15 Sentenced prisoners who have other offences that are unsentenced are counted as sentenced. Prisoners may be unsentenced because they are awaiting the outcome of their trial, convicted but awaiting sentence, or awaiting deportation.

16 If an offender has two or more different types of community-based orders operating simultaneously, then each order will be counted. If two or more community-based orders are of the same type, these orders together will only be counted as one order.

RATES

17 Imprisonment and community-based corrections rates enable comparisons of prisoner numbers to be made across states and territories. Prisoner and community-based corrections rates are expressed per 100,000 adult population. Imprisonment rates are calculated based on two different counting concepts (average daily and first day of the month), as a result there may be variations in imprisonment rates presented in this publication.

18 In this publication the population figures used in the calculation of rates are for persons aged 18 years and over for all states and territories except Queensland where the population is persons aged 17 years and over (see paragraph 9).

19 Rates for the total adult prisoner population and persons in community-based corrections are calculated using the estimated resident population (ERP) for each of the states and territories. All estimates for the Australian Capital Territory exclude Jervis Bay Territory. All estimates for Australia exclude the external territories of Christmas Island and the Cocos (Keeling) Island. As the population changes over time the denominator used for the calculation of rates varies, depending on the reference period. The most current ERP data available at the time of publication are used to calculate rates as follows:

- for the March quarter, ERP is from the previous September quarter;
- for the June quarter, ERP is from the previous December quarter;
- for the September quarter, ERP is from the previous March quarter;
- for the December quarter, ERP is from the previous June quarter; and
- annual rates are an average of the rates of the contributing quarters.

20 The ERP series are revised every five years to incorporate additional information available from the latest Census of Population and Housing. The rates per 100,000 adult persons presented in this issue have been calculated using different ERP counts as follows:

- Rates from the June 2007 quarter (excluding Indigenous rates) are calculated using rebased data from the intercensal period (2001-2006) sourced from the 2006 Census of Population and Housing;
- All other rates (excluding Indigenous rates) are calculated using ERP data based on the 2001 Census of Population and Housing.

21 For population estimates and information on the methodology used to produce the ERP, see *Australian Demographic Statistics* (cat. no. 3101.0).

Indigenous imprisonment rates

22 In the September quarter 2009 issue of this publication, Indigenous imprisonment rates for the September quarter 2009 were calculated using an incorrect Indigenous adult population estimates. The rates were calculated using the estimates and projections for the period 1991 to 2009 rather than using the updated population figures provided in *Experimental Estimates and Projections, Aboriginal and Torres Strait Islander Australians, 1991 to 2021* (cat. no. 3238.0). This was caused by a programming error. These rates have been revised (see Tables 14 and 16).

23 Rates for the Indigenous adult population are calculated using rebased estimates (for the period 1986 - 2006) and projections (2007 - 2021) of the Indigenous population. These data are based on data from the 2006 Census of Population and Housing and use assumptions about future fertility, paternity, life expectancy at birth and migration. For

EXPLANATORY NOTES *continued*

Indigenous imprisonment rates *continued*

more information see *Experimental Estimates and Projections, Aboriginal and Torres Strait Islander Australians, 1991 to 2021* (cat. no. 3238.0).

24 The projections used in this publication are based on Series B projections for 30 June of the relevant calendar year. Series B is one of two main projection series (Series A and B) that have been published for the years 2007 to 2021. Both of these series assume an annual decline of 0.5% in fertility rates; an annual increase of 1% in paternity rates; constant interstate migration at levels observed in the 2006 Census; and zero net overseas migration with no arrivals and no departures. Further, two different assumptions were made about future Indigenous life expectancy at birth for Australia:

- In Series A, Indigenous life expectancy at birth will remain constant; and
- In Series B, Indigenous life expectancy at birth will increase by 0.3 years per year for both males and females.

25 The impact of re-basing Indigenous imprisonment rate data using Series B projections, instead of the previous "low series" of projections, is minimal at the national level. Differences of no greater than 5% are seen in the state and territory data, and generally the result has been a decrease in the imprisonment rate. This is because the assumptions used by Series B result in higher population estimates and projections than those through the use of the previous "low series".

26 The decision to use Series B as the denominator in the calculation of Indigenous imprisonment rates followed consultation with the National Corrective Services Statistics Advisory Group and other stakeholders.

INDIGENOUS IDENTIFICATION

27 The ABS conducts an ongoing programme of quality assurance to monitor and improve the quality of Indigenous Status data in Corrective Services agencies (both custodial and community-based corrections). Whilst the ABS has published Indigenous status data in Corrective Services collections for a number of years, quality assurance is required to better understand the level of accuracy over time

28 The quality of the Indigenous status information collected and recorded in Corrective Services agencies is assessed against the ABS Standard Indigenous Question (SIQ). The SIQ is based upon self-identification by the individual who comes into contact with Corrective Services agencies.

29 For custodial corrections, initial indications are that corrective services agencies in all states and territories, with the exception of Western Australia, ask the SIQ as described above. South Australia asks a variation of the ABS' SIQ which generates the required output categories for Indigenous status.

30 Initial review suggests that corrective services agencies in all states and territories except Western Australia currently enter and store the ABS SIQ appropriately in recording systems for custodial data. For more information about Indigenous identification in community-based corrections refer to Appendix.

31 Some persons in custody are recorded with an unknown Indigenous status on the information systems of corrective agencies as their status has not been able to be obtained. Persons with Indigenous status unknown are excluded from tables 13 -16. Counts of persons with an unknown Indigenous status are included in all other tables. Unknowns account for just over 2% of all records.

SIGNIFICANT EVENTS

New South Wales

32 In March 2008, the administrative classification of the Wellington Correctional Centre was altered. The classification was changed from 'open' to 'secure' for 75% of the facility to reflect the change in the profile of inmates held. As such, the proportion of persons in secure and open custody altered in the March quarter 2008 compared to previous quarters.

EXPLANATORY NOTES *continued*

Queensland

33 Quality assurance conducted in Queensland during the June quarter 2009 had resulted in a revision of the number of offenders under community based corrections during January, February and March 2009.

34 Quality assurance work conducted in Queensland during the September quarter 2007 resulted in the identification and elimination of duplicate and other records for the month of July 2007. Caution should be exercised when comparing data prior to the September quarter 2007.

35 *The Corrective Services Act 2006* (Qld) commenced on 26 August 2006. One key provision in the new legislation relates to the management of offenders subject to Court-ordered Parole. This new order ensures that offenders serve 100% of their sentence under supervision, either in a correctional centre or under community supervision. This new order provides courts with the power to specify a parole release date for persons sentenced to a term of imprisonment of 3 years or less. Technical breaches of parole orders are no longer heard by a parole board and can often result in a person serving the remainder of their original sentence in custody. Court-ordered Parole is not available to sex offenders or serious violent offenders.

South Australia

36 Data on community-based correction orders extracted from the South Australian information system from the June quarter 2005 may be subject to data processing time lags.

Western Australia

37 Data for persons in secure and open custody are extracted on the basis of the prisoner's security rating, rather than the location of the prisoner as per the standard definition (see Glossary). As a result, prisoners with a minimum security rating and located in a medium or maximum security prison are counted in the open custody numbers. Data for persons in secure custody may be understated and data for persons in open custody may be overstated.

38 Data for community-based correction orders extracted from the Western Australian information system are subject to data processing time lags of 4-6 weeks. Fine option orders are most likely to be impacted by the lag, with approximately 10% of each month's data entry delayed.

Tasmania

39 In the March, June and September quarter 2009 issues of this publication, the counts of sentenced prisoner receptions for the 2008 calendar year were incorrectly derived due to a system error. The 2008 calendar year figures have been revised (see Table 10).

40 Tasmania trialled new orders for bail, suspended sentences and drug treatment as part of the Court Mandated Diversion program (CMD) from 1 July 2007 to 30 June 2008. Counts for supervision (compliance) - bail orders during the September quarter 2008 represent the transitional period concluding this trial. These orders are now being handled by alternative service providers.

Northern Territory

41 In September 2009 a new offender management system was implemented– the Integrated Offender Management System (IOMS). Caution should be exercised in comparing December 2009 data with previous quarters as the new system has resulted in significant increased counts for sentenced receptions and community-based orders. Bail counts for this quarter were also unable to be supplied, impacting on both the territory and Australian totals.

EXPLANATORY NOTES *continued*

Australian Capital Territory

42 From the September quarter 2009, all ACT sentenced and unsentenced prisoners are held within the ACT. From the June quarter 2009 all sentenced prisoner receptions were detained within the Australian Capital Territory. For this same period nearly all ACT prisoners held in New South Wales prisons were transferred to a new custodial facility (Alexander Maconochie Centre) which commenced taking prisoners in March 2009. Between 2000 and March quarter 2009, persons sentenced to full-time custody by the Australian Capital Territory were usually held in New South Wales prisons as the Australian Capital Territory only had two remand centres for unsentenced prisoners and a periodic detention centre. Unsented Australian Capital Territory prisoners may have also been detained in New South Wales prisons. The exception was for persons sentenced for fine default; these prisoners were detained in Australian Capital Territory remand.

43 A backlog of prisoners sentenced in the ACT awaiting transfer to NSW remained in the ACT during the transition of the opening of the new ACT prison. These sentenced prisoners were classified as 'unsentenced' prior to the December quarter 2009. With the opening of the new prison, sentenced reception counts better reflect accurate recording of sentenced and unsentenced prisoners, resulting in an increase in sentenced prisoner receptions from the September quarter 2009.

44 From the June quarter 2009, the new ACT custodial facility contains minimum, medium and maximum security prisoners; data for persons in secure and open custody are extracted on the basis of the prisoner's security rating, rather than the location of the prisoner as per the standard definition (see Glossary). As a result, prisoners with a minimum security rating are only recorded in open custody and data may be understated for this category, while secure custody may be overstated.

45 To provide greater understanding of the number of prisoners attributed to the Australian Capital Territory, while presenting an accurate picture of the New South Wales prisoner population, statistics relating to Australian Capital Territory prisoners in New South Wales prisons prior to the June quarter 2009 are presented as a subset of the New South Wales figures.

46 The decline in supervision bail compliance orders in December 2008 may have been partly influenced by data quality checks. Records with no completion or expiry date that should have been finalised on the system were marked as completed during this period.

47 Imprisonment rate data for the Australian Capital Territory are calculated on the basis of the total number of Australian Capital Territory prisoners (i.e. Australian Capital Territory prisoners that were held in New South Wales prisons, prior to September quarter 2009, and Australian Capital Territory prisoners held in the Australian Capital Territory) divided by the estimated resident Australian Capital Territory adult population and multiplied by 100,000. For New South Wales, the imprisonment rate is based on the count of New South Wales prisoners, excluding Australian Capital Territory prisoners held in New South Wales prisons prior to September quarter 2009, divided by the estimated resident New South Wales adult population and multiplied by 100,000. Time series data have also been derived on this basis.

RELATED PUBLICATIONS

ABS Publications

- 48** Other ABS publications that may be of interest include:
- Australian Demographic Statistics* (cat. no. 3101.0) – issued quarterly
 - Australian Social Trends* (cat. no. 4102.0) – issued quarterly
 - Australian Standard Offence Classification (second edition)* (cat. no. 1234.0) – released 1 August 2008
 - Crime Victimisation, Australia* (cat. no. 4530.0) - released 18 February 2009
 - Criminal Courts, Australia* (cat. no. 4513.0) – issued annually

EXPLANATORY NOTES *continued*

ABS Publications *continued*

Experimental Estimates and Projections, Aboriginal and Torres Strait Islander Australians, 1991 to 2021 (cat. no. 3238.0) - released 8 September 2009
General Social Survey: Summary Results, Australia (cat. no. 4159.0) – irregular
Information Paper: Measuring Crime Victimization, Australia: The Impact of Different Collection Methodologies (cat. no. 4522.0.55.001) – single issue
Information Paper: National Criminal Justice Statistical Framework (cat. no. 4525.0) – single issue
Information Paper: National Information Development Plan for Crime and Justice Statistics 2005 (cat. no. 4520.0) – single issue
Measures of Australia's Progress (cat. no. 1370.0) – released 31 May 2006
Personal Fraud Survey (cat. no. 4528.0) – released 27 June 2008
Personal Safety Survey (cat. no. 4906.0) – released 21 August 2006
Prisoners in Australia (cat. no. 4517.0) – issued annually
Recorded Crime – Victims, Australia (cat. no. 4510.0) – issued annually
Recorded Crime – Offenders, Selected states and territories (cat. no. 4519.0) – released 27 August 2009
Sexual Assault in Australia: A Statistical Overview (cat. no. 4523.0) – single issue

49 Current publications and other products released by the ABS are available from the ABS website <<http://www.abs.gov.au>>. The ABS also issues a daily Release Advice on the website that details products to be released in the week ahead. The National Centre for Crime and Justice Statistics releases *Crime and Justice News* (cat. no. 4500.0), an annual newsletter that is published on the ABS website. The Centre can be contacted by email through <crime.justice@abs.gov.au>.

Non-ABS Publications

50 Non-ABS sources that may be of interest include:
Australian Institute of Criminology, *List of Publications* – irregular
<<http://www.aic.gov.au>>
Crime Research Centre, University of Western Australia, *Crime and Justice Statistics for Western Australia* – issued annually
<<http://www.crc.law.uwa.edu.au>>
Department of Corrective Services, New South Wales, *NSW Inmate Census* – irregular
<<http://www.dcs.nsw.gov.au>>
Department of Justice, Northern Territory, *Northern Territory Quarterly Crime and Justice Statistics* – issued quarterly
<<http://www.nt.gov.au/justice/>>
Department of Justice, Victoria, *Statistical Profile of the Victorian Prison System* – issued annually
<<http://www.justice.vic.gov.au>>
NSW Bureau of Crime Statistics and Research, *New South Wales Criminal Courts Statistics* – issued annually
<<http://www.lawlink.nsw.gov.au>>
Office of Crime Statistics and Research, *South Australia, Crime and Justice in South Australia* – issued annually
<<http://www.ocsar.sa.gov.au>>
Steering Committee for the Review of Commonwealth/State Service Provision, *Report on Government Services* – issued annually
<<http://www.pc.gov.au>>

APPENDIX EXPERIMENTAL COMMUNITY-BASED CORRECTIONS DATA

INTRODUCTION

This appendix presents experimental data for Indigenous persons in community-based corrections. Data are presented as the number of Indigenous persons on community-based corrections orders on the first day of the month.

An initial evaluation of the quality of Indigenous identification by the ABS in community-based corrections has highlighted that currently most jurisdictions comply with the requirements of the ABS Standard Indigenous Question (SIQ - see Explanatory Notes, paragraphs 27 - 31). As Indigenous Status data for persons under the supervision of Community-Based Corrections are still experimental, care should be taken when referring to this data. It should be noted that both Western Australia and the Northern Territory ask offenders variations of the SIQ which do not contain all the necessary elements of the ABS question and are unable to hold the SIQ appropriately in recording systems. The ABS will continue to work with states and territories to better understand and improve the quality of this data item.

APPENDIX EXPERIMENTAL COMMUNITY-BASED CORRECTIONS DATA

continued

A1 PERSONS IN COMMUNITY-BASED CORRECTIONS(a)(b), By Indigenous status

	NSW	Vic.	Qld	SA(c)	WA(d)	Tas.	NT(e)	ACT	Aust.(f)
INDIGENOUS (NUMBER ON FIRST DAY OF MONTH)									
2007	3 198	341	2 267	816	1 643	137	880	100	9 380
2008	3 178	353	2 556	928	1 815	132	847	125	9 935
2009	3 169	439	2 823	1 001	1 949	161	876	153	10 572
2008									
Dec Qtr	3 212	359	2 617	1 003	1 850	137	834	149	10 163
2009									
Mar Qtr	3 206	380	2 714	1 011	1 928	153	863	150	10 404
Jun Qtr	3 132	420	2 735	987	2 027	157	882	158	10 498
Sep Qtr	3 143	479	2 856	990	1 980	163	908	151	10 670
Dec Qtr	3 195	479	3 014	1 018	1 861	173	850	154	10 744
Oct	3 167	472	2 960	997	1 889	174	812	149	10 620
Nov	3 217	477	3 039	1 019	1 867	172	858	152	10 801
Dec	3 201	489	3 044	1 037	1 826	173	881	160	10 811
NON-INDIGENOUS (NUMBER ON FIRST DAY OF MONTH)									
2007	13 843	6 707	10 317	4 809	3 580	970	291	959	41 476
2008	13 793	6 946	11 564	4 919	3 715	970	252	1 075	43 234
2009	13 119	7 220	11 785	4 956	3 626	1 067	267	1 166	43 205
2008									
Dec Qtr	13 593	6 826	11 826	5 000	3 691	996	231	1 145	43 307
2009									
Mar Qtr	13 541	6 283	11 697	5 026	3 668	1 004	234	1 170	42 623
Jun Qtr	13 289	6 606	11 603	5 005	3 655	1 051	244	1 183	42 636
Sep Qtr	12 851	7 863	11 886	4 953	3 570	1 089	258	1 153	43 624
Dec Qtr	12 792	8 127	12 008	4 840	3 612	1 123	332	1 159	43 993
Oct	12 824	8 084	11 872	4 883	3 618	1 098	324	1 146	43 849
Nov	12 903	8 098	12 029	4 819	3 629	1 124	332	1 152	44 086
Dec	12 650	8 200	12 124	4 818	3 588	1 146	339	1 178	44 043
UNKNOWN (NUMBER ON FIRST DAY OF MONTH)									
2007	962	662	—	46	6	52	2	79	1 809
2008	983	651	—	41	15	41	1	101	1 833
2009	1 849	820	—	64	20	44	6	75	2 877
2008									
Dec Qtr	1 247	964	—	42	6	25	3	50	2 336
2009									
Mar Qtr	1 533	1 349	—	57	12	38	3	71	3 062
Jun Qtr	1 848	1 223	—	58	16	38	—	47	3 232
Sep Qtr	1 972	343	—	65	35	40	1	82	2 538
Dec Qtr	2 044	363	—	76	16	59	20	98	2 675
Oct	2 038	342	—	73	12	50	18	98	2 631
Nov	2 047	368	—	75	15	56	20	101	2 682
Dec	2 048	378	—	80	20	72	21	94	2 713

— nil or rounded to zero (including null cells)

(a) Figures include persons with breached or suspended orders, with the exception of Vic. and Tas.

(b) Figures for the quarter and year for first day of the month counts are calculated as a simple average – see Explanatory Notes, paragraph 5.

(c) Data movements may be influenced by data entry delays – see Explanatory Notes, paragraph 36.

(d) Data is subject to processing delays of 4 to 6 weeks - see Explanatory Notes, paragraph 38.

(e) Bail data for the December quarter 2009 is excluded. See Explanatory Notes paragraph 41.

(f) See footnotes c-e.

APPENDIX EXPERIMENTAL COMMUNITY-BASED CORRECTIONS DATA
continued

A1 PERSONS IN COMMUNITY-BASED CORRECTIONS(a)(b), By Indigenous status *continued*

	NSW	Vic.	Qld	SA(c)	WA(d)	Tas.	NT(e)	ACT	Aust.(f)
PERSONS (NUMBER ON FIRST DAY OF MONTH)									
2007	18 002	7 710	12 584	5 671	5 229	1 159	1 173	1 138	52 665
2008	17 954	7 950	14 120	5 888	5 545	1 143	1 100	1 301	55 001
2009	18 137	8 479	14 608	6 021	5 595	1 272	1 149	1 394	56 654
2008									
Dec Qtr	18 052	8 150	14 443	6 045	5 547	1 158	1 068	1 344	55 806
2009									
Mar Qtr	18 280	8 012	14 411	6 093	5 608	1 195	1 100	1 390	56 089
Jun Qtr	18 269	8 249	14 339	6 050	5 699	1 247	1 126	1 388	56 366
Sep Qtr	17 966	8 685	14 742	6 008	5 585	1 291	1 167	1 387	56 832
Dec Qtr	18 032	8 969	15 023	5 934	5 488	1 355	1 202	1 410	57 412
Oct	18 029	8 898	14 832	5 953	5 519	1 322	1 154	1 393	57 100
Nov	18 167	8 943	15 068	5 913	5 511	1 352	1 210	1 405	57 569
Dec	17 899	9 067	15 168	5 935	5 434	1 391	1 241	1 432	57 567

(a) Figures include persons with breached or suspended orders, with the exception of Vic. and Tas.

(b) Figures for the quarter and year for first day of the month counts are calculated as a simple average – see Explanatory Notes, paragraph 5.

(c) Data movements may be influenced by data entry delays – see Explanatory Notes, paragraph 36.

(d) Data is subject to processing delays of 4 to 6 weeks - see Explanatory Notes, paragraph 38.

(e) Bail data for the December quarter 2009 is excluded. See Explanatory Notes paragraph 41.

(f) See footnotes c-e.

APPENDIX EXPERIMENTAL COMMUNITY-BASED CORRECTIONS DATA

continued

A2 PROPORTION OF PERSONS IN COMMUNITY-BASED CORRECTIONS(a)(b), By Indigenous status

	NSW	Vic.	Qld	SA(c)	WA(d)	Tas.	NT(e)	ACT	Aust.(f)
INDIGENOUS (%)									
2007	17.8	4.4	18.0	14.4	31.4	11.8	75.0	8.8	17.8
2008	17.7	4.4	18.1	15.8	32.7	11.5	77.0	9.6	18.1
2009	17.5	5.2	19.3	16.6	34.8	12.7	76.2	11.0	18.7
2008									
Dec Qtr	17.8	4.4	18.1	16.6	33.3	11.9	78.1	11.1	18.2
2009									
Mar Qtr	17.5	4.7	18.8	16.6	34.4	12.8	78.4	10.8	18.5
Jun Qtr	17.1	5.1	19.1	16.3	35.6	12.6	78.3	11.4	18.6
Sep Qtr	17.5	5.5	19.4	16.5	35.5	12.6	77.8	10.9	18.8
Dec Qtr	17.7	5.3	20.1	17.2	33.9	12.8	70.8	10.9	18.7
Oct	17.6	5.3	20.0	16.7	34.2	13.2	70.4	10.7	18.6
Nov	17.7	5.3	20.2	17.2	33.9	12.7	70.9	10.8	18.8
Dec	17.9	5.4	20.1	17.5	33.6	12.4	71.0	11.2	18.8
NON-INDIGENOUS (%)									
2007	76.9	87.0	82.0	84.8	68.5	83.7	24.8	84.3	78.8
2008	76.8	87.4	81.9	83.5	67.0	84.9	22.9	82.6	78.6
2009	72.3	85.2	80.7	82.3	64.8	83.9	23.2	83.7	76.3
2008									
Dec Qtr	75.3	83.8	81.9	82.7	66.5	86.0	21.7	85.2	77.6
2009									
Mar Qtr	74.1	78.4	81.2	82.5	65.4	84.1	21.3	84.1	76.0
Jun Qtr	72.7	80.1	80.9	82.7	64.1	84.3	21.7	85.2	75.6
Sep Qtr	71.5	90.5	80.6	82.4	63.9	84.3	22.1	83.1	76.8
Dec Qtr	70.9	90.6	79.9	81.6	65.8	82.9	27.6	82.2	76.6
Oct	71.1	90.9	80.0	82.0	65.6	83.1	28.1	82.3	76.8
Nov	71.0	90.6	79.8	81.5	65.9	83.1	27.4	82.0	76.6
Dec	70.7	90.4	79.9	81.2	66.0	82.4	27.3	82.3	76.5
UNKNOWN (%)									
2007	5.3	8.6	—	0.8	0.1	4.5	0.1	6.9	3.4
2008	5.5	8.2	—	0.7	0.3	3.6	0.1	7.7	3.3
2009	10.2	9.7	—	1.1	0.4	3.4	0.5	5.3	5.1
2008									
Dec Qtr	6.9	11.8	—	0.7	0.1	2.1	0.2	3.7	4.2
2009									
Mar Qtr	8.4	16.8	—	0.9	0.2	3.2	0.3	5.1	5.5
Jun Qtr	10.1	14.8	—	1.0	0.3	3.1	—	3.4	5.7
Sep Qtr	11.0	3.9	—	1.1	0.6	3.1	0.1	5.9	4.5
Dec Qtr	11.3	4.0	—	1.3	0.3	4.4	1.6	6.9	4.7
Oct	11.3	3.8	—	1.2	0.2	3.8	1.6	7.0	4.6
Nov	11.3	4.1	—	1.3	0.3	4.1	1.7	7.2	4.7
Dec	11.4	4.2	—	1.3	0.4	5.2	1.7	6.6	4.7

— nil or rounded to zero (including null cells)

(a) Figures include persons with breached or suspended orders, with the exception of Vic. and Tas.

(b) Figures for the quarter and year for first day of the month counts are calculated as a simple average – see Explanatory Notes, paragraph 5.

(c) Data movements may be influenced by data entry delays – see Explanatory Notes, paragraph 36.

(d) Data is subject to processing delays of 4 to 6 weeks - see Explanatory Notes, paragraph 38.

(e) Bail data for the December quarter 2009 is excluded. See Explanatory Notes paragraph 41.

(f) See footnotes c-e.

GLOSSARY

Bail	This is generally a pre-sentence option where a person is released into the community for a period before they appear in court for trial or final sentencing. Bail orders can require a financial surety to be lodged with the court, and a number of conditions including supervision and residential requirements designed to ensure the re-appearance of the person at court. Bail counts are available only in states and territories where bail orders are supervised by corrective services. Bail is a sub-category of Supervision where the person is under the supervision of corrective services (<i>see</i> Supervision).
Community-based corrections	This refers to the community-based management of court-ordered sanctions, post-prison administrative arrangements and fine conversions, which principally involve the provision of one or more of the following activities: supervision, programs or community work.
Community service	This category of community-based corrections orders includes sentencing options requiring offenders to undertake a specified number of hours of unpaid, supervised work to benefit the community on an approved project. Community service is a sub-category of Reparation (<i>see</i> Reparation).
Corrective services custody	Confinement in a place intended primarily for the purpose of confining prisoners, such as a prison, prison farm, Periodic Detention Centre or Community Custody Centre.
Federal sentenced prisoner	Persons charged and sentenced under a Commonwealth statute or transferred from another country to serve their sentence in Australia.
Fine option	A community-based sentence type where the offender is serving a sentence for default of a fine. In most jurisdictions this order type requires an offender to complete community service as a reparatory act. Fine option is a sub-category of Reparation (<i>see</i> Reparation).
Full-time prison custody	A type of custody where a prisoner is required to be held in custody on a full-time basis. This includes prisons, Queensland Community Custody Centres and work outreach camps. Full-time prison custody excludes periodic detention (<i>see</i> Periodic detention).
Home detention	(<i>see</i> Restricted movement)
Indigenous prisoner	A prisoner who identifies as being of Aboriginal or Torres Strait Islander origin, or both.
Legal status	A person may be either sentenced or unsentenced depending on the warrant(s) or court order(s) that provide the legal basis for the administration of the person through the criminal justice system.
Open custody	Refers to prisoners housed in minimum security custodial facilities that do not require them to be confined by a secure perimeter physical barrier, irrespective of whether a physical barrier exists.
Parole	A parole order is made following a period of imprisonment and requires an offender to be subject to supervision in the community. Additional conditions may also be applied such as programs, counselling or drug testing. Parole is a sub-category of Supervision (<i>see</i> Supervision).
Periodic detention	A type of custody or order where a sentenced prisoner is required to be held in custody on a part-time basis. Currently this consists of two consecutive days in a one-week period, while remaining at liberty during the rest of the week.
Prisoner	A person held in custody. For the purposes of this collection, prisoners are those whose confinement is the responsibility of a corrective services agency.
Remand	(<i>see</i> Unsentenced)
Reparation	Reparation refers to all offenders with an order that requires them to undertake unpaid, justice agency-approved community service work.

GLOSSARY *continued*

Restricted movement	This refers to persons who are subject to a system of restricted movement, including supervision and/or electronic monitoring. This category includes home detention that may restrict residence to a nominated place. Restricted movement can be either a pre-sentence or post-sentence order.
Secure custody	Refers to prisoners housed in medium or maximum security custodial facilities requiring them to be confined by a secure physical barrier.
Sentenced	A legal status indicating that a person has received a custodial or community-based order from a court in response to a conviction for an offence.
Sentenced prisoner reception	Refers to entry into corrective services custody from the community, having received a sentence of imprisonment as an outcome of a court proceeding; or persons who are sentenced to custody while in custody on remand (i.e. changed status from a remand to a sentenced prisoner); or persons entering custody as a result of defaulting on the payment of a fine. Sentenced prisoners in custody who receive a further sentence of imprisonment are not counted as sentenced receptions.
Sentenced probation	A supervision order made following an original sentence handed down in court following conviction. A probation order generally requires 'good behaviour' and compliance with the directions of supervisors. The order may also require compliance with conditions such as program attendance and residential requirements.
Supervision (compliance)	This includes community-based orders other than those categorised as restricted movement or reparation (e.g. parole, bail and sentenced probation).
Unsentenced	A legal status indicating that a person is confined to custody or supervision while awaiting the outcome of their trial.

FOR MORE INFORMATION . . .

INTERNET **www.abs.gov.au** the ABS website is the best place for data from our publications and information about the ABS.

INFORMATION AND REFERRAL SERVICE

Our consultants can help you access the full range of information published by the ABS that is available free of charge from our website. Information tailored to your needs can also be requested as a 'user pays' service. Specialists are on hand to help you with analytical or methodological advice.

PHONE 1300 135 070

EMAIL client.services@abs.gov.au

FAX 1300 135 211

POST Client Services, ABS, GPO Box 796, Sydney NSW 2001

FREE ACCESS TO STATISTICS

All statistics on the ABS website can be downloaded free of charge.

WEB ADDRESS www.abs.gov.au